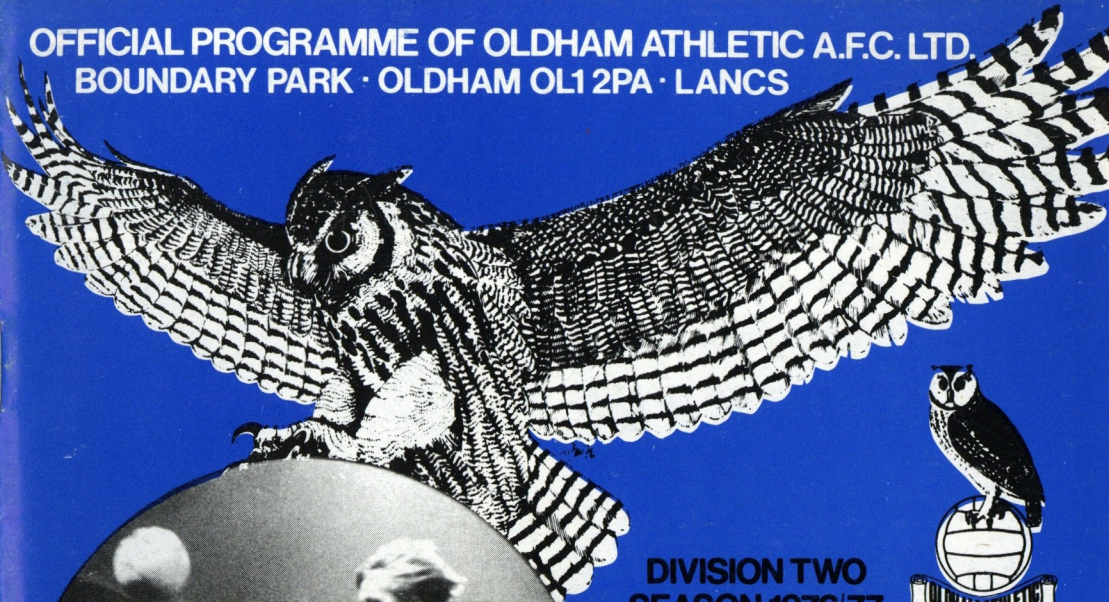
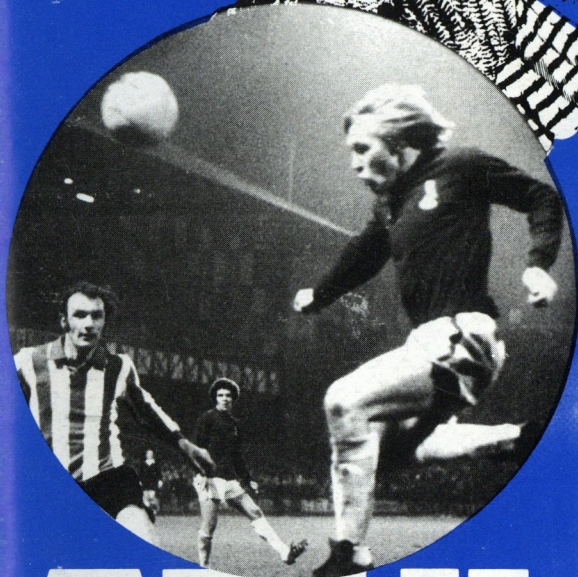


OFFICIAL PROGRAMME OF OLDHAM ATHLETIC A.F.C. LTD.
BOUNDARY PARK · OLDHAM OL1 2PA · LANCs



DIVISION TWO
SEASON 1976/77



ATHLETIC
v
LUTON TOWN

SATURDAY, MAY 14th 1977
KICK-OFF 3.00 p.m.

ATHLETIC REVIEW

3341

PRICE 10pence

**OLDHAM
ATHLETIC
A.F.C. LTD.**



HONOURS LIST:

Division 1: Runners-up — 1914-15.
Division 2: Runners-up — 1909-10.
Division 3: Champions — 1973-74.
Division 3 (North): Champions — 1952-53.
Division 4: Third (promoted) — 1970-71.
Runners up — 1962-63.

H. Wilde (Chairman). R. Schofield (Vice Chairman).
DIRECTORS: D. A. Brierley, G. T. Butterworth, J. Kershaw,
G. Knight, I. H. Stott, E. Sykes, F. D. Whitehead,
MANAGER: J. Frizzell
SECRETARY: W. Griffiths, ASST. SECRETARY: T. Fisher
PHYSIOTHERAPIST: R. Ray, CLUB DOCTOR: R. B. Hollos
PROMOTIONS MANAGER: B. Joyce.

Editor: S. Liversedge
Art Design: Comprehensive Art Services
Photographs: Oldham Chronicle
& County Press Photos, Wigan
R.H.H. Venables (Oldham Camera Club)
Print: L.V. Lawlor, Oldham

TODAY'S MATCH IS
BEING SPONSORED BY

**ROTHMANS
OF
PALL MALL**

EVERY GOOD WISH IS
EXTENDED BY THEM TO
OLDHAM ATHLETIC
FOOTBALL CLUB

**DON'T FORGET THE
Ian Wood
TESTIMONIAL MATCH**

**ATHLETIC
v
MANCHESTER
CITY**

at Boundary Park on
Tuesday, 17th May
K.O. 7-30

Tickets Available for
Main Stand Seats
at the General Office



ON THE SPOT!



IT ALL depends upon your point of view . . . and here are two viewpoints of the same goal, when Dave Irving took a penalty against Fulham, and left Gerry Peyton with no chance. You can see the dejection on the 'keeper's face, as he gazes at the ball in the back of the net.

Welcome to LUTON TOWN

LUTON TOWN'S players trooped off the field at Bloomfield-road two weeks ago knowing that their waning hopes of promotion had just been virtually demolished, with a goal scored by Blackpool's Bob Hatton in the closing stages of the game. They also had a casualty from the match, for PAUL FUTCHER, one of Town's footballing twins, had been stretchered off the field.

Futcher had been injured in a goalmouth incident when Hatton was challenging for the ball, and the Luton defender and his 'keeper, MILIJA ALEKSIC, went up to try to avert danger. Futcher received a nasty injury to his right ear which required several stitches, and he took no further part in the game.

So Luton, who in March (when they scored the only goal of the game against us at Kenilworth-road) had been in the middle of a tremendous run which gave them high hopes of claiming a First Division place, come to Boundary Park today knowing their efforts were not enough, and that a Lancashire club, Blackpool, had probably been the ones to kill off their dreams of promotion.

Luton's financial problems obviously played a part in their calculations, when it came to bidding for a place in the First Division again, but they have contrived to recruit some players of great promise, and some with a lot of experience at top level.

The Futcher twins, Ron and Paul, were signed from Chester in the summer of 1974. Paul cost Luton a club-record transfer fee of £100,000, and he was still only 17, with a handful of Fourth Division games behind him. Ron cost a £25,000 fee, and while his brother was initially rated the big-name buy, both players have now made their mark — one in the back-four line, the other as a striker — with Luton.

Goalkeeper Aleksic, born in the North of Yugoslav parents, first came to notice with Stafford Rangers, and he broke into League football when Plymouth signed him. Luton recruited him from Argyle last January.



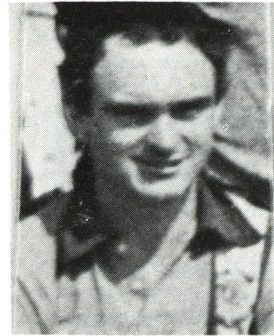
Luton manager Harry Haslam . . . he has dealt shrewdly in the transfer market, signing experienced players and youngsters of tremendous promise.

And from Leeds Luton signed central defender JOHN FAULKNER, who was at centre-half for Sutton United when they played the Elland-road club in the F.A. Cup some years ago.

He did so well against Leeds that Don Revie immediately signed him, but the newcomer to League football had little luck, for a broken leg threatened to end his career. Eventually, he recovered, and since he joined Luton five years ago, he has been a first-team regular. He proved a bargain buy, at £6,000.

Right-back PAUL PRICE was another broken-leg casualty in 1974, and though he recovered, he broke the leg again, so he has had to fight back with real courage. But he returned to make his Second Division debut last season and, at 22, he has many years ahead of him in League football.

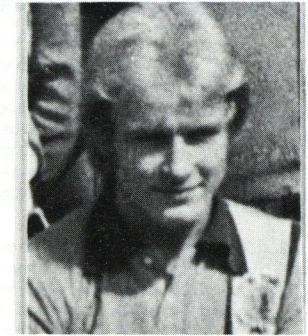
STEVE BUCKLEY began as a scoring winger with Burton Albion, in the Southern League, then Luton stepped in to sign him for £2,000 in the summer of 1974. Within six months, he was playing First Division football — at full-back — and he has retained the No. 3 spot ever since his impressive debut . . . though he still enjoys going up in support of the attack.



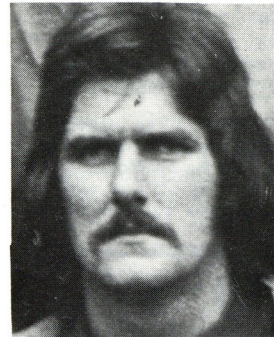
John Aston



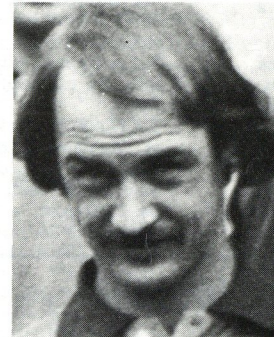
Paul Futcher



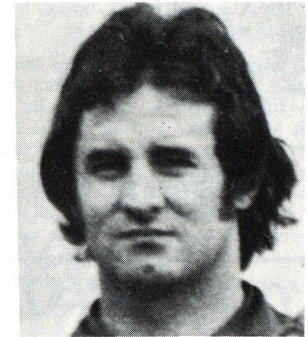
Ron Futcher



Brian Chambers



John Faulkner



Jimmy Husband

PROMOTION HOPES WERE DENTED BY A DEFEAT AT THE SEASIDE . . .

BRIAN CHAMBERS made his name as a midfield player with Sunderland, and in 1973 Arsenal paid a £70,000 fee for him. A year later, Luton moved in smartly to land him for less than half that price, and last season he became a first-team regular.

Two other players from the North are JIMMY HUSBAND and JOHN ASTON. Husband collected a string of honours as a youngster and during his career with Everton, and it cost Luton a £70,000 fee when they signed him in November, 1973. Last season, he finished as Luton's leading marksman.

Aston, of course, achieved fame with his display for Manchester United in the 1968 European Cup-final triumph, and he has been at Luton since 1972, when he was signed for £30,000. He has been one of

Town's most consistent players ever since. He is no stranger to Oldham, for he still lives in the area and trains regularly with us.

Two of Luton's younger players — DAVID GEDDIS and RICKY HILL — show great promise for the future, and in PASQUALE FUCCILLO they have another player of great potential. Fuccillo, the son of Italian parents who settled at Bedford, joined Luton as a 16-year-old apprentice in the summer of 1973, and worked his way through to the League side, scoring on his debut in February of last year.

Manager HARRY HASLAM, a former Manchester United player, has dealt shrewdly in the transfer market, and already many people are tipping Luton to be a force in the promotion race next season.

LATICS YOUNGSTERS REACH FINAL

ONCE AGAIN, Oldham Athletic's youngsters showed that they lacked nothing in fighting spirit, when they took on Burnley in the first leg of the Lancashire F.A. Youth Cup semi-final, for after going 2-1 down, they came back to score a 3-2 victory and go into the return match at Boundary Park with a slender lead.

It took Oldham fewer than five minutes to score their first goal, but Burnley rapped back with a couple of goals, and we were still trailing when half-time arrived. In the second half, however, Oldham's youngsters gave their Burnley counterparts a real chasing, and when the final whistle blew, goals from Tim Jordan (2) and Mark Hilton meant that we returned home holding a single-goal lead.

So, not for the first time, the 'Latics boys had shown they could upset the odds. First, they gave a tremendous display against Manchester United at Old Trafford, to snatch victory in the dying seconds of a replay there. United, 3-0 down, had scored 10 minutes from time, hit another goal with five minutes to go, and got the equaliser with only 60 seconds left. But before the

final whistle went, Oldham struck again, to earn the right to meet Burnley.

And that was the second replay 'Latics had won, for after a 1-1 draw against Blackpool at Oldham, they went to the seaside and won 2-1. In the first meeting with United, after being two goals up, Oldham had to settle for a 2-2 draw. And then came that last-gasp winner in the Old Trafford replay.

In the first leg of the semi-final, Oldham had to do it the hard way again, by coming back from behind. And that 3-2 result made certain of a "cliffhanger" second leg in the return at Boundary Park.

Oldham made no mistake in the second leg, though, and goals from Jordan, Hilton, Jim Steel and David Taylor (penalty) ensured a 4-2 victory and an aggregate 7-4 scoreline, which took 'Latics youngsters into the two-legged final against Manchester City.

The first leg of the final will be played at Maine-road next Wednesday, and the Boundary Park decider will be on Monday, May 23. In each case, the kick-off time will be 7.00 p.m. — and we hope you will be there to cheer our lads on.

'CAPS MUST BE WORN' — AND THE PLAYERS' WAGES WERE 25p

THESE ARE the days of massive transfer fees and substantial rewards for playing success... but what was it like away back in 1890? — Then, Luton Town became the first southern club to pay wages — 5s. (25p) — and then it was only to the three best players.

When the season was over, it was decided to pay every player 2s.6d. (12½p) plus 6d. (2½p) for away matches, and an allowance for working time lost. And, as Luton's funds and prestige increased, so the wages were doubled, and further improved.

In those early days of Soccer, also, Luton had a reputation for colourful attire — the players first wore navy-blue and pink halved shirts, with caps to match. And the edict was that caps must be worn on the field. Soon, however, the caps were cast on one side, and the colours changed to "cochineal" for Luton's entry into League football.

Luton greeted the arrival of the new century with sky-blue shirts and white shorts, then in 1920 they switched to white shirts and black shorts. And they changed again, in their promotion season of 1973-74,

to orange shirts with navy and white vertical stripes down the left-hand side, navy shorts and orange stockings.

But, of course, whatever the colour of their playing strip, Luton have always been known to football fans by the one and only nickname of The Hatters.

Luton first joined the Second Division in 1897, taking the place of Bolton, but the turn of the century spelled their exit in favour of Blackpool, and it was 1920 before they gained League status again. Since then they have sampled all four divisions. In 1955, after 11 seasons in Division 2, they gained promotion, and four years later went to Wembley, only to lose to Nottingham Forest.

Twelve months later, they were relegated sliding down to Divisions 3 and 4. They made the long haul back in season 1967-68, equalling the record of 66 points for the division, regained Second Division status in 1970, then moved up to Division 1, only to be relegated again. So it's been a long journey of ups and downs since 1885, when Luton were formed by the amalgamation of the local Wanderers and a team named Excelsior.

Jimmy Frizzell

OLDHAM ATHLETIC'S MANAGER gives you his

CANDID COMMENT

WE'VE HAD our ups and downs this season, and we've had our critics, too, but as we go into the final home game, I would just like to thank those supporters who have stuck with us, and to say that we can hope for better things next season. At least, we have consolidated our Second Division status.

Early on, it looked as if we could break through to the promotion pack, but our results since the F.A. Cup-tie at Liverpool dispelled those hopes. Even so, we WERE in with a chance, at one stage, and our ambition was — and is — to claim a First Division place. We were not the only club to suffer a Cup "hangover", either... see how Cardiff have struggled, since their tie against Everton.

We have now published our retained list, and free transfers have been given to Jim Branagan, John Dungworth and Colin Johnson. So there is room for new faces, if we can sign players to boost our bid next season. I might add that I recently inquired about a player — to be quoted a fee of £200,000! So you can see the problems.

On the brighter side, I am pleased to report that goalkeeper John Platt is home and convalescing, and we are all hoping he will be back to full fitness for next season — even if it means that he will spend some hours during the summer doing training.

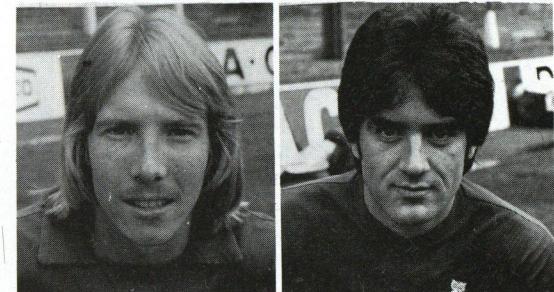
John's injury in the game at Luton may have proved a blessing in disguise, for it was when he was being treated for the bruised kidney that it was found his other was damaged — nothing to do with the match injury — and so the doctors were able to remove the damaged one before real harm was done. Knowing John, and the courage he has shown, I have no doubts that he will be back in action next season.

We at Oldham also know one of our opponents today better than is usually the case, for John Aston has been a regular visitor to Boundary Park for training sessions this season. It's a tribute to him when I say that he has mixed with the lads as if he had been one of our own players — although, of course, he will let us know that he's on the opposite side today!

I have seen a lot of players come here to train, when they have been with other clubs, and I have to say that no-one has shown



LET'S FINISH OFF WITH A FLOURISH!



John Platt

Jim Branagan

more dedication than John Aston — there have been times when he has trained on his own, and still put 100 per cent effort into the job. From what I have seen of him, I consider him to be an ideal professional.

But today, I hope our own players will show the supporters that they can round off the season with a flourish. And the best way would be to score a decisive victory, and so enable us to finish on a note which leaves everyone optimistic about the prospects for next season. I think we can do it, too.

You will be sure to 'score'
every time when you shop at

Phil Cohen & Son Limited

Oldham's leading
Gents clothiers and outfitters



Phil Cohen
& Son Limited

2, MARKET PLACE
5, ST. PETER'S SHOPPING CENTRE
OLDHAM

COURTLETS INSURANCE

BROKERS LIMITED

5, QUEEN STREET, OLDHAM OL1 1TH
TELEPHONE: 061 624 6063

SPECIALISTS IN:

- LIFE ASSURANCE
- MOTOR INSURANCE
- SELF EMPLOYED PENSIONS
- INVESTMENT ADVICE
- PERSONAL INSURANCES

Facilities at Lloyds and
with all major BIA Companies

**AGENTS FOR NATIONWIDE
BUILDING SOCIETY**

ASHTON FURNISHING

BETTER FURNITURE AT BIGGER DISCOUNTS

**LOW COST
CONFIDENTIAL
CREDIT
TERMS**

**1 King Street,
Oldham**

Tel: 620 2484

Branches at
Ashton &
Stockport

MATCH BALL DONATED BY

Mr. A. Fitton

32 Shaw Road, Thornton, Rochdale

HAPPY BIRTHDAY ANDREW

OLDHAM

Blue shirts, White shorts

CHRIS OGDEN
IAN WOOD
RONNIE BLAIR
GRAHAM BELL
DAVID HOLT
JOHN HURST
CARL VALENTINE
IAN ROBINS
VIC HALOM
LES CHAPMAN
ALAN GROVES
To be announced

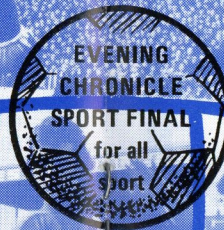
1
2
3
4
5
6
7
8
9
10
11
12

LUTON TOWN

MILIJA ALEXSIC
PAUL PRICE
STEVE BUCKLEY
BRIAN CHAMBERS
JOHN FAULKNER
PAUL FUTCHER
JIMMY HUSBAND
RICKY HILL
DAVID GEDDIS
PASQUALE FUCCILLO
JOHN ASTON
To be announced

Referee
T. Farley
Newton Aycliffe

Kick-off 3.00 p.m.



Linesmen
J. Kaye
Red Flag
F. Potter
Yellow Flag

CABARET:
FRIDAYS &
SATURDAYS.
MODERN & OLD TYME
DANCING - WEDNESDAY & SUNDAYS

LATE
LICENCE
FRIDAYS &
SATURDAYS.
ROOM AVAILABLE
FOR PRIVATE PARTIES
ON CERTAIN NIGHTS.

The Latics Boundary Club

TELEPHONE: 061 624 1051



GEORGE HILL

(OLDHAM) LIMITED

**TIMBER MERCHANTS &
WALLBOARD DISTRIBUTORS**

Imported softwoods, hardwoods
plywoods, formica, mouldings, doors,
dowels. Stockists of Weyroc,
interwoven fencing and Asbestolux.

Saw, Planing and Moulding Mills
**SCOTTFIELD SAW MILLS
OLDHAM**

Telephone: 061 652 7421
NEW BRANCH AT GLEBELANDS RD/SALE
TELEPHONE: 061 969 7543

F.D. WHITEHEAD BUILDING SERVICES LTD.

**CHADDERTON
OLDHAM**

**COMPLETE DESIGN
BUILDING & FURNISHING
SERVICE**

**SPECIALISTS IN ALL TYPES
OF CLUB BUILDING WORK**

Tel: 061 624 9737/3343.

BOAT & HORSES

— BROADWAY — CHADDERTON —

COLD TABLE, a la Carte

Monday—Friday 12 noon to 3 p.m.

* Reception Room for 60 persons

Reservations 061-681 2363

AA Registered — Diners Club
American Express, Access.

Your Hosts:

Mike and Jean Healey

★ SPORTS REQUIREMENTS

GILBERTS

WATER LANE, WILMSLOW

Telephone: 29221/2

Bramhall Centre - Bramhall

Telephone: 439 7394

Suppliers of kit to leading teams
including OLDHAM ATHLETIC

Butterworth's Electrical

Tel: Shaw 47773

THE BEST BY ANY TEST WE
SCORE. AND WIN BY
50 YEARS OF EXPERIENCE

Telephone: 061-370 8611

THOMAS A. METCALFE LTD

SUPPLIERS OF WELDING AND
CUTTING EQUIPMENT

TAMCO WORKS,
AUDENSHAW ROAD, AUDENSHAW,
MANCHESTER, M34 5PL.

A WIN EVERY TIME THAT'S WHY . . .

BUTTERWORTH'S

106 UNION STREET, OLDHAM

ARE TOP OF THE LEAGUE

Quick Cafe or Take-out Service

Phone: 624 4402

★ Oldham's Leading
Fish and Chip Cafeteria

Dinners Daily 11.30 to 2 p.m.

Tea Friday 4 p.m. to 7 p.m. Seating for 100

FURNISHERS

R. SCHOFIELD & SON

14/16, 27/29 OLD ROAD

FAILSWORTH, MANCHESTER

Telephone: 061-681 2292

PENNINE PETROLEUM PRODUCTS

Authorised
Distributors



67 UNION STREET . OLDHAM

Telephone: 061-624 1332 (Depot)
061-624 4489 (Accounts)

WATSON'S STORES

Pay a visit to Lancashire's leading
Carpet Specialists and safeguard
your own interests by comparing
our prices and qualities.

FIRST-CLASS FITTING SERVICE

Estimates Free Any Distance

NO "FREE" GIFTS OR GIMMICKS

GLODWICK ROAD . OLDHAM

Telephone 061-633 2461

WHAT DO YOU KNOW ABOUT SOCCER?

QUIZ

1. What is Scotland's highest score against England?
2. Can you name the manager, who in post-war years, took his club to five Cup victories at Wembley?
3. Name three players who were voted Footballer of the Year, but were not internationals.
4. Which club supplied the Footballer of the Year in consecutive years?
5. Which player won the European Footballer of the Year award, but never the equivalent English award?
6. Name the last club to reach the F.A. Cup final without a manager.
7. Name the team that, on the last two times they appeared at Wembley, did so as members of the Second Division.
8. Can you name — four goalkeepers — who, since the war, played in F.A. Cup finals and had surnames of only four letters?
9. Which club has played in League Cup finals as members of the First, Second and Third divisions?
10. Name the eight grounds on which the F.A. Cup final has been staged.

ST. JOHN AMBULANCE BRIGADE CENTENARY

AS OUR supporters will know, every week a detachment from the St. John Ambulance Brigade is in attendance at our matches. In this centenary year, the brigade is being honoured by the issue of special postage stamps by the Post Offices in Jersey (24 June), Guernsey (25 October) and Isle of Man (25 May).

All these stamps are being offered on the official St. John FIRST DAY COVERS for the all-in price of £2.50. Send correct payment with your name and address to:

"SJA Stamps", 1 High Street,
Worthing, Sussex
HELP YOURSELF WHILE
HELPING OTHERS

Paul Varea, of 61 Stella Croft, Chelmsley Wood, Birmingham B37 7NJ, is seeking programmes of past games: two copies of those against Borussia Dortmund, Sofia Select XI, DFK Belgrade, F.C. Thun and Internacional, and mint copies of the programme for the game against West Brom on April 24, last year. "I'll pay cash, or exchange programmes at a rate of 5 to 1," he says. And he sends best wishes to our striker, David Shaw, "from some of his most ardent fans on the 'Rainbow Stand' side of The Hawthorns."

TEAM CHANGES

USE THE letters in the names of these three "players" to spell out two Scottish clubs:

ART BEST
VIC RICH
RORY HINE

(C) PQRS

FOUR OF A KIND

HERE, in alphabetical order, are the names of four post-war managers of one club. Can you list the names in their correct order, and give the name of the club?

FRED FORD
BERT HEAD
MAURICE LINDLEY
LOUIS PAGE

(C) PQRS

CLUB SANDWICH

FIND THE nickname of a League Soccer club that will fit between and make every column a three-lettered word:

A R E O P I A

- - - - -

E T D E A K H

(C) PQRS

QUIZ ANSWERS

1. 7-2, in 1878. 2. Bill Nicholson, when he managed Spurs. 3. Bert Trautmann, (1957), Jimmy Adamson (1963), and Tony Book (1970). 4. Manchester City, Don Revie, in 1956, and Bert Trautmann, in 1957. 5. Denis Law. 6. Luton Town, in 1959. 7. Barnsley, in 1910 and 1912. 8. Ray Wood, Gordon West, Nigel Sims and George Farm. 9. Aston Villa. 10. Wembley, Old Trafford, Goodison Park, Kennington Oval, Lillie Bridge, Stamford Bridge, Crystal Palace and Fallowfield.

TEAM CHANGES solution: Brechin City and Raith Rovers.

FOUR OF A KIND solution: Louis Page, Maurice Lindley, Bert Head and Fred Ford. And the name of the club they all managed is Swindon Town.

CLUB SANDWICH solution: aGe, rUt, eNd, oNe, pEa, iRk, aSh. Put the capital letters together, and you spell out the word GUNNERS... which, of course, is the nickname by which Arsenal are known.

FIXTURES

		results	attend
Aug.	14—Bradford City (LC1) . . . A	D 1-1	4120
	17—Bradford City (LC1) . . . H	L 3-1	7086
	21—Plymouth Argyle H	D 2-2	7010
	24—Blackpool A	W 2-0	9100
	28—Bristol Rovers A	D 0-0	7800
Sept.	4—Cardiff City H	W 3-2	8011
	11—Blackburn Rovers . . . H	W 2-0	9528
	18—Wolverhampton W . . . A	L 5-0	19250
	25—Orient H	D 0-0	9700
Oct.	2—Notts. County A	L 1-0	9125
	9—Millwall H	W 2-1	9274
	16—Chelsea A	L 4-3	25825
	23—Bolton Wanderers . . . H	D 2-2	16219
	30—Nottingham Forest . . . H	W 1-0	10597
Nov.	6—Burnley A	L 1-0	14305
	13—Carlisle United H	W 4-1	8936
	20—Hereford (F.A.1) . . . A	D 0-0	8997
	27—Southampton H	W 2-1	10622
Dec.	4—Fulham A	L 5-0	10280
	27—Sheffield United . . . H	L 2-1	14421
	28—Hull City A	W 1-0	11149
Jan.	8—Plymouth A (F.A.3) . . H	W 3-0	10000
	15—Blackpool H	W 1-0	12506
	22—Plymouth Argyle . . . A	D 2-2	10493
	29—N. Victoria (F.A.4) . . A	W 3-1	28834
Feb.	5—Bristol Rovers H	W 4-0	9529
	12—Cardiff City A	L 3-1	12689
	15—Burnley H	W 3-1	12438
	19—Blackburn Rovers . . . A	L 2-0	11372
	26—Liverpool (F.A.5) . . . A	L 3-1	52455
Mar.	5—Orient A	W 2-0	5206
	8—Luton Town A	L 1-0	12301
	12—Nott. County (LCF) . . H	D 1-1	9771
	15—Wolverhampton W . . H	L 2-0	11808
	19—Millwall (F.A.6) . . . A	L 2-1	7,400
	22—Charlton Athletic . . . H	D 1-1	7,161
Apr.	2—Bolton Wanderers . . . A	L 3-0	18,000
	5—Sheffield United . . . A	L 2-1	14,000
	9—Hull City H	W 3-0	7,421
	12—Carlisle United A	D 1-1	6831
	16—Hereford United . . . H	L 5-3	7725
	19—Chelsea H	D 0-0	10511
	23—Southampton (FASF) . A	L 4-0	14586
	27—Nottingham Forest . . A	L 3-0	17139
	30—Fulham H	W 1-0	9466
May	7—Charlton Athletic . . . A	L 2-1	7535
	14—Luton Town H		
	21—F.A. Cup Final		

DIVISION 2 TABLE

	P	W	D	L	F	A	Pts.
Wolves	41	21	13	7	83	45	55
Chelsea	41	20	13	8	69	53	53
Nottingham F.	42	21	10	11	77	43	52
Bolton	39	19	10	10	71	50	48
Notts. County	41	19	10	12	65	59	48
Blackpool	40	15	17	8	56	42	47
Luton	41	20	6	15	65	47	46
Charlton	41	15	16	10	70	58	46
Southampton	40	17	10	13	72	64	44
Millwall	41	14	13	14	55	53	41
Sheffield U.	41	14	12	15	53	60	40
OLDHAM	41	14	10	17	51	62	38
Blackburn	41	14	9	18	41	54	37
Hull	40	10	16	14	44	48	36
Burnley	41	11	14	16	46	62	36
Fulham	41	11	13	17	54	60	35
Bristol Rovers	40	11	12	17	48	65	34
Cardiff	40	12	9	19	54	64	33
Carlisle	41	11	11	19	48	74	33
Orient	39	9	14	16	35	52	32
Plymouth	42	8	16	18	46	65	32
Hereford	40	7	14	19	54	77	28

LEAGUE APPEARANCES

Bell (36), Branagan (9), Chapman (41), Groves (33), Hicks (25), Hurst (37), Halom (37), Irving (24), Platt (27), Robins (40), Whittle (24), Wood (33), Shaw (30), Holt (17), Blair (30), Young (13), Valentine (17), P. Edwards (7), Ogden (14).

GOALSCORERS

Robins (3), Irving (6), Shaw (8), Chapman (2), Halom (18), Bell (4), Young (2), Wood (1), Hicks (1), Whittle (3), Groves (1), Valentine (2).

RESERVE APPEARANCES

Ogden (18), Hoolickin (25), Edwards S. (26), Roberts (13), Edwards, P. (15), Dungworth (15), Bell (4), Hilton (17), Young (13), Blair (4), Valentine (15), Johnson (4), Wood (3), Makin (2), Carroll (2), McGoldrick (7), Hall (2), Holder (1), Campbell (1), Norton (1), Holt (16), Seddon (1), Branagan (18), Whittle (12), Barnett (6), Wilson (16), Steel (11), Jackson (1), Ball (2), Broadley (1), Waddle (1), Hicks (7), Shaw (4), Groves (3), Keenan (4), Jordan (7), Bolger (4).

GOALSCORERS

Dungworth (7), Bell (2), Young (18), Blair (2), Valentine (3), Wood (1), Whittle (1), Steel (5), Barnett (3), Wilson (3), Hilton (5), McGoldrick (1), Groves (1), Branagan (2), Hicks (2), S. Edwards (1), Holt (1).

MAN IN THE MIDDLE

TERRY FARLEY, from Newton Aycliffe, Co. Durham, took up refereeing after playing junior football, and graduated to the League list via the North Regional and Northern leagues. He lined the F.A. Charity Shield game at Wembley last year, a League Cup semi-final in 1970, and has also lined Fairs Cup and Anglo-Italian ties, and a Scotland-Peru international. Married, with two sons, he is an accountancy assistant, enjoys playing squash and is secretary of the Association of Football League Referees and Linesmen (North-East section) and of the Bishop Auckland Referees Association.

RESERVE FIXTURES

Aug.	21—Stockport C. 'A' A	W 1-0
	28—Manchester U. 'A' . . . H	W 5-1
Sept.	4—Bradford C. Reserves . A	D 1-1
	11—Blackpool 'A' A	W 5-0
	25—Chester 'A' A	W 7-2
Oct.	9—Liverpool 'A' A	D 0-0
	16—Manchester C. 'A' . . . H	D 1-1
	30—Southport Reserves . . A	D 1-1
Nov.	6—Chester 'A' H	W 6-4
	13—Burnley 'A' A	W 8-0
	20—Southport Reserves . . H	W 1-0
	27—Crewe Alexandra 'A' . . A	W 7-0
Jan	8—Tranmere Rovers 'A' . . A	D 0-0
	15—Manchester U. 'A' . . . A	W 3-1
	22—Rochdale Reserves . . H	W 2-1
Feb.	12—Bradford C. Reserves . H	L 0-1
	19—Burnley 'A' H	W 5-0
Mar.	11—Manchester C. 'A' . . . A	W 0-3
	5—Stockport C. 'A' H	W 3-0
	12—Macclesfield T. Res. . . A	W 5-0
	26—Everton 'A' A	W 3-1
	28—Everton 'A' H	D 1-1
Apr.	2—Crewe Alexandra 'A' . . H	W 6-1
	23—Macclesfield T. Res. . . H	W 7-0
	26—Liverpool 'A' H	L 1-2
May	3—Tranmere Rovers 'A' . . H	W 3-1
	5—Rochdale Res. A	W 3-0
	Blackpool 'A' H	

Half-time Scoreboard

DIVISION ONE

BIRMINGHAM C. v. EVERTON	
COVENTRY C. v. MANCHESTER C.	
DERBY C. v. IPSWICH T	
LEEDS U. v. Q.P. RANGERS	
LIVERPOOL v. WEST HAM U	
MANCHESTER U. v. ARSENAL	
MIDDLESBROUGH v. BRISTOL C	
NEWCASTLE U. v. ASTON VILLA	
NORWICH C. v. SUNDERLAND	
TOTTENHAM v. LEICESTER C	
WEST BROM v. STOKE CITY	

DIVISION TWO

BLACKBURN R. v. FULHAM	
BLACKPOOL v. SOUTHAMPTON	
BOLTON W. v. WOLVES	
BRISTOL R. v. SHEFFIELD U.	
CARDIFF C. v. CARLISLE U.	
CHELSEA v. HULL CITY	
MILLWALL v. BURNLEY	
NOTTS. COUNTY v. CHARLTON A	
ORIENT v. HEREFORD	

IT'S IAN WOOD'S TESTIMONIAL

THE season may be coming to its close, but there's another game at Boundary Park next week . . . and that's the testimonial match for Ian Wood next Tuesday night. Manchester City will be the opposition, and it is hoped that Oldham supporters will turn up in force, to salute one of the finest servants 'Latics have had. Ian, a local lad, has been a one-club player throughout his career, and he has made hundreds of first-team appearances in Oldham's colours. On Tuesday, it's his night, and we hope to see you at Boundary Park for Ian's testimonial game.

CAST YOUR VOTE!

IF YOU haven't yet cast your vote in the club Player of the Year poll, don't forget this is YOUR chance to let us know whom you think has been Oldham Athletic's No. 1 footballer this season. There are several candidates, of course, as successors to Graham Bell, last season's award winner — he's in the running this time, too — and all you have to do is make your choice. Simply write the name of YOUR Footballer of the Year on a postcard, and hand it in or post it to Bernard Joyce at the Promotions Office, Boundary Park. The name of 'Latics Footballer of the Year will be announced in due course.

1977-1978 SEASON TICKETS

Despite ever rising costs and the probability that the minimum admission price for 1st team matches will be increased at the Football League A.G.M. in June to 80p our season ticket prices for 1977-78 go up by only £1.00 for the Ground and £2.00 for the Stand.

Seats for the Vice Presidents and Private Boxes remain at the same price.

Also we are continuing with the 15% discount if season tickets are paid for by 1st June or 10% discount thereafter up to the 30th June.

This represents a big saving to our supporters and we hope that many more will take advantage of this offer.

The full price range is as follows:—

	Season ticket	Cost with 15%	Cost with 10%
	Price	Discount	Discount
V.P. Box	80.00	68.00	72.00
V.P. Stand	60.00	51.00	54.00
Private Box	55.00	46.75	49.50
Centre Stand	28.00	23.80	25.20
Wing Stand	22.00	18.70	19.80
Wing Stand O.A.P. & Juv.	13.00	11.05	11.70
Ford Stand	26.00	22.10	23.40
Enclosures	16.00	13.60	14.40
Enclosures O.A.P. & Juv.	8.50	7.23	7.65
Chadderton Stand	14.00	11.90	12.60
Chadderton Stand O.A.P. & Juv.	7.50	6.38	6.75
Car Park	2.50	2.12	2.25

N.B. Season tickets for V.P. Boxes, V.P. Stand and Private Boxes admit to all matches played by Oldham Athletic A.F.C. at Boundary Park and includes refreshments, free car parking and programme.

All other season tickets admit to 21 League matches and 2nd team matches.

OUR THANKS TO EVERYONE...

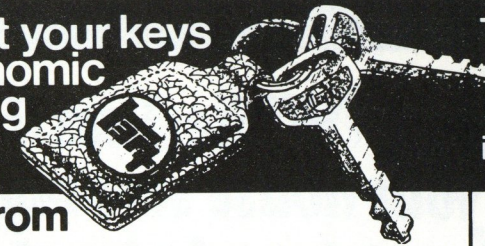
On behalf of everyone at Oldham Athletic, we would like to take this opportunity, as the season draws to its close, of thanking all our supporters for their loyalty during the past nine months. We would also like to extend a sincere thank-you to all our agents, and to the many people who, in one way or another have worked so hard on behalf of the club throughout the season. Your efforts have been greatly appreciated, and we wish you all the best, and hope that you have a very pleasant summer. And, as we sign off, we say simply...

WE HOPE TO SEE YOU AGAIN NEXT SEASON!

Seton

SETON GROUP OF COMPANIES
Tubiton House · Medlock Street · Oldham
SUPPLIERS TO O.A.F.C. MEDICAL REQUISITES

Get your keys
to economic
motoring



TOYOTA
The only trouble
you'll have
is choosing

from
**21 MUMPS OLDHAM
FAILSWORTH MOTOR SALES**

AREA DEALERS FOR

TOYOTA

The cars with both performance and economy
that give you comfortable reliable motoring
There is a car to suit everyone. From the 1000cc
Toyota to the 2600s, and commercial vehicles too.

Call and see our complete range

IMMEDIATE DELIVERY
ON MOST MODELS

Tel:- 061-633.0217,
681 2202

Showroom Hours:-
Monday to Friday 10am to 7pm
Saturday 10am to 5pm
Sunday 11am to 4pm

Service and Parts
Departments at
Hardman St.
Failsworth

right opposite Bee's Knees Club

**CENTRAL GARAGE
(ROYTON) LIMITED**

OLDHAM ROAD, ROYTON
M.O.T. Testing Station
Phone 624 1390/1510

**J. KERSHAW
(OLDHAM) LIMITED**

SUMMIT GARAGE, ROYTON
For Deliveries to the London
area, phone 624 1390/1510

**SUMMIT GARAGE
LIMITED
ROYTON**

For steam cleaning your car
Phone 624 4237

**TRY
SOMETHING
FRESH
EVERY DAY**

Choose

Warburtons
Oldham's favourite baker

There's a John Willie Lees House near your house serving traditional draught beer...

Albion Inn, Hollinwood
 Angel Inn, Royton
 Assheton Arms Hotel, Middleton
 Black Horse Hotel, Shaw
 Black Swan Hotel, Oldham
 Blue Pits Inn, Castleton
 Boarshaw Hotel, Middleton
 Boat & Horses, Chadderton
 Boundary Inn, Oldham
 Bowling Green Inn, Hollinwood
 Britannia Inn, Middleton
 Carters Arms, Middleton
 Commercial Hotel, Oldham
 Cotton Tree Inn, Middleton
 Crawford Arms, Rochdale
 Cross Keys Inn, Uppermill
 Crown & Shuttle Inn, Firgrove, Rochdale
 Crown Inn, Middleton
 Dicken Green Hotel, Rochdale
 Dog & Partridge Inn, Ashton under Lyne
 Dog & Partridge, Oldham
 Dog & Partridge, Royton
 Duke of York Inn, Royton
 Falconers Arms, Hollins, Oldham
 Farmers Arms, Prestwich, Manchester
 Free Trade Tavern, Milnrow
 Fire Brigade Inn, Ancoats, Manchester
 Gardeners Arms, Middleton
 Gardeners Arms, Middleton Junction
 Golden Pheasant Inn, Knutsford
 Grey Horse Inn, Failsworth
 Greyhound Inn, Royton
 Grosvenor Arms, Newton Heath
 The Greengate, Limeside, Oldham
 Halfway House, Royton
 Hare & Hounds, Chadderton
 Hare & Hounds, Higginshaw
 Hare & Hounds, Middleton
 Hollins Bush Inn, Bury
 Horton Arms, Chadderton
 Highland Laddie, Rochdale
 Hunt Lane Tavern, Chadderton
 The Haggate, Royton
 The Jolly Butcher, Wythenshawe
 Jolly Carter, Middleton
 Junction Inn, Denshaw
 Junction Inn, Middleton Junction
 Lancashire Fold, Alkington
 Lord Clive, Whitefield
 Middleton Archer, Middleton
 Morning Star Inn, Shaw
 Minders Arms, Middleton Junction
 The Nowster, Middleton
 Old Cock Inn, Middleton
 The Park, Wythenshawe
 Pack Horse Inn, Birtle, Nr. Bury
 Plough Inn, Oldham
 Puckersley Inn, Royton
 Radclyffe Arms, Oldham

Railway & Linnet, Middleton Junction
 Railway Hotel, Royton
 The Rembrandt, Manchester
 Rifle Range Inn, Chadderton
 Ring O Bells, Middleton
 Rose of Lancaster, Chadderton
 Royal Oak Hotel, Middleton
 Same Yet Inn, Prestwich
 Ship Inn, Slattocks, Middleton
 Spinners Arms, Springhead
 Spread Eagle Hotel, Lymm
 Spring Inn, Rochdale
 Suburban Hotel, Gorton
 Success to the Plough, Marland, Rochdale
 Tandle Hill Tavern, Slattocks, Middleton
 Three Arrows Inn, Heywood
 Travellers Call, Bredbury
 Waggon & Horses, Rochdale
 Weavers Arms, Rochdale
 Welcome Inn, Salford, 7
 Wellfield Inn, Rochdale
 White Hart Inn, Middleton
 Who'd a Thowt It, Middleton
 Woodhouse Gardens, Failsworth
 Woodman Inn, Hollinwood
 Weavers Arms, Oldham
 Albion Vaults, Wrexham
 Anglesey Arms Hotel, Anglesey
 Bee Hotel, Abergele
 Black Lion Inn, Newbridge, Nr. Wrexham
 Britannia Inn, Halkyn
 Bull Inn, Llanbedr-c-Cennin, Conway
 Bull Hotel, Abergele
 Bull Bay Hotel, Amlwch, Anglesey
 Crown Hotel Llandegla, Nr. Wrexham
 Crown Hotel, Llanfihangel, Corwen
 Dulas Arms, Llandulas
 Eagles Hotel, Penmachno, Bettws-y-Coed
 Glanrafon Hotel, Benllech Bay
 George & Dragon, Brymbo
 Grouse Inn, Carrog, Nr. Corwen
 Holland Hotel, Holyhead
 Holland Arms Hotel, Gærwen
 Holland Hotel, Llanfachreath
 Imperial Hotel, Colwyn Bay
 Links Hotel, Llandudno
 Maelog Lake Hotel, Rhosneigr
 New Inn, St. Asaph
 Old Vaults, Denbigh
 Owain Glyndwr Hotel, Corwen
 Railway Inn, Llangefni
 Red Lion Hotel, Gyfflliog, Nr. Ruthin
 Red Lion Hotel, Llansannan
 Red Lion Inn, Tyn-y-groes, Nr. Conway
 Sportsman Arms, Bylchau
 Trearddur Bay Hotel, Trearddur Bay
 Twrchyhelun Arms, Llanerchymedd
 Ty Gwyn Hotel, Roewen
 White Lion Hotel, Cerrig-y-Drudion