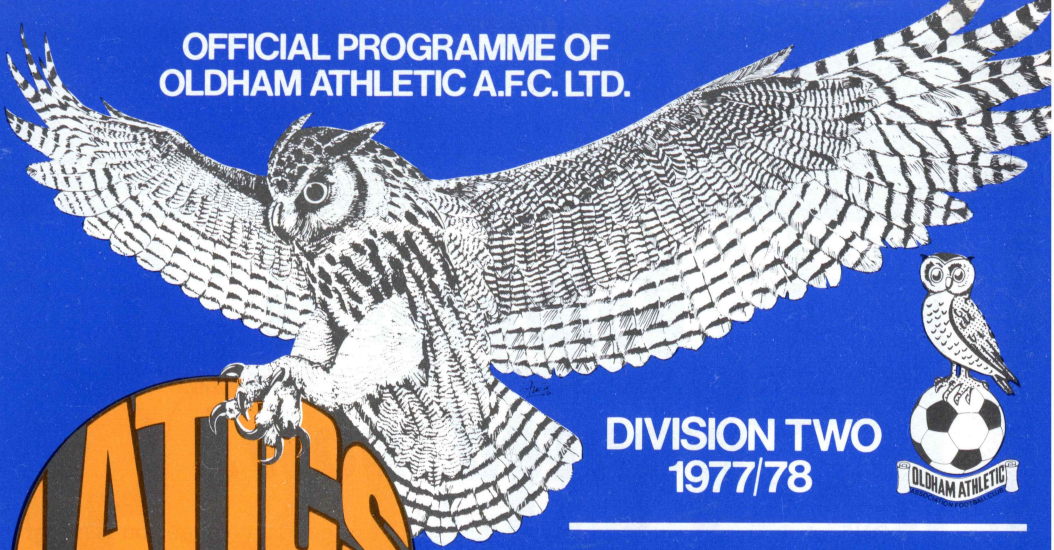


OFFICIAL PROGRAMME OF  
OLDHAM ATHLETIC A.F.C. LTD.



DIVISION TWO  
1977/78

## LUTON TOWN

SATURDAY, AUGUST 27th 1977  
KICK-OFF 3.00 p.m.

ATHLETIC  
REVIEW



PRICE 12pence

# OLDHAM ATHLETIC A.F.C. LTD.



## HONOURS:

Division 1: Runners-up — 1914-15.  
Division 2: Runners-up — 1909-10.  
Division 3: Champions — 1973-74.  
Division 3 (North): Champions — 1952-53.  
Division 4: Third (promoted) — 1970-71.  
Runners up — 1962-63.

## Volunteers wanted now!

ONE of the many good reasons for this new, easy-to-enter competition was that many genuine Latics' supporters intimated that if we had a second Lottery like many other clubs (other than bingo tickets) they would be willing to help the club. FAIR ENOUGH!

Bill Whitehead (Pools Chairman) and I have looked at and analysed many clubs second Lotteries and we honestly believe we have found one called TOTAROLA that is suitable for you, and ourselves.

We think we have produced the ideal in TOTAROLA, because of the many good points in its favour, I shall list just a few:

It is really simple to enter — they select their own numbers weekly. NO BOOKS to be filled in by the agents. The weekly pay out can be increased as the gross income increases — thus giving a continued impetus to the 'Lottery'.

Finally, a great many people know what TOTE is, well TOTAROLA is simply a bigger and better version of that type of competition.

We offer as a starter, £150 weekly prizemoney. Perm any FIVE numbers from TWELVE selections, and this gives 792 CHANCES FOR ONLY 10p STAKE!

But if you wish to increase your chances ie. any FIVE numbers from THIRTEEN, FOURTEEN, FIFTEEN, SIXTEEN, OR SEVENTEEN selections you are catered for on the coupon with increased stakes of course. DO YOU REALISE THAT ANY FIVE FROM SEVENTEEN GIVES YOU 6188 CHANCES FOR AN 80p STAKE.

This competition which is unique and copyrighted can only SUCCEED if YOU the genuine LATICS' supporter will help us distribute the weekly coupons. WITHOUT YOUR HELP IT IS DOOMED TO FAILURE and another excellent fund raiser, which would do the club a power of good, would fail through lack of support from the very people who want the club to be successful.

We urgently need a little help from a lot of people NOW!

We can easily cope with 50 volunteers in any one week and all will be personally contacted and full details explained to them. Please fill in the leaflet in your programme NOW and hand it in to the Souvenir Shop after today's game, OR RING any of the following numbers 061-652 0966, 061-624 7983 or 28 48592.

B. JOYCE, Commercial Manager

H. Wilde (Chairman), R. Schofield (Vice - Chairman)  
DIRECTORS: D.A. Brierley, G.T. Butterworth, J. Kershaw,  
G. Knight, I.H. Stott, E. Sykes, F.D. Whitehead  
MANAGER: Jimmy Frizzell  
GENERAL MANAGER: W. Griffiths, ASST. SEC: T. Fisher  
PHYSIOTHERAPIST: R. Jay, CLUB DOCTOR: R.B. Hollos  
COMMERCIAL MANAGER: B. Joyce

Editor: Bob Young  
Art Design: Comprehensive Art Services  
Photographs: Oldham Chronicle  
R.H.H. Venables (Oldham Camera Club)  
Print: L.V. Lawlor, Oldham

# TALKING POINT

WITH  
JIMMY FRIZZELL



WELL, three points from two matches is an encouraging start to the season. And, with a home match today we must be looking to make it five points from a possible six. These early points are most important since it is an old football truism that once you have got them nobody can take them off you.

The pleasing thing is that we seem to be improving with each game. I thought our performance against Fulham on Tuesday — particularly in the second half — was better than at Blackpool and that in turn was better than our Anglo-Scottish Cup efforts.

And it is worth remembering that we had to re-arrange our team against Fulham. Young Gary Hoolickin did a fine job for us at right-back and Ronnie Blair's display was really pleasing since he had only played a couple of 5-a-side games after recovering from injury.

It was certainly a just reward when Ronnie headed our second goal. We didn't really get many goals from our midfield players last season so it was good to see Ronnie getting forward quickly into that attacking position.

While Fulham were watching for Vic Halom at the back of the box, Ronnie spotted his chance well and Carl Valentine served him with a great cross. A really good goal — as was Vic's timely effort just before the

interval when we were getting a little anxious.

If we can continue to improve with our games we can do well this term. Don't forget, we still have Mike Bernard and David Shaw sidelined through injury... and Maurice Whittle and David Irving have only just come back from America.

To say we haven't played our full-strength team yet is possibly an injustice to the lads who have done such a good job for us in our first couple of games... but it is true.

We have our faults like any other side but, as I have said, if we can continue to improve and iron out any problems, we should do well.

We have three tough away matches coming up at Orient, Brighton in the League Cup and Bolton Wanderers. Your support at these games is welcomed. In view of the trouble at various grounds on the opening day may I remind you that your behaviour reflects on the club and I am sure you will not let us down.

**COVER PHOTO:** Carl Valentine is just beaten to the ball by a Fulham defender in our 2-0 victory on Tuesday.  
Picture by: Martin Smith, Oldham Chronicle

LUTON boss Harry Haslam, known throughout football for his cheery outlook, has already experienced both sides of the coin as a football manager. He played full-back for Manchester United, Brighton, Orient Guildford and Hastings before serving his apprenticeship as a manager in non-league circles with Eastbourne, Barry Town and Tonbridge.

He has also done duty as scout and fund-raiser . . . and Luton have needed all his talents since he took over the manager's job from Alec Stock in May 1972.

Two years later he had welded together the Luton Town team that won promotion to the First Division. But they got off to an atrocious start, with only nine points from the first half of the season, and despite a tremendous fight back Luton were finally relegated when Spurs escaped by beating Leeds in their last match.

Now Haslam is trying to build another team worthy of First Division status — after helping to save Luton from extinction last year when financial problems pushed them to the verge of bankruptcy.

He had to sell players to raise money and, with little cash available to buy new stars, he has concentrated on seeking out bright young players who can be groomed for stardom through the junior teams.

And here's the first team pool Luton hope will take them back to the top flight:—

Goalkeeper MILIJA ALEKSIC cost £20,000 from Plymouth in January and this son of Yugoslav parents quickly became a firm favourite at Luton where the locals call him "Elastic" in tribute to his agility and quick reflexes.

Second-choice keeper TONY KNIGHT has played a handful of league games for Luton and more will come for this promising 18-year-old, picked up from

## Cash crises hasn't blunted ambition

Romford Schoolboys.

PAUL PRICE has overcome the disaster of twice breaking a leg to make himself first-choice right-back. He graduated through the junior teams.

STEVE BUCKLEY, officially a left-back was a free-scoring winger with Burton Albion when Luton paid a bargain £2,000 for him in 1974. Loves to attack and scored the only goal against Orient on the opening day this season.

JOHN FAULKNER, Luton's senior professional, has given sterling service since they paid £6,000 for him in March 1972. He emerged from obscurity in the Sutton United team that played Leeds. Don Revie signed him on but a broken leg interrupted his career at Elland Road. A strong, no-nonsense tackler.

PAUL FUTCHER is still only 20 but was described by ex-England boss Don Revie as "an outstanding prospect". Luton risked a club record transfer fee of £100,000 to lure him away from hometown team Chester in 1974 — when he was only 17. Now established as a cool, competent "sweeper" with the vision to set up attacks.

PETER MEAD and DAVID CARR have come up through the junior ranks, Mead as full back and Carr in defence or midfield. Both pushing for a regular first-team place.

JIM McNICHOL was released by Ipswich in the summer of 1976 and is considered a good capture by Luton. He has had to be patient while Paul Futer holds down a regular place but, when called up, has proved his worth.

GRAHAM JONES was spotted playing

schoolboy soccer in Manchester and signed apprentice in 1975. Made his league debut at the age of 17 and has played in defence and midfield for the first team.

PASQUALE FUCCILLO — son of Italian parents who settled at Bedford — joined Luton as a 16-year-old apprentice in 1973. Has since made his name with some storming midfield displays. Known as "Lil" to his friends, he has been a regular goalscorer since marking his league debut with a goal.

ALAN WEST, the club captain, emerged from the famous Burnley "Production line" and joined Luton for £100,000 in 1973. Still only 25, West played for England at under-23 level.

RICKY HILL, capped by England at youth level, is a 19-year-old midfielder of great promise. Signed apprentice from schoolboy football in North London, Hill made a dream debut for Luton when he scored once and laid on another goal.

JIM HUSBAND, picked up a string of honours with Everton for whom he hit 75 goals, before joining Luton for £70,000. Plays midfield or front-runner.

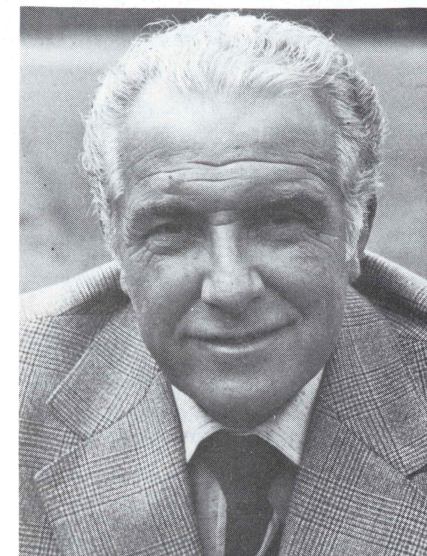
PHIL BOERSMA, Luton's pre-season signing from Middlesbrough will operate as a striker after serving Boro in midfield. Manager Harry Haslam tried to sign him three years ago when Boersma was with Liverpool.

JOHN ASTON made his name with Manchester United and won a European Cup medal in 1968. A broken leg interrupted his career at Old Trafford and Luton paid £30,000 for him five years ago. Still an exciting and dangerous winger with a superb cross.

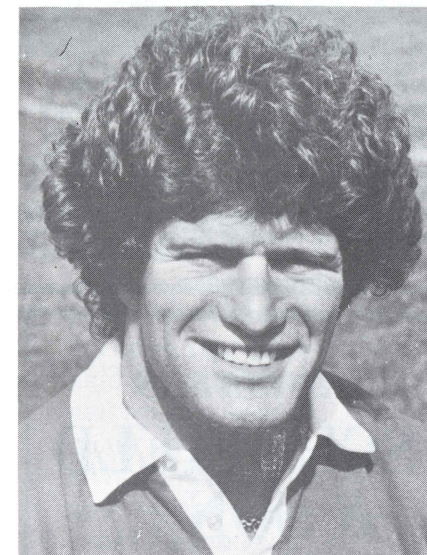
GODFREY INGRAM, a local product of Luton's youth teams, played for England Schools and has just been upgraded to junior professional.

RON FUTCHER, twin brother of Paul, cost Luton £25,000 from Chester and immediately made his mark in the First Division side — scoring a hat-trick in his second match.

Luton's squad is completed by youngsters PHILIP DRIVER, NIGEL JOHNSON, GARY HEALE, and TIM SMITH.



HARRY HASLAM



PHIL BOERSMA

# LATICS LETTER

I AM trying to build up a programme collection of all Athletic's games — league and cup — since season 1960/61. However, I still have some considerable gaps in my collection, as you can see from the list below.

With the help of fellow Latics supporters I hope I can achieve my aim. If anyone has any of the following programmes I would be pleased if they would send me a list. I will pay fair prices and refund postage.

PHILIP TAYLOR  
34 WORCESTER ROAD, ALKRINGTON  
MIDDLETON, Manchester

HOMES: versus Rochdale (1962/63); v Barnsley (68/69); v Grantham (FA Cup, 69/70).

AWAYS: 1960/61: Bradford PA, Workington, Barrow, Crewe, Peterboro', Doncaster, Wrexham, Northampton, Gillingham, Darlington, Millwall, Exeter, Mansfield, Carlisle.

1961/62: Chester, Hartlepool, Carlisle, Darlington, Accrington, Barrow, Crewe, Workington, Chesterfield (FA Cup), Colchester, Southport, Bristol Rovers (FA Cup), Stockport, Bradford C, Exeter, Mansfield, Wrexham, Tranmere, York.

1962/63: Oxford, Sunderland (FLC), Aldershot, Hartlepool, Workington, Doncaster, Gillingham, Brentford, Exeter, Southport, Barrow, Chesterfield.

1963/64: Crystal Palace. 1964/65: Bournemouth, Carlisle, Grimsby (FLC), Colchester, Exeter, Bristol Rovers, Barnsley, Workington, Grimsby, Brentford, QPR, Bristol City, Southend.

1965/66: Hull, Watford, Shrewsbury, York, Brentford, Grimsby, Mansfield, Swindon, Scunthorpe, QPR, Walsall, Bournemouth.

1966/67: Barrow (FLC), Swansea, Colchester.

1967/68: Workington (FLC 2nd replay at Carlisle), Walsall, Bristol Rovers, Scunthorpe.

1968/69: Plymouth, Brighton, Walsall, Southport, Bristol Rovers, Rotherham, Gillingham, Barrow, Hartlepool.

1969/70: Workington, Northampton, Grimsby, Peterboro', Port Vale, Scunthorpe, Southend, Wrexham.

1970/71: Colchester, Aldershot, Lincoln City.

1971/72: Torquay (FLC), Port Vale, Rotherham, Tranmere, Bristol Rovers, Plymouth, Swansea, Bournemouth.

1972/73: Grimsby, Brentford, Bristol Rovers, Walsall, Swansea, Tranmere, Bournemouth.

1973/74: Port Vale, Wrexham, Cambridge (league), Cambridge (FA Cup 2nd replay at Forest).

1975/76: Aston Villa (League Cup).

A tall order from Philip — but I am sure you Latics fans will do your best. If you want to drop us a line on any subject connected with Athletic — on or off the field — we will be glad to hear from you. How about telling us about a Latics match you particularly remember? It might be a nice memory-jerker for the rest of us.

All contributions to:  
The Programme Editor, Oldham Athletic FC, Boundary Park, Oldham Lancs.

## FACE IN THE CROWD



YOU can win a free seat ticket for our next home match. If this is YOUR FACE in the circle on our photograph then bring this programme to the general office (9.00 a.m. to 5.00 p.m.) or to the Club Shop on match day and claim your prize. Picture taken v. Sheffield United, 6th August 1977.

## Half-time Scores

### FIRST DIVISION

ASTON VILLA v. EVERTON . . . . .  
CHELSEA v. COVENTRY . . . . .  
LEEDS v. BIRMINGHAM . . . . .  
LEICESTER v. BRISTOL C. . . . .  
LIVERPOOL v. WEST BROM . . . . .  
MANCHESTER U. v. IPSWICH . . . . .  
MIDDLESBRO v. NEWCASTLE . . . . .  
NORWICH v. Q.P.R. . . . .  
NOTTM. FOREST v. DERBY . . . . .  
WEST HAM v. MANCHESTER C. . . . .  
WOLVES v. ARSENAL

### SECOND DIVISION

BLACKBURN v. CARDIFF . . . . .  
BOLTON v. SHEFFIELD U. . . . .  
BRIGHTON v. MILLWALL . . . . .  
BRISTOL R. v. FULHAM . . . . .  
CHARLTON v. BLACKPOOL . . . . .  
CRYSTAL PALACE v. HULL . . . . .  
SOUTHAMPTON v. MANSFIELD . . . . .  
STOKE v. BURNLEY . . . . .  
SUNDERLAND v. ORIENT . . . . .  
TOTTENHAM v. NOTTS. COUNTY . . . . .

### FURNISHERS

**R. SCHOFIELD  
& SON**

14/16, 27/29 OLD ROAD  
FAILSWORTH, MANCHESTER  
Telephone: 061-681 2292

### BOAT & HORSES

— BROADWAY — CHADDERTON —

COLD TABLE, a la Carte  
Monday—Friday 12 noon to 3 p.m.  
★ Reception Room for 60 persons

**Reservations 061-681 2363**

AA Registered — Diners Club  
American Express, Access.  
Your Hosts:  
Mike and Jean Healey

You will be sure to 'score'  
every time when you shop at

# Phil Cohen & Son Limited

Oldham's leading  
Gents clothiers and outfitters



**Phil Cohen**  
& Son Limited

2, MARKET PLACE  
5, ST. PETER'S SHOPPING CENTRE  
**OLDHAM**

# ASHTON FURNISHING

## BETTER FURNITURE AT BIGGER DISCOUNTS

Furnishing Centre:  
14, Market Place,  
Oldham

also branches  
at Stockport  
& Ashton

Schreiber Centre:  
1, King Street,  
Oldham  
Tel: 624 2484

Match Ball donated by:  
**GRANADA TELEVISION**

### OLDHAM ATHLETIC

*Blue Shirts and White Shorts*

- |                 |    |
|-----------------|----|
| CHRIS OGDEN     | 1  |
| IAN WOOD        | 2  |
| DAVID HOLT      | 3  |
| GRAHAM BELL     | 4  |
| PAUL EDWARDS    | 5  |
| JOHN HURST      | 6  |
| CARL VALENTINE  | 7  |
| ALAN YOUNG      | 8  |
| VIC HALOM       | 9  |
| LES CHAPMAN     | 10 |
| ALAN GROVES     | 11 |
| To be announced | 12 |

### LUTON TOWN

*Orange Shirts and Navy Shorts*

- |                   |    |
|-------------------|----|
| MILIJA ALEKSIC    | 1  |
| GRAHAM JONES      | 2  |
| STEVE BUCKLEY     | 3  |
| DAVID CARR        | 4  |
| JOHN FAULKNER     | 5  |
| PAUL FUTCHER      | 6  |
| JIM HUSBAND       | 7  |
| TIM SMITH         | 8  |
| PHIL BOERSMA      | 9  |
| PASQUALE FUCCILLO | 10 |
| JOHN ASTON        | 11 |
| To be announced   | 12 |

REFEREE  
K. McNALLY  
Hooton, Cheshire

KICK-OFF 3.00 p.m.



LINESMEN  
S. LEAVER (Preston)  
Red Flag  
J. McAULAY (Leeds)  
Yellow Flag

DESKS,  
CHAIRS,  
CUPBOARDS,  
FILING CABINETS,  
DEXION DISTRIBUTORS,

STEEL  
SHELVING,  
OFFICE  
FURNITURE,  
LARGE CASH  
& CARRY DISCOUNTS!

## Lancashire Storage Equipment Co.

BELMONT WORKS · FRANKLIN STREET · OLDHAM (opposite Oldham Brewery)  
Telephone: 061 620 2216 for all kinds of shelving for the Home, Office and Industry



## GEORGE HILL

(OLDHAM) LIMITED

TIMBER MERCHANTS &  
WALLBOARD DISTRIBUTORS

Imported softwoods, hardwoods  
plywoods, formica, mouldings, doors,  
dowels. Stockists of Weyroc,  
interwoven fencing and Asbestolux.

Saw, Planing and Moulding Mills  
**SCOTTFIELD SAW MILLS**  
OLDHAM

Telephone: 061 652 7421  
NEW BRANCH AT GLEBELANDS RD SALE  
TELEPHONE 061 969 7543

# COURTLETS INSURANCE

**BROKERS LIMITED**

5, QUEEN STREET, OLDHAM OL1 1TH  
TELEPHONE: 061 624 6063  
24, CHURCH STREET, ECCLES M30 0DF  
TELEPHONE: 061 707 1838

### SPECIALISTS IN:

- LIFE ASSURANCE
- SELF EMPLOYED PENSIONS
- INVESTMENT ADVICE
- PERSONAL INSURANCES

Facilities at Lloyds and  
with all major BIA Companies

**AGENTS FOR NATIONWIDE  
BUILDING SOCIETY**

# F.D. WHITEHEAD BUILDING SERVICES LTD.

**OLDHAM**

COMPLETE DESIGN  
BUILDING & FURNISHING  
SERVICE  
SPECIALISTS IN ALL TYPES  
OF CLUB BUILDING WORK

Tel: 061 624 9737/3343.

# Reserves Report...

THE Reserves took their first step in defence of their Lancashire League title last Saturday with a 4-1 drubbing of Southport "A". And, it is no overstatement to say they could have doubled their score.

It was virtually one-way traffic from start to finish with our lads being fitter, sharper and more positive.

We played some neat, confident approach work but had to wait 25 minutes for the breakthrough. Then STEVE EDWARDS cracked home a curling free-kick from the edge of the area. Steve is one of the more experienced players in the side at the moment and he got through a lot of work in midfield.

In a good all-round team effort, there was another promising display from front-runner JIM STEEL and he got our third goal after 57 minutes, turning in a hard-driven free-kick from Edwards.

Our second goal had come only a minute before following a flowing, five-man build-up and STEWART WILSON was on target from six yards out.

A rare lapse in concentration in defence — Keith Hicks usually kept the younger players up to their work — let in Southport for a goal but PAUL HILTON rounded off a hard-working display with a fine headed goal near the end.

We have two key home matches coming up — against Everton "A" and City "A" — but if we maintain this form there is no reason why we shouldn't make it a hat-trick of league titles.

# Supporters Club News

We have now decided on our prizes for the new 100 Club draw. Each month we will pay out £15, £10 and £5 and there will be an annual draw for £100, £50 and £25. Members pay 50p a month to enter the draw. If you are interested, see one of the Supporters Club committeemen outside the Boundary Club after the match.

As an extension of our travel club facilities we are now offering a savings scheme to help you put money aside for paying for away trips.

You can save what you like, when you like, then have the cost of your trip deducted from your savings. Savings cards will be issued so you know just where you are up to and we think this could be just the job for youngsters.

Details from myself at 15 Eustace Street, Chadderton.

**HARRY TAYLOR**  
Supporters Club secretary

Telephone: 061-370 8611

## THOMAS A. METCALFE LTD

SUPPLIERS OF WELDING AND CUTTING EQUIPMENT

MARKET STREET, DROYLSDEN,  
MANCHESTER M35 7DJ  
061-370 8611 (10 lines)

## WATSON'S STORES

Pay a visit to Lancashire's leading Carpet Specialists and safeguard your own interests by comparing our prices and qualities.

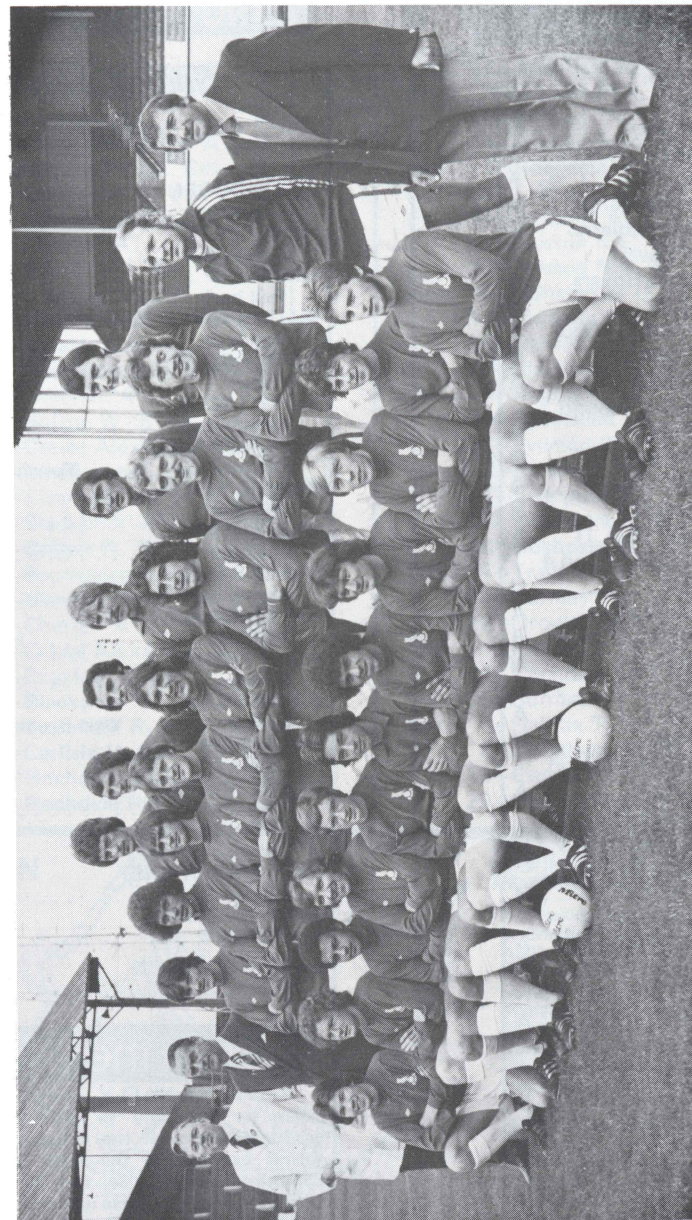
FIRST-CLASS FITTING SERVICE

Estimates Free Any Distance

NO "FREE" GIFTS OR GIMMICKS

GLODWICK ROAD . OLDHAM

Telephone 061-633 2461



Back row: G. Hoolikin, C. Ogden, D. Shaw, J. Platt, J. Hurst, R. Blair. Middle row: R. Jay (Physio), W. Griffiths, (Gen Manager), S. Edward, J. Steele, P. Edwards, D. Holt, A. Young, V. Halom, K. Hicks, M. Hilton, A. Lochhead, J. Frizzell. Front row: P. Heaton, M. Roberts, C. Valentine, M. Bernard, G. Bell, I. Green, A. Groves, L. Chapman, I. Wood, D. Barnett, T. Jordan.

By courtesy of Oldham Chronicle



specialists in  
Finished Artwork · Typography · Graphic Design · Illustration & other related services  
**COMPREHENSIVE ART SERVICES**  
Courtlets House · 38 King Street West · Manchester M3 2WZ · Tel: 061 834 8552

# LATICS FIXTURES

		results	attend
Aug. 20	Blackpool	A D 1-1	11,671
	23-Fulham	H W 2-0	7,200
	27-Luton Town	H	
	30-Brighton (LC2)	A	
Sept. 3	Orient	A	
	10-Bolton Wanderers	A	
	17-Charlton Athletic	H	
	24-Bristol Rovers	A	
Oct. 1	Blackburn Rovers	H	
	4-Stoke City	H	
	8-Tottenham Hotspur	A	
	15-Notts. County	H	
	22-Cardiff City	A	
	26-League Cup Round 3		
	29-Sunderland	A	
Nov. 5	Crystal Palace	H	
	12-Sheffield United	A	
	19-Southampton	H	
	26-Mansfield (F.A.1)	A	
	30-League Cup Round 4		
Dec. 3	Millwall	H	
	10-Brighton & Hove	A	
	17-Sheffield U. (F.A.2)	H	
	26-Hull City	A	
	27-Burnley	H	
	31-Fulham	A	
Jan. 2	Blackpool	H	
	7-F.A. Cup 3rd Round		
	14-Luton Town	A	
	18-League Cup Round 5		
	21-Orient	H	
	28-F.A. Cup 4th Round		
Feb. 4	Bolton Wanderers	H	
	8-League Cup S.F.1		
	10-Charlton Athletic	A	
	15-League Cup S.F.2		
	18-Bristol R. (F.A.5)	H	
	25-Blackburn Rovers	A	
Mar. 4	Tottenham Hotspur	H	
	11-Notts. County (F.A.6)	A	
	18-Cardiff City (L.C.F.)	H	
	24-Sunderland	H	
	25-Burnley	A	
	27-Hull City	H	
Apr. 1	Crystal Palace	A	
	8-Mansfield (F.A.S.F)	H	
	15-Southampton	A	
	22-Brighton & Hove	H	
	26-Stoke City	A	
	29-Millwall	A	
May 6	F.A. Cup Final		

## Senior Playing Staff

	Previous Club
<b>CHRIS OGDEN</b>	
Goalkeeper	Junior
<b>JOHN PLATT</b>	
Goalkeeper	Junior
<b>IAN WOOD</b>	
Full-back	Junior
<b>MAURICE WHITTLE</b>	
Full-back	Blackburn
<b>ALAN GROVES</b>	
Winger	Bournemouth
<b>KEITH HICKS</b>	
Centre-back	Junior
<b>PAUL EDWARDS</b>	
Centre-back	Manchester United
<b>RONNIE BLAIR</b>	
Midfield	Rochdale
<b>GRAHAM BELL</b>	
Midfield	Junior
<b>DAVID HOLT</b>	
Centre-back	Bury
<b>LES CHAPMAN</b>	
Midfield	Huddersfield
<b>ALAN YOUNG</b>	
Striker	Junior
<b>DAVID SHAW</b>	
Striker	West Bromwich Albion
<b>VIC HALOM</b>	
Striker	Sunderland
<b>DAVID IRVING</b>	
Striker	Everton
<b>JOHN HURST</b>	
Centre-back	Everton
<b>CARL VALENTINE</b>	
Winger	Junior
<b>MIKE BERNARD</b>	
Midfield	Everton
<b>GARY HOOLICKIN</b>	
Fullback	Junior

## Man in the Middle

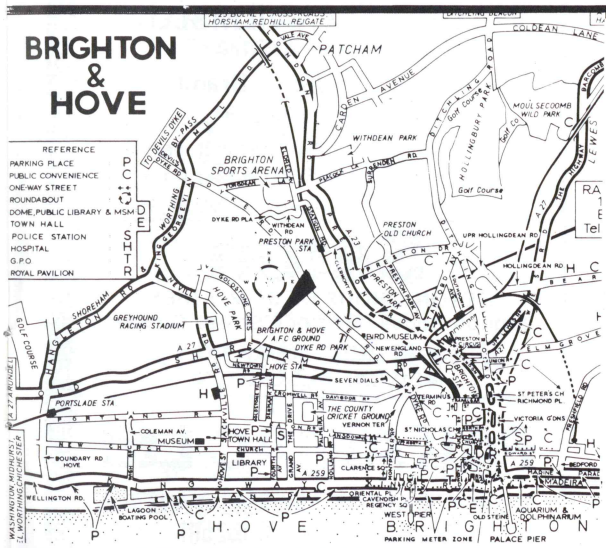
**KEVIN McNALLY** started refereeing when he was only 14 years old and has graduated through the Ellesmere Port and Wirral Leagues to the West Cheshire and Cheshire County. He was taken on the League list in 1972. He was a linesman at an FA Cup semi-final, Burnley v. Newcastle, and for a European Cup Winners Cup match in Malta in 1969. Married with three children, he runs his own newsagents business and lists his interests as gardening and keep-fit — he plays squash.

# RESERVE FIXTURES

Aug. 20	Southport Reserves	H
	27-Manchester U. 'A'	A
Sept. 3	Everton 'A'	H
	10-Manchester City 'A'	H
	17-Macclesfield T. Res	A
	24-Liverpool 'A'	H
Oct. 1	Manchester City 'A'	A
	8-Chester 'A'	H
	29-Bradford C. Res.	H
Nov. 5	Stockport C. 'A'	A
	12-Macclesfield T. Res	H
	19-Carlisle U. Res.	A
	26-Tranmere Rovers Res	H
Dec. 3	Everton 'A'	A
	17-Bolton W. 'B'	A
	31-Crewe Alexandra 'A'	H
Jan. 14	Stockport C. 'A'	H
	21-Liverpool 'A'	A
Feb. 4	Blackpool 'A'	A
	11-Bolton W. 'B'	H
	18-Southport Reserves	A
	25-Manchester U. 'A'	H
Mar. 4	Chester 'A'	A
	11-Crewe Alexandra 'A'	A
	18-Bradford C. Res.	A
Apr. 1	Blackpool 'A'	H
	7-Tranmere R. Res	A
	15-Carlisle U. Res.	H
	22-Rochdale Reserves	A
	29-Rochdale Reserves	H

# B TEAM FIXTURES

Aug. 27	Tranmere R. 'B'	H
Sept. 3	Blackburn R. 'B'	H
	10-Burnley 'A'	A
	24-Blackburn R. 'B'	A
Oct. 1	Rochdale 'A'	H
	8-Liverpool 'B'	A
	15-Burnley 'A'	H
	22-Preston N.E. 'B'	A
	29-Preston N.E. 'B'	H
Nov. 5	Manchester U. 'B'	H
	12-Manchester U. 'B'	A
	19-Halifax T. 'A'	H
	26-Blackburn R. 'B'	A
Dec. 3	Halifax T. 'A'	A
	17-Droylsden 'A'	H
	31-Everton 'B'	A
Jan. 2	Rochdale 'A'	A
	7-Liverpool 'B'	H
	14-Preston N.E. 'B'	A
	28-Rochdale 'A'	H
Feb. 4	Tranmere R. 'B'	A
	11-Burnley 'A'	H
	18-Droylsden 'A'	A
Mar. 4	Halifax T. 'A'	H
	11-Rochdale 'A'	A
	25-Burnley 'A'	A
Apr. 1	Halifax T. 'A'	A
	8-Blackburn R. 'B'	H
	15-Everton 'B'	H
	29-Preston N.E. 'B'	H



## ON OUR TRAVELS...

Here is your R.A.C. route to the game at Brighton and Hove Albion. From Oldham A627/A627(M) to M62. M62 west (follow 'Liverpool' signs) to intersection 10 at Croft junction M6. M6 south and via M6/M1 Midlands Link and M1 south to intersection 2, Five Ways Corner, Hendon, North London junction A1/A41. A41 (follow 'West End' signs) to A406 North Circular Road going right with North Circular to Chiswick roundabout junction with A205. A205 (South Circular) via Kew, Mortlake and Putney to Wandsworth junction A214. A214 for three miles to Streatham junction A23. A23 via Purley, Redhill and Crawley (by-pass) to Brighton. (Total 274 miles). Brighton and Hove Albion football ground is in Shoreham Road. Entering Brighton turn right into Mill Road/King George VI Avenue (Shoreham by-pass) for 2 miles then left into Nevill Road and left again after a mile into Shoreham Road. The ground is on your right in 200 yards.

## NEXT HOME FIXTURES:

Saturday, September 3rd—Kick-off 2.30 p.m.  
EVERTON 'A'

Saturday, September 10th—Kick-off 2.30 p.m.  
MANCHESTER CITY 'A'

## Vice-presidents' Association

IN our last news item I mentioned the Points Sponsorship Scheme which has been launched by the Association for season 1977/78.

The Scheme is being talked about all over the town as it is novel and there is no limit on the amount of money it can raise for the Club. The more success the team has the more money the club receives.

The basis is that any individual or firm can sponsor the first team by donating between 10p and £1 per point in multiples of 10p. Thus last season (38 points gained) would have cost a total of £3.80 to a 10p sponsor and £38.00 to a £1 sponsor.

For each 10p unit the sponsor has the

chance to forecast the average home attendance for this season and therefore a £1 sponsor has 10 forecasts and so on. Substantial prizes are being offered to the winners.

Finally the names of the £1 per point sponsors will be published regularly in the Match Programme and occasionally in the local press.

It is obvious that given the right support the club will obtain tremendous financial backing from this "off field" activity.

Please enquire at the Souvenir Shop or Latics Shop, 1A King Street for entry forms and brochures, your support is needed and will be welcomed.

BOB RICHMOND, Chairman

### PENNINE PETROLEUM PRODUCTS

Authorised  
Distributors



67 UNION STREET · OLDHAM

Telephone: 061-624 1332 (Depot)  
061-624 4489 (Accounts)

## Butterworth's Electrical

Tel: Shaw 47773

THE BEST BY ANY TEST WE  
SCORE. AND WIN BY  
50 YEARS OF EXPERIENCE

### ★ SPORTS REQUIREMENTS

## GILBERTS

WATER LANE, WILMSLOW

Telephone: 29221/2

Bramhall Centre - Bramhall

Telephone: 439 7394

Suppliers of kit to leading teams  
including OLDHAM ATHLETIC

## Seton

SETON GROUP OF COMPANIES  
Tubiton House · Medlock Street · Oldham

SUPPLIERS TO O.A.F.C.  
MEDICAL REQUISITES

## PAKAMAC Ltd

PAKAMAC HOUSE · MIDDLETON ROAD · CHADDERTON  
OLDHAM · Telephone: 061 652 5111



## MALCOLM CLARKE (STEEL) HOLLINWOOD LIMITED

specialists in steel plate stock

Holding de-coiled sheets  $\frac{1}{8}$ " -  $\frac{1}{2}$ " thick  
BS 4360-43A, BS 4360-50B, BS 1501-151-28A  
 $\frac{3}{16}$ " - 10" thick. Quotations for shearing & profiling  
available. Also bulk buyers of works-surplus parcels

UNIT 1, VICTORIA TRADING ESTATE, DRURY LANE,  
HOLLINWOOD, OLDHAM OL9 7PJ, LANCASHIRE  
Telephone: 061 682 7280 & 061 681 8899

## CENTRAL GARAGE

(ROYTON) LIMITED

OLDHAM ROAD, ROYTON

M.O.T. Testing Station

Phone 624 1390/1510

## J. KERSHAW

(OLDHAM) LIMITED

SUMMIT GARAGE, ROYTON

For Deliveries to the London  
area, phone 624 1390/1510

## SUMMIT GARAGE LIMITED

ROYTON

For steam cleaning your car  
Phone 624 4237



## THE FAMILY FAVOURITE

Bakers of Good Bread

IDEAL BAKERY (Shaw) LIMITED  
SHAW · OLDHAM OL2 7SF · LANCs  
Telephone: Shaw 47744



# There's a John Willie Lees House near your house serving traditional draught beer...

Angels Club, Burnley  
Albion Inn, Hollinwood  
Angel Inn, Royton  
Assheton Arms Hotel, Middleton  
Black Horse Hotel, Shaw  
Black Swan Hotel, Oldham  
Blue Pits Inn, Castleton  
Boarshaw Hotel, Middleton  
Boat & Horses, Chadderton  
Boundary Inn, Oldham  
Bowling Green Inn, Hollinwood  
Britannia Inn, Middleton  
Carters Arms, Middleton  
Commercial Hotel, Oldham  
Cotton Tree Inn, Middleton  
Crawford Arms, Rochdale  
Cross Keys Inn, Uppermill  
Crown & Shuttle Inn, Firgrove, Rochdale  
Crown Inn, Middleton  
Dickens Green Hotel, Rochdale  
Dog & Partridge Inn, Ashton under Lyne  
Dog & Partridge, Oldham  
Dog & Partridge, Royton  
Duke of York Inn, Royton  
Falconers Arms, Hollins, Oldham  
Farmers Arms, Prestwich, Manchester  
Free Trade Tavern, Milnrow  
Firwood Tavern, Middleton Junction  
Fire Brigade Inn, Ancoats, Manchester  
Gardeners Arms, Middleton  
Gardeners Arms, Middleton Junction  
Golden Pheasant Inn, Knutsford  
Grey Horse Inn, Failsworth  
Greyhound Inn, Royton  
Grosvenor Arms, Newton Heath  
The Greengate, Limeside, Oldham  
Halfway House, Royton  
Hare & Hounds, Chadderton  
Hare & Hounds, Higginshaw  
Hare & Hounds, Middleton  
Hollins Bush Inn, Bury  
Horton Arms, Chadderton  
Highland Laddie, Rochdale  
Hunt Lane Tavern, Chadderton  
The Haggate, Royton  
The Jolly Butcher, Wythenshawe  
Jolly Carter, Middleton  
Junction Inn, Denshaw  
Junction Inn, Middleton Junction  
Lancashire Fold, Alkrington  
Lord Clive, Whitefield  
Middleton Archer, Middleton  
Morning Star Inn, Shaw  
Mindars Arms, Middleton Junction  
The Nowster, Middleton  
Old Cock Inn, Middleton  
The Park, Wythenshawe  
Pack Horse Inn, Birtle, Nr. Bury  
Plough Inn, Oldham  
Puckersley Inn, Royton  
Radclyffe Arms, Oldham

Railway & Linnet, Middleton Junction  
Railway Hotel, Royton  
The Rembrandt, Manchester  
Rifle Range Inn, Chadderton  
Ring O Bells, Middleton  
Rose of Lancaster, Chadderton  
Royal Oak Hotel, Middleton  
Same Yet Inn, Prestwich  
Ship Inn, Slattocks, Middleton  
Spinners Arms, Springhead  
Spread Eagle Hotel, Lymm  
Spring Inn, Rochdale  
Suburban Hotel, Gorton  
Success to the Plough, Marland, Rochdale  
Tandle Hill Tavern, Slattocks, Middleton  
Three Arrows Inn, Heywood  
Travellers Call, Bredbury  
The White Grouse, Flaime, France  
Waggon & Horses, Rochdale  
Weavers Arms, Rochdale  
Welcome Inn, Salford, 7  
Wellfield Inn, Rochdale  
White Hart Inn, Middleton  
Who'd a Thowt It, Middleton  
Woodhouse Gardens, Failsworth  
Woodman Inn, Hollinwood  
Weavers Arms, Oldham  
Albion Vaults, Wrexham  
Anglesey Arms Hotel, Anglesey  
Bee Hotel, Abergele  
Black Lion Inn, Newbridge, Nr. Wrexham  
Britannia Inn, Halkyn  
Bull Inn, Llanbedr-c-Cennin, Conway  
Bull Hotel, Abergele  
Bull Bay Hotel, Amlwch, Anglesey  
Crown Hotel Llandegla, Nr. Wrexham  
Crown Hotel, Llanfihangel, Corwen  
Dulas Arms, Llandulas  
Eagles Hotel, Penmachno, Bettws-y-Coed  
Glanrafon Hotel, Benllech Bay  
George & Dragon, Brymbo  
Grouse Inn, Carrog, Nr. Corwen  
Holland Hotel, Holyhead  
Holland Arms Hotel, Gaerwen  
Holland Hotel, Llanfachreath  
Imperial Hotel, Colwyn Bay  
Links Hotel, Llandudno  
Maelog Lake Hotel, Rhosneigr  
New Inn, St. Asaph  
Old Vaults, Denbigh  
Owain Glyndwr Hotel, Corwen  
Railway Inn, Llangefni  
Red Lion Hotel, Gyffllion, Nr. Ruthin  
Red Lion Hotel, Llansannan  
Red Lion Inn, Tyn-y-groes, Nr. Conway  
Sportsman Arms, Bylchau  
Trearddur Bay Hotel, Trearddur Bay  
Twrchylhelun Arms, Llanerchymedd  
Ty Gwyn Hotel, Roewen  
White Lion Hotel, Cerrig-y-Drudion