

OFFICIAL PROGRAMME OF
OLDHAM ATHLETIC A.F.C. LTD.



DIVISION TWO
1977/78

LATHICS
REVIEW

LUTON TOWN

TUESDAY, 10th JANUARY 1978

KICK-OFF 7.30 p.m.



PRICE 12pence

OLDHAM ATHLETIC A.F.C. LTD.



HONOURS:

Division 1: Runners-up — 1914-15.
Division 2: Runners-up — 1909-10.
Division 3: Champions — 1973-74.
Division 3 (North): Champions — 1952-53.
Division 4: Third (promoted) — 1970-71.
Runners up — 1962-63.

H. Wilde (Chairman), R. Schofield (Vice-Chairman)
DIRECTORS: D.A. Brierley, G.T. Butterworth, J. Kershaw,
G. Knight, I.H. Stott, F.D. Whitehead
MANAGER: Jimmy Frizzell
GENERAL MANAGER: W. Griffiths, ASST. SEC: T. Fisher
PHYSIOTHERAPIST: R. Jay, CLUB DOCTOR: R.B. Hollos
COMMERCIAL MANAGER: B. Joyce

Editor: Bob Young
Art Design: Comprehensive Art Services
Photographs: Oldham Chronicle
R.H.H. Venables (Oldham Camera Club)
Print: L.V. Lawlor, Oldham

Athletic Action



All eyes on Steve Taylor - but the Latics striker heads over the Blackpool bar.

COVER ACTION

Vic Halom makes goalscoring look easy as he flicks in a header against Burnley.

Picture by Edward Woolley, Oldham Chronicle

TALKING POINT

WITH
JIMMY FRIZZELL



IN view of our recent revival and a 100 per cent record over the holiday period, it was no surprise for us to earn a replay with Luton in the FA Cup.

We now have confidence — and at last some luck — on our side as ten games without defeat goes to show. But there is no way we will allow complacency to spoil our efforts of the past few weeks.

We know that tonight's match with Luton will be really tough but the lads are determined to succeed.

There is nothing like the FA Cup for motivating players — you only have to look back at some of the memorable giant-killing acts to realise that.

It is surely every footballer's ambition to play in a Wembley final and, while it would be over-optimistic to expect us to be there this year, I am hoping for another good run in this competition.

Last season we had the misfortune to be drawn at Anfield against mighty Liverpool. There was no disgrace in our 3-1 defeat but our subsequent League efforts were really disappointing.

As we go into this tie we are again enjoying a good League run and I hope our professional pride and the incentive of extra cash will be sufficient to lift our players into an extra gear to put paid to Luton.

A good cup run is also essential from a

financial point of view as far as the club is concerned.

Looking back on our four wins out of four over the holiday period, our last match with Blackpool here was a perfect example of how our fortunes have changed.

It is not long since I was writing in this programme that I felt we were long overdue for a change of luck — having been unfortunate to drop points in several matches earlier in the season.

Against Blackpool we were showing signs of strain and a 1-1 draw seemed a likely — and on the balance of play possibly a fair result — until Vic Halom popped in the winner in the dying second with a deflected free kick.

There was certainly no fluke about our 2-0 win at Fulham and, for my money, that was our finest away display since promotion to the Second Division.

A reproduction of the patience and skill shown that night should enable us to pick up a good few points and lay the away bogey that has dogged our efforts in previous seasons.

TODAYS VISITORS TO BOUNDARY PARK

LUTON TOWN

LUTON boss Harry Haslam, known throughout football for his cheery outlook, has already experienced both sides of the coin as a football manager. He played full-back for Manchester United, Brighton, Orient, Guildford and Hastings before serving his apprenticeship as a manager in non-league circles with Eastbourne, Barry Town and Tonbridge.

He has also done duty as scout and fund-raiser . . . and Luton have needed all his talents since he took over the manager's job from Alec Stock in May 1972.

Haslam is highly regarded for his ability to spot and groom young talent and that was one of the things Millwall were looking for when they offered him the managers job with a view to rebuilding the side.

Fortunately for Luton, Haslam turned down the offer after the club reviewed his contract.

On top of the doubt about Haslam's future, Luton have also been under pressure to part with full-back STEVE BUCKLEY — wanted by Aston Villa who are willing to pay £145,000.

Buckley is an example of Haslam's ability to find new talent. He was a free-scoring left-winger with Burton Albion when Haslam signed him for just £2,000 four years ago.

Goalkeeper MILIJA ALEKSIC cost £20,000 from Plymouth in January and this son of Yugoslav parents quickly became a firm favourite at Luton where the locals call him "Elastic" in tribute to his agility and quick reflexes.

Second-choice 'keeper TONY KNIGHT has played a handful of league games for Luton and more will come for this promising 18-year-old, picked up from Romford Schoolboys.

PAUL PRICE has overcome the disaster of twice breaking a leg to make himself first-choice right-back. He graduated through the junior teams.

Latest recruit to Luton's ranks — and another success for Haslam — is striker BRIAN STEIN, a 20-year-old South African who only a month ago was playing amateur soccer with Edgeware.

Before he had done any full-time training, Stein was in the Luton first team and scored twice in a splendid 4-0 home win over Sheffield United.

JOHN FAULKNER, Luton's senior professional, has given sterling service since they paid £6,000 for him in March 1972. He emerged from obscurity in the Sutton United team that played Leeds. Don Revie signed him on but a broken leg interrupted his career at Elland Road. A strong, no-nonsense tackler.

PAUL FUTCHER is still only 20 but was described by ex-England boss Don Revie as "an outstanding prospect". Luton risked a club record transfer fee of £100,000 to lure him away from home-town Chester in 1974 — when he was only 17. Unfortunately, Futchter has been out of action most of the season following a bad car accident and has only recently resumed playing — in a Youth team match.

PETER MEAD and DAVID CARR have come up through the junior ranks, Mead as full-back and Carr in defence or midfield. Both pushing for a regular first-team place.

JIM McNICHOL was released by Ipswich in the summer of 1976 and is considered a good capture by Luton. He had to be patient while Paul Futchter held down a regular place but, when called up, has proved his worth.

GRAHAM JONES was spotted playing schoolboy soccer in Manchester and signed apprentice in 1975. Made his League debut at the age of 17 and has played in defence and midfield for the first team.

PASQUALE FUCCILLO — son of Italian parents who settled at Bedford — joined Luton as a 16-year-old apprentice in 1973. Has since made his name with some storming midfield displays. Known as "Lil" to his friends, he has been a regular goal-scorer since marking his League debut with a goal.

ALAN WEST, the club captain, emerged from the famous Burnley "Production line" and joined Luton for £100,000 in 1973. Still only 25, West played for England at under-23 level.

RICKY HILL, capped by England at youth level, is a 19-year-old midfielder of great promise. Signed apprentice from schoolboy football in North London, Hill made a dream debut for Luton when he scored once and laid on another goal.

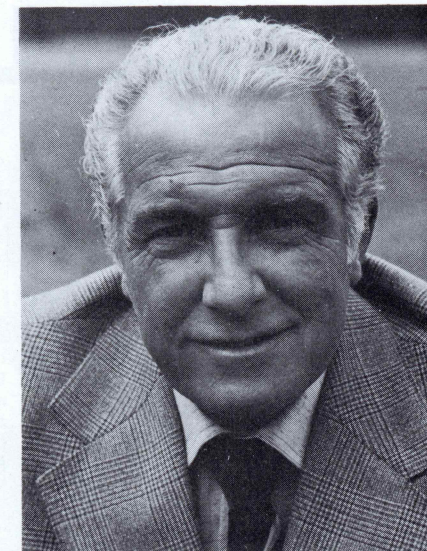
JIM HUSBAND, picked up a string of honours with Everton for whom he hit 75 goals, before joining Luton for £70,000. Plays midfield or front-runner.

PHIL BOERSMA, Luton's pre-season signing from Middlesbrough will operate as a striker after serving Boro in midfield. Manager Harry Haslam tried to sign him three years ago when Boersma was with Liverpool.

GODFREY INGRAM, a local product of Luton's youth teams, played for England Schools and has just been upgraded to junior professional.

RON FUTCHER, twin brother of Paul, cost Luton £25,000 from Chester and immediately made his mark in the First Division side — scoring a hat-trick in his second match.

Luton's squad is completed by youngsters PHILIP DRIVER, NIGEL JOHNSON, GARY HEALE, and TIM SMITH.



HARRY HASLAM



PHIL BOERSMA

LATICS LETTER

I HAVE been a regular Athletic supporter since moving to Oldham eight years ago and I don't think I have seen the side playing much better before.

It was good to see 15,000 crowds at the Burnley and Blackpool games over the holidays and the only pity is that figures like that are the exception rather than the rule. This team in its present form certainly deserves more support.

Like many other people I wondered how the team would fare when we sold Alan Groves to Blackpool — but as it turns out we needn't have worried. Whether it is coincidence or not, I don't know, but since his departure there seems to be a new determination and spirit about the side.

I have been particularly pleased to see Alan Young playing so well and getting some praise. He has always shown some

good "touches" but is vastly improved now he has got more confidence and first team experience behind him.

Another significant factor in the team's recent successful run must surely have been the marvellous form of Graham Bell — for my money one of the best midfield prospects in the Division if not the League. How long I wonder before the big clubs are queuing up at Boundary Park for the likes of Bell, Young and Carl Valentine?

And who would argue that Steve Taylor is not paying his way? Eleven goals since he arrived speaks for itself.

The way the whole team is playing at the moment I think we are in for a very good year and if the improvement is maintained, promotion is not beyond the bounds of possibility next season.

T. THOMSON

FURNISHERS R. SCHOFIELD & SON

14/16/ 27 OLD ROAD
FAILSWORTH, MANCHESTER
Telephone: 061-681 2292

BOAT & HORSES

— BROADWAY — CHADDERTON —
COLD TABLE, a la Carte
Monday—Friday 12 noon to 3 p.m.
* Reception Room for 60 persons
Reservations 061-681 2363

AA Registered — Diners Club
American Express, Access.
Your Hosts:
Mike and Jean Healey

Athletic Action



SPOT ON — Vic Halom drives home our second goal against Sheffield United from the penalty spot.

Picture by Edward Woolley, Oldham Chronicle

200 Club News

WILL all 200 Club members please note that with effect from January 1, Athletic's assistant secretary Terry Fisher is now treasurer/secretary of our organisation, taking over from Bernard Joyce.

All money must now be paid direct to Terry c/o O.A.F.C, Boundary Park, Oldham.

After 12 months in operation, the 200 Club was able to hand over a fantastic donation of £6,000 to the club and I am sure we can go on to bigger and better things with your continued support.

RAY KNOX, Chairman, 200 Club

You will be sure to 'score'
every time when you shop at

Phil Cohen & Son Limited

Oldham's leading
Gents clothiers and outfitters



Phil Cohen
& Son Limited

2, MARKET PLACE
5, ST. PETER'S SHOPPING CENTRE
OLDHAM

COURTLETS INSURANCE

BROKERS LIMITED
5, QUEEN STREET, OLDHAM OL1 1TH
TELEPHONE: 061 624 6063

SPECIALISTS IN:

- MORTGAGES
- LIFE ASSURANCE
- SELF EMPLOYED PENSIONS
- INVESTMENT ADVICE
- PERSONAL INSURANCES
- COMMERCIAL MORTGAGES

Also at Eccles Telephone:
061-788 8570

ASHTON FURNISHING

BETTER FURNITURE AT BIGGER DISCOUNTS

Furnishing Centre:

14, Market Place,
Oldham

also branches
at Stockport
& Ashton

Schreiber Centre:

1, King Street,
Oldham

Tel: 624 2484

OLDHAM ATHLETIC

JOHN PLATT
IAN WOOD
DAVID HOLT
GRAHAM BELL
KEITH HICKS
JOHN HURST
CARL VALENTINE
STEVE TAYLOR
VIC HALOM
LES CHAPMAN
ALAN YOUNG
STEVE GARDINER

LUTON TOWN

1 MILIJA ALEKSIC
2 PAUL PRICE
3 JOHN FAULKNER
4 GRAHAM JONES
5 DAVID CARR
6 ALAN WEST
7 RICKY HILL
8 PASQUALE FUCCILLO
9 JIM HUSBAND
10 RON FUTCHER
11 PHIL BOERSMA
12 GODFREY INGHAM

REFEREE
R.C. CHALLIS
Tonbridge, Kent

KICK-OFF 7.30 p.m.



LINESMEN
J.M. RUTTER
Red Flag
J.A. WEST
Yellow Flag

DESKS,
CHAIRS,
CUPBOARDS,
FILING CABINETS,
DEXION DISTRIBUTORS,

STEEL
SHELVING,
OFFICE
FURNITURE,
LARGE CASH
& CARRY DISCOUNTS!

Lancashire Storage Equipment Co.

BELMONT WORKS · FRANKLIN STREET · OLDHAM (opposite Oldham Brewery)
Telephone: 061 620 2216 for all kinds of shelving for the Home, Office and Industry



GEORGE HILL

(OLDHAM) LIMITED

TIMBER MERCHANTS &
WALLBOARD DISTRIBUTORS

Imported softwoods, hardwoods
plywoods, formica, mouldings, doors,
dowels. Stockists of Weyroc,
interwoven fencing and Asbestolux.

Saw, Planing and Moulding Mills
SCOTTFIELD SAW MILLS
OLDHAM

Telephone: 061 652 7421
NEW BRANCH AT GLEBELANDS RD/SALE
TELEPHONE: 061 969 7543

F.D. WHITEHEAD BUILDING SERVICES LTD.

OLDHAM

COMPLETE DESIGN
BUILDING & FURNISHING
SERVICE
SPECIALISTS IN ALL TYPES
OF CLUB BUILDING WORK

Tel: 061 624 9737/3343.

Player Profile...



WHAT a start to the New Year for reserve team defender Mike Roberts.

Mike, one of the crop of promising youngsters on Athletic's books, has recently been taking driving lessons, and is due to take his test at the end of this month.

So you can imagine his delight when he found out he had won a brand new car — a Skoda S100 — in the 200 Club draw. And, if that wasn't good enough, Mike also won £200 cash for selling the winning ticket to himself!

The draw was made by former Athletic striker David Shaw at the Burnley match recently and the winning ticket number was 11754.

WHAT a start for Billy Urmsen who started his full-time job with Athletic as youth team coach at the turn of the year.

Billy had previously done a lot of work with the youngsters on a part-time basis and the day after taking up his new full-time post the lads rewarded him with a

marvellous 9-1 win at Chester in the FA Youth Cup third round.

The attacking flair of Athletic's youngsters is a delight to watch and we hope you will support them in the next round of this competition, the draw for which will be made later this month.

FACE IN THE CROWD



YOU can win a free seat ticket for our next home match. If this is YOUR FACE in the circle on our photograph then bring this programme to the general office (9.00 a.m. to 5.00 p.m.) or to the Club Shop on match day and claim your prize. Picture taken v MILLWALL Saturday, December 3rd

SOUVENIR SHOP PRICE LIST 1977-78 SEASON

ALL ITEMS ARE AVAILABLE AT 1a KING STREET

Orlon College Scarves (Named Orange)	£1.25
Orlon College Scarves (Blue and White with Tangerine Stripe)	£1.50
Silk Scarves: Oldham Athletic Football Club	£1.00
Silk Scarves: (Latics are Magic)	75p
Shoulder Bags	£2.30
Grips	£3.50
Wool Bob Hats	75p
Club Ties (Two colours only Blue and Gold)	£1.00
Autograph/Photograph Album	60p
Beer Glasses	75p
Iron on Motifs (7 to choose from)	35p
Car Stickers	25p
Sew on Blazer Badges	50p
Key Rings	Leather 15p Plastic 25p
Metal Lapel Badges	40p
Coffee Beaker	45p
Team Photograph (by order only) Black and White 10" x 8"	75p
Small Colour Photograph	25p
Players Individual Photographs in colour (Small)	25p
Large Black and White Players Individual Photographs (10" x 8")	on order only 75p
Players Buttons	35p
Pens	15p
Rosettes	25p
Watch Straps	Mens 75p boys 45p
Clocks	£9.50
Plaques	£1.00
Books: Oldham Athletic Football Club Record Book	£1.50
Magnetic Football Game	35p
Full Team Squad in Colour (Autographed Picture)	50p

ALL PRICES ARE SUBJECT TO MANUFACTURERS' FLUCTUATION
We also have available our own Away Match programmes (small quantity only)

specialists in

Finished Artwork · Typography · Graphic Design · Illustration & other related services
COMPREHENSIVE ART SERVICES
Courtlets House · 38 King Street West · Manchester M3 2WZ · Tel: 061 834 8552

Telephone: 061-370 8611

THOMAS A. METCALFE LTD

SUPPLIERS OF WELDING AND CUTTING EQUIPMENT

MARKET STREET, DROYLSDEN,
MANCHESTER M35 7DJ
061-370 8611 (10 lines)

WATSON'S STORES

Pay a visit to Lancashire's leading Carpet Specialists and safeguard your own interests by comparing our prices and qualities.

FIRST-CLASS FITTING SERVICE

Estimates Free Any Distance

NO "FREE" GIFTS OR GIMMICKS

GLODWICK ROAD · OLDHAM

Telephone 061-633 2461

LATICS FIXTURES

		results	attend
Aug. 20—Blackpool	A	D 1-1	11,021
23—Fulham	H	W 2-0	7,280
27—Luton Town	H	W 1-0	7,579
30—Brighton (LC2)	A	D 0-0	20,218
Sept. 3—Orient	A	L 5-3	4,324
10—Bolton Wanderers	A	L 1-0	17,416
13—Brighton (LC Replay)	H	D 2-2	7,787
17—Charlton Athletic	H	D 1-1	7,242
20—Brighton (LC Rep 2)	A	W 2-1	1,832
24—Bristol Rovers	A	D 0-0	4,550
Oct. 1—Blackburn Rovers	H	L 2-0	7,795
4—Stoke City	H	D 1-1	8,458
8—Tottenham Hotspur	A	L 5-1	24,636
15—Notts. County	H	W 2-1	8,717
22—Cardiff City	A	L 1-0	6,892
25—Hull City (LC3)	A	L 2-0	6,923
29—Sunderland	A	L 3-1	24,210
Nov. 5—Crystal Palace	H	D 1-1	7,819
12—Sheffield United	A	L 1-0	14,776
19—Southampton	H	D 1-1	6,475
26—Mansfield (F.A.1)	A	W 2-0	7,026
Dec. 3—Millwall	H	D 2-2	6,670
10—Brighton & Hove	A	D 1-1	22,239
17—Sheffield U. (F.A.2)	H		
26—Hull City	A		
27—Burnley	H		
30—Fulham 7.30 K.O.	A		
Jan. 2—Blackpool	H		
7—F.A. Cup 3rd Round			
14—Luton Town	A		
21—Orient	H		
28—F.A. Cup 4th Round			
Feb. 4—Bolton Wanderers	H		
8—League Cup S.F.1			
10—Charlton Athletic	A		
15—League Cup S.F.2			
18—Bristol R. (F.A.5)	H		
25—Blackburn Rovers	A		
Mar. 4—Tottenham Hotspur	H		
11—Notts. County (F.A.6)	A		
18—Cardiff City (L.C.F.)	H		
24—Sunderland	H		
25—Burnley	A		
27—Hull City	H		
Apr. 1—Crystal Palace	A		
8—Mansfield (F.A.S.F)	H		
15—Southampton	A		
22—Brighton & Hove	H		
26—Stoke City	A		
29—Millwall	A		
May. 6—F.A. Cup Final			

(C) The Football League Ltd. 1977

SECOND DIVISION TABLE

	P	W	D	L	F	A	Pts.
Tottenham	24	13	8	3	49	21	34
Bolton	24	10	4	5	39	23	34
Southampton	24	13	6	5	35	22	32
Blackburn	24	12	7	5	34	28	31
Brighton	24	10	8	6	33	25	28
Luton	24	10	6	8	37	26	26
Crystal P.	24	9	8	7	36	31	26
OLDHAM A.	24	9	8	7	30	28	26
Sheffield U.	24	10	6	8	38	28	26
Sunderland	24	7	10	7	38	35	24
Blackpool	24	9	6	9	32	30	24
Fulham	24	9	5	10	34	29	23
Charlton	23	9	5	9	36	39	23
Stoke	24	8	6	10	26	28	22
Orient	24	6	10	8	25	27	22
Notts. County	24	7	7	10	31	38	21
Bristol R.	24	6	8	10	34	34	20
Hull C.	24	5	8	11	22	27	18
Cardiff	23	6	6	11	27	47	18
Mansfield	24	5	7	12	30	42	17
Millwall	24	3	10	11	20	34	16
Burnley	24	5	5	14	20	41	16

Man in the Middle

RONALD C. CHALLIS, (Tonbridge, Kent). Commenced refereeing with R.A.F. in Singapore (1952) then progressed via Kent League, Southern League — referee for 10 seasons — Football League line to full list in 1968. Has refereed F.A. Challenge Trophy Final and a European Competition Final in 1976. Lined the Football Assoc. Cup Final in 1975, also twice in Inter-Cities Cup matches.

Married and with two sons is a Magazine Production Officer. Keen member of Referees' Association who enjoys visiting societies for talks on Laws of the Game. Hobbies are photography and playing squash. Is Chairman of Association of Football League Referees and Linesmen (London and Southern Counties Section).

RESERVE FIXTURES

Aug. 20—Southport Reserves	H	W 4-1
27—Manchester U. 'A'	A	D 0-0
Sept. 3—Everton 'A'	H	W 2-1
10—Manchester City 'A'	H	postp'
24—Liverpool 'A'	H	W 4-1
Oct. 1—Manchester City 'A'	A	L 2-1
8—Chester 'A'	H	W 2-1
15—Macclesfield T. Res	A	W 8-0
29—Bradford C. Res.	H	W 7-2
Nov. 5—Stockport C. 'A'	A	W 3-2
12—Macclesfield T. Res	H	W 10-1
19—Carlisle U. Res.	A	W 2-0
26—Tranmere Rovers Res	H	W 2-0
Dec. 3—Everton 'A'	A	D 2-2
17—Bolton W. 'B'	A	
31—Crewe Alexandra 'A'	H	Canc.
Jan. 14—Stockport C. 'A'	H	
21—Liverpool 'A'	A	
Feb. 4—Blackpool 'A'	H	
11—Bolton W. 'B'	A	
18—Southport Reserves	A	
25—Manchester U. 'A'	H	
Mar. 4—Chester 'A'	A	
11—Crewe Alexandra 'A'	A	
18—Bradford C. Res.	A	
Apr. 1—Blackpool 'A'	H	
7—Tranmere R. Res	A	
15—Carlisle U. Res.	H	
22—Rochdale Reserves	A	
29—Rochdale Reserves	H	

B TEAM FIXTURES

Aug. 24—Blackburn R. 'B'	A	L 3-2
27—Tranmere R. 'B'	H	L 4-3
Sept. 3—Blackburn R. 'B'	H	D 2-2
10—Burnley 'A'	A	L 2-1
Oct. 1—Rochdale 'A'	H	W 4-1
8—Liverpool 'B'	A	L 2-0
15—Burnley 'A'	H	W 3-2
22—Preston N.E. 'B'	A	D 1-1
29—Preston N.E. 'B'	H	Postp'
Nov. 5—Manchester U. 'B'	H	W 3-2
12—Manchester U. 'B'	A	Postp'
19—Halifax T. 'A'	H	D 0-0
26—Manchester United	A	W 3-1
Dec. 3—Halifax T. 'A'	A	W 2-1
17—Droylsden 'A'	H	
31—Everton 'B'	A	
Jan. 2—Rochdale 'A'	A	
7—Liverpool 'B'	H	
14—Preston N.E. 'B'	A	
28—Rochdale 'A'	H	
Feb. 4—Tranmere R. 'B'	A	
11—Burnley 'A'	H	
18—Droylsden 'A'	A	
Mar. 4—Halifax T. 'A'	H	
11—Rochdale 'A'	A	
25—Burnley 'A'	A	
Apr. 1—Halifax T. 'A'	A	
8—Blackburn R. 'B'	H	
15—Everton 'B'	H	
29—Preston N.E. 'B'	H	

ON OUR TRAVELS...

HERE is your RAC route to next week's away game at Luton Town. From Oldham: A62 to Manchester junction A5103 (Princess Road/Parkway) (7 miles) A5103 /M56 to Bowdon junction A556 (20 miles) A556 (follow 'Northwich', 'Birmingham' signs) to intersection 19, M6 at Tabley (23 miles) M6 south and via M6/M1 to intersection 11, junction with A505 (171 miles) A505 to Luton (174 miles). Approaching the town centre along Dunstable Road (A505) Luton Town football ground is in Kenilworth Road, on your right at the triangular junction of Dunstable Road and Leagrave Road.

F.A. CUP DRAW

4th Round

The winners of tonight's game have been drawn away to Rotherham United or Millwall



NEXT HOME FIXTURES:

Saturday, January 14th--Kick-off 2.30 p.m.
STOCKPORT C. 'A'
Saturday, January 21st--Kick-off 3.00 p.m.
ORIENT

For the record . . .

CONTINUING our series which looks at Athletic's League record since the club joined the Football League, we bring you the following seasons: Don't forget to buy your record book from the club shop:

Season	Division	Position	W	L	D	F	A	Pts.
1964-65	Third	20th	13	23	10	61	83	36
1965-66	Third	20th	12	21	13	55	81	37
1966-67	Third	10th	19	17	10	80	63	48
1967-68	Third	17th	18	21	7	60	65	43
1968-69	Third	24th	13	24	9	50	83	35
1969-70	Fourth	19th	13	20	13	60	65	39
1970-71	Fourth	3rd	24	11	11	88	63	59

PENNINE PETROLEUM PRODUCTS

Authorised
Distributors



67 UNION STREET . OLDHAM
Telephone: 061-624 1332 (Depot)
061-624 4489 (Accounts)

Butterworth's Electrical

Tel: Shaw 47773
THE BEST BY ANY TEST WE
SCORE. AND WIN BY
50 YEARS OF EXPERIENCE

★ SPORTS REQUIREMENTS

GILBERTS

WATER LANE, WILMSLOW
Telephone: 29221/2

Bramhall Centre - Bramhall
Telephone: 439 7394

Suppliers of kit to leading teams
including OLDHAM ATHLETIC

Seton

SETON GROUP OF COMPANIES
Tubiton House · Medlock Street · Oldham
SUPPLIERS TO O.A.F.C.
MEDICAL REQUISITES

PAKAMAC Ltd

PAKAMAC HOUSE · MIDDLETON ROAD · CHADDERTON
OLDHAM · Telephone: 061 652 5111



MALCOLM CLARKE (STEEL) HOLLINWOOD LIMITED

specialists in steel plate stock

Holding de-coiled sheets 1/8" - 1/2" thick
BS 4360-43A, BS 4360-50B, BS 1501-151-28A
3/16" - 10" thick. Quotations for shearing & profiling
available. Also bulk buyers of works-surplus parcels

UNIT 1, VICTORIA TRADING ESTATE, DRURY LANE,
HOLLINWOOD, OLDHAM OL9 7PJ, LANCASHIRE
Telephone: 061 682 7280 & 061 681 8899

The Latics Boundary Club

ROOM HIRE CHARGES JULY 1977
HALL Weekdays £20.00
 Saturday £30.00
ORGAN & DRUMS £25.00
 (8.00 p.m. to 1.00 a.m.)
DOORMAN £5.00
COMPERE £14.00
SEATING CAPACITY
 300 (incl. small dance space)
 350 (full seating)
DINNERS 200

MODERN & OLD TYME DANCING
WEDNESDAY & SUNDAY
We can arrange dining facilities for 5 course
meals. Dinner Dances a speciality in
Candlelight atmosphere.
Enquiries to: 624 1051 (Boundary Club)
643 0186 (Bars Manager)

THE FAMILY FAVOURITE



Bakers of Good Bread

IDEAL BAKERY (Shaw) LIMITED
SHAW · OLDHAM OL2 7SF · LANCs
Telephone: Shaw 47744

There's a John Willie Lees House near your house serving traditional draught beer...

Angels Club, Burnley
Albion Inn, Hollinwood
Angel Inn, Royton
Assheton Arms Hotel, Middleton
Black Horse Hotel, Shaw
Black Swan Hotel, Oldham
Blue Pits Inn, Castleton
Boarshaw Hotel, Middleton
Boat & Horses, Chadderton
Boundary Inn, Oldham
Bowling Green Inn, Hollinwood
Britannia Inn, Middleton
Carters Arms, Middleton
Commercial Hotel, Oldham
Cotton Tree Inn, Middleton
Crawford Arms, Rochdale
Cross Keys Inn, Uppermill
Crown & Shuttle Inn, Firgrove, Rochdale
Crown Inn, Middleton
Dickens Green Hotel, Rochdale
Dog & Partridge Inn, Ashton under Lyne
Dog & Partridge, Oldham
Dog & Partridge, Royton
Duke of York Inn, Royton
Falconers Arms, Hollins, Oldham
Farmers Arms, Prestwich, Manchester
Free Trade Tavern, Milnrow
Firwood Tavern, Middleton Junction
Fire Brigade Inn, Ancoats, Manchester
Gardeners Arms, Middleton
Gardeners Arms, Middleton Junction
Golden Pheasant Inn, Knutsford
Grey Horse Inn, Failsworth
Greyhound Inn, Royton
Grosvenor Arms, Newton Heath
The Greengate, Limeside, Oldham
Halfway House, Royton
Hare & Hounds, Chadderton
Hare & Hounds, Higginsshaw
Hare & Hounds, Middleton
Hollins Bush Inn, Bury
Horton Arms, Chadderton
Highland Laddie, Rochdale
Hunt Lane Tavern, Chadderton
The Haggate, Royton
The Jolly Butcher, Wythenshawe
Jolly Carter, Middleton
Junction Inn, Denshaw
Junction Inn, Middleton Junction
Lancashire Fold, Alkington
Lord Clive, Whitefield
Middleton Archer, Middleton
Morning Star Inn, Shaw
Minders Arms, Middleton Junction
The Nowster, Middleton
Old Cock Inn, Middleton
The Park, Wythenshawe
Pack Horse Inn, Birtle, Nr. Bury
Plough Inn, Oldham
Puckersley Inn, Royton
Radclyffe Arms, Oldham

Railway & Linnet, Middleton Junction
Railway Hotel, Royton
The Rembrandt, Manchester
Rifle Range Inn, Chadderton
Ring O Bells, Middleton
Rose of Lancaster, Chadderton
Royal Oak Hotel, Middleton
Same Yet Inn, Prestwich
Ship Inn, Slattsacks, Middleton
Spinners Arms, Springhead
Spread Eagle Hotel, Lymm
Spring Inn, Rochdale
Suburban Hotel, Gorton
Success to the Plough, Marland, Rochdale
Tandle Hill Tavern, Slattsacks, Middleton
Three Arrows Inn, Heywood
Travellers Call, Bredbury
The White Grouse, Flaene, France
Waggon & Horses, Rochdale
Weavers Arms, Rochdale
Welcome Inn, Salford, 7
Wellfield Inn, Rochdale
White Hart Inn, Middleton
Who'd a Thowt It, Middleton
Woodhouse Gardens, Failsworth
Woodman Inn, Hollinwood
Weavers Arms, Oldham
Albion Vaults, Wrexham
Anglesey Arms Hotel, Anglesey
Bee Hotel, Abergele
Black Lion Inn, Newbridge, Nr. Wrexham
Britannia Inn, Halkyn
Bull Inn, Llanbedr-c-Cennin, Conway
Bull Hotel, Abergele
Bull Bay Hotel, Amlwch, Anglesey
Crown Hotel Llandegla, Nr. Wrexham
Crown Hotel, Llanfihangel, Corwen
Dulas Arms, Llandulas
Eagles Hotel, Penmachno, Bettws-y-Coed
Glanrafon Hotel, Benllech Bay
George & Dragon, Brymbo
Grouse Inn, Carrog, Nr. Corwen
Holland Hotel, Holyhead
Holland Arms Hotel, Gaerwen
Holland Hotel, Llanfachreath
Imperial Hotel, Colwyn Bay
Links Hotel, Llandudno
Maelog Lake Hotel, Rhosneigr
New Inn, St. Asaph
Old Vaults, Denbigh
Owain Glyndwr Hotel, Corwen
Railway Inn, Llangefni
Red Lion Hotel, Gyfflllog, Nr. Ruthin
Red Lion Hotel, Llanannan
Red Lion Inn, Tyn-y-groes, Nr. Conway
Sportsman Arms, Bylchau
Trearddur Bay Hotel, Trearddur Bay
Twrchyhelun Arms, Llanerchymedd
Ty Gwyn Hotel, Roewen
White Lion Hotel, Cerrig-y-Drudion