

LUTON TOWN

Official
Programme

20p

TOTTENHAM HOTSPUR

Football League
Division Two

18.2.78



TODAY'S MATCH SPONSOR

SKF (UK) LTD

Manufacturers and stockists of
Welding Equipment, Spares and Accessories

AVAILABLE FROM ALL LEADING STOCKISTS
OF WELDING EQUIPMENT

Send for name and address of your nearest stockist:



WELDING PRODUCTS

BUTCHER BROS. LTD.

KING HENRY'S DRIVE, NEW ADDINGTON,
CROYDON, SURREY, ENGLAND.

TELEPHONE. LODGE HILL 42227/8/9.

TELEX. 897894

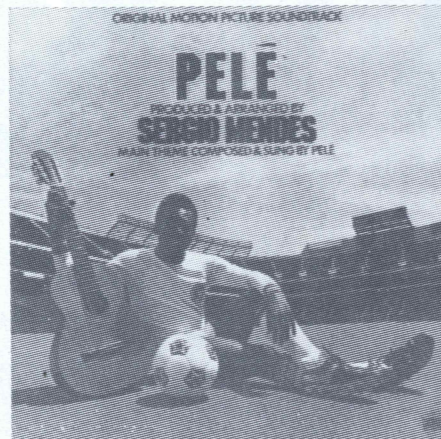
PELÉ MAKES RECORD*

with the help of SERGIO MENDES

* Including the theme from his last match PLUS 11 other great tracks

Yes, the football genius PELÉ
joins forces with the exotic
rhythms and exciting Brazilian
sounds of SERGIO MENDES —

the musical genius.
**AVAILABLE NOW AT £3.95
INCLUDING POSTAGE AND
PACKING**



Please send me copies of PELE with SERGIO MENDES at £3.95 each
inc. postage & packing. I enclose cheque/postal order for

£..... made payable to CIRCLE SPORTS
24-26 Fowler Road, Hainault, Ilford, Essex.

Name Address

ALSO AVAILABLE FROM YOUR LOCAL RECORD RETAILER

DAVID PLEAT

WELCOME to Spurs, a Club with the finest of traditions and one of the most respected Clubs in the country. Their visit should attract a good attendance and I hope that no-one will be disappointed with the efforts and abilities of both sides.

There has been much to think about and a lot of work to do since I took over the manager's position. From my point of view I can reflect that, in spite of problems, I am eating and sleeping normally and still of sound mind.

It was particularly pleasing for me to succeed in persuading Ken Gutteridge to leave Brighton to join me here as my assistant. He will prove an excellent man for our Club. The game revolves around players, Ken is as convinced as I am that here at Luton we have the basis of a team capable of pushing into the 1st Division and holding our own there.

Last Saturday's game was a temporary setback and a pantomime,



but unfortunately this one had no happy ending. Professional footballers should not be asked to risk their limbs in such conditions and to add injury to insult Lilly Fuccillo was the victim of a charge more akin to ice-hockey. We all hope that Lil is in action again quickly as he is not only a first class player but also a fighter.

We all have our own incentives to make Luton Town proud. The players in possession of first team shirts must pull out extra reserves to maintain their positions because I shall not hesitate to manoeuvre for new players if need be.

There is a tendency in football to think that the grass is always greener on the other side. We, at Luton have quality players. Give them your encouragement and they will respond. Cheers, not jeers — there's no room for doubters. We are going forward.

Saturday 18 February 1978
Kick-off: 3.00pm

LUTON TOWN FOOTBALL CLUB



President: T. Hodgson
Deputy President: J.A.C. Bain
Vice-Presidents:
Lord Hill
Sir Reginald Pearson O.B.E.
John Brent, B. England,
C. Holloway, L. Leppington,
Eric Morecambe O.B.E.,
Eric Waller, A. Berry F.C.C.A.,
C.J. Hudson, J. Lester,
R.S. Safranek.
Directors:
Denis Mortimer (Chairman),
R.L. Banks, D.J. Evans,
E.S. Pearson, H. Richardson,
R.J. Smith, J.R. Yates

Team Manager: David Pleat
Assistant Manager:
Ken Gutteridge
Company Sec. & Comm.
Manager: Doug Lygo A.C.M.A.
Club Secretary:
John Wilkinson
Physiotherapist: Reg Game
Asst. Secretary: Wayne Morgan
Solicitors:
Lathom & Co., King St., Luton
Auditors:
Messrs. Hillier, Hills, Frary & Co
Chartered Accountants.

Medical Officers:
Dr. P.J. Burrows, M.A., M.B.
B.Chir(Cantab), D.(Obst)
R.C.O.G.
Dr. H. Melville, B.A., M.B.
B.Chir(Cantab)
Dr. A.M.D. Mitchell B.A., M.B.
B.Chir(Cantab) D.(Obst)
R.C.O.G.
Design/Print:
Maybank Press Ltd.,
24-26 Fowler Road,
Hainault Industrial Estate,
Ilford, Essex IG6 3UQ.

Cover photo by courtesy of Gareth Owen — Sportswide Photography

WELCOME



RALPH COATES (*Forward*) Born at Hetton-le-Hole, County Durham, and played as a striker for Eppleton Colliery Welfare before joining Burnley. Transferred from Burnley to Spurs in May, 1971. Has made four appearances in the full England team, one of which was as substitute. Scored the goal against Norwich City that won the League Cup for Spurs at Wembley in 1973.

BARRY DAINES (*Goalkeeper*) Born at Witham and played for Essex County Boys before joining Spurs as an apprentice. Upgraded to full professional rank in September, 1969. Played for the England Youth team and was a member of Spurs' side that won the F.A. Youth Cup in 1970. Last season he made 19 League appearances, the most in any one campaign to date.

JOHN DUNCAN (*Forward*) Was out of action for most of last season with a back injury. Born in Dundee. Transferred from Dundee to Spurs in October, 1974 and made his debut at Luton on the last Saturday of that month. Played for the Scottish League against the Football League in 1973. Has already scored nine goals this season.

GLENN HODDLE (*Midfield*) Played for the England Under-21 team against Wales at Wolverhampton last December as substitute. Born at Hayes, but has lived at Harlow most of his life. Signed for Spurs as an apprentice in April, 1974 and upgraded to full professional in April, 1975. Played for the England youth team. Last season he was voted

"Best Reserve Player" of 1975-76 by Spurs Supporters Club. Made his League debut as a substitute at home to Norwich City in August, 1975.

JAMES HOLMES (*Defender*) Joined Spurs from Coventry City last March. A regular member of the Eire international team, he was born in Dublin. He played for both the Dublin and Eire Boys' teams and also shone at Gaelic football. He joined Coventry as an apprentice and was upgraded to full professional at Highfield Road in November, 1970. Made 10 League appearances for Spurs last season, and scored his first and only goal against Leicester City in the final League match at White Hart Lane last season.

CHRIS JONES (*Forward*) Born in Jersey and established himself in schools football in the Channel Islands. Signed for Spurs as an apprentice in May, 1971 and was upgraded to full professional in May, 1973. Made his League debut on the opening day of season 1974-75 at home to Ipswich Town. Last season he finished top scorer with nine League goals.

NEIL McNAB (*Midfield*) Joined Spurs from Morton in February, 1974 and after reverting to amateur status for the rest of that season, signed as a professional in June of that year. Has played for the Scottish international youth team and is a former schoolboy international. Made his League debut for Spurs as substitute at home to Chelsea in April, 1974 as a 16-year-old.



SPURS

TERENCE NAYLOR (*Defender*) Born at Islington and played for Islington Boys. Trained for a while with Arsenal and also had a brief spell with Millwall before joining Spurs as an amateur. Gave up his job in Smithfield Market to sign as a professional in July, 1969 and made his League debut at West Bromwich at Easter, 1970. His only goal for the first team was scored against Chelsea in the semi-final of the League Cup at Stamford Bridge in 1971.

KEITH OSGOOD (*Defender*) Has been ever-present in each of the last two seasons. Gained schoolboy international honours. Also played for the England Youth team. Signed for Spurs as an apprentice in June, 1971, and was upgraded to full professional in June, 1972. Made his League debut as substitute at Newcastle in the final match of season 1973-74. Six of his seven goals last season were from the penalty spot. Last March he was presented with a trophy as runner-up to "Player of the Year" for 1975-76 by Spurs Supporters Club.

STEPHEN PERRYMAN (*Midfield*) Club captain. Joined Spurs as an apprentice in July, 1967 and was upgraded to full professional in January, 1969. Made his League debut against Sunderland in a home match in September, 1969. Last season he was an ever-present. In making his 17th appearance for the England Under-23 team three seasons ago, he equalled the record set up by Martin Chivers. Over 300 League games for Spurs.

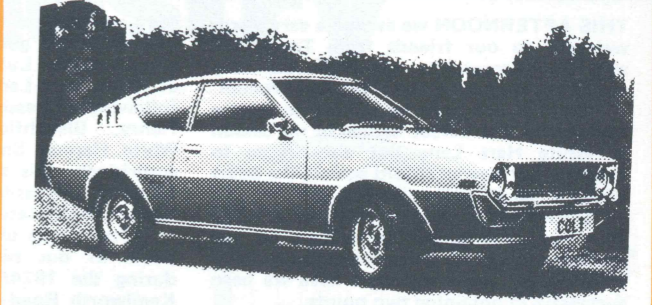
JOHN PRATT (*Midfield*) Born at Hackney. Played for the London F.A. Boys' team and spent a year in Brentford's youth side. Joined Spurs as an amateur on the recommendation of Terry Medwin. Signed as a full professional in November, 1965 and made his League debut away to Arsenal in March, 1969. Another highly experienced player.

MARTIN ROBINSON (*Forward*) Comes from Chadwell St. Mary, near Grays. Signed apprentice forms for Spurs in July, 1973 and was upgraded to full professional in May, 1975. Has finished top scorer in the Combination team in each of the last two seasons. Made his League debut at home to Leicester City in February, 1976 and also played as substitute at home to Aston Villa the following month, scoring a goal in that game. Recently got back into League side.

PETER TAYLOR (*Forward*) Joined Spurs from Crystal Palace last September and made his debut in the away match with West Bromwich Albion. A midfield player in his school-days, he gained a place in the South-East Essex District team and later played for Canvey Island. He was spotted by Southend United and gave up his job as a store-keeper to sign as a professional for them. From Southend he was transferred to Palace in October, 1973. Played for England on four occasions.

Left to Right:
Back row Pat Welton (*Ass. Manager*), Terry Naylor, Chris Jones, Keith Osgood (*Now Coventry*), Ian Moores, Barry Daines, Glenn Hoddle, Gerry Armstrong, John Duncan, Keith Burkinshaw (*Manager*).
Front row Neil McNab, Peter Taylor, John Pratt, Jimmy Holmes, Steve Perryman (*Captain*), Don McAllister, Mick Stead, John Gorman, Ralph Coates.

Test drive the new Sigma Gallant Colt Celeste.



- QUALITY USED CARS**
- 1976 (P) Triumph Stag. Automatic. Orange. £4795.00.
 - 1971. Ford Cortina 1600L Estate. Blue. £849.00
 - 1974. Jaguar XJ6. 4.2. L.W.B. Fern Green. £4395.00.
 - 1976 (R) Cortina 3 litre Ghia Estate. White £3995.00.
 - 1977/8's Series. Lotus Eclat 521 Model. Pine Green £7995.00.
 - 1976 (R) Cortina 1600L. Estate. White £2195.00.
 - 1975. Morris 1800 Princess HL. Blue. £1995.00.
 - 1976. Vauxhall Chevette 1256. Blue. £1599.00.
 - 1976. Rover SD1.5 Speed. Tumeric. £5600.00.
 - 1972. Cadillac Sedan DeVille Finished in Grey £OFFERS.
 - 1972. Rover 3500 Finished in Beige/Black trim £1599.00.
 - 1973. Audi 100GL 4 door. Brown. £1595.00.
 - 1973. Daimler Sovereign 4.2. White/Blue trim £2695.00.
 - 1974. Jaguar XJ6 4.2. L.W.B. Midnight Blue £4595.00.
 - 1975. Daimler Sovereign 4.2. Regency Red. £4995.00.

3 Years extended Warranty on all cars.
 Full Service facilities available



G S TWIGG LTD
 Colt Main Dealers
 Empress/Archway Roads
 Leagrave, Luton, Beds Telephone: Luton 52594/5

No Hire Purchase charges on purchases of new Colt cars over 12 months. This offer expires 28th February 1978.

LUTON LATEST

THIS AFTERNOON we extend a very warm welcome to our friends from Tottenham and we congratulate them on the very strong bid for promotion at the first attempt.

We shall not only be striving to reverse the narrow 2-1 defeat earlier in the season at White Hart Lane but also trying to improve our overall record against the Spurs which is not an impressive one.

Since League football resumed in 1946 we have entertained Tottenham on ten occasions prior to today in league matches and in only three instances have we been successful in obtaining two points.

The first occasion was in 1946/47 when in front of a record crowd (at that time) of 26,362 Luton triumphed by 3 goals to 2 in a 2nd Division encounter. Our goals came from Dally Duncan, Hughie Billington and Ted Duggan and the visitors side included Bill Nicholson whom we are always pleased to see at Kenilworth Road, Ronnie Burgess and Ted Ditchburn.

The following season when another ground record was established the above three star names were joined by Vic Buckingham and Len Duquemin but on this occasion defences kept the score sheet blank. Both Luton sides included Frank Soo and Horace Gager.

For the next home victory Luton had to wait until their first season in the 1st Division (1955/56). In the meantime, Spurs had been Champions of Division 2 (1950), Champions and Runners-up of Division 1 (1950/51 and 1951/52). They had been joined by Danny Blanchflower, and Eddie Baily also played in Luton's first home game of the season but they could not stop the home side winning 2-1 with goals by Cummins and Turner. Another distinguished visitor in Spurs colours who played in the two drawn games in 1949/50 was Sir Alf Ramsey. This was Spurs promotion year and the game at White Hart Lane attracted over 53,000 spectators. Even a Football Combination match between our two clubs was watched by over 4,300 in the 1950's.

The third and last home victory was achieved in the season when Spurs finished in 3rd position and Luton, finishing 22nd,

were relegated to Division Two. The margin was again one goal and the solitary scorer was Cummins. Luton also managed to draw at White Hart Lane that season against the following impressive line-up. Brown, Baker, Henry, Blanchflower, Marchi, Mackay, White, Harmer, Smith, Allen and Jones. Not surprisingly this side were celebrating the hitherto impossible "double" just over twelve months later.

After a gap of fifteen years the league paths of our two clubs crossed briefly during the 1974/75 season, Spurs visited Kenilworth Road during October when the newly promoted Hatters were still struggling to find their form, and it needed a John Aston goal in the eighty-seventh minute to ensure a point. Earlier Martin Chivers had scored for Spurs whose now departed international stars also included Pat Jennings, Cyril Knowles, Mike England and Martin Peters.

One of Luton's final 1st Division games took place at White Hart Lane when a goal from Alfie Conn which looked suspiciously offside deprived us of a point five minutes from time. I wonder how many remember that the Luton scorer that day was skipper Alan West.

ALAN'S comeback, following his ankle injury commenced two weeks ago in the Chiltern Premier League when he scored one of the eight goals by which our Youth team beat Ware. Let us hope that Alan can repeat this feat and score again against Spurs today.

WE WELCOME the Directors, Management and Guests of SKF (U.K.) Ltd. who are sponsoring their second match this season. We hope that they enjoy the afternoon and that the match result will be better for us than on their last visit.

IT ALSO gives us great pleasure to welcome our new Assistant Manager, Ken Gutteridge to Kenilworth Road. At the time of writing Ken may be travelling with the Combination team but under normal conditions he will be 'on the bench' whenever the first team is

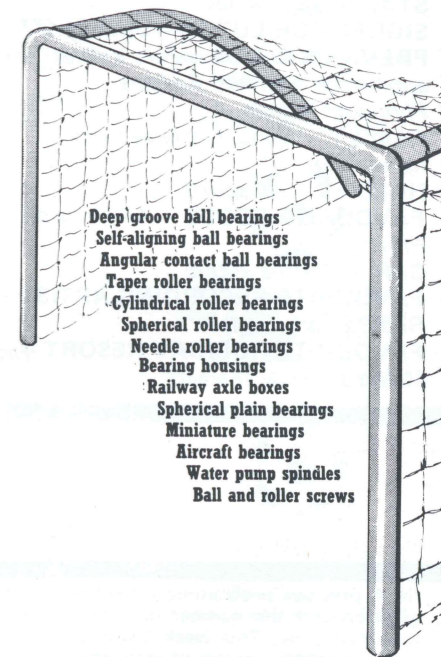
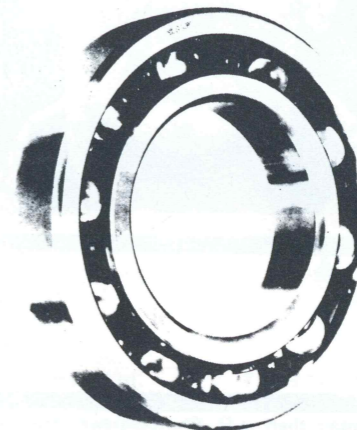
appearing. Ken has the satisfaction of knowing that he was David Pleat's first choice and we were delighted that he decided to leave Brighton to join our new management team.

THE EVER mounting costs of running a football club plus the enormous expenditure facing us all under the "Safety of Sports Grounds" Act has resulted in even the aristocratic "Gunners" launching a new Lottery Scheme to raise funds. Before theirs was announced however our Pools Office had already carried out much of the necessary spade work essential to a successful large lottery and we can now reveal that the first draw will take place on Wednesday March 15th and thereafter every Wednesday. In view of the fact that, despite strenuous efforts to keep star players in recent years and a fair ration of success in very difficult circumstances, it seems that the "Hatters" just will not receive the same level of support as Brighton or Southampton for example. This means that we need desperately to develop our commercial income and we need the help of all our loyal 6-8,000 supporters to enable us to compete with larger clubs.

The Club is relying heavily upon the new lottery and upon you, the supporters, to make it a success. We need people to sell the tickets and others to buy them. With the prizes offered this should not prove too difficult. Now please turn to pages 10 and 11 for more information, and beware of imitations. If you want to help your Club, support the "TOWN LOTTERY". Tickets will be on sale from February 20th.

CONGRATULATIONS to our two young apprentice professionals from Northern Ireland, Alan Currie and Tom Stewart. Already both capped at Schoolboy level they were called up to play in the Youth International in Dublin on Friday 10th February against the Republic of Ireland and helped their side to a 1-0 victory.

SKF Bearings for Industry



- Deep groove ball bearings
- Self-aligning ball bearings
- Angular contact ball bearings
- Taper roller bearings
- Cylindrical roller bearings
- Spherical roller bearings
- Needle roller bearings
- Bearing housings
- Railway axle boxes
- Spherical plain bearings
- Miniature bearings
- Aircraft bearings
- Water pump spindles
- Ball and roller screws

SKF was founded in 1907 and the Group is now established on a global manufacturing and marketing basis with 66 factories in 19 countries. World-wide sales and service, complemented by distributors, covers 127 countries.

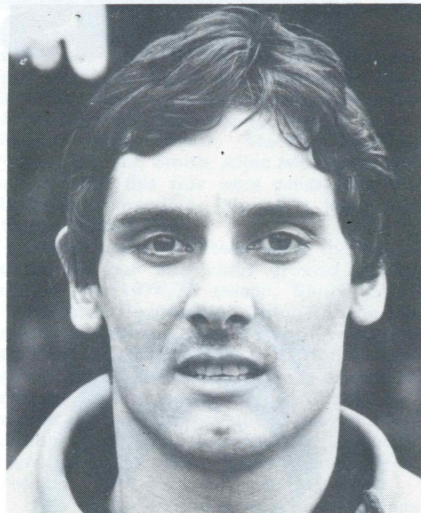
SKF possesses its own iron ore mines and, in Sweden, has two modern steel works making high grade steel for the bearing industry and other specialised applications. Other product lines include thread-cutting tools, machine tools, textile machine components and castings.

Advanced manufacturing techniques, strict quality specifications and stringent quality control procedures apply universally to SKF Group factories and ensure the consistently high quality of all SKF products.

SKF
SKF (UK) Limited
Luton
Bedfordshire

PLAYER PROFILE

FULL NAME – *Milija Antony Aleksic*
HEIGHT – 6' 1½"
WEIGHT – 12st. 4ozs.
BIRTHPLACE – *Newcastle, Staffs.*
BIRTHDAY – *14th April*
STAR SIGN – *Aries*
SIGNED FOR LUTON – *January '77*
PREVIOUS CLUBS – *Port Vale as apprentice, Stafford Rangers, Plymouth Argyle.*
FAMILY – *None, but have a dog named Ben*
HOBBIES – *All sports*
FAVOURITE FOODS – *All kinds of Fruit*
CAR – *Cortina 2000E*
FAVOURITE RECORDING ARTIST – *Rod Stewart, Eagles*
FAVOURITE HOLIDAY RESORT – *Majorca*



MOST ADMIRER PLAYERS – *P. Mariner, P. Shilton*
GREATEST FOOTBALL EXPERIENCE – *Playing at Wembley for Stafford Rangers*
AMBITION – *To become the top Goalkeeper in the Country, and win a cap for England*
LEAGUE DEBUT – *For Port Vale when I was 17.*
BEST COUNTRIES VISITED – *America, Italy, Yugoslavia*
BEST TEAM PLAYED AGAINST – *Manchester City*
FAVOURITE CLUB APART FROM LUTON – *Notts Forest*

Signature

BEHIND THE SCENES

From the Secretaries Office

IN A previous programme I mentioned the gatemen and the number of years services they had done. This week I would like to mention another group of men who also do a fine job for the club and I must be honest are often taken for granted. These are the Stewards, who apart from directing people to seats, also do their part in helping the Police control the crowds. Working under Ken Emerton and Eric Weeks the majority of them haven't been long in the job but nevertheless their contribution is greatly appreciated. Eric leads the way with 32 years service and is closely followed by Cecil Poulter who says that he is not quite sure how long he has been with the club but knows that it is over 30 years. Ken has been helping now for 28 years. After these three there is a big gap and the longest serving

member then is R. Shotbolt with 15 years. J. Hart & R. Hutchins have each done 12 years and A. Archer and E. Reynolds 10 years. On 8 years are D. Jones, J. Gatwood, C. Mann and A. Parsons. On 7 years A. Hills, F. Biggart, and P. Banwell. On 6 years is T. Brookes and R. Lawrence. After these come another 34 men with 5 years service down to 6 men who are in their 1st seasons. To all of them on behalf of everyone at the club I say, well done, and keep up the good work.

Last week I had the pleasure of meeting one of the all-time greats of football. Sam Weaver, the man famous for his long throw in his Newcastle United days. Sam who was 69 on February 8th still looks as if he could do 90 minutes. I often wonder, if he could throw those heavy balls to the far post,

what would his distance be today with our treated ones.

It was nice to see more personalities here at our last home game against Bristol Rovers. Jimmy Hill and Gordon Milne from Coventry. Bobby Robson and the former Watford player Charlie Woods now with Ipswich Town. Frank McLintock and his chief scout Ray Shaw from Leicester City, Les Allen, former Spurs player now working for Q.P.R., and Maurice Lindlay, the Leeds assistant manager. Representatives were also here from Bristol City, Aston Villa, Cambridge United, Wimbledon, Orient, Mansfield Town. In fact looking back the Director's Box was the fullest part of the ground.

Enjoy the match.
John Wilkinson.

THE VICE PRESIDENTS SUITE

Neahurst Ltd.
London Road,
Lower Stondon
Hitchin
Phone Hitchin 814008



Euro-Exhaust Centre,
233 Dunstable Road,
Luton
Phone Luton 38651



Robert Yates (Shopfitters)
158 Leagrave Road,
Luton
Phone Luton 22083



Mr E. Fountain
Vauxhall Motors
Luton



Drapers Coaches,
117B Gardenia Avenue,
Luton
Phone Luton 597391

Ashley Overhill Ltd.
22 Midland Road
Luton
Phone Luton 29331



Mike & Mary Talbot
Burston Hill Farm
Weedon, Nr. Aylesbury
Phone Aston Abbots 218



Richard C. Larkinson
(Baldock) Ltd.
Station Works,
Baldock, Herts.
Phone Baldock 893158



Robinson Metal (Luton) Ltd.
Caleb Close
464 Dunstable Road, Luton
Phone Luton 53866



Maybank Press Ltd.,
24-26 Fowler Road,
Hainault Industrial Estate,
Ilford, Essex IG6 3UQ.

E.W. Hudson Ltd.
6 Union Street
Luton
Phone Luton 30511



West Luton (Shopfitters) Ltd.
Tudor House,
1 Bishopscoote Road, Luton
Phone Luton 503671



Fine Stamps Ltd.
Bilton Way,
Luton
Phone Luton 36761



T & H Tyre Services Ltd.
Manor Road,
Luton
Phone Luton 27665



Richmond Electronics
(Markyate) Ltd.
Hicks Road,
Markyate, Herts.
Phone Luton 840761

Brengreen Holdings Ltd.
61 Cheapside,
London EC2V 6AX
Phone 01-248 6026



Hatters Pools (MFH) Ltd.
74 Kenilworth Road,
Luton
Phone Luton 30748



Mr M. Watson-Challis
Blue Arrow Staff Bureau
3 Holywell Hill
St. Albans, Herts
Phone St. Albans 61373



R & J Travis Ltd.
Northbridge Road,
Berkhamsted
Phone Berkhamsted 5303



Filmergraphic Associates
Alton Road,
Luton
Phone Luton 36407

Floral displays in the Vice President Suite this season have been kindly supplied by Raymond Fox of Bishopsgate Road, Luton.

LUTON TOWN'S GIANT NEW LOTTERY

THE TOWN LOTTERY LOTTERY NO. 1 (22-3-78) No. 00000

Promoter: R. J. Powell, 74 Kenilworth Road, Luton.
Reg. with the Gaming Board for Great Britain No. LO 150/118/1

1st £10000 PLUS Three £100 Consolation Prizes to holders of tickets with the Last Four Numbers Correct

2nd £5000 PLUS Thirty-nine £10 Consolation Prizes to holders of tickets with Last Three Numbers Correct

3rd £2500 PLUS Three Hundred and Ninety-nine £1 Consolation Prizes to holders of tickets with Last Two Numbers Correct

4th £2000 IN BONUS PRIZES
4 Winners x £50 each

FIRST DRAW MARCH 22ND
Winning Numbers will be published in the Local Press
AND ON ANSAPHONE LUTON 412418

THE TOWN LOTTERY
Winners Claim - Either bring this part of ticket to Lotteries Office, 74 Kenilworth Road, Luton OR send by Registered Post to the TOWN LOTTERY, 74 Kenilworth Road, Luton. ALL CLAIMS MUST BE RECEIVED WITHIN 28 DAYS OF DRAW.
Name _____
Address _____
Agent's Number _____
(Mr./Mrs./Miss) _____



Listerprint Luton

FIRST DRAW
TAKES PLACE
ON WEDNESDAY,
MARCH 15TH AT
BERNARD SPORTS
IN THE LUTON
ARNDALE CENTRE
THEREAFTER
EVERY
WEDNESDAY

Support the TOWN LOTTERY

LUTON TOWN FOOTBALL CLUBS
LOCAL COMPETITION
WITH OVER £3000 PRIZE MONEY WEEKLY
MEANING HUNDREDS OF WINNERS EVERY WEEK

£1,000 TOP PRIZE
WITH A

WE WANT LUTON TOWN TO HAVE NO FINANCIAL
PROBLEMS IN THE FUTURE AND SUCCESS IN THIS
LOTTERY WILL MEAN JUST THAT
HELP US NOW!

Become an agent

By taking just a few tickets each week and asking your family, friends and workmates if they would like to buy one this is what you get

10% Commission on all sales
10% Bonus on all winners over £5

Free Collection Service
You can start with just 5 tickets. Give it a go. A few minutes could be worth pounds.

Please send me under no obligation _____ tickets

Name _____

Address _____

Tel. No. _____

I am over 16 years of age.
Send to:
The Hatters Pools, 74 Kenilworth Road, Luton. Telephone 30748

TICKETS
AVAILABLE
FROM FEBRUARY
20TH.
HELP THE HATTERS
BY SUPPORTING
THE TOWN
LOTTERY.

CESARS PALACE

Luton 51357

tonight

DES O'CONNOR

★
Sunday 19th February for 7 nights
TAMMY JONES

★
Sunday 26th February for 7 nights
PETER GORDENO



ALL OUR YESTERDAYS

A look back at Luton Town a decade ago.
By BRIAN SWAIN, Sports Editor, Luton News.

AFTER THE years of disaster and disappointment, the soccer world at last looked a wonderful place to Town fans ten years ago today. For on February 17, 1968, they hit the top of the Fourth Division for the first time, and we all knew that promotion was well within the team's reach. It was a nice feeling for those of us who had suffered as the club slumped in the early sixties from First Division to Fourth.

Strangely, the first month of 1968 had not been too successful, with points being dropped to lowly teams like York and Port Vale.

But on February 10 the forwards got on target again with a 4-1 home win — their first victory of 1968 — over Rochdale in front of a crowd of 10,400. It was the best win for three months, against a visiting side that had little to offer beyond dour defence. Keith Allen and Ian Buxton both took their personal goal totals for the season into double figures.

Bruce Rioch unleashed a crackerjack drive to put the Town in front in the 14th minute, and although Fletcher equalised with a goal on the break the game was all over by half-time as Allen, Buxton and skipper Terry Branston made it 4-1.

From sixth in the table, the Town went to third, and on February 17, 1968, they grabbed top place with a 2-0 victory over Brentford at Griffin Park. It was the Town's first away win since the previous November, and was built on the foundation of a solid defence, with John Moore and Branston outstanding, and a man-of-the-match midfield showing by Alan Slough.

Brentford's goal was lucky to escape in a first half dominated by the Town, but two goals in four minutes in the second half decided the issue.

The first was whacked in by Slough after Ray Whittaker sliced through the defence and got to the by-line before pulling the ball back. Then defender Fred Jardine joined in a Town thrust down the middle and from his pass Rioch shot home the goal that ended Brentford's weak challenge for equality.

The win meant that the Town had taken seven points out of the last ten, and they had a big following in the crowd of 7,710 to celebrate the fact that they were on top of the table. With 40 points from 28 games, they were one clear of Bradford City, Barnsley and Southend, and with games in hand on the other contenders.

Today's visitors, of course, were then members of the soccer aristocracy, in the First Division.

Their football engagement ten years ago this weekend was an FA Cup Fourth Round tie at White Hart Lane with Division Two strugglers Preston. Spurs, holders of the cup after beating Chelsea 4-2 at Wembley the previous May, went through against Preston with a 3-1 win, in front of 35,000 spectators. The match-winner was Jimmy Greaves.

YOUTH

By George Rogers

ON SATURDAY 4th. February the Youth team managed, despite the rain, to play their Chiltern Premier league fixture v Ware, winning by 8 goals to 0. Our scorers being M. Pacey 2, A. Pearson 2, L. Harriott 2, M. Conquest and A. West. With the reserve game v Swindon called off, the Youth team was able to call upon the youth players in that team. It also gave the opportunity to give Alan West a chance of a competitive game after his long lay off through injury. Taking part helped in allowing him to take his place in the 1st. team v Bristol Rovers on Wednesday evening.

In the Chiltern League the facility of playing one over age player was thought to assist in the coaching of these young players but very few teams take advantage of this. At Luton we have used this opportunity twice, both for the return of players. Paul Fletcher, after his long lay off, and now Alan West. In both cases they say they are pleasantly surprised at the standard of play. In fact youth players from Luton Town, Cambridge Utd., and Bedford Town have been included in the 1st team squad and I am sure many more will make it before the season ends. Other benefits in this league are the "Any 2 from 4 substitutes" and fixtures can be arranged to suit the clubs. We at Luton like to play our Home fixtures on Saturday mornings when the 1st. team are at home and our away fixtures under lights in the evenings. This allows the manager and coaches the opportunity to assess and remedy any faults which occur. These Saturday morning fixtures also allow any apprentices who are involved in these games to be available for various tasks at the 1st. team game.

This week with the schools being on holiday, we have invited 16 year old boys to represent Luton Town F.C. against Bedfordshire Schools, Under 19 on Monday 13th and on Wednesday 15th we have invited 15 year old boys to play against a team from Northampton. These trials give us an opportunity to assess their potential and also give us a progression of age groups.

Under David Pleat and his staff, the opportunity to make the grade in professional football at Luton Town is greater than ever. Any lad who has the ability, will be given a chance to play in games such as these. Many boys write in for trials but most of them put only their name, address and age. They should also put down the club they play for, the league involved and any representative honours they have achieved. These essentials are a good guide to the boys ability. Most local lads are known, as we as well as other club scouts, attend most of the school and youth games taking place on the local parks.

CROSSWORD No.17

SPONSORED BY
ANGLIA TELEVISION



CLUES — ACROSS

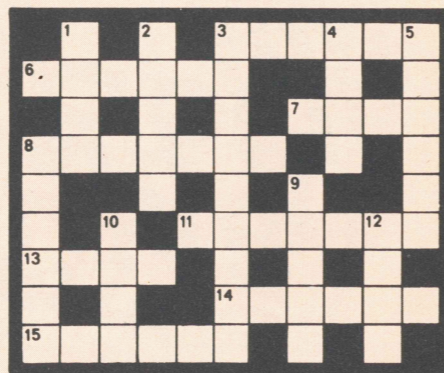
- 3 Burnley's most expensive sale before Martin Dobson (6)
- 6 One of WBA boss Ronnie Allen's previous postings (6)
- 7 & 10 dn. What the goalkeeper guards when attacked at an angle (4,4)
- 8 Notorious 'hatchet-man' half-back with Juventus and Italy (7)
- 11 The 'wrong' goals column (7)
- 13 Over 300 people were killed in one at the Peru v. Argentina match in 1964 (4)
- 14 See 9dn
- 15 Former Leicester man in Grimsby's defence (6)

- 2 Cambridge United are at ... Stadium (5)
- 3 Nickname of Fulham (9)
- 4 ... Kelly was Everton's boss before Britton (4)
- 5 Hereford have their home at Edgar ... (6) ...
- 8 ... the club they replaced in the League (6)
- 9 & 14ac. Villa keeper (5,6)
- 10 See 7ac
- 12 Carlisle referee (4)

SOLUTIONS TO CROSSWORD No. 16

Across 1. Queen's Park (Hampden), 7. McMordie 9 & 6dn. Bob Lee, 10. Heron, 14. See 12dn, 15. rosettes, 17. Fairclough.

Down 2. Union, 3. Elm, 4. promote, 5. Reds, 6. See 9ac. 8. Chester, 11. Chung, 12 & 14ac. Are The, 13. Asia, 16. Soo.



CLUES — DOWN

- 1 Summerbee or Stead (4)

PANTOMIME ON ICE

Blackburn 2 Luton Town 0

IN NORMAL circumstances a team that loses 2-0 might expect to hear a few sharp words from their manager. But there were none from David Pleat after Saturday's fiasco at Ewood Park.

For these were not 'normal circumstances' as players were asked to perform the impossible. The frost-bound pitch was bone hard and the Manager called the match 'a pantomime on ice'. He said: "I wouldn't criticise any player for performances under those conditions. I don't think the game should have been played at all, and it is to the credit of both sides that there was some football".

The Manager was less happy about the incident leading up to one of our pictures — Lil Fuccillo being carried off on a stretcher. The scoreline was blank when a foul by Glen Keeley sent Lil cartwheeling into the air. He fell heavily head-first and was fortunate not to be very seriously injured. Blackburn got both goals after Lil was carried off.

The other picture shows a moment of danger for the Blackburn defence: a full back flies through the air to avoid colliding with his keeper and John Butcher gathers the ball before Ron Futcher can reach it.

Pictures: Luton News.



FACTS & FIGURES ~ 1977-78

	Attendance	F.A.	ALEKSIC	JONES	BUCKLEY	CARR	FAULKNER	FUTCHER P.	HUSBAND	SMITH	BOERSMA	FUCILLO	INGRAM	HILL	McNICHOL	PRICE	FUTCHER R.	WEST	HEALE	STEIN B.	KNIGHT
Aug 20 Orient	8,061	1-0	1	2	3-1	4	5	6	7	8	9	10		12	6	11	11	9			
Aug 27 Oldham Athletic	7,579	0-1	1	12	3-1	4	5	6	7	8	9	10		8		11-1	10	10			
Aug 30 Wolves (LC2)	14,682	3-1	1		3-1	12-1	5	6	7-1	7-1	9-1	4		8-1		11-1	10	10			
Sept 3 Charlton Athletic	9,061	2-1	1		3-1	12	5	6	7-1	7-1	9-1	4		8-1		11-1	10	10			
Sept 10 Bristol Rovers	5,940	0-0	1		3-1	4	5	6	7	8	9	10		8		11-1	10	10			
Sept 17 Blackburn Rovers	9,149	0-0	1	12	3-1	4	5	6	7	8	9	10		8		11-1	10	10			
Sept 24 Tottenham	32,700	2-3	1		3-1	4	5	6	7	8	9	10		8		11-1	10	10			
Sept 27 Brighton	25,132	2-0	1		3-1	4	5	6	7	8	9	10		8		11-1	10	10			
Oct 1 Notts County	7,593	1-0	1		3-1	4	5	6	7	8	9	10		8		11-1	10	10			
Oct 4 Millwall	9,119	1-0	1		3-1	4	5	6	7	8	9	10		8		11-1	10	10			
Oct 8 Cardiff City	8,369	4-1	1		3-1	4	5	6	7	8	9	10		8		11-1	10	10			
Oct 15 Fulham	12,736	1-0	1		3-1	4	5	6	7	8	9	10		8		11-1	10	10			
Oct 22 Blackpool	12,167	1-2	1		3-1	4	5	6	7	8	9	10		8		11-1	10	10			
Oct 25 Man. City (LC3)	16,443	1-1	1		3-1	4	5	6	7	8	9	10		8		11-1	10	10			
Oct 29 Bolton Wanderers	20,113	1-2	1		3-1	4	5	6	7	8	9	10		8		11-1	10	10			
Nov 1 Man. City (LC3R)	28,254	0-0	1	12	3-1	4	5	6	7	8	9	10		8		11-1	10	10			
Nov 5 Hull City	8,936	1-1	1		3-1	4	5	6	7	8	9	10		8		11-1	10	10			
Nov 8 Man. City (LC3R2)	13,024	2-3	1		3-1	4	5	6	7	8	9	10		8		11-1	10	10			
Nov 12 Mansfield Town	7,522	1-3	1		3-1	4	5	6	7	8	9	10		8		11-1	10	10			
Nov 19 Stoke City	9,384	1-2	1		3-1	4	5	6	7	8	9	10		8		11-1	10	10			
Nov 26 Sunderland (1)	26,915	1-1	1		3-1	4	5	6	7	8	9	10		8		11-1	10	10			
Dec 3 Burnley	6,921	1-2	1		3-1	4	5	6	7	8	9	10		8		11-1	10	10			
Dec 10 Southampton	19,909	1-0	1	6	3	5	5	6	7	8	9	10		8		11-1	10	10			
Dec 17 Mansfield Town (2)	6,401	1-1	1	6	3	5	5	6	7	8	9	10		8		11-1	10	10			
Dec 26 Crystal Palace	22,027	3-3	1	6	3	5	5	6	7	8	9	10		8		11-1	10	10			
Dec 27 Sheffield United	10,885	4-0	1	6	3	5	5	6	7	8	9	10		8		11-1	10	10			
Dec 31 Brighton	13,200	1-0	1	6	3	5	5	6	7	8	9	10		8		11-1	10	10			
Jan 2 Orient	9,270	0-0	1	6	3	5	5	6	7	8	9	10		8		11-1	10	10			
Jan 7 Oldham (FAC3)	9,851	1-1	1	6	3	5	5	6	7	8	9	10		8		11-1	10	10			
Jan 10 Oldham (FAC3R)	13,802	2-1	1	6	3	5	5	6	7	8	9	10		8		11-1	10	10			
Jan 14 Oldham Athletic	7,792	0-1	1	6	3	5	5	6	7	8	9	10		8		11-1	10	10			
Jan 21 Charlton Athletic	8,267	0-0	1	6	3	5	5	6	7	8	9	10		8		11-1	10	10			
Jan 31 Millwall (FAC4)	8,263	0-4	1	6	3	5	5	6	7	8	9	10		8		11-1	10	10			
Feb 8 Bristol Rovers	5,913	1-1	1	6	3	5	5	6	7	8	9	10		8		11-1	10	10			
Feb 11 Blackburn Rovers	11,511	0-2	1	6	3	5	5	6	7	8	9	10		8		11-1	10	10			
Feb 18 Tottenham			1	6	3	5	5	6	7	8	9	10		8		11-1	10	10			
Feb 25 Notts County			1	6	3	5	5	6	7	8	9	10		8		11-1	10	10			
Mar 4 Cardiff City			1	6	3	5	5	6	7	8	9	10		8		11-1	10	10			
Mar 11 Fulham (6)			1	6	3	5	5	6	7	8	9	10		8		11-1	10	10			
Mar 18 Blackpool (LCF)			1	6	3	5	5	6	7	8	9	10		8		11-1	10	10			
Mar 25 Bolton Wanderers			1	6	3	5	5	6	7	8	9	10		8		11-1	10	10			
Mar 28 Sheffield United			1	6	3	5	5	6	7	8	9	10		8		11-1	10	10			
Mar 27 Crystal Palace			1	6	3	5	5	6	7	8	9	10		8		11-1	10	10			
Apr 1 Hull City			1	6	3	5	5	6	7	8	9	10		8		11-1	10	10			
Apr 8 Sunderland (SF)			1	6	3	5	5	6	7	8	9	10		8		11-1	10	10			
Apr 15 Stoke City			1	6	3	5	5	6	7	8	9	10		8		11-1	10	10			
Apr 22 Southampton			1	6	3	5	5	6	7	8	9	10		8		11-1	10	10			
Apr 26 Millwall			1	6	3	5	5	6	7	8	9	10		8		11-1	10	10			
Apr 29 Burnley			1	6	3	5	5	6	7	8	9	10		8		11-1	10	10			
May 6 F.A. Cup Final			1	6	3	5	5	6	7	8	9	10		8		11-1	10	10			

Bold figures indicate scorers
(Aston played first 2 games at No. 11)

DIVISION TWO

TABLE OF RESULTS - As at 15.2.77

	P	W	D	L	F	A	W	D	L	F	A	Pts
Tottenham	28	9	5	0	37	10	5	6	3	20	18	39
Bolton	26	11	1	1	27	12	6	3	4	18	12	38
Southampton	28	10	2	2	26	11	5	5	4	19	19	37
Brighton	28	8	5	1	29	16	5	4	5	13	12	35
Blackburn	27	10	2	1	23	8	5	6	5	16	26	34
Oldham	27	7	5	1	20	11	4	4	6	15	20	31
Blackpool	28	6	4	4	25	16	5	3	6	19	21	29
Crystal Palace	27	6	4	4	22	17	4	5	4	16	16	29
Luton Town	28	7	4	3	32	9	3	4	7	16	21	28
Sunderland	27	7	3	2	26	13	1	8	5	21	30	27
Bristol Rovers	26	8	5	2	26	13	0	5	8	14	36	26
Sheffield U.	27	8	3	2	23	16	2	3	9	17	34	26
Fulham	26	6	6	2	26	14	3	1	8	10	17	25
Charlton	26	8	3	2	29	18	1	4	8	10	28	25
Orient	27	5	2	3	20	16	1	5	8	9	17	23
Stoke	25	7	2	3	20	11	1	4	8	6	18	22
Notts C.	26	6	6	1	24	15	1	2	10	11	29	22
Cardiff C.	27	5	4	5	23	18	0	3	10	13	36	22
Hull C.	27	5	4	5	17	13	1	5	7	7	16	21
Burnley	28	4	6	4	15	14	2	1	11	11	33	19
Millwall	26	2	6	4	9	14	2	4	8	14	23	18
Mansfield	27	4	3	7	20	24	1	5	7	14	27	18

COMBINATION

Table of Results - As at 31.1.78

	P	W	D	L	F	A	Pts
Southampton	23	15	2	6	49	22	32
West Ham	23	13	5	5	44	20	31
Chelsea	27	12	7	8	46	24	31
Tottenham	25	10	11	4	44	28	31
Norwich City	26	11	9	6	33	29	31
Ipswich Town	23	13	4	6	42	21	30
Crystal Palace	25	11	7	3	35	27	29
Leicester City	27	12	5	10	38	34	29
O.P.R.	23	11	6	6	38	20	28
Hereford United							

JUNIOR HATTERS CLUB

BIRTHDAYS

Many Happy Returns of the day to the following members.

Peter Wilson (14th) Joanne Steenburgh (18th), David McKay (18th), Ian Jack (19th) Richard Beard (19th), John Peters (20th), Iain Bullock (22nd), Sean Anderson (23rd), Mathew Parker (23rd), Shaun Jackson (24th), Craig Jenner (25th), John Jordan (27th), Dean Clarke (28th), Jim Oliver (28th), Andrew Collon (29th), Karen Corbell (1st), Karen Harrington (1st), David Newman (1st), Mark Street (2nd).

★★★

COMPETITION

The answers to our last competition were as follows:-

BURNLEY (TURF MOOR).

ROTHERHAM (MILLMOOR).

TORQUAY UNITED (PLAINMOOR).

The first all correct entry picked out on Friday 10th February was member 10, Stephen Catling from 317, Dallow Road, Luton.

★★★

THIS WEEK'S COMPETITION IS:-

(a) Which two clubs play their home matches at grounds with 'MEADOW' in their names?

(b) Which English First Division Club plays its home matches on a ground whose name contains that of another sport?

Send your entries to Competition, 70-72 Kenilworth Road, Luton. The first correct entry picked out on Friday 24th February will receive two tickets for our home match against Cardiff City.

KENILWORTH CLUB

Chiltern Insulations Ltd., 70A Reginald Street, Luton.
N. S. Fookes, Engineering Services Ltd., 45 Latimer Road, Luton.
Hacfield Ltd., 71 Bedford Road, Barton.
S. McCabe Esq.



MASCOT

Our team mascot today is Shaun Jackson of 27 Sampshill Road, Westoning, Bedford - Shaun was one of the first members of our Junior Hatters Club and he will be 9 on 24 February. He attends Westoning Lower School and his favourite player is Jimmy Husband.



BALL DONOR

Today's Match Ball has been kindly sponsored by SKF (U.K.) Ltd.

SMC

Unit 158,
Arndale Centre,
Luton.

Tel: 24866



HERRINGBONE TWEED JACKET
£29.95

WOVEN CHECK SHIRT
£5.95

**BRUSHED SHETLAND V-NECK
LONG SLEEVE**
£8.95

PLEATED FLANNEL TROUSERS
£12.50

BLACK SHOES
£13.95

OXY-ACETY EQUIP. REPAIR/RECONDITION
SPECIALISTS
also Stockists of all leading Manufacturers Welding
Equipment

Chadwall Engineering Co. Ltd



Clebelands Road
Sale, Cheshire.

Tel: (061) 973 - 8721

275, Kiln Road,
Thundersley, Benfleet, Essex
Tel: (0702) 559373/4

TOWN TRAVEL

NOTTS COUNTY v LUTON TOWN

Saturday, 25 February 1978

Kick-off 3.00 pm

Leave Luton via the Dunstable Road, towards the M1 Motorway. Proceed North along the M1 through Northampton, Coventry and Leicester. Leave the motorway at intersection number 25 Nottingham. (Sandiacre A52). Continue along the A52 Derby Road through the town centre until the junction with the A612. Football ground is situated in Meadow Lane adjacent to the A612 London Road.

TRICENTROL COACHES:

Depart: Dunstable, The Square 11.30.

Luton, Maple Road 12.00

Fare: £1.65



Travel by coach to
all 'Town' away matches,
both Cup and League.

Tricentrol

Details in "Town Travel" or from
Tricentrol Travel, 25, West Side Centre, Luton
Telephone: 605 061

HACFIELD LIMITED



"Your friendly Ford
retail dealer"

71 BEDFORD ROAD
BARTON-LE-CLAY
BEDS. MK45 4LL
TEL: LUTON 881254



RICHARDS & THIRKELL

(Luton) Ltd.
Clarendon Road,
Luton, Bedfordshire.

The Greatest Name In
Sporting Headwear

SPORTS - CASUAL - INDUSTRIAL - HEADWEAR

LUTON TOWN

- 1 MILIJA ALEKSIC
- 2 PAUL PRICE
- 3 DAVID CARR
- 4 RICKY HILL
- 5 JOHN FAULKNER
- 6 PAUL FUTCHER
- 7 JIMMY HUSBAND
- 8 ALAN WEST
- 9 RON FUTCHER
- 10 GRAHAM JONES
- 11 PHIL BOERSMA
- 12



TOTTENHAM HOTSPUR

- BARRY DAINES 1
- TERRY NAYLOR 2
- JIM HOLMES 3
- GLENN HODDLE 4
- DON McALLISTER 5
- STEVE PERRYMAN 6
- JOHN PRATT 7
- NEIL McNAB 8
- JOHN DUNCAN 9
- COLIN LEE 10
- PETER TAYLOR 11
- 12

SCORE BOARD

- Arsenal
- Walsall
- Bristol Rovers
- Ipswich
- Derby
- West Brom.
- Middlesbro'
- Bolton
- Millwall.
- Notts Co..
- Wrexham.
- Blyth Spartan
- Orient
- Chelsea
- Q.P.R.
- Nottingham F.
- Coventry
- Newcastle
- Everton.
- West Ham
- Man. United
- Leeds
- Wolves
- A. Villa.
- Burnley.
- Mansfield.
- Hull.
- Southampton
- Sheffield U.
- Brighton
- Sunderland.
- Stoke

OFFICIALS

Referee: Mr. Alan Gunn, (Burgess Hill, Sussex). From refereeing in local Sussex leagues and the Sussex County League has progressed via the London Combination to the Football League line and, later, the referees list. Has officiated in all three Sussex County F.A. Senior Finals, and was linesman at the England v. Scotland Youth Amateur International in 1971. He refereed the F.A. Vase Semi-Final in 1976. A married man, with two daughters, he is Buyer for an engineering company and his interests include playing squash and swimming.

Linesmen: Mr. N. H. Benton (Red Flag); Mr. D. A. Hedges (Yellow Flag).