

# THE HATTER

**Official Matchday Magazine Price 50p**

FOOTBALL LEAGUE DIVISION TWO

**Saturday 30th January 1982**

Kick-off 3.00 p.m.

**LUTON TOWN v  
LEICESTER CITY**

TODAY'S MATCH IS SPONSORED BY:

**GREAT LAKES TRADE  
EXCHANGE**



**INSIDE TODAY:  
SPOTLIGHT ON  
BRIAN  
HORTON**

*see pages 8 & 9*

# LUTON TOWN FC



70-72 Kenilworth Road

Luton

Tel: 411622

Season 1981-82

**Chairman:**

Denis Mortimer

**Directors:**

R. L. Banks, D. J. Evans  
E. S. Pearson, H. Richardson  
R. J. Smith, J. R. Smith  
D. J. Pleat (Team Manager)

**President:**

T. Hodgson

**Vice-Presidents:**

J. A. C. Bain (Deputy President)  
Lord Hill, Sir Reginald Pearson OBE,  
A. J. Berry, J. B. Brent,  
B. Cole, B. England,  
N. S. Fookes, G. B. Holland,  
C. Holloway, I. E. Holmes,  
C. J. Hudson, R. Larkinson,  
L. Leppington,  
Eric Morecambe OBE, R. Safranek,  
E. Waller, R. Unwin

**Administration:**

**General Secretary:**  
Graham MacKrell

**Club Secretary:**  
John Wilkinson

**Project and Advertising Manager:**  
Mike Beevor

**Commercial Manager:**  
Mike Hardwicke

**Catering Manager:**  
Clive Hustwitt

**Youth Development Officer:**  
Colin Ball

**Travel Organiser:**  
Mrs C. Ball

**Auditors:**  
Arthur, Young, McClelland,  
Moore & Co.

**Photographer:**  
Gareth Owen

**Playing:**

**Coaches:**

David Coates, John Moore and  
Trevor Hartley

**Physiotherapist:**  
John Sheridan

**Doctor:**

W. A. C. Berry MBBS

# TEAM CHECK

LUTON TOWN <i>White Shirts, Orange Trim, White Shorts</i>	
1	JAKE FINDLAY
2	KIRK STEPHENS
3	MARK AIZLEWOOD
4	BRIAN HORTON (Capt)
5	CLIVE GOODYEAR
6	MAL DONAGHY
7	RICKY HILL
8	BRIAN STEIN
9	STEVE WHITE
10	LIL FUCCILLO
11	DAVID MOSS
12	
LEICESTER CITY <i>Blue Shirts, Blue Shorts</i>	
1	MARK WALLINGTON (Capt)
2	TOMMY WILLIAMS
3	PAUL FRIAR
4	ANDY PEAKE
5	LARRY MAY
6	JOHN O'NEILL
7	STEVE LYNEX
8	GARY LINEKER
9	ALAN YOUNG
10	IAN WILSON
11	EDDIE KELLY
12	



## IN CHARGE TODAY

Referee: **J. A. MOULES**, Ongar  
Linesmen: **R. LOGAN** (Red Flag)  
**B. O'LEARY** (Yellow Flag)

John Moules started refereeing in 1968 in the Harlow and District League, then through the Essex Senior League and the Football Combination to the Football League. Refereed 5th Round FA Vase matches (1980 and 1981) and also midweek League Cup Final (1980). Married with one son, he is a sales manager for a computer company, and enjoys all sports particularly golf and athletics. Chairman and Training Officer for the Harlow Referees' Society, he also trains local children in football.



# PERSONALITY PROFILE



**One fan's personal view of some of the great names of Luton Town.**

By **BRIAN SWAIN**

If you ask 100 Luton Town fans of my generation to name the most complete footballer they have ever seen in a Hatters' team, I'll bet you would get the same answer at least 90 times: George Cummins.

On his day he could do the sort of tricks George Best produced at the height of his career. But if it wasn't his day, he'd drive you to distraction.

The Town paid a then record

fee of £12,000 to bring Cummins to Kenilworth Road from Everton in 1953.

Born in Dublin, he was already an Irish international, and nearly 30 years later he still holds a Luton Town record — his 19 appearances for Eire make him the most-capped player in the Town's history.

He was an inside-left, and hardly looked like a footballer. He seemed to be too pale and skinny to have much chance in the hurly-burly soccer of the Second Division, but opponents quickly learned not to judge by appearances.

Cummins was a creative

## GEORGE CUMMINS



genius. His ball control was something very special, and ally that with a perceptive and natural ability to play defence-splitting passes and you have a player who could be near to perfection.

He stayed at Kenilworth Road for eight years before vanishing into obscurity, and perhaps we expected too much from him. Knowing how brilliant he could be, we suffered agonies on the days when his powers mysteriously refused to materialise.

Gordon Turner, Allan Brown and Bob Morton all benefited from the service they received from Cummins on form, and he played a major role in the Town's 1955 promotion campaign.

He flourished more often than not in the First Division too, but the glittering career took a couple of knocks with injuries.

The most serious cost him a cartilage in his knee, and in the late fifties his brilliant days became ever more rare. We thought Wembley Stadium in May 1959 would be the perfect setting for Cummins to remind the world of how good he could be.

Alas for Town supporters, and for him, it was one of the bad days for the little inside-forward. Perhaps it is why it was also a bad day for the whole team.

The good days are the one's I'd rather remember, and the sheer pleasure Cummins gave to me and many others ensures that he will always be remembered most for his brilliance.

# DAVID'S DIARY

Last Saturday was a tremendous day in many ways and yet very disappointing. It was wonderful to see the 20,000 crowd. When you see the standard of possible champions like Ipswich you realise that only these type of attendances will be good enough and we will need to strengthen our staff by the transfer market.

Bobby Robson was genuine and fair in victory. Our first half performance was equal to anything Ipswich could offer. But in the opening 20 minutes of the second half they imposed some authority on the game. After we conceded the second goal the last 20 minutes became very open as we gambled and lost out.

We must all keep our heads held high as the next few weeks of the League season unfolds. In the League, we have been the best footballing side, and everyone from the chairman to the youngest Junior Hatter must now encourage and back the side to an even greater effort.

Our supporters were tremendous last Saturday even when we were down and out there was no knocking and this is what the players appreciate. If we have the odd disappointment to progress as a club we must not get doubts and panic, but steadfastly continue what we believe in.

Leicester come here today as a bold young side tipped by many good judges to have a very good second half of the season. Jock Wallace has one of the best defences in the League and a fast attack.

It looks like being a lively game. Last week we played their youth side in a Midland Youth



League game and won 4-3 with Paul Keys scoring a fine hat-trick.

Three players, Mitchell Thomas, Tim Breacker and Stacey North had a few days at Lilleshall with a group of England Youth Under-17 players and they will be better for the experience.

Our reserves have also achieved two good results, drawing at West Ham and Plymouth who were runners-up in last season's Combination competition. The oldest player at Plymouth was left back Sheamus Heath who is not yet 20! So players like Beesley, Bunn, Small, North, Thomas and Johnson will need all their abilities and determination if Trevor Hartley's reserve side are to continue their results.

We have now re-arranged all the postponed games and I remind all our supporters to make a note of the new dates. With three points for a victory I consider the table is wide open and we must try to accumulate further points as quickly as possible to stay ahead of the pack. Get behind the players — they appreciate your support.



## COLOUR SHOT

Our Wallspan sponsored scoreboard is the best in the Football League. But have you ever wondered who operates it? Meet Jane Godfrey and John Pyper. Jane has operated the scoreboard since it was installed, and John is mainly concerned with the graphics. He's the one who designs all the pictures displayed on the board.

IVOR HOLMES



LUTON 56622

**R. W. UNWIN & CO LTD**

Pharmaceutical and Fine Chemicals  
and  
Chemical Intermediates

Prospect Place  
Welwyn, Herts  
AL6 9EW  
Tel: Welwyn 6441/2/3/4

**GRAHAM FORD LTD**

TRADING AS  
LOCKHART BENNETT

*Comprehensive Builders Merchants  
For Home and Garden*

Depots:  
Luton — Kingsway 31199  
Dunstable — Beale Street 603111  
Leighton Buzzard — Leighton Road 373486

**Willis-Dawson Ltd**  
Builders and Developers  
Leighton Buzzard  
Tel: Leighton Buzzard 372557

*See how far your money goes when you travel with*

**TRAVEL CENTRE**

*Come in and get the best deal going*  
47 GEORGE STREET, LUTON  
Tel: 421751  
15a HIGH STREET NORTH, DUNSTABLE  
Tel: 609677

**J. F. MEADE LTD**

Civil Engineering  
Building Contractors  
Plant Hire  
14 Tennyson Road  
Luton, Beds  
Tel: 0582 287401/414759



*Your Discount Choice*

**LUTON SPORTS  
PRESS LTD**

THE LOTTERY TICKET SPECIALIST  
Tel: Luton 28757

Discounts on all Tyres and Exhausts  
at



Manor Road, Luton. Tel: 410410  
122-124 Leagrave Road, Luton. Tel: 37835  
162-170 High Street South, Dunstable. Tel: 69913

**Cleandustrial  
Services Ltd**

The Professional Approach to  
Your Cleaning Problems  
84 Aldermans Hill N13

**ODD HAPPENINGS**

'Play to the whistle' is an old maxim and has brought forwards quite a few goals over the years. With defenders appealing for off-side forwards have carried on and put the ball into the net 'just in case'. They have then been delighted to turn and see the referee, who in fact hadn't blown his whistle, pointing to the centre.

On the other hand, players have been known to hear what appears to be the referee's whistle only to find that it has come from someone in the crowd. One day in the fifties, Arsenal defender Dennis Evans heard what he thought was the final whistle in an Arsenal v Blackburn game.

Celebrating a comfortable 3-0 win for his side he banged the ball into his own net. Imagine his shock when he saw the referee pointing to the centre as inadvertently Dennis had made the

score 3-1 with one of the hardest hit own goals in the history of the game.

An even more spectacular instance of a whistle which wasn't occurred in a West Midland League match between Walsall and Darlaston in November 1951. On a muddy pitch goals were being scored freely and, in the middle of the second-half, the visitors had shown signs of making a remarkable recovery as they pulled back from 7-1 to 7-4.

Walsall then launched a fierce attack, their striker Jack Winter (formerly with Sheffield United) crashed to the ground and a penalty seemed inevitable.

The crowd whistled, but the referee didn't. The Darlaston goalkeeper Jack Bailey thought the whistle had sounded and threw the ball down towards the penalty spot. By this time Winter

was on his feet and he banged the ball back into the net.

Despite Darlaston protests the goal stood, making the score 8-4. Walsall finally won 9-5 in a match more memorable than many an FA Cup Final. In fact one of the Darlaston defenders Guy Wharton had played for Portsmouth in their 1939 FA Cup Final win at Wembley.

Maybe players are at times rather over-hasty to react to a stray whistle and should look at the referee to make sure that the sound has come from him.

This is, however, not always practicable in the heat of the moment and spare a thought too for players who, from time to time, have played on after not hearing a referee's whistle — and have been booked for their pains on the grounds of time-wasting.

**MEMBERS  
OF THE**

**KENILWORTH SUITE**

AMERICAN-CAN (UK) LTD  
WALTON ROAD, CALDECOTTE  
BOW BRICKHILL  
MILTON KEYNES MK7 8AE

BARRATT DEVELOPMENTS  
(LUTON) LTD  
PO BOX 5, BARRATT HOUSE  
LUTON L42 7XJ  
TEL: LUTON 422771

A. G. BERRY ESQ.  
BRENGREEN HOLDINGS LTD  
61 CHEAPSIDE, LONDON EC2V 6AX  
TEL: 01-248 6026

B. COLE ESQ.  
CLEANDUSTRIAL SERVICES LTD  
PALMERS GREEN, LONDON N13  
TEL: 01-882 4626

FILMERGRAPHIC ASSOCIATES  
PHOTOTYPESETTING AND PRINTING  
BAINSON HOUSE, ALTON ROAD  
LUTON  
TEL: LUTON 36407

FINE STAMPS LTD  
BILTON WAY, LUTON  
TEL: LUTON 36761

N. S. FOOKES ESQ.  
N. S. FOOKES, ENGINEERING  
SERVICES LTD  
45 LATIMER ROAD, LUTON  
TEL: LUTON 26139

MR E. FOUNTAIN  
VAUXHALL MOTORS  
LUTON

S. GOLBY, FREDK RAY LTD  
STANBRIDGE ROAD  
LEIGHTON BUZZARD  
TEL: 372241

BRIAN E. HANDSCOMBE  
(LIFE AND PENSIONS BROKER)  
48 ALMA STREET, LUTON LU1 2PL  
TEL: LUTON 425921/4

G. B. HOLLAND ESQ.  
G. B. HOLLAND & CO. LTD  
MOTHERWELL WAY, LONDON ROAD  
WEST THURROCK, ESSEX

MR I. E. HOLMES  
IVOR HOMES LTD  
82-88 MARSH ROAD, LUTON  
TEL: LUTON 56622

C. J. HUDSON ESQ.  
E. W. HOLDINGS LTD  
6 UNION ST., LUTON  
TEL: LUTON 30511

RICHARD C. LARKINSON  
(BALDOCK) LTD  
TWENTY PENCE ROAD  
COTTENHAM, CAMBS.

P. LAYCOCK, LUTON SPORTS PRESS  
HAZELBURY CRESCENT, LUTON  
TEL: LUTON 28757

MARK JAMES (SALVAGE) LTD  
16 WEST STREET, DUNSTABLE  
TEL: DUNSTABLE 605944

MARSHALLS OF LUTON  
(BUILDERS) LTD  
SARUM ROAD, LUTON  
TEL: LUTON 597666/9

DR & MRS G. L. PLESTER  
9 BRIARS CLOSE, NUNEATON  
WARWICKSHIRE

A. HUNTER ESQ.  
RAVENMERE LTD. ALLRIC HOUSE  
21 FARLEY HILL, LUTON  
TEL: LUTON 32640

RICHMOND ELECTRONICS  
(MARKYATE) LTD  
HICKS ROAD, MARKYATE, HERTS.  
TEL: LUTON 840761

ROBINSON METAL (LUTON) LTD  
CALEB CLOSE  
464 DUNSTABLE ROAD, LUTON  
TEL: LUTON 53866

R. S. SAFRANEK ESQ.  
NEAHURST LTD, LONDON RD.  
LOWER STONDON, HITCHIN  
TEL: HITCHIN 94-813545

TRICENTROL CARS (LUTON) LTD  
326-340 DUNSTABLE ROAD, LUTON  
TEL: LUTON 31133

T. & H. TYRE SERVICES LTD  
MANOR ROAD, LUTON  
TEL: LUTON 27665

R. W. UNWIN ESQ.  
R. W. UNWIN & CO. LTD  
PROSPECT PLACE, WELWYN HERTS.  
TEL: WELWYN 6441

WALLSPAN BEDROOMS  
INDUSTRIAL ESTATE  
MAULDEN ROAD, FLITWICK, BEDS.  
TEL: FLITWICK 3621

**SPOTLIGHT  
ON  
BRIAN HORTON**



**SPOTLIGHT**

As far as experience is concerned, Brian Horton has plenty of that at his fingertips.

He arrived at Kenilworth Road during the summer from Brighton where his experience of the First Division was seen as the ideal formula for manager David Pleat immediately appointing him our skipper.

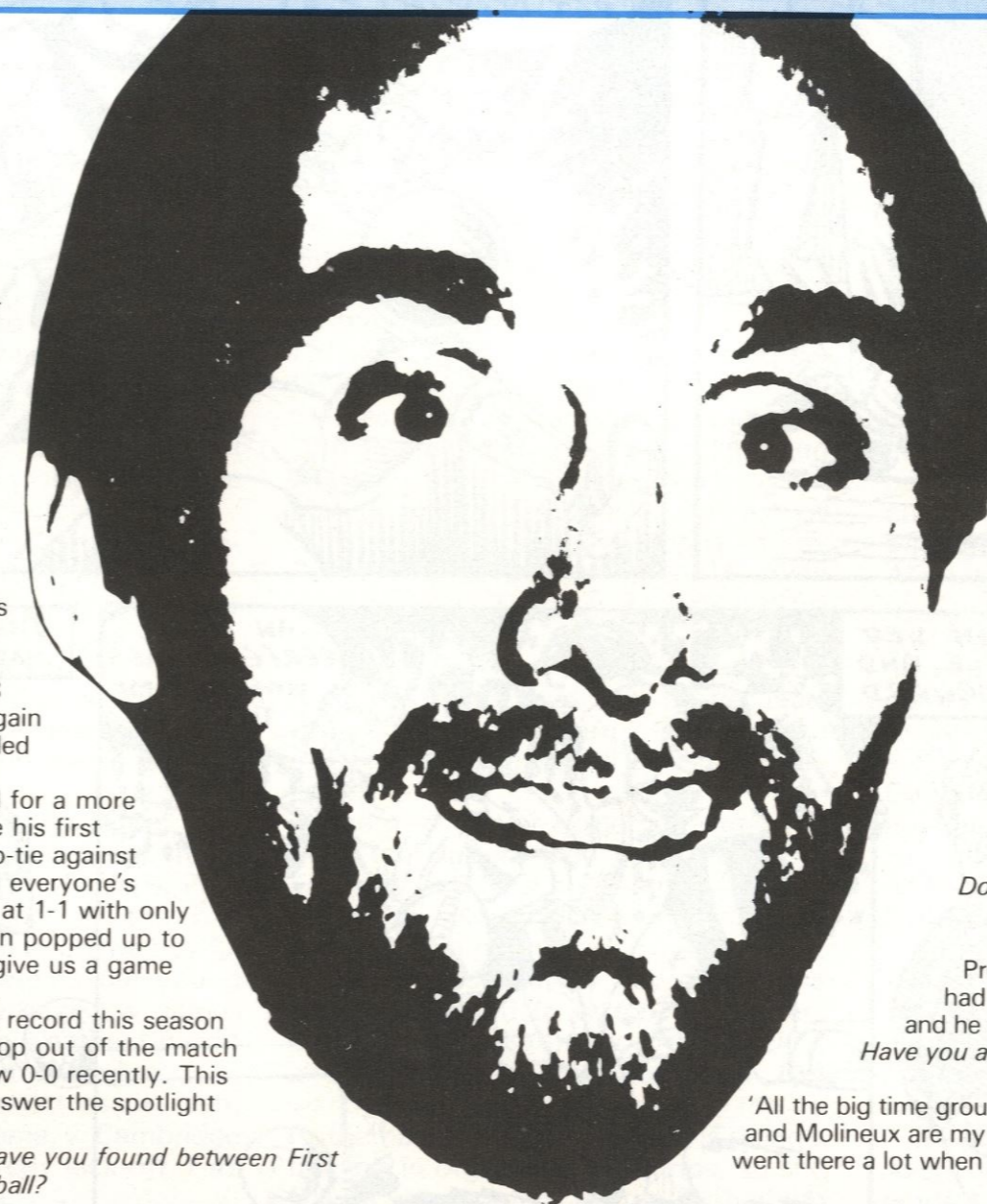
Brian started his career with Port Vale where he made 236 appearances, scoring 33 goals. He eventually moved to the south coast where he skippered Brighton into Division One — and that's exactly what he hopes to do for the Hatters.

At Brighton, he made 218 senior appearances and again scored 33 goals — an added bonus from midfield.

He could not have wished for a more dramatic moment to score his first goal for us. In the FA Cup-tie against Swindon, a replay was on everyone's lips with the score locked at 1-1 with only two minutes left. But Brian popped up to sidefoot the winner in to give us a game against Ipswich last week.

Brian lost his ever-present record this season when he was forced to drop out of the match at Charlton where we drew 0-0 recently. This week, we asked him to answer the spotlight questions.

*What difference, if any, have you found between First and Second Division football?*



'Obviously playing at Liverpool and Manchester United and other big clubs gives you a boost. Hopefully

Luton will be there next season where the games possibly just a bit quicker and mistakes are punished.'

*How do you relax before and after a game?*

'The morning before a game I sleep in late. At pre-match lunch I just have eggs with toast. After a game I enjoy a drink with the lads and family for a while and later go with my wife and friends for a quiet meal. During the earlier part of the week I like to relax playing golf when possible.'

*What was your occupation before taking up football as a career?*

'I joined Walsall as an apprentice professional straight from school. But I did not make it there and worked in the building trade for four years before I returned to League football with Port Vale.'

*Do you remember your Football League debut?*

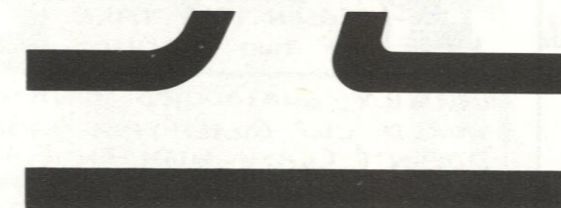
'My debut was for Port Vale against Preston which we won 1-0. The player I had to mark that day was Archie Gemmill and he went to join Derby with Brian Clough.'

*Have you any favourite ground where you like to play?*

'All the big time grounds are excellent but I think Villa Park and Molineux are my particular favourites maybe because I went there a lot when I was a lad and it was my ambition to play on those pitches.'

**Complete fitted bedrooms  
// from around £450**

**Wallspan  
Bedrooms**



**FREE DESIGN  
FREE FITTING**

**see the full range at**

LUTON  
Unit 174,  
Bute Street,  
Arndale Centre,  
Luton, Beds.  
Tel: Luton 23015

BEDFORD  
59 Midland Road,  
Bedford.  
Tel: Bedford  
211327

STEVENAGE  
18 Market Place,  
Stevenage, Herts.  
Tel: Stevenage  
724853

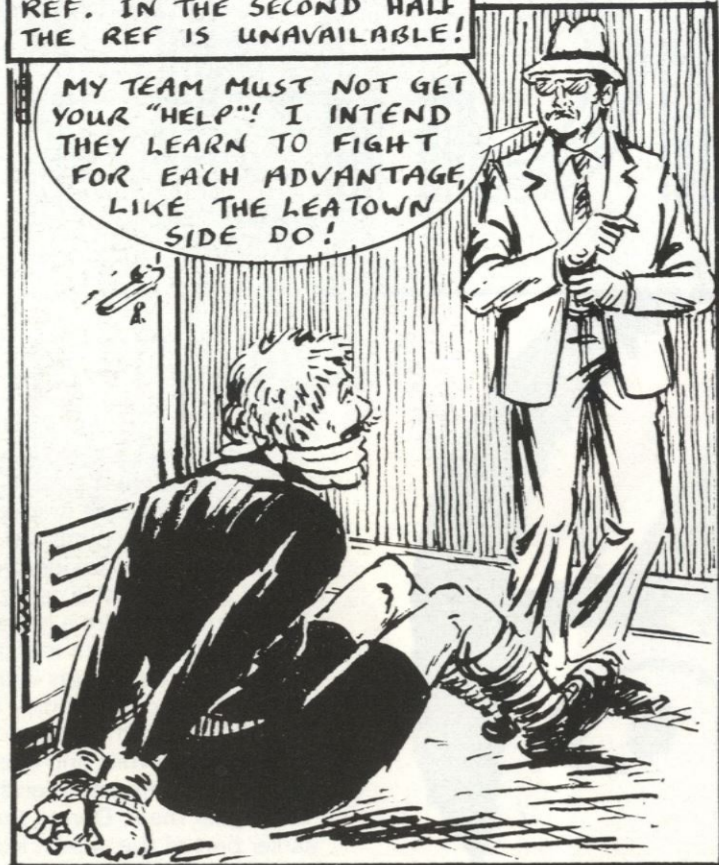
WATFORD  
17/19 Queens Road,  
Watford, Herts.  
Tel: Watford  
38388

# HEAD FOR HEIGHTS!

EPISODE THIRTEEN by Ray Aspden

LEATOWN ARE A GOAL DOWN IN A FRIENDLY AGAINST THE GUATADOR NATIONAL SIDE BECAUSE OF A PARTISAN REF. IN THE SECOND HALF THE REF IS UNAVAILABLE!

MY TEAM MUST NOT GET YOUR "HELP"! I INTEND THEY LEARN TO FIGHT FOR EACH ADVANTAGE LIKE THE LEATOWN SIDE DO!



"BOBBIN" DINO, LEATOWN'S STAR STRIKER IS PLAYING FOR HIS CENTRAL AMERICAN HOMETOWN AGAINST HIS TEAM-MATES ..

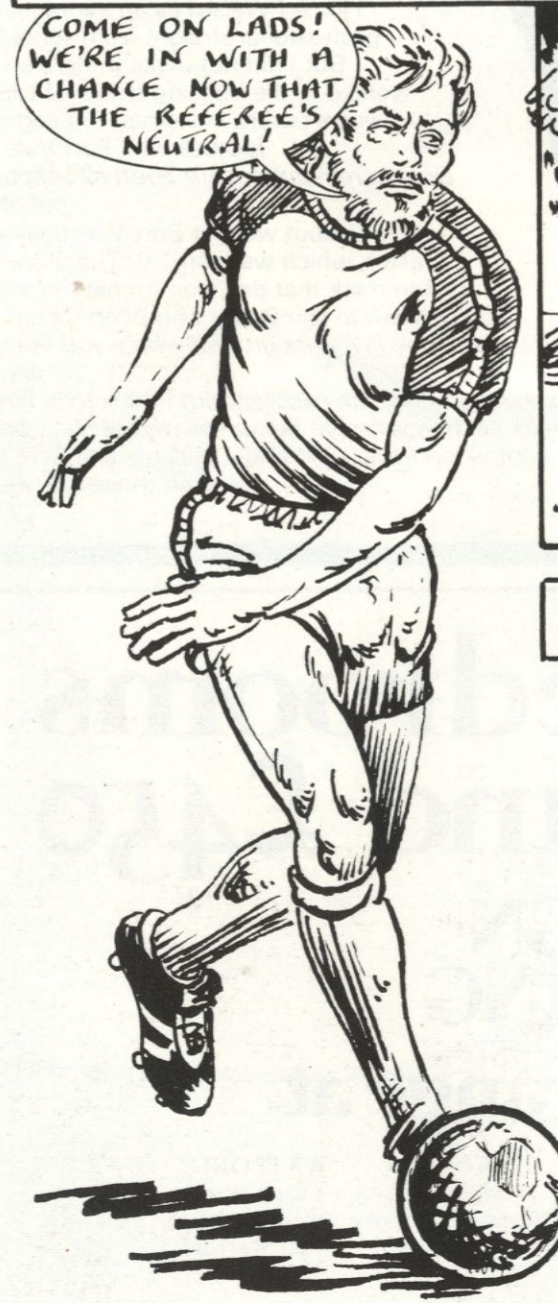
WE'LL GIVE GUATADOR A GOOD ROASTING NOW YOU DON'T HAVE YOUR PET OFFICIAL!

HE WAS NOT IN LEAGUE WITH US. THAT REF WAS JUST A MISGUIDED PATRIOT!



THE LEATOWN CAPTAIN LED HIS TEAM BY EXAMPLE AND PUSHED INEXORABLY FORWARD

COME ON LADS! WE'RE IN WITH A CHANCE NOW THAT THE REFEREE'S NEUTRAL!



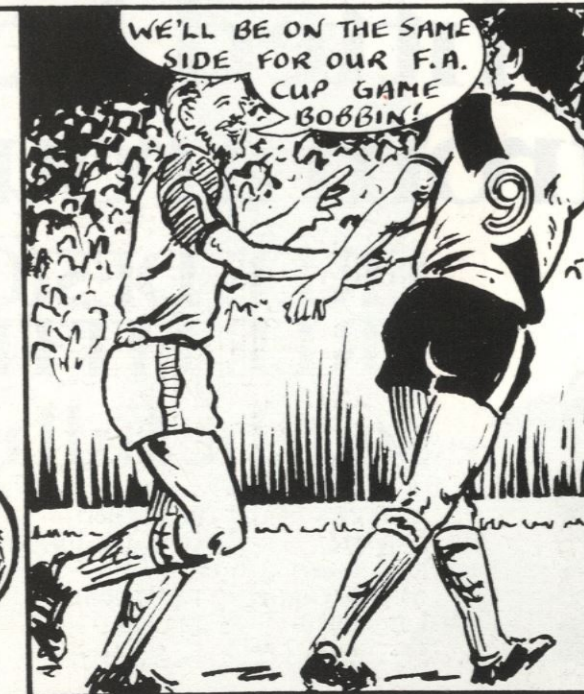
AN INCH PERFECT PASS HAS PUT ME THROUGH!

THE LEATOWN LAD MADE NO MISTAKE!

YES! IT'S THERE!!



NEITHER SIDE SCORED AGAIN AND THE GAME ENDED AS A 1-1 DRAW



WE'LL BE ON THE SAME SIDE FOR OUR F.A. CUP GAME BOBBIN!

THE ENGLISH JANUARY WAS COLD AND GREY, BUT CUP FEVER MADE LEATOWN AS TORRID AS GUATADOR ..



I HOPE THE STORY OF MY 81/82 SEASON IS A TALE OF TWO TROPHIES!

LUCKILY; GUATADOR'S FINAL WORLD CUP QUALIFYING GAME DOESN'T CLASH WITH AN F.A. CUP FIXTURE AND BOBBIN IS AWAY AGAIN NEXT EPISODE.

# JUNIOR HATTERS



## THE MASCOT ...



ROBERT HARDSTAFF

I would like to concentrate my notes this week on clearing up the mascot/escorts jumble caused by match postponements. It is hard to believe, but these notes are the first for a League match magazine since we played Rotherham United on 28th November, last year!

And all this is due to the state of the weather during December and January. During that time, three home League matches had to be postponed and, as far as our members are concerned, that means that three mascots and twelve escorts have been disappointed.

In addition, they were probably confused because of the 'shunting' operation which meant moving our mascot/escort teams up one match. The original Chelsea mascot/escorts moved to the Cambridge match, and the original Cambridge mascot/escorts moved to the FA Cup game against Swindon.

This game was played on 2nd January as planned. But unfortunately, the League match with Queens Park Rangers was again lost to the bad weather, so I thought it might be helpful if I put matters concerning our young teams straight for the next few games and let's hope that the weather doesn't spoil things any more this season.

So to recap, the mascot/escort team for the rearranged game v Cambridge on Tuesday 2nd March, kick-off 7.45 will be:

**Mascot:** Richard Stretton, Stopsley  
**Escorts:** Peter Galvin, Luton, Suzanne Collier, Luton, Robert Johnson, Luton, Oliver Hill, Greenfield.

The 'team' for our home League match with Orient on Saturday 13th February had already been selected and

the Junior Hatters concerned have been informed. However, the fifth round of the FA Cup is due to be played that day, and at the time of writing these notes I am not in a position to say whether our interest in the FA Cup is alive or dead. So 13th February could be subject to alteration too! It gets more complicated by the minute!

This leaves me to make a new draw for mascot/escorts teams for our home fixtures with Oldham Athletic (Saturday 27th February) and for our rearranged fixture with Chelsea on Tuesday 23rd March (kick-off 7.45 p.m.). This will be done very soon and will appear in my Junior Hatters column in the *Evening Post/Echo* on Tuesday, so look out for your name.

Finally, the date for the Queens Park Rangers match has yet to be rearranged, but when it is, the mascot/escort team will be as originally drawn.

The next Junior Hatters meeting will be in the Hatters Club on Tuesday 9th February at 6.30 p.m. The main feature of the evening will be a film show featuring the great Pele.

Our proposed away day trip to the Baseball Ground to watch the Hatters play Derby on Saturday 27th March is already full, and over-subscribed. But watch this space for a similar trip to Rotherham in April. Pam Gray is doing a fine job in organising both trips, so she will be your contact for the Rotherham trip.

Now back to our mascot and escort teams for today's game:

**Mascot:** Robert Hardstaff of Armthorpe, Doncaster, South Yorks. Robert is 14, and attends Armthorpe Comprehensive School. His interests

are swimming, cycling, collecting football souvenirs, and plays for his school, cubs and scouts teams.

**Escorts:** Nick Abbott of Windmill Avenue, Marshalwick, St. Albans, who is 12, and attends Beaumont School, St. Albans. His interests are football, cricket, snooker and golf and model making. He plays for his school 'A' and 'B' soccer teams, and his scout team.

Samantha Draper, of Blacksmith Common, Chalton, who is 10. Samantha attends Parkfields Middle School. Her interests are roller skating, horse riding, and discos. She plays netball for Parkfields Middle team.

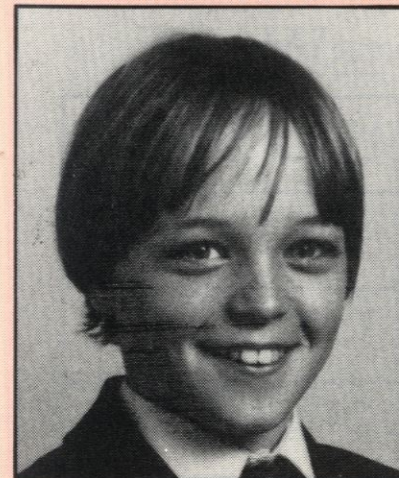
John Sayer of Warden Hill Road, Luton. John is 11 and attends Warden Hill Junior School, where he plays for his school teams. His other interests are football, snooker, fishing, cricket and swimming.

Stephen Frost of St. Ethelbert Avenue, Luton. Stephen is 12, and attends Icknield High School. His interests are football, snooker, table tennis and cork collecting. He has played for William Austin Second, Third and Fourth year teams, and St. Andrews Scouts and Choir.

## COLIN BALL

Youth Development Officer

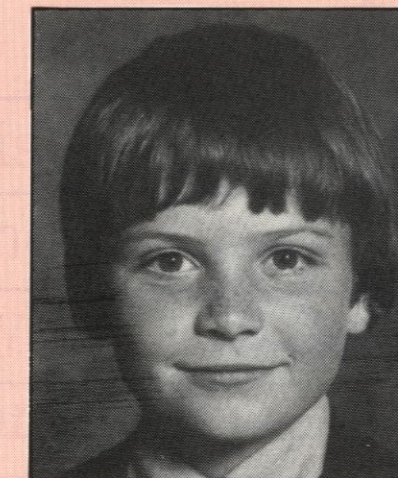
## ... AND THE ESCORTS



NICK ABBOTT



SAMANTHA DRAPER



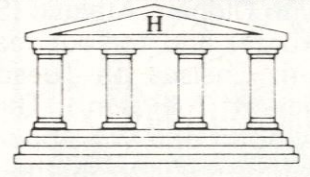
JOHN SAYER



STEPHEN FROST



**TOP OF THE DIVISION  
FOR PRINT**



**HEMMINGS**  
Lithographic Colour Printers  
IRETON AVENUE · LEICESTER · ENGLAND  
Telephone: 0533-769341-2 & 768217-8

**TRAVEL TIME**

It is nice to return to our travels again after such a long break, and we look forward to the continuance of our services until the end of the season, ready for next season.

Our away coaches are certainly being well used. We had six travel to Charlton, which was excellent in view of the fact the game had been postponed only on the previous Saturday.

We need more couriers on away coaches. Would anyone like to volunteer? Perhaps if you talked to the courier on your coach, you would have an idea of what has to be done or, alternatively, ring me at the club offices, any morning between 9.30 a.m. and 1.30 p.m. (Luton 411622). It would help also if you could let me have your coach booking during these hours, and as early in the week as possible. The couriers and I are trying to streamline our ar-

rangements to enable you to board and get away as quickly as possible.

We shall travel to Sheffield Wednesday on Saturday 6th February, leaving Maple Road at 11 a.m. and St Mary's Square, Hitchin, at 10.30 a.m. Routes and times for the Aylesbury/Bletchley/Leighton Buzzard route will be available from myself or Graham Snookes (Aylesbury 748383). All fares will be adult £4, juvenile £2.50.

I am pleased the 'in' coaches on the original three runs are being used more, and hope that the newer runs from Bedford and Biggleswade will also become more popular. I know it takes time for new things to be established. But don't forget, the service is there so please advertise it among your friends.

Keep those membership forms coming in. Our aim is a substantial travel club member-

ship by the end of the season, so we can begin our coaches straight away next season, and increase our travelling supporters week by week.

The re-arranged Barnsley game will be played on Tuesday 16th March. To avoid a lot of confusion at departure points, would *everyone* who booked on the original coaches, please *re-book*. If you find you cannot travel because it is Tuesday, and you have already paid, your money will be refunded.

Details of the Watford coaches for 20th February will appear in the Orient magazine. On this occasion, it would be greatly appreciated if you would pay for your seat when booking, either by cheque or cash. The short journey would make it difficult for couriers to do their job efficiently.

**Catherine Ball**  
Travel Organiser



**VALENTINE'S DAY**

A Happy Valentine's Day Message in the Hatter. Send a personal greeting to your loved one for 20p per word. A FREE SERVICE of an anonymous card autographed by the Town players will be sent telling your loved one to look for a special message in the Hatter on Saturday February 13th. Write your message on this coupon and send it with prepayment (cheque or P.O.) to Valentine's Day Messages, Luton Town FC, Advertising Dept., Kenilworth Road, Luton.


**Building houses to make homes in**

at

Warden Hill, Luton  
Parkside, Houghton Regis  
Two Mile Ash, Milton Keynes  
Church Green, Bletchley  
Kimbolton Gardens, Bedford.



**Barratt**

Telephone: Luton (0582) 422771

# FLASHBACK

## A CUP-TIE HANGOVER

A look at Luton Town  
a decade ago  
By **BRIAN SWAIN**  
Sports Editor, *Luton News*

A Cup-tie hangover left Luton Town and their supporters baffled, bothered and bewildered ten years ago this week.

After playing champagne soccer and being praised all round for their performance in a 2-1 defeat against mighty West Ham, the team followed up with a performance that earned harsh words from manager Alec Stock.

The Town had gone eight League games without defeat — and, after the Cup dismissal, Stock talked about the chance to get back to winning ways rapidly and make an impact in the promotion race.

He took his team to Craven Cottage, to meet a Fulham side which was threatened with relegation. They had conceded 51 goals in 25 games, and had lost six of their previous seven matches when the Town turned up to meet them on 23rd January 1972.

Football's habit of turning up surprises was never more blatant — the Town played so badly that even Stock admitted they were diabolical.

The defence stood and watched as George Johnston helped himself to two gift goals in the first half, and although Peter Anderson pulled one back early in the second, Les Barrett rounded off an easy 3-1 win for Fulham.

Stock refused to disclose the language he had used in the dressing room afterwards, but let it be known that a few home truths had been imparted.

And just to rub it in, Fulham boss Bill Dodgin told the Press that he was delighted with the victory — 'particularly because that was our worst display of the season.'

The Town's major problems stemmed from the lack of a consistent goalscorer. Vic Halom was proving to be a less than adequate replacement for Malcolm Macdonald, and Anderson, more of a midfield man than striker, was

leading scorer with ten goals.

The point was underlined the following week when Queens Park Rangers came to Kenilworth Road. The attendance was 17,280, the biggest crowd of the season, and after Gerry Francis had put Rangers ahead the Town saved a point through a 25-yard blockbuster by full-back John Ryan.

Today's visitors were enjoying football life more than we were a decade ago. Leicester, managed by Jimmy Bloomfield, and with John Smith as secretary, were in the First Division, and were to finish in a safe mid-table position in a season which saw Nottingham Forest and Huddersfield Town relegated.

Peter Shilton was their goalkeeper, with a youngster named Mark Wallington in reserve, and their stars included David Nish, Alan Birchenall, Rod Fern, Len Glover and Keith Weller.

Ten years ago this weekend they beat Stoke 2-1 at Filbert Street with goals by Glover and John Farrington, watched by 26,931 fans.



**KEITH WELLER**



**PETER SHILTON**



**DAVID NISH**

**LUTON**

**Wallspan  
Bedrooms**

Showrooms throughout  
London and Home Counties  
SEE US IN  
LUTON ARNDALE CENTRE ☎ 23015



**Wallspan  
Bedrooms**

FITTED BEDROOM FURNITURE  
SEE US IN  
Yellow Pages

Today, weather permitting, sees the opening heat of the Bernards' World of Sport and Wallspan Target Golf competition. The competitors are: Mr S. Allsop, Mr Norton and Mr Woollard.

Today's winner will receive a set of golf balls, donated by Bernards World of Sport, and will go forward to the grand final to be held later in the season.

Remember, we are offering over £400 worth of golfing equipment which has been very kindly donated by Slazenger as top prize. We still have room for more entries so, if you want to join the fun, please apply to: Mary Bunyan, Luton Town FC, 70/72 Kenilworth Road, Luton.

Meanwhile, we hope you are continuing to enjoy our Wallspan Games, and we list below the winning bingo numbers from previous matches:

Derby: 27, 69, 15, 35, 23, 51, 3, 82, 71, 45.

Bolton: 45, 82, 1, 58, 23, 90, 36, 13, 9, 45.

Rotherham: 7, 35, 19, 64, 45, 58, 23, 41, 82, 71.

Swindon: 42, 6, 82, 71, 35, 58, 13, 23, 45, 65.

Ipswich: 68, 82, 71, 38, 11, 1, 23, 40, 56, 35.

Finally, a warm welcome to Sylvia McCafferty who recently joined the Club to assist Mike Beevor on the Marketing side. Sylvia is pictured with some of the superb prizes we are giving away to winning bingo and Take your Pick contestants.



## CROSSWORD

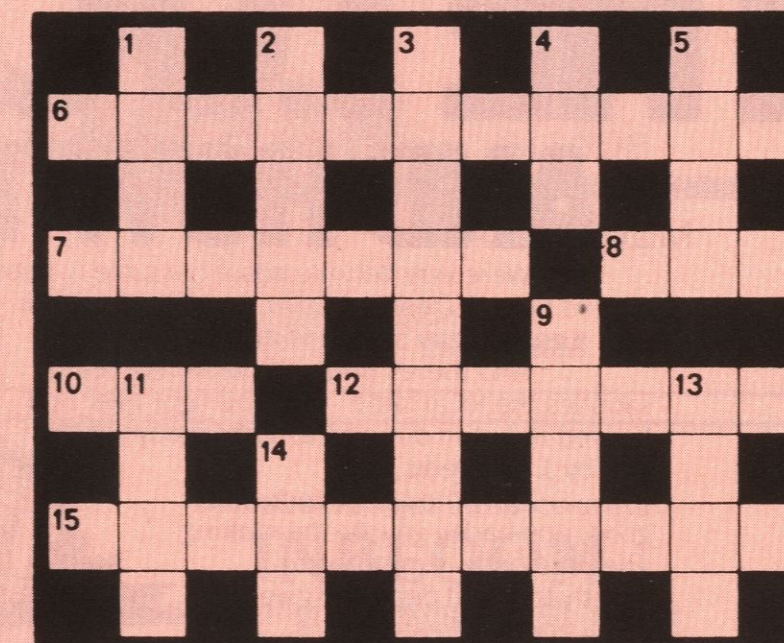
### CLUES — Across

6. He managed one United up from Division Three last season then switched to a nearby United who had also left that Division (11); 7. Big defender who made over 400 League turnouts for Notts County then moved to Forest . . . but by way of QPR (7); 8. Wrexham wear it (3); 10. The father of Kevin and Gary (3); 12. An ever-present for QPR last season, this ex-England man has had around 400 League games (7); 15. The outcome of an error in the area (7-4).

### CLUES — Down

1. After making just under 400 League appearances for Plymouth he added around 200 for Exeter (4); 2. They help a player keep a grip on the game! (5); 3. These hopefuls go to clubs to be judged . . . but most are sentenced to go free! (9); 4. McCalliog, maybe (3); 5. As Shrewsbury's shorts are (4); 9. Such a goal may be wind-assisted or take a weird deflection (5); 11. Former international . . . MacDonald served Rangers throughout the 1970s and then moved to Hearts (4); 13. He had played in almost 400 League games for Arsenal before he went to Watford last season (4); 14. For instance, 6 or 12 across (3).

• Check your answers on page 20.





# AROUND THE TOWN

## WELCOME BACK

It doesn't seem possible that today's match is our first at home in the Football League programme since November 28th when we beat Rotherham 3-1.

We have, of course, had two home FA Cup-ties against Swindon and Ipswich Town in addition to away Second Division tussles at Norwich City and Charlton which yielded four points for our promotion net.

But the big freeze claimed four other League matches which seriously disrupted our training schedules. Perhaps we can now look forward to an uninterrupted run-in to the end of the season.

## DAVID'S WEMBLEY DATE

It's not only the local and national Press who take an avid interest in our progress these days. Manager David Pleat recently received a letter from the *Daily*

*Mail's* New York correspondent Richard Lay asking him to settle a friendly argument among some of his Fleet Street colleagues.

Mr Lay wanted to know if David had played for England schoolboys in 1953-54 against Scotland at Wembley.

Our manager was able to inform Mr Lay that he did, in fact, play against Scotland although it was in season 1960-61 when England won 5-3. David scored one of the goals and was marked by Bobby Moncur, currently manager of Plymouth.

## DEATH OF A FRIEND

We are sad to record the passing of one of our oldest supporters, Arthur Wright, who was a regular visitor to Kenilworth Road at the ripe old age of 89.

Arthur and his friend, ninety-one year old William Paton, were our guests at the home game

against Rotherham at the end of November.

## GRATEFUL THANKS

One of our recent sponsors, R. W. Unwin and Company Ltd., invited children from the National Children's Home at Harpenden to be their guests for the game.

It was a lovely gesture by managing director Ron Unwin. And it brought a heavy mail bag to our office from children who had taken the trouble to write their sincere thanks.

## A DEDICATED FAN

We've heard of the fanatical support displayed by some of our fans but the devotion to Luton Town duly shown by 14 year old Damian Lally's father at one recent game must surely take some beating.

Damian said his father was on

holiday 5,000 miles away in Barbados and was scheduled to return home on the day we played Rotherham United.

He left Barbados at 10.30 for the eight and a half hour jet flight to Heathrow. The time difference meant he arrived in England at 11 a.m. and reached his home in Hillfield Road, Hemel Hempstead, at 12.30 p.m.

'He didn't have time to tell me about the holiday,' Damian wrote. 'Instead, he grabbed something to eat and went straight to Kenilworth Road to watch the game.

'By 10 p.m. the same night, he was unable to watch Match of the Day because he had fallen asleep. But his exercise was made worthwhile when Luton won 3-1.'

Damian also enclosed a cutting from a Barbadian newspaper which mentioned Luton's team.

The word of our fine entertainment is travelling fast.

## HATTERS IN VERSE

Have you heard about the good ship, the Hatter? It's odds on you haven't, but one proud supporter has named her craft after her favourite team. Mrs Irene Walker, who lives in Derwent Road, Luton sent us the following verse.

*We are Luton Town supporters,  
By the river so remote,  
We send you all our greetings,  
For today we launch our boat.  
We've called our boat the Hatter,  
For efforts past, well done,  
And here's to happy sailing,  
To Division number One.  
So all the best to David Pleat,  
May all past sorrows drown,*

*In rain or snow, win or defeat,  
We're proud of Luton Town.*

## GREETINGS FROM DOWN UNDER

We're already mentioned one fan who flew back from Barbados to watch us in action recently. We've heard from another supporter who is a few miles away — in Australia.

Peter Swan wrote from Hoppers Crossing who wrote: 'I moved to Australia in May last year and continuously keep in close contact with the club through a close friend after being a fan for the last 20 years.

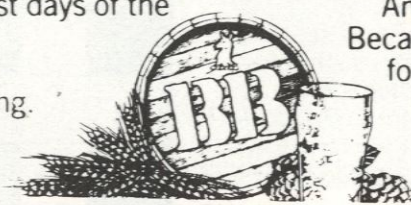
'No-one is more pleased than I with the progress of the team. I wish everyone at Kenilworth Road all the best in their bid for promotion.'

# THE LOCAL TASTE AND HOW TO SATISFY IT

We're very definite about our taste in beer around here. A clear light pint is what we look for; with a good, clean smack of malt and hops.

And there's only one name that really satisfies the local taste — BB. The light beer first brewed in Luton during the darkest days of the War by J. W. Green.

Only the finest hops and good, ripe barley go into the making. Then the brew is matured to exactly the right degree to give you a bright refreshing pint with a sound, full flavour.



**WHITBREAD**

American servicemen in local wartime bases declared that BB, chilled, was the nearest taste to Stateside draught.

It went down well when Syd Owen ruled the Hatters.

And it's been going down well ever since. Because BB is brewed with a proper respect for quality. To keep up the traditions we value round here.



*Your Local Tour Operator*  
Book now for your Summer Holiday  
Brochures available from:  
**Silvoir Holidays Ltd**  
**Silvoir House**  
**13-15 King Street, Luton**  
**Tel: 412131**

For ALL your Window and Door requirements

**WHA** ALLSOP  
ALUMINIUM

153 Newtown Street, Luton  
Tel: Luton 20011/23472. Eves 424650

For all your  
Floral arrangements contact:  
**INBLOOM**  
(Suppliers to Kenilworth Suite)  
45 Latimer Road, Luton

# TODAY'S MATCH SPONSOR

# It's Smarter to Barter

If you're in business it's odds-on we have a member of our Great Lakes Trade Exchange who wants to buy some of your goods or services.

Only they'll pay you in "Trade Units" each one worth £1.

Not interested?  
Think again.

You could use those Trade Units to buy a new car. Or to settle a restaurant bill. To pay for hotel rooms. Airline tickets. Or just to buy the stationery and office equipment you need for the day-to-day running of your business.

It's called Barter. It's absolutely legal and it's booming.

Great Lakes Trade Exchange is Britain's biggest. We've thousands of members who are eager to do business with you.

Isn't that pretty rare in this day and age?

Find out about joining. Call your local office on **Luton 503773.**

Barter boosts your business but conserves your cash. That's why . . . . . It's Smarter to Barter.



Great Lakes Trade Exchange

# LUTON LEISURE

We are proud of our association with the Luton Borough Council's Leisure Services Department who make strenuous and successful efforts to provide activities for local youngsters.

Some matches were recently played in the Chiltern Radio five-a-side, the latest League tables are as follows:

## Group 1 — 14-16 years

	P	W	D	L	F	A	Pts
D.Y.P.C.	6	5	0	1	13	4	10
Red Star	6	4	0	2	9	5	8
Hillborough Hatters 'A'	6	2	0	4	9	2	4
Kokno Muslim Club	6	1	0	5	0	20	2

(D.Y.P.C. and Red Star go through to Round 1)

## Group 2 — 14-16 years

	P	W	D	L	F	A	Pts
G & L Cont Foods	6	6	0	0	28	0	12
Hillborough Hatters 'B'	6	2	0	4	8	7	4
Icknield Youth	6	2	0	4	4	17	4
Newham Athletic 'A'	6	2	0	4	3	20	4

(G & L Cont Foods and Hillborough Hatters 'B' go through to Round 1)

## Group 3 — 14-16 years

	P	W	D	L	F	A	Pts
Japan FC	3	2	1	0	6	3	5
Dunstable Wanderers	3	1	2	0	6	4	4
Toddington Rovers	3	1	1	1	2	3	3
Elm Farm 'B'	3	0	0	3	2	6	0

## Group 4 — 14-16 years

	P	W	D	L	F	A	Pts
Olympic Runners	3	2	1	0	7	0	5
Amphill Y.C.	3	1	2	0	2	0	4
Elm Farm 'A'	3	1	0	2	3	6	2
Newham Athletic 'B'	3	0	1	2	2	8	1

## Group 1 — Adults

	P	W	D	L	F	A	Pts
Stopsley Harriers 'A'	6	6	0	0	9	1	12
D.Y.P.C. 'B'	6	4	0	2	9	6	8
International 'A'	6	2	0	4	9	8	4
Housing Social 'A'	6	0	0	6	1	13	0

(Stopsley Harriers 'A' and D.Y.P.C. 'B' go through to Round 1)

## Group 2 — Adults

	P	W	D	L	F	A	Pts
Red Star	6	4	2	0	12	3	10
F.C. Coral	6	3	1	2	9	8	7
Bedford B.C.	6	2	2	2	7	4	6
Dads 'n' Lads	6	0	1	5	1	11	1

(Red Star and F.C. Coral go through to Round 1)

## Group 3 — Adults

	P	W	D	L	F	A	Pts
Sporting Chilterns	6	3	2	1	6	3	8
Exelsior Breakaway	6	3	1	2	11	6	7
Farley Eagles	6	3	1	2	11	8	7
G.E.C. 'B'	6	0	2	4	2	13	2

(Sporting Chiltern and Exelsior 'B' go through to Round 1)

## Group 4 — Adults

	P	W	D	L	F	A	Pts
Mission Impossible	6	5	1	0	25	5	11
G.E.C. 'A'	6	3	2	1	13	11	8
L & D Hospital 'B'	6	2	1	3	2	10	5
Boater 'B'	6	0	0	6	2	16	0

(Mission Impossible and G.E.C. 'A' go through to Round 1)

The latest positions for the following trophies are:

## Junior Hot Shot Trophy

(awarded to the team who scores most average goals in proper competition)

Team	Matches Played	G.S. Average
1. G & L Continental Foods 14-16 years	5	5.6
J2. St. Joes Youth 'A' 9-12 years	3	3.66
J2. St. Joes Youth 'B' 9-12 years	3	3.66
J2. Toddington Rvrs Youth 12-14 years	3	3.66
J2. St. Joes Youth 'A' 12-14 years	3	3.66
6. D.Y.P.C. 14-16 years	5	2.6
J7. Hillborough H. 'A' 12-14 years	3	2.33
J7. Icknield Youth 12-14 years	3	2.33
J7. St. Joes Youth 'B' 12-14 years	3	2.33
J7. Olympic Runners 12-14 years	3	2.33

## Best Junior Defending Team Trophy

	Matches Played	G.S. Average
1. G & L Cont Foods 14-16 years	5	0
2. Olympic Runners 14-16 years	3	0
3. Amphill Y.C. 14-16 years	3	0
J4. St. Joes Youth 'A' 9-12 years	3	0.66
J4. St. Joes Youth 'B' 9-12 years	3	0.66
J4. Toddington Rvrs Yth 12-14 years	3	0.66
J4. St. Joes Yth 'A' 12-14 years	3	0.66
J4. St Joes Yth 'B' 12-14 years	3	0.66
9. D.Y.P.C. 14-16 years	5	0.8
10. Red Star 14-16 years	5	1

## Adult Hot Shot Trophy

	Matches Played	G.S. Average
1. Mission Impossible	6	4.16
2. Sundon White Hart	3	3.66
3. Campani F.C.	3	3.33
4. Wells Stars	2	3
5. Lewsey F.C. 'A'	3	2.66
6. Greene King F.C. 'B'	3	2.33
7. G.E.C. Dunstable 'A'	6	2.16
8. Red Star	6	2
9. Exelsior Breakaway	6	1.83
10. Farley Eagles	6	1.83

## Best Adult Defending Team

	Matches Played	G.S. Average
1. Stopsley Harriers 'A'	6	0.16
2. Greene King 'B'	3	0.33
3. Wells Stars	2	0.5
4. Red Star	6	0.5
5. Sporting Chiltern	6	0.5
6. Bedford B.C.	6	0.66
7. Dunstable Wanderers	3	0.66
8. Mission Impossible	6	0.83
9. Campani	3	1
10. Lewsey 'A'	3	1

Future articles will include information of the three-day Leader Easter Coaching Hockey Course, Summer Hockey Coaching School, Luton Junior Casting Competition, Luton Town Easter Netball Tournament, Hatters Community Junior Netball League, Luton Junior Seven-a-Side Cricket Championships, Luton News Special Pre-season Cricket School, Evening Post/Echo Three-day Easter Coaching Course, Evening Post/Echo Summer Football School, Chiltern Radio Five-a-Side Tournament and all other regional competitions including Luton Playschemes.

Ideas and views are very important. If you have any please let us know. Also if you wish for more details of any of the above mentioned courses or tournaments, please write to: Mike Iacono, Marsh House Centre, Leagrave, Luton, Beds. (Luton 56879).

**DIVISION ONE TABLE 1981-82**

	Home					Away					Pts	
	P	W	D	L	F	A	W	D	L	F		A
Ipswich Town	18	7	1	1	18	10	5	1	3	17	13	38
Southampton	21	9	0	2	28	13	2	4	4	11	17	37
Manchester United	20	3	3	1	15	5	4	3	3	17	11	36
Manchester City	21	6	4	2	20	10	4	1	4	10	13	35
Liverpool	20	5	3	3	18	11	4	3	2	15	9	33
Everton	22	7	2	2	20	11	2	4	5	12	16	33
Swansea City	21	7	2	1	18	7	3	1	7	13	26	33
Nottingham Forest	20	6	2	3	13	11	3	3	3	12	15	32
Brighton	21	4	5	2	18	13	3	5	2	7	6	31
Arsenal	19	4	3	1	5	2	5	1	5	12	13	31
Tottenham	17	4	0	5	14	13	5	2	1	12	6	29
West Ham United	18	4	3	1	19	13	2	5	3	14	13	26
W.B.A.	18	3	4	2	12	7	3	2	4	11	12	24
Coventry City	22	5	2	4	21	15	1	3	7	13	24	23
Notts County	20	4	4	2	14	16	2	1	7	13	19	23
Leeds United	19	5	5	0	15	6	1	0	8	5	26	23
Aston Villa	20	2	3	3	9	10	3	4	5	14	14	22
Stoke City	21	4	0	7	14	16	2	3	5	10	17	21
Birmingham City	19	4	4	1	22	16	0	3	7	7	15	19
Wolverhampton	20	4	2	4	7	10	1	2	7	6	20	19
Sunderland	19	1	2	6	6	17	2	3	5	10	16	14
Middlesbrough	18	2	3	4	10	15	0	3	6	6	15	12

Up to and including Tuesday 26th January 1982

**DIVISION THREE LEAGUE TABLE**

	Home					Away					Pts	
	P	W	D	L	F	A	W	D	L	F		A
Chesterfield	21	6	3	2	15	8	5	2	3	13	6	38
Fulham	21	5	3	1	16	8	6	2	4	19	16	38
Southend United	21	7	2	3	17	11	4	1	4	12	11	36
Walsall	21	7	1	2	20	7	3	4	4	10	11	35
Carlisle United	19	7	1	1	18	9	4	1	5	10	12	35
Bristol Rovers	24	6	2	4	17	16	3	4	5	12	16	33
Reading	22	5	3	4	16	20	4	2	4	12	14	32
Brentford	22	2	3	6	5	8	7	1	3	17	12	31
Huddersfield Town	21	5	3	2	15	9	3	3	5	11	13	30
Gillingham	20	5	2	3	19	15	4	1	5	10	15	30
Doncaster Rovers	19	6	1	2	15	6	2	4	4	10	16	29
Exeter City	21	6	1	4	24	23	2	4	4	13	19	29
Millwall	20	4	1	5	13	12	4	3	3	13	11	28
Oxford United	19	4	2	3	10	7	4	2	4	14	15	28
Plymouth Argyle	24	5	3	4	21	14	3	3	6	9	16	28
Lincoln City	20	4	4	3	17	11	3	2	4	13	14	27
Newport	23	5	3	3	13	9	2	3	7	15	20	27
Burnley	20	4	4	2	13	12	2	4	4	13	16	26
Portsmouth	22	4	4	2	12	8	1	5	6	12	19	24
Swindon Town	21	3	2	5	15	17	3	3	5	10	16	23
Chester	21	1	7	3	10	14	4	1	5	8	13	23
Bristol City	21	3	4	4	12	14	2	3	5	7	12	22
Preston North End	21	4	4	3	8	8	1	3	6	9	19	22
Wimbledon	20	3	2	5	12	17	1	3	6	11	21	17

Up to and including Tuesday 26th January 1982

**CROSSWORD SOLUTIONS**

Across: 6. Portfield; 7. Needham; 8. red; 10. Ray (Mabbutt); 12. Gillard; 15. penalty-kick.  
 Down: 1. Hore; 2. studs; 3. trailers; 4. Jim; 5. blue; 9. fluke; 11. Alex; 13. Rice; 14. Ian.

**The wheels for  
British industry**  
**DAF Trucks**

FLAT TRAILERS

BULK TRAILERS

**R. W. HARVEY & SON**  
45 BEDFORD ROAD  
SANDY · BEDS.  
0767-80623

ROAD HAULAGE CONTRACTORS

FOR ALL YOUR  
TRANSPORT REQUIREMENTS

CRANE TRAILERS

RIGID VEHICLES

**HENLYS** 

first for

 **TALBOT-PEUGEOT** 

Luton Way, Dunstable, Beds.  
Telephone: 64171.

LUTON TOWN PLAYERS  
DRINK



MILK

For your nearest depot  
ring Luton 23580

**JOHN'S JOURNAL**



Two or three times during the season, I shall be using my space in the programme to print our ground regulations:

- 1: All matches are played in accordance with the Rules and Regulations of the Football Association and Football League.
- 2: Play cannot be guaranteed on any day, and the Club reserves the right to make changes to its advertised fixtures without notice.
- 3: Refund of cash admission charges paid at the turnstiles will not be made in any circumstances. Right of admission reserved.
- 4: Refunds will be made in respect of seats booked in advance where a match is postponed subject to a time limitation, details of which can be obtained from the Box Office. Such

refunds will not be entertained however in respect of abandoned matches.

- 5: Unauthorised persons are not permitted to enter upon the field of play.
- 6: With the exception of authorised Press representatives holding official passes, the taking of photographs or cine-photographs inside the ground is prohibited.
- 7: Only persons specially authorised by the Club in writing are permitted to offer newspapers, periodicals, or any other articles for sale in the ground.
- 8: Unnecessary noise, such as the use of radio sets, or behaviour likely to cause confusion of any kind is not permitted in any part of the ground.
- 9: The climbing of floodlight pylons, stands or any other buildings in the ground is strictly

forbidden.

- 10: The consumption of intoxicating liquor is permitted only in the bars or other authorised places. Bottles, glasses, flags, banners and other similar articles are not permitted.
- 11: All persons entering the ground are admitted subject to the above Ground Regulations, and the Rules and Regulations of the Football Association and Football League. The Club reserves the right to remove from the ground any persons who do not comply with them, or whose presence is a source of danger or annoyance to others.

John Wilkinson  
Secretary



EVERY SUNDAY  
**MATCH OF THE WEEK**  
ON ANGLIA TELEVISION



ANGLIA  
TELEVISION



ANGLIA  
TELEVISION

See the goals and the action every Sunday afternoon

# CENTURY CLUB

It is nice to return to regular football again. After such a long break it is almost like starting a new season, as well as a new year. Today we meet Leicester City again, and wish our team good luck for a good game.

Perhaps we shall be able to catch up on some of our social functions once we have watched the backlog of games. We have been asked when we are putting on our New Years party, which was one of the casualties of the weather! We did manage to draw the raffle in the Century Club in the presence of some committee members and members. The winners are as follows, and full details are available in the Century Club.

No. 1. Ticket 4344, J. Cook, 41 Brooklands Close, Luton; No. 2. Ticket 1256, Miss Hall, 10 Shepherds Row, Redbourn; No. 3. Ticket 1018, Hacfield Ltd., Barton le Clay; No. 4. Ticket 2455, R. Newman, Century Club; No. 5. Ticket 1797, P. Leonard, Century Club; No. 6. Ticket 2665, L. Read, Century Club; No. 7. Ticket 4403, H. Hankey, Century Club; No. 8. Ticket 1976, Saracens Head, Redbourn; No. 9. Ticket 2768, M. Robinson, Century Club; No. 10. Ticket 2306, T. McAuliffe, Century Club; No. 11. Ticket 2208, B. Flood, c/o P. Mockett, Century Club; No. 12. Ticket 4876, S. Venn, Century Club; No. 13. Ticket 3640, A. Sanderson, Potton Timber, Century Club; No. 14. Ticket 0764, P. Conway, Century Club; No. 15. Ticket 3083, A. Thompson, Century Club; No. 16. Ticket 2079, Mr Goddard, Century Club. No. 17. Ticket 1568, I. Hill, Century Club; No. 18. Ticket 0911, E. Edwards, Century Club; No. 19. Ticket 2302, S. O'Connor, Edgware; No. 20. Ticket 0989, T. Emery, Century Club; No. 21. Ticket 2827, Mr Murry, 58 Coleswood Road, Harpenden, No.22. Ticket 4643, S. F. King, Century Club; No. 23. Ticket 3239, B. Tunnard, Century Club; No. 24. Ticket 0117, Stuart Allsop, Century Club; No. 25. Ticket 3836, K. Ball, Century Club. Congratulations to all the winners, and we hope that J. Cook has a wonderful weekend in Paris as a result of winning first prize!

# MATCH SPONSOR



## Great Lakes Trade Exchange

'How to boost your business while conserving your cash' — that's the promise held out by today's match sponsor, Great Lakes Trade Exchange.

In just three short months, Great Lakes have turned that promise into reality for scores of Bedfordshire business and commercial enterprises.

How?

In a word — by BARTER.

In its most primitive form (in a one-to-one situation), barter was in business before the Bible.

What Great Lakes have done has been to take today's technology — the computer — and place it at the centre of a barter system that enables businesses to exchange their goods and services for thousands of other goods or services without a penny changing hands.

Instead of cash, Great Lakes deal in Barter Units — each one worth £1.

A garage owner will sell a new car to an Exchange member and his account will be credited with, say, 6,000 units. He'd like a new air compressor for his workshop — the Exchange will find a member with one to sell which might take, say, 1,000 units.

He's had a run on snow tyres and would like to restock — the Exchange will have several tyre distributors who will supply. And so on . . .

Meanwhile, the member who sold the compressor might exchange his units for hotel accommodation for a sales conference he was planning.

The hotelier might use the units to have a new carpet fitted in the restaurant.

The carpet supplier might use his units to install a new till in his shop.

The office equipment member who supplied the till might want a new car for his salesman. So it's back to the garage owner and the cycle is complete.

Everyone has obtained goods they needed to run their business without damaging their bank account. They've had customers through their doors they would not normally have had.

And, as a major point of interest, they've obtained full retail value for their 'sales' — discounting is actively discouraged. (Over-charging is punished by instant dismissal from the Exchange).

But as the garage owner, the compressor supplier, the distributor and the rest bought their goods initially at wholesale price, another benefit becomes apparent — they are buying at wholesale and selling at retail.

Good business!

Which is what Great Lakes brings its members.

For more information contact Great Lakes' local office at Luton 503773.

# PUZZLE CORNER

Luton supporter Ken Green has an unusual hobby — compiling crosswords — and we think he has done remarkably well to produce this effort which we thought was worth printing to test your soccer skill.

The answers — there are no prizes for anyone who gets it correct — are printed upside down at the bottom of the page.

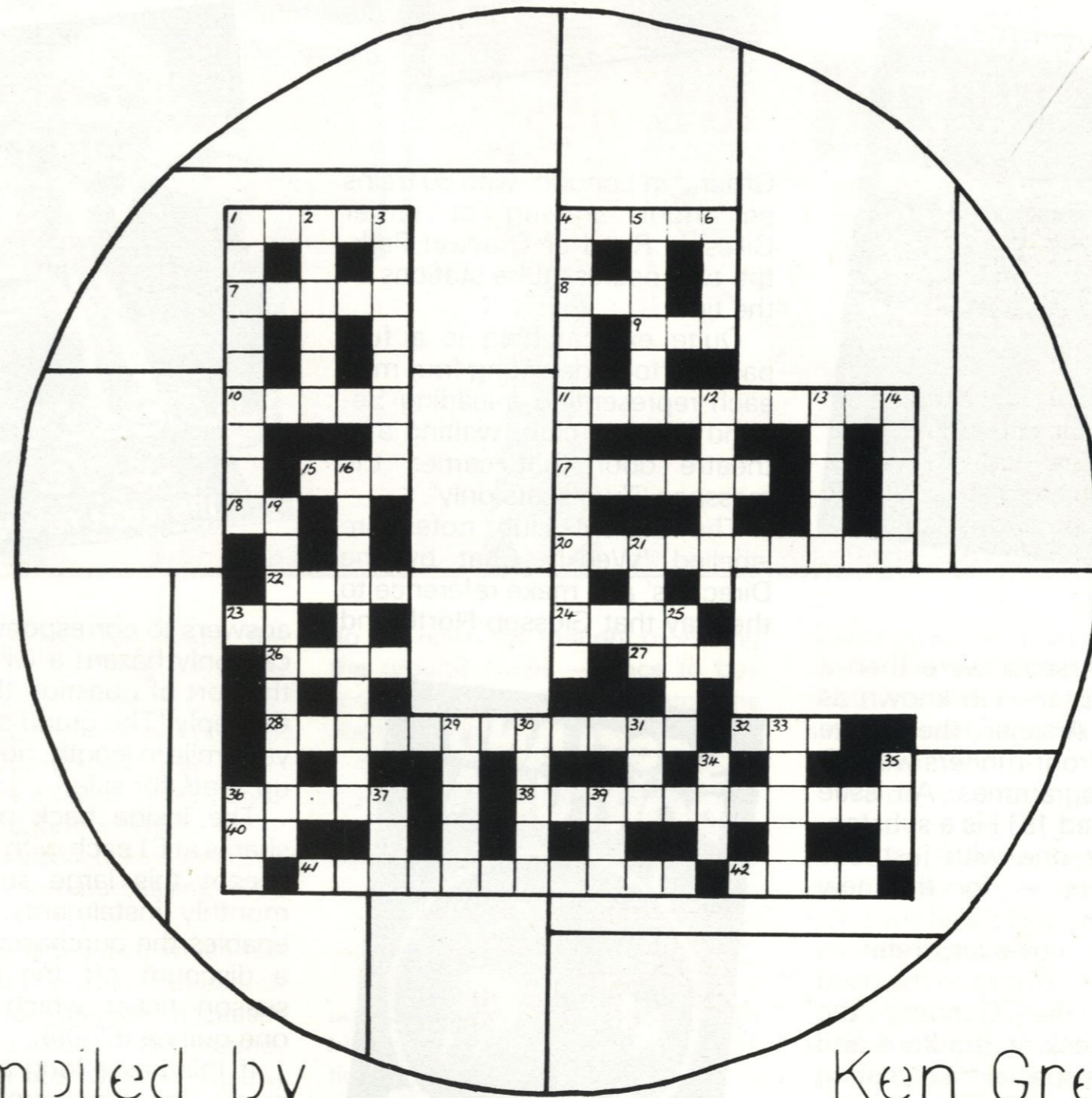
### Clues — across

1. Millwall's nickname (5); 4. The animal at Boothferry Park (5); 7. The Swans finished in this position in Division Two at the end of the 1980-81 season (5); 8. The final at Deepdale (3); 9. Villa's No. 7 \_\_\_\_\_ Bremner (3); 10. The Championship (5); 11. The Black Cats (10); 15. Einar \_\_\_\_\_, Nott'm Forest midfielder (3); 17. Could be Oxford or Cambridge (6); 18. The Magpies club initials (2); 20. Lincoln City's nickname (3-3-4); 22. A corner, as in a room (4); 23. Gay Meadow club initial (2); 24. Not difficult for the fans to chant this (4); 26. They might wander about at Belle Vue \_\_\_\_\_s (4); 27. Hibs finished here in Scottish Division One at the end of the 1980-81 season; 28. You will find Crystal

Palace at home here (8-4); 32. 4 down play here \_\_\_\_\_ Park (3); 36. A true supporter is this (5); 38. Starks Park club (5-6); 40. The Sh\_\_\_\_s, on target at the Recreation ground (2); 41. Dumbarton's ground (7-4); 42. Birmingham City colour (4).

### Clues — down

1. Headwear specialists here (5-4); 2. Ken Knighton is boss here (6); 3. Fellows Park club nickname (8); 4. These men play at 32 across (3-10); 5. One of WBA's goalkeepers (6); 6. Colin Addison's favourite animals (4); 12. The Grecians (6); 13. A supporters book for photos and autographs (5); 14. A goalkeeper will often do this (5); 16. 1980-81 League Champions (5-5); 19. Place the ball here for a start (6-4); 21. \_\_\_\_\_ Fife (4); 25. The Robins of Bootham Crescent; 29. Ex-Leeds and England manager (5); 30. After a long season, most players feel this (5); 31. Portsmouth's ground, F\_\_\_\_\_ Park (3); 33. Match all square (5); 34. Not an amateur (3); 35. \_\_\_\_\_ Hartford of Manchester City (3); 36. A ball kicked high to the back of a goalkeeper (3); 37. One of two in a UEFA Cup competition (3); 39. Bobby Gould, in charge of the P\_\_\_\_\_tes (3).



Compiled by

Ken Green

### SOLUTIONS TO CROSSWORD

Across: 1. Lions; 4. Tiger; 7. Third; 8. End; 9. Des; 10. Title; 11. Sunderland; 15. Asa; 17. United; 18. NC; 20. The Red Imps; 22. Nook; 23. ST; 24. Easy; 26. Rove; 27. Top; 28. Selhurst Park; 32. Elm; 36. Loyal; 38. Raith Rovers; 40. ot; 41. Boghead Park; 42. Blue.  
Down: 1. Luton Town; 2. Orient; 3. Saddlers; 4. The Biscuitmen; 5. God-den; 6. Rams; 12. Exeter; 13. Aston Villa; 14. Dives; 16. Aston Villa; 19. Centre spot; 21. East; 25. York; 29. Revie; 30. Tired; 31. rat; 33. Level; 34. Pro; 35. Asa; 36. Lob; 37. Leg; 39. ira.

# PROGRAMME CORNER

By JOHN FARMER

Pre-First World War programmes have in general survived even less well than people of that time. Some are still with us, however, and like some people of that era are extremely well preserved and interesting.

Most clubs had issued small team sheets before the turn of the century, but from 1900 to the outbreak of war several clubs produced quite substantial issues.



Though Arsenal were then a Second Division club known as 'Woolwich Arsenal' they were among the front-runners when it came to programmes. An issue of theirs dated 1911 is a substantial 14 page one with just one advertisement — for the new fountain pen.

They do, however, refer in three different places to the need to support the 'Gunners' the following week at Bradford and to this end a special train costing just 12 shillings (60p) looks an attractive proposition, being labelled 'Cook's Corridor Restaurant Car Excursion' Highbury is also labelled 'The Most Accessible



Ground in London' with 80 trains per hour arriving at either Gillespie Road or Drayton Park, the two nearest tube stations of the time.

Quite eye-catching is a full-page cartoon depicting four men each representing a leading Second Division club, waiting at a theatre door that carries the message 'Two seats only'.

The current club notes are labelled 'Weekly Chat by the Directors' and make reference to the way that Glossop North End



had recently gained revenge for a 6-0 defeat at Birmingham by winning the return game 4-0.

The Bradford team are also congratulated by the writers on their sportsmanship towards the Arsenal players in wishing them well at the end of a recent game and there is also a very frank confession 'At Leicester on Saturday we were rather lucky to win'.

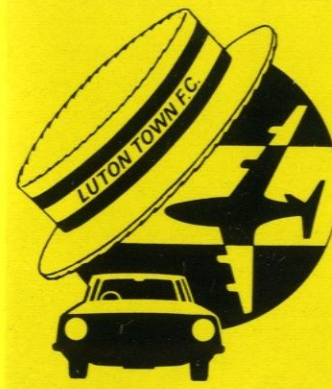
Another full page is devoted to



answers to correspondents. One can only hazard a wild guess at the sort of question that elicited the reply 'The grand stand is not yet a mile in length, nor are the tip up seats for sale.'

The inside back page offers shares at £1 each with the offer to accept this large sum in four monthly instalments. This also enables the purchaser to receive a discount off the price of a season ticket which was then one guinea (£1-05).

If this has a long ago and far away ting the warning on the back page is still relevant today. It reads 'The public are respectfully warned . . . against purchasing pirate programmes.'



# SHOP WINDOW



The ticket office, now under the wing of the lottery and souvenirs division, has just completed its second big exercise in selling tickets for the FA Cup-tie last week.

There were a few problems, due mainly to supporters who failed to bring their season ticket books to the office when purchasing their stand seats.

It has been a practice which has been allowed previously but cannot be allowed to continue. It causes delays in the issue of tickets and, for the previous Cup-tie against Swindon we had a situation where two people were competing to sit in the same seat.

We recognise that those supporters who live in outlying areas

do not relish the thought of visiting the ground twice — once to buy your ticket and once to watch the match.

But there could have been an easy way out for many of you. The method we highly recommend is that supporters post to us, in ample time, the appropriate voucher, a stamped addressed envelope and the correct remittance.

By return post, you will be in possession of your ticket without having to apply in person at the ticket office.

We regret we cannot entertain requests to reserve match tickets by telephone. That practice has also been previously allowed but we have found that many reserved

tickets have never been claimed.

We could have sold those particular tickets many times and it simply means the club has lost valuable revenue.

We do, of course, accept postal applications for any League match providing it is accompanied by a postal order or cheque for £3. The ticket will be set aside for collection from the ticket office on the day of the match.

With First Division soccer next season a big possibility, we are in the process of streamlining our operation to fall in line with other clubs.

The new system will help us to help you.

**MIKE HARDWICKE**  
Commercial Manager



# ACTION

## LUTON TOWN IPSWICH TOWN

*Above: Mal Donaghy joins the attack.*

*Below: Ricky Hill during a superb run against the Ipswich defence in the first half.*



Brian Stein challenges Ipswich's Scottish international John Wark.

# VISITORS

# LINE-UP



## LEICESTER CITY



Leicester City arrive at Kenilworth Road this afternoon looking for a better second half to the season than they enjoyed in the first period.

The club are back where they started under tough talking manager Jock Wallace — in the Second Division after being relegated at the end of last season.

Wallace is well aware of the score after taking Leicester to Division One in only his second season at Filbert Street and insisted at the end of last season: 'We are going down with a better team than the one which took us up.'

Wallace, a burly Scot, has fine credentials. But how many people south of the border realised 13 years ago that he was to carve his own little piece of history when, as manager of tiny Berwick Rangers, he plotted the downfall of the mighty Glasgow Rangers in the Scottish Cup.

Rangers, perhaps not surprisingly, didn't forget Wallace and he later became their manager and was in charge of the grand slam — both Cups and the League championship — in 1976 and 1978.

But Leicester, in a bad way in 1978, were also to make their move for the respected manager and successfully persuaded him to join them. Leicester had just been relegated from the First Division with one of the worst scoring records of all time and there was real possibility that they would slip immediately into the Third.

Numerous players had been bought and sold during the relegation season under manager Frank McLintock and the framework of former boss Jimmy Bloomfield had already been dismantled.

Wallace stripped the club to its foundations and the survivors of

the Bloomfield era moved on when Steve Whitworth (now with Bolton) went to Sunderland; Steve Sims joined Watford; Denis Rofe went to Chelsea and Keith Weller finished up in America.



Scottish midfielder  
**IAN WILSON**

The new manager, as fearless as ever, brought in the youngsters and they had enough running to keep the club out of the Third Division by the skin of their teeth.

It still seemed a long way to promotion, but Wallace bought skilfully, mainly from his broad knowledge of Scottish players, and there was a hardcore of experience in the side which outpaced Chelsea, Birmingham and Sunderland for the championship in May 1980.

Changes during that summer were kept to a minimum. Promotion skipper Eddie Kelly, previously with Arsenal and QPR, moved on to Notts County. But his departure was balanced by the arrival at Filbert Street of Scottish Under-21 international Jim Melrose from Partick Thistle.

But Leicester's return to the First Division last only one season. They dropped back into the Second for the start of this term after finishing second from bottom with 32 points from 42 League games.

Again, lack of goals was the main reason when Leicester failed to average one a game and they accompanied Norwich City and Crystal Palace in the dreaded drop.

The experts predicted a quick return this season for Leicester. But things haven't quite gone as Wallace would have planned.

Leicester have shown only average form and won only three of their nine matches at home. On their travels, they have taken maximum points only three times from ten outings.

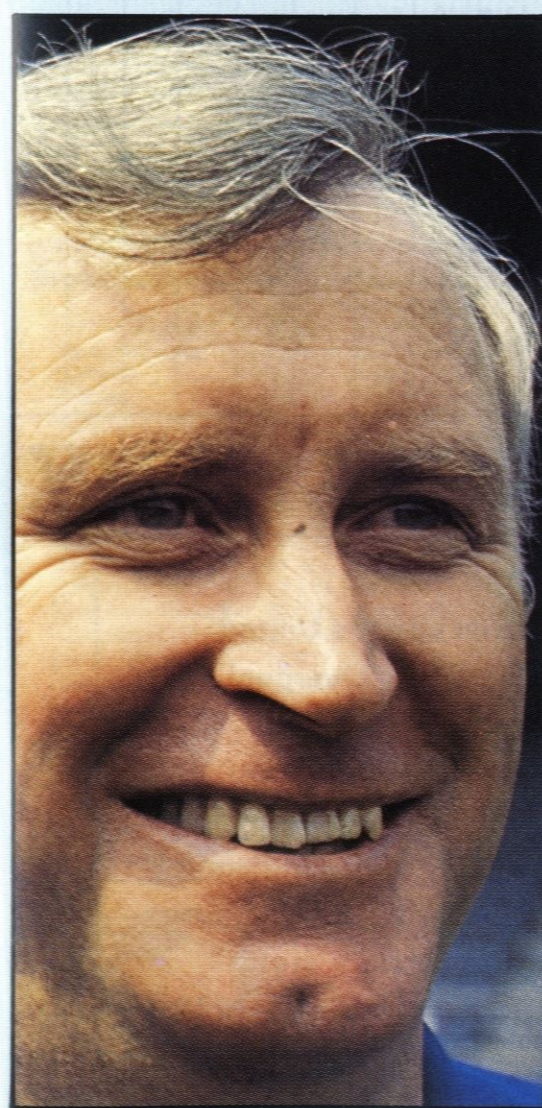
So Wallace will obviously be out to strengthen that record in the second half of the season. And he has the boost of Eddie Kelly's experience when he was released by Notts County after making 27 appearances last season.

Kelly has over 300 Football League games to his credit and his experience obviously rubs off onto younger members of the staff.

Skipper Mark Wallington, the club's keeper is another experienced member of the team, and Wallace will look to Melrose to knock in his fair share of the goals in the second half of the season.

Kevin MacDonald, still only 19, was another player to move from Scotland when he joined Leicester for the modest fee of £10,000 from Inverness Caledonian.

But time is not on Wallace's side as he attempts to bounce back to the First Division immediately and the big Scot will see today's game as another chance to make up some of the leeway on the pack chasing the leaders at the top.



Manager  
**JOCK WALLACE**

### THE PLAYERS

**Paul Friar.** Young full back who made his debut last season against Leeds United at Filbert Street. A Scottish Youth internationalist.

**Gary Lineker.** Young striker who made his debut on New Year's Day 1979 against Oldham.

**Steve Lynex.** Striker. Signed for City from Birmingham City last season. Has scored 5 goals so far this season.

**Larry May.** Made his debut in 1976-77 season. One of best young central defenders in the country.

**Jim Melrose.** Striker, bought from Partick Thistle for £250,000 during the summer of 1980. Scored the winning goal against Liverpool at Anfield last season.

**John O'Neill.** Defender who began his City career as an amateur while studying at Loughborough University. Progressed to become a regular and important member of the Northern Ireland squad.

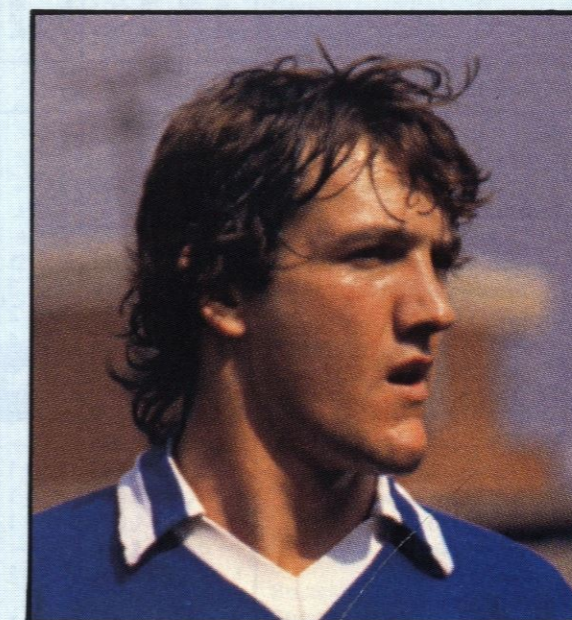
**Andy Peake.** An England Youth internationalist.

**Mark Wallington.** Club captain who leads by example and has not missed a League match for the last six seasons. Came to City from Walsall in season 1971-72.

**Tommy Williams.** One of City's most experienced and versatile players.

**Ian Wilson.** Joined City from Highland League club Elgin and had an outstanding First Division season last year.

**Alan Young.** City's first signing under the Freedom of Contract rules when he came from Oldham. Recently returned to the side after injury.



Scottish striker  
**ALAN YOUNG**



Captain and goalkeeper  
**MARK WALLINGTON**



Central defender  
**LARRY MAY**

# POINTS ATTENDANCE LEAGUE TABLES

Opponents	Result	Attendance	Points	Position	Findlay	Stephens	Aizlewood	Horton	Saxby	Donaghy	Hill	Stein	White	Antic	Ingram	Turner	Moss	Fuccillo	Goodyear	Small	Aleksic	Judge	Own Goal
<b>Goals Scored</b>							3	1	1	6	2	6	14	2			9	1	1				1
<b>1981</b>																							
<b>August</b>																							
29 Charlton Athletic	3-0	8,776	3	-	1	2	3	4	5	6●	7	8	9●	10	11								OG
<b>September</b>																							
1 Queens Park Rangers	2-1	18,703	6	-	1	2	3●	4	5	6	7●	8	9	10	11								
5 Bolton Wanderers	2-1	6,911	9	1	1	2	3●	4	5	6	7	8●	9	10	11+					12			
12 Sheffield Wednesday	0-3	12,131	9	3	1	2	3	4	5	6	7	8	9	10	-	11+				12			
19 Leicester City	2-1	14,159	12	2	1	2	3	4	5	6	7	8	9●	10	-	11							
22 Cardiff City	2-3	9,015	12	4	1	2	3+	4	5●	6	7	8	9	10●	-	11	12						
26 Watford	4-1	12,839	15	2	1	2	3	4	5	6	7	8●	9	-	-	11●	10						
<b>October</b>																							
3 Orient	3-0	5,584	18	1	1	2	3●	4	5	6	7●	8	9●	12	-	-	11	10					
6 Wrexham (LC2 - 1L)	0-2	6,146	-	-	1	2	12	4	5	6	7	8	9	3	-	-	11	10					
10 Oldham Athletic	1-1	8,403	19	1	1	2	3	4	5+	6	7	8	9●	12	-	-	11	10					
17 Grimsby Town	6-0	9,090	22	1	1	2	3	4	5	6	7	8	9●	10●	-	-	11●	10●					
24 Wrexham	2-0	4,069	25	1	1	2	-	4	5	6●	7	8	9	-	-	11	10	3					
28 Wrexham LC2 - 2L)	1-0	3,453	-	-	1	2	-	4	5	6	7	8	9●	-	12	-	11	10	3+				
31 Crystal Palace	1-0	11,712	28	1	1	2	-	4	5+	6	7	8	9	12	-	-	11●	10	3				
<b>November</b>																							
7 Derby County	3-2	10,784	31	1	1	2	5	4	-	6●	7	8	9	-	-	11●	10	3●					
14 Blackburn Rovers	1-0	9,862	34	1	-	2	5	4	-	6	7	8	9	-	-	11●	10	3		1			
21 Newcastle United	2-3	21,031	34	1	-	2	3	4	-	6●	7	8	9	-	-	11●	10	5		1			
24 Bolton Wanderers	2-0	8,889	37	1	-	2	3	4	-	6	7	8●	9	12	-	-	11●	10	5		1+		
28 Rotherham United	3-1	11,061	40	1	-	2	3	4	-	6●	7	8●	9●	12	-	-	11	10	5		1		
<b>December</b>																							
5 Shrewsbury Town	2-2	5,259	41	1	-	2	3	4	-	6●	7+	8	9●	12	-	-	11	10	5			1	
28 Norwich City	3-1	19,348	44	1	1	2	3	4	-	6	-	8●	9●	7●	-	-	11	10	5				
<b>1982</b>																							
<b>January</b>																							
2 Swindon Town FAC 3	2-1	9,488	-	-	1	2	3	4●	-	6	7	8	9	-	-	11●	10	5					
19 Charlton Athletic	0-0	7,013	45	1	1	2	3	-	-	6	7	8	9	4	-	-	11	10	5				
23 Ipswich Town (FAC 4)	0-3	20,188	-	-	1	2	3+	4	-	6	7	8	9	12	-	-	11	10	5				
30 Leicester City																							
<b>February</b>																							
6 Sheffield Wednesday																							
13 Orient (5)																							
20 Watford																							
27 Oldham Athletic																							
<b>March</b>																							
2 Cambridge United																							
6 Grimsby Town (6)																							
12 Wrexham (LCF) (Friday)																							
16 Barnsley																							
20 Crystal Palace																							
23 Chelsea																							
27 Derby County																							
<b>April</b>																							
3 Blackburn Rovers (SF)																							
9																							
10 Cambridge United																							
12 Norwich City																							
13																							
17 Newcastle United																							
24 Rotherham United																							
30 Shrewsbury Town																							
<b>May</b>																							
5 Cardiff City																							
8 Chelsea																							
15 Barnsley																							
22 FA Cup Final																							
To be arranged																							
Queens Park Rangers																							

## TODAY'S SCORECHECK

### DIVISION TWO

- Barnsley v Cambridge
- Blackburn v Cardiff
- Chelsea v Shrewsbury
- Crystal Palace v Q.P.R.
- Derby v Sheffield Wednesday
- Grimsby v Charlton
- Newcastle v Norwich
- Oldham v Bolton
- Rotherham v Watford
- Wrexham v Orient

### DIVISION ONE

- Arsenal v Leeds United
- Aston-Villa v Liverpool
- Coventry v Brighton
- Everton v Tottenham
- Ipswich v Notts County
- Man. City v Birmingham
- Middlesbro' v Southampton
- Nott'm Forest v Stoke
- Swansea v Manchester Utd
- West Ham v W.B.A.
- Wolves v Sunderland

MIDLAND YOUTH LEAGUE				
Wolves	3	3	0	0
W.B.A.	3	2	1	0
Luton Town	3	2	0	1
Leicester City	3	1	1	1
Bristol City	4	1	1	2
Birmingham	2	1	0	1
Swindon	2	1	0	1
Peterborough	5	1	0	4
Coventry	1	0	1	0
Northampton	2	0	0	2

+ Player replaced by substitute

● Goalscorer

Home fixtures in bold

Copyright of The Football League

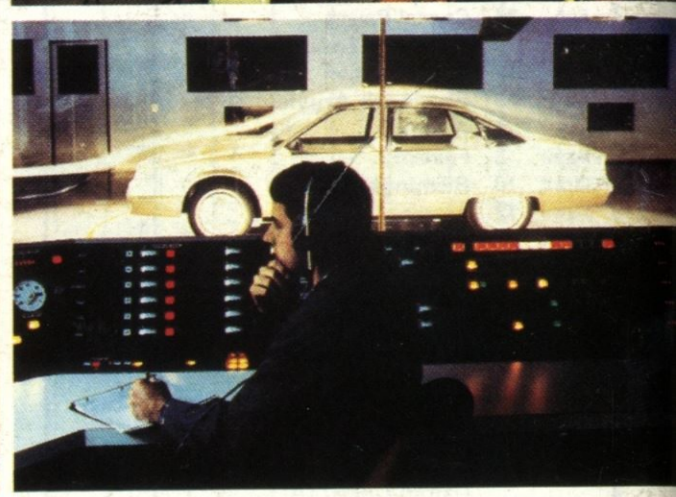
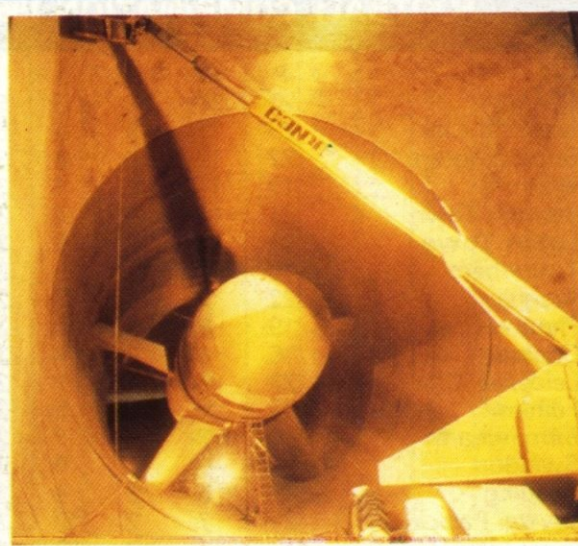
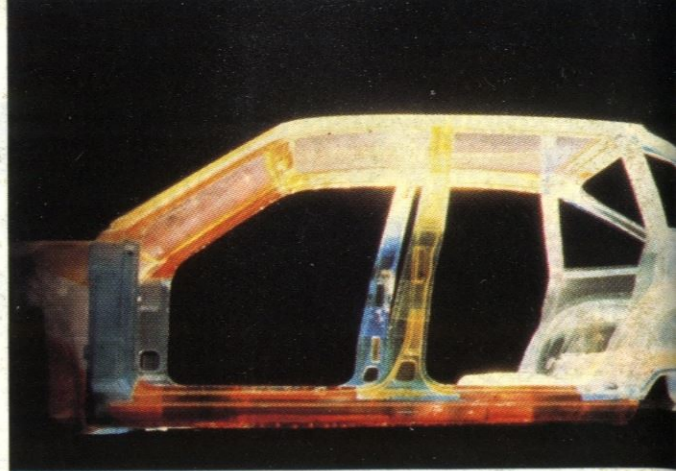
### FOOTBALL COMBINATION FIXTURES 1981-82

Date	Match	F	A
Aug. 29	Orient	4-0	
Sept. 1	Tottenham Hotspur	1-0	
Sept. 5	Oxford United	2-1	
Sept. 12	Leicester City	1-1	
Sept. 19	Queens Park Rangers	2-0	
Sept. 26	Watford	0-5	
Oct. 3	Bristol City	1-1	
Oct. 10	Crystal Palace	4-0	
Oct. 17	Swindon Town	0-3	
Oct. 24	Ipswich Town	2-3	
Nov. 3	Hereford United	1-0	
Nov. 7	Arsenal	1-1	
Nov. 10	Norwich City	1-3	
Nov. 14	Fulham	2-2	
Nov. 17	Birmingham City	1-1	
Nov. 25	Tottenham Hotspur	1-2	
Nov. 28	Southampton	3-5	
Dec. 5	Chelsea	2-1	
Jan. 6	West Ham United	1-1	
Jan. 23	Plymouth Argyle	1-1	
Jan. 26	Reading	4-0	
Jan. 30	Queens Park Rangers		
Feb. 1			
Feb. 6	Leicester City		
Feb. 8			
Feb. 13	Bristol City		
Feb. 20	Watford		
Feb. 27	Crystal Palace		
Mar. 6	Swindon Town		
Mar. 13	Ipswich Town		
Mar. 20	Plymouth Argyle		
Mar. 27	Arsenal		
Apr. 3	Fulham		
Apr. 10	Birmingham City		
Apr. 12	Reading		
Apr. 17	Hereford United		
Apr. 24	Southampton		
Apr. 27	Chelsea		
May 4	Norwich City		
May 8	West Ham United		
May 15	Bristol Rovers		
May 22			

### DIVISION TWO TABLE 1981-82

Club	Home			Away			Pts
	P	W	D	L	F	A	
Luton Town	20	7	0	2	24	10	7
Oldham Athletic	24	6	6	1	20	13	5
Watford	21	6	3	2	24	12	5
Blackburn Rovers	24	5	2	4	10	7	4
Q.P.R.	21	7	3	2	16	6	3
Sheffield Wednesday	20	5	3	2	16	14	5
Barnsley	20	7	1	1	17	4	3
Chelsea	21	5	3	2	16	12	4
Charlton Athletic	24	6	3	3	19	13	2
Norwich City	21	6	3	2	16	10	2
Newcastle United	19	6	2	1	15	5	2
Leicester City	19	3	4	2	10	7	3
Derby County	21	5	3	2	15	11	2
Crystal Palace	19	6	0	4	13	9	1
Cardiff City	20	5	1	5	13	16	2
Orient	22	4	3	4	13	14	3
Cambridge United	20	5	1	4	15	11	2
Shrewsbury Town	18	5	2	2	15	10	1
Rotherham United	19	6	1	2	20	9	2
Bolton Wanderers	21	5	2				





# Vauxhall. Backed by the world-wide resources of General Motors.

*Vauxhall cars are designed in Europe specifically to meet the demanding requirements of European motorists.*

*The advanced technology in today's Vauxhalls though, is made possible by the Company being part of General Motors, the world's largest car and truck manufacturer.*

*At General Motors' 330-acre Technical Centre in the US, research and development facilities are on an unrivalled scale. Aerodynamics, new engines, transmissions, electronics, new propellants, manufacturing techniques – these and every other aspect of car design are the subject of intensive development providing backing for General Motors' divisions throughout the world.*

*The facilities are further strengthened by General Motors' research and development centres such as the Millbrook Proving Ground in the UK.*

*It enables Vauxhall to introduce new technology and advanced design features ahead of the field thus benefiting our customers.*

*It is well-proven technology aimed at designing fuel-efficient, stylish and practical cars that represent outstanding value for money.*

