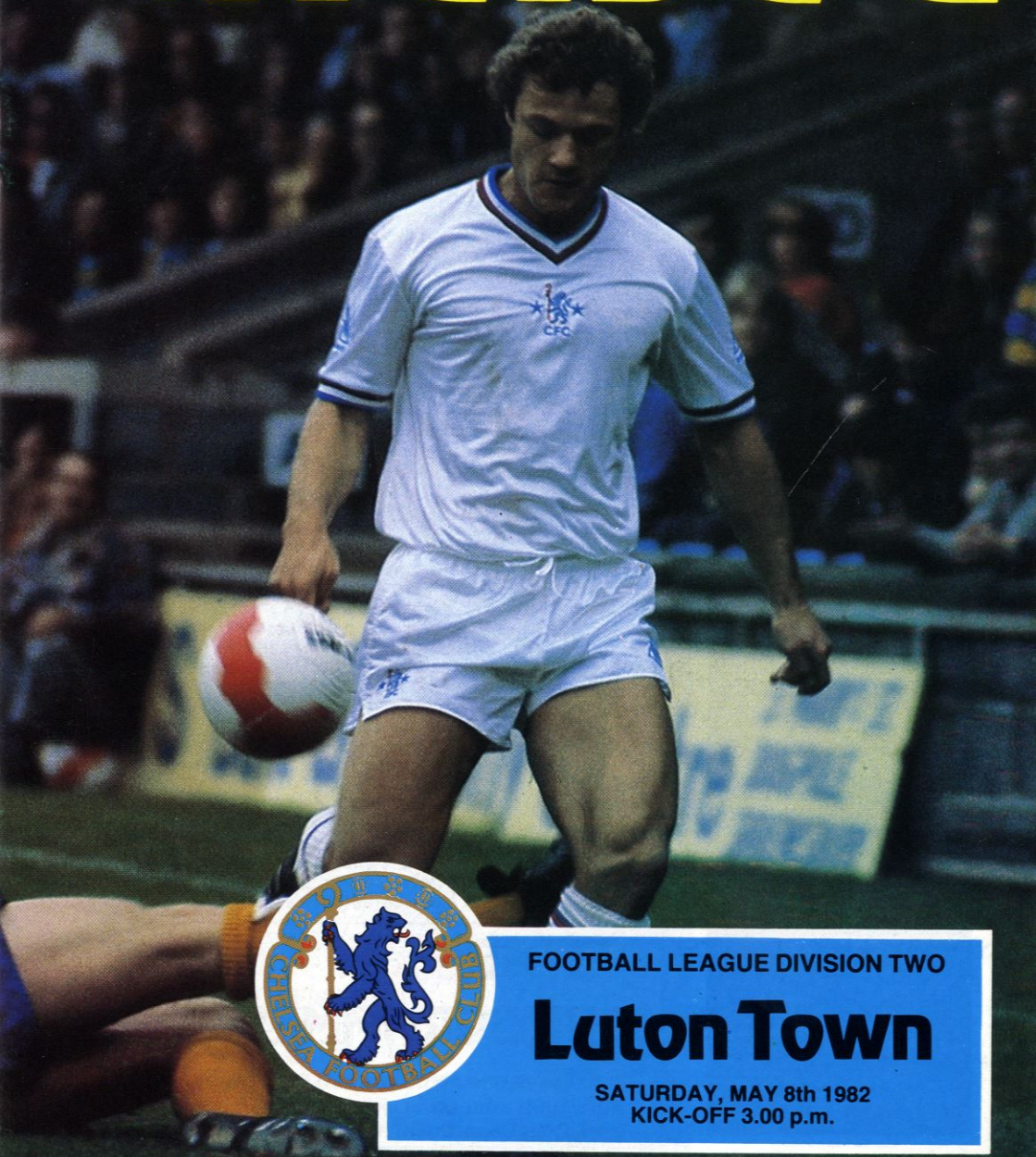


# MATCH MAGAZINE 40P

# Chelsea



FOOTBALL LEAGUE DIVISION TWO

## Luton Town

SATURDAY, MAY 8th 1982  
KICK-OFF 3.00 p.m.





Founded 1905  
**STAMFORD BRIDGE GROUNDS**  
 FULHAM ROAD,  
 LONDON SW6 1HS  
 TEL: 01-385-5545  
 ANSAPHONE: 01-381-0111

President:  
**RT. HON. THE EARL OF CADOGAN, MC, DL**

Vice Presidents:  
**BRIAN MEARS**  
**GEORGE THOMSON**

Board of Directors:  
**KENNETH BATES**  
*(Chairman)*  
**VISCOUNT CHELSEA**  
**DAVID MEARS**  
**MARTIN SPENCER, FCA**

Manager:  
**JOHN NEAL**

Assistant Manager:  
**IAN MCNEIL**

Head Trainer:  
**NORMAN MEDHURST**

Physiotherapist:  
**EDDIE FRANKLIN, MCSP**

Youth Team Coach:  
**MICK LEACH**

Youth Development Officer:  
**GWYN WILLIAMS**

Chief Scout:  
**RON SUART**

Hon. Medical Officer:  
**HUGH MILLINGTON, FRCS**

Hon. Orthopaedic Surgeon:  
**A.J. HALL, FRCS**

Secretary:  
**SHEILA MARSON**

Stadium Manager:  
**STAN BAKER**

Marketing:  
**MIKE BARKER**

# GOOD AFTERNOON....

Welcome to Stamford Bridge for our last home League fixture of the season.

It has been an eventful season, but sadly, one most likely to be remembered by what has taken place off the field, rather than on it. The side made a secure start to their campaign with two wins, but inconsistencies have once again proved our downfall. Undoubtedly, injuries have played their part in denying us League glory this year and as we write we continue to look forward to the return to action of several key players. During the course of the season our strength in depth has been tested to the full with the result that John Neal and Ian McNeill, newcomers to the club last summer, now hold a clearer picture of the squad's abilities and shortcomings which will no doubt be invaluable next season.

However, we can look back and receive some satisfaction from the past nine months: the Cup victories over Southampton and Liverpool and the tense excitement of the quarter-final with Tottenham; the 'double' over FA Cup finalists Q.P.R.; the occasions we scored four goals, against Charlton, Leicester and Cambridge, and, most of all, the emergence and development of young players such as Kevin Hales, Chris Hutchings, Colin Pates, Peter Rhoades-Brown and of course, Steve Francis, our discovery of the season.

Off the field, the good name of the club was dragged down once again by the actions of a few unwelcome thugs, causing a ban on all our away support at a time when we needed it most. That has now been lifted and we sincerely hope that those few have 'got the message' and the football authorities will not need to take action in the future. Then last month, the club's financial position became desperate again and our very future was in doubt until the intervention of Mr. Kenneth Bates, who recently became the new Chairman. His arrival causes us to look to the coming years with fresh optimism.

With promising young players in all the club's sides right down to the Junior level and a degree of financial security, we are expecting an improvement in the club's fortunes beginning next season when we resume the League programme in August. We look forward to your continued support then.

This afternoon we play hosts to a club currently enjoying their best season for many years and already celebrating their promotion to the First Division. Over the past few seasons we have taken part in many memorable matches with Luton Town and we shall miss them next term; and of course we wish them well in their new division. Towards the end of last month we fought out a draw at Kenilworth Road, indicating that perhaps we too, are not far away from creating the right blend in our side as Luton have demonstrated all season. Today presents the team with a further opportunity to cement that belief.

Remember, our season does not end at 4.40 this afternoon as we travel to Blackburn Rovers next Saturday and the Reserves and Juniors have a few remaining fixtures to play still, so please do not run onto the pitch at the final whistle as has been customary in recent seasons when we have played the final match at home — the pitch has to be in first class condition for our remaining fixtures.

## "STAR PROGRAMMES"

Your Lucky Star will appear here

If you have one of today's two Star Programmes you win £100!! Just bring your programme along to the Marketing Department after the match.

## Chelsea

Shirts: Royal Blue with White Pin stripe  
 Shorts: Royal Blue

- 1 STEVE FRANCIS
- 2 GARY LOCKE
- 3 CHRIS HUTCHINGS
- 4 MICKY NUTTON
- 5 MICKY DROY
- 6 COLIN PATES
- 7 IAN BRITTON
- 8 GARY CHIVERS
- 9 COLIN LEE
- 10 ALAN MAYES
- 11 CLIVE WALKER
- 12



- 1 JAKE FINDLAY
- 2 KIRK STEPHENS
- 3 RICHARD MONEY
- 4 BRIAN HORTON
- 5 CLIVE GOODYEAR
- 6 MAL DONAGHY
- 7 RICKY HILL
- 8 BRIAN STEIN
- 9 STEVE WHITE
- 10 LIL FUCCILLO
- 11 DAVID MOSS
- 12

## Luton Town

Shirts & Shorts:  
 White with Orange & blue trim

**TODAY'S OFFICIALS**  
**REFEREE:**  
**MR. V.G. CALLOW (Solihull)**

**LINESMEN:**  
**MR. R.J. CLEMENTS (Tonbridge) Red Flag**  
**MR. E.J. SCALES (Ware) Yellow Flag**

MATCH DETAILS	TIME
CHELSEA SCORERS	_____
OPPONENTS SCORERS	_____
ATTENDANCE	_____



# See the 1982 Vauxhall-Opel range at your local

## GENERAL MOTORS SHOW



THE ALL-NEW  
VAUXHALL CAVALIER

### You'll find a great deal going on at:



## HAMILTON MOTORS

466-490 EDGWARE ROAD, LONDON, W2  
Tel. 262 7211

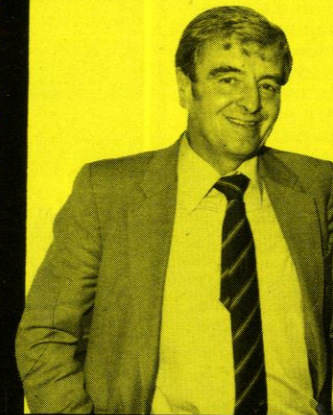
YOUR LOCAL VAUXHALL-OPEL DEALER



I must begin by congratulating our visitors today, Luton Town, on gaining promotion to the First Division, which they clinched since we met them at Kenilworth Road last month. That was a tremendously enjoyable game in which we shared the points in a 2-2 draw.

Out of all the teams we've played this season in the Second Division, I think Luton and Watford do stand out as the best two sides. All the other teams in the promotion race we have played, seemed rather brittle but these two are very strong consistent combinations. Their methods of play are very different from one another; Luton have tremendous strength in midfield and are very quick up front in addition to having players who can score from any position. And bringing Brian Horton to the club was a marvellous signing. I've always respected and admired him for well over ten years when I was at Wrexham and Brian was with Port Vale — we used to have some right-old battles but Brian Horton invariably came out head and shoulders above most people. He did a great job for Brighton in taking them into the First Division and now he's done exactly the same at Luton: a marvellous professional. As for Watford, well they play a different style altogether but I still admire them too. They have developed a system which has proved successful and works very well for them, which is that the more times the ball is in or near the opponent's penalty area then the more chances at goal your team will create, which is right; and they take the quickest route to goal. Although their style may not

# WITH JOHN NEAL



be everybody's cup of tea, they've hit upon a successful system which suits their playing staff and all credit to them for making the First Division.

I think people reading this will realise how jealous I am of these two clubs, for after having spent the last four seasons in the First Division and had some marvellous experiences visiting the top clubs, one is bound to be envious; very envious.

Having almost completed my first year at Chelsea, I can honestly say that it's been a wonderful experience too. We've still got one or two things to get right before we hopefully follow Luton and Watford and whoever finishes third into the

First Division. I think the most satisfying aspect of the Club in my season here is the supporters. The support has been, frankly, quite amazing and I felt it was injustice that they were banned earlier in the season following the disturbances caused at the Derby away match. Because of a very small minority, along with the home club's hooligan element, we lost a considerable amount of support at away games, which was a disgrace, although many somehow continued to watch our matches away from Stamford Bridge and behaved very well. However, as we all know it came out right in the end and I feel that all our decent supporters deserve First Division football. So we'd like to offer a big pat on the back to each and every one of you, not only our home supporters, but for our away fans too, who have doubled the average gate at many grounds we've gone to. I've a lot of respect and admiration for you all and hope that we can reward you next season by aiming high and winning at least promotion. I hope you all thoroughly enjoy your summer and the holidays and are well refreshed to get back behind the lads when we meet next season. No club can become successful without, if you like, successful support, and at least I can say that that side of the Club is all right, it's up to me to get the other side right too. Till next season then, All the Very Best.



# LUTON TOWN

To many people Luton were taking a big risk when they promoted David Pleat to the manager's office in the spring of 1978 when the jolly Harry Haslam departed. He inherited a team on the slide and it took him two years to complete an upheaval in the playing staff.

Luton were near to relegation at times but Pleat persevered and is now acknowledged as the inspiration for a side determined to play attractive and entertaining football. They have been on the fringe of the Second Division promotion battle for the past two seasons and no-one was surprised when the Hatters began the current season with three straight wins and went to the top of the Division where they have been ever since in the company of local rivals Watford.

One of the secrets to their success has been the ability to field a stable side. Last season six members of the squad made 40 or more League appearances and when we travelled to Luton late last month, seven first teamers had already over 30 League games to their names. Had our own manager John Neal been able to write seven names on the team sheet every week without thinking, then our position might be more favourable.

This afternoon Luton come to Stamford Bridge with the Division Two Championship as their target, having already secured promotion with the win over Shrewsbury on the last day of April. How they will fare in the top league has been the subject for much speculation throughout the year, many experts taking the view that whichever three go up from the Second this season will struggle, such is the low standard in the table. A difficult point to argue, but we can look at our Division's success in the Cup competitions this season to realise that the gap between First and Second cannot be as great as is being suggested and we wish our opponents today the very best of fortune for the coming campaign and trust our next meeting will be in Division One in 1983.



*Back Row (left to right): Robert Johnson, Wayne Turner, Clive Goodyear, Michael Small, Frankie Bunn, Godfrey Ingram, Seamus Heath, Neil Madden.  
Third Row: John Moore Coach, Steve White, Mal Donaghy, Jake Findlay Goalkeeper, Mike Saxby, Alan Judge Goalkeeper, Mark Aizelwood, Pasquale Fuccillo, Trevor Hartley Coach.  
Second Row: David Coates Coach, Kirk Stephens, Ricky Hill, Brian Horton, David Pleat Manager, Raddy Antic, David Moss, Brian Stein, Dr. Berry, John Sheridan Physiotherapist.  
First Row: Alan Lane, Barry Popplewell, Tim Breacker, Mitchell Thomas, Paul Keys, Andy Beasley Goalkeeper, Stacey North, Mark Thomas, David Owen, Raymond Daniel, Raymond Brammer.*

Aston Villa for nine years, Findlay jumped at the chance of regular first-team football when Luton paid their highest-ever fee for a goalkeeper of £100,000 in November 1979. Despite many solid and often spectacular performances, not yet a member of a Scottish international squad.

FUCCILLO, Pasquale: Midfield. Born Bedford. Son of Italian parents midfielder Fuccillo has had to work harder than most to make the grade. He made rapid progress through Luton's junior teams and made his League debut in 1976 when he was 19. Tragedy halted his career twice: he broke his leg in a match at Brighton in December 1978, started a comeback, then broke it again in a practice game. It took more than a year to regain fitness the second time, but he proved conclusively last season that his injury worries are over.

GOODYEAR, Clive: Midfield/Defender. Born Lincoln. Had made only six League appearances for Luton, his only club, before this season but has added over 25 to that total following the injury to Mike Saxby which allowed Goodyear to fill a position in central defence.

HILL, Ricky: Midfield. Born London. One of the best midfield players in the country. Voted player-of-the-year by Luton supporters last season, Hill's talent has moved manager David Pleat to ask Ron Greenwood to consider him for England duty. West Ham fancied him when he was 14 and playing in school-boy football in North London, but Luton got in first to sign him as a youth. He made his league debut when he was 17 in 1976, marked it with a goal, and has been a consistently good performer ever since.

HORTON, Brian: Midfield. Born Hednesford. Luton abandoned their normal policy when they paid a modest fee to Brighton for Horton's signature — he was the first Division One player David Pleat had signed in three years at the club. The midfielder was immediately appointed club captain at Luton. He had also been skipper at Brighton in their run from the Third Division to the First. He joined Luton with a well-earned reputation for consistency having made more than 200 appearances for each of his previous clubs, Brighton and Port Vale.

INGRAM, Godfrey: Striker. Born Luton. A former schoolboy international, attacker Ingram broke through into Luton's League squad two seasons ago after being brought through their school, youth and reserve teams. Yet to win a regular place in the first team.

MONEY, Richard: Defender. Born Lowestoft. Signed this year from Liverpool after a period on loan. Began his career with Scunthorpe (172 lge. apps., 4 goals), before joining Fulham (106 lge. apps., 3 goals). Liverpool invested in this talented defender in the summer of 1980 but he spent most of his time at Anfield in their Central League side, making only 14 league appearances. Scored a valuable goal at Rotherham two weeks ago.

MOSS, David: Striker. Born Witney. Overnight success took nearly ten years for left-winger Moss. He had been playing for his local club, Swindon Town (230 lge. apps., 60 goals), for nine seasons, mostly in the Third Division. Luton took him into the Second in exchange for a £110,000 cheque and he was an immediate hit. Club's penalty taker.

STEIN, Brian: Striker. Born South Africa. For a centre-forward, Stein looks too small and light. But opposing centre-halves have rarely been able to hold him in check. He was a 20-year-old part-timer with Edgware Town when Luton persuaded him to try his luck in October 1977. He made his League debut within a month and has never looked like being left out since.

STEPHENS, Kirk: Defender. Born Coventry. David Pleat took a chance with an unknown player from non-League soccer when he went back to his old club Nuneaton to recruit their young right-back. Stephens rapidly switched to full-time soccer, forced his way into Luton's Second Division side in a matter of weeks and is now completing his third season as a regular.

TURNER, Wayne: Midfield/Defence. Born Luton. A player brought up through schools and youth football at Kenilworth Road. Can play in either defence or midfield, he is one of several young players coming through to challenge established names in the Luton side.

WHITE, Steve: Striker. Born Chipping Sodbury. Luton had more reason than usual to follow up an interest in a 20-year-old striker with Bristol Rovers. They had watched him in his early games at Eastville, and returned on a two-goal performance which underlined his potential — against Luton in a Second Division match. Luton stepped in to sign him for £175,000 in December 1979, and although he took time to settle his hustle and bustle and sharp shooting mark him out as an outstanding prospect.

## HATTERS A-Z

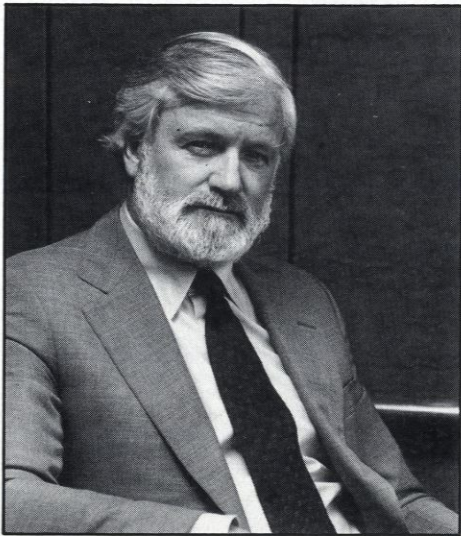
ANTIC, Raddy: Midfield. Born Yugoslavia. An elegant Yugoslav with five full international caps, Antic — pronounced Anteesh — was Luton's first continental signing. They got him for £50,000 from Zaragossa in Spain, where supporters staged protest demonstrations when the transfer was announced. Effective in defence or midfield, he has become a firm favourite with Luton fans.

DONAGHY, Mal: Defender. Born Belfast. One of David Pleat's first deals snatched inexperienced defender Donaghy from Larne, Northern Ireland in the summer of 1978; he has proved to be a snip at £20,000. Settled into Second Division soccer without fuss and his promotion to the Northern Ireland International team surprised no one at Luton.

FINDLAY, Jake: Goalkeeper. Born Blairgrove. A goalkeeper who had languished in the reserves at



# KEN'S COLUMN



Let me firstly welcome you all to the Bridge for the last home match of the season and congratulate our visitors today, Luton Town, who are worthy members of next season's First Division — let's hope they keep their place warm until we join them! I have had many letters from supporters expressing fears that we are going to sell our better players — let me now give you complete assurance that no player will be leaving

CHELSEA for financial reasons. We have a squad of good young players and I repeat that nobody BUT nobody will leave CHELSEA unless Mr. Neal believes he can replace him by a better player. We are in the business of returning to the First Division, not being a Nursery for other clubs.

The response from Season Ticket Holders in renewing for next season has been fantastic — thank you very much for your support. A few supporters have written querying the prices and I have written to them all personally. Thank you again — with supporters like you I know that the new CHELSEA will become great again — meanwhile, keep sending in your renewals, Mr. Neal will need the money to strengthen the squad.

In view of all the changes that will be taking place during the close season CHELSEA will be sending out a July Newsletter to all Season Ticket Holders who have renewed, together with the Official Supporters Club Members which is another reason for confirming your loyalty.

On behalf of the new Board, John Neal and his Staff, the Players and all the administration staff may I take this opportunity of thanking you for your generous and loyal support this season. I hope you enjoy yourselves this afternoon and I look forward to seeing you all again next season.

God bless you all.  
KEN BATES

As promised, I give below some information concerning income and expenditure for the season. On the basis of home League games only it has cost us the equivalent of £10,000 for each match made up as follows (approximate figures only):-

<b>Income</b>	<b>£</b>	<b>Expenditure</b>	<b>£</b>
<b>Gate Receipts</b>	<b>40,000</b>	<b>Salaries, Wages etc.</b>	<b>32,000</b>
<b>Receipts from the League &amp; F.A.</b>	<b>4,000</b>	<b>Bank interest, Rent &amp; Rates, etc.</b>	<b>10,000</b>
<b>Commercial</b>	<b>8,000</b>	<b>Payments to the League, F.A. &amp; other Clubs</b>	<b>4,000</b>
		<b>Ground Improvements &amp; Maintenance</b>	<b>4,000</b>
		<b>Match Expenses</b>	<b>4,000</b>
		<b>All other Expenses</b>	<b>8,000</b>
	<b>£52,000</b>		<b>£62,000</b>

This shows that we are looking at a loss of between £250-£300,000 (including Cup matches) which emphasises the need for eliminating waste and saving every penny, and the necessity for the increase in prices.

Not until the 1955-56 season did Chelsea and Luton Town meet in a Football League fixture. Then, on Good Friday and with the Bedfordshire club enjoying their first-ever experience of life in the First Division, goals by Peter Sillett, a penalty, and Alan Dicks forced a 2-2 draw at Kenilworth Road after Tony Gregory had given Luton a first-half lead. Two days later the sides again finished up all-square, with the Chelsea forwards being kept at bay by a brilliant goalkeeping display from Ron Baynam.

## Past Encounters

### A RECORD 'GATE' — AND A GREAT DAY FOR LUTON

Since then we have usually had the better of the arguments at Stamford Bridge although a hat-trick by Gordon Turner in November 1957 gave Luton a 3-1 victory on that occasion, and just over twelve months ago David Moss and Mike Saxby scored two goals to keep Town on the fringe of the promotion race after their only other success on this ground.

On our visits to their compact enclosure, however, we have found the going hard in recent years. Last month's exciting draw produced only the third point that we have prised from our last five fixtures there. Still relatively fresh in the memory is the 4-0 hammering we received in our last promotion season of 1976-77 when, on a snow-covered pitch, goals from 'Lil' Fuccillo, Brian Chambers, Jimmy Husband and

Steve Buckley (two in each half) rifled into John Phillips' net — this at a time when we were four points clear at the top of the table. Just over twelve months earlier the margin of our defeat had been three goals. On two occasions, also, we have been involved with Luton in cup-tie football, both pre-war encounters in the F.A. Cup competition. In the third round of January 1927 Bob Turnbull and Albert Thain each scored twice in a 4-0 win for Chelsea at The Bridge, while eight years later in the same round, the story had a very different ending. Once more blessed with ground advantage, we were very fortunate to survive against a fast, direct Luton Town side who went ahead shortly before half-time when

nate to have another chance" aptly summed up the game.

In the replay on the following Wednesday there was no such luck. From the start the "Hatters" made all the running, turning on another display of skilful and attacking football. Thanks largely to Johnny Jackson, Chelsea's Scottish international 'keeper, and some desperate last-ditch tackles from full-backs George Barber and Bob Macaulay we somehow survived until the interval. But, with Luton maintaining their superiority, John Ball and Fred Roberts scored the goals which knocked us out of the competition. As the final whistle blew, a delighted crowd swarmed on to the pitch to carry their heroes shoulder-high to the dressing-room, in what is still remembered as a great day in the club's history. "A tremendously fast and thrilling struggle" was one press verdict, while the Chelsea Official Programme writer mused, "Cup-tie football is, for some unknown reason, quite different to games in the League, and on the form which we displayed at Luton, the local team undoubtedly deserved to win."

*Luton Town: Coen: Smith, Mackey, Brown, Thayne, Fraser, Crompton, Bell, Ball, Roberts, Stephenson.*

*Chelsea: Jackson: Barber, Macaulay, Russell, Craig, Miller, Spence, Argue, Bambrick, Gibson, Horton.*

Attendance: 23041 (record).

Receipts: £1,879.

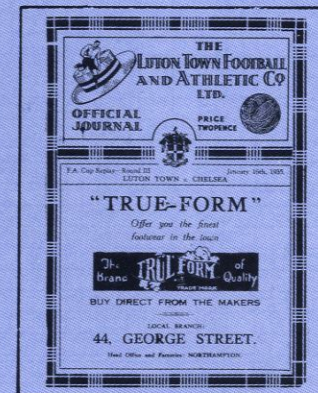
Referee: Mr. G. Hewitt (St. Helens)

#### SUMMARY

	P	W	D	L	F	A
Home	11	5	4	2	21	13
Away	12	4	4	4	19	20
<b>Total</b>	<b>23</b>	<b>9</b>	<b>8</b>	<b>6</b>	<b>40</b>	<b>33</b>

#### F.A. CUP

1926-27	Chelsea	4,	Luton Town 0.
1934-35	Chelsea	1,	Luton Town 1.
	Luton Town 2,	Chelsea	0



SCOTT CHESHIRE



# Chelsea Facts and Figures 1981-82

Goalscorers shown in small numerals S = Substitute * = Player Replaced ● = Non-playing Substitute P = Penalty			RESULT	ATTENDANCE	POINTS TOTAL	BOROTA	LOCKE	ROFE	VILJOEN	DROY	PATES	WALKER	BUMSTEAD	LEE	MAYES	FILLERY	DRIVER	CHIVERS	HUTCHINGS	RH-BROWN	BRITTON	FRANCIS	NUTTON	ILES	WILKINS	HALES	CANOVILLE
Aug. 29	Bolton Wanderers	H	W2-0	16,606	3	1	2	3	4	5 <sup>1</sup>	6	7	8*	9 <sup>1</sup>													
Sept. 5	Cardiff City	A	W2-1	8,898	6	1	2	3	4	5*	6	7	8	9	10	11	S										
Sept. 12	Watford	H	L1-3	20,036	-	1	2	3	4		5*	7 <sup>1</sup>	8	9	10	11	S										
Sept. 19	Shrewsbury Town	A	L0-1	5,616	-	1	2	3	4		5	7	8	9	10*	11	S	6									
Sept. 23	Charlton Athletic	H	D2-2	15,329	7	2	2	3*	4		5		8	9	10	11	S	6									
Sept. 26	Norwich City	H	W2-1	14,509	10	1	2				5		8 <sup>p</sup>	9	10	11	7 <sup>2</sup>	6	S				1				
Sept. 28	Orient	A	W2-0	9,698	13	1	2				5	●	8	9	10 <sup>1</sup>	11 <sup>1</sup>	7	6	3	4	●						
Oct. 3	Cambridge United	A	L0-1	8,806	-	1	2				5	S	8	9	10	11	7*	6	3	4							
Oct. 6	Southampton (FLC2 - 1L)	A	D1-1	16,901	-		2		4		5		8	9	10	11	7*	6	3	4							
Oct. 10	Wrexham	H	W2-0	14,170	16	1	2		4		5	●		9 <sup>1</sup>	10	11	6	3	7	8	1	●					
Oct. 16	Leicester City	A	D1-1	18,358	17	1	2		4		S	5		9	10*	11	6	3	7	8							
Oct. 24	Barnsley	H	L1-2	15,268	-	1	2				S	5	4	9	10 <sup>1</sup>	11	6	3	7	8*							
Oct. 28	Southampton (FLC2 - 2L)	H	W2-1	27,370	-	1	2*		4	S	5	10 <sup>1</sup>	8	9	10	11	6	3	7								
Oct. 31	Rotherham United	A	L0-6	10,145	-	1			4	5	6	10	8	9	S	11	2	3	7*								
Nov. 7	Newcastle United	H	W2-1	16,059	20	1				●	5	10	8	9	11	11	6	3	7	4					2		
Nov. 11	Wigan Athletic (FLC3)	A	L2-4	12,068	-					S	5	10	8	9	11	11	6	3	7	4	1				2*		
Nov. 14	Oldham Athletic	A	L0-1	9,773	-					S	5	10	8	9	11	11	6	3	7	4*	1				2*		
Nov. 21	Grimsby Town	H	D1-1	11,931	21					5	6	10	8	9	S	11	6	3	7	4*	1				2		
Nov. 24	Charlton Athletic	A	W4-3	11,082	24					5	6	10 <sup>2</sup>	8 <sup>2</sup>	9	7	11	3				1	●			2	4	
Nov. 28	Derby County	A	D1-1	13,963	25					5	6	10 <sup>1</sup>	8	9	7	11	3		●		1				2	4	
Dec. 5	Sheffield Wednesday	H	W2-1	17,033	28					5	6	10	8	9	7	11	3	S		1					2	4	
Dec. 19	Blackburn Rovers	H	D1-1	11,768	29					5	6	10	8	9	7	11	3	●		1					2*	4 <sup>1</sup>	
Dec. 26	Queens Park Rangers	A	W2-0	22,022	32					5	6	10	8	9	7	11	3		●		1				2	4	
Jan. 16	Bolton Wanderers	A	D2-2	7,278	33					5	6	10	8	9	7	11	3			1	●				2	4	
Jan. 18	Hull City (FAC 3)	H	D0-0	14,899	-					5	6	10	8	9	7*	11	3		S		1	●			2	4	
Jan. 21	Hull City (FAC 3 Replay)	A	W2-0	13,238	-		2				6	10	8	9	7	11	5	3	●		1				2	4	
Jan. 23	Wrexham (FAC 4)	H	D0-0	17,226	-		2				6	10	8	9	7	11	5	3	●		1				4		
Jan. 26	Wrexham (FAC 4 Replay)	A	D1-1	8,655	-		2				5	6	10	8	9	7	11	5	3	●		1			4		
Jan. 30	Shrewsbury Town	H	W3-1	11,446	36		2				5	6	10 <sup>3</sup>	8	9	7	11*	3	9	4	1	S			4*		
Feb. 1	Wrexham (FAC 4 2nd Rep.)	A	W2-1	10,647	-		2				5 <sup>1</sup>	6	10	8	9	7	S	3	11	●	1	4					
Feb. 6	Watford	A	L0-1	17,101	-		2				5	6	10	8*	9	7	S	3	11	●	1	4					
Feb. 13	Liverpool (FAC 5)	H	W2-0	41,412	-		2				5	6	10	9	●	11	3	7	1	4							
Feb. 17	Cardiff City	H	W1-0	9,710	39		2				5	6	10 <sup>1</sup>	9	●	11	3	7	1	4					8		
Feb. 20	Norwich City	A	L1-2	16,018	-		2				5*	6	10 <sup>1</sup>	9	●	11	3	7	1	4					8		
Feb. 27	Wrexham	A	L0-1	3,935	-		2					6	10	9	S	11	5	3	7	8*	1	4					
Mar. 6	Tottenham (FAC6)	H	L2-3	42,557	-		2	S			6	10*	8	9	9	11 <sup>1</sup>	5	3	7	1	4						
Mar. 9	Leicester City	H	W4-1	10,586	42		2 <sup>1</sup>					6	10	9	9 <sup>2</sup>	11	5	3	7	●	1	4					
Mar. 12	Barnsley	A	L1-2	12,706	-		2					6	S	9	10	11	5	3	7	●	1	4					
Mar. 17	Crystal Palace	H	L1-2	13,894	-		2					6*	S	9	10	11	5	3	7	8	1	4					
Mar. 20	Rotherham United	H	L1-4	11,900	-		2					6	S	9	10	11	5	3	7	8	1	4					
Mar. 27	Newcastle United	A	L0-1	26,887	-		2		8			6	S	9	10	11	5	3	7	8	1	4					
Apr. 3	Oldham Athletic	H	D2-2	8,938	43		2					6	8	9	10	11	5	3	7*	●	1	4					
Apr. 7	Cambridge United	H	W4-1	6,196	46							6	9	9	10	11	5	3	7	●	1	4					
Apr. 10	Queens Park Rangers	H	W2-1	18,365	49					5 <sup>1</sup>		6	9*	9	10	11	5	3	7	●	1	4					
Apr. 12	Crystal Palace	A	W1-0	17,189	52							6	8*	9	10	11	5	3	7	11	1	4					
Apr. 17	Grimsby Town	A	D3-3	9,164	53		2					6	9 <sup>3</sup>	9	10	11	5	3	7	11	1	4			3		S
Apr. 20	Luton Town	A	D2-2	16,185	54		2					6	8 <sup>1</sup>	9	10	11	5	3	7	11	1	4					
Apr. 24	Derby County	H	L0-2	11,005	-		2					8	5	9	10	11	5	3	7	11	1	4					
May 1	Sheffield Wednesday	A	D0-0	19,259	55		2	●		5	6	9	5	9	10	11	7*	3	11	6	1	4			11		●
May 5	Orient	H												10			8	3		7	1	4					
May 8	Luton Town	H																									
May 15	Blackburn Rovers	A																									

**FOOTBALL LEAGUE APPEARANCES DIVISION 2**  
Up to and including 24th April 1982  
(Apps. as sub. in brackets)

Pates	39	Droy	17(3)
Fillery	36(1)	Nutton	17(1)
Lee	37	Britton	16
Mayes	32(4)	Borota	12
Hutchings	32	Wilkins	10(1)
Walker	28(5)	Hales	10
Locke	28	Viljoen	9
Chivers	26	Rofe	5
Francis S.	26	Driver	4(4)
Rh-Brown	23(3)	Iles	1
Bumstead	21	Canoville	—(1)

Goalscorers: Walker 15, Mayes 11, Lee 10, Fillery 6, Bumstead 4, Driver 3, Hales 2, Droy 2, Locke 1, Rhoades-Brown 1, Hutchings 1. Total 56.

**LEAGUE CUP APPEARANCES & GOALSCORERS**

Chivers	3	Francis	2
Fillery	3	Locke	2
Hutchings	3	Viljoen	2
Lee	3	Walker	2
Pates	3	Borota	1
Rh-Brown	3	Mayes	1
Britton	2	Wilkins	1
Bumstead	2	Droy	—(2)

Scorers: Fillery 3, Bumstead 1, Walker 1 Total 5

**F.A. CUP APPEARANCES & GOALSCORERS**

Francis	7	Fillery	6
Hutchings	7	Wilkins	1
Hales	5	Droy	4
Pates	7	Locke	6
Mayes	6	Chivers	3
Bumstead	6	Rh-Brown	3(2)
Lee	6	Nutton	3
Walker	7	Rofe	—(1)

Scorers: Mayes 4, Bumstead 1, Droy 1, Rh-Brown 1, Lee 1, Fillery 1, Total: 9



### THE BIG MATCH TOMORROW

Stamford Bridge stages the traditional end of season match between the Official Supporters' Club XI and the Chelsea Staff tomorrow for the Peter Bonetti Shield. Last season the Staff won 1-0 but the COSC expect to field their strongest side this year so an entertaining match is sure to take place. Kick-off: 12 noon.

### SHEFFIELD RAFFLE

The raffle on the COSC train to Sheffield last Saturday netted £80.40, for which our grateful thanks. The winners were:

- 1st: Mr A. Stroksz of Tadley, Herts.
- 2nd: Mr N. Payne of Sidcup, Kent.
- 3rd: Mr C. Fitzsimmons.

The winners who have not yet claimed their prizes can do so from the stewards on the Blackburn train next Saturday.

### TRAIN TO BLACKBURN

Tickets are on sale to members from the Official Supporters' Club travel office today between 10am and 2pm for the train to Blackburn. Itinerary:  
 Depart Euston 10.20  
 Arrive Mill Hill 14.15  
 Depart Mill Hill 17.20  
 Arrive Euston 20.50

### THE MAYOR'S COLLECTION

The Mayor of Hammersmith and Fulham's collection which took place on the night we played Derby County raised £55.78. The Mayor has asked us to pass on his thanks to all those who contributed and particularly to the kind people who helped with the collection.

### NOT GOING TO BLACKBURN NEXT SATURDAY?

Then why not go to Wembley? Next week they are staging the Final of the FA Challenge Trophy to be played between Altrincham and Enfield, a classic North v South battle. Tickets, priced £5.00, £4.00, £3.00 and £2.00, can be obtained direct from the Football Box Office, Wembley Stadium Ltd., Wembley, Middlesex, or you can pay at the turnstiles on the day of the match. Kick-off is at 3 p.m.

### FOOTBALL LEAGUE DIVISION TWO

Up to and including 4th May, 1982

	P	W	D	L	F	A	W	D	L	F	A	Pts
Luton	38	15	2	2	44	16	7	10	2	33	24	78
Watford	40	12	6	2	43	15	10	5	5	28	23	77
Sheff. Weds.	40	9	8	3	29	22	10	2	8	23	25	67
Leicester	38	12	4	3	30	17	6	7	6	24	23	65
Norwich	39	12	3	4	37	18	8	2	10	22	29	65
Rotherham	40	12	5	3	38	18	7	2	11	22	32	64
Q.P.R.	38	14	4	2	38	8	5	2	11	19	28	63
Barnsley	40	12	4	4	30	14	6	5	9	25	26	63
Blackburn	40	11	3	6	25	14	5	7	8	20	24	58
Newcastle	39	13	4	2	26	8	3	4	13	20	35	56
Chelsea	39	10	4	5	34	26	5	6	9	22	29	55
Oldham	40	9	8	3	27	22	5	5	10	19	28	55
Charlton	41	11	5	5	33	22	2	7	11	17	39	51
Cambridge	40	10	4	6	27	19	2	5	13	16	32	45
Derby	40	8	8	4	29	21	3	3	14	20	44	44
Grimsby	38	5	8	7	29	29	5	5	8	21	30	43
Bolton	41	9	4	7	25	23	3	3	15	11	37	43
C. Palace	39	8	2	9	22	23	3	7	10	8	19	42
Shrewsbury	40	9	6	5	24	19	1	6	13	11	38	42
Wrexham	39	8	4	8	19	20	2	7	10	15	28	41
Cardiff	39	9	2	8	26	28	2	6	12	16	29	41
Orient	38	6	5	8	20	21	4	0	15	11	33	35

### SEASON TICKETS AND CUP MATCHES

Astonishing as it may sound, Chelsea F.C. lost £57,000 during this season's F.A. Cup run. The reason? The gate receipts from each F.C. Cup tie played are divided three ways between the home club, the visitors and the Football Association. If the home club does not charge its season-ticket holders any admission on the day it will clearly lose revenue as such ticket-holders are automatically included on the attendance figure. Next season, as supporters may have noticed, Cup matches are extra for this reason.

### JULY NEWSLETTER

Keep an eye on your letter box during the next few weeks if you are a member of the OSC as we shall be sending out the next Newsletter in July.

**STAMFORD'S VIEW** ©HQ CONCEPTS LTD 1982

**WE HELD THEM TO A DRAW AT LUTON.**

**NOW SHOW WHAT WE'LL BE UP TO NEXT SEASON...**

**... BY KNOCKING OFF THE TOP HATTERS TODAY!**

# Around the Bridge





# IAN McNEILL

**Most satisfying moment of my career:** Taking Wigan Athletic into League Football in 1978.

**Biggest Disappointment:** Losing my job at Wigan after five successful years there (including an F.A. Cup win at Stamford Bridge!)

**Biggest Influence:** David Halliday ex-Aberdeen and Leicester City Manager.

**They do a great job for the game:** Scouts at the grass roots level who find good players in all conditions and all over the country.

**I would like to see:** That reminds me! I must get some reading glasses and not borrow John's!

**Most rewarding aspect of job:** To see youngsters like Stevie Francis come through early and stay the course.

**Biggest headache in my day's work:** Trying to get players to do justice to their great potential.

**How I see my role at Chelsea:** Generally, assisting John Neal on whatever tasks he assigns, e.g. training, coaching, assessing players, assessing future opponents, player communication, general club policy and acting as a buffer at times between manager and players.

**Most difficult task in my job:** Telling young players that they will not be offered contracts.

**How the game has changed:** For me it changed with the advent of the sweeper which robbed the game of wingers and gave licence for full-backs to do more marking than covering.

**Previous clubs as player:** Aberdeen, Leicester City, Brighton, Southend and as Manager Ross county and Wigan Athletic.

**Personal Ambition:** To assist Chelsea to Division One.

**How I see football's future:** I feel there will be a general stream-lining in the next few years which will reduce the quantity of clubs but perhaps improve the quality of the football.

**Player I admire most and why:** John Hollins for his professional attitude and for enjoying his sport at all times.

**An aspect of the game I dislike:** Clubs bending the rules when attempting to sign on young players.

**Advice to would-be professionals:** Work on every weakness in your game to become a good all-round player.

**Views on this season at Chelsea:** The season promised so much but has finished a little disappointing — I feel the loss of key players at crucial times just before and after the Spurs game was crucial. A great deal though has been learned which will stand us in good stead for next season.

**How I think the Home Countries will do in the World Cups:** Scotland and England will do well but I can't see any joy for N. Ireland.

**The best teams we have played this season:** Leicester City and Luton.

**How I feel the game can be improved:** It won't improve until every professional player analyses his game and plays constantly to his full potential.

# The Professionals



# Commercial News

## WOULD YOU LIKE TO WORK FOR CHELSEA?

We have some interesting part-time jobs for people who would like to earn extra cash and at the same time help the club.

Why not telephone Ian Williams on 01-385-3255 to find out all the details — you could make yourself some great holiday cash and there is no limit to your earnings.

## TODAY'S MASCOT



This afternoon we welcome 11 year old RUSSELL JORDAN to Chelsea. Russell has attended every home match for the past 2½ years, and plays football for his junior school team. On Sundays he enjoys caddy-ing for his father when he plays golf.

## HELP NEEDED

Anyone who would like to help the Club during the close season we would very much welcome any voluntary help in smartening up the Bridge by painting, any carpentry work etc. Please contact the Club Secretary.

## RUSSELL HOBBS CHELSEA TEAMAKER



The Club and all those people who have been lucky enough to win a Chelsea Teamaker would like to express their thanks to Russell Hobbs for the support they have given the Club over the season.

## LUCKY PROGRAMMES

Congratulations to Mr. Wade of East Grinstead, the first winner of our Lucky Programme competition — he will be joining the Board of Directors along with a friend for this evening's game. Tonight, there's £200 to be won — see page two.

**Have a Coke and a smile.**



## PROGRAMME SALES

Please note that only HOME programmes are available by post from the Club (current season only). Programmes are 40p plus 22p for postage. There are a number of away programmes and past programmes available from the Programme Shop in the forecourt, to PERSONAL CALLERS only, on match days.

# Match Summaries

MATCH	v Grimsby Town	v Luton Town
GROUND	Blundell Park	Kenilworth Road
DATE	Saturday, April 17th	Tuesday, April 20th
ATTENDANCE	9,164	16,185
CONDITIONS	Overcast. Pitch firm.	A breezy evening.
FIXTURE	Division Two. 18th away game	Division Two. 19th away game
TEAMS	<b>CHELSEA (2) 3</b> S. Francis; Locke, Hutchings, Nutton, Lee, Pates, Britton, Chivers, Walker, Mayes, Fillery. (Sub: Canoville). Scorers: Walker 21, 29 & 75 mins.	<b>CHELSEA (1) 2</b> S. Francis; Locke, Hutchings, Nutton, Lee, Pates, Britton, Chivers, Walker, Mayes, Fillery. (Sub: did not play, Wilkins). Scorers: Walker 33 mins., Fillery 62 mins.
RESULT AND GOALSCORERS	<b>GRIMSBY TOWN (1) 3</b> Batch; Moore, Crosby, Waters, Cooper, Crombie, Ford, Kilmore, Whymark, Mitchell, Brolly. Scorers: Moore 41 mins., Cooper 64 mins., Kilmore 80 mins.	<b>LUTON TOWN (1) 2</b> Findlay; Stephens, Money, Horton, Goodyear, Donaghy, Hill, Stein, White, Fuccillo, Antic. Scorers: Antic 43 mins., Donaghy 77 mins.
PRESS REPORT	<p>"A superb hat-trick by Clive Walker was not enough to give Chelsea victory over a relegation-haunted Grimsby. The Londoners were on top for most of this scrappy encounter at Blundell Park but surrendered the two points to a late equaliser. Chelsea had the edge over a jittery Grimsby in the first half and took the lead when Walker knocked the ball in from close range. He scored the second on the half-hour when a shot from Mike Fillery was deflected into his path and he ran on to blast the ball casually past Grimsby 'keeper Nigel Batch. Chelsea were kicking themselves when Grimsby came back with goals from Moore and Cooper, but that man Walker did it again, turning home Britton's cross in the 75th minute. Grimsby's equaliser came with a free-kick from Joe Waters which was half cleared to Kevin Kilmore who hammered the ball into the roof of the net from 12 yards. It won't please the Londoners to lose another two points as they strive to attract fans to their already dying season."</p> <p>(Richard Ekberg — News of the World)</p>	<p>"Luton produced many hallmarks of quality football but they were forced to work hard for their point by a resilient and spirited Chelsea. Luton now need only seven points from their last six games to clinch promotion and they showed enterprise they must have next season by bouncing back after Chelsea had taken the lead in each half. Horton, the Luton captain, was their talented orchestrator of several impressive moves while Fuccillo and Hill weaved neat patterns to create a series of chances. But Chelsea, unbeaten for six matches, showed the spirit and skill that could launch them into a promotion run next year. Nutton and Lee, successfully switched to defence during the last month, were calm and assured marking White and the elusive Stein, while Mayes and Walker showed pace and deft touches which stretched Luton on the break. It was Walker, with his 16th goal of the season, who headed Chelsea in front after Findlay had half-cleared Fillery's rising shot before Antic equalised seconds before half time. Fillery put Chelsea ahead again when Findlay was deceived by a 25-yard speculative shot which dipped and swerved at the last moment. But Luton's passion for their play paid dividends when Donaghy, headed in Stein's corner 13 minutes from time."</p> <p>(David Luddy — Daily Telegraph)</p>





## **BROADWAY PROMOTIONS LIMITED**

9-11 Bressenden Place  
London SW1E 5DF  
Tel: 01-828-4388

**Broadway Promotions are pleased to be working with the Chelsea Football Club on behalf of Season Ticket holders offering them the opportunity of obtaining attractive savings against a wide range of popular holidays both at home and abroad.**

**Broadway Promotions is the leading company in the UK specialising in holiday-linked incentives.**

Our promotions have produced positive results for a number of nationally known companies including:

<b>Burton Tailoring Group</b>	<b>Del Monte Foods Ltd</b>
<b>Eylure Ltd</b>	<b>W.D. &amp; H.O. Wills</b>
<b>Elizabeth Arden</b>	<b>Cognac Courvoisier</b>

Does your Company need a promotion to achieve any one of the following:

- 1. Increase your sales.**
- 2. Motivate your staff.**
- 3. Increase trade support.**
- 4. Create an impact in your market.**

To learn more about how Broadway Promotions can help you, please contact **Cindy Benady, Marketing Manager** or **Pearson Dodd, General Manager** on 01-828-4388.

## **SO LONG PETE — IT WON'T BE THE SAME WITHOUT YOU**

This afternoon we shall hear the 'Voice of Chelsea' for the last time — Pete Owen is 'retiring' from the Studio after 16 years as Chelsea's DJ on the programme he himself started, The Pre-Match Spin. It all began in January 1958: "It was only by chance that I came along that day — six or seven Chelsea supporters used to meet on Friday lunchtime at school and discuss what time to meet to go to Chelsea. One day they turned round and asked me if I wanted to go — I said I might as well and that was 24 years ago. I used to stand on the halfway line where the West Stand is now. It was the building of the West Stand that prompted the Secretary at the time, Mr John Battersby, to invite suggestions for pre match entertainment. I wrote in and suggested a proper programme of records, chat, etc. etc. Apparently, mine was the ONLY suggestion and I was given a 'trial' in September 1965. My very good friend Dave Scott joined the Pre-Match Spin — a name coined by Albert Sewell, shortly after and between us we did the show for several years until Dave moved out of Greater London and I was unable, conveniently, to reach Stamford Bridge."

As we state above, the atmosphere at the Bridge won't be quite the same without your calm tones and lively show, Pete, but we sincerely hope to see and hear more of you at the ground in the future, if not in your normal capacity, then at least back in your schoolboy role, cheering the Blues to victory!

The show that Pete started will continue next season in the capable hands of Jimmy King and Andy Richens and Pete is keen for fans to give them the support that he enjoyed by sending in bags full of requests for the matchday programme.



*Pete Owen with his wife Barbara Ann and daughter Joanne Sharon.*

## **JUNIOR BLUES AND SENIOR BLUES SPECIAL SEASON TICKET OFFER**

Juvenile and Senior Citizen members of the Official Supporters' Club can buy Season-Tickets in the West Stand Enclosure for just £35.00!! Contact the secretary of the COSC or the Ticket Office for details, enclosing a SAE.



# Tom Hill Holidays

gives you MORE for your MONEY  
— weekend flights from Gatwick to:-

★ MAJORCA, IBIZA, MINORCA **£99** per person \*  
apartments from

★ MALTA, CORFU, PORTUGAL **£139** per person \*  
apartments from

★ CAMPING — South of France **£79** per person  
by Coach from London from

★ **£100 OFF MALTA** — 2 week family holidays at the  
White Rocks Holiday Centre!

**FREE CHILDRENS HOLIDAYS  
STILL SOME IN MAY & JUNE!**

**Plus** FREE HOLIDAY INSURANCE as described in our  
FREE DISCOUNT CARD giving up to 25% discount on  
FREE FLIGHT BAG value up to £5 approx.

\* Special late booking prices for some May departures.

Send this coupon today for your FREE Brochure and qualify for  
your FREE Insurance, Discount card & Flight bag.

Name \_\_\_\_\_

Address \_\_\_\_\_

**Tom Hill Holidays Ltd**

(Dept. CFC) 9-11 Bressenden Place, London, SW1E 5DF

ABTA

01-834 2244

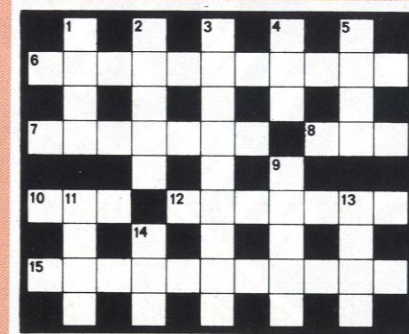
ATOL 1278B



## FACE IN THE CROWD

Today's winner was photographed in the main stand at Selhurst Park on Easter Monday. As last season, two complimentary tickets await this week's 'face' on production of this programme at the Marketing Department and in addition our good friends at ARASERVE will be supplying a mini-feast. Please ask for Mr. Maurice Hayes at the ARASERVE Portakabin adjacent to the East Stand on a matchday, between 1.30 p.m. and 2.30 p.m. where you — and a friend — can claim your reward.

# SOCCER CROSSWORD



### CLUES ACROSS

6. See 10 across
7. Roberto ---, famous Argentina centre-back, played against England in the 1966 World Cup finals (7)
8. The number of clubs that achieve 3 down each English League season (3)
- 10 & 6ac. Emyln Hughes' predecessor at Rotherham (3,11)
12. League of Ireland side (7)
15. Striker who played over 400 League games (in two spells) for Aldershot and also spent time with Swindon, Rochdale, Bournemouth and (in their last season in the League) Southport (4,7)

### CLUES DOWN

- 1 & 4dn. What the majority of the fans at most matches want to see (4,3)
2. The ground --- are some of the important but unseen members of a club (5)
3. It's beyond even the *best* clubs in the First Division in England (but not in Scotland!) (9)
4. See 1 down
5. See 14 down
9. Get the ball out of the penalty-area (5)
11. Curtis or Curbishley (4)
13. They're allowed to be of hemp, jute or nylon (4)
- 14 & 5dn. One or Uruguay's colours (3,4)

CROSSWORD SOLUTIONS — Across: 6. See nets 14 & 5dn. sky blue.  
See 1 down 5. See 14 down 9. clear 11. Alan 13.  
Down: 1 & 4dn. home win 2. staff 3. promotion 4.  
field 12. Athlone 15. Jack Howarth.  
10 across 7. Fenituro 8. ten 10 & 6ac. Ian Porter-



# SAVE FIVE SEASONS ON YOUR HOLIDAYS WITH CHELSEA

**EXCLUSIVE OFFER TO CHELSEA SEASON TICKET HOLDERS**  
**SAVE £10 — £20 — £50 — £100 OFF THIS YEARS HOLIDAY**

Purchase your 1982/83 Season Ticket before May 31st and you will become, free of charge, a member of the Chelsea Holiday Club. Membership of this Club will entitle you to achieve money off all holidays booked and taken before March 31st 1983.

**MAKE THE FOLLOWING SAVINGS**  
**Fred Olsen Cruises** CTC Chandris Cunard  
**Interhotels** with the following companies:  
**Butlin's** Pegasus Joe Walsh  
**Freshfields** Travelscene

**£10 SAVING** on every £100 you spend on holidays booked with the following companies:  
**Tom Hill Holidays** Trafalgar Tours  
**£7.50 SAVING** on every £100 you spend on holidays booked with the following companies:  
**Sovereign** Enterprise Carousel **Butlin's** **Freshfields** **Travelscene** **Pegasus** **Joe Walsh**

As an example, two adults and two children going on a TOM HILL Self Catering Holiday to Malta in July for 14 nights, would be as follows:

£458.00  
 £320.00 (1 @ 50% saving and 1 @ 10% saving)  
 £778.00  
 100.00  
 £678.00  
 68.00  
 £610.00 Total Saving £168.00

Price per brochure; 2 adults @ £229 =  
 Chelsea Holiday Club Saving  
 Adjusted Basic Cost

Prices correct at time of print. All holidays on offer subject to availability.

All you have to do is ensure that your payment for your 1982/83 Season Ticket is received by May 31st and you will receive full details of how you and your family can take advantage of this fabulous offer made exclusively to you by Chelsea Football Club.

Remember, there is no limit to the number of holidays you can take up until March 31st 1983 and on every holiday you book you will receive a valuable saving.

## SEASON TICKET RENEWAL/APPLICATION FORM 1982/3

**IMPORTANT — RENEWAL OF SEATS**

In order to guarantee the same seat(s) held last season this form and remittance (or credit card details) **must** be returned to us by 2nd July latest. Anyone wishing to purchase additional seats or change of position from last season, please indicate by separate letter attached to this form which should be returned with correct remittance (or credit card details). For the Cup Final ticket draw and Holiday Money Saving Vouchers applications must be returned by May 8th 12.00 noon. Holiday Vouchers by May 31st.  
**CREDIT CARDS:** It is now possible to purchase season tickets by the following credit cards: Barclaycard and Access. All you need do is to enter your account number in the space provided.

**CUP TIES:** We would like to remind season ticket holders that all prices do not include admission to Home Ties in the Football League Cup and the Football Association Cup, except F.L. Cup 2nd round Home Leg. Application vouchers for Cup games are printed in the back of the Season Ticket books.

**JUNIORS/SENIOR CITIZENS:** If applying for a Junior (under 14) or Senior Citizen (over 65) season ticket(s) please send us your birth certificate or arrange for us to have sight of your pension book.

**REMITTANCE:** Cheques and Postal Orders should be made out to 'Chelsea Football Club'. Renewal forms together with remittance can be posted or handed in personally at the Box Office during normal office hours.

**WHEN RENEWING:** Please ensure you send us the computer ticket(s) from the front of last Season's ticket book(s). Please enclose a s.a.envelope for the eventual return of your new book(s) with your remittance.

**NEW APPLICANTS:** Please indicate any gate/section preferred and send a self addressed envelope with remittance. Return to — The Box Office, Chelsea Football Club, Stamford Bridge Grounds, Fulham Road, London SW6 1HS.

### 1982/83 ADMISSION AND SEASON TICKET PRICES

Season ticket prices include 21 League matches plus 2nd Round League Cup

VAT. REG. NO. 226 6033 83	INDIVIDUAL MATCH PRICES	22 MATCHES	ADULT SEASON TICKET	SAVING	SENIOR CITIZENS AND UNDER 14	Season Tickets Required	
						Adults	O.A.P. Under 14
<b>TERRACES</b>	2.50 1.50	55.00 33.00	50.00	5.00 3.00	30.00		
<b>WEST STAND</b>							
<b>CENTRE</b>	5.00	110.00	100.00	10.00	70.00		
<b>WINGS</b>	4.00	88.00	80.00	8.00	56.00		
<b>EAST STAND</b>							
<b>LOWER TIER</b>							
<b>CENTRE</b>	4.00	88.00	80.00	8.00	56.00		
<b>WINGS</b>	3.50	77.00	70.00	7.00	49.00		
<b>MIDDLE TIER</b>							
<b>CENTRE</b>	7.00	154.00	140.00	14.00	98.00		
<b>INNER WINGS</b>	5.75	126.50	115.00	11.50	80.50		
<b>OUTER WINGS</b>	4.75	104.50	95.00	9.50	66.50		
<b>UPPER TIER</b>							
<b>FRONT CENTRE</b>	5.75	126.50	115.00	11.50	80.50		
<b>REAR CENTRE</b>	4.00	88.00	80.00	8.00	56.00		
<b>FRONT WINGS</b>	4.75	104.50	95.00	9.50	66.50		
<b>REAR WINGS</b>	3.50	77.00	70.00	7.00	49.00		
<b>FAMILY SECTION</b>							
<b>UPPER TIER</b>							
<b>FRONT WING</b>							
<b>CHILDREN</b>	1.25						
<b>ADULTS</b>	3.50						

**TOTAL AMOUNT DUE**

Please indicate seat(s) held last season.

Stand ..... Door .....  
 Row ..... Seat Nos. ....

Total No. of seats renewed for 1982/83 Season .....  
 Payment by Credit Card Yes/No. Enter your Account No. Here.

TO BE COMPLETED IN BLOCK CAPITALS.

NAME ..... ADDRESS .....

POSTCODE ..... DAY TIME PHONE NO. ....





Come to where the flavour is

# Marlboro



LOW TO MIDDLE TAR As defined by H.M. Govt. DANGER. H.M. Govt. Health Departments'  
WARNING: THINK FIRST - MOST DOCTORS DON'T SMOKE