

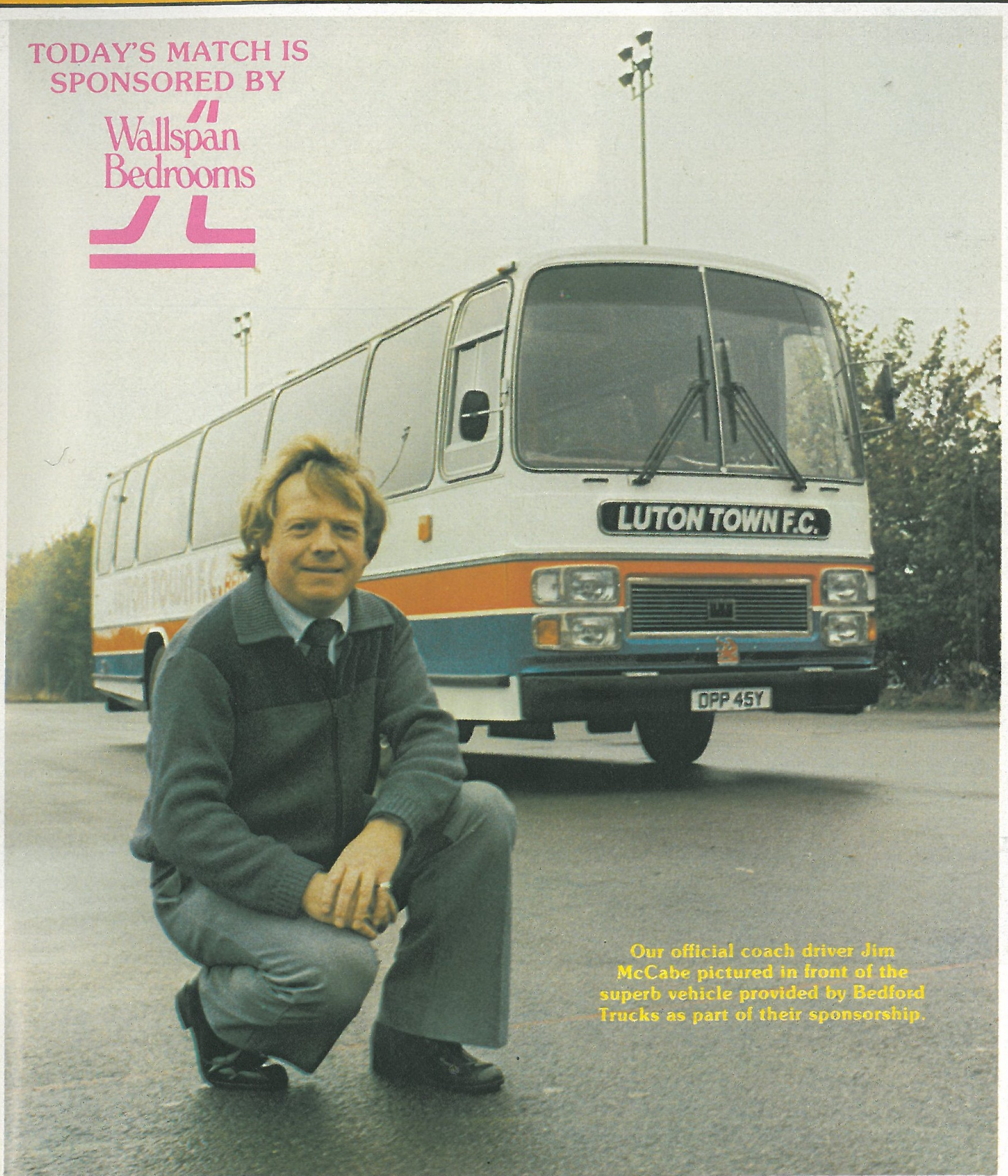
# THE HATTER

FOOTBALL LEAGUE DIVISION ONE  
SATURDAY 6th NOVEMBER 1982  
LUTON TOWN v ARSENAL



TODAY'S MATCH IS  
SPONSORED BY

Wallspan  
Bedrooms



Our official coach driver Jim McCabe pictured in front of the superb vehicle provided by Bedford Trucks as part of their sponsorship.



# ACTION...ACTION



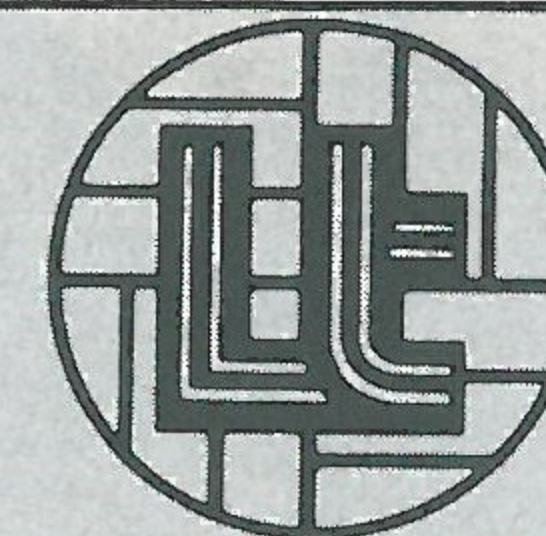
## CHARLTON 2 LUTON TOWN 0

Despite losing at Charlton, we qualified for a Milk Cup third round home tie against Blackpool by virtue of our 3-0 victory in the first leg against the London club at Kenilworth Road. Here, Brian Stein battles for possession with a Charlton player.

Picture by Gareth Owen

# TEAM CHECK

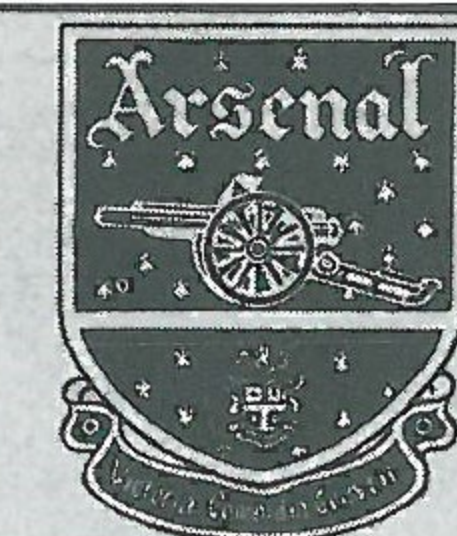
## LUTON TOWN



- 1 JAKE FINDLAY 2(0)
- 2 WAYNE TURNER
- 3 RICHARD MONEY
- 4 BRIAN HORTON
- 5 CLIVE GOODYEAR
- 6 MAL DONAGHY
- 7 RICKY HILL
- 8 BRIAN STEIN
- 9 PAUL WALSH
- 10 ~~BILLY KELLOCK~~ FULLER 0
- 11 DAVID MOSS
- 12 ANTIC

Today's Match Ball is sponsored by:  
**PRINCESS PACKAGING LTD**  
Heathfield Works, Leyton Road, Harpenden, Herts

## ARSENAL



- 1 GEORGE WOOD (0) 2
- 2 DANNY O'SHEA
- 3 KENNY SANSOM
- 4 BRIAN TALBOT
- 5 DAVID O'LEARY
- 6 CHRIS WHYTE
- 7 PAUL DAVIS
- 8 ALAN SUNDERLAND
- 9 STEWART ROBSON
- 10 TONY WOODCOCK
- 11 GRAHAM RIX
- 12 CHAPMAN

Today's Match is sponsored by:  
**WALLSPAN BEDROOMS**

Referee: E. A. READ (Bristol) Linesmen: A. J. BUNCE and P. COX

*Chairman:* Denis Mortimer

*Directors:*

R. L. Banks, D. J. Evans, E. S. Pearson  
R. J. Smith, J. R. Smith (Executive)  
D. J. Pleat (Team Manager)

*President:* T. Hodgson

*Vice-Presidents:*

J. A. C. Bain (Deputy President)  
Lord Hill, Sir Reginald Pearson OBE,  
A. G. Berry, J. B. Brent, B. Cole,  
B. England, N. S. Fookes,  
C. Holloway, I. E. Holmes,  
C. J. Evans, R. Larkinson,  
L. Leppington, Eric Morecambe OBE,  
R. Safranek, E. Waller, R. Unwin

*Administration:*

*General Secretary:* Graham MacKrell  
*Club Secretary:* John Wilkinson  
*Business Development Executive:*  
Bill Tomlins

*Projects and Advertising Executive:*  
Mike Beevor

*Promotions Manager:* Mike Hardwicke

*Catering Manager:* Clive Hustwitt

*Assistant Promotions Manager:*  
John Gornall

*Youth Development Officer:* Colin Ball

*Travel Organiser:* Mrs C. Ball

*Auditors:*

Arthur, Young, McClelland,  
Moore & Co.

*Photographer:* Gareth Owen

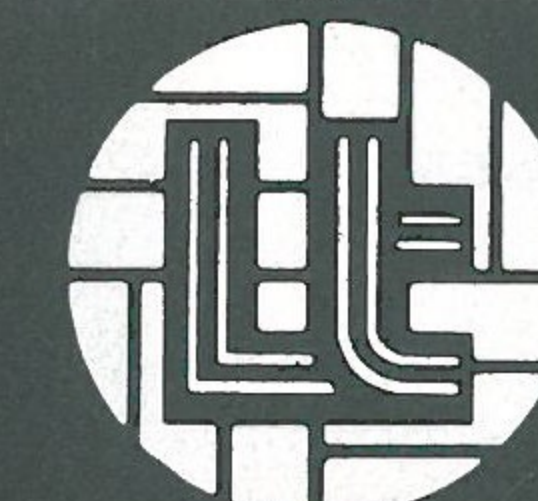
*Playing:*

*Coaches:*

David Coates, John Moore and  
Trevor Hartley

*Physiotherapist:* John Sheridan

*Doctor:* W. A. C. Berry MBBS



**LUTON TOWN FC**  
70-72 Kenilworth Road  
Luton  
Tel: 411622

All ticket enquiries please contact  
Luton 30748. All matchday information is  
obtainable from our 24-hour answering  
service - Telephone Luton 33010

Printed by  
Hemmings & Capey (Leicester) Ltd



**BEDFORD BUSINESS MEANS:**

**You need it,  
we've  
got it.**



**A vehicle for every business.**

You'll find Bedfords working in just about every business you can think of. That's because we offer a vast range of vehicles from light vans to heavy-duty trucks to keep the wheels of British industry turning. And, if you came to the match by coach, the chances are that also was a Bedford.

**A dealer round every corner.**

You'll find a Bedford dealer is never far away. He'll help you choose the vehicles that best suit your business needs; he'll advise you on our special leasing, insurance and warranty schemes; and he'll maintain your Bedfords in peak condition throughout their long working life.

Because, giving our customers what they need, when they need it, is what Bedford business means.



**BEDFORD  
MEANS  
BUSINESS**

# MY VIEW

It is always a pleasure to entertain a club with great traditions and achievements. We will have to be at our best this afternoon to pierce Arsenal's excellent defence, and be bright when we are defending to stop the alert Tony Woodcock and Alan Sunderland.

Our injury position has not improved. Mark Aizlewood received concussion in a reserve comeback game; Rob Johnson has not yet played this season along with Mick Saxby.

When Jake Findlay hurt his neck before the West Brom game, it looked as though we were in trouble, but Alan Judge once again proved a splendid deputy. It is vital that we maintain established reserve cover as we seek to establish ourselves this season.

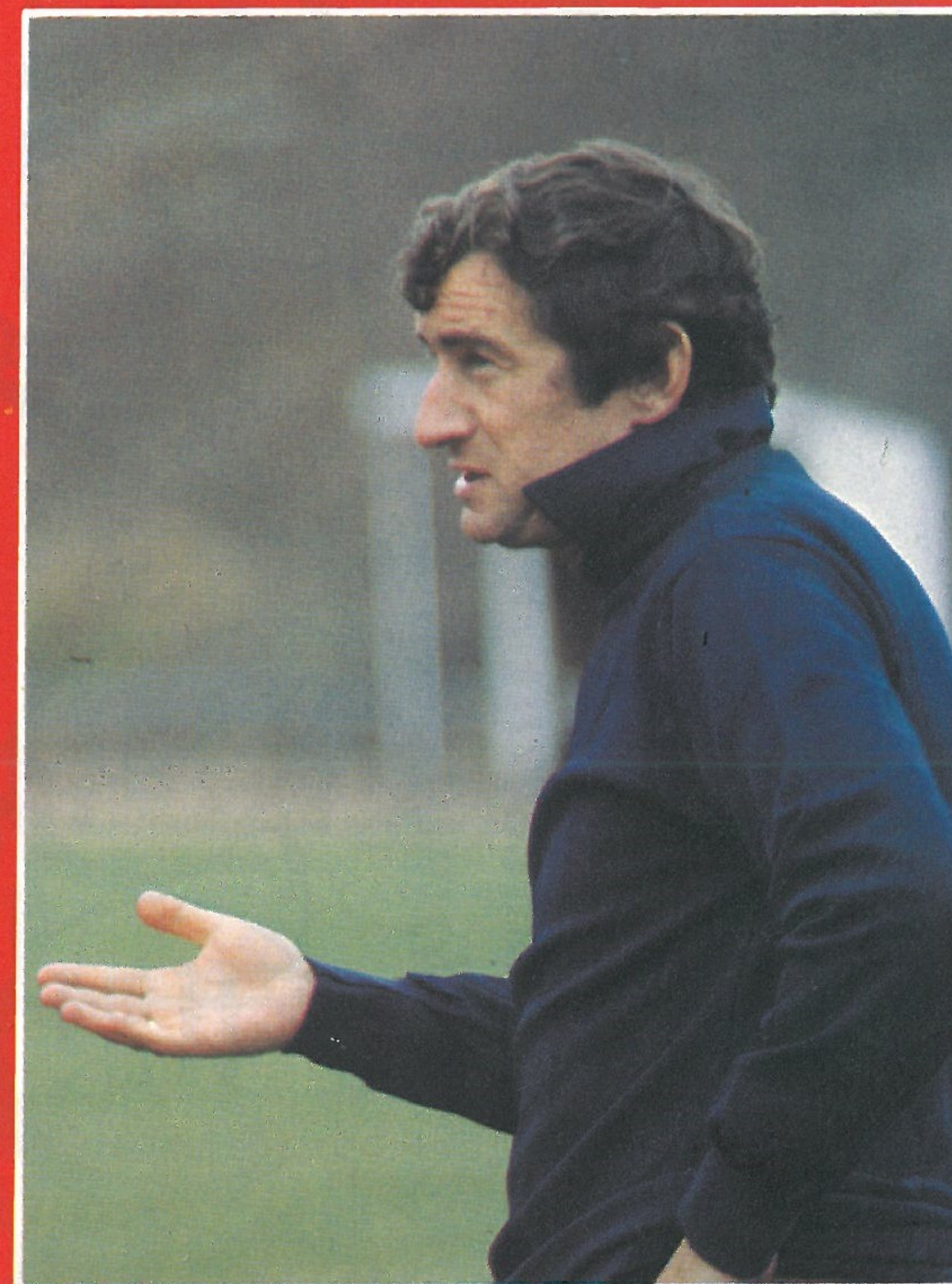
Consolidation is all important, and it is with this in mind that we shall be watching the progress of youngsters and seeing if they can cope with the better standard. Mitchell Thomas came in at Charlton, and did not look out of place in a difficult game.

With Charlton catching our defence flat-footed in the first minute a shock looked a possibility. Although we staggered to half-time, we were not controlling Charlton's pressure too well. It was distinctly satisfying, therefore, to be able to say that in the last 35 minutes our ten men excelled as they ran harder and played sensibly and skilfully to deny Charlton the vital third goal.

The sending off of Findlay was 100 per cent right — that is the ruling, and the punishment sent the game into one of the most exciting periods I have ever seen.

During the half-term period, John Moore, Trevor Hartley and David Coates sifted through a further group of hopeful triallists. But standards are down.

English football must seek to improve and capitalise on the quality youngsters from an earlier age. The development of this talent is all important to the future of the game's standards in this country. Professionals need to instruct the cream of the boys from an earlier



age, and they must have access to these boys rather than be treated as devious intruders.

When our League Milk Cup draw with Blackpool was announced, I read in the local paper that 'Luton were virtually handed a passage into the next round'. Football is a most unpredictable game, and I am sure the writer has never won the pools.

Next Tuesday's game will be tough, as Blackpool come determined to progress. We found the Charlton game more than tough with a three goal advantage.

It should be an exciting game. There are no easy games in football.

Enjoy today, and remember we appreciate your support, so get behind the team from the first whistle.

DAVID PLEAT



Happy 1st Birthday

# A. C. WINES

Come and help us celebrate with these fantastic low prices

GIN £5.50 per bottle

1 WHISKY £5.60 per bottle

Liebfraumilch £1.75 per bottle

Bereich Nierstein £1.80 per bottle

Prespater Michelsberg £2.00 per bottle

BRANDY £6.90 per bottle

Valpolicella, Soave, Bardolino, Chianti £1.70 per bottle

Asti Spumante £2.50 per bottle

French table wines. Superb value £1.50 per bottle

Italian quality table wines. Red, White & Rose £1.55 per bottle

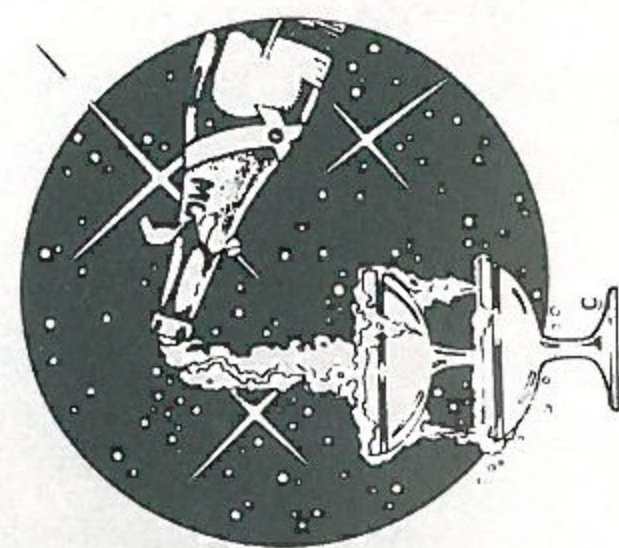
Cabinet D'Anjou £1.80 per bottle

Tafelwein £1.50 per bottle

Plus many other silly prices. Don't forget it's only at AC Wines that you can try before you buy.

**THESE FANTASTIC OFFERS AVAILABLE ONLY ON PRODUCTION OF THIS ADVERTISEMENT.**

Offers ends 20th November 1982 and is subject to stock availability.



A. C. WINES LTD.  
Metralite House  
17-33 Dudley Street  
Luton. Tel: 25055

# LUTON TRAVEL

After today, we find ourselves with two away games on consecutive Saturdays. The first is to Sunderland next Saturday where, for the first time, we are running an executive coach. This is a long trip, calling for an early start, and departure times are as follows:

Maple Road 8 a.m., Hitchin 7.30, Aylesbury 7.15, Leighton Buzzard 7.30, Milton Keynes 7.45, Stony Stratford 8.00, Hemel Hempstead 7.15, Redbourn 7.30, Harpenden 7.45. Fares: adults £8, Juveniles £6. Executive £12.

The pick up times for the executive coach are being worked out, and will be available from couriers and myself.

A reminder that you require tickets for the Coventry game the following Saturday 20th November. These can be obtained from the ticket office, Kenilworth Road, price £5. You are advised to have your match ticket before travelling. We also have a fare reduction for registered Travel Club members, who will pay £2 (adults) and £1.50 (juveniles). Non members fares are £2.50 (adults), £1.50 (juveniles). Some of you have already booked in advance. If you wish to check, contact Luton 411622.

Departure times are. Maple Road 12.00, Hitchin 11.30, Aylesbury 10.45, Leighton Buzzard 11.00, Milton Keynes 11.15, Stony Stratford 11.30, Hemel Hempstead 11.15, Redbourn 11.30, Harpenden 11.45.

A pattern is beginning to emerge as to the composition of our coach parties this season. People are beginning to

know each other, become friends, and get to know their couriers. An increasing number of ladies are travelling with us, and of course a good proportion of under 15s.

It is distressing to have complaints from some travellers — gentlemen, we hasten to add — about bad language.

We ask you all, please watch your language. A good supporter does not need to use foul language to support their team. Don't forget when you travel on our official coaches, you travel representing the good name of Luton Town Football Club. Wherever you are, at your pick-up point, at a service station, or at the game, it projects a very bad image of our club if other people hear foul and abusive language.

The police are very keen to stamp this out, and if any of our travelling supporters get into trouble with the police, they will be barred from travelling with us. Our couriers are authorised to take such action as they deem necessary if instances of travellers using bad language are brought to their attention, and persistent offenders run the risk of being put off the coach.

Our rules are few, but we do expect a good standard of behaviour. New Travel Club membership application forms are being prepared, and rules will be printed on them. Anyone joining will do so on the understanding they observe these rules, and it is very important we encourage all our travellers to join our club, to help ensure we maintain our standards.

CATHERINE BALL Travel Organiser

## MEMBERS OF THE

## KENILWORTH SUITE

AMERICAN-CAN (UK) LTD  
WALTON ROAD, CALDECOTTE  
BOW BRICKHILL  
MILTON KEYNES MK7 8AE  
BARRATT DEVELOPMENTS  
(LUTON) LTD  
PO BOX 5, BARRATT HOUSE  
LUTON L42 7XJ  
TEL: LUTON 422771

MR D. SAVAGE  
BEDFORD COMMERCIAL VEHICLES  
LUTON

A. G. BERRY FCCA  
CHAIRMAN, BLUE ARROW GROUP  
SERVICES LTD  
5 LONDON ROAD, ST ALBANS  
HERTS

BRENGREEN HOLDINGS PLC  
61 CHEAPSIDE, LONDON EC2V 6AX

B. COLE ESQ  
CLEAN INDUSTRIAL SERVICES LTD  
PALMERS GREEN, LONDON N13  
TEL: 01-882 4626

FILMERGRAPHIC ASSOCIATES  
PHOTOTYPESETTING AND PRINTING  
BAINSON HOUSE, ALTON ROAD  
LUTON

TEL: LUTON 36407

FINE STAMPS LTD  
BILTON WAY, LUTON  
TEL: LUTON 36761

N. S. FOOKES ESQ.  
N. S. FOOKES AND SONS  
(PLANT FACILITIES) LTD  
45 LATIMER ROAD, LUTON  
TEL: LUTON 26139

MR E. FOUNTAIN  
VAUXHALL MOTORS  
LUTON

S. GOLBY, FREDK RAY LTD  
STANBRIDGE ROAD  
LEIGHTON BUZZARD  
TEL: 372241

BRIAN E. HANDSCOMBE  
(LIFE AND PENSIONS BROKER)  
48 ALMA STREET, LUTON LU1 2PL  
TEL: LUTON 425921/4

MR I. E. HOLMES  
IVOR HOMES LTD  
82-88 MARSH ROAD, LUTON  
TEL: LUTON 56622

C. J. HUDSON ESQ.  
E. W. HOLDINGS LTD  
6 UNION ST., LUTON  
TEL: LUTON 30511

RICHARD C. LARKINSON  
(BALDOCK) LTD  
TWENTY PENCE ROAD  
COTTENHAM, CAMBS.

MARK JAMES (SALVAGE) LTD  
16 WEST STREET, DUNSTABLE  
TEL: DUNSTABLE 605944

MARSHALLS OF LUTON  
(BUILDERS) LTD  
SARUM ROAD, LUTON  
TEL: LUTON 597666/9

MR & MRS S. J. PEARSON  
55 LUTON ROAD, WILSTEAD  
BEDFORDSHIRE JK45 3ET  
DR & MRS G. L. PLESTER  
9 BRIARS CLOSE, NUNEATON  
WARWICKSHIRE

A. HUNTER ESQ.  
RAVENMERE LTD. ALLRIC HOUSE  
21 FARLEY HILL, LUTON  
TEL: LUTON 32640

RICHMOND ELECTRONICS  
(MARKYATE) LTD  
HICKS ROAD, MARKYATE, HERTS.  
TEL: LUTON 840761

ROBINSON METAL (LUTON) LTD  
CALEB CLOSE  
464 DUNSTABLE ROAD, LUTON  
TEL: LUTON 53866

R. S. SAFRANEK ESQ.  
NEAHURST LTD, LONDON RD.  
LOWER STONDON, HITCHIN  
TEL: HITCHIN 94-813545

MR W. POWERS  
SHAW & KILBURN OF LUTON  
540-550 DUNSTABLE ROAD  
LUTON, BEDS

TRICENTROL CARS (LUTON) LTD  
326-340 DUNSTABLE ROAD, LUTON  
TEL: LUTON 31133

T. & H. TYRE SERVICES LTD  
MANOR ROAD, LUTON  
TEL: LUTON 27665

R. W. UNWIN ESQ.  
R. W. UNWIN & CO. LTD  
PROSPECT PLACE, WELWYN HERTS.  
TEL: WELWYN 6441

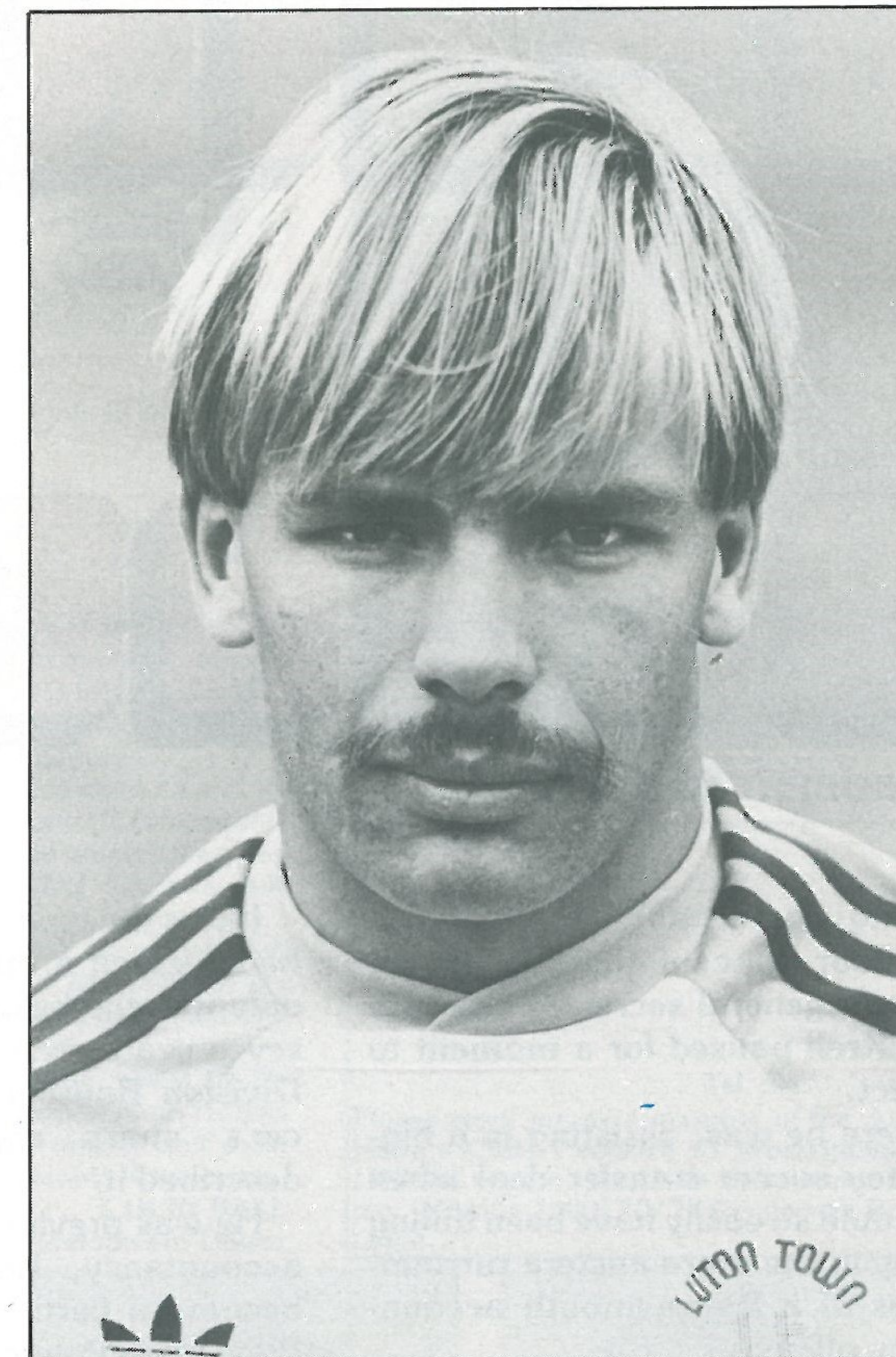
WALLSPAN BEDROOMS  
INDUSTRIAL ESTATE  
MAULDEN ROAD, FLITWICK, BEDS.  
TEL: FLITWICK 713621



# HATTER FOCUS



**Full name:** WAYNE LESLIE TURNER  
**Birthplace:** Luton  
**Birthdate:** 9.3.61  
**Height:** 5ft 9in  
**Weight:** 12st 4lb  
**Married:** No  
**Children:** No  
**Car:** Ford Capri MkIII  
**Previous clubs:** Lincoln (on loan)  
**Favourite player:** Glenn Hoddle  
**Favourite other sport:** Likes most sports  
**Nickname:** Whip, John, Bacs, and sometimes Wayne  
**Job or trade before turning professional:** None  
**Favourite newspaper:** Evening Post  
**Favourite other team:** Lincoln City  
**Players for the future:** Stacey North, Mitchell Thomas  
**Best stadium played in:** Valencia CF  
**Football hero of childhood:** George Best  
**Other sports person you most admire:** Steve Davis  
**Most memorable match:** Newcastle at home when we won 3-2  
**Favourite food and drink:** Stew, chopped salad/milk  
**Favourite holiday resort:** Magaluf, Fort Lauderdale  
**Best film seen recently:** Caddyshack  
**Biggest disappointment:** Being dropped at the end of last season  
**Favourite activity on day off:** Doing odd jobs  
**Superstitions:** Never carry a ball onto the pitch before a game  
**Favourite TV shows:** Sergeant Bilko, Not The Nine O'clock News, Fawlty Towers  
**Biggest influence on career:** Parents  
**International honours:** Under-18 Football Association XI  
**Personal ambition:** To keep enjoying life  
**Which person in the world would you most like to meet?:** The Queen



## WAYNE TURNER

**FORUM  
 THEATRE  
 HATFIELD  
 ADVANCE  
 BOX  
 OFFICE  
 HATFIELD  
 71217**

### EXPLOSIVE! Forthcoming Events Now Booking!

**TONIGHT ONLY!** By arrangement with Brightman Baines Associates Ltd presents LOUIE BELLSON and the BIG BAND EXPLOSION  
**Nov 13** at 6.30pm & 9pm AN EVENING WITH VAL DOONICAN. Special guest Jerry Stevens  
**26** at 6.30pm & 9.30pm In association with Derek Block Concert Promotions Ltd THE THREE DEGREES plus Roy Jay  
**27** at 8pm THE SEARCHERS in concert — 20th Anniversary Concert  
**Dec 3** at 8pm RANDY EDELMAN plus Mike Spencer  
**4** at 8pm Derek Block presents LULU in Concert plus Lenny Windsor  
**9&10** at 8pm SHAKATAK

*From 20th December for two weeks ONLY!  
 Mike Reid's Christmas Show.  
 Adults £2.75 Children £2.25. Fun for all the family.*



# BEHIND THE SCENES

By ROBERT HADGRAFT

Sitting comfortably in the plush top-floor suite of the Ritz Hotel, Luton's general secretary Graham MacKrell paused for a moment to reflect.

Here he was, assisting in a big-money soccer transfer deal when he could so easily have been toiling away in the more austere surroundings of a Bournemouth accountancy office.

The young man from the south coast knew he had hit the big time that day.

He was playing a vital role in the deal which saw Paul Walsh joining Luton and took Steve White to Charlton Athletic.

It was the type of situation which had seemed a million miles away only months before. He had spent seven years as secretary to Fourth Division Bournemouth — at soccer's 'sharp end', as Graham described it.

He was previously in practice in accountancy, having studied to become a certified accountant at West Ham Polytechnic.

While he was still learning the skills of his trade, Graham met Bournemouth chairman Harold Walker on a course. This proved to be his big break, because Walker remembered him and later approached him with a view to working for the Cherries.

He subsequently took over as club secretary and soon found out about the harsh world of soccer in the lower divisions.

Falling attendances, relegation and the departure of big-name personalities meant it was a tough ride for a man who had become one of the youngest secretaries in the game.

Although he had supported Bournemouth as a boy, he had no hesitation in leaving Dean Court in November 1981 to join Luton, then sitting at the top of Division Two.

He was greatly impressed by the style and ambition of the people who run the club and by the family atmosphere at the ground.

At the age of 31, it was an ideal career opportunity for this good-humoured man, who admits a deep



GRAHAM MacKRELL

passion for the game of cricket.

Graham left his home town to live in Luton, with Southampton-born wife Anne and their two sons Thomas, five, and two-year-old Laurence.

Hardly had he got into the swing of things at Kenilworth Road when he faced the massive task of pre-match organisation for the FA Cup-tie with Ipswich Town.

More than 20,000 were crammed into the ground, millions of TV viewers saw the encounter, and Graham recalls with pleasure how smoothly things went.

Graham's duties means he rarely sees the complete 90 minutes of a game, but this does not mean he detaches himself from the footballing side of things.

'You have to be interested in the game or you couldn't do this job,' he says.

Having adjusted to life at a First Division club, Graham admits he is enjoying his work immensely thanks chiefly to the 'tremendous atmosphere' at Luton Town.

It's definitely not a nine-to-five stint, and everything is on a bigger scale to that at Bournemouth.

He finds it hard, but rewarding work, and — with an eye to the future — is keen to see Football League clubs working more closely together.

'I'd like to see more contact between clubs behind the scenes. We could pick each others brains and help each other,' he added.

# JUNIOR HATTERS



A warm welcome today to all our young supporters for the visit of the Gunners to Kenilworth Road. I hope the changes in the Junior Hatters Evening Post-Echo Family Enclosure will result in more of you being able to see what I'm sure will be an exciting game.

I can remember being allowed to stand near the front as a child in the good old days. So I appeal to the grown-ups to give the 'little-uns' a chance and let them through to their special area at the front of the enclosure for a better view.

## MISSION 2000!

More and more youngsters are joining the Junior Hatters every week and our membership now stands at over solid 1,800. Two thousand by Christmas is a realistic target and wouldn't that be marvellous for Luton Town?

Youngsters are our future, and with all the wonderful plans in the pipeline for the Hatters, the future must be secured through our children. Let's try and break the 2,000 barrier

by Christmas. Use the coupon to join a young friend now.

## MASCOT AND ESCORTS

**Mascot:** Andrew Newbery of Flitton, who is 10. Andrew attends Arnold School, Barton, and is interested in football and all sports, and plays for his school team and Barton Stars.

**Escorts:** Richard Webb of Luton, attends Icknield High School and is 13. His main interest is football, and he plays for St Josephs, Icknield and Luton Schoolboys.

Robert Onley of Luton, is aged 13 and attends Challney Boys School. He is interested in football, C.B. Radio and motor bikes, and plays for Beechwood, 2nd Chilern and Hillborough Hatters.

Clive Evans of Luton is 13. He attends Putteridge High School, and his interests are fishing, air training corps and football. He plays for Stopsley Boys Club.

Leroy Hobson is from Luton, and is 15. He also attends Putteridge High School. He lists his interests as qualified referee and most sports, and plays for Dunstable Wanderers.

COLIN BALL  
Youth Development Officer

## ... AND THE ESCORTS



RICHARD WEBB



ROBERT ONLEY



CLIVE EVANS



LEROY HOBSON

## JUNIOR HATTERS SPONSORED BY EVENING POST-ECHO

FOR DELIVERY TO YOUR HOME, TELEPHONE HEMEL HEMPSTEAD 42277 EXT. 296

## THE MASCOT ...



ANDREW NEWBERY

## MISSION 2000

Name .....

Address .....

..... Tel. No. ....

Please enrol me as a member of the Junior Hatters Club. I enclose £1 subscription for 1982-83 season. To: Colin Ball, Junior Hatters (Mission 2000) 70/72 Kenilworth Road, Luton.

GLAZING REPAIRS  
GLASS SUPPLIES  
PATIO DOORS  
and  
WINDOW INSTALLATIONS  
DOUBLE GLAZING  
(Secondary and sealed units)  
INTERIOR/EXTERIOR  
DECORATORS  
DOMESTIC — COMMERCIAL  
ENQUIRIES

Contact:

**J. SAPSWORTH**  
(Glazing and  
Decorating) LTD  
92 MARSH ROAD  
LUTON LU3 2NL  
Telephone: Luton 53025



# Neahurst Ltd.

## Suppliers of thermoplastic raw materials to the industry

wish players and staff of  
Luton Town FC  
every success for the rest of the season

LONDON ROAD (A600)  
LOWER STONDON, HENLOW  
BEDFORDSHIRE SG16 6DZ  
Telephone: Hitchin (0462) 813545  
Telex: 826963

# SCENE ON ONE

A weekly feature which puts the spotlight on the First Division scene. By Tony Pullein

## WILKINS INJURY BLOW FOR UNITED AND ENGLAND

England and Manchester United skipper Ray Wilkins had to be escorted off the pitch after only 12 minutes of United's Milk Cup tie at Bournemouth with a fractured cheekbone and is likely to be out of action for at least six weeks.

The shock came at a time when Wilkins was hitting peak form for his club and his absence at a critical time could prove a big blow to their Championship hopes. England manager Bobby Robson, too, must pick someone else for the important European Championship tie in Greece later this month.

It is reasonably certain that Wilkins' United colleague Bryan Robson will captain England in Greece. Manager Robson had some difficulty in deciding between the two before reaching his choice for the permanent captain of England.

Wilkins' absence is not United's only injury problem. Manager Ron Atkinson had both his central defenders — Gordon McQueen and Kevin Moran — out of action at Bournemouth, where he recalled Martin Buchan and moved the versatile Robson back into the middle of the defence. Ashley Grimes took over Robson's place in midfield.

Perhaps it was not surprising, then, that Third Division Bournemouth became only the fourth side to score twice against United this season. Twice behind, once from a disputed Steve Coppell penalty, game Bournemouth fought back to draw 2-2. But, as they had already lost the first leg, they went out on aggregate.

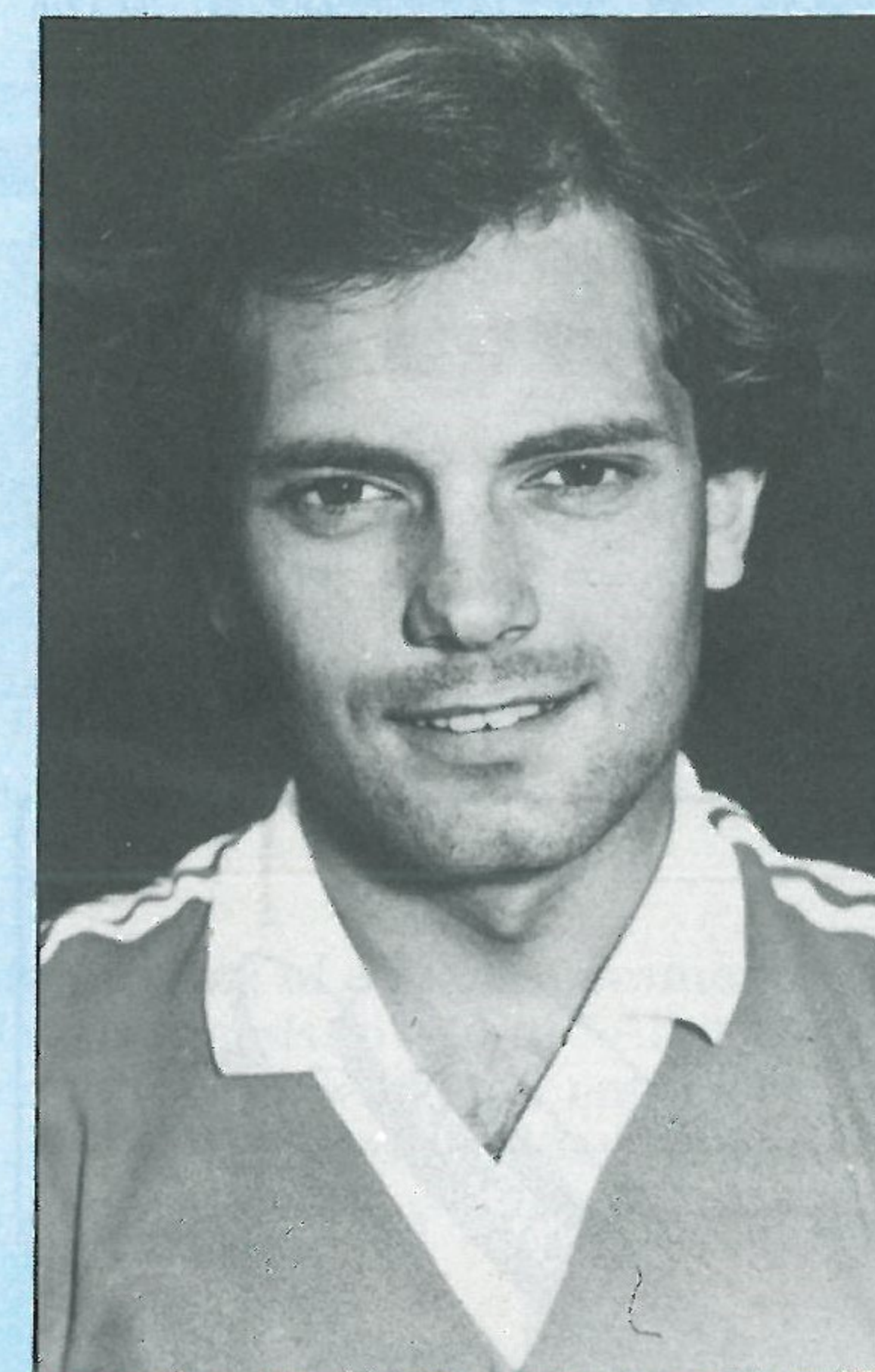
Although several of the First Division sides who met smaller clubs were given some anxious moments, most of them did enough to survive in the second round of the Milk Cup. Southampton entertained a Colchester side confident they could make history repeat itself. During their best-ever League Cup run in 1974-75, they were held at home to a 0-0 draw by the Saints but then won 1-0 at The Dell.

They again played a goalless game at Layer Road this season and, when Ian Allinson converted a 14th minute penalty to give Colchester the lead at The Dell, a big shock really did look on the cards.

Though Danny Wallace and Keith Cassells both scored to put the Saints 2-1 ahead, John Lyons levelled things for the Fourth Division side who, with two away goals in the bag, looked to be in quite a rosy position.

Late goals from David Armstrong and Steve Moran spared Southampton's blushes, though, and the final scoreline of 4-2 did little to reflect the real battle they had been through.

Swansea City, who have not looked quite so convincing in the First Division this season, faced a tough task when they entertained the high-scoring Bristol Rovers' side who took with them a 1-0 first leg lead. But a



RAY WILKINS

hat-trick from Bob Latchford — his second of the season — guaranteed there would be no upset in that tie.

Coventry City took no chances against Second Division leaders Fulham. Having drawn the first game 2-2 at Craven Cottage, Coventry needed only to draw their home leg 0-0 after extra time to go through on away goals. And that's exactly what they did.

West Hams fans are wondering whether Trevor Brooking's career might now be over. The last time he was in competitive action was for England in the World Cup and, after nursing an injury all this season, he has now had an operation for a groin strain.

Brooking said before the World Cup that he would be retiring from international football at the end of the tournament. Sadly, injuries limited him to only one appearance as substitute, against Spain in the last game, in the World Cup and his disappointment probably prompted him to say: 'If new manager Bobby Robson feels I can do a job for England I shall make myself available.'

An England come-back now looks highly unlikely and his future as a First Division player must also be in some doubt. Before this season started, Brooking told reporters: 'Towards the end of the season I shall discuss the situation with manager John Lyall and, if we feel the time has come for me to retire, I shall pack it in then. We shall just have to wait and see.'

Liverpool manager Bob Paisley is well known for his quick decision-making. So

when Craig Johnston knocked at his office door to request a transfer, he agreed on the spot.

'We have never kept unhappy players at Anfield,' he said. 'Craig made up his own mind and it was not my place to try and dissuade him.'

Johnston joined Liverpool from Middlesbrough for £650,000 two seasons ago but, after gaining a first team place towards the end of last season, he found himself back in the reserves this season. When he was recalled he was played variously in attack and in midfield and this, too, seemed to unsettle him.

'I think I should be playing regular League football at this stage of my career,' he said. 'Of course, no player feels happy about leaving Liverpool because it is such a great club.'

West Bromwich have been lurking around close to the top of the First Division all season. Even so, many people were surprised to find them in second place, just one point behind Manchester United, after their narrow victory over the Hatters.

The Throstles have only once won the League Championship, and that was way back in 1920, but they must be fancying their chances now that Manchester United have been hit by injuries. New manager Ron Wylie has certainly done a fine job in stabilising the side and, given reasonable freedom from injuries, he has been able to stick to his successful combination.

The return of England under-21 left-back Derek Statham enabled Wylie to revert Clive Whitehead to his best position as a more or less orthodox outside-left.

Tony Godden recently returned to take over the goalkeeping job from Mark Grew and, in the switch-around, the man who could lose out in the end is striker Peter Eastoe who was signed from Everton during the summer. Eastoe scored four goals in his opening six League appearances for the Throstles but was injured in last month's game against Nottingham Forest.

With Albion now achieving such good results, Eastoe could have difficulty in regaining his place.

One of the big disappointments in the second round of the Milk Cup was the size of some of the crowds. Although Liverpool held only a one-goal lead over First Division rivals Ipswich — and are this season poised to become the first club to achieve a hat-trick of Wembley successes in the League Cup — only 17,698 turned up to watch.

Liverpool are finding themselves the victims of the recession which has hit their city worse than most and a look at their attendances for other midweek games reflects this. Only 12,021 turned up to see them complete their victory over Dundalk in the European Champions' Cup. Liverpool people can't afford more than one match each week it seems.



# WATTERS A-Z

PART 8 - By TONY PULLEIN

Continuing the popular history of Luton Town.

## FOOTBALL LEAGUE (continued)

DIVISION THREE (SOUTH)									
	P	W	D	L	F	A	Pt	Pos	
1926-27	42	15	14	13	68	66	44	8th	
1927-28	42	16	7	19	94	87	39	13th	
1928-29	42	19	11	12	89	73	49	7th	
1929-30	42	14	12	16	64	78	40	13th	
1930-31	42	19	8	15	76	51	46	7th	
1931-32	42	20	7	15	95	70	47	6th	
1932-33	42	13	13	16	78	78	39	14th	
1933-34	42	21	10	11	83	61	52	6th	
1934-35	42	19	12	11	92	60	50	4th	
1935-36	42	22	12	8	81	45	56	2nd	
1936-37	42	27	4	11	103	53	58	1st	

DIVISION TWO									
1937-38	42	15	10	17	89	86	40	12th	
1938-39	42	22	5	15	82	66	49	7th	
1946-47	42	16	7	19	71	73	39	13th	
1947-48	42	14	12	16	56	59	40	13th	
1948-49	42	14	12	16	55	57	40	10th	
1949-50	42	10	18	14	41	51	38	17th	
1950-51	42	9	14	19	57	70	32	19th	
1951-52	42	16	12	14	77	78	44	8th	
1952-53	42	22	8	12	84	49	52	3rd	
1953-54	42	18	12	12	64	59	48	6th	
1954-55	42	23	8	11	88	53	54	2nd	

DIVISION ONE									
1955-56	42	17	8	17	66	64	42	10th	
1956-57	42	14	9	19	58	76	37	16th	

1957-58	42	19	6	17	69	63	44	8th	
1958-59	42	12	13	17	68	71	37	17th	
1959-60	42	9	12	21	50	73	30	22nd	

DIVISION TWO									
1960-61	42	15	9	18	71	79	39	13th	
1961-62	42	17	5	20	69	71	39	13th	
1962-63	42	11	7	24	61	84	29	22nd	

DIVISION THREE									
1963-64	46	16	10	20	64	80	42	18th	
1964-65	46	11	11	24	51	94	33	21st	



DIVISION FOUR									
1965-66	46	24	8	14	90	70	56	6th	
1966-67	46	16	9	21	59	73	41	17th	
1967-68	46	27	12	7	87	44	66	1st	

DIVISION THREE									
1968-69	46	25	11	10	74	38	61	3rd	
1969-70	46	23	14	9	77	43	60	2nd	

DIVISION TWO									
1970-71	42	18	13	11	62	43	49	6th	
1971-72	42	10	18	14	43	48	38	13th	
1972-73	42	15	11	16	44	53	41	12th	
1973-74	42	19	12	11	64	51	50	2nd	

DIVISION ONE									
1974-75	42	11	11	20	47	65	33	20th	

DIVISION TWO									
1975-76	42	19	10	13	61	51	48	7th	
1976-77	42	21	6	15	67	48	48	6th	
1977-78	42	14	10	18	54	52	38	13th	
1978-79	42	13	10	19	60	57	36	18th	
1979-80	42	16	17	9	66	45	49	6th	
1980-81	42	18	12	12	61	46	48	5th	
1981-82	42	25	13	4	86	46	88	1st	

Part Nine of the A-Z will include items on current stars RICKY HILL, CLIVE GOODYEAR and LIL FUCILLO and will form yet another essential part of your Luton encyclopedia. Make sure you buy your copy!

## COMPETITIONS

**LUTON**

## COMPETITIONS

**Wallspan Bedrooms**  
Showrooms throughout London and Home Counties  
SEE US IN  
LUTON ARNDAL CENTRE ☎ 23015

WIN A  
SUPER LUTON  
VIDEO

**Wallspan Bedrooms**  
FITTED BEDROOM FURNITURE  
SEE US IN  
Yellow Pages

### NAME THE FACES

The players' heads featured in the Nottingham Forest magazine were Francois Van Der Elst (West Ham); Paul Power (Manchester City) and Arnold Muhren (Manchester United).

At the time of going to print, we do not have the name of the lucky winner who will receive our super Champions on video tape before today's game.

A new phototeazer this with, again, a prize of a super commemorative video. The photo caption shows three players' heads mixed up. All you have to do is name the three players and their current clubs. Send your entries to: Luton Town Football Club, Matchday Magazine, 70-72 Kenilworth Road, Luton.



FRANCOIS VAN DER ELST (West Ham)



PAUL POWER (Man. City)

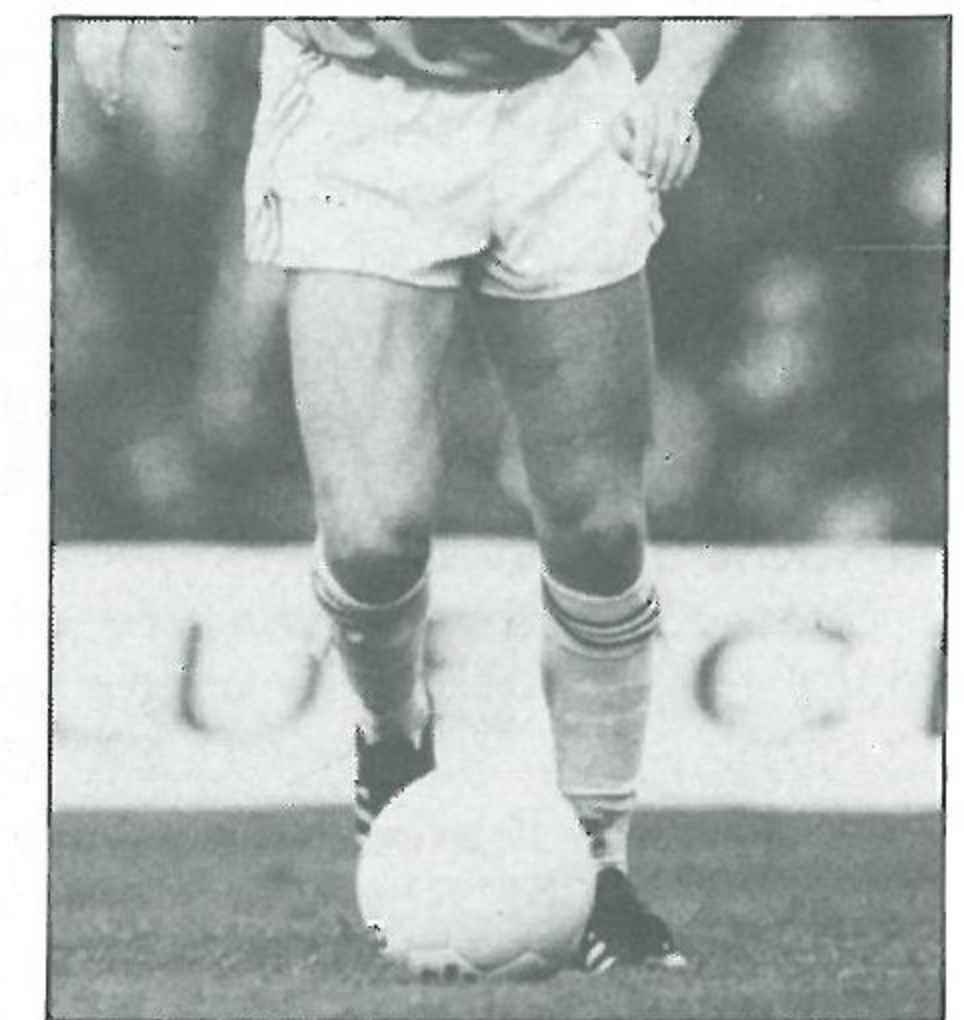
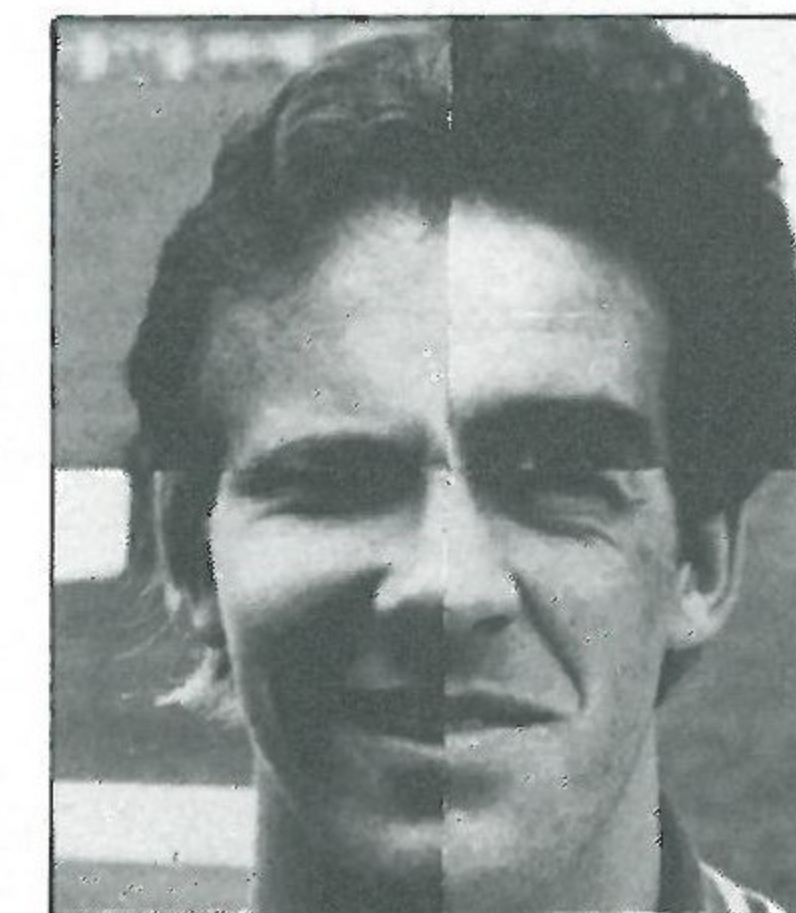
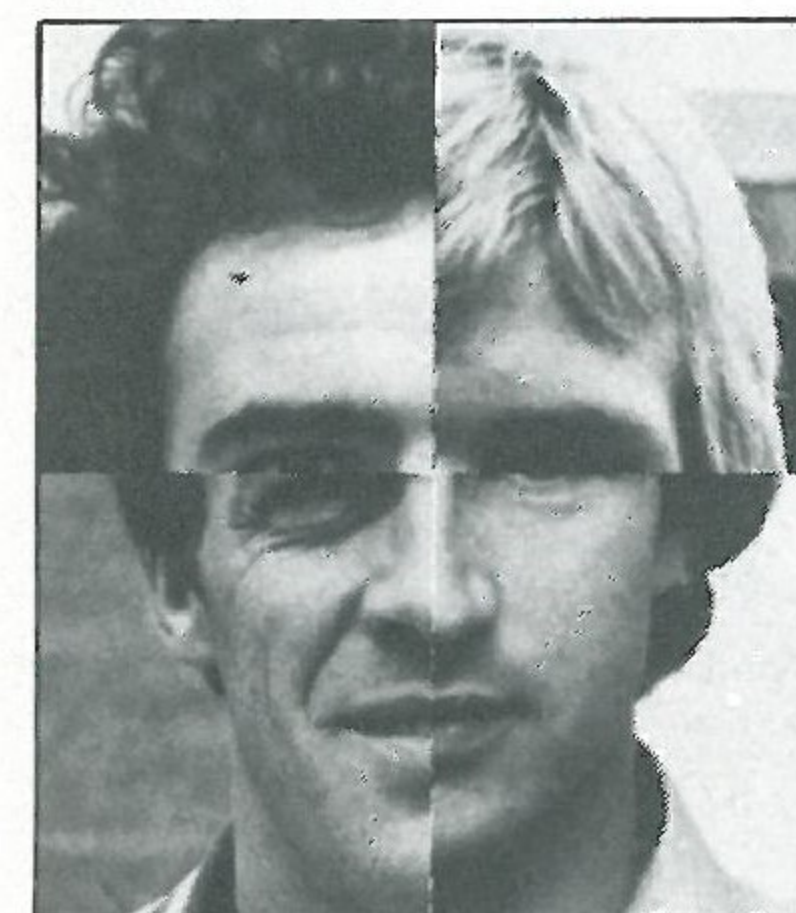


ARNOLD MUHREN (Man. Utd.)

### NAME THE STAR

The Name the Star is a continuing competition when we will add a small proportion of the body of a famous player inviting you to guess the player's identity. Today's photograph is a continuation of the body of the player featured in our last four magazines against Manchester United, Charlton, Ipswich and Nottingham Forest.

If you think you know the answer, write it immediately on a postcard with your name and address and send your entry to Luton Town Phototeazers, Luton Town Football Club Matchday Magazine, 70-72 Kenilworth Road, Luton. Winning entry will receive our Super Champions on video tape.



## CLUB '82

J. Fedigan Esq, Adriatic Enterprises Ltd, Footwear Importers, 20 St Margarets Way, Leicester  
Tel: Leicester 26022

G. E. Smith Esq, Belsize Eng Co Ltd, First Ave, Bletchley MK1 1DW  
Tel: 0908 73496

Tony Lambert Esq, Broad Street Print, 9 Broad Street, Hemel Hempstead, Herts  
Tel: Hemel Hempstead 65490

R Bowden Esq, CAP Bodies Ltd, Sunderland Road, Sandy, Beds  
Tel: 0767 82680

R A Finch Esq, Computer Technology Ltd, Eaton Road, Hemel Hempstead, Herts HP2 7LB

E Elliott, Emerella, Market Square, Biggleswade  
Tel: Biggleswade 312127

M J Matthews Esq, Greenwoods Transport, Charlton Mead Lane, Hoddesdon, Herts  
Tel: 09924 67181

D Keech Esq, D W King & Co, Argyll Works, Stevenage, Herts

G S J White Esq, The London Truck Centre Ltd, Charlton Mead Lane, Hoddesdon, Herts  
Tel: (09924) 41535

Derek Ludlow, Ludlows of Luton (Industrial Factors) Ltd, Thistle Road, Windmill Trading Estate, Luton, Bedfordshire LU1 3XJ  
Tel: Luton 29883/4

Frank Ludlow, Frank Ludlow Ltd, Car Body Repairers, 71 Windmill Road, Luton, Bedfordshire LU1 3XL.  
Tel: Luton 414441

Tom McAuliffe, Harpenden, Herts

J. Mead Esq., Pilcourt Ltd, 151 Bearton Road, Hitchin, Herts

Mr J. A. Matthews  
65 Shefford Road, Clifton, Beds

P J Sullivan Esq, Tricentrol Trading (Hardware House) Ltd, Kings Road, Flitwick, Beds  
Tel: Flitwick 712121

Mr T Bailey, Wallspan Bedrooms Ltd, Industrial Estate, Maulden Road, Flitwick  
Tel: Flitwick 713621

M. Manning. Beard & Manning Ltd, 152 Leagrave Road, Luton Beds.

Building houses to make homes in

at

Warden Hill, Luton  
Parkside, Houghton Regis  
Wallington Rise, Baldock  
Two Mile Ash, Milton Keynes  
Church Green, Bletchley  
Kimbolton Gardens, Bedford  
Morton Court, Bedford  
Telephone: Luton (0582) 422771



**Barratt**

Telephone: Luton (0582) 422771



## SUNDERLAND SPREAD

On page seven of this afternoon's matchday magazine you will find details of Travel Club coaches for our game at Sunderland a week today.

But there will undoubtedly be those Luton supporters who will make the long trip under their own steam.

We have been asked by Sunderland FC to make our fans aware of the facilities the club offers in its Roker Park restaurant where supporters can dine in comfort before the match.

A three-course meal is offered at the inclusive price of £4 and bookings can be made by telephoning Sunderland 40303 or 70840.

## HAPPY BIRTHDAY, FRANK

We offer our congratulations to striker Frank Bunn who celebrates his birthday today. Frank, who has yet to break into the first team on a regular basis, reaches the ripe old age of 20 today.

## ANOTHER SATISFIED CUSTOMER

We take a pride in our Junior Hatters Club — full details are on page 11 today — and the services we offer all our members.

But we also encourage local youngsters to take advantage of the scheme where we occasionally allow parties of boys to tour the stadium and inspect our facilities.

Vincent Mimms was one of our recent guests, and he wrote to Youth development officer, Colin Ball, expressing his thanks. Vincent, who lives in Wheatfield Road, Luton, wrote to say: 'Thank you for the great day out at Luton Town.'

'The bit I liked best was when we went into the dressing rooms and I will also treasure the moment when I ran around the pitch touching the Second Division Championship trophy.'

## ALL-TICKET GAME

Luton supporters planning to travel to Coventry two weeks today would be well advised to read John's Journal on page 21 this afternoon. It contains an important announcement about tickets.

## POPULARITY STAKES

A large number of delighted youngsters turned out to watch our involvement in the recent five-a-side tournament at Stevenage.

It was another example of our public relations exercise where we like to get out and about spreading the gospel about Luton Town.

At Stevenage, the age-old hobby of

collecting autographs was evident again with Wayne Turner besieged by young admirers begging for his signature.

## CENTURY CLUB

Today we welcome a team with a famous name to Kenilworth Road. Who hasn't heard of the Gunners and followed their fortunes with interest at some time in their life? They have a heritage of a long and proud history, and we look forward to an exciting afternoon.

Our recent trip to West Bromwich Albion was most enjoyable. We were made very welcome at the Hawthorns where our hosts had made arrangements for a very satisfying, light lunch. A pleasant meal on the return journey completed our day, and those who travelled were already talking of the trip to Norwich on 28th December.

If you are interested, please let

Catherine Ball have your names as soon as possible. The executive coach trips are so popular it is first come first served!

Don't forget we have our Century Club ties on sale on match days. Ask a committee member if you would like one. We are always pleased to receive any raffle prizes you care to donate.

## ARSENAL THROUGH THE YEARS

● Arsenal have three times recovered from a two goal deficit in an FA semi-final to ultimately win the trophy. They did so against Hull in 1930, against Chelsea in 1950 and against Stoke in 1971.

● George Male made his first team debut for Arsenal in the 1932 FA Cup Final.

● David Lewis (in April 1926) became the only Arsenal player to be sent off in the 20 seasons between the wars.

● Dr Kevin O'Flanagan was one of three amateurs in the Arsenal team against Stoke in October 1946, the others being Bernard Joy and Albert Godmundsen. He also played for Ireland at both soccer and rugby in 1946.

● The Arsenal v Cardiff FA Cup Final in April 1927 was the first to be broadcast.

● Arsenal won the FA Cup in 1950 without playing outside London. By contrast in both 1970-71 and 1971-72 they were drawn away in every round and still reached the Final.

● Arsenal retained all 58 professionals at the end of 1949-50.

● Arthur Milton, who was capped for England at soccer in 1951, later played for his country at cricket on several occasions from 1958 onwards.

● Brian Close, who was on Arsenal's books in 1948-49 later captained England at cricket. The other professional footballer to do so was Wally Hammond between the wars while with Bristol Rovers.

● Arsenal defender Leslie Compton made his England debut against Wales at Sunderland in November 1950 at the age of 38.

● Archie Macauley was in the Brentford team relegated to Division Two in 1946-47. In 1947-48 he won a First Division Championship medal with Arsenal.

● Eddie Kelly's goal for Arsenal against Liverpool in the 1971 FA Cup Final was the first FA Cup Final goal to be scored by a substitute.

## IN RETROSPECT

Luton Town v Arsenal  
Division Two: 1897-98 0-2 (h) 0-3 (a), 1898-99 0-1 (h) 2-6 (a), 1899-1900 1-2 (h) 1-3 (a).

Division One: 1955-56 0-0 (h) 0-3 (a), 1956-57 1-2 (h) 3-1 (a), 1957-58 4-0 (h) 0-2 (a), 1958-59 6-3 (h) 0-1 (a), 1959-60 0-1 (h) 3-0 (a), 1974-75 Luton 2 (Jim Ryan pen, R. Futch) Arsenal 0, Arsenal 2 (Kidd 2) Luton 2 (Alston, Shanks).

Teams for last game here, 25th March 1975 . . .

LUTON: Barber, John Ryan, Buckley, Anderson, Faulkner, P. Futch, Jim Ryan, Husband, R. Futch, West, Aston.

ARSENAL: Rimmer, Rice, Nelson, Storey, McNab, Simpson, Rostron, Ball, Radford, Price, Brady.  
Attendance: 22,101.

## MILK CUP TIE AT HOME

Our reward for beating Charlton Athletic in the two legged second round tie of the Milk Cup was a home tie in the third against Blackpool.

The match will be played at Kenilworth Road next Tuesday (7.45 p.m.) and tickets are on sale in the box office after today's match and also on Monday and Tuesday.

## TODAY'S REFEREE

Eric A. Read, of Bristol, commenced refereeing in 1962 in Chippenham, Wiltshire local Leagues and progressed via the County and Western Leagues to the Football League List. Was Linesman for UEFA Cup third round match in West Germany (1974) and has refereed three County Professional Cup Finals and FA Vase semi-final 1980.

A married man, with one daughter, he is a regional director. His interests include travelling, photography, keen electronic and church organist, kee-fit addict, and also enjoys scuba diving and country and western music. General secretary of Bristol and District Sunday League and a Gloucestershire Football Association Councillor.

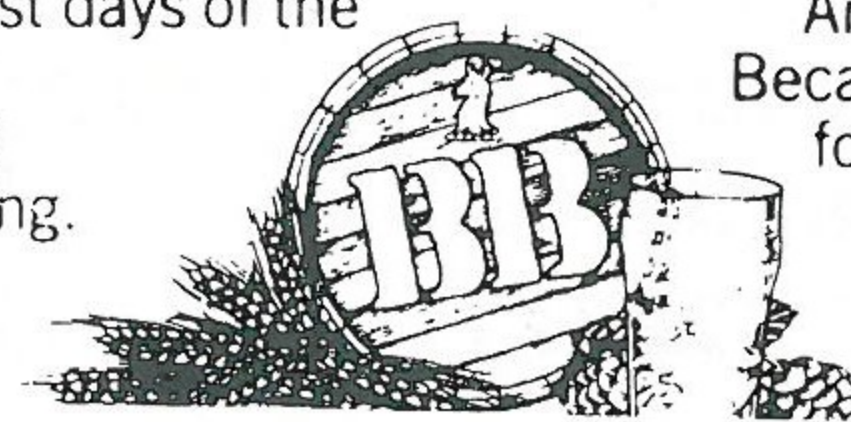


# THE LOCAL TASTE AND HOW TO SATISFY IT

We're very definite about our taste in beer around here. A clear light pint is what we look for, with a good, clean smack of malt and hops.

And there's only one name that really satisfies the local taste — BB. The light beer first brewed in Luton during the darkest days of the War by J. W. Green.

Only the finest hops and good, ripe barley go into the making. Then the brew is matured to exactly the right degree to give you a bright refreshing pint with a sound, full flavour.



**WHITBREAD**

American servicemen in local wartime bases declared that BB, chilled, was the nearest taste to Stateside draught.

It went down well when Syd Owen ruled the Hatters.

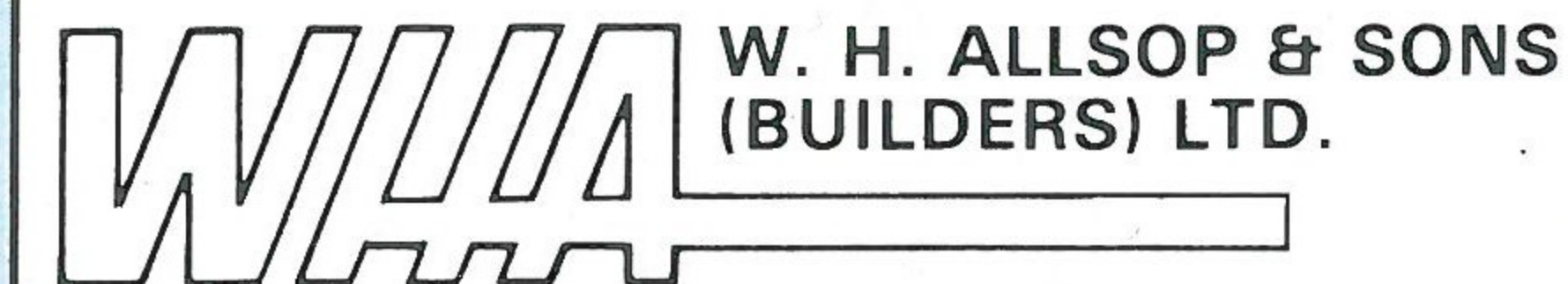
And it's been going down well ever since. Because BB is brewed with a proper respect for quality. To keep up the traditions we value round here.



Book Your Summer Holidays Early Through Your Local Tour Operator Brochures Now Available.

**Silvoir Holidays Ltd**  
Silvoir House  
13-15 King Street, Luton  
Tel: 412131

For all Building requirements contact:  
**ALLSOP BUILDING SERVICES**  
ALLSOP WINDOWS  
ALLSOP ROOFING  
ALLSOP MINI SKIP HIRE



**W. H. ALLSOP & SONS**  
(BUILDERS) LTD.  
153 New Town Street,  
Luton LU1 3ED.  
Tel: Luton 20011/23472.



# THE BEST VALUE IN 1962 EVEN BETTER IN 1982

Wallspan Bedrooms were one of the first company's to specialise in the manufacture of fitted bedroom furniture way back in 1962 and today still are the market leaders in the industry. Why?

Because the company hasn't changed its philosophy since its formation 20 years ago.

"I think Wallspan's success", says Chairman Terry Bailey, "is based on offering the customer first-class value for money - an absolutely straightforward deal without gimmicks of any kind. You have to build up a reputation for quality, reliability and straight dealing over the years. There's no quick way".

After 20 years Wallspan has certainly built up a reputation for straight dealing and value for money through their chain of showrooms throughout the U.K. Showrooms where you can see the widest range of furniture available, talk to the sales staff and have your bedroom redesigned absolutely free of charge.

"The thing the public don't appreciate is that in many cases we can plan, build and fit a bedroom tailor made for them as cheaply as they can build themselves with a self assembly kit and our furniture and workmanship are fully guaranteed for 5 years!" says Terry Bailey.

Wallspan Bedrooms possess what is probably the most modern factory of its kind in Europe, and its research and development department ensure that the public get a manufactured product of the highest possible quality in styles and designs that are the most modern available.

Other manufacturers may offer a similar service but with Wallspan you're guaranteed of that service. A full colour brochure together with a printed price list means you know where you are and what its going to cost you right from the start whereas amazingly, most other companies don't even print a price list. Hidden extras maybe? Not with Wallspan. The company you can trust to provide a fitted bedroom at a price you can afford.

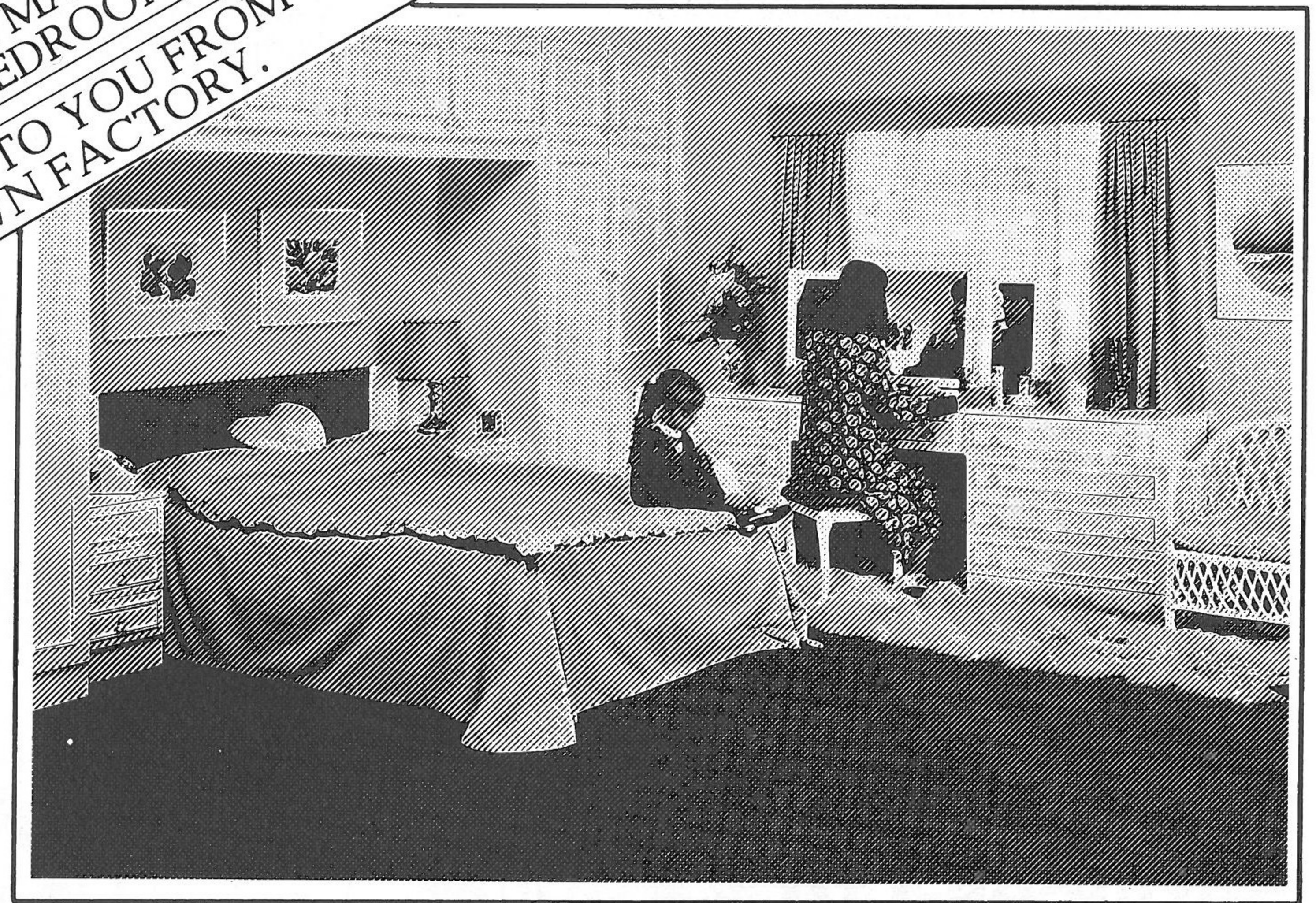
**Wallspan Bedrooms** The first name in fitted Bedroom Furniture.

**Wallspan Bedrooms**  
MAULDEN ROAD, FLITWICK, BEDS. TEL: (0525) 716161  
(HEAD SALES OFFICE)



- ✓ INTEREST FREE CREDIT (ASK FOR WRITTEN DETAILS).
- ✓ 100's OF DESIGNS TO CHOOSE FROM.
- ✓ FREE DESIGN. FREE FITTING ON A DATE TO SUIT YOU.
- ✓ 5 YEAR NO QUIBBLE GUARANTEE.
- ✓ THE ONLY COMPANY TO PUBLISH A PRICE LIST.
- ✓ OVER 1/2 MILLION SATISFIED CUSTOMERS.
- ✓ TAILOR MADE TO FIT YOUR BEDROOM EXACTLY.
- ✓ DIRECT TO YOU FROM OUR OWN FACTORY.

Branches throughout UK  
Open 6 days a week



UNIT 174, BUTE STREET, ARNDALE CENTRE, LUTON, BEDS. TEL: LUTON 23015  
(ARNDALE CENTRE OPPOSITE BRITISH HOME STORES)

59 MIDLAND ROAD, BEDFORD. TEL: BEDFORD 211327  
(OPPOSITE BEEHIVE CENTRE)

18 MARKET PLACE, STEVENAGE, HERTS. TEL: STEVENAGE 724853  
17/19 QUEENS ROAD, WATFORD, HERTS. TEL: WATFORD 38388  
(OPPOSITE TREWINS)

# WE'RE STILL THE BEST EVEN AFTER 20 YEARS.

WHY? FIND OUT TODAY. Call into your local Wallspan showroom, see the furniture and collect our brochure and detailed price list. You'll soon see that you can afford a beautiful fitted bedroom.



**Willis-Dawson Ltd**  
**Builders and Developers**  
**Leighton Buzzard**

**Tel: Leighton Buzzard 372557**

*Your local suppliers of printed polythene carrier bags, paper bags, and fashion carriers. In addition we offer a General Printing and Rubber Stamp Manufacturing Service.*



**Princess Packaging Ltd.**

HEATHFIELD WORKS, LEYTON ROAD, HARPENDEN, HERTS.  
 TEL. (05827)66806 OR 64431 (24 HR. SERVICE).

**Graham Ford** 

*Your*  
**Comprehensive Builders Merchants**

Depots: at  
 Luton — Kingsway 31199  
 Dunstable — Beale Street 603111  
 Leighton Buzzard — Leighton Road 373486

**Cleandustrial Services Ltd**

**The Professional Approach to Your Cleaning Problems**

**84 Aldermans Hill N13**

# LOTTERY TOPICS

## WE CAN HELP YOU

'Well done the boss.' The regular appeal advertisement initiated by David Pleat has certainly brought us hosts of new lottery agents.

The latest illustrated applicant, Terry Ciuffini, has been fixed-up with the speed of light, as are all applicants.

What is more, we do have existing agents in the Midlands, particularly Mike Livingstone and Mrs Perks who are really big lottery agents in their own right.

If you don't care to cut-out your lottery application from the magazine, don't worry. Your request by post or telephone will be sufficient. From this information we will be pleased to put you on the staff.

At all times we must have financial progress, and commercially, consolidation must be our aim. Complacency is the enemy we must avoid like the plague.

Thank you for your response. We look forward to an avalanche of applicants to add to our large army of lottery agents.



**MIKE HARDWICKE**  
 Promotions Manager

# JOHN'S JOURNAL

Our forthcoming away match against Coventry City on 20th November will be all-ticket as is every game in the Highfield Road Stadium this season.

I have received a letter from the Coventry club saying that an allocation of tickets in the Sky Blues Stand will be available to Luton Town supporters at £5 and £4. Juniors, under 16 providing they are accompanied by an adult, will be half price in each section.

Admission on the day to supporters of either club will be a minimum of £5 and again juniors under 16, provided they are accompanied, will pay £2.50. Tickets for this game will be on sale from our own ticket office two weeks before the fixture. If you are a regular away traveller, make sure you obtain your ticket in advance as there are only a limited number of seats available to away supporters.

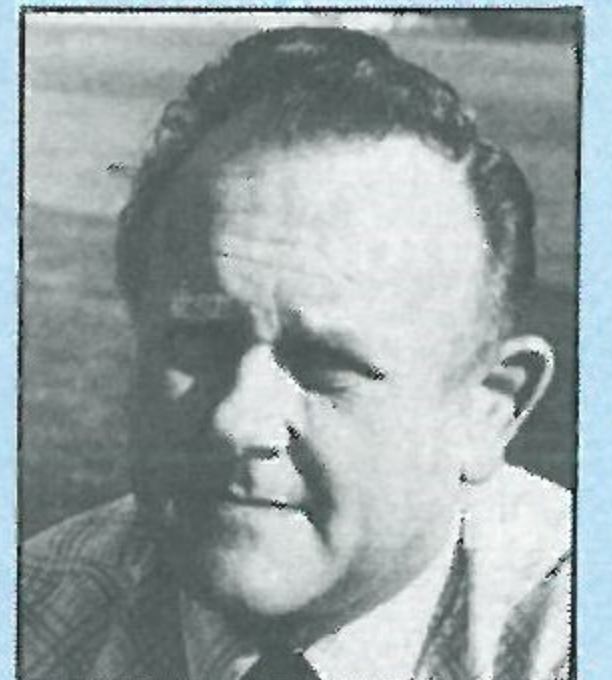
I would imagine our visitors today have had everything written about them as is possible. But one game which sticks in my memory was played on Boxing Day 1958 when we were entertained to a classic game. To make it even better we won 6-3.

The two teams were — Luton Town: Baynham, Dunne, Hawkes K., Groves, Owen, Pacey, Bingham, Brown, Gregory, Cummins, Adam.

Arsenal: Kelsey, Wills, Evans, Ward, Fotheringham, Docherty, Clapton, Groves, Julians, Bloomfield, Henderson.

The Luton Town scorers were Brown (2), Bingham (2), Gregory and Adam. Julians, Evans and Bloomfield replied for Arsenal. Of that Arsenal side, Danny Clapton came and played for the Town for one season while Dennis Evans became our physiotherapist while Alan Brown was manager.

Tom Docherty, at left-half, went on to become manager of many clubs and Jimmy Bloomfield later became manager of Orient and Leicester.



**JOHN WILKINSON**  
 Secretary

# Anglia Television

Proud to serve  
 the  
 East of England.





# HATTERS IN RESERVE

## SPURS 2 LUTON 3

After a shaky start, we settled down and started to play as a team despite having none of the strikers available from the previous week's winning team.

We plugged away until the middle of the half when we went in front after a neat one-two on the edge of the box when Mark North scored. The goal gave our confidence a boost and we added a second to give us a good lead at the break. At the start of the second half, Spurs came at us strongly but we caught them on the break to knock in the third. After that goal we seemed to relax and allowed Spurs to score while we were appealing for offside.

That goal gave them heart and they knocked in a second to add to their encouragement. It was a good result for us, but a disappointing one after leading 3-0.

TEAM: Groome, McDonald, Petts, Shearer, Bassett, Plummer, Jones, North (M), Loy, Ellisdon, Thorpe.  
Subs: Hamilton, Savage.

## LUTON 2 BRENTFORD 3

With a re-shuffle in defence for this South East Counties League game, we always looked shaky at the back and lack of cover allowed Brentford to lead 1-0 at half time.

We came back at the start of the second half to equalise but allowed Brentford to regain their lead with a free header. After conceding an own goal to add to Brentford's lead, it looked all over but our second came from an own goal direct from a corner.

Brentford were a bigger and stronger team than our lads and we will have to be patient with some of our youngsters.

TEAM: North, McDonald, McConville, Parker, Bassett, Plummer, Jones, Stein, Desmond, Ellisdon, Devine. Subs: Loy, Thorpe.

# MATCH SPONSOR

Today's match sponsor, Wallspan Bedrooms, needs little introduction to our fans, as Wallspan and their Chairman Terry Bailey, are well known around the stadium for their sponsorship of our superb electronic scoreboard, and for their generous support over the last few seasons, and a very warm welcome is extended to Terry and his staff whom we hope will have



an enjoyable day with us.

Wallspan, like ourselves, believe in offering the very best to their customers, and the quality of their workmanship reflects in everything they do.

We thank Wallspan for their valued and continued support, and wish them and their guests an enjoyable afternoon.

# COMMERCIAL SCENE



THE WEEKLY LOOK AT THE HATTERS COMMERCIAL SCENE



Today sees us take another step forward in sponsorship because in addition to our match sponsor, Wallspan Bedrooms, we extend a warm welcome to our mini-sponsors, Neahurst Ltd and A. C. Wines Ltd.

Over the last three seasons, match sponsorship has proved very popular with local and national companies, and of great importance to the finances of the club.

Now we have attained First Division status, the demand from sponsors is increasing. To meet this, we have extended our commercial activities to incorporate an executive mini-sponsorship package.

It is probably appropriate that Richard Safranek, Neahurst's chairman and a Vice President of Luton Town FC, is the first to have the use of the Mini-Sponsors' Bedfordshire Suite. It was Neahurst who first used our Joe Payne Lounge in November 1979, when they sponsored our game against QPR.

Richard Safranek has been actively engaged in the plastics industry for nearly 30 years, at home and on the overseas' scene, and formed the Neahurst Group ten years ago.

In contrast, Len Fitzgibbon, previously an accountant with an electronics firm, formed A. C. Wines Ltd just over 12 months ago. Len's a connoisseur of wine, and his company gives free service at wine tasting to the public which he proudly boasts no other Luton wine distributor offers.

A. C. Wines are wine importers and wholesalers and have their own vineyard at Mont Pellioere in the South of France.

Neahurst and A. C. Wines will enjoy the benefits of seating in the directors' box, a champagne reception, buffet lunch and a tour of the club's facilities plus advertising in the Matchday Magazine. We are very grateful to them for their support today, and hope that they and their guests have an enjoyable afternoon.

Any company who would like to improve their public profile, or make valuable contacts and increase sales and profits by using our executive facilities, should contact me on Luton 411622.

**MIKE BEEVOR**  
Project and Advertising Executive



# LUTON TOWN FC

As regular supporters will know, our future and our ambitions here at Kenilworth Road as a top League club are in jeopardy because of the A505 relief road.

We are not opposed to that road as such. On the contrary, we anticipate it will be of considerable benefit.

However, faced with this threat, we have been looking at the possibility of moving to another site in Luton. As things currently stand, no site has been finally chosen, although we have looked at many, and are still doing so.

If we do move, and it's a very big IF, we shall obviously want to build a stadium to be proud of, and one that incorporates the latest ideas.

High on our list of priorities is tackling the problem of crowd violence and hooliganism. We are not alone in suffering this, but we want to do something positive about it.

A new stadium alone is simply economic, or viable, and we envisage a combined development of a new stadium integrated with some suitable form of commercial development.

Our current thoughts include an indoor stadium which can be used for many purposes besides football, a synthetic pitch that can be used for other sports, a capacity of around 20,000, most if not all of which will be seated.

We envisage membership, with no casual visiting spectators, except possibly on a well-organised and closely controlled basis via the visiting club concerned, plenty of space for car parking adjacent to the stadium, and facilities which will attract the entire family back to football.

The concept will be like a sporting club where you can participate in your sport, such as, say, basketball or badminton, and at the same time support the Luton Town basketball or badminton team. As Jimmy Hill said on television recently, 'A place for the whole family!'

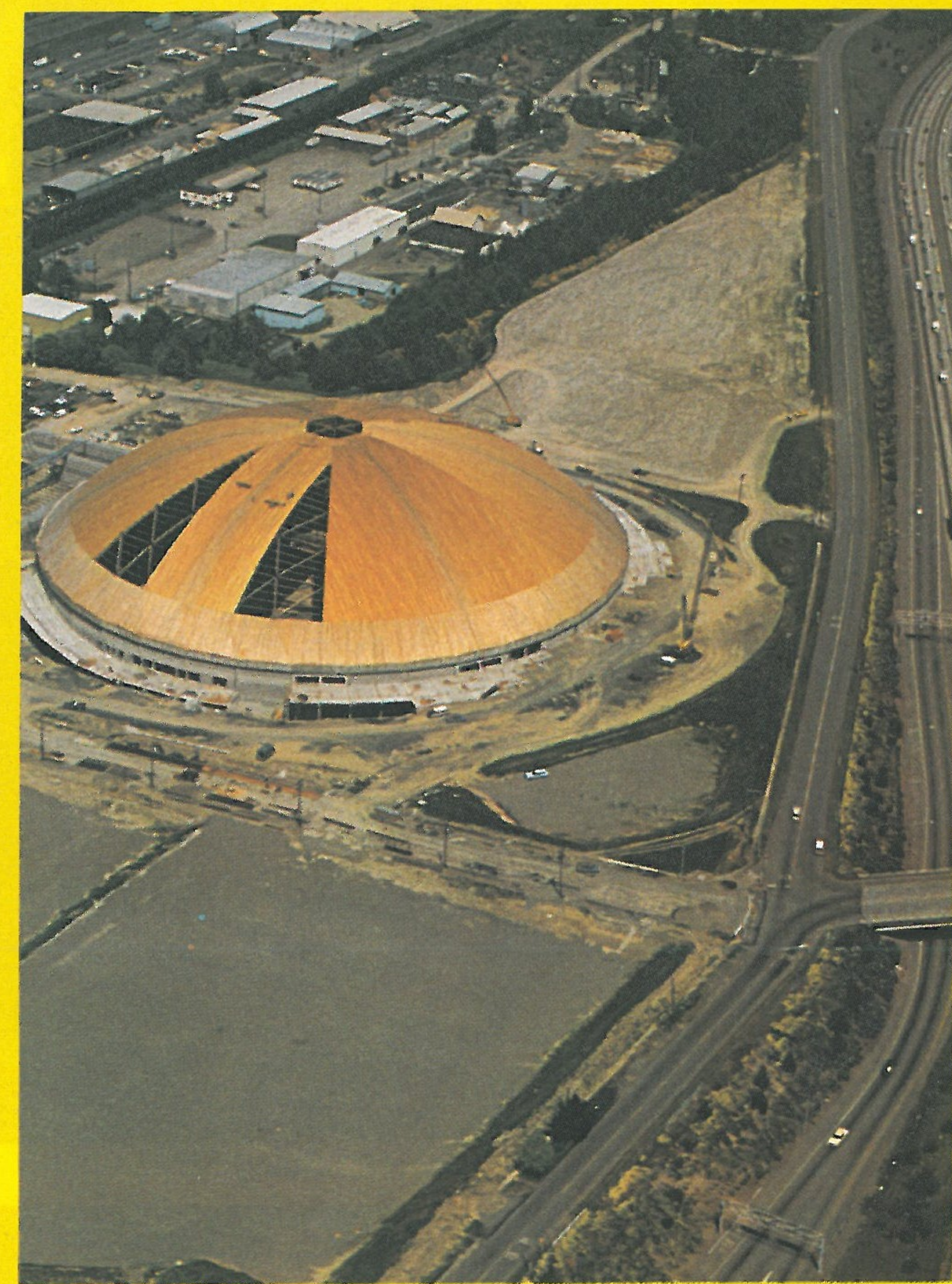
We have had talks with the Borough and County Councils about our ideas and possible sites. We are encouraged by the reception we have received, but there is a long way to go yet and our discussions are continuing.

Depending on the progress of those talks, we shall undertake a careful feasibility study before drawing up our detailed plans. However, our thoughts, in outline, are displayed pictorially in this magazine.

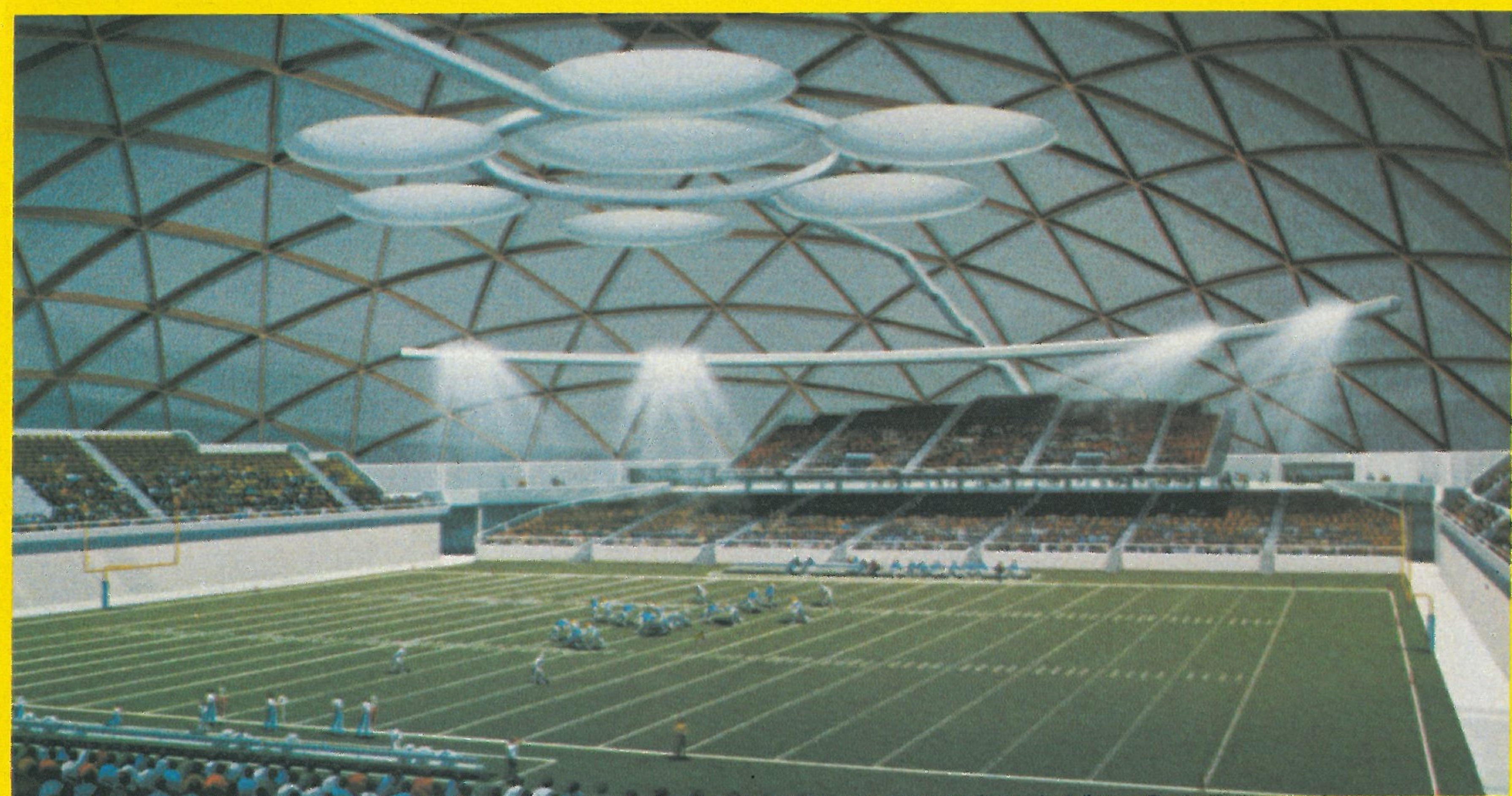
This is the stage, therefore, at which we would welcome your views. This is your club, and we want to provide the sort of surroundings and facilities that you want, so let us hear from you.

As an added incentive, we shall award prizes for the best contributions received before 27th November 1982.

Now is your chance to tell us what you think. Letters please addressed to: Luton Town FC, Kenilworth Road, Luton, marking your envelopes 'New Stadium.'



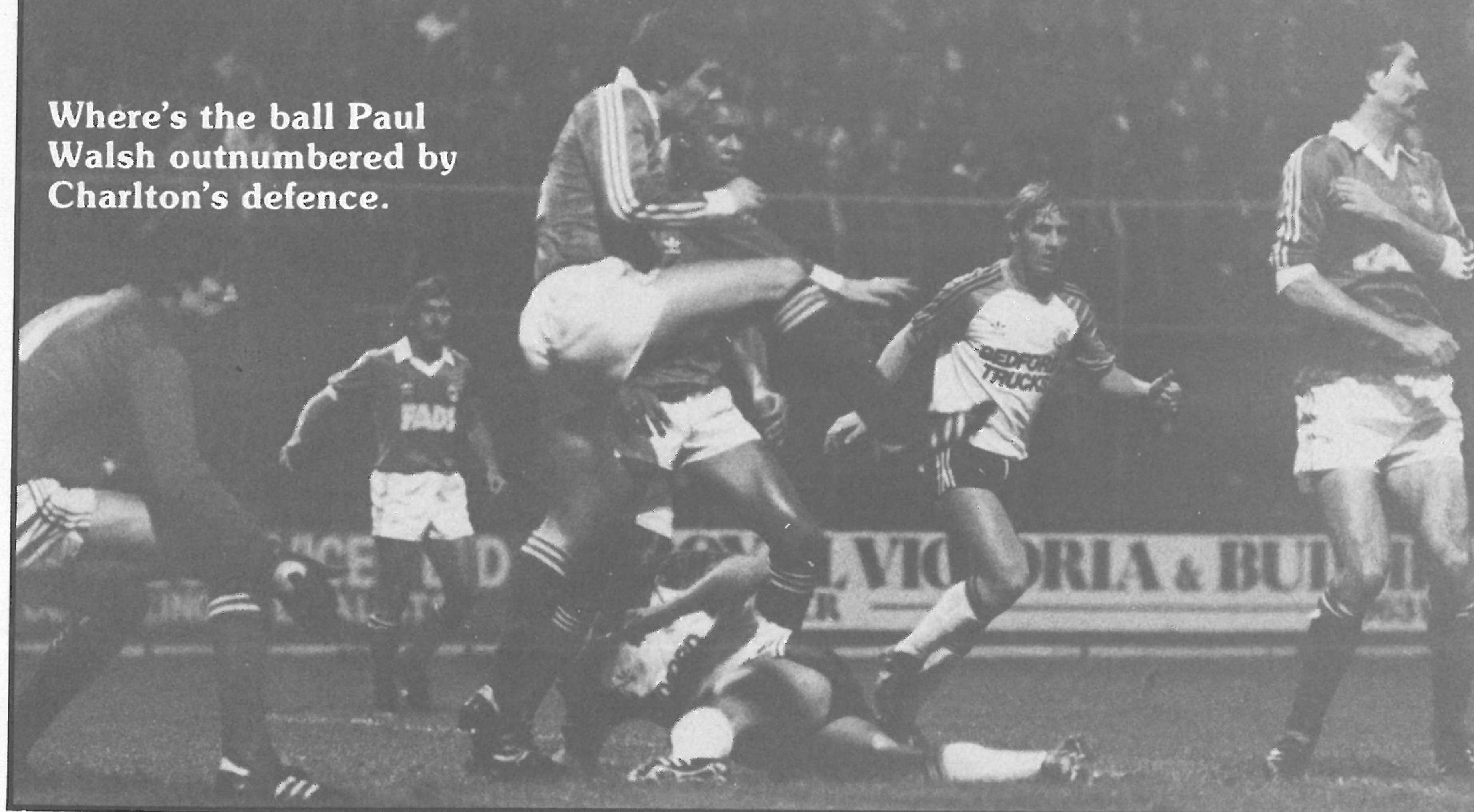
## OUR FUTURE



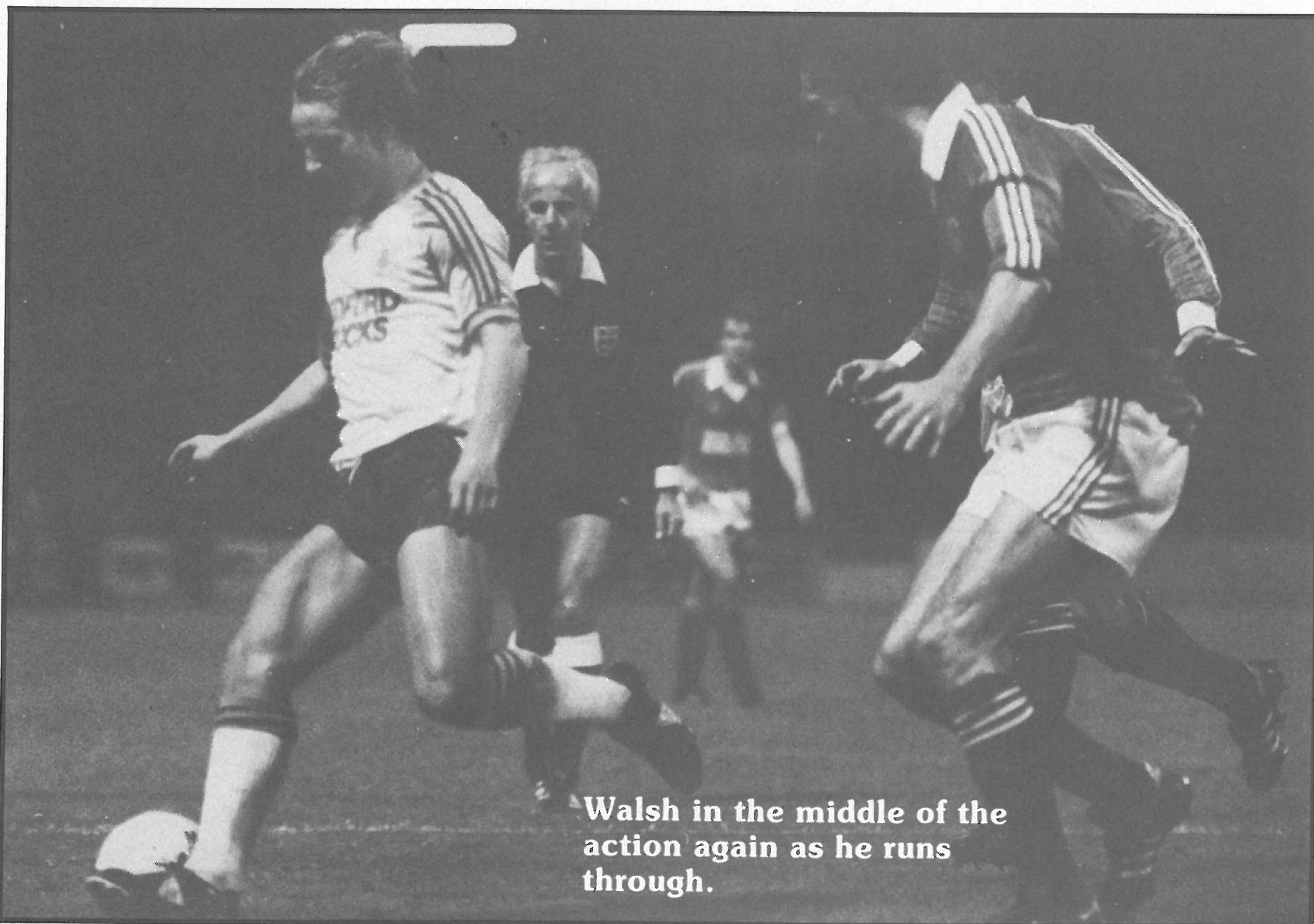
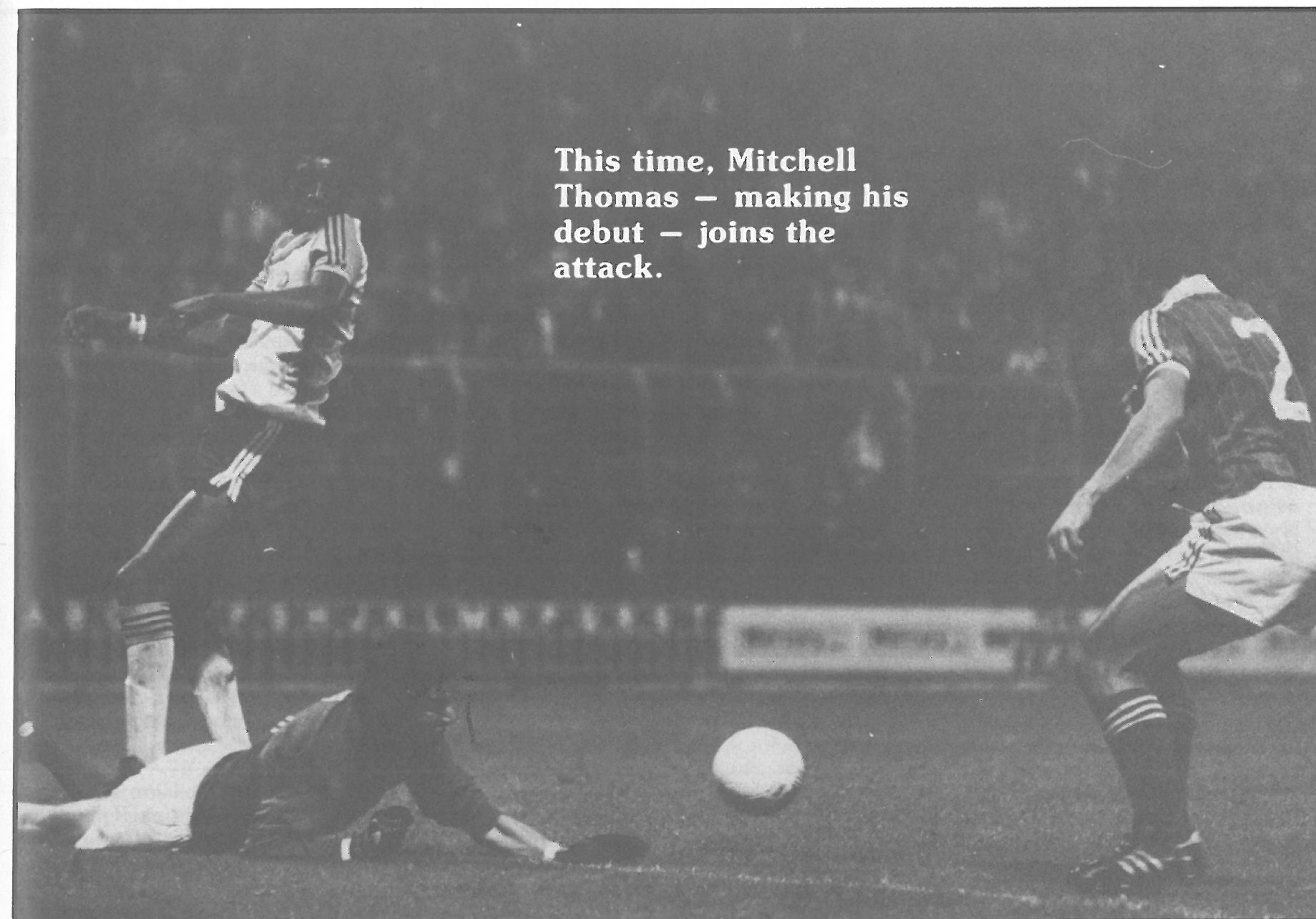


# MILK CUP ACTION FROM CHARLTON

Where's the ball Paul Walsh outnumbered by Charlton's defence.

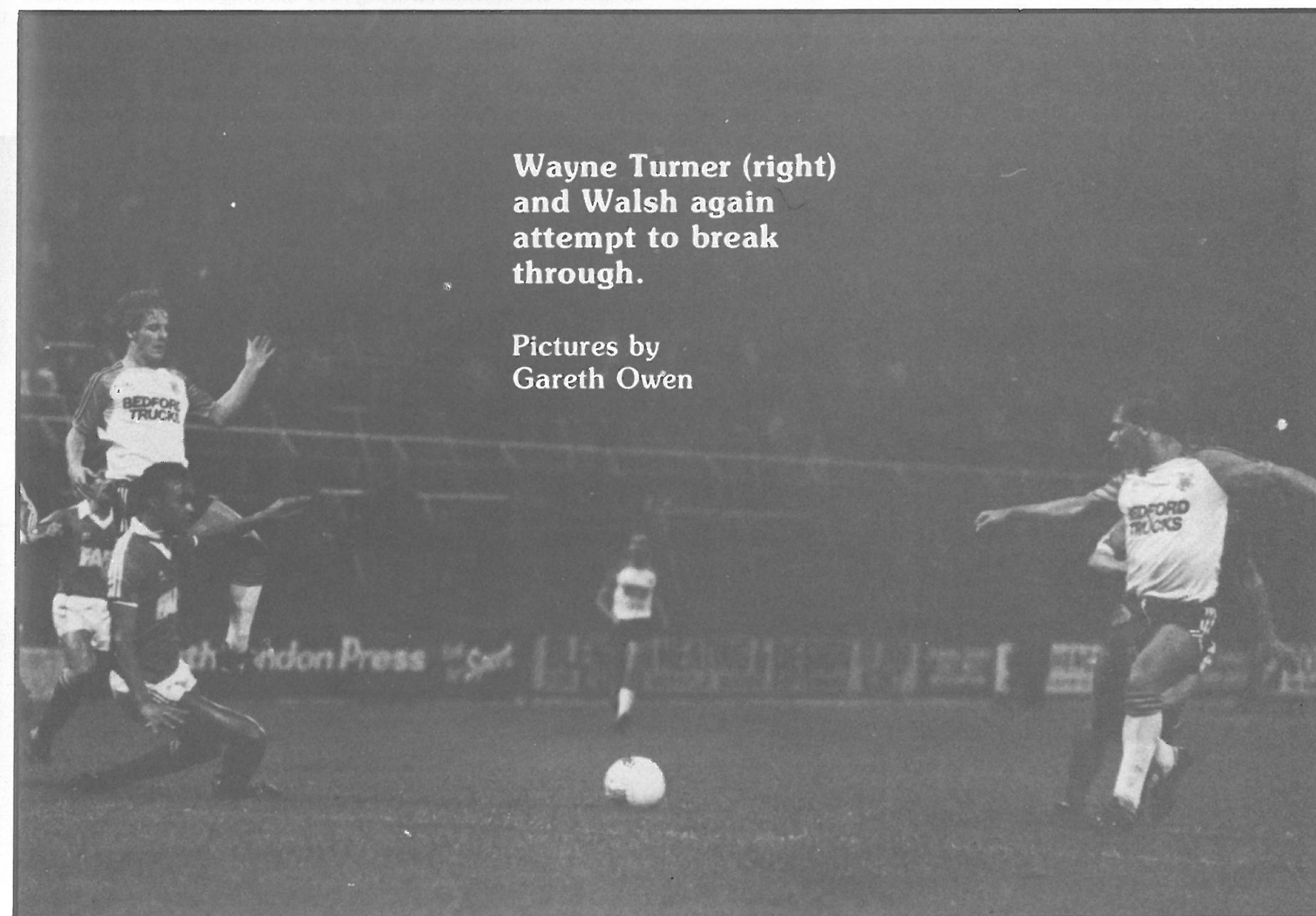


This time, Mitchell Thomas — making his debut — joins the attack.



Walsh in the middle of the action again as he runs through.

Wayne Turner (right) and Walsh again attempt to break through.



Pictures by Gareth Owen



# ARSENAL

A season which opened full of hope has so far been something of a disappointment for Arsenal. Manager Terry Neill finally obtained the two new strikers, Tony Woodcock and Lee Chapman he had been seeking but was then continually frustrated in his attempts to sign Yugoslav international midfielder Vladimir Petrovic.

Having been so heavily criticised for their lack of goals last season, Arsenal placed a great deal of hope in their new striking duo.

Tony Woodcock, signed from Cologne for £500,000, has a fine scoring record throughout a career which started with Nottingham Forest. While he was establishing himself at the City Ground, he was loaned to Lincoln and Doncaster but, once he had won a regular first team place with Forest in 1976-77, his career quickly got off the ground.

He became an England player before his £650,000 move to Cologne in 1979 and his recent appearance against West Germany at Wembley — when he scored England's goal — brought him his 25th cap. Tony scored four goals in his opening ten League games for the Gunners.

Chapman, a £500,000 summer arrival from Stoke, hasn't such a long scoring pedigree as Woodcock but, for the past two seasons, had been Stoke's leading scorer with 17 goals each time. He actually made his League debut whilst on loan to Plymouth in 1978-79 but earned his chance in the Stoke side the following season.

Although he scored in both legs of Arsenal's ill-fated UEFA Cup-tie against Moscow Spartak, Lee managed only one goal in his first eight League games for his new club and then lost his place.

This gave Alan Sunderland the chance to return to the side. He was the Gunners' leading scorer with 12 goals last season. Wolves was his first club and he became an England Under-23 international with them. Arsenal signed him for £240,000 in 1977.

If this new striking partnership has still not produced the desired result, Neill might turn to John Hawley, the big forward he signed from Sunderland for £50,000 last season. Hawley, who made a couple of appearances as substitute during the early weeks of the season, was signed by Leeds from Hull City in 1978 for £80,000.

John was Leeds' top scorer with 17 goals in his first season but, early in 1979-80, they sold him to Sunderland for £200,000. Sadly, he never settled at Roker, lost his place and was glad last season to join Arsenal.

The midfield has had a settled look about it and we can expect to see Brian Talbot, Stuart Robson, Paul Davis and Graham Rix lining up here.

Talbot, who has been capped six times by England, developed with Ipswich and was in the Ipswich side which beat Arsenal in the 1978 FA Cup final. He was transferred to the Gunners for £450,000 the following season and appeared in the next two FA Cup finals as an Arsenal player.

Robson made a spectacular First Division debut at right back against West Ham last December but later returned as a midfielder to hold his place for the closing three months of the campaign.

Davis was blooded in Arsenal's First Division side three seasons ago and, last season, established himself as a permanent member of the side with a series of intelligent displays in midfield.

Rix was an ever-present member of England's World Cup squad in Spain and won his 15th cap in last month's game against West Germany. Graham came into the Arsenal side in 1977, his skilful left wing play earning him an immediate place.

David O'Leary and Chris Whyte are the two central defenders.

O'Leary has been in the side since his debut in 1975 and is now also an established Republic of Ireland international

## DISAPPOINTING START FOR ARSENAL

with well over 20 caps. Whyte is a young giant, introduced to the side last season, and who played with such assurance that Neill abandoned his search for a successor to Willie Young. He has already played for the England Under-21s.

John Hollins, a former target for Luton and Kenny Sansom from the full back partnership.

Versatile Hollins, for so many years such a distinguished midfielder player, is carving out a new career for himself at right back. John, who was capped by England in the Chelsea days, has previously played at full back only in emergencies. He was transferred to QPR for £85,000 in 1975 and to Arsenal for £75,000 four years later. John now looks back on more than 700 appearance in the Football League.

Sansom, England's regular left back with 29 caps, began his career with Crystal Palace, and was valued at £1 million when he joined Arsenal in part-exchange for Clive Allen in 1980.

The consistency of the two full backs has limited John Devine to only a handful of appearances this season.

He was first introduced to the Gunners' First Division team in 1977-78 and later won six caps for the Republic of Ireland.

An injury to Pat Jennings enabled George Wood to return to First Division football last season and he has now established himself as the number one choice. George is an international in his own right, having won three Scottish caps in his Everton days.

He joined Arsenal for £150,000 during the 1980 close season, and last season won a recall to the Scottish team. He began his first class career with East Stirling in 1971 and moved to Blackpool for £7,000 a year later. Everton invested £150,000 in his transfer in 1977.

Arsenal have won two away League games so far — at Coventry (2-0) and Ipswich (1-0). They drew at Manchester

United (0-0) but were beaten at Stoke (1-2) and Nottingham Forest (0-3).

Their UEFA Cup hopes came to an abrupt end in the first round. After losing the first leg only 2-3 to Moscow Spartak in Russia, Arsenal were confident of going through. But they were well beaten 2-5 at Highbury.

In the Milk Cup they struggled to beat Cardiff City 2-1 in the first leg at Highbury but finally went through 5-2 on aggregate.

A flick through the record books shows the Gunners to be one of only four clubs to win the FA Cup-League double and one of only two to achieve a hat-trick of League Championships.

In recent years, they have usually been on the brink of new triumphs without quite matching the virtuosity of clubs like Liverpool and — dare we mention it — their neighbours Spurs.

Arsenal's complete list of honours includes winning the UEFA Cup (when it was known as the Fairs Cup) in 1970, eight League Championships and five FA Cup triumphs. They have never won the League Cup, though they were losing finalists in 1968 and 1969.

Arsenal are currently enjoying the longest unbroken run in membership of the First Division, having been perpetual members since their election in 1919.

For the past decade they have maintained a place among the leading clubs although the only trophy they have won during this period was the FA Cup when they beat Manchester United with a last minute goal in 1979.

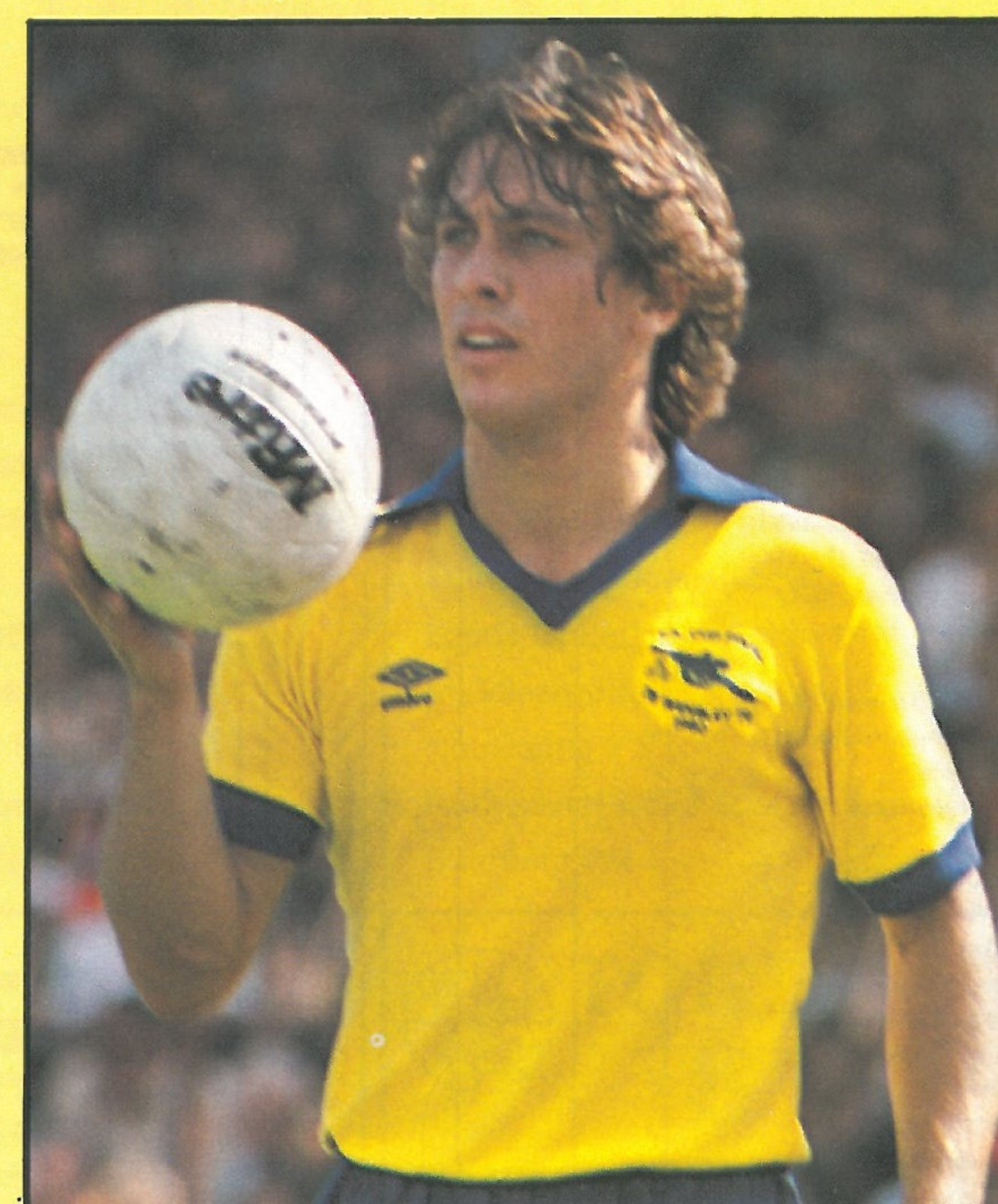
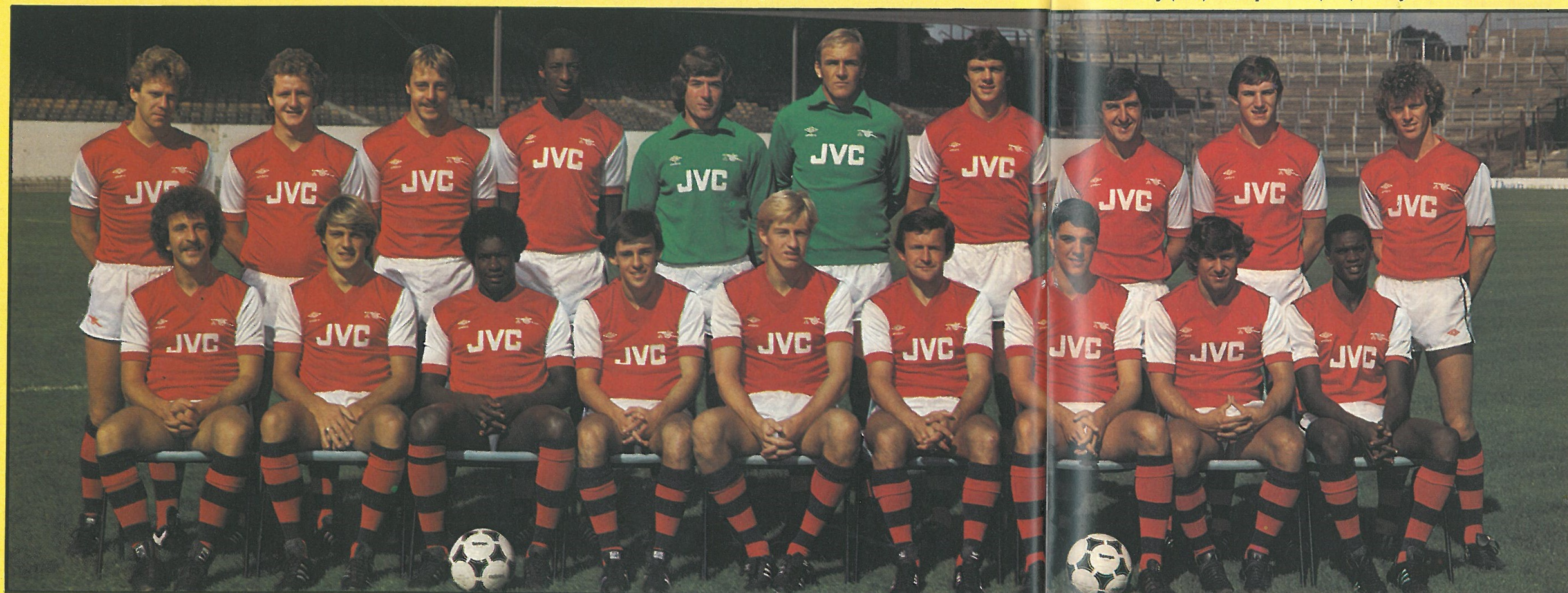
When their team settles there must be every chance of them adding to their successes.

Before they can contemplate winning trophies, though, Arsenal will need to find more consistency, particularly at Highbury where they produced only three victories from their opening seven League and Cup games.

### ARSENAL LINE-UP

**Standing (left to right):** Tony Woodcock, Peter Nicholas, John Hawley, Chris Whyte, Pat Jennings, George Wood, David O'Leary, Brian Talbot, Stewart Robson, Graham Rix.

**Sitting:** Alan Sunderland, John Devine, Raphael Meade, Brian McDermott, Lee Chapman, John Hollins, Paul Vaessen, Kenny Sansom, Paul Davis.



KENNY SANSON



# POINTS ATTENDANCE NO'S LEAGUE TABLES

Opponents	Result	Attendance	Points	Position	Findlay	Stephens	Money	Horton	Goodyear	Donaghy	Hill	Stein	Walsh	Antic	Moss	Turner	Kellock	Judge	Fucillo	Thomas	Own Goal	
<b>Goals Scored</b>																						
<b>1982</b>										1	2	11	5		5	1			2		1	
<b>August</b>																						
28 Tottenham Hotspur	2-2	35,195	1	—	1	2	3	4	5	6	7	8●	9	10	11							
31 West Ham United	0-2	13,403	1	—	1	2	3	4	5	6	7	8	9	10	11							
<b>September</b>																						
4 Notts County	5-3	9,071	4	—	1	2	3	4	5	6	7●	8	9●	10	11●							
8 Aston Villa	1-4	18,823	4	—	1	2	—	4	5	6	7	8	9	10+	11●	3	12					
11 Liverpool	3-3	33,694	5	18	1+	2	3	4	5	6	7	8●	9	10	11●	10	—	—				
18 Brighton & Hove Albion	5-0	11,342	8	11	—	2	3	4	5	6	7	8●	9	—	11●	10●		1				
25 Stoke City	4-4	18,475	9	12	—	2	3	4	5	6●	7	8●	9+	12	11	10	—	—	1			
<b>October</b>																						
2 Manchester United	1-1	17,009	10	12	1	2	3	4	5	6	7●	8	9	12	11	10+	—	—				
5 Charlton Athletic (MC2-1L)	3-0	7,030	—	—	1	2	3	4	5	6	7	8●	9	—	11	—	—	—	10●			
9 Birmingham City	3-2	13,772	13	8	1	2	3	4	5	6	7	8●	9●	—	11●	—	—	—	10			
16 Ipswich Town	1-1	13,378	14	11	1	2	3	4	5	6	7	8●	9	—	11	—	—	—	10			
23 West Bromwich Albion	0-1	16,345	14	13	—	2	3	4	5	6	7	8	9	—	11	12	—	1	10+			
26 Charlton Athletic (MC2-2L)	0-2	5,973	—	—	1	—	3	4	5	6	7	8	9	—	11	10	—	—	—	2		
30 Nottingham Forest	0-2	12,648	14	16	1	—	3	4	5	6	7	8	9	12	11	2	10+	—	—	—		
<b>November</b>																						
6 Arsenal																						
9 Blackpool (MC3)																						
13 Sunderland																						
20 Coventry City																						
27 Southampton																						
30 Milk Cup (4)																						
<b>December</b>																						
4 Swansea City																						
11 Manchester City																						
18 Everton																						
27 Watford																						
28 Norwich City																						
<b>1983</b>																						
<b>January</b>																						
1 Coventry City																						
4 West Ham United																						
8 FA Cup (3)																						
15 Tottenham Hotspur																						
18 Milk Cup (5)																						
22 Brighton & Hove Albion																						
29 FA Cup (4)																						
<b>February</b>																						
5 Liverpool																						
Milk Cup SF (1st leg)																						
12 Manchester United																						
Milk Cup SF (2nd leg)																						
19 Birmingham City																						
26 Ipswich Town																						
<b>March</b>																						
5 West Bromwich Albion																						
12 Nottingham Forest																						
19 Arsenal																						
26 Sunderland (MC Final)																						
<b>April</b>																						
2 Norwich City																						
4 Watford																						
9 Aston Villa																						
16 Notts County																						
23 Swansea City																						
30 Southampton																						
<b>May</b>																						
2 Stoke City																						
7 Everton																						
14 Manchester City																						
21 FA Cup Final																						

+ Player replaced by substitute \* Own Goal ● Goalscorer Home fixtures in bold Copyright of The Football League

**FOOTBALL COMBINATION FIXTURES 1982-83**

Aug. 28 Watford 7.30	0 - 1
Sept. 1 Norwich City	3 - 0
Sept. 13 Brighton 7.30	1 - 0
Sept. 22 Oxford United	3 - 1
Sept. 27 West Ham United 7.30	1 - 1
Oct. 5 Crystal Palace	P
Oct. 9 Birmingham City 3.00	0 - 3
Oct. 16 Ipswich Town	0 - 2
Oct. 23 Q.P.R. 3.00	0 - 2
Nov. 6 Arsenal	
Nov. 9 Fulham	
Nov. 15 Leicester City 2.15	
Nov. 20 Swansea City 3.00	
Nov. 27 Southampton	
Dec. 6 Bristol Rovers 2.15	
Dec. 14 Chelsea	
Dec. 20 Charlton Athletic 2.15	
Dec. 28 Reading 2.15	
Jan. 1 Swindon Town	
Jan. 3 Fulham 2.15	
Jan. 10 Tottenham Hotspur 2.15	
Jan. 15 Watford	
Jan. 24 Oxford United 2.15	
Jan. 29 Swansea City	
Feb. 5 Brighton & Hove Albion	
Feb. 7 Millwall	
Feb. 14 Crystal Palace 2.15	
Feb. 22 Birmingham City	
Feb. 26 Ipswich Town 3.00	
Mar. 8 Q.P.R.	
Mar. 14 Millwall 7.30	
Mar. 19 Arsenal 3.00	
Mar. 30 Leicester City	
April 2 Reading	
April 9 Tottenham Hotspur	
April 11 Norwich City 7.30	
April 18 Swindon Town 7.30	
April 26 Bristol Rovers	
April 30 Southampton 3.00	
May 3 West Ham United	
May 10 Charlton Athletic	
May 16 Chelsea 7.30	

**DIVISION ONE TABLE 1982-83**

	Home						Away					
	P	W	D	L	F	A	P	W	D	L	F	A
Liverpool	12	4	2	0	17	7	2	2	2	7	5	22
West Ham United	12	4	1	1	17	6	3	0	3	8	10	22
Manchester United	12	4	2	0	11	4	2	2	2	7	7	22
WBA	12	5	0	1	13	4	2	0	4	7	14	21
Tottenham	12	4	1	1	21	7	2	1	3	4	10	20
Manchester City	12	4	1	1	9	6	2	1	3	8	11	20
Nottingham Forest	12	4	1	1	11	4	2	0	4	10	15	19
Watford	12	4	2	0	17	3	1	1	4	7	11	18
Stoke City	12	3	2	1	14	10	2	1	3	9	8	18
Aston Villa	12	5	0	1	18	5	1	0	5	2	12	18
Everton	12	4	2	0	16	6	1	0	5	8	12	17
Coventry	12	5	0	1	9	4	0	2	4	4	11	17
Arsenal	12	2	2	2	7	6	2	1	3	4	6	15
Brighton	12	4	2	0	10	5	0	1	5	3	22	15
Ipswich Town	12	2	1	3	11	8	1	4	1	10	6	14
Luton Town	12	2	2	2	12	9	1	3	2	13	16	14
Swansea City	12	4	0	2	11	9	0	2	4	4	11	14
Notts County	12	4	1	1	9	9	0	1	5	6	14	14
Southampton	12	4	0	2	9	7	0	2	4	4	17	14
Sunderland	12	2	3	1	9	6	1	1	4	8	18	13
Norwich	12	2	2	2	9	7	0	3	3	5	14	11
Birmingham City	12	1	3	2	5	8	0	2	4	2	15	8

**DIVISION ONE APPS & GOALS 1982-83**

		FA/
	App	MC
Antic	4(4)	—
Donaghy	12	2
Findlay	9	2
Fucillo	3	1
Goodyear	12	2
Hill	12	2
Horton	12	2
Judge	3	—
Kellock	1(1)	—
Money	11	2
Moss	12	2
Stein	12	2
Stephens	11	1
Thomas	—	1
Turner	6(1)	1
Walsh	12	2
Own Goals	—	—

**COMBINATION TABLE 1982-83**

	P	W	D	L	F	A	P
--	---	---	---	---	---	---	---



# Luton's star.



Two teams from Luton are currently making a name for themselves.

'The Hatters' are in the first division.

And Vauxhall-Opel are enjoying fantastic sales success.

Achievements in different fields, but

for the same reasons.

A consistently high all-round performance and magnificent team effort.

Facts confirmed by checking out today's line-up, and by a visit to your local Vauxhall-Opel dealer.

With stars like the Cavalier, the coming season promises to be even better for us.

We're sure that's also true of Luton Town.



## VAUXHALL-OPEL