

THE HATTER

FOOTBALL LEAGUE DIVISION ONE
MONDAY 27th DECEMBER 1982
LUTON TOWN v WATFORD



TODAY'S MATCH IS SPONSORED BY

BEDFORD TRUCKS

David and the team send their compliments
of the season to all our supporters



Gareth Owen Photography,
Luton 418025

The Herald Newspaper,
Luton 415061

Cleandustrial Services, 01 882 4626

N. S. Fookes & Sons (Plant
Facilities) Ltd, Luton 26783

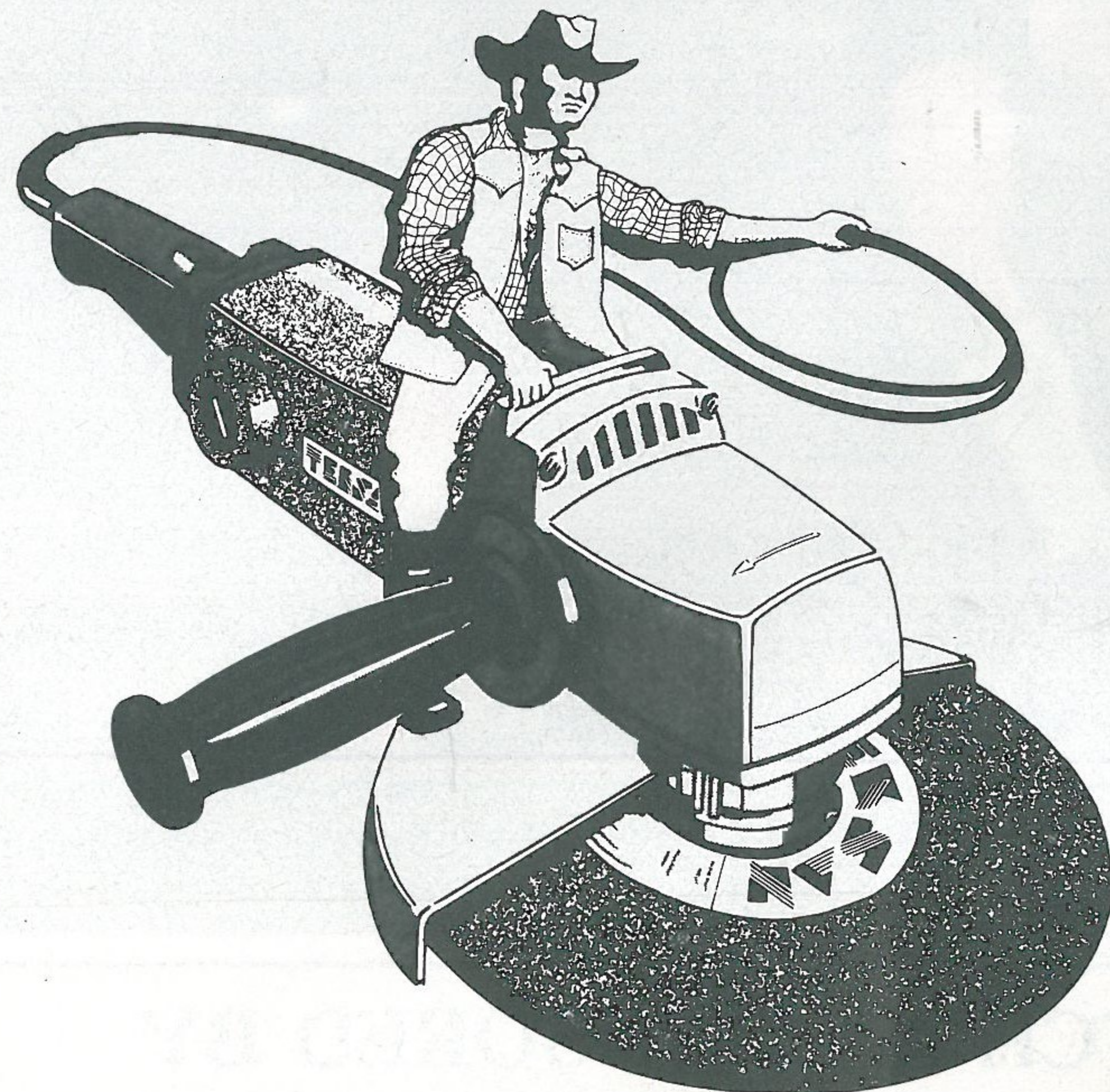
Princess Packaging Ltd,
Harpenden 66806

Autobodies Motor Repairs,
Flitwick 712494

R. W. Unwin & Co Ltd,
Pharmaceutical & Fine Chemical
Intermediates, Welwyn 6441/2/3/4

Hemmings & Capey (Leicester) Ltd,
Leicester 769341

Neahurst Ltd, Hitchin 813545



**POWER
YOUR
WAY TO
THE
TOP!**

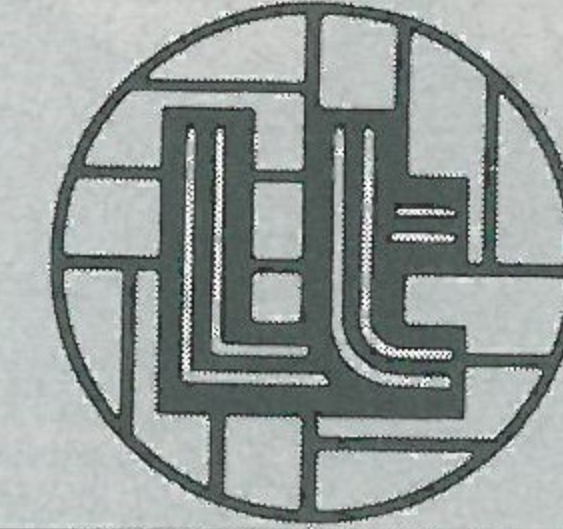


TEK POWER TOOLS LTD

Britain's leading power tool specialists

TEAM CHECK

**LUTON
TOWN**



- 1 JAKE FINDLAY (1)
- 2 KIRK STEPHENS
- 3 RICHARD MONEY
- 4 BRIAN HORTON
- 5 CLIVE GOODYEAR
- 6 MAL DONAGHY
- 7 RICKY HILL
- 8 DAVID GEDDIS
- 9 PAUL WALSH
- 10 WAYNE TURNER Focused
- 11 DAVID MOSS
- 12 ANTIC

Today's Match Ball is sponsored by:
BEDFORD TRUCKS

WATFORD



- 1 STEVE SHERWOOD (2)
- 2 PAT RICE
- 3 WILF ROSTRON
- 4 LES TAYLOR
- 5 STEVE SIMS
- 6 IAN BOLTON
- 7 NIGEL CALLAGHAN
- 8 LUTHER BLISSETT
- 9 ROSS JENKINS
- 10 KENNY JACKETT
- 11 JOHN BARNES
- 12 JOHNSON

Today's Match is sponsored by:
BEDFORD TRUCKS

Referee: B. H. DANIELS. Linesmen: G. CLARIDGE (Red Flag), K. A. MILLER (Yellow Flag)

Chairman: Denis Mortimer

Directors:

R. L. Banks, D. J. Evans, E. S. Pearson
R. J. Smith, J. R. Smith (Executive)
D. J. Pleat (Team Manager)

President: T. Hodgson

Vice-Presidents:

J. A. C. Bain (Deputy President)
Lord Hill, Sir Reginald Pearson OBE,
A. G. Berry, J. B. Brent, B. Cole,
B. England, N. S. Fookes,
C. Holloway, I. E. Holmes,
C. J. Evans, R. Larkinson,
L. Leppington, Eric Morecambe OBE,
R. Safranek, E. Waller, R. Unwin

Administration:

General Secretary: Graham MacKrell
Club Secretary: John Wilkinson
Business Development Executive:
Bill Tomlins

Projects and Advertising Executive:
Mike Beevor

Promotions Manager: Mike Hardwicke

Catering Manager: Clive Hustwitt

Assistant Promotions Manager:
John Gornall

Youth Development Officer: Colin Ball

Travel Organiser: Mrs C. Ball

Auditors:

Arthur, Young, McClelland,
Moore & Co.

Photographer: Gareth Owen

Playing:

Coaches:

David Coates, John Moore and
Trevor Hartley

Physiotherapist: John Sheridan

Doctor: W. A. C. Berry MBBS



LUTON TOWN FC

70-72 Kenilworth Road

Luton

Tel: 411622

All ticket enquiries please contact
Luton 30748. All matchday information is
obtainable from our 24-hour answering
service - Telephone Luton 33010

Printed by
Hemmings & Capey (Leicester) Ltd

BEDFORD BUSINESS MEANS:

**You need it,
we've
got it.**



A vehicle for every business.

You'll find Bedfords working in just about every business you can think of. That's because we offer a vast range of vehicles from light vans to heavy-duty trucks to keep the wheels of British industry turning. And, if you came to the match by coach, the chances are that also was a Bedford.



A dealer round every corner.

You'll find a Bedford dealer is never far away. He'll help you choose the vehicles that best suit your business needs; he'll advise you on our special leasing, insurance and warranty schemes; and he'll maintain your Bedfords in peak condition throughout their long working life.

Because, giving our customers what they need, when they need it, is what Bedford business means.



**BEDFORD
MEANS
BUSINESS**

MY VIEW

Happy Christmas to you all.

I welcome Graham Taylor and his Watford team to Kenilworth Road today for what I hope will be a fine game for the two sets of supporters.

Watford, of course, were promoted to the First Division with ourselves last May when they finished eight points behind us as runners-up.

There can be no doubt that Graham has done well this season to take his team to join the Division's leaders and we can all take inspiration from their fine start to their programme.

It could be said that we look on their position with some measure of envy, but I am sure Graham and his players felt the same last season when they looked at our overall consistent performance.

Graham and I have both attempted, with a strong measure of success, to use an attacking formula this season in a bid to encourage supporters to watch our games.

Goals are definitely the name of the game and I will never alter that policy at Kenilworth Road. Without goals, the game will die because people simply don't want to watch negative and continuous defensive football.

Last season, we took four points off Watford, winning 4-1 at Kenilworth Road and drawing 1-1 in the return game in February. I expect the competition and the thirst for a victory by both teams to be evident today.

But there usually has to be a winner and a loser. Under the old system, a draw was worth half a victory. Now it's worth only a third and I believe the three points for winning has sharpened the game.

We have had some excellent games against Watford in recent seasons when



the fans have behaved immaculately. To them, I say: 'Keep up the good work' and shout yourself hoarse to drive on your team.

Players will respond to your encouragement and, as far as I am concerned, your away support for Luton Town this season has been first class. There is no better motivation for our players when they arrive at an opposing ground to be met by dozens of fans.

I sincerely hope you enjoy today's entertainment. We shall, without doubt, do all within our power to make it attractive for the Luton supporters.

We have another opportunity to entertain you on New Year's Day when Coventry visit us. I hope to see you all then.

DAVID PLEAT

HACFIELD LIMITED

YOUR FRIENDLY



DEALER

INVITE YOU TO
TEST DRIVE THE NEW
SIERRA

SPECIALISTS IN NEW CAR
LEASING AND SELF-DRIVE
HIRE

BEST WISHES
FOR A HAPPY NEW YEAR



HACFIELD LIMITED AND
HACFIELD (LEASING)
LIMITED

71 Bedford Road
Barton Le Clay, Bedford
Telephone: Luton 881224

LUTON TRAVEL

We have had a disappointing response from our travelling supporters for the last three away games which, we hope, is only seasonal. We are looking to numbers increasing again as we start the New Year.

We are pleased to report our registered Travel Club membership is growing, enabling more of you to take advantage of concessionary fares.

These apply to our trip to Norwich tomorrow, which, as you will all now know, is an evening match. This, of course, means departure times have changed, and as conditions of roads, volume of traffic, etc., is an unknown quantity, we have allowed plenty of time:

Maple Road 3.30 p.m., Hitchin 3 p.m., Stevenage 2.45 p.m., Hemel Hempstead 2.45 p.m., Redbourn 3 p.m., Harpenden 3:15 p.m., Aylesbury 2.30 p.m., Leighton Buzzard 2.45 p.m., Milton Keynes 3 p.m.

Fares are: Registered member — Adults £3.50, Juveniles £3. Non-members — Adults £4, Juveniles £3.50.

Couriers report that the Aylesbury-Aston Clinton 'in' run is not being used to full advantage, and have requested this service reverts to last season's route, with additional stops, as follows:

Aylesbury bus station 1 p.m., Berton Old School 1.10 p.m., Wing Red Lion 1.20 p.m., Leighton Buzzard (Alan Pond's garage) — note new pick-up 1.30 p.m., Stanbridge Five Bells 1.40 p.m., Tilsworth Post Office 1.50 p.m., Luton Town FC 2.15 p.m.

We are also informed that it is easier to pick-up at Stony Stratford before Wolverton, so these pick-up times will now reverse, i.e. Wolverton 13.00 or 17.45, Stony Stratford 13.05 or 17.50. To clarify the pick-up point in Milton Keynes, this is Midsummer Boulevard, H.3 (opposite McDonalds). These changes will take place from the next home game against Coventry.

Details of our first trip away in 1983 will be published in the Coventry magazine.

CATHERINE BALL
Travel Organiser

NOW OPEN

THE PINK ELEPHANT FUN HOUSE

LUTON

SKIMPOT LANE, LUTON, BEDS.

OPEN SIX
NIGHTS A
WEEK

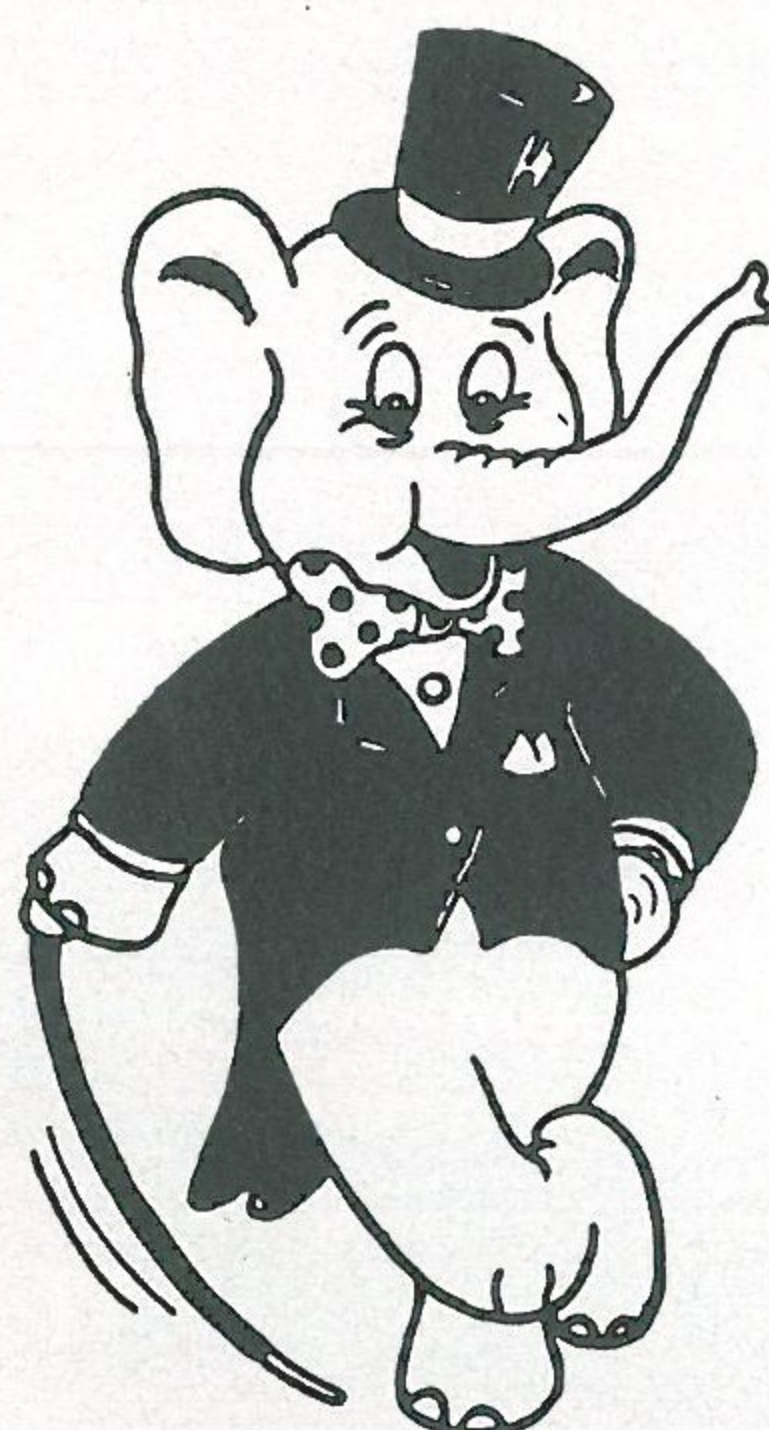
Mon-Weds
7.30pm-midnight
Thurs-Sat
7.30pm-1.00am

STRICTLY OVER 18's
ONLY

Casual dress but smart
(no jeans or trainers)

THE MANAGEMENT
RESERVE FULL RIGHTS
OF ADMISSION

Enquiries:
Luton 594144



Officially Approved by The Football Association and The Football League

FA CUP '82-83 WALL CHART MAGAZINE

99p

Inside:
giant wall chart with over 380 stick-on club badges

Steve Perryman: 'How we won the Cup, twice'

Packed with exciting full-colour photos

Who will win - analysis

Win a Video Recorder in easy to enter competition

MEMBERS OF THE

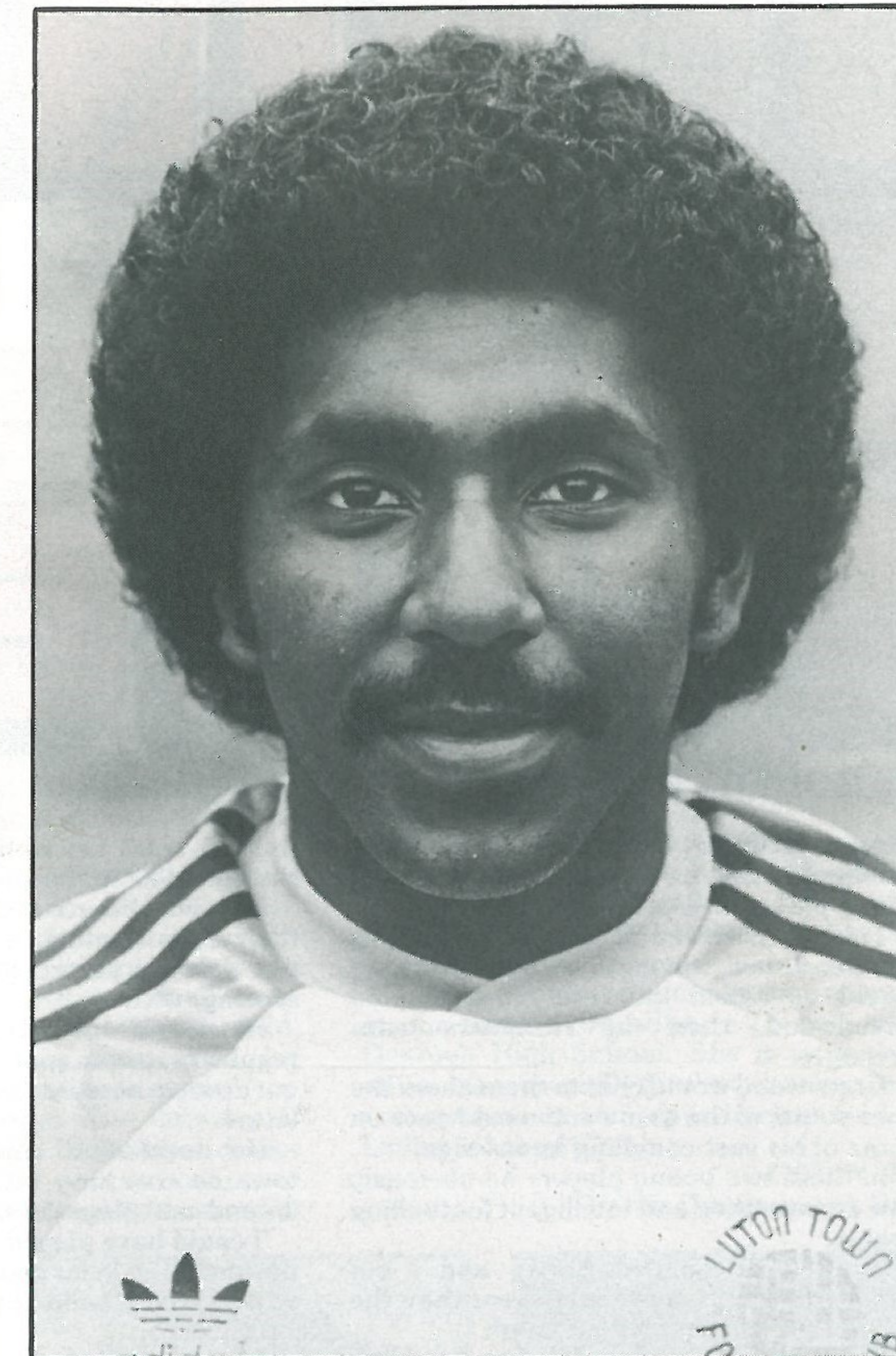
KENILWORTH SUITE

- AMERICAN-CAN (UK) LTD
WALTON ROAD, CALDECOTTE
BOW BRICKHILL
MILTON KEYNES MK7 8AE
- BARRATT DEVELOPMENTS
(LUTON) LTD
PO BOX 5, BARRATT HOUSE
LUTON L42 7XJ. TEL: LUTON 422771
- MR D. SAVAGE
BEDFORD COMMERCIAL VEHICLES
LUTON
- A. G. BERRY FCCA
CHAIRMAN, BLUE ARROW GROUP
SERVICES LTD
5 LONDON ROAD, ST ALBANS, HERTS
- BRENGREEN HOLDINGS PLC
61 CHEAPSIDE, LONDON EC2V 6AX
- B. COLE ESQ
CLEANINDUSTRIAL SERVICES LTD
PALMERS GREEN, LONDON N13
TEL: 01-882 4626
- FILMERGRAPHIC ASSOCIATES
PHOTOTYPESSETTING AND PRINTING
BAINSON HOUSE, ALTON ROAD, LUTON
TEL: LUTON 36407
- FINE STAMPS LTD
BILTON WAY, LUTON
TEL: LUTON 36761
- N. S. FOOKES ESQ.
N. S. FOOKES AND SONS
(PLANT FACILITIES) LTD
45 LATIMER ROAD, LUTON
TEL: LUTON 26139
- MR E. FOUNTAIN
VAUXHALL MOTORS
LUTON
- S. GOLBY, FREDK RAY LTD
STANBRIDGE ROAD
LEIGHTON BUZZARD
TEL: 372241
- BRIAN E. HANDSCOMBE
(LIFE AND PENSIONS BROKER)
48 ALMA STREET, LUTON LU1 2PL
TEL: LUTON 425921/4
- MR I. E. HOLMES
IVOR HOMES LTD
82-88 MARSH ROAD, LUTON
TEL: LUTON 56622
- C. J. HUDSON ESQ.
E. W. HOLDINGS LTD
6 UNION ST., LUTON
TEL: LUTON 30511
- RICHARD C. LARKINSON
(BALDOCK) LTD
TWENTY PENCE ROAD
COTTENHAM, CAMBS.
- P. M. LAYCOCK
11 THE AVENUE
FLITWICK, BEDS.
- MARK JAMES (SALVAGE) LTD
16 WEST STREET, DUNSTABLE
TEL: DUNSTABLE 605944
- MARSHALLS OF LUTON
(BUILDERS) LTD
SARUM ROAD, LUTON
TEL: LUTON 597666/9
- MR & MRS S. J. PEARSON
55 LUTON ROAD, WILSTEAD
BEDFORDSHIRE JK45 3ET
- DR & MRS G. L. PLESTER
9 BRIARS CLOSE, NUNEATON
WARWICKSHIRE
- A. HUNTER ESQ.
RAVENMERE LTD. ALLRIC HOUSE
21 FARLEY HILL, LUTON
TEL: LUTON 32640
- RICHMOND ELECTRONICS
(MARKYATE) LTD
HICKS ROAD, MARKYATE, HERTS.
TEL: LUTON 840761
- ROBINSON METAL (LUTON) LTD
CALEB CLOSE
464 DUNSTABLE ROAD, LUTON
TEL: LUTON 53866
- R. S. SAFRANEK ESQ.
NEAHURST LTD, LONDON RD.
LOWER STONDON, HITCHIN
TEL: HITCHIN 94-813545
- MR W. POWERS
SHAW & KILBURN OF LUTON
540-550 DUNSTABLE ROAD
LUTON, BEDS
- TRIMOCO PLC
2 VICTORIA STREET, LUTON
TEL: LUTON 416312
- T. & H. TYRE SERVICES LTD
MANOR ROAD, LUTON
TEL: LUTON 27665
- R. W. UNWIN ESQ.
R. W. UNWIN & CO. LTD
PROSPECT PLACE, WELWYN HERTS.
TEL: WELWYN 6441
- WALLSPAN BEDROOMS
INDUSTRIAL ESTATE
MAULDEN ROAD, FLITWICK, BEDS.
TEL: FLITWICK 713621

HATTER FOCUS



Full name: RICKY ANTHONY HILL
Birthplace: Paddington, London
Birthdate: 5.3.59
Height: 5ft 10in
Weight: 12st 10lb
Married: No
Children: No
Car: Talbot Sunbeam TI
Previous clubs: None
Favourite player: Glenn Hoddle
Favourite other sport: Snooker, table tennis, horse racing
Nickname: Ricks
Favourite newspaper: Daily Mirror
Job or trade before turning professional: None
Favourite other team: Leeds
Player for the future: Mitchell Thomas
Best stadium played in: Lois Casanova, Valencia
Other sports person you most admire: Viv Richards
Most memorable match: Full debut for England at Wembley
If not a player, what job would you do? No idea
Favourite holiday resort: Fort Lauderdale, Florida
Favourite food and drink: Most fishes, lemon & lime
Your best ever all time XI: Leeds United of the early seventies
Biggest disappointment: Not playing in the First Division sooner
Favourite activity on day off: Sleep till midday
Friendliest away fans: Liverpool
Miscellaneous likes/dislikes: Winning on the horses/bad mannered people
Biggest influence on career: Dave Pleat, Danny Bergara, Dave Coates and all the coaching staff at Luton



RICKY HILL

**FORUM
THEATRE
HATFIELD
ADVANCE
BOX
OFFICE
HATFIELD
71217**

EXPLOSIVE! *Forthcoming Events Now Booking!*

You can still see Mike Reid's Christmas Runaround with Linda Dunn, Dick Van Winkle, Russ Stevens, and The Scalliwags on December 27, 28, 29, 30 and January 1 at 6.30pm and December 28 and January 1 at 2.30pm
Fun for all the family — lots of prizes to be won
Tickets Adults £2.75 Concessions £2.25
Special rates available for party bookings

Just a sample of the treats in store for you in 1983
Morrissey Mullen & Zoot Money
Buddy Rich
George Melly
An Evening in Bed with Jeremy Beadle

BEHIND THE SCENES

By ROBERT HADGRAFT

Trevor Hartley's potential as a coach first emerged when he was an inexperienced young player at West Ham United.

Trevor recalls the days when he and his brother-in-law teammate Bobby Howe would be called into the office of Ron Greenwood, then the Hammers team manager.

Greenwood would chat to them about the finer points of the game and would pass on some of his vast coaching knowledge.

In these two young players he obviously saw constructive and intelligent footballing brains.

'I think he singled Bobby and I out because we were more intelligent than the others,' said Trevor with a laugh.

West Ham has been a fine breeding ground for coaches and managers, and this has much to do with the Greenwood approach to the game. Trevor remembers how he used to encourage his players not to fritter away their spare time, but to go to local schools and coach the youngsters.

His influence on Trevor Hartley wasn't wasted because Trevor gained his full FA coaching badge at the tender age of 20.

Trevor was born in Doncaster, but came south as a youngster. He followed his local side Arsenal as a boy, and went to training sessions for schoolboys at Highbury.

He played for London Grammar Schools and an FA Youth XI, and at the age of 17 signed professional forms at Upton Park.

West Ham had just won the FA Cup and were soon to win the Cup-Winners' Cup at Wembley, and Trevor recalls fondly the glory days of the Moore/Hurst/Peters era.

Trevor was coached in the Youth team by John Lyall, now the Hammers manager. Playing in midfield or up front, Trevor managed only five League appearances in

the first team before he left Upton Park at the age of 22 in the summer of 1969.

He joined Fourth Division Bournemouth, then under Freddie Cox, and over the next two seasons played in 42 League games, scoring twice.

He found he wasn't commanding a regular first team spot with the Cherries and got down to some serious thinking about his future.

He decided to concentrate his efforts towards coaching rather than remain an 'in-and-out' player in the lower Divisions.

'I could have played for a bit longer, but I decided to go in for coaching at a young age so that I could build up plenty of experience,' said Trevor.

Effectively, then, his playing career came to an end at the age of 24. His last game was a vital promotion encounter towards the end of 1970-71 when he came on as substitute to replace Dennis Longhorn in a match with Darlington. Bournemouth won 1-0 with a Ted MacDougall goal, in front of 8,455 spectators, and clinched promotion to Division Three soon afterwards.

Things looked rosy for the Dean Court club in the early seventies. Flamboyant John Bond was in the manager's seat, the club name was changed to the continental-sounding AFC Bournemouth, and MacDougall and Boyer were scoring prolifically.

Eventually John Bond left for Norwich, took players with him, and times began to get a little more difficult again.

Still well short of his 30th birthday, Trevor was given the manager's job and spent six months trying to make things come good again.

For financial reasons the club was forced to sell its best players. Phil Boyer's depar-



TREVOR HARTLEY

ture was followed by the steady break-up of a good team.

Trevor managed to get a few good results, though, and says he enjoyed the experience of being in the 'hot seat'.

He was soon off to more exotic climes, however. A recommendation by Allen Wade, director of coaching at the FA, led to his appointment as coaching director and technical adviser to the Singapore Football Association.

He spent four years in this job, beginning in March 1976, and worked with players who showed splendid skills but lacked the aptitude for team-work.

In 1980 Trevor was back in England, where he was soon being asked to join the coaching staff at Kenilworth Road by David Pleat, a man he had previously met on a coaching course.

These days Trevor works with the Reserves and Youth players at Kenilworth Road, although he has become involved with the first team by studying opponents before a game.

Trevor's soccer philosophy involves the procreation of enterprising attacking football. He places a heavy emphasis on skill and ball work and says that he and his fellow coaches want bright, imaginative footballers at Luton.

His greatest pleasure is seeing the club winning matches at all levels, but he says the way they win is just as important.

He is an enthusiastic and approachable man whose cheerful facade masks a very thoughtful approach to soccer.

'I have always been interested in how to achieve things and how to reach targets,' he says.

Trevor, who lives at Amphill, is married to Julie, and has two sons, Lee and Dean.

JUNIOR HATTERS



My good wishes to all our young supporters and their families at Christmas, and at a time when good will is in the air, a very special welcome to a party of Junior Hornets from Watford — who are with us today in our Junior Hatters Family Enclosure.

I hope all young people here today will see an exciting game and enjoy the chance to see a thrilling local derby, whatever the result.

Our Christmas family disco was enjoyed by over 100 members, parents and friends, and has helped to raise funds to provide hospitality for our visitors from the Junior Sky Blues on New Year's Day.

Three football matches will take place during the morning, two between teams from the Junior Sky Blues and Junior Hatters, and one between two teams of Dads.

All players and friends will be given a gift as a memento of the occasion, and will enjoy a well earned lunch at Vauxhall Motors Brache Sports ground, who have generously agreed to put their facilities at our disposal. It is yet another example of the valued link between us, as is the mascot/escort team

who are representing us today.

All Junior Hatters proudly dressed in Luton Town kit today are members of Vauxhall Motors/Bedford Trucks families, selected in a special draw as part of our major sponsorship deal with Bedford Trucks, our matchday sponsors.

MASCOTS AND ESCORTS

Mascot: Neil Grabham of Kensworth. Neil is 12 and attends Streetfield School, Dunstable and apart from football his other main interest is scouts. Teams played for are school football, rugby and basketball, and Dunstable Rugby Club.

Escorts: Kirsten Fisher, of Stopsley, Luton, who is 12, and attends Stopsley High School. Kirsten's interests are mainly sporting, and she plays in her school hockey and netball teams, and for Comets netball team. She tells us her great uncle, Will Cranfield, was in the Bristol Rovers team when Joe Payne scored his memorable 10 goals!

David Clark also comes from Stopsley, is aged 11 and attends Putteridge Junior School. He plays for his school, and Stopsley Boys Club, and is also interested in

THE MASCOT . . .



NEIL GRABHAM

snooker and table tennis.

Ronan Dowd, of Marsh Farm, Luton, is aged 12. He attends Cardinal Newman School, where he plays rugby for his school team. In addition to football, Ronan is interested in most sports.

Carolin Martin of Luton is the second girl in our team today. She is 14 and attends Denbigh High School. She is interested in all sports, especially football, hockey, tennis and swimming and plays hockey for Luton Ladies Hockey Club.

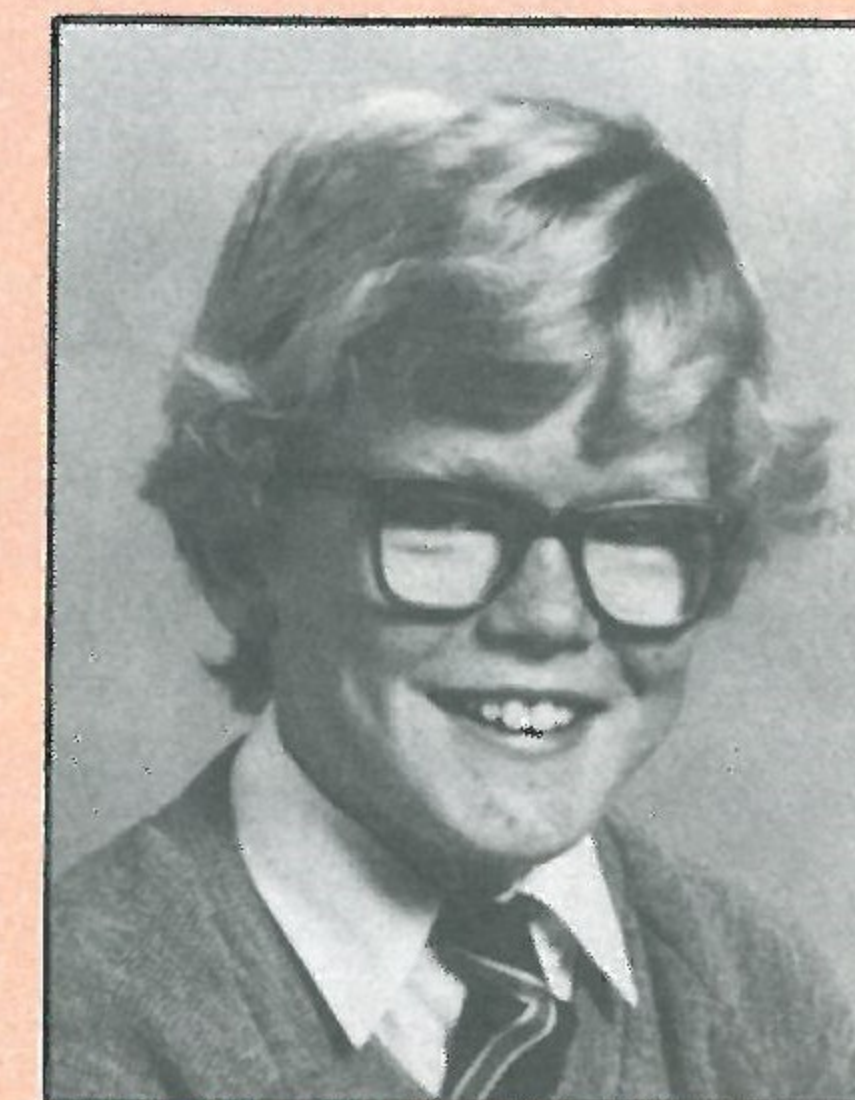
COLIN BALL

Youth Development Officer

. . . AND THE ESCORTS



KIRSTEN FISHER



DAVID CLARK



RONAN DOWD



CAROLIN MARTIN

JUNIOR HATTERS SPONSORED BY THE EVENING POST- AND CHILTERN RADIO

Read the Junior Hatters column only in the



EVERY TUESDAY

TUNE IN TO



EVERY SATURDAY MORNING

WAS YOURS AN INSIDE JOB?

GLAZING REPAIRS & GLASS SUPPLIES
PATIO DOOR & WINDOW INSTALLATIONS
DOUBLE GLAZING (SECONDARY AND SEALED UNITS)
INTERIOR AND EXTERIOR DECORATORS

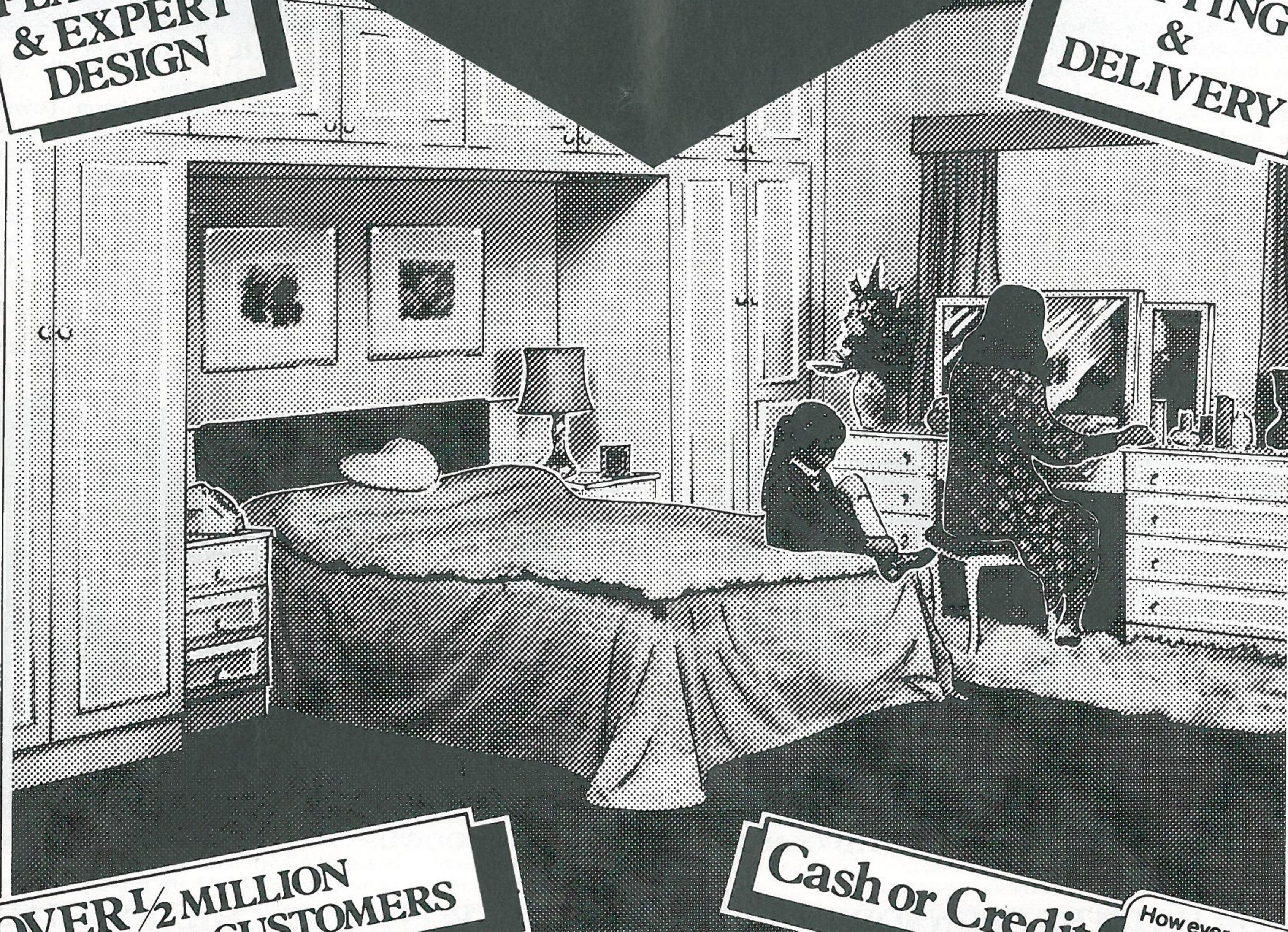
For Domestic and Commercial enquiries contact Luton 53025/597505

J. Sapsworth Limited
92 Marsh Road, Luton, Bedfordshire LU3 2NL
Telephone: Luton (0582) 53025/597505

UNBEATABLE FITTED BEDROOM FURNITURE FROM WALLSPAN

**FREE
PLANNING
& EXPERT
DESIGN**

**FREE
FITTING
&
DELIVERY**



**OVER 1/2 MILLION
SATISFIED CUSTOMERS**

Cash or Credit

How ever you
pay we guarantee
the best buy!

**Limited
Period Only**
66 BUY NOW
PAY LATER 99
NO REPAYMENTS
FOR UP TO SIX
MONTHS

Wallspan Bedrooms

**50 EXCLUSIVE
RANGES** PRICES TO SUIT
ALL BUDGETS

**20
YEARS
EXPERTISE**
1962-1982

LUTON
Unit 174, Bute Street,
Arndale Centre, LUTON,
Beds Tel 23015

BEDFORD
59 Midland Road
Tel 211327

STEVENAGE
18 Market Place
STEVENAGE Herts
Tel 724853

WATFORD
Queens Road
WATFORD Herts
Tel 38388

Head Office and Factory
Industrial Estate, Mauden Road
FITZWICK
Tel (0525) 716161
**AND THROUGHOUT
THE HOME COUNTIES**

TOWN

**THE PAGE
WHERE OUR
FANS WRITE
TO US**

Dear Sir, I am writing to express my anger and disgust at the couldn't care less attitude of Luton Borough Council in the search for the promised new ground for the football club. One councillor was even quoted as saying that Luton doesn't need a professional football club!

The existence of Luton Town is a vital part of what remains of Luton's identity and tradition. The idea that a club which has taken nearly 100 years to achieve its present status might be lost to Milton Keynes is a shameful reflection on the attitudes of some councillors and their lack of pride in the hard won achievement of First Division football for the town.

It is, of course, valid to say that the moronic hooligan minority have given the game a bad image over the last few years. But surely the plans to build an all seater stadium in an attempt to eradicate this problem should be given every encouragement to succeed, thus providing a lead for other clubs to follow.

As already stated by the club, the proposed facility could be used for all sorts of sporting and cultural events apart from football matches, giving the people of the town top class entertainment on their doorstep and all at minimal cost to the ratepayers.

Finally, while appreciating the apprehension caused by the proposals, can I ask for people to remain rational and not drive the club out of town by making remarks calculated to whip up public hostility to, what is, basically a very good idea.

A. M. King
Turners Road South, Luton

Dear Sir, As a life long supporter of Luton Town FC, I would be delighted to see the club move to a new ultra modern covered sports complex, I am sure it would regenerate spectator support in this area.

To make it a viable proposition, other events such as athletics, boxing, hockey, Gaelic football, cricket and concerts could obviously all be catered for, while facilities for club

members such as bowling, both ten pin and crown green, keep fit equipment, squash and five-a-side football courts could be included.

I hope the club finds a suitable site within the boundary of Luton.

J. Kelly
Buckingham Drive, Luton

Dear Sir, In response to your invitation I would like to express my views on the proposed new stadium for Luton Town Football Club. Before stating the type of venture I believe should be undertaken may I stress how important I think the issue is.

The decline in attendances can, to a large extent, be put down to lack of facilities and value for money at football grounds. This combined with the wealth of alternative activities available means we are inevitably moving towards a football 'Super League'.

If Luton do not invest in the facilities to compete in such a league, the days of top level soccer at Luton are numbered.

The success of the venture relies on extending your excellent work in accommodating four very important elements; business, leisure (an important growth area), sport and the community. The new stadium should be the heart of a complete leisure and business complex, making it an attractive venue for a range of activities.

The stadium must be all-seater, completely covered with the ability to stage most sports, conventions and large scale concerts. The facilities need to cater for the spectator in a relaxed and comfortable way.

To compliment the stadium there needs to be an attractive leisure complex to cater for pre- and post-event entertainment. This will ensure continuous use of the site. I suggest the following facilities: Pubs, restaurants, theatre/concert hall, cinema, amusement arcade, boutiques and craft shops, nightclubs, disco's, banking facilities.

They should cater for a wide range of tastes and create a lively entertain-

ment centre.

To maximise daytime use of the centre both business and sporting use has to be encouraged. For the businessman meeting, conferencing, exhibition, customer entertainment and hotel facilities would be required.

The entertainment facilities would attract businesses looking for a venue to stage their events. The close proximity to London and (hopefully) lower prices would be added attractions.

Finally, but not least, sporting facilities; squash; tennis; gymnasium; sauna; solarium; etc. should be available.

As for the location of the complex my own preference is Stockwood Park area. It benefits from excellent road communications with the M1 and links to the airport and points east. It is on the outskirts of the town and is central between the population centres of Hemel Hempstead and Dunstable. In addition it would be possible to incorporate the existing golfing, athletic and rugby facilities.

I realise that the suggestions in this letter touch many sensitive political issues and affect many vested interests. However, I find the idea of being able to go to such a centre and then make a leisurely decision on an evening's entertainment very attractive. I think it would generate more business than the sum of the current dispersed facilities and is, therefore, worthy of detailed study.

I have one last comment on the suggestion that the football events in the new stadium should be member only. That policy is not compatible with my view of what the venture should be. Football needs to be re-packaged and sold to the public. We are not in the privileged position of restricting the game to members only. Hooliganism must be tackled in a different way.

I fervently hope that the new stadium complex is built and wish you every success in the venture and for the future.

E. J. Wilkins
School Close, Holmer Green
High Wycombe

LETTERS

HATTERS A-Z

PART 12 - By TONY PULLEIN

MOSS, David. David has scored 84 League and Cup goals for the Hatters since his transfer from Swindon in 1978. He was our leading scorer in each of his opening two seasons at Kenilworth Road. He developed in the junior teams at Swindon, making his League debut as substitute against Hull in January 1972. David went on to score 81 goals in 268 League and Cup appearances for the Robins.

League record:

	Apps	Gls	
Swindon	1971-72	2(3)	0
	1972-73	11(5)	4
	1973-74	39(1)	6
	1974-75	40(1)	14
	1975-76	37(2)	6
	1976-77	43(1)	14
	1977-78	45	16
Luton	1978-79	29(1)	13
	1979-80	40	24
	1980-81	41	16
	1981-82	36	15
	1982-83	19	7
	382(14)	135	

NICHOLL, Chris. Chris last month celebrated 550 appearances in the Football League and has now won 46 Irish caps. Yet it was here at Kenilworth Road that he gained invaluable experience that was later to stand him in good stead. When he was originally freed by Burnley, Chris went non-League with Witton Albion but he was spotted by Halifax who gave him his chance in League football against Newport in 1968.

Luton signed him for £25,000 in 1969 and he spent almost three years with us before moving on to Aston Villa for £75,000. About two years later he was introduced to the Northern Ireland team. Southampton signed him for £90,000 in 1977.

League record:

	Apps	Gls	
Halifax	1968-69	39	3
	1969-70	3	0
Luton	1969-70	27	2
	1970-71	38	1

Aston Villa	1971-72	32	3
	1971-72	13	1
	1972-73	41	0
	1973-74	40	0
	1974-75	41	4
	1975-76	40	4
	1976-77	35	2
Southampton	1977-78	39	1
	1978-79	38	3
	1979-80	33	1
	1980-81	42	3
	1981-82	34	0
	1982-83	16	0
	551	28	

OWEN, Syd. Syd was one of the most popular players to turn out for Luton. He began as a left-half with Birmingham City and we signed him for £1,000 in 1947. It was after he had switched to centre-half that he produced his best performances, though. Syd was capped three times by England: d skipped our FA Cup Final team in 1959. He retired after that game to take over as manager. The move wasn't a success. The Hatter were relegated from the First Division at the end of the following season and Syd then left the club. He later joined Leeds where he helped to coach one of the country's most successful post-war teams.

League record:

	Apps	Gls	
Birmingham	1946-47	5	0
Luton	1947-48	27	0
	1948-49	20	2
	1949-50	40	1
	1950-51	39	0
	1951-52	35	0
	1952-53	38	0
	1953-54	25	0
	1954-55	36	0
	1955-56	27	0
	1956-57	34	0
	1957-58	36	0
	1958-59	31	0
	393	3	

PAYNE, Joe. Joe's name will live forever as the only man in the history of the Football League to score 10 goals in a game. His moment of glory came in April 1936 in the most bizarre circumstances. Joe had been played in attack and at wing-half in the Reserves without much success and he played only three first team games.

But Luton had two centre-forwards on the injured list at the time so manager Ned Liddell decided to call up Joe to make his first appearance in the senior team as a centre-forward against Bristol Rovers. Joe scored a hat-trick in the first-half as Luton turned round with a 5-0 lead.

After the break Luton completely overwhelmed Rovers and Joe scored further goals in the 49th, 55th, 57th, 65th, 76th, 84th and 86th minutes to smash the previous League record of nine goals in a game set up by Tranmere's Bunny Bell against Oldham only four months earlier.

The following season Joe created another club record with 55 League goals. He was transferred to Chelsea for £2,000 in 1938 and the following season topped their scoring list. The war virtually ended his career. He played a bit for Millwall and then West Ham. But everything he subsequently achieved was always dwarfed by that afternoon of glory at Kenilworth Road at Easter 1936.

League record:

	Apps	Gls	
Luton	1934-35	2	0
	1935-36	9	13
	1936-37	39	55
	1937-38	22	15
Chelsea	1937-38	10	4
	1938-39	26	17
Millwall (War-time)		0	0
West Ham	1946-47	10	6
	118	110	

*All statistics up to and including 11th Dec. Our next instalment will include an entry on current manager DAVID PLEAT plus other fascinating snippets of the Luton story past and present. Don't miss it!

COMPETITIONS

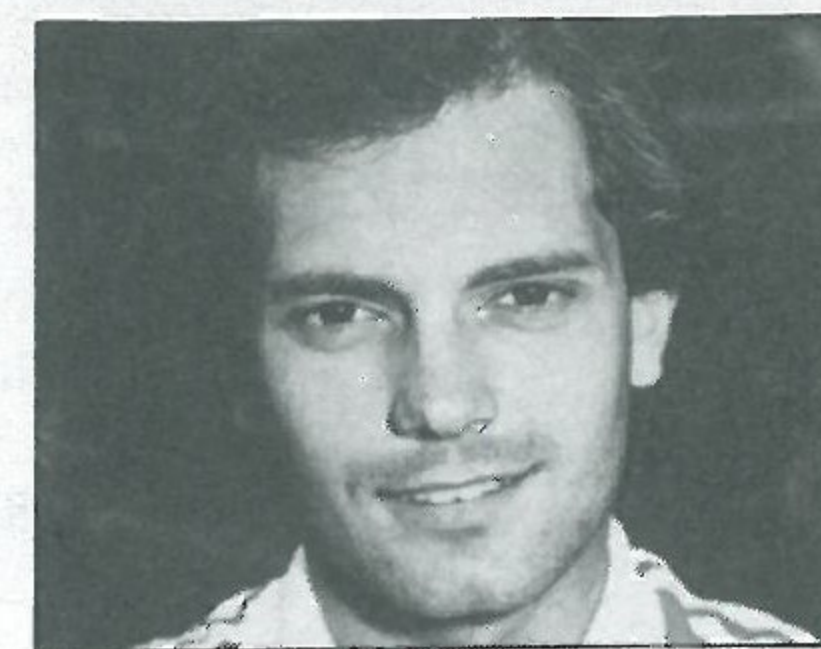
LUTON

COMPETITIONS

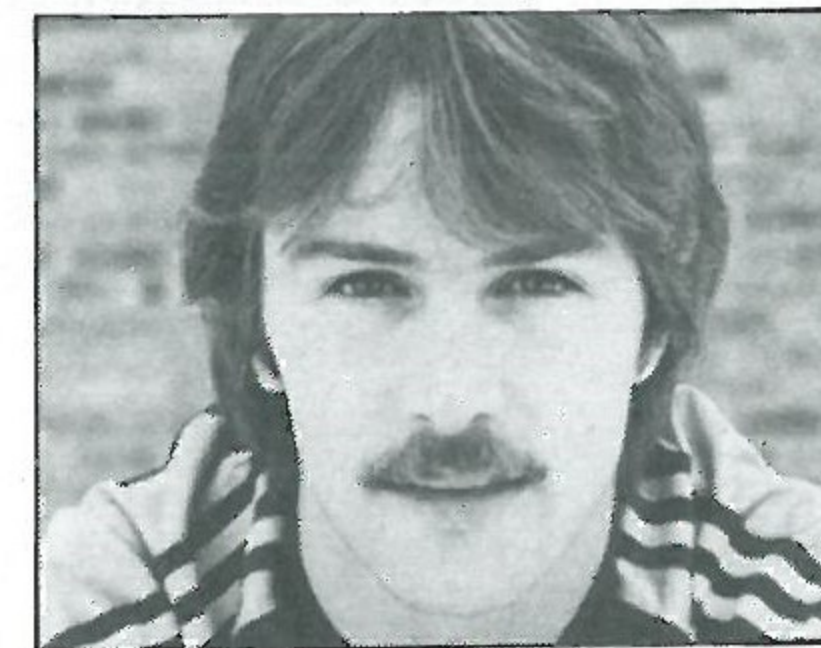
Wallspan Bedrooms
Showrooms throughout London and Home Counties
SEE US IN
LUTON ARNDALE CENTRE 23015

WIN A SUPER LUTON VIDEO

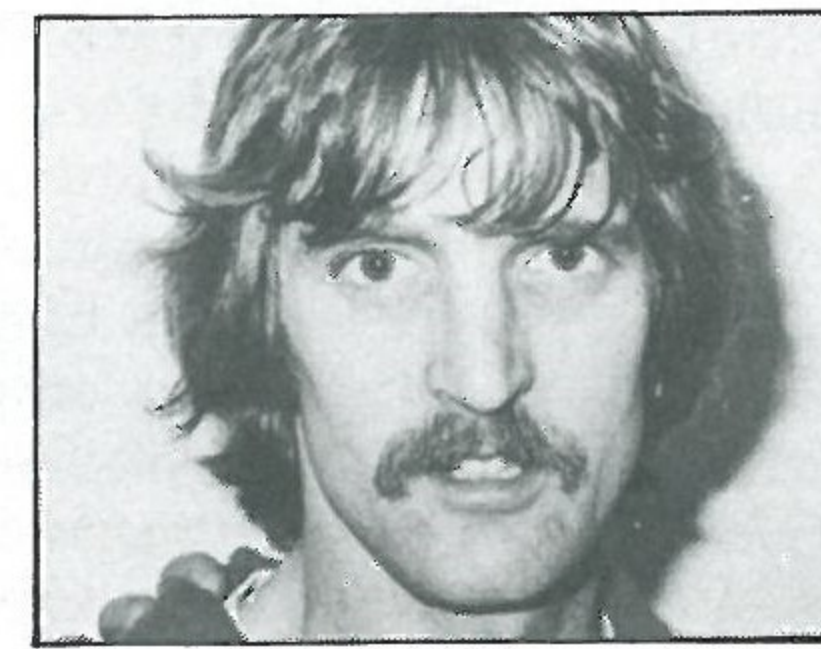
Wallspan Bedrooms
FITTED BEDROOM FURNITURE
SEE US IN
Yellow Pages



RAY WILKINS (Man. Utd.)



NEIL ORR (West Ham)



FRANS THIJSSSEN (Ipswich)

NAME THE FACES

The lucky winner of the Name The Faces competition from the Manchester City magazine who will today receive one of our videos depicting our run into Division One is Tim Burton of 13 Cloisters Road, Letchworth, Herts, S96 3JR.

He correctly spotted Ray Wilkins (Manchester United), Neil Orr (West Ham United) and Frans Thijssen (Ipswich Town). Our congratulations go to Tim.

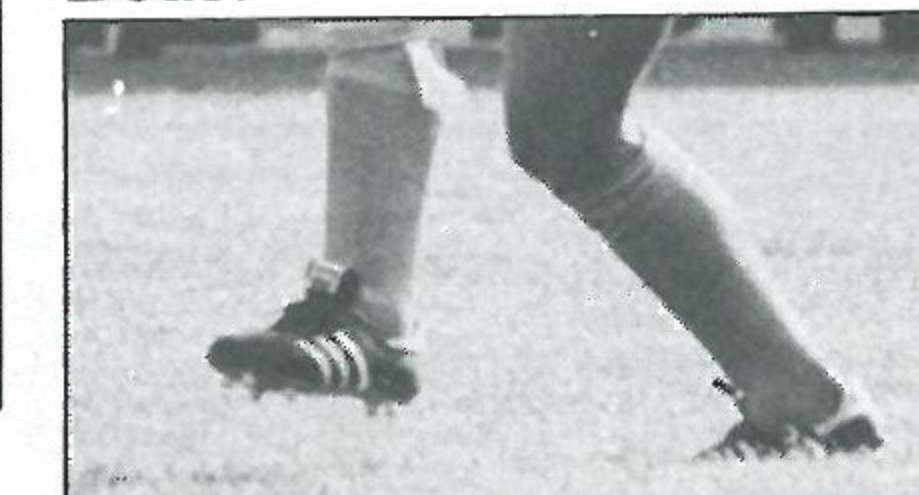
Here's a new phototeaser with again a prize of a super commemorative video. The photo caption shows three players' heads mixed up. All you have to do is name the three players and their current clubs. Send your entries to: Luton Town Football Club, Matchday Magazine, 70-72 Kenilworth Road, Luton.

NAME THE STAR

The name The Star competition continues from the Manchester City magazine. As we are sure you all know we add a small proportion of the body of a famous player inviting you to guess the player's identity.

As the detail increases so the prize will diminish.

Send your entries to: Luton Town FC Matchday Magazine, 70-72 Kenilworth Road, Luton, Beds.



CLUB '82

J. Fedigan, Adriatic Enterprises Ltd
Footwear Importers
20 St. Margaret's Way, Leicester.
Tel: Leicester 26022

G. E. Smith, Belsize Eng Co Ltd
First Avenue, Bletchley MK1 1DW.
Tel: (0908) 73496

Tony Lambert, Broad Street Print
9 Broad Street, Hemel Hempstead, Herts.
Tel: Hemel Hempstead 65490

R. Bowden, CAP Bodies Ltd
Sunderland Road, Sandy, Beds.
Tel: 0767 82680

R. A. Finch, Computer Technology Ltd
Eaton Road, Hemel Hempstead
Herts. HP2 7LB.

E. Elliott, Emerella
Market Square, Biggleswade.
Tel: Biggleswade 312127

M. J. Matthews, Greenwoods Transport
Charlton Mead Lane, Hoddesdon, Herts.
Tel: 09924 67181

D. Keech, D. W. King & Co
Argyll Works, Stevenage, Herts.

G. S. J. White
The London Truck Centre Ltd
Charlton Mead Lane, Hoddesdon, Herts.
Tel: (09924) 41535

Derek Ludlow, Ludlows of Luton
(Industrial Factors) Ltd
Thistle Road, Windmill Trading Estate,
Luton, Beds. LU1 3XJ.
Tel: Luton 29883/4

Frank Ludlow, Frank Ludlow Ltd
Car Body Repairers, 71 Windmill Road,
Luton, Beds. LU1 3XL.
Tel: Luton 414441

Tom McAuliffe, Harpenden, Herts.

J. Mead, Pilcourt Ltd
151 Bearton Road, Hitchin, Herts.

J. A. Matthews, 65 Shefford Road,
Clifton, Beds.

P. J. Sullivan, Tricentral Trading
(Hardware House) Ltd
Kings Road, Flitwick, Beds.
Tel: Flitwick 712121

T. Bailey, Wallspan Bedrooms Ltd.
Industrial Estate, Maulden Road,
Flitwick
Tel: Flitwick 713621

M. Manning, Beard & Manning Ltd
152 Leagrave Road, Luton, Beds.

David Rand, David Rand & Co Ltd
51 Radlett Road, Frogmore, St Albans,
Herts.

Building houses to make homes in
at

Bramingham Road, Luton
Warden Hill, Luton
Parkside, Houghton Regis
Wallington Rise, Baldock
Two Mile Ash, Milton Keynes
Church Green, Bletchley
Kimbolton Gardens, Bedford
Merton Court, Bedford
Padbury House, Bedford
Telephone: Luton (0582) 422771



Barratt
LUTON LTD



We welcome today the Salvation Army Band who are providing the pre-match entertainment. They will play a selection of Christmas Carols which we are sure you will all enjoy.

It is appropriate that the Salvation Army are playing here at one of the most important games of the season. It is obviously one of their final engagements of 1982 which marks the end of their centenary year since it was December 100 years ago that the Salvation Army first opened its doors in Luton.

Since then, the band has been heard in the streets of Luton, and the current band comprises of members of the Luton Temple and Luton Citadel Corps.

During the week the band members are engaged in all walks of life but on Sundays they can be found taking part in different types of services.

On the subject of matchday entertainment, we couldn't allow the opportunity to pass without recording our thanks to the Queens Regiment Band who provided the music at our last home game against Manchester City.

Football has experienced many changing faces and the days when bands regularly played at matches

have disappeared.

But the Queens Regiment Band, all fine musicians, entertained us with some good music and a marching display. We hope it won't be too long before they join us again.

... AND MORE IN THE PIPELINE
There's another treat in store for our supporters on New Year's Day when the entertainment will be provided by the touring Winnetonka High School Golden Variety Showband from America.

We can promise you that this will be one of the most exciting and fast-moving displays you will have seen. Don't miss it.

A PAT ON THE BACK

We congratulate our supporters for their immaculate behaviour at the last home game against Manchester City. There wasn't a hint of any hooliganism and there was only one incident when paper was thrown on to the pitch.

The young man responsible was identified by a supporter and taken to the police station where he was given a stern lecture.

City fans also played their part

because there wasn't a spot of trouble from their 500 travelling supporters.

AWAYDAY TRAVEL

After today's game, we make the trip to Norwich tomorrow for a 7.30 p.m. kick-off. Many of our supporters will visit East Anglia with our official Travel Club, but those making their own way by road will find this RAC prepared route helpful.

Take the M11 to the Stumps Cross turn-off, proceeding along the A11 via Newmarket and Thetford to Norwich. Enter Norwich on the A11 and continue to roundabout, taking the third exit into Daniels Road (Ring Road).

Continue to next set of lights (junction with A140) and go straight across into Lakenham Road. At next roundabout go straight ahead into Barrett Road (over railway bridge) to traffic lights. Straight over at lights into Martineau Lane to next roundabout, taking second exit into Bracondale.

Proceed along Bracondale to junction with King Street. Turn right into King Street and bear right at the bottom into Carrow Road. Continue along Carrow Road, over traffic lights and the ground is immediately on the right.

CENTURY CLUB

Once again in the Century Club we greet our friends from Watford '81 Club'. This is one of the reciprocal friendships we have built over the last few years, and we look forward to a good game.

Our visitors from Manchester City '40 Club' have written to say what an enjoyable afternoon they spent with us, and have given us a warm invita-

tion to visit them in May.

During that afternoon, we were also happy to welcome chairman Denis Mortimer to the Century Club, when our chairman, Ken Ball, presented him with a 'Christmas Box' of £2,000 - a further contribution from our members.

We must also thank everyone who supported the raffle so generously, and showed their appreciation of the generosity of Nancy Connah, who provided such a magnificent selection of prizes.

Our Christmas greetings to our manager, staff and players, and all our friends within the football club, were omitted from the Manchester City magazine. Today, we send our greetings to them all for a happy and successful New Year.

WATFORD THROUGH THE YEARS

● FRED LE MAY, a winger with Watford and Orient in the early thirties stood exactly five feet tall.

● LES GRAHAM scored direct from a corner in two successive games for Watford (v Swindon and QPR) in April 1958.

● CLIFF HOLTON became the only player since the war to have hit hat-tricks on successive days when he did so for Watford against Chester and Gateshead on 15th and 16th April 1960.

● Watford were drawn against Brighton in the FA Cup in four successive seasons - 1924/5/6/7/8.

● In a Football League Cup-tie against Southampton in August and September 1981 Watford went through 7-5 on aggregate despite losing the first leg 4-0.

● Watford scored only 24 goals in their 42 Second Division games in 1971-72.

● BILL LANE recorded a hat-trick for Watford against Clapton Orient (as they then were) in the space of three minutes in a Division Three (South) game in December 1933.

IN RETROSPECT

Luton Town v Watford

Division Three (South): 1920-21 1-0 (h) 0-1 (a), 1921-22 1-1 (h) 1-4 (a), 1922-23 0-1 (h) 1-2 (a), 1923-24 0-0 (h) 0-0 (a), 1924-25 0-3 (h) 1-1 (a), 1925-26 5-0 (h) 0-2 (a), 1926-27 2-2 (h) 1-2 (a), 1927-28 3-2 (h) 0-1 (a).

1928-29 2-2 (h) 2-3 (a), 1929-30 2-0 (h) 4-0 (a), 1930-31 4-1 (h) 0-1 (a), 1931-32 0-1 (h) 1-3 (a), 1932-33 3-2 (h) 1-4 (a), 1933-34 2-1 (h) 1-0 (a), 1934-35 2-2 (h) 2-2 (a), 1935-36 2-1 (h) 3-1 (a), 1936-37 4-1 (h) 3-1 (a).

Division Three: 1963-64 2-1 (h) 0-2 (a), 1964-65 2-4 (h) 0-2 (a), 1968-69 2-1 (h) 0-1 (a).

Division Two: 1970-71 Luton 1 (MacDonald) Watford 0, Watford 0 Luton 1 (Keen). 1971-72 Luton 0 Watford 0, Watford 2 (Eddy, Franks) Luton 1 (Halom). 1979-80 Luton 1 (Hatton) Watford 0, Watford 0 Luton 1 (Stephens). 1980-81 Luton 1 (White) Watford 0, Watford 0 Luton 1 (White). 1981-82 Luton 4 (Moss 2, Stein 2) Watford 1 (Bolton), Watford 1 (Rostron) Luton 1 (Stein).



LITTLE OR LARGE

We entertained a guest from the world of show business at the game against Manchester City in the shape of Eddie Large, one half of the Little and Large partnership. He's pictured on the pitch after presenting some of our video winners with their prizes.

TODAY'S REFEREE

Brian H. Daniels of Brentwood, Essex, passed the Referees' Examination of Essex County FA in 1951 and has progressed through local and the Isthmian League, Football League Line and the Full List in 1967. Was a linesman at the UEFA Cup quarter-final played in Las Palmas in 1972-73. Linesman for the European Champions Cup in 1977-78, and reserve referee for the Football League Cup Final in 1980.

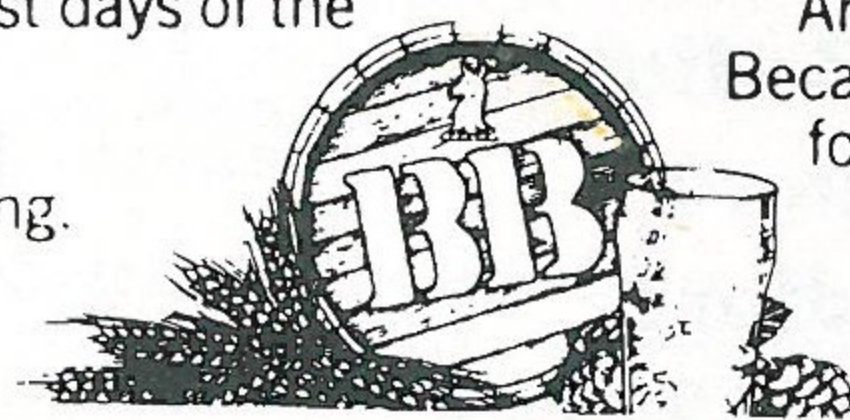
Married, with three children, he is an ex-Military Policeman now engaged as Positive Vetting Officer in Industrial Security.

THE LOCAL TASTE AND HOW TO SATISFY IT

We're very definite about our taste in beer around here. A clear light pint is what we look for; with a good, clean smack of malt and hops.

And there's only one name that really satisfies the local taste - BB. The light beer first brewed in Luton during the darkest days of the War by J. W. Green.

Only the finest hops and good, ripe barley go into the making. Then the brew is matured to exactly the right degree to give you a bright refreshing pint with a sound, full flavour.



WHITBREAD

American servicemen in local wartime bases declared that BB, chilled, was the nearest taste to Stateside draught.

It went down well when Syd Owen ruled the Hatters.

And it's been going down well ever since. Because BB is brewed with a proper respect for quality. To keep up the traditions we value round here.



Book Your Summer Holidays Early Through Your Local Tour Operator Brochures Now Available.

Silvain Holidays Ltd
190 Camden Hill Road
London W8
Tel: 01 221 6298

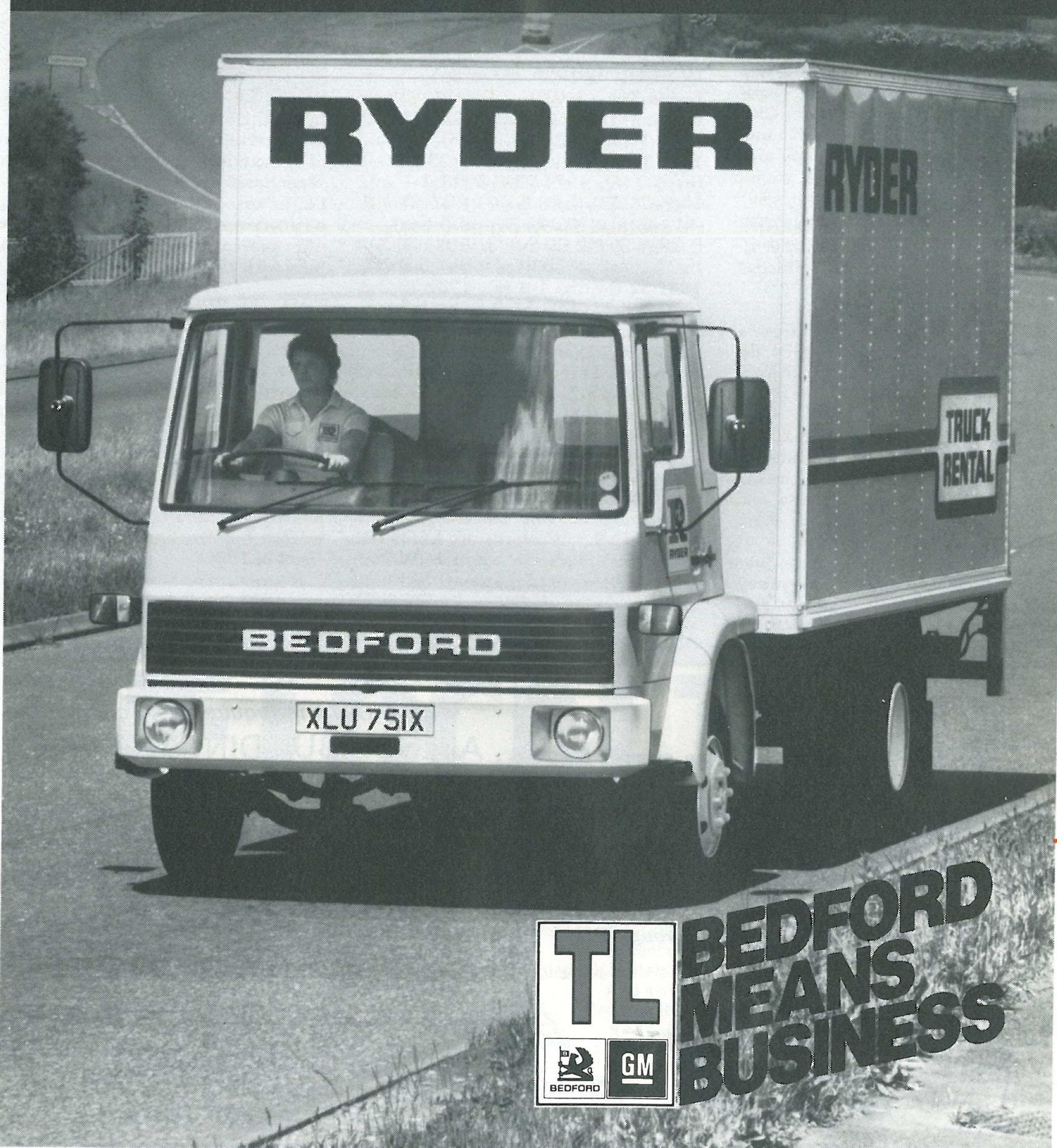
For all Building requirements contact:
ALLSOP BUILDING SERVICES
ALLSOP WINDOWS
ALLSOP ROOFING
ALLSOP MINI SKIP HIRE

WHA W. H. ALLSOP & SONS
(BUILDERS) LTD.

153 New Town Street,
Luton LU1 3ED.
Tel: Luton 20011/23472.

BEDFORD BUSINESS MEANS:

**MORE PULL
LESS DIESEL.**



TL **BEDFORD
MEANS
BUSINESS**



We know what matters to Hatters!

For many years Shaw & Kilburn have supplied cars to Luton Town executives, players and thousands of their supporters. So we reckon we know what local motorists want.

You want a wide choice — and you get it with the magnificent Vauxhall-Opel range. Or you can take your pick of 200 guaranteed used cars from Autorama.

You want first-class after sales service and parts back up. You'll get it here from factory-trained personnel using up-to-the-minute equipment.

We also promise you a generous deal on your present car. And if you're a Town season ticket holder, special terms on your new one, too.

Call in soon. We look forward to welcoming you.


Shaw & Kilburn
OF LUTON

The Right Choice

**BRITAIN'S BIGGEST VAUXHALL-OPEL DEALER
DUNSTABLE ROAD, LUTON. TEL: 55944**

Willis-Dawson Ltd
Builders and Developers
Leighton Buzzard

Tel: Leighton Buzzard 372557

Your local suppliers of printed polythene carrier bags, paper bags, and fashion carriers. In addition we offer a General Printing and Rubber Stamp Manufacturing Service.



Princess Packaging Ltd.

HEATHFIELD WORKS, LEYTON ROAD, HARPENDEN, HERTS.
 TEL. (05827)66806 OR 64431 (24 HR. SERVICE).

Graham Ford

Your
Comprehensive Builders Merchants

Depots: at

Luton — Kingsway 31199
 Dunstable — Beale Street 603111
 Leighton Buzzard — Leighton Road 373486

Cleandustrial Services Ltd

The Professional Approach to Your Cleaning Problems

84 Aldermans Hill N13

LOTTERY TOPICS

We have a saying in the pools office that 'people don't mind losing now and again as long as they know who wins the large prizes.'

In support of this sincere saying, we do produce a weekly result sheet containing the names and full addresses of all our major winners.

These result sheets are always available in large quantities from the office and we do recommend that you collect some regularly and scan the list, you may even see your name and address printed.

I have often said no true supporter gets married or goes away during the soccer season! I have to admit I will shortly be going to Australia on holiday! It goes to show how fickle some of us are!

I shall, however, meet with Hatters fans and hopefully keep up with the results.

On behalf of all our staff I wish everyone a Merry Christmas, coupled with our grateful thanks to everyone, agents and customers alike, for all the help you have given the club during the past year.

May we all go from strength to strength.



MIKE HARDWICKE
 Promotions Manager

JOHN'S JOURNAL

Today marks a piece of history between Luton Town and Watford, as this is the first meeting in a Football League Division One match between our two clubs. Let's hope that it is the first of many.

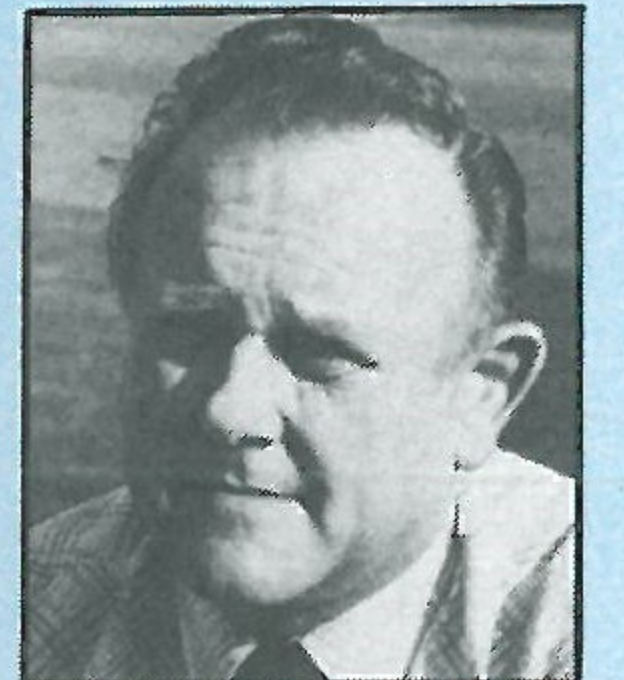
I suppose the majority of supporters are glad to be able to get out of the house for a while after two days of eating and drinking over the Christmas period, but I do hope the goodwill carries on today between the rival fans. Incidentally, our last home was the best on record for some time as only one incident marred what was a trouble-free day inside an outside the ground. Congratulations to you all, let's keep it up.

Looking through records of matches between our clubs have always been a close encounter and I have selected three games I am sure you will remember. On the 26th January 1957, in the Rigby Taylor Cup at Vicarage Road, we won 4-3, with George McLeod (2), Gordon Turner and John Groves hitting the goals for Luton. Anderson, Walker and Meadows

replied for Watford. The teams were: Luton Town: Streten, Dunne, McNally, Morton, Kelly, Smith R, Pearce, Turner, McLeod, Groves, Adam. Watford: Underwood, Shipwright, Harrop, Cateugh, Brown, Mitchell, Cook, Meadows, Anderson, Graham, Walker. Attendance: 6,715. Another Rigby Taylor fixture on April 30th 1962 again at Vicarage Road, saw us lose 2-0. Bunce and Sammy Chung scored the goals. The team was: Baynham, McNally, Bramwell, Collins, Kelly, Groves, Walden, Ashworth, Turner, Goldie, Jardine.

Someone asked me recently if Johnny Haynes and John (Budgie) Byrne played for Luton Town. Looking through the records I find they did. It was at Watford on May 13th 1968 when they lined up with Luton players in Pat Malloy's benefit match. A 6,000 crowd saw a 1-1 draw with Low scoring for Watford and Byrne for Luton. The teams: Watford: Slater, Young, Williams, Garbett, Garvey, Walley, Scullion, Currie, Holton, Eddy, Dyson.

Luton Town: Read, Hare, McDermott, Slough, Rioch (D), Moore, Brown, Haynes (Fulham), Byrne (Fulham), Rioch (B), Whittaker.



JOHN WILKINSON
 Secretary

Anglia Television

Proud to serve
 the
 East of England.



HATTERS IN RESERVE

CAMBRIDGE 1 LUTON TOWN 1

We were not intimidated and soon it settled into a ding-dong contest. We were trying a new formation and the lads took time to settle, but midway through the first-half we got the first goal to give us a lift.

Cambridge came back to equalise, worked from a throw-in and helped by some slack marking from us.

In the second-half we kicked downhill and we were a little disappointed we did not do better. Our biggest problem was that we tended to over-kick instead of just playing to feet and building our moves by good passing and not so much kick and hope.

However we were pleased with our application to the task and the formation worked better and could be built on for the future.

TEAM: North, Thomas, Petts, Burke, Tansley, Plummer, Coppin, Stein, Loy, Shearer, Ellisdon. Subs: Brennan, Hamilton.

CHARLTON 4 LUTON TOWN 1

On a very soft, muddy pitch, we were pushed back by a positive and energetic start from the Charlton lads. One or two newcomers seemed to be taken aback by the pace of the game and we soon went one down.

We had to make a substitution due to injury and we seemed on a hiding to nothing at this stage of the game. However, we started to string a few passes together and came into the game in what was to be our best spell and shocked them with an equaliser.

At the start of the second-half it was fairly even, until they got a second goal, when our goalkeeper was beaten at his near post. This seemed to spur them on and they got two more before the end — to put a convincing look on the scoreline.

TEAM: North, Hamilton, Petts, Burke, DeFreitas, Brennam, Watts, Stein, McConville, Shearer, Ellisdon. Subs: Loy, Tansley.

LUTON TOWN 2 CAMBRIDGE 1

This FA Youth Cup replay was always a close game, but we always had the edge after having a good start and scoring the first goal after five minutes through Michael Shearer.

Both sides had chances in a hard fought Cup-tie, where the commitment was evident. We managed to score a second goal just before half-time through Watts, but they never gave up and had one tremendous shot hit the post in their efforts to force themselves back into the game.

However, we held on until five minutes from the end when they got what proved to be a consolation goal from a penalty.

TEAM: North (M), Breaker, Petts, Thomas, North (S), Shearer, Parker, Cadette, Stein, Daniel, Watts. Sub: Plummer.

valuable contribution to Britain's exports.

In fact, just a few weeks ago, Bedford held a special conference in London for our overseas agents. Delegates from over 65 countries returned to their respective territories, secure in the knowledge that Bedford aim to regain and retain its position of eminence in the First Division of the world's commercial vehicle market — a position we held unchallenged, until the recent recession, for over half a century.

They will be ambassadors for Bedford, as indeed are the Luton Town team when they travel abroad in their purpose-built Bedford coach.

At home too though, you'll find Bedford's hard at work in just about every business, because we build a vast range of vehicles to keep the wheels of industry turning — from light vans to heavy duty trucks.

So it's not merely an advertising slogan when we say 'Bedford means Business Worldwide' — we mean it!

May we in Bedford wish everyone here today an enjoyable match, and a happy and prosperous 1983.

MATCH SPONSOR

Today's game is of special interest because not only is it a genuine 'local derby', but also because we understand that our team's opponents, Watford, have certain connections with another organisation in the commercial transport field who are their major sponsors, as we are Luton Town's!

Since there are probably more than a few supporters here today who are involved in building Bedford Trucks at our Dunstable and Luton plants, it might be timely to re-emphasise the commitment we have to increasing our share of the truck market overseas, thus making a

COMMERCIAL SCENE



THE WEEKLY LOOK AT THE HATTERS COMMERCIAL SCENE



Christmas is an exciting time of year and for us in the commercial department and today is no exception as we proudly add the name of *Chiltern Radio* to our ever growing list of sponsors. *Chiltern Radio* have been on the air for just over a year and have seen and heard at first hand the benefits of an association with the football club. That is why the radio station's managing director, Colin Mason, and marketing director John Rees, took little time in deciding to accept the offer of teaming up with the *Evening Post* as joint sponsors of our Junior Hatters.

The *Evening Post's* support has been of considerable benefit to Junior Hatters and has allowed Colin Ball, our Youth Development Officer, to extend his activities to include bussing in of parties from schools and youth clubs to watch matches entirely free of charge.

Chiltern Radio's involvement will ensure we are able to continue that policy which is a very important aspect of the club's future. Other advantages include the Junior Hatters column which is written exclusively for Juniors and appears weekly in the *Evening Post*.

We are now able to extend that coverage to include a Junior Hatters spot each week on *Chiltern Radio's* Phil Hoden children's show which will feature Colin Ball and members of the Junior Hatters who will be invited along to the studios and be interviewed live.

2,000 Here We Come

The advantages of being a member of the Junior Hatters

are numerous and the success of the revamping of the Junior Hatters Club two and a half years ago we leave you to judge by its growth which has risen from 350 when the *Evening Post* support commenced to its present membership of over 1,900. Activities and visits are organised for the members and their families. Two five-a-side soccer leagues, playing on a weekly basis are currently running, catering for 18 teams at under 12 and over 12 levels and this is an expanding activity. Social events include our annual open day, family disco, special Christmas events and visits to other League clubs such as Coventry City, Derby County and Rotherham United. Junior supporters are also invited to share our hospitality at Kenilworth Road as are the Junior Hornets today and the Junior Sky Blues next week. Player participation in all activities is excellent as president Ricky Hill and all the players take a very keen interest in the Junior supporters. In these difficult times it is extremely satisfying that *Chiltern Radio* and the *Evening Post* both have the foresight and initiative to involve themselves in this way with our national sport.

It shows a deep concern for the young fan and for the future of Luton Town Football Club and the supporters of tomorrow.

Pictured above are some of our Junior Hatters at a recent five-a-side tournament. Junior Hatters news today is on page 11.

Mike Beevor, Projects and Advertising Executive

SCENE ON ONE

A weekly feature which puts the spotlight on the First Division scene. By Tony Pullein

Though only four First Division clubs are showing an increase on last season's attendance figures, a look back on the season reveals that there is still a market for big games. The major reason for the drop in gates is not the quality of the football served up but, in many cases, the fact that some of the games's traditional supporters can no longer afford to see so many games.

The three promoted clubs — Norwich, Watford and ourselves — are understandably drawing bigger crowds than we were in the Second Division last season. Apart from these, the only club to show a rise is Stoke City who are more than 3,000 per game up on last season.

Stoke's fine start to the campaign, and the emergence of their fine coloured forward Mark Chamberlain, have really captured the imagination in the Potteries. The visit of Liverpool drew their largest crowd, with 29,411 paying for admission.

The club with the biggest hole in its pocket is Manchester City. Maybe Maine Road fans resented the sale of Trevor Francis? John Bond's team has lost a quarter of its support and this season's Maine Road crowds are down to 25,894. Arsenal, perhaps surprisingly in view of their very poor home performances, are only marginally down on last season. One of the most disturbing facets is Liver-

pool's drop of 1,344.

However bias we may be towards any of Bob Paisley's rivals, we have to admit that Liverpool have been the consistently most exciting team of the first half of the season. If Anfield is losing fans, we may ask, what chance have the rest of us?

The following chart was compiled about ten days before Christmas and we do know that the holiday games will draw some huge crowds and help to redress the balance on some of these dismal figures. Also, as the season draws to a climax, attendances tend to increase so that, when we come to the end of the season and make a similar comparison, the figures may be less depressing. Though crowds generally have gone down, football's interest remains very high. Liverpool and Manchester United continue to draw big crowds wherever they play and, of course, derby games still capture the imagination. The biggest attendance of the season was 57,334 for the Manchester United v Manchester City derby game in October. That astonishing Everton-Liverpool clash, in which Ian Rush scored four times and Liverpool won 5-0, attracted 52,741.

Excluding the Saturday immediately prior to Christmas, the smallest First Division crowd was 8,054 at Coventry for Brighton's visit.

The chart shows this season's

average home attendances for home League games and compares them with clubs' final figures for last season.

It's a fair bet that most of you here at Kenilworth Road today — whether you happen to support Luton or the Hornets — have accepted in your minds that Liverpool will win the League Championship this season.

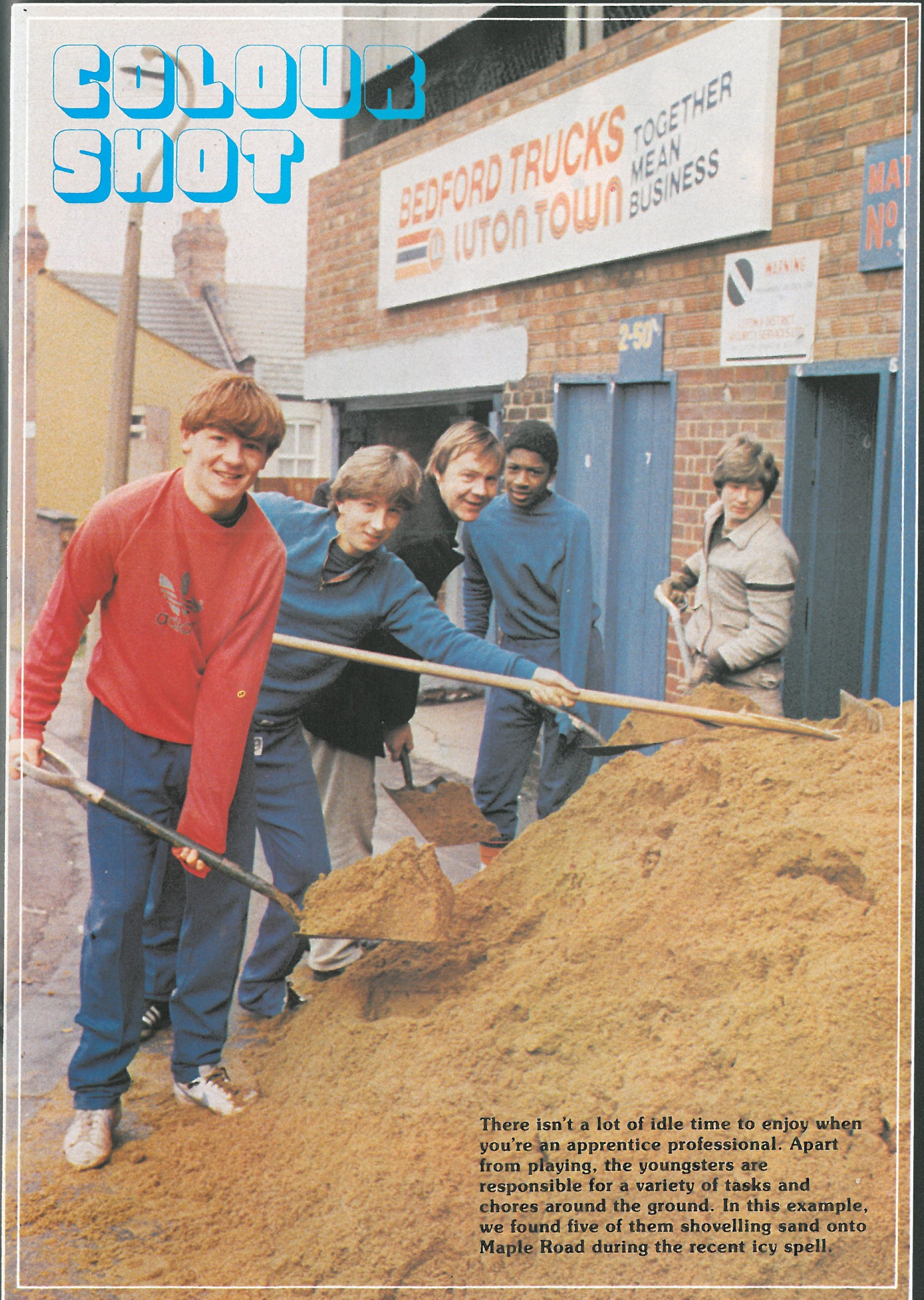
No-one can blame you for that. Outside of Manchester, Nottingham and Birmingham, most soccer folk feel that no one is going to catch Liverpool at the top. Yet, those who feel that way don't really know what English football is all about! Our Leagues are the most closely balanced in the world and, unlike places like Scotland, Holland, Italy and Spain where the outcome of their competition is more often than not predictable by this stage of the season, it is quite rare for clubs in critical positions in the Football League at Christmas to be found in the same places at the end of the season. At the corresponding stage of last season Liverpool were in 12th position, trailing leaders Swansea by nine points. Not for the first time, the Anfield side was considered to be over the hill. But Bob Paisley's men closed with a killing unbeaten run of sixteen matches to win by four points. And for the second season in succession the unlucky runners-up were Ipswich.



JOHN BOND

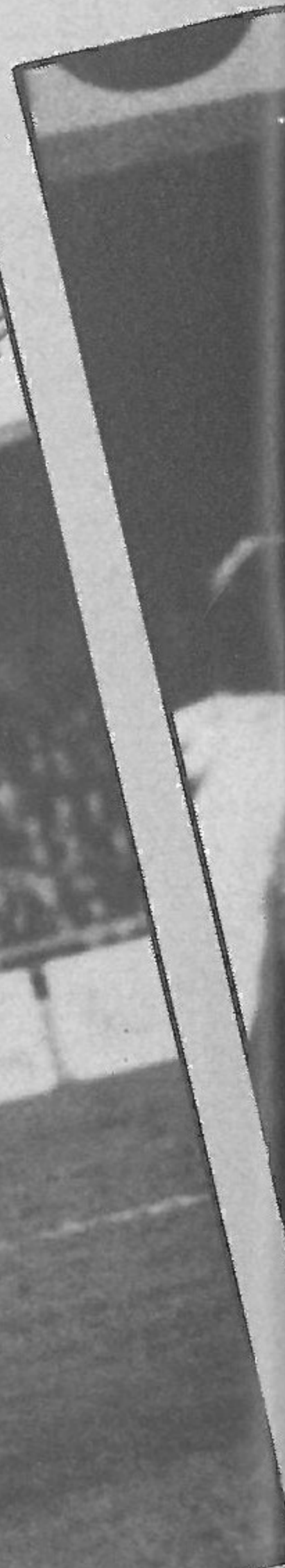
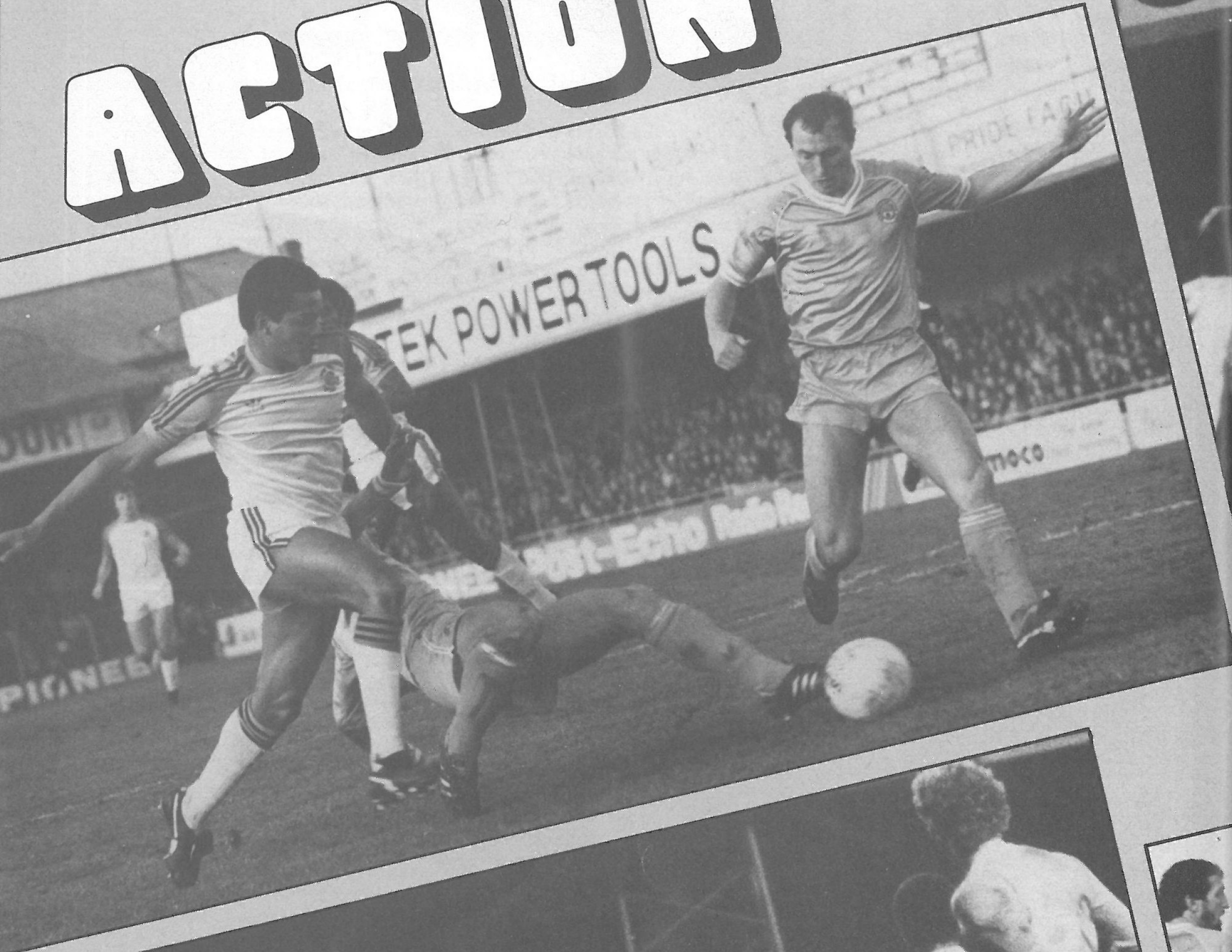
	This season	Last season	Difference
Arsenal	25,247	25,493	(- 246)
Aston Villa	23,420	26,875	(- 3,455)
Birmingham	14,228	17,116	(- 2,888)
Brighton	13,022	18,244	(- 5,222)
Coventry	9,406	13,099	(- 3,693)
Everton	24,485	24,673	(- 188)
Ipswich	20,090	21,925	(- 1,835)
Liverpool	33,716	35,060	(- 1,344)
Luton	12,796	11,880	(+ 916)
Manchester City	25,849	34,093	(- 8,244)
Manchester United	43,859	44,570	(- 711)
Norwich	17,394	14,183	(+ 3,211)
Nottingham Forest	16,452	19,937	(- 3,485)
Notts County	11,372	11,627	(- 255)
Southampton	18,599	21,835	(- 3,236)
Stoke	17,906	14,635	(+ 3,271)
Sunderland	16,501	19,607	(- 3,106)
Swansea	12,663	18,225	(- 5,562)
Tottenham	32,251	35,099	(- 2,848)
Watford	18,484	14,631	(+ 3,853)
West Bromwich Albion	15,881	16,785	(- 904)
West Ham	23,976	26,584	(- 2,608)

COLOUR SHOT



There isn't a lot of idle time to enjoy when you're an apprentice professional. Apart from playing, the youngsters are responsible for a variety of tasks and chores around the ground. In this example, we found five of them shovelling sand onto Maple Road during the recent icy spell.

ACTION



LUTON TOWN 3 MANCHESTER CITY 1

Entertainment was definitely the name of the game when we played Manchester City at Kenilworth Road. The fans were treated to a fine match which provided plenty of thrills.

Bottom left: Bang . . . Kirk Stephens lets fly with a shot at goal.

Top right: Clive Goodyear, Ricky Hill and Paul Walsh (half out of the picture) all show their jubilation with Brian Stein's goal.

Bottom right: Clive Goodyear shows his attacking qualities by kicking the ball just wide as Joe Corrigan looks on anxiously.

WATFORD

DREAM START BY WATFORD

Watford have made a dream start to this debut season as a First Division club and, at one point, they stood proudly on top of the table. When we remember they were playing in the Fourth Division as recently as in 1978, that really is quite remarkable.

The Hornet's fairy tale started during the close season of 1977 when chairman Elton John appointed Graham Taylor as manager to strike a magic partnership that has seen the club rocket to fame.

Watford won the Fourth Division Championship at the end of their first season together. One year later came further promotion to the Second Division and last season they were among the Second Division pacesetters throughout, finally taking runners-up position behind us.

Four members of Watford's Fourth Division Championship side remain at Vicarage Road and could be in the team today — goalkeeper Steve Sherwood, defender Ian Bolton, midfielder man or forward Luther Blissett and striker Ross Jenkins.

Mr Taylor, who believes football should be enjoyed even by professionals, goes for an all-out attacking policy. Though he varies his tactics to suit the opposition of the day, we can expect to see him use a 4-2-4 line-up against the Hatters.

The front line usually comprises Nigel Callaghan, Ross Jenkins, Luther Blissett and John Barnes.

Last season Callaghan, who served his apprenticeship with Watford and made his League debut three seasons ago, lost his place to John Barnes because, in the manager's opinion, he was not scoring enough goals. This season he has won back his place, is back on the goals standard — and he made his England Under-21 debut in Denmark in September.

Jenkins scored 15 times for Watford last season and has topped Watford's scoring list three times since his £30,000 transfer from Crystal Palace in 1972. His best season was 1978-79 when he was the country's leading scorer with 37 goals.

Blissett this season earned the distinction of being the first player in Watford's 91-year history to win an England cap when he appeared as substitute against West Germany at Wembley and was named to play against Luxembourg.

Luther topped Watford's scoring list for the second time last season when he hit 22. His best scoring season was 1978-79 when he scored 28 and earned himself the first of his four England Under-21 caps. He first appeared in the Watford side in 1975-76 and has now been holding a place for almost five years.

Barnes is a skilled young forward who was introduced to League soccer when being called on as substitute against Oldham in September 1981. He quickly earned a regular place, becoming a consistent goal-scorer. He scored 14 times last season. John has been introduced to the England Under-21 XI this season.

The season is developing into another one of frustration for Ireland international striker Gerry Armstrong. Gerry, who scored three of Ireland's World Cup goals in Spain, won his 43rd cap against Austria in October.

Last season he spent a great deal of his time on the substitute's bench for Watford, though. His World Cup displays earned him a recall to the Watford side at the beginning of this season but he was soon back in the number 12 shirt and then lost his place altogether.

Gerry came into English football with Spurs who paid Bangor £25,000 for him. He moved on to Watford for £250,000 two seasons ago.

Now he seems to have slipped behind some of the youngsters in his claim for a place. When Jenkins was in doubt for a recent game, Mr Taylor was preparing Ian Richardson for his League debut. And David Johnson, who made a brief appearance as substitute last season, has been nominated as substitute.

Les Taylor and Kenny Jackett form the midfield.

Taylor completed his apprenticeship with Oxford and made more than 200 League appearances before joining Watford two seasons ago. In his Oxford days he would often appear at full-back but he seems to be well established as a midfielder with Watford.

Jackett served his apprenticeship at Vicarage Road and made a couple of League appearances

in 1979-80. The following season he won a regular place and after opening last season at left-back, he switched to midfield. Ken has won two Welsh Under-21 caps and gained his first full cap against Norway in September.

Jan Lohman is another contender for a midfield place. Jan is a Dutch Under-21 international who joined Watford last season from Belgian side Lokeron. He quickly settled into midfield and managed to score a couple of goals.

Steve Sims, who lost his place through injury last season, has now re-established himself at centre-back where he plays alongside Ian Bolton.

Sims served his apprenticeship with Leicester and won 10 England Under-21 caps whilst at Filbert Street. Watford invested a then record £200,000 fee when they signed him in 1979.

Bolton made 70 League appearances for Notts County and spent a short while on loan to Lincoln City during the 1976-77 season. At the end of that campaign he was transferred to Watford.

Pat Rice and Wilf Rostron are the full-backs.

Rice, who joined Watford from Arsenal two seasons ago, was capped 49 times by Northern Ireland and he completed 397 First Division appearances for the Gunners. He was a member of Arsenal's League and Cup double winning team of 1970-71 and also gained numerous other honours at Highbury.

Rostron made a few First Division appearances in his Arsenal days. A one-time England schoolboy international, Wilf began his professional career with Arsenal. Sunderland

paid £40,000 for his transfer in 1977 and Watford invested £150,000 when signing him in 1979. Originally a midfielder, Wilf switched to left-back last season.

Goalkeeper Steve Sherwood began his career with Chelsea but, he got only 16 games in their League XI. He was loaned out to Millwall, Brighton and Brentford before transferring to Watford in 1977.

Watford have given many impressive away performances. They celebrated their first away game as a First Division club by thumping Southampton 4-1 at the Dell. They later won at Tottenham (1-0) and Arsenal (4-2).

Sometimes their anxiety to attack has backfired upon them. They lost 7-3 at Nottingham Forest in the third round of the Milk Cup and they lost 5-3 after extra-time at Reading in the quarter-final of the Football League Trophy.

None of this has deterred Mr Taylor from his point of view. 'Of course we lose games,' he shrugged. 'But we come back again next week and start winning again. The important thing is to enjoy it.'

By TONY PULLEIN

Back row (left to right): Les Taylor, Martin Patching, Kenny Jackett, Steve Sherwood, Keith Pritchett, John Barnes, Wilf Rostron.

Centre row: Pat Rice, David Johnson, Nigel Callaghan, Eric Steele, Jan Lohman, Gerry Armstrong, Luther Blissett.

Front row: Ian Bolton, Charlie Palmer, Steve Sims, Ross Jenkins, Jimmy Gilligan, Paul Franklin, Steve Terry.



Luton's star.



Two teams from Luton are currently making a name for themselves.

'The Hatters' are in the first division. And Vauxhall-Opel are enjoying fantastic sales success.

Achievements in different fields, but

for the same reasons.

A consistently high all-round performance and magnificent team effort.

Facts confirmed by checking out today's line-up, and by a visit to your local Vauxhall-Opel dealer.

With stars like the Cavalier, the coming season promises to be even better for us.

We're sure that's also true of Luton Town.



VAUXHALL-OPEL