

Welcome to

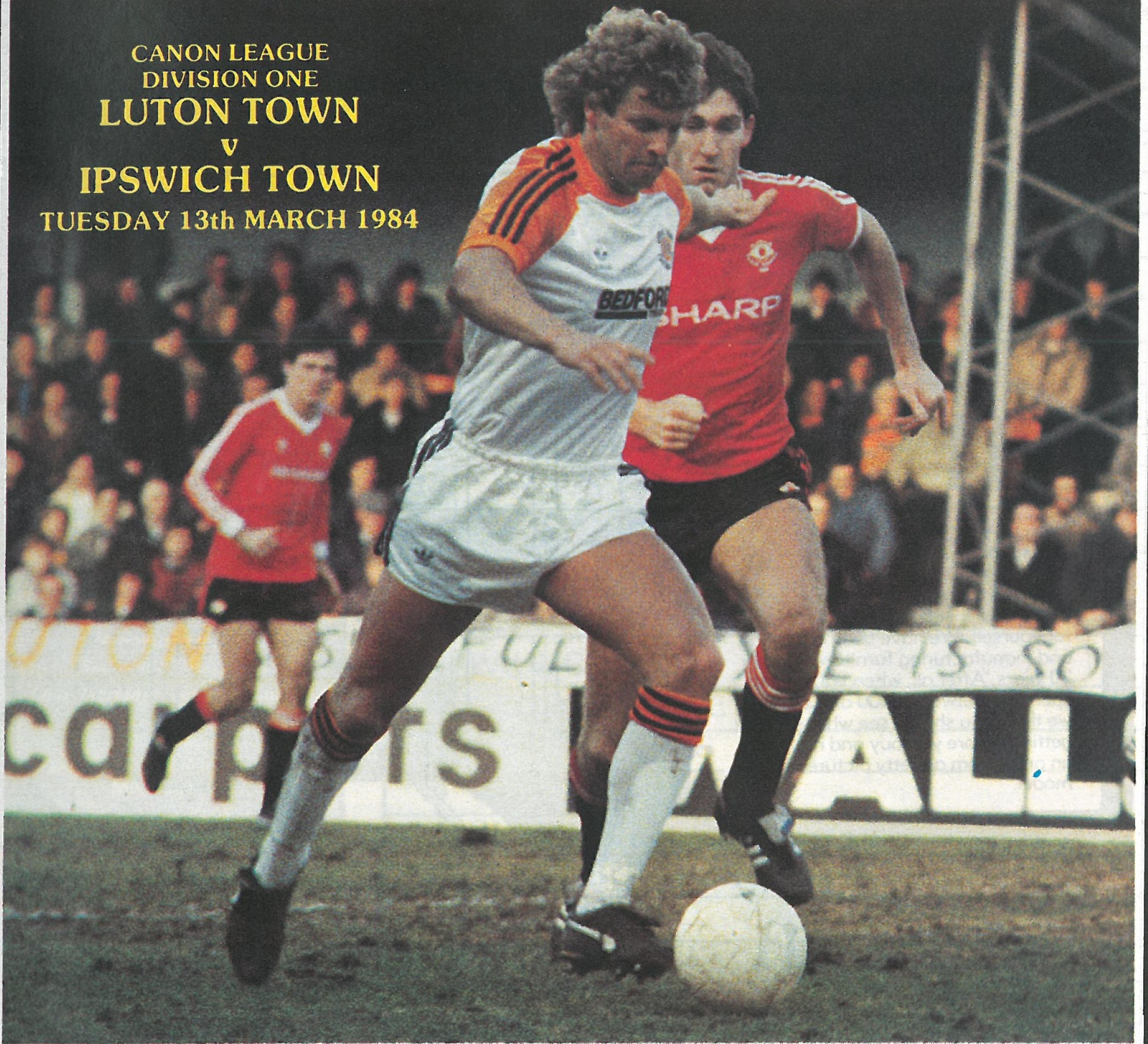
Luton Town

CANON LEAGUE
DIVISION ONE
LUTON TOWN

v

IPSWICH TOWN

TUESDAY 13th MARCH 1984

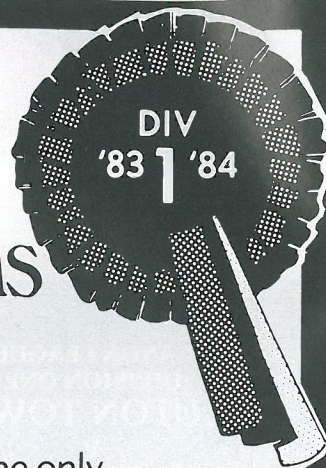


TONIGHT'S MATCH IS SPONSORED BY:



Plant Protection

Be in the Top League this season with
LUTON TOWN
 and **Wallspan Bedrooms**



The only place to go for real fitted Bedroom Furniture

You can see the full range of Wallspan luxury fitted bedrooms on display at your local Wallspan Showroom. So don't take our word call in and check the quality and price for yourself. We have been designing and manufacturing furniture for over 20 years. After all, when you are spending between £400 and £1,400 we think you should see what you are getting before you buy and not place an order from a pretty picture or model.



- You know the score with Wallspan**
- ★ FREE INSTALLATION
 - ★ FREE HOME PLANNING
 - ★ WIDE CHOICE OF FINISHES
 - ★ CREDIT FACILITIES (WRITTEN DETAILS ON REQUEST)

Come and see us today

**Unit 174, Bute St, Arndale Centre, Luton.
 Tel: Luton 23015**

Head Office and Showroom, Maulden Rd, Flitwick, Beds. Tel: 716161
 59 Midland Rd, Bedford. Tel: 211327
 18 Market Place, Stevenage, Herts. Tel: 724853

**Wallspan
 Bedrooms**

SHOWROOMS THROUGHOUT THE UK

**Luton
 Town
 F.C.**

LUTON TOWN FC
 70-72 Kenilworth Road
 Luton
 Tel: 411622

Chairman: Denis Mortimer

Directors:

R. L. Banks, D. J. Evans, E. S. Pearson
 R. J. Smith, J. R. Smith (Executive)
 D. J. Pleat (Team Manager)

President: T. Hodgson

Vice Presidents:

J. A. C. Bain (Deputy President)
 Sir Reginald Pearson OBE,
 A. G. Berry, J. B. Brent, C. Bygrave,
 B. Cole, B. England, N. S. Fookes,
 C. Holloway, I. E. Holmes,
 C. J. Evans, R. Larkinson,
 L. Leppington, Eric Morcambe OBE,
 R. Safranek, E. Waller, R. Unwin

Administration:

General Secretary: Graham MacKrell

Club Secretary: John Wilkinson

Commercial Manager:
 Bill Tomlins

Projects and Advertising Executive:
 Mike Beevor

Catering Manager: Clive Hustwitt

Development Executive:
 John Gornall

Auditors:

Arthur Young, McClelland,
 Moores & Co.

Photographer: Gareth Owen

Playing:

Coaches:

David Coates, John Moore and
 Trevor Hartley

Physiotherapist: John Sheridan

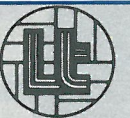
Doctor: W. A. C. Berry MBBS

All ticket enquiries please contact
 Luton 30748. All matchday information
 is obtainable from our 24-hour
 answering service - Telephone Luton
 33010

Printed by:
 Hemmings & Capey (Leicester) Ltd

Team Check

LUTON TOWN



- | | | |
|----|-----------------|---------|
| 1 | LES SEALEY | (1) 2 |
| 2 | KIRK STEPHENS | |
| 3 | MITCHELL THOMAS | |
| 4 | BRIAN HORTON | ANTIC |
| 5 | PAUL ELLIOTT | |
| 6 | CLIVE GOODYEAR | |
| 7 | RICKY HILL | DONAGHY |
| 8 | BRIAN STEIN | |
| 9 | PAUL WALSH | |
| 10 | MAL DONAGHY | AYLOTT |
| 11 | TREVOR AYLOTT | BURN |
| 12 | Moss | |

IPSWICH TOWN



- | | | |
|----|-----------------|-------|
| 1 | PAUL COOPER | (6) 1 |
| 2 | GEORGE BURLEY | |
| 3 | DAVID BARNES | |
| 4 | TREVOR PUTNEY | |
| 5 | RUSSELL OSMAN | |
| 6 | TERRY BUTCHER | |
| 7 | JOHN WARK | |
| 8 | STEVE McCALL | |
| 9 | ROBIN TURNER | |
| 10 | ALAN SUNDERLAND | |
| 11 | ERIC GATES | |
| 12 | DOZZELL | |

Referee: H. TAYLOR (Leicester)

Linesmen: A. J. BUNCE (Red Flag) D. KEEN (Yellow Flag)

Tonight's Match is sponsored by:



Tonight's Match Ball is sponsored by:



BEDFORD BUSINESS MEANS:

**You need it,
we've
got it.**



A vehicle for every business.

You'll find Bedfords working in just about every business you can think of. That's because we offer a vast range of vehicles from light vans to heavy-duty trucks to keep the wheels of British industry turning. And, if you came to the match by coach, the chances are that also was a Bedford.



A dealer round every corner.

You'll find a Bedford dealer is never far away. He'll help you choose the vehicles that best suit your business needs; he'll advise you on our special leasing, insurance and warranty schemes; and he'll maintain your Bedfords in peak condition throughout their long working life.

Because, giving our customers what they need, when they need it, is what Bedford business means.

**BEDFORD
MEANS
BUSINESS**



MY VIEW

Welcome to this evening's game. We must try and take the opportunity to improve our home results — it is at Kenilworth Road that we have missed the chance of closing on the leaders. But we are all still working hard and our efforts have been considerable. All we have sacrificed is a little quality, which is magnified if the side is not well balanced.

The 0-0 draw with Liverpool was splendid entertainment, whilst the 0-0 draw with QPR was dull and uninspiring. Spectators must realise, as indeed I must accept, that sometimes to create a foundation to win you have to work from basics. This can be foreign to your natural style and begins from the defensive area.

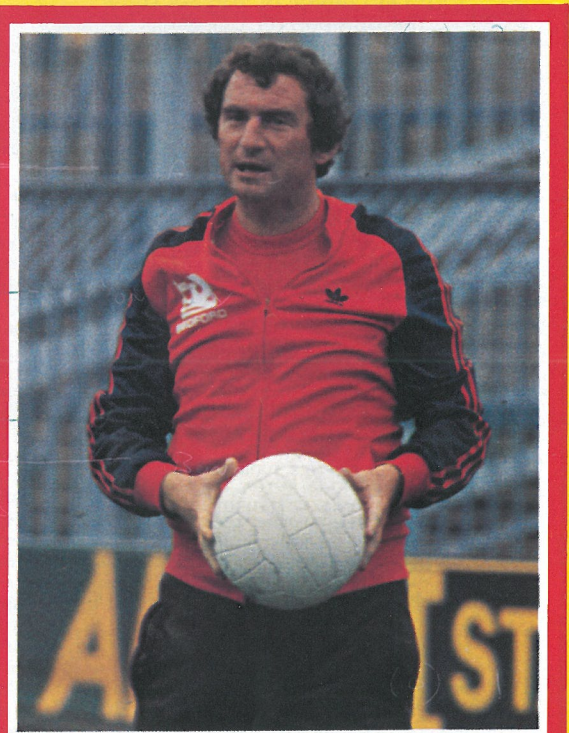
Solid defence is the springboard for attacking well — going forward while neglecting defensive duties is the recipe for the dole queue. This season, we have defended better as a team, but not attacked so well as a team. This is also very importantly due to individual's ability.

It has been quite amazing this season how many teams have changed course dramatically in mid-season. Injuries, loss of form, change of style can be several reasons. Everton's progress to a respectable League position and a League Cup Final appearance hinged on a last gasp undeserved equaliser at Oxford.

Bradford City had an appalling start and then an amazing run as did Walsall who lost one game 8-1 at Bolton. Our neighbour, Watford, have moved up impressively as have Leicester City. At the other end of the scale, consider West Bromwich and Coventry City, who have struggled to get results after a good start to the season, as have ourselves and today's visitors. Confidence is the most vital factor, and that gives the self belief that gains consistency.

When England played France in Paris, I had to keep shaking myself to remind me that the game was a friendly. If Bobby Robson cannot experiment, be allowed to lose, be allowed to make mistakes in such a game, we will never advance. The attention the game commanded and the importance that the result and performance warranted by critical media was quite staggering. How do you learn if you can't experiment?

I would like to see one game a month played privately against a League club. That way, the manager can work with his players uninhibited by others, and try to achieve the balance ap-



parently lacking in Paris. So many people have told me that Brian Stein 'froze' on his debut — I have been quite shocked.

Not one of these people went to Paris. Could it have been the TV commentator who gave them this information after 10 minutes of the game? No one has asked me about the diamond shape yet. We, at Luton, all say 'Well done, Brian Stein and Paul Walsh', and make no mistake, if you show the quality at club level, week in, week out, chances will come again.

Enjoy tonight's game. The lads need all your backing — we are fighting to get back out of a difficult period. We have shown spirit without style. Let us hope we can get back on the winning path.

MEMBERS OF THE KENILWORTH SUITE

MR D. SAVAGE
BEDFORD COMMERCIAL VEHICLES, LUTON

MR A. G. BERRY FCCA, CHAIRMAN
BLUE ARROW GROUP SERVICES LTD
5 LONDON ROAD, ST ALBANS, HERTS

BRENGREEN HOLDINGS PLC
61 CHEAPSIDE, LONDON EC2V 6AX

GARY CHAMBERLAIN
GARY CHAMBERLAIN WINDOW FASHIONS, UNIT 7,
BEAUMONT WORKS, SUTTON ROAD, ST. ALBANS, HERTS.
TEL: ST. ALBANS 62577

MR P. COOPER
CLEANINDUSTRIAL SERVICES LTD, PALMERS GREEN, LONDON N13
TEL: 01-882 4626

FILMERGRAPHIC ASSOCIATES LTD
PRINTERS AND PHOTOTYPESETTERS
BAINSON HOUSE, ALTON ROAD, LUTON, BEDS.
TEL: LUTON 36407

FINE STAMPS LTD
BILTON WAY, LUTON, BEDS. TEL: LUTON 36761

MR N. S. FOOKES
N. S. FOOKES GROUP, (PLANT FACILITIES) LTD
PROGRESS HOUSE, PROGRESS WAY, LUTON BEDS.

MR E. FOUNTAIN
VAUXHALL MOTORS, LUTON

BRIAN E. HANDSCOMBE (LIFE & PENSIONS BROKER)
48 ALMA STREET, LUTON. TEL: LUTON 425921/4

MR I. E. HOLMES, IVOR HOLMES LTD
82-88 MARSH ROAD, LUTON, TEL: LUTON 56622

MR C. J. HUDSON, E. W. HUDSON (HOLDINGS) LTD
6 UNION STREET, LUTON, TEL: LUTON 36881

RICHARD C. LARKINSON, (BALDOCK) LTD
TWENTY PENCE ROAD, COTTENHAM, CAMBS.

MARK JAMES (SALVAGE) LTD
GRANGE HOUSE, 10 COMPTON AVENUE, LUTON BEDS.
TEL: LUTON 503777

MARSHALLS OF LUTON GROUP, MARSHALL CHAMBERS
MILL STREET, LUTON LU1 2NN, TEL: 429933

IAN C. CHEVERALLS
OPALVALE GROUP
189 WALLER AVENUE, LUTON, BEDS. TEL: LUTON 56122

MR & MRS S. J. PEARSON
55 LUTON ROAD, WILSTEAD, BEDFORDSHIRE JK45 3ET

DR & MRS G. L. PLESTER
9 BRIARS CLOSE, NUNEATON, WARWICKSHIRE

NIGEL TERRY, PRIORITY FARM FOODS
81-83 PETERS STREET, BEDFORD, TEL: 0234 60372

MR A. HUNTER
RAVENMERE LTD, ALLRIC HOUSE, 21 FARLEY HILL, LUTON
TEL: LUTON 32640

RICHARDSON & BOTTOMS LTD
105-107 BISCOT ROAD, LUTON, BEDS. TEL: LUTON 35421/5

RICHMOND ELECTRONICS
(MARKYATE) LTD
HICKS ROAD, MARKYATE, HERTS. TEL: LUTON 840761

ROBINSON METAL (LUTON) LTD
CALEB CLOSE, 464 DUNSTABLE ROAD, LUTON, BEDS.
TEL: LUTON 53866

MR R. S. SAFRANEK
NEAHURST LTD
LONDON ROAD, LOWER STONDON, HITCHIN
TEL: HITCHIN 94-813545

MR. W. POWERS
SHAW & KILBURN OF LUTON
540-550 DUNSTABLE ROAD, LUTON, BEDS

WEBBEX LTD
THISTLE ROAD, WINDMILL ROAD TRADING ESTATE, LUTON, BEDS.
TEL: 457222

MR R. W. UNWIN
R. W. UNWIN & CO. LTD
PROSPECT PLACE, WELWYN HERTS. TEL: WELWYN 6441

WALLSPAN BEDROOMS
INDUSTRIAL ESTATE, MAULDEN ROAD, FLITWICK, BEDS.
TEL: FLITWICK 713621

MR & MRS P. LAYCOCK
11 THE AVENUE, FLITWICK, BEDS.

Scene on One.. Scene on One.. Scene on One

EUROPEAN BATTLE HOTS UP

By Tony Pullein

As we enter the final phase of the season all eyes are beginning to look at our chances of qualifying for next season's UEFA Cup. At the moment the situation looks bright for there is a possibility that the top eight clubs in the First Division will all qualify for Europe next season!

That, of course, depends upon a number of eventualities and the Milk Cup Final is the next major event that will have a bearing upon Europe. The winners of the Milk Cup automatically qualify for the UEFA Cup — unless they also go through to one of the other European competitions.

So, if Liverpool beat Everton in the Final and also win either the European Cup or the League Championship, they will instead participate in next season's European Cup competition.

And Everton, if they happen to lose at Wembley, will NOT qualify for the UEFA Cup instead. A Football League spokesman confirmed that when he said: 'Under no circumstances do the runners-up in the Milk Cup go forward to the UEFA Cup,' he said. 'What happens then is that qualification reverts to League positions. The four highest-placed clubs in the First Division, who have not qualified for one of the other tournaments, will represent us in the UEFA Cup.'

Our own European chances would probably be best served if Liverpool win the Milk Cup and the European Cup and for Nottingham Forest to win the League Championship.

TOUGH TIE

Then Liverpool and Forest would play in the European Champions' Cup leaving the four UEFA places open for other clubs.

Then, again, if Manchester United should win the European Cup-Winners' Cup, they would automatically participate in the same competition next season, instead of taking up one of those other European options. United, however, have a very tough quarter-final against Barcelona this month.

It would have been nice if Southampton had managed to go on to Wembley and win the FA Cup and also go into the Cup-Winners' Cup, freeing yet another UEFA Cup place.

If all those eventualities should have materialised then Liverpool, Nottingham Forest, Manchester United and Southampton — who all seem certain to finish among the top eight — would have qualified for the other two European tournaments, giving the other four places in the UEFA Cup to their best-placed rivals in the First Division.

The worst thing that could happen, from Luton's point of view, would be for Everton to win the Milk Cup, Liverpool the Championship and one of the rank outsiders to win the FA Cup. If Manchester United also failed to win the Cup-Winners' Cup, the UEFA places would then go to Everton and the clubs finishing second, third and fourth in the First Division.

Places in the UEFA Cup are allocated according to each country's results in all three competitions over the previous five years. This is calculated by awarding two points for a victory and one for a draw. Teams reaching the quarter-finals, semi-finals and Final are awarded a bonus of one point per round reached.

DIVIDED UP

The total is then divided by the number of clubs taking part to produce a coefficient.

England's coefficient is 34.426 which places us third in the European merit table for the past five seasons (not including the current campaign), behind West Germany and Spain.

The top three countries are permitted the maximum of four clubs in the UEFA Cup. Countries place between fourth and eight — Yugoslavia, Belgium, Scotland, Czechoslovakia and France — each get three entrants.

Those coming between ninth and 21st, including Italy, USSR and Denmark, are allowed two clubs with the remainder getting only one chance. Wales and Liechtenstein, being the only two UEFA members without an acceptable national league, do not get any entries though, of course, the Welsh clubs can qualify through the Football League or by winning the Milk Cup.

The Champions' Cup is open only to the Champion club of each country plus the previous season's winners. So, if Liverpool win both the European Champions' Cup and the League Championship, they will be our only entry next season.

TWO ENTRANTS

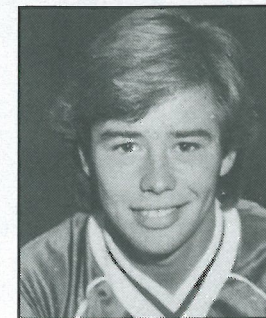
Entries in the Cup-Winners' Cup are generally the winners of the national knock-out tournament. But if the same club has also won the League Championship, then the runners-up in the Cup Final are accepted into the CWC.

Then, again, the winners of the previous season's CWC also qualify so it is possible to have two entrants in this competition, too.

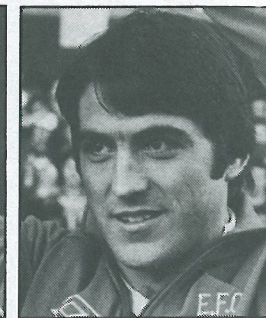
The maximum number of clubs any country can enjoy in Europe in one season is eight.

Everton are one of the clubs with an outstanding chance of returning to Europe next season and they continued their remarkable revival with a 4-4 draw at Watford where Adrian Heath scored a last-minute equaliser. Until Christmas the Toffees were one of the weakest attacking sides in the First Division. But, with Kevin Sheedy and Peter Reid hitting top form in midfield and Adrian Heath at last fulfilling all his early promise in attack, Everton are a vastly different team.

At the turn of the year, Everton had scored only 11 goals in 21 League games. Yet they netted 14 times in their next six League games and were beaten only once in their opening 15 League and Cup games of 1984. That reverse came in the second leg of the Milk Cup semi-final at Aston Villa (0-1) but, as they had carried forward a 2-0 lead from the Goodison Park leg, Everton still went through to meet Liverpool in the first all-Merseyside Final.



ADRIAN HEATH



BOB LATCHFORD

Though that Final is being shown live on television on Sunday 25th March, the Football League is still confident that Wembley will be full.

Southampton are another side ambitious to get back into Europe. And the veteran striker Frank Worthington is hoping to help them do it. Frank's goal in the Saints' 3-0 win at Ipswich was his 198th in the Football League and he has been hoping to get the other two that will make him one of only two players, still appearing regularly in League football, to claim 200 or more goals.

The other, coincidentally, is former Southampton star Mike Channon, now with Norwich. Channon still holds the Southampton club record of 182 League goals.

Pop Robson, who leads the way among currently registered professionals with 261 League goals, is now Sunderland's first team coach but he has made the occasional appearance this season. And Bob Latchford, with 209 goals, was turning out for Swansea until they recently released him because they could no longer afford to pay his salary.

Aston Villa bounced back from the disappointment of their Milk Cup semi-final defeat by Everton to thrash Wolves 4-0 and relieve some of the pressure on manager Tony Barton. Villa's last hope of retrieving something this season is to finish high enough to qualify for next season's UEFA Cup.

But for Wolves, it looks almost certain that they will make a swift return to Division Two. Defeat at Villa left them 13 points behind the safety mark. That would take four victories and a draw even to close the gap — before making further progress up the table — and, as they had won only four times all season, that already seemed an impossible task.



UNRIVALLED FOOTBALL COVERAGE

EXCLUSIVE
COLUMN
by
DAVID
PLEAT

HATTERS
REPORTS
by
BRIAN
SWAIN

LOCAL
LEAGUES
by
ERIC
NORRIS

LUTON TOWN PICTURES BY MARK RICHARDS

IN THE **LUTON NEWS** THURSDAY 12p

Town Focus

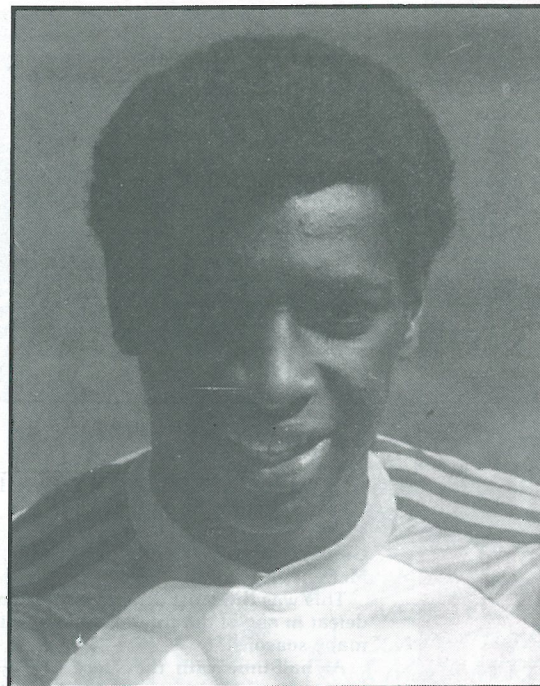


MITCHELL THOMAS CAREER RECORD

Mitchell Thomas made headlines in many local and national papers after joining Luton under the Manpower Services scheme. He made such a big impression in his early days at Kenilworth Road that he was soon offered a contract.

A local boy, and only 19, he has all the attributes a full-back requires and made his League debut in the Milk Cup-tie at Charlton last season.

He also won England Youth team caps, and further evidence of his rapid progress is emphasised by the fact that his colleagues have nicknamed him 'Viv' because of his likeness to Nottingham Forest's Anderson.



FOOTBALL LEAGUE

	82-83	83-84	Total
Arsenal		1	1
Aston Villa		1	1
Birmingham		1	1
Brighton	1		1
Liverpool		2	2
Manchester United		1	1
Norwich	1		1
Nottingham Forest		1	1
Notts County		1	1
Southampton		1	1
Tottenham	1		1
WBA		1	1
West Ham United	1	1	2
Wolves		1	1
TOTAL	4	12	16

(Up to and including 25th February)

MILK CUP

	82-83	83-84	Goals
Charlton	1		1
TOTAL	1		1

FA CUP

	82-83	83-84	Goals
Peterborough	1		1
Watford		2	2
TOTAL	1	2	3

Town Focus

FORUM

THEATRE
HATFIELD.
ADVANCE
BOX
OFFICE
HATFIELD
71217

REACH FOR THE STARS!

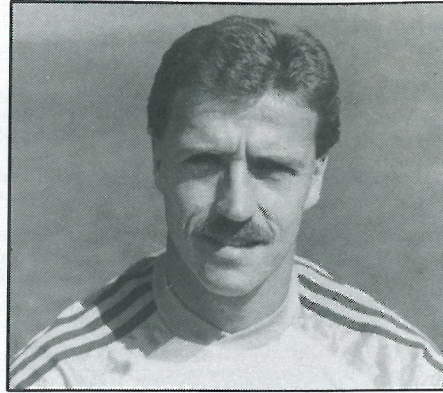
AND LET US GET YOUR SPRING
ENTERTAINMENT OFF TO A FLYING START!

March 24	Klaus Wunderlich	April 10	The Dubliners
30	Stu Francis and the Crackerjack Show	13	Alan Price
		14	The Belgrade Strings
31	Kathryn Grayson and Tony Martin in Concert	16	Howard Keel

COACH REPORT



MARK WATTS



DAVID MOSS

NORWICH CITY 6 LUTON TOWN 1
Eastern Junior Floodlight Cup
TEAM: Morgan, Davies, Devine, North, Cooke, Watts, Oldfield, Parker, Stein, McEvoy, Reynolds.

This was the most disappointing and biggest defeat in any of the three Cup competitions for many seasons.

At half-time with the score at 2-1 in their favour, we thought, on the evidence of the first half, we had a good chance to pull it back.

In the second half we did not show the spirit and determination needed to come from behind in a Cup-tie. As the game wore on, our resistance became less and less, and sometimes you have to forsake some of the finer points of the game to salvage some pride.

We had too many players who do not hold their pride in such high esteem and our feeble resistance allowed them to score four in the second half without the hint of a reply.

It was a sad night for all concerned and we shall have to get our heads up and fight back for our pride and future.

CHARLTON 4 LUTON TOWN 2
Football Combination
TEAM: Findlay, Breacker, Goodyear, Parker, Saxby, North S., Watts, Nwajobi, Stein, Turner, Daniel. Sub: North M.

In a shell shocked opening minute we found ourselves a goal behind due to a delightful lob by our own Wayne Turner over keeper Jake Findlay.

Although collectively not playing well, Emeka Nwajobi ended a fine run by hitting our equaliser only for Charlton to go ahead again

from a free-kick. Clive Goodyear then responded by getting our second; just before the interval with a vicious volley from 30 yards out.

The second half was end to end but Charlton again showed our weaknesses at dead ball situations by going ahead once again from a right-wing corner.

This time there was not a Town comeback and Charlton sealed the match from close range watched by our static defence.

LUTON TOWN 0 QPR 1
Football Combination
TEAM: Findlay, Breacker, North M., Parker, North S., Antic, Watts, Stein M., Aylott, Bunn, Moss. Sub: Davies.

Playing with two wingers — David Moss returning after a long injury — and young Mark Watts, we missed an early opportunity of going ahead when Gary Parker failed to convert a penalty when Frank Bunn was floored in the penalty area.

Stacey North then thought he had scored his first of the season only to be foiled by an offside decision. Things then started to go against us when Mark North collected an injury and Rangers began to play with confidence.

The better teamwork came from the visitors and it was with 15 minutes to go that Clive Allen, another player returning from a long injury, clinched the points with a header which gave Jake Findlay no chance.

The pleasing aspect of the game was that David Moss came through with no ill effects and delighted the spectators with some good wing play.

WAS YOURS AN INSIDE JOB?

GLAZING REPAIRS & GLASS SUPPLIES
 PATIO DOOR & WINDOW INSTALLATIONS
 DOUBLE GLAZING (SECONDARY AND SEALED UNITS)
 INTERIOR AND EXTERIOR DECORATORS

For Domestic and Commercial enquiries contact Luton 53025/597505

Sapsworth
 GLAZING & DECORATING
 J. Sapsworth Limited
 92 Marsh Road, Luton, Bedfordshire LU3 2NL
 Telephone: Luton (0582) 53025/597505

junior hatters

JUNIOR HATTERS SPONSORED BY THE HERALD AND CHILTERN RADIO

THE MASCOT



MARK BAILEY

Our readers letters, on page 14 tonight, contains a message from the father of our mascot for the match against Liverpool.

Supporters will see, from that, there are many benefits available to members of the Junior Hatters Club. Details of how to join are available in the Kenilworth Road commercial offices.

MASCOT

Mark Bailey of Luton is nine and attends Bushmead Junior School. He plays football for Bushmead Junior School and his interests are football and table tennis.

ESCORTS

Richard Herring, of Dunstable, is 11 and a pupil at Ashton Middle School. He plays football for the school team and his interests are football and all sports.

Lee Morgan, of Luton, is 12 and attends Lea Manor High School. His interests are football, fishing and all other sports.

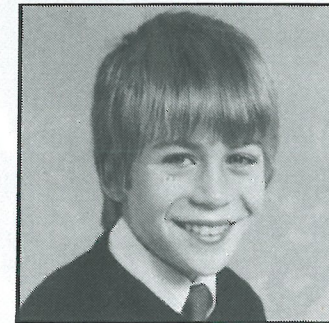
Jo Terrett, of Stevenage, is 13 and a pupil at the Barclay School. She plays for the school hockey team and her interests are supporting Luton Town and playing any kind of sport.

Richard Tomlinson, of Flitwick, is 11 and attends Woodlands School, Flitwick. He plays football and rugby for the school and he also plays rugby for Ampthill Rugby Club Juniors. His interests are computers, scouting, camping and walking.

THE ESCORTS



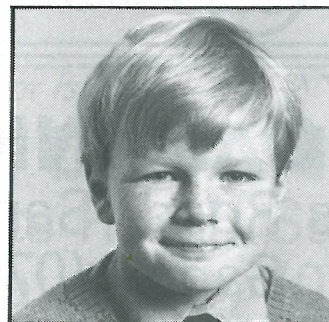
RICHARD HERRING



LEE MORGAN



JO TERRETT



RICHARD TOMLINSON

READ THE
**JUNIOR
 HATTERS
 COLUMN**

IN YOUR WEEKLY

Herald
 just a friend dropping in

PLUS ALL YOUR
 NEWS - SPORT
 COMPETITIONS
 & MUCH MORE!

FOR MORE
 INFORMATION
 RING
 LUTON 415061

CHILTERN RADIO
 BRINGS YOU ALL
 THE SPORTS NEWS

792 ^K_H_Z
 828 ^K_H_Z

**Chiltern
 Radio**

FOLLOW YOUR
 SPORT WITH
 CHILTERN RADIO

'Radar' There's no fungicide with greater scope.



When it comes to tackling mildew, Rhyncho, net blotch, Septoria, rusts and eyespot*, 'Radar' stops the rot.

*Tank mix 'Radar' and low-rate 'Stempor' DG for severe eyespot.



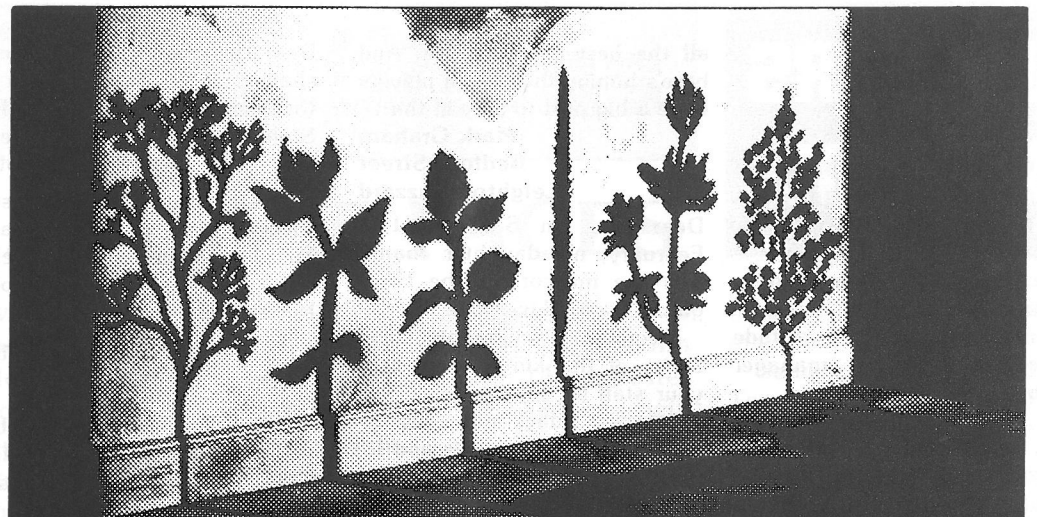
Plant Protection

Your local ICI distributor is:

SIDNEY C. BANKS p.l.c.
29 St Neots Road, Sandy, Beds.
Telephone: Sandy (0767) 80351



Plant Protection



What every winter cereal weed's got coming.

'Assassin', new from ICI, is at large.

A liquid herbicide that kills more weeds than ever before. Rubbing out all major grass and broad leaved weeds in all varieties of winter barley and wheat.

Even persistent troublemakers like black-grass, meadow-grasses, cleavers and speedwells. There's no hiding place for mayweeds and chickweed either.

'Assassin' works alone.

Make contact through an ICI agent, and watch it work for you.

Assassin

WORKS ALONE. KILLS EN MASSE.



Plant Protection

Your local ICI distributor is:

SIDNEY C. BANKS p.l.c.
29 St Neots Road, Sandy, Beds.
Telephone: Sandy (0767) 80351



Plant Protection

READERS LETTERS

Dear Sir, I would like to express, through the columns of your excellent magazine, my gratitude to current England manager Bobby Robson.

A large contingent of Luton fans, myself included, made the long trek to Southampton on 25th February by train from Waterloo.

Imagine our surprise on the return journey, when we were feeling slightly disappointed by the Town's performance, to see the England supremo on the same train.

Unlike many people in positions of power in our national game, Bobby seemed only too pleased to mingle with the fans, talking and joking with us and willing to sign autographs.

I am sure he made many new friends on the way back to London and he certainly impressed me with his eagerness to remain at grassroots level and not try to be aloof as do so many celebrities.

Here's wishing Bobby — and the England team, of course —

all the best in the future. And here's hoping that Luton players have a big part to play in that.

Mark Graham
Bedford Street
Leighton Buzzard

Dear Sir, On Saturday 18th February, my daughter Joanne was the mascot for the Luton game against Liverpool.

I would like to take this opportunity of thanking you and all your staff for making it a most memorable day, not only for Joanne, but for my wife and I. I do not think Joanne will ever forget the experience.

Thank you also for the Luton strip which she was allowed to keep which, by the way, we are having trouble getting her to take it off.

I must also thank the Luton Strikers for their encouragement to Joanne as they put her at ease when she was nervous.

She has been an ardent fan of Luton for two years and was the main reason I started to support Luton again.

Once again, thank you very much for making it such a great day for Joanne. I take this opportunity of wishing you the best of luck for the rest of the season.

David Chaplin
High Beech Road
Sundon Park
Luton

Dear Mr Wilkinson, This is just a short line to say thank you for the welcome our reporter Ray Stubbs received when he covered your match against Liverpool.

Not for the first time, your staff succeeded in making a Radio Merseyside representative feel at home, and that makes our job a lot more enjoyable.

Thanks again, and all the best for the rest of the season.

Charles Lambert
Sports Editor
Radio Merseyside

Dear Sir, The third annual Barnet Programme Fair will be held on Sunday 18th March at the Social Club, Barnet FC, Underhill, Barnet, Herts.

The fair will start at 11 am and continue until 2 pm. Admission will be 25p by programme on the day.

I would be most grateful if you could find some space to advertise the Fair in your club's programme as I am sure that many of your club's supporters may be interested in attending.

Elliot Jackson
Elliot Jackson Programmes
Gloucester Road
Hampton

Competitions

NAME THE FACES

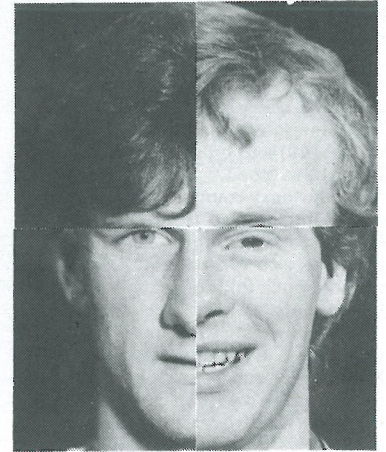
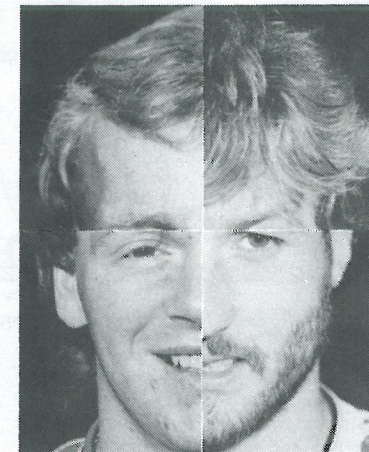
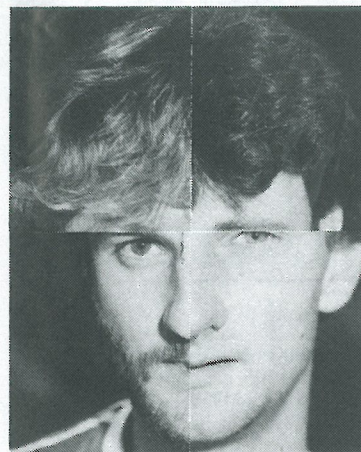
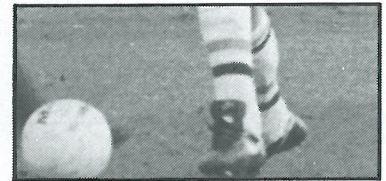
The winner of our competition in the QPR magazine was Matthew Gill from Amptill, who correctly named John Chiedozie (Notts County), Ray Wilkins (Manchester United) and Gordon Cowans (Aston Villa). Matthew will also receive one of our super videos.

Here is a new phototeazer with again a prize of a super commemorative video. The photo caption shows three players heads mixed up. All you have to do is name the three players and their current clubs. Send your entries to: Luton Town FC, 70/72 Kenilworth Road, Luton, Beds. LU1 1DH.

NAME THE STAR

The Name the Star competition continues from the Queens Park Rangers magazine. As we are sure you all know, we add a small proportion of the body of a famous player inviting you to guess the players identity.

Send your entries to Luton Town FC, 70/72 Kenilworth Road, Luton, Beds. LU1 1DH.



CLUB '82

Mr P. J. Sullivan, Tricentral Trading Ltd
Kings Road, Flitwick, Beds.
Tel: 95-712121.

J. Fedigan, Adriatic Enterprises Ltd
20 St. Margarets Way, Leicester.
Tel: Leicester 0533-26022/3

Mr D. Newton, Lormane Agents Ltd
72-76 Union Street, Dunstable, Beds.
Tel: 660272.

Mr J. Mead, Pilcourt Ltd
151 Bearton Road, Hitchin, Herts.
Tel: 0462-4367.

Mr G. White, White's Stationers Ltd
57 High Street, Woburn Sands
Milton Keynes MK17 8QY
Tel: 0908-583291.

Mr J. Peters, Avica House
346 High Street, Berkhamstead.
Tel: 75977.

Mr D. Keech, D. W. King & Co
Argyll Works, Stevenage, Herts.
Tel: 0438-4400.

Mr D. Ludlow, Ludlows of Luton Ltd
Thistle Road, Windmill Trading Estate,
Luton, Beds. LU1 3XJ.
Tel: Luton 29883/4.

Mr F. Ludlow, Frank Ludlow Ltd
71 Windmill Road,
Luton, Beds.
Tel: Luton 414441.

Mr J. Boylen, Berkeley Associates
Printing Specialists, PO Box 332, Newton
Longville
Milton Keynes MK1 7QA
Tel: 0908-75918.

Mr D. W. Graves, Westmount
Gravel Path, Berkhamsted, Herts.
Tel: 04427-75977.

Mr F. W. Pearce, F. W. Pearce (Builders) Ltd
1a Wilsden Avenue, Luton, Beds.
Tel: 24163.

Mr Tony Lambert, Broad Street Print
9 Broad Street, Hemel Hempstead, Herts.
Tel: 0442-65490.

Mr M. Manning, Beard & Manning Ltd
152 Leagrave Road, Luton, Beds.
Tel: 22538.

Mr T. Bailey, Wallspan Bedrooms Ltd
Industrail Estate, Maulden Road, Flitwick, Beds.
Tel: 9571-3621.

Mr D. Rand, David Rand & Co Ltd
51 Radlett Road, Frogmore, St. Albans, Herts.
Tel: 98-72492.

Mr R. A. Finch, Computer Technology Ltd
Eaton Road, Hemel Hempstead, Herts.
Tel: 82-3272.

Mr E. Elliott, Emeralla
Market Square, Biggleswade, Beds.
Tel: 0767-313273.

Mr J. Waller, Lathom & Co
King Street, Luton, Beds.
Tel: 29221.

Mr E. Edwards, County Motors Ltd
Unit 1, 166 Camford Way, Sundon Park, Luton

Building houses to make homes in

at

Bramingham Road, Luton
Parkside, Houghton Regis
Wallington Rise, Baldock
Two Mile Ash, Milton Keynes
Church Green, Bletchley
Kimbolton Gardens, Bedford
Merton Court, Bedford
Millfield, Bedford
Padbury House, Bedford

Future development: Astra Court, Luton



Barratt

LUTON LTD

Telephone: Luton (0582) 422771

NEWSDESK... NEWSDESK... NEWSDESK...

WELCOME BACK, JIM

Jim McCabe, who drives our players thousands of miles throughout the country every season in our magnificent Bedford Trucks sponsored coach, is back in action following an operation in London.

We willingly take this opportunity of welcoming Jim back to the Kenilworth Road scene while, at the same time, offering our thanks to Bob Murray who acted as substitute while Jim was out of action.

AWAYDAY TRAVEL

Supporters making their own way to Norwich City on Saturday may find this route, supplied by the RAC, useful.

Leave Luton and travel through Hitchin, Baldock and the Royston Bypass and proceed along the A11 via Newmarket and Thetford towards Norwich.

Enter Norwich on the A11 and continue to roundabout, taking the third exit into Daniels Road (Ring Road). Continue to next set of lights (junction with A140) and go straight across into Lakenham Road.

At the next roundabout go straight ahead into Barrett Road (over railway bridge) to traffic lights. Straight over at lights into Martineau Lane to next roundabout, taking second exit into Bracondale.

Proceed along Bracondale to junction with King Street. Turn right into King Street and bear right at the bottom into Carrow Road. Continue along Carrow Road, over traffic lights and Ground is immediately on the right.

MAD TO BE HATTERS!

Nearly 70 boys turned up at the Stopsley Regional Sports Centre in Luton for a knock-out competition to select six five-a-side teams to represent the Junior Hatters.

The Luton Town junior club has been challenged to a tournament at Coventry City ground, where they will

meet six teams of Junior Sky Blues.

There will be three teams of Under-10s and three of Under-13s, and the boys taking part will have free seats to watch the Coventry-Luton tie, which will be played after their competition on 5th May, as well as a free buffet at the Sky Blues' restaurant.



CALLING IPSWICH FANS

The London Branch of the Ipswich Town Supporters Club serves London and the south-east. It provides members with regular newsletters, sporting and social events but, most

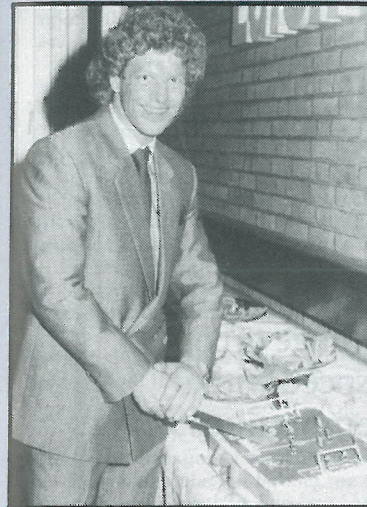
important, cheap travel to matches.

Membership details may be obtained by writing to Bob Tebbitt, 5 Stempwood Way, Barnham, Bognor Regis, West Sussex PO22 20LA.

HAPPY BIRTHDAY, KIRK

Full-back Kirk Stephens did not allow our recent defeat at Southampton to ruin his birthday celebrations.

As soon as the players arrived back in Luton from Hampshire, they joined Kirk in the Hatters Club for the party. Even if we say it ourselves, it seems like a piece of cake!



TONIGHT'S POP SPOT

Bill Young is our guest this evening in the pre-match Chiltern Radio Pop Spot. Bill, who presents the station's morning show between 9.30 am-12.45 pm, was our guest when we first introduced the Pop Spot for the match against Manchester United.

Since then, we hear that Bill has been converted into an ardent Luton fan and was responsible for re-introducing the Junior Hatters spot in Chiltern Radio's Saturday Kids Stuff programme.

MAN IN THE MIDDLE

Tonight's referee is Howard Taylor of Oadby, Leicestershire. He commenced refereeing in 1956 in local Leagues around Manchester and Stockport and progressed to the Cheshire League. Moved to Leicestershire in 1974 and continued via the Football Combina-

tion to the Football League List. Lined an FA Cup quarter-final (1979), FA Cup semi-final replay (1980), and England v Bulgaria Under-21 international (1980). Also refereed a Midland Floodlit Cup Final (1980), and an FA Vase semi-final match (1982).

A married man with two daughters, he is a finance and administration director with the National Association of Youth Clubs. His interests include golf and listening to music.

He is also a referee training instructor in Leicestershire, and vice-chairman and treasurer of Leicestershire Society of Referees.



OUR MAN ABOUT TOWN

The problem of how to remain active while attempting to make a comeback after a bad injury, has been partially solved by winger David Moss.

He has been training alone while preparing for his much awaited appearance in the Reserve side. In addi-

tion to that, he also took part in the Herald wedding show at Luton's Chiltern Hotel when he acted as a model.

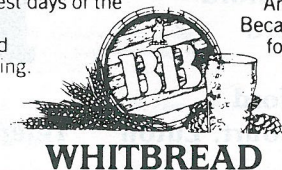
It's a fair bet that not many Luton supporters have seen David wearing this type of strip before.

THE LOCAL TASTE AND HOW TO SATISFY IT

We're very definite about our taste in beer around here. A clear light pint is what we look for, with a good, clean smack of malt and hops.

And there's only one name that really satisfies the local taste - BB. The light beer first brewed in Luton during the darkest days of the War by J. W. Green.

Only the finest hops and good, ripe barley go into the making. Then the brew is matured to exactly the right degree to give you a bright refreshing pint with a sound, full flavour.



WHITBREAD

American servicemen in local wartime bases declared that BB, chilled, was the nearest taste to Stateside draught.

It went down well when Syd Owen ruled the Hatters.

And it's been going down well ever since. Because BB is brewed with a proper respect for quality. To keep up the traditions we value round here.



Graham Ford

Your Comprehensive Builders Merchants



Depots at:
LUTON - KINGSWAY 31199
DUNSTABLE - BEALE STREET 603111
LEIGHTON BUZZARD - LEIGHTON ROAD 373486



Falcon

WE
KNOW
WHERE
WE'RE
GOING.

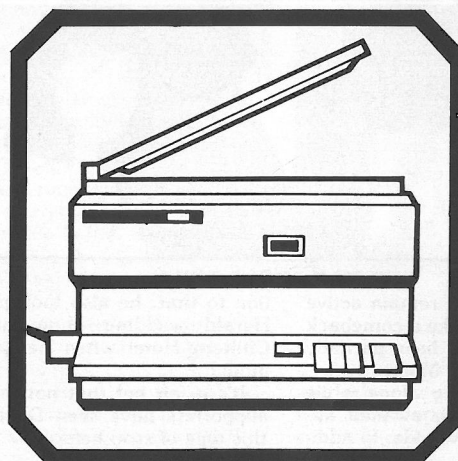
FALCON HOLIDAYS LTD

Take no chances book with a bonded A.B.T.A. member. Phone now for a copy of our latest brochure

FALCON HOLIDAYS LTD
190 Campden Hill Road
London W8

Telephone: 01 221 6298

Why do more businessmen in Britain, Europe and North America choose Canon?



The Canon NP range of copiers combines high speed with economy and compactness with versatility.

From the Personal Copiers right up to the NP500 at the top of the range, Canon has a copier to suit every business requirement.

Canon Copiers

Canon (UK) Limited, Waddon House, Stafford Road, Croydon CR9 4DD.

HATTERS WHO'S WHO

Mike Harrison is featured tonight in the continuation of Tony Pullein's feature on former Luton players.

Mike Harrison joined Luton in June 1968, shortly after we had won the Fourth Division Championship, to give the Hatters the stabilising influence of his vast experience when we tackled the higher divisions.

He was, by then, approaching the end of his playing days and, though he was not always in the first team, he made his contribution towards the growth of the club and further promotion.

Apart from being an outstanding outside-left, Mike held a deep interest in Spiritualism. He didn't force his views upon others, though would go into deep discussion with anyone who held a genuine interest.

'I used to take a lot of ribbing from the lads in the dressing room,' smiled Mike. 'But I didn't let it worry me. It was a subject my father had introduced me to and, as I advanced in life, I found it improved my way of thinking.'

Mike was born in Ilford, Essex, and it was with the local schools' side that his footballing prowess was first recognised. He was picked for the England Schools XI and, inevitably, came under the scrutiny of all the major London clubs who had scouting networks in his area.

Eventually, he agreed to sign for Chelsea. After progressing through the Youth and Reserve teams, he got his chance in their First Division side in 1956-57. It took him some while before he won a regular place in Chelsea's senior side and it was towards the end of the 1960-61 season that his career really began to flourish.

OTHER WING

In March that year he was picked for the England Under-23 side against West Germany at Tottenham. 'Bobby Moore was playing behind me and I remember Terry Paine was on the other wing,' said Mike. 'And Budgy Byrne was our centre-forward. We won 4-1.'

The Under-23s, in fact, scored four goals in each of Mike's games for them. In February 1962 Mike scored twice in a 4-2 win over Scotland at Aberdeen, playing outside Jimmy Greaves. A month later he helped produce a 4-1 victory over the young Turkey side at Southampton.

Unfortunately for Mike, Bobby Charlton was at that time firmly entrenched in the number 11 shirt for the full England team and no one else got a look in. 'Of course it would have been an honour to play for England,' Mike said once during his Luton days. 'But Bobby was really at his peak at the time and no one could argue about that.'

Mike left Chelsea in September 1962 to sign for Blackburn Rovers. 'They were a successful First Division side at the time and usually finished in the top-half of the table,' he recalled. 'But we had one disastrous season and in 1966 we finished bottom of the table.'

He remained at Ewood Park until September 1967 when he made the long journey down to Plymouth to sign for Argyle. 'They were near to the foot of the Second Division at the time and we struggled throughout. In the end we finished bottom.'

EXPERIENCED RELEGATION

'That was the third time I had experienced relegation. In 1962 Chelsea were relegated to the Second Division. Then came those drops with Blackburn and Plymouth. It was only after I had signed for Luton that I experienced a promotion campaign.'

Mike came to Kenilworth Road in June 1968 and the Hatters made a bold bid for promotion during his first season, finishing third in the days when only two clubs went up.

We made it the following season when we took runners-up spot but, by then, Mike's first team days were over. And he was released from his contract at the end of the season.

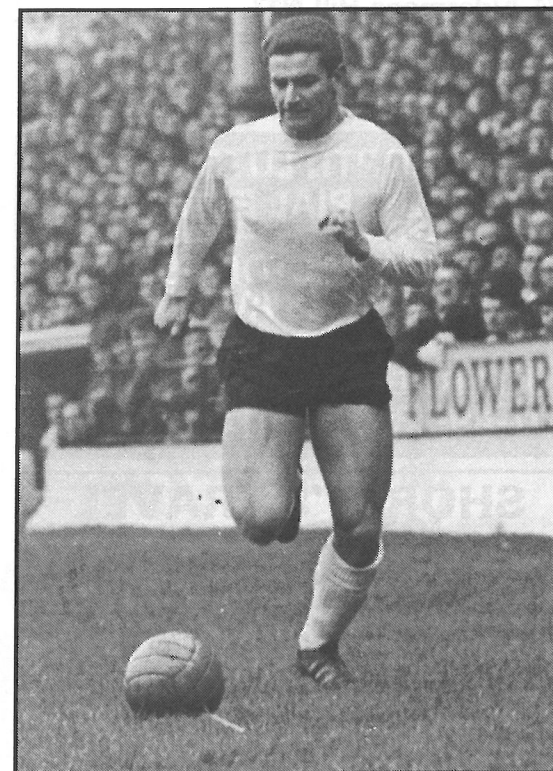
'I had had a good run and I derived much pleasure from those days as a player,' he revealed later. 'I really spent only the tail end of my playing career with Luton but the club was very much on the up-grade.'

'They had dropped from the First to the Fourth Division and the club had been devastated. But they were then getting over it and I was pleased to have played a small part in the club's recovery.'

LEAGUE RECORD

		Apps	Goals
Chelsea	1956-57	1	0
	1957-58	1	0
	1958-59	16	2
	1959-60	5	2
	1960-61	15	1
	1961-62	22	3
Blackburn	1962-63	1	0
	1962-63	31	4
	1963-64	41	14
	1964-65	31	6
	1965-66	32	9
	1966-67	21	6
Plymouth	1967-68	4	1
	1967-68	15	3
Luton	1968-69	18(1)	2
	1969-70	11(2)	4
		265(3)	57

TONY PULLEIN



Your local suppliers of
printed polythene & paper bags.
Short runs a speciality.

Princess Packaging Ltd.

HEATHFIELD WORKS, LEYTON ROAD, HARPENDEN, HERTS.
AL5 2JB TEL. (05827)66806 OR 64431 (24 HR. SERVICE).

For all your
Floral arrangements contact:

INBLOOM
(Suppliers to Kenilworth Suite)
45 Latimer Road, Luton

Cleandustrial Services Ltd

The Professional Approach to
Your Cleaning Problems
84 Aldermans Hill N13
Official Cleaning Contractors to
Luton Town FC
Telephone: 01-882 4626

NORTH LUTON INDUSTRIAL ESTATE

NEW FACTORIES/
WAREHOUSES AVAILABLE

FULLER PEISER **St Quintin**
01-499 8931 01-499 8626

SHOREY'S TRAVEL



LUXURY
COACH HIRE
FOR FOREIGN &
UK EXECUTIVE
COACHES

COMPETITIVE RATES · FRIENDLY SERVICE · LOCAL BASED

28 Sheepfold Hill, Flitwick, Bedfordshire
Telephone: Flitwick 713289 Silsoe 60694

John's



Journal

JOHN WILKINSON – CLUB SECRETARY

If ever a team has suffered through having to transfer its star players for whatever the reason, it must be our visitors today. Players of the calibre of Paul Mariner, Alan Brazil, Frans Thijssen, Arnold Muhren, Mick Mills have all left the club within the last 12 months to take the heart right out of the side.

The young players who have now taken their places have a real job on their hands. If it is any consolation to them, my son Neil is still an ardent fan even if his favourite player has just joined Arsenal.

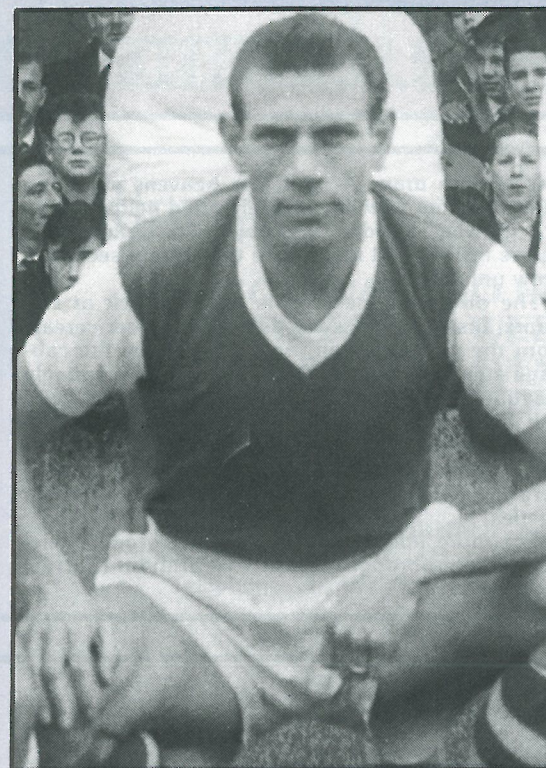
From my records I have picked out a game played between our two clubs on 5th November 1960, when in front of 11,221 spectators we won 3-2. The teams were LUTON: Standen, McNally, Bramwell, Pacey, Groves, McGuffie, Spencer, Ashworth, Turner, Brogan, Tracey. Goalscorers: Turner (2), Ashworth.

IPSWICH: Bailey, Carberry, Malcolm, Compton, Nelson, Elsworthy, Stephenson, Millward, Crawford, Phillips, Leadbetter. Goalscorer: Crawford (2).

I have just completed the dates for the local Cup Finals which are normally held at Kenilworth Road around this time of the season. For those interested they are: Monday 9th April Whitbread Final, Monday 16th April William Pease Final, Monday 30th April Solar Final, Tuesday 1st May Wallspan Southern Combination Final, Monday 14th May Chiltern Youth League Final. There is still one match outstanding at this time of writing and that is a Bedfordshire County Cup Final.

All matches will kick-off at 7.30 pm and admission is only 50p. Why not come along and watch these games. There is usually plenty of excitement and goals. In fact over the years the majority of these games have gone into extra time so you get even more for your money.

The outstanding Canon League fixture against Birmingham City has now been arranged for Tuesday 20th March kick-off 7.30 pm. The match, of course, is at St Andrew's.



MEMORY LANE

THIS WEEK:
TED PHILLIPS

One of the most prolific goalscorers of the post-war years, Ted made his debut for Ipswich in 1953-54 but it wasn't until two seasons later that he became a first team regular.

His ability to find the net was one of the main factors of the side, managed by Alf Ramsey, winning promotion from the Third Division South.

In all, he scored 160 goals in his 10 years at Portman Road and made 269 appearances. March 1964 saw him join Orient where he made 36 appearances and scored 17 times.

He joined Luton Town in February 1965 but made only 12 appearances, scoring eight goals. In September 1965 he joined Colchester United where he finished his League career. In his total career Ted scored nearly 200 League goals.

Anglia Television

Proud to serve
the
East of England.



Today's Sponsor...

We would like to extend a warm welcome to our match sponsors tonight, ICI Plant Protection, who are the market leaders in the agricultural chemical industry, selling chemicals to solve farming problems of weeds, pests and diseases in crops.

The range of products offered by ICI, including such well known names in the agricultural sector as 'Gramoxone', 'Fusilade', 'Radar' and 'Aphox', are technically excellent and are backed by one of the largest sales forces in the industry. There is always an ICI representative close at hand to advise on any farming question.

Problems being currently encountered by local

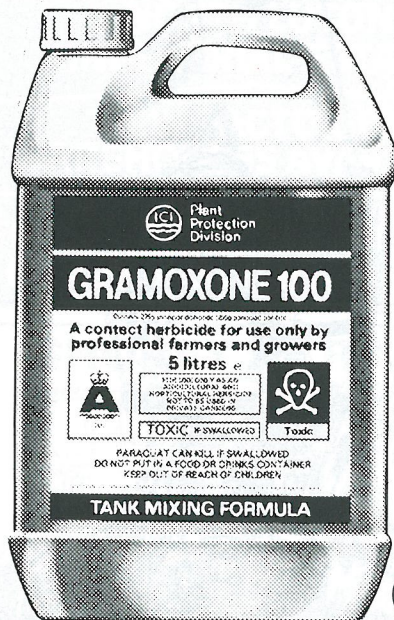
farmers are many — with the heavens emptying their contents over freshly cultivated fields, weeds are growing rapidly. A spray with 'Gramoxone' before drilling will make sure that cereal seedlings grow unhindered.

The oil seed rape crop is under attack at two fronts, firstly by grass weeds and volunteer cereals from the previous crop, and secondly by the cabbage stem flea beetle, an insect with a seemingly insatiable appetite for the oil seed rape plant.

ICI can help on both counts: 'Fusilade' can be sprayed on to the crop any time now to make sure those grass weeds are killed and 'Gamma-Col' is a very inexpensive insecticide to deal with the flea beetles.

For more information on any ICI product telephone Peterborough 313100 or Farnham (Surrey) 724525.

Whatever the weather. It works.



ICI Plant Protection

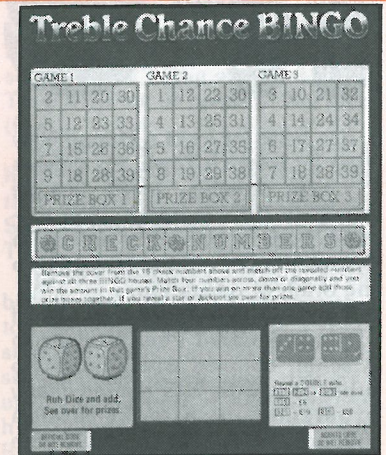
Whether or not it rains, your spraying needn't be a wash-out, because 'Gramoxone' 100 is rainfast in just ten minutes.

GRAMOXONE 100

Lotteries

DO YOU WANT TO EARN UP TO £50 per WEEK (WORKING PART-TIME EVENINGS) WE ARE LOOKING FOR PART-TIME AGENTS (18 years-of-age or over) TO ESTABLISH LOTTERY SALES IN THIS AREA

Contact:
JOHN P. GORNALL
70-72 KENILWORTH ROAD, LUTON, BEDS
Telephone: 30748 (24 hour ansaphone)



Travel...



Travel...



IF YOU'RE GOING TO IPSWICH ON SATURDAY, WHY NOT TRAVEL BY OUR LUXURY COACHES? IT WILL COST YOU ONLY £4 TO TRAVEL IN STYLE. COACHES LEAVE MAPLE ROAD AT 11.30 am AND BOOKINGS ARE NOW BEING ACCEPTED IN THE COMMERCIAL OFFICE.

Souvenirs

Our Souvenir Shop in the Kenilworth Road Commercial Offices is still the best bet for obtaining that special present.

This is a further selection of our stock. All you have to do, if taking advantage of our mail order system, is to send your request Luton Town FC, 70-72 Kenilworth Road, Luton, with the correct remittance and post and packing costs.

If you order on a personal basis, our staff will be delighted to assist you.

Mugs: Crested Pottery	£1.50	★
Pens: Orange/White	15p	sae
Pens: Orange	25p	sae
Programme Binders	£4.75	58p
Rosettes: Crested Orange/White	50p	16p
Ties: Navy — Club Crest	£3.30	22p
Sweat Bands	95p	16p
Straw Hats	£3.50	★
Straw Hats: Mini	£1.50	20p
England Quiz Books	£1	23p
Luton Town Record	£1	16p
Luton Town Video	£20	85p
Football Shirts Adidas: (Home and Away)		
Boys 26"	£10	40p
Large Boys 30"	£10	40p
Youths 32-34"	£12	40p
Small Mens	£12	40p
Medium Mens 38"	£12	40p
Large Mens 40"	£12	40p
Car Mascot: Mini Football Kit	75p	16p
Gloves: Woollen Orange or White	£1.50	16p

IPSWICH

It has been far from a Happy New Year for Ipswich Town. Six defeats in their opening seven League games of 1984 has sent them toppling from comparative safety, in the middle of the First Division, to the brink of relegation.

The £150,000 transfer of England forward Paul Mariner to Arsenal, coupled with injuries to other forwards, has caused many problems in attack though manager Bobby Ferguson did gain some temporary relief by signing Alan Sunderland on a month's loan from Arsenal.

Sunderland has played for England at four levels and provides the wealth of experience so necessary just now. He entered League soccer with Wolves in 1971-72 and moved on to Arsenal for £240,000 in 1977. In addition to his full England cap, Alan has played seven times in 'B' internationals and has also turned out for the Under-21s and Under-23s.

Eric Gates and Kevin O'Callaghan, normally the other two forwards, have both spent time on the treatment table and Mich D'Avray and the versatile Steve McCall have both been used in the front line.

Gates first came into the Ipswich side in 1973-74 but it took him about four years to earn a regular place. He then won two England caps.

CLUB RECORD

The £250,000 fee paid to Millwall in January 1980 for O'Callaghan remains an Ipswich club record though at the time he was only signed as cover! What's more, he made only 15 full appearances for Millwall's League XI.

For more than two years he was virtually a Reserve at Portman Road but, following Under-21 honours, he still got into the Republic of Ireland side. He is now firmly established at international

level, winning his 14th cap against Malta in November.

D'Avray was born in South Africa but joined Ipswich as an apprentice and worked his way up through the Junior teams. He made his League debut in 1979-80. He won a regular place last season after the departure of Alan Brazil.

McCall has proved a most versatile player. He was originally considered a forward when making his League debut in 1979-80 but, because of the club's injury problems, he spent almost the whole of the 1981-82 season at left-back. Last season he became a fixture in midfield but he recently turned up again at left-back.

Jason Dozzell has been picked a few times as substitute and celebrated his arrival in the First Division by scoring a goal when called onto the field at Coventry last month.

Trevor Putney, John Wark and McCall filled the midfield positions for much of the season but, when McCall was needed elsewhere, Mark Brennan was drafted into the side. Robin Turner, Tommy Parkin and Tony Kinsella have also been used in this department.



FIRST OUTING

Putney was signed from Brentwood and received his first League outing as substitute against Arsenal in October 1982.

Wark has for some while been holding a place in the Scotland team, the East Germany match in November bringing him his 26th cap. John developed in the Ipswich Youth team and, after making his early first team appearances as a defender, has developed into a prolific scorer from midfield. He scored 15 goals in 1979-80, 36 the following season and 23 in 1981-82 and last



IPSWICH TOWN

Back row (left to right): Trevor Putney, Tommy Parkin, Robin Turner, Kevin Steggles, Tony Kinsella, Kevin O'Callaghan.

Middle row: Bobby Ferguson (Manager), Cor Lems, David Barnes, Laurie Sivell, Paul Cooper, Irvin Gernon, Mich D'Avray, Charlie Woods (Assistant Manager).

Front row: Terry Butcher, George Burley, John Wark, Paul Mariner, Eric Gates, Russell Osman, Steve McCall.

RELEGATION THREATENS IPSWICH

season. He has reached double figures again this season.

Brennan served his apprenticeship at Portman Road and made his first League appearance against Arsenal in November.

Turner won England Youth honours in his early days with the club and can be counted as one of their unluckiest players. Though he made his first League appearances in 1975-76, he hasn't quite been able to nudge out the well-known players and many of his 40 odd League appearances have been as substitute.

Parkin completed his apprenticeship at Portman Road, but he made his League debut while on loan to Grimsby in 1975-76. The following season he played in the League for Peterborough during another loan spell and he finally got into the Ipswich side in 1977-78.

Kinsella is a Republic of Ireland Youth and Under-21 international who first played League football for Millwall in 1978-79. He joined Tampa Bay Rowdies in 1981 but Ipswich signed him for £60,000 at the end of that summer season.

CONSISTENT

England men Terry Butcher and Russell Osman function in the middle of the defence, normally with George Burley and Irvin Gernon in the full-back positions.

Butcher has been one of England's most consistent performers over the past two years and he now has 23 caps. Terry has been in the Ipswich side since 1978 and was earlier capped at Under-21 level.

Osman, who won his 11th cap against Denmark this season, was an instant success when making his Ipswich debut in 1977 and, after gaining England Under-21 honours, earned his full international call four seasons ago.

Burley has been an Ipswich first teamer since 1973 and was honoured by Scotland at Under-21 and Under-23 levels before gaining full international caps. At the moment he has 11 full caps.

Gernon made his League debut against Nottingham Forest in

March 1982. He was a midfield player then but last season, following the departure of Mick Mills to Southampton, he took over as left-back.

Goalkeeper Paul Cooper is now into his 10th season with the club. Once a striker in his early days with Shrewsbury, he switched to goalkeeping and signed for Birmingham. Paul made 17 League appearances for the Blues before initially joining Ipswich on loan in 1974. The transfer was quickly completed for £30,000.

Before travelling to Arsenal last Saturday, Ipswich had won two away League games — at Notts County (2-0) and Coventry (2-1). They drew at Watford (2-2), Sunderland (1-1) and Norwich (0-0).

Their other away games all ended in defeat — at Birmingham (0-1), Southampton (2-3), West Ham (1-2), Nottingham Forest (1-2), Aston Villa (0-4), WBA (1-2), Tottenham (0-2), Stoke City (0-1) and Leicester (0-2).

Ipswich reached the fourth

round of both Cups. In the Milk Cup they won both legs against Blackburn — 4-3 at Portman Road and 2-1 away — and then scored a 3-2 home win over QPR. They went out at home to Norwich (0-1).

A 3-0 win at Cardiff gave them a hopeful start in the FA Cup but they then lost 0-2 away to another Second Division side, Shrewsbury Town.

Ipswich won the FA Cup in 1978 but, though they've finished in the top three places in the First Division five times over the past nine seasons (and twice been runners-up), the League Championship has eluded them since Alf Ramsey's team shook the world by lifting the title at the end of the club's debut season in the top flight back in 1962.

Ipswich have maintained constant membership of the First Division since their last promotion in 1978.

By TONY PULLEIN



Terry Butcher joins Noel Blake in aerial combat

LUTON STRIKERS



The time leading up to the start of a match can be a boring experience for supporters — unless they happen to watch Luton Town at Kenilworth Road. In addition to the Chiltern Radio Pop Spot which provides entertainment for the fans, we have the benefit of the Luton Strikers. But their appearance on the pitch could not be possible without the generous help of Brian Cole's Cleandustrial company who have sponsored the Strikers for us this season. We are extremely grateful for Mr Cole's involvement with the club and take this opportunity of thanking him for his valuable support. The Strikers are pictured here with Paul Elliott at a recent Kennings promotion and with a party of sponsors.



Action

LUTON 0 QPR 0

We thought we had enough chances to take three points off Rangers a week last Saturday. Here Brian Stein is pictured trying to penetrate the Rangers' defence with a powerful shot. Trevor Aylott tumbles in another attack.



REPLAY IN COLOUR. . REPLAY IN COLOUR



Despite doing enough to take three points we had to settle for one against QPR. Les Sealey who had little to do is pictured making a rare save backed-up by Mal Donaghy, Clive Goodyear and Paul Elliott.




TOWN RECORD '83/84

Opponents	Result	Attendance	Points	Position	Sealey	Stephens	Turner	Horton	Elliott	Donaghy	Hill	Stein	Walsh	Bunn	Moss	Antic	Ayllott	Daniel	Thomas	Parker	Johnson	Goodyear	Nwajobi	Own Goals
Goals Scored								2	2	1	2	8	13	3	3		7	2		1			2	3
1983																								
August																								
27 Arsenal	1-2	39,348	—	—	1	2	3	4	5	6	7	8	9	10	11	—	—	—	—	—	—	—	—	—
31 Leicester City	3-0	11,929	3	—	1	2	3	4	5	6	7	8	9	10	11	—	—	—	—	—	—	—	—	—
September																								
3 Sunderland	*4-1	10,846	6	5	1	2	3	4	5	6	7	8	9	10	11	—	—	—	—	—	—	—	—	—
6 Norwich City	2-2	11,905	7	5	1	2	3	4	5	6	7	8	9	10	11	12	—	—	—	—	—	—	—	—
10 Manchester United	0-2	41,013	7	8	1	2	3	4	5	6	7	8	9	10	11	12	—	—	—	—	—	—	—	—
17 Wolverhampton W.	4-0	10,975	10	7	1	2	3	4	5	6	7	8	9	10	11	—	—	—	—	—	—	—	—	—
24 Nottingham Forest	0-1	16,296	10	13	1	2	3	4	5	6	7	8	9	10	11	12	—	—	—	—	—	—	—	—
October																								
1 Aston Villa	1-0	12,747	13	9	1	2	3	4	5	6	7	8	9	10	11	12	—	—	—	—	—	—	—	—
4 Rotherham (MC2-1L)	3-2	4,035	—	—	1	2	3	4	5	6	7	8	9	10	11	—	11	—	—	—	—	—	—	—
15 Everton	1-0	14,325	16	7	1	2	3	4	5	6	7	8	9	10	11	—	—	—	—	—	—	—	—	—
22 Southampton	3-1	12,389	19	4	1	2	3	4	5	6	7	8	9	10	11	12	9	—	—	—	—	—	—	—
25 Rotherham (MC2-2L)	0-2	6,755	—	—	1	2	3	4	5	6	7	8	9	10	11	—	10	—	—	—	—	—	—	—
29 Liverpool	0-6	31,940	19	6	1	2	3	4	5	6	7	8	9	10	11	—	—	—	—	—	—	—	—	—
November																								
5 Queens Park Rangers	1-0	15,053	22	4	1	2	3	4	5	6	7	8	9	10	11	—	—	—	—	—	—	—	—	—
12 Birmingham City	1-1	11,111	23	5	1	2	3	4	5	6	7	8	9	10	11	—	—	—	—	—	—	—	—	—
19 Tottenham Hotspur	2-4	17,275	23	10	1	2	3	4	5	6	7	8	9	10	11	—	—	—	—	—	—	—	—	—
26 Watford	2-1	17,791	26	5	1	2	3	4	5	6	7	8	9	10	11	—	—	—	—	—	—	—	—	—
December																								
3 Coventry City	*2-4	10,698	26	10	1	2	3	4	5	6	7	8	9	10	11	12	10	—	—	—	—	—	—	—
10 Stoke City	4-2	10,329	29	8	1	2	3	4	5	6	7	8	9	10	11	12	10	11	—	—	—	—	—	—
18 West Bromwich Albion	2-0	11,566	32	6	1	2	3	4	5	6	7	8	9	10	11	—	—	—	—	—	—	—	—	—
26 Notts County	3-0	9,789	35	3	1	2	3	4	5	6	7	8	9	10	11	—	—	—	—	—	—	—	—	—
27 West Ham United	0-1	16,343	35	5	1	2	3	4	5	6	7	8	9	10	11	—	—	—	—	—	—	—	—	—
31 Sunderland	0-2	19,482	35	6	1	—	3	4	5	6	7	8	9	10	11	—	—	—	—	—	—	—	—	—
1984																								
January																								
2 Nottingham Forest	2-3	12,126	35	9	1	2	3	4	5	6	7	8	9	10	11	12	—	—	—	—	—	—	—	11
7 Watford (FAC3)	2-2	15,007	—	—	1	2	3	4	5	6	7	8	9	10	11	12	—	—	—	—	—	—	—	11
10 Watford (FAC3R)	3-4	20,586	—	—	1	2	3	4	5	6	7	8	9	10	11	12	—	—	—	—	—	—	—	12
14 Arsenal	*1-2	16,320	35	10	1	2	3	4	5	6	7	8	9	10	11	—	—	—	—	—	—	—	—	12
21 Wolverhampton W	2-1	11,594	38	8	1	2	3	4	5	6	7	8	9	10	11	—	—	—	—	—	—	—	—	12
February																								
4 Aston Villa	0-0	18,656	39	7	1	2	3	4	5	6	7	8	9	10	11	—	—	—	—	—	—	—	—	—
12 Manchester United	0-5	11,265	39	8	1	2	3	4	5	6	7	8	9	10	11	—	—	—	—	—	—	—	—	—
18 Liverpool	0-0	14,877	40	8	1	2	3	4	5	6	7	8	9	10	11	—	—	—	—	—	—	—	—	—
25 Southampton	1-2	17,947	40	11	1	2	3	4	5	6	7	8	9	10	11	—	—	—	—	—	—	—	—	11
March																								
3 Queens Park Rangers	0-0	11,922	41	10	1	2	3	4	5	6	7	8	9	10	11	—	—	—	—	—	—	—	—	—
13 Ipswich Town																								
17 Norwich City																								
24 Leicester City																								
31 Ipswich Town																								
April																								
7 Everton																								
14 Tottenham Hotspur																								
17 West Ham United																								
21 Notts County																								
28 Watford																								
May																								
5 Coventry City																								
7 Stoke City																								
12 West Bromwich Albion																								
19 FA Cup Final																								
TBA																								
Birmingham City (A)																								



Today's Mitre Match Ball is sponsored by:

Plant Protection



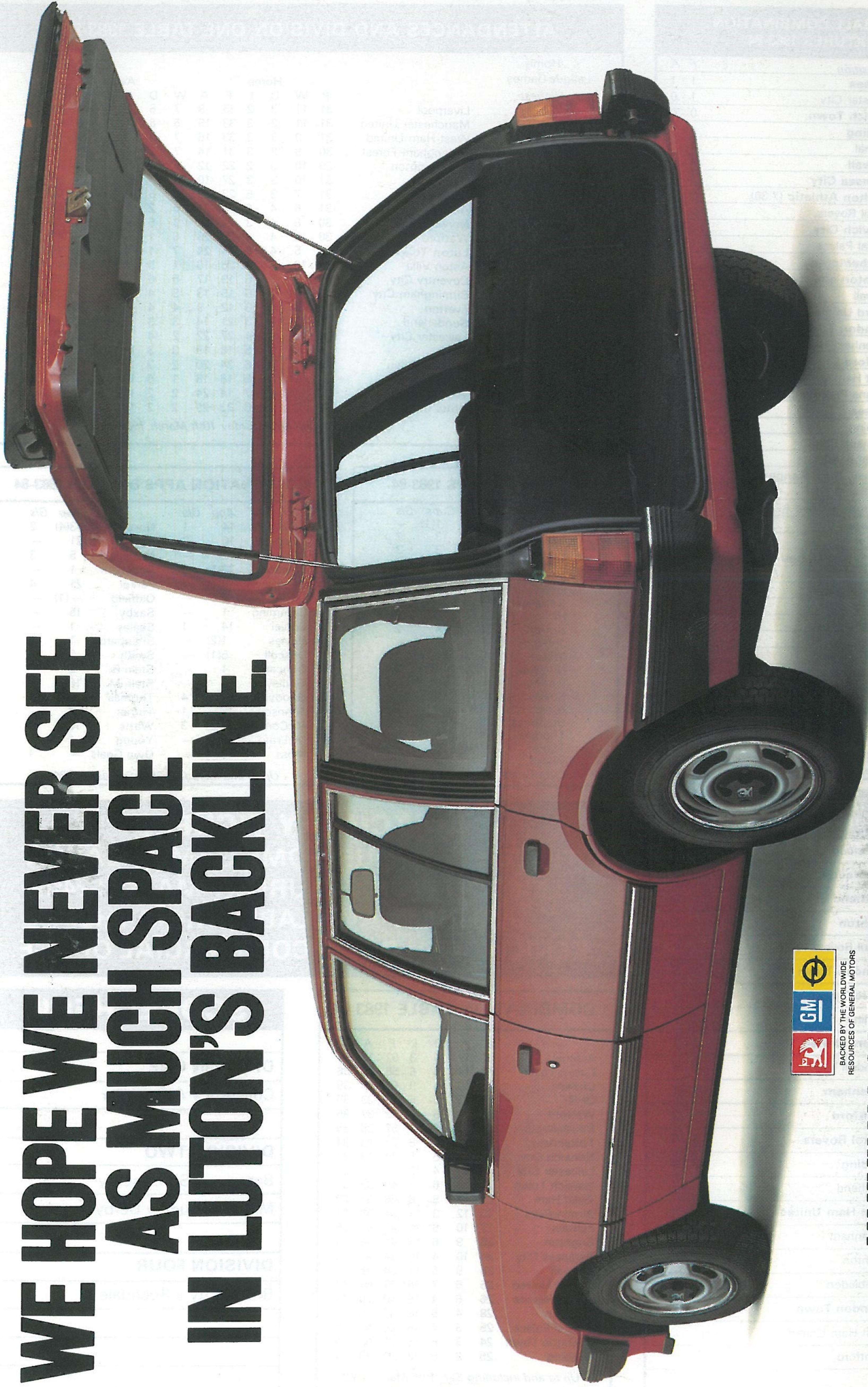
TOKEN
18
Tuesday 13th March 1984
IPSWICH TOWN

FOOTBALL COMBINATION FIXTURES 1983-84

Date	Opposition	F	A
Aug. 27	Chelsea	1	1
Sept. 7	Leicester City	1	0
Sept. 10	Ipswich Town	0	0
Sept. 14	Reading	4	1
Sept. 17	Arsenal	1	2
Sept. 20	Millwall	4	0
Sept. 24	Swansea City	3	1
Oct. 3	Charlton Athletic (7.30)	1	1
Oct. 8	Bristol Rovers	2	1
Oct. 11	Norwich City	0	0
Oct. 18	Crystal Palace	0	0
Oct. 25	Southampton	3	1
Nov. 5	Brighton and Hove A.	4	0
Nov. 9	Millwall	2	1
Nov. 23	Oxford United	0	1
Nov. 26	Swindon Town	4	1
Dec. 3	Tottenham Hotspur	2	1
Dec. 10	Watford	3	0
Dec. 17	West Ham United	2	1
Jan. 3	Queens Park Rangers	1	1
Jan. 17	Chelsea	0	1
Jan. 21	Reading	3	1
Jan. 28	Swansea City	1	2
Feb. 14	Charlton Athletic	2	4
Feb. 25	Queens Park Rangers	0	1
Feb. 28	Southampton	1	1
Mar. 6	Brighton & Hove A.	0	0
Mar. 9	Fulham	3	0
Mar. 13	Watford	—	—
Mar. 17	West Ham United	—	—
Mar. 20	Fulham	—	—
Mar. 24	Norwich City	—	—
Mar. 27	Crystal Palace	—	—
Mar. 31	Leicester City	—	—
April 2	Bristol Rovers	—	—
April 7	Ipswich Town	—	—
April 10	Birmingham City	—	—
April 14	Oxford United	—	—
April 24	Arsenal	—	—
May 5			

**WE HOPE WE NEVER SEE
AS MUCH SPACE
IN LUTON'S BACKLINE.**



VAUXHALL CAVALIER ESTATE.

Better. By Design.