

Welcome to

Luton Town



CANON LEAGUE
DIVISION ONE
LUTON TOWN
v
EVERTON

SATURDAY 7th APRIL 1984

TODAY'S MATCH IS SPONSORED BY
BEDFORD TRUCKS



We know what matters to Hatters!

For many years Shaw & Kilburn have supplied cars to Luton Town executives, players and thousands of their supporters. So we reckon we know what local motorists want.

You want a wide choice — and you get it with the magnificent Vauxhall-Opel range. Or you can take your pick of 200 guaranteed used cars from Autorama.

You want first-class after sales service and parts back up. You'll get it here from factory-trained personnel using up-to-the-minute equipment.

We also promise you a generous deal on your present car. And if you're a Town season ticket holder, special terms on your new one, too.

Call in soon. We look forward to welcoming you.


Shaw & Kilburn
 OF LUTON

The Right Choice

BRITAIN'S BIGGEST VAUXHALL-OPEL DEALER
DUNSTABLE ROAD, LUTON. TEL: 55944

Luton Town F.C.

LUTON TOWN FC
 70-72 Kenilworth Road
 Luton
 Tel: 411622

Chairman: Denis Mortimer

Directors:

R. L. Banks, D. J. Evans, E. S. Pearson
 R. J. Smith, J. R. Smith (Executive)
 D. J. Pleat (Team Manager)

President: T. Hodgson

Vice Presidents:

J. A. C. Bain (Deputy President)
 A. G. Berry, J. B. Brent, C. Bygrave,
 B. Cole, B. England, N. S. Fookes,
 C. Holloway, I. E. Holmes,
 C. J. Evans, R. Larkinson,
 L. Leppington, Eric Morcambe OBE,
 R. Safranek, E. Waller, R. Unwin

Administration:

General Secretary: Graham MacKrell

Club Secretary: John Wilkinson

Commercial Manager:

Bill Tomlins

Projects and Advertising Executive:

Mike Beevor

Catering Manager: Clive Hustwitt

Development Executive:

John Gornall

Auditors:

Arthur Young, McClelland,
 Moores & Co.

Photographer: Gareth Owen

Playing:

Coaches:

David Coates, John Moore and
 Trevor Hartley

Physiotherapist: John Sheridan

Doctor: W. A. C. Berry MBBS

All ticket enquiries please contact
 Luton 30748. All matchday information
 is obtainable from our 24-hour
 answering service — Telephone Luton
 33010

Printed by:
 Hemmings & Capey (Leicester) Ltd

Team Check

LUTON TOWN



1 LES SEALEY
 2 KIRK STEPHENS
 3 MITCHELL THOMAS
 4 BRIAN HORTON
 5 PAUL ELLIOTT

6 CLIVE GOODYEAR *DONAGHY*
 7 MAL DONAGHY *BRACKER*
 8 BRIAN STEIN
 9 PAUL WALSH *MARK STEIN*

10 TREVOR AYLOTT

11 DAVID MOSS *BUNN*

12 *GOODYEAR*

EVERTON



1 NEVILLE SOUTHALL *(6) 3*

2 GARY STEVENS

3 JOHN BAILEY

4 KEVIN RATCLIFFE *CURBAN*

5 DEREK MOUNTFIELD

6 PETER REID

7 TREVOR STEVEN

8 ADRIAN HEATH

9 GRAEME SHARP

10 ANDY GRAY *HARPER*

11 KEVIN RICHARDSON

12 *IRVINE*

Referee: J. ASHWORTH

Linesmen: T. P. HEALY (Red Flag) A. G. ROGERS (Yellow Flag)

Today's Match
 is sponsored by:
BEDFORD TRUCKS

Today's Match Ball
 is sponsored by:
BEDFORD TRUCKS

BEDFORD BUSINESS MEANS:

**You need it,
we've
got it.**



A vehicle for every business.

You'll find Bedfords working in just about every business you can think of. That's because we offer a vast range of vehicles from light vans to heavy-duty trucks to keep the wheels of British industry turning. And, if you came to the match by coach, the chances are that also was a Bedford.



A dealer round every corner.

You'll find a Bedford dealer is never far away. He'll help you choose the vehicles that best suit your business needs; he'll advise you on our special leasing, insurance and warranty schemes; and he'll maintain your Bedfords in peak condition throughout their long working life.

Because, giving our customers what they need, when they need it, is what Bedford business means.

**BEDFORD
MEANS
BUSINESS**



MY VIEW

Congratulations to Everton on reaching the semi-finals of the FA Cup. They have also proved a splendid advertisement for football, with their performance in the two Milk Cup Final televised games. Football fortunes can change rapidly, and Howard Kendall obviously found a successful recipe to revive his team after their poor start. Perhaps the signing of Andy Gray was the spark that stimulated competition.

Our performance last week was not good enough. We expected pressure from Ipswich as they had been going through a bad patch, although only losing narrowly. For the second consecutive year we lost our way at Portman Road and will need a greater effort to pick up points. Our forward play has not been as progressive in recent games, although the determination and fire shown by the side could not be queried before last week. At this time of the year, players tend to start thinking about next season, and their future. The old maxim 'You're only as good as you last game' will always ring true. You secure your future only with 100 per cent effort applied to skill consistently if you are to progress in football.

One or two new signings before the deadline could have heightened competition for places given greater cover for injury and prepared for any future possible deals. Supporters of clubs with small support competing at First Division level must realise their clubs cannot survive without the advantage of using the transfer market.

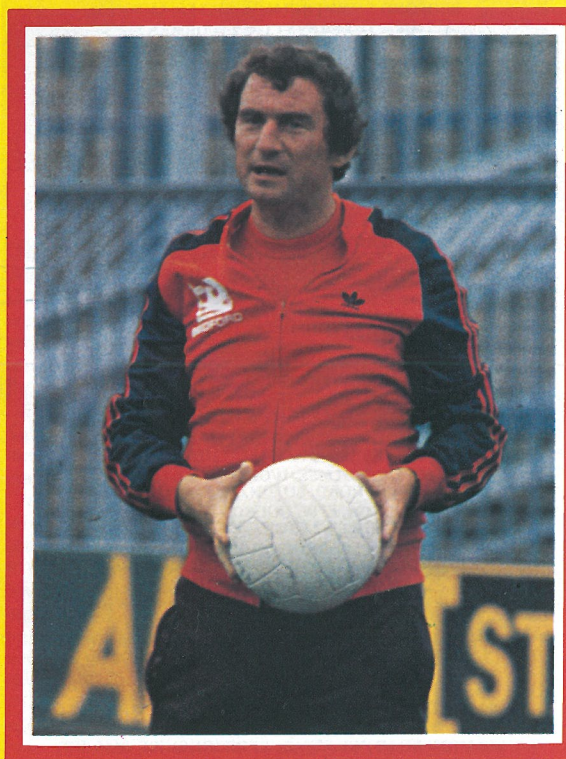
Hopefully, all the youngsters who have been given a taste of first team football will come through and make the grade. Last Saturday, Tim Breacker continued his recent good form in the reserves with a more than sound debut.

The reserve side have achieved two impressive victories recently, 4-2 at Fulham and 5-0 against Crystal Palace. Brian Stein's young brother is showing some clever forward play, and he will also get his chance shortly. I am hoping that we can achieve a few more points quickly so I can give the group of youngsters who have done so well at reserve level a run in the First Division before the end of season.

We all know our performances have suffered through injury and lack of experienced balance, but the ambition at the start of the season was survival, and a couple of good wins should capably ensure that target.

I would like to thank all our kind supporters who have sent kind wishes to Ricky Hill, Mick Saxby and Rob Johnson. John Sheridan will be helping their rehabilitation. Ricky has taken a positive attitude to his disappointment and I can assure our supporters that I do not see any long term problem. Mike Saxby has fought gamely since October, 1982. The club have been patient and done everything possible — only last week, the surgeon took another look into Mick's troublesome knee. Mick's future had a frustrating time, but we are still hoping that he can continue in the Football League. Rob Johnson has the resolve to champion over a horrible injury — a tear of the anterior cruciate ligament, the second identical injury within 24 months. We wish them all well.

David Moss has now played two first team games since his stomach injury. We were delighted with his comeback



against Leicester, and if we persist with David, we shall be looking for that quality to shine through.

We anticipated Mal Donaghy and possibly Paul Walsh gaining further caps last Wednesday. Mal is a top class professional, who is an example to every professional. It seems only yesterday he arrived from Larne to play such an important part in this club's success. In recent weeks, he has played various positions without ever querying the readjustment. He is a team player of the highest standard, and an example to all our youngsters who will move up into the first team.

Support the lads. Last season, we received a 5-1 drubbing from Everton which plunged us into the most traumatic week of the season. A win today would help wipe out that memory.

MEMBERS OF THE KENILWORTH SUITE

MR D. SAVAGE
BEDFORD COMMERCIAL VEHICLES, LUTON

MR A. G. BERRY FCCA, CHAIRMAN
BLUE ARROW GROUP SERVICES LTD
5 LONDON ROAD, ST ALBANS, HERTS

BRENGREEN HOLDINGS PLC
61 CHEAPSIDE, LONDON EC2V 6AX

GARY CHAMBERLAIN
GARY CHAMBERLAIN WINDOW FASHIONS, UNIT 7,
BEAUMONT WORKS, LUTON ROAD, ST. ALBANS, HERTS.
TEL: ST. ALBANS 62577

MR P. COOPER
CLEANINDUSTRIAL SERVICES LTD, PALMERS GREEN, LONDON N13
TEL: 01-882 4626

FILMERGRAPHIC ASSOCIATES LTD
PRINTERS AND PHOTOTYPESETTERS
BAINSON HOUSE, ALTON ROAD, LUTON, BEDS.
TEL: LUTON 36407

FINE STAMPS LTD
BILTON WAY, LUTON, BEDS. TEL: LUTON 36761

MR N. S. FOOKES
N. S. FOOKES GROUP, (PLANT FACILITIES) LTD
PROGRESS HOUSE, PROGRESS WAY, LUTON BEDS.

MR E. FOUNTAIN
VAUXHALL MOTORS, LUTON

BRIAN E. HANDSCOMBE (LIFE & PENSIONS BROKER)
48 ALMA STREET, LUTON. TEL: LUTON 425921/4

MR I. E. HOLMES, IVOR HOLMES LTD
82-88 MARSH ROAD, LUTON, TEL: LUTON 56622

MR C. J. HUDSON, E. W. HUDSON (HOLDINGS) LTD
6 UNION STREET, LUTON, TEL: LUTON 36881

RICHARD C. LARKINSON, (BALDOCK) LTD
TWENTY PENCE ROAD, COTTENHAM, CAMBS.

MARK JAMES (SALVAGE) LTD
GRANGE HOUSE, 10 COMPTON AVENUE, LUTON BEDS.
TEL: LUTON 503777

MARSHALLS OF LUTON GROUP, MARSHALL CHAMBERS
MILL STREET, LUTON LU1 2NN, TEL: 429933

IAN C. CHEVERALLS
OPALVALE GROUP
189 WALLER AVENUE, LUTON, BEDS. TEL: LUTON 56122

MR & MRS S. J. PEARSON
55 LUTON ROAD, WILSTEAD, BEDFORDSHIRE JK45 3ET

DR & MRS G. L. PLESTER
9 BRIARS CLOSE, NUNEATON, WARWICKSHIRE

NIGEL TERRY, PRIORY FARM FOODS
81-83 PETERS STREET, BLDFORD, TEL: 0234 60372

MR A. HUNTER
RAVENMERE LTD. ALLRIC HOUSE, 21 FARLEY HILL, LUTON
TEL: LUTON 32640

RICHARDSON & BOTTOMS LTD
105-107 BISCOT ROAD, LUTON, BEDS. TEL: LUTON 35421/5

RICHMOND ELECTRONICS
(MARKYATE) LTD
HICKS ROAD, MARKYATE, HERTS. TEL: LUTON 840761

ROBINSON METAL (LUTON) LTD
CALEB CLOSE, 464 DUNSTABLE ROAD, LUTON, BEDS.
TEL: LUTON 53866

MR R. S. SAFRANEK
NEAHURST LTD
LONDON ROAD, LOWER STONDON, HITCHIN
TEL: HITCHIN 94-813545

MR. W. POWERS
SHAW & KILBURN OF LUTON
540-550 DUNSTABLE ROAD, LUTON, BEDS

WEBBEX LTD
THISTLE ROAD, WINDMILL ROAD TRADING ESTATE, LUTON, BEDS.
TEL: 457222

MR R. W. UNWIN
R. W. UNWIN & CO. LTD
PROSPECT PLACE, WELWYN HERTS. TEL: WELWYN 6441

WALLSPAN BEDROOMS
INDUSTRIAL ESTATE, MAULDEN ROAD, FLITWICK, BEDS.
TEL: FLITWICK 713621

MR & MRS P. LAYCOCK
11 THE AVENUE, FLITWICK, BEDS.

Scene on One.. Scene on One.. Scene on One

SAINTS CRASH... BUT CONFIDENT OF WINNING CUP

By Tony Pullein

Southampton's chance of winning the League Championship effectively came to an end at QPR where they were thrashed 4-0. But, after watching Everton's fine performance against Liverpool in the drawn Milk Cup final at Wembley, there was a general feeling among Saints' players that they would beat Everton in the FA Cup semi-finals and go on to win the FA Cup.

England goalkeeper Peter Shilton was shattered after pulling the ball out of his net four times. 'I joined Southampton because I was hoping to win another League Championship medal but we were well beaten and it looks as if our chance has gone for this season.'

But Shilton has yet to win in an FA Cup final and himself refrained from commenting upon his chances this season. But most of his colleagues felt they would make it to Wembley.

It's clear that the collapse of their defence at Shepherd's Bush was an isolated event. In 38 previous League and Cup games this season, only two teams had managed to score more than twice against the Saints — Luton, who defeated them 3-1 at Kenilworth Road in October, and Manchester United who won 3-2 at Old Trafford in January.

Mark Wright, the centre-back now on the fringe of the England team, was as bemused as anyone. 'We have been playing exceptionally well defensively this season and had the best record in the First Division before this game,' he shrugged.

WORST DEFEAT

This was Southampton's worst defeat since they crashed 5-0 at Liverpool in September 1982 in the wake of their dismay after the sudden departure of Kevin Keegan and before the current team was properly assembled.

Although Southampton players were apparently instructed not to give free interviews after they had qualified for the semi-finals, and would not talk at length individually about their chances, there was no disguising their confidence after seeing Everton at Wembley.

They felt Everton should have beaten Liverpool comfortably but saw, in their failure to do so, why they will beat them in the semi-final at Highbury. 'They play exceeding well defensively, and looked very aggressive and positive in midfield. But they were so poor when it came to finishing,' said one player.

Southampton's defence, with Reuben Agboola operating so effectively as a sweeper, feel they should easily hold the Toffees' attack and then produce so much threat from midfield and up front to score the necessary goals to take them to Wembley.

● Watford have been fancying their chances of being the other FA Cup finalists, particularly after their opponents Plymouth were so comprehensively beaten 5-0 in a Third Division game at Oxford.

IMPROVE CHANCES

One move manager Graham Taylor was considering, to improve their Wembley chances, was the dropping of skipper Wilf Rostron, plus defenders Steve Terry and David Bardsley from preceding League matches. All had reached the number of penalty points to ensure that one more booking would keep them out of the semi-final.

League rules state that clubs must field their strongest team in every match but Mr Taylor could argue that his action was simply to ensure that he would field his best team in the match that most mattered for them — the Villa Park clash with Plymouth.

The draw for the semi-finals of the three big European competitions has given England the chance to become the first country ever to win all three in one season. We have on several occasions brought home two of the European titles to England but so far the hat-trick has eluded all challengers.

● Liverpool feel they can handle the challenge of the Rumanian champions Dinamo Bucharest. 'We have produced some of our best performances this season in the European Cup and have won all three of our away games,' points out manager Joe Fagan. 'We shall be working at this one in the same way as we have approached all other games.'

● Nottingham Forest look our best bet in the UEFA Cup though Tottenham, who have been hit so badly by injuries this season, could pull it off if manager Keith Burkinshaw is able to field his best side.

VERY TOUGH

● Forest have to face the Belgian side Anderlecht, who were beaten 2-1 on aggregate in last season's final by Benfica. It's clearly going to be a very tough one for Brian Clough's team yet, if their chances of wresting the League Championship have finally receded, Forest will be able to concentrate solely upon this tie.

● Spurs play their first leg away to Hajduk Split of Yugoslavia and they could find the going rather tough out there.

● Until quite recently, few would have rated Manchester United's chances of winning the Cup Winners' Cup but, quite suddenly, United have come out of their shell. Maybe the shock of losing in both domestic Cups to Third Division sides, Oxford and Bournemouth, has been put behind them?

For United, who have turned in a few abysmal performances at Old Trafford this season, thrashed Arsenal there 4-0 in a League match and then pulled back from a 2-0 deficit against Barcelona and win 3-0 on their own ground.

'That was undoubtedly our best performance since I have been here,' beamed manager Ron Atkinson. Clearly the whole feeling in the United camp has changed. Now they don't go out fearing another failure, but believing they can win well.



PETER SHILTON



GRAHAM TAYLOR

CRACK SHOT

United now have to face the crack Italian club Juventus, who were beaten 1-0 by Hamburg in last season's European Champions' Cup final. Since then, however, Juventus have been struggling a bit. Though they have famous names like Platini, Tardelli, Rossi, Gentile and Cabrini, the team seems to have lost its way in recent weeks.

Even Europe's current Footballer of the Year, Michel Platini, has been nominated as substitute and he has twice been replaced by a substitute during their run to the semi-final.

In their present mood, United can defeat Juventus and gain revenge for their defeat by these Italians in the UEFA Cup in 1976-77.

● One of the most perplexed men in football must be Coventry's manager Bobby Gould. He performed the near impossible by signing a dozen new players, mostly from the Third and Fourth Divisions, after taking over last summer and, in no time, knocked them into a powerful First Division force.

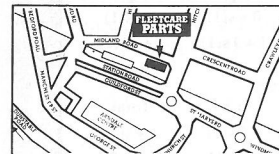
The Sky Blues peaked in December when, quite unbelievably, they crushed Liverpool 4-0 at Highfield Road and rose to within three points of The Reds, who led the table. Such a defeat was expected to have inspired a Championship challenge but, in fact, had precisely the opposite effect.

For Coventry managed only one victory in their next 16 League games and they are now in danger of relegation.

One good aspect for Coventry is that their average attendance of 13,395 is just about 3,000 up on last season's figure.

FLEETCARE PARTS

AT LAST GENUINE ALL-MAKE TRUCK, TRAILER, VAN AND CAR PARTS AT ONE STOP AND ONE QUALITY. THE BEST.



- Guaranteed branded parts.
- Comprehensive all vehicle and trailer range.
- Computer-speeded order system.
- Retail or Trade.
- DIY customers welcome.
- Free Parking.
- Expert staff on hand to advise.
- Fast Delivery and Fitting Services available.



FLEETCARE PARTS
Midland Road, Luton LU2 0BL
Telephone: Luton 457522
Telex: 311621 (Reference SP002)

FLEETCARE PARTS Guaranteed, genuine parts for cars & trucks

8.30-5.30 WEEKDAYS 8.30-12.30 SATURDAYS

Town Focus



CHUKWUEMEKA NWAJOBI CAREER RECORD

When manager David Pleat heard progress reports on the ability of Emeka (full name Chukwuemeka), a young winger playing for Dulwich Hamlet, it didn't take him long to realise the Nigerian had plenty of potential.

He played only a handful of games for the Isthmian League club before joining us as a full-time professional in December last year.

His astonishing rise was earmarked by his first team debut on 2nd January against Nottingham Forest when he scored on his debut.

He kept his place for the FA Cup third round tie against Watford and again repaid his manager's faith by scoring one of the two goals which gave us a replay.

Another two appearances in the first team as substitute against Watford — in the replay — and Arsenal proved to the Luton fans that the manager had again made one of his renowned deals in the transfer market.

However, an injury restricted his appearances in the first team although, in nine Reserve games, Emeka managed to produce four goals.

FOOTBALL LEAGUE

	83-84	Total
Arsenal	1	1
Nottingham Forest	0 + s(1)	0 + s(1)
	1 + 1s(1)	1 + 1s(1)

FA CUP

	83-84	Total
Watford	1 + s(1)	1 + s(1)
	1 + 1s(1)	1 + 1s(1)

REPORT ON THIS YEAR'S AGM

Last Friday (30th March) the club held its 87th AGM. This is the Annual Meeting of the Limited Company which owns the Football Club and at which amongst other items, the accounts are submitted to the shareholders for their approval.

The accounts presented were for the year ending 30th May 1983, and showed that the club had lost £162,521 on trading in its first year back in the First Division, and had spent £318,000 on strengthening the team.

Annual General Meetings are required to be held under the Companies Acts which apply to companies. Football clubs are somewhat different from most companies in that their shareholders are also usually supporters of the team. This makes the chairman's task more difficult in that he has his duty in law to deal with the business specific to that meeting, and at the same time answer questions on matters which are not necessarily relevant to the Agenda.

The Company has something over 700 members, 61 of these attended the 87th AGM plus the representatives (proxies) of 25 others, a total of 86 (not 200, as reported in some Press statements). The Agenda for the meeting contained four items.

1. To receive and adopt the Directors' Report and Financial Statements for the year ended 31st May 1983.
2. To Elect Directors.
3. To re-appoint the Auditors.
4. To transact any other Annual General Meeting business of the Company.

So far as (4) was concerned, there was no other Annual General Meeting business to be dealt with. All except one of the resolutions were carried on a show of hands and all were carried by very substantial majorities on a poll vote.

The chairman received questions such as 'Why

don't we pay our manager over £40,000 per year?' and 'Will the directors resign if the Milton Keynes strategy fails?' However, the majority of the questions centred on the re-location question.

We mentioned earlier that most of the questioning related to Milton Keynes. The chairman anticipated this and although this formed no part of the agenda he made a statement as follows:

'To pre-empt unnecessary questions and to avoid speculation, I would like to state the present position regarding the possible re-location of the club. Unfortunately, there is nothing useful I can add to the directors' past statements. Negotiations with all parties concerned are proceeding. When there are further developments, we will issue statements and call meetings, as appropriate.'

Despite this, during the meeting a debate lasting about 30 minutes took place. The chairman then adjourned the meeting and a poll vote took place, the result of this poll vote was:

Resolution	For	Against	Majority in favour
Accounts 1	108696	4997	103699
Re-elect D. J. Evans 2	108415	5273	103142
Re-elect R. Banks 3	114427	266	114161
Auditors 4	113633	60	113573

Even after excluding the directors and their families votes, all the resolutions obtained substantial majorities.

The chairman then concluded the meeting. However, those against the resolution(s) were not satisfied, and wished the meeting to continue. The lawful business was done, and no further acrimonious debate by a minority would have served any interest other than the purpose of seeking publicity.

In correction of another mistake in the Press, Mr D. J. Evans, a director, was present at the meeting.

SHAREHOLDERS LETTER

Secretary
LTFC

Dear Sirs

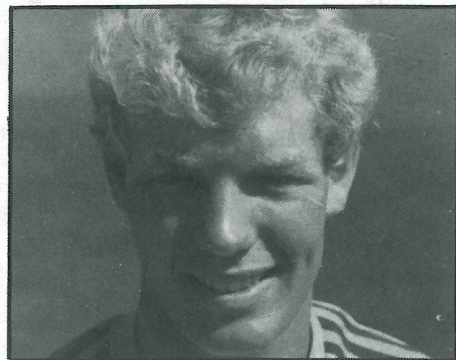
I would like to think that this note will be read by our Board of Directors and I can only ask your help. I attended the AGM last night with a total vote of 100, and due to the very rude and extremely stupid babbling of all these 'no to Milton Keynes personnel' it was impossible to make a small speech, which I had prepared, after some considerable thought. However, after their behaviour in dominating all questions, I feel strongly that the Directors should know that some of us are very grateful for their efforts with making LTFC a formidable club with super facilities.

I enclose the small speech I would like to have made and I assure you that MANY shareholders are behind them with their efforts to get forward.

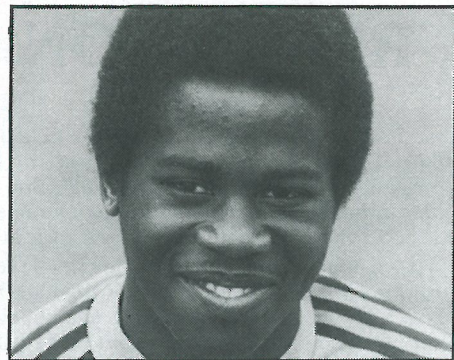
Yours faithfully name and address supplied

Shareholder
Bedford

COACH REPORT



TIM BREACKER



RAY DANIEL

BRIGHTON 0 LUTON TOWN 0 Football Combination

Team: Findlay, Breacker, North (M), Driscoll, Saxby, North (S), Parker, Nwajiobi, Stein, Bunn, Moss. Sub: Davies.

Both sides started brightly with Nwajiobi forcing a good save from keeper Digweed early on.

The experienced Brighton side were hard to break down but a marvellous chip from David Moss completely fooled the keeper but only a last ditch despairing header by a Brighton defender saved the day when the ball seemed certain to enter the net.

Good attractive football was met by resolute defence and the trend continued with Brighton pushing hard for the decisive goal only to be denied by a determined back four during the last hectic 10 minutes of the game.

It was nice to see good defensive concentration in the later stages of the game, because as so often happens, certain individual players tend to tire towards the end of a game leaving opportunities for teams to get last minute goals. It's very important to remain totally alert during such periods.

LUTON TOWN 3 FULHAM 0 Football Combination

Scorers: Nwajiobi, Breacker (2)
Team: Findlay, Breacker, Turner, Antic, North (S), Saxby (Davies), Parker, Nwajiobi, Bunn, Daniel, Moss.

In a first-half which provided plenty of football from both sides but relatively few goalmouth incidents, the crowd were soon applauding at the start of the second period. Ray Daniel, with one of his characteristic runs, crossed a super ball for Emeka Nwajiobi to gleefully glide the ball in for the first of the evening and his fourth goal in eight games.

A long throw by Stacey North resulted in Tim Breacker rounding the goalkeeper and sliding the ball in for our second goal and it wasn't long before Nwajiobi sent Tim Breacker away with a clever flick for Tim to score a fine left foot shot.

Although it looked to be a little one-sided, it wasn't, with Jake Findlay back to good form and having to make a couple of good saves at vital times.

Congratulations to Tim Breacker for collecting a double goal tally for the second time this season whilst starting the game at full-back. No letters please with regard to our forwards!

WAS YOURS AN INSIDE JOB?

GLAZING REPAIRS & GLASS SUPPLIES
PATIO DOOR & WINDOW INSTALLATIONS
DOUBLE GLAZING (SECONDARY AND SEALED UNITS)
INTERIOR AND EXTERIOR DECORATORS

For Domestic and Commercial enquiries contact Luton 53025/597505

Sapsworth
GLAZING & DECORATING
J. Sapsworth Limited
92 Marsh Road, Luton, Bedfordshire LU3 2NL
Telephone: Luton (0582) 53025/597505

junior hatters

JUNIOR HATTERS SPONSORED BY THE HERALD AND CHILTERN RADIO

THE MASCOT



NICOLA HARRIS

We take this opportunity of issuing a warm welcome to our mascot and escorts this afternoon and hope they enjoy their stay with us.

Ricky Hill, our Junior Hatters Club president, takes a close interest in all the club's activities. If you want further details of how to join — and perhaps be a mascot or escort — pop in to the commercial offices after today's match.

TODAY'S MASCOT

Nicola Harris is 10 and lives in Leighton Buzzard. Nicola attends Gilbert Inglefield Middle School and her interests are swimming, ice skating and watching Luton Town play.

ESCORTS

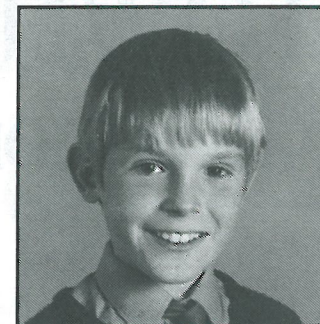
Jeremy Smith lives in Luton and is 12. He attends Lea Manor High School and plays football for the Boys Brigade. His interests are collecting sports stickers and pictures of footballers and football teams. He also enjoys cricket.

Peter Lyons lives in Luton and is 11. A pupil at Challney Boys School, he plays football for the school team and his interests are football and bike riding.

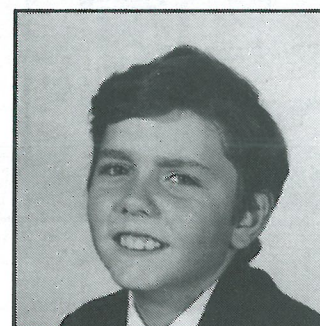
David Bull of Peterborough is aged 12 and attends Watton School Peterborough. He plays football for his school and his interests are football, speedway and pop music.

Christos Parry lives in Luton and is 12. He attends Icknield High School and his interests are fishing and football.

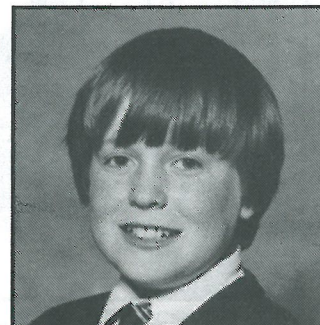
THE ESCORTS



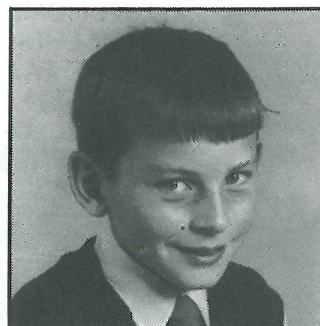
DAVID BULL



CHRISTOS PARRY



PETER LYONS



JEREMY SMITH

READ THE
JUNIOR
HATTERS
COLUMN

IN YOUR WEEKLY

Herald
just a friend dropping in

PLUS ALL YOUR
NEWS - SPORT
COMPETITIONS
& MUCH MORE!

FOR MORE
INFORMATION
RING
LUTON 415061

CHILTERN RADIO
BRINGS YOU ALL
THE SPORTS NEWS

792 ^K_H^Z
828 ^K_H^Z

**Chiltern
Radio**

FOLLOW YOUR
SPORT WITH
CHILTERN RADIO

Be in the Top League this season with

LUTON TOWN

and **Wallspan Bedrooms**



The only place to go for real fitted Bedroom Furniture

You can see the full range of Wallspan luxury fitted bedrooms on display at your local Wallspan Showroom. So don't take our word call in and check the quality and price for yourself. We have been designing and manufacturing furniture for over 20 years. After all, when you are spending between £400 and £1,400 we think you should see what you are getting before you buy and not place an order from a pretty picture or model.



Wallspan Bedrooms

SHOWROOMS THROUGHOUT THE UK

You know the score with Wallspan

- ★ FREE INSTALLATION
- ★ FREE HOME PLANNING
- ★ WIDE CHOICE OF FINISHES
- ★ CREDIT FACILITIES (WRITTEN DETAILS ON REQUEST)

Come and see us today

**Unit 174, Bute St, Arndale Centre, Luton.
Tel: Luton 23015**

Head Office and Showroom, Maulden Rd, Flitwick, Beds. Tel: 716161
59 Midland Rd, Bedford. Tel: 211327
18 Market Place, Stevenage, Herts. Tel: 724853

IPSWICH 3 LUTON 0

Action



Our return to Portman Road proved unsuccessful. Pictured is substitute Frank Bunn receiving a hard time in the Ipswich area.

Building houses to make homes in

at

- Bramingham Road, Luton
- Parkside, Houghton Regis
- Wallington Rise, Baldock
- Two Mile Ash, Milton Keynes
- Church Green, Bletchley
- Kimbolton Gardens, Bedford
- Merton Court, Bedford
- Millfield, Bedford
- Padbury House, Bedford

Future development: Astra Court, Luton



Barratt

LUTON LTD

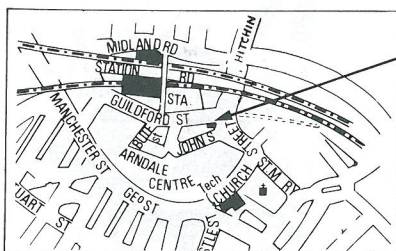
Telephone: Luton (0582) 422771



La Capannina

ITALIAN RESTAURANT

wishes Luton Town F.C.
and its supporters
an enjoyable match



La Capannina
FULLY LICENSED ITALIAN RESTAURANT
5, Guildford Street, Luton.
Tel: 20327

Opening Hours Mon-Fri 12.00-2.00 Mon-Sat 6.30-11.00

Alfredo & Patrizia hope to see you soon.

BOOK YOUR TABLE NOW

Competitions

AWAYAGAME – AWAYAGAME

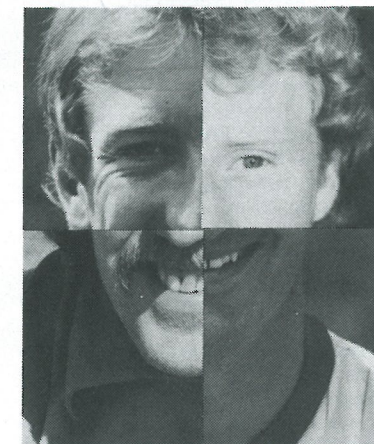
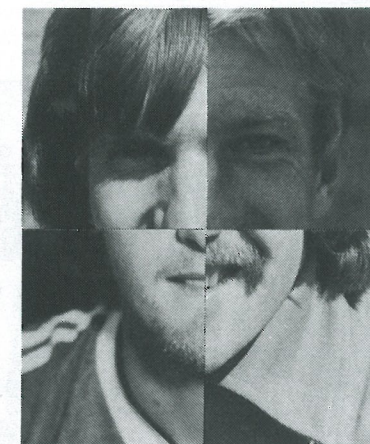
Following correct prediction of last Saturday's 3-0 defeat at Ipswich, Martin Illingworth and J. Seller are joint leaders with 15 points. Immediately behind them is Philip Marsh with 14 points, followed by Mrs J. M. Seller, Mark Lethbridge, R. J. Ogden, Richard Lovelock, Sheila Rainbow and M. Addis all on 13 points.

Here is a new phototeazer with again a prize of a super commemorative video. The photo caption shows three players heads mixed up. All you have to do is name the three players and their current clubs. Send your entries to: Luton Town FC, 70/72 Kenilworth Road, Luton, Beds. LU1 1DH.

NAME THE STAR

The Name the Star competition continues from the Queens Park Rangers, Ipswich Town and Leicester City magazines. As we are sure you all know, we add a small proportion of the body of a famous player inviting you to guess the players identity.

Send your entries to Luton Town FC, 70/72 Kenilworth Road, Luton, Beds. LU1 1DH.



CLUB '82

Mr P. J. Sullivan, Tricentral Trading Ltd
Kings-Road, Flitwick, Beds.
Tel: 95-712121.

J. Fedigan, Adriatic Enterprises Ltd
20 St. Margarets Way, Leicester.
Tel: Leicester 0533-26022/3

Mr D. Newton, Lormane Agents Ltd
72-76 Union Street, Dunstable, Beds.
Tel: 660272.

Mr J. Mead, Pilcourt Ltd
151 Bearton Road, Hitchin, Herts.
Tel: 0462-4367.

Mr G. White, White's Stationers Ltd
57 High Street, Woburn Sands
Milton Keynes MK17 8QY
Tel: 0908-583291.

Mr J. Peters, Avica House
346 High Street, Berkhamstead.
Tel: 75977.

Mr D. Keech, D. W. King & Co
Argyll Works, Stevenage, Herts.
Tel: 0438-4400.

Mr D. Ludlow, Ludlows of Luton Ltd
Thistle Road, Windmill Trading Estate,
Luton, Beds. LU1 3XJ.
Tel: Luton 29883/4.

Mr F. Ludlow, Frank Ludlow Ltd
71 Windmill Road,
Luton, Beds.
Tel: Luton 414441.

Mr J. Boylen, Berkeley Associates
Printing Specialists, PO Box 332, Newton
Longville
Milton Keynes MK1 7QA
Tel: 0908-75918.

Mr D. W. Graves, Westmount
Gravel Path, Berkhamsted, Herts.
Tel: 04427-75977.

Mr F. W. Pearce, F. W. Pearce (Builders) Ltd
1a Wilsden Avenue, Luton, Beds.
Tel: 24163.

Mr Tony Lambert, Broad Street Print
9 Broad Street, Hemel Hempstead, Herts.
Tel: 0442-65490.

Mr M. Manning, Beard & Manning Ltd
152 Leagrave Road, Luton, Beds.
Tel: 22538.

Mr T. Bailey, Wallspan Bedrooms Ltd
Industrail Estate, Maulden Road, Flitwick, Beds.
Tel: 9571-3621.

Mr D. Rand, David Rand & Co Ltd
51 Radlett Road, Frogmore, St. Albans, Herts.
Tel: 98-72492.

Mr R. A. Finch, Computer Technology Ltd
Eaton Road, Hemel Hempstead, Herts.
Tel: 82-3272.

Mr E. Elliott, Emeralla
Market Square, Biggleswade, Beds.
Tel: 0767-313273.

Mr J. Waller, Lathom & Co
King Street, Luton, Beds.
Tel: 29221.

Mr E. Edwards, County Motors Ltd
Unit 1, 166 Camford Way, Sundon Park, Luton

NEWSDESK... NEWSDESK... NEWSDESK...

CENTURY CLUB

Today, we welcome to Kenilworth Road Everton, the team who helped to keep the Merseyside flag flying in the recent Milk Cup final at Wembley, and the replay at Maine Road. Together, Everton and Liverpool provided tremendous entertainment, and were a good example of English football at its best.

It was good to see the old Luton Town favourite, Andy King, in action as substitute. Perhaps Everton's season will still end with a place in the coveted FA Cup Final. We wish them luck, and look forward to a good afternoon's entertainment today.

With the season rapidly drawing to a close, we have to wait until 21st April for our next home game, when we shall meet our friends from Notts County, followed the next week by a visit from Watford. All Century Club guest seats have been booked for the Watford game.

PROGRAMME FAIR

We have strong evidence that programme collecting is increasing in popularity. Many people, not only football fans, are beginning to realise that older copies of programmes are valuable.

Programme fairs attract hundreds of enthusiastic collectors and we are pleased to announce that one has been arranged in the Hatters Club a week tomorrow between 11 a.m.-3 p.m.

Admission is 25p by programme and we can guarantee that collectors will

not be disappointed by the items on view.

BUSINESS MINDED

We receive hundreds of requests for our players, coaches and officials to attend various functions and, as part of our public relations exercise, we try and oblige with as many as possible.

We firmly believe in forging strong relations at grass roots level although it is obviously impossible to attend every function.

However, our keeper Les Sealey had the pleasant experience recently when he was one of the judges at the Miss Chiltern Radio 1984 beauty contest at Tiffany's, Dunstable.

In addition to that, skipper Brian Horton, Mal Donaghy and Kirk Stephens were the guests of Profile Business Systems when they joined Mayor of Luton Frank Lester at the opening ceremony.



POP SPOT

As usual, Chiltern Radio provide the entertaining Pop Spot for you this afternoon before the kick off with all the latest sounds from the charts.

Bill Young, who provides the station's Morning to Midday show, is our guest this afternoon. He has become a converted Luton fan since Chiltern Radio started the service for our supporters recently and there are strong rumours that Bill is thinking of buying a season ticket next year.

SIR REGINALD PEARSON OBE

It is with regret that we announce the recent death of Sir Reginald Pearson OBE. Sir Reginald a Vice President of Luton Town FC, and a former Deputy Chairman of Vauxhall Motors, was one of Luton's best known industrialists. We extend our sympathy to his family.

SAD LOSSES

We were very saddened to learn of the deaths of two former club members recently. Horace Gager died at his home in Nottingham after a long illness.

He was born in Luton and went to school in the town and played for Vauxhall Motors before signing for Luton in the 1937-38 season. He was originally an inside forward but, in later years, became a centre half and club captain.

He caused something of a surprise when he was transferred to Nottingham Forest and he was also a Bedfordshire county cricketer and a keen golfer.

We were also shocked to learn of the sudden death of Miss Florence Cheney. She had worked for the club on a part time basis for nearly 40 years until she retired some three years ago.

She was responsible for the food in our directors and guest rooms. She was well known in football circles and her presence at our home games will be missed.

To both families we offer our deepest sympathy.

WELCOME TO EVERTON . . .

We take this opportunity of welcoming Everton to Kenilworth Road this afternoon.

Millions of television viewers will

join us in thanking Howard Kendall and his players for the wonderful entertainment they provided in the Milk Cup Final and subsequent replay. Who said the game was dying?

. . . AND TO WILLIE

We would also like to introduce you to Willie Raynes who has joined us on a month's loan from Rotherham United.

His debut was delayed when, after the reserve side travelled to Norwich for a Football Combination game, the match was postponed because the pitch was waterlogged.

However, it didn't take him long to get into the goal groove when he popped one in during our Combination victory over Crystal Palace only three days later.



THE LOCAL TASTE AND HOW TO SATISFY IT

We're very definite about our taste in beer around here. A clear light pint is what we look for, with a good, clean smack of malt and hops.

And there's only one name that really satisfies the local taste - BB. The light beer first brewed in Luton during the darkest days of the War by J. W. Green.

Only the finest hops and good, ripe barley go into the making. Then the brew is matured to exactly the right degree to give you a bright refreshing pint with a sound, full flavour.



WHITBREAD

American servicemen in local wartime bases declared that BB, chilled, was the nearest taste to Stateside draught.

It went down well when Syd Owen ruled the Hatters.

And it's been going down well ever since. Because BB is brewed with a proper respect for quality. To keep up the traditions we value round here.



Graham Ford

Your Comprehensive Builders Merchants



Depots at:
LUTON - KINGSWAY 31199
DUNSTABLE - BEALE STREET 603111
LEIGHTON BUZZARD - LEIGHTON ROAD 373486



Falcon

WE
KNOW
WHERE
WE'RE
GOING.

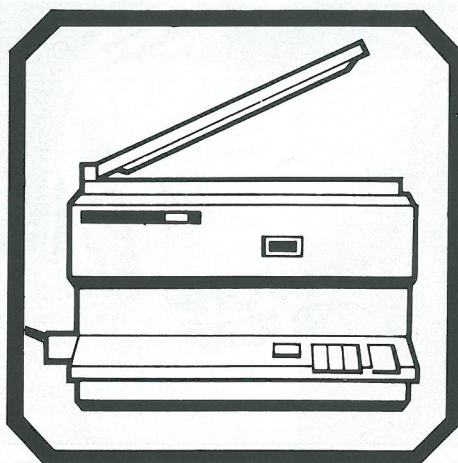
FALCON HOLIDAYS LTD

Take no chances book with a bonded A.B.T.A. member. Phone now for a copy of our latest brochure

FALCON HOLIDAYS LTD
190 Campden Hill Road
London W8
Telephone: 01 221 6298

Why do more businessmen in Britain, Europe and North America choose Canon?

Canon



The Canon NP range of copiers combines high speed with economy and compactness with versatility.

From the Personal Copiers right up to the NP500 at the top of the range, Canon has a copier to suit every business requirement.

Canon Copiers

Canon (UK) Limited, Waddon House, Stafford Road, Croydon CR9 4DD.

HATTERS WHO'S WHO

Bruce Rioch is featured today in Tony Pullein's series on former Luton players.

Bruce Rioch has remained grateful to the Hatters for taking him off soccer's scrapheap and putting him on the road to an international career. He always believed in his own talent but it took Luton to fully recognise this and it was with us that he became the first Third Division player to command a £100,000 transfer fee.

'I scored four goals in a trial for Chelsea but they didn't want me,' Bruce recalled. 'Then Arsenal said they couldn't sign me after a trial with them and, finally, I was rejected by Tottenham.'

'I was feeling a bit depressed when I was invited by Luton to go for a trial. So you can imagine how delighted I was to be asked to sign as an apprentice at the end of the game.'

Bruce had played for London Schoolboys and had reached the final trials for the England Schoolboys' team, but he didn't quite make it. He turned professional for the Hatters on his 17th birthday and made his first appearance in our senior side in a League Cup-tie at Port Vale in September 1964.

'In those early days I was just a striker. I understood my job to be simply a goalscoring machine, nothing else, and believed that as long as I was continually shooting at goal, I was doing my task properly.'

WINNING CAMPAIGN

Bruce hit 27 League and Cup goals during our Fourth Division championship winning campaign of 1967-68.

Many bigger clubs were by then taking a serious interest in his future and it was clear he was destined for a higher grade of football. At the end of the 1968-69 season he was signed by Aston Villa, becoming the first player from the Third Division to attract a £100,000 fee.

In some respects that was a hinderance. Because, when he failed to score with the same consistency for Villa, the crowd got at him. 'It was then that manager Vic Crowe and coach Ron Wylie began to help me to change my game,' said Bruce.

'I moved back into midfield and became a creator of goals, rather than a scorer.'

Derby County signed him for £200,000 in 1974 and it was with the Rams that he really reached the top. He won a League Championship medal in 1975 and soon after that he made his debut for the Scotland team against Portugal at Hampden Park.

IMPORTANT MEMBER

Bruce soon became an important member of the Scottish squad. He played for them in the 1978 World Cup finals and eventually won a total of 24 caps.

In 1976 he moved on to Everton in a £180,000 deal but about a year later he returned to Derby for £150,000. His first-class playing days seemed to be ending with the '70s and, after loan spells with Birmingham and Sheffield United, he joined Seattle Sounders on a free-transfer in 1980.

Torquay United persuaded him to return to England later that year, offering him the job as player-coach. Seeing this as an opportunity to build a new

career in the game, Bruce snapped it up and in July 1982 he took over as Torquay's player-manager.

Unfortunately, he fell into dispute with the club during the early weeks of this season and left Plainmoor in January.

Bruce played for Torquay a couple of times this season but accepts that his playing days are probably over now.

'I've had a wonderful run since they gave me that boost at Luton,' he says. 'I played in a League Championship side and I reached a League Cup final at Wembley. The one unexpected thing was playing for Scotland.'

'I was born in England — at Aldershot — and my big ambition had always been to play for England. Somehow the chance never came so, because of my parentage, I accepted my chance with Scotland. They were great days.'

Bruce's brothers Jim and Neil also played for Luton, but neither made the first team. Neil later played League soccer for Aston Villa, Northampton and Plymouth but Jim drifted out of the game.

There seems little doubt that Bruce will pop up again soon in some capacity in the Football League. Meanwhile, he has time to reflect back over the years.

'Of course, I'm pleased to see Luton making a success in First Division football,' he says. 'In my days they were in the lower divisions but even then there was optimism in the air following the club's dramatic decline. When I left they were on their way back again.'

LEAGUE RECORD:

		Apps	Goals
Luton Town	1964-65	11	—
	1965-66	19(1)	3
	1966-67	37	10
	1967-68	44	24
	1968-69	36	10
Aston Villa	1969-70	42	6
	1970-71	17(5)	5
	1971-72	40	9
	1972-73	32	7
	1973-74	18	7
Derby County	1973-74	13	2
	1974-75	42	15
	1975-76	38	13
	1976-77	13	4
	1977-78	22	2
Everton	1977-78	8	1
	1978-79	20	4
Derby County	1978-79	7(1)	—
	1979-80	3	—
Birmingham City (Loan)	1978-79	3	—
	1979-80	8	1
Sheffield United (Loan)	1978-79	8	1
	1979-80	13	—
Seattle Sounders (not known)	1980-81	15	2
	1981-82	35(1)	2
Torquay United	1982-83	13(5)	2
	1983-84	1(1)	—
		547(14)	129

TONY PULLEIN



Your local suppliers of
printed polythene & paper bags.
Short runs a speciality.

Princess Packaging Ltd.

HEATHFIELD WORKS, LEYTON ROAD, HARPENDEN, HERTS.
AL5 2JB TEL. (05827)66806 OR 64431 (24 HR. SERVICE).

For all your
Floral arrangements contact:

INBLOOM

(Suppliers to Kenilworth Suite)

76 Marsh Road, Luton
Telephone: 584244

**Cleandustrial
Services Ltd**

The Professional Approach to
Your Cleaning Problems
84 Aldermans Hill N13
Official Cleaning Contractors to
Luton Town FC
Telephone: 01-882 4626

**NORTH LUTON
INDUSTRIAL ESTATE**

**NEW FACTORIES/
WAREHOUSES AVAILABLE**

FULLER PEISER **St Quintin**
01-499 8931 01-499 8626

SHOREY'S TRAVEL

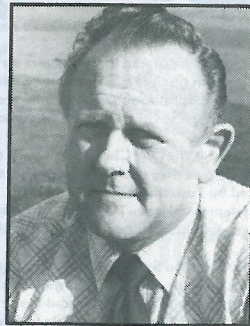


LUXURY
COACH HIRE
FOR FOREIGN &
UK EXECUTIVE
COACHES

COMPETITIVE RATES · FRIENDLY SERVICE · LOCAL BASED

28 Sheepfold Hill, Flitwick, Bedfordshire
Telephone: Flitwick 713289 Silsoe 60694

John's



Journal

JOHN WILKINSON - CLUB SECRETARY

Our visitors today have come out of the shadows of near neighbours Liverpool this season and are searching for their first honours for many seasons.

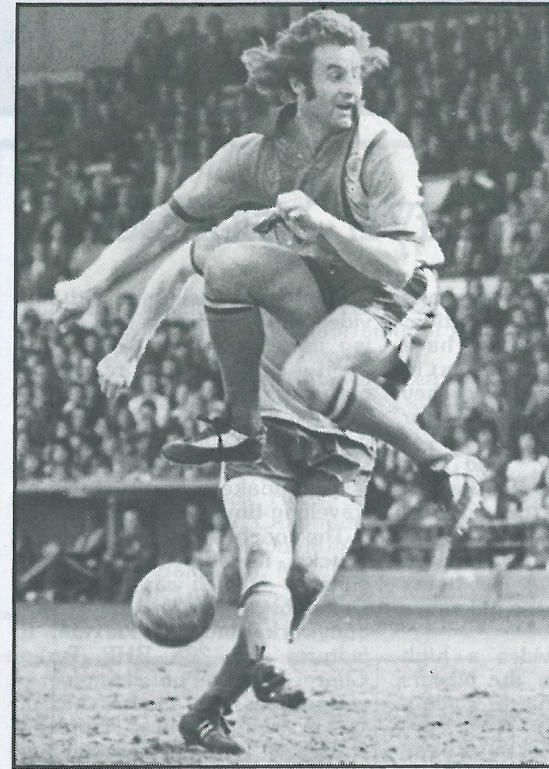
They have reached the semi-final of the FA Cup and must have more than an even chance of reaching Wembley for the second time this season. Founded in 1878, their record attendance at Goodison Park against Liverpool in a Division One game in 1948, was 78,299.

People say you should never look back but I believe that a football club is built on its history and what better names to build on than some of the all time great players that have worn the blue jersey.

Dixie Dean still holds their record for goalscoring and Tommy Lawton was possibly the best centre-forward to play for club and country. Ted Sagar, a goalkeeper, made 465 appearances and still holds that record.

Others include Wally Fielding, who still tells a good tale; Cliff Brittan and Joe Mercer, both England regulars in their time; Billy Bingham, our Cup Final outside-right, and, in more recent times, Alan Ball, Jimmy Husband, Bob Latchford and now Andy Gray has joined them to keep the history of star players going.

I received a letter this week from our former winger, Mike Harrison, who was very pleased to read about himself in the last home magazine. Mike now lives in Lincolnshire but travels to Amphyll regularly where he has an insurance business.



**MEMORY
LANE**

THIS WEEK:

JIMMY HUSBAND

Although born in Newcastle, it was Everton who first signed him as an apprentice and later took him as a professional in 1964. He stayed with the Merseyside club until 1973.

In that time, he won England international honours at Schoolboy, Youth and Under-23 levels. He joined Luton in November 1973 and soon became a favourite with the supporters. In all he scored 88 goals in the Football League, 44 for each of his only two English clubs.

Jimmy played in America for three years and is now running a pub in Roxton.

**Anglia
Television**

Proud to serve
the
East of England.



Today's Sponsor... Today's Sponsor

There has been a distinct improvement in our away form over the last two years and we wonder whether it has anything to do with our luxury coach, provided by our main sponsors Bedford Trucks.

This article appeared in Diesel Driver and gives a complete run-down on the benefits we have derived from it.

Luton could be forgiven if they boasted of having the two best soccer coaches in the Football League. One, they might argue, is manager David Pleat and the other... a £55,000 luxury coach for transporting their team.

The executive coach, complete with physiotherapy unit, is one of the special benefits Luton gains from their Bedford Truck Sponsorship.

Painted in the club colours of blue, orange and white the coach is a big attraction on its travels throughout the country.

The physio couch is perhaps the most important innovation. It means players no longer have to stay behind if they are hurt in away games. If necessary they can be treated by the club doctor on the coach.

'It's a big asset,' said club physio John Sheridan. 'We can treat a player on the journey home where in the past we might have had to wait until we arrived back at the club. A few hours delay can make all the difference to the recovery.'

The coach provides a high level of comfort for the players with reclining chairs, video, stereoradio, public address system, catering facilities and toilet.

Manager Pleat who advised on the design of the coach said: 'This is probably the first sponsorship where a club has been invited to specify its transport needs right from the word go.'

Pleat is also delighted with the video unit because as well as being used for relaxing entertainment it can have a more serious purpose.

'Studying videos of previous games can help provide a stimulus to the players. It will help us make a practical use of travelling time,' added Pleat.

The coach is based on Bedford Trucks flagship YNT coach chassis - which was built at the Dunstable plant - and has bodywork made by Plaxton. It features the 206 BHP Turbo Charged mid-mounted engine.

But does the sponsorship of Luton, who include England stars Paul Walsh, Ricky Hill and Brian Stein, help sell trucks?

Bob McCulloch, sales promotions manager of Bedford Trucks is in no doubt. 'It is one of the best things we have done. It has opened the doors to our customers throughout the country.'



Lotteries

For the benefit of our thousands of lottery customers, we take this opportunity of publishing the latest list of winners. They are:

Mr W. Simmonds, 101 Mullway, Letchworth; A. Bright, 3 Hexton Road, Lilley, Luton; Mrs M. Williams, 102 Bury Park Road, Luton; Mrs Brown, 1 Friars Court, Farley Hill, Luton; D. M. Lowrie, 18 Tythe Barn Close, Westoning; Mrs Mabbitt, 5 Weston Way, Baldock, Herts; S. Bierton, 29 Pary's Road, Luton; Miss J. Chapman, 40 Stokenchurch Place, Bradwell Common; Mr A. Perryman, 9 Dunmow Close, Hanworth, Middlesex.

Mrs B. Gayton, 33 Manor Close, Cosgrove, Milton Keynes; Mr F. Gooding, 138 Crescent Road, New Barnet; Mr A. Bettell, 15 Capian Walk, Two Mile Ash, Milton Keynes; Mrs K. Clarke, 5 Brook Road, Marston, Beds; Mr S. Clarke, 14 Ravigill Place, Hodge Lea II, Milton Keynes; Jean Owen, 45 Kyrkeby, Letchworth; Mrs D. Quantrill, 17 Hannell Road, Fulham.

Mrs P. Brown, 84 Peter Sell House, Desborough Road, Hitchin; Mr D. Walker, Studham Hall Farm, Studham, Dunstable; Mr A. Christy, 35 Pound Green, Guilden Morden, Royston; Miss B. Bernard, 54a Woodstock Road, Finsbury Park, London N4; Mr D. Keerie, 3 Dane Close, Harpenden, Herts; Mr L. Parker, 15 Shillitoe Avenue, Potters Bar.

Travel...



Travel...



IF YOU ARE TRAVELLING TO SPURS A WEEK TODAY, LEAVE THE CAR AT HOME AND AVOID ALL THE PARKING PROBLEMS IN LONDON. THE FARE ON ONE OF OUR LUXURY COACHES IS ONLY £2.50. WE LEAVE MAPLE ROAD AT 1 PM. POP INTO THE COMMERCIAL OFFICES AFTER TODAY'S GAME AND BOOK YOUR SEAT.

Souvenirs

We have added four new items to our extensive range of souvenirs. Luton Town FC footballs sell at £7.25 while our attractive tank tops are only £7.

How about a Luton Town boater? You can have one for only £2.50. Last, but by no means least, our football shirts and shorts. Prices vary according to size. Pop into our shop and browse around. You won't be disappointed.



EVERTON

Everton hope to follow a modern trend by following a defeat by Liverpool in the Milk Cup Final with a return to Wembley and success in the FA Cup Final.

Tottenham (in 1982) and Manchester United (last season) both succumbed to Liverpool in the Milk Cup Final but later battled their way back to Wembley to win the FA Cup. Next Saturday Everton face Southampton in the semi-final at Highbury.

The Toffees were most unfortunate not to beat their local rivals in the first game at Wembley. They outplayed Liverpool for long periods but didn't have the best of luck with their finishing. And they were also denied what looked like a definite penalty. After all that they lost 1-0 to the Reds in the Maine Road replay.

Despite their great success in both Cups, Everton are still in some danger of relegation though their performances, since their real revival started around Christmas suggest they need not have too much cause for concern.

Everton usually play with two strikers — Andy Gray and Graeme Sharp.

DESPERATELY SHORT

Gray, who has been capped 19 times by Scotland, was signed from Wolves for £250,000 in November when Everton were desperately short of goals. Andy came into English football with Aston Villa, who signed him for £110,000 in 1975 after he had twice topped Dundee United's scoring list.

Andy scored consistently for Villa and Wolves invested a club record £1,469,500 to sign him in 1979.

Sharp lost his place when Gray arrived in November but was recalled for Milk Cup-ties and later regained his place. Graeme has

been top scorer for the past two seasons. In 1981-82 he scored 15 goals, adding 16 last term. He was signed from Dumbarton for £125,000 at the end of the 1979-80 season.

The versatile Adrian Heath has been used both in attack and midfield. Adrian is an England Under-21 international who developed with Stoke City. Everton paid £700,000 to sign him two seasons ago.

Everton's other midfield players include Alan Irvine, Peter Reid, Trevor Steven, Kevin Sheedy, Kevin Richardson and former Hatter Andy King.

CLOSE SEASON

Irvine spent five years with the famous Scottish amateur club Queens Park and made 88 appearances in Scottish League soccer before going to Goodison Park during the 1981 close season.

Reid was signed from Bolton for £60,000 last season. He developed in the junior teams at Burnden Park and made his League debut in 1974. His stylish displays in midfield earned him six England Under-21 caps.

Steven developed with Burnley and was introduced to their League XI in 1981. Everton signed him for £325,000 last summer.

Sheedy is a former Irish Youth international who played his first League soccer with Hereford United, making his debut against Preston in 1976. He made such a big impression that Liverpool paid £80,000 for him in 1978.

Sadly, the Reds were so well endowed with midfield players that he got only three brief outings in their League XI and his transfer to Everton in 1982 gave him the chance to make a fresh start. This he took splendidly and now he is an established First Division player.

REGULAR PLACE

Richardson, who also plays in defence, made his First Division debut at home to Sunderland in November 1981, when he was called on as substitute, and he has this season earned a regular place in the senior squad.

King returned for his second spell at Goodison Park during the summer of 1982 when the Toffees completed an exchange deal with West Bromwich Albion, Peter Eastoe moving in the opposite direction. Andy served his apprenticeship at Kenilworth Road, making his League debut in 1975.

Everton paid a £35,000 fee to sign him a year later and Andy won two England Under-21 caps. He moved on to QPR in 1980 for £425,000 but, at the beginning of the 1981-82 season, he was involved in yet another transfer when WBA paid £400,000 for him.

Derek Mountfield and Kevin Ratcliffe have been playing in the middle of the defence.

Mountfield developed across the Mersey with Tranmere Rovers. After only 26 League appearances for the Rovers, he was transferred to Everton for £30,000 in 1982. He has now won a regular place in the Toffees' First Division side.

FIRMLY ESTABLISHED

Ratcliffe has now firmly established himself in international football, winning his 22nd cap for Wales against Scotland in February. He was blooded in Everton's League XI for the first time against Manchester United in March 1970.

John Bailey is the regular left-back but both Alan Harper and Gary Stevens have filled the right-back spot.

Bailey made his name with Blackburn Rovers and he joined Everton for £300,000 in 1979. He was ever-present in his first season at Goodison Park and won deserv-

EVERTON FANCY ANOTHER TRIP TO WEMBLEY

ed representative honours when he played for England 'B' against Australia three seasons ago.

Stevens worked his way up from the junior teams to take his League debut two seasons ago.

Harper was originally signed by Liverpool as a schoolboy and, after serving his apprenticeship at Anfield, joined the club's professional ranks. But he didn't get a run in the Reds' League XI. He joined Everton last summer and went straight into the team.

REMARKABLE RISE

Goalkeeper Neville Southall completed a remarkable rise to stardom when he won his first full Welsh cap against Northern Ireland in the 1982 British Championship. Thus, in less than two years, he had risen from non-League obscurity to international fame! Bury spotted him in non-League circles with Winsford United four seasons ago and took

him onto their staff in June 1980.

He made his League bow for the Shakers against Wigan in September 1980 and played with such confidence that he held the first-team position for the remainder of that season. He was transferred to Everton for £150,000 during the summer of 1981. Neville now has 12 Welsh caps.

Everton's away points have been picked up from victories at Tottenham (2-1), Notts County (1-0), Manchester United (1-0) and Birmingham (2-0); and draws at Coventry (1-1), Stoke (1-1), WBA (1-1) and Watford (4-4).

The Toffees were beaten at Ipswich (3-0), Leicester (2-0), Liverpool (3-0), Arsenal (2-1), QPR (2-0), Wolves (3-0) and Nottingham Forest (1-0).

Their Milk Cup run started with a narrow 3-2 aggregate victory over Fourth Division Chesterfield. They then won 2-1 at home to

Coventry and, after a 2-2 draw at West Ham, won the replay 2-0.

Everton were within 11 minutes of defeat at Oxford in round five but Adrian Heath's late equaliser earned them a replay which they won 4-1.

A 2-1 aggregate victory over Aston Villa in the semi-final took Everton into that electrifying Wembley Final against Merseyside rivals Liverpool.

In the FA Cup they won 2-0 at Stoke then, after twice being held to goalless draws by Third Division Gillingham, then Toffees won 3-0 at Priestfield Stadium.

A 3-0 home victory over Shrewsbury was followed by a 2-1 win at Notts County which took them into a semi-final clash with Southampton to be played at Highbury.

By TONY PULLEIN



PETER REID

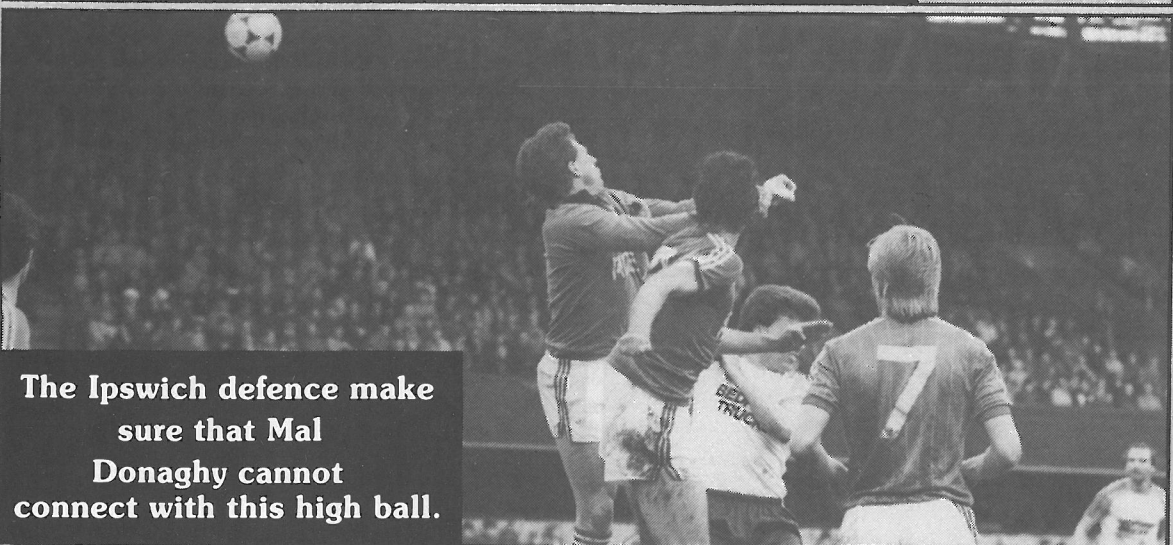


ALAN IRVINE

Action



Paul Cooper makes easy work of a shot from Brian Stein.



The Ipswich defence make sure that Mal Donaghy cannot connect with this high ball.

FORUM

THEATRE
HATFIELD.
ADVANCE
BOX
OFFICE
HATFIELD
71217

REACH FOR THE STARS!

AND LET US GET YOUR SPRING ENTERTAINMENT OFF TO A FLYING START!

April 10	The Dubliners	May 5	Barbara Dickson in Concert
13	Alan Price plus support	7	Camel plus support
14	The Belgrade Strings	11	Don McLean
16	Howard Keel in Concert	13	Juan Martin
		14	The Chieftains

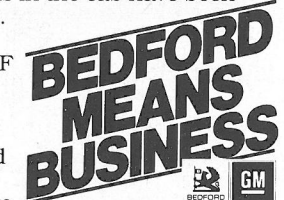
Bedford means to save you money on vans in '84.



Bedford Astra vans.
Our new Fleet Astra van is well-equipped to prosper in a tough market-place. For a start, it's nimble. Front wheel drive and coil spring suspension see to that. And it's frugal. In its 1,3 N petrol engine form it runs on 2 star. Alternatively, for only £400 more, there's a 1,6 diesel version available. It's equally easy on fuel. (In a recent Motor Transport road test the Astra van diesel returned an average 42,5 mpg.) Most important of all, the Fleet Astra has a huge load carrying capacity. Up to 415kg, evenly distributed. And some 65kg more than its main rival. And yet it costs a lot less. At £3 947* the Astra 1300 is some £118 less than its main 1300cc competitor. If you fancy something a little more luxurious look into the Astra van 'L', sister to the Fleet Astra van. You'll find fitted carpets, tweed cloth upholstery, a heated rear window and tailgate wash/wipe as standard.

And there's a choice of 1,3 or 1,6 petrol engines, as well as the 1,6 diesel. There's even an optional 5-speed overdrive gearbox if you wish. 'L' prices start at £4 169*.

Bedford CF vans.
Moving up a size, Bedford's medium-range CF vans are as versatile as they come. There are two wheelbases to choose from. As well as all sorts of door and payload variations. Each model is available with either a petrol or diesel engine. (In every case, Bedford CF's offer a more powerful petrol engine than their main rival.) Thanks to revised suspension you're also guaranteed a very smooth ride. Not to mention a quieter one. Noise levels in the cab have been cut by as much as 33%. And to cap it all, nearly every Bedford CF van costs less than its main competitor. For the complete low-down on Astra and CF vans contact your Bedford dealer and take a test drive.



BEDFORD COMMERCIAL VEHICLES. PO BOX 3, LUTON, BEDS., LU2 0SY. *excluding VAT, number plates and delivery.

REPLAY IN COLOUR. . . REPLAY IN COLOUR



**IPSWICH 3
LUTON 0**

We returned from our second visit to East Anglia pointless. After containing their forwards in the first half Ipswich finally broke our defence. Pictured is Kirk Stephens moving forward to add grit to our front line.

TOWN RECORD '83/84

Opponents	Result	Attend-ance	Points	Position	Sealey	Stephens	Turner	Horton	Elliott	Donaghy	Hill	Stein	Walsh	Bunn	Moss	Antic	Aylott	Daniel	Thomas	Parker	Johnson	Goodyear	Nwajobi	Breacker	Own Goals
1983																									
August																									
27 Arsenal	1-2	39,348																							
31 Leicester City	3-0	11,929	3	1																					
September																									
3 Sunderland	*4-1	10,846	6	5	1	2	3	4	5	6	7	8	9	10	11										
6 Norwich City	2-2	11,905	7	5	1	2	3	4	5	6	7	8	9	10	11										
10 Manchester United	0-2	41,013	7	8	1	2	3	4	5	6	7	8	9	10	11										
17 Wolverhampton W.	4-0	10,975	10	7	1	2	3	4	5	6	7	8	9	10	11										
24 Nottingham Forest	0-1	16,296	10	13	1	2	3	4	5	6	7	8	9	10	11										
October																									
1 Aston Villa	1-0	12,747	13	9	1	2	3	4	5	6	7	8	9	10	11	12									
4 Rotherham (MC2-1L)	3-2	4,035															11								
15 Everton	1-0	14,325	16	7	1	2	3	4	5	6	7	8	9	10	11										
22 Southampton	3-1	12,389	19	4	1	2	3	4	5	6	7	8	9	10	11	12									
25 Rotherham (MC2-2L)	0-2	6,755														10	11								
29 Liverpool	0-6	31,940	19	6	1	2	3	4	5	6	7	8	9	10	11			3							
November																									
5 Queens Park Rangers	1-0	15,053	22	4	1	2	3	4	5	6	7	8	9	10	11					11					
12 Birmingham City	1-1	11,111	23	5	1	2	3	4	5	6	7	8	9	10	11	12			3	11	4				
19 Tottenham Hotspur	2-4	17,275	23	10	1	2	3	4	5	6	7	8	9	10	11										
26 Watford	2-1	17,791	26	5	1	2	3	4	5	6	7	8	9	10	11										
December																									
3 Coventry City	*2-4	10,698	26	10	1	2	3	4	5	6	7	8	9	10	11	12									
10 Stoke City	4-2	10,329	29	8	1	2	3	4	5	6	7	8	9	10	11	12									
18 West Bromwich Albion	2-0	11,566	32	6	1	2	3	4	5	6	7	8	9	10	11										
26 Notts County	3-0	9,789	35	3	1	2	3	4	5	6	7	8	9	10	11	12									
27 West Ham United	0-1	16,343	35	5	1	2	3	4	5	6	7	8	9	10	11	12									
31 Sunderland	0-2	19,482	35	6	1	2	3	4	5	6	7	8	9	10	11	12									
1984																									
January																									
2 Nottingham Forest	2-3	12,126	35	9	1	2	3	4	5	6	7	8	9	10	11	12									
7 Watford (FAC3)	2-2	15,007																							
10 Watford (FAC3R)	3-4	20,586																							
14 Arsenal	*1-2	16,320	35	10	1	2	3	4	5	6	7	8	9	10	11	12									
21 Wolverhampton W	2-1	11,594	38	8	1	2	3	4	5	6	7	8	9	10	11	12									
February																									
4 Aston Villa	0-0	18,656	39	7	1	2	3	4	5	6	7	8	9	10	11	12									
12 Manchester United	0-5	11,265	39	8	1	2	3	4	5	6	7	8	9	10	11	12									
18 Liverpool	0-0	14,877	40	8	1	2	3	4	5	6	7	8	9	10	11	12									
25 Southampton	1-2	17,947	40	11	1	2	3	4	5	6	7	8	9	10	11	12									
March																									
3 Queens Park Rangers	0-0	11,922	41	10	1	2	3	4	5	6	7	8	9	10	11	12									
13 Ipswich Town	2-1	8,776	44	8	1	2	3	4	5	6	7	8	9	10	11	12									
17 Norwich City	0-0	14,181	45	7	1	2	3	4	5	6	7	8	9	10	11	12									
20 Birmingham City	1-1	9,592	46	8	1	2	3	4	5	6	7	8	9	10	11	12									
24 Leicester City	0-0	10,509	47	11	1	2	3	4	5	6	7	8	9	10	11	12									
31 Ipswich Town	0-3	10,570	47	11	1	2	3	4	5	6	7	8	9	10	11	12									
April																									
7 Everton																									
14 Tottenham Hotspur																									
17 West Ham United																									
21 Notts County																									
28 Watford																									
May																									
5 Coventry City																									
7 Stoke City																									
12 West Bromwich Albion																									
19 FA Cup Final																									

FOOTBALL COMBINATION FIXTURES 1983-84

Date	Opposition	F	A
Aug. 27	Chelsea	1	1
Sept. 7	Leicester City	1	0
Sept. 10	Ipswich Town	0	0
Sept. 14	Reading	4	1
Sept. 17	Arsenal	1	2
Sept. 20	Millwall	4	0
Sept. 24	Swansea City	3	1
Oct. 3	Charlton Athletic (7.30)	1	1
Oct. 8	Bristol Rovers	2	1
Oct. 11	Norwich City	0	0
Oct. 18	Crystal Palace	0	0
Oct. 25	Southampton	3	1
Nov. 5	Brighton and Hove A.	4	0
Nov. 9	Millwall	2	1
Nov. 23	Oxford United	0	1
Nov. 26	Swindon Town	4	1
Dec. 3	Tottenham Hotspur	2	1
Dec. 10	Watford	3	0
Dec. 17	West Ham United	2	1
Jan. 3	Queens Park Rangers	1	1
Jan. 17	Chelsea	0	1
Jan. 21	Reading	3	1
Jan. 28	Swansea City	1	2
Feb. 14	Charlton Athletic	2	4
Feb. 25	Queens Park Rangers	0	1
Feb. 28	Southampton	1	1
Mar. 6	Brighton & Hove A.	0	0
Mar. 9	Fulham	3	0
Mar. 17	West Ham United	1	5
Mar. 20	Fulham	4	2
Mar. 27	Crystal Palace	5	0
Mar. 31	Leicester City	2	2
April 2	Bristol Rovers	1	1
April 7	Ipswich Town		
April 10	Birmingham City		
April 14	Oxford United		
April 24	Arsenal		
April 28	Oxford United		
May 5	Swindon Town		
May 9	Birmingham City		
May 12	Tottenham Hotspur		
TBA	Watford (a)		
	Norwich City (a)		

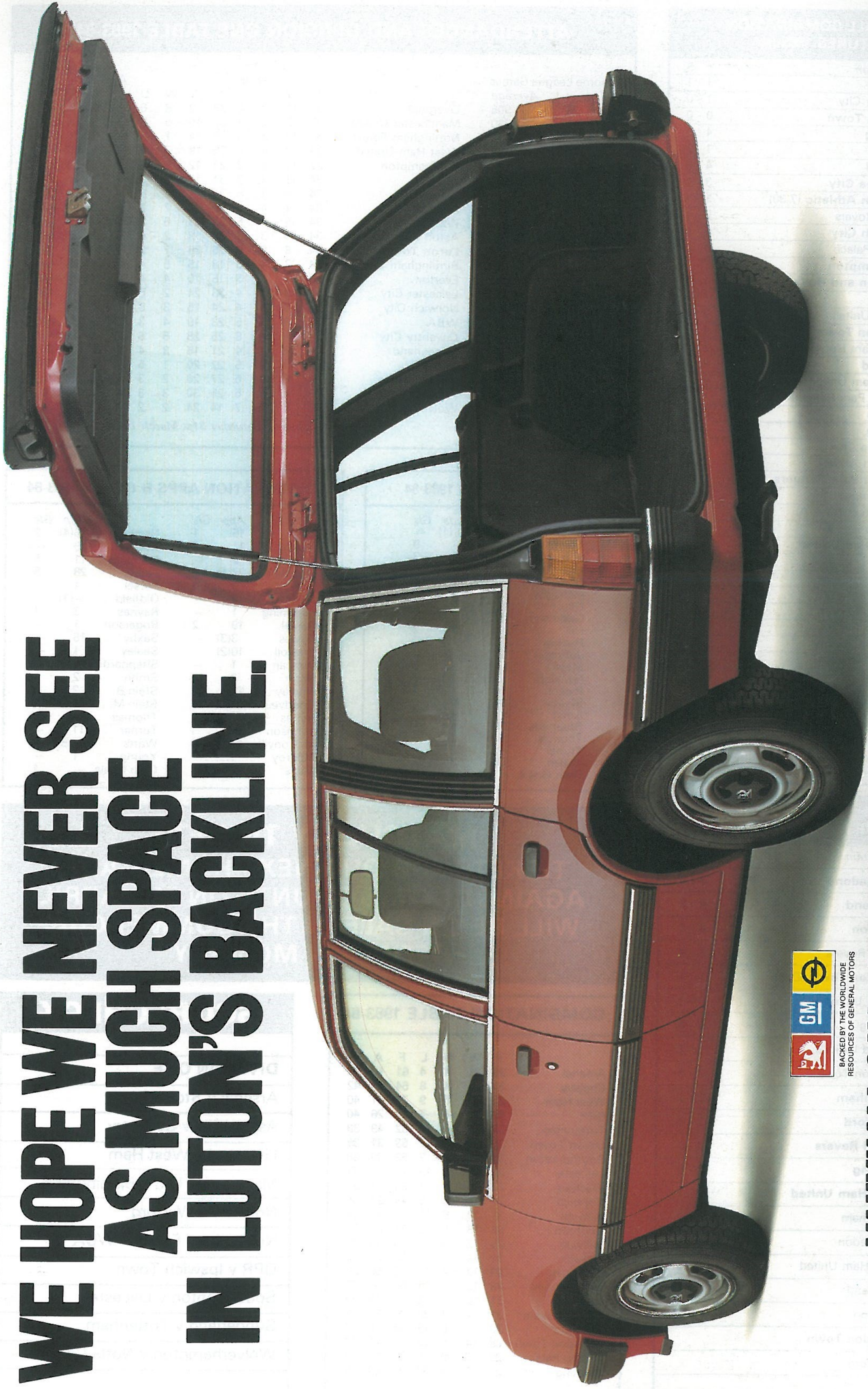
SOUTH EAST COUNTIES LEAGUE FIXTURES 1983-84

Date	Opposition	F	A
Sept. 3	Wimbledon	3	2
Sept. 9	Southend	4	2
Sept. 17	Brighton	4	1
Sept. 24	Bristol Rovers	1	4
Oct. 1	Swindon Town (Cup)	1	5
Oct. 15	Oxford United	0	0
Oct. 22	Reading	0	3
Oct. 29	Oxford United	1	2
Nov. 5	Swindon Town	0	5
Nov. 19	Tottenham	1	1
Dec. 3	Brentford	1	3
Dec. 17	Bristol Rovers	3	0
Jan. 21	Reading	3	0
Feb. 11	West Ham United	3	1
Feb. 18	Tottenham	1	2
Mar. 10	Wimbledon	1	5
Mar. 31	West Ham United	2	4
April 7	Southend		
April 14	Brighton		
April 21	Swindon Town		
April 28	Brentford		

ATTENDANCES AND DIVISION ONE TABLE 1983-84

Home League Games		Home		Away		Pts							
Highest	Average	P	W	D	L	F	A	W	D	L	F	A	Pts
45,122	30,905	33	11	3	2	33	9	8	6	3	20	15	66
56,121	42,730	33	12	2	3	37	15	6	8	2	26	18	64
29,692	18,070	33	10	3	3	32	14	7	3	7	23	21	57
32,555	22,058	33	9	4	3	35	18	7	3	7	18	20	55
20,674	17,863	32	11	3	2	24	12	5	4	7	15	18	55
27,140	15,411	34	11	3	3	31	10	5	3	9	22	21	54
45,032	29,475	34	8	3	6	24	21	6	5	6	29	30	50
42,704	27,231	34	7	4	6	30	22	7	2	8	28	27	48
21,293	16,099	34	8	4	5	33	29	6	2	9	27	32	48
39,318	22,640	34	11	3	3	27	18</						

**WE HOPE WE NEVER SEE
AS MUCH SPACE
IN LUTON'S BACKLINE.**



BACKED BY THE WORLDWIDE
RESOURCES OF GENERAL MOTORS

VAUXHALL CAVALIER ESTATE.

Better. By Design.