

CANON LEAGUE DIVISION ONE

**LUTON TOWN**

v

**WATFORD**

Saturday 20th October 1984

Kick-off 3.00 pm

TODAY'S MATCH IS SPONSORED BY:



**PYRENE**

**CHAMBERLAIN**  
CURTAINS

**Freshbake Foods** **Priory Farm Foods**

Official Matchday Magazine  
Price 50p



**LUTONTOWN**



# ACTION REPLAY



## LUTON 1 SHEFFIELD WED 2

1. MITCHELL THOMAS is stopped short as he moves into the attack.
2. FRANK BUNN on the run which was completed with a fine goal.
3. RICKY HILL pushes forward to give our front men another scoring chance.



Pictures by Gareth Owen



Today we can expect a top class game. During the last few seasons, we have had some outstanding games. Perhaps the most vital of all was the spirit and skill shown by both sets of players at Vicarage Road in the replayed Cup tie that began Watford's road to Wembley. Our relationship has always been good, and I sincerely hope it will stay that way.

I do not believe that Watford's early season results will be any guide to the end of season placings. They have made a few changes (Steve Sims to Notts County, Maurice Johnston to Celtic, Luther Blissett from AC Milan and Tony Coton from Birmingham), and as a consequence, like ourselves, may have to sail through some choppy seas before reaching calmer waters. It is my hope that we both retain our respective status, so that we can continue our strong rivalry.

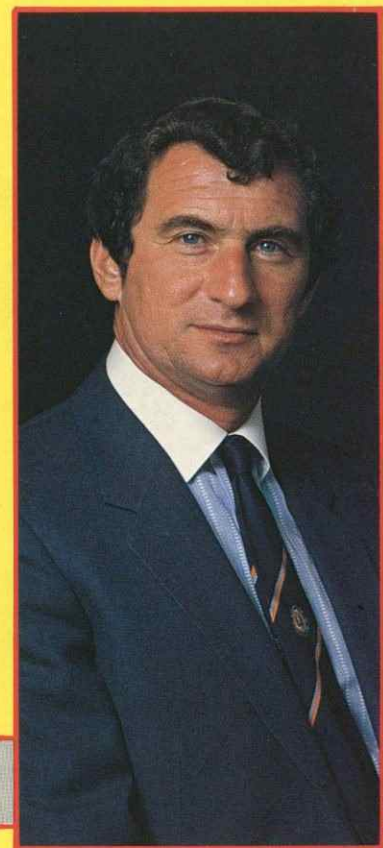
Our Reserves have played in some remarkable games of football recently. After 10 Reserve games, they had scored a remarkable 37 goals. When our first team are away, Kenilworth Road seems to be the place to be! Hand in hand with this enterprising attacking has been an unbeaten start by our South East Counties Under-17 side. It is all encouraging, but once again I remind supporters that patience will be needed before some of our brighter younger talent is ready for regular First Division football.

The Sun Life Milton Keynes Middle Schools five-a-side tournament proved most popular again this year. Our players have been praised for their attitude, and appearance when attending the finals night. We are increasingly receiving requests for our players to attend functions and to coach teams. Please understand that they will do all they can, but it will not be possible to always accept. Professional players need to rest properly, as well as train and play hard.

Last Monday, four of our players plus coach, Trevor Hartley, represented the club in the Football League Secretary and Managers' Association Golf Classic at the Belfry Course in the Midlands. Sponsoring our two teams was the Blue Arrow Company, and our thanks go to Mr Tony Berry, the Managing Director. Last season, Mr Ron Unwin, also a vice-president of the club, supported this event. We appreciate their support, and thank them most sincerely.

Our golfing fraternity were also relaxing at the invitation of Cleandustrial Holdings prior to the QPR game. Thanks here to Mr Brian Cole, who assures me that the team always win after a morning's golf in the week prior to a game!

One very important addition to our staff was made last week. I am more than delighted to welcome Colin Todd to our ranks. His experience will help the younger



# WELCOME

In 10 days time, we shall be competing for a place in the last 16 of this year's Milk Cup. Leicester City will provide difficult opposition, but I am sure we have a chance of progressing, particularly if we can get a good crowd to provide the Cup tie atmosphere. Against Orient, the players did a satisfactory job to score seven goals over the two legs. But the initial first leg results precluded the possibility of decent second game crowds. Obviously, many people felt our second match was a foregone conclusion, and consequently stayed away.

Any Cup run is rewarding both for players morale and financially. Good terrace support can be vital.

Although 35 Colin looks quick and strong, and is pleased to be resuming his First Division career. Once I knew he was assured by Vancouver Whitecaps that he would be released, I made my move. We need some depth and it is a bonus to have a dedicated international of such quality amongst our number. We all wish him well.

At the other end of the scale, Marcus Tuite, a 16-year-old from Dublin, has joined the club as an apprentice. He is the third boy from Dublin to join us, alongside Aaron Tighe and Ricky McEvoy. Their arrival here is due to the considerable efforts of our scout, Mr Eddie Corcoran. It is his efforts with other scouts, searching for talent, which will enable the

club to have a good base on which to build.

Enjoy the game today, whether you have allegiance to either team, and if you appreciate the players' efforts, please come again.

# LUTON TOWN F.C.

70-72 KENILWORTH ROAD · LUTON LU1 1DH · TELEPHONE: 0582-411622

**CHAIRMAN**  
DENIS MORTIMER  
**DIRECTORS**  
R. L. BANKS, D. J. EVANS, E. S. PEARSON,  
R. J. SMITH, J. R. SMITH  
**CHIEF EXECUTIVE**  
JOHN SMITH  
**MANAGER**  
DAVID PLEAT  
**GENERAL SECRETARY**  
GRAHAM MACKRELL  
**CLUB SECRETARY**  
JOHN WILKINSON  
**COMMERCIAL MANAGER**  
BILL TOMLINS

**PRESIDENT**  
T. HODGSON  
**DEPUTY PRESIDENT**  
J. A. C. BAIN  
**VICE PRESIDENTS**  
T. W. BAILEY, A. G. BERRY F.C.C.A.  
J. B. BRENT, C. BYGRAVE  
C. J. EVANS, B. COLE  
B. ENGLAND, N. S. FOOKES  
E. FOUNTAIN, C. HOLLOWAY  
I. E. HOLMES, L. LEPPINGTON  
R. LARKINSON, R. SAFRANEK  
R. UNWIN, E. WALLER

## HONOURS

FA CUP FINALISTS 1958-59  
CHAMPIONS — DIVISION 3(S) 1936-37  
RUNNERS-UP — DIVISION 2 1954-55  
CHAMPIONS — DIVISION 4 1967-68  
RUNNERS-UP — DIVISION 3 1969-70  
RUNNERS-UP — DIVISION 2 1973-74  
CHAMPIONS — DIVISION 2 1981-82





BOBBY FERGUSON

The suprise of the week must be the transfer of Mo Johnston Watford's Scottish international striker to Celtic for a fee reported to be £400,000. Johnston scored 24 goals for the Hornets last season after joining them from Partick Thistle and has frequently spoken about his wish to return to Scotland. After signing the forms Johnston said: 'This is a dream come true for me. I wouldn't have signed for any other club and I am sure that this move will help my international career. Watford have been good to me and the manager has helped me but I think I have been good for them as well.'

Another transfer just completed is that of Cyrille Regis, West Bromwich Albion's England international striker who has signed for Coventry City for £300,000. He accepted Bobby Gould's offer of a three year contract and at the same time took a hefty cut in salary to join the Blues. Cyrille admitted: 'I was determined to be realistic about the financial state of football today. I am aware that there is not the money in the game today that there was a few years ago.' This move must surely give Regis a fresh start after two bad years at the Hawthorns and he added: 'I can't wait to get started. My aim is to win my place back in the international side.'

Asa Hartford, the two goal hero at Norwich in the Milk Cup last week has admitted that he took a big gamble to get into the top flight. He took a monthly contract at Norwich and said: 'It wasn't an easy choice to make as I had offers from other clubs in lower divisions but I know that I can still do it in the First Division. I would have liked a longer contract but it is now up to me to prove that I am good enough and that Norwich manager Ken Brown, who was the only manager in the First Division to offer me a deal, was right in his judgement.'

Kevin O'Callaghan, Ipswich Town's young winger has asked for a transfer after being left out of the side that played Derby County in the Milk Cup last week. The former Millwall player wants a guarantee of first team football and any club interested will have to pay a five figure fee.

West Brom have signed Carl Valentine from Vancouver Whitecaps for £60,000. Valentine spent three years working with Albion manager Johnny Giles where he was coach. 'He is a natural winger and a good passer of the ball,' said Giles.

Jimmy Nicholl the Northern Ireland right-back is also set to join West Brom. Manager Giles followed up his Vancouver connection with another £55,000 cheque. Nicholl was all set to join Coventry City but Giles moved quickly to persuade him that the Hawthorns is the place to be at this time.

# SCENE on ONE



BRYAN ROBSON

point gap after a 4-1 win at Leicester. They recovered after a disastrous start when Anderson headed into his own goal after only 33 seconds, but they hit back with two goals from Talbot, Rix and Anderson. Leicester goalkeeper Wallington saved a penalty from Charlie Nicholas.

Sunderland snatched a dramatic 2-1 victory over Norwich City. Steve Berry, a free transfer summer signing from Portsmouth was the Roker Park hero snatching an injury time winner. Stoke City snop up the First Division after handing Southampton there first away win of the season. Welsh international Alan Curtis put the Saints in front after five minutes and 10 minutes later the visitors went further in front when Paul Dyson put through his own goal. Philip Heath pulled one back just before half-time, but their hopes of retrieving anything from this game were dashed when Steve Williams got Southampton's third in the 66th minute. Ipswich maintained their unbeaten home record with a 1-1 draw against QPR but really deserved more than a single point for their efforts. The home side did all the running but paid dearly for a second half penalty miss by Eric Gates.

Manchester United, inspired by the return of skipper Brian Robson, turned on a masterly display as they crushed West Ham 5-1 at Old Trafford. Gordon McQueen celebrated his first game since January by getting United's first goal after 27 minutes and five minutes later Alan Brazil added a second and his first for United. In the second half they turned on the style and further goals came from Strachan, Moses and Hughes. The Hammers consolation goal was scored by Goddard.

Newcastle United manager Jack Charlton blasted his players for squandering the lead against Coventry at Highfield Road. Kenny Hibbitt equalised to earn Coventry a point after Peter Beardsley had put the visitors ahead from the penalty spot. Charlton referring to his Leeds United days said: 'I used to play for a team which did not lose a lead once it got in front.' He added: 'I am pleased that we have gone six matches without defeat, but we can play much better and have done so.'

The black spot here was the scattering of glass on the pitch by the Animal Rights Association and the home officials did a good job in getting it off. Apparently it was done as a protest against United's manager Jack Charlton's love of hunting. It seems that the possibility of severely injuring a player doesn't matter.

Leading goalscorers in the Division this week are: Bannister (QPR) 12; Falco (Spurs) 11; Thompson (WBA) 10; Gates (Ipswich) 8.

## UNVEILED. THE NEW CF2 VAN.



From the outside, the new CF2 looks very like the old CF. Underneath, however, it's a completely different story.

The mechanics are almost all new. So, don't go by appearances. Go and arrange a road test with your local Bedford dealer instead.

**THE NEW CF2 SHOWS BEDFORD MEANS BUSINESS.**

### GLAZING & DECORATING SPECIALISTS

GLAZING REPAIRS & GLASS SUPPLIES  
PATIO DOOR & WINDOW INSTALLATIONS  
DOUBLE GLAZING (SECONDARY AND SEALED UNITS)  
INTERIOR AND EXTERIOR DECORATORS

For Domestic and Commercial enquiries contact Luton 573025/597505  
For 24 hour Emergency Service contact Dunstable 666665

**sapsworth**  
GLAZING & DECORATING  
J. Sapsworth Limited  
92 Marsh Road, Luton, Bedfordshire LU3 2NL  
Telephone: Luton (0582) 53025/597505



# ACTION

# REPLAY

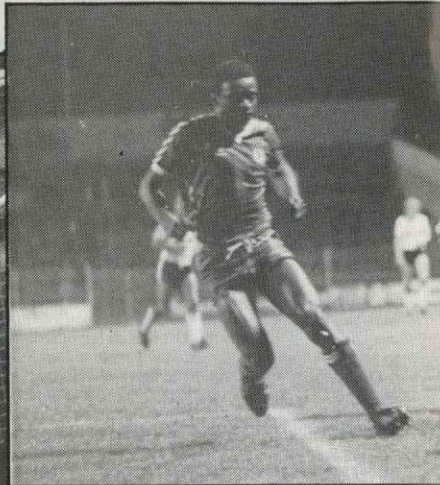
**Milk Cup  
2nd Round 2nd Leg  
LUTON 4 ORIENT 1**

- 1 Paul Elliott's header from a corner kick is punched away by Orient's 'keeper Wilmot.
- 2 Fine run down the wing by David Moss finishing with a fine strike that hits the Orient's upright.
- 3 Goalscorer Steve Elliott has a first half chance snatched away.
- 4 Ricky Hill's midfield skills prove too much to handle for Orient's defence.

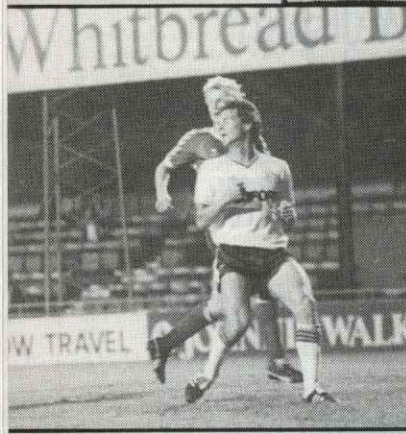
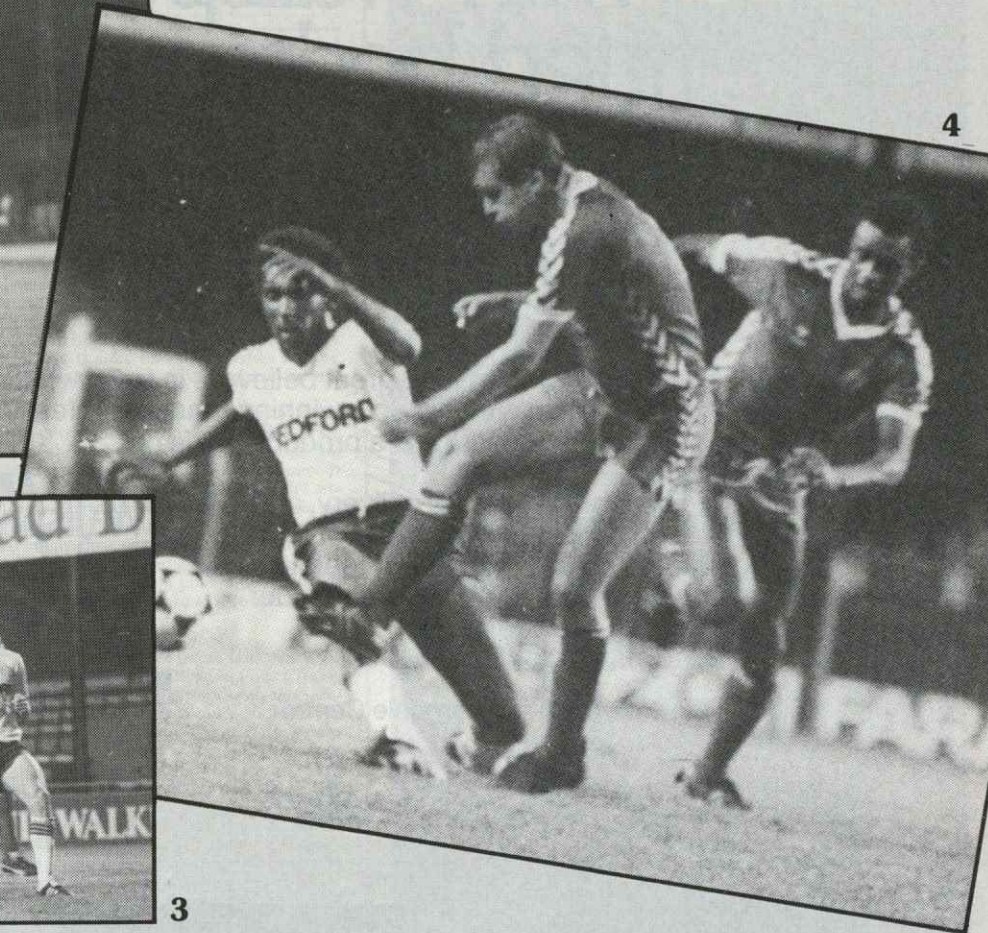
1



2



4



3

# THE LOCAL TASTE AND HOW TO SATISFY IT

We're very definite about our taste in beer around here. A clear light pint is what we look for; with a good, clean smack of malt and hops.

And there's only one name that really satisfies the local taste — BB. The Light beer first brewed in Luton during the darkest days of the War by J. W. Green.

Only the finest hops and good, ripe barley go into the making. Then the brew is matured to exactly the right degree to give you a bright refreshing pint with a sound, full flavour.



**WHITBREAD**

American servicemen in local wartime bases declared that BB, chilled, was the nearest taste to Stateside draught.

It went down well when Syd Owen ruled the Hatters.

And it's been going down well ever since. Because BB is brewed with a proper respect for quality. To keep up the traditions we value round here.



There's a handy man to know at **Graham Ford**



Your Comprehensive Builders Merchants

Depots at: KINGSWAY LUTON 31199

BEALE ST DUNSTABLE 603111

LEIGHTON RD LEIGHTON BUZZARD 373486

Home Improvement and Building Material Centres



**Falcon Holidays**

QUALIFIED FOR EUROPE

We've been in European competition for 12 seasons. Try a Falcon Holiday this year and find out why we're top of the Holiday League.

Fly direct from your local airport for your winter or summer holiday.

190 Campden Hill Road  
London W8 7TH  
Telephone 01-221 6298





# With Wallspan fitted bedrooms, a good result is guaranteed.

Wallspan fitted bedrooms are great believers in team work. Over the years we have built up a winning team of professionals who work together to produce a product that is out of everyone else's league.

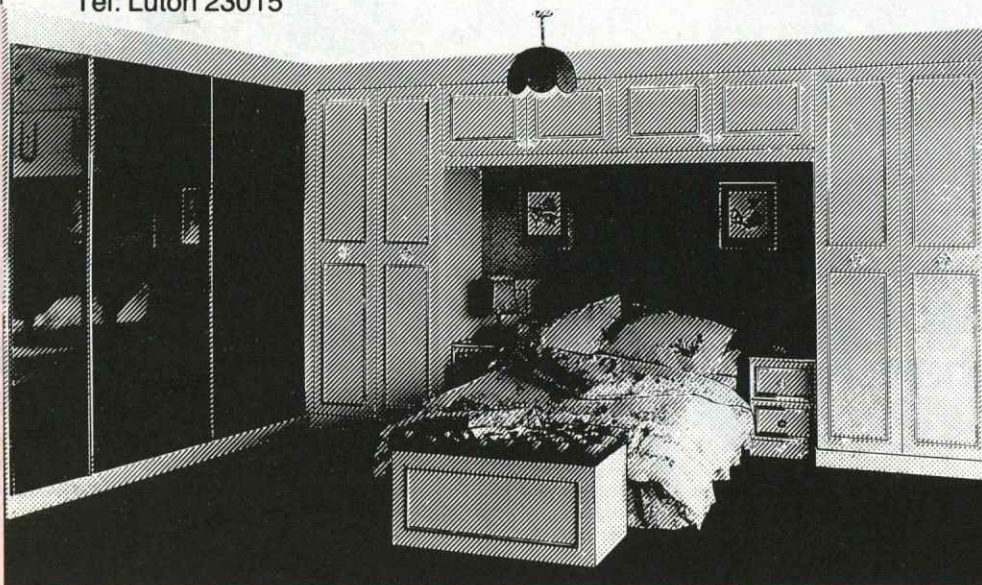
Free design, free fitting, free delivery, and for a limited period interest free credit.

Unfortunately we cannot guarantee the result of today's match but we do guarantee our result for a full five years.

Come and support our team soon.

Luton Showroom Unit 174 Arndale Centre  
Tel: Luton 23015

**Wallspan  
Bedrooms**  
  
Throughout the UK



## POINTS OF VIEW

This is the page YOU write . . . so let's hear from you. Keep it brief (not more than 100 words), enclose your name and full address and have patience - we have a massive postbag to get through! The club reserves the right to publish only suitable letters of interest to supporters and to cut letters where necessary.

Write to: Points of View, Luton Town FC, Kenilworth Road, Luton.

Dear Mr Wilkinson, I would just like to pass on my thanks to you and your office staff for keeping us supplied with all your programmes last season. It is an admirable way for us to keep in touch with clubs all over the country. I hope that you will be able to offer us the same service in the coming season, as it is an invaluable source of information giving, in many cases, ideas for the programme. Again, many thanks and best wishes for the new season. Yours sincerely, Ian St John, ITV World of Sport.

Dear Sirs, For about 10 years I have supported Luton Town Football Club, rarely missing a match. Unfortunately, since moving to North Cambridgeshire two years ago I have found the cost too high. I have tried advertising locally for someone to travel with, but have had no response. I really miss the atmosphere at Kenilworth Road, and was wondering if it would be possible to print a few lines in your 'Readers Letters' enquiring as to whether anyone who might live somewhere near me may possibly be prepared to share transport and expenses with me. I would be very grateful for your help. Thank you. Yours faithfully, G. S. Webb, Staffurth Bridge Bungalow, Floods Ferry, near March, Cambs, PE15 0YP.

Dear Sir, I wonder how many of the present Luton fans yearn for a return of the 'Oak Road Choir' as in our Division Four Championship winning days? The repertoire in the 'middle-to-late' sixties was excellent and the whole team was lifted at home with the chants of 'Molly Malone', 'Oggy-Oggy-Oggy', 'Knees up Luton Town' and 'We've got the best team in the land' amongst others. Nowadays it is all very 'limited' with 'Here we go, here we go' and the occasional 'Come on you Hatters', although just lately we do hear choruses of 'We love you Luton, Oh! yes we do, Oh! Luton we love you' (to the old 'We love you Beatles' tune). But the volume and togetherness is no longer there, although the teams style should encourage more vocal support. One tune which we could 'patent' as an 'Oak Road choir exclusive' is 'Luton Town are po-etry in motion, David Pleat's super football team, Luton Town you really are the greatest football team, that Luton Town has seen!' (Sung to the Goonbay Dance Band's 'Seven Tears, tune of a couple of years ago.) So come on you Hatters let's give our team the vocal backing they deserve! Yours faithfully, 10 Portland Street, Whitwell, Worksop, Notts S80 4RH.

Dear John, and members of Luton Town FC. MILTON KEYNES LUTON TOWN YOUTH SOCCER CLINIC GERMAN TOUR, AUGUST-SEPTEMBER 1984. As manager of the above mentioned team I would like to thank you on behalf of the players and officials for your help and kindness, without which the tour would not have been possible. This was our fourth trip abroad and a most memorable one. The 3rd Royal Tank Regiment were our hosts and as always their hospitality was superb. Eight games were played over 14 days, the team won five, lost two and drew one, a fine achievement by any standard. We have been invited back next year, August, to take part in an International Youth Tournament in which teams from eight different countries will be taking part. The invitation has been accepted and the 3rd Royal Tank Regiment has agreed to be our hosts again. During the 14 days abroad the party visited various parts of Germany, Holland and Belgium, they were invited to the homes of German families, and guests of Schloss Neu Haus (German 3rd Division side) who's chairman took the complete party out to dinner. Please accept our sincere thanks, we are most grateful and do appreciate all the help you gave us. We did not let you down in anyway. Thank you very much, Joe Joseph, Tour Manager, Bletchley Leisure Centre.

## EXECUTIVE MEMBERS

- ANACHEM LTD
- A1 HEATING (WHOLESALE & RETAIL) LTD
- MR W. ASHBURNER
- BEARD & MANNING CATERING SERVICES LTD
- BEDFORD COMMERCIAL VEHICLES
- BERVALE MEAD INSURANCE BROKERS LTD
- BERKELEY ASSOCIATES
- BLAKEY ENGINEERING CO LTD
- BLUE ARROW SERVICES
- BRENGREEN HOLDINGS PLC
- BROAD STREET PRINT
- CANVERMOOR PLC
- CLEANDUSTRIAL SERVICES LTD
- GARY CHAMBERLAIN WINDOW FASHIONS
- DUPONT (UK) LTD
- FILMERGRAPHIC ASSOCIATES LTD
- FINE STAMPS LTD
- N. S. FOOKES GROUP (PLANT FACILITIES) LTD
- BRIAN E. HANDSCOMBE (LIFE & PENSION BROKERS)
- E. W. HUDSON (HOLDINGS) LTD
- IVOR HOLMES LTD
- INFORMATION TECHNOLOGY LTD
- MARK JAMES (SALVAGE) LTD
- JOHN LAING CONSTRUCTION LTD
- RICHARD C. LARKINSON (CAMBRIDGE) LTD
- MR P. LAYCOCK
- NEAHURST LTD
- OPELVALE GROUP
- MR & MRS PEARSON
- F. W. PEARCE BUILDERS LTD
- PETER GRAVES & CO
- PILCOURT LTD
- DR & MRS G. L. PLESTER
- PRIORY FARM FOODS
- DAVID RAND & CO LTD
- RAVENMERE LTD
- RICHARDSON & BOTTOMS LTD
- RICHMOND ELECTRONICS (MARKYATE) LTD
- ROBINSON METAL (LUTON) LTD
- ROGERS RESIDENTIAL SALES
- SHAW & KILBURN
- SHOREYS TRAVEL
- TRITRADE LTD
- R. W. UNWIN & CO LTD
- VAUXHALL MOTORS LTD
- WALLSPAN BEDROOMS
- WEBBEX LTD
- MR J. W. WEBB
- WHITE'S STATIONERS LTD
- YARNSFIELD LTD

THE FULL ADDRESSES AND SERVICES OF OUR EXECUTIVE MEMBERS CAN BE OBTAINED THROUGH OUR COMMERCIAL OFFICES - LUTON TOWN FOOTBALL CLUB





ANDY DIXON

Hi again.  
A warm welcome to all Junior Hatters, Junior Hornets and Mums and Dads for today's derby match with Watford and a special welcome to our mascots and escorts.

### MASCOT

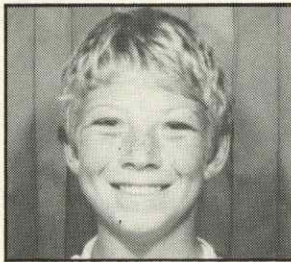
Andy Dixon lives in Luton and attends Denbigh High School. His interests are football, pop music and mathematics.



DANIEL WALKER

### ESCORTS

Daniel Walker age 10 from Clophill attends Robert Bloomfield Middle School, Shefford. He plays football for Clophill Tigers and his interests are wild animals, football and swimming.



DARREN WILLIS

Darren Willis age 12 from Caddington attends Five Oaks Middle School. He plays football for Downside Boys Club and his interests are cricket, football, basketball, BMX riding and tennis.



ROBERT FIGGINS

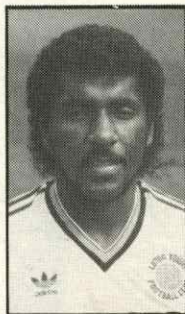
Robert Figgins age 13 from Luton attends Stopsley High School. Plays football for St Joseph's Youth and Stopsley High School. His interests are table tennis, tennis and golf.



CRAIG ANDREWS

Craig Andrews age 11 from Luton attends Icknield High School, his interests are football, swimming and computers.

*Subj  
Wells*



## NEWSDESK

### MILK CUP

Our Milk Cup Third Round Tie versus Leicester City will be played at Kenilworth Road, Luton on Tuesday 30th October 1984 - KO 7.45 p.m.

Tickets priced £5/£3/£2 can be purchased from our Box Office in Kenilworth Road commencing Tuesday 16th October 1984.

Credit card sales are welcomed via Luton 30748.

Season Ticket holders have until 5 p.m. Tuesday 23rd October 1984 to claim their tickets.

In the event of a replay this will be staged at Filbert Street, Leicester on Wednesday 7th November at 7.45 p.m.

### HATTERS TRAVEL

Our next away game takes us to Sunderland, details of which have already been covered in our last two programmes.

On Saturday 10th November we travel to Norwich. Coaches leave Maple Road car park at 11.00 a.m. and the price is £4 (only available to Travel club Members). If you have not joined Hatters Travel you can obtain a membership form from our offices in Kenilworth Road and become a member for £1 for the whole season.

### TODAY'S REFEREE

Alan Robinson - Civil Servant. Married with one daughter. Commenced refereeing in 1957 and progressed via Portsmouth and Hampshire Leagues and the Football Combination. Member of the FIFA panel of referees. Interested in philately and ornithology. Overseas/Services Divisional Secretary of the National Council of the RA since 1968, FA Staff Instructor for Referees, President of Portsmouth Referees' Society and holder of the national RA Merit Service award. Lined 1980 FA Cup Final and refereed 1976 FA Vase Final, 1980 League Cup semi-final, 1983 Charity Shield and the 1984 Milk Cup Final.

### CLUB INFORMATION:

- ☎ OFFICE HOURS 9 am-5 pm  
LUTON (0582) 411622
- ☎ ADVERTISING & PROMOTIONS  
RING - MIKE BEEVOR  
PROJECTS & ADVERTISING  
EXECUTIVE  
LUTON (0582) 411622
- ☎ SOUVENIRS - TRAVEL -  
JUNIOR HATTERS  
LUTON (0582) 412418
- ☎ MATCH TICKETS & LOTTERY  
ENQUIRIES  
RING - JOHN GORNALL,  
DEVELOPMENT EXECUTIVE  
LUTON (0582) 30748
- ☎ BANQUETING & FUNCTION  
FACILITIES  
RING - CLIVE HUSTWITT,  
CATERING MANAGER  
LUTON (0582) 411526
- ☎ MATCH ENQUIRIES -  
24-HOURS SERVICE  
LUTON (0582) 33010

## RESERVES + YOUTHS

After our recent scoring exploits at combination level. Our first-half against Chelsea was very tame and unenthusiastic by comparison. It was a hot and humid afternoon, and although we had our fair share of possession we lost our way in finding the net. Defences were on top and forwards lacked that spark of imagination to outwit them.

Only four chances, two at each end sums up the cat and mouse situation with each side wary of conceding the initiative.

Unfortunately at the start of the second-half, we were the ones who let our concentration slip. At a corner-kick for them our marking was not tight enough and we let them glance the ball on, to be knocked in at the far post, to put them one up. Worse was to follow when with 75 minutes gone we again lost out at a set piece to lose a second goal and put a good result seemingly beyond us.

However we came back and snatched a goal from a bad back pass to put our tails up. From then until the end of the game it was Chelsea who were hanging on and us showing the fire and character we had lacked up until then. We hit the bar, and the goalkeeper made two excellent saves to deny us the draw we deserved but failed to get.

### CHELSEA 2 LUTON RESERVES 1

Team: Sealey, North (M), Thomas, Breacker, North (S), Bunn, Parker, Stein (M), Nwajobi, Daniel, Hilaire.

Sub: Ellisdon

Scorer: Stein (M)

However our 4-2 win on Tuesday afternoon at QPR gave our first team the required incentive prior to our second leg Milk Cup-tie versus Orient that same evening. The lads got back in time to watch the game and



JOHN MOORE



DAVID COATES

pass their result on to the first team before they went out for their match. The interest and involvement throughout the club encourages the competitiveness that is required to achieve good team spirit.

This was our most pleasing performance of the season so far, against a good experienced team after going a goal down inside two minutes, before we had a chance to settle on the surface, it would have been easy to think it was not our day.

However our defence held firm and our midfield and forwards started to get some

passes together and threaten their goal.

As a result of one of their defenders being over anxious he conceded a direct free-kick from which we equalised.

We continued to play accurate football despite their offside trap and went on to take the lead before half-time.

In the second-half our defence was under a lot of pressure, but stood their ground although conceding a lot of corners and free-kicks. Every time we broke out and sprung a counter attack we looked likely to increase our lead. After missing an excellent chance, we managed to penetrate their defence twice more, to make the pay for over committing themselves to attack.

Although they managed to make it 4-2 two minutes before the end, this was an excellent team performance and just shows what can be achieved when everyone pulls together.

### QPR 2 LUTON RESERVES 4

Team: Findlay, Breacker, Ellisdon, Parker, North (S), North (M), Nwajobi, Stein (M), Oldfield, Daniel, Cobb. Sub: Doughty

Scorers: Parker 2, Daniel, Nwajobi

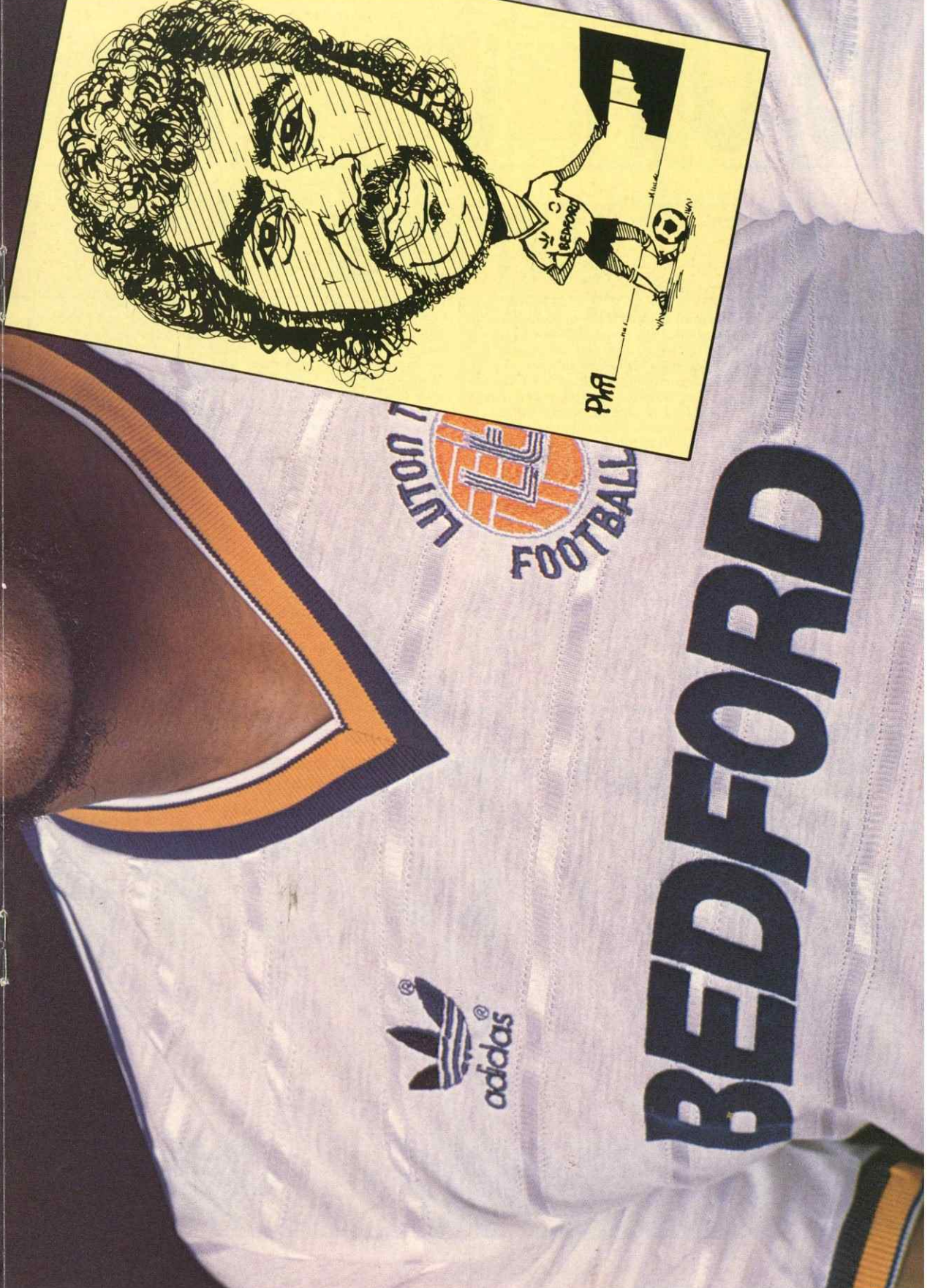
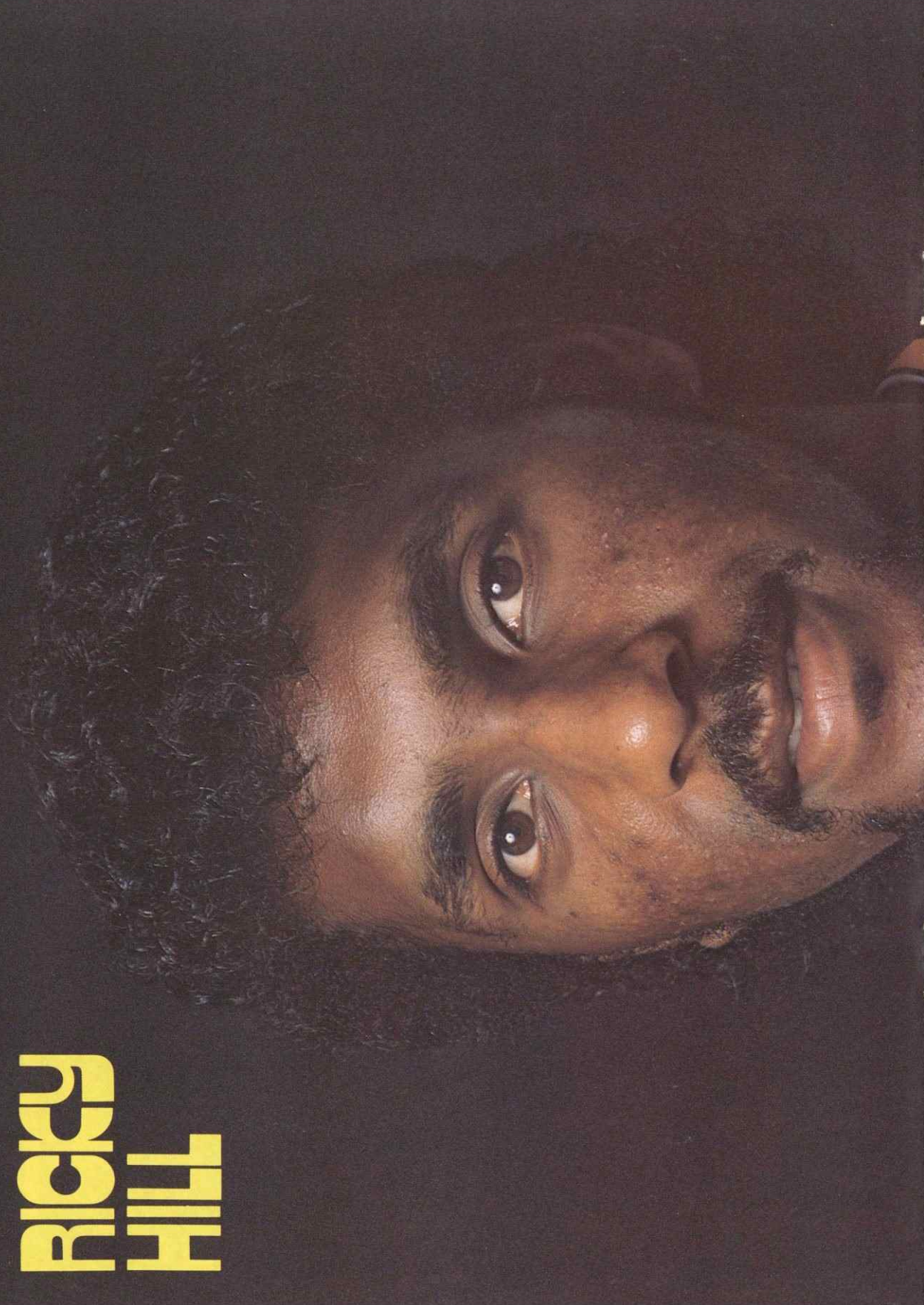
# Anglia Television

Proud to serve  
the  
East of England.





**RICKY  
HILL**





# OUR VISITORS



## WATFORD



Just five months after reaching Wembley and an FA Cup final appearance against Everton, Watford found themselves stranded at the foot of the First Division and the only side in the top two Divisions without a League win.

That's a surprising and worrying transition for Graham Taylor's team after two seasons when they have had things very much their own way since reaching the top flight.

And a candid Taylor admitted after the recent home defeat by Coventry that he could see the problems back in the summer. 'I know my players and I noticed subtle changes,' he explained after the Coventry defeat a fortnight ago.

'They liked the attention that surrounded Wembley. They want to look pretty now but they're having to face up to the harsh realities of life. When you're losing the boot comes in in a variety of ways and it's no good moaning and groaning.'

That suggests that Taylor believes the answers to Watford's problems lie in hard work and getting back to basics. With the season not quite at the quarter way stage there's still plenty of time for Watford to recover their form of the past two seasons but no doubt everyone at Vicarage Road would be relieved to see some points in the bag and some progress being made away from the foot of the table.

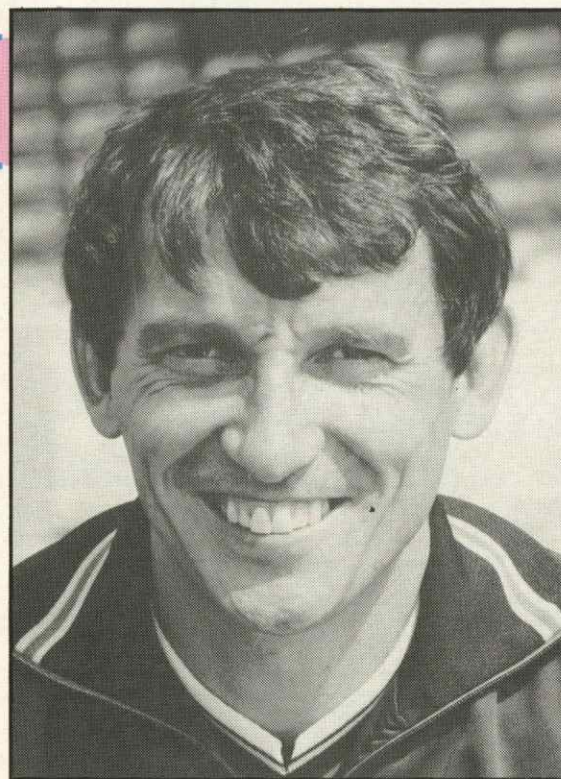
There have been only two significant changes in the side that finished mid-table last season and won through to Wembley . . . and one of the side's newcomers was very much part of the squad that took the club to the heady heights of the First Division from the lower reaches of the League.

Luther Blissett returned to Vicarage Road after a frustrating season in Italy but reports suggest that the England striker, has, like the rest of the Watford side, struggled to find the form that made him such a potent force in the Watford ranks a couple of seasons ago. The England striker was sub for the Coventry game a fortnight ago and lost his place in Bobby Robson's squad for the World Cup match with Finland in midweek.

Watford's other new man is goalkeeper Tony Coton, an expensive signing from Birmingham City towards the end of last month. Despite Birmingham's relegation last season, Coton has long been regarded as one of the top young 'keepers in the game and Taylor moved in quickly after a defeat at Norwich when Steve Sherwood had an uncertain time as Norwich striker John Deehan scored a hat-trick.

Coton's debut was against Everton at Vicarage Road three weeks ago when Watford were beaten 5-4 by the side they lost to at Wembley in May. Taylor exonerated his new 'keeper from the blame and pointed an accusing finger at an inexperienced back-four.

Experience is a quality that Watford tend to be short of. For all their success in the last couple of years, the side is still cutting its teeth in the First Division. Defenders David Bardsley, signed from Blackpool last season, Lee Sinnott and Steve Terry barely total 100 League appearances for the club between them and although Les Taylor and Kenny Jackett have been around slightly longer they are by no means veterans in terms of First Division backgrounds.



GRAHAM TAYLOR

Nigel Callaghan and John Barnes have both tasted international life with England's full and Under-21 squads. Barnes' goal against Brazil in Rio last June is one to rank with the best and the former Vicarage Road apprentice seems certain to be a key man in Bobby Robson's bid for World Cup glory that opened this week.

Manager Graham Taylor's options have been reduced by the sale of Maurice Johnston to Glasgow Celtic recently. He will be sadly missed after scoring 24 League and Cup goals and marking his Scottish debut against Wales with a goal as substitute.

Reilly, too, played a big part in Watford's Cup success. He was born in Scotland but brought up south of the border and learned his game with Northampton and Cambridge before switching to Vicarage Road two seasons ago.

Gary Porter and Paul Atkinson are both former England Youth internationals while Dutchman Jan Lohman is another candidate for a place in midfield. An injury has kept former Arsenal and Sunderland man Wilf Rostron on the sidelines in recent weeks.

No doubt Graham Taylor will be hoping that today's short trip up the motorway produces a result similar to the couple Watford achieved at Kenilworth Road last season . . . a 2-1 win here in the League in April and a 2-2 draw in the third round of the FA Cup back in January that set Watford on the way to Wembley. But that was last season and as Graham Taylor has been telling his players in recent weeks, Wembley is just a memory now . . . First Division safety is the immediate target.

For all your  
Floral arrangements contact:

### INBLOOM

(Suppliers to Kenilworth Suite)

76 Marsh Road, Luton

Telephone: 584244

### B. DOHERTY SKIPHIRE

34 MOUNT PLEASANT ROAD  
LUTON

Telephone: 54633 and 54799

### SHOREY'S FUELS



ANTHRACITE  
PHURNACITE  
COALITE  
REXCO  
HOMEFIRE  
COAL

YOUR NATURAL WARMTH  
FROM YOUR LOCAL  
SOLID FUEL MERCHANT

28 Sheepfold Hill, Flitwick, Bedfordshire

Telephone: Flitwick 713289 Silsoe 60694

Mentholatum

# DEEP HEAT

For rapid relief from muscular pain  
Your team's favourite choice!

### Cleandustrial Services Ltd

The Professional Approach to  
Your Cleaning Problems

84 Aldermans Hill N13

Official Cleaning Contractors to  
Luton Town FC

Telephone: 01-882 4626



# BACKTRACK

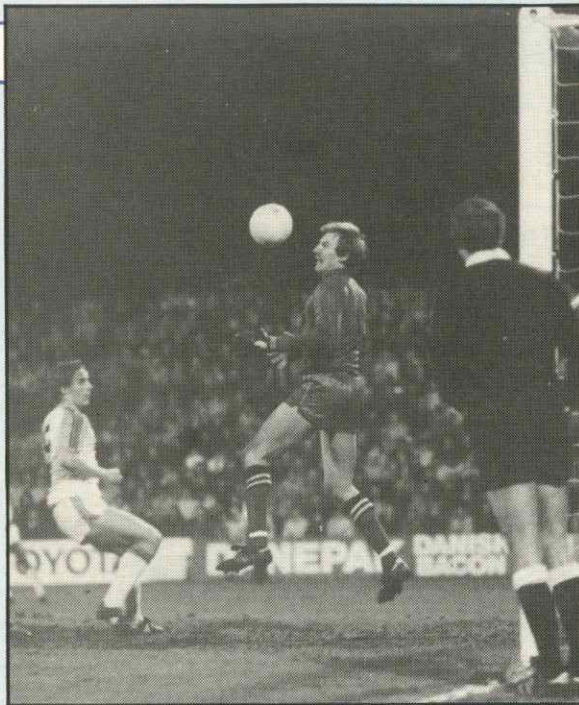
## HATTERS AND HORNETS

Over the years we have had many fine matches against our neighbours just up the motorway and I have selected just five of these matches which I hope will bring back a few pleasant memories for you.

19th February 1969, Luton Town v Watford, at Kenilworth Road, attendance 21,143, Division Three. This match was abandoned after 60 minutes because of a snow storm and the picture below shows goalkeeper Sandie Davie, Max Dougan and Jack Bannister keeping out a Watford effort. The teams that day were . . . LUTONTOWN: Davie, Dougan, Bannister, Slough, Branston, Moore, French, Keen, Allen, Lewis, Jardine. Scorer: Jardine. WATFORD: Walker, Welbourne, Williams, Eddy, Lees, Walley, Scullion, Hale, Green, Endean, Owen. Scorer: Endean.



JOHN WILKINSON



Paul Walsh heading his second goal in the Cup replay at Vicarage Road season 1983-84.

LUTON TOWN: Godden, Stephens, Money, Horton, Elliott, Donaghy, Hill, Aylott, Walsh, Antic, Moss. Sub: Turner. WATFORD: Sherwood, Rice, Rostron, Taylor, Terry, Jackett, Callaghan, Blissett, Barnes, Jobson, Lohman. Sub: Armstrong. Scorers: Blissett 2, Jobson, Taylor, Callaghan.

Then who could forget last season's FA Cup-tie matches when the Hornets ran out the eventual winners after two of the most exciting matches that have been played between the two clubs. The first match at Kenilworth Road ended 2-2 and the attendance was 15,007. The teams were . . .

LUTON TOWN: Sealey, Stephens, Thomas, Horton, Elliott, Donaghy, Hill, Stein, Walsh, Bunn, Nwajiobi. Sub: Antic. Scorers: Nwajiobi, Stein. WATFORD: Sherwood, Bardsley, Rostron, Taylor, Simms, Franklin, Callaghan, Johnson, Reilly, Jackett, Barnes. Scorers: Johnson, Barnes.

The only changes were in the Town side in the replay at Vicarage Road, Gary Parker replaced Nwajiobi who was the substitute that evening and Trevor Aylott replaced Frank Bunn. This game was decided in extra-time and it was a pity that one club had to go out as it was a great advert for English football. Scorers . . . WATFORD: Barnes, Reilly, Callaghan, Johnson; TOWN: Walsh 2, Donaghy.

You will no doubt remember our defeat that evening was the start of Watford's road to Wembley were they eventually ended runners-up to Everton. Let's hope that today's game is as exciting as that replay.



The re-arranged match at Kenilworth Road was on 30th April 1969 where 4,380 more spectators watched Luton win a very tempremented match two goals to one. In this game Slough, Endean and Wally were all sent off. The team changes for Luton that day was Tony Read replacing Davie in goal and Buxton replacing Branston. Watford had only made one change from the original fixture, Sinclair replacing Green. Buxton and Allen getting the Town's goals and Scullion for Watford.

To come into the eighties our match at home on 26th September 1981, attendance 12,839 for a Division Two fixture saw us chalk up a 4-1 victory. The teams that day were . . .

LUTON TOWN: Findlay, Stephens, Aixlewood, Horton, Saxby, Donaghy, Hill, Stein, White, Fuccillo, Moss. Sub: Antic. Scorers: Moss 2 (penalties), Stein 2.

WATFORD: Sherwood, Rice, Jackett, Taylor, Simms, Bolton, Callaghan, Jenkins, Armstrong, Blissett, Barnes. Scorer: Bolton.

A Division One match on 4th April 1983 saw us again have a player sent off. This time it was Raddy Antic who received his marching orders. The score this time was a convincing win for the Hornets by five goals to two. The teams were . . .



Gary Parker in action against Watford in the memorable FA Cup replay.

TODAY'S MATCH SPONSORS

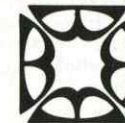
# CHAMBERLAIN CURTAINS

Our Exclusive hand tailored curtains come made to measure and fully fitted.

You can choose from a wide range of exciting colours and fabrics in the comfort of your own home or office.

For **FREE** estimates and advice ring to arrange your appointment now.

**ST ALBANS 62577**



**PYRENE**

**METAL TREATMENT SERVICES IN INDUSTRY**

**If Quality is Your Goal!**

**BONDERITE PROCESSES ARE RECOGNISED AND USED THROUGHOUT THE WORLD FOR THE PERFORMANCE THEY PROVIDE WITH ALL MODERN PAINT SYSTEMS. BONDERITE PROCESSES ARE THE NATURAL CHOICE.**

Contact:

**The People with the right chemistry**

**Pyrene Chemical Services Limited. Tel: Iver (0753) 651812. Telex: 847693**



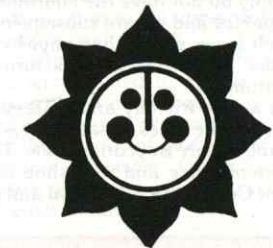
A Member of the Brent Chemicals International Group



**PRIORY FARM FOODS LTD**

61-63 St Peter's Street, Bedford MK40 2PR.  
Telephone: Bedford 60372 (3 lines). Telex: 826850  
Directors: N. S. Terry, W. J. Turnbull

Regd. Office: Burghwallis Grange, Green Lane, Skellow, nr-Doncaster DN6 8JX. Reg. No. 1599780



**Freshbake Foods**

**BELL ROAD, SITTINGBOURNE KENT ME10 4HE**

**Telephone: Sittingbourne 24333**



# AROUND THE TOWN

## TOP SCORE

Trevor Hartley reckons that given the chance of a day off there is nothing he enjoys more than a round of golf.

Our picture above shows Trevor receiving the Cleandustrial Cup from Cleandustrial Services chairman Brian Cole when Trevor proved too hot for all the opposition at Cleandustrial's recent golf day at Brickendon Grange Golf and Country Club. The opposition who Trevor proved his golfing prowess to included David Moss, Andy Dibble, Wayne Turner, Brian Stein, club physiotherapist John Sheridan, club doctor Bill Berry and our vice president Ivor Holmes.

Congratulations Trevor, we hope that's the first cup of many this season.



## EXECUTIVE SPONSORS

Today we have pleasure in welcoming as Executive sponsors Crest Cars who are long established motor dealers in Luton. Family owned and run by senior partner Mr Roger Jarmin, who says: 'We are able to offer value for money because we simply do not have the enormous overheads of the larger companies and we are subsequently able to offer our cars at much lower prices than anywhere else.' By doing this he adds: 'We ensure a quick turnover and a fair deal for our customers.'

Crest Cars is a very friendly and professional company, leading the team in the sales department is sales manager John Dunber and Hugh Boycott-Brown. Together with a thoroughly efficient office and workshop combine to give the customers of Crest Cars a 'fair deal and complete value for money'.

Century Club member Mr Roger Jarmin and family are all avid football fans and have supported Luton Town for many seasons and they especially look forward to the derby game with Watford, so good luck today lads.

## MATCH BALL SPONSOR

A warm thank you to today's match ball sponsor Luton Market Traders Association. The Luton Arndale Market caters for all your needs for easy shopping giving the variety and bargains of an outdoor market under cover. The market gives value for money and friendly service so we suggest that whether your looking for the latest in fashion, sportswear, grocery items or household equipment the Arndale Market is the place to shop.

## PLAYING FOR YOUR COUNTRY

Our picture shows Gary Parker and Mark Stein proudly showing their England Caps which they officially received on Tuesday evening, presented by Mr A. E. McMullen, vice chairman of the FA for representing their country in the UEFA Youth Championship against Iceland 1983-84.

Well done Gary and Mark.



## TODAY'S MATCH SPONSORS

Our Match Sponsorship today is shared by three companies, Priory Farm Foods in conjunction with Freshbake Foods, Chamberlain Curtains and Pyrene Chemical Services Limited.

## WELCOME

This is our first opportunity of passing on all our good wishes to our latest signing, Colin Todd who returns to English football after a short stay in Canada where he played for Vancouver Whitecaps.

Our picture shows David Pleat welcoming Colin to the club on Tuesday night when he watched our victory over Orient in the Milk Cup.

The Hatters will be Colin's seventh club, having played for Sunderland, Derby, Everton, Birmingham, Nottingham Forest and Oxford United. With 27 full England international caps his wealth of experience must be an exciting addition to our young but talented squad. Our other picture shows Colin in action against the Hatters at the City Ground on the 12th March 1983 which Luton won 1-0, our winning goal came in the first half from Ricky Hill.

Colin's last match against Luton was on the 24th September 1983 again at Forest when Nottingham reversed the scoreline.

We look forward to seeing Colin playing in a Hatters shirt and hopefully again on the winning side when we play Forest on January 12th. We wish Colin a long and successful stay with Luton Town.



## FRESHBAKE FOODS/PRIORY FARM FOODS

Freshbake Foods are the biggest supplier of frozen uncooked pies, sausage rolls and cornish pasties in the country.

Their sister company, Chef Foods, sells a complete range of frozen vegetable and fish dishes under the Chef's label and a number of the vegetable products are grown by Priory Farm Foods. You can see Freshbake pies and Chef's choice vegetables in most freezer centres and supermarkets.

## CHAMBERLAIN CURTAINS

It's always pleasing to hear the story of a young entrepreneur who successfully sets up in business on his own in his teens. That's exactly the story behind our sponsor Chamberlain Curtains. Gary Chamberlain, who is also Kenilworth Suite member, was just 18 when he formed Chamberlain Curtains five years ago and since then the company have gone from strength to strength. Which has necessitated the company's third move to larger premises.

Chamberlain Curtains specialises in making hand-made tailored curtains exclusively designed made to measure and fitted which includes specialist interior design work. The company offers a complete service from the smallest local customer requirements to major hotels and offices providing a wide range of exciting colours and fabrics.

## PYRENE CHEMICAL SERVICES

Pyrene Chemical Services Ltd of Iver, Bucks are leading suppliers of metal pre-treatment chemicals. Their products help to reduce corrosion and improve the final paint finish of passenger cars and commercial vehicles manufactured in the UK.

Among their leading customers are Bedford Trucks (sponsors of Luton Town FC), Vauxhall Motors, Ford UK, Rolls Royce, The Austin Rover Group and Jaguar Cars Ltd.

If it is a quality finish that you need, choose Pyrene, 'The People with the Right Chemistry'.

## STRIKING FEATURES

One of the success stories of our Match Day Presentation is our Luton Strikers, who thanks to the sponsorship of our vice president Brian Cole, chairman of Cleandustrial Services are now a regular feature of our pre-match entertainment.

Although the Strikers are on the pitch for a short period, a great deal of hard work and thought is put into the routines and all of it is in the girls spare time as all the girls have full time occupations.

Finding music that is suitable, working out routines suited to wet and often slippery surfaces, and ensuring the whole team work together, these are the problems of choreographer Julia Farestivedt.

For the girls themselves, smiling through the rain, trying to hear the music over the roar of the crowds and staying upright on a muddy pitch as well as ensuring the performance is right, these things are uppermost in their minds as they go out before each match.

The Strikers routine has been noted by other clubs and last season they were invited to appear at Norwich City plus they have starred at numerous Charity football matches, performed at company promotions and at the end of last season had the honour of performing prior to UEFA Cup Final, England v Sweden. Come rain or shine the Strikers are always glad to be asked to such events to provide pre-match entertainment.



## UNRIVALLED FOOTBALL COVERAGE

EXCLUSIVE COLUMN  
by  
DAVID PLEAT

HATTERS REPORTS  
by  
BRIAN SWAIN

LOCAL LEAGUES  
by  
ERIC NORRIS

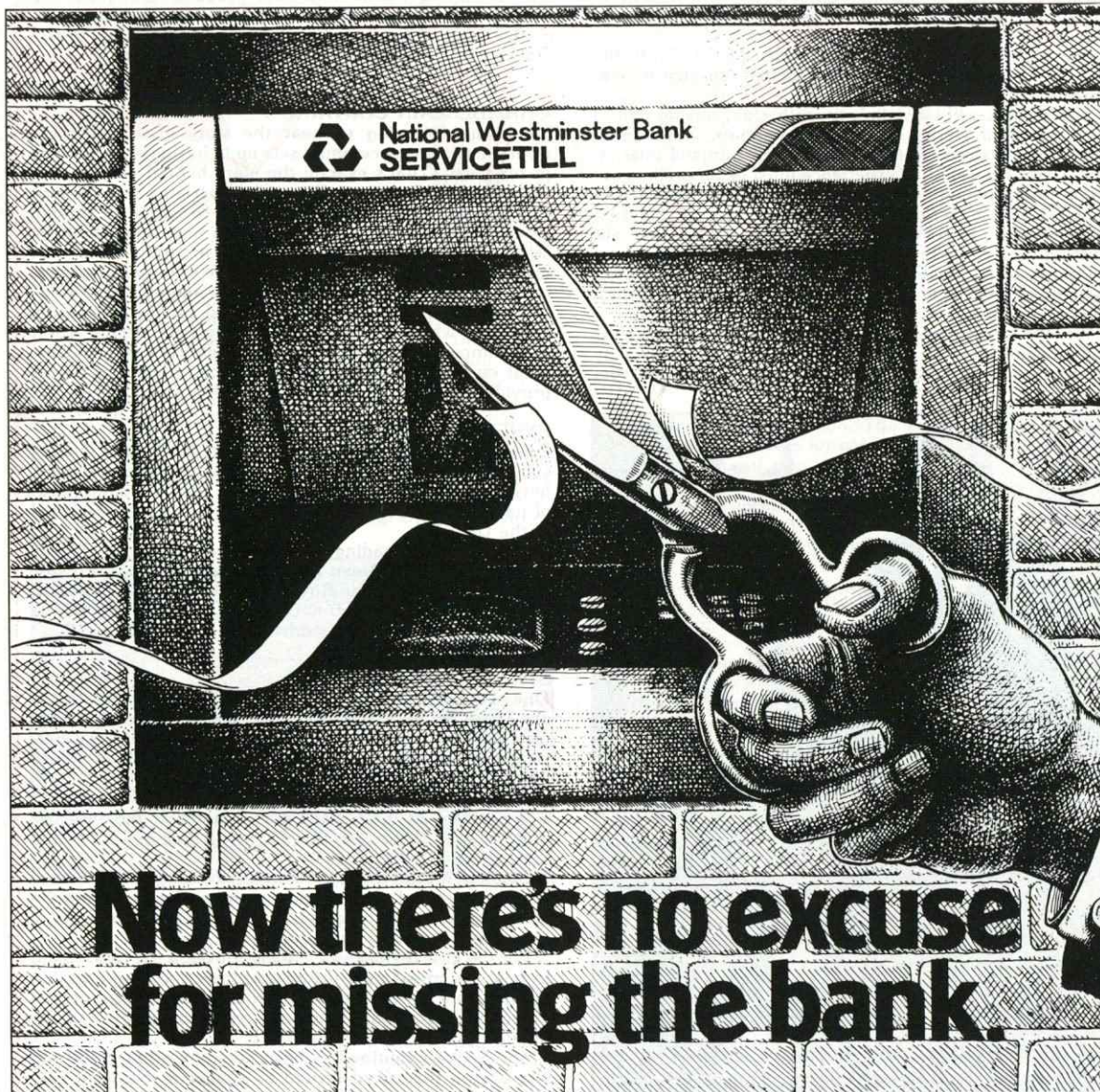
LUTON TOWN PICTURES BY MARK RICHARDS

IN THE

# LUTON NEWS

THURSDAY 14p





**Now there's no excuse  
for missing the bank.**

**142 Dunstable Road, Luton**

That's where NatWest has just installed a new SERVICETILL. So now you can get instant cash, 24 hours a day, 7 days a week at over 1,000 outdoor SERVICETILLS (more than any other bank in the world!). You can also order a statement or new chequebook, or get an immediate check on your balance during working hours - not just in your own area but at any one of

our nationwide SERVICETILLS. If you haven't got one already, just ask your branch for a SERVICECARD.

You will find life's so much easier when you're never out of pocket.



Existing SERVICETILLS in your area are located at: 4 High Street North, Dunstable; 21 High Street, Harpenden; 12 High Street, Hitchin; 31 George Street, Luton; 40 Kimpton Road, Luton.

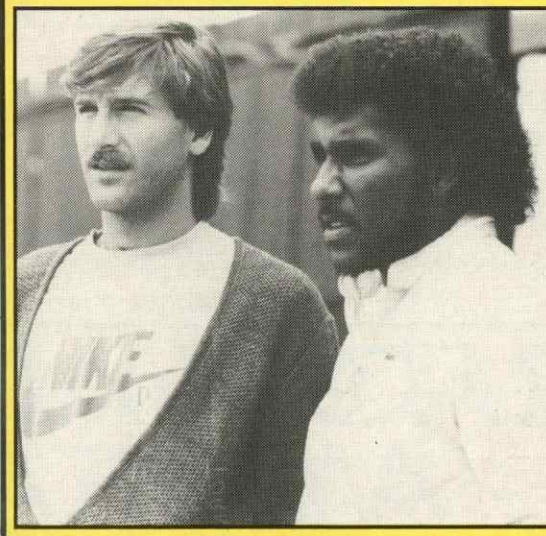
**WHERE ARE  
THEY NOW**

**GARY HEALE**

Gary was born in Canvey Island and was spotted playing for the islanders before signing for Luton in August 1977. He made only seven appearances in the Town colours. I suppose the game he will want to forget was the League Cup tie second replay against Manchester City which was played at Old Trafford. With the score at 2-2 Gary missed an open goal, with the 'keeper nowhere in sight, from a yard out. The match went to extra time and City got the winning goal. Gary had already scored both the Town's goals.

After that he had a spell on loan at Exeter City where he made three appearances. Was transferred to Reading in August 1979 and made over 50 appearances and scored 12 goals in his spell there. He then went to play in Holland for Sparta Rotterdam and later joined San Diego in the North American Soccer League.

At present he is playing in the major indoor soccer League in the States for Tacoma stars, A team managed by Freddie Goodwin the former Birmingham City manager. Gary is pictured here with his ex-colleague Ricky Hill at one of our recent matches during a break in the indoor season.



**1983 VAUXHALL ASTRA E 1200S 3 DOOR HATCHBACK** Aquamarine Blue with matching cloth interior, one owner, a very economical car. **£3,150**

**1982 MORRIS ITAL 1.3L 4 DOOR SALOON** Finished in Champagne with Paprika cloth interior, very good condition throughout. **£2,495**

**1982 VAUXHALL CAVALIER 1600L 5 DOOR HATCHBACK** Finished in Reed Green with matching cloth interior, ideal family hatchback only **£2,995**

**1982 TALBOT HORIZON 1.5LS 5 DOOR HATCHBACK** One owner, 25,000 miles, finished in Black with limited edition specifications only **£3,279**

**1982 AUSTIN METRO HLE 3 DOOR HATCHBACK** One owner, 30,000 miles, finished in Nautalus Blue with matching cloth interior, economical car. **£2,995**

**1982 TALBOT SUNBEAM 1.3LS 3 DOOR HATCHBACK** Own owner, 16,000 miles, finished in Jonquil Yellow with Grey interior, economical family hatchback. **£2,875**

**1981 RENAULT 5TL 3 DOOR HATCHBACK** One owner, 37,000 miles, finished in Black with Red cloth interior. **£2,150**

**1981 AUSTIN MAXI 2 1750 HLS 5 DOOR HATCHBACK** One owner, 23,000 miles, finished in Bronze metallic, ideal family car. **£2,295**

**CREST CARS**

100-116 CHAPEL STREET, LUTON  
Open Mon-Fri 9-7pm Sat 9-6pm Sun 10-5pm  
Telephone 27537/21845





# RECORD

## FIRST TEAM RESULTS

Date	V	Opposition	F	A	Att	Pos
Aug 25	H	Stoke City	2-0	8,626	—	—
Aug 28	A	Ipswich Town	1-1	15,331	—	—
Sept 1	A	West Bromwich Albion	0-4	11,720	10	—
Sept 4	H	Liverpool	1-2	14,127	13	—
Sept 8	H	Southampton	1-1	8,657	17	—
Sept 16	A	Nottingham Forest	1-3	18,605	19	—
Sept 22	H	Chelsea	0-0	16,066	19	—
Sept 25	A	Orient (MC2 1L)	4-1	4,500	—	—
Sept 29	A	Tottenham Hotspur	2-4	3,0204	—	—
Oct 6	A	Queens Park Rangers	3-2	12,051	19	—
Oct 9	H	Orient (MC2 2L)	1-1	3,374	—	—
Oct 13	H	Sheffield Wednesday	1-2	10,285	19	—

## 1984-85 RESULTS · ATTENDANCES · APPEARANCES · GOALSCORERS

	1	2	3	4	5	6	7	8	9	10	11	12
Dibble	Thomas	Grimes	Breacker	North S	Donaghy	Hill	Stein B	Elliott S <sup>1</sup>	Bunn <sup>1</sup>	Moss	Turner	
Dibble	Thomas	Grimes	Breacker	North S	Donaghy	Hill	Stein B	Elliott S	Bunn +	Moss <sup>1</sup>	Nwajiobi	
Dibble	Thomas	Grimes	Breacker +	North S	Donaghy	Hill	Stein B	Elliott S +	Bunn	Moss	Nwajiobi	
Dibble	Thomas	Grimes	Breacker	Elliott P	Donaghy <sup>1</sup>	Hill	Stein B	Elliott S +	Turner	Moss	Nwajiobi	
Dibble	Thomas	Grimes	Parker	Elliott P	Donaghy	Hill	Stein B	Nwajiobi	Turner +	Moss <sup>1</sup>	Bunn	
Dibble	Thomas	Grimes	Turner +	Elliott P	Donaghy	Hill	Stein B	Nwajiobi	Bunn	Moss <sup>1</sup>	Parker	
Dibble	Thomas	Grimes	Turner	Elliott P	Donaghy	Hill	Stein B	Nwajiobi	Bunn	Moss	Parker	
Dibble	Thomas	Grimes	Turner	Elliott P	Donaghy <sup>1</sup>	Hill	Stein <sup>2</sup>	Bunn	Hilaire	Mwajiobi +	Parker <sup>1</sup>	
Dibble	Thomas	Grimes	Turner	Elliott P	Donaghy	Hill	Stein	Bunn <sup>1</sup> +	Hilaire	Moss <sup>1</sup>	Parker	
Dibble	Thomas	Grimes	Turner	Elliott P <sup>1</sup>	Donaghy	Hill	Stein <sup>1</sup>	Elliott S <sup>1</sup>	Parker	Moss	Hilaire	
Dibble	Thomas	Grimes	Turner	Elliott P +	Donaghy	Hill	Stein <sup>1</sup>	Elliott S <sup>1</sup>	Bunn <sup>1</sup>	Moss	Hilaire	
Dibble	Thomas	Turner	Bunn <sup>1</sup>	Elliott P	Donaghy	Hill	Stein	Elliott S	Hilaire	Moss +	Parker	

## FOOTBALL COMBINATION FIXTURES 1984-85

Date	Opposition	F	A
Aug 25	Swansea	7 - 2	
Sept 1	Tottenham	0 - 3	
Sept 5	Birmingham	4 - 1	
Sept 11	Brighton	0 - 4	
Sept 15	Southampton	5 - 1	
Sept 22	Oxford	2 - 0	
Sept 29	Charlton	9 - 1	
Oct 2	Chelsea	1 - 2	
Oct 6	Norwich	4 - 4	
Oct 9	QPR	4 - 2	
Oct 17	Reading		
Oct 27	Fulham		
Oct 30	Crystal Palace		
Nov 10	Bristol Rovers		
Nov 17	Ipswich		
Nov 24	Watford		
Nov 27	Portsmouth		
Dec 1	Swindon		
Dec 8	West Ham		
Dec 15	Arsenal		
Dec 19	Millwall		
Jan 12	Tottenham		
Jan 15	Swansea		
Jan 19	Birmingham		
Jan 22	Brighton		
Feb 2	Southampton		
Feb 9	Oxford		
Feb 12	Charlton		
Feb 19	Chelsea		
Feb 23	Crystal Palace		
Feb 27	Bristol Rovers		
Mar 5	Fulham		
Mar 9	Reading		
Mar 16	QPR		
Mar 20	Norwich		
Mar 26	West Ham		
Mar 30	Portsmouth		
April 13	Watford		
April 16	Swindon		
April 23	Ipswich		
April 27	Millwall		
May 11	Arsenal		

## CANON LEAGUE DIVISION ONE 84-85

	Home					Away					Pts	
	P	W	D	L	F	A	W	D	L	F		A
Arsenal	10	4	1	0	11	2	3	0	2	11	9	22
Tottenham	10	4	1	0	15	5	2	0	3	6	5	19
Sheffield Wednesday	10	3	2	0	11	7	2	1	2	8	7	18
Manchester United	10	2	3	0	13	4	2	2	1	6	5	17
Nottingham Forest	10	4	1	0	12	4	1	1	3	7	10	17
Everton	10	2	2	1	8	9	3	0	2	10	9	17
Newcastle United	10	3	1	1	11	5	1	2	2	9	15	15
West Ham United	10	3	2	0	8	2	1	1	3	5	14	15
Sunderland	10	3	2	0	7	3	0	3	2	6	9	14
Chelsea	10	3	0	2	9	4	0	4	1	4	6	13
Southampton	10	2	2	1	6	5	1	2	2	8	9	13
Aston Villa	10	3	0	2	8	8	1	1	3	7	12	13
WBA	10	3	1	1	13	6	0	2	3	4	8	12
Ipswich Town	10	2	3	0	8	4	0	3	2	4	8	12
QPR	9	2	1	1	13	9	0	4	1	4	9	11
Liverpool	10	1	3	1	5	4	1	2	2	7	9	11
Norwich City	10	2	3	0	8	6	0	1	4	4	10	10
Coventry City	10	1	2	2	4	6	1	1	3	3	6	9
Luton Town	10	1	2	2	5	5	1	1	3	7	14	9
Leicester City	10	2	1	2	8	10	0	2	3	5	12	9
Watford	10	0	2	3	11	14	1	2	2	7	9	7
Stoke City	9	1	2	2	8	11	0	2	2	1	7	7

## FOOTBALL COMBINATION 1984-85

	P	W	D	L	F	A	Pts
Ipswich Town	8	8	0	0	22	4	16
Watford	9	7	1	1	21	12	15
Arsenal	8	5	2	1	20	8	12
Tottenham Hotspur	7	6	0	1	22	11	12
Luton Town	9	5	1	3	33	18	11
Oxford United	8	5	1	2	16	10	11
Queens Park Rangers	6	5	0	1	19	7	10
Brighton	6	4	2	0	14	3	10
Chelsea	6	3	3	0	8	5	9
Millwall	9	3	2	4	12	11	8
West Ham United	7	2	2	3	11	9	6
Southampton	7	2	2	3	14	18	6
Swansea City	8	2	2	4	10	16	6
Swindon Town	8	3	0	5	9	17	6
Charlton Athletic	7	2	2	3	10	20	6
Norwich City	8	1	3	4	19	25	5
Portsmouth	5	1	2	2	6	7	4
Reading	8	2	0	6	12	21	4
Birmingham City	8	1	2	5	7	18	4
Crystal Palace	9	1	2	6	11	23	4
Fulham	6	0	1	5	3	10	1
Bristol Rovers	9	0	0	9	6	33	0

Up to and including Saturday 6th October 1984

## SOUTH EAST COUNTIES LEAGUE FIXTURES 1984-85

Date	Opposition	F	A	Date	Opposition	Date	Opposition
Aug 25	Swindon	0 - 0		Oct 20	Wimbledon	Jan 5	Brighton
Sept 8	West Ham	3 - 1		Nov 3	Tottenham	Jan 12	Bristol Rovers
Sept 15	Brentford	3 - 2		Nov 10	LCR2	Jan 19	Crystal Palace
Sept 22	Brighton	0 - 0		Nov 17	Reading	Jan 26	Wimbledon
Sept 29	Reading (LC1)	4 - 1		Nov 24	Southend	Feb 19	Tottenham
Oct 6	Bristol Rovers	2 - 0		Dec 1	Oxford	Feb 16	Reading
Oct 13	Crystal Palace	2 - 2		Dec 8	Swindon	Feb 23	Southend
Oct 19	Tottenham			Dec 22	West Ham	Mar 2	Oxford
	(SJFC)			Dec 29	Brentford		

## FIRST DIVISION STATISTICS 1984-85

## FIRST DIVISION STATISTICS 1984-85

**Highest Attendance:**  
56,638 Manchester United v Liverpool - 22.9.84

**Lowest Attendance:**  
8,626 Luton Town v Stoke City - 25.8.84

**Highest Home Wins:**  
Manchester United 5 Newcastle United 0 - 8.9.84  
Tottenham Hotspur 5 QPR 0 - 15.9.84

**Highest Away Win:**  
Aston Villa 0 Nottingham Forest 5 - 5.9.84  
Watford 4 Everton 5 - 29.9.84

## FIRST TEAM APPS 1984-85

	League		Cups	
	App	Gls	App	Gls
Breacker	4	—	—	—
Bunn	7(1)	3	2	1
Dibble	10	—	2	—
Donaghy	10	1	2	1
Elliott P	7	1	2	—
Elliott S	6	2	1	1
Grimes	9	—	2	—
Hilaire	2	—	1(1)	—
Hill	10	—	2	—
Moss	10	4	1	—
North S	3	—	—	—
Nwajiobi	3(3)	—	1	—
Parker	2(3)	—	1(1)	1
Stein B.	10	1	2	3
Thomas	10	—	2	—
Turner	7	—	2	—

Figures in brackets denotes substitute

## RES TEAM APPS 84-85

	App	Gls
Bunn	3	—
Breacker	7	—
Cobb	6(1)	3
Daniel	6	4
Doughty	3	—
Elliott P.	1	—
Elliott S.	4	2
Ellisdon	9(1)	—
Findlay	7	—
Grimes	1	—
Harvey	—(2)	1
Hilaire	6	—
McEvoy	5(1)	—
North M.	10	1
North S.	8	—
Nwajiobi	7	10
Oldfield	8(1)	3
Parker	5	3
Sealey	2	—
Stein M.	10	8
Thomas	1	—
Turner	1	—

## FORTHCOMING MATCHES

Canon League Division One  
v NEWCASTLE UNITED  
Saturday 3rd November - KO 3 p.m.

Football Combination  
v FULHAM  
Saturday 27th October - KO 2 p.m.

## CLUB COMMENT

Because of the unfortunate publicity regarding our derby fixture today against Watford.

We feel it necessary to point out from all levels of our club that a healthy rivalry with our neighbours Watford is welcomed and should not be confused with the action of a tiny minority which attach themselves to all clubs regardless of the fixture.

It is unfair and damaging to 'paint the majority of supporters of both clubs with the same tarnished brush'.

We at Luton welcome all friends and supporters of Watford Football Club in the same spirit as the spontaneous applause which we gave Graham Taylor last season for Watford's achievement in the FA Cup and our genuine support of Ross Jenkins in his testimonial year prior to a vital relegation match.

We hope these responsible comments encourage the majority of supporters to continue to enjoy the traditional sporting rivalry that has been witnessed over the seasons.

The healthy rivalry between both clubs is enjoyed and should be encouraged.

We would take this opportunity of wishing Watford continued success.

From the management, staff and players and supporters of Luton Town Football Club.



Today's Matchball is sponsored by:  
**LUTON MARKET TRADERS ASSOCIATION**  
99-100 MARKET HALL, ARNDALE CENTRE  
LUTON, BEDS. LU1 2TP

All statistics up to and including Saturday 13th October 1984

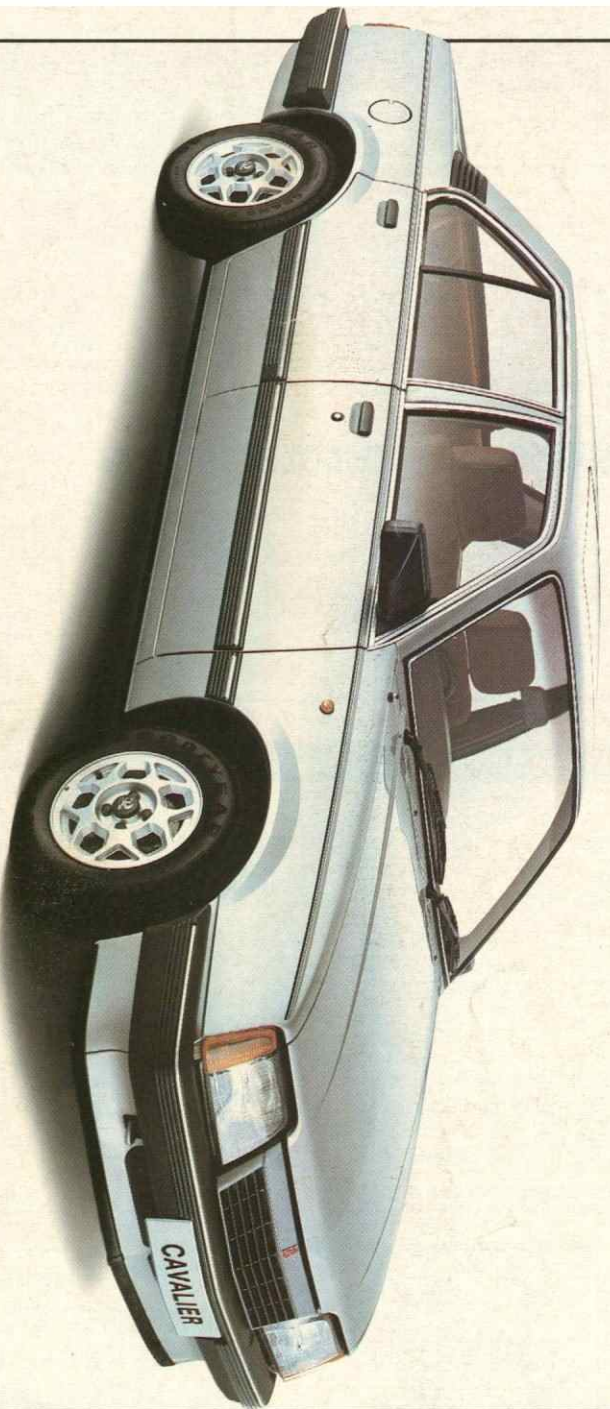
© Copyright of The Canon League MC = Milk Cup FAC = FA Cup + Indicated Player Substituted Home fixtures in bold Scorers name in bold Fig 1 Indicates goals scored



# LUTON AND ADIDAS - A GREAT TEAM.







**OUTSTANDING PROSPECT.  
GOOD AT PASSING. QUICK OFF THE MARK.  
REASONABLE TRANSFER FEE.**

**TEAMCHECK**

**LUTON TOWN 3**

- 1 Andrew Dibble F (IND) / 4y
- 2 Mitchell Thomas
- 3 Ashley Grimes T (URN) / 6R
- 4 Wayne Turner
- 5 Paul Elliott
- 6 Mal Donaghy
- 7 Ricky Hill
- 8 Brian Stein
- 9 Steve Elliott / /
- 10 Frank Bunn / / /
- 11 Vince Hilaire
- 12 BREACKER

**WATFORD 2**

- 1 Tony Cotton
- 2 Dave Bardsley
- 3 Will Rostrom
- 4 Les Taylor
- 5 Steve Terry T (OB) / 5N
- 6 Lee Sinnott
- 7 Nigel Callaghan
- 8 Luther Blissett /
- 9 George Reilly /
- 10 Kenny Jackett
- 11 John Barnes
- 12 GILLIGAN

**OFFICIALS**

Referee: A. ROBINSON  
Linesmen:  
R. W. PELLATT (Red Flag)  
J. F. THOMPSON (Yellow Flag)



**VAUXHALL CAVALIER.**

Better. By Design.