

CANON LEAGUE DIVISION ONE
LUTON TOWN

v
WEST HAM UNITED
Saturday 24th November 1984
Kick-off 3.00 pm

TODAY'S MATCH IS SPONSORED BY:

Whitbread



Official Matchday Magazine
Price 50p

LUTON TOWN

ACTION REPLAY



MANCHESTER UTD 2 LUTON TOWN 0

- 1 Frank Bunn puts United defenders again under constant pressure at Old Trafford.
- 2 Our captain Mal Donaghy moves effectively into attacking position alongside Brian Stein.
- 3 Vince Hilaire and Brian Stein building an effective attack in front of Man United's goal area.



Pictures by Gareth Owen



CHAIRMAN'S MESSAGE

It has come as a surprise to us all that our chairman has retired and even more of a surprise to me when I was voted in as the new chairman, even though I am the junior director, in time served on the Board. It is an honour for me to lead this club which means so much to us all, you the fans, the team, the management and the directors.

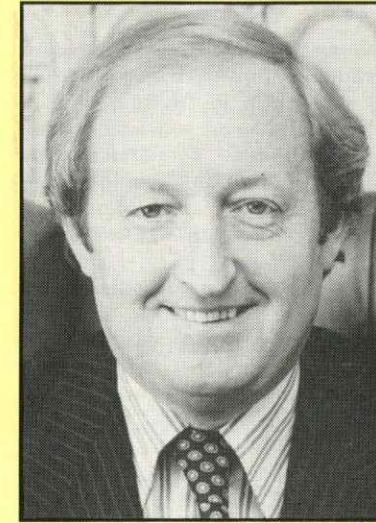
I have been asked what I will do as chairman and what I think my responsibilities are. My first job has been to ensure the financial security of the club. I am pleased to be able to tell you that with further commitments from the existing directors, with the introduction of a new director Mr Terry Bailey, and with the tremendous continuing support of Barclays Bank, this has been assured.

Secondly, it is necessary for the manager to have room to manoeuvre in the transfer market. He now has that opportunity.

Thirdly it is of upmost importance that the Milton Keynes issue is understood fully by all interested parties.

a) The Bedfordshire County Council are to take away the car and coach parks and the sponsors suites in order to build a relief road immediately along the back of the Main Stand, because of this in our opinion and that of other independent experts the club will not be able to survive financially at Kenilworth Road.

b) It is quite natural for us all to wish to stay in Luton, we looked at 14 different sites in Luton itself and its immediate surrounds over a three-year period. One of these was Lewsey Farm, which was a viable proposition. However the local MP, the councillors, the officers, all were unanimous in a firm NO. Nothing has been agreed, but time is running



DAVID JOHN EVANS

David, has held public office as Councillor for the City and District of St Albans from 1980-84. He is married to Janice and has three children, Christopher, Gary and Amanda.

As founder, chairman and managing director of Brengreen (Holdings) Plc, the £40 million turnover city-based group operating mainly in the field of Contract Cleaning, having started the company 24 years ago. The group now operates through 15 subsidiary companies and employs 22,000 people.

Acquired the contract with SOUTHEND ON SEA BOROUGH COUNCIL for refuse collection and street cleaning services, the first Local Authority to hand over its Cleansing Department to the private sector. Responsible subsequently for 12 such contracts.

He is past chairman of the Lord Taverners — 1981-82, and currently a member of the MCC. Has played professional cricket with Gloucestershire and Warwickshire. Played professional football for Aston Villa and has the honour to have played for England six times at Youth level.

David has been a director of Luton Town Football Club since 1976.

out if our Local Authorities are to persuade us to reconsider.

c) The directors, being responsible for the clubs survival vigorously pursued the Milton Keynes proposal after the firm NO on Lewsey and will hopefully be able to make a statement in the not too distant future. Nothing has so far been formally agreed but the Luton Borough Council are fast running out of time if they are to change the Board's view.

The challenge ahead has never been greater and I pledge myself to serving the club to the best of my ability and I hope that together we will succeed in our quest for both pride and excellence on and off the field.

David Evans

LUTON TOWN F.C.

70-72 KENILWORTH ROAD · LUTON LU1 1DH · TELEPHONE: 0582-411622

CHAIRMAN
DAVID EVANS
DIRECTORS
R. L. BANKS, E. S. PEARSON,
R. J. SMITH, J. R. SMITH
CHIEF EXECUTIVE
JOHN SMITH
MANAGER
DAVID PLEAT
GENERAL SECRETARY
GRAHAM MACKRELL
CLUB SECRETARY
JOHN WILKINSON
COMMERCIAL MANAGER
BILL TOMLINS

PRESIDENT
T. HODGSON
DEPUTY PRESIDENT
J. A. C. BAIN
VICE PRESIDENTS
T. W. BAILEY, A. G. BERRY F.C.C.A.
J. B. BRENT, C. BYGRAVE
C. J. EVANS, B. COLE
B. ENGLAND, N. S. FOOKES
E. FOUNTAIN, C. HOLLOWAY
J. E. HOLMES, L. LEPPINGTON
R. LARKINSON, R. SAFRANEK
R. UNWIN, E. WALLER

HONOURS
FA CUP FINALISTS 1958-59
CHAMPIONS — DIVISION 3(S) 1936-37
RUNNERS-UP — DIVISION 2 1954-55
CHAMPIONS — DIVISION 4 1967-68
RUNNERS-UP — DIVISION 3 1969-70
RUNNERS-UP — DIVISION 2 1973-74
CHAMPIONS — DIVISION 2 1981-82

TRIBUTE TO DENIS MORTIMER

We were saddened to learn of the retirement of our chairman, Denis Mortimer from the Board, having 14 years as a director of the club, nine of which were as chairman.

Denis joined the Board at the invitation of Robert Keens and subsequently the club found themselves in extreme financial difficulty and a rescue operation was mounted.

The relentless efforts of Denis and his colleagues at that time, ensured that the club remained intact, from which position they started to build in 1978.

David Pleat was appointed manager of the club, and in 1979 John Smith was appointed general

manager. The fortunes of the team gradually improved, culminating in promotion to Division One in 1982. This was a tremendously proud moment for Denis. The presentation of the Championship trophy and the celebration banquet were highlights of that year.

The sustaining of First Division by a team such as ours has never been easy, and needs a strong financial basis. This was underlined when, in 1979, the County Council advised the club of their road proposals, the effects of which still threaten the future survival of the club, and have drained the club of its money and energy since that date. The effects of the

scheme focus the Board's mind on re-location, and we know it was an enormous disappointment to Denis when the Borough Council did not have the courage to go through with the re-location of the club from Kenilworth Road in Luton.

We felt bitterly let down, and it caused great hurt to our chairman, who felt he had done so much to save the club for Luton. It was hurtful to him that some of the fans forgot what Denis had striven for, and what he had attempted for the club. Siding with the Borough Council despite the fact that it was the Council who had flunked the issue. To be accused of feathering your own nest after putting in so much time, devotion and finance to keep the club going was a bitter pill to swallow.

Nevertheless, always foremost in Denis's mind was securing the future of the club, and he courageously followed from 1983 onwards the strategy of re-location and the option of Milton Keynes, knowing that the Board were unanimously behind him.

The new era in the club's history will now be embarked upon with the hope that Denis will join the exalted list of men who have been elevated presidents of the club over the period of its history.

We wish Denis a very healthy and happy retirement, and look forward to seeing him at our matches at home and away.



Denis Mortimer receiving presentation from Mayor of Luton Len Chantter to commemorate Luton Council's official recognition of our Second Division Championship success in 1981-82.

GLAZING & DECORATING SPECIALISTS

GLAZING REPAIRS & GLASS SUPPLIES
PATIO DOOR & WINDOW INSTALLATIONS
DOUBLE GLAZING (SECONDARY AND SEALED UNITS)
INTERIOR AND EXTERIOR DECORATORS

For Domestic and Commercial enquiries contact Luton 573025/597505
For 24 hour Emergency Service contact Dunstable 666665

J. Sapsworth Limited
92 Marsh Road, Luton, Bedfordshire LU3 2NL
Telephone: Luton (0582) 53025/597505

Since my last programme notes our Board has been reshuffled and Mr Denis Mortimer has retired. Football is a great game, but at professional level it can place tremendous strain on responsible people. Results are important, but so is finance and support. It is difficult to achieve results without finance or support. We have been finding the going difficult, and one has to consider all areas. If one is persistently worried and health is affected, one must heed the warning signs. Mr Mortimer was always a fair chairman, who ran a democratic Board during a successful period. I wish him well.

Mr David Evans is now chairman and will continue to work with only one aim: the success of Luton Town Football Club. To achieve this, the players, coaching staff and the Board need constructive support. I wish the new chairman every success — only 100 per cent plus from everyone will be good enough.

Welcome to West Ham today. Faithful followers of both sides will be aware of some of the outstanding games both in the Second and First Division that we have shared. I like to think that players in both clubs know about playing good football.

Recent results have been disappointing, but there has been some very promising features. Injury wise, we are having some bad luck, but we must be positive. It is no use moaning, we have to be forward looking. When one door closes, another opens.

At Norwich, we played some good football

ly at this level. In earlier games, Mitchell Thomas also showed that age is no barrier. Stacey North has also coped admirably.

With Paul Elliott and Andy Dibble out of action, but part of the future, we can confidently suggest that we have some outstanding hopes for the future.

But the present is our concern, and the injuries have only heightened the need to strengthen our team's resources and get the valuable assistance of experience.

Colin Todd has started steadily, but received a knee injury. It was therefore vital that we added some security to our defensive cover and we did this in the shape of Micky Droy from Chelsea. Mick has joined us for a one month period, and I am sure he will be a valued inspiration.

Ashley Grimes has been ordered to have back rest for two weeks to help solve his problem whilst Andy Dibble and Paul Elliott see the specialist on Monday with their respective injuries. David Moss is making good progress after his hamstring injury.

One bright spot has been the return to action of Rob Johnson now having played two successful Reserve games. Rob has been out many months and has shown great resolution to overcome his knee injury.

On 13th November our first team squad travelled to Walsall for a game in aid of the Trust Fund for five poor youngsters who died in a crash returning from a school game. The evening gave us a lot of satisfaction, almost



remember I shall shake John's hand after, and we'll remain friendly rivals. Enjoy the game.

WELCOME

and made some promising openings. Unfortunately, we did not play with enough vigour until too late, and we came away well beaten. We did have chances — most fell to Brian Stein. He is working away and creating chances for himself. Once he gets a break, he will start making people sit up again.

At Manchester last week, we showed many good signs. Tim Braecker showed he will become a League player. Gary Parker, too, showed that he can cope with the First Division stage. Frank Bunn has come through his tough baptism and is now playing consistent-

3,000 people came along despite a bus strike, to support the game. An entertaining game (3-2 to Luton, Hill, Turner, Hilaire) provided the perfect answer to those individuals who think that football people are selfish.

This season, our players have continued their community involvement and spent much time with people less fortunate than themselves.

I hope today's game is everything that John Lyall and I would wish for, and from our point of view, I hope we can capture the points. Whatever the result, the rival fans should



CANON LEAGUE THREE POINTS PAY-OFF



When the Football League conceived their three points for a win 'experiment' four years ago they hoped that more enterprising football would follow naturally.

'Those expectations have been fully justified. If the present goalscoring rate is maintained, the Canon League will achieve its highest scoring level for 18 years.'

Four seasons ago, the 1980-81 League programme yielded 5,002 goals at an average of 2.88 a match. At the current rate therefore the seasonal total could be more than 5,800 for the first time since 1966-67. 'That would be a remarkable up-lift of more than 800 goals compared with four seasons ago, an increase of nearly 17 per cent. It confirms that the decision to change to three points for a win was the right one and

there are no indications that any of the clubs want to revert to the old system. The fact that these higher figures have been maintained each season since the introduction of three points for a win is surely no coincidence.

'On researching this season's figures, it is pleasing to note the number of high scoring games. No fewer than 108 of the first 623 matches of the season produced five or more goals.

'Six goals in a match has been achieved 32 times — seven in a match on eight occasions. Three more fixtures have yielded eight goals, nine have been scored twice, and 10 were scored when QPR and Newcastle drew 5-5 and Plymouth Argyle beat Preston North End 6-4.

'Yet the statistic which is perhaps most significant and the one that emphasises the success of the three points for a win decision, is that as many as 72 of the away victories in the Canon League have been achieved by teams who were only level or behind at half-time.

'It confirms that closing up the game in its later stages and playing for a draw is no longer a worthwhile exercise.'

ACTION

REPLAY

NORWICH CITY 3
LUTON TOWN 0

1. Tim Breacker puts a controlled cross past two City defenders.
2. Norwich keeper covers ball well, under pressure from Nwajobi.
3. Goal area action breaks down for Hatters with another save from a Brian Stein shot.
4. Town's young midfielder Tim Breacker showing good ball control to get past Norwich defender.

2

1

4

3

THE LOCAL TASTE AND HOW TO SATISFY IT

We're very definite about our taste in beer around here. A clear light pint is what we look for; with a good, clean smack of malt and hops.

And there's only one name that really satisfies the local taste — BB. The Light beer first brewed in Luton during the darkest days of the War by J. W. Green.

Only the finest hops and good, ripe barley go into the making. Then the brew is matured to exactly the right degree to give you a bright refreshing pint with a sound, full flavour.



WHITBREAD

American servicemen in local wartime bases declared that BB, chilled, was the nearest taste to Stateside draught.

It went down well when Syd Owen ruled the Hatters.

And it's been going down well ever since. Because BB is brewed with a proper respect for quality. To keep up the traditions we value round here.



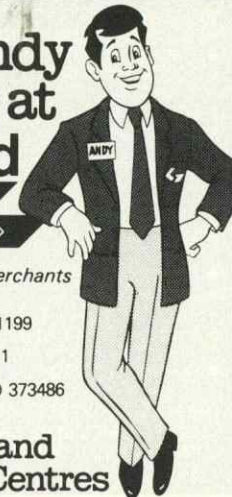
6

There's a handy man to know at
Graham Ford

Your Comprehensive Builders Merchants

Depots at: KINGSWAY LUTON 31199
BEALE ST DUNSTABLE 603111
LEIGHTON RD LEIGHTON BUZZARD 373486

Home Improvement and
Building Material Centres



Falcon
Holidays

QUALIFIED FOR EUROPE

We've been in European competition for 12 seasons. Try a Falcon Holiday this year and find out why we're top of the Holiday League.

Fly direct from your local airport for your winter or summer holiday.

190 Campden Hill Road
London W8 7TH
Telephone 01-221 6298

Falcon
Holidays



ATOL
1337BC

7

POINTS OF VIEW

Dear Mr Pleat. I am writing to make enquiries to whether your first team would be interested in playing a match for charity.

It would be held on any Sunday morning, at your convenience, in or around Leighton Buzzard and it would be against a group of schoolboys known as 'Brooklands Under-12s'.

The charity has not yet been decided but I think that the money will be donated to the NSPC or the Guide Dogs for the Blind.

EDITOR: Thank you for your letter. I am sorry we are not able to help you, as we are already inundated with charity games with senior clubs for various charities and the team wish you every success.

Dear Sirs. Amongst my programme collection is a programme for East Germany featuring Dr Auswahl of Karl-Marx-Fradt v Luton Town. The date is 8th May 1957. It was a friendly match and the Town team that day included Baynham, Morten, Pearce, Turner, etc. It is a six-page issue on plain white paper. If any Luton Town supporters are interested in old programmes involving the club, contact me at the address below. I will gladly do business. **Paul Walsharr, 10 Ringstead Avenue, Sheffield S10 5SN.**

Dear Mr Pleat. Thank you for your letter of the 19th September. We were sad that you were unable to attend our Sponsorship Evening of the Leighton Corinthian Youth Football Clubs which we held in the Kenilworth Suite in October.

However, Emeka and Andy came along to the evening and on behalf of all of us there we would like to thank you for allowing us to invite them and to congratulate them on their present day League status. We hope that you may be able to come along to the Presentation Evening of the club which is always held at the end of the football season.

Good luck for the rest of the season. Kind regards, **Stephen (Leighton Homes Ltd).**

Dear David. I should like to thank you for so quickly agreeing to allow Paul Elliott to play in the Eric Gates Testimonial match here later this month, but I was very sorry to hear of his unfortunate accident on Tuesday which will put him out of the game for a few months. I know he will be a tremendous loss to your team but I hope you can put this set-back behind you and soon get the results to help you climb the table.

With very best wishes to Paul for a complete recovery. Yours sincerely, **Bob (Manager Ipswich Town FC).**

Dear Mr Pleat. '11/Under and 14/Under Inter-Centre 5-a-side and Netball Tournament.' I would be grateful if you could convey my thanks again to Mark Stein and Mark North for coming along on Friday 26th October 1984, and making the presentations to the youngsters for the above event. It was very hectic and enjoyable two days for the children, and you could see that they were delighted that two of your playing staff were able to be here and present them with their trophies and sign autographs. Yours sincerely, **R. K. Wainwright, Assistant Manager, Borough of Luton, Luton Regional Sports Centre, St Thomas's Road, Luton.**

EXECUTIVE MEMBERS

- ANACHEM LTD
- A1 HEATING (WHOLESALE & RETAIL) LTD
- MR W. ASHBURNER

- BEARD & MANNING CATERING SERVICES LTD
- BEDFORD COMMERCIAL VEHICLES
- BERVALE MEAD INSURANCE BROKERS LTD
- BERKELEY ASSOCIATES
- BLAKEY ENGINEERING CO LTD
- BLUE ARROW SERVICES
- BRENGREEN HOLDINGS PLC
- BROAD STREET PRINT

- CANVERMOOR PLC
- CLEANDUSTRIAL SERVICES LTD
- GARY CHAMBERLAIN WINDOW FASHIONS

- DUPONT (UK) LTD

- FILMERGRAPHIC ASSOCIATES LTD
- FINE STAMPS LTD
- N. S. FOOKES GROUP (PLANT FACILITIES) LTD

- BRIAN E. HANDSCOMBE (LIFE & PENSION BROKERS)
- E. W. HUDSON (HOLDINGS) LTD
- IVOR HOLMES LTD

- INFORMATION TECHNOLOGY LTD

- MARK JAMES (SALVAGE) LTD

- JOHN LAING CONSTRUCTION LTD
- RICHARD C. LARKINSON (CAMBRIDGE) LTD
- MR P. LAYCOCK

- NEAHURST LTD

- OPELVALE GROUP

- MR & MRS PEARSON
- F. W. PEARCE BUILDERS LTD
- PETERS GRAVES & CO
- PILCOURT LTD
- DR & MRS G. L. PLESTER
- PRIORY FARM FOODS

- DAVID RAND & CO LTD
- RAVENMERE LTD
- RICHARDSON & BOTTOMS LTD
- RICHMOND ELECTRONICS (MARKYATE) LTD
- ROBINSON METAL (LUTON) LTD
- ROGERS RESIDENTIAL SALES

- SHAW & KILBURN
- SHOREYS TRAVEL

- TRITRADE LTD

- R. W. UNWIN & CO LTD

- VAUXHALL MOTORS LTD

- WALLSPAN BEDROOMS
- WEBBEX LTD
- MR J. W. WEBB
- WHITE'S STATIONERS LTD

- YARNSFIELD LTD

THE FULL ADDRESSES AND SERVICES OF OUR EXECUTIVE MEMBERS CAN BE OBTAINED THROUGH OUR COMMERCIAL OFFICES - LUTON TOWN FOOTBALL CLUB



UNVEILED. THE NEW CF2 VAN.

From the outside, the new CF2 looks very like the old CF. Underneath, however, it's a completely different story.

The mechanics are almost all new. So, don't go by appearances. Go and arrange a road test with your local Bedford dealer instead.

THE NEW CF2 SHOWS BEDFORD MEANS BUSINESS.

Junior Hatters

SPONSORED BY THE HERALD NEWSPAPER AND CHILTERN RADIO - THE HERALD NEWSPAPER AND CHILTERN RADIO



DANIEL O'NEILL



ANDREW HOBBS



MARTYN DUNN



PAUL LUPTON

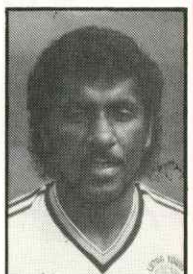


PAUL McIVOR

Hello and a warm welcome to all Junior Hatters especially our mascot Daniel O'Neill and escorts Paul McIvor, Andrew Hobbs, Paul Lupton and Martyn Dunn. Applicants are coming in fast and furious for our Junior Hatters Christmas Party on Monday 10th December, 7-9 pm when Frank Bunn, Brian Stein and Emeka Nwajioji and myself are challenging you to a sports quiz. Also we will be making the draw for our mascots and escorts for the remainder of the season plus you'll be able to dance away to disco music. The evening is being sponsored by the *Herald* newspaper with assistance also from Chiltern Radio. It should be great fun and if you want to come along apply immediately by completing the attached slip and sending it to Joyce Ellis, Junior Hatters Fun Night, Luton Town FC, 70-72 Kenilworth Road, Luton. The evening is restricted to the first 150 children.

Name.....
 Address.....
 Membership No.....

Suby
Wells



NEWSDESK NEWSDESK

BALL SPONSOR

We thank J. Sapsworth Ltd for their sponsorship of today's matchball. Sapsworths are glazing and decorating specialists and pride themselves in the personal attention they pay to all their customers, whether it be small domestic repair or major commercial work. The company's Managing Director Jack Sapsworth (Senior) is an avid fan of ours as are his three sons Jack, Gordon and Barry.

HATTERS TRAVEL CLUB

- Travel by comfort.
- Reclining seats — air conditioning.
- LTFC official courier.
- Competitive prices.

December 1st takes us to Highbury when we play Arsenal. Coaches leave Maple Road car park at 12.15 pm and the inclusive price to Travel Club members is £3. So hurry along, book your seat, forget the traffic, and travel in style. For membership details phone Luton 412418.

REFEREE

George Courtney is a headteacher and is married with one son. He commenced refereeing in 1962 and progressed via Auckland, Wearside and Northern Leagues. Appointed to FIFA list in 1977 and UEFA list in 1979. Has officiated at many World Cup and European Cup matches and refereed the following Finals: 1977 Trophy; 1980 FA Cup; 1982 UEFA Cup; 1983 Milk Cup; 1984 Associate Members' Cup. Interested in tennis, golf, squash and music. Also enjoys Wilbur Smith novels and talking about football refereeing. Spends a vast amount of time training for his refereeing and is very keen on athletics. Linesmen: D. T. Phillips and G. Whitfield.

Much has been written recently about attendances. The following are some facts:

Stoke	down 2,819	on average
QPR	down 2,784	on average
West Ham	down 1,334	on average
N. Forest	down 794	on average
Leicester	down 721	on average
Luton	down 279	on average

MICKY DROY

Micky Droy, the Chelsea defender, has joined us on loan for one month. We hope his stay is enjoyable.

TERRY BAILEY

Our congratulations go out to Mr Terry Bailey who last week joined our Board of Directors.

He is the Chairman and Managing Director of the Wallspace Group of Companies, the Flitwick based manufacturers of fitted bedroom furniture with branches throughout the UK.

Although born in Bow, Terry moved to Luton as an evacuee when four-years-old.

A keen amateur sportsman, he played football for Limbury Old Boys and Barton Rovers. He is now President of the Isthmian League club.

FORTHCOMING MATCHES AT KENILWORTH ROAD

Football Combination
 v PORTSMOUTH
 November 27th
 KO 2.00 pm

Canon League Division One
 v ASTON VILLA
 December 8th
 KO 3.00 pm

Seats for Aston Villa will be available for sale on Monday 26th November, priced £5, £4, £3 (£2 for Juvenile and Senior Citizens in the Main Stand Enclosure) Postal applications must contain SAE. 24 hr Booking Service accepted by Credit Card (Access & Visa) on Luton 30748.

PROGRAMME NOTE

In preparation for our Centenary publication, research of our records brings to light some interesting facts, for instance:
 In 1932-33, we played 21 games in Division 3 of the Football League. Of those 21 games, only two were over 10,000, whilst three were below 3,000. The highest attendance was versus Northampton (11,431), lowest versus Bristol Rovers (2,272). Whilst the Watford fixture attracted only 4,140. Our average for the season was 5,825 which included 159 season ticket holders.

Congratulations to David Oldfield who was selected for the England Youth (Under-17) training and selection session to be held at Lilleshall between 12th/14th November 1984.

RESERVES + YOUTHS

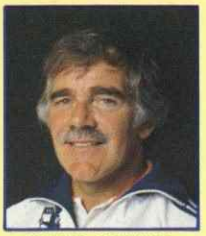
Playing the team bottom of the League is a game you are always expected to win. Fielding our youngest team of the season the task was not made any easier.

Rovers decided to play with a sweeper to tighten up a leaky defence. Unfortunately our free scoring attack chose today to go off the boil.

After only eight minutes of play confusion on a call between our



JOHN MOORE



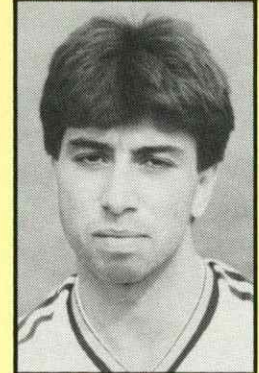
DAVID COATES

had by far the greater possession and goal chances our attack lacked that vital sharpness to get us that elusive second goal that would have given us another victory.

When you consider that nine out of 12 players who made up the team were teenagers and two of the 12 were schoolboys, though a disappointing score it does put a different perspective on the result.

It is nice to see Rob Johnson back involved in a competitive game and managing to complete the 90 minutes after a long lay off.

Team: Sealey, Johnson, Ellisdon, McEvoy, Berry, North M., Cobb, Stein M., Oldfield, Daniel, Hilaire. Sub: Harvey. Scorer: Hilaire.



ROB JOHNSON

schoolboy centre-half and our keeper allowed their forward to nip in and score off the legs of our other centre-back. This set-back made us much more alert. Up front our passing was not accurate or quick enough to trouble their eager defenders. However after 17 minutes our patience was rewarded when Hilaire struck a good goal from the edge of the box. The remainder of the first half was frustrating from our angle as we failed to pierce a tight defence, determined not to concede any more goals.

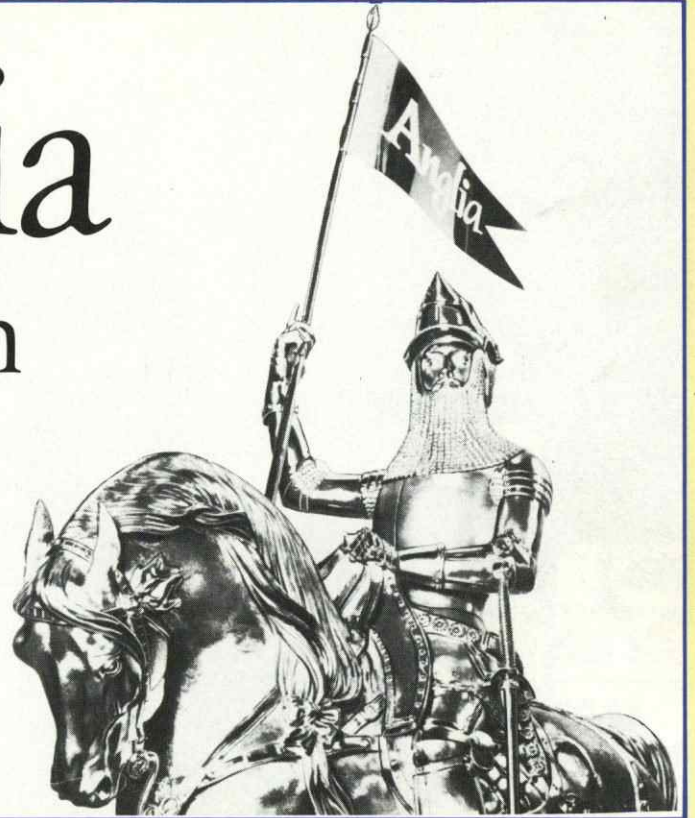
In the second half, although we

SOUTH EAST COUNTIES JUNIOR TABLE

	P	W	D	L	F	A	Pts
1. Oxford United	8	7	1	0	24	9	15
2. Luton Town	8	5	3	0	21	7	13
3. Brentford	9	4	2	3	26	14	10
4. Tottenham Hotspur	8	4	2	2	28	20	10
5. West Ham United	8	4	1	3	16	16	9
6. Brighton	8	3	2	3	10	8	8
7. Wimbledon	7	3	1	3	14	12	7
8. Reading	9	2	3	4	10	16	7
9. Crystal Palace	8	3	1	4	13	22	7
10. Swindon Town	8	1	3	4	6	17	5
11. Southend United	8	1	2	5	10	24	4
12. Bristol Rovers	9	1	1	7	10	23	3

Anglia Television

Proud to serve the East of England.



CLUB INFORMATION:

- ☎ OFFICE HOURS 9 am-5 pm
LUTON (0582) 411622
- ☎ ADVERTISING & PROMOTIONS RING — MIKE BEEVOR
PROJECTS & ADVERTISING EXECUTIVE
LUTON (0582) 411622
- ☎ SOUVENIRS — TRAVEL — JUNIOR HATTERS
LUTON (0582) 412418
- ☎ MATCH TICKETS & LOTTERY ENQUIRIES
RING — JOHN GORNALL,
DEVELOPMENT EXECUTIVE
LUTON (0582) 30748
- ☎ BANQUETING & FUNCTION FACILITIES
RING — CLIVE HUSTWITT,
CATERING MANAGER
LUTON (0582) 411526
- ☎ MATCH ENQUIRIES — 24-HOURS SERVICE
LUTON (0582) 33010

GARY PARKER



OUR VISITORS



WEST HAM UNITED



Although beaten at home for the first time in the League this season by leaders Everton a fortnight ago, West Ham were still in the top six after a third of the season had been completed.

Now the Hammers must be aiming to maintain that challenge for honours and avoid the mid-season slumps that have frustrated them in the last few seasons.

For West Ham are traditionally good starters to the season . . . but have tended to slip in the mid-winter period. Since returning to the First Division in 1981, the club has been in the top two or three in the first two months in four consecutive seasons. In the last three years though they have dropped to final places of ninth, eighth and ninth suggesting that they have had problems coping with heavier mid-season pitches.

Reports from Upton Park however indicate that there's a new toughness about West Ham this season allied to their more traditional skills.

The side has not been helped by a lengthy injury list that has deprived them of key players like goalkeeper Phil Parkes, midfielder Alan Devonshire and striker Dave Swindlehurst and the departure of established names like Trevor Brooking and Frank Lampard have not aided the Hammers' cause either.

So it's very much to the credit of manager John Lyall and his staff that the new look Hammers have done so well in the opening three months of the season.

Back row (left to right): Paul Hilton, Billy Bonds, Tony Gale, Tom McAlister, John Vaughan, Phil Parkes, Alvin Martin, Steve Walford, Dave Swindlehurst.

Centre row: Paul Brush, Keith McPherson, Greg Campbell, Ray Stewart, Steve Whitton, Alan Devonshire, George Parris, Alan Dickens, Neil Orr.

Front row: Warren Donald, Frank Lampard, Paul Allen, Tony Cottee, Bobby Barnes, Geoff Pike, Paul Goddard.

Copyright: West Ham United FC



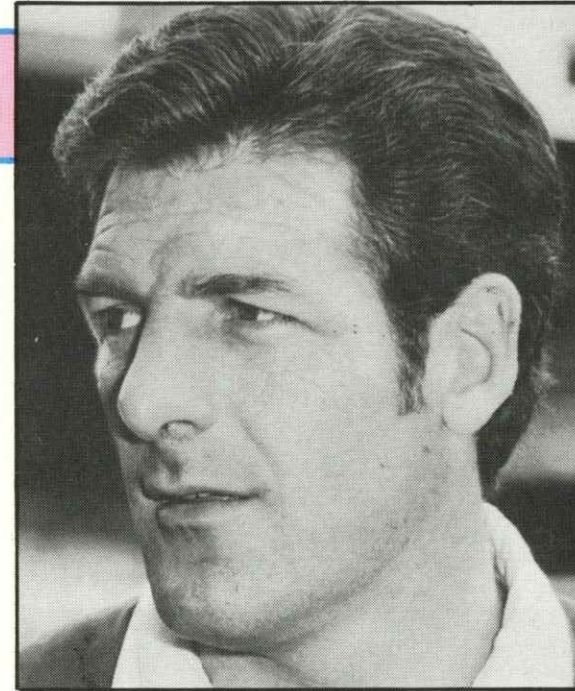
After five games, they were level on points with Arsenal at the top of the table and although they've slipped a little since losing to Manchester City in a Milk Cup replay at Upton Park and then falling to Everton four days later, the Hammers remain handily placed to mount a challenge for a European placing next season, providing they throw off their previous mid-season inconsistencies.

Parkes' absence all season from between the posts has meant a new lease of life for 31-year-old Tom McAlister and a chance to re-establish himself as a First Division goalkeeper.

McAlister joined West Ham three seasons ago as cover for Parkes and had played only three League games before this season. But he has emerged from the shadows in impressive style, showing the consistency that earmarked him as one of the best young keepers around a decade ago when he had First Division experience with Sheffield United.

Sharing the full back roles, West Ham use Scottish defender Ray Stewart and Steve Walford who has taken over from Lampard at number three.

Previously with Tottenham, Arsenal and Norwich, Walford was a £165,000 signing from Carrow Road last year. England centre half Alvin Martin skips the side and has a new partner this season in ex-Fulham defender Tony Gale, an England Under-21 man who made more than 300 senior appearances for the Craven Cottage club.



JOHN LYALL

Brooking's retirement left a gap in the midfield area and the enforced absence of Devonshire has also been missed. But Billy Bonds continues to provide sterling service alongside the highly promising Paul Allen and Geoff Pike. There have also been further chances this season for Alan Dickens in midfield.

Dickens won an England Under-21 cap as sub against Finland last month and striker Tony Cottee also made an appearance in the same game from the substitute's bench.

Fifteen League goals last season established Cottee as a youngster to watch for the future and although he has been without his regular partner from last season, the injured Swindlehurst, the Hammers have welcomed back Paul Goddard who managed only five appearances last year through injury.

Steve Whitton who moved to Upton Park from Coventry at the start of last season has been a useful addition to the Hammers rank and the squad has strength in depth provided by youngster Billy Barnes, former Bury defender Paul Hilton and Neil Orr, signed from Morton three seasons ago and back in the reckoning recently after injury.

West Ham also have two youngsters knocking on the first team door from famous backgrounds. Greg Campbell made his debut two months ago and is the son of the former Fulham and Portsmouth manager Bobby while Kevin Keen, a member of this season's England youth side, is the son of Mike Keen, well remembered at Kenilworth Road from his time at Town a decade ago.

After 14 games, a third of the season, West Ham had wins at Southampton and Stoke to their credit plus draws at Newcastle and Aston Villa.

That Milk Cup defeat by Second Division Manchester City a fortnight ago was a blow to West Ham's hopes but they've time now to build on their useful start to the League season before the FA Cup comes round in the New Year.

For all your
Floral arrangements contact:

INBLOOM

(Suppliers to Kenilworth Suite)

76 Marsh Road, Luton

Telephone: 584244

B. DOHERTY SKIPHIRE

34 MOUNT PLEASANT ROAD
LUTON

Telephone: 54633 and 54799

SHOREY'S TRAVEL



LUXURY
COACH HIRE
FOR FOREIGN &
UK EXECUTIVE
COACHES

COMPETITIVE RATES · FRIENDLY SERVICE · LOCAL BASED

28 Sheepfold Hill, Flitwick, Bedfordshire
Telephone: Flitwick 713289 Silsoe 60694

Mentholatum

DEEP HEAT

For rapid relief from muscular pain
Your team's favourite choice!

Cleandustrial Services Ltd

The Professional Approach to
Your Cleaning Problems

84 Aldermans Hill N13

Official Cleaning Contractors to
Luton Town FC

Telephone: 01-882 4626

BACKTRACK

Saturday 10th November 1984
NORWICH CITY
 v
LUTON TOWN
 Score: 3-0



JOHN WILKINSON

Veteran internationals Mick Channon and Asa Hartford made their experience tell as they ran this game from start to finish. They created chance after chance, and all three goals. The home side went one up after good work by Channon on the right, Peter Mendham scoring from Paul Haylock's cross. In the 27th minute Hartford scored the second goal and then he and Channon combined for Dale Gordon to score his first senior goal for the Canaries.

Man of the match was undoubtedly Asa Hartford who gave an inspirational performance. He proved he is still a quality player and a shining example to all young players.

NORWICH: Woods, Haylock, Downs, Bruce, Mendham, Watson, Gordon, Channon, Deehan, Hartford, Donowa. Sub: Van Wyk.

LUTON: Dibble, Breacker, Turner, Todd, S. North, Donaghy, Hill, Stein, Bunn, Parker, Moss. Sub. C. Nwajiobi.

Attendance: 14,395.

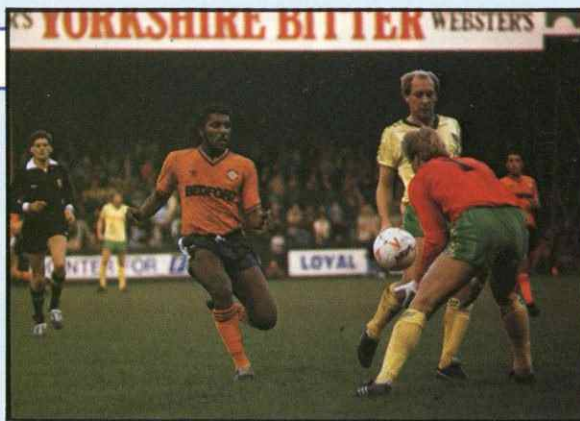
Saturday 17th November 1984
MANCHESTER UNITED
 v
LUTON TOWN
 Score 2-0

Andy Dibble's injury put paid to any hope the Town had of salvaging a point from this game. The critics were saying after the game that United didn't play well but to be fair they weren't allowed to. They were met by a Luton side who were determined to do well. Micky Droy playing his first game in the Town's colours had a splendid match in defence. After a goalless first-half, Frankie Bunn nearly put the Town in front with an effort that hit the bar shortly after the restart but they went a goal behind after 55 minutes when Whiteside scored. Then came Dibble's injury, falling awkwardly after catching the ball. Mal Donaghy went into goal but it was five minutes from the end before he was beaten, Norman Whiteside getting his second.

MANCHESTER UNITED: Bailey, Gidman, Albiston, Moses, McQueen, Duxbury, Robson, Strachan, Hughes, Whiteside, Olsen. Sub: Stapleton.

LUTON: Dibble, Breacker, Turner, S. North, Droy, Donaghy, Hill, Stein, Elliott, S. Bunn, Hilaire. Sub. Parker.

Attendance: 42,776.



Ricky Hill puts Norwich keeper under pressure at Carrow Road.



An excellent shot from Brian Stein just goes wide of the Canaries far post.



Vince Hilaire contends for the ball from two United players.



Frank Bunn competes effectively for a fifty-fifty ball.



An excellent attacking run down the left side by Steve Elliott against Manchester United.

TODAY'S MATCH IS SPONSORED BY:

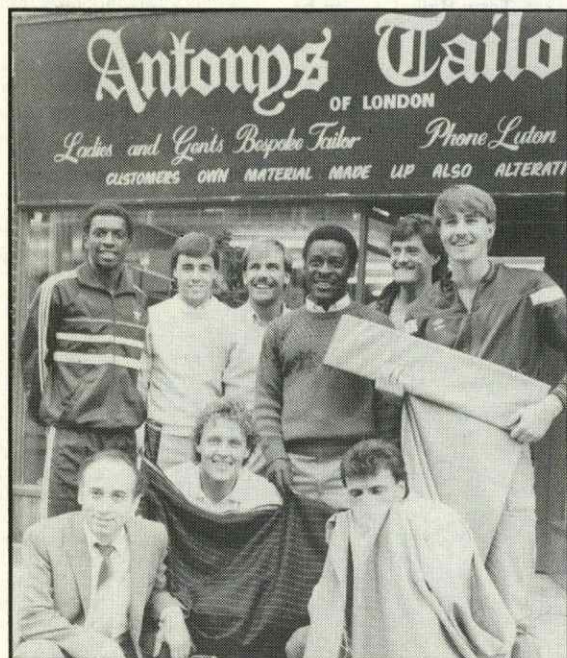
Whitbread Best Bitter.



AROUND THE TOWN

TAILOR MADE FOR HATTERS

When you see our players out and about in their suits and wonder why they look so smart, the answer may be because they have their suits made at Anthonys Tailors in Dunstable Road, Luton.



The owner Anthony Nicolan is pictured here with some of the players outside his premises.

EXECUTIVE SPONSOR

Today's executive sponsors are J. M. Keenan Ltd whose managing director Jimmy Keenan is a member of our Century Club. Keenan's were formed 12 years ago and specialise in Civil Engineering and plant hire. Their work involves them in anything from laying footpaths, driveways and foundations to roads and drainage, whilst on the plant hire side their fleet includes Ford 555 Diggers with 4-in-1 buckets.

The company is a family business with Jimmy being supported by his wife Marie and son Sean who like Jimmy are both Luton fans, besides today's executive sponsorship Jimmy is heavily committed to local sporting circles and is the ex-chairman of Westoning Boys Club.

We thank J. M. Keenan Ltd for their sponsorship and hope that they and their guests enjoy today's match.

MATCH SPONSOR

Today's match is sponsored by Whitbread, who have been supporters of Luton Town Football Club for many years, and brewers of fine beers for even longer.

Whitbread was founded in 1742 when Samuel Whitbread began brewing in the City of London at Chiswell Street, and Whitbread has had an unrivalled reputation for quality products ever since, with a range which includes Stella Artois, Heineken, Whitbread Best Bitter and some fine cask conditioned ales, such as Wetherheads Bitter, Flowers Original Bitter and Castle Eden Ale.

The Whitbread bottled beer range is world famous, with Pale Ale, Mackeson and Gold Label being among the stars.

The products may well be superb, but Whitbread has a lot more to offer than just products. The company is in the forefront of the leisure industry with thousands of pubs, ranging from the traditional country inn to the ultra modern theme and disco type pubs.

Eating with Whitbread is also a memorable experience, customers can enjoy steaks in fine surroundings with first class service at the Beefeater restaurants (have you tried the Halfway House recently?) Roast Inns and Pizza Hut are gaining fans quickly by providing excellent quality and efficient, warm service.

This match sponsorship demonstrates Whitbread's commitment to Luton Town Football club, and to the local community, and both may be assured of our support for the future.

KEEP COOL WITH ELECTROLUX

Fridge/Freezers are not just used at Luton Town for our extensive catering areas but are an essential piece of equipment required for our medical room. John Sheridan the Town's physio who looks after the constant physical welfare of our players, goes through some 350lb of ice a week treating a variety of injuries. Our medicines have to be kept safe and refrigerated. Therefore when our old medical fridge finally gave up, who better to substitute it with a brand new Electrolux Fridge/Freezer. Electrolux are an international world-wide company with headquarters in



Luton, they kindly donated this new fridge/freezer to the Town's playing staff.

Our picture shows Electrolux product manager Peter Reeves handing over the fridge officially to our captain Mal Donaghy. It goes without saying Electrolux your generosity is most appreciated. Thank you.

KEEPING IN TOUCH

Supporters will be pleased to know that our England Under-21 international Paul Elliott is making excellent progress after breaking his leg in our Milk Cup match with



Leicester. Paul has had a pin inserted in the leg and now resting at home where he is pictured above. He is due for a check up at the Luton and Dunstable on Monday 26th

November and it is hoped that soon after he will be able to resume training concentrating on upper body work under the supervision of club physiotherapist John Sheridan.

Photo by courtesy of Ilford Recorder



'A SUPER STRIP FOR YOUR BEDROOM'

It can be a tiring day when your the managing director of Wallspan Bedrooms, especially when you are match sponsors. Terry Bailey is seen here with our executive director John Smith taking a break from the day's activities — resting of course in a superb showroom display of a Wallspan Fitted Bedroom.



'NO YOU PRESENT IT TO HIM RICKY'

When Bran Stein and Ricky Hill met our executive sponsor Anachem after the Newcastle match, they were some what surprised even a little put out to learn that the competition winner George Robinson was an Everton supporter. Still you can't win them all lads. Joking aside George like our executive sponsors Anachem Ltd supports the Town loyally every week.



'ON CUE'

John Smith pictured with the chairman of Menswear Association of Great Britain and Duncan Goodhew, discussing the opening of the Austin Reid 'Cue Shop' at St Albans.

UNRIVALLED FOOTBALL COVERAGE

EXCLUSIVE COLUMN
by
DAVID PLEAT

HATTERS REPORTS
by
BRIAN SWAIN

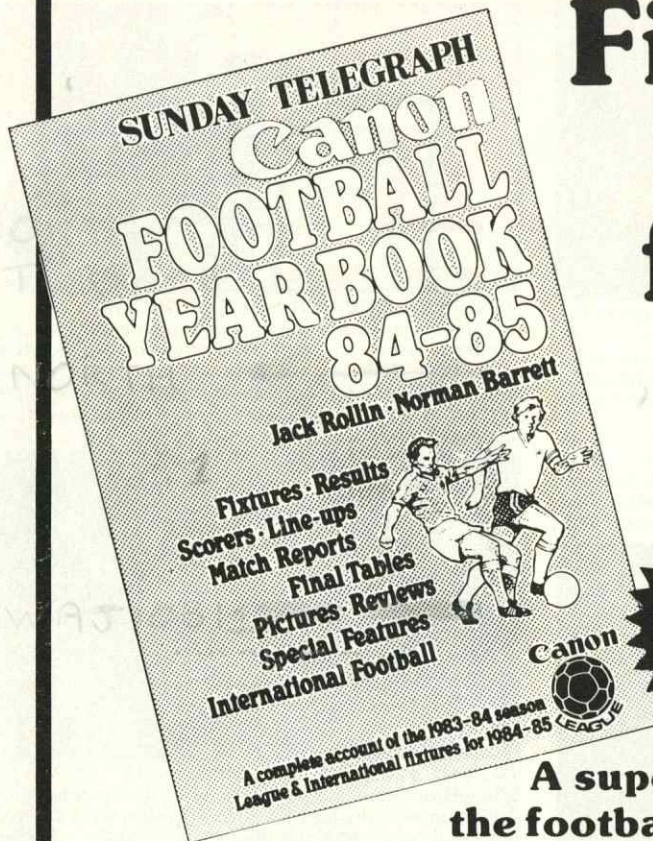
LOCAL LEAGUES
by
ERIC NORRIS

LUTON TOWN PICTURES BY MARK RICHARDS

IN THE

LUTON NEWS

THURSDAY 14p



First in the field!

Now in its second successful year

£5.95
(+P&P)

A superb record of the football season, edited by Sunday Telegraph columnist Jack Rollin, and football writer Norman Barrett.

Available from your local bookseller and from the Telegraph Bookshop at 130 Fleet Street. To order by post, send a cheque/postal order for £6.50 to Dept FYB, Sunday Telegraph, 135 Fleet Street, London EC4P 4BL

Please send me _____ copies of the Canon Football Year Book 84-85 at £6.50. I enclose a cheque/postal order for £ _____ made payable to the Sunday Telegraph.

Name _____

Address _____

Telegraph
PUBLICATIONS

WHERE ARE THEY NOW

FREDDIE JARDINE

Call in at Popes, the menswear shop in Bury Park, and it is odds on that you will be served by this former Town favourite. Fred has worked there now for many years. He joined the club from Dundee



United in May 1961 as an outside-left but it wasn't until he switched positions to left-back that he became a regular member of the League side. He also won over the supporters with his enthusiastic style of play and became a favourite with them.

In the nine years he was at Kenilworth Road he made 218 appearances and scored nine goals. He was also a member of the Town side that won promotion from Division Four. It came something of a surprise when he was transferred to Torquay United in February 1971, but he only made 11 appearances for them before retiring from the Football League scene.



TODAY'S
EXECUTIVE SPONSOR
J. M. Keenan Ltd.



SPECIALISTS
IN
CIVIL ENGINEERING
AND
PLANT HIRE

Contact:
JIMMY KEENAN

at:
J. M. Keenan Ltd
1A Westoning Road
Greenfield
Flitwick
Beds

Tel: Flitwick 714708

FOOTBALL COMBINATION FIXTURES 1984-85

Date	Opposition	F	A
Aug 25	Swansea	7	2
Sept 1	Tottenham	0	3
Sept 5	Birmingham	4	1
Sept 11	Brighton	0	4
Sept 15	Southampton	5	1
Sept 22	Oxford	2	0
Sept 29	Charlton	9	1
Oct 2	Chelsea	1	2
Oct 6	Norwich	4	4
Oct 9	QPR	4	2
Oct 17	Reading	2	3
Oct 27	Fulham	3	1
Nov 10	Bristol Rovers	1	1
Nov 17	Ipswich	1	0
Nov 24	Watford		
Nov 27	Portsmouth		
Dec 1	Swindon		
Dec 8	West Ham		
Dec 15	Arsenal		
Dec 19	Millwall		
Dec 28	Crystal Palace		
Jan 12	Tottenham		
Jan 15	Swansea		
Jan 19	Birmingham		
Jan 22	Brighton		
Feb 2	Southampton		
Feb 9	Oxford		
Feb 12	Charlton		
Feb 19	Chelsea		
Feb 23	Crystal Palace		
Feb 27	Bristol Rovers		
Mar 5	Fulham		
Mar 9	Reading		
Mar 16	QPR		
Mar 20	Norwich		
Mar 26	West Ham		
Mar 30	Portsmouth		
April 13	Watford		
April 16	Swindon		
April 23	Ipswich		
April 27	Millwall		
May 11	Arsenal		

CANON LEAGUE DIVISION ONE 84-85

Team	Home				Away				Pts			
	P	W	D	L	F	A	W	D		L		
Everton	15	5	2	1	20	9	5	0	2	12	9	32
Manchester United	15	5	3	0	20	6	3	2	2	9	12	29
Arsenal	15	6	2	0	16	5	3	0	4	14	16	29
Tottenham	15	5	1	1	21	8	4	0	4	11	7	28
West Ham United	15	5	2	1	12	4	2	2	3	9	16	25
Chelsea	15	6	0	2	20	7	0	4	3	5	9	22
Sheffield Wednesday	15	4	2	1	17	9	2	2	4	8	9	22
Southampton	15	4	2	1	8	5	1	5	2	11	12	22
Liverpool	15	1	4	2	6	6	4	2	2	12	9	21
Nottingham Forest	15	4	1	2	13	8	2	2	4	11	13	21
Newcastle United	15	4	2	2	14	9	1	4	2	14	20	21
Sunderland	15	5	2	0	13	3	0	3	5	9	16	20
Norwich City	15	4	3	0	13	6	1	2	5	8	15	20
WBA	15	4	2	1	15	6	1	2	5	8	15	19
Aston Villa	15	3	3	2	12	1	2	4	8	18	17	18
Ipswich Town	15	3	4	1	13	10	0	3	4	4	11	16
Watford	15	2	3	3	18	1	3	3	12	15	15	15
QPR	14	3	2	1	15	10	0	4	4	4	15	15
Coventry City	15	3	2	3	7	9	1	1	5	6	14	15
Leicester City	15	4	1	3	17	13	0	2	5	5	20	15
Luton Town	15	2	3	2	10	9	1	1	6	7	22	13
Stoke City	14	1	2	4	10	16	0	2	5	1	17	7

FOOTBALL COMBINATION 1984-85

Team	P	W	D	L	F	A	Pts
Watford	13	10	2	1	34	17	22
Tottenham Hotspur	13	9	2	2	50	26	20
Arsenal	12	7	3	2	29	13	17
Ipswich Town	11	8	1	2	23	7	17
Brighton	10	6	4	0	22	6	16
Luton Town	12	7	1	4	42	24	15
Chelsea	9	6	3	0	16	7	15
Queens Park Rangers	11	6	2	3	30	16	14
Southampton	12	5	4	3	26	26	14
Millwall	12	5	3	4	17	13	13
Oxford United	11	5	2	4	20	18	12
West Ham United	13	4	4	5	17	15	12
Charlton Athletic	11	4	2	5	16	31	10
Norwich City	13	2	5	6	24	34	9
Portsmouth	9	2	4	3	12	11	8
Reading	12	4	0	8	19	32	8
Swansea City	12	2	4	6	15	29	8
Birmingham City	11	2	3	6	13	22	7
Swindon Town	12	3	1	8	11	28	7
Crystal Palace	12	2	2	8	14	31	6
Fulham	11	1	2	8	9	19	4
Bristol Rovers	14	1	0	13	18	53	2

Up to and including Saturday 3rd November 1984

SOUTH EAST COUNTIES LEAGUE FIXTURES 1984-85

Date	Opposition	F	A	Date	Opposition	F	A	Date	Opposition	F	A
Aug 25	Swindon	0	0	Oct 20	Wimbledon	4	2	Jan 5	Brighton		
Sept 8	West Ham	3	1	Nov 3	Tottenham	7	1	Jan 12	Bristol Rovers		
Sept 15	Brentford	3	2	Nov 10	Brighton (LCR2)	3	5	Jan 19	Crystal Palace		
Sept 22	Brighton	0	0	Nov 17	Reading			Jan 26	Wimbledon		
Sept 29	Reading (LC1)	4	1	Nov 24	Southend			Feb 19	Tottenham		
Oct 6	Bristol Rovers	2	0	Dec 1	Oxford			Feb 16	Reading		
Oct 13	Crystal Palace	2	2	Dec 8	Swindon			Feb 23	Southend		
Oct 19	Tottenham	3	6	Dec 22	West Ham			Mar 2	Oxford		
	(SJFC)			Dec 29	Brentford						

FIRST TEAM RESULTS

Date	V	Opposition	FA	Att	Pos
Aug 25	H	Stoke City	2-0	8,626	-
Aug 28	A	Ipswich Town	1-1	15,331	-
Sept 1	A	West Bromwich Albion	0-4	11,720	10
Sept 4	H	Liverpool	1-2	14,127	13
Sept 8	H	Southampton	1-1	8,657	17
Sept 16	A	Nottingham Forest	1-3	18,605	19
Sept 22	H	Chelsea	0-0	16,066	19
Sept 25	A	Orient (MC2 1L)	4-1	4,500	-
Sept 29	A	Tottenham Hotspur	2-4	3,0204	-
Oct 6	A	Queens Park Rangers	3-2	12,051	19
Oct 9	H	Orient (MC2 2L)	3-1	3,374	-
Oct 13	H	Sheffield Wednesday	1-2	10,285	19
Oct 20	H	Watford	3-2	10,192	19
Oct 27	A	Sunderland	0-3	19,280	20
Oct 30	H	Leicester City (MC3)	*3-1	8,015	-
Nov 3	H	Newcastle United	2-2	10,009	20
Nov 10	A	Norwich City	0-3	14,395	20
Nov 17	A	Manchester United	0-2	42,776	21
Nov 20	A	Sheffield Wed. (MC4)			
Nov 24	H	West Ham United			
Dec 1	A	Arsenal			
Dec 8	H	Aston Villa			
Dec 15	A	Leicester City			
Dec 18	H	West Bromwich Albion			
Dec 26	H	Coventry City			
Dec 29	A	Liverpool			
Jan 1	A	Everton			
Jan 5	(FAC 3)				
Jan 12	H	Nottingham Forest			
Jan 16	(MC5)				
Jan 19	A	Stoke City			
Jan 26	(FAC 4)				
Feb 2	H	Tottenham Hotspur			
Feb 6	(MC SF 1st Leg)				
Feb 9	A	Southampton			
Feb 13	(MC SF 2nd Leg)				
Feb 16	H	Norwich City (FAC 5)			
Feb 23	A	Newcastle United			
Mar 2	H	Sunderland			
Mar 9	A	Watford (FAC 6)			
Mar 16	A	Sheffield Wednesday			
Mar 23	H	Queens Park Rangers			
Mar 24	(MC Final)				
Mar 30	H	Ipswich Town			
April 6	A	Coventry City			
April 9	H	Everton			
April 13	A	Chelsea (FAC SF)			
April 20	H	Manchester United			
April 27	A	West Ham United			
May 4	H	Arsenal			
May 6	A	Aston Villa			
May 11	H	Leicester City			

1984-85 RESULTS · ATTENDANCES · APPEARANCES · GOALSCORERS

	1	2	3	4	5	6	7	8	9	10	11	12
Dibble	Thomas	Grimes	Breacker	North S	Donaghy	Hill	Stein B	Elliott S ¹	Bunn ¹	Moss	Turner	
Dibble	Thomas	Grimes	Breacker	North S	Donaghy	Hill	Stein B	Elliott S	Bunn +	Moss ¹	Nwajobi	
Dibble	Thomas	Grimes	Breacker +	North S	Donaghy	Hill	Stein B	Elliott S	Bunn	Moss	Nwajobi	
Dibble	Thomas	Grimes	Breacker	Elliott P	Donaghy ¹	Hill	Stein B	Elliott S +	Turner	Moss	Nwajobi	
Dibble	Thomas	Grimes	Parker	Elliott P	Donaghy	Hill	Stein B	Nwajobi	Turner +	Moss ¹	Bunn	
Dibble	Thomas	Grimes	Turner +	Elliott P	Donaghy	Hill	Stein B	Nwajobi	Bunn	Moss ¹	Parker	
Dibble	Thomas	Grimes	Turner	Elliott P	Donaghy	Hill	Stein B	Nwajobi	Bunn	Moss	Parker	
Dibble	Thomas	Grimes	Turner	Elliott P	Donaghy ¹	Hill	Stein ²	Bunn	Hilaire	Nwajobi +	Parker ¹	
Dibble	Thomas	Grimes	Turner	Elliott P	Donaghy	Hill	Stein	Bunn ¹ +	Hilaire	Moss ¹	Parker	
Dibble	Thomas	Grimes	Turner	Elliott P ¹	Donaghy	Hill	Stein ¹	Elliott S ¹	Parker	Moss	Hilaire	
Dibble	Thomas	Grimes	Turner	Elliott P +	Donaghy	Hill	Stein ¹	Elliott S ¹	Bunn ¹	Moss	Hilaire	
Dibble	Thomas	Turner	Bunn ¹	Elliott P	Donaghy	Hill	Stein	Elliott S	Hilaire	Moss +	Parker	
Findlay	Thomas	Turner	Parker	Elliott P	Donaghy	Hill	Stein	Elliott S ¹	Bunn ²	Hilaire	Breacker	
Findlay	Thomas	Turner	Parker +	Elliott P	Donaghy	Hill	Stein	Elliott S	Bunn	Hilaire	Breacker	
Dibble	Breacker	Turner	Todd	Elliott P +	Donaghy ¹	Hill	Stein	Elliott S	Bunn	Moss ¹	Parker	
Dibble	Breacker	Turner	Todd	North S	Donaghy	Hill	Stein ¹	Elliott S	Parker ¹	Daniel +	Hilaire	
Dibble	Breacker	Turner	Todd	North S	Donaghy	Hill	Stein ¹	Bunn	Parker	Moss +	Nwajobi	
Dibble +	Breacker	Turner	North S	Droy	Donaghy	Hill	Stein	Elliott S	Bunn	Hilaire	Parker	

FIRST TEAM APPS 1984-85

Player	League		Cups	
	App	Gls	App	Gls
Breacker	7(1)	1	-	-
Bunn	11(1)	5	3	1
Daniel	1	-	-	-
Dibble	13	-	3	-
Donaghy	15	1	3	2
Droy	1	-	-	-
Elliott P	9	1	3	-
Elliott S	10	3	2	1
Findlay	2	-	-	-
Grimes	9	-	2	-
Hilaire	5(1)	-	1(1)	-
Hill	15	-	3	-
Moss	11	4	2	1
North S	6	-	-	-
Nwajobi	3(4)	-	1	-
Parker	6(4)	1	(2)	1
Stein B.	15	2	3	3
Thomas	12	-	2	-
Todd	2	-	1	-
Turner	12	-	3	-
Own goal	-	-	-	1

Figures in brackets denotes substitute

RES TEAM APPS 84-85

Player	App		Gls	
	App	Gls	App	Gls
Berry	1	-	-	-
Bunn	3	-	-	-
Breacker	8	-	-	-
Cobb	9(1)	3	-	-
Daniel	10	5	-	-
Doughty	3	-	-	-
Elliott P.	1	-	-	-
Elliott S.	4	2	-	-
Ellisdon	13(1)	-	-	-
Findlay	9	-	-	-
Grimes	1	-	-	-
Harvey	1(3)	1	-	-
Hilaire	7	1	-	-
Johnson	2	-	-	-
McAlister	1	-	-	-
McEvoy	7(1)	-	-	-
Moore	1	-	-	-
Moss	2	-	-	-
North M.	14	2	-	-
North S.	10	-	-	-
Nwajobi	10	13	-	-
Oldfield	11(1)	4	-	-
Parker	5	3	-	-
Sealey	3	-	-	-
Stein M.	14	8	-	-
Thomas	2	-	-	-
Todd	1	-	-	-
Turner	1	-	-	-



ITALIAN RESTAURANT
 Angelo and Anna proprietors of Sorrento's the recently opened Italian Restaurant at West Side Centre, Luton, are pictured with our players when they were invited to sample the superb food at the restaurant's recent opening.
 Angelo and

VAUXHALL TEAMCHECK.

2 LUTON TOWN		WEST HAM UNITED 2	
JAKE FINDLAY	1	TOM McALISTER	
TIM BREACKER	2	RAY STEWART	
DONAGHY WAYNE TURNER	3	STEVE WALFORD	
TURNER COLIN TODD	4	PAUL ALLEN	
MICKY DROY	5	ALVIN MARTIN /	
NORTH MAL DONAGHY	6	TONY GALE	
RICKY HILL	7	STEVE WHITTON /	
1 BRIAN STEIN	8	PAUL GODDARD	
STEVE ELLIOTT	9	TONY COTTEE	
FRANK BUNN	10	BILLY BONDS	
NWAJIOBI VINCE HILAIRE	11	GEOFF PIKE	
PARKER	12	SWINDIEHURST	

Referee: G. COURTNEY

Linesmen: D. T. PHILLIPS (Red Flag)
G. WHITFIELD (Yellow Flag)

THE ROVERS' TEAM COACH.



**THE NEW VAUXHALL
ASTRA ESTATE.**

Remember, we got here first.

