

LUTON TOWN

Official
Matchday
Magazine
Price 50p

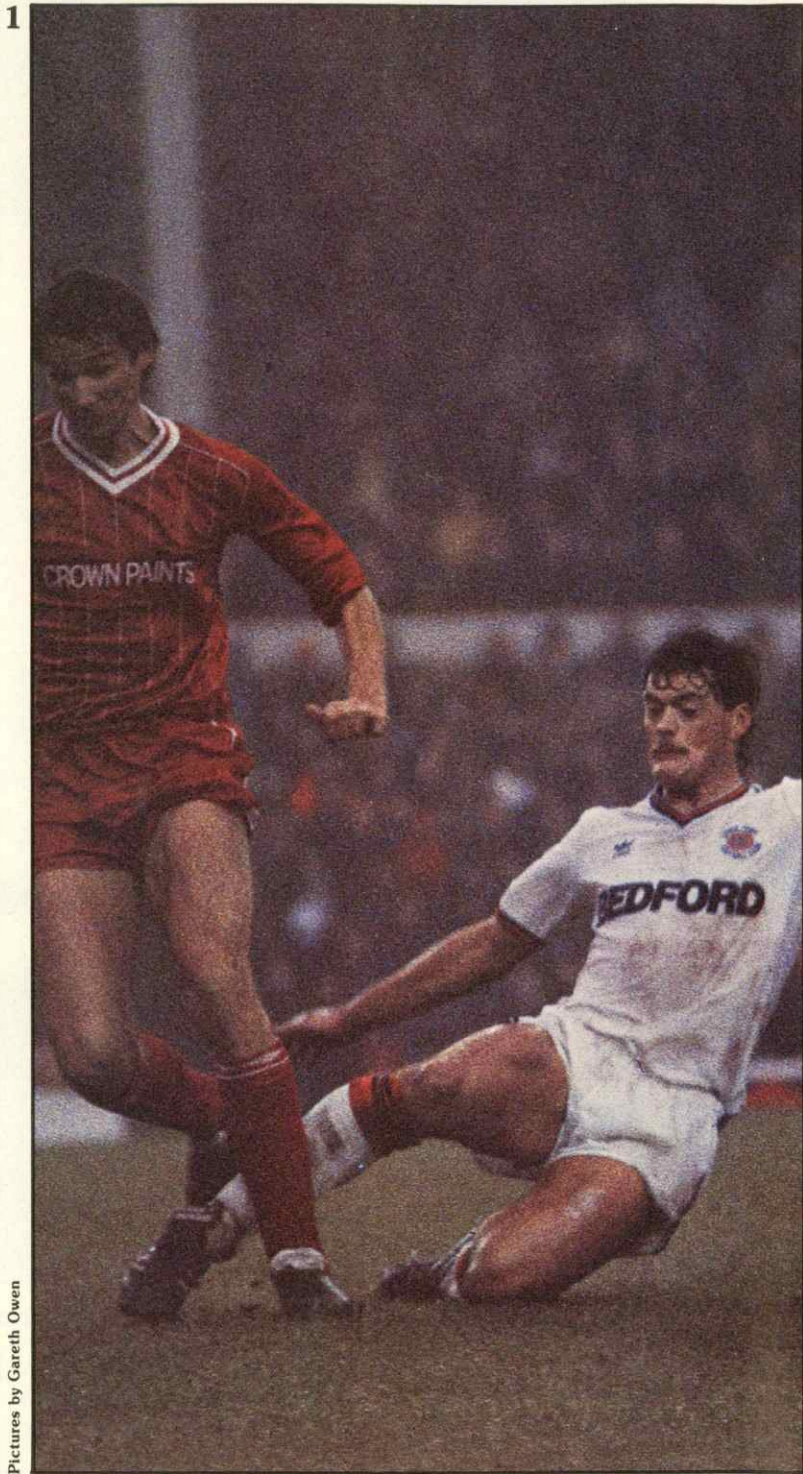
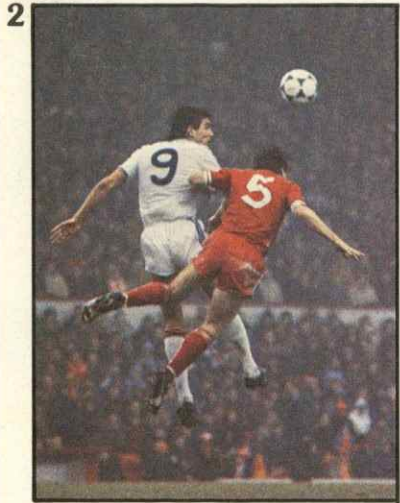


FA CUP THIRD ROUND
LUTON TOWN
v
STOKE CITY
Saturday 5th January 1985
Kick-off 3.00 pm

TODAY'S MATCH IS SPONSORED BY:

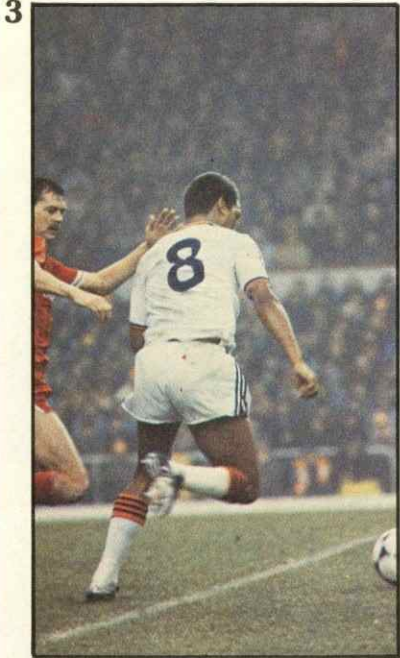
**R. W. UNWIN
& CO LTD**

ACTION REPLAY



LIVERPOOL 1 LUTON TOWN 0

- 1 Hatters midfielder Frank Bunn contending for possession with Alan Hansen of Liverpool at Anfield.
- 2 Mick Harford in a high jump duel with Liverpool's Steve Nicol.
- 3 'Walk alone' Stein keeps the Reds off his back.



Pictures by Gareth Owen

Welcome to this afternoon's game. The FA Cup has a special place for football followers it has the glamour and excitement of sudden death. Every club hopes for a good Cup run. It not only stimulates interest in the second half of the season but the financial rewards can turn a poor balance sheet into a healthy one.

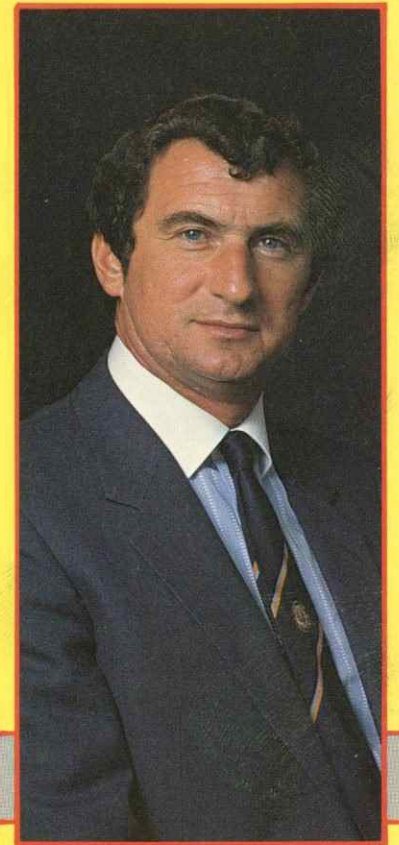
Today we are sponsored by Mr R. Unwin of R. W. Unwin and Co from Welwyn. His company are leaders in the field of pharmaceutical suppliers. But most importantly Ron and his wife Iris have used their sponsorship today to make a most splendid new Year present for some deserving children. They have invited children from the National Children's Home at Harpenden to share their afternoon with them. A great gesture. Thanks Ron for your continued support.

We particularly welcome Stoke City. Like ourselves they have found the going tough during the first half of the season. Bill Asprey has done tremendously well keeping the spirit strong whilst the results have not reflected their performances. They have kept faith and although narrowly beaten by several teams they recently gained a spectacular triumph over Manchester United. This result will give their players heart to go

and have nothing to fear. Football is always a challenge but only players with positive minds can be successful.

Our injury situation is improving slowly. Ashley Grimes is hoping to begin training this week. Paul Elliott is working hard keeping himself in body trim. Andy Dibble returned in the Reserves success at Crystal Palace on the 28th December. Within a fortnight Andy will be ready to challenge Les Sealey for the goalkeeping jersey. Les has done an exceptionally good job during December, unfortunately John Findlay is still troubled with one of his upper back discs which is causing him discomfort. We are optimistic also about young Rob Johnson's chances of making a fully successful comeback. He has played six successful Reserve games after his knee operation and long recovery period.

We are now approaching what promises to be an exciting year. We are coming out of a transitional period and a new team is being formed. Mick Harford, David Preece and Steve Foster are solid professionals who will add strength to the tremendous promise of our younger players. The signs are good — the Reserves are riding high in the Combination with a young squad and the South East Counties side top their League with a

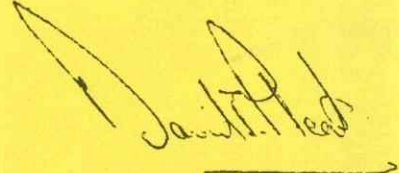


WELCOME

on to better things. Our December results have stabilised themselves somewhat but we are aware of the task ahead. These notes were penned prior to our visit to Everton but during the month only Liverpool looked a better side on the day and I was delighted with the way we went about our task at Anfield. Unfortunately our use of the ball when we gained possession was poor and as a consequence we did not trouble Grobbelaar to any extent. Against Aston Villa, Leicester City, West Bromwich Albion and Coventry City we proved we can handle First Division opposition

nucleus of players who will join the club in the summer. Off the field we have ambition on the Board and a determination to succeed. During the last 12 months I would like to thank all our supporters home and away who have given such great encouragement to the lads. It is easy to sit in an armchair and claim to be a supporter of Liverpool, Manchester United or Spurs. We are not one of the big clubs yet we are striving to gain that respect. When we had outstanding seasons in the Second Division many 'floaters' enjoyed our rise — players get older

and move on and teams change. It is during those periods when support is appreciated more whilst we are building for a new era. On behalf of the players I would like to thank you all for that support and we wish you all a wonderful 1985.



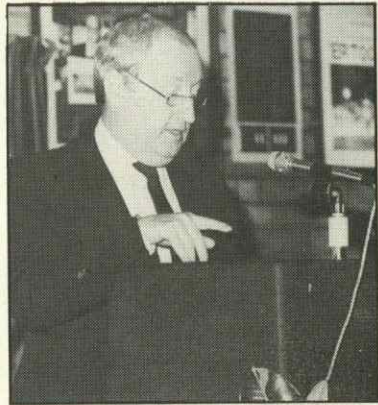
LUTON TOWN F.C.

70-72 KENILWORTH ROAD · LUTON LU1 1DH · TELEPHONE: 0582-411622

<p>CHAIRMAN DAVID EVANS</p> <p>DIRECTORS T. W. BAILEY, R. L. BANKS, E. S. PEARSON, R. J. SMITH, J. R. SMITH</p> <p>CHIEF EXECUTIVE JOHN SMITH</p> <p>MANAGER DAVID PLEAT</p> <p>GENERAL SECRETARY GRAHAM MACKRELL</p> <p>CLUB SECRETARY JOHN WILKINSON</p> <p>COMMERCIAL MANAGER BILL TOMLINS</p>	<p>PRESIDENT T. HODGSON</p> <p>DEPUTY PRESIDENT J. A. C. BAIN</p> <p>VICE PRESIDENTS A. G. BERRY F.C.C.A., J. B. BRENT C. BYGRAVE, C. J. EVANS B. COLE, B. ENGLAND N. S. FOOKES, E. FOUNTAIN C. HOLLOWAY, I. E. HOLMES L. LEPPINGTON, R. LARKINSON R. SAFRANEK, R. UNWIN E. WALLER</p>	<p>HONOURS</p> <p>FA CUP FINALISTS 1958-59</p> <p>CHAMPIONS — DIVISION 3(S) 1936-37</p> <p>RUNNERS-UP — DIVISION 2 1954-55</p> <p>CHAMPIONS — DIVISION 4 1967-68</p> <p>RUNNERS-UP — DIVISION 3 1969-70</p> <p>RUNNERS-UP — DIVISION 2 1973-74</p> <p>CHAMPIONS — DIVISION 2 1981-82</p>
--	---	---



LUTON TOWN THE REAL FUTURE



Meanwhile at present the club's gates are little more than half the First Division average while the weekly players' wage bill was exactly the same as the Division average. The club had survived by good management plus occasionally resorting to the sale of players, but was now surviving through the commercial activities now at risk from the proposed relief road.

Chairman David Evans was applauded warmly both during and at the end of the meetings for the frank and open way in which they were handled. But he warned the club needed to plan for the future to ensure continuity of football. 'Time is rapidly running out.'

Chairman David Evans hosted two of a series of meetings he intends to hold to keep the supporters in the picture in relation to its real future.

He is seen in the photographs, answering questions and debating the issues involved.

Whilst many of those who attended the meetings were from Luton, it was interesting that at the second meeting supporters came from Bedford, Welwyn Garden City, Hemel Hempstead, Towcester, St Albans and other surrounding areas within our catchment.

To quote the *Luton News* on 28th December 1984:

'New Chairman David Evans put himself in the firing line when he hosted the first of a series of meetings at the club. And while he probably has not persuaded anyone else that a move to Milton Keynes is good for Luton as a community, he has built the first bridge with the dissidents.'

Both meetings were chaired by Chiltern Radio sports presenter Nigel King, and it was clear by the close of the second that while many fans would naturally prefer the club to stay at Luton they could appreciate the very real dilemma over the issue.

Obviously there was a host of questions raised. One of the most interesting of which was: 'Why build a multi purpose stadium.'

'To build a football stadium just as a football stadium would not be viable,' explained Mr Evans. 'The estimates we have to build a stadium are approximately £15m, the same amount as you need to build a hyper-market. Imagine running a hyper-market open the same amount of times as a football club, open every other Saturday from 1.30 to 5.30 pm and closed all summer!'



GLAZING & DECORATING SPECIALISTS

GLAZING REPAIRS & GLASS SUPPLIES
PATIO DOOR & WINDOW INSTALLATIONS
DOUBLE GLAZING (SECONDARY AND SEALED UNITS)
INTERIOR AND EXTERIOR DECORATORS

For Domestic and Commercial enquiries contact Luton 573025/597505
For 24 hour Emergency Service contact Dunstable 666665



sapsworth
GLAZING & DECORATING
J. Sapsworth Limited
92 Marsh Road, Luton, Bedfordshire LU3 2NL
Telephone: Luton (0582) 53025/597505

UNVEILED, THE NEW CF2 VAN.



From the outside, the new CF2 looks very like the old CF. Underneath, however, it's a completely different story.

The mechanics are almost all new. So, don't go by appearances. Go and arrange a road test with your local Bedford dealer instead.

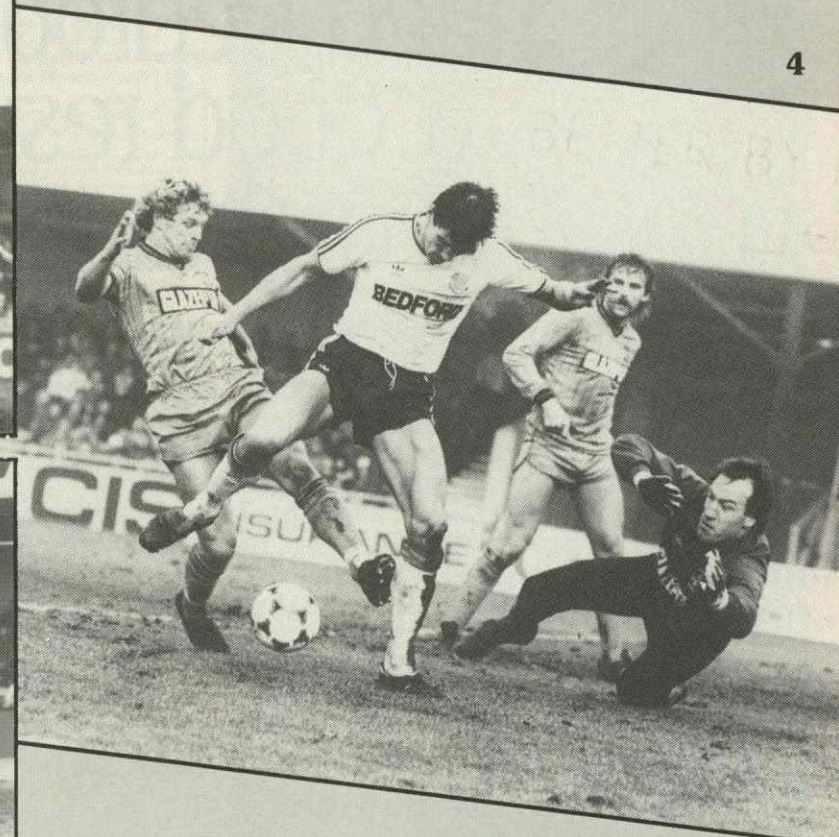
THE NEW CF2 SHOWS BEDFORD MEANS BUSINESS.

ACTION

REPLAY

LUTON TOWN 2
COVENTRY CITY 1

- 1 Our photographer was on the spot, to confirm the justifiable penalty claim from Brian Stein in the first half.
- 2 First half action sees a classic header from Mick Harford just go wide of the Coventry post.
- 3 Coventry keeper Steve Ogrizovic dives in vain from Ricky Hill's shot which was only inches wide.
- 4 Hatters striker Mick Harford has Coventry defence in a turmoil.



THE LOCAL TASTE AND HOW TO SATISFY IT

We're very definite about our taste in beer around here. A clear light pint is what we look for; with a good, clean smack of malt and hops.

And there's only one name that really satisfies the local taste - BB. The Light beer first brewed in Luton during the darkest days of the War by J. W. Green.

Only the finest hops and good, ripe barley go into the making. Then the brew is matured to exactly the right degree to give you a bright refreshing pint with a sound, full flavour.



WHITBREAD

American servicemen in local wartime bases declared that BB, chilled, was the nearest taste to Stateside draught.

It went down well when Syd Owen ruled the Hatters.

And it's been going down well ever since. Because BB is brewed with a proper respect for quality. To keep up the traditions we value round here.



There's a handy man to know at
Graham Ford



Your Comprehensive Builders Merchants

Depots at: KINGSWAY LUTON 31199

BEALE ST DUNSTABLE 603111

LEIGHTON RD LEIGHTON BUZZARD 373486

Home Improvement and
Building Material Centres



Falcon
Holidays

QUALIFIED FOR EUROPE

We've been in European competition for 12 seasons. Try a Falcon Holiday this year and find out why we're top of the Holiday League.

Fly direct from your local airport for your winter or summer holiday.

190 Campden Hill Road
London W8 7TH
Telephone 01-221 6298



ATOL
131/BC

With Wallspan fitted bedrooms, a good result is guaranteed.

Wallspan fitted bedrooms are great believers in team work. Over the years we have built up a winning team of professionals who work together to produce a product that is out of everyone else's league.

Free design, free fitting, free delivery, and for a limited period interest free credit.

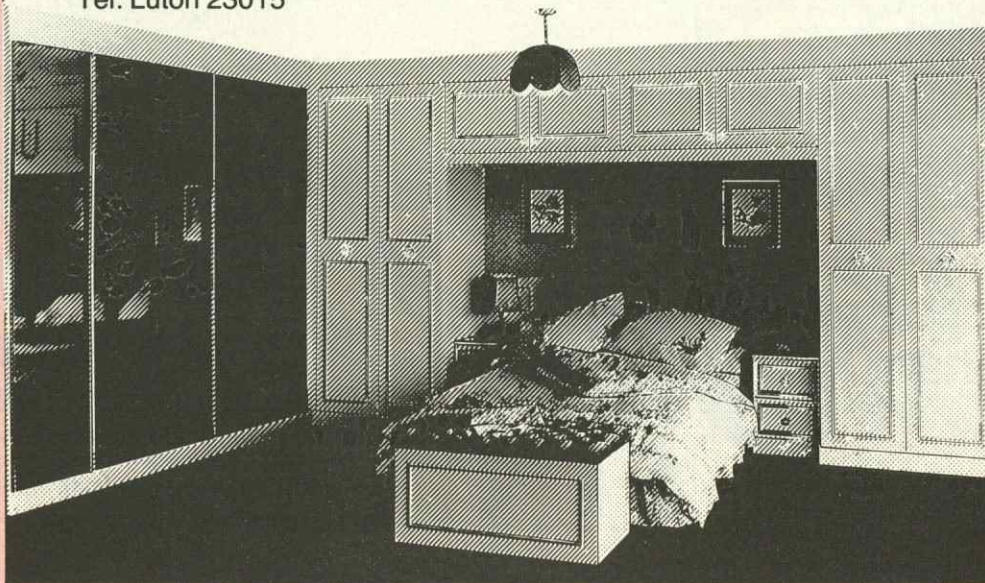
Unfortunately we cannot guarantee the result of today's match but we do guarantee our result for a full five years.

Come and support our team soon.

Luton Showroom Unit 174 Arndale Centre
Tel: Luton 23015

**Wallspan
Bedrooms**

Throughout the UK



POINTS OF VIEW

Dear Mr Evans

I'm just writing to say thank you for organising the Junior Hatters Christmas Party. My brother Gordon and I had a fabulous time.

I was thrilled when I was picked to play in the sports quiz against Ricky Hill, Frank Bunn, Brian Stein and Emeka Nwajobi and I felt even better when we beat them.

Gordon was also pleased because he was picked to be an escort for the match against Notts Forest on 12th January. (We can't stop him talking about it now!)

We never expected Wayne Turner, Gary Parker, Paul Elliott and Mitchell Thomas to turn up so we would like to thank everyone for a brilliant evening.

I would also like to thank Paul Elliott for being so kind to me and my friends while we were in the L&D Hospital in October, we found him great company as he gave us confidence when we were having our operations! (Get well soon Paul!) Thank you once again for a great evening.

Tracy Wilmot (aged 16), Leighton Buzzard.

P.S. I enclose a photo of our dog, Majek. As you can see, he is an ardent Luton supporter, just like me!



Variety Club of Great Britain, Welwyn Garden City

Dear Mr Tomlins

The Variety Club of Great Britain would be delighted if, through the medium of your programme, you would give our very grateful thanks to Luton Town Football Club for allowing us to arrange the presentation of a Sunshine Coach to Woolgrove School, Letchworth.

The coach was very kindly donated by one of your directors Mr Terry Bailey, who apart from being an incredible Luton Town supporter, is also a most generous supporter of Variety Club, and through his help many thousands of handicapped and underprivileged children benefit each year. The presentation of the Sunshine Coach is just one example of his great generosity. Yours sincerely

John Ratcliff, Chief Barker Elect.

Dear Sir

I went to watch Luton play Coventry City today, and the team were giving away footballs, Mitchell Thomas kicked a ball into the crowd. I went to catch it, but it hit me in the face (it might not have happened if I trained for a keeper instead of a midfielder). Mitchell came over to see me and asked me if I was OK and said he would get me a football, but they had all gone. I had told my Mum that when the ball hit me I saw stars, she said it wasn't the Luton players. I have told her off and made her have an early night in bed with my Dad.

As compensation, could I have a football Mum said this is the season of goodwill, so it's worth asking. My face really hurts. Yours sincerely

Steven Eagles

EDITOR: Thank you for your funny letter Steven, to save any more embarrassment to your Mum we have a stationary football at our offices awaiting your collection.

EXECUTIVE MEMBERS

- ANACHEM LTD
- A1 HEATING (WHOLESALE & RETAIL) LTD
- MR W. ASHBURNER

- BEARD & MANNING CATERING SERVICES LTD
- BEDFORD COMMERCIAL VEHICLES
- BERVALE MEAD INSURANCE BROKERS LTD
- BERKELEY ASSOCIATES
- BLAKEY ENGINEERING CO LTD
- BLUE ARROW SERVICES
- BRENGREEN HOLDINGS PLC
- BROAD STREET PRINT

- CANVERMOOR PLC
- CLEANDUSTRIAL SERVICES LTD
- GARY CHAMBERLAIN WINDOW FASHIONS

- DUPONT (UK) LTD

- FILMERGRAPHIC ASSOCIATES LTD
- FINE STAMPS LTD
- N. S. FOOKES GROUP (PLANT FACILITIES) LTD

- BRIAN E. HANDSCOMBE (LIFE & PENSION BROKERS)
- E. W. HUDSON (HOLDINGS) LTD
- IVOR HOLMES LTD

- INFORMATION TECHNOLOGY LTD

- MARK JAMES (SALVAGE) LTD

- JOHN LAING CONSTRUCTION LTD
- RICHARD C. LARKINSON (CAMBRIDGE) LTD
- MR P. LAYCOCK

- NEAHURST LTD

- OPELVALE GROUP

- MR & MRS PEARSON
- F. W. PEARCE BUILDERS LTD
- PETERS GRAVES & CO
- PILCOURT LTD
- DR & MRS G. L. PLESTER
- PRIORY FARM FOODS

- DAVID RAND & CO LTD
- RAVENMERE LTD
- RICHARDSON & BOTTOMS LTD
- RICHMOND ELECTRONICS (MARKYATE) LTD
- ROBINSON METAL (LUTON) LTD
- ROGERS RESIDENTIAL SALES

- SHAW & KILBURN
- SHOREYS TRAVEL

- TRITRADE LTD

- R. W. UNWIN & CO LTD

- VAUXHALL MOTORS LTD

- WALLSPAN BEDROOMS
- WEBBEX LTD
- MR J. H. WEBB, INVESTMENT CONSULTANT
- WHITE'S STATIONERS LTD

- YARNSFIELD LTD

THE FULL ADDRESSES AND SERVICES OF OUR EXECUTIVE MEMBERS CAN BE OBTAINED THROUGH OUR COMMERCIAL OFFICES — LUTON TOWN FOOTBALL CLUB

SPONSORED BY THE HERALD NEWSPAPER AND CHILDREN RADIO - THE HERALD NEWSPAPER AND CHILDREN RADIO



SCOTT KELLY



DAVID CHANCE



SHAUN MARK



MARTIN WOOLMER



ASHLEY HUDSON

A warm welcome to today's game to all Junior Hatters and their parents and a special welcome to today's mascot and escorts.

Our mascot is Scott Kelly aged seven from Luton. Scott attends Someriers Junior School and his interests are swimming and computers.

ESCORTS

David Chance aged 11 from Luton attends Icknield High School. He plays football for 3rd Someriers Scout Group and his interests are football, rugby and tennis and he enjoys most other sports.

Shaun Mark aged eight from Caddington attends Heathfield Juniors Caddington. He plays football for his school team and Markyate West End FC. His interests are football and any gymnasium games.

Martin Woolmer aged nine from St Albans attends Gunningham Hill Junior School. He plays football for Don Bosco FC and 2nd St Albans Cubs. His interests are football, swimming and fishing.

Ashley Hudson aged 11 from Luton attends Stockwood High School. His interest is football.

Ricky McEvoy
Marcus Tuite



FORTHCOMING MATCHES AT KENILWORTH ROAD
Saturday 12th January

CANON LEAGUE DIVISION ONE

v

NOTTINGHAM FOREST
Kick-off 3 pm

Tuesday 15th January FOOTBALL COMBINATION

v

SWANSEA CITY
Kick-off 2 pm

Seats for the Nottingham Forest game are available now from our Ticket Office priced £5, £4, £3 (£2 for Juvenile and Senior Citizens in the Main Stand Enclosure) Postal applications must contain SAE. 24 hour Booking Service accepted by Credit Card (Access and Visa) on Luton 30748.

MATCHBALL SPONSOR

Today's matchball is sponsored by Ivor Holmes Limited, main BMW dealers for Luton and surrounding areas. The company's reputation is built on the personal attention offered to its customers. New and used cars are always available with leasing facility service and a first-class back-up is provided by the service and parts operation which is on hand six days a week.

In addition a petrol sales service is available seven days a week from 7.30 am to 10 pm.

We thank Ivor Holmes, a vice-president of the Town, and his wife Peggy for their support.

HATTERS TRAVEL

Our next away fixture is on 19th January 1985, when we travel to Stoke. Why not join us on our luxury coaches, sit back enjoy the journey and relax. Coaches depart from Maple Road Car Park at 10.15 am and the inclusive price is £4.50. For membership details ring Luton 412418.

REFEREE

Darryl Reeves. Manager, A. Sanderson and Sons. Married with two children. Commenced refereeing in 1961 and progressed via Spartan and Isthmian Leagues. Interests include coarse fishing and listening to popular music. Refereed the 1973 Varsity match and has officiated in the Home Championships.

Linesmen:
R. Pawley and C. T. Kelly

FA CUP THIRD ROUND

In the event of today's game being drawn, the replay will be on Wednesday 9th January, kick-off 7.30 pm. Tickets for this game will be on sale in the Ticket Office directly after today's game.

Saturday 15th December 1984 Football Combination LUTON TOWN 3 ARSENAL 0

We started the game with a fair amount of aggression, so as not to concede a goal in the early stages. Solid at the back, feeling our way into the game, and expressing ourselves as we realised we are our opponents equals. Young players sometimes go on to the field in awe of a club like Arsenal, but this time we seemed determined to show we were best on the day.

Three times in the first half they threatened our goal without being able to seriously trouble our goalkeeper.

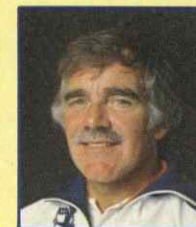
At the other end we were not fairs a lot better, our best chance had been well saved by Pat Jennings. However, three minutes from half time we snatched the lead from a corner that was deflected and knocked in on the volley by Emeka Nwajobi. Half-time 1-0.

At the start of the second half we set about our task with a lot more purpose, and attacked them with flair and relish. Some of our best flowing moves failed to produce a second goal, and we had to wait until the 58th minute before Emeka latched onto a rebound to knock it in.

Four minutes later Emeka scored the best of his three goals and brought everyone to their feet to applaud. Picking up a through pass ten yards inside their half he set off for goal, out-running their defenders he dummied the



JOHN MOORE



DAVID COATES

goalkeeper, and had him lying on the ground before rounding him to roll the ball in.

Emeka was the goalscoring sensation, but there was eleven heroes who contributed to a very solid all round team performance.

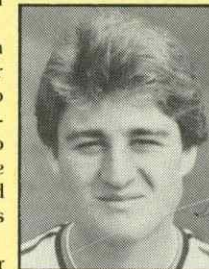
TEAM: North M, Johnson, Ellisdon, McEvoy, North S, McAllister, Tuite, Stein M, Oldfield, Daniel, Nwajobi.

SUB: Cobb. **SCORER:** Nwajobi 3.

INTERNATIONAL HONOURES

Congratulations to our two apprentice professionals. Ricky McEvoy and Marcus Tuite on their selection for the Eire Youth XI to play Northern Ireland on Tuesday 15th January 1985 in Dublin.

Quite an honour for these two young midfielders who both have recently found themselves playing regularly for our Reserves.



RICKY McEVOY



MARCUS TUIE

Anglia Television

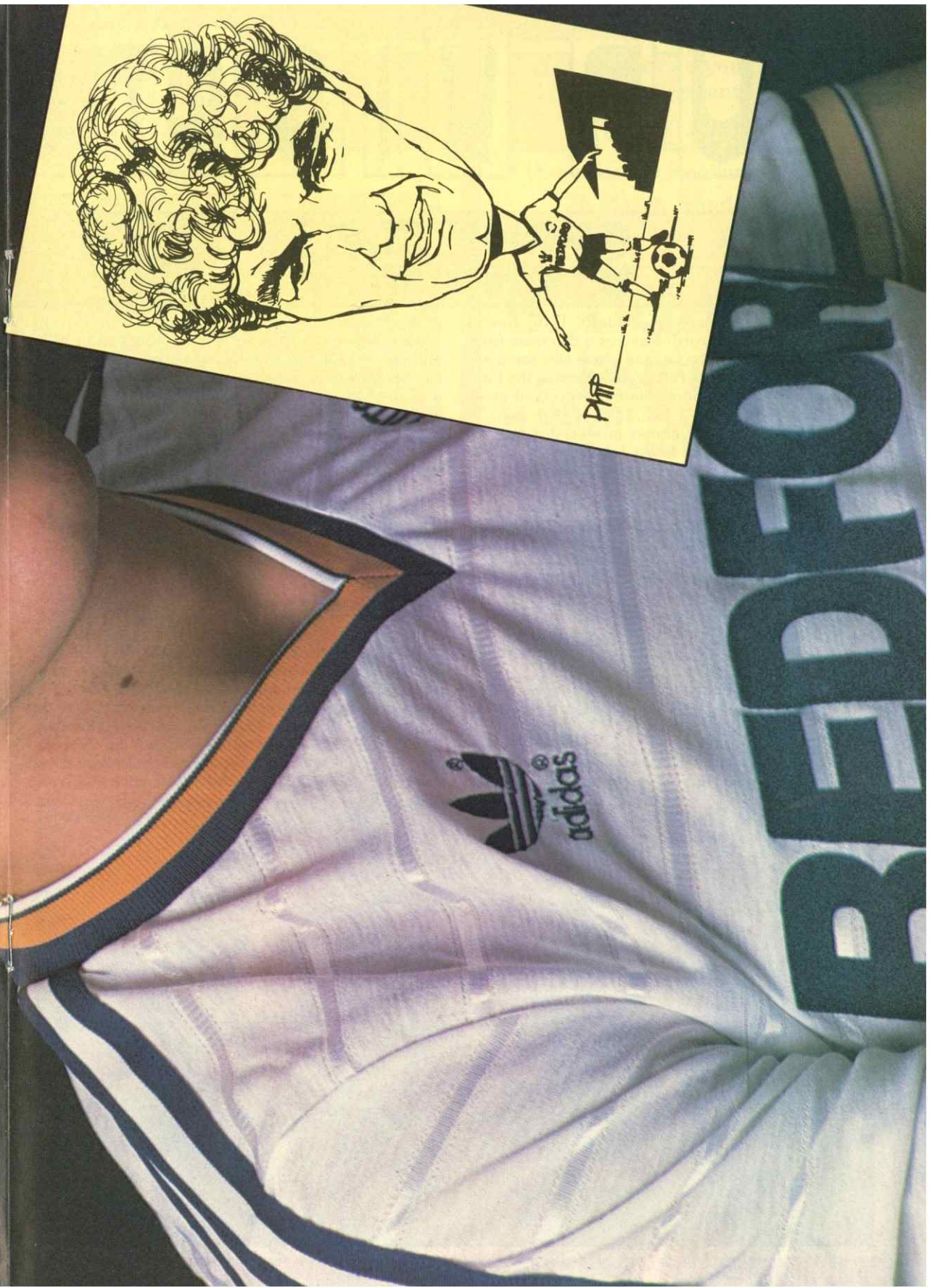
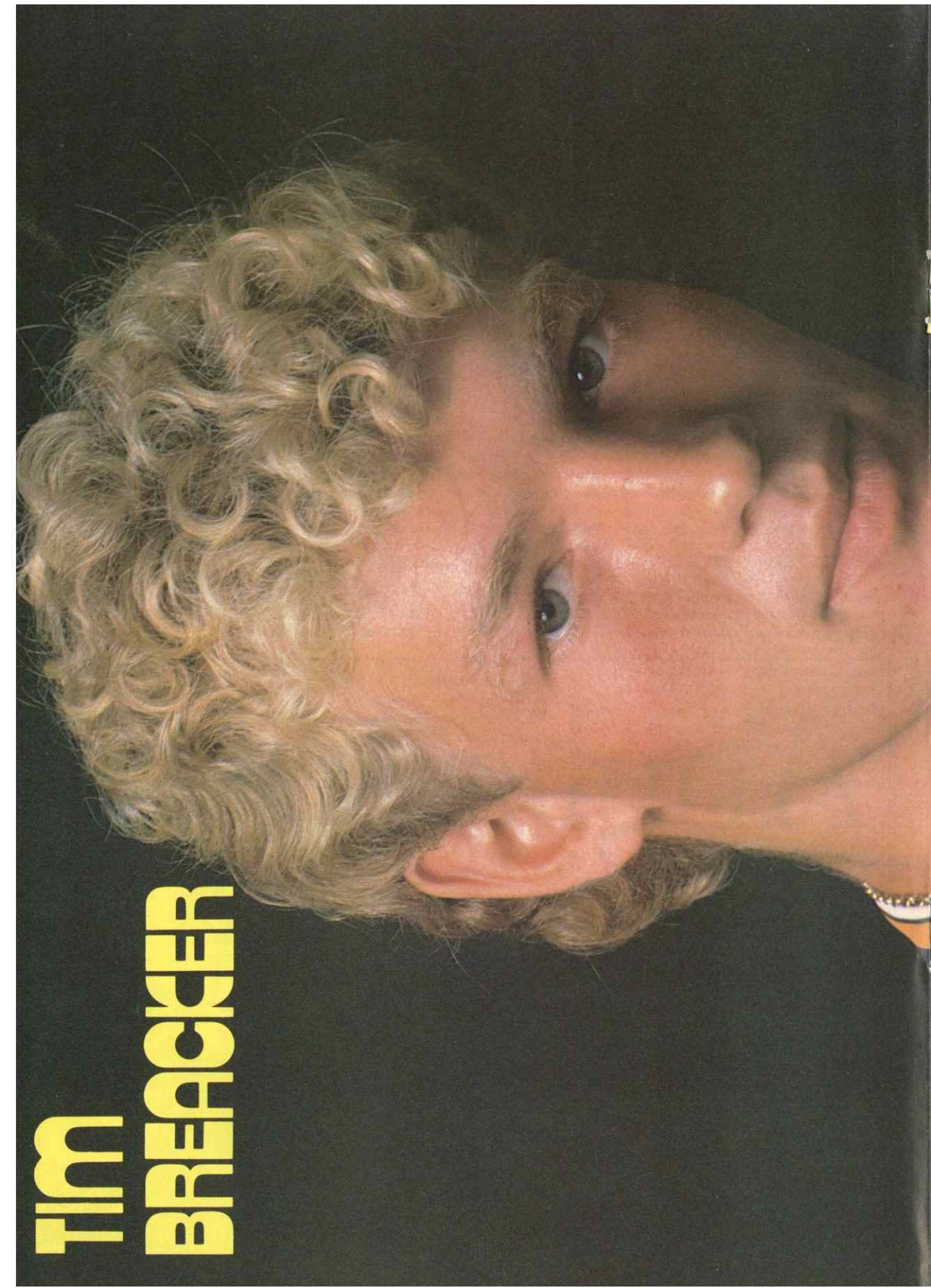
Proud to serve the East of England.



CLUB INFORMATION:

- ☎ OFFICE HOURS 9 am-5 pm
LUTON (0582) 411622
- ☎ ADVERTISING & PROMOTIONS RING - MIKE BEEVOR
PROJECTS & ADVERTISING EXECUTIVE
LUTON (0582) 411622
- ☎ SOUVENIRS - TRAVEL - JUNIOR HATTERS
LUTON (0582) 412418
- ☎ MATCH TICKETS & LOTTERY ENQUIRIES
RING - JOHN GORNALL,
DEVELOPMENT EXECUTIVE
LUTON (0582) 30748
- ☎ BANQUETING & FUNCTION FACILITIES
RING - CLIVE HUSTWITT,
CATERING MANAGER
LUTON (0582) 411526
- ☎ MATCH ENQUIRIES - 24-HOURS SERVICE
LUTON (0582) 33010

TIM BREACKER



OUR VISITORS



STOKE CITY



Stoke will probably welcome today's Third Round FA Cup visit to Kenilworth Road as a diversion from the harsh realities of the League which saw them approach the New Year cut off from the rest of the First Division and with few immediate prospects of making up lost ground.

City's first 19 League games produced a meagre haul of just eight points and a 1-1 draw at Chelsea just before Christmas ended a disastrous 10 match losing sequence.

Manager Bill Asprey, who had seen his team escape the drop into the Second Division by the skin of its teeth last May, probably realised the side was on for another struggle for survival when the season kicked-off at Kenilworth Road back in late August.

City lost that opening game 2-0 and not much has gone right for them since. They did beat Sheffield Wednesday 2-1 a week after the Luton match but that was their only win over the first four months of the season.

Even the Milk Cup did not improve matters with a defeat over two legs by Third Division Rotherham United in the second round putting Stoke out.

So the FA Cup offers City their only chance of some light relief before its back to the grindstone of battling for First Division survival over the remainder

of the season.

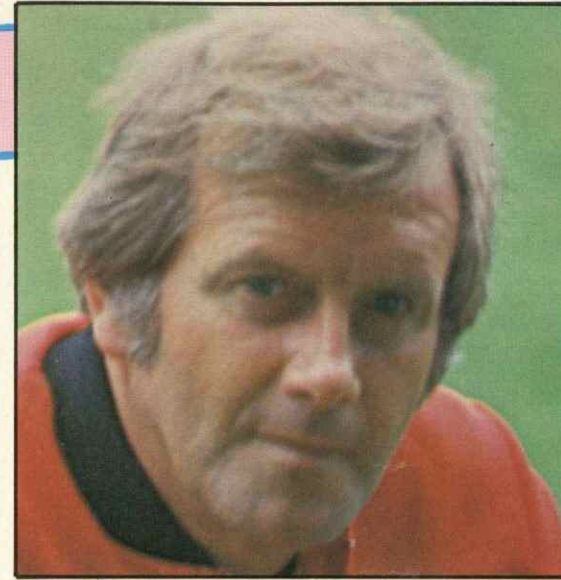
Just before Christmas Stoke launched a £½ million appeal to raise much needed cash with which to strengthen the side, the money being paid back over the next ten years. The success of that survival package could determine City's short term future because the emphasis over the first half of the season at the Victoria Ground has largely been placed on youngsters.

In the early weeks of the season the team consisted of no fewer than six teenagers, a fair proportion taken from last season's side that reached the FA Youth Cup Final, losing to Everton.

Chris Maskery 19, Steve Parkin 18, Philip Heath 19, Ian Painter 19, Chris Hemming 18 and Wayne Ewbanks 19 — signed on loan from West Bromwich Albion were all entrusted with key roles.

More recently, City have gone back to experience, signing striker Keith Bertschin from Norwich and goalkeeper Joe Corrigan on loan from Brighton as a replacement for regular goalkeeper Peter Fox who was forced out through injury.

Money for the Bertschin move was largely funded through the sale of Welsh international Robbie James to Queens Park Rangers and Stoke would no doubt be forced to listen to offers for their England



BILL ASPREY

winger Mark Chamberlain if his departure meant money was on hand for strengthening the team.

Stoke's poor League form has put added pressure on other older heads in the side like Northern Ireland midfielder Sammy McIlroy and Alan Hudson who returned to the Potteries towards the end of last season after leaving Stoke for spells with Arsenal, in the States and at Chelsea.

Brendan O'Callaghan has been switched between the centre of defence and a more forward role in a bid to find more fire power up front with a defence built round former Coventry man Paul Dyson and ex-Wolves defender George Berry who returned to the Victoria Ground after a brief loan spell with Doncaster in the early weeks of the season.

Stoke's first ten away matches of the season produced only four goals and their scoring rate at home, eleven goals in their first nine games, was the second lowest in the top Division illustrating the importance put on Bertschin's signing.

Considering they were founder members of the Football League back in 1888, Stoke's record in the FA Cup is undistinguished. They were beaten semi-finalists back in the last century and had two memorable Cup runs a decade ago when they lost on both occasions to Arsenal with Wembley one match away.

But that apart, and leaving aside City's League Cup success in 1972, Stoke have struggled to make an impact in the Cup and the club must be hoping that today's encounter at the start of a New Year sees better things ahead after such a poor start to the season.



For all your
Floral arrangements contact:

INBLOOM

(Suppliers to Kenilworth Suite)

76 Marsh Road, Luton

Telephone: 584244

B. DOHERTY SKIPHIRE

34 MOUNT PLEASANT ROAD
LUTON

Telephone: 54633 and 54799

SHOREY'S TRAVEL



LUXURY
COACH HIRE
FOR FOREIGN &
UK EXECUTIVE
COACHES

COMPETITIVE RATES · FRIENDLY SERVICE · LOCAL BASED

28 Sheepfold Hill, Flitwick, Bedfordshire
Telephone: Flitwick 713289 Silsoe 60694

MARTIN SMITH MOTORS

USED COMMERCIAL VEHICLE SALES

REPAIRS · SERVICING · MOT TESTING

LEAGRAVE MARSH GARAGE
MOUNT PLEASANT ROAD
LEAGRAVE, LUTON

Telephone: Luton 574455 or 572806

Cleandustrial Services Ltd

The Professional Approach to
Your Cleaning Problems

84 Aldermans Hill N13

Official Cleaning Contractors to
Luton Town FC

Telephone: 01-882 4626

BACKTRACK

Saturday 29th December 1984
LIVERPOOL
 v
LUTON TOWN
 Score: 1-0
 Attendance: 35,403



JOHN WILKINSON

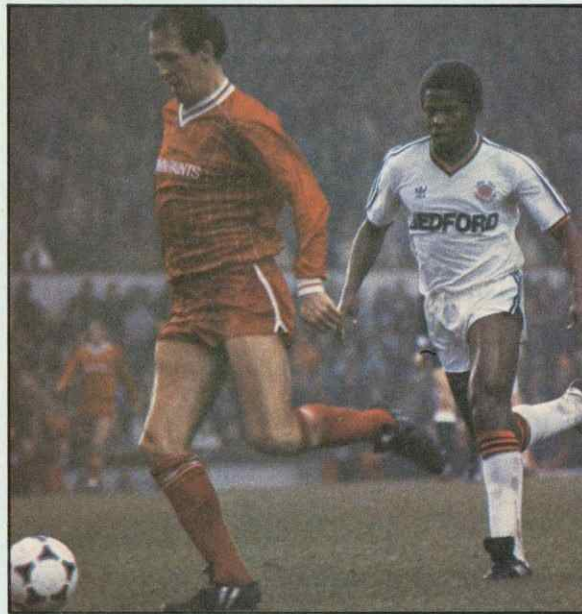
This match saw Liverpool's England international full-back Phil Neal make his 800th League appearance and he was given a warm reception when he led out the home side. Unfortunately that was the only warm thing of the whole afternoon. With a dull grey sky and rain falling the game did nothing to warm up both sets of supporters. It was amazing to see the number of skilful players on both sides failing to master the wet conditions and that they simply gave the ball away with their final passes. In fact it was 25 minutes before Les Sealey was called on to make a save. A cross from the right was not cleared properly by the goalkeeper and from the ensuing scramble the ball was eventually knocked away from a corner. This was taken on the left by Dalglish and a glancing header by John Wark just eluded Sealey's dive to enter the net at his left-hand post. It was not until seconds before half-time that the Town caused any problems to the home defence. They forced two consecutive corners but the danger passed when Steve Foster was alleged to have fouled Grobbelaar. The second-half was a repeat of the first with both sets of players still failing to cope with the wet conditions and were still giving the ball away. Neither goalkeeper had a difficult save to make and with a quarter of an hour to go the Town brought on Nwajobi for Daniel but the Town attack still didn't play with any confidence. Both Walsh and Dalglish missed sitters for the home side and with just six minutes from the end the Town had two half chances to snatch a point. Firstly Brian Stein had a great run down the left-wing leaving two defenders sliding around but unfortunately he pulled the ball back from the goal line directly to Hansen who easily cleared. Then a similar play this time on the right saw Ricky Hill's forceful run to the goal line come to nothing as his pull back was again cleared by the defenders. This was not a game which will be remembered by players or spectators but it must be said that Tim Breacker had a good match and stood out in the gloom like a beacon. Not far behind him came Steve Foster who coped with the speed and trickery of Walsh effectively. Two players were booked, Mitchell Thomas for a foul on Nichol and Dalglish for a silly foul on Les Sealey.

LIVERPOOL: Grobbelaar, Neal, Kennedy, Gillespie, Nichol, Hansen, Dalglish, Whelan, Walsh, McDonald, Wark. **Sub:** Johnson.

LUTON TOWN: Sealey, Breacker, Thomas, Turner, Foster, Donaghy, Hill, Stein, Harford, Daniel, Bunn. **Sub:** Nwajobi.



Frank Bunn's strength of play, denies Alan Hanson from a high ball clearance.



Pressure from Hatter's midfielder Ray Daniel forces a long back pass from Liverpool's captain Phil Neal.



Wayne Turner and Mitchell Thomas link up on a midfield build-up for the Town during the first-half.



Mitchell Thomas contains Craig Johnson in first-half action.

TODAY'S MATCH SPONSOR

R. W. UNWIN & CO LTD

Pharmaceutical and Fine Chemicals

and

Chemical Intermediates



**PROSPECT PLACE
 WELWYN
 HERTS
 AL6 9EW**

Telephone:
Welwyn (0438 71) 6441/2/3/4

AROUND THE TOWN

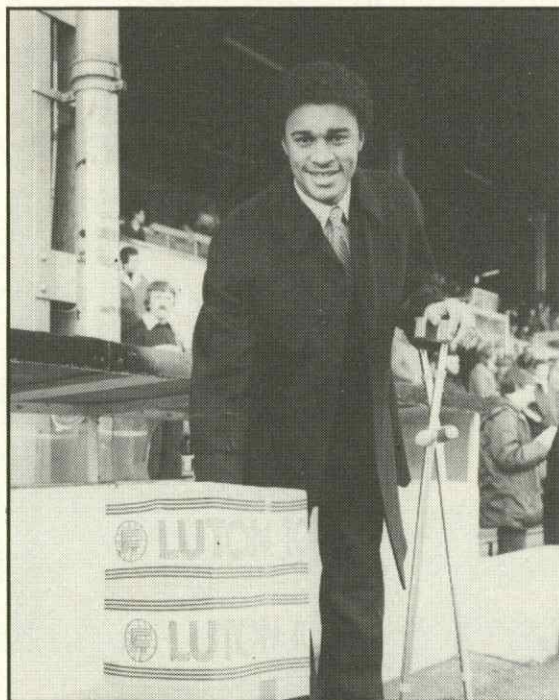
MATCH SPONSOR

Today's match is the fifth game that R. W. Unwin and Company have sponsored at Kenilworth Road and today as on the previous four occasions Ron is using the day as a treat for the children from the National Children's Home, Harpenden.

Ron, a Vice-President of the club organised a really special day for the kids, not only will they enjoy the benefits that sponsors receive such as a tour behind the scenes, exclusive seat in the stand, and the opportunity to meet up with the players afterwards. Ron has arranged with manager David Pleat for the use of the club's luxury executive coach to escort the children to and from the game.

In addition in conjunction with the *Herald Newspaper* and Chiltern Radio, Ron has devised a competition to include Junior Hatters 40 of whom will be joining together with the party from the National Childrens Home.

Sounds a great day for the kids and our grateful thanks go to Ron Unwin and his wife Iris and we trust that R. W. Unwin and Company, a private company engaged in the manufacture and distribution of fine pharmaceutical and chemical intermediates on a world wide basis, will continue to flourish.



GRAND CHRISTMAS DRAW

Paul Elliott who is currently sidelined with a broken leg, but is making rapid progress to fitness is seen drawing one of the tickets in our Christmas draw. May we take this opportunity to thank all those people who took part, for making it a success, and also to Paul for taking time out and making it a Happy Christmas for 15 lucky winners.

Look below to see if you were one of our 'Lucky 15' winners of our fabulous cash prizes.

1st	50931	£1,000	Betty Clarke, 141B Wendover Road, Stoke Manderville
2nd	08365	£250	T. Radon, 5 Aydon Road, Luton
3rd	43496	£250	Miss S. Mills, 86 Reeds Avenue, Reading
4th	10996	£100	Donna Cunningham, 146 Alburgh Close, Bedford
5th	08954	£100	Paul Denton, National Westminster Bank, Luton

6th 36736 £50

7th 22837 £50

8th 39260 £25

9th 39261 £25

10th 10759 £25

11th 41927 £25

12th 14932 £25

13th 14928 £25

14th 46691 £25

15th 53725 £25

Harold Edwards, 'Cavendish House', High Street, Markyate

M Self, 22 Home Close, Marston, Beds.

D. Robson, 6 Brook Lane, Great Barford, Beds.

G. Hills, 5 Northfield Avenue, Ringstea, Kettering

B. Lecoche, 30 Bushmead Avenue, Bedford

G. Searl, 45 Francis Avenue, St Albans

K. Searl, 45 Francis Avenue, St Albans

RAOB Winston Churchill Lodge, St Albans

D. Lines, 29 Corner Wood, Markyate, Nr. St Albans

M. McGraa, 7 Tiffany Close, Bletchley

NICE TO SEE YOU 'BASHER'

Our Boxing Day match against Coventry, gave us all a chance to give a warm welcome to Kirk Stevens. His first visit back to play at Kenilworth Road, since his departure in the summer. Talking to Kirk after the match, he was quite overcome by your warm response he received when he came out, and would like to send his best wishes to everyone at Luton for the New Year.



No doubt quite a few Luton fans were pleased to hear on Saturday when Coventry played West Ham, that Kirk found the back of that elusive net. An event that always delighted Hatters fans at Kenilworth Road. Well done 'Bash' we all wish you every success at your new club.

'TWO FOSTERS FOR THE PRICE OF ONE'

When your name's the same as a famous lager, you can understand why NURDEN & PEACOCK trade



wholesalers of Sundon Park Road, called upon our captain Steve Foster to promote their special trade offer on Foster lager. Our players are often required to promote many products for different companies . . . This one brought a smile to Steve's face and David Pleat quite liked the caption too.

'MATCH OF THE DAY'

Obviously . . . John Motson's choice of Match of the Day was Luton v Coventry. Smiles all round after our Boxing Day win, when John kindly presented a souvenir football to Mr Iddenden, guest of our Executive Sponsors, Ray Beresford of RBT Electrics Limited after the game.



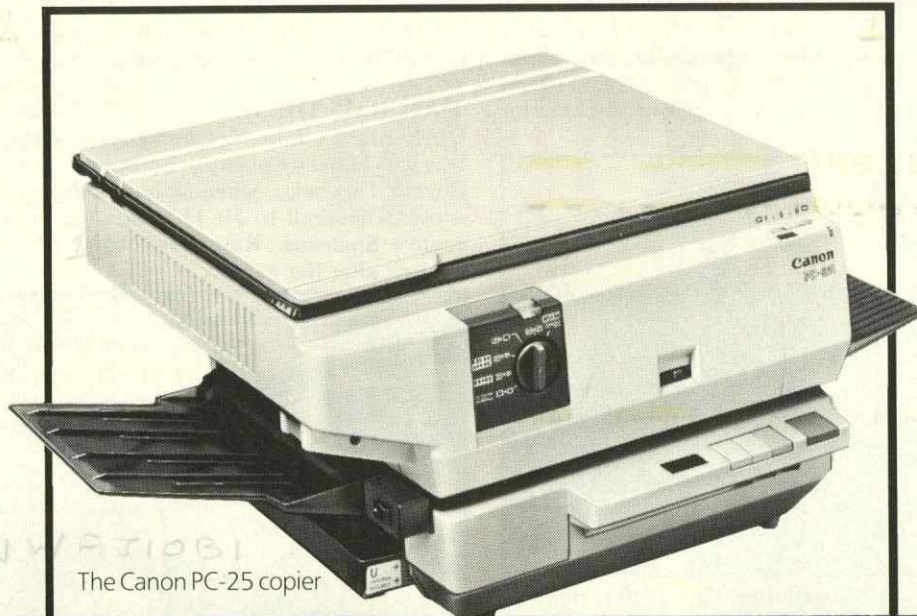
John as you know, as well as BBC's Sports presenter is renowned for his knowledge on football facts. He reminded us that our win against Coventry was our 1,001 win since the club was formed in 1885. Thanks for the facts John . . . Obviously you read Luton's 'Back Track' as well.

ON THE BALL

Two extra Christmas presents for Luton Town fans on Boxing Day . . . three essential points in the bag, plus 100 leather footballs. The footballs were kicked into the crowd by the players and staff just before kick-off.

Our picture shows Wayne doing the honours for some lucky Oak Road supporter.





The Canon PC-25 copier

**So reliable
you'll never need
a substitute.**



**Canon
Personal Copiers**

We'll help you look good on paper.

MANUFACTURERS OF COPIERS, CAMERAS, ELECTRONIC TYPEWRITERS, CALCULATORS, COMPUTERS, FACSIMILE AND MICROFILM EQUIPMENT

WHERE ARE THEY NOW

CHRIS NICHOLL

Alec Stock couldn't wait to get Chris Nicholl's signature on a form after an impressive display at centre-half for Halifax against the Town in 1969. This tall imposing man fulfilled the promising future that Alec predicted for him. He started his career by joining Burnley as a junior but didn't show up very well at Turf Moor. Whilst playing for Wilton Athletic Halifax persuaded him that he had a future at 'The Shay'. He made 43 appearances for them before joining the Town. In his two and a half years at Kenilworth Road he made 98 appearances and scored six times, but it was at his next two clubs that he really made the big times. Five seasons at Aston Villa and three at Southampton saw him make over 360 League appearances and he won over 30 Northern Ireland international caps. Chris is now applying his skill in defence at Grimsby Town where he is the Assistant Manager.

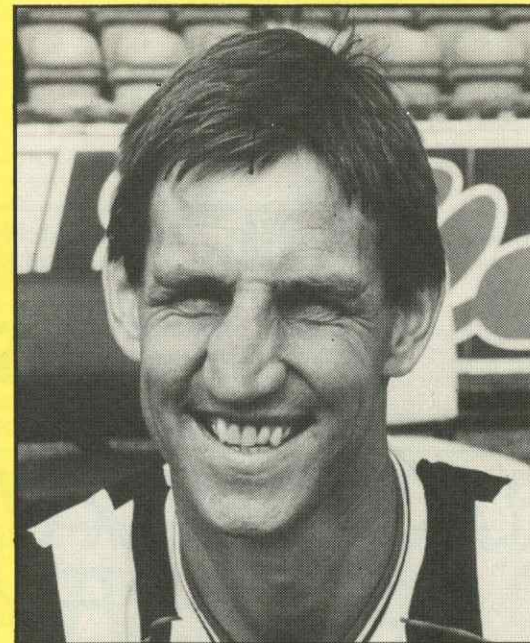


PHOTO FILE

Four photographs of different eras showing important action for and against Luton Town.



Terry Kelly (number four), John Groves and the late Gordon Turner in a goalmouth incident in a match against Portsmouth. The player on the extreme left is the late Jimmy Dickinson the player who's name will never be forgotten in the Portsmouth area in fact in any area.



Two former Luton favourites Alan Garner and Vic Hallom in action against each other when Luton played Sunderland.



Luton v Norwich FA Cup semi-final at White Hart Lane, Crossan the Norwich number seven scores but the goal is disallowed.



Alan Brown later to become the Town's manager has calmly headed the ball past Adam Blacklaw the Burnley goalkeeper for Luton's third goal and his second. Alan went on to get his hat-trick in this 6-2 win. The Town player in the background is outside left Tony Gregory.



RECORD

FOOTBALL COMBINATION FIXTURES 1984-85

Date	Opposition	F	A
Aug 25	Swansea	7	2
Sept 1	Tottenham	0	3
Sept 5	Birmingham	4	1
Sept 11	Brighton	0	4
Sept 15	Southampton	5	1
Sept 22	Oxford	2	0
Sept 29	Charlton	9	1
Oct 2	Chelsea	1	2
Oct 6	Norwich	4	4
Oct 9	QPR	4	2
Oct 17	Reading	2	3
Oct 27	Fulham	3	1
Nov 10	Bristol Rovers	1	1
Nov 17	Ipswich	1	0
Nov 24	Watford	1	4
Nov 27	Portsmouth	4	2
Dec 8	West Ham	2	1
Dec 15	Arsenal	3	0
Dec 28	Crystal Palace	2	1
Jan 12	Tottenham		
Jan 15	Swansea		
Jan 19	Birmingham		
Jan 22	Brighton		
Feb 2	Southampton		
Feb 9	Oxford		
Feb 12	Charlton		
Feb 19	Chelsea		
Feb 23	Crystal Palace		
Feb 27	Bristol Rovers		
Mar 5	Fulham		
Mar 9	Reading		
Mar 16	QPR		
Mar 20	Norwich		
Mar 26	West Ham		
Mar 30	Portsmouth		
April 13	Watford		
April 16	Swindon		
April 23	Ipswich		
April 27	Millwall		
April 30	Millwall		
May 11	Arsenal		
TBA	Swindon		

CANON LEAGUE DIVISION ONE 84-85

	Home					Away					Pts	
	P	W	D	L	F	P	W	D	L	F		
Tottenham	23	7	3	1	29	12	7	1	4	18	11	46
Everton	23	7	3	2	31	15	7	1	3	18	14	46
Manchester United	23	8	3	1	29	8	4	2	5	17	21	41
Arsenal	23	8	3	1	25	9	4	0	7	18	21	39
Sheffield Wednesday	23	6	4	1	23	13	4	4	4	14	11	38
Southampton	23	6	2	3	11	10	4	5	3	18	17	37
Nottingham Forest	23	8	1	2	23	13	3	2	7	13	21	36
Chelsea	23	8	1	3	26	12	1	7	3	13	16	35
Liverpool	23	4	4	3	13	9	5	4	3	16	13	35
WBA	23	7	2	2	24	11	3	2	7	13	23	34
Norwich City	23	7	3	1	20	10	2	3	7	10	20	33
West Ham United	23	5	3	4	15	12	3	4	4	15	22	31
Watford	23	4	4	4	26	22	3	4	4	19	20	29
QPR	23	5	4	2	21	14	2	4	6	9	23	29
Leicester City	23	6	2	4	29	18	2	2	7	13	27	28
Aston Villa	23	6	4	2	20	13	1	3	7	11	25	28
Newcastle United	23	6	3	3	21	15	1	4	6	16	30	28
Sunderland	23	6	2	3	17	13	1	3	8	12	22	26
Ipswich Town	23	4	4	4	15	15	1	3	7	6	18	22
Coventry City	23	5	3	4	15	13	1	1	9	10	29	22
Luton Town	23	4	4	3	16	13	1	2	9	11	30	21
Stoke City	23	2	2	7	13	24	0	3	9	4	28	11

FOOTBALL COMBINATION 1984-85

	P					Pts	
	W	D	L	F	A		
Watford	19	13	3	3	49	27	29
Queens Park Rangers	18	11	4	3	51	24	26
Tottenham Hotspur	18	12	2	4	64	38	26
Luton Town	19	12	2	5	55	33	26
Arsenal	18	9	4	5	43	29	22
Southampton	17	9	4	4	40	33	22
Chelsea	14	9	3	2	27	15	21
Brighton	15	8	4	3	30	18	20
Ipswich Town	17	9	2	6	25	13	20
West Ham United	19	6	5	8	30	21	17
Oxford United	19	6	5	8	29	38	17
Millwall	16	6	4	6	22	26	16
Norwich City	19	4	8	7	36	41	16
Reading	16	6	0	10	25	40	12
Charlton Athletic	15	5	2	8	20	41	12
Swansea City	14	3	5	6	19	30	11
Crystal Palace	18	4	3	11	21	40	11
Swindon Town	15	4	2	9	15	34	10
Portsmouth	15	2	5	8	15	24	9
Fulham	13	3	2	8	14	19	8
Birmingham City	12	2	3	7	13	23	7
Bristol Rovers	18	2	2	14	24	59	6

SOUTH EAST COUNTIES LEAGUE FIXTURES 1984-85

Date	Opposition	F	A	Date	Opposition	F	A	Date	Opposition	F	A
Aug 25	Swindon	0	0	Oct 20	Wimbledon	4	2	Jan 5	Brighton		
Sept 8	West Ham	3	1	Nov 3	Tottenham	7	1	Jan 12	Bristol Rovers		
Sept 15	Brentford	3	2	Nov 10	Brighton (LCR2)	3	5	Jan 19	Crystal Palace		
Sept 22	Brighton	0	0	Nov 17	Reading	P		Jan 26	Wimbledon		
Sept 29	Reading (LC1)	4	1	Nov 24	Southend	P		Feb 19	Tottenham		
Oct 6	Bristol Rovers	2	0	Dec 1	Oxford	7	1	Feb 16	Reading		
Oct 13	Crystal Palace	2	2	Dec 8	Swindon	2	0	Feb 23	Southend		
Oct 19	Tottenham	3	6	Dec 22	West Ham	3	4	Mar 2	Oxford		
	(SJFC)			Dec 29	Brentford	2	0				

FIRST TEAM RESULTS

Date	V	Opposition	F	A	Att	Pos
Aug 25	H	Stoke City	2-0	8,626	—	
Aug 28	A	Ipswich Town	1-1	15,331	—	
Sept 1	A	West Bromwich Albion	0-4	11,720	10	
Sept 4	H	Liverpool	1-2	14,127	13	
Sept 8	H	Southampton	1-1	8,657	17	
Sept 16	A	Nottingham Forest	1-3	18,605	19	
Sept 22	H	Chelsea	0-0	16,066	19	
Sept 25	A	Orient (MC2 1L)	4-1	4,500	—	
Sept 29	A	Tottenham Hotspur	2-4	30,204	—	
Oct 6	A	Queens Park Rangers	3-2	12,051	19	
Oct 9	H	Orient (MC2 2L)	3-1	3,374	—	
Oct 13	H	Sheffield Wednesday	1-2	10,285	19	
Oct 20	H	Watford	3-2	10,192	19	
Oct 27	A	Sunderland	0-3	19,280	20	
Oct 30	H	Leicester City (MC3)	*3-1	8,015	—	
Nov 3	H	Newcastle United	2-2	10,009	20	
Nov 10	A	Norwich City	0-3	14,395	20	
Nov 17	A	Manchester United	0-2	42,776	21	
Nov 20	A	Sheffield Wed. (MC4)	2-4	18,313	—	
Nov 24	H	West Ham United	2-2	10,789	21	
Dec 1	A	Arsenal	1-3	26,366	21	
Dec 8	H	Aston Villa	1-0	7,696	21	
Dec 15	A	Leicester City	2-2	10,476	22	
Dec 18	H	West Bromwich Albion	1-2	7,286	22	
Dec 26	H	Coventry City	2-0	9,237	19	
Dec 29	A	Liverpool	0-1	35,408	19	
Jan 1	A	Everton	1-2	31,682	21	
Jan 5	H	Stoke City (FAC 3)				
Jan 12	H	Nottingham Forest				
Jan 19	A	Stoke City				
Jan 26		(FAC 4)				
Feb 2	H	Tottenham Hotspur				
Feb 9	A	Southampton				
Feb 16	H	Norwich City (FAC 5)				
Feb 23	A	Newcastle United				
Mar 2	H	Sunderland				
Mar 9	A	Watford (FAC 6)				
Mar 16	A	Sheffield Wednesday				
Mar 23	H	Queens Park Rangers				
Mar 30	H	Ipswich Town				
April 6	A	Coventry City				
April 9	H	Everton				
April 13	A	Chelsea (FAC SF)				
April 20	H	Manchester United				
April 27	A	West Ham United				
May 6	A	Aston Villa				
May 11	H	Leicester City				

1984-85 RESULTS · ATTENDANCES · APPEARANCES · GOALSCORERS

	1	2	3	4	5	6	7	8	9	10	11	12
Aug 25	Dibble	Thomas	Grimes	Breacker	North S	Donaghy	Hill	Stein B	Elliott S ¹	Bunn ¹	Moss	Turner
Aug 28	Dibble	Thomas	Grimes	Breacker	North S	Donaghy	Hill	Stein B	Elliott S	Bunn +	Moss ¹	Nwajobi
Sept 1	Dibble	Thomas	Grimes	Breacker +	North S	Donaghy	Hill	Stein B	Elliott S	Bunn	Moss	Nwajobi
Sept 4	Dibble	Thomas	Grimes	Breacker	Elliott P	Donaghy ¹	Hill	Stein B	Elliott S +	Turner	Moss	Nwajobi
Sept 8	Dibble	Thomas	Grimes	Parker	Elliott P	Donaghy	Hill	Stein B	Nwajobi	Turner +	Moss ¹	Bunn
Sept 16	Dibble	Thomas	Grimes	Turner +	Elliott P	Donaghy	Hill	Stein B	Nwajobi	Bunn	Moss ¹	Parker
Sept 22	Dibble	Thomas	Grimes	Turner	Elliott P	Donaghy	Hill	Stein B	Nwajobi	Bunn	Moss	Parker
Sept 25	Dibble	Thomas	Grimes	Turner	Elliott P	Donaghy ¹	Hill	Stein ²	Bunn	Hilaire	Nwajobi +	Parker ¹
Sept 29	Dibble	Thomas	Grimes	Turner	Elliott P	Donaghy	Hill	Stein	Bunn ¹ +	Hilaire	Moss ¹	Parker
Oct 6	Dibble	Thomas	Grimes	Turner	Elliott P ¹	Donaghy	Hill	Stein ¹	Elliott S ¹	Parker	Moss	Hilaire
Oct 9	Dibble	Thomas	Grimes	Turner	Elliott P +	Donaghy	Hill	Stein ¹	Elliott S ¹	Bunn ¹	Moss	Hilaire
Oct 13	Dibble	Thomas	Turner	Bunn ¹	Elliott P	Donaghy	Hill	Stein	Elliott S	Hilaire	Moss +	Parker
Oct 20	Findlay	Thomas	Turner	Parker	Elliott P	Donaghy	Hill	Stein	Elliott S ¹	Bunn ²	Hilaire	Breacker
Oct 27	Findlay	Thomas	Turner	Parker +	Elliott P	Donaghy	Hill	Stein	Elliott S	Bunn	Hilaire	Breacker
Oct 30	Dibble	Breacker	Turner	Todd	Elliott P +	Donaghy ¹	Hill	Stein	Elliott S	Bunn	Moss ¹	Parker
Nov 3	Dibble	Breacker	Turner	Todd	North S	Donaghy	Hill	Stein ¹	Elliott S	Parker ¹	Daniel +	Hilaire
Nov 10	Dibble	Breacker	Turner	Todd	North S	Donaghy	Hill	Stein	Bunn	Parker	Moss +	Nwajobi
Nov 17	Dibble +	Breacker	Turner	North S	Droy	Donaghy	Hill	Stein	Elliott S	Bunn	Hilaire	Parker
Nov 20	Findlay	Breacker	Turner +	North S	Droy	Donaghy	Hill	Stein	Elliott S ²	Bunn	Hilaire	Parker
Nov 24	Findlay	Breacker	Donaghy	Turner	Droy +	North S	Hill	Stein ¹	Elliott S	Bunn	Nwajobi ¹	Parker
Dec 1	Sealey	Breacker	Thomas	Turner	Foster	Donaghy	Hill	Stein ¹	Elliott S	Bunn +	Parker	Nwajobi
Dec 8	Sealey	Breacker	Turner	Parker	Foster	Donaghy	Hill	Stein	Bunn	Preece ¹	Moss	Nwajobi
Dec 15	Sealey	Breacker	Turner	Parker +	Foster	Donaghy	Hill	Stein ¹	Harford ¹	Preece	Moss	Thomas
Dec 18	Sealey	Breacker	Turner	Parker	Foster ¹	Donaghy	Thomas	Stein	Harford	Preece +	Moss	Turner
Dec 26	Sealey	Breacker	Thomas	Turner	Foster	Donaghy	Hill	Stein ¹	Harford	Daniel ¹	Nwajobi	Bunn
Dec 29	Sealey	Breacker	Thomas	Turner	Foster	Donaghy	Hill	Stein	Harford	Daniel +	Bunn	Nwajobi
Jan 1	Sealey	Breacker	Thomas +	Turner	Foster	Donaghy	Hill	Stein	Harford ¹	Preece	Moss	Bunn

FIRST TEAM APPS 1984-85

	League		Cups	
	App	Gls	App	Gls
Breacker	15(1)	—	2	—
Bunn	15(3)	5	4	1
Daniel	3	1	—	—
Dibble	13	—	3	—
Donaghy	23	1	4	2
Droy	2	—	1	—
Elliott P	9	1	3	—
Elliott S	12	3	3	3
Findlay	3	—	1	—
Foster	7	1	—	—
Grimes	9	—	2	—
Harford	5	2	—	—
Hilaire	5(1)	—	1(1)	—
Hill	22	—	4	—
Moss	15	4	2	1
North S	7	—	1	—

Vauxhall Teamcheck.

1	LUTON TOWN		STOKE CITY	1
	LES SEALEY	1	STUART ROBERTS	
	TIM BREAKER	2	STEVE BOULD	
	MITCHELL THOMAS	3	TONY SPEARING MASKERY	
	WAYNE TURNER	4	CHRIS MASKERY HUDSON	
1	STEVE FOSTER	5	BRENDAN O'CALLAGHAN	
	MAL DONAGHY	6	PAUL DYSON	
	RICKY HILL	7	STEVE PARKIN	
	BRIAN STEIN	8	SAMMY McILROY	
	MICK HARFORD	9	PHIL HEATH PAINTER 1	
	RAY DANIEL	10	KEITH BERTSCHIN	
	DAVID MOSS	11	MARK CHAMBERLAIN	
	NWAJIOBI	12		

LOOK OUT FOR THE NEWCOMER IN OUR LINE-UP.



THE NEW 126MPH VAUXHALL ASTRA GTE.

Remember, we got here first.



BACKED BY THE WORLDWIDE
RESOURCES OF GENERAL MOTORS