

LUTON TOWN

LUTON TOWN

WATFORD



FA CUP
FIFTH ROUND
SECOND REPLAY
Saturday 9th March 1985
Kick-off 3.00 pm

Official
Matchday
Magazine

Price 50p

TODAY'S MATCH IS SPONSORED BY:
**Wallspan
Bedrooms**

ACTION REPLAY

Captain Steve Foster is first to congratulate Mick Harford's excellent header which beat keeper Chris Turner, to open the Town's scoreline.



Midfield dominated by Ricky Hill who's just reward was to secure three points for the Town with a precisioned first half second goal.

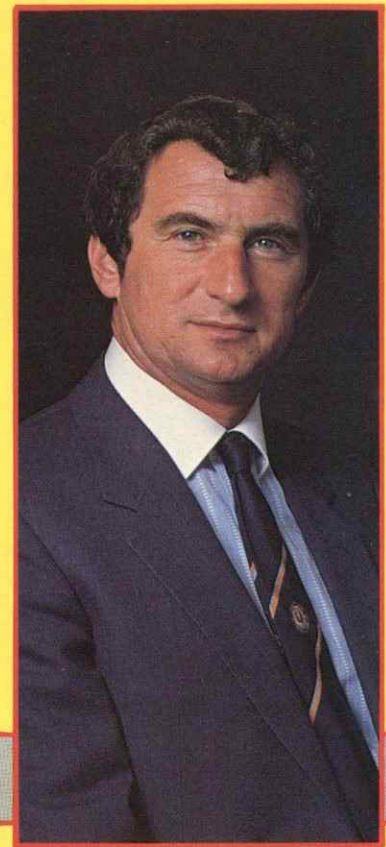
Here we go again. Our friends from Watford join us again at Kenilworth Road today for a game that illustrates all the excitement and tension associated with Cup-tie football. The previous two games have been full of incident — goalmouth action, fast football and sensible refereeing. Hopeful today's game is equally as fascinating for both sets of supporters. We have now played five FA Cup-ties this season and my only concern is that a backlog of League fixtures could jeopardise our chances of accumulating points.

It will be a test of character as well as skill. Of course we will need all our players fit and I hope in this respect Frank Bunn will be ready soon as well as Ashley Grimes.

The Reserves are continuing their excellent results. A 3-2 victory at Fulham last Tuesday was their third successive away win. Previously they had beaten Palace 4-1 and Bristol Rovers 5-1. Mark Stein is amongst the goals again and we are still confident that he will follow in the footsteps of his brother Brian. Andy Dibble is back in the firing line and working hard at his game. We now have competition again for the goalkeeping spot. Unfortunately John Findlay's return has been delayed and we hope that his visit to the specialist yesterday was successful.

Our South East Counties side are flying

I was interested to read the Press coverage of our first Cup-tie with Watford. The local reporters considered the game favourable but the nationals gave rather a different view. I am sure the committed supporters went away speaking well of the entertainment provided. I have always respected the Press boys. They try to give a fair reflection of what they have seen. The problems occur when they are seeking 'other angles'. There was a time when the Press reported the 'game'. Now the managers are a centre of attraction and their quotes are elevated to headlines. Also the Saturday games are covered by the Sunday and Monday nationals as well as the local mid-week papers. As a consequence there is great competition for 'good' stories and so there is a search for some pieces of a controversial or sensational nature. There is no clearer illustration of this than the massive publicity that Charlie Nicholas has endured or deserved since his transfer to Arsenal. I am sure there are journalists following his every move both on and off the field. It must be a difficult problem for Don Howe to have such a talented player who apparently has not been able to cope with the pressures and the Press. If in doubt the best comment is 'No comment'. Most players are very sensible and respect the honest reporters.



WELCOME

the flag proudly as front runners. A walloping 13-1 win against Oxford produced the same brilliant passing and finishing. Four players Ian Scott from Dunstable, Paul Lewis from Merthyr, Duncan Berry from Telford and Aaron Tighe from Dublin have accepted apprenticeships this summer. I hope they will be successful, the last three boys are schoolboy internationals and the fourth Welsh boy John Kennedy will be offered terms also. Last weekend John scored an excellent goal in Wales Schoolboys 3-1 win over Eire. There are other boys in our South East Counties side who will be joining the club.

Today our game is sponsored by Wallspan Bedrooms. I hope they have a super afternoon. Graham Taylor and I are two of their satisfied customers. Mr Terry Bailey their chairman, has been a most valuable addition to our board at Kenilworth Road. He has supported the club solidly for many years and our magnificent scoreboard is a testimony to his backing.

Once again I trust the behaviour on the terraces will be exemplary — remember it is nice to win and win in style but it is always important to compete fairly and with sportsmanship.

To all our supporters who were so magnifi-

cent at Watford on Wednesday I say thank you. Let us hope that today we can achieve the result that your backing deserves. Enjoy the game.



LUTON TOWN FC

70-72 KENILWORTH ROAD · LUTON LU1 1DH · TELEPHONE: 0582-411622

<p>CHAIRMAN DAVID EVANS</p> <p>DIRECTORS T. W. BAILEY, R. L. BANKS, E. S. PEARSON, R. J. SMITH, J. R. SMITH</p> <p>CHIEF EXECUTIVE JOHN SMITH</p> <p>MANAGER DAVID PLEAT</p> <p>GENERAL SECRETARY GRAHAM MACKRELL</p> <p>CLUB SECRETARY JOHN WILKINSON</p> <p>COMMERCIAL MANAGER BILL TOMLINS</p>	<p>PRESIDENT D. MORTIMER</p> <p>DEPUTY PRESIDENT J. A. C. BAIN</p> <p>HONORARY LIFE MEMBERS J. RICHARDSON, T. HODGSON</p> <p>VICE PRESIDENTS A. G. BERRY F.C.C.A., J. B. BRENT C. BYGRAVE, C. J. EVANS B. COLE, B. ENGLAND N. S. FOOKES, E. FOUNTAIN C. HOLLOWAY, I. E. HOLMES L. LEPPINGTON, R. LARKINSON R. SAFRANEK, R. UNWIN, E. WALLER</p>	<p>HONOURS</p> <p>FA CUP FINALISTS 1958-59</p> <p>CHAMPIONS — DIVISION 3(S) 1936-37</p> <p>RUNNERS-UP — DIVISION 2 1954-55</p> <p>CHAMPIONS — DIVISION 4 1967-68</p> <p>RUNNERS-UP — DIVISION 3 1969-70</p> <p>RUNNERS-UP — DIVISION 2 1973-74</p> <p>CHAMPIONS — DIVISION 2 1981-82</p>
--	---	---

FA CUP SCENE

Cottee and one each from Alan Dickens and Paul Allen gave West Ham an easy passage into the next round. Although Paul Fishenden equalised West Ham's opening goal it wasn't Wimbledon's night.

In the other replay Watford and Luton again battled out a 2-2 draw after extra-time. The game itself was a nail-biter for the fans and Watford went one up with only seconds to go in the first-half when Les Taylor shot through a crowd of players. Steve Terry made it two for the home side after 61 minutes and it looked as if the home side were through to the next round. Luton however, had other ideas and Emeka Nwajobi pulled a goal back after a patient build-up from midfield. Three minutes later Ricky Hill made it all square when his shot was deflected into the net. After the match David Pleat won the toss and ensured another game at Kenilworth Road, on Saturday.

Wimbledon top scorer Stuart Evans ruined Alan Devonshire's dramatic return to football. Devonshire was surprisingly plunged back into this London derby after 14 months absence through injury. Tony Cottee struck his 14th goal of the season with only 13 minutes left and West Ham who had been the better of the two sides looked as if they were heading for Old Trafford for the next round. With only eight minutes left Evans scored with a glancing header that went in off the far post.

Luton and Watford gave the large crowd at Kenilworth Road their money's worth after this exciting no-score draw. Mick Harford hit the woodwork for Luton and that was followed by a Nigel Callaghan effort which hit the underside of the bar. Both goalkeepers, Feeley and Sherwood made fine saves to keep their sides interest in the Cup.

In the replay at Upton Park on Wednesday night a hat-trick by Tony

Barnsley pulled off a shock result last Monday by beating Southampton at the Dell by 2-1. Fourth choice striker Steve Agnew was the man who did the damage. The 19-year-old son of a Barnsley policeman scored the equaliser and then won a controversial penalty which was converted by Gordon Owen to destroy the Saints' dream of a quarter-final at home to Liverpool on Sunday. Saints looked certain to progress when Steve Moran opened the scoring following their sixth corner in the first 16 minutes but along came Agnew to spoil the party dream.

Ipswich continued their double assault on Wembley by snatching a last minute goal at Portman Road, against fancied Sheffield Wednesday. Substitute Alan Sunderland was the hero when he scored the winner in the 88th minute. The other two goals came from Romeo Zondervan and George Burley. Wednesday's efforts were from Imre Varadi and skipper Mike Lyons.

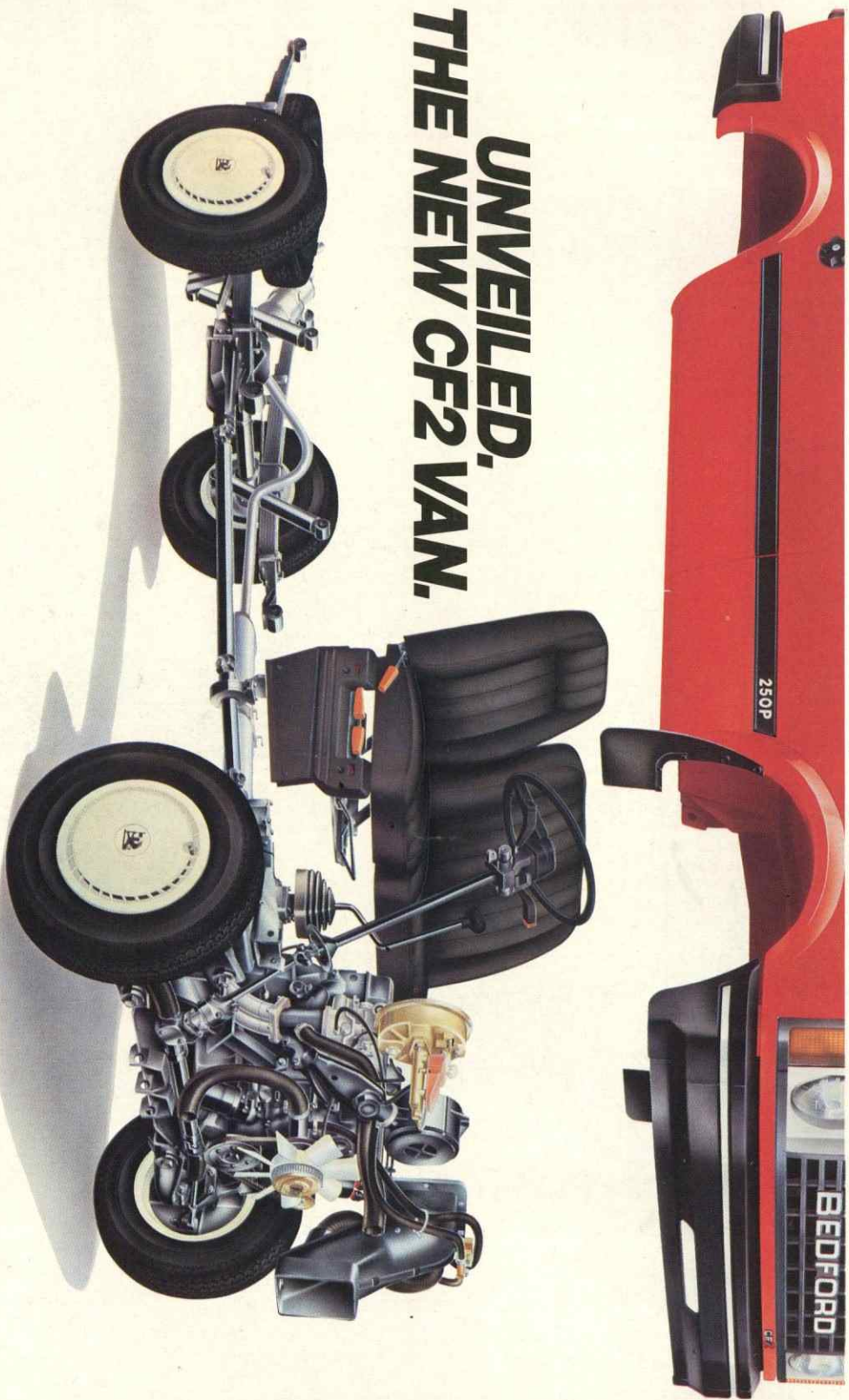


After hitting the crossbar twice in the first-half Emeka Nwajobi places our first goal over Steve Sherwood's head.



Ricky Hill's late equaliser puts us into extra-time at Vicarage Road. Our photographer captures David Pleat's team talk just before extra-time.

UNVEILED, THE NEW CF2 VAN.



From the outside, the new CF2 looks very like the old CF. Underneath, however, it's a completely different story.

The mechanics are almost all new. So, don't go by appearances. Go and arrange a road test with your local Bedford dealer instead.

THE NEW CF2 SHOWS BEDFORD MEANS BUSINESS.

GLAZING & DECORATING SPECIALISTS

GLAZING REPAIRS & GLASS SUPPLIES
PATIO DOOR & WINDOW INSTALLATIONS
DOUBLE GLAZING (SECONDARY AND SEALED UNITS)
INTERIOR AND EXTERIOR DECORATORS

For Domestic and Commercial enquiries contact Luton 573025/597505
For 24 hour Emergency Service contact Dunstable 666665

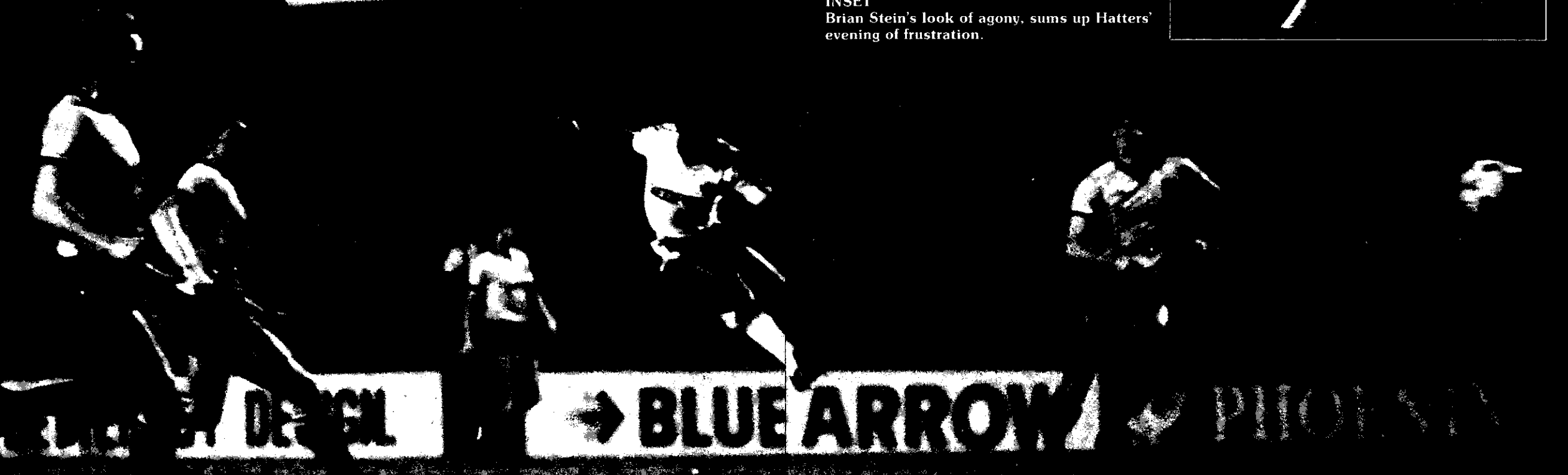
sapsworth
GLAZING & DECORATING
J. Sapsworth Limited
92 Marsh Road, Luton, Bedfordshire LU3 2NL
Telephone: Luton (0582) 53025/597505

ACITION REPLAY

Whitt



INSET
Brian Stein's look of agony, sums up Hatters' evening of frustration.



MAIN PICTURE
Ray Daniel having made midfield space, capitalises by producing a powerful shot which screamed past Sherwood's post.

THE LOCAL TASTE AND HOW TO SATISFY IT

We're very definite about our taste in beer around here. A clear light pint is what we look for; with a good, clean smack of malt and hops.

And there's only one name that really satisfies the local taste - BB. The Light beer first brewed in Luton during the darkest days of the War by J. W. Green.

Only the finest hops and good, ripe barley go into the making. Then the brew is matured to exactly the right degree to give you a bright refreshing pint with a sound, full flavour.



WHITBREAD

American servicemen in local wartime bases declared that BB, chilled, was the nearest taste to Stateside draught.

It went down well when Syd Owen ruled the Hatters.

And it's been going down well ever since. Because BB is brewed with a proper respect for quality. To keep up the traditions we value round here.

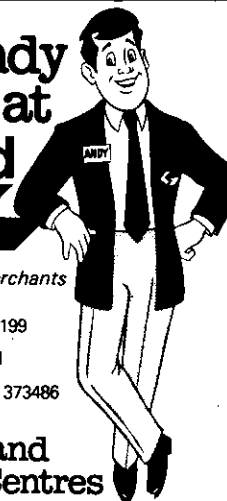


There's a handy man to know at **Graham Ford**

Your Comprehensive Builders Merchants

Depots at: KINGSWAY LUTON 31199
BEALE ST DUNSTABLE 603111
LEIGHTON RD LEIGHTON BUZZARD 373486

Home Improvement and Building Material Centres



Falcon Holidays

QUALIFIED FOR EUROPE

We've been in European competition for 12 seasons. Try a Falcon Holiday this year and find out why we're top of the Holiday League.

Fly direct from your local airport for your winter or summer holiday.

190 Campden Hill Road
London W8 7TH
Telephone 01-221 6298

Falcon Holidays



AO

ATOL
1478C

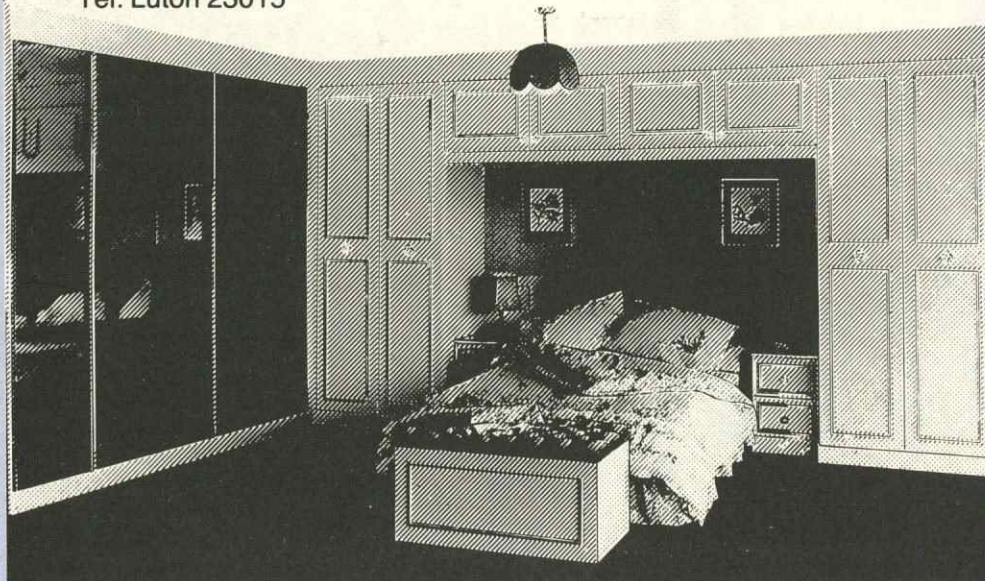
With Wallspan fitted bedrooms, a good result is guaranteed.

Wallspan fitted bedrooms are great believers in team work. Over the years we have built up a winning team of professionals who work together to produce a product that is out of everyone else's league.

Free design, free fitting, free delivery, and for a limited period interest free credit. Unfortunately we cannot guarantee the result of today's match but we do guarantee our result for a full five years. Come and support our team soon.

**Wallspan
Bedrooms**
Throughout the UK

Luton Showroom Unit 174 Arndale Centre
Tel: Luton 23015



POINTS OF VIEW

Dear Editor

I should just like, through the programme to extend my thanks to all the other fans on the coach which broke down on the way home from Newcastle for being so good humoured and for keeping what could have been an annoying and frustrating situation at a humorous level.

Having such a cheerful outlook, even after a disappointing defeat, is a credit to the Travel Club. I am proud to be a member and a supporter of Luton Town.

A. C. Babington, Hemel Hempstead

Dear David and the lads

Thanks for the home match on 2nd February 1985. Welcome back to the football from the lads we love so much. It reminded me of our season at the top of the Second Division 'invincible'. Three points would have been perfect but I am sure all supporters would agree seeing the team play with such skill was a reward in itself.

Anyone not at Kenilworth Road on Saturday for whatever reason should feel ashamed that they are not supporting their local club. All grievances should now be buried.

Luton Town FC are going to be victorious in 1985.

Catherine Gillespie, Stevenage

Dear Bill

Would you, through the programme, thank the family of Luton Town supporters who visited me in Southampton General Hospital on Saturday 9th February.

I would have written personally, but at the time I did not think to ask their name and address, all that I know is they live in Ampthill.

Best wishes.

Stacey North

Gentlemen

Although we in Canada seldom get to see Luton Town play soccer and news reports of game scores and League standings are sketchy at best, the Cable Sports Network was able to present the recent game between Tottenham and the Town which, although drawn 2-2, was a fine example of the excitement of British First Division soccer.

For those who, wherever they are, still follow the fortunes of Luton Town, the sixth round draw against Millwall makes a victory over Watford a must.

If you get through to the semi-finals, even those of us thousands of miles away will have the opportunity to see you play again.

Good luck to everyone on the Cup team.

Brian Matthews,
West Island Financial Consultants Ltd

EXECUTIVE MEMBERS

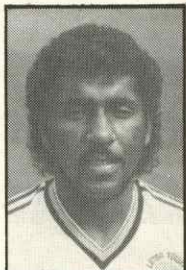
- ANACHEM LTD
 - A1 HEATING (WHOLESALE & RETAIL) LTD
 - MR W. ASHBURNER
 - BEARD & MANNING CATERING SERVICES LTD
 - BEDFORD COMMERCIAL VEHICLES
 - BERVALE MEAD INSURANCE BROKERS LTD
 - BERKELEY ASSOCIATES
 - BLAKEY ENGINEERING CO LTD
 - BLUE ARROW SERVICES
 - BRENGREEN HOLDINGS PLC
 - BROAD STREET PRINT
 - CANVERMOOR PLC
 - CLEANDUSTRIAL SERVICES LTD
 - GARY CHAMBERLAIN WINDOW FASHIONS
 - DUPONT (UK) LTD
 - FILMERGRAPHIC ASSOCIATES LTD
 - FINE STAMPS LTD
 - N. S. FOOKES GROUP (PLANT FACILITIES) LTD
 - BRIAN E. HANDSCOMBE (LIFE & PENSION BROKERS)
 - E. W. HUDSON (HOLDINGS) LTD
 - IVOR HOLMES LTD
 - INFORMATION TECHNOLOGY LTD
 - MARK JAMES (SALVAGE) LTD
 - JOHN LAING CONSTRUCTION LTD
 - RICHARD C. LARKINSON (CAMBRIDGE) LTD
 - MR P. LAYCOCK
 - NEAHURST LTD
 - OPELVALE GROUP
 - MR & MRS PEARSON
 - F. W. PEARCE BUILDERS LTD
 - PETERS GRAVES & CO
 - PILCOURT LTD
 - DR & MRS G. L. PLESTER
 - PRIORY FARM FOODS
 - DAVID RAND & CO LTD
 - RAVENMERE LTD
 - RICHARDSON & BOTTOMS LTD
 - RICHMOND ELECTRONICS (MARKYATE) LTD
 - ROBINSON METAL (LUTON) LTD
 - ROGERS RESIDENTIAL SALES
 - SHAW & KILBURN
 - SHOREYS TRAVEL
 - TRITRADE LTD
 - W. S. TYREMASTERS (DIVISION OF WEST & SELICK (TYRES) LTD)
 - R. W. UNWIN & CO LTD
 - VAUXHALL MOTORS LTD
 - WALLSPAN BEDROOMS
 - WEBBEX LTD
 - JOHN W. WEBB FCI INVESTMENT CONSULTANT
 - WHITE'S STATIONERS LTD
 - YARNSFIELD LTD
- THE FULL ADDRESSES AND SERVICES OF OUR EXECUTIVE MEMBERS CAN BE OBTAINED THROUGH OUR COMMERCIAL OFFICES - LUTON TOWN FOOTBALL CLUB



PAUL OWEN

My column in the Sunderland programme giving details of our away day trip to Coventry on April 6th has met with an immediate response from many of you eager to take part in the trials at Luton Regional Sports Centre in Stopsley at 10.00 am on Monday 1st April. Remember we are looking for 30 boys to make up six teams, 15 boys from the 7-10 age group and 15 boys from the 10-13 age group. (Ages to apply from 31st August 1984). The only criterion is that you possess a replica strip. The cost of the trip to include coach and buffet lunch is £3. Admission to the stadium is free. If you wish to attend the trials send a letter to Junior Hatters (Coventry Trip), Luton Town FC, 70-72 Kenilworth Road, Luton stating your age and membership number. Closing date for applications is Monday 25th March. Finally a warm welcome to our mascot today Paul Owen. Paul is aged six, comes from Stopsley, Luton and attends Summaries Infants School. His interests are music, football women and fast cars. Now we know why you read my column!

*Subj
Wesley*



SPONSORED BY THE HERALD NEWSPAPER AND CHILTERN RADIO - THE HERALD NEWSPAPER AND CHILTERN RADIO

NEWSDESK NEWSDESK

BALL SPONSOR

We welcome to the match today our ball sponsor V. G. Green & Sons, Building Contractors from Shefford who have become something of a lucky omen as we seek the glory trail to Wembley. Green's sponsored the ball for our fourth and fifth round games against Huddersfield and Watford and director Vic Green's intention is to sponsor us all the way to Wembley. We are very appreciative of Green's support and appreciate the confidence they have shown in the team by booking their sponsorship so far ahead.



BREAKFAST STAR SHINES ON LATE NIGHT T.N.T. SHOW

Executive sponsors for the FA Cup tie with Watford was T.N.T Overnight Express who were delighted to have join them after the game avid Town fan TV AM star Nick Owen. Nick a Town fan all his life reckoned the strain and tension of appearing live on TV nothing compared to the nerves he felt at the Cup tie, something David Pleat would certainly sympathise with. Our picture shows Nick presenting T.N.T's guest Mick Midson with a Luton jumper and souvenir ball.



REFEREE

Jeff Bray is a Production manager with a dry cleaning firm. Married with two daughters. Commenced refereeing in 1965 progressing via Football Combination. Spare time is spent recruiting new referees and promoting local football. Chairman of local

R.A. and secretary of a local football league for the past 17 years.

Linesmen:

J. Byles and P. Joyce

TICKET OFFICE

Extended Opening Hours

To cater for the majority of our supporters our ticket office in Kenilworth Road will now, from 4th March be open from Monday to Friday 8.30 am to 7.30 pm. Saturday 8.30 am to 12.30 pm.

These new times will enable us to cater for all ticket purchases and enquiries at more convenient times to you our supporters.

CLUB INFORMATION:

- ☎ OFFICE HOURS 9 am-5 pm LUTON (0582) 411622
- ☎ ADVERTISING & PROMOTIONS RING - MIKE BEEVOR PROJECTS & ADVERTISING EXECUTIVE LUTON (0582) 411622
- ☎ SOUVENIRS - TRAVEL - JUNIOR HATTERS LUTON (0582) 412418
- ☎ MATCH TICKETS & LOTTERY ENQUIRIES RING - JOHN GORNALL, DEVELOPMENT EXECUTIVE LUTON (0582) 30748
- ☎ BANQUETING & FUNCTION FACILITIES RING - CLIVE HUSTWITT, CATERING MANAGER LUTON (0582) 411526
- ☎ MATCH ENQUIRIES - 24-HOURS SERVICE LUTON (0582) 33010

MATCH INFORMATION FA CUP

Watch the scoreboard and listen to the PA announcement for details of arrangements for either a further replay at Vicarage Road or a sixth round FA Cup fixture.

Canon League Division One

NOTTINGHAM FOREST

Tuesday 12th March KO 7.45 pm. Should today's match be drawn then the above fixture will be postponed and re-arranged at a later date.

RESERVES + YOUTHS

21st February 1985
Football Combination
CHARLTON 2 LUTON 2

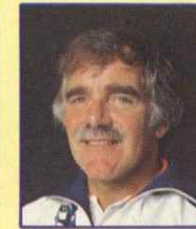
Our first game for 19 days and the surface was tricky due to the frost still coming out of the ground.

It took us only 3½ minutes to go into the lead, when a lovely diagonal ball from Mark North found Richard Harvey on the left wing and from his cross Mark Stein arrived at the near post to knock it in.

However, if we thought they were going to make it easy for us, they punished us for our complacency when they broke away to equalise after 7 minutes.



JOHN MOORE



DAVID COATES

The top surface of the pitch was quickly becoming cut up and it tended to make it a scrappy game, with a lot of effort and not enough thought going into the game. Both sides had chances to regain the lead, but failed to find the net before the half time whistle.

At the start of the second half we seemed to be a bit sharper in our play and began to push forward in numbers in search of another goal. After 60 minutes we got our reward when Mark Stein broke down the left and squared the ball into the path of David Oldfield who slipped it into the net. Although we continued to dominate play we failed to increase our lead and as the game wore on Charlton began to come back into it in search of

an equaliser. Their determination to gain an equaliser proved too much and we conceded a penalty in the 81st minute from which they scored.

After this we had three good chances to snatch victory but failed to convert any, but a draw was probably a fair result.

TEAM: Dibble, Johnson, Ellisdon, Turner, North M, Grimes, Cobb, Stein, Oldfield, Parker, Harvey, Black. SCORERS: Stein M, Oldfield.



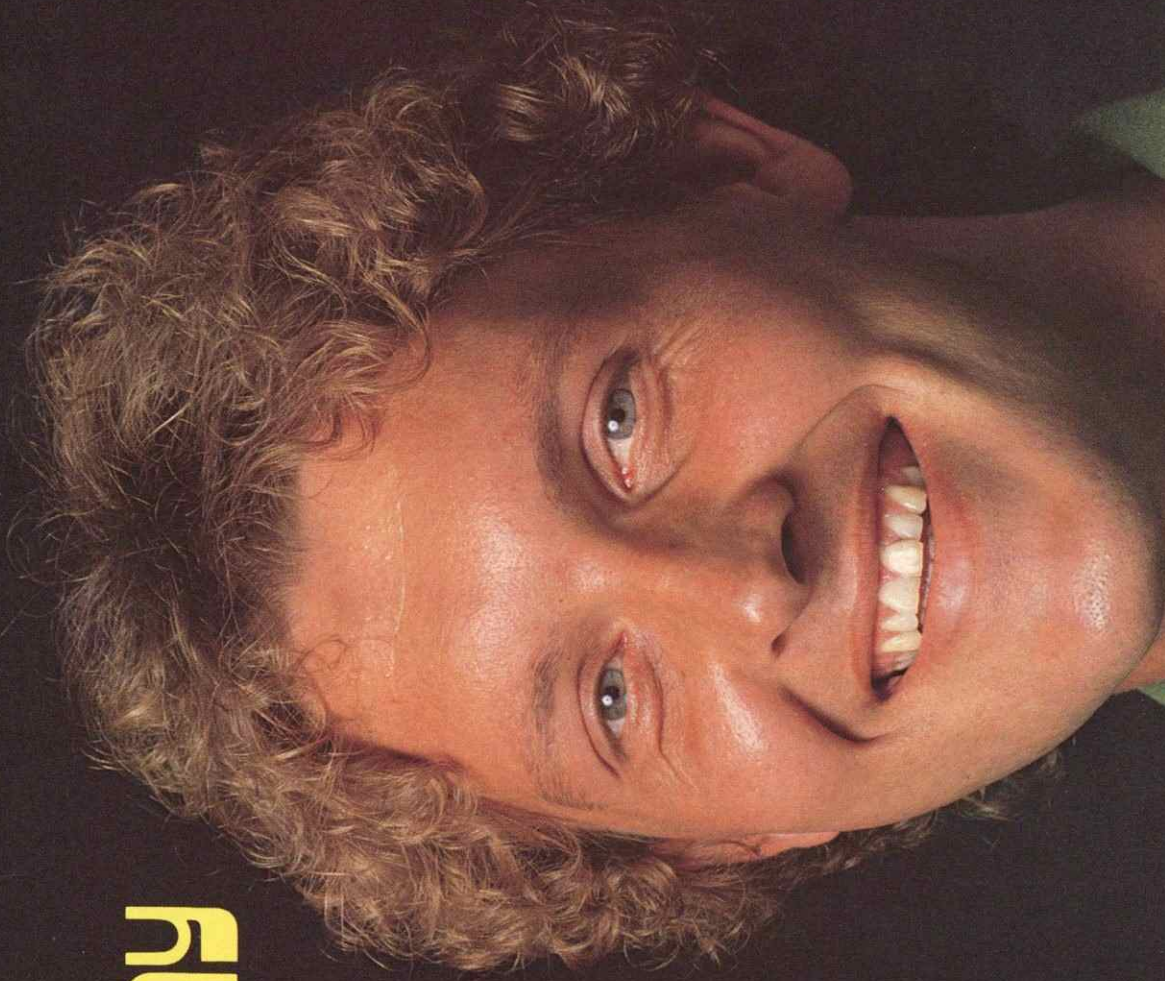
SOUTH EAST COUNTIES JUNIOR TABLE

	P	W	D	L	F	A	Pts
1. Luton Town	15	10	4	1	44	14	24
2. Oxford United	15	9	2	4	36	35	20
3. Tottenham Hotspur	14	8	2	4	45	32	18
4. Wimbledon	15	6	4	5	30	26	16
5. Brentford	16	6	2	7	37	29	14
6. Reading	16	5	4	7	24	27	14
7. West Ham United	15	6	2	7	28	32	14
8. Brighton	14	5	3	6	20	20	13
9. Swindon Town	14	5	3	6	17	23	13
10. Crystal Palace	12	5	1	6	20	31	11
11. Bristol Rovers	14	3	2	9	17	33	8
12. Southend United	10	1	3	6	12	28	5

Anglia Television

Proud to serve the East of England.

**JAKE
FINDLAY**



BEDFORD

OUR VISITORS



WATFORD



Millwall manager George Graham must be wondering if his Third Division promotion hopefuls will ever get the chance of playing their quarter-final tie against the winners of our long-running fifth round tie against Watford.

For while Town and Watford have been battling away this week the team waiting for them in the quarter-finals, Millwall, have been forced to sit on the Cup sidelines to await the outcome and learn whether it's Kenilworth Road or Vicarage Road they're heading for in the sixth round.

Millwall did take the opportunity to add three more precious League points to their promotion challenge at Lincoln on Wednesday evening while Town were forcing the fifth round tie into today's third meeting but down at the Den, Millwall must be hoping that Luton and Watford can finally sort things out today to get that long-delayed sixth round tie on the road.

Watford certainly aren't letting go of their Cup ambitions lightly. Beaten finalists at Wembley last May, Graham Taylor's men have developed an appetite for the Cup in the last 15 months and it could well be the

case that after today's ties, Luton or Watford or Millwall will be the south's only challengers at the semi-final stage.

It's worth remembering that only a short while ago Watford were a Fourth Division club so their climb up the League ladder in the last few seasons is remarkable.

Since Graham Taylor arrived at Vicarage Road from Lincoln in June 1977, Watford have won three promotions, been runners-up to Liverpool in the League title race, played in Europe and reached the FA Final. And they've achieved this outstanding record with a brand of football which although not universally approved by the purists has brought goals and a fair amount of entertainment — qualities that most unbiased supporters would applaud.

Up to the start of last month Watford's record as a First Division side proves the point. They had conceded almost as many goals as they scored, but each game they've been involved in as a top flight club has produced an average of 3.4 goals and that says much for Taylor's belief in playing the game the positive way.



Steve Terry, pictured in action in Watford's FA Cup semi-final against Plymouth Argyle at Villa Park last season.

WATFORD ROLL CALL

Player	Birthplace	Previous Clubs	Full Int's	Date Signed
David Bardsley	Manchester	Blackpool	—	Nov '83
John Barnes	Kingston (Jamaica)	—	England	July '81
Luther Blissett	Jamaica	Watford, AC Milan	England	Aug '84
Nigel Callaghan	RAF Singapore	—	—	July '79
Tony Coton	Tamworth	Birmingham	—	Sept '84
Nigel Gibbs	St Albans	—	—	July '82
Jimmy Gilligan	London	—	—	July '80
Kenny Jackett	Watford	—	Wales	June '78
Jan Lohman	Dussen (Holland)	Lokeren	—	Oct '81
John McClelland	Belfast	Portadown, Cardiff, Bangor, Mansfield, Rangers	N. Ireland	Nov '84
Gary Porter	Sunderland	—	—	July '82
Wilf Rostron	Sunderland	Arsenal, Sunderland	—	Oct '79
Steve Sherwood	Selby	Chelsea	—	Nov '76
Lee Sinnott	Walsall	Walsall	—	Sept '83
Worrell Sterling	Bethnal Green	—	—	July '81
Les Taylor	North Shields	Oxford	—	Nov '80
Steve Terry	Enfield	—	—	July '78

*Date registered as a Professional.

There's little need today to look closely at the make up of the Watford side. Coming into what will be the team's third game inside five days against each other, Watford's line-up will be almost as well known to Kenilworth Road regulars as Town's.

Since the programme was prepared for the first fifth round meeting, due to have been played in the middle of last month, the Hornets have sold two players, Richard Jobson to his home city club, Hull, and big striker George Reilly to Newcastle.

Reilly opened his account for his new club with his first goal, ironically against Watford, in Newcastle's 3-1 win at St James' Park last Saturday.

His move from Vicarage Road suggests that Taylor will now play England winger John Barnes alongside Luther Blissett, although injury problems have delayed this.

Defender Lee Sinnott, an England Youth player who moved to Watford from Walsall in September 1983, made his first appearance for the England Under-21 side last week as substitute in Israel and fully capped players in the Hornet's ranks, apart from Barnes are Blissett, Welshman Kenny Jackett and defender John McClelland who, as we pointed out earlier in the week, has made a big impression in stabilising the Watford defence since his move from Glasgow Rangers in November.

So it's back to square one this afternoon and you can be sure that the most interested follower of today's second replay is likely to be Millwall boss George Graham.

GARETH OWEN PHOTOGRAPHY

Photography for Luton Town FC and First Division Companies in the area

STUDIO 9
GUILDFORD STREET
LUTON, BEDS
LUTON (0582) 418025

B. DOHERTY SKIPHIRE

34 MOUNT PLEASANT ROAD
LUTON
Telephone: 54633 and 54799

SHOREY'S FUELS



ANTHRACITE
PHURNACITE
COALITE
REXCO
HOMEFIRE
COAL

YOUR NATURAL WARMTH
FROM YOUR LOCAL
SOLID FUEL MERCHANT

28 Sheepfold Hill, Flitwick, Bedfordshire
Telephone: Flitwick 713289 Silsoe 60694

MARTIN SMITH MOTORS

USED COMMERCIAL VEHICLE SALES
REPAIRS · SERVICING · MOT TESTING

LEAGRAVE MARSH GARAGE
MOUNT PLEASANT ROAD
LEAGRAVE, LUTON

Telephone: Luton 574455 or 572806

Cleandustrial Services Ltd

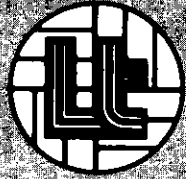
The Professional Approach to
Your Cleaning Problems
84 Aldermans Hill N13
Official Cleaning Contractors to
Luton Town FC
Telephone: 01-882 4626

ACTION

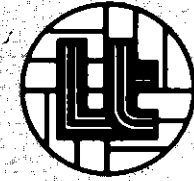
REPLAY

HATTERS 0
HORNETS 0

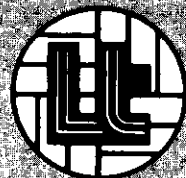
- 1 Second-half corner puts Watford's defence under pressure.
- 2 Mick Harford prowess in front of the Watford goal, keeps Steve Sherwood in the action.
- 3 First-half action by Emeka Nwajobi lets fly a half volley shot at the Hornet's goal.
- 4 Another Hatter's attack, with Mick Harford connecting on to Watford's clearance only to see his shot hit the Hornet's far post.



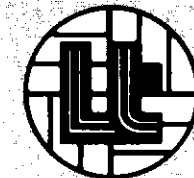
2



4



3



17

AROUND THE TOWN

TOTAL INVOLVEMENT

When the guests of Bedford Trucks, match sponsors for our fifth round against Watford



picked their Man of the Match for each team, who better than the chairman of both clubs Luton's chairman David Evans and Watford's chairman Elton John to present Tim Breacker and Wilf Rostron their well deserved bottle of champagne.

JUST FOR OUR SPONSORS

When Richardson & Bottoms sponsored our Sunderland match they were asked to guess the weight of our Luton striker. They were surprised to learn it wasn't Brian Stein or Mick Harford but Sarah who normally entertains you all with our other strikers before the match.



Our picture shows TV presenter Michael Groth presenting a Luton Town tie to Philip Gilbert who is Richardson & Bottoms building estimator — Well done Philip and thank you Sarah and Michael.

HATTERS FIXED IT

We have many unusual requests from fans at

the club none more unusual than Town supporter Brian Horsnell who requested, 'With the help of your scoreboard and my knee could you fix it for me to propose to my girlfriend Barbara.' The rest is history as our pictures show. With the BBC's 'That's Life' team secretly recording the proposal with a little help from us for Bab's reaction to Brian's proposal to be shown on a future programme.

A quite eventful day for Barbara and Brian pictured here with Michael Groth presenter of That's Life, especially when the media picked up this unusual story.

Sorry Barbara you seemed to be the only one that day who wasn't in the picture — 'Well That's Life!' — Joking aside — congratulations to you both.



WHERE ARE THEY NOW

JOHN (DIXIE) DEANS

When the Town were looking for a name to boost the falling gates, they turned to Glasgow Celtic and persuaded them to part with their Scottish international centre forward in June 1976. He was only at Luton for nine months but in that time he made quite a name for himself. He found the net only six times in the thirteen appearances he made but supporters will remember his goalkeeping exhibition at Meadow Lane, Nottingham after Keith Barbes received injured ribs. I don't think that any substitute goalkeeper has stopped shots in such an unorthodox manner. February 1977 saw him have a loan spell with Carlisle United and on his return to Luton decided he would retire and return to Scotland but he didn't stay idle for long because he had a spell playing in Ireland. Eventually the travelling became too much and he finally hung up his boots. Dixie is now mine host in a public house in Hamilton, Scotland.

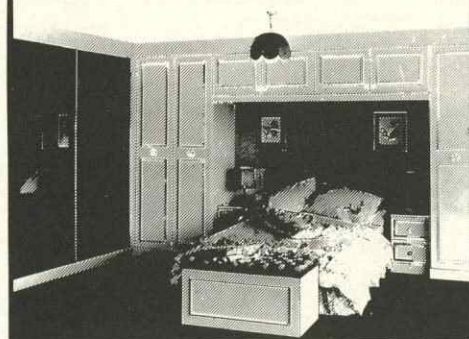


Luton were last in the final over half a million bedrooms ago.

Wallspan fitted bedrooms are great believers in team work. Over the years we have built up a winning team of professionals who work together to produce a product that is out of everyone else's league.

Free design, free fitting, free delivery, and for a limited period interest free credit.

Unfortunately we cannot guarantee the result of today's match but we do guarantee our result for a full five years.



Luton Showroom
Unit 174
Arndale Centre
Tel: Luton 23015

Wallspan
Bedrooms

BACKTRACK

LUTON
v
SUNDERLAND
Score: 2-1
Attendance: 8,019



JOHN WILKINSON

This vital match between two sides at the wrong end of the table produced one of the best matches seen at Kenilworth Road for some weeks. The Town's determination showed especially in the first-half when they gave the Sunderland defence a real pounding. Mick Harford headed the Town in front after 22 minutes from a right-wing corner taken by David Preece. Seven minutes later Ricky Hill made it two when he hooked a low shot into the far corner of the net. The visitors were in desperate trouble and Turner and Berry combined to clear a Steve Foster effort off the line. What ever was said at half-time by the Sunderland manager must have got home to his players as they were a difficult side in the second-half. In the 51st minute a casual back pass was intercepted by Bennett and although Les Sealey saved his first effort he regained his balance to score from an acute angle. Sealey saved a Walker effort only two minutes later. The Town's reply to this was a glancing header by Nwajiobi from a Hill cross on the right but the referee disallowed the goal for offside. Sunderland had a great chance to draw level five minutes from the end but Hodgson headed Walker's precise cross wide of the post. LUTON: Sealey, Breacker, Thomas, Nicholas, Foster, Donaghy, Hill, Stein, Harford, Nwajiobi, Preece.



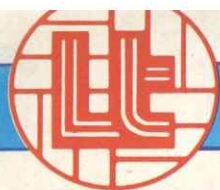
Congratulations all round for Ricky Hill for a well taken hooked shot into the far corner of the net.



Sunderland's defence keeps a watchful eye on Emeka Nwajiobi for a second-half corner.



Mick Harford again demonstrates his heading ability laying a ball into the path of Brian Stein.



RECORD

FIRST TEAM RESULTS

Date	V	Opposition	F	A	Att	Pos
Aug 25	H	Stoke City	2-0	8,626		
Aug 28	A	Ipswich Town	1-1	15,331		
Sept 1	A	West Bromwich Albion	0-4	11,720	10	
Sept 4	H	Liverpool	1-2	14,127	13	
Sept 8	H	Southampton	1-1	8,657	17	
Sept 16	A	Nottingham Forest	1-3	18,605	19	
Sept 22	H	Chelsea	0-0	16,066	19	
Sept 25	A	Orient (MC2 1L)	4-1	4,500		
Sept 29	A	Tottenham Hotspur	2-4	30,204		
Oct 6	A	Queens Park Rangers	3-2	12,051	19	
Oct 9	H	Orient (MC2 2L)	3-1	3,374		
Oct 13	H	Sheffield Wednesday	1-2	10,285	19	
Oct 20	H	Watford	3-2	10,192	19	
Oct 27	A	Sunderland	0-3	19,280	20	
Oct 30	H	Leicester City (MC3)	3-1	8,015		
Nov 3	H	Newcastle United	2-2	10,009	20	
Nov 10	A	Norwich City	0-3	14,395	20	
Nov 17	A	Manchester United	0-2	42,776	21	
Nov 20	A	Sheffield Wed. (MC4)	2-4	18,313		
Nov 24	H	West Ham United	2-2	10,789	21	
Dec 1	A	Arsenal	1-3	26,366	21	
Dec 8	H	Aston Villa	1-0	7,696	21	
Dec 15	A	Leicester City	2-2	10,476	22	
Dec 18	H	West Bromwich Albion	1-2	7,286	22	
Dec 26	H	Coventry City	2-0	9,237	19	
Dec 29	A	Liverpool	0-1	35,408	19	
Jan 1	A	Everton	1-2	31,682	21	
Jan 5	H	Stoke City (FAC 3)	1-1	7,270		
Jan 9	A	Stoke City (FAC 3R)	3-2	9,917		
Jan 26	H	Huddersfield (FAC4)	2-0	8,712		
Feb 2	H	Tottenham Hotspur	2-2	17,511	21	
Feb 23	A	Newcastle United	0-1	23,737	21	
Mar 2	H	Sunderland	2-1	8,019	21	
Mar 4	H	Watford (FAC5)	0-0	18,506		
Mar 6	A	Watford (FAC5 R)	2-2	19,000		
Mar 9	H	Watford (FAC5 2R)				
Mar 12	H	Nottingham Forest (prov)				
Mar 16	A	Sheffield Wednesday				
Mar 19	A	Watford				
Mar 23	H	Queens Park Rangers				
Mar 30	H	Ipswich Town				
Apr 2	A	Southampton				
Apr 6	A	Coventry City				
Apr 9	H	Everton				
Apr 13	A	Chelsea (FAC SF)				
Apr 16	H	Norwich City				
Apr 21	H	Manchester United				
Apr 27	A	West Ham United				
May 1	A	Stoke City				
May 4	H	Arsenal				
May 6	A	Aston Villa				
May 11	H	Leicester City				

1984-85 RESULTS · ATTENDANCES · APPEARANCES · GOALSCORERS

1	2	3	4	5	6	7	8	9	10	11	12
Dibble	Thomas	Grimes	Breacker	North S	Donaghy	Hill	Stein B	Elliott S ¹	Bunn ¹	Moss	Turner
Dibble	Thomas	Grimes	Breacker	North S	Donaghy	Hill	Stein B	Elliott S	Bunn +	Moss ¹	Nwajobi
Dibble	Thomas	Grimes	Breacker +	North S	Donaghy	Hill	Stein B	Elliott S	Bunn	Moss	Nwajobi
Dibble	Thomas	Grimes	Breacker	Elliott P	Donaghy ¹	Hill	Stein B	Elliott S +	Turner	Moss	Nwajobi
Dibble	Thomas	Grimes	Parker ¹	Elliott P	Donaghy	Hill	Stein B	Nwajobi	Turner +	Moss ¹	Bunn
Dibble	Thomas	Grimes	Turner +	Elliott P	Donaghy	Hill	Stein B	Nwajobi	Bunn	Moss ¹	Parker
Dibble	Thomas	Grimes	Turner	Elliott P	Donaghy	Hill	Stein B	Nwajobi	Bunn	Moss	Parker
Dibble	Thomas	Grimes	Turner	Elliott P	Donaghy ¹	Hill	Stein ²	Bunn	Hilaire	Nwajobi +	Parker ¹
Dibble	Thomas	Grimes	Turner	Elliott P	Donaghy	Hill	Stein	Bunn ¹ +	Hilaire	Moss ¹	Parker
Dibble	Thomas	Grimes	Turner	Elliott P ¹	Donaghy	Hill	Stein ¹	Elliott S ¹	Parker	Moss	Hilaire
Dibble	Thomas	Grimes	Turner	Elliott P +	Donaghy	Hill	Stein ¹	Elliott S ¹	Bunn ¹	Moss	Hilaire
Findlay	Thomas	Turner	Parker	Elliott P	Donaghy	Hill	Stein	Elliott S	Hilaire	Moss +	Parker
Findlay	Thomas	Turner	Parker +	Elliott P	Donaghy	Hill	Stein	Elliott S	Bunn	Hilaire	Breacker
Dibble	Breacker	Turner	Todd	Elliott P +	Donaghy ¹	Hill	Stein	Elliott S	Bunn	Moss ¹	Parker
Dibble	Breacker	Turner	Todd	North S	Donaghy	Hill	Stein ¹	Elliott S	Parker ¹	Daniel +	Hilaire
Dibble	Breacker	Turner	Todd	North S	Donaghy	Hill	Stein	Bunn	Parker	Moss +	Nwajobi
Dibble +	Breacker	Turner	North S	Droy	Donaghy	Hill	Stein	Elliott S	Bunn	Hilaire	Parker
Findlay	Breacker	Turner +	North S	Droy	Donaghy	Hill	Stein	Elliott S ²	Bunn	Hilaire	Parker
Findlay	Breacker	Donaghy	Turner	Droy +	North S	Hill	Stein ¹	Elliott S	Bunn	Nwajobi ¹	Parker
Sealey	Breacker	Thomas	Turner	Foster	Donaghy	Hill	Stein ¹	Elliott S	Bunn +	Parker	Nwajobi
Sealey	Breacker	Turner	Parker	Foster	Donaghy	Hill	Stein	Bunn	Preece ¹	Moss	Nwajobi
Sealey	Breacker	Turner	Parker +	Foster	Donaghy	Hill	Stein ¹	Harford ¹	Preece	Moss	Thomas
Sealey	Breacker	Turner	Parker	Foster ¹	Donaghy	Thomas	Stein	Harford	Preece +	Moss	Turner
Sealey	Breacker	Thomas	Turner	Foster	Donaghy	Hill	Stein ¹	Harford	Daniel ¹	Nwajobi	Bunn
Sealey	Breacker	Thomas	Turner	Foster	Donaghy	Hill	Stein	Harford	Daniel +	Bunn	Nwajobi
Sealey	Breacker	Thomas +	Turner	Foster	Donaghy	Hill	Stein	Harford ¹	Preece	Moss	Bunn
Sealey	Breacker	Thomas	Turner	Foster ¹	Donaghy	Hill	Stein	Harford	Daniel	Moss +	Nwajobi
Sealey	Breacker	Thomas	Turner	Foster	Donaghy ¹	Hill ¹	Stein	Harford ¹	Daniel	Parker	Nwajobi
Sealey	Breacker	Thomas	Turner	Foster	Donaghy ¹	Hill	Stein ¹	Harford	Parker +	Daniel	Nwajobi
Sealey	Breacker	Thomas	Nicholas	Foster	Donaghy	Hill	Stein ¹	Harford	Nwajobi ¹	Preece +	Daniel
Sealey	Breacker	Thomas	Nicholas	Foster	Donaghy	Hill	Stein	Harford	Nwajobi	Preece	Daniel
Sealey	Breacker	Thomas	Turner	Foster	Donaghy	Hill	Stein	Harford	Nwajobi	Daniel	Parker
Sealey	Breacker	Thomas	Turner	Foster	Donaghy	Hill ¹	Stein	Harford	Nwajobi ¹	Daniel +	Parker

FOOTBALL COMBINATION FIXTURES 1984-85

Date	Opposition	F	A
Aug 25	Swansea	7	2
Sept 1	Tottenham	0	3
Sept 5	Birmingham	4	1
Sept 11	Brighton	0	4
Sept 15	Southampton	5	1
Sept 22	Oxford	2	0
Sept 29	Charlton	9	1
Oct 2	Chelsea	1	2
Oct 6	Norwich	4	4
Oct 9	QPR	4	2
Oct 17	Reading	2	3
Oct 27	Fulham	3	1
Nov 10	Bristol Rovers	1	1
Nov 17	Ipswich	1	0
Nov 24	Watford	1	4
Nov 27	Portsmouth	4	2
Dec 8	West Ham	2	1
Dec 15	Arsenal	3	0
Dec 28	Crystal Palace	2	1
Jan 22	Brighton	5	0
Jan 29	Tottenham	1	3
Feb 2	Southampton	3	3
Feb 21	Charlton	2	2
Feb 23	Crystal Palace	4	1
Feb 27	Bristol Rovers	5	1
Mar 5	Fulham	3	2
Mar 9	Reading		
Mar 16	QPR		
Mar 20	Norwich		
Mar 26	West Ham		
Mar 30	Portsmouth		
Apr 2	Swindon		
Apr 5	Oxford		
Apr 13	Watford		
Apr 16	Swindon		
Apr 23	Ipswich		
Apr 27	Millwall		
Apr 30	Millwall		
May 11	Arsenal		
May 13	Birmingham		
May 15	Swansea		
TBA	Chelsea		

CANON LEAGUE DIVISION ONE 84-85

	Home					Away					Pts	
	P	W	D	L	F	A	P	W	D	L		F
Everton	27	9	3	2	39	15	8	2	3	21	16	56
Tottenham	27	7	3	1	29	12	9	3	4	24	15	54
Manchester United	28	9	4	2	32	10	5	3	5	19	22	49
Liverpool	28	8	4	3	23	9	5	5	3	17	14	48
Sheffield Wednesday	27	8	6	1	28	15	4	4	4	14	11	46
Arsenal	28	10	3	2	29	12	4	1	8	19	25	46
Southampton	28	8	2	3	16	13	5	5	5	22	20	45
Nottingham Forest	27	10	1	2	27	13	4	2	8	14	22	45
Chelsea	28	9	2	3	28	13	1	8	5	14	20	40
Aston Villa	27	7	4	3	22	15	3	3	7	16	26	37
Norwich City	27	8	3	2	21	11	2	4	8	12	26	37
Newcastle United	29	8	4	3	26	17	1	5	8	17	36	36
WBA	28	7	3	3	24	12	3	2	10	16	31	35
QPR	29	6	6	3	26	22	2	5	7	9	25	35
Leicester City	27	6	4	5	31	21	3	2	7	14	27	33
West Ham United	26	5	4	4	17	15	3	4	5	16	24	32
Watford	26	4	4	4	26	22	3	5	6	21	28	30
Sunderland	27	7	2	3	18	13	1	3	11	13	26	29
Coventry City	28	6	3	5	16	16	2	1	11	12	32	28
Ipswich Town	25	5	4	4	17	15	1	3	8	7	20	25
Luton Town	26	5	5	3	20	16	1	2	10	11	31	25
Stoke City	27	2	2	8	13	25	0	4	11	4	31	12

FOOTBALL COMBINATION 1984-85

	P	W	D	L	F	A	Pts
Queens Park Rangers	27	17	5	5	69	38	39
Luton Town	26	16	4	6	78	45	36
Watford	22	15	3	4	64	33	33
Tottenham Hotspur	23	15	3	5	72	42	33
Chelsea	20	14	3	3	44	21	31
Ipswich Town	23	13	3	7	37	19	29
Arsenal	21	11	4	6	50	33	26
Southampton	21	9	6	6	45	45	24
Millwall	21	9	5	8	30	33	23
Brighton	21	8	5	8	35	38	21
Norwich City	22	5	10	7	42	44	20
West Ham United	22	7	5	10	34	29	19
Oxford United	23	6	6	11	32	47	18
Charlton Athletic	20	7	4	9	32	49	18
Swansea City	16	5	5	6	23	32	15
Crystal Palace	22	6	3	13	35	50	15
Birmingham City	18	5	4	9	19	38	14
Portsmouth	20	3	6	11	18	29	12
Reading	19	6	0	13	28	52	12
Fulham	19	4	3	12	23	29	11
Swindon Town	19	4	3	12	19	46	11
Bristol Rovers	24	3	4	17	33	75	10

SOUTH EAST COUNTIES LEAGUE FIXTURES 1984-85

Date	Opposition	F	A	Date	Opposition	F	A	Date	Opposition	F	A
Aug 25	Swindon	0	0	Oct 20	Wimbledon	4	2	Jan 26	Wimbledon	1	1
Sept 8	West Ham	3	1	Nov 3	Tottenham	7	1	Feb 16	Reading	1	0
Sept 15	Brentford	3	2	Nov 10	Brighton (LCR2)	3	5	Feb 23	Southend	1	0
Sept 22	Brighton	0	0	Dec 1	Oxford	7	1	Mar 2	Oxford	13	1
Sept 29	Reading (LC1)	4	1	Dec 8	Swindon	2	0	Mar 9	Reading		
Oct 6	Bristol Rovers	2	0	Dec 22	West Ham	3	4	Mar 16	Southend		
Oct 13	Crystal Palace	2	2	Dec 29	Brentford	2	0	Mar 30	Tottenham		
Oct 19	Tottenham	3	6	Jan 12	Bristol Rovers	7	1	April 13	Crystal Palace		
(SJFC)				April 20	Brighton						

FIRST TEAM APPS 1984-

Vauxhall Teamcheck.

/ LUTON TOWN		WATFORD 0	
LES SEALEY	1	STEVE SHERWOOD	COTON
TIM BREACKER	2	LEE SINNOTT	
MITCHELL THOMAS	3	WILF ROSTRON	
/ WAYNE TURNER	4	LES TAYLOR	
STEVE FOSTER	5	STEVE TERRY	
MAL DONAGHY	6	JOHN McCLELLAND	
RICKY HILL	7	NIGEL CALLAGHAN	
BRIAN STEIN	8	LUTHER BLISSETT	
MICK HARFORD	9	JIMMY GILLIGAN	BARNES
EMEKA NWAJIOBI	10	JAN LOHMAN	
PARKER	RAY DANIEL	11	WORRELL STERLING JACKETT
MOSS		12	BARDSLEY

Referee: J. BRAY Linesmen: J. BYLES (Red Flag) P. JOYCE (Yellow Flag)

LOOK OUT FOR THE NEWCOMER IN OUR LINE-UP.



THE NEW 126MPH VAUXHALL ASTRA GTE.

Remember, we got here first.



BACKED BY THE WORLDWIDE
RESOURCES OF GENERAL MOTORS