

# LUTON TOWN

LUTON TOWN

MILLWALL



**FA CUP  
SIXTH ROUND**  
Wednesday 13th March 1985

Official  
Matchday  
Magazine

Price 50p

TONIGHT'S MATCH IS SPONSORED BY:

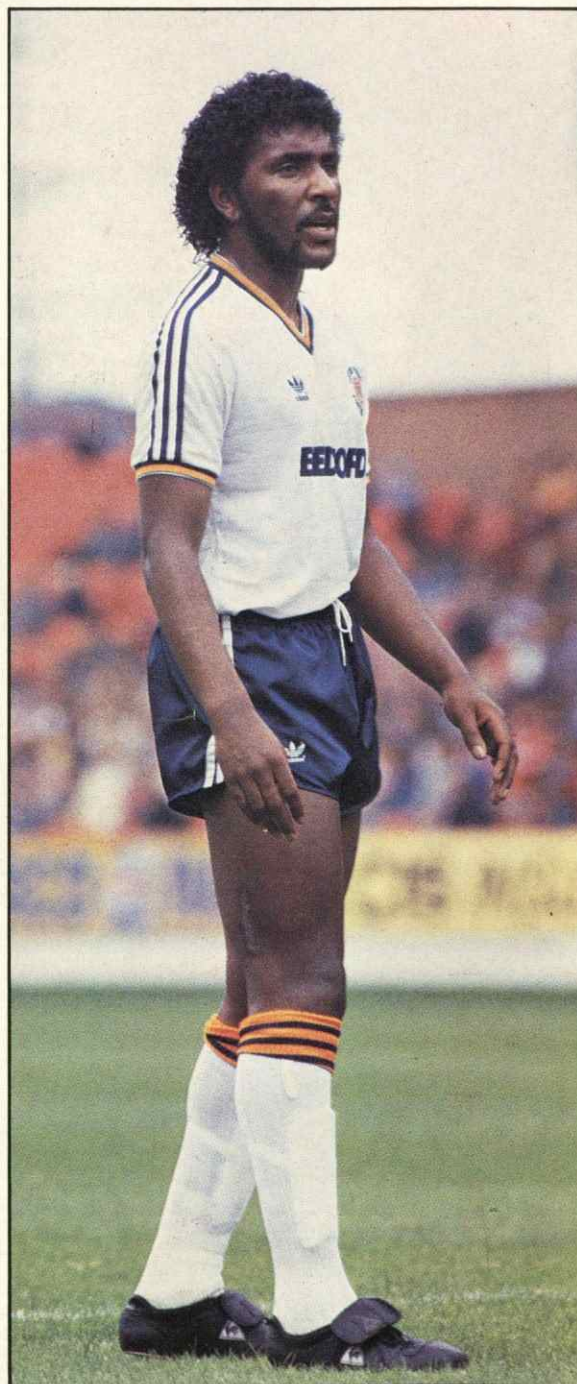


**Plant  
Protection**



# ACTION REPLAY

## 1985 FA Cup Fifth Round Replay



Picture focus on Hatters' marksmen Emeka Nwajiobi and Ricky Hill

Pictures by Gareth Owen

This season could be developing into one of the most important and exciting ever for our club.

At the beginning of next season we will be celebrating 100 years of football at Luton.

Many changes have taken place this season, but the most significant has been the reconstruction of the Board. This has enabled the club to be in a position to fight for our future. I am also deeply respectful of the confidence that the Board has placed in me by inviting me to be one of their number.

Our aim is simple — to provide for our supporters the best quality football in the best League in the world.

The chairman has termed our aim as 'The Pursuit of Excellence' and there is no reason to believe we cannot be achievers amongst the best.

Our players are in good heart for the vital weeks ahead. It will be like a prolonged Cup Final. To retain First Division status is a must, but there is also a little chance of further glory.

At Watford our supporters showed me to what height their cheers can stimulate the team. Their roars were worth a goal — the fact that we play in the sixth round tonight is a tribute to their backing. There is a good spirit around the club.

I can assure all our players that the old adage 'you're only as good as your last game',

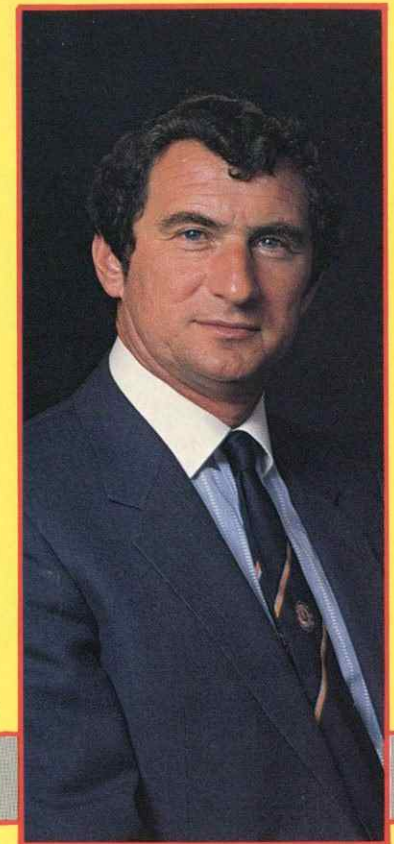
Our Reserves kept up the pressure at the top of the Combination last Saturday morning. Although a defensive mix up gave Reading an equaliser, the general standard of football was good with schoolboys, Kingsley Black, Aaron Tighe and Ian Scott coping well with their promotion to the Reserves.

Ashley Grimes was the only experienced professional playing like a school teacher guiding his class through a difficult examination. The same morning our South East Counties side gained a further point with two Sean Farrell goals away to Reading. With five games left we are anticipating a deserved Championship.

So to tonight. Welcome Millwall and congratulations on a magnificent season so far. We sincerely hope you continue your superb League run and is reward for Mr Alan Kerne their likeable chairman for his shrewd appointment of George Graham as Manager.

We welcome all their supporters and hope you will return with memories of a game of sporting rivalry and excellent football.

During our three games with Watford, I was most heartened by their sportsmanship and the genuine feeling of all connected with their club. In the three ties there was not one booking on the field, nor any hint of crowd trouble off the field. The sportsmanship and humility in the Boardroom continued to make Watford



# WELCOME

will ring true. With Andy Dibble, Peter Nicholas, David Preece and Ashley Grimes waiting in the wings and Frank Bunn nearing fitness, we are ready for the difficult weeks ahead.

The players that carried the flag through a 2-1 win against Sunderland, and the three Watford games in seven days deserve great praise. We had heavy colds and bruised limbs during this spell and John Sheridan was more than busy, but I cannot praise both their play and competitiveness enough. Ray Daniel, Gary Parker, Wayne Turner who with Ricky Hill comprised our midfield deserve a special mention.

and Luton genuine football friends and rivals.

The club has been a hectic hive of activity in the last couple of weeks. The ticket office has been under siege and the switchboard has been blocked. It is at times like this that the atmosphere that football generates gives a stimulating boost to all our efforts.

We thank all our fans for their patience, understanding and support at this time.

The players have never appreciated your backing so much. Not since that traumatic day at Maine Road have we been involved in anything similar.

Whatever the Cup-tie result, I repeat that the next weeks will be our test. Around the

corner are tough games at Sheffield Wednesday and Watford.

We all feel our season is just beginning so I hope you will all support the club in an effort to make LUTON TOWN a force to be reckoned with.

# LUTON TOWN FC

70-72 KENILWORTH ROAD · LUTON LU1 1DH · TELEPHONE: 0582-411622

**CHAIRMAN**  
DAVID EVANS  
**DIRECTORS**  
T. W. BAILEY, R. L. BANKS, E. S. PEARSON,  
D. PLEAT, R. J. SMITH, J. R. SMITH  
**CHIEF EXECUTIVE**  
JOHN SMITH  
**MANAGER**  
DAVID PLEAT  
**GENERAL SECRETARY**  
GRAHAM MACKRELL  
**CLUB SECRETARY**  
JOHN WILKINSON  
**COMMERCIAL MANAGER**  
BILL TOMLINS

**PRESIDENT**  
D. MORTIMER  
**DEPUTY PRESIDENT**  
J. A. C. BAIN  
**HONORARY LIFE MEMBERS**  
J. RICHARDSON, T. HODGSON  
**VICE PRESIDENTS**  
A. G. BERRY F.C.C.A., J. B. BRENT  
C. BYGRAVE, C. J. EVANS  
B. COLE, B. ENGLAND  
N. S. FOOKES, E. FOUNTAIN  
C. HOLLOWAY, I. E. HOLMES  
L. LEPPINGTON, R. LARKINSON  
R. SAFRANEK, R. UNWIN, E. WALLER

**HONOURS**  
FA CUP FINALISTS 1958-59  
CHAMPIONS — DIVISION 3(S) 1936-37  
RUNNERS-UP — DIVISION 2 1954-55  
CHAMPIONS — DIVISION 4 1967-68  
RUNNERS-UP — DIVISION 3 1969-70  
RUNNERS-UP — DIVISION 2 1973-74  
CHAMPIONS — DIVISION 2 1981-82



# FA CUP S C E N E

The death of famous former Cup-winning manager, Harry Catterick, overshadowed a day of heroes and villains in the FA Cup.

Catterick, who took Everton to a winning Wembley Final against Sheffield Wednesday in 1966, collapsed and died from a heart attack only seconds after seeing his old club held 2-2 by Ipswich Town in a sixth round clash of high drama at Goodison Park.

Only minutes earlier, in the 85th minute of the tie, Catterick had seen centre-half Derek Mountfield head the Everton equaliser — just eight minutes after Ipswich's reliable left-back Steve McCall had been sent off for a late tackle on Trevor Steven. Ipswich

were leading 2-1 when villain McCall was sent off, a soft goal by Kevin Wilson and a precision half-volley by Romeo Zondervan putting them on top after Kevin Sheedy had shot the League leaders ahead with an accurate free-kick from 20 yards. Another hero who had no trouble in finding the net was Northern Ireland striker Norman Whiteside. He hit a hat-trick, including a late penalty, in Manchester United's 4-2 sixth round win over West Ham United.

Mark Hughes stroked United in front after 21 minutes, but West Ham fought back to equalise with an own goal by Graeme Hogg. Then Whiteside took over with a close-range header and a

sharp finish to put United in line for their 15th semi-final since the War. His late penalty erased another good goal from a sharp angle by West Ham's Paul Allen.

Luton Town's Wayne Turner was another hero — scoring the winner on his 24th birthday in the Hatters' fifth round second replay over local rivals Watford at Kenilworth Road.

The goal, a low drive on the run, from a through ball by Gary Parker, was one of the few bright moments in a slugging battle-of-a-match that had taken five hours to find a winner. Luton face Millwall at Kenilworth Road for a place in the semi-finals alongside Everton or Ipswich, Manchester United and Liverpool.

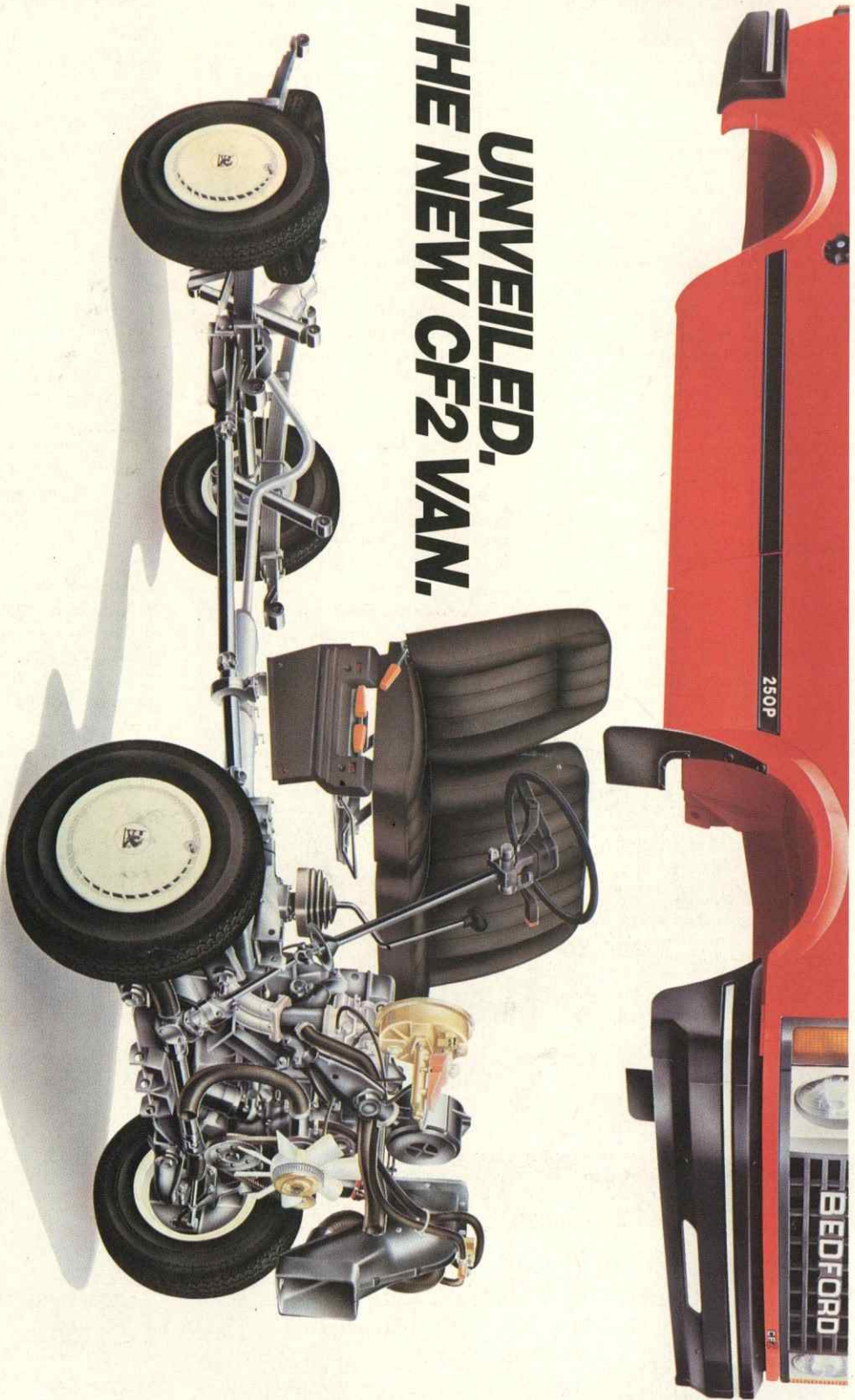


Brian Stein in first-half action.



Heads you win! Mick Harford is first there to meet a high corner kick.

## UNVEILED, THE NEW CF2 VAN.



From the outside, the new CF2 looks very like the old CF. Underneath, however, it's a completely different story.

The mechanics are almost all new. So, don't go by appearances. Go and arrange a road test with your local Bedford dealer instead.

**THE NEW CF2 SHOWS BEDFORD MEANS BUSINESS.**

### GLAZING & DECORATING SPECIALISTS

GLAZING REPAIRS & GLASS SUPPLIES  
PATIO DOOR & WINDOW INSTALLATIONS  
DOUBLE GLAZING (SECONDARY AND SEALED UNITS)  
INTERIOR AND EXTERIOR DECORATORS

For Domestic and Commercial enquiries contact Luton 573025/597505  
For 24 hour Emergency Service contact Dunstable 666665

**sapsworth**  
GLAZING & DECORATING  
J. Sapsworth Limited  
92 Marsh Road, Luton, Bedfordshire LU3 2NL  
Telephone: Luton (0582) 53025/597505



# ACTION REPLAY



INSET:  
Brian Stein's evident ball skill keeps the Watford defence guessing.



MAIN PICTURE:  
Mick Harford's well struck shot under pressure hits the Hornets' post in this exciting replay.

## THE LOCAL TASTE AND HOW TO SATISFY IT

We're very definite about our taste in beer around here. A clear light pint is what we look for; with a good, clean smack of malt and hops.

And there's only one name that really satisfies the local taste — BB. The Light beer first brewed in Luton during the darkest days of the War by J. W. Green.

Only the finest hops and good, ripe barley go into the making. Then the brew is matured to exactly the right degree to give you a bright refreshing pint with a sound, full flavour.



WHITBREAD

American servicemen in local wartime bases declared that BB, chilled, was the nearest taste to Stateside draught.

It went down well when Syd Owen ruled the Hatters.

And it's been going down well ever since. Because BB is brewed with a proper respect for quality. To keep up the traditions we value round here.



There's a handy man to know at  
**Graham Ford**



Your Comprehensive Builders Merchants

Depots at: KINGSWAY LUTON 31199

BEALE ST DUNSTABLE 603111

LEIGHTON RD LEIGHTON BUZZARD 373486

Home Improvement and  
Building Material Centres



**Falcon**  
Holidays

QUALIFIED FOR EUROPE

We've been in European competition for 12 seasons. Try a Falcon Holiday this year and find out why we're top of the Holiday League.

Fly direct from your local airport for your winter or summer holiday.

190 Campden Hill Road  
London W8 7TH  
Telephone 01-221 6298

**Falcon**  
Holidays



ATO  
141/BC



# With Wallspan fitted bedrooms, a good result is guaranteed.

Wallspan fitted bedrooms are great believers in team work. Over the years we have built up a winning team of professionals who work together to produce a product that is out of everyone else's league.

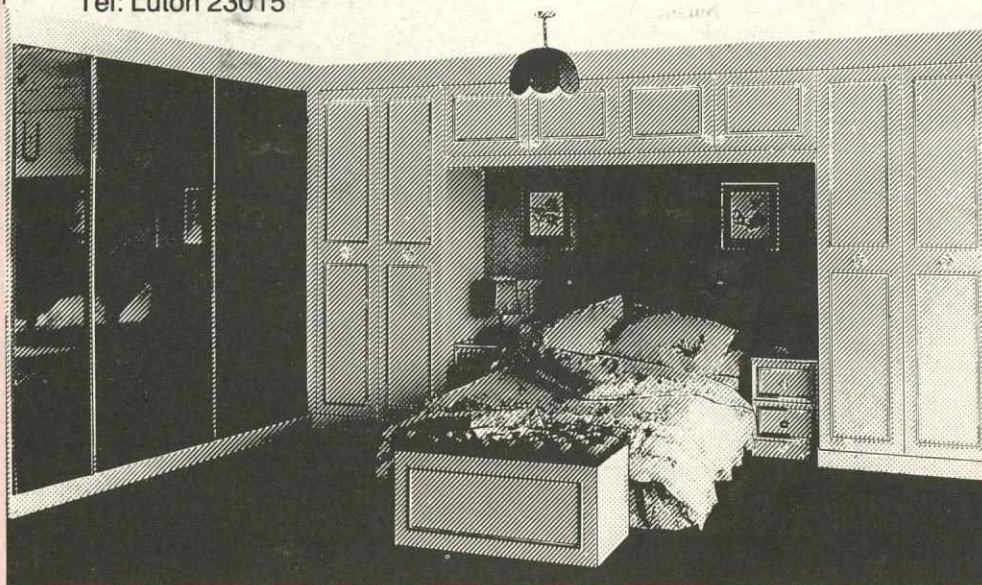
Free design, free fitting, free delivery, and for a limited period interest free credit.

Unfortunately we cannot guarantee the result of today's match but we do guarantee our result for a full five years.

Come and support our team soon.

Luton Showroom Unit 174 Arndale Centre  
Tel: Luton 23015

**Wallspan  
Bedrooms**  
  
Throughout the UK



## POINTS OF VIEW

### Drogi Klubie Luton Town!

Nazywam sie mariusz siedlok, mam ig lat. Chodze do klasy 8a szkoly podstawowej. Pisze do was ten list z wielka prosba.

Od dawna interesuje sie dobbze snana calemu swiatu pilka nozna I jestem kolekcjonerem zdjec i autografow pilkarzy roznnych klubow. Goraco was prosze o przestanie mi na moj adres Zdjecie lub autografy phkarzy waszego klubu.

Mysle ze moja nie sprawi wam wielkiego klopotu, I ze mozna na was polegac. Serdecznie pozdrawiam wszystkich pilkarzy, oraz trenera DAVIDA PLEATA!

Zycze wielu sukcesoli w nowym 1985 Roju!

**EDITORS NOTE:** We believe this letter to David is from a fan in Poland. If any supporter could translate for us it would be most helpful. Support abroad for the 'Town' seems to grow daily!

Dear David

I would like to take this opportunity to say how impressed I was with your side's attacking policy on your recent visit to Newcastle. This is something quite uncommon for a side in the position that you unfortunately find yourselves in and, as a Newcastle supporter, you did nothing to help my fingernails grow. Best wishes for the rest of the season.

**Bob Frank, Peterborough.**

Dear Luton Town FC. Thank you for the great day I had when I was the escort for the match against Newcastle. I got all the autographs of the Luton team and was able to run on with them. Thank you for the free Luton kit I got.

My Dad and I really enjoyed the match but it was a pity Luton didn't win. Yours gratefully.

**Andrew Pemberton (aged 12), Dunstable.**

My second cousin, Miss Grace Galer, has moved from Northampton to Sibbertoft Manor Nursing Home. She still keeps the Luton Town autographed photograph by her bed in a special non-reflective frame. She would like to congratulate Luton Town FC on their football year.

**Audrey Sharman, Kettering, Northants.**

Dear Editor. I have supported the Town for approximately 30 years through thick and thin but nowadays rarely get to Kenilworth Road for geographical and business reasons.

However, I recently had the pleasure of watching the Hatters beat QPR 3-2 at Loftus Road and on the way home my friends and I found ourselves discussing some of our favourites and the best players to have appeared for the Town over the past 30 years.

This ultimately lead to a team being picked as the best Luton team of all players during that period.

I am pleased to list this team below which was picked not only on the basis of the best players but the assumed best blend.

With several notable exceptions, the majority of the players come from First Division teams which we considered a natural choice, yet it is hard to forget such 100 per cent characters from the Fourth Division days such as Keith Allen, Freddie Jardine, Tony Read, etc.

I would be very pleased to hear readers' views about any improvements or omissions. My line-up would be:

**Ron Baynham**

Kirk Stephens Paul Elliott Sid Owen Mal Donaghy  
Ricky Hill Bruce Rioch George Cummins  
Billy Bingham Ron Davies Malcolm MacDonald

Subs: Paul Walsh, Brian Stein, Andy Dibble, Graham French, Keith Allen.

Yours faithfully, **A. R. Davis, Woking, Surrey.**

## EXECUTIVE MEMBERS

- ANACHEM LTD
- A1 HEATING (WHOLESALE & RETAIL) LTD
- MR W. ASHBURNER

- BEARD & MANNING CATERING SERVICES LTD
- BEDFORD COMMERCIAL VEHICLES
- BERVALE MEAD INSURANCE BROKERS LTD
- BERKELEY ASSOCIATES
- BLAKEY ENGINEERING CO LTD
- BLUE ARROW CLEANING GROUP
- BLUE ARROW SERVICES
- BRENGREEN HOLDINGS PLC
- BROAD STREET PRINT

- CANVERMOOR PLC
- GARY CHAMBERLAIN WINDOW FASHIONS

- DUPONT (UK) LTD

- FILMERGRAPHIC ASSOCIATES LTD
- FINE STAMPS LTD
- N. S. FOOKES GROUP (PLANT FACILITIES) LTD

- BRIAN E. HANDSCOMBE (LIFE & PENSION BROKERS)
- E. W. HUDSON (HOLDINGS) LTD
- IVOR HOLMES LTD

- INFORMATION TECHNOLOGY LTD

- MARK JAMES (SALVAGE) LTD

- JOHN LAING CONSTRUCTION LTD
- RICHARD C. LARKINSON (CAMBRIDGE) LTD
- MR P. LAYCOCK

- NEAHURST LTD

- OPELVALE GROUP

- MR & MRS PEARSON
- F. W. PEARCE BUILDERS LTD
- PETERS GRAVES & CO
- PILCOURT LTD
- DR & MRS G. L. PLESTER
- PRIORY FARM FOODS

- DAVID RAND & CO LTD
- RAVENMERE LTD
- RICHARDSON & BOTTOMS LTD
- RICHMOND ELECTRONICS (MARKYATE) LTD
- ROBINSON METAL (LUTON) LTD
- ROGERS RESIDENTIAL SALES

- SHAW & KILBURN
- SHOREYS TRAVEL

- TRITRADE LTD
- W. S. TYREMASTERS  
(DIVISION OF WEST & SELICK (TYRES) LTD)

- R. W. UNWIN & CO LTD

- VAUXHALL MOTORS LTD

- WALLSPAN BEDROOMS
- WEBBEX LTD
- JOHN W. WEBB FCI INVESTMENT CONSULTANT
- WHITE'S STATIONERS LTD

- YARNSFIELD LTD

THE FULL ADDRESSES AND SERVICES OF OUR EXECUTIVE MEMBERS CAN BE OBTAINED THROUGH OUR COMMERCIAL OFFICES — LUTON TOWN FOOTBALL CLUB



SPONSORED BY THE HERALD NEWSPAPER AND CHILTERN RADIO - THE HERALD NEWSPAPER AND CHILTERN RADIO



LUCY RUST



DARREN HOWE



GORDON SANDERS



LISA ROGERS



JASON GLENNON

A warm welcome to all Junior Hatters and their parents and a special welcome to today's mascot and escorts.

Our mascot is Lucy Rust aged 14 from Woburn Sands. She attends Cedars Upper at Leighton Buzzard and plays hockey for the school team and her interests are watching the Hatters and playing sport.

**ESCORTS**

Darren Howe from Luton is aged eight and attends Sundon Park Junior School. His interests are watching Luton, Judo and listening to records.

Gordon Sanders from Leighton Buzzard is aged 11. He attends Brooklands School and plays football for Brooklands Junior Football Club. His interests are football, swimming and pop music.

Lisa Rogers from Dunstable is aged nine and attends Priory Middle School, Dunstable. Her interests are reading, swimming and playing hockey.

Jason Glennon from Luton is aged 10 and attends Whitefields School. His interests are collecting stamps, playing golf and Karate.

*Lucy Rust*  
*Lucy*



# NEWSDESK NEWSDESK

**BALL SPONSOR**

We welcome to the match today our ball sponsor V. G. Green & Sons, Building Contractors from Shefford who have become something of a lucky omen as we seek the glory trail to Wembley. Green's sponsored the ball for our fourth and fifth round games against Huddersfield and Watford and director Vic Green's intention is to sponsor us all the way to Wembley. We are very appreciative of Green's support and appreciate the confidence they have shown in the team by booking their sponsorship so far ahead.

**FA CUP SIXTH ROUND**

In the event of tonight's game being drawn the replay will be on Monday 18th March, KO 7.30 pm at The Den. This game will be **All Ticket**. Seats will only be available to our Season Ticket Holders. Tickets for all areas will be available from the Ticket Office directly after tonight's game.

## 3 ways to win with Canon

Starting on 15th March, next Saturday and running through to the end of the season is an entirely new promotion from Canon.

2.5 million leaflets will be distributed in club programmes throughout the Canon League. So every supporter who attends a match, home or away, and buys a programme gets the chance to win.

**Spell & Win** Eleven highest scoring supporters can win prizes ranging from a Canon T70 35mm camera to £50 cash, plus the chance to be a guest of the club for a Canon League match next season.

The club can win as well in this collector game. The club that gains the highest score within the Division wins a cash prize of £400.

**Shoot for Goal** Two different skill competitions, each one carrying a magnificent Canon video camera and recorder as a first prize, two second prizes of Canon Sureshot cameras plus 300 Canon calculators.

Making a total of over £20,000 in prizes for the game and competition.

**Hidden Discount** Enterprising business people can win discounts ranging from 15% to 50% off RRP. Simply by taking their programme insert along to their nearest Canon dealer.

So make sure you get a programme when you come along to the home match on 23rd March 1985. You could be one of the hundreds of Canon prize winners in this new promotion.

**REFEREE**



David Hutchinson is a Police Inspector, married with three children. Commenced refereeing in 1964 progressing via Eastern Counties and Southern League. Enjoys cricket and 'eating out'. In 1979 Linesman European Cup Winners' Cup semi-final, 1980 Referee FA Trophy semi-final, 1981 Senior Linesman FA Cup Final, 1984 Reserve Referee Associate Members' Cup Final.

**Linesmen:**  
G. K. Rodick and D. H. Nevin.

**TICKET OFFICE**

**Extended Opening Hours**

To cater for the majority of our supporters our ticket office in Kenilworth Road will now, from 4th March be open from Monday to Friday 8.30 am to 7.30 pm. Saturday 8.30 am to 12.30 pm.

These new times will enable us to cater for all ticket purchases and enquiries at more convenient times to you our supporters.

**AWAY TRAVEL**

On the 16th March we visit Sheffield Wednesday for a Canon League Division One fixture. Our luxury coaches leave Maple Road Car Park at 9.30 am and the inclusive price is £5. We anticipate a large following for this game so could we ask Travel Club members to book early so as to enable us to inform the coach company as soon as possible on numbers of coaches.

**CLUB INFORMATION:**

- ☎ OFFICE HOURS 9 am-5 pm  
LUTON (0582) 411622
- ☎ ADVERTISING & PROMOTIONS  
RING - MIKE BEEVOR  
PROJECTS & ADVERTISING  
EXECUTIVE  
LUTON (0582) 411622
- ☎ SOUVENIRS - TRAVEL -  
JUNIOR HATTERS  
LUTON (0582) 412418
- ☎ MATCH TICKETS & LOTTERY  
ENQUIRIES  
RING - JOHN GORNALL,  
DEVELOPMENT EXECUTIVE  
LUTON (0582) 30748
- ☎ BANQUETING & FUNCTION  
FACILITIES  
RING - CLIVE HUSTWITT,  
CATERING MANAGER  
LUTON (0582) 411526
- ☎ MATCH ENQUIRIES -  
24-HOURS SERVICE  
LUTON (0582) 33010

# RESERVES + YOUTHS

16th February 1985

**Football Combination  
LUTON TOWN v CRYSTAL PALACE**

As you will see from the venue we were forced to travel to play this home game to save us from falling into a greater fixture congestion.

The pitch was tacky and on the small side but we settled quickly and took the lead after eight minutes when a pass from Kingsley Black was converted by David Oldfield. Kingsley making his Combination debut and went one better in 15 minutes when he latched on to a through pass and rounded the goalkeeper before putting us two up.

Palace did not take kindly to this setback and reduced the arrears after 32 minutes, when No. 10 David Jones served a good shot in off the far post.

We were not going to be denied and Mark Stein scored in the 40th and 43rd minute from good passes from Alex Ellisdon and Gary Cobb respectively. Half-time 4-1.

The second-half was a very one sided affair but we failed to turn our superiority into goals.

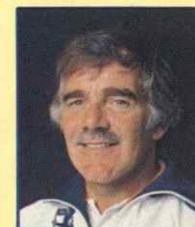
The pleasing aspect was a good team performance with two schoolboys Ian Scott and Kingsley Black making their debut, and all credit to the senior lads for making them feel at ease to make a valuable contribution to our victory.

**TEAM:** Dibble, Turner, Ellisdon, McEvoy, North M., Scott, Cobb, Stein M., Oldfield, Grimes, Black. **Sub:** Harvey.

**Score:** 4-1.  
**Scorers:** Stein 2, Oldfield, Black.



JOHN MOORE



DAVID COATES

when from another good move Mark Stein hits the goalkeeper on the legs, but David Moss crashes the rebound into the roof of the net.

Then comes the goal of the match, when Rob Johnson just on the halfway line slides a diagonal pass to Mark Stein, who dummies it and spins and David Oldfield also dummies it and Mark Stein picks it up and runs on to fire it home.

Finally David Oldfield gets a goal from a knock down header from David Moss to seal what was a convincing victory after a dismal start.

**TEAM:** Dibble, Johnson, Ellisdon, McEvoy, North M., Grimes, Cobb, Stein M., Oldfield, Parker, Moss. **Sub:** Tuite.  
**Scorers:** Stein 2, Moss, McEvoy, Oldfield.

Saturday 23rd February 1985  
South East Counties  
SOUTHEND UTD 0 LUTON TOWN 1



ANDY DIBBLE



ASHLEY GRIMES

28th February 1985

**Football Combination  
BRISTOL ROVERS 1 LUTON 5**

After starting the game, 12 seconds later we found ourselves a goal down due to a lack of concentration and correct reading of danger. For the next 10 minutes we looked shocked and likely to concede a second goal, but we broke away in the 11th minute for Ricky McEvoy to hit the bar and Mark Stein to knock in the rebound. After 14 minutes the same combination in reverse, produced another quality pass and finish to put us in the lead. Half-time leading 2-1.

At the start of the second-half we are calling all the shots, by our quick accurate passing, but we are failing to turn our superiority into goals. Until the 65th minute,

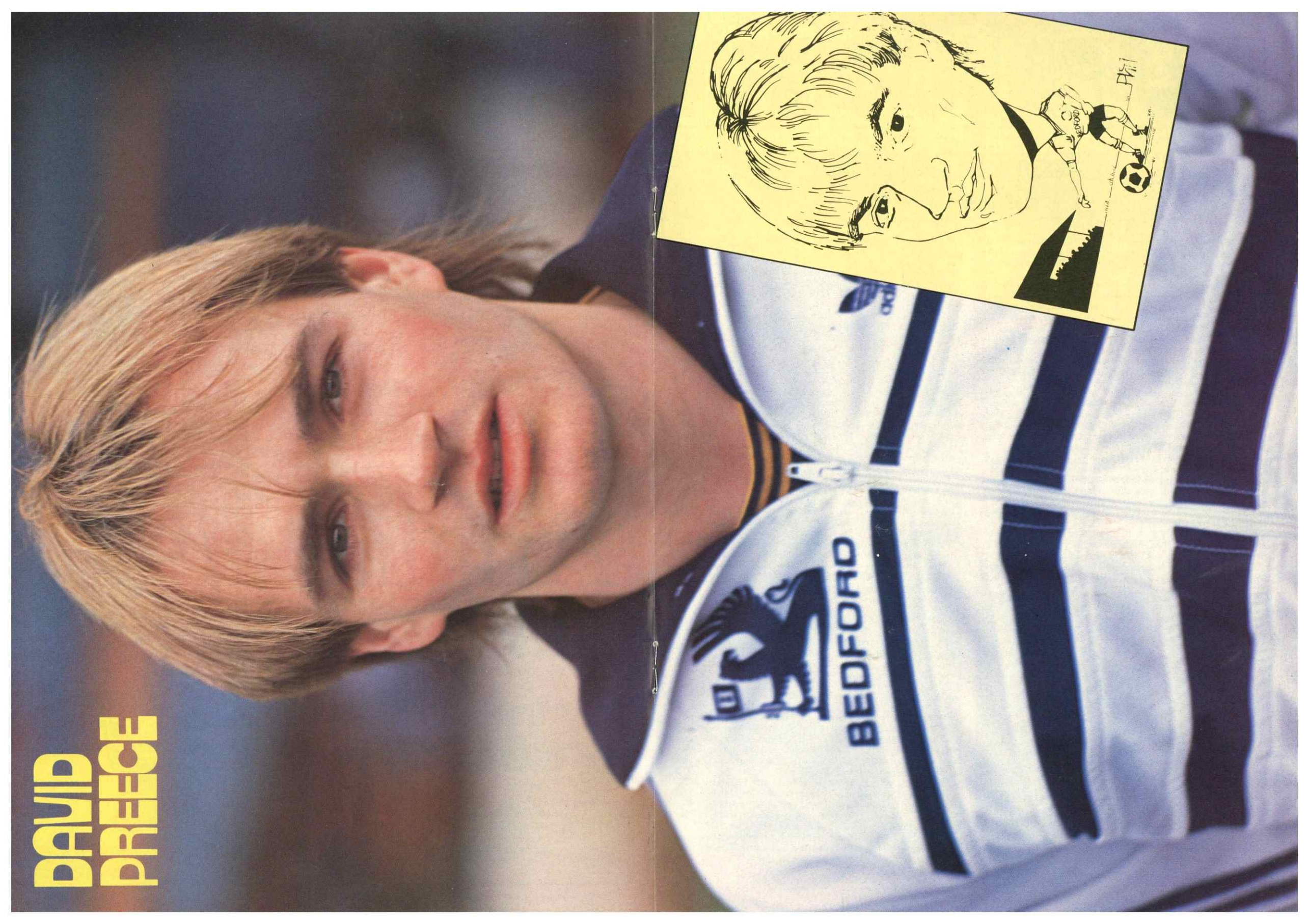
# Anglia Television

Proud to serve  
the  
East of England.





**DAVID  
PREECE**





# OUR VISITORS



## MILLWALL



These are exciting days down in London's Dockland area as Millwall chase a double target over the final months of the season . . . a place in the FA Cup semi-finals and promotion from the Third Division.

They should have a clearer picture of how they stand in the first leg of that double after tonight's Kenilworth Road game. As for promotion, the Lions from Cold Blow Lane may have to wait until the final weeks of the season to see if they are heading back into the Second Division.

Millwall have had their ups and downs in the last decade — twice relegated to the Third Division, once promoted to the second flight — but there's an air of optimism at the club these days boosted by their fine Cup run and some impressive League results.

George Graham's side showed their pedigree in a four day spell last month when they beat First Division Leicester 2-0 to reach this stage of the Cup and the following Saturday, hammered run-away Third Division leaders Bradford City 4-0, to leave them well placed in the promotion race with vital games in hand on their closest rivals.

One of the men largely responsible for both results was striker John Fashanu, younger brother of the better-known Justin, whose goal put the Lions on their way to a fine win against Leicester and who then added two more against Bradford City.

Fashanu moved to the Den earlier in the season after spells with Norwich, Crystal Palace on loan, and Lincoln and in his short time with Millwall has shown the power and finishing touch that made his brother such an exciting prospect at Norwich a few seasons ago.

The man who has transformed Millwall from an average Third Division side into Cup giant killers and promotion

prospects is George Graham, nicknamed 'Stroller' in his playing days with Villa, Chelsea, Arsenal and Manchester United.

Capped 12 times by Scotland, Graham was appointed in charge in December 1982 and has worked hard at the Den to assemble a side capable of taking the club back to better things.

Up to the end of last month, Millwall were one of only three League clubs unbeaten at home (Oxford and Blackpool were the others) and in 14 home games they had conceded just seven goals.

After the fifth round Cup win against Leicester, Graham pointed out that his priority was still promotion . . . but the Cup success was adding spice to Millwall's season.

'We still see promotion as our main aim but our run in the Cup has given us some nice publicity. To get to the quarter-finals is a feat in itself. So far as this game goes we'll be going to compete and enjoying ourselves.'

Millwall's side on duty at Kenilworth Road may be short on big names but there are plenty of youngsters who have worked hard this season to push the club back into the spotlight.

Full-back Paul Hinshelwood played plenty of First Division football for Crystal Palace before moving on to Oxford where he shared in last season's Third Division title success and Milk Cup run. He moved to Cold Blow Lane recently and partners Wimbledon-born Keith Stevens at full-back.

Former Palace apprentice Paul Sansome is regular choice in goal and key figures in defence are former Chelsea and Reading man Mickey Nutton and David Cusack who played almost 200 games for Southend before joining Millwall in a £30,000 move.

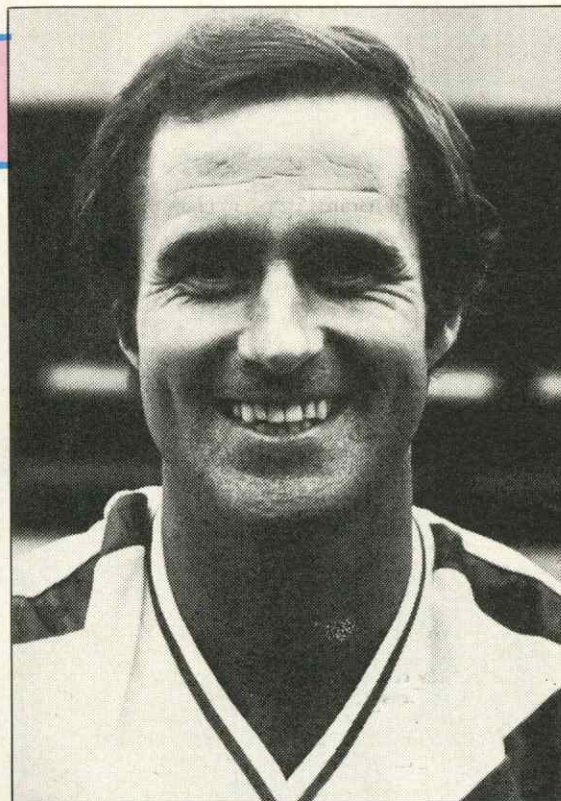
Anton Otulakowski is a Yorkshireman with a tongue-twister of a name who was a £60,000 signing by West Ham from Barnsley eight seasons ago. Subsequently he moved on to Southend and linked up with the Lions two seasons ago. He partners Les Briley in midfield and the Crystal Palace link with the Den is strengthened by Nick Chatterton who played 150 games for the Selhurst Park club and cost Millwall a £100,000.

Former England Youth player Alan McLeary was a scorer in the fifth round win against Leicester while Steve Lowndes is a Welsh international (two caps) who moved from Newport for the start of last season.

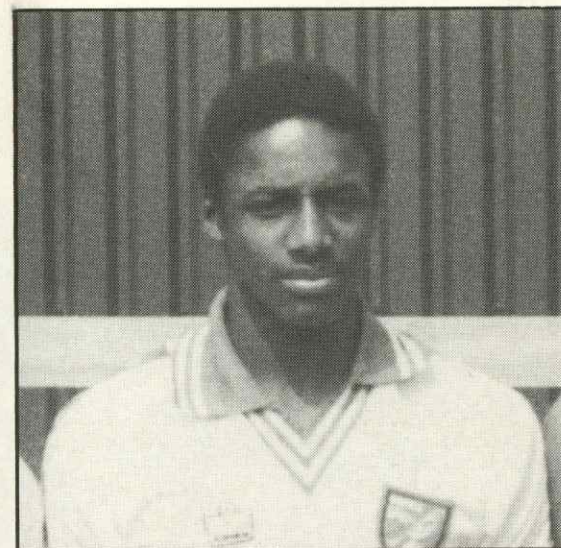
Kevin Bremner, brother of the former Villa player Des, now at Birmingham, began his League career at Colchester and has had loan spells with Birmingham, Wrexham and Plymouth. He was the side's leading League scorer last season with 16 goals.

For a club who have never been in the First Division, Millwall have a proud Cup fighting record. They've reached the last four stages three times, the most recent in 1937 when they became the first Third Division club to get within one match of Wembley.

Plymouth are the most recent club to achieve this, last season, and the Lions of Cold Blow Lane would dearly like to match Argyle's success 12 months ago.



GEORGE GRAHAM



JOHN FASHANU



Millwall goalkeeper (Paul Sansome) saves from Leicester's Gary Lineker in the last round of the Cup.

## GARETH OWEN PHOTOGRAPHY

Photography for Luton Town FC and First Division Companies in the area

STUDIO 9  
GUILDFORD STREET  
LUTON, BEDS  
LUTON (0582) 418025

## B. DOHERTY SKIPHIRE

34 MOUNT PLEASANT ROAD  
LUTON  
Telephone: 54633 and 54799

## SHOREY'S TRAVEL



LUXURY  
COACH HIRE  
FOR FOREIGN &  
UK EXECUTIVE  
COACHES

COMPETITIVE RATES · FRIENDLY SERVICE · LOCAL BASED

28 Sheepfold Hill, Flitwick, Bedfordshire  
Telephone: Flitwick 713289 Silsoe 60694

## MARTIN SMITH MOTORS

USED COMMERCIAL VEHICLE SALES  
REPAIRS · SERVICING · MOT TESTING

LEAGRAVE MARSH GARAGE  
MOUNT PLEASANT ROAD  
LEAGRAVE, LUTON  
Telephone: Luton 574455 or 572806

## Blue Arrow Cleaning Group

The Professional Approach to  
Your Cleaning Problems  
84 Aldermans Hill N13  
Official Cleaning Contractors to  
Luton Town FC  
Telephone: 01-882 4626



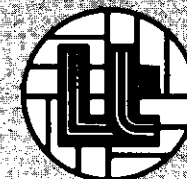
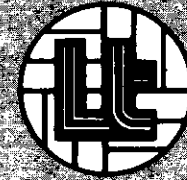
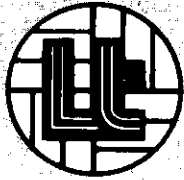
# ACTION

# REPLAY

HATTERS 1  
HORNETS 0

- 1 Goal! Wayne Turner picks up a through ball from Gary Parker to slide in a fine low drive.
- 2 Mick Harford in acrobatic action as the pace hots up.
- 3 A penetrating shot from Brian Stein forcing another save.
- 4 Emeka Nwajiobi in control as he pushes forward.

2



3

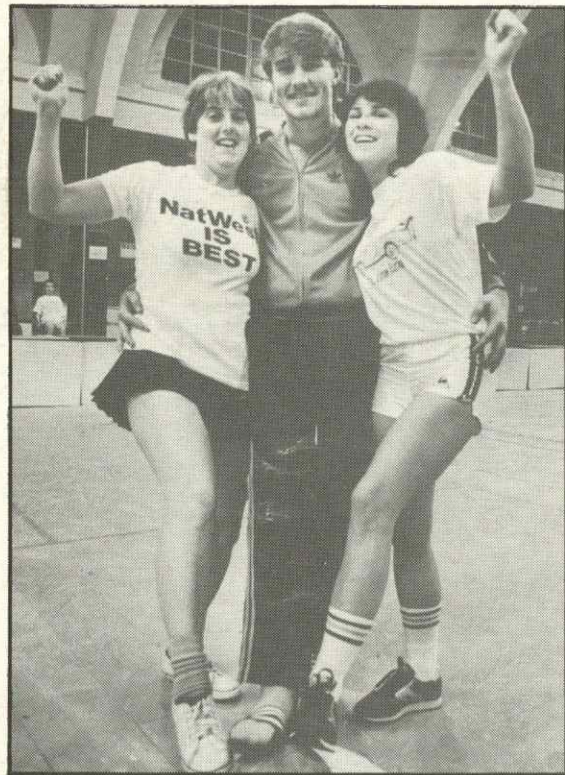


# AROUND THE TOWN

## 'KNOCKED OUT FOR CHILDREN'

Just knockout — that was the verdict of the players who took part in a Vauxhall charity five-a-side football marathon and doubled the target they had set themselves.

The 150 odd participants originally hoped to raise £1,000 to buy equipment for the children's ward at Luton and Dunstable Hospital.



The marathon started on Friday evening, when Luton Town goalkeeper Andy Dibble currently on crutches due to ligament trouble, blew the whistle for the games to begin.

The idea was originally that of the Vauxhall A C Trim Shop workers, who regularly play five-a-side tournaments and decided to do the charity marathon as a way of saying thank you for the work done in the Children's Ward.

## MATCH SPONSOR

We would like to extend a warm welcome to our match and match ball sponsors today, ICI Plant Protection, who are the market leaders in the agricultural chemical industry, selling chemicals to solve farming problems of weeds, pests and diseases in crops.

The range of products offered by ICI, including such well known names in the agricultural sector as 'Gramoxone',

'Fusilade', 'Radar' and 'Aphox', are technically excellent and are backed by one of the largest sales forces in the industry. There is always an ICI representative close at hand to advise on any farming question.

The launch of ICI's new fungicides — 'Ferrax' seed treatment, Early 'Impact' and 'Impact' Extra — is certainly a major step forward for cereal farmers. With the new products to complete its range, ICI now offers a programme of treatments to give better and more cost-effective disease control than ever before. It covers not only just foliar diseases like Mildew and Septoria, but also Eyespot and seed-borne diseases such as Loose Smut.

ICI aims, through its programmed approach, to maximise the effectiveness of fungicide treatment and therefore cut costs as well as increase yields. All of this is vitally important to cereal growers in present economic circumstances.

ICI, together with their local major distributor, 'Banks of Sandy Ltd', are confident that they can now offer a comprehensive crop care service second to none in the farming industry.

For more information on any ICI product telephone Peterborough 313100 or Farnham (Surrey) 724525.

Today's match is the third game ICI Plant Protection have sponsored at Kenilworth Road and we wish them and their guests an enjoyable afternoon.

## QUACKERS ON LUTON

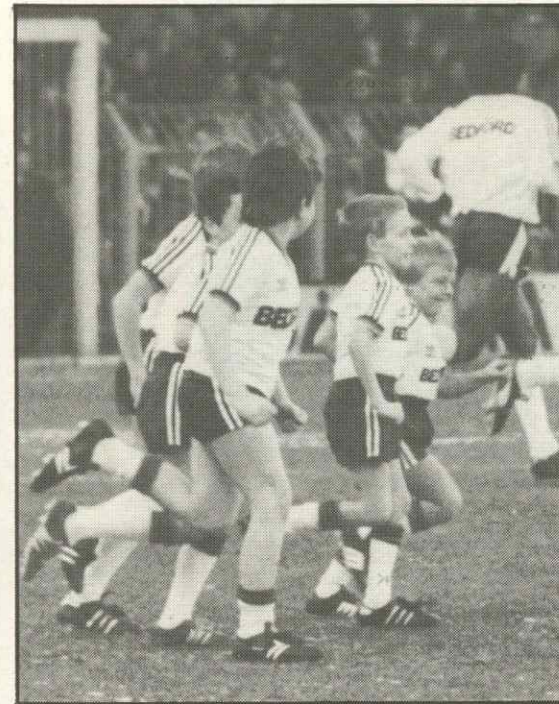
Our picture shows four lucky Junior Hatters with their 'Quackers Souvenirs' given as a prize for guessing the correct weight of our Luton Striker 'Tracy Britton'. We are not sure what made their day . . . meeting Paul Elliott or Tracy!



Obviously they have a good head for figures and dates. Because they had to answer two questions on the club through our Junior Hatters sponsors The Herald and Chiltern Radio to be one of 28 lucky winners to be guests of our match sponsor R. W. Unwin on Saturday.

## 'THE MOMENT THEY WILL REMEMBER'

As a true Luton fan you will know what these young Junior Hatters feel. A chance to run out at Kenilworth Road with the team they love. A moment we are sure that will stay



with them for a long time. Our picture captures the thrill on their young faces running out behind Town stars Ricky, Mitchell and Hatters captain Steve especially in front of our own supporters in the Oak Road end.

So the next time you see these youngsters take the field give them an even bigger cheer that they won't forget, it will make their day more memorable. It certainly does wonders for the moral of our own players too. Imagine what it does for our young Junior Hatters when they are included in this tremendous vocal support!

## LUTON'S PAT ON THE BACK FOR SCHOOLBOY SOCCER HOPEFULS

Schoolboy soccer players in North Bedfordshire have been given a pat on the back by Luton Town Football Club official Ron Howard.

Mr Howard, the club's chief scout, praised the youngsters for their excellent spirit and good sportsmanship while taking part in the first ever Luton Town FC Schools five-a-side tournament held at the Bunyan Centre, Bedford on Thursday.

He told the young players, all aged under 13: 'I've certainly seen one or two lads who show excellent prospects.' And he added: 'The important thing at your age is to enjoy your football.'

Eight teams representing schools in and around Bedford took part in the competition — the first of a series of events organised by Luton Town FC in their campaign to establish closer links in the Bedford area.

After a closely played series of matches, the Luton Town Trophy went to Lincroft School, Oakley, who beat Abbey School, Elstow 2-1 in the Final.

Luton team player Frank Bunn and North Beds Mayor Vic Storrow presented the prizes to the finalists. In addition every player taking part was given a special computerised certificate and a Luton Town poster.

The event was organised by Bedford and District Schools Football Association, whose secretary, Derek Benson, thanked Luton Town and Bedford Trucks for making it possible.

It had been planned for Luton Town manager David Pleat and several top players to attend, but the FA Cup replay with Watford meant that was not possible.



However as a special surprise for all the youngsters taking part, the club are providing them with grandstand seats for the Ipswich match on 30th March, when the winning Lincroft team will also have their trophies re-presented on the pitch before the match.

Said club commercial manager Bill Tomlins: 'We were naturally disappointed that we could not send more of the team, but obviously our Watford match came first. We hope this will give a treat to the lads.'





Cultivate the art of self-defence.



From seed to harvest.

'CEREVAX' Seed treatment for Wheat and Rye. Controls all the major seed-borne diseases.

'FERRAX' Seed treatment for Barley. Controls Mildew. Fends off attacks of Rhyncho and Rusts.

'EARLY IMPACT' Fungicide for Winter Barley and Wheat. Controls MBC sensitive Eyespot and gives useful protection against resistant strains. Offers long-lasting control of Mildew, Rhyncho, Net Blotch, Septoria and Rusts.

'IMPACT' EXTRA Fungicide for Wheat. Gives excellent control of all the major late leaf and ear diseases.



Plant Protection

'Ferrax' is a trade mark of Imperial Chemical Industries PLC, England. 'Ferrax' is jointly marketed by Imperial Chemical Industries PLC, England and Murphy Chemical Limited.

Your local ICI distributor is:

**BANKS OF SANDY LTD**  
29 St Neots Road, Sandy, Beds.  
Telephone: Sandy (0767) 80351

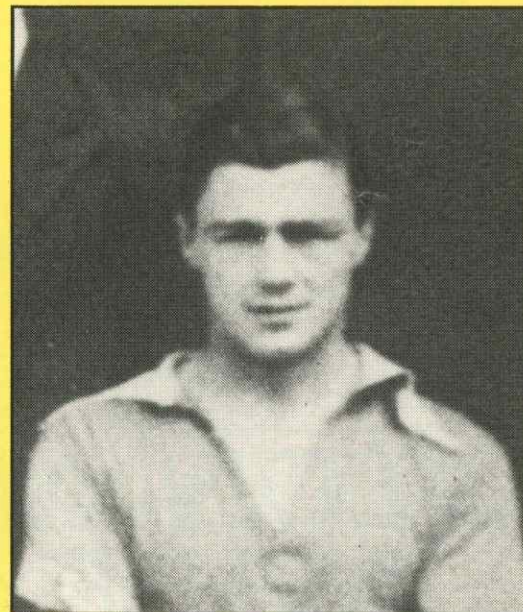


Plant Protection

# WHERE ARE THEY NOW

## GORDON BRICE

Centre-half Gordon signed for Luton in the 1945-46 season after being spotted playing for Bedford St Cuthberts and although he made only 13 League appearances in the two years he was at Kenilworth Road he made a big impression on Wolverhampton Wanderers who saw him as a replacement for Stan Cullis and secured his transfer in May 1947. Things didn't work out for him at Molineux where he made only 12 appearances and was transferred to Reading in March 1948. He soon became a permanent figure at Elm Park and spent four years there. In that time he made 198 League appearances and scored eight goals before moving on to Fulham in December 1952. He made 87 League appearances at the Cottage before leaving League football. Gordon now lives in retirement in Bedford and is a regular visitor to Kenilworth Road.



# CENTRE OF EXCELLENCE

This season of course saw the introduction of the FA Schools of Excellence which now allows the professional clubs to take, for the first time, young players from the age of 11 for coaching.

This in my view is an encouraging sign as I have openly stated many times that it is in this area that we have allowed the continentals to leave us standing, with the result that we are no longer the leaders in our great game.

As soon as the scheme was announced we put in an application and after representatives of the FA had visited us, were given a licence to proceed and set up schools at both Luton and Bletchley.

Strict guide lines have been laid down and numbers are kept down to 15 players to each coach ensuring more personal tuition.

Coaches themselves must be full badge and we are happy to have the services here of David Coates and John Moore who run the Luton School on Mondays, Wednesdays and Thursdays ensuring that all age groups are catered for.

Just prior to the scheme, we were very fortunate to be able to enlist Les Shannon who had just returned from successful management in Greece following his exceptional career in the game here and he is in charge of the Bletchley centre which operates on Thursdays.

Even though these are early days the results have been encouraging and several boys have signed for our schools and are showing immediate signs of improvement.

Eventually from these schools will go the boys selected for the FA School at Lilleshall who each year will take around 24. These will attend boarding schools to advance their education and have daily coaching from the FA coaches.

Whether or not these boys make the professional grade, the advancement in the standards of play at all levels must be all the better for the scheme and I along with everyone else concerned for the future of the game in the UK, look forward to it being expanded further.

The Christmas school holidays that have just ended, allowed us once more to invite many of our young players to attend our training and coaching sessions which were mainly held at Vauxhall Motors Sports ground and our very sincere thanks must go to them for the use of their excellent facilities, which are always made available to us.

During the first week of the New Year we had practice games at all age groups this week ending on Friday 4th with two games against our local friendly rivals Watford.

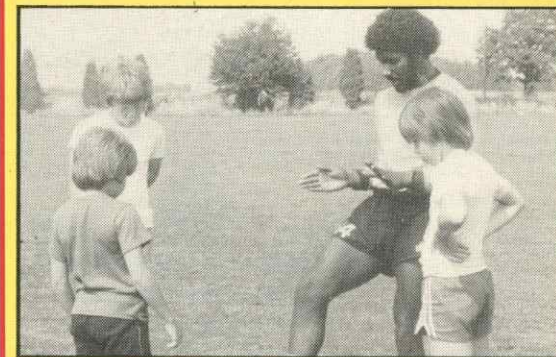
All these matches produced some excellent football and a great deal of fun and learning took place.

Whilst the majority of our lads came from local areas we did have visits from Wales, Eire, Newcastle and Scotland and thanks must go out to our landladies bless them, without who's help we would be lost.

The standard of our schoolboy players continues to improve and it is almost certain that we shall have on our books at least half a dozen internationals before the season ends.

We are now competing with all the so called glamour clubs and doing well and if the senior side get a little of the luck they deserve we can all look forward to 1985.

RON HOWARD







# RECORD

## FIRST TEAM RESULTS

Date	V	Opposition	F	A	Att	Pos
Aug 25	H	Stoke City	2-0	8,626	-	-
Aug 28	A	Ipswich Town	1-1	15,331	-	-
Sept 1	A	West Bromwich Albion	0-4	11,720	10	-
Sept 4	H	Liverpool	1-2	14,127	13	-
Sept 8	H	Southampton	1-1	8,657	17	-
Sept 16	A	Nottingham Forest	1-3	18,605	19	-
Sept 22	H	Chelsea	0-0	16,066	19	-
Sept 25	A	Orient (MC2 1L)	4-1	4,500	-	-
Sept 29	A	Tottenham Hotspur	2-4	30,204	-	-
Oct 6	A	Queens Park Rangers	3-2	12,051	19	-
Oct 9	H	Orient (MC2 2L)	3-1	3,374	-	-
Oct 13	H	Sheffield Wednesday	1-2	10,285	19	-
Oct 20	H	Watford	3-2	10,192	19	-
Oct 27	A	Sunderland	0-3	19,280	20	-
Oct 30	H	Leicester City (MC3)	2-1	8,015	-	-
Nov 3	H	Newcastle United	2-2	10,009	20	-
Nov 10	A	Norwich City	0-3	14,395	20	-
Nov 17	A	Manchester United	0-2	42,776	21	-
Nov 20	A	Sheffield Wed. (MC4)	2-4	18,313	-	-
Nov 24	H	West Ham United	2-2	10,789	21	-
Dec 1	A	Arsenal	1-3	26,366	21	-
Dec 8	H	Aston Villa	1-0	7,696	21	-
Dec 15	A	Leicester City	2-2	10,476	22	-
Dec 18	H	West Bromwich Albion	1-2	7,286	22	-
Dec 26	H	Coventry City	2-0	9,237	19	-
Dec 29	A	Liverpool	0-1	35,408	19	-
Jan 1	A	Everton	1-2	31,682	21	-
Jan 5	H	Stoke City (FAC 3)	1-1	7,270	-	-
Jan 9	A	Stoke City (FAC 3R)	3-2	9,917	-	-
Jan 26	H	Huddersfield (FAC4)	2-0	8,712	-	-
Feb 2	H	Tottenham Hotspur	2-2	17,511	21	-
Feb 23	A	Newcastle United	0-1	23,737	21	-
Mar 2	H	Sunderland	2-1	8,019	21	-
Mar 4	H	Watford (FAC5)	0-0	18,506	-	-
Mar 6	A	Watford (FAC5 R)	2-2	19,000	-	-
Mar 9	H	Watford (FAC5 2R)	1-0	15,586	-	-
Mar 13	H	Millwall (FAC6)	-	-	-	-
Mar 16	A	Sheffield Wednesday	-	-	-	-
Mar 19	A	Watford	-	-	-	-
Mar 23	H	Queens Park Rangers	-	-	-	-
Mar 30	H	Ipswich Town	-	-	-	-
April 2	A	Southampton	-	-	-	-
April 6	A	Coventry City	-	-	-	-
April 9	H	Everton	-	-	-	-
April 13	A	Chelsea (FAC SF)	-	-	-	-
April 16	H	Norwich City	-	-	-	-
April 21	H	Manchester United	-	-	-	-
April 27	A	West Ham United	-	-	-	-
May 1	A	Stoke City	-	-	-	-
May 4	H	Arsenal	-	-	-	-
May 6	A	Aston Villa	-	-	-	-
May 11	H	Leicester City	-	-	-	-
TBA	H	Nottingham Forest	-	-	-	-

## 1984-85 RESULTS · ATTENDANCES · APPEARANCES · GOALSCORERS

	1	2	3	4	5	6	7	8	9	10	11	12						
Dibble	Thomas	Grimes	Breacker	North S	Donaghy	Hill	Stein B	Elliott S <sup>1</sup>	Bunn <sup>1</sup>	Moss	Turner							
Dibble	Thomas	Grimes	Breacker	North S	Donaghy	Hill	Stein B	Elliott S	Bunn +	Moss <sup>1</sup>	Nwajobi							
Dibble	Thomas	Grimes	Breacker +	North S	Donaghy	Hill	Stein B	Elliott S	Bunn	Moss	Nwajobi							
Dibble	Thomas	Grimes	Breacker	Elliott P	Donaghy <sup>1</sup>	Hill	Stein B	Elliott S +	Turner	Moss	Nwajobi							
Dibble	Thomas	Grimes	Parker	Elliott P	Donaghy	Hill	Stein B	Nwajobi	Turner +	Moss <sup>1</sup>	Bunn							
Dibble	Thomas	Grimes	Turner +	Elliott P	Donaghy	Hill	Stein B	Nwajobi	Bunn	Moss <sup>1</sup>	Parker							
Dibble	Thomas	Grimes	Turner	Elliott P	Donaghy	Hill	Stein B	Nwajobi	Bunn	Moss	Parker							
Dibble	Thomas	Grimes	Turner	Elliott P	Donaghy <sup>1</sup>	Hill	Stein <sup>2</sup>	Bunn	Hilaire	Nwajobi +	Parker <sup>1</sup>							
Dibble	Thomas	Grimes	Turner	Elliott P	Donaghy	Hill	Stein	Bunn <sup>1</sup> +	Hilaire	Moss <sup>1</sup>	Parker							
Dibble	Thomas	Grimes	Turner	Elliott P <sup>1</sup>	Donaghy	Hill	Stein <sup>1</sup>	Elliott S <sup>1</sup>	Parker	Moss	Hilaire							
Dibble	Thomas	Grimes	Turner	Elliott P +	Donaghy	Hill	Stein <sup>1</sup>	Elliott S <sup>1</sup>	Bunn <sup>1</sup>	Moss	Hilaire							
Dibble	Thomas	Turner	Bunn <sup>1</sup>	Elliott P	Donaghy	Hill	Stein	Elliott S	Hilaire	Moss +	Parker							
Findlay	Thomas	Turner	Parker	Elliott P	Donaghy	Hill	Stein	Elliott S <sup>1</sup>	Bunn <sup>2</sup>	Hilaire	Breacker							
Findlay	Thomas	Turner	Parker +	Elliott P	Donaghy	Hill	Stein	Elliott S	Bunn	Hilaire	Breacker							
Dibble	Breacker	Turner	Todd	Elliott P +	Donaghy <sup>1</sup>	Hill	Stein	Elliott S	Bunn	Moss <sup>1</sup>	Parker							
Dibble	Breacker	Turner	Todd	North S	Donaghy	Hill	Stein <sup>1</sup>	Elliott S	Parker <sup>1</sup>	Daniel +	Hilaire							
Dibble	Breacker	Turner	Todd	North S	Donaghy	Hill	Stein	Bunn	Parker	Moss +	Nwajobi							
Dibble +	Breacker	Turner	North S	Droy	Donaghy	Hill	Stein	Elliott S	Bunn	Hilaire	Parker							
Findlay	Breacker	Turner +	North S	Droy	Donaghy	Hill	Stein	Elliott S <sup>2</sup>	Bunn	Hilaire	Parker							
Findlay	Breacker	Donaghy	Turner	Droy +	North S	Hill	Stein <sup>1</sup>	Elliott S	Bunn	Nwajobi <sup>1</sup>	Parker							
Sealey	Breacker	Thomas	Turner	Foster	Donaghy	Hill	Stein <sup>1</sup>	Elliott S	Bunn +	Parker	Nwajobi							
Sealey	Breacker	Turner	Parker	Foster	Donaghy	Hill	Stein <sup>1</sup>	Bunn <sup>1</sup>	Preece <sup>1</sup>	Moss	Nwajobi							
Sealey	Breacker	Turner	Parker +	Foster	Donaghy	Hill	Stein <sup>1</sup>	Harford <sup>1</sup>	Preece	Moss	Thomas							
Sealey	Breacker	Turner	Parker	Foster <sup>1</sup>	Donaghy	Thomas	Stein	Harford	Preece +	Moss	Turner							
Sealey	Breacker	Thomas	Turner	Foster	Donaghy	Hill	Stein <sup>1</sup>	Harford	Daniel <sup>1</sup>	Nwajobi	Bunn							
Sealey	Breacker	Thomas	Turner	Foster	Donaghy	Hill	Stein	Harford	Daniel +	Bunn	Nwajobi							
Jan 1	A	Everton	1-2	31,682	21	-	Sealey	Breacker	Thomas +	Turner	Foster	Donaghy	Hill	Stein	Harford <sup>1</sup>	Preece	Moss	Bunn
Jan 5	H	Stoke City (FAC 3)	1-1	7,270	-	-	Sealey	Breacker	Thomas	Turner	Foster <sup>1</sup>	Donaghy	Hill	Stein	Harford	Daniel	Moss +	Nwajobi
Jan 9	A	Stoke City (FAC 3R)	3-2	9,917	-	-	Sealey	Breacker	Thomas	Turner	Foster	Donaghy <sup>1</sup>	Hill <sup>1</sup>	Stein	Harford <sup>1</sup>	Daniel	Parker	Nwajobi
Jan 26	H	Huddersfield (FAC4)	2-0	8,712	-	-	Sealey	Breacker	Thomas	Turner	Foster	Donaghy <sup>1</sup>	Hill	Stein <sup>1</sup>	Harford	Parker +	Daniel	Nwajobi
Feb 2	H	Tottenham Hotspur	2-2	17,511	21	-	Sealey	Breacker	Thomas	Nicholas	Foster	Donaghy	Hill	Stein <sup>1</sup>	Harford	Nwajobi <sup>1</sup>	Preece +	Daniel
Feb 23	A	Newcastle United	0-1	23,737	21	-	Sealey	Breacker	Thomas	Nicholas	Foster	Donaghy	Hill	Stein	Harford	Nwajobi	Preece	Daniel
Mar 2	H	Sunderland	2-1	8,019	21	-	Sealey	Breacker	Thomas	Nicholas	Foster	Donaghy	Hill <sup>1</sup>	Stein	Harford <sup>1</sup>	Nwajobi	Preece	Daniel
Mar 4	H	Watford (FAC5)	0-0	18,506	-	-	Sealey	Breacker	Thomas	Turner	Foster	Donaghy	Hill	Stein	Harford	Nwajobi	Daniel	Parker
Mar 6	A	Watford (FAC5 R)	2-2	19,000	-	-	Sealey	Breacker	Thomas	Turner	Foster	Donaghy	Hill <sup>1</sup>	Stein	Harford	Nwajobi <sup>1</sup>	Daniel +	Parker
Mar 9	H	Watford (FAC5 2R)	1-0	15,586	-	-	Sealey	Breacker	Thomas	Turner <sup>1</sup>	Foster	Donaghy	Hill	Stein	Harford	Nwajobi	Parker	Moss

## CANON LEAGUE DIVISION ONE 84-85

	Home					Away					Pts	
	P	W	D	L	F	A	W	D	L	F		A
Everton	27	9	3	2	39	15	8	2	3	21	16	56
Tottenham	27	7	3	1	29	12	9	3	4	24	15	54
Manchester United	28	9	4	2	32	10	5	3	5	19	22	49
Southampton	29	8	2	3	16	13	6	5	5	24	20	48
Liverpool	28	8	4	3	23	9	5	5	3	17	14	48
Arsenal	29	10	3	2	29	12	4	2	8	19	25	47
Sheffield Wednesday	28	8	6	1	28	15	4	4	5	15	14	46
Nottingham Forest	28	10	2	2	27	13	4	2	8	14	22	46
Chelsea	29	9	2	4	28	15	1	8	5	14	20	40
Aston Villa	28	7	4	3	22	15	3	4	7	18	28	38
Norwich City	28	8	4	2	23	13	2	4	8	12	26	38
Newcastle United	30	8	4	3	26	17	1	6	8	17	36	37
Leicester City	28	7	4	5	34	22	3	2	7	14	27	36
WBA	28	7	3	3	24	12	3	2	10	16	31	35
QPR	30	6	6	3	26	22	2	5	8	9	28	35
West Ham United	26	5	4	5	17	15	3	4	5	16	24	32
Coventry City	29	7	3	5	19	16	2	1	11	12	32	31
Watford	26	4	4	4	26	22	3	5	6	21	28	30
Sunderland	28	7	3	3	18	13	1	3	11	13	30	20
Ipswich Town	25	5	4	4	17	15	1	3	8	7	20	25
Luton Town	26	5	5	3	20	16	1	2	10	11	31	25
Stoke City	27	2	2	8	13	25	0	4	11	4	31	12

## FOOTBALL COMBINATION 1984-85

	P					W					Pts	
	P	W	D	L	F	A	P	W	D	L		F
Queens Park Rangers	27	17	5	5	69	38	39					
Luton Town	27	16	5	6	79	46	37					
Tottenham Hotspur	24	16	3	5	74	42	35					
Watford	23	15	4	4	64	33	34					
Chelsea	20	14	3	3	44	21	31					
Ipswich Town	24	13	3	8	37	20	29					
Arsenal	22	12	4	6	55	33	28					
Southampton	22	10	6	6	46	45	26					
Millwall	21	9	5	8	30	33	23					
Brighton	22	8	5	9	35	43	21					
Norwich City	22	5	10	7	42	44	20					
West Ham United	22	7	5	10	34	29	19					
Oxford United	23	6	6	11	32	47	18					
Charlton Athletic	20	7	4	9	32	49	18					
Swansea City	17	5	6	6	23	32	16					
Crystal Palace	22	6	3	13	35	50	15					
Birmingham City	18	5	4	9	19	38	14					
Reading	20	6	1	13	29	53	13					
Portsmouth	20	3	6	11	18	29	12					
Fulham	19	4	3	12	23	29	11					
Swindon Town	19	4	3	12	19	46	11					
Bristol Rovers	25	3	4	18	33	77	10					

## SOUTH EAST COUNTIES LEAGUE FIXTURES 1984-85

Date	Opposition	F	A	Date	Opposition	F	A	Date	Opposition	F	A
Aug 25	Swindon	0-0		Oct 20	Wimbledon	4-2		Jan 26	Wimbledon	1-1	
Sept 8	West Ham	3-1		Nov 3	Tottenham	7-1		Feb 16	Reading	1-0	
Sept 15	Brentford	3-2		Nov 10	Brighton (LCR2)	3-5		Feb 23	Southend	1-0	
Sept 22	Brighton	0-0		Dec 1	Oxford	7-1		Mar 2	Oxford	13-1	
Sept 29	Reading (LC1)	4-1		Dec 8	Swindon	2-0		Mar 9	Reading	2-2	
Oct 6	Bristol Rovers	2-0		Dec 22	West Ham	3-4		Mar 16	Southend		
Oct 13	Crystal Palace	2-2		Dec 29	Brentford	2-0		Mar 30	Tottenham		
Oct 19	Tottenham	3-6									



# Vauxhall Teamcheck.

1 LUTON TOWN		MILLWALL 0	
LES SEALEY	1	PAUL SANSOME	
TIM BREACKER	2	KEITH STEVENS	
MITCHELL THOMAS	3	PAUL HINSHELWOOD	
WAYNE TURNER	4	LES BRILEY	
STEVE FOSTER	5	LINDSEY SMITH	
MAL DONAGHY	6	DAVE CUSACK	
RICKY HILL	7	STEVE LOUNTS LOWNDES	
1 BRIAN STEIN	8	JOHN FASHANU	
MICK HARFORD	9	NICK CHATTERTON	
EMEKA NWAJIOBI	10	STEVE LOVELL	
PARKER	<del>RAY DANIEL</del>	11	ANTON OTULAKOWSKI
MOSS	12	BREMNER	

Referee: D. HUTCHINSON Linesmen: G. K. RODICK (Red Flag) D. H. NEVIN (Yellow Flag)

## LOOK OUT FOR THE NEWCOMER IN OUR LINE-UP.



### THE NEW 126MPH VAUXHALL ASTRA GTE.

Remember, we got here first.



BACKED BY THE WORLDWIDE  
RESOURCES OF GENERAL MOTORS