

OFFICIAL PROGRAMME £1.00

COVENTRY CITY

BARCLAYS LEAGUE DIVISION ONE



WEMBLEY '89
VENUE OF LEGENDS

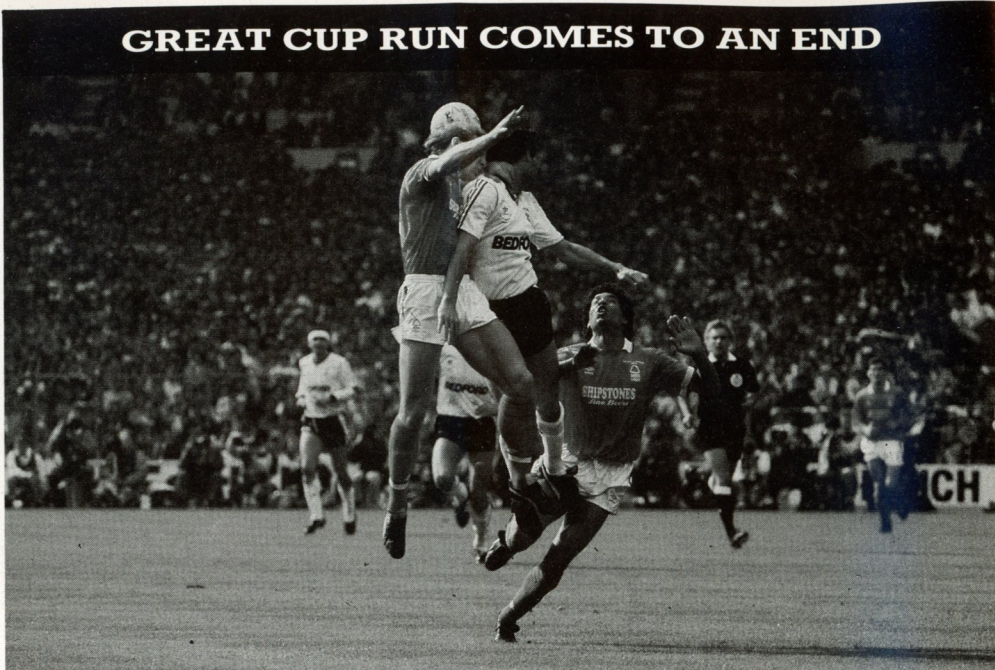
Saturday, April 15, 1989 Kick-off 3.00 p.m.

LUTON TOWN

This match is sponsored by: Richard C. Larkinson (Cambridge) Ltd

ACTION

GREAT CUP RUN COMES TO AN END



• **Aerial power:** Mick Harford leaps high to win another ball in the air during a magnificent display in last Sunday's Littlewoods Cup final.

LUTON TOWN HOTLINE

Match Tickets, Match Enquiries, Membership, Junior Hatters:

Ring - Cherry Newbery,
Ticket Supervisor - Luton (0582) 411622
24 Hour Service - Luton (0582) 30748

Advertising and Match Sponsorship:

Ring - Wendy Greaves, Marketing Executive
Luton (0582) 411622

Stadium Hire/Special Events: Ring - Mike Beevor,
Special Events Manager Luton (0582) 411622

Souvenirs/Adidas Sportswear: Ring - Bev Tyler,
Sales Supervisor Luton (0582) 411622

Banqueting & Function Facilities:

Ring - Catering Manager Luton (0582) 411622

Promotions Office: Lotteries - Ring John Cornall,
Development Executive Luton (0582) 416976

Soccerline for all the up-to-date information on Luton

Town F.C.: Ring - 0898 700273

Club Office hours: 8.30 am - 6 pm. Luton (0582) 411622

Edited by: Robert Alexander Associates
Pictures by: Apex Photography, Milton Keynes

OGDEN & CLEAVER

320-328 Selbourne Road, Luton, Beds. LU4 8NY
Tel: (0582) 597631.

The biggest selection of Wallcoverings in
Luton.

Quality Paints by Dulux, Manders,
Sandtex & Sadolin.

Glass cut to size

Wide selection of mirrors and
other decorative items.

SPECIAL DISCOUNTS FOR LUTON TOWN MEMBERS

Part of the Manders Group



• **Unlucky heroes:** Les Sealey (top) and Roy Wegerle (below) both gave their best at Wembley last Sunday when Forest won 3-1 to take the Littlewoods Cup.



CALL
SOCCERLINE
ON

0898 700 273

For all the latest news and
views from Luton Town

REPLAY



The Rascal. A real half-tonner.

BEDFORD RASCAL 
BACKED BY THE WORLDWIDE RESOURCES OF GENERAL MOTORS

RAY'S REVIEW



After all the excitement of last Sunday's Littlewoods Cup final, we face Coventry this afternoon in a match which I regard as far more important than the one at Wembley last weekend. I have always maintained that the First Division is the true test of our team and it is now up to us to prove we deserve to keep a status as we enter the final six games of the season. With four home matches to come, our destiny is in our own hands. Coventry, who we welcome to Kenilworth Road today, have enjoyed a good season in the league and have proved difficult opponents for us in the past. But after our performance last Sunday, when I felt the team played magnificently for an hour, we know we have the ability to succeed against anyone and, given reasonable luck and a continuation of the terrific support shown last Sunday and Monday, I am sure we can climb to safety.

Since my last notes, the team have given everything and produced some excellent football but not had any luck. The fans who travelled with us to Manchester United and Aston Villa, not to mention Wembley, will know that. The effort at Wembley last Sunday was brilliant and I hope now that all our fans can get behind the team and left then for these last few very important games. This afternoon, of course, we shall be without Mick Harford, who is suspended for one match. Fortunately, we did not collect any injuries against Nottingham Forest, so I have a strong squad to work with for the final weeks of the season.

Finally, my congratulations to Jim Ryan, John Faulkner and the youngsters who won the Bedfordshire Premier Cup for Luton Town last week when we beat Barton 1-0 in the second leg of the final. That triumph, and Kingsley Black's well-deserved recognition as the Barclays Young Eagle of the Month for March in the Midlands, proves again the strength and talent we have on the way through. Enjoy the match - and give the team all your vocal support.

Ray Harford

LUTON TOWN



CHAIRMAN
David Evans MP

DEPUTY CHAIRMAN
Brian Cole

DIRECTORS
T.W. Bailey, C.J. Hudson,
E.S. Pearson, R.J. Smith
J.R. Smith, D.G. Watson-Challis

MANAGING DIRECTOR
John Smith

PRESIDENT
Cecil Holloway

TEAM MANAGER
Ray Harford

GENERAL SECRETARY
Bill Tomlins

HONORARY LIFE MEMBERS
J. Richardson
T. Hodgson

VICE PRESIDENTS
R.L. Banks, C. Bygrave,
C.J. Evans, E. Fountain,
I.E. Holmes, R. Larkinson,
R. Safranek, E. Waller

HONOURS

LITTLEWOODS CUP WINNERS - 1987-88
FA CUP FINALISTS - 1958-59
SIMOD CUP FINALISTS - 1987-88
CHAMPIONS - DIVISION 3(S) 1936-37
CHAMPIONS - DIVISION 4 1967-68
CHAMPIONS - DIVISION 2 1981-82



Mailbag

Write to: The Editor, Luton Town F.C.,
Kenilworth Road Stadium, Maple Road, Luton by Tuesday a.m.

Multiple Sclerosis Football Drive

Dear Sir

In March 1st a brand new Renault 19 was driven through the gates of White Hart Lane by Tottenham Manager, Terry Venables. A team of drivers then drove the car to every English First Division Football Ground, finishing 24 hours later at Queens Park Rangers where they were met by John Hollins.

The journey was attempted to raise money for A.R.M.S. (Action for Research in Multiple Sclerosis) and at each ground an autographed football was presented which will be auctioned at a later date.

It is hoped that the event will raise in excess of £50,000 for Multiple Sclerosis Research.

For any further information about A.R.M.S., or for donations, please contact:

Jon Lewis
1 Romeland,
Elstree Village,
Hertfordshire.

WELL DONE LADS

Dear Sir,

Well done and a nice try Luton. Every player gave us 100% effort last Sunday at Wembley. The first half in particular gave us "Hatters" reason to believe we would be able to hold on to our trophy. Unfortunately we were up

against very formidable opposition in Nottingham Forest, and I'm sure that the shrewd tactics employed by Mr. Cloughs team helped them to Wrestle the Littlewoods Cup from our grasp.

Not many sides play with two "wide" men nowadays, but in doing so at Wembley, Forest were able to prevent our defence keeping its "shape" and composure. Also, in Nigel Clough they had a player in the "Brian Stein" role, able to drop "deep", and create openings for his midfielders to exploit, as "Fozzie" or Dave Beaumont were forced out of position to close young Cloughie down. Yes I'm convinced that Brian Clough "out-thought" us on the day, and as Forest moved the ball around so sweetly, our hard-running style last momentum on the "energy-sapping" grass of Wembley. Mind you, I noticed Tim Breaker didn't give his old buddy Garry Parker an inch out there on the sacred turf and he came out "well-on-top" of his man. Unfortunately, with Tim being occupied in a "Containing" role, he couldn't make any of his famous surges and crosses down that right flank for Mick Harford to exploit.

All in all though we were

proud of our team's efforts last Sunday and if they can show the same attitude and commitment, learn a little from the likes of Forest and Liverpool and given a fair share of luck, I'm confident we will still be witnessing First Division football at Kenilworth Road next season.

Many thanks
Yours faithfully

Geoff Evans

10 Portland Street,
Whitwell,
Worksop. Notts.
Herts

IT HAPPENED

50 YEARS AGO TODAY

Three straight wins over Easter had put the Town right back in the promotion frame from Division Two and the trip to fellow contenders, Chesterfeld, was seen as a stern test.

Two goals from Bill Redfern secured a fine 2-1 win, but the Town blew their chances by taking only one point from their remaining three games which included a 3-1 home defeat by Coventry.

J. SAPSWORTH LTD

GLAZING REPAIRS - GLASS SUPPLIES
DECORATING SPECIALISTS

92 MARSH ROAD, LUTON, BEDS.

☎ GLAZING & 24 hr EMERGENCY SERVICE 0582 573025
DECORATING 0582 597505

EXECUTIVE MEMBERS

ABB ROBOTICS LTD
MR T ADAMSON
ADRIATIC ENTERPRISES LTD
ANACHEM LIMITED
MR W ASHBURNER
BEDFORD COMMERCIAL VEHICLES
BERKELEY ASSOCIATE PRINTERS
BERVALE MEAD INSURANCE BROKERS LTD
W J BILLINGTON LTD
BLAKEY ENGINEERING CO LTD
BRITISH CAR AUCTIONS
BROAD STREET PRINT
CAMARGUE KITCHENS
CAMBERWELL PLAIN PAPER COPIERS LTD
CHEF FOODS
COUNTY MOTORS LTD
CRANE & STAPLES SOLICITORS
CHAMBERLAIN WINDOW FASHIONS
CAPITAL METALWORK LTD
DUPONT (UK) LTD

EVERGREEN SUPPLIES LTD
FILMERGRAPHIC PRESS LIMITED
FENNEMORES SOLICITORS
FLITWICK OIL
F W PEARCE BUILDERS LTD
V G GREEN & SONS LTD
MR D HALES
HANDSCOMBE Financial and Investment Services
E W HUDSON (HOLDINGS) LTD
IVOR HOLMES LTD
INFORMATION TECHNOLOGY LTD
I S INITIAL CONTRACT SERVICES LTD
MARK JAMES (SALVAGE) LTD
HANS JURGEN (IMPORTERS) LTD
JSB BUSINESS FORMS
JOHN LAING CONSTRUCTION LTD
J M KEENAN LTD
MR P LAYCOCK
LUTON BATHROOM & TILE CENTRE
MILCUTT ENGINEERING LTD
NEAHURST LIMITED

OPELVALE GROUP
MR S PEARSON
PETERS GRAVES & CO
RAVENMERE LTD
A W REMOVALS LTD
R B T GROUP LTD
REYVEN (SPORTSFIELDS) LTD
RICHARDSON & BOTTOMS LTD
ROGERS/COUNTRY PROPERTIES ESTATE AGENTS
SHOREY'S TRAVEL
MR & MRS D SHERIDAN
THE KITCHEN CENTRE
W S TYREMASTERS (Div. of West & Sellick (Tyres) Ltd)
TILDAE INVESTMENTS LTD
VAUXHALL MOTORS LTD
WALLSPAN BEDROOMS
WILTON TRUCK RENTAL
WOODWARD BUILDERS
YARNSFIELD LTD

EXECUTIVE BOX HOLDERS

Team **Trimoco**
The name that's moving

ESTD 1712
WHITBREAD

Ribocoon

CONNOLLY HOMES
HOMES TO BE HAPPY IN

Unigate DAIRIES
Bringing out the best.

Key Consultants MORTGAGES NETWORK Ltd

SYNAPSE

LUDLOWS OF LUTON
D. KEECH

TNT

PRUDENTIAL Property Services

S&S BUILDERS

National Westminster Bank PLC

DBF Crosswinds Ltd
COMPUTER AND BUSINESS STATIONERY

S&S HOMES

Hillson Twicken

EDS Electronic Data Systems

RYDER INSURANCE CONSULTANTS LTD

EXPOTECHNIK

McCANN HOMES

WILTON TRUCK RENTAL

SKF SERVICES Interior Contracts Ltd

Hunting Gate 4444

Herald just a friend dropping in

ADJ

T. J. ALDRIDGE Builders

INITIAL CONTRACT SERVICES

DRG PAPER & BOARD

WE'VE ALSO MADE SOME CHANGES TO OUR LINE UP THIS SEASON

Kenilworth Road isn't the only place you can see a new line up this afternoon.

Just down the road in the Arndale Centre, and in our showrooms throughout the U.K., you can see the new additions to our own squad.

The Cameo Collection is making its home debut in what is undoubtedly the most attractive and unbeatable line-up in fitted bedroom furniture in the U.K.

And if that weren't enough you'll find that like Luton Town, we too have proved that you don't need to break the bank to put together a winning combination.



Wallspan

Wallspan Bedrooms Limited,
Head Office: Maulden Road,
Flitwick, Beds MK45 5BW.
Telephone: 0525 716161

SHOWROOMS THROUGHOUT THE U.K.

ACTION REPLAY



• **Wembley special:** The tension shows before last Sunday's Littlewoods Cup final as the players go through the pre-match presentations (above). Steve Foster (below) is pictured with referee Roger Milford and Nottingham Forest captain Stuart Pearce.





by BILL TOMLINS

THE TOWN

ALL ROUND TEAM EFFORT WINS FRIENDS AT WEMBLEY

What a terrific performance it was at Wembley last Sunday – by the team, the club and our supporters at the Littlewoods Cup final. I am sure everyone would agree with me that the team were very unlucky to lose after playing so well for most of the game.

On the day, it was Nottingham Forest who had the breaks and we congratulate them on winning the trophy and a chance to emulate our achievement last season in all three cup competitions. Ironically, this afternoon they could go one better than we did last year by securing a place in the F.A. Cup final.

Winners

Last week, of course, we were involved in not just one, but two cup finals as our youngsters succeeded in beating local rivals Barton Rovers 1-0 in the second leg of the Bedfordshire Premier Cup final to win the trophy. We were the winners in its inaugural season of 1920-22.

That result, and our great show

at Wembley, are very encouraging after the big day out and I would like to thank everyone involved in the arrangements for both matches, but particularly the Littlewoods Cup final. It was a week when both teams – on and off the pitch – did the club proud.

I also took some satisfaction from the recognition gained by our new Supporters Club in having Pam Gray featured in the Radio Times last week with Ricky Hill.

On the subject of recognition, I am pleased to note that Iain Dowie and Kingsley Black were selected by Billy Bingham this week for the Northern Ireland under-23 squad and Darren Salten's for the Scottish under-18's. Darren unfortunately had to withdraw with a bruised foot.

Hockey

Finally, while we were preparing for Wembley, the BBC were here to cover live the Poundstretcher National League Hockey Cup Final which was another home success.

GOOD LUCK CHERRY



• **Marathon runner:** We all wish Cherry Newbery, our Ticket Supervisor, all the best in next Weekend's London Marathon. Cherry is running for the Herts Autistic Society.

WHAT A TREMENDOUS TURNOUT!

• **Happy crowds:** The great scenes in the town on Monday night were a true tribute to the team's effort at Wembley last Sunday. In spite of the weather, there was a superb reception for the lads.



• **Out of space:** Ricky Hill ran out of room when he was sent through by a superb pass by Kingsley Black. Des Walker came over to cover with goalkeeper Steve Sutton beaten.



• **Out of nowhere:** Mick Harford rose brilliantly among four defenders to head the opening goal at Wembley last Sunday.



• **Out of luck:** Mick was out of luck by inches early in the second half when Brian Laws came across to clear off the time as we threatened to take a 2-0 lead.

CAPTAIN'S DIARY



STEVE FOSTER

BACK TO BUSINESS

Hello everyone and thanks to all our fans for the terrific support at Wembley last Sunday and at the Civic Reception in the town on Monday night. The turnout was fantastic, especially as we had not been able to hang on to the Littlewoods Cup against Forest, and it was such a wet and miserable night.

We were all disappointed last weekend because I felt we had a real chance of winning until the penalty was awarded to them. The result might work out as a blessing in disguise for us though now as we return to the real business of making sure we stay up.

big occasion

The performance at Wembley was great and should have given everyone heart. It was a big occasion and we did not let anyone down at all. But now we must convert our performances and effort into points, starting with Coventry this afternoon.

We need to win and we may need to play with patience and self-control. Please try to help and please keep up the good work off the pitch with some really loud vocal support for the team. Thanks. Enjoy the match.

FOREST BOUNCE BACK TO WIN
Luton Town 1 Nottingham Forest 3

Nottingham Forest finally wrenched the Littlewoods Cup away from the Town on Sunday April 9 when they recovered from a first-half goal by Mick Harford to sweep to victory at Wembley Stadium. Three goals, two from manager Brian Clough's son Nigel and one from Neil Webb, in a 22-minute spell secured their first major triumph since they lifted the European Cup in 1980.

But with more luck in both penalty area, it might have been a very different story for the Town. After settling first, they controlled the opening period and deservedly led through Harford's superb 35th header from Danny Wilson's cross. Had a Wilson volley, Grimes drive or Ricky Hill run also succeeded, Forest might not have recovered.

They did, however, in the second half when Clough scored from a 54th minute penalty, after Les Sealey had brought down Steve Hodge, and 76th minute shot with Webb – looking offside – scoring a second in between. Harford and Kingsley Black were unlucky not to score a second for the Town, but it was not to be as Forest ran off with the trophy.

Teams: Luton Town – Sealey, Breacker, Grimes, (sub McDonough 76), Preece, Foster, Beaumont, Wilson, Wegerle, Harford, Hill, Black.

Nottingham Forest – Sutton, Laws, Pearce, Walker, Wilson, Hodge, Gaynor, Webb, Clough, Chapman, Parker.

Referee: R. Milford (Bristol).

Attendance: 76,130.

1st Team ACTION



• Tremendous effort but out of luck: It was a great occasion at Wembley last Sunday, but we were unable to hang on to the Littlewoods Cup despite a terrific first half performance. Mick Harford was in commanding form in attack with Roy Wegerle but we could not add a second goal to his 35th minute opener – and Forest roared back after the interval to win. Action pictures from Wembley by Josh Levy of Apex Photography, Milton Keynes.

HOT NEWS - HOT MUSIC

on
The Hot FM

24 HOUR RADIO
THROUGHOUT THE AREA

**Chiltern
Network**

Chiltern South
97.6 FM Stereo 828 AM

Northants 96
96.6 FM Stereo 1557 AM

Chiltern North
96.9 FM Stereo 792 AM

Switch on to Anglia . . .
Top of the League for News and
Sports Coverage



ANGLIA
Television Limited

Bedfordshire News Centre

16 Park Street, Luton. Telephone: (0582) 29666
Resident Reporter: Peter Lugg

BOX OFFICE INFORMATION



MAN IN CHARGE Dennis Hedges (Oxford)

A joinery works manager, Dennis is married with two sons. He began refereeing in 1963 and progressed via the Oxford Senior, Hellenic and Isthmian Leagues to the Football League list. He enjoys all sport particularly cricket, and folk music.

FORTHCOMING MATCHES AT KENILWORTH ROAD

Ovenden Papers Football Combination	Barclays League Division One
Saturday, April 22, 1989	Saturday, April 29, 1989
Luton Town v Portsmouth	Luton Town v Derby County
Kick-off 2.00p.m.	Kick-off 3.00p.m.

CLOSED CIRCUIT TELEVISION



Photographs courtesy of 'The Times'

Three minutes before the interval, a bottle was thrown towards the opposing side's goalkeeper. The incident was captured by the CCTV system and 57 seconds later police had arrested the offender. By the half-time whistle, he had been led away for questioning, charged and subsequently pleaded guilty at the court hearing.

CCTV is the most effective anti-hooligan measure inside grounds and more than 100 stadia in Britain are equipped with cameras installed by The Football Trust.

CCTV forms only part of the Trust's many initiatives. Each year it receives over £9.5 million from the Spotting-the-Ball competition run by Littlewoods, Vernons and Zettlers and spends it on projects that benefit every level of the game throughout the United Kingdom.

ALL THE ACTION FROM OUR WEMBLEY CUP FINAL



• **Top man:** Mick Harford shows his power and skill against Terry Wilson



• **Captain Foster:** Steve moves in to tackle Steve Hodge.



• **Clever worker:** Danny Wilson was in fine form at Wembley.



• **Flying winger:** Kingsley Black jumps to avoid the trailing leg of Brian Laws.



HATTERS IN GEAR



- | | | | |
|-------------------------------------|--------|----------------------------------|--------|
| • ADIDAS football shirts from | £14.00 | • Key rings | £0.75 |
| • ADIDAS football shorts from | £6.00 | • Teddy Bears | £5.00 |
| • ADIDAS football socks from | £3.50 | • Luton Town Scarves from | £2.50 |
| • ADIDAS club tracksuits from | £28.00 | • V Neck Sweaters | £14.99 |
| • ADIDAS jacket | £49.99 | • Caps and Ski Hats from | £2.30 |
| • Bath towel | £8.00 | • Club Tie | £6.25 |
| • Wall clock | £9.50 | • Club pennants from | £2.50 |
| • Sports bags from | £10.00 | • Boot bags (club crest) | £3.99 |
| • Rugby shirt (club crest) | £17.50 | • Books A Pictorial Celebration | |
| • Sweat shirts from | £14.00 | of Their Cup History | £7.95 |
| • Leisure shirts | £12.99 | • Football League Yearbook | £7.95 |

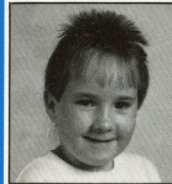
**MANY ADDITIONAL ITEMS AVAILABLE FROM OUR SOUVENIR SHOP
AT 125 OAK ROAD, LUTON. Tel (0582) 411622**

MASCOT

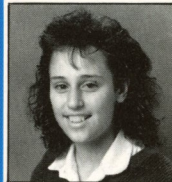


Scott Neto

ESCORTS



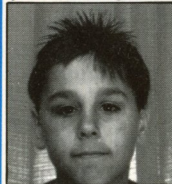
Stacey Smith



Joanna Simmonds



James Milligan



John Rowe

JUNIOR HATTERS!



BY DANNY WILSON

GREAT TO SEE SO MANY FANS ON MONDAY NIGHT

This afternoon we extend a warm welcome to Coventry City. It was so nice to see you all at Wembley on Sunday giving the team your support. It was a good game with Mick Harford putting us in front with his well taken goal and going in at half time in the lead. Nottingham Forest came out in the second half and played better football. They changed their style of play and this allowed Forest to take the Littlewoods Cup back to Nottingham. It was so good to see you on Monday night when we came back to Luton on the open top bus to the Town Hall. It did manage to stay dry otherwise we would have all got wet.

The lads are sorry that they could not manage to retain the Littlewoods Cup and keep it in Luton for the second time. We will have to do our best now and try to retain our First Division status. It looks like a hard job but the lads will do their best to keep us afloat. If we can win four games out of the matches that we have left it will be enough.

Today's lucky Junior Hatters membership number is H018807312. The winning member should contact Bev Tyler in the Souvenir Shop at Oak Road with his or her membership card for two free tickets to one of our home matches.

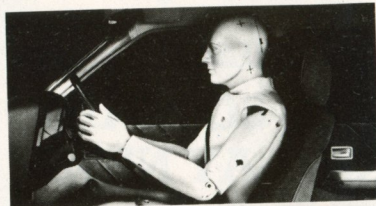
Have a good day and I will see you at our next home game when we entertain Derby County.



FIRST WITH NEWS - MAGIC WITH MUSIC

24HRS EVERY DAY ON 828kHz AM. AND 97.6mhz FM.

Introducing 5-wheel drive.



As you can see, this is not some new kind of vehicle for negotiating rough terrain.

It is, in fact, Saginaw Tilt Wheel Steering.

A special factory-fitted extra that can alter the way you drive.

The wheel adjusts to five separate positions.

So, from a driver's point of view, it can make life a lot more comfortable.

In turn, making driving far safer.

(Added to which, a unique Saginaw energy-absorbing column comes as standard.)

Changing the angle of the wheel takes no effort whatsoever.

By moving a small lever on the steering column, it can be set to the ideal position.

Tilted down, it's easy to imagine what a fast sports car feels like.

Tilted up, it's like being behind the wheel of a bus.

This last position also provides more leg room, so getting in and out of a car becomes a much simpler exercise,

But it's not only you who will benefit from Saginaw Tilt Wheel Steering.

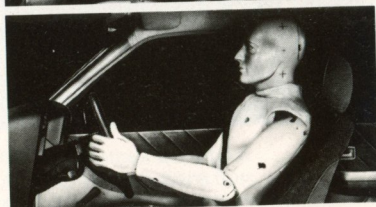
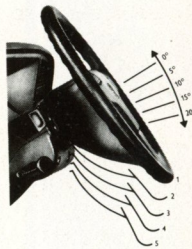
Anyone who drives your car will too. Because it will make it more adaptable to any driver's individual needs.

Not many extras make a car so flexible. And certainly not for just £88 (plus Car Tax plus VAT).

Saginaw Tilt Wheel Steering is available as an optional extra on most new Vauxhall-Opel cars.*

So contact your nearest Vauxhall-Opel dealer for a chat.

He'll be able to tell you more about 5-wheel drive and exactly how it handles.



Degrees more comfortable. Degrees safer.

*STANDARD EQUIPMENT ON SOME MODELS

COMMERCIAL COMMENT BY WENDY GREAVES



RICHARD C. LARKINSON (CAMBRIDGE) TODAY'S SPONSORS

Richard Larkinson, a vice-president of the club and a long-term supporter, is our match sponsor for today's match against Coventry City.

Richard, of Richard C. Larkinson (Cambridge) Ltd, operates an extensive business of secondary metal merchants and transport contractors with a container service to industrial undertakings, local authorities and government departments specialising in the purchase of non-ferrous metal from the building trade and its associated industries.

The business has been established since 1958, but its roots go back more than a century in Bedfordshire and the firm is under the control of the fourth generation of the Larkinson family.

This afternoon, Richard will be entertaining his valued clients and customers in the relaxed surroundings and atmosphere of the Joe Payne lounge.

We hope he and all his guests enjoy their day and an entertaining match with a good result.

Keith Harvey of R.W. Harvey & Son Haulage Contractors are our Match Ball Sponsors today Keith and his son are avid town fans and have supported the club for many years. Their support is very much appreciated and we hope they enjoy today's match.

Today's MATCH SPONSOR

RICHARD C. LARKINSON

(Cambridge) LTD.



Secondary Metal Merchants Machinery & Transport Contractors

Tel: Cambridge 315854/315890

Station Works, 123a Hills Road
Cambridge. CB2 1PG



●**Victorious squad:** The Town squad, with coach Jim Ryan, after winning the Bedfordshire Premier Cup at Kenilworth Road on April 4.



●**Midfield leader:** Ian Scott is on the ball during the 1-0 win over Barton Rovers.

COACHES' CORNER



YOUNGSTERS WIN THE BEDFORDSHIRE PREMIER CUP FINAL

In their first season in the competition, the Town youngsters won the Bedfordshire Premier Cup in the snow at Kenilworth Road on Tuesday April 4. A touch of class by Gary Cobb who scored the only goal in the 70th minute of the second leg of the final proved decisive and brought a 1-0 win over battling Vauxhall Opel league side Barton.

But the part-timers from Sharpence Road fought every inch of the way and with away goals counting double might have snatched the trophy from the Town's grasp in injury time when striker Peter Robinson beat the advancing Andy Peterson to the ball, but failed to get enough power into his shot. Mark Pembridge was able to clear the ball before it reached the line.

The youth team's bid for the South East Counties League Division Two title came to an end when they were beaten 2-1 at Brentford in the final match on April 1. Kurt Nogan scored the Town's equaliser after Brentford, playing with the wind in the first half, had taken the lead. The Town youngsters deserved better than a defeat, but were unable to beat a superb performance by the Brentford goalkeeper, an England youth international. "I was very sorry for the lads," said coach Jim Ryan. "They didn't deserve to lose. It was difficult to play good football, but they tried and their goalkeeper really saved them."

SOUTH EAST COUNTIES LEAGUE DIVISION TWO 1988/89

	P	W	D	L	F	A	Pts
Brentford	27	16	5	6	54	31	37
Luton Town	28	14	8	6	83	51	36
Swindon Town	26	14	6	6	43	36	34
Southampton	23	14	4	5	55	29	32
Wimbledon	27	15	2	10	55	38	32
Crystal Palace	27	13	4	10	57	35	30
Oxford United	24	13	2	9	44	44	28
Bristol City	24	8	10	6	37	32	26
A.F.C. Bournemouth	27	10	5	12	49	48	25
Reading	25	8	4	13	44	74	20
Brighton & Hove Albion	26	5	9	12	33	53	19
Bristol Rovers	26	7	5	14	31	61	19
Tottenham Hotspur	25	7	3	15	38	54	17
Northampton Town	26	6	5	15	42	64	17
Colchester United	27	6	4	17	37	52	16

OVENDEN FOOTBALL COMBINATION 1988/89

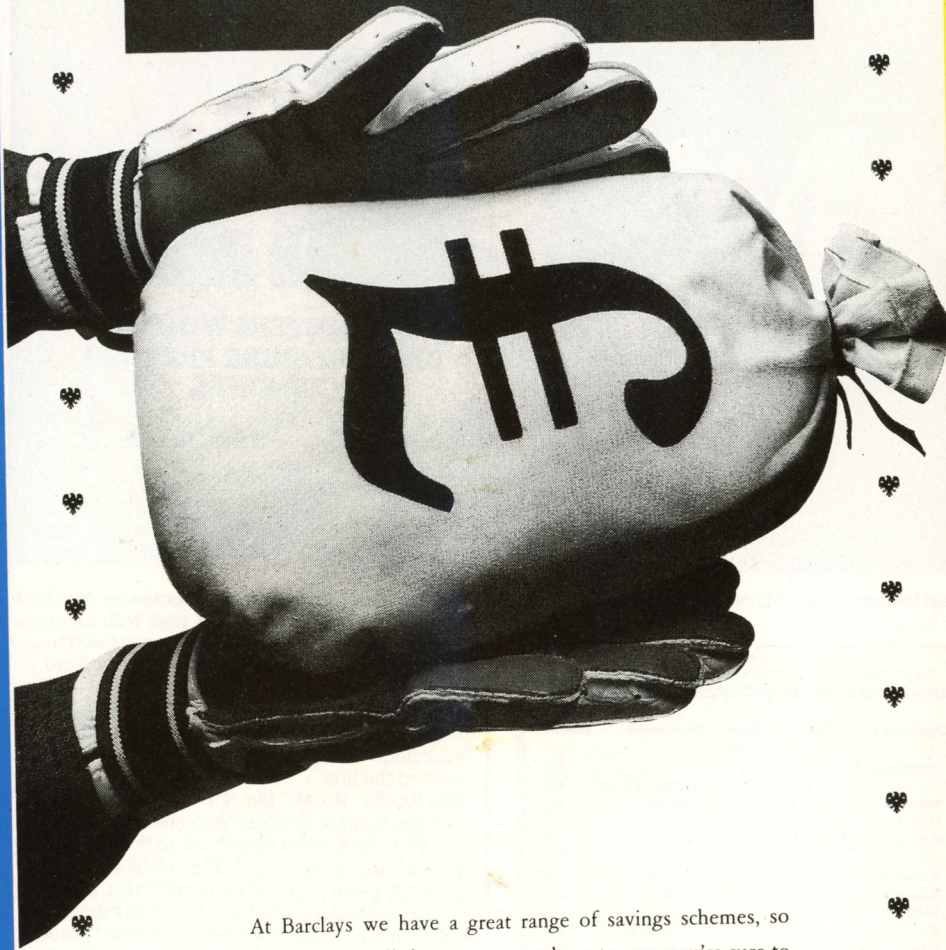
	P	W	D	L	F	A	Pts
Tottenham Hotspur	33	20	8	5	75	32	48
Luton Town	36	17	10	9	84	52	44
Arsenal	31	17	10	4	69	37	44
Watford	30	16	9	5	73	42	41
Wimbledon	31	17	6	8	59	33	40
Chelsea	30	16	7	7	59	39	39
Swindon Town	29	16	4	9	57	43	36
Millwall	30	14	7	9	61	38	35
Norwich City	31	14	5	12	56	56	33
Oxford United	29	13	6	10	63	59	32
Southampton	32	12	6	14	58	63	30
Ipswich Town	28	12	4	12	44	47	28
Brighton & Hove Albion	32	7	13	12	40	60	27
Crystal Palace	29	9	8	12	41	42	26
West Ham United	33	8	10	15	49	59	26
Fulham	32	10	5	17	43	78	25
Charlton Athletic	29	6	3	15	46	61	20
Portsmouth	27	6	8	18	25	66	15
Reading	31	4	4	23	28	83	12
Queens Park Rangers	29	3	5	21	25	65	11

(To April 2, 1989)

OVENDEN PAPERS FOOTBALL COMBINATION 1988/89

Date	Opponents	Result	Date	Opponents	Result
1988			1989		
Aug 27	Southampton	3-2	Jan 4	Brighton	2-2
Sept 6	Norwich City	2-3	Jan 7	Crystal Palace	0-0
Sept 10	Swindon T	1-1	Jan 14	Reading	4-1
Sept 17	Watford	2-2	Jan 17	Chelsea	2-2
Sept 24	Oxford United	7-1	Jan 21	Wimbledon	1-3
Oct 1	Arsenal	2-3	Jan 28	Southampton	7-2
Oct 5	Norwich	2-1	Feb 4	Tottenham	1-2
Oct 11	Brighton	3-0	Feb 7	Millwall	0-2
Oct 15	Watford	4-0	Feb 14	Swindon T	0-2
Oct 18	Charlton A	1-0	Feb 25	West Ham	3-1
Oct 22	Wimbledon	0-2	Mar 4	Arsenal	3-1
Oct 29	Reading	4-2	Mar 15	Crystal Palace	0-6
Nov 1	Fulham	0-3	Mar 22	Charlton A	3-0
Nov 5	Ipswich Town	2-1	Mar 25	West Ham	3-0
Nov 9	QPR	1-0	Apr 1	Fulham	6-0
Nov 12	Chelsea	1-1	Apr 11	Ipswich T	1-2
Nov 15	Portsmouth	7-0	Apr 22	Portsmouth	
Nov 22	Millwall	2-2			
Nov 26	QPR	1-1			
Nov 30	Oxford United	3-3			
Dec 31	Tottenham	1-1			

GREAT SAVES.



At Barclays we have a great range of savings schemes, so however large or small the amount you have to save you're sure to find one that suits you.

We can offer everything from special accounts for young people with just £1 to save, to premium rate savings accounts like Capital Advantage for those with £10,000 or more to invest.

Ask at your local branch for details.

With Barclays on your side you're bound to get a good result.

MEMBER OF IMRO
●●● YOU'RE
BETTER OFF
TALKING TO
BARCLAYS

PHOTO FILE



• The final whistle: David Preece (top) gets in his tackle on Neil Webb. Danny Wilson (below) shakes hands with former Hatter Garry Parker.



LUTON TOWN Goal'den Oldies

SKY BLUES VISIT STIRS OLD MEMORIES

We welcome today one of the seemingly increasing number of "bogey" teams in Division One to Kenilworth Road. With only two wins at Highfield Road since our first meeting in 1926/27 and two home wins since 1952, we have a fair amount of catching up to do, writes club statistician Roger Wash.

With most of our home wins coming before the war honours remained fairly even typified by two epic struggles in 1935/36

On Easter Monday 1936 Joe Payne had scored his record breaking ten goals against Bristol Rovers in a 12-0 win and followed it up with both goals in a 2-0 victory at Newport the following Saturday.

After being considered also rans in the promotion race immediately before Easter, we now found ourselves level on points with leaders Coventry who we were to meet twice in our last three games.

As only one team was promoted from Third Division South at that time great interest welled up in the town again, fanned by Joe Payne curiosity with the result that a record crowd of 23,142 came to Kenilworth Road on 25th April 1936 to see a disappointing 1-1 draw with Payne inevitably - netting again.

The return the following Monday attracted another record crowd - 42,975 - and although the Town were only the second team to come away from Coventry with any reward that season a 0-0 draw was not sufficient as the "Bantams" won their final game while we could only draw at QPR.

We, of course, rejoined Coventry one season later but for some reason games between the sides in Division Two never did match up to the clashes that took place prior to 1936.

After Coventry's relegation in 1951/52 paths did not cross again until 1963 when we were on our downward spiral through the Divisions and they were on the ascendancy. The early season home defeat in 1963/64 did not however, truly reflect the run of the game as we missed an open goal through Jim Weir in the

opening minute with Coventry then breaking away to score with a blatantly offside goal.

Since our return to Division One, games have very much tended to go Coventry's way with only two home wins in our favour. Goals from Brian Stein and Ray Daniel gave us a 2-0 victory in 1984/85 with the scoreline being repeated two seasons later.

Our solitary away win also took place in 1986/87 with Stein again on the scoresheet thus securing an extremely rare double.

Our previous encounters with Coventry

	Home	Away
1926/27	4-1	1-4
1927/28	3-1	2-4
1928/29	1-1	1-1
1929/30	1-1	1-5
1930/31	2-0	2-1
1931/32	3-1	2-3
1932/33	4-1	0-4
1933/34	0-1	2-2
1934/35	4-0	0-1
1935/36	1-1	0-0
1937/38	1-4	1-2
1938/39	1-3	0-1
1946/47	1-1	0-0
1947/48	2-3	1-4
1948/49	2-0	0-2
1949/50	2-0	0-1
1950/51	1-1	1-4
1951/52	2-1	2-5
1963/64	1-3	3-3
1974/75	1-3	1-2
1982/83	1-2	2-4
1983/84	2-4	2-2
1984/85	2-0	0-1
1985/86	0-1	0-1
1986/87	2-0	1-0
1987/88	0-1	0-4
1988/89	-	0-1

Summary

	P	W	D	L	F	A
Home	26	11	5	10	44	35
Away	27	2	6	19	25	62
	53	13	11	29	69	97



• Brian Stein: On the mark against Coventry and now playing for Caen in France.

Luton News

**LUTON TOWN FOR
TOP SOCCER
LUTON NEWS FOR
TOP COVERAGE**

For the best match reports, and all the latest news and views from Kenilworth Road, get the
LUTON NEWS and DUNSTABLE GAZETTE

THURSDAYS 14p

INTRODUCING...

COVENTRY CITY

Today we welcome a Coventry side who have won on four of their last six visits and are currently well placed to at least equal their previous best-ever final position of sixth in Division One. Last week they beat Norwich 2-1 and so almost certainly ended the Canaries' championship aspirations.

Founded as Singers FC in 1883 Coventry first played in the F.A. Cup in 1892, joined the Birmingham League in 1894 and achieved a highest position of fourth in 1907/8. They then moved into the Southern League and in their first season there lost 6-1 to us here in December 1908 and beat us 5-2 at Coventry in the following April.

They slipped down to the second Division of the Southern League in 1914, but after being out of action for most of the First World War they emerged to join the Midland Section of the wartime regional league in 1918 and attracted attention with some notable wins over teams

such as Sheffield Wednesday, Nottingham Forest and Huddersfield and in the following March they topped the poll in the quest for one of the three vacancies in Division Two.

Their early Football League life was a struggle. By 1931 eight different managers had tried their luck and with the foundation of the two sections of Division Three they had, owing to their central position, spells in both the Northern and Southern sections.

The thirties were brightened by the spectacular goalscoring of Clarrie Bourton, who scored 50 goals in 1931/2 and another 43 in 1932/3 and they regained their Second Division place for the last three postwar seasons. In fact they twice finished in fourth position, but it was to be almost 30 years before they came that near to Division One again. They were relegated to Division Three (South) in 1953, remained there for five seasons and were allocated to the new Division Four in the

reorganisations of 1958.

From that time they began to move forward with promotion in 1959 as Ray Straw banged home the goals. They went up again in 1963, this time under the captaincy of George Curtis and with Terry Bly the goalscorer in chief. George was still leading them and Bobby Gould was scoring a fair proportion of their goals when they climbed to Division One for the first time ever in 1967. Jimmy Hill was manager in those days but he moved on to other things soon afterwards and for several years Coventry dived with possible relegation, but held on.

Joe Mercer and Gordon Milne brought some better times in the early seventies but with major honours still out of reach. 1986/7 however brought the breakthrough with the winning of the F.A. Cup, beating Spurs in what was the Sky Blues' first ever final. Last season a sparkling end to the campaign with only two defeats in 16 games lifted them to a final placing of tenth as an extra achievement by John Sillett, who had served them as a player in the Third and Second Division games in the sixties and was promoted from chief coach when George Curtis moved up to managing director.

"This Season

This season the Sky Blues have not quite maintained the tremendous start of four successive away wins but they have lost only five times on their travels. But for their five home defeats they could be challenging Liverpool and Arsenal. They beat Arsenal in February but failed to hold Liverpool at Highfield Road in March.

David Speedie (from Chelsea last season, has been in good scoring form of late and **Cyrille Regis** (from West Brom in 1964) has a career tally of over 15 goals. **David Phillips** (ex-Manchester City) is in his third season in midfield where he links up with home-grown **Steve Sedgley** and dynamic **Dean Emerson** (from Rotherham last season) and up and coming **David Smith**.

Brian Kilcline is in his fifth season and **Trevor Peake** in his sixth at the heart of the defence since moving from Notts County and Lincoln respectively while on the flanks **Brian Borrows** came from Everton in 1983 and **Tony Dobson** made his debut last season. In goals **Steve Ogrizovic** has not missed a game since moving from Liverpool in 1984. Substitutes recently have included young striker **Steve Livingstone** and further Norwich defender **Greg Downs**.



Back Row (left to right): **Mick Kearns** (Chief Scout), **Neil Sillett** (Assistant Physiotherapist), **Martin Lane**, **Brian Borrows**, **Trevor Peake**, **Steve Livingstone**, **Steve Sedgley**, **Graham Rodger**, **Keith Houchen**, **Jake Findlay**, **Steve Ogrizovic**, **Dean Kiely**, **Chris Galley**, **Tony Dobson**, **Cyrille Regis**, **Howard Clark**, **Chris Greenman**, **Michael Cook**, **Terry Paine** (Youth Team Coach), **Mick Coop** (Reserve Team Coach) Front Row: **George Dalton** (Physiotherapist), **Gary Bannister**, **David Speedie**, **David Phillips**, **Michael Gynn**, **Greg Downs**, **Brian Kilcline**, **John Sillett** (Team Manager), **Dean Emerson**, **Lloyd McGrath**, **David Bennett**, **David Smith**, **Dougie McGuire**, **Paul Shepstone**.

Follow the
Hatters ... on
SPORTSOUND

Saturdays 2pm – 6pm
with John Smith

BBC RADIO
BEDFORDSHIRE

Weekdays — Sports News at
6.35/7.35/8.35 am
12.45/5.20/6.20 pm

AM: 630 kHz
FM/VHF: 95.5 MHz
COUNTYWIDE

(AM Bedford: 1161 kHz
FM/VHF Luton: 103.8 MHz)

FOR THE COMPLETE BUILDING SERVICE AND
HOME IMPROVEMENTS

T. J. ALDRIDGE
Builders

302 Selbourne Road, Luton, Beds LU4 8NU.
Telephone: 505412-505413

EXTENSION SPECIALISTS

ESTIMATES FREE

B. DOHERTY
SKIPHIRE

34 MOUNT PLEASANT ROAD
LUTON
Telephone: 574633 & 574799

UPDATE

1988-89 SEASON

BARCLAYS FOOTBALL LEAGUE DIVISION ONE

P	W	D	L	F	A	W	D	L	F	A	Pts
30	8	5	2	26	15	Arsenal	10	4	3	35	17 63
31	8	5	2	25	8	Liverpool	9	4	3	28	15 60
32	7	6	4	20	18	Norwich City	9	2	4	23	17 56
31	5	7	3	19	13	Nottingham Forest	8	5	3	27	21 51
32	10	2	4	25	13	Millwall	4	7	5	18	23 51
33	9	3	5	26	18	Coventry	4	7	5	15	16 49
33	7	5	5	29	23	Tottenham Hotspur	5	6	5	22	20 47
31	9	3	4	24	15	Wimbledon	4	4	7	18	23 46
31	7	3	7	20	17	Derby	6	4	4	13	12 46
30	8	5	1	23	8	Manchester United	3	7	6	15	16 45
31	7	6	2	26	15	Everton	3	5	8	14	23 41
32	6	4	5	18	14	Queens Park Rangers	4	6	7	17	19 40
33	7	4	5	22	18	Aston Villa	2	6	9	17	30 37
33	5	6	18	21	Sheffield Wednesday	4	5	8	13	25 37	
32	6	7	4	25	25	Middlesbrough	2	3	10	13	28 34
31	3	7	6	20	24	Charlton Athletic	4	5	6	15	21 33
31	5	5	6	23	25	Southampton	2	7	6	22	34 33
32	5	5	5	21	17	LUTON TOWN	2	4	11	10	30 30
32	3	4	9	17	25	Newcastle United	4	4	8	13	28 29
29	1	6	8	13	26	West Ham United	4	2	8	10	22 23

LEADING SCORERS: 21 Alan McNally (Aston Villa), Alan Smith (Arsenal), 17 Dean Saunders (Derby), Paul Williams (Charlton), Bernie Slaven (Middlesbrough), 15 Mark Hughes (Manchester United), Brian McClair (Manchester United), Tony Cascarino (Manchester United), John Fashanu (Wimbledon), David Speedie (Coventry) 22 John Aldridge (Liverpool), 19 Nigel Clough (Nottingham Forest) 16 Tony Cottee (Everton).

APPEARANCES AND GOALSCORERS

	League		Littlewoods Cup		FA Cup	
	Aps	Gls	Aps	Gls	Aps	Gls
Ian Allinson	1(4)	-	-	-	-	-
David Beaumont	9	-	3	-	-	-
Kingsley Black	30(1)	7	9	-	1	1
Tim Breacker	13(3)	-	5(2)	-	1	-
Richard Cooke	-(2)	-	-	-	-	-
Mal Donaghy	6	-	2	-	-	-
Iain Dowie	1(6)	-	1	-	-	-
John Dreyer	10(2)	-	5	-	-	-
Steve Foster	30	3	9	-	1	-
Ashley Grimes	12	-	5	-	-	-
Mick Harford	28	5	7	4	1	-
Richard Harvey	11(1)	-	1	-	-	-
Ricky Hill	27	3	8(1)	3	1	-
Julian James	1	-	1	-	(1)	-
Marvin Johnson	16	-	2	-	1	-
Rob Johnson	19(2)	-	3	1	1	-
Raphael Meade	1	-	-	-	-	-
Darron McDonough	9	-	-	-(1)	-	-
David Oldfield	15(6)	1	4(1)	2	(1)	-
David Preece	20	-	6	-	1	-
Les Sealey	32	-	9	-	1	-
Roy Wegerle	20(4)	7	7	4	1	-
Steve Williams	10	-	3	-	-	-
Danny Wilson	30	4	9	2	1	1

As at April 12, 1989

Luton Town F-A Att Pos 1

Aug 27	Sheffield Wednesday	0-1	16,433	-	Sealey
Sept 3	Wimbledon	2-2†	8067	12	Sealey
Sept 10	Southampton	1-2	13,214	16	Sealey
Sept 17	Manchester United	0-2	11,010	18	Sealey
Sept 24	Everton	2-0	26,170	15	Sealey
Sept 27	Burnley (LC2)	1-1	6,282	15	Sealey
Oct 1	Nottingham Forest	0-0	15,340	17	Sealey
Oct 8	Liverpool	1-0	12,117	13	Sealey
Oct 11	Burnley (LC2)	1-0	14,031	13	Sealey
Oct 22	Middlesbrough	1-2	17,749	16	Sealey
Oct 25	Arsenal	1-1	10,548	16	Sealey
Oct 29	Queens Park Rangers	0-0	8,453	16	Sealey
Nov 2	Leeds United (LC3)	2-0	19,447	16	Sealey
Nov 5	Millwall	1-3	12,511	16	Sealey
Nov 12	Coventry City	0-1	12,631	16	Sealey
Nov 19	West Ham United	4-1	9,308	16	Sealey
Nov 26	Norwich City	2-2	13,541	15	Sealey
Nov 29	Manchester City (LC4)	3-1	10,778	15	Sealey
Dec 3	Newcastle United	0-0	8,338	16	Sealey
Dec 10	Derby County	1-0	15,228	15	Sealey
Dec 17	Aston Villa	1-1	8,785	16	Sealey
Dec 26	Tottenham Hotspur (11.30 am)	0-0	27,337	16	Sealey
Dec 31	Wimbledon	0-4	4,899	16	Sealey
Jan 2	Southampton (3 pm)	6-1	8,637	15	Sealey
Jan 7	Millwall (FAC3)	2-3	12,504	15	Sealey
Jan 10	Crystal Palace (S3)	1-4	5,842	15	Chamberlain
Jan 14	Charlton Athletic	0-3	5,212	16	Sealey
Jan 18	Southampton (LC5)	1-1	11,785	16	Sealey
Jan 21	Everton	1-0	9,013	13	Sealey
Jan 25	Southampton (LC5R)	2-1	18,250	13	Sealey
Feb 4	Nottingham Forest	2-3	10,465	14	Sealey
Feb 12	West Ham (LCSF)	3-0	24,602	15	Sealey
Feb 18	Middlesbrough	1-0	8,187	13	Sealey
Feb 25	Arsenal	0-2	31,012	14	Sealey
Mar 1	West Ham (LCSF)	2-0	12,020	14	Sealey
Mar 11	Millwall	1-2	7,838	15	Sealey
Mar 14	Liverpool	0-5	31,447	15	Sealey
Mar 18	Sheffield Wednesday	0-1	7,776	16	Sealey
Mar 21	Queens Park Rangers	1-1	9,372	15	Sealey
Mar 25	Manchester United	0-2	36,335	16	Sealey
Mar 28	Tottenham Hotspur	1-3	11,146	17	Sealey
Apr 1	Aston Villa	1-2	15,640	18	Sealey
Apr 9	NOTTINGHAM FOREST (LCF)	1-3	76,130	18	Sealey
Apr 15	Coventry City				
Apr 22	Newcastle United				
Apr 29	Derby County				
May 2	Charlton Athletic				
May 6	West Ham United				
May 13	Norwich City				

© The Football League FAC = F.A. Cup () indicates player substituted

	2	3	4	5	6	7	8	9	10	11	12
Breacker	Dreyer	Williams	Foster	Donaghy	Wilson	(Wegerle)	Harford	Oldfield	Black	RJ/[IA]	
R. Johnson	Grimes	Williams	Foster	Donaghy	Wilson	Preece	Harford	Oldfield	Black ¹	JD/RW	
R. Johnson	Grimes	Williams	Foster ¹	Donaghy	Wilson	Oldfield	Harford	(Preece)	Black	TB/[RW]	
R. Johnson	Dreyer	Williams	Foster	M. Johnson	Wilson	(Oldfield)	Harford	Hill	Black	[RW]/TB	
R. Johnson	Dreyer	Williams	Foster	Donaghy	Wilson	(Oldfield) ¹	Harford	(Hill)	Black ¹	[TB]/[IA]	
(R. Johnson) ¹	Dreyer	Williams	Foster	Donaghy	Wilson	Oldfield	Harford	Hill	Black	[TB]/IA	
R. Johnson	Dreyer	Williams	Foster	Donaghy	Wilson	Oldfield	(Harford)	Hill	Black	[IA]/TB	
R. Johnson	Dreyer	Williams	Foster	Donaghy	Wilson	(Oldfield)	Harford ¹	Hill	Black	[RW]/TB	
(R. Johnson)	Dreyer	Williams	Foster	Donaghy	Wilson	(Oldfield)	Harford	Hill ¹	Black	[TB]/[IA]	
(R. Johnson)	Dreyer	(McDonough)	Foster	M. Johnson	Wilson ^{1P}	Oldfield	Harford	Hill	Black	[TB]/[RW]	
R. Johnson	Breacker	(McDonough)	Foster	M. Johnson	Wilson	Wegerle	Harford	Hill	Black ¹	[DO]/IA	
R. Johnson	Dreyer	Williams	Foster	M. Johnson	Wilson	(Allinson)	Wegerle	Hill	Black	[DO]/RH	
J. James	Dreyer	Williams	Foster	M. Johnson	Wilson ¹	Oldfield ¹	Wegerle	Hill	Black	IA/AG	
(J. James)	Dreyer	Williams	Foster	M. Johnson	Wilson ¹	Wegerle	Oldfield	Hill	Black	[RW]/AG	
R. Johnson	Grimes	(Williams)	Foster	M. Johnson	Wilson	Wegerle	Harford	Hill	Black	[DO]/JJ	
R. Johnson	Grimes	Preece	Foster	M. Johnson	Wilson ¹	Wegerle ²	Harford	Oldfield	Black ²	RH/IS	
R. Johnson	Harvey	Preece	Foster	M. Johnson	Wilson	Wegerle ²	Harford	Oldfield	Black	JD/IA	
R. Johnson	Harvey	Preece	Foster	M. Johnson	Wilson	Wegerle ²	(Harford)	Oldfield ¹	Black	[RH]/JD	
R. Johnson	Harvey	Preece	Foster	M. Johnson	Wilson	Wegerle	(Oldfield)	Hill	Black	[IA]/JJ	
R. Johnson	Harvey	Preece	Foster	M. Johnson	Wilson	(Wegerle)	Harford ¹	Hill	Black	[DO]/JD	
R. Johnson	Harvey	Preece	Foster	M. Johnson	Wilson	Wegerle ¹	Harford	Hill	Black	DO/JD	
R. Johnson	Harvey	Preece	Foster	M. Johnson	Wilson	Wegerle	Harford	Hill	Oldfield	TB/JD	
R. Johnson	Harvey	Preece	Foster	M. Johnson	Wilson	(Wegerle)	Harford ²	Oldfield	Black	[KB]/ID	
R. Johnson	Harvey	Preece	Foster	M. Johnson	Wilson ^{1P}	Wegerle ²	Hill ¹	Black ¹	TB/ID	[DO]/JJ	
R. Johnson	Harvey	Preece	Foster	M. Johnson	(Williams)	Dowie	Harford	Hill	Oldfield	[RW]/RH	
R. Johnson	(Harvey)	Preece	Foster	M. Johnson	Wilson	Wegerle	(Oldfield)	Hill	Black	[TB]/ID	
Breacker	Grimes	Preece	Foster	Dreyer	Wilson	Wegerle	Dowie	Hill	Black	RJ/DO	
Breacker	Grimes	Preece	Foster	Dreyer	(Wilson)	Wegerle ¹	Harford	Hill	(Black)	[ID]/[RJ]	
Breacker	Grimes	Preece	Foster	Dreyer	Wilson	Wegerle	(Harford) ¹	Hill ¹	Black	[DO]/RJ	
Breacker	Grimes	Preece	Foster	Dreyer	Wilson	Wegerle	Harford ¹	Hill	Black ¹	[DO]/R	
Breacker	Grimes	Preece	Foster	Beaumont	Wilson ^{1P}	Wegerle ¹	Harford ¹	Hill	Black	RJ/DM	
Breacker	Grimes	Preece	Foster ¹	Beaumont	Wilson	Wegerle	Harford	Hill	Black	DO/DM	
Breacker	Harvey	(Preece)	Foster	Beaumont	Wilson	Wegerle	Harford	Hill	Black	[DO]/DM	
Breacker	Grimes	Preece	Foster	Beaumont	Wilson	Wegerle ¹	Harford ¹	Hill	Black	DO/DM	
Breacker	Grimes	(Preece)	McDonough	Beaumont	Wilson ^{1P}	(Wegerle)	Harford	Hill	Black	[JD]/ID	
Breacker	Grimes	(Preece)	M. Johnson	Beaumont	Wilson	McDonough	Harford	Hill	Black	[ID]/JD	
Breacker	(Grimes)	(Preece)	Foster	Beaumont	Wilson	McDonough	Harford	Hill	Black	[ID]/[RH]	
Breacker	Harvey	McDonough	Foster	Beaumont	Wilson	(Meade)	Harford	Hill ¹	Black	[ID]/JD	
Breacker	Harvey	McDonough	Foster	Beaumont	(Wilson)	(Preece)	Harford	Hill	Black	[RC]/ID	
Breacker	Grimes	Preece	Foster ¹	Beaumont	McDonough	(Dowie)	Harford	Hill	Black	[RC]/R	
Breacker	(Grimes)	Wilson	Foster	Beaumont	(McDonough)	Wegerle	Harford	Hill ¹	Black	[JD]/[RM]	
Breacker	(Grimes)	Preece	Foster	Beaumont	Wilson	Wegerle	Harford ¹	Hill	Black	[DM]/RM	

[] indicates substitute used Home fixtures in **Bold** Scorer's name in **Bold** P = Penalty † denotes own goal



Probably the world's most advanced and researched sportswear



Abacus Press

Interplan House, North Bridge Road, Berkhamsted, Herts HP4 1ET. Tel: (0442) 874391 Fax: 874873

Voucher No. 20

VAUXHALL TEAM CHECK.

LUTON TOWN ²

Team Manager: Ray Harford
White Shirts, Navy Shorts

- 1 Les Sealey
 - 2 Tim Breacker
 - 3 ~~Ashley Grimes~~ ^{JOHN GREYER 1}
 - 4 David Preece
 - 5 Steve Foster ^{10.G.}
 - 6 David Beaumont
 - 7 Danny Wilson ¹
 - 8 Roy Wegerle
 - 9 Raphael Meade ¹
 - 10 Ricky Hill
 - 11 Kingsley Black
- Subs

COVENTRY CITY ²

Team Manager: John Sillett
Sky Blue Shirts and Shorts


- 1 Steve Ogrizovic
 - 2 Brian Borrows
 - 3 Tony Dobson
 - 4 Dean Emerson
 - 5 Brian Kilcline
 - 6 Trevor Peake
 - 7 David Phillips
 - 8 David Speedie
 - 9 Cyrille Regis
 - 10 Steve Sedgley
 - 11 David Smith ¹
- Subs

Referee: D.A. HEDGES (Oxford) Linesmen: R.L. BIGGER (Yellow Flag) S.B. FURSSE (Red Trim)

OUR BACK HAS EXTRA FEET.



VAUXHALL. ONCE DRIVEN, FOREVER SMITTEN.

 VAUXHALL IS BACKED BY THE WORLDWIDE RESOURCES OF GENERAL MOTORS. CAR SHOWN BELMONT SRi.

Designed and printed by Abacus Press, Berkhamsted, Herts.