

OFFICIAL PROGRAMME £1.00

DERBY COUNTY

BARCLAYS LEAGUE DIVISION ONE



Saturday, April 29, 1989 Kick-off 3.00 p.m.

LUTON TOWN

This match is sponsored by: Luton International Airport

SKY BLUES ESCAPE WITH A DRAW



● **Number one:** John Dreyer, out of camera, has found the net with his first goal for the Town to put us 1-0 up against Coventry. On the opposite page, Danny Wilson follows up his penalty to make it 2-1.

LUTON TOWN HOTLINE

Match Tickets, Match Enquiries, Membership,

Junior Hatters:

Ring - Cherry Newbery,
Ticket Supervisor - Luton (0582) 411622
24 Hour Service - Luton (0582) 30748

Advertising and Match Sponsorship:

Ring - Wendy Greaves, Marketing Executive
Luton (0582) 411622

Stadium Hire/Special Events: Ring - Mike Beevor,
Special Events Manager Luton (0582) 411622

Souvenirs/Adidas Sportswear: Ring - Bev Tyler,
Sales Supervisor Luton (0582) 411622

Banqueting & Function Facilities:

Ring - Catering Manager Luton (0582) 411622

Promotions Office: Lotteries - Ring John Cornall,
Development Executive Luton (0582) 416976

Soccerline for all the up-to-date information on Luton

Town F.C.: Ring - 0898 700273

Club Office hours: 8.30 am - 6 pm. Luton (0582) 411622

Edited by: Robert Alexander Associates

Pictures by: Apex Photography, Milton Keynes

OGDEN & CLEAVER

320-328 Selbourne Road, Luton, Beds. LU4 8NY
Tel: (0582) 597631.

The biggest selection of Wallcoverings in Luton.

Quality Paints by Dulux, Manders,
Sandtex & Sadolin.

Glass cut to size

Wide selection of mirrors and
other decorative items.

SPECIAL DISCOUNTS FOR LUTON TOWN MEMBERS

Part of the Manders Group



There will be a minute's
silence before today's
kick-off in memory of
the Liverpool supporters
who died in the tragedy
at Hillsborough on
Saturday, April 15.

Direct Booking!

Direct Saving!

Direct from Luton to
Florida & Mexico

01-727 2680

Access/Visa ATOL 1071

Tjaereborg
LIMITED



CALL
SOCCERLINE
ON

0898 700 273

For all the latest news and
views from Luton Town



The Rascal. A real half-tonner.

BEDFORD RASCAL 
BACKED BY THE WORLDWIDE RESOURCES OF GENERAL MOTORS

IN MEMORY OF THOSE WHO DIED IN THE HILLSBOROUGH DISASTER

On behalf of all those involved at Luton Town, directors, players, management, staff and supporters we express our feelings of shock and utter dismay at the horrific tragedy which occurred at Hillsborough, last Saturday. Our deepest sympathy is extended to the people of Merseyside for the suffering they have experienced and heartfelt condolences are sent to those who lost loved ones in that terrible disaster.

Liverpool has become League football's premier city and we would hope that this tradition and affinity with the national game will help to unite the people of Merseyside and give them the strength and fortitude to overcome this latest heartbreaking setback.

We will continue to pray for the families and friends of those who died so tragically.

LUTON TOWN



KENILWORTH ROAD STADIUM, 1 MAPLE ROAD, LUTON, BEDS LU4 8AW

CHAIRMAN
David Evans MP

DEPUTY CHAIRMAN
Brian Cole

DIRECTORS
T.W. Bailey, C.J. Hudson,
E.S. Pearson, R.J. Smith
J.R. Smith, D.G. Watson-Challis

MANAGING DIRECTOR
John Smith

PRESIDENT
Cecil Holloway

TEAM MANAGER
Ray Harford

GENERAL SECRETARY
Bill Tomlins

HONORARY LIFE MEMBERS
J. Richardson
T. Hodgson

VICE PRESIDENTS
R.L. Banks, C. Bygrave,
C.J. Evans, E. Fountain,
I.E. Holmes, R. Larkinson,
R. Safranek, E. Waller

HONOURS

LITTLEWOODS CUP WINNERS - 1987-88
 FA CUP FINALISTS - 1958-59
 SIMOD CUP FINALISTS - 1987-88
 CHAMPIONS - DIVISION 3(S) 1936-37
 CHAMPIONS - DIVISION 4 1967-68
 CHAMPIONS - DIVISION 2 1981-82

RAY'S REVIEW



The minute's silence before today's match will express better than any words how we all feel about the Hillsborough tragedy two weeks ago when 95 Liverpool fans lost their lives. I, like everyone else in football, was shocked and deeply upset when I heard the news. We did not hear about it until we were coming off the pitch at the end of the match against Coventry and I must say the first feeling one has is for the families of the bereaved. I have a boy of my own who goes regularly to matches all over the place and my heart went out to the parents of those who died. It must have been a terrible experience and one we all hope will never happen again. Our club, as you may have read elsewhere, has made a contribution to the disaster fund.

Since my last notes, for that match, we have worked with great spirit and determination to climb out of our troubled position in the First Division table and Terry Mancini has joined us as my assistant on a temporary part time basis. I felt we needed a new face for the final run-in and Terry fitted the bill perfectly. I have known him for 10 years or more and he is not only a first-class coach but also someone who can handle the senior players. He has a good sense of humour and can help to lift us and ensure our already excellent team spirit remains that way. The players have already taken to Terry well and the spirit and determination in the dressing room is first class.

We have not enjoyed much luck in recent matches and hopefully fortunes will change for us this afternoon when we welcome Derby County to Kenilworth Road. We know exactly what we have to do - and every match is like a cup final from now on. The senior experienced players have not let me down and I am sure we have the quality to survive.

Ray Harford.

J. SAPSWORTH LTD

GLAZING REPAIRS - GLASS SUPPLIES
DECORATING SPECIALISTS

92 MARSH ROAD, LUTON, BEDS.

☎ GLAZING & 24 hr EMERGENCY SERVICE 0582 573025
DECORATING 0582 597505

EXECUTIVE MEMBERS

ABB ROBOTICS LTD
MR T ADAMSON
ADRIATIC ENTERPRISES LTD
ANACHEM LIMITED
MR W ASHBURNER
BEDFORD COMMERCIAL VEHICLES
BERKELEY ASSOCIATE PRINTERS
BERVALE MEAD INSURANCE BROKERS LTD
W J BILLINGTON LTD
BLAKEY ENGINEERING CO LTD
BRITISH CAR AUCTIONS
BROAD STREET PRINT
CAMARGUE KITCHENS
CAMBERWELL PLAIN PAPER COPIERS LTD
CHEF FOODS
COUNTY MOTORS LTD
CRANE & STAPLES SOLICITORS
CHAMBERLAIN WINDOW FASHIONS
CAPITAL METALWORK LTD
DUPONT (UK) LTD

EVERGREEN SUPPLIES LTD
FILMERGRAPHIC PRESS LIMITED
FENNEMORES SOLICITORS
FLITWICK OIL
F W PEARCE BUILDERS LTD
V G GREEN & SONS LTD
MR D HALES
HANDSCOMBE Financial and Investment Services
E W HUDSON (HOLDINGS) LTD
IVOR HOLMES LTD
INFORMATION TECHNOLOGY LTD
I S INITIAL CONTRACT SERVICES LTD
MARK JAMES (SALVAGE) LTD
HANS JURGEN (IMPORTERS) LTD
JSB BUSINESS FORMS
JOHN LAING CONSTRUCTION LTD
J M KEENAN LTD
MR P LAYCOCK
LUTON BATHROOM & TILE CENTRE
MILCUTT ENGINEERING LTD
NEAHURST LIMITED

OPELVALE GROUP
MR S PEARSON
PETERS GRAVES & CO
RAVENMERE LTD
A W REMOVALS LTD
R B T GROUP LTD
REYVEN (SPORTSFIELDS) LTD
RICHARDSON & BOTTOMS LTD
ROGERS/COUNTRY PROPERTIES ESTATE AGENTS
SHOREY'S TRAVEL
MR & MRS D SHERIDAN
THE KITCHEN CENTRE
W S TYREMASTERS (Div. of West & Sellick (Tyres) Ltd)
TILDAE INVESTMENTS LTD
VAUXHALL MOTORS LTD
WALLSPAN BEDROOMS
WILTON TRUCK RENTAL
WOODWARD BUILDERS
YARNSFIELD LTD

EXECUTIVE BOX HOLDERS

Team **Trimeco**
The name that's working

WHITBREAD

WILTON TRUCK RENTAL

Ribocan

SKF

D.K. SERVICES
Interior Contracts Ltd

CONNOLLY HOMES
HOMES TO BE HAPPY IN

Unigate
DAIRIES
Bringing out the best.

Hunting Gate
4444

Herald
just a friend dropping in

Key Consultants

SYNAPSE

LUDLOW OF LUTON
D. KEECH

T.J. ALDRIDGE
Builders

National Westminster
Bank PLC

PRUDENTIAL
Property Services

COMMUNICATIONS (U.K.) LTD.

DBF
Crosswinds Ltd
COMPUTER AND BUSINESS STATIONERY

sdc builders

IS
INITIAL CONTRACT SERVICES

DRG
PAPER & BOARD

S&S
HOMES

EDS
Electronic Data Systems

RYDER INSURANCE
CONSULTANTS LTD

McCANN HOMES

Hillson Twigden

EXPOTECHNIK

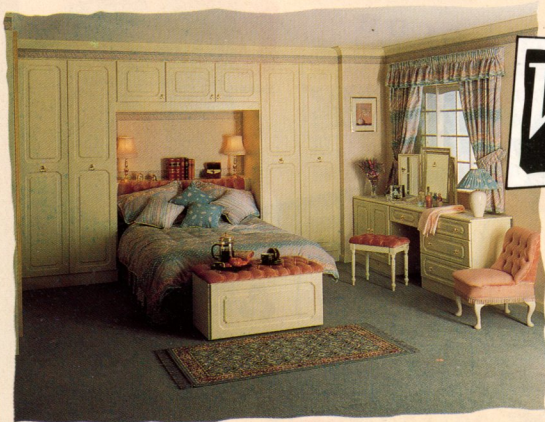
WE'VE ALSO MADE SOME CHANGES TO OUR LINE UP THIS SEASON

Kenilworth Road isn't the only place you can see a new line up this afternoon.

Just down the road in the Arndale Centre, and in our showrooms throughout the U.K., you can see the new additions to our own squad.

The Cameo Collection is making its home debut in what is undoubtedly the most attractive and unbeatable line-up in fitted bedroom furniture in the U.K.

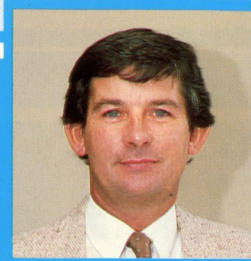
And if that weren't enough you'll find that like Luton Town, we too have proved that you don't need to break the bank to put together a winning combination.



Wallspan

Wallspan Bedrooms Limited,
Head Office: Maulden Road,
Flitwick, Beds MK45 5BW.
Telephone: 0525 716161

SHOWROOMS THROUGHOUT THE U.K.



CLUB COMMENT

From John Smith, Managing Director

You will note on page five, that we have offered our condolences to the victims of the tragedy at Hillsborough and offered our sympathy to the family and friends of the bereaved.

Lord Justice Taylor is now conducting an inquiry into the circumstances and events which led to the tragic events that fateful day.

Subsequent to the Ibrox disaster in 1971, Lord Wheatley conducted an inquiry into Safety at Sports Grounds and published a report. Arising out of this report, the Government of the day enacted an Act of Parliament called 'The Safety of Sports Grounds Act 1976'. The Home Office, at the same time, issued a booklet containing guidelines covering the criteria to be adhered to if a Safety Certificate was to be obtained by those clubs designated. This booklet has become known as the 'Green Guide' and has been updated as recently as 1986.

Although the guide referred to safety it did, however, also contain recommendations and guidelines relating to the behaviour of spectators, including those laid down by the Football Association.

Within football there has always been grave misgivings, which were represented prior to the safety legislation, that the mix of safety and behaviour were unworkable.

There is no doubt in our minds that this confusion was the root cause of the Hillsborough tragedy.

If there was no crowd disorder or misbehaviour, we would not have fences; segregation; the practice of admitting supporters without tickets for all ticket matches; separation of supporters outside grounds.

Without hooliganism, the allocation of ends at Hillsborough would not have been an issue: the fences would not have been there (the fences were erected to keep opposing fans apart, and to prevent pitch invasions). The fear and concern of the police to keep order would not have been there.

To ensure these tragedies do not occur, the conflict of behaviour and safety need to be removed. We need to concentrate our management on safety. It should now be clear to all supporters that if this tragedy is going to mean anything in the future we, in turn, need a substantial act of good faith and goodwill on their part.

The mood is now there, throughout the country, to ensure these deaths are not in vain.

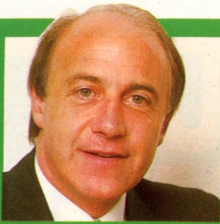
The way forward is to dismantle fences; reduce police levels; get rid of segregation of fans; thus paving the way forward for clubs to provide new and enlightened facilities for fans, with supporters standing side by side. If we do not act now, the Game will die and the hooligan will have won.

At Luton, we will commence discussions now with all the responsible authorities, including the local authorities, the police, the Supporters' Club and the members to open a debate on not only our future, but the future of football.

We shall be providing a lead in the hope that, with enlightenment, a basis can be provided that in the end will be a true and lasting memorial when people will look back and say that this was the turning point, and Football will have regained its pride.

If you have any views, please write to John Smith at the club.

Let us all act together.



by BILL TOMLINS

THE TOWN

COLLECTION HERE TODAY FOR THE VICTIMS OF THE HILLSBOROUGH DISASTER

The kick-off of this afternoon's match will be preceded by one minute's silence in memory of those who died at Hillsborough two weeks ago on a day which will always be recalled as the worst in British sport.

There will also be a bucket collection, organised by the Luton Town Supporters Club, for money to be sent to the Liverpool Disaster Fund.

The club has donated £10,000 towards the fund and the Football League is coordinating the effort of all the other 91 league clubs raising money for the bereaved families following the disaster which claimed 95 lives.

After such a tragedy, it is the least we can do as we join together in offering our hope and encouragement to Liverpool and the future of the game.

Several events in the next few weeks will reflect the vitality and the generous nature of the game at all levels as the season draws to its close.

One is here on May 14 when a Great Britain team will meet a Dutch international veterans team, based

on their great side of the 1970's which reached the 1974 and 1978 World Cup finals, in a match organised to raise money for the Stoke Mandeville hospital's plastic surgery burns unit.

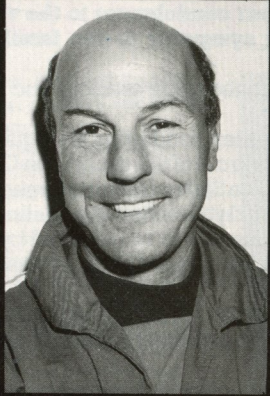
That promises to be a very entertaining and worthwhile match with tickets at £3 for adults and £1 for children and senior citizens and will hopefully remind everyone of the great wealth of good that can come from football.

Finally, congratulations to Kingsley Black who will receive his award this afternoon from Barclays Bank after being selected as the Barclays young Eagle of the month for March for the Midlands.

Kingsley has been a credit to the club with his effort and application throughout his career. Further congratulations are due to him, Danny Wilson and Iain Dowie for being selected this week to travel with the Northern Ireland squad which played in Malta on Wednesday.

We hope they all return unscathed for today's meeting with Derby County.

WELCOME TERRY



• **New face:** Terry Mancini has recently joined the club as a temporary assistant to manager Ray Harford. Good Luck, Terry.

MEMORABLE FAREWELL FOR ERIC

• **Special moments:** Our chairman David Evans MP presents Vauxhall Motors' Eric Fountain with an autographed photograph to mark his last sponsorship before his retirement.



• **Eddie on the ground:** Olympic ski jumper Eddie 'the Eagle' Edwards meets our match forecast winner after the home match against Spurs.



• **American visitors:** Darren McDonough, Ashley Grimes, Danny Wilson, John Dreyer and Iain Dowie are pictured with a group of American soccer coaches after our home match against Coventry.



• **Big match line-up:** Coventry caption David Speedie lines up with our own Steve Foster and the officials and mascot Scott Neto before the last home match.

CAPTAIN'S DIARY



STEVE FOSTER

GREAT SUPPORT

We all know the position we are now in the league table and there is only one way of improving it - wins and points. Your support, which has been very good in the last few matches particularly, can once again make all the difference.

I know the lads all felt very disappointed at not taking all three points against Coventry, but it was great to have your backing.

shocked

We were all shocked in the dressing room afterwards when we heard news of the Hillsborough tragedy. That sort of disaster brings home to you the most important things in life.

And that is why we will all wear armbands this afternoon and give a 100 per cent professional performance on the pitch against Derby as we aim for a convincing victory.

SKY BLUES GRAB POINT

Luton Town 2 Coventry City 2
On a day when the tragedy at Hillsborough overshadowed all else, the Town were utterly out of luck against Coventry City at Kenilworth Road. After a dull first half, riddled with nervous tension but still entertaining with plenty of good football, the Town were locked in a goalless stalemate.

Then in the second half the Town went 1-0 up with a fine header from John Dreyer only to see the Sky Blues draw level with a lucky goal in the 70th minute when a pot shot from Cyrille Regis deflected wildly off Steve Foster and beyond Alec Chamberlain, making his Town debut in goal.

It was a severe blow but Luton fought back to lead again with a goal from Danny Wilson, who followed up his own penalty to score in the 75th minute only to see a defensive mix-up allow Coventry winger David Smith to sneak a headed second equaliser.

Teams: Luton Town – Sealey, Breacker, Dreyer, Preece, Foster, Beaumont, Wilson, Wegerle, Meade (Cooke 74), Hill, Black.
Coventry City – Ogrizovic, Borrows, Dobson, Emerson (Bannister 45), Rodger, Downs, Phillips, Speedie, Regis, Sedgley, Smith.

Referee: Dennis Hedges (Oxford).
Attendance: 8,610.

1st Team ACTION



• **Cruel luck:** After taking the lead twice, the Town were forced to settle for one point after a 2-2 draw with Coventry on April 15. Josh Levy's action pictures show Raphael Meade, Danny Wilson and David Preece in action and John Dreyer being congratulated after scoring the opening goal his first for the club!

HOT NEWS - HOT MUSIC

on **The Hot FM**

24 HOUR RADIO
THROUGHOUT THE AREA

**Chiltern
Network**

Chiltern South
97.6 FM Stereo 828 AM

Northants 96
96.6 FM Stereo 1557 AM

Chiltern North
96.9 FM Stereo 792 AM

Switch on to Anglia . . .
Top of the League for News and
Sports Coverage



ANGLIA
Television Limited

Bedfordshire News Centre

16 Park Street, Luton. Telephone: (0582) 29666
Resident Reporter: Peter Lugg

BOX OFFICE INFORMATION

MAN IN CHARGE John Carter (Christchurch)

An electronics technician, John is married and has two sons. He began refereeing in 1971 and progressed via the Hampshire Leagues and the Southern Leagues to the Football League in 1976 as a linesman and as a referee in 1987. He enjoys gardening, bowls and country and western music.



LUTON TOWN SUPPORTERS CLUB End-of-season Presentation Night May 7, 1989

The Coliseum, Gordon Street,
Luton Tickets £6 from Luton Town
Souvenir Shop, Oak Road, Luton

SEASON TICKET HOLDERS AND MEMBERS

Please note our renewal information
on page 18 and remember to notify
the Ticket office of any change of
address.

FORTHCOMING MATCHES AT KENILWORTH ROAD

Barclays League Division One
Tuesday May 2, 1989
Luton Town v Charlton Athletic
Kick-off 7.45p.m.

Ovenden Papers Football Combination
Saturday, May 7, 1989
Luton v Portsmouth
Kick-off 1.00p.m.

Bedfordshire Sunday Cup Final
Sunday, April 30, 1989
Celtic SC v St Josephs
Kick-off 2.00p.m.

CLOSED CIRCUIT TELEVISION



Photographs courtesy of 'The Times'

Three minutes before the interval, a bottle was thrown towards the opposing side's goalkeeper. The incident was captured by the CCTV system and 57 seconds later police had arrested the offender. By the half-time whistle, he had been led away for questioning, charged and subsequently pleaded guilty at the court hearing.

CCTV is the most effective anti-hooligan measure inside grounds and more than 100 stadia in Britain are equipped with cameras installed by The Football Trust.

CCTV forms only part of the Trust's many initiatives. Each year it receives over £9.5 million from the Spotting-the-Ball competition run by Littlewoods, Vernons and Zetters and spends it on projects that benefit every level of the game throughout the United Kingdom.

PLAYER PROFILE

RAPHAEL MEADE

Six weeks after joining the Town in a £250,000 transfer from Dundee United, striker Raphael Meade is still searching for the lucky break which can bring him his first goal for the club and help lift the team in the scrap for First Division safety.

Injuries and bad luck have combined to reduce Raphael's opportunities to just two outings in the starting line-up and a couple of further appearances as a substitute.

Born in Islington, in November 1982, Raphael began his career as an apprentice with Arsenal where he broke into the first team before leaving to play for Sporting Lisbon and then Dundee United where he earned a reputation as a quick and dangerous goalscorer.



•Quick and dangerous: Raphael Meade.



RAPHAEL MEADE

SEASON TICKET AND MEMBERSHIP RENEWAL SEASON 1989-1990

Renewal forms for current Season Ticket Holders and Members will be mailed directly to you in the week commencing 15th May 1989.

SEASON TICKET HOLDERS

Season ticket holders can renew by returning their application form together with an s.a.e. to the Ticket Office after 15th May 1989.

Personal applications to the ticket office will be accepted from 1st June 1989.

All Season Ticket Holders seats will be reserved until 30th June 1989.

EXCHANGES

Those Season Ticket holders who wish to change their seat position should contact the ticket office prior to the 30th June 1989.

GENERAL SALE

Unsold seats will go on general sale from July 11th 1989.

SEASON TICKET HOLDERS INSTALMENT OFFER

Season Ticket Holders may pay by four instalments, one on purchase, followed by one payment on 1st August, 1st September and 1st October. Further details available from the ticket office.

Prices are as follows: Renewals Prices
(All prices include membership fee)

	Prior to	from
	30.6.89	11.7.89
MAIN STAND (A-E)	£	£
Adult	142	160
Junior/OAP	65	80
MAIN STAND (F)		
Adult	110	125
Junior/OAP	45	51
MAIN STAND ENCLOSURE		
Adult	110	125
Junior/OAP	45	51
Blocks B, H and J	75	85
OAK STAND		
Adult	110	125
Junior/OAP	45	51
Restricted View	75	85

SPECIAL FAMILY DISCOUNT

In the Oak Stand there will be a special family discount of 20% off season tickets purchase. To qualify the minimum requirement will be at least two adults, plus one juvenile under 16 years of age, all of whom must come from the same family.

KENILWORTH STAND

	71	80
Adult	38.50	43.50
Junior/OAP		

MEMBERSHIP

Members can renew by returning their application from together with an s.a.e. to the Ticket Office after 15th May 1989. Personal applications to the ticket office will be accepted from 1st June 1989.

The membership fee for all categories for Season 1989-90 is £1.00

Club 100 Membership £25.00

NEW MEMBERS NEW SEASON TICKET HOLDERS

Supporters wishing to become first time Season Ticket Holders plus new membership applications please apply either in writing to the ticket office or telephone the club on Luton 411622 after the 15th May 1989.

MASCOT

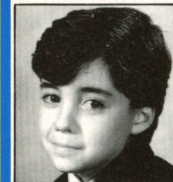


Gina Bentley

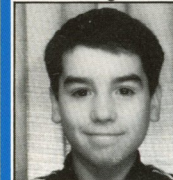
ESCORTS



Neil Martyn



Paul Gallagher



Daniel Barker



Ben Combes

JUNIOR HATTERS!



BY DANNY WILSON

JOIN US FOR A SPECIAL FUN DAY AT WATFORD

Today we extend a warm welcome to Derby County. We have had an invitation to join Watford on their Fun Day on Sunday June 4th. The time the fun starts is 11am and finishes around 4.00pm.

We will be fielding two teams for this seven-a-side - one team for under 10 years, made up from players of the following ages: two players aged eight; two players aged nine; two players aged 10; plus one player of any age.

The team for under 13 years will be made up from players of the following ages: two players aged 11, two players aged 12, two players aged 13, plus one player of any age.

We are hoping to take a team for girls of mixed ages so come on you girls lets show the boys what you can do. Refreshments are available on the day for Hot Dogs, Drinks, Crisps and Sweets.

If you would like to take part in this fun day, see Bev Tyler in the Oak Road Souvenir Shop as we only have a few places in the Teams, book early to save any disappointment.

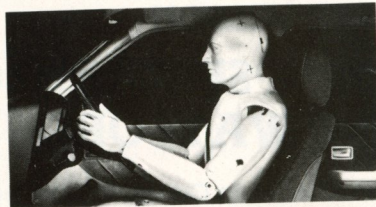
Today's lucky Junior Hatters membership number is H0188091527. The winning member should contact Bev Tyler in the Souvenir Shop with his or her membership card, for two free tickets to one of our home matches.

Have a good day and I will see you at our next home game when we entertain Charlton. Next Tuesday Night kick-off 7.45 pm.



FIRST WITH NEWS - MAGIC WITH MUSIC
24HRS EVERY DAY ON 828kHz AM. AND 97.6mhz FM.

Introducing 5-wheel drive.



As you can see, this is not some new kind of vehicle for negotiating rough terrain.

It is, in fact, Saginaw Tilt Wheel Steering. A special factory-fitted extra that can alter the way you drive. The wheel adjusts to five separate positions.

So, from a driver's point of view, it can make life a lot more comfortable.

In turn, making driving far safer.

(Added to which, a unique Saginaw energy-absorbing column comes as standard.)

Changing the angle of the wheel takes no effort whatsoever.

By moving a small lever on the steering column, it can be set to the ideal position.

Tilted down, it's easy to imagine what a fast sports car feels like.

Tilted up, it's like being behind the wheel of a bus.

This last position also provides more leg room, so getting in and out of a car becomes a much simpler exercise.

But it's not only you who will benefit from Saginaw Tilt Wheel Steering.

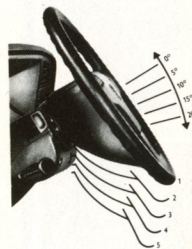
Anyone who drives your car will too. Because it will make it more adaptable to any driver's individual needs.

Not many extras make a car so flexible. And certainly not for just £88 (plus Car Tax plus VAT).

Saginaw Tilt Wheel Steering is available as an optional extra on most new Vauxhall-Opel cars.*

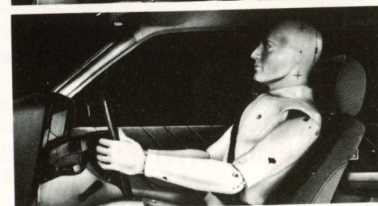
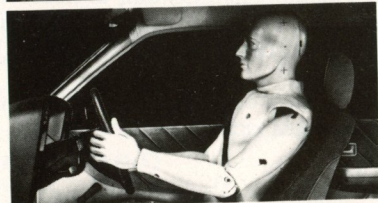
So contact your nearest Vauxhall-Opel dealer for a chat.

He'll be able to tell you more about 5-wheel drive and exactly how it handles.



Degrees more comfortable. Degrees safer.

*STANDARD EQUIPMENT ON SOME MODELS



COMMERCIAL COMMENT BY WENDY GREAVES



BIG MATCH LIFT OFF FOR OUR SPONSORS LUTON INTERNATIONAL AIRPORT

A big welcome this afternoon to our match sponsors Luton International Airport and all their guests.

Today's big match against Derby County will be the last this season to be sponsored by LIA and looks set to be a day of drama, action and excitement on and off the pitch.

Among their guests today, Luton Airport are particularly delighted to welcome representatives from Thomsons, Pegasus and Falcon.

This afternoon's match at Kenilworth Road provides them with a unique opportunity for a get-together with these tour operators at the beginning of what seems likely to be another very busy holiday season for Luton airport.

We hope everyone invited to the match enjoys their afternoon and a satisfactory result.

BALL SPONSORS FILMERGRAPHIC PRESS LTD

Our ball sponsors are Filmergraphic Press of Alton Road, Luton, one of the leading design, phototypesetting and printing companies in the area. Derek Filmer has been a loyal supporter of the club for many years and we thank him for his support and hope he and his guests enjoy a first-class afternoon.

Today's MATCH SPONSOR



A GOALDEN OPPORTUNITY TO WISH OUR TEAM EVERY SUCCESS

It's hardly surprising, Luton International is now the region's No 1 holiday and business airport.

After a multi-million pound modernisation programme, LIA has every conceivable facility to ensure that leisure and business travel takes off just inside the terminal building. We are now at the forefront of choice to an astonishing number of frequent air travellers.

What's more, getting to Luton couldn't be easier.

A rapid rail link means **CENTRAL LONDON TO THE TERMINAL BUILDING IN AS LITTLE AS 45 MINUTES.**



There are superb coach links serving many parts of the country, and the M1 and M25 leave us only minutes from most of North and Central London and the northern Home Counties.

LUTON INTERNATIONAL AIRPORT, LUTON LU2 9LY.
TEL: (0582) 405100. TELEX 826409. PRESTEL 34470
Late availability - Oracle p. 594



● **Letting rip:** Ian Scott fires in a shot during the Beds Premier Cup final against Barton.



● Cup-final action from the win over Barton.

SOUTH EAST COUNTIES LEAGUE DIVISION TWO 1988/89

	P	W	D	L	F	A	Pts
Brentford	27	16	5	6	54	31	37
Luton Town	28	14	8	6	83	51	36
Southampton	25	15	5	5	61	30	35
Swindon Town	27	14	7	6	44	37	35
Wimbledon	28	15	3	10	57	40	33
Oxford United	27	14	4	9	52	48	32
Crystal Palace	28	13	5	10	59	37	31
Bristol City	27	8	12	7	39	36	28
A.F.C. Bournemouth	28	10	6	12	51	50	26
Brighton & Hove Albion	28	7	9	12	40	54	23
Reading	27	9	5	13	48	77	23
Bristol Rovers	28	7	7	14	34	64	21
Tottenham Hotspur	26	7	3	16	39	56	17
Northampton Town	28	6	5	17	43	74	17
Colchester United	28	6	4	18	38	57	16

OVENDEN FOOTBALL COMBINATION 1988/89

	P	W	D	L	F	A	Pts
Tottenham Hotspur	36	21	10	5	85	36	52
Watford	33	18	9	6	79	46	45
Luton Town	37	17	10	10	85	54	44
Arsenal	32	17	10	5	69	38	44
Wimbledon	33	19	6	8	64	33	44
Chelsea	31	16	8	7	61	41	40
Swindon Town	32	17	5	10	60	48	39
Millwall	32	14	9	9	64	41	37
Norwich City	33	14	7	12	58	58	35
Oxford United	31	13	7	11	64	61	33
Ipswich Town	31	14	5	12	51	52	33
Crystal Palace	32	12	8	12	44	42	32
Southampton	35	13	6	16	61	66	32
West Ham United	35	9	10	16	52	61	28
Brighton & Hove Albion	33	7	13	13	41	67	27
Fulham	33	10	6	17	45	80	26
Charlton Athletic	32	6	8	18	48	69	20
Portsmouth	29	7	4	18	28	67	18
Queens Park Rangers	31	4	5	22	28	66	13
Reading	33	4	4	25	30	91	12

OVENDEN PAPERS FOOTBALL COMBINATION 1988/89

Date 1988	Opponents	Result	Date 1989	Opponents	Result
Aug 27	Southampton	3-2	Jan 4	Brighton	2-2
Sept 6	Norwich City	2-3	Jan 7	Crystal Palace	0-0
Sept 10	Swindon T	1-1	Jan 14	Reading	4-1
Sept 17	Watford	2-2	Jan 17	Chelsea	2-2
Sept 24	Oxford United	7-1	Jan 21	Wimbledon	1-3
Oct 1	Arsenal	2-3	Jan 28	Southampton	7-2
Oct 5	Norwich	2-1	Feb 4	Tottenham	1-2
Oct 11	Brighton	3-0	Feb 7	Millwall	0-2
Oct 15	Watford	4-0	Feb 14	Swindon T	0-2
Oct 18	Charlton A	1-0	Feb 25	West Ham	3-1
Oct 22	Wimbledon	0-2	Mar 4	Arsenal	3-1
Oct 29	Reading	4-2	Mar 15	Crystal Palace	0-6
Nov 1	Fulham	0-3	Mar 22	Charlton A	3-0
Nov 5	Ipswich Town	2-1	Mar 25	West Ham	3-0
Nov 9	QPR	1-0	Apr 1	Fulham	6-0
Nov 12	Chelsea	1-1	Apr 11	Ipswich T	1-2
Nov 15	Portsmouth	7-0	May 6	Portsmouth	
Nov 22	Millwall	2-2			
Nov 26	QPR	1-1			
Nov 30	Oxford United	3-3			
Dec 31	Tottenham	1-1			

COACHES' CORNER



RESERVES MATCH POSTPONED BUT YOUNGSTERS STILL ACTIVE IN FRIENDLIES

The reserves last match of the season, due to have been played here last Saturday 22, was postponed and will be played now on Saturday May 6, 1989, kick-off 1pm. After a good season in the Ovenden Papers Football Combination the young reserves can still finish in the leading group and will be hoping for a good result to end the campaign.

The youth team have already finished their season and in the last week have been playing friendly matches. They played Tottenham Hotspur at Talbots and Swansea at Kenilworth Road, losing 2-3 and 0-4 respectively with teams made up from a mixture of first year apprentices and under-16 schoolboys.

Excellent Game with Tottenham

Ron Howard, who was in charge of the team for both matches, said: "The Spurs match was an excellent game. We went in front through Alan O'Sullivan, they equalised, then we went 2-1 up through Ian Rutherford, a young schoolboy. It was 2-2 at halftime and we enjoyed a fair second half but they pinched the win with a goal 15 minutes or so from the end.

"Against Swansea, we had a much younger side out than theirs. They fielded a youth team which has only lost twice this season and they were stronger than us and on top. They were 3-0 up at the interval and we did well in the second half but finished up losers. It was a very useful exercise in the trying to assess some of our younger players."

This afternoon a youth team will travel to London to play West Ham in a friendly.

GREAT SAVES.



At Barclays we have a great range of savings schemes, so however large or small the amount you have to save you're sure to find one that suits you.

We can offer everything from special accounts for young people with just £1 to save, to premium rate savings accounts like Capital Advantage for those with £10,000 or more to invest.

Ask at your local branch for details.

With Barclays on your side you're bound to get a good result.

MEMBER OF IMRO

••• YOU'RE
BETTER OFF
TALKING TO
BARCLAYS

PHOTO FILE



• No luck at Villa Park: Kingsley Black and Roy Wegerle were in good form but out of luck against Aston Villa. Pictures by Josh Levy of Apex Photography.



LUTON TOWN

Goal'den Oldies

PYE THE PROVIDER WAS A CROWD-PLEASER FOR BOTH LUTON AND DERBY

In welcoming Derby County to Kenilworth Road we are mindful of the fact that although both clubs have been in existence for over 100 years meetings between the sides have been few and far between writes club statistician Roger Wash.

Our first meeting was as recent as 14th November 1953 when we won 2-1 at the Baseball Ground courtesy of two goals from high scoring winger Bert Mitchell. The scoreline was expected at Kenilworth Road in the return and the winning run continued when a 2-0 home victory the following season provided two valuable points as the Town marched on to eventual promotion.

The smile on the faces of the Luton supporters was wiped off however when one of the goalscorers that day, Jesse Pye, asked for a transfer after the game and was subsequently transferred to Derby.

Pye, an original crowd favourite was signed for the princely sum of £9000 from Wolves in 1952 when it was hoped that his vast First Division and England International experience would assist the Town to become a football force. He fully lived up to all expectations by scoring 28 goals in his first season equalling the record set up by Hugh Billington and then in a more deep lying role provided the necessary experience and coaching to enable the young Gordon Turner to become the Town's all time record goalscorer.

Paths crossed again in the early 1960's but with the Town at the start of a downward spiral five out of six matches against the Rams were lost with the only win coming in 1961/62 when an important 4-2 home victory which included two goals from Tom McKechnie gave Luton supporters false hopes for the future.

Appearing for Derby around that time but never actually against the Town was a young inside forward by the name of Ian Buxton. He eventually joined the Town on 27th September 1967 in time to make his debut at home to Southend the same evening.

We did not realise it then but Buxton became the final piece in manager Allan Brown's jigsaw as the Town ran away with the 4th Division championship. His clever play, providing the ideal foil for Bruce Rioch and Keith Allen, quickly endeared him to the crowd. Thirteen goals in the promotion season helped as well, of course!

Buxton's double life as a County cricketer for Derbyshire which meant that he missed the start of the following season, together with the signing of Brian Lewis, limited his appearances in 1968/69. As the team faltered towards the end of that season Buxton was recalled however in a last ditch attempt at promotion two years running and scored his only goal of that campaign in the infamous game against Watford on 30th April 1969 before being transferred to Notts County the following close season.

By the time Luton and Derby met again, during our short stay in Division One in 1974/75 a young full back by the name of Steve Buckley was just beginning to make a name for himself. He made his debut at Leicester in October 1974 and by the time of our two meetings with Derby that season he was a regular in the side although he would be prepared to forget the 5-0 pasting at the Baseball Ground over Easter 1975 when Roger Davies scored all five and missed ten more!

Buckley was another crowd pleaser with his cavalier runs down the wing and ferocious shot with his left foot. It was a sad day for all Luton supporters when he was transferred to the "Rams" for £165000 in January 1978 after giving such standing service which he continued to give until only a couple of seasons ago to Derby.

Our previous encounters with Derby County

	Home	Away
1953/54	2-1	2-1
1954/55	2-0	0-0
1960/61	1-1	1-4
1961/62	4-2	0-2
1962/63	1-2	0-1
1974/75	1-0	0-5
1980/81	1-2	2-2
1981/82	3-2	0-0
1987/88	1-0	0-1
1988/89	-	1-0

Summary

	P	W	D	L	F	A
Home	9	6	1	2	16	10
Away	10	2	3	5	6	16
	19	8	4	7	22	26

IT HAPPENED THIS DAY 22 YEARS AGO

On 29th April 1967 the Town beat Lincoln 2-1 at Kenilworth Road with goals from Keith Allen and Ray Whittaker in a 4th Division encounter. Nothing too remarkable about that but the win was extremely important at the time for it finally dispelled all fears of the Town needing to reach re-election for the first time!

Roger Wash



• Ian Buxton: A subtle inside-forward who gave great service to Luton and Derby in action at Kenilworth Road.

Luton News

LUTON TOWN FOR TOP SOCCER LUTON NEWS FOR TOP COVERAGE

For the best match reports, and all the latest news and views from Kenilworth Road, get the **LUTON NEWS and DUNSTABLE GAZETTE**

THURSDAYS 14p

INTRODUCING...

DERBY COUNTY

Today we welcome a Derby side now in their second season back in Division One and currently just above mid-table. With points at such a premium for us we can expect another close game like the last three that have all ended 1-0 with us getting the edge twice and Derby once. Founded in 1884 from members of a cricket club, Derby County became founder-members of the Football League four years later and in 1892 introduced one of the greatest inside forwards of all time into the game. This was the late Steve Bloomer, who had two separate spells with them and a place in the England team for many years.

In 1895 they moved to the Baseball Ground and were runners-up to Aston Villa in their first season there. They had two spells in Division Two before the First World War and one just afterwards and their players during this period included two future outstanding managers in Frank Buckley in

his pre-Major days and Harry Storer.

In the thirties County also fielded two of the top strikers of their era in Jack Bowers and Hughie Callacher and though they did not win a major honour then they were runners-up in Division One in 1929/30 and 1935/36 and were semi-finalists in the FA Cup in 1933. They did win the FA Cup in the first postwar season, however, in 1946 when that competition was resumed after the war, their team including those two great inside forwards Raich Carter and Peter Doherty and a future manager of ours in 'Dally' Duncan.

After an FA Cup semi-final appearance in 1948 a period of decline set in and in 1955 they slipped to Division Two and for two seasons they actually slipped to Division Three (North). Things did not really take off again until the appointment of Brian Clough and Peter Taylor in 1967. They returned to Division One in 1969 and won the Championship



Back Row (left to right): Roy McFarland (Assist. Manager), Trevor Hebbard, Michael Forsyth, Andy Garner, Martin Taylor, Mark Wright, Peter Shilton, Rob Hindmarch, Mark Wallington, Brett Angell, Nick Pickering, Ted McMinn, Gordon Guthrie (Physio). Front Row: Brian McCord, Mel Sage, Nigel Callaghan, David Penney, Steve Cross, Phil Gee, Arthur Cox (Manager), Paul Blades, Paul Goddard, John Chiedoie, Gary Micklewhite, Geraint Williams, Mark Patterson.

in 1972. At that stage they were one of the top club sides in the world, but a year later Clough and Taylor resigned and though Dave Mackay picked up some of the momentum as he led them to another championship in 1975 things began to decline soon afterwards.

Managers came and went, Tommy Docherty and Colin Addison amongst them, as they slipped to Division Two in 1980 and to Division Three in 1984. A severe financial crisis was weathered before Arthur Cox was appointed manager in 1984 after Peter Taylor's second spell at the helm and some shrewd buying enabled him to fashion a promotion side. Not only did they climb out of Division Three in 1986, but also out of Division Two in 1987 and they settled back reasonably well in Division One last season, finishing just below mid-table. Goals however were a problem with only 35 scored.

This Season

This season they began with only one away defeat in the League until February though they did crash 5-0 at West Ham in the Littlewoods Cup and at one stage in December they lost three successive home games 1-0 to Luton, Liverpool and Millwall. In recent weeks they have lost 1-0 at Liverpool, drawn 1-1 at West Ham and won 2-0 at Manchester United.

Midfielder **Gary Micklewhite** (from QPR in 1985) has just netted in successive away games while two strikers who need watching are both newcomers this season, **Dean Saunders** from Oxford and **Paul Goddard** from West Ham. **Trevor Hebbard** is another former Oxford man in midfield, linking up with Scotsman **Ted McMinn**, who has seen service with Glasgow Rangers and Seville, and **Geraint Williams**, who came from Bristol Rovers four years ago.

In defence **Mark Wright** is in his second season since moving from Southampton and this England-man links up with **Rob Hindmarch** (from Sunderland in 1984) in the centre with home grown **Paul Blades** and former West Brom man **Mick Forsyth** on the flank. In goal **Peter Shilton**, aged 39 and a half with over a hundred England caps and over 1,050 league and cup games behind him seems as good as ever. He is the only player in the game's history to have played over 850 league games. Substitutes recently have included former Shrewsbury midfielder **Steve Cross** and lively young striker **Phil Gee**, who got the matchwinner against Arsenal in November.

Follow the Hatters ... on SPORTSOUND

Saturdays 2pm - 6pm
with John Smith

BB RADIO
BEDFORDSHIRE

Weekdays — Sports News at
6.35/7.35/8.35 am
12.45/5.20/6.20 pm

AM: 630 kHz
FM/VHF: 95.5 MHz
COUNTYWIDE

(AM Bedford: 1161 kHz
FM/VHF Luton: 103.8 MHz)

FOR THE COMPLETE BUILDING SERVICE AND
HOME IMPROVEMENTS

T. J. ALDRIDGE
Builders

302 Selbourne Road, Luton, Beds LU4 8NU.
Telephone: 505412-505413

EXTENSION SPECIALISTS

ESTIMATES FREE

B. DOHERTY
SKIPHIRE

34 MOUNT PLEASANT ROAD
LUTON
Telephone: 574633 & 574799

FIRST TEAM

UPDATE

1988-89 SEASON

BARCLAYS FOOTBALL LEAGUE DIVISION ONE

P	W	D	L	F	A	W	D	L	F	A	Pts	
33	9	5	2	27	15	Arsenal	10	4	3	35	17	66
32	8	5	2	25	8	Liverpool	10	4	3	30	16	63
34	7	7	4	22	20	Norwich City	9	3	4	23	17	58
36	6	7	3	22	13	Nottingham Forest	9	5	3	31	24	57
36	8	6	5	31	24	Tottenham Hotspur	6	6	5	24	21	54
33	8	3	7	21	17	Derby	7	4	4	15	12	52
34	10	2	5	26	15	Millwall	4	7	6	18	26	61
35	9	3	6	26	21	Coventry	4	8	5	17	13	50
33	9	3	5	25	17	Wimbledon	4	5	7	18	23	47
32	8	5	2	23	10	Manchester United	3	7	7	15	17	45
34	6	5	5	18	14	Queens Park Rangers	5	6	7	20	19	44
33	8	6	2	29	17	Everton	3	5	9	15	25	44
34	7	4	5	22	18	Aston Villa	2	7	9	19	32	38
35	6	7	5	28	29	Middlesbrough	3	4	10	15	29	38
35	5	7	6	23	25	Southampton	3	7	7	24	38	38
35	5	5	6	18	21	Sheffield Wednesday	4	6	9	13	26	38
33	4	7	6	21	24	Charlton Athletic	4	5	7	17	24	36
34	5	6	5	23	19	LUTON TOWN	2	5	11	10	30	32
34	3	5	9	17	25	Newcastle United	4	4	9	13	29	30
32	2	6	10	18	30	West Ham United	4	2	8	10	22	26

LEADING SCORERS: 22 John Aldridge (Liverpool), Alan McInally (Aston Villa), 21 Alan Smith (Arsenal), 20 Nigel Clough (Nottingham Forest), 18 Dean Saunders (Derby County), Bernie Slaven (Middlesbrough).

APPEARANCES AND GOALSCORERS

Player	League		Littlewoods Cup		FA Cup	
	Aps	Gls	Aps	Gls	Aps	Gls
Ian Allinson	1(4)	-	-	-	-	-
David Beaumont	11	-	3	-	-	-
Kingsley Black	32(1)	7	9	-	1	1
Tim Breacker	15(3)	-	5(2)	-	1	-
Alec Chamberlain	2	-	-	-	-	-
Richard Cooke	-	(3)	-	-	-	-
Mal Donaghy	8	-	2	-	-	-
Iain Dowie	1(7)	-	1	-	-	-
John Dreyer	12(2)	1	5	-	-	-
Steve Foster	32	3	9	-	1	-
Ashley Grimes	12	-	5	-	-	-
Mick Harford	29	5	7	4	1	-
Richard Harvey	11(1)	-	1	-	-	-
Ricky Hill	29	3	8(1)	3	1	-
Julian James	1	-	1	-	(1)	-
Marvin Johnson	16	-	2	-	1	-
Rob Johnson	19(2)	-	3	1	1	-
Raphael Meade	2(2)	-	-	-	-	-
Darron McDonough	9(1)	-	-	-	(1)	-
David Oldfield	15(6)	1	4(1)	2	(1)	-
David Preece	22	-	6	-	1	-
Les Sealey	32	-	9	-	1	-
Roy Wegerle	24(4)	7	7	4	1	-
Steve Williams	10	-	3	-	-	-
Danny Wilson	33	5	9	2	1	-

As at April 27, 1989

Luton Town F-A Att Pos 1

Aug 27	Sheffield Wednesday	0-1	16,433	-	Sealey
Sept 3	Wimbledon	2-2+	8067	12	Sealey
Sept 10	Southampton	1-2	13,214	16	Sealey
Sept 17	Manchester United	0-2	11,010	18	Sealey
Sept 24	Everton	2-0	26,170	15	Sealey
Sept 27	Burnley (LC2)	1-1	6,282	15	Sealey
Oct 1	Nottingham Forest	0-0	15,340	17	Sealey
Oct 8	Liverpool	1-0	12,117	13	Sealey
Oct 11	Burnley (LC2)	1-0	14,031	13	Sealey
Oct 22	Middlesbrough	1-2	17,749	16	Sealey
Oct 25	Arsenal	1-1	10,548	16	Sealey
Oct 29	Queens Park Rangers	0-0	8,453	16	Sealey
Nov 2	Leeds United (LC3)	2-0	19,447	16	Sealey
Nov 5	Millwall	1-3	12,511	16	Sealey
Nov 12	Coventry City	0-1	12,631	16	Sealey
Nov 19	West Ham United	4-1	9,308	16	Sealey
Nov 26	Norwich City	2-2	13,541	15	Sealey
Nov 29	Manchester City (LC4)	3-1	10,778	15	Sealey
Dec 3	Newcastle United	0-0	8,338	16	Sealey
Dec 10	Derby County	1-0	15,228	15	Sealey
Dec 17	Aston Villa	1-1	8,785	16	Sealey
Dec 26	Tottenham Hotspur (11.30 am)	0-0	27,337	16	Sealey
Dec 31	Wimbledon	0-4	8,999	16	Sealey
Jan 2	Southampton (3 pm)	6-1	8,637	15	Sealey
Jan 7	Millwall (FAC3)	2-3	12,504	15	Sealey
Jan 10	Crystal Palace (S3)	1-4	5,842	15	Chamberlain
Jan 14	Charlton Athletic	0-3	5,212	16	Sealey
Jan 18	Southampton (LC5)	1-1	11,785	16	Sealey
Jan 21	Everton	1-0	9,013	13	Sealey
Jan 25	Southampton (LC5R)	2-1	18,250	13	Sealey
Feb 4	Nottingham Forest	2-3	10,465	14	Sealey
Feb 12	West Ham (LCSF)	3-0	24,602	15	Sealey
Feb 18	Middlesbrough	1-0	8,187	13	Sealey
Feb 25	Arsenal	0-2	31,012	14	Sealey
Mar 1	West Ham (LCSF)	2-0	12,020	14	Sealey
Mar 11	Millwall	1-2	7,838	15	Sealey
Mar 14	Liverpool	0-5	31,447	15	Sealey
Mar 18	Sheffield Wednesday	0-1	7,776	16	Sealey
Mar 21	Queens Park Rangers	1-1	9,372	15	Sealey
Mar 25	Manchester United	0-2	36,335	16	Sealey
Mar 28	Tottenham Hotspur	1-3	11,146	17	Sealey
Apr 1	Aston Villa	1-2	15,640	18	Sealey
Apr 9	NOTTINGHAM FOREST (LCF)	1-3	76,130	18	Sealey
Apr 15	Coventry City	2-2	8,610	18	Chamberlain
Apr 22	Newcastle United	0-0	18,493	18	Chamberlain
Apr 29	Derby County				
May 2	Charlton Athletic				
May 6	West Ham United				
May 13	Norwich City				

© The Football League FAC = F.A. Cup () indicates player substituted

	2	3	4	5	6	7	8	9	10	11	12
Breacker	Dreyer	Williams	Foster	Donaghy	Wilson	(Wegerle)	Harford	Oldfield	Black	R/[IA]	
R. Johnson	Grimes	Williams	Foster	Donaghy	Wilson	Preece	Harford	Oldfield	Black	JD/RW	
R. Johnson	Grimes	Williams	Foster ¹	Donaghy	Wilson	Oldfield	Harford	(Preece)	Black	TB/[RW]	
R. Johnson	Dreyer	Williams	Foster	M. Johnson	Wilson	(Oldfield)	Harford	Hill	Black	[RW]/TB	
R. Johnson	Dreyer	Williams	Foster	Donaghy	Wilson	(Oldfield) ¹	Harford	(Hill)	Black	[TB]/[IA]	
(R. Johnson) ¹	Dreyer	Williams	Foster	Donaghy	Wilson	Oldfield	Harford	Hill	Black	[TB]/IA	
R. Johnson	Dreyer	Williams	Foster	Donaghy	Wilson	Oldfield	(Harford)	Hill	Black	[IA]/TB	
R. Johnson	Dreyer	Williams	Foster	Donaghy	Wilson	(Oldfield)	Harford ¹	Hill	Black	[RW]/TB	
(R. Johnson)	Dreyer	Williams	Foster	Donaghy	Wilson	(Oldfield)	Harford	Hill ¹	Black	[TB]/[IA]	
(R. Johnson)	Dreyer	(McDonough)	Foster	M. Johnson	Wilson ^{1P}	Oldfield	Harford	Hill	Black	[TB]/[RW]	
R. Johnson	Breacker	(McDonough)	Foster	M. Johnson	Wilson	Wegerle	Harford	Hill	Black	[DO]/IA	
R. Johnson	Dreyer	Williams	Foster	M. Johnson	Wilson	(Allinson)	Wegerle	Hill	Black	[DO]/RH	
J. James	Dreyer	Williams	Foster	M. Johnson	Wilson ¹	Oldfield ¹	Wegerle	Hill	Black	IA/AG	
(J. James)	Dreyer	Williams	Foster	M. Johnson	Wilson ¹	Wegerle	Oldfield	Hill	Black	[RJ]/AG	
R. Johnson	Grimes	(Williams)	Foster	M. Johnson	Wilson	Wegerle	Harford	Hill	Black	[DO]/JJ	
R. Johnson	Grimes	Preece	Foster	M. Johnson	Wilson ¹	Wegerle ¹	Harford	Oldfield	Black	Black ²	
R. Johnson	Harvey	Preece	Foster	M. Johnson	Wilson	Wegerle ²	Harford	Oldfield	Black	JD/IA	
R. Johnson	Harvey	Preece	Foster	M. Johnson	Wilson	Wegerle ²	(Harford)	Oldfield ¹	Black	[RH]/JD	
R. Johnson	Harvey	Preece	Foster	M. Johnson	Wilson	Wegerle	(Oldfield)	Hill	Black	[IA]/JJ	
R. Johnson	Harvey	Preece	Foster	M. Johnson	Wilson	(Wegerle)	Harford ¹	Hill	Black	[DO]/JD	
R. Johnson	Harvey	Preece	Foster	M. Johnson	Wilson	Wegerle ¹	Harford	Hill	Black	DO/JD	
R. Johnson	Harvey	Preece	Foster	M. Johnson	Wilson	Wegerle	Harford	Hill	Oldfield	TB/JD	
R. Johnson	Harvey	Preece	Foster	M. Johnson	Wilson	(Wegerle)	Harford	Oldfield	Oldfield	[KB]/JD	
R. Johnson	Harvey	Preece	Foster	M. Johnson	Wilson	Wegerle ²	Harford ²	Hill ¹	Black	TB/ID	
R. Johnson	Harvey	Preece	Foster	M. Johnson	Wilson ^{1P}	Wegerle	Harford	Hill	Black	[DO]/JJ	
Breacker	Dreyer	Preece	James	M. Johnson	(Williams)	Dowie ¹	Harford	Hill	Oldfield	[RW]/RH	
R. Johnson	(Harvey)	Preece	Foster	M. Johnson	Wilson	Wegerle	(Oldfield)	Hill	Black	[TB]/ID	
Breacker	Grimes	Preece	Foster	Dreyer	Wilson	Wegerle	Dowie	Hill	Black	RJ/DO	
Breacker	Grimes	Preece	Foster	Dreyer	(Wilson)	Wegerle ¹	Harford	(Black)	Black	[ID]/[RJ]	
Breacker	Grimes	Preece	Foster	Dreyer	Wilson	Wegerle	(Harford) ¹	Hill ¹	Black	[DO]/RJ	
Breacker	Grimes	Preece	Foster	Dreyer	Wilson	Wegerle	Harford ¹	Hill	Black	[DO]/DM	
Breacker	Grimes	Preece	Foster	Beaumont	Wilson ^{1P}	Wegerle ¹	Harford ¹	Hill	Black	DO/DM	
Breacker	Grimes	Preece	Foster	Beaumont	Wilson	Wegerle	Harford	Hill	Black	[DO]/DM	
Breacker	Harvey	(Preece)	Foster	Beaumont	Wilson	Wegerle	Harford	Hill	Black	[DO]/DM	
Breacker	Grimes	Preece	Foster	Beaumont	Wilson	Wegerle ¹	Harford ¹	Hill	Black	DO/DM	
Breacker	Grimes	(Preece)	McDonough	Beaumont	Wilson ^{1P}	(Wegerle)	Harford	Hill	Black	[JD]/ID	
Breacker	Grimes	(Preece)	M. Johnson	Beaumont	Wilson	McDonough	Harford	Hill	Black	[ID]/JD	
Breacker	(Grimes)	(Preece)	Foster	Beaumont	Wilson	McDonough	Harford	Hill	Black	[ID]/[RH]	
Breacker	Harvey	McDonough	Foster	Beaumont	Wilson	(Meade)	Harford	Hill ¹	Black	[ID]/JD	
Breacker	Harvey	McDonough	Foster	Beaumont	(Wilson)	(Preece)	Harford	Hill	Black	[RC]/ID	
Breacker	Grimes	Preece	Foster ¹	Beaumont	McDonough	(Dowie)	Harford	Hill	Black	[RC]/R	
Breacker	(Grimes)	Wilson	Foster	Beaumont	(McDonough)	Wegerle	Harford	Hill ¹	Black	[JD]/[RM]	
Breacker	(Grimes)	Preece	Foster	Beaumont	Wilson	Wegerle	Harford ¹	Hill	Black	[DM]/RM	
Breacker	Dreyer	Preece	Foster	Beaumont	Wilson	Wegerle	(Meade)	Hill	Black	[RC]/DM	
Breacker	Dreyer	Preece	Foster	Beaumont	Wilson	(Wegerle)	Harford	Hill	(Black)	[RM]/[DM]	

[] indicates substitute used Home fixtures in **Bold** Scorer's name in **Bold** P = Penalty + denotes own goal



Probably the world's most advanced and researched sportswear



Abacus Press

Interplan House, North Bridge Road, Berkhamsted, Herts HP4 1ET. Tel: (0442) 874391 Fax: 874873

Voucher No. 21

VAUXHALL TEAM CHECK.

LUTON TOWN ³

Team Manager: Ray Harford

White Shirts, Navy Shorts

- 1 Alec Chamberlain
- 2 Tim Breacker
- 3 John Dreyer
- 4 David Preece
- 5 Steve Foster
- 6 David Beaumont
- 7 Danny Wilson |
- 8 Roy Wegerle
- 9 Mick Harford |
- 10 Ricky Hill
- 11 Kingsley Black |

Subs

DERBY COUNTY ⁰

Team Manager: Arthur Cox

Royal Blue Shirts, White Shorts

- 1 Peter Shilton
- 2 Paul Blades
- 3 Micheal Forsyth
- 4 Geraint Williams
- 5 Mark Wright
- 6 Rob Hindmarch
- 7 Ted McMinn
- 8 Dean Saunders
- 9 Paul Goddard
- 10 Trevor Hebbard
- 11 Gary Micklewhite


Subs

Referee: J.M. CARTER (Christchurch) Linesmen: J.M. TYTHCOTT (Yellow Flag) P.A. VOSPER (Red Trim)

OUR BACK HAS EXTRA FEET.



 **VAUXHALL. ONCE DRIVEN, FOREVER SMITTEN.**

 VAUXHALL IS BACKED BY THE WORLDWIDE RESOURCES OF GENERAL MOTORS. CAR SHOWN BELMONT SRi.

Designed and printed by Abacus Press, Berkhamsted, Herts.