

OFFICIAL PROGRAMME £1.00

# NORWICH CITY

BARCLAYS FOOTBALL LEAGUE DIVISION ONE



Saturday, May 13, 1989 Kick-off 3.00 p.m.

# LUTON TOWN

This match is sponsored by: Broad Street Print

## POWER SHOW BEATS CHARLTON



• **Danny's opener:** Danny Wilson opened the Scoring against Charlton with this close range header as the Town romped to a 5-2 win.

### LUTON TOWN HOTLINE

**Match Tickets, Match Enquiries, Membership, Junior Hatters:**

Ring - Cherry Newbery,  
Ticket Supervisor - Luton (0582) 411622  
24 Hour Service - Luton (0582) 30748

**Advertising and Match Sponsorship:**

Ring - Wendy Greaves, Marketing Executive  
Luton (0582) 411622

**Stadium Hire/Special Events:** Ring - Mike Beevor,  
Special Events Manager Luton (0582) 411622

**Souvenirs/Adidas Sportswear:** Ring - Bev Tyler,  
Sales Supervisor Luton (0582) 411622

**Banqueting & Function Facilities:**

Ring - Catering Manager Luton (0582) 411622

**Promotions Office:** Lotteries - Ring John Cornall,  
Development Executive Luton (0582) 416976

**Soccerline for all the up-to-date information on Luton Town F.C.:** Ring - 0898 700273

**Club Office hours:** 8.30 am - 6 pm. Luton (0582) 411622

Edited by: Robert Alexander Associates  
Pictures by: Apex Photography, Milton Keynes

## OGDEN & CLEAVER

320-328 Selbourne Road, Luton, Beds. LU4 8NY  
Tel: (0582) 597631.

The biggest selection of Wallcoverings in Luton.

Quality Paints by Dulux, Manders, Sandtex & Sadolin.

Glass cut to size

Wide selection of mirrors and other decorative items.

SPECIAL DISCOUNTS FOR LUTON TOWN MEMBERS

Part of the Manders Group



• **Great display:** Mick Harford and David Preece are pictured in action during the win over Charlton.



CALL  
SOCCERLINE  
ON

0898 700 273

For all the latest news and views from Luton Town



# The Rascal. A real half-tonner.

**BEDFORD RASCAL**   
BACKED BY THE WORLDWIDE RESOURCES OF GENERAL MOTORS

# RAY'S REVIEW



Circumstances have contrived to turn this afternoon's final home match of the season against our friends from Norwich into one of great importance. We have played with great spirit in recent weeks, particularly at home, and hope that another genuine performance this afternoon coupled with a good result can secure our First Division future. Norwich have proved all season long they are one of the best footballing teams in the country. They play very relaxed football of good quality and we shall need to be at our best. Our crowd at the last home match against Charlton Athletic were quite superb and I believe and hope a similar volume of vocal support can be a great boost for the team this afternoon. We must all work together.

Last Sunday night's Supporters Club presentation evening was a great success and did a lot to lift the players after last Saturday's defeat at West Ham. We were unable to keep our improved run going at Upton Park and West Ham collected all three points to keep the nail-biting going to the last. Mick Harford won the two main awards, as you will know, at the supporters' evening and was given a great reception by the fans. The event was a great lift for everyone. Julian James won the young player's award which was deserved for him after all the effort and progress he has made this year.

Ricky Hill, one of the real gentlemen of the game, will be making his 500th appearance in a starting line-up for the club this afternoon. This a tremendous landmark for any player but particularly for Ricky as he has missed many games through injury. He has always been a fine ambassador of the club and I hope he enjoys many more enjoyable years of football. But like all of us, I am sure the one thing Ricky wants more than anything is to see us win and gain a safe position this afternoon. It will be tight and dramatic. Give the team your full support. Thank you.

*Ray Harford*

**LUTON TOWN**



KENILWORTH ROAD STADIUM, 1 MAPLE ROAD, LUTON, BEDS LU4 8AW

**CHAIRMAN**  
David Evans MP

**DEPUTY CHAIRMAN**  
Brian Cole

**DIRECTORS**  
T.W. Bailey, C.J. Hudson,  
E.S. Pearson, R.J. Smith,  
J.R. Smith, D.G. Watson-Challis

**MANAGING DIRECTOR**  
John Smith

**PRESIDENT**  
Cecil Holloway

**TEAM MANAGER**  
Ray Harford

**GENERAL SECRETARY**  
Bill Tomlins

**HONORARY LIFE MEMBERS**  
J. Richardson  
T. Hodgson

**VICE PRESIDENTS**  
R.L. Banks, C. Bygrave,  
C.J. Evans, E. Fountain,  
I.E. Holmes, R. Larkinson,  
R. Safranek, E. Waller

**HONOURS**

LITTLEWOODS CUP WINNERS - 1987-88  
 FA CUP FINALISTS - 1958-59  
 SIMOD CUP FINALISTS - 1987-88  
 CHAMPIONS - DIVISION 3(S) 1936-37  
 CHAMPIONS - DIVISION 4 1967-68  
 CHAMPIONS - DIVISION 2 1981-82



The Editor  
Luton Town FC  
Kenilworth Road  
Luton

# Mailbag

Write to: **The Editor, Luton Town F.C.,  
Kenilworth Road Stadium, Maple Road, Luton by Tuesday a.m.**

## Special thanks

Dear Sir  
My son, Martin Drabble was recently seriously injured in a road accident. He is an ardent Luton supporter and, after we phoned you, you sent him a get well card signed by the Team. He was supposed to be at Wembley for the Littlewoods Cup but was, at that point, too ill to know what day it was.

Today he received from you a signed programme, which was a great thrill for him. I can't tell you how much pleasure this and the card have given him. He is at home now but has 6/12 months recovery in front of him. Your kindness has meant a great deal to him, and to us, and I would like to thank yourself and the Team on Martin's behalf.

No doubt when he's recovered he will be cheering you on as always meantime, we are most grateful.

Sincerely  
Jean & Brian Ellaby  
13 The Dingle  
Fulwood  
Preston

Dear Sir,

Just a short letter of thanks to all those concerned at the club for their assistance throughout this season.

May I also at the same time wish all our Travel Club members a great summer break and thank them for travelling with us.

Yours in Sport

Bobbers Travel Club  
Committee

P.S.

Let's all hope we are back in August travelling to First Division Clubs.

So cheer the lads on to victory today-they deserve it!

Club statistician Roger Wash is always interested in purchasing or loaning any printed memorabilia on the club (match reports, photographs, programmes etc).

He can be contacted on 0638-660708 during the day or 0638-730806 evenings.

## Always a Pleasure

Dear Sir,

I am writing to thank Luton Town for the enjoyment they have given myself and my family. We have always lived in Bedfordshire and have supported Luton for as long as we can remember. When I was 15, I started attending matches regularly, now nearly 5 years later I am off to Ripon college to train as a teacher, and as a family we are moving to Preston in the summer.

We shall miss our regular trips to Kenilworth Road, but shall certainly try to get to as many games you play in the area, as possible!

So on behalf of my parents, two brothers and myself may I wish the players all the best for the next season, and thank them once again for all the wonderful memories they have given us at Kenilworth Road.

We look forward to many more!

Yours forever  
Samantha Clayton  
1 Brookes Road  
Flitwick, Beds

## J. SAPSWORTH LTD

GLAZING REPAIRS - GLASS SUPPLIES  
DECORATING SPECIALISTS

92 MARSH ROAD, LUTON, BEDS.

☎ GLAZING & 24 hr EMERGENCY SERVICE 0582 573025  
DECORATING 0582 597505

# EXECUTIVE MEMBERS

ABB ROBOTICS LTD  
MR T ADAMSON  
ADRIATIC ENTERPRISES LTD  
ANACHEM LIMITED  
MR W ASHBURNER  
BEDFORD COMMERCIAL VEHICLES  
BERKELEY ASSOCIATE PRINTERS  
BERVALE MEAD INSURANCE BROKERS LTD  
W J BILLINGTON LTD  
BLAKEY ENGINEERING CO LTD  
BRITISH CAR AUCTIONS  
BROAD STREET PRINT  
CAMARGUE KITCHENS  
CAMBERWELL PLAIN PAPER COPIERS LTD  
CHEF FOODS  
COUNTY MOTORS LTD  
CRANE & STAPLES SOLICITORS  
CHAMBERLAIN WINDOW FASHIONS  
CAPITAL METALWORK LTD  
DUPONT (UK) LTD

EVERGREEN SUPPLIES LTD  
FILMERGRAPHIC PRESS LIMITED  
FENNEMORES SOLICITORS  
FLITWICK OIL  
F W PEARCE BUILDERS LTD  
V G GREEN & SONS LTD  
MR D HALES  
HANDSCOMBE Financial and Investment Services  
E W HUDSON (HOLDINGS) LTD  
IVOR HOLMES LTD  
INFORMATION TECHNOLOGY LTD  
I S INITIAL CONTRACT SERVICES LTD  
MARK JAMES (SALVAGE) LTD  
HANS JURGEN (IMPORTERS) LTD  
JSB BUSINESS FORMS  
JOHN LAING CONSTRUCTION LTD  
J M KEENAN LTD  
MR P LAYCOCK  
LUTON BATHROOM & TILE CENTRE  
MILCUTT ENGINEERING LTD  
NEAHURST LIMITED

OPELVALE GROUP  
MR S PEARSON  
PETERS GRAVES & CO  
RAVENMERE LTD  
A W REMOVALS LTD  
R B T GROUP LTD  
REYVEN (SPORTSFIELDS) LTD  
RICHARDSON & BOTTOMS LTD  
ROGERS/COUNTRY PROPERTIES ESTATE AGENTS  
SHOREY'S TRAVEL  
MR & MRS D SHERIDAN  
THE KITCHEN CENTRE  
W S TYREMASTERS (Div. of West & Sellick (Tyres) Ltd)  
TILDAE INVESTMENTS LTD  
VAUXHALL MOTORS LTD  
WALLSPAN BEDROOMS  
WILTON TRUCK RENTAL  
WOODWARD BUILDERS  
YARNSFIELD LTD

# EXECUTIVE BOX HOLDERS

Team Trimoco  
The name that's motivating

WHITBREAD

Riboccon

SKF SERVICES  
Interact Contracts Ltd

Unigate DAIRIES  
Bringing out the best.

Herald  
just a friend dropping in

SYNAPSE

LUDLOW OF LUTON  
D. KEECH

TNT

PRUDENTIAL  
Property Services

S&S HOMES

EDS  
Electronic Data Systems

RYDER INSURANCE CONSULTANTS LTD

EXPOTECHNIK

HILLSON TWIGG

DRG PAPER & BOARD

NATIONAL WESTMINSTER BANK PLC

T.J. ALDRIDGE  
Builders

Key Consultants  
MORTGAGES NATIONWIDE Ltd

CONNOLLY HOMES  
HOMES TO BE HAPPY IN

HUNTING GATE  
4444

WILTON TRUCK RENTAL

DBF  
Crosswinds Ltd  
COMPUTER AND BUSINESS STATIONERY

# WE'VE ALSO MADE SOME CHANGES TO OUR LINE UP THIS SEASON

Kenilworth Road isn't the only place you can see a new line up this afternoon.

Just down the road in the Arndale Centre, and in our showrooms throughout the U.K., you can see the new additions to our own squad.

The Cameo Collection is making its home debut in what is undoubtedly the most attractive and unbeatable line-up in fitted bedroom furniture in the U.K.

And if that weren't enough you'll find that like Luton Town, we too have proved that you don't need to break the bank to put together a winning combination.



## Wallspan

Wallspan Bedrooms Limited,  
Head Office: Maulden Road,  
Flitwick, Beds MK45 5BW.  
Telephone: 0525 716161

SHOWROOMS THROUGHOUT THE U.K.

# DRESSING ROOM

# TALK

with Ricky Hill

*After more than 13 years at Kenilworth Road, our former England midfielder Ricky Hill will, fitness permitting, this afternoon start his 500th senior match for the club. It is a tremendous landmark to achieve. Ricky made his debut as a substitute against Bristol Rovers on Easter Monday 1976, scoring one goal and making another in a 3-1 win. Today he reflects on his long career with Luton Town:*

### Always happy

"I have had a lot of big influences on my career in my time here at Luton and I have always been happy. The crowd have been good for me and I have enjoyed my football. But I find it really difficult to look back as we approach such an important match as today's against Norwich. Nothing is more important for us than to win this afternoon - then maybe by a quarter to five I would feel a bit more like talking.

"Looking back I remember all the managers who have been in charge in my time and particularly David Pleat and Danny Bergara who was the youth team coach when I first came to the club. They taught me good habits and encouraged me to use my natural ability and showed me when and how to use it.

"On the playing side, I always think of Brian Stein. The lads have always joked about Brian and I having a telepathic understanding and so on, but it was more due to us knowing each other's games very well. I knew Brian would move a lot and I could anticipate his turns, spins and runs and time passes for him. He was a very underrated player.

"There have been a lot of tremendous characters - far too many to be able to recall them all by name - but I always thought of Alan West as a great captain with tremendous skill. He was a great example on and off the pitch. He could always handle himself well and I am not surprised he is doing so well now in non-league football.

"Our 1982 promotion team was full of great characters too. All winners. The spirit was



• **Loyal club man:** Ricky Hill

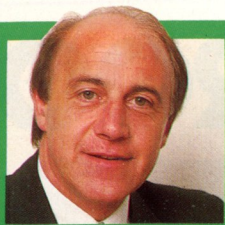
fantastic. And of course the more modern teams which have established the club and taken us to the Littlewoods Cup finals - people like Mick, Fossie and David Preece. All great players and personalities.

"To reach 500 games is a landmark. A lot of players who are injury prone like me don't even get to the 300 mark and it is also nice for me that it has happened not long after my 30th birthday.

"For me, the landmarks of my career, the big matches, always start with the relegation match at Manchester City in 1983. That was unforgettable with Raddy Antic scoring the winning goal so late in the game. And then the Littlewoods Cup finals which were also fantastic.

"The most enjoyable time of my career has been probably the first few months in the First Division in 1982 when we attacked everyone everywhere. The football was fantastic and there were goals all the time. It was really tremendous football.

"The crowd here have always been every good to me from the start when I came on to replace John Faulkner in the match against Bristol Rovers. I was lucky to get off to a good start and the crowd appreciated it and it has been really good ever since."



by BILL TOMLINS

# THE TOWN

## DRAMATIC END TO A BUSY AND EXCITING SEASON

This afternoon's vital clash here with Norwich City brings us to the end of another truly exciting First Division campaign at Kenilworth Road. It has been a hectic season and put greater demands than ever on all our matchday staff.

On behalf of every member of the permanent staff I would like to say thankyou to all our matchday assistants in all their capacities - our stewards, gateman, programme-sellers, police, ground supervisors, chief stewards, hospital broadcasting staff and scoreboard operators.

### special thanks

Without such sterling work from the likes of Ron Hutchins, Mike Williams, Ken Halsey, Fred, Inspector Lovell, John Buttle and Steve Cudgeon, we would all have felt less comfortable and secure and I am sure everyone joins me in thanking them.

The matchday staff will know, as I do, the strengths and weakness of a membership scheme such as ours and have realised that we all have to be more vigilant than ever in the future due to the increasing media attention being focussed on such schemes and the proposed launching of a national membership scheme.

I think our own scheme has shown

the possibilities. But parts of the media appear intent on proving, through the misuse of our scheme as an example, that a national scheme would not work. Any misuse of our guesting system by members has aided this sort of argument and could put our own members at risk.

Having said that, the vast majority of our loyal supporters have shown great faith and affection for the club this season and proved it when they turned out for a great night at the Coliseum in Luton for the new Supporters Club first presentation night.

### top player

Mick Harford proved to be the man of the night. he won both the Supporters Club's and the Players' awards and received them to tumultuous cheers from the Supporters' Club president Nick Owen. Julian James won the Young Player of the Year award.

Further presentations are due this afternoon - the Bobbers Club have voted Steve Foster as their player of the year and Ricky Hill is to be presented with a commemorative gift to mark his 500th full appearance for the club. If he starts today Ricky's total of starts will reach the 500 mark and overall total including substitute appearances will reach 507.

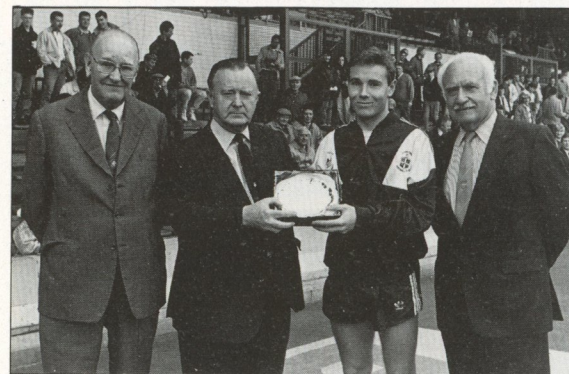
## TOP HATTER



• **Player of the year:** Mick Harford presents David Rutt, our ball sponsor against Charlton, with a match ball.

## 500 UP TODAY FOR RICKY HILL

• **Landmark achieved:** Our loyal and long-serving midfielder Ricky Hill will start his 500th match for the club today. Ricky has made a total of 428 league appearances, plus seven as a substitute, 33 in the F.A. Cup, 38 in the League Cup and one in the Simod Cup.



• **Young Eagle:** Kingsley Black is presented with his award as Barclays young player of the month for March.



• **Winning golf team:** Mick Harford is pictured with the Carwin Business Forms golf team - winners at the club's golf day recently.



• **Dressed for Wembley again:** The lads' cup performances attracted many kind sponsorship offers - and these smart suits were supplied by Freeze Import Export Ltd, a national supplier. Thanks to their chairman John Baldacchino.

## CAPTAIN'S DIARY



STEVE FOSTER

### VOCAL EFFORT

The support for the team in our last home match against Charlton was absolutely great and played a big part in helping the team to win. It could be nearly as important again today and it would be tremendous if the vocal effort and team effort work so well together again.

Obviously this afternoon's match is vitally important. Non-one is more aware of that than the players. It has been with us for the last week and the chief problem we have faced is trying to relax and prepare properly.

### Good news

There has been some good news though with David Preece being contacted by England as a standby player for the England 'B' tour at the end of the season and Mick Harford winning two trophies at the fantastic supporters evening last weekend.

The Supporters Club really did us proud and I know all the players felt great about it afterwards. You can be sure we shall do everything we can today to make sure we get the result we all need. Finally, special congratulations are due to three of the players - Ricky Hill has completed 500 appearances for the club, Tim Breacker 200 and Danny Wilson 100. Well done, lads. Enjoy the match.

## TITANIC STRUGGLE

Luton Town 3 Derby 0

Mick Harford's arial power helped secure a convincing victory for the Town against Derby County here on April 29 when he outplayed Mark Wright in a titanic struggle which ended our run of 10 matches without a win.

Harford scored in the second half and also had a last-minute penalty saved by England goalkeeper Peter Shilton following an incident when Roy Wegerle was brought down. Wright was sent off for his protests.

Danny Wilson, back from World Cup duty with Northern Ireland in midweek, opened the scoring when he beat Shilton from the spot after the goalkeeper had brought down David Preece.

The Town turned on the style for long periods and Mick Harford and Kingsley Black added to Wilson's early goal long before the last minute dramas which stole the headlines from what was an otherwise excellent Luton performance.

**Teams:** Luton Town – Chamberlain, Breacker, Dreyer, Preece, Foster, Beaumont, Wilson, (sub Cooke 68), Wegerle, Harford, Hill, Black.

**Derby** – Shilton, Blades, Forsyth, Williams, Wright, Hindmarch, McMinn, Saunders, Goddard, Hebbard, Micklewhite.

**Referee:** J.M Carter (Christchurch).  
**Attendance:** 8,507.

# 1st Team ACTION



• **Vital win:** A great team effort helped to destroy Derby County when they came to Kenilworth Road on April 29 with Danny Wilson, Kingsley Black and Mick Harford scoring the goals. Josh Levy's action photographs today show Danny Wilson, Mick Harford and Roy Wegerle in action during that match.

# HOT NEWS - HOT MUSIC

on **The Hot FM**

24 HOUR RADIO  
THROUGHOUT THE AREA

**Chiltern  
Network**

Chiltern South  
97.6 FM Stereo 828 AM

Northants 96  
96.6 FM Stereo 1557 AM

Chiltern North  
96.9 FM Stereo 792 AM

Switch on to Anglia . . .  
Top of the League for News and  
Sports Coverage



ANGLIA  
Television Limited

**Bedfordshire News Centre**

16 Park Street, Luton. Telephone: (0582) 29666  
Resident Reporter: Peter Lugg

## BOX OFFICE INFORMATION

### **MAN IN CHARGE** David Hutchinson (Abingdon)

A police inspector, David is married with three children. He began refereeing in 1964 and progressed via the Eastern Counties and Southern Leagues to the Football League list. He enjoys entertaining friends and eating out and has been in charge of many big matches at home and abroad.



### **POSTAL PROGRAMME SUBSCRIPTION** **SEASON 1989 - 1990**

HOME £22 AWAY £22 HOME & AWAY £37

Our service guarantees you all match day programmes sent out direct. Remittances payable to Luton Town FC should be sent to:

**Cherry Newbery,**

Programme Distributor,

Luton Town Football Club, Kenilworth Road Stadium, 1 Maple Road, LUTON Bedfordshire.

## THE CARING FACE OF FOOTBALL



Strenuous efforts are being made to provide modern facilities for the safety and comfort of all football spectators.

This year, more than £1.25 million will be spent on improvements projects at Football League grounds and areas for people with disabilities form a major part of this programme. 1989 will see further initiatives including new and better toilet facilities and additional enclosures for family support.

The Football Grounds Improvement Trust is responsible for all these measures. Each year it receives £4.5 million from the Spotting-the-Ball competition run by Littlewoods, Vernons and Zetters and spends it on schemes to improve standards at British football stadia.



# PLAYER PROFILE

## ALEC CHAMBERLAIN

After waiting patiently in the reserves for much of the season, Alec Chamberlain has taken his chance of grabbing the goalkeeper's jersey with both hands in recent weeks and this afternoon is likely to be starting his sixth first team match as a Town player in the First Division.

Alec hails from Ramsey, Cambridgeshire, and early in his career played in the same side as Tim Breacker before going on to make his debut with Colchester United in January 1983. After many fine displays he joined Everton in exchange for a big fee in the summer of 1987.

Things did not work out perfectly for Alec at Goodison Park because they also had Welsh international Neville Southall and Bobby Mimms on their books at the time and after a loan spell with Tranmere he took the chance to move to the Town in 1988.

Alec made his Luton debut in the Simod Cup tie at Crystal Palace in January and his first full league appearance in the 2-2 home draw with Coventry here on April 15. We wish him a long and successful career.



● Making his mark: Alec Chamberlain.



ALEC CHAMBERLAIN

# SEASON TICKET AND MEMBERSHIP RENEWAL SEASON 1989-1990

Renewal forms for current Season Ticket Holders and Members will be mailed directly to you in the week commencing 15th May 1989.

## SEASON TICKET HOLDERS

Season ticket holders can renew by returning their application form together with an s.a.e. to the Ticket Office after 15th May 1989.

Personal applications to the ticket office will be accepted from 1st June 1989.

All Season Ticket Holders seats will be reserved until 30th June 1989.

## EXCHANGES

Those Season Ticket holders who wish to change their seat position should contact the ticket office prior to the 30th June 1989.

## GENERAL SALE

Unsold seats will go on general sale from July 11th 1989.

## SEASON TICKET HOLDERS INSTALMENT OFFER

Season Ticket Holders may pay by four instalments, one on purchase, followed by one payment on 1st August, 1st September and 1st October. Further details available from the ticket office.

Prices are as follows: Renewals Prices  
(All prices include membership fee)

	Prior to 30.6.89	from 11.7.89
<b>MAIN STAND (A-E)</b>	£	£
Adult	142	160
Junior/OAP	65	80
<b>MAIN STAND (F)</b>		
Adult	110	125
Junior/OAP	45	51
<b>MAIN STAND ENCLOSURE</b>		
Adult	110	125
Junior/OAP	45	51
Blocks B, H and J	75	85
<b>OAK STAND</b>		
Adult	110	125
Junior/OAP	45	51
Restricted View	75	85

## SPECIAL FAMILY DISCOUNT

In the Oak Stand there will be a special family discount of 20% off season tickets purchase. To qualify the minimum requirement will be at least two adults, plus one juvenile under 16 years of age, all of whom must come from the same family.

## KENILWORTH STAND

	71	80
Adult	38.50	43.50
Junior/OAP		

## MEMBERSHIP

Members can renew by returning their application form together with an s.a.e. to the Ticket Office after 15th May 1989. Personal applications to the ticket office will be accepted from 1st June 1989.

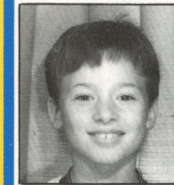
The membership fee for all categories for Season 1989-90 is £1.00

Club 100 Membership £25.00

## NEW MEMBERS NEW SEASON TICKET HOLDERS

Supporters wishing to become first time Season Ticket Holders plus new membership applications please apply either in writing to the ticket office or telephone the club on Luton 411622 after the 15th May 1989.

## MASCOT

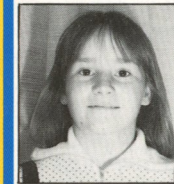


James Ayres

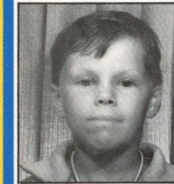
## ESCORTS



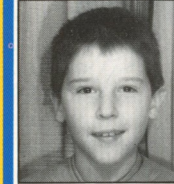
Daniel Mules



Jayne Davies



Michael Hickey



Richard Hardy

# JUNIOR HATTERS!



BY DANNY WILSON

## WARM WELCOME TO THE JUNIOR CANARIES TODAY

Today, we extend a warm welcome to Norwich City. With this being our last game of the season, I would like to thank all you Junior Hatters Parent's and Friends's for your continued support through the season and the cup runs that we have had, including a visit to Wembley for the second year in the Littlewoods Cup.

It has been a good season and lets hope today's game is the one that keeps us in the First Division for next season.

We are fully booked for the Fun Day at Watford on the 4th June, we have also had a good response for the girls team, well done you girls, we are all meeting at the Souvenir Shop by 10.00am to be at Watford for 11.00am.

Today we welcome the Junior Canaries of Norwich who have been playing football with our Junior Hatters this morning, I hope that you all had a good time and scored plenty of goals. The Junior Canaries are sitting in our Oak Road Family enclosure for today's game please make them feel welcome.

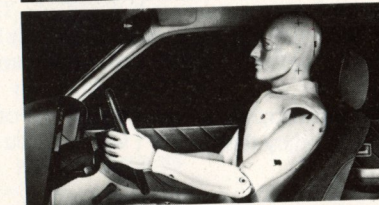
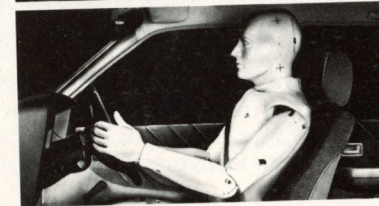
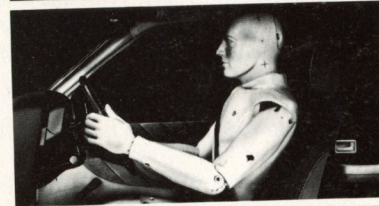
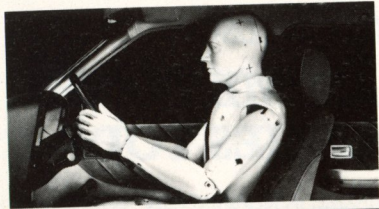
Today's lucky Junior Hatters membership number is J0188070342. The winning member should contact Bev Tyler in the Souvenir Shop with his or her membership card, for two free tickets to one of our home games next season.

Do not forget to renew your Membership for next season. It will only cost you £1.00. Have a good day and enjoy the match. I will see you all next season.



FIRST WITH NEWS - MAGIC WITH MUSIC  
24HRS EVERY DAY ON 828kHz AM. AND 97.6mhz FM.

# Introducing 5-wheel drive.



As you can see, this is not some new kind of vehicle for negotiating rough terrain.

It is, in fact, Saginaw Tilt Wheel Steering.

A special factory-fitted extra that can alter the way you drive.

The wheel adjusts to five separate positions.

So, from a driver's point of view, it can make life a lot more comfortable.

In turn, making driving far safer.

(Added to which, a unique Saginaw energy-absorbing column comes as standard.)

Changing the angle of the wheel takes no effort whatsoever.

By moving a small lever on the steering column, it can be set to the ideal position.

Tilted down, it's easy to imagine what a fast sports car feels like.

Tilted up, it's like being behind the wheel of a bus.

This last position also provides more leg room, so getting in and out of a car becomes a much simpler exercise.

But it's not only you who will benefit from Saginaw Tilt Wheel Steering.

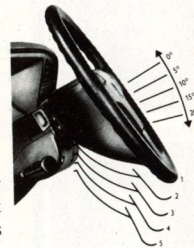
Anyone who drives your car will too. Because it will make it more adaptable to any driver's individual needs.

Not many extras make a car so flexible. And certainly not for just £88 (plus Car Tax plus VAT).

Saginaw Tilt Wheel Steering is available as an optional extra on most new Vauxhall-Opel cars.\*

So contact your nearest Vauxhall-Opel dealer for a chat.

He'll be able to tell you more about 5-wheel drive and exactly how it handles.



**Degrees more comfortable. Degrees safer.**

\*STANDARD EQUIPMENT ON SOME MODELS



## TODAYS SPONSORS BROAD STREET PRINT

Our match sponsors for our last home match of the season are Broad Street Print.

Tony and Fred Lambert are avid Town Fans and have given Luton their support for many years now. In fact today marks their sixth sponsorship. We are grateful for their loyalty and hope they have an enjoyable day at Kenilworth Road.

### Ball sponsors

Our match ball sponsor today is a special surprise birthday present for Lesley and Wendy Skinner aged 10 and 9, both of whom are season ticket holders. Happy Birthday to both of you and we hope you enjoy your day.

As this is the last programme this season I would like to take this opportunity of saying a big thankyou to all our Advertisers, Box Holders, Executive Members and Sponsors for their support over the past season.

We hope the result is a good one for the club and all our supporters and look forward to another exciting season in 1989-90.

Today's **MATCH SPONSOR**

**SUPPLIERS OF  
COMPUTER  
AND CONTINUOUS  
AND STATIONERY  
BUSINESS FORMS**



**9 Broad Street,  
Hemel Hempstead,  
Hertfordshire.  
Telephone: (0442) 65490**

Fred and Tony Lambert are pleased to welcome their guests to Kenilworth Road this afternoon.



● **Tight challenge:** Ian Scott in action for the reserves against Norwich this season.



● **On the ball:** Paul Telfer takes command.

## COACHES' CORNER



### RESERVES COMPLETE THEIR SEASON WITH A 5-1 WIN OVER POMPEY

Our young reserves completed their Football Combination season last weekend by following up the first team's home example against Charlton the previous Tuesday with a five-goal flourish against Portsmouth. The final result was 5-1 after the Town reserves had been trailing 0-1 in the first period.

Portsmouth took the lead and it was not until Kurt Nogan headed the equaliser just before the interval that the Town were back in the game. But in the second half they swamped Portsmouth and rapped in another four goals.

Flowing attractive football tore Portsmouth apart with Paul Gray scoring twice and Garry Cobb converting a penalty at the second attempt after the club's Young Player of the Year Julian James had been fouled.

### OWN GOAL COMPLETES THE ROUT

The final goal came from a Portsmouth player but could very nearly have provided Paul Gray with his hat-trick – his show was deflected into the net by a defender making a desperate attempt to make a clearance.

The match completed the Town's programme but the final table and their final position will depend on how teams below and around them fare with their games in hand. Coach Jim Ryan however must be pleased with the goal output and the good performance from his young team this season.

#### SOUTH EAST COUNTIES LEAGUE DIVISION TWO 1988/89

	P	W	D	L	F	A	Pts
Brentford	28	16	6	6	54	31	38
<b>Luton Town</b>	<b>28</b>	<b>14</b>	<b>8</b>	<b>6</b>	<b>83</b>	<b>51</b>	<b>36</b>
Southampton	26	15	6	5	61	30	36
Swindon Town	27	14	7	6	44	37	35
Wimbledon	28	15	3	10	57	40	33
Oxford United	27	14	4	9	52	48	32
Crystal Palace	28	13	5	10	59	37	31
Bristol City	28	9	12	7	41	36	30
A.F.C. Bournemouth	28	10	6	12	51	50	26
Brighton & Hove Albion	28	7	9	12	40	54	23
Reading	27	9	5	13	48	77	23
Bristol Rovers	28	7	7	14	34	64	21
Tottenham Hotspur	27	7	3	17	39	58	17
Northampton Town	28	6	5	17	43	74	17
Colchester United	28	6	4	18	38	57	16

#### OVENDEN FOOTBALL COMBINATION 1988/89

	P	W	D	L	F	A	Pts
Tottenham Hotspur	37	22	10	5	88	37	54
Arsenal	33	18	10	5	73	39	46
Watford	35	18	9	6	79	46	45
Wimbledon	34	19	7	8	66	35	45
<b>Luton Town</b>	<b>37</b>	<b>17</b>	<b>10</b>	<b>10</b>	<b>85</b>	<b>54</b>	<b>44</b>
Swindon Town	33	18	5	10	62	48	41
Chelsea	31	16	8	7	61	41	40
Millwall	33	15	9	9	66	41	39
Oxford United	33	15	7	11	73	61	37
Norwich City	34	14	7	13	58	60	35
Ipswich Town	32	14	5	13	51	54	33
Crystal Palace	32	12	8	12	44	42	32
Southampton	35	13	6	16	61	66	32
West Ham United	36	9	10	17	52	66	28
Brighton & Hove Albion	34	7	13	14	41	68	27
Fulham	34	10	6	18	45	84	26
Charlton Athletic	33	6	8	19	49	72	20
Portsmouth	30	7	5	18	30	69	19
Queens Park Rangers	32	5	5	22	29	66	15
Reading	34	4	4	26	31	95	12

#### OVENDEN PAPERS FOOTBALL COMBINATION 1988/89

Date	Opponents	Result	Date	Opponents	Result
1988			1989		
Aug 27	Southampton	3-2	Jan 4	Brighton	2-2
Sept 6	Norwich City	2-3	Jan 7	Crystal Palace	0-0
Sept 10	Swindon T	1-1	Jan 14	Reading	4-1
Sept 17	Watford	2-2	Jan 17	Chelsea	2-2
Sept 24	Oxford United	7-1	Jan 21	Wimbledon	1-3
Oct 1	Arsenal	2-3	Jan 28	Southampton	7-2
Oct 5	Norwich	2-1	Feb 4	Tottenham	1-2
Oct 11	Brighton	3-0	Feb 7	Millwall	0-2
Oct 15	Watford	4-0	Feb 14	Swindon T	0-2
Oct 18	Charlton A	1-0	Feb 25	West Ham	3-1
Oct 22	Wimbledon	0-2	Mar 4	Arsenal	3-1
Oct 29	Reading	4-2	Mar 15	Crystal Palace	0-6
Nov 1	Fulham	0-3	Mar 22	Charlton A	3-0
Nov 5	Ipswich Town	2-1	Mar 25	West Ham	3-0
Nov 9	QPR	1-0	Apr 1	Fulham	6-0
Nov 12	Chelsea	1-1	Apr 11	Ipswich T	1-2
Nov 15	Portsmouth	7-0	May 6	Portsmouth	5-1
Nov 22	Millwall	2-2			
Nov 26	QPR	1-1			
Nov 30	Oxford United	3-3			
Dec 31	Tottenham	1-1			

# GREAT SAVES.



At Barclays we have a great range of savings schemes, so however large or small the amount you have to save you're sure to find one that suits you.

We can offer everything from special accounts for young people with just £1 to save, to premium rate savings accounts like Capital Advantage for those with £10,000 or more to invest.

Ask at your local branch for details.

With Barclays on your side you're bound to get a good result.

MEMBER OF IMRO  
**YOU'RE  
BETTER OFF  
TALKING TO  
BARCLAYS**

# PHOTO FILE



● **Great display: Spirited team work produced a great result against Charlton in our last home match. David Preece and Kingsley Black are pictured in action by Josh Levy as we charged to a 5-2 win.**



# LUTON TOWN

# Goal'den Oldies

## OLD FRIENDS MAKING THEIR SHORTEST TRIP OF SEASON

We welcome to Kenilworth Road a Norwich team for whom Luton is their nearest away trip in Division One, writes club statistician Roger Wash.

Meetings between the sides stretch back to the turn of the 19th century with the first clashes taking place in the Southern League and subsequent games being enjoyed in the Football League after we both became founder members of Division Three in 1920.

The first League meeting took place on 20th November at Kenilworth Road with a 7,000 crowd witnessing a 4-0 win for the Town with the goals coming from Louis Bookman and a hat-trick from Ernie Simms.

Throughout the early 1920's return fixtures were played the following Saturday but a big win one week rarely guaranteed a victory the next against the same opposition and as if to set an early precedent the Town lost at Norwich on 27th November 3-0!

The first of only five away league victories against the Canaries came on the opening day of the following season when a solitary goal from Alan Mathieson secured the points in front of a crowd of 11,000 at the Nest. Norwich not moving to Carrow Road until the mid 1930's.

From then until Norwich's eventual promotion in 1934 games tended to go with the home side but mention must be made of a thumping 7-1 win at Kenilworth Road on 29th March 1932 with Jacky Slicer scoring twice against his old side before a crowd of only 3,000. Crowds did improve that season, however, as the Town scored six in each of their next two home games.

We joined Norwich in Division Two for season 1937/38 with Ted Vinall becoming another ex-Canary to score against his old club when he was on target in the 1-1 home draw as well as the 4-0 victory at Carrow Road. He also scored in the home win the following season but by the time of the return he had been displaced by Hugh Billington and was unable to keep up his record which was put fully to rest when Norwich were relegated at the end of the campaign.

Paths did not cross again until 1960/61 which followed the Towns relegation from Division One and the promotion of Norwich from Division Three. Still smarting from the recent F.A. Cup semi-final defeat by Luton, a large Norfolk contingent swelled the season gate to 22,252 who saw a comfortable 2-0 win for their team at Kenilworth Road.

The Town won 4-0 at Carrow Road the following season to avenge the defeat but the two results in the relegation season of 1962/63 took the eye due to the goalscoring exploits of a young Welshman by the name of Ron Davies.

Davies had been signed from Chester in October 1962 and made his debut at the end of that month. By the end of that season and playing in a poor side he had scored 21 goals in 29 games including two in a 3-3 draw at Norwich and all four in the 4-2 return game. No wonder Norwich

invested a paltry £40,000 for his talents early the following season!

In more recent years supporters of both clubs will look back to the promotion season of 1981/82 and remember two fine games between the sides.

The game at Carrow Road saw the Town open up a 3-0 lead in the first few minutes with the most devastating spell of football I have witnessed on my Luton travels. Norwich pulled a goal back just before the interval and it was only solid defensive play that prevented the Canaries from closing the gap in the second half.

The return was also a game of two halves with Norwich missing a hatful of chances in the opening period but then being forced back after the break before succumbing to goals from Brian Stein and Billy Jennings.

### Our previous encounters with Norwich City

	Home	Away
1920/21	4-0	0-3
1921/22	2-1	1-0
1922/23	4-0	2-1
1923/24	2-1	0-2
1924/25	0-0	1-1
1925/26	3-2	0-2
1926/27	2-2	2-3
1927/28	1-3	0-3
1928/29	2-1	0-3
1929/30	1-1	1-1
1930/31	1-0	0-1
1931/32	7-1	3-3
1932/33	1-1	1-2
1933/34	2-3	0-4
1937/38	1-1	4-0
1038/39	2-1	1-2
1960/61	0-2	1-2
1961/62	1-2	4-0
1962/63	4-2	3-3
1970/71	0-0	1-1
1971/72	1-1	1-3
1981/82	2-0	3-1
1982/83	0-1	0-1
1983/84	2-2	0-0
1984/85	3-1	0-3
1986/87	0-0	0-0
1987/88	1-2	2-2
1988/89	-	2-2

### Summary

	P	W	D	L	F	A
Home	27	12	9	6	49	31
Away	28	5	9	14	33	49
	55	17	18	20	82	80



• Billy Jennings: A vital scorer against Norwich here in 1981-82.

## Luton News

# LUTON TOWN FOR TOP SOCCER LUTON NEWS FOR TOP COVERAGE

For the best match reports, and all the latest news and views from Kenilworth Road, get the **LUTON NEWS and DUNSTABLE GAZETTE**

**THURSDAYS 14p**

# INTRODUCING...

## NORWICH CITY

For our final home game of the season we welcome a Norwich side, who have won two and drawn two of their last five games here but who have fallen away in recent weeks after topping the table at one stage and looking capable of a first-ever First Division Championship, writes *Geoff Allman*.

Even so this has been one of the best-ever seasons in the history of a club who were founded in 1902 and first played in the Norfolk and Suffolk League. In their very first season they played in both the F.A. Cup and the F.A. Amateur Cup and in 1906 they joined the Southern League. In 1909 they beat Liverpool 3-2 on Merseyside in a F.A. Cup-tie but then for several years they were a mid-table Southern League side. They played regional football during the First World War and then in 1919 appointed Major Frank Buckley as manager.

He did not stay long enough, however, to see the 'Canaries' elected as founder-members of Division Three in 1920. This became Division

Three (South) a year later and after a number of moderate seasons Norwich had to apply for re-election in 1931. Then just three years later they topped the table and for several seasons held their own in Division Two. Relegation at the end of the last postwar season was, however, followed by re-election applications as they struggled in Division Three (South) in the first two postwar seasons.

Then came some good F.A. Cup performances. They put out Liverpool in 1951 and after two runs to the fifth round they became the first Third Division team to take an F.A. Cup semi-final to a replay. A season later they went up to Division Two and they have not been back to Division Three since. They won the Football League Cup in 1961/62, the second season of its existence and just ten seasons later they topped Division Two to reach the First Division for the first time.

Though they stayed up for only two seasons on that occasion they enjoyed a tremendous 1974/7, reaching the League Cup final again and gaining

promotion after the number of teams going up had been increased to three. Though relegated again in 1981 they bounced straight back up again, but 1985 saw them losing to Sunderland in the Milk Cup final in a season in which both clubs went down. Again they bounced straight back up again and in the last two seasons they have finished fifth and fourteenth respectively. Last season saw a good recovery after they had slipped to twentieth early in December.

### This Season

This season is Dave Stringer's first full season at the helm and he saw his side get off to a remarkable start with five successive First Division away wins. At the time of writing they still have more away points than home points though they have in fact just lost four away games out of five. At home they followed up their 8-0 F.A. Cup win over Sutton United with wins over Sheffield United and Wimbledon before going out to Everton in the semi-final. In recent weeks at Carrow Road they have beaten West Ham, lost to Newcastle and Liverpool and drawn with Aston Villa.

Scoring regularly this season has been **Malcolm Allen**, a close-season signing from Watford and he has been joined recently by **Dean Coney** from QPR. **Ian Crook** from Spurs has recently been given his chance up front while in midfield home-grown **Dale Gordon** is something of a goalscorer linking up with Andy Townsend, a close season signing from Southampton and former Burnley man **Mike Phelan**.

**Andy Linighan** (ex-Oldham) and **Ian Butterworth** (ex-Coventry and Nottingham Forest) control the centre of the defence with former Spurs junior **Ian Culverhouse** and Welsh under 21 cap **Mike Bowen** on the flanks. In goal **Bryan Gunn** came from Aberdeen two seasons ago.



Back Row (left to right): **Alan Reeves**, **Ian Butterworth**, **Robert Rosario**, **Jon Sheffield**, **Bryan Gunn**, **Andy Linighan**, **Mike Phelan**, **Andy Townsend** Middle Row: **Tim Sheppard (Physiotherapist)**, **Malcolm Allen**, **Jeremy Goss**, **Dale Gordon**, **Simon Ratcliffe**, **Paul Cook**, **Ian Culverhouse**, **Andy Fensome**, **Mark Bowen**, **Dave Williams (Assistant Manager)**. Front Row: **Mike Walker (Reserve Team Manager)**, **Trevor Putney**, **Junior Soanes**, **Robert Fleck**, **Tony Flanagan**, **Ruel Fox**, **Ian Crook**, **Dave Stringer (Manager)**.

## Follow the Hatters ... on SPORTSOUND

Saturdays 2pm - 6pm  
with John Smith

BB RADIO  
BEDFORDSHIRE

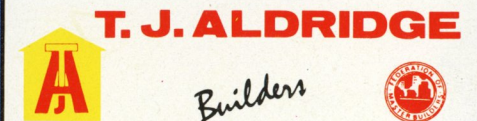


Weekdays — Sports News at  
6.35/7.35/8.35 am  
12.45/5.20/6.20 pm

AM: 630 kHz  
FM/VHF: 95.5 MHz  
COUNTYWIDE

(AM Bedford: 1161 kHz  
FM/VHF Luton: 103.8 MHz)

FOR THE COMPLETE BUILDING SERVICE AND HOME IMPROVEMENTS



302 Selbourne Road, Luton, Beds LU4 8NU.  
Telephone: 505412-505413

EXTENSION SPECIALISTS

ESTIMATES FREE

## B. DOHERTY SKIPHIRE

34 MOUNT PLEASANT ROAD  
LUTON  
Telephone: 574633 & 574799

FIRST TEAM

# UPDATE

1988-89 SEASON

## Luton Town F-A Att Pos 1

Date	Opposition	Score	Att	Pos	Notes
Aug 27	Sheffield Wednesday	0-1	16,433	-	Sealey
Sept 3	Wimbledon	2-2†	8,067	12	Sealey
Sept 10	Southampton	1-2	13,214	16	Sealey
Sept 17	Manchester United	0-2	11,010	18	Sealey
Sept 24	Everton	2-0	26,170	15	Sealey
Sept 27	Burnley (LC2)	1-1	6,282	15	Sealey
Oct 1	Nottingham Forest	0-0	15,340	17	Sealey
Oct 8	Liverpool	1-0	12,117	13	Sealey
Oct 11	Burnley (LC2)	1-0	14,031	13	Sealey
Oct 22	Middlesbrough	1-2	17,749	16	Sealey
Oct 25	Arsenal	1-1	10,548	16	Sealey
Oct 29	Queens Park Rangers	0-0	8,453	16	Sealey
Nov 2	Leeds United (LC3)	2-0	19,447	16	Sealey
Nov 5	Millwall	1-3	12,511	16	Sealey
Nov 12	Coventry City	0-1	12,631	16	Sealey
Nov 19	West Ham United	4-1	9,308	16	Sealey
Nov 26	Norwich City	2-2	13,541	15	Sealey
Nov 29	Manchester City (LC4)	3-1	10,778	15	Sealey
Dec 3	Newcastle United	0-0	8,338	16	Sealey
Dec 10	Derby County	1-0	15,228	15	Sealey
Dec 17	Aston Villa	1-1	8,785	16	Sealey
Dec 26	Tottenham Hotspur (11.30 am)	0-0	27,337	16	Sealey
Dec 31	Wimbledon	0-4	4,899	16	Sealey
Jan 2	Southampton (3 pm)	6-1	8,637	15	Sealey
Jan 7	Millwall (FAC3)	2-3	12,504	15	Sealey
Jan 10	Crystal Palace (S3)	1-4	5,842	15	Chamberlain
Jan 14	Charlton Athletic	0-3	5,212	16	Sealey
Jan 18	Southampton (LC5)	1-1	11,785	16	Sealey
Jan 21	Everton	1-0	9,013	13	Sealey
Jan 25	Southampton (LCSR)	2-1	18,250	13	Sealey
Feb 4	Nottingham Forest	2-3	10,465	14	Sealey
Feb 12	West Ham (LCSF)	3-0	24,602	15	Sealey
Feb 18	Middlesbrough	1-0	8,187	13	Sealey
Feb 25	Arsenal	0-2	31,012	14	Sealey
Mar 1	West Ham (LCSF)	2-0	12,020	14	Sealey
Mar 11	Millwall	1-2	7,838	15	Sealey
Mar 14	Liverpool	0-5	31,447	15	Sealey
Mar 18	Sheffield Wednesday	0-1	7,776	16	Sealey
Mar 21	Queens Park Rangers	1-1	9,372	15	Sealey
Mar 25	Manchester United	0-2	36,335	16	Sealey
Mar 28	Tottenham Hotspur	1-3	11,146	17	Sealey
Apr 1	Aston Villa	1-2	15,640	18	Sealey
Apr 9	NOTTINGHAM FOREST (LC†)	1-3	76,130	18	Sealey
Apr 15	Coventry City	2-2	8,610	18	Chamberlain
Apr 22	Newcastle United	0-0	18,493	18	Chamberlain
Apr 29	Derby County	3-0	8,507	18	Chamberlain
May 2	Charlton Athletic	5-2	10,024	17	Chamberlain
May 6	West Ham United	0-1	18,688	17	Chamberlain
May 13	Norwich City				

2	3	4	5	6	7	8	9	10	11	12
Breacker	Dreyer	Williams	Foster	Donaghy	Wilson	(Wegerle)	Harford	Oldfield	Black	RJ/ IA
R. Johnson	Grimes	Williams	Foster	Donaghy	Wilson	Preece	Harford	Oldfield	Black <sup>1</sup>	JD/RW
R. Johnson	Grimes	Williams	<b>Foster<sup>1</sup></b>	Donaghy	Wilson	Oldfield	Harford	(Preece)	Black	TB/RW
R. Johnson	Dreyer	Williams	Foster	M. Johnson	Wilson	(Oldfield)	Harford	Hill	Black	[RW]/TB
R. Johnson	Dreyer	Williams	Foster	Donaghy	Wilson	<b>(Oldfield<sup>1</sup>)</b>	Harford	(Hill)	Black <sup>1</sup>	[TB]/IA
<b>(R. Johnson<sup>1</sup>)</b>	Dreyer	Williams	Foster	Donaghy	Wilson	Oldfield	Harford	Hill	Black	[TB]/IA
R. Johnson	Dreyer	Williams	Foster	Donaghy	Wilson	Oldfield	(Harford)	Hill	Black	[IA]/TB
R. Johnson	Dreyer	Williams	Foster	Donaghy	Wilson	(Oldfield)	<b>Harford<sup>1</sup></b>	Hill	Black	[RW]/TB
(R. Johnson)	Dreyer	Williams	Foster	Donaghy	Wilson	(Oldfield)	Harford	<b>Hill<sup>1</sup></b>	Black	[TB]/IA
(R. Johnson)	Dreyer	(McDonough)	Foster	M. Johnson	<b>Wilson<sup>1P</sup></b>	Oldfield	Harford	Hill	Black	[TB]/RW
R. Johnson	Breacker	(McDonough)	Foster	M. Johnson	Wilson	Wegerle	Harford	Hill	Black <sup>1</sup>	[DO]/IA
R. Johnson	Dreyer	Williams	Foster	M. Johnson	Wilson	(Allison)	Wegerle	Hill	Black	[DO]/RH
J. James	Dreyer	Williams	Foster	M. Johnson	<b>Wilson<sup>1</sup></b>	<b>Oldfield<sup>1</sup></b>	Wegerle	Hill	Black	IA/AG
(J. James)	Dreyer	Williams	Foster	M. Johnson	<b>Wilson<sup>1</sup></b>	Wegerle	Oldfield	Hill	Black	[RJ]/AG
R. Johnson	Grimes	(Williams)	Foster	M. Johnson	Wilson	Wegerle	Harford	Hill	Black	[DO]/JJ
R. Johnson	Grimes	Preece	Foster	M. Johnson	<b>Wilson<sup>1</sup></b>	<b>Wegerle<sup>1</sup></b>	Harford	Oldfield	Black <sup>2</sup>	RH/IS
R. Johnson	Harvey	Preece	Foster	M. Johnson	Wilson	<b>Wegerle<sup>2</sup></b>	Harford	Oldfield	Black	JD/IA
R. Johnson	Harvey	Preece	Foster	M. Johnson	Wilson	<b>Wegerle<sup>2</sup></b>	(Harford)	<b>Oldfield<sup>1</sup></b>	Black	[RH]/JD
R. Johnson	Harvey	Preece	Foster	M. Johnson	Wilson	Wegerle	(Oldfield)	Hill	Black	[IA]/JJ
R. Johnson	Harvey	Preece	Foster	M. Johnson	Wilson	(Wegerle)	<b>Harford<sup>1</sup></b>	Hill	Black	[DO]/JD
R. Johnson	Harvey	Preece	Foster	M. Johnson	Wilson	<b>Wegerle<sup>1</sup></b>	Harford	Hill	Black	DO/JD
R. Johnson	Harvey	Preece	Foster	M. Johnson	Wilson	Wegerle	Harford	Hill	Oldfield	TB/JD
R. Johnson	Harvey	Preece	Foster	M. Johnson	Wilson	(Wegerle)	Harford	Hill	Oldfield	[KB]/JD
R. Johnson	Harvey	Preece	Foster	M. Johnson	Wilson	<b>Wegerle<sup>2</sup></b>	<b>Harford<sup>2</sup></b>	<b>Hill<sup>1</sup></b>	Black <sup>1</sup>	TB/ID
R. Johnson	Harvey	Preece	Foster	M. Johnson	<b>Wilson<sup>1P</sup></b>	Wegerle	Harford	Hill	(Black <sup>1</sup> )	[DO]/JJ
Breacker	Dreyer	Preece	James	M. Johnson	(Williams)	<b>Dowie<sup>1</sup></b>	Harford	Hill	Oldfield	[RW]/RH
R. Johnson	(Harvey)	Preece	Foster	M. Johnson	Wilson	Wegerle	(Oldfield)	Hill	Black	[TB]/ID
Breacker	Grimes	Preece	Foster	Dreyer	Wilson	Wegerle	Dowie	Hill	Black	RJ/DO
Breacker	Grimes	Preece	Foster	Dreyer	(Wilson)	<b>Wegerle<sup>1</sup></b>	Harford	Hill	(Black)	[ID]/RJ
Breacker	Grimes	Preece	Foster	Dreyer	Wilson	Wegerle	(Harford <sup>1</sup> )	<b>Hill<sup>1</sup></b>	Black	[DO]/RJ
Breacker	Grimes	Preece	Foster	Dreyer	Wilson	Wegerle	<b>Harford<sup>1</sup></b>	Hill	Black	[DO]/RJ
Breacker	Grimes	Preece	Foster	Beaumont	<b>Wilson<sup>1P</sup></b>	<b>Wegerle<sup>1</sup></b>	<b>Harford<sup>1</sup></b>	Hill	Black	RJ/DM
Breacker	Grimes	Preece	<b>Foster<sup>1</sup></b>	Beaumont	Wilson	Wegerle	Harford	Hill	Black	DO/DM
Breacker	Harvey	(Preece)	Foster	Beaumont	Wilson	Wegerle	Harford	Hill	Black	[DO]/DM
Breacker	Grimes	Preece	Foster	Beaumont	Wilson	<b>Wegerle<sup>1</sup></b>	<b>Harford<sup>1</sup></b>	Hill	Black	DO/DM
Breacker	Grimes	(Preece)	McDonough	Beaumont	<b>Wilson<sup>1P</sup></b>	(Wegerle)	Harford	Hill	Black	[JD]/DM
Breacker	Grimes	(Preece)	M. Johnson	Beaumont	Wilson	McDonough	Harford	Hill	Black	[ID]/JD
Breacker	(Grimes)	(Preece)	Foster	Beaumont	Wilson	McDonough	Harford	Hill	Black	[ID]/RH
Breacker	Harvey	McDonough	Foster	Beaumont	Wilson	(Meade)	Harford	<b>Hill<sup>1</sup></b>	Black	[ID]/JD
Breacker	Harvey	McDonough	Foster	Beaumont	(Wilson)	(Preece)	Harford	Hill	Black	[RC]/ID
Breacker	Grimes	Preece	<b>Foster<sup>1</sup></b>	Beaumont	McDonough	(Dowie)	Harford	Hill	Black	[RC]/RJ
Breacker	(Grimes)	Wilson	Foster	Beaumont	(McDonough)	Wegerle	<b>Harford<sup>1</sup></b>	Hill	Black	[JD]/RM
Breacker	(Grimes)	Preece	Foster	Beaumont	Wilson	Wegerle	<b>Harford<sup>1</sup></b>	Hill	Black	[DM]/RM
Breacker	Dreyer	Preece	Foster	Beaumont	Wilson	Wegerle	(Meade)	Hill	Black	[RC]/DM
Breacker	Dreyer	Preece	Foster	Beaumont	Wilson	(Wegerle)	Harford	Hill	(Black)	[RM]/DM
Breacker	Dreyer	Preece	Foster	Beaumont	(Wilson)	Wegerle	<b>Harford</b>	Hill	Black	[RC]/DM
Breacker	Dreyer	Preece	Foster	Beaumont	<b>Wilson<sup>2</sup></b>	<b>Wegerle<sup>1</sup></b>	<b>Harford<sup>1</sup></b>	Hill	(Black <sup>1</sup> )	[RC]/DM
Breacker	Dreyer	Preece	Foster	Beaumont	Wilson	Wegerle	Harford	Hill	(Black)	[RC]/DM

BARCLAYS FOOTBALL LEAGUE DIVISION ONE

P	W	D	L	F	A	W	D	L	F	A	Pts	
35	10	5	2	32	15	Arsenal	11	4	3	36	17	72
34	9	5	2	26	8	Liverpool	10	5	3	30	16	61
<b>36</b>	<b>8</b>	<b>7</b>	<b>4</b>	<b>23</b>	<b>20</b>	<b>Norwich City</b>	<b>9</b>	<b>3</b>	<b>5</b>	<b>23</b>	<b>22</b>	<b>61</b>
35	7	7	3	26	14	Nottingham Forest	9	5	4	31	25	60
37	8	6	5	31	24	Tottenham Hotspur	7	6	5	29	21	57
36	9	3	7	23	18	Derby	7	4	6	15	18	55
36	9	3	6	26	21	Coventry	5	8	5	18	18	53
37	10	2	6	26	20	Millwall	4	8	7	20	31	52
36	8	5	5	22	16	Queens Park Rangers	5	6	7	20	19	50
36	10	3	5	29	17	Wimbledon	4	5	9	18	25	50
37	9	5	4	25	13	Manchester United	3	7	9	18	22	48
36	8	7	2	29	17	Everton	4	5	10	17	27	48
37	6	7	6	25	26	Southampton	4	7	7	26	39	44
37	6	7	6	25	24	Charlton Athletic	4	5	9	19	30	42
37	7	5	6	24	21	Aston Villa	2	7	10	20	34	39
37	7	6	6	28	30	Middlesbrough	3	5	10	16	30	39
<b>37</b>	<b>7</b>	<b>6</b>	<b>5</b>	<b>31</b>	<b>21</b>	<b>LUTON TOWN</b>	<b>2</b>	<b>5</b>	<b>12</b>	<b>10</b>	<b>31</b>	<b>38</b>
36	5	5	7	18	23	Sheffield Wednesday	4	6	9	13	26	38
35	3	6	10	19	30	West Ham United	6	2	8	14	23	35
37	3	6	10	19	28	Newcastle United	4	4	10	13	33	31

APPEARANCES AND GOALSCORERS

Player	League		Littlewoods Cup		FA Cup	
	Aps	Gls	Aps	Gls	Aps	Gls
Ian Allinson	1(4)	-	-(1)	-	-	-
David Beaumont	14	-	3	-	-	-
Kingsley Black	35(1)	9	9	-	1	1
Tim Breacker	18(3)	-	5(2)	-	1	-
Alec Chamberlain	5	-	-	-	-	-
Richard Cooke	-(6)	-	-	-	-	-
Mal Donaghy	8	-	2	-	-	-
Iain Dowie	1(7)	-	1	-	-	-
John Dreyer	15(2)	1	5	-	-	-
Steve Foster	35	3	9	-	1	-
Ashley Grimes	12	-	5	-	-	-
Mick Harford	32	7	7	4	1	-
Richard Harvey	11(1)	-	1	-	-	-
Ricky Hill	32	3	8(1)	3	1	-
Julian James	1	-	1	-	(1)	-
Marvin Johnson	16	-	2	-	1	-
Rob Johnson	19(2)	-	3	1	1	-
Raphael Meade	2(2)	-	-	-	-	-
Darron McDonough	9(1)	-	-	-(1)	-	-
David Oldfield	15(6)	1	4(1)	2	(1)	-
David Preece	25	-	6	-	1	-
Les Sealey	32	-	9	-	1	-
Roy Wegerle	27(4)	8	7	4	1	-
Steve Williams	10	-	3	-	-	-
Danny Wilson	36	8	9	2	1	1

As at April 27, 1989

© The Football League FAC = F.A. Cup ( ) indicates player substituted

[ ] indicates substitute used Home fixtures in **Bold** Scorer's name in **Bold** P = Penalty † denotes own goal

Probably the world's most advanced and researched sportswear

Abacus Press

Interplan House, North Bridge Road, Berkhamsted, Herts HP4 1ET. Tel: (0442) 874391 Fax: 874873

Voucher No. 23



# VAUXHALL TEAM CHECK.

## LUTON TOWN

Team Manager: Ray Harford  
White Shirts, Navy Shorts

- 1 Alec Chamberlain
- 2 Tim Breacker
- 3 John Dreyer
- 4 David Preece
- 5 Steve Foster
- 6 David Beaumont
- 7 Danny Wilson
- 8 Roy Wegerle
- 9 Mick Harford
- 10 Ricky Hill
- 11 Kingsley Black

Subs

## NORWICH CITY

Team Manager: David Stringer  
Yellow Shirts, Green Shorts

- 1 Bryan Gunn
- 2 Ian Culverhouse
- 3 Ian Crook
- 4 Ian Butterworth
- 5 Andy Linighan
- 6 Andy Townsend
- 7 Dale Gordon
- 8 Robert Fleck
- 9 Robert Rosario
- 10 Michael Phelan
- 11 Paul Cook


Subs

Referee: D. HUTCHINSON (Abingdon) Linesmen: K.S. DUNN (Yellow Flag) I.C. MURRAY (Red Trim)

# OUR BACK HAS EXTRA FEET.



**VAUXHALL. ONCE DRIVEN, FOREVER SMITTEN.**

 VAUXHALL IS BACKED BY THE WORLDWIDE RESOURCES OF GENERAL MOTORS. CAR SHOWN BELMONT SRi.

Designed and printed by Abacus Press, Berkhamsted, Herts.