

1990

# TOWN

HAPPY NEW YEAR

OFFICIAL PROGRAMME £1.20

LUTON

1990



Saturday, December 30, 1989 Kick-off 3.00 p.m.

# CHELSEA

BARCLAYS FOOTBALL LEAGUE DIVISION ONE

This match is sponsored by: Luton International Airport.





● **In command:** Steve Williams earned a standing ovation at Highbury for his performance in our 3-2 defeat by Arsenal. He is pictured tussling with Michael Thomas.

## APOLLO SYSTEMS LTD.

0582 34928 - 481102

- ★ Electrical Installations
- ★ Industrial and Commercial
- ★ Maintenance ★ Fire Alarms
- ★ C.C.T.V. Installations
- ★ Suspended Ceilings
- ★ Office Partitions & Screens
- ★ Fireproof Curtain Walls

39B SHAFTESBURY RD, LUTON

## OGDEN & CLEAVER

320-328 Selbourne Road, Luton, Beds. LU4 8NY  
Tel: (0582) 597631.

The biggest selection of Wallcoverings in Luton.

Quality Paints by Dulux, Manders, Sandtex & Sadolin.

Glass cut to size

Wide selection of mirrors and other decorative items.

SPECIAL DISCOUNTS FOR LUTON TOWN MEMBERS

Part of the Manders Group



● **Number two:** Lars Elstrup scores his and the Towns second goal at Highbury from the penalty spot after a foul on Iain Dowie.



● **Welcome back:** Mal Donaghy was back at the heart of the Town defence at Highbury and looked as composed as ever.





# The Rascal. A real half-tonner.

**BEDFORD RASCAL**   
BACKED BY THE WORLDWIDE RESOURCES OF GENERAL MOTORS



**Kenilworth Road Stadium**  
1 Maple Road, Luton, Beds LU4 8AW

**PRESIDENT**

Bertram Ward

**CHAIRMAN**

Brian Cole

**VICE CHAIRMAN**

R.J. Smith

**DIRECTORS**

T.W. Bailey, D. Evans M.P. C.J. Hudson, E.S. Pearson,  
R.J. Pinney, H. Richardson J.P. D.G. Watson-Challis

**GENERAL MANAGER/SECRETARY**

Bill Tomlins

**TEAM MANAGER**

Ray Harford

**ASSISTANT TEAM MANAGER**

Terry Mancini

**HONORARY LIFE MEMBERS**

J. Richardson, T. Hodgson  
C. Holloway

**VICE PRESIDENTS**

R.L. Banks, C. Bygraves, C.J. Evans, G. Evans,  
E. Fountain, I.E. Holmes, R. Larkinson, R. Safranek,  
J.R. Smith, E. Waller

**HONOURS**

LITTLEWOODS CUP WINNERS 1987/88  
FA CUP FINALISTS - 1958-59  
LITTLEWOODS CUP FINALISTS - 1988-89  
SIMOD CUP FINALISTS - 1987-88  
CHAMPIONS - DIVISION 3(S) 1936-37  
CHAMPIONS - DIVISION 4 1967-68  
CHAMPIONS - DIVISION 2 1981-82

**LUTON TOWN HOTLINE**

**Match Tickets, Match Enquiries,  
Membership, Junior Hatters:**

Ring - Cherry Newbery,  
Ticket Supervisor - Luton (0582) 411622  
24 Hour Service - Luton (0582) 30748

**Advertising and Match Sponsorship:**

Ring - Wendy Grzybowska, Marketing Executive  
Luton (0582) 411622

**Stadium Hire/Special Events:** Ring - Mike Beevor,  
Special Events Manager Luton (0582) 411622

**Umbro Sportswear/Souvenirs:** Ring - Bev Tyler,  
Sales Supervisor Luton (0582) 411622

**Banqueting Function Facilities:** Ring - Peter Saul  
Catering Manager Luton (0582) 411622

**Promotions Office:** Lotteries - Ring John Gornall,  
Development Executive Luton (0582) 416976

**Soccerline:** Ring - 0898 700 273 (38p per min peak)  
(25p off peak)

**Club Office hours:**

8.30 am - 6 pm. Luton (0582) 411622 Fax: (0582) 405070

Edited by: Robert Alexander Associates

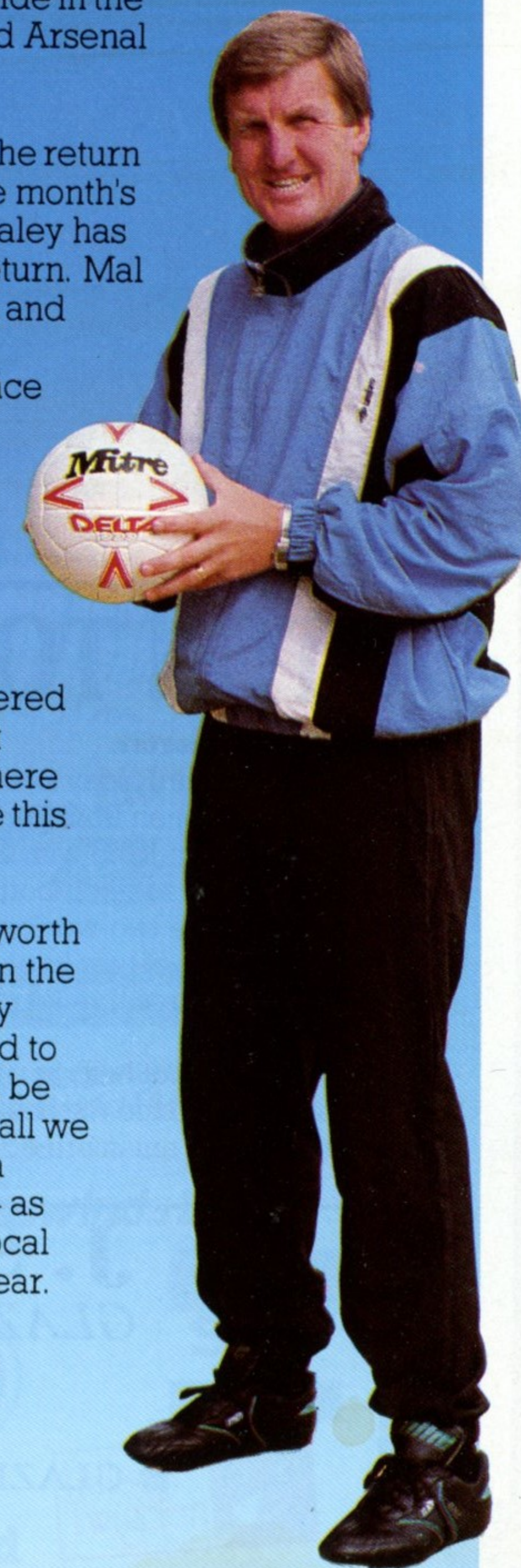
Pictures by: Apex Photography, Milton Keynes

# RAY'S REVIEW

A very happy New Year to everyone here today for our last home match of the old year and the old decade. Looking back, it has been a very dramatic and exciting period for the club in recent times and there is every prospect of it continuing to remain just as successful and enjoyable as we enter the 1990's. As I write, we are preparing for Christmas and our Boxing Day fixture at home to Nottingham Forest, having suffered a narrow defeat at Arsenal where I felt we performed very well in the second half, but not quite well enough to win a point. It was a disappointing defeat but I was very pleased with the overall spirit and attitude of the team and certainly felt we were the better side in the closing stages. In some ways, we paid Arsenal too much respect.

It was of course very satisfying to see the return of Mal Donaghy who is with us on one month's loan from Manchester United. Les Sealey has gone to Old Trafford for a month in return. Mal has given us some experience, poise and leadership and his qualities showed clearly at Highbury where his presence helped many of the younger players around him. With Danny Wilson suspended, the captaincy passed to Tim Breacker and he did a tremendous job and also set a great example. I know the league table does not make great reading at the moment, but with so many teams clustered together in the bottom half of the First Division, it is still very close. It shows there is a great level of equality in the league this season.

Today, we welcome Chelsea to Kenilworth Road. After leading the table earlier in the season they have suffered some heavy defeats and will be working extra hard to change their fortunes. We know it will be another difficult game, but we shall do all we can to make sure the 1980's end with a rousing victory. Enjoy the match and - as always - please give the team your vocal support. It really helps. Happy New Year.



*Ray Harford*



# Mailbag & Supporters News

Want to air your views?

Please write to: The Editor, c/o Luton Town FC., Kenilworth Road Stadium, 1 Maple Road, Luton, Beds. LU4 8AW.

## Record Xmas Collection

Dear Sir  
May I take this opportunity on behalf of the Rotary Clubs of Luton in thanking you for allowing us to organise a bucket collection at your Ground on Saturday 2nd December 1989 for the Mayors Xmas Appeal Fund.

I am pleased to inform you that we collected £875.59 which was a record collection for the Clubs, this in addition to collections at Sainsburys on Friday 8th December £135.37, Arndale

Centre on Saturday 9th December £496.97 and Sainsburys on Saturday 9th December £303.33 resulting in a grand total of £1,811.26.

We are indeed most grateful for your co-operation in this instance and take this opportunity to Wish You and All Your Staff at Luton Town Football Club a Merry Xmas and Happy New Year.

Yours sincerely

J Sapsworth  
Community Services Chairman  
Rotary Club of Luton  
92 Marsh Road  
Luton

## A club with Standards

Dear Sir  
Sunday is my only time at home, so I take the opportunity of writing to thank Luton Town for the help and generosity in staging the Regional Game last Tuesday.

Once more, I think you will agree, we saw some skilful and intelligent players: giving the lie to those who say these things are going out!

I always enjoy visiting your club and, as I said on Tuesday, I can commend Luton Town as a club which is friendly and has standards.

I hope to see you again sometime soon.

With best wishes

Pat Smith

The English Schools' Football Association  
95 Boxley Drive  
West Bridgford  
Nottingham



• Buckets full: A record collection.

## LUTON TOWN SUPPORTERS CLUB

### Dear Fellow Supporter.

It is my great pleasure today to welcome to Kenilworth Road Juhani Leppenen from Turku in Finland.

Juhani is over in England with some friends with the sole aim of taking in as much football as they can possibly cram in during a two-week stay.

To give some idea of how keen Juhani is, he even plans to take in the reserve team fixture at QPR (now, that is dedication!).

This tip will no doubt help Juhani, who runs our Finnish branch, to produce the next edition of the WILU Newsletter which I am informed is a must for all the

many Hatters fans in Finland be they based in Helsinki or the northern outpost of Oulu. Enjoy your visit Juhani, we hope you see some really great matches.

In closing, may I on behalf of the committee wish all the staff at the club and all our members plus all other Luton Town supporters – who may still have to join us – a superb 1990.

All the best...and remember to, please, get behind the team. Our vocal encouragement can be so vital and is really appreciated by the players.

Nick Cooper

## J. SAPSWORTH LTD

GLAZING REPAIRS – GLASS SUPPLIES  
DECORATING SPECIALISTS

92 MARSH ROAD, LUTON, BEDS.  
☎ GLAZING & 24 hr EMERGENCY SERVICE 0582 573025  
DECORATING 0582 597505  
FAX 0582 492025

# EXECUTIVE MEMBERS

ABB ROBOTICS LTD  
MR T ADAMSON  
ADRIATIC ENTERPRISES LTD  
ANACHEM LIMITED  
BEDFORD COMMERCIAL VEHICLES  
BERVALE MEAD INSURANCE  
W J BILLINGTON LTD  
BLAKEY ENGINEERING CO LTD  
BROAD STREET PRINT  
JSB BUSINESS FORMS  
MR R BANKS  
BEVENGRACE LTD  
CAMBERWELL COPIERS  
CHEF FOODS  
CRANE & STAPLES SOLICITORS  
CHAMBERLAIN WINDOWS  
CAPITAL METALWORK LTD  
CLARENDON HATS  
MR T COATES  
MR P COOPER  
MR M CONNELL  
COMPLETE CONTRACTS  
COUNTRY PROPERTIES

DUPONT (UK) LTD  
MR E EDWARDS  
EVERGREEN SUPPLIES LTD  
FILMERGRAPHIC PRESS LTD  
FENNEMORES SOLICITORS  
FLITWICK OIL  
V G GREEN & SONS LTD  
MR D HALES  
HANDSCOMBE FINANCIAL AND INVESTMENT SERVICES  
K W HARVEY & SONS LTD  
E W HUDSON (HOLDINGS) LTD  
B. HICKS & COMPANY  
HUMBERGROVE INSURANCE SERVICES  
HANS JURGEN (IMPORTERS) LTD  
JOHN LAING CONSTRUCTION LTD  
J M KEENAN LTD  
MR P LAYCOCK  
MILCUTT ENGINEERING LTD  
NEAHURST LIMITED  
OPELVALE GROUP  
MR S PEARSON  
F W PEARCE BUILDERS LTD

R B T GROUP  
REYVEN (SPORTSFIELDS) LTD  
RICHARDSON & BOTTOMS LTD  
MARK JAMES SALVAGE  
SHOREY'S TRAVEL  
MR & MRS D SHERIDAN  
SPACE DISPLAY SYSTEMS  
SWIFTS OFFICE SHOP  
TILDAL INVESTMENTS LTD  
W S TYREMASTERS (DIVISION OF WEST & SELICK (TYRES) LTD)  
VAUXHALL MOTORS  
WALLSPAN BEDROOMS  
WILTON TRUCK RENTAL  
WOODWARD BUILDERS  
ELECTROLUX LTD

## SOCCKERLINE

0898 700 273

38p per min Peak

25p per min off Peak

# EXECUTIVE BOX HOLDERS

WILTON TRUCK RENTAL

Trimoco  
MORGANA FINISHING SYSTEMS LIMITED  
Ribocon  
SKF  
Jefferies Hilleard Group Limited  
CONNOLLY HOMES  
HOMES TO BE HAPPY IN  
Hunting Gate 4444  
Herald & Post Britain's Free Newspaper  
ADT  
Key Surveyors Nationwide Ltd  
GA Property Services  
SYNAPSE  
LUDLOW OF LUTON  
Key Consultants MORTGAGES NATIONWIDE Ltd  
T. J. ALDRIDGE Builders  
Key Consultants MORTGAGES NATIONWIDE Ltd  
National Westminster Bank PLC  
FINE STAMPS LIMITED  
ELECTROLUX LTD  
COMUNICATIONS (U.K.) LTD.  
DBF Crosswinds Ltd  
COMPUTER AND BUSINESS STATIONERY  
S&S HOMES  
sdc builders  
EDS Electronic Data Systems  
DRG PAPER & BOARD  
McCANN HOMES  
RYDER INSURANCE CONSULTANTS LTD  
MacIntyre Financial Services Ltd  
Hillsdon Twiggden



# WE'VE ALSO MADE SOME CHANGES TO OUR LINE UP THIS SEASON

Kenilworth Road isn't the only place you can see a new line up this afternoon.

Just down the road in the Arndale Centre, and in our showrooms throughout the U.K., you can see the new additions to our own squad.

The Cameo Collection is making its home debut in what is undoubtedly the most attractive and unbeatable line-up in fitted bedroom furniture in the U.K.

And if that weren't enough you'll find that like Luton Town, we too have proved that you don't need to break the bank to put together a winning combination.



**Wallspan**

Wallspan Bedrooms Limited,  
Head Office: Maulden Road,  
Flitwick, Beds MK45 5BW.  
Telephone: 0525 716161

SHOWROOMS THROUGHOUT THE U.K.



## BACK HOME

Mal Donaghy was back at Kenilworth Road and clearly enjoying it when he returned on loan from Manchester United before Christmas. Mal has joined us for one month with Les Sealey going for a month to Old Trafford for the same period.

## A DOG'S LIFE

One extra-keen fan of Billingham Synthonia travelled all the way from the north-east to Lincoln City for an FA Cup tie this season with his dog...

Lincoln City's stewards and officials were a little surprised and it needed some persuasive talk for the canine to gain a ticket and sit alongside his master in the stand.

The dog was a regular at all Billingham's home games, they were told. And his behaviour was perfect. In victory and defeat. In the end, he went home with his tail between his legs - Synthonia lost 1-0.

## ON THE WAY BACK

Mick Harford is on the way back. After missing all the first half of the season through injury, our England international centre-forward Mick Harford is pencilled in for a return to action during January.

## UNLUCKY DAVID

Our Scottish central defender David Beaumont is not likely to be celebrating the New Year as vigorously as usual this time round as he was told before Christmas that he has a broken bone in his ankle and will be out of action until late January or February. Best wishes for a speedy recovery, David.

## HAPPY NEW YEAR

The players, directors and all staff at Luton Town would like to thank all their supporters for their encouragement and backing in 1989 and extend best wishes to everyone for a happy, peaceful and healthy 1990.

# FIRST CLASS HONOURS FOR SCHOOL OF EXCELLENCE

The future of our club is in good hands thanks to the work of our coaching staff with young schoolboy and youth players who attend recognised Centres of Excellence to gain expert help in the development of their skills and their understanding of the game.

Paul Wade, our youth development officer, has put in terrific work to make sure youngsters throughout the area are properly coached and looked after, as the picture below shows, with the accent put always on skills and technique.

One of the successes of the club's coaching schemes who has made progress all the way through the ranks has been Kingsley Black, now an established first team player and also a member of Billy Bingham's Northern Ireland international squad.

"Kingsley is a good example of a boy who has worked right through the system," said Paul. "He came to us as a schoolboy and carried on at Sixth Form

College while he was playing in the reserves."

Paul stressed that the work done by the youngsters in the Schools of Excellence is put second to school academic work and never interferes. "We cannot field teams from our boys and we always make sure parents are aware of this and the onus we put on schoolwork coming first."

One thing which is clear from the Schools of Excellence is the pleasure and knowledge that the boys gain from attending. Not only do they develop as individual players, but they also learn more about how and why the game is played in different ways.

"There is too much rush-and-kick competitive football for young boys and this does not do their development much good as players. We are trying to help solve that problem and also to make sure there is a good pool of youngsters on the way for the future of the club."



●Shooting practice: Paul Wade with the youngsters.



# Easy Rider

These tickets offer you a low cost way to travel in Luton and Dunstable, on both our buses and Hoppanstopper minibuses !

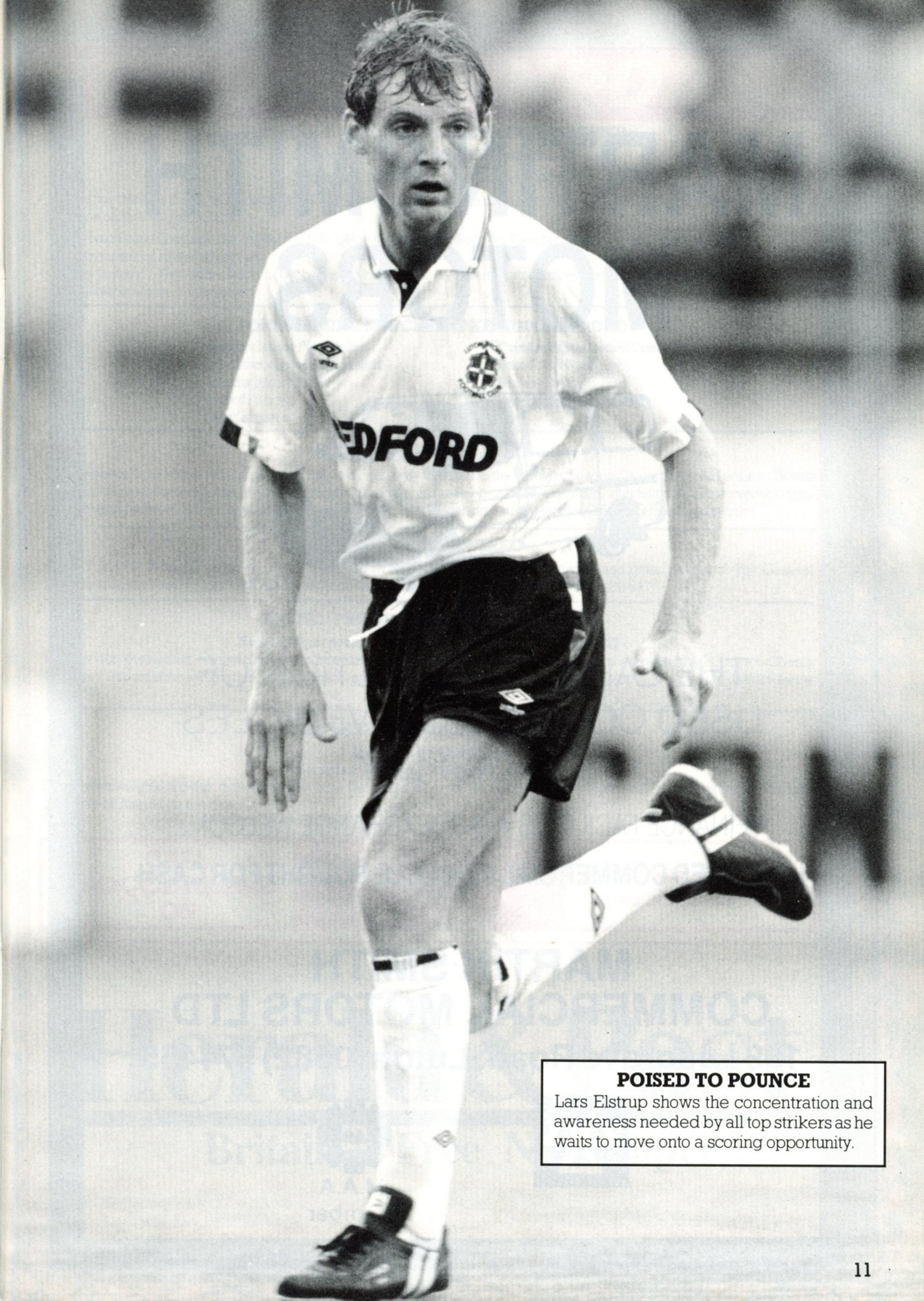
Easy Rider	Adult	Child up to 16 years
7 day	£ 7.25	£ 4.75
14 day	£ 13.75	£ 9.00
28 day	£ 25.50	£ 17.00
3 month	£ 72.00	£ 47.50
6 month	£135.00	£ 89.00
Annual	£250.00	£165.00

Buy your tickets at Luton Bus Station,  
Dunstable Queensway Hall or any Post Office  
in the local area !

*The more miles you go, the more you SAVE !*

For further details, telephone: (0582) 404074

N.B. Prices correct at time of going to Press.

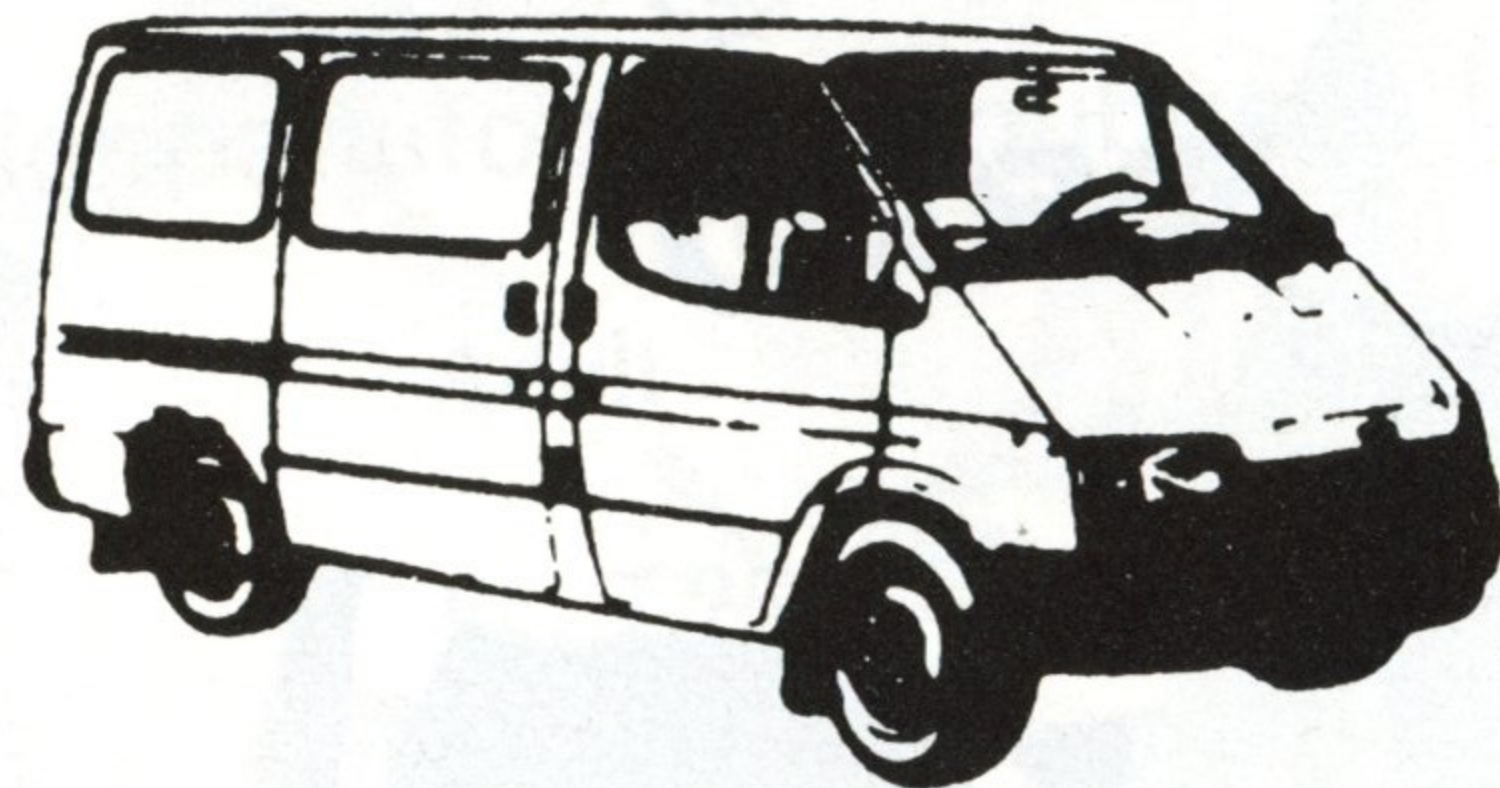


#### POISED TO POUNCE

Lars Elstrup shows the concentration and awareness needed by all top strikers as he waits to move onto a scoring opportunity.



# MARTIN SMITH MOTORS



THE LARGEST SELECTION OF  
USED COMMERCIAL VEHICLES  
ON DISPLAY

● FINANCE FACILITIES ● PART EXCHANGE WELCOME  
LATE USED COMMERCIAL VEHICLES BOUGHT FOR CASH

**MARTIN SMITH  
COMMERCIAL MOTORS LTD**  
199 Leagrave Road, Luton (0582) 574455



M.A.A  
Member

## BOX OFFICE UPDATE

### FOOTBALL ASSOCIATION CUP THIRD ROUND

**Brighton and Hove Albion v Luton Town**

**Saturday, January 6, 1990, kick-off 3pm**

Tickets for this match will be available at £10 each from the ticket office in Kenilworth Road. Standing tickets will be available at Brighton on the day priced at £5.

If this match ends in a draw, the replay will take place at Kenilworth Road on Tuesday, January 9, 1990, kick-off 7.45pm.

Arrangements for sale of tickets are:

Sunday January 7, 9am-4pm season ticket holders Monday January 8, 9am-6pm members general sale Tuesday January 9, 9am-kick-off general sale to members.

### FORTHCOMING MATCHES AT KENILWORTH ROAD

#### Barclays League Division One

Luton Town v Queen's Park Rangers

Saturday, January 20, 1990

Kick-off 3.00p.m.

Match number 12

#### Ovenden Papers Football Combination

Luton Town v Wimbledon

Saturday, January 13, 1990

Kick-off 2.00p.m.

### BOBBERS TRAVEL CLUB

The Bobbers Travel Club have organised trips to all our away matches in the Barclays League Division One this season. Tickets are issued to members only and are available from John Pyper in the Bobbers Club, Oak Road, after Saturday home matches (5pm-5.30pm) and midweek home matches (9.45pm-10.15pm) or by telephoning Paul Deason on 0234-750996 (evenings only)

### GATEMEN REQUIRED

Luton Town FC requires gatemen. Please apply in writing stating previous experience and other details to: The General Secretary, Luton Town FC, Kenilworth Road Stadium, 1, Maple Road, Luton, Bedfordshire. LU8 8AW.

### POSTAL PROGRAMME SUBSCRIPTIONS

**Home £22 per season Away £22 per season All games £37**

Our service guarantees all match day programmes sent out direct. Revised half-season prices available. Contact: Cherry Newbery, Programme Distributor, Luton Town Football Club, Kenilworth Road Stadium, 1, Maple Road, Luton, Bedfordshire LU4 8AW.

### BARCLAYS LEAGUE DIVISION ONE

**Liverpool v Luton Town**

**Saturday, January 13, 1989, kick-off 3pm**

Seats are available for this match at £7.50 from the ticket office in Kenilworth Road. There will be no tickets or standing available at Anfield on the day.

**CALL  
SOCCERLINE  
ON**

**0898 700 273**

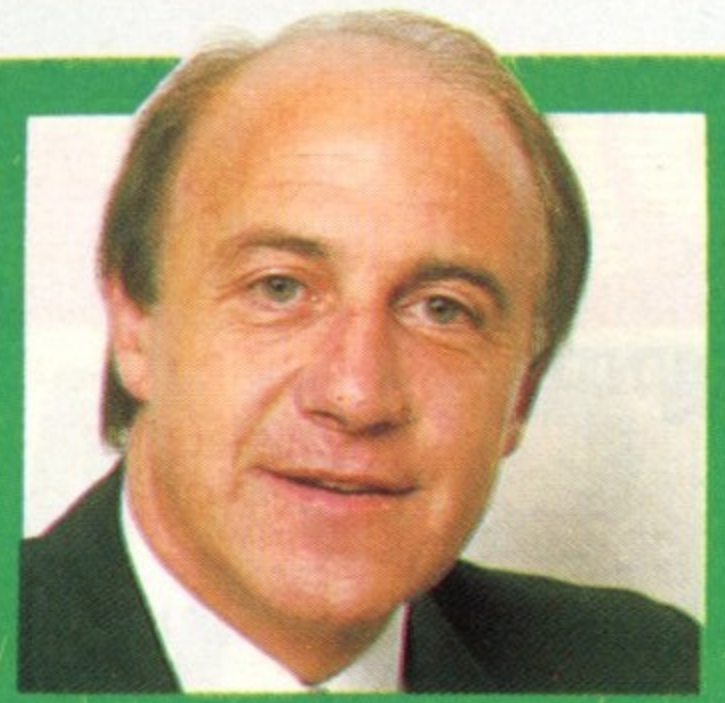
38p per min Peak  
25p per min off Peak

*For all the latest news and  
views from Luton Town*

# Herald & Post

**Britain's Free Newspaper**





by BILL TOMLINS

## LOOKING BACK ON A DECADE OF TRULY MARVELLOUS MEMORIES

### KINGSLEY'S HONOUR



● **Congratulations:** Kingsley Black has won the Barclays Young Eagle award for December. Well done, Kingsley.

A very happy and peaceful New Year to everyone and thank you for your support throughout 1989 and the rest of the decade which has ended. We have had some wonderful moments and some wonderful memories during the 1980's.

I have been very pleased this season with the level of support we have had at our reserve games. It has shown a truly positive reaction to our policy of free admission for Combination fixtures and the introduction of a programme on sale.

Our reserve manager Jim Ryan has told me how much the players have enjoyed having the atmosphere created by 500-600 people at these games and, of course, all the spectators have a great opportunity to enjoy seeing our talented players of the future.

With the 1980's behind us, it is now time to look ahead to the 1990's and in particular whatever this New Year will bring. As we go into the FA Cup with an away tie at Brighton next weekend, it is a year we approach with great anticipation.

It is sure to be another eventful year and decade as the club faces up to a possible switch from synthetic to other pitches at the end of the 1990-91 season and the board continues to pursue relocation in the town.

Discussion of relocation and the future is, unfortunately, a subject which is inevitably fraught with the divided views of the political arena, but I believe the town needs a First Division football club and a facility which offers community usage.

When you reflect on the last ten years, it is worth recording that the club has been in the First Division now since 1982 and that many of the Luton public take this for granted.

There are youngsters who support the club now who have probably never considered Luton Town as anything other than a First Division club. To have achieved that on the level of gates we have at Kenilworth Road is an achievement although, of course, financial pressures are always there.

Our board of directors, however, remain full of ambition as we go into the 1990's and we all aim to continue to be successful at the top level. On that note, it would also be great to see Mick Harford back in action after his long absence.

Finally, welcome to Chelsea. Unfortunately, we will not be operating our guesting facility this afternoon on police advice. I hope everyone understands particularly as Chelsea have done so much in the last two years to improve their reputation.

● **Santa at the party:** The Junior Hatters had a great night at their Christmas Party on December 11 when Father Christmas's visit really made the evening. The Juniors are entertaining Chelsea's juniors this afternoon.



● **Brains of sport:** Iain Dowie's team were the winners during a special Sports Quiz evening held by the Supporters Club before Christmas.



● **Runners-up:** Graham Rodger and his team mates took the second prizes.



● **Chat show stars:** Danny Wilson and Roy Wegerle provided great entertainment at the Supporters Club chat show on December 4 and made the night for this young fan.

## CAPTAIN'S DIARY



DANNY WILSON

### WELCOME RETURN

I have more than one reason for thinking of welcome returns to day as David Preece and I end our two-match suspensions. It is also my first opportunity to say how nice it has been to welcome Mal Donaghy back to Kenilworth Road.

Mal's return brings the number of Northern Ireland men in our squad up to four as he, myself, Kingsley and Iain have all been in Billy Bingham's recent squad selections. Mal is here for a month and his experience and sheer class is an obvious bonus to us all.

### Agony for me

For myself, it is great to be free to play again if selected. I am not the best of spectators. In fact, I am absolutely terrible. So, it has been a bit of an agony to sit on the sidelines over Christmas and watch the lads in action.

I was of course at least able to join in the pre-Christmas parties at the club when, the flu bug permitting, everyone had a really good time. Now we are all looking forward to the new year and hopefully a run of consistent results. Happy New Year to everyone.



## OWLS GROUNDED

Sheffield Wednesday 1 Luton Town 1

Another solid and impressive all-round team display helped the Town secure a valuable away point and at times go agonisingly close to winning at Hillsborough against Sheffield Wednesday on December 9.

Julian James, making his first full appearance of the season at the heart of a reshaped defensive system, produced an incident-packed performance and scored our goal on a day the Owls fans were desperate to hear the final whistle.

Wednesday took the lead after 17 minutes when a shot by King hit the bar and James, attempting to clear, succeeded only in crashing the ball against John Dreyer and, via him, into the net.

It seemed the Town's ill luck with injuries was continuing after the interval when Marvin Johnson was carried off on a stretcher with an ankle injury. Richard Cooke substituted and soon they drew level.

James moved up to equalise and erase his earlier misfortune in the 65th minute when he dived to head in from Williams' right wing cross.

Seven minutes later, when he looked almost certain to score Iain Dowie narrowly missed with a side-footed shot from close range which would probably have wrapped up the first away win of the year in the First Division.

**Teams:** Sheffield Wednesday – Pressman, Nilsson, King, Palmer, Shirliff, Pearson, Bennett (Whitton 86), Sheridan, Hirst, Atkinson, Worthington.

Luton Town – Chamberlain, Breacker, Harvey, Wilson, Johnson, (Cooke 51), Dreyer, Williams, James, Dowie, Elstrup, Preece.

Referee: R.A. Hart (Darlington).

Attendance: 16,339

# 1st Team ACTION



• **Deserved point won:** The Town fully merited the point they collected from Sheffield Wednesday with a controlled and promising performance at Hillsborough. Our pictures today show Tim Breacker, Steve Williams, Lars Elstrup and Iain Dowie in action during that match. Pictures by Josh Levy of Apex Photography of Milton Keynes.





The **Hottest NEWS**  
 The **Best MUSIC**  
**The Hot FM** 97.6  
 828  
 Chiltern Radio  
 in Herts, Beds & Bucks  
 24 Hours a day!



**High Power Pressure Washers:**  
 Sales, Hire, Service Repairs,  
 Spares, Maintenance Contracts.

SPECIALISTS IN SALES & SERVICING OF  
 PRESSURE WASHERS  
 (Most makes repaired)

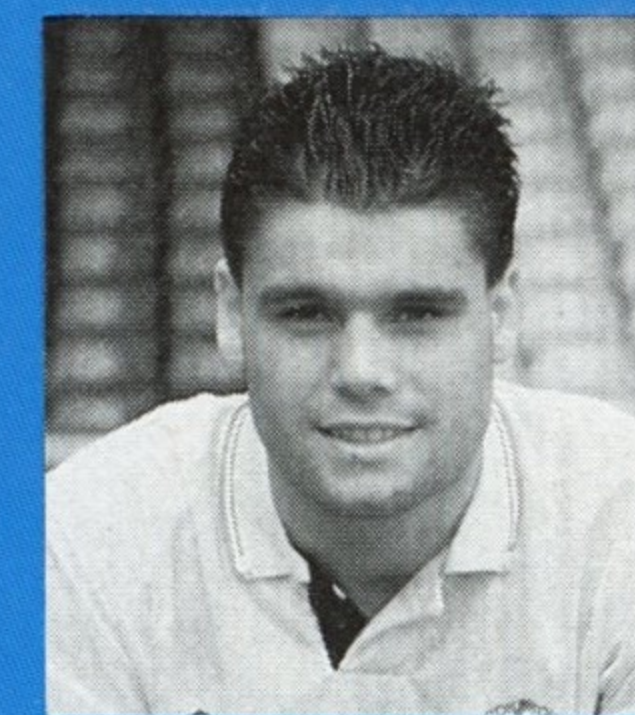
Main distributor for 'Warwick'

**JR Power Cleaning**

11 Sunbeam Rd., Woburn Rd. Ind. Est., Kempston,  
 Bedford MK42 7BZ. Fax: (0234) 840110

**0234 840838**

# Top HATTER



## RICHARD HARVEY

### RICHARD HARVEY FACT FILE

Born: Letchworth, Herts, 17.4.69  
 Source: Apprentice  
 League debut: Luton T. v QPR.  
 1.11.86 (1-0)  
 International honours: England schoolboy and  
 youth caps.

"I like to go home and relax and I also like to play golf and snooker. I am a member of the Stockwood Park golf club in Luton and I also play quite a lot at the Letchworth club too when I am at home. It is very relaxing and I enjoy it.

"There are quite a lot of good players at the club with the Scottish lads of course all showing up strongly. David Beaumont is one of the star men on the golf course, but David Preece is pretty good too when he has time to play.

"I suppose Paul Telfer is one of the very best though and he is Scottish too."

Richard believes the Town are currently in a false position in the First Division table and that injuries have played a large part in upsetting what should have been a very good season.

"We have had injury problems all the time so we have not been able to get a settled team. For me, that has meant a chance to get into the side.

"But it has meant a lot of players have been missing. I think we have missed Mick Harford a lot. He is a big influence but it has been a bonus in the same sort of way to have Mal Donaghy back with his experience.

"We have a team with quite a lot of young players now and his experience can be very important. he sets such a good example. He is such a good professional. Even at his age, and after missing playing for a month, he showed his fitness and dedication at Arsenal with his performance. I am glad he is not a left-back!"

Richard has 18 months to run on his current contract and it is his ambition to try and establish himself as a regular in the team. "We have had a lot of chopping and changing at left-back in the last few years and I would like to make the position my own."

### Keen golfer

"We were unlucky again. We had quite a bit of the game, particularly in the second half, but it didn't go our way," said Richard as he reflected on the 3-2 defeat we suffered at Arsenal on December 16. "I think the sweeper defensive system works well for us, but it can be a bit difficult to make chances sometimes with three or five at the back.

"I quite like it though. It gives me and Tim a good chance to go forward and I always think of that as being one of the strengths of my game. It can mean a very exciting attacking game for us. But if things are not working out, it can be a bit difficult.

"At Arsenal for example we had Mal playing at the back in the first half and then as a front sweeper in the second. That meant he could support the midfield players more because earlier on they were outnumbered a bit and it was difficult for Tim and I to push up and help."

Richard, who made his debut three years ago as a 17-year-old, is still only 20 but has the tactical knowledge and understanding of players much older. He clearly enjoys the tactical side of the game. But what does he do in his spare time?





**RICHARD HARVEY**



# LUTON TOWN SPORTS SHOP FOR ALL THE FAMILY



UMBRO REPLICA KITS AVAILABLE IN PRESENTATION BOXES  
 STYLISH Ladies and Gents Tracksuits  
 Childrens Tracksuits with 2 pairs of coordinating Tracksuit bottoms  
 Childrens Dressing Gowns and Slippers  
 Sweatshirts and Rugby Shirts  
 Match Footballs and Umbro Football Boots (in all sizes)  
 Pencil Cases, Clocks, Videos, Scarves, Caps,  
 Coffee mugs, Towels, Key Rings

See our selection on display in the shop at the top of Oak Road or take  
 advantage of our new mail order facility. Tel: (0582) 411622.

Access or Visa accepted

**SOCCKERLINE 0898 700 273** 38p per min Peak  
 25p per min off Peak



# BARCLAYS

## Junior Hatters

### A TYPICAL WEEK'S TRAINING

• Today, I thought you might like to know what a typical week's work would be for a Luton Town player. It would go like this:

- Monday – two hour training session on grass.
- Tuesday – A one and a half hour session on the pitch with some running to finish.
- Wednesday – Day off.
- Thursday – Another one and a half hours. This might consist of crossing or shooting and some build-up play to assist with passing and shooting techniques. All on the pitch.
- Friday – A light session. Warm-up, shooting, a few sprints, free-kicks and corners, defensive and offensive. Possibly 5-a-side for ten minutes. About an hour on the pitch.
- Saturday – Match day. Squad assemble at hotel at 11.30am. for pre-match meal with choice from beans on toast, omelettes, tea and toast. A light lunch. Team talk at about 1pm. Management pick the team and inform them of tactics for the match.
- At 1.45pm, arrive at ground to begin final preparations: put kit on, stretch muscles, ankle strapping for some, mental preparations. At 2.30pm warm-up on the pitch. At 2.45pm put on shin pads, referee checks all rings etc taped up. Then a last-minute team talk and at 3.00pm ...kick-off.
- **Today's Mascot** is Ryan Pereira. **Today's Escorts** are Luke Philbrick, Mark Thompson, Yvonne McKeowh, Stephen Grover.

**Kingsley Black**

### LUCKY NUMBERS

Our lucky Junior Hatters membership number today is 190861 – Sarah Kennedy. Well done, Sarah. You have won two tickets to one of our home matches. But, remember to take your membership card with you when you go to the Sports Shop in Oak Road to collect them from Bev Tyler.

The luck number in our other draw this week is 106503 – Mark Smith. Congratulations to you Mark. You have won a sports bag sponsored by Spearman International.

### WARM WELCOME

Today we extend a warm welcome to the Junior Supporters of Chelsea who are at today's game at the invitation of our Junior Hatters. It is a great move and should help promote friendship in football. Let us all enjoy the match together.

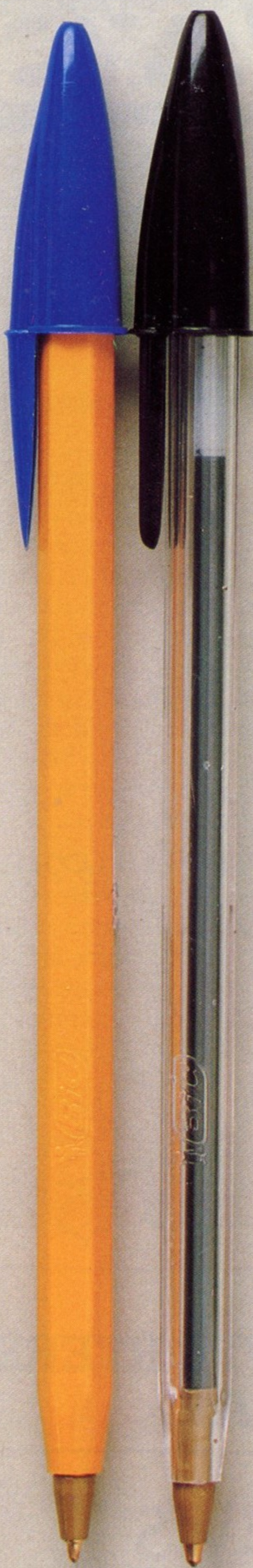


## WE WISH ALL OUR JUNIOR SUPPORTERS A VERY HAPPY NEW YEAR



The **Hottest NEWS**  
 The **Best MUSIC**  
 24 Hours a day!





# OPTIONS

If you find that you are paying more than £2.99 for a box of 50 Bic pens - it could be that your company is using the wrong stationery supplier.

0462·421431

The Competitive Edge  
Quality - Price - 24hr Service

The Ultimate Stationery Purchasing Decision...



BY WENDY GRZYBOWSKA

## COMMERCIALLY

### END OF THE YEAR BRINGS THE END OF A SUCCESSFUL DECADE

Welcome to the final match of 1989 and the 1980's, a decade we shall all look back on in the future as one that was full of success and progress at Kenilworth Road.

The 10 years past have seen the club claim a place in the First Division and retain it for eight years, having gained promotion in 1982. This has resulted in an unprecedented run of membership of the top flight for Luton Town and been accompanied by rapid expansion and improvements off the pitch.

The synthetic pitch has been a tremendous success, bringing with it great community involvement and commercial benefits for the club. The Kenilworth Road stand has been roofed over, the executive boxes installed and the membership scheme introduced. All have succeeded in guaranteeing our supporters safe and comfortable spectating of First Division football in Luton.

We now have a comfortable modern stadium in which families can enjoy unobstructed viewing of their football in an environment which is safe and secure. This is one direct lesson from the 1980's which the club has taken to heart.

The two Littlewoods Cup final appearances at Wembley and particularly the memorable 1988 victory have helped to give the club a national and international profile which has attracted many major sponsors. It is good business for everyone to be associated with a successful and progressive First Division club.

#### Luton International Airport

Today, we give a big welcome to staff from our match sponsors Luton International Airport. LIA have taken the opportunity to thank their staff for their support over the last year by inviting more than 60 to this afternoon's match.

A special prize draw was held at the airport just before Christmas and the winners are here today ready to cheer the home team on... Congratulations to you all.

Our match day box 28 is taken this afternoon by Allglaze Windows whose managing director Barry Boulton has been a keen supporter of the club for many years.

SPEAKING

## Today's MATCH SPONSOR

#### READ THIS, AND YOU'RE ALREADY CLOSER TO LUTON AIRPORT

Brussels will be the latest addition to our rapidly growing Scheduled Services timetable that currently includes Amsterdam, Maastricht, Belfast (Aldergrove & Harbour), Dublin, Cork, Galway, Isle of Man, Mahon, Malta, Malaga, Tenerife, Waterford, Jersey, Guernsey, Knock, Shannon, Kerry and Leeds/Bradford, with more to be added soon.

All aimed at providing your business customers with a range of key destinations and level of service worth a closer look.

LUTON  
international  
AIRPORT

*Close to you*

LUTON INTERNATIONAL AIRPORT, LUTON LU2 9LY. TELEPHONE: (0582) 405100. TELEX 826409. PRESTEL 34470.



# RESERVE

## OVENDEN PAPERS FOOTBALL COMBINATION 1989/90

Date	Opponents	Result	Date	Opponents	Result
1989/90		F-A	1990		F-A
Aug 19	Arsenal	6-1	Jan 2	QPR	
Sept 2	Reading	2-0	Jan 6	West Ham	
Sept 9	Tottenham	0-4	Jan 10	Oxford	
Sept 23	Southampton	1-0	Jan 13	Wimbledon	
Sept 30	Ipswich Town	3-2	Jan 16	Portsmouth	
Oct 10	Stotfold (BPC1)	4-4	Jan 27	Brighton	
Oct 20	Norwich City	0-2	Feb 3	Millwall	
Oct 28	Watford	3-3	Feb 13	Chelsea	
Oct 31	Swindon	0-2	Feb 17	Oxford	
Nov 7	Millwall	0-0	Feb 21	Fulham	
Nov 11	West Ham	1-1	Feb 28	Crystal Palace	
Nov 14	Stotfold (BPC1R)	5-0	Mar 3	Southampton	
Nov 25	Fulham	5-0	Mar 10	Swindon Town	
Nov 29	Brighton	1-2	Mar 13	Wimbledon	
Dec 2	Watford	1-1	Mar 21	Ipswich	
Dec 12	Charlton A	0-1	Apr 3	Portsmouth	
Dec 16	Norwich	0-2	Apr 7	QPR	
Dec 19	Tottenham		Apr 11	Reading	
Dec 22	Vauxhall Motors (BPC2)		Apr 18	Crystal Palace	
			Apr 21	Arsenal	
			May 1	Charlton A	
			May 8	Chelsea	

BPC = Bedfordshire Premier Cup

### APPEARANCES AND GOALSCORERS

	Football Combination		Beds Premier Cup	
	Aps	Gls	Aps	Gls
Allpress	13(1)	-	2	-
Brown	(2)	-	-	-
Cobb	5(3)	1	1(1)	-
Cooke	6	2	-	-
Crawshaw	10(3)	4	2	1
Dowie	2	-	-	-
Farrell	1	2	-	-
Gray	6	3	1	2
Harvey	1	-	-	-
Hughes	11(1)	-	1	1
Jackson	3	-	1	-
James	9	1	1	-
Johnson	4	1	1	-
McConagle	-(1)	-	-	-
Nogan	11(2)	3	1(1)	3
O'Brien	5(1)	1	1	-
O'Sullivan	-(1)	-	-	-
Pembridge	9	-	1	-
Petterson	3	-	1	-
Poutch	13(1)	-	1(1)	-
Rees	11	1	2	2
Rodger	4	-	-	-
Salton	1(1)	-	-	-
Scott	14	1	2	-
Sealey	12	-	1	-
Shanley	2(3)	-	1	-
Telfer	1(1)	1	(1)	-
Tighe	8	1	1	-



● Aaron Tighe's: progress this season has seen him earn a senior debut at Crystal Palace.

### OVENDEN PAPERS FOOTBALL COMBINATION

	P	W	D	L	F	A	Pts
Tottenham Hotspur	18	14	1	3	53	23	43
Millwall	18	11	5	2	32	17	38
Arsenal	18	11	3	4	42	31	36
Chelsea	14	9	2	3	36	18	29
Wimbledon	17	7	6	4	29	21	27
Brighton & Hove	16	8	2	6	28	28	26
Norwich City	14	8	1	5	21	18	25
Swindon Town	17	8	0	9	27	29	24
Oxford United	16	7	2	7	30	24	23
QPR	15	7	2	6	29	28	23
Ipswich Town	16	6	3	7	27	32	21
Crystal Palace	18	5	5	8	26	24	20
<b>Luton Town</b>	<b>13</b>	<b>5</b>	<b>4</b>	<b>4</b>	<b>23</b>	<b>18</b>	<b>19</b>
Charlton Athletic	16	5	3	8	28	33	18
Portsmouth	13	4	6	3	14	19	18
West Ham	16	3	5	8	29	36	14
Watford	15	2	6	7	25	33	12
Southampton	18	1	6	11	17	30	9
Fulham	13	3	0	10	9	37	9
Reading	15	1	4	10	17	43	7
	4.12.89						

### SOUTH EAST COUNTIES LEAGUE

Date	Opponents	Result	Date	Opponents	Result
1989		F-A	1990		F-A
Aug 19	Crystal Palace	0-4	Jan 6	Crystal Palace	
Aug 26	Tottenham	2-0	Jan 13	Tottenham	
Sept 2	Reading	1-0	Jan 20	Reading	
Sept 9	Reading (LC)	2-2	Jan 27	Nottingham T	
Sept 13	Aston Villa (SJFC1)	1-0	Feb 3	Bristol Rovers	
Sept 18	Reading (LC) (R)	3-2	Feb 10	Southampton	
Sept 25	Northampton T	1-0	Feb 17	Bristol City	
Sept 30	Southampton	2-2	Feb 24	Brighton	
Oct 7	Swindon Town	2-1	Mar 3	Wimbledon	
Oct 14	Bristol Rovers	2-2	Mar 10	Colchester Utd	
Oct 21	Norwich City (LC)	4-1	Mar 17	Swindon Town	
Oct 23	Chelsea (SJFC2)	1-0	Mar 24	Bournemouth	
Oct 28	Bristol City	1-0	Mar 31	Aldershot	
Nov 11	Bournemouth	3-0	Apr 7	Oxford	
Nov 18	Wimbledon	1-1	Apr 14	Brentford	
Nov 25	Aldershot	3-3	Apr 21	Brighton	
Nov 28	Arsenal (FAYC2)	2-2			
Dec 2	Colchester	1-1			
Dec 6	Arsenal FAYC2R	2-4			
Dec 9	Leyton Orient LC3	3-2			
Dec 12	Arsenal (SJFC3)	0-4			
Dec 16	Brentford	0-0			

	SECL		Lge Cup		SJFC		FAYC	
	Aps	Gls	Aps	Gls	Aps	Gls	Aps	Gls
Brading	-	-	1	-	1	-	-	-
Brown	11	5	4	2	3	0	1	-
Campbell J.	9(3)	4	2	1	2	0	2	-
Campbell M.	1	-	-	-	-	-	-	-
Cooper	9	-	2	-	2	-	2	-
Gillard	2	-	2	-	1	-	-	-
Gormley	6(5)	2	3(1)	2	1(2)	1	(2)	-
Hancock	1	-	-	-	-	-	1	-
Jackson	12	3	4	1	3	1	2	1
Lawford	6(6)	-	2(1)	1	(2)	-	2	-
McGill	13	-	4	-	3	-	2	-
McConagle	11	1	4	1	3	-	2	1
Meldrum	2	-	-	-	-	-	1	-
Nolan	2(1)	-	1(1)	-	1	-	-	-
O'Sullivan	11	2	4	1	3	-	2	-
Rogers	3	-	-(1)	-	1	-	-	-
Rutherford	3(6)	-	2(1)	1	2	-	2	-
Salton	9	1	2	1	2	-	2	-
Telfer	12	-	4	1	3	-	2	-
Tilly	-	-	-(1)	-	-	-	-	-
Thompson	8	-	-(2)	-	-(2)	-	(2)	-
Watkiss	12	-	3	-	2	-	1	-

	P	W	D	L	F	A	Pts
Crystal Palace	15	11	3	1	33	12	25
Oxford United	12	9	2	1	31	15	20
Southampton	19	7	6	6	27	25	20
Colchester United	19	9	2	8	32	31	20
Northampton Town	15	8	2	5	29	20	18
Wimbledon	16	7	3	6	29	16	17
Brighton & Hove	14	8	1	5	30	18	17
Swindon Town	16	7	3	6	23	25	17
<b>Luton Town</b>	<b>12</b>	<b>5</b>	<b>5</b>	<b>2</b>	<b>18</b>	<b>15</b>	<b>15</b>
Brentford	14	6	2	6	31	25	14
Reading	14	6	2	6	19	15	14
A.F.C. Bournemouth	15	4	5	6	27	26	13
Tottenham Hotspur	18	6	1	11	22	38	13
Bristol City	15	5	1	9	26	35	11
Bristol Rovers	15	3	3	9	15	22	9
Aldershot	15	-	1	14	12	66	1

## FROM THE BENCH



With John Faulkner, Jim Ryan and Terry Mancini

**Ovenden Papers Football Combination**  
November 29, 1989  
Brighton and Hove Albion 2 Luton Town 1  
Scorers: Nogan  
Team: Sealey, Poutch, Pembridge, Rees, Allpress, Hughes, Cooke, Crawshaw, Nogan, Scott, Cobb.  
Subs: Telfer, Salton.

**Ovenden Papers Football Combination**  
December 2, 1989  
Watford 1 Luton Town 1  
Scorers: Rees.  
Team: Sealey, Poutch, Pembridge, Rees, Salton, Allpress, Scott, Crawshaw, Nogan, Tighe, Hughe.  
Subs: Cobb, Rutherford.

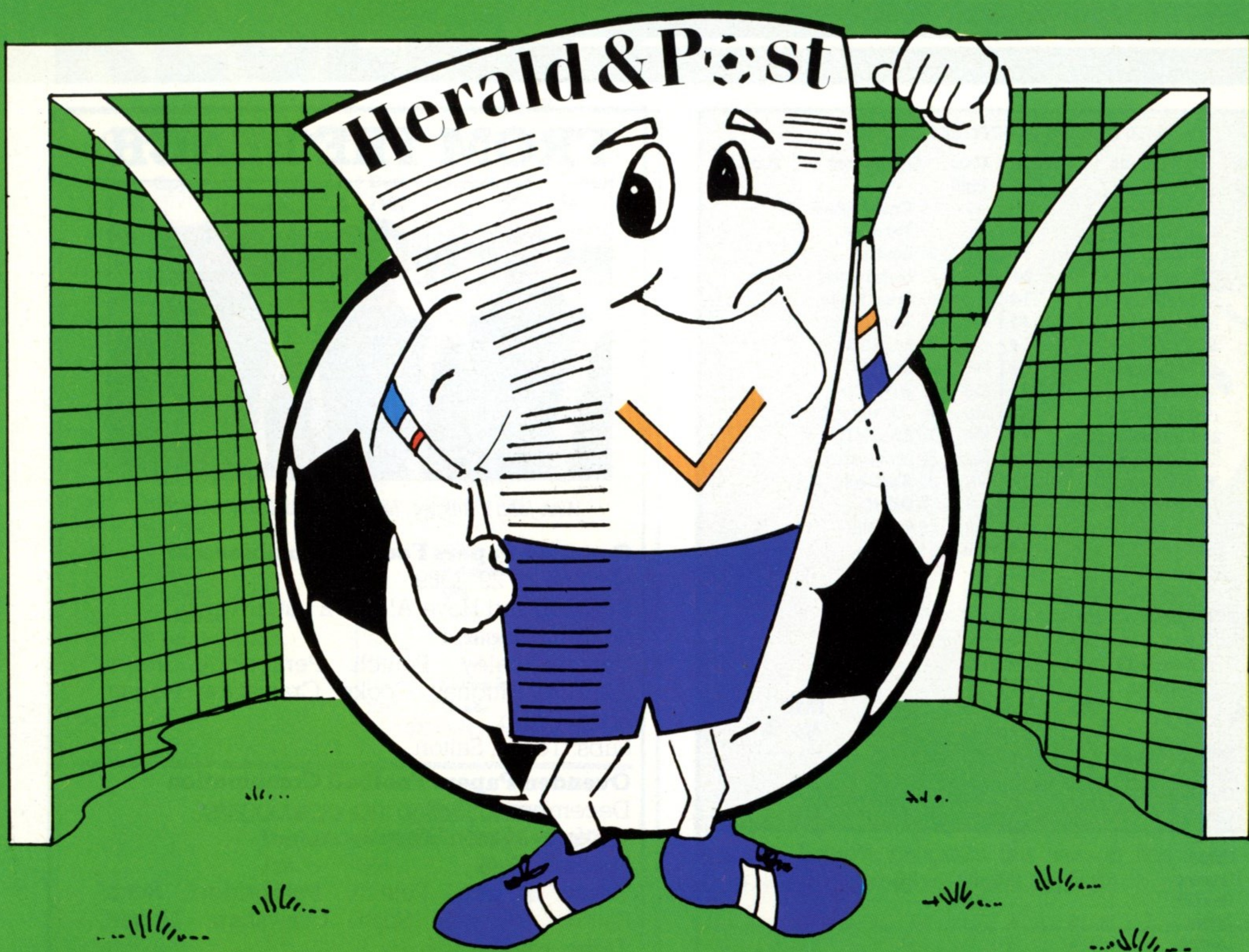
**Ovenden Papers Football Combination**  
December 12, 1989  
Charlton 1 Luton Town 0  
Team: Sealey, Poutch, Pembridge, Hughes, Rodger, Allpress, Cooke, Scott, Nogan, Gray, Tighe.  
Subs: Rees, Crawshaw.

Jim's view: "In truth, our performances have been very mixed recently. For example, the week before our play had been excellent at Watford and we deserved far more than the 1-1 we got. It is hard to explain such wide divergences of form although obviously the team was changed a bit. As I have often said, inconsistency is the curse of youth - and it is part of my job to smooth out these peaks and troughs. I might add that the reserve team players themselves take a certain pride in providing good entertainment for our faithful fans so they will always be looking to remedy a poor performance."

# & YOUTH



# JOIN THE WINNING TEAM



## Herald & Post Line-up

READ THEIR NEWS AND VIEWS EACH WEEK IN

### LUTON & DUNSTABLE

Danny Wilson, Kingsley Black, Lars Elstrup

### BEDFORD

Tim Breacker

### MILTON KEYNES

Alec Chamberlain

### STEVENAGE/HATFIELD

Richard Harvey, Iain Dowie

### AYLESBURY

Marvin Johnson

### TRING

Julian James

### LEIGHTON BUZZARD

David Preece

### ST ALBANS/HARPENDEN

Mick Harford

The Best for News and Sport  
The Best for Advertising

Tel: LUTON 38981  
Tel: LUTON 401234

Britain's Free Newspaper **THE Herald & Post**

## A DECADE NEVER TO BE FORGOTTEN

And so tomorrow night we shall sing out the old year and welcome the new, ending a decade of emotional, controversial and never dull football at Kenilworth Road. The 1980's will certainly go down as the best 10 years in the club's history with the vast majority spent in the First Division and a Wembley win to boot.

But, at a time of year when we are sunk in puzzles and parlour games, which game was the best of the decade? Who were the best players? Which was the best goal? And, one for everyone to join in, what is the Hatters team of the 1980's?

A few suggestions could help the grey matter to work, but might spoil enjoyment for those who prefer to do the research and spadework themselves, but when it comes to match of the decade today's confrontation with Chelsea throws up some memories.

For it was almost exactly 10 years ago to the day that Chelsea came to Luton on January 1, 1980, and drew 3-3 in a fixture few who witnessed it will ever forget. Mal Donaghy, Mike Saxby and David Moss scored the Town's goals, but it was the ones we narrowly missed and had ruled out that left us drooling.

It was a Second Division match. We were second, Chelsea third, level on points. The pitch was frozen, bone-hard and icy. It was a morning kick-off and close on 20,000 packed in for it.

Chelsea led, after eight minutes, thanks to Mike Fillery's 25-yarder, but the Hatters drew level when Donaghy, in midfield to replace the injured Tony Grealish, beat startled showman goalkeeper Peter Borota with a wicked drive of his own. Then Saxby headed in a Moss corner and it looked all over.

But no. Ricky Hill had a wonderful overhead effort from 18 yards ruled out. Bob Hatton was offside. Chelsea survived to the interval and afterwards Ian Britton, keeping his feet, levelled as everyone else slipped in a goalmouth scramble.

Moss, with a rare header, nodded in a bouncing long throw from the right to make it 3-2 and then had another well-placed shot past the Yugoslav disallowed. Hatton offside again. It was expensive because, with 12 minutes to go, Britton sent Clive Walker away and he ran on to beat Jake Findlay.

It was a breathless finish to an invigorating match. But was the first match of the decade the best? Or was it the Littlewoods Cup final against Arsenal - another tear-stained dream-come-true. My favourite goal...? It has to be Brian Stein's second at Wembley.

Let me know what you think. Send your best goal and best team selections to Pick of the 80's, c/o Luton Town FC programme, Kenilworth Road Stadium, 1, Maple Road, Luton, Beds. LU4 8AW.



•Mike Saxby, a scorer against Chelsea 10 years ago, rises above the Reading defence to score here in September 1980.



OUR TEAM ALSO  
COVERS BUSINESS  
EVERYWHERE.

YOU'RE  
BETTER OFF  
TALKING TO  
**BARCLAYS**  
MEMBER OF IMRO

We know it's teamwork that counts, so come down to see our squad for the back-up your business needs.

# ■ TAKE YOUR PIC! ■



● Iain Dowie shows exemplary chest control of the ball to thwart Jimmy Case during our clash with Southampton at the Dell last month.



● Tim Breacker attacks Russell Osman during our clash with the Saints.



# LUTON & DISTRICT

**YOUR FAST & FREQUENT LONDON LINK**

## 757

**LUTON TOWN-LONDON**

**£3.00 SINGLE – £4.50 DAY RETURN – £5.50 PERIOD RETURN**

**LUTON TOWN-LONDON**

**£4.00 SINGLE – £5.00 DAY RETURN – £6.00 PERIOD RETURN**

## CLOSED CIRCUIT TELEVISION



*The first televised football match, 1937*

Now every Football League ground is equipped with television cameras.

The Football Trust has installed Closed Circuit Television systems at more than 110 British grounds. The cameras have a range of 150 metres and immediate close-up prints can be produced. Within minutes of an incident offenders can be identified and arrested with film made available as evidence in court. CCTV is the most effective anti-hooligan measure inside football grounds and the programme has been extended to include portable systems.

CCTV is only one of The Football Trust's many initiatives. Each year it receives over £9.5 million from the Spotting-the-Ball competition run by Littlewoods, Vernons and Zettors and spends it on projects that benefit all levels of the game throughout the United Kingdom.



**●Power and determination:** Tim Breacker shows his strength during our 1-1 draw at Sheffield Wednesday.



# OFF THE RECORD

## REVIEW OF THE DECADE

By Roger Wash

### Part two:

We would not have believed what was to follow during the summer of 1981 with Paul Price going to Tottenham and Tony Grealish being exchanged for veteran Brian Horton.

The signing of Horton was the master stroke that converted the "nearly" men into champions and from the start of the season until the end the Town were only off the top spot once, and that was only for a matter of days.

The season opened with three straight wins including the first ever game on Q.P.R.'s Omniturf and although two home defeats followed the Town soon bounced back and by Christmas, and a magnificent 3-1 win at Norwich, the lead at the top was eleven points.

The team eased off a shade in the New Year and did not win away again until May thus allowing the chasing pack to close the gap a little. A final spurt saw promotion clinched with five games to go and the Championship with three. Eight points was the final margin over runners-up Watford and eighteen over fourth placed Sheffield Wednesday!

Of the 86 League goals Brian Stein was again the top scorer with 21 followed by Steve White and David Moss with 18 and 15 respectively.

For the Towns first season back in the top drawer for eight years, only one major signing was made, that of Paul Walsh who it was predicted would set the football world alight.

On the opening day the Town were soon 2-0 down to FA Cup holders Tottenham at White Hart Lane but fought back to earn a point thus setting up a crazy first half to the season when goals were scored with remarkable regularity at both ends.

Luton Town were featured in televised games more often than Liverpool or Manchester United and anyone lucky enough to be the owner of a video at that time would have recorded for posterity a 5-3 home win over Notts County, a 3-3 draw at Liverpool 4-4 at Stoke, a 3-2 win at Birmingham and a 3-3 draw at home to Southampton.

Although the Town were hovering just above the relegation

### OUR LAST FIVE MEETINGS AT KENILWORTH ROAD

1987/88	1/1/88	Luton 3 (Stein M, Stein B, Harford) Chelsea 0 Att. 8,018
1986/87	3/1/87	Luton 1 (Newell) Chelsea 0 Att. 10,556
1985/86	7/9/85	Luton 1 (Harford) Chelsea 1 Att. 10,720
1984/85	22/9/84	Luton 0 Chelsea 0 Att. 16,066
1981/82	20/4/82	Luton 2 (Antic, Donaghy) Chelsea 2 Att. 16,185

\* Roger Wash is our official club statistician.

Anyone with inquiries or comments please write to him  
c/o The Editor, Luton Town F.C., Kenilworth Road Stadium,  
1, Maple Road, Luton LU4 8AW.

### IT HAPPENED 10 YEARS AGO THIS WEEK ...

1st January 1980

In a thrilling game the Town and Chelsea fought out a 3-3 draw on an ice-covered Kenilworth Road pitch. Luton had three good efforts ruled out by the the referee in the first half much to the disbelief of the crowd of 19,717.

### IT HAPPENED 5 YEARS AGO THIS WEEK ...

1st January 1985

The Town lost 2-1 to Everton at Goodison Park before a crowd of 31,682  
The defeat pushed us down to 21st position.

zone the broken foot sustained by leading scorer Brian Stein in the 3-1 home win over Manchester City just before Christmas proved to be disastrous.

The Town attack never really got going again and by Easter relegation loomed large but after a last minute winner by David Moss at home to Aston Villa a run of six games without defeat left the Hatters with only one move win to secure safety.

The home game with Everton on May 7th ended in a terrible 5-1 defeat as all the other relegation battlers won to send the Town into their last two games as favourites for the drop.

The first game was lost 3-0 at Old Trafford meaning that only a win in the final match at Maine Road, Manchester would retain a First Division place.

The result of that game is, of course, written into Luton Town folklore with Raddy Antic scoring with five minutes remaining to keep the Town up and send Manchester City down.

Despite missing half the season Brian Stein finished level top scorer with Paul Walsh – both scoring 14 league goals.

After the excitement of the previous four seasons 1983/4 proved to be an anti-climax.

The season opened brightly enough with two wins out of the first three games and after a run of three wins on the trot in October culminating in a fine 3-1 home win over Southampton fourth position has been attained.

The performances after that lacked conviction however and with inconsistency a major failing it was a surprise when, after three straight wins against poor opposition that Town found themselves in third position on Boxing Day – they actually led the table for a few hours that day due to a morning kick-off!

Because of the cushion of 35 points the Town were never in danger of relegation but only three further wins that season and a final position of 16th told a sorry story of a disastrous second half to the campaign.

Paul Walsh finished top scorer in the League with 11 goals followed by Brian Stein, with 9.

To be continued



•Lars Elstrup, our most expensive signing of any decade, in action at Southampton. He scored twice at High-bury before Christmas.

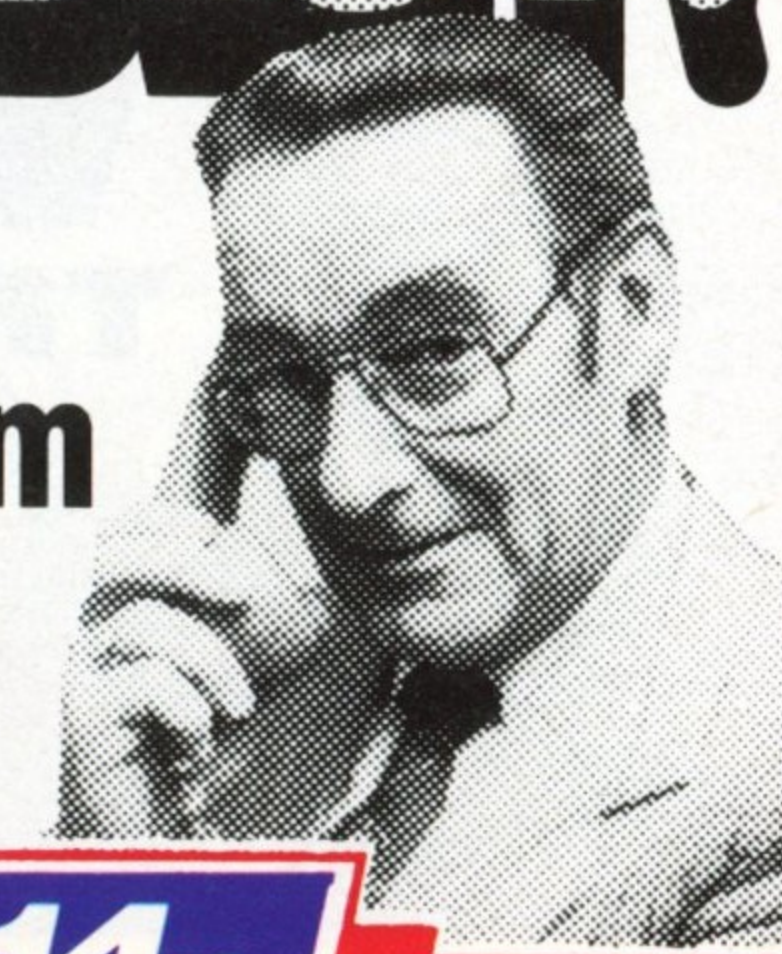
# Luton News

TOWN & COUNTRY • Mid and South Beds DUNSTABLE GAZETTE

# Best AND BEST!

All the LUTON TOWN NEWS from BRIAN SWAIN

The 'Man in the know'



WEDNESDAYS 14p





**TOP  
HATTERS  
COVERAGE!**

SATURDAY SPORTSOUND 2-6PM

◆ DAILY SPORTS DESKS ◆

**103.8 FM & 630 kHz**

STEREO

**HARROW FINANCE**  
GROUP PLC  
THE UNDERSTANDING MONEY PEOPLE

- EXPRESS LOANS
- MORTGAGES AND RE-MORTGAGES
- COMMERCIAL FINANCE

**NO PROBLEM TOO GREAT - WE CAN HELP**

CALL 7 DAYS A WEEK 9am-9pm ON

**01-861 3077**

BROKER FACILITIES AVAILABLE

OR WRITE TO HARROW FINANCE FREEPOST HARROW HA1 1BR FOR WRITTEN DETAILS AND QUOTATIONS

LOANS SECURED ON PROPERTY LICENSED CREDIT BROKERS

**T.J. ALDRIDGE**  
Builders

302 Selbourne Rd. Luton  
Tel: (0582) 505412-3

Roofing Specialists - General Building Repairs - Brickwork -  
Plumbing - Painting & Decorating - Carpentry - Electrical

SPOT RENTAL TO CONTRACT HIRE

**Wilton**  
TRUCK RENTAL

**STEVENAGE 352469 & LUTON 417559**

**WELCOME TO...**

**CHELSEA**

- This afternoon we are pleased to welcome Chelsea to Kenilworth Road. Formed in 1905, the Blues regained their First Division status last season by winning the Second Division championship.
- Chelsea have a reputation as one of London's leading clubs and a challenger to the north London giants Tottenham and Arsenal as the capital's top team. They have proved this already this season by going top of the league for several weeks during November having also led the table in August.
- The club's formation came about when Fulham rejected an offer to rent Stamford Bridge from Mr H.A. Mears who had owned it since 1904. Mr Mears then got together with Frederick Parker and the pair went ahead to create a football club of their own.
- The first league match at Stamford Bridge was played on September 11, 1905. Chelsea beat Hull City 5-1 that day in a Division Two fixture.
- Since then, the Blues have come a long way and produced many great players. They were Football league champions in 1955 and FA Cup winners in 1970 when they beat Leeds United 2-1 after extra time in a replay at Old Trafford. The first meeting at Wembley ended in a 2-2 draw after extra time.
- Chelsea have also won the Football League Cup in

- 1965 when they beat Leicester City 3-2 on aggregate and the Full Members Cup. This they collected after beating Manchester City 5-4 at Wembley in 1986.
- Chelsea's greatest triumph, however, was winning the European Cup Winners Cup in 1971. They beat Real Madrid 2-1 in a replay after a 1-1 draw in the initial meeting. Both matches took place in Athens.
- The official record attendance at Stamford Bridge is 82,905 for a Football League meeting with Arsenal on October 12, 1935. But on November 13, 1945, Chelsea played Moscow Dynamo at Stamford Bridge. After the entrances had been closed, many fans gained admission without tickets and a crowd estimated at 100,000 packed in.
- Ron Harris, Peter Bonetti and John Hollins are the three most long-serving players in the club's history. Harris played in 655 league games, Bonetti in 600 and Hollins in 465.
- Hollins went on to become one of Chelsea's 15 club managers. The Blues' post-war bosses have been: William Birrell (1939-52), Ted Drake (1952-61), Tommy Docherty (1962-67), Dave Sexton (1967-74), Ron Suart (1974-75), Eddie McCreadie (1975-77), Ken Shellito (1977-78), Danny Blanchflower (1978-79), Geoff Hurst (1979-81), John Neal (1981-85), John Hollins (1985-88).



Back Row (left to right): Mick Hazard, Gareth Hall, Joe McLaughlin, Roger Freestone, David Lee, Kevin Hitchcock, Alan Dickens, Peter Nicholas, John Bumstead. Middle Row: Eddie Niedzwiecki (Youth Team Coach), Bob Ward (Physiotherapist), Steve Clarke, Kerry Dixon, Dave Beasant, Kenneth Monkou, Gordon Durie, Ian Porterfield (Assistant Manager), Gwyn Williams. Front Row: David Mitchell, Clive Wilson, Kevin McAllister, Bobby Campbell (Manager), Graham Roberts, Tony Dorigo, Kevin Wilson.



FIRST TEAM

# UPDATE

1989-90 SEASON

## Luton Town F-A Att Pos 1

Aug 19	Tottenham Hotspur	1-2	17,668	-	Chamberlain
Aug 22	Sheffield Wednesday	2-0	9,503	-	Chamberlain
Aug 26	Liverpool	0-0	11,124	10	Chamberlain
Aug 30	Queens Park Rangers	0-0	10,565	11	Chamberlain
Sept 9	Charlton Athletic	1-0	8,859	7	Chamberlain
Sept 16	Coventry City	0-1	11,152	8	Chamberlain
Sept 19	Mansfield Town (LC2-1)	4-3	5,361	8	Chamberlain
Sept 23	Wimbledon	1-1	8,449	10	Chamberlain
Sept 30	Manchester City	1-3	23,863	14	Chamberlain
Oct 3	Mansfield Town (LC2-2)	7-2	6,519	14	Chamberlain
Oct 14	Aston Villa	0-1	9,433	16	Chamberlain
Oct 21	Norwich City	4-1	9,038	12	Chamberlain
Oct 24	Everton (LC3)	0-3	18,428	12	Chamberlain
Oct 28	Millwall	1-1	10,433	14	Chamberlain
Nov 4	Derby County	1-0	8,919	11	Chamberlain
Nov 8	Oxford United (ZDC)	3-2	1,754	11	Chamberlain
Nov 11	Crystal Palace	1-1	8,000	10	Chamberlain
Nov 18	Manchester United	1-3	11,141	13	Chamberlain
Nov 25	Southampton	3-6	14,014	13	Chamberlain
Nov 27	Crystal Palace (ZDC2)	1-4	3,747	13	Chamberlain
Dec 2	Tottenham Hotspur	0-0	12,620	15	Chamberlain
Dec 9	Sheffield Wednesday	1-1	16,339	15	Chamberlain
Dec 16	Arsenal	2-3	28,761	18	Chamberlain
Dec 26	Nottingham Forest (11.30am)				
Dec 30	Chelsea				
Jan 1	Everton				
Jan 6	Brighton (FAC3)				
Jan 13	Liverpool				
Jan 20	Queens Park Rangers				
Jan 27	FA Cup 4th Round				
Feb 3	Wimbledon				
Feb 10	Coventry City				
Feb 17	Charlton Athletic				
Feb 14	Southampton				
Mar 3	Manchester Utd				
Mar 10	Aston Villa				
Mar 17	Manchester City				
Mar 24	Millwall				
Mar 31	Norwich City				
Apr 7	Chelsea				
Apr 14	Everton				
Apr 16	Nottingham Forest				
Apr 21	Arsenal				
Apr 28	Crystal Palace				
May 5	Derby County				
May 12	FA Cup Final				

## 2 3 4 5 6 7 8 9 10 11 12 14

Breacker	McDonough	Beaumont	Dreyer	Wilson	(Williams)	(Preece)	Black	Wegerle <sup>1</sup>	Kennedy	[Harvey]	[Dowie]
Breacker	Dreyer	Williams	McDonough	Beaumont	Kennedy	Wegerle	Wilson <sup>1P</sup>	Preece	(Black <sup>1</sup> )	[Farrell]	Harvey
Breacker	Dreyer	(Williams)	McDonough	Beaumont	(Kennedy)	Wegerle	Wilson	Preece	Black	[Elstrup]	[Harvey]
Breacker	Dreyer	Williams	McDonough	Beaumont	Kennedy	Wegerle	Wilson	Preece	(Black)	[Elstrup]	Harvey
Breacker	Dreyer	Wilson <sup>1P</sup>	McDonough	Beaumont	Kennedy	Wegerle	Elstrup	Preece	Black	Harvey	Farrell
Breacker	Dreyer	Wilson	(McDonough)	Beaumont	Kennedy	Wegerle	Elstrup	(Preece)	Black	[Harvey]	[Cooke]
Breacker	Dreyer	Wilson	McDonough	Beaumont	Kennedy	Wegerle <sup>2</sup>	Elstrup <sup>2</sup>	Preece	(Williams)	[Black]	Harvey
Breacker	Dreyer	Wilson	(McDonough)	Beaumont	Kennedy	Wegerle <sup>1</sup>	(Elstrup)	Preece	Black	[Harvey]	[Cooke]
Breacker	Dreyer	Wilson	Harvey	Beaumont	(Kennedy)	Wegerle	(Elstrup)	Preece	Black <sup>1</sup>	[Johnson]	[Cooke]
Breacker	Dreyer <sup>1</sup>	Wilson	Rodger	Beaumont	Kennedy	Wegerle <sup>2</sup>	Elstrup <sup>3</sup>	Preece <sup>1</sup>	Black	Harvey	Cooke
Breacker	Dreyer	Wilson	(Rodger)	Beaumont	Williams	(Wegerle)	Elstrup	Preece	Black	[Cooke]	[Harvey]
Breacker	Dreyer <sup>1</sup>	Wilson <sup>1</sup>	(Rodger)	Beaumont	Williams <sup>1</sup>	Wegerle	Elstrup	Preece	Black <sup>1</sup>	[Harvey]	[Dowie]
Breacker	(Dreyer)	Wilson	McDonough	Beaumont	Harvey	Wegerle	Elstrup	(Preece)	Black	[Johnson]	[Dowie]
Breacker	Dreyer	Wilson	(McDonough)	Beaumont	Williams	(Wegerle)	Elstrup <sup>1</sup>	Kennedy	Black	[Dowie]	[Harvey]
Breacker	Dreyer	Wilson	Johnson	Beaumont	Williams	Dowie <sup>1</sup>	Elstrup	Kennedy	(Black)	[Preece]	Harvey
Breacker	Harvey	Wilson	Johnson	Beaumont	(Cooke)	Wegerle	Dowie <sup>2</sup>	(Kennedy)	Preece	[Gray <sup>1</sup> ]	[Tighe]
Breacker	Dreyer	Wilson <sup>1</sup>	Johnson	(Beaumont)	Williams	Dowie	(Elstrup)	Kennedy	Black	[Wegerle]	[Harvey]
Breacker	Harvey	Wilson <sup>1</sup>	Johnson	Dreyer	(Williams)	Wegerle	Dowie	Kennedy	Black	[Elstrup]	Preece
Breacker	Harvey	Wilson	(Johnson)	Dreyer <sup>1</sup>	(Preece)	Elstrup <sup>1</sup>	Dowie	Kennedy	Black <sup>1</sup>	[James]	[Wegerle]
Breacker	Harvey	Wilson	(Allpress)	Dreyer	Preece	Wegerle	Dowie <sup>1</sup>	James	(Tighe)	[Cooke]	[Gray]
Breacker	Harvey	(Wilson)	Johnson	Dreyer	Williams	Wegerle	Dowie	Kennedy	(Black)	[Preece]	[Elstrup]
Breacker	Harvey	Wilson	(Johnson)	Dreyer	Williams	James <sup>1</sup>	Dowie	Elstrup	Preece	[Cooke]	Gray
Breacker	Harvey	Kennedy	Donaghy	Johnson	Williams	(James)	Dowie	Elstrup <sup>2</sup>	(Black)	[Cooke]	[Gray]

APPEARANCES AND GOALSCORERS

	League		Littlewoods Cup		Z.D. Cup	
	Aps	Gls	Aps	Gls	Aps	Gls
Tim Allpress	-	-	-	-	-	-
David Beaumont	13	-	3	-	1	-
Kingsley Black	17	4	2(1)	-	-	-
Tim Breacker	18	-	3	-	2	-
Alec Chamberlain	18	-	3	-	2	-
Richard Cooke	(-6)	-	-	-	1(1)	-
Mal Donaghy	1	-	-	-	-	-
Iain Dowie	7(3)	1	(-1)	-	2	3
John Dreyer	18	2	3	1	1	-
Lars Elstrup	12(4)	4	3	5	-	-
Sean Farrell	(-1)	-	-	-	-	-
Paul Gray	(-1)	-	-	-	(2)	1
Richard Harvey	6(8)	-	1	-	2	-
Julian James	2(1)	1	-	-	1	-
Marvin Johnson	6	-	(-1)	-	1	-
Mick Kennedy	15	-	2	-	1	-
Darron McDonough	8	-	2	-	-	-
David Preece	12(2)	-	3	1	2	-
Graham Rodger	2	-	1	-	-	-
Les Sealey	-	-	-	-	-	-
Aaron Tighe	-	-	-	-	1(1)	-
Roy Wegerle	13(2)	2	3	4	2	-
Steve Williams	13	1	1	-	-	-
Danny Wilson	17	5	3	-	2	-

LEADING GOALSCORERS: 16 - Saunders (Derby, 8 g), 13 - Platt (Aston Villa, 11), 11 - Barnes (Liverpool, 10), Bright (Palace, 8), Goddard (Derby, 8), Lineker (Tottenham, 10), Rush (Liverpool, 9)

BARCLAYS FOOTBALL LEAGUE DIVISION ONE

P	W	D	L	F	A	W	D	L	F	A	Pts.
18	8	2	0	24	6	Arsenal	3	1	4	8	13 36
18	4	2	1	16	4	Liverpool	6	2	3	23	16 34
18	6	2	1	20	10	Aston Villa	3	2	4	8	9 31
18	4	6	0	15	9	Norwich City	4	1	3	10	9 31
18	5	0	3	14	12	Tottenham Hotspur	3	4	3	12	12 28
18	4	3	1	19	12	Southampton	3	3	4	16	16 27
<b>18</b>	<b>3</b>	<b>5</b>	<b>2</b>	<b>19</b>	<b>16</b>	<b>Chelsea</b>	<b>4</b>	<b>1</b>	<b>3</b>	<b>9</b>	<b>10 27</b>
18	6	0	3	10	9	Coventry	2	2	5	5	14 26
18	5	1	3	16	7	Derby	2	3	4	6	8 25
18	4	2	3	11	8	Nottingham Forest	3	2	4	12	9 26
18	6	2	2	17	9	Everton	1	2	5	7	15 26
18	4	2	3	13	13	Crystal Palace	2	2	5	9	24 22
17	4	2	3	13	8	Manchester United	2	1	5	11	16 21
18	3	2	3	10	10	Queens Park Rangers	2	4	4	11	13 21
18	4	3	3	16	11	Millwall	1	3	4	10	19 21
18	1	3	4	6	11	Wimbledon	3	5	2	13	11 20
19	4	4	2	12	7	Sheffield Wednesday	1	1	7	2	20 20
<b>18</b>	<b>4</b>	<b>3</b>	<b>2</b>	<b>10</b>	<b>6</b>	<b>LUTON TOWN</b>	<b>0</b>	<b>4</b>	<b>5</b>	<b>10</b>	<b>18 19</b>
18	2	4	3	10	9	Charlton Athletic	1	3	5	4	12 16
18	4	1	4	15	14	Manchester City	0	3	6	6	20 16

MAN IN CHARGE Howard King (Merthyr Tydfil)

A keen summer-time cricketer, Howard is a Servis representative who took up refereeing in 1967. He progressed through the local and Welsh Leagues to join the Football League linesmen's list in 1977 and the full referees' list in 1980. He has officiated at 10 international matches and a UEFA Cup quarter-final. Howard's linesmen today are P.G. Cobby of Gloucestershire and P. Taylor of Waltham Cross. Reserve official is N.J. Bullenthorpe of Aylesbury.



CHELSEA FORM CHECK - THEIR LAST SIX OUTINGS BEFORE CHRISTMAS

- Nov 11 Everton (A) 1-0 (Clarke)
- Nov 18 Southampton (H) 2-2 (Monkou, K. Wilson)
- Nov 25 Manchester United (A) 0-0
- Dec 2 Wimbledon (H) 2-5 (Dixon, Roberts)
- Dec 9 QPR (A) 2-4 (Dickens, Clarke)
- Dec 16 Liverpool (H) 2-5 (Durie, Dixon)

© The Football League FAC = F.A. Cup ZDC = Zenith Data Cup ( ) indicates player substituted [ ] indicates substitute used Home fixtures in **Bold** Scorer's name in **Bold** P = Penalty † denotes own goal

TEAM SPIRIT-  
REPLI-KIT.



Voucher No. 12



# CAVALIER GSi 2000. A WHOLE NEW BALL GAME



**VAUXHALL. ONCE DRIVEN, FOREVER SMITTEN.**



VAUXHALL IS BACKED BY THE WORLDWIDE RESOURCES OF GENERAL MOTORS.

## VAUXHALL TEAM CHECK.

### LUTON TOWN ○

*Team Manager: Ray Harford*

*White Shirts, Navy Shorts*

- 1 Alec Chamberlain
  - 2 Tim Breacker
  - 3 Richard Harvey
  - 4 Mick Kennedy
  - 5 Mal Donaghy
  - 6 John Dreyer
  - 7 Steve Williams
  - 8 Julian James
  - 9 Iain Dowie
  - 10 Lars Elstrup
  - 11 Kingsley Black
- Subs



**Official Ball  
Sponsors**



**umbro**

**Official Kit Sponsors**

### CHELSEA 3

*Team Manager: Bobby Campbell*

*Red/White Shirts, White Shorts*

- 1 Dave Beasant
  - 2 Steve Clarke
  - 3 Tony Dorigo
  - 4 Graham Roberts
  - 5 David Lee
  - 6 Kenneth Monkou
  - 7 Alan Dickens
  - 8 John Bumstead
  - 9 Kerry Dixon
  - 10 Gordon Durie
  - 11 Micky Hazard
- Subs

Referee: H.W. KING (Merthyr Tydfil) Linesmen: P.G. COBBY (Yellow Trim) P. TAYLOR (Red Trim)

**Designed and printed by Abacus Press, Berkhamsted, Herts.**