

CLUB SPONSORS: Bovis Urban Renewal Ltd



# OLDHAM ATHLETIC GAZETTE

AND OFFICIAL PROGRAMME

SEASON 1991-92 • PRICE £1.20



BARCLAYS LEAGUE DIVISION ONE

SATURDAY 11th APRIL 1992 - KICK OFF 3.00pm.

V

**MATCH SPONSORS**

**LUTON TOWN**

**'MATCHMATES'**





**IF YOU'RE AGED 11-16, THERE'S ONE CLUB YOU SHOULD KNOW MORE ABOUT.**



For the best save this season, open a BarclayPlus account.

You'll automatically become a member of BOP MC (BarclayPlus Our Price Music Club) and get great discounts on music and videos at any Our Price Music store.

You'll also receive regular BOP MC bulletins, packed with music features and details of mega prizes to be won.

And you'll enjoy a good rate of interest on your savings in your BarclayPlus account.

Call in to any Barclays branch to pick up a BarclayPlus leaflet.

It could be a right result.



Registered in London, England. Reg. Number: 1026167. Reg. Office: 54 Lombard Street, London EC3P 3AH.

S.O.S. as we are all aware is a cry for help. So please SAVE OUR SOCCER. At the time of writing these programme notes the P.F.A.'s ballot on strike action has just been announced with an overwhelming majority prepared to strike if necessary. Hopefully it won't come to that with common sense prevailing on both sides. Quite frankly I'm surprised its got to the stage of a confrontation and the sooner an amicable agreement can be achieved the better. Hopefully by the time the Latics are ready to go into action today, with luck the two parties concerned will have resolved their differences.

I only hope that everyone will have benefitted from the unusual experience. The English game must be preserved with all its outstanding qualities at all costs.

There may be faults perhaps with technical skills and abilities, but the passion which exists can often overcome weaknesses and therefore continue to supply exciting entertainment.

I found a perfect example of all the main qualities in the English game just a few weeks ago. For the first time ever three live games were featured on the same night.

BBC, ITV and BSkyB. Having been given an ideal opportunity I decided to experiment by watching the three games in question at different times. The matches were Tottenham v Feyenoord, Liverpool v Genoa and Sunderland v Chelsea. The Italians' application was excellent, but remember they were already two goals to the good - and whilst it was interesting it wasn't compelling.

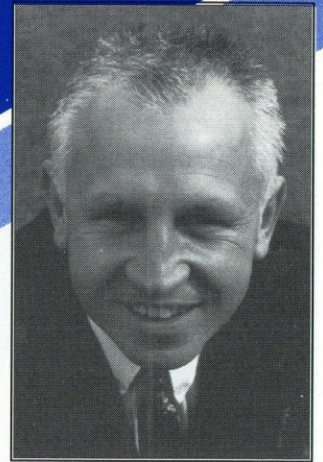
The Spurs game failed to set the heart fluttering with both sides not seeming able to produce energy or enthusiasm, but the Sunderland - Chelsea FA Cup replay really was riveting, all the ingredients of the

# OWL Talk



with

**Jack Dearden**



positive aspects of the brighter side of our game were on display.

I do feel we've had a habit over the years of focusing too much attention on what's wrong with our game rather than what's right with it. I hope we never lose sight of the fact that we produce a viable asset and project quality in our own style of play that cannot be found elsewhere.

As for today's game Latics will be looking for three points to rubber stamp what has been a satisfactory season, with Joe Royle already having declared that he will be "looking for quality players to supply an immediate impact next season rather than striving for squad strength".

Last word today goes to the university coach of an Hawaiian grid iron team and gives further example of being able to rely on people to come up with the unexpected. In this case it's an excuse given by losing coach Bob Wagner who says his team lost a game in Colorado because of a pink dressing room.

Wagner revealed after the defeat that the colour scheme was more critical than you think "We put newspapers over the pink walls and tried to get out of the dressing room faster than normal".

Is there time I wonder before kick-off to repaint Luton's dressing room?

Enjoy your sport.

**JACK DEARDEN**

Don't forget to keep in touch with Latics Clubcall as we bring you all the latest news first and fast.

0898 12 11 42 - the official voice at Boundary Park.

Front cover: Rick Holden takes on the Coventry defence, watched closely by Nick Henry.

**PICCADILLY  
GOLD 1152  
AM**

## OLDHAM ATHLETIC ASSOCIATION FOOTBALL CLUB

Boundary Park, Oldham OL1 2PA  
Telephone: 061 624 4972

Latics Clubcall: 0898 12 11 42  
Latics Ticket Call 0898 12 15 82  
Calls cost 36p min. cheap,  
48p other times

Commercial Department  
061 652 0966 - 061 627 1802  
Physiotherapy Clinic: 061 678 0455  
Community Programme: 061 678 8464

**HONOURS:**  
Div. 1 Runners up 1915  
Div. 2 Champions 1991  
Div. 2 Runners up 1910  
Div. 3 Champions 1953, 1974  
FA CUP Semi-finalists 1913, 1990  
League Cup Finalists 1990  
Ford Sporting League Winners 1971  
**PRESIDENT:** R. Schofield  
**CHAIRMAN:** I.H. Stott  
**BOARD OF DIRECTORS:**  
D.A. Brierley (Vice Chairman)  
R. Adams, G.T. Butterworth  
P. Chadwick, N. Holden,  
J.C. Slevin, D.R. Taylor.  
**TEAM MANAGER:** J. Royle  
**SECRETARY:** J.T. Cale  
**COMMERCIAL MANAGER:** A. Hardy  
**COACHING STAFF:**  
W. Donachie, W. Urmson.  
**CHIEF SCOUT:** J. Cassell

**YOUTH DEVELOPMENT OFFICER:**  
G. Hollinshead  
**PHYSIOTHERAPIST:**  
I. Liversedge, M.C.R.P., S.R.P.  
**HON. MEDICAL OFFICER:** J.W. Kelso  
**ASST. MEDICAL OFFICER:** R.B. Hollos  
**BLUE BOND CLUB MANAGER:**  
G.A. Lawton  
**COMMUNITY PROGRAMME MANAGER:**  
J.R. Platt  
**PROGRAMME EDITOR:** A. Hardy  
**PROGRAMME COMPILATION:**  
G. Lawton & B. Pascall  
**FRONT COVER DESIGN:**  
Stewart Beckett (C.A.S.)  
**DESIGNED AND PRINTED BY:**  
Windmill Print  
& Design

# LATICS IN ACTION

## v COVENTRY CITY - 21st March 1992



Nick Henry fires in the Latics equaliser at Highfield Road.

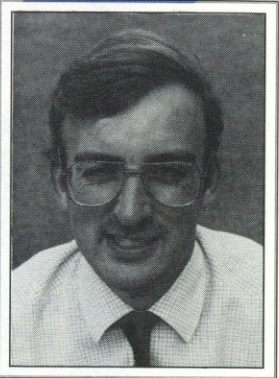


Andy Ritchie tries his luck, but fires just wide.

(Photos: Oldham Evening Chronicle)

# TALKING

## Sport



with  
**Tony Bugby**

What constitutes the so called 'professional' foul, and its interpretation by referees, continues to be a cause for concern.

Rarely a week passes by without television pundits highlighting the inconsistencies which so often give rise to controversy.

And as these occur in the handful of televised matches there are presumably countless other incidents which never get the same glare of publicity.

What I find disturbing is that after all these months there are still grey areas and that football's governing bodies have seemingly done little to clarify them.

Referees were ordered to take swift and effective action to eliminate the professional foul.

But what in one official's eye is deemed malicious is frequently not in the opinion of another, and that is what causes the trouble.

I was fascinated by the results of a recent statistical survey in a football magazine on the punishments meted out by referees.

This provokes further discussion and proves once more that there is a marked level of inconsistency between referees.

Preston official Jim Parker has produced the red card 10 times, yet 22 of the Football League's 91 referees have not sent a single player off.

Surely over the duration of a season the level of foul play evens itself out.

Mr Parker evidently interprets the laws of the game differently to the likes of Keith

Hackett and Roger Milford - two of our top refs who have not sent off a player between them.

That is not to say Mr Parker is doing anything wrong other than going strictly by the book whereas the others probably give players the benefit of any doubt.

Twelve referees have sent off five or more players while the average appears to be three in around 18 games.

When it comes to yellow cards Mr Parker again leads the way with 68 bookings in his 18 games, yet somebody like Joe Worrall has produced the book only 14 times in 20 matches.

The feared Mr Parker is one of five referees to issue over 50 yellow cards this season.

Some clubs, admittedly, have horrendous disciplinary records. But should Mr Parker officiate here at Boundary Park he ought to have a relatively quiet afternoon.

Latics' behaviour on the park is exemplary with no player sent off in the first team this season, although four

(John Keeley, Mike Fillery, Chris Makin and Paul Bernard) have been so in the reserves.

And with the season approaching its final weeks no Latics player has served a ban for the points accumulated from bookings.

When it comes to dishing out the fair play awards Latics will surely be in the running.

Latics play the game hard, but fair, and rarely get involved in retaliation and dissent - two of the scourges of the modern game.

Manager Joe Royle is a tough disciplinarian. He will not stand for any nonsense and that must be applauded.

Many youngsters are influenced by the actions of their footballing heroes and it is therefore important for the players to set a shining example.

## OLDHAM EVENING CHRONICLE



Our Success - Take it as Read

LATICS Prize .....ON THE LINE - 0898 12-15-82

I NEVER WIN ANY Prizes .....NOW YOU CAN! CALL 0898 12-15-82

# PARTNERS *in* PROGRESS

*Bovis Urban Renewal* combines the construction, development and house building expertise of the Bovis Group in a single company, committed to the removal of urban decay and the sensitive regeneration of local communities.

To achieve these aims, the company believes in genuine partnership, bringing together the best of public and private sector practice in a practical and positive manner.

*Bovis Urban Renewal* thinks long and strategically. It is community based, with all the skills, experience and enthusiasm needed to help provide new jobs, training, homes and recreational amenities anywhere in the UK.



## **Bovis Urban Renewal Ltd**

Contact: *John Spanswick, Managing Director*  
Bovis House, Northolt Road, Harrow,  
Middlesex, HA2 OEE  
Tel: 081-422 3488 Fax: 081-422 0097



# Joe ROYLE W.R.I.T.E.S

Welcome back to Boundary Park for our third last home game of this very eventful first season back in Division One. We have the chance to cement our status today against Luton Town, who are yet again mounting their annual crusade against the drop.

The Hatters looked at one stage as if they 'needed snookers' to survive, but last week's victory over a very awkward Wimbledon has shown yet again that they have the desire and ability to avoid the drop.

I wish David Pleat's team all the best after today, but we desperately need to avenge our defeat at Kenilworth Road, when we managed to clutch a defeat from out of the jaws of victory in a nightmare last four minutes.

Our short unbeaten run came to an end at Bramall Lane last week, when, to put it bluntly, we played all the football, but they scored all the goals.

After our best performance of the season against Sheffield Wednesday, it was a bitter pill to swallow at Bramall Lane, but the performance was at least encouraging.

By the time you read these notes, we shall know who the nation has voted into power in the General Election. Will it be the Tories, who by consensus of opinion have not done very well of late?, or will it be Labour who are desperately keen to show that they have all the answers? Frightening! I sometimes wish that a 'Hung Parliament' was exactly what it sounds to be, as the country seems to be desperately short of generals at present.

Back to the football, and I sincerely hope that the PFA and the Premier League have solved their differences by now, as I know that any industrial action by the players will do irreparable damage to the public's attitude to soccer.

We should all be directing our energies towards bringing the public in, not disenchanting them with internal squabbles which have arisen due to a lack of negotiation.

Thank you to all our fans at Bramall Lane who cheered us on, only to come away once again with 'Away Day Blues', and on to the job at hand and hopefully three more points towards next season's Premier League.

See you soon

**JOE**

SEE PAGE 19 FOR FURTHER DETAILS

Joe Royle's mobile phone supplied by



**BT Network 10** AUTHORIZED MOBILE DEALER

**061-627 4858**

No 4 Ellen Business Park Featherstall Road North Oldham

A MEMBER OF THE JWE GROUP OF COMPANIES

SUPPORT THE *Club* .....CALL THE PRIZELINE 0898 12-15-82

"There's no comeback, now."

"Time to throw in the towel!"

"We probably won't even win the toss."

# WHOSE SIDE ARE YOU ON?

"This will probably slice out of bounds."

"Me win? On your bike."

"Bet I'm out for a duck."

"As long as I'm not last."

"Oh no, look who we've drawn."

"I'm sick as a parrot."

"It's not over till it's over."

"I am the greatest."

"We're going out there to win."

"Here comes a hole in one."

"I'll be the first through the tape."

"I'll knock this one for six."

"You won't see me for dust."

"The cup's a great leveller."

"I'm over the moon."

Win or lose, we're positive everyone will do their best. And, as usual, we at TSB give you all our support.

## POSITIVE THINKING TSB

8

LATICS Prizeline 0898 12-15-82 YOU'VE SEEN THE NUMBER....NOW WIN THE PRIZE

### IS THERE A LIFE AFTER ALDERSHOT?

Football is, indeed, a funny old game. In a week when Aldershot F.C. disappeared into oblivion because they could not raise £350,000, something like £3-million was spent on pre-deadline transfers. Ken Bates was reported to have invested £3-million towards the purchase of Stamford Bridge for Chelsea and the PFA was threatening its first-ever player strike over a dispute in fees from televised games.

When poor old Aldershot were suffering the most traumatic moment in their history, two of their fairly close neighbours were about to enjoy highlights of their respective careers - Southampton played Nottingham Forest before a crowd of almost 70,000 in the Zenith Data Systems Cup Final at Wembley whilst tiny Wimborne Town were preparing for their first-ever trip to Wembley for the F.A. Vase Final.

I suppose one of football's great fascinations is its very illogicality. Here we have a fairy tale world in which, one day, Fourth Division Wrexham can beat mighty Arsenal in the F.A. Cup, then we have Second Division Blackburn Rovers paying £5.2-million for new players - whilst, almost at the same time, suffering a run-in in which they won only once in nine games - whilst Aldershot's players existed for seven weeks or so without any wages.

Whilst the League's newest club Barnet faced a winding up order in the High Court, Penniless Northampton Town had to call in the PFA to pay their players' wages.

During this same crazy period, I read that the Football League had turned down a £12.5-million offer from the BBC to televise the Rumbelows League Cup over the next five years.

In yet another paragraph I saw that Carlisle are going part-time next season because the Fourth Division club can no longer afford full-time salaries.

With all this turmoil within the game, I read headlines about Aldershot being the first of many little clubs to go to the wall. This would have a domino effect. We are about to witness the collapse of the lower divisions as we have known them.

Yet, lest we get carried away by all this, I should remind you that - this has all happened before!

Going back through my files, I came across ALMOST IDENTICAL headlines. "The End for Small Clubs", "The Rich Will Get Richer - Small Clubs Will Die".

The date of those comments? March 1962!

It was, ironically, almost 30 years to the day since Accrington Stanley disappeared from the Football League for precisely the same reasons as Aldershot.

Prophets of gloom foresaw absolute disaster for English football.

Yet, four years later, England won the World Cup. Later Manchester United, Liverpool, Nottingham Forest and Aston Villa were to win the European Cup and the Football League Cup and all have continued to thrive.

# FROM THE Touchline

with

**Tony Pullein**

At the time of Accrington's demise, Coventry, Crystal Palace, Q.P.R. and Notts County were in the Third Division. Wimbledon were a tiny non-League outfit. Today all of those clubs are in the First Division.

Within the very nature of the game, some clubs indeed get richer whilst others go into decline.

A few days after Accrington announced their resignation, First Division leaders Burnley won a place in the F.A. Cup semi-finals.

Blackpool, Bolton and Cardiff were all in the First Division. Clubs like Workington, Bradford Park Avenue, Southport, Barrow and Newport County still enjoyed League status.

It is worth remembering that the Football League has now been in existence for 104 years and that, during that time, only three clubs have been forced to resign during the course of a season. The other was Wigan Borough back in 1931.

In fact, it seems that we can expect one club to go in this way every thirty years. It happened to Wigan in 1931/32, to Accrington in 1961/62 and Aldershot in 1991/92.

Who will be next in 2021/22?

So, whilst many have been posing the question - Is there a life after Aldershot? - the answer has to be an impossible one.

For every club that goes the way of Aldershot, there will be dozens lining up to take its place.

It may be of small consolation to Aldershot now but, though their demise was tragic for their own band of followers, their passing will make absolutely no difference to the future of English League football.

## PICCADILLY GOLD 1152 AM

## LOOKING FOR BUILDING MATERIALS?

<b>WALLBOARDS &amp; DOORS</b> MASSIVE STOCKS!	<b>TIMBER &amp; MOULDINGS</b> ARCHITRAVES & SKIRTING WALL CLADDING & WEATHERBOARD	<b>IRONMONGERY &amp; TOOLS</b>	<b>BRICKS &amp; BLOCKS</b> Plus: SAND, CEMENT READY-MIXED CONCRETE
<b>GEORGE FORT</b>		SCOTTFIELD SAW MILLS, ASHTON ROAD, OLDHAM. 061-627 2020	OPEN MON-FRI 8am-5pm SATURDAY 8am-4pm <b>FREE DELIVERY</b>

ALL TICKET NEWS....CALL THE LINE 0898 12-15-82

# HOME & AWAY

## Our Next Home Game: TOTTENHAM HOTSPUR

At this time last year Tottenham were fighting for their financial future. Having solved most of those problems. Spurs now find themselves battling against relegation to the Second Division.

Even with England skipper Gary Lineker at his superb best, Spurs have found themselves slipping dangerously towards the bottom of the table. Lineker, who scored four times against Wimbledon in September, got his second hat-trick of the season as Tottenham defeated West Ham 3-0 on April Fools' Day. Prior to this week's game at Notts County, Lineker had scored 30 times.

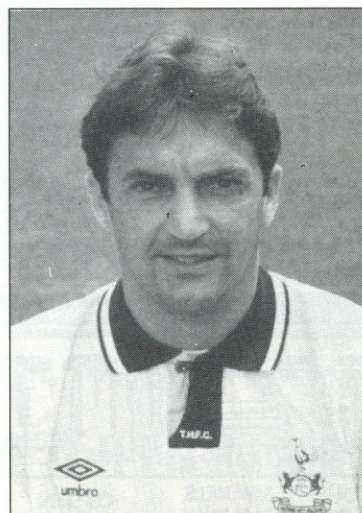
One of the reasons for Tottenham's demise is that they have no one else to support Lineker in the chase for goals. Scotland international Gordon Durie, signed from Chelsea just before the start of the season, started well but he went several months without a goal and, even allowing for his hat-



Peter Shreeves (Team Manager)



Gary Lineker



Gary Mabbutt

trick against Coventry last month, he has netted only 11 times.

For most of the season Tottenham have looked sound in defence with Norway international Erik Thorstvedt turning in some superb displays in goal. And centre-back Gary Mabbutt has been playing well enough to earn himself a recall to the England side.

But when Thorstvedt has injured, England youth international Ian Walker was called up. He had a poor game as Spurs lost 2-5 at home to Aston Villa, but manager Peter Shreeves said he would persevere with the youngster.

Tottenham have obviously missed the talents of Paul Gascoigne in midfield and their latest move to restore some creativity here was to sign Andy Gray on loan from Crystal Palace. Gray won his first England cap earlier this season but later fell out with Palace.

Strangely it is poor home form that has put Tottenham in danger. They have lost 11 home League matches. Yet they have a comparatively good away record.

They have won at Southampton (3-2), Nottingham Forest (3-1), Norwich (1-0), Wimbledon (5-3), Crystal Palace (2-1) and Coventry (2-1). They drew at Aston Villa (0-0), Sheffield Wednesday (0-0), Leeds (1-1) and Luton (0-0).

Spurs were beaten at Everton (1-3), West Ham (1-2), Arsenal (0-2), Chelsea (0-2), Manchester City (0-1) and Liverpool (1-2).

**PICCADILLY  
GOLD 1152  
DAM**

## AWAY TRAVEL

Bookings for coach travel should be made at Latique

### BARCLAYS LEAGUE DIVISION ONE CRYSTAL PALACE v ATHLETIC Saturday 18th April, 1992 Kick Off 3pm

Executive Coaches depart Boundary Park at 9.00am  
Return Fare: £14.00

Standard Coaches Depart Boundary Park at 8.00am  
Return Fare: £11.50

#### TICKET ARRANGEMENTS FOR CRYSTAL PALACE

Tickets are now on sale at Boundary Park - Priced £10 seats and £7 standing.

Whilst this match is not all ticket we would advise supporters to purchase their tickets in advance as there will be no cash admission on the day. Tickets can be purchased from the Ticket Office at Selhurst Park on the day, but there may be considerable queuing.

### LONDON AT EASTER APRIL 17th - 19th 3 DAYS ONLY £82 CRYSTAL PALACE v ATHLETIC

Spend Easter in London with Latique Travel and take in the Latics game at Crystal Palace whilst your partner goes shopping. You could also take in a London show on the Friday or Saturday evening.

#### YOUR EASTER WEEKEND BREAK INCLUDES

- \* Return Coach Travel from Boundary Park
- \* Two nights at the Hilton Olympia Hotel all rooms en suite, T.V. Radio, Mini Bar etc
- \* Continental Breakfast each morning
- \* Visit to Covent Garden and Market
- \* Escort and Vat

To book, call in Latique Travel, Oldham Athletic AFC, Boundary Park, Oldham or ring 061 652 0966 for full details.

### SOUTHAMPTON v ATHLETIC Saturday 25th April, 1992 Kick Off 3pm

Executive Coaches Depart Boundary Park 8.30am  
Return Fare: £14.50

Standard Coaches Depart Boundary Park 8.00am  
Return Fare: £12.00

#### TICKET ARRANGEMENTS FOR SOUTHAMPTON

We now have on sale at the ticket office 450 seat tickets price £9.50.

Standing is by payment at the turnstiles on the day - price £6



# HOTEL

*Smokies  
Park*

Public Bars  
Restaurants  
Conference Suites  
Meeting Rooms  
Night Club

Ashton Road, Bardsley,  
Oldham OL8 3HX

Telephone: 061-624 3405  
Telex: 667490  
Fax: 061-627 5262

# NORMAN LEISURE SNOOKER

- 14 SNOOKER TABLES
- GAMES ROOM
- BAR FOOD SERVED DAILY
- LARGE BAR AND LOUNGE

Hold your company or club sports and snooker competitions at

**NORMAN LEISURE** (buffet available)  
GRAINS ROAD, SHAW. Telephone (0706) 841460

- BADMINTON COURTS • GYMNASIUM
  - SAUNA • SUN-BEDS • CRICKET
  - LADIES AEROBICS • TABLE TENNIS
  - 5-A-SIDE FOOTBALL • INDOOR BOWLS
- plus SATELLITE TV, BAR FOOD, BAR, LOUNGE  
also available for PRIVATE HIRE.

## NORMAN LEISURE SPORT

**THE ADMIRAL SUITE** For your special functions:-

- Anniversaries • Banquets • Birthday Parties • Christenings • Dinners
- Sportsmens Evenings • Promotional Occasions • Wedding Receptions

## PROMOTIONS MARKETING & COMMERCIAL

with Alan Hardy



### WELCOME TO TODAY'S SPONSORS - MATCHMATES

Matchmates is a scheme to promote friendship in and through sport for children in their final years in primary schools. It is one of a number of initiatives aimed at combating the menace of hooliganism on the terraces at our national game. The idea is very simple: Matchmates aims to provide an enjoyable, exciting early experience of supporting football.

There is no attempt to segregate the 'fans'. Quite the opposite. They, their teachers and families are mixed together on the terraces for today's game: the culmination of a term's work and re-reinforcement of new friendships.

Oldham youngsters have been involved in Matchmates in previous seasons. So, too, in the past have today's visitors Luton. This is the first time however, that they have had the opportunity to combine together. Nevertheless, the association of Oldham and Luton schools is a long one at school town level: Oldham boys have entertained and visited Luton boys regularly in the past; they have attended football festivals together, and they journeyed together to Wembley to cheer on the national schoolboy side.

Matchmates has built upon these links. Since Christmas, six Oldham schools have been in touch with six Luton schools. They have followed a course of study based upon football, had visits from the local community police to learn about how and why a large event is policed, spent a whole day at the club learning about the business, watched the players train, and met the backroom staff.

They have also had a half-term of ballskill lessons from the Club's Community Programme Staff and visits by players to the school. This weekend the school's and town team boys have hosted their opposite numbers from Luton, living and playing together and

sharing the excitement of a civic reception, police motorcycle escorts for their coaches to the ground and, of course today's game. At five o'clock this evening the Matchmates will say "farewell". They will go back to school next term to continue their studies. They will remember and continue the friendships cemented this weekend. The lesson for us all is a simple one. The fact that we support different football teams does not mean we cannot be friends.

### THRILLING TIME

Gail Hansford of Waterhead had the time of her life at the Sheffield Wednesday game. Gail was the Latics Prizeline winner of a VIP day out at the big game and after enjoying lunch and the facilities within our hospitality suite Gail met two of her favourite players Andy Ritchie and Jon Hallworth.

Another fabulous prize is now up for grabs in the latest competition on the Latics Prizeline 0898 12 15 82 - an executive day out to our last away game of the season at Southampton. The winner along with a friend will travel in style on the Pullman Diner a really luxurious coach with leather seats and a host of other facilities and refinements.

A full English breakfast will be served on departure, light refreshments at lunch time and a four course dinner on the return journey. We will also provide the best seats available for the game at the Dell.

A truly luxurious trip to what is an historic game, as it will be our last in the First Division before the formation of the Premier League - so don't miss out, ring now -

**0898 12 15 82.**



### GOLDEN GOAL

We apologise for not mentioning in our last programme one of the winners of Golden Goal from the Notts County game. The winner of £5 was David Walton of Woodend Street, Oldham. The times of the goals for the Sheffield Wednesday game were as follows:-  
1st Goal - 3 mins 33 secs Wins £100  
2nd Goal - 55 mins 11 secs Wins £5  
3rd Goal - 64 mins 56 secs Wins £5  
Today's £10 winning Tombola numbers on your Golden Goal Tickets are

**1218 6829 8412**

All claims to Laticque after the game please.

### STARLINE WINNERS

The latest crop of winners on Latics Starline are (Week 29)  
£500 - No 1677 F.Russell, Rochdale Road, Oldham  
£25 - No 1590 Alan Gregory, Mymms Drive, Hatfield  
£25 - No 1681 David Nestor, Lynwood Drive, Greenacres.  
Another draw will be held today at half-time

### Sportsman's Dinner

THURSDAY 30TH APRIL 1992

Sponsored by



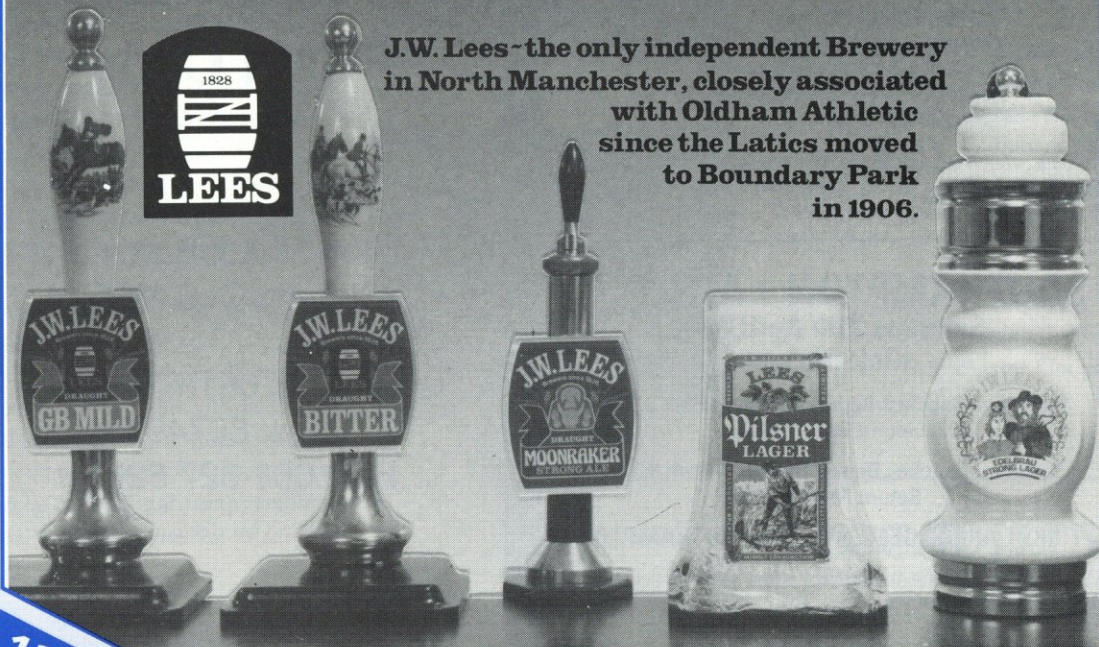
**Roland Bardsley Construction Group**

### SPEAKERS:

Peter Brackley & Mike Osman  
Comps: Neil Midgeley -  
Comedian: Micky Finn  
Periquito Hotel, Oldham  
Reception 7.30pm for 8pm Dinner  
Dress: Lounge Suit

# LEES SUPERB BEERS

J.W. Lees - the only independent Brewery in North Manchester, closely associated with Oldham Athletic since the Latics moved to Boundary Park in 1906.



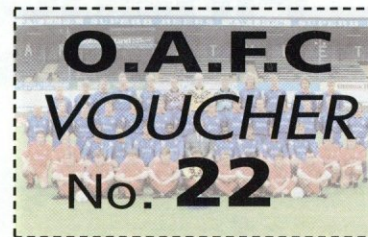
J.W. LEES & CO (Brewers) LTD · MIDDLETON JUNCTION · TEL: 061-643 2487

## PICCADILLY GOLD AM

1152

**1218 6829 8412**

All claims to Laticque after the game please.



12

13

# RESERVES

## & Youths

**Pontins League  
Division 2  
Tuesday 31st March 1992  
Oldham Athletic 2  
York City 3**

The game was only two minutes old when Athletic took the lead with a marvellously worked goal, Andy Kenton driving the ball home after Paul Moulden had sold the City defence an outrageous dummy.

That was the last that was seen of the Latics attack as a more work man like York team took control and went in at halftime leading 1-3. After the substitution of young Neil Tolson the Athletic attack 'perked up' a little. A neat move involving Neil McDonald and Roger Palmer ended up with Kenton firing the ball into the roof of the net for his and Latics' second. The last twenty minutes was an end to end affair but ended in a deserved victory for York which leaves Athletic lying second from the bottom on goal difference above Hull City.

TEAM: KEELEY, MAKIN, HESELTINE, McDONALD, HARRIOT, HALL, PALMER, MOULDEN, TOLSON, BERNARD, KENTON, SUBS: GRAHAM, RICKERS. GOALSCORER: ANDY KENTON (2)

**Lancashire League Division 1  
Saturday 4th April 1992**

### Marine Reserves 1 Oldham Athletic "A" 1

An end to end affair resulted in a good point for Latics "A" team against middle of the table Marine. Quality football was hard to find due mainly to the poor standard of the pitch but Athletic's young side battled magnificently to obtain a result against a strong Marine XI. Richard Graham put Athletic ahead in the 63rd minute with a fine looping header from 12 yards but the youngsters couldn't hold out and in the 85th minute Marine equalised.

TEAM: GRAY, HOOLICKIN, HARRIOT, HALL, PARKINSON, WILSON, RICKERS, GRAHAM, LANE, EYRE, EVERINGHAM, SUBS: HILTON, BODEN.

**SUNDAY 5TH APRIL 1992**

### F.A. School of Excellence 2 Oldham Athletic Youth 4

GOALSCORERS: STEVE NATMAN, MATT SPEAKE, PAUL RICKERS, JOHN EYER

### RE-ARRANGED GAME - LANCASHIRE LEAGUE DIVISION 1

#### LATICS v TRANMERE

THURSDAY 16TH APRIL - KICK OFF 1.30pm

### LANCASHIRE LEAGUE TABLE

As at 28/3/92

	P	W	D	L	F	A	PTS
CREWE 'A'	25	19	4	2	75	32	61
TRANMERE 'A'	25	15	4	6	71	30	49
MAN UTD 'A'	23	14	6	3	60	23	48
BLACKBURN 'A'	26	13	5	8	70	54	44
MAN CITY 'A'	24	13	4	7	53	26	43
BURNLEY 'A'	24	12	6	6	67	43	42
BOLTON 'A'	27	11	7	9	46	41	40
EVERTON 'A'	26	12	4	10	56	57	40
MARINE RES	25	8	7	9	53	52	32
MORECAMBE RES	26	9	4	13	39	55	31
LIVERPOOL 'A'	22	7	7	8	39	31	28
CHESTER CITY 'A'	28	7	6	15	46	90	27
<b>OLDHAM ATH 'A'</b>	<b>26</b>	<b>7</b>	<b>4</b>	<b>15</b>	<b>41</b>	<b>59</b>	<b>25</b>
PRESTON N.E. 'A'	26	6	4	6	65	72	22
UMIST	28	1	1	26	12	127	4

DATE	OPPONENTS	GROUND	RESULT
Aug	21st Grimsby Town	A	F-A 2-1
	29th Mansfield Town	A	0-1
Sept	10th Wigan Athletic	A	3-1
	18th Blackpool	A	2-4
	23rd Leicester City	A	1-4
Oct	2nd Middlesbrough	A	0-1
	12th Notts County	A	3-0
	16th Hull City	A	3-3
	23rd SCUNTHORPE UNITED	H	2-0
	30th NOTTS COUNTY	H	5-2
Nov	7th Derby County	A	1-3
	13th Stoke City	A	1-5
	20th HUDDERSFIELD TOWN	H	1-2
	25th Burnley	A	1-2
Dec	3rd York City	A	1-0
	17th GRIMSBY TOWN	H	0-3
	23rd PORT VALE	H	2-4
Jan	7th MANSFIELD TOWN	H	1-0
	14th PRESTON N.E.	H	3-2
Feb	12th Wolves	A	1-4
	19th BURNLEY	H	0-0
	25th Preston N.E.	A	1-1
Mar	3rd STOKE CITY	H	1-4
	17th DERBY COUNTY	H	1-1
	23rd WOLVES	H	2-2
	25th WIGAN ATHLETIC	H	1-2
	31st YORK CITY	H	2-3
Apr	6th LEICESTER CITY	H	0-3
	13th HULL CITY	H	
	15th BLACKPOOL	H	
	21st MIDDLESBROUGH	H	
	23rd Huddersfield	A	
	27th Scunthorpe	A	
	29th Port Vale	A	

### FINAL MEETING

Tickets are now on sale for the final Junior Latics Meeting of the season which will be held on THURSDAY 30TH APRIL. 7pm - 9pm at the QUEEN ELIZABETH HALL.

Special Guests will be OLDHAM CELTICS BASKETBALL TEAM, who will be showing us some of their basketball skills.

JON HALLWORTH, ROGER PALMER, NICK HENRY, RICHARD JOBSON, and PAUL BERNARD will be going along to join in the fun, and we'll be doing the mascot draw for the first few games of next season.

Highlight of the evening is sure to be the presentation of the Junior Latics 'PLAYER OF THE YEAR' award. Last year's winner was Richard Jobson and he is sure to be in contention once again.

So make sure you complete your voting slips as voting is very close at the moment.

Tickets priced at 50p members and £1 parents can be purchased in the Junior Latics lounge on matchdays, the Latique at any time or by post. So make sure you don't miss out on what promises to be a great evening by purchasing your tickets NOW.

# JUNIOR Latics

Sponsored by:  
**Barclays Bank**  
Local Branches

### JUNIOR LATICS SOCCER TOURNAMENT

The Junior Latics Soccer Tournament is now nearing its conclusion.

The League fixtures have been completed, leaving only the play-off matches to be decided.

In the 8/11 league the four teams who have qualified for the play-offs are Gunnar Halle, Neil Adams, Jon Hallworth and Andy Barlow.

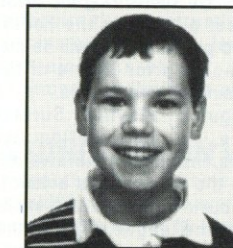
In the 12 and over league the qualifiers are Neil McDonald, Andy Ritchie, Rick Holden and Graeme Sharp.

The play-off matches took place last night and we'll let you know the final outcome in the Tottenham programme.



Philip Sutch, mascot for our away game at Villa Park, leads out the team.

### MATCH MASCOT



**ROBERT TAPLIN**

AGE: Nine

SCHOOL:

Mills Hill Primary

HOBBIES:

Football and Computer games

FAVOURITE T.V. PROGRAMME:

BBC Children's TV

FAVOURITE SINGER:

Michael Jackson

NAME OF FAVOURITE

ATHLETIC PLAYER:

Ian Marshall

NUMBER OF YEARS

SUPPORTING CLUB:

Three.

Robert plays right back for Chadderton Park Under 10's team, and moved to Oldham from Lincoln four years ago.

## MYSTERY STAR 5


PUT THE FIRST LETTER OF EACH OBJECT INTO THE SPACE ABOVE IT AND THEN RE-ARRANGE THE LETTERS TO FIND A SCOTLAND FORWARD.

ANSWER: THE MYSTERY STAR IS BRIAN M'CLAIR. --:RMSNS

## FINANCIAL ADVICE THAT'S LOCAL PERSONAL AND INDEPENDENT.

**Courtlets Insurance Brokers Ltd**

5 QUEEN STREET OLDHAM OL1 1TH (Regd. Office)

Tel: 061-624 6063

MEMBERS OF THE BRITISH INSURANCE BROKERS' ASSOCIATION

## Financial goals.



**The Royal Bank of Scotland**  
WHERE PEOPLE MATTER

1-5 Church Terrace, Oldham, OL1 3AU.  
Group Manager: George D. Giles.

14

## The PARK CAKE BAKERIES

The Park Cake Bakeries  
Ashton Road, Oldham, Lancashire OL8 2ND  
Telephone 061-633 1181 & 652 5411 Telex 668738  
Fax 061-626 6199

*A Slice of Tradition*

I NEVER WIN ANY Prizes .....NOW YOU CAN! CALL 0898 12-15-82

SUPPORT THE Club .....CALL THE PRIZELINE 0898 12-15-82



### LIVERPOOL WIN FIRST TITLE OF THE SEASON

Liverpool have secured at least one title this season with the pitch at Anfield officially declared number one in the First Division. For the second year Rumbelows are sponsoring the awards for the best pitches in the Football League and presentations will be made to the winners prior to one of their club's remaining home fixtures.

The League's Playing Surfaces Committee, in conjunction with Rumbelows, introduced the awards to recognise the tremendous amount of hard work put in by ground staff at clubs throughout the league. The winners were selected after consideration of nominations received from clubs together with pitch reports which are completed by match referees after each game.

The groundsmen of the year, who receive a special scroll and colour television are: **DIVISION ONE:** Reg Summers (Liverpool). **DIVISION TWO:** David Rigg (Middlesbrough). **DIVISION THREE:** Charlie Hasler (Leyton Orient). **DIVISION FOUR:** Bill Corby (Rotherham United).

### PLAYER OF THE YEAR

The voting procedure for the Lookers Player of the Year will be published in the match programme for the Tottenham Hotspur game on 20th April. The voting is likely to be very close again this year with quite a few players being in contention. Make sure you get a copy of the programme at the Tottenham game.

**PICCADILLY**  
**GOLD** 1152 AM

### COACHING



Andy Ritchie and Paul Moulden met youngsters from the recent OAFS Soccer School which was based at Oldham Sports Centre. Two further courses are planned for Easter, and bookings for these, and courses held throughout the summer, can be made by contacting John Platt on 061 678 8464.

### LIVE IN EUROPE

Latique Travel is offering trips to live concerts in Europe to see some of the world's top attractions.

**BRUCE SPRINGSTEEN** live in Paris  
- Two nights in Hotel -  
June 21st-24th - £149

### MICHAEL JACKSON

live in Brussels - One night in Hotel  
August 24th - 26th - £95

*All tours include concert ticket.*

Full details are available from Latique Travel, Boundary Park, Oldham 061 652 0966

### DOWN UNDER



Seen displaying the 'Latics' stickers in the rear window of his car is Brian Barnett - nothing special about that you may say, but when you realise that Brian lives in Tasmania, Australia then it is something different. Brian (54) emigrated to Australia in 1972 on an assisted package, it cost him £10. When he left the UK he had only £50 in his pocket. On arriving in Aussie land he obtained a job in a shipyard before moving to Tasmania as a rigger for a steel company. Brian, formerly of Stevenson Drive, Sholver worked for George Dew as a driver and had supported Latics for 15 years singing the club's praises from the Chaddy End terraces up to his departure in February 1972. He is proud to be displaying the club's name in the back of his car Down Under and may just be our most distant supporter.

### STARLINE WINNERS



It was smiles all round last week at Park Cake Bakeries where a syndicate of four young ladies won a £1000 dream holiday on Latics Starline.

The four ladies, Joan Creegan, Beryl Devine, Lauren Hughes and Mary Chappell, have each been paying their 50p a week religiously and last week it paid off as their number '206' came up in the draw. Richard Jobson officially handed over their prize which will be shared equally with each receiving a £250 voucher.

We have quite a few syndicates operating in factories and offices and if you would like to organise one at your premises then give us a ring on 061 627 1802 and ask for Lisa.

### EASTER MONDAY

The Easter Monday clash with London glamour club Tottenham Hotspur is not now an all ticket game.

Entry to the terraces is by payment at the turnstiles. The game kicks off at 3pm. Tottenham's 2-0 win at Notts County on Tuesday night lifted them above ourselves in the league table leaving us just nine points clear of today's visitors Luton Town.

That basically outlines the situation in relation to the fight to avoid relegation and highlights the importance of winning today's encounter with Luton.

### LOOKERS AWARD

The Lookers Player of the Month for March will receive his award before today's game from Stuart Gordon, Personnel Manager of Lookers plc.

### IN THE HOT SEAT



Mike Milligan found himself in the hot seat recently when he visited St. Stephens CE Infant School on Shaw Street.

Mike went to the school so that the children could try out interviewing techniques as part of their National Curriculum Assessment. Some of the older children devised and delivered questions about Mike's career.

As a prominent member of the local community Mike was also asked to reward the children by presenting signed certificates, these were awarded for endeavour, hard work and fair play - characteristics associated with Oldham Athletic. Club captain Mike is a hero to many of the children for all the right reasons.

### £1M GRANT FOR NEW STAND

The Football Trust have confirmed that the new stand to be built at the Rochdale Road end during the close season will attract a grant of £1M. This represents 60% of the total cost of £1.7M.

The stand will accommodate 4600 seats and require the construction of new turnstiles and boundary fences. The electronic scoreboard will be repositioned on the fascia of the new stand.

### WEDNESDAY ON VIDEO

Our spectacular 3-0 home win over Sheffield Wednesday is available on a special video price £11.99 available from Latique.

### STILL TIME

There are just 12 vacancies left for the Royal Mail/Oldham Athletic Golf Classic taking place on 28th May at Crompton and Royton Golf Club.

If you are considering entering a team and have not yet returned your form then do so immediately to avoid being disappointed.

Details can be obtained by ringing 061 627 1802.

### FOR THE RECORD

**Div One:** Highest Gate: 47,185 Man Utd v West Ham. Lowest Gate: 3,121 Wimbledon v Sheff Wed. Best Average: 44,809 Man Utd. Lowest Average: 6,926 Wimbledon. Goal Power: Leeds U 65 (1.86 goals/game). Top Stoppers: Man Utd (24 goals in 33 games). Best home record: Leeds Utd, Liverpool (17 games 37 points). Best away record: Man Utd (16 games 30 points).

### HATTERS CUT COSTS

Today's visitors Luton Town on Tuesday parted company with general Manager Bill Tomlin and Chief Scout Ron Howard. The club ran up losses of £1.6m last season.

# CLUB Gossip

## OP FOR ANDY

Striker Andy Ritchie faces a major operation on his back during the close season, specialists have decided that his recurring injuries are a result of a problem with the discs in his back and therefore an operation is the only answer to clearing up the problem. Recovery time for the operation is expected to be five months which will mean that it will be September before Andy is in contention for a return to action. We hope everything goes well for Andy and that he makes a speedy recovery.

## ANOTHER MOVE

Clive Allen's recent move from Chelsea to West Ham means that he has, at some stage, signed for all the London clubs currently in the First Division except one - Wimbledon.

Notice that we say signed because there was one club he did not kick a ball for.

In June 1980 he signed for Arsenal for £1.25M from QPR but two months later, before the start of the season, Arsenal recovered their money from Crystal Palace.

## SOON OVER

Our first season back in Division One seems to have gone so quickly with only four games left to play after today. Two of those games are away from home,

the first at Selhurst Park against Crystal Palace on Easter Saturday and the final one at Southampton the following week. Our final home game against Manchester City brings the season to a close in front of what is expected to be a full house.

## PREMIER LEAGUE

At the time of going to press it looked as if the threatened players strike was to be averted.

A new offer from the 22 First Division chairmen was met with optimism by PFA Chief Executive Gordon Taylor at a meeting with his counterpart from the Premier League, Rick Parry.

It was anticipated that agreement would be reached on Wednesday when, as Taylor put it "We want to dot the I's and cross the T's on a range of issues.

## PRIZE MONEY ON OFFER

With the season approaching its closing stages, a significant incentive for all teams chasing success is provided by the Barclays League prize fund, which this year totals £300,000.

The Barclays League Champions will pick up a cheque for £100,000 with divisional winners in the Second collecting £50,000 and those in the Third and Fourth £25,000 each. Full details of the prize money on offer are shown below.

DIVISION	CHAMPIONS	RUNNERS-UP	3RD PLACE
ONE	£100,000	£50,000	_____
TWO	£50,000	£25,000	_____
THREE	£25,000	£10,000	_____
FOUR	£25,000	£10,000	£5,000

The Football Trust is helping the game at all levels.

It assists clubs implement the Taylor Report. Grants are made for seating, new stadia, ground improvements, safety, community schemes, policing and stewarding and closed circuit television.

## MEET FOOTBALL'S £32MILLION SUPPORTER

This £32M a year boost for football comes from the reduction in pool betting duty and the Spotting-the-Ball competition organised by Littlewoods, Vernons and Zettlers.



**THE FOOTBALL TRUST**  
Helping the game



# Lookers

IN OLDHAM

**LEAGUE LEADERS IN  
QUALITY MOTORING**

**VAUXHALL PEUGEOT**

**VOLKSWAGEN AUDI**



MANCHESTER RD., OLDHAM

☎ 061 652 7131



Huddersfield Rd., Oldham

☎ 061 652 4422



VAUXHALL  
*Once driven, forever smitten*

Park Rd., Oldham

☎ 061 633 1331



OFFICIAL SPONSORS  
OF  
OLDHAM ATHLETIC  
A.F.C.

## THE ONE STOP!

*Business  
Communication  
Centre*

CELLULAR PHONES

RADIO PAGERS

FAX MACHINES

MOBILE FAX

PAY PHONES

BUSINESS PHONE SYSTEMS

PHOTO COPIERS

BAND III RADIO

2 WAY RADIO

B.T. &  
PANASONIC  
AUTHORISED  
SERVICE  
CENTRE



Short term hire

**BT Network 10** AUTHORISED MOBILE DEALER  
**061-627 4858**

No 4 Ellen Business Park Featherstall Road North Oldham

A MEMBER OF THE JWE GROUP OF COMPANIES

# BAKERS BORN AND BRED



**Warburton's**  
*Family Bakers Since 1876*

Warburton's Pennine Limited,  
Glebe Street, Shaw, Oldham O12 7SF.  
Telephone Shaw (0706) 847744

**PERSONAL**

**View** with  
**Tony Bugby**

# NEIL TOLSON

Neil Tolson's signing came as a bolt from the blue as manager Joe Royle splashed out £150,000 for the unknown teenage striker. When Latics' scouts had been spotted at Walsall, it was assumed they were interested in Rod McDonald, the Fourth Division club's sought-after leading goalscorer.

Never for one moment were they linked with Neil (18), a player who had made only four full first-team appearances and a further 11 as substitute before his signing.

The glowing scouting reports were confirmed when Joe and chief scout Jim Cassell travelled to Cardiff City to watch Neil in action.

The pair immediately spotted the rich potential of the 6ft 1½" striker which is why they made an immediate swoop for the youngster who only turned professional in January.

Joe said: "We decided there and then that Neil was one for the future. It is a lot of money to pay, but we feel in view of the state of the transfer market, he is worth taking the chance on."

Latics will not be complaining if Neil matches the footballing achievements of his late grandfather.

He was Ray Westwood, the former Bolton Wanderers and England inside forward, who won six caps for his country.

Midlands journalist Paul Marston, a long-time Walsall follower, certainly believes Latics have unearthed a gem.

Paul describes Neil as the best player he has seen at Walsall since Allan Clarke who went on to carve out a career with Leicester City, Leeds United and England.

And he cannot believe the clubs from the Black Country have allowed Neil to slip through their net. It could prove a black day for them.

Paul rates Neil higher than Wrexham teenager Lee Jones who Liverpool recently spent £300,000 in signing.

"I reckon Neil is a far better player than Lee Jones and that Oldham have got him for chicken feed. Well done to them, but I cannot believe clubs on Walsall's doorstep have missed out."

Neil has a phenomenal goalscoring record in junior football. Seven of his 30 goals this season for Walsall came in one week as he hit four for the youth team and three for the reserves.

He has scored twice for the first team - in an FA cup tie at Yeovil and in a Fourth Division game against York.

Neil recently had a trial for England Under 18's and admits: "I would love to play for England one day like my grandfather because it was he who started me off in football."

Neil's footballing idol is Ian Rush with Liverpool the team he has supported since childhood.

"I think Ian is brilliant and I also admired Kenny Dalglish when he played at Anfield."

Neil understands it will be some time before he is ready for First Division football.

"I accept I must start at the bottom and work my way up. All I can do is to try and keep scoring and not to think too much of the transfer."

"It is good that the manager was a good centre forward and somebody of Graeme Sharp's pedigree is also here. They should be able to guide me along."

Neil has already learned from a former Latics player now plying goals at Walsall.

He said: "Mike Cecere was one of my best mates at Walsall. He has worked hard with me and told me a lot about the club."

Walsall will receive an extra £100,000 if Neil makes a specified number of first-team appearances, but at £250,000 that could still turn out to be a bargain investment.



# CLUB GOSSIP

- Continued

**PICCADILLY**  
**GOLD** 1152  
**AM**

## YOU CAN REPRESENT LATICS AT WEMBLEY

The Nationwide Football Against MS is organising a celebratory walk into Wembley during half-time at this year's FA Cup Final on 9th May.

All 92 Football League clubs will be represented along with the Football Association, The Football League, The Women's FA, The Referees' Association, The Football Supporters' Association and the PFA.

Oldham Athletic are looking for a person to represent the club on this historic occasion. The person selected will have the once in a lifetime chance to walk around Wembley in front of 80,000 soccer fans and in front of millions of TV viewers wearing the Oldham Athletic kit.

In addition Oldham Athletic will provide two tickets for the Final to be used by the person selected and his/her companion, together with return rail fare, overnight accommodation in a twin room at the Hilton Hotel, with English Breakfast and Dinner, and £25 spending money and of course the kit.

How do you become the person selected?

We need to know if you are a true Latics fan so you will have to answer four questions and tell us why you think you deserve to represent your club on the walk into Wembley. The questions are on our usual telephone number 0898 12 15 82.

Ring this number now to have a chance of being selected to represent your club in front of millions of viewers.

The closing date for entries is Tuesday 5th May.

## TESTIMONIAL FOR WAYNE

Wayne Harrison was only 17 years old when he moved from Boundary Park to Anfield for a staggering £250,000 in January 1985.

During his seven years at Liverpool he suffered many injuries, the latest one a serious knee ligament problem, has prematurely ended his playing career at the age of 24.

Wayne was almost on the verge of first team action at Anfield when fit, and he proved to be a consistent goalscorer for the reserves. However with the likes of

Rush, Beardsley and Barnes to contend with it was a frustrating time for him.

Both clubs have decided that a testimonial game for Wayne would be some consolation for the loss of a promising football future and on the 28th April at 7.30pm Latics will take on the mighty Liverpool at Boundary Park.

## GROUND SHARING

There has been a certain amount of speculation in the local press about the possibility of Oldham Rugby Club sharing Boundary Park with ourselves.

The idea has not been totally dismissed but with the existing problems of the new playing surface and other factors the ground sharing plan could not be seriously considered for the next two years.

## DERBY GAME

The last day of the season clash with Manchester City here at Boundary Park is of course and ALL TICKET MATCH

The only tickets available are terrace tickets and these will go on sale to members at the following times.

From MONDAY 13TH APRIL to members producing their Membership Book and Voucher No 21.

Opening Times.

Monday - Friday 9am - 5pm - Saturday 9am - 12 Noon

The Ticket Office will also be open until 7pm on the following nights when there is a reserve game taking place

Monday 13th April, Wednesday 15th April, and Tuesday 21st April.

We would appeal to supporters not to sell tickets in any circumstances to away fans because the police will eject ANY supporter found in the wrong enclosure.

TICKETS WILL NOT BE SOLD ON THE DAY OF THE MATCH

## THANK YOU

The Cradlewatch Trust, which organised a collection at the Sheffield Wednesday game, would like to thank all those supporters who contributed to their collection which raised £332.98.

# MATCH SPONSORS

Today's sponsor is unusual. It is not a large household name or a local business. Today's sponsorship is part of the Matchmates exercise, promoting friendship in sport, which has been operating in Oldham and Luton schools for the last three months of the Spring term. Today's sponsorship is not the usual corporate hospitality. It is hospitality of a different kind. The many agencies who support and believe in the value of Matchmates are today's guests. These include: The civic parties of the Mayors of Oldham and Luton; representatives of the community police; the schools themselves; and the Oldham and Luton schoolboy town teams.

Sponsorship of today's fixture recognises the many benefits local schools have derived each season from a partnership with Oldham Athletic. The Oldham Athletic Community Team provides a full and valued programme of half term block visits to schools, providing games skill teaching for young pupils in primary, secondary and special education. Many schools visit the ground on conducted tours; others receive players into schools on visits; other parties have been the guests of the Chairman in the boardroom. At schoolboy town team level, the club has generously made its facilities available and provided thousands of free tickets in the past for league fixtures. Schoolboy cup finals have been played here at Boundary Park. In the days of the artificial pitch, 100 schoolboys and their teachers trained here once a week. In-service courses for teachers have been run here, often taken by Oldham Athletic staff. The conference facilities have been used without charge. The list goes on and on and on.

Sponsorship of this game acknowledges the worth of the co-operation between club and schools to the children and teachers. It says "thank you". It acknowledges that their co-operation will continue to the benefit of pupils yet to come.



MATCHSPONSORS 'STAR' PLAYER AWARDS SUPPORTED BY



AVAILABLE AT ALL THE GROUND BARS

## ATHOLL HOUSE HOTEL

DUNVEGAN, ISLE OF SKYE  
Telephone: (047022) 219

AA  
★ ★

Scottish Tourist Board



Commended



Proprietors: CLIFF & BARBARA ASHTON

(Ex Counthill G.S.)

# TODAY'S VISITORS

## Luton Town

It is going to be another nail-biting end of season for Luton Town, their players, management and supporters - and if you glance at the First Division table as it stands right now, you will see that David Pleat's men have an awful lot to do if they are to retain their Premier League status for next season. The bottom three teams go down and at the minute the Hatters are right in the relegation sector - and the matches are running out fast.

Last season two went down into the Second Division - Luton finished third from bottom, one win better off than Sunderland. In 1989-90 they took 17th place, again missing the dreaded drop by one place on goal-difference and in 1988-89 they scrambled clear of the trap door two points ahead of relegated Middlesbrough.

Luton's last respectable season in the top flight was back in 1987-88 when they finished 9th - but over these past four seasons nothing whatsoever has gone right for the Hatters, who have had to battle against relegation on each

occasion....and they're fighting it out again this time round.

Hard up for cash, Luton have had to sell several quality players over the past four years or so to help balance the books, including goalkeepers Les Sealey and Andy Dibble, Northern Ireland international Mal Donaghy (Manchester United), South African striker Roy Wegerle (now with Blackburn), full-back Tim Breacker (West Ham), ex-England defender Steve Foster, tricky winger Kingsley Black (Forest), David Oldfield (Leicester), Ashley Grimes, Mick Kennedy and Mark Stein (all of whom are now with Stoke City), Iain Dowie (Southampton), midfielder Danny Wilson, star defender Darron McDonough (Newcastle) and the Danish striker Lars Elstrup. In fact, a full team has left the club - and poor old Luton have practically nothing to show for their efforts - apart from a Littlewoods League Cup win in 1988 and a runners-up prize in the League Cup in '89.

However, manager David Pleat and his players are born fighters and they will battle every inch of the way until the last ball is kicked in early May.

Checking on Luton's form-rate away from home, there is no doubt that they don't travel at all well. They haven't won on opponents' soil since March 1991 (at Villa Park) and the record books show that from their last 60 away trips they have managed just five wins and 13 draws. This is where the trouble lies....let's see how they perform in Lancashire today.



Back row - Julian James, Darren Salton, Graham Rodger (now with Grimsby Town), Andy Petterson (on loan to Ipswich), Alec Chamberlain, Sean Farrell (now with Fulham), Des Linton, John Dreyer. Middle row - Mick Harford, Trevor Peake (capt.), Darron McDonough (now with Newcastle United), Marvin Johnson, Kurt Nogan, Richard Harvey, Chris Kamara. Front row - Colin Murphy (asst. manager), Brian Stein, Scott Oakes, Ceri Hughes, Paul Telfer, Jason Rees, Mark Pembridge, David Preece, David Pleat (manager).

## MEET OUR VISITOR'S MANAGER



### David Pleat

It was at Luton where David Pleat made his name, both as a player and manager. He started his playing career with Nottingham Forest, moving to Kenilworth Road in 1964. Three years later he switched to Shrewsbury Town and later played

for Exeter City and Peterborough before retiring in 1971 with 184 League games to his credit. In 1974 he returned to Luton as reserve team coach and was promoted to first team duties as coach in 1977, taking over as manager twelve months later. He guided Luton into the First Division but in 1986 he took over as manager of Tottenham, guiding them to the 1987 FA Cup Final. In December 1987 he took charge of Leicester City and returned for a third spell with The Hatters in the summer of 1991. David is used to pressure. He's seen Luton scrape clear of relegation before, and now he's as keen as ever to see them hold onto their Premier League status yet again.

## DANGER Man



### MICK HARFORD

One of the country's leading strikers, Luton's big striker is well on his way to topping 200 goals as a professional. He has already passed the 160 mark in the League and is also Luton's top marksman so far this term.

Aged 33, born in Sunderland, Mick has played, in turn, for Lincoln, Newcastle, Bristol City, Birmingham, Luton Town and Derby County, and is now in his second spell at Kenilworth Road, having returned there for £325,000 last September. His first game back in Luton colours was against Athletic and he scored both their goals in a 2-1 win.

Capped by England at full and 'B' team levels, he helped Luton win the Littlewoods Cup at Wembley in 1988 and reach the Final of the Simod Cup that same season.

# VISITORS FACT FILE

## LUTON TOWN

- \* Club formed 1885, turned professional 1890
- \* Joined Football League (Div.2) for 1897-98
- \* Won Third Division (S) title in 1936-37
- \* Played in Division One for first time in 1955-56
- \* Beaten 2-1 by Nott. Forest in 1959 FA Cup Final
- \* Division Four Champions in season 1967-68
- \* Second Division Champions, season 1981-82
- \* League Cup winners (v. Arsenal) in 1987-88
- \* Record scorer - Gordon Turner 265 (1951-64)
- \* Most League appearances - Bob Morton (495)
- \* Record League win - 12-0 v. Bristol R. Div.3 (S) 1936
- \* Top FA Cup score - 15-0 v. Great Yarmouth 1914
- \* Joe Payne hit 10 goals in that 12-0 win in 1936.
- \* Oldest player - Dally Duncan: 39 yrs.11 mths. 1948
- \* Youngest player - Mike O'Hara: 16 yrs. 32 days, 1960
- \* Top gate at home - 30,069 v. Blackpool, FA Cup 1959
- \* Most capped player - Mal Donaghy (N.I.) 56 caps.
- \* Managers since World War 2 - twelve including Pleat (twice)

### Luton's 1991-92 Playing Squad

Player	Age	Position	Joined from
Alec CHAMBERLAIN	27	Goalkeeper	Everton
Mervyn DAY	36	Goalkeeper	Leeds United
John DREYER	28	Defender	Oxford United
Julian JAMES	22	Right back	Y.T.S.
Trevor PEAKE	35	Defender	Coventry City
Richard HARVEY	22	Defender	Y.T.S.
Des LINTON	20	Defender	Leicester City
Darren SALTON	19	Defender	Y.T.S.
Marvin JOHNSON	23	Full back	Apprentice
Mark PEMBRIDGE	21	Midfield	Y.T.S.
Paul TELFER	20	Midfield	Y.T.S.
David PREECE	28	Midfield	Walsall
Ceri HUGHES	21	Midfield	Y.T.S.
Chris KAMARA	34	Utility	Leeds United
Brian STEIN	34	Striker	Anancy (France)
Mick HARFORD	33	Striker	Derby County
Philip GRAY	23	Forward	Tottenham Hotspur
Kurt NOGAN	21	Forward	Y.T.S.
Scott OAKES	19	Forward	Leicester City
Jason REES	20	Forward	Y.T.S.
Imre VARADI	32	Striker	Leeds U. (on loan)

# VISITORS

## Star Player

# Chris Kamara



Luton Town's 34 year-old utility player, CHRIS KAMARA, who can occupy the left-back berth, a central defensive position or man midfield, made his professional debut for Portsmouth in 1975. Since then he's appeared in more than 550 League matches for a variety of clubs and has scored around 70 goals.

Born in the North East at Middlesbrough he surprisingly broke out 400 miles south with Pompey for whom he had 63 League games before transferring to Swindon Town in the summer of 1977. He spent exactly four years with the Robins, adding a further 147 League outings to his tally. He then tried his luck back with Portsmouth, staying at Fratton Park for only two months (to October 1981) when he moved up to London to sign for Brentford.

At Griffin Park he became a big favourite with the fans and helped the Bees reach the Freight Rover Trophy Final at Wembley in 1985 when they were beaten by Wigan Athletic.

Three months after that Wembley appearance and with another 152 League games under his belt, Chris switched back to Swindon Town where he stayed until the summer of 1988. Then he tried his luck with Stoke City, having 60 League calls for the Potters prior to a transfer deadline move to Leeds United in March 1990. Unfortunately he never really settled in at Elland Road, injuries, loss of form and suspension restricting his outings to less than 20 in two seasons. Consequently he jumped at the chance of joining Luton Town in October of last year and now he is determined to help steer the Hatters away from the relegation zone.

**ROYTON ELECTRICAL**  
ENGINEERS AND CONTRACTORS  
CELEBRATE 50 YEARS AS MAIN SUPPLIERS  
TO INDUSTRY AND LATICES

"EXPERTISE COUNTS IN ALL GAMES"

# BOB MORTON

Over a period of 16 years from 1948 to 1964, wing-half Bob Morton accumulated a club record 550 League and Cup appearances for Luton Town, beating the previous best of 406 set by his colleague Gordon Turner who spent two years less at Kenilworth Road than Morton.

Born in the picturesque village of Aston Clinton, Buckinghamshire, on 25th September 1927, Bob attended Edlesborough School and was spotted by Luton playing non-League football for Eaton Bray. He had trials at Kenilworth Road in 1943 and turned out occasionally for Hitchin Town before becoming a full-time professional with the Hatters in 1945. He made his Football League debut in the Second Division for the Hatters in 1948-49 and established himself in the first team in 1950-51.

An ever-present in the ranks in 1952-53 he was instrumental in midfield as Luton climbed into Division One for the first time in their history in 1955 and four years later he was in the side which lost to Nottingham Forest in the FA Cup Final.

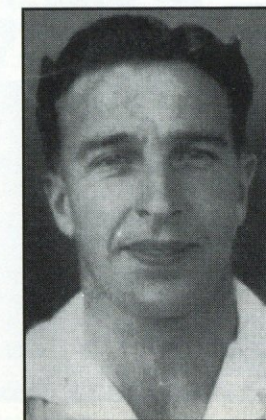
A real utility player, Bob could also slot in as a centre-half or as a centre-forward, but it was in the No.4 shirt where he blossomed most.

In 1955 he represented the London Combination v. the Dutch XI and earned himself an England 'B' cap v. Switzerland later that same year. He went on tour with the F.A. to South Africa in the summer of 1956 and played in the last two Test Matches. He was also named as reserve to the full England team in 1957.

There is no doubt that if Bob Morton had been with a more fashionable club then he would surely have gained a full cap. He was a dedicated club man who gave Luton Town supporters a great deal to cheer about, especially during the 1950's when he was certainly at his peak.

# THANKS For the Memory

with  
**Tony Matthews**



## It's a Fact

\* 100 years ago the first team players of Luton Town were paid half-a-crown a week with sixpence extra for away games.

\* In their earliest days the Luton players wore blue and pink caps. Unfortunately this didn't help when heading the ball for it never went in the right direction!

\* Luton Town are proud of their nickname - The Hatters. In fact, ash trays designed as miniature straw hats were made for use in the club's boardroom.

\* The late, great, Eric Morecambe was once a director of Luton Town F.C.

\* The 1959 FA Cup Final was unique in that both teams - Luton and Nottingham Forest - fielded the same 11 players in every game they played during that season's competition.



START LIVING - START DANCING

# BILLINGTONS

ASCROFT STREET - OLDHAM  
Telephone: 061-624 1222/633 5958

Instruction given in MODERN, BALLROOM, LATIN AMERICAN  
& OLD TIME DANCING

Private Lessons by Appointment  
Room Available for Functions  
with Private Bar

# LATICS IN ACTION

## v NOTTS COUNTY - 14th March 1992



Andy Ritchie tries a spectacular 'scissor kick' which Steve Cherry saved.



Richard Jobson has a pot at goal, the ball flew just wide of the post.  
Photos: Oldham Evening Chronicle.

# MATCH & BALL SPONSORS

MATCH	MATCH SPONSOR	EXECUTIVE MATCHBALL SPONSORS	PREMIER MATCHBALL SPONSORS
CHELSEA	BOVIS URBAN RENEWAL / MOTOR BODIES	EXECUTIVE CLEANING	MOORES DELICATESSEN
NORWICH CITY	OWL PLASTICS / GREENBOOTH CONSTRUCTION	GARFORTH GLASS	DENNIS ANDREW
COVENTRY CITY	ROYAL MAIL	E & S DENTAL LABORATORY	KENYON PAINTS
SHEFFIELD UTD	COWGILL, HOLLOWAY / BROOKLANDS BUILDING / BRAYMONT LTD	SLUMBERLAND	THORNHAM NEWS CENTRE
CRYSTAL PALACE	DIE TECHNOLOGY / KASPARIANS	ARKOL INSURANCE	MR MARTIN WALL
TORQUAY UTD	MOTOR BODIES / RUSSELL BROTHERS / ALFRED TAYLOR	ACTION CHEMICALS	CIS PLUMBING & TILING
SOUTHAMPTON	ABLE HIRE CO / PATTERSON & ROTHWELL	CORROTEC U.K.	RIPLEY & BROUGHTON
WEST HAM UTD	DANNIMAC / ASHDENE & WINDSOR	CASSONS COMMERCIAL COLLEGE	PARK CAKE BAKERIES
DERBY COUNTY	TARGET FINISHING / VENDA VALET / MOTOR BODIES	90 MINUTES	ATLAS TRADING GROUP
ARSENAL	KERSHAW ADAMS / MOTOR BODIES	ALAN CUNLIFF WHOLESALE	O.A.S.I.S.
ASTON VILLA	WHITBREAD BEER CO / PLATT & HILL	J.A.B. COMMERCIAL LTD	JUNIOR LATICS CLUB
EVERTON	ROYAL MAIL	F. M. MOTORS	STOTT BENHAM
MAN UNITED	INTERCITY PROPERTY GROUP / WARWICK PLUMBING/BRIERSTONE PROPERTIES	BANHAM & THORPE	AGS ELECTRICAL
NOTTS FOREST	MOORSIDE METAL / ROLLITE BLINDS	ANTHONY MICHAEL LANDSCAPES	LEES NEWSOME
LEYTON ORIENT	ROYAL MAIL / MOTOR BODIES	HATFIELD INSURANCE	BARCLAYS BANK, OLDHAM BRANCH
LIVERPOOL	LOOKERS / ALAN CUNLIFF WHOLESALE	IAN PALMER (WHOLESALE)	OLDHAM FRUIT BOWL
LEEDS UNITED	DANNIMAC / CHESHIRE LIGHT TRACTORS	LINGUARD PRODUCTS	SUMMIT PLANT & CIVIL ENG.
Q.P.R.	INVINCIBLE D.G. / CAMERON, MIDDLETON & LEES	RODNEY/RODNEY	KENYON PAINTS
WIMBLEDON	QUEENS ARMS / COBDEN CHADWICK	LADY IN LEISURE	G. BARLOW & SONS
NOTTS COUNTY	CHRIS McCALL / MADGE & HOYLE / CARPET SHOWCASE	G.J.B. HEATING	CORROTEC U.K.
SHEFF WED	R.F.A GROUP / SPORTS MANAGEMENT LTD	PRESCOTT TRANSPORT	ATLAS TRADING
LUTON TOWN	MATCHMATES	ALEXANDER TATHAM & CO	ROYAL BANK OF SCOTLAND
TOTTENHAM	CALDMATE MANAGEMENT LTD. / KEN ROSEBURY	JOHN CLEGG (OPTICIANS)	TK SHUTTERS
MAN CITY	MOTOR BODIES / WHITBREAD BEER CO	ATLAS TRADING	MARWOODS BABYWEAR

## SHUTTERS

( Proprietor Terry Kerr )

Security Roller Shutters & Grilles,

SUPPLIED AND FITTED  
PROTECT YOUR PROPERTY

Shops, Bars, Industrial & Private Property.

15 Chadderton Fold, Chadderton, Oldham.  
Tel: 061 652 4747 Mobile 0860 301103  
Fax: 061 628 9103



Executive  
CLEANING SERVICES

PREMIER OFFICE CLEANERS

ALL TYPES OF INDUSTRIAL & DOMESTIC CLEANING.

HOTELS - RESTAURANTS - BUILDERS CLEANERS ETC

CARPETS & SUITES.

ALL TYPES OF VEHICLE VALETING

Tel: 061 - 652 2799

## RYDER & DUTTON

ESTATE AGENTS  
VALUERS AND SURVEYORS

11/15 UNION STREET  
OLDHAM OL1 1HA  
TELEPHONE: 061-652 1234

## Megson Ponsonby

SOLICITORS

"Legal & Financial Services"

Yorkshire Bank Chambers,  
1 Curzon Street,  
Oldham OL1 3QP

Tel: 061 633 6131

28

LATICS Prizeline 0898 12-15-82 YOU'VE SEEN THE NUMBER...NOW WIN THE PRIZE

LATICS Prize .....ON THE LINE - 0898 12-15-82

29

# Construction is our game

## Ashdene & Windsor

CONSTRUCTION

Tel 061 624 1956 Fax 061 627 5423

# We've always looked like First Division material.



Last season Oldham Athletic won the 2nd division championship wearing Umbro kit. Who knows what the same outfit's capable of this year?

# LATICS

# on Record

Home matches and scorers in heavy type. ▲ Own Goal  
P Penalty. ■ Player with drawn. ● Sub used.

DATE	OPPONENTS	ATT.	RES	PTS	POS	1	2	3	4	5	6	7	8	9	10	11	12	14
AUG. 17	Liverpool	38,841	1-2	0	5th	HALLWORTH	HALLE	SNODIN	HENRY	BARRETT	JOBSON	BERNARD	MARSHALL	SHARP	MILLIGAN	HOLDEN	CURRIE	KANE
21	CHelsea	14,987	3-0	3	8th	HALLWORTH	HALLE	SNODIN	HENRY	BARRETT	JOBSON	ADAMS	MARSHALL	SHARP	MILLIGAN	HOLDEN	FLEMING	KANE
24	NORWICH CITY	13,584	2-2	4	13th	HALLWORTH	HALLE	SNODIN	HENRY	BARRETT	JOBSON	ADAMS	MARSHALL	SHARP	MILLIGAN	HOLDEN	FLEMING	BERNARD
28	Manchester Utd LC	42,078	0-1	4	17th	HALLWORTH	HALLE	SNODIN	HENRY	BARRETT	JOBSON	ADAMS	MARSHALL	SHARP	MILLIGAN	HOLDEN	FLEMING	BERNARD
31	Nottingham Forest	23,244	1-3	4	17th	HALLWORTH	HALLE	SNODIN	HENRY	BARRETT	JOBSON	ADAMS	MARSHALL	SHARP	MILLIGAN	HOLDEN	FLEMING	BERNARD
SEPT. 3	SHEFFIELD UNITED	12,986	2-1	7	14th	HALLWORTH	HALLE	SNODIN	HENRY	BARRETT	JOBSON	ADAMS	MARSHALL	SHARP	MILLIGAN	HOLDEN	FLEMING	BERNARD
7	Cardiff City	9,095	1-1	10	11th	HALLWORTH	HALLE	SNODIN	HENRY	BARRETT	JOBSON	ADAMS	MARSHALL	SHARP	MILLIGAN	HOLDEN	FLEMING	BERNARD
14	CRUSHERS	9,095	1-2	10	12th	HALLWORTH	HALLE	SNODIN	HENRY	BARRETT	JOBSON	ADAMS	MARSHALL	SHARP	MILLIGAN	HOLDEN	FLEMING	BERNARD
21	TORQUAY (RLC 2RL)	13,391	2-3	10	17th	HALLWORTH	HALLE	SNODIN	HENRY	BARRETT	JOBSON	ADAMS	MARSHALL	SHARP	MILLIGAN	HOLDEN	FLEMING	BERNARD
24	Leeds United	17,250	7-1	13	15th	HALLWORTH	HALLE	SNODIN	HENRY	BARRETT	JOBSON	ADAMS	MARSHALL	SHARP	MILLIGAN	HOLDEN	FLEMING	BERNARD
28	Manchester City	31,271	2-1	13	15th	HALLWORTH	HALLE	SNODIN	HENRY	BARRETT	JOBSON	ADAMS	MARSHALL	SHARP	MILLIGAN	HOLDEN	FLEMING	BERNARD
OCT. 1	Everton (ZDSC 2R)	4,588	2-3	14	17th	HALLWORTH	KEELEY	BARLOW	HENRY	BARRETT	JOBSON	ADAMS	MARSHALL	SHARP	MILLIGAN	HOLDEN	FLEMING	BERNARD
5	SOUTHAMPTON	13,133	1-1	14	17th	HALLWORTH	KEELEY	BARLOW	HENRY	BARRETT	JOBSON	ADAMS	MARSHALL	SHARP	MILLIGAN	HOLDEN	FLEMING	BERNARD
9	Torquay (RLC 2RL)	1,965	2-0	15	16th	HALLWORTH	KEELEY	BARLOW	HENRY	BARRETT	JOBSON	ADAMS	MARSHALL	SHARP	MILLIGAN	HOLDEN	FLEMING	BERNARD
19	WEST HAM UNITED	14,365	2-2	15	16th	HALLWORTH	KEELEY	BARLOW	HENRY	BARRETT	JOBSON	ADAMS	MARSHALL	SHARP	MILLIGAN	HOLDEN	FLEMING	BERNARD
26	Leeds United	28,199	0-1	15	16th	HALLWORTH	KEELEY	BARLOW	HENRY	BARRETT	JOBSON	ADAMS	MARSHALL	SHARP	MILLIGAN	HOLDEN	FLEMING	BERNARD
29	DERBY COUNTY (RLC 3)	11,219	2-1	15	16th	HALLWORTH	KEELEY	BARLOW	HENRY	BARRETT	JOBSON	ADAMS	MARSHALL	SHARP	MILLIGAN	HOLDEN	FLEMING	BERNARD
NOV. 2	Notts County	7,634	0-2	15	16th	HALLWORTH	KEELEY	BARLOW	HENRY	BARRETT	JOBSON	ADAMS	MARSHALL	SHARP	MILLIGAN	HOLDEN	FLEMING	BERNARD
16	ARSENAL	15,681	1-1	16	16th	HALLWORTH	KEELEY	BARLOW	HENRY	BARRETT	JOBSON	ADAMS	MARSHALL	SHARP	MILLIGAN	HOLDEN	FLEMING	BERNARD
23	Queen's Park Rangers	8,947	5-1	19	14th	HALLWORTH	KEELEY	BARLOW	HENRY	BARRETT	JOBSON	ADAMS	MARSHALL	SHARP	MILLIGAN	HOLDEN	FLEMING	BERNARD
30	ASTON VILLA	15,370	3-2	22	14th	HALLWORTH	KEELEY	BARLOW	HENRY	BARRETT	JOBSON	ADAMS	MARSHALL	SHARP	MILLIGAN	HOLDEN	FLEMING	BERNARD
DEC. 7	Manchester United (RLC 4)	39,550	0-2	22	16th	HALLWORTH	KEELEY	BARLOW	HENRY	BARRETT	JOBSON	ADAMS	MARSHALL	SHARP	MILLIGAN	HOLDEN	FLEMING	BERNARD
14	Wolves	4,011	1-2	22	16th	HALLWORTH	KEELEY	BARLOW	HENRY	BARRETT	JOBSON	ADAMS	MARSHALL	SHARP	MILLIGAN	HOLDEN	FLEMING	BERNARD
17	EVERTON	14,955	2-2	23	14th	HALLWORTH	KEELEY	BARLOW	HENRY	BARRETT	JOBSON	ADAMS	MARSHALL	SHARP	MILLIGAN	HOLDEN	FLEMING	BERNARD
21	Chelsea	13,136	2-4	23	15th	HALLWORTH	KEELEY	BARLOW	HENRY	BARRETT	JOBSON	ADAMS	MARSHALL	SHARP	MILLIGAN	HOLDEN	FLEMING	BERNARD
26	MANCHESTER UNITED	18,947	3-6	23	17th	HALLWORTH	KEELEY	BARLOW	HENRY	BARRETT	JOBSON	ADAMS	MARSHALL	SHARP	MILLIGAN	HOLDEN	FLEMING	BERNARD
28	NOTTINGHAM FOREST	16,496	2-1	26	16th	HALLWORTH	KEELEY	BARLOW	HENRY	BARRETT	JOBSON	ADAMS	MARSHALL	SHARP	MILLIGAN	HOLDEN	FLEMING	BERNARD
JAN. 4	Sheffield Wednesday	32,679	1-1	27	16th	HALLWORTH	KEELEY	BARLOW	HENRY	BARRETT	JOBSON	ADAMS	MARSHALL	SHARP	MILLIGAN	HOLDEN	FLEMING	BERNARD
11	LEYTON ORIENT (FAC 3)	10,764	1-1	30	15th	HALLWORTH	KEELEY	BARLOW	HENRY	BARRETT	JOBSON	ADAMS	MARSHALL	SHARP	MILLIGAN	HOLDEN	FLEMING	BERNARD
15	Nottingham Forest	10,988	2-1	30	15th	HALLWORTH	KEELEY	BARLOW	HENRY	BARRETT	JOBSON	ADAMS	MARSHALL	SHARP	MILLIGAN	HOLDEN	FLEMING	BERNARD
18	Leeds United	10,566	2-4	30	15th	HALLWORTH	KEELEY	BARLOW	HENRY	BARRETT	JOBSON	ADAMS	MARSHALL	SHARP	MILLIGAN	HOLDEN	FLEMING	BERNARD
21	Leeds United (FAC 3 Replay)	18,952	2-3	30	15th	HALLWORTH	KEELEY	BARLOW	HENRY	BARRETT	JOBSON	ADAMS	MARSHALL	SHARP	MILLIGAN	HOLDEN	FLEMING	BERNARD
25	LIVERPOOL	20,843	0-0	31	16th	HALLWORTH	KEELEY	BARLOW	HENRY	BARRETT	JOBSON	ADAMS	MARSHALL	SHARP	MILLIGAN	HOLDEN	FLEMING	BERNARD
FEB. 1	Tottenham Hotspur	32,679	1-1	31	16th	HALLWORTH	KEELEY	BARLOW	HENRY	BARRETT	JOBSON	ADAMS	MARSHALL	SHARP	MILLIGAN	HOLDEN	FLEMING	BERNARD
7	West Ham United	18,016	2-0	34	12th	HALLWORTH	KEELEY	BARLOW	HENRY	BARRETT	JOBSON	ADAMS	MARSHALL	SHARP	MILLIGAN	HOLDEN	FLEMING	BERNARD
8	LEEDS UNITED	22,096	1-2	37	14th	HALLWORTH	KEELEY	BARLOW	HENRY	BARRETT	JOBSON	ADAMS	MARSHALL	SHARP	MILLIGAN	HOLDEN	FLEMING	BERNARD
15	O.P.R.	15,062	2-1	37	14th	HALLWORTH	KEELEY	BARLOW	HENRY	BARRETT	JOBSON	ADAMS	MARSHALL	SHARP	MILLIGAN	HOLDEN	FLEMING	BERNARD
22	Wolves	20,509	0-1	37	14th	HALLWORTH	KEELEY	BARLOW	HENRY	BARRETT	JOBSON	ADAMS	MARSHALL	SHARP	MILLIGAN	HOLDEN	FLEMING	BERNARD
23	WIMBLEDON	12,166	0-1	37	13th	HALLWORTH	KEELEY	BARLOW	HENRY	BARRETT	JOBSON	ADAMS	MARSHALL	SHARP	MILLIGAN	HOLDEN	FLEMING	BERNARD
MAR. 7	Everton	21,004	1-2	37	14th	HALLWORTH	KEELEY	BARLOW	HENRY	BARRETT	JOBSON	ADAMS	MARSHALL	SHARP	MILLIGAN	HOLDEN	FLEMING	BERNARD
10	ARSENAL	22,096	1-2	37	14th	HALLWORTH	KEELEY	BARLOW	HENRY	BARRETT	JOBSON	ADAMS	MARSHALL	SHARP	MILLIGAN	HOLDEN	FLEMING	BERNARD
14	NOTTS COUNTY	12,125	4-3	40	15th	HALLWORTH	KEELEY	BARLOW	HENRY	BARRETT	JOBSON	ADAMS	MARSHALL	SHARP	MILLIGAN	HOLDEN	FLEMING	BERNARD
21	Nottingham Forest	12,840	1-1	41	15th	HALLWORTH	KEELEY	BARLOW	HENRY	BARRETT	JOBSON	ADAMS	MARSHALL	SHARP	MILLIGAN	HOLDEN	FLEMING	BERNARD
28	SHEFFIELD WEDNESDAY	15,897	3-0	44	13th	HALLWORTH	KEELEY	BARLOW	HENRY	BARRETT	JOBSON	ADAMS	MARSHALL	SHARP	MILLIGAN	HOLDEN	FLEMING	BERNARD
APR. 4	Sheffield United	19,843	0-2	44	15th	HALLWORTH	KEELEY	BARLOW	HENRY	BARRETT	JOBSON	ADAMS	MARSHALL	SHARP	MILLIGAN	HOLDEN	FLEMING	BERNARD
11	LUTON TOWN					HALLWORTH	KEELEY	BARLOW	HENRY	BARRETT	JOBSON	ADAMS	MARSHALL	SHARP	MILLIGAN	HOLDEN	FLEMING	BERNARD
18	League Cup Final					HALLWORTH	KEELEY	BARLOW	HENRY	BARRETT	JOBSON	ADAMS	MARSHALL	SHARP	MILLIGAN	HOLDEN	FLEMING	BERNARD
20	Crystal Palace					HALLWORTH	KEELEY	BARLOW	HENRY	BARRETT	JOBSON	ADAMS	MARSHALL	SHARP	MILLIGAN	HOLDEN	FLEMING	BERNARD
25	TOTTENHAM HOTSPUR					HALLWORTH	KEELEY	BARLOW	HENRY	BARRETT	JOBSON	ADAMS	MARSHALL	SHARP	MILLIGAN	HOLDEN	FLEMING	BERNARD
28	Southern League					HALLWORTH	KEELEY	BARLOW	HENRY	BARRETT	JOBSON	ADAMS	MARSHALL	SHARP	MILLIGAN	HOLDEN	FLEMING	BERNARD
MAY 2	LIVERPOOL (Testimonial)					HALLWORTH	KEELEY	BARLOW	HENRY	BARRETT	JOBSON	ADAMS	MARSHALL	SHARP	MILLIGAN	HOLDEN	FLEMING	BERNARD
9	MANCHESTER CITY					HALLWORTH	KEELEY	BARLOW	HENRY	BARRETT	JOBSON	ADAMS	MARSHALL	SHARP	MILLIGAN	HOLDEN	FLEMING	BERNARD

**IMPORTANT NOTICE**

Boundary Park is equipped with an emergency alert system (loud high Pitch Twp Tone Signal). If you should hear this signal please pay attention and follow the instructions given. A test of the alert system will be made prior to each game, twenty minutes before the scheduled kick off time, followed by the words:- "THIS IS A TEST OF THE BOUNDARY PARK ALERT SYSTEM"

I NEVER WIN ANY Prizes .....NOW YOU CAN! CALL 0898 12-15-82

SUPPORT THE Club .....CALL THE PRIZELINE 0898 12-15-82

These Fixtures are the Copyright of the Football League Ltd and are not to be reproduced without permission.





### PONTINS LEAGUE DIVISION TWO

Up to and including 5th April 1992.

	P	W	D	L	F	A	Pts
Stoke City	29	21	5	3	80	25	68
Wolverhampton W.	29	16	7	6	57	31	55
Huddersfield Town	28	15	7	6	55	31	52
Leicester City	28	13	8	7	42	26	47
Notts County	28	13	7	8	37	32	46
Middlesbrough	26	12	3	11	31	35	39
Burnley	27	11	4	12	37	40	37
Wigan Athletic	27	11	4	12	37	45	37
Blackpool	28	10	5	13	45	44	35
Derby County	26	9	8	9	38	39	35
Port Vale	29	9	8	12	49	49	33*
York City	29	9	4	16	31	44	31
Preston North End	28	8	7	13	34	58	31
Grimsby Town	27	8	6	13	30	38	30
Scunthorpe United	27	7	9	11	38	57	30
Mansfield Town	28	8	5	15	38	47	29
Oldham Athletic	27	8	5	14	40	55	29
Hull City	29	7	8	14	26	49	29

\* 2 POINTS DEDUCTED.

### BARCLAYS LEAGUE DIVISION ONE

### ATTENDANCES & GOALSCORERS DIVISION ONE

	Up to and including 8th April 1992.											Up to and including 4th April 1992.				
	Home					Away						Aggregate	Average	Leading scorers		
	P	W	D	L	F	A	P	W	D	L	F	A	Pts			
Man United	36	10	7	1	29	10	9	7	2	28	16	71	762,154	44,833	McClair 16, Hughes 9.	
Leeds United	37	10	8	0	32	13	8	7	4	33	22	69	528,731	29,374	Chapman 15, Rod Wallace 8.	
Sheff Wed	36	11	4	3	35	24	7	5	6	21	24	63	526,779	29,266	Hirst 16, Williams 8.	
Arsenal	36	9	7	2	38	20	6	6	6	25	21	58	557,680	30,982	Wright 17, Smith 11.	
Liverpool	35	12	4	2	30	14	3	9	5	12	17	58	631,780	35,099	Saunders 10, Houghton 8.	
Man City	37	11	4	4	28	14	5	6	7	22	28	58	532,424	28,022	White 15, Quinn 9.	
Crystal Palace	37	7	6	6	23	24	6	7	5	26	31	52	335,408	17,653	Bright 16, Thomas 6.	
Aston Villa	37	10	3	5	25	15	4	6	9	17	24	51	465,491	24,500	Regis 10, Yorke 10.	
Chelsea	37	6	7	6	28	28	6	6	6	17	22	49	349,321	18,385	Wise 8, Allen 7.	
Notts Forest	35	9	5	4	32	25	4	4	9	20	25	48	429,323	23,851	Sheringham 11, Keane 8.	
QPR	37	4	10	4	21	18	6	7	6	21	23	47	239,453	13,303	Bailey 9, Ferdinand 8.	
Sheff Utd	36	8	5	5	24	19	5	3	10	31	36	47	382,908	21,273	Deane 11, Bryson 8.	
Everton	37	7	8	3	25	14	4	5	10	20	29	46	426,395	23,689	Beardsley 12, Cottee 8.	
Wimbledon	37	9	5	5	29	19	2	8	8	15	27	46	135,388	7,126	Fashanu 16, Earle 11.	
Tottenham H	36	6	2	11	27	30	7	4	6	22	21	45	524,414	27,601	Lineker 23, Durie 6.	
<b>Oldham Ath.</b>	<b>37</b>	<b>9</b>	<b>5</b>	<b>4</b>	<b>38</b>	<b>30</b>	<b>3</b>	<b>3</b>	<b>13</b>	<b>17</b>	<b>30</b>	<b>44</b>	269,585	14,977	Marshall 10, Sharp 8.	
Norwich City	36	8	5	5	27	23	3	6	9	18	28	44	237,780	13,210	Fleck 10, Beckford 7, Newman 7.	
Southampton	35	6	5	7	16	26	5	5	7	19	21	43	272,284	15,127	Shearer 12, Dowie 9.	
Coventry	36	5	6	7	17	14	5	4	9	17	24	40	248,478	13,804	Gallacher 8.	
Luton Town	36	8	6	4	20	15	0	5	13	10	45	35	169,210	9,401	Harford 9.	
Notts Cty	37	5	5	8	20	25	2	5	12	15	31	31	191,983	11,293	Johnson 9, Bartlett 6.	
West Ham U.	35	3	6	7	14	21	3	5	11	15	32	29	349,305	21,832	Small 13.	

### PLAYERS APPEARANCES & GOAL SCORERS RECORDS SEASON 1991 - 92

	LEAGUE		CUP			LEAGUE		CUP	
	Apps	Gls	Apps	Gls		Apps	Gls	Apps	Gls
NEIL ADAMS	17 (5 sub)	4	2 (1 sub)	1	RICHARD JOBSON	32	2	6	1
ANDY BARLOW	23	2	4	-	PAUL KANE	1 (3 sub)	-	3	-
EARL BARRETT	29	2	7	-	JOHN KEELEY	-	-	1	-
PAUL BERNARD	11 (4 sub)	5	3 (2 sub)	-	BRIAN KILCLINE	8	-	2	-
DAVID CURRIE	1 (3 sub)	1	-	-	IAN MARSHALL	36	10	5 (1 sub)	-
CRAIG FLEMING	23 (4 sub)	1	5 (1 sub)	-	NEIL McDONALD	15	1	2	-
GUNNAR HALLE	10	-	1	-	MIKE MILLIGAN	31	2	5	2
JON HALLWORTH	37	-	6	-	PAUL MOULDEN	- (1 sub)	-	-	-
NICK HENRY	37	4	6	1	ROGER PALMER	13 (6 sub)	3	3 (1 sub)	2
RICK HOLDEN	33 (4 sub)	5	6 (1 sub)	2	ANDY RITCHIE	6 (7 sub)	3	2	4
					GRAEME SHARP	37	8	7	3
					GLYN SNODIN	8	1	1	-

Neighbours and First Division rivals Manchester City put a very large dent in Leeds' championship hopes by thrashing them 4-0, although the scoreline could have been different but for some magnificent goalkeeping from Tony Coton. Hill, Sheran, Quinn and Brennen were the goalscorers.

Meanwhile Everton's recent slump continued, losing 1-0 at Crystal Palace and Manager Howard Kendall comes under pressure to change things round.

In the Second Division Blackburn Rovers didn't play and slipped to third place in the table and it seems that Ipswich could be taking the championship to Portman Road after another win on Tuesday night.

In the Third Division our neighbours had a better week with the exception of Stockport County who went down at lowly Torquay.

Better news from Bury who notched a 3-2 home win over fellow strugglers Hull City - on loan striker Darren Lyons hit two of the goals and a permanent move from Ashton United looks on the cards.

Bolton Wanderers 'play off' hopes seem to have all but disappeared, their 2-2 draw at WBA leaves them 12 points adrift of the top seven, but they seem to have unearthed a real goalscorer in ex-Celtic man Andy Walker who bagged another goal at the Hawthorns.

In Division Four, three of our neighbours are in the top six, Burnley still lead the table even though they lost 1-0 at Crewe, second placed Blackpool won 2-1 at home to Mansfield, giant striker Dave Bamber scored both goals once again and our next door neighbours, Rochdale, look certain for a play off place after beating Cardiff 2-0 at Spotland, Reeves and Milner scored the goals which mean the Dale could be appearing at Wembley come next May!!

# Latigue

SPORTS & LEISUREWEAR

stockists of:

mitre

PUMA

NIKE

Reebok

adidas

umbro

Boundary Park, Oldham.

Tel: 061 - 652 - 0966

Open: Monday - Saturday 9am - 5pm.

# MITSUBISHI

The Image of Perfection

# GOLF

MITSUBISHI GOLF -  
"the leaders in graphite golf clubs"

"To test drive the latest Mitsubishi equipment call in at your Local Golf Professional"

Major stockists include:-

Brian Connor - Manchester Golf Club  
Tom Shard - Saddleworth Golf Club  
John Richardson - Werneth Golf Club  
Martin Barton - Blackley Golf Club

Peter Lunt - North Manchester Golf Club  
Colin Boyle - Ashton-under-Lyne Golf Club  
David Melling - Crompton & Royton Golf Club  
Andy Laverty - Rochdale Golf Club

# WHERE ARE THEY NOW?

with  
**Tony Bugby**

Fred Ogden had the distinction of serving Latics for 30 years.

Goalkeeper Fred, who made 156 first-team appearances (plus five war-time games), continued his association long after he hung up his boots and returned to work in industry.

He took charge of the juniors for many years, served as reserve-team trainer and did many other backroom tasks before retiring 10 years ago this month.

"I have mixed concrete for terracing and forked the ground. In fact I don't think there are many jobs I have not done," he said, "They are all memories now, but they were happy days."

Fred (67), who is Oldham born and bred, now lives in retirement in Chadderton with wife Kathleen. Their son Chris followed in Fred's footsteps in keeping goal for Latics.

It was back in 1941-42 season that Fred joined Latics part-time

after playing for Edge Lane Methodists. He combined playing with an apprenticeship at Buckley and Taylor engineers.

Fred recalled "In those days you played and wrote asking for a trial at the local club. That is what happened to me."

The young Fred made five war-time appearances before receiving his call-up papers for the Army. It was not until towards the end of the 1947-48 season that Fred was able to resume his Latics career.

His League debut came in a 3-0 home victory against Bradford City on April 10th, 1948 in the Third Division North.

Fred said: "I was still in the army at the time, but when I was demobbed manager Billy Wootton offered me professional terms.

He remained with Latics until June 1955, but was not a regular in the later years after George Burnett's signing. Indeed, Fred played only four times in the third Division title-winning team of 1952-53.

George Hardwick succeeded Wootton and Fred played in the former England captain's first and last games for Latics.

In those days Fred was a sporting all-rounder playing cricket for Oldham in the CLL. He was a batsman and occasional bowler.

After leaving Latics, Fred had a brief spell at Chesterfield where he lost his place in the reserves through injury to a young lad called Gordon Banks.

When he was unable to reclaim his place he decided to retire from playing and return to industry. He rejoined the workforce at Buckley and Taylor and remained with them until his retirement last July.

He was signed on by Latics as goalkeeping cover and was surprised to win a first-team recall and play three times towards the end of 1955-56 season.



Of his playing days, Fred said: "I enjoyed some good as well as bad times at Oldham. I played in the side which won promotion to the Second Division and also in the one which was relegated."

Fred was in charge of the juniors at the time when the likes of Keith Hicks, Graham Bell, John Platt and his own son graduated. He recalls Ian Wood making his 'A' team debut as a centre forward. Wood went on to play a club record 524 league games as a right back.

Son Chris' signing for Latics was an enormous thrill as Fred said: "It was like a second coming, although for my wife it was a second headache as she dislikes football.

"Chris' arrival at Latics also brought about my departure. Steve Hoolickin, pulled me aside one day and told me I was being too hard on Chris.

"So after thinking it over I decided it would be best if I called it a day. It is hard when your son is at the same club and you don't want to be seen to be favouring him."

Fred and Chris managed to buy season tickets for Latics' first season back in the First Division.

But Fred admitted "I have only been once for the visit of Sheffield United. I am afraid I am not a good watcher. I do not feel there is as much skill in the game today. "That does not mean to say I do not support the Latics. They have done remarkably well and their result is always the first I listen to."

Fred's sporting interest today revolves mainly around tennis.

He is president of Fernlea Tennis Club and was Chairman of the Oldham Tennis League for many years.

**PICCADILLY  
GOLD<sup>1152</sup>  
AM**

## NORWOOD

**MACHINERY INSTALLATIONS  
LIMITED**

**FACTORY REMOVALS •  
MECHANICAL AND ELECTRICAL  
INSTALLATIONS • LABOUR HIRE •  
• HIAB TRANSPORT.**

UNIT 56,  
TOUCHET HALL ROAD,  
STAKEHILL INDUSTRIAL  
PARK,  
MIDDLETON,  
MANCHESTER M24 2FL.

TEL: 061 653 3286

FAX: 061 655 3138



### A Better Proposal for your disposal...

Your local Cleanaway fleet  
can handle all types of  
industrial and commercial,  
dry and wet waste  
-quickly and efficiently.



**CLEANAWAY LIMITED**  
Manchester Service Centre

1001 CHESTER ROAD  
STRETFORD, MANCHESTER M32 0RA  
Tel: 061 865 4254/5

**Makes the least of waste**



## PERIQUITO HOTEL OLDHAM – A COMPLETELY DIFFERENT BALLGAME

**E**xperience a bright and exciting choice of hotel, within easy walking distance from Boundary Park • **F**ull Restaurant & Bar Services • **A**merican Sunday Lunch • **B**ar Snacks • **R**omantic Dinners • **B**uffet Lunches • **D**inner Dances • **C**onference facilities for 2-350 delegates • **C**ar park for 250 cars • **130** luxuriously appointed bedrooms with full facilities.

**PERIQUITO  
HOTELS**

Periquito Hotel, Manchester Street, Oldham, OL8 1UZ. Tel: 061 624 0555

# NORTH of the Border

With  
**ALASTAIR  
MacLACHLAN**

## LIGHT BLUES GO SINGING IN THE RAIN

'Fried Green and Whites by a non stop whistler'

A parody of the current well publicised movie might well reflect Celtic's misfortunes in their Scottish Cup semi-final with Rangers last week.

On a night of teeming sleet and rain - an evening you wouldn't want to send either your dog or your mother-in-law out for a walk - the Parkhead side lost out to a single Ally McCoist goal in the 44th minute.

Having beaten Rangers in the cup in each of the last three seasons, Celtic, the current form team, were expected to make it four in a row. The Hampden euphoria surrounding the Ibrox triumph not only centred round the McCoist strike - his thirtieth of the season for which he receives a cheque for £1,000 and a crate of bubbly courtesy of The Daily Record - but more controversially, on the seventh minute sending off of Rangers' David Robertson for a body check on winger Joe Miller.

It's to Rangers' credit that they overcame the elements and the stress of playing with ten men for 83 minutes to give them the possibility of their first cup final win since 1981.

The paying customers regularly fork out hard earned cash to see a game contested by 22 players. To have a participant red carded, in this game by match official Andrew Waddell, clearly short changes the spectators who were unanimous that a yellow card would have sufficed.

Andrew Waddell, an Edinburgh pathologist and FIFA official, will want to undertake a post mortem on his handling of a number of his recent refereeing appointments. In last season's quarter final clash between the same teams, Waddell sent off Hurlock, Walters and Hateley of Rangers together with Peter Grant of Celtic. In the league match between Rangers and St. Johnstone immediately preceding the aforementioned semi-final, TEN players were booked.

Mr Waddell is certainly a strict disciplinarian with a penchant for distributing coloured cards at pace. His pathology department are reputed to be currently conducting an in depth study of writer's cramp!

# The Golden Disc

6-12 Hilton  
Arcade-Oldham-  
Phone 652-4018

LP's • C.D.'s • Cassettes • Video's • Singles

36

## BABES IN THE SEMI-FINAL WOODS

The high fives were flying! Aurora Borealis (or Northern Lights to the uninitiated) was at it's sparkling best! The granite city of Aberdeen was in party mood.

The catalyst for this outflow of caledonian exuberance was the Under 21 success achieved by the Scottish babes in the European championship tie against Germany at Aberdeen's Pittodrie Stadium. Squeezing a one-all draw in the first quarter final leg at the Rhur Stadium in Bochum, the bookmaking fraternity still had their odds balanced in favour of the lads from the Bundesliga in this return match.

Pittodrie had been a questionable location for the game. Would the canny Aberdonians turn out and support the tartan cause?

A full house of 22,500 took up the challenge for further international honours although the initial stages of the game produced some heavy Scottish hearts as the efficient German side stormed into a 3-1 lead. Dundee United's Ray McKinnon had knocked in the first Scottish strike, but three goals in the last 25 minutes seemed a footballing fancy of the Brigadoon variety.

National coach, Craig Brown, pulled one out of the hat when he sent on Millwall midfielder Alex Rae. His strength and non-stop aggression almost single handedly hauled the Scots into semi-final contention.

Gerry Creaney scored.....2-3. After hitting a post, skipper Paul Lambert got the equaliser and with only two minutes left the irrepressible Alex Rae volleyed home the winner to send the crowd into orbit and a furor of tartan ecstasy.

Now Sweden face Paul Bernard and the rest of the young scots in the semi-final later this month, the Scottish leg again being scheduled for Pittodrie.

## CELTIC FAR FROM PARADISE.

It's a complete anachronism!

Celtic, playing their best of the season, have now strung together a run of fourteen games without defeat.

The Celtic Board, in abject comparison, continue to shoot themselves in the foot and score more own goals than the leakiest Parkhead defence.

Having had an AGM, an EGM was subsequently called for March 30th. Media considerations suggested they would be through the entire alphabet of general meetings before the warring directorate factions finally dispensed with the vitriolic jibes and made peace.

The latest attempt by the ruling Kelly-White dynasty to sack "rebel" directors Tom Grant and James Farrell ended with both men still enjoying membership of the seven man Parkhead Board with both the rival camps claiming the only real winner being the club.

The bottom line now with the mystified outsiders is to see the 104 year old club move into an up market financial state and go public, bury their boardroom differences and set the seal of approval for either the modernisation of Celtic Park, affectionately know as 'Paradise', or initiate the construction of a brand new stadium in the Cambuslang area of eastern Glasgow.

This latter option has been conservatively priced at £40 million, an outlay that 70 year old James Farrell had publicly condemned as being the financial road to receivership and had precipitated his possible premature retirement from the green and white boardroom.

## Cowgill, Holloway & Company

CHARTERED ACCOUNTANTS

AUDITORS, ACCOUNTANTS AND TAXATION ADVISERS  
TO THE 'LATICS'

To make sure you're on the right side in business

Contact: JOHN McNEENEY

COWGILL HOLLOWAY & COMPANY

REGENCY HOUSE

45-49 CHORLEY NEW ROAD, BOLTON BL1 4QR

Telephone: 0204 397327 Fax: 0204 21529

Also at MIDDLETON Tel: 061 653 8225

# KIT

## Sponsors - for the Latics

### KEY

- ☐ - Complete Kit
- - Shirt
- - Shorts
- ▲ - Socks
- ★ - Boots
- + - Tracksuit
- ◆ - Training Kit

**EARL BARRETT**  
Days  
of Royton  
FARMERS & DAIRYMEN  
061 624 4937

**GUNNAR HALLE**  
- Ian Riley  
(Joiner & Builder)  
624 6252 & 620 8359

**NICK HENRY**  
★ - Alison, Gill & Les Jones  
▲ - Brian & Patricia Rose  
○ - Wendy & Alison  
● - Mike & Ross Mason  
+ - Zoe Akeroyd  
◆ - TSB Bank - Royton

**PAUL MOULDEN**  
- Andrew Thorne & Co  
(Solicitors)  
Shaw/Lees - 0706 841775

**GRAEME SHARP**  
- Atlas Trading

**JOHN KEELEY**  
- Trevor Hall -  
Isle of Wight

**BRIAN KILCLINE**  
- Natalie Taylor

**PAUL BERNARD**  
★ - Rodney/Rodney  
▲ - Dave & Sue Croft  
○ - Julie & Win  
● - T.K. Shutters  
+ - W & G Welding Supplies  
◆ - Oldham Ath. Supporters A

**ANDY HOLDEN**  
- Davis,  
Blank Furniss

**RICHARD JOBSON**  
- Oldham Athletic  
Supporters  
Association

**ROGER PALMER**  
- Oldham  
Fruit Bowl  
Marwoods Babywear

**FRANK BUNN**  
- Windmill Print  
& Design

**NEIL McDONALD**  
+ - Pinder Dawson Associates  
& Staff  
★ - Andy and Sandy  
▲ - Hollimwood Dental  
Laboratory

**CRAIG FLEMING**  
▲ - Rodney / Rodney  
+ ★ ○ ● ◆  
Ann Morrison &  
Jayne Pearson

**NEIL ADAMS**  
★ ▲ ○ ●  
Dick Turpin & Bess -  
c/o Motor Bodies (O/M) Ltd.  
+ - The Seal Family,  
Pull Over Wool Shop.

**IAN THOMPSTONE**  
★ - Roger Howarth D.H.M. & J  
▲ - Angie Simpson  
○ - Rosemary & John  
● - Reflections Hair & Beauty  
+ - Moorgate school football team

**WILLIE DONACHIE**  
- Fletcher Broadbent  
Partnership  
Ian Palmer  
(Wholesale) Ltd

**PAUL KANE**  
- Stott Benham

**ANDY RITCHIE**  
- Neil Mellor  
(Butchers)  
Lawrence Smith  
(Confectioners)

**MIKE MILLIGAN**  
- Elsie Shaw

**IAN MARSHALL**  
- Geraldine Byrne

**JON HALLWORTH**  
- Frank Stephens

**ANDY BARLOW**  
★ - Bryn Cocker  
○ - Judith & Hilary  
◆ - Gordon Summers  
Junior Latics Club

IF YOU WOULD LIKE TO SPONSOR THE KIT OF ANY  
LATICS PLAYER PLEASE TEL: 061 627 1802  
FOR DETAILS

LATICS Prize .....ON THE LINE - 0898 12-15-82

I NEVER WIN ANY Prizes .....NOW YOU CAN! CALL 0898 12-15-82

# FLASHBACK

This Day in History with Tony Matthews

## 11th April 1964

No joy for the Latics 28 years ago as they lost 2-0 at Brentford in a Third Division match which attracted 8,925 fans.  
Luton Town were also playing in Division Three and they beat Wrexham 3-1 at home to ease clear of the bottom four.

## 11th April 1966

Almost 12,800 fans at The County Ground saw the Latics take both points with a hard-fought 1-0 win over Swindon Town. The match-winner was Ian Towers. Luton were held to a 1-1 draw at home by Colchester United in a Fourth Division promotion match.

## 11th April 1981

Chelsea came to Boundary Park for a Second Division match and returned to London with a point after forcing a 0-0 draw in front of just 6,740 fans. Also in Division Two Luton Town, watched by over 12,000 fans, beat Q.P.R. 3-0 at home with goals from Brian Stein, Raddy Antic and Godfrey Ingram.

## 11th April 1987

The Latics, chasing a play-off spot in Division Two, and unbeaten in eight games, went down south and crashed to a 3-0 defeat at Portsmouth where the turnout topped 19,700. Meanwhile Luton were having one of their best-ever seasons in Division One and after drawing 2-2 at Q.P.R. they moved up into 4th place in the table. There were 11,184 spectators present at Loftus Road and on target for the Hatters were Mark Stein and Ricky Hill.

## 11th April 1952

Almost 16,000 fans made their way to Boundary Park to see the Latics take on and beat Hartlepool United 5-2 in a Third Division (N) match. On target for the victors were Bobby McIlvenny, Jimmy Munro (2), Eric Gemmell and Willie Ormond. Luton Town, meanwhile, played Rotherham United at Millmoor 24 hours later and won 1-0 to keep in touch with the leading pack in Division Two.

## 11th April 1953

A bumper 19,000 plus crowd at Boundary Park cheered the Latics on to a 2-1 victory over struggling Chester in a vital Third Division (N) game. But it took an own-goal by visiting defender Ray Gill to bring the two points. Big-hearted centre-forward Joe Harris from Belfast netted Athletic's other goal. Luton, still in with a chance of gaining promotion from Division Two, beat Nottingham Forest 3-0 at Kenilworth Road in front of a 20,000 crowd.

## 11th April 1955

The Latics suffered their heaviest League defeat since losing 8-0 at Hull in December 1953 when they crashed 6-1 at Scunthorpe in a Third Division (N) match. A crowd of 8,471 witnessed this humiliation when Welshman Frank Scrine netted Athletic's consolation goal. Luton, going for promotion to the top flight, suddenly lost form in front of a 29,500 crowd and nosedived to a 4-0 defeat in the top-of-the-table battle at Leeds for whom Welsh international John Charles scored two penalties. Luton, in fact, went up this season; Leeds finished fourth!

## 11th April 1959

A crowd of just over 5,000 saw a lone strike from winger John Bazley give the Latics a 1-0 home win over Torquay United as the team faced up to the fact that it would have to apply for re-election to the Fourth Division. Luton were getting geared up for a Wembley appearance in the F.A. Cup Final v. Nottingham Forest, and they were put through their paces in a First Division home game with Manchester United, who forced a 0-0 draw in front of a 27,000 plus crowd at Kenilworth Road.



FRANK SCRINE

Latics scorer against Scunthorpe in 1955

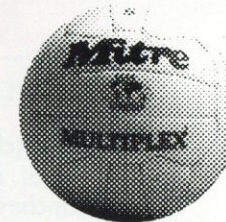
PICCADILLY  
GOLD 1152  
AM

# RESULTS AT A GLANCE

RESULTS AT A GLANCE

	Arsenal	Aston Villa	Chelsea	Coventry	C. Palace	Everton	Leeds	Liverpool	Luton	Man City	Man Utd	Norwich	Nottm Forest	Notts Co	Oldham Ath.	QPR	Sheff Utd	Sheff Wed	Southampton	Tottenham H	West Ham	Wimbledon
Arsenal		0-0	3-2	1-2		4-2	1-1		2-0	2-1	1-1	1-1	3-3	2-0	2-1	1-1	5-2	7-1		2-0	0-1	1-1
Aston Villa	3-1				0-1	0-0	1-4		4-0	3-1	0-1	1-0	3-1	1-0	1-0	0-1	1-1	0-1	2-1	0-0	3-1	2-1
Chelsea		2-0		0-1	1-1	2-2	0-1	2-2	4-1	1-1	1-3	0-3	1-0	2-2	4-2		1-2	0-3	1-1	2-0	2-1	2-2
Coventry	0-1	1-0	0-1		1-2		0-0	0-0	5-0	0-1	0-0		0-2	1-0	1-1	2-2	3-1		2-0	1-2		0-1
C. Palace	1-4	0-0	0-0	0-1		2-0	1-0	1-0	1-1	1-1	1-3	3-4		1-0		2-2	2-1		1-0	1-2	2-3	3-2
Everton	3-1	0-2		3-0	1-1		1-1	1-1			0-0	1-1	1-1	1-0	2-1	0-0		0-1	1-0	3-1	4-0	2-0
Leeds	2-2				1-1	1-0		1-0	2-0	3-0	1-1		1-0	3-0	1-0	2-0	4-3	1-1	3-3	1-1	0-0	5-1
Liverpool	2-0	1-1	1-2	1-0	1-2	3-1			2-1	2-2		2-1	2-0	4-0	2-1	1-0	2-1	1-1	0-0	2-1	1-0	
Luton	1-0		2-0	1-0	1-1	0-1	0-2	0-0		2-2		2-0		1-1	2-1	0-1	2-1	2-2	2-1	0-0	0-1	2-1
Man City	1-0	2-0	0-0	1-0	3-2	0-1	4-0	2-1	4-0		0-0	2-1	2-1	1-2	2-2	3-2	0-1	0-1	1-0			0-0
Man Utd	1-1	1-0	1-1	4-0	2-0	1-0	1-1	0-0	5-0	1-1		3-0		2-0	1-0	1-4	2-0	1-1			2-1	0-0
Norwich		2-1	0-1	3-2	3-3	4-3	2-2	3-0	1-0	0-0	1-3		0-0		1-2	0-1	2-2	1-0	2-1	0-1	2-1	
Nottm Forest	3-2		1-1	1-0	5-1	2-1	0-0		1-1	2-0	1-0	2-0		1-1	3-1		2-5	0-2	1-3	1-3	2-2	4-2
Notts Co	0-1	0-0	2-0		2-3	0-0	2-4	1-2		1-3	1-1	2-2	0-4		2-0	0-1		2-1	1-0	0-2	3-0	1-1
Oldham Ath.	1-1	3-2	3-0	2-1	2-3	2-2	2-0	2-3			3-6	2-2	2-1	4-3		2-1	2-1	3-0	1-1		2-2	0-1
QPR	0-0	0-1	2-2	1-1		3-1	4-1	0-0		4-0	0-0	0-2	0-2	1-1	1-3		1-0	1-1	2-2		0-0	1-1
Sheff Utd		2-0	0-1	0-3	1-1	2-1		2-0	1-1	4-2	1-2	1-0	2-0	4-2	2-0						1-1	0-0
Sheff Wed	1-1	2-3	3-0	1-1	4-1	2-1	1-6		3-2		3-2		2-1	1-0	1-1	4-1	1-3		2-0	0-0	2-1	2-0
Southampton	0-4	1-1	1-0	0-0	1-0	1-2	0-4	1-1	2-1	0-3	0-1	0-0			2-1	2-4	1-1		2-3			1-0
Tottenham H	1-1	2-5	1-3	4-3	0-1		1-3	1-2	4-1	0-1	1-2	3-0	1-2	2-1	0-0	2-0	0-1	0-2	1-2		3-0	
West Ham	0-2	3-1	1-1	0-1		0-2	1-3	0-0	0-0	1-2				0-2	1-0	2-2	1-1	1-2		2-1		1-1
Wimbledon	1-4	2-0	1-2	1-1	1-1	0-0	0-0	0-0	3-0	2-1	1-2	3-1	3-0	2-0	2-1	0-1		2-1		3-5	2-0	

YOU SUPPLY THE TALENT  
MITRE SUPPLY THE REST!



**mitre**  
FOOTBALL



MITRE ARE THE SOLE MANUFACTURER & SUPPLIER TO THE ENGLISH FOOTBALL LEAGUE  
OF THE EXCLUSIVE DELTA DESIGN OFFICIAL MATCH BALL.

# TODAY'S TEAMS

5

## OLDHAM ATHLETIC

COLOURS: ALL BLUE

# V

## LUTON TOWN

COLOURS: ALL ORANGE

Jon Hallworth  
 Craig Fleming  
 Andy Barlow  
 Nick Henry  
 Richard Jobson  
 Ian Marshall  
 Neil Adams  
 Roger Palmer  
 Graeme Sharp  
 Paul Bernard  
 Rick Holden  
 T.B.A.  
 T.B.A.

*Manager:* Joe Royle

*Referee:*

Mr. R. A. Hart  
Darlington.

*Reserve Official*  
Mr. F. Ainsworth

1  
2  
3  
4  
5  
6  
7  
8  
9  
10  
11  
12  
14

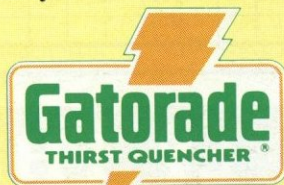
Mervyn Day  
 Julian James  
 Richard Harvey  
 Chris Kamara  
 John Dreyer  
 Trevor Peake  
 Jason Rees  
 Brian Stein  
 Mick Harford  
 Mark Pembridge  
 David Preece  
 T.B.A.  
 T.B.A.

*Manager:* David Pleat

*Linesmen*

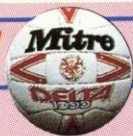
Red Trim: Mr. P. D. Harding  
Crewe

Yellow Trim: Mr. J. J. Richardson  
Liverpool



THE OFFICIAL SPORTS DRINK OF  
OLDHAM ATHLETIC

## Matchball



## Sponsors

EXECUTIVE

Alexander Tatham,  
30 St. Ann Street,  
Manchester, M2 3DB

Telephone: 061 236 4444

*Commercial solicitors providing  
specialist advice for  
companies in the  
North West.*

PREMIER



The Royal Bank of Scotland

1-5 Church Terrace  
Oldham OL1 3AU

Telephone: 061-624 0314

Facsimile: 061-627 0157

