

# MAGPIE

Official  
Matchday  
Magazine £1.20



**BARCLAYS**

**LEAGUE DIVISION ONE**



TODAY'S MATCH SPONSORS  
**The Hockley Snooker  
Centre, Nottingham.**



**Notts County v Luton Town** • Saturday 2nd May 1992 • Kick-off 3.00pm



# COWIES of Nottingham Sponsors of Notts County Football Club

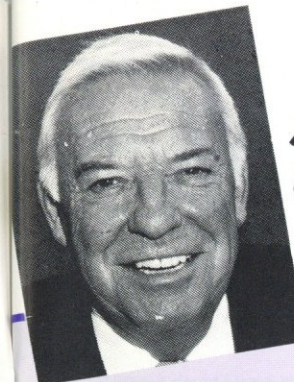


**No. 1 in Nottingham for:-**  
NEW FORDS ★ USED CARS ★ SERVICE PARTS  
★ CAR HIRE AND BODY SHOP

**COWIES**  
the right choice

MANSFIELD RD, DAYBROOK, NOTTINGHAM TEL. (0602) 262042

LOWER PARLIAMENT ST, NOTTINGHAM TEL. (0602) 506282



## inside write

DEREK PAVIS

I was interested to hear the rumours that I would be pulling out of Notts County if we were relegated and I can only say that the person who started them doesn't know me very well.

Of course it's a setback - a very big one - but you underestimate me if you think I can be beaten that easily.

It's been an ambition of mine for a long time to see Notts County established in the top flight and challenging for honours and nothing has changed.

We will get there eventually and although the past nine months have been a bit of a nightmare, I've come through it a stronger and wiser person and I'm sure that's true of many at Meadow Lane.

The challenge now is to put that knowledge and experience to good use so that we can claim a place in the Premier League as quickly as possible...but that will be easier said than done.

As you may have read this week, the players and management must pay the price of relegation with a pay-cut because we cannot afford to continue paying First Division wages and the cut-backs will not end there.

I am determined that the club will not be thrown into financial turmoil again by allowing more money to be spent than we have coming in and if that upsets some people, so be it.

The club is far bigger than any individual - myself included - and we must take a hard look at all financial matters, save where possible and channel what money we do have available in the right direction.

As you are well aware, Phase 1 of the project to re-develop the ground is already underway and helped by a grant from the Football Trust, I'm confident we will find the £3.2million involved.

It won't be necessary to sell players in order to meet those bills but the new players we expect to sign during the summer will largely have to be paid for by others moving on.

In other words, Neil Warnock will have to wheel and deal to strengthen and increase the senior squad - and he has already shown himself capable of doing that.

At the bottom end of the scale, the youth policy which has been so productive for the club over the past few years will not be affected by the cut-backs to any great extent.

It's vital for our long-term future that we continue to find and develop our own youngsters but we must be more ruthless in deciding which of the young professionals has a realistic chance of making the grade.

We have taken the decision this week to withdraw the A team from the Midland Senior League as a cost-cutting exercise but although steps have to be taken to balance the books, don't think that means we have lost our desire to be successful.

I'm not foolish enough to predict that we will win promotion again next season but you have my word on it that we will try.

I'm sorry that we have failed to match up to expectations. But no one is more disappointed than me and having had a taste of the big-time, I can promise that I will do all in my power to get back there as quickly as possible.

PUBLISHED BY NOTTS COUNTY FOOTBALL CLUB  
DESIGNED AND PRODUCED BY CHRISTIAN JAMES DESIGN & MARKETING, NOTTINGHAM  
PRINTED BY THE SHERWOOD PRESS. COLOUR REPRO BY PLAN-4.



**NOTTS COUNTY  
FOOTBALL CLUB**

FOUNDED IN 1862

**Telephone:**  
Main Office 0602 861155  
Lottery 0602 864718  
Clubcall 0898 12 11 01  
Community Office  
0602 863656

**CHAIRMAN**  
Derek Pavis

**VICE CHAIRMAN**  
John Mounteney

**DIRECTORS**  
Bill Hopcroft, Doug Ward,  
Peter Jackson

**PRESIDENT**  
Frank Sherwood

**CHIEF EXECUTIVE**  
Neal Hook

**MANAGER**  
Neil Warnock

**ASSISTANT MANAGER**  
Mick Jones

**COACH**  
Michael Walker

**PHYSIOTHERAPIST**  
David Wilson

**YOUTH COACH**  
Russell Slade

**COMMERCIAL MANAGER**  
Shuna Shaw

**PROMOTIONS MANAGER**  
Les Bradd

**COMMUNITY OFFICER**  
Alan Young

**SAFETY OFFICER**  
Bob Davy

**HON. CLUB SURGEON**  
Peter Jackson

**HON. CLUB DOCTOR**  
Brian Bates

**HON. CLUB DENTIST**  
Warren Torz

**CLUB CHAPLAIN**  
Clive Andrews

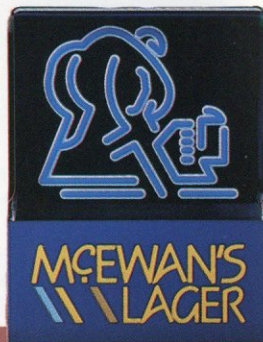


PROMOTED TO DIVISION TWO  
1989-90

PROMOTED TO DIVISION ONE  
1990-91



# JOIN YOUR TOP FLIGHT TEAM.



Home Bitter and McEwan's Lager, a winning team from Home Brewery.



Home and away enjoy your favourite brew as you support the Magpies back in the Top Flight.

# EXCLUSIVE NEIL WARNOCK

It has to rank as one of the biggest disappointments of my career that we failed to make it into the Premier League and the fact that we ought to have finished halfway up the table makes it all the more galling.

Without doubt I have made mistakes and I readily accept my share of responsibility for what has happened.

But I remain convinced that we are going down not so much because other teams had more ability than us but because of the suicidal tendencies that plagued us all season.

We haven't helped ourselves at times and although there is a saying in the game that luck balances out, I'm not at all sure we have had our just desserts in that respect over the past nine months.

For example, my mind goes immediately to the decisive penalties in our Meadow Lane meetings with Liverpool, Norwich, Manchester United and Wimbledon.

They all came in the final 15 minutes, every one of them was dubious to say the least and when you add them together, they represent seven points lost.

I'm well aware that every manager has a hard-luck story to tell at this stage of the season. That's the nature of the game but I don't recall too many occasions when we had a stroke of good fortune at a crucial moment of the games.

Nevertheless, we have to be positive and salvage what we can from the disappointment and there's no doubt that it has been an invaluable experience for all of us.

Some players now know they can cope with life at the top, others found it difficult to maintain consistently high standards but without exception, they will have learned a lot which I hope will be of benefit in the future.

It's not an ideal situation when you are in a position to dictate what happens to another club and as you will be aware, Luton will be fighting for their Premier Division lives this afternoon.

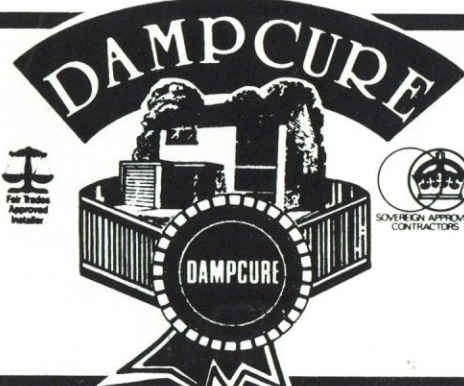
But as happened in the final game of last season, when we deprived West Ham of the Second Division title by winning at Upton Park, we owe it to others to do our best to sign off with a victory - and I assure you we will.

Finally, on behalf of all the players and staff, I would like to place on record how much we appreciate your patience and support.

There must have been times when you were tempted to criticise but in general, you haven't done that and I'm sure that was influenced by the fact that you know we have a very genuine set of lads.

They did their best to try and keep the club afloat but unfortunately, in the final analysis, that wasn't quite good enough.





- APPROVED BY BUILDING SOCIETIES & ESTATE AGENTS
- ONLY ENVIRONMENTALLY FRIENDLY CHEMICALS USED
- PALACE, SOVEREIGN & SAFEGUARD APPROVED
- RE-PLASTERING SERVICE AFTER TREATMENT
- QUALITY WORK & MATERIALS
- FREE SURVEY & QUOTATION

ALL TYPES OF BUILDING WORK UNDERTAKEN

NOTTM 671597

- ★ RISING DAMP
- ★ DRY/WET ROT
- ★ TANKING
- ★ WOODWORM

49 MANSFIELD RD,  
DAYBROOK

**un** united news shops ltd.

**JOIN COUNTY CASHLINE  
AT ANY OF THE FOLLOWING**

UNITED NEWS  
236 Beckhampton Road,  
Bestwood.

**For a wide range of  
newspapers,  
confectionary, tobacco  
and greetings cards call at  
any of our branches  
throughout Nottingham.**

NEWSCARD  
2 Wensley Road,  
Woodborough.

UNITED NEWS  
23 Woodstock Road,  
Toton.

**Join our Christmas Club  
NOW and spread the cost  
of Christmas.**

UNITED NEWS  
99a Melton Road  
West Bridgford.

FIELDWICKS  
83 College Street  
Long Eaton.

**UNITED NEWS SHOPS  
WOULD LIKE TO  
WISH NOTTS COUNTY  
WELL IN TODAY'S  
MATCH.**

UNITED NEWS  
44 Abbey Road,  
West Bridgford.

NEWSCARD  
571 Nuthall Road  
Cinderhill.

UNITED NEWS  
16 Musters Road,  
West Bridgford.

UNITED NEWS  
79/81 Bracebridge Dr,  
Bilborough.

UNITED NEWS  
2 Andover Road  
Bestwood.

NEWSCARD  
28 Kyle View,  
Top Valley.

UNITED NEWS  
8 Robin Hood Chase  
St Anns.

UNITED NEWS  
193 Loughborough Road,  
West Bridgford.

WATMOUGHS.  
5 Beechwood Road,  
Arnold.

UNITED NEWS  
150 Front Street,  
Arnold.

# CAPTAIN'S

# LOG



**CRAIG SHORT**

**SATURDAY APRIL 11**

Michael Johnson and Paul Devlin were drafted into the starting line-up against Coventry but the surprise was the inclusion of Rob Matthews as substitute. Although he had trained with us the previous day, we didn't expect him to figure but he proved to be a lucky mascot as we at last recorded a victory.

Kevin Bartlett and his wife travelled south to stay at the Hilton Hotel in Watford - at the expense of Rumbelows - and prepared for the following day's Sprint Challenge.

**SUNDAY APRIL 12**

Most of the lads had put their 'shirts' on Barts to do the business at Wembley and he wasn't exactly top of the pops when, after coasting to victory in the heats, he could only manage second place in the final.

**MONDAY APRIL 13**

Barts was given the day off to recover from his exertions and maybe that was just as well because some of the lads were still licking their wounds and couldn't wait to get at him!

Maybe that was partly to blame for the shock result in the five-a-side competition - Mick Jones' team emerging victorious against the boss' side.

**TUESDAY APRIL 14**

Barts had to accept the consequences when he arrived for training and we had a change of routine because the boss took us for a four-mile stroll around the Peak District.

Andy Williams discovered it's a small world when he bumped into former Rotherham colleague John Green in the middle of the moor and although some of the lads didn't appreciate their day out in the wind and rain, the pub lunch helped to cheer them up.

**WEDNESDAY APRIL 15**

A day-off for the lads and Mark Draper proved himself to be the champion when a group of us decided to tackle the local go-karting circuit.

Phil Turner received confirmation that he must undergo an operation for a double hernia but Dean Yates was still waiting for the specialist to decide the best course of action for his knee problem.

Yatesy, meanwhile, joined forces with Michael Johnson and Steve Slawson to present the prizes after the Junior Magpies Easter Coaching Course.

**THURSDAY APRIL 16**

We had a tough training session at Grove Farm and 'Drapes' caused a stir

afterwards when he let it slip that he was having guitar lessons. Will this be the start of something big?

Tommy Johnson dropped in to show-off his new car and it was good to see Alan Paris back in training - even though he was restricted to muscle-building exercises.

**FRIDAY APRIL 17**

Richard Dryden was suffering from a calf injury but with our resources stretched, it was decided he would have to play at Norwich - and take responsibility for marking Ruel Fox. Dean Thomas was set to return and young Mark Wells was also named in the squad.

**SATURDAY APRIL 18**

Rob Matthews emerged as the hero and when his goal gave us a deserved 1-0 win at Carrow Road, we suddenly found ourselves with a chance of pulling clear of trouble.

**SUNDAY APRIL 19**

The Easter Monday clash with Sheffield United was now a crucial fixture and we all reported to Meadow Lane for training - although Mark Draper spent the morning receiving treatment for a sore ankle.

**MONDAY APRIL 20**

Other results went perfectly for us in the afternoon and when we began brightly against United and scored an early goal, there was genuine cause for optimism. But we fell away badly and the lads were utterly dejected at the finish because we knew we had blown our last chance of survival.

**TUESDAY APRIL 21**

Predictably, it was a miserable-looking group that met up as planned to sample the golf course at Risley, where Drapes has just become a member. But he took some 'stick' at the finish when we realised we had only played 16 holes because he took us the wrong way!

**WEDNESDAY APRIL 22**

Two goals from Gary Lund gave the Reserves victory over Port Vale and after playing for the first hour as a central defender, he was earmarked for that job at Manchester City.

**THURSDAY APRIL 23**

It was a big day for Don O'Riordan and Tony Agana, who made their long-awaited comebacks in the A team at Lincoln - and came through unscathed.

**DOMESTIC  
APPLIANCES  
VACUUM  
CLEANERS  
KETTLES, IRONS, ETC  
All Guaranteed**

Domestic Electrical  
Repairs & Installations

**SHERWOOD  
ELECTRICAL**

564 Mansfield Road,  
Sherwood (next door  
to Post Office -  
opposite Bus Depot)

Telephone

**602777**

**Trent Cars**  
24 HOUR SERVICE

**(0602) 50-50-50**

NO PICK-UP CHARGE • PARCEL DELIVERY •  
PROBABLY NOTTINGHAM'S CHEAPEST FIRM.

ROLLS ROYCE, BENTLEY, MERCEDES BENZ FOR  
EXECUTIVE HIRE, WEDDINGS & SPECIAL OCCASIONS

# NOTICEBOARD

**BARCLAYS LEAGUE**

## COUNTY CLUBLINE

We are about to end our agreement with Clubcall and will be launching our own telephone information service from July 1 - in association with Ring-a-Round.

We have been keen for some time to improve the quality of the service being offered to supporters and will be genuinely striving to give value for money by making the new line the best in the country.

It will work on the 'menu' system, which means you can choose which information you want, whether it be the latest news, an interview, competition or ticket and travel information.

Anything worth knowing about Notts County will appear first on County Clubline - the only official service to supporters - so make a note of the number...0891 88 86 84.



## PROMOTION PARTY

There's an opportunity tomorrow to take a last look at Meadow Lane in its present form - and offer your congratulations to our Reserves following their promotion to Division One of the Pontins League.

Huddersfield's midweek draw means we are already assured of promotion but we complete our fixtures with a game against Scunthorpe, which will kick off at 11am.

It's nice to have something to celebrate and in an attempt to encourage supporters to come along to the promotion party, children aged 14 and under will be admitted free of charge.

Incidentally, the youth team still have a home game to play in the Purity League and we regret that we are unable to tell you when that will be because Nottingham Forest have still not confirmed a date at the time of writing.

## NOTTS COUNTY FOOTBALL CLUB FIXTURES 1991/92

Date	Opposition	Home / Away
08.08.91	Notts County	H
15.08.91	Sheff Wed	A
22.08.91	Sheff Wed	H
29.08.91	Sheff Wed	A
05.09.91	Sheff Wed	H
12.09.91	Sheff Wed	A
19.09.91	Sheff Wed	H
26.09.91	Sheff Wed	A
03.10.91	Sheff Wed	H
10.10.91	Sheff Wed	A
17.10.91	Sheff Wed	H
24.10.91	Sheff Wed	A
31.10.91	Sheff Wed	H
07.11.91	Sheff Wed	A
14.11.91	Sheff Wed	H
21.11.91	Sheff Wed	A
28.11.91	Sheff Wed	H
05.12.91	Sheff Wed	A
12.12.91	Sheff Wed	H
19.12.91	Sheff Wed	A
26.12.91	Sheff Wed	H
02.01.92	Sheff Wed	A
09.01.92	Sheff Wed	H
16.01.92	Sheff Wed	A
23.01.92	Sheff Wed	H
30.01.92	Sheff Wed	A
06.02.92	Sheff Wed	H
13.02.92	Sheff Wed	A
20.02.92	Sheff Wed	H
27.02.92	Sheff Wed	A
06.03.92	Sheff Wed	H
13.03.92	Sheff Wed	A
20.03.92	Sheff Wed	H
27.03.92	Sheff Wed	A
03.04.92	Sheff Wed	H
10.04.92	Sheff Wed	A
17.04.92	Sheff Wed	H
24.04.92	Sheff Wed	A
01.05.92	Sheff Wed	H
08.05.92	Sheff Wed	A
15.05.92	Sheff Wed	H
22.05.92	Sheff Wed	A
29.05.92	Sheff Wed	H
05.06.92	Sheff Wed	A
12.06.92	Sheff Wed	H
19.06.92	Sheff Wed	A
26.06.92	Sheff Wed	H
03.07.92	Sheff Wed	A

## BARCLAYS LEAGUE FIRST TEAM DIVISION ONE 1991/92

Date	Opposition	Home / Away
08.08.91	Notts County	H
15.08.91	Sheff Wed	A
22.08.91	Sheff Wed	H
29.08.91	Sheff Wed	A
05.09.91	Sheff Wed	H
12.09.91	Sheff Wed	A
19.09.91	Sheff Wed	H
26.09.91	Sheff Wed	A
03.10.91	Sheff Wed	H
10.10.91	Sheff Wed	A
17.10.91	Sheff Wed	H
24.10.91	Sheff Wed	A
31.10.91	Sheff Wed	H
07.11.91	Sheff Wed	A
14.11.91	Sheff Wed	H
21.11.91	Sheff Wed	A
28.11.91	Sheff Wed	H
05.12.91	Sheff Wed	A
12.12.91	Sheff Wed	H
19.12.91	Sheff Wed	A
26.12.91	Sheff Wed	H
02.01.92	Sheff Wed	A
09.01.92	Sheff Wed	H
16.01.92	Sheff Wed	A
23.01.92	Sheff Wed	H
30.01.92	Sheff Wed	A
06.02.92	Sheff Wed	H
13.02.92	Sheff Wed	A
20.02.92	Sheff Wed	H
27.02.92	Sheff Wed	A
06.03.92	Sheff Wed	H
13.03.92	Sheff Wed	A
20.03.92	Sheff Wed	H
27.03.92	Sheff Wed	A
03.04.92	Sheff Wed	H
10.04.92	Sheff Wed	A
17.04.92	Sheff Wed	H
24.04.92	Sheff Wed	A
01.05.92	Sheff Wed	H
08.05.92	Sheff Wed	A
15.05.92	Sheff Wed	H
22.05.92	Sheff Wed	A
29.05.92	Sheff Wed	H
05.06.92	Sheff Wed	A
12.06.92	Sheff Wed	H
19.06.92	Sheff Wed	A
26.06.92	Sheff Wed	H
03.07.92	Sheff Wed	A

## FA CUP FINAL TICKETS

Are you feeling lucky because we are holding a draw on Tuesday for FA Cup Final tickets?

If you are a Lifeline member, shareholder, season-ticket holder, Cashline member, lottery agent or Programme holder, you are eligible to take part. The closing date for entries to the draw is Monday and applications should include name, address, membership or share certificate number or, for programme holders, the date panel from the front of the programme v Coventry - together with a stamped addressed envelope.

Applications may be made for more than one category and the draw winners will be invited to purchase a ticket and provide proof that they will personally use it.



## SUPPORT THE YOUNGSTERS

Raffle tickets will be on sale around the ground this afternoon and the object of the exercise is to raise funds to pay for our youth team to compete in Switzerland in June.

Following our Championship success in the Purity League last season, we have been invited to represent England in a prestigious tournament, which will involve many top European clubs.

It's an under-19 event so our first-year professionals will also be eligible to take part and the only snag is that the cost of the trip amounts to more than £2,000. Please give the lads your support because it's bound to provide them with valuable experience and if you want to make a donation other than by purchasing a raffle ticket, cheques should be sent to Notts County FA Youth Fund.



## SEASON-TICKET PRICES

Decisions were scheduled to be made at yesterday's Board meeting on the price of season-tickets for next season.

Full details are expected to be announced next week but as you can imagine, it is not a straightforward exercise compared to previous years.

As chairman Derek Pavis made clear to supporters when plans for the ground redevelopment were revealed, we realise it would be unreasonable to ask you for a lot more for the chance to sit next season.

By the same token, the overall facilities - seat, view, toilets and refreshment areas - will be much better value for money and we hope you will feel a small increase in prices is justified.

# CERAMIC TILES FOR WALLS & FLOORS

GREAT VALUE  
GREAT CHOICE  
ONLY AT  
**EAST MIDLANDS CERAMICS**



Showrooms and Trade Centre at:-  
542-6 Mansfield Road, Sherwood, Nottingham Tel: 625515  
Southglade Park, Hucknall Road, Bulwell Tel: 770155  
Open Mon-Fri 9am-5.30pm Sat 9am-4pm  
Open Mon-Fri 8am-5pm Sat 8am-Noon

**LARGE FREE CAR PARK**

# EQUPT GOLF

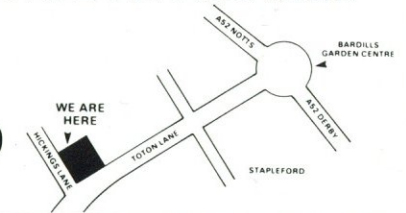
**OPENING HOURS**  
9.00am - 6.00pm Mon-Sat  
10.00am - 4.00 Sunday  
Open 7 Days a Week

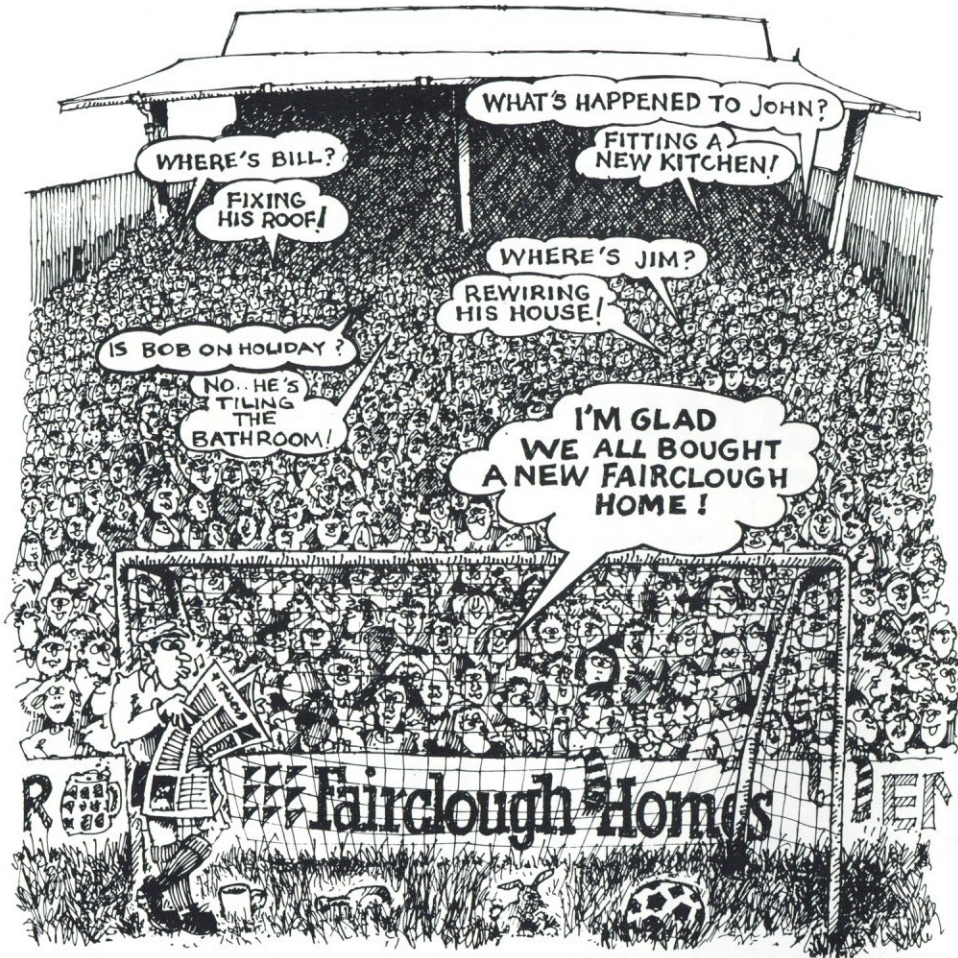
<b>8 IRONS 3 WOODS BAG &amp; PUTTER NOW ONLY £135.00</b>	<b>SECOND HAND FULL SETS FROM ONLY £60.00</b>	<b>JUMBO DRIVERS GRAPHITE SHAFT MADE TO MEASURE L/H &amp; R/H ONLY £59.99 FREE HEADCOVER</b>	<b>TROLRIES FROM £23.99</b>
<b>4 IRONS 1 WOOD BAG &amp; PUTTER NOW ONLY £70.00</b>	<b>SECOND HAND HALF SETS FROM £25.00</b>	<b>WATERPROOF SHOES ONLY £15.99</b>	<b>L/H &amp; R/H 1 IRONS &amp; 2 IRONS SPECIALIST WEDGES ONLY £19.99</b>

**FREE CUSTOM FITTING SERVICE AVAILABLE**

**MAJOR STOCKISTS:**  
★ RAM ★ DAIWA  
★ MACREGOR ★ SPALDING  
★ HOGAN ★ SAYERS ★ DUNLOP  
★ T. SHARK ★ SLAZENGER  
PLUS MANY MORE!!

**1 HICKINGS LANE  
STAPLEFORD  
NOTTS NG9 8PB  
0602 499599**





If you buy a new Fairclough Home ~ *you too* will have the time to watch your favourite team.

**Fairclough Homes**

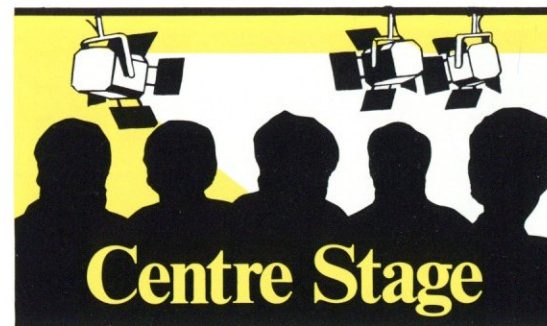
Achieving New Heights in Homebuilding  
A member of the AMEC Group.

*..in a league of their own.*

For a winning combination, there's a Fairclough Home development near you

**MIDLANDS REGION**

Telephone  
0827 54544



## DESPONDENCY AND DELIGHT

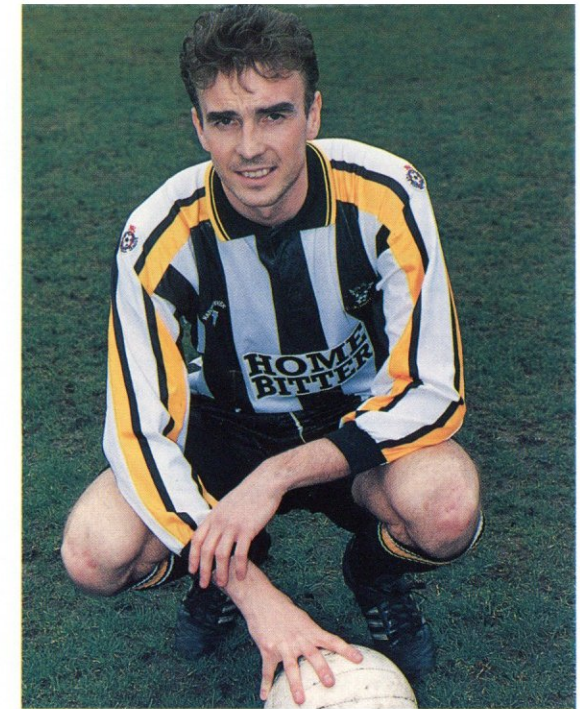
Andy Williams experienced the two extremes of football life in the space of little more than 24 hours last weekend.

After the gloom and despondency of being sentenced to relegation on Saturday, he went to Bramall Lane to see his former colleagues earn the victory which was to win the League Championship.

"It was a strange sensation in some ways," he said. "You can imagine how we all felt after the defeat at Manchester City and it went from one extreme to the other at Bramall Lane.

"It was a great atmosphere and a terrific game and although I'm not really a part of that scene any more, it was impossible not to get caught up in the euphoria and I was delighted for the lads."

Although Andy made three cup appearances for Leeds



ANDY WILLIAMS...no regrets about coming to Meadow Lane.

this season before switching to Meadow Lane, he cannot claim to have helped them to finish on top of the pile.

In fact, it was because the former Rotherham midfielder couldn't force his way back into Howard Wilkinson's starting line-up that he decided the time had come to move on.

And even though we are heading straight back to the Second Division, Andy has no regrets about completing the £115,000 move after his extended spell on loan to us.

He added: "The object of the exercise was to help get the club clear of trouble and with 15 games left, I was optimistic we would do that.

"But it wasn't to be and although we never got our share of luck, I think we have to be honest enough to admit that we didn't always help ourselves.

"No club in the country could have lost so many players with injuries without noticing the difference and it's never easy to find consistency when you don't have a settled side.

"It takes a lot to overcome those problems - especially in the First Division - but we made things worse by conceding bad goals at vital times.

"Despite what has happened, I don't have any regrets about coming to Nottingham because it has given me the chance to play regular first-team football again.

"Obviously there's a bit of despondency around the place at present but as always in these situations, it's a matter of where we go from here.

"We've enjoyed our taste of the big time and if we all want it badly enough, I see no reason why we shouldn't bounce back next season.

"That's easy to say but in reality, as I found with Leeds, it's a hard job to get out of the Second Division because there are a lot of good teams with big ambitions.

"But the majority of our lads have already shown on one occasion that they can be successful at Second Division level so why shouldn't they do it again."

**HARTLEYS**

ELECTRICAL RETAILERS

20/22 High Street, Ruddington,  
Nottingham NG11 6EJ

**Panasonic  
Technics**

- Credit Sales - Rentals
- Television - Hi-Fi Video
- Satellite Systems
- PA Video Hire

**NEIL WARNOCK'S  
PLAYER OF THE  
SEASON**

1st CRAIG SHORT  
2nd STEVE CHERRY  
3rd CHARLIE PALMER

Tel: 0602 214535



IF  
YOU THINK  
THAT'S FRESH,  
TRY A  
*dale  
farm*  
DELIVERY.

# SETTING THE SCENE...



WITH RADIO NOTTINGHAM'S COLIN SLATER

Unbelievable as it must sound, this is the fifth time in ten seasons that Luton Town have needed to win their last game of the campaign in order to preserve their First Division status. The Hatters come to Meadow Lane today with the same cliff-hanging target again.

The first time it happened was at the end of the 1982-83 season and, for most of us, the memories of that particular day will be the strongest of all.

The script could not have been crafted more dramatically: Luton to play at Manchester City, whoever won would stay up while the losers went into the Second Division. With home advantage, most of the smart money went on City's chances.

Those were the days (to many of us the good days) when we could settle back in the evening and watch recorded highlights on BBC TV's Match of the Day and the City-Luton game was quite naturally chosen for coverage. It was one of those occasions when the quality of the football scarcely mattered, the result and its consequences being all-important.

David Pleat, then in his first spell as Luton manager, made perhaps the most inspired substitution that soccer has known since the system was introduced into our domestic game. With the scores locked at 0-0, he thrust Radi Antic into the action. Four minutes from the end, Antic rewarded him with the winning goal -and salvation. The TV director, with many emotional scenes to choose, let his cameras linger on Pleat as he dashed at the end, arms aloft, on to the Maine Road pitch, an abiding memory.

If it's unbelievable that this is the fifth time in a decade that Luton seek safety by winning on the last Saturday, it's even more bizarre that in each of the last three seasons precisely the same thing has happened!

In 1988-89, with Ray Harford in charge, Luton beat Norwich City 1-0 in a home game, thanks to a late Danny Wilson penalty, a result which left them

two points above Middlesbrough, who went down with West Ham United and Newcastle United.

Then, both in 1989-90 and 1990-91, Luton had to play Derby County on the season's last day, thanks to a quirk of fixture planning. (Who said computers don't have a sense of humour?).

In 1989-90, at the Baseball Ground, Luton won by 3-2, Tim Breacker scoring once and Kingsley Black twice for them. It enabled Luton to finish on 43 points, the same as Sheffield Wednesday, but a superior goal difference saved Luton and sent Wednesday crashing to relegation with Charlton and Millwall. For good measure that season, incidentally, Luton not only won at Derby on the last day, they won all their last three matches!

In 1990-91, this time playing Derby at home, Luton were perhaps saved as much as anything by the rule change which sent only two clubs down instead of three. Nevertheless, Luton beat Derby 2-0 to put them on 37 points and ensure that Sunderland would accompany Derby into the Second Division. An own goal by Mick Harford and another by Lars Elstrup saw Luton home...and dry.

In a story with so many curious twists and turns, Harford later joined Luton from Derby!

Today, of course, we'll have both eyes on the game in front of us and one ear on the Coventry match at Aston Villa. We all know what happens if Coventry lose and Luton win.

I hope from County's point of view that there's the same sense of the dramatic when, at a remodelled Meadow Lane, the new season starts in August. See you then...

This page is sponsored by:



FM STEREO SOUTH NOTTS 103.8MHZ MID NOTTS 95.5MHZ  
AM SOUTH NOTTS 1521KHZ/197M MID NOTTS 1584KHZ/189M

## SPECIALIST CARPET FITTING SERVICE

ANY MAKE OF  
CARPET SUPPLIED

24 HR  
EMERGENCY  
REPAIRS

FREE ESTIMATES  
NO OBLIGATION  
FREE PLANNING &  
DESIGN SERVICE

- HUGE SELECTION AVAILABLE
- HOME SAMPLE SERVICE
- GUARANTEED QUALIFIED PERSONAL FITTER.
- NO SUBCONTRACTORS
- NEW & READAPTATIONS AVAILABLE
- DAY & EVENING FITTING AVAILABLE TO SUIT YOUR REQUIREMENTS



PROBABLY THE BEST PRICES  
& SERVICE IN THE AREA  
RING US FIRST & COMPARE PRICES

GENUINE 5% DISCOUNT WITH THIS ADVERT

**Celebrity Carpets**

RING NOW OUR ADVICE IS FREE

**0602 791181**

# PROFILE ON

## MICHAEL JOHNSON

**FAMILY:** I'm still single but have a steady girl-friend called Charlene.

**HOME:** I live with my mum and sister in Clifton.

**BIRTHPLACE/DATE:** Nottingham on 4th July 1973.

**FAVOURITE FOOD AND DRINK:** Chicken, peas and rice is my favourite dish and I'm a Guinness drinker - on "doctor's" orders because I was told it would help build me up.

**FAVOURITE RESTAURANT:** The Clubhouse at the Nottingham Forte Crest.

**FAVOURITE NEWSPAPER:** The Nottingham Evening Post - especially when they write nice things about me.

**FAVOURITE TV PROGRAMME:** 291 Club.

**MUSIC LIKES:** Reggae and Soul.

**MUSIC DISLIKES:** Heavy Metal.

**BEST FILMS SEEN:** House Party.

**FAVOURITE ACTOR/ACTRESS:** Bruce Lee/Whoopy Goldberg.

**FAVOURITE COMEDIAN:** Lenny Henry.

**FAVOURITE CARTOON CHARACTER:** Wile E. Coyote in the Roadrunner.

**FAVOURITE ITEM OF CLOTHING:** A tracksuit.

**FAVOURITE COLOUR:** Black.

**HOBBIES:** Listening to music and collecting birthday cards.

**TOP HOLIDAY RESORT:** Birmingham! When Mick Walker asked the youth team lads last year where they were going for their holidays, they were all heading for exotic places except me but I enjoy my annual visit to stay with relations.

**FIRST CAR/CURRENT CAR:** My first car was a Ford Fiesta, I currently have an Astra and my next car will be a BMW!

**SILLIEST THING YOU HAVE EVER DONE:** Spraying James Walker with a fire extinguisher. I thought it was full of water but it was chemical powder and it might have been nasty had Dave Wilson not reacted so smartly.

**BEST FRIEND IN FOOTBALL:** Last year's youth team were a really close bunch and I'm especially friendly with Shaun Browne, Mark Wells and Darron Harmon.

**MOST TREASURED POSSESSION:** My family and the youth team "Player of the Year" award I won last season.

**WHAT FRIGHTENS YOU MOST:** Doctor's needles - I'm a complete coward when faced with them.

**BEST FEATURE:** My girl-friend says it's my eyes.

**WORST HABIT:** A tendency to be late, which has got me fined more than once when I haven't arrived for training at the appointed time.

**WHAT ANNOYS YOU MOST:** Smoking and bad manners.

**WHAT WOULD YOU CHANGE ABOUT YOURSELF:** I really wish I could be more prompt.

**FAVOURITE STADIUM:** Highbury - where I made my League debut.

**BIGGEST INFLUENCE ON CAREER:** Mick Walker, Russell Slade and Charlie Palmer, who is always willing to give me advice and encouragement.

**MOST FAMOUS PERSON MET:** Ian Wright.

**PERSON YOU WOULD MOST LIKE TO MEET:** Nelson Mandela.



**Bristol Street Sherwood**

NOTTINGHAM'S ONLY APPOINTED  
**CITROËN**  
SERVICE-REPAIR AND PARTS CENTRE  
**RAC QUALITY CONTROL APPROVED**  
TEST DRIVES AVAILABLE  
FOR THE ENTIRE CITROËN RANGE

ALL MAKES  
M.O.T.s  
WHILE-U-WAIT  
24 HOUR  
RECOVERY SERVICE

WITTER TOWBAR  
STOCKISTS

UNDER BONNET  
FIRE EXTINGUISHER  
FITTING CENTRE

GEMINI CAR  
ALARM  
FITTING  
CENTRE

WINDOW  
ETCHING

MANSFIELD ROAD, SHERWOOD, NOTTINGHAM  
**(0602)621000** EVENING & WEEKEND  
24 HR RECOVERY  
Tel. No. 0850 363591



# DEMOLITION MATRIXGRADE LTD

- ★ 40 TONNE CRAWLER CRANES
- ★ 60 TONNE EXCAVATORS
- ★ 600 TONNES HYDRAULIC SCRAP SHEAR
- ★ 501 MONTABERT IMPACT BREAKERS
- ★ POWER FORKS
- ★ MOBILE CONCRETE CRUSHERS
- ★ TIPPING FACILITIES

**EXCAVATION — SITE CLEARANCE  
LATEST EQUIPMENT  
SKILLED WORKFORCE**

COMMERCIAL & INDUSTRIAL  
SPECIALISTS WITH OVER  
20 YEARS EXPERIENCE

APPROVED CONTRACTORS TO BRITISH COAL, P.S.A,  
BRITISH RAIL LOCAL & STATUTORY AUTHORITIES



**LICENSED FOR ASBESTOS  
REMOVAL**

## Nottingham 870871

**(0602) Matrix House, Meadow Road, Netherfield, Nottingham, NG4 2FQ.**



## Naylor Automatics Limited

THE POPLARS, WOLLATON ROAD,  
BEESTON, NOTTS. NG9 2PD.

★★★  
SUPPLIERS OF ALL COIN-OPERATED  
GAMING AND AMUSEMENT MACHINES  
★★★

FOR SERVICE THROUGHOUT THE MIDLANDS,  
LANCASHIRE, SOUTH AND WEST YORKSHIRE...  
CONTACT:

NOTTINGHAM FACSIMILE CLECKHEATEN  
(0602) 252412 (0602) 228950 (0274) 851409



A Member of the Naylor Group of Companies

**FOR ALL  
YOUR  
GLASS AND  
GLAZING  
NEEDS  
TELEPHONE  
FRED  
WILDE  
GLASS  
878091  
ANYTIME**

*The Premier League may have passed us by for next season but we are sure we will be there soon!! We reproduce on this page an article by Rick Parry of the Premier League, setting out the details.*

### PREMIER LEAGUE PLUS POINTS FOR YOU, THE FANS.

The Premier League will make its long-awaited debut on Saturday, August 15 following its protracted teething troubles... and the wait will be well worthwhile.

For you, the fans, will enjoy... CRITERIA... the aim with the Premier League is for excellence in all areas: high priority is to secure the best possible facilities for spectators - good positioning, first-class refreshment facilities, proper toilets.

**VISITING SUPPORTERS**... There will be a long-term commitment to meeting the needs of visiting supporters. Most clubs are now faced with short-term difficulties while building work to implement the Taylor Report is going on. During that time, some provisional facilities will be implemented. The question of away supporters' ticket allocation ground by ground is still under debate at the moment.

**PROMOTION**... For the next three seasons, the size of the Premier League will remain at 22 clubs, with 3 up and 3 down at the end of each season.

At the end of season '95/'96, there will be 4 down and 2 up resulting in a Premier League of 20 clubs - which is on par with France, Spain and Germany and other major European countries - and consequently from '96/'97 reverting to three clubs up and three down.

Although promoted clubs will have to meet ground criteria, the primary criterion for entry to the Premier League will always be on playing merit. There has always been the intention to preserve the dream factor.

**MANAGERS & PLAYERS**... The structure of the Premier League is of one club, one vote with, in the early stages a 'board' of 22. Management responsibility is delegated to an executive management team comprising Sir John Quinton as Chairman and chief executive Rick Parry.

Says Parry: "We are keen to listen to the professionals in the game - managers, players, chief executives - in order to have an enlightened competition with everyone pulling together."

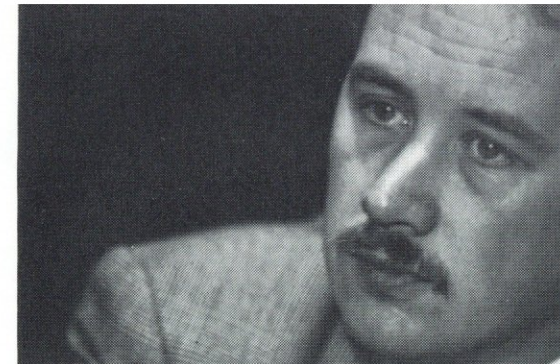
The Premier League has a place - along with the FA, The Football League and the PFA - on the professional Football Negotiating Committee, the decision-making umbrella body (chaired by Sir John Wood) affecting all matters relating to the rules and regulations of the sport.

Two ideas being mooted for your consideration are:  
**MID-SEASON BREAK**... around the Christmas period seems a good idea for the players - but what would you the fans think about a 2 - 3 week break around that time like they have on the Continent.

Certainly the players would enjoy a short break at the Festive Season but would you, the fans... or would you miss your Boxing Day and New Year's Day holiday fixtures?

On the Continent, these breaks relate principally to the weather - but in this country, our weather isn't as predictably bad as it is in some other countries. Here, it's difficult to forecast the unplayable spells.

**SATURDAY INTERNATIONALS**... not something that would be achieved overnight and can only be done if the opposition agrees. But there are signs



Rick Parry, Chief Executive FA Premier League.

that this custom is growing on the Continent (in Italy, for instance). It would mean the clubs getting their players back in good time for their following club fixtures.

But again, what do you, the fans, think?

**TELEVISION COVERAGE**... The Premier League are looking to Television to promote the game: Rick Parry's policy thinking "to be visionary rather than mercenary".

Namely, that any television deals actioned by the Premier League "would ensure that the game is portrayed in the best possible light and that television coverage is a boost to the long-term health of the sport", which should include TV coverage from the start of the season.

The Premier League will also be looking for a more rounded coverage of the sport to include "decent magazine programmes, programmes aimed at children and even coaching programmes."

Parry's summing up - "The need for a more rounded coverage is why we will not just be looking at the size of the offer but at many other factors" - makes sense... and takes into account the wishes of the fans, not just the TV companies. A policy to strike a healthy balance: but assuredly not to swamp the airways with mass football coverage and total overkill.

**COMMERCIALLY**... and this includes sponsorship, the Premier League plans are long-term. It looks into providing a more unified face.

It looks for a selection of sponsors who are committed to promoting the game in a variety of ways.

**ON FIELD**... Rick Parry says: "I think the time has come to stop apologising for striving for excellence at the highest possible level - that's unashamedly what the Premier League is about."

"One of the aims of the Premier League is to generate additional revenue to help all of the clubs to implement the Taylor Report AND, given increasing challenges from Europe, to help the clubs retain our best players."

"We are looking for top quality in facilities and a top quality game on the pitch."

"It is crazy to suggest that major changes will take place within the first few weeks," warns Parry. "It will be three or four years before we feel the full benefits. Our aim is to take football into the next century."

"We want to ensure that all our clubs are able to compete at the highest level in Europe: we want a structure that will ensure more equality regarding income sharing and voting power... this will be a League of equality."

# BULWELL TIMBER Co. Ltd.

**MOST STOCK IS UNDER  
COVER AND LAID OUT FOR  
EASE OF COLLECTION**

**WE SUPPLY:**

- ★ Carcassing Timber ★ Joinery Timber ★
- Sheet Materials ★ Doors ★ Door Frames
- ★ Machined and Moulded Timber ★
- Prompt Delivery Service ★ Competitive Rates

**NOTTINGHAM (0602) 753811  
HUCKNALL LANE, BULWELL, NOTTINGHAM.**

# LUTON TOWN *ON VIEW*

*Directing the Play*



KENILWORTH ROAD has become a home from home for David Pleat since the early 1960s.

He's now in his second spell in charge of the Bedfordshire club - having also appeared as a winger for The Hatters between 1964 and 1967.

Pleat also served Forest, Shrewsbury, Exeter and Peterborough as a player but it's as a manager that he's really made his name, guiding Luton into Division One and Tottenham to an F.A. Cup final appearance in 1987.

He returned to Kenilworth Road last summer after parting company with Leicester, where he was in charge for more than four years, and it's been just like old times as he steered them through another relegation battle.

Luton Town, soccer's equivalent to a Houdini act, hope to work their magic once again this afternoon.

The Hatters have dramatically escaped relegation in their last game of each of the previous three seasons and it's straight-forward what has to be done if they are to extend the sequence... they must beat us while Aston Villa beat Coventry.

Manager David Pleat seems confident enough that Luton will be members of the inaugural Premier League when it gets underway next season.

"The law of averages might suggest we'll go down this time," he admitted. "But there won't be a single Luton player who isn't 100 per cent certain we can win at Notts, even though we haven't won away this season."

That Luton should once again find themselves going into the final game with a chance of surviving is a credit to both Pleat and his players.

At Christmas, with just a handful of victories to their name, they looked certain to be relegated but since the turn of the year their home form has shown a marked improvement.

Victories over the likes of Arsenal, Chelsea, Norwich, Wimbledon and Nottingham Forest have helped Luton haul themselves off the bottom of the table and offered a ray of hope.

If they should fail to avoid the drop they may find themselves losing one of their brightest young players -£1.2million-rated

midfielder Mark Pembridge.

The Welsh international is being tracked by Tottenham and the north London club's chief scout, Ted Buxton, was at Kenilworth Road last Saturday to see Pembridge play a key role in Luton's 2-0 win over Villa.

In fact, Pembridge sealed three precious points with a spectacular 25-yard effort after creating the first goal for Brian Stein.

Pleat will be looking for the likes of Pembridge and the experienced trio of Stein, striker Mick Harford and midfielder Chris Kamara to inspire success this afternoon although their destiny could be decided some 50-miles to the west of us.



Back Row (left to right): Julian James, Darren Salton, Graham Rodger, Andy Petterson, Alec Chamberlain, Sean Farrell, Des Linton, John Dreyer.  
Middle Row: Mick Harford, Trevor Peake (Capt.), Darron McDonough, Marvin Johnson, Kurt Nogan, Richard Harvey, Chris Kamara.  
Front Row: Colin Murphy (Asst. Manager), Brian Stein, Scott Oakes, Ceri Hughes, Paul Telfer, Jason Rees, Mark Pembridge, David Preece, David Pleat (Manager).

## "POPULAR FIGURE"



David Pleat's decision to re-sign Mick Harford from Derby last year was greeted with widespread delight by Kenilworth Road fans.

For the big striker established himself as an enormously popular figure during his spell with Luton between 1986 and 1988, during which time he scored 57 goals in 139 League appearances.

He's picked up where he left off since returning to Bedfordshire for £325,000 in September and has scored a string of important goals for Pleat's side.

Harford started his career with Lincoln in 1977 and had spells with Newcastle and Bristol City before moving to Luton, where he also won two England caps.

## The last time we met...

We were fortunate to escape with a point when we went to Kenilworth Road in September and figured in a 1-1 draw thanks to a late penalty by Tommy Johnson.

Struggling Luton had always looked the more likely winners of a drab game played in heavy rain and it was no surprise when Phil Gray headed them in front after 69 minutes.

John Dreyer had earlier struck a post and Mark Pembridge then fired against the crossbar but we managed to hold out and when substitute Phil Turner was fouled, Johnson duly obliged with two minutes remaining.

Luton's last League visit to Meadow Lane was way back in 1983 when we met in a Boxing Day fixture - and they stormed to a convincing 3-0 win.

Our decision to make it a morning kick-off rebounded on us because the crowd was just 9,789 but it was very much to Luton's liking as Trevor Aylott scored twice and Ray Daniel got their other goal.



**BEECH**

Restoration Ltd.  
RESTORING CONFIDENCE

**BEECH RESTORATION LTD**  
UNIT 4B COWLAIRS  
off HUCKNALL ROAD  
NOTTINGHAM NG5 6RA  
Tel: 0602 753021

- Stone and brick cleaning by chemicals
- Grit and sand blasting
- Marble cleaning, polishing and renovating
- Internal cleaning (Churches and Hospitals)
- Graffiti removal and anti-graffiti coatings
- Restoration of stone and brickwork
- New masonry
- Resin injection of brickwork and stonework

MEMBERS OF THE BEC, STONE FEDERATION AND GUILD OF MASTER CRAFTSMEN

## William Bee & Son

DECORATIVE & INDUSTRIAL PAINTERS FOR OVER 100 YEARS

**HOTELS - OFFICES - SHOPS - FACTORIES**  
*DOMESTIC WORK UNDERTAKEN*

Interior + Exterior Decorating - Prompt Excellent Service - Free Estimates  
W. BEE & SONS, CROCUS STREET, THE MEADOWS, NOTTINGHAM NG2 3DP.

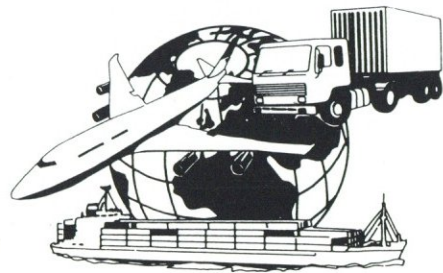
**Tel: (0602) 868193**



ESTABLISHED 1880

# Shipping and Export Service Worldwide

Shipping, Forwarding, Container Loading Specialist



## B.M.R. Freight & Transport

Lows Lane, Stanton By Dale, Ilkeston, Derby DE7 4QU.  
Telephone: 0602 307163  
Fax: 0602 323766

The Football Trust is helping the game at all levels.

It assists clubs implement the Taylor Report. Grants are made for seating, new stadia, ground improvements, safety, community schemes, policing and stewarding and closed circuit television.

### MEET FOOTBALL'S £32MILLION SUPPORTER

This £32M a year boost for football comes from the reduction in pool betting duty and the Spotting-the-Ball competition organised by Littlewoods, Vernons and Zettlers.



**THE FOOTBALL TRUST**  
*Helping the game*



with Mick Walker & Don O'Riordan

## in RESERVE

If anyone has doubts about whether our Reserves deserve to be promoted to Division One of the Pontins League, you should have seen the performance at Ayresome Park this week.

Middlesbrough only just missed out on promotion and have some capable players but we stunned them with three goals in the opening nine minutes and went on to record a 7-2 success.

That stretched our winning sequence to six matches and if we manage to beat Scunthorpe at Meadow Lane in tomorrow morning's final fixture, it's just possible that we can finish in third place.

It will be a good effort if we can do that because at Christmas, after winning just one of our previous eight games, our chances of promotion looked slim.

Just as we did last year, however, we suddenly found some form in the second half of the season and as results show, we have got progressively stronger.

The boss was tempted to use the Short brothers and Dean Thomas at Middlesbrough following their suspensions but in the end, decided against it.

It meant that Phil Robinson and Kevin Blackwell provided the experience in a very young side - and that familiar blend just may have something to do with our success this season.

More often than not, the nucleus of our team have been lads who have grown up together and they are a close-knit group who play for each other.

And they certainly did that at Ayresome Park because we gave an outstanding performance throughout - possibly the best of the season.

Rob Matthews struck twice in the first nine minutes when he used his pace to get away from defenders and finished well and there's no doubt that he is improving rapidly.

The experience of being involved with the first-team has not only given him an insight into what is required at the highest level but also boosted his confidence.

And that showed because although scoring goals has never really been his strength, he was prepared to go for goal whenever the opportunity arose at Middlesbrough - and go his rewards.

A Middlesbrough defender also gave us a helping hand with an own goal in the opening nine minutes and we were 5-1 ahead by half time after goals from John Brough and Mark Wells.

There was the hint of a comeback when they scored from the penalty soon after the break but Brough struck again and another own goal completed our biggest win of the season.

It proved to be a lot more difficult against Port Vale at Meadow Lane the previous week but Gary Lund, who had played as a central defender for the first hour, moved up front to inspire a 2-0 win as he converted two penalties in the final 10 minutes.

Our team against Middlesbrough was: Blackwell, Barrow, Hodder, Johnson (Patterson), Cox, Walker, Devlin, Robinson, Brough, Matthews, Wells (Sherlock).

### PONTIN'S LEAGUE FIXTURES

			F	A
Aug 19	Derby County	A	0	0
Aug 27	Huddersfield	H	0	0
Sep 10	York City	H	3	0
Sep 18	Wigan Athletic	A	3	0
Sep 25	Blackpool	H	1	0
Oct 2	Port Vale	A	2	1
Oct 10	Middlesbrough	H	2	1
Oct 12	Oldham Athletic	H	0	3
Oct 16	Scunthorpe United	A	1	0
Oct 24	Leicester City	H	2	2
Oct 30	Oldham Athletic	A	2	5
Nov 6	Hull City	H	0	1
Nov 13	Wolves	A	0	1
Nov 19	Grimby Town	H	1	0
Nov 27	Stoke City	A	1	4
Dec 2	Mansfield Town	A	2	2
Dec 17	Derby County	H	2	3
Jan 8	Huddersfield	A	2	0
Jan 15	Burnley	H	0	2
Jan 21	Grimby Town	A	2	0
Feb 3	Leicester City	A	1	1
Feb 12	Preston North End	A	2	2
Feb 18	Stoke City	H	2	1
Feb 26	Burnley	A	1	0
Mar 3	Wolves	H	2	1
Mar 18	Hull City	A	1	1
Mar 25	York City	A	0	1
Apr 1	Mansfield Town	H	2	0
Apr 8	Blackpool	A	1	0
Apr 14	Wigan Athletic	H	3	2
Apr 16	Preston North End	H	3	0
Apr 22	Port Vale	H	2	0
Apr 29	Middlesbrough	A	7	2
May 3	Scunthorpe	H		

### MIDLAND SENIOR LEAGUE FIXTURES

			F	A
Aug 20	Chesterfield	A	1	1
Aug 26	Doncaster Rovers	H	6	0
Sep 4	Peterborough	A	0	2
Sep 9	Shrewsbury Town	H	3	0
Sep 23	Northampton	H	2	2
Sep 30	Walsall	H	2	1
Oct 7	Nottingham Forest	A	2	0
Oct 14	Birmingham	H	3	0
Oct 23	Birmingham LC	A	1	0
Oct 28	Chesterfield LC	H	4	0
Nov 11	Doncaster Rovers LC	H	2	3
Nov 20	Peterborough LC	A	0	2
Nov 26	Birmingham	A	2	0
Dec 2	Chesterfield	H	5	0
Dec 16	Peterborough	H	1	3
Jan 8	Shrewsbury	A	0	0
Jan 13	Lincoln City	H	3	1
Jan 20	Northampton LC	A	1	0
Feb 12	Shrewsbury LC	A	2	2
Feb 24	Northampton	A	1	0
Mar 4	Lincoln LC	H	0	3
Mar 9	Nottingham Forest LC	H	2	0
Mar 24	Walsall	A	1	1
Apr 23	Lincoln City	A	1	1
Apr 27	Doncaster Rovers	A	0	0

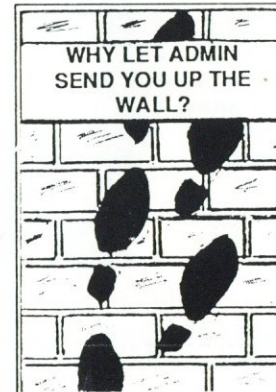
For the Best Bacon always ask for



86 Brookfield Road, Arnold, Notts.  
Tel: 264256

Supplied Throughout the Midlands by  
**LEIVERS BROTHERS LTD.**

**THE PROVISION WHOLESALERS SINCE 1880**



WHY LET ADMIN SEND YOU UP THE WALL?

Organized Administration

3. WOODSIDE CRES.  
LONG EATON  
NOTTINGHAM NG10 4AP  
(0602) 731983

NEIL WARNOCK  
■ Bucken Tyres, 5  
Midland Rd.,  
Netherfield, Nottm  
Tel (0602) 870234



STEVE CHERRY  
■ Stuart Roche,  
Hadfield, Cheshire



CHARLIE PALMER  
■ Westminster  
Hotel & Restaurant  
Tel (0602) 623023



ALAN PARIS  
■ Westminster  
Hotel & Restaurant  
Tel (0602) 623023



§ Ian & Paul Swift  
• Thomas Wood

§ Curtis Reynolds  
• Stuart Woolley

§ Beth Poole  
• Helen Louise Tyr  
• Scott Rudge

§ Willow  
Brookbanks

CRAIG SHORT  
■ Peter Joyce,  
Rothley, Leics



DEAN YATES  
■ Carr Farm  
Boarding Kennels &  
Catteries  
Tel (0602) 663880



DON O'RIORDAN  
■ "The Pie"



DEAN THOMAS  
■ Rutland  
Household Textiles  
Panasonic Batteries



§ Adam Chantrey  
• Richard & Steven  
Hyde

§ Anna Marie  
Martin

§ Natalie Burton  
• Jimmy Smith &  
Jack Martin

§ Niki Reynolds

PHIL TURNER  
■ William Bee &  
Son, Painting &  
Decorating  
Contractors  
Tel (0602) 868193



TONY AGANA  
■ Brand  
Investments



MARK DRAPER  
■ I Mills, D Prest, M  
Shearstone, T Lord,  
M Harrison &  
Alfred's Driving  
School  
Tel (0602) 333991  
§ Stuart Roe  
• Paul, Tom & Chris  
Sadler



KEVIN WILSON  
■ Forest Bakery,  
Alfreton Road,  
Nottingham.



§ Shamaine Rudge  
• Lauren Webster

§ Christian Sales

§ Daniel Chantrey

PAUL HARDING  
■ Mac Gill,  
Marketing Insight  
Tel (0602) 455005  
with encouragement  
from Viv, Ian and  
Ben  
§ Alison Crowe



KEVIN BARTLETT  
■ Westminster  
Hotel & Restaurant  
Tel (0602) 623023



CHRIS SHORT  
■ Trent Oil/Conoco  
Distributors,  
Chettles Ind Est.,  
Ilkeston Road,  
Nottm  
Tel (0602)  
782884/782131  
§ Jodie, Jake,  
Jordan Worthington



PHIL ROBINSON  
■ Join the Official  
Supporters Club for  
£5 including New  
Exclusive Magpie  
Badge



RICHARD DRYDEN  
■ Frank Smith Ltd.,  
The Exclusive  
Caterer  
Tel (0602)  
240654/586136



KEVIN BLACKWELL  
■ Belwood Foods  
Tel (94) 716321



STEVE SLAWSON  
■ The Hockley  
Snooker Club, 1  
Heathcote St.,  
Hockley, Nottm  
Tel 473498  
Open 24 Hours  
• Anthony & Joanne  
Platt  
§ Phillip Mills



MICHAEL  
JOHNSON  
■ Notts County FC  
Supporters Club,  
Official Away  
Transport  
Organisers  
Tel 866802



§ Leah Dyer

IF YOU'D LIKE TO FILL  
ONE OF THE GAPS IN  
OUR KIT SPONSORS  
LIST 'PHONE SHUNA  
SHAW ON NOTTM.  
(0602) 861155

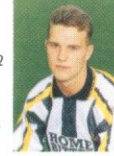
ANDY WILLIAMS



RICHARD WALKER  
■ Notts County FC  
Supporters Club  
The Official  
Supporting Body of  
the Club  
Tel 866802



JOHN BROUGH  
■ Carr & Co  
Caranco House  
Tel (0602) 862272



§ Karen, Evonne &  
Clare Biddle.

PAUL COX



STEVE HODDER



MARK WELLS  
■ Nottingham  
Suspended Ceilings  
Ltd., Suspended  
Partitioning and  
Industrial Lining  
Tel (0602) 879880  
§ Daniel Chantrey  
Lindsey Webster



SHAUN BROWNE  
■ Broughton's  
Locksmiths Ltd., 5/7  
Glasshouse St.,  
Nottm  
Tel (0602) 582377



STEVE ALDRIDGE  
□ The Thin Yellow  
Stripe



LEE BARROW



GARY PATTERSON



JAMES WALKER  
• London &  
Bracknell Magpies  
Tel (071) 2633102/  
(081) 904 0008



*Kit Sponsors*

■ Full Kit £275 or □ Shirt £120; \* Shorts & Socks £60; † Boots £60; ★ Blazer  
£60; § Track Suit £60. For Junior Magpies Only: • Training Shoes £10;  
§ Laces & Ties £5.00.



YOUR LOCAL  
MAIN DEALER...

# SMITHS of Ilkeston



5. NOVA GSI

LARGE STOCKS OF NEW CARS ALWAYS AVAILABLE

"RENOWNED FOR QUALITY & INTEGRITY"

- USUALLY OVER 100 QUALITY USED VAUXHALLS IN STOCK
- COMPETITIVE LEASING & CONTRACT HIRE
- MOTABILITY SPECIALISTS
- FULL FINANCE FACILITIES

- COMPREHENSIVE PARTS & SERVICE BACK-UP
- FREE SERVICE LOAN CAR AVAILABLE

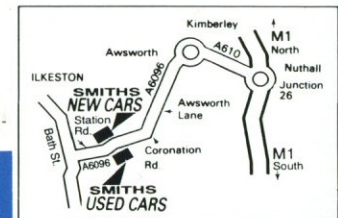
MASTER HIRE & VAUXHALL  
RENTAL DEALERS

STATION ROAD, ILKESTON.



(DETAILS  
ON REQUEST)  
CARING AFTER  
SALES SERVICE

(0602) 322387



A & B

## Use your head!

FOR QUALITY WINDOWS & DOORS  
AT THE RIGHT PRICE

OUR QUALITY'S PLAIN TO SEE

COME TO OUR DAYBROOK  
SHOWROOM 20/22  
MANSFIELD RD.,  
DAYBROOK, NOTTM.

NOTTM. 267682

ESTABLISHED 1975

Open 7 Days 10am - 5pm

Head Office & Factory Telephone Nottm. 770777

PLASTICS WINDOW FEDERATION

WRITTEN FINANCE DETAILS ON REQUEST.

It seemed for a long time that we might win the Purity League Championship for the second successive year...but it wasn't to be.

There was no margin for error if we were going to really put pressure on Forest at the top and when we managed to take just one point from the games against Grimsby, Leicester and Lincoln, that wrecked our chances.

I'm not looking to make excuses and we have to admit that in the final analysis, we were just short of what was required to retain the title.

But to finish runners-up and reach the semi-finals of the Midland Youth Cup wasn't a bad effort - and was far better than I expected when we set out in August.

All things are relative and having achieved a League and Cup double the previous year, that was always going to be a tough act to follow for what was largely a fresh crop of youngsters.

If I'm honest, they didn't appear to be up to the same standard as last year's group and certainly didn't have the same strength and physical presence.

But they set a good standard early on and improved steadily from there - individually and collectively - which is all you can ever ask for as a coach.

It's 'crunch-time' now for the second-year YTS lads who are being offered professional contracts because as they are about to discover, it's a different world they will be moving into.

Make no mistake about it, it's a very difficult way to earn a living and I

just hope they are physically and mentally strong enough to take the step up and continue their development.

As they move up, others will fill the vacancies underneath and we will have a new intake of about 10 YTS trainees this summer - and a lot of good prospects among them.

A couple are coming from the North East, some are from Leicestershire and Derbyshire and some are local lads, like Danny Marshall, Malcolm Rigby and Matthew Dodson, who have already been involved at Meadow Lane for several years.

As you may be aware, our production-line stretches a long way these days, both in terms of age-range and miles, and is still in very good order.

If pushed, I would have to say next season will be a year of consolidation for the youth team because I'm not convinced our current first-year lads are ready to take responsibility for chasing prizes.

In fact, they could well find themselves under pressure from the new lads when it comes to deciding who will fill the Purity League places...but time will tell.

They are still very young and hopefully, will have a good break and come back in July ready to show they have learned a lot from the rigours of the past nine months.

# YOUTH IN FOCUS



BY RUSSELL SLADE

## MIDLAND PURITY YOUTH LEAGUE FIXTURES

			F	A
Aug 17	Wolves	A	2	1
Aug 31	Peterborough United	A	1	2
Sep 7	Port Vale	H	4	2
Sep 14	Shrewsbury Town	A	1	1
Sep 21	Stoke City	H	2	1
Sep 28	Walsall	A	2	2
Oct 5	West Bromwich	H	5	1
Oct 12	Aston Villa	A	0	0
Oct 19	Birmingham City	H	2	1
Oct 26	Coventry City	A	1	5
Nov 2	Derby County	H	3	2
Nov 16	Grimsby Town	A	3	1
Nov 23	Leicester City	H	0	2
Nov 30	Lincoln City	A	3	1
Dec 7	Mansfield Town	H	2	1
Dec 20	Northampton Town	A	5	1
Jan 4	Northampton Town	H	4	1
Jan 11	Wolves	H	2	0
Jan 18	Nottingham Forest	A	1	1
Feb 1	Peterborough Utd	H	3	1
Feb 8	Port Vale	A	3	1
Feb 15	Stoke City	A	1	0
Feb 21	Walsall	H	5	1
Feb 29	WBA	A	0	3
Mar 7	Aston Villa	H	3	0
Mar 14	Shrewsbury Town	H	3	1
Mar 21	Birmingham	A	1	0
Mar 28	Coventry City	H	3	2
Apr 4	Derby County	A	1	0
Apr 11	Grimsby Town	H	1	2
Apr 18	Leicester City	A	0	0
Apr 25	Lincoln City	H	2	3
May 2	Mansfield Town	A		
To be re-arranged:				
	Nottingham Forest	H		

The Magpies' Youth Team is Sponsored by  
**EAST MIDLANDS CERAMICS**  
CERAMIC WALL AND FLOOR TILE SPECIALIST  
Tel: 0602 625515 or 770155



**THE WINNING TEAM**

**DAVIS & COOK**

FULL RECOVERY AND BREAKDOWN SERVICE  
INCLUDING WELDING AND CRASH REPAIRS  
MOT TESTING, SERVICING, LATEST COMPUTER  
PRINT OUT CRYPTON TUNING  
TYRES, BATTERIES  
PETROL AND OILS  
WORKSHOP OPEN  
MONDAY TO SATURDAY  
PETROL  
7-DAYS A WEEK



MAPPERLEY SERVICE STN. 601 WOODBOROUGH RD  
MAPPERLEY, NOTTINGHAM NG3 5GG  
TELEPHONE NOTTM. 624975

# AS SEEN ON TV WHATEVER YOU WANT

WINDOWS • DOORS • CON

OPEN THIS BANK  
HOLIDAY WEEKEND  
FREE CHEESE AND  
WINE PARTY  
COME ALONG!

## WE OFFER MORE.

- ★ Unique double guarantee.  
Plastics Window Federations  
Independent Indemnity.

This guarantee covers both deposit and product, is transferable and renewable.

- PLUS A&B's own 20 year  
guarantee on PVCu.

- ★ High spec security  
multi-locking systems.

- ★ Creative designs to  
compliment the quality  
of your home.

- ★ Over 15 years  
experience.

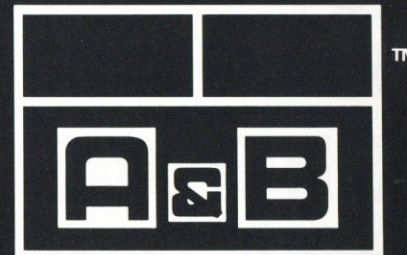
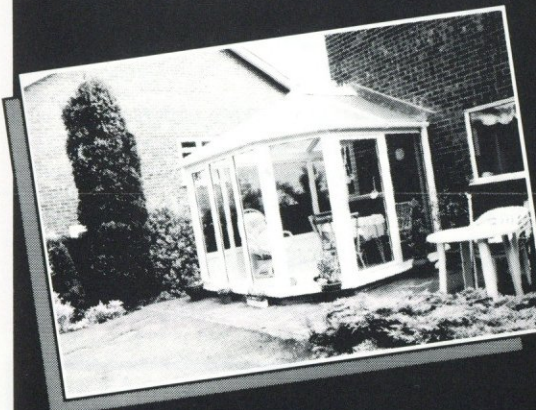
- ★ Genuine value for money.

"It is unwise to pay too much but it is worse to pay too little". John Ruskin (1819-1900)

**N.B.**

WE GAIN OVER 60% OF SALES FROM  
EXISTING CUSTOMER RECOMMENDATIONS

PHONE NOW FREEPHONE  
**0800 770777**



Our quality's plain to see

HEAD OFFICE/SHOWROOM:  
Martin Close • Blenheim Industrial Estate  
BULWELL • Nottingham NG6 8UW • (0602) 770777

20-22 Mansfield Road, DAYBROOK, Nottingham  
(0602) 267682

5a Sandringham Drive, SPONDON, Derby  
(0332) 660063

1311 Melton Road, SYSTON, Leics.  
(0533) 640640

Shipleigh Garden Centre, Hassocks Lane North, Shipley,  
(0773) 533833



B.P.I.F. MEMBER

DESIGN · PHOTOGRAPHY  
TYPESETTING · PLATE MAKING  
PRINTING · FINISHING

*The Complete  
Design to Delivery  
Service*

WESTBURY ROAD, BASFORD  
NOTTINGHAM NG5 1EJ  
Telephone: (0602) 701485  
Fax: (0602) 782921



COMMERCIAL & INDUSTRIAL  
PHOTOGRAPHERS

Tel. Nottm. (0602) 706010  
Fax. Nottm. (0602) 782921

WESTBURY ROAD, BASFORD, NOTTINGHAM NG5 1EJ



## FARNBOROUGH ROAD CAR SALES - CLIFTON

Cars from £1000 - £7000  
including Sierras, Astras, Granadas, Fiestas and  
Metros

New M.O.T. with every car ★ Our own Parts and Labour Warranty  
Your car taken in part exchange

FARNBOROUGH ROAD SERVICE STATION, CLIFTON, NOTTINGHAM.  
Telephone: 845429



### DAVID KEVAN LOOKS BACK...

It's all happening for David Kevan at the moment and one way or another, his life will be transformed during the course of this month.

His immediate priority is to try and help Stoke City clinch promotion to the Second Division at Bolton this afternoon.

All being well, David will then achieve every footballer's ambition by playing at Wembley against Stockport County in the final of the Autoglass Trophy on May 16.

And wedding bells are scheduled to ring at the end of the month when he marries Debbie Belshaw, who will be remembered by many at Meadow Lane from her days behind the bar in the Sportsmen's Suite.

In fact, there will be something of a Notts County reunion in Stoke that day because invitations have gone out to the likes of Wayne Jones, Keith Downing, Ian McParland, Mick Leonard, Tommy Johnson and Gary Lund.

Said David: "I was fortunate in my time at Meadow Lane to be involved with a great set of lads and I keep in regular contact with most of them.

"It will be nice to meet up again and talk over old times and I think it says a lot for Notts County that most of those I grew up with are still earning a living from the game.

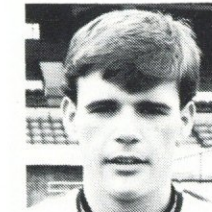
"That's a tribute to Mick Walker and we all have cause to be grateful to him and Dick Bate for pointing us in the right direction.

"Mick was a hard task-master and it was very rare to get praise from him. But he demanded high standards on and off the field and to be honest, I couldn't have had a better apprenticeship.

"It sounds a bit unkind to say that County were the perfect 'starting club' but I mean that in the sense that I had a good education and an early chance to gain experience in the first-team. No young player can ask for more."

A regular member of the team that won the Midland Intermediate League in 1986, David made his League debut at Gillingham that season as a 17-year-old substitute.

And after figuring in the starting line-up for the final two games, he established a regular place the following year and recalled: "If we had won our final match at York, we would have been in the play-offs and that was a terrific effort when you consider what a young team we had."



DAVID KEVAN... had a good education.

The Wigtown-born midfielder was a virtual ever-present during the John Barnwell era and his potential was noted north of the border when he was called into the Scotland Under-21 squad against Yugoslavia.

Alan Ball was one of several managers also aware of the developing talent and in February 1989, he took him to Stoke for £75,000.

Added David: "It was a bit of a wrench to leave because I had been at Meadow Lane since I left school in Northampton and was never really unhappy.

"But I wasn't getting a regular game in the first-team so it made sense to move and as it happens, I made a very good decision in agreeing to join Stoke.

"They are a big club with tremendous support and the potential is enormous. There's no telling what they could achieve and I hope I'm a part of it because I like the place.

"I was a bit concerned about how it might affect me when Lou Macari took over from Alan Ball but I have played more first-team matches than any other player this season.

"The only ones I've missed have been through injury and suspension and although I never take things for granted, I just hope I can stay fit and in favour for the next few weeks because they could be a bit special."

David, still as good-natured as ever, has travelled across from the Potteries several times this season to watch us in action and added: "I'll always have fond memories of my time at Meadow Lane."

Accidents happen.

When they do,  
we're here to help.



G. S. HAWLEY

MECHANICAL  
SPECIALISTS

\* Accident Insurance Work  
\* Cars & Commercial

THE ROPE WALK

IND. ESTATE. Tel: 0602 - 325 887  
0602 - 440553

Contact  
us for  
competitive  
prices



BY ANNETTE CHANTREY

The last programme of the season is traditionally the one where I say 'thank you' to everyone without whom I couldn't manage on a matchday. The regular faces you see every home game in the family room lending a helping hand.

First and foremost a huge thank you to Doreen Gadsby, her daughter Sharon and Barbara Walmsley and their happy band of helpers for keeping the cups of tea and penny mixes going.

Barbara Smithson is ever-present with stamp and pad as my 'right-hand lady'.

Last but not least is, of course, Reg Killick, who everyone knows for his wonderful work with football training, games, trips etc. Reg has been 'doing' for the juniors for something like 28 years in one way or another and we are extremely grateful for his dedication but with numbers steadily on the increase at football training etc, it would be nice if we could find one or two regular helpers perhaps amongst the dads.

If you have a couple of hours to spare on a Friday evening and feel you could give Reg a hand please give me a call.

In the meantime I would ask all my helpers to accept my very sincere thanks for everything they do for the Family Magpies and hope that they will continue with their invaluable support.

#### MORE SUCCESS AT NORWICH

Not only did our 1st Team find success in East Anglia at Easter but so did two of our junior sides. Under the guidance of Reg Killick the Under 16's and 13's were both successful. The Under 16's beat the Norwich Under 16's by 8 goals to 4 with 3 goals each from Andrew Clarke and Chris Cotton and one each from Mark Eade and Dominic Oldham.

The Under 13's won their game 4-3 with two goals from Paul Smith and one each from Paul Clough and Mark Smith.

Also in Reg's party at Carrow Road were our two mascots Neil and Nigel Buxton. Bearing in mind the result perhaps they should have been mascots more often!

#### BIRTHDAY CARD COMPETITION

I am expecting lots of entries for the 'Design a Birthday Card' competition as today is the final day to get your entries in. As yet I have had no entries at all and I know from the Christmas Card competitions of the last few years that there are some of you who are terrific at designing cards.

If it helps I will extend the deadline by a week and ask you to send your entries to me by Saturday, 9th May.

#### SUMMER EVENTS

There will be events taking place during the summer months when there is no Family Magpies column in the Nottingham Evening Post so if you would like to receive details of soccer coaching, trips etc. please send me a stamped self addressed envelope.

At present we have the trip to London to see Philip Schofield in the musical 'Joseph and the Amazing Technicolour Dreamcoat' on August 26th for which there are a few vacancies but other things could be arranged and I wouldn't like you to miss out.

There will almost certainly be some soccer coaching although I can't say, as yet, when that will be.

May I take this opportunity to wish you all a very happy summer and I look forward to seeing you all back at Meadow Lane in August.

#### DEEPEST SYMPATHY

I'm sure that you will all join me in offering deepest sympathy to Rita and Donna Huthwaite in the sudden loss, this week, of husband and Father Don. We will all miss him in the family room and on the terraces.

## NOTTS COUNTY F.C. SELECT minerva MATCH BALLS



FOR FURTHER DETAILS OF THE COMPLETE RANGE OF MINERVA PRODUCTS PLEASE CONTACT THE MINERVA FOOTBALL CO. LTD., UNIT 10, METRO CENTRE, ST. ALBANS ROAD, SANDRIDGE, ST. ALBANS, HERTS, AL4 9QT. TEL: 0727 - 45550



## Commercial Comment

BY SHUNA SHAW

**A special mention today for Cowies, the No. 1 Ford dealer in Nottingham, who have not only advertised extensively in the programme this season, but have shown their support once again by sponsoring today's matchball. Your help is greatly appreciated and we wish you a very enjoyable day here at Meadow Lane.**

Thankyou also to everyone who attended the Sportsman's Dinner, it was a tremendous success, and we managed to raise £8000 to boot! (Which, as I'm sure you know, is going towards the phenomenal amount needed to redevelop Meadow Lane into an all seater stadium for the start of next season). Talking of which, isn't it amazing, (and a little bit sad) how quickly it's all happening - it was very hard to believe that such a gigantic task could be accomplished in such a short time, but seeing what's already been achieved begins to put it all into perspective, don't you think!

It goes without saying that there are going to be many major changes in all areas next season, but speaking on behalf of the commercial dept., it's certain areas of sponsorship that will mainly be affected, so therefore it would be a consoling factor for us to be secure in the knowledge that we will be able to rely on the support of all our advertisers and sponsors to help us again in our quest for financial support next season, and can I just, at this point, say a very big thankyou to everyone who has contributed to us in whatever way this season - things would have been even more difficult for us had you not been there! THANKYOU.

And now, the news you have all been waiting for...our 1992 diaries are here!! Whilst you pick yourselves up off the floor, let me tell you that they are at the very special price of just 50p, and come in either purple or grey. Please form your queue to buy one in an orderly fashion!

Finally, I hope you all have a very good summer, and I look forward to seeing you at our super new stadium next season, for the start of what I'm sure will be another exciting challenge. Happy Holidays!

*There will be a superb compilation video available shortly with highlights of all our First Division League and Cup action, including interviews with the players and manager. Phone the commercial dept., on 861155 for details and availability.*



## County'75 Lotteries

BY LES BRADD

As the present season draws to a close, I should like to thank all our agents and supporters for their efforts in fund raising for the club. It has been a difficult period for our fans in terms of the added costs of supporting Notts County in the First Division during a time when the county has been experiencing a recession but once again your support has been tremendous and County 75 has been able to provide donations to help with the running of the Club. Although sales of our instant lottery tickets have not maintained the high standards of last year we have managed to increase the membership of County Cashline and during the summer months we shall be running a Grand Draw with a fabulous holiday in America and the West Indies as the top prize. As you are well aware, Meadow Lane is currently undergoing a major facelift and our ground will be unrecognisable next season. The cost of the new developments are extremely high and you can help us by supporting the Grand Draw raffle. During the next month we shall be sending all our Lifeline members, season ticket holders and lottery agents a book of ten tickets valued at 50p each to sell during the summer months, with the draw taking place at half-time at the second home match in October. Your support will be much appreciated by the Club and if you feel you could support us in this venture and have not sold any tickets for us in the past then call in at the County 75 office or ring us on Nottingham 864718 for details.

Congratulations to Mr Johnson, one of our cashline agents in Eastwood for winning £80 in our agents 50/50 Draw last Saturday when courier Charlie Parkin drew out his lucky number 3.

Once again many thanks for your support during the season, keep up the good work and I look forward to seeing you next season.

## JOHN & KATHY BEAUMONT would like to welcome you all to join them at THE ROSE GROWER

SANDRINGHAM DRIVE, BRAMCOTE.

HARDY & HANSONS FINE ALES  
HOT & COLD BAR SNACKS AVAILABLE

Telephone:

Nottm. 255413



NORWICH CITY FC



**IF YOU'RE AGED 11-16, THERE'S ONE CLUB YOU SHOULD KNOW MORE ABOUT.**



For the best save this season, open a BarclayPlus account.

You'll automatically become a member of BOP MC

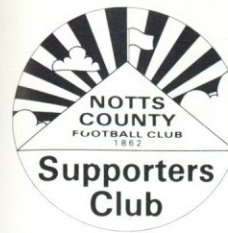
(BarclayPlus Our Price Music Club) and get great discounts on music and videos at any Our Price Music store.

You'll also receive regular BOP MC bulletins, packed with music features and details of mega prizes to be won.

And you'll enjoy a good rate of interest on your savings in your BarclayPlus account.

Call in to any Barclays branch to pick up a BarclayPlus leaflet.

It could be a right result.



# The Official Column

BY PETER DENNIS

## ANNUAL GENERAL MEETING

The Annual General Meeting of the Supporters Club will be held on Thursday 21st May, 1992 in the Sportsmans Suite, Meadow Lane commencing at 8pm. All current members of the Supporters Club are entitled to attend. Admission will be on production of a current Supporters Club membership card. There are, due to the retirement of several committee members, a number of vacancies on the committee. Nominations to stand for Committee must be received, in writing, duly proposed and seconded by members of the Supporters Club by the closing date for nominations on 14th May, 1992. Nominations should be sent to The Secretary, Notts County F.C. Supporters Club, Meadow Lane Ground, Nottingham NG2 3HJ. Anyone who is considering joining the Committee and wants further details should contact Peter Dennis on 269550. Any items for inclusion on the Agenda of the A.G.M. should also be sent in writing to the Secretary by Thursday 14th May.

## THANK YOU

I would like to take this opportunity to thank all supporters who have supported the activities of the Supporters Club throughout the season and look forward to seeing you again next season at the exciting new look Meadow Lane.

## PLAYER OF THE YEAR

Unfortunately, due to circumstances beyond our control, it proved necessary to cancel the annual Player of the Year Awards Evening due to be held on Wednesday 29th April. I would like to apologise to all supporters who purchased tickets in advance for the short notice given of the cancellation. The decision to cancel was taken on Friday 24th April and details were broadcast on local radio on the following day. Unfortunately, despite being given the details at the same time the Evening Post were unable to include the information until the day of the event. Anyone who purchased tickets will, of course, be entitled to a full refund from wherever they purchased their tickets. Anyone who obtained tickets from the Supporters Club Kiosk can obtain a refund today from the kiosk.

Because the season ends today it will not be possible to re-schedule the Player of the Year event as many of the players will be away from Meadow Lane until the start of next season. So, for this season only, we will break with tradition and present the awards on the pitch prior to today's match.



# Football in the Community

BY ALAN YOUNG

## AWARD WINNER

Well here we all are for what is our final league match of the 91-92 season. I would like to welcome Luton Town and their supporters to Meadow Lane. I hope they had a pleasant journey here, enjoy the match, and have a safe journey home.

I would like to take this opportunity to thank Neil Warnock, Mick Jones, Mick Walker, Russell Slade, Dave Wilson and the entire playing staff for their co-operation this season with our Community Programme. I have never, ever been let down by any of them regarding player visits, presentations, publicity events and they have all done a magnificent job representing Notts County. Just ask some of the kids who have had their certificates presented to them by their heroes. Thanks lads, your help has been brilliant.

Although it is the end of the season the Community Programme will continue as ever throughout the summer with schools activities and visits, soccer schools, presentations etc., so if you would like to know more please ring us on 863656. Incredibly there are still one or two of you out there who have not had the benefit of our expertise. Go on, give us a ring.

If anyone would like to sit the F.A. Preliminary Coaching Award I am holding one between Monday 18th May through to Friday 22nd May inclusive from 9.30-4.00. It costs £27.50 and there are still a few spaces left alongside the likes of Kevin Bartlett, Craig Short, Phil Robinson and Gary Lund so if you would like to book a place call me on 863656 or leave a message on 861155.

Finally our photograph this week shows the winners of our NCP Car Crime Prevention Trophy heats and they are LADY BAY PRIMARY. Although they lost in the semi-finals of the Regional Finals they did a great job wearing the colours and representing Notts County F.C. Until next season, bye for now, Alan.





# "CHANGING FACE OF MEADOW LANE"



A VISION OF THE FUTURE... and it won't be long before Meadow Lane looks like this.

The bulldozers have already made their presence felt and after today's game, it will be all systems go in the race to transform Meadow Lane before the start of next season.

In case you are not aware, the contractors have just 17 weeks in which to convert The Kop and Meadow Lane End - and totally re-build County Road.

That represents Phase 1 of plans to convert the ground into a modern all-seater stadium...and here's a closer look at the changes to be made and how it will affect you next season.

*\* What exactly is being done?*

We are re-developing three sides of the ground in line with recommendations in the Taylor Report and the expected criteria for members of the Premier League.

The terracing has already been removed at the Meadow Lane end and will be replaced by 2,320 seats which will be covered by a roof, attached to the current building.

The Kop is being completely dismantled and replaced by terracing more suitable for seats. When finished, complete with roof, it will accommodate 5,550 people.

County Road is the most challenging part of the project, not least because the stand backs onto a busy road and there's a river running underneath!

The tiles have already been removed from the current structure, which is to be demolished next week and replaced by a cantilever stand with 5,741 seats.

*\* What facilities will the new stand include?*

The easy answer to that is the bare minimum but don't be misled. In order to keep down the costs, the plans have not included any executive or corporate hospitality facilities but the toilets and refreshment bars in all three sides of the ground will be a vast improvement.

The object of the exercise was to create a situation where supporters are guaranteed a comfortable seat with an excellent view and we are confident that that will be achieved.

*\* Will access be easier?*

Without doubt it will be easier to enter and leave the ground because extra and more modern turnstiles are being installed. On County Road, for example, there will be 13 new stiles equally spread along the stand as opposed to the current figure of 10 - some of which will remain in use.

Ten new turnstiles are also being installed for The Kop at Cattlemarket Corner, an area where we have had problems in the past.

And as from the start of the new season, entrance to the Meadow Lane End will be from the junction of County Road-Meadow Lane, which used to be the entrance for standing on the County Road side.

*\* Where will visiting supporters be accommodated next season?*

The new facilities will make it possible for us to introduce proper segregation for the first time and the plan at this stage is for away fans to use The Kop Stand.

Realistically, we will only need to reserve half of that area for the vast majority of matches but where visiting supporters have always tended to use the seats and some terracing on the County Road side, they will no longer be allowed into that area of the ground.

*\* How much extra will the installation of seats affect prices next season?*

The chairman promised when he revealed our plans to supporters some months ago that prices would, as near as possible remain in line with the current cost of standing.

We realise it would be unreasonable to ask you to pay a vast amount more to sit and it is certainly not in our interests to have thousands of empty seats every week.

The price structure for next season has not been decided at the time of writing but you can rest assured that they will be set at a level designed to encourage you to come and sample the new facilities - and bring a friend!

*\* Will you have a good view?*

We have followed the 'sight-line' guidelines of the Football Stadia Advisory Council and a lot of effort has gone into making sure that you have a good view - wherever you are in the ground.

Minimum requirements are laid down and we will be well above those for all areas of all three sides of the ground.

One of the new regulations to be introduced next season is that if a seat does not provide a complete view of the pitch, it must make that clear on the ticket. We do not anticipate selling any such tickets next season.

Obviously we cannot guarantee there will not be some exceptions to the rule but a person of average height and weight will have no problems.

*\* Will there be any other changes?*

As you will be aware our floodlights and PA system have left something to be desired in recent years and they are being replaced during the summer.

Each of the four floodlights will be on a single column, designed for Premier League standards, and more than adequate for providing good-quality television pictures.

They will be the very latest in modern technology with hydraulic masts so that they can be lowered to ground level to provide easier access for replacing bulbs and general servicing.

As for the PA system, it's a requirement of the Taylor Report that everyone within the ground can hear and understand announcements which are made and there will be no problems in that direction once the new equipment has been installed.



LESS than two weeks ago it was packed with Sheffield United fans... now the Spion Kop is changing rapidly.

*\* What's to become of the Main Stand?*

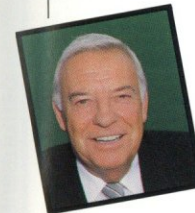
Phase 2 of the re-development plan is to build a new Main Stand and all things being equal, the intention is for that to get underway during the summer of 1994.

Obviously the timing and scale of that project is likely to depend on whether we are in the Premier League at that time and the financial situation of the club but the chairman's dream is that it will be the 'jewel in the crown'.

That will include executive viewing areas and corporate facilities and it is also envisaged that the dressing rooms etc will be built into that stand.

For the time being, however, the Main Stand will remain as it is next season - including the only standing accommodation with room for 2,620 spectators - and until such time as it is replaced the overall capacity of Meadow Lane will be reduced to 19,196 including 16,576 seats.

**NEW! NEW! NEW!**



**COUNTY CLUBLINE**  
0891 · 88 · 86 · 84



**LINES ARE OPEN 24 HOURS A DAY - 7 DAYS A WEEK**

\* Calls cost 36p per minute cheap rate, 48p per minute at all other times.

**LAUNCHED ON JULY 1st 1992**

**KEEP UP-TO-DATE DURING THE SUMMER WITH...**

★ NEWS AND GOSSIP  
★ INTERVIEWS  
★ SIGNINGS  
★ COMPETITIONS

★ TICKET NEWS  
★ TRAVEL NEWS  
★ LIVE 'PHONE-INS

**IF YOU WANT TO FIND OUT THE REAL FACTS FIRST - LISTEN TO COUNTY CLUBLINE - WE GUARANTEE YOU WILL HEAR IT FIRST ON: 0891 · 88 · 86 · 84**



# NOTTS COUNTY

## STEVE CHERRY

The experienced 'keeper will complete a remarkable hat-trick this afternoon - the third consecutive season when he has been an ever-present in our line-up.

## CHARLIE PALMER

According to Neil Warnock, he's been our most consistent player this season and has proved that life in the First Division holds no fears for him.

## RICHARD DRYDEN

It must have occurred to him that he could have been lining up against us at Maine Road last Saturday. Manchester City were chasing his signature last summer.

## CRAIG SHORT

The big Yorkshireman had no problems adjusting to life in the top flight this season and enhanced his reputation as one of the best young defenders in the country.

## MICHAEL JOHNSON

The talented teenager has adapted to senior football without difficulty and if he continues to progress at the same rate, will surely have a big future in the game.

## MARK DRAPER

The England Under-21 star took his tally of League appearances past the 100-mark this season and although he hasn't always done himself justice, will have learned a lot.

## ANDY WILLIAMS

He may have missed out on Leed's title celebrations last weekend but the amiable midfielder has no regrets about leaving Elland Road to join us at Meadow Lane.

## PAUL HARDING

It's been an eventful season for the former Barnet midfielder who, has been transfer-listed, captained the side for a spell and also had an extended run at centre forward.

## DEAN THOMAS

Along with the two Short brothers, he missed last Saturday's defeat at Manchester City through suspension and after that disappointment, hopes to finish the season on a high note this afternoon.

## KEVIN BARTLETT

His first-team days looked numbered earlier this season following the arrival from Sheffield United of Tony Agana but he forced his way back into the spotlight.

## KEVIN WILSON

While the rest of our first team squad had a "free week", he was on World Cup qualifying duty on Tuesday for Northern Ireland against Lithuania in Belfast.

1  
2  
3  
4  
5  
6  
7  
8  
9  
10  
11  
12  
14

# LUTON TOWN

## ALEC CHAMBERLAIN

Lost his spot to on-loan goalkeepers Steve Sutton and Mervyn Day earlier this season but has bounced back in recent weeks to re-establish himself as first choice.

## JULIAN JAMES

A product of Luton's youth policy, the England Under-21 international defender had a spell on loan with Preston earlier this season.

## DARREN SALTON

Another former Kenilworth Road trainee, the 20-year-old Edinburgh-born defender has thrust himself into the first-team spotlight this season.

## CHRIS KAMARA

The much travelled midfielder - he's served Portsmouth, Swindon, Brentford and Stoke - joined Luton from Leeds earlier this season after a spell on loan at Kenilworth Road.

## JOHN DREYER

Has given excellent value for money since joining Luton from Oxford for £140,000 in 1988. Made 60 appearances for the Manor Ground club and also had loan spells with Torquay and Fulham.

## TREVOR PEAKE

Was made club captain immediately after his £100,000 move from Coventry last August. Was a member of the Sky Blues' F.A. Cup winning side in 1987.

## SCOTT OAKES

The highly-rated young forward followed David Pleat from Leicester earlier this season. A versatile player, he is equally effective when operating in defence.

## BRIAN STEIN

Currently in his second spell with Luton, the former England international returned to this country last summer after a spell in France with Caen.

## MICK HARFORD

Another player in his second spell with Luton, he was signed from Derby earlier this season and has raced to the top of the club's scoring charts with 12 goals.

## MARK PEMBRIDGE

Made his full League debut on New Year's Day in 1991 and has since established himself at the heart of Luton's midfield. A Welsh international, he made his debut against Brazil in September.

## DAVID PREECE

Signed for £150,000 from Walsall in 1984, he's since made more than 200 League appearances for Luton. Capped by England at B international level, he's also played in two League Cup finals.

## MATCH OFFICIALS

### Mr R F NIXON

From West Kirby, Wirral - first appointed to the Referees' List in season '81-'82, Senior Linesman FA Cup Final 1987, and for international and European Cup matches. His last visit here was for the FA Cup fourth round visit of Blackburn Rovers.

REFEREE

## LINESMEN



Mr K M Lynch from Lincoln.



Mr R R Rawson from Sheffield. Standby Official: Mr P D Jevons from Selston.

## MAGPIES



We would like to say a big HELLO to our Mascot this afternoon, David Morris. David, who is 8 years old, comes from West Bridgford and attends the Abbey Road Primary School. David is a real sport enthusiast and enjoys football, cricket and tennis. Obviously, football is his first love and he recently attended the Junior Magpies' Easter Soccer School - he tells us "It was great!" We hope you have a super time here at Meadow Lane David when you lead the team out with your favourite player Craig Short. Lets all hope you bring us lots of luck for this last game of the 1991/92 season.

# Cowies

Parliament Street, Nottingham.  
Tel: 506282



SPONSOR  
Gatorade Sports Beverage is  
the Official Sports Drink  
of Notts County FC.

