

Luton

Town Football Club

Match Day Magazine £1.50



Cambridge United

Saturday 27th March 1993

Kick-off 3.00pm

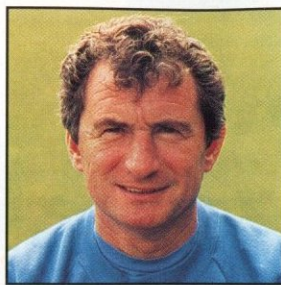


BARCLAYS

LEAGUE DIVISION ONE



Returning to the right conditions



MANAGER'S VIEWPOINT BY DAVID PLEAT

Welcome to our friends from Cambridge United, a club who have done very well in recent seasons and are striving, like ourselves, to clear a path to safety.

A particular welcome to Brian Owen who worked solidly and professionally as our physio and is now assisting Ian Atkins.

The last weeks of a season can be more than difficult, changing ground conditions and tired limbs can cause irritating performances. Last week Bobby Gould was quoted, 'too many people criticise from the stands without knowing what it is like on the pitch'. A rather strong statement. Most spectators do understand the difficulties, but there are varying degrees of encouragement that can be applied to players who are undergoing problems.

We welcome our new groundsman and, after giving him our initial sympathies, we shall work solidly with him to help try and recover and create a good grass surface. If we have a reputation for playing passing football and wish to retain it then we need the right conditions.

Partly the pitch and partly the proximity of the executive boxes has been the main reason why some players have been forced to clear heartily into the local residents gardens and alleyways. Against Swindon seven balls went astray but it did not merit further criticism in a couple of tabloids. Had it been on any other ground the balls would not have disappeared. We need two safety nets! Coupled with the tradition of

allowing hat-trick scorers to take the match ball we are now around thirty balls light this season, so it with some pleasure that I thank Mr Andy Mitchell of Mitchell Sports, South Normanton, Derby for sending us a brand new ball re-placing the one given to Mark Pembridge. We appreciate the gesture and thank our seasons ball sponsors.

Further generosity last week was accept-

"THE LAST WEEKS OF A SEASON CAN BE MORE THAN DIFFICULT."

ed from those splendid people from The Bobbers Travel Club who kindly raised £2,000 which they handed to Andy McDade for the benefit of club medical equipment. We need more of this type of support. We may be unable to buy but we need good conditions for the current staff. Our club does not receive any financial support from other supporters organisations and our commercial income desperately needs boosting. There is a recession and lotteries are down, but that should be the signal for us to encourage and work harder to attract more support.



Philip Gray rounds a Swindon defender, only to be penalised, during our 0-0 draw on March 17.

One of the most philanthropic supporters is Mr Cliff Bassett of Universal Salvage Auctions. Hopefully his company will continue to sponsor us next season. His support for my local Herald columns has meant sponsorship monies of over £500 going to charities. His support, and the good faith of all our sponsors, are both needed and appreciated.

Before kick off this afternoon Darren Salton will make a brief appearance on the pitch as his way of thanking those many supporters whose thoughts, letter and cards surrounded him whilst on a Life Support Machine in November. His courage and your prayers got Darren through and we trust that eventually we will see him pursuing his young career.

Last week produced much discussion and telephoning regarding players but at the time of writing we have not lost any of our future possible assets, but neither of course are we able to invest and rearrange our forces. It is a difficult time and we have to hope that the wheel of fortune is turning, however slowly it may seem.

Enjoy the game.

Magpies prove the doubters wrong

1

NEWS ON ONE

Newcastle United provided the perfect answer to those who doubted their ability to remain Division One's top side, with an emphatic 4-0 victory against Notts County last Saturday.

The win followed their 2-1 defeat at fellow promotion chasers Swindon Town, and also marked the arrival to St James' Park of striker Andrew Cole, their £1.75 million signing from Bristol City.

"It was a brilliant feeling scoring in front of those fans," said Cole after the game. "I hope it is the first of many, but there are so many good players here that I know my place in the side cannot be taken for granted."

David Kelly (2) and Robert Lee were Newcastle's other scorers in front of a capacity crowd of 30,029. The victory kept the Magpies five points clear of nearest rivals West Ham United, who stepped up the pressure with a 2-0 victory over Tranmere Rovers at Upton Park.

The absence of goalscorers John Aldridge and Clive Allen through injury left a goalscoring void at Upton Park, and the Hammers had two second-half penalties by Julian Dicks to thank for the victory. The game also saw the arrival of David Speedie, on loan from Southampton, in West Ham colours. It is hoped he will spark the United forward line into action in Allen's absence and manager Billy Bonds was pleased with his contribution after his opening game.

"I was very pleased with David's commitment on the field today," he said. "We hope he can keep the team buzzing,

and I'm sure he'll have our fans on his side."

Glenn Hoddle's Swindon Town slipped to fourth place with a 2-1 defeat at unpredictable Derby County on Sunday. The Robins had lost only once in their previous ten league games and victory would have taken the club within five points of second-placed West Ham United.

As it turned out, Portsmouth moved into third spot with a 1-



John Taylor - impressed Rovers manager John Ward.

0 victory at home to Charlton Athletic. Guy Whittingham rang the Pompey chimes for the 37th time this season with a superb diving header, but the victory has left the club with severe injury problems. Kit Symons, Chris Burns, Lee

Russell, Stuart Doling and Micky Ross are all ruled out this weekend and Danish midfielder

Bjorn Kristiansen, on loan from Newcastle, will face a suspension following his sending-off against the Addicks.

At the other end of the table, John Taylor came to Bristol Rovers' rescue against the Town, just 48 hours after his proposed move to Pompey was put on ice. His equaliser left new manager John Ward delighted and hopeful that the striker will now stay to help the Pirates escape the drop. "I have spoken with John and told him that I would be delighted if he stayed. I believe I have a lot to offer him here at Bristol."

Southend also revived their hopes of playing Division One football next season with an exciting 3-3 draw with Millwall at Roots Hall. The Shrimpers were 3-1 down at one stage, but fought back with two goals from Steve Tilson to salvage a point. Millwall also had captain Colin Cooper sent off for a foul on Stan Collymore, who scored Southend's opening goal.

"Collymore's goal was a great strike," said opposing manager Mick McCarthy. Nottingham Forest officials Ron Fenton and Alan Hill must also have been impressed, watching in the stands along with only 3,840 other spectators - the lowest First Division crowd this season.



Universal Salvage Auctions

We welcome our latest Community Scheme guests

Today's guests, Denbigh Road Junior School of Denbigh Road, Luton are here courtesy of our community scheme sponsored by Universal Salvage Auctions, (USA), the league leaders in motor salvage auctions, and associate sponsors Kenning Car and Van Rental.

"The children were told three or four weeks ago that they had been invited along to a live football match and are very excited and very much looking forward to their VIP day out," said Headmistress Margaret Quow.

"Unfortunately, we don't have our own football team, as the school doesn't have it's own playing field. We only have a tarmac playground. If we want to use a local playing field for games we all have to get ready and go for a long walk to get there," continued Mrs Quow.

"During the summer term we organise a six-a-side tournament when the children can make up their own mixed teams. It turns out to be quite a big event as we have 420 pupils at Denbigh Road Junior.



Members of Ramridge Rangers F.C. are pictured with Gary Hooper before our match with Swindon Town on March 17.

"Last week the children particularly enjoyed the visits by Luton's Community Liaison Officer Gary Hooper who came along to the school to show them some basic football skills, techniques and to explain about Luton Town Football Club and the way it runs.

"I hope my pupils will have taken notice of what he has said and continue their footballing education this afternoon."

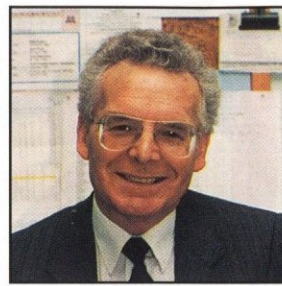
If you would like further information on the USA/Luton Town Community Programme, please contact Gary Hooper, Community Liaison Officer, Luton Town Football Club, Kenilworth Road Stadium, 1 Maple Road, Luton, Bedfordshire LU4 8AW.

TELEPHONE: 0234 766500 • FAX: 0234 766200

WOBURN ROAD • WOOTTON • BEDS • MK43 9EJ



Outstanding Cup dates now agreed



ON THE INSIDE BY JOHN SMYLIE

Kenilworth Road Stadium,
1, Maple Road, Luton, Beds
LU4 8AW.
Tel: (0582) 411622
Fax: (0582) 405070.
Clubcall: 0898 12 11 23 (48p
per min peak, 36p off peak)

President: E.S. Pearson

Chairman: R.J. Smith

Managing Director:
D.A. Kohler, Bsc. (Hons) ARICS

Directors: P. Collins,
E.S. Pearson, H. Richardson,
N. Terry

Vice Presidents: R.L. Banks,
C. Bygraves, R. Safranek,
E. Waller, J. Hudson,
D. Ludlow.

Secretary: John Smylie

Manager: David Pleat

Coaches: John Moore,
Wayne Turner, Terry Westley

Physiotherapist: Andy McDade

Youth Development Officer:
Paul Lowe

Scouting: Les Shannon

Commercial Executive:
John Buttle

Commercial Sales: Andy King

Medical Officer: Dr Bill Berry

Club Dentist: A. Chris BDS (Syd)

■ It is our pleasure to welcome the directors, management, players and supporters of our near-neighbours Cambridge United to Kenilworth Road this afternoon. We are also delighted to have back watching the game Darren Salton. I am sure all football supporters here today, be they our own, neutral or from Cambridge, will join me in wishing Darren continued progress on his road back to recovery and football.

■ The dates of our outstanding cup fixtures have now been agreed. The Eastern Junior Cup match with Royston Town will be played at Royston on Wednesday, March 31, 1993, kick-off 7.30 pm. The first leg of the Bedfordshire Premier Cup Final versus Biggleswade Town will take place on Thursday, April 22, 1993, kick-off 7.30 pm at Biggleswade and the second leg will be played here at Kenilworth Road on Thursday, April 29, kick-off 7.30 pm.

■ To accommodate these cup matches it has been necessary to re-arrange two of our

Football Combination home fixtures. The Chelsea home game will now be played on Monday, April 19 and our match against Charlton Athletic will take place on Tuesday, April 27, both at Kenilworth Road, both kicking-off at 2.00 pm. Our away Combination fixture with Tottenham Hotspur has also been re-scheduled for Friday, May 7 at White Hart Lane, kick-off 2.00 pm.

■ On Monday, Richard Bird joined the club as head groundsman. During the past five years, he has been the deputy head greenkeeper at Tilsworth Golf Centre. A local man living in Dunstable, Richard has been an ardent Town supporter for a number of years.

■ Radio 5 and Autoglass have teamed up to offer a unique prize to the winner of a special phone-in competition on the 'Sportscall' quiz show – a chance to play at Wembley Stadium. Entry is welcome from all age groups, providing they are reasonably fit and if they win, they will find themselves captaining a pro-celebrity team at Wembley, prior to the Autoglass Trophy Final on Saturday, May 22. There will be two semi-final stages to the competition on May 1 and May 8, with the two winners meeting in a head-to-head on May 15 to determine the winner. Listen to Radio 5 closer to the date. The number to take part is (0345) 909693.

Honours

Littlewoods Cup winners 1987-88
FA Cup finalists 1958-59
Littlewoods Cup finalists 1988-89
Simod Cup finalists 1987-88
Champions – Division Three (S) 1936-37
Champions – Division Four 1967-68
Champions – Division Two 1981-82

Editorial and pictures: Collings Communications/Apex Photography,
PR and Media Consultants Hitchin.
Tel: 0462 441068 Fax: 0462 441069

Design and print: McLeod Warner Limited, Luton. Tel: 0582 38389

Awkward conditions make winning difficult



CAPTAINS' LOG BY TREVOR PEAKE

Our last two home performances have been scrappy 0-0 affairs, but we are not just facing the opposition, but also a hard pitch as well.

I know our supporters will not be satisfied with successive 0-0 draws at home and believe me, we are not too pleased ourselves, but I felt in both games – against Swindon and Bristol Rovers – we had the bulk of the play but just could not create enough clear-cut chances to take maximum points.

A major factor creating this problem in both games was the pitch. It was extremely hard and did not suit our passing game. It has made the ball difficult to control and that is why against Swindon – a game in which both teams are known for their passing ability – we had seven balls flying over the Executive Boxes into Dunstable Road!

The game against Bristol Rovers was even harder because Rovers' players were not only playing for points, but also their places. Nevertheless, we saw that game as two points dropped rather than two points gained.

It is imperative that we get back to winning ways this afternoon after a difficult trip to Millwall in midweek. Cambridge have been doing quite well lately and will come to us in confident mood. We are determined to put that 3-3 draw at the Abbey earlier in the season behind us and take maximum points today, something we should have done last time.



Jason Rees came back into the side against Swindon.

Enjoy the game!



The Station with
More Winning Ways

The Hot FM

ACTION REPLAY

From: Kenilworth Road
Date: March 20, 1993
LUTON TOWN 1
(Maddison OG)
BRISTOL ROVERS 1
(Taylor)
Attendance: 7,717

PICTURES BY JOSH LEVY



Marvin Johnson clears his lines powerfully against Marcus Stewart.



Scott Oakes curls his free-kick goalwards.



Kerry Dixon tussles for possession.

LUTON TOWN FOOTBALL HOLIDAY CLUB



**KIDS FLY TO ORLANDO
FOR ONLY £99**

**Departure dates during first two weeks of May
Take two grown-ups for two weeks with
FREE CAR HIRE**

FOR ONLY £269

**Hotels in Orlando or on the beach from
£12.50**

**Ring SUE now 0582 435020 seven days a week
OR visit the Skyline Travel Shop at London**

Luton Airport



LTFC Holiday Club is operated by Luton Town Football Club in association with Worlds End Travel Ltd. ABTA No. 76029.



Latest Box Office news



BY CHERRY NEWBERY

Watford v Luton Town

BARCLAYS LEAGUE DIVISION ONE

Saturday, April 3, 1993 – Kick-off 3.00 pm

Seats for this match are **ONLY** available from the Ticket Office in Kenilworth Road, price £10.00. (no concessions) until 5.00 pm on Friday, April 2. Seats are not available at Vicarage Road.

For standing, pay at the turnstile on the day of the match only, price £7.00 (no concessions).

Luton Town v Wolverhampton Wanderers

BARCLAYS LEAGUE DIVISION ONE

Wednesday, April 7, 1993 – Kick-off 7.45 pm

Tickets for this match are now on sale at the normal league price. Normal guesting facilities apply.

Swindon Town v Luton Town

BARCLAYS LEAGUE DIVISION ONE

Saturday, April 10, 1993 – Kick-off 3.00 pm

Seats for this match are **ONLY** available from the Ticket Office in Kenilworth Road, price £8.50 (no concessions) until Thursday, April 8 at 5.00 pm.

Seats are not available at Swindon.

For standing, pay at the turnstile on the day of the match only, price £7.50 (no concessions)

Luton Town v West Ham United

BARCLAYS LEAGUE DIVISION ONE

Tuesday, April 13, 1993 – Kick-off 7.45pm

Tickets for this match are now on sale at the discounted price. Normal guesting facilities apply.

Easter Holiday 1993 Ticket Office Hours

April 9th Good Friday Closed

April 10th Easter Saturday 10.00 am – 1.00 pm

April 12th Bank Holiday Monday 10.00 am – 1.00 pm

Travelling to...

Watford

Address: Vicarage Road, Watford, Herts WD1 8ER.

Telephone: 0923 30933.

Take the M1 south to junction 6, then to Watford on A405, A41 and 'A411. Take the A412 towards Slough and turn left into Harwoods Road. Turn left at end for Vicarage Road. Nearest Railway: Watford Junction or Watford High Street.

Swindon

Address: The County Ground, Swindon SN1 2ED.

Telephone: (0793) 36804.

Follow signs St Albans A505. In 1.3 miles at roundabout take 2nd exit A1081 junction with M1 spur. At roundabout take 2nd exit to join motorway M1 spur. At next roundabout take 1st exit (signs London) to join M1 to junction 6a. Branch left (signs Heathrow) to join M25 to junction 15. Branch left (signs The West) then keep right to join M4 to junction 15. Leave motorway (signs Swindon) to join A419. In 1 mile at roundabout take 1st exit A4259. At next two roundabouts forward. Take 4th exit into Shrivensham Road for ground.

Directions courtesy of the Automobile Association.

Bobbers Travel Club

Coaches for the trip to WATFORD will cost £4.50 adults and £3.60 children/OAP's. Coaches will depart from Cranfield at 11.45 am and from Luton at 12.45 pm with the normal pick-up points en route.

Coaches for the trip to SWINDON will cost £6.50 adults and £5.20 children/OAP's. Coaches will depart from Cranfield at 10.00 am and from Luton at 11.00 am, again with the normal pick-up points en route.

All bookings and further information can be made by telephoning Paul Deason on (0234) 750996.

Old friends help United's bid to stave off relegation

CAMBRIDGE UNITED F.C. 1992-93

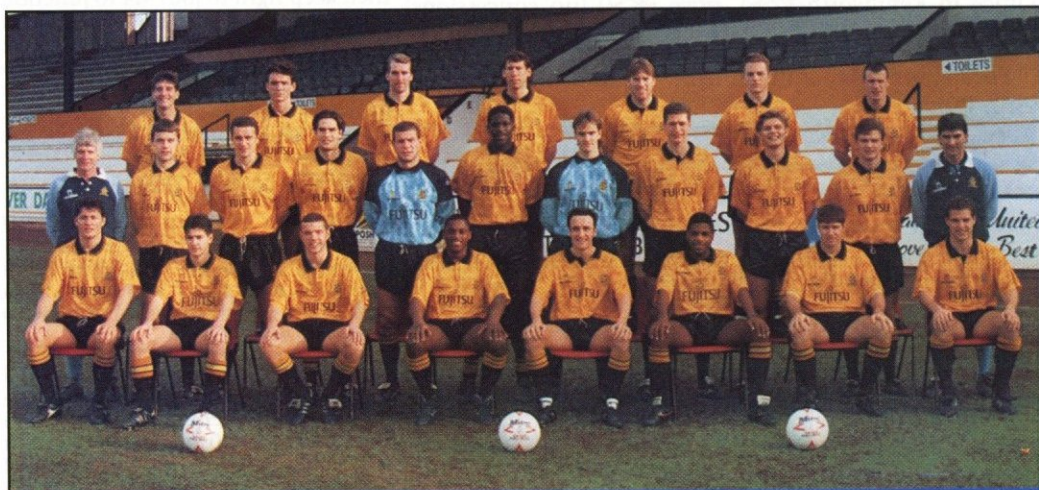


■ After hitting the heights in the old First Division last season, Cambridge United have struggled to repeat the performance this term. Managerial and playing staff changes have led to disruptions both on and off the pitch, which has not helped their cause. Three straight defeats at the start of the season, at Tranmere (0-2), Birmingham (0-3) and at home to Swindon Town (1-4) set the tone for the struggles which lay ahead.

■ However, following the departure of manager John Beck in December and the arrival of new boss Ian Atkins, the side now appears to have settled down and the results have improved. Recent victories against Brentford (1-0), Swindon (1-0), Wolves (2-1) and a creditable draw against Millwall have improved their situation and they now find themselves alongside the Town in the league table, aiming to escape from the threat of the relegation zone.

■ Their connection with the Hatters does not end there. Top-scorer this season for United is Steve Claridge. He appears to be hitting the goal trail again with his former club after struggling to reach top form at Kenilworth Road. Also guiding Cambridge United this season as assistant manager is former Town physiotherapist Brian Owen. We give them both a warm welcome on their first visit back to Kenilworth Road.

■ A football revival in Cambridge began soon after World War II when Abbey United (formed 1919) decided to turn professional and in 1949 changed their name to Cambridge United F.C. They competed in the United Counties League, before graduating to the Eastern Counties League in 1951 and the Southern League in 1958. United are one of the Football League's newest members, making their first appearance in 1970. They have since gone on to win the Division Four championship in 1976/77 and the Third Division crown in 1990/91.



Back row (left to right): Gary Clayton, Danny O'Shea, Michael Heathcote, John McGlashan (now Peterborough United), Paul Raynor, Gary Rowett, Steve Claridge.
Middle row (left to right): Brian Owen (assistant manager), Jamie Smeeth, Liam Daish, Miachael Danzey, John Vaughan, Devon White (now QPR), Jon Sheffield, Phil Chapple, Neil Lyne, Michael Cheetham, Ian Atkins (manager).
Front row (left to right): Richard Wilkins, Phil Parkhill, John Fowler, John Francis, Chris Leadbitter, Tony Dennis, Alan Kimble, Andy Fensome.

UNITED ON PARADE

JOHN VAUGHAN (goalkeeper) – John began his career at West Ham United before joining Fulham for £20,000 in 1986. He made 44 appearances for the Craven Cottage club before joining Cambridge in August 1988 and has missed only a handful of games since.

ANDY FENSOME (defender) – Right-back Andy started his career at Norwich but had to be content with reserve team football. He spent a while at non-league Bury Town before joining United in December 1989.

ALAN KIMBLE (defender) – Alan began his career at Charlton Athletic, but made only a handful of appearances in 1985. After a brief loan spell at Exeter City, he joined United in 1986 and has established himself as first-choice left-back at The Abbey.

MICK HEATHCOTE (defender) – Mick began his career at Middlesbrough but made his Football League debut after joining neighbours Sunderland. However, he established himself at Shrewsbury Town before joining United for £150,000 in 1991. Mick operates at centre-half or right-back.

DANNY O'SHEA (defender) – Danny began his career as an apprentice at Highbury, but joined Exeter City after making six first team appearances. He joined Southend United for £5,000 in 1985 and spent four seasons at Roots Hall. Two years later he joined United on a free transfer and played an integral part in the club's rise from the Fourth Division.

TONY DENNIS (midfielder) – Tony had spells with Exeter, Bideford, Taunton and Slough before joining Cambridge United for £15,000 in February 1989. A tough tackling midfielder, he has been a regular in the United side since last season.

CHRIS LEADBITTER (midfielder) – A former Grimsby Town apprentice, Chris played regular league football once he had moved to Hereford United. He joined Cambridge in August 1988 and

has been a versatile member of the squad, being able to play in most positions.

GARY CLAYTON (midfielder) – Gary was bought from Doncaster Rovers in 1987 for £10,000, having previously played for Rotherham, Gainsborough and Burton Albion. During his non-league days, Gary represented England at semi-professional level.

JOHN FRANCIS (midfielder) – John joined Cambridge in August 1992 from Burnley. Another player who started his career at non-league level, he played for Emley before moving to Sheffield United. Unable to gain a regular place at Bramall Lane, he joined Burnley, whom he helped to the Fourth Division title last season.

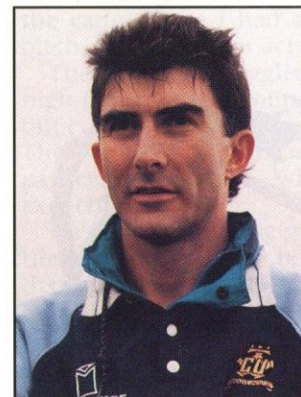
STEVE CLARIDGE (forward) – Steve began his career at Portsmouth, but dropped into non-league football with Weymouth. He resurrected his league career with Aldershot and made 62 appearances, before joining Cambridge for £75,000 in 1990. He joined the Hatters last July, but 15 appearances later he found himself back at the Abbey Stadium.

STEVE BUTLER (forward) – Steve made a name for himself as a prolific goalscorer with Maidstone United before joining Watford in 1991. Following the signings of Furlong and Charlery, Steve found himself surplus to requirements at Vicarage Road and joined Cambridge for an undisclosed fee in December 1992.

GARY ROWETT (forward) – A former YTS trainee, Gary signed professional forms for United in July 1991. He made an immediate impact in the side, scoring on his debut at Millwall in September 1991.

MICHAEL CHEETHAM (forward) – A former member of the British Army Signal Regiment, Michael was bought out of the forces in 1988. After being unable to secure a first team spot at Portman Road, Michael joined United on a three month loan which resulted in a permanent transfer.

MEET THE BOSS

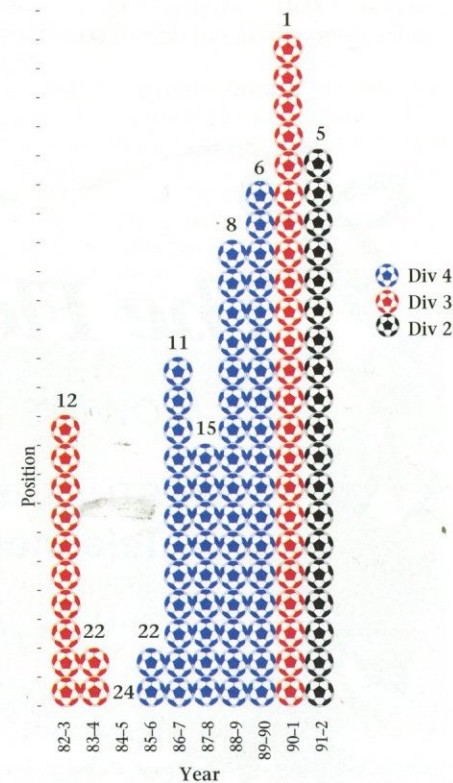


Born in Birmingham in 1957, Ian Atkins started his playing career at Shrewsbury Town in 1975, making over 270 appearances for the Gay Meadow club. He then had a spell with Sunderland before joining Everton and played during the season the Blues won

the League Championship and the European Cup Winners' Cup. He moved on to Ipswich Town in 1985, before returning to Birmingham, to play for City, where he made over 100 appearances.

Ian then embarked on his first job in management with a player/manager role at Colchester United, but the lure of the Midlands took him back to St Andrews to join up with Terry Cooper as his assistant. Ian took over at the Abbey Stadium in December 1992 following the departure of John Beck.

Cambridge United 10 year record

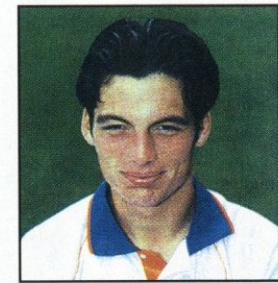


THERE'S ONLY ONE MITRE DELTA...
 ...ONE MITRE DELTA.
 THERE'S ONLY
 ONE MITRE
 DELTA...

mitre
International Excellence

Mitre Sports International Ltd., Bay Hall Works, Birkby, Huddersfield, West Yorkshire HD1 5AJ. Tel: (0484) 537488 Fax: (0484) 530042

Debut appearance the climax to a fine season for David



PLAYER INTERVIEW WITH DAVID GREENE

1 9-year-old defender David Greene made his Town debut at Grimsby Town earlier this month. Although the Hatters lost the match, for David, it was an experience he wants to sample again.

David had previously made two non-playing substitute appearances for the Town earlier in the season at Cambridge and Peterborough, but admits he was surprised to be called up for action at Grimsby Town. Illness to Trevor Peake paved the way for the Luton-born Eire under-21 international to make his mark in the first-team.

"I didn't even have time to be nervous," he stated. "I only knew that I was playing about an hour-and-a-half before the match, so I didn't have time to really think about the game. Once I had a warm up on the pitch, I felt ready for action."

The Hatters struggled to match their high-flying neighbours and found it difficult to impose themselves on the game. The Grimsby forward line looked particularly sharp, which David was expecting.

He said: "I think the speed of the game is the biggest difference between reserve and first-team football. Grimsby's forwards were fast and I had to be alert at all times. Nevertheless, I think I coped adequately enough in the first-half."

As the game progressed, David inevitably found it increasingly difficult to cope with the pace and developed cramp. He was eventually substituted and was disappointed with the way the second period went.

"I was not particularly pleased with my second-half performance," he continued. "Once I got cramp I struggled and would have liked to have lasted the whole match."

"Looking back though, I really enjoyed being involved and hope I get my opportunity again soon. Saying that

though, John Dreyer and Trevor Peake have had an outstanding season so I know my opportunities this season will be limited. I must continue to work hard at my game and hope that when my chance does come along again, I can keep it and stay in the team."

David's progress is a fine example to other youngsters at the club hoping to make the grade. Last season he was a regular in Terry Westley's youth side and six months later he has sampled first team football. However, he admits that playing international football has also progressed his career.

He said: "Without doubt playing for Ireland has improved my game. The standard at under-21 level is good and technically some of the opposition I have come up against has been excellent. Playing against Spain was a recent example of this."

"Being selected regularly for international duty has definitely given me confidence which is a big part of my game."



The Flower Shop
 Flowers for all occasions
 34 STUART STREET, LUTON BEDS.
 Telephone: Luton 422796
 "Say it with Flowers"

Leading goalscorer Philip Gray is pictured in action against Bristol Rovers. Unfortunately, he will be missing this afternoon through suspension.



EXECUTIVE MEMBERS

KENILWORTH SUITE

Anachem Ltd
Mrs E Bain
Blakey Engineering Company Ltd
CBC Print Ltd
Mr G. Chamberlain
Fisher Frozen Foods Ltd
Flitwick Oil Company Ltd
F & T Goodwin Ltd
Mr D Hales
Handcombe Financial Services Ltd
R.W. Harvey & Son
Holmes Commercial
Mr P Laycock
Seamarks Coach Travel
Wilton Truck Rental Plc
Radley Shaw
Origination

CLUB 82

T.J. Aldridge Builders
Bervale Meade Insurance Brokers
Bevangrace Ltd
Broad Street Print
J.S.B. Business Forms
Nordic Supplies
Mr F.W. Pearce
Mr J. Peters
E.C.J. Shorey Travel
Space Display Systems
David C. Rutt
Techno Sign Ltd

INDIVIDUAL BOX HOLDERS

Mr Malcolm Eade
Mr Roger Eade
Mr R. Pinney

EXECUTIVE BOXHOLDERS



There's still time to enter our Easter Egg Competition

JUNIOR HATTERS WITH
RICHARD HARVEY



Today's mascot is Katie Sewell. She is seven-years-old and attends Godmanchester Primary School. Katie's interests are swimming, brownies, reading and playing the recorder. Her favourite player is Alec Chamberlain.

Welcome to this afternoon's game with Cambridge United. We have a busy run up to the end of the season, so it is important that we have your support.

Today we give a warm welcome to the Junior U's. They are with us this afternoon in the Main Stand giving their team some support. We hope you enjoy your time at Kenilworth Road and enjoy the game.

You still have time to enter our Easter Egg Competition. The first 24 Junior Hatters that can give me the correct answers to the following question will receive an Easter egg.

Name the clubs that these ex-Luton players now play for: Steve Foster, Mal Donaghy, David Oldfield and Tim Breacker.

All entries should be sent to Easter Egg Competition, Luton Town FC, Kenilworth Road Stadium, 1 Maple Road, Luton, Beds LU4 8AW no later than Friday, April 2. Don't forget to put your membership number and address on your entry.

We are currently making arrangements for a day out this summer and it has been suggested that we go to Thorpe Park. The date we have decided on is Sunday, June 20. I am waiting on prices for party bookings so I will let you have all the details and costs in our next home programme against Wolverhampton Wanderers.

Our coach trip to Watford on April 3 is fully booked. The coach will leave from the top of Oak Road at 10.00 am. We will be playing football with the Junior Hornets in the morning and watching the first-team play in the afternoon.

Our next planned trip is to Swindon Town on Saturday, April 10. The price will be £9.00 juniors and £10 parents and you can book after today's game in the club shop.

Today's lucky Junior Hatters membership numbers 1174.....DAVID CHURCH. David wins two free tickets to one of our home games this season. To claim your prize, please call into the club shop with your membership card.

STAR IS BORN

Sort out the seven clubs and put them into their correct places. You will then find Robert Fleck's place of birth reading down.

ROBERT FLECK WAS BORN IN GLASSGOW. - : R E M S W N

LUTON & DISTRICT LUTON & DISTRICT LUTON & DISTRICT LUTON & DISTRICT LUTON & DISTRICT

FAIR FARES FOR LUTON TOWN F.C.
Special half price tickets for members of Luton Town on Match Days.

HOME GAMES
 We offer ½ price travel on all local bus services operated by Luton & District.

AWAY GAMES
 Take our 757 express coach from Luton to London for a direct route and frequent friendly service ½ price for Luton Town Members!

RECESSION BUSTER

£1.00

RECESSION BUSTER

OFF-PEAK RETURN CONTINUES...
 ...as Luton & District Transport plays its part in helping both it's passengers and the stores of Luton and Dunstable to beat the recession.

RECESSION BUSTER

£1.00 Return Fare valid for journeys within the Luton & Dunstable area. Tickets must be purchased from the driver between 0900-1600 Mondays to Saturdays. Return Journeys may be taken anytime on day of issue. Further reductions for children (up to and including 13 years of age) to 75p Mondays-Fridays and 50p Saturdays and school holidays (excluding Bank holidays).

We operate buses in most parts of the Home Counties.
 For further information about your local services please telephone your nearest bus station or garage.

LUTON & DISTRICT

Luton - Dunstable - Aylesbury - Leighton Buzzard - Slough - Chilterns - Lee & District - Red Rover - Stevenage - Hitchin - Hemel Hempstead - Watford



Schoolboy's dream appearance at Wembley



AROUND THE TOWN

CONGRATULATIONS ANDREW

We extend our congratulations to Town schoolboy and Hitchin Boys School pupil Andrew Fortiadis, who represented the England Schoolboys Under-15 side in their recent televised game with Scotland at Wembley Stadium.

Andrew, who had only passed a fitness test shortly before the game, came on as a second-half substitute and made an immediate impact, creating a couple of good chances.

"It was a great experience for Andrew," said youth development officer Paul Lowe. "He was playing slightly out of position on the left when he came on, but had several shots in a short spell. I would like to thank Andy McDade for helping Andrew through his hamstring injury beforehand and Julian James and Marvin Johnson for giving him a fitness test prior to the game."

LOOK AFTER THE STARS OF THE FUTURE

We are looking for long/short term accommodation for YTS players for the 1993/94 season and also temporary accommodation for schoolboy trialists during the school holidays (Easter, Christmas, Summer).

We would prefer offers to come from the Warden Hills/Barton Hills area of Luton and landladies would receive payment for the players staying. We must emphasise that family

atmosphere, friendship and a relaxed environment are of utmost importance.

Please contact: Paul Lowe, Youth Development Officer, Luton Town FC, 1 Maple Road, Luton, Beds, LU4 8AW or telephone (0582) 411622.

PHILIP EQUALS GOALSCORING RECORD

With the Town drawing 0-0 with Swindon Town last Wednesday night. March 17, our leading goalscorer Philip Gray failed to break a record of goals scored in consecutive matches. His goal at Grimsby Town on March 13 was his sixth goal in consecutive games, which equalled a record shared by Jesse Pye in 1952 and Joe Payne in 1936.

WELCOME DARREN

Today we welcome defender Darren Salton back to Kenilworth Road for his first visit to the club since his car accident in November. Darren is now recovering well and we send him warm congratulations following the announcement of his engagement to Luton girl Sarah Barnes.

BLETCHLEY HATTERS CLUB

For coach travel to all Luton Town home matches from various pick-up points in Bletchley, Bow Brickhill, Woburn Sands and Aspley Guise, please telephone (0908) 377750 for further information.

DIXON LOAN SPELL EXTENDED

Southampton striker Kerry Dixon had his loan spell extended at Kenilworth Road last Thursday (March 18). The new deal left manager David Pleat delighted. He said: "The extension gives Kerry the chance to resume his fruitful partnership with Philip Gray." On the transfer front, the club have released striker Chris Brooks, who joined the club last summer from Ilkeston Town.



Previous encounters fail to capture the imagination

BACK TRACKING BY ROGER WASH



Having only entered the Football League in 1970, it is hardly surprising that Cambridge United are paying only their fifth visit to Kenilworth Road this afternoon.

The first league clash took place here on September 23, 1978 and a crowd of 10,801 saw Brian Stein give us an early lead, only for ex-Town player Alan Biley to level the score from the penalty spot in the second-half.

Equally uninspiring was the return game at the Abbey the following February when the two defences dominated with a 0-0 scoreline the only likely result.

Cambridge were the first visitors to Kenilworth Road in 1979/80 and a goal from David Moss secured a breakthrough but that man Biley

again saw to it that United returned with a point. This time the return marked a change in the Town's fortunes with a win finally being recorded.

The Town were leading the Division Two table by the following November, but the trip to Cambridge was seen as a test in view of the way the previous meetings had ended. We need not have worried, however, as goals from Bob Hatton after 58 minutes and another from David Moss three minutes later from the penalty spot set up an important win.

Biley maintained his record by netting a consolation just before the end.

We eventually missed out on promotion by a whisker that season, but by the time of our next meeting with Cambridge, Division One was furthest from our thoughts as we were struggling at the wrong end of the table. A dismal run of results meant that avoiding defeat was vital but returning with a win achieved, for a large part of the game, with only ten men proved to be the turning point in the season.

Moss gave the Town the lead after 20 minutes, from the spot again after he had been tripped, but Cambridge equalised shortly afterwards when George Reilly scrambled the ball over the line. Surprisingly, we went ahead shortly after half-time when Clive Goodyear was perfectly placed to head home a free-kick from Moss for his first-ever league goal.

Back came Cambridge for a second equaliser and after one onslaught, Luton goal-

keeper Jake Findlay was so badly winded following a strong challenge by Reilly that he had to be carried off despite a hold up of over six minutes.

Mal Donaghy took over in goal and as the substitute had already been used, we had to face the final 25 minutes with only 10 men. As so often happens in these situations, the ten men played like 12 and Donaghy had only one shot to stop before Stein caught the Cambridge rearguard on the break to lob a third Luton goal in the final minute.

The home game in March 1982 saw a ten-man Cambridge

defence keep out everything the Town could throw at them and with the minutes ticking away another stalemate looked the likely outcome. Justice was done, however, when a rocket shot from skipper Brian Horton secured a vital win.

The final game in the series took place at Cambridge a month later when over 4,000 Town supporters swelled the crowd to a best of the season 8,815. The match itself was a disappointment with the Town never allowed to get into their stride. The game ended 1-1 with the only bright spot being Wayne Turner's first league goal.

PREVIOUS ENCOUNTERS

| | P | W | D | L | F | A |
|-------|---|---|---|---|----|---|
| Home | 4 | 1 | 3 | 0 | 3 | 2 |
| Away | 5 | 2 | 3 | 0 | 9 | 6 |
| Total | 9 | 3 | 6 | 0 | 12 | 8 |

5 It happened five years ago:- 29/3/88 - A 4-1 home win over Portsmouth halted a run of three defeats and pushed the Town up to ninth position in Division One.

10 It happened ten years ago:- 26/3/83 - Three players made their Luton debut in the home game against Sunderland. Unfortunately for Tony Godden, Trevor Aylott and Ray Daniel, the visitors won 3-1.

15 It happened 15 years ago:- 27/3/78 - In a hard fought game, the Town ended up 1-0 winners at home against Crystal Palace. A penalty from Lil Ficillo was all that separated the two sides.

20 It happened 20 years ago:- 27/3/73 - A solitary goal from Rodney Fern was enough to secure the points in a 1-0 win at Fulham. This was the Town's ninth away win of the season.



David Moss takes on Cambridge defender David Donaldson during our encounter at the Abbey Stadium in 1982.

For the full Match Report, read —

Brian Swain's SPORTSVIEW

IN THE
Luton News

5 pages of Sport Every Wednesday

Luton Town F.C.

KIT SPONSORS

RICHARD HARVEY
ECJ Shorey Travel

DES LINTON
Simkins Solicitors of
Baldock and Sandy

CERI HUGHES
Mark Varney Investments

IAN BENJAMIN
Bobbars Travel Club,
Committee and Members

JOHN DREYER
Milton Keynes Branch of
the Luton Town Supporters Club

CHRIS KAMARA
Tim Arnold

ANDY PETTERSON
Simorg Ltd of Luton

JAMIE CAMPBELL
Lea Manor School
Luton

DAVID PREECE
Mr K. Craven of
Shaldon Court Newsagents

TREVOR PEAKE
Bennetts Gate Bakery
of Hemel Hempstead

SCOTT OAKES
Profile Systems and Networks Ltd

MARVIN JOHNSON
Cornish Newsagents
Leighton Buzzard

DARREN SALTON
Fastech Scotland

DAVID PLEAT
A-Top Management Services Ltd
Property Letting Service

PHIL GRAY
Coloramic Ltd of Sandy

CHRIS BROOKS
McLeod Warner Ltd

JULIAN JAMES
ECJ Shorey Travel

ALEC CHAMBERLAIN
RAH Design Ltd
Mark Nelson & Elaine Nelson

PAUL TELFER
5 Star Cars and Couriers Ltd

JASON REES
Wilton Vehicle Rental

MARTIN WILLIAMS
Leicester & Harpenden Hatters
Adrian Danes and Clive Garrett

DAVID GREENE
Katy and Phil Shaw



FOR PRICING, TELEPHONE THE
COMMERCIAL DEPARTMENT
ON 0582 411622

Luton Town Clubcall 0898 12 11 23

A warm welcome to all guests with us today



COMMERCIAL FOCUS BY ANDY KING AND JOHN BUTTLE

HAVE YOU VISITED THE "HATTERS" YET?

If you are a season ticket holder and have not yet done so, why not pay it a visit either before or after the game today, for a bar snack and a drink?

WELCOME TO OUR SPECIAL FRIENDS

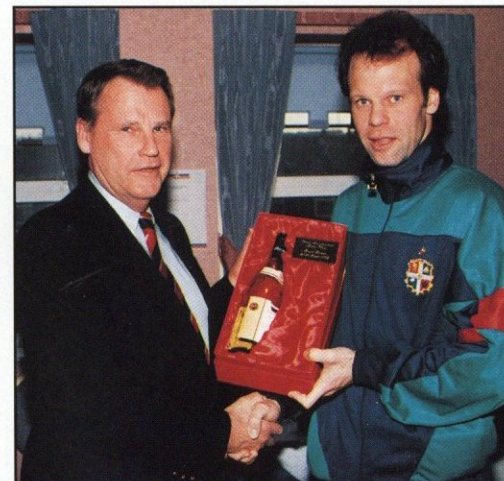
Today the club has joined forces with one of our executive box holders, British Gas, to bring a group of young people with learning and physical disabilities from the Lea Manor Youth Centre to the game.

The club are delighted to have as a guest in one of our executive boxes, Mr Leonard Chapman who, at the ripe old age of 101, must be our oldest supporter. He has been a Luton fan since the early 1930's when he moved to the town. We hope you all have an enjoyable day..

BIRTHDAY GREETINGS

Today we welcome David Forsey, who is celebrating his 10th birthday with family and friends in executive box 25. We also welcome John McLoughlin who is celebrating his seventh birthday with his family in executive box 4.

Everyone at Luton Town FC sends their best wishes and hopes you both enjoy your day.



Mr Lennark Hedlund of Atlas Copco Compressors Ltd presents Trevor Peake with his man-of-the-match award following our 1-1 draw with Bristol Rovers.

JOINT MATCH SPONSORS

Anachem supply Laboratory Equipment to companies and universities involved in biomedical research. Their guests today include customers from the University of Cambridge and Biotechnology companies from the surrounding area. As many of these customers are involved in genetic research, we should ask them to clone a few star players.

We also welcome Mr and Mrs Goodwin of F&T Goodwin Ltd and their guests.

Both of the above companies are valued, regular sponsors of our matches and we thank them for their continued support and hope that they have a very enjoyable day with us.

SORRY M'LUD

Our apologies go to Simpkins Solicitors of Baldock and Sandy for the technicolour production error which meant they were not highlighted as Des Linton's sponsor in our last match day magazine.

**Antony's
Tailor**
OF LONDON

THE MOST
ESTABLISHED
AND RELIABLE
TAILORS IN
LUTON

DRESS HIRE
LADIES AND GENTS
BESPOKE TAILORING

12 DUNSTABLE ROAD, LUTON,
BEDS OPPOSITE MAIN POST OFFICE
TEL: (0582) 424687



Whatever your goal...



Fans' forum



TOWN CARD BRINGS A SMILE

Dear Sir,

I would like to thank Mr Pleat and the Luton Town squad for signing a 'get well' card for my son-in-law Steve Whitehead. He was surprised and delighted to receive the card and the team's recent good run has been an added bonus.

Luton Town has now gained a new follower as I will also be rooting for you from now on!

Wendy Mead, 27 Denmark Close, Corby, Northants NN18 9EH.

PRAISE INDEED FOR THE HATTERS

Dear Sir,

On attending the match at Luton on March 17, I felt I had to write and congratulate your club on the hospitality that was shown to Swindon supporters which included the stewards, police, and Luton supporters. May I also mention the cleanliness of

your toilets – a real feather in your caps.

I have travelled to all away matches over the past two years and may I say how pleasant it was to be treated as a human being and not like an animal.

So thanks to everyone connected with Luton Town and I sincerely hope I will pay another visit to the club in the near future.

Olive Holden, 16 Medina Way, Swindon, Wilts SN2 6NW.

SPARE PROGRAMMES WANTED

Dear Sir,

I am trying to complete a collection of league and non-league football club programmes for 1992/93.

If there are any Luton supporters who have some spare Luton first-team or reserve programmes, please contact me at the address below.

Luke Emery, 75 Lower Icknield Way, Chinnor, Oxon OX9 4EA.



Kerry Dixon is pictured in action against Swindon Town on March 17.

LUTON TOWN 2

Colours: White/Blue Shirts,
Blue/White Shorts

Manager: David Pleat

Alec Chamberlain
John Dreyer
Paul Telfer
Marvin Johnson
Jason Rees
Trevor Peake
Ceri Hughes
Kerry Dixon
Scott Oakes
Ian Benjamin
David Preece

1
2
3
4
5
6
7
8
9
10
11
12
14

CAMBRIDGE UNITED

Colours: Yellow Shirts,
Yellow Shorts

Manager: Ian Atkins

John Vaughan
Andy Fensome
Alan Kimble
Danny O'Shea
Mick Heathcote
Phil Chapple
Matthew Rush
Steve Claridge
Steve Butler
Gary Clayton
Chris Leadbitter

REFEREE: R.G. Milford (Bristol)
LINESMEN: N.J. Ludlow (yellow trim)
D.J. Rowley (red/yellow trim)
FOURTH
OFFICIAL: M.T. Jackson

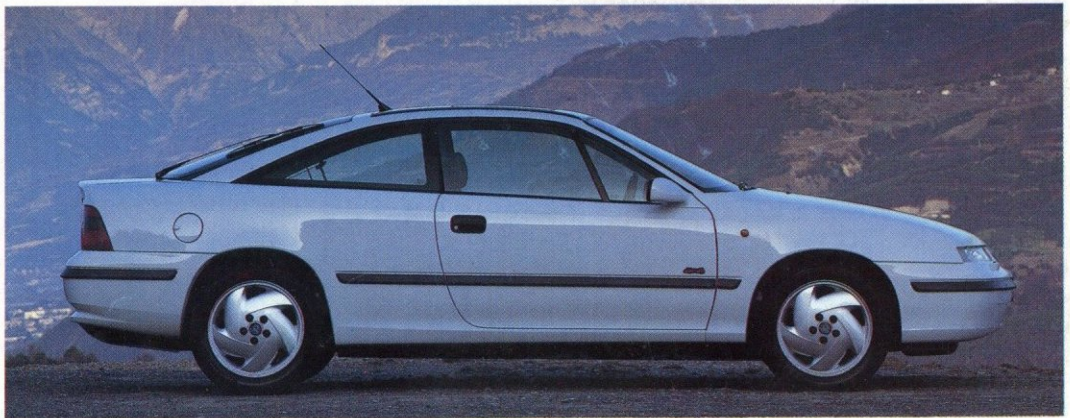


Official kit sponsor



Official ball sponsor

GREAT AT TAKING CORNERS



VAUXHALL *Once driven, forever smitten*



VAUXHALL IS BACKED BY THE WORLDWIDE RESOURCES OF GENERAL MOTORS. CAR SHOWN CALIBRA TURBO