

Luton

Town Football Club

Match Day Magazine £1.50



Wolverhampton Wanderers

Wednesday 7th April 1993

Kick-off 7.45pm

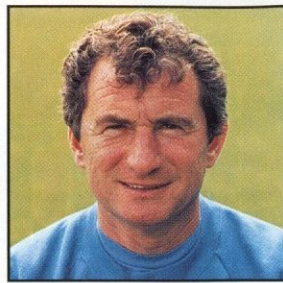


BARCLAYS

LEAGUE DIVISION ONE



Full squad of players needed for final run-in



MANAGER'S VIEWPOINT BY DAVID PLEAT

Welcome to all the supporters, officials and players of Wolverhampton Wanderers Football Club. There is no team in our league with greater tradition or a more famous history.

When televised soccer first came to the screens in the 50's we were all magnetised by their performances against the likes of the great Honved. The link with that great era is still to be seen around Molineux with the cheerful face of the great Billy Wright C.B.E. He is one of the finest sportsmen that this county has ever produced.

Last Saturday's game at Watford was a disappointing affair. The swirling wind, an uneven pitch and some irritating decisions meant that the game never flowed. There was too much tension and although some supporters may have gained some satisfaction in securing a point, I felt we were below par and not bright in our play.

This was a contrast to the Cambridge game where we played some good open football in the first part and fully deserved our interval lead. The absence of Julian James and Philip Gray through suspension and the illness of David Preece meant it was a case of playing together as a team to make up for the absence of three regulars. Chris Kamara was recalled from Middlesbrough. I was pleased with the

reception the supporters gave him and he gave a sound midfield performance but the highlights were the two outstanding goals that Kerry Dixon and Scott Oakes scored to secure three vital points.

After this evening's game we only have two remaining home fixtures. No one needs to

"LAST SATURDAY'S GAME AT WATFORD WAS DISAPPOINTING. THE SWIRLING WIND, UNEVEN PITCH AND SOME IRRITATING DECISIONS MEANT THAT THE GAME NEVER FLOWED"

stress the importance of making sure that we do not have any great last day traumas.

With the deadline gone we need a full complement of fit players for the next few weeks and then I hope that we can look towards next season and some introduction of finance that will give me and the staff a reasonable opportunity of working. Young players give you great heart and great hopes but is



Chris Kamara returned to the Town side against Cambridge United on March 27.

difficult to be successful with a mainly young group because youngsters are inconsistent and have not yet gained the experience to show maturity.

The senior players' contribution this season has been quite stirring in helping the younger element progress. Trevor Peake, has formed a sound partnership with John Dreyer and Alec Chamberlain has returned and has given us several months of excellent goal keeping.

Enjoy this evening's game and remember we have another attractive fixture on Tuesday 13th April against West Ham

United who look destined to return to the Premier League.

Strikers in super form

1

NEWS ON ONE

The quality of strikers in Division One this season has shown that there is an abundance of talent within the league. Jonathan Noble takes a look at the men who have led the way this term.

Guy Whittingham's remarkable season of goal scoring continues as the term enters its closing stages. Although his total of 40 (so far!) equals the record set by Billy Haines in 1926/7 for the most goals scored by a Portsmouth player in a season, he has a long way to go to beat the all-time Football League goal scoring record. That was set by Dixie Dean in 1927/8 during his long spell with Everton, when he scored 60 goals.

Just what is the secret to Guy's continued success though? "It's down to hard work," said the Pompey player. "When I get in the penalty box I have always got one eye on goal. If you know where it is you can hit the target.

"Confidence is a big factor for a striker and it came to me, obviously, from the first day of the season getting a hat-trick. There is nothing like scoring goals to give a striker confidence."

Although Tranmere's John Aldridge is lagging behind Whittingham with just 24 goals to his credit this season (!), his strike rate still sets the precedent. The 35-year-old, who's career has spanned 15 years, has scored on average over one goal every two games. Although a prolonged injury has limited Aldo's season, he will be hoping to return before the season is out.

Tranmere manager John King has been pleased with the former Liverpool and Oxford star this season, a player he nicknames 'Top Gun'.

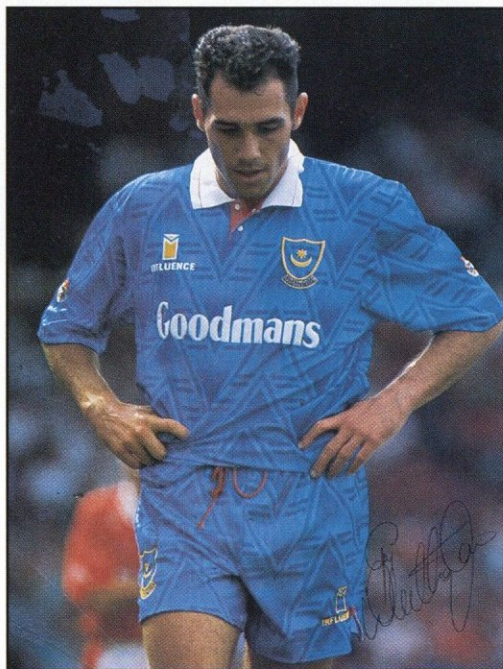
"I've always been delighted with John," he said. "He goes in, kills them off and comes out again. He's just like a gunslinger."

One of Aldridge's ambitions is to return to his former home Anfield with Tranmere next season. If he can return to the side soon and shoot Tranmere back into contention, then facing the Kop could become a real possibility.

"I'd like nothing better," said King. "Count me in," ended Aldridge.

Equalling Aldridge's 24 goals for the season is Gary Blissett, although those goals are getting harder and harder for the 28-year-old Mancunian to find. Brentford have had a lean spell recently and must be hoping for their luck to change.

Craig Maskell, Swindon's striking ace, has recently passed the 100 League goals marker. His partnership with Australian Dave Mitchell has paid dividends this season for the high-flying Robins. 25-year-old Maskell said: "Dave has helped a lot. You certainly feel a buzz when you have helped create a goal. Forwards must always be looking to link up, to understand where the other player is moving. Anticipation plays a large part in the success."



Guy's opponents - at their 'Whitts' end?



Universal Salvage Auctions

Newly-crowned champions are the latest guests at Kenilworth Road

Tonight's guests, Lea Manor High School from Luton are here courtesy of our community scheme sponsored by Universal Salvage Auctions (USA), the league leaders in motor salvage auctions, and associate sponsors Kenning Car and Van Rental.

On behalf of Luton Town Football Club, Universal Salvage Auctions and Kenning, we hope you all have a very enjoyable evening.

All of tonight's pupils are between the ages of 11 and 16 and hail mainly from Lea Manor High's successful football squads. They have been invited along to the game as a reward for their hard work and effort during this season.

Luton Town Football Club are no strangers to Lea Manor as the Hatters have used the astro-turf surface at their sports centre many times this winter.

Teacher Mark Cronin said: "All the boys visiting tonight's game have done extremely well in their football competitions this season, and we as a school, would just like to say how well we think they have done and congratulate them all on their achievements. Many of them are already avid Luton Town fans and regular season ticket holders, except for our deputy headmaster, Andy Capell who unfortunately, is a Wolves supporter. He has insisted on buying a seat in the away end with his son, instead of joining us in the Main Stand. It will



Members of Denbigh Road Junior School are pictured with Community Liaison Officer Gray Hooper on March 27.

matches will take place at Leighton Town one evening in April.

"Our under-16 team also reached a county final just before Christmas, but unfortunately lost after a hard-played match," concluded Mark.

Lea Manor would like to thank Luton Town Football Club, Universal Salvage Auctions and Kenning for their superb scheme.

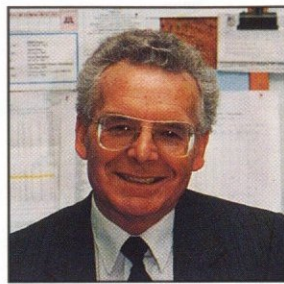
If you would like further information on the USA/Luton Town Community Programme, please contact Gary Hooper, Community Liaison Officer, Luton Town Football Club, Kenilworth Road Stadium, 1 Maple Road, Luton, Bedfordshire LU4 8AW.

TELEPHONE: 0234 766500 • FAX: 0234 766200

WOBURN ROAD • WOOTTON • BEDS • MK43 9EJ



Jewson family room in operation next season



ON THE INSIDE BY JOHN SMYLIE

Kenilworth Road Stadium,
1, Maple Road, Luton, Beds
LU4 8AW.
Tel: (0582) 411622
Fax: (0582) 405070.
Clubcall: 0898 12 11 23 (48p
per min peak, 36p off peak)

President: E.S. Pearson

Chairman: R.J. Smith

Managing Director:
D.A. Kohler, Bsc. (Hons) ARICS

Directors: P. Collins,
E.S. Pearson, H. Richardson,
N. Terry

Vice Presidents: R.L. Banks,
C. Bygraves, R. Safraneck,
E. Waller, J. Hudson,
D. Ludlow.

Secretary: John Smylie

Manager: David Pleat

Coaches: John Moore,
Wayne Turner, Terry Westley

Physiotherapist: Andy McDade

Youth Development Officer:
Paul Lowe

Scouting: Les Shannon

Commercial Executive:
John Buttle

Commercial Sales: Andy King

Medical Officer: Dr Bill Berry

Club Dentist: A. Chris BDS (Syd)

■ Tonight we extend a warm welcome to the directors, management, players and supporters of Wolverhampton Wanderers F.C.

■ Unfortunately, due to the lack of space, I was unable to extend birthday greetings for 23rd March to Mr J.E. Hitch. In a letter from his son David, who now lives in Penrith, Cumbria, I am informed that his father, who was 83-years-old on this day and is a season ticket holder, has supported the Club for 72 years. He saw his first game, a cup tie, in 1921 when we played Preston North End. From everyone at the Club, belated birthday greetings and long may you continue to visit Kenilworth Road.

■ Confirmation has been received from the Football League that we have been

awarded a Jewson Spectator Improvement Grant in respect of the conversion of a store room into a junior's room with its own refreshment bar and T.V. This will be located under the K1 section of the Kenilworth Stand with seating allocated in Blocks A & B and it will be open before each game and at half-time. Work will commence during May and will be completed prior to the start of next season.

■ I would like to thank all supporters for the tremendous reception given to Darren Salton upon his appearance on the pitch, prior to the start of our match with Cambridge United. It was a very emotional occasion for everyone, none more so than for Darren who was very touched by the warmth of the response received.

■ On Wednesday evening our youth team beat Royston Town 5-2 in the Eastern Junior Cup second round. The third round draw gives us an away fixture at Saffron Walden, this will be played on Saturday, April 17, kick-off 3.00pm.

Honours

Littlewoods Cup winners 1987-88
FA Cup finalists 1958-59
Littlewoods Cup finalists 1988-89
Simod Cup finalists 1987-88
Champions - Division Three (S) 1936-37
Champions - Division Four 1967-68
Champions - Division Two 1981-82

Editorial and pictures: Collings Communications/Apex Photography,
PR and Media Consultants Hitchin.
Tel: 0462 441068 Fax: 0462 441069

Design and print: McLeod Warner Limited, Luton. Tel: 0582 38389

The spirit shown against United is now needed for every game



CAPTAINS' LOG BY TREVOR PEAKE

As we enter the final stages of the season, we need to show the same grit and determination we showed during our last home game against Cambridge United, a game we dominated from start to finish.

That game typified the spirit we have at the club at the moment. We seemed more determined to win than Cambridge did and we will look to that performance to spur us on when the going gets tough.

Looking at the fixtures we have left this season, we have some tough battles ahead and we probably have the hardest run-in of all the

clubs down at the bottom. We have to travel to Swindon, Sunderland and Derby, but our recent away form suggests we are more than capable of getting the right results. It is a tough task, but if we come through those games, we will have deserved to stay up.

We are all desperate to climb out of trouble and save all our fans from yet another nail-biting end to the season. We know we have the quality in the side to stay clear of the relegation zone, the trouble is, many of the teams around us in the league keep picking up points as well. The relegation places could well be decided on the final day of the season, and we have to make sure we are safe by then.

All football matters became insignificant when we met up with Darren Salton again at the Cambridge match. It was great to see him up and walking again. His battle is more important than any we have on our minds at the moment. Let's hope he makes a speedy recovery, and is back in a Luton shirt before too long.



Jason Rees sees his header saved by Cambridge United goalkeeper John Vaughan.

Enjoy the game.



The Station with
More Winning Ways

The Hot FM

ACTION REPLAY

From: Kenilworth Road

Date: March 27, 1993

LUTON TOWN 2
(Dixon, Oakes)

CAMBRIDGE UNITED 0

Attendance: 8,077

PICTURES BY JOSH LEVY



"A quick word in your ear Ceri?" says Cambridge captain Danny O'Shea!



A diving header by Scott Oakes flies into the back of the net for the Town's second goal.



Marvin Johnson mounts an attack, ably assisted by Martin Williams.

LUTON TOWN FOOTBALL HOLIDAY CLUB



HOLLAND MINI-TRIPS

- 2 nights and a day excursion

Cruise to Holland and enjoy a day in Amsterdam or Efteling

AMSTERDAM

All day travel pass and canal cruise included.

EFTELING

- Voted "Best Theme Park in the World"

Admission, all rides and attractions included

From only £122 For a family of four

Daily to 25 May

Ring SUE today on 0582 435020

OR visit the Skyline Travel Shop at London Luton Airport
Open seven days a week

SOP PRESS STOP PRESS STOP PRESS STOP PRESS STOP PRESS
See England V Brazil OR Germany in the U.S.A. this June

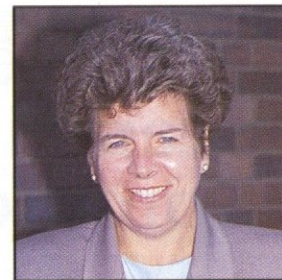
From £737 per person



LTFC Holiday Club is operated by Luton Town Football Club in association with Worlds End Travel Ltd. ABTA No. 76029.



Latest Box Office news



BY CHERRY NEWBERY

Swindon Town v Luton Town

BARCLAYS LEAGUE DIVISION ONE

Saturday, April 10, 1993 - Kick-off 3.00 pm

Seats for this match are **ONLY** available from the Ticket Office in Kenilworth Road, price £8.50 (no concessions) until Thursday, April 8 at 5.00 pm.

Seats are not available at Swindon.

For standing, pay at the turnstile on the day of the match only, price £7.50 (no concessions)

Luton Town v West Ham United

BARCLAYS LEAGUE DIVISION ONE

Tuesday, April 13, 1993 - Kick-off 7.45pm

Tickets for this match are now on sale at the normal league price. Normal guesting facilities apply.

Sunderland v Luton Town

BARCLAYS LEAGUE DIVISION ONE

Saturday, April 17, 1993 - Kick-off 3.00 pm

There are no seats available for Luton Town supporters for this match. Standing only available, priced £7.00 (no concessions). Pay at the turnstile on the day of the match only.

Derby County v Luton Town

BARCLAYS LEAGUE DIVISION ONE

Saturday, April 24, 1993 - Kick-off 3.00 pm

There are no seats available for Luton Town supporters for this match. Standing only available, priced £6.00 (no concessions). Pay at the turnstile on the day of the match only.

Easter Holiday 1993 Ticket Office Hours

April 9th Good Friday Closed

April 10th Easter Saturday 10.00 am - 1.00 pm

April 12th Bank Holiday Monday 10.00 am - 1.00 pm

For bookings, membership and enquiries, please telephone 0582 416976.

Travelling to...

Swindon

Address: The County Ground, Swindon SN1 2ED.

Telephone: (0793) 36804.

Follow signs St Albans A505. In 1.3 miles at roundabout take 2nd exit A1081 junction with M1 spur. At roundabout take 2nd exit to join motorway M1 spur. At next roundabout take 1st exit (signs London) to join M1 to junction 6a. Branch left (signs Heathrow) to join M25 to junction 15. Branch left (signs The West) then keep right to join M4 to junction 15. Leave motorway (signs Swindon) to join A419. In 1 mile at roundabout take 1st exit A4259. At next two roundabouts forward. Take 4th exit into Shrivensham Road for ground. Directions courtesy of the Automobile Association.

Sunderland

Address: Roker Park, Grantham Road, Sunderland, SW6 9SW.

Telephone: 091 567 2275. Follow signs Dunstable A5065. In 3.9 miles at roundabout take 3rd exit A505 (signs Motorway M1). In 0.7 mile at roundabout take 1st exit (signs North) to join M1 to junction 32. Follow signs The North, Doncaster to join M18 to junction 2. Follow signs The North to join A1(M). 7.9 miles further forward leaving motorway to join A1 Scotch Corner. In 1.8 miles forward to join motorway A1(M). In 24.6 miles leave motorway (signs Sunderland) and at roundabout take 3rd exit A690 East Herrington. At roundabout take 2nd exit then follow signs South Shields and cross Wearmouth Bridge. In 0.4 mile turn right into Roker Ave then left into Gladstone St and further right into Roker Baths St for ground. Directions courtesy of the Automobile Association.

Directions courtesy of the Automobile Association.

Bobbers Travel Club

For information on forthcoming trips, see page 21 of today's match day magazine.

Wolves battle to remain with promotion pack



WOLVERHAMPTON WANDERERS F.C. 1992-93

■ Autumn 1992 hailed Wolverhampton Wanderers F.C. as serious First Division title contenders and a place among the game's elite seemed a distinct possibility. Only one defeat in their opening 11 league matches (0-1 at Barnsley) justified this tag, and the Molineux club rose to third place in the league table in front of home crowds regularly peaking at 15,000.

■ However, since the club's home defeat by the Hatters in December, where two goals by Philip Gray secured an impressive Town victory, events have taken a turn for the worse. Two successive defeats followed at Tranmere Rovers (0-3) and at Newcastle (1-2) and Graham Turner's side have struggled to find their rhythm ever since.

■ Winning one week, losing the next, the club has dropped to eighth place in the league table. Thankfully, for the Molineux faithful, the inability of teams in a similar predicament to take advantage has meant

that Wolves are still in the hunt for a play-off place come May. Manager Mr Turner recently emphasized this point. He said: "Mick Stowell and Steve Bull have recently signed new contracts with the club, which is an indication of the feeling there is at the club that we can be successful. The facilities are top-class, everything here is top-quality. I know we can be successful, so do the players."

■ Wolverhampton Wanderers F.C. was founded in 1879 when players from St Lukes and Goldthorn broke away to form Wolverhampton Wanderers Association. They played their first Football League game in 1888 against Aston Villa and drew 1-1. The club's major honours include the Division One Championship in 1954, 1958 and 1959; the FA Cup in 1893, 1908, 1949 and 1960; and the Football League Cup in 1974 and 1980.



Back row (left to right): Paul Cook, Mark Venus, Darren Roberts, Mike Stowell, Shane Westley, Paul Jones, Derek Mountfield, Darren Simkin, Lawrie Madden.
Middle row (left to right): Steve Bull, Andy Mutch, Robbie Dennison, Mark Burke, Tim Steele, Mark Rankine, Tom Bennett, James Kelly, .
Front row (left to right): Andy Thompson, Keith Downing, Gary Pendrey, Graham Turner, Paul Darby, Paul Birch, Kevin Ashley.

WOLVES ON PARADE

MIKE STOWELL (goalkeeper) – A former under-study to Neville Southall at Goodison Park, Mike was signed from Everton for a substantial fee in July 1990. He had previously served Wolves on loan during the 1988/89 season.

PAUL BLADES (defender) – An England youth international, Paul started his career with Derby County and helped the Rams rise from the Third to the First Division. He later had a spell at Norwich City before joining Wolves last year.

ANDY THOMPSON (defender) – Andy started his career with West Bromwich Albion, but after failing to establish himself at The Hawthorns, moved to Molineux in November 1986. This season, Andy has been a regular member of the Wolves side.

KEITH DOWNING (defender) – Keith was signed from Notts County in 1987, a club where he made several first-team appearances. He made his debut for Wolves on the opening day of the 1987/88 season and has been a regular squad member ever since.

LAWRIE MADDEN (defender) – Lawrie joined Wolves from Sheffield Wednesday in 1991, having previously played for Mansfield, Charlton and Millwall. His vast experience has been invaluable to the Wolves defence since his arrival.

DEREK MOUNTFIELD (defender) – A player who won FA Cup, League Championship and European honours with Everton, Derek joined Wolves from Aston Villa for £150,000 in January 1992. He started his career with Tranmere Rovers in 1980, before joining Everton two years later.

MARK BURKE (midfield) – Locally-born, Mark served his apprenticeship with Aston Villa, before establishing himself in the first-team at Middlesbrough in 1987-88. He returned to the West

Midlands with Wolves in 1990-91, and this season has impressed with his goalscoring runs from midfield.

MARK RANKINE (midfield) – Mark was signed from Doncaster Rovers for £70,000 in January 1992. He made his debut against Leicester City later that month and has since gone on to become an important member of the side.

PAUL COOK (midfield) – Paul started his career with Wigan Athletic where he became known for his goalscoring exploits from midfield. He moved on to Norwich City in 1988, but a year later he was on the move again – to Wolves – for £250,000.

PAUL EDWARDS (midfield) – Paul started his career in non-league football with Altrincham before joining Crewe Alexandra in 1987. Two years later he was snapped up by Coventry City before joining Wolves last season.

STEVE BULL (forward) – Former England international, Steve joined Wolves from West Bromwich Albion in 1986. Top-scorer in his first three seasons with the club, Steve was called up to the full England squad and made his debut v Scotland in 1989. He was again leading goalscorer at Molineux last season with 20 league goals.

ANDY MUTCH (forward) – Andy joined Wolves from Southport in 1986. He quickly established himself as a proven goalscorer alongside Bull, and he made his England B debut against Switzerland in 1989, having scored 23 goals that season.

ROBBIE DENNISON (forward) – Another player signed from West Bromwich, Robbie made his debut for Wolves in 1987. His strong running and supportive play has prompted regular inclusions in the full Northern Ireland squad.

MEET THE BOSS

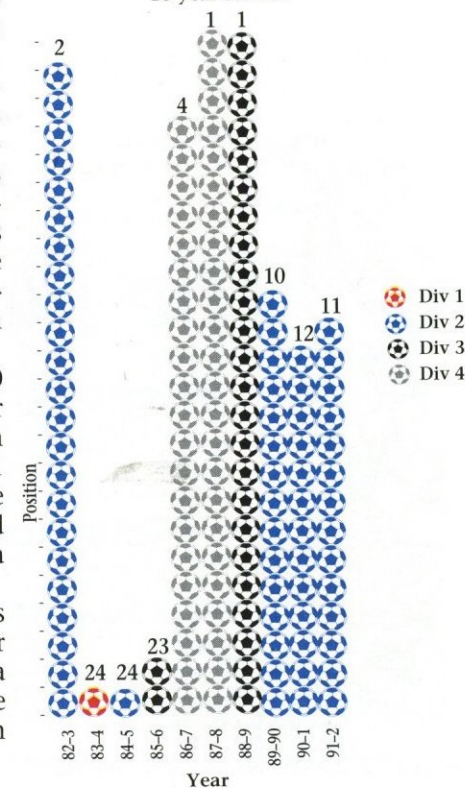


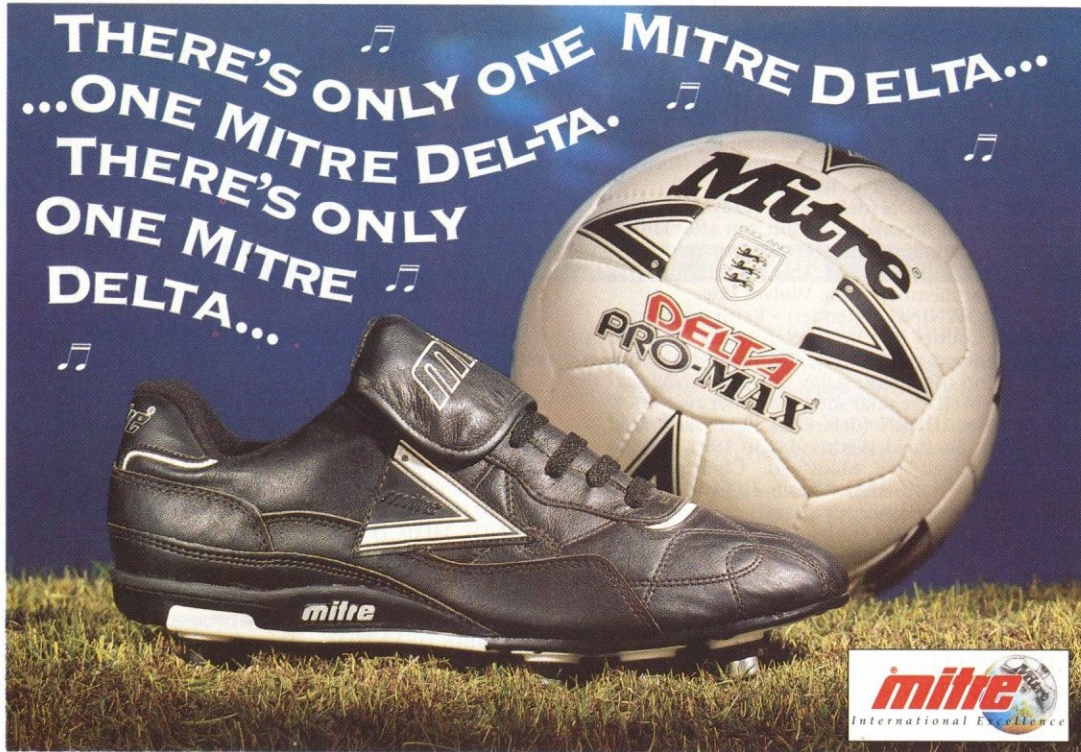
Born in Ellesmere Port on October 5, 1947, Graham Turner joined Wrexham as a junior, turning professional in 1965. He was an England youth international during his time at the Racecourse Ground, before transferring to Chester in January 1968.

He made over 200 senior appearances for Chester before moving on to Shrewsbury in January 1973. He remained at Gay Meadow for 11 years before becoming manager at Aston Villa. He struggled to bring the results Villa fans wanted and shortly after the start of his third season at Villa Park, he was sacked.

He then joined Wolves in October 1986 and has since taken the Molineux club from Division Four to Division Two. The club has also won the Sherpa Van Trophy during this time and, for some time this season, have looked contenders for a place in the Premier League.

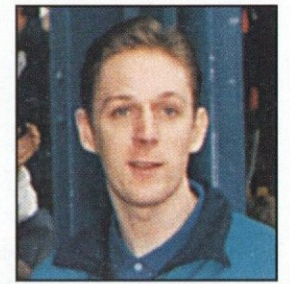
Wolverhampton Wanderers 10 year record





Mitre Sports International Ltd., Bay Hall Works, Birkby, Huddersfield, West Yorkshire HD1 5AJ. T el: (0484) 537488 Fax: (0484) 530042

Darren makes a grand return to Luton



PLAYER INTERVIEW WITH DARREN SALTON

Darren Salton made a welcome return to Kenilworth Road for the Town's home game with Cambridge United last month. It was his first visit to the club since the car accident in November, and as we found out, he was delighted to return 'home'.

Darren, who celebrated his 21st birthday on March 16, enjoyed a two-week stay in Luton and it gave him the chance to meet up with his fellow-Town players and friends again. "It's great to be back," said Darren during his short stay. "I have had the chance to see everyone and to thank them for their support over the past four months."

Shortly before the game with Cambridge United on March 27, Darren ventured on an emotional lap of honour to thank all the Luton supporters personally. He entered the ground to rapturous applause from both sets of supporters and, walking without crutches, he showed everyone that he is now on the road to recovery.

"Making an appearance was my way of thanking all the supporters personally," he continued. "I have received hundreds of 'get well' cards and messages and it certainly brightened up those early dark days. It was a great reception and it's nice to know that Luton have such caring fans."

Darren saw the Hatters in determined mood against Cambridge, and was delighted with the result. Goals from Kerry Dixon and Scott Oakes gave the Hatters three valuable points in their bid to climb the table. Darren watched the game from one of the club's executive boxes and was clearly impressed. He said: "It was great to see the lads win, especially as the game was a 'six-pointer'. We dominated throughout and fully deserved the three points. After the game I got together with all the lads and it was also nice to meet up with Brian Owen and Steve Claridge again who are now with Cambridge."

While he was staying in Luton, Darren received treatment from Town physiotherapist Andy McDade. He returned to Scotland on Sunday to continue his recovery, and a recent breakthrough makes him optimistic for the future.

"I walked without crutches for the first time while I was in Luton which really pleased me," he stated. "I currently have a metal nail inserted in my right leg to help the bone form again and I am hoping it will do the trick."

"I have received words of encouragement from Rangers midfielder Ian Durrant and Hearts' Criag Levein, who both made full recoveries after lengthy injuries. It is my aim to follow in their footsteps and return to action. I have given myself two years to get back into action with Luton Town and I am determined to make it."



Darren receives a warm welcome from the Kenilworth Road crowd, assisted by Jan McElroy, ward sister at Addenbrokes Hospital.

The Flower Shop
 Flowers for all occasions
 34 STUART STREET, LUTON BEDS.
 Telephone: Luton 422796
 "Say it with Flowers"

Kerry Dixon, who scored the Town's opening goal with a superb volley, is pictured in action against Cambridge United.



EXECUTIVE MEMBERS

KENILWORTH SUITE

Anachem Ltd
Mrs E Bain
Blakey Engineering Company Ltd
CBC Print Ltd
Mr G. Chamberlain
Fisher Frozen Foods Ltd
Flitwick Oil Company Ltd
F & T Goodwin Ltd
Mr D Hales
Handsome Financial Services Ltd
R.W. Harvey & Son
Holmes Commercial
Mr P Laycock
Seamarks Coach Travel
Wilton Truck Rental Plc
Radley Shaw
Origination

CLUB 82

T.J. Aldridge Builders
Bervale Meade Insurance Brokers
Bevanrace Ltd
Broad Street Print
J.S.B. Business Forms
Nordic Supplies
Mr F.W. Pearce
Mr J. Peters
E.C.J. Shorey Travel
Space Display Systems
David C. Rutt
Techno Sign Ltd

INDIVIDUAL BOX HOLDERS

Mr Malcolm Eade
Mr Roger Eade
Mr R. Pinney

EXECUTIVE BOXHOLDERS



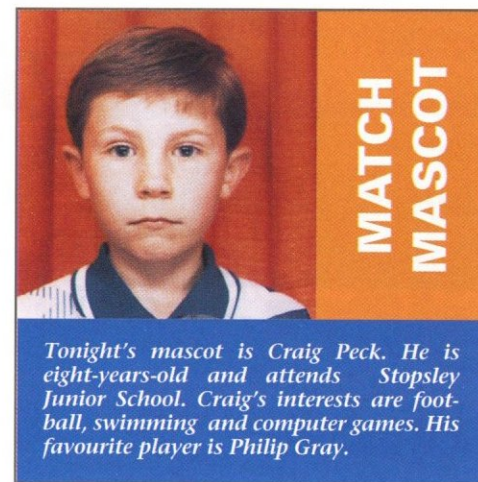
Book your place on our coach trip to Thorpe Park!

JUNIOR HATTERS WITH RICHARD HARVEY

Welcome to this evening's game with Wolverhampton Wanderers. Let's cheer the team on in our bid to escape the drop this season.

Tonight I am going to give you all the details of our day out planned for this summer. We are running a coach trip to Thorpe Park in Surrey on Sunday, June 20 which is sure to be a great day out for all of you who go. There are plenty of rides for you to go on, such as the Depth Charge, which is an inflatable raft which plummets 40 feet into water; the logger leap; a rocky mountain railway; the rapids on Thunder River and the teacup ride.

Also, sample the delights of Thorpe Park's farm and nature world and enjoy the various films shown in the park's theatres. There are fine restaurant facilities available if you choose to use them and there is plenty for younger



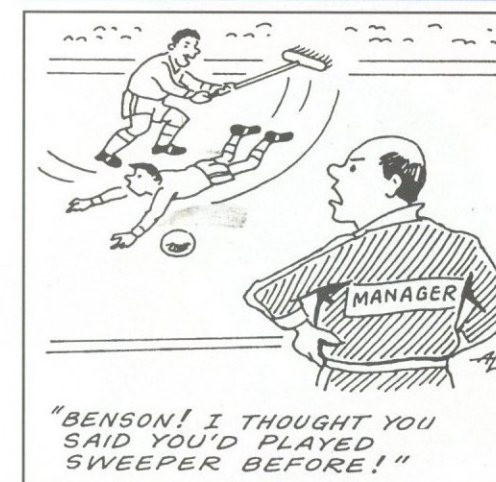
Tonight's mascot is Craig Peck. He is eight-years-old and attends Stopsley Junior School. Craig's interests are football, swimming and computer games. His favourite player is Philip Gray.

children to do with the many slides and climbing facilities available.

If you would like to go on the outing, please book now at the Club Shop in Kenilworth Road. The price will be £10.00 for juniors and £12.00 for parents and this will include your coach fare, entrance to the park and the use of all rides. A deposit of £5.00 is required with your booking.

Today's lucky Junior Hatters membership number is 1048.....MICHAEL KINLOCH. Michael wins two free tickets to one of our home games this season. To claim your prize, please call into the Club Shop with your membership card.

SOCCARTOON



Junior Spot 3

USE THE PICTURE CLUES TO FIND THE NAMES OF FIVE CHAMPIONSHIP-WINNING MANAGERS.

1. GEORGE GRAHAM, 2. JOE MERCER, 3. RON SAUNDERS, 4. BOCK STEIN, 5. KENNY DALGLISH

RECESSION BUSTER

£1.00

OFF-PEAK RETURN CONTINUES...

...as Luton & District Transport plays its part in helping both it's passengers and the stores of the recession.

£1.00 Return Fare valid for journeys within the Luton & Dunstable area. Tickets must be purchased from the driver between 0900-1600 Mondays to Saturdays. Return Journeys may be taken anytime on day of issue. Further reductions for children (up to and including 13 years of age) to 75p Mondays-Fridays and 50p Saturdays and school holidays (excluding Bank holidays).

RECESSION BUSTER

FAIR FARES FOR LUTON TOWN F.C.

Special half price tickets for members of Luton Town on Match Days.

HOME GAMES We offer ½ price travel on all local bus services operated by Luton & District.

AWAY GAMES Take our 757 express coach from Luton to London for a direct route and frequent friendly service ½ price for Luton Town Members!

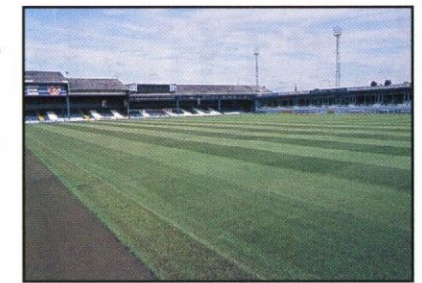


We operate buses in most parts of the Home Counties. For further information about your local services please telephone your nearest bus station or garage.

LUTON & DISTRICT

Luton - Dunstable - Aylesbury - Leighton Buzzard - Slough - Chilterns - Lee & District - Red Rover - Stevenage - Hitchin - Hemel Hempstead - Watford

Community dates for your diary



AROUND THE TOWN

Community Liaison Officer Gary Hooper is organising a community golf day on April 15 at the South Beds Golf Club. All the Town first-team players will be present and the tee-off time will be 12 o'clock. If you would like to participate in the event, please contact Gary on (0582) 411622 for further information.

Gary is also organising a residential coaching fun week at Berkhamstead Boys' School from August 16 - August 19. The cost will be £160, inclusive of accommodation and three meals a day. For further information, again contact Gary.

GRAY ON INTERNATIONAL DUTY

We send our congratulations to Philip Gray, who won his latest international cap last Wednesday (March 31) for Northern Ireland in their important World Cup qualifier against Eire. It was Gray's third cap, following appearances against Denmark and Albania.

BOBBERS TRAVEL CLUB

Coaches for the trip to Swindon Town on Saturday, April 10 will cost £6.50 adults and £5.20 children/OAP's. Coaches will depart from Cranfield at 10.00 am and from Luton at 11.00 am with the normal pick-up points en route. Coaches for the trip to Sunderland on April 17 will cost £13.50 adults and £11.00 children/OAP's. Coaches will depart from Cranfield at 7.30 am and from Luton at 8.30 am, again with the normal pick-up points en route.

Please telephone Paul Deason on (0234) 750996 for further information.

RELEGATION RUN-IN AT-A-GLANCE

With the First Division relegation places unlikely to be decided until the final days of the season, listed below are the remaining fixtures for the other clubs currently occupying the bottom placings:

Bristol Rovers: 10.4 Portsmouth (h), 14.4 Southend United (a), 17.4 Cambridge United (h), 24.4 West Ham United (a), 1.5 Birmingham City (h), 8.5 Millwall (a).

Southend United: 10.4 Watford (a), 14.4 Bristol Rovers (h), 17.4 Barnsley (a), 20.4 Leicester City (a), 23.4 Grimsby Town (h), 1.5 Cambridge United (a), 8.5 Luton Town (h).

Cambridge United: 10.4 Peterborough United (a), 13.4 Watford (h), 17.4 Bristol Rovers (a), 24.4 Bristol City (a), 1.5 Southend United (h), 8.5 West Ham United (a).

Brentford: 10.4 Derby County (a), 12.4 Notts County (h), 17.4 West Ham United (a), 24.4 Watford (a), 1.5 Barnsley (h), 8.5 Bristol City (a).

Birmingham City: 10.4 Sunderland (a), 12.4 Notts County (h), 17.4 West Ham United (a), 24.4 Watford (a), 1.5 Barnsley (h), 8.5 Bristol City (a).

Bristol City: 10.4 Oxford United (a), 12.4 Wolves (h), 17.4 Peterborough United (a), 20.4 Derby County (h), 24.4 Cambridge United (h), 1.5 Leicester City (a), 8.5 Brentford (h).

Notts County: 10.4 Charlton Athletic (h), 12.4 Brentford (a), 17.4 Portsmouth (h), 24.4 Swindon Town (h), 1.5 Oxford United (a), 5.5 Derby County (a), 8.5 Sunderland (h).

For an announcement regarding junior supporters next season, see next week's match day magazine v West Ham United.

DIXON GOAL REVIVES MEMORIES

Kery Dixon's spectacular goal against Cambridge United last month, brought back memories of his father Mike hitting the net for Luton. Mike scored on his home debut against tonight's opponents Wolves in 1959 - a game the Town lost 5-1! He made two further appearances for Luton before moving on to Coventry City.

101 YEARS OLD AND STILL GOING STRONG

Pictured opposite is 101-year-old Leonard Chapman who must be the club's oldest living supporter. He was the club's special guest for our league match with Cambridge United on March 27 and has been supporting the Hatters since the early 1930's. He was presented with a club scarf by club steward Cyril Walker.



"The best game ever seen"



BACK TRACKING BY ROGER WASH

Earlier in the season, following the Town's 2-1 win at Molineux, John Buttle mentioned in a subsequent programme that he had spoken to the great Billy Wright who had waxed lyrical about a game between the Town and Wolves in 1956. The game was a classic.

To set the scene, the Town had successfully survived the 1955/56 season which was their first in Division One and along the way had beaten Wolves, then one of the powers in the land, 5-1 at home and 2-1 at Molineux.

The close season had not seen any major signings due to the Board's insistence that the team would be 'home-grown' as far as possible. It was pointed out, however, that if this policy did not work, then money would be made available.

Ron Baynham and George Cummins were carrying injuries and were unable to take their places as the Town opened season 1956/57 at home to Sunderland. A sun-soaked crowd of 23,049 gathered to see an emphatic 6-2 win, with 'home-grown' Gordon Turner leading the way with four goals in a display which dispelled any misgivings the supporters may have had with the 'no buy-no sell' policy.

The following Wednesday, Wolves were the visitors to

Kenilworth Road and in a highly-charged atmosphere, generated by a crowd of 26,715 the visitors, who had won their first game of the season 5-1, were seen off 1-0 courtesy of a goal by local boy Bob Morton.

By the time of the return with Wolves a week later, the Town had won their third match in a row - at Charlton - and were now heading the table. The majority of the 46,781 crowd were therefore out to see the toppling of league leaders and the team who beat their heroes three times running.

The Town were without captain Syd Owen and John Groves. Terry Kelly and Reg Pearce took their places but this did not appear to affect the team as Mike Cullen and Turner put the Town 2-0 up in the first ten minutes.

Jimmy Murray reduced the deficit after a quarter-of-an-hour and then Bill Slater, from the penalty spot, levelled the score after he was harshly adjudged to have fouled Murray. Peter Broadbent made the score 3-2



Gordon Turner scored a hat-trick for the Town in the epic encounter with Wolves in 1956.

to Wolves in the 25th minute only for Turner to latch on to another Cullen pass to equalise five minutes later.

Wolves then scored twice to give the half-time scoreline an unrealistic look, but midway through the second period, Turner notched his hat-trick to set up a pulsating last few minutes as the Town desperately fought for the equaliser which did not come due to some fine saves by England goalkeeper Bert Williams.

The national press went on about the game for weeks

with Desmond Hackett of the 'Daily Express' being moved to say that it was the best game he had ever seen and commented that it was a tragedy that either side had to lose and that the match had not been filmed.

Wolves: Williams, Stuart, Harris, Slater, Wright, Flowers, Hooper, Broadbent, Murray, Booth, Mullen.

Luton: Stretton, Dunne, Aherne, Pemberton, Kelly, Shanks, Cullen, Turner, Morton, Pearce, Adam.

PREVIOUS ENCOUNTERS

	P	W	D	L	F	A
Home	8	6	0	2	19	10
Away	9	4	1	4	17	23
Total	17	10	1	6	36	33

5 It happened five years ago: 5/4/88 - A 2-2 home draw with Sheffield Wednesday saw all the the goals come in the second-half. An injury sustained by Les Sealey in a clash with Lee Chapman kept him out of the Littlewoods Cup Final.

10 It happened ten years ago: 9/4/83 - David Moss scored in the final minute to secure a tremendous 2-1 home win over Aston Villa.

15 It happened 15 years ago: 8/4/78 - The Town went down 3-1 at home to Sunderland in front of a crowd of 7,616. Martin Sperrin came on as a substitute in this game for his Football League debut.

20 It happened 20 years ago: 7/4/73 - A first-half goal from Jim Ryan was enough to see off Fulham at Kenilworth Road. This was to be the Town's last win of the season.

For the full Match Report, read —

Brian Swain's SPORTSVIEW

IN THE **Luton News**

5 pages of Sport Every Wednesday



Helping the most important people in football

Football is much more than a game of 90 minutes. Every day clubs throughout Britain are providing recreational and sporting opportunities for their local communities.

Much of this has been achieved with the help of the Football Trust. As part of its commitment to Football, The Trust has granted £4M to set up the National Football and Community Development Scheme.

Bringing club and community together, Trust-backed initiatives have provided a variety of local amenities, including:

- Artificial pitches for local teams
- Coaching for youngsters
- Support for women's football
- Facilities for people with disabilities

The Football Trust is helping the game at all levels.



THE FOOTBALL TRUST
Helping the game

COPYRIGHT ALSPORT/REN BAIRD

Chiltern Radio
SUPERGOLD

*for the greatest Hits of All Time
and Unrivalled Daily Sports News!*

SUPERGOLD 828 AM
in Herts, Beds & Bucks

Youth team maintain grip on fourth place

RESERVES AND YOUTH BY TERRY WESTLEY & WAYNE TURNER



Match Report

Luton Town 4 Brighton & Hove Albion 4
South East Counties League Division Two, Saturday, March 27, 1993.

Terry Westley's youth side maintained fourth place in the South East Counties Division Two table with this exciting draw at Electroflux. The opening spell pleased Terry, but overall, he was disappointed with the side's defending. "For the first 20 minutes we played as well as I have seen for some time, both in attacking and defending," he said. "We were very quickly 2-0 in front only to completely relax, defend like amateurs and find ourselves 2-4 down with six minutes remaining. Another attacking surge put us back on level terms, leaving us to reflect on the dismal defending qualities we showed throughout."

Team: Davis, Philp, Simpson 1, McLaren, Chenery, Rioch, Woolgar 1, Ryan, Butler 1, Campbell, Woodsford 1. Subs: Gibb, Goodridge.

Luton Town 3 Watford 4

Neville Ovenden Football Combination, Tuesday, March 23, 1993.

With an under-strength team, our reserve team held out for much of this tense derby game, but like our youth side, the defence appeared to be at fault. "Our defence was very poor and naive and all four goals were down to individual mistakes," said Wayne Turner. "Using six youth team players who played the night before was always going to make the game physically demanding for our side, but I was pleased with our attacking play and Tony Thorpe was very prominent, scoring two goals."

Team: Sommer, Philp, Rioch, Thorpe 2, Allpress, Campbell J, Murray 1, Ryan, Hartson, Flain, Gentle. Subs: Campbell L, Woolgar.

Neville Ovenden Football Combination 1992/93 League Table

	P	W	D	L	F	A	Pts
Chelsea	28	16	8	4	63	36	56
Millwall	29	15	8	6	53	29	53
Crystal Palace	26	14	7	5	51	29	49
Wimbledon	28	14	6	8	48	27	48
Southampton	27	12	10	5	41	26	46
Q.P.R.	28	12	9	7	45	34	45
Watford	28	11	9	8	46	45	42
Tottenham Hotspur	26	10	11	5	47	22	41
Arsenal	28	11	8	9	48	36	41
Oxford United	29	10	11	8	38	44	41
Ipswich Town	29	12	5	12	45	52	41
Swindon Town	29	9	9	11	41	43	36
West Ham United	29	10	5	14	40	41	35
Charlton Athletic	28	10	5	13	35	41	35
Norwich City	28	7	10	11	48	58	31
LUTON TOWN	27	8	6	13	31	48	30
Portsmouth	29	7	7	15	32	53	28
Brighton & H.A.	28	7	5	16	28	61	26
Bristol City	27	5	8	14	30	47	23
Fulham	29	4	5	20	19	57	16

Neville Ovenden Football Combination Fixtures Season 1992/93

Mon 7 Sept	Crystal Palace	1-4	Tues 16 Feb	Fulham	2-0
Mon 14 Sept	Tottenham Hotspur	1-4	Tue 23 Feb	Watford	2-3
Wed 7 Oct	Brighton & Hove Albion	1-1	Tue 25 Feb	Arlesey Town (BPC SF)	3-1
Mon 12 Oct	Oxford United	2-3	Mon 1 Mar	Swindon Town	2-1
Mon 26 Oct	Brighton & Hove Albion	1-2	Tue 9 Mar	Oxford United	0-0
Thur 29 Oct	Stotfold (BPC)	4-0	Tues 16 Mar	Ipswich Town	3-2
Wed 4 Nov	Portsmouth	2-2	Tues 23 Mar	Watford	3-4
Mon 9 Nov	Wimbledon	1-0	Mon 29 Mar	Millwall	1-2
Thur 12 Nov	Portsmouth	1-1	Mon 5 Apr	Crystal Palace	0-0
Mon 23 Nov	West Ham United	2-0	Thurs 8 Apr	Bristol City	7.30pm
Thur 10 Dec	Leighton Town (BPC)	3-1	Wed 14 Apr	Southampton	7.30pm
Mon 14 Dec	Southampton	1-1	Mon 19 Apr	Chelsea	2.00pm
Thur 17 Dec	Wimbledon	0-1	Thu 22 Apr	Biggleswade Town (BP CF)	7.30pm
Mon 21 Dec	Swindon Town	1-2	Sat 24 Apr	Queens Park Rangers	2.00pm
Tue 29 Dec	Arsenal	1-0	Tues 27 Apr	Charlton Athletic	2.00pm
Tue 5 Jan	Bristol City	0-3	Thur 29 Apr	Biggleswade Tn (BPCF)	7.30pm
Mon 19 Jan	Arsenal	0-3	Tues 4 May	Norwich	2.00pm
Wed 27 Jan	Ipswich Town	3-2	Fri 7 May	Spurs	2.00pm
Mon 1 Feb	Charlton Athletic	0-4	Tues 11 May	West Ham United	2.00pm
Thur 4 Feb	Chelsea	1-4			
Fri 12 Feb	Norwich City	0-2			

South East Counties League Division Two 1992/93

	P	W	D	L	F	A	Pts
Wimbledon	26	19	3	4	67	26	41
Bristol City	24	15	2	7	47	29	32
Brentford	26	12	8	6	39	26	32
LUTON TOWN	24	13	1	10	52	44	27
Brighton & H.A.	23	10	5	8	42	40	25
Southampton	25	8	9	8	27	28	25
AFC Bournemouth	23	9	6	8	34	37	24
Tottenham Hotspur	24	10	4	10	43	47	24
Crystal Palace	25	10	3	12	37	32	23
Oxford United	24	7	4	13	45	49	18
Reading	25	6	6	13	35	51	18
Swindon Town	23	6	5	12	26	43	17
Colchester United	22	8	0	14	20	40	16
Bristol Rovers	24	5	6	13	32	54	16

South East Counties League Division Two Fixtures Season 1992/93

Sat 15 Aug	Bristol Rovers	8-0	Tue 8 Dec	W.B.A. (FAYC2)	1-2
Sat 22 Aug	Reading	4-1	Wed 6 Jan	Coventry City (SJFC3)	2-1
Sat 29 Aug	Colchester United	1-2	Sat 9 Jan	Tottenham Hotspur	4-2
Sat 5 Sep	Tottenham Hotspur	2-0	Sat 23 Jan	Brentford	3-2
Thu 10 Sept	Chelsea (SJFC 1)	1-1	Sat 30 Jan	Oxford United	1-6
Sat 12 Sept	AFC Bournemouth	0-2	Sat 6 Feb	Southampton	0-3
Sat 19 Sept	Charlton Athletic (SECLC 1)0-3		Sat 13 Feb	Crystal Palace	0-5
Sat 26 Sept	Brentford	0-2	Sat 20 Feb	Wimbledon	3-2
Thu 1 Oct	Chelsea (SJFC 1R)	3-2	Sat 27 Feb	Brighton & H.A.	3-0
Sat 3 Oct	Oxford United	1-2	Sat 6 Mar	Bristol Rovers	4-1
Sat 10 Oct	Southampton	0-1	Sat 13 Mar	Bristol City	1-0
Sat 17 Oct	Crystal Palace	0-3	Sat 20 Mar	Reading	1-0
Wed 21 Oct	Southend United (EJC)	4-2	Mon 22 Mar	Millwall (SJFCSF)	0-4
Sat 31 Oct	Wimbledon	1-3	Sat 27 Mar	Brighton & H.A.	4-4
Wed 4 Nov	Port Vale (FAYC 1)	4-1	Wed 31 Mar	Royston Town (EJFC)	5-2
Sat 7 Nov	Swindon Town	3-1	Sat 10 Apr	Colchester United	11.00am
Tue 10 Nov	Tottenham Hotspur (SJFC)	2-1	Sat 17 Apr	Saffron Walden (EJFC3)3.00pm	
Sat 14 Nov	Bristol City	4-1	Sat 24 Apr	Bournemouth	11.00am
Sat 28 Nov	Swindon Town	1-4			

Luton Town F.C.

KIT SPONSORS

RICHARD HARVEY
ECJ Shorey Travel

DES LINTON
Simkins Solicitors of
Baldock and Sandy

CERI HUGHES
Mark Varney Investments

IAN BENJAMIN
Bobbars Travel Club,
Committee and Members

JOHN DREYER
Milton Keynes Branch of
the Luton Town Supporters Club

CHRIS KAMARA
Tim Arnold

ANDY PETTERSON
Simorg Ltd of Luton

JAMIE CAMPBELL
Lea Manor School
Luton

DAVID PREECE
Mr K. Craven of
Shaldon Court Newsagents

TREVOR PEAKE
Bennetts Gate Bakery
of Hemel Hempstead

SCOTT OAKES
Profile Systems and Networks Ltd

MARVIN JOHNSON
Cornish Newsagents
Leighton Buzzard

DARREN SALTON
Fastech Scotland

DAVID PLEAT
A-Top Management Services Ltd
Property Letting Service

PHIL GRAY
Coloramic Ltd of Sandy

CHRIS BROOKS
McLeod Warner Ltd

JULIAN JAMES
ECJ Shorey Travel

ALEC CHAMBERLAIN
RAH Design Ltd
Mark Nelson & Elaine Nelson

PAUL TELFER
5 Star Cars and Couriers Ltd

JASON REES
Wilton Vehicle Rental

MARTIN WILLIAMS
Leicester & Harpenden Hatters
Adrian Danes and Clive Garrett

DAVID GREENE
Katy and Phil Shaw



FOR PRICING, TELEPHONE THE
COMMERCIAL DEPARTMENT
ON 0582 411622

Luton Town Clubcall 0898 12 11 23

'Hatters' now also open after evening games



COMMERCIAL FOCUS BY ANDY KING AND JOHN BUTTLE

Welcome and thank you to tonight's joint match sponsors

Holmes Commercial Property Services Ltd – Stephen Janes and Sheila Harrison of Holmes Commercial Property Services Ltd, based in Luton, welcome their guests to Kenilworth Road for this evening's match. Established more than four years ago, the company works in conjunction with the partnership of Holmes Commercial- the Professional and Agency arm – managing clients property portfolios and advising on property development situations. Sheila regularly attends the home games and notwithstanding what preferences their guests might have, wants Luton to win.

D D & A Tools – Based in Aylesbury and specialists in toolmakers, mouldmakers, press work production, special purpose machinery and carry out prototype work in both metal and plastic. Mr Des Dwyer and Brendan Daniels welcome their guests Mr Adrian Nicklin and his colleagues from Edward Rose, Brownhills in Birmingham.

We would also like to welcome Mr Peter Saunders, golf professional at the **Wavenden Golf Centre** in Milton Keynes, and his guests and wish them all an enjoyable evening with us.

'Hatters' is open, for season ticket holders and guests, prior to tonight's game from 6.00 pm to 7.15 pm. It is also now open after the game until 11.00 pm for all forthcoming evening games.

Stadco Limited (Pressings) in Executive Box 28 – is a leading supplier of body pressings and assemblies to the European motor industry. It's product range includes fenders headlamp surrounds, roof members and oil pans. The company is based in Shrewsbury, Shropshire. Today, the company welcomes it's guests from Rover Group and Vauxhall Motors.

Match Ball Sponsors – Our thanks go to tonight's match ball sponsors, **Mills Associates Ltd**, from whom we are pleased to welcome Mr John Mellor and Mr David Hegarty. The company are a nationwide specialist computer and payroll bureau, based in Newcastle-upon-Tyne.

Happy Anniversary
Celebrating their 25th wedding anniversary with us tonight in the sponsors lounge are Mr and Mrs Cruickshank. Lesley would like to say to Joe that every minute has been worth it! We hope they enjoy their evening with us, and may we wish them many more happy years together from all at Luton Town.

FACE IN THE CROWD

Are you the face ringed at our match with Cambridge United on March 27. If you are, please contact the ticket office on (0582) 416976 to pick up your complimentary ticket for a town home game this season!



Antonys Tailor OF LONDON

THE MOST ESTABLISHED AND RELIABLE TAILORS IN LUTON

DRESS HIRE
LADIES AND GENTS
BESPOKE TAILORING



12 DUNSTABLE ROAD, LUTON,
BEDS OPPOSITE MAIN POST OFFICE
TEL: (0582) 424687

Whatever your goal...



Fans' forum



LUTON LINK

Most Luton Town fans are aware that the club are currently facing difficulties with the police bill. But why?

This is the latest question posed by many fans to Luton Link, who sought answers from Mr Kohler. Firstly, let's look at the size of the bill. The total charge for policing the ground last season was £223,741. This was the sixth highest in the country with only Manchester United, Chelsea, Arsenal, West Ham and Tottenham paying more.

In fact, Luton paid some £1.10 for every supporter who attended last season's home matches. Compare that with Notts County, who had similar crowds and were relegated with us last season. They paid just 14p per head!

So why is it that our charges are so high? To get some idea of this, you have to understand how the system works. The County Council sit down with the Police and decide how much this will cost and then present the bill to the club. The club have no input, no recourse or no right of appeal. Just pay up or close the gates.

In fairness, the Football Trust did contribute £25,000 towards the total costs, but most clubs were able to claim similar amounts. To the credit of the club, they are trying to defray a large portion of this cost by training stewards to the required Police standards. This should then cut down the number of Police needed on match days. We are aware that a number of fans have complained about heavy-handed stewards (an issue we will tackle soon), but training stewards to replace the Police is the only way the club can keep costs down.

RSPCA THANKS

Dear Sir,

On behalf of the RSPCA Grimsby and District branch, I would like to express our appreciation of the courtesy accorded to our collectors, located inside the Luton turnstiles, at Grimsby Town on Saturday, March 13.

Their generosity contributed to a collection of £134.14 for animal welfare.

Colin Kennedy, Chairman, RSPCA Grimsby and District branch.



Philip Gray's disallowed header against Bristol Rovers hits the back of the net.

AND LUTON TOWN

Date	Opposition	Score	Pos	Att	F-A	Notes
Aug 15	Leicester City	1-2	17,428	16	Peterson	Linton
Aug 22	Bristol City	0-3	7,926	22	Peterson	Linton
Aug 29	Charlton Athletic	0-0	6,302	21	Peterson	Linton
Sept 2	Newcastle United	0-2	27,054	21	Peterson	Linton
Sept 5	Tranmere Rovers	3-3	6,801	23	Peterson	LINTON
Sept 13	Brentford	2-1	7,310	19	Peterson	Linton
Sept 15	Watford (AFC)	0-0	5,197	-	Peterson	Linton
Sept 19	Birmingham City	1-1	8,461	21	Peterson	Linton
Sept 23	Phymouth Argyle (CCC21)	2-2	3,782	-	Peterson	Linton
Sept 26	Notts County	0-0	5,992	21	Peterson	Linton
Sept 29	Bristol City (AFC)	1-1	2,538	-	Peterson	Linton
Oct 3	Primsby Town	1-4	7,954	22	Peterson	Linton
Oct 10	Phymouth Argyle (CCC22)	2-3	8,946	-	Peterson	Linton
Oct 16	Barnsley	0-3	5,261	23	Peterson	Linton
Oct 17	Derby County	1-3	8,848	23	Peterson	Linton
Oct 24	Peterborough United	3-2	7,125	22	Peterson	Linton
Oct 31	Southern United	2-2	7,256	22	Peterson	Linton
Nov 3	Cambridge United	3-3	5,716	22	Peterson	Linton
Nov 7	Grimsby Town	1-4	6,928	22	Chamberlain	(Linton)
Nov 14	Oxford United	0-4	5,760	22	Chamberlain	Linton
Nov 21	Millwall	1-1	8,371	23	Chamberlain	Dreyer
Nov 29	Watford	2-0	8,341	21	Chamberlain	Dreyer
Dec 5	Bristol Rovers	0-2	6,245	22	Chamberlain	Dreyer
Dec 12	Wolverhampton Wanderers	2-1	13,932	20	Chamberlain	Dreyer
Dec 19	Sunderland	0-0	8,256	20	Chamberlain	Dreyer
Dec 28	West Ham United	2-2	18,786	20	Chamberlain	DREYER
Jan 9	Birmingham City	1-2	9,601	22	Chamberlain	Dreyer
Jan 16	Notts County	0-0	6,729	22	Chamberlain	Dreyer
Jan 19	Bristol City (FACS)	2-0	6,082	-	Chamberlain	Dreyer
Jan 23	Derby County (FACA)	1-5	9,170	-	Chamberlain	Dreyer
Jan 27	Newcastle United	0-0	10,337	24	Chamberlain	Dreyer
Jan 30	Bristol City	0-0	8,877	24	Chamberlain	Dreyer
Feb 6	Leicester City	2-0	9,140	21	Chamberlain	Dreyer
Feb 9	Brentford	0-0	7,248	21	Chamberlain	Dreyer
Feb 13	Tranmere Rovers	2-0	8,723	20	Chamberlain	Dreyer
Feb 20	Charlton Athletic	1-0	8,443	19	Chamberlain	Dreyer
Feb 27	Barnsley	2-2	7,585	19	Chamberlain	Dreyer
Mar 6	Portsmouth	1-2	10,457	20	Chamberlain	Dreyer
Mar 9	Oxford United	3-1	6,887	17	Chamberlain	Dreyer
Mar 13	Grimsby Town	1-3	5,193	18	Chamberlain	Dreyer
Mar 17	Swindon Town	0-0	8,902	18	Chamberlain	Dreyer
Mar 20	Bristol Rovers	1-1*	7,717	17	Chamberlain	Dreyer
Mar 24	Millwall	0-1	8,266	21	Chamberlain	Dreyer
Aug 22	Bristol City	0-3	7,926	22	Peterson	Linton
Mar 27	Cambridge United	2-0	8,077	17	Chamberlain	Dreyer
Apr 3	Watford	0-0	10,556	17	Chamberlain	Dreyer
Apr 7	Wolverhampton Wanderers	1-0	10,656	17	Chamberlain	Dreyer
Apr 10	Swindon Town	0-0	-	-	-	-
Apr 13	West Ham United	0-0	-	-	-	-
Apr 17	Sunderland	0-0	-	-	-	-
Apr 24	Derby County	0-0	-	-	-	-
May 1	Peterborough United	0-0	-	-	-	-

*Own Goal

Luton Town F.C. Appearances and Goalscorers 1992-93

Player	League		Coca-Cola Cup		All Cup		FA Cup	
	Apps	Goals	Apps	Goals	Apps	Goals	Apps	Goals
Ian Benjamin	5(5)	1	-	-	-	-	1	-
Jamie Campbell	2(7)	1	(-)	-	1(1)	-	-	-
Alec Chamberlain	25	-	-	-	-	-	1	-
Steve Clardige	15(1)	2	2	3	2	1	-	-
Kerry Dixon	9(1)	2	-	-	-	-	-	-
John Dreyer	31	2	(-)	-	1	-	-	-
Phil Gray	38	17	2	-	2	-	1	1
David Greene	1	-	-	-	-	-	-	-
Richard Harvey	1	-	-	-	-	-	(-)	-
Ceri Hughes	23(2)	2	-	-	-	-	1	1
Julian James	36	2	2	-	2	-	-	-
Marvin Johnson	31(2)	3	2	-	1	-	-	-
Chris Kamara	14	-	2	-	2	-	-	-
Des Linton	17(3)	1	2	-	2	-	-	-
Damien Matthew	3(2)	-	-	-	1	-	-	-
Scott Oakes	23(15)	5	1(1)	-	(-)	-	(-)	-
Trevor Peake	33	-	2	-	1	-	-	-
Andy Petterson	14	-	2	-	2	-	-	-
David Prece	36	1	2	1	1(1)	-	-	-
Jason Rees	27(1)	-	1(1)	-	2	-	-	-
Darren Salton	15	-	2	-	2	-	-	-
Paul Telfer	24(1)	1	-	-	-	-	1	-
Martin Williams	7(9)	-	-	-	-	-	-	-

Matchday music is supplied by HMV Stores, Arndale Centre, Luton.



VOUCHER NUMBER 24

Barclays League Division One Table

Team	P	W	D	L	F	A	Pts	Av Att	Leading Goalscorers
Newcastle United	39	23	9	7	72	34	78	28,960	Kelly 20, Cole 12
West Ham United	39	21	10	8	67	36	73	15,441	Morley 18, Allen 14
Portsmouth	39	20	10	9	65	40	70	11,985	Whittingham 35
Swindon Town	39	19	11	9	63	46	68	9,666	Moralee 14, Goodman 11
Millwall	39	17	15	7	62	41	66	8,743	Moralee 14, Goodman 11
Leicester City	38	19	8	11	61	48	65	15,124	Walsh 10, Lowe 10
Tranmere Rovers	38	18	7	13	60	51	61	7,611	Aldridge 21, Nevin 12
Grimsby Town	39	16	7	16	52	50	55	5,696	Groves 12, Mendonca 8
Wolverhampton W	39	14	12	13	52	47	54	13,564	Bull 15, Mutch 7
Barnsley	39	15	9	15	50	45	54	6,696	Biggins 16, Rammell 7
Charlton Athletic	39	13	13	13	43	39	52	7,137	Pardew 9, Nelson 7
Derby County	37	15	6	16	56	47	51	15,731	Kitson 12, Simpson 10
Peterborough United	38	13	11	14	47	55	50	7,618	Adcock 15, Philliskirk 11
Watford	39	12	11	16	52	64	47	8,289	Furlong 19, Charley 13
Sunderland	38	12	9	17	40	51	45	16,585	Goodman 11, Cunningham 7
Brentford	39	12	8	19	43	55	44	8,587	Blissett 16, Allon 5
LUTON TOWN	39	9	17	13	41	55	44	7,946	Gray 17, Oakes 5
Notts County	38	10	13	15	46	37	43	7,812	Draper 9, Smith 7
Oxford United	38	10	13	15	44	49	43	6,630	Durnin 11, Magilton 8
Bristol City	38	11	10	17	41	42	43	10,452	Rosenoir 4, Shelton 4
*Birmingham City	39	11	9	19	39	60	42	10,578	Saville 17, Peschisolido 7
Cambridge United	39	9	13	17	40	63	40	5,603	Clardige 8, Butler 4
Southern United	38	9	12	17	44	53	39	4,461	Collymore 11, Ansa 6
Bristol Rovers	39	9	9	21	45	74	36	5,881	Taylor 11, Stewart 9, Saunders 9
(up to and including 3.4.93)									

Leicester City v Oxford United
Newcastle United v Barnsley
Southend United v West Ham United

THIS WEEKEND'S OTHER BARCLAYS LEAGUE DIVISION ONE ACTION

THE MAN IN THE MIDDLE: KELVIN MORTON

A group accountant, Kelvin is married with one daughter and two sons. He commenced refereeing in the Eastern Counties League in 1970 and progressed via the Football Combination to the full league list in 1986. Kelvin enjoys tennis and plays in the Cambridgeshire First Division.

Team Check

LUTON TOWN

Colours: White/Blue Shirts,
Blue/White Shorts

Manager: David Pleat

Alec Chamberlain
John Dreyer
Julian James
Marvin Johnson
Ceri Hughes
Trevor Peake
Paul Telfer
Kerry Dixon
Scott Oakes
Philip Gray
David Preece

1
2
3
4
5
6
7
8
9
10
11
12
14

WOLVES

Colours: Gold Shirts,
Black Shorts

Manager: Graham Turner

1 Mike Stowell
2 Paul Blades
3 Andy Thompson
4 Paul Birch
5 Derek Mountfield
6 Kevin Ashley
7 Mark Rankine
8 Paul Cook
9 Darren Roberts
10 Andy Mutch
11 Robbie Dennison

REFEREE: K. Morton (Bury St Edmonds)

LINESMEN: C.T. Finch (yellow trim)
M.A. Hair (red/yellow trim)

**FOURTH
OFFICIAL:** R.A. Windle



Official kit sponsor



Official ball sponsor

BUY OF THE SEASON.



VAUXHALL *Once driven, forever smitten*



VAUXHALL IS BACKED BY THE WORLDWIDE RESOURCES OF GENERAL MOTORS. CAR SHOWN CAVALIER SRI.