

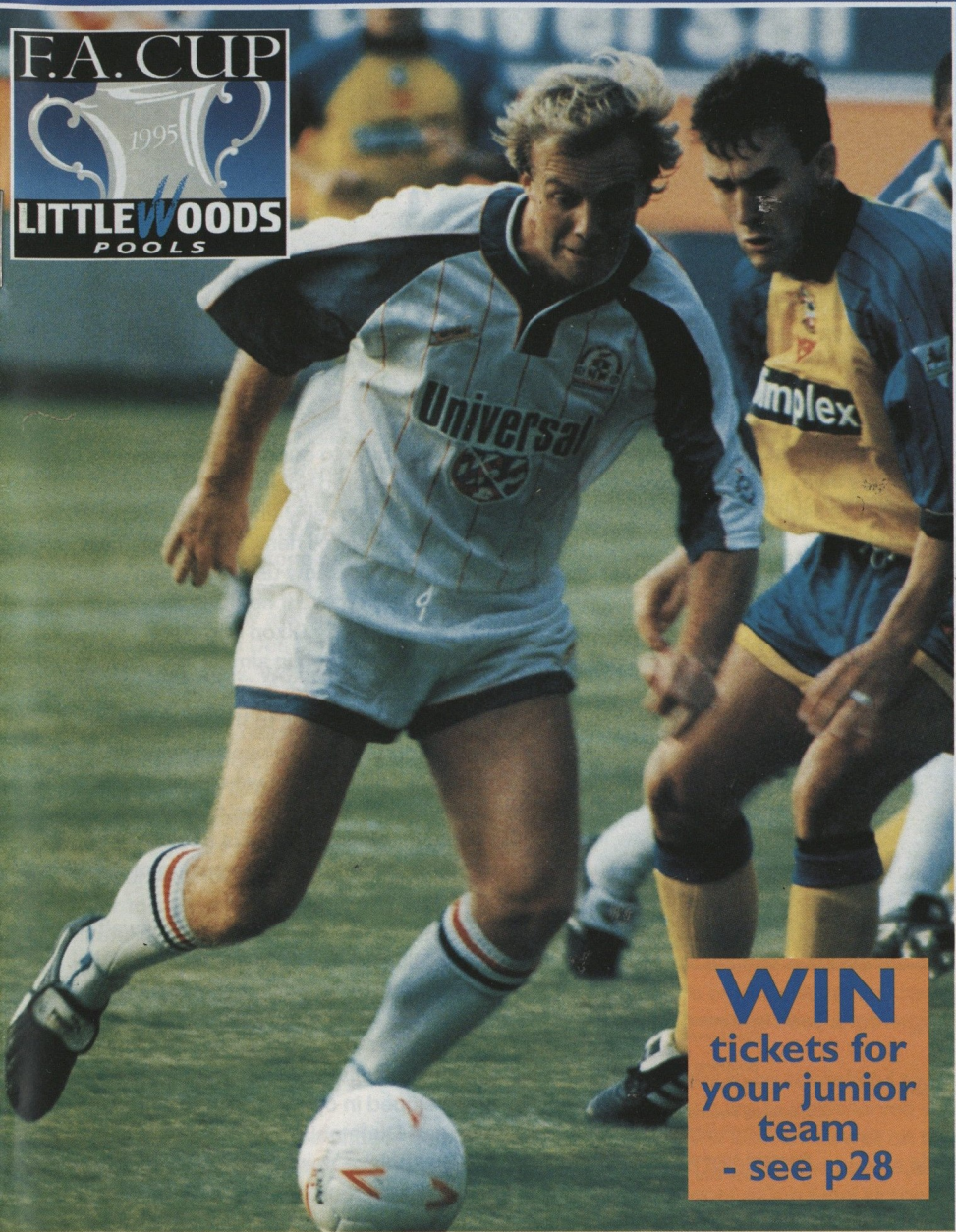
FOOTBALL ASSOCIATION CHALLENGE CUP
(SPONSORED BY LITTLEWOODS POOLS) FOURTH ROUND

v SOUTHAMPTON



LUTON TOWN
FOOTBALL CLUB

LUTON TOWN



WIN
tickets for
your junior
team
- see p28

SATURDAY, JANUARY 28, 1995, 3PM

MATCH SPONSORS

Anachem, Fisher Frozen Foods Ltd, Electrolux,
& Southampton FC Sponsors and Executive Club

MATCHBALL SPONSORS

Keith and Richard Harvey

Official matchday programme £1.50



Sponsors of
Luton Town F.C.



PLEAT'S PERSPECTIVE

I WILL NOT GET INTO AN AUCTION IN THE TRANSFER MARKET

A WARM welcome to this afternoon's guests from the Premier Division. Southampton have visited us once before this season when they set the pattern for our home results by winning with goals from Matthew Le Tissier and Iain Dowie.

As recently as Tuesday evening they gained a fully deserved draw at Arsenal, and in their previous four games away they were unbeaten, so we do not underestimate the size of our task this afternoon.

It will need a repeat of the resilience shown in the replay with Bristol Rovers to get a favourable result.

With the sale of John Hartson to Arsenal we were a little bit concerned after it coincided with the facial injuries to both Martin Williams

and Tony Adcock, so we decided to make an urgent move for a forward who would give us much needed experience and cover.

On a busy day last Friday to beat the 5pm deadline for the seven-day FA Cup registration, we secured the services of Wayne Biggins from Stoke City.

As a side we know to our cost how effective he is, as he has scored against us for several seasons for both Barnsley and Stoke. We hope he enjoys his spell here, and he will have every opportunity to show us that he can make a permanent move if he does well.

Previously, both Kerry Dixon and Gary Waddock joined our club in similar circumstances.

Gary has resettled in well to the higher standard in Division One, and played particularly well at Bristol Rovers when we came under pressure, and proved the value of his reading of the game in midfield. There is no substitute for experience to help the progression of the younger element.

Kerry Dixon of course will be eagerly awaiting today's game. It has been well documented that I was partly responsible for not accepting Kerry as a 15-year-old schoolboy after he had spent regular training sessions with us whilst at school.

Kerry developed in open-age football at Chesham and Dunstable, and the rest of his goalscoring achievements are outstanding. We should always remember that he gained the ultimate in a player's career - England caps.

The torrential rain left Mr Pooley, of Bishop Stortford, without any serious questions last Saturday.

It was disappointing, as we would have been up against a Wolves side missing several of their highly expensive players such as Goodman, Thomas, Daley, Froggatt and Bull.

.....LISTEN TO THE MANAGER'S VERDICT ON TODAY'S BIG GAME ON LUTON TOWN CLUBCALL 0891 121 123



SINGING in the rain? Hardly..... referee Graham Pooley was forced to postpone last Saturday's game against Wolves. (See page 8 for ticket information).

However, the fixture later in the season could have even more appeal if Wolves are going strongly for the championship, and hopefully, if we can put a run together, we maybe looking at a play-off place.

Our main priority at the moment is to get Ceri Hughes and Des Linton back challenging for league places. We need all our available players for the second half of the season as the grounds get heavy and there tends to be fixture congestion.

We also have to consider that there is a transfer deadline on the third Thursday in March, and any moves we make in the transfer market should be done in a relaxed way.

Far too often in the past, because of the financial position, we have been forced to make hasty last minute decisions and take players from other clubs in a panic situation.

Since the beginning of the season we have been looking closely at several players, and have already made one offer for a midfield forward in Division Three.

That offer was rejected and I have no intention of getting into an auction or pursuing that avenue for the moment.

We must spend the money that the board have made available sensibly, and I would like to bring in two, or possibly even three players, who have quality, but age on their side. They also may have to come from the lower divisions where we can afford the market place.

In recent weeks, both Jamie Woodsford and Aaron Skelton have been on the subs bench. Both are further examples of the excellent

coaching through all levels of the club.

We have already allocated six places for new YTS boys this summer. Once again they will feel assured that if they progress they will get the opportunity of a first-team platform.

We are delighted that John Hartson has taken the move to Arsenal in his stride, and he should be an example to all our younger element.

This afternoon's game will be seen by telly viewers tonight. Let us hope that all the good elements of the challenge between the Premiership and the Endleigh League, where the flag was so proudly carried last year by many clubs from our division, will be well illustrated and prove good viewing for the arm-chair watchers.

Let's hope we can recreate the captive atmosphere of last season and have the self-belief to go on and have another run to Wembley.

If we are not to be successful today and Southampton are to be deserved winners of the tie, we will wish them well on their way to Wembley to recreate the Lawrie McMenemy achievement of a Cup Final victory; when they were a Second Division team which beat Manchester United with a Bobby Stokes goal.

Enjoy the game.

Luton Town Football Club
Kenilworth Road Stadium,
1, Maple Road,
Luton, Beds LU4 8AW.
Tel: (0582) 411622
Fax: (0582) 405070
Ticket Office: (0582) 416976

Chairman and Managing Director: David Kohler Bsc (Hons) ARICS	Youth Development Officer: Paul Lowe
Directors: C.S. Bassett, C.T.F. Green, N.S. Terry	Scouting: Les Shannon
Vice Presidents: R.L. Banks, P.Collins C. Bygraves, R. Safranek, D. Ludlow, P. Ireton.	Community Football Officer: Colwyn Rowe
Secretary: Cherry Newbery	Financial Administrator: Bob Bird
Manager: David Pleat	Commercial Manager: Kathy Leather
Coaches: John Moore, Wayne Turner, Terry Westley	Safety Manager: Geoff Lovell
Physiotherapist: Clive Goodyear	Catering Manager: Peter Saul
Consultant Physio: John Sheridan	Medical Officer: Dr Bill Berry
	Club Dentist: A. Chris BDS (Syd)

HONOURS

Littlewoods Cup winners 1987-88

FA Cup finalists 1958-59

Littlewoods Cup finalists 1988-89

Simod Cup finalists 1987-88

Champions - Division Three (S) 1936-37

Champions - Division Four 1967-68

Champions - Division Two 1981-82

David Pleat

AROUND THE TOWN

Hatters welcome on-loan Wayne

STRIKER Wayne Biggins has joined Luton on loan from Stoke City for one month, and is eligible to play in this afternoon's cup tie.

The 32-year-old is a vastly experienced striker with spells at Lincoln, Burnley, Norwich, Manchester City, Stoke (twice), Barnsley and Celtic under his belt.

He has also been a regular goalscorer, with 29 goals in 78 appearances at Burnley, and 46 goals in 122 league starts in his first spell at Stoke.

"Wayne is tried and trusted, and is a very good all-round player," said David Pleat.

"With Tony Adcock's injury we need cover for Kerry Dixon, and Wayne can cope with the situation."

What a cheek! New injury blow for Tony

TONY Adcock has suffered another injury blow and looks set to be ruled out for eight weeks with a double fracture of the cheekbone.

Tony picked up the injury during the reserve team game at Bristol City.

He has yet to make his full debut for Luton following his summer transfer from Peterborough, after suffering knee and back injuries earlier in the season.

And Fred Barber, back at Peterborough on loan, was carried off after 15 minutes of last Saturday's 0-0 draw against Bradford, after dislocating his shoulder.

Meanwhile, Des Linton went into hospital last week for an operation on his long-term groin injury.

Luton Town FC Matchday Programme

Editor: Simon Oxley.

Tele: 0582 411622

Pictures: Andy Handley

Design and print:

McLeod Warner, Luton.

Tele: 0582 38389



HAPPY Birthday to Hatters youngster Ben Chenery who celebrates his 18th birthday today! Ben made his debut in the replay win at Bristol Rovers, and you can read his thoughts on the big day on page 29.

Richard's return after injury woe

RICHARD Harvey marked the end of a near three-year battle against injury when he played at Barnsley.

It was Richard's first appearance for Luton in the league this season, and only his second since the Hatters were relegated at the end of the 1991-92 campaign.

He was a virtual ever-present at left-back that season, but only played one game for Luton in 1992-93, at Millwall in March 1993, before missing the whole of last season after a cruciate knee ligament

operation. He did have a brief loan spell at Blackpool, and prospects for this term looked bright as he played in the pre-season friendly against Southampton, but he has suffered a series of niggling injuries and has battled back through the reserves.

The Letchworth-born defender, a former England youth international, made his Town debut as a 17-year-old in 1986.

FRONT COVER: Kerry Dixon, a £575,000 signing for Southampton in July 1992, pictured against his former club in August's friendly.



Universal Salvage Auctions

SELL OVER **1000**
REPAIRABLE/BREAKERS/STOLEN
AND RECOVERED VEHICLES AT
WEEKLY AUCTIONS

CORBRY - NORTHANTS

DENNY - SCOTLAND

SANDTOFT - S.YORKS

WESTBURY - WILTS



Your nearest auction is every Wednesday at...

**DUNSTABLE ROAD
REDBOURN, HERTS**

For further information
☎ 01234 766500



The best service on a plate.

As one of the largest independent vehicle rental companies in the U.K., you can always expect a little extra from Kenning.

AN EXTENSIVE RANGE OF:

- CARS, VANS & TRUCKS.
- FULLY INCLUSIVE RATES WITH UNLIMITED MILEAGE.
- 24 HOUR NATIONAL HOTLINE HELPLINE.
- AA/RAC COVER.



LUTON 0582 455333

24-34 Crawley Road.



- ◆ **HOURLY SPORTS NEWS**
- ◆ **FRIDAY SPORTS PREVIEW (7pm)**
- ◆ **SATURDAY SPORTSOUND (2pm-6pm)**
- ◆ **MIDWEEK MATCH COVERAGE (7.05pm - 10pm)**

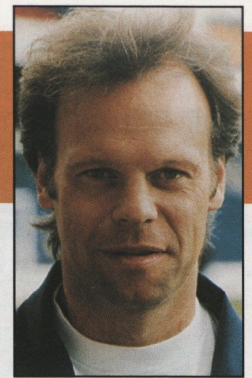
NEWS, SPORT & MUSIC
for BEDS, HERTS & BUCKS

▶ 103.8 FM STEREO ▶ 630 kHz AM



LEADING THE LINE

by TREVOR PEAKE



LEFT: Kerry Dixon wins this aerial battle during the Town's gritty win at Bristol Rovers.



IT was disappointing that last Saturday's game against Premiership hopefuls Wolves was postponed, but that was more than made up for by the prospect of being able to test ourselves against a genuine Premiership outfit this afternoon.

For the 'more experienced' among us it's a chance to relive former glories and prove a point or two, while the 'younger element' have the opportunity to catch the eye and gauge how good they are, or are capable of being.

The game against Wolves would have set us up nicely for Southampton, but quite clearly the lunchtime downpour made any sort of game impossible. Opinions were split in the dressing room, but casting an eye over the pitch about an hour after the referee's decision there was still standing water, and in the long term we could have caused a lot of damage to the pitch.

The postponement did give us the chance of a bit of a break after a particularly busy period, and not least the replay at Bristol Rovers.

We coped admirably I thought with their aerial threat, and then David Preece conjured up a simple header for Dwight.

Today's cup opponents will pose different kinds of problems, but we should take heart from that gritty display.

Young Ben Chenery did us proud, and it was

to his credit that the potential disruption to the back four, caused by Julian James' suspension, did not materialise.

It is a credit to all the coaches here that Ben was able to step up into the first-team, and with the likes of Ben, Paul McLaren, Kelvin Davis and Jamie Woodsford about it augurs well for the future.

With last Saturday's postponement it is possible that Ben could be in the starting line-up again today, with Julian still ruled out.

I'm sure he will do us proud again. I'm sure supporters will remember how well David Greene performed in the 0-0 draw at West Ham in last season's FA Cup sixth round tie, when yours truly was injured.

The performance in the replay that followed must also serve as a great inspiration for us this afternoon.

We gave a good account of ourselves against Southampton in August, albeit in a pre-season friendly, when, although we didn't need reminding, Matthew Le Tissier did remind us just how good a player he is.

However, we must not be over-awed, and must believe in our own talents and capabilities. A glance through last season's cup highlights shows that spectacular goals aren't confined to the Premiership sides.

Luton Town FC are delighted to link up with LEGAL AND GENERAL, to offer a full and comprehensive financial service to supporters of the club.

Anyone interested in receiving Legal and General's expert financial and insurance advice should contact:

Warren Miskin or Barry Shaw on 081 882 0249, quoting reference LU1.

PENALTY DRAMA IN CUP CLASH...



LEFT: Penalty! Former Bristol Rovers skipper Gary Waddock is sent flying in the penalty area.

RIGHT: Brian Parkin saves Marvin Johnson's spot-kick.



...More cup action on pages 14, 15, 32 and 33



If it's a draw today....

The replay would be at The Dell, on Wednesday, February 8, kick-off 7.30pm

SOUTHAMPTON v LUTON TOWN

This would be an **ALL-TICKET** match for Luton supporters, with seats only available - price £13 (no concessions).

Tickets will go on sale after today's game - to season ticket holders. For further details contact the ticket office on 416976.

LUTON'S trip to Portsmouth next month has been brought forward 24 hours, from Wednesday, February 22, to Tuesday, February 21, kick-off 7.45pm. This is to avoid a clash with live TV coverage of the Coca-Cola Cup semi-final on the Wednesday evening.

Luton v Wolves - ticket office update

Season ticket holders who entered the ground for last Saturday's postponed game against Wolves will have a new voucher sent to them. Other season ticket holders should use the existing voucher for the rearranged game.

If you entered the ground with a ticket, you can get a replacement from the ticket office. If you are still holding a ticket, you can use it for the rearranged game or claim a refund up to 24 hours before the rearranged match. (No new date has yet been fixed.)



LUTON TOWN TICKET OFFICE NEWS

Luton Town v Oldham Athletic

ENDSLEIGH INSURANCE LEAGUE DIVISION ONE

Saturday, February 4, 1995, kick-off 3pm

Tickets for this match are now on sale. Normal guesting facilities apply.

Grimsby Town v Luton Town

ENDSLEIGH INSURANCE LEAGUE DIVISION ONE

Saturday, February 11, 1995, kick-off 3pm

Pay on the day only at Grimsby. Seats are £11 (no concessions), with standing £8 (no concessions).

Luton Town v Swindon Town

ENDSLEIGH INSURANCE LEAGUE DIVISION ONE

Saturday, February 18, 1995, kick-off 3pm

Tickets for this match are now on sale at the discounted price. Normal guesting facilities apply.

(Please note this match is subject to the result of the FA Cup fourth round match against Southampton).

Portsmouth v Luton Town

ENDSLEIGH INSURANCE LEAGUE DIVISION ONE

Tuesday, February 21, 1995, kick-off 7.45pm

Seating priced at £13 (adults) and £9 (seniors and juniors) available from the ticket office until Monday, February 20 at 4pm. Also available at Portsmouth - but no concessions.

Terracing - £8 (no concessions) - pay on night only.

PLEASE NOTE CHANGE OF DATE FOR THIS FIXTURE

Ticket Office opening hours

Monday to Friday: 10am to 4pm

Saturday (match days): 9am to 3pm and 4.45 to 5.15pm

Saturdays (non match days): Subject to change. Please contact the ticket office

For bookings, membership and enquiries, ring the Ticket Office direct on (0582) 416976. Supporters wishing to order by credit card can do so by using the 24-hour Credit Card Hotline on (0582) 30748.

Travelling to...

Grimsby Town

Address:
Blundell Park,
Cleethorpes, DN35 7PY.
Tel: (0472) 697111.

Take M1 north, M18, M180 and A180 following signs to Grimsby/Cleethorpes.

A180 ends at roundabout (third in short distance after crossing docks). Take second exit from roundabout over railway flyover into Cleethorpe Road (A1098) and continue into Grimsby Road. After second stretch of dual carriageway, ground is half-a-mile on left.

Directions courtesy of Automobile Association

The Bobbers Travel Club organise coach trips to Luton away matches.

To book a place on the coaches, which pick up from a variety of points in Luton and Mid Beds, visit the club's ticket kiosk in the Kenilworth Road turnstiles, and see Travel Co-ordinator Paul Deason before any Saturday first-team home match between 2.15 and 2.45pm.

You can also telephone Paul on Bedford (0234) 750996 - after 6pm.



THE BIGGEST DRAW OF ALL.

LITTLEWOODS

For coupons phone free 0800 800 000.

Football's greatest supporter after the fans.

ON THE OTHER SIDE

SAINTS CONVERT TO SOCCER AND STARS ARE BORN.....

SOUTHAMPTON Football Club was formed in 1885 by members of St Mary's Church Young Men's Association, and nearly started out as a rugby club! At that time rugby was the more popular sport in the area, but soccer won the vote and so the Saints were born.

They entered the FA Cup for the first time in 1891/92, 20 years after the competition was launched, and eight seasons later reached the first of their three FA Cup Finals, losing 4-0 to Bury.

In the 1902 final, Sheffield United beat Saints 2-1 in a replay, but in 1976 it was third time lucky when Saints lifted the Cup with Bobby Stokes' goal giving them a memorable 1-0 win over Manchester United.

Southampton St Mary's had joined the Southern League in 1894 and finished unbeaten champions in 1897. The link with the Church was severed a year later when a limited company was formed and a year after that, the club moved to their new headquarters, The Dell. This had been built at a cost of £10,000 by George Thomas who rented the new stadium.

The club went on to win successive Southern League titles before the outbreak of WW1 halted progress. In 1920/21 Saints joined the newly-formed Football League Division Three South, and after finishing second first time out they gained promotion by winning the championship the following year.

In 1926 The Dell became club property and has remained so ever since. Another unsettled period came with WW2, as during that time the ground was bombed, leaving an 18-foot crater which damaged an underground culvert and flooded the pitch. At this time, all league matches were played 'away' at Fratton Park, Portsmouth!

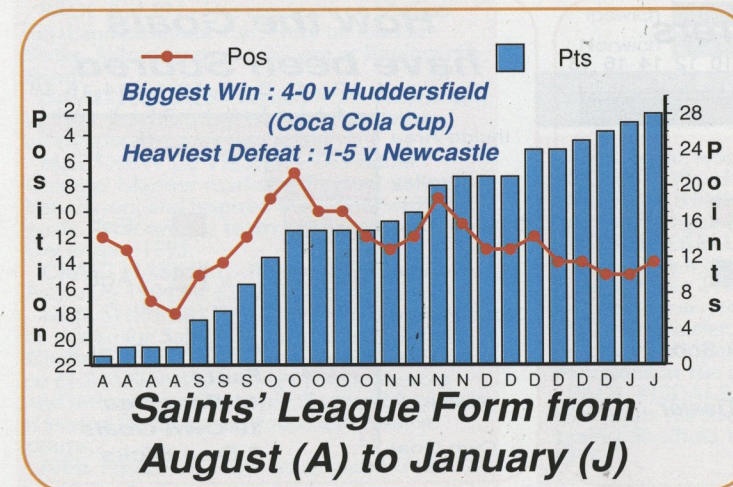
It took until 1960 for Saints to regain Second Division status following relegation in 1953, and the dream of promotion to Division One for the first



SOUTHAMPTON fans have enjoyed the skills of Channon, Ball, Keegan and Shearer, but Matthew Le Tissier (above) is perhaps their greatest entertainer.

time was realised in 1966. They stayed there for eight years, but returned in 1978 as runners-up to Bolton. The 1983/84 season was perhaps the most successful, as the Saints were runners-up to Liverpool in the league, and reached the semi-finals of the FA Cup.

During the 1988/89 season they created history by fielding a team with three brothers - Danny, Rod and Ray Wallace. All three moved on for large fees, as did two stars of the 1990s, striker Alan Shearer and goalkeeper Tim Flowers - both to Blackburn for a total of £5 million.



ABOVE: Southampton manager Alan Ball.

LEFT: Southampton's Premier League form.



SOUTHAMPTON 1994/95

SPOTLIGHT ON TODAY'S VISITORS

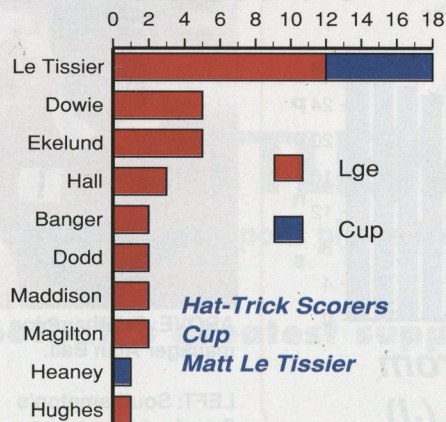


Back row, from left to right: Nicky Banger, Kevin Doherty, Paul McDonald, Derek Allan, Colin Cramb, Matthew Bound, David Hughes, Frankie Bennett, Neal Bartlett, Matthew Robinson, Paul Tisdale, Paul Sheerin.

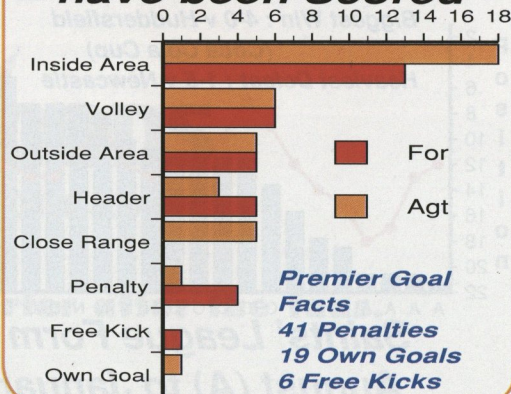
Middle row: Dave Merrington (reserve team manager), Jason Dodd, Tommy Widdrington, Craig Maskell, Ian Andrews, Richard Hall, Dave Beasant, Ken Monkou, Neil Hopper, Iain Dowie (now Crystal P), Perry Groves, Neil Heaney, Don Taylor (physio).

Front row: Lew Chatterley (asst manager), Simon Charlton, Jeff Kenna, Neil Maddison, Lawrie McMenemy (Director of Football), Matthew Le Tissier, Alan Ball (manager), Francis Benali, Jim Magilton, Paul Allen, John Mortimore (asst manager).

Goal Scorers



How the Goals have been Scored



VISITORS ON PARADE

BRUCE GROBBELAAR - Signed on a free transfer at the start of the season. The Zimbabwe international won every domestic and several European honours in his 13 years at Liverpool.

DAVE BEASANT - Former England international, who saved a penalty in the 1988 FA Cup Final for Wimbledon against Liverpool.

JEFF KENNA - Republic of Ireland international, and regular at right-back for the Saints. Came through the club's youth system.

FRANCIS BENALI - Southampton-born and the new club captain. Former England schoolboy international.

RICHARD HALL - Captained the England Under-21 team, before missing almost all last season through injury. Played squash at junior county level!

KEN MONKOU - Capped by Holland at Under-21 level, and played for Feyenoord before a three-year spell with Chelsea. Joined the Saints for £750,000 in 1992.

PETER WHISTON - Signed from Exeter for £30,000 in August 1994.

MATTHEW BOUND - Somerset-born centre-half who has come through the ranks at The Dell.

SIMON CHARLTON - A £250,000 signing from Huddersfield in the summer of 1993, he made 31 appearances last season at fullback and in midfield.

JASON DODD - Joined the Saints from Bath City, but made only seven appearances last season following a broken leg.

TOMMY WIDDRINGTON - Graduated through the Saints youth system, making his debut in 1991/92.

JIM MAGILTON - Signed from Oxford in February 1994 for £600,000, two days after scoring the winning goal in extra-time in an FA Cup replay at Leeds. Regular in the Northern Ireland side.

NEIL MADDISON - Missed only one match last season. Former captain of the Saints youth team, who scored on his senior debut in the 1989/90 season.

PAUL ALLEN - Has made three FA Cup Final appearances. Currently on loan at Stoke, following a month here at Kenilworth Road.

DAVID HUGHES - Signed from Weymouth in 1991, but his progress has been twice interrupted by a broken ankle.

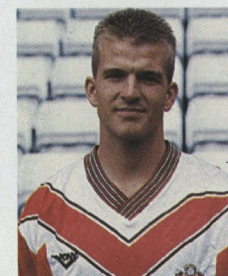
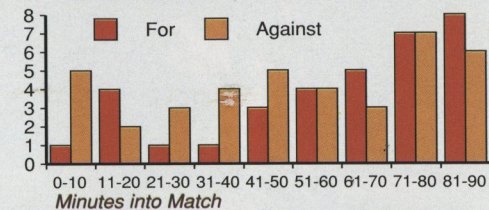
MATTHEW LE TISSIER - The skilful Channel Islander made his England debut last season, and inspired the Saints with 25 goals. Took over as team captain in December 1993.

CRAIG MASKELL - Rejoined Saints in February 1994 for £250,000 from Swindon.

NEIL SHIPPERLEY - The 20-year-old striker signed for Saints earlier this month from Chelsea, for a £750,000 fee which could rise to £1.2 million depending on appearances and international honours. Scored 50 goals in a season for Chelsea's youth and reserve teams.

NEIL HEANEY - Former England Under-21

When Southampton have Scored and Conceded

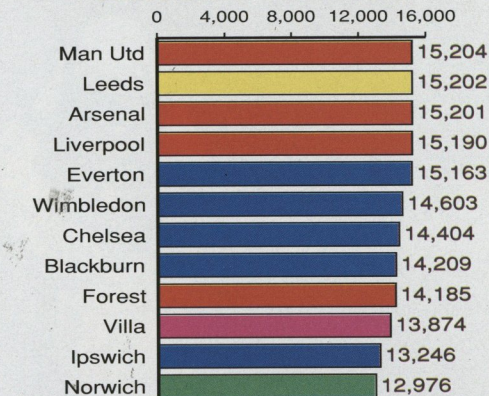


NEIL Maddison



JEFF Kenna

Gates at The Dell



Graphics by Football Information Services (Stats do not include Arsenal v Southampton 24/1)

international, who joined from Arsenal for £300,000 in March 1994.

FRANKIE BENNETT - Signed in 1992/93 from non-league Halesowen at the age of 24.

RONNIE EKELUND - The 22-year-old Danish Under-21 international joined Saints in September 1994, on loan from Barcelona for the season, with a view to a permanent £500,000 transfer. Started his career with Brondby of Copenhagen and joined Barcelona at the age of 19.

PAUL TISDALE - Malta-born midfielder who made his Southampton league debut against Sheffield Wednesday on January 2, 1995.

BRISTOL R v LUTON TOWN



PAUL Telfer leaps into action at Twerton Park.

From

Twerton Park

Date

January 18, 1995

Result

Bristol Rovers 0

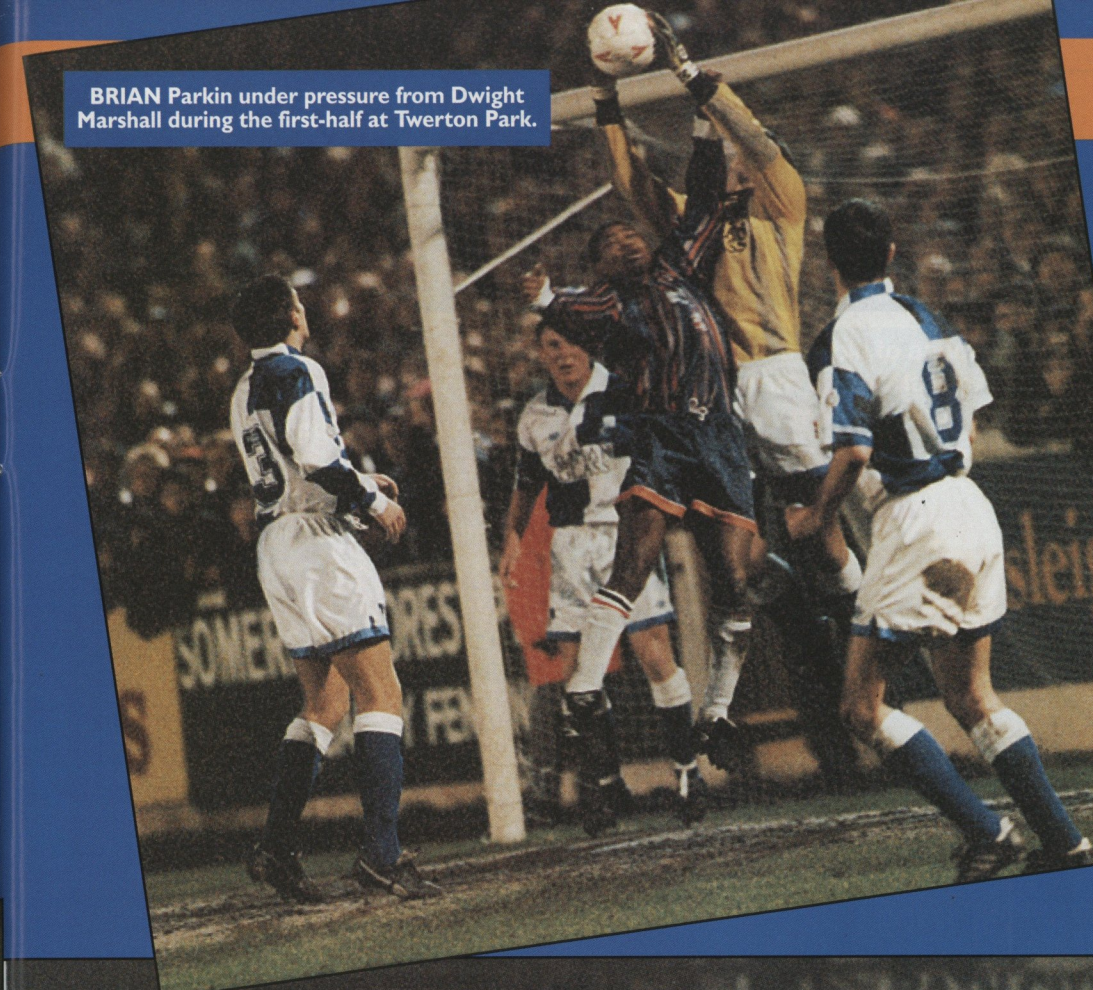
Luton Town 1
(Marshall)

Attendance 8,213

**Pictures by
ANDY HANDLEY**



BRISTOL Rovers keeper Brian Parkin thwarts this Luton attack during last week's replay.



BRIAN Parkin under pressure from Dwight Marshall during the first-half at Twerton Park.



DWIGHT Marshall heads home David Preece's 62nd minute cross to book Luton's place in the fourth round of the FA Cup.

S U P P L I E D B Y



MITRE SPORTS INTERNATIONAL LTD.
BIRKBY, HUDDERSFIELD, HD1 5AJ. TEL: 0484 537488. FAX: 0484 530042

A GENESCO Company



Football wins the Pools every Saturday



Every time you enter Littlewoods, Vernons and Zettlers Pools or Littlewoods Spot the Ball you are helping the game at all levels. The Football Trust administers funds from the Pools, helping clubs to improve safety and comfort.

The Trust receives some £37 million every year, all of it coming directly or indirectly from Littlewoods, Vernons and Zettlers Pools and Littlewoods Spot the Ball.

Football also receives £8 million a year for the use of fixtures on coupons and Littlewoods, the game's biggest benefactor, is the first sponsor of the FA Cup.

Up and down the country, clubs are building new grounds, stands, seating and roofing. All depend on the support of the Football Trust and on the success of the football pools.



LITTLEWOODS VERNONS ZETTLERS
*Making sure football wins
the Pools each week*



THE FOOTBALL TRUST
Helping the game

THE FOOTBALL TRUST, WALKDEN HOUSE, 10 MELTON STREET, LONDON NW1 2EB



HARRY OF THE HATTERS

WELCOME BACK TO THE SATURDAY CLUB!

A WARM welcome to all Junior Hatters, and to the Saturday Club which started up again last week.

Hopefully the weather will be a little kinder to us today!

If you haven't been to the Saturday Club yet, why not come along and join the fun.

There's football, a hot lunch and a ticket for the game.

Bookings can be made at the ticket office, before the day of the game, on (0582) 416976.

Give the lads a cheer this afternoon, and why not pop along to the Hatters Shop where there are a variety of new items in stock.

We look forward to seeing you all for the next home league game against Oldham on February 4.

WE hope to be able to announce details of more Junior Hatters trips to away matches soon.

Watch this space for details!



TODAY you have a chance to watch England international Matthew Le Tissier (above left) in action. Paul Telfer (right) scored Luton's goal when the sides met in August's pre-season friendly.

MATCH DAY MASCOT



Name: Daniel Cook
Date of birth: 16/8/85
School attended: Hadrian Lower School
Other hobbies: Judo
Favourite Luton Town player: David Preece
Who accompanies you to Luton matches: My dad.

HOW SWEET!

Belgian Chocolate footballs in presentation box with LTFC crest

Were £4..... now just £3

Ideal present for Easter!

ALL Junior Hatters can claim a £1 discount when they play Lazer Quest at Park Square, Luton, on production of their Junior Hatters membership card

TURN TO PAGE 27 OF TODAY'S MATCH PROGRAMME FOR THE CHANCE TO WIN SOME SPARKLING PRIZES IN OUR SUPER LUCOZADE COMPETITION.....



DWIGHT Marshall finds his route to goal blocked, during August's pre-season friendly between Luton and Southampton. The Hatters took the lead through Paul Telfer, but the Saints won 2-1, with second-half goals from Matt Le Tissier and Iain Dowie. (Picture: ANDY HANDLEY).

CALLING ALL SUPPORTERS.....



LUTON TOWN FCListening to YOU!

LUTON Town Football Club are to pioneer a unique Football Supporters Panel, where we ask the views of YOU the fans.

Luton Town are genuinely concerned to listen to the views of their supporters, and together with Critical Research Ltd, a Luton-based, independent professional market research company, we are planning to regularly canvass the views of Town fans.

Starting next weekend, following the home game against Oldham Athletic (and for a five-match trial period) a sample of members will be telephoned on Sunday by Critical Research's trained interviewers to

get their views on all aspects of the previous day's game, Luton Town Football Club, and the football world in general.

You might be asked about the best players, the ground or facilities. And if there's any other issue you want to raise, please don't hesitate to do so.

The results of these interviews will be compiled to give a unique cross-section of what you the supporters want to see at Kenilworth Road, and a summary of the results will be forwarded to the club, and published in future match programmes.

Each interview will take less than 10 minutes, so if you get the call please tell us what you think..... We're listening.



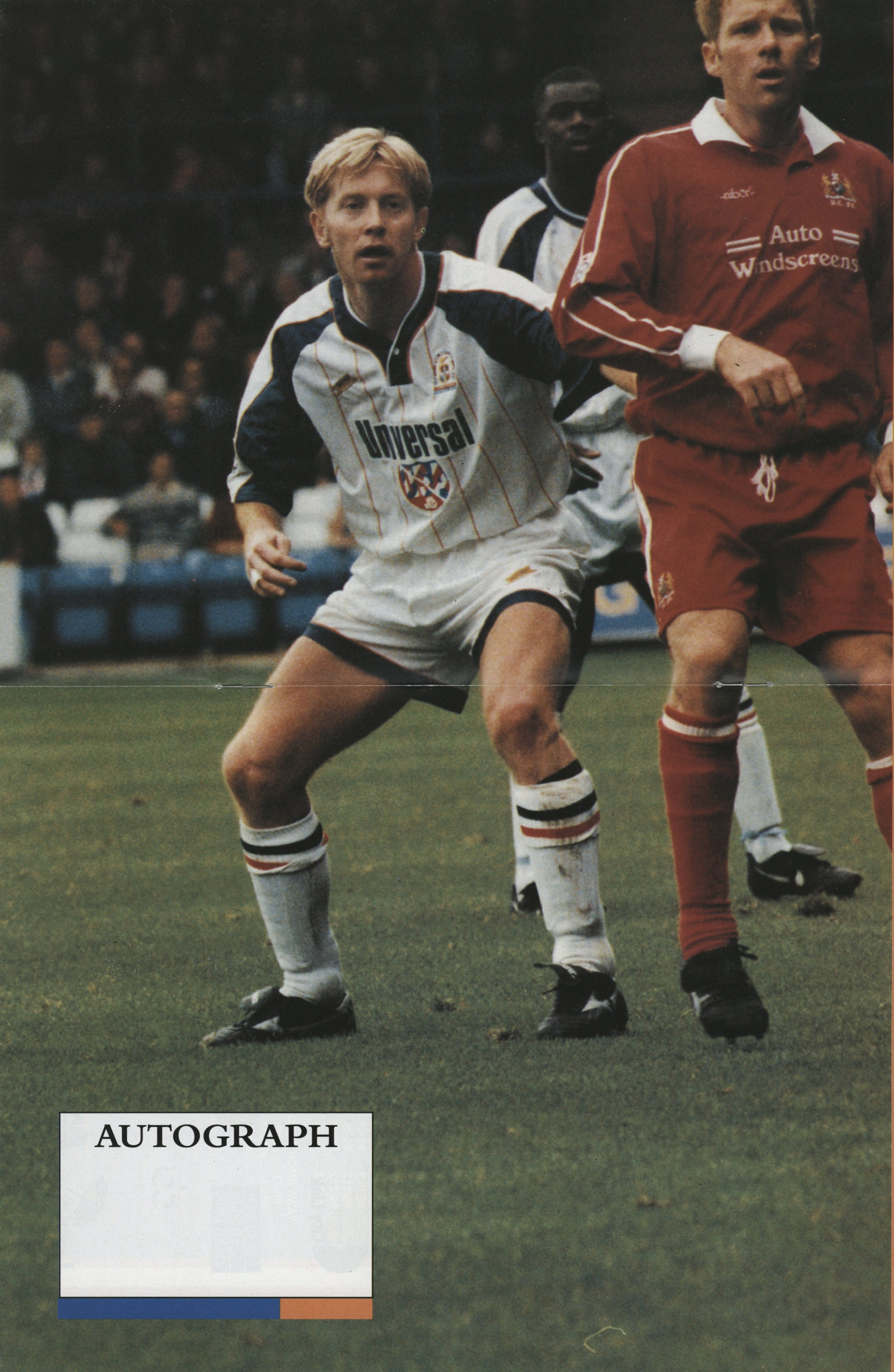
Critical Research Ltd



Crown Life House
41-43 Alma Street Luton LU1 2PL
Tel: 0582 480588
Fax: 0582 485015



Keep up-to-date with all the news from Kenilworth Road on
LUTON TOWN CLUBCALL 0891 121 123



Gary Waddock

AUTOGRAPH

A rectangular box containing a faint, illegible signature or text, likely a placeholder for an autograph.

KENILWORTH SUITE

ABB Flexible Automation Ltd
 Anachem Ltd
 Mr G. Chamberlain
 Ken & Judi Craven
 Fisher Frozen Foods Ltd
 F & T Goodwin Ltd
 Grosvenor Contracts
 Handscombe Financial Services Ltd
 R.W. Harvey & Son

R. Yates
 Origination
 Radley Shaw
 Regal Litho
 Steadfast Properties PLC
 Wilton Contract and Vehicle Rental
 Complete Contracts Ltd
 The Home Counties Newspaper Group
 Frank and Audrey Ludlow

CLUB 82

Bervale Mead Insurance Brokers
 C.P. Contracts
 J.S.B. Business Forms
 Luton Cleaning Company
 Nordic Supplies
 Mr F.W. Pearce
 The Unimec Group of Companies
 Shorey Travel

TJ Aldridge Builders
 Chris and Kim Clarke - The Wheatsheaf,
 Flitwick
 Space Display Systems
 Techno Sign Ltd
 Mr D.R. Kenningham
 Carol and Stuart Kendall - The Blackbirds,
 Flitwick

INDIVIDUAL BOX HOLDERS

Mr Alan Garner

Mr Malcolm Eade

Mr Roger Eade

EXECUTIVE BOX HOLDERS



Cope Brothers (Printers) Limited



GET IN GEAR AT THE HATTERS SHOP.....



ABOVE:
 Padded baseball jackets
 (S, M, L and XL) -
 £45.00

New style jaquard scarf
 (Luton Town/The
 Hatters) - £4.99

LEFT:
 Wool bronx hat (navy -
 LTFC) - £4.99

New style jaquard scarf
 (Luton Town/The
 Hatters) - £4.99

LTFC quarter style
 rugby shirts - £22.99



LTFC kit prices 1994/95

HOME/AWAY SHIRTS

22-24 £23.99
 26-28 £23.99
 30-32 £23.99
 34-36 £28.99
 38-40 £28.99
 42-44 £30.99
 46-48 £30.99

GOALKEEPER SHIRTS

- Grey/green
 22-24 £29.99
 26-28 £29.99
 30-32 £29.99
 34-36 £34.99
 38-40 £34.99

HOME/AWAY SHORTS

22-24 £12.99
 26-28 £12.99
 30-32 £15.99
 34-36 £15.99

SOCKS HOME/AWAY

Boys £5.99
 Youths £5.99
 Mens £5.99

Hatters Shop Sale

Plastic mugs.....were £2.50.....now £2
 Plastic 'glass'..... was £2.50.....now £2

Bottle opener/ keyring.....was £1.60 now
 £1

Reversible car pennant.....was £3.99.....
 now £2.50

Joe Payne limited edition T-shirt..... was
 £19.99.....now £10.99

Boxed cufflinks.....were £5.....now £4
 Mens 'old style' blue socks.....were £5.99
now £2

Wristbands.....were £1.50.....now £1.25
 Headbands.....were £1.50.....Now £1.25

'Old style' crest penwas 65pnow
 30p

Ladies knickers (black, red or white).....
 were £2.99.....now £2.49

OPENING HOURS: Enquiries (0582) 411622

Monday to Friday - 10am to 4pm

(Evening matchdays 10am to 10pm)

Saturdays - matchdays 9am to 5pm

-non matchdays 9am until coaches leave for away game

KIT SPONSORS

RICHARD HARVEY

is sponsored by
Shorey Travel



RICHARD HARVEY
Shorey Travel

DWIGHT MARSHALL
Milton Keynes Branch of the
Luton Town Supporters Club

FRED BARBER
Royal Air Force Careers
Information Office, Bedford

DAVID PREECE
Ken and Judi Craven

TONY ADCOCK
Chris and Kim Clarke
The Wheatsheaf, Flitwick

DAVID GREENE
O'Shea's Public House,
Castle Street, Luton

TONY THORPE
Bedfordshire Rural
Communities Charity

JULIAN JAMES
Shorey Travel

PAUL TELFER
Convoy Installations Ltd

KELVIN DAVIS
McLeod Warner

MITCHELL THOMAS
Sam Hill

DES LINTON
Simkins Solicitors of
Baldock and Sandy

CERI HUGHES
Les and Sue Miller

CLIVE GOODYEAR

MARTIN WILLIAMS
Anchor Insurance Brokers
Milton Keynes

SCOTT OAKES
Legal and General Assurance

JUERGEN SOMMER
Paul Deason

AARON SKELTON
Club Skyway of London
Travel Agents

TREVOR PEAKE
Bennetts Gate Bakery of
Hemel Hempstead

MARVIN JOHNSON
Graham Group PLC

DAVID PLEAT
Bobbars Travel Club,
Committee and Members

KERRY DIXON
The Loyal Luton Supporters Club

To be decided
Kate and Phil Shaw

JOHN MOORE

To sponsor a player's kit
please contact the
Commercial Department
on
Luton 411622

LTFC in the Community

with the club's new 'Football in the Community' officer
COLWYN ROWE - (0582) 411622



HATTERS FEBRUARY HALF-TERM COMMUNITY PROGRAMME 1995

Course A BEDFORD - Goldington Middle School, Haylands Way, on Sat Feb 18 and Sun Feb 19 1995, from 10am to 2pm, for boys and girls 5-14yrs, cost £16.

Course B LEIGHTON BUZZARD - Brooklands Middle School, Brooklands Drive, on Mon Feb 20 and Tues Feb 21 1995, from 10am to 2pm, for boys and girls 5-14yrs, cost £16.

Course C DUNSTABLE - Streetfield Middle School, Dunstable Road, Caddington, on Wed Feb 22 1995, from 10am to 2pm, for boys and girls 5-14yrs, cost £10.

Course D FLITWICK - Woodland Middle School, Malham Close, on Thurs Feb 23 1995, from 10am to 2pm, for boys and girls 5-14yrs, cost £10.

Course E LUTON - Lea Manor High School, Northwell Drive, on Wed Feb 22 1995, from 10am to 2pm, for boys and girls 5-14yrs, cost £10.

Course F SHEFFORD - Mini-Soccer Centre - Ideal for Beginners - at Robert Bloomfield School, Bloomfield Drive, starts Sun Feb 12 1995, for five consecutive Sunday mornings, from 10am to 11am, for boys and girls 5-11yrs, cost £11.

Course G MILTON KEYNES - Water Hall County Combined, Melfort Drive, Bletchley, on Thurs Feb 23 and Fri Feb 24 1995, from 10am to 2pm, for boys and girls 5-14yrs, cost £16.

Specialist Goalkeeping Course GK LUTON - Electrolux Sports Ground, Ely Way, off Oakley Road, on Mon Feb 20 and Tues Feb 21 1995, from 10am to 2pm, for boys and girls 8-14yrs, cost £20. Guest appearances by Luton Town goalkeepers.

All half-term courses include free match ticket

The one and two-day coaching clinics offer children a well organised coaching programme supervised by experienced, qualified Football Association coaches, with a programme designed to suit all boys and girls regardless of their footballing ability. (Staff coaches are under no liability for any loss, injury or damage whatsoever, caused throughout the course).

LUTON TOWN FOOTBALL CLUB - IN THE COMMUNITY APPLICATION FORM

Please reserve a place on course ____ (write course letter here)

NAME: _____

AGE: _____ DATE OF BIRTH: _____

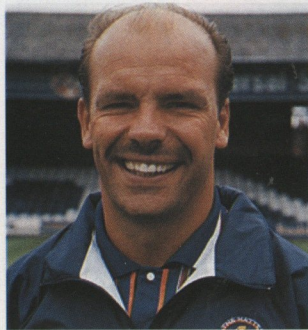
ADDRESS: _____

TELEPHONE NUMBER: _____ POSTCODE: _____

SIGNATURE OF PARENT/GUARDIAN: _____

To reserve a place, please return completed application form and cheque for full amount, made payable to "Luton Town Football Club", together with a stamped, self-addressed envelope, to: Colwyn Rowe, Community Football Officer, LTFC, Kenilworth Stadium, 1 Maple Road, Luton, Beds, LU4 8AW. You will be sent a letter of confirmation.

Colwyn Rowe would like to hear from any qualified FA coach wishing to work on Luton Town's 'Football in the Community' programme. You can phone Colwyn at the club, or write to him c/o LTFC, Kenilworth Road Stadium, 1-Maple Road, Luton, enclosing a CV.



RESERVES AND YOUTH

WITH WAYNE TURNER AND TERRY WESTLEY



Wed Aug 17 WATFORD	2-0
Wed Aug 24 QPR	2-1
Wed Aug 31 Charlton Athletic	1-3
Wed Sep 7 IPSWICH	2-2
Wed Sep 14 Bristol Rovers	1-3
Wed Sep 21 OXFORD	2-1
Wed Sep 28 PORTSMOUTH	1-0
Wed Oct 5 Tottenham	0-2
Wed Oct 12 Oxford	1-0
Wed Oct 19 NORWICH	3-5
Wed Oct 26 BRISTOL ROVERS	2-2
Mon Oct 31 Swindon	2-1
Tue Nov 8 Watford	0-1
Wed Nov 16 WIMBLEDON	2-4
Mon Nov 21 Portsmouth	3-0
Wed Nov 30 SWINDON	2-2
Wed Dec 7 Norwich City	0-2
Wed Dec 14 TOTTENHAM	1-2
Wed Dec 21 Southampton	1-3
Wed Jan 4 Brighton (Postponed)	
Tue Jan 10 West Ham	0-1
Mon Jan 16 Bristol City - abandoned	2-3
Wed Jan 18 WEST HAM (Postponed)	
Wed Jan 25 CRYSTAL PALACE	
Wed Feb 1 CHARLTON 2pm	
Wed Feb 8 ARSENAL 2pm	
Tue Feb 14 Crystal Palace 2pm	
Thu Feb 23 BRISTOL CITY 2pm	
Sat Feb 25 Arsenal 3pm	
Wed Mar 8 SOUTHAMPTON 2pm	
Wed Mar 15 Wimbledon 2pm	
Wed Mar 22 MILLWALL 2pm	
Wed Mar 29 Ipswich Town 7.30pm	
Wed Apr 5 BRIGHTON 2pm	
Mon Apr 10 Millwall 2pm	
Wed Apr 19 CHELSEA 2pm	
Tue Apr 25 Queens Park Rgrs 7pm	
Mon May 8 Chelsea 7pm	

BOLD type denotes home game. October to February inclusive to be played at Hitchin Town FC. (Luton score first).

LAST Wednesday's reserve team game at home to West Ham, at Hitchin, was postponed because of the clash with the FA Cup replay at Bristol.

But Wayne Turner's side were due back in action on Wednesday this week, entertaining Crystal Palace. And they are at Top Field again next Wednesday, February 1, against Charlton.

Their last game was the abandoned game at Bristol City on January 16, when heavy rain forced the referee to halt the game after 67 minutes with the Town trailing 3-2.

It was not a good night all round, as Tony Adcock suffered a double fracture of the cheekbone.

The youth team were without a game on Saturday, but an Under 17 XI played a friendly against the Peterborough youth team at Luton Rugby Club.

The Luton side was comprised of first-year trainees and youngsters looking to earn a place as trainees for next season.

The end result was a 1-1 draw, with Chris Willmott scoring for the Hatters.

"The conditions were bad but you can learn a lot about players in bad conditions," said coach Terry Westley.

"The youngsters were certainly trying to impress, and Nathaniel Abbey stood out for us with a sound display in goal."

The youth team were due to return to South East Counties League action this morning, against Reading, and next Saturday travel to Southampton.

Please note that all reserve team home matches until the end of February will be played at Hitchin Town FC.



CHRIS Willmott



TONY Adcock

South East Counties League, FA Youth Cup and Southern Junior Floodlit Cup

Sat Aug 13 CRYSTAL PALACE	4-2	Sun Oct 23 Saffron Walden (EJC)	2-3	Sat Jan 14 Brighton (Postponed)
Sat Aug 20 Wycombe Wanderers	5-0	Sat Oct 29 WIMBLEDON	2-4	Sat Jan 28 READING
Sat Aug 27 BRIGHTON	2-3	Sat Nov 5 Brentford	1-3	Sat Feb 4 Southampton
Thu Sep 1 Coventry (SJFC Pre)	2-2	Mon Nov 7 STAINES TOWN (FAYC1)	5-0	Sat Feb 11 OXFORD UNITED
Mon Sep 5 Coventry (SJFC Pre)	1-2	Sat Nov 12 BRISTOL CITY	1-2	Sat Feb 18 Bristol Rovers
Sat Sep 10 Reading	4-0	Sat Nov 19 Swindon Town	0-1	Sat Feb 25 COLCHESTER UNITED
Sat Sep 17 NORWICH (LC1)	2-0	Mon Nov 28 Wycombe (FAYC2)	0-1	Sat Mar 4 Wimbledon
Sat Sep 24 SOUTHAMPTON	0-2	Sat Dec 3 BOURNEMOUTH	0-1	Sat Mar 11 BRENTFORD
Sat Oct 1 Oxford United	0-3	Sat Dec 10 Tottenham	2-0	Sat Mar 18 Bristol City
Sat Oct 8 BRISTOL ROVERS	2-1	Sat Dec 17 TOTTENHAM	2-3	Sat Mar 25 SWINDON TOWN
Sat Oct 15 COLCHESTER	7-0	Sat Dec 31 Crystal Palace (Postponed)		Sat Apr 1 Bournemouth
Sat Oct 22 Colchester (LC2)	0-1	Sat Jan 7 WYCOMBE WANDERERS	5-0	HOME matches denoted in bold.

Be a winner with Lucozade

THE SPARKLING GLUCOSE DRINK

C	E	T	O	T	T	E	N	H	A	M	H	O	T	S	P	U	R	D
I	L	I	V	E	R	P	O	O	L	K	T	R	A	Q	P	M	G	F
W	D	F	H	J	K	Y	T	R	D	V	B	N	K	S	H	Y	R	J
P	O	I	U	D	R	E	R	G	T	B	H	F	W	U	Y	U	T	E
L	D	U	C	C	V	P	E	D	I	F	K	R	O	N	R	T	T	Q
K	F	S	H	G	B	H	V	Z	O	C	U	L	P	D	E	I	R	A
H	S	H	E	F	F	I	E	L	D	W	E	D	N	E	S	D	A	Y
J	V	R	L	F	G	H	K	O	E	W	Q	R	T	R	W	J	R	G
C	R	Y	S	T	A	L	P	A	L	A	C	E	U	L	R	L	D	S
V	D	S	E	Q	W	R	T	Y	I	K	H	F	S	A	U	L	F	A
S	D	G	A	H	K	U	T	E	R	C	B	M	N	N	O	I	B	Z
T	G	Y	U	H	J	K	S	D	F	E	T	R	Y	D	P	U	V	P
N	O	T	T	I	N	G	H	A	M	F	O	R	E	S	T	Y	U	O



YOU could win 24 cans of Lucozade, a Lucozade T-shirt, cap and triathlon bottle in our super wordsearch competition. The last EIGHT FA Cup runners up have been jumbled in our wordsearch.



Can you find them? The words can be up, down, across, diagonal and backwards.



Please return your answers to: Lucozade Competition (LTFC), Alan Pascoe Associates, 141-143 Drury Lane, London, WC2B 5TB.

WIN TICKETS FOR YOUR TEAM.....



LUTON directors Chris Green (centre) and Cliff Bassett are presented with a cheque by the Loyal Luton Supporters Club before the cup tie against Bristol Rovers.

THE Loyal Luton Supporters Club have teamed up with Luton Town to offer junior teams in the area the chance to watch a Hatters home match absolutely free.

The fans have successfully applied for a grant from the National Westminster Bank, as part of the bank's community programme, and, supported by the Football Club, wish to donate tickets for youngsters in the area to try and attract new supporters to Kenilworth Road.

The tickets will take the form of a monthly award, starting with January 1995, which will enable the winning team, and their manager, to watch the next Hatters home game the following month. The win-

ning team will be selected from YOUR nominations, and is not just aimed at the teams at the top of the leagues.

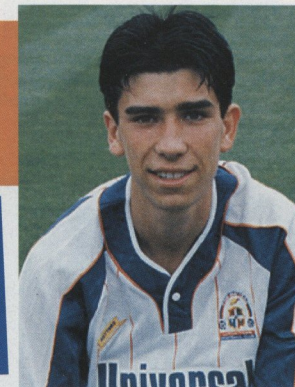
Managers or parents should write in telling us why your team should be the Team of the Month. It may be that you recorded a first win, or only lost narrowly to the top side in your league.

Nominations should be sent in to: Junior Team Award, c/o Simon Oxley, LTFC, Kenilworth Road Stadium, 1 Maple Road, Luton, Beds, LU4 8AW.

We've already had several entries, and we'll be announcing the first winners next week!

CUP DEBUT WAS A SPECIAL NIGHT!

Luton Town fullback **BEN CHENERY** reflects on his debut in the 1-0 win at Bristol Rovers..... as told to CLUBCALL 0891 121 123



Q: One player who certainly enjoyed the win against Bristol Rovers, was Ben Chenery, making his debut. Quite a memorable night for you.

A: It was a great night for me. I didn't really expect to play, until the boss told me that Julina James was suspended, and even then I didn't think I would have a chance because Des Linton would come in.

But he wasn't fit, and so for the couple of days leading up to the game I was training with the first-team, and then on Wednesday I was confirmed in the team. So I didn't really have much time to worry about it.

Q: How nervous were you, because it was a difficult ground to play at, in that it was tight and compact, the crowd were very close to you.

A: The other lads had warned me what it would be like, and when I got there it was certainly compact, and with virtually a full house, very noisy.

Q: I'm sure youth team coach Terry Westley had words of encouragement, and you had a very experienced player in Trevor Peake alongside.

A: Trevor was a great help during the game, especially later on when I began to tire and got pulled out of position a bit, and Gary

Waddock was a great help as well.

Q: Terry of course brought you to the club from the Ipswich area, and this is your second year at Luton.

A: I was a schoolboy at Ipswich, but was released by them. When Terry came to Luton from Ipswich I gave him a ring, came up for a trial and got an apprenticeship, and things have come on from there.

Q: Of course you were hoping to make your league debut against Wolves on Saturday, but that wasn't to be.

A: Yes that was disappointing, because I knew after the Bristol game that I would probably be playing against Wolves, and so I was really keyed up for it. My parents had come over from Ipswich, but as you said it wasn't to be.

Q: But with Julian James still suspended, there's every chance that you might line-up against Southampton and Matthew Le Tissier.

A: I haven't been told for definite, but I have been training with the first-team this week. Obviously I would love to play, a couple of years ago I never dreamed that I would be on the same pitch as the likes of Le Tissier, but of course it's up to the boss.

Q: But at Luton the youngsters get their chance.

A: That's right, but nonetheless I didn't really expect this. A few months ago I was in the youth team every week, and had a couple of reserve games. But it gives me confidence that if there's injury or suspension the boss isn't frightened to throw the youngsters in.

SAFETY NOTE

The Chairman and Directors of Luton Town Football Club undertake to ensure as far as humanly possible that all activities that take place at the Kenilworth Stadium are conducted in such a way that, as far as is reasonably practicable, the safety of everyone working at or attending that stadium is assured.

The club's primary responsibility through the Safety Officer, Officials, Staff and Stewards will be to ensure the reasonable safety of those attending the stadium.

In the interests of public safety, the safety authority (Beds County Council) have imposed a NO SMOKING restriction in and beneath our main stand. Your co-operation is appreciated.

Remember.... Luton Town's next home league game is on Saturday, February 4, when Oldham Athletic are the visitors to Kenilworth Road, kick-off 3pm.

For full ticket information both home and away, see page 9 of today's match programme!

CATCH ALL THE ACTION ...AGAIN... AND AGAIN!

Match videos available, for just £11.99, to buy/order, include:

Season 1993/94:

Luton 2 Newcastle 0

Luton 4 Portsmouth 1

Luton 2 Sunderland 1

Luton 2 Grimsby 1

Luton 2 Derby County 1

Luton 3 Oxford United 0

Luton 2 Peterborough 0

This season:

Watford 2 Luton 4

Luton 5 Middlesbrough 1

Swindon 1 Luton 2

LUTON TOWN FOOTBALL CLUB



OFFICIAL MATCH VIDEO

One-all as we welcome the Saints!



by ROGER WASH

5 YEARS AGO

27/1/90: As the Town had been knocked out of the FA Cup at the first time of asking, 4-1 at Brighton, the players had to suffer a blank Saturday. In fact, it was the middle of February before the first team played a competitive match again.

10 YEARS AGO

26/1/85: A relatively easy fourth round win over Huddersfield at Kenilworth Road, watched by a crowd of 8,712. Goals from Mal Donaghy and Brian Stein, after a Huddersfield defender was sent off, eased the Town through 2-0.

15 YEARS AGO

25/1/80: Due to the Town being knocked out in the third round by Swindon, the blank weekend set aside for round four was filled with a friendly at Southampton!

20 YEARS AGO

25/1/75: Another blank Saturday, due to a round three home defeat by Birmingham. This time the players travelled to York for a friendly fixture.

Luton: Sealey, Breacker, Foster, Donaghy, Johnson (Grimes), Wilson, McDonough, Allinson, Brian Stein, Mark Stein, Harford.

Southampton: Burridge, Forrest, Moore, Blake, Statham, Hobson, Baker, Cockerill, Townsend, Clarke, Danny Wallace.



LEFT: Ian Allinson (left) and Darron McDonough celebrate the equalising goal against Southampton in 1988.

WE welcome Southampton to Kenilworth Road today for our third meeting in the FA Cup competition, and with previous results ending in a win each, matters are nicely poised.

Our first pairing took place in season 1914/15 during our first campaign back in Southern League Division One after relegation two years before.

Exempt until the fourth qualifying round we then hammered Great Yarmouth 15-0 at Kenilworth Road to record our record score in domestic competition.

Oxford City were beaten 1-0 away and Bromley 5-1 at home, before we were drawn out of the hat with the Saints in the first round proper.

According to contemporary reports the game, which took place at The Dell before a crowd of 11,000, was all one-way traffic with the Town unable to mount a meaningful attack during the whole 90 minutes.

Southampton opened the scoring with a penalty, put away by Andrews after 15 minutes, but it was not until the second half that the score was

made safe when the same player hit home goal number two, after outfoxing the Luton defence with a clever backheel. A header from Kimpton near the end completed the rout.

Luton: Mitchell, Elvey, Dunn, Fred Hawkes, Frith, Bob Hawkes, Roberts, Wileman, Simms, Chipperfield, Hoar.

Southampton: Wood, Small, Ireland, Hadley, Denby, McAlpine, Curtin, Dominy, Kimpton, Jones, Andrews.

Our next meeting took place in rather more recent times, during probably the most successful season in our history, 1987/88.

After winning through a potentially difficult tie at Hartlepool in round three, we were drawn at home to Southampton in the next stage, a game that obviously filled Saints boss Chris Nicholl with dread.

Nicholl launched a pre-match attack on the artificial surface. "It gives his team an excuse for losing even before kick-off, and I hope they worry about it all week long," commented Luton manager Ray Harford.

Luton were missing David Preece, but hoped to welcome back Ashley Grimes, while a decision had to be made between 19-year-old Kingsley Black or the experienced Ian Allinson. Southampton were missing the injured Matthew Le Tissier, together with Jimmy Case and Kevin Bond who were suspended.

The visitors sat back and soaked up early pressure, hoping for a break engineered by the speedy Danny Wallace who always seemed to enjoy Kenilworth Road. Early chances fell to the Town, with Mark Stein shooting over and then seeing John Burridge tip a second effort onto the bar.

The first half ended in stalemate, but it livened up a little in the second period when Ray Harford decided to change tactics and adopt a more direct approach.

Brian Stein saw two efforts go wide, but as they pushed up so the Town were left open to the counter-attack, and in one raid Northern Ireland international Colin Clarke cleverly lobbed Les Sealey only to see the ball hit the bar.

With 20 minutes to go, the Saints did take the lead when Clarke, wide on the left, sent over a high cross aimed for the onrushing Wallace, with the ball sailing over Sealey, hitting the far post, and nestling in the back of the net.

Harford then sent on Grimes for Rob Johnson, and he was instrumental in setting up the equaliser with seven minutes to go.

Taking a left wing corner, he spurned hitting the ball into the box where the Saints had pulled everyone back, and instead played a short ball to Allinson standing unmarked at the edge of the area. Allinson let fly, and after a couple of dummies from the Stein brothers the ball found its way into the net.

Tails were now up, and the winner came two minutes later when Brian Stein, given a tiny opening in the area, remained cool to place an accurate shot past Burridge.

"It was a day when we had to battle," said Harford after the game. "I was getting a bit worried until Allinson got the equaliser, and then Brian Stein showed again that he is a superb finisher, probably as good as I have ever seen."

A disappointed Nicholl said: "We went slack and the players know they should have got a draw at the very least."

HATTERS HELD AS ROVERS GRAB THIRD ROUND DRAW



LEFT: Julian James heads for goal during the FA Cup third round draw against Bristol Rovers.



LEFT: John Hartson gets to grips with Bristol, in what was to be his final appearance for the Hatters.



RIGHT: Rovers keeper Brian Parkin is first to the ball, as Dwight Marshall and Andy Tillson challenge.

LUTON TOWN I (Hartson)
BRISTOL ROVERS I (Stewart)
Saturday, January 7, 1995, at Kenilworth Road.
Attendance: 7,571
Pictures by ANDY HANDLEY



ABOVE: Gary Waddock in action against his old club.



LEFT: One that got away! Dwight Marshall can't quite connect with this cross.



ABOVE: The eyes have it! Scott Oakes in watchful mood against Bristol.

Action pictures featured in the Luton Town matchday programme are available at the special introductory price of just £2 per print!
Write to Simon Oxley, at the club, giving a brief description of the picture (programme and page number etc), and enclosing a cheque/ postal order made payable to Luton Town Football Club.



HATTERS DOWN UNDER!

PICTURED left, proudly displaying his Luton Town flag, and Hatters T-shirt, is Town fan Paul Bradley.

This picture was taken at the Sydney Cricket Ground, during Paul's trip to watch the third cricket test between Australia and England.

Who knows, if he had stayed another week, he might have got a game!

Pleat confirms backroom team for 'the Italian job'



TOWN manager David Pleat will take charge of a young Football League side in Italy next month. Mr Pleat will liaise with the FA's Jimmy Armfield to select a 16-strong squad for the clash against a Serie B XI.

LUTON boss David Pleat, who will lead the Football League's representative side against the Italian Serie B in Andria in February, has this week announced his backroom team for the trip to Southern Italy.

Keith Peacock, father of Chelsea star Gavin and currently reserve team manager at Charlton Athletic, has been selected by Pleat to operate as coach on the trip.

Peacock, who previously managed Gillingham, made over 500 appearances during his playing days at the Valley and brings with him a wealth of experience in the game.

The medical team has also been confirmed with Billy Hails, physiotherapist at Vicarage Road for Watford, and Dr Bill Berry of Luton Town, included in the Football League party.

Mr Pleat is expected to announce his squad of 16 play-

ers within the next two weeks. The Football League has already received many club recommendations for players who are qualified to play for England, and who were under 21 on August 1, 1994.

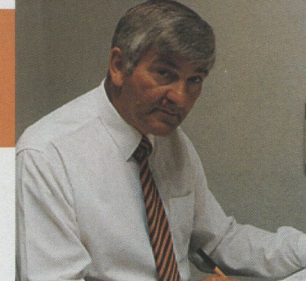
"It's a tremendous opportunity for the players," said Mr Pleat. "It's a chance to show what they can do against a different system and different opposition, and of course if they do well they come more to the notice of people outside the Endsleigh League.

"These are players who have already won our respect in this Endsleigh League competition this season, but some players are outside the first team, and some players may come from Divisions Two or Three."

The Italian League have also confirmed that the game has been brought forward 24 hours, and will now be played at the Stadio Comunale in Andria, on Tuesday evening, February 14.

SAFETY MATTERS

by LTFC Safety Manager, Geoff Lovell



IN programme notes earlier in the season I made reference to a number of safety issues which were on-going.

The one giving most headaches was the provision of additional catering facilities in the Maple Road end of the Main Stand. Those of you in the Main Stand and Enclosure will no doubt

have seen that we have been using mobile trolleys (see picture below) and boxes to provide an additional service.

This has now been approved by the Licensing Authority, and will now be a permanent feature. All I would ask of supporters is that when queuing, gangways, exit and entrance routes are not blocked.

Another issue that has again been a problem relates to golf umbrellas. For some years now they have not been permitted in the stadium. The numbers being brought to the ground during inclement weather is increasing, as are the problems associated with storage and return.

I am aware of the annoyance being caused to supporters when having their golf umbrellas confiscated. I have taken all views on board, including those of the police, and in future supporters will be made responsible for looking after their own umbrellas.

They will be permitted in on the following conditions: a) They are not put up, b) Waved around, or c) Pointed at anyone.

Anyone seen misusing them will have them confiscated.

I said earlier in the season that people were still smoking in the Main Stand, which is totally prohibited, both in and under.

Despite warnings given it is still happening. In recent games a policy of ejecting people has been implemented. I am sorry to have to do this, but safety has to be maintained. So far seven people have been removed by stewards.

Between now and the end of the season I will be testing some of our emergency procedures related to evacuating the stadium.

This will involve closing some of the usual exit routes at the end of a game. This is designed to check exit times with reduced exits and the amount of congestion it causes.

These checks are essential to highlight any major problems we may have in evacuating the stadium. You will be notified prior to the end of a game which exit will be closed, and inconvenience will be kept to a minimum.

We have a firm policy at the club in dealing with people who come on to the playing area during a game. This policy is ejection, or arrest and charge, as it is an offence under the Football Spectators Act.

Both the police and the club would like to complement our supporters for the restraint they show in keeping off the playing area when celebrating a goal!

Please continue this. It makes for good public order and safety.



WE have introduced mobile catering units for the Main Stand.

LUTON TOWN CLUBCALL

0891 121 123

For all the news updated live from Kenilworth Road. Match commentary... Reports... Interviews with manager David Pleat and all the Hatters players... plus ticket information and fixture details.

Calls cost 39p a minute cheap rate and 49p at all other times.

Money from YOUR calls helps support YOUR club

TicketLine 0645 10 10 10
 The exclusive ticket booking service for fans of Endsleigh League First Division clubs
 24 HOURS A DAY, 7 DAYS A WEEK
ALL CALLS CHARGED AT LOCAL RATE



COMMERCIAL CORNER with Kathy Leather

A warm welcome to Kenilworth Road to today's match and matchball sponsors



PICTURED above are our match ball sponsors for last Saturday's game against Wolves. Keith Harvey, and his son Richard, also sponsoring today's match ball, are pictured with Luton Town's Commercial Manager Kathy Leather.

THIS afternoon, we welcome joint match sponsors, ANACHEM, FISHER FROZEN FOODS LTD, ELECTROLUX, and SOUTHAMPTON FOOTBALL CLUB'S Sponsors and Executive Club Members.

ANACHEM supply laboratory equipment to UK Biomedical Research and Industrial companies.

Established over 20 years ago, they now employ around 100 staff.

Anachem have supported Luton Town for a number of years, inviting customers from around the country to their regular sponsorship matches. Their last sponsorship was when we entertained Middlesbrough in October.

We also welcome ELECTROLUX, the world's largest domestic appliance manufacturer, and FISHER FROZEN FOODS LTD.

We are also pleased to greet our guests from The Dell, the SOUTHAMPTON FOOTBALL

LUTON Town can cater for everything from business breakfasts, lunches or dinners to birthday/ anniversary celebrations and wedding breakfasts.

We can help to plan events by either clients visiting the club or by making a private visit to the clients own premises.

We have a number of function suites available, from our boardroom, which is an exclusive setting for senior management meetings, to our adjacent suites which can cater for up to 100 or more delegates for conferences and seminars.

Our catering operation, which prides itself on a personal service, can provide quality refreshments to complement any occasion.

CLUB Sponsors and Executive Club Members.

Our matchball sponsor today, is MR KEITH HARVEY and his son RICHARD.

Keith Harvey operates the family haulage company of RW Harvey & Son at Sandy, Bedfordshire, and serves the local building and agricultural industries with mainly 38T vehicles and various types of trailers.

Keith and Richard are both avid supporters of the club.



OUR Club 82 suite was certainly one of the best places to keep dry last Saturday, but the rain didn't dampen the spirits of these guests. To find out how you can entertain at Luton Town Football Club, contact Kathy Leather or John Buttle on (0582) 411622.

Antony's Tailor
OF LONDON

THE MOST ESTABLISHED AND RELIABLE TAILORS IN LUTON

DRESS HIRE
LADIES AND GENTS
BESPOKE TAILORING

12 DUNSTABLE ROAD, LUTON,
BEDS OPPOSITE MAIN POST OFFICE
TEL: (0582) 424687

offer
OFFICE OF ELECTRICITY REGULATION

IS YOUR ELECTRICITY SUPPLIER PLAYING THE GAME?

The Office of Electricity Regulation

- PROTECTS THE INTERESTS OF ELECTRICITY CUSTOMERS
- HELPS AND ADVISES ON DISPUTES WITH EASTERN ELECTRICITY

At home:
4th Floor, Waveney House, Handford Road,
Ipswich, Suffolk IP1 2BJ.
Telephone 01473 216101 Fax 01473 215838

And away:
The phone book or your electricity bill shows your nearest office.

SUPPORT THE HATTERS

But Join The Gunners - and be paid!

Come and see what your local Territorial Army Unit does

Phone (01582) 572032

201 Battery RA (M)
TA Centre
Marsh Road
Leagrave
Luton LU3 2RX.

TEAM STATISTICS 1994-95

Date	Opponents	F-A	Att	Pos	1	2	3	4	5	6	7	8	9	10	11	12	14	GK
Sat Aug 13	WEST BROMWICH ALBION	1-1	8,640	-	Sommer	James	Johnson	(Skelton)	Greene	Peake	Telfer	OAKES	Dixon	Preece	(Houghton)	(Marshall)	(Linton)	Barber
Tue Aug 16	FULHAM CCC 1 (1)	1-1	3,287	-	Sommer	James	Johnson	(Hughes)	Greene	Peake	Telfer	OAKES	Dixon	Preece	(Houghton)	(Marshall)	(Linton)	Barber
Sat Aug 20	Derby County	0-0	13,060	14	Sommer	James	Johnson	Linton	Greene	Peake	Telfer	Marshall	Dixon	Preece	(Houghton)	(Marshall)	(Linton)	Barber
Tue Aug 23	Fulham CCC 1 (2)	1-1	5,134	-	Sommer	James	Johnson	(Linton)	(Greene)	Peake	Telfer	MARSHALL	Dixon	Preece	Hughes	(Oakes)	(Skelton)	Barber
Sat Aug 27	SOUTHEND	2-2	5,918	16	Sommer	(James)	Johnson	Oakes	Greene	Peake	Telfer	(Marshall)	HARTSON	Preece	HUGHES	(Thomas)	(Dixon)	Barber
Tue Aug 30	Tranmere Rovers	2-4	5,480	20	Sommer	James	Johnson	(Skelton)	Greene	Peake	Telfer	Oakes	HARTSON	Preece	HUGHES	(Thomas)	(Dixon)	Barber
Sat Sep 3	Port Vale	1-0	8,541	15	Sommer	(James)	Johnson	Skelton	Greene	Peake	Telfer	MARSHALL	Dixon	(Preece)	Oakes	(Thomas)	(Woodsford)	Barber
Sat Sep 10	BURNLEY	0-1	6,911	18	Sommer	James	Johnson	(Waddock)	(Greene)	Peake	Telfer	Marshall	Hartson	Preece	Oakes	(Thomas)	(Dixon)	Barber
Tue Sep 13	BOLTON WANDERERS	0-3	5,764	20	Sommer	James	Johnson	Waddock	(Thomas)	Peake	Telfer	Oakes	Dixon	Preece	(Hartson)	(Linton)	(Marshall)	Barber
Sat Sep 17	Watford	4-2	8,880	16	Sommer	James	Johnson	Waddock	Thomas	Peake	TELFER 2	OAKES	DIXON	Preece	Marshall	Hartson	Linton	Barber
Sat Sep 24	Millwall	0-0	7,150	16	Sommer	James	Johnson	Waddock	Thomas	Peake	Telfer	Oakes	(Dixon)	Preece	Marshall	(Hartson)	Skelton	Barber
Sat Oct 1	BRISTOL CITY	0-1	6,633	20	Sommer	James	Johnson	Waddock	(Thomas)	Peake	Telfer	Oakes	(Dixon)	Preece	Marshall	(Hartson)	(Hughes)	Barber
Sun Oct 9	Stoke City	2-1	11,712	18	Sommer	James	Johnson	Waddock	Thomas	Peake	Telfer	Hughes	Hartson	(PREECE)	MARSHALL	(Oakes)	Williams	Barber
Sat Oct 15	MIDDLESBROUGH	5-1	8,412	11	Sommer	James	Johnson	Waddock	Thomas	Peake	Telfer	Hughes	HARTSON	(PREECE)	MARSHALL 2	(Oakes)	Dixon	Barber
Sat Oct 22	Sheffield United	3-1	13,317	7	Sommer	JAMES	Johnson	Waddock	Thomas	Peake	Telfer	Hughes	DIXON	(Preece)	Marshall	(Oakes)	Thorpe	Barber
Sat Oct 29	BARNLEY	0-1	7,212	10	Sommer	James	Johnson	(Waddock)	Thomas	Peake	Telfer	Hughes	Hartson	Preece	(Marshall)	(Oakes)	(Dixon)	Barber
Tue Nov 1	GRIMSBY TOWN	1-2	5,839	13	Sommer	James	Johnson	Waddock	Thomas	Peake	Telfer	(Hughes)	Hartson	Preece	Marshall	(OAKES)	Dixon	Barber
Sat Nov 5	Wolverhampton Wanderers	3-2	26,749	8	Sommer	James	Johnson	Waddock	Thomas	Peake	Telfer	Oakes	(DIXON)	PREECE	MARSHALL	(Hartson)	Thorpe	Barber
Sat Nov 12	Oldham Athletic	0-0	7,907	8	Sommer	James	Johnson	Waddock	Thomas	Peake	Telfer	Oakes	Dixon	Preece	(Marshall)	(Hartson)	Thorpe	Barber
Sat Nov 19	PORTSMOUTH	2-0	8,214	8	Sommer	James	Johnson	Waddock	Thomas	Peake	Telfer	Oakes	DIXON	PREECE	(Marshall)	(Thorpe)	Hartson	Barber
Sat Nov 26	Swindon Town	2-1	9,455	5	Sommer	James	Johnson	Waddock	Thomas	Peake	Telfer	OAKES	(DIXON)	Preece	Linton	Woodsford	(Hartson)	Barber
Sat Dec 3	SHEFFIELD UNITED	3-6	8,516	8	Sommer	James	JOHNSON	Waddock	Thomas	Peake	Telfer	Oakes	Dixon	(Preece)	(Linton)	(HARTSON)	(Marshall)	Barber
Sun Dec 11	DERBY COUNTY	0-0	6,400	9	Sommer	James	Johnson	Waddock	Thomas	Peake	Telfer	Oakes	(DIXON)	Preece	(Allen)	(Hartson)	(Marshall)	Barber
Sun Dec 18	West Bromwich Albion	0-1	14,392	12	Sommer	(James)	Johnson	Allen	Thomas	Peake	Telfer	Oakes	Dixon	Preece	Marshall	(Hartson)	Skelton	Barber
Mon Dec 26	Reading	0-0	11,623	12	Sommer	James	Johnson	Waddock	Thomas	Peake	Telfer	(Allen)	(Dixon)	Preece	Marshall	(Hartson)	(Oakes)	Davis
Tue Dec 27	SUNDERLAND	3-0	8,953	9	Sommer	James	Johnson	Waddock	Thomas	Peake	Telfer	OAKES 2	HARTSON	(Preece)	(Marshall)	(Skelton)	(Williams)	Davis
Sat Dec 31	Notts County	1-0	6,249	8	Sommer	James	Johnson	Waddock	Thomas	Peake	TELFER	Oakes	Hartson	Preece	(Marshall)	Skelton	(Adcock)	Davis
Mon Jan 2	CHARLTON ATHLETIC	0-1	7,642	8	Sommer	(James)	Johnson	Waddock	Thomas	Peake	Telfer	Oakes	Hartson	Allen	Marshall	Skelton	(Adcock)	Davis
Sat Jan 7	BRISTOL ROVERS FAC 3	1-1	7,571	-	Sommer	James	Johnson	Waddock	Thomas	Peake	Telfer	Oakes	HARTSON	Preece	(Marshall)	Williams	(Adcock)	Davis
Sat Jan 14	Barnsley	1-3	4,808	11	Sommer	James	Johnson	Waddock	Thomas	Peake	Telfer	Oakes	DIXON	(Harvey)	Marshall	(Skelton)	Woodsford	Davis
Wed Jan 18	Bristol Rovers FA3	1-0	8,213	-	Sommer	Oakes	Johnson	Waddock	Thomas	Peake	Telfer	Chenery	Dixon	Preece	MARSHALL	Skelton	Woodsford	Davis
Sat Jan 28	SOUTHAMPTON FAC 4																	
Sat Feb 4	OLDHAM ATHLETIC																	
Sat Feb 11	Grimsby Town																	
Sat Feb 18	SWINDON TOWN (FAC5)																	
Tue Feb 21	Portsmouth																	
Sat Feb 25	Bristol City																	
Sat Mar 4	MILLWALL																	
Tue Mar 7	PORT VALE																	
Sat Mar 11	Southend United (FAC6)																	
Sat Mar 18	TRANMERE ROVERS																	
Tue Mar 21	Burnley																	
Sat Mar 25	WATFORD																	
Sat Apr 1	Bolton Wanderers																	
Sun Apr 2	CCC Final																	
Sat Apr 8	NOTTS COUNTY (FAC S/F)																	
Sat Apr 15	Sunderland																	
Mon Apr 17	READING																	
Sat Apr 22	Charlton Athletic																	
Sat Apr 29	Middlesbrough																	
Sat May 6	STOKE CITY																	
Sat May 20	FAC Final																	
TBA	WOLVERHAMPTON W																	

CCC = Coca-Cola Cup
FAC = FA Cup



The FA Cup Fourth Round draw in full....

- Burnley v Liverpool
- Coventry City v Norwich City
- Leeds United v Oldham Athletic
- Luton Town v Southampton
- Manchester City v Aston Villa
- Manchester United v Wrexham
- Millwall v Chelsea
- Newcastle United v Swansea City
- Nottingham Forest v Crystal Palace
- Portsmouth v Leicester City
- QPR v West Ham United
- Watford v Swindon Town
- Bristol City v Everton (Sun)
- Tranmere Rovers v Wimbledon (Sun)
- Sunderland v Tottenham Hotspur (Sun)
- Sheffield Wed v Wolverhampton W (Mon)

LUTON TOWN 1994/95

PLAYER (figure in bracket = sub app.)	LEAGUE APPS	LEAGUE GOALS	CUP APPS	CUP GOALS
Juergen SOMMER	27	-	4	-
Julian JAMES	27	1	3	-
Marvin JOHNSON	27	1	4	-
Aaron SKELTON	3 (2)	-	(1)	-
David GREENE	6	-	2	-
Trevor PEAKE	27	-	4	-
Paul TELFER	27	3	4	-
Scott OAKES	20 (6)	6	3 (1)	1
Kerry DIXON	17 (2)	6	3	-
David PREECE	25	4	4	-
Scott HOUGHTON	1	-	1	-
Dwight MARSHALL	21 (5)	5	3 (1)	2
Des LINTON	3 (2)	-	1 (1)	-
Ceri HUGHES	8 (1)	2	2	-
Mitchell THOMAS	21 (2)	-	2	-
John HARTSON	11 (9)	5	1	1
Gary WADDOCK	(2)	-	2	-
Jamie WOODSFORD	(1)	-	-	-
Tony THORPE	(1)	-	-	-
Paul ALLEN	4	-	-	-
Martin WILLIAMS	(1)	-	-	-
Tony ADCOCK	(2)	-	(1)	-
Richard HARVEY	1	-	-	-
Ben CHENERY	-	-	1	-
Own goal		3		

ENDSLEIGH LEAGUE DIVISION ONE

	P	W	D	L	F	A	PTS
Middlesbro	27	14	7	6	41	25	49
Wolves	27	14	5	8	49	34	47
Bolton W	28	13	8	7	44	30	47
Tranmere R	28	13	7	8	43	31	46
Reading	28	12	8	8	33	27	44
Sheff Utd	28	11	9	8	44	31	42
Barnsley	26	12	5	9	32	31	41
Derby C	27	10	9	8	33	27	39
Grimsby T	27	9	11	7	40	37	38
Oldham Ath	28	10	8	10	38	36	38
Watford	27	9	11	7	28	28	38
LUTON T	27	10	7	10	36	34	37
Millwall	27	9	10	8	34	32	37
Stoke City	26	9	8	9	28	31	35
Southend U	27	10	5	12	28	46	35
West Brom	27	9	7	11	25	33	34
Charlton A	27	8	9	10	41	45	33
Sunderland	27	6	13	8	27	27	31
Portsmouth	28	7	9	12	28	41	30
Swindon T	26	7	8	11	34	42	29
Port Vale	25	7	7	11	30	34	28
Burnley	25	6	9	10	27	36	27
Bristol C	28	7	6	15	22	37	27
Notts County	27	6	6	15	27	37	24

(Table up to and including Sunday, January 22).
Playing today: Bolton v Sheff Utd, Middlesbro v Barnsley



Matchday music is supplied by HMV Stores, 98 Arndale Centre (Tel: 35290) and 73 The Mall (Tel: 21368), Luton.



TODAY'S OFFICIALS

Today's referee is
GERALD ASHBY from
Worcester.

Mr Ashby, a Finance Manager,
was appointed to the FIFA list in
1992, and refereed the 1993 FA
Charity Shield.



RF Jeavons



BD Priest

IF IT'S A DRAW THIS AFTERNOON

If this afternoon's match is drawn,
the replay will be at The Dell, on

Wednesday, February 8,
kick-off 7.30pm.

Ticket details for Luton supporters
can be found on page 8.

The draw for the Fifth Round will
take place at approximately 4.50pm
tomorrow, on BBC1's Match of the
Day, and on Radio Five, following
Sunderland v Tottenham.

TEAM CHECK

LUTON TOWN

Manager: David Pleat

- 1 Juergen SOMMER
- 2 Ben CHENERY
- 3 Marvin JOHNSON
- 4 Gary WADDOCK
- 5 Mitchell THOMAS
- 6 Trevor PEAKE
- 7 Paul TELFER
- 8 Scott OAKES
- 9 Kerry DIXON
- 10 David PREECE
- 11 Dwight MARSHALL
- 12
- 14
- GK

SOUTHAMPTON

Manager: Alan Ball

- 1 Bruce GROBBELAAR
- 2 Jeff KENNA
- 3 Francis BENALI
- 4 Jim MAGILTON
- 5 Richard HALL
- 6 Ken MONKOU
- 7 Matthew LE TISSIER
- 9 Neil SHIPPERLEY
- 10 Neil MADDISON
- 15 Jason DODD
- 21 Tommy WIDDRINGTON



Plowmans
of
Luton

AND
LUTON
TOWN

—
THE
PERFECT
MATCH

You'll do a great deal better with us!

Open 7 Days

Vauxhall Main Dealers, 15 Hitchin Road, Luton.

Tel: 454666