

WIN A VIP DAY OUT WITH THE DAILY STAR
INSIDE!
SEE PAGE 41



CLUB PATRON



SPONSORS OF THE NEW KOP
BREW XI
BEST BITTER

TILTON ROAD STAND SPONSOR



MATCH SPONSOR

Hockley
Pattern & Tool Co Ltd



CLUB SPONSOR

Auto
Windscreens

versus

LUTON TOWN
Endsleigh League
Division One
Saturday

13th April 1996
Kick Off 3.00pm

B I R M I N G H A M



C I T Y Football Club



BIRMINGHAM CITY FOOTBALL CLUB

Presidents:

**David Sullivan
Ralph Gold
David Gold**

Chairman:

Jack Wiseman

Managing Director:

Karren Brady

Directors:

**Alan Jones
Henri Brandman
Bradley Gold**

Company Secretary:

Alan Jones

Commercial Director:

Allan Robson

Manager:

Barry Fry

Assistant Manager:

Edwin Stein

First Team Coach:

Mark Ward

Reserve Team Coach:

David Howell

Chief Scout:

Lil Fuccillo

Youth Development Officer:

Mick Murray

Youth Team Manager:

Kevan Broadhurst

Physiotherapist:

Neil McDairmid

Medical Officers:

Dr D N Watson

Dr J S Sanghera

**BIRMINGHAM CITY FOOTBALL CLUB
ST. ANDREWS GROUND
BIRMINGHAM B9 4NH
Tel: 0121 772 0101
(All Departments)
Fax: 0121 766 7866**

INSIDE

ST. ANDREWS

with Ben Hallam



Autobahn PORSCHE MAN OF THE MATCH



Paul Barnes was voted Man of the Match for the game against Port Vale after a fine performance which was capped with a goal. Barnes is pictured here receiving his award from matchsponsor Robert Osbourne of the Daily Star.

BLUES IN LONDON MARATHON

Whilst many of you are sitting comfortably at home watching the London Marathon this year keep your eyes and ears open for the name Andy Wilton. Andy will be taking part and representing Birmingham City Football Club in the Football Challenge. A Blues supporter living in Buxton, Derbyshire, Andy has been sponsored by the Club and aims to finish in the first 50 of the 39,000 entrants with a time of under 2hrs 20mins. "The last time I ran the London Marathon

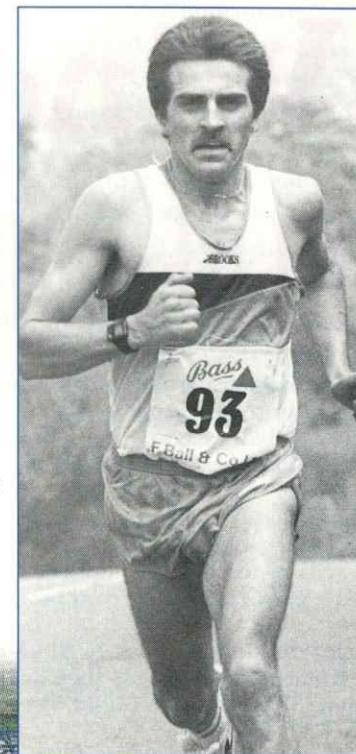
was three years ago when I finished 75th in 2hrs 27mins and I have been preparing for this race for the last three months", explains Andy. "Then one evening my coach Bud Baldaro rang me and said Allan Robson, Blues Commercial Director had been in touch and had offered to sponsor me if I would run in Blues' colours. Well, I have been a Blues supporter all my life and jumped at the chance. Now I've got something else to run for which will make the day even more special and my time even more important".

Andy, who like most runners started his athletics career in school cross country races has been a member of Tipton Harriers for 12 years and has represented England in cross country, fell running and road running competitions all over Europe. In 1994 he finished 20th in the World Fell Running Championships in Germany.

"This year the organisers have introduced a race within a race and invited football clubs to enter a representative", explains Blues Commercial Director, Allan Robson. "All the football club runners will wear a microchip in their shoelace which will activate a timekeeping system whenever they pass a specific point in the race and that way it will be easy

to keep a track on the runners and their times. In Andy Blues do have a real chance. Although anything can always go wrong in a gruelling race like a marathon expert opinion suggests that the football challenge will be won either by Andy who hopes to finish in the first 50 on the day or by the Liverpool FC runner who could possibly finish in the top 10!"

Andy works as a maintenance fitter in a stone quarry and his marathon preparation has been to run between 85-100 miles a week before and after his working day for the last three months - still, as a Blues supporter he knows it will be a long, long road and we can be assured he will "keep right on..... Good Luck Andy!"



Barry Fry - Manager

HELP US TO FIND

Auto

Windscreens

BLUES NO. 1 SUPPORTER

As Birmingham City's number one supporter (and many of our staff are loyal fans too) Autowindscreens recognise the importance of having one of the biggest and best supporter groups in the Football League. In celebration of our first season with the club, therefore, we have decided to find Blues' best, most dedicated supporter.

Are you that No.1 fan or do you know, who is? Season Ticket Holders, True Blue Members, fans who travel away to support Barry and the team, stewards or matchday volunteers, peoples with long journeys to get to home matches - all of these may be good reasons for you to win this coveted award.

If you think that support to Blues is as good as anyone else's or you know someone who deserves this tremendous accolade then drop us a line with the reason why to: BCFC Supporter of the Season, St. Andrews Ground, Birmingham B9 4NH.

The Blues Supporter of the Year will be chosen by a panel consisting of Richard Ames (Autowindscreens Deputy Managing Director), Graham Frisby (Autowindscreens Sponsorship Manager), Barry Fry and Blues' Commercial Director, Allan Robson.

The winner will receive:

- * A 1996/97 Season Ticket of their choice
- * A luxury VIP day out for 2 in AutoWindscreens' private Suite at a 1996/97 home match.
- * You will feature in an edition of the Club's matchday magazine
- * The gift of your choice from the Club Shop

You will be presented with your prize at the Club's Awards Evening on 2nd May 1996.

FROM BLUES' No.1 SUPPORTER

Auto

Windscreens

A big welcome to David Kohler, the Luton Chairman, directors, players, officials and supporters of Luton Town and especially their manager Lennie Lawrence and his assistant Wayne Turner. Lennie has got to work a miracle to keep Luton in the first division. However, I am sure that if anyone can do it then Lennie can having already performed wonders in keeping Charlton in the league during his nine seasons at The Valley. He then went onto build a very good side at

Middlesborough and despite leaving the club, his players helped them gain Premiership status. His good work at Bradford has also come to fruition with them now looking to finish in a play off position this season. When he joined Luton they put together a tremendous run that took them out of the bottom three but unfortunately since then, due to a horrific injury list, they have dropped back down to the bottom. We all know that when you are at the bottom luck does not follow you.

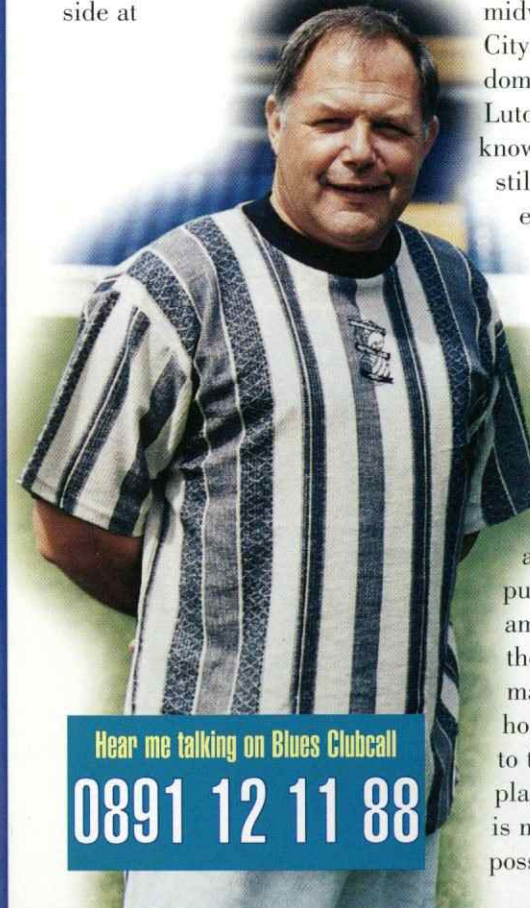
This was apparent in midweek against Stoke City when despite dominating the game Luton lost out. However, knowing Lennie, he will still be confident of escaping relegation and he will be looking for the three points today. His assistant, Wayne Turner, who was at Barnet with me as a player and a coach, will also be desperate to put one over on me. I am determined to gain the three points that may rekindle our slim hopes of gaining entry to the first division play-offs. As long as it is mathematically possible for us to do so

then we must all pull together to achieve this aim.

After two recent wins at home against Portsmouth and Port Vale when we played some very impressive football. It was so disappointing to go to the New Den in midweek and offer little or no resistance to Millwall. They ran out worthy 2-0 winners on the night and thoroughly deserved the victory. The same players who impressed me so much against Port Vale disappointed me immensely in this horror show at Millwall.

I felt that 'The Lions' were there for the taking but no team could have carried the amount of players that we did during this game. Let's hope that it was a one off and the lads will bounce straight back to winning ways today. It will be a very difficult game but I am sure an entertaining one as both sides try to play football. Lets get behind the lads and roar them onto victory.

Keep Right On
Barry Fry

Hear me talking on Blues Clubcall

0891 12 11 88

BLUES CLUBCALL

Where you can hear

David Sullivan • Barry Fry • Karren Brady
John Frain • Jonathan Hunt
and much, much, more.....**ONLY ON 0891 12 11 88**This week and every week catch up with all the latest news and views from St.Andrew's on Birmingham City Clubcall 0891 12 11 88
The Official Voice of Birmingham City**BREW XI
BEST BITTER**The **BLUES** are delighted to be in partnership with **BREW XI Best Bitter** sponsors of the excellent **BREW XI KOP****WACKY FACTFILE****PAUL JOHN DEVLIN**Full Name:
Paul John DevlinBirthdate / Place:
14.4.72 BhamCurrent Residence:
BirminghamNickname:
'Dev'In the summer I enjoy:
Going on holidayI stay home to watch:
Any SportFavourite holiday spot:
ScotlandI spend my money foolishly on:
Going OutThere's no one in the world I admire more than:
The PopeIf I could change one thing about myself I'd:
kick harder with my left foot.If I won the lottery I'd buy:
A big houseMy football fantasy is to:
to play for Celtic in a European Cup FinalFavourite Ground:
Celtic ParkIf I had to pay to watch a sportsman it would be:
Mike TysonWhen I'm 64 I see myself:
happyI'm better than anyone at Blues when it comes to:
taking penaltiesI recommend reading:
The SunWhen I want a good meal I particularly like:
Indian and ChineseIf I could pick one person to build a team around it would be:
RomarioIf I could pick any club to manage it would be:
CelticBest moment of my career:
Playing in the Anglo Italian Cup final at Wembley for Notts County.When I was young I supported:
CelticFunniest thing in football:
My big mate Michael Johnson!If I could date any women it would be:
Demi Moore**CARTOONS
by WAYNE**AS SEEN IN THE BIRMINGHAM CITY F.C.
MATCHDAY PROGRAMME**IT'S
PAY-BACK
TIME!!**

We all know someone, whether at work, at home or down the local pub, who takes great pleasure in playing practical jokes on people. Sometimes humorous, sometimes cruel, and sometimes downright annoying!

WELL NOW IT'S TIME TO GET YOUR REVENGE!

By forwarding a decent-sized photograph (preferably colour) of your intended 'victim', I can produce a full-colour cartoon with your victim doing anything you require!

FOR FURTHER INFORMATION and PRICE GUIDE, PLEASE SEND A S.A.E. TO:
WAYNE PRICE,
50 Brickfields Road, Worcester WR4 9TW



*Main photo: Barnsey rises high to score, 1-0, Birmingham take the lead
Top Left: There is no way through for Cornforth
Bottom Left: Up we go!
Bottom Right: Peschisolido makes it 2-0 and celebrates*



**BIRMINGHAM CITY 3
PORT VALE 1**

Endsleigh League Division One
Saturday 6th April 1996
Kick Off 3.00pm
Attendance: 17,469
Scorers: Barnes, Peschisolido, Tait

Blues kept alive their play-off hopes with a convincing 3-1 demolition of form team Port Vale. The Blues attack looked dangerous and goals could have come from anywhere. Paul Peschisolido scored a real beauty and hopefully there are more to come from the Canadian favourite. Paul Barnes again showed his prowess with a well taken header and Birmingham's favourite son, Paul Tait, rounded off proceedings the goal that sealed three points for Blues.

FLASHBACK

versus PORT VALE

LEEDS
SERVING THE PROFESSIONALS

Excellence for the Professional Image Maker

Photographic equipment & consumables
Digital imaging
AV and presentation equipment
Equipment hire
After sales
Installation, advice and service

Official Club Photographers
Birmingham City F.C.

LONDON Tel: 0171-433 1861 Fax: 0171-433 1578
NEWPORT Tel: 01483 27848 Fax: 01483 27828
BIRMINGHAM Tel: 0121-267 2728 Fax: 0121-267 1862
MANCHESTER Tel: 0161-274 4865 Fax: 0161-274 3488
LEEDS Tel: 01132 486013 Fax: 01132 451268
GLASGOW OFFICE Tel: 0141-353 1222
NEWCASTLE OFFICE Tel: 0191-221 6300

ALL ROUND QUALITY SERVICE



NEW CAR



USED CAR



SERVICE



PARTS



24 hours
BREAKDOWN



BODYSHOP



FINANCE



FLEET



LIGHT COMMERCIALS



MOTABILITY

Bristol Street

Open: Mon-Fri 8.80am-7.00pm. Sat 9.00am-6.00pm. Sun 11.00am-5.00pm

BRISTOL STREET
BIRMINGHAM
0121 666 6000

MACKADOWN LANE
GARRETS GREEN
0121 789 7666

STRATFORD ROAD
SHIRLEY, SOLIHULL
0121 733 3333

A BSG INTERNATIONAL COMPANY

TERRACE TALK

What a difference a couple of results make. If nerves were becoming slightly frayed prior to the Portsmouth game, then the two home victories in the space of five days, have left us wondering what might have been. The Pompey game was certainly no classic and in truth the result hid many deficiencies in our play. However, the players couldn't be faulted for their hard working display and how many times have we played well and lost this season. The Port Vale game was totally different. An excellent all round team performance which saw us play some flowing football at times. Solid at the back, inventive in midfield and skillful and full of running up front. What a pleasure to see the game played on the deck and how refreshing to come away full of optimism. It's probably unfair to pick out individuals in a fine team performance, but in the two games Paul Tait has looked the player we all know he can be. The impressive Martin Grainger has the ability and attitude to become a real favourite with the fans and his tough, no-nonsense tackling makes him a worthy successor to the likes of Mark Dennis, Pat van den Hauwe and Julian Dicks! Up front Paul Barnes looks the natural goalscorer we've been crying out for and his partnership with Paul Devlin and Pesch promises much for the future whatever happens for the rest of this season, we now have the nucleus for a successful team and with the right addition of three or four quality players in the summer, the future looks assured. There are bound to be a number of 'comings and goings' in the close season but this time, those released should far exceed our new signings.

On a personal note may I thank everyone for their positive response to my recent articles, particularly those concerning the Steve Claridge saga and the cut price admission to the Sunderland game. I'm sure everyone is delighted that the club has announced a price freeze on season ticket prices for existing season ticket holders next season. The decision to scrap the Travel Club has been welcomed by all and though somewhat belatedly the club has undoubtedly made the correct decision.

Finally on a lighter note, to those who have enquired about the advert which has appeared at the bottom of my column for the last ten games, you know as much as I do. Perhaps the club is keeping me on my toes!

Ivor Crigman
BIRMINGHAM CITY
HISTORICAL & COLLECTORS SOCIETY

Do you have a view from the Terrace. If so send your article to :
Ben Hallam, Blues Matchday Magazine,
St. Andrews Ground, Birmingham B9 4NH.

HAVE YOU WON £1000 TAX FREE ON THE BLUENOSE MATCHDAY BONANZA



FIND OUT AT HALF TIME WITH THE PITCHSIDE DRAW
BUY YOUR BONANZA TICKET TONIGHT FROM ONE OF OUR SELLERS SITUATED IN THE
TURNSTILE AREAS OR IN THE STANDS. IT WILL COST YOU ONLY £1 AND YOU COULD WIN

£1000 TAX FREE MIDLAND AUTO TRADER BLUENOSE MATCHDAY BONANZA £1000 WINNERS

The winning ticket drawn at the
PORT VALE
game was number 107935 which was
claimed by Amanda Jones from Nechells
who receives a cheque for **£1000**

ST. ANDREWS NEWS DESK



■ Massive Sale Now on

The Club Shops currently have on a massive sale. Many products are reduced including home shirts down to £16.50 from £34.99 away shirts now only £12 and further reductions on tracksuits, drill tops, rain jackets and sponsors t-

shirts. There are many more fantastic offers at 1/2 original price or less and season ticket holders can gain an additional 10% off sale prices upon production of their season ticket book!

Make sure you visit the club shops today, situated at Cattell Road, St. Andrews and Dale End, City Centre. Open Monday to Saturday 9am-5.30pm.

■ Reading Game Switch

The last home game of the season against Reading on Saturday May 4th, kick off 3pm, could be switched to Sunday May 5th if the game bears a significance on the promotion or relegation issues in Division One. As

soon as we hear from the League on this we will put it straight onto the Blues Ticket Line - 0891 33 29 88.

■ Beau Brummie Trip

Our last Beau Brummie trip of the season is to Derby County on Saturday 20th April. The cost for juniors is £10.50 and for adults £16.50 this is inclusive of coach travel and match ticket. For the juniors this also includes a game of 5-a-side football against Derby Juniors. To book your place please call Lyn Tivinan on 0121 686 1431 or Wendy Lowe on 0121 475 3173.

■ Back Issue Programmes

If you are missing any programmes from this season then visit the Kop Shop on a matchday where a stock of both homes and aways are now on sale. Alternatively please write to : Club Shop, St. Andrews Ground, Bham B9 4NH with a list of required programmes and the correct remittance (£1.50 per programme) and we will send them out to you.



BLUENOSE IN THE CROWD

Are You This Lucky Bluenose ?

If you are then you have won a case of the midlands best selling Bitter Brew XI. To claim your prize please call Ben Hallam on 0121 772 0101 ext 1236. As part of their continued support for Birmingham City, Brew XI will be giving away prizes to lucky Bluenoses until the end of the season. So watch this space - **IT COULD BE YOU !!!**

BREW XI
BEST BITTER

John Frain

Our performance against Port Vale was probably one of the best for a long time. I felt that we played some excellent stuff and considering Port Vale came to St. Andrews in such fine form just shows what a great result it was. We played some good flowing football and every player looked capable of scoring. On the scoring front it was good to see Paul Barnes bang another one in and also his partner Pesch get off the mark. This was a big relief for Paul and hopefully with the pressure off he can repeat his form before he left for Stoke. After the game the lads were looking forward to the trip to the New Den and confident of coming away with a result.

However, it wasn't to be and the most disappointing aspect of the evening was that we played so badly. We looked a completely different side to the one that did so well against Port Vale and this has been the story of our season - inconsistency. There was a lot of talk



after the game that all the hype may have affected the players but I don't think that was the case. As a professional footballer you learn to cope with many different pressures and although Millwall is never the most pleasant place to go to this cannot be used as an excuse. The fact of the matter is we did not play well and got punished for it.



Although Luton lost to Stoke in mid-week reports suggest that they were very unlucky and should have won the game. They are desperate for points in order to get out of the relegation mire and this will make today's game even more difficult. In new signing Kim Grant, they have a man who can provide the goals and we will be watching him closely

today. We will have to match them for passion and commitment and try to re-capture the good habits picked up against Port Vale.

Get behind the lads today

KEEP RIGHT ON JOHN FRAIN

"We looked a completely different side to the one that did so well against Port Vale and this has been the story of our season..."

Welcome to Our Visitors



It has not been a good season for the Hatters and they have struggled at the bottom of the table for much of the campaign. They are currently five points off a safe spot and the acquisition of Kim Grant just before deadline may fire them to safety. It will be a tall order but with the division as it is who knows what might happen? The Hatters predicament will make today's game extremely tough for Blues as they must get three points.

Ian Feuer (Goalkeeper)
Ian signed for the Hatters from West Ham in 1995 for a fee of £500,000. The 6ft 7ins American joined West Ham from Los Angeles Salsa after being spotted playing in Belgium. Has been an everpresent in the Luton side this season.



Midfielder David Oldfield

Mitchell Thomas (Full Back)
Former England U21 international who made over 100 appearances for Luton before moving to Spurs. Re-joined Luton on a free transfer in 1993/94 season after a spell at West Ham.

Graham Alexander (Full-back)
Joined the Hatters in July 1995 from Scunthorpe United for £100,000 after being watched closely by the Luton backroom for two years. A versatile player who can play at full back or right side midfield.

Marvin Johnson (Central Defender)
Has made over 150 appearances for Luton and can play at Left Back or Centre Half. Formed a reliable partnership with Trevor Peake last season and was one of only three players to play in every first team match. He was awarded the players player of the year trophy.

Darren Patterson (Central Defender)
Darren signed for the Hatters in August 1995 from Crystal Palace for £150,000. Northern Ireland International who has also had a spell at Bury. Made his first Luton appearance in the Anglo-Italian Cup defeat in Cesena last November.

Scott Oakes (Midfield)
Can play in either a central position or out wide. Signed from Leicester in 1991 in a player

The Hatters



LUTON TOWN 1995-1996

exchange deal. His performances for the Hatters in the 1994 FA Cup run attracted much attention from Premiership clubs but he has since signed a new contract with the Town. Is an England U21 International.

Tony Thorpe (Midfield)
Tony made an immediate impact in the Town side when he scored for the Hatters on his full debut at Newcastle United in the 4th Round of the FA Cup in January 1994. Scored Luton's winning goal at Southend in August 1995 - the

Hatters' first win of the season, and their first under Terry Westley.

Gary Waddock (Midfield)
Gary completed a free transfer move from Bristol Rovers in December 1994, after a three month loan spell at Kenilworth Road. Much travelled player who has enjoyed spells at QPR, Charleroi, Millwall and Swindon.

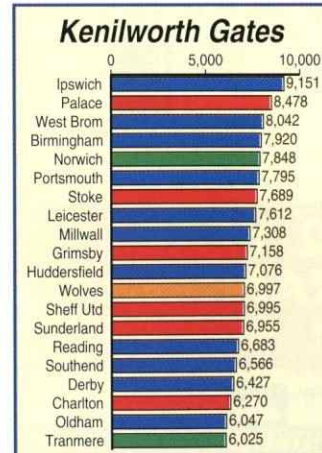
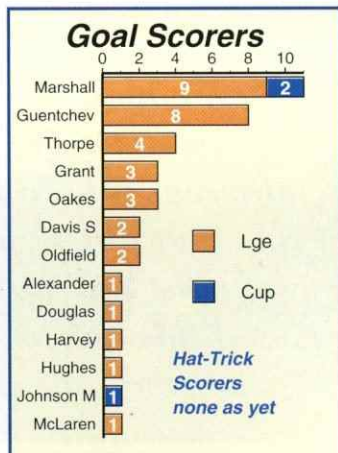
David Oldfield (Midfielder)
David returned to Kenilworth Road in the summer of 1995, six years after leaving Luton Town. Australian born Oldfield, who played for England U21's, joined Manchester City for £600,000 in March 1989, before moving onto Leicester City and then back to Luton for £150,000.

Bontcho Guentchev (Striker)
Bulgarian International who signed for Luton after being released by Ipswich in July of last year. Played in the 1994 World Cup Finals when Bulgaria reached the semi-finals.

Kim Grant (Striker)
After a rocky start to his Charlton career due to niggling injuries Kim Grant had this season established himself in their starting line-up before moving to Luton on deadline day for £250,000. Has a prolific scoring record in reserve team football and has already started to show this in the first team at Luton after scoring three goals in four appearances.



Striker... Kim Grant



Finance available, subject to status

FIRST TIME EVER SALE PRICES

PLUS!
0% INTEREST FREE CREDIT
AND NOTHING TO PAY UNTIL '96



Yes it's the upholstery sale that beats them all! Interest Free Credit, Pay Nothing until '96 AND YOU BUY AT SALE PRICES. So make your way to the Suite Factory for a suite that suits. There's a fantastic range of suites on display, all hand built by our own craftsmen. If you can't see one that's right for you we'll build a suite exactly to your requirements. All our furniture is made at our own on-site factory so quality is guaranteed.



FULL RANGE OF LEATHER SUITES

OPENING TIMES	
FRIDAY	10am-6pm
SATURDAY	10am-6pm
SUNDAY	10am-6pm
MONDAY	10am-6pm
TUESDAY	10am-8pm
WEDNESDAY	10am-6pm
THURSDAY	10am-8pm

HOW TO FIND US
A to Z Ref: 2G Page 91
Please follow this sign!
We are located on Birmingham Truck Stop (Lorry Park) Estate From A45 Coventry Road, Swan, Yardley and A41 Warwick Road, Acoccks Green to Colliers Garage.

FULL 2 YEAR GUARANTEE ON ALL SUITES

Wharfedale Road, Tyseley, Birmingham.
Tel: 0121 765 4504



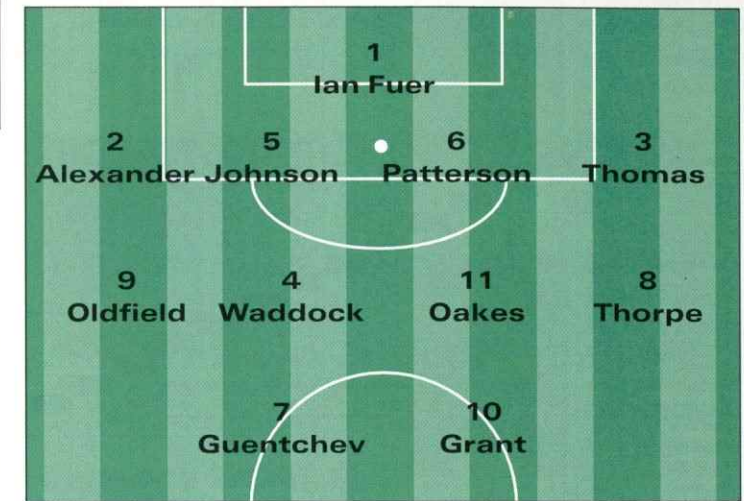
ON THE FIELD

Meet the Manager



Lennie Lawrence was appointed manager of Luton Town in December 1995, following the departure of Terry Westley. Became manager of Charlton Athletic in 1982 after spells at Lincoln and Plymouth. Went onto enjoy nine years with the 'Addicks' making him at the time the third longest serving manager in the league behind Brian Clough at Forest and Joe Royle at Oldham. Took Charlton into the top flight during the 1985/86 season after an absence of 29 years. Left Charlton in 1991 and had spells at Middlesbrough and Bradford before becoming Luton's 21st manager in November of last year.

HOW LUTON TOWN SHOULD LINE UP



DID YOU KNOW?

Did you know that Luton Town played in the last FA Cup semi-final to take place at St. Andrew's. The match in question was the replay of their tie against Norwich City in 1959. In those days Luton were a Division I team whilst Norwich were in Division III. The first tie was due to be played at Stamford Bridge but Norwich complained that the Hatters would have an unfair advantage, having recently played there in a League game. The FA upheld the protest and the match was moved to White Hart Lane. It's fair to say that no-one really gave Norwich a chance but the match finished at 1-1. Allan Brown headed Luton into the lead in the first half but former Blues man Bobby Brennan equalised in the second half. Luton had far the better of play but failed to take advantage and so the game petered

out into a draw. The replay took place at St. Andrew's on March 18th, 1959 in front of 49,500 fans. Luton again had the best of the first half but the game remained goalless at the interval. Ten minutes into the second half Luton scored the goal that clinched the tie. Inside forward George Cummins ployed the ball out to Brown who laid the ball on to Bob Morton. Morton flicked the ball onto Billy Bingham and the Irishman hammered a right foot shot into the roof of the net. Luton captain Syd Owen was a former Blues man and he later said that it gave him a special pleasure to earn a Wembley appearance at the ground where he had begun his career. Luton went on to lose the final to Nottingham Forest 2-1. Forest's first goal that day was scored by Roy Dwight, whose nephew Reg later

became chairman of Luton's local rivals Watford. Reg is, of course, better known as Elton John. Unusually, the first FA Cup tie ever played at St. Andrew's was also a semi-final. After the ground opened in 1906 the Blues were knocked out in a first round tie at Liverpool but the FA were so impressed by the new ground that the Sheffield Wednesday-Woolwich Arsenal tie was played here. Wednesday won the tie in front of 36,000 fans but they had more luck than Luton in the final, beating Everton 2-1.

Roger Baker

BIRMINGHAM CITY HISTORICAL & COLLECTORS SOCIETY

DIVISION ONE UPDATE

95/96 Division 1 stats

All the Results and Fixtures in Division 1

	Barnsley	Birmingham	Charlton	Palace	Derby	Grimsby	Huddersfield	Ipswich	Leicester	Luton	Millwall	Norwich	Oldham	Portsmouth	Port Vale	Reading	Sheff Utd	Southend	Stoke	Sunderland	Tranmere	Watford	West Brom	Wolves
Barnsley	0-0	0-5	1-2	1-1	2-0	4.5	3-0	3-3	2-2	1-0	3-1	2-2	2-1	0-0	1-1	13.4	2-2	1-1	3-1	0-1	2-1	2-1	30.4	1-0
Birmingham	0-0	3-4	0-0	1-4	3-1	2-0	3-1	2-2	13.4	2-2	3-1	0-0	2-0	3-1	4.5	0-1	2-0	1-1	0-2	1-0	1-0	1-1	2-0	2-0
Charlton	1-1	3-1	0-0	13.4	0-1	2-1	0-2	0-1	1-1	2-0	1-1	1-1	2-1	2-2	2-1	1-1	0-3	2-1	1-1	30.4	2-1	4-1	4.5	3-2
Palace	4-3	3-2	1-1	0-0	5-0	0-0	1-1	0-1	2-0	1-2	4.5	2-2	0-0	2-2	0-2	0-0	13.4	1-1	0-1	2-1	4-0	1-0	3-2	4-1
Derby	4-1	20.4	2-0	27.4	1-1	3-2	1-1	0-1	1-1	2-2	2-1	2-1	3-2	0-0	3-0	4-2	1-0	3-1	3-1	6-2	1-1	3-0	0-0	0-0
Grimsby	3-1	2-1	1-2	0-2	1-1	1-1	3-1	2-2	0-0	1-2	2-2	1-1	2-1	1-0	0-0	20.4	1-1	1-0	0-4	27.4	0-0	1-0	3-0	3-0
Huddersfield	3-0	4-2	2-2	3-0	0-1	1-3	2-1	3-1	1-0	13.4	3-2	0-0	4.5	0-2	3-1	1-2	3-1	1-1	1-1	1-0	1-0	4-1	2-1	2-1
Ipswich	2-2	2-0	1-5	1-0	1-0	2-2	1.5	4-2	0-1	4.5	13.4	2-1	3-2	5-1	1-2	1-1	1-1	4-1	3-0	1-2	4-2	2-1	1-2	1-2
Leicester	2-2	27.4	1-1	2-3	0-0	2-1	20.4	0-2	1-1	2-1	3-2	17.4	4-2	1-1	1-1	0-2	1-3	2-3	0-0	0-1	1-0	1-2	1-0	1-0
Luton	27.4	0-0	0-1	0-0	1-2	3-2	2-2	1-2	1-1	1-0	1-3	1-1	3-1	30.4	1-1	1-2	0-0	3-1	1-2	3-2	2-0	1-2	2-3	2-3
Millwall	0-1	2-0	0-2	1-4	0-1	2-1	0-0	2-1	1-1	1-0	2-1	20.4	1-1	1-2	1-1	1-0	0-0	27.4	1-2	2-2	1-2	2-1	0-1	2-0
Norwich	3-1	1-1	0-1	1-0	1-0	2-2	2-0	2-1	0-1	0-1	0-0	2-1	1-1	2-1	3-3	0-0	0-1	0-1	0-0	1-1	27.4	20.4	2-3	2-3
Oldham	0-1	4-0	1-1	3-1	0-1	1-0	3-0	1-1	3-1	4.5	2-2	2-0	1-1	2-2	2-1	2-1	0-1	30.4	1-2	1-2	0-0	1-2	13.4	1-0
Portsmouth	20.4	0-1	2-1	2-3	2-2	3-1	1-1	27.4	2-1	4-0	0-1	1-0	2-1	1-2	0-0	1-2	4-2	3-3	2-2	0-2	4-2	0-2	0-2	0-2
Port Vale	3-0	1-2	27.4	1-2	1-1	16.4	1-0	2-1	0-2	23.4	0-1	1-0	1-3	0-2	3-2	2-3	2-1	1-0	1-1	20.4	1-1	3-1	2-2	2-2
Reading	0-0	0-1	20.4	0-2	3-2	0-2	3-1	1-4	1-1	3-1	1-2	0-3	2-0	0-1	2-2	27.4	3-3	1-0	1-1	1-0	0-0	3-1	tba	tba
Sheff Utd	1-0	1-1	2-0	2-3	0-2	1-2	0-2	2-2	1-3	1-0	2-0	2-1	2-1	4-1	4.5	0-0	3-0	0-0	13.4	0-2	1-1	1-2	2-1	2-1
Southend	0-0	3-1	1-1	1-1	1-2	1-0	0-0	20.4	2-1	0-1	2-0	1-1	27.4	2-1	2-1	0-0	2-1	2-4	0-2	2-0	1-1	2-1	2-1	2-1
Stoke	2-0	1-0	17.4	1-2	1-1	1-2	1-1	3-1	1-0	5-0	1-0	1-1	0-1	13.4	0-1	1-1	2-2	4.5	1-0	0-0	2-0	2-1	2-0	2-0
Sunderland	2-1	16.4	0-0	1-0	3-0	1-0	3-2	1-0	1-2	1-0	6-0	0-1	1-0	1-1	0-0	2-2	2-0	1-0	20.4	0-0	1-1	27.4	2-0	2-0
Tranmere	1-3	2-2	0-0	2-3	5-1	0-1	3-1	17.4	13.4	1-0	2-2	1-1	2-0	1-2	2-1	1-1	3-0	0-0	4.5	2-3	2-2	2-2	2-2	2-2
Watford	2-3	1-1	1-2	0-0	0-0	23.4	0-1	2-3	4.5	1-1	0-1	0-2	2-1	1-2	13.4	16.4	2-1	2-2	3-0	3-3	3-0	1-1	1-1	1-1
West Brom	2-1	1-0	1-0	2-3	4.5	13.4	1-2	0-0	2-3	0-2	1-0	1-4	1-0	2-1	1-1	2-0	3-1	3-1	0-1	0-1	1-1	4-4	0-0	0-0
Wolves	2-2	3-2	0-0	20.4	3-0	4-1	27.4	2-2	2-3	0-0	1-1	0-2	1-3	2-2	0-1	1-1	1-0	2-0	1-4	3-0	2-1	3-0	1-1	1-1

18

Auto Windscreens

Fascinating Facts

Did you know...
The Electric Eel is one of the most dangerous fish, with an average discharge of 400 volts

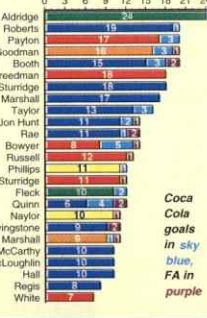
Campaign Records

- Highest / Lowest gates
27,064 Wolves v Norwich 13/9/95
3,993 Grimsby v Watford 2/9/95
- Highest Aggregate Scores
West Brom 4-4 Watford 13/3/96
- Biggest Home Win
Sunderland 6-0 Millwall 9/12/95
- Biggest Away Win
Barnsley 0-5 Birmingham 2/9/95
- Consecutive Wins
Sunderland 9
- Games Unbeaten
Derby 20
- Consecutive Defeats
West Brom 11
- Games without a Win
Grimsby, West Brom 14

Current Sequences

- Consecutive Wins
Sheff Utd 5
- Games Unbeaten
Sunderland 13
- Consecutive Defeats
Ipswich 2
- Games without a Win
Watford 7

Club Top Scorers



Average Attendances



Vote for your

PLAYER OF THE YEAR AND GOAL OF THE SEASON

RING 0891 33 22 88 AND WIN

- 4 Tickets for the Players and Directors VIP lounge at the Club's Official Presentation Night
- A Playing Shirt autographed by Barry Fry and the Blues First Team Squad
- Your Photograph taken with the Player and Goalscorer of the Season

GOAL OF THE SEASON

- take your choice from the following goals:-

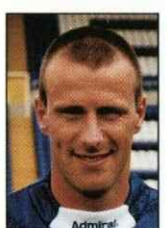


GOAL A
Ricky Otto v Ipswich 12.8.95
An absolute scorer that rocketed into the top right hand corner of

the net from the outside of his left boot.



GOAL B
Jonathon Hunt v Norwich 26.8.95
A screaming right foot bender from the edge of the box.



GOAL C
Steve Claridge v Southend 8.10.95
Picked the ball up on the half-way line, turned, outstripped 2

players and shot into the corner of the net.



GOAL D
Kevin Francis v Middlesbrough 20.12.95
A powerful 12 yard header from Steve Claridge's cross which secured Blues victory.



GOAL E
Liam Daish v Norwich 24.1.96
A firm header into the roof of the net from a John Frain corner.



GOAL F
Jason Bowen v Norwich 24.1.96
A side foot volley into the roof of the net after he ghosted in on the far

post.



GOAL G
Kevin Francis v Leeds Utd 11.2.96
Blues rocked the Premiership when Super Kev collected

Claridge's flick on, held off 2 defenders and rifled in a 30 yard drive.



GOAL H
Paul Devlin v Wolves 5.3.96
Devlin glanced Barnes' low cross into the bottom corner following a

crossfield ball from Hunt.

Calls cost 39p per minute cheap rate, 49p per minute all other times. Your vote should cost less than 90p.

PLAYER OF THE YEAR

There has certainly been a few to choose from! In goal what about Ian Bennett, surely the best keeper outside the Premiership. But then Bart has made some outstanding saves too! In defence we have seen the comeback of the ever dependable John Frain his testimonial season, the arrival of Micheal Johnson and Gary Breen who have not yet put a foot wrong. Liam 'Captain Marvel' Daish was a rock as always and until his injury, stand-in skipper Gary Poole must have been a contender. Jonathon Hunt, Richard Forsyth and Paul Tait have all dominated at some point this season whilst Steve Claridge must be in the running too!

But then we'll let you decide.....

FIXTURES AND RESULTS

AVON COMBINATION FOOTBALL LEAGUE

Date	Team	Time	Fixture	Result
Wed 30th Aug	Swansea City	2.00	A	4-2
Mon 4th Sept	Cheltenham Town	7.30	A	0-2
Tue 19th Sept	Cardiff City	7.00	H	3-0
Wed 4th Oct	Newport County	7.00	H	6-1
Wed 11th Oct	Swansea City	7.00	H	PP
Wed 18th Oct	Cardiff City	2.00	A	1-2
Wed 25th Oct	Cheltenham Town	7.00	H	4-0
Wed 1st Nov	Newport County	7.00	A	3-1
Wed 8th Nov	Cardiff City	7.00	H	2-1
Mon 13th Nov	Cheltenham Town	7.00	A	5-3
Wed 22nd Nov	Newport County	7.00	H	PP
Wed 29th Nov	Swansea City	2.00	A	2-2
Thu 14th Dec	Torquay United	7.30	A	PP
Wed 20th Dec	AFC Bournemouth	7.00	H	PP
Wed 10th Jan	Bath City	7.30	A	PP
Wed 24th Jan	Cheltenham Town	7.45	H	0-2
Wed 31st Jan	Newport County	7.45	H	PP
Wed 7th Feb	Swansea City	7.00	H	PP
Tue 13th Feb	Plymouth Argyle	2.00	A	3-1
Wed 21st Feb	Plymouth Argyle	7.00	H	PP
Wed 28th Feb	Bath City	7.00	A	1-3
Wed 6th Mar	Torquay United	7.00	H	4-2
Thur 7th Mar	Newport County	7.45	H	3-0
Wed 13th Mar	AFC Bournemouth	2.00	A	2-1
Wed 20th Mar	Bath City	7.45	H	
Wed 17th April	Cardiff City	2.00	A	



PONTINS LEAGUE FIXTURES 1995/96

Date	Team	Fixture	Result
Mon 14th	Newcastle United	H	3-1
Mon 28th Aug	Oldham Athletic	H	0-2
Mon 4th Sept	Wolverhampton Wanderers	A	2-1
Mon 11th Sept	Everton	A	2-3
Mon 18th Sept	Tranmere Rovers	H	2-1
Tue 26th Sept	Sheffield Wednesday	A	3-3
Mon 2nd Oct	Sheffield United	A	2-1
Mon 9th Oct	Derby County	H	0-2
Wed 18th Oct	Manchester United	A	3-0
Mon 23rd Oct	Notts. County	H	3-1
Tue 31st Oct	West Bromwich Albion	A	2-1
Mon 13th Nov	Stoke City	H	1-3
Mon 20th Nov	Leeds United	A	0-1
Mon 27th Nov	Bolton Wanderers	H	P-P
Mon 4th Dec	Tranmere Rovers	A	2-3
Mon 11th Dec	Sheffield Wednesday	H	1-1
Mon 18th Dec	Liverpool	A	2-4
Tue 2nd Jan	Nottingham Forest	A	2-2
Wed 10th Jan	Blackburn Rovers	A	0-3
Mon 15th Jan	Everton	H	5-1
Mon 22nd Jan	Newcastle United	A	5-2
Mon 29th Jan	Wolverhampton Wanderers	H	P-P
Wed 7th Feb	Oldham Athletic	A	P-P
Mon 12th Feb	Blackburn Rovers	H	3-2
Thur 22nd Feb	Stoke City	A	0-4
Mon 4th Mar	West Bromwich Albion	H	3-0
Thu 14th March	Nottingham Forest	H	3-0
Mon 18th Mar	Liverpool	H	0-1
Mon 25th Mar	Sheffield United	H	5-1
Thu 28th Mar	Wolverhampton Wanderers	H	0-1
Wed 3rd Apr	Oldham	A	1-1
Tue 9th Apr	Notts. County	A	1-3
Mon 15th April	Bolton	H	
Wed 17th May	Notts County	A	
Mon 22nd April	Man Utd	H	
Wed 1st May	Bolton	A	
Mon 6th May	Leeds	H	

Melville Youth League

Sat 5th Aug	Aston Villa	A	0-3
Sat 12th Aug	Wolves	H	3-3
Sat 19th Aug	Coventry	H	3-4
Sat 26th Aug	Derby	A	1-1
Sat 2nd Sept	Grimsby	H	3-2
Sat 9th Sept	Leicester	A	2-7
Sat 23rd Sept	Mansfield	H	3-0
Sat 30th Sept	Northampton	H	3-1
Sat 7th Oct	Notts County	A	2-1
Sat 28th Oct	Grimsby	A	2-1
Sat 4th Nov	Port Vale	H	2-1
Sat 11th Nov	Shrewsbury	A	2-0
Sat 25th Nov	Walsall	A	1-4
Sat 16th Dec	West Brom	A	2-1
Sat 13th Jan	Wolves	A	1-3
Sat 20th Jan	West Brom	H	4-0
Sat 17th Feb	Lincoln	H	4-0
Sat 24th Jan	Mansfield	A	1-0
Sat 2nd Mar	Northampton	A	1-0
Tue 5th Mar	Aston Villa	H	1-2
Sat 9th Mar	Stoke City	H	0-2
Tue 19th Mar	Notts County	H	1-1
Sat 23rd Mar	Notts Forest	A	2-4
Sat 23rd Mar	Peterborough	H	3-3
Sat 3rd Apr	Notts County	H	2-1
Sat 6th Apr	Port Vale	A	2-0
Mon 8th Apr	Lincoln	A	3-0
Wed 10th Apr	Shrewsbury	H	
Tue 16th Apr	Leicester	H	
Sat 20th Apr	Stoke City	A	
Wed 24th Apr	Coventry	A	
Sat 27th Apr	Walsall	H	
Tue 29th Apr	Peterborough	A	

Pontins League Division One (up to and including Tues 2nd April)

	Pl	W	D	L	F	A	PTS
Manchester United	26	17	5	4	55	27	56
Stoke City	28	17	7	7	51	36	49
Derby County	28	14	7	7	47	37	49
Liverpool	28	14	5	9	50	37	47
Leeds United	26	13	6	7	32	24	45
Everton	28	12	7	9	41	35	43
Nottingham Forest	28	11	7	10	42	44	40
Tranmere Rovers	25	12	3	10	52	45	39
Oldham Athletic	27	10	8	9	40	41	38
Birmingham City	27	12	2	13	51	53	38
Newcastle United	28	11	5	12	44	47	38
Sheffield Wednesday	28	9	8	11	52	51	35
Blackburn Rovers	27	7	10	10	41	39	31
Sheffield United	27	7	10	10	30	44	31
Bolton Wanderers	26	7	9	10	37	43	30
Notts County	28	8	6	14	41	49	30
Wolves	28	8	4	16	35	40	28
West Brom	27	2	5	20	24	73	11

**NEXT RESERVE GAME
AT ST. ANDREW'S
BLUES V MAN UTD
MONDAY 22ND APRIL
1996
KICK OFF 7PM**

**ADMISSION
£3 ADULTS £1 KIDS
SEASON TICKET HOLDERS FREE
BEAU BRUMMIES FREE**

WHERE THEY PLAY

PONTINS RESERVE TEAM
St. Andrew's
AVON INSURANCE COMBINATION RESERVE/UNDER 21 TEAM
Coles Lane, Sutton Coldfield

MELVILLE MIDLAND YOUTH LEAGUE
Sedgemere Sports & Social Club, Stetchford

RESERVES & YOUTH

Derby County 3 Birmingham City 1

Pontins League Division One

**Tuesday
9th April 1996**

Kick Off 7pm

Blues : Barber, Bass, Legg, Barnett, Rea, Frain, Donowa, Martin, Bowen, Otto, Barnes.

Subs Hiles, Round, Webb

Blues fielded a strong reserve team for this Pontins League fixture which marked a surprise return for Dave Barnett to competitive action. As expected Blues started in fine form and after 25mins they took the lead. Louie

Donowa hit a dangerous cross to the far post which was bundled over the line by Steve Barnes. On 38mins Ricky Otto missed a good opportunity from close range to fire Blues 2-0 up. However, he almost made amends 2 minutes later with a rasping 25yard drive that hit the post. On 41minutes disaster struck when Fred Barber was taken off with cuts to his head after dropping on a through ball, colliding with Dave Barnett and a Derby player. Andy Legg took the responsibility of goalkeeper. This made the game difficult for Blues and Derby fully exposed the Blues weakness scoring three second half goals to win the game 3-1.

Bolton Wanderers & Manchester United Next At St. Andrews

Its a Manchester double header next at St. Andrews as we entertain Bolton Wanderers on Monday 15th April, kick off 7.00pm and then Manchester United on the following Monday (22nd April) again kick off 7pm.



Otto hit the woodwork with a fine 25 yard effort

LAST GAME OF THE SEASON



BLUES

versus

READING



ENDSLEIGH LEAGUE DIVISION ONE

SATURDAY MAY 4th 1996

or SUNDAY 5th* MAY 1996

KICK OFF 3.00pm

TICKETS ON SALE NOW

GRADE B MATCH PRICES

Make sure you are at St. Andrews for the traditional end of season party. Blues take on Reading and it could be make or break time as Blues will hopefully be challenging for a play-off place. Get your tickets early in order to avoid disappointment on the day.

*The day of the game could change to Sunday if the outcome of the fixture effects promotion or relegation for either side. Keep in touch by calling 0891 33 29 88.

TICKET INFORMATION 0891 33 29 88

ENQUIRIES/CREDIT CARD HOTLINE 0121 772 0101

TICKET OFFICE OPENING HOURS

Monday, Tuesday, Wednesday, Friday: 9.30am-5.30pm Thursday: 9.30am-7.00pm

Saturday (Non Matchday): 9.30am-12.30pm

Saturday (Matchday): 9.30am-3.00pm, 4.45pm-5.30pm

Tel: 0891 33 29 88 Enquiries: 0121 772 0101 Credit Card Hotline: 0121 772 0101

MATCH SPONSOR

Hockley
Pattern & Tool Co. Ltd.

Church Lane, West Bromwich, West Midlands, B71 1DG.
Tel: 0121 525 0095 Fax: 0121 525 0595

*Suppliers of patterns, models, tooling
and checking fixtures for the automotive
and aerospace industries*

Full CAD/CAM design and CNC Manufacturing Facilities

FREE FAMILY FUN NIGHT

BIRMINGHAM CITY V MANCHESTER UNITED

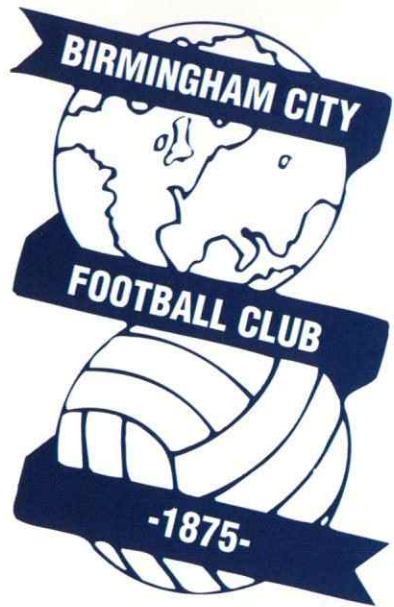
MONDAY 22nd APRIL

FUN STARTS 6.15pm MAIN STAND

Kick Off 7pm

- * XTRA AM's Tom Ross
 - * Meet the Players
 - * Fun & Games
 - * Free Prize Giveaways
 - * Bluenose Painting
 - * Pitchside Interviews
- and much more

FREE ENTRANCE TO ALL



A MESSAGE FROM THE OWNERS



Dear Blues Supporters

During our recent trip to the Molineux, the home of neighbours Wolverhampton Wanderers, we were amazed to see the plaque (pictured centre) taking pride of place in their boardroom. The 'Wolverhampton Wanderers Development Association' made up of ordinary supporters like you, had managed to raise an amazing £1,000,000 towards the cost of re-developing the magnificent new Molineux Stadium. The supporters had raised this money on their own by arranging a series of fund raising events including functions and raffles. Every single supporter did their bit to contribute such a fantastic amount of money to their stadium.

We would dearly, dearly love you, the Blues supporters, to help us to continue the re-development of St. Andrews by setting up a 'Friends of Birmingham City' fund. Supporters would be involved in organising a series of events that will allow you to donate the same amount of money to your club as the Wolves supporters have done for



theirs. Think of the great pride and satisfaction you will have knowing that you have personally contributed to the development fund. We need your help and we hope that your ambition for Blues matches that of the Wolves supporters. If you would like to be involved in setting up a committee to run such a venture then please call Karren Brady on 0121 772 0101 ext 1229 or alternatively please write to Karren at Birmingham City Football Club, St. Andrews Ground, Bham B9 4NH.

It would be fantastic to have a special committee set up to raise money for the club for this very special cause. If Wolves supporters can do it then we are sure that Blues fans can! Please, please consider becoming involved. We cannot do all the work alone. We hope that you will rise to the occasion and help us to ensure that the future of Birmingham City Football Club remains a bright one.

Up the Blues!

David Gold

David Sullivan

Ralph Gold

From the Commercial Director Allan Robson

OFF THE FIELD

LET THE BLUES HELP YOUR BUSINESS NEXT SEASON

BLUES CAN

- * Improve Your Company's Profile
- * Advertise Your Company's Name
- * Promote Your Products or Service
- * Incentivise Your Staff and Sales Team
- * Help You Influence Potential Customers
- * Help You Entertain Your Customers, Clients or Suppliers

FOR FULL INFORMATION AND DETAILS ABOUT ADVERTISING, HOSPITALITY AND PROMOTIONAL OPPORTUNITIES WITH BIRMINGHAM CITY PLEASE CONTACT MARK BOWLER on

0121 772 0101 ext 1223

BOOKING FAST FOR 95/96 SEASON

- The Following Opportunities
- Perimeter Advertising Boards
- Match Programme Advertising
- Match Sponsorships
- Executive Boxes
- Vice President Membership
- Executive Club Membership
- Kit Sponsorship
- VIP Matchday Hospitality
- Sportsmans Dinners
- Stand Sponsorship
- Tannoy Advertising
- Database Marketing

and many, many more

CALL 0121 772 0101 ext. 7



26



SUPER SALE ON AWAY SHIRTS



ADULT AWAY SHIRTS

NOW ONLY £12.00
less than 1/2 original price

Tracksuits	£72.99	NOW £36.50
Drill Tops	£36.99	NOW £18.50
Admiral Sponsors T-Shirts ..	£9.99	NOW £5.00
Rain Jackets	£45.99	NOW £22.99

SEASON TICKET HOLDERS WILL RECEIVE AN ADDITIONAL 10% OFF SALE PRICES

ONLY WHILE STOCKS LAST

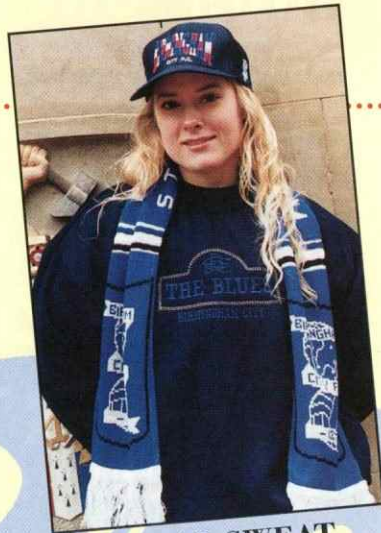
TO AVOID DISSAPPOINTMENT VISIT YOUR CLUB SHOPS TODAY OR USE OUR MAIL ORDER SERVICE

TEL: 0121 772 0101 EXT8

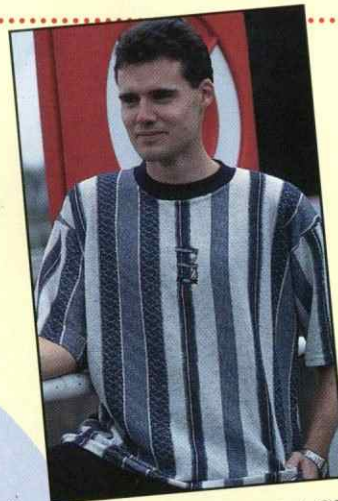
2

ITEMS NOW AVAILABLE FROM THE CLUB SHOPS

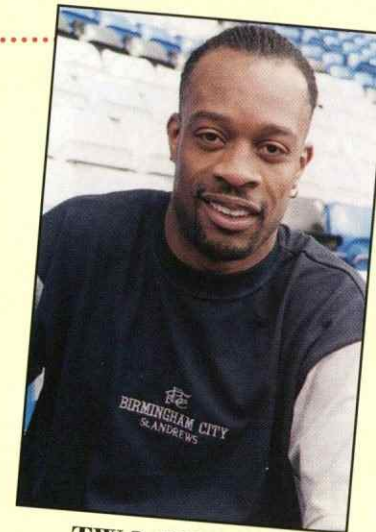
VISIT YOUR CLUB SHOPS NOW



ZIG ZAG SWEAT
NAVY/BLUE
£27.99



STRIPE LOOP BACK T
£16.99



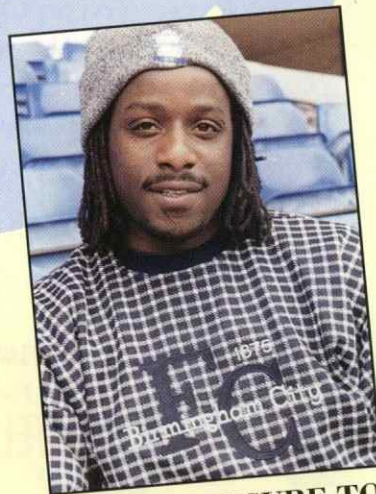
TWO TONE T
£14.99



HOOP FLECK
LEISURE TOP
£26.99



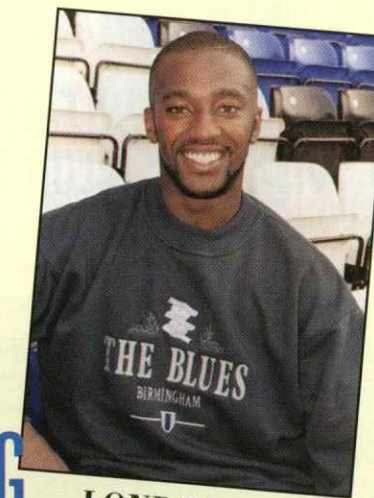
WAFFLE CHECK T
£18.99



FC. CHECK LEISURE TOP
£26.99



NEW ITEMS ARRIVING *All the Time!*



LONDON LONG
SLEEVE SWEAT
£29.99



MICRODOT SHIRT
£16.50 Juniors
£26.99 Adults

SHIRT PRINTING SERVICE
(non Matchdays) Numbers £3
Letters 75p each
at the Cattell Rd. Club Shop



SHOW YOUR TRUE COLOURS

HOME REPLICAS KITS



**SUPER SALE ON
HOME REPLICAS KIT
NOW 1/2
ORIGINAL PRICE**

ADULT SHIRTS ~~£32.99/£34.99~~
NOW £16.50

SEASON TICKET HOLDERS WILL RECEIVE AN ADDITIONAL 10% OFF SALE PRICES!

**ONLY WHILE STOCKS LAST
VISIT YOUR CLUB SHOPS TODAY!**

CLUB SHOP

26 Cattell Road, Birmingham B9 4NH. Open Monday to Saturday 9am to 5.30pm
Telephone 0121 772 0101 Ext 1239 & 1240 (Mail Order Service Available)

CITY CENTRE SHOP

64 Dale End, Birmingham B2 4UB (opposite "Toys 'R' Us").
Open Monday to Saturday 9am to 5.30pm
Telephone 0121 212 0873

KOP MATCHDAY SHOP

Telephone 0121 771 0101 Ext 1245 (Match Days Only)

REMEMBER TO BUY ALL YOUR BIRMINGHAM CITY MERCHANDISE FROM YOUR CLUB SHOPS

Calls cost 39p per minute cheap rate 49p per minute at all other times

ALL THE NEWS-ALL THE VIEWS-FIRST ON BLUES CLUBCALL 0891 12 11 88

Birmingham City AWARDS EVENING



- Player of the Year ●
- Goal of the Season ●
- Golden Boot Award (sponsored by Berne Eng Electrical) ●
- Young Player of the Year ●
- Supporter of the Year ●

Presentations hosted by XTRA AM's TOM ROSS

WITH the Directors, Players and Barry Fry

THURSDAY 2nd MAY 1996 8'til late
at XL's Nightclub, Fiveways Shopping Centre

Players from past and present ● Family Disco ● Fun, competitions and prizes

Tickets just £5 from
Main Ticket Office, City Centre Ticket Office (Dale End), or by post to Birmingham City Presentation Evening, St.
Andrews Stadium, Birmingham B9 4NH

MY FAVOURITE THING

GARY BREEN



"My favourite thing from the Blues Club Shops is this brand new Birmingham City Wilkinson Sword Protector Razor. Its smooth, clean action keeps me

looking good at all times and at only £3.99 its a real bargain."

**The Blues Razor is on sale now
from the Blues Club Shops
priced at £3.99**

MY FAVOURITE THING

SCUM OF YOUR CLUB

Please do not buy merchandise from any street seller

Do you realise that these people are stealing from your club. Every penny you put into their pockets means that Blues may not be able to buy more players, may not be able to continue the development of the ground and may not be able to hold current admission prices next year. So please do not buy from any street seller.

The only place you can buy official Birmingham City Merchandise is from the Club Shop.

These street sellers are not supporters of the club, they are the Scum of the Club stealing and feeding off your club.

Do not make your club weak and poor, be strong and do not buy inferior rip off items.

Help me to help you and only buy from the club shops, not from the scum.

Very Best Wishes
David Sullivan
Club President

Calls cost 39p per minute cheap rate. 49p per minute at all other times.

JOIN THE TRUE BLUE CLUB LOOK WHAT YOU GET

For Only £2 a Week you can help build a dream and get the following great benefits :-

- Chance to win £400 a week in our prize draw
- Four runners up prizes of £25 each week
- Monthly draw for a TV, Hi Fi, Video Recorder, Satellite Dish
- End of year prize of a holiday abroad for 4 people
- Ticket Priority for big games
- Quarterly Newsletter
- Invitation to special members only functions

To join the True Blue Club pick up an application form from the ticket office, club shops, main office reception or ring Bob Matthews on 0121 772 0101 ext 1218 and we will post one to you.

Help the Blues build a Dream - Join the True Blue Club today

AWAY TRAVEL CLUB

You will need to be a member of the AWAY TRAVEL CLUB in order to be able to purchase a ticket for any AWAY league game. Prices and applications should be sent as follows:-

ADULT MEMBERSHIP **£15** (1 ticket)

FAMILY MEMBERSHIP **£20** (2 tickets)

Send postal order or cheque made payable to:- BIRMINGHAM CITY FC, and post along with your name and address in order for us to return your away match season ticket booklet to: Birmingham City Travel Club, St. Andrews Ground, Bham, B9 4NH. Alternatively if you wish to pay in CASH (DO NOT SEND CASH IN POST) come to main office reception at the Club. For Credit Card bookings call Bob Matthews on **0121 772 0101 ext 1218**

MEMBERSHIP BENEFITS

- ONLY MEMBERS OF AWAY TRAVEL CLUB CAN PURCHASE TICKETS TO ALL AWAY LEAGUE GAMES.
- NO BOOKING FEE
- DISCOUNTS ON OFFICIAL BLUES ON TOUR TRAVEL CLUB COACHES
- FREE PARKING AT ST. ANDREWS WHILST TRAVELLING TO AWAY GAMES
- FURTHER BENEFITS IF YOU TRAVEL WITH BLUES ON TOUR.

BLUES ON TOUR

v *Stamford*

Endsleigh League Division One
Tuesday 16th April 1996
Travel Club Members £13
Non Members £16
Coaches depart Club Shop Cattell Rd 2pm
Please note that coach tickets purchased for the postponed fixture on 30th December 1995 are still valid.

v *Derby County*

Endsleigh League Division One
Saturday 20th April 1996
Travel Club Members £8
Non Members £11
Coaches depart Club Shop Cattell Rd 12.45pm

v *Leicester*

Endsleigh League Division One
Saturday 27th April 1996
Travel Club Members £8
Non Members £11
Coaches depart Club Shop Cattell Rd 12.45pm

Coach Tickets are available from the Ticket Office. Any enquiries please call 0121 772 0101 ext 1218 and ask for Bob Matthews in the Promotions Office.

BIRMINGHAM CITY FC DIAMOND CLUB PATRONS

- RAY COX
- M1 PAINTING
- JOHN F. PAINTER
- RL CROFT
- RESTALLS INTERNATIONAL
- PHIL & LIZ THOMPSON
- M. WISEMAN

Paul Tait - Proud to be a Brummie



Paul Tait has been Blues Brummie hero for almost nine years. He made his Blues debut at the tender age of 16 whilst still a trainee on the 30th April 1988, Blues losing out 3-0 at home to Manchester City. He turned professional in 1989 and has been with the club he supported as a boy ever since. For Paul the highlight of his career was Blues 1-0 Autowindscreen Shield victory last season: "I have seen many ups and downs in my Blues career. The highlight for me however, has to be Wembley last year. It was a great atmosphere and a great day out for everyone. To score the winning goal in front of 55,000 Bluenoses was a feeling that I will never forget and I am sure will live with me for many years to come. I think my proudest moment has to be making my debut at such a young age."

He has seen his fair share of dressing room and boardroom upheavals but he will always remember the early days at the club: "There have been many managers and different regimes at St. Andrews during my time here. I think the biggest influences on my footballing career where Norman Bodell, Fred Davies and Keith Bradley. They were all good to me and really did help me develop into a professional."

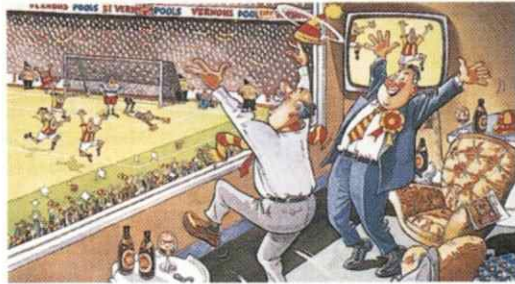
Being a Blues fan has helped spur Paul on through the good times and the bad and through his career he has always been proud to be a Brummie:

"I have been a Blues supporter all my life and it really does help when you take to the pitch. You get that extra buzz and sense of pride. You know that each week you will have many family and friends watching from the stands and apart from not letting the club down you want to impress them. It really does spur me on and make me more determined to do well here. I have never really thought of leaving St. Andrews and I would like to play at the highest level with the Blues. However, sometimes you have to draw a line and not let your heart rule your head. Football is a short career and you have to do your best in a limited time period. I have not been the luckiest of players with injuries and this has shortened my time even more. Every player has high ambitions and I want to play at the top."

The club has changed dramatically over the past few years and Paul feels that the Premiership foundations have now been laid: "The club has changed so much over the past three years. It has been great to watch those changes and I am glad that I have been part of it. I just hope we can get to the Premiership soon, a club of this size should be competing at the highest level and I am sure that the foundations are know in place for us to get there".

PROUD TO BE A BRUMMIE

WHEN YOU PLAY VERNONS POOLS YOUR CLUB ALWAYS WINS!



We appreciate the true value of football as much as you do, so when you play to win with Vernons, we pay a fortune in winnings into the Football Trust, an organisation that helps to improve conditions in football clubs – including yours!

The Football Trust contributes towards the better safety, comfort and facilities of football clubs throughout the UK, through an improvement

programme which includes new seating, new stands, new roofing – and even entirely new grounds.

So remember, when you play Vernons Pools, not only might you win a fortune but you know that Vernons is working hard to help your Club and the great game of football.



34

**The
Total
Football
Brand..**



TIRED & WEARY OF YOUR OLD CAR
KEEP RIGHT ON TO THE END OF THE ROAD
 DEPOSITS FROM **£99** TO RENAULT BIRMINGHAM

ALL NEW RENAULT FROM £99 CASH DEPOSIT
RENAULT BIRMINGHAM
 WE DO IT ALL FOR YOU
 75-80 HIGH STREET, DIGBETH, BIRMINGHAM B12 0LL
 OPEN Mon Fri 8.30-7.00 Sat 9.00-5.00 Sun (viewing only) 10.00-4.00
021 766 6636

35



ACTION REPLAY

PESCH MAKES IT 2-0... AND CELEBRATES

IN TOUCH IN CONTROL

Design

Repro

Print

Colourplan
design & print

.....Colourplan

the company that offers the complete service from design through to delivery at a cost to suit your budget.

So whether it's a business card, letterhead, multi-page full colour brochure or sports programme.

Call Ian McCue now.

.....advice costs nothing!

IN HOUSE ON TIME

Colourplan Design & Print

11 Waterside Court, St.Helens Technology Campus, St.Helens, WA9 1UA. Tel: (01744) 23868 Fax: (01744) 753316/753029

Members of the British Printing Industries Federation

Karren Brady  Main Sponsor: <i>Giuseppie</i> Briefcase.....Ribena Mobile Phone.....Ribena Personal Computer.....Ribena Suit.....Ribena	Barry Fry  Main Sponsor: <i>Lucozade</i> Boots.....Brenda Russell, Capricorn Blinds Tracksuit.....Barrie J. Davies Training Kit.....Powerpacks (UK) Ltd	Ian Bennett  Main Sponsor: <i>David John Butchers</i> Boots.....Lyn Allsop Guest Tracksuit.....Martin Brook, Andy Waldron, Andy Partridge Training Kit.....Emma Gamer	Gary Poole  Main Sponsor: <i>XTRA am</i> Boots.....Jan Parsons Tracksuit.....URA JOHNS Training Kit.....Your name here Call 0121 772 ext 217	
John Frain  Main Sponsor: <i>XTRA am</i> Boots.....Anne Holmes Tracksuit.....Andreas Ervik Training Kit.....Andreas Ervik	Marin Grainger  Main Sponsor: <i>Birmingham Beer Supplies</i> Boots.....Capricorn Blinds Tracksuit.....Xposure Rock Cafe, Birmingham Training Kit.....Your name here Call 0121 772 ext 217	Richard Forsyth  Main Sponsor: <i>Falcon Cars (233 0000)</i> Boots.....Xposure Rock Cafe, Black Country Tracksuit.....Linda Goodman Training Kit.....Your name here Call 0121 772 ext 217	Jon Bass  Main Sponsor: <i>Paul Hope Vice President</i> Boots.....Peter Russell Tracksuit.....Tommy Palmer Training Kit.....Malcolm Willday	
Paul Barnes  Main Sponsor: <i>Phil & Liz Thompson (T.A. Consultants)</i> Boots.....Daniel Phil Liz A.G. Tracksuit.....Daniel Phil Liz A.G. Training Kit.....Daniel Phil Liz A.G.	Andy Legg  Main Sponsor: <i>Philip Mayling</i> Boots.....J.F. Painter Tracksuit.....Martin Brook, Andy Waldron, Andy Partridge Training Kit.....Kelly Ensor	Ricky Otto  Main Sponsor: <i>Phil & Liz Thompson (T.A. Consultants)</i> Boots.....Chris & Maggie Howitt John & Colin Platt Tracksuit.....Your name here Call 0121 772 ext 217 Training Kit.....Your name here Call 0121 772 ext 217	Jason Bowen  Main Sponsor: <i>Lucozade (James Elston)</i> Boots.....M. Wiseman Tracksuit.....Your name here Call 0121 772 ext 217 Training Kit.....Your name here Call 0121 772 ext 217	
Gary Cooper  Main Sponsor: <i>Phil & Liz Thompson (T.A. Consultants)</i> Boots.....Malcolm & Steve Bampfield Tracksuit.....Malcolm & Steve Bampfield Training Kit.....Malcolm & Steve Bampfield	Jonathan Hunt  Main Sponsor: <i>Dorgrove Floors</i> Boots.....Paul Johns Tracksuit.....Martin Brook, Andy Waldron, Andy Partridge Training Kit.....XL's Birmingham	Kevin Francis  Main Sponsor: <i>Lucozade (Jessica Hallam)</i> Boots.....Capricorn Blinds Tracksuit.....David & Andrew Hawkins Training Kit.....Steven & Paul Killeen	Paul Tait  Main Sponsor: <i>Giuseppie</i> Boots.....Hayley N John Tracksuit.....Hayley N John Training Kit.....Your name here Call 0121 772 ext 217	
Andy Edwards  Main Sponsor: <i>BRM Insurance Bloxwich</i>	Bart Gremienk  Main Sponsor: <i>Borshch Electric</i>	Steve Castle  Main Sponsor: <i>XTRA am</i>	Vinny Samways  Main Sponsor: <i>Linda Goodman</i> Boots.....Keith Evans, Fishing Tackle, 475 2859	Paul Peschioleio  Main Sponsor: <i>Phil & Liz Thompson</i>
Gary Breen  Main Sponsor: <i>Phil & Liz Thompson (TA Consultants)</i>	Peter Shearer  Main Sponsor: <i>Blues News Unofficial Fanzine</i>	John Cornforth  Main Sponsor: <i>Blues News Unofficial Fanzine</i>	Michael Johnson  Main Sponsor: <i>Alex Fox</i>	Steve Barnes  Main Sponsor: <i>Linsey & Ali Levenhal</i>
Steve Finnan  Main Sponsor: <i>Phil & Liz Thompson (T.A. Consultants)</i>	Dave Barnett  Main Sponsor: <i>Rapid Industrial</i>	Louie Donowa  Main Sponsor: <i>R.H. Nuttall (Washers/ Gaskets) Ltd</i>	Jac Martin  Main Sponsor: <i>Phil & Liz Thompson (T.A. Consultants)</i>	Paul Devlin  Main Sponsor: <i>Roy Smiljanic</i>

Avanti
YOUR KITCHEN FACTORY

QUALITY AT A PRICE YOU CAN AFFORD

PHONE NOW FOR A FREE BROCHURE
+ DETAILS OF OUR FREE PLAN AND DESIGN SERVICE



SHOWROOMS
THROUGHOUT THE MIDLANDS
AVANTI HOTLINE
01384 639161

Avanti
YOUR KITCHEN FACTORY

THE MIDLANDS No. 1 KITCHEN COMPANY

OPEN: MONDAY to SATURDAY 10am-5pm SUNDAY 10am-2pm

38

TODAY'S MASCOTS



Today's mascots are Toby Brymer, Mark Brookes and Lindsay McDonough. Toby Brymer is from Surrey and attends Catherham School. He plays for the school team and can't wait to be a mascot for the Blues. Mark Brookes is from Balsall Common and has been a Blues fan for two years. His hobbies include football, badge collecting and karate. Lindsay McDonough's favourite player is Ian Bennett and her hobbies include music and reading. She attends Hobmoor school in Yardley and has been a Blues fan for four years. The Luton mascot for today's game is Daniel Kent. Daniel attends Solihull School and his favourite player is Ian Feuer.

WANTED FOR 96-97 SEASON STEWARDS AND TURNSTILE OPERATORS

If you are interested in helping the Blues by becoming a turnstile operator or steward then please write to :-

Brian Tew,
Birmingham City F.C.
St. Andrews Ground,
Birmingham B9 4NH,

giving details of the position(s) you are interested in and a contact name, address and telephone number.

39

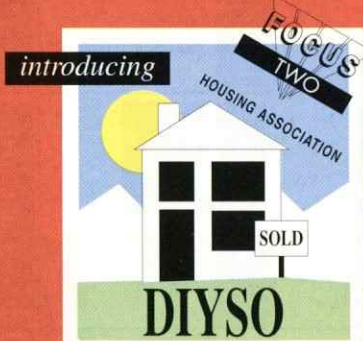
Auto Windscreens

Fascinating Facts

Did you know...

*A Starfish can be cut
into sizeable chunks
and each piece will
grow into a complete
new Starfish*

DO YOU WANT TO BUY YOUR
OWN HOME
BUT THINK YOU CAN'T
AFFORD IT?



DO IT YOURSELF SHARED OWNERSHIP
THE AFFORDABLE WAY TO BUY YOUR OWN HOME ON
A PART-RENT PART-BUY BASIS
FOR FURTHER DETAILS CONTACT THE DIYSO OFFICER ON
0121 633 3365

Mean Deals

100's of Ex-Lease Cars for sale prior to auction

- GUARANTEED MILEAGE
- FULL SERVICE HISTORY on most vehicles
- FINANCE (subject to status)
- OPTIONAL WARRANTIES, IMMOBILISERS, ALARMS, NATIONAL RECOVERY BREAKDOWN COVER
- LARGE SELECTION OF VANS AVAILABLE

AUTOLEASE

EX-LEASE CAR SALES

Mackadown Lane, Garretts Green, Birmingham

0121-789 8255

Mac A Doon says -
Save £££'s off
Car Dealer
Prices



**OPEN
7 DAYS
A WEEK**

SUPPORTERS CHARTER

Birmingham City Football Club aims to be recognised throughout the land as a club which welcomes football supporters from any club to a friendly atmosphere and a safe environment. Blues supporters must help us if we are to achieve this aim:

1. Arrive at the stadium sober and at least 30 minutes before kick off.
2. Show respect for our visitors and their players at all times.
3. Applaud good play and goals by both teams.
4. Allow free kicks and penalties to be taken without distraction.
5. Do not use foul and abusive language or behave in a manner likely to cause offence especially to our visitors, ladies or children.
6. Respect the decisions of the referee and linesmen-they have a difficult job.
7. Accept both victory and defeat gracefully.
8. Leave the stadium in a quiet and orderly fashion.

The following breaches of our ground regulations are also a CRIMINAL OFFENCE and will result in a police prosecution and ejection from the ground.

- (a) The throwing of any article onto the pitch
- (b) Running onto the playing area at any time.
- (c) Racial or obscene chanting.

By observing this charter you can help YOUR stewards to maintain an environment in which YOUR enjoyment at matches at St. Andrew's will be improved and YOU WILL BE A CREDIT TO BIRMINGHAM CITY F.C.



STOP PRESS



BIRMINGHAM CITY V READING

WILL BE PLAYED ON

SUNDAY 5TH MAY KICK OFF 3PM

DONT MISS THE LAST GAME OF THE SEASON

Wear your Fancy Dress and Bluenoses for the End of Season Party

TICKETS ON SALE NOW GRADE B MATCH PRICES

TICKET INFORMATION **0891 33 29 88**
ENQUIRIES/CREDIT CARD HOTLINE **0121 772 0101**

TICKET OFFICE OPENING HOURS

Monday, Tuesday, Wednesday, Friday: 9.30am-5.30pm Thursday: 9.30am-7.00pm

Saturday (Non Matchday): 9.30am-12.30pm

Saturday (Matchday): 9.30am-3.00pm, 4.45pm-5.30pm

Tel: 0891 33 29 88 Enquiries: 0121 772 0101 Credit Card Hotline: 0121 772 0101

40

41

DISCOUNT STORE

VISIT THE KOP DISCOUNT STORE (Matchdays Only) WHERE YOU WILL FIND FANTASTIC DISCOUNTED OFFERS AT LESS THAN HALF PRICE. YES THESE OFFERS ARE ONLY AVAILABLE FROM THE KOP SHOP SO MAKE SURE YOU VISIT BEFORE OR AFTER THE GAME.

The Kop Shop also carries the Normal range of gifts and souvenirs

Auto Windscreens

Fascinating Facts

Did you know..

The Midland Bank

began life in Union

Street in 1836 as the

Birmingham and

Midland Bank

DAILY STAR

WIN A VIP DAY OUT WITH THE DAILY STAR

Answer the three questions below and win a great day out with the Daily Star which will include :-

- * 2 VIP SEATS IN THE BREW XI KOP * BUCKS FIZZ RECEPTION *
- * TOUR OF THE GROUND * 3 COURSE MEAL WITH WINE *
- * COMPLIMENTARY PROGRAMME * MANAGER/PLAYER INTERVIEWS *
- * HALF TIME & FULL TIME REFRESHMENTS * MOMENTO OF THE OCCASION *

To win this superb prize just send in the answers together with a masthead from Monday's Daily Star (15.4.96) to Daily Star Competition, Birmingham City FC, St. Andrews Ground, Bham B9 4NH

1. Who are the only football league team in Kent?
2. Which Premiership team were formerly called Ardwick?
3. Name Blues opponents on the Last Day of the Kop?



BLUES

EXCLUSIVELY

LIVE

ON XTRA
1 1 5 2
SPORT
am

- FULL COVERAGE OF THE BLUES
- INDEPTH INTERVIEWS
- UP TO DATE TEAM NEWS
- FINAL ANALYSIS
- KICK-BY-KICK COMMENTARY

**.....SPORTS.....
BULLETIN.....**

MON - FRI 7.30am / 8.30am
1.00pm / 5/6pm
SAT 8.30am / 9.30am

XTRA
1 1 5 2
SPORT
am **SATURDAY FEAST OF FOOTBALL**
1.00-7.00pm

- 1pm** It's A Funny Old Game. Soccer celebrities choose their favourite music and talk about their careers.
- 2-3pm** Pre-match team news/interviews and predictions.
- 3-4:45pm** Exclusive live kick-by-kick commentary of the big match of the day—with Tom Ross and Ian Crocker.
- 4:45pm** All of the day's results and post-match interviews.
- 5-7pm** 'React to the Action' on the liveliest football phone-in in the Midlands with Tom Ross.

ALSO EVERY FRIDAY: '90 MINUTES'. TACKLE ROSS & BUTLER LIVE ON AIR

0121 359 5599

True Blue Club
BUILDING THE DREAM
HELP OUR TEAM BY BUILDING YOUR OWN TEAM !!!

The True Blue Club is launching an exciting new venture - THE TRUE BLUE TEAM! Aimed at small groups of work colleagues or friends within a pub or club you can form your own team to help the Blues and receive all the great benefits below :-

- a ball autographed by the whole Blues squad
- a welcome in the official Blues matchday magazine
- an acknowledgement in every edition of the quarterly True Blue News (companies may also show details of any discount or special offer they would like to make to other True Blue members) the opportunity to choose two players to visit your place of work or club
- 10 chances to win
 - * £400 every week
 - * one of four £25 consolation prizes each week
 - * a luxury electrical item each month - TV's, videos, satellite systems, CD players etc.
 - * quarterly prize of a luxury weekend away for two
 - * fantastic annual prize of a luxury holiday abroad for a family of four
- Ticket priority for all cup matches
- Invitations to members only functions with Barry and the Players
- Free regular newsletter with all the chat from Inside St. Andrews
- An exclusive True Blue members lapel pin



To form a True Blue Team and receive this terrific special package all you have to do is gather a few friends or workmates to form a syndicate. The cost of the package is just £10 a week or £43 a month. To set up your team write to or telephone : Bob Matthews, Promotions Manager, Birmingham City FC, St. Andrews Ground, Birmingham B9 4NH - Tel: 0121 772 0101 ext. 1218

DON'T FORGET ALL PROFITS ARE PLOUGHED STRAIGHT BACK INTO STRENGTHENING THE PLAYING SQUAD AND BUILDING THE TRUE BLUE DREAM

Latest winners True Blue Club Weekly Draw

Week 19 £400 0777
£25 1476, 2443, 4168, 5280

MOTOR & HOME INSURANCE

WE'VE ALREADY HUNTED DOWN THE LOWEST PREMIUMS



PUT US TO THE TEST PHONE NOW!

0121 236 9960

193 Corporation Street, Birmingham

0121 643 8500

61a New Street, Birmingham



Endsleigh



FOR FORTHCOMING MATCHES TICKET INFORMATION

Sunderland
v
Birmingham
City

Endsleigh League
Division One

Tuesday 16th April 1996

Kick Off 7.45pm

Tickets on Sale NOW to
Away Travel Club Members
voucher 11 priced at £11.

Derby County
v
Birmingham
City

Endsleigh League
Division One

Saturday 20th April 1996

Kick Off 3pm

Adults £12

Concessions £6

Tickets go on Sale to
Travel Club Members
(voucher 24)
from Monday 15th April.

Leicester City
v
Birmingham
City

Endsleigh League
Division One

Saturday 27th April 1996

Kick Off 3pm

Block U £13 Adults.

Block T £10 Adults.

Block V £10 Adults

£5 Concessions.

Tickets go on sale to Away
Travel Club Members Only
(voucher 25)
from Monday 22nd April.

CITY CENTRE TICKET OFFICE NOW OPEN

Supporters can now purchase tickets for forthcoming Blues games from the NEW City Centre Ticket Office situated within the Blues Collection Club Shop in Dale End Birmingham City Centre. The City Centre Ticket Office is open from 9.30am - 5.30pm Monday to Saturday.

DON'T FORGET TO VISIT OUR CITY CENTRE TICKET OFFICE TODAY

KEY: Scorers name in bold D=Debut □ - Player Booked
 ■ - Player Sent Off



Date	Opp.	Venue	Res	Gate	Pts	Pos	1	2	3	4	5	6	7
Aug 12th	IPSWICH	H	3-1	18,910	3	4	Bennett	Poole	Frain	Ward	Edwards D	Daish	Hunt
Aug 15th	PLYMOUTH (CCC R1)	H	1-0	7,964	-	-	Bennett	Poole	Cooper □	Ward	Edwards	Whyte	Donowa
Aug 19th	Charlton	A	1-3	9,632	3	10	Bennett	Poole	Frain	Ward □	Edwards □	Daish	Hunt
Aug 22nd	Plymouth (CCC R1)	A	2-1	6,529	-	-	Bennett	Poole □	Cooper	Ward □	Edwards □	Whyte	Hunt
Aug 26th	NORWICH	H	3-1	19,267	6	4	Bennett	Poole	Cooper	Ward	Whyte	Edwards	Hunt (3)
Aug 30th	Huddersfield	A	2-4	12,305	6	5	Bennett	Poole	Cooper	Ward (2)	Whyte □	Edwards	Hunt
Sep 2nd	Barnsley	A	5-0	11,129	9	6	Bennett	Poole □	Whyte	Ward	Edwards	Johnson D	Hunt
Sep 5th	GENOA (AIT)	H	2-3	20,430	-	-	Bennett	Hiley	Whyte	Ward □	Edwards	Johnson	Hunt
Sep 9th	CRYSTAL PALACE	H	0-0	19,403	10	6	Bennett	Poole	Johnson	Ward	Edwards	Daish	Hunt
Sep 12th	STOKE CITY	H	1-1	19,005	11	5	Bennett	Poole	Johnson	Ward	Edwards	Daish	Hunt
Sep 17th	West Brom	A	0-1	17,875	11	11	Bennett	Poole	Johnson	Ward	Edwards □	Daish	Hunt
Sep 20th	GRIMSBY (CCC R2)	H	3-1	7,446	-	-	Bennett	Poole	Cooper	Castle	Edwards	Daish	Hunt
Sep 23rd	Watford	A	1-1	9,422	12	13	Bennett	Poole	Cooper	Ward	Edwards	Daish □	Hunt
Sep 30th	OLDHAM ATH.	H	0-0	17,264	12	13	Bennett	Poole	Cooper	Ward	Edwards	Daish	Hunt
Oct 3rd	Grimsbey (CCC R2)	A	1-1	3,280	-	-	Bennett	Poole	Cooper □	Forsyth	Edwards	Daish □	Bowen
Oct 8th	SOUTHEND	H	2-0	17,341	16	6	Bennett	Poole	Cooper	Castle	Edwards	Johnson	Hunt
Oct 11th	Perugia (AIT)	A	1-0	1,500	-	-	Bennett	Poole	Cooper	Castle	Edwards	Johnson	Hunt
Oct 14th	Portsmouth	A	1-0	10,006	19	5	Bennett	Poole	Cooper □	Castle □	Edwards	Johnson	Hunt □
Oct 21st	GRIMSBY	H	3-1	16,445	22	3	Bennett	Poole	Cooper	Castle	Edwards □	Johnson	Hunt
Oct 24th	TRANMERE R. (CCC R3)	H	1-1	13,752	-	-	Bennett	Poole	Cooper	Castle	Edwards	Johnson	Hunt
Oct 29th	Port Vale	A	2-1	8,875	25	2	Bennett	Poole	Cooper	Castle	Edwards	Johnson	Hunt
Nov 4th	MILLWALL	H	2-2	23,016	26	2	Bennett	Poole	Cooper	Castle	Edwards	Johnson	Hunt
Nov 8th	Tranmere R. (CCC R3R)	A	3-1	9,151	-	-	Bennett □	Poole □	Johnson	Ward	Edwards	Daish	Hunt
Nov 11th	Reading	A	1-0	10,203	29	3	Bennett	Poole □	Johnson	Ward □	Edwards	Daish	Hunt
Nov 15th	Ancona (AIT)	A	2-1	1,500	-	-	Bennett	Forsyth	Johnson □	Castle	Edwards	Daish	Hunt
Nov 18th	Luton	A	0-0	7,920	30	3	Bennett	Hiley	Cooper □	Ward	Edwards □	Johnson	Hunt □
Nov 21st	DERBY	H	1-4	19,417	30	3	Bennett	Hiley	Cooper	Ward	Edwards	Johnson	Finnan
Nov 26th	LEICESTER	H	2-2	17,350	31	5	Bennett	Forsyth	Frain □	Castle	Whyte □	Johnson	Hunt (2)
Nov 29th	Middlesbrough (CCC R4)	0-0	28,031	-	-	-	Bennett □	Forsyth	Johnson	Castle	Edwards	Daish	Hunt □
Dec 2nd	Southend	A	1-3	7,770	31	5	Bennett	Forsyth	Frain	Castle	Edwards	Daish	Hunt
Dec 9th	WATFORD	H	1-0	16,970	34	4	Bennett	Poole □	Frain	Preece □	Edwards	Daish	Hunt
Dec 13th	CESENA (AIT)	H	3-1	7,813	-	-	Bennett	Poole	Frain	Forsyth	Edwards	Richardson	Hunt
Dec 16th	Oldham Athletic	A	0-4	6,602	34	8	Bennett	Poole	Frain	Forsyth	Edwards	Daish	Hunt
Dec 20th	MIDDLESBROUGH (CCC R4)	H	2-0	19,878	-	-	Bennett	Poole	Frain	Forsyth	Edwards	Daish	Hunt □
Dec 23rd	TRANMERE ROV.	H	1-0	18,439	37	4	Bennett	Forsyth	Frain	Preece	Edwards	Daish	Hunt
Dec 26th	Sheffield Utd	A	1-1	17,688	38	3	Bennett	Forsyth	Frain	Preece	Edwards	Daish	Hunt
Jan 6th	WOLVES (FA CUP 3)	H	1-1	21,349	-	-	Bennett	Poole	Frain	Forsyth	Edwards	Daish □	Hunt
Jan 10th	Norwich (CCCS)	A	1-1	13,028	-	-	Sansome D	Poole	Frain	Forsyth	Edwards	Daish	Hunt □
Jan 14th	CHARLTON	H	3-4	17,688	38	7	Bennett	Poole	Frain	Forsyth	Edwards □	Daish	Hunt
Jan 17th	Wolves (FA CUP 3 R)	A	1-2	28,088	-	-	Griemink	Frain	Forsyth	Edwards □	Daish □	Richardson	Hunt
Jan 20th	Ipswich	A	0-2	12,540	38	9	Griemink	Hiley	Frain	Forsyth	Edwards	Daish	Hunt
Jan 24th	NORWICH (CCCS)	H	2-1	21,097	-	-	Griemink	Poole	Frain	Forsyth	Edwards	Daish □	Donowa
Jan 30th	WEST BROM (AIT D.S.F)	H	2-2	9,113	-	-	Griemink	Poole	Frain	Forsyth	Edwards	Johnson	Hunt
Feb 4th	Norwich	A	1-1	12,612	39	11	Griemink	Poole	Frain	Forsyth	Johnson	Daish	Cooper
Feb 11th	LEEDS (CCC S/F 1)	H	1-2	24,781	-	-	Griemink	Bass	Frain	Forsyth	Whyte	Johnson	Hunt
Feb 17th	Stoke City	A	0-1	12,612	39	-	Griemink	Bass	Frain	Samways D □	Edwards	Johnson	Hunt
Feb 20th	BARNLSLEY	H	0-0	14,168	40	13	Griemink	Poole	Frain	Forsyth	Breen	Johnson	Hunt
Feb 25th	LEEDS (CCC S/F 2)	A	0-3	35,435	-	-	Griemink	Poole	Frain	Forsyth	Edwards □	Johnson	Richardson
Feb 27th	Crystal Palace	A	2-3	12,965	40	13	Griemink	Poole	Frain □	Breen □	Edwards □	Johnson	Hunt
Mar 2nd	SHEFFIELD UTD.	H	0-1	16,799	40	15	Griemink	Edwards	Frain	Samways	Breen	Johnson	Hunt
Mar 5	WOLVES	H	2-0	22,051	43	13	Griemink	Bass	Frain	Tait	Breen	Johnson	Hunt
Mar 9th	Tranmere Rovers	A	2-2	8,696	44	12	Barber D	Bass	Frain	Tait	Breen	Johnson	Hunt
Mar 12	HUDDERSFIELD	H	2-0	15,296	47	11	Griemink	Bass	Frain	Tait	Breen	Johnson	Hunt
Mar 17th	SUNDERLAND	H	0-2	23,251	47	11	Griemink	Bass	Frain	Tait	Breen	Johnson	Hunt
Mar 20	WEST BROM	H	1-1	19,147	48	11	Griemink	Forsyth	Legg	Tait	Breen	Johnson	Hunt
Mar 23rd	Wolves	A	2-3	26,256	48	12	Griemink	Forsyth	Legg	Tait	Breen	Johnson	Hunt
Mar 30th	Grimsbey	A	1-2	5,475	48	13	Griemink	Grainger D	Frain	Cornforth D	Breen	Johnson	Hunt
Apr 2nd	PORTSMOUTH	H	2-0	14,886	51	13	Griemink	Edwards	Grainger	Samways	Breen	Johnson	Hunt
Apr 6th	PORT VALE	H	3-1	17,469	54	10	Griemink	Breen	Grainger	Cornforth	Edwards	Johnson	Hunt
Apr 10th	Millwall	A	0-2	9,271	54	10	Griemink	Breen □	Grainger □	Cornforth	Edwards	Johnson	Hunt
Apr 13th	LUTON	H	-	-	-	-	-	-	-	-	-	-	-
Apr 16th	Sunderland	A	-	-	-	-	-	-	-	-	-	-	-
Apr 20th	Derby	A	-	-	-	-	-	-	-	-	-	-	-
Apr 27th	Leicester	A	-	-	-	-	-	-	-	-	-	-	-
May 4th	READING	H	-	-	-	-	-	-	-	-	-	-	-

8	9	10	11	12	13	14
Claridge	Muir	Forsyth D	Tait	Otto (7)	Donowa (9)	Bowen (10) D
Claridge	Bowen	Otto	Tait	Muir (8)	Forsyth (4) D	Hunt (11)
Claridge	Bowen	Cooper	Tait	Donowa (8)	Forsyth (4)	Otto (3)
Claridge	Bowen	Castle D	Hiley	Doherty (11)	Forsyth (7)	Donowa (4)
Claridge	Bowen	Donowa	Hiley	Charley	Forsyth (4)	Castle (10)
Claridge	Bowen	Donowa	Hiley	Doherty (10)	Forsyth (7)	Castle (11)
Claridge	Bowen	Charley D	Cooper □	Donowa (7)	Forsyth (9)	Doherty (11)
Claridge	Bowen (2)	Charley	Cooper	Martin (10) D	Forsyth (11)	Doherty (8)
Claridge	Bowen	Charley	Cooper	Doherty	Forsyth (4)	Castle
Claridge	Bowen	Charley	Cooper	Otto (11)	Forsyth	Tait (10)
Claridge	Bowen	Tait	Otto	Cooper (3)	Forsyth (11)	Charley (10) □
Claridge	Finnan D	Charley	Tait	Otto (9)	Bowen (10)	Ward
Claridge	Finnan	Charley □	Castle	Otto (9)	Forsyth	Bowen (10)
Claridge	Finnan	Charley	Castle	Otto (9)	Forsyth (11)	Bowen (10)
Claridge	Otto	Charley	Castle	Claridge (8)	Ward (4)	Hunt (7)
Claridge (2)	Finnan	Charley	Bowen	Otto (9)	Forsyth (10)	Martin (11)
Claridge	Finnan	Rea D	Otto	Richardson (7) D	Tait (10) □	Martin (11)
Claridge	Finnan	Tait	Bowen	Richardson (9)	Otto (11)	Charley (8)
Claridge (2)	Finnan	Otto	Tait	Martin (10)	Richardson (4)	Charley (9)
Claridge	Charley	Otto	Tait	Martin	Richardson (4)	Finnan (10) O.G.
Claridge	Charley	Martin	Tait	Finnan (10)	Rushfield (9) D	Daish (7)
Claridge	Rushfield	Otto	Tait	Martin (10)	Forsyth	Charley (7)
Claridge	Rushfield	Castle	Tait	Otto (10)	Finnan (7)	Charley (2) (9) □
Claridge	Rushfield	Castle	Tait	Otto	Finnan	Charley (9)
Claridge	Rushfield	Otto	Tait □	Cooper (3)	Richardson (4)	Finnan (11) O.G.
Claridge	Charley	Otto	Tait	Finnan (11)	Rushfield (9)	Martin (10)
Claridge	Rushfield	Otto	Tait	Martin (11)	Hunt (7)	Charley (9)
Claridge	Francis	Preece D	Hill D □	Sahlin (11) D	Lowe (4)	Charley (9)
Claridge	Francis	Hill	Frain □	Donowa (3)	Whyte	Charley (9)
Claridge	Francis	Preece	Hill	Poole (10)	Charley (7)	Donowa (4) □
Claridge	Francis □	Hill	Castle	Donowa (13)	Finnan (11)	Charley
Claridge	Francis	Preece	Donowa	Griemink D (1)	Charley (9)	Rae (5)
Claridge	Francis	Richardson	Donowa	Lowe (2)	Cooper	Charley (9)
Claridge	Francis (2) □	Hill	Richardson □	Barnes (S) (10) D	Rushfield	Donowa (9)
Claridge	Francis	Hill	Richardson	Barnes (S)	Rushfield (9)	Donowa (10)
Claridge	Francis	Hill	Richardson	Donowa (10)	Rushfield (9)	Castle (11)
Claridge	Francis	Richardson	Donowa □	Bowen (7)	Cooper	Bull (9)
Claridge	Francis	Richardson □	Donowa □	Bowen (7)	Cooper (10)	Bull
Claridge	Bull	Preece	Donowa	Francis (8)	Cooper (3)	Bowen (7)
Claridge	Francis □	Johnson □	Castle	Bowen (11)	Hunt (7)	Bull (9)
Claridge	Francis	Bowen	Johnson	Finnan (2)	Tait (11)	Bull (10)
Claridge	Francis	Castle	Doherty	Bull (9)	□	Bowen (11)
Claridge	Bull	Otto	Finnan	Claridge (10)	Tait (11)	Barnes (S) (8)
Claridge	Francis □	Tait	Bowen	Bull	Barnes (S) (11)	Otto (10)
Claridge	Francis	Sheridan D	Cooper	Otto (4)	Bowen (10)	Donowa (11)
Claridge	Francis	Sheridan	Donowa □	Otto (11)	Bull (8)	Breen D (7)
Bowen	Francis	Otto	Samways	Donowa (10)	Bull (7)	Sheridan (4)
Claridge	Francis	Otto	Samways	Whyte	Hunt (1)	Bowen (9)
Claridge	Francis	Sheridan	Samways	Forsyth (2)	Otto (9)	Finnan (13)
Bull	Francis	Bowen 2	Samways	Tait (9)	□	Martin (11)
Legg D	Bull	Devlin B	Bowen	Tait (9)	□	Martin (11)
Devlin 2	Barnes (P)	Samways	Legg	Bowen (7)	Cooper	Forsyth (9)
Devlin	Barnes (P)	Samways	Legg	Bowen (8)	□	Forsyth
Devlin	Barnes (P)	Samways	Legg	Forsyth	Richardson (4)	Bowen
Devlin	Barnes (P)	Samways	Legg	Forsyth (2)	Richardson (10)	Bowen (8)
Devlin	Barnes (P)	Samways	Bowen	Francis (4)	Edwards (9)	Otto (11)
Devlin 2	Barnes (P)	Samways	Francis	Donowa	Bowen	Edwards
Devlin	Barnes (P)	Samways	Legg	Francis (9)	Peschisolido (7)	Tait (3)

TEAM CHECK

BIRMINGHAM CITY

- 1 Bart Greimink
- 2 Gary Breen
- 3 Martin Grainger
- 4 John Cornforth
- 5 Micheal Johnson
- 6 Andy Edwards
- 7 Jonathon Hunt
- 8 Paul Devlin
- 9 Paul Barnes
- 10 Paul Peschisolido
- 11 Paul Tait
- 12 John Frain
- 13 Kevin Francis
- 14 Steve Barnes

LUTON TOWN

- 1 Ian Feuer
- 2 Graham Alexander
- 3 Mitchell Thomas
- 4 Gary Waddock
- 5 Marvin Johnson
- 6 Darren Patterson
- 7 Bontcho Guentchev
- 8 Tony Thorpe
- 9 David Oldfield
- 10 Kim Grant
- 11 Scott Oakes
- 12
- 13
- 14



REFEREE: R. Gifford

LINESMEN: ■ D. Brammer | ■ P. Norman

PROGRAMME SPONSOR

BEAUBLADE

Beauble Ltd., Saxon Way
Chelmsley Wood
Birmingham B3 5AY
Tel: 0121 788 2180
Fax: 0171 788 1495

MATCHBALL SPONSOR

News of the World

ASSOCIATE SPONSOR

KINGFISHER
SOFTWARE SERVICES LTD

P.O. Box 2556, Redditch,
Worcestershire B97 4AA
Tel: 01527 595700
Fax: 01527 595720

Ladbrokes

BETTING FOR THE BLUES TO GO ALL THE WAY OFFICIAL
BOOKMAKER TO BIRMINGHAM CITY FOOTBALL CLUB