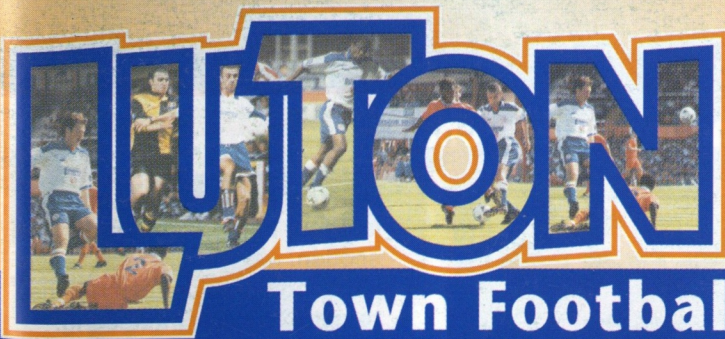


LUTON



Town Football Club



£1.60

Official matchday programme

**LENNIE LAWRENCE
ON TODAY'S
MATCH - p2&3**

**MEET THE
VISITORS
- p12-15**

**HATTERS v
CHERRIES
STATS - p20**

**LTFC TICKET
NEWS - p9**

**MIDWEEK CUP
ROUND-UP - p4**

MATCH SPONSORS:
Bobbers Travel Club,
WHOSH (Worldwide
Hatters on the Super
Highway),
Mr Roy Bunyan

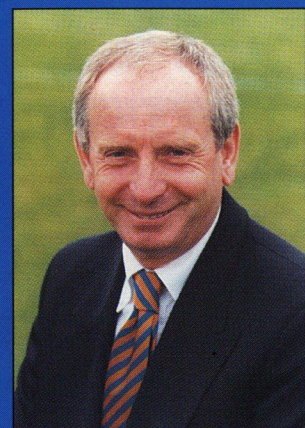
MATCHBALL SPONSORS:
Keith and Richard Harvey



v AFC BOURNEMOUTH

Nationwide League Div Two - Saturday, January 31, 1998 - Kick-Off 3pm

From the manager's chair



with **LENNIE LAWRENCE**

AFTER our contrasting fortunes in our league and cup games against Fulham we now face Bournemouth, whose supporters, players and officials we welcome here this afternoon.

The Cherries have enjoyed a good run in recent weeks, culminating in their win over Bristol City in the Auto Windscreens Shield on Tuesday night.

The semi-final draw is not known at the time of writing, but who knows, we could be facing Bournemouth again in two or three weeks time.

Looking back on our most recent games, we could hardly complain about the defeat at Oldham, only some of the decisions made in our penalty area, but generally I thought the overall performance deserved better.

The 4-1 scoreline against Fulham last Saturday was harsh, but it does seem that every time we make a mistake we are ruthlessly punished for it.

Speaking to the players on Monday, I emphasised that, that apart, we acquitted ourselves fairly well. That was certainly the case between the two penalty areas, and for the 10th time in 11 games we were on the scoresheet.

Fulham can be a formidable outfit, and within the first five minutes we had given their best team a goal start and had sustained an injury which meant a major reshuffle. It was hardly the start we needed.

It was just a pity that the 2-1

scoreline didn't stay that way for a further 10 minutes in the second half.

We emphasised the positive aspects as we went into Tuesday's cup match against Fulham at Craven Cottage, and the players responded well.

There were five changes - some enforced, some by design - and the end result was an excellent first-half performance.

The first minute save by Kelvin Davis set the tone, and indeed we would not have been flattered by a 2-0 scoreline at half-time.

In the second half they pushed us back, and we enjoyed some fortune inside our penalty area, but there was some determined defending and some good goalkeeping from Kelvin.

All that enabled us to pop up with a last minute winner through substitute Tony Thorpe

which sees us through into the last four in the southern section.

This competition now begins to get extremely interesting.

Looking ahead, I believe this area semi-final will be sandwiched between our league fixtures next month against the top two of Watford and Bristol City, which adds up to a mega-week for us!

All I would wish for is that more of the squad are available to get us through this period.

That though is in the future and we must today focus on Bournemouth.

We have lost our last two league games which makes a win today of paramount importance.

If we can cut out the defensive errors there is no reason why we can't win convincingly.

At the time of writing, both sides are waiting news of loan players.

Bournemouth striker Steve Jones has returned to Charlton after a month on loan, whilst we were hoping to extend the loan of Chris Allen by a further month from Nottingham Forest to enable him to play.

On the injury front, Phil Gray suffered a blow on the knee in the reserve game against Watford last week, but hopefully by the time you read this he will be back in training again, and could play in the reserves next week.

Graham Alexander had a viral infection which kept him out on Tuesday, but Alan White made



a rapid recovery from Saturday's injury, and Stuart Douglas and Andrew Fotiadis were due to play for the reserves on Wednesday.

Julian James is still three to four weeks away, and Mitchell Thomas starts a two-match

suspension today.

Marvin Johnson could figure though this afternoon.

He was due to play at Fulham, but missed the game to be at the birth of his daughter in the early hours of Wednesday morning.

ABOVE: Steve Davis was close to an equaliser for the Hatters against Fulham last Saturday, with this close range effort in first-half stoppage time.

see every goal

Goals, goals, goals!
See every goal from the weekend with **ITV's NATIONWIDE FOOTBALL LEAGUE EXTRA**, in association with Nationwide Building Society.

We'll be on air just after midnight on Mondays and repeated later in the week in many regions. The programme is introduced by Gabriel Clarke and includes interviews, competitions, the latest news and talking points, and all the goals scored at the weekend from the Nationwide Football League.

CHECK YOUR TV LISTINGS FOR DETAILS AND SET YOUR VIDEO



Luton Town Football Club
Kenilworth Road Stadium,
1, Maple Road,
Luton, Beds LU4 8AW.

Tel: (01582) 411622
Fax: (01582) 405070
Ticket Office: (01582) 416976
Clubcall: 0891 121 123

Chairman and Managing Director:
David Kohler Bsc (Hons)
ARICS

Directors:
C.S. Bassett, C.T.F. Green,
N.S. Terry

Vice Presidents:
R.L. Banks, D. Ludlow,
C. Bygraves, R. Safranek,
P. Ireton, J. Sapsworth.

Club Secretary:
Cherry Newbery

Manager:
Lennie Lawrence

Player Coach/Reserves:
Trevor Peake

Youth Team Coach:
John Moore

Physiotherapist:
Clive Goodyear

Consultant Physio:
John Sheridan

Youth Development Officer:
Paul Lowe

Scouting:
Les Shannon

Football Development Officer:
Dean Rastrick

Company Secretary and Financial Controller:
Bob Bird

Commercial Manager:
Kathy Leather

Safety Manager:
Geoff Lovell

Catering Manager:
Peter Saul

Medical Officer:
Dr Bill Berry

Club Dentist:
A. Chris BDS (Syd)

Club Chiropodist:
Gillian Michael B.Sc. (Hons)
S.R.Ch.

Hot-shot Thorpe books semi place

A 90th-minute goal from Tony Thorpe sent Luton into the area semi-finals of the Auto Windscreens Shield with a 2-1 win at Fulham on Tuesday, writes *Simon Oxley*.

Thorpe netted his 19th goal of the season, coming on as a 78th-minute substitute, after Dwight Marshall had given the Hatters a first-half lead.

Marshall's goal came after 20 minutes as he pounced to net the rebound after Steve Davis' shot was only parried by Fulham keeper Mark Walton.

Chris Allen hit the post before the break, but after the interval the home side posed the greater threat and Kyle Lightbourne headed them level on 61 minutes.

Lightbourne was one of only two players retained from Saturday's Fulham starting line-up, but Luton too made five changes and the recalled Kelvin Davis made several key saves as the tie headed towards 'Golden Goal' extra-time.

But from Sean Evers' cross, Thorpe headed home to secure a semi-final place.

Elsewhere in the southern section, an 80th minute goal from Jamie Vincent gave Bournemouth



FULHAM'S hat-trick hero Paul Moody helps out his defence to deny Steve Davis during Saturday's league match at Kenilworth Road.

a 1-0 win at home to Bristol City, and Barry Fry's Peterborough beat Northampton 2-1.

The fourth quarter-final between Bristol Rovers and Walsall was due to be played on Wednesday evening.

Print deadlines allowing, we hope to have details of the Thursday's draw, with ticket information, elsewhere in this afternoon's matchday programme.

In the northern section, Blackpool, Preston and Grimsby are through to the semi-finals, with Burnley and Carlisle contesting the remaining place.

Luton Town defender Darren Patterson has been included in the Northern Ireland squad for a B international against the Republic of Ireland in Dublin on February 11.

Former Luton Town goalkeeper Juergen Sommer has returned to his native United States to play full-time in the US Soccer League.

His transfer from Queens Park Rangers this week cost a reported £175,000. Juergen left Kenilworth Road at the start of the 1995/96 season for a fee of £600,000.

SAFETY NOTE

The Chairman and Directors of Luton Town Football Club undertake to ensure as far as humanly possible that all activities that take place at the Kenilworth Stadium are conducted in such a way that, as far as is reasonably practicable, the safety of everybody at the stadium is assured.

It is the policy of the Chairman and Directors to ensure that the conditions set out in the General Safety Certificate, issued under Safety at Sports Ground Act 1975 are fully complied with.

It is the club's policy to provide at any activity sufficient and competent staff and management systems to ensure as far as humanly possible, for the safe admission, accommodation, and exiting of spectators attending the stadium. These systems will be subject to continual monitoring, testing and updating where necessary.

In the interests of public safety, the safety authority (Beds County Council) have imposed a NO SMOKING restriction in and beneath our main stand. Your co-operation is appreciated.

FRONT COVER: Tony Thorpe celebrates his 18th goal of the season, to reduce Fulham's lead to 2-1 just before half-time in last Saturday's Division Two match.

(Picture: GARETH OWEN).

LUTON TOWN FC MATCHDAY PROGRAMME

Editor: Simon Oxley
Tel: 01908 807648
Fax: 01582 405070

Design and Print: McLeod Warner
Luton. Tel: 01582 38389

Pictures: Gareth Owen & Home Counties Newspapers

The views expressed in this programme are not necessarily those of Luton Town Football Club.



Universal Salvage Auctions

THERE IS AN AUCTION CENTRE NEAR YOU!

WEEKLY AUCTIONS



Universal Salvage plc is the largest salvage group in the UK specialising in the sale by auction of Car, Motorbike Light Commercial and vans. We also sell Heavy Commercial and Plant. Since 1967 we have built a reputation for unbeatable choice and highly competitive prices.

Our increasing number of customers are both private and trade buyers.

If you would like more information on an Auction Centre near you, or how to register, please telephone Netta Starr today.

OVER 200 VEHICLES SUITABLE FOR REPAIR OR DISMANTLING AVAILABLE AT EACH AUCTION

01234 762219

HEAD OFFICE: ACREY FIELDS, WOOTTON, BEDS MK43 9EJ

LUTON TOWN v BRENTFORD

AUTO WINDSCREENS SHIELD - SECOND ROUND

Tuesday, January 6, 1998, kick-off 7.45pm

Unreserved seating. Pay on the turnstiles on the night.
Cash only.

Prices: £5.00 for adults.

£1.00 for Juniors/Senior Citizens.

Please note the only areas that will be open will be the Main Stand, Main Stand Enclosure, and the Kenilworth Lower Tier.



**R. J. BLOW &
C O M P A N Y**

THE FRIENDLY ACCOUNTANTS

*Book-Keeping
Taxation and Wages etc.*

GUILD HOUSE,
28 GUILDFORD STREET,
LUTON, BEDS, LU1 2NR

Tel: (01582) 738792
Fax: (01582) 423347

 **THE MAD HATTERS
CLUB LTD** 
**LUTON'S NO.1
MEMBERS CLUB**

**Two floors of music
- Soul, Swing, Lovers Rock
- House, Garage**

**OPEN MONDAY TO SUNDAY
11am to 3am**

VIP Lounge - Top Floor

**Find us at
Cheapside**

**Phone: 01582 411894
Membership Available**

STEVO

**Club Captain's Corner
with STEVE DAVIS**



LEFT: Steve Davis beats Fulham's £2 million centre-half Chris Coleman to the ball, during last Saturday's meeting between the two sides.

AFTER two consecutive defeats it was nice to get back on the winning trail at Fulham on Tuesday. The league encounter with Fulham turned into an anti-climax from our point of view, after putting ourselves back into the game with Thorpey's goal just before half-time. The second half was one to forget as they had the game sewn up after an hour, but we still worked hard to give ourselves a chance, although couldn't quite repeat our efforts against Northampton on Boxing Day.

The result on Tuesday was encouraging as not only did it put us in the semi-finals, but it gave a few of the first-team squad members a run out against a team which you could say was Fulham's league side pre-Wilkins and Keegan.

The lads who did come in all showed they can do a job for the side and are vital members of the squad. I was pleased to see Dwight on the scoresheet as obviously it's important for his World Cup chances that the Jamaican manager knows he is still alive and kicking! We had started to wonder ourselves!

Supporters host evening with cup hero

THE Luton Town Supporters Club are holding 'An Evening with Brian Stein' on Thursday, February 5, 1998, at the Eric Morecambe Lounge at LTFC, at 7.30pm.

No doubt his winning goal in the 1988 Littlewoods Cup Final will be among the topics for discussion, along with many more memories from Brian's distinguished career at Kenilworth Road.

Tickets are available for £2 members, and £3 non members, and can be purchased from the LutonTown Supporters Club Kiosk at home games only. All are welcome, but please note this is a ticket only event.

Thorpey did a great impression of David Fairclough (showing your age there! - Ed) on Tuesday by grabbing the winner in the dying seconds. After he had scored, Wads asked the ref how long was left. When he said "10 seconds" I thought 'Well surely we can't lose this one!'

After scoring 31 goals last season, Thorpey had given himself a hard act to follow and to his credit he has nearly matched his achievements of last year in what has been a struggling side.

Goals keep managers in their jobs, and Thorpey and players like him are always going to be in high demand. I think it's fair to say he has things he could improve on, like all of us, and the things he has added to his game, most notably his work-rate, will eventually get him a move to bigger and better things.

When that day comes, Luton's loss will be someone's gain and in Thorpey they'll get someone who will frustrate you from time to time, but you will always know he will get you a goal out of nothing to win you a game. Sixty goals in 137 games is good scoring in anyone's book - except maybe Ronaldo!

Many of you will have noticed or read about Whitey playing on Tuesday. No it wasn't a ghost, he had actually recovered from his stretcher ride on Saturday - Clive's magic sponge worked wonders over the weekend. All credit to him though, as he was still in some pain. But he's a northerner, and they breed them tough up there!

And so to today's game against Bournemouth. They are a good footballing side, who down at their ground had us camped in our box for 40 out of the 45 second half minutes.

We know it will be a difficult game, but one we hope to win to help us reach mid-table security, and only then can we talk about trying to get a play-off spot. Enjoy the game, and remember..... "It's only two weeks to Watford!!"

FOR THE LATEST NEWS - CLUBCALL 0891 121 123

Calls cost 50p per minute at all times

FOLLOWING our win at Fulham on Tuesday, we have been drawn away to Bournemouth in the area semi-final of the Auto Windscreens Shield.

This game will take place on Tuesday, February 17, with a 7.45pm kick-off.

The rules of the competition remain the same at this stage, with the 'Golden Goal' coming into operation in extra-time, followed by penalties if necessary. It is only the area final that is played over two legs, home and away, with again the 'Golden Goal' being used in extra-time of the second match if necessary.

As today's programme went to press we were able to confirm the date for our outstanding league fixture - away to Grimsby Town.

This game will now be played on Tuesday, April 7 at Blundell Park, with a 7.45pm kick-off.

A number of reserve team matches are still outstanding, and a number of changes have been made to the Combination fixtures. Please see the Reserves and Youth pages for full details.

The Royal National Lifeboat Institution, founded in 1824, and which is run on a purely voluntary basis, has a collection here at the ground today.

Thank you in advance to all those supporters who give to this worthy cause. The recent storms certainly give further cause to admire the work of these men and women.

From the secretary's chair



with **CHERRY NEWBERY**

Whilst the club is happy to put out any birthday or family messages over the public address system, please can you telephone your message by the day before a match, to help our organisation. To the man who telephoned last Saturday at 2.50pm and thought that I was being unreasonable not to ensure that his message went out before kick-off..... sorry!

Finally, if any supporters have video clips of Eric Morecambe and Ernie Wise, please could they contact me!

STOP PRESS

Auto Windscreens Shield
Area Semi-Final
AFC BOURNEMOUTH
v LUTON TOWN
Tuesday, February 17, 1998
Kick-Off 7.45pm

Pay on the night only for
Luton supporters.

Seating (Families only)
£10.50 adults
£3 juniors/senior citizens

Terracing
£8.50 adults
£3 juniors/senior citizens

TOWN TEASER

In 1983, the Hatters escaped relegation on the final day of the season by defeating Manchester City 1-0 at Maine Road. Who was the goalscorer?

Listen out for the PA announcer asking this question this afternoon.

Bobbers Travel Club - Coach Travel 1997/98

Date	Destination	Adult	Child/OAP	Depart Cranfield	Depart Luton
Sat Feb 7	Wrexham	£11.00	£9.00	9.00am	10.00am
Sat Feb 14	Watford	£5.00	£4.00	9.00am	10.00am
Sat Feb 28	Plymouth	£16.50	£13.50	7.30am	8.30am
Tue Mar 3	Preston NE	£13.00	£10.50	1.00pm	2.00pm

Coaches from Cranfield pick up additionally at the following places: Marston Moretaine, Ampthill, Flitwick, Westoning and opposite the Luton Gateway Hotel. All coaches then depart from the junction of Hazelbury Crescent and Kenilworth Road.

To book: 1) From the ticket kiosk in the Kenilworth Road turnstiles. See BTC co-ordinator Paul Deason before any Saturday 1st team home match between 2.15 and 2.45pm. (NB No bookings taken at midweek matches). 2) On the return journey from the previous away game. 3) Telephone Paul Deason on Bedford 01234 750996. Membership of the Bobbers Travel Club is £1 for adults and 50p for children/OAPs.

Wrexham v Luton Town

NATIONWIDE LEAGUE DIVISION TWO
Saturday, February 7, 1998, kick-off 3pm

Pay on the day only at Wrexham.

Seats: £12.00 for adults, £7.00 for juniors and senior citizens.
Terracing: £9.00 for adults, £5.00 for juniors and senior citizens.

(Please note the LTFC ticket office will be open from 9am to 11am on Saturday, February 7, for the sale of other match tickets).

Watford v Luton Town

NATIONWIDE LEAGUE DIVISION TWO

Saturday, February 14, 1998, kick-off 12 noon - please note kick-off time.

Luton supporters can pay on the day of the match by using the turnstiles at the south-west corner of the ground, or by purchasing tickets from the LTFC ticket office by 5pm on Friday, February 13.

But please note, there will be no concessions on the day of the match.

Prices: £12.00 for adults, £8.00 for juniors and senior citizens.

(The LTFC ticket office will be open on Saturday, February 14, for the sale of other match tickets from 9am to 11am).

Auto Windscreens Shield - area semi-final

BOURNEMOUTH v LUTON TOWN

Tuesday, February 17, kick-off 7.45pm

At the time of going to press, following Thursday morning's semi-final draw, ticket information for this game at Dean Court was not available.

We hope to give you details over the public address system this afternoon, and via the local press in the forthcoming weeks.

Luton Town v Bristol City

NATIONWIDE LEAGUE DIVISION TWO

Saturday, February 21, 1998, kick-off 3pm

Tickets for this match are now on sale at the discounted price.
Normal guesting facilities apply.

Luton Town v Wigan Athletic

NATIONWIDE LEAGUE DIVISION TWO

Tuesday, February 24, 1998, kick-off 7.45pm

Tickets for this match are now on sale at the discounted price.
Normal guesting facilities apply.

TICKET OFFICE OPENING HOURS

Monday to Thursday: 10am to 4pm. Fridays: 10am to 6pm.

Saturday (matchdays): 9am to 3pm, and 4.45 to 5.15pm.

Saturday (non-matchday): Subject to change, please contact ticket office on 416976.

For bookings, membership and enquiries, ring the ticket office direct on (01582) 416976.

Supporters wishing to order by credit card can do so by using the 24-hour credit card hotline on (01582) 730748.

Travel Information

WREXHAM

Racecourse Ground, Mold Road,
Wrexham, Clwyd, LL11 2AN.
Tele: (01978) 262129.

Take M1 and M6 north, exiting M6 at M54 for Telford. Continue on M54, until it becomes the A5 continuing on round Shrewsbury and heading for Oswestry. Bypass Oswestry and continue north, before taking the A483 for Wrexham. Continue on the A483 which becomes the Wrexham bypass, exiting at signpost Mold A5841. At roundabout follow signs to Wrexham A541, and ground is on LHS after 0.2 miles.

WATFORD

Vicarage Road, Watford, Herts, WD1 8ER.
Tele: (01923) 230933.

Exit M1 at junction 5. At motorway roundabout follow s/p Watford Town Centre A4008 onto Stephenson Way. After 0.6 miles take slip road (s/p Watford Town Centre/Oxhey) to bypass roundabout. At next two roundabouts follow signs to Bushey and Oxhey, to junction opposite Kwik Fit. All traffic turns left onto one-way system. Where road divides go straight on (s/p Watford, Bushey) to junction by large railway bridge. Go under bridge and take second exit into Eastbury Road. At lights, right onto Deacons Hill, then left into Cardiff Road for ground.

Editor's note: Directions courtesy of FOOTBALL FAN'S GUIDE, an excellent publication with directions to, and full details of, every ground in the Premiership and Football League. Copies of this seasonally updated book are available in the club shop.

NATIONWIDE BUILDING SOCIETY

Top Strip

For Youth Football Teams

Branded shirts Nos 1-14

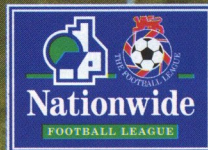
Choice of 4 colours

Kitting out your team can be a major expense that's guaranteed to stretch your budget. Not any more. We can offer you team strips for ages 6-16 at cost price! It's just one of the ways Nationwide supports youth football in the community.

Freephone 0500 30 20 10
for a leaflet and order form

Exclusive, live commentary of
Nationwide Football League
matches every Saturday from 2pm.

talk
radio
1053/1089 am

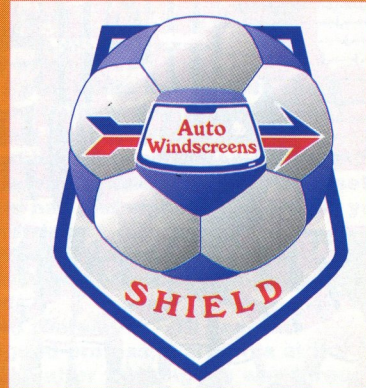


OFFICIAL SPONSOR OF
THE FOOTBALL LEAGUE

AUTO WINDSCREENS SHIELD

SOUTHERN
AREA
SEMI-FINAL

TICKET
INFORMATION



AFC BOURNEMOUTH v LUTON TOWN

Tuesday, February 17, 1997
Kick-Off 7.45pm, at Dean Court

Unfortunately, at the time of going to press following Thursday morning's draw, ticket information for this game was not available. We hope to bring you details over the public address system this afternoon, and via the local press.

DON'T FORGET.... WATFORD v LUTON TOWN

SATURDAY FEBRUARY 14, KICKS-OFF AT 12 NOON

SEE PAGE 9 FOR TICKET DETAILS

FOR THE LATEST NEWS - CLUBCALL 0891 121 123
Calls cost 50p per minute at all times



Back row: l to r: Eddie Howe, Antony Griffin, Owen Coll, Dave Wells, Jimmy Glass, Steve Fletcher, Robert Murray, Franck Rolling. Middle row: Sean O'Driscoll (youth manager), Justin Harrington, Russell Beardsmore, Leo Cotterell (no longer at club), John Williams (assistant manager), Jamie Vincent, John O'Neill, Neil Young, Steve Hardwick (physio). Front row: James Hayter, Mike Dean, Jamie Jenkins, Steve Robinson, Mel Machin (manager), Ian Cox, John Bailey, Mark Rawlinson, David Town.

Cherries striker Jones has a loan moan....

STRIKER Steve Jones returns to The Valley determined to sort out his future with Charlton after a month on loan at Bournemouth.

Jones had hoped to stay at least another month.

He scored four goals in five league appearances for the Cherries but must now rejoin the queue of strikers at Charlton.

Jones said: "I am going back to play in their reserves and I am not happy about it."

WHAT THE PAPERS SAY!

Reaction from Bournemouth's 0-0 draw at home to Oldham last Saturday, as reported in THE SUN

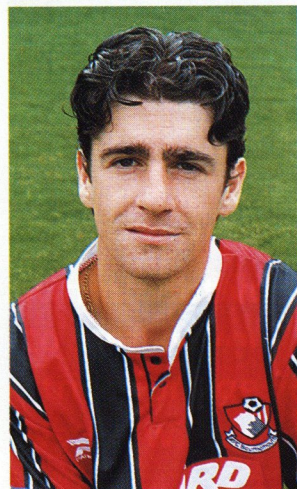
"I do not know why Charlton want me back, I have not figured much in their team this season." He came close to signing off with the winning goal but was twice denied by Oldham keeper Gary Kelly.

Team: Glass, Young, Vincent, Howe, Cox, Bailey, O'Neill, Robinson, Jones, Fletcher, Brissett (Warren).

Subs: Teather, Hayter.



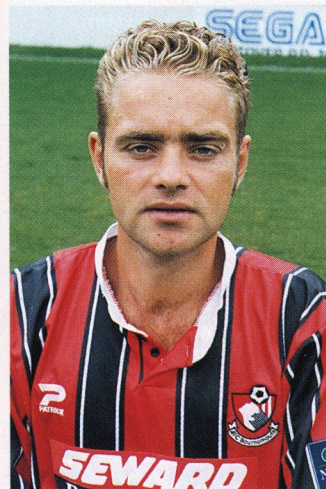
LEFT: Dwight Marshall fires Luton 1-0 in front at Bournemouth earlier this season.



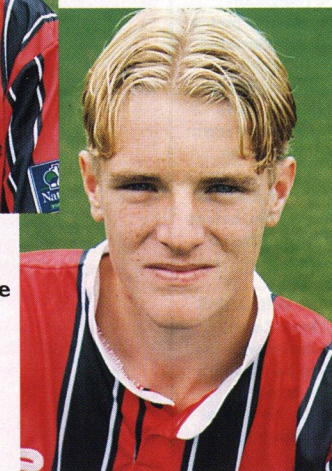
LEFT: Steve Robinson



RIGHT: Steve Fletcher



LEFT: Neil Young



RIGHT: Eddie Howe

JIMMY GLASS (Goalkeeper) - Former Crystal Palace goalkeeper who joined Bournemouth after a long career at Selhurst Park which saw him as understudy to Nigel Martin and he never got a first team chance. He made his league debut whilst on loan at Portsmouth before joining Bournemouth in March 1996. A superb stopper who is one of the most popular players at the club.

DAVE WELLS (Goalkeeper) - Portsmouth born Dave has also represented Northern Ireland at international level. He came through the ranks at Dean Court, turning pro in 1996 and made his one and only league appearance as substitute against Wrexham in 1994. Tall keeper who commands his area well, he was awarded a new contract at the start of the season.

OWEN COLL (Defender) - Owen was enjoying a tremendous run in the side after joining from Tottenham in March 1996 and his performances were earning him caps for the Republic of Ireland Under 21 side, but serious knee injury saw him miss the entire second half of last season.

IAN COX (Defender) - Powerful and dominating centre half, Ian is Club Captain and swept the board with the Player of the Year awards last season. Ian joined Bournemouth from Crystal Palace on transfer deadline day in 1996 after starting his career in non-league with Whyteleafe and Carshalton. He was a midfielder when he arrived but Mel Machin converted him to a centre half and he hasn't looked back since. Top scorer last season, he has already scored twice this season in the 2-1 win over Fulham and also one at

Bristol Rovers.

EDDIE HOWE (Defender) - 19 year old defender who has shown maturity far beyond his years this season and kept more experienced players out of the side. Only in his second year as a pro, Eddie has already spent years at Dean Court after coming through the ranks. He made his debut whilst still a youth player and scored his first senior goal in the 2-2 draw at Burnley earlier this season. A true asset to the club, Eddie has just signed a record six year deal with the Cherries.

ANTONY GRIFFIN (Defender) - First year professional who has been with the club since he was 12 years old.

JAMIE JENKINS (Defender) - 18 year old defender who signed professional forms at the start of the season after working his way through the School of Excellence and the Youth Team. A Welsh Under 19 international.

FRANCK ROLLING (Defender) - Former Strasbourg, FC Pau, Ayr and Leicester defender who joined the Cherries on a free transfer prior to this season from Filbert Street. This tall, strong Frenchman endeared himself to the Bournemouth fans when he scored on his home league debut against Wigan.

JAMIE VINCENT (Defender) - Left back with a superb shot who joined Bournemouth from Crystal Palace on loan back in 1994. He returned to Palace but his progress was tracked and he was signed in August 1996. He has come to the fore this season with some tremendous displays and scored the Cherries first goal of the season at Northampton.

NEIL YOUNG (Defender) - Always first on the team sheet, Neil has now been with the club since 1994 when he joined on a free transfer from Tottenham. Since then, he has missed a mere handful of games through suspension and the very occasional injury. Neil finally scored his first ever goal for the club in the 4-0 win over Gillingham.

JOHN BAILEY (Midfield) - Tigerish midfielder who always gives 100% and never stops running. He joined Bournemouth prior to the 95/96 season from Enfield.

RUSSELL BEARDSMORE (Midfield) - Former Manchester United player, and long serving player with Bournemouth after joining in 1993, he passed the 150 league appearance mark for the club earlier in the season.

MIKE DEAN (Midfield) - Versatile player who can also play in defence, Mike came through the youth ranks to sign professional forms in 1996, six months after making his first team debut.

(Continued on page 14).

See page 20 for Bournemouth stats.....

JUSTIN HARRINGTON (Midfield/Utility) - Truro born player who came to Dean Court via Norwich and Leicester. He played a trial match at the end of last season and became the first signing of the new community club.

ROBERT MURRAY (Midfield) - A versatile player who has played in virtually every position for the club but is most comfortable in a midfield role. Made his debut as sub at Blackpool in 1992 whilst still a youth player.

MARK RAWLINSON (Midfield) - Mark joined the Cherries from Manchester United in 1995 after spending two years there as a pro.

STEVE ROBINSON (Midfield) - Steve joined Bournemouth from Tottenham in 1994 and he can operate either in the middle or up front. A hard working player, he has been a first team regular since moving to Dean Court. A Northern Ireland International, he impressed and scored for the B team, and gained his first full cap in the summer.

JASON BRISSETT (Forward) - Jason joined Bournemouth from Peterborough to make his debut in December 1994 after serving his apprenticeship at Arsenal.

STEVE FLETCHER (Forward) - Long serving forward who joined the club from Hartlepool in 1992. Steve passed the 150 league appearance this season and it would have been far more if he hadn't had his career

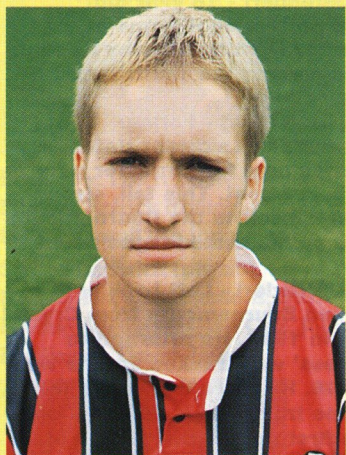
hampered by injuries.

JOHN O'NEILL (Forward) - Joined Bournemouth in 1996 from Celtic. He started his career at Queens Park before joining the Glasgow giants.

JAMES HAYTER (Forward) - Isle of Wight born James came through the youth ranks to sign a professional contract during the summer after making his first team debut at Peterborough last season.

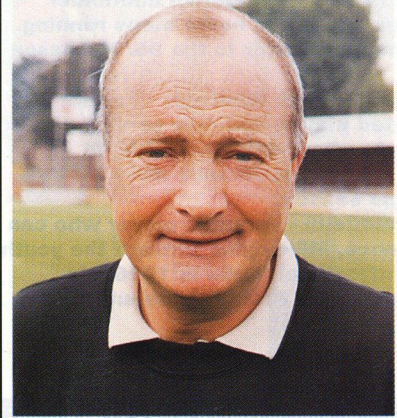
DAVID TOWN (Forward) - Young striker who made his first team debut as a 16 year old in 1994.

CHRISTER WARREN (Forward) Local lad who started his career with Cheltenham and once scored against the Cherries in an FA Cup tie before moving in to the full time game at Southampton.



JAMIE Vincent

MEET THE MANAGER



MEL MACHIN (left) is now in his fourth season in charge at Dean Court, in what has been a dramatic time both on and off the field.

When he arrived 1994, relegation seemed a certainty with just nine points on the board, but the Cherries avoided the drop. Then came the financial troubles which almost saw the club fold, but Machin steered the club to some excellent results, and also invested some of his own money to help ensure the club survived.

As a player, he was a popular full back at Dean Court in the early 1970s, before moving to Norwich as a player, then a coach. He has also managed Manchester City and Barnsley.

Assistant Manager **JOHN WILLIAMS** was a popular player at Dean Court, and started his coaching duties with the youth team. Stepped up to be Machin's assistant in 1994, and such is his popularity at Bournemouth, his wages were paid by supporters during the club's financial struggles.

The Hatters and The Cherries

OUR first clashes with today's visitors took place in 1923/24, following the Cherries election to the Football League, and we got off to a great start when we saw off the new boys to the tune of 6-2 at Kenilworth Road in December 1923.

Andy Kerr scored four of the Town's goals and followed it up with a brace in a 3-2 win at Dean Court in the return the following week.

Bournemouth returned the compliment the following season and then games fell into a pattern of each side winning on their home soil.

The Town were 3-0 up after 20 minutes during the home clash with the Cherries in 1927/28 and after Sid Reid and Jimmy Yardley contrived to miss open goals the away side managed to claw back to level the score, and it was the Town players who were anxiously waiting for the final whistle at the end!

Two seasons later we inflicted the first away defeat in four months on the Cherries when we won 1-0 at Kenilworth Road and, still smarting from this defeat, the referee had to call both teams together for a lecture in the corresponding game in the following season as matters got out of hand.

The Cherries won through in the end, 3-2, but both sides were left with a few walking wounded according to the match reports.

The fixture compilers decreed that the Luton v Bournemouth clash was a local derby and made the teams play each other home and away over Christmas 1932.

Tom Alderson scored both Town goals in the 2-0 win at Dean Court to earn us our first away win of the campaign but we spoilt things somewhat when going down 2-1 in the return the following day. Alderson was satisfied though as he scored the Town's consolation goal.

We achieved the double again in 1934/35, but during our promotion campaign two years later when we were expected to repeat the feat we went down 2-1 at Dean Court.

Our excuse was that Joe Payne, who had scored the only goal of the game in



by ROGER WASH

the match at Kenilworth Road earlier in the campaign, was absent through injury.

Following our promotion we had to wait until 1963/64 before paths crossed again and a solitary goal from Gareth Salisbury earned both points in the clash at Kenilworth Road in October 1963.

We then lost three consecutive games to the Cherries leading up to our relegation in 1965 with our performances in those matches giving a snapshot of how poor we were in probably the bleakest time in our history.

Rejuvenated we returned to the old Division Three in 1968 a different side but Bournemouth tried to halt our rise by becoming the first team to take a point at Kenilworth Road when drawing 1-1 at the end of November 1968.

The return was played the following February at a time when we could do nothing right away from Kenilworth Road.

The whole of the country was blanketed by a thick coat of snow but miraculously the south coast escaped the worst of the weather.

The Bobbers Club coaches weaved their way around abandoned vehicles on the M1, not believing that the game could be on but when we arrived at Bournemouth we were greeted by bright sunshine although it was bitterly cold and the pitch was rock hard.

Rolling up their sleeves the players turned in a tremendous performance with Keith Allen the star of the show, and returned with a 2-0 win courtesy of goals from Fred Jardine and Laurie Sheffield.

In the following season we travelled to Bournemouth for our first away game of the campaign, and returned with both points again with Malcolm

MacDonald scoring the only goal, his first for the club. The return was played two months later and again the Cherries spoiled the party in holding us to a 0-0 draw in front of a Kenilworth Road crowd of 18,065, our biggest of the season.

We were promoted at the end of that campaign and had to wait until last season before catching up with the Cherries again.

Two goals from Tony Thorpe, including one from the spot, earned all three points in a 2-0 home win but we were disappointed to go down 3-2 at Dean Court in the return - in a game marking Aaron Skelton's last game for the club.

Earlier this season, Dwight Marshall, who scored at Dean Court in the defeat the previous year, put us 1-0 in front. But the Cherries equalised through John O'Neill and it finished 1-1.

LEFT: Marvin Johnson pictured in action during last season's 2-0 win over Bournemouth at Kenilworth Road.



Chris Allen in the thick of the action just before half-time, as the Hatters pressed for an equaliser.

David Oldfield holds off the challenge of Fulham's Welsh international defender Chris Coleman.

Tony Thorpe scores his 18th goal of the season - two minutes before half-time.

Fulham keeper Maik Taylor gathers under pressure from Tony Thorpe.



ACTION STATIONS



Luton Town 1 Fulham 4

(Thorpe)

(Moody 3 (1 pen), Hayward)

Saturday, January 24, 1998 - Nationwide League Division Two

Attendance: 8,366

Pictures by Gareth Owen

It's.. TRIVIA TIME

© Metro Marketing (UK) Ltd
e.mail metro@netmatters.co.uk

HALF TIME QUIZ

1. Which team knocked Leeds United out of the 1995/96 UEFA Cup?
2. Who became chairman of Leyton Orient in 1996?
3. Which English midfielder joined Real Sociedad in 1990?
4. Which two brothers played for Celtic in the 1985 Scottish Cup final?
5. Which London side beat Wales in a friendly in May 1996?
6. When was the last time Manchester City won the FA Cup?
7. How was Brazilian Manoel Francisco dos Santos better known?
8. With which club did Terry Venables make his first FA Cup Final appearance?
9. From which club did Steve Claridge join Leicester City?
10. For which club did Phil Neal play before joining Liverpool?



whose crests?

Name the three club crests featured in this montage

IDENTIKIT

Name the three players in this patchwork pic



SHOTTEN MOUTHPART

HOODLUMS BRIDGE SYBIL TRICOT
LAVA TONSIL PLAYACT CLEARS

WHAT A JUMBLE!

Unscramble the names of these ten clubs.

NUNS LADDER AS LEECH
UNWISE TENTACLED
COW TWINSHIP HIDEOUT STUNNED

Norm & Ec

by Norman Hood

COURSE, I REMEMBER THE REAL OLD-TIME TOUGH GUYS ~ JOHNNY GILES, LOFHOUSE, RAUTMANN ~ THEY'D CLICK A DISLOCATION BACK INTO PLACE, HAVE A COUPLE OF STITCHES ON THE TOUCHLINE AND CARRY ON PLAYING....

NOWADAYS, THE PHYSIO'S ON IF A SOCK FALLS DOWN!

ANSWERS

HALF TIME QUIZ: 1. PSV Eindhoven; 2. Barry Hearn; 3. Kevin Richardson; 4. Paul and Willie McGee; 5. Leyton Orient; 6. 1969; 7. Garmacha; 8. Tottenham Hotspur; 9. Birmingham City; 10. Northampton Town.
WHOSE CRESTS?: Aston Villa, Reading and Southampton.
IDENTIKIT: John Salako, Rudi Gullit and Roberto Di Matteo.
WHAT A JUMBLE: Tottenham Hotspur, Middlesbrough, Chelsea, Newcastle United, Ipswich Town and Sunderland United.

This page is sponsored by the LTFC Community and Schools Programme - See pages 32 and 33 for more details

LUTON TOWN F.C. COACHING COURSES
Luton News LEADER 01582 411622 DUNSTABLE GAZETTE Observer

Junior Hatters visit Wrexham and Watford

A WARM welcome today to the Junior Cherries from Bournemouth who joined our Junior Hatters at this morning's Saturday Club for football and lunch.

The Saturday Club will be visited by the Junior Reds at our next home match against Bristol City on February 21, and if you are a Junior Hatter and are interested in joining us, the prices for the day is £4 for season ticket holders - which includes a lunch of sausage and chips with a drink - and £8 for non-season ticket holders - which includes a ticket for the match and lunch of sausage and chips with a drink.

A reminder that the Junior Hatters will be visiting Wrexham on February 7, where our Juniors will be playing football against the Wrexham Juniors prior to the match. Places are limited, so please book now to avoid disappointment.

We will also be taking a coach to Watford - to watch the match only.

The prices for each of these trips will be £12 for adults and £10 for juniors, and anyone interested in the Saturday Club, or the away trips, can book at the ticket office on 01582 416976.

A reminder for all those of you who attended the Junior Hatters Christmas Party that photographs taken with the players are now on sale at the Ticket Office at £1 each.



Today's mascot



Today's Junior Hatters mascot is 11-year-old MARTIN PRATT, who attends Lealands High School.

His hobbies are going to scouts, skiing and mountain biking, and his favourite Luton Town player is Ian Feuer.

Today's ballboys are JAMES BEESON and CRAIG BUTLER.

DON'T FORGET TO POP INTO THE CLUB SHOP FOR A WHOLE RANGE OF GIFT IDEAS FOR ALL THE FAMILY....



ABOVE: Happy Harry and friend against Blackpool.



ABOVE: Our Junior Hatters mascot last Saturday against Fulham was Cieran Dee. He is pictured with the team captains and match officials prior to kick-off.

FOR THE LATEST NEWS - CLUBCALL 0891 121 123
Calls cost 50p per minute at all times

Hatters



v Cherries



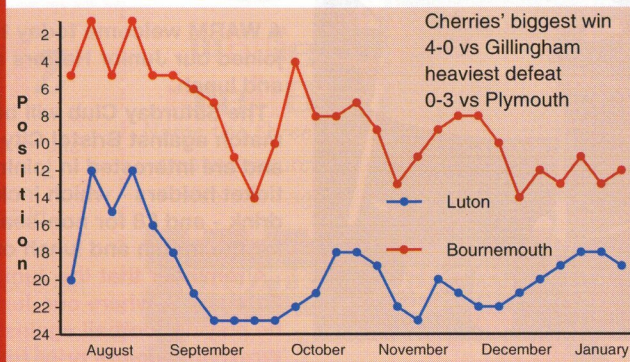
Who has played for Bournemouth

	A	G	C	Previous Clubs
Ian Cox	28	3		Palace
25/3/71		5		
Jimmy Glass	28			Palace Portsmouth (L)
1/8/73		5		
Steve Robinson	28	8	3	Tottenham Orient (L)
10/12/74 N Ire		5	2	
Neil Young	28	2	4	Tottenham
31/8/73		5	1	
Jamie Vincent	27	2	3	Palace Bournemouth (L)
18/6/75		5		
Steve Fletcher	26	5	4	Hartlepool
26/7/72		5	1	
Jon O'Neill	24(3)	2		Celtic Queen's Park
2/1/74		5	1	
Eddie Howe	21(4)	1	1	
29/11/77		4(1)		
Russell Beardmore	19	1	2	Man Utd Blackburn (L)
28/9/68 Eng U21		3	1	
Christer Warren	17(1)	3	2	Southampton Fulham (L) Brighton (L)
10/10/74		3		
Mark Rawlinson	14(5)	3		Man Utd
9/6/75		3(1)		
John Bailey	14(2)	5		
6/5/69		3(1)	2	
Frank Rolling	12(4)	2	2	Leicester Ayr FC Pau
23/8/68		2(2)	1	
Steve Jones	5	4	1	on loan from Charlton
17/3/70				
Justin Harrington	4(3)			Leicester Norwich
18/6/75		1(2)		
Paul Teather	4			on loan from Man Utd
26/12/77 Eng Yth				
Jason Brissett	3(11)			Peterborough
7/9/74		1(2)	1	
Robert Murray	(4)			
31/10/74 Scot U21		(2)		
James Hayter	(3)			
9/4/79				
David Town	(3)			
9/12/76		(1)		
Michael Dean	(2)			
9/3/78				

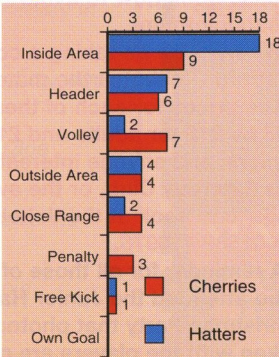
Football Information Services
Tel: 0151-632-5679

Key: A=Appearances (Sub) C=Cautions (Sent Off) G=Goals
Cup details in italics

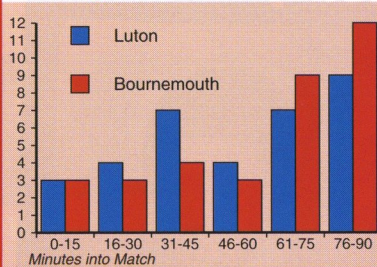
league positions so far this season



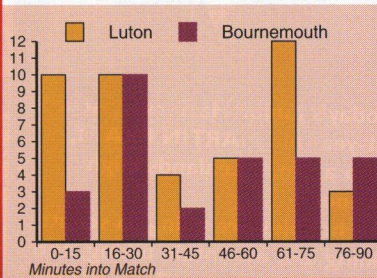
goals - how scored



when goals have been scored



.. and when conceded

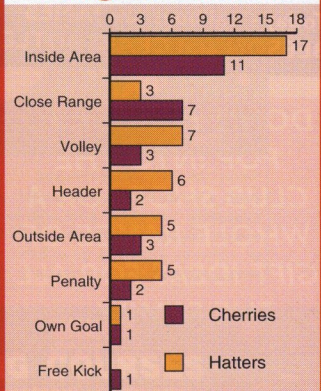


Cherries' results analysis

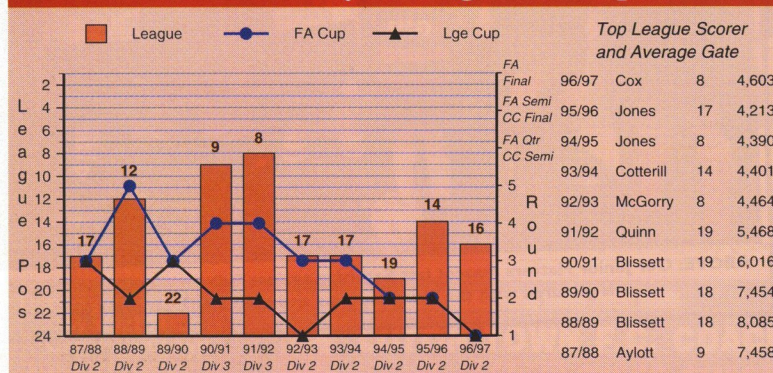
shows the number of matches finishing with a variety of scores, eg they have won 2 games 2-0 and lost 4 games 1-2

goals agt	0	1	2	3	4	5	6
6							
5							
4							
3			1				1
2		2	2	1			
1	2	5	4				
0	4	3		1			

how goals conceded



Bournemouth's 10 year league and cup record



Top League Scorer and Average Gate

Season	Player	Goals	Avg Gate
FA Final 96/97	Cox	8	4,603
FA Semi 95/96	Jones	17	4,213
CC Final 94/95	Jones	8	4,390
FA Or 93/94	Cotterill	14	4,401
CC Semi 92/93	McGorry	8	4,464
91/92	Quinn	19	5,468
90/91	Blissett	19	6,016
89/90	Blissett	18	7,454
88/89	Blissett	18	8,085
87/88	Aylott	9	7,458



**Official Supplier to
Luton Town FC**

PONY™

QUALITY USED CARS



CAR OF THE WEEK SAVE 33%
BMW 316i 4dr Saloon, Red
 £44.61 p/w
£8,450

THE ROVER
400
 SALE

PEACE OF MIND MOTORING

- Cars come with:
- Full AA check
 - Valeted
 - 12 months warranty
 - 12 months AA Roadside Assistance
 - 12 months MOT (if required)

ROVER METROS

96 (P) Rover 100 Knightsbridge SE 3dr, Dark Blue met, s/roof, 7,300 m £5,450

ROVERS

96 (P) Rover 214 L 5dr, Dark grey met, s/roof, PAS, 2,000 m £9,995
 97 (P) Rover 214 5dr, Silver, dark grey interior, 3,100 m £9,495
 97 (R) Rover 214 3dr, hatch, mid blue, del. mileage £9,995
 96 (P) Rover 618 Si 4dr, Black, beige interior, elec s/roof, elec front win, PAS, 8,300 m £10,995
 95 (N) Rover 416i 5dr, Turquoise met, s/roof, 15,100 m £8,995
 96 (N) Rover 414 Si 5dr, Dark Grey met, s/roof, elec. win, 8,000 m £8,995
 95 (N) Rover 416i 5dr, Turquoise met, s/roof, 15,100 m £8,995
 96 (N) Rover 414 Si 5dr, Dark Grey met, s/roof, elec. win, 8,000 m £8,995
 96 (P) Rover 416 Si 5dr, hatch, bright red, s/roof, elec/win, R/W/W, 800 m £10,750
 96 (P) Rover 416i 5dr, Est. Nightfire Red, s/roof, elec/front win, PAS, c/lock, 4,500 m £11,275
 95 (N) Rover 416i 5dr, Man. Deep blue, s/roof, 16,000 m £8,750
 96 (N) Rover 416i 5dr, BRG, s/roof, 40,000 m £8,995
 96 (N) Rover 420 D 5dr DSL, Dark red met, s/roof, 9,300 m £9,500
 96 (N) Rover 420 SDi 5dr Hatch DSL, Silver met, s/roof, 10,000 m £10,500
 96 (P) Rover 400 SD 4dr, Bottle green met, s/roof, 2,150 m £11,995
 96 (N) Rover 414 5dr, Man. White, 4,700 m £8,450
 96 (N) Rover 416 Si 5dr, Man. BRG, s/roof, 39,000 m £8,995
 96 (N) Rover 416 Si 5dr, Man Hatch, Olive green met, s/roof, 10,600 m £9,995
 96 (P) Rover 416i Saloon 3dr, Man. Dark red met, s/roof, front elec windows, c/locking, 8,000 m £10,450
 96 (N) Rover 420 GSi Tourer 5dr Estate, Man. BRG, s/roof, alloy wheels, elec windows, half black leather, 15,700 m £11,495
 97 (P) Rover 416 16V Tourer Auto, Dark green met, grey leather, alloys, air cond, s/roof, 6,000 m £12,995
 96 (P) Rover 620 SDi 4dr DSL, Bright red, s/roof, elec/win, 10,000 m £11,450

4x4s

96 (P) Range Rover 4.6 HSE 5dr, Dark green met, brown leather, climate control, cruise control, sunroof, e/windows, etc, 12,000 m £39,995
 97 (R) Land Rover Discovery V8 LS 5dr, Bright Red, elec win, alloys, roof bars, delivery mileage £23,995
 93 (L) Range Rover Vogue SE 5dr, Auto, Olive Green met, s/roof, a/c, leather interior, elec win, 42,500 m £17,995
 95 (N) Land Rover Discovery V8 Auto, Dark Green met, elec win, 28,000 m £17,995
 96 (P) Land Rover Discovery 5dr, Man TDI, Dark green silver met, elec windows, 2,100 miles £18,995
 94 (M) Rover Vogue TD 5dr, Man. Bronze met, s/roof, bull bars, tow bar, 38,000 m £8,995
 96 (N) Subaru Impreza 2.0 4WD Turbo 5dr, Dark green met, elec windows, alloy wheels, PAS, c/locking, 6,800 m £16,250

FORDS

93 (K) Ford Mondeo 1.6LX 5dr, Dark Blue, s/roof, elec. front win with only 35,200 m £6,250
 94 (M) Ford Mondeo 2.0si 16V 5dr, Dark Green met, s/roof, alloys, boot spoiler, 53,000 m £7,994
 96 (N) Ford Mondeo GLX TD 5dr, Dark Blue met, s/roof, elec front win, 12,000 m £9,995
 95 (N) Ford Galaxy GLX V6 7 seat, Silver met, s/roof, 23,000 m £15,250
 976 (P) Ford Fiesta 1.3 LX 5dr, Man Hatch, Dark Red met, s/roof, elec f/windows, del mileage only £8,995
 96 (N) Ford Mondeo LX 16V 5dr, Dark green met, s/roof, elec f/windows, 18,200 m £8,995
 97 (P) Ford Mondeo 2.4 24v 4dr, Man. Dark green met, e/sunroof, elec f/windows, boot spoiler, 6,000 m £10,995
 95 (M) Mondeo 1.8 LX 16V 5dr, Man Hatch, Silver met, s/roof, elec f/windows, tow bar, 37,000 m £7,995

DAEWOO

96 (P) Daewoo Espero 2.0 Cdx. Mauve grey metallic, elec s/roof, alloys, a/c, 12,000 m £8,995
 96 (P) Daewoo Nexia 1.5 GLX 5dr, Auto, Bright Red, a/c, PAS, s/roof, £8,995
 96 (P) Nexia 1.5 GL 5dr, Cashmere beige, 9,859 m £8,495

96 (P) Nexia 1.5 GLX 3dr, Ruby red, 4,679 m £8,395
 97 (P) Daewoo Espero 2.0 CDXL, Ruby red, e/sunroof, alloys, PAS, a/con, 5,500 m £10,495

HONDA

95 (N) Honda Civic 1.5 VETC 5dr, Bright Red, s/roof, 30,000 m £8,995
 95 (M) Honda Civic Coupe 1.5 2dr, Man. Bright red, 13,000 m £7,995
 94 (M) Honda Accord 2.3L SR 4dr, Auto, Dark grey met, black leather, alloy wheels, a/cond, s/roof, cruise control, elec s/roof, 37,000 m £11,400

AUDI

94 (L) Audi 80 S2 Turbo 4WD, Dark Green met, black leather int, s/roof, roof bars, alloys, elec win, a/c, 46,200 m £19,250
 94 (M) Audi 80 1.9 TDI 4dr, Man. Bright red, s/roof, FSH, 1 owner, 123,000 m £7,495

OTHER QUALITY MAKES

93 (K) Renault Espace V6 3.0, Dark Red met, a/c twin s/roof, 7 seats, alloys, 58,000 m £12,995
 96 (N) Daihatsu 1.3 GLX 5dr, Man. Lilac met, p/steering, c/locking, 7,000 m £7,950
 95 (M) BMW 316i 5dr, Man. White, s/roof, elec front win, FSH, 1 owner, 86,000 m £9,450
 92 (L) Mercedes 5500 4dr, Saloon, Gold met, beige leather interior, climate control, cruise control, elec seats, windows and s/roof, alloy wheels, 67,000 m £27,995
 93 (K) Peugeot 106 Roland Garos 1.4 3dr, Dark Green met, half cream leather, alloys, s/roof, c/lock, elec win, 24,000 m £5,995

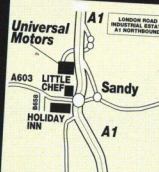
TYPICAL FINANCE EXAMPLE

Cash price	£8,450.00
Deposit	£845.00
1 month (inc. admin fee) at	£253.29
47 months	£193.29
Total amount payable	£10,182.92

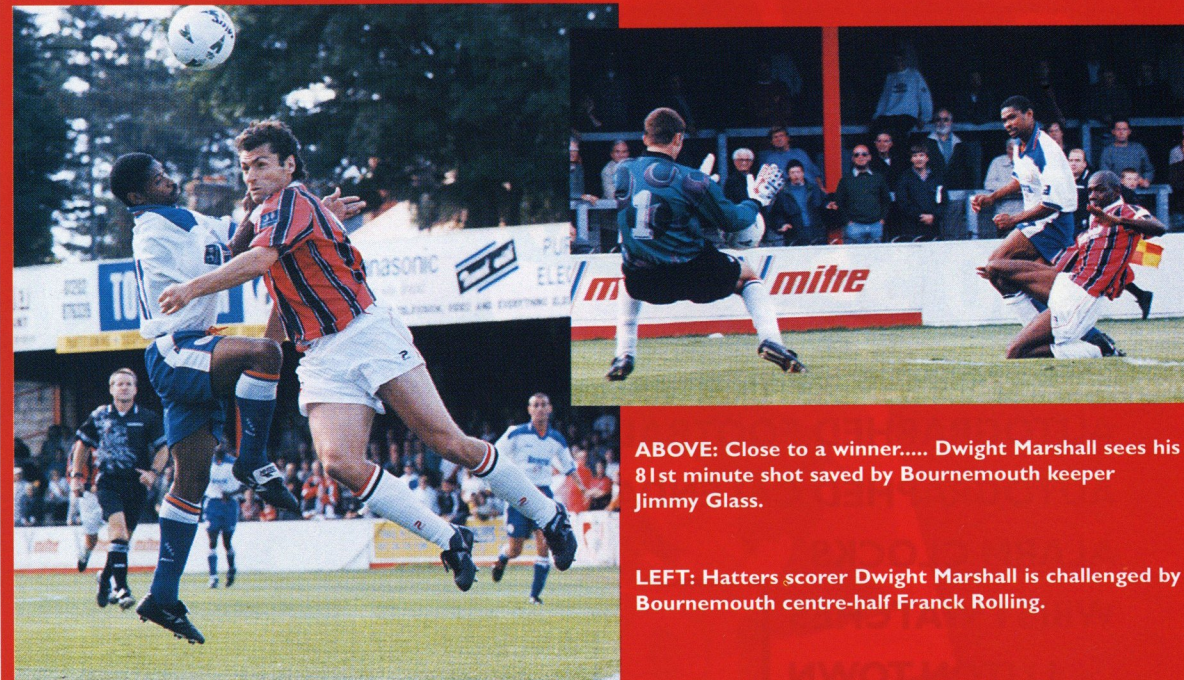
11% APR

Finance subject to status written details on request

Universal Motors
 A1 NORTHBOUND CARRIAGEWAY - SANDY - BEDS
 Tel: 01767 681111

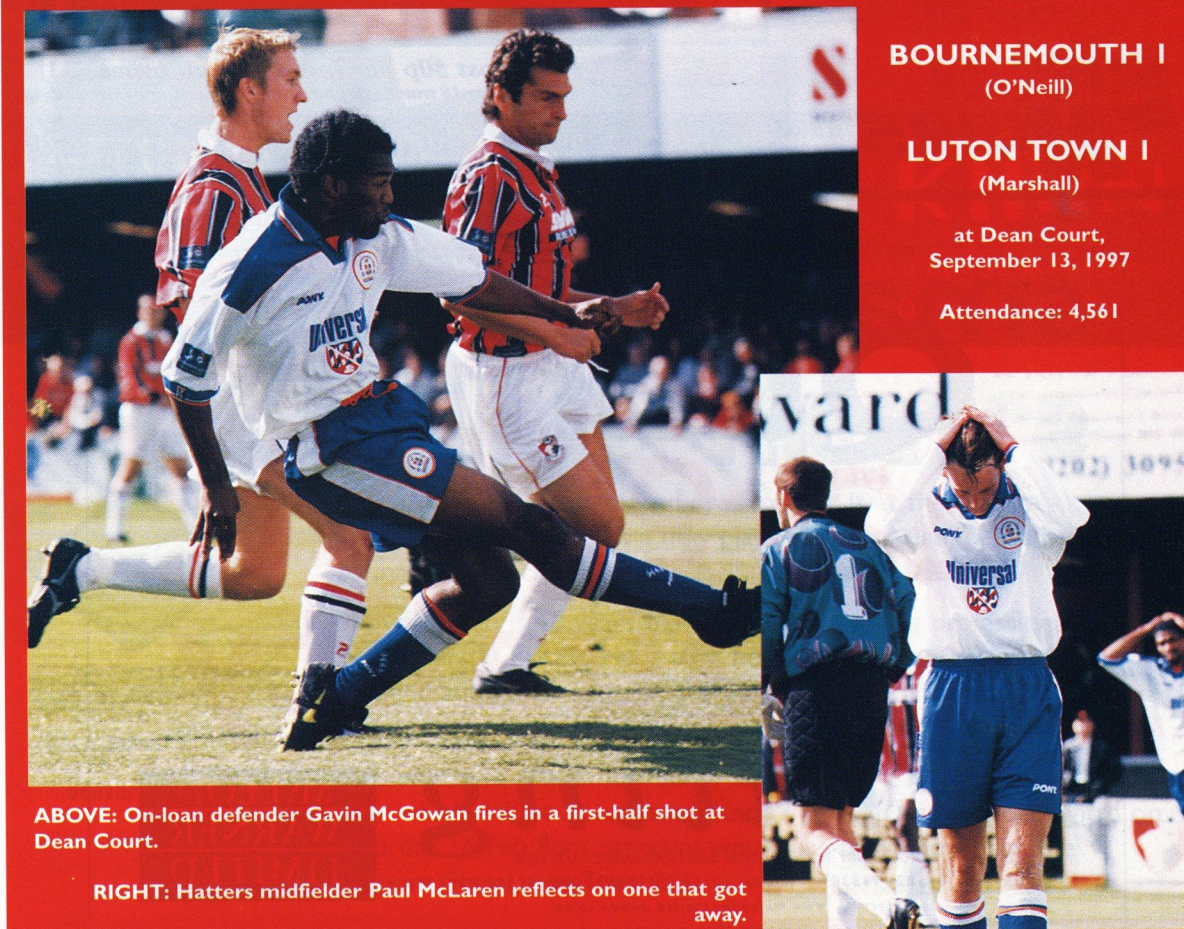


LAST TIME WE MET.... September 13, 1997



ABOVE: Close to a winner.... Dwight Marshall sees his 81st minute shot saved by Bournemouth keeper Jimmy Glass.

LEFT: Hatters scorer Dwight Marshall is challenged by Bournemouth centre-half Franck Rolling.



BOURNEMOUTH 1
 (O'Neill)

LUTON TOWN 1
 (Marshall)

at Dean Court,
 September 13, 1997

Attendance: 4,561

ABOVE: On-loan defender Gavin McGowan fires in a first-half shot at Dean Court.

RIGHT: Hatters midfielder Paul McLaren reflects on one that got away.

LUTON TOWN FC

PRIZELINE



CALL 0930 55 50 50

WIN...

- 5 AUTOGRAPHED FOOTBALLS
- 5 AUTOGRAPHED CALENDARS
- 5 ALARM CLOCKS
- 5 WRIST WATCHES
- 50 LUTON TOWN FC PENCILS

Plus

10 PAIRS OF MATCH VOUCHERS TO BE WON FOR LUTON v YORK CITY, APRIL 4TH 1998



PRIZELINE Calls cost 50p per minute at all times Those under 18 must have parental permission before calling

Luton News

For the best coverage of Luton Town FC every week!

STUDIO-LT-03-KN-006

small Quantity Large Quality Printing

16 ROTHESAY ROAD LUTON BEDFORDSHIRE LU1 1QX Telephone: (01582) 738389 Facsimile: (01582) 423597 ISDN: 01582 429194

Internet: www.mcleodwarnerltd.demon.co.uk

E-mail: studio@mcleodwarnerltd.co.uk

McLEOD WARNER LIMITED

Principal Sponsor



Midland Bank

Member HSBC Group



Photo: Grimward & Hepp

SHOWAB KHAN

18



Presents

OOH AH SHOWAB KHAN

Written by Clifford Oliver Directed by Carole Pluckrose Designed by Ian Teague Music by Duncan Chave

football is theatre



65+67 bute st luton bedfordshire

Football is pure theatre! And now football is at the theatre - Ooh Ah Showab Khan is a new play about an Asian footballer trying to make his mark on the professional game.

Showab Khan is 18 years old and one of the first professional Asian Footballers in Britain. He is torn between his determination to succeed and be accepted in the world he has joined and his need to maintain his dignity and identity within that world.

This evocative play is both funny and moving, it is part of a national tour which will be at artezium, Luton's new arts and media centre on Saturday 14 Feb 8pm. artezium would like to acknowledge the support from Luton Town FC.

box office 01582 707100 sat 14 feb 7.30pm £7.50 plus concs



LTFC Community & Schools Noticeboard



Official Drinks Supplier to
Community & Schools Programme

AFTER SCHOOL COACHING SESSIONS WITH LTFC IN 1998

Learn the game with our technique coaching and skills programme to suit all abilities, for boys and girls between the ages of 6 to 13 years.

LUTON - Luton Regional Sports Centre, Stopsley, Luton - every Tuesday afternoon from 4 to 5pm. Starts January 20.

LEIGHTON BUZZARD - Tiddenfoot Leisure Centre, Linslade - every Monday evening from 6 to 7pm for 6-8 years; 7 to 8pm for 9-13 years. Starts January 19.

DUNSTABLE - Dunstable Leisure Centre, Court Drive, Dunstable - every Thursday afternoon from 4 to 5pm for 6-8 years; 5 to 6pm for 9-13 years. Starts January 15.

All courses will cost £2 per session, and will run up to Easter.

Also, **HITCHIN** - The Priory School, Bedford Road, Hitchin - every Saturday morning from March 7 from 9.30 to 10.30am for 6-8 years; 10.30 to 11.30am for 9-13 years.



ABOVE: Leighton Buzzard youngsters enjoy the after-school coaching sessions at the Tiddenfoot Leisure Centre.



LEFT: Heath Panthers Under 10s, with their manager Terry Emm, received the Community ticket allocation for the match against Fulham.



RIGHT: Weatherfield School in Dunstable received the Community ticket allocation for the recent home game against Blackpool.

HALF-TERM COACHING COURSES

Courses for boys and girls aged 6 to 13 years..... Qualified LTFC coaches supervised by Dean Rastrick (LTFC Development Officer)..... 10am to 2pm daily..... Please bring trainers as all courses will be indoor..... All courses will cost £8 per day..... One and two-day courses..... EXCEPT WHERE STATED To book a place - CONTACT THE COMMUNITY AND SCHOOLS DEPARTMENT on (01582) 411622

LUTON

Luton Regional Sports Centre, Stopsley
Monday, Feb 16 and Tuesday, Feb 17 - Coaching
Wednesday, February 18 - Goalkeeping
Wednesday, February 18 - **GIRLS ONLY** Coaching
Thursday, Feb 19 and Friday, Feb 20 - Coaching - from 12 to 4pm

DUNSTABLE

Dunstable Leisure Centre
Thursday, Feb 19 and Friday, Feb 20 - Coaching

LEIGHTON BUZZARD

Linslade Middle School, Mentmore Road
Tues, Feb 17, Wed, Feb 18 & Thurs, Feb 19 - Coaching - from 10am to 12 noon - £10 for whole course - Outdoor course, please bring football boots

HOUGHTON REGIS

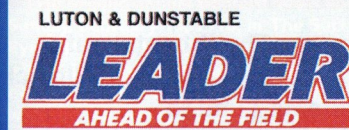
Houghton Regis Sports Centre
Monday, February 16 - Coaching



COME AND JOIN THE FUN!



Associate sponsor to the
LTFC Community and
Schools Programme



Bedfordshire's biggest and best team - for the best coverage of Luton Town FC every week

Contact
Football
Development
Officer
DEAN
RASTRICK
for any
information
regarding our
Community
and Schools
Programme,
on (01582)
411622.



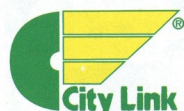
EXECUTIVE MEMBERS

KENILWORTH SUITE

Anachem Ltd
Fisher Frozen Foods Ltd
F & T Goodwin Ltd
Handscombe Financial Services Ltd
R W Harvey & Son
Wilton Contract and Vehicle Rental
Information Design Associates
Mr Malcolm Eade
Mr Roger Eade
Arrow Business Systems Limited
J Sapsworth Ltd
Dr D Siegler

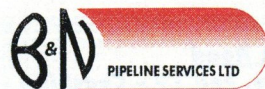
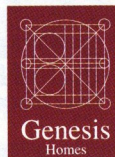
Neahurst Ltd
Mr P Dimery
Grosvenor Casino
Churchman Thacker
Good & Co
Mr R Banks
Ludlow Group
Holmes Commercial
Regal Litho Ltd
Mr Geoff Cooper

EXECUTIVE BOX HOLDERS

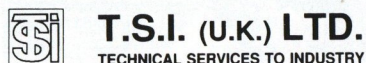


MURTAGH GROUP

Luton News



Judy Brown



THE MARK OF QUALITY



Herald & Post



CLUB 82

C P Contracts
C P Contracts Flooring
Nordic Supplies
Mr F W Pearce
Shorey's Travel

Chris and Kim Clarke - The Wheatsheaf,
Flitwick
Space Display Systems Limited
The Home Counties Newspaper Group
JP Hygiene Supplies

INJURY UPDATE

White's rapid recovery enables Shield start!

Defender ALAN WHITE was able to play in Tuesday night's match at Fulham, after a rapid recovery from the injury sustained in last Saturday's league match.

Alan was stretchered off early in the game with a knee injury, but fortunately there was no permanent damage, just bad bruising and the swelling had gone down enough to enable him to start in the Auto Windscreens clash.

PHIL GRAY sustained a knee injury in the reserve game at Watford, and is unfortunately once again under treatment. But this isn't a bad injury, and should just set him back about a week.

MARVIN JOHNSON though came through the game without any problems and could figure this afternoon.

PAUL SHOWLER also played in that reserve game at Northwood and is still struggling with groin and stomach problems. He has seen the surgeon again this week, and may have a further scan.

MITCHELL THOMAS missed the

midweek trip to Fulham with a 'dead leg', but is now suspended for two games, whilst STUART DOUGLAS and ANDREW FOTIADIS were due to play in the reserves on Wednesday.

JULIAN JAMES continues to make good progress, but we await news on GRAHAM ALEXANDER who was taken ill on Monday night with a viral infection.

Youth team keeper DANIEL TATE is making good progress after his shoulder injury, and long-term absentee STEVE AUGUSTINE is up and about on crutches after his broken leg.

HATTERS fan Terry Hopper of 1 Falcon Lodge Crescent, Sutton Coldfield, would like to hear from fellow Town supporters in the West Midlands, with a view to sharing travel to games etc. He can be contacted at the above address, or on 0121 241 9235.

IN October 1998, Dallow Junior School are celebrating 100 years; they were formerly Dunstable Road School. And the association with Luton Town Football Club goes back 100 years when a fete was held in the grounds by the club.

The organisers of the school's centenary celebrations are looking for families who are, and were, part of this association between school and football club at this time or since. Contact Caz Meers on 01582 616601 or 431769 for further information.

THE second annual Bedford Town Football Programme Fair will be held on Sunday, February 15, 1998, in The Social Club, Bedford Town FC, The New Eyrie, Meadow Lane, Cardington, Bedford, from 11am to 2.30pm. Admission will be 30p, and light refreshments and bar facilities will be available. The event is organised by The Football Programme Directory, in conjunction with the Supporters' Club.

For further information contact, David Stacey, The Editor and Events Organiser, The FPD, 66 Southend Road, Wickford, Essex, SS11 8EN. Telephone and fax: 01268 732041.



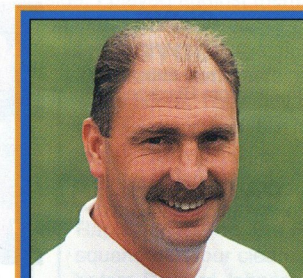
LEFT: Phil Gray - suffered a knee injury in the reserve match against Watford.



RIGHT: Paul Showler - struggling to shake off the effects of a hernia operation.



LEFT: Julian James is stepping up his fitness work following a knee injury.



with **CLIVE GOODYEAR**

R. J. BLOW &
C O M P A N Y

THE FRIENDLY ACCOUNTANTS

Book-Keeping
Taxation and Wages etc.

GUILD HOUSE,
28 GUILDFORD STREET,
LUTON, BEDS, LU1 2NR

Tel: (01582) 738792
Fax: (01582) 423347



PHIL GRAY
G + S Ceramics
Stapleford Road, Luton



SEAN EVERS
David Forman -
West Malaysian Branch
of the Luton Town
Supporters Club



PAUL McLAREN
Danny and Elsie Clubb,
from Blackpool



CHRIS WILLMOTT
McLeod Warner



STUART DOUGLAS
Richard Culley and
Pete Carney



KELVIN DAVIS
Space Display Systems
Ltd



JULIAN JAMES
Shorey's Travel



MARVIN JOHNSON
Capital Golf



DWIGHT MARSHALL
Milton Keynes Branch of
the Luton Town Supporters Club



LENNIE LAWRENCE
201 Hertfordshire and
Beds Yeomanry



SIMON DAVIES
Les and Sue Miller



TREVOR PEAKE
Bobbars Travel Club



TONY THORPE
Bedfordshire Rural
Communities Charity



CLIVE GOODYEAR
Danny and Elsie Clubb,
from Blackpool



GRAHAM ALEXANDER
Mad As A Hatter



RICHARD HARVEY
Paul Deason



DAVID KOHLER
Critical Research



GARY WADDOCK
Mad As A Hatter



MITCHELL THOMAS
JP Hygiene Supplies



PAUL SHOWLER
Graham Group plc



DARREN PATTERSON
Rob Stringer - EPIC
Records



DAVID OLDFIELD
Luton Town Supporters
Club



TERRY SWEENEY
Alan Brown of Haywood
Plastics



ANDREW FOTIADIS
Rococo Ltd



IAN FEUER
Grosvenor Casino



LIAM GEORGE
Worldwide Hatters on the
Super Highway (WHOSH)



STEVE DAVIS
Mick Garbutt,
Virgin Records



RICHARD CLARKE
Barclays Treasury
Products



JOHN MOORE
Ian Smith



ALAN WHITE
Regal Litho



GARY DOHERTY
Murtagh Group



MATTHEW SPRING
Brian Hall



COZ
Regal Litho

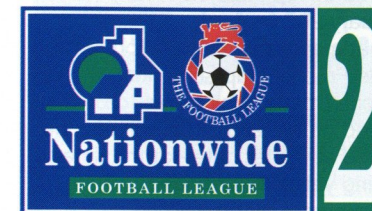
City miss their chance as Hornets are back on top

BRISTOL City were held 0-0 at home by Northampton, allowing Watford to return to the top of Division Two following their 2-1 win at struggling Brentford.

City's best chance at Ashton Gate came a minute after half-time when Matt Hewlett missed from close range, but 18-year-old midfielder Tommy Doherty again made a big impression.

The closest the Cobblers came to scoring was when John Gayle's long range chip bounced back off the bar with City keeper Keith Welch stranded.

Watford rode their luck at Brentford but still came away with the points, much to the disgust of Bees'



goalkeeper Michael Pollitt, on loan from Notts County, and up against the Hornets for the second time this season.

He said: "Watford are a remarkable side. I played against them when I was on loan at Oldham earlier in the season and we murdered them, but lost 2-1.

"It was the same here, and the same score. They only had one shot in the second half, but it was a wonder strike."

Tommy Mooney hooked Watford into a seventh minute lead, before Kevin Rapley equalised. But Rapley squandered four clear-cut chances before Richard Johnson cracked home the winner on 71 minutes.

Carlisle continued their good form at the bottom end of the table, with a 3-1 home win over play-off hopefuls Bristol Rovers.

Ian Stevens netted a hat-trick for the Cumbrians, but it was youngster Matt Jansen who again made the headlines.

He has been on trial at Manchester United, and Rovers boss Ian Holloway was impressed.

"I haven't played against anyone as sharp since my days in the Premiership with QPR," said Holloway.

"I played with Trevor Sinclair and Andrew Impy, and I put Jansen above both of them. That is a hell of a statement, but it is true."

Plymouth claimed only their second win in 14 matches, coming from 2-0 down to beat Wigan 3-2 at Home Park.

Ian Kilford and David Steel put the visitors in control, the second gifted

by Argyle's Martin Barlow.

But Barlow made amends with a free-kick to set up Mark Saunders for Plymouth's first, before firing the equaliser himself with 13 minutes left.

Then, with three minutes to go, Barlow's cross gave centre-back Simon Collins the winner.

Top scorer Mark Stallard sealed the points for Wycombe against Blackpool. Stallard netted after Andy Preece had equalised Maurice Harkin's opener.

Millwall boss Billy Bonds praised his new look side as they won 3-2 at York.

Bonds fielded new signings Andy Gray and Stuart Nethercott, who is on loan from Spurs, while Lee McRobert made his first start of the season.

Paul Stephenson fired York ahead against his old club before Kim Grant and Paul Shaw scored for the visitors.

A dramatic finale then saw Gary Bull equalise for York on 89 minutes, before Shaw fired the Lions' winner in stoppage time.

Andy Payton ended a 16-year round trip with the goal that clinched three precious points for his hometown club Burnley, with a 1-0 win over Southend.

Payton, 30, was on Burnley's books at 14, but they let him go. His travels then took him to Hull, Middlesbrough, Celtic, Barnsley and Huddersfield before he returned two weeks ago.

"My parents were watching and I was pleased for them and all the other fans who gave me a great welcome," said Payton.

Preston and Chesterfield drew 0-0 at Deepdale, and it was the same scoreline at Dean Court as Oldham took a point against Bournemouth.

Division Two's remaining representatives in the FA Cup both bowed out at the fourth round stage.

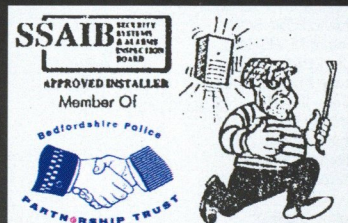
Grimsey lost 2-0 at Leeds, with Walsall going down 5-1 at Manchester United..

-Simon Oxley.

PROTECT YOUR FAMILY AND BUSINESS

- FULLY COMPREHENSIVE SECURITY PACKAGE
- INTRUDER ALARM SYSTEMS
- ACCESS CONTROL
- SECURITY LIGHTING
- C.C.T.V.
- LOCKSMITH

24 HOUR EMERGENCY SERVICE

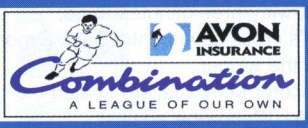
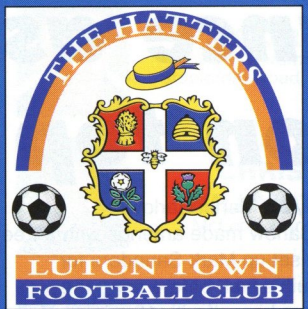


One Stop Security

FREEPHONE
0800-7316762

4 GORDON STREET, LUTON LU1 2QP

RESERVES AND YOUTH ROUND-UP



Wed Aug 13	OXFORD UTD	drew 1-1
Thu Aug 21	Queens Park R	drew 1-1
Thu Aug 28	MILLWALL	won 3-1
Wed Sep 10	Tottenham	lost 3-0
Wed Sep 17	CRYSTAL PAL	lost 2-0
Wed Sep 24	WATFORD	won 3-1
Wed Oct 15	CHARLTON	lost 4-1
Mon Oct 20	Chelsea	drew 0-0
Mon Oct 27	Norwich City	lost 1-0
Wed Nov 5	Wimbledon	lost 2-0
Mon Nov 10	IPSWICH T	lost 3-0
Wed Nov 19	Southampton	drew 1-1
Mon Nov 24	Arsenal	lost 4-1
Thu Dec 4	Millwall	won 3-0
Mon Dec 8	SWINDON T	won 6-0
Tue Dec 16	Crystal Palace	won 2-1
Tue Jan 13	Oxford	lost 2-1
Wed Jan 21	Watford	lost 1-0
Wed Jan 28	BRIGHTON	7pm*
Wed Feb 4	Charlton	2pm
Mon Feb 9	PORTSMOUTH	7pm*
Mon Feb 16	ARSENAL	7pm*
Wed Feb 25	QPR	2pm
Wed Mar 4	WIMBLEDON	2pm
Wed Mar 11	NORWICH	2pm
Mon Mar 16	Swindon	7.15pm
Wed Apr 1	SOUTHAMPTON	2pm
Wed Apr 8	Portsmouth	7pm
Wed Apr 15	Ipswich Town	7pm
Wed Apr 22	CHELSEA	2pm
TBA	Brighton	
TBA	West Ham	
TBA	WEST HAM	
TBA	TOTTENHAM	

Games in CAPITALS denotes home fixture. Home matches played at Kenilworth Road will kick-off at 2pm. * Denotes home match to be played at Hitchin, kick-off 7pm.

THERE have once again been a number of changes to the reserve team fixture list.

The match against Brighton, due to be played at Hitchin on Monday, was delayed 48 hours and was due to be played at Top Field on Wednesday, January 28.

That meant the cancellation of the Beds Premier Cup semi-final at Brache Sparta, which was to be played on the 28th. This will now be played at a later date - at the time of writing yet to be arranged.

A reminder that the home match against West Ham due to be played in December was postponed. At the time of writing, no new date has been fixed. The away match against Swindon will now be played on Monday, March 16, kick-off 7.15pm.

We also agreed to change our Combination match with Oxford from Tuesday, March 24 to Tuesday, January 13, at the Manor Ground.

This means the match at West Ham which was scheduled for the 13th was postponed to a later date.

And the home match with Tottenham changed to Wednesday, January 7, with a 7pm kick-off at Hitchin, was also postponed.

But there has been some action to report, with the reserves losing 1-0 to Watford last Wednesday, in a game played at non-league Northwood.

Welsh Under-21 international Dai Thomas scored the winner for Watford, as a number of Luton players continued their returns from injury lay-offs.

Team: Davis, Willmott, Harvey, Evers, Omegbehin, Johnson, Kean, Marshall, Gray, Davies, Showler. Subs not used: George, Doherty, Sweeney.

The youth team travelled to White Hart Lane on Monday evening for their FA Youth Cup third round replay against Tottenham.

Unfortunately the Town youngsters went down 4-2. There will be more

AVON INSURANCE COMBINATION

	P	W	D	L	F	A	Pts
Arsenal	20	14	5	1	53	13	47
Tottenham	18	12	4	2	38	18	40
Charlton	17	11	4	2	38	11	37
Norwich	22	8	8	6	24	25	32
Wimbledon	20	8	5	7	27	22	29
Southampton	20	7	8	5	33	24	29
QPR	21	8	4	9	33	28	28
C Palace	18	9	0	9	27	26	27
Oxford	20	7	6	7	29	39	27
Millwall	21	7	5	9	18	31	26
Portsmouth	20	6	6	8	23	26	24
Ipswich	17	5	6	6	27	33	21
Watford	17	5	5	7	16	28	20
LUTON	18	5	4	9	23	28	19
Chelsea	21	4	7	10	27	38	19
West Ham	17	5	3	9	19	32	18
Swindon	18	5	2	11	25	35	17
Brighton	15	1	4	10	12	35	7

League table up to and including 22.1.98

AVON INSURANCE COMBINATION 1997/98 APPS & SCORERS (21.1.98)

	APPS	G		APPS	G
Nathan ABBEY	10		Haraldar INGOLFSSON	1	
Ian JONES	8		Marvin JOHNSON	4	
Richard HARVEY	13		Dwight MARSHALL	5	
Sean EVERS	15		Ian FEUER	2	
Gary DOHERTY	10	3	Steve AUGUSTINE	2 (1)	
Emerson BOYCE	6 (2)		Simon DAVIES	9	
Robert KEAN	17 (1)		Andrew FOTIADIS	7	2
Matthew SPRING	8 (3)	1	Stuart DOUGLAS	3 (1)	1
Andrew BARR	6	4	Mitchell THOMAS	5	
Liam GEORGE	9 (2)	8	Darren PATTERSON	4	
Terry SWEENEY	9 (3)		Phil GRAY	3	
Andre SCARLETT	(5)		Delroy McKOY	1 (1)	
Michael McINDOE	2 (3)		Chris WILLMOTT	6 (2)	
Stuart FRASER	7 (3)		Tresor KANDOL	(1)	
Daniel TATE	1		Kelvin DAVIS	6	
Gavin McGOWAN	3	1	Steve DAVIS	1	1
Paul SHOWLER	4				
Alan WHITE	2				
Russell LAWES	3 (2)				
Colin OMOGBEHIN	10				
S QUINN	2				
Trevor PEAKE	2 (2)				
Richard CLARKE	1 (2)				
M BLOCK					

details of this game in our next home match programme.

That followed a 2-2 draw at Kenilworth Road, when Matthew Spring netted twice for the Hatters.

Spurs will be away to Crewe in round four.

The replay against Spurs meant that last weekend's league game against Barnet was brought forward to Friday.

The Town side returned to winning ways in the league, with a 3-0 victory.

Stuart Fraser, Jimmy Cox and Clifford Akurang were the Town scorers, also Fraser was later sent off.

Team: Kimber, Lawes, Fraser, Spring (Howe), Clarke, Boyce, Scarlett, Cox (Kandol), Doherty (Akurang), McIndoe, Jerry.

In the next round of the South East Counties League Cup, Luton will be away to Watford at Vicarage Road. At the time of writing no date has been confirmed.

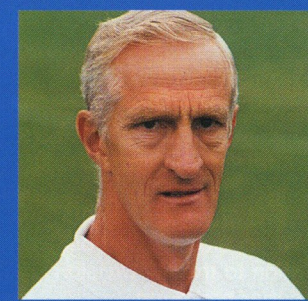
SOUTH EAST COUNTIES DIV TWO

	P	W	D	L	F	A	Pts
Bristol City	18	11	5	2	38	24	38
LUTON TOWN	18	11	4	3	48	21	37
Brentford	20	10	7	3	40	25	37
Southampton	19	10	2	7	43	35	32
Oxford	20	9	2	9	40	48	29
Swindon	16	8	2	6	30	24	26
Barnet	21	7	5	9	37	42	26
Colchester	18	6	7	5	27	26	25
Wimbledon	17	7	3	7	32	34	24
Wycombe	16	5	7	4	25	18	22
Bristol R	20	5	5	10	36	41	20
Tottenham	19	6	2	11	26	37	20
Reading	18	5	4	9	25	32	19
Bournemouth	19	4	6	9	27	42	18
Brighton	17	2	3	12	20	45	9

League table as at January 24, 1998



with **TREVOR PEAKE**



and **JOHN MOORE**

South East Counties League, and League Cup; FA Youth Cup; Southern Jnr Floodlit Cup; and Eastern Jnr Cup

Sat Aug 9	WYCOMBE W	lost 1-0	Sat Dec 13	Bristol Rovers	won 1-0
Sat Aug 16	Reading	won 6-0	Sat Dec 20	Wycombe W	postponed
Tue Aug 19	Ipswich (SJFC Pre)	won 1-0			
Sat Aug 23	Swindon Town	won 4-2	Sat Jan 10	SWINDON TOWN	lost 1-0
Sat Aug 30	OXFORD UTD	won 5-1	Wed Jan 14	TOTT'HAM (FAYC3)	drew 2-2
			Sat Jan 17	OxfordUnited	drew 1-1
Fri Sep 5	Barnet	won 4-2	Fri Jan 23	BARNET	won 3-0
Tue Sep 9	C PALACE (SJFC1)	lost 1-0	Mon Jan 26	Tottenham (FAYC3)	lost 4-2
Sat Sep 13	Southend (SECLC1)	won 1-0	Sat Jan 31	Brighton	
Sat Sep 20	BRIGHTON	won 8-1			
Sat Sep 27	Bristol City	drew 2-2	Sat Feb 7	BRISTOL CITY	11am
Sat Oct 4	BRENTFORD	lost 1-0	Sat Feb 14	Brentford	
Sat Oct 11	Southampton	won 3-2	Sat Feb 21	SOUTHAMPTON	11am
Sat Oct 18	Arsenal (SECLC2)	won 2-0	Sat Feb 28	Tottenham	
Sat Oct 25	TOTTENHAM	won 1-0			
			Sat Mar 14	Wimbledon	
Sat Nov 1	READING	won 4-2	Sat Mar 21	Colchester	
Sat Nov 15	COLCHESTER	won 3-2	Sat Mar 28	BOURNEMOUTH	11am
Sat Nov 22	SWINDON (SECLC3)	won 4-2	Sat Apr 4	WIMBLEDON	11am
Sat Nov 29	Bournemouth	drew 1-1			
Wed Dec 3	Coventry (FAYC2)	won 4-0			
Sat Dec 6	BRISTOL ROVERS	drew 2-2			

	LGE APPS	G	CUP APPS	G	YOUTH TEAM 1997/98
Daniel TATE	15		6		LEAGUE AND CUP
Russell LAWES	11 (1)		6		APPEARANCES
Stuart FRASER	13	2	7		& SCORERS
Matthew SPRING	8	4	5	3	
Emerson BOYCE	12 (3)	3	5	1	
James AYRES	13		1		Up to and including
Andre SCARLETT	18	5	6		January 23, 1998
Clifford AKURANG	7 (3)	5	2 (2)	1	
Gary DOHERTY	6 (1)	3	3	1	
Richard CLARKE	17 (1)		7		
Delroy McKOY	7 (6)	1	2 (1)	2	
Darren HOWE	5 (3)		2 (1)		
C DREW	(1)				
Michael McINDOE	15 (1)	3	7	1	
Jimmy COX	12	7	6		
Tresor KANDOL	11 (4)	11	4 (1)		
Moses JERRY	13 (3)	4	4		
J STIRLING	6		1 (1)		
J HARRINGTON	1 (4)		(1)		
S ROBERT	2 (2)		1		
A MINTON	1				
C GREGORY	1				
R MORAN	2 (2)				
Stuart KIMBER	3		1		

LUTON Town FC require landladies on a permanent and/or part-time basis for our YTS players. We are ideally looking for families, in Luton, with an interest in football, who have room available for one of our youngsters, either on a permanent (seven days a week) basis, or on a temporary basis (for example in school holidays). Anyone interested should contact Youth Development Officer Paul Lowe on (01582) 411622.

Where are they now?

IN last week's programme we looked back at the early career of Gordon Dreyer, centre half of the successful Luton Town side that almost won promotion to the old Division One just as War broke out.

Gordon, born in Sunderland in 1914, played his early football for Washington Colliery before signing for Hartlepool and then transferring to Hull City.

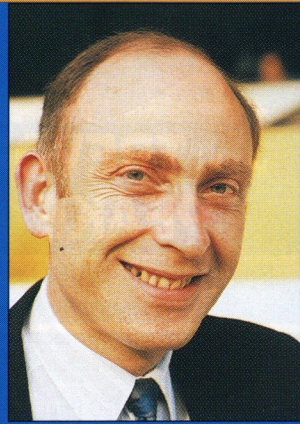
After a second spell at Hartlepool, Gordon was in limbo and was on the point of leaving the game. The Hartlepool directors had decided, because of the club's parlous financial state, not to pay the players during the close season and with part time jobs few and far between in the North East decisions had to be made.

"I was seriously thinking of giving up the game but a chance trip to Luton to see my girlfriend, now my wife, ended up with me signing for the Hatters. My girlfriends family had moved to Luton because of the lack of jobs back home and I was paying a visit over the summer. I was walking along George Street when I bumped into Luton manager Ned Liddell.

"I knew Ned from his days as chief scout at West Ham as he had tried to sign me on amateur forms for the Hammers as a 16 year old. I told him of my problems with Hartlepool and he asked me to call at his office the following day.

"Unbeknown to me Hartlepool had, by not paying me, released me from my contract and Ned offered me terms to come to Kenilworth Road, which I accepted like a shot."

Gordon played in his first competitive match for the Town in a reserve game against Southend as a full back but it was not until Christmas that he moved over to centre half from where he made his debut in the first team on February 2nd 1938 in a mid week home game against Sheffield United.



by **ROGER WASH**

"I do not remember much about my league debut for Luton apart from the fact that I was up against Jock Dodds

who towered above me. "On one occasion we both went for a ball, I made a back for him and he hurtled over the barriers at the Kenilworth Road end of the ground landing up on the terraces which stand below pitch level!"

The previously injured Jack Nelson returned to the side for the next game and it was back to the reserves for Gordon until Christmas 1938 when further injury problems in the centre half position meant a recall, but this time he was here to stay. "We beat West Brom 3-1 at home on my 'second' debut on Christmas Eve and I kept my place for the next game on Boxing Day at Nottingham Forest which we also won.

"From then on we kept moving up the table and after the Easter games,

when we beat Southampton twice as well as Fulham, promotion looked a distinct possibility. Unfortunately we blew up with only three games to go.

"In my early games I was well protected by Fred Roberts and Jock Finlayson. I was not a natural centre half, being only 5'10", but I made up for it with my fitness which probably came about because of all the training I did on wet sand back in the North East.

"Because of my lack of height I was always suffering cut eyes as the big fellows came over the ball.

"I honestly believe that we could have gone on to win promotion the following season as we managed to keep most of the squad together.

"Tom Dunsmore, even though he was a rough diamond, was a brilliant defender, Jock Finlayson was steady and dependable, George Stephenson was very quick down the wing but the star of the side was centre forward Hugh Billington who had everything and in my opinion was better than Joe Payne."

As if to prove Gordon right we were unbeaten after



ABOVE: Gordon Dreyer (front row, third left) on a training run at Kenilworth Road in 1938.

three games at the start of the 1939/40 season and were leading the table when War broke out and put an end to our hopes and ambitions.

Unfortunately the immediate curtailment of league football meant that no wages were paid which Gordon is still bitter about to this day.

One of the club's directors found work for him at Laportes and after a while regional football was organised and he once again turned out for the Hatters albeit for expenses only.

"I was eventually called up for the Royal Navy and spent a good part of the War in Australia on the medical staff. I managed to play services football and once turned out against Tommy Lawton who was playing for the Army.

"At the end of the War I played a bit for Bedford and carried out some scouting work for Luton manager George Martin, but after Dally Duncan took over he brought in his own men and my services were dispensed with.

"I then did some scouting work for my old school pal Raich Carter who was by then manager of Leeds United and I spotted Terry Venables at this time but Raich discovered he was already 'promised' to Chelsea."

After over 25 years working at Vauxhall, Gordon retired at the age of 61 in 1975, and is enjoying a long retirement on the outskirts of Luton where he still keeps an eye out for the Town's results.

5 YEARS AGO

30/1/93: The Town, despite sitting in bottom place in Division One, put up a good performance in drawing 0-0 at Bristol City in front of a crowd of 8,877.

10 YEARS AGO

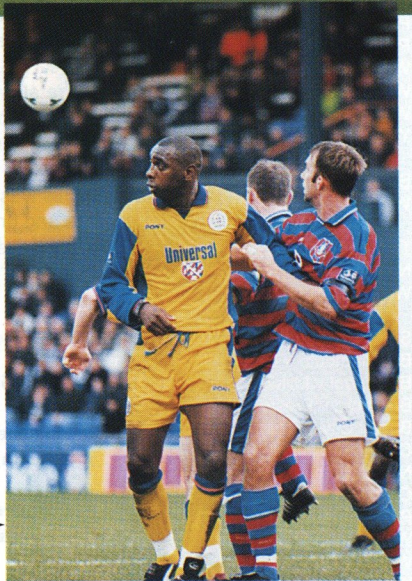
30/1/88: Late goals from Ian Allinson and Brian Stein secured a 2-1 victory over Southampton at Kenilworth Road in a fourth round FA Cup tie, setting us up for an away game at QPR at the next stage of the competition.

15 YEARS AGO

29/1/83: We went out of the FA Cup with barely a whimper going down 2-0 to Manchester United at Kenilworth Road, in front of a crowd of 20,516.

20 YEARS AGO

31/1/78: David Pleat, in his first game in charge of the team, probably wondered what he had let himself in for as we went down 4-0 at Millwall in a re-arranged FA Cup tie.

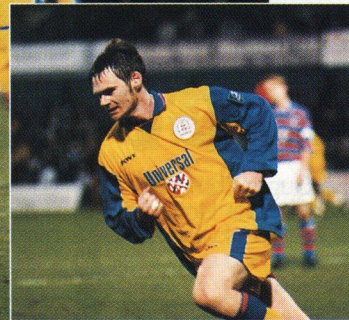
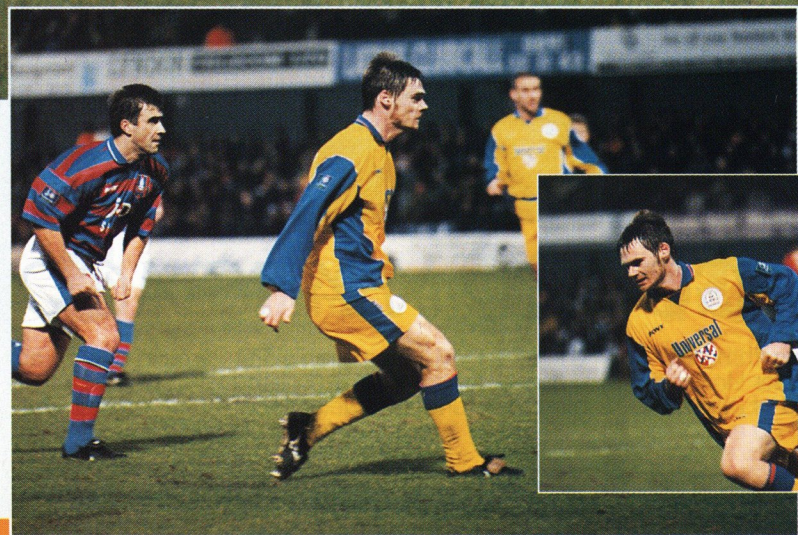


↑ This first-half free-kick by Steve Davis was saved by Oldham keeper Gary Kelly.

← Oldham keeper Gary Kelly is quickly off his line to deny Tony Thorpe.

↓ Graham Alexander pulls a goal back for Luton with 12 minutes to go, and (inset) celebrates his seventh of the season.

→ Mitchell Thomas challenges for possession at Boundary Park.



ACTION STATIONS

Oldham Athletic 2 Luton Town 1

(Graham 2)

(Alexander)

Saturday, January 17, 1998 - Nationwide League Division Two

Attendance: 6,057

Pictures by Gareth Owen



OPENING TIMES

MONDAY TO FRIDAY

10am to 4pm

EVENING MATCHDAYS

10am to 10pm

SATURDAYS - MATCHDAYS

10am-3pm & 4.45-5.15pm

- non matchdays 9am until coaches leave for away game

LTFC KIT PRICES 1997/98

GET YOUR KIT ON!

NOW AVAILABLE..... FULL COLOUR
1998 LTFC CALENDAR - ONLY £4.99
PLUS..... NEW MERCHANDISE CATALOGUE
WITH ALL YOUR GIFT IDEAS.....

matchday essentials

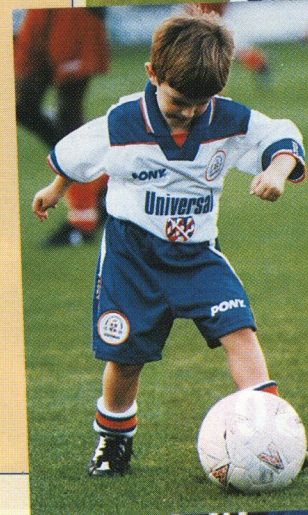
A 1. Harry Hatter Scarf	£ 4.75
2. Bar Stripe Scarf	£ 5.75
3. Jumbo Scarf	£12.50
4. Come on you Hatters	£ 5.75
5. Fleck Scarf	£ 5.75
B 1. Crest Bronx Hat £ 6.99	
Royal, Navy, Black	
2. Bronx Hat £ 4.99	
Royal, Navy, Black	
3. Childs Bronx Hat £ 4.50	
Grey	
4. Hatters Bronx Hat £ 4.99	
Grey, Blue/White	
C 1. Mens Gloves £ 4.25	
2. Childrens, Youths Gloves £ 3.25	
D Base Ball Hats	
1. Royal Hat £ 8.50	
2. Yellow Hat £ 8.50	
3. White Hat £ 8.50	
4. Org/Blue Hat £ 9.99	
5. Pinstripe Hat £ 4.99	

FOR THE STARS OF TODAY AND TOMORROW.....

HOME SHIRTS
SB, B, LB - £29.99. Youths - £34.99
S, M, L, XL, XXL - £39.99

HOME SHORTS
SB, B, LB - £15.99. Youths, S, M - £19.99
L, XL, XXL - £19.99

HOME SOCKS
MB, LB - £7.99. Mens - £9.99
Home long sleeved shirts (from Oct 97)
S, M, L - £42.99. XL, XXL - £42.99



AWAY SHIRTS
SB, B, LB - £29.99. Youths - £34.99
S, M, L, XL, XXL - £38.99

AWAY SHORTS
SB, B, LB - £15.99. Youths, S, M - £19.99
L, XL, XXL - £19.99

AWAY SOCKS
MB, LB - £5.99. Mens - £7.99

Just the ticket for birthdays...

Gift Voucher
000 500

CLUB SHOP
Kenilworth Road
Luton
Beds
LU1 1DN
Tel: 01582 411622

Amount in Words: **THIRTY NINE POUNDS AND NINETY NINE PENCE**

ONLY THE COMPLETE VOUCHER WILL BE ACCEPTED FOR REDUCTION AND MAY BE EXCHANGED FOR GOODS FROM THE CLUB SHOP ONLY. THE VOUCHER MAY NOT BE EXCHANGED FOR CASH OR PART CASH.

MANAGER'S SIGNATURE: *[Signature]*

Available now at the Club Shop!

HATTERS SHOP

FOR THE LATEST NEWS - CLUBCALL 0891 121 123
Calls cost 50p per minute at all times

COMMERCIAL NEWS

This afternoon we welcome matchday sponsors THE BOBBERS TRAVEL CLUB and WHOSH (Worldwide Hatters on the Super Highway).

The Bobbers Travel Club are regular sponsors of both matches, and players, and their support both commercially and of course following the Town home and away is gratefully received.

WHOSH keeps Luton fans around the world in contact with events at Kenilworth Road, and provides a forum for fans to come together.

WHOSH can be contacted by E-mail at ltfc-request@robots.ox.ac.uk or by phoning Ralph on 01865 721518.

A warm welcome into the sponsors' lounge today to Mr Roy Bunyan.

The matchball sponsors are KEITH AND RICHARD HARVEY.

If you or your company would like details of match or matchball sponsorship, please contact the



with **KATHY LEATHER**

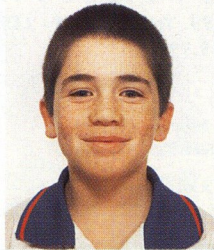
Commercial department on (01582) 411622. We have packages to suit all budgets, and a variety of ways in which your company can get involved with Luton Town.

This afternoon's Cabletel kids are: Ben Roberts, Max Archer, Harry Angus, Keith Smith, Marcus Fox, Conor O'Shea, Ashley Philpott, Josh Cosgrove and Benjamin Gopal.

THIS afternoon we welcome two Commercial Mascots for the game against Bournemouth.

Zoe Sapsworth (below left) celebrates her ninth birthday tomorrow. She attends Willowfield Lower School in Caddington, and her favourite Luton player is Ian Feuer.

Aaron Sapsworth (below right) is 10-years-old, and attends Streetfield Middle School in Caddington. His favourite Luton player is Gary Waddock.



Don't forget the Luton Town PRIZELINE

0930 55 50 50

(Calls cost 50p per minute at all times)

Antony's Tailor

OF LONDON

THE MOST ESTABLISHED AND RELIABLE TAILORS IN LUTON

DRESS HIRE LADIES AND GENTS BESPOKE TAILORING

12 DUNSTABLE ROAD, LUTON, BEDS OPPOSITE MAIN POST OFFICE
TEL: (01582) 424687



Win FREE tickets for YOUR junior team

FOR the third season in succession, the Loyal Luton Supporters Club are once again sponsoring the Young Team of the Month Award.

Having received a grant from NatWest Bank as part of the bank's Community Action Scheme, and through monies raised through the year, the supporters, in conjunction with Luton Town FC, have again funded the award.

The award is run on a monthly self-nomination basis, and is open to all teams, boys and girls, under the age of 16. Winners receive 15 tickets (13 children and two adults) for a chosen Luton home match.

Previous winners have included successful regional champions through to teams who have won their first point after two years of playing.

Anyone wanting to nominate their local youth, school, cubs or girls team, should send a letter to Simon Oxley, c/o LTFC, briefly explaining why they deserve to win one of the monthly awards. And remember, you only need to make one nomination. All remaining letters will be considered throughout the rest of the season.



Caught.
Ball watching!

The official ball supplier to:



Rephotographs by Sentybox Tel: 01895 251220

Trust us to help the game

The Football Trust has been providing support for the game at every level throughout the UK for over 22 years. Its present priority task is to help League clubs to complete the implementation of the Taylor Report recommendations.

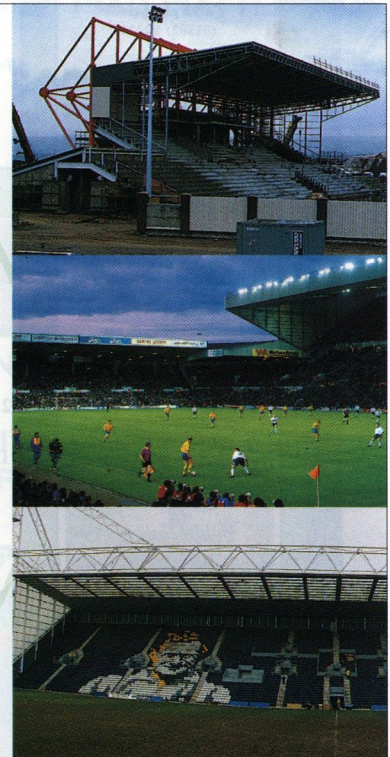
Thanks to the Government and to the Football Association, the FA Premier League and the English Sports Council, a major new funding package to secure the future of the Trust has been put in place.

These funds will be in addition to income derived from the football pools companies Littlewoods, Vernons and Zetters, and will enable the Trust to complete its Taylor task, carry on its essential safety work and continue to grant aid football at every level. The Government's commitment to the Trust has the support of everyone who cares about our national game.



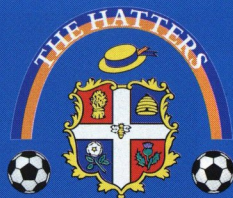
THE FOOTBALL TRUST
Helping the game

THE FOOTBALL TRUST, WALKDEN HOUSE, 10 MELTON STREET, LONDON NW1 2EB



OVER THE BAR!

Drink a toast to the Hatters in the following pubs...



LUTON TOWN FOOTBALL CLUB

Kim and Chris welcome you to
THE WHEATSHEAF

Traditional country pub serving snacks and real ales.

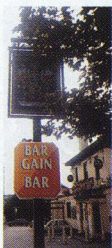
Large garden, children welcome.

15 High Street, Flitwick.
Tele: (01525) 712574.



KINGSWAY ARMS
Kingsway, Luton
(01582) 584581

Home of the Loyal Luton Supporters Club. Disco music 1pm to 2.30pm, and 5pm to 7.30pm on matchdays, everybody welcome. Cheap draught lager and beer available. Large car park. Prop: Ian Robinson



EDDIES BAR

100 Church Street, Luton. Bedfordshire LU1 3JG. Tel: 01582 400005

THE live music venue
Food available seven days a week.

"The original and best"

106 Church Street, Luton
(01582) 400005



THE SOMERSET TAVERN

Good food and fine selection of cask ales. Quiz nights and karaoke.
Crawley Grn Rd, Luton.
Tele: 01582 29912.



Carol and John Brennan welcome you to
THE FARMERS BOY
Common Road, Kensworth

Real ales (CAMRA 'Good Beer Guide')

Traditional Sunday lunches
£4.75 per person
(01582) 872207



Kevin and Hayley welcome all supporters to
THE CENTURION
Poynters Road

For a great atmosphere and live music on Saturday nights!

Tele: 01582 661721



93 High Street South
Dunstable

The only place to eat in Dunstable.
Tele: (01582) 667833
Fax: (01582) 475552



THE BEDFORDSHIRE YEOMAN

Just a two-minute walk from the ground. Food available on matchdays. Supporters welcome.

214 Dallow Road, Luton.
(01582) 30469



THE CHEQUERS
Park Road, Westoning
(off J12, M1)

For all live TV games
(01525 713125)



THE BREWERY TAP
22 Park Street, Luton
(01582) 31797

Disco on Thurs, Fri, Sat and Sun nights



THE RED LION
Breachwood Green
Hitchin, Herts

Fine traditional ales Bar snacks & buffets (Parties catered for) Regular traditional jazz and live music evenings
Phone for details: (01438) 833123



Richard welcomes you to



Hotel accommodation, good food and fine selection of cask ales & lagers.
Kings Walden Rd, Offley.
01462 768281



To advertise contact the Commercial Department (01582) 411622

LTFC EVACUATION PROCEDURE

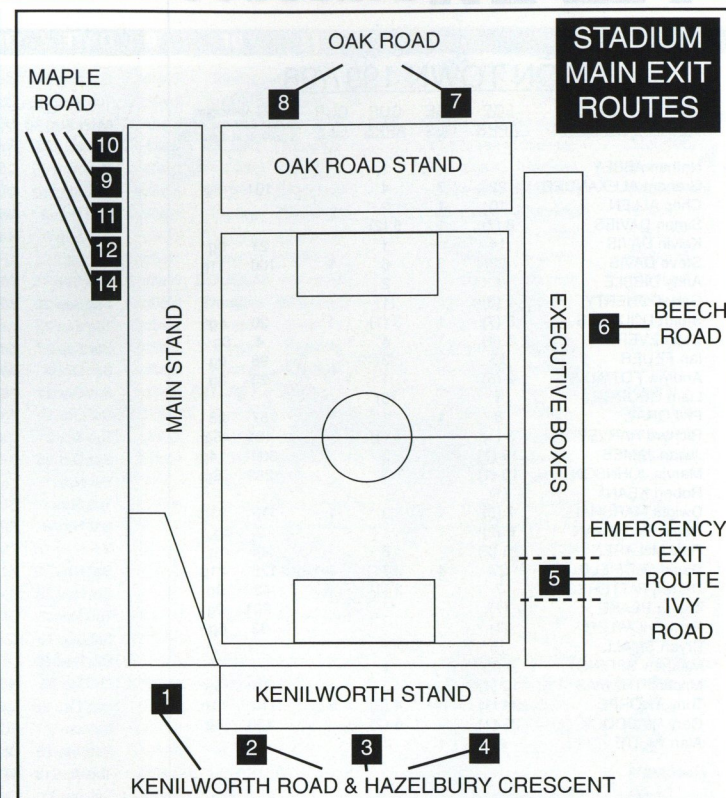
IN the event of any emergencies at Luton Town Football Club, the emergency services and the club have agreed on an evacuation policy which is designed to:

a) Ensure the safe and controlled evacuation of the ground.

b) Ensure the dispersal of the crowd from the area to allow the emergency services to carry out their tasks.

IN the event of an evacuation of all or part of the stadium, you will receive instructions over the public address system on how you should leave the stadium. Stewards will direct you to the nearest exit. It may be that your normal exit route will not be available. On leaving the stadium, you will find some roads closed to pedestrian traffic, to enable swift and unobstructed arrival of the emergency services.

Please leave the area of the ground as quickly as possible by the route directed. Your co-operation will be most appreciated.
GEOFF LOVELL, Safety Manager.



We can win three points today....
YOU could win up to £2,000 in cash in the *LTFC Golden Gamble!*

Each ticket costs just £1, with half the money collected going to the winning ticket holder, in our half-time draw made on the pitch.



PLUS win £25,000 in our Premier Instant ticket on sale at half-time.... Money from these tickets helps YOUR club, and supports charities for children with special needs

THE MAD HATTERS CLUB LTD
LUTON'S NO.1 MEMBERS CLUB

Two floors of music
- Soul, Swing, Lovers Rock
- House, Garage

OPEN MONDAY TO SUNDAY
11am to 3am.

VIP Lounge - Top Floor.
Find us at Cheapside.

Phone: 01582 411894
Membership Available

TEAM Statistics

1997/98 See page 39 for Division Two stats

LUTON TOWN 1997/98

PLAYER (figure in bracket = sub app.)	LGE APPS	LGE GLS	CUP APPS	CUP GLS	LTFCA career apps (league & cup incl subs) & goals, as at start 9/7/98
Nathan ABBEY			1		
Graham ALEXANDER	22	7	4		101 3g
Chris ALLEN	10	1	2		
Simon DAVIES	8 (7)	1	5 (2)		
Kelvin DAVIS	14		1		21 0g
Steve DAVIS	23	3	6	1	100 11g
Andy DIBBLE	1		2		
Gary DOHERTY	1 (3)		(1)		
Stuart DOUGLAS	5 (7)	1	3 (1)	1	20 1g
Sean EVERS	2 (4)		4		4 0g
Ian FEUER	13		3		98 0g
Andrew FOTIADIS	2 (5)		1		23 3g
Liam GEORGE	1		(3)		
Phil GRAY	8	1	1		67 26
Richard HARVEY	3 (1)		4 (1)		181 5g
Julian JAMES	15 (1)		2		309 14g
Marvin JOHNSON	10 (1)		3		289 6g
Robert KEAN	(1)				
Dwight MARSHALL	7 (5)	1	3	1	115 33g
Gavin MCGOWAN	6 (2)		6		2 0g
Paul McLAREN	25 (2)		7	1	44 1g
David OLDFIELD	27	4	7	1	125 21g
Darren PATTERSON	7		2 (1)		42 0g
Trevor PEAKE	(1)				201 0g
Paul SHOWLER	(1)				33 6g
Bryan SMALL	15				
Matthew SPRING	4 (2)		1		
Mitchell THOMAS	12 (1)		3		273 5g
Tony THORPE	24 (1)	14	4 (2)	5	110 41g
Gary WADDOCK	25 (1)		5 (2)		133 3g
Alan WHITE	18	1	4		

Nationwide League Division Two 97/98

	P	W	D	L	F	A	PTS
Watford	28	18	7	3	44	20	61
Bristol City	28	18	5	5	51	21	59
Fulham	28	12	8	8	37	27	44
Bristol R	28	12	7	9	41	42	43
Northampton	28	11	10	7	32	25	43
Oldham	27	10	11	6	40	31	41
Grimsby	26	11	8	7	36	23	41
Chesterfield	29	9	14	6	27	23	41
Gillingham	28	10	8	10	35	38	38
York	28	9	11	8	34	32	38
Millwall	27	11	5	11	33	35	38
Bournemouth	28	9	10	9	34	30	37
Wrexham	26	9	10	7	32	30	37
Blackpool	28	10	6	12	36	44	36
Walsall	26	10	6	10	30	31	36
Wycombe	28	8	10	10	35	39	34
Preston	28	9	6	13	33	33	33
Wigan	27	9	5	13	40	44	32
LUTON TOWN	28	8	8	12	34	44	32
Carlisle	28	8	5	15	38	46	29
Plymouth	28	6	10	12	35	42	28
Southend	29	7	6	16	30	55	27
Brentford	29	6	9	14	29	50	27
Burnley	28	6	9	13	26	37	27

Up to and including Saturday, January 24, 1998. Does not include Tuesday night's Oldham v Wrexham match.

DATE	OPPONENTS	F-A	ATT	POS	GK	2	3	4	5	6	7	8	9	10	11	12	13	14
Sat Aug 9	Blackpool	0-1	6,547	-	Feuer	McGowan	Thomas	Waddock	S.Davis	Johnson	McLaren	Alexander	Oldfield	Thorpe	(Davies)	(Douglas)	Evers	Harvey
Tue Aug 12	Colchester Utd CCC1 (1)	1-0	2,840	-	Feuer	Douglas	Thomas	Waddock	S.Davis	Johnson	McLaren	Alexander	(Oldfield)	THORPE	Davies	Kean	(Harvey)	Evers
Mon Aug 18	SOUTHEND UTD	1-0	5,140	12	Feuer	James	Thomas	Waddock	S.Davis	Johnson	Davies	Alexander	(Fotiadis)	(Thorpe)	Marshall	(DOUGLAS)(McLaren)		Harvey
Sat Aug 23	Fulham	0-0	8,142	15	K.Davis	James	Thomas	Waddock	S.Davis	Johnson	(Davies)	(Alexander)	Oldfield	(Douglas)	Marshall	(McGowan)	(Harvey)	(McLaren)
Tue Aug 26	COLCHESTER UTD CCC1 (2)	1-1	2,816	-	Abbey	James	Thomas	Waddock	S.Davis	Johnson	(Davies)	McLaren	Oldfield	THORPE	Marshall	(Douglas)	Showler	Evers
Sat Aug 30	OLDHAM ATHLETIC	1-1	5,404	12	K.Davis	(James)	Thomas	Waddock	S.Davis	Johnson	(Davies)	McLaren	Oldfield	THORPE	(Marshall)	(Douglas)	(Showler)	(McGowan)
Tue Sep 2	MILLWALL	0-2	5,781	15	K.Davis	(James)	McGowan	Waddock	S.Davis	Johnson	McLaren	(Alexander)	Oldfield	Thorpe	(Marshall)	(Douglas)	(Doherty)	(Evers)
Tue Sep 9	Northampton Town	0-1	7,246	18	K.Davis	McGowan	Small	Waddock	S.Davis	Johnson	McLaren	(Evers)	Oldfield	Douglas	(Marshall)	Peake	(Davies)	(Doherty)
Sat Sep 13	AFC Bournemouth	1-1	4,561	21	Sat Sep 13	McGowan	Small	Waddock	S.Davis	Johnson	(Davies)	McLaren	Oldfield	(Douglas)	MARSHALL	(Evers)	Peake	(Doherty)
Tue Sep 16	WEST BROM CCC2 (1)	1-1	3,437	-	Dibble	Alexander	Harvey	Waddock	S.Davis	(Johnson)	(Evers)	McLaren	Oldfield	DOUGLAS	Marshall	Doherty	(Davies)	(George)
Sat Sep 20	WREXHAM	2-5	5,241	23	Dibble	McGowan	(Harvey)	(Waddock)	S.DAVIS	Small	GRAY	McLaren	Oldfield	Douglas	(Marshall)	(Thorpe)	(Evers)	(Peake)
Tue Sep 23	West Brom CCC2 (2)	2-4	7,227	-	Dibble	Evers	Harvey	Waddock	S.DAVIS	White	Gray	McLaren	Oldfield	(Douglas)	(Davies)	(THORPE)	Doherty	(George)
Sat Sep 27	Bristol City	0-3	8,509	23	K.Davis	Evers	Harvey	(Waddock)	Small	White	Davies	McLaren	Oldfield	Thorpe	(George)	(Kean)	(Spring)	Omogbehin
Sat Oct 4	WATFORD	0-4	9,041	23	K.Davis	(McGowan)	Harvey	Waddock	Small	White	Gray	McLaren	Oldfield	Thorpe	(Davies)	(Douglas)	Spring	James
Sat Oct 11	PLYMOUTH ARGYLE	3-0	4,931	23	K.Davis	Alexander	Small	Waddock	James	White	Spring	McLaren	Oldfield	(THORPE 2)	(Doherty)	(DAVIES)	Harvey	(Evers)
Sat Oct 18	Wigan Athletic	1-1	4,466	22	K.Davis	James	Small	(Spring)	S.Davis	White	(Gray)	McLaren	OLDFIELD	Thorpe	Alexander	(Davies)	Doherty	(Marshall)
Tue Oct 21	Carlisle United	1-0	4,341	21	K.Davis	James	Small	(Spring)	S.Davis	WHITE	(Gray)	McLaren	Oldfield	Thorpe	Alexander	Davies	(Waddock)	(Marshall)
Sat Oct 25	BRENTFORD	2-0	5,972	18	K.Davis	(James)	Small	Waddock	S.Davis	White	Gray	McLaren	OLDFIELD	(THORPE)ALEXANDER	(Johnson)	Davies	(Marshall)	(Marshall)
Sat Nov 1	Wycombe Wanderers	2-2	6,219	18	K.Davis	James	Small	Waddock	S.Davis	Johnson	Gray	McLaren	OLDFIELD	THORPE	Alexander	Davies	Fotiadis	White
Tue Nov 4	BURNLEY	2-3	5,315	19	K.Davis	James	Small	(Waddock)	S.Davis	Johnson	Gray	McLaren	Oldfield	Thorpe	ALEXANDER 2	Davies	(Fotiadis)	White
Sat Nov 8	PRESTON NORTH END	1-3	5,767	22	K.Davis	James	(Small)	(Waddock)	White	Johnson	(Gray)	McLaren	Oldfield	THORPE	Alexander	(Davies)	(Fotiadis)	(Marshall)
Sat Nov 15	TORQUAY UNITED FAC1	0-1	3,446	-	Feuer	James	(Harvey)	(Waddock)	White	(Spring)	Fotiadis	McLaren	Oldfield	Thorpe	Alexander	(Davies)	(Patterson)	(Doherty)
Sat Nov 22	WALSALL	0-1	4,726	23	Feuer	James	Small	(Waddock)	White	(Davies)	Fotiadis	McLaren	Oldfield	Thorpe	Alexander	(Spring)	(Douglas)	Harvey
Sat Nov 29	York City	2-1	3,636	20	Feuer	James	Small	Waddock	S.Davis	White	Allen	McLaren	Oldfield	THORPE	ALEXANDER	Davies	Fotiadis	Thomas
Tue Dec 2	GILLINGHAM	2-2	4,408	21	Feuer	James	Small	(Waddock)	S.DAVIS	(White)	Allen	McLaren	Oldfield	THORPE	Alexander	Davies	(Fotiadis)	(Thomas)
Sat Dec 13	Chesterfield	0-0	4,358	22	Feuer	(James)	Thomas	Waddock	S.Davis	White	Allen	McLaren	Oldfield	Thorpe	Alexander	Davies	Fotiadis	(Douglas)
Sat Dec 20	BRISTOL ROVERS	2-4	5,266	22	Feuer	Patterson	Thomas	(Douglas)	S.Davis	White	ALLEN	(McLaren)	OLDFIELD	Thorpe	Alexander	Waddock	(Davies)	(Fotiadis)
Fri Dec 26	NORTHAMPTON TOWN	2-2	8,035	21	Feuer	Patterson	Thomas	Waddock	S.Davis	White	Allen	McLaren	OLDFIELD	THORPE	(Alexander)	Davies	(Fotiadis)	Spring
Sun Dec 28	Millwall	2-0	7,461	20	Feuer	Patterson	Thomas	Waddock	S.DAVIS	White	Allen	McLaren	Oldfield	THORPE	Alexander	Davies	Fotiadis	Spring
Sat Jan 3	Southend United	2-1	5,056	19	Feuer	Patterson	Thomas	Waddock	S.Davis	White	Allen	McLaren	Oldfield	Thorpe	ALEXANDER 2	Davies	Fotiadis	Spring
Sat Jan 10	BLACKPOOL	3-0	5,574	18	Feuer	Patterson	Thomas	Waddock	S.Davis	White	Allen	McLaren	Oldfield	THORPE 3	Alexander	Davies	Fotiadis	Evers
Tue Jan 13	BRENTFORD AWS2	2-1	3,106	-	Feuer	Patterson	Thomas	Evers	S.Davis	White	Allen	Davies	OLDFIELD	(THORPE)(Alexander)	(George)	Harvey	(Waddock)	
Sat Jan 17	Oldham Athletic	1-2	6,057	18	Feuer	Patterson	Thomas	(Waddock)	S.Davis	White	Allen	(Spring)	Oldfield	Thorpe	ALEXANDER	(Davies)	(Marshall)	Evers
Sat Jan 24	FULHAM	1-4	8,366	19	Feuer	Patterson	Thomas	Waddock	S.Davis	(White)	Allen	McLaren	Oldfield	THORPE	Alexander	(Davies)	Evers	Marshall
Tue Jan 27	Fulham AWS3	2-1	5,103	-	K.Davis	Patterson	Harvey	Evers	S.Davis	White	Allen	(McLaren)	Oldfield	Davies	(MARSHALL)	(Waddock)	(THORPE)	George
Sat Jan 31	AFC BOURNEMOUTH																	
Sat Feb 7	Wrexham																	
Sat Feb 14	Watford																	
Sat Feb 21	BRISTOL CITY																	
Tue Feb 24	WIGAN ATHLETIC																	
Sat Feb 28	Plymouth Argyle																	
Tue Mar 3	Preston North End																	
Sat Mar 7	WYCOMBE W																	
Sat Mar 14	Burnley																	
Sat Mar 21	GRIMSBY TOWN																	
Sat Mar 28	Walsall																	
Sat Apr 4	YORK CITY																	
Sat Apr 11	Gillingham																	
Tue Apr 14	CHESTERFIELD																	
Sat Apr 18	Bristol Rovers																	
Sat Apr 25	Brentford																	
Sat May 2	CARLISLE UTD																	
TBA	Grimsby Town																	

Game in **BOLD** denotes home match.
Name in **CAPITALS** denotes goalscorer.
Name in (brackets) denotes player substituted or substitute used.

Graham GREAT DEALS FOR THE NEW YEAR **Graham**

ZANUSSI

The Appliance of Science®

FRIDGE FREEZER (ZFD 50/17R)	DISHWASHER (DW 907)	WASHING MACHINE (FL 882)
--------------------------------	------------------------	-----------------------------

EACH AT THE INCREDIBLE PRICE OF

£299.99 inc VAT

DON'T FORGET WE CAN DESIGN AND INSTALL IT FOR YOU

96A KINGSWAY, LUTON
& LEIGHTON ROAD, LEIGHTON BUZZARD

SEE OUR SHOWROOMS AT

Remember if you're looking for a new kitchen



Team Check



Luton Town

V Bournemouth

Ian FEUER	1	Jimmy GLASS
Darren PATTERSON	2	Neil YOUNG
Mitchell THOMAS	3	Jamie VINCENT
Gary WADDOCK	4	Eddie HOWE
Steve DAVIS	5	Ian COX
Alan WHITE	6	John BAILEY
Chris ALLEN	7	John O'NEILL
Paul McLAREN	8	Steve ROBINSON
David OLDFIELD	9	Steve JONES
Tony THORPE	10	Steve FLETCHER
Graham ALEXANDER	11	Jason BRISSETT

12
13
14



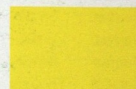
Today's referee is
ROGER FURNANDIZ
from Doncaster.

Mr Furnandiz, a Technical Sales Manager, joined the Football League list in 1994, and refereed our home game against Millwall earlier this season.

M.D.
Dearing



R.G.
James



4th official: R. Woods

Next match at Kenilworth Road

The next scheduled visitors to Kenilworth Road are **BRISTOL CITY**, in Nationwide League Division Two, on Saturday, February 21, kick-off 3pm.

See page 9 for ticket details.



Plowmans of Luton

Motorbodies of Luton

AND
LUTON TOWN

—
THE PERFECT MATCH

You'll do a great deal better with us!

Plowmans, 15 Hitchin Road, Luton. Tel: 454666
Open 7 Days Motorbodies, Memorial Road, Leagrave, Luton. Tel: 567500