

The Matchday Magazine of Macclesfield Town Football Club

the macc

silken 98/99 £1.80



Bodycote
METAL TECHNOLOGY

Club Sponsors

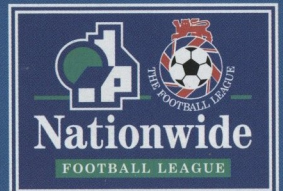
**McCann
Erickson
Manchester
Ltd.**

Match Sponsors

**Nighthawk
Software**

Match Ball Sponsors

Macclesfield Town
versus
Luton Town



Saturday December 12th 1998 Kick Off 3.00 pm

Nationwide League Division Two

WELCOME TO



THE MOSS ROSE

The home of Cheshire's Team: Macclesfield Town FC

Directors:

Chairman: Alan Cash
Treasurer: Eddie Ashley
Club Sec': Colin Garlick

Roy Higginbotham
John Brooks
Harry Armstrong
Reg Flower
John Chesworth

Sammy McIlroy

Yth Dev Mgr: Gill Prescott

Reserves: Geoff Lutley

Coach: Peter Davenport

Physio: Steve Wade

Fitness: Pete Everson

Doctors: Mike Whiteside

& John Mackay

Scouts: Colin Brooks

Terry Murphy

Ian Robb.

Admin Mgr: Dianne Hehir

Comm Mgr: Jackie Birks

PA: Dave Westbury

Kit men: Chris Pugsley

& Frank Peate

Junior Blues: John Clubb

Ground staff: Mark Patterson

& Mark Mathers

contents

	page
Merry Xmas from the Chairman	4
Mac on Macc	5
Today's Visitors Luton Town	7
Commercial Comment	12
Action from Macc vs Cambridge	16
Junior Blues	18
Roary's Mascot Page	19
Match Stats	20
Editors Clipboard	23
Club Shop	24
Macc Ladies	25
Travelling Blues - to Bristol Rovers	28
Travelling Blues - to Lincoln City	32
Diary of a Macc Fan	35
Supporters Club	37
Football in the Community	38
Today's Teams	40



programme production team

Editors: Mark Pritchard & Andy Thomas
Sub Editor: Mike Griffiths.
Contributions: Jackie Birks, Gill Prescott, Dianne Hehir, Geoff Lutley, Supporters Club, Mercer Print UK Ltd, Accrington.
Design, Repro & Print:
Photography: Andy Thomas & Mark Pritchard.

Today's Front Cover Pic: Do the Hokey Cokey, Do the Hokey Cokey.

Address: Moss Rose Ground, London Road, Macclesfield SK11 7SP
Phone: 01625 264 686 **Fax:** 01625 264 692
Web Site: <http://www.mtfc.co.uk/> **e.mail address:** office@mtfc.co.uk



Good afternoon and welcome to the Moss Rose.

A big welcome to our friends from Luton on their first visit to Macclesfield.

It does not seem right wishing you all a MERRY XMAS on the 12th Dec, but this is believe it or not our last home game before Santa comes visiting. I am sure you will join me in wishing Sammy, Gill, the Directors and all the backroom staff a super Xmas. The home game with Blackpool will give us the chance for some New Year thoughts, and hopefully the chance to report on some good results at Bristol Rovers and Lincoln.

A special Xmas greeting to our Junior Blues, particularly the Matchday Club juniors who give

the club such great support from their stand on the Estate side.

I have had my Xmas present already, the away draw with Coventry City on Jan 2nd in the FA Cup. While United or Liverpool may have brought a bigger Revenue, our chances of progressing to the 4th round would have been slim. Sammy will believe we can go to Coventry and get a result

against Colin Strachan's struggling Sky Blues. Those of you who were at Slough suffering the penalty nightmares now know there is some justice out there.

HAVE A GREAT XMAS AND KEEP ON SUPPORTING THE SUPER SILKMEN.



CLUB HONOURS

Nationwide Div 3 Promotion:	97 / 98.
GM Vauxhall Conference Champions:	96 / 97 & 94 / 95.
FA Trophy Winners:	95 / 96 & 69 / 70.
Finalists:	88 / 89.
Northern Premier League Champions:	86 / 87, 69 / 70 & 68 / 69.
Runners Up:	84 / 85.
Northern Premier Challenge Winners:	86 / 87.
Finalists:	82 / 83, 70 / 71 & 69 / 70.

THE CHAIRMAN



merry christmas from

An away tie at Premiership Coventry City is a just reward for the excellent performance, last Saturday against Cambridge. This draw has given everyone at the club a tremendous boost and we look forward to January 2nd.

After today's game, Martin McDonald will again be available after suspension and hopefully, we will have received clearance from Spain so that Pedro Matias can play. This should give Sammy a full squad to pick from as we try to move away from the lower reaches of the league table.

A quote I read last week 'Football depends upon the good will of its audience' gives much food for thought about our disappointing attendance's. When news abounds about bigger clubs than ours being in financial difficulties, for a wide variety of reasons, it raises the question How are we to progress unless can generate that increased support, which is so necessary even to survive?

Our attendance last Saturday was the lowest in the cup and we are next to bottom of the Second Division attendance

league above York City. The support we do receive has been great, but we do need to increase our regular attendance to give us a chance of competing with the bigger clubs in the league.

In order to benefit from those clubs who will visit us in the New Year, with a good following, we have built two extra turnstiles on the corner of Moss Lane. This will give us the flexibility to offer visiting fans seats in D and E block, in the estate stand and ensuring the necessary segregation.

This is, of course, added expense and we will have to provide additional toilets, but if we cannot fill the seats with our own fans, we may as well offer them to the visitors.

Christmas will have passed, by the time we play at home again, so I take this opportunity to wish everyone involved at the club and all our fans, a Happy Christmas and especially the Blessing of Jesus. After all, it is His Birthday, which is the reason for all the celebrations.

In the words of Tiny Tim...

First of all a big welcome to Lennie Lawrence, his directors players and the supporters of Luton Town. Luton are a team we all know like to play good football so we feel that today's game could be a bit special given a fair wind.

Our performance against Cambridge was all the better given their away form in cup competition, they gave us all we could handle in the first half after a little change of track we gave a vintage performance in the second half and gained a good result. Coventry away! what a great tie, a Premiership club for the first time in the club's history, not too far to cause travel problems for our supporters but hopefully a day to remember.

Talking of support, we are aware that we have a superb group of about two thousand fans who follow us through thick and thin, we all realise that with bitterly



disappointing gates like Cambridge the board will have little money to try and entice the quality of player this league demands. I am afraid that the town in general, has to get real if they really want a team to be proud of, last Saturday there

was not a big game within forty miles and we attracted less than three thousand people.

Our game v Wrexham was a poor affair, and given the numbers and atmosphere generated it is hardly surprising, we had enough chances to have won two games but sometimes it is just not there, no excuses it was not up to the standard we expect and hope it does not carry through to today.

Please get behind the lads today, if we could win this difficult game it could have a great effect on our league position long term.

Regards.

Sam.

MAC

on

macco

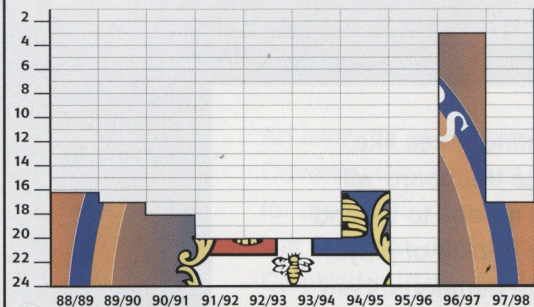
sponsored by

**Ambassador
Life and
Pensions
Services
Limited**
01625
422866



LUTON TOWN

Luton Town's last ten years - the full record



Div.	88/89	89/90	90/91	91/92	92/93	93/94	94/95	95/96	96/97	97/98	
F.A.	3	3	4	3	4	SF	4	3	3	1	
Lg.C.	RU	3	2	2	2	1	1	1	3	2	
L.S.	Black	Wilson	Black	Elstrup	Harford	Gray	Dixon	Marshall	Goetsch	Marshall	Thorpe
Goals	9	11	15	12	19	9	11	9	28	14	
Ave Att	9,350	9,872	10,275	9,711	8,213	7,878	7,350	7,223	6,294	5,879	

When Luton Town have scored goals... and conceded them



HATTERS' HARD MEN

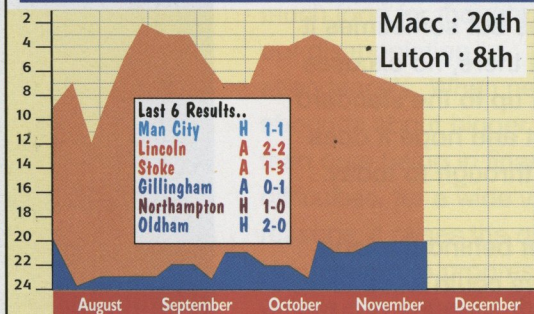
McGowan 6 Spring ...1
Davis S ..4 Thomas ...1
Alexander 2 White ...1
George ...2
Gray ...2
Johnson ...2
McKinnon 2
Douglas ...1
Evers ...1
McIndoe ...1
McLaren ...1

MACC'S MISCREANTS

Hitchin ...4 Whittaker 1
Payne ...4 Wood ...1
McDonald 3
Sodje ...3
Askey ...1
Durkan ...1
Holt ...1
Ingram ...1
Sedgemore ...1
Sorvel ...1
Tinson ...1

N.B. LEAGUE DETAILS ONLY

League Positions throughout this season



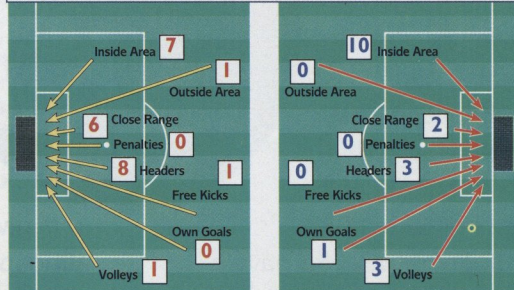
When Macc have scored goals... and conceded them



Who's played for The Hatters this season...

Player	Pos	Lge	Lge	Age	Ht	Weight	Prev. Club	Int.
		Apps		Gls				
Kelvin Davis	G	18	22	6	1	14	00	Eng U21
Steve Davis	D	18	5	30	6	2	14	07 Burnley
Sean Evers	M	18	2	21	5	9	11	
Matthew Spring	M	18	19	5	11	11	07	
Phil Gray	F	17(1)	5	30	5	9	12	09 Sunderland N Ire
Ray McKinnon	M	17(1)	1	28	5	10	11	09 Dundee Utd
Graham Alexander	M	17	2	27	5	11	12	02 Scunthorpe
Stuart Douglas	F	16	5	20	5	8	11	05
Marvin Johnson	D	16	30	6	1	13	06	
Gavin McGowan	D	14(1)	22	5	8	11	07	Arsenal Eng Yth
Mitchell Thomas	D	8(6)	34	6	2	13	00	West Ham Eng B
Michael McIndoe	M	6(2)	19	5	8	11	00	
Alan White	D	3(7)	22	6	0	13	04	Middlesbrough
Dwight Marshall	F	3(1)	33	6	1	11	02	Plymouth
Herve Bacque	F	2(3)	22	5	9	11	10	Monaco
Liam George	F	2(3)	19	5	9	11	04	
Jimmy Cox	F	2(2)	18	5	6	10	07	
Andrew Fotiadis	F	1(7)	21	5	11	11	00	Eng Sch
Paul McLaren	M	1(4)	22	6	1	13	04	
Simon Davies	M	1	24	6	0	12	03	Man Utd Wales
Gary Doherty	F	3	2	18	6	13	00	
Andre Scarlett	M	1	1	18	5	4	04	

How The Hatters have scored goals... and conceded them

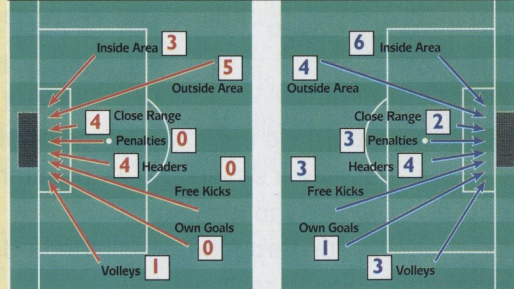


Macc v Hatters

FORM GUIDE	W	D	L	F	A	PTS	Sequence
Macclesfield Town	2	2	2	6	6	8	LDWDLW
Luton Town	2	2	2	7	7	8	DDLWW

Statistics compiled by Football Information Services Telephone: 0151-632 5679

How Macc have scored goals... and conceded them



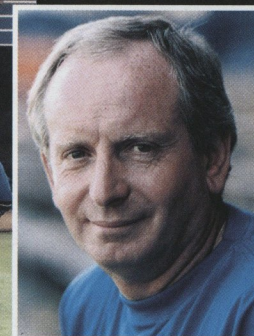
LUTON TOWN FC - PLAYERS, MANAGER, COACHES AND PHYSIO 1998/99

For further information, including guidance on who is currently in or out of the squad call Brian Swain (LTFC programme editor) on 01582 493605

THE MANAGER LENNIE LAWRENCE.

Born Brighton, 14.12.47

WITH FORMER youth coach Terry Westley struggling in his first experience as a manager, he and Luton Town reluctantly decided to part company as the Hatters slid to the bottom of Division One. Four months in the autumn of 1995 had seen £2million spent, but only four matches won out of 22. Luton decided they needed an experienced hand on the tiller, and Lawrence fitted the bill perfectly. Perhaps more importantly, he knew about running clubs on shoestring budgets, having made his name by taking impoverished Charlton into what is now the Premiership, and keeping them there for four years, when they did not even have a home of their own. Lawrence was a non-league player, with Croydon, Carshalton and Sutton United. His managerial career started as assistant at Plymouth and then Lincoln. He went to Charlton as reserve team coach before landing the hot seat. He had been boss for nine years when he left Charlton in 1991 and took over at Middlesbrough. He led them to promotion to the Premiership a year later, but they were relegated after only one season and was replaced by Bryan Robson. Bradford City offered the next opportunity, but he left after 18 months to return south. A few weeks later he became Luton's 21st manager. The survival task proved too much, with the December leeway too big a gap to close, but relegation was followed by a thrilling recovery. In their first season back in Division Two, Luton were farly out of the promotion frame, but it ended in disappointment, with play-off semi-final defeat against Crewe. And, as so often happens, reaction to the near-miss saw Luton struggle last season. Beset by injuries, and forced to sell leading scorer Tony Thorpe to balance the



Lennie Lawrence

books, relegation was a real threat until Luton picked themselves up in the last couple of months of a frustrating campaign. The manager's record at Luton, to the start of this season: Played 138, won 49, drawn 42, lost 47, goals for 182, goals against 162

THE PLAYERS

Graham Alexander

Born Coventry, 10.10.71

Bought for £100,000 from Scunthorpe in the summer of 1995, Alexander is a midfielder who can also fill in at the back when necessary. An injury crisis forced Luton to use him as an emergency right back several times last season, but his best performances have been on the right side of midfield, looking to back up the attack. He contributed eight valuable goals to help Luton out of relegation danger. Luton record to the start of this season: 145 appearances, 11 goals.

Jimmy Cox. Born Gloucester, 11.4.80

First joined Luton on associate schoolboy forms, and made a big impact in the youth team as an old-fashioned winger, able to take on men and go past them with the ball. He was in the Luton Town squad which did the youth double in the 1997/98 season, winning the South East Counties League Championship and the Southern Junior Floodlit Cup. He made the breakthrough into the first team squad earlier this season with his senior debut in a victory over Ipswich in the Worthington Cup second round.

Kelvin Davis. Born Bedford, 29.9.76

After seeing off two Americans, finally became first choice goalkeeper last season. A product of the Hatters' youth development programme, he started his league career on loan to Torquay early in the 1994/95 season, but despite having few chances at Kenilworth Road because of the form of Juergen Sommer he won England youth and under-21 caps. Davis eventually ousted Sommer, who is now back in the States, but went through a rocky spell in a struggling Luton team and lost his place to Ian Feuer, a

Luton town

giant American who cost £600,000 from West Ham. Feuer lost his place through injury last season, and this time Davis proved too good to drop again, and Feuer has since returned to the USA.

Luton record to the start of this season: 55 appearances.

Steve Davis. Born Hexham 30.10.68

A massive bonus from Terry Westley's short reign as Luton manager in 1995, Davis was formerly Burnley's skipper and the Turf Moor club wanted £1.5million for him, in the days before Bosman. Luton offered £300,000 and happily accepted a tribunal decision of £750,000. He was immediately appointed skipper, and as well as being a commanding figure in central defence has a habit of popping up in attack and powering in goals.

Luton record to the start of the season: 144 appearances, 17 goals.

Gary Doherty. Born Donegal, 31.1.80.

Big and brave, Doherty is a centre-half who can also operate as a centre-forward. He played in central defence for the Luton team which reached the FA Youth Cup semi-finals and won the South East Counties League championship last season. He became a temporary striker to help an injury crisis, and did well enough to make the switch permanent. And he is making an impact on a bigger stage too: after being capped at youth level he has already been on the subs' bench for the Republic of Ireland.

Luton record to the start of the season: 21 appearances, no goals.

Stuart Douglas. Born London, 9.4.78

A real hotshot in youth and reserve team football, Douglas was still a 17-year-old trainee when he made his league debut for Luton against Oldham in 1995. He scored and won the sponsors' man of the match award. The pacey striker looked set to be a regular in Luton's league side last season, but was one of the unlucky victims of the injury plague which swept through Kenilworth Road.

Luton record to the start of this season: 25 appearances, 3 goals.

Sean Evers. Born Hitchin, 10.10.77.

Another young player brought on through Luton's productive youth squad, Evers was on the fringe of the league squad until midway through last season. But when injuries struck Lennie Lawrence had to ask boys to do men's jobs. The tenacious midfielder coped very well and established himself as a regular.

Luton record to the start of this season: 32 appearances, 3 goals.

Andrew Fotiadis. Born Hitchin, 6.9.77.

Another local discovery, Fotiadis chose to stay at school to gain GCSE A-levels before being a full-time soccer professional. He won England Schools caps at under-15 and under-18 level, and developed a style to delight Luton fans and

worry opposing defences, as an old-fashioned centre-forward, with good physique, power, and concentrated determination to score goals. Luton record to the start of this season: 38 appearances, 4 goals.

Phil Gray. Born Belfast 2.10.68.

Greeted like a prodigal son when he signed for Luton for the second time in September 1997, the Northern Ireland striker soon discovered that football can be cruel. A succession of injuries struck, culminating in surgery to cure a back problem, leaving Gray determined to make up for lost time when this season kicked off. He was in Spurs reserves when David Pleat, ex-boss at White Hart Lane, and then in his second spell as Luton manager, splashed out £275,000 for him in August 1991. Two years later he moved on to Premiership football with Sunderland, for £800,000 and after three years at Roker went to Nancy in France, and then Fortuna Sittard in Holland. He needed little encouragement to return to Kenilworth Road in exchange for £400,000, and having rediscovered his goal touch this season was recalled to the Northern Ireland squad in November.

Luton record to the start of this season: 19 appearances, 2 goals.

Marvin Johnson. Born Wembley, 29.10.68.

A versatile defender, normally a centre-half but capable of filling in on the flanks or in midfield, Johnson is celebrating a full decade as a first-team regular at Luton, his only club. Injuries have been a problem, but he has always bounced back, and is a former winner of the Players' Player of the Year award at Kenilworth Road after becoming a regular in central defence.

Luton record to the start of this season: 306 appearances, 8 goals.

Gavin McGowan. Born Blackheath, 16.1.76.

A right back fighting for a Premiership places against very stiff competition at Arsenal, McGowan signed for Luton for the third time in June 1998. The first time was a loan deal in March 1997, but that ended after only two impressive appearances. A calf muscle injury needed surgery, and after getting over that he joined Luton on loan again, this time for three months, at the start of the 1997/8 season. Lennie Lawrence rated him, but could not afford to make an offer, and was delighted to conclude a quick deal a year later when Arsenal offer the defender a free transfer.

Luton record to the start of this season: 10 appearances, no goals.

Ray McKinnon. Born Dundee, 5.8.70

A move to Luton at the start of this season gave the former Scottish under-21 international midfielder his second chance at making the grade in English soccer, after an unhappy

experience with Nottingham Forest. He joined Dundee United as a YTS boy and in 1992 Nottingham Forest paid £750,000 for him. But Brian Clough resigned, and Frank Clark was determined to build his own squad. McKinnon made only eight appearances for Forest in 20 months before being transferred to Aberdeen. He had two years there, then returned to Dundee United. After two years, and vastly experienced, he took advantage of the Bosman ruling to try his luck in England again, and Luton beat several other clubs to secure his signature.

Michael McIndoe. Born Edinburgh, 2.12.79

Made his debut for Luton's senior side earlier this season when injuries hit three players above him in the pecking order for the wide left midfield slot. He joined Luton as a YTS boy after leaving school, and was part of their youth team which won the South East Counties League championship and the Southern Junior Floodlit Cup in the 1997/98 season. He made his first team debut in the Worthington Cup first round victory over Oxford United in August.

Paul McLaren. Born High Wycombe, 17.11.76.

The midfielder was still a schoolboy when Luton realised that he had enough talent and strength to play regularly in their youth team. A YTS offer was a formality, and he was offered pro terms while still only 17. Forceful and always ready to back up attacks, he was one of the reasons why Luton were ready to let Welsh international Ceri Hughes move to Wimbledon in the summer of 1997. McLaren slotted into the Hughes role so well that he played in all but three of Luton's league games in 1997/98.

Luton record to the start of this season: 94 appearances, 1 goal.

Andre Scarlett. Born Brent, London, 11.1.80

It was a Roy of the Rovers story when the 18-year-old made his league debut for Luton in October. Because of injuries the winger was on the subs' bench against Oldham, and got his chance with 20 minutes to go, with the score at 0-0. His trickery tempted an Oldham player into a rash tackle which earned a red card, and Luton went on to win 2-0, with Scarlett netting the clincher in a 2-0 win.

Matthew Spring. Born Harlow, 17.11.79.

A competitive midfielder, Spring was a

driving force in the Luton side which reached the FA Youth Cup semi-finals in 1997, and it was no surprise when he was called up for a league debut, when still only 17, as a sub against Bristol City in September 1997. His full debut followed a month later, in a home victory against Plymouth and boss Lennie Lawrence called Spring's display "the best debut I have seen in a long time."

Luton record to the start of this season: 13 appearances, no goals.

Mitchell Thomas. Born Luton, 2.10.64.

Now the senior professional at Kenilworth Road, and appointed player-coach at the start of this season, elegant left back Thomas is back where it all started as a boy. Luton signed him on schoolboy forms, and he moved up through the ranks to make a league debut in the old First Division, now the Premiership, against West Ham in January 1983. He won England under-21 honours and Luton were not entirely delighted when manager David Pleat left for Spurs three years later and persuaded Thomas to go with him. The tribunal fee was £250,000, half of what Luton wanted. They turned out to be right: Thomas moved on to West Ham for £500,000 in the summer of 1991, and three years later returned to Kenilworth Road, signing for David Pleat again, on a free transfer. By the start of this season Thomas had made 456 league appearances for his three clubs, and was hungry for more: his coaching deal is for him to be 90 per cent a player, 10 per cent a coach.

Luton record in his second spell, to the start of this season: 175 appearances, 5 goals.

Alan White. Born Darlington, 22.3.76

Lennie Lawrence went back to Middlesbrough, one of his old clubs when an injury crisis robbed him of three of his back four in September 1997. The Luton boss, as ever, had little money to spend, but centre-half White was a prospect he knew well: Lawrence had signed him as a 17-year-old at Ayresome Park. White was unable to force his way into Middlesbrough's Premiership squad after the advent of Bryan Robson and big-money signings, and grabbed the chance to rejoin Lawrence and sample league football. And the £40,000 fee has looked a bigger bargain with every match.

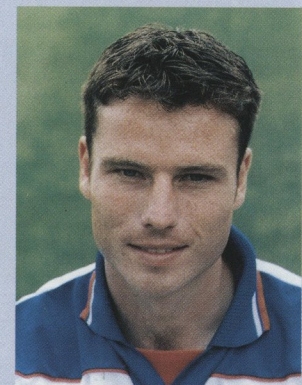
Luton record to the start of this season: 33 appearances, 1 goal.



Kelvin Davis



Gary Doherty



Steve Davis



The Sun Inn



The pub where Quality Counts

Hand Pulled

CASK ALES

FROM CRAFT BREWERS



Hand Made Local Pies & Pasties
Sandwiches & Snacks available

The Sunday Quiz
8.30pm
Music Quiz
Wednesday 8.30pm

Watch all Major Sporting Events Live!!!

**Good Luck to Macclesfield
Town Football Club**

**TEAM PLAYERS WANTED
FOR ALL PUB SPORTS**

Skittle Team, Boule Team, Darts & Pool

The Sun Inn

45 Mill Lane, Macclesfield, Cheshire, SK11 7NN.

TEL: 01625 610436

Tel: Shop - (Macc) 424395/511416
Farm - (Boll) 574307
12 PARK GREEN, MACCLESFIELD.
All Districts Served Daily



Marshall Spearing Family Butcher

**Quality Beef, Pork, Lamb, Poultry
and Game**

**Specialists for Cooked Meats,
Pies, Sausages and
Home Freezer orders**

**all prepared in our modern
air-conditioned shop and bakery.**

**Fresh pies daily from 7am.
for deliveries:- phone: 01625
424395 fax: 01625 511416**

**SIMPLY
THE
BEST**

ONE STOP TRAVEL SHOP

For **all** your flights and
holidays world-wide
telephone:

01625 586224



HF **Holiday
Flight
Company**

8-10 Trafford Road,
Alderley Edge, Cheshire SK9 7NT
Tel: 01625 586224
Fax: 01625 586778
E-mail: hfc@travel.itsnet.co.uk



*THE
CHESHIRE DISCO
COMPANY*

Provide professional disco entertainment and
event themes worldwide

We are very proud to be associated with Macclesfield
Town F.C. We wish the club and their supporters every
success for the forthcoming season.

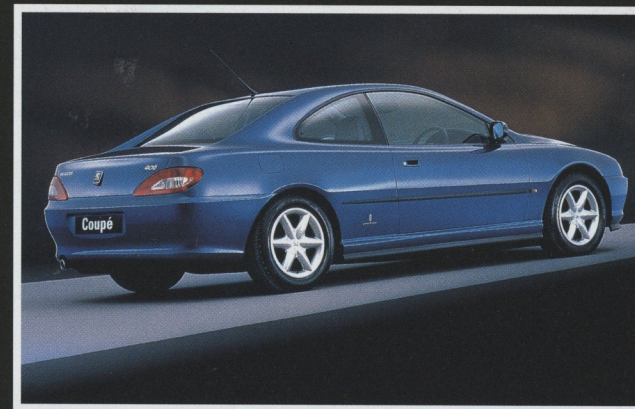
For more information contact Paul Davies.
Tel: 01625 501375. Fax: 01625 502191.
E-mail: CDCTHEMES@AOL.COM

H.N. NUTTALL LTD.
Catering Supplies

NEWTON MOOR
INDUSTRIAL ESTATE, HYDE.

0161 368 0331

Where do your desires lead you?



PEUGEOT
Sales
Service
Parts
M.O.T.
Tyres
Express Fit



J.J. COOKSON

Macclesfield
01625-422226

Est. 1911

Congleton
01260-280020

Opposite
Railway
Station,
Macclesfield.
(01625)
422226

**T-SHIRTS
SWEATSHIRTS
POLOSHIRTS**

HICKSON STAR GRAFIX

BROCHURE
AVAILABLE
ON REQUEST

PRINTING

EMBROIDERY

BASEBALL CAPS, SCHOOLWEAR,
WORKWEAR, BADGES
+ OTHER PROMOTIONAL ITEMS

ADELPHI MILL, GRIMSHAW LANE,
BOLLINGTON, CHESHIRE, SK10 5JB
TEL- 01625 575753 / FAX- 01625 560850

Open to all

Treatment at BUPA Regency Hospital is available to
everyone, not just BUPA members. Anyone who is not
covered by private medical insurance or whose cover
excludes certain medical conditions can access our
fixed price care scheme to pay for treatment
themselves.

The hospital is proud of its reputation for clinical
expertise and high standards of nursing care.
For further information, please contact Linda
Batchelor, Marketing Manager: 01625
501150

BUPA Regency Hospital

West Street, Macclesfield, Cheshire SK11 8DW

COMMENT

commercial

Good afternoon to all supporters, sponsors and officials.
Today we welcome our Match Sponsors McCann Erickson Ltd.
We wish to thank John Abbott and guests for their continuing sponsorship.

Match Sponsor McCann Erickson Ltd.

McCann Erickson celebrates its twenty-fifth year in Macclesfield this year and is proud to be the sponsor of today's match. Like Macclesfield Town, McCann Erickson has grown in stature, ability and performance over the recent years and is now the largest advertising agency outside London by some margin.

Matchball Sponsor Nighthawk Softwear Ltd.

Our gratitude to Les Phelps of Nighthawk Softwear for this second matchball sponsorship.

Programme Sponsor Hallmark Coaches

A big thank you to Hallmark Coaches who provide us with the transport to all our away fixtures. We wish Brian Foster and guests an enjoyable day.

HALLMARK COACHES 01675 465821

The shop is always open after the match for your Christmas presents, we do have some brilliant Christmas cards in at £1.00 each.

New design scarves have arrived for adults and of course our Roary scarves for children. We still have in stock our "Against All Odds" book, which is a limited addition at £19.99, also prints of the "Three Wise Men" at £5.00 each.

Don't forget the Mad hatter hats at only £5.00 for the Coventry game.

We have a sale with our white away shirts they are now:-

Adults were £ 30.00 Now £ 25.00 Children's were £ 23.50 Now £ 20.00

Call in while stocks last.

We will be back in Sainsbury's on the 18th & 19th Friday and Saturday selling our merchandise, Roary will be there, Football in the Community and of course Silk FM giving away stickers and screensavers.

I hope you will be able to join us !.

Do all have a very Merry Christmas and I look forward to seeing you all on the 28th December.

All enjoy the game.

Yours in Sport

Jackie Birks

NB. With our Coventry draw on the 2nd Jan, I have details on Coventry's Premier Club and Carling Suite hospitality. Please give me a call for more details 01625 264693.

Sponsored by



0800 0740 400



CLUB SHOP PRICE LIST.

Replica Shirts	(Home - Blue) (Away - White)	
Children's	(Medium Boys, and Large Boys)	£ 23.50
Adults	(Small, Medium, large, XL, XXL)	£ 30.00
Sweatshirts	(Medium, Large, XL) Blue	£ 20.00
Poloshirts	(Medium, Large, XL) Blue or White	£ 16.00
Fleeces	(Medium)	£ 15.00
Scarf	(MTFC)	£ 5.00
Bronx hat	(Blue)	£ 6.00
Baseball Cap	(Blue)	£ 8.00
Lapel Badge		£ 2.50
New Lapel Badge	(Promoted to Division 2 1998)	£ 3.00
Keyrings		£ 1.00
Pencils		50p
Ball Point Pen		60p
Executive Pen		£ 1.50
Teddy (Stick on)		£ 1.50
Nationwide Mug		£ 3.00
Car Stickers	(I've joined the silkmen)	50p
New Car Stickers		£ 1.00
Mini Scarves		£ 2.75
Pennant	(small)	£ 3.00
	(XL)	£ 5.00
	(Wembley)	£ 5.00
	(Champions)	£ 5.00
Ties		£ 1.50
Pencil cases		50p
Lion Bilbo's		£ .60p
Magnets		£ 1.00
Tax Disc Cover		£ 5.00
Programme Binder		£ 4.00
Bandanna		70p
Postcard		£ 2.50
Iron on Nationwide badges		£ 5.00
Cushion		£ 2.00
Mini Kits		£ 1.50
Team Photographs	(Promoted to Division 2)	£ 10.00
(Promoted to Division 2)		£ 24.50
Silkprint		£ 14.00
Golf Umbrella		£ 4.00
Beanie Hats		£ 3.00
Flags		£ 12.99
Chester Video		£ 5.50
Mad Hats		£ 4.00
First Day Covers	(Macclesfield v Fulham)	£ 4.00
	(Macclesfield v Man City)	£ 4.00
	(Sodje, Woody or Tinson)	£ 1.50
	(Three Wise Men or Sodje)	£ 1.50
Birthday Cards		
Christmas Cards		
Childrens Range		
Roary Lion Soft Toy		£ 6.00
Roary Scarf		£ 5.00
Roary Pyjamas	(Sizes 2-3, 3-4, 4-5,)	£ 9.00
Roary Pyjamas	(Sizes 5-6, 6-7,9-10)	£ 10.00
Roary T-Shirts		£ 5.00
Roary Vests		£ 3.50
Roary Bibs	(Pack of 2)	£ 4.50
Roary Playsuits		£ 8.00
Childrens Poloshirts	(White or Royal Blue)	£ 12.00
Childrens Sweatshirts		£ 12.00
New Boys Socks		£ 6.00
Old Boys Socks	(Sale Price)	£ 5.00
Large Boys Shorts	(White with Blue stripe)	£ 11.50

More Items on order.

P & P for Shirts & Mugs £ 2.00. 75p P & P for Badges etc...
Great Britain prices only. Please add £1.00 P/P for large pennants.

Please make cheques payable to Macclesfield Town Football Club Ltd
Address: Moss Rose Ground, London Road, Macclesfield, Cheshire, SK11 7SP
Telephone: 01625 264686 Fax: 01625 264692. We can also take Credit card orders over the telephone. Thank You.

The Football Trust has been providing support for football throughout the UK for 22 years.

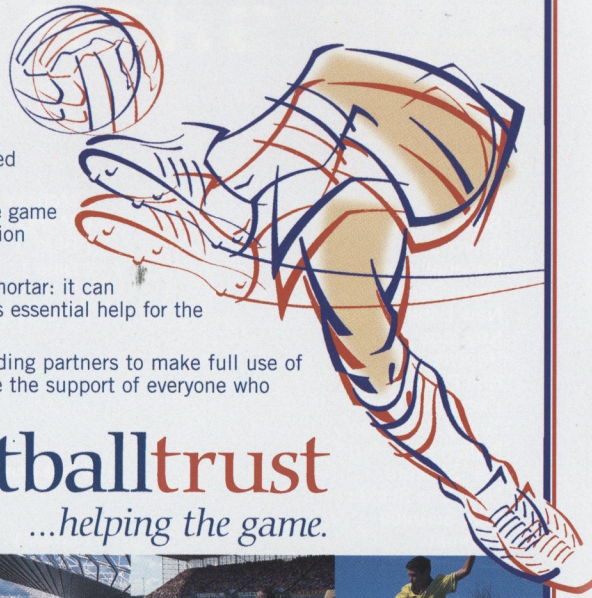
A major new funding package made up of annual contributions from The F.A. Premier League, The Football Association, The English Sports Council, The Football League and The Professional Footballers Association has been added to the Trust's pools derived income to secure its future.

The Trust has a major part to play in the success of the game and will continue its vital grant support for lower division clubs to complete the Taylor programme.

The Trust is about a great deal more than bricks and mortar: it can handle grant aid programmes of every sort and provides essential help for the game at all levels.

The commitment of the Government and the new funding partners to make full use of the Trust's grant aid experience and expertise will have the support of everyone who cares about the future of our national game.

thefootballtrust
...helping the game.



The Football Trust, Walkden House, 10 Melton Street, London NW1 2EB

There's Nothing to MatchA Brilliant Performance



For Sales of New and Used BMW's, Servicing, Parts and Bodyshop
Freephone 0800 1385456

Blue Bell Wilmslow

Manchester Road
Wilmslow
Cheshire
SK9 2LE



The Ultimate Driving Machine

Shire Motors

70 King Edward Street
Macclesfield, Cheshire SK10 1AT
Tel: (01625) 619611
VAT Reg. No. 548 3939 00

Diesels and Catalysts tested

Full Workshop facilities

Fuel Injection & Manual Gearbox Specialists

No Job Too Small Loan Cars Available



Member of the
Retail Motor
Industry
Federation

Fuel Injection and
ABS Specialists
Catalyst Emission Fails
Work undertaken

*Best Wishes
to the Silkmen for 1998/99*

Top of the league for independent advice on all aspects
of pensions, life assurance and investments.
For more information please contact David Smith
at

AMBASSADOR LIFE & PENSIONS SERVICES LTD.
1 Westminster Street, Macclesfield, Cheshire SK10 1AS.
Tel: 01625 422866

REGULATED BY THE PERSONAL INVESTMENT AUTHORITY



MATCH

ACTION



macctown 4 cambridge 1

Saturday
December 5th
Axa FA CUP
Round 2
at the
Moss Rose



Mascot Ashley Stewart lines up for kick off in this memorable game.

On a bitterly cold Saturday afternoon, the Silkmen battled well and eventually over-ran a Cambridge side who deserve credit for a battling and sporting display against the steadily improving Blues.



Steve Payne celebrates John Askey's goal on 35 minutes.

After a first half dominated by Macc, a one goal John Askey lead looked fragile and in the 56th minute, Cambridge equalised to silence the Star Lane end. From that moment on, it was all Silkmen with wave after wave of attacks, mostly created by the industrious Sorvel and Sedgemore partnership, with Steve Wood starting to show some form again. Tinson and Hitchen were excellent, overlapping and supporting the forwards. Woody had earlier hit the post after rounding the keeper, but Tomlinson made no mistake when his opportunities arose, bagging a hatrick in the 60th, 65th and 71st minutes.

This was one of the best games seen at the Moss Rose this season and a big confidence boost against a good side.

With the arrival of Pedro Matias, and the extended loan of Peter Smith, Graham Tomlinson needed a boost and this performance was outstanding, making it 5 goals in 5 games from the ex United striker.



Neil Sorvel had an outstanding game in midfield.



Graham Tomlinson gets his first in the 60th minute.



Stuart Whittaker was once again a menace on either wing.



A happy Tommo acknowledges the crowd.



5 minutes later it is all smiles as he bags No.2.



And its No. 3 for Tomlinson and Game Over in the 71st minute.

junior blues

AWAYDAY BLUES STRIKE AGAIN

The Junior Blues enjoyed another Awayday Express for the Silkmen's recent visit to Chesterfield. However it seems that we are proving something of an unlucky omen to the team, as of the three games we have travelled to each the results of ended in a two - nil defeat. These were at Stoke City, Wigan Athletic and now Chesterfield. Can this luck possibly change in 1999. Where our first Awayday Express of the New Year is to the bright light of Blackpool. Although it will not be so warm and sunny in January it is hoped that the juniors will enjoy a full day of football fun playing against the Junior Blackpool supporters, an opportunity to visit some of the resorts more pleasurable amenities, before going on to cheer the Silkmen to victory in their Division Two clash.

AWAY TO BLACKPOOL IN 1999.

Cost for this fantastic day including coach fare and match tickets will be;

Junior Blues- £7.00

Junior Guest - £8.00

Adult Guests - £10.00

Further details will be printed in the Blackpool (home) programme on December 28, so keep your eyes peeled or call the Community Office.

FESTIVE FIVE - A - SIDES

Don't forget our Junior Blues Festive Five A Side competition on December 29. This full day of football action and fun, that includes a behind the scenes visit to the Moss Rose is a must for all true Macc Town fans. But places are going quickly and very limited. So please be sure to book to avoid disappointment.

*FINALLY ALL THE JUNIOR BLUES STAFF AND ASSISTANTS EXTEND
A WARM AND SAFE CHRISTMAS WISH TO OUR MEMBERS AND THEIR
FAMILIES, AND WE LOOK FORWARD TO SEEING YOU OVER THE
CHRISTMAS PERIOD AND INTO THE NEW YEAR.*

ROARY'S

mascot

Hello again Silkmen fans.

All this Christmas spirit, I really luv this time of year.

Last Saturday I had a brill time in the morning with Marlborough School, lots of Christmas mince pies and the afternoon was a dream 4 - 1, 4 - 1, 4 - 1,, I'm really excited about going to Coventry on the 2nd Jan, What a day out that's going to be.



I'm out with the Commercial team in Sainsbury's on the 18th and 19th December, pop in to see us for a chat!!

On with today we have a young lady who's name is Charlotte Victoria Marlow. Charlotte is 9 years old and goes to Woodhouse Middle School in Biddulph. Her hobbies include singing, acting, walking and reading. Her favourite team is the one and only Macc Town and her favourite player is Efe Sodje.

A big roar please for Charlotte Marlow. All have a super Christmas, I hope Father Christmas is kind to you all with lots of presents.

Luv you all, your friend



match & ball

S P O N S O R S H I P

Help the club by Sponsoring a match - Contact Jackie Birks.

DATE	MATCH	MATCH SPONSOR	BALL SPONSOR
Sat 8 Aug	FULHAM	P H Labels	Park Lane Knitwear
Tue 11 Aug	STOKE CITY	Silk FM	Adrian Cookson Seven Stars Garage
Sat 22 Aug	LINCOLN CITY	R H Stevens	Nighthawk Software Ltd
Mon 31 Aug	NOTTS COUNTY	Vanguard	Marshall Spearing Butchers
Sat 12 Sep	MANCHESTER CITY	F.B.L.	McGregor's The Wheatsheaf Northwest Mortgages
Tues 15 Sep	BIRMINGHAM CITY WC2.1	Cheshire Building Society	The Samaritans
Sat 26 Sep	READING	Syndicate Sponsor	Britannia Inn, Hurdsfield Rd. Blackshaw Bros.
Sat 10 Oct	AFC BOURNEMOUTH	Bollington Insurance	T.E.C.
Sat 24 Oct	BURNLEY	P H Labels	Sutton Hall
Sat 31 Oct	NORTHAMPTON TOWN	Windmill Car Sales	Marfield Springs Bollington Radio Cars
Sat 14 Nov	SLOUGH	F.B.L.	Chamber of Commerce
Sat 21 Nov	WALSALL	H Nuttalls	Bulls Head Mkt. Place / Royal Bank of Scotland
Sat 5 Dec	CAMBRIDGE	FBL Building Services	Mercer Print (UK) Ltd
Sat 12 Dec	LUTON TOWN	McCann Erickson Manchester Ltd	Nighthawk Softwear Ltd.
Mon 28 Dec	BLACKPOOL	Zeneca	H.N. Nuttall Ltd.
Sat 2 Jan	MILLWALL	CPS Ltd	Baileys Sports
Sat 16 Jan	STOKE CITY	Macclesfield Borough Council	Dyno-Rod Cheshire Bakeries Graham Hough and Karen Hayward
Sat 6 Feb	WREXHAM	S.T.D.	Nicholas Winterton MP Adlington Hall
Sat 13 Feb	OLDHAM ATHLETIC	Personality Quilts	Arighi Bianchi / Samaritans
Sat 27 Feb	WIGAN ATHLETIC	Alfred McAlpine	NatWest
Tue 9 Mar	GILLINGHAM	Alex Stewart "Assayers" Ltd	D&M Posters
Sat 13 Mar	COLCHESTER UNITED	BUPA	S.O.C.7 Ltd
Sat 3 Apr	WYCOMBE WANDERERS	Balfour Beatty	
Sat 10 Apr	PRESTON NORTH END	William Kirk	Nicholas Winterton MP
Tue 13 Apr	CHESTERFIELD	Time	
Sat 24 Apr	YORK CITY	BMW Bluebell	Brian Simpson M.E.P.
Sat 8 May	BRISTOL ROVERS	Unique Oils	Park Lane Knitwear

theMacc

editors clipboard



AUTO WINDSCREEN SHIELD

Sorry, did I say things could only get better after our One played, One lost, Nil scored record in the Windscreen Shield ? I was wrong, our record now reads Two played, two lost and nil scored courtesy of a 0-1 defeat against Wrexham on Tuesday night.

Tragically, Manchester City lost at home to Mansfield. !

TAKING THE TRAIN TO COVENTRY

We will be providing full directions for our FA CUP 3rd Round tie at Coventry. For those of you who are considering travelling by train, the following options currently apply:

Getting There	Leave Macc	arrive Coventry	
	08.38	10.30	direct train
	09.38	11.28	direct train
	10.38	13.26	change at Birmingham New Street
	11.38	13.34	change at Birmingham New Street
Coming home	Coventry	back in Macc	
	18.02	19.50	direct train
	19.13	21.12	change at Birmingham New Street

Please check all train times before travelling, as they are subject to last minute change.

GOOD LUCK MIKE!

Mike Griffiths, who has supported Mark Pritchard & I well with the Matchday Programme, and has had a lot to do with the success of the Macc Town Web Site is moving on. He is off to the big city London Town to find fame and fortune and we will be sad to see him go. Many thanks for all your efforts for the football club, and good luck with your new job. We will no doubt be seeing you at away games 'down South', how about setting up a London branch of the supporters club Mike??

TRACKING MACC.

Footie Crazy father and son Paul & David Dobbie attended the recent Macc Town vs Cambridge game as the latest in their pursuit of the eventual Cup Winners. They attended their local side Dunston Federation Brewery's 1st preliminary round game at Durham, and have then followed the winners of each game since. Macc's game against Cambridge was the 9th cup game they have attended this season (8 rounds + one replay). Paul & David will now follow Macc down at Coventry, and then follow the winners of that game into the next round. A great idea, and we look forward to seeing them at Highfield Road in January.

THANK YOU AND MERRY XMAS PARK LANE.

A big welcome and Roar for our very good freinds from the Park Lane special school. I am sure all Blues fans will join me in thanking them for their continued support, and in wishing them a brilliant Xmas.

KEEP ON SUPPORTING THE SUPER SILKMEN.
MERRY XMAS.

Well done TOMMO.
Five goals in five games
and overdue rewards at
last.
Just what the doctor
ordered, now give us all
a big Xmas bonus with
another couple today.

ENJOY
TODAY'S
GAME AND
HAVE A SAFE
JOURNEY
HOME.

twenty • three

CLUBCALL 0930 555 835

MACC

BUILDING FOR THE FUTURE NOW.

WOULD YOU LIKE TO SIGN UP FOR THE GIRLS TEAM?

On December 23 the Football in the Community scheme is hosting a special girls only Five-A-Side event at Macclesfield College (see Community Pages). Following this there will be a special meeting held at Moss Rose Ground, concerning the Girls team and future developments for next season. When it is intended that the girls team will expand to two teams, at Under 14 & Under 16 years. This expansion will provide even more girls with an opportunity of representing both Macclesfield and the club at a competitive level. The meeting is free to attend for all potential players and their parents, who may wish to find out more about the girls teams and clubs.

DISCO BELLES

Following the above meeting the girls will be letting their

hair down with a club disco of their own. This again is open for all prospective players and guests. Although there will a minimal charge of 50p for each unaffiliated guest. The team would also like to invite donations as prizes for a club raffle and continue their appeal for a club sponsor.

A DATE FOR THE FUTURE WEDNESDAY 23 DECEMBER at THE MOSS ROSE GROUND

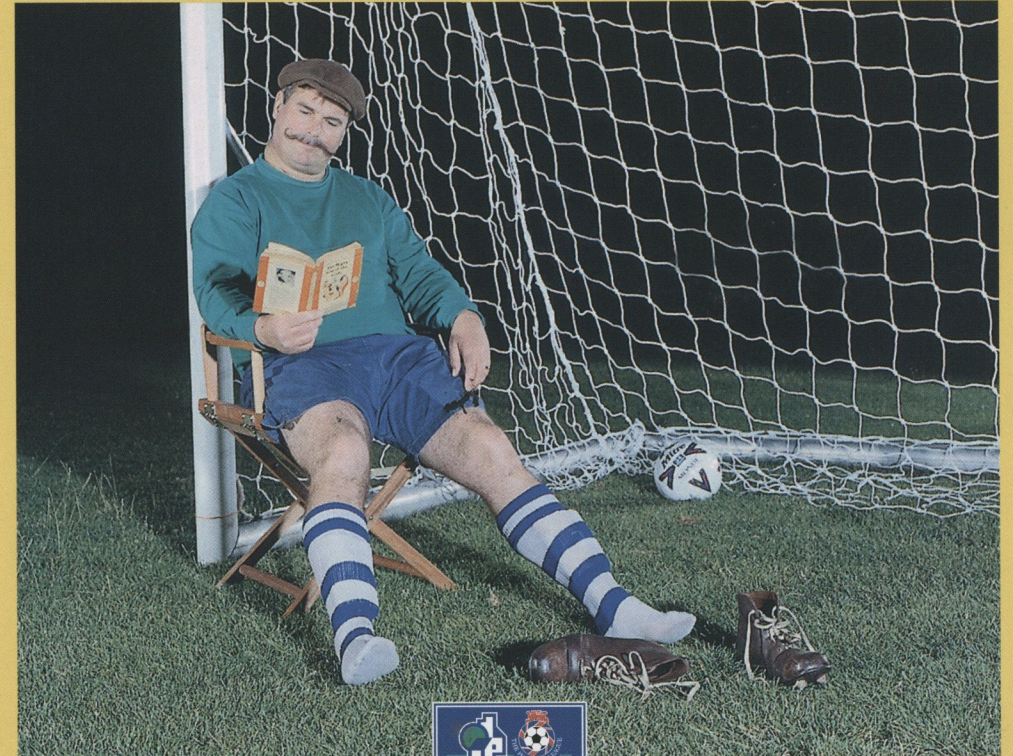
10.00AM-4.00PM
Five-A-Side football at
Macclesfield College.

6.00-6.30PM
Meeting for the future.

6.30-9.00PM
Club disco.

FOR FURTHER
INFORMATION CALL
01625 264688.
FOOTBALL IN THE
COMMUNITY
PROVIDING GREATER
OPPORTUNITIES FOR ALL

Before your playing days come to an end...



...make sure you've talked to us about your pension plans.

It pays to decide...



**For more information pop into your local branch
or call us FREE on 0500 30 20 14 (quoting ref: LM34)**


Nationwide Building Society, Nationwide Life Limited and Nationwide Unit Trust Managers Limited represent only the Nationwide Marketing Group, which is regulated by the Personal Investment Authority for life assurance, pensions and unit trust products. Nationwide Unit Trust Managers Limited is also regulated by IMRO. Nationwide Life Limited is registered in England No. 2319634. Registered Office: Nationwide House, Pipers Way, Swindon, Wiltshire SN38 1NW. Customer Service Centre Telephone: 01793 482206.

www.nationwide.co.uk

ladies

We offer services to meet all our clients' needs from the larger companies or family businesses to the individual with personal or inheritance tax concerns.

For a free informal discussion about how we may be able to advise you please telephone David Powell at Borough Chambers, St Petergate or Clive Westbury in our Cheadle office.



Stockport 0161 474 0200
Cheadle 0161 491 0200

William Kirk Limited

TRANSPORT
& STORAGE SPECIALISTS


ADLINGTON INDUSTRIAL ESTATE,
LONDON ROAD, ADLINGTON,
MACCLESFIELD, CHESHIRE SK10 4NL
Telephone: 01625 879990 Fax: 01625 879807

CHESHIRE BUILDING SOCIETY

FOR WHEN SOUND FINANCIAL PLANNING IS YOUR GOAL


Call us on:
FREEPHONE 0800 243 278

Cheshire Building Society is a member of the Building Societies Ombudsman Scheme and subscribes to the Banking Code and The Mortgage Code. The Society represents only General Accident Life which is regulated by the Personal Investment Authority for life assurance, pensions and investments.



Alfred McAlpine
Special Projects

is proud to support



MACCLESFIELD TOWN
FOOTBALL CLUB LTD

in the second division

Alfred McAlpine House, King Edward Road, Knutsford, Cheshire, WA16 0BY.
Telephone: (01565) 756800 Fax: (01565) 756850

SOMETIMES IT'S EASIER TO TALK TO SOMEONE YOU DON'T KNOW

Someone who won't judge or tell you what to do, but who will listen in total confidentiality. If you're troubled, even in despair, call us - 24 hours.

01625 426000 or 427000
0345 90 90 90 National number (local rate)

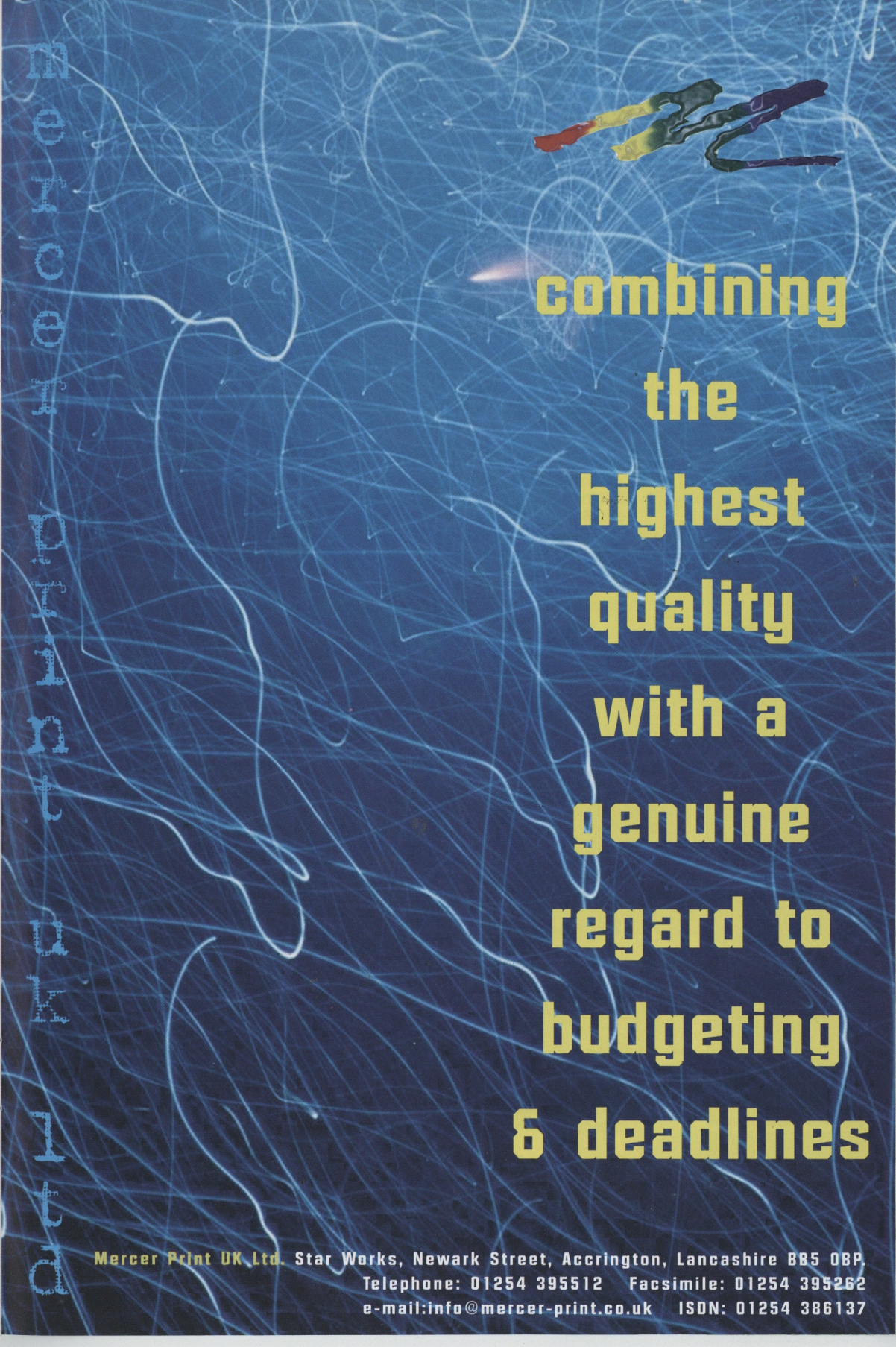
The Samaritans

MANCHESTER AIRPORT
AIR CARGO INTERNATIONAL



Vanguard AIRBORNE EXPRESS

TEL: 0161 499 3835
FAX: 0161 499 3837



combining the highest quality with a genuine regard to budgeting & deadlines

Mercer Print UK Ltd. Star Works, Newark Street, Accrington, Lancashire BB5 0BP.
Telephone: 01254 395512 Facsimile: 01254 395262
e-mail: info@merc-print.co.uk ISDN: 01254 386137

TRAVELLING

ground address

v BRISTOL ROVERS Friday 18th Dec at the Memorial Ground

The Memorial Ground, Filton Avenue, Horfield, Bristol. Ph: 0117 977 2000.

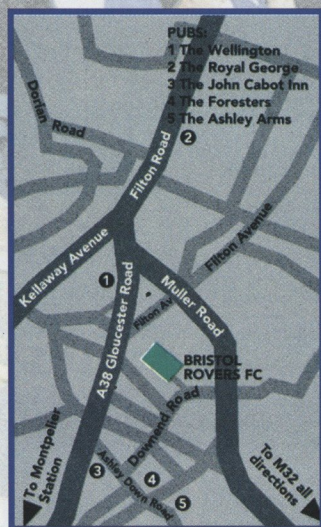
by car

Getting There: Good News, Bad News. Yes, Friday night away is bad news, but the good news is, you can get that last minute Xmas shopping done now on the Saturday!

By Car: With the exception of traversing the M6/M5 junction this is a straightforward journey and compared to Colchester on a Friday night it is a doddle.

Take the Macc - Congleton - Sandbach route to the M6 motorway. Follow the M6 into Birmingham and get off onto the M5 at the RAC tower (M6 junction 8) Then follow the motorway all the way down to M5 junction 15 with the M4. Take the East (London, Reading etc) turning onto the M4.

Exit the M4 after about 4 miles, at junction 19 signposted Bristol M32. After 3.1 miles, exit M32 at junction 2 (s/p B4469 Fishponds, Horfield). At the roundabout turn right (3rd exit, s/p A38 Bristol Eastville Stadium, Eastgate Shopping Centre, Horfield and Southmead). Immediately the road divides: branch right (s/p Horfield B4469 (A38)) onto Muller Road. Go straight on, up the hill, for 1.4 miles to traffic lights. Here, there is a signpost right to Horfield Health Centre and Library. Ignore it! and turn left instead (no signpost) into Filton Avenue. The ground is on the left after 0.1 miles.



parking

Not good, it is street parking and there is not much of it. Try to get there early. Best chance, near the Foresters pub at the junction of Ashley Down Rd & Gloucester Rd.

railway

Consult Macc Railway Station for the best route to Bristol Temple Meads (3.5 miles from the ground) or Bristol Parkway (2 miles from the ground). Either way its a long walk, so get a cab or Bus. From Temple Meads, the No 8 or 9 takes you to Broadmeads Shopping centre then the No 70 and 73 run to the ground. From Bristol Parkway station the No 73 goes straight to the ground.

BLUES

stadium

Our Supporters will be housed in the Alton Rd Terrace, which houses 740. It is uncovered and is located similar to Gillingham, on the side of the pitch at one end. Prices are: Adults: £ 10.00
OAP's, Juniors £ 6.00

disabled

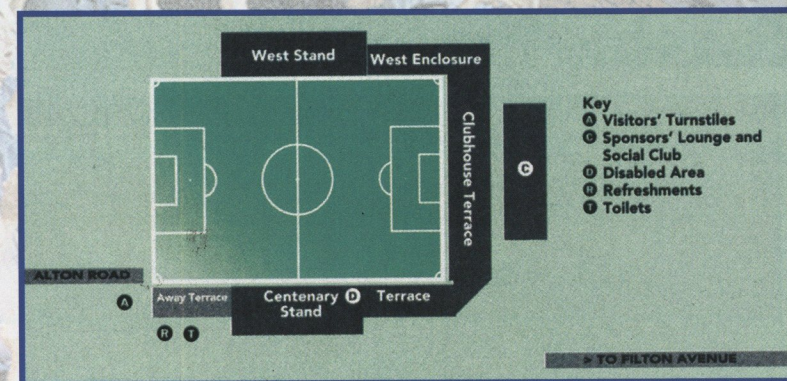
There is no seating allocated to away fans, so if you wish to sit, please remember you will be sat with the Bristol supporters.

There are 5 spaces in front of the main stand at pitch level. Cost is free for disabled, full price for helper. Booking is essential. No disabled parking available. Toilet close by. For the Blind. If you book, you will be allocated a seat next to the Hospital Radio commentary.

food & drink

Toilets: Clean and adequate numbers for the size of the away section. Nice change.

In the Ground, the food choice is limited, but of good quality, the Cornish pasties (£1.30) being the real thing for once. Good coffee and tea in cups that don't require fireproof mitts. Around the Ground, Gloucester Rd provides an excellent food choice. Locals recommend 'The Bristol Flyer' nr the junction with Quarrington Rd, or Clancy's Bakery/Coffee Shop. If you like Indian food, try 'Ghurkhas' close to Clancy's Bakers.



pubs

The Wellington(1). Gloucester rd, Scottish & Newcastle, Big, detached pub, with a good matchday atmosphere, and usually very busy. Varied menu served all day. Darts, TV etc. Open all day
The Royal George(2). Again Scottish & Newcastle. Traditional, football friendly pub. 'Red hot Value menu', includes 8 oz rump steak and chips for £2.99 served all day.
The Foresters (4). 94 Ashley Down Rd. House of Bellingham pub with Courage Bitter. Traditional footie friendly pub with a good matchday atmosphere. Bar snacks and sandwiches served all day.

local radio

BBC Radio Bristol FM 94.9 and 104.6.

fanzines

'The Black Arab' PO Box 1740, Chipping Sodbury, Bristol, BS37 6BF.

websites

(Unofficial): HYPERLINK <http://www.geocities.com/Colosseum/6542/>
<http://www.geocities.com/Colosseum/6542/>
HYPERLINK <http://www.coley.u-net.com/rovers/>
<http://www.coley.u-net.com/rovers/>

DM POSTERS

for all your
SIGNS · POSTERS · BANNERS

The specialists in sports stadia signs
and event advertising.

**SIGNWRITERS TO MACCLESFIELD
TOWN F.C. AND OTHER LEADING
FOOTBALL CLUBS NATIONWIDE**

Tel: 01942 258572 (24 hrs)

Fax: 01942 253747 (24 hrs)

Last Season
The Nationwide Football
League saw an Increase in
Attendance of 13.5%;
Why...?



The Quality of the Football



The authority...

Image by Empics 0115 840 444 Digital Artwork by SentryBox 01895 251 220

MACCLESFIELD MOTOR BODIES (U.K.) LTD



QUEENS AVENUE, HURDSFIELD INDUSTRIAL ESTATE, MACCLESFIELD

Tel: (01625) 432413/428111/611056/615025

MERCEDES BENZ FACTORY APPROVED REPAIRER

CHESHIRE'S PREMIER ACCIDENT REPAIR CENTRE



*Best Wishes to the Macclesfield Town
For the 1998/99 Season*

Bodycote

METAL TECHNOLOGY



HEAT TREATMENTS

HOT ISOSTATIC PRESSING

MATERIALS TESTING

METALLURGICAL COATINGS

**Vital Metallurgical Services
for Aerospace, Automotive and
General Engineering
Industries**

NATIONAL AND INTERNATIONAL SERVICE

Tel: +44 (0)1625 505300

Fax: +44 (0)1625 505311

www.bodycote.com

BODYCOTE METAL TECHNOLOGY LTD · HULLEY ROAD · MACCLESFIELD · CHESHIRE · SK10 2SG

TRAVELLING

ground address

LINCOLN CITY Boxing Day 26th Dec at Sincil Bank.

Sincil Bank Stadium, Lincoln Ph: 01522 880 011.

Getting There: Xmas is a time for visiting friends !! So lets see you all at Sincil Bank on Boxing Day to give Sammy's boys some major vocal backing against the Imps. Please note the change in away fans location in the ground - details below.

by car

Head up to Manchester and take the M60 / M62 route over the Pennines. Stay on the M62 past the M1 turn and get off the M62 at the Ferrybridge Services (junction 33). Take the A1/A1M South turn at the roundabout. Follow the A1/A1M route south and turn off at the A57 roundabout south of Retford, taking the A57 East signposted Lincoln.

Stay on the A57 until you reach the A46 Lincoln outer ring road and get onto the Newark bound A46. At the next roundabout, go straight on (s/p Lincoln Central & South, Newark). Then at the next roundabout turn left (s/p Lincoln Sth, Doddington Rd Ind Estate) into Doddington Rd. Cross over a level crossing, and straight over a crossroads, for 2 miles to a T junction. Turn left onto Newark Rd A1434.

Stay on this road following Lincoln City centre signs. Get into the inside lane, (city centre, Worksop A57) and straight on (1st exit) at the roundabout into High Street. After 0.5 miles get into the outside lane, and straight on at the lights(s/p City Centre). After 0.1 miles, with a NatWest Bank on the left hand side, turn right into Scorer Street, then 3rd right into Cross Street for Car Park.



parking

There is plenty of street parking, the best options being west of the High Street. We parked in the little car Park at the Ground last yr (Cross St), which is right behind our terrace, but it took a long time to get away after the game. If you are in no rush it is ideal. (Cost is £2.00 this season).

railway

Consult Macc Railway Station for the best route to Lincoln. From the Station (Lincoln Central) it is a good 15 minute walk to Sincil Bank. Turn left out of the station, and first left into High St. Cross the railway line, and take the 8th turn left into Scorer St, first right into Sincil Bank. The following Buses run along High St : M1, M2, 4, M6, 14, 24, 27, 66.

BLUES

stadium

All change from last season. Instead of being sat at one end of the big Simons Stand, Lincoln have allocated the opposite end (the Stacey West Stand) to Away fans for this season. They have taken out the seating, forming a 3,400 capacity covered terrace behind the goal. Prices given:
Adults: £ 11.00, OAP's, Juniors £ 8.00

There is no seating now allocated to away fans, and for those of you who visited last yr, the Ballboys promise to behave better this year !!

disabled

There are 20 spaces in the Simons stand. Cost is free for disabled, full price for helper. Booking is not required. Disabled Parking is available. Toilet close by. For the Blind. Sorry, no special facilities..

Toilets: The toilets in the Simon's stand last season were excellent, and I am told that the Stacey West Stand toilets are not new, but are kept very clean and even hygienic !.

food & drink

In the Ground, Not the best fare you will come across this season, but a nice change from Turkey and Cranberry sauce. The usual mass produced tinned hot dogs and Burgers, at £1.20 and £1.50 respectively, but little else to brighten up your Boxing Day.

Around the Ground, The nearest Chippy is on the corner of Cross St and Scorer St, 'The Fish Dish', offering Plaice and chips for £1.50. Nearby on the High St are Perfect Pizza, KFC and another Fish & Chip shop. There is also a pie shop next to the Shakespeare pub.

pubs

The Supporters Club at the Ground 'The Centre Spot' welcomes visiting fans (no charge) and sells excellent Lincoln Pork rolls

The George and Dragon(1). 100 High St. Free House with Bass & Whitbread. Bar snacks, incl. Chip butties for 80p served 11:30 ñ 14:00. Darts, pool & TV.

The Shakespeare(2). 40 High Street, Scottish & Newcastle, small two room friendly pub with Pool and TV. Open all day.

The Golden Eagle(3). 21 High St, Camra pub with 7 real ales and very football friendly crowd. Open all day.

local radio

BBC Radio Lincolnshire 94.9 FM; Lincs FM 102.2
Phone in: 5 - 6pm call 01522 511 052

fanzines

'The Deranged Ferret' 185 Burton Road, Lincoln, LN1 3LT.

websites

Websites (Unofficial) HYPERLINK <http://www.netlink.co.uk/users/impnet/>
<http://www.netlink.co.uk/users/impnet/>

Tourist Information: make a day of it - 01522 529 828

diary of a macc fan

MATCH :
Slough Town vs Silkmen:
FA Cup first round replay

DATE :

24 November 1998

RESULT :

1-1 draw. Macc win 9-8 on penalties

JOURNEY :

Travelling to London for a 7:45pm kick off on a Tuesday evening was never going to be an easy journey. Usual sluggishness around Birmingham and then at end of M40 approaching M25. Journey home far more difficult: no traffic problems but several pockets of dense patchy fog severely slowed down our progress. With the game not ending until 10:45pm it was 2:30 on Wednesday morning before the first weary fans were arriving back in Macc.

WEATHER :

Mild and misty. Thank goodness it was dry - covered accommodation at Wexham Park is just about adequate for around 100 spectators!

CAR PARKING :

Large free car park at ground and plenty of spaces left on arrival at 7:15pm. Late comers may have had some problems in finding any decent alternative parking nearby.

ADMISSION PRICE :

We must have become accustomed to Nationwide League prices because these admission charges were excellent value. £6 adults, £3 concessions.

PROGRAMME :

At £1:50 a great effort from the Ryman League club with some very interesting editorial comment including a real bouquet for Sammy from their manager Graham Roberts. Not sure about the article though that suggested just because we are a League club all our travelling supporters would be badly behaved hooligans!

TRAVELLING CONTINGENT :

Approximately 250, an excellent turnout for a what was 400 mile round trip on a Tuesday evening.

STEWARDS / POLICING :

Much to the annoyance of the home fans and for this big match all the stewards had been borrowed from Slough's near neighbours and great rivals Wycombe Wanderers, they even wore their Wycombe jackets! Can you imagine stewards at the Moss all wearing Alty jackets!

Not a policeman in sight which of course was not a problem but a little surprising in view of the programme article (see above) and considering there was no crowd segregation.

CONDUCT OF MACC FANS :

Very difficult to get behind the team in the first half as with no segregation we were all scattered around and somewhat lost within the 2010 crowd. Much better in the second half and into extra time when most Macc

fans managed to congregate behind the goal and give the lads some good backing.

CONDUCT OF HOME FANS :

This was the Cup Final for Slough and they did give their team some tremendous support throughout. Unfortunately for visiting fans though (as those who went to our last Conference game at Slough will recall) the home support is literally drummed up by the most irritating, noisy and tuneless band. We have had problems at games this season taking umbrellas into games so how on earth do they get that ensemble into their ground!

GROUND :

This is a tidy non league ground but with the limited cover and seated accommodation it is easy to see how the Conference finally lost patience and kicked them out at the end of last season. Two years ago this was a run of the mill away trip for Macc fans, I am not sure how Stoke or Fulham or even Man City fans would have reacted to such ordinary non league facilities.

CATERING :

Reasonable food - standard football ground grub, burgers, hot dogs etc. Surprisingly no Mars bars when the factory is only two miles away! Main problem is that Slough's usual home crowd is about 600 and therefore with over 2000 spectators in the ground the queues were appalling. In fact I think some supporters are probably still queuing for their half time tea!

TOILETS :

Non league loos at a non league ground. Totally inadequate for 2000 spectators but I've seen worse!

TEAM PERFORMANCE :

This was a game that, with three leagues apart, the Silkmen were expected to win but, as set out above this was Slough's Cup Final and they were going to fight all the way to stay in the Cup. The early advantage gained from Ben Sedgemore's goal lasted but five minutes whilst in truth the game should never have gone to extra time let alone penalties if Whit had converted our second half spot kick.

Full marks to the lads for sticking at it and full marks for keeping your heads in that nerve wrangling penalty shoot out.

OFFICIALS' PERFORMANCE :

Generally okay but somewhat influenced by the vociferous home supporters. Effy's sending off seemed a somewhat dodgy decision and why on earth did Slough keeper Wilkerson not walk for felling Tommo in the incident leading to our second half penalty?

DAY OUT ENJOYMENT RATING :

This is one of those evenings that will linger for a long, long time in the memories of those Macc fans who were there. The admission charge was excellent at £6 only, the entertainment over the 120 minutes was first class and the penalty shoot out was just unbelievable - particularly when the Slough number 10 blasted that fifth kick over the bar! Overall 9/10.

diary of a macc fan

MATCH :

**Chesterfield vs Silkmen: Nationwide
League Division Two**

DATE :

28 November 1998

RESULT :

Lost 0-2

JOURNEY :

Pleasant drive through the Peak District in a convoy of Macc cars and coaches. Not surprisingly, no traffic problems - a leisurely one hour journey.

WEATHER :

Chilly but dry, thankfully, as the away terrace - like Moss Rose - is exposed to the elements.

CAR PARKING :

Not bad for a town centre football ground. Safe parking in school playground for £1.50 and less than 200 yards' walk from the away turnstiles.

ADMISSION PRICE :

Warnings of no concessions for away fans proved unfounded. Reasonable admission charges; £8.50 adults, £4.00 concessions for the terracing, £9.50 and £5.00 in the seats.

PROGRAMME :

Reasonable effort and decent value for £1.60. Good coverage of our last visit to Saltergate in the 1992 FA Cup.

TRAVELLING CONTINGENT :

Superb following of approx. 800 Silkmen. A local away game on a Saturday for a change!

STEWARDS / POLICING :

Not noticed and probably not needed, despite the large number of travelling supporters.

CONDUCT OF MACC FANS :

As ever behaviour was first class. Struggled to raise any vocal backing though as is always the case on open, draughty terracing - ask the away fans at Macc.

CONDUCT OF HOME FANS :

Disappointingly quiet for most of the game considering how high their team are flying in Division 2. Very little animosity towards the Macc fans and to their credit, very little bad language either. "You're going to lose to the Spireites"

being perhaps the most offensive chant to be heard all afternoon!

GROUND :

This is a very old fashioned ground with surprisingly very little seating. The main stand (and the only seated area in the ground) is an ancient wooden structure of which there are very few remaining, good to see though that the awful perimeter fences evident at our last visit in 1992 have all gone. For all this, bags of character probably still appreciated by the traditional soccer fan like me!

CATERING :

Decent pies, burgers, sausage rolls all sold from a wooden shed at the rear of the terracing. Usual football ground grub, okay but rather surprising that it rated so highly in recent survey.

TOILETS :

In keeping with the ground, old fashioned and well past the sell by date. No roof on the gents - this is Division 2 in 1998 not the Cheshire League in 1958 for goodness sake!

TEAM PERFORMANCE :

There is no doubting this was a disappointing result but this was in no way a disappointing performance. The Silkmen matched the high flying Spireites throughout the 90 minutes whilst, yet again, it was two brief defensive lapses that cost us the game. At Wycombe and Wigan this season we got what we deserved, another day at Chesterfield we could have come away with a 2-0 win.

OFFICIALS' PERFORMANCE :

If we didn't notice the ref then he must have had a half decent game. This was the first match for weeks where I haven't noticed the ref! Well done Mr Jones from Barrow.

DAY OUT ENJOYMENT RATING :

Disappointing result but promising show on the pitch from the lads. Interesting return trip to the scene of one of our all time most memorable FA Cup games. Pleasant journey through some pretty countryside.

Overall rating 6/10.

PLAYERS KIT SPONSORS - SEASON 98/99

PLAYER	SHIRT £60	SHORTS £40	BOOTS £30	SOCKS £15
Glynn Clyde				
Ryan Price	FULL KIT SPONSOR: Joshua Michael Thomas Hughes.			£145
Phil Morgan				
Greg Brown			Luke Clubb	Steve & Pete
Steve Hitchen	Margaret & Bill Milligan			Argo Transport
Neil Howarth	Red Lion, Bollington	Sybill Faulty	J.A Jackson	Paul Gibbons Landscapes
Steve Payne	FULL KIT SPONSOR: Geoff Findlow.			£145
Efetobore Sodje	FULL KIT SPONSOR: Colin Brooks.			£145
Darren Tinson	Lucy Wood	Karen Jervis	Paul Gibbons	Ashley Stewart
Rae Ingram	Brittania Inn Hurdfield Rd.	Lynne & Glenn	Landscapes	Richard Goulsbra & Nicole Pritchard
Kieron Durkan	FULL KIT SPONSOR: Plough Inn, Station Street.			£145
Martin McDonald	Nighthawk Software Ltd		The Star Lane Gang	Liam Phelps
Ben Sedgemore	FULL KIT SPONSOR: Kay Metzeler Blue			£145
Neil Sorvel	FULL HOME KIT SPONSOR: Bernard Watson			£145
Neil Sorvel	FULL AWAY KIT SPONSOR: Roy Higginbotham			£145
Steve Wood	FULL KIT SPONSOR: Victoria Page Elizabeth Hughes			£145
John Askey	FULL KIT SPONSOR: British Flag Formation Drinking Team !			£145
Darren Lonergan				
Peter Davenport				
Richard Landon				
Stuart Whittaker	Billbo UK	Rebecca & Huw Morgan	Paul Jefford	Billbo UK
Graeme Tomlinson	FULL KIT SPONSOR: Robert & Hilary Panton			£145
Steve Brown	FULL KIT SPONSOR: Terry & Judith McGovern			£145
Sammy McIlroy	FULL KIT SPONSOR: Sutton Hall			£145
Gil Prescott	FULL KIT SPONSOR: Shirley, Geoff, Chris & Nicky Knights			£145
Dominic Barclay	FULL KIT SPONSOR: GILKS (Nantwich) Ltd.			£145

SUPPORTERS CLUB

sponsored by Paul Peters Electrical Ltd 3 Roe Street 01625 423888

Well, we made it through to the 3rd round of the FA Cup after a great victory over Cambridge. Our reward for this is an away tie at Premiership Coventry City, and I personally can't wait for the day. It should be very interesting with our boys pitted against Darren Huckerby, Gary McAlister etc

Back to today's game, we'll need to put in a very good performance against Luton who have started the campaign very well. A performance like the second half against Cambridge will certainly suffice.

The Supporters Club recently held their 'Evening with Phil Power' which proved to be very enjoyable and successful. It was nice to chat to one of our old heroes again and it was great to see some of the current players along to support the cause. More details of this and other events in the latest Supporters Club Newsletter which will be released this week.

Enjoy the Game

Rob Kerr.

FORTHCOMING EVENTS:

15th December

Christmas Bingo at the Football Club, eyes down around 8pm - look out for more wonderful Christmas prizes up for grabs.

31st December

New Years Eve Disco and celebrations at the club. Tickets now available from the newly located shop at the corner of the Star Lane terrace and Estate Rd Stand. Tickets are £4.00.

6th January

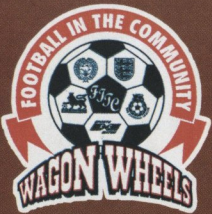
Supporters Club meeting at the Baths Hotel. 8pm start, all are welcome.

16th January

Trip to see the production 'Oliver' in Manchester, further details available from Sarah Kerr on 421 833 or any other committee member.

30/31st Jan 99

Blackpool vs Macc - Join us for the weekend at the Royal York Hotel on the North Promenade. Tickets are £51 for adults and £26.50 for children. The price includes travel, dinner, bed (all rooms en suite) & breakfast at the hotel but does NOT include your match ticket for the game. To book or obtain further information contact any committee member or myself in the Supporters Club bar or at home on 421 833.



FESTIVE FOOTIE FUN

The Football in the Community scheme is hosting a series of special one day festive football 'n' fun five-a-side events over the Christmas period. There are courses for players of all ages and abilities, with many prizes and fun games for all. It is also hoped that some of the first team players will visit the courses, dependent upon club commitments. All courses will be held at indoor venues so whatever the weather we're going to kick ball.



COURSE INFORMATION.

22 December - JUNIOR FIVE-A-SIDE & FUN Macclesfield College	£3.50 1.30-4.00pm
23 December - GIRLS ONLY FIVE-A-SIDE & FUN Macclesfield College	£8.00 10.00-4.00pm
29 December - MICRO SOCCER FUN Macclesfield Leisure Centre	£3.50 10.00-12.00noon

FOR FURTHER INFORMATION AND A BOOKING FORM FOR ANY OF THESE COURSES PLEASE CONTACT FOOTBALL IN THE COMMUNITY 01625 264688

BLUE HERO COMPETITION. CHANGE OF DATE

The Community Office has received loads of fantastic nominations for our True Blue Hero competition. One of the lucky winners so far was Aaron Carr who nominated his older brother Paul Jefford. Aaron was selected as a late call-up to be mascot for last weeks cup game against Wrexham. There is still time for you to enter your nomination, remember all you need to do is write down a few words to support your nomination of Macclesfield Town's greatest supporter. Then return your nomination to the Community Office by 14 December, to stand a chance of winning a superb Match Mascot package for the home fixture against Millwall. HOWEVER.

Due our fantastic cup victory against Cambridge we will now be travelling down the M6 to Coventry on January 2. Therefore the Millwall fixture will be re-arranged for a future date. This fantastic prize however will remain and be up for grabs for the re-arranged fixture. Happy writing and we look forward to some more top fan nominations.

FINALLY JOHN, DANNY, AND ALL THE COMMUNITY STAFF AND ASSISTANTS WOULD LIKE TO WISH ALL SILKMEN FANS A SAFE AND HAPPY CHRISTMAS.



ZENECA **Bodycote**
METAL TECHNOLOGY



Football in the Community

R.H. STEVENS GROUP LTD.

MACCLESFIELD OFFICE
Gunco Lane
Macclesfield
Cheshire
SK11 7JL



LONDON OFFICE
Kingsgate Business Centre
12-50 Kingsgate Road
Kingston-upon-Thames
Surrey KT2 5AA

Tel: 01625 613939/616011
Fax: 01625 616829

Tel: 0181 974 8396
Fax: 0181 974 8399



- Bulk tanker division
- Movement of granular sugar, starch, plastic granules or even PVC resin.
- Internal tank cleaning.
- Delivery of bulk powder throughout the United Kingdom and Europe.

- Fleet of over 80 modern vehicles, including 38 tonne tractor units, curtain sided trailers, 7.5 and 16 tonne rigid vehicles.

- Specialised chemical & hazardous goods department.
- Regular driver accompanied service to Switzerland Germany, France, Belgium & Holland.



Today's Teams



Home Team

Macclesfield

Visiting Team

Luton Town

<input type="checkbox"/>	Ryan Price		Kelvin Davis	<input type="checkbox"/>
<input type="checkbox"/>	Darren Tinson		Graham Alexander	<input type="checkbox"/>
<input type="checkbox"/>	Steve Hitchen		Gavin McGowan	<input type="checkbox"/>
<input type="checkbox"/>	Steve Payne		Matthew Spring	<input type="checkbox"/>
<input type="checkbox"/>	Steve Wood		Steve Davis	<input type="checkbox"/>
<input type="checkbox"/>	Efetobore Sodje		Alan White	<input type="checkbox"/>
<input type="checkbox"/>	John Askey		Ray McKinnon	<input type="checkbox"/>
<input type="checkbox"/>	Neil Sorvel		Sean Evers	<input type="checkbox"/>
<input type="checkbox"/>	Graeme Tomlinson		Gary Doherty	<input type="checkbox"/>
<input type="checkbox"/>	Ben Sedgemore		Phil Gray	<input type="checkbox"/>
<input type="checkbox"/>	Stuart Whittaker		Paul McLaren	<input type="checkbox"/>
<input type="checkbox"/>	Rae Ingram		Michael McIndoe	<input type="checkbox"/>
<input type="checkbox"/>	Peter Griffiths		Stuart Douglas	<input type="checkbox"/>
<input type="checkbox"/>	Neil Howarth		Andre Scarlett	<input type="checkbox"/>

MATCH OFFICIALS

YELLOW FLAG:
Mr. A. N. Smith

REFEREE:
Mr. R. Warren

RED/YELLOW FLAG
Mr. W. Shaw

RESERVE OFFICIAL:
Mr. A. Keates

NEXT AT THE MOSS ROSE
MACCLESFIELD TOWN
v BLACKPOOL



NATIONWIDE LEAGUE DIVISION 2
MONDAY 28TH DECEMBER 1998 KICK-OFF 3.00PM