



Luton Town v Walsall

Tuesday 5 January 1999
Kick Off 7.45pm
Official matchday programme. Price £1.00



*Sponsors
of Luton
Town F.C.*

Match sponsors: Bedfordshire and Luton
Chamber of Commerce, Training and Enterprise.



welcome to kenilworth road

WELCOME

Midfielder Gerry Harrison, 26, has joined us on loan for a month from Sunderland, and played for us at Bournemouth and Colchester. He joined the First Division leaders last summer. He was not in the team that ended our run in the Worthington Cup, at the Stadium of Light, but has played against us in the past. Before moving to Wearside he was with Burnley, and voted the fans' player of the year at Turf Moor last season.

Gerry began his career as a trainee at Watford, and made nine league appearances for the Hornets before going to Bristol City. He had loan spells at Cardiff and Hereford, and a brief time with Huddersfield before earning a reputation as a strong defensive midfielder with Burnley, for whom he made 124 league appearances.

GOOD-BYE

A combination of circumstances led to the departure of Steve Davis last week, despite strenuous efforts to persuade him to stay. Burnley broke their transfer record to take him back, and he was determined to go.

He joined us in the summer of 1995 when he was 26, at a tribunal-fixed fee of £750,000, the second-highest cash fee we had ever paid, after Lars Elstrup. It was a significant investment: because of freedom of contract rules, the contract was depreciating at a rate of £50,000 a month. - and £800,000 is a significant fee between two Second Division clubs, especially for a player over 30.

We also received an enquiry from a First Division club, and the player was told about it, but he said he was interested only in a return to Burnley.

We offered him the best contract any player at Luton has ever been offered to try to keep him here until the end of his career, but he turned it down.

It is no secret that this club is losing money, and the failure to secure planning

consent for the new stadium adds to our problems: there is investment available when we get the go-ahead, but in the meantime we have to underwrite continued losses, and repay loans. Add all those factors together, particularly Steve Davis's strongly-expressed personal reasons for wanting to return to his former club, and the directors had little choice. It was in the best interests of the club that Steve Davis should be granted his wish to return to Turf Moor.

SPONSORS

We are delighted to start the New Year with sponsorship for tonight's match from an organisation that plays a major part in the success of the local community: the Bedfordshire and Luton Chamber of Commerce, Training and Enterprise. The Chamber is the local membership-driven organisation committed to developing the people, businesses and economy of Bedfordshire and Luton.

FRONT COVER

Happy birthday to Stuart Fraser, who will be 19 on Saturday. His early present was a first league appearance of the season against Millwall, when boss Lennie Lawrence singled him out as one of the very few who performed well in a disappointing match.

MAN IN THE MIDDLE

Tonight's referee is Paul Taylor, a computing manager from Waltham Cross, paying his second visit of the season - he was also in charge of our Worthington Cup match against Ipswich.

FINALLY

The chairman, directors, coaches, players and all staff of Luton Town wish all supporters a peaceful, prosperous and promotion-winning new year. And thank you for your support - we need every one of you, and more!

from the manager's chair

IT IS NO secret that at this stage of the tournament the Auto Windscreens Shield does not figure too highly in the priorities of most football clubs. But that can change if you get to the latter stages, so we welcome Walsall this evening for a match which we want to win.

The area final and the final at Wembley can be significant money-spinners, and this competition represents the best chance Second and Third Division clubs have of playing at Wembley. Last year we were knocked out by Bournemouth, and they went all the way. By co-incidence, they beat Walsall in the southern area final, before losing at Wembley to Grimsby, in front of a crowd of over 62,000. We would quite like to sample that sort of occasion ourselves. And you can be sure the income would be very welcome.

But, while we want to do the best we can tonight, there are a few players we need to rest, and some who need to be looked at, put into the team to stake claims for more regular appearances. I hope also to have signed another player on loan in time for him to play tonight.

We can expect a tough test, whatever team Walsall put out, but a win can set us up for Saturday's home game with Wycombe.

I will comment more about our last two league matches in Saturday's programme, but to be brief and to the point our form has been indifferent, and



we need the confidence a couple of good wins can bring.

Finally, I was very sorry to see Steve Davis leave this club, but it was what he wanted, and it was inevitable. The background is reported on the facing page. We are very sad to lose the services of such an excellent player, but financial considerations and his desire to return

to his spiritual home left us with no practical alternative. He has given us tremendous service, and I wish him well.

But we have to look forward: the old year ended on a disappointing note with a sense of anti-climax since we went to Sunderland.

But, considering where we were 12 months ago, we have made progress, and we will do all we can to maintain it and hopefully improve it in the new year. The first requirement is a good performance tonight, and I hope we give you good reason to enjoy our first home game of 1999.

Lennie Lawrence

Chairman and
Managing Director
David Kohler
Bsc (Hons) FRICS

Directors
C.S. Bassett, C.T.F Green,
N.S. Terry

Vice Presidents:
R.L. Banks, D. Ludlow,
C. Bygrave, R. Safranek,
P. Ireton, J. Sapsworth.

Chief Executive and
Company Secretary
Cherry Newbery

Manager
Lennie Lawrence

Reserves Coach
John Moore

Youth Coach
Paul Lowe

Club Coach
Trevor Hartley

Physiotherapist
Clive Goodyear

Consultant Physio
John Sheridan

Sales & Marketing
Managers
John Bailey
Jacqueline Parker

Financial Controller
Anthony McNally A.C.A.

Youth Development
Dean Rastrick

Scouting
Les Shannon

Fitness Trainer
Mandy Malins

Safety Manager
Geoff Lovell

Catering Manager
Fiona Wallace

Medical Officer
Dr Bill Berry

Club Dentist
A.Chris BDS (Syd)

**Luton Town
Football Club**
Kenilworth Road Stadium
1 Maple Road, Luton
Bedfordshire LU4 8AW

Main Reception
01582 411622

Fax
01582 405070

Ticket Office
01582 416976

Clubcall
0891 121 123

Honours
Littlewoods Cup
Winners 1987-88
Finalists 1988-89

FA Cup
Finalists 1958-59

Simod Cup
Finalists 1987-88

Division 2
Champions 1981-82

Division 3 (S)
Champions 1936-37

Division 4
Champions 1967-68

Official Matchday Programme

Editor
Brian Swain

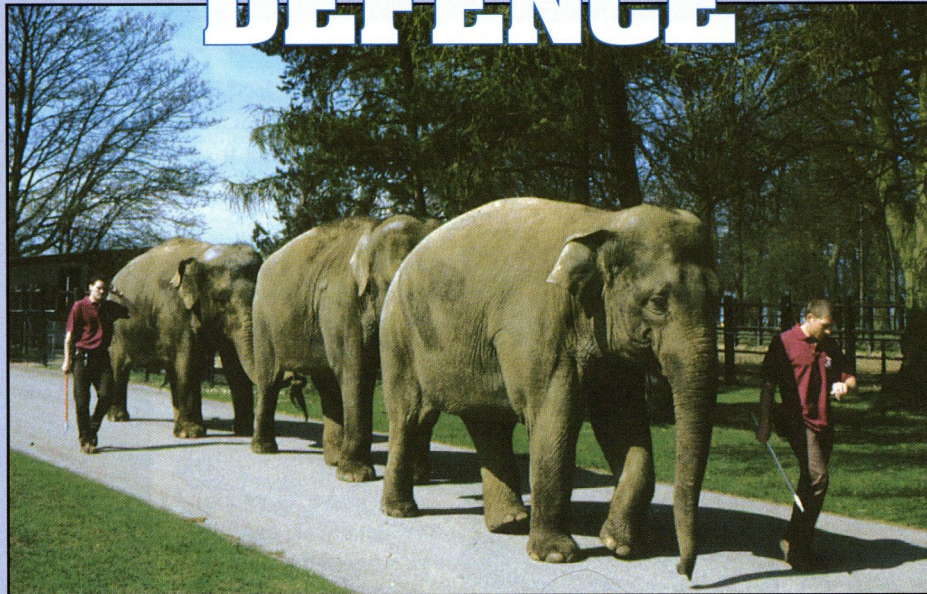
Design & Layout
Wolff Evans

Printing
Security Printers

Photography
Gareth Owen
Home Counties Newspapers

The views expressed in this programme are not necessarily those of Luton Town Football Club

THE LAST LINE OF DEFENCE



A HAT TRICK DEAL FOR HATTERS MEMBERS

- 1. 20% Discount on Gate Price**
- 2. Pay gate price and get Free Winter Membership Dec-Feb 99**
- 3. Discounted rate for 1 years membership**

HATTERS 1011

Whipsnade

WILD ANIMAL PARK

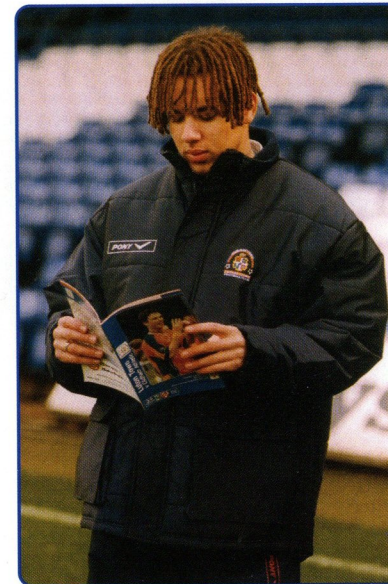
TELEPHONE 0990 200123

FOR FURTHER INFORMATION AND ADVANCE BOOKINGS

HATTERS SHOP

Pony Training Kit now available in the Club Shop

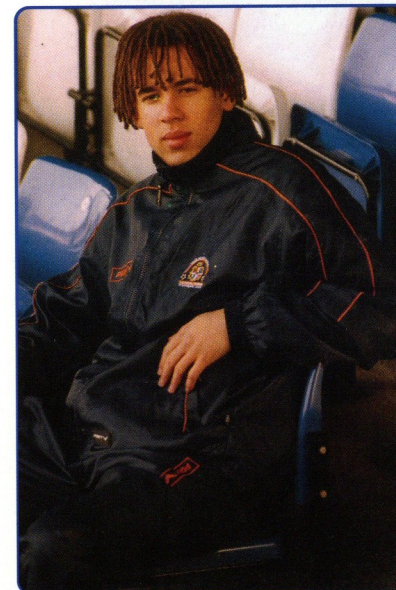
These garments will only be available to buy during season 1998/99 while stocks last



Pony Bubble Jacket
Navy
SB, B, LB
£59.99
Y, S, M, L, XL, XXL
£74.99



Pony Bench Coat
Navy
SB, B, LB
£54.99
Y, S, M, L, XL, XXL
£69.99



Pony Travel Suit
Navy
SB, B, LB
£54.99
Y, S, M, L, XL, XXL
£69.99



Pony Rain Jackets
SB, B, LB
£44.99
(available mid December)
Y, S, M, L, XL, XXL
£54.99
(in stock)



Universal
Salvage plc



Quality secondhand motor cycle parts available. Most makes in stock. Breaking all models.

The UK's largest motorcycle auction network

Private and trade enquiries welcome.

Warranties available on selected parts. Nationwide delivery.

Telephone for more information.

Motorcycle enquiries contact Richard Howe on

Tel: 01234 766500

Rover spares contact Nick Ventrone on

Tel: 01234 765555

Acrey Fields, Woburn Road, Wootton, Beds, MK43 9EJ

Auto Windscreens

Luton Town in the Auto Windscreens Shield

Originally introduced as the Associate Members Cup in 1983, the title had changed to the Auto Windscreens Shield by the time the Hatters first took part following relegation to Division Two in 1996.

Our first opponents were old adversaries Leyton Orient who visited Kenilworth Road for a First Round clash in December 1996. Unfortunately the fixture failed to capture the imagination of the Luton public with only 1594 scattered around Kenilworth Road. This was the lowest crowd to watch a first team competitive fixture since accurate records were kept 'beating' the previous low, co-incidentally against Clapton Orient for a league fixture in 1932.

In a poor game a defensive Orient broke out to take a shock lead through Martin Ling before a second half header from Steve Davis levelled the score. The crowd was spared extra-time on a cold night when Kim Grant headed the winner five minutes from the end from a Paul Showler cross.

Our reward was a first ever visit to the Sixfields Stadium at Northampton. After a couple of postponements because of the weather, over 1000 Luton supporters travelled up the M1 to see a lacklustre Hatters performance which ended with a devastating free-kick from Cobblers' loanee Matthew Rush in the final minute. The dreams of Wembley were over for another season.

In 1997/98 we received a bye in the First Round and were drawn to play Brentford at Kenilworth Road at the next stage. Buoyed by three straight league wins in an otherwise dismal season a respectable crowd of 3106 was present to see the Town win through fairly easily 2-1. A clever free-kick from Davis let in Tony Thorpe who made no mistake from close range and when David Oldfield fired in number two ten minutes from the end the game appeared safe. The Bees pulled a goal back with seconds remaining but it was too little too late.

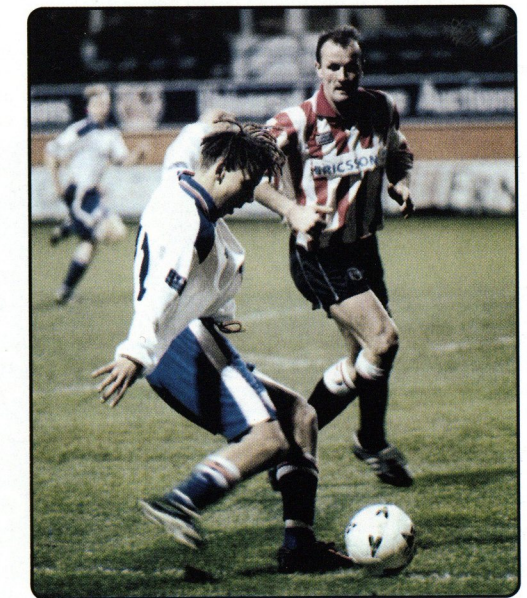
Three days before the Town were due to face Fulham in the next round the Cottagers had won convincingly 4-1 at Kenilworth Road in a league fixture. Not many supporters gave the Hatters much hope but with Fulham putting out a so-called second team we stood a fighting chance.

Dwight Marshall grabbed an opener after the Fulham goalkeeper could only parry Davis' volley but the Cottagers fought back with Kyle Lightbourne heading in a deep cross on the hour as the game continued to ebb and flow.

The Hatters winner came just before the end when substitute Tony Thorpe stooped low to head home a Simon Davies cross and spoil Fulham Chairman Mohammed Al Fayed's birthday and exact full revenge for the league hammering.

The Town were now through to the Southern Area semi-final where they were drawn to play at Bournemouth. The competition was now becoming interesting and with the 'twin towers' beckoning the Town filled midfield mindful of how the Cherries had overrun them in that department in league meetings between the sides.

Chances were created at both ends but Bournemouth had the majority, although they left it late before scoring the only goal as only three minutes remained when Frank Rolling crashed the ball into the top corner of the net.



Action from last season's A.W.S. clash with Brentford at Kenilworth Road.

welcome to tonight's visitors

TEAM MANAGER - RAY GRAYDON

Emerged as the surprise choice to replace Jan Sorensen in the Saddlers hot seat during the course of the last pre-season break. The vastly experienced coach has never previously sampled life in the manager's chair, but commands a tremendous amount of respect throughout the football world. A disciplined and intelligent man, he ended the 1997/98 campaign working as a coach at Port Vale, where he was an instrumental figure helping the Valiants avoid relegation. Best known in the Midlands for his time as a player at Aston Villa for whom he scored the winner in the 1975 League Cup Final against Norwich City.

JAMES WALKER

An inspiring and vociferous figure who provides an extremely sound base to the side. Ever present last term, the agile and action 'keeper also skippered the side to good effect on a number of occasions, playing with a high level of confidence and reliability which transferred itself to the players around him. Moving to Bescot Stadium from Notts County in August 1993, he is another free transfer capture who has gone on to prove his worth in no uncertain terms.

DANIEL NAISBITT

A promising young keeper who many believe has potential to go far in the game. Currently being forced to bide his time in the reserve team, he is working hard so that when his opportunity eventually arises he will be able to grab it with both hands.

WAYNE EVANS

Since joining The Saddlers back in August 1993, the Welshman has blossomed into an extremely accomplished defender, playing with an extraordinary level of consistency, which has made him a firm favourite amongst The Saddlers faithful. On the fringe of the Welsh national squad, he was delighted to finally break his Football League scoring duck towards the end of the last season by bagging the winner against Gillingham.

MATTHEW GADSBY

After impressing greatly with some solid performances whilst coming through the ranks, the young defender was given a brief opportunity to taste first-team action in the final game of last season against Wycombe Wanderers when coming on as a second half substitute. With his appetite well and truly whetted this could well be the season in which he emerges from the shadows.

IAN ROPER

Another youngster who has made the transition through the ranks to become very much a part of the first-team set-up. His overall game is gradually improving as he learns from the more experienced people around him. A good competitor, he is expected to become a key figure in the heart of defence.

ADRIAN VIVEASH

The rock on which the back-line is built, he enjoyed yet another solid season last term whereby he reaffirmed his position as an

extremely vital and well respected figure in the side. Showing a steely determination to succeed which transferred itself to other members of the side, his experience proved essential to the youngsters around him. Walsall stepped in to snap him up on a Bosman transfer in October 1995 when he was somewhat surprisingly released by Swindon Town and what an acquisition he has proven to be!

CHRIS MARSH

Comfortably the longest serving player in the current squad, Chris arrived at Walsall as a fresh-faced youngster back in July 1988 and has gone on to serve the club tremendously well over the intervening year, playing in a whole host of different positions - including goalkeeper. An extremely popular figure both on and off the field, he is sure to prove his worth in no uncertain terms during the course of the season.

NEIL POINTON

The vastly experienced 33 year-old defender became Ray Craydon's second pro-season signing when making a return to the English league after spending the last couple of seasons in Scotland's top flight with current Scottish FA Cup holders, Hearts. Not one to shy out of a challenge, he has a tremendous strength of character which should serve the club well.

WAYNE THOMAS

An extremely busy player in the middle of the park, made a big impact when introduced to the side in 1996-97 Season. He was used only occasionally over the course of the last season, spending a spell out on loan to Kidderminster Harriers. Nevertheless, when called upon he showed considerable skill, approaching each game with refreshing 100 per cent commitment to the task in hand.

JEAN FRANCOIS PERON

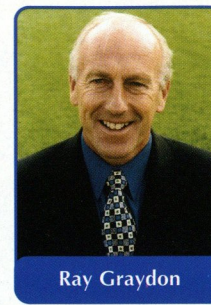
Another Bosman transfer capture from French Club EC Lens in August 1997, his performances settled into the English game with much aplomb, leading many to rank him as one of the finest players ever to grace a Walsall shirt. Deservedly scooping the player of the Season award at the end of last season, his presence was sorely missed on the occasions that he was out of the side.

GARY PORTER

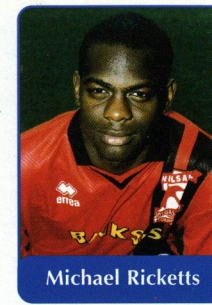
After ending his long and fruitful association with Watford during the summer of 1997, the Sunderland born midfielder arrived at Walsall on a free transfer, bringing with him some much needed experience and know-how to an otherwise youthful and raw midfield unit. His passing ability proved to be vital and there was a noticeable void on the occasions when he was missing from the side.

DARREN WRACK

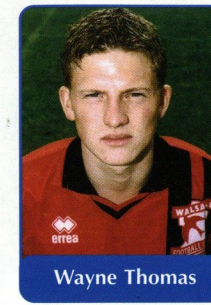
The talented 22 year old midfielder joined the club in the week leading up to the start of the 1998/99 season after impressing during a trial spell. A lively and energetic player, he is a very good crosser of the ball. Arrived on a free transfer from Grimshy



Ray Graydon



Michael Ricketts



Wayne Thomas



Town where his opportunities were limited following his move from Derby County in July 1996.

DEAN KEATES

One of the greatest success stories of the 1997/1998 campaign, the pocket-size midfielder workhorse has grabbed a first-team berth with both hands and is now an integral part of the side, playing with steady assurance beyond his 20 years. Born and lived in the area all his life, there will be nobody more keen to see The Saddlers rise up the league ladder in the years to come. Attracted the scouts along to Bescot Stadium last term and is likely to do the same this season.

JOHN KEISTER

The tenacious midfielder found his path to a regular first-team berth blocked for much of last season. Beginning the campaign in the team, he fell out of favour for long periods before being thrust into action towards the end of the season to add some much needed bite to the heart of the side. Another player plucked from non-League obscurity, the Sierra Leone international will no doubt be aiming to impress Ray Craydon sufficiently to earn a regular starting place in the months ahead.

CLIVE PLAIT

Last Season saw the tall, young front man make occasional first team appearances. Another player who has come through the ranks at the club, he will be looking to win Walsall Football Club regular First-team place under the new management team.

MICHAEL RICKETTS

The imposing young striker failed to cement a regular place in the side last term, drifting in and out of the forward line and not scoring the goals that many expected him to. Yet another player

whom the club have nurtured, he has a striking physical presence, and is reckoned to have a bright future in the game. At just 19 years of age he certainly has time on his side.

ANDY RAMMELL

Became Ray Craydon's first capture when arriving on a Bosman transfer from Southend United during the pre-season break. A big and strong front man, his commitment to the cause is total and as a result he is a well-respected figure on the terraces. Manchester United plucked him from non-League football in 1989 before moves to Barnsley and latterly Southend.

JASON BRISSETT

An exciting winger who possesses a high level of skill and pace. He was snapped up from AEC Bournemouth in the week leading up to the start of the 1998/99 season after impressing in a couple of friendly fixtures. Sure to become a favourite amongst the faithful at Bescot Stadium.

NEIL DAVIS

Arrived at the club on a short term deal from neighbours Aston Villa over the summer as he looks to get his career back on track after suffering at the hands of illness and injury in recent seasons.

ANDY WATSON

The hard-working front man weighed in with some very important goals over the course of last term. However, he found his season blighted by a niggling injury towards the end of the campaign which kept him on the sidelines for much longer than expected, and his presence was certainly missed out on the field. Walsall paid £60,000.00 for his signature from Blackpool in September 1996.



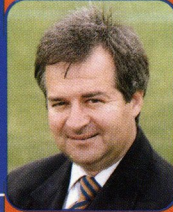
Left to Right - Back Row: Tom Bradley (Physiotherapist), Neil Pointon, Andy Rammel, Adrian Viveash, Clive Platt, Daniel Naisbitt, James Walker (Goalkeeper), Ian Roper, Michael Ricketts, Matthew Gadsby, Neil Davies, Bill Jones (Youth Liason Officer)
Left to Right - Front Row: Jason Brissett, Wayne Evans, Jean Francois Peron, John Keister, Chris Marsh, Ray Graydon (Manager), Dennis Booth (Youth Team Manager), Dean Keates, Wayne Thomas, Darren Wrack, Gary Porter, Andrew Watson.



**Official Supplier to
Luton Town FC**

PONY™

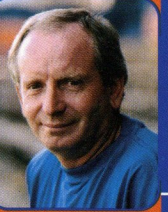
David Kohler



Critical Research Ltd

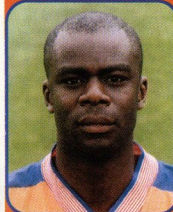
Kit Sponsors
If you would like to sponsor a player?
Call the Commercial Department on 01582 411622

Lennie Lawrence



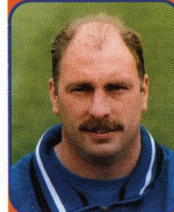
LTFC Supporters Club - Milton Keynes

Marvin Johnson



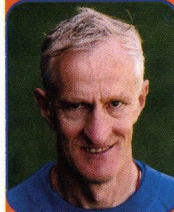
Capital Golf

Clive Goodyear



Danny & Elsie Clubb from Blackpool

John Moore



Ian Smith

Phil Gray



G&S Ceramics Stapleford Road, Luton

Mathew Spring



Brian Hall

Gavin McGowan



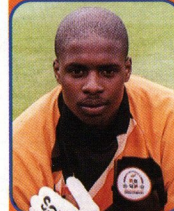
Luton Town Supporters Club

Michael McIndoe



The Bobbers Travel Club

Nathan Abbey



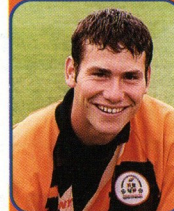
Grosvenor Casino

Liam George



Worldwide Hatters on the Super Highway

Kelvin Davis



Space Display Systems Ltd

Mitchell Thomas



Neil Withall

Gary Doherty



Murtagh Group

Sean Evers



David Forman - West Malaysian LTFC Supporters Club

Paul Showler



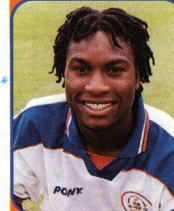
Graham Group plc

Julian James



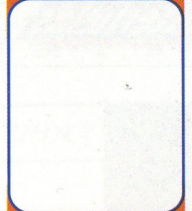
Pete & Mandy Carney Les & Sue Miller

Stuart Douglas



Richard Culley & Pete Carney

To be allocated



Les and Sue Miller

Paul McLaren



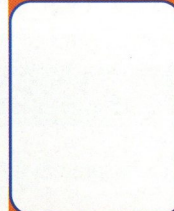
Danny & Elsie Clubb

Graham Alexander



Mad as a Hatter

To be allocated



Mick Garbutt Virgin Records

Hervé Bacque



Mad as a Hatter

Alan White



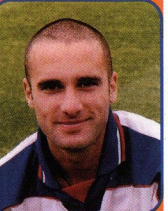
Rob Stringer Epic Records

Ray McKinnon



Paul Deason

Andrew Fotiadis



Sally Mayne & Richard Culley

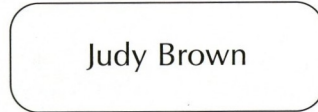
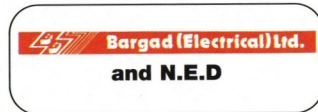
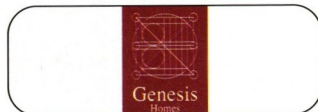
Executive Members

Fisher Frozen Foods Ltd
R W Harvey & Son
Wilton Contract and Vehicle Rental
Mr. Malcolm Eade
Wolff Evans
Mr. Roger Eade

Arrow Business Systems Limited
J. Sapsworth Ltd
Dr. D. Siegler
Neahurst Ltd
Grosvenor Casino
Datapace Ltd
Luton News and Leader

Good & Co.
Critical Research Ltd
Mr. R. Banks
Ludlow Group
Regal Litho Ltd
Mr. Geoff Cooper

Executive Box Holders



Club 82

The Magic Touch (GB) Ltd
Mr. F.W. Pearce

Chris and Kim Clarke of
The Weatsheaf, Flitwick

Space Display Systems Limited
JP Hygiene Supplies

Ticket News



LUTON TOWN v WYCOMBE WDRS

Saturday January 9, kick-off 3pm

Tickets now on sale, including our special "three for the price of two" offer.

Keep your ticket stubs from this match and the Millwall game, and if you produce them by January 22 at the ticket office you can claim a FREE ticket for the home game with Wigan.

PRESTON NORTH END v LUTON TOWN

Saturday January 16, kick-off 3pm

This match is pay on the day only. Seating, in the new Bill Shankley Cop costs £13 adults, £8 concessions (under 16s and over 65s).

LUTON TOWN v WIGAN ATHLETIC

Saturday January 23, kick-off 3pm

Tickets for this match are now on sale at discounted prices, but see details of our special "three for the price of two" offer.

Viva Pizza

Tel (01582) 486586
Any Pizza, any size
Buy one...
Get one free!
(offer valid all season)
94 High Town Road, Luton



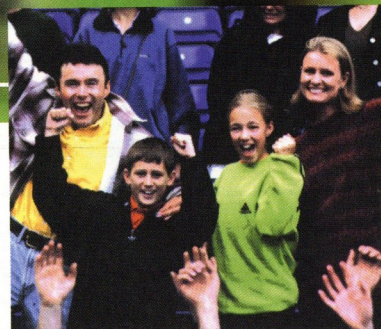
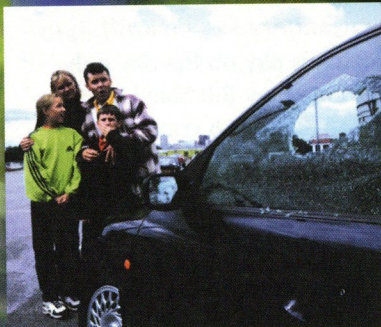
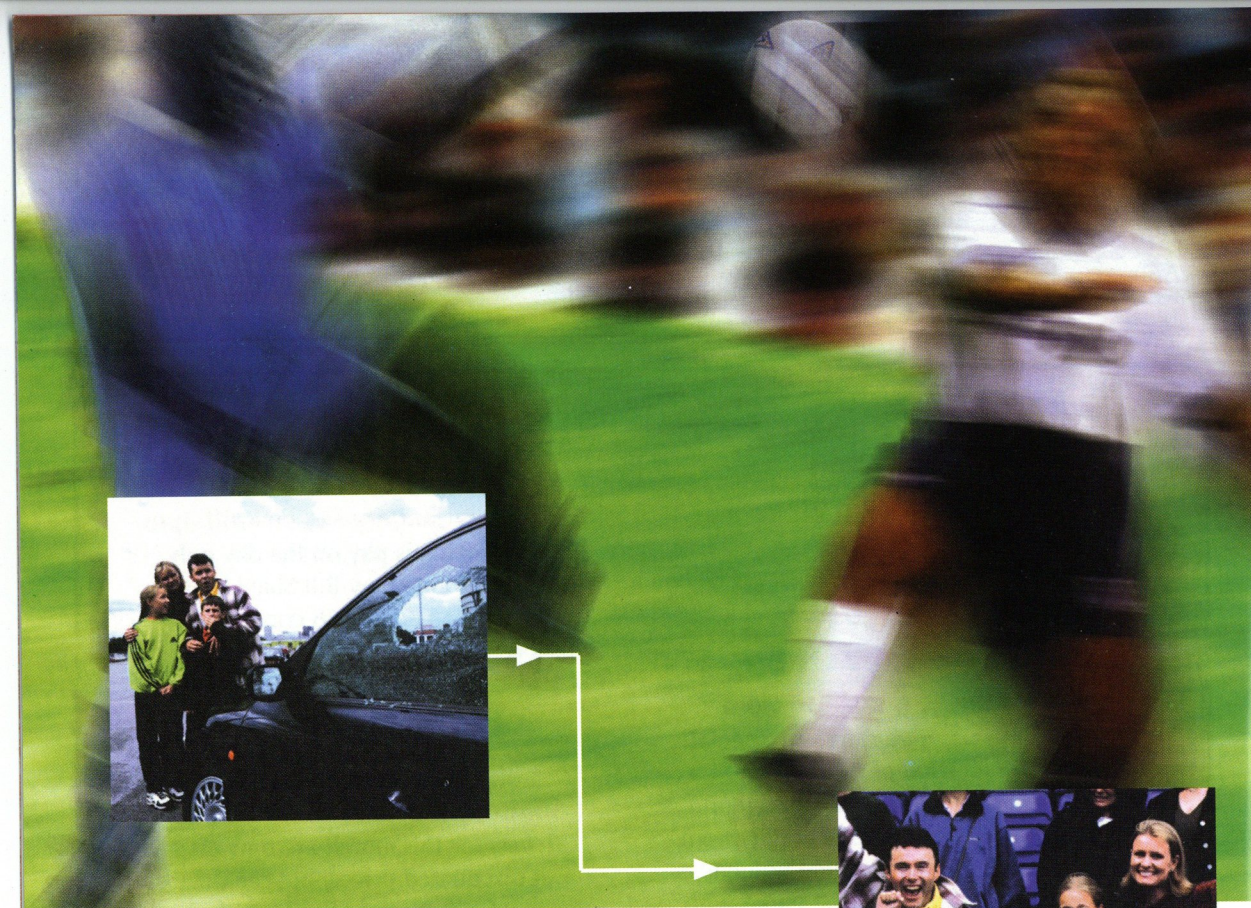
R. J. BLOW & COMPANY

THE FRIENDLY ACCOUNTANTS

Book-Keeping
Taxation and Wages etc.

GUILD HOUSE,
28 GUILDFORD STREET,
LUTON, BEDS, LU1 2NR

Tel: (01582) 738792
Fax: (01582) 423347



IN TIME FOR Kick Off

For

- ▶ Full 24 hour mobile service
- ▶ Every day and night of the year for windscreen repair, replacement, rear window and side glass replacement

From

- ▶ 800 fully equipped mobile units
- ▶ 150 fitting centres

By

- ▶ 900 fully trained and skilled installers

With

- ▶ Service accredited to BS EN ISO 9002
- ▶ Approved by all motor insurers
- ▶ 26 years experience of automotive glazing
- ▶ Working on over 700,000 vehicles every year



It could be a golden goal tonight!

IT COULD be a golden goal tonight for the winners of this match. If the scores are level after 90 minutes extra time will be played, the usual two periods of 15 minutes, except that if either side scores in extra time that goal finishes the match.

If we have no golden goal, the tie will be decided by a penalty shoot-out. Just in case, having seen what happened when Glenn Hoddle took a different view, you might be pleased to hear that the Town have included spot-kick practice as part of the preparation for tonight's game!

TOWN TEASER

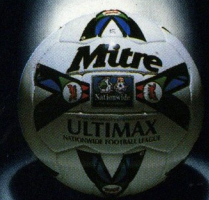
ONE of our Wembley heroes in the 1988 Littlewoods Cup final had played for Walsall before he joined us. Who was he? Listen for the PA announcer to ask this question tonight, and if you know the answer you could win a prize.

FANCY OWNING a Luton Town programme from the other side of the world? We have had a letter from Vic Deverill, secretary and treasurer of the New Zealand Soccer Media Association to say they have a number of match programmes from the Town's tour of New Zealand in 1977 and are willing to sell them to collectors.

They include the match against the NZ World Cup squad, sold in 1977 for 40 New Zealand cents. The programmes now on offer are two for a quid, as are programmes from England B team's tour of New Zealand in 1978.

If you're interested, Mr Deverill's address is 12 Pupuke Road, Birkenhead, Auckland 10, New Zealand.

Last Season
The Nationwide Football
League saw an Increase in
Attendance of 13.5%;
Why...?



The authority...

The Quality of the Football



Luton Town v Walsall

- | | | |
|------------------|-----|---------------------|
| Kelvin Davis | 1. | 1. James Walker |
| Graham Alexander | 2. | 2. Chris Marsh |
| Mitchell Thomas | 3. | 3. Neil Pointon |
| Matthew Spring | 4. | 4. Dean Keates |
| Alan White | 5. | 5. Richard Green |
| Marvin Johnson | 6. | 6. Ian Roper |
| Paul McLaren | 7. | 7. Darren Wrack |
| Gerry Harrison | 8. | 8. Walter Otta |
| Stuart Douglas | 9. | 9. Andy Rammell |
| Phil Gray | 10. | 10. Bjarni Larusson |
| Sean Evers | 11. | 11. Paul Simpson |
| Michael McIndoe | 12. | 12. Jason Brissett |
| Gary Doherty | 13. | 13. Wayne Thomas |
| Stuart Fraser | 14. | 14. Adrian Viveash |

Referee: Paul Taylor, Waltham Cross
Assistants: S. C. E. Head, Stokenchurch (yellow flag)
M. A. Maynard, Hertford (yellow & red flag)
Reserve official: G. G. Wilson, St. Neots



Plowmans of Luton

Motorbodies of Luton

**AND
LUTON
TOWN
—
THE
PERFECT
MATCH**

You'll do a great deal better with us!

Open 7 Days

Plowmans, 15 Hitchin Road, Luton. Tel: 454666
Motorbodies, Memorial Road, Legrave, Luton. Tel: 567500