



Luton Town v Macclesfield Town



Saturday May 1, 1999

Kick-off 3pm

Official matchday programme. Price £1.80



Match sponsors: Wendi Arnold and the Regular Rabble, supporting Luton Town and FLAG
Ball sponsors: Construction Industry Training Board



Inside Forward

welcome to kenilworth road

**Luton Town
Football Club**
Kenilworth Road Stadium
1 Maple Road, Luton
Bedfordshire LU4 8AW

Main Reception
01582 411622

Fax
01582 405070

Ticket Office
01582 416976

Clubcall
0891 121 123

Honours
Littlewoods Cup
Winners 1987-88
Finalists 1988-89

FA Cup
Finalists 1958-59

Simod Cup
Finalists 1987-88

Division 2
Champions 1981-82

Division 3 (S)
Champions 1936-37

Division 4
Champions 1967-68

Official Matchday Programme

Editor
Brian Swain

Design & Layout
Wolf Evans

Printing
Security Printers

Photography
Gareth Owen
Johnston Press

The views expressed in this programme are not necessarily those of Luton Town Football Club

Brian Swain reports

THE TOWN will be playing in a new strip next season, and reverting to a mainly orange kit for home games. Supporters traditionally greet such announcements with loud groans, and even phrases like rip-off. On this occasion, it is a change that has been forced on the club.

Pony, whose kit has been used for the past five years, are pulling out of the market, so we had to find a new supplier.

You may recall that some time ago we asked supporters for their views on what the new strips should look like, and a variation of the orange that Harry Haslam introduced in the 1970s was the fans' favourite.

John Bailey, our sales and marketing manager, explained: "We took that survey result on board, and we think supporters will like the new style.

"Olympic Sportswear will produce it, and we have done a two-year deal with them. In home games the shirts will be mainly orange, with a blue flash down the sides, and the away kit will be mainly white, with a black flash. We will have to think about a third kit, but have not yet decided on that."

For all clubs, and in present circumstances especially the Town, the crucial requirement is to have a strip which the fans will like enough to buy from the club shop to boost income. To get an idea of what the new home gear will look like, please see the advert on pages 40 and 41.

Olympic are manufacturing the home kit first, and it is hoped it will be available by July 1.

Welcome back to the 1959 heroes

WE give heartfelt thanks to Marilyn Fussell, of Luton Town Supporters Club, for her brainwave in thinking up today's 1959 FA Cup finalists' reunion at Kenilworth Road - and for her hard work in tracing all the ex-players and getting them here.

She in turn thanks Richards and Thirkell (Luton) Ltd for their help in providing traditional, genuine boaters, for our honoured guests. Thanks also to Danny Clubb, a Town fan who still attends every match with his wife, despite living in Blackpool. Allan Brown lives nearby, and was struggling for transport to Luton, and Mr and Mrs Clubb very kindly and generously volunteered to be his chauffeurs.

The old stars will be introduced to take a bow on the pitch at half time. We welcome them all and hope they enjoy meeting up again after so long.



TOP HATTERS: The three prize-winners at Luton Town Supporters Club's annual presentation night at the Kent Social Club. Tresor Kandol was the young player of the year, selected by the manager and coaches; Kelvin Davis took the top two trophies, voted player of the year by the fans and by his dressing room colleagues, and Matthew Spring was the player of the year choice of the junior members of LTSC.



I'M BACK: Tony Thorpe milks the applause at Meadow Lane, after scoring his first goals for the Town since his return. And after the match-winning brace at Notts County, he netted another winner on Tuesday against Chesterfield.

Contents

- | | |
|----------------------------------|--------------------------------|
| 2. Inside Forward | 23. Hatters On Card |
| 4. Hatters Roll Call | 24. Top Hatters Gallery |
| 5. Lennie Lawrence | 27. It Happened On This Day |
| 7. Captain's Log | 28. Into the Archives |
| 8. From the Treatment Room | 30. Community & Schools |
| 9. Club News from Cherry Newbery | 35. Notts County Action Replay |
| 11. Hatters Chatter | 36. Chesterfield Action Replay |
| 13. Commercial News | 38. Junior Hatters |
| 15. Travel News | 40. New Kit News |
| 17. Welcome to Macclesfield Town | 43. Youth |
| | 45. Division Two Scene |
| | 46. Statistics |
| | 48. The Teams |

FLAG is flying

SUPPORT from the ordinary fans continues to keep FLAG's fund-raising efforts on the ball as they try to raise money to turn LTFC into a community club. The Supporters' Club had a whip-round at their annual do on Sunday, and £500 was raised, to add to the £2,800 from the bucket collection at last week's match.

There is another collection today, and all donations will be gratefully received. One that came in this week was from the Boys Brigade at Harlington. Their marching band is in great demand, and they have donated £250 to FLAG, their fee from a recent event.

Chip off the old block

CONGRATULATIONS to Anthony McNally, our financial controller, on reaching a cup final. The son of Brendan, who is among our 1959 FA Cup guests this afternoon, Anthony has played more than 400 games for Barton Rovers, and also turns out on Sundays for St. Joseph's, along with Kerry Dixon.

St. Joe's reached the final of the FA Umbro National Sunday Cup but on Nottingham Forest's ground they were beaten on penalties by Little Paxton after being 2-1 up until stoppage time at the end of 90 minutes. McNally hit a post with a header in extra time, and netted in the penalty shoot-out but the St. Neots side won 4-3 on penalties.

Better than Watford!

THE FULL official results of the Flora London Marathon came out this week, and show that Luton Town's man in the Football Section, Paul Smith, was eighth in Division Two. More to the point, he raised around £1,500 for the hospice where his young wife died last year, including sponsorship from within Kenilworth Road and from supporters. Paul's time was 3hrs 24mins 5secs, and the Division Two winner was a Northampton fan, Robert Hobbs, in 2-59-40.

Paul asks us to point out that in Division One the Watford entrant clocked a leisurely 4-13-9, well behind our man.

News in brief

The Town are seeking matchday stewards for next season, aged between 18 and 55, fit, and of good character. Ring Luton 411622 and ask for Geoff Lovell.

Also wanted for next season is a disabled supporters co-ordinator, on a voluntary basis. Ring Cherry Newbery, also on 411622, if you are interested.

The AXA FA Women's Cup final, between Arsenal and Southampton Saints, will be played at The Valley on Monday, kick-off 2.30. Admission is £3 and £2, but it is free for under 16s and senior citizens.

Paul Fuller, of Whitehill Avenue, Luton, is desperate to acquire a copy of the Luton v Everton programme of March 22, 1986. If you can help, he is on Luton 652839

Programme collector Damon Hitchen, of Halifax, is seeking various programmes of games between Luton and Leeds from 1947 to 1963, and is willing to pay £40 for some of them. His phone number is 01422 354516.

Chairman
D. Kohler
BSc (Hons) FRICS

Directors
C.S. Bassett, C.T.F Green,
N.S. Terry

Vice Presidents:
R.L. Banks, D. Ludlow,
C. Bygrave, R. Safranek,
P. Ireton, J. Sapsworth.

Chief Executive and
Company Secretary
Cherry Newbery

Manager
Lennie Lawrence

Reserves Coach
John Moore

Youth Coach
Paul Lowe

Club Coach
Trevor Hartley

Physiotherapist
Clive Goodyear

Consultant Physio
John Sheridan

Sales & Marketing
Manager
John Bailey

Financial Controller
Anthony McNally A.C.A.

Youth Development
Dean Rastrick

Scouting
Les Shannon

Fitness Trainer
Mandy Malins

Safety Manager
Geoff Lovell

Catering Manager
Fiona Wallace

Medical Officer
Dr Bill Berry

Club Dentist
A.Chris BDS (Syd)

Hatters Roll-Call 1998/99

	Appearances				Total	Goals			
	League	WC	FAC	AWS		League	WC	FAC	Total
Abbey	1	0	0	1	2	0	0	0	0
Boyce	1	0	0	1	2	0	0	0	0
Cox	3(5)	1(1)	0	0	4(6)	0	0	0	0
Davis	43	7	2	0	52	0	0	0	0
Doherty	5(13)	0(1)	1(1)	0(1)	6(16)	5	0	0	5
Douglas	40	6	1(1)	0	47(1)	9	2	0	11
Fotiadis	8(10)	1(1)	0	1	10(11)	2	1	0	3
Fraser	3(3)	0	0	1	4(3)	0	0	0	0
Gray	30(3)	6	2	0	38(3)	8	3	2	13
George	5(4)	0(2)	0	0	5(6)	0	0	0	0
Johnson	40	7	1	0	48	0	1	0	1
Kandol	2(2)	0	0	0(1)	2(3)	0	0	0	0
McGowan	27(4)	7	2	0	36(4)	0	0	0	0
McIndoe	15(5)	2(1)	(2)	1	18(8)	0	0	0	0
McKinnon	28(1)	4(1)	2	0	34(2)	2	0	0	2
McLaren	14(8)	1(3)	2	1	18(11)	0	1	0	1
Scarlett	2(4)	0	0(1)	0(1)	2(6)	1	0	0	1
Showler	2(1)	0	0	0	2(1)	0	0	0	0
Spring	43	7	1(1)	0	51(1)	3	0	0	3
Thomas	24(6)	3	0	0	27(6)	0	0	0	0
Thorpe	5(1)	0	0	0	5(1)	3	0	0	3
White	16(15)	0(3)	1	1	18(18)	1	0	0	1
Willmott	11(1)	0	0	0	11(1)	0	0	0	0
Zahana-Oni	4(4)	0	0	0	4(4)	0	0	0	0

Also played: Alexander 28(1) league apps, 4 goals; 7 Worthington Cup apps 2 goals. S. Davis 21 league appearances, 6 goals; 6 Worthington Cup apps, 2 goals; 2 FA Cup apps, 2 goals. Dyche 14 league apps; 1 AWS app. Evers 27 league apps, 3 goals; 7 Worthington Cup apps, 1 goal; 2 FA Cup apps; 1 AWS app. Harrison 14 league apps, 1 AWS app. Marshall 3(1) League apps, 1 goal; 3 Worthington Cup apps. Davies 2 League appearances. Bacque 2(5) league apps; 1(2) Worthington Cup apps; 1 AWS app. Nyamah 1 FA Cup appearance, 1 as sub Worthington Cup.

 on the ball?.....



.....or on the bench?

Sorting out your future isn't easy but the CfBT Bedfordshire Careers team are here to help you make the **right moves**.

CfBT Bedfordshire Careers are your local Careers Service and the experts in providing a free and friendly advice service to young people and their parents or carers on career choices and educational options. We can also help you find a job or training course.

Our four Bedfordshire centres have extensive careers information libraries, including self-help careers software, and a range of job and training opportunities. You don't need an appointment – just call in during our opening hours, our team are ready and waiting to assist you.

We also visit local schools and colleges to provide advice and guidance for students from Year 9 upwards, through group sessions and individual interviews.

Opening Hours

Monday - Friday 09.30 – 16.30
Leighton Buzzard

(Mon 14.00 – 17.00 & Thurs 09.30 – 13.00)

Telephone Enquiries

08.30 – 17.30

Or visit our [website](http://www.cfbt.com) on www.cfbt.com



Luton Careers Centre

Link House
49 Alma Street
Luton
LU1 2PL
tel: 01582 728654

Dunstable Careers Centre

21 West Street
Dunstable
LU6 1SL
tel: 01582 662949

Bedford Careers Centre

Eagle Court
Dame Alice Street
Bedford
MK40 2SR
tel: 01234 210000

Leighton Buzzard

The Library
Lake Street
Leighton Buzzard
LU7 8RX
tel: 01525 383344

Lennie Lawrence

from the manager's chair



TUESDAY'S well-deserved victory over Chesterfield saw us move into the top half of the table and leapfrog over several teams who like us have put together reasonable sequences of results recently.

Before going to Notts County to win there, we had a little cause for concern regarding a possible last-ditch relegation battle following three consecutive defeats.

But two wins have banished all thoughts of that, and hopefully we can now achieve our aims of a top-half finish, do better than last season's 57 points, and overhaul Reading.

The season can be recalled as one of four distinct phases. Up until October, and set up by a good pre-season, we thought we were doing everything right. We had an excellent run of league results to establish ourselves in the top six, and made good progress in the Worthington Cup. Most importantly, we had no injury problems except for one to Paul McLaren.

Then came the October to January spell, when we struggled to maintain league form and drew too many games. The Worthington Cup run ended in defeat at Sunderland, after we were reduced to ten men, and the FA Cup defeat against Hull City at home was the worst day of the season.

Then Steve Davis left and we knew life would become more difficult. It did, and a crop of injuries started to cause problems, and more and more young players had to be blooded. Our form was too inconsistent. Our lowest point in terms of away games was at Chesterfield in mid-March, when our second half was our worst of the season. It ended a good sequence where we were always close contenders away from home.

Within a week we had gone into receivership, and thankfully everyone at the club, on and off the field, and including supporters, responded in the right manner and results picked up again.

On paper, perhaps for a club of Luton Town's tradition and reputation the season has been no more than average.

But think of the circumstances, and you can see the campaign in a different light. Having been a manager for 16 years and experienced more differing scenarios probably than any other manager currently in the league, I can safely say that the weeks leading up to David Kohler's decision to leave, and prior to the receivership, were the most difficult of my life. Uncertainty and indecision pervaded every corner of the club.

But going into receivership focused everyone's minds on the problems just in time. I hate to think about what might have happened if it had been done two days after the deadline instead of two days before.

After Steve Davis we had to lose Graham Alexander and Sean Evers to raise money to keep the club going, and key men like Phil Gray and Ray McKinnon went out of the side through injuries. But young players took their chances, and in certain cases have established themselves.

Eight of last year's youth team have played in our Second Division side this season, and three or four have come through to deserve their places permanently. No team in this division is younger than ours, with the possible exception of Millwall. Certainly none has fewer senior professionals available.

We had not needed to bring in loan players over the first half of the season, but in the second that avenue proved extremely fruitful. Sean Dyche and Gerry Harrison were excellent additions to the squad, and now Tony Thorpe is again beginning to show the outstanding ability we always knew he had.

If these can be added to the ever-developing young players, and some of our older ones can remain free from injuries, there is no doubt we can make a play-off place next season.

But we are still in receivership, which may put severe financial restraints on us, and retaining such a squad may not be possible. Obviously I hope the situation will be resolved quickly, before decisions have to be made on players out of contract, but that may not happen.

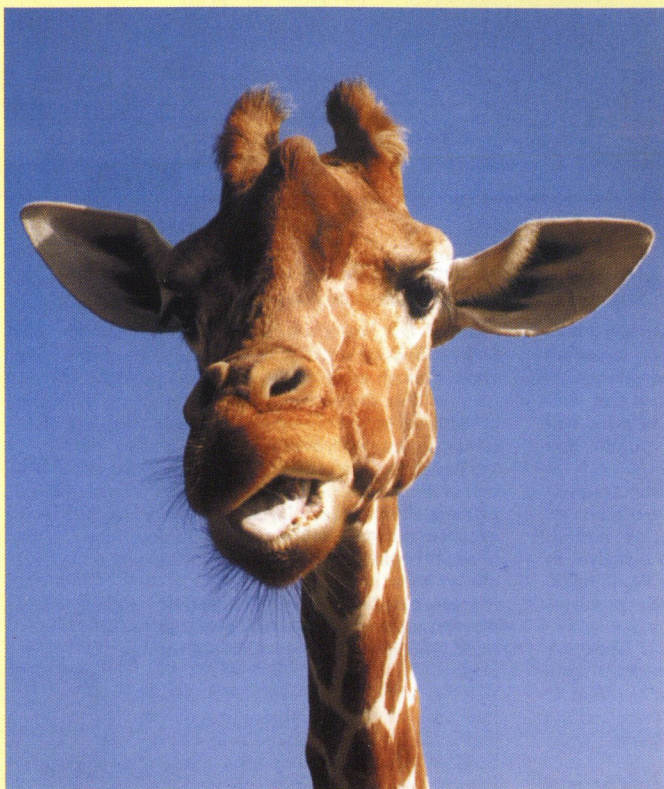
It is always difficult and demanding to meet the expectations of a football club with such excellent recent traditions as Luton. We have found it difficult at times, what with injuries and the need to raise over £1million through player sales. So far 50 per cent of that money has been received, plus £370,000 from the Worthington Cup. It is ironic that we are in receivership when our young players are appreciating in value week by week.

I am sure that with the efforts of the receivers, the current directors and all who have the good of Luton Town are heart, our problems can be resolved and Luton can move on. to a brighter future.

So let us all try to make this last home game a memorable occasion. Get behind the team - and thank you for doing just that so often. It will be a case of all pull together again next season, but in the meantime, I hope we all have a very good summer.

Lennie Lawrence





**YOU
DON'T
NEED
TO BE
TALL
TO SEE
OUR
GAME**

20% DISCOUNT ON ALL ANIMAL ADOPTIONS

10% DISCOUNT ON THE FRIENDS OF WHIPSNADE MEMBERSHIP SCHEME

OFFER CLOSSES 28/2/99. CANNOT BE USED IN CONJUNCTION WITH ANY OTHER OFFER. THE MANAGEMENT RESERVES THE RIGHT TO REFUSE ADMISSION.

Whipsnade
WILD ANIMAL PARK

TELEPHONE 0990 200123

FOR FURTHER INFORMATION AND ADVANCE BOOKINGS

Marv in charge

captain's log



AFTER a season which has been full of wonderful highlights and a few bleak experiences, we are all pleased that we go into today's game with no worries about our final placing in the Second Division. I suppose overall mid-table is a fair reflection of our performances, but I can't help wondering about what might have been.

In September we were playing well, third in the table and going great guns in the Worthington Cup, enjoying the best start to a season in my ten years at the club. We believed we were good enough to have a say in the promotion race and the Worthington Cup run was a real boost to confidence.

You know the rest of the story. We had real hopes of getting into the semi-finals at least, but it all went wrong at Sunderland when Mitch got sent off and we bowed out to the team that has since proved to be by far the best in the First Division.

That night was for me the lowest point of the season. If we had not lost, I wonder if Steve Davis would have stayed? At 30, he was not going to get too many more chances of reaching Wembley.

Sunderland were easily the best team we have played this season, and we can only wonder how we would have fared in their magnificent stadium if it had been 11 men against 11.

In the Second Division, I think the best teams we met in home games were Preston and Fulham, with Manchester City looking a very good side when we played them at Maine Road.

My choice of highlight matches would be Fulham away - it looks like we will be the only visiting team to win at Craven Cottage this season - and the Worthington Cup replay at home to Ipswich. I don't think I have ever played in a more exciting game than that one, and I thought the injury-time deciding goal was a real gem! Steve Davis's decision to go back to Burnley meant the loss of an inspirational player, and a run of injuries afterwards was no help as we lost form. Two runs of four successive defeats in the spring made life difficult, but even then there was some consolation in seeing how young players responded when they were thrown in at the deep end.

I don't think I can remember so many young players in the team all at once as we have seen this season, and it is to their credit that they have learned quickly to adapt to a tough division. In many matches only Phil Gray, Mitch and myself had any real senior experience.

Some of the teams we have met have disappointed in the way they have approached the game, but we can say with a clear conscience that we have always tried to pass and move, wanting to play football as it should be played. You have to adapt according to the opposition, but the Luton Town way is still about passing the ball.

The players have been kept informed all the way along about the difficulties upstairs, and we did our best not to

let the receivership affect our game. I think we succeeded.

I was well pleased to be given the captaincy after Stevo left, and I have enjoyed doing the job. It has probably been a little more demanding than I expected in view of the inexperience of so many of our players.

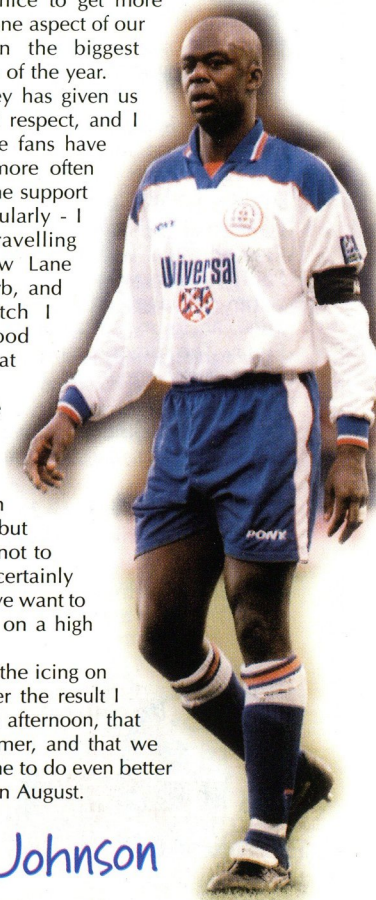
Overall, having dispelled the faint worries about relegation at Notts County a week ago, it has not been a bad season.

I was glad we improved in the second half against Chesterfield on Tuesday to get the result we deserved, but it would have been nice to get more goals, and that is the one aspect of our game that has been the biggest concern since the turn of the year.

The return of Thorpey has given us and him a lift in that respect, and I must add that you the fans have also been excellent more often than not. We notice the support in away games particularly - I thought the travelling supporters at Meadow Lane were absolutely superb, and the other away match I remember for good support was at Colchester.

Today, we have the chance to reward you in the way that matters most. Macclesfield are in an unenviable position, but we owe it to football not to ease up. The boss certainly won't tolerate it, and we want to end the home season on a high note.

A few goals would be the icing on the cake, but whatever the result I hope we all enjoy the afternoon, that we have a good summer, and that we are all in the right frame to do even better when we come back in August.



Marvin Johnson



Clive Goodyear

from the treatment room

WE CAME through Tuesday evening's match against Chesterfield just about unscathed and we are nearing the end of the season with a pretty fit squad of players.

Marvin Johnson needed treatment when he was kicked on the shin, but he soon got over the short sharp pain and continued playing well. Stuart Douglas took a tumble and a slight knock, but he too made a quick recovery.

I was pleased to see Ray McKinnon get through the match, his second game since suffering a hamstring injury which is connected to a lower back problem. He will be examined by a surgeon within a few days to ascertain the exact nature of his condition. It causes some pain, and he certainly felt it after his appearance for us at Notts County on Saturday.

But he got over it well enough to retain his place against Chesterfield, and I have every hope that he will be all right for today as well.

Kelvin Davis is now completely clear of the hip injury he was suffering from at Meadow Lane, and Phil Gray is back in training and along with Andrew Fotiadis ready to return to action today, if called upon.

One who has had more disappointing news is Paul McLaren, who has had an operation to cure a torn cartilage and ligament damage in his left knee, an injury sustained at Oldham on Good Friday. The surgery went well, but he will still be in recovery mode as the season reaches its conclusion.

He faces a summer of work to be ready to compete for a place in the squad in the pre-season fixtures.

Andrew Scarlett has the same timetable, but in his case his medial ligament injury did not need surgery.

Our long-term injured, Paul Showler and Julian James, are also aiming at pre-season



ANXIOUS MOMENTS: Michael McIndoe, rigid stiff with cramp, is carried off the field at Notts County. It turned out to be severe cramp, and he recovered in time to make another contribution to the cause against Chesterfield on Tuesday, and was available for selection today.

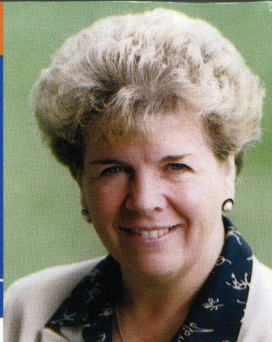
involvement. We have to wait for a scan to decide what must be done to clear up Showler's knee injury, but James has come through his final operation after breaking his leg more than a year ago.

The surgery this time was to remove the pin which was inserted to ensure the bone healed correctly, and it should ensure he is ready for full training as pre-season approaches.

Clive Goodyear



For the latest news
0891 121 123
Calls cost 50p per minute at all times



Cherry Newbery

club secretary

AT THE last home match of the season it is traditional to say thank-you to everyone who has helped the club over the past eight months. Today, even more than usual, I want to offer very grateful thanks to many, many people.

For instance, there is a little army of around 300 people on duty at every single match day - stewards, turnstile operators, catering staff and so on, and without them we would have no football match. But perhaps even more deserved is my thanks to all the permanent staff at Kenilworth Road.

They have had some worrying times in recent months, as you will appreciate. Fortunately the people who work for us are also real supporters of Luton Town, and they have shown it in many different ways. Their efforts have been marvellous, a real case of actions speaking so much louder than words.

I have felt the same sort of attitude around the ground on recent match days, and for that I thank all supporters. I know it was appreciated by Lennie Lawrence and the players as well.

The manager and players were guests at Luton Town Supporters Club's annual presentation night on Sunday, and we enjoyed their company. And congratulations to double award winner Kelvin Davis, and to Matthew Spring and Tresor Kandol, who won the other awards.

Congratulations also to Paul Lowe and his youth team on their third consecutive championship of the South East Counties League. The trophy will be presented before kick-off today, and I am sure all supporters will show their appreciation. We need a good youth team at Kenilworth Road for all sorts of reasons!

There should be a good atmosphere in the ground today, and FLAG will be holding another bucket collection. Tuesday's produced the marvellous sum of £2,801, which I think must be a record. It shows again that people care about our club.

While I am on the subject of congratulations, well done Paul Smith on his achievement in the London Marathon, in which he was our representative. As is reported elsewhere, he was well into the top half of the Second Division runners, and, more importantly, raised a lot of money for charity. It was a delight to know that supporters had helped him with their donations.

My thanks are due to the Kenilworth Road end supporters who kindly took time to take part in our survey on how or if our membership scheme should operate next season. We are still collating the

Please keep off the grass!

MAY we remind all supporters that while we have no wish to interfere with celebrations on the last home game of the season, it is a criminal offence to go onto the pitch. Please abide by the law.
Thank-you.

information, but you can be sure we will take on board the views of our customers. We will always listen to you, and if you have any issues to raise, please get in touch.

It will be a real pleasure today to see some of our heroes of yesteryear - most of the 1959 FA Cup final players will be guests of the club and of Luton Town Supporters Club, and it goes without saying that we will be thrilled to see them again 40 years after our first trip to Wembley.

The reunion is the brainchild of Marilyn Fussell, of the Luton Town Supporters Club, and she and her husband Vic have had to work hard to make it possible. Our thanks are due to both of them for their efforts.

As I have already pointed out, despite rumours to the contrary we will be playing Nationwide League football again next season, and preparations for that are well under way. The first match is on August 7, but we expect to have a few pre-season fixtures. We are talking to various other clubs about that, and will make an announcement via the local press as soon as arrangements are made.

Usually at this time of the year we are able to announce next season's ticket prices, but as you will read elsewhere in this magazine, that has not been possible at present - sorry about that, but the information will be put out as soon as possible.

Finally, I hope we all have a pleasant summer. Thanks to all supporters who have rallied to the cause, and we look forward to seeing you again in August. And if you can help us attract a few more through the turnstiles, that too would earn our grateful thanks.

Cherry Newbery



**Official Supplier to
Luton Town FC**

PONY™



Another Premiership break-away

NEXT SEASON'S fixture list for the reserves will be radically altered as the FA Premiership launches a new competition for its clubs, pulling them out of the leagues they have played in this season.

The possibility is that instead of the 28-game schedule played by teams in the Avon Insurance Combination this season, it could be 38 for the next campaign, although that depends on a series of ifs and buts.

Today's Avon Insurance Combination membership is 29 clubs, who play each other once. To play twice, home and away, would have produced 56 games, and as clubs go into other local competitions as well they did not want that many games.

But now the FA Premier League has announced that it wants to form a new Reserve League for its 20 clubs. Seven Premiership teams currently use the AIC for their reserves' fixtures. The three clubs relegated will not be eligible, but the three promoted from the Nationwide First Division will be.

So if the FA Premier Reserve League comes into being, the Avon Insurance Combination will lose Tottenham, Chelsea, West Ham, Arsenal and Wimbledon. Southampton and Charlton will also go out of the AIC into the new Premiership Reserve League if their first teams avoid relegation.

The Combination might also lose clubs if First Division promotion is won by, for example, Watford and Ipswich.

THE final home match of the season for the reserves is on Wednesday, against Peterborough, kick-off 2pm at Kenilworth Road.

So the planners cannot begin to think about next season's AIC fixtures until promotion and relegation issues are settled. There is also the possibility that other clubs might ask to join.

As it stands at present, the likelihood is that the Combination will be reduced to 24 members, which opens up the possibility for a 46-match league season, with teams playing each other twice. The membership could conceivably drop to 20, which would give a 38-game programme.

Whatever happens, the Football League will not see its various reserve competitions founder. Director of Football Competitions Andy Williamson said: "The Football League will as a matter of urgency consult with the existing reserve team competitions in order to determine the best way forward for our own member clubs."

"You can be assured that provisions will be made to include every club wishing to participate in competitive reserve team football."

The Football Trust has been providing support for football throughout the UK for 22 years.

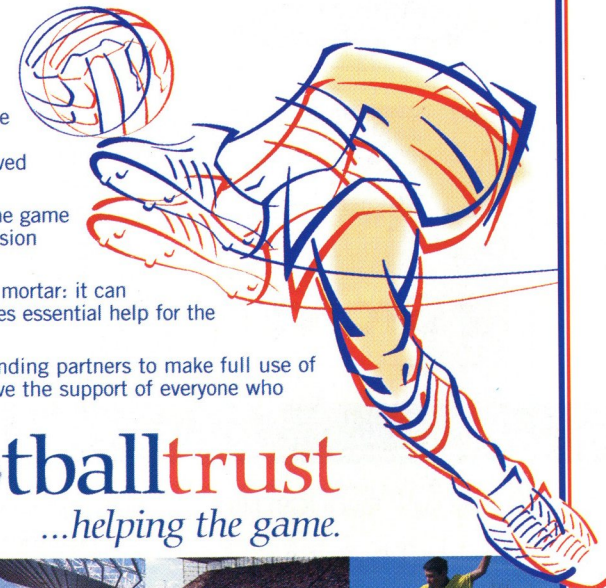
A major new funding package made up of annual contributions from The F.A. Premier League, The Football Association, The English Sports Council, The Football League and The Professional Footballers Association has been added to the Trust's pools derived income to secure its future.

The Trust has a major part to play in the success of the game and will continue its vital grant support for lower division clubs to complete the Taylor programme.

The Trust is about a great deal more than bricks and mortar: it can handle grant aid programmes of every sort and provides essential help for the game at all levels.

The commitment of the Government and the new funding partners to make full use of the Trust's grant aid experience and expertise will have the support of everyone who cares about the future of our national game.

the football trust
...helping the game.



The Football Trust, Walkden House, 10 Melton Street, London NW1 2EB

Executive Members

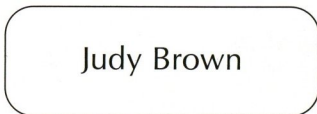
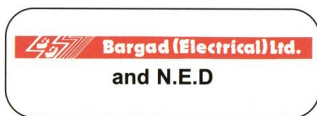
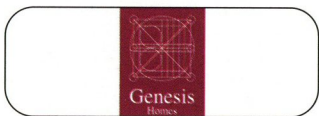
Kenilworth Suite

Fisher Frozen Foods Ltd
R W Harvey & Son
Wilton Contract and Vehicle Rental
Mr. Malcolm Eade
Wolff Evans
Mr. Roger Eade

Arrow Business Systems Limited
J. Sapsworth Ltd
Dr. D. Siegler
Neahurst Ltd
Grosvenor Casino
Datapace Ltd
Luton News and Leader

Good & Co.
Critical Research Ltd
Mr. R. Banks
Ludlow Group
Regal Litho Ltd
Mr. Geoff Cooper

Executive Box Holders



Club 82

The Magic Touch (GB) Ltd
Mr. F.W. Pearce

Chris and Kim Clarke of
The Weatsheaf, Flitwick

Space Display Systems Limited
JP Hygiene Supplies

Commercial



A GROUP of real Luton Town supporters are the match sponsors today, and in giving them a welcome we express our appreciation of the way they are showing very tangible support for the club, by buying one of our sponsorship packages.

It was bought in the name of Wendi Arnold and the Regular Rabble, and they are keen to let it be known that as well as supporting Luton Town they are also backing FLAG, the fans' organisation which has been formed to help us through our current difficulties.

Regular Rabble is their very modest way of describing themselves, particularly on away games, because Wendi and her friends, members of Luton Town Supporters Club, are among those who shout for the team away from home as well as at Kenilworth Road. Sponsorship is a vital part of our business, and we are already working towards next season - and yes, we will still be playing in the Football League into the new millennium!

Our executive boxes, for instance, are well worth considering, either for a full season, for which we will offer a discount, or match by match. In terms of price per head, it is not that expensive, and it is a highly enjoyable way of watching the Town with a little luxury thrown in. We have boxes of various sizes, and can offer all kinds of packages in terms of catering and drinks.

We also offer a wide range of sponsorship schemes, and again they can be tailored to suit individual needs and budgets, and you don't need a big

business background to take advantage of the facilities. You might be pleasantly surprised at how affordable they can be. To find out more, please ring Luton 411622 and ask for the commercial department.

One way to give support is to sponsor the matchball, and today we welcome an organisation which has done exactly that, the Construction Industry Training Board's local office, in Peel Street, Luton.

It plays a major role in the building industry - construction workers are increasingly being asked for their CSCS cards (Construction Skills Certification Scheme) on sites large and small across the country. There have already been instances of "No card, no job."

So if you are in the building trade, and are concerned about this, or feel you have missed the opportunity to apply for a card, call the CSCS national help desk on 01485 578777. Do it today and get the right advice - a new opportunity starts in June.

We thank the CITB for their support, as we do all the many individuals and organisations who have given us such staunch backing throughout the season, and look forward to meeting all friends, old and new, when the new campaign kicks off on August 7.

Golden Gamble

TODAY is your last chance this season to enjoy a modest flutter and perhaps go home with a handful of cash. That was what happened on Tuesday to David Stott when he came to the match against Chesterfield. Like many fans, he had a go on the Golden Gamble, and when the half-time draw was made his ticket was the one picked out of the drum by Paul McLaren, and he pocketed £430 Mr Stott, of River Way, Luton, paid just £1 for that lovely slip of paper with the right number on it.



Some-one will win another jackpot this afternoon, and the odds are a lot better than on the National Lottery, even if the prize is not quite so dramatic. Golden Gamble sellers are on duty all around the ground, and will be pleased to offer you the chance to take home a fistful of fivers and tenners. The size of the prize depends on how many £1 tickets are sold. The Golden Gamble income is split 50/50 split, half to club funds and half to the holder of the lucky ticket. The draw is made at half-time.

see every



goal

Goals, goals, goals! See every goal from the weekend with ITV's Nationwide Football League Extra, in association with Nationwide Building Society.

We'll be on air just after midnight on Mondays and repeated later in the week in many regions.

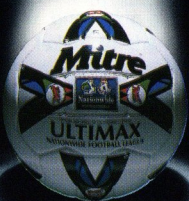
The programme is introduced by Gabriel Clarke and includes interviews, competitions, the latest news and talking points, and all the goals scored at the weekend from the Nationwide Football League.

Check your TV listings for details and set your video.



Last Season

The Nationwide Football League saw an Increase in Attendance of 13.5%;
Why...?



The authority...

The Quality of the Football

Image by Empics 0115 840 441 Digital Artwork by SennyBox 01895 251 220

Hatters Away

WE GO to the New Den to play Millwall next Saturday to complete our season. Kick-off is at 3pm and admission is pay on the day only. Seats are £11, or £6 for concessions - over 60s and under-16s.

Town on Tour and the Bobbers Travel Club will be running coaches, and they will be pleased to give you further information at their kiosks in Kenilworth Road today.

The Bobbers are providing a service leaving Cranfield at 11 am, and calling at various villages on the way to Luton, with a 12 noon departure from Kenilworth Road. The fare is £6 for adults and £5 for pensioners and under-16s.

Town on Tour trips leave from Maple Road, and can offer secure parking if you book in advance. Their coaches will leave at noon, and the price is £7.50 for members of Luton Town Supporters Club, £6 for concessions. The fare for non-members is £8.50.

Driving through London to Millwall can be a bit of a strain, and if you cannot use the official coach services public transport is worth considering: train from Luton to Kings Cross, tube to London Bridge and thence to New Cross or Surrey Quays, then walk to the New Den.

If you want to drive it, there are various routes: basically head for London, and take any crossing of the Thames - for instance Tower Bridge, and turn left to Bermondsey and towards Deptford. Then follow

the part of the route given below referring to Blackwall Tunnel and beyond.

Our seasoned traveller prefers to use motorways, not the shortest route, but usually the quickest because it avoids most of the congested areas of London: leave Luton on the M1 south, and turn left onto the M25 (signposted towards Dartford). Leave at junction 27 to join the M11, signposted to London North East. At the end of the M11 bear left onto the A12, signposted to London East and the City. After 4.8 miles, at a roundabout, take the third exit onto the A13, still heading towards the City, and watch for the signs to the Blackwall Tunnel on your left. Go through the tunnel and on the A102(M) for two miles, then at a roundabout take the third exit to join the A2 signposted towards central London. Stay on the A2, into Shooters Hill, through the parkland of Blackheath and follow the signs towards Deptford and New Cross. Go straight on at the crossroads near the George and Dragon and continue over the next set of traffic lights. Then watch for a right turn filter signposted towards Rotherhithe Tunnel and Tower Bridge to go into Deptford Church Street. Go straight on at the first roundabout, then left at the next lights, still signposted towards Tower Bridge. After just over half a mile, you will see a left turn signposted to the stadium.

The Man in the Middle

A SENIOR police officer is in charge of today's match. Alan Butler, from Nottinghamshire, is just completing his fifth season as a Football League referee, having begun his career with the whistle in junior football in Nottingham in 1981.

Within seven years he had risen up the pyramid to become a linesman in the Football League, and was promoted to referee in panel competitions a year

later. Mr Butler became a Premiership linesman in 1993.

Asked to name the most important matches he has refereed so far, he picks out the GM Vauxhall Conference Cup final in 1995, and the Umbro FA Trophy semi-final a year later, but adds: "All games are important."

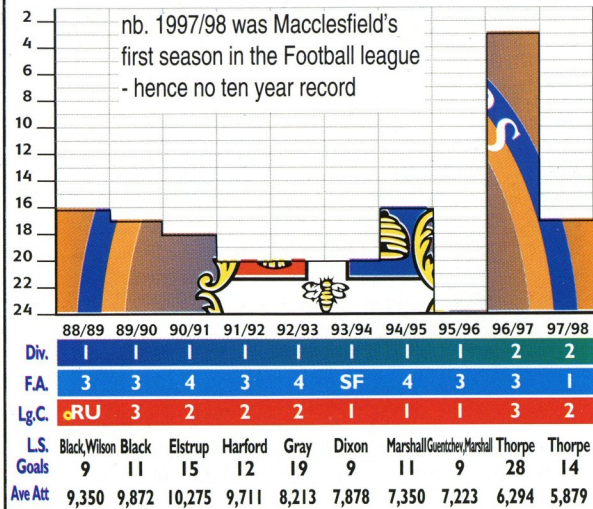
Away from football, he gives time to local voluntary work, and enjoys do-it-yourself, travel, reading and gardening.



TOWN TEASER

WHICH team did Luton Town beat on the last day of the 1989-90 season and again on the last day of the season 12 months later, to avoid relegation each time? Listen for the PA announcer to ask this question this afternoon - if you know the answer you could win a prize.

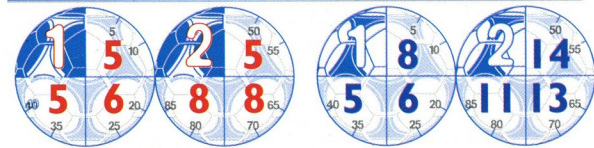
Luton Town's last ten years - the full record



Who's played for Macclesfield this season...

Player	Pos	Lge	Lge	Age	Ht	Weight	Prev. Club	Int.
		Apps		Gls				
Ryan Price	G	39	29	66	14	00	Birmingham	
Efetobar Sodje	D	39	3	26	61	12	00	Stevenage
Neil Sorvel	M	35(3)	3	26	60	12	09	Crewe
Darren Tinson	M	35	29	60	14	04	Northwich	
Steve Hitchin	D	34	22	58	11	07	Blackburn	
Steve Payne	D	29(6)	3	23	51	12	05	Huddersfield
Steve Wood	M	29(13)	4	35	59	10	10	Ashton
John Askey	F	29(7)	3	34	60	12	02	Port Vale
Rae Ingram	D	23(4)	2	24	51	12	02	Man City
Ben Sedgemore	M	23(8)	2	23	60	12	08	Mansfield
Kieron Durkan	M	20(3)	3	25	51	12	09	Stockport
Stuart Whittaker	M	18(9)	1	24	57	10	00	Bolton
Pedro Matias	M	18(1)	1	25	-	-	-	Logrones
Graeme Tomlinson	F	12(13)	3	23	51	12	07	Man Utd
Richard Landon	F	9(2)	2	29	62	13	10	Stockport
Simon Davies	M	8(2)	2	25	60	12	03	Luton
Alan Bailey	F	5(5)	1	20	59	11	07	on loan from Man City
Steve Soley	M	5(2)	1	-	-	-	-	on loan from Portsmouth
Peter Griffiths	F	4	1	18	-	-	-	Ashton
Dominic Barclay	F	3(6)	1	22	51	11	07	Bristol City
Steve Brown	F	4(1)	1	25	60	11	06	Lincoln
Glynn Clyde	G	-	-	20	62	11	07	-
Peter Davenport	M	38	51	12	10	10	10	Stockport
Darren Loneragan	D	25	60	13	01	01	01	Oldham

When Macclesfield have scored goals... and conceded them



MACC'S MISCREANTS

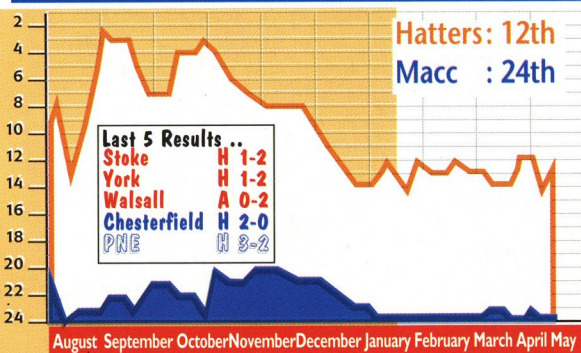
- Sodje.....9
- Hitchin.....7
- Payne.....6
- Askey.....4
- Sedgemore...4
- Durkan.....3
- McDonald...3
- Sorvel.....3
- Davies.....2
- Ingram.....2
- Meitas.....2

HATTERS' HARD MEN

- McGowan...9
- McLaren...6
- Alexander...5
- McKinnon...5
- Davis S...4
- Johnson...4
- Thomas...4
- Douglas...3
- Gray.....3
- White.....3
- George.....2

N.B. LEAGUE DETAILS ONLY

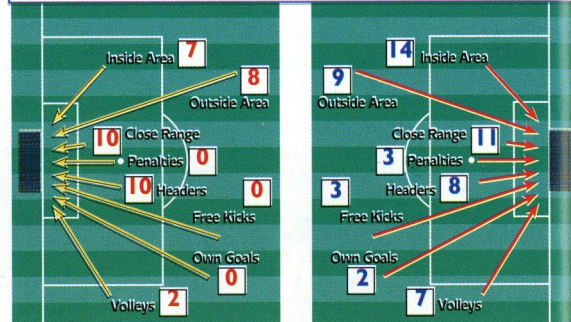
League Positions throughout the season



When The Hatters have scored goals... and conceded them



How Macc have scored goals... and conceded them

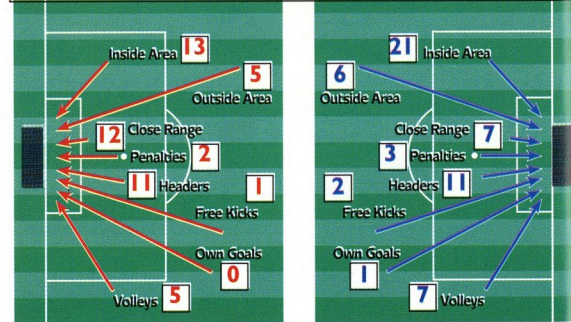


Hatters v Macc

FORM GUIDE	W	D	L	F	A	PTS	Sequence
Luton Town	3	0	3	5	6	9	WWLLLW
Macclesfield Town	2	0	4	7	9	6	LLLWWL

Statistics compiled by Football Information Services Telephone: 0151-632 5679

How Luton have scored goals... and conceded them



Macclesfield

welcome to today's visitors

SAMMY McILROY (Manager)

The last of the 'Busby Babes', Sammy joined in the footsteps of the legendary George Best when he moved from his native Belfast to join Manchester United as a raw teenager in the late sixties. He became an established member of the highly successful side built by Tommy Docherty. In all he made 418 appearances for United, one of the highlights being the 1978 FA Cup Final win over Liverpool.

In 1982 he moved to Stoke City where he played 144 games before heading back to Manchester to join United's deadly rivals, City. His time at Maine Road was curtailed when he accepted an offer to join Bury, then managed by Martin Dobson, whom he was to succeed at Northwich Victoria's Drill Field. He then took up the post of player coach at Preston, but a severe knee injury virtually ended his playing days.

In July 1991 he was appointed manager at The Drill Field. Coming into the job cold with practically no experience of the Non-League scene, everyone at the club was delighted with his and his team's performance. Being involved with a team playing in a green shirt, no doubt brought back memories of his '78 performances in emerald for his country Northern Ireland.

Sammy left Northwich Victoria in 1992, became manager of Ashton United for a short spell until he was appointed manager of Macclesfield Town Football Club for the start of the 1993/94 season. In his first season he won the Drinkwise Cup (Bob Lord Trophy) as well as the Staffordshire Senior Cup. Sammy's second season in charge saw him bring the Vauxhall Conference Championship to the Moss Rose. Last season success at the Club continued under Sammy as he won the Championship shield and the FA Trophy.



Back row: Peter Davenport (Coach), Darren Loneragan, Leroy Chambers, Dominic Barclay, Efetobore Sodje, Martin McDonald, Steve Payne, Steve Wade (Physio)
Middle row: Geoff Lutley (Res. Team Manager), Steve Wood, Greg Brown, Rae Ingram Phil Morgan, Ryan Price, Glynn Clyde, Richard Landon, Neil Sorvel, Steve Hitchin, Eric Cambell (Asst. Physio.)
Front row: Keiron Durkan, Stuart Whittaker, Graeme Tomlinson, Steve Brown, Gil Prescott (Asst. Manager), Sammy McIlroy (Manager), Neil Howarth, Ben Sedgemore, John Askey, Darren Tinson.

RYAN PRICE (Goalkeeper)

Ryan started his career at the age of 16. At the end of his two year contract he made the move to semi professional game joining Stafford Rangers. During his six years at Marston Road he completed a record 320 consecutive league games also collecting 4 England caps, making his debut against Wales at Cheltenham.

In 1994 Barry Fry made a successful £40,000 bid for Ryan which took him to Birmingham City. In his 17 months at St Andrews he made 64 appearances on the bench whilst backing up first choice Ian Bennett. Ryan also played reserve team football. He made one league appearance against Peterborough United. In the 94/95 season he was very much involved with the first team as they won the second division title and the Auto Windscreen Shield, beating Carlisle United in the final at Wembley.

In November 1995 he became Macclesfield's record signing. On his return to the semi pro game he won further England caps and was voted into the Conference team of the year for two years running.

STEPHEN PAYNE (Defender)

Made his debut for Macclesfield in September 1994 at the age of 19. At the time he was at the start of a three month loan period from Huddersfield Town, where he had progressed through the ranks to become a professional. Steve's arrival at the Moss Rose sparked off a 13 match unbeaten run during which time the Silkmen set a new conference record of 10 consecutive victories. Many people (including Steve) believe that this his arrival and this historic run were not just a coincidence. His move was made permanent in December 1994 and he represented the FA XI in January 1995. Steve has been voted Player's Player of the Year on three occasions and supporter's player of the year. Season 96/97 saw Steve called up into the England semi pro team.

DARREN TINSON (Defender)

Darren was a five figure signing from Northwich Victoria in February 1996 and this was a case of Sammy McIlroy finally getting his man. In the summer of 1993 both Macc and the Vics were keen to sign this powerfully built defender from Colwyn Bay. At the time Darren opted for the shorter travelling distance and eventually made his debut for the Vics on New Years Day 1994 following a pre season injury.

EFETOBORE SODJE (Defender)

Born in Greenwich, 'Efe' went to Nigeria at the age of 8 with his parents. Invisible Leopards was his first non league team and their impressive performances in the State National Challenge Cup where they were eventually beaten by professional side Steele Pioneers. This prompted Pioneers to offer Efe a contract. In 1994 he returned to England and had trials at Luton, Millwall and Wimbledon. International registration problems held up his career and in October 1994 he signed for Stevenage Borough. The following season he won a Conference Champion medal with Stevenage. He signed for Macclesfield in the summer of 1997.

STEVE HITCHEN (Defender)

Steve was Sammy's first signing in preparing Macclesfield Town for League Football. Steve's big break came when captaining Salford Boys, Blackburn Rovers spotting his potential and signing him on schoolboy forms. He progressed to a two-year apprenticeship and onto a full two-year contract as a professional. He played over 100 reserve team games and was a member of the first team squad on numerous occasions including being named as a substitute against Legia Warsaw in Rovers European Championship campaign. Ray Hartford rejected a £500,000 bid for Steve before leaving Ewood Park.

GREG BROWN (Defender)

Greg is a local lad who represented the Macclesfield and district schoolboys, he also represented Cheshire and the North of England schoolboys. He signed for Chester City on schoolboy forms and progressed to a two-year apprenticeship. Two broken legs sandwiched a 1 year professional contract where he played for the first team and played at Middlesborough's Riverside stadium in the FA Cup. Following his release from Chester Greg signed for the Silkmen in December 1997.

NEIL SORVEL (Midfielder)

Neil is a 23 year old Widnes born defender who joined Macclesfield from Crewe Alexandra with whom he played in the Football League. He spent much of the 93/94 season in midfield proving what a versatile player he is. Neil was the only ever-present player during the 93/94 season, making midfield his now recognised position.

STEVEN WOOD (Midfielder)

Born in Oldham, Steve has played all his football in the Greater Manchester area, he spent the early part of his career at Chadderton before moving to Mossley where he spent two years. He won a Manchester County Cup winners medal with Mossley, beating Droylsden in the final. He obviously impressed the Droylsden management as they lured him to the Butchers Arms ground the following season. 'Woody' found it hard to settle at Droylsden and joined Stalybridge before teaming up with his current Manager at Ashton United.

During the 96/97 season Steve was leading goalscorer and had a clean sweep at the player of the year awards, Steve was also last seasons leading goalscorer and was again named Supporters Player of the Year.

JOHN ASKEY (Forward)

John is Macclesfield's longest serving player of the current squad. He joined the Silkmen from Milton United in 1987 having previously been with Port Vale. John has represented England at semi pro level and has played for Middlesex Wanderers in Japan. John won the Mail on Sunday Goalscorer of the Month award in November 1993.

PETER DAVENPORT (Forward)

Peter had league experience with Nottingham Forest, Manchester United and Middlesbrough. His striking prowess earned him full international honours for England. Peter left the old Football League having scored 99 goals. He went to Scotland and played with St Johnstone before moving into semi professional football with Southport and had a short spell as caretaker manager before signing for the SILKMEN in January 1997. Peter finally got his 100th goal in the Football League in our final game of last season.

BEN SEDGEMORE (Midfielder)

Ben was scouted out of the local leagues and offered a two year apprenticeship at Birmingham City. He refused this offer to continue his education and take his A levels. However, he played on Saturdays for the youth team and he played for the England schoolboys on 5 occasions, an achievement which his brother Jake emulated 3 years later. He turned down the opportunity to take a degree at Loughborough University to stay in football with Birmingham City. He had two and a half years at St. Andrews making his football league debut at the age of 19. He had a loan spell at Northampton Town and 3 months out with a medial ligament injury. He returned to have a 10 month loan spell at Mansfield Town. Barry Fry, when at Birmingham sold Ben to Peterborough and later when at Peterborough sold Ben to Mansfield Town for £20,000. A two year spell at Mansfield was followed by his £20,000 move to Macclesfield on deadline day 1998. Ben is also studying part-time for a degree in Psychology and Law.



SIMON DAVIES (Midfield)

Simon signed for the Silkmen in December 1998 from Luton Town, he had been with the Kenilworth Road club for just over a year having been signed from Manchester United for £200,000. Simon started his career with Manchester United progressing through the Youth Team to the First Team and Premiership and European appearances. Simon was also a member of the very successful youth team squad that produced the Neville brothers, David Beckham, Nicky Butt and Paul Scholes.

STEVE BROWN (Forward)

Steve signed schoolboy forms for Southend United and went on to a two year apprenticeship. He then signed professional and made his football league debut at the age of 18, in that debut against Notts County Steve's strike partner was Stan Collymore. The game finished 3-1 to Southend with Stan getting two and Steve getting the third. He had a short six week stop at Scunthorpe before moving to Colchester where he spent two seasons scoring 24 goals in 63 appearances. A player exchange deal took Steve to Gillingham before Lincoln's Steve Wicks signed him for £20,000. A fans favourite at Lincoln, Steve scored 14 goals and made over 60 appearances (many as substitute) over a three year period. Steve caught Sammy McIlroy's eye whilst on loan to Dover Athletic scoring Three goals in two games, including a spectacular 25 yard volley against Macclesfield.







DOMINIC BARCLAY (Forward)

Dominic was a promising young athlete as well as a footballer, he opted for the latter and via his local team, St Judes, he signed schoolboy forms for Bristol City. He represented both Bristol and Avon boys and had trials for the England Schoolboy team He made his football league debut at the tender age of 17 and scored the winning goal in a 1-0 victory. He was a member of the squad who lost to Brentford in the playoff Semi Finals In his Final season with Bristol City he was the leading scorer in the reserves in the south west reserve division he netted 21 goals in 38 games. He joined Macclesfield in the summer of 1998.


PEDRO MATHIAS (Forward)

Pedro is from Spain where he signed schoolboy forms for one of their most successful teams, Real Madrid. He spent six years with Spain's top club before moving around, and from Logrones he signed for Macclesfield in December 1998, keen to further his career by testing his skills in what is arguably the toughest league in the world, The Football League.

If you would like to sponsor a player please call the Commercial Department on 01582 411622

Sponsors' choice under consideration	David Kohler  Critical Research Ltd	Lennie Lawrence  LTFC Supporters Club - Milton Keynes	Clive Goodyear  Danny & Elsie Clubb from Blackpool	John Moore  Ian Smith	Phil Gray  Stapleford Road, Luton	Sponsors' choice under consideration
	David Forman - West Malaysian LTFC Supporters Club				Mad as a Hatter	
Michael McIndoe  The Bobbers Travel Club	Nathan Abbey  Grosvenor Casino	Liam George  Worldwide Hatters on the Super Highway	Kelvin Davis  Space Display Systems Ltd	Mitchell Thomas  Neil Withall	Gary Doherty  Murtagh Group	Mathew Spring  Brian Hall
Marvin Johnson  Capital Golf	Paul Showler  Graham Group plc	Julian James  Pete & Mandy Carney Les & Sue Miller	Chris Willmott  Les & Sue Miller	Andre Scarlett  Worldwide Hatters on the Super Highway	Paul McLaren  Danny & Elsie Clubb	Russell Lawes  Rococo
Sponsors' choice under consideration	Andrew Fotiadis  Sally Mayne & Richard Culley	Gavin McGowan  Luton Town Supporters Club	Alan White  Rob Stringer Epic Records	Ray McKinnon  Paul Deason	Stuart Douglas  Richard Culley & Pete Carney	Sponsors' choice under consideration
	Mad as a Hatter				Mick Garbutt Virgin Records	

Carol and John Brennan welcome you to
The Farmers Boy
 Common Road, Kensworth
 Real ales
 (CAMRA 'Good Beer Guide')
 Traditional Sunday lunches
 £4.75 per person
 Tel: (01582) 872207




Richard welcomes you to




Hotel accommodation, good food and fine selection of cask ales and lagers.
 Kings Walden Rd, Offley
 Tel: (01462) 768281

The Brewery Tap
 22 Park Street, Luton
 Tel: (01582) 31797
 Disco on Thursday, Friday, Saturday and Sunday nights



WHITBREAD
 CHILTERN INNS

Mac's Bar
 80 Russell Street
 Luton LU1 5EB
 Tel: 01582 727848

Live music every Friday, Saturday and Sunday Night
 Karaoke every Monday night
 Sky & Setanta Sports shown on Big Screen TV




Over the bar!

Drink a toast to the Hatters in these pubs

The White Swan

93 High Street South, Dunstable
 Dunstable's favourite meeting place
 Tel: (01582) 667833
 Fax: (01582) 475552

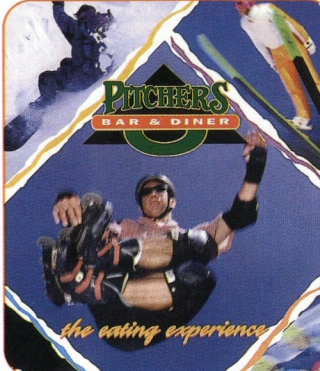


Green Man
 52 Duke Street
 High Town Luton
 01582 429893

Awful beer, poor service,
 All welcome
 Footie on the Giant Screen




PITCHERS
 BAR & DINER




the eating experience

The Chequers
 Park Road, Westoning
 (off J12, M1)
 For all live TV games
 Tel: (01525) 713125




The Bedfordshire Yeoman

Just a two-minute walk from the ground. Food available on matchdays. Supporters welcome.
 214 Dallow Road, Luton
 (01582) 30469



The Hansom Cab
 Wigmore Lane
 Stopsley, Luton, LU2 8AB
 Tel: (01582) 727400

XMAS Party Menu; From only £7.95 for 2 courses, all served on our famous 17" big plates
 Please phone for more details



The Boater
 Fine traditional ales,
 home cooked lunch and evening meals
 Regular Jazz and live music evenings.
 Quiz night every Tuesday

121 Ickenield Way,
 Luton LU3 2JR
 Tel: (01582) 575191



Universal Salvage AUCTIONS



Visit our Salvage Auctions for quality accident damaged vehicles at our Sandy site every Wednesday.

**Viewing from 8.30am.
Auctions start 10.00am.
You can register for our Salvage Auction on the day.**

Simply bring:

- 2 household bills in your name
- 2 passport photos
- Drivers licence
- £11.75 (inc. VAT) Registration fee - valid for 12 months

For more information on our network of auction branches across the UK please call :

01234 762218

**Universal Salvage Sandy Office:
Sandy Lakes, London Road Industrial Estate, Georgetown Road, Sandy, Beds SG19 1QH
Telephone: 01767 692696**

Universal Salvage Head Office: Acrey Fields, Woburn Road, Wootton, Beds MK43 9EJ

talk to the professionals

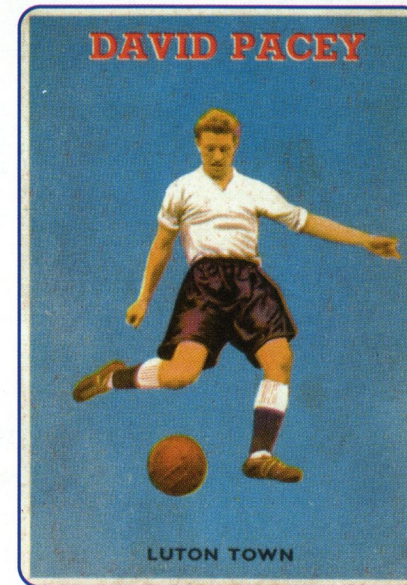
Hatters on Card

by Alan Robinson

AS WE have the pleasure of seeing members of the Town's 1959 FA Cup final team at Kenilworth Road today, it seemed fitting to choose as this afternoon's subject one of that illustrious band.

It was a problem to decide who it should be. Several of the team have already featured in this series, while unfortunately I have been unable to trace any cards depicting either Ken Hawkes or Tony Gregory.

But perhaps it is fitting that we should honour the only man to score a goal for us in an FA Cup final, so it's back to those lovely bubble-gum cards from A & BC, and their 1959 offering. Dave Pacey is to be found on number 38, with five other members of our Wembley line-up also in the series, Bob Morton at No. 34, Ron Baynham at No. 44, Billy Bingham at No. 54 and Allan Brown at No. 56.



**A & BC Gum Co
Football Quiz, 1959**

He was chosen for the England under-23 summer tour of 1959, after suffering the disappointment of losing at Wembley on May 2, 40 years ago all but a day.

At least he had the satisfaction of scoring in the cup final, when he reduced Forest's lead on the hour with a low shot following a corner.

He continued to play regularly for the Town until 1965, appearing in all the half-back positions, and then had a couple of years with Southern League Kettering Town before hanging up his boots. His final tally for Luton was 274

senior appearances, and 19 goals including the one at Wembley that makes him unique.

According to the back of this card, his hobbies were carpentry, table-tennis and fishing, while his favourite sportsman was the elegant England cricketer Peter May.

Dave Pacey still lives locally and I am sure we all hope that he and the rest of that wonderful team enjoy their return to Kenilworth Road.

As for the cards, it is rare to find a complete set these days. Odd cards turn up at fairs, and dealers quote £2 or £3 for single examples in good condition, but for some reason the higher numbers are harder to find.

Forty years ago clubs relied much more heavily on local talent than they do now. Dave Pacey was born in Luton, and joined the Town after a spell with Hitchin. He signed professional forms in 1957, following his stint of National Service.

He made his league debut at Old Trafford on Christmas Day of that year, playing at right-half in a 3-0 defeat. (No change there - we have still never won a game at Old Trafford!)

Pacey's progress was such that his stylish performances resulted in him making the No. 6 shirt his own the following season, as a left-half.



Kelvin Davis, 1998/9 Luton Town Supporters Club player of the year and

LTC players' player of the year

Born: Bedford, 29.9.76

Previous clubs: None

Joined Luton Town: 1992 as a YTS boy

Luton debut: v Stoke City (A) 8.5.94

Luton Town record: 107 appearances



Autograph

Top Hatters Gallery

Kelvin Davis

UNIVERSAL MOTORS

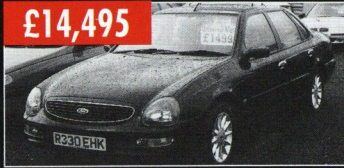
FORD

- 98 R Galaxy Glia X** Dark Metallic Blue, 2.3 auto, climate control **£15,995**
- 97 R Scorpio Ultima** 4 door saloon, Dark Aubergine, leather interior, air conditioning, auto **£13,750**

ROVER

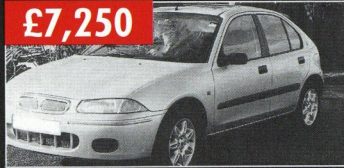
- 97 R 114 SLi** Flame Red, 3 door, central locking, 14,500 miles **£4,995**
- 97 R 114 SLi** 3 door, manual, Metallic Turquoise, 5,000 miles **£4,995**
- 95 N 115 SD** Flame Red, 3 door, 49,000 miles **£3,995**
- 96 P 216 Si** 5 door hatch, Metallic Turquoise, 25,000 miles **£7,495**
- 96 P 216 SLi** Metallic Grey, 5 door, alloys, 31,000 miles **£7,995**
- 98 R 216 SLi** Metallic Turquoise, 5 door, alloys, central locking, 15,000 miles **£9,495**
- 98 R 216 SLi** Red, 5 door auto, 10,000 miles **£9,995**
- 98 R 216 SLi** 5 door, Metallic Blue, alloys, 13,300 miles **£9,495**
- 98 S 218 Si** 3 door hatch, Nightfire Red, cloth interior, central locking, alloys **£9,995**
- 96 P 220 D** Metallic Grey, 5 door, 29,000 miles **£6,250**
- 97 R 220 SDi** Metallic Blue, 5 door, 16,300 miles **£8,750**
- 96 P 414 Si** 5 door hatch, Metallic Green, 27,000 miles **£6,495**
- 97 P 416i** Metallic Green, 5 door, 18,000 miles **£6,995**
- 97 P 416 Si** Metallic Silver, saloon, central locking, electric windows, 22,000 miles **£6,995**
- 95 N 418 SLD** 4 door saloon, Dark Grey Metallic, 2 owners, VGC, 36,600 miles **£4,495**
- 92 K 420 GSi** Metallic Blue, saloon, 43,000 miles **£3,495**
- 95 M 420 GSi Tourer** White, black leather, alloys, 37,500 miles **£6,495**
- 97 R 420 SDi** Dark Metallic Blue, saloon, air conditioning, central locking, electric windows, 18,000 miles **£8,750**
- 97 R 420 SLDTi** Metallic Blue, 4 door, air conditioning, alloys **£8,995**

£14,495



FORD SCORPIO ULTIMA 2.3 'R' REG
Panther Black, leather interior, alloys, air conditioning, automatic
APR from 10%.
Finance subject to status. Written details on request.

£7,250



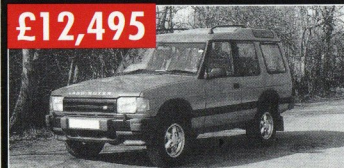
ROVER 216 Si 'P' REG
Metallic Turquoise, 5 door hatch
TYPICAL FINANCE EXAMPLE
Rover price £7,250. Deposit £1,500.
48 months at £146.15. APR@11.3%.
Finance subject to status. Written details on request.

£5,750



ROVER 623 IS 'M' REG
Nightfire Red, half leather interior, alloys
TYPICAL FINANCE EXAMPLE
Rover price £5,750. Deposit £1,500.
48 months at £108.02. APR@11.6%.

£12,495



LANDROVER DISCOVERY V8i 'S' REG
Bright Red, automatic, air conditioning
APR from 10.9%.
Finance subject to status. Written details on request.

- 96 N 620 SLi** Grey Metallic, rear spoiler, 28,000 miles **£7,995**
- 98 S 620 SDi Lux** Metallic Oxford Blue, air conditioning, alloys, 6,000 miles **£11,995**
- 99 T 620 Ti** 4 door, manual, Quick Silver Blue, dark grey 1/2 leather interior, alloys, sun roof, air conditioning, twin SRS, delivery miles only **£14,495**
- 94 M 820 SE** saloon, Metallic Green, alloys, manual, 59,000 miles **£4,750**
- 99 T 820i** manual, saloon, Metallic Green, air conditioning **£11,995**
- 98 S MGF 1.8** Metallic Bronze, alloys, 6,000 miles **£15,995**
- 98 R Mini Cooper** Metallic Red, alloys, 11,000 miles **£6,495**
- 99 T Mini Cooper** 5.2 door, Metallic Green, automatic, air conditioning, as new **£8,495**

OTHERS

- 91 J BMW 525i SE** saloon, Red, automatic, central locking, electric windows, 51,000 miles **£8,250**
- 95 M BMW M3** Metallic Blue, 2 door Coupé, black leather interior, 40,000 miles **£20,995**
- 96 N Citroen Xantia Activa Turbo 2.0** Red Metallic, air conditioning, full service history, 45,000, VGC **£6,500**
- 95 N Jaguar XJS 6.0 V12** Metallic Red, tan leather interior, automatic, air conditioning, 11,800 miles **£17,995**
- 95 M Laguna 20 RT** Dark Red, manual, central locking, electric windows, rear spoiler, 79,000 miles **£4,995**
- 96 P Land Rover Discovery** TDi XS, White, alloys, manual, 12,000 miles **£15,495**
- 94 L Mercedes C180 Elegance** Metallic Silver, saloon, manual, 37,000 miles **£11,495**
- 97 R Range Rover DSE 2.5** manual, Epsom Green, sand leather interior **£25,995**
- 96 N SAAB 9000 2.3 Turbo** 5 door, manual, Dark Blue, 30,000 miles **£9,995**

It happened on this day

by Roger Wash

1st May 1959

The whole of Luton waited with baited breath, for tomorrow the Hatters were on their way to Wembley for the first time in their history. The six weeks that had elapsed since the semi-final win over Norwich had flown by as the area went Cup mad.

Neither the Town nor their Cup final opponents, Nottingham Forest, had distinguished themselves during the period of waiting with each side winning only three of the fourteen league games played. The Town, however, had scored a psychological advantage when beating Forest 5-1 at Kenilworth Road on April 9th with Allan Brown netting four times. Unfortunately any feeling of superiority was tempered by the fact that Forest had played a makeshift side that bore no resemblance to their Cup eleven.

The Hatters had been without a manager since the previous October when Dally Duncan departed to Blackburn, and the Luton team had been picked by a committee consisting of directors and the coaching staff which included skipper Syd Owen who was widely tipped to take over the managerial reigns after the Cup final. The committee's insistence in choosing the same side throughout the Cup run, which omitted goalscorer ace Gordon Turner and winger Jim Adam, had not gone down well with certain sections of the crowd. Of greater concern amongst the Kenilworth Road faithful, moreover, was the allocation of tickets for the big day.

With an allocation of only 16,000 tickets the Board, in an attempt to squeeze a quart out of a pint pot, decided that all non season-ticket holders should enter into a postal ballot. This obviously brought about winners and losers and the local press was inundated with letters from irate fans who were unlucky and resentment from some probably still lingers to this day. On the day before the game a cruel rumour spread like wildfire around the town that spare tickets were on sale at Kenilworth Road. A queue quickly formed which office staff frantically attempted to disband but 'sharp-suited London spivs' were soon on the scene offering 3/6d (17.5p) tickets for £4.

No real preparations were made by the Town for the big day and the only concessions made to the fact that they were about to play on the lush turf at Wembley were training sessions on the hockey pitch at Cedars School at Leighton Buzzard. This surface was supposed to mirror that at Wembley but the players were exhausted after training on such heavy ground.

The players cannot recall any special team talks being given and the match was simply regarded as being just another game. Forest on the other hand were secreted away during the week prior to the final which meant their nervous tension was building while the Town players were supposedly relaxed.

On the Thursday before the game skipper Syd Owen was presented with the Footballer of the Year award by the Football Writers Association, a fitting end to a playing career which was due to end at 4.40 p.m. on Saturday 2nd May.

As the day drew to a close anyone walking around Luton could not fail to recognise that the Hatters were Wembley bound. Black and white ribbon and straw boaters adorned every shop in the town centre and along Dunstable Road, a special floral display had been carefully laid out on the Moor and Dudley's wet fish shop had dressed up a skate in Luton colours and straw hat with the legend "May you skate to victory!"

Britain's oldest woman, 108 year old Mrs Hannah Taylor of Norman Road professed that she would be unable to sleep, the pubs were given extended opening hours to 10.30 p.m. and with beer reducing to 1/1d (5.5p) a pint after duty reduction in the recent Budget it was going to be a long night.

The last action of the evening came when full-back Ken Hawkes, who unfortunately lived in one of the houses in Kenilworth Road, was still seen answering his door at midnight to desperate supporters seeking tickets.

Many supporters were already in possession of the Cup final programme which could be pre-ordered for 1/6d (including postage and packing).



Universal Motors



Telephone **01234 76 66 06**

Acreey Fields, Woburn Road, Wootton, Beds MK43 9EJ

12 MONTHS WARRANTY

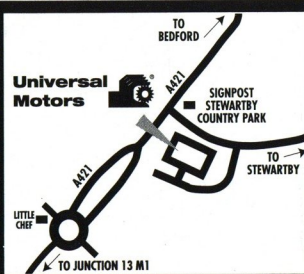
MANY CARS AT TRADE PRICES

FULL AA CHECK

fully valeted

Competitive Finance Available - Subject to Status.
Quotations available on request.

OPEN 7 DAYS: Mon-Fri 9.00am-6.00pm
Sat 9.00am-4.00pm Sun 10.00am-3pm



Into the Archives

a blast from the past courtesy of Roger Wash

In the final part of our occasional series looking back on the tremendous F.A.Cup run of 1959 we now come to 2nd May and the final at Wembley.

The big day finally arrived and at 8.30 a.m, 56 year old Bill Wright set off on the 29 mile run to Wembley closely followed by a 1909 vintage Commer bus suitably bedecked in black and white on its 20m.p.h crawl to the stadium.

As normal on match days, wing-half John Groves caught a bus from Sundon Park to meet up with his playing colleagues at Kenilworth Road and after a few photo calls with the team seen bashfully sporting boaters it was off on the short drive to North London. As a departure from normal custom the players were treated to a pre-match lunch at the Hendon Hall Hotel and later arrived at the stadium in good time to inspect the lush, green turf.

Meanwhile back in Luton every coach for miles around was mobilised to take the fans to Wembley while several special trains were laid on to ship supporters directly to Wembley Park station. Although the local Chamber of Commerce had suggested that all shops stay open, Luton was like a ghost town as those not lucky enough to secure a ticket gathered around 14 inch television sets to watch the game in black and white.

The armchair supporters watched Eileen Fowler give a 'Keep Fit' demonstration and then listened to half an hour of Community singing.

As the two teams lined up in the tunnel the Luton players looked relaxed and confident while those of Forest were tense. The Forest players were even more tense when they found out that the Town had not been holed up in a hotel and thought it was being said to put them off and that they had something special up their sleeves.

Tom Hodgson led out the Town team in the absence of a manager and after both sets of players had been introduced to the Duke of Edinburgh the two captains exchanged banners - a first in Wembley history. Battle then commenced.

After the epic run that had started in the snow of the previous January so much was now expected of the Hatters and everyone connected with the club was fully confident that the Cup would find a resting place at Kenilworth Road.

The first half performance, and in particular the opening twenty minutes, therefore came as a highly unpleasant shock. Forest ripped into the Town and pinged the ball around on the true surface with the result that the Hatters were left chasing shadows.

With ten minutes gone Forest's Roy Dwight came racing onto a pulled back centre from Stuart Imlach and flashed the ball into the net past a helpless Ron Baynham. Four minutes later the game was as good as over when Billy Gray floated over a diagonal centre which was headed back into the far corner of the net by Tom Wilson.

The Town seemed set for a hiding but were handed an unfortunate lifeline on 32 minutes when Dwight and Luton full-back Brendan McNally went for a high ball. Dwight's studs caught McNally's chest and as both players went down it was clear that the Forest player was badly injured. After attempting to carry on he collapsed with what was later diagnosed as a fractured shin.

Substitutes were still six years away and the so called 'Wembley Hoodoo' had struck again and Forest had to battle on with ten men. The pitch was often blamed for the many injuries at Wembley and this game was no exception with the trainers being called on eleven times and McNally left a limping passenger with a cartilage problem.

The Town frantically tried to force their way back into the game knowing that a ten man side had yet to win a Wembley final, but too often found the Forest centre-half, Bobby McKinlay, blocking their path. Hopes were raised in the 62nd minute



Forest goalkeeper, Chick Thomson, is powerless to prevent Dave Pacey's goal at Wembley.

when Dave Pacey, eight yards out, drove in a Ken Hawkes cross but as the Town huffed and puffed Forest fought like tigers.

Allan Brown almost forced extra time against a tiring Forest when he launched himself at a Billy Bingham cross, but his header flashed narrowly wide. In truth an equaliser would have been an injustice and when the final whistle sounded everyone agreed that Forest were deserving winners.

The players have since maintained to a man that the preparation was all wrong and they were far too relaxed and casual and were not keyed up enough, unlike Forest who were as taut as a guitar string and looked on the game as a release.

The disappointed players trooped off to receive their runners-up medals with the moment particularly poignant for Syd Owen who was making his final appearance before hanging up his boots.

A muted 'celebration' dinner was held at the Piccadilly Hotel and the players probably thought that the following days open top bus ride through Luton was going to be akin to a wake. They were therefore shocked and pleased to see thousands line the streets of the town as the bus made its way to the Town Hall on a wet, miserable day. All Syd Owen could say to the massed crowds from the Town Hall balcony was "See you at Wembley in 1960".

One final word on the gentlemen who are honoured guests this afternoon. No Luton side since has matched that great achievement of 1959 and reached an F.A.Cup final at Wembley!

Luton Town F.C.- Wembley F.A.Cup finalists 1959: Ron Baynham, Brendan McNally, Ken Hawkes, John Groves, Syd Owen, Dave Pacey, Billy Bingham, Allan Brown, Bob Morton, George Cummins, Tony Gregory.



After Schools Spring & Summer Coaching Programme

MONDAY

AMPTHILL/FLITWICK

Redborne Upper School
 6-8 year olds from 4pm-5pm
 9-11 year olds from 5pm-6pm
 12-14 year olds from 6pm-7pm

LEIGHTON BUZZARD

Linslade Middle School
 6-8 year olds from 4pm-5pm
 9-11 year olds from 5pm-6pm
 12-14 year olds from 6pm-7pm

TUESDAY

LUTON

Stopsley Junior School
 6-8 & 9-13 year olds from
 4pm-5pm
 Bushmead Junior School
 9-13 year olds from 5pm-6pm

WEDNESDAY

LUTON

St Josephs Junior School
 6-8 year olds from 4pm-5pm
 9-11 year olds from 5pm-6pm
 12-14 year olds from 6pm-7pm

LEIGHTON BUZZARD

Gilbert Inglefield Middle School
 6-8 year olds from 4pm-5pm
 9-11 year olds from 5pm-6pm
 12-14 year olds from 6pm-7pm

THURSDAY

CADDINGTON/DUNSTABLE

Streetfield Middle School
 6-8 year olds from 5pm-6pm
 9-11 year olds from 6pm-7pm
 12-14 year olds from 7pm-8pm

LUTON

Barnfield College
 Rotherham Avenue (Farley Hill)
 6-8 year olds from 4pm-5pm
 9-13 year olds from 5pm-6pm

FRIDAY

DUNSTABLE

Dunstable Leisure Centre
 6-8 year olds from 4pm-5pm
 9-13 year olds from 5pm-6pm

LUTON

Sacred Heart Junior School
 6-8 year olds from 4pm-5pm
 9-13 year olds from 5pm-6pm

To register a place or for further information, simply ring the Community & Schools Department at the Club on 01582 411622



Whitsun Holiday Coaching Courses

LUTON

Icknield Jnr School
 Goalkeeping - Tues 1st June
 Coaching - Wed, Thurs & Fri
 2nd - 4th June

Stopsley Junior School
 Coaching - Wed & Thurs
 2nd - 3rd June

DUNSTABLE

Dunstable Leisure Centre
 Coaching - Tues & Wed 1st - 2nd June

Streetfield Middle School
 Coaching - Thurs & Fri 3rd - 4th June

LEIGHTON BUZZARD

Gilbert Inglefield Jnr School
 Coaching - Tues & Wed 1st -2nd June

Linslade Middle School
 Coaching - Thurs & Fri 3rd - 4th June

FLITWICK/AMPTHILL

Redborne Upper School
 Coaching - Tues, Wed & Thurs
 1st - 3rd June
 Goalkeeping - Fri 4th June

To register a place or for further information, simply ring the Community & Schools Department on 01582 411622



Kids Coaching Weekend

Friday, Saturday & Sunday 2-4 July
 Pakefield Family Centre,
 Lowestoft, Suffolk

Prices from £46.00 per child, £62.00 per adult

Fully catered and use of all facilities.
 Coaching on Saturday and Sunday mornings with the LTFC Community Coaches.

For more information telephone LTFC Community & Schools **01582 411622**



Associate Sponsor to the LTFC Community & Schools Programme

The Luton News



Local & proud of it!



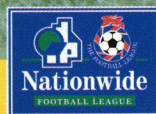
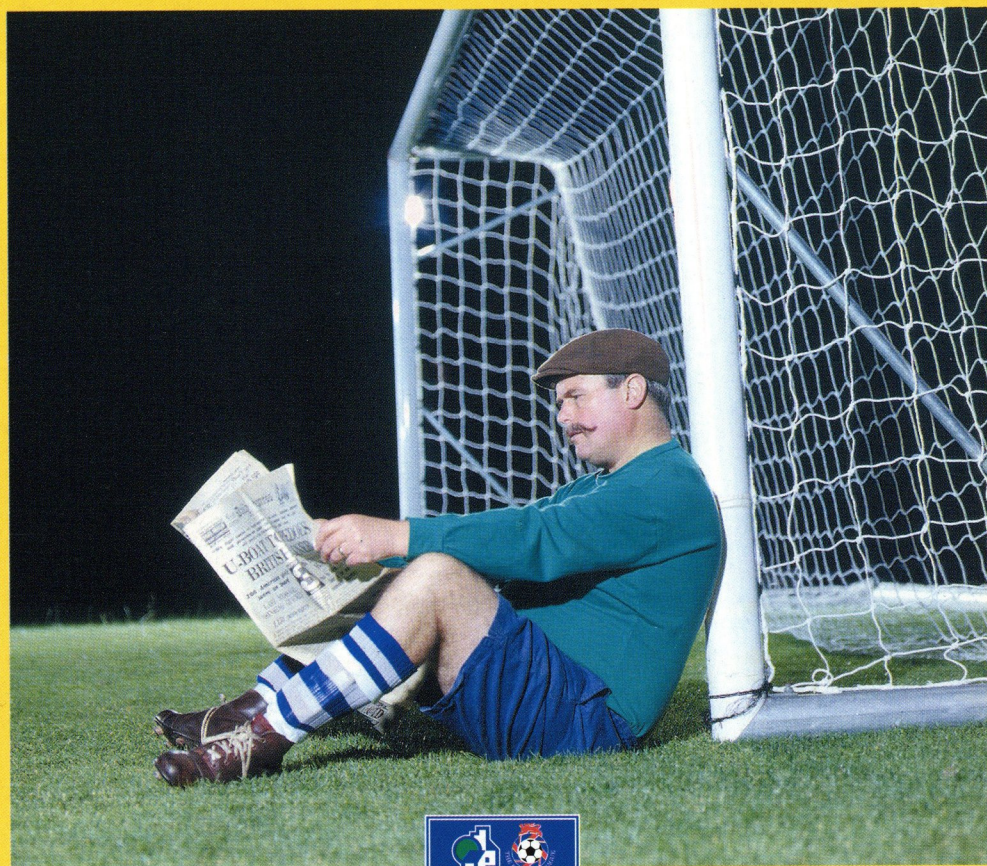
The Dunstable Gazette

Local & proud of it!



Official Drinks Supplier to Community & Schools Programme

'Savings made easy with the World's No.1'



Last season the Nationwide Football League
saw some spectacular saves

It pays to decide...



Contact your local Nationwide Building Society branch at
77-79 George Street, Luton, Bedfordshire LU1 2AP
Telephone: (01582) 680300
<http://www.nationwide.co.uk>

The World's No.1 Building Society

Seen it live.....

Celebrate it Live

After the match, bring your ticket stub or season ticket into Sadlers & receive selected drinks for only £1.25 each

SADLERS

33-39 Manchester Street, Luton
Offer valid for all home games until the end of the season.
Saturday offer valid between 5 - 7:30pm
Midweek offer valid between 9:30 - 11pm

Viva Pizza

Tel (01582) 486 586
Any Pizza, any size
Buy one...
Get one free!
(offer valid all season)
94 High Town Road, Luton

**R. J. BLOW &
C O M P A N Y**

THE FRIENDLY ACCOUNTANTS

*Book-Keeping
Taxation and Wages etc.*

★

GUILD HOUSE,
28 GUILDFORD STREET,
LUTON, BEDS, LU1 2NR

★

Tel: (01582) 738792
Fax: (01582) 423347

Stewards Required

Matchday Stewards required for season 1999/2000.
Must be between 18-55 years of age, fit and of good character.
Full training will be given.
For an application form or further details, please contact:
Geoff Lovell, Safety Manager on
(01582) 411622

Season 1999-2000

Nationwide League Division Two



Admission prices

AS THE receiver does not wish to commit any prospective new owner of the club to ticket prices for next season, we are unable to publish prices at this time.

However, it would seem likely that existing prices will be held, and there may be some opportunity for reducing the cost of some tickets.

All season ticket holders will be notified by post of the new season's prices. Any prospective new season ticket holders should contact the ticket office direct, on 01582 416976, for details of the new prices as soon as they are available.

We will again be offering a facility to buy season tickets on deferred terms, with payment by instalments over eight months. They can also be bought by cash, cheque or credit card.

We thank you all for your support in 1998/99, and look forward to entertaining you again when the new season begins, on August 7.

Please watch the local Press for announcements about season ticket prices and matchday admission charges. Meanwhile we wish all Luton Town supporters a very pleasant summer.

Matchday Magazine Subscriptions

THE CLUB will again be running its matchday magazine subscription service next season. It guarantees you all first team league and cup programmes for the whole of the 1999/2000 season.

The price will be held at this season's charges: for £38 we will post every home matchday magazine to anywhere in the UK. Away programmes can be ordered for £35, postage included. For the combined package, to offer a collection of the whole season's magazines, the price is £70.

To take up the offer, please forward your name, address and a cheque or postal order payable to Luton Town Football Club to: Matchday magazine subscriptions, Luton Town FC Ticket Office, Kenilworth Road, Luton LU1 1DH.



Action Replay

Notts County 1 Luton Town 2

A VINTAGE goal by Tony Thorpe sealed our fourth away win of the season, the first since the trip to Burnley in early February, ended lingering worries about relegation, and repaid the debt owed to Notts County for their win at Kenilworth Road two months ago.

That victory was courtesy of a handball the referee and linesmen missed, so it was poetic justice when Thorpe's first goal for us since his return was partly down to a lucky deflection off a defender. But his winner was sheer class, an instant appreciation of what was needed, and the instinctive ability to curl his shot from an angle beyond the goalkeeper and into the far corner of the net.

County had been on a bit of a roll after their fluke win at Luton, and like us were on 49 points, and looking for one more win to complete their recovery from what had once looked like near-certain relegation.

They were big, strong and direct, but in class second best.

Stuart Fraser came in for the second league start of his career, and despite being a left back used as a right wingback always looked comfortable. Even more so was Chris Willmott, proving to many who saw him in the youth team before suffering a horrible knee injury that he had at least as much potential as his then central defence partner Matthew Upson. Stand by for the vultures to gather!

Alan White also grabbed his chance, as he has to for his sake and the club's, after the departure of Sean Dyche, and while Thorpe's quick feet took the scoring



ON TARGET AGAIN: Tony Thorpe shoots his first Luton Town goal for 14 months to put us on the road to victory and safety.

MATCH DETAILS

Luton Town: Davis, Willmott, Thomas, Spring, White, Johnson, Thorpe (Doherty 83 mins), McKinnon, Douglas (Fotiadis 89 mins), McIndoe, Fraser. Unused sub Abbey.

Booked: No-one

County: Ward, Owers, Pearce, Hughes (Liburd 56 mins), Redmile, Warren, Creaney, Richardson, Stallard, Beadle, Murray (Rapley 73 mins). Unused sub Tierney.

Booked: No-one.

The goals: 0-1 - Tony Thorpe, 32 mins, deflected shot from just inside the box; 1-1 - Matt Redmile, 55 mins, after a scramble at the far post following a corner; 1-2 - Thorpe again, classic curled drive across and beyond the goalkeeper, after being set up by Stuart Douglas's pass.

Referee: David Laws, Whitley Bay.

Attendance: 5,583, including 945 from Luton

honours, Stuart Douglas earned much credit as well. It was, said manager Lennie Lawrence, his best performance as leader of the line for some while. The midfield contribution of the returning Ray McKinnon was also an important factor.

Thorpe's opener came on 32 minutes, through half a chance made by Willmott's forward pass. Thorpe made space for a shot which seemed to be slightly mishit, but the goalkeeper was wrong-footed by a defender's deflection, and the Luton contingent saluted the striker's first Town goal since a last-minute winner at Fulham in the Auto Windscreens Shield in February last year.

County tried to bomb us into submission at the start of the second half, and brute strength brought them a scrambled equaliser ten minutes after the break.

But the Town weathered the storm and came back strongly, with Thorpe's winner coming 10 minutes later after a thoughtful pass across the box by Douglas.

County had enough pressure after that to think they might nick an equaliser, but were denied by a mixture of good defence and poor finishing.

The crucial difference, said Lennie Lawrence, was that we had Thorpe, and they didn't. But he was just as quick to point out that every man played his part in a performance which gave great pleasure to the travelling fans, who also contributed with their loud encouragement.

Action Replay

Luton Town 1 Chesterfield 0

TONY Thorpe struck again to put a little much-needed life into Tuesday's game, when Chesterfield came determined to be hard to beat, without looking good enough to win.

Like us they had no more than professional pride to play for, having missed the chance of reaching the play-offs, and being in no danger of the drop. They were strong in defence, but not very adventurous, and it was a pity they were not in the mood to open up the game until after Thorpe nicked the winner, after 63 minutes.

Marvin Johnson was the central rock on which almost all Chesterfield raids foundered, although the visitors might have bettered their record of one goal in the last six matches when Stuart Fraser tripped to allow Jon Howard to set up a chance for Marcus Ebdon. He side-footed wastefully wide when he should have given the visitors a 13th-minute lead.

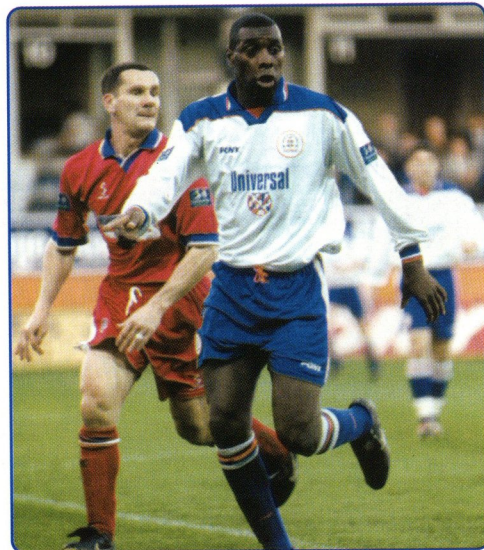
They never again threatened beyond a few crosses into the box, where Kelvin Davis was in confident mood. Our own attacking, against a massed defence of eight men, was not too bright in the first half, but in the second Ray McKinnon dropped deeper to allow Michael McIndoe and Matthew Spring to push further upfield, and the change paid dividends.

Billy Mercer made a good save from a stinging low drive by Thorpe eight minutes into the second half as the Town at last got into their stride, and in the 63rd minute Spring ran down the left wing. He was strong enough to withstand a couple of challenges, then whipped the ball low across the face of the goal. Stuart Douglas had the first bite, and although Mercer blocked his effort, Thorpe anticipated the possibilities quicker than anyone else, and the goal-poacher's instincts made it look easy.

So the season is as good as over, with no fears about the last-day dramatics we used to worry about, but Lennie Lawrence has made it clear to his players that it's not a joy-ride for the last two games. Big changes are likely at Kenilworth Road in the summer, with the financial situation still in doubt, and the boss insists everyone must compete for the right to be in the team.

Thus, he expects today to be a party occasion for spectators only - for the team there is a job to be done, and a modest target to chase, to overhaul Reading and finish in 11th place, compared to last season's final position of 17th.

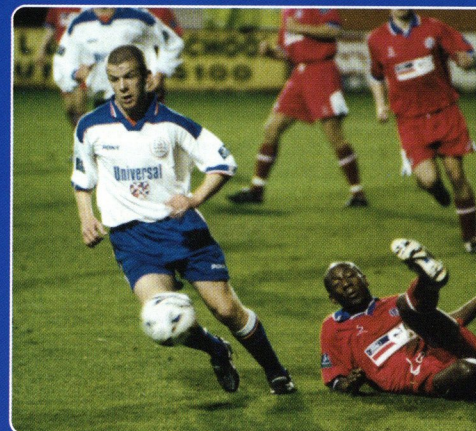
MATCH DETAILS
Luton Town: Davis, Willmott, Thomas, Spring, White, Johnson, Thorpe, McKinnon, Douglas (Fotiadis 83 mins), McIndoe, Fraser. Unused sub Doherty and George.
 Booked: Stuart Fraser, 15 mins, foul on Mark Jules.
Chesterfield: Mercer, Hewitt, Jules (Perkins 77 mins), Beaumont, Blatherwick, Breckin, Howard, Holland, Lenagh (Willis 75 mins), Ebdon, Carss. Unused sub Simpkins
 Booked: No-one.
The goal: Tony Thorpe, 63 mins, gobbling up the rebound after Stuart Douglas's close range effort from Matthew Spring's run and cross had been parried by the goalkeeper.
Referee: Matt Messias, York.
Attendance: 4,287, with Chesterfield's contingent barely a coachload.



STALWART: Mitchell Thomas, still enthusiastic in defence and attack at 34 years old.



THE WINNER: Tony Thorpe is down, but most certainly not out, after scoring his third goal in two games. Stuart Douglas is the other Town man joining Chesterfield defenders in getting down to it... is that Robbie Fowler on the left?



LATEST RECRUIT: Stuart Fraser enjoying life in the first team as an attacking wing-back.



JUMP TO IT: Chesterfield's man of the match, goalkeeper Billy Mercer, becomes the emergency sweeper to keep Tony Thorpe at bay.



MAKING AN IMPACT: Michael McIndoe, settling into league football as a midfielder, perfectly balanced and shielding the ball from the opposition.

Junior Hatters

welcome

WE ARE all in carnival mood today for the last home game of the season, and the Junior Hatters give a very warm welcome to their counterparts from Macclesfield. We hope they enjoy their time at Kenilworth Road with us, and wish them the very best of luck as Macclesfield try to avoid the pain of relegation just a year after the joy of promotion from Division Three.

Meeting "opposing" fans is one of the best features of being a football supporter, and we are looking forward to seeing more old friends next week, when we round off the season with a trip to Millwall.

We always have a good time there, because they are very good hosts, so any Junior Hatters who want to come with us ought to think about booking early.

Departure time on Saturday is 10.15am from Kenilworth Road, and there will be the usual full range of activities when we get to the New Den to join up with the young Millwall fans.

We expect to be back in Luton at about 6.45, and the normal bargain price is on offer: £10 for Junior Hatters, and £12 for adults and guests. That includes a ticket to the match, so it is very good value.

We will be taking on the Junior Lions in a five-a-side football tournament, and we hope there will also be a penalty shoot-out competition at half-time while the league players are having their cups of tea and listening to encouraging words from the managers and coaches.

If you would like to join us for the last match of the season, please contact the ticket office to book your place. You can call in, or book by phone to Luton 416976 on a credit card, but don't forget that the ticket office will not be open on Monday, which is a bank holiday.



AT LAST: This is the moment Thomas Finch waited five months for. He was chosen to be Junior Hatters mascot for the Chesterfield match which was postponed on October 31. It finally happened on Tuesday, and at long last he got to meet the players, and joined the captains and match officials for the toss-up.

And as this is our last report of the season, we want to end by thanking everyone at Luton Town for helping us to enjoy another good campaign. We look forward to doing it all again next season, but meanwhile have a good summer. See you in August!

Today's Mascot

SHE MAY be only 11, but Lucy Johnston, this afternoon's Junior Hatters mascot, is not a bad judge of players. Even before our goalkeeper was named as the double winner of the Luton Town player of the year awards, she had nominated Kelvin Davis as her big favourite.

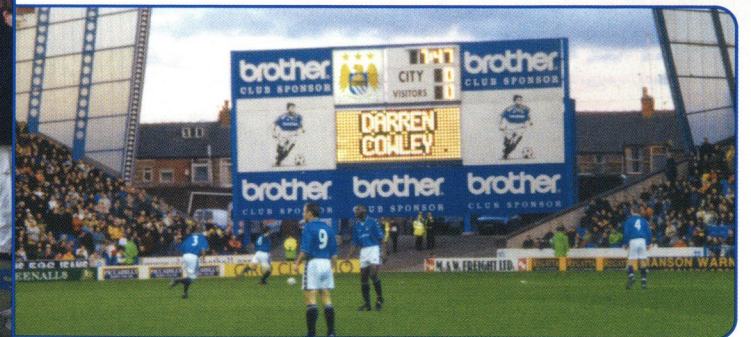
Today she will get the chance to meet him close up, joining the players before the game and taking part in the pre-match formalities.

Lucy lives in Ox Lane, Harpenden, and goes to Roundwood Park School, and she lists her hobbies as playing her flute, shopping, and watching Luton Town. She also watches and supports her young brother when he plays football for Harpenden Colts under-nines.

Lucy comes to games with her dad and brother, and they watch from the enclosure.



IN THE LIMELIGHT: Darren Cowley was the Junior Hatters mascot at Maine Road, and is pictured with the Manchester City version of Happy Harry - Bluemooner - and in the other photograph the moment when he saw his name go up in lights.



IT WAS a real day to remember when we went to see the Town play at Manchester City, even if our Junior Hatters were the other Luton team to come home without a win. City were very good hosts, and we took them on in a penalty shoot-out competition.

We were beaten 3-2 but Rhiannon Morgan, our only girl sharpshooter, struck a blow for equality by being one of our scorers. Craig Vickors was the other.

Before going to Maine Road we had a tour of Old Trafford, and were lucky enough to see the dressing rooms, the board room, and the trophy room.

It's nice to see how the other half lives, but we would still rather be Luton Town supporters!

SPOT ON: She's a bit of a blur, being quick on her feet, but this is Rhiannon Morgan scoring in the penalty shoot-out competition against Manchester City's mascot.



ON THE SPOT: Our Junior Hatters penalty experts on duty at Maine Road. Left to right: James Beeson, John Cannella, Happy Harry, Rhiannon Morgan, Craig Vickors and Glenn Lewis.



Sales & Marketing

New Kit News

The club's new kit sponsor will be Olympic Sportswear Limited. Below is an illustration of next seasons home kit which is reflective of the outcome of the supporters kit census.

Prices for this and artwork of the Away and Goalkeeping kits will be published in the near future. Aslo, negotiations are in their final stages and we are pleased to advise you that we hope to make an announcement within the next two to three weeks as to who our shirt sponsor will be.



HATTERS SHOP



A commemorative presentation set of classic pin badges from the clubs history.

A set of 12 enamel badges mounted behind glass in a 10¼" x 8¼" (260 x 212mm) wooden frame.

For Only £22.95 (plus £3.50 pp) each

Order Form

Name	Address	Quantity	Price
£3.50 postage and packing per Lapel Badge Collection Please forward your order and payment to: Luton Town Club Shop, Kenilworth Road, Luton, Beds. LU1 1DH			Total Price

Tel: 01582 411622 Fax: 01582 405070



Football programmes

Annual reports

Catalogues

Corporate identity

Corporate manuals

Copywriting

Digital re-touching

Exhibition design

Interior design

Literature packs

Marketing brochures

Packaging design

Photography

Product brochures

Publications

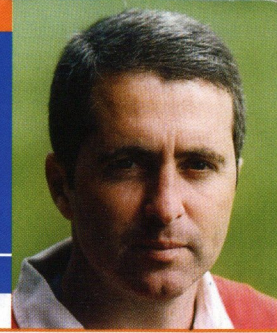
Stationery

Styling

London: 287 Green Lanes, Palmers Green, London N13 4XS
 Phone: 0181 882 7882 Fax: 0181 882 7847 Isdn: 0181 882 1182
 Hertfordshire: The Studio, 28 Wentworth Close, Watford, Herts WD1 3LW
 Phone: 01923 228887 Fax: 01923 248981

Paul Lowe

youth



THE South East Counties League championship trophy will be formally presented to us this afternoon, at the end of a season in which another intake of new talent moves up from youth football to full professional status.

We won 20 and drew six of our 30 league games, and 25 goals against was easily the best defensive record, and the platform for our success. Four of those goals were put past us in the first game of the season, when we lost 4-2 at Brentford, but no-one else did that to us. Tresor Kandol, from Canning Town, London, was our top marksman with 21 goals in 31 matches, and has had a remarkable season, earning a pro contract, making a Nationwide League debut, and being selected young player of the year by the manager and coaching staff. Midfielder Matthew Taylor came to us from Abingdon for a trial in pre-season, and was quickly offered a YTS place, and on his 17th birthday he too was given a pro contract. Moses Jerry, from Ladbrook Grove, London, and goalkeeper Daniel Tate, from Bedford, were also taken on as professionals. Tate has the record to prove his abilities - he kept 17 clean sheets.

Perhaps the proudest to receive a pro contract was this season's youth team skipper, centre-half James Ayres, because he is a Luton boy. The disappointment of the seasons was our early elimination from the FA Youth Cup. Drawn at home to Colchester, the first experience of playing on the Kenilworth Road pitch, under floodlights, caused a few nerves and we were beaten 1-0.

But we had a good run in the Southern Junior Floodlit Cup, reaching the semi-final before going out a little unluckily, 3-2 to Wolves in a replay at Molineux.

I thank all the players for their efforts, and also the helpers whose efforts are a vital part of running a football team, especially physios Doug Everett and John Smith, Jim Hugill our kit man and driver, and Dean Rastrick for his hard work as youth development officer. But most of all it was a team effort, so well done all the players.

Youth Team Results

Sat 08	August	Brentford	A	2-4
Sat 15		AFC Bournemouth	H	4-2
Sat 22		Brighton & Hove Albion	A	0-0
Sat 29		Bristol Rovers	H	3-1
Sat 05	September	Oxford United	A	3-0
Sat 07		Swindon (SJFCP)	H	2-0
Sat 12		Reading	H	2-2
Sat 19		Wycombe Wanderers	A	1-0
Sat 26		Gillingham	H	2-2
Sat 03	October	Leyton Orient	A	3-0
Sat 10		Portsmouth	H	3-0
Sat 17		Cambridge United	A	4-0
Tue 21		Colchester (FAYC)	H	0-1
Sat 24		Colchester United	H	2-0
Sat 31		Southend United	H	3-1
Sat 07	November	Swindon	A	1-0
Wed 11		Northampton (SJFC1)	H	3-1
Sat 14		Barnet	H	2-0
Sat 21		AFC Bournemouth	A	2-1
Sat 28		Brighton & Hove Albion	H	2-0
Sat 05	December	Barnet	A	0-2
Sat 12		Brentford	H	2-1
Sat 23	January	Wycombe Wanderers	H	0-0
Sat 06	February	Leyton Orient	H	1-3
Sat 13		Portsmouth	A	1-1
Sat 20		Cambridge United	H	2-1
Sat 27		Colchester United	A	0-2
Sat 06	March	Southend United	A	1-0
Sat 13		Swindon Town	H	3-0
Sat 20		Bristol Rovers	A	0-0
Sat 27		Reading	A	1-0
Tues 30		Brighton (SJFC2)	A	2-1
Sat 10	April	Oxford United	H	2-1
Tue 13		Wolves (SJFC 3)	H	0-0
Sat 17		Gillingham	A	7-1
Mon 19		Wolves (SJFC3R)	A	2-3



 **Critical Research – Main Sponsors of Luton Town Youth Team**



Luton Town v Macclesfield Town



Kelvin Davis	1	1 Ryan Price
Chris Willmott	2	2 Darren Tinson
Mitchell Thomas	3	3 Steve Hitchen
Matthew Spring	4	4 Greg Brown
Alan White	5	5 Steve Wood
Marvin Johnson	6	6 Efetobore Sodje
Tony Thorpe	7	7 John Askey
Ray McKinnon	8	8 Neil Sorvel
Stuart Douglas	9	9 Graeme Tomlinson
Michael McIndoe	10	10 Pedro Matias
Stuart Fraser	11	11 Kieron Durkan
Andrew Fotiadis	12	12 Simon Davies
Gary Doherty	13	13 Alan Bailey
Liam George	14	14 Ben Sedgemore

Referee: Alan Butler, Sutton-in-Ashfield

Assistants: J. R. Hubbard, Leicester (yellow flag)

M. A. Maynard, Hertford (yellow & red flag)

Reserve official: P. R. J. Worrall, Huntingdon



Plowmans of Luton

Motorbodies of Luton

**AND
LUTON
TOWN**

**—
THE
PERFECT
MATCH**

You'll do a great deal better with us!

Open 7 Days

Plowmans, 15 Hitchin Road, Luton. Tel: 454666
Motorbodies, Memorial Road, Leagrave, Luton. Tel: 567500