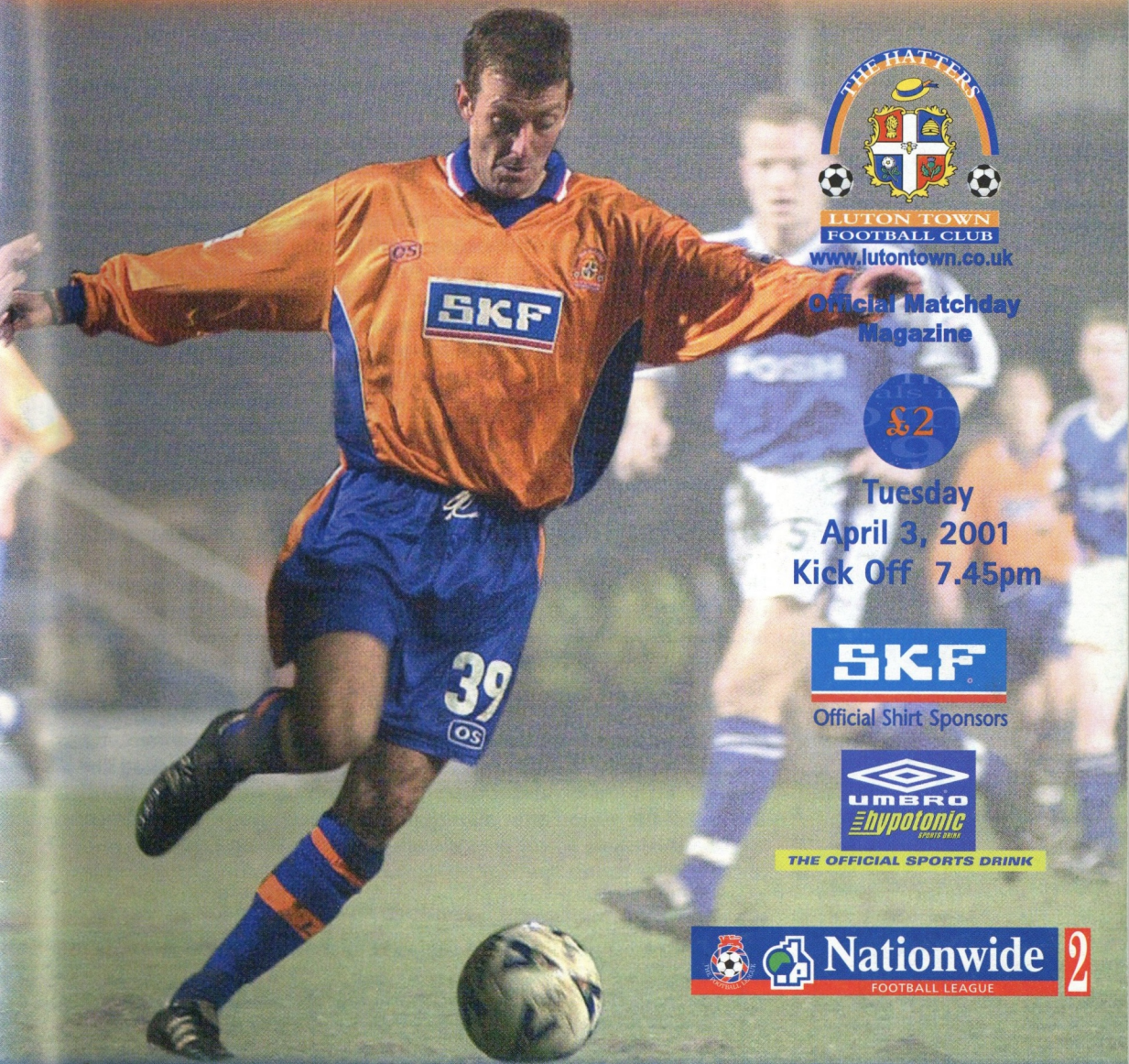


# Luton Town



LUTON TOWN  
FOOTBALL CLUB  
[www.lutontown.co.uk](http://www.lutontown.co.uk)

Official Matchday  
Magazine

£2

Tuesday  
April 3, 2001  
Kick Off 7.45pm

**SKF**  
Official Shirt Sponsors



THE OFFICIAL SPORTS DRINK



## Luton Town v Reading

Match Sponsors: Critical Research Ltd  
Match Ball Sponsors: Cannon Lane, Stopsley

## Luton Town FC

Kenilworth Road Stadium  
1 Maple Road, Luton  
Bedfordshire LU4 8AW

Main Reception: 01582 411622

Fax: 01582 405070

Ticket Office: 01582 416976

### Honours

#### Littlewoods Cup

Winners 1987-88

Finalists 1988-89

#### FA Cup

Finalists 1958-59

#### Simod Cup

Finalists 1987-88

#### Division 2

Champions 1981-82

#### Division 3 (S)

Champions 1936-37

#### Division 4

Champions 1967-68

### Official Matchday Magazine

Editor

**Brian Swain**

Layout & Printing

**Regal Litho**

Photography

**Gareth Owen**

The views expressed in this programme  
are not necessarily those of Luton Town  
Football Club.

### Front Cover



**BATTLING:** Keith Rowland in  
action at Peterborough a week  
ago - see pages 36 & 37, and  
24 & 25 for a report and more  
pictures.

# Inside Forward

TWO players in and one out was the transfer deadline day business at Kenilworth Road. Rocky Baptiste, who was unable to make the transition from the Conference to the Football League, has gone back to Hayes on loan, and will be given a free transfer at the end of the season.

Ricky Hill took a £2,000 punt on the 28-year-old striker in October, but Baptiste managed only three substitute appearances for the Town.

Under no pressure from the board to sell players, Joe Kinnear's other deadline day action was to recruit striker Steve Howard and defender Paul Shepherd.

Town supporters may remember 24-year-old Howard for scoring the second of the two goals by which Northampton beat us here in September. He stands 6ft 2ins and weighs in at something over 14 stone, and boss wanted him to offer attacking options for an otherwise lightweight strike force.

The £50,000 bargain price was down to the Bosman effect - Howard cost the Cobblers a then record club fee of £120,000 when they recruited him from Hartlepool two years ago. Northampton grudgingly accepted a third of their asking price for a player who could have left for nothing at the end of the season.

Howard made a decent start to his Town career, with a header setting up the attack which brought an equaliser at Peterborough a week ago, and then smashing in the penalty consolation goal at Colchester on Saturday. A report of that match will feature in our next matchday magazine.

Shepherd, 23, was an apprentice with his home town club Leeds United, and took a free transfer a couple of years ago to play for Ayr United, having previously been on loan to them. He came back to England last summer, and accepted the Town's offer of a contract until the end of the season after playing briefly for Scunthorpe on a non-contract basis. He was on the subs' bench at Colchester on Saturday.

In the run-up to deadline day, 26-year-old Jimmy Quinn was the other major striker in the Town manager's sights. West Brom invited offers for the Northern Ireland international many of us remember from his days at Blackpool. He had five good years at Bloomfield Road before a £500,000 move in 1998.

The Town asked to take Quinn on loan until the end of the season, but West Brom were interested only in a sale, wanting to recoup most of what they paid. Joe Kinnear thought their price was not realistic, and ended negotiations.

## Up for it

SOME of us thought the late postponement of the game at Brentford might work to the Town's advantage, but the manager and skipper Marvin Johnson disagree.

The Town would have been without Petri Helin and Liam George, while

Steve Howard's transfer formalities were not completed in time for him to play on a Friday evening. Helin and George were both collecting more international honours, going on as subs for, respectively, Finland against England at Anfield, and Ireland under-21s against Cyprus in Larnaca.

Depleted or not, the Town fancied their chances at Griffin Park, and were very much up for it when it was called off. See Marvin Johnson's column on page 7.

The re-arranged trip to Griffin Park is provisionally booked for Thursday May 3 - Brentford, having reached the LDV Vans trophy final, do not have a single Tuesday evening available on days when the Town are also without a game.

## Marathon Appeal

WE WOULD like today to renew our invitation to supporters to sponsor Lynda Smith, our club representative in the football section of the Flora London Marathon on Sunday April 22. She is raising money for a local charity, the Keech Cottage, the hospice for children.

You can pledge an amount per mile completed, or a round sum for the full distance, and all sponsorship promises will be acknowledged in the matchday magazine.

Please make your cheque payable to Keech Cottage, and send it, with the coupon or a copy of it, to: Marathon Appeal, Commercial Department, Luton Town FC, Kenilworth Road Stadium, 1, Maple Road, Luton, Beds LU4 8AW.

We will hold the cheques until after the marathon's official results are published and we have confirmation of Lynda's finish.

## FLORA LONDON MARATHON

I would like to sponsor Lynda Smith, the Luton Town runner in the Football Challenge, and my cheque, payable to Keech Cottage, is enclosed.

Name.....

\*Please return my cheque for a replacement if Mrs Smith completes less than 26.2miles.

Address.....

.....

\*I wish to make the donation in any event.

Telephone.....

\*Please delete as appropriate.

Amount per mile.....



Chairman

**M. Watson-Challis**

Directors

**E. Hood, J. Mitchell,  
C. Bassett, R. Stringer,  
Y. Fletcher, R. H. G. Kelly**

Vice Presidents

**C. T. F. Green, N. S. Terry,  
R. L. Banks, D. Ludlow  
MBE, C. Bygrave,**

**R. Safranek, J. Sapsworth**

Club Secretary

**Cherry Newbery**

Manager

**Joe Kinnear**

Coaches

**Lil Fuccillo**

**John Moore**

Reserve Team Coach

**Kevan Broadhurst**

Youth Coach

**Brian Stein**

Sports Therapist

**Bruce Sewell** BSc (Hons) MSST

Consultant Physio

**John Sheridan**

Youth Development Officer

**Dean Rastrick**

Chief Scout

**Les Shannon**

Sales and Marketing Manager

**John Bailey**

Catering Manager

**Marie Hunter**

Safety Officer

**Geoff Lovell**

Financial Controller

**Tania Buonpane FCCA**

Medical Officer

**Dr. Bill Berry**

Club Dentist

**A. Chris BDSA (Syd)**

Club Chaplain

**Rev Catherine Bell**

Company Secretary

**Cherry Newbery**

For all the latest news, views and interviews call

**CLUBCALL - 09068 121123**

(Calls charged at 60p per minute at all times)

Up and Running!

Luton Town's very own official website.

**www.lutontown.co.uk**

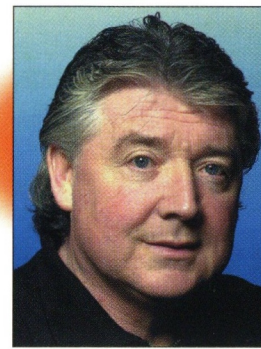
# Catch a ride with a winner!

## SKF AquaMax



Boost profits – and customer confidence – with SKF AquaMax, the new quality standard for replacement pumps. Designed to meet or exceed all OE standards, these new pumps produce maximum flow under all driving conditions, while providing added protection from corrosion and vapour leakage. For more information about SKF, talk to your SKF Automotive Parts Distributor or visit our website: [www.vsm.skf.com](http://www.vsm.skf.com)

# SKF



## The Manager Joe Kinnear

IT'S NICE to be back at Kenilworth Road for the first time in a month, at the start of a sequence of four consecutive home games. Each will pose a different challenge, and it goes without saying that I expect much better results from them than we have seen from the last couple of games. The pitches at Peterborough, where we worked hard for a draw, and at Colchester, where we did not play well, were both very poor, and did nothing for our passing game. But there are no excuses for the defeat at Layer Road on Saturday when we were punished for sloppy defending, and needed to handle the physical side of the game much better. We were not as bright as we had been in previous games, and looked a bit stale. But that's history. We talked it through after the game, and the bright side is that in our last ten matches we have collected as many points as we did in the first 26. If we keep that up over the next ten, to the end of the season, we will be safe.

It will take mental as well as physical strength to achieve it, but we are capable of doing it. We have the possibility of staying up, and if it is possible, it is achievable if you have the will and guts to go out and do it. Sometimes you have to be patient, and be brave, in wanting to receive the ball, keep it, and then pass it well, all the while not letting frustration creep into your game. It's a simple game, with a ball, not a hot potato that has to be given away as quickly as possible. You must stand up, be ready and willing to receive it, and be confident in your ability to use it well.

It is nearly two months since I arrived, and we have made good progress, and we all must share the determination to do what is necessary to stay in this division.

Our players must maintain the unbeaten

home record they have achieved since I arrived. Nine home defeats before then was more than enough for a whole season, and the key to our efforts must be to win every available home point.

I realise that tension and anxiety is liable to creep in but really there is no need to be nervous. We have plenty of points to play for, so we will not be feeling sorry for ourselves. We must keep our heads up, put Saturday's disappointment behind us, and realise that we can do it. When you are fighting for survival, you don't throw in the towel.

The support at Layer Road was excellent again, and thank you for that. The board is also proving that directors are supporters: I was under no pressure to sell on deadline day, and able to do the deals I felt were in the best interest of the club. In particular I was pleased to secure the services of Steve Howard. At 24 he is a good prospect, with height, strength and pace. It widens our attacking options, and he has done reasonably well in his first two games for us - he played a part in our goal at Peterborough, and at Colchester he took responsibility when our penalty was awarded, and stuck it away very confidently. Paul Shepherd, a defender who learned his trade at Leeds, was our other signing last week, and I hope he too has a very successful career with Luton Town.

I was also pleased to hear about the appointment of Paul Fletcher to oversee plans for the new stadium, and it is clear that this club has a future to look forward to. But the short-term is more pressing at the moment. Reading are one of the best sides in our division, and come here tonight trying to strengthen their promotion challenge. We, like them, need every point we can get, so the scene should be set for a good contest.

Enjoy your football.

*Joe Kinnear*

You can e-mail the boss on:  
[manager@lutontown.co.uk](mailto:manager@lutontown.co.uk)

## The Hatters roll-call 2000-2001

	Appearances (as sub in brackets)					Goals			
	League	WC	FAC	LDV	Total	League	WC	FAC	Total
Nathan Abbey	17	0	3	0	20	0	0	0	0
James Ayres	0	0	0	1	1	0	0	0	0
Rocky Baptiste	0(3)	0	0	0	0(3)	0	0	0	0
Emmerson Boyce	32	4	2(1)	0	38(1)	3	0	0	3
Dean Brennan	2(7)	1(1)	0	0	3(8)	0	0	0	0
Friedrich Breitenfelder	2(3)	0	0	0	2(3)	0	0	0	0
Stuart Douglas	11(2)	0	1(1)	0	12(3)	4	0	1	5
Richard Dryden	10	0	0	0	10	0	0	0	0
Andrew Fotiadis	12(10)	1	3	1	17(10)	3	0	1	4
Stuart Fraser	10(5)	4	4	1	19(5)	0	0	0	0
Liam George	29(4)	3(1)	4	0	36(5)	5	0	2	7
Petri Helin	19	0	3	1	23	1	0	0	1
Peter Holmes	12(6)	2(1)	1	0	15(7)	1	0	0	1
Steve Howard	2	0	0	0	2	1p	0	0	1p
Marvin Johnson	6	0	2	0	8	0	0	0	0
Tresor Kandol	6(7)	2(1)	0	0	8(8)	3	1	0	4
Kent Karlsen	4(1)	0	2	1	7(1)	0	0	0	0
Adam Locke	17(6)	1(1)	2(1)	1	21(8)	2	0	0	2
Lee Mansell	9(1)	0	1	0	10(1)	4	0	1	5
Gavin McGowan	5(1)	0	1	0	6(1)	0	0	0	0
Paul McLaren	25	4	3	1	33	1	0	1	2
Lee Nogan	7	0	3	0(1)	10(1)	1	0	1	2
Mark Owendale	19	4	2	1	26	0	0	0	0
Keith Rowland	10	0	0	0	10	2	0	0	2
Andre Scarlett	5(4)	2	0(1)	0	7(5)	0	1	0	1
Matthew Spring	33	4	5	1	43	4(2p)	0	0	4(2p)
Mark Stein	17(7)	3	1(1)	0(1)	21(9)	3	1	0	4
Jude Stirling	5(3)	0	0(2)	0	5(5)	0	0	0	0
Matthew Taylor	35	4	4	1	44	1	0	0	1
Peter Thomson	4(7)	1(1)	1(1)	1	7(9)	2	0	0	2
Julian Watts	22(2)	4	3	0	29(2)	2	0	0	2
Adrian Whitbread	9	0	4	0	13	0	0	0	0



# Captain's Log

## Marvin Johnson

THERE has been a very determined atmosphere about

the place for the past couple of days after the huge disappointment at Colchester. You can never put your finger on why things go so wrong, but we knew we did not do ourselves justice - we can play very much better than that.

I thought our first half was probably the poorest display the gaffer has had to see since he got here. We were better after the interval, but by then, of course, the damage was already done after we gave away three goals in the first half.

It was all the more frustrating after the way we worked hard for a point at Peterborough last Tuesday. There, the pitch was very poor, with pools of water on the surface. We wondered if the game would go ahead or not, but we were glad that it did, having seen the two previous matches postponed.

The trip to Brentford was a huge let-down. I have heard it suggested that the postponement of that match suited us because we would have been without Petri Helin, Liam George and our new striker Steve Howard. Don't be kidded: the team had been picked, and we were at our hotel having our pre-match meal when news came through that Griffin Park was waterlogged, and we were all bitterly disappointed. We were up for the game, and players brought into the squad were ready to stake their claims for more regular appearances. We were well focused, and fancied our chances of clinching our first double of the season, and the late postponement was a massive disappointment to us all.

We followed up with a hard-working performance at Peterborough in conditions which did not suit our style of play. I was pleased to see how the lads got on with the

job. We deserved our point, but in our present situation we need to win games.

At Colchester we were in good heart before the match, but there was no way back after conceding three goals in the first half. I am sure Steve Howard's penalty will be the first of many goals he will score for us, and I was well pleased when he was brought in on deadline day. I know from personal experience that he is a very awkward customer for defenders!

I hope he and our other new man, Paul Shepherd, enjoy their careers with Luton Town, and they will soon discover that we are a friendly club, with a very good atmosphere in the dressing room. They will also find out that we have excellent supporters. The following to away games has been marvellous recently, and the stage is now set for our fans to help us get the results we need to end our relegation worries.

We have ten matches to go, and only three of them away from home. I think a minimum of six wins will do the job for us, and I see no reason why we should not get them out of the seven home games.

On the way home from Colchester on Saturday night, the general feeling was that we had just suffered "one of those days" and the best way to put it behind us was to get back into winning action as soon as possible.

We know Reading are a good side, but our belief is that we can make up for Saturday's failure by playing well tonight.

Once more I will be in the stand, shouting for the lads, and of course there will be a warm welcome back for Adrian Whitbread. I had hoped he would stay with us, but understood his reasons for taking his chance to join Reading. I hope he gets his wish of playing in the First Division next season - but only after overcoming the disappointment of a defeat at Kenilworth Road tonight!

*Marvin Johnson*



# Hatters Financial Services

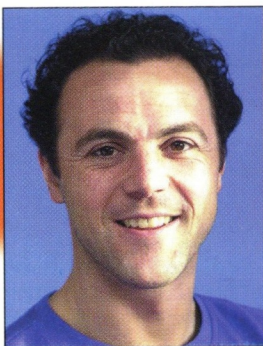
- SAVINGS AND INVESTMENTS •
- LIFE ASSURANCE •
- CRITICAL ILLNESS COVER •
- INCOME REPLACEMENT •
- PENSIONS •
- INHERITANCE TAX PROVISION •
- FINANCIAL REVIEW •

**Hatters Financial Services**

Freepost (SCE 9094) Aylesbury Bucks HP21 9BR  
0800 02 88 149

Hatters Financial Services is a trading style of Aylesbury Financial Services, a representative only of the AXA Sun Life Marketing Group. AXA Assurance is a trading name of members of the AXA Sun Life Marketing Group, the members of which are regulated by the Personal Investment Authority and/or IMRO for life assurance, pensions, and investment business. 01/612 Expiry 21/08/2001

**Up and Running!**  
Luton Town's very own official website.  
[www.lutontown.co.uk](http://www.lutontown.co.uk)



# Treatment Room

Bruce Sewell

THE result at Colchester might have been painful, but at least we

came through with no more injuries. I have enough to keep me busy, with six first-team men still under treatment.

Stuart Fraser has been told by the surgeon that he must keep his plaster cast on for three more weeks as he waits for his broken leg to heal. He is still working as hard as he can in the circumstances, on the exercise bike, and walking.

Once the cast is off, we might well add him to our group who are using the swimming pool at Bath Road to aid recovery. It's not just that swimming is a good exercise, but you can use it as a kind of therapy as well, for instance in getting players to try to run through the water.

Marvin Johnson has had a slight setback, having begun his comeback by playing for the reserves. The neck injury which kept him out for so long is no problem now, but he collected a calf muscle injury while playing at Norwich. There is some swelling, and a possibility that there is a partial tear. I was hav-

ing another look at him yesterday, and considering whether a scan should be carried out to aid diagnosis.

Adam Locke continues his steady recovery from a hamstring strain, but is still not match fit, and Kent Karlsen, Andrew Fotiadis and Mark Stein are also unavailable.

Karlsen, who has been out since early December with a knee ligament injury, is doing well, and is now more comfortable running, kicking balls at less than full power, and working in the gym and swimming pool. If he maintains his current progress I would hope to be able to release him for full training in a couple of weeks or so.

Andrew Fotiadis has seen the specialist again about his groin strain, and has been prescribed a two-week programme of exercise and rehabilitation procedures. Mark Stein, having gone on as a sub at Peterborough a week ago, was expecting to be involved again at Colchester, but in the event collected an ankle injury in training. He was unable to travel to Layer Road, and I don't think he will be available tonight either.

*Bruce Sewell*



# Club Secretary

Cherry Newbery

I KNOW it seems a long time ago, but I wish first today to

apologise to supporters who were inconvenienced at our last home game, against Cambridge. We were not able to open the turnstiles as early as usual, and inside the ground some of the catering units were unable to cope with demand for hot food.

Supporters might be surprised at how much work is done inside the ground before we open the gates, and one of the most important jobs is a thorough safety check. That has to be carried out to very high standards, and by law the ground cannot be opened until every safety detail is covered. So, sorry for the inconvenience, but I am sure you will appreciate that the safety of everyone in the ground has to be paramount.

On the shortage of hot food, more apologies - we had a problem, and have now taken steps to ensure that it does not occur again.

On the subject of our ground and its facilities, I have to remind supporters that in an all-seat stadium standing up during games can cause problems for them, and for us as a club.

You may have seen that Trafford Council has issued a warning that Manchester United stands could be closed if supporters refuse to heed calls to sit down. It is the same for all grounds - in seated areas, standing is not allowed under the terms of safety legislation, and we ask all our supporters to bear that in mind.

We invariably get good responses from supporters in all kinds of ways, and I want to thank Kevin and Justine Batchelor, who very kindly agreed to represent the club at the

annual meeting of the National Association of Disabled Supporters. It is an organisation we are pleased to work with as we try to offer good facilities for all our supporters.

You will know that we have fixed new dates for all our postponed game but one, the away match at Brentford, and at the time of writing discussions about that match at Griffin Park are still taking place.

The problem is that as well as bad weather postponements, Brentford have enjoyed success in the LDV Vans Trophy, in which they have reached the final, and while we had one Tuesday evening available, Brentford have none. It looks as though the game will be played on a Thursday, and as soon as we have a date arranged it will be announced here, on the website, on Clubcall and via the media.

Finally, thanks to all who supported the bucket collection for the Pasque Hospice at the last home game. It raised £634, and your generosity is much appreciated.

I am delighted that even more money will be handed over to the two local hospices this evening. Cash raised by the annual Charity Shield game is now distributed to all clubs who take part in the FA Cup from the first round onwards, and we have received £7,620 to be passed on to good causes of our choice. We have decided to share the money between the Pasque Hospice and the Keech Cottage Hospice, and before kick-off this evening Cliff Bassett will present the two cheques to hospice trustee Jack Sapsworth. He tells us it is financial support much needed at a crucial time, to fund work on a sizeable hydrotherapy pool which will be used by hospice patients and the wider disabled community. We as a club are delighted to be of help.

*Cherry Newbery*

Last Season

The Nationwide Football League saw an Increase in Attendance of 13.5%;  
Why...?



The authority...



The Quality of the Football

You can e-mail Cherry Newbery on:  
[clubsec@lutontown.co.uk](mailto:clubsec@lutontown.co.uk)

# Hatters Chatter

## New Stadium Development

ONE OF the leading lights behind the McAlpine Stadium at Huddersfield and the Reebok at Bolton has been signed up by the Town to play a major role in planning our new ground.

Fifty-year-old Paul Fletcher is very much a football man - until his retirement 20 years ago he had a successful career with Burnley and Bolton. He was in a terrific Burnley team in the early 70s which also included Alan West, and both won England under-23 caps. Harry Haslam bought West to lead the Town to promotion in 1974. West is now a minister of religion in Luton, while Fletcher moved into football administration.

He was chief executive of Huddersfield, with responsibility for the construction of the McAlpine Stadium, which won the building of the year award in 1995.

We played there in March 1996, and came home green with envy at a wonderful facility. After doing the business for Huddersfield, Mr Fletcher joined Bolton Wanderers, to do a similar job for them, delivering the Reebok Stadium in 1996.

At Kenilworth Road he has been appointed Project Consultant for the Town's new stadium. Eric Hood, the Town's deputy chairman, said: "He has a wealth of experience and will undoubtedly assist us in building a first-class stadium. He will work specifically with John Mitchell, who represents the board on all matters concerning the new stadium.

McAlpine Stadium



© Chorley Handford/Premier Image

Reebok Stadium



© Chorley Handford/Premier Image

This team will be complimented by the overall site development team, which will come under my control."

Mr Fletcher said he was excited by the new challenge, and was delighted at the chance to make use of a first-class site. He added: "Importantly, the way the board has set up the overall project will enable me to focus entirely on the design and build phases, through to the delivery of the new stadium, without the complication of other elements appertaining to the overall site."

He said we should not expect to see a copy of the McAlpine or Reebok, but added: "My job is to be an adviser to the architects. As a football man I have a good idea of what is required, and I draw in everyone possible. You talk to, for instance, disabled supporters, and other fans groups, to find out their views. In the overall design, you take the best bits out of the latest stadium projects, and integrate them into your plan. I also go and see new grounds and speak to people to ask them what mistakes they made. Inevitably, there will be one or two, and you take note and ensure you avoid them.

"In the end, we will finish with a stadium which incorporates features from perhaps many others, but which will be unique. It will be something special, something we can all be really proud of."

# Ticket News

Nationwide Football League 2 Nationwide League - Division Two Nationwide Football League 2



## Luton Town v Stoke City

Saturday April 7, 2001, kick-off 3pm

Tickets are now on sale at normal match day prices  
Cash turnstiles will be open on the day, subject to availability.



## Luton Town v Oxford Utd

Tuesday April 10, 2001, kick-off 7.45pm

Tickets are now on sale at normal match day prices  
Cash turnstiles will be open on the day, subject to availability.  
**Tickets for the original date, March 17, 2001, are valid for this re-arranged date**



## Luton Town v Oldham Athletic

Saturday April 14, 2001, kick-off 3pm

Tickets are now on sale at normal match day prices  
Cash turnstiles will be open on the day, subject to availability.



## Wrexham v Luton Town

Easter Monday - April 16, 2001, kick-off 3pm

This match is pay on the day only for Luton supporters  
Prices: Adults £13, seniors and juniors £8.



## Luton Town v Bury

Saturday April 21, 2001, kick-off 3pm

Tickets are now on sale at normal match day prices  
Cash turnstiles will be open on the day, subject to availability.  
Half Term Special - Children under 16 can watch this match for just £1  
subject to availability, offer valid until Friday 20th April 6pm.



## Luton Town v Rotherham

Tuesday April 24, 2001, kick-off 7.45pm

Tickets are now on sale at normal match day prices  
Cash turnstiles will be open on the day, subject to availability.



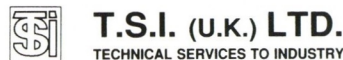
## Luton Town Credit Card Hotline

By using our telephone hotline system you can order match tickets up to 48 hours prior to any game by ringing:

**01582 730748** 24 HOURS A DAY

You can order tickets via email on:  
**ticketoffice@lutontown.co.uk**

# Executive Box Holders



Mr H. Khatab



Mick Connolly



G.P. Quorenton  
(Ductwork)



## Kenilworth Suite Members

Paul Armitage	Woburn Media Ltd	SKF (UK) Ltd
Corporate Coaching	Critical Research	DBF Crosswinds Ltd
RW Harvey & Son	Dr David Siegler	Regal Litho Ltd
Mr Malcolm Eade	Mr J Siegler	Protexx
Mr Roger Eade	Datapace Ltd	Mr P Mitchell
Vangis UK Ltd	J P Hygeine Supplies	Travel Extras
Anachem	Filmergraphics	Belldene Ltd.

To reserve an Executive Box or become a Kenilworth Suite member call Commercial on:

**01582 411622**



## Player of the Season Presentation Evening



Sunday 29th April 2001 - 7.00pm till late  
at

The Riverside Suite, Vauxhall Recreation Centre  
Gipsy Lane, Luton.

With Special Guest Speaker  
**John Motson**

**Raffle • Disco • Hot & Cold Buffet • Smart Casual Dress**

Tickets now on sale at the Club Shop, Ticket Office and Matchdays  
at the Luton Town Supporters Club Kiosk.

Priced at £12 LTSC Members, £15 Non Members



## Never Ever Beaten on Price!



Are offering **30% off 7 night holidays starting on 21st July 2001\*\***  
To book this offer & for all your holiday requirements  
Call: **0870 600 8003** or visit your local store

**Dunstable** - White Lion Retail Park, (near to Sainsbury), Boscombe Road.

**Milton Keynes** - The Kingston Centre, (near Tesco).

**Staines** - Two Rivers Retail Park, (near to McDonalds), Middlesex.

Open 7 DAYS A WEEK Mon/Sat 9am-7pm (Staines Mon/Sat 9.30am-6pm), Sun 11am-5pm (Milton Keynes Sun 10am-4pm).

ABTA  
J0722

Lines Open Mon/Sat 9am-7pm, Sun 11am-5pm

[www.holidayhypermarket.co.uk](http://www.holidayhypermarket.co.uk)

\*\*We guarantee to beat any other High Street ABTA bonded Travel Agents "like for like" price, written quotes at time of booking are necessary. \*\*This offer is applicable to selected parks and accommodation only, cannot be used in conjunction with any other offers, is available on new bookings only and is subject to availability. Offer valid until 14th April 2001. To book this offer quote Haven booking code TT023 or British Holidays code TA30%.



**Official Kit Suppliers of  
Luton Town Football Club**



# Commercial Corner

John Bailey

SPONSORSHIP plays a vital role in helping to keep Luton Town going,

and once again this evening we are grateful for long-time supporters who are backing our commercial activities by being match sponsors.

Critical Research Ltd, are regular supporters of the club in various ways, and it is a pleasure to welcome them back this evening.

Based in Alma Street, Luton, the company specialises in market research, and also has offices in Reading and Watford, but Critical's Derek Farr stresses that Luton Town is the club he has always supported. As a telephone-based research company Critical employs many staff locally, and is always on the lookout for people wanting to train to be telephone interviewers.

Information gathered can be a valuable tool for Critical's customers, for instance in terms of marketing strategy. If you would like to know more about this

very successful market research agency, phone them on Luton 480588.

THIS evening's match ball sponsors are more old friends and good supporters, Cannon Lane, Stopsley, who are very well known in Luton, and here at the club, where they are executive box holders.

Cannon Lane are motor traders who supply new and used Chryslers, including the PT Cruiser, Voyager and Neon, and, through Jeep, the Cherokee, Grand Cherokee and Wrangler. In addition they have a wide range of used 4x4s, which you can see at their base in Hitchin Road, on the corner of Cannon Lane, or on the internet at [www.cannonlane.co.uk](http://www.cannonlane.co.uk).

*John Bailey*



Supplier of tonight's matchday music.

**WE HAVE a variety of sponsorship packages on offer to make football at Kenilworth Road something of a special event, and for fans of all ages. Youngsters, for instance, love being mascot for the day, and if you want to give a son or daughter a very special treat that's something well worth considering.**

**Our facilities are open to parties of all sizes, and you might be very pleasantly surprised at what good value we can offer - tell us what you would like and we will tailor a deal to suit your requirements. For more information, get in touch by e-mail, at the address at the bottom of this page, or phone the commercial department on Luton 411622.**

## Golden Gamble

WE HAVE £615 to give away to a lucky Luton Town supporter today. That was the jackpot in the Golden Gamble lottery at the Bristol Rovers match, and unusually the money was not claimed on the day. The winning ticket number was 20492, and we believe it was sold in the Eric Morecambe Suite, or in the main stand. The owner of the winning ticket is invited to call the commercial department on Luton 411622 to make arrangements to collect the prize.

The jackpot at the Cambridge game was £505, and our picture shows the winners, Michelle Litchfield and Dennis Townsend, from Peregrine Road, Luton, with Mark Ovendale, who drew their lucky ticket out of the drum.

We think it is a pretty good return for an outlay of just £1, which is that each Golden Gamble ticket costs. The size of the jackpot depends on ticket sales - half the income makes up the prize, and the other half

goes to club funds, so we are very grateful to everyone for supporting an important fund-raising endeavour. The draw is made at half-time, with the cash available immediately. The 21 prizes so far this season have totalled £9,875, an average of £470 each.



To advertise in the matchday magazine phone Luton 411622 or e-mail us at:

**[commercial@lutontown.co.uk](mailto:commercial@lutontown.co.uk)**



# Kit Sponsors

NATHAN ABBEY	Paul Deason
GAVIN MCGOWAN	Luton Town Supporters Club
MATTHEW SPRING	Brian Hall
MARVIN JOHNSON	Space Display Systems
PETER HOLMES	G & S Ceramics
PAUL McLAREN	Elsie Clubb
STUART DOUGLAS	Les & Sue Miller
KENT KARLSEN	Icknield Windows Ltd
PETER THOMSON	The Bobbers Travel Club
LIAM GEORGE	WHOSH
STUART FRASER	David & Jonathan Siegler
ANDREW FOTIADIS	Sally Mayne & Family
MATTHEW TAYLOR	Mick Garbutt, Inside Media
MARK STEIN	Wendi Arnold & Graham Bates
ADAM LOCKE	Jeremy Cain of D.A.P. Consulting
FRIEDRICH BREITENFELDER	Regal Litho and Corporate Coaching
EMMERSON BOYCE	Michael Capp & Danny Clubb, Century Club Members
ANDRE SCARLETT	WHOSH
PETRI HELIN	Icknield Windows Ltd
JUDE STIRLING	Century Club
SCOTT WARD	G. Owen Ceramic Tiling Ltd
MARK OVENDALE	JEWSON Ltd
JULIAN WATTS	Les Miller, Miller & Company, Bedford
To Be Advised	E.C. Smith & Sons Ltd.
DEAN BRENNAN	B.D. Sanders
JOE KINNEAR	Luton Town Supporters Club, Milton Keynes
LIL FUCCILLO	Loyal Luton Supporters Club
BRUCE SEWELL	Century Club
JOHN MOORE	Ian Smith
JOHN CARROLL	Danny Clubb & Michael Capp, Century Club Members
LEE MANSELL	Danny Clubb & Michael Capp, Century Club Members
DEAN STANDEN	Available
TRESOR KANDOL	Terry Neale
BRIAN STEIN	Danny Clubb
STEVEN HOWARD	Jeremy Cain of D.A.P. Consulting

If you are interested in sponsoring a player's kit please contact the Commercial Department on 01582 411622.

Up and Running!  
Luton Town's very own official website.  
[www.lutontown.co.uk](http://www.lutontown.co.uk)

## Goalscoring Head 2 Head

in the graphics below, Hatters' figure is to the left with the goals scored indicated in orange and Royals' to the right and scored in blue

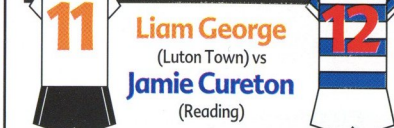
### Where



### How



### Top League Scorers



42 in 35 games Team Goals 68 in 37 games  
1.2 goals Ratio per Game 1.84 goals

5 in 32 games Player's Goals 18 in 34 games  
0.16 goals Ratio per Game 0.53 goals

Games Scored In 14  
Games Scored 1st Goal 7  
Games Scored 1 Goal 12  
Games Scored 2 Goals 0  
Games Scored 3 Goals 2

**IMPORTANCE OF GOALS**  
(Taking out top scorers, how would results be affected)

0 (0pts) Games Won -> Drawn 6 (12pts)  
0 (0pts) Games Won -> Lost 0 (0pts)  
1 (1pts) Games Drawn -> Lost 2 (2pts)  
1 Number of points gained 14

**SCORING SEQUENCES**

Consecutive Games Scored 2  
2 Games 2  
3 Games 2  
2 games Maximum Scoring Run 3 games

**CONSECUTIVE GAMES WITHOUT SCORING**

2 Games 4  
1 Games 2  
5 Games 1  
9 games Maximum Dry Spell 5 games

### Hatters' Results

LUTON TOWN GOALS								
OPPOSITION GOALS	0	1	2	3	4	5	6	7
0	3	3						
1	3	4	4					
2	3	3	1					
3	3	1	2	1	1			
4	1	1	1					
5								
6								
7								

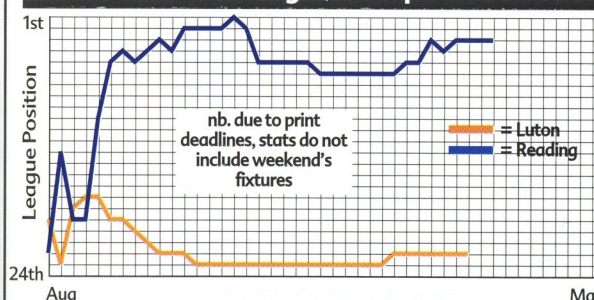
shows the number of results for each scoreline.  
eg. Luton have won 4 games 3-1

### Royals' Results

READING GOALS								
OPPOSITION GOALS	0	1	2	3	4	5	6	7
0	1	6	5	1	1	1		
1	2	4	2	1	2	1		
2	2	2	1	1				
3	1	1	1	1	1			
4	1							
5								
6								
7								

eg. Reading have won 6 games 1-0 and drawn 4 games 1-1

### Seasonal Progress Comparison



# Stats & Facts

Stats compiled by Football Information Services

### When goals scored & conceded



### Average time of Scoring / Conceding

75 mins All Goals for 49 mins  
76 mins Home Goals For 36 mins  
74 mins Away Goals For 83 mins  
52 mins All Goals Against 87 mins  
53 mins Home Goals Against 90 mins  
50 mins Away Goals Against 77 mins

Table shows average time taken for both teams to score and concede goals in home and away games.

### Face2Face

Last Season  
At Kenilworth Road...3-1  
At The Madejski...2-1

This Season  
Hatters' Season records:  
Home Win...3-1 Brentford  
.....5-3 Swansea  
Away Win...3-1 Swindon  
3-1 Notts County, 3-1 Stoke  
Home Defeat...0-3 Bristol City  
.....0-3 Colchester  
Away Defeat...0-4 Swansea  
Consec. Wins.....3  
Consec. Defeats.....4

Royals' Seasons records:  
Home Win...5-0 Oldham  
Away Win...3-1 Rotherham  
.....2-0 Bury, 2-0 Oldham  
Home Defeat...1-3 Bristol City  
Away Defeat...0-4 Bristol City  
Consec. Wins.....3  
Consec. Defeats.....2

### Last 10 Games Form Guide Comparison

Hatters : **LWWWLWDWLS** F 15 A 12 Pts 17  
Royals : **WSWWWWSWWLW** F 14 A 7 Pts 23

Form Guide shows last 10 results. W = Won, L = Lost, S = Score Draw, D = No Score Draw. Most recent result to the right

### Reading's Last 10 Years - The Complete Record

	DIV	FAC	WC	LS	Gls	Ave Att
90/91	3	1	1	Senior	15	4,057
91/92	3	3	1	Maskell	16	3,858
92/93	2	3	2	Quinn	17	4,781
93/94	2	1	2	Quinn	35	6,924
94/95	1	3	2	Lovell	11	9,350
95/96	1	4	QF	Quinn	11	8,918
96/97	1	4	1	Morley	22	9,165
97/98	1	5	QF	Asaba	8	9,676
98/99	2	1	2	Williams	11	11,262
99/00	2	3	2	Caskey	17	8,985

More teams take the field to 'Simply The Best' than any other song.

Who says the modern game lacks humour?

digital  
**on**  
0808 100 0101

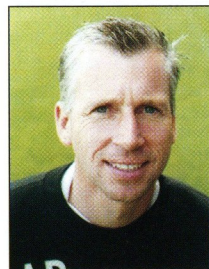


# Tonight's Visitors

## Reading



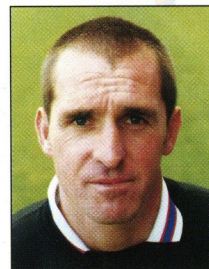
### Reading F.C. 2000 - 2001



#### ALAN PARDEW - MANAGER

Former reserve team manager who took control of the first team in October 1999. Spent a month in charge in a caretaker capacity following the departure of Tommy Burns, and was given the job full time after overseeing an upturn in the club's fortunes.

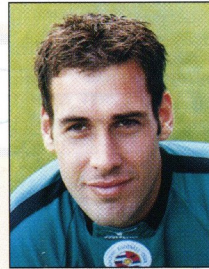
Pardew came into the professional game from non-League Yeovil Town, and went on to enjoy a successful career with Crystal Palace, Charlton and Barnet. He is well remembered for scoring the winning goal in Palace's 4-3 FA Cup Semi Final victory over Liverpool in 1990.



#### MARTIN ALLEN - FIRST TEAM COACH

Martin Allen succeeded John Gorman as Alan Pardew's assistant in late January 2000 when the former England coach re-united with Glenn Hoddle to take over at Southampton.

Son of former Reading player Dennis Allen, Martin was born and raised in Reading as a Royals fan and took the opportunity to watch the team as often as possible throughout his playing career.



#### NO. 21 - SCOTT HOWIE - GOALKEEPER

Born Motherwell 04.01.72 Height 6'2" Weight 13.7 Excellent shot-stopper signed from Motherwell for £30,000 on transfer deadline day in March 1998. Former Scotland Under-21 international who enjoyed spells at Clyde, Norwich and Motherwell. Was also involved in the Scottish squad for World Cup qualifiers. Regular first team keeper in his first season at Reading but was on the bench after the October arrival of Phil Whitehead. Was in very good form after regaining his place in the side, and finished third in the Player of the Season vote.

#### NO. 1 - PHIL WHITEHEAD - GOALKEEPER

Born Halifax 17.12.69 Height 6'3" Weight 15.10 Big keeper signed from West Brom for £300,000 in October 1999. Started his career with hometown club Halifax before a £60,000 move to Barnsley in March 1990. After three and a half years at Oakwell he joined Oxford United for £75,000, and went on to establish a regular first team place at the Manor Ground, making nearly 250 first team appearances. Signed for West Brom for £250,000 in December 1998 and was a regular in the first team until managerial changes cost him his place. Signed a four-year deal to become Alan Pardew's first signing as first team boss after being recommended by then assistant manager John Gorman.

#### NO. 2 - JOHN POLSTON - DEFENDER

Born Walthamstow 10.06.68 Height 5'11" Weight 11.12 An assured central defender who signed for the Royals in July 1998. Former Spurs trainee who won England under-19 honours whilst at White Hart Lane. Played a total of 28 senior games for Spurs before his moving to Norwich City in July 1990 for £300,000. A member of the giant-killing squad that knocked Bayern Munich out of the UEFA Cup in 1993/94. Signed by Tommy Burns on a free transfer in July 1998, but his first season at Madejski Stadium was ruined by injuries.

#### NO. 26 - STUART GRAY - DEFENDER

Born Harrogate 18.12.73 Height 5'11" Weight 11.2 Son of former Leeds and Scotland legend Eddie Gray, this left-sided full/wingback arrived from Celtic, his first club, on transfer deadline day 1998 for £100,000. A good passer of the ball and comfortable in possession, Stuart was brought up in Yorkshire but became a Scotland U/21 international. After being a regular under Tommy Burns, he then suffered with a back problem and failed to regain his place in the side. Transfer-listed in Summer 2000.

#### NO. 6 - BARRY HUNTER - DEFENDER

Born Coleraine 18.11.68 Height 6'2" Weight 13.2 Northern Ireland international centre-back who cost £400,000 from Wrexham in July 1996. Nephew of former Irish international defender Alan Hunter and ex-Newcastle United keeper Ian McFaul. Made an instant impact at Reading after signing in July 1996, replacing Adrian Williams as captain but missed the whole of 1997/98 season and the first half of the 1998/99 season with a knee injury. Worked his way back to fitness on loan at Southend in February 1999 and made a handful of appearances for the Royals at the end of that season. His performances grew increasingly assured as the 1999/2000 season progressed, and by the end of the season he had returned to the form that had made him club captain and a regular in the Northern Ireland side.

#### NO. 20 - CHRIS CASPER - DEFENDER

Born Burnley 28.4.75 Height 6'0" Weight 11.11 A ball-playing central defender who signed permanently from Manchester United for a bargain fee of £100,000 in November 1998 after impressing during a loan spell. Son of Burnley legend Frank Casper, Chris went through an apprenticeship at Old Trafford and was also loaned to Swindon and Bournemouth after failing to secure a first-team place for United. A very composed player with good passing ability.

#### NO. 3 - MATTHEW ROBINSON - DEFENDER

Born Exeter 23.12.74 Height 5'11" Weight 11.8 Signed from Portsmouth for £150,000 in January 2000 and became an immediate crowd favourite with an excellent debut in the 2-0 win over Colchester at Madejski Stadium. Robinson is a versatile player who is comfortable on both flanks and can play in midfield or defence, although he has spent most of his time at left-back. An energetic player who is always looking to get forward, he is also solid in the tackle and comfortable in possession, and has become an instant favourite with the Madejski Stadium faithful.

#### NO. 18 - ANDY GURNEY - DEFENDER

Born Bristol 25.1.74 Height 5'10" Weight 11.6 Signed from Torquay in January 1999 for £100,000, Gurney is an attack-minded right-sided defender who can also play in midfield. Started his career at hometown club Bristol Rovers, where he spent four seasons before moving to Torquay for one year and impressing during their surge to the play-offs. Established a regular starting place with Reading in 1999/2000 and made a good impression with his surging forward runs.

#### NO. 5 - ADRIAN VIVEASH - DEFENDER

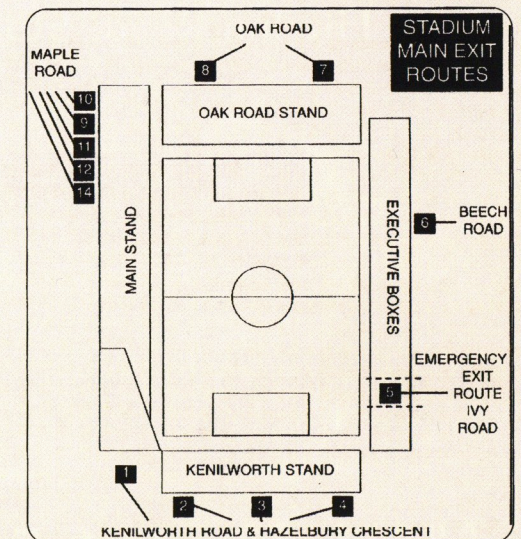
Born Swindon 30.9.69 Height 6'2" Weight 12.13 Dominant central defender signed at the beginning of July 2000 on a 'Bosman'-style free transfer from Walsall. Captain

## EVACUATION PROCEDURE

IN THE event of any emergency in the stadium, Luton Town FC and the emergency services have agreed on an evacuation procedure which is designed to ensure the safe and controlled evacuation of the crowd, and to ensure their safe dispersal from the area, to allow the emergency services to carry out their tasks.

In the event of evacuation from all or part of the stadium, you will receive instructions over the public address system on how you should leave. In an evacuation of the main stand you will be instructed to use the pitch. Stewards will direct you to the nearest exit. It may be that your normal exit route will not be available. On leaving the stadium, you will find some roads closed to pedestrians, to enable swift and unobstructed access for the emergency services. Please leave the area of the ground as quickly as possible, by the route directed. Your co-operation will be most appreciated.

Geoff Lovell, Safety Manager.



For all the latest news, views and interviews call

**CLUBCALL - 09068 121123**

(Calls charged at 60p per minute at all times)

at the Bescot Stadium for two seasons and a vital member of the Walsall team which won promotion from Division Two in 1998/99. Started his career with Swindon Town, and spent two separate brief spells on loan with the Royals in the 1992/93 and 1994/95 seasons. Started the 2000/01 season as first choice centre-back.



**NO. 29 - ADRIAN WILLIAMS - DEFENDER**

**Royals apps: 67(12) Goals: 3**  
**Born Reading 16.8.71**  
**Height 6'2" Weight 13.2**  
 Centre-back and captain of the team that came so close to winning promotion to the Premiership in 1995. Returned to the Royals on loan from Wolverhampton Wanderers in mid-February 2000,

and the switch was made permanent at the end of the season when he signed a three year contract after joining on a Bosman transfer. The Welsh international made more than 200 appearances in his first spell for the Royals, his home town club, and he became a big crowd favourite before joining Wolves for £1million. A powerful and determined defender who is an excellent tackler and header of the ball.

**NO. 23 - JOHN MACKIE - DEFENDER**

**Born London 5.7.76 Height 6'1" Weight 13.0**  
 Central defender signed from non-league football in October 1999 after impressing during a trial. Made his senior Royals debut in the League Cup clash at Leyton Orient in August 2000 and came in for a prolonged spell alongside Adi Viveash when both Barry Hunter and Adie Williams were ruled out through injury.

**NO. 15 - SEAN EVERS - MIDFIELDER**

**Born: Hitchin 10.10.77 Height 5'9 Weight 9.11**  
 This dynamic midfielder was signed by Tommy Burns on

transfer deadline in March 1998 and cost £500,000 from Luton Town. The talented, attack-minded player had already established himself in Luton's team, and Burns had been tracking his progress for a number of months.



**NO. 8 - DARREN CASKEY - MIDFIELDER**

**Born Basildon 21.08.74 Height 5'8" Weight 11.9**  
 Influential playmaker whose £700,000 move from Tottenham Hotspur in February 1996 smashed Reading's transfer record. An FA School of Excellence graduate, he skipped an England Under-18 team containing Sol Campbell and

Robbie Fowler to victory in the 1993 UEFA Championships, his penalty beating Turkey in the final. Made his Premiership debut at White Hart Lane in January 1994, but couldn't command a first team place, and after a loan spell at Watford he joined the Royals. Played superbly throughout the 1999/2000 season, scoring 23 goals from midfield and winning the Player of the Year award.

**NO. 7 - GRAEME MURTY - MIDFIELDER**

**Born: Saltburn 13.11.74 Height 5'10" Weight 11.10**  
 Right-sided midfielder or defender who arrived from York City for £700,000 in July 1998 but has been jinxed by injury ever since. A skilful, pacey player who played in York City's legendary win over Manchester United in the Coca Cola Cup and also scored the winner in a 3-2 victory over Everton.

**NO. 4 - KEITH JONES - MIDFIELDER**

**Born Dulwich 14.10.65 Height 5'8" Weight 11.2**  
 Keith became the third of Alan Pardew's summer 2000 signings when he joined the Royals on a free transfer from Charlton Athletic. He had spent six seasons at the Valley and most recently made a significant contribution to the Addicks'

First Division Championship-winning campaign. Former England youth international and a tenacious midfielder who has also played for Brentford and Southend United since starting his career with Chelsea.



**NO. 16 - PHIL PARKINSON - MIDFIELDER**

**Born Chorley 01.12.67**  
**Height 6'0" Weight 12.8**  
 Tough-tackling midfielder and longest serving player at the club. Started his career as a Southampton apprentice but was unable to get a chance in the first team. £12,000 took him to Bury during the 1987/88 season, and he

went on to play more than 150 games for the Gigg Lane club. A highly competitive midfielder whose battling displays are guaranteed to give opponents a hard time.

**NO. 17 - NEIL SMITH - MIDFIELDER**

**Born Lambeth 30.9.71 Height 5'9" Weight 12.12**  
 Midfielder who was a key part of Fulham's Second Division championship winning team in the 1997/98 season. Joined the Club in a £100,000 move from the Cottagers on the same day as Peter Grant in August 1999. A versatile player who can play in the centre of midfield or in a wide position, he started his career with Tottenham before moving to Gillingham in 1991.

**NO. 11 - LEE HODGES - MIDFIELDER**

**Born Epping 04.09.73 Height 6'0" Weight 12.1**  
 Midfielder/striker with a natural goalscorer's instinct. Began his career at Tottenham Hotspur and made four substitute appearances at White Hart Lane before joining Barnet on a free transfer in summer 1994. His three years at Underhill included loan spells at Plymouth Argyle and Wycombe Wanderers. Hit 27 goals in 107 games for Barnet before joining Reading for £100,000 in July 1997 in a deal that also saw Linvoy Primus move to Elm Park.

**NO. 14 - SAMMY IGOE - MIDFIELDER**

**Born Spelthorne 30.09.75 Height 5'6" Weight 10.0**  
 Signed from Portsmouth on transfer deadline day in April 2000 for an initial fee of £100,000 that could rise to £150,000 depending on appearances and promotion. He is a sharp and bright player, who offers pace and quality from a wide area as well as through the middle. He came highly recommended by assistant manager Martin Allen, who coached Igoe at Portsmouth.

**NO. 25 - RICKY NEWMAN - MIDFIELDER**

**Born Guildford 5.8.70 Height 5'10" Weight 12.6**  
 Versatile performer who joined the Royals from Millwall in March 2000, initially on loan but the deal soon became permanent after some impressive displays. Primarily a central midfielder, the former Crystal Palace player can also play in defence and is committed player who added extra grit to the Royals midfield. Scored two particularly memorable goals in the year 2000, the first a superb volley at Notts County and another cracker against York in the FA Cup.  
**Royals apps: 32 Goals: 2**



**NO. 10 - NICKY FORSTER - FORWARD**

**Born Caterham 8.9.73**  
**Height 5'8" Weight 11.5**  
 A £650,000 signing from Birmingham City in June 1999, Nicky is a very quick player with a good eye for goal. He started his career with Gillingham in 1992, and after two fine seasons he joined Brentford. He continued to score goals and earned England Under-21 recognition, before a £700,000 transfer to Trevor Francis' Birmingham early in 1997. Although he continued to score his fair share of goals, he struggled to establish a regular place in the starting line-up and made the switch to Madejski Stadium.

**NO. 12 - JAMIE CURETON - FORWARD**

**Born Bristol 28.8.75 Height 5'8" Weight 10.7**  
 In the aftermath of Nicky Forster's knee injury, the Royals moved quickly to secure the services of Jamie Cureton from Bristol Rovers in a bargain £250,000 deal. His contract with Reading ties him in until June 2003. A quick, elusive and hard-working striker with a natural eye for goal, Cureton made a good early impression for the Royals, scoring on his debut at Leyton Orient in the Worthington Cup.

**NO. 37 - TONY ROUGIER - FORWARD**

**Born Trinidad 17.7.71 Height 6'0" Weight 14.1**  
 Signed from Port Vale for a fee of £325,000 the day before the start of the 2000/1 season. The Trinidadian international signed a three-year contract and made his debut the following day in the 2-0 defeat at Millwall. Rougier started his British career in Scotland with Raith Rovers in 1995 before joining Hibs in 1997. In January 1999 he moved to Port Vale for £175,000, and he was Vale's top scorer in Division One last season despite often operating from a wide position. A quick and skilful player, Rougier is primarily a winger but can also play through the middle.



**NO. 9 - MARTIN BUTLER - FORWARD**

**Born Dudley 15.9.74**  
**Height 5'11" Weight 12.0**  
 At the beginning of February 2000, the Royals beat off competition from a number of clubs to secure the signature of highly-rated Cambridge United striker Martin Butler for £750,000 on a four and a half year contract. Started his

career with Walsall before moving to Abbey Road at the beginning of the 1997/98 season. A hardworking and strong player, Martin scored in each of his first two games for the Club and quickly formed a devastating partnership with Nicky Forster.

**NO. 22 - JIM MCINTYRE - FORWARD**

**Born Alexandria 24.05.72 Height 5'11" Weight 12.0**  
 Arrived at Elm Park on transfer deadline day 1998 for a fee of £420,000 from Kilmarnock. Jim won the Scottish Cup with Kilmarnock and also played in the Scottish Cup Final for his previous club, Airdrie.

**CANNON LANE**  
 Hitchin Road, Stopsley, Luton, Beds

**CHRYSLER** 01582 725506  
 www.cannonlane.co.uk

Treat yourself and your friends to an Executive Box.  
 Call the Commercial Department on:  
**01582 411622**



**Premierimage.co.uk**

**THE SOCCER STUFF & NONSENSE STORE**

Aerial & Fisheye photos of all British  
Stadiums... Paintings... Cakes...  
Mousemats... Jigsaws...  
Garden Kit Gnomes... House nameplates...  
& much much more

For a FREE gift catalogue  
**Call: 0208 461 4214**

or write to: Unit 12  
157-159 Boundfield Rd  
London SE6 1PE



## R. J. BLOW & C O M P A N Y

*THE FRIENDLY ACCOUNTANTS*

*Book-Keeping  
Taxation and Wages etc.*

24 GUILDFORD STREET  
LUTON  
BEDS, LU1 2NR

Tel: (01582) 738792  
Fax: (01582) 423347

## FANS ON THE MOVE

Visitors to Luton	Away-day Hatters
Notts Co .....606	Wigan .....640
Peterborough (WC) .....360	Wycombe .....1,266
Bournemouth .....539	Rotherham .....603
Northampton .....1,240	Peterborough (WC) .....908
Walsall .....313	Swansea .....285
Swindon .....531	Sunderland (WC) .....332
Sunderland (WC) .....1,366	Bristol Rovers .....333
Millwall .....1,389	Cambridge .....1,210
Brentford .....695	Oxford .....817
Wrexham .....352	Bury .....419
Bristol City .....1,396	Port Vale .....420
Rushden (FAC) .....1,736	Stoke .....499
Colchester .....309	Peterborough .....290
Darlington (FAC) .....221	Darlington .....527
Peterborough .....918	Reading .....1,010
Wigan .....261	Bournemouth .....446
QPR (FAC) .....1,976	QPR (FAC) .....2,586
Wycombe .....402	Oldham .....153
Swansea .....336	Northampton .....1,250
Bristol Rovers .....788	Notts County .....646
Cambridge .....752	Walsall .....965
	Swindon .....1,512
	Millwall .....1,092
	Peterborough .....1,342
<b>Total:</b> .....16,486	.....19,531
<b>Average:</b> .....785	.....814

## TOWN TEASER

IF YOU know your Town Trivia, you might have a chance to win a little prize this evening, when the PA announcer will pose another Town teaser before kick-off. Listen to him for your chance to have a go. And if you don't know the answer, it can be found elsewhere in this magazine.

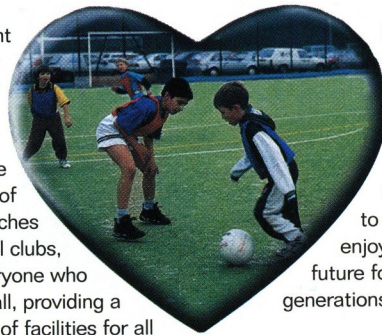
At the Cambridge match we asked about a defender who played for both clubs, and the answer was John Dreyer.

### Tonight's Question

Unusually, the Town were not involved in any big sales of players on deadline day this season. It was different two years ago, when a midfielder was transferred to Reading for £500,000. Who was he?

## There's a brand new team at the heart of English football.

Football and the Government have teamed up in a new partnership to provide new lifeblood for the grass roots of English football – pumping financial support into the game that's so close to the hearts of so many. From parks pitches to professional football clubs, we'll be there to help everyone who loves football, providing a new generation of facilities for all



by pooling resources from The FA Premier League, The Football Association, Sport England and the Government into a single substantial fund for redistribution throughout the game. Together, we intend to ensure that football enjoys a healthy future for many generations to come.



### FootballFoundation

football's biggest supporter

1 Waterhouse Square, 138-142 Holborn, London EC1N 2ST.  
T: (020) 7832 0100 F: (020) 7832 0119  
E: enquiries@footballfoundation.org.uk  
W: www.footballfoundation.org.uk



## MORTGAGES



# 1 in 3 people are paying too much for their mortgage

**Be different - switch to Nationwide**

www.nationwide.co.uk

0800 30 20 10

Nationwide. Underlining the difference

OPEN or visit us today

Banking | Credit Card | Insurance | Investments | Loans | Mortgages | Pensions | Savings

NATIONWIDE ESTIMATE THAT ONE IN THREE PEOPLE ARE PAYING TOO MUCH FOR THEIR MORTGAGE AS AT 19 FEBRUARY 2001. MORTGAGES ARE SUBJECT TO STATUS, VALUATION AND SECURITY. AVAILABLE TO THOSE AGED 18 OR OVER ONLY. NATIONWIDE BUILDING SOCIETY, NATIONWIDE LIFE LIMITED AND NATIONWIDE UNIT TRUST MANAGERS LIMITED REPRESENT ONLY THE NATIONWIDE MARKETING GROUP WHICH IS REGULATED BY THE PERSONAL INVESTMENT AUTHORITY FOR LIFE ASSURANCE, PENSIONS AND UNIT TRUST PRODUCTS. NATIONWIDE UNIT TRUST MANAGERS LIMITED IS ALSO REGULATED BY IMRO. WRITTEN QUOTATIONS AVAILABLE ON REQUEST FROM NATIONWIDE BUILDING SOCIETY, NATIONWIDE HOUSE, PIPERS WAY, SWINDON, SN9 1NN. CALLS RECORDED. NATIONWIDE IS A MEMBER OF THE BUILDING SOCIETIES OMBUDSMAN SCHEME AND SUBSCRIBES TO THE BANKING AND MORTGAGE CODES, COPIES OF WHICH ARE AVAILABLE ON REQUEST. SECURITY WILL BE REQUIRED ON PROPERTY.

YOUR HOME IS AT RISK IF YOU DO NOT KEEP UP REPAYMENTS ON A MORTGAGE OR OTHER LOAN SECURED ON IT.

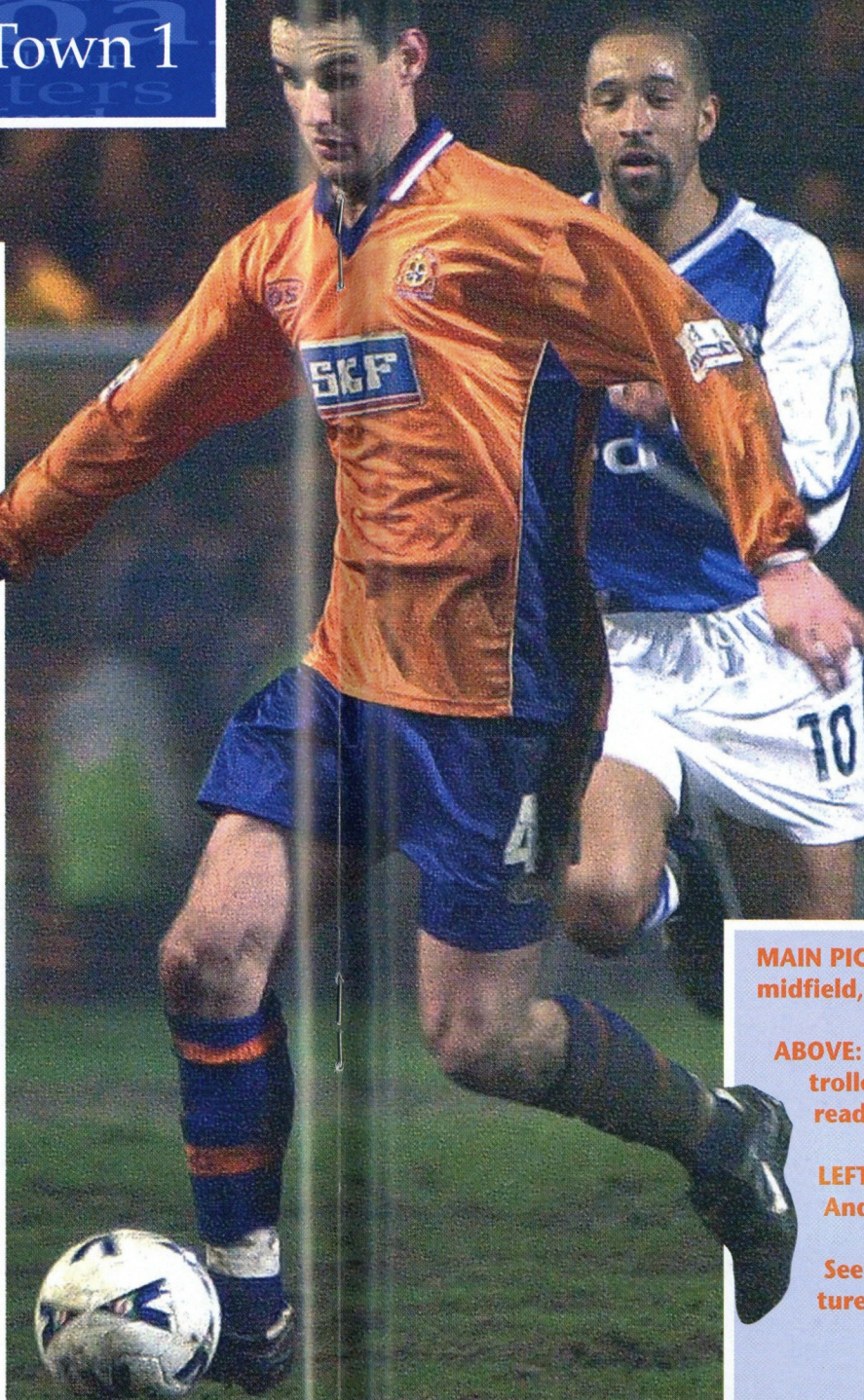
For all the latest news, views and interviews call

**CLUBCALL - 09068 121123**

(Calls charged at 60p per minute at all times)

# Photo Action

Peterborough Utd 1 Luton Town 1



**MAIN PICTURE:** Driving force - Matthew Spring surges from midfield, leaving Tony Shields in his wake.

**ABOVE:** New man at the ready - Steve Howard, whose controlled header led to the equaliser, making it clear he is ready to receive a pass.

**LEFT:** Midfield confrontation - Keith Rowland and Andy Edwards in close competition.

See pages 36 and 37 for a report and more action pictures.

Photos Gareth Owen/LTFC

# Entire system

Like a finely balanced ecosystem, SKF offers you a complementary range of products and services.

- Bearings
- Seals
- Housings
- Lubricants
- Maintenance tools
- Condition monitoring solutions
- Engineering advisory services
- Product refurbishment



# SKF

Helping your world run smoother

Tel: 01582 496436  
www.skf.co.uk



THE CANE INDUSTRIES (UK) LTD  
QUALITY CANE FURNITURE



Daytona



Toronto



San Francisco



Wyoming

Established 1980 SHOWROOM OPEN  
2-B LAPORTE WAY,  
LUTON, BEDS LU4 8RJ  
Tel: 01582 727123 Fax: 01582 727233

**www.superkarts.co.uk**

**SUPER KARTS**  
Indoor Karting Centre

For further information and bookings telephone **01462 485959**

2 Pixmore Avenue  
Letchworth  
Herts SG6 1JS

- Arrive and Drive Group Events
- Karting Clubs Birthday Parties
- Corporate Events Open Events



## Regal Litho

352 Selbourne Road  
Luton Beds LU4 8NU  
Tel: 01582 493332  
Fax: 01582 560731  
ISDN: 01582 560854  
Email: regallithold90@atlas.co.uk  
www.regallitho.co.uk

- ◆ Digital Artwork
- ◆ Conventional Repro
- ◆ Platemaking
- ◆ Colour Printing
- ◆ Finishing
- ◆ Distribution
- ◆ Stationery
- ◆ Point of Sale
- ◆ Brochures
- ◆ Commercial Print
- ◆ Magazine Publishing

The Publishers & Printers of:

**Scale  
Aircraft  
Modelling**

**Scale  
Aircraft  
Monographs**

For the latest ticket information call  
the Luton Ticket Office on:  
**01582 416976**



# Blast from the Past

## Roger Wash

### Brian Lewis spoils an unblemished record

Following promotion from Division Four in 1968, the Hatters started off the new campaign like a train and were unbeaten in their first eight games as they emerged as early leaders of the table.

In that golden autumn the die was cast for a tremendous home record with Oldham, Rotherham, Barnsley, Tranmere and Mansfield all leaving Kenilworth Road following heavy defeats in front of increasingly larger crowds. It is difficult to imagine now that a crowd of below 15,000 was regarded as small, and that was in the old Division Three!

After the first defeat of the season, a narrow 0-1 reversal at Brighton, the early promise started to fall apart as, although the home record was still excellent, the away form was abysmal with defeat after defeat putting pressure on the players to perform at Kenilworth Road. After seven straight away defeats the gloom was lifted slightly when the first visit to Northampton for league points since 1936/37, saw a couple of goals from Bruce Rioch earn us a well deserved 2-0 win on a dangerous, icy pitch. The crowd of 15,161 included a mass of scouts looking at the sharp shooting inside-forward.

Unfortunately Rioch's and the Town's season took another turn for the worse when the player was badly injured in the next home game, against Walsall, with the result that the return to the customary away defeat the following week at lowly Crewe was seen as the end to any promotion aspirations the team may have had.

Reading were the next visitors to Kenilworth Road and a crowd of 'only' 11,871 turned up on a cold February day to see if the Town could at least maintain their unbeaten home record. The reliable Ian Buxton continued to deputise for the injured Rioch, while Graham

French returned to the side at the expense of recent signing from Q.P.R, Mike Keen. As it turned out, the Town got off to a flying start when Alan Slough put us into the lead in the third minute with a great drive after his first attempt had been blocked, and had bounced straight back to him. The joy of the crowd was soon stilled however, when the injury prone winger, Mike Harrison, had to leave the field after ten minutes with yet another pulled muscle.

French on the other wing though was having a field day, beating the Reading full-back Alan Hitchcock, who was making only his second league appearance, at will, and putting over a stream of teasing crosses for Brian Lewis and Keith Allen in the box.

The Town increased their lead just before half time when Allen was brought down in the area by Ernie Yard, with Lewis making no mistake from the spot.

The second period saw Reading rely on spoiling tactics and physical play, and Dave Bacuzzi was lucky to receive only a booking for a foul on Buxton. The Town were not entirely blameless, however, with Lewis antagonising defenders as only he could.

Dick Spiers had been with Reading, his only club, since the mid-1950's and had never been sent off, but all that changed when he brought down Lewis, and in all honesty the retaliation was understandable.

As so often happens the ten men fought like twelve, and Reading pulled a goal back just before the end through Yard, but the Town managed to hang on by the skin of their teeth and were relieved to hear the final whistle which signalled a rather fortunate two points. Although we did not know it at the time, this game proved to be the turning point in the season and by the return, six weeks later, we



*Brian Lewis, antagonist in chief.*

had moved up to third place in the table following four straight wins. Two of those victories were, surprisingly, away from home at Bournemouth, on another icy pitch, and at Oldham where we scored via a fluke own goal in the first minute and managed to survive a bombardment for the next 89.

The game at Reading was played on a miserable March evening with thick fog shrouding Elm Park and thick mud underfoot. Although I was there it was difficult to see much of what was going on, and if the ball was over on the far side of the pitch reliance had to be made on the shouts of the unseen spectators.

It was a night for the brave and both sides showed great determination with a reshuffled Luton defence ably marshalled by Max Dougan, deputising as captain for Terry Branston, making sure that the Reading forwards did not pass.

Reading did though open the scoring on the hour when a soft header from Peter Silvester skidded under Luton goalkeeper Sandy Davie. The Town fought back however, and a minute later Laurie Sheffield took advantage of a loose ball in the box and ended up firing home into

an empty net. Despite some scares at both ends and some fine saves from Davie, the game finished all square with another point in the bag as the Town closed on the leaders. For the record, we went another eight games unbeaten but were unable to overtake the top two, Swindon and Watford. The early away form had cost us dear, and promotion would have to wait until the following season!

**Luton (first game):** Davie, Dougan, Bannister, Slough, Branston, Moore, French, Buxton, Allen, Lewis, Harrison (McDerment).

**Luton (second game):** Davie, Dougan, Bannister, McDerment, Slough, Moore, French, Allen, Sheffield, Lewis, Jardine.

**Reading (first game):** Brown, Bacuzzi, Spiers, Thornhill, Hitchcock, Yard, Allen, Collins, Sainty, Silvester, Harris.

**Reading (second game):** Brown, Bacuzzi, Meldrum, Yard, Spiers, Thornhill, Docherty, Sainty, Silvester, Collins, Harris.

*Roger Wash*



# EASTER HOLIDAY COACHING COURSES

Come and join in the fun!

Our Coaching courses are first and foremost a fun way to spend half term and offer a well organised programme supervised by our F.A. qualified coaches. The programme is designed to improve the youngsters game with our skills and technique coaching whilst encouraging good attitudes and behaviour.

## LUTON

MONDAY to THURSDAY 9th to 12th April  
Luton Regional Sports Centre

TUESDAY to FRIDAY 17th to 20th April  
Icknield Junior School

MONDAY to WEDNESDAY 23rd to 25th April  
Sacred Heart RC Junior School  
St Josephs RC Junior School

## DUNSTABLE

MONDAY to THURSDAY 9th to 12th April  
Hadrian Lower School

TUESDAY to FRIDAY 17th to 20th April  
Watling Lower School

## LEIGHTON BUZZARD

MONDAY to THURSDAY 9th to 12th April  
Gilbert Inglefield Middle School

TUESDAY to FRIDAY 17th to 20th April  
Memorial Park Playing Fields, Linslade

## TODDINGTON

MONDAY to THURSDAY 9th to 12th April  
Parkfields Middle School

## FLITWICK/AMPTHILL

TUESDAY to FRIDAY 17th to 20th April  
Redborne Upper School

## HENLOW

MONDAY to THURSDAY 9th to 12th April  
Henlow Middle School

All courses run from 10.00 am to 3.00 pm  
and are based around programmes for  
School Years 1 to 3 (beginners)  
and School Years 4 to 8 (Advanced)

For further information or to register  
a place simply ring the Club on  
01582 411622 or 07958 43 83 22



The Dunstable Gazette

The Luton News



# Community & Schools Football Programme



## HATTERS LAUNCH LTEF FOOTBALL EDUCATION AND DEVELOPMENT PROGRAMME

Luton Town in partnership with Barnfield College and Barton Rovers Football Club has launched an educational and football development programme aimed at local footballers aged between 16 and 19 who can demonstrate good footballing ability together with a desire to continue in further education in sports related subjects.

The full time study programme will be known as the LTEF (Luton Town Education and Football) Scheme and will be based at Barnfield College's well established and successful sports therapy/health and fitness courses. From September, students on the course will be able to combine gaining a vocational qualification in a sports related subject including football coaching together with a programme of professional football coaching from the Hatter's coaching staff.

Students on the course will represent Barton Rovers Football Club in both the AXA FA Youth Cup and Southern Counties Floodlit Youth League and Barnfield College in the South East SSA League. Those who show outstanding ability will be offered the opportunity to join Luton Town's youth scholarship scheme.

Kevin Thoburn, the Hatters Community Development Officer and Barton Rovers youth team manager will act as the LTEF Course co-ordinator and added that, "by bringing together Luton Town, Barton Rovers and Barnfield College to form the LTEF scheme we are offering our local footballers a chance to achieve their potential both on and off the football pitch through exciting full time playing and sports education and coaching career opportunities. The LTEF scheme represents another community partnership initiative by the Club aimed at helping young people achieving their potential".

Football trials and course interviews will be held in May. For further information and application forms, prospective candidates should either see their school careers advisor or head of PE or contact Barnfield College's course tutor.

**NEW Football Development Programme**

Further your education through football with the Football Development Programme

In association with Luton Town and Barton Rovers football clubs, Barnfield College offers three courses that combine gaining a qualification in a sports-related subject with professional football coaching by Luton Town.

- **FOUNDATION**  
Health & Fitness Certificate (IHHT)
- **INTERMEDIATE**  
Clinical Sports Therapy Diploma (IHHT)
- **ADVANCED**  
Sports Therapy National Diploma (BTEC)

Progress to advanced qualifications including university-level studies and/or employment in such fields as sports therapy, health and fitness, leisure centres and football clubs.

For more information, contact your school/college PE department, careers advisor, or telephone Dawn Stow:

**01582 569616**

Barnfield COLLEGE

www.barnfield.ac.uk



## INVESTMENTS



## Play FTSE with the professionals

Over the last 5 years the FTSE All-Share Index rose by 87%\* •

Apply by April 3rd for an Index Tracking ISA to make the most of this year's tax free allowance •



[www.nationwide.co.uk](http://www.nationwide.co.uk) | 0500 30 20 10 | or just call in

Banking | Credit Card | Insurance | Investments | Loans | Mortgages | Pensions | Savings

\*Source: Standard and Poor's Micropal 1/1/96 to 1/1/01, offer to offer, net income reinvested.

This information is based on our understanding and interpretation of current and proposed legislation and Inland Revenue practice, which is subject to change. The value of any tax relief is dependent on personal financial circumstances. The favourable tax treatment of ISAs may not be maintained. The 10% tax credit currently paid on dividends will be removed in April 2004. The value of investments, and the income from them, may go down as well as up and may not be guaranteed. You may not necessarily get back the full amount invested. Past performance is not necessarily a guide to the future. Nationwide Building Society, Nationwide Life Limited and Nationwide Unit Trust Managers Limited represent only the Nationwide Marketing Group, which is regulated by the Personal Investment Authority for life assurance, pensions and unit trust products. Nationwide Unit Trust Managers Limited is also regulated by IMRO. Nationwide Unit Trust Managers Limited is registered in England No. 2022725. Registered office: Nationwide House, Pipers Way, Swindon, Wiltshire, SN38 1NW. Operations Support Telephone: 01793 732300.

The Junior Hatters are sponsored by London-Luton Airport



# Junior Hatters

TONIGHT we welcome not only Junior Hatters to Kenilworth Road, but also our counterparts from Reading, Richard Wickson and the Young Royals. They are always welcoming hosts at the Madejski Stadium, and we are glad to repay their hospitality.

We had almost a full coach for the trip to Peterborough, and had a good time on the journey as well as at the match. Tom Brandham, 14, of Cowper Street, Luton, was our mascot, selected during the journey. We now have a run of four consecutive home games, but are already planning an Easter Monday outing to see the Town play Wrexham, and details will be in Saturday's matchday magazine.

WE have three mascot groups today, memories of the matches at home to Bristol Rovers and Cambridge, and away to Millwall. For the Rovers game our mascot was Stuart Atha, from Farnborough, who was joined by commercial mascot Steve Bowron, from Luton Road, Toddington.

In the picture from the Cambridge game, the Junior Hatters mascot is Nicholas Hodges, from Barford Rise, Luton, while at the New Den Vicki Usher, 15, from Scarborough Avenue, Stevenage, was selected on the coach going to the game.



## Tonight's Mascot



THE luck of the draw was due to give Richard James Owen, from Chard Drive, Luton, an early "birthday present" when tonight's game was originally scheduled. He celebrated his eighth birthday on February 23, and by then he expected to have pictures and happy memories of a special day at Kenilworth Road. He was chosen to be the Junior Hatters mascot for the fixture against Reading which was washed out by the bad weather on January 27.

But his patience has been rewarded, and this evening becomes a belated present for Richard. He attends Warden Hill Junior School, and comes to games with his dad, and his favourite player is Matthew Spring. As well as supporting the Town he likes cricket and his PlayStation.

We also have a ball boy and a ball girl this evening, Robert Moss and Vicky Usher.

If you would like to join the Junior Hatters, call the Club Shop on:

**01582 411622**



**KIDS  
AT  
KENILWORTH**

SPONSORED BY

**SKF**

**Sainsbury's**

# The Best in post-match reports

*The Luton News* *The Dunstable Gazette*



ON SALE  
EVERY WEDNESDAY  
STILL ONLY 25P

©T&C-PROJ-053-W34

# Hatters on Card

Alan Robinson

OUR game against Oxford which was postponed last month was due to be played on St. Patrick's day, and to make the occasion it seemed appropriate to feature a native of the Emerald Isle. And who better than Mal Donaghy, one of the most popular players ever to pull on a Luton Town shirt? With 485 league and cup outings for Luton, Mal stands fourth in our all-time appearances list, and was included on several trade cards during his time here, including this offering from Shoot! magazine in 1983.

Malachy Donaghy was born in Belfast on September 13, 1957, one of ten children. As a youngster he excelled at Gaelic football, but took up soccer after leaving school, when he joined Larne Town.

It was here that he took the eye of David Pleat, who persuaded the shy Irishman to come to Luton in the summer of 1978. The £20,000 deal was one of the best Pleat ever struck during his two spells in charge here. Signed as a defender or midfielder, Donaghy went straight into the Town side for the opening fixture of the 1978-79 season, which resulted in a 6-1 win over Oldham, and after sampling a variety of positions he settled down in the No. 4 jersey. The following two seasons Donaghy was ever-present at left back, before switching to central defence following Paul Price's departure to Spurs in the summer of 1981.

By this time Donaghy was a regular in the Northern Ireland team, having won the first of his 91 caps in May 1980. The first 58 were awarded while he was with the Town, which makes him easily our most-capped international.

The 1981-82 season was a triumph for Donaghy and his team-mates - he was once again ever-present as the Second Division championship was won. He also chipped in with nine league goals that year, which was more than half his eventual total of 16 for the club. Donaghy continued his progress in the top flight, and was rarely absent from his now favoured No. 6 shirt. His remarkable consistency can be measured by the fact that following Luton's promotion he

missed only four games in five seasons, and for the last three of those campaigns he played in every game.

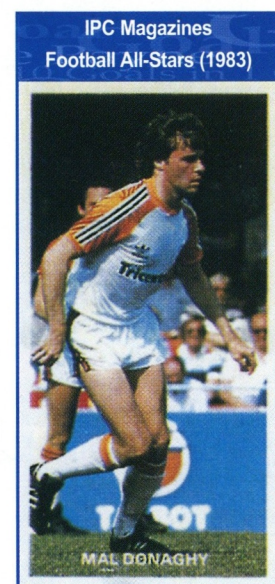
When Steve Foster came in December 1984, he and Donaghy formed a defensive partnership that was among the best in the land. Apart from his solid reliability and consistency, Donaghy's main attributes were speed, anticipation and no-nonsense tackling. He was one of those players who never hit the headlines, but was certainly missed on the rare occasions he was not in the team.

Of course, other clubs noticed him, and Luton could have sold him many times, but his family were happy in Luton and he was content to remain here. However, after helping the Town to the Littlewoods Cup victory in 1988, Manchester United came in for Donaghy, and, at 31 and after careful consideration, he took the opportunity to end his career at a glamour club. Luton had the consolation of banking a cheque for £650,000.

Donaghy returned for a spell on loan, during which time he had a well-deserved testimonial in January 1990, but he enjoyed nearly four years at Old Trafford, during which he managed 90 league appearances. He was on the bench for United's 1991 Cup Winners Cup success in Rotterdam. There was talk of him coming back to Kenilworth Road, but in 1992 he joined Chelsea, where he enjoyed a

couple more seasons before retiring at the top, and then heading back to Ireland.

These cards, on which Donaghy is No. 5 of a set of 20, are not easy to get hold of today. This is partly due to the fact that, although there is a comprehensive text on the reverse, there is no mention of the series title, or manufacturer, which makes identification difficult. The same goes for a series of Goalscorers, again comprising 20 subjects, given away by the same magazine the following year. This later set featured Luton's Paul Walsh in England strip. Like players of the calibre of Donaghy and Walsh, these items are now keenly sought-after.



Up and Running!  
Luton Town's very own official website.

[www.lutontown.co.uk](http://www.lutontown.co.uk)

Alan Robinson

# Action Replay

Peterborough Utd 1 Luton Town 1 (HT 0-0)

THE RIVAL managers underlined the old football cliché about games being seen differently by every spectator. Peterborough boss Barry Fry was "bitterly disappointed" that his side had done much more attacking than the Town, but failed to win. Joe Kinnear was equally niggled that for all their threat, Peterborough would never have scored had not Andy Clarke been left unmarked six yards from goal to meet a corner. Fortunately for the Town, Lee Mansell was again in the right place at the right time to knock in an equaliser, but a single point was much less than we wanted in the scrap to close the gap between dropping zone and safety mark.

Probably the pitch was the night's winner. After heavy rain it was a real sodden pudding, and the pre-match inspection by the ref must have been a close call. In the event, both sides deserved credit for ploughing on, but it was no night for pretty football.

Nathan Abbey had much more to do than home goalkeeper Mark Tyler, although Fry exaggerated a little when he claimed: "I can't remember Tyler having to make a save except for the goal. Luton defended well but their attack didn't cause us too many problems and we made enough chances to have won the game."

The Town had Steve Howard making his debut after his deadline day move from Northampton, and he offered an extra option in attack. He looked capable of using his height and strength, and played a crucial role in the Town's goal.

But in a muddy midfield, neither side had anyone able to really dig in and take charge, each side cancelling out the other. In a first half which the Town shaded, Tyler was fortunate that a drive by Mansell, and a thundering header by Howard from a corner by Matthew Spring, both went straight to him. Peterborough had slightly the better of the second half, although neither side really mastered the clinging mud.

Abbey made a good double save from Martin Williams and Clarke, on a night when the corner count was 14-3 to Peterborough. The one that mattered came in the 75th minute, with Richard Forsyth playing in an inswinger. Clarke, a 5ft 10in striker who was bought by Joe Kinnear for Wimbledon from Barnet, was given the freedom of the box to direct his header into the net.

At least the Town had the character to fight back, and the equaliser was beautifully worked. Spring floated a diagonal free kick to the edge of the box, and Howard rose clear of all opposition to direct a cushioned header into the path of Mark Stein, who had just come on as a sub for Liam George. Tyler managed to block Stein's shot, but Mansell was first to the rebound and knocked in his fifth goal in nine starts. We might have been a touch lucky - the shot went through Stein's legs, who jumped smartly out of the way. Had the ball deflected off him into the net, the goal would almost certainly have been chalked off for off-side.

## Match Details

**Luton Town:** Abbey, Boyce, McLaren, Dryden, Helin, Mansell, Spring, Rowland, Taylor, Howard, George (Stein 73 mins). Unused subs: Stirling, Watts, Douglas, Ovendale.

**Booked:** Keith Rowland, 81 minutes, foul on Tony Shields.

**Peterborough:** Tyler, Hooper, Morrow, Rea, Edwards, Farrell, Clarke, Martin Williams (Lee 61 mins), McKenzie, Shields, Forsyth. Unused subs: Scott, Oldfield, Hanlon, Tom Williams.

**The Goals:** 1-0 75 mins - Andy Clarke unmarked on the edge of the six-yard box for a header from a corner by Richard Forsyth; 1-1 79 mins - Lee Mansell sweeping in the rebound from the edge of the box after Mark Stein's effort was blocked.

**Referee:** David Laws

**Attendance:** 5,425 including 1,342 shouting for the Town.

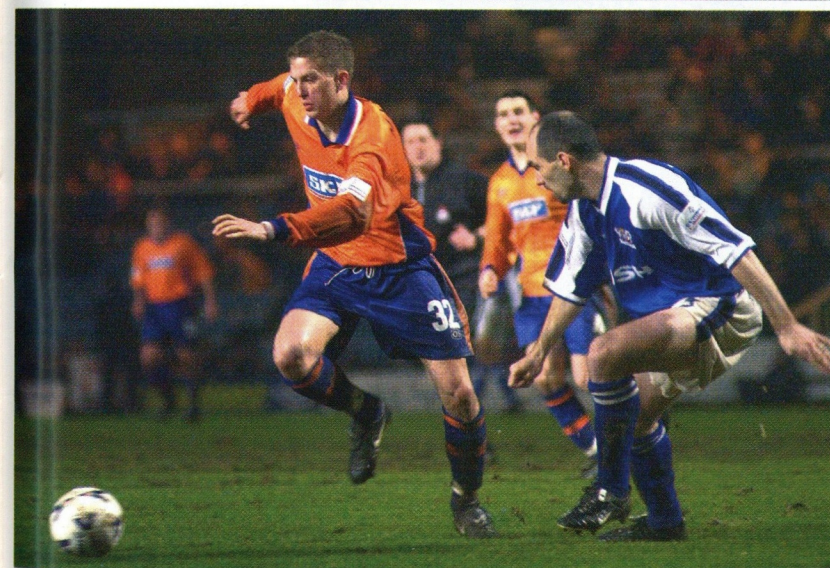


*DOUBLING UP: Peterborough try to keep Steve Howard quiet by putting two defenders up against him.*

*ON ITS WAY: Mark Stein is close to scoring, and the goal was delayed for only a second or two, with Lee Mansell taking his chance from the rebound.*

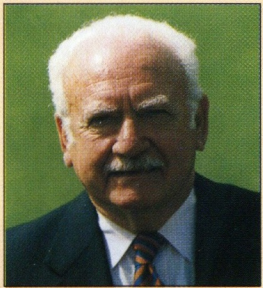


*SWAGGERING: Lee Mansell in typical midfield action.*



Up and Running!  
Luton Town's very own official website.  
[www.lutontown.co.uk](http://www.lutontown.co.uk)

## POLICY STATEMENT - SPECTATOR SAFETY



The Chairman and Directors of Luton Town Football Club undertake to ensure as far as humanly possible that all activities that take place at the Kenilworth Road Stadium are conducted in such a way that as far as is reasonably practical the safety of everybody at the stadium is assured. It is the policy of the Chairman and Directors to ensure that the conditions set out in the General Safety Certificate, issued under the Safety at Sports Grounds Act, 1975, are fully complied with.

It is the Club's policy to provide at any activity sufficient and competent staff and management systems to ensure as far as humanly possible the safe admission, accommodation and exiting of spectators attend the stadium. These systems will be subject to continual monitoring, testing and updating where necessary.

April 2001

*Mike Watson-Challis,*

Chairman

Find Freedom within.....

**Fitnessfirst**  
Health Clubs



no other Health Club offers you more for less...  
.....with no need for contracts

Fitness First Luton, Skimpot Lane, Luton, Beds, LU4 0JB  
Tel: 01582 560200  
[www.fitnessfirst.co.uk](http://www.fitnessfirst.co.uk)

For the latest ticket information call  
the Luton Ticket Office on:  
**01582 416976**

# Hatters Chatter

International football comes to Town

INTERNATIONAL football returned to Kenilworth Road when for the second time the ground hosted an England ladies game. A crowd of 3,602, many of them youngsters, created a good, boisterous atmosphere, and enjoyed seeing England win 4-2 in a game full of good passing football.

The Spanish girls took an early lead with a shot that went through the luckless England goalkeeper, but Kelly Smith, the only English girl signed to play women's professional produced a neat turn and left foot shot for the equaliser, and England took command from then on. Sue Smith, a midfielder from Tranmere Rovers, and the Nationwide International Player of the Year in the women's game in 1999, helped herself to a smart hat-trick.

Not everything was ladylike - the hat-trick hero also collected a booking for a touch of gamesmanship to prevent a quick free kick, and Tara Proctor was carried off



**SHARP STRIKER:** Kelly Smith, whose well-taken equaliser set up England for victory.

on a stretcher with a painful ankle injury after a crunch Spanish tackle.

But it was a sporting encounter, with the girls showing that physical strength is not the be-all and end-all of football - a lot of the best moves from both sides were an illustration of the value of the old adage "Let the ball do the work."

A lot of people from Luton Town also did plenty of work to enable the game to take place, and the FA have already been in touch to express their grateful thanks for the arrangements made and facilities offered for a game that was a friendly in preparation for England's participation in the UEFA women's championships in Germany in the summer.

Town chairman Mike Watson-Challis said he was delighted to have the club host the game, and hoped that we would see more international football at Luton in the not too distant future.



**HAPPY:** Hat-trick hero Sue Smith shows how much she enjoys her football.



**FRIENDLY RELATIONSHIPS:** The teams line up together for the national anthems before kick-off.

Up and Running!  
Luton Town's very own official website.  
**[www.lutontown.co.uk](http://www.lutontown.co.uk)**

# Leisure Wear



## College Style Luton Town Hooded Sweatshirt

Available in adult sizes only S,M,L,XL

£27.50

## Mad Hatter Polo Shirt

Black with orange and white chest stripe, velcroed placket instead of buttons.

Available in:

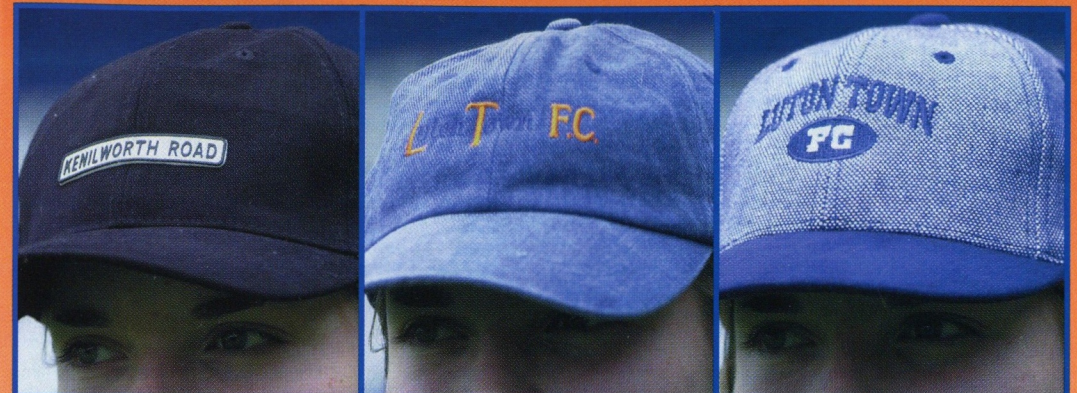
Children sizes: 3-4yrs, 5-6yrs, 7-8yrs, 9-11yrs, 12-14yrs

£22.00

Adult sizes: S,M,L,XL,XXL,XXXL

£29.50

# Caps & Car Accessories



Black Kenilworth Road Baseball Cap

Was ~~£8.95~~ Now £4.95

LTFC Denim Baseball Cap

Was ~~£8.95~~ Now £4.95

Navy Luton Town FC Baseball Cap

Was ~~£8.95~~ Now £4.95



Tax Disc Holder

£1.00

Car Supporter Sticker

£1.00

Car Scarf Sticker

£1.00

Car Crest Sticker

£1.50

# AVAILABLE NOW IN THE CLUB SHOP

STILL 20% OFF ALL LEISURE WEAR AND SOME END OF LINE CLEARANCE REDUCTIONS NOW AT HALF PRICE



# The Reserves

## Kevan Broadhurst



Norwich City 0  
Luton Town 0

FACING the Avon Insurance Combination leaders, who had lost only once all season, our performance was quite pleasing for several reasons. We deserved the draw, having as much of the play as Norwich, although our final ball and end product was not always up to standard.

Neither side had any really good chances, with both teams working hard, and a bonus for us was the continued progress of men coming back after injuries, Marvin Johnson, Gavin McGowan, Adam Locke and Julian Watts.

**Luton Town:** Ward, McGowan, Watts, Johnson, Stirling, Scarlett, Locke, Bakalli (Brennan 75 mins), Holmes, Fotiadis (Kandol HT), Stein (Murphy 80 mins).

### Luton Town 2 Southend Utd 0

HAVING done well at Norwich, and drawn, we did not play particularly well at home on Wednesday, but won - funny old game, as they say! The fact that we had four trialists in the side did not help our teamwork, although one of them scored an excellent goal. Scott Ward had to make some good saves when we allowed Southend to get through us, and our passing and movement needs to be much better.

A piece of very good individual skill saw us take a 25th-minute lead. Adrian Bakalli, looking for a club after being released by Watford, netted from about 35 yards after collecting a clearance by the keeper and seeing him well off his line. It was reminiscent of Matthew Taylor's goal against Cambridge, except that Bakalli controlled the ball first with two touches before despatching it. Jude Stirling went on for the second half, and a long throw by him led to Tesor Kandol heading in with 15 minutes to go.

**Luton Town:** Ward, Shepherd, Breitenfelder, Haveron, McGowan (Stirling HT), Scarlett (Holmes 70 mins), Bakalli, Mohammed, Brennan, Kandol, Thomson (Murphy 70 mins).

WE enjoyed a well-deserved 3-0 win over Brentford at Baldock, and a report will be in Saturday's matchday magazine. Tomorrow we are due to be away to Northampton (2pm).

**Appearances (as sub in brackets):** Breitenfelder 16, Scarlett 16, Stirling 15(1), Brennan 13(1), Standen 11(5), Kandol 9(3), Thomson 9(1), Holmes 9(1), Abbey 9, Ayres 8, McGowan 7, Owendale 6, Johnson 5, Ward 5, Dogbe 4(3), Baptiste 4(2), Stein 4, Locke 4, Fraser 4, Mansell 3(1), Carroll 3(1), Karlson 3, Douglas 3, Fotiadis 3, Watts 3, Carter 3, Glasgow 2(2), Minton 2(1), James-Barriteau 2(1), George 2, Bakalli 2, Walker 2, Piercewright 2, Murphy 1(5), Bruce 1(4), Osborn 1(3), Dillon 1(2), Downer 1(1), Shepherd 1, Boyce 1, McLaren 1, Everitt 1, Mortara 1, Murffin 1, Codner 1, Tait 1, Onachie 1, Okai 1, Dickie 1, Carham 1, Joynson 1, Mason 1, Showunmi 1, Rose 1, Gray 1, Pihamma 1, Saker 1, Shepherd 1, Haveron 1, Mohammed 1, Clarke 0(1), Carroll 0(1), Newell 0(1), Essandoh 0(1).

**Goals:** Brennan 5, Thomson 5, Kandol 5, Stein 2, Ayres 1 pen, Scarlett 2, Holmes 2, Carter 1, Baptiste 1, George 1, Osborn 1, Bakalli 1, OG 2

Avon Insurance Combination							
	P	W	D	L	F	A	Pts
Norwich	20	14	5	1	56	19	47
Fulham	18	14	2	2	50	11	44
Reading	19	13	2	4	31	14	41
QPR	17	11	2	4	25	10	35
Cambridge	18	10	4	4	29	22	34
Oxford	20	9	3	8	30	31	30
Millwall	18	8	5	5	24	16	29
Swindon	20	8	5	7	31	26	29
Gillingham	12	8	1	3	22	13	25
Crystal Palace	17	7	4	6	26	27	25
Brighton	15	7	2	6	31	27	23
Brentford	17	5	8	4	19	23	23
<b>Luton Town</b>	<b>15</b>	<b>6</b>	<b>4</b>	<b>5</b>	<b>19</b>	<b>16</b>	<b>22</b>
Portsmouth	15	5	5	5	18	19	20
Bristol Rovers	15	6	2	7	18	22	20
Southend	18	5	5	8	24	32	20
Bournemouth	19	5	5	9	23	35	20
Cheltenham	18	5	4	9	22	37	19
Peterborough	18	5	2	11	17	26	17
Colchester	15	3	3	9	16	25	12
Northampton	14	4	0	10	15	29	12
Wycombe	16	3	3	10	12	36	12
Bristol City	13	2	5	6	11	18	11
Barnet	14	2	2	10	18	32	8
Leyton Orient	17	1	3	13	14	33	6

### Avon Insurance Combination League Results and Fixtures

AUG					
Wed 16	Barnet	H	3-1	Brennan 2, Kandol	
Mon 21	Peterborough (LC)	A	2-1	Kandol, Carter	
Tues 29	Millwall	A	0-2		
SEPT					
Wed 13	L. Orient	A		postponed	
Wed 20	Gillingham (LC)	H	1-1	Ayres pen	
OCT					
Wed 4	Fulham	H	4-1	Thomson 3, Brennan	
Wed 18	Gillingham	A	1-1	Brennan	
NOV					
Wed 1	Reading	A	0-2		
Wed 15	Bristol City	A	0-0		
Wed 29	Swindon	A	2-4	Scarlett, Thomson	
DEC					
Mon 6	Portsmouth	H*	3-0	Holmes, OG 2	
Mon 18	Oxford Utd	H*	1-0	Baptiste	
JAN					
Thurs 4	Norwich (LC)	A	0-2		

\*To be played at Baldock Town.

Wed 10	Wycombe	A	0-1	
Mon 15	Brighton	H	Postponed	
Wed 24	Bournemouth	A	2-1	George, Stein
Mon 29	Bristol Rov	H*	Postponed	
FEB				
Mon 12	Cheltenham	H*	Postponed	
Wed 21	Cambridge Utd (LC)	H	0-2	
Mon 26	Colchester	A	1-1	Stein
MAR				
Thurs 1	Dunstable (BPC)	A	4-1	Brennan, Kandol, Scarlett, Osborn
Mon 12	Norwich City	A	0-0	
Wed 14	Southend	H	2-0	Bakalli, Kandol
Wed 21	Peterborough	A	2pm	postponed
Mon 26	Brentford	H*	3-0	Thomson, Kandol, Holmes
APRIL				
Wed 4	Northampton	A	2pm	
Thur 12	Brache Sp (BCP)	A	7.45	
Wed 18	C. Palace	H	2pm	
MAY				
Tues 8	QPR	A	2pm	



# Youth Soccer

## Brian Stein



### Luton Town 2 Plymouth Argyle 2

TWO goals in the last 15 minutes gave us the draw we deserved in our first match in the Southern Section Merit Division of the Football League Youth Alliance. We put in a very good performance, spoiled only by missing a lot of chances. We must have had ten in the first half alone, but failed to score through a mixture of bad luck, good defending, and inaccurate shooting. By contrast, Plymouth had three shots in the 90 minutes, and scored twice.

They took the lead after 15 minutes when a striker very bravely went diving in for a header as Adam Everitt tried to clear. The lad scored, and was then taken to hospital for treatment for a broken nose.

We had more of the first half play without scoring, and the feeling was that if we kept going goals would follow. Daryl Murphy, who passed up a hat-trick at least, headed over the bar from six yards, and James Osborn missed a couple of decent chances.

Chris Dillon looked a certain scorer when he was left with an open goal after a good ball by Murphy, but a defender appeared from nowhere to clear, and Plymouth broke to score a second goal, completely against the run of play. From nearly being 1-1 we had gone to 0-2 with 20 minutes left.

Parys Okai was sent on as a sub for John Carroll, to give us fresh legs on a tacky pitch, and our domination con-

tinued. Within five minutes Osborn hit a free kick from the edge of the box which was blocked, and Murphy netted from the rebound. We sent on a second sub, Duane Clarke, to give us three at the front in the closing stages, and with four minutes to go some semblance of justice was done when Clarke got the equaliser after good work by Dillon.

**Luton Town:** Chatfield, Leary, Carroll (Okai 70 mins), Deeney, Everitt, Gillman, Osborn (Clarke 75 mins), Foley, Murphy, Dillon, O'Leary.

A DECISION by the Football League not to play Youth Alliance games postponed in the winter has left us with a light fixture list for the rest of the season, in our Merit Division. We were due to be at home to Portsmouth on Saturday, and a report will be in next Saturday's match-day magazine.

**Appearances (as sub in brackets):** Dogbe 25, Dillon 23(2), Gillman 22, Bruce 21(2), Mansell 21, Leary 20(2), O'Leary 19(6), Osborn 19(3), Ward 16, Deeney 15(2), Carroll 15(2), Clarke 14(9), James-Barriteau 12(4), Chatfield 10, Murphy 8(1), Jeffrey 4(10), Foley 4(5), Everitt 4, Mortara 3, Nurse 2(2), Standen 2, Okai 1(10), Meike 1(1), Carter 1, Minton 1, Green 1, Howell 0(1), Koo-Boothe 0(1), Fashanu 0(1), Ramirez 0(1),

**Goals:** Dillon 15, Clarke 8, Osborn 4, Leary 4, Murphy 4, Mansell 3, O'Leary 3, Carroll 3, James-Barriteau 1, Gillman 1, Jeffrey 1, Deeney 1, OG 1

### FOOTBALL LEAGUE YOUTH ALLIANCE South East Conference Results and fixtures

AUG					
16	Southend	H	2-2	Carroll, James-Barriteau	
26	L. Orient	A	0-4		
SEPT					
2	Portsmouth	H	1-1	Dillon	
9	Wycombe Wdrs	H	2-0	Dillon 2	
16	Northampton	A	1-1	Dillon pen	
23	Cambridge	H	1-2	Dillon	
OCT					
7	Barnet	A	4-0	Gillman, Leary, O'Leary, Mansell	
14	Brighton	H	1-2	Dillon	
17	FAYC1 Lincoln Utd	A	2-2	Carroll pen, Dillon	
21	Brentford	A	0-0		
28	Colchester	H	4-2	Dillon, Leary, Osborne, Jeffrey	
31	FAYC1R Lincoln Utd	H	2-1	Clarke, Deeney	
NOV					
4	Gillingham	A	2-3	Dillon, Mansell	
11	Southend	A	2-0	Clarke, Dillon	
14	FAYC2 Walsall	H	4-1	Mansell, Clarke, Osborne, Dillon	
18	L. Orient	H	3-3	Leary, O'Leary, Murphy	
25	Portsmouth	A	postponed		
28	FAYC3 Bournemouth	H	4-0	Osborne 2, Murphy, Dillon	
DEC					
9	LC Cambridge Utd	H	2-2	Dillon, Murphy	
16	Wycombe Wdrs	A	1-2	Dillon	
JAN					
13	Barnet	H	3-1	Clarke 2, Leary 1	
20	Cambridge	A	postponed		
27	Brighton	A	postponed		
16	FAYC4 Manchester City	H	2-3	Leary, Clarke	
FEB					
3	Brentford	H	postponed		
10	Colchester	A	0-1		
14LC	Colchester	A	1-2	Carroll	
17	Gillingham	H	0-1		
24	Northampton	H	3-1	Clarke, Dillon, OG	

### FL YOUTH ALLIANCE MERIT DIVISION Southern Section, Division One Results and Fixtures

MARCH					
3	Plymouth	H	2-2	Murphy, Clarke	
31	Portsmouth	H			
APRIL					
14	Swansea City	A			
7	Cardiff City	A			
21	Wycombe Wdrs	H			
MAY					
5	Brentford	A			

### South East Conference Under-19 section

	P	W	D	L	F	A	Pts
Cambridge Utd	16	11	3	2	33	15	36
Colchester	19	11	3	5	40	27	36
Brighton	15	10	3	2	32	16	33
Leyton Orient	17	9	5	3	43	21	32
Wycombe Wdrs	19	9	4	6	28	22	31
Portsmouth	17	6	5	6	26	26	23
Brentford	16	5	6	5	27	23	21
<b>Luton Town</b>	<b>16</b>	<b>5</b>	<b>5</b>	<b>6</b>	<b>27</b>	<b>24</b>	<b>20</b>
Southend	18	5	4	9	27	43	19
Gillingham	20	3	6	11	25	47	15
Northampton	19	3	4	12	18	39	13
Barnet	16	1	4	11	16	39	7

For all the latest news, views and interviews call

**CLUBCALL - 09068 121123**

(Calls charged at 60p per minute at all times)

Up and Running!

Luton Town's very own official website.

**www.lutontown.co.uk**

**Campaign Records**

Highest Gate  
22,133  
Stoke v Port Vale

Lowest Gate  
1,584  
Wrexham  
vs Cambridge

Highest  
Aggregate  
Score  
Brentford .....2  
Bristol Rovers .6

Bristol City .....6  
Cambridge .....2

Luton .....5  
Swansea .....3

Wrexham .....5  
Oxford .....3

Biggest  
Home Win  
Cambridge .....6  
Rotherham .....1

Reading .....5  
Oldham .....0

Millwall .....5  
Oxford .....0

Millwall .....6  
Colchester .....1

Port Vale .....5  
Peterborough .0

Biggest  
Away Win  
Brentford .....2  
Bristol Rovers .6

Peterborough .0  
Stoke .....4

Consec. Wins  
Walsall,  
Rotherham .....5

Games  
Unbeaten  
Wigan .....18

Consec. Defeats  
Bury, Swansea 5  
Winless Run  
Bristol Rovers,  
Cambridge ...12

Walsall

Bristol Rovers

Swansea City

# Nationwide2Stats

Statistics Compiled by  
Football  
Information  
Services  
Tel: 0151-632 5679

## Div.2 Results Grid

HOME GOALS									
	0	1	2	3	4	5	6	7	8
AWAY GOALS	0	39	43	27	19	10	3		
1	50	58	37	25	7	5	2		
2	19	22	21	15	3		1		
3	9	10	9	6	3	2			
4	1	4		4					
5			1						
6				1					
7									
8									

for clubs below, read  
across row to right  
for Big Wins/Defeats  
and last 5 results

## Division 2 Ave. Attendances

	3000	6000	9000	12000	15000
Bournemouth					4,111
Brentford					4,892
Bristol City					10,366
Bristol Rovers					7,253
Bury					3,324
Cambridge					4,274
Colchester					3,476
Luton					5,866
Millwall					10,711
Northampton					5,768
Notts County					5,398
Oldham					4,672
Oxford					5,056
Peterborough					6,006
Port Vale					4,372
Reading					11,839
Rotherham					5,416
Stoke					13,338
Swansea					5,549
Swindon					6,114
Walsall					5,612
Wigan					6,583
Wrexham					3,584
Wycombe					5,389

## Biggest Wins & Losses

Win - vs.	Defeat - vs.
4-0 <b>Bristol City</b>	1-3 <b>Cch/Rth</b>
3-0 <b>Oxford</b>	2-6 <b>B Rovers</b>
6-2 <b>Cambridge</b>	0-4 <b>Col/Bmt</b>
6-2 <b>Brentford</b>	1-4 <b>Stoke</b>
3-0 <b>Swansea</b>	0-4 <b>Millwall</b>
6-1 <b>Roth'ham</b>	2-6 <b>Bristol City</b>
4-0 <b>Bristol City</b>	1-6 <b>Millwall</b>
5-3 <b>Swansea</b>	0-4 <b>Swansea</b>
6-1 <b>Colchester</b>	2-3 <b>3 clubs</b>
2-0 <b>4 Clubs</b>	0-3 <b>3 clubs</b>
4-1 <b>Roth'ham</b>	1-5 <b>Walsall</b>
5-1 <b>Wrexham</b>	0-5 <b>Reading</b>
3-1 <b>Nrthmptn</b>	0-5 <b>Millwall</b>
4-0 <b>Swindon</b>	0-5 <b>Port Vale</b>
5-0 <b>Peterboro</b>	0-4 <b>Cmbridge</b>
5-0 <b>Oldham</b>	0-4 <b>Bristol City</b>
3-0 <b>5 clubs</b>	1-6 <b>Cmbridge</b>
4-0 <b>Oxfo/Stke</b>	0-3 <b>Walsall</b>
4-0 <b>Luton</b>	1-5 <b>Rdg/Wal</b>
3-0 <b>Bury/Oldh</b>	0-4 <b>P'boro</b>
5-1 <b>3 clubs</b>	1-3 <b>Wy/Swa</b>
3-1 <b>3 Clubs</b>	1-3 <b>Millwall</b>
4-1 <b>Bury</b>	1-5 <b>Oldham</b>
3-1 <b>3 Clubs</b>	1-5 <b>Walsall</b>

## Last 5 Home Results

Bournemouth	DLWWW
Brentford	LWWDW
Bristol City	DLWDD
Bristol Rovers	DDWWD
Bury	WWWDW
Cambridge	LLWLW
Colchester	LWLWL
Luton	LLWDW
Millwall	LWWDW
Northampton	DWVWL
Notts County	LWDDL
Oldham	LWLWD
Oxford	LDLL
Peterborough	WVDDW
Port Vale	WVDDW
Reading	DVWLW
Rotherham	WVWWW
Stoke	DWLLW
Swansea	DLLDL
Swindon	DLWDL
Walsall	WLLWD
Wigan	DDDDD
Wrexham	WVWLL
Wycombe	LWLDL

## Referees Report

G	RC	YC	Av.	Yell
Fletcher	22	3	103	4.68
Olivier	21	4	88	4.19
Prosser	18	7	75	4.17
Hall	25	11	100	4.00
Mathieson	25	2	99	3.96
Cooper	14	5	53	3.79
Dowd	22	8	83	3.77
Harris	8	2	30	3.75
Riley	10	3	37	3.70
Foy	23	5	85	3.70
Knight	12	5	43	3.58
Jordan	22	2	77	3.50
Ryan	18	4	63	3.50
Winter	9	0	31	3.44

Grid shows the number of games ending with each result, e.g. 58 matches have been 1-1 draws and 50 games have ended 1-0 away win.

## Hotshots - Div.2 Clubs' most prolific marksmen, inc. the difference their goals made

see key below	Leading Scorer	GS	1stGI	Sc1	Sc2	HT	Gms	Ave	W\L	W\D	D\L	Pts	Run	Dry
Bournemouth	Defoe	14	5	10	2	0	22	0.64	1	3	2	11	10	6
Brentford	Owusu	7	2	7	0	0	25	0.28	0	2	3	7	2	6
Bristol City	Thorpe	18	3	10	1	2	35	0.51	1	2	2	9	2	5
Bristol Rovers	Ellington	10	3	6	2	0	31	0.32	1	1	4	9	3	10
Bury	Newby	5	3	3	1	0	13	0.38	0	4	0	8	1	3
Cambridge	Youngs	12	2	8	2	0	33	0.36	0	3	2	8	3	5
Colchester	Stockwell	9	2	5	2	0	38	0.24	1	1	2	7	1	16
Luton	George	5	0	5	0	0	33	0.15	0	0	1	1	2	9
Millwall	Harris	24	8	11	2	3	37	0.65	1	4	2	13	3	3
Northampton	Forrester	16	9	12	2	0	37	0.43	1	5	5	18	5	8
Notts County	Stallard	14	7	14	0	0	35	0.40	0	5	3	13	3	5
Oldham	Corazzini	8	3	4	0	1	34	0.24	0	2	0	4	1	10
Oxford	Beauchamp	6	1	4	1	0	34	0.18	0	1	0	2	1	7
Peterborough	McKenzie	11	3	7	2	0	23	0.48	1	1	2	7	2	3
Port Vale	Naylor	9	4	5	2	0	32	0.28	0	2	0	4	2	7
Reading	Cureton	19	7	13	0	2	35	0.54	0	7	2	16	3	5
Rotherham	Robins	22	6	13	3	1	35	0.63	2	5	3	19	2	2
Stoke	Thorne	16	6	7	3	1	30	0.53	1	4	2	13	3	6
Swansea	Savarese	12	2	3	3	1	23	0.52	1	0	4	7	2	5
Swindon	Invincible	8	2	4	2	0	35	0.23	0	2	1	5	2	13
Walsall	Leitao	15	8	15	0	0	38	0.39	0	4	1	9	3	5
Wigan	Liddell	9	4	7	1	0	36	0.25	0	5	0	10	3	9
Wrexham	Trundle	7	0	4	0	1	9	0.78	1	2	0	7	5	2
Wycombe	Rammell	10	3	4	3	0	23	0.43	2	2	1	11	2	4

Key: GS=Goals Scored; 1st GI=Games Scored 1st Goal; Sc1=Games Scored 1 Goal; Sc2=Games Scored 2 Goals; HT=Hat-Tricks; Each club's leading league scorer and their goals per game (Ave). Next 3 columns show taking off their goals, how many games change from Win to Loss (W\L), Win to Draw (W\D), Draw to Loss (D\L) and Points (Pts) lost. Last 2 figures show best scoring run, and longest dry spell in consecutive games. NUMBERS: PU=Players Used CS=Clean Sheets FS=Games Failed to Score



# Second Division Scene

## Brian Swain

TONIGHT'S visitors, going strong for promotion and

looking certs for the play-offs at least, did us a favour a week ago by winning at Swindon, to peg back one of the teams we want to overhaul to escape from the bottom four of the Second Division.

Now, other teams will be hoping that Reading do the business here, to repay the favour to them, and Alan Pardew's men have every incentive to chase their ninth away victory of the season. If they do it, and if second-placed Millwall fail to beat Stoke at the New Den, Reading will move back into the top two for the first time since early November. They also have a game in hand on Millwall.

For the Town, games in hand are crucial, and with the next four matches all at home, a consistent run can go a long way to dispelling relegation worries.

We have to believe in the ability to stay ahead of Swansea and Oxford, and a win this evening could take us level on points with Bristol Rovers, who entertain City in the Bristol derby this evening. Cue Tony Thorpe to do us a favour!

The only slight consolation for Town fans after the poor display at Colchester was that Bristol Rovers, Swindon and Cambridge also lost. Rovers have a game in hand on us, and a much better goal difference. After tonight's six-match Second Division programme, we will have two games in hand of Swindon and Cambridge, and a Town victory this evening will cut the deficit to six points. Once again, however, our goal difference currently minus 21, is inferior - Cambridge are minus 14 and Swindon minus 15. Bristol Rovers are minus 7. Effectively, the situation now is that we are one of six teams fighting for two safe spots, and if we are to gain revenge for the defeat at Reading in December, we must succeed where a dozen others have already failed. Reading's away record shows eight victories, four draws and six defeats.

They are also on a hot streak - a home defeat against Bristol City a couple of weeks ago is their only league reverse in their last 14 outings. Their away victories were at Port Vale, Rotherham, Bury, Brentford, Oldham, Swansea, Wrexham and Swindon. The draws were at Wigan, Bristol Rovers, Stoke and Wycombe, and the pointless trips were to Millwall, Northampton, Peterborough, Bristol City, Walsall and Notts County.

Brian Swain

Nationwide Division Two Table														
	HOME					AWAY								
	P	W	D	L	F A	W	D	L	F A	Pts				
Rotherham	39	14	4	3	47	25	9	4	5	25	24	77		
Millwall	39	12	2	4	36	11	10	7	5	34	25	74		
Reading	38	14	3	3	49	20	8	4	6	21	21	73		
Walsall	39	13	5	3	46	20	6	5	7	21	23	67		
Wigan	40	11	8	0	25	11	5	9	7	21	23	65		
Stoke	39	10	5	5	32	19	7	8	4	31	23	64		
Bristol City	39	10	6	5	43	26	6	6	6	19	22	60		
Notts County	38	8	5	5	31	25	7	5	8	19	29	55		
Bournemouth	38	7	6	5	27	18	7	6	7	35	28	54		
Bury	40	10	5	5	24	19	5	4	11	16	29	54		
Northampton	39	8	6	5	24	21	6	5	9	19	27	53		
Wrexham	37	8	4	7	26	24	6	4	8	28	34	50		
Brentford	37	8	7	3	26	23	4	7	8	16	28	50		
Colchester	38	8	4	8	25	20	5	5	8	19	27	48		
Peterborough	38	10	5	4	32	23	2	7	10	17	32	48		
Oldham	40	10	5	6	33	24	2	7	10	15	33	48		
Port Vale	35	7	7	4	30	16	5	3	9	12	23	46		
Wycombe	37	8	4	8	22	21	4	6	7	14	22	46		
Cambridge	39	7	5	7	27	22	5	3	12	24	43	44		
Swindon	39	5	7	8	26	31	6	4	9	15	25	44		
Bristol Rov	35	2	9	4	12	16	6	5	9	24	27	38		
Luton Town	36	5	2	9	19	27	4	6	10	24	37	35		
Swansea	36	3	7	7	15	19	3	4	12	20	41	29		
Oxford Utd	37	4	3	12	19	29	2	1	15	21	50	22		

## Tonight's Other Second Division Fixtures

- Bournemouth v Oxford
- Bristol Rovers v Bristol City
- Colchester v Swansea
- Millwall v Stoke
- Port Vale v Wrexham

More teams take the field to 'Simply The Best' than any other song.

Who says the modern game lacks humour?

0808 100 0101

Up and Running!  
Luton Town's very own official website.  
[www.lutontown.co.uk](http://www.lutontown.co.uk)


# Statistics Fixtures

# 2000 / 2001

Date	Opposition	Result	Scorers	League		Team
				Place	Attn.	
AUGUST	Sat 12 Notts County	H 3pm 0-1		-	7,059	Ovendale Boyce Watts McLaren Johnson
AUGUST	Sat 19 Wigan	A 3pm 1-2	Watts	-	6,518	Ovendale Boyce Watts McLaren Johnson
AUGUST	Tue 22 Peterborough WC1(1)	H 7.45pm 0-0		-	3,175	Ovendale Boyce Watts McLaren Fraser
AUGUST	Sat 26 Bournemouth	H 3pm 1-0	Spring pen	18	5,221	Ovendale Boyce Watts McLaren Fraser
AUGUST	Mon 28 Wycombe Wdrs	A 3pm 1-1	Kandol	17	6,001	Ovendale Boyce Watts McLaren Fraser
SEPTEMBER	Sat 2 Rotherham Utd	A 3pm 1-1	Fotiadis	17	4,061	Ovendale Boyce Watts McLaren Locke
SEPTEMBER	Tue 5 Peterborough WC1(2)	A 7.45pm 2-2	Stein, Scarlett	17	4,286	Ovendale Boyce Watts McLaren Fraser
SEPTEMBER	Sat 9 Northampton Town	H 3pm 0-2		19	6,712	Abbey Boyce Watts McLaren Fraser
SEPTEMBER	Tue 12 Walsall	H 7.45pm 0-0		19	4,362	Abbey Boyce Watts McLaren Locke
SEPTEMBER	Sat 16 Swansea City	A 3pm 0-4		20	6,011	Ovendale Boyce Watts McLaren Locke
SEPTEMBER	Tue 19 Sunderland WC2(1)	A 7.45pm 0-3		20	24,668	Ovendale Boyce Watts McLaren Fraser
SEPTEMBER	Sat 23 Swindon Town	H 3pm 2-3	Stein, George	21	4,933	Ovendale Boyce Watts George Fraser
SEPTEMBER	Tue 26 Sunderland WC2(2)	H 7.45pm 1-2	Kandol	21	5,262	Ovendale Boyce Watts George Fraser
SEPTEMBER	Sat 30 Bristol Rov	A 3pm 3-3	Kandol 2, George	22	7,901	Ovendale Boyce Watts George Fraser
OCTOBER	Sun 8 Millwall	H 12pm 0-1		22	5,345	Ovendale Boyce Watts George McGowan
OCTOBER	Fri 13 Cambridge Utd	A 8pm 1-2	Stein	23	6,191	Ovendale Boyce Watts George McGowan
OCTOBER	Tue 17 Oxford Utd	A 7.45pm 0-0		23	4,537	Abbey Boyce Watts George McGowan
OCTOBER	Sat 21 Brentford	H 3pm 3-1	Douglas 2, Spring pen	23	5,382	Abbey Boyce Watts George Locke
OCTOBER	Sat 28 Wrexham	H 3pm 3-4	Stein, Watts, George	23	5,341	Abbey Boyce Watts George Johnson
NOVEMBER	Sat 4 Bury	A 3pm 1-1	Helin	23	2,861	Abbey Boyce Watts George Karlsen
NOVEMBER	Sat 11 Bristol City	H 3pm 0-3		23	6,595	Abbey Boyce McGowan George Karlsen
NOVEMBER	Fri 17 Rushden & D FAC1	H 8pm 1-0	George	23	5,771	Abbey Boyce Fraser Watts Karlsen
NOVEMBER	Sat 25 Port Vale	A 3pm 0-3		23	4,194	Abbey Boyce Whitbread Watts Karlsen
DECEMBER	Sat 2 Stoke City	A 3pm 3-1	McLaren, Thomson 2	23	12,389	Abbey Johnson Whitbread Watts Locke
DECEMBER	Tue 5 Peterborough LDVT1	A 7.45 0-1		23	2,075	Ovendale Ayres Karlsen Fraser Locke
DECEMBER	Sat 9 Darlington FAC2	A 3pm 0-0		23	3,641	Abbey Johnson Whitbread Watts Locke
DECEMBER	Sat 16 Colchester Utd	H 3pm 0-3		23	4,791	Abbey Johnson Whitbread Watts Locke
DECEMBER	Tue 19 Darlington FAC2R	H 7.45 2-0	Nogan, McLaren	23	3,563	Abbey Johnson Whitbread Watts Fotiadis
DECEMBER	Sat 23 Reading	A 3pm 1-4	Nogan	23	10,771	Abbey Johnson Whitbread Boyce Fotiadis
DECEMBER	Tue 26 Peterborough	H 1pm 3-2	Spring, Holmes, Boyce	23	7,374	Abbey Boyce Whitbread Fraser Holmes
DECEMBER	Sat 30 Wigan	H 3pm 0-2		23	5,322	Ovendale Watts Whitbread Fraser Holmes
JANUARY	Mon 1 Bournemouth	A 3pm 2-3	Fotiadis, Locke	23	5,411	Ovendale Watts Whitbread Fraser Holmes
JANUARY	Sat 6 QPR FAC3	H 3pm 3-3	Fotiadis, George, Douglas	23	8,677	Ovendale Boyce Whitbread Fraser George
JANUARY	Fri 12 Wycombe	H 7.45pm 1-2	Locke	23	4,551	Ovendale Boyce Whitbread Fraser George
JANUARY	Wed 17 QPR FAC3R	A 8pm 1-2aet	Mansell	23	14,395	Ovendale McGowan Whitbread Fraser Karlsen
JANUARY	Tue 23 Oldham	A 7.45pm 0-2		23	3,011	Ovendale McGowan Whitbread Boyce Karlsen
FEBRUARY	Sat 10 Northampton Town	A 3pm 1-0	Douglas	23	6,633	Ovendale Boyce Stirling Dryden Rowland
FEBRUARY	Tue 13 Notts County	A 7.45pm 3-1	Boyce, George, Fotiadis	23	4,333	Ovendale Boyce Stirling Dryden Rowland
FEBRUARY	Sat 17 Swansea City	H 3pm 5-3	Mansell 2, Douglas, Rowland, George	22	7,085	Ovendale Boyce Stirling Dryden Rowland
FEBRUARY	Tue 20 Walsall	A 7.45pm 1-3	Spring	22	4,816	Ovendale Boyce Stirling Dryden Rowland
FEBRUARY	Sat 24 Swindon	A 3pm 3-1	Rowland, Boyce, Mansell	22	7,160	Ovendale Boyce McLaren Dryden Rowland
MARCH	Sat 3 Bristol Rov	H 3pm 0-0		22	7,405	Abbey Boyce Watts Dryden Rowland
MARCH	Tue 6 Cambridge Utd	H 7.45pm 1-0	Taylor	22	6,370	Abbey Boyce McLaren Dryden Rowland
MARCH	Sat 10 Millwall	A 3pm 0-1		22	11,691	Abbey Boyce McLaren Dryden Rowland
MARCH	Tue 27 Peterborough	A 7.45pm 1-1	Mansell	22	5,425	Abbey Boyce McLaren Dryden Rowland
MARCH	Sat 31 Colchester	A 3pm 1-3	Howard pen	22	4,271	Abbey Boyce McLaren Dryden Rowland
APRIL	Tue 3 Reading	H 7.45pm				
APRIL	Sat 7 Stoke City	H 3pm				
APRIL	Tue 10 Oxford Utd	H 7.45pm				
APRIL	Sat 14 Oldham	H 3pm				
APRIL	Mon 16 Wrexham	A 3pm				
APRIL	Sat 21 Bury	H 3pm				
APRIL	Tue 24 Rotherham Utd	H 7.45				
APRIL	Sat 28 Bristol City	A 3pm				
MAY	Thur 3 Brentford	A 7.45pm				
MAY	Sat 5 Port Vale	H 3pm				

						Substitutes
Taylor	Spring	Locke,	George,	Stein	Fotiadis	Holmes for Locke 57, Fraser for Watts 78. Unused: Stirling, Brennan, Abbey
Taylor	Holmes	Locke	George	Stein	Fotiadis	Fraser for Johnson HT, Scarlett for Locke 73, Brennan for Holmes 83. Unused: Stirling, Abbey
Taylor	Holmes	Spring	George	Stein	Fotiadis	Brennan for Fotiadis 81. Unused: Stirling, Locke, Scarlett, Abbey
Taylor	Holmes	Spring	George	Stein	Fotiadis	Brennan for George 57, Locke for Holmes 86. Unused: Stirling, Kandol, Abbey
Taylor	Scarlett	Spring	George	Stein	Fotiadis	Brennan for George 55, Kandol for Fotiadis 76. Unused: Locke, Stirling, Abbey
Taylor	Scarlett	Spring	Holmes	Stein	Fotiadis	Kandol for Fotiadis HT; Brennan for Holmes 65; George for Stein 81. Unused: Stirling, Abbey
Taylor	Scarlett	Spring	Brennan	Stein	George	Holmes for Brennan 74; Locke for Spring 105; Kandol for Stein 113. Unused: Stirling, Abbey
Taylor	Scarlett	Spring	Brennan	Stein	George	Holmes for Spring 75; Kandol for Brennan 60. Unused: Locke, Stirling, Brietenfelder
Taylor	Scarlett	Spring	Holmes	Stein	Kandol	George for Brennan 52; Kandol for Thomson 72: Holmes for Scarlett 82. Unused: Fraser, Ovendale.
Taylor	Scarlett	Spring	Holmes	Stein	Kandol	George for Stein 75. Unused: Fraser, Scarlett, Thomson, Abbey.
Taylor	Scarlett	Spring	Holmes	Stein	Kandol	George for Stein 70; Thomson for Kandol 70. Unused: Brennan, Stirling, Abbey
Taylor	McLaren	Spring	Locke	Thomson	Kandol	Locke for Spring 66; Thomson for Kandol 72. Unused: Brennan, Ayres, Abbey
Taylor	McLaren	Spring	Locke	Thomson	Kandol	Brennan for Thomson 81. Unused: Holmes, Breitenfelder, Ayres, Abbey
Taylor	McLaren	Spring	Locke	Thomson	Kandol	Mc Gowan for Fraser HT; Stein for Thomson HT; Holmes for Spring 79. Unused: Brennan, Abbey
Taylor	McLaren	Spring	Locke	Stein	Kandol	All unused: Brennan, Holmes, Stirling, Scarlett, Abbey.
Taylor	McLaren	Spring	Locke	Stein	Kandol	Holmes for Kandol HT; Brennan for McGowan 89. Unused: Fraser, Breitenfelder, Abbey
Taylor	Fraser	Spring	Holmes	Stein	Kandol	Breitenfelder for McGowan HT; Brennan for Kandol 79. Unused: Locke, Thomson, Ovendale
Taylor	McLaren	Spring	Holmes	Stein	Douglas	Breitenfelder for Locke 18 mins; Thomson for Douglas 44 mins; Brennan for George 86 mins. Unused: Kandol, Ovendale
Taylor	McLaren	Brietenfelder	Holmes	Stein	Fotiadis	Fraser for McLaren 47 mins; Thomson for Fotiadis 70 mins. Unused: Brennan, Baptiste, Ovendale
Taylor	McLaren	Spring	Helin	Stein	Douglas	Baptiste for Douglas 75 mins; Holmes for George 80 mins. Unused: McGowan, Breitenfelder, Ovendale
Taylor	McLaren	Spring	Helin	Stein	Douglas	Fotiadis for Douglas 44 mins; Baptiste for Stein 74 mins. Unused: Watts, Locke, Ovendale
Taylor	McLaren	Spring	Helin	George	Stein	Thomson for Stein 73 mins. Unused: McGowan, Locke, Fotiadis, Ovendale
Taylor	McLaren	Spring	Helin	George	Nogan	Fotiadis for Nogan 74 mins; Fraser for Helin 77 mins. Unused: Locke, Scarlett, Ovendale
Taylor	McLaren	Spring	Helin	George	Thomson	Fotiadis for Thomson 89 mins; Karlsen for George 90 mins. Unused: Fraser, Nogan, Ovendale
Taylor	McLaren	Spring	Helin	George	Thomson	Stein for Thomson HT; Nogan for Fotiadis 56 mins. Unused: Scarlett, Stirling, Abbey
Taylor	McLaren	Spring	Fraser	George	Thomson	All unused: Stein, Nogan, Karlsen, Stirling, Ovendale
Taylor	McLaren	Spring	Helin	George	Nogan	Fotiadis for Locke 56 mins. Unused: Scarlett, Holmes, Fraser, Ovendale
Taylor	McLaren	Spring	Helin	George	Nogan	Boyce for Watts 68 mins; Locke for Spring 86 mins. Unused: Baptiste, Fraser, Ovendale
Taylor	McLaren	Spring	Helin	George	Nogan	Fraser for Johnson 23 mins; Locke for McLaren 52 mins; Baptiste for George 82 mins. Unused: Scarlett, Ovendale
Taylor	McLaren	Spring	Helin	George	Nogan	Scarlett for Holmes 75 mins; Kandol for Nogan 76 mins. Unused: Karlsen, Stirling, Ovendale
Taylor	Locke	Spring	Helin	Fotiadis	Nogan	Thomson for Holmes 59 mins; Stein for Nogan 75 mins. Unused: Breitenfelder, Stirling, Abbey
Taylor	Locke	Spring	Helin	Fotiadis	Nogan	Stirling for Watts 38 mins; Breitenfelder for Fraser 74 mins; Scarlett for Fotiadis 80 mins. Unused: Baptiste, Abbey
Taylor	Locke	Spring	Helin	Fotiadis	Nogan	Douglas for Fotiadis 70 mins; Stirling for Helin 79 mins. Unused: Holmes, Kandol, Abbey
Taylor	Locke	Spring	Breitenfelder	Thomson	Douglas	Kandol for Thomson 71 mins; Scarlett for Breitenfelder 78 mins; Stirling for Boyce 83 mins. Unused: Holmes, Ward
Holmes	Mansell	Spring	Nogan	Fotiadis	Douglas	Stirling for Fraser 4 mins; Stein for Douglas 65 mins; Scarlett for Fotiadis 79 mins. Unused: Abbey, George
Holmes	Mansell	Spring	Nogan	Fotiadis	Douglas	Thomson for Nogan HT; George for Holmes 55 mins; Stein for Fotiadis 78 mins. Unused: Abbey, Stirling
Taylor	Mansell	Spring	Helin	George	Douglas	Fotiadis for Douglas 86 mins. Unused: Abbey, Stein, Holmes, Breitenfelder
Taylor	Mansell	Spring	Helin	George	Douglas	Kandol for Douglas 59 mins; Fotiadis for Kandol 78 mins. Unused: Abbey, Holmes, Breitenfelder
Taylor	Mansell	Spring	Helin	George	Douglas	Fotiadis for Douglas 65 mins; Locke for Rowland 89 mins. Unused: Abbey, Thomson, Breitenfelder
Taylor	Mansell	Spring	Helin	George	Douglas	Locke for Mansell 19 mins; Fotiadis for George HT; Thomson for Douglas HT. Unused: Abbey, Breitenfelder
Taylor	Locke	Spring	Helin	George	Fotiadis	Stein for Fotiadis 12 mins; Mansell for Locke 65 mins; Thomson for Stein 85 mins. Unused: Abbey, Stirling
Taylor	McLaren	Locke	Helin	George	Stein	Douglas for Stein 66 mins; Stirling for McLaren 80 mins. Unused: Fotiadis, Thomson, Ward
Taylor	Mansell	Spring	Helin	George	Douglas	Fotiadis for Douglas HT; Watts for Rowland HT; Stein for Fotiadis 84 mins. Unused: Stirling, Ward
Taylor	Mansell	Spring	Helin	George	Douglas	Fotiadis for Douglas 65 mins; Watts for Dryden 82 mins; Stein for Mansell 82 mins. Unused: Stirling, Ward
Taylor	Mansell	Spring	Helin	George	Howard	Stein for George 73 mins. Unused: Stirling, Watts, Douglas, Ovendale
Taylor	Mansell	Spring	Helin	George	Howard	Douglas for Rowland HT. Unused: Stirling, Watts, Shepherd, Ovendale

**Next Home Match**

 **Nationwide**  
FOOTBALL LEAGUE

**Luton Town v Stoke City**

Saturday, April 7, 2001, kick-off 3pm

 **The Official Sponsors of the Substitute Board**

[www.goals-oncd.com](http://www.goals-oncd.com)

Fancy a party or reception at Kenilworth Road? e-mail us on: [catering@lutontown.co.uk](mailto:catering@lutontown.co.uk)

Up and Running! Luton Town's very own official website. [www.lutontown.co.uk](http://www.lutontown.co.uk)



The Big Match Tonight's Teams  
**Tonight's Teams**  
 Tonight's Teams The Big Match

# Luton Town

# Reading



## Tonight's Officials

**Referee:**

Graham Poll, Hertfordshire

**Assistants:**

D. S. Bryan, Lincolnshire (red flag)

R. Lee, Essex (yellow and red flag)

**Fourth Official:**

K. K. Wright, Lincolnshire



Manager: Joe Kinnear

NATHAN ABBEY **16**

EMMERSON BOYCE **19**

RICHARD DRYDEN **33**

PETRI HELIN **30**

MATTHEW TAYLOR **15**

MATTHEW SPRING **4**

PAUL McLAREN **8**

LEE MANSELL **32**

KEITH ROWLAND **39**

STEVE HOWARD **34**

LIAM GEORGE **11**

Substitutes

STUART DOUGLAS **9**

JULIAN WATTS **5**

JUDE STIRLING **23**

PAUL SHEPHERD **35**

MARK OVENDALE (GK) **1**

Changes



Manager: Alan Pardew

**1** PHIL WHITEHEAD

**3** MATT ROBINSON

**25** RICKY NEWMAN

**6** BARRY HUNTER

**34** ADRIAN WHITBREAD

**7** GRAEME MURTY

**16** PHIL PARKINSON

**40** JAMES HARPER

**22** JIM McINTYRE

**12** JAMIE CURETON

**9** MARTIN BUTLER

Substitutes

**37** ANTHONY ROUGIER

**8** DARREN CASKEY

**4** KEITH JONES

**14** SAMMY IGOE

**21** SCOTT HOWIE (GK)

Changes



*"Genuine Deals For Genuine Fans!"*  
**Luton Fans Are**  
*Guaranteed To Score At*  
**Motorbodies Luton**

**114 Point Service**

**12 Months/ 15,000 mile guarantee**

**12 Months AA Assistance Mileage Check**

**30 Day Exchange Plan**

**Free MoT for life**

**HPI Check**

NETWORK



**NETWORK Q**

Total Commitment to used car quality

- 12 months Assistance
- 12 months/15,000 mile Guarantee

- 114 point service
- 30 day exchange pledge

**Motorbodies Central**

15 Hitchin Road, Luton Bedfordshire.  
 Telephone 01582 454666

**Motorbodies Leagrave**

166 Marsh Road, Leagrave, Luton  
 Telephone 01582 567500

**OPENING HOURS**

Mon-Fri 9am-7pm  
 Sat 9am-5pm

