

Luton Town



LUTON TOWN
FOOTBALL CLUB
www.lutontown.co.uk

Official Matchday
Magazine



Saturday
April 14, 2001
Kick Off 3pm

SKF

Official Shirt Sponsors



THE OFFICIAL SPORTS DRINK



Luton Town v Oldham Athletic

Match Sponsors: Bricklayers Arms, High Town
Match Ball Sponsors: IBC Vehicles Ltd

Luton Town FC

Kenilworth Road Stadium
1 Maple Road, Luton
Bedfordshire LU4 8AW

Main Reception: 01582 411622

Fax: 01582 405070

Ticket Office: 01582 416976

Honours

Littlewoods Cup

Winners 1987-88

Finalists 1988-89

FA Cup

Finalists 1958-59

Simod Cup

Finalists 1987-88

Division 2

Champions 1981-82

Division 3 (S)

Champions 1936-37

Division 4

Champions 1967-68

Official Matchday Magazine

Editor

Brian Swain

Layout & Printing

Regal Litho

Photography

Gareth Owen

The views expressed in this programme
are not necessarily those of Luton Town
Football Club.

Front Cover



Action from Tuesday's game -
Oxford's Darren Patterson, once of
Luton Town, has to raise his game
to compete with Steve Howard.

Action Replay

Luton Town 1 Oxford Utd 1 (HT 1-0)

SURVIVAL hopes took a heavy knock on Tuesday evening when the Town proved to be unable to beat a visiting team which is officially the worst in the Second Division. Already relegated, Oxford did not seem to have much to offer for the first hour, but the Town, getting the first goal that should have settled them, failed to build on it.

For the second time in eight days, a home draw felt like a defeat as the task of avoiding relegation grew ever-greater.

Elsewhere in this magazine today the manager and skipper make the point that it is not all over yet, and the squad is capable of producing more than it did on Tuesday. Joe Kinnear said he had spoken some harsh words in the dressing room after the game, but the immediate need was to consign another bad day to history, and be all the more determined to beat Oldham this afternoon.

He was critical of the defending when Andy Scott stole in for an equaliser 13 minutes from time, and with problems caused by poor delivery of final passes and crosses at the other end.

In the first half the Town looked well capable of getting the win we all wanted. With Keith Rowland injured, Julian Watts was recalled to defence, with Paul McLaren moving forward into midfield. He and Matthew Spring seemed to enjoy being teamed up again, and for the first half they just about ran the show.

McLaren's efforts led to the Town's goal - a clever move involving Matthew



HAPPY RETURN: Julian Watts, who came back into the side and celebrated by bustling upfield to score his third goal of the season.

Taylor and Steve Howard ended with McLaren surging forward and hitting a shot which was tipped over the bar. From the corner Oxford got into a real Third Division tangle, and Watts celebrated his return to the side with his third goal of the season.

Sadly, the Town failed to build on that, even though the visiting goalkeeper had to be their man of the match. He was let off the hook at times, and Oxford improved after the break, when they switched to a back four instead of three, and put on Peter Fear to do a marking job on Spring. He concentrated on McLaren after Spring limped off with hamstring trouble with 22 minutes to go.

The Town began to stutter and stumble, but it was still a shock when Oxford's attack stirred itself sufficiently to get an equaliser. Inevitably, a man returning to his old club played a big part - Phil Gray tried an overhead kick which might have gone anywhere, but dropped for Andy Scott to poach the 77th minute leveller. The rest was purgatory for Town fans as the sequence without a victory stretched to six games.

It was another "If only" occasion. The Town thought they should have had a penalty when they were one up, when Howard and John Robertson went down in a heap together. It looked a good shout, but the ref would have none of it.

A second goal then would surely have finished off the very small amount of resistance Oxford were showing at the time. But their manager David Kemp, once Joe Kinnear's assistant at Wimbledon, tore into his men at the interval, and got the response he wanted. He was well pleased with the draw. He also thinks we might have seen on Tuesday night two teams who will be contesting the Third Division championship in a year's time.

Match Details

Luton Town: Abbey, Boyce, Watts, Dryden, Helin (Stein 79 mins), Spring (Stirling 68 mins), Mansell, McLaren, Taylor, Howard, George. Unused subs: Thomson, Holmes, Ovendale.

Booked: Steve Howard, 14 mins, dissent

Oxford Utd: Knight, Robertson, Powell (Beauchamp 68 mins), Richardson, Hatswell, Patterson, Ricketts, Murphy, Tait (Fear 41 mins), Scott, Gray.

Booked: Darren Patterson, 76 mins, foul on Steve Howard; Sam Ricketts, 88 mins, time-wasting.

Goals: 1-0 18 mins - Julian Watts toe-poke in a crowded goalmouth when Oxford failed to deal with a corner; 1-1 77 mins - Andy Scott converting involuntary pass by Phil Gray's mis-directed overhead kick.

Referee: David Pugh, Wirral

Attendance: 6,010, 336 of them shouting for Oxford



Chairman

M. Watson-Challis

Directors

**E. Hood, J. Mitchell,
C. Bassett, R. Stringer,
Y. Fletcher, R. H. G. Kelly**

Vice Presidents

**C. T. F. Green, N. S. Terry,
R. L. Banks, D. Ludlow
MBE, C. Bygrave,**

R. Safraneq, J. Sapsworth

Club Secretary

Cherry Newbery

Manager

Joe Kinnear

Coaches

Lil Fuccillo

John Moore

Reserve Team Coach

Kevan Broadhurst

Youth Coach

Brian Stein

Sports Therapist

Bruce Sewell BSc (Hons) MSST

Consultant Physio

John Sheridan

Youth Development Officer

Dean Rastrick

Chief Scout

Les Shannon

Sales and Marketing Manager

John Bailey

Catering Manager

Marie Hunter

Safety Officer

Geoff Lovell

Financial Controller

Tania Buonpane FCCA

Medical Officer

Dr. Bill Berry

Club Dentist

A. Chris BDSA (Syd)

Club Chaplain

Rev Catherine Bell

Company Secretary

Cherry Newbery

For all the latest news, views and interviews call

CLUBCALL - 09068 121123

(Calls charged at 60p per minute at all times)

Up and Running!

Luton Town's very own official website.

www.lutontown.co.uk

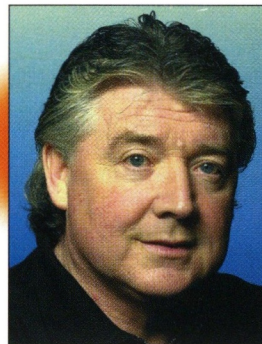
Catch a ride with a winner!

SKF AquaMax



Boost profits – and customer confidence – with SKF AquaMax, the new quality standard for replacement pumps. Designed to meet or exceed all OE standards, these new pumps produce maximum flow under all driving conditions, while providing added protection from corrosion and vapour leakage. For more information about SKF, talk to your SKF Automotive Parts Distributor or visit our website: www.vsm.skf.com

SKF



The Manager Joe Kinnear

IF YOU went home feeling depressed on Tuesday night after the draw against Oxford, I can assure you that you didn't feel any worse than I did. On a night when we had to pull out all the stops and beat the team who are bottom of the division, we failed to deliver.

I won't go into details of the private views I expressed in the dressing room after the game. That's between me and the players, but you can be certain that I had a bit of a go at them for not giving the performance and result we wanted.

I felt we did not show enough urgency and desire after going a goal up, and we ought to have played at a greater tempo, and too often our final pass or cross was below the required standard.

But, as always, yesterday is history, and we are fortunate that we have an early opportunity to seek the win we so desperately need. A week ago I was saying we needed to win six of our last eight games to stay up. The requirement is similar today - six out of seven, although that safety target might be cut to five out of seven if other teams suffer bad results.

The major message to every-one today, on and off the field, is not to give up. Swindon had a decent result in midweek and climbed a few places up the table, but I bet they are still looking over their shoulders and worrying about being caught. The same goes for Bristol Rovers and Cambridge, and perhaps even Wycombe, who have been sucked into the trouble zone while doing so magnificently in the FA Cup. We have got to put together a winning sequence to put pressure on others. By allowing Oxford back into the game on Tuesday we punished ourselves, and added to our problems.

The players and I spent some time analysing the video of Tuesday's game, picking up the good and the bad points of the team display and of individuals' performances. We will try to

eradicate the errors, and build on the good points.

We have a squad capable of doing much better than they did against Oxford, and the players know they owe it to themselves, the club, and the supporters to get cracking and give us an overdue win.

The instructions to the team will be pretty simple: "You've got something to prove - go out there and prove it."

You must fight for each other, get your minds right, be brave, and get at the opposition. Get the first goal, then make sure you give nothing away, and take the chances that are bound to crop up when a second goal is needed.

Several men are playing for their futures, hoping to win new contracts. So they must play for themselves, for the club, and also for the fans - we ought to give something back to them after the magnificent support we have received, even on occasions when we perhaps have not deserved it.

On a personal note, I am very grateful for the way supporters have stuck with us through thick and thin - especially through too much thin! - and I know how deeply so many of you feel about this club.

I promise you I feel the same - I didn't come here to be a failure, and relegation was never on my agenda when I discussed terms and conditions, and dreams and ambitions, with the board when they interviewed me for the job.

The season is not over yet. The fight for survival is an uphill battle. But as I have said before in this column, if it's possible, it can be achieved. Today, we must go for it, and then get right quickly for Monday's next game, at Wrexham.

Easter is very often a crucial time for football clubs, and it might well be so for us this year. I hope we all have a very happy holiday - and enjoy our football.

Joe Kinnear

You can e-mail the boss on:
manager@lutontown.co.uk

The Hatters roll-call 2000-2001

Appearances (as sub in brackets)

Goals

	League	WC	FAC	LDV	Total	League	WC	FAC	Total
Nathan Abbey	20	0	3	0	23	0	0	0	0
James Ayres	0	0	0	1	1	0	0	0	0
Rocky Baptiste	0(3)	0	0	0	0(3)	0	0	0	0
Emmerson Boyce	35	4	2(1)	0	41(1)	3	0	0	3
Dean Brennan	2(7)	1(1)	0	0	3(8)	0	0	0	0
Friedrich Breitenfelder	2(3)	0	0	0	2(3)	0	0	0	0
Stuart Douglas	11(4)	0	1(1)	0	12(5)	4	0	1	5
Richard Dryden	13	0	0	0	13	0	0	0	0
Andrew Fotiadis	12(10)	1	3	1	17(10)	3	0	1	4
Stuart Fraser	10(5)	4	4	1	19(5)	0	0	0	0
Liam George	30(6)	3(1)	4	0	37(7)	5	0	2	7
Petri Helin	22	0	3	1	26	1	0	0	1
Peter Holmes	12(6)	2(1)	1	0	15(7)	1	0	0	1
Steve Howard	5	0	0	0	5	1p	0	0	1p
Marvin Johnson	6	0	2	0	8	0	0	0	0
Tresor Kandol	6(7)	2(1)	0	0	8(8)	3	1	0	4
Kent Karlsen	4(1)	0	2	1	7(1)	0	0	0	0
Adam Locke	17(6)	1(1)	2(1)	1	21(8)	2	0	0	2
Lee Mansell	12(1)	0	1	0	13(1)	5	0	1	6
Gavin McGowan	5(1)	0	1	0	6(1)	0	0	0	0
Paul McLaren	28	4	3	1	36	1	0	1	2
Lee Nogan	7	0	3	0(1)	10(1)	1	0	1	2
Mark Owendale	19	4	2	1	26	0	0	0	0
Keith Rowland	12	0	0	0	12	2	0	0	2
Andre Scarlett	5(4)	2	0(1)	0	7(5)	0	1	0	1
Matthew Spring	36	4	5	1	46	4(2p)	0	0	4(2p)
Mark Stein	19(8)	3	1(1)	0(1)	23(10)	3	1	0	4
Jude Stirling	5(4)	0	0(2)	0	5(6)	0	0	0	0
Matthew Taylor	38	4	4	1	47	1	0	0	1
Peter Thomson	4(7)	1(1)	1(1)	1	7(9)	2	0	0	2
Julian Watts	23(2)	4	3	0	30(2)	3	0	0	3
Adrian Whitbread	9	0	4	0	13	0	0	0	0
OGs						1	0	0	1



Captain's Log

Marvin Johnson

TWICE in my career as a professional footballer I have

suffered as Luton Town have been relegated. It's a horrible experience, a bitter blow to pride, and I don't want to go through it again. I only wish I could get out there on the pitch with the lads today and perhaps help to see this club pull off the great escape.

I know it's a long shot, but we are not down yet, and we as a group of players have got to believe in ourselves, and fight for our Second Division lives.

To put it mildly the gaffer was not too pleased by Tuesday night's performance and result, and we all knew we had let ourselves down. Obviously it was a difficult match, with nerves and tension always likely to play a part in proceedings. But we had chances to score again after going one up, and at least one should have been taken to give us a bit of a comfort zone. When it is 1-0, you can all too easily be on edge, especially when you know it is desperate to win the game.

The mental side of football is something every player has to deal with, and I suppose the older and more experienced you get, the easier it becomes to deal with potential anxiety and tension. I have played more than 400 first-team games, and I still get butterflies in the stomach in the dressing room before kick-off. I think that is a good thing, inevitable as you concentrate on the job you are about to do. But once the game gets under way I find myself so busy thinking about what is going on that I haven't got time to be nervous.

Perhaps it was not quite the same when I was much younger, but whatever the difficulties facing us today, it is pretty obvious what the requirements are. First, and foremost, don't give up. We have to keep going and fighting, because our fate is not sealed. There are enough points to play for, and it is up to us, the players, to prove that what is possible can

be achieved.

We have got the club into today's position. It is up to us to get us out of it. I know for sure that I have no wish to go into the Third Division, having tasted the old First Division when I was younger. Players need a driving force to reach for the sky, to be in the best possible team, and to play at the highest possible level.

We were all desperately disappointed not to beat Oxford, and we knew we did not play well.

After the game I had a chat with Phil Gray and Darren Patterson, and as you may imagine they were much more pleased with the night's events than I was. But it was noticeable that having been relegated a few days earlier, they still felt tremendous disappointment.

They are good professionals, as I hope we all are at Kenilworth Road. You might think that pro footballers don't care where they play so long as they pick up their pay cheques. I suppose there are a few like that in the game, but certainly not Tippy and Patty - they cared for Oxford United, and our players have the same feelings for Luton Town.

We don't play badly on purpose, but I think the pressure has got to some of our lads, particularly those who have not been in this sort of difficult situation before. We face a battle against the odds to avoid meeting Oxford United in the league again next year. No offence to them, but I hope with all my heart that we can beat the odds.

That means we must win this afternoon, and once more it will be against a side with nothing to worry about. We have had some good games against Oldham over the years, but this is one where result is all-important. We owe it to our supporters to win, to keep hope alive, and then who knows what might happen.

Marvin Johnson



Hatters Financial Services

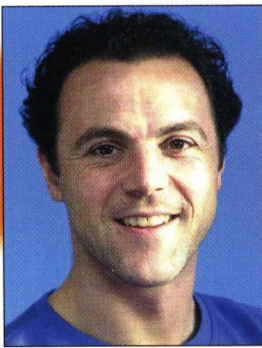
- SAVINGS AND INVESTMENTS •
- LIFE ASSURANCE •
- CRITICAL ILLNESS COVER •
- INCOME REPLACEMENT •
- PENSIONS •
- INHERITANCE TAX PROVISION •
- FINANCIAL REVIEW •

Hatters
Financial Services

Freeport (SCE 9094) Aylesbury Bucks HP21 9BR
0800 02 88 149

Hatters Financial Services is a trading style of Aylesbury Financial Services, a representative only of the AXA Sun Life Marketing Group. AXA Assurance is a trading name of members of the AXA Sun Life Marketing Group, the members of which are regulated by the Personal Investment Authority and/or IMRO for life assurance, pensions, and investment business. 01/612 Expiry 21/08/2001

Up and Running!
Luton Town's very own official website.
www.lutontown.co.uk



Treatment Room

Bruce Sewell

MATTHEW Spring has been in the treatment room this week, after

he had to be subbed because of a hamstring problem during Tuesday's game against Oxford. I am hoping that the prompt decision to bring him off will aid a quick recovery. On Wednesday he was walking well, which is a very good sign, because it suggests there is no pull or tear.

Players were in for duty yesterday, and Spring was hoping he might be able to train with the squad. At the time or writing I could not make a forecast, but the midweek signs were that he might make it. The verdict is similar for Keith Rowland, who missed the Oxford game, because of a groin problem. There was a very tender area in the left groin area, and although by Wednesday he was able to jog it was still painful. The key to his chances of playing today lay in his progress on Thursday: if by then he was able to resume full training, I would pass him as fit for first team duty this afternoon. The midfielder's hope was that he would make it in time, and if not perhaps he would be OK for

Monday's match at Wrexham. Three other players came out of Tuesday's game carrying slight hamstring knocks - Emmerson Boyce, Paul McLaren and Lee Mansell. By the following morning they were feeling better, and had every chance of making quick recoveries. The good news for Stuart Douglas, who has been sidelined with a groin strain, is that he is now fully fit again, and available for selection, but another striker, Andrew Fotiadis, is still troubled by a pelvic problem. It is proving difficult to diagnose, and this week the surgeon was organising a scan in the hope of discovering the root of the problem. Until we see what the scan reveals, there is no chance of Fotiadis returning to full training. But Marvin Johnson is back in business, having got over a neck injury and a calf muscle problem. He is looking good, and I expect him to play in the reserves against Crystal Palace at Kenilworth Road on Wednesday, and he might then be very close to the first team squad.

Bruce Sewell



Club Secretary

Cherry Newbery

I HAVE a mixed bag of subjects to talk about this afternoon. Firstly,

please will you be as generous as you always our for today's bucket collection in the ground. It is to raise money for the Great Ormond Street Hospital, and a lot of children from this area go there for treatment.

Charity collections at Kenilworth Road are invariably successful, and we know we have some of the best supporters in the country, but unfortunately a small minority is letting us down, and our club could be in serious trouble with the FA because of an alleged incident at the end of last Saturday's match against Stoke.

We understand the referee has reported that one of his assistants was hit by a coin thrown from the crowd as they were near the tunnel, leaving the pitch.

Investigations are ongoing as we try to establish the facts, but there must be a very good chance that if it did happen, some-one near the scene at the time knows who was responsible. If you have any information, please contact any steward this afternoon, or get in touch with me as soon as possible. Any information given will be treated in total confidence.

And please don't be misguided enough to protect the individual if you know him. We know that football can raise passions, and we all get annoyed about some of the things we see on the pitch. But nothing justifies anyone bringing discredit to the club he or she supports. If you can help us identify the person involved, you will be helping your club.

A reputation for good behaviour and sportsmanship is priceless, and it needs only one or two out of a crowd of thousands to spoil it. We work hard to be a family club, where everyone in the ground can be confident they will have a good day out and not be embarrassed by the actions of a minority.

The FA has wide powers to punish clubs, and they

are rightly particularly keen on protecting referees. It is possible that the law was broken, and if that is so we and the police will do everything in our power to identify and arrest the suspect. And if that leads to a conviction, the courts have a duty to ban the person concerned from football. We as a club support that policy, and will ban for life anyone found guilty of football hooliganism.

It is ironic that I need to mention this subject today, because we heard this week from Colchester about problems they had on the day we played at Layer Road. As on our ground, it was a very small minority of so-called supporters involved, at a club where strenuous efforts are made to attract a family audience.

A few home fans were guilty of racial abuse to some of our players, and of crude chants directed at visiting supporters.

If you were there and felt annoyed, you might like to know that Colchester United have issued a statement saying that if they can identify the people concerned they will be banned for life.

I have every sympathy with the statement made by Colchester, and published on the internet. It reflects our views entirely, speaking of hard work by the club to encourage a family atmosphere in the ground.

The statement added: "We want to make it a place where everyone can come and enjoy a game of football and support their team. We will not allow a small minority to spoil that for everyone else."

I know how they feel, and I am sure the vast majority of supporters would agree. So if you can help us discover the true facts about last week's incident, please get in touch.

And having said that, let me close this afternoon by wishing all supporters a very happy Easter, with our thanks for the excellent backing we are still getting home and away.

Cherry Newbery

Last Season
The Nationwide Football
League saw an Increase in
Attendance of 13.5%;
Why...?



The authority...

The Quality of the Football

WE HAVE been saddened this week by the sudden death of one of our most loyal supporters. Eric Phillimore, 78, from Woburn Sands, was a regular at Kenilworth Road for almost the whole of his life, and had held a season ticket for over 40 years. He collapsed and died in the ground on Saturday, during the Stoke match, and it was a great shock to us and to his many friends. We offer our sympathy to his wife and family.

You can e-mail Cherry Newbery on:
clubsec@lutontown.co.uk

Hatters Away

IF THE weather is fine a bank holiday Monday is probably not the best day of the year to be driving to Wrexham for football.

The Town play at the Racecourse on Monday, and the unknown quantity is how busy the roads might be on the first bank holiday since the official start of spring. A lot of people from the Midlands tend to head for North Wales on holidays when the sun shines, which can make the M6 even more of a pain than usual. Part of the route to Wrexham, after leaving the motorways, can be a bit of a drag at the best of times.

If you want to sit back and let someone else do the driving the Bobbers Travel Club and Town on Tour will be running coaches to the game. Town on Tour, an offshoot of the Luton Town Supporters Club, set off at 10am, picking up at Milton Keynes Coachway 20 minutes later. The fare is £14.50 for adult members of LTSC, £12 for concessions, and £16 for all others. You can book ToT coach tickets at the LTSC kiosk in Kenilworth Road on match days, or through the club shop at other times.

The Bobbers will have a coach leaving Cranfield at 9am, with various pick-up points on the way to Luton, and departure time from Kenilworth Road is 10am. The fare is £12 adults, and £10 for junior and senior citizens and tickets can be bought at the Bobbers Travel Club kiosk before home matches, or by phone to Paul Deason on 01234 750996. Stewarded car parking is available for all coach

travellers at Maple Road, price £3 for members of the Bobbers or LTSC, £4 for others.

DIY travellers

Racecourse Ground



© Chorley Handford/Premier Image

THE ROAD journey to Wrexham is a mixture of motorways and iffy trunk roads. Leave Luton on M1 north, and then take the M6. Turn off M6 at junction 10a to go onto the M54, to Telford and beyond.

That road becomes the A5, and follow that to go past Shrewsbury and Oswestry. After bypassing Oswestry take the A483, which is sign-posted to Wrexham. That road becomes the Wrexham by-pass, which you leave to follow the signs to Wrexham and Mold. You will see the Racecourse Ground on your left as you approach the town, and it has good car parking facilities.

Mileage from Luton: about 170.

Ticket News



Wrexham v Luton Town

Easter Monday - April 16, 2001, kick-off 3pm

This match is pay on the day only for Luton supporters
Prices: Adults £13, seniors and juniors £8.



Luton Town v Bury

Saturday April 21, 2001, kick-off 3pm

Tickets are now on sale at normal match day prices
Cash turnstiles will be open on the day, subject to availability.
School Holiday Offer - Children under 16 can watch this match for just £1 subject to availability, offer valid until Friday 20th April 6pm.



Luton Town v Rotherham

Tuesday April 24, 2001, kick-off 7.45pm

Tickets are now on sale at normal match day prices
Cash turnstiles will be open on the day, subject to availability.



Bristol City v Luton Town

Saturday April 28, 2001, kick-off 3pm

This match is ALL TICKET for Luton Town supporters, with none available on the day at Ashton Gate. Prices: Adults £14, Students & OAP's £11, Under 16's £9. Tickets will be on sale at Kenilworth Road ticket office until Thursday 26th April 4pm.



Brentford v Luton Town

Thursday May 3, 2001, kick-off 7.45pm

This match is ALL TICKET for Luton supporters, with none available on the night at Griffin Park
Prices: Seating: Adults £15, seniors and juniors £12 Terracing: £11 for everyone - no concessions
Tickets will be on sale at Kenilworth Road ticket office until 12 noon on the day of the game
Tickets bought for the original date are still valid for the new one.



The Official Sponsors of the Substitute Board

www.goals-oncd.com

Luton Town Credit Card Hotline

By using our telephone hotline system you can order match tickets up to 48 hours prior to any game by ringing:

01582 730748
24 HOURS A DAY

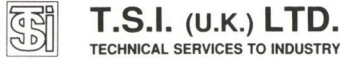
Please have your credit card to hand when you make the call.

Easter Opening Hours

- Good Friday - April 13, 2001 - 10.00am - 2.00pm
- Saturday - April 14, 2001 - 9.00am - 5.30pm
- Easter Sunday - April 15, 2001 - CLOSED
- Easter Monday - April 16, 2001 - CLOSED

You can order tickets via email on:
ticketoffice@lutontown.co.uk

Executive Box Holders



Mr H. Khatab



Mick Connolly



G.P. Quorenton
(Ductwork)



Kenilworth Suite Members

Paul Armitage	Woburn Media Ltd	SKF (UK) Ltd
Corporate Coaching	Critical Research	DBF Crosswinds Ltd
RW Harvey & Son	Dr David Siegler	Regal Litho Ltd
Mr Malcolm Eade	Mr J Siegler	Protexx
Mr Roger Eade	Datapace Ltd	Mr P Mitchell
Vangis UK Ltd	J P Hygeine Supplies	Travel Extras
Anachem	Filmergraphics	Belldene Ltd.

To reserve an Executive Box or become a Kenilworth Suite member call Commercial on:

01582 411622



Player of the Season Presentation Evening



Sunday 29th April 2001 - 7.00pm till late
at

The Riverside Suite, Vauxhall Recreation Centre
Gipsy Lane, Luton.

With Special Guest Speaker
John Motson

Raffle • Disco • Hot & Cold Buffet • Smart Casual Dress

Tickets now on sale at the Club Shop, Ticket Office and Matchdays
at the Luton Town Supporters Club Kiosk.
Priced at £12 LTSC Members, £15 Non Members



Never Ever Beaten on Price!^{*}
Save up to 30% on May
June & July holidays (including Whitsun)

with **BRITISH HOLIDAYS** and **Haven**

Contact your priority booking line on 0870 600 8003
or visit your local store

Dunstable - White Lion Retail Park, (near to Sainsbury), Boscombe Road.
Manchester - Regent Park, (near Sainsbury), off Regent Road, (near Granada Studios).
Bolton - Middlebrook Retail & Leisure Park, Horwich, Nr Reebok Stadium.

Open 7 DAYS A WEEK Mon/Sat 9am-7pm, Sun 11am-5pm.
Lines Open Mon/Sat 9am-7pm, Sun 11am-5pm

ABTA
06722

www.holidayhypermarket.co.uk

holidayclub@holidayhypermarket.uk.com

*We guarantee to beat any other High Street ABTA bonded Travel Agents "like for like" price, written quotes at time of booking are necessary. Excludes First choice retail group and JMC. Offer is on selected dates at selected parks. 3 & 4 nights breaks not included for Haven but are included for British Holidays. These offers cannot be used in conjunction with any other offer and apply to new bookings only. All offers are subject to availability, are correct at time of going to press and may be withdrawn at any time without prior notice.



**Official Kit Suppliers of
Luton Town Football Club**



Commercial Corner

John Bailey

THERE is a belated birthday party in our sponsorship lounges today, and we add our overdue congratulations to Luton Town supporter Alison Taylor and her guests. She is the landlady of the Bricklayers Arms, High Town, and is sponsoring today's game.

The pub was due to sponsor our match with Reading on January 27, which was Alison's birthday. The game was called off that morning, but we hope that this afternoon she will still enjoy a good party. We know it will help if we win, because Alison is a season-ticket holder, and many of the regulars at her pub are also keen Town fans.

The Bricklayers is featured in the Good Beer Guide, and recently received a highly commended award from the South Bedfordshire branch of CAMRA, the organisation devoted to

preserving real ales. We hope that after Alison and her friends enjoy their party here, they have every reason to continue the celebrations and toast a Luton victory when they get back to the pub!

TODAY'S match ball sponsors are also very good supporters of the football club and of our commercial activities, and it is a pleasure to welcome back old friends from IBC Vehicles. The company is a wholly-owned subsidiary of General Motors, and produces the very successful Frontera range of vehicles.

The Luton factory is expanding into new lines, and is also producing the Vauxhall Vivaro/Renault Trafic, to complement their range of mid-size vans.

John Bailey

Golden Gamble

SHE DID not enjoy the result very much, but Town supporter Helen Gatward had some considerable consolation from the Stoke match: she went home richer by £570. That was the prize in our popular Golden Gamble, and Helen, from St.

Bernard's Close, Luton, is pictured after collecting the cash. Her lucky ticket, which cost her only £1, was pulled out of the drum by Adam Locke.

Saturday's prize took the Golden Gamble pay-out £10,860 to 23 winners so far this season, an average of £472 each. We will give details of Tuesday's 24th winner in next Saturday's programme.

Sellers are on duty in the ground again today, and, as always if you want to win it you've got to be in it!

The size of the jackpot depends on ticket sales - half the income goes to the lucky winner, and the other half to club funds, so even if you don't win you are helping the football club, and we very much appreciate your support. The draw is made at half-time, with the cash available immediately.



To advertise in the matchday magazine
phone Luton 411622 or e-mail us at:

commercial@lutontown.co.uk

Kit Sponsors

NATHAN ABBEY	Paul Deason
GAVIN MCGOWAN	Luton Town Supporters Club
MATTHEW SPRING	Brian Hall
MARVIN JOHNSON	Space Display Systems
PETER HOLMES	G & S Ceramics
PAUL McLAREN	Elsie Clubb
STUART DOUGLAS	Les & Sue Miller
KENT KARLSEN	Icknield Windows Ltd
PETER THOMSON	The Bobbers Travel Club
LIAM GEORGE	WHOSH
STUART FRASER	David & Jonathan Siegler
ANDREW FOTIADIS	Sally Mayne & Family
MATTHEW TAYLOR	Mick Garbutt, Inside Media
MARK STEIN	Wendi Arnold & Graham Bates
ADAM LOCKE	Jeremy Cain of D.A.P. Consulting
FRIEDRICH BREITENFELDER	Regal Litho and Corporate Coaching
EMMERSON BOYCE	Michael Capp & Danny Clubb, Century Club Members
ANDRE SCARLETT	WHOSH
PETRI HELIN	Icknield Windows Ltd
JUDE STIRLING	Century Club
SCOTT WARD	G. Owen Ceramic Tiling Ltd
MARK OVENDALE	JEWSON Ltd
JULIAN WATTS	Les Miller, Miller & Company, Bedford
To Be Advised	E.C. Smith & Sons Ltd.
DEAN BRENNAN	B.D. Sanders
JOE KINNEAR	Luton Town Supporters Club, Milton Keynes
LIL FUCCILLO	Loyal Luton Supporters Club
BRUCE SEWELL	Century Club
JOHN MOORE	Ian Smith
JOHN CARROLL	Danny Clubb & Michael Capp, Century Club Members
LEE MANSSELL	Danny Clubb & Michael Capp, Century Club Members
DEAN STANDEN	Available
TRESOR KANDOL	Terry Neale
BRIAN STEIN	Danny Clubb
STEVEN HOWARD	Jeremy Cain of D.A.P. Consulting

If you are interested in sponsoring a player's kit please contact the Commercial Department on 01582 411622.

Goalscoring Head 2 Head

in the graphics below, Hatters' figure is to the left with the goals scored indicated in orange and Latics' to the right and scored in claret

Stats&Facts

Stats compiled by Football Information Services

Where



How



Top League Scorers

32 Lee Mansell (Luton Town) vs **6** Lee Duxbury (Oldham Athletic)

45 in 38 games Team Goals 49 in 41 games
1.18 goals Ratio per Game 1.2 goals

5 in 12 games Player's Goals 8 in 35 games
0.42 goals Ratio per Game 0.23 goals

4	Games Scored In
2	Games Scored 1st Goal
3	Games Scored 1 Goal
1	Games Scored 2 Goals
0	Games Scored 3 Goals

IMPORTANCE OF GOALS
(Taking out top scorers, how would results be affected)
1 (2pts) Games Won -> Drawn 2 (4pts)
0 (0pts) Games Won -> Lost 1 (3pts)
1 (1pts) Games Drawn -> Lost 0 (0pts)
3 Number of points gained 7

SCORING SEQUENCES
Consecutive Games Scored
0 2 Games 0
0 3 Games 0
1 game Maximum Scoring Run 1 game

CONSECUTIVE GAMES WITHOUT SCORING
2 2 Games 3
1 3 Games 0
0 4 Games 5
3 games Maximum Dry Spell 12 games

Hatters' Results

LUTON GOALS								
OPPOSITION GOALS	0	1	2	3	4	5	6	7
0	3	3						
1	3	5	4					
2	3	4	1					
3	3	2	2	1				
4	1	1	1					
5								
6								
7								

shows the number of results for each scoreline.
eg. Luton have drawn 5 games 1-1

Latics' Results

OLDHAM GOALS								
OPPOSITION GOALS	0	1	2	3	4	5	6	7
0	4	3	3	1				
1	3	7	3	1	1			
2	2	2	1	1				
3	2	3	2					
4	1							
5	1							
6								
7								

eg. Oldham have drawn 7 games 1-1 and won 1 game 5-1

When goals scored & conceded



Average time of Scoring / Conceding

76 mins	All Goals for	75 mins
77 mins	Home Goals For	57 mins
75 mins	Away Goals For	113 mins
51 mins	All Goals Against	65 mins
54 mins	Home Goals Against	79 mins
49 mins	Away Goals Against	55 mins

Table shows average time taken for both teams to score and concede goals in home and away games.

Face2Face

Last Season
At Kenilworth Road.....1-1
At Boundary Park.....1-2
This Season
Hatters' Season records:
Home Win...3-1 Brentford
.....5-3 Swansea
Away Win.....3-1 Swindon
3-1 Notts County, 3-1 Stoke
Home Defeat...0-3 Bristol City
.....0-3 Colchester
Away Defeat...0-4 Swansea
Consec. Wins.....3
Consec. Defeats.....4
Latics' Seasons records:
Home Win...5-1 Wrexham
Away Win...2-0 Bristol Rovers
Home Defeat.....1-4 Posh
Away Defeat...0-5 Reading
Consec. Wins.....2
Consec. Defeats.....4

Last 10 Games Form Guide Comparison

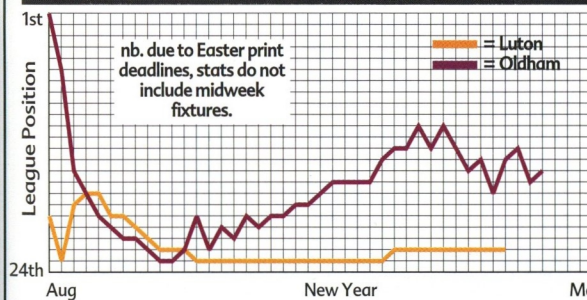
Hatters	: WLWDWLSLSL	F 14 A 15 Pts 12
Latics	: LWLLLLWSSW	F 11 A 17 Pts 11

Form Guide shows last 10 results. W = Won, L = Lost, S = Score Draw, D = No Score Draw. Most recent result to the right

Oldham Athletic's Last 10 Years - The Complete Record

	DIV	FAC	WC	LS	Gls	Ave Att
90/91	2	4	3	Marshall	17	13,234
91/92	1	3	4	Sharp	12	15,087
92/93	P	3	4	Olney	12	12,859
93/94	P	SF	4	Sharp	9	12,569
94/95	1	4	3	McCarthy	18	8,444
95/96	1	4	2	Richardson	11	6,627
96/97	1	3	3	Barlow	12	7,045
97/98	2	3	1	Barlow	12	5,588
98/99	2	3	1	Allott	7	5,628
99/00	2	3	1	Allott	10	5,391

Seasonal Progress Comparison



Only 90,000 minutes to go.
The new season starts August 18th. Call now to reserve your seat.
digital on 0808 100 0101



Today's Visitors

Oldham Athletic



OLDHAM ATHLETIC AFC SEASON 2000/2001

Back Row (left to right): Paul Jones, Danny Boshell, Ryan Sugden, Gary Kelly, Jamie Campbell, David Miskelly, Paul Beavers, Ben Futcher, Stuart Thom.

Middle Row (left to right): Steve Whitehall, Paul Rickers, John Sheridan, Mark Allott, Craig Dudley, David Cross (Senior Youth Coach), Phil Stock (Physiotherapist), Tony Philliskirk (Assistant Youth Coach), Danny Walsh, Jordan Tait, Mark Inns, Matthew Tipton, Gerry McLaughlin.

Front Row (left to right): Andy Holt, Mark Hotte, Neil Adams, Lee Duxbury, Bill Urmsen (Assistant Manager), Andy Ritchie (Manager), Andy Beaglehole (Director of Youth Development), Phil Salt, Scott McNiven, Shaun Garnett, Carlo Corazzini.

ANDY RITCHIE - MANAGER

Andy is now in his third season as a manager after a long and very successful playing career.... Actually Andy is still registered as a player with a Potent Right foot but Andy sees the future at club with its youth policy. Andy Ritchie's career started at Old Trafford with Manchester United under the fatherly hand of the late Sir Matt Busby. After making only 33 appearances for United scoring 13 goals (including 2 hat tricks), Andy moved on to then First Division Brighton & Hove Albion for £500,000. After making 89 appearances and scoring 23 goals Ritchie moved on to Leeds United in a player exchange/cash deal valued at £750,000, 136 games later after scoring 40 times Andy surprisingly agreed to join Oldham Athletic for a tri-

bunal set fee of only £55,000.

The rest, as they say, is history as Andy went on to become one of Latics' greatest ever goalscorers, scoring an incredible 105 goals in 250 games before being given a free transfer in 1995 when he joined Scarborough.

After spending just 18 months on the North East coastline the call from Latics Chairman, Ian Stott, brought Andy back 'home' to Boundary Park to take over as player coach alongside Neil Warnock.

Neil Warnock's reign was a short one....15 months to be exact, and when Warnock's contract was not renewed Andy was offered his first ever managerial roll in football.

NO.1 - GARY KELLY - GOALKEEPER

33 year old Goalkeeper who was recently

recalled to represent his Country (Eire) after a stirring run of form. Good shot-stopper and a great enthusiast, cost Latics £10,000 when signing from Bury. Previous clubs Newcastle United and Bury. Consistently good shot stopper.

NO.13 - DAVID MISKELLY - GOALKEEPER

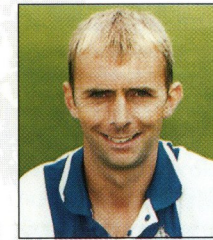
20 year old keeper that has come through the ranks at Boundary Park. Once again David is an Irishman but this time from the North. Very promising youngster already drawing the attention of other clubs. Made his debut last season against Reading but still cannot knock Gary Kelly from number one spot.

NO.2 - SCOTT MCNIVEN - DEFENDER

22 year old full back with already more than 100 first team appearances under his belt, one of twins at the club, another youngster to come through the youth set up. Solid tackler and quick.

NO.3 - ANDREW HOLT - DEFENDER

22 year old defender standing at 6'2" another product of the youth system under Bill Urmsen, now head coach. Very quick, good in the air with a devastating left foot. Supporter's Player of the Year last term.



NO.4 - SHAUN GARNETT - DEFENDER

31 year old who joined Latics from Swansea City for a £50,000 fee having spent only 3 months with Swansea after his move from Tranmere Rovers where he made over 100 first team appearances. Mainstay of the Latics defence, over 120 appearances for Latics.

NO.11 - MARK INNES - DEFENDER

22 year old product of the youth system, very intelligent footballer strong on the tackle, fiery Scottish approach to game, just beginning to make his mark at first team level.

NO.20 - MARK HOTTE - DEFENDER

Standing at only 5'5" one of the smallest defenders in the Football League ... but one of the quickest. Burst on to the scene during the 99/2000 season, and immediately made a name for himself as a strong versatile defender, looks like having a long career in the game.

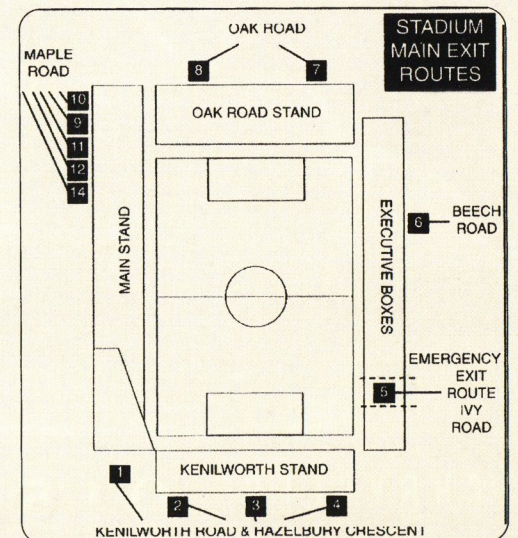
NO.21 - BARRY PRENDERVILLE - DEFENDER

23 year old defender signed from St Patrick's Athletic (Dublin). Ex Coventry City and Hibernian player joined Latics September 2000. Ball playing central defender of some promise spent five years at Coventry as a junior now

EVACUATION PROCEDURE

IN THE event of any emergency in the stadium, Luton Town FC and the emergency services have agreed on an evacuation procedure which is designed to ensure the safe and controlled evacuation of the crowd, and to ensure their safe dispersal from the area, to allow the emergency services to carry out their tasks.

In the event of evacuation from all or part of the stadium, you will receive instructions over the public address system on how you should leave. In an evacuation of the main stand you will be instructed to use the pitch. Stewards will direct you to the nearest exit. It may be that your normal exit route will not be available. On leaving the stadium, you will find some roads closed to pedestrians, to enable swift and unobstructed access for the emergency services. Please leave the area of the ground as quickly as possible, by the route directed. Your co-operation will be most appreciated.



Geoff Lovell, Safety Manager.

For all the latest news, views and interviews call

CLUBCALL - 09068 121123

(Calls charged at 60p per minute at all times)

making his mark in the Nationwide League.

NO.27 - BEN FUTCHER - DEFENDER

19 year old son of Paul Futchter and nephew of Ron Futchter, third generation of Futchers to play for Latics. Standing at 6'5", giant of a defender. Still learning the game but on the fringe of first team glory.

NO.29 - PAUL JONES - DEFENDER

Signed from Leigh R.M.I. on a free transfer, once with Tranmere Rovers but released when 19 years old. Now 22 years old was part of Barrow's Unibond Championship side. Made a place for himself immediately in the first team, very powerful defender who never likes to be beaten.



NO.6 - LEE DUXBURY - MIDFIELDER

31 year old who started his career with Bradford City where he made over 250 appearances before moving on to Huddersfield Town and then back to Bradford City from where he joined Latics for £350,000. Strong in the tackle, very much the midfield general. Captain of the Oldham side can chip in with useful goals as well.

NO.7 - PAUL RICKERS - MIDFIELDER

Yet another product from the Boundary Park Youth System. Paul has very quick feet, now made nearly 200 appearances for Latics scoring 20 goals. Knocks the ball about with ease.

NO.8 - JOHN SHERIDAN - MIDFIELDER

35 year old very experienced Ire International. Started his career with Leeds United having been released as a junior at Manchester City, Notts Forest was John's next stop after a £650,000 transfer in 1989 and only three months later was on the move again to Sheffield Wednesday for £500,000. Bolton paid £180,000 to secure his services in 1996 from where he joined Latics in October '98 on a free transfer. Still today one of the best passers of a ball in the game possessing a right foot capable of splitting the tightest of defences. Very dangerous at dead ball situations.

NO.14 - PHILIP SALT - MIDFIELDER

Another youngster just breaking through into the big time. Never say die attitude, good tackler. 21 years old. Born locally in Oldham, learning very much from the evergreen John Sheridan.

NO.18 - DANNY BOSHELL - MIDFIELDER

19 year old midfield player of some promise. Has a sweet right foot and likes to spray the ball around the park. Another product of the youth system at Latics, a very promising future ahead of him.

NO.31 - TONY CARSS - MIDFIELDER

24 year old started his career with Bradford City before joining Blackburn Rovers from where he moved on to Darlington, Cardiff City and a brief spell with Carlisle United before signing for Latics mid-season 2000/01. Talented midfield player with a powerful shot.

NO.9 - MATTHEW TIPTON - FORWARD

20 year old Welsh U21 International. Product of the youth system at Boundary Park, made many appearances coming off the subs bench last season. Quick feet and possesses a powerful shot.

NO.12 - MARK ALLOTT - FORWARD

22 year old product of the youth system made his scoring debut against Bolton Wanderers in 1996. Now a regular at Boundary Park and was top scorer last season (10 games). Deceiving pace, stunning right foot. Can hold the ball up very well. Just signed a new three year deal at Boundary Park.

NO.16 - RYAN SUGDEN - FORWARD

Came through the youth development programme at Boundary Park, a prolific goalscorer notching 34 goals in only 38 games for the reserves & youth team. Notched his debut senior goal by sending Blackpool down to Division Three last season.



NO.19 - GIAN CARLO CORAZZIN - FORWARD

28 year old striker with over 50 appearances for his country under his belt (Canada) scoring 11 goals. Winner of the Golden Boot in the CONACAF Gold Cup where Canada beat Mexico, Columbia and Costa Rica. Scorer of over 90 Football League goals with previous clubs Cambridge Utd, Plymouth A and Northampton Town. Signed for Latics in July 2000 under the Bosman Ruling.

NO.17 - CRAIG DUDLEY - FORWARD

Signed on deadline day March '99 from Notts County for £10,000. Made over 40 senior appearances for County and Shrewsbury Town (loan). England U'19 and U'21 player of some promise, and broke into the Latics' first team last season ... extremely quick on the break.

NO.23 - ANDY RITCHIE - FORWARD

Now manager.....scorer of 110 goals for Latics in his 250 appearances. Previously with Manchester United, Leeds United and Brighton & Hove Albion. See manager's details for more information.

NO.24 - NEIL ADAMS - FORWARD

34 year old winger returning to Latics for second time from Norwich City. Over 375 league appearances under his belt with over 50 goals to his credit. Tricky winger with a great right foot. Suffered a bad knee injury in the 1-0 win at Stoke City in November, could be out for some time.

NO.28 - DAVID EYRES - FORWARD

36 year old very experienced Scouser who came into the game late at the age of 25 after working on the production line of Fords Halewood Plant on Merseyside. Played all his professional football with Lancashire clubs, Blackpool, Burnley, Preston North End and now Oldham Athletic. Scored over 100 goals and notched his first for Latics in the 3-2 win over Oxford in December 2000.

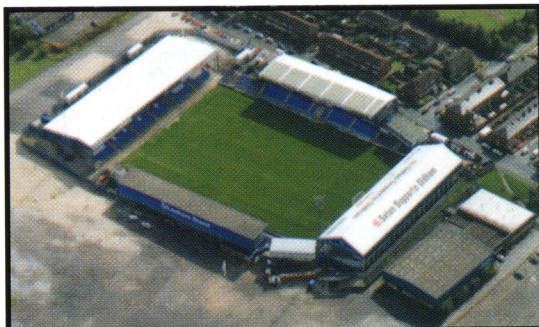
BILL URMSON - HEAD COACH

Bill has now spent over 40 years in the game, as player, scout, and coach. His playing career started in 1955 with Bury Football Club, before moving on to Stockport County in 1960. Bill then moved on to become Youth Coach at Bury Football Club before moving up to the position of First Team Coach in 1970. It was not until 1976 Bill moved over to Boundary Park where he has served now for 22 years as Youth Coach, Reserve Team Coach, and he is now in his second spell as First Team Coach.. A man of vast experience and likes to see a game played in the traditional way.

CANNON LANE
Hitchin Road, Stopsley, Luton, Beds

CHRYSLER 01582 725506
www.cannonlane.co.uk

Treat yourself and your friends to an Executive Box.
Call the Commercial Department on:
01582 411622



Premierimage.co.uk

THE SOCCER STUFF & NONSENSE STORE

Aerial & Fisheye photos of all British Stadiums... Paintings... Cakes...

Mousemats... Jigsaws...

Garden Kit Gnomes... House nameplates... & much much more

For a FREE gift catalogue

Call: 0208 461 4214

or write to: Unit 12
157-159 Boundfield Rd
London SE6 1PE



R. J. BLOW & COMPANY

THE FRIENDLY ACCOUNTANTS

*Book-Keeping
Taxation and Wages etc.*



24 GUILDFORD STREET
LUTON
BEDS, LU1 2NR



Tel: (01582) 738792

Fax: (01582) 423347

FANS ON THE MOVE

Visitors to Luton

Notts Co	.606
Peterborough (WC)	.360
Bournemouth	.539
Northampton	.1,240
Walsall	.313
Swindon	.531
Sunderland (WC)	.1,366
Millwall	.1,389
Brentford	.695
Wrexham	.352
Bristol City	.1,396
Rushden (FAC)	.1,736
Colchester	.309
Darlington (FAC)	.221
Peterborough	.918
Wigan	.261
QPR (FAC)	.1,976
Wycombe	.402
Swansea	.336
Bristol Rovers	.788
Cambridge	.752
Reading	.1,249
Stoke	.1,086

Away-day Hatters

Wigan	.640
Wycombe	.1,266
Rotherham	.603
Peterborough (WC)	.908
Swansea	.285
Sunderland (WC)	.332
Bristol Rovers	.333
Cambridge	.1,210
Oxford	.817
Bury	.419
Port Vale	.420
Stoke	.499
Peterborough	.290
Darlington	.527
Reading	.1,010
Bournemouth	.446
QPR (FAC)	.2,586
Oldham	.153
Northampton	.1,250
Notts County	.646
Walsall	.965
Swindon	.1,512
Millwall	.1,092
Peterborough	.1,342
Colchester	.1,013

Total: .18,821

Average: .818

TOWN TEASER

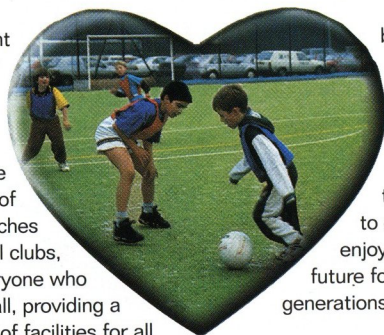
IF YOU know your Town Trivia, you might have a chance to win a little prize this afternoon, when the PA announcer will pose another Town teaser before kick-off. Listen for your chance to have a go - fans will be picked out of the crowd until one comes up with the right answer. At the Oxford match we asked about an international striker in the Manor Ground squad who had two spells with Luton, and the answer, of course, was Phil Gray.

Today's Question

IN THE 1980s Luton Town and Oldham had something in common that Kenny Dalglish, among others, hated. It helped to make history for Andy King at QPR. What was it?

There's a brand new team at the heart of English football.

Football and the Government have teamed up in a new partnership to provide new lifeblood for the grass roots of English football - pumping financial support into the game that's so close to the hearts of so many. From parks pitches to professional football clubs, we'll be there to help everyone who loves football, providing a new generation of facilities for all



by pooling resources from The FA Premier League, The Football Association, Sport England and the Government into a single substantial fund for redistribution throughout the game. Together, we intend to ensure that football enjoys a healthy future for many generations to come.



FootballFoundation

football's biggest supporter

1 Waterhouse Square, 138-142 Holborn, London EC1N 2ST.
T: (020) 7832 0100 F: (020) 7832 0119
E: enquiries@footballfoundation.org.uk
W: www.footballfoundation.org.uk



MORTGAGES



1 in 3 people are paying too much for their mortgage

Be different - switch to Nationwide

www.nationwide.co.uk

0800 30 20 10

Nationwide. Underlining the difference

or visit us today

Banking | Credit Card | Insurance | Investments | Loans | Mortgages | Pensions | Savings

NATIONWIDE ESTIMATE THAT ONE IN THREE PEOPLE ARE PAYING TOO MUCH FOR THEIR MORTGAGE AS AT 19 FEBRUARY 2001. MORTGAGES ARE SUBJECT TO STATUS, VALUATION AND SECURITY. AVAILABLE TO THOSE AGED 18 OR OVER ONLY. NATIONWIDE BUILDING SOCIETY, NATIONWIDE LIFE LIMITED AND NATIONWIDE UNIT TRUST MANAGERS LIMITED REPRESENT ONLY THE NATIONWIDE MARKETING GROUP WHICH IS REGULATED BY THE PERSONAL INVESTMENT AUTHORITY FOR LIFE ASSURANCE, PENSIONS AND UNIT TRUST PRODUCTS. NATIONWIDE UNIT TRUST MANAGERS LIMITED IS ALSO REGULATED BY IMRO. WRITTEN QUOTATIONS AVAILABLE ON REQUEST FROM NATIONWIDE BUILDING SOCIETY, NATIONWIDE HOUSE, PIPERS WAY, SWINDON, SN38 1NW. CALLS RECORDED. NATIONWIDE IS A MEMBER OF THE BUILDING SOCIETIES OMBUDSMAN SCHEME AND SUBSCRIBES TO THE BANKING AND MORTGAGE CODES, COPIES OF WHICH ARE AVAILABLE ON REQUEST. SECURITY WILL BE REQUIRED ON PROPERTY.

YOUR HOME IS AT RISK IF YOU DO NOT KEEP UP REPAYMENTS ON A MORTGAGE OR OTHER LOAN SECURED ON IT.

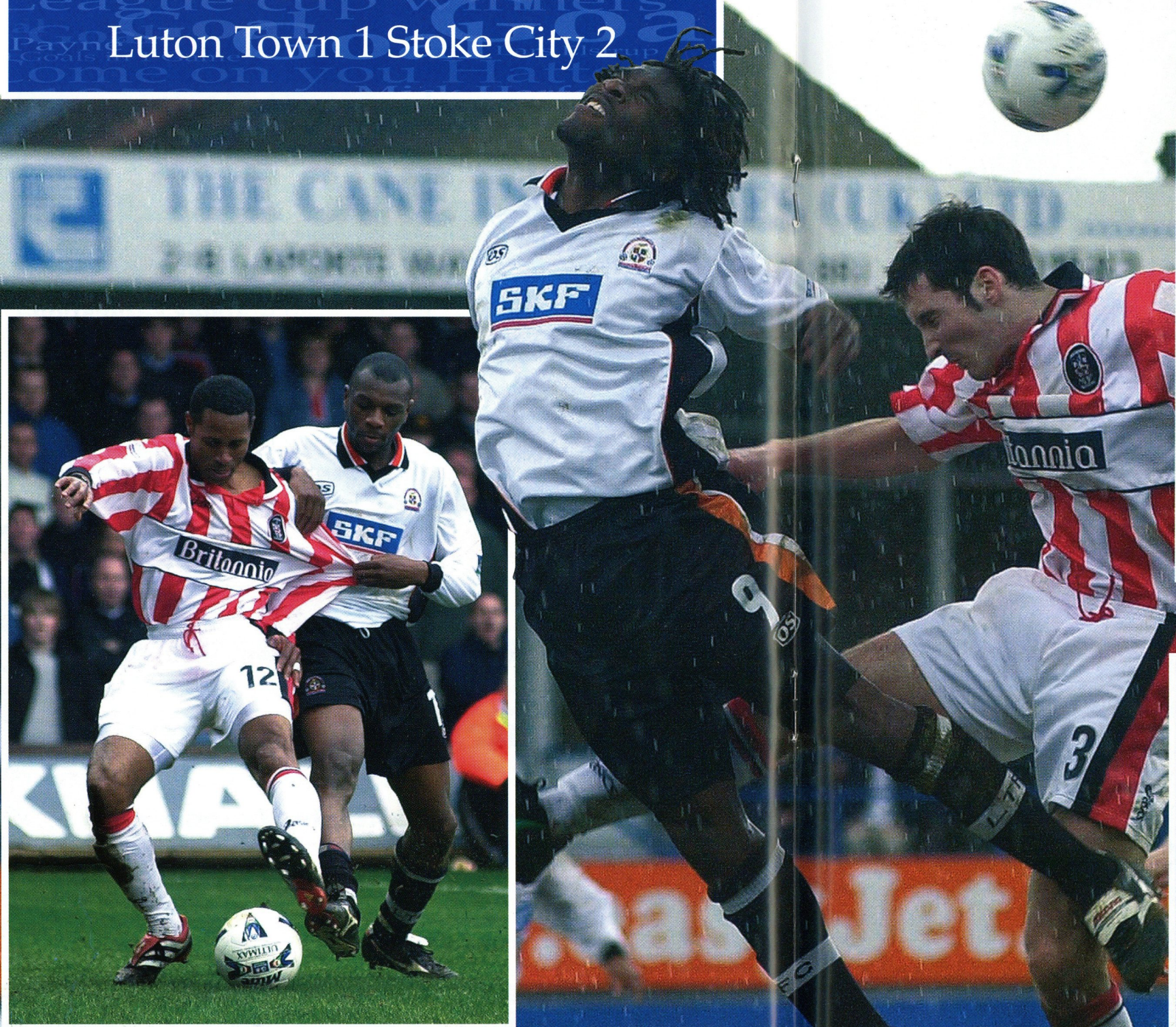
For all the latest news, views and interviews call

CLUBCALL - 09068 121123

(Calls charged at 60p per minute at all times)

Photo Action

Luton Town 1 Stoke City 2



MAIN PICTURE: Leaping in the rain - Stuart Douglas and Stoke's Clive Clarke rising to the occasion.

LEFT: Handy defending - Emmerson Boyce making sure Kyle Lightbourne doesn't get away.

ABOVE: On the ball - Paul McLaren, who was the sponsors' man of the match.

See pages 36 and 37 for a report and more action pictures.

Photos Gareth Owen/LTFC

Team work

The ideal team requires that the different talents work together as one.

The new standard for self-aligning bearing systems makes this a reality.

- CARB™ toroidal roller bearing
- Explorer spherical roller bearing

For further enhancement

- SNL bearing housings and accessories
- Seals
- System 24 automatic lubricators
- Condition monitoring solutions



SKF

Helping your world run smoother

Tel: 01582 496436
www.skf.co.uk




THE CANE INDUSTRIES (UK) LTD
QUALITY CANE FURNITURE



Daytona



Toronto




San Francisco



Wyoming

Established 1980 SHOWROOM OPEN
2-B LAPORTE WAY,
LUTON, BEDS LU4 8RJ
Tel: 01582 727123 Fax: 01582 727233



www.superkarts.co.uk

For further information and bookings telephone **01462 485959**

2 Pixmore Avenue
Letchworth
Herts SG6 1JS

- Arrive and Drive Group Events
- Karting Clubs Birthday Parties
- Corporate Events Open Events



Regal Litho

352 Selbourne Road
Luton Beds LU4 8NU
Tel: 01582 493332
Fax: 01582 560731
ISDN: 01582 560854
Email: regallithold90@atlas.co.uk
www.regallitho.co.uk

- ◆ Digital Artwork
- ◆ Conventional Repro
- ◆ Platemaking
- ◆ Colour Printing
- ◆ Finishing
- ◆ Distribution
- ◆ Stationery
- ◆ Point of Sale
- ◆ Brochures
- ◆ Commercial Print
- ◆ Magazine Publishing

The Publishers & Printers of:

**Scale
Aircraft
Modelling**

**Scale
Aircraft
Monographs**

For the latest ticket information call
the Luton Ticket Office on:
01582 416976



Blast from the Past

Roger Wash

Harford's second coming

A lot happened in the summer of 1991. After the final game win over Derby at Kenilworth Road had secured safety at the end of the previous season, we looked forward to a period of consolidation in the top flight. Some hope!

A change of manager was the first news to hit the streets of Luton, with Jim Ryan departing in controversial circumstances to be replaced by former boss David Pleat. The chairman then resigned, the physiotherapist moved on and the youth team coach left. All this happening before the players reported back from their summer break.

On the playing front, Lars Elstrup, who had been our record signing a couple of years before, had not returned from Denmark and was reported to have taken a job as a bank teller while threatening to turn out as an amateur for Odense.

The vultures were out, as they normally are at Kenilworth Road, with the target local lad and crowd favourite, Kingsley Black. The Board resisted all the initial bids and instead added to the squad by bringing back old hero Brian Stein, even though he was now 33.

The Town kicked off the 1991/92 season at newly promoted West Ham and we were all heartened by a battling performance in a 0-0 draw.

Just before the game Pleat had made his first big cash signing when he went back to one of his former clubs, Tottenham, and spent £275,000 on Phil Gray, but unfortunately the new boy was unable to shine on his full debut as the Town went down 0-5 at Coventry in the next game. As well as the heavy defeat the Hatters had to contend with the dismissal of young forward, Sean Farrell, for a bad foul on Sky Blues veteran Trevor

Peake.

A 0-0 draw at home to Liverpool followed, with Pleat then making the announcement that Peake was to join the Town- presumably to keep a close eye on Farrell!

Two further away defeats were suffered at Arsenal (0-2) and Chelsea (1-4) before our first win of the season was recorded with a 2-1 victory over Southampton at Kenilworth Road.

The previous week Pleat had bowed to the inevitable and sold Kingsley Black to Nottingham Forest for £1.5 million, but had taken forward Lee Glover on loan from the City Ground. As if to typify the club's fortune at that time Glover was injured on his debut never to return.

A disastrous 0-3 drubbing at Wimbledon led Pleat into the transfer market once again and Steve Thompson joined us from Bolton for £180,000. By this time our heads were spinning with all the comings and goings and we were told that even more signings were in the offing.

Pleat had talked about the need for a 'Mick Harford type' of player to lead the attack, and it was therefore not a surprise when a fee of £325,000 was spent on the best Harford type in the business...Mick himself.

Harford had no hesitation in returning to Kenilworth Road where he had enjoyed the best and most productive time of his career the first time around. After leaving Luton for Derby he had suffered relegation to the old Division One the previous year and relished the chance to show his skills at the top once more.

The second coming of Mick Harford was greeted by a rapturous Kenilworth Road crowd who had turned up to see one of the

previous season's promoted sides, Oldham, beaten out of sight and the campaign transformed just as it had in 1984 during Harford's first spell at the club.

As it turned out, the game against Oldham started off in less than sparkling fashion with the Town pulling back defenders to counter the threat of the Latics strikeforce of Ian Marshall and Graeme Sharp, which resulted in few chances at the other end.

The only shot on target by the Town in the first half saw David Preece hit the crossbar with a volley but the players had to come out of their shells when Oldham took the lead from Marshall's header after 52 minutes.

Despite throwing everyone forward in search of an equaliser, the Hatters did not look like scoring until a double substitution was made with Paul Telfer and Kurt Nogan coming on for Brian Stein and Darron McDonough.

The two fresh youngsters turned the game on its head with their enthusiasm and willingness to run at the Oldham defence but, as the minutes ticked away, it looked as though the Latics would escape with all three points to make it three wins in a row for them.

With five minutes to go, the ball was worked down the right by Matthew Jackson and Telfer, for Nogan who put over a low cross for Harford, who had got in front of his marker, to tap in.

The crowd went wild and in true 'Roy of the Rovers' style Harford was on hand to take advantage of some hesitancy in the Oldham defence to hit a sweet overhead kick into the roof of the net in injury time to secure an unlikely victory.

Pleat said afterwards, "I have to be mean with Luton's money and I think I paid about



Mick Harford, second time around.

£75,000 over the odds for a man of 32, but I knew what Mick had to offer and what he was really worth to us."

The only question to Harford was, "Who writes your script?"

Luton: Chamberlain, Jackson, Rodger, Peake, McDonough (Telfer), Dreyer, Pembridge, Thompson, Preece, Stein (Nogan), Harford.

Oldham: Hallworth, Fleming, Barrett, Kilcline, Halle, Adams, Milligan, Henry, Holden, Sharp, Marshall (Ritchie).

Roger Wash

For all the latest news, views and interviews call

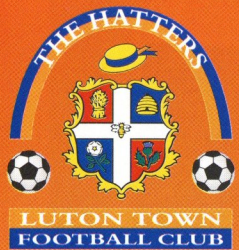
CLUBCALL - 09068 121123

(Calls charged at 60p per minute at all times)

Up and Running!

Luton Town's very own official website.

www.lutontown.co.uk



EASTER HOLIDAY COACHING COURSES ALL NEXT WEEK

Come and join in the fun!

Our Coaching courses are first and foremost a fun way to spend half term and offer a well organised programme supervised by our F.A. qualified coaches. The programme is designed to improve the youngsters game with our skills and technique coaching whilst encouraging good attitudes and behaviour.

LUTON

TUESDAY to FRIDAY 17th to 20th April
Icknield Junior School

MONDAY to WEDNESDAY 23rd to 25th April
Sacred Heart RC Junior School
St Josephs RC Junior School

DUNSTABLE

TUESDAY to FRIDAY 17th to 20th April
Watling Lower School

LEIGHTON BUZZARD

MONDAY to THURSDAY 9th to 12th April
Gilbert Inglefield Middle School

TUESDAY to FRIDAY 17th to 20th April
Memorial Park Playing Fields, Linslade

FLITWICK/AMPTHILL

TUESDAY to FRIDAY 17th to 20th April
Redborne Upper School

All courses run from 10.00 am to 3.00 pm and are based around programmes for School Years 1 to 3 (beginners) and School Years 4 to 8 (Advanced)

For further information or to register a place simply ring the Club on 01582 411622 or 07958 43 83 22

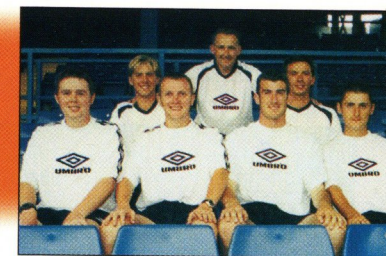


The Dunstable Gazette

The Luton News



Community & Schools Football Programme



WEEKLY AFTER SCHOOLS INDOOR SPRING & SUMMER COACHING PROGRAMME

LUTON

MONDAYS

Bushmead Primary School
School Years 4 to 6 at 3.50 pm to 4.50 pm
School Years 1 to 3 at 4.50 pm to 5.50 pm
Southfields Junior School
School Years 1 to 3 at 4.00 pm to 5.00 pm
School Years 4 to 7 at 5.00 pm to 6.00 pm

TUESDAYS

Luton Regional Sports Centre
School Years 1 to 3 at 4.00 pm to 5.00 pm
Somerles Junior School
School Years 1 to 3 at 6.00 pm to 7.00 pm
School Years 4 to 8 at 7.00 pm to 8.00 pm

WEDNESDAYS

Icknield Junior School
School Years 1 to 2 at 4.00 pm to 5.00 pm
School Years 3 to 4 at 5.00 pm to 6.00 pm
School Years 5 to 7 at 6.00 pm to 7.00 pm

THURSDAYS

Barnfield College (Farley Hill)
School Years 1 to 3 at 6.30 pm to 7.30 pm
School Years 4 to 7 at 7.30 pm to 8.30 pm
Wigmore Primary School
School Years 1 to 2 at 3.50 pm to 4.50 pm
School Years 3 to 4 at 4.50 pm to 5.50 pm
School Years 5 to 7 at 5.50 pm to 6.50 pm

FRIDAYS

St Joseph's Junior School
School Years 1 to 3 at 4.00 pm to 5.00 pm
School Years 4 to 8 at 5.00 pm to 6.00 pm
Lealands High School
School Years 1 to 3 at 4.00 pm to 5.00 pm
School Years 4 to 8 at 5.00 pm to 6.00 pm

DUNSTABLE

THURSDAYS

Watling Lower School
School Years 1 to 3 at 4.00 pm to 5.00 pm
Queensbury Upper School
School Years 3 to 4 at 6.00 pm to 7.00 pm
School Years 5 to 7 at 7.00 pm to 8.00 pm

FRIDAYS

Hadrian Lower School
School Years 1 to 3 at 3.45 pm to 4.45 pm
School Years 4 to 7 at 4.45 pm to 5.45 pm

LEIGHTON BUZZARD

MONDAYS

Linslade Lower School
School Years 1 to 2 at 4.00 pm to 5.00 pm
School Years 3 to 4 at 5.00 pm to 6.00 pm
Gilbert Inglefield Middle School
School Years 5 to 8 at 7.00 pm to 8.00 pm

WEDNESDAYS

Gilbert Inglefield Middle School
School Years 1 to 2 at 4.00 pm to 5.00 pm
School Years 3 to 4 at 5.00 pm to 6.00 pm
Memorial Park Playing Field
School Years 5 to 8 at 7.00 pm to 8.00 pm

CADDINGTON

THURSDAYS

Five Oaks Junior School
School Years 4 to 7 at 3.45 pm to 4.45 pm
School Years 1 to 3 at 4.45 pm to 5.45 pm

HOUGHTON REGIS

TUESDAYS

Kings Houghton Middle School
School Years 1 to 2 at 5.15 pm to 6.15 pm
School Years 3 to 4 at 6.15 pm to 7.15 pm

FLITWICK/AMPTHILL

TUESDAYS

Redborne Upper School
School Years 1 to 2 at 4.00 pm to 5.00 pm
School Years 3 to 4 at 5.00 pm to 6.00 pm
School Years 5 to 8 at 6.00 pm to 7.00 pm

HENLOW

FRIDAYS

Henlow Middle School
School Years 4 to 8 at 3.45 pm to 4.45 pm
School Years 1 to 3 at 4.45 pm to 5.45 pm
School Years 4 to 8 at 5.45 pm to 6.45 pm

BEDFORD

THURSDAYS

The Bunyan Sports Centre
School Years 1 to 3 at 4.00 pm to 5.00 pm
School Years 4 to 7 at 5.00 pm to 6.00 pm

For further information or to register a place simply phone the Community & Schools dept on 01582 411622 or 0958 438322



McDonald's under 9's and 10's 6 a side Finals Tournament

Pictured are the victorious players from Bushmead Wanderers, Caddington Tigers, Icknield Youth and Leighton Corinthians Football Clubs following their presentation on the pitch during our home game with Stoke City.

All four teams won through to their finals from over 30 teams to play on the pitch and in the end it was Icknield Youth who defeated Leighton Corinthians 3-0 in the under 9's Final and in the under 10's final Caddington Tigers won 1-0 over Bushmead Wanderers in a very close game.

Well done to all of the teams who took part and reached the final stage.

MORTGAGES



1 in 3 people are paying too much for their mortgage

Be different - switch to Nationwide

	Rate (VARIABLE) %	APR (VARIABLE) %	Monthly payment	5 year saving with Nationwide
Nationwide	6.49	6.7	£404.75	-
Halifax (New Variable Rate 2)	6.75	7.0	£414.55	£588.00
Halifax (Variable Rate 1)	7.50	7.8	£443.39	£2,318.40
Abbey National	7.49	7.9	£448.16	£2,604.60
Cheltenham & Gloucester (Lloyds TSB)	7.50	8.0	£448.55	£2,628.00
NatWest	7.49	7.9	£448.16	£2,604.60

At Nationwide we offer our great value CAT standard mortgages to everyone. So, whether you're a first time buyer, an existing borrower, a home mover or a remortgage customer we can offer you better value. Our new Base Mortgage Rate is currently around 1% lower than the standard variable rate most borrowers pay. It comes with daily interest and a full range of flexible features from 1 May 2001. So don't be one of the many who pay too much. Check out our rates and enjoy longer lasting value with Nationwide. Call us today quoting reference number MA09.

Nationwide. Underlining the difference

www.nationwide.co.uk | 0500 30 20 10 | or just call in

Banking | Credit Card | Insurance | Investments | Loans | Mortgages | Pensions | Savings

COMPETITOR COMPARISON TABLE ASSUMES A £60,000 REPAYMENT STANDARD VARIABLE RATE MORTGAGE, BASED ON A PURCHASE PRICE OF £80,000, OVER A 25 YEAR TERM. COMPETITOR INFORMATION SOURCE: MORTGAGE BROKER LTD. COMPETITOR INFORMATION CORRECT AS AT 22 MARCH 2001. NATIONWIDE ESTIMATE FOR BORROWERS PAYING TOO MUCH FOR THEIR MORTGAGE AS AT 19 FEBRUARY 2001. NATIONWIDE TYPICAL EXAMPLE ASSUMES BORROWERS TAKE OUT A BASE MORTGAGE RATE OF 6.49%. NEW BORROWERS TO NATIONWIDE REQUIRE A MINIMUM DEPOSIT OF 25% FOR THIS RATE. A BORROWER APPLYING FOR A £50,000 REPAYMENT MORTGAGE OVER 25 YEARS BASED ON A PURCHASE PRICE OF £80,000, 300 MONTHLY PAYMENTS OF £404.75 WILL BE REQUIRED. 6.7% APR (VARIABLE). APR ASSUMES A 25 YEAR TERM. TOTAL AMOUNT PAYABLE (TAP) WILL BE £121,877 WHICH INCLUDES 300 MORTGAGE INTEREST PAYMENTS, SOLICITOR'S MORTGAGE COSTS OF £100 EXCLUDING VAT (AND ASSUMING THE SAME SOLICITOR ACTS FOR BOTH OF US), A VALUATION FEE OF £175 WHICH IS REFUNDED ON COMPLETION. APR QUOTED ASSUMES THAT COMPLETION TAKES PLACE ON 1 MAY 2001 AND ASSUMES ALL MONTHLY PAYMENTS TAKE PLACE ON THE 28TH OF THE MONTH. MORTGAGES ARE SUBJECT TO STATUS, VALUATION AND SECURITY. AVAILABLE TO THOSE AGED 18 OR OVER ONLY. NATIONWIDE BUILDING SOCIETY, NATIONWIDE LIFE LIMITED AND NATIONWIDE UNIT TRUST MANAGERS LIMITED REPRESENT ONLY THE NATIONWIDE MARKETING GROUP WHICH IS REGULATED BY THE PERSONAL INVESTMENT AUTHORITY FOR LIFE ASSURANCE, PENSIONS AND UNIT TRUST PRODUCTS. NATIONWIDE UNIT TRUST MANAGERS LIMITED IS ALSO REGULATED BY IMRO. WRITTEN QUOTATIONS AVAILABLE ON REQUEST FROM NATIONWIDE BUILDING SOCIETY, NATIONWIDE HOUSE, PIPERS WAY, SWINDON, SN38 1NW. CALLS RECORDED. NATIONWIDE IS A MEMBER OF THE BUILDING SOCIETIES OMBUDSMAN SCHEME AND SUBSCRIBES TO THE BANKING AND MORTGAGE CODES, COPIES OF WHICH ARE AVAILABLE ON REQUEST. SECURITY WILL BE REQUIRED ON PROPERTY.

YOUR HOME IS AT RISK IF YOU DO NOT KEEP UP REPAYMENTS ON A MORTGAGE OR OTHER LOAN SECURED ON IT.

The Junior Hatters are sponsored by London-Luton Airport



Junior Hatters

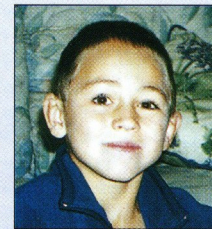
IT HARDLY seems possible that another season is within a few weeks of the final whistle, and the Junior Hatters have only two more football days out to watch the Town in away games. First up is Monday's visit to Wrexham, where we always have a good time. The trip might have sold out by the time these notes appear, but if you want to go it's worth checking at the club shop today. We will have a football match against our counterparts from Wrexham, and we have also been invited to provide a mascot, so there are two very good reasons for bringing your Luton kit with you - the mascot is chosen by lucky dip on the coach going to the game. Our final awayday will be to see the game at Bristol City in a fortnight's time. They are another club who offer good hospitality to us, and as this is always a popular trip, we advise early booking if you want to go. Thanks to our sponsors, London Luton Airport, we are able to offer subsidised prices, only £10 for Junior Hatters and £13 for others. For more information, about trips or anything else to do with the Junior Hatters, please contact the club shop.



TWELVE years old on Sunday, Steve Bostock had a wonderful early birthday present the day before, when he was the Junior Hatters mascot for the game against Stoke. He is pictured with the match officials and skippers after getting a close-up view of what goes on when they meet to toss the coin for choice of ends.

Today's Mascot

USUALLY to be found sitting in the Kenilworth and waiting impatiently for kick-off, seven-year-old Daniel Riley had plenty to occupy his mind this afternoon. He arrived early for the game because he has been picked to be the Junior Hatters mascot,



which means he has a lot of very pleasant duties to perform.

He goes into the dressing room to meet the players, and then accompanies them onto the pitch for the kick-about and pre-match rituals, and for Daniel it will be an

extra treat to meet Matthew Taylor and Mark Owendale, because they are his favourite players.

Daniel goes to Warden Hill Infants School, Luton, and lives at Beckham Close, and comes to games regularly with his dad and brother James. When he is not watching the Town, he enjoys swimming and his PlayStation, and he also plays football, for Bramingham under-9s.

We also have two ballboys today, 11-year-old Paul Punter from Carisbrooke Road, Luton, and 12-year-old David Loader, from Watling Place, Houghton Regis.

If you would like to join the Junior Hatters, call the Club Shop on: **01582 411622**



**KIDS
AT
KENILWORTH**

SPONSORED BY

SKF

Sainsbury's

The Best in post-match reports

The Luton News The Dunstable Gazette



ON SALE
EVERY WEDNESDAY
STILL ONLY 25P

©T&C-PROJ-063-W34

Hatters on Card

Alan Robinson

JUST like today, April 14, 1990, was Easter Saturday, and Luton Town were in a desperate fight to avoid relegation, albeit from a higher company than this time. On that day the Hatters entertained Everton, in a match which finished 2-2, with both home goals coming from Iain Dowie.

Luton were a well-established club in the top flight in those days, and many of their players appeared on the football trade cards and stickers of that era. Dowie was on card No. 124 of Pro-Set's 1990 offering.

A former British Aerospace engineer, Dowie was a late entrant to professional football, being past his 24th birthday when he made his debut as a sub against Charlton in January 1989. He had arrived at Kenilworth Road a few weeks earlier from Hendon, after previously playing for Cheshunt and St. Albans.

The lanky striker had several further outings from the subs' bench that season before finally making his full debut against Spurs at the end of March.

At the beginning of the following season Dowie was loaned to Fulham, but on his return he found that his first-team opportunities had been enhanced due to Mick Harford's injury problems. Dowie scored his first league goal against Derby in November, and from then on he was a regular in the side. Although he may not have been up to Harford's illustrious standards, Dowie showed the kind of commitment, courage and workrate that were to become his trade mark throughout his career.

By the time of that Everton match at Easter 11 years ago, Hatfield-born Dowie was a full Northern Ireland international, through parental qualification, and he went on to win more than 50 caps, several as captain. However, in April 1990 our thoughts were very much focused on avoiding relegation, but even after the point gained against Everton the situation was beginning to look terminal.

But a Dowie goal in a 2-0 victory over Arsenal the following week gave us some hope, although it was not until Dowie grabbed a last-gasp winner against Crystal Palace at Kenilworth Road that we dared to hope survival might be possible.

The Town had to win at Derby on the final day of the season, and hope that Ron Atkinson's Sheffield Wednesday lost at home to Brian Clough's Nottingham Forest. It all happened to our satisfaction and huge delight, with Dowie again instrumental in the Town's epic 3-2 victory at the Baseball Ground. Tim Breacker and Kingsley Black (2) were the marksmen.

Unfortunately the Town were once again struggling the following season, although Dowie was doing well. His vital goals included two against Liverpool and the winner at home to Nottingham Forest on successive Saturdays.

The latter strike, on March 2, turned out to be his last goal for Luton, because the board decided to accept a deadline day bid of around £500,000 for a man who cost £30,000 three years previously. This was despite the fact that the Town were in relegation trouble again, although they once more escaped on the last day of the season with another victory over Derby (Mick Harford set us on our way with an OG and Lars Elstrup got the other in a 2-0 win).

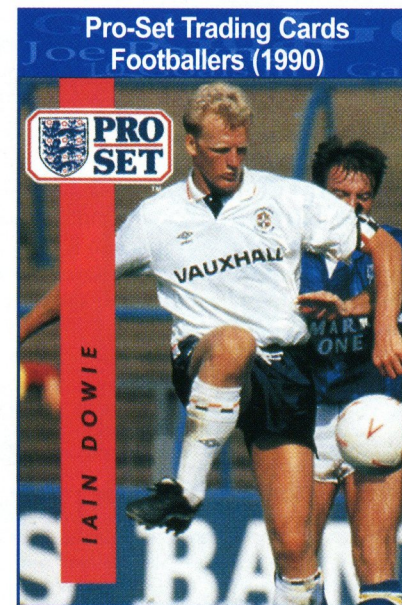
Dowie helped the Hammers return to the top flight, but he moved on to Southampton in September 1991 after only a dozen games for West Ham, and he enjoyed three and a half good years at The Dell, scoring 30 goals in 117 league appearances. Then it was on to Crystal Palace for £400,000 in January 1995, followed by a return at the start of the following season to West

Ham. That £500,000 deal took the combined fees for the now 30-year old past the £2million mark.

Dowie's last league club was QPR, when he was signed by Ray Harford in January 1998, nine years after Harford had recruited the player for Luton. Dowie was player-coach, but lost his job a few weeks ago following a change of management at Loftus Road.

The 1990 Pro-Set series feature most of the Town's first team squad, including Kingsley Black, Alec Chamberlain, John Dreyer, Lars Elstrup, and a young Jason Rees, who delivered the cross for Dowie's vital late winner against Palace.

These cards are still in plentiful supply from most dealers, and are available for just a few pence each



Up and Running!
Luton Town's very own official website.
www.lutontown.co.uk

Alan Robinson

Action Replay

Luton Town 1 Stoke City 2 (HT 1-2)

ANOTHER home defeat, the tenth of the season but the first since Joe Kinnear became manager, was all the more frustrating for the Town because it was a game that should have yielded at least a point from a promotion-chasing team which grabbed a first-half lead, then defended in numbers after the break.

Stoke got away with it mainly because the Town missed two decent second-half chances and the referee ruled in Stoke's favour when even their players thought a penalty might have been awarded against them. Sweet revenge for the defeat the Town inflicted on the Potters at the Britannia in December was greeted by Stoke manager Gudjon Thordarson with an honest assessment. He was not too convinced by his team's performance, but added: "Getting the points is all that matters."

"It is a big relief to get this win, especially after going a goal down, and I give credit to our players for how well they bounced back, because Luton played well and were giving us a hard time."

The Town had just about matched high-flying opponents, for the second time in four days, and defeat was a bitter blow, especially after taking an early lead. Nathan Abbey made a vital full-length save, to tip a shot by Mikael Hansson onto a post, and from the clearance, helped on into space down the right wing by Steve Howard, Lee Mansell surged forward. Stoke were stretched, and goalkeeper Gavin Ward advanced hopefully. Mansell knocked the ball past him, and kept going to win the race with Brynjar Gunnarsson to knock in his sixth goal in 12 starts.

Sadly, that was as good as it got. Stoke raised their game, and after nearly half an hour of probing, during which Andy Cooke wasted a good chance with an off-target volley, Graham Kavanagh hit an equaliser, and nine minutes later struck a superb winner. The midfielder's first goal was credited by some as an own goal by Matthew Taylor, who smashed the ball into the net in his attempt to clear, but the Stoke manager said he had a perfect angle to see that the ball was going in anyway, so it was Kavanagh's goal.

Joe Kinnear complained that Kavanagh should have been closed down quicker to prevent what turned out to be the winner, but was full of sympathy for his men for the way they battled to save the game after the break, when Stoke played five at the back.

"I feel so disappointed for the players because they did enough to get something out of the game," said the Town boss. "Richard Dryden and Liam George had chances - a header and a one-on-one - and we were robbed by the referee. We were sure Stuart Douglas was fouled by Wayne Thomas, and it should have been a penalty."

Match Details

Luton Town: Abbey, Boyce, McLaren, Dryden, Helin, Spring, Mansell, Rowland (Douglas HT), Taylor, Howard, Stein (George 85mins). Unused subs: Watts, Stirling, Owendale.

Booked: No-one.

Stoke City: Ward, Gunnarsson, Mohan, Thomas, Hansson, Gudjonsson (Lightbourne 87 mins), Kavanagh, O'Connor, Clarke, Cooke (Risom 69 mins), Thorne. Unused subs Thordarson, Kippe, Kristinsson.

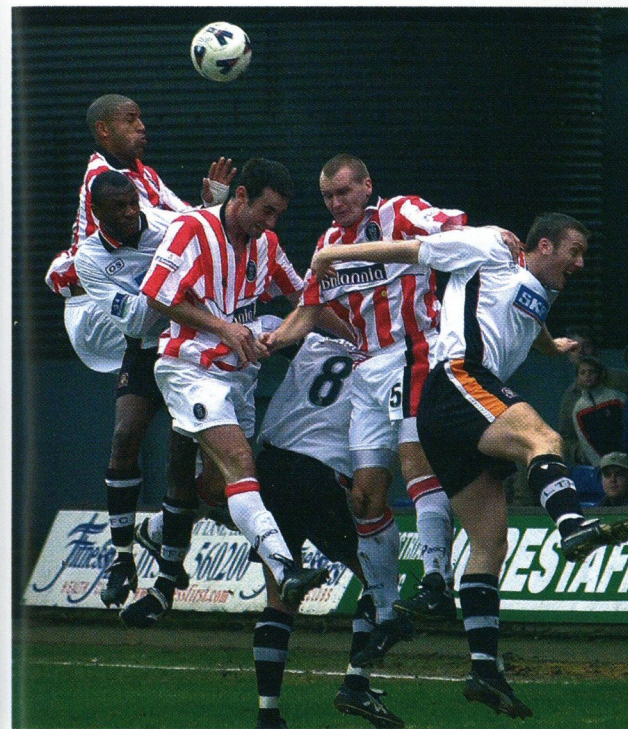
Booked: No-one.

The Goals: 1-0 4 mins - Lee Mansell, going past keeper Gavin Ward and shooting in from close range after Stoke were caught out by Steve Howard's ball into space; 1-1 30 mins - Graham Kavanagh, fierce cross-shot from the left after the ball bounced to him off Matthew Spring, the drive helped into his own net by Matthew Taylor; 1-2 39 mins - Kavanagh again, stunning 25-yard volley after a free kick by Brynjar Gudjonsson was headed out to him.

Referee: Bill Burns, Scarborough.

Attendance: 6,456, 1,086 of them away supporters.

HIGH-STEPPING TUSSLE - Steve Howard and Nicky Mohan in close competition



EVERYBODY UP - Emmerson Boyce, Paul McLaren and Steve Howard are the Town men mixing it with Stoke's Clive Clarke, Nicky Mohan and Peter Thorne.



ONE UP - Lee Mansell gives the Town the lead with his sixth goal of the season, sliding in to get the final touch ahead of Brynjar Gunnarsson.

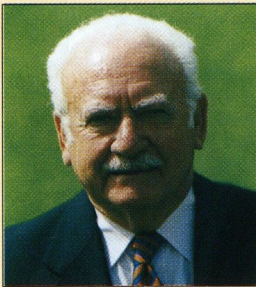
For the latest ticket information call the Luton Ticket Office on:

01582 416976

Up and Running!
Luton Town's very own official website.

www.lutontown.co.uk

POLICY STATEMENT - SPECTATOR SAFETY



The Chairman and Directors of Luton Town Football Club undertake to ensure as far as humanly possible that all activities that take place at the Kenilworth Road Stadium are conducted in such a way that as far as is reasonably practical the safety of everybody at the stadium is assured. It is the policy of the Chairman and Directors to ensure that the conditions set out in the General Safety Certificate, issued under the Safety at Sports Grounds Act, 1975, are fully complied with.

It is the Club's policy to provide at any activity sufficient and competent staff and management systems to ensure as far as humanly possible the safe admission, accommodation and exiting of spectators attend the stadium. These systems will be subject to continual monitoring, testing and updating where necessary.

April 2001

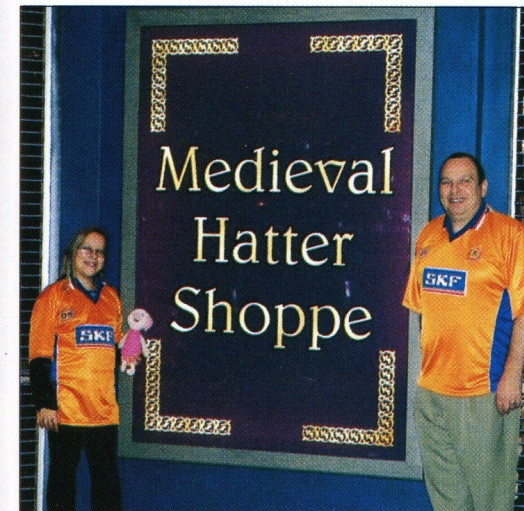
Mike Watson-Challis,

Chairman

Hatters Abroad

WE MEAN no offence to anyone in publishing a picture today from Northern Ireland. We realise that it is not really "abroad" but we felt we could not deny the Dumbleton family, of Pottery Close, Luton, a chance to see their offering in print. Proud mum Linda Dumbleton said: "The picture shows Junior Hatters Anthony, 13, and Kevin, 10, with their older brother Paul, who is 28. "He is an ex Junior Hatter, and is with REME in the army, and the photo was taken in Northern Ireland when we visited him there. He is now in Kosovo, with Nato's KFOR troops, and you might soon get another picture of him from there. He takes his Luton Town shirts and flag with him wherever he is posted, and I know it would make his day to see himself in the Luton programme."

We are pleased to oblige, and send Paul our very best wishes, and look forward to his safe return to his family and to his favourite football club.



ENOYING a much more peaceful trip are the subjects of our other picture today, Peter Thompson and his daughter Charlotte. Peter, from The Hedgerows, Furzton, Milton Keynes, said: "The photo was taken during a holiday in Las Vegas. We are season ticket holders, and Charlotte has been coming to watch the Town since she was eight weeks old. In fact she appeared in the programme in August 1989. The Hatter Shoppe in the picture was in the Excalibur Hotel in Las Vegas."

THIS page is open to all Luton Town fans, and the matchday magazine will be pleased to consider for publication photographs from anywhere in the world. All we ask is that the Hatters colours are well to the fore. So if you have an interesting snap of Town kit in far-off places, please send it, with a few details, to the matchday magazine editor at Luton Town FC. Please enclose a stamped envelope if you want the photographs back, but please be aware that with the best will in the world they do sometimes go astray. We are also interested in hearing about our very young fans sporting the Town's colours for our occasional "Mini Hatters" series.

Find Freedom within.....

Fitnessfirst
Health Clubs



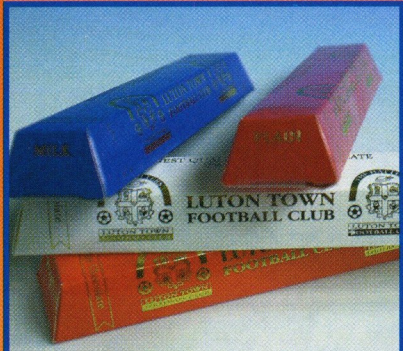
*no other Health Club offers you more for less...
.....with no need for contracts*

*Fitness First Luton, Skimpot Lane, Luton, Beds, LU4 0JB
Tel: 01582 560200
www.fitnessfirst.co.uk*

For the latest ticket information call
the Luton Ticket Office on:
01582 416976

Up and Running!
Luton Town's very own official website.
www.lutontown.co.uk

Souvenirs Currently Available In The Club Shop



Luton Town Chocolate Milk, Dark, Orange, £2.95 each

Luton Town Rock £1.00

Humbugs and Rock in a Bottle £2.00



Bull Nose Morris Limited Edition £6.50



3 - Piece Vehicle Set £9.99

Souvenirs Currently Available In The Club Shop



Earrings	Gold	Silver
Single Stud	£11.00	£5.95
Stud Pair	£22.00	£9.95
Drop	£25.00	£9.95
Single Hoop	£18.00	£6.95



Rings	Gold	Silver
LTFC Gents	£83.00	£15.00
LTFC Ladies	£69.00	£13.00
Crest	£39.00	£11.00



Footballers Badge	£2.50
Cheers Badge	£1.95
Kit Badges	£1.95
Hatters Badge	£1.95
Crest Badge	£1.95



Colours of Luton Badge	£1.95
Small Brass Badge	£1.50
Hat Badge	£1.95
Medal Badge	£1.95
Ground Badge	£1.95

Don't Forget 20% Off All Leisure Wear In The Club Shop



Field of Dreams



You can be the King of Kenilworth Road for a day. Luton Town are offering a rare opportunity for supporters, clubs and companies to hire the pitch and play at Kenilworth Road for selected dates in May after the season's end and prior to its annual reseeding. The dates available are during the weeks commencing 8th and 14th May 2001.

Hire rates are from £750+VAT.

For more information please contact the Commercial Department on **01582 411622**

Field of Dreams

For all the latest news, views and interviews call

CLUBCALL - 09068 121123

(Calls charged at 60p per minute at all times)

Hatters Chatter

Marathon Appeal

SPONSORSHIP donations are beginning to come in as supporters rally to the cause as Lynda Smith gets ever-closer to the biggest athletics challenge of her life. She will be the Luton Town representative in the

football section of the Flora London Marathon a week tomorrow, and the club is backing her appeal for sponsorship pledges. She is raising money for a local good cause, the Keech Cottage hospice for children.

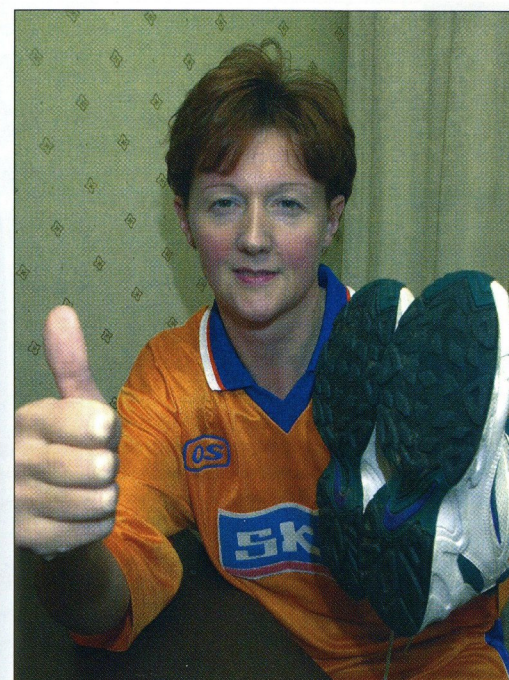
A long-time Town supporter, Lynda, 42, also works for the club on match days, as one of the staff in the Joe Payne lounge.

She runs for fun, and although she has completed several 10k races, next week's gruelling run through London will be her first marathon. She cheerfully admits that she is not expecting to win any prizes, but is determined to complete the course, and will be happy if she can do it in about four and a half hours.

Everyone at Kenilworth Road wishes her well in her endeavours, and we invite supporters to join us in offering sponsorship. You can give any amount you like, either an amount per mile completed, or a round sum for the full distance. Pledges will be acknowledged in the matchday magazine.

Please make your cheque payable to Keech Cottage, and send it, with the coupon or a copy of it, to: Marathon Appeal, Commercial Department, Luton Town FC, Kenilworth Road Stadium, 1, Maple Road, Luton, Beds LU4 8AW.

We will hold the cheques until after the marathon's official results are published and we have confirmation of Lynda's finish.



FLORA LONDON MARATHON

I would like to sponsor Lynda Smith, the Luton Town runner in the Football Challenge, and my cheque, payable to Keech Cottage, is enclosed.

Name..... Amount per mile.....

Address..... *Please return my cheque for a replacement if Mrs Smith completes less than 26.2miles.

..... *I wish to make the donation in any event.

Telephone..... *Please delete as appropriate.



Up and Running!
Luton Town's very own official website.

www.lutontown.co.uk

Campaign Records

Highest Gate
22,133
Stoke v Port Vale

Lowest Gate
1,584
Wrexham vs Cambridge

Highest Aggregate Score

Brentford2
Bristol Rovers .6
Bristol City6
Cambridge2
Luton5
Swansea3

Wrexham5
Oxford3

Biggest Home Win

Cambridge6
Rotherham1

Reading5
Oldham0

Millwall5
Oxford0

Millwall6
Colchester1

Port Vale5
Peterborough .0

Biggest Away Win

Brentford2
Bristol Rovers .6

Peterborough .0
Stoke4

Consec. Wins

Walsall,
Rotherham5

Games Unbeaten

Wigan18

Consec. Defeats

Bury, Swansea 5
Winless Run

Bristol Rovers,
Cambridge ...12

Walsall
Peterborough

Wrexham

Swansea

Millwall

Reading

Colchester

Oldham

Brentford

Nationwide2Stats

n.b. due to print deadlines, stats don't include mid-week matches

Div.2 Results Grid

HOME GOALS		0	1	2	3	4	5	6	7	8
0	39	45	28	20	11	3				
1	53	65	38	26	7	5	2			
2	19	24	21	15	3	1				
3	9	11	9	6	4	2				
4	1	4	4							
5		1								
6			1							
7										
8										

for clubs below, read across row to right for Big Wins/Defeats and last 5 results

Division 2 Ave. Attendances

	3000	6000	9000	12000	15000
Bournemouth	█				4,218
Brentford	█				4,854
Bristol City	█				10,366
Bristol Rovers	█				7,333
Bury	█				3,343
Cambridge	█				4,297
Colchester	█				3,448
Luton	█				5,918
Millwall	█				11,023
Northampton	█				5,768
Notts County	█				5,398
Oldham	█				4,672
Oxford	█				5,014
Peterborough	█				6,006
Port Vale	█				4,344
Reading	█				11,839
Rotherham	█				5,416
Stoke	█				13,338
Swansea	█				5,408
Swindon	█				6,105
Walsall	█				5,612
Wigan	█				6,579
Wrexham	█				3,501
Wycombe	█				5,389

Biggest Wins & Losses

Win - vs.	Defeat - vs.
4-0 Bristol City	1-3 Clch/Rth
3-0 Oxford	2-6 B Rovers
6-2 Cambridge	0-4 Col/Bmt
6-2 Brentford	1-4 Stoke
3-0 Swansea	0-4 Millwall
6-1 Roth'ham	2-6 Brstl City
4-0 Bristol City	1-6 Millwall
5-3 Swansea	0-4 Swansea
6-1 Colchester	2-3 3 clubs
2-0 4 Clubs	0-3 3 clubs
4-1 Roth'ham	1-5 Walsall
5-1 Wrexham	0-5 Reading
3-1 Nthmptn	0-5 Millwall
4-0 Swindon	0-5 Port Vale
5-0 Peterboro	0-4 Cmbridge
5-0 Oldham	0-4 Brstl City
3-0 5 clubs	1-6 Cmbridge
4-0 Oxfd/Stke	0-3 Walsall
4-0 Luton	1-5 Rdg/Wal
3-0 Bury/Oldh	0-4 P'boro
5-1 3 clubs	1-3 Wy/Swa
3-1 3 Clubs	1-3 Mill/Brnt
4-1 Bury	1-5 Oldham
3-1 3 Clubs	1-5 Walsall

Last 5 Home Results

WWWWL
WWDWL
DLWDD
WWDDW
WWDWL
LWLWD
LWLWW
DWDLD
WDWWW
DWWWL
LWWDL
LWLWD
DLLWL
WWDDW
DWDDW
DWWLW
WWWWW
DWLLW
LLDLW
LWDLD
WLLWD
DDDDL
WLLWD
LWLDL

Referees Report

	C	RC	YC	Av. Yell
Fletcher	23	3	107	4.65
Olivier	21	4	88	4.19
Prosser	18	7	75	4.17
Hall	27	11	107	3.96
Mathieson	26	2	102	3.92
Dowd	22	8	83	3.77
Cooper	15	5	56	3.73
Riley	11	3	41	3.73
Foy	24	5	88	3.67
Harris	9	2	33	3.67
Knight	12	5	43	3.58
Jordan	23	2	81	3.52
Ryan	18	4	63	3.50
Jones T	25	11	87	3.48
Winter	9	0	31	3.44

Grid shows the number of games ending with each result. e.g. 65 matches have been 1-1 draws and 53 games have ended a 1-0 away win.

Hotshots - Div.2 Clubs' most prolific marksmen, inc. the difference their goals made

see key below	Leading Scorer	GS	1st Gt	Sc1	Sc2	HT	Gms	Ave	W:L	W:D	D:L	Pts	Run	Dry
Bournemouth	Defoe	15	6	11	2	0	24	0.63	1	3	2	11	10	6
Brentford	Owusu	8	2	8	0	0	29	0.28	0	2	3	7	2	6
Bristol City	Thorpe	18	3	10	1	2	35	0.51	1	2	2	9	2	5
Bristol Rovers	Ellington	10	3	6	2	0	34	0.29	1	1	4	9	3	10
Bury	Newby	5	3	3	1	0	13	0.38	0	4	0	8	1	3
Cambridge	Youngs	12	2	8	2	0	34	0.35	0	3	2	8	3	5
Colchester	Stockwell	9	2	5	2	0	39	0.23	1	1	2	7	1	16
Luton	Mansell	5	2	3	1	0	13	0.38	0	1	1	3	1	3
Millwall	Harris	24	8	11	2	3	37	0.65	1	4	2	13	3	3
Northampton	Forrester	16	9	12	2	0	38	0.42	1	5	5	18	5	8
Notts County	Stallard	14	7	14	0	0	35	0.40	0	5	3	13	3	5
Oldham	Corazzin	8	3	4	0	1	34	0.24	0	2	0	4	1	10
Oxford	Gray	7	3	3	2	0	20	0.35	1	0	0	3	1	7
Peterborough	McKenzie	11	3	7	2	0	24	0.46	1	1	2	7	2	3
Port Vale	Naylor	11	5	7	2	0	34	0.32	0	3	1	7	2	7
Reading	Cureton	21	8	15	0	2	38	0.55	0	8	3	19	3	5
Rotherham	Robins	22	6	13	3	1	36	0.61	2	5	3	19	2	2
Stoke	Thorne	16	6	7	3	1	32	0.50	1	4	2	13	3	6
Swansea	Savarese	12	2	3	3	1	26	0.46	1	0	4	7	2	8
Swindon	Invincibile	8	2	4	2	0	37	0.22	0	2	1	5	2	15
Walsall	Leitao	15	8	15	0	0	38	0.39	0	4	1	9	3	5
Wigan	Haworth	10	5	7	0	1	25	0.40	1	2	1	8	2	10
Wrexham	Trundle	8	0	5	0	1	12	0.67	1	3	0	9	5	3
Wycombe	Rammell	10	3	4	3	0	24	0.42	2	2	1	11	2	5

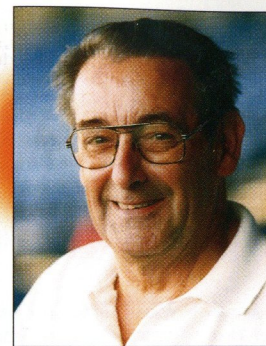
Numbers

PU	CS	FS
31	11	4
29	10	11
33	10	10
35	13	17
27	12	13
38	9	10
28	12	13
31	6	13
32	20	7
32	9	12
35	12	9
28	11	12
38	4	16
26	11	12
25	12	11
29	15	6
27	15	4
28	12	7
29	8	18
35	12	15
25	12	9
31	15	12
29	7	10
32	9	16

Last 5 Away Results

DLLDW
LLDLW
LWLDW
DLLLL
DLWLD
LLLWL
DLLLW
LWLDL
WLLDD
LLDL
LDDL
LDDL
LLWLD
DDLDL
DWWW
WWDDW
LWVLL
DWLLW
LWDL
WVLDLW
WDDLW
LLDW
LWVLD
WVLL

Key: GS=Goals Scored; 1st Gt=Games Scored 1st Goal; Sc1=Games Scored 2 Goals; HT=Hot-Tricks; Each club's leading league scorer and their goals per game (Ave). Next 3 columns show taking off their goals, how many games change from Win to Loss (W:L), Win to Draw (W:D), Draw to Loss (D:L) and Points (Pts). Last 2 figures show best scoring run, and longest dry spell in consecutive games. NUMBERS: PU=Players Used CS=Clean Sheets FS=Games Failed to Score



Second Division Scene

Brian Swain

IT'S TIME to chase a dream for Luton Town today. After three

consecutive home games yielded only two points, it needs a supreme effort to avoid relegation. It can be done - it just requires a winning sequence of something like six on the trot.

Effectively we are ten points adrift of today's safety mark as we try to overhaul two teams. For some weeks Bristol Rovers have been thinking they will get out of trouble thanks to their games in hand, but it has not quite panned out the way they wanted.

Brian Horton did us a favour on Monday when Bristol Rovers used up their game in hand on us with a visit to Vale Park. Port Vale's leading scorer Tony Naylor struck the only goal, his 15th of the season, to deny Rovers the chance of moving out of the bottom four for the first time since early March.

But they had another chance on Wednesday, with a home game against Peterborough. Our apologies for being unable to include that game in today's round-up, because of Easter printing problems.

Rovers were seeking their fourth home win of the season, knowing it would take them above Cambridge on goal difference.

But Swindon - and this was more bad news for the Town on Tuesday evening - are making a great effort to escape a second successive relegation. While we were dropping two home points to Oxford, Swindon were grabbing three with a 1-0 victory at Brentford, which sent them three notches up the table to 18th. It shows what just a little consistency can achieve - Swindon were in the bottom four in early March, after the Town won at the County Ground. In ten games since then, four wins and four draws have put Andy King and his men within touching distance of safety.

Today's visitors to Kenilworth Road are looking reasonably comfortable, 15th in the table, with 51 points from 41 games, but perhaps a little concerned that several teams just below them have games in hand. Oldham might be concerned about their away record too, because it is marginally worse than the Town's. They have managed only three victories on their travels, at Bristol Rovers last October, Stoke in November, and Oxford last Saturday, when David Eyres struck a last-minute winner from a free kick to end Oxford's slight hopes of avoiding the drop to Division Three.

Oldham have seven away draws in their league record, at Colchester, Bournemouth, Bury, Brentford, Peterborough, Port Vale and Bristol City. Ten away defeats were at Walsall, Wrexham, Reading, Rotherham, Northampton, Wigan, Notts County, Cambridge, Swindon and Wycombe.

Brian Swain

Nationwide Division Two Table

	HOME					AWAY					Pts	
	P	W	D	L	F A	W	D	L	F A			
*Millwall	41	14	2	4	42	11	10	6	5	34	25	80
Reading	41	14	3	3	49	20	9	6	6	25	24	78
Rotherham	40	14	4	3	47	25	9	4	6	25	28	77
Walsall	39	13	5	3	46	20	6	5	7	21	23	67
Stoke	41	10	5	5	32	19	8	8	5	33	26	67
Wigan	41	11	8	1	26	14	5	9	7	21	23	65
Bristol City	41	10	6	5	43	26	7	7	6	21	23	64
Bournemouth	40	8	6	6	32	23	7	6	7	35	28	57
Notts County	39	8	5	5	31	25	7	6	8	20	30	56
Wrexham	40	9	5	7	29	26	6	5	8	29	35	55
*Northampton	40	8	6	5	24	21	6	6	9	20	28	54
Bury	41	10	5	6	24	20	5	4	11	16	29	54
Brentford	39	8	7	4	26	24	5	7	8	19	29	53
Colchester	39	9	4	8	28	20	5	5	8	19	27	51
Oldham	41	10	5	6	33	24	3	7	10	16	33	51
*Port Vale	37	8	8	4	32	17	5	3	9	12	23	50
*Peterborough	39	10	5	4	32	23	2	7	11	18	34	48
Swindon	41	5	8	8	27	32	7	4	9	16	25	48
Wycombe	38	8	4	8	22	21	4	6	8	15	25	46
*Cambridge	40	7	6	7	28	23	5	3	12	24	43	45
*Bristol Rov	38	3	10	4	14	17	6	5	10	24	28	42

Statistics Fixtures 2000 / 2001

	Date	Opposition	Result	Scorers	League Place	Attn.	Team
AUGUST	Sat 12	Notts County	H 3pm 0-1		-	7,059	Ovendale Boyce Watts McLaren Johnson
AUGUST	Sat 19	Wigan	A 3pm 1-2	Watts	-	6,518	Ovendale Boyce Watts McLaren Johnson
AUGUST	Tue 22	Peterborough WC1(1)	H 7.45pm 0-0		-	3,175	Ovendale Boyce Watts McLaren Fraser
AUGUST	Sat 26	Bournemouth	H 3pm 1-0	Spring pen	18	5,221	Ovendale Boyce Watts McLaren Fraser
AUGUST	Mon 28	Wycombe Wdrs	A 3pm 1-1	Kandol	17	6,001	Ovendale Boyce Watts McLaren Fraser
SEPTEMBER	Sat 2	Rotherham Utd	A 3pm 1-1	Fotiadis	17	4,061	Ovendale Boyce Watts McLaren Locke
SEPTEMBER	Tue 5	PeterboroughWC1(2)	A 7.45pm 2-2	Stein, Scarlett	17	4,286	Ovendale Boyce Watts McLaren Fraser
SEPTEMBER	Sat 9	Northampton Town	H 3pm 0-2		19	6,712	Abbey Boyce Watts McLaren Fraser
SEPTEMBER	Tue 12	Walsall	H 7.45pm 0-0		19	4,362	Abbey Boyce Watts McLaren Locke
SEPTEMBER	Sat 16	Swansea City	A 3pm 0-4		20	6,011	Ovendale Boyce Watts McLaren Locke
SEPTEMBER	Tue 19	Sunderland WC2(1)	A 7.45pm 0-3		20	24,668	Ovendale Boyce Watts McLaren Fraser
SEPTEMBER	Sat 23	Swindon Town	H 3pm 2-3	Stein, George	21	4,933	Ovendale Boyce Watts George Fraser
SEPTEMBER	Tue 26	Sunderland WC2(2)	H 7.45pm 1-2	Kandol	21	5,262	Ovendale Boyce Watts George Fraser
SEPTEMBER	Sat 30	Bristol Rov	A 3pm 3-3	Kandol 2, George	22	7,901	Ovendale Boyce Watts George Fraser
OCTOBER	Sun 8	Millwall	H 12pm 0-1		22	5,345	Ovendale Boyce Watts George McGowan
OCTOBER	Fri 13	Cambridge Utd	A 8pm 1-2	Stein	23	6,191	Ovendale Boyce Watts George McGowan
OCTOBER	Tue 17	Oxford Utd	A 7.45pm 0-0		23	4,537	Abbey Boyce Watts George McGowan
OCTOBER	Sat 21	Brentford	H 3pm 3-1	Douglas 2, Spring pen	23	5,382	Abbey Boyce Watts George Locke
OCTOBER	Sat 28	Wrexham	H 3pm 3-4	Stein, Watts, George	23	5,341	Abbey Boyce Watts George Johnson
NOVEMBER	Sat 4	Bury	A 3pm 1-1	Helin	23	2,861	Abbey Boyce Watts George Karlsen
NOVEMBER	Sat 11	Bristol City	H 3pm 0-3		23	6,595	Abbey Boyce McGowan George Karlsen
NOVEMBER	Fri 17	Rushden & D FAC1	H 8pm 1-0	George	23	5,771	Abbey Boyce Fraser Watts Karlsen
NOVEMBER	Sat 25	Port Vale	A 3pm 0-3		23	4,194	Abbey Boyce Whitbread Watts Karlsen
DECEMBER	Sat 2	Stoke City	A 3pm 3-1	McLaren, Thomson 2	23	12,389	Abbey Johnson Whitbread Watts Locke
DECEMBER	Tue 5	Peterborough LDVT1	A 7.45 0-1		23	2,075	Ovendale Ayres Karlsen Fraser Locke
DECEMBER	Sat 9	Darlington FAC2	A 3pm 0-0		23	3,641	Abbey Johnson Whitbread Watts Locke
DECEMBER	Sat 16	Colchester Utd	H 3pm 0-3		23	4,791	Abbey Johnson Whitbread Watts Locke
DECEMBER	Tue 19	Darlington FAC2R	H 7.45 2-0	Nogan, McLaren	23	3,563	Abbey Johnson Whitbread Watts Fotiadis
DECEMBER	Sat 23	Reading	A 3pm 1-4	Nogan	23	10,771	Abbey Johnson Whitbread Boyce Fotiadis
DECEMBER	Tue 26	Peterborough	H 1pm 3-2	Spring, Holmes, Boyce	23	7,374	Abbey Boyce Whitbread Fraser Holmes
DECEMBER	Sat 30	Wigan	H 3pm 0-2		23	5,322	Ovendale Watts Whitbread Fraser Holmes
JANUARY	Mon 1	Bournemouth	A 3pm 2-3	Fotiadis, Locke	23	5,411	Ovendale Watts Whitbread Fraser Holmes
JANUARY	Sat 6	QPR FAC3	H 3pm 3-3	Fotiadis, George, Douglas 2	23	8,677	Ovendale Boyce Whitbread Fraser George
JANUARY	Fri 12	Wycombe	H 7.45pm 1-2	Locke	23	4,551	Ovendale Boyce Whitbread Fraser George
JANUARY	Wed 17	QPR FAC3R	A 8pm 1-2aet	Mansell	23	14,395	Ovendale McGowan Whitbread Fraser Karlsen
JANUARY	Tue 23	Oldham	A 7.45pm 0-2		23	3,011	Ovendale McGowan Whitbread Boyce Karlsen
FEBRUARY	Sat 10	Northampton Town	A 3pm 1-0	Douglas	23	6,633	Ovendale Boyce Stirling Dryden Rowland
FEBRUARY	Tue 13	Notts County	A 7.45pm 3-1	Boyce, George, Fotiadis	23	4,333	Ovendale Boyce Stirling Dryden Rowland
FEBRUARY	Sat 17	Swansea City	H 3pm 5-3	Mansell 2, Douglas, Rowland, George	22	7,085	Ovendale Boyce Stirling Dryden Rowland
FEBRUARY	Tue 20	Walsall	A 7.45pm 1-3	Spring	22	4,816	Ovendale Boyce Stirling Dryden Rowland
FEBRUARY	Sat 24	Swindon	A 3pm 3-1	Rowland, Boyce, Mansell	22	7,160	Ovendale Boyce McLaren Dryden Rowland
MARCH	Sat 3	Bristol Rov	H 3pm 0-0		22	7,405	Abbey Boyce Watts Dryden Rowland
MARCH	Tue 6	Cambridge Utd	H 7.45pm 1-0	Taylor	22	6,370	Abbey Boyce McLaren Dryden Rowland
MARCH	Sat 10	Millwall	A 3pm 0-1		22	11,691	Abbey Boyce McLaren Dryden Rowland
MARCH	Tue 27	Peterborough	A 7.45pm 1-1	Mansell	22	5,425	Abbey Boyce McLaren Dryden Rowland
MARCH	Sat 31	Colchester	A 3pm 1-3	Howard pen	22	4,271	Abbey Boyce McLaren Dryden Rowland
APRIL	Tue 3	Reading	H 7.45pm 1-1	OG(Harper)	22	6,132	Abbey Boyce McLaren Dryden Rowland
APRIL	Sat 7	Stoke City	H 3pm 1-2	Mansell	22	6,456	Abbey Boyce McLaren Dryden Rowland
APRIL	Tue 10	Oxford Utd	H 7.45pm 1-1	Watts	22	6,010	Abbey Boyce Watts Dryden McLaren
APRIL	Sat 14	Oldham	H 3pm				
APRIL	Mon 16	Wrexham	A 3pm				
APRIL	Sat 21	Bury	H 3pm				
APRIL	Tue 24	Rotherham Utd	H 7.45pm				
APRIL	Sat 28	Bristol City	A 3pm				
MAY	Thur 3	Brentford	A 7.45pm				
MAY	Sat 5	Port Vale	H 3pm				

Next Home Match



Luton Town v Bury

Saturday April 21, 2001, kick-off 3pm

	Date	Opposition	Result	Scorers	League Place	Attn.	Team	Substitutes
								Holmes for Locke 57, Fraser for Watts 78. Unused: Stirling, Brennan, Abbey
								Fraser for Johnson HT, Scarlett for Locke 73, Brennan for Holmes 83. Unused: Stirling, Abbey
								Brennan for Fotiadis 81. Unused: Stirling, Locke, Scarlett, Abbey
								Brennan for George 57, Locke for Holmes 86. Unused: Stirling, Kandol, Abbey
								Brennan for George 55, Kandol for Fotiadis 76. Unused: Locke, Stirling, Abbey
								Kandol for Fotiadis HT; Brennan for Holmes 65; George for Stein 81. Unused: Stirling, Abbey
								Holmes for Brennan 74; Locke for Spring 105; Kandol for Stein 113. Unused: Stirling, Abbey
								Holmes for Spring 75; Kandol for Brennan 60. Unused: Locke, Stirling, Brietenfelder
								George for Brennan 52; Kandol for Thomson 72; Holmes for Scarlett 82. Unused: Fraser, Ovendale.
								George for Stein 75. Unused: Fraser, Scarlett, Thomson, Abbey.
								George for Stein 70; Thomson for Kandol 70. Unused: Brennan, Stirling, Abbey
								Locke for Spring 66; Thomson for Kandol 72. Unused: Brennan, Ayres, Abbey
								Brennan for Thomson 81. Unused: Holmes, Breitenfelder, Ayres, Abbey
								Mc Gowan for Fraser HT; Stein for Thomson HT; Holmes for Spring 79. Unused: Brennan, Abbey
								All unused: Brennan, Holmes, Stirling, Scarlett, Abbey.
								Holmes for Kandol HT; Brennan for McGowan 89. Unused: Fraser, Breitenfelder, Abbey
								Breitenfelder for McGowan HT; Brennan for Kandol 79. Unused: Locke, Thomson, Ovendale
								Brietenfelder for Locke 18 mins; Thomson for Douglas 44 mins; Brennan for George 86 mins. Unused: Kandol, Ovendale
								Fraser for McLaren 47 mins; Thomson for Fotiadis 70 mins. Unused: Brennan, Baptiste, Ovendale
								Baptiste for Douglas 75 mins; Holmes for George 80 mins. Unused: McGowan, Breitenfelder, Ovendale
								Fotiadis for Douglas 44 mins; Baptiste for Stein 74 mins. Unused: Watts, Locke, Ovendale
								Thomson for Stein 73 mins. Unused: McGowan, Locke, Fotiadis, Ovendale
								Fotiadis for Nogan 74 mins; Fraser for Helin 77 mins. Unused: Locke, Scarlett, Ovendale
								Fotiadis for Thomson 89 mins; Karlsen for George 90 mins. Unused: Fraser, Nogan, Ovendale
								Stein for Thomson HT; Nogan for Fotiadis 56 mins. Unused: Scarlett, Stirling, Abbey
								All unused: Stein, Nogan, Karlsen, Stirling, Ovendale
								Fotiadis for Locke 56 mins. Unused: Scarlett, Holmes, Fraser, Ovendale
								Boyce for Watts 68 mins; Locke for Spring 86 mins. Unused: Baptiste, Fraser, Ovendale
								Fraser for Johnson 23 mins; Locke for McLaren 52 mins; Baptiste for George 82 mins. Unused: Scarlett, Ovendale
								Scarlett for Holmes 75 mins; Kandol for Nogan 76 mins. Unused: Karlsen, Stirling, Ovendale
								Thomson for Holmes 59 mins; Stein for Nogan 75 mins. Unused: Breitenfelder, Stirling, Abbey
								Stirling for Watts 38 mins; Breitenfelder for Fraser 74 mins; Scarlett for Fotiadis 80 mins. Unused: Baptiste, Abbey
								Douglas for Fotiadis 70 mins; Stirling for Helin 79 mins. Unused: Holmes, Kandol, Abbey
								Kandol for Thomson 71 mins; Scarlett for Breitenfelder 78 mins; Stirling for Boyce 83 mins. Unused: Holmes, Ward
								Stirling for Fraser 4 mins; Stein for Douglas 65 mins; Scarlett for Fotiadis 79 mins. Unused: Abbey, George
								Thomson for Nogan HT; George for Holmes 55 mins; Stein for Fotiadis 78 mins. Unused: Abbey, Stirling
								Fotiadis for Douglas 86 mins. Unused: Abbey, Stein, Holmes, Breitenfelder
								Kandol for Douglas 59 mins; Fotiadis for Kandol 78 mins. Unused: Abbey, Holmes, Breitenfelder
								Fotiadis for Douglas 65 mins; Locke for Rowland 89 mins. Unused: Abbey, Thomson, Breitenfelder
								Locke for Mansell 19 mins; Fotiadis for George HT; Thomson for Douglas HT. Unused: Abbey, Breitenfelder
								Stein for Fotiadis 12 mins; Mansell for Locke 65 mins; Thomson for Stein 85 mins. Unused: Abbey, Stirling
								Douglas for Stein 66 mins; Stirling for McLaren 80 mins. Unused: Fotiadis, Thomson, Ward
								Fotiadis for Douglas HT; Watts for Rowland HT; Stein for Fotiadis 84 mins. Unused: Stirling, Ward
								Fotiadis for Douglas 65 mins; Watts for Dryden 82 mins; Stein for Mansell 82 mins. Unused: Stirling, Ward
								Stein for George 73 mins. Unused: Stirling, Watts, Douglas, Ovendale
								Douglas for Rowland HT. Unused: Stirling, Watts, Shepherd, Ovendale
								Douglas for Stein 72 mins; George for Rowland 81 mins. Unused: Stirling, Watts, Ovendale
								Douglas for Rowland HT; George for Stein 85 mins. Unused: Stirling, Watts, Ovendale
								Stirling for Spring 68 mins; Stein for Helin, 79 mins. Unused: Thomson, Holmes, Ovendale



THE RESERVES were due to play Brache Sparta in the Beds Premier Cup on Thursday, and there will be a report in next Saturday's matchday magazine. Their next fixture in the Avon Insurance Combination is at Kenilworth Road on Wednesday, against Crystal Palace (2pm).

Fancy a party or reception at Kenilworth Road?
e-mail us on:

catering@lutontown.co.uk

Up and Running!
Luton Town's very own official website.
www.lutontown.co.uk

The Big Match

Today's Teams

Today's Teams

Today's Teams

The Big Match

Luton Town

Oldham Athletic



Today's Officials

Referee:

Phil Richards, Lancashire

Assistants:

J. E. Pearce, Essex (red flag)

A. J. Webb, Berkshire (yellow and red flag)

Fourth Official:

A. J. Conn, Hertfordshire

Manager: Joe Kinnear

Manager: Andy Ritchie

NATHAN ABBEY

1 GARY KELLY

EMMERSON BOYCE

2 SCOTT McNIVEN

JULIAN WATTS

4 SHAUN GARNETT

RICHARD DRYDEN

20 MARK HOTTE

PETRI HELIN

21 BARRY PRENDERVILLE

MATTHEW TAYLOR

7 PAUL RICKERS

MATTHEW SPRING

6 LEE DUXBURY

PAUL McLAREN

8 JOHN SHERIDAN

LEE MANSELL

31 TONY CARSS

STEVE HOWARD

9 MATTHEW TIPTON

LIAM GEORGE

28 DAVID EYRES

Substitutes

Substitutes

MARK STEIN

12 PAUL ALLOTT

PETER THOMPSON

27 BEN FUTCHER

PETER HOLMES

10 SAM PARKIN

JUDE STIRLING

19 CARLO CORAZZIN

MARK OVENDALE (GK)

13 DAVID MISKELLY (GK)

Changes

Changes



"Genuine Deals For Genuine Fans!"

Luton Fans Are Guaranteed To Score At Motorbodies Luton

NETWORK Q
Total Commitment to used car quality

Motorbodies Central

15 Hitchin Road, Luton Bedfordshire.

Telephone 01582 454666

e-mail: enquiries@cxxtongroup.co.uk

- 12 months Assistance
- 12 months/15,000 mile Guarantee

Motorbodies Leagrave

166 Marsh Road, Leagrave, Luton

Telephone 01582 567500

e-mail: sales@cxxtongroup.co.uk

114 Point Service

12 Months/ 15,000 mile guarantee

12 Months AA Assistance Mileage Check

30 Day Exchange Plan

Free MoT for life

HPI Check

- 114 point service
- 30 day exchange pledge

OPENING HOURS

Mon-Fri 9am-7pm

Sat 9am-5pm

Sun 10.30-4.30pm

NETWORK

