

Luton Town



LUTON TOWN
FOOTBALL CLUB

www.lutontown.co.uk

Official Matchday
Magazine



Tuesday
April 24, 2001
Kick Off 7.45pm

SKF

Official Shirt Sponsors



THE OFFICIAL SPORTS DRINK



Luton Town v Rotherham United

Match Sponsors: The Cane Industries (UK) Ltd
Match Ball Sponsor: G. Owen Ceramic Tiling Ltd

Luton Town FC

Kenilworth Road Stadium
1 Maple Road, Luton
Bedfordshire LU4 8AW

Main Reception: 01582 411622

Fax: 01582 405070

Ticket Office: 01582 416976

Honours

Littlewoods Cup

Winners 1987-88

Finalists 1988-89

FA Cup

Finalists 1958-59

Simod Cup

Finalists 1987-88

Division 2

Champions 1981-82

Division 3 (S)

Champions 1936-37

Division 4

Champions 1967-68

Official Matchday Magazine

Editor

Brian Swain

Layout & Printing

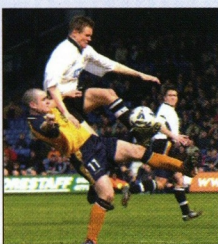
Regal Litho

Photography

Gareth Owen

The views expressed in this programme are not necessarily those of Luton Town Football Club.

Front Cover



Action man: Matthew Taylor jumping to it to beat Paul Reid during Saturday's match at Kenilworth Road.

Action Replay

Luton Town 1 Bury 2 (HT 1-1)

RELEGATION is not quite a certainty after Saturday's 11th home defeat of the season, but after the latest disappointment chairman Mike Watson-Challis and manager Joe Kinnear sat down for a council of war to decide the drastic action required to revive Luton Town's fortunes.

Both are highly dis-satisfied with the season as a whole, and Bury's last-minute snatch job which gave ten men victory was the latest indignity.

While our first goal from a striker in open play in 13 games gave us a good start, an equaliser was quickly conceded from a set piece, and opposition seeking the mid-table comfort zone was able to defend all too comfortably, and wait to catch the Town stretched.

The policy became even more effective after Bury had defender Danny Swailes red-carded just before the interval. Inevitably the ten men, stirred up by what they thought was an injustice, took all the more care to be well organised, and you had to admire the way they went about their jobs.

The Town had plenty of possession, but there was little conviction in the penalty area, and Bury's only moment of worry was when Matthew Spring's header was cleared off the line.

The Town looked bright in the opening stages, and after Spring had a shot well saved following a route one attack from Mark Ovendale, Steve Howard's flick and Liam George's pass, the goal we needed came after only six minutes.

Lee Mansell hustled his way past Swailes to set up George, who shot against a post and quickly met the rebound for his eighth goal of the season.

The cheering and optimism that generated was blown away two minutes later, with set-piece defending found wanting as Chris Swailes rammed in an equaliser from an angle that should have been easily blocked.

From then on the Town threatened a bit but delivered less.

Steve Howard won plenty of balls in the air, but too often no-one anticipated where they would drop, and thus failed to get there to take advantage.

George was always looking to take men on, and three times he tumbled under defensive challenges. Two were unsuccessful shouts for penalties, but the middle one brought the early departure of Swailes. Had it happened to a Town defender we would have called it harsh, but referee Steve Tomlin decided that Swailes was the last man between George and the goal, and the red card was therefore a formality.

Bury re-organised, switching midfielder Chris Billy into the right back slot vacated by Swailes, and their 4-3-2 formation looked more solid than their previous three at the back, with five in midfield.

They allowed the Town to get at



SEEN OFF: Richard Dryden, voted man of the match, makes sure here is no way through for Bury's Jon Newby.



SOLO RUN: Lee Mansell leaves Bury men in his wake on a burst from midfield

them, without embarrassing their goalkeeper except for a 51st-minute header by Spring from Matthew Taylor's cross. Nicky Hill cleared off the line, and the Town rarely looked like getting that close again.

And in the pacey front pairing of Jon Newby and Colin Cramb, Bury had excellent counter-attackers, with Cramb completing our miserable afternoon by finishing a quick break with a drive into the far corner after being allowed to run free down the inside-right channel.

Match Details

Luton Town: Ovendale, Watts, Boyce, Dryden, Shepherd, McLaren, Mansell (Douglas 61 mins), Spring, Taylor, George, Howard. Unused subs: Stein, Locke, Stirling, Ward.

Booked: Steve Howard, 15 mins, foul on Chris Armstrong; Matthew Spring, 39 mins, foul on Nicky Daws.

Bury: Kenny, Hill, Danny Swailes, Chris Swailes, Billy, Daws, Jarrett, Reid, Armstrong, Newby, Cramb (Forrest 90 mins). Unused subs: Littlejohn, Halford, Martin, Connell.

Sent off: Danny Swailes, 39 mins, for pulling back Liam George just outside the penalty area.

The Goals: 1-0 6 mins - Liam George, converting the rebound after his first shot came back to him off a post; 1-1 8 mins - Chris Swailes, low close-range drive from an acute angle after a deep free kick was played to the far post by Nicky Daws; 1-2 90 mins - Colin Cramb, on loan from Crewe, firing in expertly after catching the Town stretched by a long clearance from Paul Reid.

Referee: Steve Tomlin, Sussex.

Attendance: 4,902, including 150 in the away end.



LUTON TOWN
FOOTBALL CLUB

www.lutontown.co.uk

Chairman

M. Watson-Challis

Directors

**E. Hood, J. Mitchell,
C. Bassett, R. Stringer,
Y. Fletcher, R. H. G. Kelly**
Vice Presidents

**C. T. F. Green, N. S. Terry,
R. L. Banks, D. Ludlow
MBE, C. Bygrave,
R. Safranek, J. Sapsworth**

Club Secretary

Cherry Newbery

Manager

Joe Kinnear

Coaches

Lil Fuccillo

John Moore

Reserve Team Coach

Kevan Broadhurst

Youth Coach

Brian Stein

Sports Therapist

Bruce Sewell Bsc (Hons) MSST

Consultant Physio

John Sheridan

Youth Development Officer

Dean Rastrick

Chief Scout

Les Shannon

Sales and Marketing Manager

John Bailey

Catering Manager

Marie Hunter

Safety Officer

Geoff Lovell

Financial Controller

Tania Buonpane FCCA

Medical Officer

Dr. Bill Berry

Club Dentist

A. Chris BDSA (Syd)

Club Chaplain

Rev Catherine Bell

Company Secretary

Cherry Newbery

For all the latest news, views and interviews call

CLUBCALL - 09068 121123

(Calls charged at 60p per minute at all times)

Up and Running!

Luton Town's very own official website.

www.lutontown.co.uk

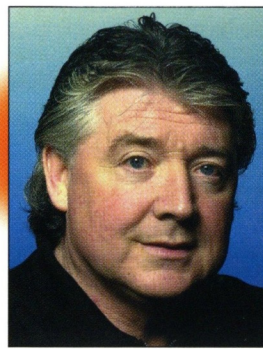
Catch a ride with a winner!

SKF AquaMax



Boost profits – and customer confidence – with SKF AquaMax, the new quality standard for replacement pumps. Designed to meet or exceed all OE standards, these new pumps produce maximum flow under all driving conditions, while providing added protection from corrosion and vapour leakage. For more information about SKF, talk to your SKF Automotive Parts Distributor or visit our website: www.vsm.skf.com

SKF



The Manager Joe Kinnear

IT WAS an all too familiar experience against Bury on

Saturday, when points we desperately needed were there for the taking, but thrown away for reasons which are difficult to fathom out. It's galling to have so much possession of the ball, but apparently forget what we're supposed to do with it.

Just when we have needed points most, we have lacked the imagination to break down defence-minded visitors. It happened against Oxford and Oldham, and again on Saturday, when we were not capable of holding on to one point, never mind picking up three. We are capable of dominating games, but all too often are guilty of defending poorly at crucial times, and if you are fighting for survival you cannot afford that.

The going has been tough recently, and perhaps our mental as well as physical strength, has been called into question, and we seem to lose our way and forget the basics. Put simply, we have not been professional enough.

The task facing us now looks more or less impossible, but there is still a lot to play for, not least new contracts here and there. And it is no secret that I am planning changes, whatever league we are playing in next season. Five players have been given free transfers, and four others have been made available for transfer. The summer will see a major rebuilding job, with one aim in view: to have a better, stronger and deeper squad for first team duty next season.

In the two months I have been here it has become clear that the squad was not good enough, particularly when we had to cope with injuries. I am sure the poor start to the season did not help confidence, which in turn can affect players' mental approach. I

can't imagine how many silly points have been thrown away, but I am sure that the last three home games should have produced nine, instead of the two we got from draws with Oxford and Oldham. Add the missing seven points to our current total, and our position wouldn't look quite so hopeless as it does now. Saturday's defeat was bitterly disappointing to me and I know supporters must have felt the same. But the league table doesn't lie, and it tells a story that began last August. Realistically, the teams above us are just one good result from safety. A few short weeks ago, with a lot of home games to come, we had the opportunity to look for a finishing total of at least 55 points. Now the most we can get is 50, and that is most unlikely to be enough to survive. Just to make it more painful, Oxford survived last year with only 45 points.

Whatever the outcome of our last four games, I have cleared with the chairman my plans to bring in new men for next season. This one has been wretched for everyone connected with Luton Town, and most of all I feel sorry for the chairman and supporters. But we will rebuild, from top to bottom, and in the meantime we have an obligation to try to win our last four games, and hope against hope that 50 points will be enough. Players are desperate to do well, but too many mistakes have been made which have cost us dear.

Supporters are the people who really matter, and I thank you all for being so tolerant and patient through some very difficult times. Our promise is that next season every Luton Town supporter will have a smile on his face at football - and a team to be proud of.

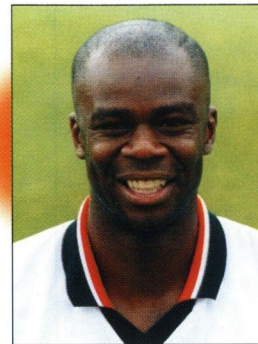
Joe Kinnear

You can e-mail the boss on:

manager@lutontown.co.uk

The Hatters roll-call 2000-2001

	Appearances (as sub in brackets)					Goals			
	League	WC	FAC	LDV	Total	League	WC	FAC	Total
Nathan Abbey	20	0	3	0	23	0	0	0	0
James Ayres	0	0	0	1	1	0	0	0	0
Rocky Baptiste	0(3)	0	0	0	0(3)	0	0	0	0
Emmerson Boyce	38	4	2(1)	0	44(1)	3	0	0	3
Dean Brennan	2(7)	1(1)	0	0	3(8)	0	0	0	0
Friedrich Breitenfelder	2(3)	0	0	0	2(3)	0	0	0	0
Stuart Douglas	13(5)	0	1(1)	0	14(6)	4	0	1	5
Richard Dryden	16	0	0	0	16	0	0	0	0
Andrew Fotiadis	12(10)	1	3	1	17(10)	3	0	1	4
Stuart Fraser	10(5)	4	4	1	19(5)	0	0	0	0
Liam George	33(6)	3(1)	4	0	40(7)	6	0	2	8
Petri Helin	22	0	3	1	26	1	0	0	1
Peter Holmes	12(6)	2(1)	1	0	15(7)	1	0	0	1
Steve Howard	8	0	0	0	8	1p	0	0	1p
Marvin Johnson	6	0	2	0	8	0	0	0	0
Tresor Kandol	6(7)	2(1)	0	0	8(8)	3	1	0	4
Kent Karlsen	4(1)	0	2	1	7(1)	0	0	0	0
Adam Locke	17(7)	1(1)	2(1)	1	21(9)	2	0	0	2
Lee Mansell	15(1)	0	1	0	16(1)	5	0	1	6
Gavin McGowan	5(1)	0	1	0	6(1)	0	0	0	0
Paul McLaren	31	4	3	1	39	1	0	1	2
Lee Nogan	7	0	3	0(1)	10(1)	1	0	1	2
Mark Ovendale	22	4	2	1	29	0	0	0	0
Keith Rowland	12	0	0	0	12	2	0	0	2
Andre Scarlett	5(4)	2	0(1)	0	7(5)	0	1	0	1
Paul Shepherd	3	0	0	0	3	0	0	0	0
Matthew Spring	37	4	5	1	47	4(2p)	0	0	4(2p)
Mark Stein	19(8)	3	1(1)	0(1)	23(10)	3	1	0	4
Jude Stirling	5(4)	0	0(2)	0	5(6)	0	0	0	0
Matthew Taylor	41	4	4	1	50	1	0	0	1
Peter Thomson	4(7)	1(1)	1(1)	1	7(9)	2	0	0	2
Julian Watts	26(2)	4	3	0	33(2)	4	0	0	4
Adrian Whitbread	9	0	4	0	13	0	0	0	0
OGs	1	0	0	0	1				



Captain's Log

Marvin Johnson

I KNOW we need an incredible end of season run, and perhaps a little help from other teams, but as we go into tonight's game I have been doing everything I can to make sure the lads all believe in my philosophy: we are not relegated yet, so we have every reason to keep going.

Saturday's defeat was a bitter blow, and our home results have been crucial in our miserable season. It has been misery twice over for me, of course, because of my long spell on the injury list. I am ready to return if the manager wants me back in the squad, but I am not kidding myself that the result against Bury would have been different if I had been playing.

To be honest, the minute their man was sent off I feared the worst. Bury would no doubt have been happy to go home with a point, and as it was 1-1 at the time I knew they would sit back, defend first, and hope for the occasional counter-attack if the chance arose.

It might have been a lot different if we had still been leading when the red card was administered, and one of the day's big disappointments was that we held our lead for only two minutes. I was delighted for Liam George to get back on the score sheet after a period of frustration for all our strikers, but conceding a goal from a set piece was a blow. Personally, I felt the red card for Danny Swales was a bit harsh. The ref obviously thought he was the last man between Liam and the goal, but as a defender I would expect at least one other man to be getting back rapidly to cover the possibility that the forward would go past his man.

In the event, the ref did us no favours by reducing Bury to ten men. They had looked very well organised with 11, a good hard-working unit, and it was obvious that their reaction to losing a man would be to redouble their efforts in terms of commitment and endeavour.

It helped them that we had to chase the game, because they were able to set out their stall to defend and cover each other. I give them credit for doing it well, but it was so frustrating to see us have plenty of possession and not find the little bit of guile that might have created clear scoring chances. Over the 90 minutes, we didn't open them up often enough.

Bury had a lively front pair in Jon Newby and Colin Cramb, so it was even more frustrating when after battering away at them for so long we were caught out, well stretched, for the late goal that settled it.

Players have been under a lot of mental pressure this season because of our poor start, and the bad results at home, where there is bound to be more expectation on and off the field alike.

As you might guess, it was a very sombre atmosphere in the dressing room after the game. I had heard some shouts from the stand suggesting players didn't care about the result. Believe me, we do. Being relegated is the last thing you want on your CV as a footballer.

Mathematically, we are not relegated yet. And while there is a glimmer of hope, we must keep going and play each game as though it is a cup final. Never give up is my belief. I was just a kid in 1983 when the famous Maine Road match took place and Luton pulled off an unlikely escape. I played in the match at Derby seven years later, when we saved ourselves on the final day with a 3-2 win. I was out injured - no rude comments please! - a year later when we did it again, once more against Derby, on the day Mick Harford set us on our way with a cracking own goal. Great escapes, every one of them, and I don't think anyone outside of Luton gave us any chance of doing it on those occasions. So why shouldn't we remind ourselves that in this game anything is possible, including Luton Town beating the odds once more?

Marvin Johnson



Hatters Financial Services

- SAVINGS AND INVESTMENTS •
- LIFE ASSURANCE •
- CRITICAL ILLNESS COVER •
- INCOME REPLACEMENT •
- PENSIONS •
- INHERITANCE TAX PROVISION •
- FINANCIAL REVIEW •

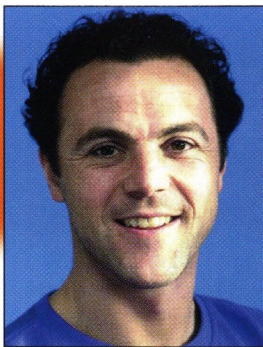
Hatters Financial Services

Freepost (SCE 9094) Aylesbury Bucks HP21 9BR
0800 02 88 149

Hatters Financial Services is a trading style of Aylesbury Financial Services, a representative only of the AXA Sun Life Marketing Group. AXA Assurance is a trading name of members of the AXA Sun Life Marketing Group, the members of which are regulated by the Personal Investment Authority and/or IMRO for life assurance, pensions, and investment business. 01/612 Expiry 21/08/2001

Up and Running!
Luton Town's very own official website.

www.lutontown.co.uk



Treatment Room

Bruce Sewell

WE PICKED up a couple of knocks in the game against Bury on

Saturday, which might affect the midfield formation for this evening's match.

Matthew Spring and Lee Mansell were both under treatment yesterday, and while I was hopeful that both would make swift recoveries, it was impossible to give a firm verdict before then.

Spring tweaked a muscle at the back of his knee, probably through over-stretching, and it was certainly nothing to do with his earlier hamstring problem - it was the other leg, and a different part of the limb.

Mansell took a hefty kick on the leg, a bony point just below the knee which includes a lot of nerves. It was very uncomfortable, to say the least, and treatment began the minute he was taken off and replaced by Stuart Douglas.

Otherwise, everyone in Saturday's squad came through the game unscathed, which was good news following the return to action in the reserves a few days earlier of Kent Karlsen and Keith Rowland. I reported on Saturday that we were hoping for

good news about Stuart Fraser's progress after his broken leg. It has turned out to be not quite as good as it might have been, but certainly not bad news.

He was hoping to throw away his plaster cast, but the surgeon's advice, which we accept without question, is that it needs to be kept on a little longer, although not 24 hours a day. He can take it off for a part of each day, which helps him doing the exercises needed to rebuild muscle strength.

The general rule after a player breaks a leg is to expect it to be 15 weeks in plaster, followed by another 15 weeks at the most, of rehabilitation work before he can resume playing. Tomorrow will be 14 weeks since he was carried off at QPR, so he is on course to be ready for full training in pre-season work.

I hope to book him in for a week at Lilleshall for concentrated rehab and therapy work, when he will receive one-to-one treatment which cannot be guaranteed at clubs with other players to look after.

Bruce Sewell



Club Secretary

Cherry Newbery

IN MY column on Saturday I mentioned a few

dates which would be of interest to supporters, particularly the pre-season friendlies that have been arranged, at home to Norwich City on Saturday August 4, and then the visit of Tottenham on Tuesday August 7.

Those games are in the week before the new season kicks off, and I thought you might want to put down other footballing dates for your diaries. I must stress that at this stage they are provisional, not yet formally confirmed, so there could be some changes announced later.

After our Nationwide League season begins on August 11 we have the first round of the Worthington Cup, on Tuesday August 21 or Wednesday August 22, depending on where we are drawn - most clubs, including us, like Tuesdays for midweek games but some prefer Wednesdays, and normally the home club decides.

The second Round of the Worthington will be on Tuesday September 11 and the third round on October 9.

There will be one major change for us in that competition next season: the first two rounds will be played as one-off ties, and not over two legs as they used to be. The League thinks it will make for more exciting games, with away teams no longer having the comforting knowledge that they get a second chance on their own pitch.

The Worthington Cup final is scheduled for Sunday April 24, 2002, the 14th anniversary of our famous victory at Wembley when it was called the Littlewoods Cup.

The LDV Vans Trophy first round is October

23, with the second round four weeks later. Area quarter-finals are the first week in December, and the final is due to be played on Sunday March 24.

Our entry into the FA Cup will be on Saturday November 17, with the second round due on December 8 and the third round on January 5. Semi-finals are in mid-April with the final on Saturday May 4.

Hopefully, in 12 months time we will be celebrating promotion, and able to watch with interest who goes up with us. The play-offs are down for first legs on Sunday April 28, with the second legs the following Tuesday or Wednesday. The finals are on the weekend of May 10-12.

Because the World Cup begins at the end of May, our league season will end earlier than usual, with Saturday April 20 next year marked down as the final day of the regular campaign.

Meanwhile, we are still very much in business as this season approaches its end, and can I please again remind you that the matches at Bristol City and Brentford are all-ticket games. Tickets bought for the original date for the Brentford match are of course still valid.

We have good allocations for both games, and our away support this season has been tremendous, both in numbers and vocally, so if you want to go please remember to buy tickets in advance from Kenilworth Road. Sales of tickets for Ashton Gate have to end at 4pm on Thursday, April 26, but Brentford tickets will be available at Kenilworth Road until noon on the day of the game.

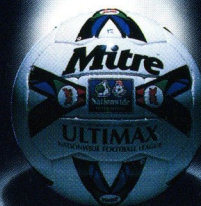
Cherry Newbery

Last Season

The Nationwide Football League saw an Increase in Attendance of 13.5%;
Why...?

Mitre >

The authority...



The Quality of the Football

You can e-mail Cherry Newbery on:
clubsec@lutontown.co.uk

Hatters Away

THE Town reach the end of this season's road next week, with trips to Bristol City and Brentford before our final match at home in a fortnight's time.

As usual, two reliable coach services are available for supporters wishing to travel, run by Town on Tour and the Bobbers Travel Club.

Town on Tour, an offshoot of Luton Town Supporters Club, is introducing a new service for Saturday's trip to Ashton Gate - a stop for lunch near Bristol.

They will leave Luton at 10am, and the coach fare is £12 for adult members of LTSC, £10 for junior and senior citizen members, and £13.50 for others.

The Bobbers, departing Cranfield at 9.30am and Luton an hour later, are charging £11 for adults, £9 for concessions.

On Thursday it is an all-ticket match for Town supporters, and coach travel might be better than driving because of parking difficulties around Griffin Park. The Bobbers fare is £7 for adults and £6 for junior and senior citizens, while Town on Tour's prices will be £8.50 for members of LTSC, £7.50 concessions LTSC members, and £9.50 for others. Coaches will leave Luton at 5pm, with the Bobbers starting from Cranfield an hour earlier and picking up at villages en route.

To book tickets, visit the Bobbers and Supporters Clubs kiosks today, or, for the Bobbers, phone Paul Deason on 01234 750996. Town on Tour bookings can be made any day through the club shop, by phone or personal visit, or you can leave messages on the ToT mobile, 07960 567465 at any time of the day or night.

DIY travellers

THE road journey to Bristol is an easy motorway drive of just over two hours. Leave Luton on the M1 south, then take the M25 west.

Ashton Gate



© Chorley Handford/Premier Image

Near Heathrow turn onto the M4 heading west. Leave M4 at junction 19, turning onto the M32. Nearly five miles after leaving the motorway turn left to follow the signs to Broadmead and Temple Meads, and then get into the right hand lane to follow signs towards Bristol Airport. At the next two roundabouts go left to follow the signs towards Taunton A38. After leaving the second roundabout stay in the left hand lane, still following the A38 signs, into Brunel Way, the A3029. This swings left into Winterstoke Road, and Ashton Gate is on your left.

Mileage from Luton: About 150.

Griffin Park



© Chorley Handford/Premier Image

IF YOU want to drive to Griffin Park, the shortest route, about 40 miles, is via the M1 south, to the very end, then turning right onto the A406, the North Circular Road. Follow that to Chiswick

roundabout, which is the junction with the M4, but be warned - the North Circular can be an awful drag with heavy traffic on any day and any time. For directions from Chiswick roundabout, see below. It is usually quicker to take the M1 and M25 west, then head towards London on the M4. Turn off at the Chiswick roundabout, 8.4 miles after leaving M25.

Take the A205, the South Circular Road (the continuation of the North Circular) towards Kew Bridge. After a third of a mile, the road divides: go straight on, which means not going over Kew Bridge, but instead go into Kew Bridge Road, passing the Kew Steam Museum on your right. After half a mile, turn right at the traffic lights just beyond the Red Lion, and you are in Ealing Road, which runs past Griffin Park.

Mileage on this route: About 45.

Ticket News



Nationwide League - Division Two



Bristol City v Luton Town

Saturday April 28, 2001, kick-off 3pm

This match is ALL TICKET for Luton Town supporters, with none available on the day at Ashton Gate. Prices: Adults £14, Students & OAP's £11, Under 16's £9. Tickets will be on sale at Kenilworth Road ticket office until Thursday 26th April 4pm.



Brentford v Luton Town

Thursday May 3, 2001, kick-off 7.45pm

This match is ALL TICKET for Luton supporters, with none available on the night at Griffin Park. Prices: Seating: Adults £15, seniors and juniors £12. Terracing: £11 for everyone - no concessions.

Tickets will be on sale at Kenilworth Road ticket office until 12 noon on the day of the game. Tickets bought for the original date are still valid for the new one.



Luton Town v Port Vale

Saturday May 5, 2001, kick-off 3pm

Tickets are now on sale at normal match day prices. Cash turnstiles will be open on the day, subject to availability.



Luton Town Credit Card Hotline

By using our telephone hotline system you can order match tickets up to 48 hours prior to any game by ringing:

**01582
730748**

24 HOURS A DAY

Please have your credit card to hand when you make the call.

Ticket Office Opening Hours

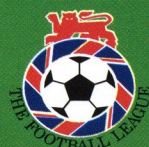
MONDAY TO FRIDAY

10am to 4pm,
except on Fridays before Saturday home games when it is 10am to 6pm.

SATURDAY

9am to 5.30pm on match days;
10am until the away coaches depart on days when there is no game at Kenilworth Road.

You can order tickets via email on:
ticketoffice@lutontown.co.uk



goals oncd

The Official
Sponsors of the
Substitute Board

www.goals-oncd.com

Executive Box Holders



Mr H. Khatab



Mick Connolly



G.P. Quorenton
(Ductwork)



Kenilworth Suite Members

Paul Armitage	Woburn Media Ltd	SKF (UK) Ltd
Corporate Coaching	Critical Research	DBF Crosswinds Ltd
RW Harvey & Son	Dr David Siegler	Regal Litho Ltd
Mr Malcolm Eade	Mr J Siegler	Protexx
Mr Roger Eade	Datapace Ltd	Mr P Mitchell
Vangis UK Ltd	J P Hygeine Supplies	Travel Extras
Anachem	Filmergraphics	Belldene Ltd.

To reserve an Executive Box or become a Kenilworth Suite member call Commercial on:
01582 411622



Player of the Season Presentation Evening



Sunday 29th April 2001 - 7.00pm till late
at

The Riverside Suite, Vauxhall Recreation Centre
Gipsy Lane, Luton.

With Special Guest Speaker
John Motson

Raffle • Disco • Hot & Cold Buffet • Smart Casual Dress
Tickets now on sale at the Club Shop, Ticket Office and Matchdays
at the Luton Town Supporters Club Kiosk.
Priced at £12 LTSC Members, £15 Non Members



Never Ever Beaten on Price!
Save up to 30% on May

June & July holidays (including Whitsun)

with **BRITISH HOLIDAYS** and **Haven**

Contact your priority booking line on **0870 600 8003**
or visit your local store

Dunstable - White Lion Retail Park, (near to Sainsbury), Boscombe Road.
Milton Keynes - The Kingston Centre, (near Tesco).
Sheffield - Drakehouse Retail Park, Drakehouse Crescent, (near Crystal Peaks).
Open 7 DAYS A WEEK Mon/Sat 9am-7pm, Sun 11am-5pm.
Lines Open Mon/Sat 9am-7pm, Sun 11am-5pm

ABTA
J0722

www.holidayhypermarket.co.uk

holidayclub@holidayhypermarket.uk.com

*We guarantee to beat any other High Street ABTA bonded Travel Agents "like for like" price, written quotes at time of booking are necessary. Excludes First choice retail group and JMC. Offer is on selected dates at selected parks. 3 & 4 nights breaks not included for Haven but are included for British Holidays. These offers cannot be used in conjunction with any other offer and apply to new bookings only. All offers are subject to availability, are correct at time of going to press and may be withdrawn at any time without prior notice.



**Official Kit Suppliers of
Luton Town Football Club**



Commercial Corner

John Bailey

CLOSE links with the local community are always highly valued at Kenilworth Road, and today those good relationships are underlined again, with all our sponsors being regulars in backing our commercial activities. The Cane Industries (UK) Ltd will be a name familiar to most supporters through their adverts in the ground and in the matchday magazine.

The Cane Industries (UK) Ltd are your local quality cane furniture specialists. Managing director Peter Lee and his wife and co-director Jenny started the company in 1980 and now employ 26 staff at their local warehouse in Laporte Way.

Financial controller Mel Westwood has supported Luton town since his boyhood, following the Hatters since 1959. His son Matt is now a committed Town fan who hopes one day to have his chance to play for the club.

Cane Industries have a wide and varied customer base throughout the UK, but there is

always a warm welcome awaiting all friends and supporters of Luton Town and their families at the factory and showroom.

MORE old friends are here this evening as sponsors of the match ball - long-time Luton Town supporters G. Owen Ceramic Tiling Ltd.

The company has close links with Luton, but is now based at Northampton, having had to move to find larger premises to cope with increasing business.

They are one of the country's most successful companies in supplying and fixing ceramic tiles for the house construction industry. It is a pleasure to see them back here again tonight, and we hope everyone in our sponsorship and guest lounges enjoys the evening.

For our part, we thank everyone who backs our commercial activities, which are vital in a club like ours.

John Bailey

Golden Gamble

WHATEVER happens on the pitch this evening, one Luton Town supporter is likely to go home with reason to smile, because as usual we are running our popular Golden Gamble lottery. It will pay out a very welcome bundle of notes to one lucky punter, and tickets are still priced at only £1 each. Printing schedules make it impossible for us to report details of Saturday's



winner, but at the Oldham game the jackpot was £505, and was won by Caz Meers, of Brook Street, Luton.

It was the 24th prize of the season, worth a total of £11,365, an average of £474 each. Another lucky supporter will join the list this evening, and sellers are on duty all round the ground for the quid-a-go draw.

The size of the jackpot depends on ticket sales - half the income goes to the winner, and the other half to club funds, so even if you don't win you are helping the football club, and we very much appreciate your support. The draw is made at half-time, with the cash available immediately.

To advertise in the matchday magazine
phone Luton 411622 or e-mail us at:

commercial@lutontown.co.uk

Kit Sponsors

NATHAN ABBEY	Paul Deason
GAVIN McGOWAN	Luton Town Supporters Club
MATTHEW SPRING	Brian Hall
MARVIN JOHNSON	Space Display Systems
PETER HOLMES	G & S Ceramics
PAUL McLAREN	Elsie Clubb
STUART DOUGLAS	Les & Sue Miller
KENT KARLSEN	Icknield Windows Ltd
PETER THOMSON	The Bobbers Travel Club
LIAM GEORGE	WHOSH
STUART FRASER	David & Jonathan Siegler
ANDREW FOTIADIS	Sally Mayne & Family
MATTHEW TAYLOR	Mick Garbutt, Inside Media
MARK STEIN	Wendi Arnold & Graham Bates
ADAM LOCKE	Jeremy Cain of D.A.P. Consulting
FRIEDRICH BREITENFELDER	Regal Litho and Corporate Coaching
EMMERSON BOYCE	Michael Capp & Danny Clubb, Century Club Members
ANDRE SCARLETT	WHOSH
PETRI HELIN	Icknield Windows Ltd
JUDE STIRLING	Century Club
SCOTT WARD	G. Owen Ceramic Tiling Ltd
MARK OVENDALE	JEWSON Ltd
JULIAN WATTS	Les Miller, Miller & Company, Bedford
To Be Advised	E.C. Smith & Sons Ltd.
DEAN BRENNAN	B.D. Sanders
JOE KINNEAR	Luton Town Supporters Club, Milton Keynes
LIL FUCCILLO	Loyal Luton Supporters Club
BRUCE SEWELL	Century Club
JOHN MOORE	Ian Smith
JOHN CARROLL	Danny Clubb & Michael Capp, Century Club Members
LEE MANSSELL	Danny Clubb & Michael Capp, Century Club Members
DEAN STANDEN	Available
TRESOR KANDOL	Terry Neale
BRIAN STEIN	Danny Clubb
STEVEN HOWARD	Jeremy Cain of D.A.P. Consulting

If you are interested in sponsoring a player's kit please contact the Commercial Department on 01582 411622.

Goalscoring Head 2 Head

in the graphics below, Hatters' figure is to the left with the goals scored indicated in orange and Millers' to the right and scored in sky

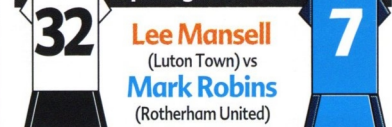
Where



How



Top League Scorers



47 in 41 games Team Goals 73 in 42 games
1.15 goals Ratio per Game 1.74 goals

5 in 15 games Player's Goals 23 in 38 games
0.33 goals Ratio per Game 0.61 goals

4 Games Scored In
2 Games Scored 1st Goal
3 Games Scored 2 Goals
1 Games Scored 3 Goals
0

IMPORTANCE OF GOALS

(Taking out top scorers, how would results be affected)
1 (2pts) Games Won -> Drawn 6 (12pts)
0 (0pts) Games Won -> Lost 2 (6pts)
1 (1pts) Games Drawn -> Lost 3 (3pts)
3 Number of points gained 21

SCORING SEQUENCES

0 Consecutive Games Scored 2 Games 5
0 3 Games 0
1 game Maximum Scoring Run 2 games

CONSECUTIVE GAMES WITHOUT SCORING

2 2 Games 8
2 3 Games 0
0 4 Games 0
3 games Maximum Dry Spell 2 games

Hatters' Results

LUTON TOWN GOALS								
OPPOSITION GOALS	0	1	2	3	4	5	6	7
0	4	3						
1	3	6	4					
2	3	4	1					
3	3	3	2	1				
4	1	1	1					
5								
6								
7								

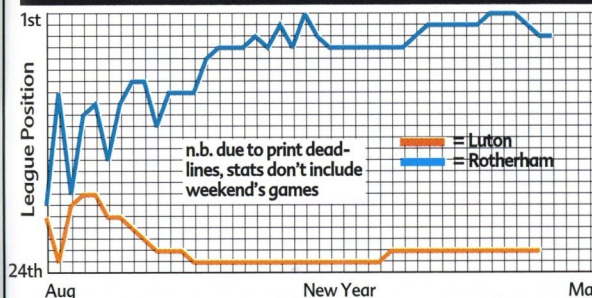
shows the number of results for each scoreline.
eg. Luton have drawn 6 games 1-1

Millers' Results

ROTHERHAM GOALS								
OPPOSITION GOALS	0	1	2	3	4	5	6	7
0	3	7	2	5				
1	6	1	3					
2	1	2	4	1				
3	1	1	1					
4	1	1	1					
5								
6								
7								

eg. Rotherham have won 7 games 1-0 and won 5 games 3-0

Seasonal Progress Comparison



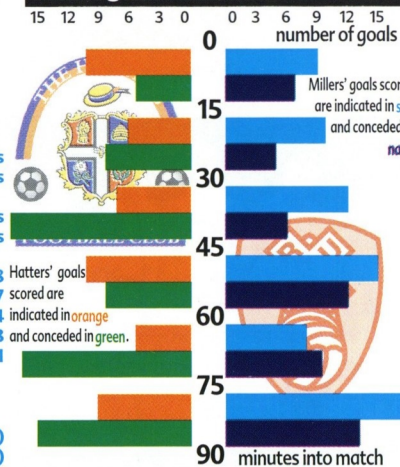
n.b. due to print deadlines, stats don't include weekend's games

Legend: Luton (orange), Rotherham (sky)

Stats & Facts

Stats compiled by Football Information Services

When goals scored & conceded



Average time of Scoring / Conceding

79 mins	All Goals for	52 mins
82 mins	Home Goals For	41 mins
76 mins	Away Goals For	72 mins
52 mins	All Goals Against	71 mins
58 mins	Home Goals Against	79 mins
47 mins	Away Goals Against	64 mins

Table shows average time taken for both teams to score and concede goals in home and away games.

Face2Face

Last Season
At Kenilworth Road ...n/a
At Millmoorn/a
This Season
Hatters' Season records:
Home Win ...3-1 Brentford
.....5-3 Swansea
Away Win3-1 Swindon
3-1 Notts County, 3-1 Stoke
Home Defeat ...0-3 Bristol City
.....0-3 Colchester
Away Defeat...0-4 Swansea
Consec. Wins.....3
Consec. Defeats4
Millers' Seasons records:
Home Win 4 games by 3 goals
Away Win...3-0 Brentford
Home Defeat 1-3 Reading
Away Defeat...1-6 Cambridge
Consec. Wins.....5
Consec. Defeats0

Last 10 Games Form Guide Comparison

Hatters : DWLSLSLSDL F 7 A12 Pts 8

Millers : LWWWWLWLDW F 18 A16 Pts 19

Form Guide shows last 10 results. W = Won, L = Lost, S = Score Draw, D = No Score Draw. Most recent result to the right

Rotherham's Last 10 Years - The Complete Record

	DIV	FAC	WC	LS	Gls	Ave Att
90/91	3	4	2	Mendonca	10	4,596
91/92	4	2	1	Cunningham	18	4,780
92/93	2	4	2	Wilder	8	4,750
93/94	2	1	2	Varadi	19	3,723
94/95	2	2	1	Goater	19	3,278
95/96	2	1	2	Goater	18	3,423
96/97	2	1	1	Jean	5	2,844
97/98	3	3	1	Glover	17	3,651
98/99	3	3	1	Fortune-West	12	3,988
99/00	3	2	1	Fortune-West	17	4,426

Only 90,000 minutes to go.

The new season starts August 11th. Call now to reserve your seat.

on digital 0808 100 0101



Tonight's Visitors

Rotherham United



Rotherham United F.C. 2000-2001



RONNIE MOORE - MANAGER

Born in Liverpool, Ronnie scored 72 goals in 248 appearances for Tranmere Rovers before moving to Cardiff City in February 1979. He signed for Rotherham United in August 1980 when he

became leading goal scorer in the championship winning side. He signed for Charlton Athletic in September 1983 before returning to Tranmere Rovers in July 1986.

He became Assistant Manager and first team coach at Prenton Park for nine years taking them to Wembley five times in the Autoglass and Okay Off Finals.

His first appointment as Manager came at Southport in the Vauxhall Conference, however after just a few months he was successfully sought out to take over at Millmoor. A local newspaper had conducted a poll amongst Rotherham United F.C. fans asking who they would choose as the next Manager - Ronnie polled almost 80%.

NO. 1 - IAN GRAY - GOALKEEPER

Goalkeeper born in Manchester in February 1975, he was a trainee at Oldham Athletic. Went on loan to Rochdale and signed for them in 1995, before signing for Stockport County for £200,000 in 1997. Agile and keen with good handling ability. Signed for Rotherham in July 2000.

NO. 2 - CHRIS BEECH - DEFENDER

The Congleton born player was an ever present with Cardiff City but after being surprisingly released, Rotherham moved quickly to snap him up in the face of competition from several other Clubs. After spending two years at Lillleshall as an England schoolboy, Chris gained England youth international honours. He started his career at Manchester City and the left footed defender should prove to be a major coup for the Millers.

NO. 3 - DAVID ARTELL - DEFENDER

A local central defender who has come up through the ranks of the schoolboys and juniors to earn his first professional contract at the end of the season 1998/9. He will be looking

to further develop his strength as he is already a big lad. Scorer of several goals last season for the juniors.



NO. 4 - ROBERT SCOTT - DEFENDER

Signed from Fulham in November 1998, a £50,000 buy who has now been converted from a striker to a defender. Revelled in his new role as a sweeper, and barring injury would have been Player of the Year.

NO. 5 - DARREN GARNER - MIDFIELDER

Plymouth born Darren joined Rotherham from Dorchester Town in 1995 and last season enjoyed his best ever campaign. An all action midfielder, he has an eye for goals and is the Millers workhorse, fetching and carrying for those around him. He never stops working and provides openings for others although he possesses a strong shot of his own having scored ten goals for the Millers last season.

NO. 6 - MARVIN BRYAN - DEFENDER

Born in Paddington in August 1975 Marvin is a

full back who was a trainee at Queens Park Rangers, went on loan to Doncaster Rovers and then signed for Blackpool for £20,000 in August 1995, before coming to Rotherham in July 2000. A speedy full back with over 300 games to his credit.

NO. 7 - MARK ROBINS - FORWARD

Born in Ashton under Lyne in 1969. He was an apprentice at Manchester United and signed for Norwich City in August 1992 for £800,000, and then moved on to Leicester City for £1,000,000. Clubs since then have included Reading, Manchester City and Panionis in Greece before joining Rotherham United in July 2000. A proven goal-scorer at the top level.

NO. 8 - PAUL DILLON - DEFENDER

Paul is a strong never-say-die, left-sided central defender who can also play with comfort at left back. He has played for the Republic of Ireland Under 18s and 21s and he could well make it into their full side in their full national team in the not too distant future.

Find Freedom within.....



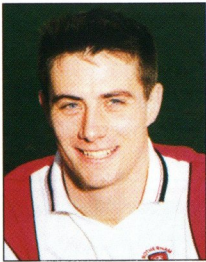
*no other Health Club offers you more for less...
.....with no need for contracts*

*Fitness First Luton, Skimpot Lane, Luton, Beds, LU4 0JB
Tel: 01582 560200
www.fitnessfirst.co.uk*

For all the latest news, views and interviews call

CLUBCALL - 09068 121123

(Calls charged at 60p per minute at all times)



NO. 9 - ROBERT SCOTT - FORWARD

The tall young striker has proved to be a very astute acquisition since arriving during the course of the 2000-2001 season. A player of undoubted talent and ability, he kicked off his career at Aston Villa and has

also got a Republic of Ireland Under 21 cap to his name.

NO. 10 - PAUL WARNE - FORWARD

Signed initially on a short term contract in January 1999, Paul quickly became a crowd favourite with his willing running up front and he had a blistering start at Millmoor scoring five goals in his first four appearances including two on his debut. Thankfully he soon agreed a longer deal and forged a good understanding with Leo Fortune-West for whom he laid on several goals. He should be a key figure next season.

NO. 11 - ANDREW TURNER - FORWARD

Started his professional career at Tottenham Hotspur where he played in the Premiership and after several loan moves, he moved to Portsmouth at a cost of £250,000 in

September 1996. He is highly recommended by Terry Venables who signed him for the third time when he was boss at Crystal Palace. Joined the Millers in the summer of 1999 and he should be a major asset with his pace and crossing ability from the left.

NO. 12 - STEWART TALBOT - MIDFIELDER

A new signing this season Stewart is a mid field player with a "never say die" attitude. Signed from Port Vale and will add bite to the mid-field, and his hard work and determination has made him a well respected player at the Club.

NO. 13 - PAUL PETTINGER

Paul joined Rotherham from Carlisle United in the summer of 1998 and he has gained previous experience on loan at Torquay United while also having spent time on Gillingham's books after starting his career as a trainee at Leeds United.

NO. 14 - KEVIN WATSON - MIDFIELDER

Kevin was skipper of our successful promotion winning side last season. Kevin signed for the Millers in August 1999 from Swindon Town. Learned his trade at Tottenham Hotspur. Skilful with a lovely touch on the ball and a creative passer of the ball.

NO. 16 - PAUL HURST

Paul has been at the Club since he joined as a Schoolboy, working his way up the ranks. He has established himself in the first team and will be looking to continue with the fine form he displayed last season.

NO. 17 - JOHN (WILL) VARTY - DEFENDER

Signed on loan from Carlisle United in March 1999 and it was difficult to understand why the struggling Cumbrians let him go as he proved to be a very accomplished central defender. Cool on the ball unflappable and with quick feet, he was a vital member of Rotherham's back line helping to bring more stability as the goals conceded reduced drastically following his arrival.

NO. 18 - MARK WILLIAMS - DEFENDER

When Rotherham took over his contract from Rochdale in March 1999, they signed a defender who has an enormous amount of enthusiasm and he quickly showed he is equally at home at the centre of the defence or in the right wing back slot. Has youth on his side and he should develop into an accomplished player with a bright future.

NO. 19 - BRIAN WILSTERMAN - DEFENDER

Signed for Rotherham in June 1999 after being released by Oxford United, the Surinam born central defender has spent the majority of his career playing in Holland and Belgium. A no nonsense player, he has bought all round strength to the Rotherham defence.

NO. 20 - ANDREW MONKHOUSE - FORWARD

A highly skilful young player who will be one to watch in the future playing wide on the left. He marked his debut as a substitute with a spectacular diving goal against Hartlepool in September 1998. His only start was in the Auto Windscreens Shield but he will surely get many opportunities in the coming season.

NO. 21 - DANNY HUDSON - MIDFIELDER

Another product of the Rotherham United youth policy, Danny broke into the first team 1997/8 season when he was still only 18 years old and he grabbed his first goal in the FA Cup 6-0 romp against Kings Lynn. He is a midfield player with a great turn of speed and he will be

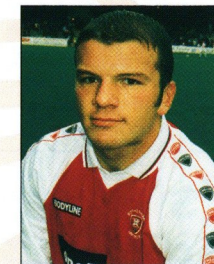
looking to displace some of his more experienced colleagues thanks to his all out action style of play.

NO. 23 - TREVOR BERRY - FORWARD

A former England youth international, Trevor started his career at Bournemouth from where he moved to Aston Villa for £50,000 in April 1992 and joined Rotherham just over three years later. Trevor is very much like an old fashioned winger although he has also played as an out and out striker on occasions.

NO. 24 - CHRIS SEDGWICK - FORWARD

Still a youngster, Chris shows outstanding promise as a winger for the future, with his ability to run at defences and supply good crosses. He became a regular in Season 1999/2000 with some good performances, catching the attention of a number of Premier League Clubs.



NO. 28 - GUY BRANSTON - DEFENDER

Guy is a big strong left-footed central defender, signed from Leicester City in November 1999 for £50,000. Quickly established himself as a crowd favourite, with his no nonsense tackling. Still only 21 years of age with time on his side to return to the Premiership.

NO. 29 - RICHARD BARKER - FORWARD

A big and bustling front man who earned himself a goal-scoring reputation at previous club Macclesfield Town, before making the switch to Millmoor. He got his career back on track after starting out with high hopes at Sheffield Wednesday and will be hoping to score the goals which will keep Rotherham United in promotion contention.

NO. 30 - ASHLEY CONNOR - GOALKEEPER

A young goalkeeper with great potential, who has come through the ranks at Rotherham United. He had an outstanding season last year and was rewarded with a pro contract.

CANNON LANE
Hitchin Road, Stopsley, Luton, Beds

CHRYSLER 01582 725506
www.cannonlane.co.uk

Treat yourself and your friends to an Executive Box.
Call the Commercial Department on:
01582 411622



Premierimage.co.uk

THE SOCCER STUFF & NONSENSE STORE

Aerial & Fisheye photos of all British Stadiums... Paintings... Cakes...
Mousemats... Jigsaws...
Garden Kit Gnomes... House nameplates...
& much much more

For a FREE gift catalogue
Call: 0208 461 4214

or write to: Unit 12
157-159 Boundfield Rd
London SE6 1PE



R. J. BLOW & C O M P A N Y

THE FRIENDLY ACCOUNTANTS

*Book-Keeping
Taxation and Wages etc.*



24 GUILDFORD STREET
LUTON
BEDS, LU1 2NR



Tel: (01582) 738792
Fax: (01582) 423347

FANS ON THE MOVE

Visitors to Luton	Away-day Hatters
Notts Co606	Wigan640
Peterborough (WC)360	Wycombe1,266
Bournemouth539	Rotherham603
Northampton1,240	Peterborough (WC)908
Walsall313	Swansea285
Swindon531	Sunderland (WC)332
Sunderland (WC)1,366	Bristol Rovers333
Millwall1,389	Cambridge1,210
Brentford695	Oxford817
Wrexham352	Bury419
Bristol City1,396	Port Vale420
Rushden (FAC)1,736	Stoke499
Colchester309	Peterborough290
Darlington (FAC)221	Darlington527
Peterborough918	Reading1,010
Wigan261	Bournemouth446
QPR (FAC)1,976	QPR (FAC)2,586
Wycombe402	Oldham153
Swansea336	Northampton1,250
Bristol Rovers788	Notts County646
Cambridge752	Walsall965
Reading1,249	Swindon1,512
Stoke1,086	Millwal1,092
Oxford336	Peterborough1,342
Oldham256	Colchester1,013
	Wrexham428
Total:19,41320,972
Average:777807

TOWN TEASER

IF YOU know your Town Trivia, you have a chance to win a little prize this evening. The PA announcer will pose another Town Teaser before kick-off, so listen to him for your chance to have a go. And if you don't know the answer, you can find it somewhere in today's magazine.

The question on Saturday was about the Town player who made his debut for us at Bury, and the answer was Petri Helin.

Tonight's Question
Today is the anniversary of a famous Luton Town victory over Arsenal. Where and what was the game, and who saved a crucial penalty?

There's a brand new team at the heart of English football.

Football and the Government have teamed up in a new partnership to provide new lifeblood for the grass roots of English football – pumping financial support into the game that's so close to the hearts of so many. From parks pitches to professional football clubs, we'll be there to help everyone who loves football, providing a new generation of facilities for all



by pooling resources from The FA Premier League, The Football Association, Sport England and the Government into a single substantial fund for redistribution throughout the game. Together, we intend to ensure that football enjoys a healthy future for many generations to come.



FootballFoundation

football's biggest supporter

1 Waterhouse Square, 138-142 Holborn, London EC1N 2ST.
T: (020) 7832 0100 F: (020) 7832 0119
E: enquiries@footballfoundation.org.uk
W: www.footballfoundation.org.uk



MORTGAGES



1 in 3 people are paying too much for their mortgage

Be different - switch to Nationwide

www.nationwide.co.uk

0800 30 20 10

Nationwide. Underlining the difference

or visit us today

Banking | Credit Card | Insurance | Investments | Loans | Mortgages | Pensions | Savings

NATIONWIDE ESTIMATE THAT ONE IN THREE PEOPLE ARE PAYING TOO MUCH FOR THEIR MORTGAGE AS AT 19 FEBRUARY 2001. MORTGAGES ARE SUBJECT TO STATUS, VALUATION AND SECURITY. AVAILABLE TO THOSE AGED 18 OR OVER ONLY. NATIONWIDE BUILDING SOCIETY, NATIONWIDE LIFE LIMITED AND NATIONWIDE UNIT TRUST MANAGERS LIMITED REPRESENT ONLY THE NATIONWIDE MARKETING GROUP WHICH IS REGULATED BY THE PERSONAL INVESTMENT AUTHORITY FOR LIFE ASSURANCE, PENSIONS AND UNIT TRUST PRODUCTS. NATIONWIDE UNIT TRUST MANAGERS LIMITED IS ALSO REGULATED BY IMRO. WRITTEN QUOTATIONS AVAILABLE ON REQUEST FROM NATIONWIDE BUILDING SOCIETY, NATIONWIDE HOUSE, PIPERS WAY, SWINDON, SN38 1NW. CALLS RECORDED. NATIONWIDE IS A MEMBER OF THE BUILDING SOCIETIES OMBUDSMAN SCHEME AND SUBSCRIBES TO THE BANKING AND MORTGAGE CODES, COPIES OF WHICH ARE AVAILABLE ON REQUEST. SECURITY WILL BE REQUIRED ON PROPERTY.

YOUR HOME IS AT RISK IF YOU DO NOT KEEP UP REPAYMENTS ON A MORTGAGE OR OTHER LOAN SECURED ON IT.

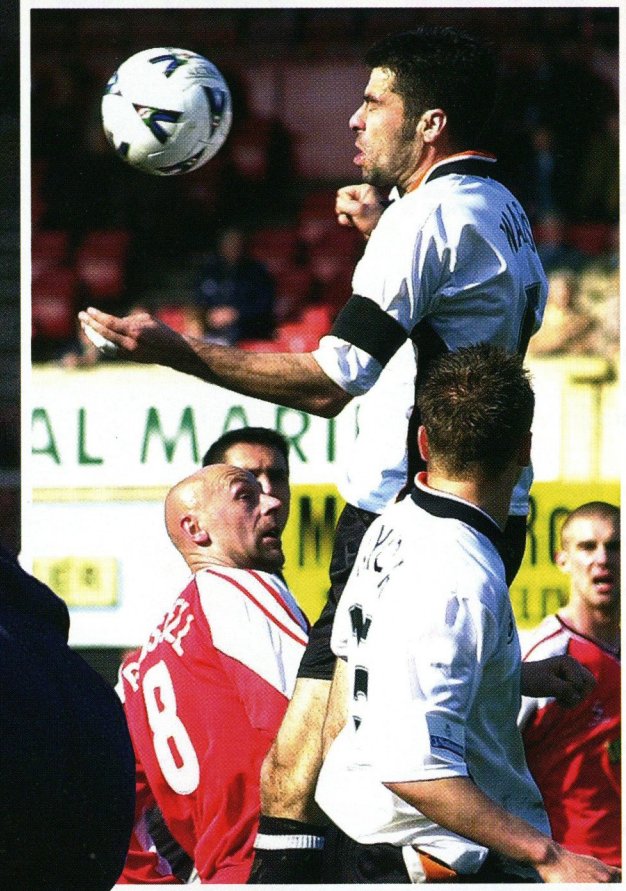
For all the latest news, views and interviews call

CLUBCALL - 09068 121123

(Calls charged at 60p per minute at all times)

Photo Action

Wrexham 3 Luton Town 1



MAIN PICTURE: Howard's way - Striker Steve chases hard, but cannot quite get to the ball before Wrexham goalkeeper David Walsh.

LEFT: At full stretch - Liam George in typical action.

ABOVE: Stand-in captain - Julian Watts, our goal scorer who took the armband after Paul McLaren went off injured, gets head and shoulders above Kevin Russell, with Matthew Taylor in support.

Photos Gareth Owen/LTFC

Entire system

Like a finely balanced ecosystem, SKF offers you a complementary range of products and services.

- Bearings
- Seals
- Housings
- Lubricants
- Maintenance tools
- Condition monitoring solutions
- Engineering advisory services
- Product refurbishment



SKF

Helping your world run smoother

Tel: 01582 496436
www.skf.co.uk



THE CANE INDUSTRIES (UK) LTD
QUALITY CANE FURNITURE



Daytona



Toronto



San Francisco



Wyoming

Established 1980 SHOWROOM OPEN
2-B LAPORTE WAY,
LUTON, BEDS LU4 8RJ
Tel: 01582 727123 Fax: 01582 727233

SUPER KARTS
Indoor Karting Centre

For further information and bookings telephone **01462 485959**

2 Pixmore Avenue
Letchworth
Herts SG6 1JS

- Arrive and Drive Group Events
- Karting Clubs
- Birthday Parties
- Corporate Events
- Open Events

Regal Litho

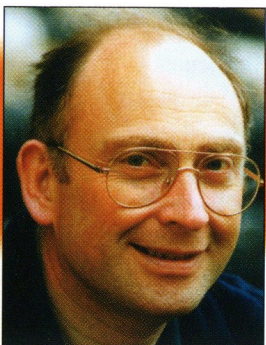
- ◆ Digital Artwork
- ◆ Conventional Repro
- ◆ Platemaking
- ◆ Colour Printing
- ◆ Finishing
- ◆ Distribution
- ◆ Stationery
- ◆ Point of Sale
- ◆ Brochures
- ◆ Commercial Print
- ◆ Magazine Publishing

The Publishers & Printers of:

Scale Aircraft Modelling **Scale Aircraft Monographs**

352 Selbourne Road
Luton Beds LU4 8NU
Tel: 01582 493332
Fax: 01582 560731
ISDN: 01582 560854
Email: regallithold90@atlas.co.uk
www.regallitho.co.uk

For the latest ticket information call the Luton Ticket Office on: **01582 416976**



Blast from the Past

Roger Wash

Clashes with the Millers

We welcome the Millers to Kenilworth Road after an absence of four years and aim to pick up again on League meetings which started in the old Division Two in 1951/52.

Rotherham had won promotion by finishing as champions of Division Three (North) at the end of the previous campaign and by the time of their first visit to Kenilworth Road in November 1951 they had continued their championship winning form and sat proudly at the top of the table with the Town just below.

We were still celebrating a famous 5-3 home victory over a star-studded Sheffield Wednesday side in the previous home game and a record crowd for the fixture of 23,565 turned up to see more of the same but had to be content with a hard fought 1-1 draw with Jack Taylor on the mark for the Town.

By the time of the return, the Rotherham bubble had burst and we returned from Millmoor with both points following a solitary Bert Mitchell strike.

The Hatters achieved the double in 1952/53 with Gordon Turner adding to his growing reputation when scoring both goals in a 2-1 home win. Turner's mentor, Jesse Pye, followed this up by hitting two against his home town club in a 3-1 victory at Millmoor in the return.

In the 1954/55 season both sides were fighting toe to toe for promotion throughout the campaign with the Town finally scraping through, pipping the Millers at the death on goal average. We lost 0-2 at Millmoor in an early season clash but gained full revenge in winning there 5-1 in the F.A.Cup and following it up with a 4-0 home victory with Turner again netting twice.

Our paths crossed again following our relegation in 1960 but this time it was the Town's turn to be on the receiving end of a thrashing, when we crashed 2-5 at Millmoor to a

Rotherham side that had not won for two months. The only consolation for the Luton supporters was that Turner, inevitably, scored both Town goals.

Following our further relegation in 1963, five seasons passed before the two teams were to meet again in the old Division Three. When we clashed in August 1968, there was a considerable amount of media interest surrounding the game. The Town were in unstoppable form following promotion, while newly relegated Rotherham were unbeaten in the new campaign under Tommy Docherty.

It was meant to be a severe test for the Hatters but a sun soaked crowd of 14,163 was treated to a vintage display of attacking football with Bruce Rioch hammering home two of his speciality left foot rocket shots in the first fifteen minutes.

Rotherham's Johnny Quinn narrowed the lead shortly afterwards, only for Brian Lewis to restore the two goal advantage before the interval. The second half avalanche of goals failed to materialise but we were well worth the two points that increased our lead at the top of the table.

In the return game, in March 1969, the players and supporters had to fight through snow, mist and rain to reach Millmoor but on a bog of a pitch the points were shared after a brilliant attacking game which could have gone either way.

Almost identical goals from Graham French and Brian Lewis were sandwiched between two fine Rotherham efforts and at the end both teams left the pitch to a standing ovation.

With our promotion to the old Division Two in 1970 it was to be eleven years before our paths crossed again, following the Millers elevation in 1981.

When the teams came up against each other in

October 1981 at Kenilworth Road, we were sitting pretty at the top of the table and were getting to that confident stage where we were almost unbeatable at home.

Most sides coming to Luton that season were content to soak up the pressure and hope to attack on the break, but the Millers tried the opposite which made for an absorbing contest and a 0-0 scoreline at half-time with both teams missing good chances.

The breakthrough came after 49 minutes, when Steve White squeezed home the ball following a cross from Ricky Hill only for Rotherham to equalise six minutes later through old Town player Rodney Fern.

Two goals in a minute, from Mal Donaghy and Brian Stein, just after the hour mark gave the scoreline a slightly flattering look but it was a good test for the Town's defence and proved that we were equally adept at both ends of the field.

The return game that season was another close contest which was to end in dramatic fashion. The Hatters were as good as promoted when the teams met at Millmoor in April 1982, but the Millers were going for a late bid themselves and a win would have pushed them up to fourth place in the table.

The 'Match of the Day' cameras were present to see if Emlyn Hughes' side could beat David Pleat's champions elect, but it was the Town that gained the advantage when Lil Fuccillo hit home a low shot after 12 minutes. Rotherham stormed back through Ronnie Moore and ex-Town striker John Seaman either side of the interval and with Tony Towner rampaging down the wing the Hatters were on the end of



Despite the best efforts of Emlyn Hughes, Steve White manages to head the ball back to the waiting Brian Stein at Millmoor in April 1982.

one of their severest tests of the season. A third Rotherham goal would have killed the game but it was left to full-back Richard Money to save the day with a 25 yard cracker to equalise, and pay back some of the transfer fee we had handed over to Liverpool shortly before.

With the game petering out, a shot from Rotherham's Billy McEwan hit Luton defender Clive Goodyear on the elbow and to everyone's amazement the referee awarded a penalty. It was left to Alan Judge, deputising for the injured Jake Findlay, to save the day when he dived to save Gerry Gow's spot-kick to consign Emlyn Hughes and his side to another season in Division Two.

The final pair of matches took place in 1996/97 at the end of which the Town narrowly failed to bounce back to Division One at the first attempt while the Millers were relegated. In the game at Kenilworth Road a goal from Mitchell Thomas earned the players their first win bonus of the campaign while at Millmoor in April 1997 a hat-trick from Tony Thorpe secured a comfortable 3-0 victory and consolidated second spot in the table.

Roger Wash

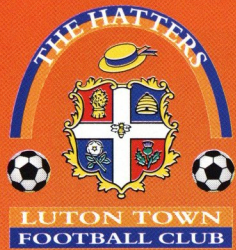
For all the latest news, views and interviews call

CLUBCALL - 09068 121123

(Calls charged at 60p per minute at all times)

Up and Running!
Luton Town's very own official website.

www.lutontown.co.uk



The Dunstable Gazette

The Luton News



ntl: NTL SCHOOLS VISIT PROJECT ntl:

With everyone now back at school our NTL School Visit Project is back in full swing with our coaches visiting schools throughout Beds and Herts and despite all the rain is as busy as ever with a packed schedule leading all the way up to the summer school holidays. In fact with the increased popularity of the project we have decided to increase our "In Schools Days" allocation and also increase the opportunities for schools to set up breakfast and lunchtime Clubs.

The in schools days simply mean that instead of our coaches visiting your school for one PE lesson in the day we arrive in the morning and coach as many children as we can within the whole school day. Quite a number of schools have already set aside their curriculum for a whole day to have an "In Schools Day" and we are pleased to be able to add this to our Schools Visit Project.

With breakfast and lunchtime clubs our coaching can take place around the curriculum either before school starts or during the lunch break. Of course schools can still contact us to book individual PE lessons during the day.

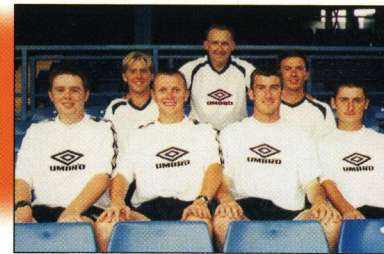
The NTL Schools Visit Project aims to provide curriculum time PE and football coaching in schools to youngsters of all abilities and we're well on our way to reaching a total of some 25,000 youngsters who will have benefited from the scheme over the last couple of years.

Although we have visited over 150 schools in our area there are still schools we've not yet reached - if you're reading this and think you might be one of them why not give us a ring at the Club to arrange a visit or to answer any questions you may have.

The number to ring is 01582 411622



Community & Schools Football Programme



WEEKLY AFTER SCHOOLS SPRING & SUMMER COACHING PROGRAMME

LUTON

MONDAYS

Bushmead Primary School
School Years 4 to 6 at 3.50 pm to 4.50 pm
School Years 1 to 3 at 4.50 pm to 5.50 pm
Southfields Junior School
School Years 1 to 3 at 4.00 pm to 5.00 pm
School Years 4 to 7 at 5.00 pm to 6.00 pm

TUESDAYS

Luton Regional Sports Centre
School Years 1 to 3 at 4.00 pm to 5.00 pm
Somerles Junior School
School Years 1 to 3 at 6.00 pm to 7.00 pm
School Years 4 to 8 at 7.00 pm to 8.00 pm

WEDNESDAYS

Icknield Junior School
School Years 1 to 2 at 4.00 pm to 5.00 pm
School Years 3 to 4 at 5.00 pm to 6.00 pm
School Years 5 to 7 at 6.00 pm to 7.00 pm

THURSDAYS

Barnfield College (Farley Hill)
School Years 1 to 3 at 6.30 pm to 7.30 pm
School Years 4 to 7 at 7.30 pm to 8.30 pm
Wigmore Primary School
School Years 1 to 2 at 3.50 pm to 4.50 pm
School Years 3 to 4 at 4.50 pm to 5.50 pm
School Years 5 to 7 at 5.50 pm to 6.50 pm

FRIDAYS

St Joseph's Junior School
School Years 1 to 3 at 4.00 pm to 5.00 pm
School Years 4 to 8 at 5.00 pm to 6.00 pm
Lealands High School
School Years 1 to 3 at 4.00 pm to 5.00 pm
School Years 4 to 8 at 5.00 pm to 6.00 pm

DUNSTABLE

THURSDAYS

Watling Lower School
School Years 1 to 3 at 4.00 pm to 5.00 pm
Queensbury Upper School
School Years 3 to 4 at 6.00 pm to 7.00 pm
School Years 5 to 7 at 7.00 pm to 8.00 pm

FRIDAYS

Hadrian Lower School
School Years 1 to 3 at 3.45 pm to 4.45 pm
School Years 4 to 7 at 4.45 pm to 5.45 pm

LEIGHTON BUZZARD

MONDAYS

Linslade Lower School
School Years 1 to 2 at 4.00 pm to 5.00 pm
School Years 3 to 4 at 5.00 pm to 6.00 pm
Gilbert Inglefield Middle School
School Years 5 to 8 at 7.00 pm to 8.00 pm

WEDNESDAYS

Gilbert Inglefield Middle School
School Years 1 to 2 at 4.00 pm to 5.00 pm
School Years 3 to 4 at 5.00 pm to 6.00 pm
Memorial Park Playing Field
School Years 5 to 8 at 7.00 pm to 8.00 pm

CADDINGTON

THURSDAYS

Five Oaks Junior School
School Years 4 to 7 at 3.45 pm to 4.45 pm
School Years 1 to 3 at 4.45 pm to 5.45 pm

HOUGHTON REGIS

TUESDAYS

Kings Houghton Middle School
School Years 1 to 2 at 5.15 pm to 6.15 pm
School Years 3 to 4 at 6.15 pm to 7.15 pm

FLITWICK/AMPTHILL

TUESDAYS

Redborne Upper School
School Years 1 to 2 at 4.00 pm to 5.00 pm
School Years 3 to 4 at 5.00 pm to 6.00 pm
School Years 5 to 8 at 6.00 pm to 7.00 pm

HENLOW

FRIDAYS

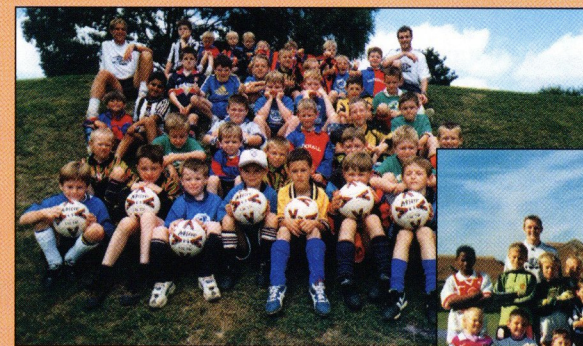
Henlow Middle School
School Years 4 to 8 at 3.45 pm to 4.45 pm
School Years 1 to 3 at 4.45 pm to 5.45 pm
School Years 4 to 8 at 5.45 pm to 6.45 pm

BEDFORD

THURSDAYS

The Bunyan Sports Centre
School Years 1 to 3 at 4.00 pm to 5.00 pm
School Years 4 to 7 at 5.00 pm to 6.00 pm

For further information or to register a place simply phone the Community & Schools dept on 01582 411622 or 0958 438322



MORTGAGES



1 in 3 people are paying too much for their mortgage

Be different - switch to Nationwide

	Rate (VARIABLE) %	APR (VARIABLE) %	Monthly payment	5 year saving with Nationwide
Nationwide	6.49	6.7	£404.75	-
Halifax (New Variable Rate 2)	6.75	7.0	£414.55	£588.00
Halifax (Variable Rate 1)	7.50	7.8	£443.39	£2,318.40
Abbey National	7.49	7.9	£448.16	£2,604.60
Cheltenham & Gloucester (Lloyds TSB)	7.50	8.0	£448.55	£2,628.00
NatWest	7.49	7.9	£448.16	£2,604.60

At Nationwide we offer our great value CAT standard mortgages to everyone. So, whether you're a first time buyer, an existing borrower, a home mover or a remortgage customer we can offer you better value. Our new Base Mortgage Rate is currently around 1% lower than the standard variable rate most borrowers pay. It comes with daily interest and a full range of flexible features from 1 May 2001. So don't be one of the many who pay too much. Check out our rates and enjoy longer lasting value with Nationwide. Call us today quoting reference number MA09.

Nationwide. Underlining the difference

www.nationwide.co.uk | 0500 30 20 10 | or just call in

Banking | Credit Card | Insurance | Investments | Loans | Mortgages | Pensions | Savings

COMPETITOR COMPARISON TABLE ASSUMES A £60,000 REPAYMENT STANDARD VARIABLE RATE MORTGAGE, BASED ON A PURCHASE PRICE OF £60,000, OVER A 25 YEAR TERM. COMPETITOR INFORMATION SOURCE: MORTGAGE BROKER LTD. COMPETITOR INFORMATION CORRECT AS AT 22 MARCH 2001. NATIONWIDE ESTIMATE FOR BORROWERS PAYING TOO MUCH FOR THEIR MORTGAGE AS AT 19 FEBRUARY 2001. NATIONWIDE TYPICAL EXAMPLE ASSUMES BORROWERS TAKE OUT A BASE MORTGAGE RATE OF 6.49%. NEW BORROWERS TO NATIONWIDE REQUIRE A MINIMUM DEPOSIT OF 25% FOR THIS RATE. A BORROWER APPLYING FOR A £60,000 REPAYMENT MORTGAGE OVER 25 YEARS BASED ON A PURCHASE PRICE OF £60,000, 300 MONTHLY PAYMENTS OF £404.75 WILL BE REQUIRED. 6.7% APR (VARIABLE). APR ASSUMES A 25 YEAR TERM. TOTAL AMOUNT PAYABLE (TAP) WILL BE £121,877, WHICH INCLUDES 300 MORTGAGE INTEREST PAYMENTS, SOLICITOR'S MORTGAGE COSTS OF £100 EXCLUDING VAT (AND ASSUMING THE SAME SOLICITOR ACTS FOR BOTH OF US), A VALUATION FEE OF £175 WHICH IS REFUNDED ON COMPLETION. APR QUOTED ASSUMES THAT COMPLETION TAKES PLACE ON 1 MAY 2001 AND ASSUMES ALL MONTHLY PAYMENTS TAKE PLACE ON THE 28TH OF THE MONTH. MORTGAGES ARE SUBJECT TO STATUS, VALUATION AND SECURITY. AVAILABLE TO THOSE AGED 18 OR OVER ONLY. NATIONWIDE BUILDING SOCIETY, NATIONWIDE LIFE LIMITED AND NATIONWIDE UNIT TRUST MANAGERS LIMITED REPRESENT ONLY THE NATIONWIDE MARKETING GROUP WHICH IS REGULATED BY THE PERSONAL INVESTMENT AUTHORITY FOR LIFE ASSURANCE, PENSIONS AND UNIT TRUST PRODUCTS. NATIONWIDE UNIT TRUST MANAGERS LIMITED IS ALSO REGULATED BY IFCO. WRITTEN QUOTATIONS AVAILABLE ON REQUEST FROM NATIONWIDE BUILDING SOCIETY, NATIONWIDE HOUSE, PIPERS WAY, SWINDON, SN38 1NW. CALLS RECORDED. NATIONWIDE IS A MEMBER OF THE BUILDING SOCIETIES OMBUDSMAN SCHEME AND SUBSCRIBES TO THE BANKING AND MORTGAGE CODES. COPIES OF WHICH ARE AVAILABLE ON REQUEST. SECURITY WILL BE REQUIRED ON PROPERTY.

YOUR HOME IS AT RISK IF YOU DO NOT KEEP UP REPAYMENTS ON A MORTGAGE OR OTHER LOAN SECURED ON IT.

The Junior Hatters are sponsored by London-Luton Airport



Junior Hatters

THE Junior Hatters hit the road for the last time this season on Saturday, to follow the Town to Ashton Gate. We always have a good time there, and when Bristol City came to Kenilworth Road their juniors enjoyed our hospitality so much they have promised to offer us "something special" in return. At the time of writing we had no details, but you should be able to find out through the club shop tonight.

We will provide a mascot, and as usual the choice will be made on the coach travelling to the game, so bring your Luton Town kit if you want to be in the draw. The day will also see the last round of our famous Junior Hatters coach quiz, and hopefully we will have some results to report in the next matchday magazine. Meanwhile, if you want to go to Bristol, book early - the coach is likely to be full, especially as the price is a real bargain, £10 for Junior Hatters and £13 for others.



WE reported on Saturday on our day out at Wrexham on Easter Monday, and our picture shows the Junior Hatter who enjoyed it most. Robert Moss is seen with the officials in the centre circle after being chosen by lucky dip to be our mascot. He is 12, and comes from Hart Lane, Luton, and is a real Junior Hatters fanatic, at home and away. His favourite player is Steve Howard. We exchanged pennants with Wrexham, adding another to the impressive collection in our family room.

Tonight's Mascot

NINE-year-old Christopher Chaplen has had to be very patient waiting for his special birthday treat this evening. His name was picked out of the computerised drum to be the Junior Hatters mascot against Rotherham for when the game was originally scheduled in early February, a couple of days before his birthday.



He lives at Crabtree Way, Dunstable, and goes to Icknield Lower School at Dunstable, and as well as watching the Town he enjoys roller hockey, swimming and computer games. He also likes playing in goal - he turns out for Icknield Youth and his school's A team, and says he would like to be between the sticks for Luton Town in a few years!

Normally, Christopher sits in the New Stand with his dad Alan, but today he gets much closer to the action, joining the players in the dressing room before the match and then going out onto the pitch with them for the warm-up and toss-up for choice of ends. And while he cheers for every Town player, his favourite is Liam George.

If you would like to join the Junior Hatters, call the Club Shop on: **01582 411622**



**KIDS
AT
KENILWORTH**

SPONSORED BY

SKF

Sainsbury's

The Best in post-match reports

The Luton News The Dunstable Gazette



ON SALE
EVERY WEDNESDAY
STILL ONLY 25P

©T&C-PROJ-053-W34

Hatters on Card

Alan Robinson

OVER the years April 24 has proved an eventful date in Luton Town's history. On this day in 1965 the Hatters suffered an 8-1 defeat at Scunthorpe, which confirmed their relegation to Division Four. Exactly three years later, the championship of the division was secured with a 4-0 victory over Crewe. However, the most memorable Town match played on this day was the wonderful Littlewoods Cup triumph over Arsenal at Wembley in 1988. Every Town player was a hero that afternoon, but none more so that Andy Dibble, whose inspired performance played a vital part in the 3-2 win. The goalkeeper figures in a couple of football stickers from around this era, including this one, which was produced by Panini for the 1984/85 season. Dibble had just joined the Town from Cardiff for a fee of £125,000, having been at Ninian Park since leaving school. Born in Cwmbran, he had made his league debut as a 17-year-old, and became Cardiff's first choice. Nevertheless, after coming to Luton in the summer of 1984, Dibble's inclusion in the side to face Stoke on the opening day of the season caused a few raised eyebrows among the Kenilworth Road faithful because Les Sealey had been an ever-present the previous season. Dibble kept him out in a team struggling in the old First Division until he suffered a bad knee injury in a 0-2 defeat at Old Trafford in November.

Sealey grabbed his chance, and retained his place for the rest of the season, with relegation comfortably avoided in the end following the acquisitions of Steve Foster, Mick Harford, David Preece and Peter Nicholas.

It seemed that David Pleat was determined to give Dibble a fair crack at the keeper's slot, for he started the following season as first choice. This time his run lasted seven matches before Sealey was reinstated. He became the undisputed No. 1 and Dibble was loaned out to Sunderland and Huddersfield, and in May 1986 won the first of this three Welsh caps despite being out in the cold at Luton.

April 1988 was a hectic time for Luton Town, with a Simod Cup final defeat by Reading followed by an FA Cup semi-final with Wimbledon a fortnight before the Littlewoods Cup final.

Sealey was injured just before the semi-final at White Hart Lane, and Dibble deputised, his first senior match of the season. He played well, but the team didn't, and the Town were beaten 2-1, John Fashanu and Dennis Wise netting for the Dons after Mick Harford gave the Town the lead.

Further heartache seemed to be in store at Wembley two weeks later. After Brian Stein scored, the game

was turned round when Arsenal scored twice in four minutes deep in the second half. Dibble pulled off several magnificent saves as the Gunners threatened to run riot, but it looked all over when they were awarded a penalty ten minutes from time. However, Dibble made the save of his life to prevent Nigel Winterburn making it 3-1 and that put new heart into the Town. Goals by Danny Wilson, and Stein's second of the game completed an epic victory which none of us who were there will ever forget.

Hero Dibble, his place still in jeopardy from Sealey, decided to throw in his lot with Manchester City following a £240,000 bid during the close season. Over several years he clocked up more than 100 matches for City, but

just as at Luton he was often out of the side and went on loan to several clubs. In the autumn of 1997 a goalkeeping crisis paved the way for him to return to Luton on a short term contract, but that spell was not a success. Luton fans prefer to remember a wonderful afternoon in the April sunshine at Wembley 13 years ago.

Early Panini stickers, designed to be mounted in specially-produced albums, are becoming increasingly harder to find in "unstuck" condition. However, most dealers can still supply the 1985 series, which also included Vince Hilaire and Paul and Steve Elliott, for under 50p each.

Alan Robinson



Up and Running!
Luton Town's very own official website.
www.lutontown.co.uk

Action Replay

Wrexham 3 Luton Town 1 (HT 1-1)

WE SEEM to have a problem with Wrexham and late goals - and with Darren Ferguson, son of a famous father. At Kenilworth Road in October the midfielder master-minded an astonishing Wrexham recovery which saw them win after being three down until the 55th minute.

On Easter Monday, they did it something like it again, with Ferguson snatching the second of two goals in the last seven minutes which turned a potential draw into a home win.

It was cruel for the Town and their supporters, and while Wrexham felt they had edged the game, their manager Brian Flynn admitted: "The result flattered us... we didn't get going until the last five or ten minutes.

"I knew a Joe Kinnear team would be up for it, and they didn't let us play as well as we have done recently. We probably deserved to win, but 3-1 flattered us."

The Town boss sort of agreed: "The result might have flattered them, but the last ten minutes didn't. We shot ourselves in the foot again. We did well to get an equaliser, and had slightly more possession than Wrexham, especially in the first half, but in the end we didn't do well enough in the two penalty areas, and got punished for it."

Three of the game's four goals came from defenders at set pieces, and over the 90 minutes the teams looked evenly matched. But Wrexham produced the final flourish to make it another miserable away day for Town fans.

The Town's cause was not helped when Paul McLaren limped off after 36 minutes with a hamstring injury. Adam Locke, who replaced him, plays a different kind of role, in a re-shaped midfield already missing injured Matthew Spring. With Liam George playing behind Steve Howard and Stuart Douglas, the Town threatened often enough, without being too convincing as they got near goal. Howard went close with an early screamer that rose too high, and was denied by debut goalkeeper David Walsh's block when the Town might have gone 2-1 up. Douglas and Matthew Taylor also threatened a time or two, but against that Mark Ovendale had to make saves from Danny Williams, Craig Faulconbridge and a top class tip-over from Michael Blackwood. Ironically, that save led to a corner from which Wrexham regained the lead, and they were not disposed to give up their advantage after that.

Match Details

Luton Town: Ovendale, Watts, Boyce, Dryden, Shepherd, McLaren (Locke 36 mins), Mansell, Taylor, George, Howard, Douglas. Unused subs: Stein, Stirling, Helin, Abbey.

Booked: Richard Dryden, 30 mins, foul on Kevin Russell; Emmerson Boyce, 80 mins, foul on Michael Blackwood.

Wrexham: Walsh, Roche, McGregor, Carey, Hardy, Gibson (Edwards HT), Williams, Ferguson, Thomas (Blackwood 63 mins), Russell, Faulconbridge. Unused subs: Chalk, Warren, Dearden.

Booked: Danny Williams, 60 mins, foul on Adam Locke.

The Goals: : 1-0 18 mins - A free kick from the right finds its way to the left, and defender Brian Carey returns the ball for Mark McGregor to shoot in from seven yards; 1-1 27 mins - Julian Watts far post header, hitting the target from a difficult angle from a corner by Matthew Taylor; 2-1 83 mins - Carey header, close range, from a corner by Darren Ferguson; 3-1 85 mins - Ferguson unmarked in the penalty area to convert a pull-back by Craig Faulconbridge which completed one of the best passing moves of the game.

Referee: Howard Webb, Yorkshire

Attendance: 3,329, including 428 shouting for the Town.



HELD OFF: Lee Mansell up against Lee Roche.



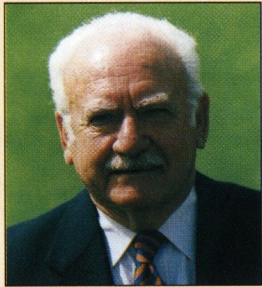
GETTING STUCK IN: Paul Shepherd, in his second league match, in the thick of the action.



TRYING: Steve Howard goes for goal, with Wrexham centre-half Brian Carey left helpless.

Hatters Abroad

POLICY STATEMENT - SPECTATOR SAFETY



The Chairman and Directors of Luton Town Football Club undertake to ensure as far as humanly possible that all activities that take place at the Kenilworth Road Stadium are conducted in such a way that as far as is reasonably practical the safety of everybody at the stadium is assured. It is the policy of the Chairman and Directors to ensure that the conditions set out in the General Safety Certificate, issued under the Safety at Sports Grounds Act, 1975, are fully complied with.

It is the Club's policy to provide at any activity sufficient and competent staff and management systems to ensure as far as humanly possible the safe admission, accommodation and exiting of spectators attend the stadium. These systems will be subject to continual monitoring, testing and updating where necessary.

April 2001

Mike Watson-Challis,

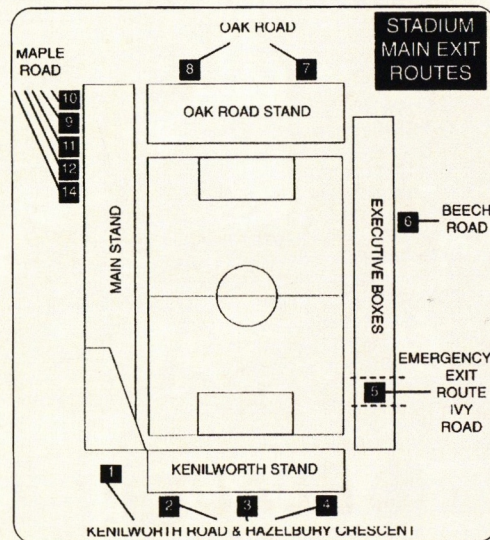
Chairman

EVACUATION PROCEDURE

IN THE event of any emergency in the stadium, Luton Town FC and the emergency services have agreed on an evacuation procedure which is designed to ensure the safe and controlled evacuation of the crowd, and to ensure their safe dispersal from the area, to allow the emergency services to carry out their tasks.

In the event of evacuation from all or part of the stadium, you will receive instructions over the public address system on how you should leave. In an evacuation of the main stand you will be instructed to use the pitch. Stewards will direct you to the nearest exit. It may be that your normal exit route will not be available. On leaving the stadium, you will find some roads closed to pedestrians, to enable swift and unobstructed access for the emergency services. Please leave the area of the ground as quickly as possible, by the route directed. Your co-operation will be most appreciated.

Geoff Lovell, Safety Manager.



WE SPAN the globe today in our occasional series about the weird and wonderful places where Luton Town fans are to be found. In blazing African sunshine or deep North American snow, Hatters colours are everywhere.



The wintry scene is from Canada, and shows Andrew Hingston, whose home in this country is at Chesterton Avenue, Harpenden. He is a professional snowboarder, at present living in Whistler, Canada, and he often rides the slopes wearing his Luton Town top.

"I am not able to get to many games as I am out of the country most of the season," he said. "But I try to go to Kenilworth Road every time I am home." He asked for something suitable to put on his snowboard to show his football allegiance, and a selection of Hatters stickers has been sent to him.

The summer scene is from Africa, and the picture is of Neil Flint and his girlfriend Julie Vyskock. Neil said: "I am working and living in Cameroon, but have been a Town fan since the early 80s. Julie has been a supporter since the play-off game at home to Crewe four years ago.

"The photo was taken at an African Champions League match in Yaounde, the capital of Cameroon. Canon Yaounde were playing Zamorak of Egypt, and the Cameroon side won 2-0 on the day, but had lost the first leg 3-0. The match was screened live on Canal+, French TV, and there was a crowd of around 50,000.

"The stadium is the home of the Cameroon national team, and despite being somewhat dated often houses a fanatical home crowd of 80,000. Last year was a great one for Cameroon football, because they won the Olympic gold, and the African Cup of Nations. We were fortunate to see Cameroon beat Eritrea 1-0 with a goal by Rigobert Song."



THIS page is open to all Luton Town fans, and the matchday magazine will be pleased to consider for publication photographs from anywhere in the world. All we ask is that the Hatters colours are well to the fore. So if you have an interesting snap of Town kit in far-off places, please send it, with a few details, to the matchday magazine editor at Luton Town FC. Please enclose a stamped envelope if you want the photographs back, but please be aware that with the best will in the world they do sometimes go astray. We are also interested in hearing about our very young fans sporting the Town's colours for our occasional "Mini Hatters" series.

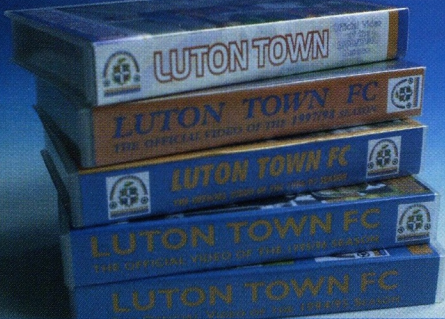
For the latest ticket information call the Luton Ticket Office on:

01582 416976

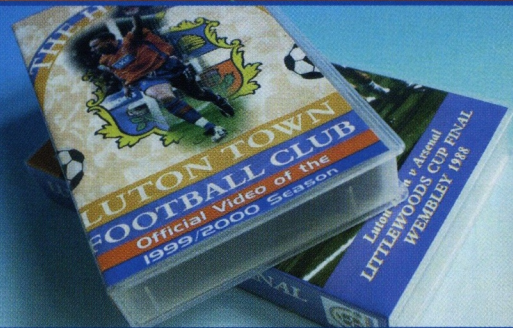
Up and Running!
Luton Town's very own official website.

www.lutontown.co.uk

Available Now In The Club Shop



Previous Seasons
Goal Highlights £12.50

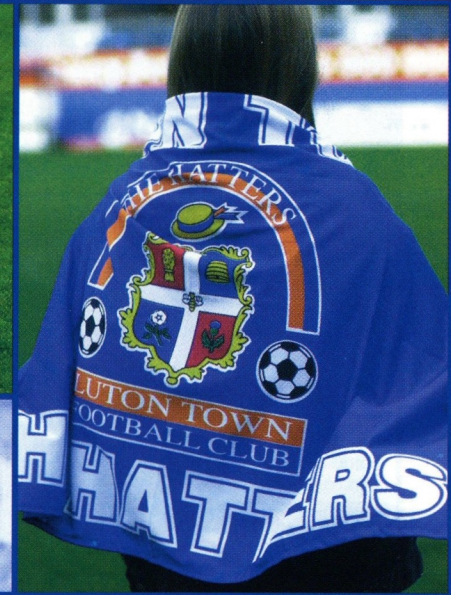


Last Seasons
Video £12.50

Littlewoods Cup Final Luton v
Arsenal £15.99



Navy Umbrella £17.00



Shoulder Flag £10.50

50% OFF



Luton Town 3rd Kit Reduced To Half Price To Clear

Shirts

Childrens: ~~was £29.99~~ now £15.00
Youths/Adults: ~~was £29.99~~ now £20.00

Shorts

Childrens: ~~was £25.99~~ now £8.00
Adult: ~~was £19.99~~ now £10.00

Socks

Childrens: ~~was £7.99~~ now £4.00
Adult: ~~was £9.99~~ now £5.00

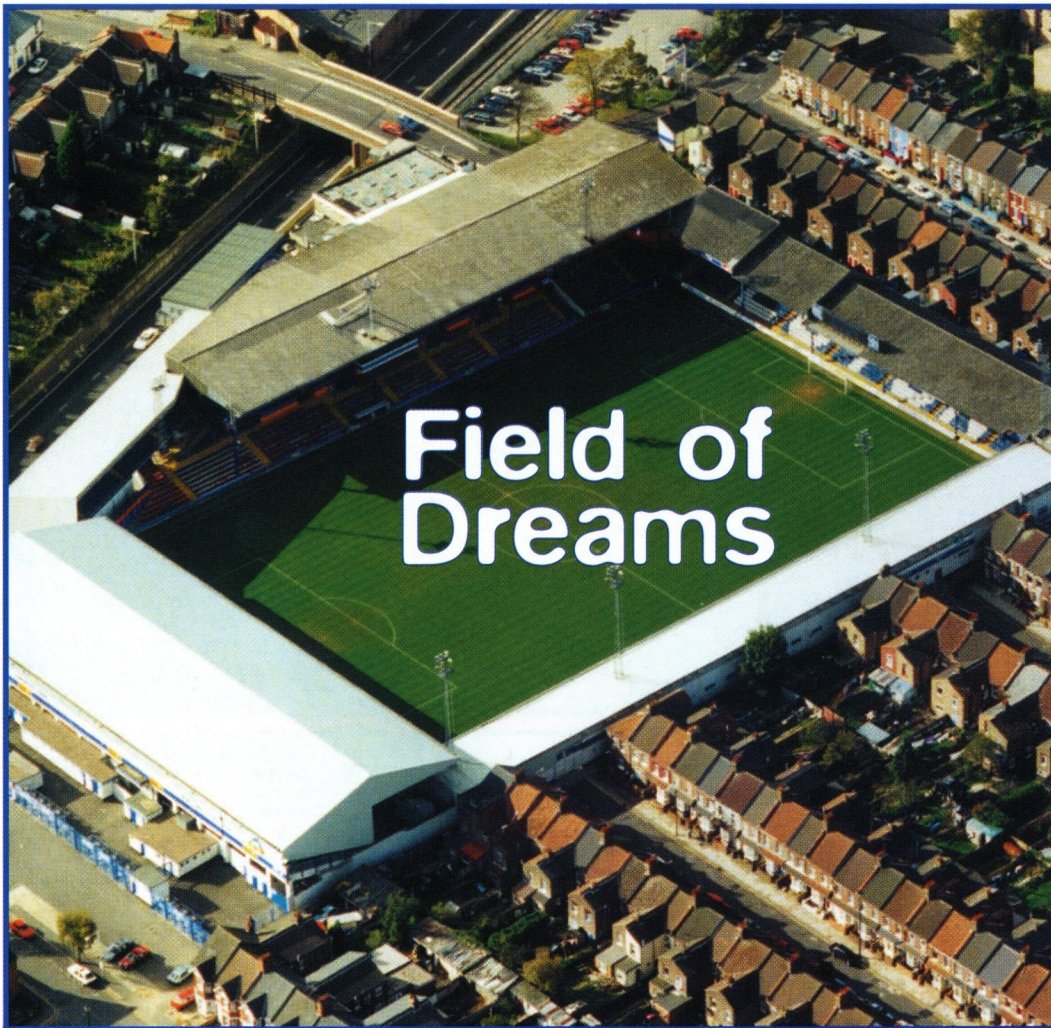
FREE
WHEN YOU SPEND £20



SPRING OFFER

Spend more than £20 on any assortment of merchandise in the Club Shop and you will receive this Collins Personnel Organiser absolutely FREE!!

Don't Forget 20% Off All Leisure Wear In The Club Shop



Field of Dreams



You can be the King of Kenilworth Road for a day. Luton Town are offering a rare opportunity for supporters, clubs and companies to hire the pitch and play at Kenilworth Road for selected dates in May after the season's end and prior to its annual reseeding. The dates available are during the weeks commencing 8th and 14th May 2001.

Hire rates are from £750+VAT.

For more information please contact the Commercial Department on
01582 411622

Field of Dreams

For all the latest news, views and interviews call

CLUBCALL - 09068 121123

(Calls charged at 60p per minute at all times)



The Reserves

Kevan Broadhurst



**Luton Town 1
Crystal Palace 3**

THE visitors were better

going forward than us, which was the major reason for a home defeat in the Avon Insurance Combination. But I could not fault our work rate and commitment. We won a lot of possession, but lacked a cutting edge.

It was a more competitive game than you usually get at this time of the year, and if players learn to put in that level of commitment in every game they will be winners more often than losers. We fielded a team of mixed experience: Marvin Johnson, Keith Rowland and Kent Karlsen were in the side to help them regain fitness after injuries, and we also gave outings to youth team players Adam Everitt, Daryl Murphy, James Osborn and Michael Leary. Others were playing for their futures, and as was

announced later, not all of them made it.

On the run of play we were unfortunate to be a goal down at the interval, having conceded from a corner, which was disappointing because we had chances to clear the danger, but failed to do so.

We started the second half quite brightly, but Palace scored a good goal after 55 minutes. A goal from a corner by Peter Holmes ten minutes later put us back into the game, Mark Stein heading in after Jude Stirling's flick-on.

After that we were a match for Palace, but could not find an equaliser, and five minutes from time they finished us off with a top class strike.

Luton Town: Ward, Helin, Everitt, Karlsen, Stirling, Johnson, Standen (Leary 75 mins), Rowland (Osborn 60 mins), Thomson, Stein (Murphy, 60 mins), Holmes.

Avon Insurance Combination

	P	W	D	L	F	A	Pts
Norwich	24	16	6	2	73	27	54
Reading	21	15	2	4	38	16	47
Fulham	20	14	3	3	51	13	45
Cambridge	22	13	4	5	36	25	43
QPR	19	12	2	5	29	16	38
Millwall	20	9	5	6	26	18	32
Oxford	23	9	5	9	35	37	32
Swindon	21	8	5	8	32	28	29
Gillingham	17	9	2	6	28	27	29
Crystal Palace	18	8	4	6	31	31	28
Brighton	17	8	3	6	34	29	27
Portsmouth	18	7	6	5	25	23	27
Luton Town	16	7	4	5	22	16	25
Brentford	20	6	8	6	21	28	25
Peterborough	20	6	2	11	23	27	23
Southend	22	6	5	11	32	40	23
Colchester	19	6	3	10	22	30	21
Cheltenham	20	5	6	9	26	41	21
Bristol Rovers	16	6	2	8	18	23	20
Bournemouth	21	5	5	11	23	31	20
Barnet	19	6	2	11	26	38	20
Bristol City	17	4	6	7	19	24	18
Northampton	16	4	0	12	16	33	12
Wycombe	20	3	3	13	16	47	12
Leyton Orient	20	2	3	15	19	43	9

WE ARE due to entertain Leyton Orient tomorrow, with a 2pm kick-off at Kenilworth Road. We are still awaiting new dates for matches postponed earlier in the season, at home to Brighton and Cheltenham, and away to Peterborough and Northampton. Also awaited is a date for our Bedfordshire Premier Cup semi-final visit to Kempston Rovers. The other half of the draw is well behind schedule, and it looks as though the final will be delayed until the start of next season.

Appearances (as sub in brackets): Breitenfelder 17, Scarlett 17, Stirling 16(1), Standen 13(5), Brennan 13(2), Kandol 10(3), Thomson 10(1), Holmes 10(1), Abbey 9, Ayres 8, McGowan 8, Ward 7, Ovendale 6, Johnson 6, Locke 5, Stein 5, Dogbe 4(3), Baptiste 4(2), Karlsen 4, Fraser 4, Mansell 3(1), Carroll 3(1), Douglas 3, Fotiadis 3, Watts 3, Shepherd 3, Carter 3, Murphy 2(6), Bruce 2(4), Osborn 2(4), Glasgow 2(2), Everitt 2(1), Minton 2 (1), James-Barriteau 2(1), George 2, Bakalli 2, Walker 2, Piercwright 2, Dillon 1(2), Downer 1(1), Boyce 1, McLaren 1, Helin 1, Rowland 1, Mortara 1, Murrfin 1, Codner 1, Tait 1, Onachie 1, Okai 1, Dickie 1, Carham 1, Joynson 1, Mason 1, Showunmi 1, Rose 1, Gray 1, Pihamma 1, Saker 1, Haveron 1, Mohammed 1, Leary 0(2), Clarke 0(1), Carroll 0(1), Newell 0(1), Essandoh 0(1).

Goals: Brennan 7 (1 pen), Thomson 5, Kandol 5, Stein 3, Scarlett 2, Holmes 2, Carter 1, Baptiste 1, George 1, Osborn 1, Bakalli 1, Murphy 1, Ayres 1 pen, OG 2

Avon Insurance Combination League Results and Fixtures

AUG	Wed 16	Barnet	H	3-1	Brennan 2, Kandol	Mon 15	Brighton	H	Postponed	
	Mon 21	Peterborough (LC)	A	2-1	Kandol, Carter	Wed 24	Bournemouth	A	2-1 George, Stein	
	Tue 29	Millwall	A	0-2		Mon 29	Bristol Rov	H*	Postponed	
SEPT	Wed 13	L. Orient	A	-	postponed	FEB	Mon 12	Cheltenham	H*	Postponed
	Wed 20	Gillingham (LC)	H	1-1	Ayres pen	Wed 21	Cambridge Utd (LC)	H	0-2	
OCT	Wed 4	Fulham	H	4-1	Thomson 3, Brennan	Mon 26	Colchester	A	1-1 Stein	
	Wed 18	Gillingham	A	1-1	Brennan	MAR	Thurs 1	Dunstable (BPC)	A	4-1 Brennan, Kandol, Scarlett, Osborn
NOV	Wed 1	Reading	A	0-2		Mon 12	Norwich City	A	0-0	
	Wed 15	Bristol City	A	0-0		Wed 14	Southend	H	2-0 Bakalli, Kandol	
	Wed 29	Swindon	A	2-4	Scarlett, Thomson	Wed 21	Peterborough	A	Postponed	
DEC	Mon 6	Portsmouth	H*	3-0	Holmes, OG 2	Mon 26	Brentford	H*	3-0 Thomson, Kandol, Holmes	
	Mon 18	Oxford Utd	H*	1-0	Baptiste	APRIL	Wed 4	Northampton	A	Postponed
JAN	Thurs 4	Norwich (LC)	A	0-2		Thur 12	Brache Sp (BCP)	A	3-1 Murphy, Brennan 2(1p)	
	Wed 10	Wycombe	A	0-1		Wed 18	C. Palace	H	1-3 Stein	
						Wed 25	L. Orient	H	2pm	
MAY	Tues 8	QPR	A	2pm						

Up and Running!

Luton Town's very own official website.

www.lutontown.co.uk

Statistics Fixtures

2000 / 2001

Date	Opposition	Result	Scorers	League		Team	Substitutes
				Place	Attnd.		
AUGUST	Sat 12 Notts County	H 3pm 0-1		-	7,059	Ovendale Boyce Watts McLaren Johnson	Taylor Spring Locke, George, Stein Fotiadis
AUGUST	Sat 19 Wigan	A 3pm 1-2	Watts	-	6,518	Ovendale Boyce Watts McLaren Johnson	Taylor Holmes Locke George Stein Fotiadis
AUGUST	Tue 22 Peterborough WC1(1)	H 7.45pm 0-0		-	3,175	Ovendale Boyce Watts McLaren Fraser	Taylor Holmes Spring George Stein Fotiadis
AUGUST	Sat 26 Bournemouth	H 3pm 1-0	Spring pen	18	5,221	Ovendale Boyce Watts McLaren Fraser	Taylor Holmes Spring George Stein Fotiadis
AUGUST	Mon 28 Wycombe Wdrs	A 3pm 1-1	Kandol	17	6,001	Ovendale Boyce Watts McLaren Fraser	Taylor Scarlett Spring George Stein Fotiadis
SEPTEMBER	Sat 2 Rotherham Utd	A 3pm 1-1	Fotiadis	17	4,061	Ovendale Boyce Watts McLaren Locke	Taylor Scarlett Spring Holmes Stein Fotiadis
SEPTEMBER	Tue 5 Peterborough WC1(2)	A 7.45pm 2-2	Stein, Scarlett	17	4,286	Ovendale Boyce Watts McLaren Fraser	Taylor Scarlett Spring Brennan Stein George
SEPTEMBER	Sat 9 Northampton Town	H 3pm 0-2		19	6,712	Abbey Boyce Watts McLaren Fraser	Taylor Scarlett Spring Brennan Stein George
SEPTEMBER	Tue 12 Walsall	H 7.45pm 0-0		19	4,362	Abbey Boyce Watts McLaren Locke	Taylor Scarlett Spring Brennan Stein Thomson
SEPTEMBER	Sat 16 Swansea City	A 3pm 0-4		20	6,011	Ovendale Boyce Watts McLaren Locke	Taylor Stirling Spring Holmes Stein Kandol
SEPTEMBER	Tue 19 Sunderland WC2(1)	A 7.45pm 0-3		20	24,668	Ovendale Boyce Watts McLaren Fraser	Taylor Scarlett Spring Holmes Stein Kandol
SEPTEMBER	Sat 23 Swindon Town	H 3pm 2-3	Stein, George	21	4,933	Ovendale Boyce Watts George Fraser	Taylor Scarlett Spring Holmes Stein Kandol
SEPTEMBER	Tue 26 Sunderland WC2(2)	H 7.45pm 1-2	Kandol	21	5,262	Ovendale Boyce Watts George Fraser	Taylor McLaren Spring Locke Thomson Kandol
SEPTEMBER	Sat 30 Bristol Rov	A 3pm 3-3	Kandol 2, George	22	7,901	Ovendale Boyce Watts George Fraser	Taylor McLaren Spring Locke Thomson Kandol
OCTOBER	Sun 8 Millwall	H 12pm 0-1		22	5,345	Ovendale Boyce Watts George McGowan	Taylor McLaren Spring Locke Stein Kandol
OCTOBER	Fri 13 Cambridge Utd	A 8pm 1-2	Stein	23	6,191	Ovendale Boyce Watts George McGowan	Taylor McLaren Spring Locke Stein Kandol
OCTOBER	Tue 17 Oxford Utd	A 7.45pm 0-0		23	4,537	Abbey Boyce Watts George McGowan	Taylor Fraser Spring Holmes Stein Kandol
OCTOBER	Sat 21 Brentford	H 3pm 3-1	Douglas 2, Spring pen	23	5,382	Abbey Boyce Watts George Locke	Taylor McLaren Spring Holmes Stein Douglas
OCTOBER	Sat 28 Wrexham	H 3pm 3-4	Stein, Watts, George	23	5,341	Abbey Boyce Watts George Johnson	Taylor McLaren Brietenfelder Holmes Stein Fotiadis
NOVEMBER	Sat 4 Bury	A 3pm 1-1	Helin	23	2,861	Abbey Boyce Watts George Karlsen	Taylor McLaren Spring Helin Stein Douglas
NOVEMBER	Sat 11 Bristol City	H 3pm 0-3		23	6,595	Abbey Boyce McGowan George Karlsen	Taylor McLaren Spring Helin Stein Douglas
NOVEMBER	Fri 17 Rushden & D FAC1	H 8pm 1-0	George	23	5,771	Abbey Boyce Fraser Watts Karlsen	Taylor McLaren Spring Helin George Stein
NOVEMBER	Sat 25 Port Vale	A 3pm 0-3		23	4,194	Abbey Boyce Whitbread Watts Karlsen	Taylor McLaren Spring Helin George Nogan
DECEMBER	Sat 2 Stoke City	A 3pm 3-1	McLaren, Thomson 2	23	12,389	Abbey Johnson Whitbread Watts Locke	Taylor McLaren Spring Helin George Thomson
DECEMBER	Tue 5 Peterborough LDVT1	A 7.45 0-1		23	2,075	Ovendale Ayres Karlsen Fraser Locke	Taylor McLaren Spring Helin Fotiadis Thomson
DECEMBER	Sat 9 Darlington FAC2	A 3pm 0-0		23	3,641	Abbey Johnson Whitbread Watts Locke	Taylor McLaren Spring Fraser Thomson
DECEMBER	Sat 16 Colchester Utd	H 3pm 0-3		23	4,791	Abbey Johnson Whitbread Watts Locke	Taylor McLaren Spring Helin George Nogan
DECEMBER	Tue 19 Darlington FAC2R	H 7.45 2-0	Nogan, McLaren	23	3,563	Abbey Johnson Whitbread Watts Fotiadis	Taylor McLaren Spring Helin George Nogan
DECEMBER	Sat 23 Reading	A 3pm 1-4	Nogan	23	10,771	Abbey Johnson Whitbread Boyce Fotiadis	Taylor McLaren Spring Helin George Nogan
DECEMBER	Tue 26 Peterborough	H 1pm 3-2	Spring, Holmes, Boyce	23	7,374	Abbey Boyce Whitbread Fraser Holmes	Taylor Locke Spring Helin Fotiadis Nogan
DECEMBER	Sat 30 Wigan	H 3pm 0-2		23	5,322	Ovendale Watts Whitbread Fraser Holmes	Taylor Locke Spring Helin Fotiadis Nogan
JANUARY	Mon 1 Bournemouth	A 3pm 2-3	Fotiadis, Locke	23	5,411	Ovendale Watts Whitbread Fraser Holmes	Taylor Locke Spring Helin Fotiadis Nogan
JANUARY	Sat 6 QPR FAC3	H 3pm 3-3	Fotiadis, George, Douglas	23	8,677	Ovendale Boyce Whitbread Fraser George	Taylor Locke Spring Breitenfelder Thomson Douglas
JANUARY	Fri 12 Wycombe	H 7.45pm 1-2	Locke	23	4,551	Ovendale Boyce Whitbread Fraser George	Taylor Locke Spring Breitenfelder Thomson Douglas
JANUARY	Wed 17 QPR FAC3R	A 8pm 1-2aet	Mansell	23	14,395	Ovendale McGowan Whitbread Fraser Karlsen	Holmes Mansell Spring Nogan Fotiadis Douglas
JANUARY	Tue 23 Oldham	A 7.45pm 0-2		23	3,011	Ovendale McGowan Whitbread Boyce Karlsen	Holmes Mansell Spring Nogan Fotiadis Douglas
FEBRUARY	Sat 10 Northampton Town	A 3pm 1-0	Douglas	23	6,633	Ovendale Boyce Stirling Dryden Rowland	Taylor Mansell Spring Helin George Douglas
FEBRUARY	Tue 13 Notts County	A 7.45pm 3-1	Boyce, George, Fotiadis	23	4,333	Ovendale Boyce Stirling Dryden Rowland	Taylor Mansell Spring Helin George Douglas
FEBRUARY	Sat 17 Swansea City	H 3pm 5-3	Mansell 2, Douglas, Rowland, George	22	7,085	Ovendale Boyce Stirling Dryden Rowland	Taylor Mansell Spring Helin George Douglas
FEBRUARY	Tue 20 Walsall	A 7.45pm 1-3	Spring	22	4,816	Ovendale Boyce Stirling Dryden Rowland	Taylor Mansell Spring Helin George Douglas
FEBRUARY	Sat 24 Swindon	A 3pm 3-1	Rowland, Boyce, Mansell	22	7,160	Ovendale Boyce McLaren Dryden Rowland	Taylor Locke Spring Helin George Fotiadis
MARCH	Sat 3 Bristol Rov	H 3pm 0-0		22	7,405	Abbey Boyce Watts Dryden Rowland	Taylor McLaren Locke Helin George Stein
MARCH	Tue 6 Cambridge Utd	H 7.45pm 1-0	Taylor	22	6,370	Abbey Boyce McLaren Dryden Rowland	Taylor McLaren Spring Helin George Douglas
MARCH	Sat 10 Millwall	A 3pm 0-1		22	11,691	Abbey Boyce McLaren Dryden Rowland	Taylor Mansell Spring Helin George Douglas
MARCH	Tue 27 Peterborough	A 7.45pm 1-1	Mansell	22	5,425	Abbey Boyce McLaren Dryden Rowland	Taylor Mansell Spring Helin George Howard
MARCH	Sat 31 Colchester	A 3pm 1-3	Howard pen	22	4,271	Abbey Boyce McLaren Dryden Rowland	Taylor Mansell Spring Helin George Howard
APRIL	Tue 3 Reading	H 7.45pm 1-1	OG(Harper)	22	6,132	Abbey Boyce McLaren Dryden Rowland	Taylor Mansell Spring Helin Stein Howard
APRIL	Sat 7 Stoke City	H 3pm 1-2	Mansell	22	6,456	Abbey Boyce McLaren Dryden Rowland	Taylor Mansell Spring Helin Stein Howard
APRIL	Tue 10 Oxford Utd	H 7.45pm 1-1	Watts	22	6,010	Abbey Boyce Watts Dryden McLaren	Taylor Mansell Spring Helin George Howard
APRIL	Sat 14 Oldham	H 3pm 0-0		22	4,886	Ovendale Boyce Watts Dryden McLaren	Taylor Mansell Douglas Shepherd George Howard
APRIL	Mon 16 Wrexham	A 3pm 1-3	Watts	22	3,329	Ovendale Boyce Watts Dryden McLaren	Taylor Mansell Douglas Shepherd George Howard
APRIL	Sat 21 Bury	H 3pm 1-2	George	22	4,902	Ovendale Boyce Watts Dryden McLaren	Taylor Mansell Spring Shepherd George Howard
APRIL	Tue 24 Rotherham Utd	H 7.45pm					
APRIL	Sat 28 Bristol City	A 3pm					
MAY	Thur 3 Brentford	A 7.45pm					
MAY	Sat 5 Port Vale	H 3pm					

JOE Kinnear meets fans on Thursday evening to have a chat, listen, and answer questions. The Luton Town Supporters Club meeting is in the Eric Morecambe Suite, starting at 7.30. Admission is by ticket only - they were originally sold for a meeting in February which had to be postponed. Those tickets are still valid, and as it was a sell-out there will be no cash admission on Thursday.

Next Home Match - Final Day of the Season

 **Nationwide**  **Luton Town v Port Vale**

Saturday May 5, 2001, kick-off 3pm

Fancy a party or reception at Kenilworth Road?
e-mail us on:
catering@lutontown.co.uk

Up and Running!
Luton Town's very own official website.
www.lutontown.co.uk

Tonight's Teams

Luton Town

Rotherham United



Tonight's Officials



Referee:

Paul Armstrong, Berkshire

Assistants:

D. Deadman, Hertfordshire (red flag)

Whitestone Northamptonshire (yellow and red flag)

Fourth Official:

M. J. Cairns, Northamptonshire

Manager: Ronnie Moore

Manager: Joe Kinnear

MARK OVENDALE 1

13 PAUL PETTINGER

EMMERSON BOYCE 17

3 DAVID ARTELL

JULIAN WATTS 5

4 ROB SCOTT

RICHARD DRYDEN 33

6 MARVIN BRYAN

PAUL SHEPHERD 35

7 MARK ROBINS

MATTHEW TAYLOR 15

9 ALAN LEE

MATTHEW SPRING 4

10 PAUL WARNE

PAUL McLAREN 8

12 STEWART TALBOT

LEE MANSELL 32

14 KEVIN WATSON

LIAM GEORGE 11

16 PAUL HURST

STEVE HOWARD 34

28 GUY BRANSTON

Substitutes

Substitutes

MARK STEIN 10

19 BRIAN WILSTERMAN

ADAM LOCKE 12

22 JEFF MINTON

STUART DOUGLAS 9

24 CHRIS SEDGWICK

JUDE STIRLING 23

29 RICHARD BARKER

SCOTT WARD 24

1 IAN GRAY (GK)

Changes

Changes

"Genuine Deals For Genuine Fans!"
Luton Fans Are
Guaranteed To Score At
Motorbodies Luton

NETWORK Q
 Total Commitment to used car quality

Motorbodies Central
 15 Hitchin Road, Luton Bedfordshire.
 Telephone 01582 454666
 e-mail: enquir@cxxtongroup.co.uk

- 12 months Assistance
- 12 months/15,000 mile Guarantee

Motorbodies Leagrave
 166 Marsh Road, Leagrave, Luton
 Telephone 01582 567500
 e-mail: sales@cxxtongroup.co.uk

114 Point Service

- 12 Months/ 15,000 mile guarantee
- 12 Months AA Assistance Mileage Check
- 30 Day Exchange Plan
- Free MoT for life
- HPI Check

- 114 point service
- 30 day exchange pledge

OPENING HOURS

Mon-Fri 9am-7pm
 Sat 9am-5pm
 Sun 10.30-4.30pm

NETWORK

