

# WELL RED

Bristol City FC's official match magazine 2000/2001 • Number 27 • £2.00



**INSIDE:**

over the  
gate –  
latest  
city news

the visitors

lifestyle  
with lourenco  
da silva  
+ poster

reds revisited  
– 1975/76  
season



BCFC Shirt  
Sponsor



Match  
Sponsor

**HUGHES  
RAIL**

**v luton town**

division two : 28.04.2001



— So what do **DAS** do?

## DAS do Legal Expenses Insurance—

*Put simply, we protect your legal rights at home, on the road, at work or play.*

Our **Commercial** policy protects countless organisations from time consuming and costly legal disputes.

Our **Family** and **Family Plus** policies provide cover for personal employment and taxation problems, consumer and property disputes, and bodily injury claims.

Our **DASDrive Plus** offers the complete solution to recovering uninsured losses for millions of motorists. We also offer both **Motor Breakdown** and **Home Assistance** products, providing help in the event of both domestic emergencies and vehicle breakdowns.

Our helplines offer immediate access to advice on personal and commercial legal issues, taxation, health and fitness, and counselling.

*If you are interested in any of these products, ask your insurance broker about DAS cover.*



**DAS Legal Expenses Insurance Company Limited**  
DAS House, Quay Side, Temple Back, Bristol, BS1 6NH  
Telephone: 0117 934 2000 Fax: 0117 934 2109  
Or visit our website at: www.das.co.uk

official shirt sponsors of the 2000 - 2001 season

LEGAL PROTECTION ♦ FAMILY ♦ MOTOR ♦ COMMERCIAL ♦ ASSISTANCE

# the manager



## contents

page 4  
Over The Gate

page 7  
Today's visitors:  
Luton Town FC

page 11  
Chief Executive  
Colin Sexstone

page 18  
City Junior Strikers

page 22  
Nationwide Review

page 24  
Lifestyle . . .  
with Lourenco  
Da Silva

page 29  
A tribute to  
Dr S Dasgupta

page 30  
1975/76 -  
Reds Revisited  
with James Ryan

page 36  
Taken As Red  
with Dave Massey

page 43  
What's Next . . . ?

Cover pic:  
Lourenco Da Silva

The Manager's Page is  
sponsored by

**Nevard Roland**

Executive Resourcing  
0117 311 1222

city clubcall: 09068 12 11 76 **WELL RED 3**

**T**he only appropriate way to start my final column of the season is with a huge thank you to supporters for the fantastic backing you have given the team this season.

Results have not always gone as we would have liked and it is particularly disappointing to have missed out on what I felt was a very realistic chance of taking our play-off challenge right to the wire.

But I hope the quality of football we have produced and the clear signs of progress made during a campaign marred by several injuries to key players have been reward for the very positive and loyal support throughout.

I can assure all our fans that, while we will be doing everything in our power to win our final two games, work has already begun to ensure we are a stronger force next season.

I know of players I want to bring to the club and of some already here who will be leaving. Once the last two matches are

completed wheels will be set in motion which I hope will lead to a good few new faces in the squad by the start of next season.

We go into today's match with Luton Town on the back of three successive defeats, made all the more frustrating by the fact that we took the lead in each game.

There were two major contributing factors to each setback, a failure to take chances when on top and the conceding of sloppy goals to throw away our advantage.

Hopefully, we can overcome those deficiencies to end our League programme on a

high note. We owe it to ourselves, our supporters and the clubs whose future can be affected by our results to produce the best possible performances against Luton today and Wigan Athletic next Saturday.

Overall, I feel that our promotion challenge failed because we were not strong enough to cope with a succession of injuries to senior players, which affected us from the very start of the campaign.

Now we must look forward, rather than back. We know of certain weaknesses that must be addressed and the strengths already in the team that can be built upon for next season.

There has been a lot to be positive about in our play, as the selection of Mickey Bell, Scott Murray and Brian Tinnion by their fellow professionals for the PFA Second Division Team of the Season demonstrates. My congratulations to all three on well-deserved recognition.

I wouldn't have committed myself to a new two-year contract if I didn't believe this club is on the up. There is terrific potential here and I am totally committed to seeing it fulfilled.

With your continued magnificent support, we can make next season one to remember.

**'Work has already begun to ensure we are a stronger force next season'**



**Danny Wilson**

LEGAL PROTECTION ♦ FAMILY ♦ MOTOR ♦ COMMERCIAL ♦ ASSISTANCE





## John's still our number one!

The late, great, John Atyeo remains the most popular player ever to don a City shirt, according to contributors to our Red Blooded page in **WELL RED** this season.

While there was a wide range of names selected in the Favourite City Player of All-Time category, only two players received more than one vote.

Nine of our 25 selected fans listed Big John as their hero, with current under-17 coach Alan Walsh running out a worthy second with four nominations.

We have also compiled a Best All-Time City XI from the players picked in that category by our contributors, based on a 4-4-2 formation. The line-up, together with the number of votes each player received, came out like this: Keith Waugh (5); Rob Newman (7); Shaun Taylor (12); Norman Hunter (12); Darren Barnard (12); Jacki Dziekanowski (9); Gerry Gow (10); Brian Tinnion (10); Alan Walsh (11); Bob Taylor (10); John Atyeo (9). Subs: Andy Cole (8); Gerry Sweeney (7); Clive Whitehead (7); Gary Shelton (6); Martin Scott (6).

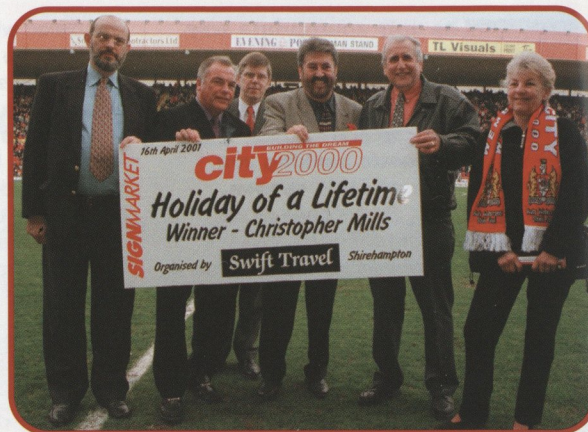
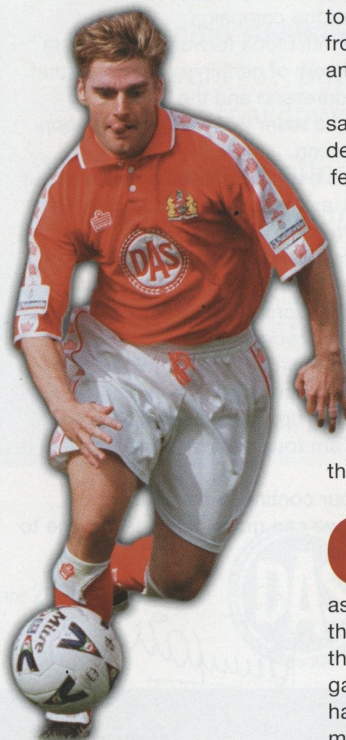
Many thanks to all our featured Red Blooded fans for their contributions over the course of the season.

## City stars win PFA honour

Congratulations to Brian Tinnion, Mickey Bell (pictured) and Scott Murray, who have all been chosen in the Second Division Team of the Season, nominated by the Professional Footballers' Association.

It is Mickey's second successive nomination, but a first for both Brian and Scott, and means that three of City's regular five-man midfield have been honoured by their fellow professionals.

The trio will form part of the club's party for the PFA Awards dinner in London



## off on their hols!

One City fan who will be enjoying a very special break abroad this year is Chris Mills. He is the winner of the **city2000 Holiday Of A Lifetime** draw and will be taking wife Margaret to a destination of their choice, courtesy of Swift Travel. Chris and Margaret are pictured far right receiving their prize at the Wycombe Wanderers home game with, from left to right, **city2000** secretary John Greenwood, **city2000** chairman Norman Lavis, **city2000** Co-Ordinator Richard Gardner and Swift Travel boss Paul Emery.

tomorrow where Select XIs from all divisions will be announced.

Brian spoke for all three, saying: "We're absolutely delighted. It's great that our fellow players have

nominated us and I am really looking forward to the presentations."

Players cannot vote for their own team-mates so the selection indicates how highly Brian, Mickey and Scott are respected by opponents throughout the Second Division.

One of City's most loyal servants, Dr Dasgupta, is retiring as Club Medical Officer at the end of the season so this will be his final home game in the job. Dr "Das" has worked for the club for more than 20 years and

established himself as one of Ashton Gate's most well known characters. His work for the club is spotlighted on page 29 of this issue of **WELL RED**.

A minute's silence will be requested before today's game with Luton Town in memory of City's 14-year-old schoolboy player Peter Reeve, who died so tragically last week.

A full tribute to Peter is on the Academy Page of this issue of **WELL RED**. Our sincere condolences are sent to all his family and friends.

City have announced their Season Ticket prices for next season, with some great news for families and children. The main thrust is

to standardise all prices for children under-16 at just £30, to include automatic membership of City Junior Strikers, City's young supporters club.

For full details please turn to page 11 of this issue of **WELL RED**.

Today will mark the end of an era in the Club Supershop. Steve Tutfield is retiring after 21 years running the Programme Shop on matchdays.

He originally took over from dad Don in 1979/80 – the final year of City's spell in the old First Division – and sold City and other club programmes from a section of the old portakabin shop opposite the Williams Stand. He moved to the Supershop when it opened

in 1993. Now marriage to fiancée Nicky beckons and, although he will continue to watch home games as a season-ticket holder in the Williams Stand, he has decided that means enjoying some more civil hours on Saturday mornings.

Steve would like to offer his thanks to all his regular customers and loyal collectors for their support over the years.

## MESSAGE FROM BARS MANAGER MIKE STONE

“Once again we have come to the end of what has been a very exciting League campaign. During the season I have tried to talk to as many supporters as possible with regard to the products and service

available in all the bars.

“We always aim to produce a good quality product at a competitive price and from talking to you, the customer, it is very rewarding to know that you feel high standards have been reached.

“If you have any constructive comments about any of the bar areas or products on sale within them, please do not hesitate to contact me on 0117 963 0644.

“In the meantime, have a great summer and I look forward to seeing you all again next season.”

**Mike Stone**

Our thanks to London Camera Exchange of Bristol for their kind support during the course of this season.

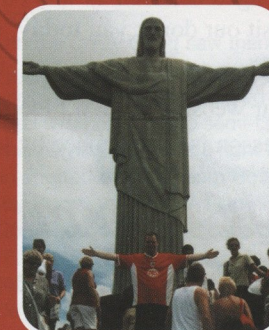
## city fans around the world

The final photographs in our City Around the World features this season were sent in by Tony Colliver, from Stoke Gifford, following a trip to Rio de Janeiro and Richard Haile, former member of the Ashton Gate groundstaff.

Tony is pictured beneath the famous statue of Christ the Redeemer, which has become one of the world's most famous landmarks. His four-week trip took in Antarctica, Argentina and Uruguay, as well as Brazil, and included watching Sao Paulo beat Botafogo 4-1 amid a 100,000 crowd at the Maracana Stadium.

Richard is pictured standing proudly behind a Bristol City FC flag with his new team-mates from Cape Fear Rugby Football Club (great name – Ed.) in Wilmington, North Carolina, USA.

“Dickie” moved across the pond in January after spending two years as assistant to Head groundsman Steve Drew. His new side have just come second in the League over there and, according to his regular e-mails back home, the only thing that is spoiling his new life in the sun is the absence of Blackthorn cider. You can't have it all Dickie!



## Bristol City Football Club

Ashton Gate Stadium,  
Bristol BS3 2EJ  
Tel: 0117 963 0630  
Fax: 0117 963 0700

Chairman:  
**John Laycock**  
Vice-chairman:  
**Steve Lansdown**  
Directors:  
**John Clapp,**  
**Scott Davidson,**  
**Keith Dawe,**  
**A.W. Gooch MBE, JP,**  
**Bob Neale**  
Club President:  
**Marina Dolman D.St.J., JP**  
Vice-Presidents:  
**Betty Rosemary Bennett**  
**John Bennett**  
**James Bragg**  
**Roger Buoy**  
**Brian Cook**  
**Graham Cooper**  
**Bernard Cripps**  
**Norman Lavis**  
**Graham Thompson**  
Chief Executive:  
**Colin Sexstone**  
Manager:  
**Danny Wilson**  
Academy Director and  
Football Co-ordinator:  
**Tony Fawthrop**  
First-team Coach:  
**Frank Barlow**  
Technical Advisor:  
**David Burnside**  
Medical Officer:  
**Dr S Dasgupta**  
Chartered Physiotherapist:  
**Gill O'Shea BSc (Hons), SRP**  
Financial Accountant:  
**Roger Pearce**  
Football Secretary:  
**Michelle McDonald**  
Corporate Sales Manager:  
**Elaine White**  
Media Manager and  
Match Magazine Editor:  
**Steve Henderson**  
PA to Chairman/  
Press & PR Manager:  
**Rita Murgatroyd**  
Manager of  
Community Affairs:  
**Paul Taylor**  
Football in the  
Community Officer:  
**Tommy Hutchison**  
Stadium Manager:  
**Dave Lewis**  
Head Groundsman:  
**Steve Drew**  
Box Office Manager:  
**Helen Mills**  
Retail Manager: **Steve Gray**  
Safety Officer: **Keith Draisay**  
Banqueting: **Kerry Price**  
Kiosk Manager: **All Ousaid**  
Fitness Consultant:  
**Mark Hammond**  
Chaplain: **Derek Cleave**

Match Magazine contributors:  
Richard Latham, Ed Furness,  
Emily Williamson, James Ryan,  
Tony Matthews and  
Dave Massey.  
Photography by: Paul Gittam.  
Designed and produced by  
Bristol City Media.  
Printed by BCF's official printer:  
TL Visuals, Yale, Tel: 01454 519555.  
Paper supplied by Howard Smith.  
Individual contributions made to this  
magazine do not necessarily reflect the  
views of Bristol City FC.



a warm welcome to today's sponsors:

PERTEMPS ON THE BALL  
FOR RECRUITMENT,

**Whatever Your Goal!**

- Whatever your goal, Hit the target with excellent opportunities in a wide range of positions.
- For Central Bristol Call: 0117 9226500
- For Bristol North Call: 01454 202555



## DO SOMETHING AMAZING!



### APPEAL FOR BLOOD DONORS

The National Blood Service needs 50,000 new donors in the South West this year to ensure patients receive the life-saving treatment they need. Please help support your local community by becoming a blood donor. If you are aged between 17 and 60 and in general good health, your support is **vital**. Why not visit our donor van **today**, situated opposite the Williams Stand

To enrol, or to find out details of sessions in your area, please ring our National Donor Helpline on **08457-711-711**, or visit our website at **www.blood.co.uk** for more information. You can also find out where your nearest session is taking place by looking at details on **Ceefax BBC2, page 465**.

*A minute of your time can mean a lifetime to someone else.*

## the visitors



**If City fans feel a bit gloomy after missing out on the play-offs, you can bet supporters of today's visitors Luton Town are feeling slightly more downcast after Tuesday night's defeat at Rotherham.**

The result condemned the Hatters to the League basement next season, for the first time since they won the old Fourth Division title in 1968.

It is also the first relegation in boss Joe Kinnear's long career in football, and he reacted by getting himself sent-off in the 74th minute of the game for disputing a linesman's decision.

Kinnear, the third manager at Kenilworth Road this year, is now demanding a summer clear-out and an influx of new players.

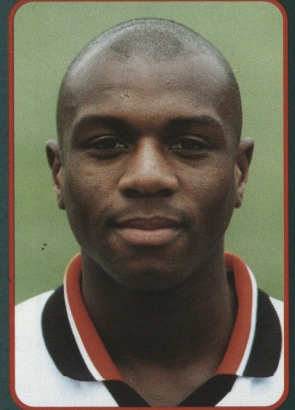
It was all very different back in August. Millionaire owner Mike Watson-Challis had just completed a take-over and pledged a return to Luton's glory days by installing Ricky Hill – midfield partner of City boss Danny Wilson in the First Division side of the mid-80s – as manager.

Hill's reign was a disappointment but it was still a shock to see him ditched so early in favour of assistant Lil Fuccillo in the autumn. Fuccillo himself, who remains coach, merely found himself as stop-gap for Kinnear who was appointed on a three-year contract in February.

It was the former Wimbledon manager's first job back in football, barring a Football Consultancy post at Oxford, since he suffered a heart-attack in the spring of 1999. Now fully recovered, he has vowed to see out his contract at Luton despite any job offers that will no doubt come his way.

### NATHAN ABBEY

Born: Islington, 11.7.78. Goalkeeper who joined Luton as a YTS boy after being spotted in local schoolboy football. Has yet to maintain a regular first-team place, however, and is currently second-choice to Mark Ovendale.



Emmerson Boyce

### EMMERSON BOYCE

Born: Aylesbury, 24.9.79. Defender who has progressed through the Hatters' flourishing youth set-up, making his first-team debut in January 1999. Can play at right back or in central defence.

### DEAN BRENNAN

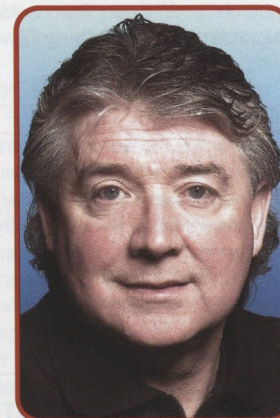
Born: Dublin, 17.6.80. Young midfielder spotted by former manager Ricky Hill whilst in charge of Sheffield Wednesday's youth squad, and brought to Luton on a free transfer. Can also play in attack.

### STUART DOUGLAS

Born: Enfield, 9.4.78. Pacy striker who was a trainee when he scored on his League debut for Luton in 1995. Has never quite fulfilled his potential, as his career since then has been frustrated by injury, but is a regular in the first-team squad.

### JOE KINNEAR

Born: Dublin, 27.12.46. The former Wimbledon boss became Luton's third manager this season, when he was appointed in January following the short reigns of ex-Hatters Ricky Hill and Lil Fuccillo.



It is Kinnear's first job back in football, with the exception of a Football Consultancy at Oxford, since suffering a heart-attack shortly before a Premiership game between Wimbledon and Sheffield Wednesday in spring 1999 which prematurely ended his seven-year spell with the Dons. The opposing manager that evening was Danny Wilson.

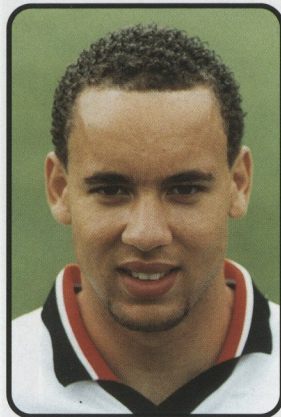
His eventful period with the Crazy Gang saw them maintain their Premiership status and ditch their old route-one style in favour of a more sophisticated passing game. Under his stewardship, Wimbledon recorded their highest-ever League finish of sixth, and reached two League Cup semi-finals.

Luton's boss started his playing career as a right-back with non-League side St. Albans City before being spotted by Tottenham Hotspur in 1965. He made more than 280 appearances for Spurs, winning FA Cup, League Cup and UEFA Cup medals, and collected 26 Republic of Ireland caps before ending his playing days with Brighton in 1975/76.

His only managerial job before Wimbledon was as national team coach of United Arab Emirates, alongside former Tottenham colleague Dave Mackay.

### MANAGER





Liam George

## RICHARD DRYDEN

Born: Stroud, 14.6.69. Central defender who was a free transfer signing from Southampton in February and who is one of three City old boys in the Luton squad. Joe Jordan paid Notts County £150,000 for him in December 1994 and he made 45 appearances before a surprise move to Premiership side Southampton in August 1996. Subsequently joined Stoke on loan, for whom he played against City last season.

## ANDREW FOTIADIS

Born: Hitchin, 6.9.77. Strong centre-forward who, despite being capped for England at under-15 and under-18 level, stayed at school to gain his A Levels before becoming a full-time professional at Kenilworth Road.

## LIAM GEORGE

Born: Luton, 2.2.79. Republic of Ireland under-21 international striker who is another product of Luton youth system. Made his Hatters debut in September 1997 and recovered from a broken leg to become the club's leading scorer last season.

## PETRI HELIN

Born: Helsinki, 13.12.69. Finnish international midfielder who played as substitute against England in last month's World Cup qualifier at Anfield. Signed in November 2000 by former Hatters boss Ricky Hill, he skippered his home club side Jokerit to runners-up spot in the Finnish Premier League.

## PETER HOLMES

Born: Bishop Auckland, 18.11.80. Promising midfielder who was in the same year as Michael Owen at the FA School of Excellence. Spotted by former manager Ricky Hill while playing in Sheffield Wednesday's youth squad, and brought to Kenilworth Road for a nominal fee.

## STEVE HOWARD

Born: Durham, 10.5.76. Target-man who was a bargain £50,000 signing from Northampton Town on transfer deadline day last month. Started his career at Hartlepool before moving to Sixfields Stadium where he helped fire the Cobblers to promotion from Division Three last season.

## TRESOR KANDOL

Born: Banga (Zaire), 30.8.81. Striker spotted

playing schoolboy football in London, starting his Luton career as a trainee before making his first-team debut in January 1999. Relative of Newcastle United forward Lomana Tresor Lua Lua.

## ADAM LOCKE

Born: Croydon, 20.8.70. Utility player who was a regular in City's 1997/98 Second Division promotion-winning side under John Ward. Started his career as a trainee with Crystal Palace before moving to Southend, Colchester and City where he made 76 appearances – mainly at right-back – before moving to Luton on a free transfer in August 1999. Can play in defence or midfield.

## LEE MANSELL

Born: Gloucester, 23.9.82. Young midfielder who scored just 58 seconds into his senior debut against Queens Park Rangers in January's FA Cup third round replay. In common with many of Luton's youth discoveries, he was signed as an 11-year-old and kept on as a scholar after leaving school.

## PAUL McLAREN

Born: High Wycombe, 17.11.76. Forceful midfielder who has been a first-team regular since making his debut as an 18-year-old. Progressed through the youth ranks and played in the youth team while still a schoolboy.

## MARK OVENDALE

Born: Leicester, 22.11.73. Experienced goalkeeper snapped up by Ricky Hill at the start of the season from AFC Bournemouth, where he was Player Of The Season last year. Started his career at Wisbech Town before moves to Northampton Town, Barry Town and Bournemouth.

## KEITH ROWLAND

Born: Portadown, 1.9.71. Northern Ireland international midfielder who was initially signed on a three-month loan deal in January this year. Capped 18 times by his country, he began his career as a trainee at Bournemouth before moves to West Ham and Queens Park Rangers.

## PAUL SHEPHERD

Born: Leeds, 17.11.77. Right-back signed on transfer deadline day in March after impressing on trial. Began his career as a



## LUTON TOWN FC 2000/2001

**BACK ROW** (l-r): Mark Stein, André Scarlett, Stuart Fraser, Andrew Fotiadis, Matthew Taylor, Peter Holmes, Stuart Douglas, Gavin McGowan, Dean Brennan.

**MIDDLE ROW** (l-r): John Moore (Coach), Peter Thomson, Jude Stirling, Kent Karlsen, Nathan Abbey, Mark Ovendale, James Ayres (no longer at the club), Friedrich Breitenfelder, Tresor Kandol, Rocky Baptiste, Brian Stein (Youth Coach).

**FRONT ROW** (left to right): Liam George, Emmerson Boyce, Petri Helin, Matthew Spring, Lil Fuccillo (Coach), Paul McLaren, Julian Watts, Marvin Johnson, Adam Locke.

trainee with Leeds United, and was capped by England at youth level, before moving on a free transfer to Ayr United.

## MATTHEW SPRING

Born: Harlow, 17.11.79. Competitive midfielder who was a member of the Luton side which reached the FA Youth Cup semi-finals in 1997, making his League debut whilst only 17. Has since been a regular in the first-team squad until picking up a recent hamstring injury.

## MARK STEIN

Born: South Africa, 28.1.66. Experienced striker who returned to Luton last summer to join former Hatters team-mate Ricky Hill, with whom he won the League Cup in 1988. Enjoyed four years at Kenilworth Road before moving to Queens Park Rangers, Oxford United, Stoke City, Chelsea and Bournemouth – for whom he scored against City in the Auto Windscreens Shield last season. Brother of former Luton forward, and now coach, Brian.

## MATTHEW TAYLOR

Born: Oxford, 27.11.81. Promising wing-back

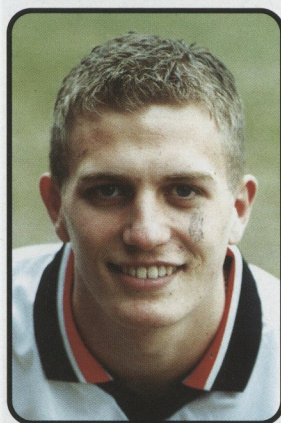
who progressed through the youth ranks to make his debut as a 17-year-old during Luton's financial crisis, in 1998/99. Immediately settled and has since become a regular in the first team.

## PETER THOMSON

Born: Bury, 30.6.77. Striker who was a £100,000 signing from Dutch Premiership club NAC Breda in September 2000. Began his career with home town club Bury and enjoyed a profitable spell in the Unibond Premier League for Chorley and Lancaster before his move to Holland.

## JULIAN WATTS

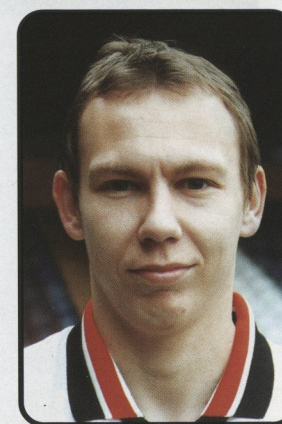
Born: Sheffield, 17.3.71. Central defender who spent an unhappy year at Ashton Gate in 1998/99, after arriving on a free transfer from Leicester City in time for City's First Division campaign. Played 21 games under John Ward before falling out of favour under Benny Lennartsson and was allowed to go on a free to Luton in August 1999. Has also played for Rotherham United and Sheffield Wednesday.



Lee Mansell



Paul McLaren



Paul Shepherd

## TRIVIA ANSWERS

The answers to today's trivia quiz on the scoreboard and PA are: 1. Wayne Thomas, own goal; 2. Reading; 3. 6-2 versus Cambridge United



# J&P Builders

10 Rosemount Road,  
Flax Bourton, North Somerset BS48 1UQ  
Tel: 01275 464166  
Fax: 01275 464771  
Mobile: 0831 287289

Brick Laying Contractors

## ENTERPRISE APOLLO - VIDEO

BRISTOL'S LARGEST INDEPENDENT VIDEO RENTAL OUTLETS.

Multiple copies of all top titles + DVD rental

50,000 CUSTOMERS CAN'T BE WRONG

Tel: 0117 971 6533

For your nearest branch

For all your print requirements



ISDN: 01454 313270  
E-mail: tlvisuals@tl-visuals.co.uk

TL Visuals Limited  
Rainbow Court,  
Armstrong Way  
Yate, Bristol  
BS37 5NG

Telephone  
01454 319555  
Facsimile  
01454 316774

## Design Bedrooms Ltd.

The Fitted Bedroom Specialists



UNIT 21 HANHAM BUSINESS PARK  
1 MEMORIAL ROAD, HANHAM  
BRISTOL BS15 3JE

(0117) 949 9910  
(0117) 971 1667

(EVENINGS & WEEKENDS)

Tailor made bedrooms designed  
& estimated in your own home.  
No obligation. 5 year guarantee.

COMPARE OUR PRICES

### 50 plus

Are you aged 50 or over and in receipt of benefit for 6 months or more?

Are you looking for work and have a personal income of less than £15,000 a year?

You could be entitled to:

- PERSONAL ADVICE AND PRACTICAL HELP FROM YOUR LOCAL JOB CENTRE TO FIND SUITABLE EMPLOYMENT
- A TAX FREE EMPLOYMENT CREDIT OF UP TO £60 PER WEEK, FOR UP TO 52 WEEKS, PAID DIRECTLY TO YOU ON TOP OF YOUR WAGE
- AN IN WORK TRAINING GRANT OF UP TO £750

NEW DEAL 50 PLUS IS ALSO AVAILABLE TO YOU IF YOU WISH TO START YOUR OWN BUSINESS

REMEMBER, NEW DEAL 50 PLUS IS VOLUNTARY

CONTACT A NEW DEAL 50 PLUS ADVISER AT YOUR LOCAL JOB CENTRE FOR MORE INFORMATION ...

... or ring our advice line on  
0800 783 9870

new deal

# colin sexstone chief executive

**T**his week has seen the announcement of our Season Ticket prices for next season, with the emphasis on promoting our image as a family club.

We are very much aware of the need to attract the fans of the future to our stadium, encouraging them to bring along mum, dad, brother and sister too. So we have made the main thrust of our new price structure an attempt to make watching football more affordable for families.

With that in mind, we have standardised all prices for children under-16 at just £30, to include automatic membership of our young supporters club, the City Junior Strikers.

The Club are also introducing for the first time a Family Ticket (two adults and two children, under-16) for as little as

£530, a saving of more than £550 on matchday prices.

Other Season Ticket prices have been raised by five per cent – the first increase in three years. This decision was taken before we knew which division we would be in next season and would have applied had we managed to gain promotion.

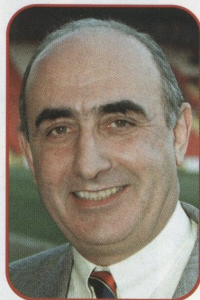
Unfortunately, that has not proved the case. But I am sure supporters are aware of the delicate balance we have to strike between keeping faith with our loyal fans and guaranteeing sufficient income to back what we all hope will be a successful campaign in 2001/02.

To encourage existing Season Ticket Holders to introduce new ones, the Club will pay them £50 for every new Season Ticket Holder they attract. There is no limit to numbers in this respect so if an individual introduced five new purchasers we would hand over £250.

Another new scheme will enable

Season Ticket Holders to order all their match magazines for the 2001/02 season (League and Cup matches) in advance at a significant discount.

We have just over 7,000 Season Ticket holders at present and I would like to think we can increase that number by ten per cent at least in our joint effort to help Bristol City regain First Division status. Your backing in this respect would be enormously appreciated.



Colin Sexstone

## 2001/2002 season ticket prices

PLEASE NOTE: CURRENT SEASON TICKET HOLDERS HAVE UNTIL 2nd JUNE, 2001 TO RESERVE THEIR SEAT

Area	Season Ticket Prices 2001/2002			Area	Season Ticket Prices 2001/2002			
	PRE 9th JUNE	PRE 31st JULY	MATCH DAY COST#		PRE 9th JUNE	PRE 31st JULY	MATCH DAY COST#	
Dolman Stand	Adult	285	330	Atyeo Stand	240	280	328	
	Concessions	215	250		155	185	259	
	16-18	99	125		99	125	259	
	Under 16	30	50		30	50	213	
Family Enclosure	Adult	270	310	Williams Stand	285	330	374	
	Concessions	210	245		215	250	305	
	16-18	89	115		99	125	305	
	Under 16	30	50		30	50	236	
Platinum Seating	Family ticket			# Match prices increased by £1 for all categories. Costs are calculated for non-members using the Atyeo Stand and attending 2 x A (£32), 2 x B (£30) and 19 x C (£266) category games  16-18-year-olds matchday prices would be concessionary				
	2 Adults + 2 children	530	599					1082
	Adult	385	440					489
	Concessions	280	320	374				
	Under 16	160	190	282				



# Radio made for Bristol City

**107.3** The **EAGLE**

BRISTOL'S NEW RADIO STATION

## ACCEPT NO SUBSTITUTES

...contact **THE SPECIALISTS**

**Burdens**  
CIVIL ENGINEERING &  
BUILDING MATERIALS

Supplying the Civil Engineering and Building Industries from a national network of ISO 9002 accredited branches.

Head Office: Durley Park, Keynsham, Bristol BS31 2EE  
Tel: 0117 986 1766 Fax: 0117 937 6426

## in reserve with shaun taylor

**T**hree successive home wins the Avon Insurance Combination is very pleasing, particularly as we have fielded a young side on each occasion.

We followed up our 2-0 win over Gillingham by beating Cambridge United 3-1 at Ashton Gate in a game that might easily have ended up seven all.

It was a bit too open from a defensive point of view and there were certainly lessons for us to learn about reacting to losing the ball. Our recovery wasn't as good as I would have liked and that is something we need to work on.

However, I couldn't complain at the number of chances we created. We took an early lead through Neil Ashley, who converted a Kevin Amankwaah cross, and continued to look dangerous going forward throughout the match.

After Cambridge had got back into the game Albano Correia made it three goals in two Combination games by finishing off a Marvin Brown pass and the scoring was completed before half time.

Marvin thumped an unstoppable shot past Cambridge keeper Lionel Perez just before the break to give us a two-goal cushion and perhaps we should have built on that in the second period.

Instead, we missed some good chances, while allowing Cambridge too many opportunities to get back into the game. We didn't defend particularly well as a team and made life hard for ourselves.

But it is all part of a learning process and there was a bonus from the game in that Keith Millen played for an hour with no reaction to his first appearance since knee surgery.

On Monday we entertained a Portsmouth team who had to play with ten men for two-thirds of the game after having a defender sent-off for fouling Albano as he attempted to move onto a Tommy Doherty pass.

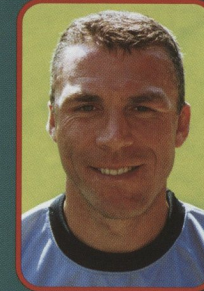
The old adage that it isn't easy to play against ten looked like coming true again when Portsmouth took the lead early in the second half. But Lourenco Da Silva, who had come on at half time for Marvin Brown, soon equalised with an excellent finish.

It proved to be the Portuguese show again as Albano continued his good run with an injury-time winner, showing good awareness to capitalise on a defensive mistake.

But the whole side deserved some praise because, apart from Robin Hulbert and Tommy Doherty in midfield, we fielded mainly teenagers, including the likes of Sekani Simpson and Ben Cleverley, who are only just breaking into reserve team football.

The one disappointing result since my last column was the 1-0 home defeat by Clevedon Town in the Somerset Premier Cup semi-finals. I have said before that these games against the local clubs present a different type of challenge with more of a physical element to them.

On the night we were not able to pass that particular test. But the county cup competitions remain a valuable part of the education of our young players and we still hope to end the season by lifting the Gloucestershire Cup.



### AVON INSURANCE COMBINATION TABLE @ 23.4.01

	Pld	W	D	L	F	A	GD	Pts
Norwich City	24	16	6	2	73	27	46	54
Fulham	21	15	3	3	52	13	39	48
Reading	21	15	2	4	38	16	22	47
Cambridge U.	23	13	4	6	36	28	8	43
QPR	20	13	2	5	30	16	14	41
Millwall	21	9	5	7	26	18	8	32
Oxford U.	23	9	5	9	35	37	-2	32
Crystal Palace	19	9	4	6	34	32	2	31
Brighton & H.A.	18	9	3	6	36	30	6	30
Portsmouth	20	8	6	6	29	25	4	30
Swindon T.	21	8	5	8	32	28	4	29
Gillingham	19	9	2	8	29	30	-1	29
Brentford	21	6	9	6	22	29	-7	27
Luton T.	17	7	4	6	23	19	4	25
<b>BRISTOL CITY</b>	<b>18</b>	<b>6</b>	<b>6</b>	<b>7</b>	<b>24</b>	<b>26</b>	<b>-2</b>	<b>24</b>
Southend U.	23	6	6	11	33	41	-8	24
Peterbro U.	20	7	2	11	23	27	-4	23
Barnet	20	7	2	11	28	38	-10	23
Bristol R.	17	6	3	8	19	24	-5	21
Colchester U.	20	6	3	11	22	33	-11	21
Cheltenham T.	20	5	6	9	26	41	-15	21
Bournemouth	22	5	5	12	23	43	-20	20
Wycombe W.	22	4	4	14	19	49	-30	16
Northampton T.	17	4	0	13	17	35	-18	12
Leyton Orient	20	2	3	15	19	43	-24	9



### fixtures

#### AUGUST

Wed 16 AFC Bournemouth 0-0  
Wed 30 BRISTOL ROVERS 3-1

#### SEPTEMBER

Thur 7 Norwich City 1-4  
Wed 20 CHELTENHAM TOWN 3-0  
Wed 27 SOUTHEND UNITED 1-1

#### OCTOBER

Mon 2 Colchester United 0-1  
Mon 9 Peterborough United 2-2  
Wed 18 CRYSTAL PALACE (LC) 1-0  
Wed 25 Bristol Rovers (LC) 0-0

#### NOVEMBER

Wed 15 LUTON TOWN 0-0  
Wed 29 MILLWALL 1-1

#### DECEMBER

Wed 20 Leyton Orient p-p

#### JANUARY 2001

Wed 3 READING (LC) 1-2  
Wed 17 Fulham 0-2

#### FEBRUARY

Thu 1 Crystal Palace 0-2  
Wed 7 Reading 0-2

#### MARCH

Mon 26 BRIGHTON & HA 0-2  
Wed 21 Swindon Town p-p  
Wed 28 Oxford United 2-2

#### APRIL

Mon 2 Barnet 2-3  
Wed 4 Wycombe Wanderers 2-1

#### MAY

Mon 9 GILLINGHAM 2-0  
Wed 18 CAMBRIDGE UNITED 3-1  
Mon 23 PORTSMOUTH 2-1

#### THU 26 QPR

Mon 30 Brentford

#### MAY

Wed 2 Northampton Town

### cup games

#### NOVEMBER

Tue 21 PAULTON ROVERS (SC2) 1-0

#### JANUARY 2001

Tue 9 GLOUCESTER C. (GFA C1) 2-0

#### FEBRUARY

Wed 21 TAUNTON TOWN (SC3) 4-1

#### MARCH

Mon 26 Cheltenham T. (GFA C) 2-1

#### APRIL

Wed 11 CLEVEDON (SC SF) 0-1

All home games to be played at Ashton Gate Stadium. Kick-off times are 2pm unless stated otherwise. Home matches in **BOLD CAPS**.

LC = League Cup; SC = Somerset Cup; GFA C = GFA Cup; FNF = Family Night Football. p-p = Match postponed





## under-17 fixtures 2000/01

Academy Group D: Southampton, Reading, Arsenal, West Ham United, Crystal Palace, Fulham and Wimbledon

### AUGUST

Sat 26 Everton 2-4

### SEPTEMBER

Sat 2 DERBY COUNTY 1-5

Sat 9 TOTTENHAM H. 2-2

Sat 16 MILLWALL 0-5

Sat 23 QPR 1-1

Sat 30 CHARLTON A. 0-2

### OCTOBER

Sat 7 Watford 1-1

Sat 21 IPSWICH TOWN 2-3

### NOVEMBER

Sat 4 ARSENAL 1-2

Sat 11 CRYSTAL PALACE 0-0

### DECEMBER

Sat 2 SOUTHAMPTON 1-1

Sat 16 READING 6-1

### JANUARY 2001

Sat 6 WIMBLEDON 2-3

Sat 13 Fulham 2-4

Sat 27 SOUTHAMPTON 2-0

Tue 30 West Ham United 0-4

### FEBRUARY

Sat 3 Reading 4-3

Sat 10 Crystal Palace 0-4

Sat 17 ARSENAL\* 3-1

Sat 24 Wimbledon 0-1

### MARCH

Sat 3 Coventry City 0-5

Sat 10 BIRMINGHAM C. 1-3

Wed 14 FULHAM 2-3

Mon 26 WEST HAM U. 0-3

### APRIL

Sat 7 Tottenham (p-o) 0-4

Sat 21 Southampton (p-o) 1-1

Sat 28 Charlton A. (p-o)

Home games (in BOLD CAPITALS) are played at Clifton College Training Ground, Bristol, kick-off 11am  
p-p = Match postponed p-o = Play-off

The under-17's play other group members twice (14 games), and play other north/south group members once (8 games). Also they play one team from another group once (2 games), followed by three play-off games to qualify for the quarter-finals.

\* Originally an away fixture but switched to home.

## schoolboy fixtures 2000/01

Date	Team	Under 9	Under 10	Under 11	Under 12	Under 13	Under 14	Under 15
Sept 3	Charlton Athletic	H 2-1	A 4-6	H 3-5	A 2-1	H 4-1	A 3-1	H 1-1
10	Coventry City	A 2-8	H 5-4	A 0-3	H 1-1	A 1-2	H 2-3	A 0-1
17	Wolves	All matches postponed due to petrol shortage						
24	Southampton	H 3-1	H 14-4	H 4-6	H 6-5	A 2-1	A 1-1	A 4-2
Oct 1	Fulham	H 5-3	A 3-5	H 3-2	A 3-2	H 4-2	A 3-1	H 3-4
8	Reading	A 0-1	H 2-0	A 3-3	H 4-2	A 3-2	H 2-1	A 3-2
15	In-service day							
22	Aston Villa	H 4-3	A 3-9	H 4-8	A 4-4	H 1-1	A 2-2	H 2-4
29	Birmingham City	H p-p	A 4-2	H p-p	A 1-1	H p-p	A 0-5	H p-p
Nov 5	Crystal Palace	All matches postponed due to weather						
19	Chelsea	A 6-5	H 1-1	A 2-4	H 3-1	A 2-8	H 0-2	A 1-0
26	Millwall	All matches postponed due to weather						
Dec 3	Wimbledon	A p-p	H 2-3	A p-p	H 4-7	A p-p	H 1-1	A p-p
10	In-service day							
17	QPR	All matches postponed due to weather						
Jan 7	In-service day							
14	Southampton	A 2-2	A 3-3	A 1-1	A 5-4	H p-p	H p-p	H p-p
21	Fulham	All matches postponed due to weather						
28	Reading	H 1-0	A 4-3	H 5-4	A 5-2	H 2-2	A 5-1	H 1-1
Feb 4	Aston Villa	All matches postponed due to weather						
11	Birmingham City	A 0-1	H p-p	A 1-6	H p-p	A 2-0	H p-p	A
18	Crystal Palace	H p-p	A 3-1	H p-p	A 1-2	H p-p	A 1-2	H p-p
Mar 4	Chelsea	H p-p	A 1-4	H p-p	A 6-2	H p-p	A 1-4	H p-p
11	Millwall	A 1-1	H 2-5	A 2-1	H 4-1	A 1-1	H 2-2	A 0-2
18	Wimbledon	All matches postponed due to weather						
25	QPR	All matches postponed due to weather						
Apr 1	In-service day							
8	Charlton Athletic	A 0-3	H p-p	A 6-4	H p-p	A 1-4	H p-p	A 0-1
15								
22	Coventry City	All matches postponed						
29	Wolves	H	A	H	A	H	A	H
May 6								
13	Available date for re-arranged fixture							
20	Available date for re-arranged fixture							
27	Available date for re-arranged fixture							
28	to June 1: Small-sided Regional Festivals							

## bcfc academy staff:

Academy Director: **Tony Fawthrop**; Technical Advisor: **Dave Burnside**; Assistant Director, under-17, under-19 and under-21 manager: **Peter Amos**; Assistant Director, under-8 to 16 Manager: **Alan Walsh**; Head of Education and Welfare: **Peter Coleman**; Bristol Recruitment Officer: **Roger Barton**; Bristol Area Scout: **Jock Rae**; Coach: **Frank Jacobs**; Goalkeeper Coach: **Len Bond**; Coach: **Graham Muxworthy**; Coach and Girls Centre of Excellence Director: **Ian Tincknell**; Physiotherapists: **Caroline Woods**; Academy Administrator: **Laura Pearce**.

## peter reeve - a tribute

**P**eter Reeve died suddenly at the age of 14 on the afternoon of Wednesday April 18th of a pulmonary embolism - a blood clot resulting in a heart attack.

Last Sunday's Academy games against Coventry City were cancelled and there will be a minutes' silence before this afternoon's game against Luton Town as a mark of respect for Peter and his family.

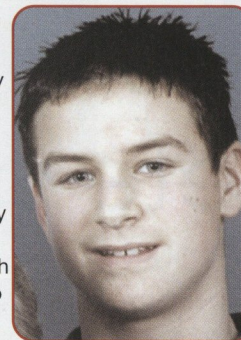
Peter joined our Academy in May 1998 from the Burnham-on-Sea Centre of Excellence and was coached by Frank Jacobs. He played for the under-14 team, but he was also talented enough to have represented the older age group for over a year before breaking his collarbone in December 1999.

Able to play at centre-back or right-back, Peter had exceptional defensive qualities. He was an outstanding player, who combined technical ability and athleticism with extraordinary personal qualities, approaching everything he did with commitment and enthusiasm.

Peter also possessed that rare mixture of exceptional talent and extreme modesty. He was a good listener, always ready to learn, and loved being part of a team, caring deeply about others, with a Corinthian attitude to sportsmanship so unusual in the modern game. He was therefore a pleasure to coach and a positive role model for all the players in the team.

He lived at Cheddar and attended Fairlands Middle School until last summer when he moved to Kings of

Wessex Community School. Fully involved in school activities, he was respected by everyone lucky enough to come into contact with him.



Not surprisingly, Peter came from an exceptional family. Father Jim, mother Mary and sister Clare always supported his various activities and were the source of his many qualities.

The Funeral Service took place on Wednesday at St Andrews Church, Cheddar, which was packed with people wanting to pay their respects. Moving tributes were paid and the Club were represented by chairman John Laycock, Academy Director Tony Fawthrop, Brian Tinnion and all the staff who worked with Peter on a regular basis.

Also present were a large number of his team-mates and their families. Everyone was united in their respect for an exceptional young footballer with rare and special personal qualities that made it a pleasure and a privilege to have known him. We also shared the grief that his life was far too short.

We hope to arrange a Memorial Game for Peter at Ashton Gate next month with our under-14s taking on Norwich City. Details will be circulated in the local media.

The club would like to thank the many fans, not just of City, but Bristol Rovers and other clubs who have sent messages of sympathy.

**Peter Coleman**  
Head of Education and Welfare

## under-19 fixtures 2000/01

Academy Group D: Southampton, Reading, Crystal Palace, Wimbledon, QPR, Chelsea, West Ham United, Fulham and Tottenham Hotspur

### AUGUST

Sat 26 EVERTON 1-0

### SEPTEMBER

Sat 2 Derby County 0-2

Sat 9 BIRMINGHAM C. 2-3

Sat 16 Aston Villa 4-5

Sat 23 Coventry City 1-6

Fri 29 Arsenal 0-2

### OCTOBER

Sat 7 CHARLTON A. 4-2

Sat 21 IPSWICH TOWN 1-0

### NOVEMBER

Sat 11 Fulham 2-2

Sat 18 SOUTHAMPTON 0-0

### DECEMBER

Sat 2 CHELSEA 1-2

### JANUARY 2001

Sat 13 WIMBLEDON 0-2

Sat 27 Reading 5-4

### FEBRUARY

Sat 17 Chelsea 1-3

Thu 22 READING 1-3

Sat 24 WEST HAM U. 2-0

Tue 27 CRYSTAL PALACE 0-2

### MARCH

Wed 7 Crystal Palace 0-6

Sat 10 Tottenham H. 4-2

Sat 17 QPR 1-4

Wed 21 TOTTENHAM H. p-p

Sat 24 FULHAM p-p

### APRIL

Sat 7 Peterborough U. 2-3

Sat 14 QPR 1-1

Sat 21 NORWICH CITY 1-2

Wed 25 Wimbledon 0-5

Sat 28 Southampton

### MAY

Sat 5 West Ham U.

Home games (in BOLD CAPITALS) are played at Clifton College Training Ground, Bristol, kick-off 11am  
p-p = Match postponed

The under-19's play other group members twice (18 games), and play 10 inter-group games. Winners of each group qualify for semi-finals.



# here at **brunel ford** we offer you the complete package



- new + used car sales
- business to business vehicle sales
- new + used commercial sales
- finance + insurance
- car + light commercial servicing
- rapid fit
- accident repair centre
- parts distribution centre

...what more  
could you  
ask for?



FORD MAIN DEALER

## Brunel Ford

Winterstoke Road,  
Weston-Super-Mare  
01934 415511

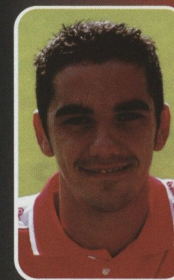
Winterstoke Road,  
Ashton Gate  
0117 908 9999

Muller Road,  
Bristol  
0117 951 3333

Opening times: Mon-Fri 9am-7pm • Sat 9am-5pm • Sun 10am-5pm

city talk in conjunction with **ClubCall**

“The lads are absolutely devastated in the dressing room. We had enough chances to win the game and I hit the post so we don't really feel we had the rub of the green. To lose at home to an injury-time goal is very hard to take.



“It's always nice to score, even when a defender kicks the ball against you and it goes in. But any pleasure at getting on the scoresheet is totally overshadowed when you don't win.”

**Scott Murray after City's 2-1 defeat by Wycombe Wanderers in the last home game**

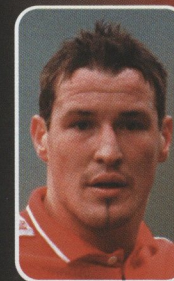
“We felt we got what we deserved in the end. We were by far the better side in the first half and finished the game stronger than City as well. It was a good all-round performance and we could have won by more if we had taken our chances.



“Now I think we need one more win to make us safe from relegation. If we keep playing as we did today there shouldn't be too many problems getting it. It was a very important victory for us.”

**Wycombe boss Lawrie Sanchez after Guy Whittingham's last gasp winner.**

“We have all put a lot of hard work into this season and had high hopes of making the play-offs. To throw it all away with three successive defeats is devastating for everyone.



“The supporters have been travelling to see us play week-in, week-out throughout the season and we are gutted for them as much as ourselves. But the harsh truth is that we only have ourselves to blame.”

**Lee Peacock after last Saturday's 2-1 defeat at Notts County had ended City's promotion challenge.**

“We both want to reach the landmark of playing in every League game because it's something we might never get the chance to do again.



“It's not often that you stay injury and suspension free over a whole season and I think it will be a good achievement if we do it. Me and Scotty will certainly be keeping each other going over the last games to make sure we retain form and fitness.”

**Louis Carey on his efforts and those of Scott Murray to be ever-presenters for City in the League this season.**

For the very latest news and views from Ashton Gate Stadium, call

**09068 12 11 76**

Calls cost 60p a minute at all times

**ClubCall**

city clubcall: 09068 12 11 76 WELL RED 17



## your chance to play at the 'gate!

**H**ave you ever wanted to emulate your City heroes by playing on the Ashton Gate pitch?

Well, if you're a fully-signed-up member of City Junior Strikers, here's your chance.

This Thursday (3rd May) we are holding two football training sessions at City's home ground.

The first will run from 5.30-6.30pm and be open to six to nine-year olds only. A second session, for members aged ten to 16, will follow between 6.45-7.45pm.

Places, which MUST be pre-booked, are available now at just £5 per head by phoning the CJS hotline on 0117 963 0601.

Please note that this invitation is open to CJS members only. In addition, due to the expected demand there will be no places available to those turning up on the day. See you there!



is sponsored by:



**NATIONAL DEPOSIT**

Friendly Society Limited



Peter Beadle and Matt Hill meet their young fans at the Ashton Gate Fun Day ...

## easter soccer schools

More than 240 youngsters attended our Fun Days/Soccer Schools, which were held

throughout the Easter break. Everybody had a great time, including the first-team players who turned up to sign autographs and chat to our young supporters.

Many thanks to Peter Beadle, Matt Hill and Louis Carey who did just that at the two Fun

## the city junior striker line-up

Congratulations to all those CJS's selected:

### TODAY'S MASCOTS



Jamie Ashford

**JAMIE ASHFORD** is aged four and attends Leapfrog Nursery School. He enjoys collecting Pokémon and his favourite City player is Lee Peacock.



Jamie Naish

**JAMIE NAISH** is aged 11 and goes to St. Annes School. His favourite City player is Lee Peacock.



Joseph Barnsley

**JOSEPH BARNSELEY** is aged eight and attends Fairfield School, Backwell. His interests include football, cricket, computers and judo. His favourite City player is Scott Murray.



Thomas Sheehan

**THOMAS SHEEHAN** is eight-years-old and attends Keynsham County Primary School. His hobbies include football, swimming, playing on his gameboy and collecting Pokémon cards. His favourite City player is Brian Tinnion.



Charlie McQuaid

**CHARLIE McQUAID** is eight-years-old and goes to St Bernadette School. His interests include football, judo and badminton. His favourite City player is Steve Phillips.



Abigail Wright

**ABIGAIL WRIGHT** is seven-years-old and goes to Hambrook Primary School. She enjoys horse-riding, music and dancing and her favourite City player is Mickey Bell.



... as does defender Louis Carey

Days held at Ashton Gate Stadium, which featured a behind-the-scenes tour of the ground.

Thanks too to Tony Malessa who popped in to say hello to the youngsters taking part at the Priory School Fun Day in Weston-super-Mare.

There were plenty of smiles too at our dates in Cheddar and Clevedon where youngsters took part in a special skills session hosted by City-affiliated coaches and competed in a Champions League tournament.

We'll keep you informed of any forthcoming Fun Days.

## junior hatters

A quick thought for our Luton Town friends today. While we may be disappointed at missing out on the chance of promotion, they face the prospect of relegation from Division Two.

So give them a friendly Ashton Gate welcome today and let's hope they can



Peter Beadle (back row) joins the Ashton Gate Fun day crew

bounce straight back up from Division Three next season. Enjoy the game!

## scott's our man!

We are proud to announce that City winger Scott Murray will be the official CJS Chairman for next season.

Scott will be attending all CJS-related events on a regular basis as well as sending regular newsletters to all members.

City's winger said he was "delighted" to take up the post and is looking forward to meeting all the club's young supporters.

## next season

We'll keep you posted in the summer on how you can go about renewing your membership for next season.

But before then, thank you for your fantastic support throughout the year. Danny and the boys have certainly appreciated it. See you in 2001/2002!

## CJS player of the year

**B**rian Tinnion has been voted YOUR Player Of The Year.

The influential midfielder (pictured right) has been enjoying his best-ever form since his switch to central midfield this season.



Young defender Matt Hill - who has been a regular at the back throughout this season - gets your vote as CJS Young Player Of The Year.

And goalkeeper Steve Phillips, who has done a sterling job deputising for the injured Billy Mercer, was judged to be Most Improved Player.

The full results are:-

### PLAYER OF THE YEAR

1st: Brian Tinnion; joint 2nd: Lee Peacock, Scott Murray; 4th: Tony Thorpe

### YOUNG PLAYER OF THE YEAR

1st: Matt Hill; 2nd: Simon Clist; 3rd: Aaron Brown

### MOST IMPROVED PLAYER

1st: Steve Phillips; joint 2nd: Aaron Brown/Louis Carey; 4th: Matt Hill

Many thanks to the hundreds of members who sent their votes in.





**action from the games against peterboro, wycombe and notts county**

1. The play-offs are still on when Lee Matthews celebrates opening the scoring in City's 2-1 defeat at Peterborough.

2. And hopes are still alive when, with City one-up, Tony Thorpe is unable to convert this chance to put City further ahead at home to Wycombe.

3. Where did it all go wrong? Peter Beadle buries his head in his hands after the visitors come from behind to win 2-1.

4. Lee Peacock battles Notts County left-back Dennis Pearce, but City lose 2-1 after taking the lead via Simon Clist.

5. It's all over. Peacock (left) and Matt Hill (far right) sum up what every City fan felt like last Saturday night after missing out on promotion for another year.



**well shot – photography by city's paul gilham**







## vale win ldv vans trophy

**P**ort Vale are the winners of the LDV Vans Trophy, after coming from behind to beat Brentford 2-1 at the Millennium Stadium, Cardiff on Sunday.

Bees defender Matthew Dobson gave the Londoners a third minute lead, but Vale fought back and equalised through a Marc Bridge-Wilkinson penalty after 77 minutes.

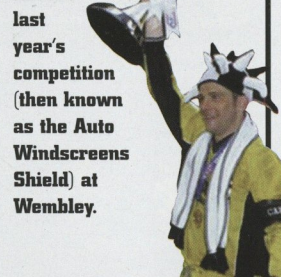
Then Stephen Brooker hit a glorious 20-yard strike to win the game six minutes from time.

Delighted Vale manager Brian Horton said: "I thought it was a tremendous game for the punters."

"Our supporters have had a hard season and so have we. We've treated the competition as a major thing right from day one, and we've had our reward today."

As expected, with two smaller clubs taking part, the final attracted a crowd of just 25,654.

This was well down on the 75,057 who watched Stoke's victory over City in the final of last year's competition (then known as the Auto Windscreens Shield) at Wembley.



## division two form table

	P	W	D	L	F	A	GD	PTS	%PTS
BOURNEMOUTH	8	7	0	1	16	6	10	21	87.50
READING	8	5	3	0	15	7	8	18	75.00
MILLWALL	8	5	2	1	14	3	11	17	70.83
ROTHERHAM U.	8	5	1	2	12	11	1	16	66.67
OLDHAM ATH.	8	4	3	1	10	7	3	15	62.50
PETERBRO. U.	8	4	2	2	15	10	5	14	58.33
COLCHESTER U.	8	4	1	3	12	9	3	13	54.17
PORT VALE	8	3	4	1	6	4	2	13	54.17
WALSALL	8	3	3	2	13	9	4	12	50.00
WREXHAM	8	3	3	2	10	9	1	12	50.00
CAMBRIDGE U.	8	3	2	3	13	17	-4	11	45.83
WIGAN ATH.	8	3	2	3	8	10	-2	11	45.83
BRISTOL R.	8	3	1	4	12	11	1	10	41.67
BURY	8	3	1	4	6	9	-3	10	41.67
STOKE C.	8	3	1	4	11	10	1	10	41.67
BRENTFORD	8	2	3	3	12	13	-1	9	37.50
BRISTOL C.	8	2	3	3	11	11	0	9	37.50
NOTTS COUNTY	8	2	3	3	10	12	-2	9	37.50
NORTHAMPTON T.	8	2	2	4	7	9	-2	8	33.33
SWINDON T.	8	1	3	4	6	9	-3	6	25.00
WYCOMBE W.	8	1	3	4	6	14	-8	6	25.00
OXFORD UTD.	8	1	1	6	9	18	-9	4	16.67
SWANSEA C.	8	1	1	6	4	12	-8	4	16.67
LUTON T.	8	0*	3	5	6	13	-7	3	12.50

This table shows the current form (last eight games) of each team, sorted by points percentage. This is calculated by the percentage of points taken against all-points available - ie a team which has won all of its games has claimed all available points and would have 100%. Correct up to and including 25.4.2001.

## also playing today

AFC Bournemouth v Northampton Town  
 Bury v Wycombe Wanderers  
 Cambridge United v Wigan Athletic  
 Colchester United v Reading  
 Oldham Athletic v Stoke City  
 Oxford United v Swansea City  
 Port Vale v Notts County  
 Rotherham United v Brentford  
 Swindon Town v Peterborough United  
 Walsall v Bristol Rovers  
 Wrexham v Millwall

## season review

**In the first issue of WELL RED this season we took a look into the Division Two crystal ball and foresaw Stoke as champions and Oxford finishing ninth. It's a funny old game ...**

### AFC BOURNEMOUTH

This season's "tortoise" to Millwall's "hare", Jermain Defoe's goals have fired the community-owned club from relegation trouble to a possible play-off place.

**Our prediction: 11th**  
**Current position: 7th**

### BRENTFORD

Defeat in the LDV Vans Trophy Final and never really got going in the League. Ray Lewington's appointment as manager gave the club some much needed stability off-the-field. **14th 16th**

### BRISTOL CITY

Well, everybody got a bit carried away pre-season didn't they? We'll be back ... **2nd 8th**

### BRISTOL ROVERS

Must play four games in seven days to decide their Division Two future, after the Memorial Ground mudbath claimed another victim midweek. With Cureton sold, Holloway sacked and the Dunfords claiming poverty - it's not been a happy year (for them). **7th 21st**

### BURY

They have no money and the lowest crowds in the Division. But Andy Preece's side still managed to beat the big boys and avoid relegation, so that has to be seen as an achievement. **22nd 14th**

### CAMBRIDGE UNITED

Beck is back, but the long-ball merchant who took the U's to the brink of the top flight has a short-

term relegation battle on his hands. Replaced Roy McFarland who could never afford replacements for strikers Butler and Benjamin. **23rd 19th**

### COLCHESTER UTD.

The £2 million sale of Tesor Lomana Lua-Lua to Newcastle United and Division Two survival is as close to the big time the U's have got since their famous FA Cup win over Leeds, back when Essex boys strill drove Ford Capris. **24th 17th**

### LUTON TOWN

The Hatters have been relegated to the bottom division for the first time since the 'sixties, and a season that started smilingly with a millionaire owner and the return of Ricky Hill ends in Joe Kinnears (slang). **10th 22nd**

### MILLWALL

Champions-elect, the Sarf London boys have held off challenges from Rotherham and Walsall for the top spot and held on to top-scorer Neil Harris. Shame a minority of their supporters still can't act like normal human beings. **3rd 1st**

### NORTHAMPTON TOWN

Summer buys, strikers Jamie Forrester and Marco Gabbiadini, failed to send the Cobblers shooting up the table. Rumours persist about a possible mystery foreign buyer. **15th 13th**

### NOTTS COUNTY

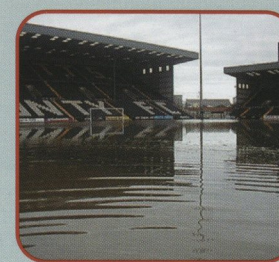
Partially sunk by the River Trent in the autumn (see picture top), County re-surfaced and, after last Saturday's victory over City, Jocky Scott's side can still reach the play-offs. **13th 10th**

### OLDHAM ATHLETIC

Another Manchester club who are feeling the pinch. Inconsistent form has ruled them out of a play-off challenge despite a strong finish. Never in danger of going down. **20th 12th**

### OXFORD UNITED

City arrived at the Manor Ground at the end of September, knowing the



side that lost would go bottom. Oxford lost 1-0, sacked manager Denis Smith and have stayed 24th ever since. And we forecast that Smith would "rejuvenate a talented ... squad"! **9th 24th**

### PETERBOROUGH UTD.

Barry Fry possesses some terrific strikers in Andy Clarke and Leon McKenzie, and the Posh should finish in the top-half of the table. Not bad after winning promotion last year through the play-offs. **19th 11th**

### PORT VALE

One of Division Two's youngest and brightest teams, their 2001 form could well have won them promotion as well as the LDV Vans Trophy, if it wasn't for their abysmal record pre-Christmas. **12th 15th**

### READING

City did the double over them but that proved a rare slip for the Royals who took advantage of Bristol Rovers' £250,000 autumnal gift of top-scorer Jamie Cureton to book a place in the play-offs, if not win automatic promotion. **5th 3rd**

### ROTHERHAM UNITED

Without question the team of the year. Ronnie Moore's Yorkshire fighters took everyone by surprise except us. Back in July we forecast: "If Mark Robins ... starts banging in the goals the Millers will be looking very Merry indeed." We also said they'd finish 16th. **16th 2nd**

### STOKE CITY

Never quite champion material, except when playing City. Peter Thorne has again banged in the goals, but it's been an inconsistent season and, despite being barely out of the top six since the start, the

Potters are still in danger of 'doing a Rovers' and missing out on the final day. **1st 5th**

### SWANSEA CITY

It's what happens when you spend nothing after going up - you tend to go back down again. Last season's Division Three champions have become Two's whipping boys this year and endured some distracting boardroom disputes. Now heading in the opposite direction to their Hamman-backed Cardiff rivals. **18th 23rd**

### SWINDON TOWN

With financial saviour Terry Brady more concerned with the on/off new stadium saga, and Colin Todd walking out to join Derby in the autumn it's been a farce of a season for our old mates up the M4. Not surprisingly, Division Three beckons. **6th 20th**

### WALSALL

Ray Graydon found the bargain of the year in £150,000 Portuguese striker Jorge Leitao, and is still in with a shout of riding the Saddlers back to Division One at the first attempt. **8th 4th**

### WIGAN ATHLETIC

One of the few Division Two clubs who can spend £1.5 million and lose their manager in the same month, which sums up why Dave Whelan's restless ambition and consistent results don't necessarily go hand in hand. Rioch's successor Steve Bruce is 'the Latics' fifth manager in three years. **4th 6th**

### WREXHAM

Caribbean duo Hector Sam and Carlos Edwards were supposed to be the saviours but in the end it was a youngster from Rhyl, Lee Trundle, who scored a bundle. **17th 9th**

### WYCOMBE WANDERERS

What more can you say? All but ruined City's play-off hopes to avoid relegation and proved there was still romance in the old FA Cup by reaching the semi-final. Boss Lawrie Sanchez is a tip for the top even if his side aren't yet. **21st 18th**

## Joining us next season

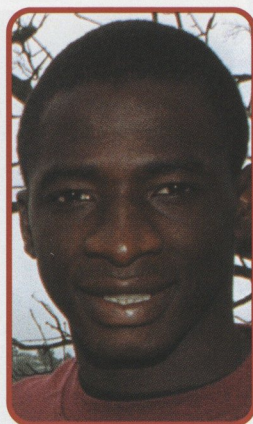
### COMING DOWN

Ian Holloway has his work cut out at **QUEENS PARK RANGERS**. Millions in debt and currently under administration, there'll be no quick way back, as Swindon have found out this season. **TRANMERE ROVERS** made their name in the Cup competitions but have finally found the weekly slog of Division One a round too far. One from **WOLVES, GILLINGHAM, NORWICH CITY, GRIMSBY TOWN, STOCKPORT COUNTY, HUDDERSFIELD** and **PORTSMOUTH** could still join them.

### COMING UP

The League are still to make up their minds about how to punish **CHESTERFIELD**, over financial irregularities, but definitely up are **CARDIFF CITY** - expect them to do a "Fulham" with Sam Hamman's backing next season - and **BRIGHTON & HOVE ALBION**. Eight clubs, including Greg Goodridge at Cheltenham and Steve Torpey at Scunthorpe, are still chasing the play-offs.





profile

**Born:** Angola Luanda, 5.6.83. **Exciting Portuguese under-18 international forward signed until the end of the season from Sporting Lisbon. Made an immediate impact at Ashton Gate, scoring the winner on his senior debut at Bury after coming on as substitute.**

at work

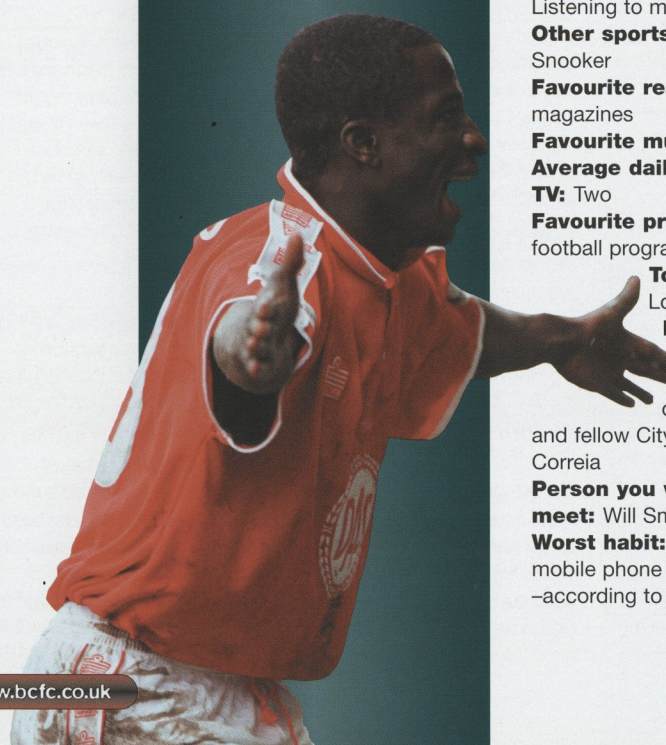
**Most enjoyable part of training:** Shooting  
**Least enjoyable part of training:** Pre-season fitness work  
**Most difficult opponent:** None in particular yet  
**Best goal:** My first one for City, which proved to be the winner at Bury recently  
**Most memorable match:** The above game when I came on as a substitute for my debut in League football  
**Worst moment in a game:** Losing at Notts County last Saturday  
**Make of boots:** Nike  
**Worst injury:** None as yet  
**Favourite Second Division stadium:** Ashton Gate  
**Soccer idol:** Dwight Yorke and Rivaldo

at home . . .

**Where do you live?** Staple Hill (in digs)  
**Describe your home:** Three-bedroom semi-detached house  
**Who lives there?** Jamie Edwards, Craig Woodman and myself, with the Landlord and his family.  
**Who does the housework?** Landlady  
**Least favourite household chore:** Washing-up  
**Describe your garden:** Patio, lawn, frog pond and sand-pit  
**Do you like gardening?** No  
**Car:** I don't have a car  
**Most precious possession:** My first Portuguese under-18 cap  
**Favourite meal:** Portuguese cooking.

at play . . .

**Favourite way of relaxing:** Listening to music  
**Other sports played:** Pool and Snooker  
**Favourite reading:** Soccer magazines  
**Favourite music:** African  
**Average daily hours watching TV:** Two  
**Favourite programme:** Any football programme  
**Top pin-up:** Jennifer Lopez  
**Favourite way of spending a night out:** A couple of drinks with my friend and fellow City player Albano Correia  
**Person you would most like to meet:** Will Smith  
**Worst habit:** Talking loudly on my mobile phone late at night -according to my landlord!



**W**hen did football first become important to you? My father and brother were both footballers where I was brought up in Angola so it was always a part of life for us. But I only started playing after my family moved to Portugal when I was eight.

**'My first goal made me very happy. The feeling was really good and the supporters were all celebrating. I shall remember it for a long time.'**

**How long have you been representing Portugal at international level?**

This is my fourth year. I am now with the under-18 squad and we are trying to qualify for the European Championship finals through the play-offs. Ultimately, it is my ambition to play for the senior Portuguese team.

**How do you see your future?**

I have signed for City until the end of the season, but I have a three-year contract at Sporting Lisbon so it is really up to them what happens next. If they are prepared to let me stay here for a couple of years I will be delighted because I have enjoyed my time at the club.

**What has life been like for you at Ashton Gate?**

Football-wise it has been great, but the language is a much greater problem and not knowing much English has made things difficult. Fortunately, Albano Correia was already at the club when I arrived and has been able to help me make myself understood. The players have been very friendly and I think Bristol is a very beautiful city.

**Are there major differences between football in Portugal and England?**

Yes, I would have to say that in Portugal there is great concentration on short passing and the technical side of the game, whereas in England teams tend to use the long ball more. Matches are more physical and there is a greater need for players to be strong as well as skillful.

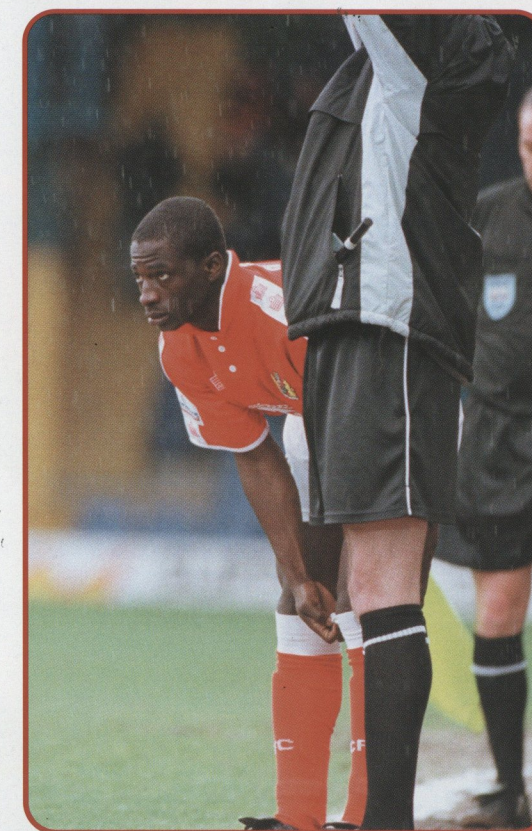
**How did you feel about scoring your first City goal at Bury?**

It made me very happy, especially as it helped us win the game. The goalkeeper saved a shot and I had to take the ball a bit wide before squeezing it in. The feeling was really good and the supporters were all celebrating. I shall remember it for a long time.

**What will you need to work on if you stay at Ashton Gate next season?**

In regard to my football I would have to say that my finishing can be improved and I will be working on that. Off the field, there is no doubt that if I stay here I will take English lessons, which should make everyday life a lot easier. I also have to get used to English cooking!

*Our thanks to Albano Correia for his assistance in acting as Lourenco's interpreter for this interview.*



For in-depth player interviews, log on to the official City website at:

[www.bcfcc.co.uk](http://www.bcfcc.co.uk)







*WELL RED* poster power:  
lourenco da silva





## Fantastic Holiday Savings for Bristol City Fans

Don't be blinded by the 50% OFF discounts – 50% off what!! –  
we can bring you some REAL holiday bargains

### RING US FOR A REAL DEAL

Swift Travel  
INDEPENDENT

FREE TRAVEL INSURANCE



Shirehampton, Bristol Tel: 0117 982 0365

Conditions may apply, subject to availability - ask for details

## MORTGAGES



# 1 in 3 people are paying too much for their mortgage

Be different - switch to Nationwide

www.nationwide.co.uk

0800 30 20 10

Nationwide. Underlining the difference

OPEN or visit us today

Banking | Credit Card | Insurance | Investments | Loans | Mortgages | Pensions | Savings

NATIONWIDE ESTIMATE THAT ONE IN THREE PEOPLE ARE PAYING TOO MUCH FOR THEIR MORTGAGE AS AT 19 FEBRUARY 2001. MORTGAGES ARE SUBJECT TO STATUS, VALUATION AND SECURITY. AVAILABLE TO THOSE AGED 18 OR OVER ONLY. NATIONWIDE BUILDING SOCIETY, NATIONWIDE LIFE LIMITED AND NATIONWIDE UNIT TRUST MANAGERS LIMITED REPRESENT ONLY THE NATIONWIDE MARKETING GROUP WHICH IS REGULATED BY THE PERSONAL INVESTMENT AUTHORITY FOR LIFE ASSURANCE, PENSIONS AND UNIT TRUST PRODUCTS. NATIONWIDE UNIT TRUST MANAGERS LIMITED IS ALSO REGULATED BY IMRO. WRITTEN QUOTATIONS AVAILABLE ON REQUEST FROM NATIONWIDE BUILDING SOCIETY, NATIONWIDE HOUSE, PIPERS WAY, SWINDON, SN3B 1HW. CALLS RECORDED. NATIONWIDE IS A MEMBER OF THE BUILDING SOCIETIES OMBUDSMAN SCHEME AND SUBSCRIBES TO THE BANKING AND MORTGAGE CODES, COPIES OF WHICH ARE AVAILABLE ON REQUEST. SECURITY WILL BE REQUIRED ON PROPERTY.

YOUR HOME IS AT RISK IF YOU DO NOT KEEP UP REPAYMENTS ON A MORTGAGE OR OTHER LOAN SECURED ON IT.

**A**shton Gate just won't be the same without 'The Doc'. But from the end of this season City must start doing without a face as familiar around the club as any past manager or player. Dr Dasgupta is leaving after more than 20 years in charge of medical matters, which have seen him share the highs and lows of the club of which he has been a passionate and committed supporter.

Known to his friends simply as 'Dr Das', he has often described the club as "my second wife", an indication of the commitment he has made since first taking on the job in 1980.

Back then he was running a busy practice in Bedminster and Bishopsworth. It was former City player Gerry Sweeney who first suggested he might become Club Doctor. They had a mutual friend and used to have a drink together at weekends.

Already rushed off his feet, 'Dr Das' had to discuss the prospect with real wife Kate, whose response was "You love your football. So why not go for it."

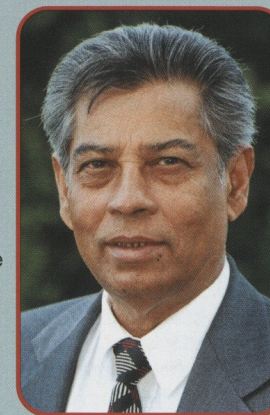
Fate took a hand as another doctor City were looking to appoint sadly died before he could take up the position. 'Dr Das' decided to take Kate's advice and was soon finding out that he hadn't joined the most affluent football club in the world.

The financial collapse of 1982 was not far off. He still recalls with a smile how he helped save money by getting samples of various remedies from the reps who visited his practice and putting them to use in his work for City.

In the dark days when the club almost went out of business 'The Doc' acted as go-between for players and directors, using his knowledge and understanding of both to try and pull things together. He takes great satisfaction from having instigated a meeting at which a member of the Board did address the players. Happier times saw 'Dr Das' in the front-line when City lifted the Freight Rover Trophy at

Wembley in May 1986 and memories of the match against Bolton Wanderers remain among his most treasured.

As a key member of Terry Cooper's off-the-field team, he shared the celebrations on the pitch afterwards and appeared in the front row of team photographs taken moments after the trophy was secured – a dream come true for any fan.



### He has often described the club as "my second wife"

It is, of course, his medical expertise that has made 'Dr Das' such a well known and respected character at Ashton Gate. He is immensely knowledgeable and pays enormous attention to detail in dealing with every individual case.

Having retired from general practice in 1995, he might have expected life to get easier. Soon, however, he was spending more time than ever at the ground, having assumed the extra responsibility of working for the Club's Academy.

During the 1998/99 season in the First Division City Directors invited 'Dr Das' and Kate to be guests of honour at a home game with Crystal Palace in recognition of his immense service. His son Ranjit, daughter Lucy and grandchildren Edward and Harriett shared the occasion.

Now 'The Doc' has decided to hang up his stethoscope.

City chairman John Laycock said: "Many players

have reason to be grateful to 'The Doc'. What might not be widely recognised is that he has helped numerous other people connected to the club.

"'The Doc' has shown tremendous helpfulness and kindness and he will be greatly missed."



Dr Dasgupta – second from left, front row – pictured with City's Freight Rover Trophy winning side at Wembley in 1986.



# reds re-visited james ryan recalls City's days in the top flight



**Last Friday (20th April) marked the 25th anniversary since Bristol City secured promotion to the top flight, after an absence of 65 years.**

Throughout this season **WELL RED** has featured the squad of players and coaching staff who took City out of Division Two in 1975/76, as well as some of the names who came to the club during the four seasons in Division One.

Each individual told of their memories from a very special period in Bristol City's history and, although they spoke of an identical era, no two interviews were the same, with column space often being the only limitation. It is testimony to a decade that will not be forgotten by those who were there or by the thousands of fans that will learn of the fantastic achievement in the future.

Despite losing unexpectedly to



Norman Hunter  
"Bite 'Yer Legs"

Blackpool and Notts County in the run-in, City's promotion would be guaranteed with a win over already-relegated Portsmouth. A crowd of 27,394 packed into Ashton Gate on a Tuesday evening to watch a noticeably nervous City clinch a 1-0 victory, thanks to a goal from Clive Whitehead.

It was highly appropriate that a goal from Whitehead, one of the squad's youngest members, clinched promotion. The youth policy, highly influenced by Alan Dicks and former chairman Harry Dolman, was the basis for City's success. Six of the players out of the frequent starting XI were Bristolian, with no fewer than nine in the squad who had progressed through the youth ranks. Dicks, Tony Collins, John Sillett and Ken Wimshurst carefully nurtured the promise and potential shown by the youngsters.

Cup runs in the years preceding the promotion season showed that in one-off matches, the team could compete at the highest level against the likes of Leeds United and Liverpool – two of the greatest clubs in European football during the 1970s. Promotion proved that they had now found consistency over an entire season.

The issuing of the fixture lists was eagerly awaited, and Bristol City couldn't have asked for a bigger game to make their bow –

Arsenal at Highbury. In their change strip of black-and-white, Geoff Merrick led City out into the warm summer sunshine to a fantastic reception from the thousands who had travelled from Bristol. Arsenal proudly paraded their recent record-breaking signing in Malcolm MacDonald, but it was City who made all the headlines in the following days' papers. In the sixty-fifth minute, Paul Cheesley leapt up in typical fashion to head home what would prove to be the winner, sending the West Country following delirious and leaving the remainder of the 41,032 spectators speechless.

After such a promising start to the season, it all turned sour in the first home game against Stoke City the following Tuesday. Cheesley, who had been highly influential, and promised

great things for the future, climbed for the ball with Stoke 'keeper Peter Shilton. He fell awkwardly, with his knee crumpled beneath him. Many feared for the striker at the time, but few would have predicted that the knee injury would, in effect, end his career.

It was a massive blow for Paul and the club. His form leading City's front-line was of paramount importance to the team. On realising the severity of the injury, Alan Dicks searched for a replacement, but initially struggled to uncover anything suitable in the transfer market.

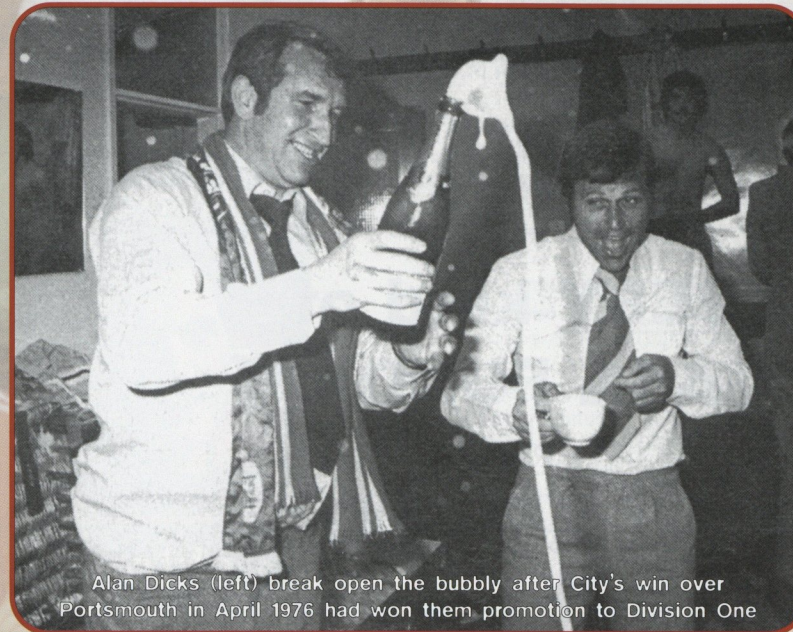
The pressure was building on Dicks to bring players to Ashton Gate. The young squad had proved their quality, but their inexperience at this level was clear. On 28th October 1976, Alan Dicks pulled off a major coup for the club, when he signed one of England's greatest post-war defenders. Norman Hunter was welcomed as a messiah by supporters and his performances for City made sure he won a permanent place in their affections.

It wouldn't be long before two other major signings were brought in to bolster the squad. Peter Cormack was signed from Liverpool for £50,000 and, shortly afterwards, Chris Garland arrived back at Ashton Gate after spells at Chelsea and Leicester City. It was hoped that Cormack would bring experience to the midfield, with Garland, now an established First Division marksman, replacing Cheesley in attack.

After a tough first season back in the top-flight, the issue of relegation was decided at Coventry City. Stoke City and Tottenham Hotspur were already relegated and the final place would go to either City, Coventry or Sunderland – who coincidentally played Everton that same evening.

Fifteen-thousand fans travelled up to the Midlands from Bristol, causing congestion around Highfield Road in the lead up to kick-off. As a result, the police advised that the game should be delayed by five minutes to allow the 36,903 fans into the ground.

After fifty-two minutes, City were 2-0 down and staring relegation in the face, but within two minutes of Coventry's



Alan Dicks (left) break open the bubbly after City's win over Portsmouth in April 1976 had won them promotion to Division One

second goal, man-of-the-match Gerry Gow scored from 12 yards to give City a lifeline.

Eleven minutes from time, Garland nodded down a Gary Collier free-kick to Donnie Gillies, who brought the sides level from ten yards. The frantic action continued until four minutes from time, when Coventry's Managing Director, Jimmy Hill, instructed the score-line from Goodison Park should be flashed up on the electronic scoreboard. Everton had beaten Sunderland 2-0, meaning a draw for City and Coventry would be enough to guarantee them both First Division football the following season. The non-stop action came to an amazing halt, with both teams keeping possession in their own halves, until a somewhat bemused referee blew the final whistle. The celebrations for fans and players alike will long be remembered, as will the game itself.

The 1977/78 season, City's second in Division One, was in many ways overshadowed by the off-the-field developments in the Boardroom. The battle for control, primarily between Robert Hobbs and Stephen Kew, filled the newspapers, putting football temporarily on the backburner in the eyes of the media. Its conclusion would

come one year later after an expensive High Court battle. It left many of the opinion that what had evolved had become more about personal pride, and not necessarily what was for the good of the club.

The season was a mixed one. City won the Anglo-Scottish Cup, defeating St Mirren 3-2 on aggregate in the final, but after a modest season finished in 17th place. The highlight was the signing of another big name at Ashton Gate. Joe Royle arrived from Manchester City, in what was initially a loan deal, scoring four goals against Middlesbrough on his debut in an amazing 4-1 home victory.

With the balance of youth and experience slowly coming together, the 1978/79 season looked promising for City. European football was a distinct possibility, when at one stage they occupied fifth position and were seventh as late on as April. A run of poor results and poor discipline, however, saw City tumble to a finishing position of thirteenth.

**The match programme from the first home game back in Division One, versus Stoke City**

There was also a sudden influx of foreign players including Finnish international Pertti Jantunen and Ajax winger Geert Meyer. The strong youth policy which had served them so well in elevating them to their current position had seemingly been put on hold, and City parted with promising reserve-team youngsters to boost the transfer kitty.

The departure of several other first-team players including Norman Hunter and Gary Collier (who was the first British player to leave a club under the Freedom of Contract rule) and the failure to replace them, would cost the club dearly. Despite riding high early on in sixth place, City eventually finished third from bottom and lost their First Division status after four seasons.

Further departures were inevitable, and an immediate return was often looked upon optimistically rather than realistically, by the fans and media alike. Few would be even close, however, when predicting what would lie ahead for City in the coming two years.

The strength and spirit, so often referred to when talking about the great team of the 'seventies, would then be needed more than ever, as Bristol City Football Club once again fought for survival, on this occasion, in the literal sense of the word.





# BARONS

MORTGAGE CENTRE  
(BRISTOL)

For **EVERY** kind of  
MORTGAGE FUNDING

We like to  
say **Yes!**

Don't think you can't  
until you've spoken to us . . .  
For written credit details:

**FREEPHONE**  
**0800 195 23 24**

Representative only of MGM Assurance Marketing Group, members of which are regulated by the Personal Investment Authority and IMRO, for the purpose of advising on and selling life assurance, pension and unit trust products bearing the MGM Assurance name

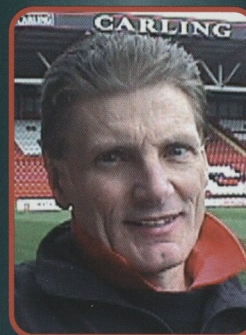
YOUR HOME IS AT RISK IF YOU DO NOT KEEP UP REPAYMENTS ON A MORTGAGE OR OTHER LOANS SECURED ON IT.

**204 NORTH STREET, BEDMINSTER,  
BRISTOL BS3 1JF**

# red-blooded . . .



**WELL RED**  
gives you  
the city fan,  
the third degree!



profile

**Full name:** John Evans  
**Date of birth:** 6.6.42  
**Birthplace:** Bristol  
**Occupation:**  
Sports Therapist/  
Remedial Masseuse  
**Family:** Daughters Julie  
and Sue, and son Nigel  
**Favourite other team:**  
Somerset County Cricket  
Club. I used to watch  
them when younger and  
still follow their progress  
with interest.

**When and where did you watch  
your first City match?**

At Ashton Gate on 10th March 1951  
against Norwich City. It was a 2-2  
draw, with Arnold Rodgers netting  
both City goals. I stood against the  
railings at what is now the Atyeo  
Stand end of the ground.

**What is your most memorable  
City match?**

There are four that stand out –  
winning at Leeds United in the  
1973/74 FA Cup; drawing at  
Coventry City to preserve First  
Division status in 1977; beating  
Liverpool at Anfield in the 1993/94  
FA Cup and last season's Auto  
Windscreens Shield final at Wembley  
against Stoke City.

**What is your worst memory of  
watching City?**

Seeing the club drop from Division  
One to Division Four in  
successive seasons  
between 1980 and 1983,  
almost going out of  
existence in the process.

**Who is your favourite  
City player of all time?**

It has to be John Atyeo. I  
was privileged to witness a  
large proportion of his  
Ashton Gate goals and  
appearances and watched  
some of his England games  
on black-and-white TV. I  
used to collect autographs  
in my youth and John  
kindly took my book to be  
signed by the entire  
England team who played  
Brazil, including Stanley  
Matthews and Duncan  
Edwards.

**Name your best City  
all-time XI:**

Mike Gibson, Gerry  
Sweeney, Martin Scott,  
Gerry Gow, Brian Tinnion,  
Norman Hunter, Gerry  
Sharpe, John Atyeo, Alec  
Eisentragar, Jantzen

Derrick, Jacki Dziekanowski. Subs:  
Alan Walsh, Bob Taylor, Shaun  
Goater, Gary Collier, Keith Curle,  
Tony Cook.

**Best away ground visited:**

Madejski Stadium, Reading and the  
McAlpine Stadium, Huddersfield.  
Both are well designed, spacious,  
modern stadia with excellent  
facilities, spectator viewing and  
playing surface.

**If you could have one wish for  
City what would it be?**

The club needs a period of stability  
after numerous management and  
boardroom upheavals. I would like  
to see City established as a solid  
First Division club, so that if we  
ever lucky enough to receive a  
financial boost from whatever source  
the Premiership would not be out of  
reach.





in  
association  
with



**RAILTRACK**  
stay safe, play safe!



**HMV**  
top dog for music-videos-games  
21/23 BROADMEAD



**ODEON**  
FOOTBALL FULL STOP.  
NSPCC



**GOOCH & HOUSEGO PLC**



## flying the red flag

**C**ity's final League game at Wigan next Saturday is not the only match to involve both clubs.

The Bristol City Supporters Club team (pictured above) have arranged a friendly against their Latics counterparts on the morning of the game, to be played at the JJB Sports Centre.

The team have been going for ten years now, and wear the club's colours in a local Sunday League. Next Saturday they will be taking a signed pennant and ball, donated by

the club, to present to their opposition. We wish them the best of luck!

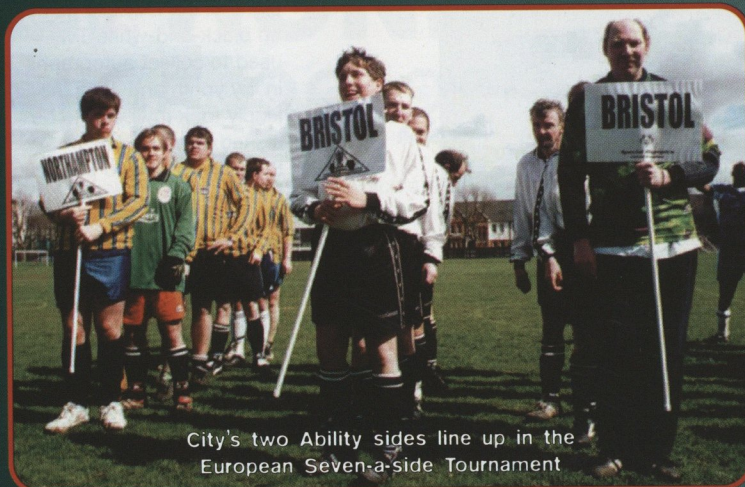
### BRISTOL CITY ABILITY FC

Bristol City Ability FC participated in a European seven-a-side Disabled Football Tournament in Antwerp on 21st April, competing against teams from across Northern Europe.

The senior team won three of their four group games, before an overall play-off match versus Millwall. After a gruelling 0-0 draw, it was down to penalties.

Dave Bawdon and Dave Plumbley showed nerves of steel as they blasted in their shots whilst Millwall shot wide, winning 2-0 on penalties.

The players went wild in celebration, as the win meant they had achieved the triple over Millwall



City's two Ability sides line up in the European Seven-a-side Tournament

this season. Our reserves also showed great courage and determination against generally stronger teams.

All our players were exemplary both on and off the pitch, developing a great team spirit.

**Mike Robey**  
Chairman BCAF

### SAFETY MESSAGE

As part of the national arrangements with Railtrack, all Football in the Community Projects around the country are keen to support and promote awareness of the dangers which surround the railways.

Vince Lucas, Railtrack

Commercial Manager, sends this message to all children, parents and everyone who looks after children:

"With the light nights now upon us and school holidays fast approaching children look to play outside. This brings an increased danger of them playing on or near railway lines.

"At Railtrack, through our involvement with the national Football in the Community Scheme, we want to encourage children to play football and keep away from the dangers of the railway.

"Our theme this year is 'Stay Safe, Play Safe!' Please help to keep children away from the tracks."

## City around the world pt. 2

**I**t never ceases to amaze us how far and wide across the world the name of Bristol City Football Club stretches. When supporters Carole Leslie and Richard Weale took a holiday in Vietnam last December they happened to take with them their City hats from the Auto Windscreens Shield final at Wembley and wore them with pride.

During the holiday they became friendly with local girls Tuyet, 16, and Nhi, 15, who were very interested to hear about the club. The hats became a parting gift as the photograph illustrates.

When they returned to England Carole and Richard sent the girls a copy of **WELL RED** together with copies of the photo. It was suggested that they formed a local branch of City Supporters Club in their town of Hoi An.

What Carole and Richard have heard since is that Tuyet (pictured left) and Nhi are regularly seen out wearing their prized City hats. Nhi plays football regularly with her brother.

So support for City is alive and well in Vietnam. Thanks to Carole and Richard for sharing their photo and story with us.



## womens fixtures 2000/2001

### SEPTEMBER

Sun 3	SWINDON TOWN	3-3
Sun 10	Southampton	4-0
Sun 17	BRISTOL ROVERS	0-2
Sun 24	Cheltenham Town	2-3

### OCTOBER

Sun 1	READING (AC) aet	3-1
Sun 8	DENHAM	0-0
Sun 15	Reading	4-3
Sun 22	PORTSMOUTH	2-2
Sun 29	Oxford (FAC)	6-1

### NOVEMBER

Sun 5	CHELTHENHAM (AC)	6-0
Sun 19	BRISTOL R. (FAC)	0-4
Sun 26	OXFORD	p-p

### DECEMBER

Sun 3	Bristol R. (AC)	0-4
Sun 10	Yeovil Town	p-p
Sun 17	Swindon Town	p-p

### JANUARY 2001

Sun 7	SOUTHAMPTON	6-0
Sun 14	CIRENCESTER (GC)	7-0
Sun 21	OXFORD	3-0
Sun 28	Denham	p-p

### FEBRUARY

Sun 4	READING	p-p
Sun 11	Portsmouth	p-p
Sun 18	CAM BLDGS. (GC)	10-0
Wed 21	CLEVEDON	0-0
Sun 25	Clevedon	3-1

### MARCH

Sun 11	Yeovil	0-3
Sun 25	Bristol Women	1-0

### APRIL

Sun 8	SALTASH	4-0
Fri 13	Oxford	2-1
Sun 15	Saltash	4-1
Sun 22	Portsmouth	1-2

Thu 26 YEOVIL (evening)

Sun 29 CHELTENHAM

### MAY

Tue 1	ROVERS (evening)	
Thu 3	CUP FINAL (Almondsbury, 7.30pm)	
Sun 6	Swindon	

Home games (in **BOLD CAPITALS**) are played at Watsons Playing Fields Abbots Leigh, Bristol, kick-off 2pm.

AC = Ambassador Cup

FAC = FA Cup

GC = Gloucestershire Cup

For more details ring Women's Team Manager Jack Edgar on 01934 513760.



## nearly isn't enough

**S**o we're in Division Two for yet another season. So near yet so far could be one conclusion. Looking on the brighter side, we're better prepared for a promotion campaign next season and it's not surprising that we didn't make it this time because of all the management and player changes. 'If only we had started better', would be a familiar cry. Here are my thoughts.

When he took over last summer, Danny Wilson had relatively little time to get prepared for the new campaign. He also had very little scope in the transfer market as the Board, understandably, were wary of the possible changes to the transfer system affecting players contracts and wanted to see the already inflated squad reduced.

Too many were unlikely to get a chance at first-team level, either through simple volume of numbers or lack of "the right stuff". The manager was actually successful in moving a number of players on to new clubs. More will probably follow.

After a poor pre-season the start to the new campaign was little better, but Danny made changes in September that saw the beginnings of a major improvement. Paul Holland's injury meant bringing in the youth and pace of Simon Clist and Aaron Brown to support Brian Tinnion's unstinting efforts in midfield. The same thing happened in defence. From September onwards Steve Phillips proved a worthy deputy in making the keeper's jersey his own as Billy Mercer battled to overcome his long-standing groin injury.

The long-term absence of new signing Mark Lever meant Danny played three at the back, moving Louis Carey out of his less effective position of right back to the right of the three and in came the tough-tackling qualities of Matt Hill. In the fine win at Wycombe, Carey was flanked by

Hill and Joe Burnell, which, along with Kevin Amankwaah, could be the nucleus of the defence for the future.

The pace and skill of Scott Murray and Mickey Bell gave us width and penetration in attack, and they contributed to the goal tally.

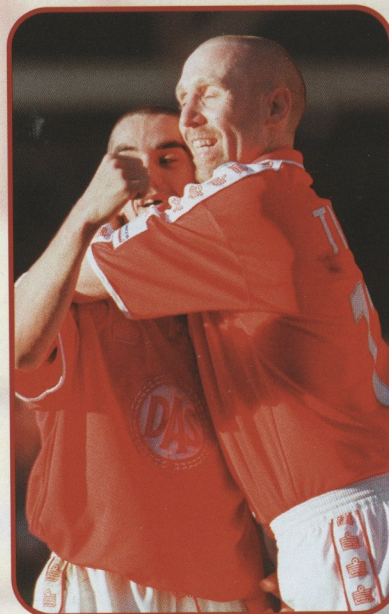
After the home draw with Colchester that set us on our way for the rest of 2000, Tony Thorpe was often deadly in front of goal with his regular partner upfront Lee Peacock, making major repayments of his 600K transfer fee. Sadly the goals dried up in the early months of 2001 for the hard working former Mansfield and Man. City forward, but his all round endeavour never wavered and he started netting again in March.

There was also the emergence of goalscoring form from Peter Beadle. Inspired by the impact of his substitute showing against the Gas before Xmas the affable target man exorcised our bitter memory of his last minute equalizer in the televised fixture 4 years previously. The deadline-day signing of the quick and direct Lee Matthews from Leeds was a smart piece of business, and the striker's goals in each of his first 2 games promises much for the future.

Maybe the shock of a complimentary piece in the usually pro-Gas 'Total Football', and the bonus of an FA Cup run may well have backfired in the aftermath of the defeat at Leicester. Danny was outfoxed by Peter Taylor - for the second season running - and there was no doubt in my mind that the spotlight shining on poor Matt Hill's two errors in that game had a short-term effect on the lad's performances. He has too much ability and character to let it get in the way of his impressive progress this season.

Unfortunately the teams overall form then dipped for several games. Opposition managers had us sussed - stop Brian Tinnion and his defence splitting passes to Murray and Bell and you stop our supply of goal chances.

Matt Hill is one of the players that City's Academy can be proud to point to as evidence of home-grown talent breaking through into the first team. He joins the ranks of Louis Carey, Damien



Spencer, Simon Clist, Aaron Brown, Joe Burnell, Kevin Amankwaah, Kayode Odejayi, Craig Woodman, Danny Coles and, of course, Marvin Brown. Doubtless there will be others to follow.

The crucial question is 'are they good enough to play at this and a higher level?'. 'Do they have the mental and physical toughness, and do they possess a winner's mentality?'

In the end, Danny put out the team that he considered to be the best of what he had available and got the best out of them. Unfortunately, we lacked consistency - we only beat two of the top 6 sides - an impressive double over free-scoring Reading and the heroic 'Gladiator' performances both home and away that bagged four points from the lions of Millwall - but were beaten by Stoke (twice) and took only one point from Walsall and Rotherham. It's not just about beating the Gas. We lacked the necessary street-wise, killer instinct in games against strugglers or mid-table mediocrities like Swindon, Oldham, Port Vale, Peterborough, Wycombe, Colchester and Brentford for example.

There were graphic demonstrations this term of how coaching could improve players. Steve Phillips had come on in leaps and bounds, Aaron Brown was more effective in attack than last season

where I sensed his confidence had taken a knock; and the sight of Louis Carey successfully performing a classy drag back against a Bury player in the resounding 4-1 victory at the Gate lingers long in the pleasure dome. Sadly, coaching cannot legislate for individual errors.

In the three-month purple patch towards the end of last year we enjoyed football filled with pace, flair and solidarity as several sides were sent packing. Reading were demolished 4-0, as were a poor Notts County, who unbelievably nearly ended up in the play-offs.

The New Year kicked off with a 6-2 crushing of Cambridge. The players seemed liberated from the stifling tactics imposed on them for the bulk of last season as they played with inspiration, self-expression and belief.

We have the basis for, and must continue to build, a promotion-winning squad. We weren't strong enough to go all the way this time.

If Man Utd, the top club in England, think they need a refit, where does that leave everyone else? What WE need, in my opinion, is an 'H-Block' strength Hypia/Henchoz/Hammam/Heskey spine to the team.

I hope the summer will see some smart dealing in the transfer market, snapping up quality bargains in much the same way that John Ward did, in most cases, before the start of the 1997/98 season, emulating clubs like Ipswich, Charlton, Southampton, and even Derby who have achieved Premiership status and consolidated their position.

There are players in the lower divisions and in the reserve teams of top Premiership sides (not relegation candidates) that would be the right ones to get. If the Gas can get former Man Utd and Arsenal reserves, then so can we.

We need a 'link player' striker who is a proven goalscorer with genuine pace and power, a two-footed winger like Joey Beauchamp, another creative and tough-tackling central midfielder, at least one quick, tough central defender and maybe another keeper.

Danny Wilson has shown a sure touch in the transfer market, both with his permanent signings such as Lee's Peacock and Matthews - we hope Mark Lever returns next time around - and with the excellent loan signings of Alan Miller, Darren Dunning and Neil Maddison. But if you need any help and recommendations for next season Danny, just give me a call!!!

## ROLL OF HONOUR

### PLAYER OF THE SEASON

Brain 'Rivaldo' Tinnion - ever willing and totally inspirational

### YOUNG PLAYER OF THE SEASON

Matt Hill - tenacious, tough and terrific in defence

### MOST IMPROVED PLAYER

Steve Phillips - made the keeper's jersey his own

### GOALS OF THE SEASON

Brian Tinnion v Cambridge (h)  
Tony Thorpe v Bury (h), v Notts County (h), v Kingstonian (h)  
Scott Murray v Notts County (h)  
Lee Peacock v Reading (h)  
Simon Clist v Kettering (h)  
Lee Matthews v Millwall (h) - a truly under pressure penalty

### BEST OPPOSITION PLAYERS

Neil Harris, Stephen Reid, Wade Elliot, Matthew Spring, Geoff Pitcher, Andy Edwards, Delroy Facey, Tony Rougier, Dave Artell, Martin Rowlands, Paul Evans, Lloyd Owusu, Wayne Thomas, Tom Youngs, Robbie Savage, Muzzy Izzett, and two old boys, Sean Dyche and Colin Cramb.

### SPORTS PICTURE OF THE YEAR

Paul Gilham's graphic shot (used as a backdrop to this article) of the despair and anguish of both City and Reading players to the horrific injury by Dani Rodrigues at the Gate. The shot recalls the reactions of the players to David Busst's terrible career-ending injury when playing for Coventry versus Man Utd several seasons back.

# city 2000

BUILDING THE DREAM

**C**ongratulations to Chris and Margaret Mills who became the winners in our recent Holiday Of A Lifetime Draw. See Over The Gate, on page four, for more details.

## THANK YOU

Many thanks to all our existing members for their continued support this season and, in addition, all those who have joined us this year. That said, **city2000** still needs more members so let me know if you can persuade a family member or friend to join up.

## WEEKLY DRAWS

Thank you also to those members who have made our weekly draws at Ashton Gate this season. The £500 draws will continue throughout the close season - so give me a call if you would like to help us pick out a winner.

## CHANGE OF ADDRESS

Please let us know if you change your address or telephone number. It makes it easier for us to contact you if you are a winner!

## LOTTERY WINNERS

**APRIL:** Ernest Long, Bristol (A1661); David Carleton, Bristol (A2441). Steve Dawson, North Harrow (B405)

## VIP TICKETS

M. Flower, Bristol (Wycombe); Paul Delaney, Bristol (Luton).

**RICHARD GARDNER**  
City2000 Co-ordinator



MORTGAGES

 Nationwide




# Most people only get a great mortgage deal for two years

## Be different - come to Nationwide

At Nationwide our new Base Mortgage Rate ensures great value both now and in the future. It's currently around 1% lower than the standard variable rate most borrowers pay. And, unlike most lenders, at Nationwide we make sure our loyal borrowers get our best rates year after year. What's more our mortgages come with daily interest, a full range of flexible features and the reassurance of meeting the Government's CAT standards. So call us today quoting reference number MA09 and move to a mortgage with longer lasting value.

Nationwide. Underlining the difference

BASE MORTGAGE RATE	
<b>6.24%</b>	<b>6.5%</b>
(VARIABLE)	APR (VARIABLE)

 [www.nationwide.co.uk](http://www.nationwide.co.uk) |  0500 30 20 10 |  or just call in

Banking | Credit Card | Insurance | Investments | Loans | Mortgages | Pensions | Savings

TYPICAL EXAMPLE ASSUMES BORROWERS TAKE OUT A BASE MORTGAGE RATE OF 6.24%. NEW BORROWERS TO NATIONWIDE REQUIRE A MINIMUM DEPOSIT OF 25% FOR THIS RATE. A BORROWER APPLYING FOR A £60,000 REPAYMENT MORTGAGE OVER 25 YEARS BASED ON A PURCHASE PRICE OF £80,000, 300 MONTHLY PAYMENTS OF £395.44 WILL BE REQUIRED. 6.5% APR (VARIABLE). APR ASSUMES A 25 YEAR TERM. TOTAL AMOUNT PAYABLE (TAP) WILL BE £119,081, WHICH INCLUDES 300 MORTGAGE INTEREST PAYMENTS, SOLICITOR'S MORTGAGE COSTS OF £100 EXCLUDING VAT (AND ASSUMING THE SAME SOLICITOR ACTS FOR BOTH OF US), A VALUATION FEE OF £175 WHICH IS REFUNDED ON COMPLETION. APR QUOTED ASSUMES THAT COMPLETION TAKES PLACE ON 1 MAY 2001 AND ASSUMES ALL MONTHLY PAYMENTS TAKE PLACE ON THE 28TH OF THE MONTH. MORTGAGES ARE SUBJECT TO STATUS, VALUATION AND SECURITY. AVAILABLE TO THOSE AGED 18 OR OVER ONLY. NATIONWIDE BUILDING SOCIETY, NATIONWIDE LIFE LIMITED AND NATIONWIDE UNIT TRUST MANAGERS LIMITED REPRESENT ONLY THE NATIONWIDE MARKETING GROUP WHICH IS REGULATED BY THE PERSONAL INVESTMENT AUTHORITY FOR LIFE ASSURANCE, PENSIONS AND UNIT TRUST PRODUCTS. NATIONWIDE UNIT TRUST MANAGERS LIMITED IS ALSO REGULATED BY IMRO. WRITTEN QUOTATIONS AVAILABLE ON REQUEST FROM NATIONWIDE BUILDING SOCIETY, NATIONWIDE HOUSE, PIPERS WAY, SWINDON, SN38 1NW. CALLS RECORDED. NATIONWIDE IS A MEMBER OF THE BUILDING SOCIETIES OMBUDSMAN SCHEME AND SUBSCRIBES TO THE BANKING AND MORTGAGE CODES, COPIES OF WHICH ARE AVAILABLE ON REQUEST. SECURITY WILL BE REQUIRED ON PROPERTY.

YOUR HOME IS AT RISK IF YOU DO NOT KEEP UP REPAYMENTS ON A MORTGAGE OR OTHER LOAN SECURED ON IT.

# seeing red

Bristol City Supporters Club news  
Tel no: 0117 966 5554

## award ceremony

**S**hortly after the final whistle this afternoon we will be staging our annual Player Of The Year presentation in the Atyeo Suite.

This is your chance to find out who will be succeeding last season's winners, Billy Mercer and Joe Burnell, as Player Of The Year and Young Player Of The Year respectively. This evening's presentation will also include a Top Goal Scorer award.

The event will kick-off at 5.30pm and, for the first time, we are laying on this event FREE to our members - see admission details below.

In addition to the player presentations, we will be making donations of £1,000 each to the Academy and Girls football team.

### THE PROGRAMME

**5.30pm:** Introductions

**5.35pm:** Presentation of cheques to the Academy, by Supporters Club and Academy member Scott Golbourne; and the Girls Football Team, by Supporters Club member Stacey Rowe.

**5.45pm:** Presentation to Player of the Year, Young Player of the Year and Top Goal Scorer.

**Followed by:** A vote of thanks; draw to win a Season Ticket; draw to win Billy Mercer's sponsored and signed shirt and a free members-only draw for Mark Lever's sponsored and signed shirt.

### ADMISSION DETAILS

Join us in the Clubroom immediately after the match. There will be no charge to members (on production of their paid-up membership card) but non-members should pay £1 admission after 5.15pm (space permitting).

As you know, without income from the bar, our resources are limited so we hope you will support all our fundraising

ventures today to help keep the Club thriving.

### MEMBERSHIP RENEWAL

Holders of White membership cards should check their membership now to see if it needs renewing before the start of next season. If it does, either hand in your card for renewal today ready for collection on the first match of next season or post it to Bristol City Football Supporters' Club, Ashton Gate, Bristol BS3 2EJ, with cheques payable to Bristol City Supporters' Club. Please include an SAE.

White card renewal costs just £10 adults, £5 seniors and £2 juveniles.

In addition Gold and Silver membership is limited in number and existing members will need new cards for August. Hand in your renewal form and subscription NOW so that your card will be ready for the first game (or post it to us).

### SEASON TICKET DRAW

It's your last chance today to win a 2001/2002 season ticket for just £1. Look out for volunteers selling squares in the Clubroom - the Draw will take place following the Player Of The Year presentation.

Will anyone Open The Box again this season? There's £220 to be won if they do, and this will increase today. It's just 20p a go. A fresh game starts next season.

### A FINAL NOTE FROM YOUR COMMITTEE

We would like to take this opportunity to thank all Supporters' Club members for their involvement throughout the year and for making this Club our own.

On the field, we have watched some displays of exciting football and, whilst we are making presentations to just a few of the players today, our good wishes go to all the players for their contribution to what is, after all, a team game. We wish everyone a very good summer and we look forward to some exciting games next season.

## final reminder

**M**ake a note in your diary NOW to attend our Programme Fair on Sunday 20th May 2001.

The event will be staged in the Atyeo Suite from 11am-2pm.

It follows on from our success in hosting a similar Fair in January, which we have been asked to repeat by popular request.

So dig out all those old programmes that you don't know what to do with.

Or, perhaps you're missing one or two to complete your collection? Many different dealers set up stall last time, which is always an indication of the popularity of the Fair.

There are lots of footy bargains on offer plus the chance to buy and sell your own programmes.

We run our own stall at the Fair to help boost our funds and would welcome any programmes you may like to donate.

Ring us on the Supporters' Club number (at any time) if you can help, or seek out Tony Sheppard in the Clubroom today.

## Have you always meant to join?

We are a Club run by members, for members and would like to meet you in our Clubroom next season. Call in today for full details, or ring the number at the top of the page. We hope to have our website up and running for the start of next season. Look out for details from August.



# There's a brand new team at the heart of English football.

Football and the Government have teamed up in a new partnership to provide new lifeblood for the grass roots of English football – pumping financial support into the game that's so close to the hearts of so many. From parks pitches to professional football clubs, we'll be there to help everyone who loves football, providing a new generation of facilities for all



by pooling resources from The FA Premier League, The Football Association, Sport England and the Government into a single substantial fund for redistribution throughout the game. Together, we intend to ensure that football enjoys a healthy future for many generations to come.



## FootballFoundation

football's biggest supporter

1 Waterhouse Square, 138-142 Holborn, London EC1N 2ST.  
T: (020) 7832 0100 F: (020) 7832 0119  
E: enquiries@footballfoundation.org.uk  
W: www.footballfoundation.org.uk



# commercial city

making business  
a pleasure

**W**elcome to our Match Sponsors for this, the last home match of the season.

**Hughes Rail are a brand new company joining us for the first time today and we hope this will be the start of a long association with us.**

Match Magazine sponsors are the well-known recruitment agency Pertemps, also joining us for the first time.

To all our hospitality guests, we hope you all have a very enjoyable day and look forward to seeing you all next season.



## meet the matchday team

The Corporate Hospitality team pictured have had a superb season and are now busily preparing all next seasons packages. If you would be interested in working within our bar and restaurant areas on a matchday as a host telephone Corporate Sales Manager Elaine White on 0117 963 0606.

## NEW SPONSORSHIP, NEW DEAL

We are delighted to announce a brand new partnership between Bristol City Football Club and the Employment Service.

The Bristol and South Gloucestershire Employment Service are sponsoring the Senior Reds Club with the New Deal 50 plus.

The sponsorship is for one year initially and will give New Deal the opportunity to promote the service to all supporters at Ashton Gate.

A lunch was organised on Thursday for all Senior Red members and club Chief Executive Colin Sexstone, who warmly welcomed the new sponsors.

*new deal*   
Freephone 0800 793 9870

City Corporate Sales Manager Elaine White said: "We are delighted to be working with the Employment Service. This must be a first for any Football Club to be sponsored by a Government Department!"

Sarah Furlong – New Deal 50 plus Manager said: "We hope the sponsorship deal will attract more people over the age of 50 to join the scheme. For people who start full or part-time work through New Deal they may be entitled to an employment credit of up to £60 per week."

## ALL SYSTEMS GO!

We are already getting ready for the

2001/2002 season and have plenty of opportunities to get your company noticed at Ashton Gate Stadium.

For details of all advertising opportunities now available contact the Corporate Sales Department on 0117 963 0600

## WHERE CAN WE HOLD A PARTY?!

With the last match today for this season all our facilities will be available for hire. Whether it's a wedding, anniversary, meeting or trade show, we can accommodate you.

Telephone Kerry Price on 0117 963 0605 for further details.

up for it!



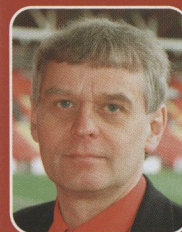
OFFICIAL KIT SUPPLIER TO



BRISTOL CITY



## webbie's half-century!!



A very very happy birthday this week to Steve Webb, one of our matchday hosts, who we understand has reached his half-century this week!

Steve has been the club historian this season, leading the stadium tour for corporate guests every matchday. Today he will be completing 20 years of ground tours, a landmark which coincides with this very special birthday.

On behalf of everyone at Bristol City Football Club – congratulations Steve!







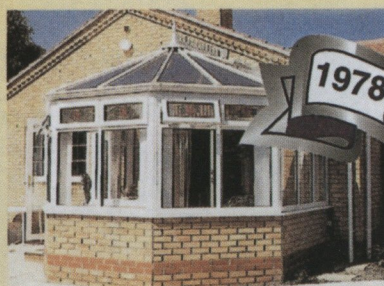
## WINDOWS, DOORS AND CONSERVATORIES

10 year labour and parts insurance backed guarantee



All windows and doors are internally Glazed and have high security locking Georgian or Leaded

Celebrating 22 years of local service



Full conservatory construction from concept to completion



Established FOR 22 years



Patio Doors  
All products have high security locking

Home of top quality windows and doors

77 NAGS HEAD HILL, ST. GEORGE, BRISTOL.

FREEPHONE ANY TIME

08000 133122

**CR  
WINDOWS  
AVON LTD.**



JJB Stadium - home of Wigan Athletic and Wigan Warriors

**T**his was supposed to have been the match when the play-offs all but began - a top six decider between Wigan Wilson's home-town club and his adopted Reds.

Instead, with City now out of the running for promotion, it is only the home side who are likely to have anything to play for. Depending on how today's results go, the Latics may still need to win next Saturday to secure their place in the Division Two play-offs for a second successive year.

City, then, could still have an important role to play in the promotion race - even if it is simply as party-poopers!

With just three victories in their last 13 matches, the Lancashire club, bank-rolled by JJB Sports supremo Dave Whelan, have rather spluttered across the finishing line this season.

This has largely been down to a lack of firepower up front - Wigan have the lowest goal difference in the top six and have never really found an adequate replacement for last season's top-scorer Stuart Barlow who was sold to Tranmere Rovers in the summer. Defensively, however, they remain strong, conceding less goals than anyone bar the League leaders, and probable champions, Millwall.

Whelan - who has often stated his ambition to emulate the late Sir Jack Walker's success up the road at Blackburn - hasn't been afraid to splash the cash.

Midfield arrivals Alan McLoughlin and Stephen McMillan cost £1.5 million from Motherwell.

The flip side is an unstable backroom. Internal bickering led to the departure of manager Bruce Rioch in March, with both sides blaming each other for the mess. His replacement, former Manchester United skipper Steve Bruce, becomes the fifth Latics manager in just three years.

### RECENT FORM

Most recent result first:

**Wigan Athletic:** LWWLWD

### JJB STADIUM

Capacity: 25,000

#### Directions

Go northbound on the M6, exiting at junction 25. Turn left at the roundabout at the top of the slip road and follow the signs for "A49 Wigan". Go straight on at the next roundabout, continuing along the road until you reach a major road junction. Follow the bend left, keeping in the left-hand lane, and then right as you come round the bend turning left at the lights. Proceed along this road and turn right at the second set of lights into Scot Lane. You should then enter the Robin Park Complex with the JJB Stadium ahead of you.

## ticket details

**NATIONWIDE LEAGUE DIVISION TWO**

**WIGAN ATHLETIC**  
**JJB Stadium**  
**Saturday 5th May 2001,**  
**kick-off 3pm**

This match is all-ticket for visiting supporters. There will be no tickets available for sale on the day of the game.

City has received an allocation of 2,816 reserved and covered seats in the Adidas East Stand. Tickets are priced £12 adults and £7 OAP/juveniles, and are on general sale until close of business on Thursday (3rd May).

Disabled supporters will receive free admission but their carers will be charged £12 adults and £7 OAP/juveniles. They should contact the ticket hotline in 0117 966 6666 for further details.

To claim members discounts tickets must be purchased by the day **BEFORE** the game. For further enquiries please call 0117 966 6666.

see you all next season!



# CWJ

C W JONES (FLOORINGS) LTD.

10 Vale Lane (Off Hartcliffe Way)  
Bedminster, Bristol BS3 5RU  
Tel: 0117 966 1454

Open 9am-5.30pm Sat 9am-5pm  
LATE NIGHT FRIDAY 9AM-7.30PM

### BEDS

Special offers, new models, competitive prices,  
immediate delivery on stock items, free  
delivery/disposal of old bed

HUNDREDS OF ROOM SIZED REMNANTS  
MANY 1/2 PRICE OR LESS

Huge range of "Roll Stock" carpet low, low prices  
(Cash/carry, delivery or fitting)

1000's of contract quality carpet tiles  
- home, office, anywhere!  
Prices from £1.99 per tile (500mm x 500mm)

### Largest selections of Floorcoverings and beds in the West Country

As members of the largest buying  
group in Great Britain,  
you will not better our prices

- PERGO Laminate
- AMTICO Vinyl
- KARN DEAN Vinyl

APPROVED  
SPECIALIST/EXPERT  
QUALITY  
INSTALLATIONS

### CARPETS

Many new ranges  
including "naturals", Sisal, Coir, Wool  
Free home selection/measuring service available

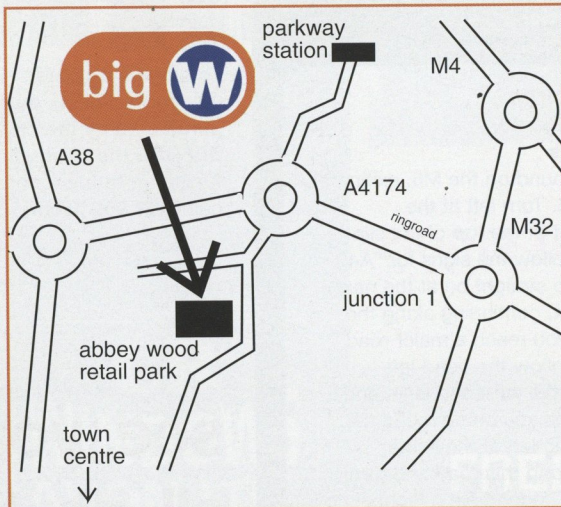
Ring us for a quotation on Britain's leading carpet  
manufacturers including;

Axminster, Brinton, Gaskells, Penthouse, Ryelux, Sandersons,  
Stoddard/Templeton, Ulster, Victoria, Woodward, Grosvenor

AMPLE FREE PARKING

40 years serving the west country

abbey wood retail park, station road, filton, bristol BS34 7JF • 0117 969 7303



monday to saturday  
8am to 10pm

sunday  
11am to 5pm

bradford • bristol • coventry • edinburgh • glasgow • redruth • rotherham • stockton-on-tees

### Campaign Records

Highest Gate 22,133 Stoke v Port Vale	Lowest Gate 1,584 Wrexham vs Cambridge	Highest Agg. Score Brentford .....2 Bristol Rovers .6	Biggest Home Win Cambridge .....6 Rotherham .....1	Biggest Away Win Brentford .....2 Bristol Rovers .6
Bristol City .....6	Cambridge .....2	Luton .....5	Swansea .....3	Wrexham .....5
Oxford .....3	Reading .....5	Oldham .....0	Millwall .....5	Oxford .....0
Millwall .....6	Colchester .....1	Port Vale .....5	Peterborough .0	Consec. Wins Walsall, Millwall, Rotherham .....5
Games Unbeaten Wigan .....18	Consec. Defeats Bury, Swansea 5 Winless Run Bristol Rovers, Cambridge .....12	Consec. Wins Walsall, Millwall, Rotherham .....5	Games Unbeaten Wigan .....18	Consec. Defeats Bury, Swansea 5 Winless Run Bristol Rovers, Cambridge .....12

# NATIONWIDE2STATS

Statistics Compiled by  
Football  
Information  
Services  
Tel: 0151-632 5679

for clubs below, read  
across row to right for  
Big Wins/Defeats and  
last 5 results

Club	Average Attendances					Goals - Where From			Form Guide: Last 5 Home & Away				
	3000	6000	9000	12000	15000	Scored Conceded	CR	IA	OA	Home Form	most recent result on right	Away Form	
Bournemouth					4,307	Bo	17	15	45	30	12	7	WWLWW Bournemouth LDWWW
Brentford					4,795	Bt	20	12	21	40	7	5	WDWLD Brentford LDLWL
Bristol City					10,424	Bc	27	14	35	28	5	13	LWDDL Bristol City WDWLL
Bristol Rovers					7,265	Bv	18	12	23	32	6	6	DWLWW Bristol Rovers LLLLL
Bury					3,414	Bu	12	14	26	33	5	8	WDWLL Bury WLDLW
Cambridge					4,341	Cu	20	21	30	34	5	16	WLWDL Cambridge LLWLW
Colchester					3,489	Cu	14	14	29	35	6	4	WLWWD Colchester LLWLL
Luton					5,777	Lt	16	22	28	45	4	7	LDDL Luton WLDLL
Millwall					11,121	Mi	23	10	50	25	10	2	WWWWW Millwall LDDDW
Northampton					5,746	Nt	8	12	30	29	8	11	WWLLW Northampton LDLDL
Notts County					5,386	Nc	16	17	37	38	2	4	WDLWW Notts County DDLDW
Oldham					4,773	Oa	15	22	28	30	9	6	WLWDW Oldham LDWDW
Oxford					5,103	Ou	16	34	21	48	11	14	LLWLL Oxford WLDLL
Peterborough					6,024	Pu	10	21	44	31	5	11	DWWLW Peterborough LDLWD
Port Vale					4,347	Pv	15	10	22	26	9	6	WDDWW Port Vale WWDLD
Reading					12,288	Re	34	17	37	27	11	3	WLWWD Reading WDDWW
Rotherham					5,475	Ru	34	21	34	21	8	11	WWWWW Rotherham LLDWW
Stoke					13,457	Sc	21	14	39	26	8	7	LLWDW Stoke WLLWL
Swansea					5,124	Ss	13	20	19	43	7	6	LWDL Swansea WDLWL
Swindon					6,110	St	13	24	26	32	5	4	WDLDL Swindon DLWLD
Walsall					5,564	Wi	22	17	41	21	9	11	LLWDW Walsall LWDDL
Wigan					6,625	Wa	20	17	26	18	5	6	DDLWL Wigan LLDWW
Wrexham					3,494	Wx	7	25	42	31	15	10	LLWDW Wrexham LDDLW
Wycombe					5,459	Ww	12	17	18	28	10	5	LDDL Wycombe LLLWL

### Clubs' top scorers & the points their goals have won

see key below	Leading Scorer	GS	Sc1	Sc2	HT	Gms	Ave	Pts	Run
Rotherham	Robins	24	15	3	1	40	0.60	21	2
Reading	Cureton	25	17	1	2	41	0.61	20	5
Northampton	Forrester	17	13	2	0	41	0.41	18	5
Bournemouth	Defoe	17	13	2	0	27	0.63	15	10
Millwall	Harris	25	12	2	3	40	0.63	15	3
Notts County	Stallard	15	15	0	0	38	0.39	15	3
Stoke	Thorne	16	7	3	1	35	0.46	13	3
Walsall	Leitao	18	16	1	0	42	0.43	13	3
Wycombe	Rammell	10	4	3	0	26	0.38	11	2
Wigan	Haworth	11	8	0	1	28	0.39	10	2
Wrexham	Ferguson	9	7	1	0	41	0.22	10	2
Bristol City	Thorpe	18	10	1	2	38	0.47	9	2
Bristol Rovers	Ellington	13	7	3	0	38	0.34	9	3
Peterborough	McKenzie	12	8	2	0	28	0.43	9	2
Cambridge	Youngs	13	9	2	0	35	0.37	8	3
Colchester	Stockwell	10	6	2	0	42	0.24	8	1
Brentford	Owusu	8	8	0	0	28	0.29	7	2
Oldham	Duxbury	8	4	2	0	38	0.21	7	1
Port Vale	Naylor	11	7	2	0	36	0.31	7	2
Swansea	Savarese	12	3	3	1	28	0.43	7	2
Bury	Cramb	5	5	0	0	15	0.33	6	1
Swindon	Invincible	8	4	2	0	40	0.20	5	2
Oxford	Beauchamp	7	5	1	0	40	0.18	2	1
Luton	George	6	6	0	0	40	0.15	1	2

### Biggest Wins & Heaviest Defeats

Club	Win - vs.	Defeat - vs.	PU	CS	FS
Bournemouth	4-0 Bristol City 1-3	Cldh/Rth	31	14	4
Brentford	3-0 Oxford	2-6 B Rovers	30	10	11
Bristol City	6-2 Cambridge 0-4	Col/Bmt	33	10	10
Bristol Rovers	6-2 Brtd/Oxf 1-4	Stoke	35	14	18
Bury	3-0 Swansea 0-4	Millwall	28	12	14
Cambridge	6-1 Roth'am	2-6 Brstl City	39	10	10
Colchester	4-0 Bristol City 1-6	Millwall	28	12	15
Luton	5-3 Swansea 0-4	Swansea	32	7	15
Millwall	6-1 Colchester 2-3	3 clubs	32	22	7
Northampton	2-0 5 Clubs	0-3 3 clubs	35	10	14
Notts County	4-1 Roth'am 1-5	Walsall	35	12	10
Oldham	5-1 Wrexham 0-5	Reading	28	13	13
Oxford	3-1 Nrthmptn 0-5	Millwall	39	4	17
Peterborough	4-0 Swindon 0-5	Port Vale	27	12	12
Port Vale	5-0 Peterboro 0-4	Cambridge	26	13	12
Reading	5-0 Oldham 0-4	Brstl City	29	16	6
Rotherham	3-0 5 clubs 1-6	Cambridge	27	19	5
Stoke	4-0 Oxf/Stke 0-3	Walsall	28	13	9
Swansea	4-0 Luton 1-5	Rdg/Wal	30	9	21
Swindon	3-0 Bury/Oldh 0-4	P'boro	35	13	17
Walsall	5-1 3 clubs 1-3	Wy/Swa	25	13	11
Wigan	3-1 3 Clubs 1-3	Mill/Brnt	31	16	13
Wrexham	4-1 Bury 1-5	Oldham	30	8	10
Wycombe	3-1 3 Clubs 1-5	Walsall	32	10	18

Key: GS=Goals Scored; Sc1=Games Scored 1 Goal; Sc2=Games Scored 2 Goals; HT=Hat-Tricks; Each club's leading league scorer and their goals per game (Ave). Next column shows taking off their goals, how many Points (Pts) lost. Last figure show best scoring Run in consecutive games. NUMBERS: PU=Players Used CS=Clean Sheets FS=Games Failed to Score

Football  
Information  
Services is  
sponsored by

Only 90,000 minutes to go.

The new season starts August 11th. Call now to reserve your seat.

digital  
**on**  
0808 100 0101

This page has kindly  
been sponsored by



20 Bond Street, Bristol Tel: (0117) 929 1425  
1 Union Street, Bristol Tel: (0117) 922 5288  
Asda Store, East Street, Bedminster, Bristol Tel: (0117) 923 1839  
9 Imperial Arcade, Bedminster, Bristol Tel: (0117) 966 4000



# city kit sponsorship



**kevin amankwaah**

**Colin Fox**  
home

**Bob, Georgina and Rebecca Bell**  
away

**simon clist**

**CITY LIST**  
www.citylist.org.uk  
home

**B RISLINGTON FASTENERS**  
away

**steve jones**

**Commercial Department**  
0117 963 0605  
home away

**paul mortimer**

**Conferencing Department**  
0117 963 0605  
home away

**brian tinnion**

**Sounds Commercial**  
the fine art of CONFERENCE SERVICE  
home

**Maggie Lansdown**  
away

**peter beadle**

**DIAMOND KNIFE PLC**  
home

**Mark Tunbridge**  
away

**danny coles**

**Trade Windows Manufacturing Ltd**  
0117 963 0605  
home away

**gerard lavin**

**Community Department**  
0117 963 0603  
home away

**scott murray**

**The Three Lions Public House**  
home

**Marmobello Marble Granite**  
away

**craig woodman**

To sponsor this player call Kerry on 0117 963 0605  
home away

**mickey bell**

**Joe, Jean and Paul Reeves**  
home

**Marmobello Marble Granite**  
away

**tommy dohererty**

**ABS ELECTRICAL & HEATING ENGINEERS**  
0117 963 0605  
home away

**mark lever**

**BCFC Supporters Club**  
0117 963 0605  
home away

**kayode odejayi**

**Colin Fox**  
home

**0117 963 0605**  
away

**danny wilson**

**Norman and Graham from KINGSWOOD CONSTRUCTION**  
home away

**aaron brown**

**NISSAN WESSEX GARAGES (BRISTOL)**  
home

**Robin, Richard and Brian Young**  
away

**greg goodridge**

**ADAM MAWER**  
home away

**lourengo da silva**

**Katrina and Ruby Young**  
home away

**lee peacock**

**Bignell & Davidson**  
home

**ICI Autocolor & Hex Holdings**  
away

**frank barlow**

**THE WHITEHOUSE PRESS LIMITED**  
home away

**marvin brown**

**CITY LIST**  
www.citylist.org.uk  
home

**Richard Knight and Russell Clifford**  
away

**matt hill**

**Nigel Ricketts and Scott Golbourne**  
home

**ANGELA GIBSON**  
away

**antony malessa**

**Barber Co. W-s-M**  
01934 511560  
home

**Alan Brown Domestic Appliance Repairs**  
away

**steve phillips**

**WRS SECURITY ALARMS**  
0800 738175  
home

**ANGELA GIBSON**  
away

**shaun taylor**

**MAIL MARKETING INTERNATIONAL LIMITED**  
home

**Rotterdam Reds**  
away

**joie burnell**

**GEM SECURITY CENTRE**  
0117 977 8426  
home

**SENIOR REDS**  
away

**paul holland**

**Sterling Towing and Alarms**  
0850 623745  
home

**Wendy Foster & Billy Maggs**  
away

**lee matthews**

**Phil and Chris Read**  
home

**ABS ELECTRICAL & HEATING ENGINEERS**  
away

**damian spencer**

**Hossmann, Gibbo & Reggie**  
home

**S. W. WREN BUILDING SERVICES LTD**  
away

**leroy rosenior**

To sponsor Leroy call 0117 963 0605  
home away

**john burns**

To sponsor this player call Kerry on 0117 963 0605  
home away

**robin hulbert**

**Mark & Daniel Tunbridge**  
home

**Suzanne Purchase**  
away

**billy mercer**

**BCFC Supporters Club**  
home

**Maggie Lansdown**  
away

**tony thorpe**

**Di and Wendy Rowland**  
home

**SIGNMARKET**  
away

**gill o'shea**

**Archie Gooch**  
home away

**louis carey**

**UNITY TYRE Co. Ltd**  
home

**BRISTOL TILE**  
away

**darren jones**

To sponsor this player call Kerry on 0117 963 0605  
home away

**keith millen**

*The Little Thatch*  
home away

Thank you to all our kit sponsors this season. We are staging a Players Kit Sponsors Presentation Evening on Tuesday 8th May at 7.30pm in the Centenary Restaurant. See you there!

associate sponsors around the gate

the boardroom sponsored by **J&P BUILDERS**

the chairman's lounge sponsored by **MAIL MARKETING INTERNATIONAL LIMITED**

the executive lounge sponsored by **West Street Glazing**

the bootroom bar sponsored by **MARK JOINERY**

the players bar sponsored by **The Three Lions**

the red'n'white bar sponsored by **STRONGBOW**

the wedlock stand sponsored by **BLACKTHORN**

man of the match sponsored by **BABLAKI WINES LTD**







## City

Manager: Danny Wilson

Red shirts, white shorts with red trim,  
red socks with white tops

- 1 BILLY MERCER
- 2 LOUIS CAREY
- 3 MICKEY BELL
- 4 PAUL HOLLAND
- 5 KEITH MILLEN
- 6 NEIL MADDISON
- 7 SCOTT MURRAY
- 8 TOMMY DOHERTY
- 9 PETER BEADLE
- 10 TONY THORPE
- 11 BRIAN TINNION
- 14 STEVE PHILLIPS
- 15 MARK LEVER
- 16 LEE PEACOCK
- 17 LEE MATTHEWS
- 18 LOURENCO DA SILVA
- 19 GERARD LAVIN
- 20 PAUL MORTIMER
- 22 AARON BROWN
- 23 JOE BURNELL
- 24 MATT HILL
- 26 JOHN BURNS
- 27 KEVIN AMANKWAAH
- 29 ROBIN HULBERT
- 30 MARVIN BROWN
- 31 SIMON CLIST
- 32 KAYODE ODEJAYI
- 33 DANNY COLES
- 37 CRAIG WOODMAN
- 41 ANTONY MALESSA
- 43 DARREN JONES
- 44 SEKANI SIMPSON

## Luton Town

Manager: Joe Kinnear

White shirts, black shorts and socks

- 1 MARK OVENDALE
- 2 GAVIN McGOWAN
- 4 MATTHEW SPRING
- 5 JULIAN WATTS
- 6 MARVIN JOHNSON
- 7 PETER THOMSON
- 8 PAUL McLAREN
- 9 STUART DOUGLAS
- 10 MARK STEIN
- 11 LIAM GEORGE
- 12 ADAM LOCKE
- 13 STUART FRASER
- 14 ANDREW FOTIADIS
- 15 MATTHEW TAYLOR
- 16 NATHAN ABBEY
- 17 EMMERSON BOYCE
- 18 TRESOR KANDOL
- 20 PETER HOLMES
- 21 ANDRÉ SCARLETT
- 22 DEAN BRENNAN
- 23 JUDE STIRLING
- 24 SCOTT WARD
- 25 DEAN STANDEN
- 26 FRIEDRICH BREITENFELDER
- 28 ROCKY BAPTISTE
- 29 KENT KARLSEN
- 30 PETRI HELIN
- 32 LEE MANSELL
- 33 RICHARD DRYDEN
- 34 STEVEN HOWARD
- 35 PAUL SHEPHERD
- 39 KEITH ROWLAND

### MATCH OFFICIALS

Referee:

P. WALTON  
(Northamptonshire)

Assistants:

P. BROADHURST  
(Merseyside)

A.M. MARRINER  
(West Midlands)

Fourth Official:

S.D. HABGOOD  
(Wiltshire)



### MATCH SPONSORS **HUGHES RAIL**

Match Magazine

PERTEMPS

# free 30 day contact lens trial



Specsavers easyvision all day monthly disposable contact lenses are so comfortable, you can wear them for longer each day and your eyes stay fresh. Call in for a free consultation and 30 day trial, and you can see the difference for yourself.

## easyvision all day

designed to be the most comfortable contact lens in the world



1 Union Street, Bristol. Telephone 0117 922 5288

[www.specsavers.com/easyvision](http://www.specsavers.com/easyvision)

A current prescription will be necessary. Ask for details of our price.  
Cannot be used in conjunction with any other offer. Free trial offer ends 28 July 2001.



# COME AND MEET THE FAMILY



Shogun Sport  
now from £18,995 OTR

Shogun  
now from £21,995 OTR

Shogun Pinin  
now from £12,495 OTR

## AND OUR NEW ADDITION

Prices reduced on the entire Shogun range



Shogun Pinin 5dr  
now from £15,995

### MITSUBISHI MOTORS BRISTOL

78 FEEDER ROAD, ST PHILIPS, BRISTOL BS2 0PQ

TEL: 0117 971 4888 FAX: 0117 972 4999

TAKE A DIFFERENT ROAD

