

# Luton Town Football Club



LUTON TOWN  
FOOTBALL CLUB

[www.lutontown.co.uk](http://www.lutontown.co.uk)

Official Matchday  
Magazine

Luton Town  
v  
Southend  
United

Monday  
August 27  
2001

Kick Off  
3.00pm

**SKF**  
Official Shirt Sponsors

**XARA**  
Official Kit Supplier

**Nationwide**  
FOOTBALL LEAGUE

Match  
Sponsor  
Intasport

Match Ball  
Sponsor  
The Galaxy

£2



## Luton Town FC

Kenilworth Road Stadium  
1 Maple Road, Luton  
Bedfordshire LU4 8AW

Main Reception:  
01582 411622

Fax: 01582 405070

Ticket Office: 01582 416976

### Honours

#### Littlewoods Cup

Winners 1987-88  
Finalists 1988-89

#### FA Cup

Finalists 1958-59

#### Simod Cup

Finalists 1987-88

#### Division 2

Champions 1981-82

#### Division 3 (S)

Champions 1936-37

#### Division 4

Champions 1967-68

### Official Matchday Magazine

#### Editor

Brian Swain

#### Design & Printing

Regal Litho Ltd

#### Photography

Gareth Owen

The views expressed in this programme are not necessarily those of Luton Town Football Club.

### Front Cover



On target: Carl Griffiths has knocked in the Town's second goal against Cheltenham, and their keeper is suitably not amused.

# Les Sealey 1957 - 2001

THESE pages would normally be filled with the latest news from Kenilworth Road - welcome on-loan Ian Hillier, manager offers £75,000 for Walsall's Darren Wrack, and so on. But for everyone in Luton Town, such things have been put into cruel perspective because we are still struggling to come to terms with the sudden death of Les Sealey.

Supporters will remember him as a very good goalkeeper, and a real entertainer, famous for giving defenders very blunt advice in his never-ending quest for clean sheets. Those of us lucky to know him recall one of the liveliest and most likeable men you could ever meet. To hear he had collapsed and died at the age of 43 was stunning, and almost unbelievable.

Chairman Mike Watson-Challis, who was a director when Les was playing for us, led the club tributes, and caught the sombre mood, shock, and depth of feeling perfectly. He said: "It is difficult to find the words to express our sorrow at the news of the death of a man who was a good player and a very popular member of the staff. We are all stunned, and our thoughts are with his family, who have suffered a grievous loss."

Les played for us through most of the glory years in the old First Division, now the Premiership, and was in the side which finished runners-up to Nottingham Forest in the Littlewoods Cup in 1989. He had missed the winning final a year previously because of injury.

David Pleat signed him from Coventry for £80,000 in the summer of 1983, and he had to see off competition from Jake Findlay and then Andy Dibble to claim the No. 1 shirt. In 1986/87, when John Moore guided us to seventh place in the First Division, still our best-ever, Sealey was goalkeeper in every game bar one - we lost at Watford in the only

match Dibble played, when Sealey was injured.

Moore credits Sealey with a major role in that success, and this week recalled another side to the extrovert goalkeeper's character - when Moore decided to resign after just one season, Sealey was first to bang on his door and say how sorry he was to hear of that decision.

We could fill a whole programme with tributes in memory of Les. Club captain Marvin Johnson and secretary Cherry Newbery voice their sadness in their columns.

Brian Stein and Mick Harford, who shared much of Les's glorious career at Luton, both remember a man who was the life and soul of the club, always cheerful, and in the words of David Pleat "a great lifter of people."

Brian Stein also remembers that Les was a thorough professional - dedicated in training, super fit, and "a larger than life character, loud and very gregarious."

He added: "If you scored against him in training he would storm off the pitch, shouting his head off. He commanded his defence, shouting all the time to let them know what was going on... and where they were going wrong. Even Steve Foster, a big man and strong captain, was subject to Les's views. He often called him all the names under the sun. But he was an inspiration, and had a fantastic rapport with fans."

We also chuckled a lot at Les's "Del Boy" touches. He always had a mate who knew someone who could lay hands on a bargain. Want to buy a watch? Jewellery? Cars? He could have talked Scrooge into spending a million quid.

Joe Kinnear was one of many pleased to call Les a good friend - they shared the same agent. "It's unbelievable to think he has died," said the Town manager. "He was a



smashing lad, a lovely character and the shock for us was all the greater because he had been at our training ground a few days before, with the West Ham youth team.

"I will remember him as a good goalkeeper, a thorough professional, and a real character. It is so tragic that he should be taken away from his family at such an early age."

Les played 259 games for the Town, before moving to Manchester United in 1990, having been there on loan a month or two before that. He replaced Jim Leighton in the replay of the 1990 FA Cup final, United beating Crystal Palace 1-0. A year later he had another big medal, when United won the European Cup-Winners Cup, beating

Barcelona in the final. They were Alex Ferguson's first trophies, and after his rocky start in management at Old Trafford were credited with keeping him in the job.

Les's career after that took him to Aston Villa, Birmingham, back to Old Trafford, Blackpool, West Ham, Leyton Orient, West Ham again, and finally Bury.

He loved West Ham, his local club, and returned to Upton park to be a goalkeeping coach. His teenage sons, George and Joe, were under his professional care in that capacity.

Our hearts go out to Les's family: we know how devastated we all were at Luton Town, but for them it must be even worse.

*Brian Swain*



LUTON TOWN  
FOOTBALL CLUB  
www.lutontown.co.uk

#### Chairman

M. Watson-Challis

#### Directors

E. Hood, J. Mitchell,  
C. Bassett, R. Stringer,  
Y. Fletcher, R. H. G. Kelly

#### Vice Presidents

C. T. F. Green, N. S. Terry,  
R. L. Banks, D. Ludlow MBE,  
C. Bygrave, R. Safranek,  
J. Sapsworth

#### Club Secretary

Cherry Newbery

#### Manager

Joe Kinnear

#### First Team Coach

Mick Harford

#### Reserve Team Coach

Brian Stein

#### Youth Team Coach

John Moore

#### Medical Officer

Dr. Bill Berry

#### Sports Therapist

Bruce Sewell BSc (Hons) MSST

#### Consultant Physio

John Sheridan

#### Youth Development Officer

Dean Rastrick

#### Sales and Marketing Manager

John Bailey

#### Catering Manager

Peter Saul

#### Safety Officer

Geoff Lovell

#### Financial Controller

Tania Buonpane FCCA

#### Club Dentist

A. Chris BDSA (Syd)

#### Club Chaplain

Rev Catherine Bell

#### Company Secretary

Cherry Newbery

For all the latest news, views and interviews call

**CLUBCALL - 09068 121123**

(Calls charged at 60p per minute at all times)

Up and Running!

Luton Town's very own official website.

**www.lutontown.co.uk**



# Perfect balance

**CARB™ toroidal roller bearings bring absolute balance to your system.**

When total precision is a necessity, use CARB as your non-locating bearing.

- Higher machine speed
- Less vibration/friction
- Reduced noise levels
- Decreased operating temperature
- Lower maintenance costs
- Fits standard housings
- Option to increase life or downsize plant



# SKF

Helping your world run smoother

Tel: 01582 496436  
www.skf.co.uk



**Joe Kinnear**

## The Manager

THE SEASON is barely a couple of weeks old, and already we have seen the best and the worst of Luton Town - and sometimes within

the space of one match. It underlines one of our big problems, inconsistency, and in the Worthington Cup at Reading we were also given a sharp reminder that despite good results in our first two league games we were nowhere near their Second Division standard, which is what we aspire to.

This column had to be written before we went to Bristol, and hopefully we will have shown there that we learned something from our poor performance at the Madejski Stadium.

Even though it was not our strongest team, and it was a game I wanted to win, I am not crying. I am now focussed on promotion, and I am adamant that I will get in more players to strengthen the squad.

The cup result is done, and we have got to put it behind us. We were not a fluent side, and certainly we need to play better.

However, we won our first two league games, which meant we sat on top of the table, which is exactly where I wanted us to be at this stage of the season.

I was pleased to recruit Ian Hillier on loan from Spurs, and hope he does well here, and enjoys his football. During the past few days I have also tried to get Darren Wrack from Walsall, a natural left-sided player who could help us considerably by giving us a better balance.

I have also been working on a deal to try to bring Matt Jackson back, and there were other names on my hit-list last week. At present they must remain under wraps because I don't want other clubs to be alerted.

Transfer talk puts pressure on players already in the club, and that is no bad thing. Competition for places is already far better than it was when I arrived here, and hopefully will get tougher still in the near future.

I think we have seen enough of this division already to know that to get out of it will take a

lot of effort, hard graft, and good football. Good home results will be crucial, and to get back to my point about consistency, we must not produce any more mixtures like the contrasting two halves of the game against Cheltenham.

We had shown how capable we can be in the win at Carlisle, where we had to match the opposition's workrate to earn the right to impose our football on them.

The same was required against Cheltenham, another well-organised team, and at half-time, two goals to the good, we should have been in the mood to push on and finish them off.

Instead, complacency crept in, and we allowed Cheltenham to take the initiative. While I thought we deserved the points overall, we had to dig deep at the end, the more so because we had to battle through the closing minutes with only ten men.

At Reading I was very critical of our performance. We were taught a lesson, and the good hiding we suffered was deserved. Strong words were expressed in the dressing room afterwards, but the bottom line is that players must learn from their experience of the match.

It was a severe warning that anything less than full commitment and 90-minute concentration will be punished by half-decent teams. The right mental approach will be needed in our future games, and despite the cup result we know we are capable of much better things.

We are in a hard division, and cannot afford too many slip-ups if we are to achieve our ambition of winning promotion. Players can make life a lot more cheerful for all of us if they learn that lesson, and I think they will.

We owed the big following at Reading an apology for the fare we served up for them there. We will be all the more keen to put things right on our own pitch this afternoon, and with your help we can realise our dream.

There is still feel-good factor around the club, with three league games played, and 43 to go. Let's keep it going.

Enjoy the game.

*Joe Kinnear*

Sponsored by



**Never Beaten On Price\***

Visit us at White Lion Retail Park, Dunstable.  
or call: 0870 600 8003

\*Conditions apply, see in-store for details

5





# Hatters Financial Services

- SAVINGS AND INVESTMENTS •
- LIFE ASSURANCE •
- CRITICAL ILLNESS COVER •
- INCOME REPLACEMENT •
- PENSIONS •
- INHERITANCE TAX PROVISION •
- FINANCIAL REVIEW •



# Hatters Financial Services

Freepost (SCE 9094) Aylesbury Bucks HP21 9BR  
0800 02 88 149

Hatters Financial Services is a trading style of Aylesbury Financial Services, a representative only of the AXA Sun Life Marketing Group. AXA Assurance is a trading name of members of the AXA Sun Life Marketing Group, the members of which are regulated by the Personal Investment Authority and/or IMRO for life assurance, pensions, and investment business. 01/612 Expiry 21/08/2001



Marvin Johnson

## Club Captain

FOR A lot of us it has been a pretty horrible week. Those who knew him are still coming to terms with the shock of the news that Les Sealey had died. He lived life to the full, was a wonderful character on and off the field, and a very good footballer as well.

You never had any doubts about who was in charge of the penalty area when Les was between the posts, and if defenders sometimes bristled at his blunt advice and criticism, we knew it was done for the best of motives. He was a winner, and expected everyone to show that determination. He hated conceding goals, even in training games, and for every goal he let in there was one defender at least who shared the blame!

Many will remember the time when I expected a real roasting from him, but didn't get it, when I scored against him in a First Division game. I was a youngster who had just got into the team. In a home game with Aston Villa, in December 1988, I sliced an attempted clearance and netted the worst OG of my career, from about 40 yards, with poor Les stranded and screaming in rage when he could not prevent the ball sailing over him into the net.

Les was notorious for the strips he tore off defenders, but on that occasion he was remarkably mild. He knew I had made a mistake and felt rotten about it, and he chose not to pile on the agony.

He will be missed by a lot of people, and I feel for his wife and sons at the loss of a good man at such a young age.

Our thanks are due to supporters of both teams who kept the minute's silence in memory of Les so impeccably at Reading before the cup-tie, and I am sure it will be the same before this afternoon's game kicks off.

The only other thing I can say to supporters who were at the Madejski Stadium is to acknowledge that you were tremendous in your efforts to lift the team, and we failed miserably to deliver the performance you and we wanted.

We can't explain it, especially after doing so well at Carlisle and then getting a win against Cheltenham, which was the archetypal "game of two halves." I was not quite fit enough to play in that match, and my view of it from the stand was that we were doing well at half-time, and should have got stronger and more in control in the second half. Cheltenham were big and strong, and very direct, and our passing started to go wrong.

We really should have won the game much more comfortably, but there was a bit of tension in the closing minutes, especially after Nicko was sent off. I felt sorry for him: I wouldn't argue with his second booking, but I felt the first was very harsh.

I thought Ian Hillier played well, and we have given him a warm welcome. He is a quiet lad, but thoroughly professional, and everyone at Spurs speaks very highly of him. He was delighted to play the first league game of his career. It might be Third Division, but it is a lot better than reserve team football!

He was unable to play at Reading, to avoid being cup-tied, so I made my return to the team. Hardly triumphant, was it? We don't know why things went so wrong, but we let everyone down, and know it. Reading were a good side, probably First Division quality, and they took full advantage of our poor form. We have no excuses, and I am sorry for the supporters who were at the game.

We let you and ourselves down, and we know we can't afford to get into that habit if we are to achieve our promotion ambition. The boss has made himself very clear on that subject, as you might imagine, and we all know the only way to bury the bad memories is to build up a few good ones. Our home record this season has got to be very much better than last, and I promise we are all in the right frame of mind to make it happen.

*Marvin Johnson*





**Bruce Sewell**

## Treatment Room

THE CUP defeat at Reading brought a little extra work for the treatment room, with Rusell Perrett the player I was most concerned about. He fell awkwardly on his right knee, which caused a problem with his thigh muscle, and he had to be subbed at the interval and replaced by Richard Dryden. Perrett found running painful, and the first impression was that he would do well to get over the injury in time to play at Bristol. There was a much better chance that he would be all right for this afternoon's game. Our other injury from Reading was to Paul Hughes, who turned his ankle, but that responded well to treatment and all the signs were that he would make a quick recovery, and still be available for selection. Liam George has a bigger problem, after being hurt during the match against Cheltenham, which ruled him out of the visit to the Madejski Stadium. His knee was

swollen and sore, and as a precaution we had him X-rayed, and were pleased to discover that it was nothing worse than bad bruising. It has been getting better day by day, but it looked as though he would be unable to train for a week or so.

Aaron Skelton has resumed training after being out since the first day of the season with a leg muscle injury. Naturally he is desperate to get back into action after missing two games, but when he stepped up the pace he still felt some discomfort, and we will not push him back too quickly. There was a chance, though, that he could be ready to return to the squad for this weekend's matches.

Matthew Spring also gets closer with each day. He is able to do ball work now, which is a very good sign that he is well on the way to full recovery after his cartilage operation, and it should not be too long before he is able to think about resuming full training.

*Bruce Sewell*



**Cherry Newbery**

## Club Secretary

FOOTBALL in general has been mourning the loss of Les Sealey this week, and the hurt has run very deep through Luton Town. For many of us it is a great personal loss. We were lucky to know a real character, always so full of life and cheerfulness, and it is still hard to believe that he is dead.

The whole place was stunned when the news came through. Staff and players were coming into the ground on a high after the team had won the first two games of the season, and gone top of the table. Then we were knocked flat as we heard what had happened. It puts things into perspective.

I know supporters share our deep sorrow, and will show their respect with a minute's silence before kick-off today. There was a huge response from supporters to the bad news, and a lot have been in touch saying they would like to contact Les's family to express their sympathy. If you want to do so, I will take in letters and cards, and ensure they are passed on to the family as quickly as possible.

For me, who knew Les so well, it still hasn't really sunk in, and my heart goes out to Les's wife and his two young sons. We have already sent our official club condolences.

Many of you learned about Les's death through our website, and to all those who have complained about the poor coverage, I can only say I feel the same, and I can but apologise. There have been big technical problems out of our control, and we feel as annoyed as you do when we know good work is being done to provide the service which is not, in the event, delivered. We are doing our best to get it right and have been speaking to the Football League to enlist their help.

I think you will agree that our website used to be brilliant. That was when we were in full

control of it, producing and transmitting all the material from within our own offices. Now we no longer have total control, and the recent technical problems are not down to us. An outside company is involved as part of a deal done by the Football League's commercial department, to which we and most clubs are party.

It has been as galling for us as it has been for supporters calling up the site to discover that our best efforts have been in vain. I can only say sorry, again, and promise that we are doing the best we can to put things right.

The same goes for our blessed PA system which was playing up again at the last home game. Engineers have been in to look at the system, and we hope it will be working properly for today's match. We will get it right, I promise!

The new scoreboard is on order, but we have been told that it will take some weeks to deliver and install it, and in the meantime we have taken quick action to help our Golden Gamble customers. I am sorry the winning number failed to be heard all over the ground at the Cheltenham match because of the PA breakdown, but we have come up with a fool-proof low-tech answer to that difficulty. This afternoon the winning number will be posted on a board which will be carried around the ground - back to the good old days!

There will be a pleasant ceremony just before kick-off today: our youth team won their Merit Division of the Football League Youth Alliance last season, and the awards will be presented to them on the pitch at 2.45.

Finally, don't forget you are all welcome to come and look around our facilities at the open evening on Tuesday week, September 4, between 6 and 8.30 pm.

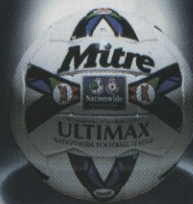
It is an ideal chance to share a drink with us, and talk to us in a non-matchday atmosphere. We are always interested in hearing your views.

*Cherry Newbery*

Last Season  
The Nationwide Football  
League saw an Increase in  
Attendance of 13.5%;  
Why...?



The authority...



The Quality of the Football

You can e-mail Cherry Newbery on:

[clubsec@lutontown.co.uk](mailto:clubsec@lutontown.co.uk)



# Ticket News

Nationwide League Division Three

## Exeter City v Luton Town

Saturday September 1, 2001, kick-off 3pm

This match is pay on the day only for Luton supporters.

No tickets are available at Kenilworth Road.

Admission prices: Seats: Adults £13, senior citizens and students £10, juniors £7  
Terracing: Adults £10, senior citizens, students and juniors £7



Nationwide League Division Three

## Luton Town v Oxford Utd

Saturday September 8, 2001, kick-off 3pm

Tickets are now on sale at normal match day prices

Cash turnstiles will be available on the day, subject to availability

Reminder: There are NO CONCESSIONS available on the cash turnstiles



Nationwide League Division Three

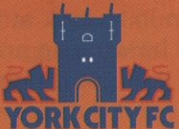
## York City v Luton Town

Saturday September 5, 2001, kick-off 3pm

This match is pay on the day only for Luton supporters.

No tickets are available at Kenilworth Road.

Admission prices: Main stand seats: Adults £12, senior citizens and juniors £9  
Popular stand seats: Adults £11, senior citizens and juniors £8  
Terracing: Adults £9, senior citizens and juniors £6



Nationwide League Division Three

## Luton Town v Lincoln City

Tuesday September 18, 2001, kick-off 7.45pm

Tickets are now on sale at normal match day prices

Cash turnstiles will be available on the day, subject to availability

Reminder: There are NO CONCESSIONS available on the cash turnstiles.



## Matchday Ticket Collection Point Kenilworth Road

Supporters collecting tickets from the Kenilworth Road Collection Point, must collect their tickets a least 30 mins before kick-off

Supporters entering via the Maple Road Bridge turnstiles can now collect their pre-ordered tickets from the Eric Morecombe Lounge Foyer. Please advise the ticket office staff when ordering your tickets that you wish to collect at the Eric Morecombe Lounge Foyer. Tickets must be collected at least 30mins before kick off.

### Ticket Office Opening Hours

**MONDAY TO FRIDAY**

10am to 4pm,  
except on Fridays before Saturday home games when it is 10am to 6pm.

**SATURDAY**

9am to 5.30pm on match days;  
10am until the away coaches depart on days when there is no game at Kenilworth Road.

### Luton Town Credit Card Hotline

By using our telephone hotline system you can order match tickets up to 48 hours prior to any game by ringing

**01582 730748**

**24 HOURS A DAY**

You can order tickets via email on:  
**ticketoffice@lutontown.co.uk**

# Hatters Away

WE FACE another long trip on Saturday when we meet Exeter City in a league match for the first time since we hammered them 5-0 (Allen 2, Buxton, Slough, Whittaker) in October 1967, on our way to the championship of Division Four, now the Third Division.

As usual two coach services are on offer, through Town on Tour, an offshoot of Luton Town Supporters Club, and the Bobbers Travel Club. Both will leave Luton at 8.30 am, with the Bobbers village pick-ups starting at Cranfield at 7.30. Fares on the Bobbers coaches are £16.50 for adults, £13.50 for junior and senior citizens. You have to be a member to travel, but the cost of life membership is only £1.

Town on Tour offers discounts for members of LTSC. Adult members can travel for £16, with junior and senior citizen members charged £14. Non-members are welcome to travel at £18, and you can join LTSC and claim your discount on the coach

Bookings for either service can be made at the organisations' kiosks in Kenilworth Road, before or after today's match.

You can also book for the Bobbers by phoning Paul Deason on 01234 750996, while Town on Tour coach seats are sold through the club shop in Kenilworth Road. The Town on Tour mobile number for out of office hours calls is 07960 567465.

## DIY Travellers

THERE are two decent routes to Exeter if you want to drive to the game, with the drawback being that both are likely to be affected by holiday traffic heading for the West Country on Saturday morning. Given a good run, you can get there in four hours or less, but the knack is choosing the right

route, which is a matter of luck.

The shorter by about 30 miles, and a more pleasant ride if you are not keen on motorways, is via the A303 across Salisbury Plain. Our man uses it often, and always for the return journey, because roadside eating and drinking establishments are considerably better than they are on the M4 and M5.



**St James' Park**

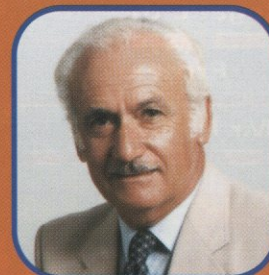
To take the scenic route, leave Luton on M1 south, then on M25 towards and just beyond Heathrow. Go past the M4 junction, but leave shortly afterwards to take the M3 towards Southampton. Follow M3 to junction 8, where you take the A303, and stay on that road for the best part of 100 miles. You will pass Stonehenge on your right. The A303 becomes the A30 in Devon, near Honiton, and stay on that road until you reach the M5.

Go onto the M5 briefly, and follow the signs towards Exeter. The ground is near the city centre. Leave M5 at junction 30, and turn right to follow the signs towards Middlemore park and ride, into Sidmouth Road. You come to a roundabout about 200 yards further on, where you take the first exit, still on Sidmouth Road. At the next roundabout, near the Exeter Arms, take the third exit, go down the hill for just over a mile and you come to a T junction where you turn left into Pinhoe Road. After nearly two miles, at a roundabout by the Odeon, take the third exit, into Old Tiverton Road and the ground is on your left. There is street parking, but a lot of it is for residents only.

If you fancy your chances of making good progress on the all-motorway route, leave Luton on M1, then M25 west, and M4. Near Bristol take the M5, signposted to Exeter, and then follow the instructions as above from junction 30.

**Mileage from Luton:** 210 via M4 and M5, about 180 via M3 and A303.

## POLICY STATEMENT - SPECTATOR SAFETY



The Chairman and Directors of Luton Town Football Club undertake to ensure as far as humanly possible that all activities that take place at the Kenilworth Road Stadium are conducted in such a way that as far as is reasonably practical the safety of everybody at the stadium is assured.

It is the policy of the Chairman and Directors to ensure that the conditions set out in the General Safety Certificate, issued under the Safety at Sports Grounds Act, 1975, are fully complied with. It is the Club's policy to provide at any activity sufficient and competent staff and management systems to ensure as far as humanly possible the safe admission, accommodation and exiting

of spectators attend the stadium. These systems will be subject to continual monitoring, testing and updating where necessary.

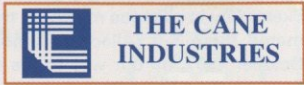
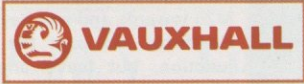
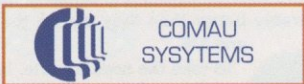
*Mike Watson-Challis*

Chairman

Reviewed August, 2001.



# Executive Box Holders



## Kenilworth Suite Members

- |                    |                      |                    |
|--------------------|----------------------|--------------------|
| C P Contracts      | Woburn Media Ltd     | DBF Crosswinds Ltd |
| Corporate Coaching | J P Hygeine Supplies | Regal Litho Ltd    |
| RW Harvey & Son    | Dr David Siegler     | Protexx            |
| Mr Malcolm Eade    | Mr J Siegler         | Mr P Mitchell      |
| Mr Roger Eade      | Datapace Ltd         |                    |
| Vangis UK Ltd      | SKF (UK) Ltd         |                    |

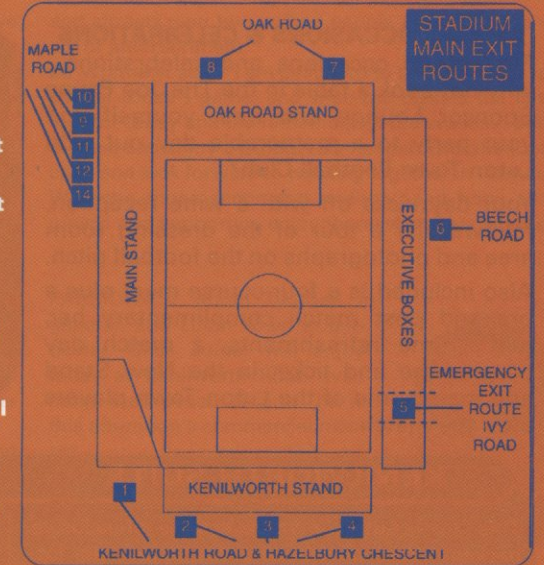
Kenilworth Suite Membership details can be found on page 14 or contact the Commercial Department on

**01582 411622**

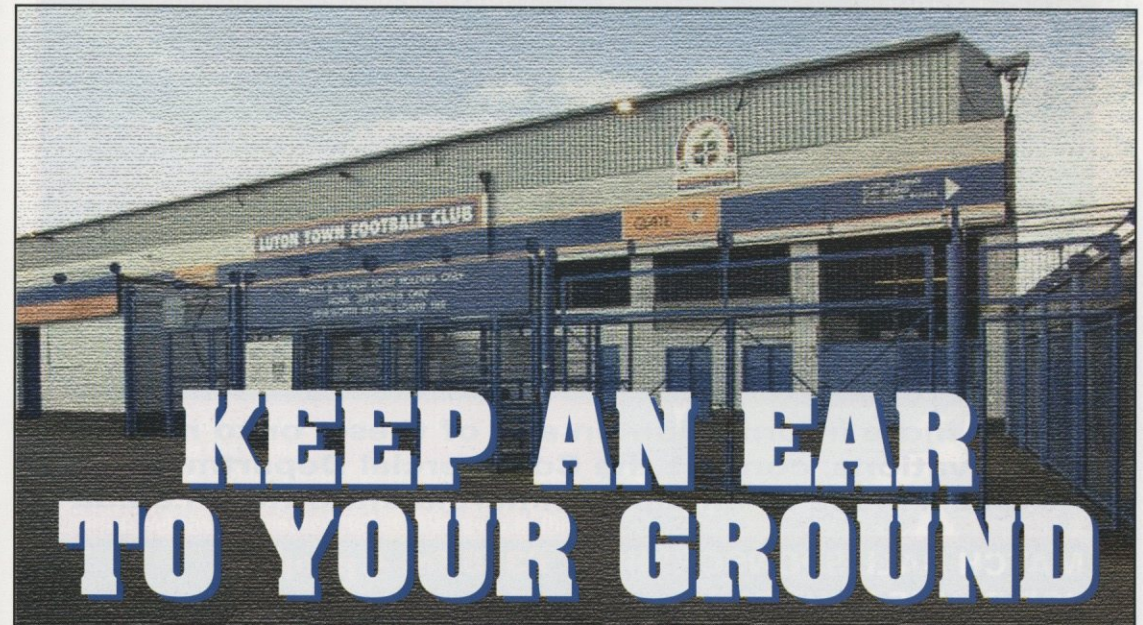
# EVACUATION PROCEDURE

IN THE event of any emergency in the stadium, Luton Town FC and the emergency services have agreed on an evacuation procedure which is designed to ensure the safe and controlled evacuation of the crowd, and to ensure their safe dispersal from the area, to allow the emergency services to carry out their tasks.

In the event of evacuation from all or part of the stadium, you will receive instructions over the public address system on how you should leave. In an evacuation of the main stand you will be instructed to use the pitch. Stewards will direct you to the nearest exit. It may be that your normal exit route will not be available. On leaving the stadium, you will find some roads closed to pedestrians, to enable swift and unobstructed access for the emergency services. Please leave the area of the ground as quickly as possible, by the route directed. Your co-operation will be most appreciated.



Geoff Lovell, Safety Manager.



# KEEP AN EAR TO YOUR GROUND

**09068 121123**

The real news from inside your club





# Matchday Hospitality & Sponsorship

## SPECIAL OCCASIONS & CELEBRATIONS

For special occasions and celebrations, why not book a table in the The Joe Payne Sponsor Lounge and treat yourself and your party to a memorable day out with Luton Town Football Club?

Your day kicks off with a wine reception, followed by a tour of the dressing room area and photographs on the football pitch. Also included is a four-course meal plus a pre and post match complimentary bar, half - time refreshments, a match day programme and ticket in the New Stand and meet some of the Luton Town players after the match.



Joe Payne Sponsors Lounge

## KENILWORTH SUITE

This Club is Luton Town's executive all-inclusive package. Your membership fee covers the lot, food, drink, and most importantly FOOTBALL!! Every Hatter's 1st Team match played at Kenilworth Stadium is included, as is complimentary pre-match buffet, seat in the Directors' Box etc. See below for full membership details.

- Directors' car park pass
- Directors' box seat
- Complimentary match programme
- Complimentary bar before and after game (en-suite)
- Full buffet plus tea & coffee at half time
- TV with Sky plus all other channels
- Name in matchday programme on the Executive Suite page.

## MATCH BALL SPONSOR

Match Ball Sponsorships provide supporters and small businesses with a unique way to be a part of the ever-growing world of football sponsorship. This four-person package includes:

- Signed match ball
- Name on match day programme cover
- Write up in match day programme
- Pre-match announcement
- Tour of the player's dressing room area
- Four-course meal
- Complimentary pre and post match drinks
- Seats in the directors' box
- Complimentary match day programmes
- Certificate commemorating the day, signed by the manager, and photographs of the occasion.

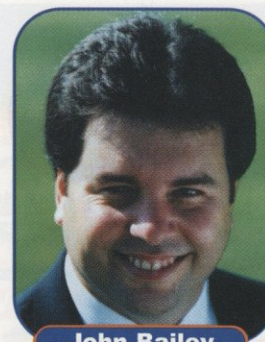
For more information on any of these, or to make reservations, contact the Commercial Department on 01582 411622 or email: [commercial@lutontown.co.uk](mailto:commercial@lutontown.co.uk)

|                        |                      |
|------------------------|----------------------|
| MATCH BALL SPONSORSHIP | £395 for 4 people    |
| JOE PAYNE LOUNGE       | £70 per person       |
| KENILWORTH SUITE       | £1500 per membership |

ALL PRICES INCLUDE VAT

To advertise in the matchday magazine phone Luton 411622 or e-mail us at: [commercial@lutontown.co.uk](mailto:commercial@lutontown.co.uk)

# Commercial Corner



John Bailey

WE TRY very hard to give our sponsorship clients an enjoyable time and good value for money, and we seem to be getting it right pretty often, judging by the number of times old friends

come back.

A case in point is Intasport, this afternoon's match sponsors. It is a great pleasure to welcome back a company which has for a long time been among our most loyal supporters.

They are based in Stafford, but a lot of companies in this area are on their client list. Intasport is a hospitality and sports promotion organisation, and has built up an enviable reputation as publishers of fixtures charts, year planners and other brochures for sports clubs.

They are entertaining some of their local clients and friends, including D. S. and A. E. Prigmore & Son, R. J. Blow & Co., J. J. Kelly & Son, The Cane Industries, G.M.H Air Conditioning, Neves Solicitors, Sainsbury's, Luton Insulation and Beechwood Shirts Ltd. We hope all of them and the Intasport representatives enjoy their afternoon with us, and we thank Intasport for backing us again.

TODAY'S match ball sponsor is The Galaxy, and we welcome Paul Whittaker, Centre Manager, and his colleagues and guests.

The Galaxy is a major town centre landmark in Luton,

and attracts over two million people annually for a variety of entertainment.

Mr Whittaker said: "I am delighted to be match ball sponsor for today's game, and wish the Hatters the best of luck for today and the remainder of the season. I believe that we can enjoy a fruitful relationship with the football club, and look forward to working together in the future." We echo those sentiments entirely, and hope all our guests and supporters enjoy themselves this afternoon.

PASSIONATE about football in general, and Luton Town in particular, Giles Joiner will enjoy today at Kenilworth Road even more than usual, because he is this afternoon's commercial mascot.

Ten years old, he lives at Chandos Road, Amptill, and goes to Almeda Middle School. His hobbies are football, cricket, tennis, golf, PlayStation and reading and he is a regular at Kenilworth Road, along with his dad.

As mascot he is one of the day's VIPs. He will meet the Town players in the dressing room before kick-off, and join them on the pitch for the pre-match rituals, including the toss of the coin. Giles likes all the Luton players, with Stuart Douglas his personal favourite.



John Bailey

## Golden Gamble

IT'S A knock-out as popular Luton boxer Billy Schwer hams it up with Happy Harry at our last home game. Billy was a guest of the club, and did the honours at half-time, drawing out the winner of the Golden Gamble competition.

He had a good wedge of cash for the winner: £575 to be precise, but unfortunately we have not yet found the holder of the lucky ticket. We think it was sold in the main stand area, and its number is 03204. If you have that ticket, please contact the commercial department, and we will be delighted to hand over the money.

With luck, a similar jackpot is on offer this afternoon, although we cannot guarantee the size of the prize: half the income from ticket sales goes to the winner, with the other 50 per cent going to club funds. The average pay-out last season was £477, a total of nearly £13,000.

You have got to be in it to win it, and Golden Gamble sellers will be on duty all round the ground again this afternoon. The draw is made at half time

and the winner can collect the fistful of fivers there and then - and it's all for a stake of just £1 per ticket.



To advertise in the matchday magazine phone Luton 411622 or e-mail us at: [commercial@lutontown.co.uk](mailto:commercial@lutontown.co.uk)



# Kit Sponsors

**Emmerson Boyce**  
MICHAEL CAPP & DANNY CLUBB  
CENTURY CLUB MEMBERS

**Happy Harry**  
LUTONFC.COM

**James Osborn**  
DANNY CLUBB & MICHAEL CAPP  
CENTURY CLUB MEMBERS

**Dean Brennan**  
AVAILABLE

**Peter Holmes**  
G & S CERAMICS

**Mark Ovendale**  
AVAILABLE

**John Carroll**  
DANNY CLUBB & MICHAEL CAPP  
CENTURY CLUB MEMBERS

**Steven Howard**  
JEREMY CAIN OF DAP  
CONSULTING

**Russell Perrett**  
GRAHAM BATES & CHRIS PARK

**Joseph Deeney**  
MICHAEL CAPP & DANNY CLUBB  
CENTURY CLUB MEMBERS

**Paul Hughes**  
AM PLANT & TOOL HIRE LTD

**Bruce Sewell**  
IN NEGOTIATION

**Stuart Douglas**  
LES & SUE MILLER

**Marvin Johnson**  
SPACE DISPLAY SYSTEMS LTD

**Aaron Skelton**  
THE BOBBERS TRAVEL CLUB

**Richard Dryden**  
LUTON TOWN SUPPORTERS CLUB

**Kent Karlsen**  
AVAILABLE

**Matthew Spring**  
BRIAN HALL

**Adrian Forbes**  
OFFICE POWER SYSTEMS LTD

**Joe Kinnear**  
LUTON TOWN SUPPORTERS CLUB  
MILTON KEYNES

**Dean Standen**  
AVAILABLE

**Andrew Fotiadis**  
SALLY MAYNE & FAMILY

**Adam Locke**  
REGULAR RABBLE

**Brian Stein**  
DANNY CLUBB

**Stuart Fraser**  
DAVID SIEGLER &  
JONATHAN SIEGLER

**Lee Mansell**  
ELSIE CLUBB

**Jude Stirling**  
IN NEGOTIATION

**Liam George**  
WHOSH

**John Moore**  
IAN SMITH

**Matthew Taylor**  
MICK GARBUTT  
OUTSIDE ORGANISATION

**Carl Griffiths**  
PAUL DEASON

**Daryl Murphy**  
DANNY CLUBB & MICHAEL CAPP  
CENTURY CLUB MEMBERS

**Peter Thomson**  
AVAILABLE

**Mick Harford**  
LES MILLER  
MILLER & COMPANY, BEDFORD

**Kevin Nicholls**  
WHOSH

**Scott Ward**  
G. OWEN CERAMIC TILING LTD

16

If you are interested in sponsoring a player's kit please contact the Commercial Department on:

**01582 411622**

itv  
DIGITAL

# Head 2 Head

itv  
DIGITAL

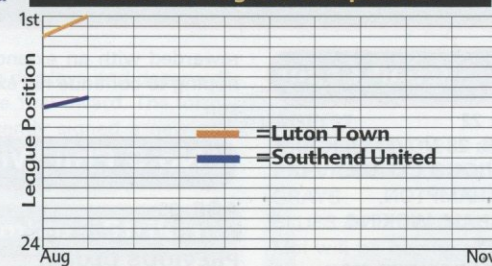
## Goals Info:

### Hatters' Last 2

|     |            |     |         |
|-----|------------|-----|---------|
| Res | Opp        | Ven | Opp Pos |
| W   | Cheltenham | H   | 11th    |
| W   | Carlisle   | A   | -       |

### Stats don't include Saturday's games

### Seasonal Progress Comparison



### Shrimpers' Last 2

|     |            |     |         |
|-----|------------|-----|---------|
| Res | Opp        | Ven | Opp Pos |
| D   | Mansfield  | A   | 14th    |
| W   | Darlington | H   | -       |

## Where



4 Goals



0 Goals



0 Goals

## How

|            |   |
|------------|---|
| Shots      | 2 |
| Headers    | 1 |
| Volleys    | 1 |
| Penalties  | 0 |
| Free Kicks | 0 |
| O.G.s      | 0 |

## Top Scorers

|           |   |
|-----------|---|
| Hughes    | 2 |
| Griffiths | 2 |

## 2001-2002

|                 |         |
|-----------------|---------|
| Highest Gate    | 6,177   |
| vs Cheltenham   |         |
| Lowest Gate     | 6,177   |
| vs Cheltenham   |         |
| Average Gate    | 6,177   |
| Players Used 17 |         |
| Clean Sheets    | 1       |
| Failed to Score | 0       |
| Consec. Wins    | 2 games |
| Consec. Defeats | none    |

### Carl Griffiths (Luton)

|         |       |                       |       |
|---------|-------|-----------------------|-------|
| 2 games | ..... | Total Games Scored In | ..... |
| 2 games | ..... | Games Scored 1 Goal   | ..... |
| 0 games | ..... | Games Scored 2 Goals  | ..... |
| 0 games | ..... | Hat-tricks            | ..... |
| W->L    | ..... | 0 (Opts)              |       |
| W->D    | ..... | 1 (2pts)              |       |
| D->L    | ..... | 0 (Opts)              |       |
| Goals   | ..... | 2                     |       |
| Games   | ..... | 2                     |       |
| Average | ..... | 1.00                  |       |

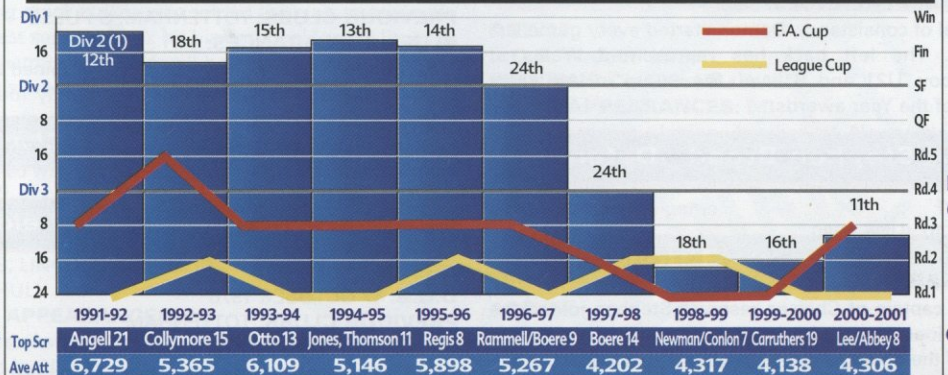
### Top Scorers Comparison

|         |       |                     |       |
|---------|-------|---------------------|-------|
| 2 games | ..... | Maximum scoring run | ..... |
| 0 games | ..... | Maximum Dry Spell   | ..... |
| 0       | ..... | Shot                | ..... |
| 0       | ..... | Header              | ..... |
| 1       | ..... | Volleyed Shot       | ..... |
| 0       | ..... | Penalty             | ..... |
| 0       | ..... | Direct free Kick    | ..... |

### Mark Rawle (Southend)

|         |       |                       |       |
|---------|-------|-----------------------|-------|
| 1 game  | ..... | Total Games Scored In | ..... |
| 1 game  | ..... | Games Scored 1 Goal   | ..... |
| 0 games | ..... | Games Scored 2 Goals  | ..... |
| 0 games | ..... | Hat-tricks            | ..... |
| W->L    | ..... | 0 (Opts)              |       |
| W->D    | ..... | 1 (2pts)              |       |
| D->L    | ..... | 0 (Opts)              |       |
| Goals   | ..... | 1                     |       |
| Games   | ..... | 2                     |       |
| Average | ..... | 0.50                  |       |

## Southend United's Last 10 Years - The Complete Record



ITV Digital – The new home of football

UEFA Champions League, FA Barclaycard Premiership, Nationwide Football League, FA Cup, Worthington Cup, Scottish Premiership, Tennents Scottish Cup, Internationals.

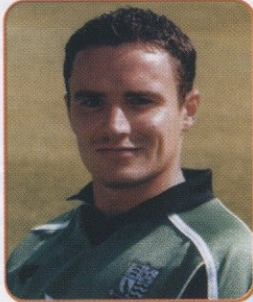
Call ITV Digital on  
**0808 100 0101**

Subject to coverage,  
terms and conditions.



# Welcome to Southend United F.C.

## No.1 Darryl Flahavan - Goalkeeper



**AGE:** 22  
**D.O.B:** 28 NOVEMBER 1978  
**PREVIOUS CLUBS:** SOUTHAMPTON, CHESHAM, WOKING  
**BLUES APPEARANCES:** 39/0

David Webb's first signing on his return to Roots Hall, Darryl fought his way into the side and produced a series of impressive displays. One of the best keepers in the lower leagues Darryl will be hoping to enhance his growing reputation this season.

## No.2 Carl Hutchings - Defender

**AGE:** 26  
**D.O.B:** 24 SEPTEMBER 1974  
**PREVIOUS CLUBS:** BRENTFORD, BRISTOL CITY  
**BLUES APPEARANCES:** 15/0

Competitive performer who impressed on loan at Roots Hall last season, versatile Carl is comfortable in defence or midfield. Now working under David Webb for the second time in his career Carl will be hoping the injury troubles which plagued him last season are fully healed, enabling him to play a vital part in the push for promotion.

## No.3 Damon Searle - Defender

**AGE:** 29  
**D.O.B:** 26 OCTOBER 1971  
**PREVIOUS CLUBS:** CARDIFF, STOCKPORT, CARLISLE, ROCHDALE  
**BLUES APPEARANCES:** 58/2

A model of consistency, Damon started every game last season. The left back has represented Wales at Schoolboy, U21 and B level. Runner-up in last years Player of the Year awards.

## No.4 Stephen Broad - Defender

**AGE:** 21  
**D.O.B:** 10 JUNE 1980  
**PREVIOUS CLUBS:** CHELSEA  
**BLUES APPEARANCES:** 10/0

Former captain of Chelsea reserves Stephen joined the club on-loan on transfer deadline day and, playing at the heart of the Blues back four, produced a number of solid displays. The young defender was consequently

rewarded with an extended one-year deal and will be hoping to continue his excellent form into the new season.

## No.5 Phil Whelan - Defender

**AGE:** 29  
**D.O.B:** 7 MARCH 1972  
**PREVIOUS CLUBS:** IPSWICH, MIDDLESBROUGH, OXFORD, ROTHERHAM  
**BLUES APPEARANCES:** 53/2

Club captain Phil enjoyed an impressive first season at Roots Hall and will be hoping for more of the same this time around. The giant defender, who won three U21 caps for England, marshalled the back four well and his experience will prove vital in the months ahead.



## No.6 Leon Johnson - Midfielder

**AGE:** 20  
**D.O.B:** 10 MAY 1981  
**PREVIOUS CLUBS:** PRODUCT OF YOUTH SYSTEM  
**BLUES APPEARANCES:** 27/1

Leon enjoyed a magnificent campaign last season, making the most of his opportunity and becoming a regular in the starting line-up before injury prematurely brought his season to an end. The battling midfielder was magnificent in the exciting victory at Leyton Orient and went on to make 21 successive starts.

## No.7 Stuart Thurgood - Midfielder

**AGE:** 19  
**D.O.B:** 21 SEPTEMBER 1981  
**PREVIOUS CLUBS:** TOTTENHAM, S PULSE  
**BLUES APPEARANCES:** 14/1

A tough, battling performer, Stuart, who joined the club towards the end of last season, eventually fought his way into the first-team, starting the last six games of the season. The young midfielder will be hoping to cement his place in the centre of the park for the new campaign.

## No.8 Kevin Maher - Midfielder

**AGE:** 24  
**D.O.B:** 17 OCTOBER 1976  
**PREVIOUS CLUBS:** TOTTENHAM  
**BLUES APPEARANCES:** 126/8

Kevin completed a remarkable turnaround last season,

# Today's Visitors

producing a number of superb displays and deservedly winning the club's Player of the Year award. The former Eire U21 international has recently signed a new one-year deal and is looking forward to mounting a serious charge for promotion.

## No.9 Tesfaye Bramble - Striker

**AGE:** 21  
**D.O.B:** 20 JULY 1980  
**PREVIOUS CLUBS:** CHELMSFORD CITY, CAMBRIDGE CITY  
**BLUES APPEARANCES:** 19/6

Having hit six goals in his last eight starts of the previous campaign Tes enters the new season as one to watch. The powerful forward, brother of Titus at Ipswich Town, improved dramatically with each appearance and could help spearhead a promotion campaign this time around.

## No.10 Daniel Webb - Striker

**AGE:** 18  
**D.O.B:** 2 JULY 1983  
**PREVIOUS CLUBS:** SOUTHAMPTON  
**BLUES APPEARANCES:** 20/1

A tall targetman who adds something different to the Southend attack, Daniel fought his way into the starting line-up soon after arriving from Southampton. Webb, son of manager David, hit seven goals in the reserves to become the club's top scorer at that level.

## No.11 Mark Rawle - Striker

**AGE:** 22  
**D.O.B:** 27 APRIL 1979  
**PREVIOUS CLUBS:** RUSHDEN, BOSTON  
**BLUES APPEARANCES:** 14/1

Lightning quick striker who joined the club towards the end of last season, Mark hit his first goal for the Blues at Cheltenham in May and will be hoping for more of the same this season.

## No.12 Jason Harris - Striker

**AGE:** 24  
**D.O.B:** 24 NOVEMBER 1974  
**PREVIOUS CLUBS:** CRYSTAL PALACE, BRISTOL ROVERS, LINCOLN CITY, LEYTON ORIENT, PRESTON, HULL  
**BLUES APPEARANCES:** 0/0

Speedy striker who recently joined the Blues after being released by Hull.

## No.13 Melvin Capleton - Goalkeeper

**AGE:** 27  
**D.O.B:** 24 OCTOBER 1973  
**PREVIOUS CLUBS:** BLACKPOOL, LEYTON ORIENT, GRAYS  
**BLUES APPEARANCES:** 61/0  
Mel will be hoping to get his career back on track this season after missing virtually all of the previous campaign with a broken leg.

## No.14 Shane Wardley - Defender

**AGE:** 21  
**D.O.B:** 26.2.80  
**PREVIOUS CLUBS:** CHELMSFORD CITY, CAMBRIDGE CITY  
**BLUES APPEARANCES:** 2/0  
Signed as cover for Damon Searle, Shane performed well in the reserves and improved as the season progressed. The left sided defender made two first-team appearances as substitute towards the end of the season.

## No.15 David McSweeney - Defender

**AGE:** 19  
**D.O.B:** 28 DECEMBER 1981  
**PREVIOUS CLUBS:** PRODUCT OF YOUTH SYSTEM  
**BLUES APPEARANCES:** 17/0  
Having captained both the youth and reserve teams in his time at Roots Hall David progressed into the first-team last season performing well whenever Martyn Booty was unavailable for selection. The young defender recently signed a one-year deal and will be hoping for more first-team opportunities this year.

## No.16 Leon Cort - Defender

**AGE:** 22  
**D.O.B:** 11 JULY 1979  
**PREVIOUS CLUBS:** MILLWALL  
**BLUES APPEARANCES:** 0/0  
Another recent signing, brother of Newcastle striker Carl, Cort made one appearance at Millwall before joining the Blues. A strong, quick defender who looks set for a big future in the game.

## No.17 Scott Forbes - Midfielder

**AGE:** 24  
**D.O.B:** 3 DECEMBER 1976  
**PREVIOUS CLUBS:** SAFFRON WALDEN  
**BLUES APPEARANCES:** 43/4

For all the latest news, views and interviews call

18

**CLUBCALL - 09068 121123**

(Calls charged at 60p per minute at all times)

Up and Running!

Luton Town's very own official website.

[www.lutontown.co.uk](http://www.lutontown.co.uk)

19



Scott enjoyed a brilliant first season in professional football and quickly won over the Roots hall faithful with a series of passionate and committed displays on the left flank. A local lad Forbes' season was disrupted through injury and he will be hoping to show more of the form which earned him second place in the Player of the Year award.

### No.18 Ben Smith - Midfielder

**AGE:** 22  
**D.O.B.:** 23.11.78  
**PREVIOUS CLUBS:** READING, ARSENAL, YEOVIL  
**BLUES APPEARANCES:** 0/0  
 David Webb returned to his former club Yeovil to pick the skillful midfielder who is being tipped to enjoy a successful first season at Roots Hall.

### No.19 Gareth Risbridger - Defender

**AGE:** 19  
**D.O.B.:** 31.10.81  
**PREVIOUS CLUBS:** YEOVIL  
**BLUES APPEARANCES:** 0/0  
 Young defender who made just a handful of appearances at Yeovil before making the step up to Roots Hall.

### No.20 Leon Hunter - Midfielder

**AGE:** 19  
**D.O.B.:** 27 AUGUST 1981  
**PREVIOUS CLUBS:** PRODUCT OF YOUTH SYSTEM  
**BLUES APPEARANCES:** 1/0  
 Although Leon made just one first-team appearance last season, at Birmingham in the Worthington Cup, the young midfielder continued to make progress making 17 appearances in the reserves. Leon tasted first-team football during a loan spell at Chelmsford City and represented England in this summer's beach football competitions.

### No.21 Daniel Pitts - Striker

**AGE:** 18  
**D.O.B.:** - 18 AUGUST 1982  
**PREVIOUS CLUBS:** PRODUCT OF YOUTH SYSTEM  
**BLUES APPEARANCES:** 0/0  
 Daniel failed to make a first-team appearance last season but was an impressive figure in the reserves making 15 appearances.

### No.22 Daniel Kerrigan - Midfielder

**AGE:** 19  
**D.O.B.:** - 4 JULY 1982  
**PREVIOUS CLUBS:** PRODUCT OF YOUTH SYSTEM  
**BLUES APPEARANCES:** 6/0  
 Daniel endured a difficult time last season. After making six first-team appearances during the 1999/2000 season, the left sided performer failed to taste first-team action and will be hoping for more opportunities in the new campaign.

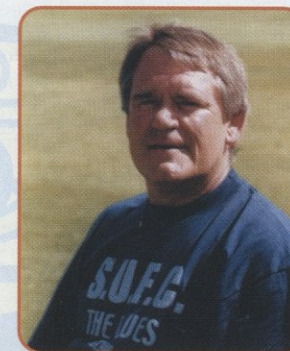
### No.23 Daniel Gay - Goalkeeper

**AGE:** 18  
**D.O.B.:** 5 AUGUST 1982  
**PREVIOUS CLUB:** NORWICH CITY  
**BLUES APPEARANCES:** 0/0  
 Daniel completed his scholarship with Norwich City. Daniel who is a young keeper was another one of David Webb's summer signings and will be determined to establish himself as soon as possible.

### No.24 Rob Newman - Defender

**AGE:** 37  
**D.O.B.:** 13 DECEMBER 1963  
**PREVIOUS CLUBS:** BRISTOL CITY, NORWICH, MOTHERWELL, WIGAN  
**BLUES APPEARANCES:** 71/10  
 In his first season as reserve team coach Rob appeared sparingly in the first-team, but the veteran defender per-

formed well when called upon and even managed to hit two goals in just ten appearances.



David Webb - Manager



Who Rocks the Party

## The Place to Eat Drink & Party...

Join us after the match for a 'Bud and a Burger' for £5 at anytime!

- Every Monday, 2 meals for the price of 1
- 'Feast for a Fiver' from a selected menu (Available from 5pm to 7pm, Monday to Friday)
- 'Double Vision' 2 drinks for the price of 1 (Available from 5pm to 7pm, Monday to Friday)
- Children eat FREE from 5pm to 7.30pm, Monday to Friday
- Christmas Party bookings now being taken
- Chicago Rock Cafe, Luton is also available for Private Hire Parties, please contact the Duty Manager for further details

Contact:

The New Chicago Rock Cafe, Gordon Street, Luton. LU1 1QP.  
 Tel: 01582 405144. Fax: 01582 405518

Find Freedom within.....



no other Health Club offers you more for less...

.....with no need for contracts

Fitness First Luton, Skimpot Lane, Luton, Beds, LU14 0JB  
 Tel: 01582 560200  
[www.fitnessfirst.co.uk](http://www.fitnessfirst.co.uk)





Flocks of pigs will fly over Westminster before the private sector will improve public services

Join the GMB phone 01582 494492 [www.gmb.org.uk](http://www.gmb.org.uk)

**funding the future...** Grass roots  
Community  
Education

**Football Foundation**  
football's biggest supporter

25 Soho Square, London W1D 4FF  
t: 020 7534 4210 f: 020 7287 0459  
e: [enquiries@footballfoundation.org.uk](mailto:enquiries@footballfoundation.org.uk)

[www.footballfoundation.org.uk](http://www.footballfoundation.org.uk)



## Upcoming Ticket Offers



### Kids for a Quid

Luton Town Football Club is delighted to announce the continuation of its ever popular Kid a Quid Offer.

This offer will be available for the following home matches:

#### Luton Town v Torquay United

Saturday 22nd September 2001 Kick-off 3.00pm  
Tickets will go on sale Tuesday 27th August 2001

#### Luton Town v Hartlepool United

Saturday 22nd December 2001 Kick-off 3.00pm

### Friends for a Fiver

Season Ticket Holders will be able to bring a friend for a fiver to see:

#### Luton Town v Rochdale

Saturday 22nd October 2001 Kick-off 3.00pm

Both of these offers are subject to availability.  
For further details contact the ticket office  
on 01582 411622 or  
email: [ticketoffice@lutontown.co.uk](mailto:ticketoffice@lutontown.co.uk)



# The Top Hatters - Luton Town, 2001/2002



**SKF** LUTON TOWN F.C. **SKF**

Back Row (left-right): Russell Perrett, Andrew Fotiadis, Adam Locke, Matthew Spring, Emmerson Boyce, Jude Stirling, Richard Dryden, Kevin Nicholls, Stuart Fraser.  
Middle Row (left-right): Bruce Sewell, Mick Harford, Kent Karlsen, Steve Howard, Mark Ovendale, Scott Ward, Carl Emberson, Paul Hughes, Peter Holmes, Brian Stein, John Moore.  
Front Row (left-right): Liam George, Lee Mansell, Carl Griffiths, Marvin Johnson, Joe Kinnear, Aaron Skelton, Adrian Forbes, Stuart Douglas, Matthew Taylor.



# World class

The SKF Explorer Series – a better class of workhorse.

If the standard spherical roller bearing is the workhorse, reliable, solid and strong, then SKF now introduces the thoroughbred – Explorer.

- Up to three times longer life
- Higher load ratings
- Reduced noise
- Lower maintenance costs
- Increased machine uptime
- Option to power-up or size-down



# SKF

Helping your world run smoother

Tel: 01582 496436  
www.skf.co.uk



## Regal Litho

352 Selbourne Road  
Luton Beds LU4 8NU

Tel: 01582 493332

Fax: 01582 560731

ISDN: 01582 560854

Email: [regallithold90@atlas.co.uk](mailto:regallithold90@atlas.co.uk)

[www.regallitho.co.uk](http://www.regallitho.co.uk)

- ◆ Digital Artwork
- ◆ Conventional Repro
- ◆ Platemaking
- ◆ Colour Printing
- ◆ Finishing
- ◆ Distribution
- ◆ Stationery
- ◆ Point of Sale
- ◆ Brochures
- ◆ Commercial Print
- ◆ Magazine Publishing

The Publishers & Printers of:

**Scale  
Aircraft  
Modelling**

**Scale  
Aircraft  
Monographs**

WE ARE YOUR ALL IN ONE SOLUTION FOR COMMERCIAL PROPERTY REFURBISHMENT

# CP CONTRACTS

Commercial Property Specialists

**DESIGN & BUILD  
BUILDING  
REFURBISHMENT  
INTERIORS  
PROJECT MANAGEMENT**

Tel **01525 405430**

[www.cpcontracts.co.uk](http://www.cpcontracts.co.uk)

The Old Coach House 6 Woburn street Ampthill Bedfordshire MK45 2HP

Fax 01525 840095

SPONSORS OF THE EXECUTIVE BOXES NET





Roger Wash

## All our **yesterdays**

### Buxton boosts the Town.

After the trials and tribulations of season 1966/67, when the Town were a whisker away from needing to go cap in hand to seek re-election, the following close season was like a breath of fresh air as new manager, Allan Brown, cleared the decks.

Brown, appointed in the previous November, had fought valiantly to ensure that the Town clung on to a spot outside the bottom four but would now use the summer to bring in some of his own men and make a bid for a return to former glories.

None of the close season signings could be termed 'big name' with Terry Branston, signed from Northampton on a free and immediately named skipper, probably the best known in these parts. Billy McDerment was picked up from Leicester's reserves, Tommy Hare made the move from Southampton and Micky Brown came from Millwall while a modest £7,000 was paid to Charlton for Rodney Green.

Despite all this, Luton supporters felt we were really going places and to us the new players represented a club finally moving forward after six years of decline during which time we had sunk from the old Division One to the basement.

The first pre-season friendly, at home to near neighbours Watford, drew a crowd of 5,360 which was better than a good many of the previous year's league attendances and the Division Three visitors were lucky to escape with a 1-1 draw. The Hatters followed this up with a 2-0 win over Colchester at Kenilworth Road and a 2-0 victory at Southern League Brentwood.

Considering the Town's poor away record the previous season, when they picked up only six points on their travels, it was regarded as a major achievement when they recorded a 1-1 draw at Wrexham on the opening day of the new campaign. Green side-footed the equaliser a minute from the end of a bruising encounter to emphasise the new found determination in the side.

Barnsley were then seen off at Kenilworth Road the following week, with a 2-2 draw at Swansea maintaining the unbeaten record. However, a 0-3 defeat at Southend in the next game brought everyone back to earth.

Many excuses were made for the hammering at Roots Hall including the absences through injury of

Tony Read, Graham French, Ray Whittaker and Max Dougan and the early loss of Green with a knee injury. In truth though, Southend's fast, powerful style would have sorely tested a full strength Luton side as they maintained the form that made them early season promotion favourites.

The Hatters soon bounced back, however, with a 1-0 home win over Hartlepool courtesy of a brilliant individual goal from Bruce Rioch, followed by yet another draw in Wales, this time 1-1 at Newport. Crowds were now on the increase and it was only very wet weather that kept the attendance down to 7,977 as York were beaten 3-1 at Kenilworth Road to maintain the 100% home record. The win was not achieved without scares though as York missed a couple of sitters before Rioch, once more, made the game safe just before the end.

With Green now in hospital recuperating from a cartilage operation, the legacy of the injury sustained at Southend, it was becoming obvious that a replacement was urgently required as the Town could not continue to rely solely on the power shooting of Rioch.

The local press was full of rumours as manager Brown scoured the country for a proven goalscorer. Harry Lyon from his old club Wigan, Paul Aimson of Bury and Jim Hutchinson of Halifax were all mentioned as possible targets and doubtless there would have been many more if websites had been available!

It was while watching former England international Alan Peacock playing for Leeds reserves at Derby that Brown finally spotted the man who turned out to be the missing link in the Town's eventually successful quest for promotion.

Ian Buxton had been at the Baseball Ground for eight years and had netted 41 times in 145 appearances for the Rams but he could see his first team opportunities coming to an end in the early Brian Clough era. A fee of £11,000 was quickly agreed and Buxton signed on the morning of 27th September 1967 only hours before the return game with Southend at Kenilworth Road.

The clash with the unbeaten Shrimpers drew a crowd of 13,332, the biggest for almost two years, and they roared when John Moore moved up to open the scoring in the 23rd minute after anticipating a fumble by Southend goalkeeper Trevor Roberts to slam the ball home.



Ian Buxton (number 8), proved an astute buy during the Division Four championship winning side of 1967/68.

The play continued frantically from end to end and it came as little surprise when Jackie Ferguson headed the equaliser mid-way through the second half. Two minutes later Branston headed the Town back in front and as the Southend fire slowly extinguished, French made the game safe just before the end to push the team up to fifth position and on to the eventual championship. Buxton could have been forgiven if he was baffled by the pace and changing direction of the game but his obvious class shone through and once he had

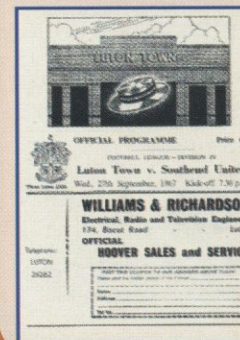
settled in he became a very important member of the side, weighing in with 13 goals in a brilliant campaign.

**Luton:** Read, Hare, Jardine, Dougan, Branston, Moore, French, Buxton, Allen, Rioch, Whittaker.

**Southend:** Roberts, Bentley, Birks, Ashworth, May, Stevenson, Ferguson, Chisnall (Beasley), Smillie, McMillan, McKinven.

*Roger Wash*

## Yesterday's pages

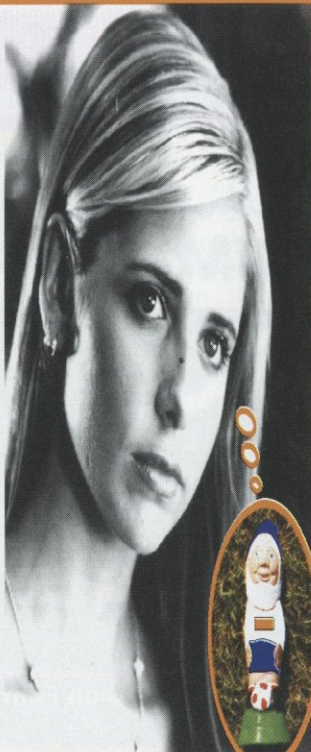


The Town's programme had remained unchanged since 1961 and in an era when clubs the country over were recognising the commercial possibilities of a decent magazine ours was quickly becoming an embarrassment.

Full of adverts and with little reading material it was only out of habit that a programme was purchased at the time. Unless, of course, you needed to know that Roger Whittaker was appearing at Cesars Palace!



"I love my  
Luton  
gnome, I  
can't wait  
to see  
what else  
Premier  
Image  
have got"



**WWW.PREMIERIMAGE.CO.UK**

For a FREE gift catalogue CALL: 020 8461 4214  
or write to: Unit 12, 157-159 Boundfield Rd, London SE6 1PE



**THE CANE INDUSTRIES (UK) LTD**  
**QUALITY CANE FURNITURE**



Daytona



Toronto



San Francisco



Wyoming

Established 1980 SHOWROOM OPEN  
**2-B LAPORTE WAY,**  
**LUTON, BEDS LU4 8RJ**  
Tel: 01582 727123 Fax: 01582 727233

# TRAVEL EXTRAS

for everything but the flight

- X Car Rental**
- X Accommodation**
- X Airport Parking**
- X Travel Insurance**
- X Airport Lounges**
- X Currency**

[www.travelextras.com/ltfc](http://www.travelextras.com/ltfc)

Telephone: 08707 27 37 27

For the latest ticket information call  
the Luton Ticket Office on:  
**01582 416976**

# XARA

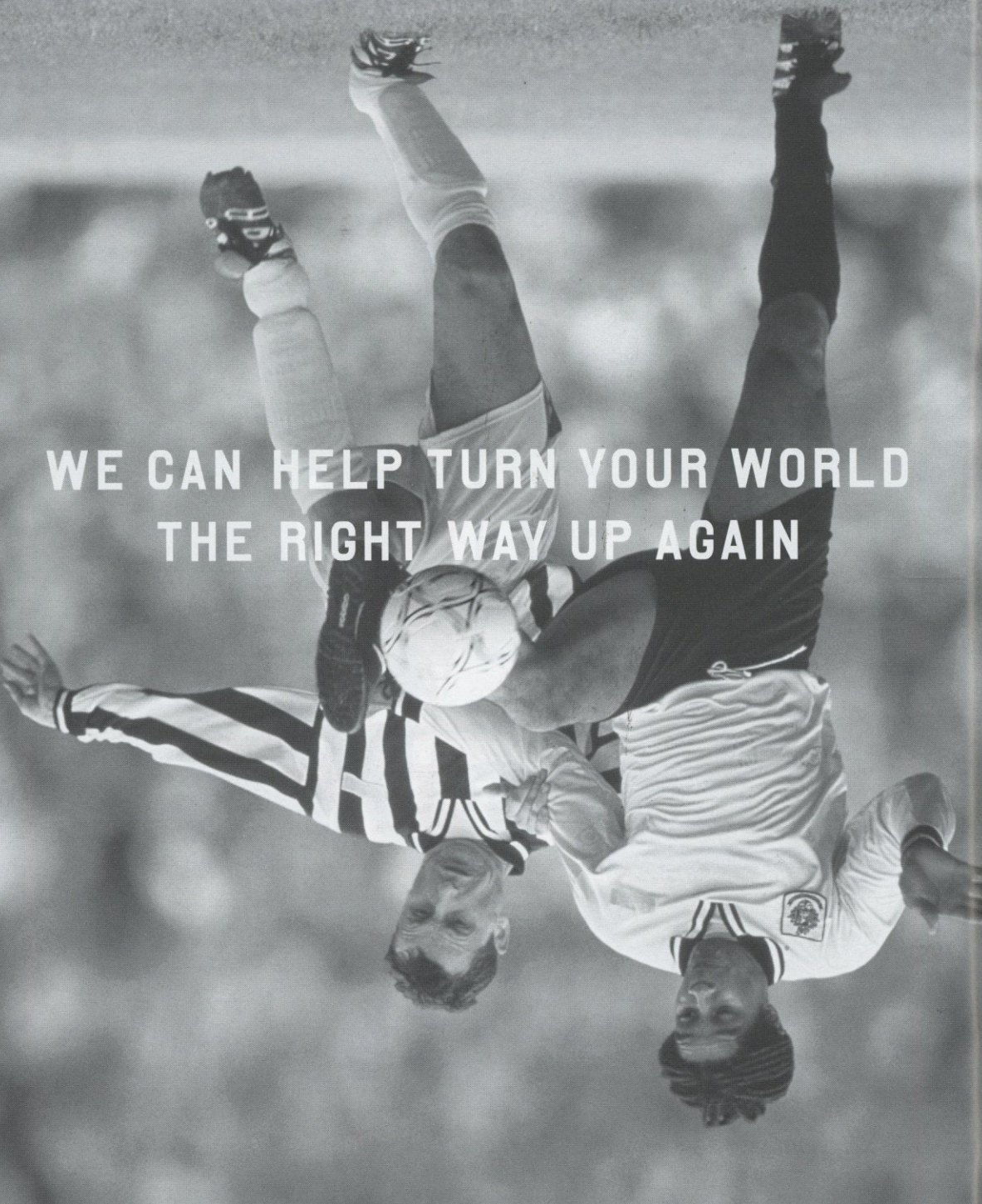
**XARA SPORTSWEAR UK LTD**



**OFFICIAL KIT SUPPLIER TO**  
**LUTON TOWN F.C.**  
**SEASON 2001 - 2002**



WE CAN HELP TURN YOUR WORLD  
THE RIGHT WAY UP AGAIN



Being diagnosed with cancer can turn your life upside down. Macmillan Cancer Relief provides a range of services for people affected by cancer including Macmillan nurses and doctors, patient grants and cancer centres. Call the Information Line on 0845 601 6161 (Mon-Fri 9:30am-7:30pm) [www.macmillan.org.uk](http://www.macmillan.org.uk)  
Nationwide are proud to support Macmillan in helping people live with cancer.

Macmillan  
cancer relief

Nationwide

## Junior Hatters



Happy Harry

PRINTING deadlines mean that we cannot give a report on the Junior Hatters trip to Bristol Rovers on Saturday, but you can be pretty sure we had a good time meeting our opposite numbers at the Memorial Ground. We have decided not to run a trip to Exeter next Saturday, because of the distance involved, although of course there is nothing to stop Junior Hatters and their parents going with the Bobbers Travel Club or Town on Tour. Our Saturday Club will be back in business a week later, when we are at home to Oxford United, and we think it offers tremendous value for money at £5 for

Junior Hatters with season tickets, or £9 including a match ticket. It includes a sausage and chips lunch, and we have lots of games, usually including football. Occasionally there are visits to the cinema and bowling alley, for £3 extra. The Saturday Club is, of course, fully supervised.

So is our family room, which is under the Kenilworth Road stand. It is opened up 45 minutes before kick-off, and again at half time and at the end of the game. All Junior Hatters are welcome, and they can bring in one guest each to join in the entertainment. We have quizzes in which everyone wins a prize of some sort and, of course, when the winter gets cold it's a lovely place to warm the cockles of your heart! If you want to know more about joining the Junior Hatters, please contact the club shop.



VIP YOUNGSTERS: Two mascots were on duty at our last home game, against Cheltenham, and are pictured carrying out one of their pleasant duties, meeting the team captains and match officials before kick-off. Nine-year-old Timothy Owen, from Kislingbury, Northants, was commercial mascot, and doing the honours for the Junior Hatters was Daniel Chaplen, 11, from Crabtree Way, Dunstable.

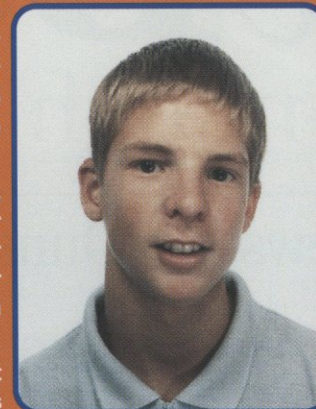
*Happy Harry*

## Today's Mascot

JUST turned 14, and a staunch Luton Town fan, Christopher Lindsay is today's Junior Hatters mascot after his name was picked out of the computerised drum.

He lives at King Street, Potton, and goes to Sandy Upper School. He plays football for Potton Colts, and his other hobbies are golf, mountain biking and tennis.

Christopher is a regular at Town matches, along with his



dad and sister, and today he gets the chance to meet his favourite player, Stuart Douglas, because the mascot's duties include going into the Town dressing room before kick-off, and then joining them on the pitch before kick-off.

We also have two 11-year-old ball boys today, Thomas Quinn, from Shefford Road, Clophill, and Charles Day, of Whitehill Road, Barton.

If you would like to join the Junior Hatters,  
call the Club Shop on:  
**01582 411622**



## Pre-Match Entertainment

This afternoon's pre-match and half time entertainment is managed by our PA announcers Justin Dealey and Steve Faulkner.

- 1.45** Gates Open - music starts
- 2.00** Track from HMV Album of the Week - THE GREATEST 80'S SOUL WEEKENDER.
- 2.10** Club mascot Happy Harry runs out on pitch.
- 2.15** LETS DANCE by FIVE - the current No1 single to be played.
- 2.20** Hatters Hot Hit - MODJO - WHAT I MEAN.
- 2.25** Team line up to be announced.
- 2.30** HMV Single of the Week - KOSHEEN with HIDEU.
- 2.35** Dedications announced.
- 2.40** Town Teaser - Its always good fun!
- 2.45** Youth Team Presentation
- 2.55** Teams runout to our new song - The Blues Brothers " Gimme Some Lovin".
- 2.57** Final run down of the teams.
- 2.59** One minute silence for Luton Legend Les Sealey who passed away last Sunday.
- 3.00** THE BIG KICK OFF

### HALF TIME

- 3.50** Golden Gamble - Winning ticket picked by Luton Town Player.
- 3.55** Half time score check - Every half time score announced from all 92 league clubs.
- 4.00** Repeat of dedications.
- 4.05** Teams arrive back on pitch to theme song "Gimme Some Lovin".

### 4.55 FULL TIME

Matchday music supplied by



Arndale Centre.

If you would like your dedication read out, please contact the Club prior to matchdays.

# The Best in post-match reports

The Luton News The Dunstable Gazette



ON SALE EVERY  
WEDNESDAY



# WE'VE GOT ALL THE FOOTBALL

UEFA Champions League  
FA Barclaycard Premiership  
Nationwide Football League



itv  
DIGITAL

ITV Digital gives you all the football: the FA Barclaycard Premiership and AXA FA Cup on Sky Sports 1, 2 and 3, plus live games from the UEFA Champions League, Nationwide Football League, and the Worthington Cup exclusively on the new ITV Sport Channel.

Call 0808 100 0101 for details or visit your local electrical retailer.  
Subject to coverage, status and terms. Calls may be monitored.





# Action Replay



## Luton Town 2 Cheltenham Town 1 (HT 2-0)

THE BIG mystery about a valuable win in the first home league game of the season was how the Town could ease their way to being comfortable by the interval, and then lose the plot enough to allow Cheltenham to recover in the second half and go perilously close to snatching a point.

Joe Kinnear could not understand it. His half-time instructions, he said, were that the Town had matched the opposition physically, had imposed some decent football on them, and deserved their two-goal lead.

"Don't get complacent, and don't defend too deep," he demanded. Complacent or not, deep defending overcame the Town, almost inviting Cheltenham to stage the revival they were bound to seek after being given a talking-to with the half-time tea.

Their manager, Steve Cotterill, once a Wimbledon centre-forward given a free transfer by Joe Kinnear, was indignant afterwards when people spoke of his side's tactics. We thought he had packed his team with six-footers, but he dismissed that with a slightly rude epithet, and concentrated instead on praising his men for the way they fought their way back into the game from two down.

The Town's scorers were the Carlisle double act again, Paul Hughes and Carl Griffiths, and having mixed it when they had to, the Town looked real like-

ly lads after the 30th minute opener.

The defence had to be alert as Cheltenham's tactics used the long ball for two front men to chase. The reference books say that Martin Devaney is only 5ft 10ins tall and Julian Alsop a mere 6ft 4ins. They had to be watched well, and were, by a defence which was re-shuffled because Marvin Johnson and Aaron Skelton were injury absentees. Ian Hillier, on loan from Spurs, played his first-ever league game at right back, and did well, while Emmerson Boyce moved to centre-back and had a good game until he was one of two or three who stood off Cheltenham sub Neil Howarth - 6ft 2ins according to the PFA - when he headed his side back into contention with 20 minutes to go.

The Town contributed to their own problems by conceding a lot of free kicks, and were complaining later that the referee had not been even-handed in his decisions on yellow cards, one to Cheltenham, who got stuck in as well, and five to the Town. Kevin Nicholls earned two bookings for his all-action display, which left the Town down to ten men for the last seven minutes plus nearly five of stoppage time. Overall the Town were worth the points, but it was a close thing at the end, with Cheltenham driving forward and nearly equalising when Michael Duff, a 6ft 1in midfielder, hit a post in a hectic scramble.

## Match Details

**Luton Town:** Emberson; Hillier, Boyce, Perrett, Taylor; Forbes (George 71 mins), Nicholls, Hughes, Mansell; Howard (Fotiadis 61 mins), Griffiths (Locke 85 mins).

**Unused subs:** Dryden, Owendale.

**Booked:** Steve Howard, 13 mins, foul on Mark Yates; Kevin Nicholls, 24 mins, lunging for the ball, but making no contact, as goalkeeper Carl Muggleton went down for it; Adrian Forbes, 63 mins, foul on Michael Duff; Matthew Taylor, 80 mins, dissent; Nicholls again, and sent off, 83 mins, foul on Yates.

**Cheltenham:** Muggleton; Jones (Howarth 66 mins), Banks, Walker, Victory; Duff, Yates, Milton, McAuley (Grayson 27 mins); Devaney, Alsop (Naylor 51 mins).

**Booked:** Mark Yates, 65 mins, foul on Mathew Taylor.

**The Goals:** 1-0 30 mins - Paul Hughes calm and composed side-foot shot from the edge of the box after a clever lay-off by Carl Griffiths; 2-0 37 mins - Griffiths, poaching close in after Lee Mansell robbed Steve Jones and fed Kevin Nicholls for a pinpoint cross which by-passed the goalkeeper; 2-1 70 mins - Neil Howarth, surprisingly free header to meet a free kick by Russell Milton, with the Town caught unaware as Cheltenham worked the set piece without waiting for the signal the ref indicated he would give.

**Referee:** Grant Hegley, Hertfordshire.

**Attendance:** 6,177, 467 of them in the away end.



**STRAINING EVERY MUSCLE:** This was the first-half incident which brought Kevin Nicholls a booking - there was no contact - Muggleton dived over the danger - but it was still ruled to be a yellow card challenge.



**DOUBLE DOUBLE:** Paul Hughes and Carl Griffiths played a winning duet against Cheltenham, just as they had done at Carlisle. This was the goal by Griffiths, with goalkeeper Carl Muggleton looking a touch out of position from a cross by Kevin Nicholls.

**ON THE BALL:** Paul Hughes, voted man of the match in the executive lounges, is too smart for Cheltenham's Michael Duff.





# Action Replay



## Reading 4 Luton Town 0 (HT 2-0)

PERHAPS we had been kidded by our smashing start to the Third Division campaign. But in the Worthington Cup on Tuesday the Town were some way short of matching their Second Division opposition.

Reading destroyed the Town while resting expensive strikers Martin Butler and Jamie Cureton, and their manager, Alan Pardew, was purring at the end about an excellent team performance by a side that finished the game with five home-grown 19-year-olds on the park.

Joe Kinnear's mood was vastly different. He was furious at the way the defence was brushed aside as Reading helped themselves to a couple of goals in each half, and at the lack of power in attack. Steve Howard and Carl Griffiths were never allowed to discomfort Reading in the first half, and in the second the Stuart Douglas/Howard combination fared no better.

"I need more players and I'm desperate for a couple of strikers," said the boss, after spending nearly an hour shut up in the dressing room to tell his players "a few home truths."

With Spurs refusing to allow Ian Hillier to be cupped, the Town recalled Marvin Johnson after injury, to play in central defence, with Emmerson Boyce switching to the right.

Lee Mansell was again asked to play wide left, which is not a role well suited to his talents, and

the lack of balance was in sharp contrast to the Reading pattern. Mansell was one of three players subbed at the break.

Reading are a good side, and could well be in the First Division by the time we reach their current level, so losing to them in their magnificent stadium is not the end of the world. But it was painful for the good Town following, with Kevin Nicholls and Paul Hughes striving manfully in midfield, but the team as a whole struggling to make a consistent collective impression.

Once Reading got into their stride the Town were second best. Only two goal attempts got close, and we can only dream of what might have happened if the first, with a minute played, had brought success. Matthew Taylor hit a scorching free kick from the right flank which the keeper turned to Adrian Forbes whose drive from the edge of the box whistled the wrong side of a post. Reading were two up at the break, and the third goal was a sadistic killer. The Town were battling to try to get back into the game, and from a free kick by Nicholls Howard headed against the bar. Boyce followed up but from close range and under pressure put the ball narrowly wide. Reading broke from the goal kick and within seconds of the score nearly being 2-1 it was 3-0, leading to the humiliation of a first four-goal defeat since the trip to Swansea in Ricky Hill's days.

## Match Details

**Luton Town:** Emberson; Boyce, Perrett (Dryden HT), Johnson, Taylor; Forbes, Nicholls, Hughes, Mansell (Holmes HT); Howard, Griffiths (Douglas HT).

**Unused subs:** Locke, Ovendale.

**Booked:** Adrian Forbes, 30 mins, dissent; Paul Hughes, 83 mins, foul on James Harper.

**Reading:** Whitehead; Murty, Williams, Whitbread, Shorey; Igoe, Harper, Parkinson (Gamble 80 mins), Smith (Tyson 63 mins); Forster (Rougier HT), Henderson.

**Unused subs:** Viveash, Ashdown.

**Booked:** Alex Smith, 42 mins, foul on Paul Hughes.

**The Goals:** 11-0 38 mins - corner cleared back to Alex Smith, on Reading's right, and from his cross Darius Henderson barged in to head home; 2-0 in stoppage time - Phil Parkinson, emphatic drive after Russ Perrett headed out a cross to his feet; 3-0 51 mins - Alex Smith close range after Henderson breezed clear of Emmerson Boyce down the left and delivered a perfect ball in; 4-0 90 mins - Tony Rougier skipped down the wing again, and set up Henderson for his second.

**Referee:** David Crick, Surrey.

**Attendance:** 5,115, including 889 trying to rouse the Town.



### OLD PALS MEET AGAIN:

Adrian Whitbread, with the Town on loan last season, is now enjoying his football with Reading, although Stuart Douglas, a second-half sub, set him a problem or two.

**UNDER GUARD:** Defenders well in evidence as Steve Howard manages to get in a shot at goal.



### JUMPING TO IT:

Lee Mansell trying to do his bit to get the Town attack moving fluently.







**New Luton Town Kit - made by Xara Soccer UK Limited.  
Sponsored by SKF UK Ltd**

|                                   |               |                       |               |
|-----------------------------------|---------------|-----------------------|---------------|
| <b>Short Sleeve Replica Shirt</b> |               | <b>Replica Shorts</b> |               |
| <b>Youths</b>                     |               | <b>Youths</b>         | <b>£15.99</b> |
| S, M, L,                          | <b>£29.99</b> | <b>Adults</b>         | <b>£19.99</b> |
| XL                                | <b>£34.99</b> |                       |               |
| <b>Adults</b>                     |               | <b>Replica Socks</b>  |               |
| S,M,L,XL,XXL                      | <b>£39.99</b> | <b>Youths</b>         | <b>£7.99</b>  |
|                                   |               | <b>Adults</b>         | <b>£9.99</b>  |

The new away kit will be launched later in September 2001 on a date to be announced.

# Matchday Accessories



**Holdall £13.50**



**Shirt Bag 21.00**

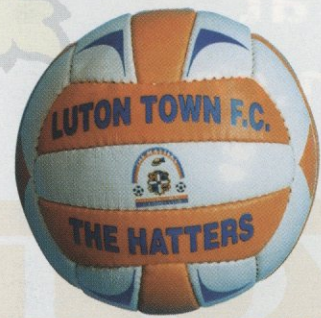
**Boot Bag £6.50**



**Rucksack £8.50**



**Goalkeeper Gloves £4.95**



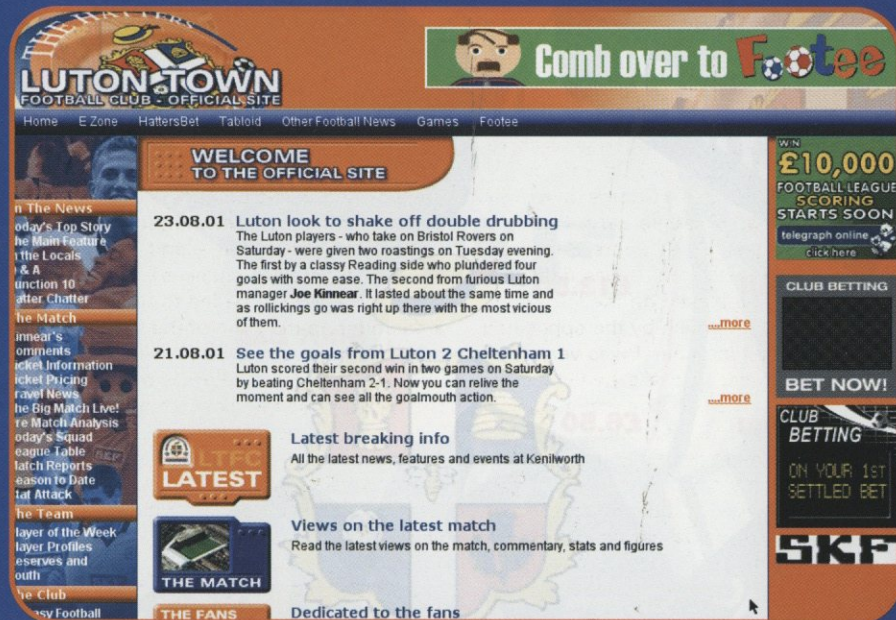
**LTFC Football £9.95**



**Shin Pads £8.50**



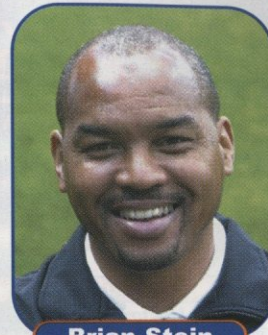
# The New Look Official Website www.lutontown.co.uk



Featuring goal highlights, audio commentary and a host of other interactive features. Get online at [www.lutontown.co.uk](http://www.lutontown.co.uk)



## In Reserve



**Brian Stein**

**Barnet 0  
Luton Town 3**

THE RESULT in our opening fixture in the Avon Insurance Combination sounds pretty good, but I was not very happy about it because we should have dished out a real thrashing to a side that was second best in every department. The good news was that we created a stack of chances, probably 15 or more. The bad news was that we missed too many of them. Andrew Fotiadis scored two and should have had four, and Stuart Douglas, Sean Maher, Steve Leary, Liam George and Peter Holmes could all have had a couple each. Our other goal came from Lee Hodges, 27, ex Spurs, Barnet and Reading, who is looking for a club. It was difficult to judge his performance - he played on the left of midfield, and was not tested too much by the opposition. The quality of our football in general was very good, and we were never in danger of losing, even though it took us 35 minutes to net the overdue first goal. The clean sheet was welcome, but Mark Ovendale, back after suspension, would probably have appreciated a bit more work on the day. A lot of our display showed good professionalism, except for the inability to turn possession into goals. It

was more about careless finishing than good defending by Barnet, and it is vital for players who want to progress into the league side to produce the killer instinct, and finish off teams when you have them on the rack. Barnet, outplayed in midfield, and unable to make much impression on a solid back four, must have felt grateful that we let them off so lightly. It was only 1-0 at half time, even though we had continually got behind them with good movement and passing. But the decision-making by individuals was very disappointing, including some of the running off the ball. Too often, when we were attacking, the man in possession was not helped enough by others who should have been drawing defenders away from him. But the team deserves credit for its attitude - I had no complaints about that - and hopefully the lessons about sticking away chances will be learned quickly. Good work by George led to the first goal: he robbed a defender on the edge of the box and set up Fotiadis to score on a one-on-one with the keeper. Hodges volleyed in our second on 52 minutes from just inside the box, and he and Fotiadis played a smart one-two for Fotiadis to shoot the third on 70 minutes. **Luton Town:** Ovendale; Foley, Maher, Stirling, Brennan (Hall 85 mins); Osborn (Leary 73 mins), George, Holmes, Hodges; Fotiadis, Douglas (Murphy 65 mins).

*Brian Stein*

### Avon Insurance Combination Results and Fixtures

|       |        |                |   |        |                    |
|-------|--------|----------------|---|--------|--------------------|
| AUG   | Wed 15 | Barnet         | A | 3-0    | Fotiadis 2, Hodges |
|       | Wed 29 | Millwall       | H | 2pm    |                    |
| SEPT  | Wed 12 | Leyton Orient  | A | 2pm    |                    |
|       | Wed 26 | Gillingham     | H | 2pm    |                    |
| OCT   | Wed 3  | Cardiff        | A | 2pm    |                    |
|       | Wed 10 | QPR            | H | 2pm    |                    |
|       | Mon 15 | Crystal Palace | A | 7.30pm |                    |
|       | Wed 24 | Cambridge(LC)  | H | 2pm    |                    |
| NOV   | Wed 31 | Reading        | H | 2pm    |                    |
|       | Wed 7  | Brentford      | A | 7pm    |                    |
|       | Wed 14 | Bristol City   | H | 2pm    |                    |
| DEC   | Wed 28 | Norwich(LC)    | A | 7.30pm |                    |
|       | Wed 5  | Oxford         | A | 2pm    |                    |
|       | Wed 12 | Swindon        | H | 2pm    |                    |
|       | Wed 19 | Portsmouth     | A | 7pm    |                    |
| JAN   | Wed 9  | Brighton       | A | 7pm    |                    |
|       | Wed 16 | Wycombe        | H | 2pm    |                    |
|       | Wed 23 | Bournemouth    | H | 2pm    |                    |
| FEB   | Wed 6  | Bristol Rov    | A | 7pm    |                    |
|       | Wed 13 | Norwich        | H | 7pm    |                    |
|       | Wed 20 | Cheltenham     | A | 2pm    |                    |
|       | Wed 27 | Colchester     | H | 7pm    |                    |
| MAR   | Wed 13 | Peterborough   | H | 7pm    |                    |
|       | Wed 20 | Southend       | A | 2pm    |                    |
|       | Mon 25 | Cambridge      | A | 2pm    |                    |
| APRIL | Wed 10 | Northampton    | H | 2pm    |                    |

### Youth Football

THE YOUTH team began its season in the Football League Youth Alliance on Saturday, and the normal coverage of their games will be in future match day magazines. Home matches are at Luton RFC, Newlands Road, and kick off at 11 am. The fixtures:

|     |                  |               |    |              |   |
|-----|------------------|---------------|----|--------------|---|
| Aug | 17               | Kidderminster | A  |              |   |
| 25  | Rushden & D      | H             | 24 | Cambridge    | H |
| 28  | Walsall          | A             | 24 | Northampton  | A |
| 28  | L. Orient (Cup)  | A             | 24 | West Brom    | H |
| 28  | Kidderminster    | H             | 12 | Notts County | A |
| 28  | Cambridge        | A             | 19 | Peterborough | H |
| 28  | Northampton      | H             | 26 | Peterborough | H |
| 28  | Colchester (Cup) | H             | 26 | Rushden & D  | A |
| 28  | West Brom        | A             | 16 | Walsall      | H |
| 28  | Peterborough     | A             | 16 | Walsall      | H |
| 28  | Southend (Cup)   | H             |    |              |   |
| 28  | Notts County     | H             |    |              |   |

Up and Running!

Luton Town's very own official website.

[www.lutontown.co.uk](http://www.lutontown.co.uk)



not including weekend's matches

### Average Attendances

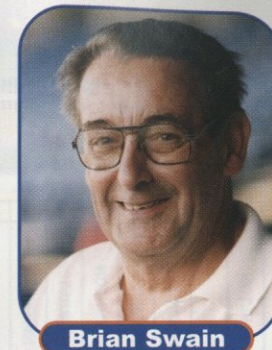
### Goals - When Scored

### Form Guide: Home & Away

| Records         | Average Attendances |      |      |      |       | Goals - When Scored |       |       |       |       | Form Guide: Home & Away |           |           |                |   |
|-----------------|---------------------|------|------|------|-------|---------------------|-------|-------|-------|-------|-------------------------|-----------|-----------|----------------|---|
|                 | 2000                | 4000 | 6000 | 8000 | 10000 | 0-15                | 16-30 | 31-45 | 46-60 | 61-75 | 76-90                   | Home Form | Away Form |                |   |
| Highest Gate    |                     |      |      |      |       | BR                  | 0     | 1     | 0     | 1     | 0                       | 1         | W         | Bristol Rovers | W |
| 10,755          |                     |      |      |      |       | CU                  | 0     | 0     | 0     | 0     | 0                       | 0         | L         | Carlisle       | D |
| Hull            |                     |      |      |      |       | CT                  | 0     | 0     | 0     | 0     | 2                       | 0         | D         | Cheltenham     | L |
| v Plymouth      |                     |      |      |      |       | Da                  | 0     | 0     | 0     | 0     | 2                       | 0         | W         | Darlington     | L |
| Lowest Gate     |                     |      |      |      |       | EC                  | 1     | 1     | 0     | 0     | 0                       | 0         | L         | Exeter         | D |
| 1,937           |                     |      |      |      |       | HT                  | 0     | 1     | 2     | 0     | 0                       | 0         | D         | Halifax        | W |
| Halifax         |                     |      |      |      |       | HU                  | 0     | 0     | 0     | 0     | 2                       | 2         | D         | Hartlepool     | W |
| v Exeter        |                     |      |      |      |       | HC                  | 0     | 0     | 1     | 1     | 0                       | 1         | D         | Hull           | W |
| Highest         |                     |      |      |      |       | KI                  | 0     | 0     | 0     | 0     | 1                       | 0         | W         | Kidderminster  | L |
| Agg Score       |                     |      |      |      |       | LQ                  | 0     | 0     | 0     | 1     | 0                       | 0         | D         | Orient         | D |
| Exeter          |                     |      |      |      |       | LQ                  | 0     | 0     | 1     | 0     | 0                       | 0         | L         | Lincoln        | D |
| 1               |                     |      |      |      |       | LT                  | 0     | 0     | 2     | 2     | 0                       | 0         | W         | Luton          | W |
| Hull            |                     |      |      |      |       | MT                  | 0     | 1     | 1     | 0     | 0                       | 0         | L         | Macclesfield   | D |
| Macclesfield    |                     |      |      |      |       | MT                  | 1     | 0     | 0     | 0     | 0                       | 0         | D         | Mansfield      | D |
| 1               |                     |      |      |      |       | OU                  | 0     | 0     | 0     | 1     | 0                       | 0         | L         | Oxford         | D |
| Swansea         |                     |      |      |      |       | PA                  | 0     | 0     | 0     | 0     | 0                       | 0         | L         | Plymouth       | D |
| 3               |                     |      |      |      |       | RO                  | 0     | 1     | 1     | 0     | 1                       | 0         | D         | Rochdale       | W |
| Shrewsbury      |                     |      |      |      |       | Rd                  | 0     | 1     | 0     | 0     | 0                       | 0         | D         | Rushden        | W |
| 1               |                     |      |      |      |       | SU                  | 0     | 0     | 0     | 1     | 0                       | 0         | L         | Scunthorpe     | L |
| Hartlepool      |                     |      |      |      |       | ST                  | 0     | 0     | 1     | 0     | 1                       | 0         | L         | Shrewsbury     | W |
| 3               |                     |      |      |      |       | SU                  | 0     | 0     | 0     | 0     | 0                       | 1         | W         | Southend       | D |
| Biggest         |                     |      |      |      |       | SC                  | 1     | 1     | 0     | 0     | 0                       | 1         | D         | Swansea        | W |
| Home Win        |                     |      |      |      |       | TU                  | 0     | 0     | 0     | 0     | 0                       | 0         | L         | Torquay        | L |
| Darlington      |                     |      |      |      |       | YC                  | 0     | 0     | 1     | 2     | 0                       | 0         | L         | York           | W |
| 2               |                     |      |      |      |       |                     |       |       |       |       |                         |           |           |                |   |
| Kidderminster   |                     |      |      |      |       |                     |       |       |       |       |                         |           |           |                |   |
| 0               |                     |      |      |      |       |                     |       |       |       |       |                         |           |           |                |   |
| Biggest         |                     |      |      |      |       |                     |       |       |       |       |                         |           |           |                |   |
| Away Win        |                     |      |      |      |       |                     |       |       |       |       |                         |           |           |                |   |
| Torquay         |                     |      |      |      |       |                     |       |       |       |       |                         |           |           |                |   |
| 0               |                     |      |      |      |       |                     |       |       |       |       |                         |           |           |                |   |
| York            |                     |      |      |      |       |                     |       |       |       |       |                         |           |           |                |   |
| 3               |                     |      |      |      |       |                     |       |       |       |       |                         |           |           |                |   |
| Consec. Wins    |                     |      |      |      |       |                     |       |       |       |       |                         |           |           |                |   |
| Bristol Rovers, |                     |      |      |      |       |                     |       |       |       |       |                         |           |           |                |   |
| Luton           |                     |      |      |      |       |                     |       |       |       |       |                         |           |           |                |   |
| 2               |                     |      |      |      |       |                     |       |       |       |       |                         |           |           |                |   |
| Games           |                     |      |      |      |       |                     |       |       |       |       |                         |           |           |                |   |
| Unbeaten        |                     |      |      |      |       |                     |       |       |       |       |                         |           |           |                |   |
| 11 Teams        |                     |      |      |      |       |                     |       |       |       |       |                         |           |           |                |   |
| 2               |                     |      |      |      |       |                     |       |       |       |       |                         |           |           |                |   |
| Consec. Defeats |                     |      |      |      |       |                     |       |       |       |       |                         |           |           |                |   |
| Scunthorpe,     |                     |      |      |      |       |                     |       |       |       |       |                         |           |           |                |   |
| Torquay         |                     |      |      |      |       |                     |       |       |       |       |                         |           |           |                |   |
| 2               |                     |      |      |      |       |                     |       |       |       |       |                         |           |           |                |   |
| Winless Run     |                     |      |      |      |       |                     |       |       |       |       |                         |           |           |                |   |
| 11 Teams        |                     |      |      |      |       |                     |       |       |       |       |                         |           |           |                |   |
| 2               |                     |      |      |      |       |                     |       |       |       |       |                         |           |           |                |   |
| Total Games     |                     |      |      |      |       |                     |       |       |       |       |                         |           |           |                |   |
| 24              |                     |      |      |      |       |                     |       |       |       |       |                         |           |           |                |   |
| Home Wins       |                     |      |      |      |       |                     |       |       |       |       |                         |           |           |                |   |
| 5               |                     |      |      |      |       |                     |       |       |       |       |                         |           |           |                |   |
| .....21%        |                     |      |      |      |       |                     |       |       |       |       |                         |           |           |                |   |
| Away Wins       |                     |      |      |      |       |                     |       |       |       |       |                         |           |           |                |   |
| 10              |                     |      |      |      |       |                     |       |       |       |       |                         |           |           |                |   |
| .....42%        |                     |      |      |      |       |                     |       |       |       |       |                         |           |           |                |   |
| Draws           |                     |      |      |      |       |                     |       |       |       |       |                         |           |           |                |   |
| 9               |                     |      |      |      |       |                     |       |       |       |       |                         |           |           |                |   |
| .....38%        |                     |      |      |      |       |                     |       |       |       |       |                         |           |           |                |   |
| 1-1 Draws       |                     |      |      |      |       |                     |       |       |       |       |                         |           |           |                |   |
| 4               |                     |      |      |      |       |                     |       |       |       |       |                         |           |           |                |   |
| .....17%        |                     |      |      |      |       |                     |       |       |       |       |                         |           |           |                |   |

| see key below  | Clubs' top scorer & the points their goals have won |    |     |     |    |     |      |     |     | Biggest Wins & Heaviest Defeats |                |                | Numbers |    |    |
|----------------|---|----|-----|-----|----|-----|------|-----|-----|---------------------------------|----------------|----------------|---------|----|----|
|                | Leading Scorer                                      | GS | Sc1 | Sc2 | HT | Gms | Ave  | Pts | Run | Club                            | Win -vs.       | Defeat -vs.    | PU      | CS | FS |
| Luton          | Griffiths   | 2  | 2   | 0   | 0  | 2   | 1.00 | 2   | 2   | Bristol Rov                     | 2-1 Scnthorpe  | -              | 15      | 1  | 0  |
| Bristol Rovers | Ellington   | 1  | 1   | 0   | 0  | 2   | 0.50 | 2   | 1   | Carlisle                        | -              | 0-2 Luton      | 17      | 1  | 2  |
| Kidderminster  | Ducros  | 1  | 1   | 0   | 0  | 2   | 0.50 | 2   | 1   | Cheltenham                      | -              | 1-2 Luton      | 16      | 0  | 0  |
| Rushden        | Patmore   | 1  | 1   | 0   | 0  | 2   | 0.50 | 2   | 1   | Darlington                      | 2-0 Kiddmstr   | 0-1 Southend   | 14      | 1  | 1  |
| Southend       | Rawle   | 1  | 1   | 0   | 0  | 2   | 0.50 | 2   | 1   | Exeter                          | -              | 1-3 Hull       | 17      | 0  | 0  |
| Hartlepool     | Clark   | 2  | 2   | 0   | 0  | 2   | 1.00 | 1   | 2   | Halifax                         | 2-1 Lincoln    | -              | 14      | 0  | 0  |
| Macclesfield   | Glover  | 2  | 2   | 0   | 0  | 2   | 1.00 | 1   | 2   | Hartlepool                      | 3-1 Shrsbry    | -              | 14      | 0  | 0  |
| Exeter         | Kerr  | 1  | 1   | 0   | 0  | 2   | 0.50 | 1   | 1   | Hull                            | 3-1 Exeter     | -              | 16      | 1  | 1  |
| Halifax        | Swales  | 1  | 1   | 0   | 0  | 2   | 0.50 | 1   | 1   | Kidderminster                   | 1-0 Scnthorpe  | 0-2 Darlington | 13      | 1  | 1  |
| Orient         | Lockwood  | 1  | 1   | 0   | 0  | 2   | 0.50 | 1   | 1   | Orient                          | -              | -              | 16      | 1  | 1  |
| Mansfield      | Greenacre   | 1  | 1   | 0   | 0  | 2   | 0.50 | 1   | 1   | Lincoln                         | -              | 1-2 Halifax    | 12      | 1  | 1  |
| Rochdale       | Ford  | 1  | 1   | 0   | 0  | 2   | 0.50 | 1   | 1   | Luton                           | 2-0 Carlisle   | -              | 17      | 1  | 0  |
| Cheltenham     | Howarth   | 1  | 1   | 0   | 0  | 2   | 0.50 | 0   | 1   | Macclesfield                    | -              | 1-3 Swansea    | 14      | 0  | 0  |
| Darlington     | Mellanby  | 1  | 1   | 0   | 0  | 2   | 0.50 | 0   | 1   | Mansfield                       | -              | -              | 12      | 1  | 1  |
| Hull           | Whitmore  | 1  | 1   | 0   | 0  | 2   | 0.50 | 0   | 1   | Oxford                          | -              | 1-2 Rochdale   | 15      | 1  | 1  |
| Lincoln        | Thorpe  | 1  | 1   | 0   | 0  | 2   | 0.50 | 0   | 1   | Plymouth                        | -              | 0-1 Shrsbry    | 16      | 1  | 2  |
| Oxford         | Brooks  | 1  | 1   | 0   | 0  | 2   | 0.50 | 0   | 1   | Rochdale                        | 2-1 Oxford     | -              | 14      | 0  | 0  |
| Scunthorpe     | Quailey   | 1  | 1   | 0   | 0  | 2   | 0.50 | 0   | 1   | Rushden                         | 1-0 York       | -              | 15      | 2  | 1  |
| Shrewsbury     | Rodgers   | 1  | 1   | 0   | 0  | 2   | 0.50 | 0   | 1   | Scunthorpe                      | -              | 1-2 Bristol R  | 15      | 0  | 1  |
| Swansea        | Watkin  | 1  | 1   | 0   | 0  | 2   | 0.50 | 0   | 1   | Shrewsbury                      | 1-0 Plymouth   | 1-3 Hartpool   | 15      | 1  | 0  |
| York           | Nogan   | 1  | 1   | 0   | 0  | 2   | 0.50 | 0   | 1   | Southend                        | 1-0 Darlington | -              | 14      | 2  | 1  |
| Carlisle       | no scorers as yet                                   |    |     |     |    |     |      |     |     | Swansea                         | 3-1 Maccsfil   | -              | 15      | 1  | 1  |
| Plymouth       | no scorers as yet                                   |    |     |     |    |     |      |     |     | Torquay                         | -              | 0-3 York       | 15      | 0  | 2  |
| Torquay        | no scorers as yet                                   |    |     |     |    |     |      |     |     | York                            | 3-0 Torquay    | 0-1 Rushden    | 18      | 1  | 1  |

Key: GS=Goals Scored; Sc1=Games Scored 1 Goal; Sc2=Games Scored 2 Goals; HT=Hat-Tricks; Each club's leading league scorer and their goals per game (Ave). Next column shows taking off their goals, how many Points (Pts) lost. Last figure show best scoring Run in consecutive games. NUMBERS: PU= Players Used CS= Clean Sheets FS= Games Failed to Score



Brian Swain

## Third Division Scene

I KNOW it's already out of date - we had to go to print before Saturday's games - and that after only two matches the first league table of the season is often a touch unreal. But the prospect of publishing a table showing Luton Town in pole position was too pretty to resist, and perhaps it might really be a portent of things to come. A year ago, at the same stage of the Second Division season, we were 23rd, having lost twice, against Notts County at home and Wigan away. We were stuck there almost every week afterwards. What should cheer us up, whatever happened at Bristol on Saturday, is that the first table of the season 12 months ago showed, then as now, only two teams with 100 per cent records, Millwall and Walsall, and both were promoted, Millwall as champions and Walsall via the play-offs. Our trip to the Memorial Ground on Saturday meant that one of the only two perfect records remaining in the Third Division was doomed. We inched above Rovers to top place by one goal - our aggregate was 4-1 while Rovers had beaten Torquay 1-0 at home and Scunthorpe 2-1 away.

|                | Nationwide League Division Three |   |   |   |   |      |     |  |   |   |   |   |   |   |     |
|----------------|----------------------------------|---|---|---|---|------|-----|--|---|---|---|---|---|---|-----|
|                | HOME                             |   |   |   |   | AWAY |     |  |   |   |   |   |   |   |     |
|                | P                                | W | D | L | F | A    | Pts |  | P | W | D | L | F | A | Pts |
| Luton Town     | 2                                | 1 | 0 | 0 | 2 | 1    | 6   |  | 1 | 0 | 0 | 2 | 0 | 6 | 6   |
| Bristol Rovers | 2                                | 1 | 0 | 0 | 1 | 0    | 6   |  | 1 | 0 | 0 | 2 | 1 | 6 | 6   |
| Hartlepool     | 2                                | 0 | 1 | 0 | 1 | 1    | 4   |  | 1 | 0 | 0 | 3 | 1 | 4 | 4   |
| Hull City      | 2                                | 0 | 1 | 0 | 0 | 0    | 4   |  | 1 | 0 | 0 | 3 | 1 | 4 | 4   |
| Swansea        | 2                                | 0 | 1 | 0 | 0 | 0    | 4   |  | 1 | 0 | 0 | 3 | 1 | 4 | 4   |
| Halifax        | 2                                | 0 | 1 | 0 | 1 | 1    | 4   |  | 1 | 0 | 0 | 2 | 1 | 4 | 4   |
| Rochdale       | 2                                | 0 | 1 | 0 | 1 | 1    | 4   |  | 1 | 0 | 0 | 2 | 1 | 4 | 4   |
| Rushden & D    | 2                                | 0 | 1 | 0 | 0 | 0    | 4   |  | 1 | 0 | 0 | 1 | 0 | 4 | 4   |
| Southend       | 2                                | 1 | 0 | 0 | 1 | 0    | 4   |  | 0 | 1 | 0 | 0 | 0 | 4 | 4   |
| York           | 2                                | 0 | 0 | 1 | 0 | 1    | 3   |  | 1 | 0 | 0 | 3 | 0 | 3 | 3   |
| Darlington     | 2                                | 1 | 0 | 0 | 2 | 0    | 3   |  | 0 | 1 | 0 | 1 | 0 | 3 | 3   |
| Shrewsbury     | 2                                | 0 | 0 | 1 | 1 | 3    | 3   |  | 1 | 0 | 0 | 1 | 0 | 3 | 3   |
| Kidderminster  | 2                                | 1 | 0 | 0 | 1 | 0    | 3   |  | 0 | 0 | 1 | 0 | 2 | 3 | 3   |
| L. Orient      | 2                                | 0 | 1 | 0 | 0 | 0    | 2   |  | 0 | 1 | 0 | 1 | 1 | 2 | 2   |
| Mansfield      | 2                                | 0 | 1 | 0 | 0 | 0    | 2   |  | 0 | 1 | 0 | 1 | 1 | 2 | 2   |
| Cheltenham     | 2                                | 0 | 1 | 0 | 1 | 1    | 2   |  | 0 | 0 | 1 | 1 | 2 | 1 | 2   |
| Lincoln        | 2                                | 0 | 0 | 1 | 1 | 2    | 2   |  | 0 | 1 | 0 | 0 | 0 | 1 | 1   |
| Oxford         | 2                                | 0 | 0 | 1 | 0 | 1    | 1   |  | 0 | 1 | 0 | 0 | 0 | 1 | 1   |
| Plymouth       | 2                                | 0 | 0 | 1 | 0 | 1    | 1   |  | 0 | 1 | 0 | 0 | 0 | 1 | 1   |
| Exeter         | 2                                | 0 | 0 | 1 | 1 | 3    | 3   |  | 0 | 1 | 0 | 1 | 1 | 1 | 1   |
| Macclesfield   | 2                                | 0 | 0 | 1 | 1 | 3    | 3   |  | 0 | 1 | 0 | 1 |   |   |     |



# Statistics and all the fixtures

| Date       | Opponents              | Venue | Kick Off Time/Result | Score (LT first) | Attendance | Competition/Position | Referee       | Yellow Cards (LT first) | Red Cards (LT first) | Mark OVENDALE <small>ok</small> | Aaron SKELTON | Matthew SPRING | Russ PERRETT | Marvin JOHNSON | Adrian FORBES | Kevin NICHOLLS | Stuart DOUGLAS | Carl GRIFFITHS | Liam GEORGE | Stuart FRASER | Andrew FOTTADIS | Matthew TAYLOR | Carl EMBERSON <small>ok</small> | Emmerson BOYCE | Adam LOCKE | Steve HOWARD | Peter HOLMES | Richard DRYDEN | Dean BRENNAN | Jude STIRLING | Scott WARD <small>ok</small> | Peter THOMSON | Paul HUGHES | Kent KARLSEN | Lee MANSELL | Ian HILLIER <small>loan</small> | Own Goals |  |  |  |  |  |  |  |  |
|------------|------------------------|-------|----------------------|------------------|------------|----------------------|---------------|-------------------------|----------------------|---------------------------------|---------------|----------------|--------------|----------------|---------------|----------------|----------------|----------------|-------------|---------------|-----------------|----------------|---------------------------------|----------------|------------|--------------|--------------|----------------|--------------|---------------|------------------------------|---------------|-------------|--------------|-------------|---------------------------------|-----------|--|--|--|--|--|--|--|--|
| Sat 11 Aug | Carlisle United        | A     | W                    | 2-0              | 4,432      | 3rd                  | M Clattenburg | 2/2                     | 0/0                  | sus                             |               |                |              | X              |               |                |                |                |             |               |                 |                |                                 |                |            |              |              |                |              |               |                              |               |             |              |             |                                 |           |  |  |  |  |  |  |  |  |
| Sat 18 Aug | CHELTENHAM TOWN        | H     | W                    | 2-1              | 6,177      | 1st                  | G Hegley      | 4/1                     | 1/0                  |                                 |               |                |              |                |               |                |                |                |             |               |                 |                |                                 |                |            |              |              |                |              |               |                              |               |             |              |             |                                 |           |  |  |  |  |  |  |  |  |
| Tue 21 Aug | Reading                | A     | L                    | 0-4              | 5,115      | WC1                  | D Crick       | 2/1                     | 0/0                  |                                 |               |                | X            |                |               |                |                |                |             |               |                 |                |                                 |                |            |              |              |                |              |               |                              |               |             |              |             |                                 |           |  |  |  |  |  |  |  |  |
| Sat 25 Aug | Bristol Rovers         | A     |                      | 3pm              |            | D3                   |               |                         |                      |                                 |               |                |              |                |               |                |                |                |             |               |                 |                |                                 |                |            |              |              |                |              |               |                              |               |             |              |             |                                 |           |  |  |  |  |  |  |  |  |
| Mon 27 Aug | SOUTHEND UNITED        | H     |                      | 3pm              |            | D3                   |               |                         |                      |                                 |               |                |              |                |               |                |                |                |             |               |                 |                |                                 |                |            |              |              |                |              |               |                              |               |             |              |             |                                 |           |  |  |  |  |  |  |  |  |
| Sat 1 Sep  | Exeter City            | A     |                      | 3pm              |            | D3                   |               |                         |                      |                                 |               |                |              |                |               |                |                |                |             |               |                 |                |                                 |                |            |              |              |                |              |               |                              |               |             |              |             |                                 |           |  |  |  |  |  |  |  |  |
| Sat 8 Sep  | OXFORD UNITED          | H     |                      | 3pm              |            | D3                   |               |                         |                      |                                 |               |                |              |                |               |                |                |                |             |               |                 |                |                                 |                |            |              |              |                |              |               |                              |               |             |              |             |                                 |           |  |  |  |  |  |  |  |  |
| Sat 15 Sep | York City              | A     |                      | 3pm              |            | D3                   |               |                         |                      |                                 |               |                |              |                |               |                |                |                |             |               |                 |                |                                 |                |            |              |              |                |              |               |                              |               |             |              |             |                                 |           |  |  |  |  |  |  |  |  |
| Tue 18 Sep | LINCOLN CITY           | H     |                      | 7.45pm           |            | D3                   |               |                         |                      |                                 |               |                |              |                |               |                |                |                |             |               |                 |                |                                 |                |            |              |              |                |              |               |                              |               |             |              |             |                                 |           |  |  |  |  |  |  |  |  |
| Sat 22 Sep | TORQUAY UNITED         | H     |                      | 3pm              |            | D3                   |               |                         |                      |                                 |               |                |              |                |               |                |                |                |             |               |                 |                |                                 |                |            |              |              |                |              |               |                              |               |             |              |             |                                 |           |  |  |  |  |  |  |  |  |
| Tue 25 Sep | Leyton Orient          | A     |                      | 7.45pm           |            | D3                   |               |                         |                      |                                 |               |                |              |                |               |                |                |                |             |               |                 |                |                                 |                |            |              |              |                |              |               |                              |               |             |              |             |                                 |           |  |  |  |  |  |  |  |  |
| Sat 29 Sep | Plymouth Argyle        | A     |                      | 3pm              |            | D3                   |               |                         |                      |                                 |               |                |              |                |               |                |                |                |             |               |                 |                |                                 |                |            |              |              |                |              |               |                              |               |             |              |             |                                 |           |  |  |  |  |  |  |  |  |
| Sat 6 Oct  | DARLINGTON             | H     |                      | 1pm              |            | D3                   |               |                         |                      |                                 |               |                |              |                |               |                |                |                |             |               |                 |                |                                 |                |            |              |              |                |              |               |                              |               |             |              |             |                                 |           |  |  |  |  |  |  |  |  |
| Sat 13 Oct | Scunthorpe United      | A     |                      | 3pm              |            | D3                   |               |                         |                      |                                 |               |                |              |                |               |                |                |                |             |               |                 |                |                                 |                |            |              |              |                |              |               |                              |               |             |              |             |                                 |           |  |  |  |  |  |  |  |  |
| Tue 16 Oct |                        |       |                      |                  |            | LDVT1                |               |                         |                      |                                 |               |                |              |                |               |                |                |                |             |               |                 |                |                                 |                |            |              |              |                |              |               |                              |               |             |              |             |                                 |           |  |  |  |  |  |  |  |  |
| Sat 20 Oct | ROCHDALE               | H     |                      | 3pm              |            | D3                   |               |                         |                      |                                 |               |                |              |                |               |                |                |                |             |               |                 |                |                                 |                |            |              |              |                |              |               |                              |               |             |              |             |                                 |           |  |  |  |  |  |  |  |  |
| Tue 23 Oct | Halifax Town           | A     |                      | 7.45pm           |            | D3                   |               |                         |                      |                                 |               |                |              |                |               |                |                |                |             |               |                 |                |                                 |                |            |              |              |                |              |               |                              |               |             |              |             |                                 |           |  |  |  |  |  |  |  |  |
| Sat 27 Oct | SWANSEA CITY           | H     |                      | 3pm              |            | D3                   |               |                         |                      |                                 |               |                |              |                |               |                |                |                |             |               |                 |                |                                 |                |            |              |              |                |              |               |                              |               |             |              |             |                                 |           |  |  |  |  |  |  |  |  |
| Sat 3 Nov  | Mansfield Town         | A     |                      | 3pm              |            | D3                   |               |                         |                      |                                 |               |                |              |                |               |                |                |                |             |               |                 |                |                                 |                |            |              |              |                |              |               |                              |               |             |              |             |                                 |           |  |  |  |  |  |  |  |  |
| Sat 10 Nov | SHREWSBURY TOWN        | H     |                      | 3pm              |            | D3                   |               |                         |                      |                                 |               |                |              |                |               |                |                |                |             |               |                 |                |                                 |                |            |              |              |                |              |               |                              |               |             |              |             |                                 |           |  |  |  |  |  |  |  |  |
| Sat 17 Nov |                        |       |                      |                  |            | FAC1                 |               |                         |                      |                                 |               |                |              |                |               |                |                |                |             |               |                 |                |                                 |                |            |              |              |                |              |               |                              |               |             |              |             |                                 |           |  |  |  |  |  |  |  |  |
| Tue 20 Nov | HULL CITY              | H     |                      | 7.45pm           |            | D3                   |               |                         |                      |                                 |               |                |              |                |               |                |                |                |             |               |                 |                |                                 |                |            |              |              |                |              |               |                              |               |             |              |             |                                 |           |  |  |  |  |  |  |  |  |
| Sat 24 Nov | Macclesfield Town      | A     |                      | 3pm              |            | D3                   |               |                         |                      |                                 |               |                |              |                |               |                |                |                |             |               |                 |                |                                 |                |            |              |              |                |              |               |                              |               |             |              |             |                                 |           |  |  |  |  |  |  |  |  |
| Sat 1 Dec  | Kidderminster Harriers | A     |                      | 3pm              |            | D3                   |               |                         |                      |                                 |               |                |              |                |               |                |                |                |             |               |                 |                |                                 |                |            |              |              |                |              |               |                              |               |             |              |             |                                 |           |  |  |  |  |  |  |  |  |
| Sat 15 Dec | RUSHDEN & DIAMONDS     | H     |                      | 3pm              |            | D3                   |               |                         |                      |                                 |               |                |              |                |               |                |                |                |             |               |                 |                |                                 |                |            |              |              |                |              |               |                              |               |             |              |             |                                 |           |  |  |  |  |  |  |  |  |
| Sat 22 Dec | HARTLEPOOL UNITED      | H     |                      | 3pm              |            | D3                   |               |                         |                      |                                 |               |                |              |                |               |                |                |                |             |               |                 |                |                                 |                |            |              |              |                |              |               |                              |               |             |              |             |                                 |           |  |  |  |  |  |  |  |  |
| Wed 26 Dec | Oxford United          | A     |                      | 3pm              |            | D3                   |               |                         |                      |                                 |               |                |              |                |               |                |                |                |             |               |                 |                |                                 |                |            |              |              |                |              |               |                              |               |             |              |             |                                 |           |  |  |  |  |  |  |  |  |
| Sat 29 Dec | Southend United        | A     |                      | 3pm              |            | D3                   |               |                         |                      |                                 |               |                |              |                |               |                |                |                |             |               |                 |                |                                 |                |            |              |              |                |              |               |                              |               |             |              |             |                                 |           |  |  |  |  |  |  |  |  |
| Tue 1 Jan  | EXETER CITY            | H     |                      | 3pm              |            | D3                   |               |                         |                      |                                 |               |                |              |                |               |                |                |                |             |               |                 |                |                                 |                |            |              |              |                |              |               |                              |               |             |              |             |                                 |           |  |  |  |  |  |  |  |  |
| Sat 5 Jan  | BRISTOL ROVERS         | H     |                      | 3pm              |            | D3                   |               |                         |                      |                                 |               |                |              |                |               |                |                |                |             |               |                 |                |                                 |                |            |              |              |                |              |               |                              |               |             |              |             |                                 |           |  |  |  |  |  |  |  |  |
| Sat 12 Jan | Cheltenham Town        | A     |                      | 3pm              |            | D3                   |               |                         |                      |                                 |               |                |              |                |               |                |                |                |             |               |                 |                |                                 |                |            |              |              |                |              |               |                              |               |             |              |             |                                 |           |  |  |  |  |  |  |  |  |
| Sat 19 Jan | CARLISLE UNITED        | H     |                      | 3pm              |            | D3                   |               |                         |                      |                                 |               |                |              |                |               |                |                |                |             |               |                 |                |                                 |                |            |              |              |                |              |               |                              |               |             |              |             |                                 |           |  |  |  |  |  |  |  |  |
| Tue 22 Jan | Hartlepool United      | A     |                      | 7.45pm           |            | D3                   |               |                         |                      |                                 |               |                |              |                |               |                |                |                |             |               |                 |                |                                 |                |            |              |              |                |              |               |                              |               |             |              |             |                                 |           |  |  |  |  |  |  |  |  |
| Sat 26 Jan | Darlington             | A     |                      | 3pm              |            | D3                   |               |                         |                      |                                 |               |                |              |                |               |                |                |                |             |               |                 |                |                                 |                |            |              |              |                |              |               |                              |               |             |              |             |                                 |           |  |  |  |  |  |  |  |  |
| Sat 2 Feb  | PLYMOUTH ARGYLE        | H     |                      | 3pm              |            | D3                   |               |                         |                      |                                 |               |                |              |                |               |                |                |                |             |               |                 |                |                                 |                |            |              |              |                |              |               |                              |               |             |              |             |                                 |           |  |  |  |  |  |  |  |  |
| Sat 9 Feb  | Rochdale               | A     |                      | 3pm              |            | D3                   |               |                         |                      |                                 |               |                |              |                |               |                |                |                |             |               |                 |                |                                 |                |            |              |              |                |              |               |                              |               |             |              |             |                                 |           |  |  |  |  |  |  |  |  |
| Sat 16 Feb | SCUNTHORPE UNITED      | H     |                      | 3pm              |            | D3                   |               |                         |                      |                                 |               |                |              |                |               |                |                |                |             |               |                 |                |                                 |                |            |              |              |                |              |               |                              |               |             |              |             |                                 |           |  |  |  |  |  |  |  |  |
| Sat 23 Feb | YORK CITY              | H     |                      | 3pm              |            | D3                   |               |                         |                      |                                 |               |                |              |                |               |                |                |                |             |               |                 |                |                                 |                |            |              |              |                |              |               |                              |               |             |              |             |                                 |           |  |  |  |  |  |  |  |  |
| Tue 26 Feb | Lincoln City           | A     |                      | 7.45pm           |            | D3                   |               |                         |                      |                                 |               |                |              |                |               |                |                |                |             |               |                 |                |                                 |                |            |              |              |                |              |               |                              |               |             |              |             |                                 |           |  |  |  |  |  |  |  |  |
| Sat 2 Mar  | Torquay United         | A     |                      | 3pm              |            | D3                   |               |                         |                      |                                 |               |                |              |                |               |                |                |                |             |               |                 |                |                                 |                |            |              |              |                |              |               |                              |               |             |              |             |                                 |           |  |  |  |  |  |  |  |  |
| Tue 5 Mar  | LEYTON ORIENT          | H     |                      | 7.45pm           |            | D3                   |               |                         |                      |                                 |               |                |              |                |               |                |                |                |             |               |                 |                |                                 |                |            |              |              |                |              |               |                              |               |             |              |             |                                 |           |  |  |  |  |  |  |  |  |
| Sat 9 Mar  | Rushden & Diamonds     | A     |                      | 3pm              |            | D3                   |               |                         |                      |                                 |               |                |              |                |               |                |                |                |             |               |                 |                |                                 |                |            |              |              |                |              |               |                              |               |             |              |             |                                 |           |  |  |  |  |  |  |  |  |
| Sat 16 Mar | KIDDERMINSTER HARRIERS | H     |                      | 3pm              |            | D3                   |               |                         |                      |                                 |               |                |              |                |               |                |                |                |             |               |                 |                |                                 |                |            |              |              |                |              |               |                              |               |             |              |             |                                 |           |  |  |  |  |  |  |  |  |
| Sat 23 Mar | HALIFAX TOWN           | H     |                      | 3pm              |            | D3                   |               |                         |                      |                                 |               |                |              |                |               |                |                |                |             |               |                 |                |                                 |                |            |              |              |                |              |               |                              |               |             |              |             |                                 |           |  |  |  |  |  |  |  |  |
| Sat 30 Mar | Swansea City           | A     |                      | 3pm              |            | D3                   |               |                         |                      |                                 |               |                |              |                |               |                |                |                |             |               |                 |                |                                 |                |            |              |              |                |              |               |                              |               |             |              |             |                                 |           |  |  |  |  |  |  |  |  |
| Mon 1 Apr  | MANSFIELD TOWN         | H     |                      | 3pm              |            | D3                   |               |                         |                      |                                 |               |                |              |                |               |                |                |                |             |               |                 |                |                                 |                |            |              |              |                |              |               |                              |               |             |              |             |                                 |           |  |  |  |  |  |  |  |  |
| Sat 6 Apr  | Hull City              | A     |                      | 3pm              |            | D3                   |               |                         |                      |                                 |               |                |              |                |               |                |                |                |             |               |                 |                |                                 |                |            |              |              |                |              |               |                              |               |             |              |             |                                 |           |  |  |  |  |  |  |  |  |
| Sat 13 Apr | MACCLESFIELD TOWN      | H     |                      |                  |            |                      |               |                         |                      |                                 |               |                |              |                |               |                |                |                |             |               |                 |                |                                 |                |            |              |              |                |              |               |                              |               |             |              |             |                                 |           |  |  |  |  |  |  |  |  |



# Todays Squads

## Luton Town

|    |                 |    |
|----|-----------------|----|
| 1  | Mark Ovendale   | 1  |
| 2  | Aaron Skelton   | 2  |
| 4  | Matthew Spring  | 4  |
| 5  | Russell Perrett | 5  |
| 6  | Marvin Johnson  | 6  |
| 7  | Adrian Forbes   | 7  |
| 8  | Kevin Nicholls  | 8  |
| 9  | Stuart Douglas  | 9  |
| 10 | Carl Griffiths  | 10 |
| 11 | Liam George     | 11 |
| 13 | Stuart Fraser   | 13 |
| 14 | Andrew Fotiadis | 14 |
| 15 | Matthew Taylor  | 15 |
| 16 | Carl Emberson   | 16 |
| 17 | Emmerson Boyce  | 17 |
| 18 | Adam Locke      | 18 |
| 19 | Steve Howard    | 19 |
| 20 | Peter Holmes    | 20 |
| 21 | Richard Dryden  | 21 |
| 22 | Dean Brennan    | 22 |
| 23 | Jude Stirling   | 23 |
| 24 | Scott Ward      | 24 |
| 26 | Peter Thomson   | 26 |
| 27 | Paul Hughes     | 27 |
| 29 | Kent Karlsen    | 29 |
| 32 | Lee Mansell     | 32 |
| 33 | Ian Hillier     | 33 |

## Southend United

|    |                   |    |
|----|-------------------|----|
| 1  | Darryl Flahavan   | 1  |
| 2  | Carl Hutchings    | 2  |
| 3  | Damon Searle      | 3  |
| 4  | Stephen Broad     | 4  |
| 5  | Phil Whelan       | 5  |
| 6  | Leon Johnson      | 6  |
| 7  | Stuart Thurgood   | 7  |
| 8  | Kevin Maher       | 8  |
| 9  | Tesfaye Bramble   | 9  |
| 10 | Daniel Webb       | 10 |
| 11 | Mark Rawle        | 11 |
| 12 | Jason Harris      | 12 |
| 13 | Melvin Capleton   | 13 |
| 14 | Shane Wardley     | 14 |
| 15 | David McSweeney   | 15 |
| 16 | Leon Cort         | 16 |
| 17 | Scott Forbes      | 17 |
| 18 | Ben Smith         | 18 |
| 19 | Gareth Risbridger | 19 |
| 20 | Leon Hunter       | 20 |
| 21 | Daniel Pitts      | 21 |
| 22 | Daniel Kerrigan   | 22 |
| 23 | Daniel Gay        | 23 |
| 24 | Rob Newman        | 24 |
| 25 | Tony Richards     | 25 |
| 26 | Dean Holness      | 26 |
| 27 | Stuart King       | 27 |

tick if playing  tick if substitute

### Todays Officials

**Referee:** Joe Ross, London.

**Assistants:** John Holbrook, Shropshire (red flag) Andy Woolmer, Northamptonshire (yellow and red flag)

**Forth Official:** Steve Chittenden, Herts

*"Genuine Deals For Genuine Fans!"*  
**Luton Fans Are  
 Guaranteed To Score At  
 Motorbodies Luton**

**NETWORK Q**  
 Total Commitment to used car quality

**Motorbodies Central**  
 15 Hitchin Road, Luton Bedfordshire.  
 Telephone 01582 454666  
 e-mail: enquiry@caxtongroup.co.uk

- 12 months Assistance
- 12 months/15,000 mile Guarantee

**Motorbodies Leagrave**  
 166 Marsh Road, Leagrave, Luton  
 Telephone 01582 567500  
 e-mail: sales@caxtongroup.co.uk

114 Point Service  
 12 Months/ 15,000 mile guarantee  
 12 Months AA Assistance Mileage Check  
 30 Day Exchange Plan  
 Free MoT for life  
 HPI Check

- 114 point service
- 30 day exchange pledge

**OPENING HOURS**  
 Mon-Fri 9am-7pm  
 Sat 9am-5pm  
 Sun 10.30-430pm

NETWORK

Q

