

Saturday 28th December 2002 • Kick off 3.00pm • Official Programme No 14 • £2.50



WYCOMBE WANDERERS

v LUTON TOWN



www.wycombewanderers.co.uk

OFFICIAL STADIUM SPONSORS



OFFICIAL YOUTH TEAM SPONSORS



OFFICIAL CLUB SPONSORS

Integrity software

MATCH SPONSORS

BLUES FANS

FOOTBALL

First Eleven



Wednesday 1st January 2003

BRISTOL CITY

At Adams Park, Kick Off 3.00pm

Saturday 4th January

NORTHAMPTON TOWN

At Sixfields Stadium, Kick Off 3.00pm
SUBJECT TO FA CUP RESULTS

Saturday 11th January

MANSFIELD TOWN

At Field Mill, Kick Off 3.00pm

Saturday 18th January

OLDHAM ATHLETIC

At Adams Park, Kick Off 3.00pm

Reserves

Wednesday 8th January

CAMBRIDGE UNITED

at Abbey Stadium, Kick Off 2.00pm

Wednesday 15th January

AFC BOURNEMOUTH

at Buckingham Road, Aylesbury,
Kick Off 2.00pm

Youth

U19

Saturday 11th January

BRIGHTON
& HOVE ALBION

Away, Kick Off 11am

U17

Saturday 11th January

COLCHESTER UNITED

at Molins, Kick Off 11am

Ladies

FIRST TEAM

Sunday 12th January - Home

THAME

RESERVES

Sunday 12th January - Home

MORRIS MOTORS

NEW YEARS
EVE DISCO

At Adams Park

Bar Open 7.15pm - 1am

£22 per head

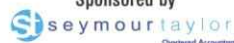
Running Buffet

Emlyn Hughes
Sportsmans Dinner

Monday 27th January

Also Featuring Comedian Mike Pugh
& MC Barry WilliamsTables of 10 £495 + VAT
Tables of 12 £585 + VATCharity Casino Night
in Keen& Black Tie Dinner Dance
in the Vere Suite run by Adams Park Events Ltd.

Sponsored by

Friday 21st March
£40 pp inc. 5 Course MealJohn Parrott
Sportsmans Dinner

Monday 31st March

Sponsored by

Jimmy Greaves
Sportsmans Dinner

Monday 12th May

Also Featuring Barry Williams
& Comedian Ronnie Stewart

Sponsored by



Loans.co.uk

Too book contact Emma or Mark
on (01494) 538461 or (01494) 472100WYCOMBE WANDERERS
FOOTBALL CLUB LIMITEDAdams Park, Hillbottom Road, Sands,
High Wycombe, Bucks, HP12 4HJ.

Telephone: 01494 472100

Facsimile: 01494 527633

Website: <http://www.wycombewanderers.co.uk>Email: WWFC@wycombewanderers.co.uk

Ringing the Blues: 09003 446855 40p per minute all times

Centre Spot: 01494 473689

Wanderers in Town: 01494 450957

Ticket Creditcard Hotline: 01494 441118

Merchandise Creditcard Hotline: 01494 450957

Members of

The Football Association,
The Football League and
The Berks & Bucks Football Association

President:	M.E. Seymour
Chairman:	I.L. Beeks
Directors:	B. Kane, A. Parry, G. Poart, A. Thibault, R. Tomlin, D. Vere
Associate Directors:	G. Cox, J. Goldsworthy, B.R. Lee
Manager:	Lawrie Sanchez B.Sc. (Hons)
Assistant Manager:	Terry Gibson
Reserve Team Manager:	Peter Cawley B.Sc. (Hons)
Sports Therapist:	Dave Jones B.Sc. (Hons) M.B.S.T.
Head Groundsman:	Jim Gardner
Youth Team Manager:	Michael Forsyth
Youth Development Officer:	Adrian Cole
Youth Team Physiotherapist:	Terry Evans
Chief Scout:	Alan Fogarty
Club Doctors:	Dr. Chris Trower and Dr. Gina Allan
Club Secretary:	Keith Allen
Director of Sales & Marketing:	Mark Austin B.A. (Hons) FRSA
Sales & Marketing Assistant:	Emma Curtis
Promotions Manager:	Mike Phillips
Director of Food & Beverage:	Tony Leese
Deputy Food & Beverage Manager:	Matt Baker
Community Officer:	Dave Evans
Safety Officer:	Frank Knowles
Media Manager:	Alan Hutchinson
Website Team:	Catherine Long, Steve Giles
Official Blues Supporters Club:	Debbie Ibbotson 01494 523051
Wycombe Wanderers Ladies:	Marion Lyon 01494 437477
Programme Editor:	Alan Hutchinson
Programme Team:	Adrian Wood, Dave Finch
Programme Photos:	Paul Dennis
Printed by:	PK InPrint Limited 01494 452266

The views expressed in this programme are not necessarily
those of Wycombe Wanderers Football Club Limited

Contents

Cover	The players visited the Children's Ward at Wycombe Hospital
4	Sanch's Smoke Signal
9	Visiting Today
10	Man to Watch - Tony Thorpe
18	Definitive Collection
23	Classic Clash
30	Match Action
47	On the Couch
51	Trivia Time

by Dave Peters - Sports Editor of The Bucks Free Press

WELL we've almost reached New Year and contrary to the musings of some Wanderers fans the world has not ended yet.

The past year has seen more doom and gloom at Adams Park than Patrick Moore has ever seen through his telescope. But Wanderers haven't been relegated and Wasps have not taken over the world.

If you cast your mind back to the start of the season there were many Wanderers fans out there who thought Wasps arrival at Adams Park was the equivalent of armageddon. They feared the end of their football club as we know it simply because it was allowing someone else to use the pitch.

But in the months that have passed since, the two clubs have managed to live happily side by side and what's more Wanderers are banking £1 million in the process.

To the fan who only watches the football you would hardly even know that Wasps also reside at Adams Park. Unless you are sitting in the press box after home matches when the groundstaff are erecting the rugby posts you wouldn't even know the ground was dual purpose.

Where are all those scaremongers who predicted that the pitch would resemble a ploughed field by now and that the stands would all be painted gold and black in honour of the Men In Black?

I wonder what has happened to those fans who were threatening to turn their backs on the club simply because the board of directors

were making the best use of Adams Park. It doesn't make sense that a football ground should only be used for something like 30 Saturdays a year, yet some fans were prepared to ditch the club they supposedly love, simply because they were trying to maximise the earning potential of the ground.

'Wasps are happy, Wanderers are happy and what's more important, the bank manager is a lot happier'

Wanderers have treated the groundshare sensibly. They haven't sold their soul to the egg-chasers. Fears that the seats would all be painted gold and black and that Bodger would be replaced by a giant Wasps have been totally unfounded.

And in my view the whole thing has been great for the town and great for Wycombe Wanderers. Out of nowhere we have suddenly got a first class rugby team on our doorstep complete with fully-fledged internationals of the calibre of Lawrence Dallaglio. I know many Wanderers fans have taken the Wasps experience on board and been down to see them in action at Adams Park.

I have even seen well-known Wanderers fans wearing Wasps shirts at Wasps away matches. I'm sure Reading and Watford didn't

face such fierce criticism from their supporters when they decided to open their doors to London Irish and Saracens so I'm amazed that Wycombe did.

I just hope that both teams can continue to prosper in the same stadium and if the groundshare extends beyond the current two-year agreement, then I'm all for it.

Wasps are happy, Wanderers are happy and what's more important, the bank manager is a lot happier than he would have been without the Zurich Premiership club's money.

All we need now is for the two teams to do the business on the pitch. It has certainly been a disappointing first half of the season for the town's footballers. Players, supporters, management and everyone have been disappointed so far but as everyone is so quick to point out leagues are not won and lost at Christmas.

There is still plenty of football left in this campaign and who knows a good run by the Blues could have us all raising a glass in celebration at the end of the season.

On a personal note I would like to thank everyone for reading my ramblings in the first half of the season and wish you all a Happy New Year.

Dave Peters writes for the Bucks Free Press and the Bucks Free Press Midweek.

Read his match report in Tuesday's Midweek and his big-match preview in the Free Press on Friday.

by Lawrie Sanchez, Manager of Wycombe Wanderers Football Club

Good afternoon and welcome to Joe Kinnear, Mick Harford, the players and supporters of Luton Town. I hope you all had a good Christmas and enjoyed the break and are now ready to celebrate the coming New Year.

At last we can report on a win, our performance against Port Vale was very pleasing and gave a number of us a good weekend after five miserable ones. We need to start collecting more points, if we can win today then we shall finish the first half of the season around 30 points, eight less than at the same time last season. In the second half we accumulated 26 points, a target we need to beat in the second half of this season. We all know how difficult it will be but it is possible to achieve a larger haul of points and that will be our aim. We know we have not had the best of starts to

the season but we have the chance to improve on what has happened since August.

Let me also clear up the incident surrounding the shirt worn by Jonny Dixon when he came on at Cheltenham. Originally he was not due to play and so Jim did not pack his kit. When we arrived at the ground Andy Thomson was suffering from a bug and unable to play, it meant moving the team around and bringing another player onto the bench. The only shirt available was the number 10 and so we checked with the referee and Cheltenham who agreed for us to put tape over 'Devine' and Jonny could use the shirt. The significance of this escaped us completely until the press turned up after the game asking questions.

One major disappointment from our match at Cheltenham was the loss of Martin Taylor. He damaged his calf muscles and at this moment in time we

do not know how long he is likely to be out. As it has turned out we now have the benefit of Frank Talia remaining on loan with us and he will now come in.

Our match at Cheltenham proved to be as difficult as expected, having been beaten 4-1 by Peterborough the previous week it was no surprise they made us fight all the way for a point. With two games unbeaten we come into today's match with a target to reach and in doing so hope we can claim our first victory over Luton at Adams Park. Luton Town have experienced one or two problems of late and will be another tough test for us, despite recent results they have managed to hang in and around the top ten. They have been one of only three clubs to take points from Bristol City at Ashton Gate, a recent 1-1 draw saw City equalise in the 95th minute, Town so close to joining QPR

collecting all three points.

As these notes were written before our match at Loftus Road I cannot comment on the Boxing Day clash with QPR. I will cover that in the notes for our New Year's Day game with Bristol City.

The visit of Bristol City on Wednesday 1st January will herald a bright start to 2003 and give us the opportunity to take revenge for two defeats already suffered at Ashton Gate this season. In August we lost 3-0 in the League and by the same score line in the LDV Vans Trophy just before Christmas. For my money Bristol City are possibly the best side we have seen this season and they showed how strong they can be away from home with the great win at

Ninian Park against Cardiff City three days after knocking us out of the LDV competition.

So here we are, the final game of 2002 and another year ahead of us. Let us join together and move forward full of hope and look forward to a better second half of the season, ever **ONWARD and UPWARD.**




WELCOME

Wycombe Wanderers would like to thank to following Blues Fans who are sponsoring today's match:


- | | |
|----------------------|---------------------------------|
| Mark Hyland | Jack Nash |
| Sharon Hyland | John Adams |
| Tom Hyland | Ron Langston |
| Emily Hyland | Roger Hildred |
| Ann Proctor | Monica Hildred |
| Howard Jones | Steve Kenny |
| Jeni Abbott | Julie Petworth |
| Harvey Klein | Michael Petworth |
| David King | Sinead Petworth |
| Mrs King | John Dockett - |
| Jimmy Mulvoy | Prolok International & guests |
| Annika Meier | Chris & Angela Wilson - Profile |
| Connor Latta | Video Ltd & Guests |
| Kieran Latta | Integrity Software Ltd: |
| Andras Latta | Peter Nagle |
| Alan Bray | Sharon Nagle |
| Phillip Crompton | Paul Nagle |
| Alexander Crompton | Adam Nagle |
| Javier Mulvoy | Helen Nagle |
| Chas Broadbridge | Rebecca Nagle |
| Colin Calvert | Robert Smith |
| Kelly Calvert | Elaine Smith |
| Doug MacKin | Harrison Smith |
| Ian Collins | Jordan Smith |
| Robin Stewart | Chloe Smith |
| Roger Harvey | Phil Auguste |
| Dave Dakin | Lynne Roberts |
| Carol Dakin | Alison Alger |
| Mark Dakin | Kandy Scott |
| Stephanie Dakin | Yvonne Stringer |
| Steve Gab & partner | Jon Haines |
| Roger Boddington | Karen Bond |
| Karen Boddington | Greene King Plc |
| Charlie Boddington | Lesley and Steven |
| Daniel Boddington | Andrews |
| Ian Hamilton & Guest | |
| Peter Mallet | |

THE WANDERERS
50/50 MATCHDAY DRAW
v **PORT VALE**
14.12.02
£557.00
TICKET No. 125928
MR D BUSBY
PENMOOR CLOSE, HIGH WYCOMBE
TICKETS FOR TODAY'S MATCHDAY DRAW ARE ON SALE AROUND THE GROUND, IN THE BARS AND EXECUTIVE BOXES
£1 EACH
REMEMBER - YOU HAVE TO BE IN IT TO WIN IT!!



Hopes
The story of 2002
AVAILABLE NOW

MEN OF THE MATCH
CHAMPAGNE DELBECK
v **PORT VALE**
Saturday 14th December 2002



Voted for by match sponsors **Intersport MICHAEL SIMPSON**
Sponsored at home by Frances Carvell & Barbara Willis and Away by Alison, Richard, Katherine & Fraser Sanderson

Voted for by match **The VP's MARTIN TAYLOR**
Sponsored at home by Millside Timber and Away by Away coach Travellers Official WWFC Supporters Association



Profile Video Ltd
23 Gaisford Road, Cowley, Oxford OX4 3LH
Tel: 01865 715429 Fax: 01865 747559

- Equipment sales & installation
- Equipment hire
- Production & post production
- Duplication & standards conversion
- Maintenance & service
- Tapes & consumables



by Brian Kane, Director of Wycombe Wanderers Football Club

Brian Kane, one of our Directors, has relocated to Los Angeles for a short business assignment and sends his thoughts from across the Atlantic.

I was reading an interesting set of football club statistics recently and although I shouldn't have been, I was surprised how little of a club's revenue now comes from gate receipts. For the likes of Manchester United and Arsenal less than 30% of their total revenues come from gate receipts, while the likes of Spurs and Newcastle are closer to 40%. I assume because of the limitation of local TV revenue, clubs like Rangers derive over 50% of their income from traditional gate money. As you go down the Leagues, the importance of gate receipts increases and, of course, towards the bottom a good gate is the life blood of the club as it used to be for all clubs 30, 40 or 50 years ago. I am not sure if this is good or bad. It is good because it means other sources of income are coming into our clubs, particularly the top ones and whereas I do strongly feel the money flow is too much funneled into too few pockets, I do accept that if the game is strong at the top can attract the world's best players, it benefits both the national team and football in general.

The bad is that the influence a true fan can have on the club or the value the club places on its terrace paying customers diminishes. Perhaps not deliberately, but at the

end of the day club management, not team management, is about profits or survival and that he that pays the piper calls the tune. It isn't just about TV money but the need for clubs to have as many revenue streams bringing money into the club as possible. Be they conferencing, shop sales, advertising, sponsorship or promotions, these are all activities that need managing and produce income in addition to gate receipts.

'the core of our supporter group is very faithful and committed'

The trick is to ensure the drive for income and the investments ensuing don't override the needs of the team and its fans. Comes the day a club stops being first and foremost a football club, then so starts a progression that can be painful and difficult to reverse. I always feel Wimbledon is a good example of this, whereby no matter how well the club was playing, the fans were treated as second-class citizens and the club became primarily a financial yo-yo. It amazes me they are still hanging in.

In the U.S., fan appreciation is back in fashion across all types of games—baseball, basketball and American football. In the 70's and

early 80's, when TV money was flowing in big time, these clubs gave up on their fans and many games played to half empty stadiums. The clubs were making loads of money and fans were a hassle. Not surprisingly, though, because of the lack of atmosphere at games, interest started to wane and while basketball and American football have come back strong, supported by innumerable fan incentives to attend games, baseball has never recovered and operates at about 50% attendance than it did in its heyday. As a result, the TV companies, due to the lack of interest, want to pay less to televise games and the clubs have lost their easy money. It takes clubs of any sport to realize the only enduring aspect of their club is their fan's support. The rest are all in it for what they can get out. Manchester City is a case in point. I don't know the pain their supporters have gone through these last 20 years, but it must have been hell. Everyone else was not interested—now, of course it is a different matter, but I hope City appreciates who stuck with them during their lean times.

We have had our ups and downs at Wycombe and while there is a fair weather crowd, a lot of whom disappeared after the Liverpool game, the core of our supporter group is very faithful and committed. I don't think our club management will ever forget or not appreciate your importance.

www.wycombewanderers.co.uk

Sponsored by
Francis D. Glenister
Schroder Salomon Smith Barney
020 7986 3180
francis.d.glenister@citigroup.com



Sponsored by
David Woodbridge
Profile Video Ltd
01865 715429



Sponsored by
M & C Carpets
01494 527696



Home fixture

Mortgages & Re-Mortgages

- Special Rates for Member & Season Ticket Holders.
- We offer Discounted, Capped, Fixed, Variable, Tracker Mortgages - ask the experts.
- Free Legal Fees and Survey available on most re-mortgages.
- Council R.T.B.
- Self-Certified Mortgages (No Proof of Income).
- Buy to Let. *
- Mortgages for People with C.C./S/ Arrears.
- Independent Financial Advice & Guidance.
- Prize draw for an autographed shirt.



For Independent Financial Advice contact your Club official advisers on **0845 600 1931**
or e-mail: wwfc@greatsave.co.uk

For every Financial Plan taken out, your Club receives a donation

*There is no guarantee that it will be possible to arrange continuous letting of a property, nor that the retail income will be sufficient to meet the cost of the mortgage. YOUR HOME IS AT RISK IF YOU DO NOT KEEP UP REPAYMENTS ON A MORTGAGE OR OTHER LOAN SECURED ON IT. Written details on request. All loans subject to status. Mortgages are not regulated by the FSA. Wycombe Wanderers Financial Services is a trading name of Fans First Mortgages Limited registered in England No. 4198517. Registered with the Mortgage Code Compliance Board. Registration No. 5573963.



Quality
Heating
Services

Quality Heating Services Limited
Telephone: 01494 795000
Fax: 01494 795001
Email: SERVICE@QUALITY-HEATING.CO.UK
Web Site: WWW.QUALITY-HEATING.CO.UK

**BUCKS AUTO
COMPONENTS**

*Suppliers of
Quality Components
to the Motor Trade*

AYLESBURY (01296) 487227
THAME (01296) 381661
RETAIL STOCKIST
AMERSHAM (01494) 431903

LAKES

TV • VIDEO • HI-FI

11 WEST STREET, MARLOW ☎ 01628 483555

117/119 OXFORD ROAD, HIGH WYCOMBE ☎ 01494 528605



if only self assessment were easy peasy



just tax uk tax return service

www.just-tax.co.uk

Just Tax

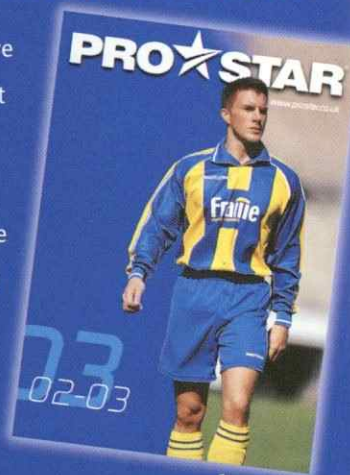
PRO STAR

WYCOMBE WANDERERS OFFICIAL KIT SUPPLIERS



For a comprehensive range of football kit and trainingwear, pick up a copy of our latest catalogue available now from the club shop or Wanderers in the Town

www.prostar.co.uk



At ADAMS PARK TODAY

LUTON TOWN



9



Back : Ahmet Brkovic, Alan Neilson, Russell Perrett, Mark Owendale, Cedric Berthelin (left the club), Carl Emberson, Peter Holmes, Ian Hillier, David Bayliss

Middle Bruce Hobbs (Physio), Sol Davis, Carl Griffiths, Tony Thorpe, Steve Howard, Chris Coyne, Aaron Skelton, Paul Hughes, Andrew Fotiadis, Michael Leary, Brian Stein (Coach)

Front, Emmerson Boyce, Alan Kimble, Adrian Forbes, Kevin Nicholls, Mick Harford (Coach), Joe Kinnear (Manager), Matthew Spring, Marvin Johnson, Lee Mansell, Steve Robinson.

This afternoon we welcome Luton Town to Adams Park who are making a return after an absence of one season. Relegated at the end of season 2000-01 they bounced back at the first time of asking last season. At one time it did look as if they would claim the Championship but in the end that went to Plymouth Argyle.

Life in Division Two did not get off to the best of starts but the Hatters have climbed into the top eight with some decent results of late. They are another club who would love to be back in Division One, it was as long ago as season 1995-96 since Luton were in the higher division.

A recent 3-1 win over Tranmere Rovers at Prenton Park took the Hatters to five games unbeaten out of their last six and moved them into seventh place in the table. However, in the F.A. Cup they came back down to earth with a 3-0 home defeat by league leaders Wigan Athletic.

That was followed by another home defeat, this time to Third Division Cambridge United in the Southern Area LDV Vans quarter-final.

The Hatters have certainly had their share of injuries this season but all the players have responded well when called upon by Joe Kinnear. Like so many clubs the Hatters have had to watch the finances very carefully and trim their squad accordingly. For Luton fans the last two seasons will be looked upon as successful, promotion from Division Three and still in with a chance of a play off place with Division Two football next season at the very least.

Luton have enjoyed life at the very top, and suffered the indignity of twice falling all the way from the top to the bottom division. Now everyone associated with Kenilworth Road is hoping they are on their way back to the top once more.

U'S TOP THE HATTERS

A hard working Colchester side brought the rewards with two goals to take all three points at Kenilworth Road on Saturday 14th December. It was their third away win of the season and spoiled the Hatters hopes of moving into a play off spot. A bright promising start

for the home side faded away after Andrew Fotiadis had given them the lead on 35 minutes. Luton certainly had the edge in that opening period but deep into added on time at the end of the first half the U's drew level. Steve Robinson gave away a free kick and then proceeded to argue his point and the match referee moved the ball ten yards nearer the goal. Carl

WANDERERS BACK ON TRACK

The Blues finally overcame a determined Port Vale side to earn their first league win in five games. It was the introduction of sub Sean Devine who turned the game for the home side with a penalty and a goal in injury time. Vale had started well and manager Brian Horton must have wondered how his side had gone in at half time a goal down. Wycombe keeper Martin Taylor had pulled off some fine saves before Wanderers scored with their first attack. A Michael Simpson corner on 39 minutes was flicked on by Craig Faulconbridge at the near post for Andy Thomson to power a header past Goodlad. Within four minutes of the restart Vale were level when Armstrong looped a shot off the boot of Keith Ryan for the ball to drop beyond Taylor and in at the far post. The substitutions of Devine and Roberts immediately reaped reward as Charnock handled a Roberts knock down and Devine scored from the spot. In injury time Dannie Bulman found Sean Devine on the right with a 30 yard pass and the striker cut in to send his left foot shot beyond the groping Goodlad.

Duguid took advantage and curled the ball into the corner for the equaliser. The home side lost their way in the second half and Dean Morgan headed the winner from a Micky Stockwell cross. Although Luton had half an hour to get back into the game they never produced any real threat and Colchester defended well to claim the points.

Luton's prolific goal scorer Tony Thorpe is Adrian Wood's featured player

Now aged 28 and back for a fourth spell at Kenilworth Road, Tony Thorpe has established himself as one of the most feared strikers outside of the Premiership with a remarkably consistent scoring ratio over the last six seasons. He is well known here at Adams Park having been on the score sheet here for both Luton and Bristol City (three times).

Born in Leicester he started as a junior with his local club before making his first move to Luton in August 1992. In his early days he was played as an attacking midfield player with only limited success but when moved to a more advanced role he came into his own – making goal scoring look routine. He scored for the Hatters on his full debut at Newcastle United in an FA Cup 4th round tie in Jan'94. He was restricted to five substitute appearances during the 1994/95 campaign and then scored seven times in a poor side as Town were relegated from Division One in 1996.

Thorpe proceeded to take Division Two by storm and had a prolific 1996/97 season. His total of 28 league and 4 cup goals saw him become the first Town player since Malcolm MacDonald in 1970/71 to reach 30 goals. He hit hat tricks against Plymouth, Crewe and Rotherham as Luton reached the play-offs but missed out on promotion. Thorpe then netted a further 19 for Luton the next season including one at Adams Park in a 2-2 draw. His goal scoring exploits tempted Fulham boss Kevin Keegan to pay out £800,000 to lure Thorpe to Craven Cottage in Feb'98.

Thorpe netted three times that season for his new side but the season ended in disappointment with Fulham losing out in the play-offs to Grimsby. That summer Thorpe moved to Bristol City for a £1m transfer fee. City had won promotion to Div 1 the previous May. 1998/99 however was not a memorable season for Thorpe. After 3 goals in 18 appearances, he was loaned out to firstly Reading and then to Luton. City were relegated and Thorpe enjoyed a much more profitable 1999/00 season – scoring 18 goals including one as The Robins won 2-1 at Adams Park. Midway through that season he had another short loan spell at Luton.

He scored both City goals in their 2-1 win at Adams Park in 2000/01 and finished that season with a total of 23 – including hat tricks against Bournemouth and Cambridge United. He started last season in dramatic fashion with a hat trick at Northampton but he later indicated that he would not be resigning for The Robins at the end of the season. Despite this he still topped the club's scoring charts with 19 goals.

Thorpe returned to his spiritual home Kenilworth Road on 'a free' in June this year – Luton having won promotion from Div 3 last April. He is still a nippy striker with quick reflexes and, with 5 goals in 13 appearances to date this season, is still proving a handful for Div 2 defences. Given half a chance he will only be too pleased to add to his Adams Park tally of goals this afternoon.



photo: Gareth Owen/Itfc



For a copy of our Prospectus call **0800 0565 660**

email: advice@bcuc.ac.uk

www.bcuc.ac.uk



Buckinghamshire Chilterns
UNIVERSITY COLLEGE

Achieve your career aspirations, advance your education, learn new skills or make more of your leisure time with part-time learning.

We are your local university with a dynamic reputation as a centre of excellence, offering a wide range of full and part-time courses to suit your needs.

From Leisure and Tourism to Health Studies, Business to Design and Technology to Applied Social Sciences and Humanities, our six faculties can provide you with an innovative approach to learning.

**BARTER
CARD**

business profits www.bartercard.co.uk

PAID TO PLAY?

Play for Success and Financial Gain with Bartercard

**BARTER
CARD**

business profits www.bartercard.co.uk

If you are:

- Dynamic
- Ambitious
- Success Oriented
- Self Motivated

... and would like to be paid to play on the winning team...

CALL BARTECARD NOW!

0800 198 3000 or email success@bartercard.co.uk

There are big rewards on offer for high fliers - all you have to do is sell the smartest idea in business!



Dial 999 and let Professional IT
come to your rescue ...

01494 880 999

Security:

Firewall and intrusion detection systems.
Email, web filtering and virus protection.
Full disaster recovery and implementation programs.

Networks:

Installation of networks, maintenance and consultancy.
Dedicated office servers. Backup systems. Network traffic analysis.

Internet:

Web site design and hosting. Intranet, extranet, lease line and ISP provision.

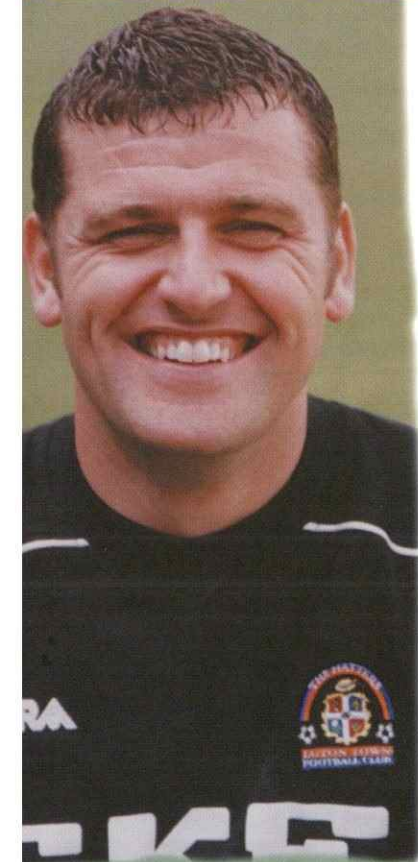
Contact us:

web: www.professionalit.com

email: info@professionalit.com

phone: 01494 880 999

Alan Hutchinson takes a look at the opposing players



The Hatters possess two very experienced goalkeepers in **Carl Emberson** (top left) and **Mark Owendale**. Carl Emberson had been the regular keeper but had missed out with an injury, he is fit again and was on the bench at Tranmere recently. Emberson joined Luton in 2001 after he left Walsall on a Bosman free. Mark Owendale has now made a full recovery from a hip operation and will be hoping to make a push for the first team once more. Mark arrived from Bournemouth for £425,000 a Luton record fee for a goalkeeper. Upon the arrival of Emberson both had spells in the side knowing the other was always waiting to replace him.

The defence has been well assembled by Kinnear who began building the moment he arrived at the club. **Emmerson Boyce** is one who has come through the clubs youth scheme, he broke into the first team during season 1999-2000 but became a regular at right back the following season. Has signed a new contract in the summer. **Chris Coyne** is an Aussie from Brisbane who was playing for Perth when spotted by Harry Rednapp. He signed for West Ham but opportunities were few and far between. After a move to Dundee he signed for Luton in a £50,000 transfer in September 2001. **Sol Davis** signed for Luton in the summer after his contract expired at Swindon and he decided to leave the County Ground for pastures new. This tough tackling left back has been an excellent addition to the team. **Ian Hillier** originally came on loan from Spurs and slotted in so well at right back that the club paid £30,000 to sign him permanently. **Alan Kimble** was signed from Wimbledon by Kinnear to add experience to his back four. He knew exactly what he was getting and despite his advancing years has contributed well to the side. **Alan Neilson** was snapped up from Grimsby Town who released him as part of a cost cutting exercise. A Welsh International enjoyed a run in the Premiership with Newcastle United. **Russell Perrett** helped Cardiff City to promotion in May 2001 and joined Luton via the Joe Kinnear/Sam Hamman connection just before the season started. Russ is a big central defender



who has suffered some injuries and will be hoping to get a place in the first team. **Aaron Skelton** is in his second spell at Luton having re-joined in July 2000. He went on a free transfer to Colchester in 1997 where he became a favourite at Layer Road. He was offered a new contract but the chance to return to Luton saw him move on a Bosman. During a recent injury crisis to defenders in November 2001 Joe Kinnear swooped to sign Rochdale's longest serving player, centre half **David Bayliss** (bottom left). He had been at Spotland since he was an 18 year old trainee and is now enjoying life at Kenilworth Road.

The midfield is another area of the team that has seen a number of changes. **Ahmet Brkovic** (top right) is a Croatian born in Dubrovnik and is regarded as the midfield playmaker. He joined Luton on a Bosman free after refusing new terms with Leyton Orient in the summer of 2001. Playing mainly on the right flank of midfield he has become a regular in the side. **Adrian Forbes** gained valuable experience at Norwich City playing in the First Division before being snapped up by Joe Kinnear in the summer of 2001 for £75,000. Forbes is noted for his ability to run past defenders and deliver crosses into the box, something he did for four seasons at Carrow Road. **Paul Hughes** began his career at Chelsea under the guidance of Glenn Hoddle, the former England boss. He joined Hoddle at Southampton where injury curtailed his progress and joined Luton just before the start of last season. **Kevin Nicholls** is a tough tackling midfielder who began his career at Charlton Athletic and was England Youth team skipper at U18, U19 and U20 levels. Having moved to Wigan for £250,000 he failed to gain and regular place and so Kinnear stepped in and offered £150,000 to take secure his services at Kenilworth Road. **Steve Robinson** arrived during the summer from Preston North End for £50,000, the attacking midfielder made his name with Bournemouth after joining the Cherries from Spurs. He scored 60 goals in 286 appearances for Bournemouth and that attracted Preston to stump up £375,000 for him but he failed to make the same impact at Deepdale. **Matthew Spring** has

been with Luton since he was a schoolboy, he was the driving force in the Luton side that reached the semi-finals of the F.A. Youth Cup in 1997. Has been a big part of the Luton side since establishing himself as a regular at the age of 20.

The Hatters have five good strikers on the books with a mixture of youth and experience who can all score goals. **Dean Crowe** was originally signed on loan from Stoke in September 2001 after an injury crisis decimated the squad. After scoring on his debut he was signed on a permanent deal and his goals helped Luton win promotion last season. **Andrew Fotiadis** (bottom right) is a local discovery who won England caps at U15 and U18. He has developed into an 'old fashioned' centre forward with good physique and power. **Carl Griffiths** was signed from Leyton Orient specifically to help get the Hatters back into Division Two. A fee of £65,000 brought him to Kenilworth Road but he suffered a broken leg soon after arriving. He is looking to get an opportunity this season having missed most of last with injury.

Steve Howard has proved to be the bargain buy for Kinnear who swooped on deadline day March 2001 to prise the tall striker away from Northampton Town. He helped the Cobblers to gain promotion from Division Three after his £120,00 transfer from Hartlepool in 1999. His 24 goals for Luton last season made him top scorer in Division Three, he has ten so far this season. **Tony Thorpe** signed for the Hatters in the summer making it the fourth time he has signed for Luton. He got his first chance with Luton when David Pleat was the manager back in 1992, he then moved to Fulham in 1998 for £850,000. A £1 million move to Bristol City followed four months later, he returned to Luton twice on loan from Ashton Gate and when he became a free agent in the summer of 2002 he signed permanently for Kinnear.



ON THEIR BENCH

MANAGER - Joe Kinnear

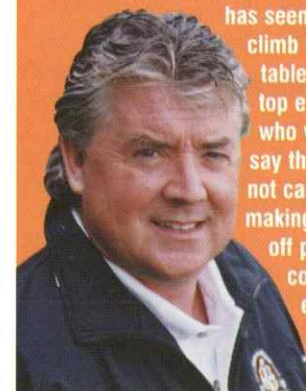
Having seen the Hatters relegated upon his arrival at Kenilworth Road Joe Kinnear promised they would be celebrating promotion the following season. They returned to the Second Division as runners-up to Plymouth Argyle bringing with them a warning, 'Second Division beware - I want another promotion!'

Joe Kinnear has certainly brought a dramatic revival in Luton's fortunes with his experience in the game both as a player and manager at Wimbledon.

Born in Dublin and brought up in Watford he was playing Isthmian League football with St. Albans City when Spurs spotted him in 1965. He went on to enjoy ten years of Spurs success making close to 300 appearances for them.

His first managerial job in this country came at Wimbledon when he took over in 1992 and kept the Dons in the Premiership throughout his tenure. A heart attack in 1999 forced him to step down and take an 18 month break from the game. The Directors of Luton persuaded him to take on the daunting task at Kenilworth Road in February 2001, the third manager the club had seen that season.

Already this season has seen them climb up the table into the top eight and who would say they are not capable of making a play off place come the end of April.



Rothmans pull out

Rothmans, who have been a major contributor to Football over the past thirty years are withdrawing their sponsorship from the end of this season. As sponsors of the 'Football Year Book' they have played a big part of producing what is considered as the Encyclopaedia of football in this country. Now the government have banned any form of cigarette sponsorship a search will be on for a company who can allocate some £50,000 to keep the Football Year Book on the bookshelves.

Johnson three match ban

Roger Johnson is available again after serving a three match ban following his sending off in the reserve fixture against Millwall on Wednesday 27th November. He has missed the games against Bristol City (LDV), Port Vale and Cheltenham Town.



Brownie misses Cheltenham

Steve Brown served a one match suspension against Port Vale and returned last Saturday when we visited Cheltenham Town. He collected his fifth booking against Stockport County on the last day of November.

Ex-Wanderer head of F.A.

Wycombe Wanderers former midfield player from the 1970's Les Read has been appointed the successor to Howard Wilkinson at the Football Association. The F.A. Technical Director has the overall power when it comes to coaching and decisions on forward planning for the F.A. relating to the new purpose built academy. Les Read was a school teacher in London when he played for the Blues and John Goldsworthy collected him at the station and drove him to Loakes Park for the home matches. One incident at Farnborough occurred after a game when he cut his back in the bath on a soap dish that was set into the wall. Suddenly

the water turned a bright red as Les suffered a nasty gash in his back.

Rams new boots

Andy Rammell has been keen to invest in some new boot so he asked Jim Gardner to ring the supplier and get a price for boots with his name on the side. The supplier told him £130 + £19.99 for 'Rammell' along the side. But he offered a pair with Rommell on the side for £40, Rams said "done, and will they get all the sand out before posting".



Robbo back playing

Stuart Roberts has returned to playing after being out for eight weeks with a damaged ankle collected in our match at Cardiff on October 12th. Robbo now starts the fight to regain a first team place.



Ijah will return to Brentford

Left full back Ijah Anderson will be returning to Brentford early in January following his one month loan spell at Adams Park. With Brentford already committed to releasing him at the end of the season Lawrie Sanchez would like to be in a position to offer him something here. Watch this space!



Frank Talia signs once more

Goalkeeper Frank Talia has signed for another month after spending a three month loan period with the Blues. The popular Australian put in some good performances while regular Martin Taylor was out injured. With Frank staying until the middle of January it does provide the manager with competition for the top spot.



Stats by Sidu

Former Ex-Indian Test Cricketer Sidu has the answer to all those stato's who can't watch sport without them. "Statistics are like a mini skirt. Promises everything but delivers nothing".

Intruders Beware

Two white vans were seen paying a visit to the Wanderers training Ground on the Marlow Road recently in what was believed to be a reconnaissance exercise. While both Pete Cawley and Mickey Forsyth were preparing to start a training session the two vans drove around the car park before stopping at the exit gate to measure the distance between the ground and the top bar of the gate. The immediate reaction was that persons unknown were preparing to break into the ground at some stage. The club have countered by contacting the local Council about protection and what can be done to discourage such attempts. The gate has also been reinforced to make it more difficult to break in. If anyone spots persons unknown trying to break into the ground would they please telephone the club or the police.

Cup run over

Our youth team bowed out of the F.A. Youth Cup when they lost 3-2 at Adams Park in the Third Round. It was another good cup run for our youngsters who have made this competition a bit special over the past four seasons. They were extremely unlucky not to reach the semi-final last season and lost in the Fourth Round the season before. Congratulations to Mick Forsyth and his team for another good showing.



Nice One Rob

A snippet from the Sun newspaper was passed to me recently, I thought it worth repeating: 'I really can't understand all the fuss about Wimbledon moving to Milton Keynes. I would follow my beloved Wycombe Wanderers to the ends of the Earth, before changing my allegiance to another club' Rob Rand, East London.



Willo on loan

Wanderers young goalkeeper Steve Williams has gone on a one moth loan to Windsor & Eton of the Ryman's Division One South. The team is managed by former Blues striker Dennis Greene and playing in the side at the moment is Dave Carroll.

Wanderers Windfall

Other media carry a report under this banner which is not wholly accurate. A package of financial assistance has been offered to the Football League by The Football Association and the Premier League. It is intended to be replacement television monies following the demise of ITV Digital and will be payable to member clubs over that would have been the remaining two years of the ITV Digital contract.

The package consists support of a grant of £10 million for 2002-03, a similar grant for 2003-04 and a loan of between £10 million and £15 million. There are certain legal issues still to be resolved and the loan, not the grant, has yet to be confirmed by the Government, which has an important role to play in this exercise.

The grant support available to Wycombe Wanderers for the current season is £51,000. However there are timing issues. A number of conditions attach to the grant. Rod Tomlin, Executive Director, speaking on behalf of the Board said, "We expect to be able to meet these conditions in order to qualify for the grant. However detailed logistical exercise is required in conjunction with our bankers and our auditors in order to convince the Football League that we are in good shape and not about to squander £51,000. As far as the loan is concerned I can make no comment whatsoever until its terms are made known. The support package is welcome but for those clubs who are in a mess it isn't going to be their salvation. Our objective at Wycombe Wanderers is to complete the current season in good shape for a determined attack on the next. Whatever that takes we are all on the same track despite a poor run of form on the pitch. Receipt of the grant monies will prove a point about the state of the business of the overview procedures at the Football League".

OBITUARY

It is with sadness the club have to announce the passing of Mick Higgs at the age of 54. Mick was a well known face around the club who had performed a number of tasks over the years, including a match day steward. Mick had battled with cancer for a number of years and passed away on Monday 2nd December. The funeral took place on Wednesday 11th December at Amersham Crematorium. The club send condolences to his wife Cynthia and two daughters Sarah and Lynn at this sad time.



Youth Team Award

The Youth team Player of the Month Award for November has been won by Stuart Hole. Congratulations to Stuart who was chosen by Youth Team Manager Mickey Forsyth, his award was presented by Walters Group Chairman John Walters prior to our match with Port Vale.



Supporters Player of the Month Award



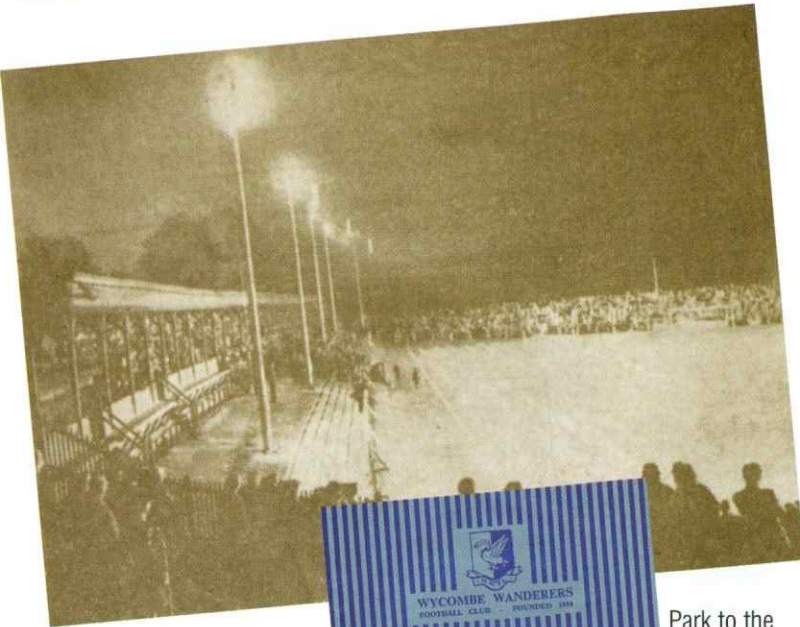
The Wycombe Wanderers Supporters Player of the Month Award for November has gone to Keith Ryan. Congratulations to Keith who was chosen by the supporters and presented with his award prior to our match with Port Vale by club Chairman Ivor Beeks with sponsor John Hedgeland and son Jack.

MILESTONES

With Dave Finch

With this having to be at the printers early because of the holiday period there are just two matches to cover. The first, the LDV Vans game at Bristol, I will pass by. I think that everyone who was there will know why. Suffice to say that in my 38 years of regular support it is one of my lowest moments, it was that bad!

On a happier note we then recorded our second successive 3-1 home win over Port Vale, who have managed to score on all three of their visits to Adams Park. Well done to Andy Thomson, who scored his first goal for the club. He is the 65th player to score in the Football League for us. How about that man Sean Devine though. Wasn't it great to see him on the scoresheet again? His two goals means that he is now level with Dave Carroll as our all-time Football League leading scorer. Our top ten reads as such: 1.Dave Carroll, Sean Devine 41, 3.Steve Brown 31, 4. Keith Scott 30, 5. Miquel Desouza 29, 6. Andy Rammell, Keith Ryan 25, 8. Mark Stallard 23, 9. Jermaine McSpornan 22, 10. Terry Evans, Simon Garner 16.

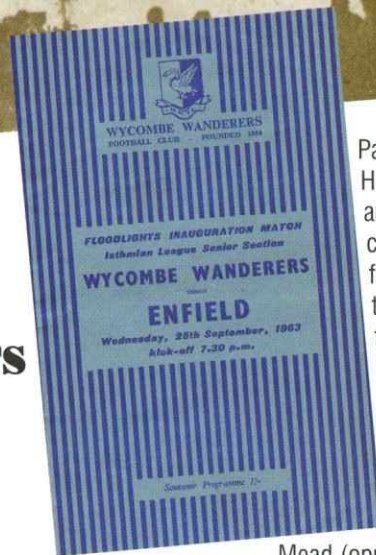


ISTHMIAN LEAGUE EXTENDED - FLOODLIGHTS INSTALLED

Wanderers sparkle under lights Move from Loakes Park first mooted

In season 1963-64 the Isthmian League was extended by another four clubs, Hendon, Enfield, Hitchin Town and Sutton United all joined from the Athenian League, bringing the total to 20 clubs. At the end of that season Wimbledon won the Championship for the second successive season and turned professional by joining the Southern League for the start of 1964-65, they were replaced by another Athenian League side, Wealdstone.

The summer of the 1963 was very eventful. It was the first time that the Football club released the news that the Wanderers might sell Loakes



Park to the Hospital if another site could be found. In those days the two best options put forward were Hollywell

Mead (opposite the

Swimming Pool on the Rye) and Wendover Way (near the Health Centre on the Rye), the local paper headlined it 'Miniature Wembley to replace Loakes Park'. Needless to say the local Council were not in agreement with the use of either of those sites and the Hospital authorities had to wait another twenty seven years for the club to move. But the main decision to be taken by the club committee was that Wanderers would install floodlights as soon as possible to accommodate the additional evening kick off times that an enlarged Isthmian League would bring. A floodlight appeal had been in

operation throughout the previous season to raise the funds required and so Wycombe Electrical Installations were given the task of advising on the floodlighting for Loakes Park. It was not necessary to have lights for the start of the season as the late evenings took care of any scheduled matches. However, as September came to a close the date was confirmed as Wednesday 25th for the match against Enfield for the big switch on.

The club also saw the arrival of a new coach, Don Welsh, the former Charlton and England inside forward who had made his name as a player in the 1930's and 40's. He came in with a reputation as a disciplinarian and with the accent on youth and for all the players to attain perfect fitness.

The period of the early 1960's was a time for change throughout football in general. The game had enjoyed a remarkable upturn after the Second World War, even Amateur football saw very good attendances, none more so than in the F.A. Amateur Cup competition. Sadly it was not to last and the advent of floodlight football was just part of the change to entice more fans back to the terraces.

Another change saw the team appear in light blue and dark blue striped shirts, a strip that had not been used since before the First World War. The change was signified by the front cover design of the match programme, it proved to be an unpopular move away from the quartered shirts and only lasted that season.

The floodlights had been installed at a cost of £6,000 and club patron Mr. Frank Adams was invited to 'switch on' just before the kick off against Enfield. An enthusiastic crowd of over 3,000 applauded the

brilliant effectiveness of light that flooded the entire ground. Frank Adams pressed a small button following an informal address, the eight pencil slim lights each supported on eight poles, burst into life as fire crackers were let off in the crowd. It was the first time that the tubular poles were used in Britain, they had been specially designed so that the lights could be lowered for cleaning and replacing.

A special 16 page souvenir programme was issued with the cover printed in the light blue and dark blue stripes to match the new kit the team would wear.

SLIDE CHECKED AGAINST ENFIELD

First win in three for Blues Hodges has fine game

It was very fitting that the Wanderers should turn on an illuminating performance to match the big switch on. After three successive league defeats and just one win in the first eleven games they put on a show for the enthusiastic crowd against newcomers Enfield. The visitors were full of energy and confirmed their reputation as a fine footballing side. Even a top professional match would have been hard pressed to match the passion and fire of this first ever floodlight game at Loakes Park.

Playing with two talented wingers the Blues went straight for the visitors jugular and full back Charlie Gale playing at centre forward hounded the Enfield defence. On the right Len Worley was dominant, just the right kind of atmosphere for him. On the left Paul Hodges had his finest game for the club as he tore

right back Pat Terry to pieces. It was Hodges great speed, which enabled Wycombe to take the lead on 19 minutes. His square pass was neatly side footed into the net by Charlie Gale who relished the prospect at centre forward. Three minutes later half back John Cooper fed Dave Thomas and he put Wanderers further in front. As the half progressed Enfield came strongly into the match, with Dennis Syrett, making his return in goal he failed to hold a fierce cross from the right from Roger Day and Peter Roystone put the rebound into his own net. In the second half Wycombe maintained the momentum with both Tony Horseman and Dave Thomas going close. With just seconds remaining John Beck sent a 40 yard shot goalwards that sailed over keeper Mitchell into the back of the net for 3-1.

The win lifted the Blues up to fourth from bottom of the table, the lowest the club had been for over thirty years. This was also the season a young Dave Bassett came

into the side as chief coach Don Welsh turned his attention to youth. At the start of the season he adopted a very interesting 4-2-4 formation but changed to 4-3-3 for the big game against league leaders Wimbledon in mid October. They arrived at Loakes Park with an unbeaten record but returned to Surrey having been beaten 2-0 in a pulsating game. It was the night the Dons discovered Paul Hodges, a left winger with frightening pace and plenty of ability to match. At the end of the season Hodges moved to Wimbledon to begin a career in the Southern League.

Team: Dennis Syrett, John Beck, Alistair Lewis, George Pullin, Peter Roystone, John Cooper, Len Worley, Dave Thomas, Charlie Gale, Tony Horseman, Paul Hodges.

How the new enlarged league finished at the end of the season. It was interesting to see how three of the four new clubs finished in the top five of the table. For the Blues it was the lowest league position for twelve seasons.

Final League Table

	P	W	D	L	F	A	Pts
Wimbledon	38	27	6	5	87	44	60
Hendon	38	35	4	9	124	38	54
Kingstonian	38	24	4	10	100	62	52
Sutton United	38	23	5	10	99	64	51
Enfield	38	20	10	8	96	56	50
Oxford City	38	20	8	10	90	55	48
Tooting & Mitch	38	19	8	11	78	51	46
St. Albans City	38	14	12	12	62	63	40
Ilford	38	16	8	14	75	79	40
Maidstone Utd	38	15	8	15	65	71	38
Walthamstowe A	38	15	6	17	70	66	38
Leytonstone	38	14	8	16	66	71	36
Wycombe Wand	38	13	6	19	74	80	32
Hitchin Town	38	14	4	20	67	100	32
Bromley	38	11	8	19	64	75	30
Barking	38	10	9	19	46	69	29
Woking	38	10	9	19	49	88	29
Corinthian-Cas	38	10	4	24	52	92	24
Dulwich Ham	38	6	12	20	47	97	24
Clapton	38	2	5	31	31	100	9

Let's start with your overall performance this season - are you happy with it at the moment?

Not really, no. I feel my form has been patchy and I've been struggling to get some consistency. The manager and I have spoken about the problems and, from time to time, he has put me on the bench in the hope that it will give me a chance to recapture some more consistent form.

What do you think has been the problem?

I don't really know. I think with the changes at various times in the midfield area, I find myself playing wide and I've always preferred to be in the centre.

What are you going to try and work on?

I just want to work on my overall game, to be honest. I have a good partnership in midfield with Michael Simpson and I feel very comfortable playing in that position but, like all players, I just want to be in the team and I will keep working hard to achieve that.

Do you prefer to play in a midfield three or a midfield four?

I prefer playing in a midfield four because I'm more of a conventional player. Often playing with a three you can find yourself becoming too narrow with people going up the outside and if you then get too wide, the midfield three are too stretched.

Moving onto goal scoring this season, it's not been

your strongest point but do you think you can get a few more?

I hope so. If there's space and the opportunity then I try and get forward and get a shot in. Again, the manager and I have talked about my shooting and we both agree that I need to do this a lot more but often in games I might see someone in a better position and decide to make a pass instead of taking a shot myself.

Your midfield partner Michael Simpson seems to have found the net a few times this season!

Yes, Simmo's done really well this season, he's got three goals so far. There isn't a bet going on between us this season but obviously we want to try and get as many as we can between us. Unfortunately, we don't score enough goals from midfield and when the forwards dry up, suddenly the pressure is on the whole team to try and get a goal.

What do you think is the secret to your solid partnership with Simmo in midfield?

We travel away together, share a room and we're good friends outside of football as well. We tend to socialise, play a bit of golf together and go out to dinner, so it works well on the pitch too. During a game, we don't really have an agreement as to who goes forward and who stays back but we have a good understanding of each other's game.

With regards to Luton, we

won 2-1 at Kenilworth Road last time we played them there in the league but we have never beaten them at home. What do you make of the Hatters?

They have made a good recovery after a poor start to the season and they are always a hard team to play against. Even in the 2-1 victory a couple of seasons ago, I seem to remember, we were 1-0 down at half-time when the gaffer made three changes and Rams scored twice in the second-half.

What do you think has gone wrong this season?

We've not performed as well as we would have liked or expected this season. I think the key is for us all to pull together as a team and help each other through it. Just recently, we have suffered from players being out with lengthy injuries and a few suspensions that we could have done without. All this has tended to disrupt the team, either at the back, midfield or at the front but I'm sure when these problems are sorted we can turn everything around. It was unfortunate that we went out of the FA Cup so early this season and we were hoping to have a good run in the LDV Vans but that came to an end at Bristol City. It's now time for the old cliché "we can concentrate on the league" and I am sure we can give something to the fans to cheer about in 2003.

You can catch the full interview with Frank in audio - visual format by subscribing to Wanderers World.





wycombebets powered by
Our official online betting service **bet365**

20 quid
says you're
a winner!

Sign up to WycombeBet,
our official online betting service,
and have a £20 bet for free*.

Having a flutter has never been easier!

- 90 minutes, correct score, scorecasts, first goalscorer, half time/full time and 'specials' – available on every one of our matches this season
- Unrivalled international sports betting coverage

And remember,
every bet you place,
big or small,
directly benefits
the club.

Bookie-mark the page!

www.wycombewanderers.co.uk

*See site for details, terms and conditions apply.

CLASSIC CLASH

With Luton Town - by Alan Hutchinson

23

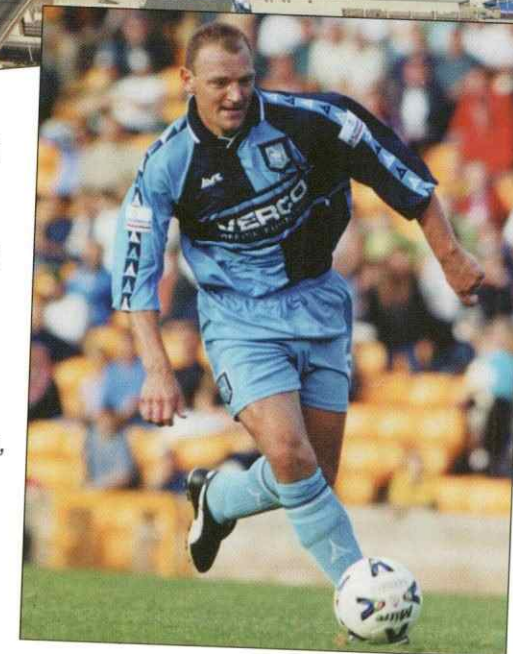
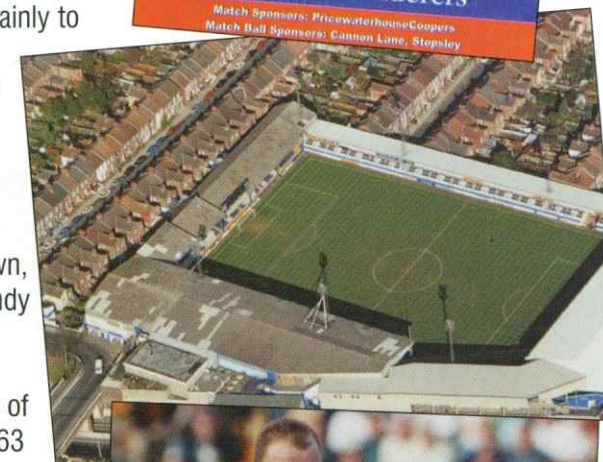
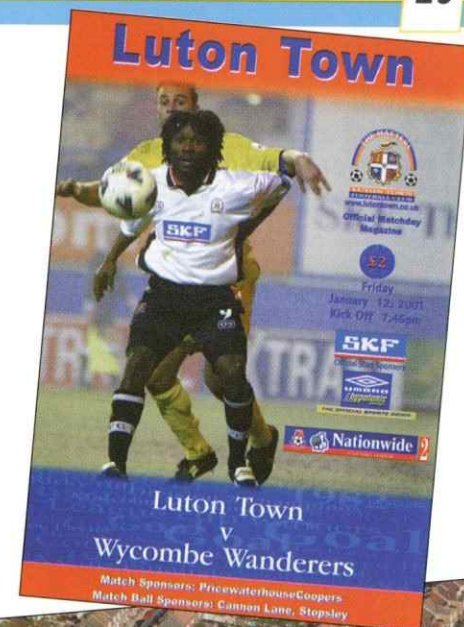
On Friday 12th January 2001 we visited Kenilworth Road for a Sky TV live transmission fixture. The Hatters were struggling in second from bottom at the time, we were in the middle of our fantastic F.A. Cup run with Wolves still to come in Round Four. We had never won at Kenilworth Road, the best we could offer was a draw and this surely was to be the best chance of taking all three points away from Luton Town.

Anyone who remembers the first half will wonder how Sky had decided to pick this for a live match. Both sides were woeful. In fact the Blues were so bad Lawrie Sanchez made three changes at half time and it woke everyone up for the second half. Luton were poor but they had managed to score and led 1-0 at half time.

A second half revival by the Wanderers was due mainly to the manager's half time team talk and the change of personnel. Wycombe were heading for a 2-1 victory with both goals from Andy Rammell in the second half, but the opening goal went to Adam Locke on nineteen minutes. Trailing 1-0 at half time Wycombe manager Lawrie Sanchez made three substitutions during the half time break, Martyn Lee for Steve Brown, Mark Rogers for Danny Senda and Sam Parkin for Andy Baird. On fifty minutes Wanderers drew level when Andy Rammell finished a Martyn Lee corner. As Wycombe began to dominate proceedings the tempo of the match increased and the second goal arrived on 63 minutes. A ball from the Wycombe right by Dannie Bulman reached the far post where Andy Rammell just touched it home for a 2-1 lead. Luton had the odd moment towards the end as they tried to force an equaliser but Wanderers also had some good chances and deserved all three points. The Wanderers 2-1 win meant the Hatters had lost nine of their thirteen home league games and survival looked beyond a miracle.

Teams: WANDERERS: Taylor, Vinnicombe, Cousins, McCarthy, Brady, Bulman, Simpson, Brown (Lee), Senda (Rogers), Baird (Parkin), Rammell. *Subs not used:* Bates, Harkin.

LUTON TOWN: Ovendale, Fraser, Boyce (Sterling), Breitenfelder (Scarlett), Whitbread, Taylor, Locke, Spring, George, Thomson (Kandol), Douglas. *Subs not used:* Holmes, Ward.



VERCO
OFFICE FURNITURE LIMITED
Chapel Lane, Sands, High Wycombe, Bucks. Telephone: 01494 448000

walters group
OFFICIAL YOUTH TEAM SPONSORS

Quality Heating Services

HYPNOS.
The Most Comfortable Beds in the World
TEL 01844 342233
SPONSORS OF THE FAMILY ENCLOSURE

ERCOL
OFFICIAL BOARDROOM SPONSORS

PK GRAPHICS
OFFICIAL MASCOT SPONSORS

fans1st

JNP
www.jnp.co.uk

BKR Haines Watts
Chartered Accountants
Delivering Different Financial Solutions
Tel: 01494 452921 • www.hwca.com

OFFICIAL SPORTS DRINK SPONSOR TO WYCOMBE WANDERERS
Lucozade SPORT

DOORS • WINDOWS
WARWICK
CONSERVATORIES
DOUBLE GLAZING
TEL: 01494 - 672924

SALES DESIGN INSTALLATION SERVICE MAINTENANCE
H.M. AIR COOLING LTD.
AIR CONDITIONING AND REFRIGERATION
PHONE: 01494 459858

BP Collins
SOLICITORS
www.bpcollins.co.uk
01753 889995

Rosehill Instruments Limited
Champion instruments for all sorts of players
64 London End, Beaconsfield - Tel. 01494 671717

B M W
Sytner
01494 562662

RTS
RISBORO' TURF
GARDEN, ESTATE AND SPORTSTURF MACHINERY: SALES, SERVICE AND HIRE
01844 274127

THOMAS WINTER INSURANCE
40/42 Chapel Street, Marlow, Bucks, SL7 1DD.
Telephone: (01628) 470400

HANDS
Furniture Makers

Uniworld
LOW COST CALLS & OUTSTANDING SERVICE

Percy Prior's
MUSIC
Rosehill Instruments Limited
High Wycombe Beaconsfield
01494 443418 01494 671717

OFFICIAL PHOTOCOPIER SUPPLIERS
CDT
City Digital Technology Limited
Official Photocopier & Office Equipment Suppliers
Tel: 01494 532222 www.citydigital.com

NEALE'S
Taxis and Private Hire Cars - 01494-463399

LP LP SUPPORTS
SUPPORTING THE PROFESSIONALS
THE STANDARD OF EXCELLENCE IN SPORTS MEDICINE

Thrifty Car Rental
01494 751600

seymour taylor
Chartered Accountants

KIDD RAPINET
SOLICITORS
THE CLUBS OFFICIAL SOLICITORS
01494 535321 01296 432541

SGB Rovacabin
Instant Space for Hire or Sale
0800 585 383

Hot Wheels

Syan
The Specialists in Outsourcing

Sponsored at home by
Alan, Michael and Richard Sunderland & Rod Armitage
Sponsored away by
Hemsley Miller & Co
10 Sean Devine

Sponsored at home by
Strategic Shipping Company Ltd 01753 686784
Sponsored away by
Selly Oak Properties
11 Dannie Bulman

Sponsored at home by
Jeni Abbott
Sponsored away by
Abbotts Office Solutions
All your office needs 01494 521851
12 Richard Harris

Available for sponsorship
Please ring 01494 472100
Available for sponsorship
Please ring 01494 472100
13 Mark Osborn

Sponsored at home by
A&M Partnership 01494 512384
Sponsored away by
Alex, Simon & Nigel Vickery
14 Stuart Roberts

Sponsored at home by
Pitman Training, IT Business and Office Skills Training 01494 535955
Sponsored away by
Stephen James Hunt Carpets 01494 529489
15 Jeannine McSparran

Sponsored at home by
Come on Andy - Give 'em Hell! Dave, Gill, Glyn & Stuart Meredith
Sponsored away by
The Glenister World Wide One Name Study http://www.glenister.org
16 Andy Rammell

Sponsored home by
The Glenister World Wide One Name Study http://www.glenister.org
Sponsored away by
Tony Crow WWFC PA/DJ
17 Roger Johnson

Sponsored at home by
Good Luck for the Season Ben Best Wishes Peter Mallett
Sponsored away by
Good Luck for the Season

WANDERERS IN TOWN UPDATE 25

ORDER HOTLINE 01494 450957



OFFICIAL CLUB TRAVEL SUIT
AS WORN BY ALL PLAYERS TO AWAY GAMES

SIZES 26-28, 30-32
SIZES S-XXL
PRICE £39.99
PRICE £49.99



OFFICIAL CLUB RAIN JACKET
USED BY PLAYERS DURING TRAINING

SIZES S-XXL
PRICE £34.99



OFFICIAL CLUB POLO SHIRTS
NAVY OR WHITE

SIZES S-XL
PRICE £19.99



RETRO HOODED SWEATSHIRT & RETRO T.SHIRT

SIZES 26-28,30-32
SIZES M-XXL
PRICE £29.99/£17.99
PRICE £34.99/£19.99

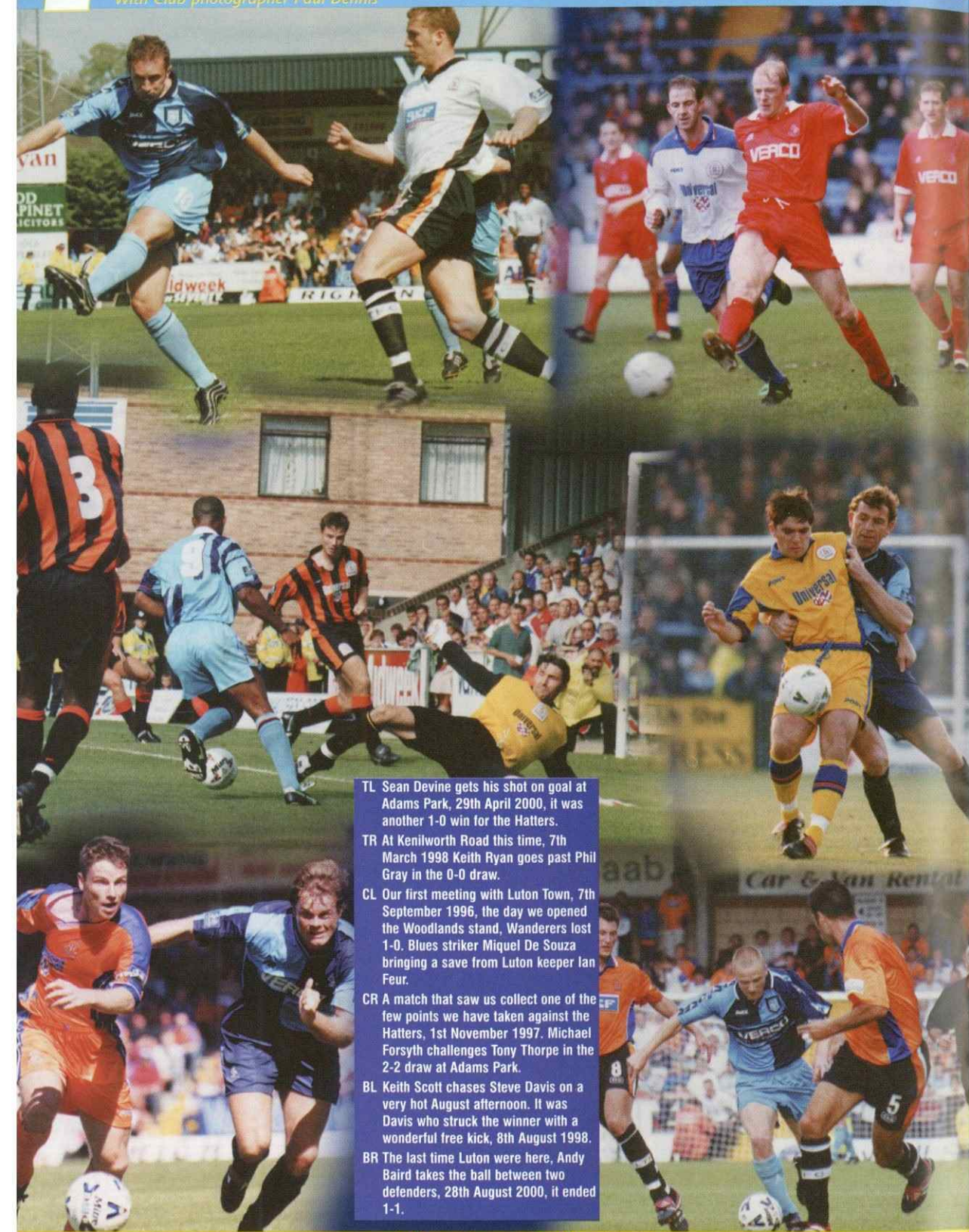


BENCH FLEECE FULL ZIP OR 1/4 ZIP

SIZES S-XXL
PRICE £34.99

CAUGHT IN THE ACT IN PAST GAMES

With Club photographer Paul Dennis



TL Sean Devine gets his shot on goal at Adams Park, 29th April 2000, it was another 1-0 win for the Hatters.

TR At Kenilworth Road this time, 7th March 1998 Keith Ryan goes past Phil Gray in the 0-0 draw.

CL Our first meeting with Luton Town, 7th September 1996, the day we opened the Woodlands stand, Wanderers lost 1-0. Blues striker Miquel De Souza bringing a save from Luton keeper Ian Feur.

CR A match that saw us collect one of the few points we have taken against the Hatters, 1st November 1997. Michael Forsyth challenges Tony Thorpe in the 2-2 draw at Adams Park.

BL Keith Scott chases Steve Davis on a very hot August afternoon. It was Davis who struck the winner with a wonderful free kick, 8th August 1998.

BR The last time Luton were here, Andy Baird takes the ball between two defenders, 28th August 2000, it ended 1-1.

SUPPLIER OF COACHES TO WYCOMBE WANDERERS

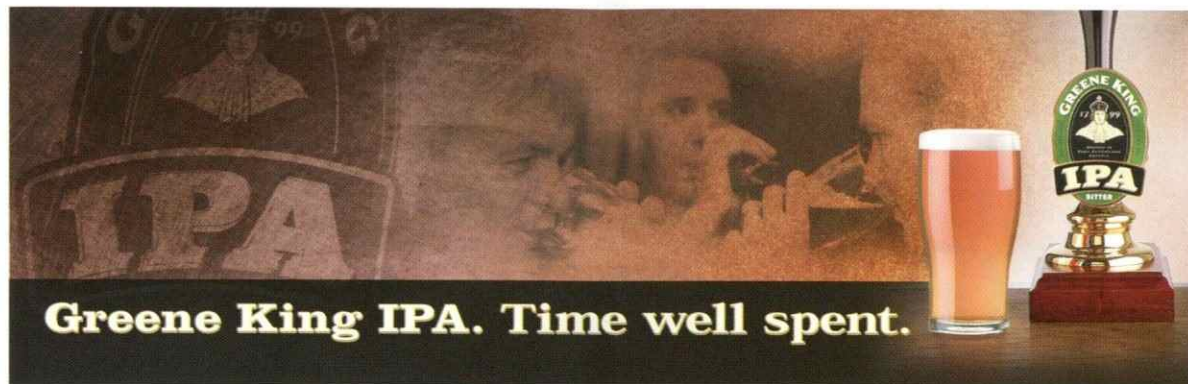


Coach hire - Tel: 01296 613831

Fax 01296 613175

Holidays/Day Trips - Tel: 01296 336666

Fax 01296 336667



Greene King IPA. Time well spent.



ERCOL

Integrity Software

BUCKS CYCLE CENTRE

1st Choice for Cycles



OXFORD ROAD . HIGH WYCOMBE . TEL: 01494 451972

4-0 | No other line-up comes near



Wishing Wanderers a successful season.

Join the new Jag generation at:

MERRITTS

44 London Road, Amersham.
Tel: (01494) 725911.
Fax: (01494) 432370.
A DIVISION OF THE MERRITTS MOTOR GROUP
Email: jaguarsales@merritts.co.uk

The art of performance | JAGUAR

Wycombe Wanderers v Luton Town

Location <http://www.soccer-stats.com/headtohead>

Navigation: For/Against Goalscoring Home/Away Top Scorer Form Guide Discipline Attendances Swings/Margins Miscellaneous

Seasonal Progress Comparison

due to xmas deadlines stats are up to date as of Sunday 22nd Dec

Legend: — = Wycombe, — = Luton

Clubs Comparison

11	Goals Scored	19
9	Shots	7
4	Headers	4
5	Volleys	2
0	Penalties	0
0	Free Kicks	0
0	Own Goals	0

Where Goals Scored

Where Goals Conceded

Average Goals per game

1.32	For	1.45
2.09	Home For	1.64
0.55	Away For	1.27
1.41	Against	1.36
1.73	Home Against	1.36
1.09	Away Against	1.36

When Goals Scored

2002-2003 Attendances

63,937	Chairboys	74,293	Hatters
8,383	Aggregate	9,477	
4,897	Highest	5,890	
5,812	Lowest	6,754	
58	Average	68	% of Capacity

10 Year Record

59	Chairboys	Avg Pos.	53.3	Hatters
5,448	among 92 clubs	Avg Att 1993	7,878	
5,812	Avg Att 2002	6,754		
7	+ / - %	-14		

Top League Scorers

5	Devine	League Goals	10
18	Howard	Games Played	20
0.28		Lge Goals/Game	0.50
3		Points Gained	6
1		Scoring Run	4
0		Hat-Tricks	0
1		Close Range	5
4		Inside Area	4
0		Long Range	1
2		Shots	4
0		Headers	4
1		Volleys	2
2		Penalties	0
0		Direct FKs	0

2002-2003 Figures

23	Players Used	33
5	Clean Sheets	8
6	Failed to Score	5
6	Goals scored from...	
2	Corners	4
2	Free Kicks	2
1	Goals conceded from...	
2	Corners	2
2	Free Kicks	3

Form Guide - Last 6

1	Won	1
2	Drawn	3
3	Lost	2
7	For	5
9	Against	7
5	Points	6
-2	Goal Difference	-2
LDLLWD	Sequence	LDDWLD

Yellow & Red Cards

36	Yellow	46
2	Red	4

Luton Town's 10 Year History

Div	Season	Leading Scorer	Ave Att
Div 1	01/02	Howard.....24	6,853
Fin	00/01	George.....7	5,754
SF	99/00	George.....14	5,658
QF	98/99	Douglas.....9	5,527
Rd.5	97/98	Thorpe.....14	5,879
Rd.4	96/97	Thorpe.....28	6,294
Rd.3	95/96	Guentcher/Marshall.9	7,223
Rd.2	94/95	Marshall.....11	7,350
Rd.1	93/94	Dixon.....9	7,878
	92/93	Gray.....19	8,213

THE SP YOUR FREE SPORTS PAPER WITH THE PEOPLE

with Club photographer Paul Dennis



THE SP DIVISION 2 STATS THE SP

due to print deadlines, stats up to date on Sunday Dec 22

WINNING MARGINS

Games won by:	1 gl	2 gls	3 gls	4+
Wigan	5	9	1	0
Cardiff	9	2	1	2
Bristol City	5	5	3	1
Oldham	6	3	0	3
Crewe	4	5	2	1
Tranmere	5	2	1	1
Brentford	6	2	0	1
Chesterfield	7	1	0	1
Blackpool	4	2	3	0
QPR	1	5	1	1
Stockport	4	2	1	1
Luton	5	1	2	0
Northampton	3	1	3	0
Plymouth	5	1	1	0
Wycombe	3	3	1	0
Port Vale	6	1	0	0
Mansfield	3	1	0	2
Barnsley	5	1	0	0
Colchester	5	1	0	0
Swindon	3	3	0	0
Peterborough	2	1	1	1
Huddersfield	3	1	1	0
Cheltenham	3	2	0	0
Notts County	1	0	3	0

FULL GROUNDS - ATTENDANCES

Club	Aggregate	% Capacity
Luton	74,293	68
QPR	142,326	68
Blackpool	75,599	67
Cheltenham	54,339	67
Northampton	55,658	66
Cardiff	143,681	65
Crewe	68,240	61
Chesterfield	44,644	58
Wycombe	63,937	58
Bristol City	126,800	54
Oldham	74,173	50
Brentford	65,597	47
Plymouth	102,067	46
Mansfield	49,770	45

CLEAN SHEETS

Gms without conceding	Lge Pos
Wigan	12
Oldham	12
Chesterfield	11
Cardiff	10
Crewe	9
Bristol City	8
Brentford	8
Luton	8
QPR	7
Blackpool	7
Northampton	7
Huddersfield	7
Port Vale	6
Cheltenham	6
Plymouth	5
Stockport	5
Wycombe	5
Colchester	5
Notts County	5
Tranmere	4
Peterborough	4
Mansfield	3
Swindon	2
Barnsley	2

FAILED TO SCORE

Gms without scoring	Lge Pos
Huddersfield	11
Northampton	10
Chesterfield	10
Mansfield	9
Peterborough	9
Blackpool	9
Swindon	8
Barnsley	7
Colchester	7
Tranmere	7
QPR	7
Cheltenham	6
Notts County	6
Wycombe	6
Crewe	6
Stockport	6
Luton	5
Oldham	5
Port Vale	4
Bristol City	4
Cardiff	3
Wigan	3

SEQUENCES:

CONSECUTIVE WINS:	UNDEFEATED RUN:	LOSING STREAK:
Bristol City	Wigan	Swindon
Oldham	Bristol City	Colchester
Wigan	Cardiff	Mansfield
Luton	Crewe	Peterborough
Port Vale	Blackpool	Blackpool
QPR	Brentford	Luton
Plymouth	Luton	Northampton
Cardiff	Oldham	Port Vale
Chesterfield	Swindon	Wycombe
Northampton		Brentford
Stockport		Cheltenham
		Huddersfield
		Stockport

HEADERS SCORED

Oldham	10
Peterborough	10
Wigan	9
Wycombe	9
Barnsley	8
Cardiff	8
Crewe	8
Port Vale	8
Tranmere	8
Luton	7
Mansfield	7
Plymouth	7
Brentford	6
Bristol City	6
Stockport	6

PENALTIES SCORED

Swindon	5
Wycombe	5
Brentford	4
Oldham	4
Bristol City	3
Port Vale	3
Wigan	3
Blackpool	2
Cardiff	2
Chesterfield	2
Colchester	2
Luton	2
Plymouth	2

GOALS FROM OUTSIDE 18 YARD BOX

SCORED	Gls	Total	%	CONCEDED	Gls	Total	%
Mansfield	9	37	24	Luton	8	30	27
Crewe	8	35	23	Northampton	8	33	24
Colchester	5	22	23	Cheltenham	7	29	24
Chesterfield	4	18	22	Plymouth	7	30	23
Barnsley	5	24	21	Cardiff	4	18	22
Plymouth	6	30	20	Blackpool	7	32	22
Bristol City	9	46	20	Oldham	3	16	19
Northampton	4	21	19	Peterborough	6	33	18
Notts County	6	32	19	Wycombe	5	31	16
Tranmere	5	28	18	Wigan	2	13	15
QPR	5	29	17	Port Vale	5	35	14
Wigan	6	37	16	Colchester	4	29	14
Stockport	4	30	13	Mansfield	7	53	13
			ordered as % of all goals scored	Stockport	4	31	13

GOALS PER GAME - THE MOST CONSISTENT STRIKERS

Player:	Rob Hulse	Robert Earnshaw	Luke Beckett	Clyde Wijnhard	Scott Murray	Iyeden Christie	Sam Parkin	Nathan Ellington	Andy Clarke	Steven Howard	Simon Haworth
Lge Gls:	15	18	17	8	12	13	13	9	9	10	9
WC Gls:	1	3	1	2	0	0	0	5	0	1	1
FAC Gls:	0	0	1	1	3	1	0	2	1	0	1
LDV:	3	0	0	0	2	0	1	0	2	0	0
Gls/Game:	0.86	0.81	0.70	0.65	0.63	0.58	0.58	0.53	0.50	0.48	0.48

THE SP 48 PAGE SPORTS PAPER FREE WITH THE PEOPLE

Bucks Free Press Midweek Star Limited Edition BUSINESS NEWS

Editorial 01494 755081
Advertising 01494 755100
Newspaper Sales 01494 755124
Main Switchboard 01494 755000

www.bucksfreepress.co.uk

CHAIRMAN

integrated solutions

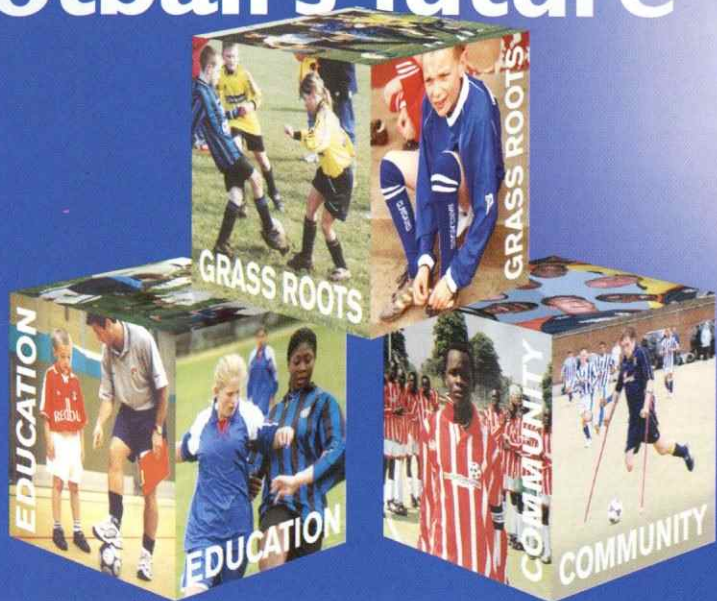
The complete supplier for all your computerised business systems requirements. Hardware, Software and service.

Chairman Software Ltd
120 Lane End Rd, High Wycombe, Bucks, HP12 4HX
Tel:- 01494.468711 Fax:- 01494.462138
E/Mail:- sales@chairman.co.uk Website:- www.chairman.co.uk

BEAT CIGARETTES ONE AT A TIME.

YOU'RE TWICE AS LIKELY TO SUCCEED WITH NICORETTE. NICORETTE

building
football's future



Football Foundation
football's biggest supporter

Helpline 0800 0277766 www.footballfoundation.org.uk

107.4 & 107.7

swanfm

just great songs
all day long

Listen Live!

full match commentary
on EVERY

Wycombe Wanderers
League Division Two match
IS LIVE AND EXCLUSIVE
to 107 swanfm



AMERICA'S No 1 GENTLEMEN'S CLUB

120 High Street
Uxbridge UB8 1JT
Tel: 01895 237330

Colnbrook By-pass
Colnbrook,
Slough SL3 0EH
Tel: 01753 680011

Nationwide

LADIES DAY

WEDNESDAY 1st JANUARY 2003

Wycombe Wanderers



Bristol City



Wycombe Wanderers start the New Year by promoting Women's Football thanks to the Nationwide Supporters of Tomorrow Scheme, courtesy of The Nationwide Building Society.

- Pre-match penalty shoot out to be taken by members of The WYCOMBE WANDERERS LADIES against a Reserve or Youth Team Goal Keeper.
- Half-time penalty shoot out competition to be taken by Chesham girls.
- 1,000 FREE Mince Pies available for Ladies from the Lindley Catering Tea Bars (Mince Pies available on a first come-first served basis).
- 1,440 FREE Packets of Maltesers will be distributed to girls & ladies courtesy of Mars confectionery.
- Look out for Additional special promotions on the day.

BUY YOUR TICKETS NOW

CREDITCARD HOTLINE 01494 441118 www.wycombewanderers.co.uk
The Commercial Offices, Adams Park or Wanderers in Town, The Octagon



**Ladies
Football Club**

Junior & Senior squads, training, small-sided tournaments,
"friendlies" & competitive leagues

Teams in South Region and Berks & Bucks FA County League

4 FA Qualified Coaches

Experienced players and beginners welcome from school year 3
upwards

For more information call Maz on 01494 437477, or email
Maz@wwlfc.co.uk



Time to get a bigger car?

Time for a Nationwide Personal Loan

Our lowest
rate ever
7.9%
APR FIXED

Call us today for a quick decision •

Nationwide. Proud to be different

 www.nationwide.co.uk |  0800 30 20 10 |  or just call in

Banking | Credit Card | Insurance | Investments | Loans | Mortgages | Pensions | Savings

LOANS ARE SUBJECT TO AN APPLICANT'S FINANCIAL STANDING AND ARE AVAILABLE TO THOSE AGED 18 OR OVER. CREDIT FACILITIES PROVIDED BY AND WRITTEN QUOTATIONS AVAILABLE FROM NATIONWIDE TRUST LIMITED, NATIONWIDE HOUSE, 20 LOWER DAGNALL STREET, ST. ALBANS, HERTS AL3 4RR.

Good afternoon and welcome to today's game against local boys Luton Town. On behalf of the Scheme I hope you all had a wonderful Christmas and that Santa brought you all you wanted. Lets see if Santa can give us 3 points today against the 'Hatters' and push our boys up the table.

Birthday Parties

Although its Christmas the Scheme has been very busy with our Birthday Packages. I have two matchday options today both including tours of the ground, McDonalds Lunch and tickets to this afternoon's game. The Scheme would like to say a big Happy Birthday to Matthew Ashford who is celebrating his 7th birthday with 9 of his friends. Also a big Happy Birthday to David Gardner who is celebrating his 9th Birthday here at the club with 7 of his chums. I hope both parties have a great day and hope this is a memorable birthday for them both. If you would like more information on our birthday packages or want to book one you can either call me on 01494 472100 or check the details on our web page at www.wycombewanderers.co.uk

Course Update

Our courses this Christmas have proved very popular once again with all of the courses being fully booked. The courses were run over 1 or 2 days and involved a number of different topics including; dribbling, passing, control, shooting, turning and penalty and world cup competitions. The Children all received a certificate and going away gift from the course as well as individual prizes for player and

sportsman's of the day.

We only have a few places left on our courses in the New Year so if you want a place then ring the club for information on what courses are available.

Matchday & Penalties

Today we welcome Clive Webb and his Under 9's from Hughenden Valley who will be entertaining you today at half time with our penalty shoot out. Good luck to all the boys and lets see some great celebrations. If you want to book one of our matchday packages for the season then contact me at the club to check availability.

Dave Evans

00 -

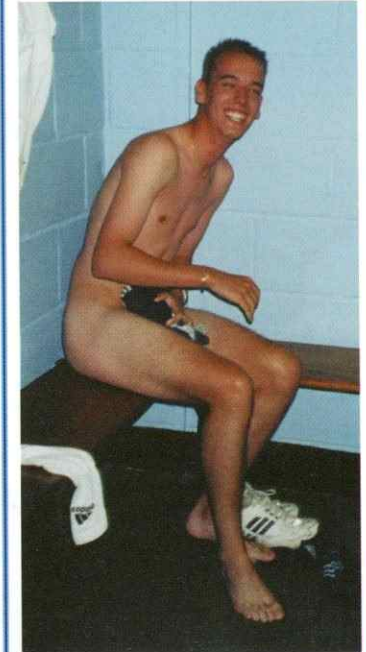
'License to Coach!'



Congratulations to our Scheme Manager Dave Evans who achieved a coaches milestone by obtaining his UEFA 'A' License coaching qualification. This is the highest coaching qualification in our national game and we are very proud to boast having Dave as part of our team. Dave received the award from the Welsh FA after many weeks of hard work and dedication, culminating in the final assessment on Thursday 28th November by one of the FA's assessors at his coaching session with the Wycombe Wanderers Youth Team, he also had a bit of help from some of the Community Staff, including me, to make up the numbers for the 11 a side game at the end of the session.

Staff Profile

Its time to 'beam me up' as its Captain Kirk's profile.



Name: Kirk 'Captain' Williams

Age: 22 ¼

Job @ WWFC: Community Officer for Wycombe Area

Favourite Football Team: Liverpool

Favourite WWFC Player: Darren Currie

Present Playing Club: Chazley Heath - (Division 2 Central Reading League- Good team really!!)

Family: Girlfriend

Favourite Player of all time: Gazza

Best Moment in Football: When my Manager told me I was starting

Worst Moment in Football: My brother getting all the glory.





**ALL THE ACTION:
Exclusive,
Official,
Unmissable!**

**ANY CLOSER...
YOU'D BE IN THE
TEAM**

**DAILY TV
WEEKDAY TV NEWS BULLETIN
EXCLUSIVE
INTERVIEWS AND FEATURES
SEARCHABLE
VIDEO ARCHIVES
COMPREHENSIVE
MATCH HIGHLIGHTS
INTERACTIVE
MATCH LIVE CONSOLE**

all this for only

£34.99

FOR 12 MONTHS - THAT'S LESS THAN 70p PER WEEK

go to www.wycombewanderers.co.uk

Terms and conditions apply. See website for details.

Sponsored at home by
Graham, Michael & Pat Chandler
(Michael Chandler Home Search)
01725 511152



20 Gavin Holligan

Available for sponsorship
Please ring 01494 472100

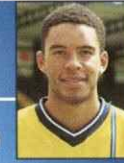
Available for sponsorship
Please ring 01494 472100



22 Frank Talia

Available for sponsorship
Please ring 01494 472100

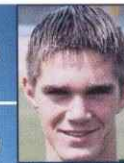
Sponsored at home by
Motts Travel
01296 613831



23 Ian Simpamba

Available for sponsorship
Please ring 01494 472100

Available for sponsorship
Please ring 01494 472100



24 Steve Williams

Available for sponsorship
Please ring 01494 472100

Sponsored at home by
Planet Platforms (Southern) Ltd
Suppliers of Hydraulic Access
Platforms 01428 643916



25 Martyn Lee

Sponsored away by
Woodlands Choir at Tylers Green
Village Hall. 01494 819990

Sponsored at home by
Good luck for the season from
Frances Carvell & Barbara Wills



28 Michael Simpson

Sponsored away by
Alison, Richard, Katherine
& Fraser Sanderson

Sponsored at home by
**Bucks Auto
Components**



30 Steve Brown

Sponsored away by
Geoff Taylor - Services provided as
a sales, marketing, advertising &
management consultant

Sponsored at home by
Bisset Moffatt Hill
Chartered Surveyors 01753 747420



35 Lewis Cook

Sponsored away by
C & G DJs
SOUL, JAZZ, FUNK & DISCO - 01494 452754

Available for sponsorship
Please ring 01494 472100



Available for sponsorship
Please ring 01494 472100

Good afternoon everybody. I hope you have all had a wonderful Christmas, lots of presents and too much scrummy food! But for now it's back to football! So let's hope the weather is on our side today, if not, try keeping warm by cheering very loud! Come on you Blues!!!

Birthdays

Happy belated 13th birthday to Sarah Treacher for the 18th December, with love from all her family and friends. Sarah has been a Wycombe Racer for a number of years now and is a member of our player fan club, sponsoring the one and only Martyn Lee!

Christmas Party

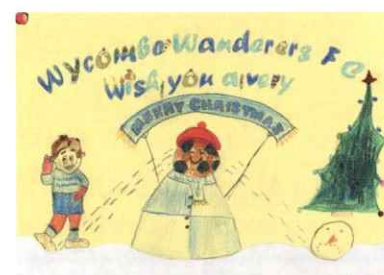
By now you should all have received your invite to the Racers Christmas Party, 4th January 2003, in the Vere Suite at Adams Park. As with the last couple of years, there will be two separate parties for different age groups, 8 years & under, 9 to 16 years old and each Wycombe Racer may bring a friend for free. If you haven't received anything, don't worry, you are all invited! But I will need to know how many people are attending, please contact me here at the club for further details. I look forward to seeing you there!

Nicky

Featured below are some more of the entries from our Christmas Card competition.



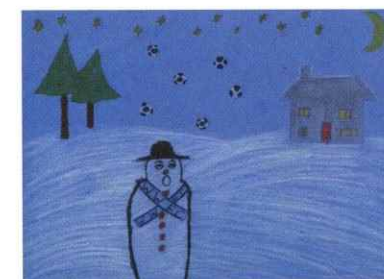
Alana Hurford (10)



Candy Mooney (9)



Kirstyn (12) & Elliot Keeble (9)



Joshua Triggs (8)

H.M. AIR COOLING LTD.

AIR CONDITIONING AND REFRIGERATION

PHONE: 01494 459858

MATCHDAY CRÈCHE

WYCOMBE WANDERERS MATCHDAY CRÈCHE
FOR 1 - 7 YEAR OLDS

OPEN EVERY AFTERNOON MATCHDAY - 2.30pm - 5.00pm

For Bookings and Information Please Call 01494 472100
or book online www.wycombewanderers.co.uk

OFFICIAL
CRÈCHE SPONSOR
BASSETSBURY
BALLOONS



PARTY SHOP
1st Floor Octagon, High Wycombe
Tel: 01494 445046
www.partycentre.co.uk

Home fixture Mortgages & Re-Mortgages



- Special Rates for Member & Season Ticket Holders.
- Self-Certified Mortgages (No Proof of Income).
- We offer Discounted, Capped, Fixed, Variable, Tracker Mortgages - ask the experts.
- Buy to Let. *
- Free Legal Fees and Survey available on most re-mortgages.
- Mortgages for People with C.C.J.'S/ Arrears.
- Council R.T.B.
- Independent Financial Advice & Guidance.
- Prize draw for an autographed shirt.

For Independent Financial Advice contact your
Club official advisers on 0845 600 1931
or e-mail: wwfc@greatsave.co.uk

For every Financial Plan taken out, your Club receives a donation

*There is no guarantee that it will be possible to arrange continuous letting of a property, nor that the retail income will be sufficient to meet the cost of the mortgage. YOUR HOME IS AT RISK IF YOU DO NOT KEEP UP REPAYMENTS ON A MORTGAGE OR OTHER LOAN SECURED ON IT. Written details on request. All loans subject to status. Mortgages are not regulated by the FSA. Wycombe Wanderers Financial Services is a trading name of Fans First Mortgages Limited registered in England No. 4198517. Registered with the Mortgage Code Compliance Board. Registration No. 5573963.

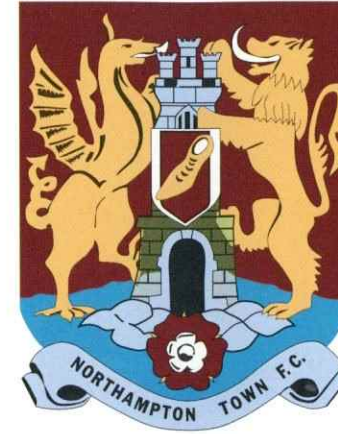


AWAY DAY

by Adrian Wood

At the time of my printing deadline (Dec 16th) our next scheduled away day is to Northampton next Saturday, Jan 4th 2003. The Cobblers however had an FA Cup 2nd round replay on Dec 17th and, if successful, will be in 3rd round action on Jan 4th. Our league fixture will thus have to be rearranged - in that case keep this programme safe for future reference!

Kevan Broadhurst's side just avoided relegation last April and are finding life slightly easier in Division Two this time around. Back in mid August The Cobblers drew 1-1 at Adams Park (a late finish due to the power cut!) and are currently in 16th place in the table. Their veteran striker Marco Gabbiadini has been in fine form and his goal tally has already reached double figures. At home they have won five of their first 11 league outings but crashed 0-4 at Sixfields to Tranmere two weeks ago. Other sides to win at Northampton this season have been Blackpool, Brentford and Cheltenham. Best attendance at Sixfields this season to date has been 5,750, with an average of 5,059. In the Worthington Cup they lost at home at the first hurdle to Wigan 1-0. In the FA Cup they overcame Boston 3-2, then came back from a two-goal deficit to draw at Cambridge in round 2.



in the South Stand where 850 supporters can be accommodated. If demand requires it, then an additional 300 seats can be made available in the Alwyn Hargrave Stand. Note that you can't pay at the turnstiles - you have to buy your ticket first from a Portakabin and then you have to queue again. Thus allow plenty of time for getting into the ground!

How to get there:

By road: Take the M40 westwards, exit at Junction 10 and take the A43 following signs to Northampton. At the junction with the M1 (15A) continue to follow 'Northampton A43' signs for a further 1.3 miles, over three roundabouts. At the fourth roundabout, go straight on (signposted Coventry A45, Market Harborough A508, and Sixfields Leisure). At the Upton Way roundabout, turn right into the Sixfields complex.

Mileage from High Wycombe = 62

There is a fair sized car park located at the ground with a designated away parking area. This was free last season but it takes some time to get out after the game. The police advise visiting fans against following the example of home supporters and parking on nearby industrial estates or at Sainsburys, as wheel clamping is widespread, and there is some car crime.

By rail: The station is some 1.5 miles away. A taxi will cost £3-£3.50 and buses nos. 27 and 28 run to the

Sixfields complex. Walking directions: cross car park and up steps to main road. Turn right towards Esso garage, over bridge, passing Shell garage and 'Thomas A Becket' pub. After 0.4 miles, where road divides, bear left (s/p Motorway M1, Rugby, Coventry A45) into Weedon Road. Past rugby ground on the left, and 'Big Hand Mo's' pub on the right, and straight over roundabout by Rover garage (s/p Coventry). Turn left at next roundabout into the Sixfields complex.

Facilities around the ground:

The ground is built on a leisure complex on the outskirts of Northampton. This consists of a couple of fast food establishments, a cinema and the ground itself. It's not the easiest place to get a drink before kick-off. The Sports Bar at the ground is 'members only' but if you are not wearing colours you may get into the Sixfields Tavern. This had a good range of ales last season but tends to get very crowded.

Were you there when...?

We looked on course for our first ever victory at Sixfields last April when we led at the interval courtesy of a Gavin Holligan goal. A superb second half performance however saw The Cobblers ease their relegation fears - Hargreaves netted twice, and with further goals from Forrester and Carruthers we left well beaten 4-1. We have drawn there twice - 1-1 in 1998/99 (Nicky Mohan scoring our goal), and then the teams shared 4 goals two years ago - Steve Brown and Dannie Bulman netting our goals. Our first visit in 1997/98 ended in a 0-2 defeat. Best attendance for a game between the two sides at Sixfields has been 6,248 for the game in 1998/99.

Our total playing record at this venue currently stands at:

P	W	D	L	F	A	Pts
4	0	2	2	4	9	2



Sixfields Stadium, Upton Way,
Northampton, NN5 5QA

Sixfields is a smart all seater stadium (capacity 7,653) located on the outskirts of Northampton and has been The Cobblers' home since 1994. There are three small covered single tier stands, and another larger single tier covered West Stand (capacity 4,000), at one side of the pitch. The club has received awards for the facilities provided for disabled supporters. A large hill overlooks the ground and some supporters congregate there to watch the game for free, even though they can only see half of the pitch! Away supporters are housed at one end

The **official** club SMS text service:
use your mobile to **sign up now!**



The Gold Service

- Team line-ups before kick-off
- Every league & cup goal
- Half & full time divisional round ups
- Red cards
- **Exclusive** match quotes from the gaffer or key player – straight after the game!
- **Exclusive** club breaking news

To receive this package simply text:
CLUB WYCW GOLD ON
to 82222

The Silver Service

- Every league & cup goal
- Full time divisional round ups
- **Exclusive** club breaking news

To receive this package simply text:
CLUB WYCW SILVER ON
to 82222

The Away Service

If you already go to all the home games,
this one's perfect for you!

- Every away league & cup goal
- Full time divisional round ups for all away matches
- **Exclusive** club breaking news

To receive this package simply text:
CLUB WYCW AWAY ON
to 82222



BE AT THE MATCH WHEREVER YOU ARE!

By signing up to this official service
you're directly supporting the club.

Brought to you by www.wycombewanderers.co.uk

This service is available to UK Vodafone, Orange & O2 mobile customers. The cost of each SMS text message sent shall be a maximum of 25p and will be charged direct to your mobile phone bill or deducted from your mobile phone's pre-pay balance. The cost of calling 8222 for your club's official SMS service will be charged at your normal text rate. All charges are inclusive of VAT. Full terms & conditions can be found on the mobile zone at your club's official website.

CENTRE OF EXCELLENCE

by Adrian Cole, Youth Development Officer

43

Today's report comes from our encounter with Oxford United on Sunday 10th November.

The under 12's produced one of their best performances of the season so far away to Oxford. Wycombe's attitude was fantastic, closing down the Oxford lads extremely well. David Pearce continued his rich vein of form opening the scoring after 5 minutes. Pearce then made it two, finishing well after some good work by Paul Jeffery. Josh Gardener was introduced for the second period and had an immediate effect by scoring a goal. Wycombe were really playing some great football and soon scored again, Matty Phillips converting from the penalty spot after Jeffery was tripped in the box. Gardener scored his second and David Pearce got a hat-trick after some great play by Jamie Rudd. In the final period Wycombe took the foot off the gas but still managed another goal, Aaron Rogers scoring with a clever lob. Oxford got a consolation goal in the dying minutes but the game belonged to Wycombe.

The under 13's took one look at the pitch and weather conditions and knew that this was not going to be a day for pretty football. The boys attitude was superb and they battled well working hard and showing the odd touch of quality. Excellent performances from Jake Hyde

and Paul Greenidge in particular but all round it was a really good performance by everyone involved and all the hard work put in by the boys over the last few weeks is starting to pay off.

With the under 14's being soundly beaten in the first game of the season, this was going to be a good test against a strong Oxford side. The day did not start well when we lost Lewis Christan with a hip injury. The movement and workrate was something we have been striving for and today it was evident from every player producing flowing moves and more penetration. One such move after 15 minutes found Simon Church in the channel on the right-hand side, Martyn Busby then worked hard to get on the end of his cross to open the scoring. A similar move was finished 5 minutes later by Del Sam-Yorke, again Churchie being the provider. The third period saw Oxford bring on 7 fresh pairs of legs, whilst we were limited to 1 substitution (due to injuries). Nevertheless we stood firm through sheer hard work and organisation. Corin Evans once again kept us in it with a string of fine saves in the last period. All round an excellent performance from the team as a whole and one I hope we continue to bring the standard up to.

With a number of players missing through

injury and skipper Steve Brown having been promoted to the under 17's it was always going to be a tall task for the under 15's against a strong Oxford side. However we started quite brightly and although our passing was unusually below par we competed well enough and made it difficult for our visitors. Striker James Faulkner showed his ability but failed to convert a couple of good chances. In training lately the emphasis has been on the importance of retaining possession and when and where it is worth risking this to gain a good advantage. However we got caught on the ball in front of our back four which meant our centre half became attracted to the player with the ball, who slipped it into an Oxford striker to slot home from 8 yards. There was a suspicion of offside but this doesn't detract from the cardinal sin of losing possession in the wrong areas. In the remaining third of the game another individual error at the back by not getting to the ball early enough saw an Oxford striker square the ball to a supporting midfielder, who escaped his marker, to slot home from outside the box. On a positive note this game clearly illustrated to the boys the importance of being comfortable in possession of the ball and not conceding it in the wrong areas.

WITH THE LADIES

by Marion Lyon



Wanderers secured a place in the County Cup third round draw with a 5-0 win over MK Wanderers earlier this month.

Blues got off to a good start against the Northern Division side, Jess Bacon and Claire Perkins in particular started brightly and there were many encouraging signs. Although we had most of the play in the first half, and created a good number of half chances this was a tight game. A series of corners offered no clear cut chances but eventually Bacon's touch at the near post allowed Atkinson to stab the ball over the line and that was all that stood between the teams for most of the game. The visitors must have thought they'd equalised almost immediately, with a shot from the edge of the area heading for the top corner of the goal, but Lou Plumridge made a great save to tip it over for a corner.

Milton Keynes had their best spell early in the second half and Blues back four had their work cut out. Esther Morley kept the defence together as the north Bucks side pushed forward en masse, often playing three up front, and kept the number of real chances to a minimum. It was on the break that Bacon scored the second from wide on the left, midway through the second half. The visitors kept pushing forwards and a foul in the area gave them a spot kick with 15 minutes remaining. Plumridge took her place between the sticks, saved the penalty and cleared

the ball down field to begin Blues second good spell. With the game more open now, half chances became real chances and Su Oakley added two more goals from open play. The fifth came from Oakley's corner, knocked down by Anna Moelland for Laura Coull to calmly score on her First Team debut.



Jess Bacon in action against MK Wanderers

Beginners and experienced players are always welcome,
check out our website www.wwlfc.co.uk or contact the club
secretary Maz on maz@wwlfc.co.uk or 01494 437 477.

Get connected for low cost business calls and premier service

Uniworld



Sales 0845 458 4510

Fax 0845 458 4509

Email sales@uniworld.co.uk



www.sennheiser.co.uk



crystal clear wireless
from Sennheiser

models start from £70



SENNHEISER

Freepost, High Wycombe, Bucks HP12 3BR Brochure Line: 0800 6525002



Mercedes

Hughes of Beaconsfield are pleased to support Wycombe Wanderers Football Club



MERCEDES BENZ



55 Station Road, Beaconsfield. Tel 01494 672141
www.hughesofbeaconsfield.co.uk

ON THE COUCH

with Dave Jones - Sports Therapist of Wycombe Wanderers

47

Sponsored by
Wycombe Leisure Ltd
Managing Wycombe Sports Centre
and Court Garden Leisure Complex
Ring 01494 688100



Dave Jones

Sponsored by
Dashwoods Limited
Chartered Accountants
Specialising in the Smaller Business
01494 521687



Terry Evans

Sponsored by
The Shelburne Hospital
01494 888700



Dr. Gina Allen

Sponsored by
**The Chiltern
and Paddocks Hospitals**
01494 890890



Dr. Chris Trower

NEXT AT ADAMS PARK

On New Year's Day we entertain a team that we have become very familiar with already this season. Wednesday 1st January second place Bristol City are here. They have got off to a flying start this season, particularly at home where they have only lost once this season. Under manager Danny Wilson they have produced some very good results and hope to gain promotion at last. One of their most recent surprising results was a 90th minute victory at Mansfield where they trailed 4-3 and then scored twice in added on time to win 5-4. The result took them to within four points of league leaders Wigan Athletic. We met at Ashton Gate in August and were on the receiving end of a 3-0 defeat and so this will be a chance to take on an in form team who have lost four times on the road this season. We recently met at Ashton Gate in the LDV Vans competition for a place in the Southern Area semi-final and once again lost 3-0. The match kicks off at 3pm.

I hope you have all had a very happy and enjoyable Christmas day and you are not suffering from over indulgence during this very special period of the year. Christmas brings about a lot of logistical problems for the Football Club in order to get the team prepared for the high density of matches that always fall at this period of time. From my point of view preparation and particularly recovery are major issues. If we take this match for example, it is our second match in a 48 hour period. From a scientific point of view, this is the minimum period of time required by the body to replenish carbohydrate stores used up in the match against Queens Park Rangers on Boxing Day. In order to address this issue Jim Gardener and I will mix up some 18 pints of a recovery drink during the morning prior to the QPR game. Each pint is equivalent to a good meal with the right proportions of Carbohydrate, Protein and only a very small percentage of fat. The players on leaving the pitch at the end of the game are expected to drink a pint of this recovery "meal". Whilst the major emphasis is on replenishing the carbohydrate levels we also need to supply sufficient protein to facilitate repair of any tissue that has been damaged during the match. As you would expect some of the team find this very difficult so soon after running around at high intensity for 90 minutes.

The importance of consuming the "meal" so soon after the games is based around the

scientific evidence that during the first hour post match the body is craving for carbohydrates (energy) and will readily absorb what ever it is supplied with. After this period the absorption rate reduces very considerably. By supplying energy in abundance during this time we hopefully can with the players co-operation restore fuel levels to create the desired optimal recovery between the matches.

The Christmas period leads to a military style organization that ensures that all the good thought and science can be put into practice. With most business now closing for a complete 2-week break we must determine that we have sufficient supplies of water, Lucozade and all the consumables required to create a smooth preparation of our team during this period. Jim Gardener and I lease constantly ensuring that nothing is left to chance.

Unfortunately the festive period with its excess in alcohol and food consumption is not conducive to those who play professional football for a living. It requires a considerable amount of self-discipline for all those involved, whilst everyone around enjoys the festive period to excess.

Wishing you all a very happy and prosperous New Year

For All Your Local Electrical Needs Contact

Dave Dakin
Electrical Contractors
01494 437670

by Catherine Long and Steve Gales

Against Bristol City I had real hopes that we might cause an upset - oh well, that's why I never win on the pools. The trip to Ashton Gate was the coldest one of the year so far but the friendliness of the staff whom I've met on several occasions made it a comfortable atmosphere to work in.

One of the highlights of the game - if you didn't attend - was when the referee pulled up with a sore hamstring on the half-hour. Ok, it was a cold evening and modern refs do a fair bit of leg work during 90 minutes but a pulled hamstring?! Well, it caused a giggle around the press box and the stadium. One main point of note about the incident was that Mr Leake, upon realising that he'd pulled a muscle, made his way to

the home bench where the physio was a young lady, he obviously didn't fancy Dave Jones rubbing his legs then!

Once the referees had re-shuffled, I was informed by City's press that one of their club staff had taken over the roll of 4th official. I must say that he did a grand job but appeared to struggle with the electronic board. This caused great joviality and the said man, I was informed, would recall this moment for sometime!

It was a real shame about the result but the goal from Murray was the best I'd seen this season and I'll be very surprised if the 28-year-old Scot in his prime won't find a summer move, if City don't make Division One.

As a fan, being out of the cup

competitions before Christmas can be depressing as you kind of know what to expect for the rest of the season and you can't really beat the uncertainty and excitement of the cup. However, I'm sure we will be in for many more twists and turns.

Anyway on to the website! Recently we paid a visit to the 'Trotters' - no, not the fictional ones but Wanderers' very own Roberts & Johnson! We had a great afternoon filming and we were impressed by the camera work of the big centre-back - many thanks to the lads for letting us into their bachelor domain. It turned out to be a great feature on Wanderers World and is well worth the fee alone, so why not pay a visit, you may be surprised by what's on offer!

- * OFFICIAL NEWS FROM ADAMS PARK!
- * INTERVIEWS WITH THE MANAGER!
- * FEATURE-LENGTH INTERVIEWS WITH THE PLAYERS!
- * RESERVE AND YOUTH TEAM FOOTAGE & INTERVIEWS!
- * LIVE MATCH COMMENTARY FROM EVERY LEAGUE GAME!
- * NEWS & QUOTES DIRECT TO YOUR MOBILE VIA SMS!
- * WYCOMBEBET.CO.UK OFFICIAL BETTING SITE!
- * MATCH HIGHLIGHTS!
- * DIVISION 2 HIGHLIGHTS!
- * VIDEO ARCHIVE!
- * VIDEO VOTING!
- * EXCLUSIVE FEATURES, INCLUDING 'AT HOME WITH...' THE PLAYERS!
- * OFFICIAL CLUB AUCTIONS!



ALL THIS AND MORE ON THE OFFICIAL WWFC WEBSITE!
THE OFFICIAL SITE HAS THE FULL SUPPORT OF THE CHAIRBOYS' MANAGER AND TEAM!

WWW.WYCOMBEWANDERERS.CO.UK

www.wycombewanderers.co.uk

with Emma Curtis

Profile Video Ltd

Video equipment has undergone a radical change with new digital formats appearing in the marketplace and the link to the computer field being strengthened.

Profile Video always evaluates the latest technology and incorporates it in its production facilities. This summer Profile have been re-equipping so that the latest filming and duplication technology can be utilised in the work they carry out for their clients.

Their duplication department are now able to replay all the Betacam formats from the old oxide tapes to the latest Beta SX and Beta IMX in addition to the high quality DigiBeta format. Profile has always had specialist standards conversion facilities for the transfer of foreign tapes to the British system and vice versa. They have now replaced their standards converter ensuring much higher picture quality.

Many organisations have distributed training and marketing material by video cassette but nowadays many people want the programme

duplicated onto CD, CDR or DVD. To meet this need, Profile is now able to produce copies on any of these formats and will also be able to offer on-body printing.

Today's presentation equipment interfaces with computer technology and Profile has been able to buy some very specially priced plasma screens from Panasonic.

A number of these screens have been incorporated in their hire stock and others have been sold to educational users.



Welcome to this afternoon's matchball sponsor - Hughes of Beaconsfield.

There has never been a better time to buy a Mercedes - and with the help of Hughes of Beaconsfield it couldn't be easier or more affordable.

Established in 1955, Hughes is one of Britain's most successful Mercedes-Benz dealerships. But we still pride ourselves on delivering the personal service that only a true

family business can offer.

From the remarkable A-class to the flagship S-class, hailed in the motoring press as "the best luxury car in the world", today's Mercedes range combines stunning design with world-beating technical innovation and safety features.

Choose from stylish saloons to spacious estates, and formidable 4x4's to versatile people-carriers, not to mention some of the most desirable sports cars and convertibles on the road.

Our wide selection of top quality used cars are guaranteed by the Mercedes-Benz Signature programme, which takes all of the worry out of buying a pre-owned vehicle.

We also offer a variety of finance schemes to suit the individual requirements of all whether you're a private customer or a corporate buyer.

And when it comes to looking after your Mercedes, nobody does it better than Hughes. Whether its vehicle maintenance, accident repair or parts supply, our fully-trained after sales team are the best in the business.

For more information, visit our dealership in Station Road, call us on 01494 672141, or check out our web site at www.hughesofbeaconsfield.co.uk.

- ✳ Special Rates for Member & Season Ticket Holders.
- ✳ We offer Discounted, Capped, Fixed, Variable, Tracker Mortgages - ask the experts.
- ✳ Free Legal Fees and Survey available on most re-mortgages.
- ✳ Council R.T.B.
- ✳ Self-Certified Mortgages (No Proof of Income).
- ✳ Buy to Let. *
- ✳ Mortgages for People with C.C.J.' S/ Arrears.
- ✳ Independent Financial Advice & Guidance.
- ✳ Prize draw for an autographed shirt.

Make your next move with us!

Mortgages & Re-Mortgages



For Independent Financial Advice contact your Club official advisers on **0845 600 1931**
or e-mail: wwfc@greatsave.co.uk

For every Financial Plan taken out, your Club receives a donation

*There is no guarantee that it will be possible to arrange continuous letting of a property, nor that the rental income will be sufficient to meet the cost of the mortgage. YOUR HOME IS AT RISK IF YOU DO NOT KEEP UP REPAYMENTS ON A MORTGAGE OR OTHER LOAN SECURED ON IT. Written details on request. All loans subject to status. Mortgages are not regulated by the FSA. Wycombe Wanderers Financial Services is a trading name of Fans First Mortgages Limited registered in England No. 4198517. Registered with the Mortgage Code Compliance Board. Registration No. 5573963.



www.wycombewanderers.co.uk



Wycombe Wanderers in partnership with Lindley Catering

We did a pretty good job running the kiosks on match days. You told us so. At times it was hard to maintain acceptable service standards due to inconsistent levels of staffing. However our priority was, and still is, to provide you with good food and drink where and when you want it, all at an affordable price. In financial terms the tea bar operation provided a small contribution to the pot. We would like to think news of the price and quality of our fare spread far and wide outside the stadium and brought more people in – a hard one to fathom !

We received an approach from Lindley Catering and they convinced us they could do an even better job. They cater for around 30 football and rugby clubs. It's a market they understand. Their track record was a good one. We did our homework on this. Also we needed to accommodate London Wasps fans – not so important you might say but our future, at least for the time being, is alongside London Wasps. They have added an extra dimension to Adams Park and they have paid us a lot of money to be here. Try and imagine how tough it would be at the moment without their contribution to our football franchise !

Lindley are acknowledged



experts. Wycombe Wanderers and London Wasps together would have seriously stretched our resources and our capabilities. We are disappointed about the price increases applied to certain lines. But we like the brand image and overall presentation from Lindley – we hope you do too. They are here to stay and they have paid us for that privilege. That is not to say they have things all their own way. We negotiated a contract which is heavy on product quality and service standards. Price is about market rates (and we know Lindley's proposition for Adams Park is in line with similar offerings at many other stadia) and the forces of supply and demand. Because we struck a deal with Lindley which is good for Wycombe Wanderers they have to pitch their prices at a level which will ensure they get as many buyers as possible with as high a spend per head as possible. It's basic economics and should work in your favour and in our favour anyway !

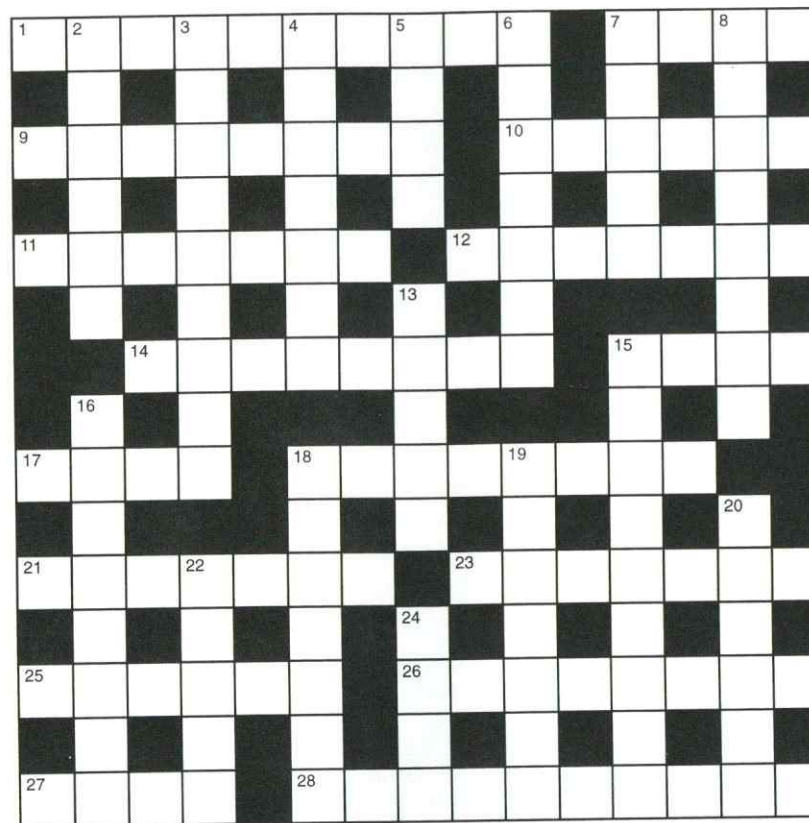
The Lindley proposition looks like this.....

Wycombe fans can expect Lindley Catering to offer you a service standard at Adams Park concourse catering to include the following 10 Service Points:-

- *Polite and Efficient Service Delivery*
- *Efficiency in being Served*
- *Appropriate Staff Numbers in Each Kiosk*
- *Staff Courtesy*
- *Staff in Full Uniform Wearing Caps*
- *Staff Appear Friendly / Smile*
- *Tidy Presentation of Kiosks*
- *Quality Freshness Food Offering*
- *Tidy Menu / Price List in Full View*
- *Overall Cleanliness of staff and kiosks*
- *Watch for special promotions and meal deals at all the matches.*

Constructive feedback is important – what you have to say will help shape our future offering. Letters or Emails please to tony.leese@wycombewanderers.co.uk or the normal office address. Worth bearing in mind that the Club will deal with any issues to do with price – Lindley will respond to any complaints about product and service. We have agreed a formal complaints procedure in your own interests and ours.

Watch future programmes for more tea bar news !



Across

- 1 A little too much, and into the crown! (4:3:3)
- 7 & 11 Both on offer at kick off, but you must choose one (4:3:5)
- 9 Freescoring Wasp, or advice to those not succeeding (3:5)
- 10 Cloth from North of the border (6)
- 11 See clue number 7
- 12 Is not dismissed (5:2)
- 14 Position if your keeper is suspect (4:4)
- 15 Question?? (4)
- 17 A manager to his team perhaps (4)
- 18 Top man at St Andrews (8)
- 21 As north goes it works out well for O'Neill's striker (7)
- 23 Gillespie Road/now 'Arsenal' (7)
- 25 Two piece in the North Pacific (6)
- 26 Be ready for the contest in the ring? (6:2)
- 27 Changed automatically in soccer (4)
- 28 What you might get if you do 26 to the wrong man (4:6)

Down

- 2 A Man United player, one of two Shakespearean Gentlemen! (6)
- 3 Quick ones required particularly by keepers (9)
- 4 In front, without using hands or feet (7)
- 5 Geordie flower (4)
- 6 Ironically where F1 Races are won (3:4)
- 7 Redknapp or Bassett? (5)
- 8 Muscle growth steroid (8)
- 13 Elegance or refinement (5)
- 15 Blues shirts are this (9)
- 16 Selection system for those with enough! (8)
- 18 Marking, or making ones mark on the game (7)
- 19 Not on the field, but still communicating (2:5)
- 20 Built up, though read downwards (7)
- 22 Days out are penalised in soccer (5)
- 24 A Scandinavian capital (4)

Answers on Page 56

Firstly, I must sincerely thank all the Blues fans who are very kindly co-match sponsoring the match today. When the fixtures came out, three out of the four local Nationwide Football League derbies were on duff dates for attracting corporate entertaining and sponsorship. The only "decent" local Derby date is Saturday 8th March 2003, when we take on the Bees at Adams Park. Corporate Bookings are very good for this "revenge" match, Brentford having knocked out the FA Cup.

In terms of the three "duff dates" Queens Park Rangers was on the August Bank Holiday Monday, Luton Town this afternoon follows hot on the heels of our away trip to Loftus Road on Boxing Day and Bristol City is on New Years Day. While these dates are not as critical for non-corporate entertaining, it makes it much harder than in previous seasons to meet the budgetary hopes and expectations of the board. Many of the Wycombe Wanderers boxholders will tell you from their own experiences it is MUCH harder to get invitations accepted by their corporate clients on Bank Holidays, during school holiday periods or over the Christmas break. So to all the 50+ Blues fans that are sponsoring today's match, thank you very much.

Next, I want to thank all the 4,000+ supporters who have persevered with the registration form on the Official Website. Consequently, the Club is now able to send out a quality weekly newsletter by e-mail to over 4,000 Wycombe Wanderers supporters. In September and October 2002, both the Club and I had numerous complaints about the tedious registration process from Blues fans. I totally sympathise, but there is nothing the Club can do, as Premium TV run the platform centrally and make all the rules. The Club did make it's views known but one of the reasons NTL paid so much for the rights to run all the websites was to obtain the names, addresses, postcodes and e-mail addresses of their customers. Registration is therefore part of the "price" paid by the 86 Clubs who are contracted for the next 10 or more years with FLPTV, a joint venture company owned 50% by the Football League Ltd and 50% by Premium TV Ltd, a wholly owned subsidiary of NTL. The 86 Clubs come exclusively from the Barclaycard Premiership, the Nationwide Football League and two from the

Sponsored by
Lisa Homes Ltd



Mark Austin

Nationwide Conference. The good news is that once registered you can visit any of these 86 Club websites without having to register again.

Many fans feared being bombarded with e-mails if they register (there is a tick box if you do not want any e-mails etc. to be sent to you) or that if they register they would be signing up for the subscription audio visual news service Wanderers World, neither is true. You have the security of knowing that anyone using Wycombe Wanderers Official Website has also had to register. If you have not yet registered, please do so and enjoy the free weekly e-mail newsletter with all the latest news from Adams Park.

Apart from the emotive issue of registration, all the 86 Clubs involved have agreed to use the same platform, allow FLPTV to sell all the advertising on all the home pages centrally and to keep all those revenues. Those who navigate between the Official Nationwide Football League websites will notice the similar structure to both the layout and operation. As the editorial tool is controlled centrally by FLPTV all any Club can do on their Official Websites to substantially alter the content is change the editorial content such as breaking news and action photos. Any major design or operational changes are done only with FLPTV's agreement, and by them. I hope that this answers many questions regular visitors to www.wycombewanderers.co.uk have had when visiting the site.

The World Plus product is an enhanced audio visual subscription service available to fans of Clubs who have opted to offer this premium service to their fans. Under the FLPTV contract Clubs HAVE to offer either 1) World (an audio only news service) at a cost of £24.99 a year or 2) World Plus (audio visual news service) at a cost of £34.99 a year. Both these services can only be accessed by the completion of a centrally controlled application form. Wycombe Wanderers felt that for the extra £10 per annum Wycombe Wanderers fans get far far better value for money from the

jazzy World Plus service, along with archive access to goal highlight footage from previous matches from all the 72 Nationwide Football League Clubs.

Can the Club get out of the contract? Yes, but it would have to pay back the £300,000 it has so far received in rights fees from FLPTV Ltd. Having re-invested about £120,000 of this in hardware, software and personal to be able to run the project, this is not an option. Also, even if WWFC could get out of the contract without paying back the rights fees it would not wish to, as it have to pay an Internet provider £10,000 - £20,000 per annum to host a platform of similar high quality. All the Clubs are in for the long haul and are relying on the FLPTV platform to be financially sustainable. Like 100% to do with anything Football related, this will not happen unless it receives long-term support from football fans. To do this all Clubs will need to ensure the content on their Official Websites is kept interesting and up to date.

Recently, all the players, managers and all the staff were given a presentation by an FLPTV representative on the exciting future of the Internet and exactly what services Wycombe Wanderers fans could access via the Official Club Website. It was only when we all saw how high tech the World Plus service was and learnt about all the many facets contained on our Website, that there was a collective understanding of the vital importance wycombewanderers.co.uk will play in the future development of the football club, both as a football club and as a business.

As this is the last match of 2002, all that remains is for me to thank you for your much needed support and wish you both a very happy and prosperous New Year.

WYCOMBE Racers
Happy Birthday

Happy Belated 13th Birthday to Thomas Jervis, for the 23rd December, with love from all of his family and friends.

Happy 9th Birthday to Andrew Ellemore, for the 30th December, with love from his mum, dad and sister Lauren. Andrew loves following Wycombe and attends all their home games and the occasional away game.



CARRY YOUR TEAM'S COLOURS WITH PRIDE

Apply today for the Wycombe Wanderers FC Credit Card and reap the benefits for you and your Club. With no annual fee, 0% p.a. for Balance Transfers, fixed for six months from the date your account is opened, and an attractive 15.9% APR (variable), the Wycombe Wanderers FC Credit Card offers you the best support you could ever wish for from a superior credit card.

What's more, when your application is approved, and each time your card is used for retail purchases, MBNA Europe Bank Limited, the card's issuer, will make a contribution to the Club – and it won't cost you a penny extra!



- ✓ No annual fee
- ✓ 0% p.a. for Balance Transfers, fixed for six months from the date your account is opened
- ✓ 15.9% APR (variable)
- ✓ Up to 59 days interest free on retail purchases when you pay your statement balance in full and on time each month



TO APPLY CALL FREE ON
0800 028 2440

Please quote ODW4

When calling, please have to hand your bank details and account information of any loans or credit cards that you currently have.

The Wycombe Wanderers FC Credit Card is issued by MBNA Europe Bank Limited, Registered Office: Stansfield House, Chester Business Park, Chester CH4 9QQ. Registered in England Number 2783251. The monthly MBNA interest rate on purchases is 1.2408%, equivalent to an APR of 15.9% (variable). The monthly MBNA interest rate on balance transfers, cash transactions and cheque transactions is 0.0000% fixed for six months from the date your account is opened, the equivalent to a rate of 0.0% p.a. for balance transfers and a rate of 1.5% p.a. for cash transactions and cheque transactions. Six months from the date your account is opened a monthly rate of 1.2408% equivalent to an APR of 15.9% (variable) applies to all transactions. Interest rates are calculated on the basis of a credit limit of £1,000, and the minimum monthly payment is the lesser of: 2.25% of the outstanding balance (min £5) OR the total sum of all of the following: charges for Payment Protection Cover, interest charged on the statement, and fees, plus £5. There will be a handling charge for cash transactions and cheque transactions of 1.5% (variable), (min £2, max £25). Balances cannot be transferred from another MBNA account at the promotional rate. Written quotations available on request. Credit is available, subject to status, only to UK residents aged 18 or over. Some telephone calls will be monitored and/or recorded.



premier venue for
**conferences
and banqueting**



Adams Park has on site parking for over 700 vehicles.



For your special occasions and family events.



Adams Park is open 7 days a week for your business and leisure requirements.



The Centre Spot Public House and Restaurant is open to the public every day.

An
**Experience
You Will
Want To
Repeat,
Again &
Again**

**Exceptional
Quality
of Food
and Drink
with
Reliable
Service**



Ideal for wedding receptions.



For meetings, seminars, exhibitions and conferences.



For your entertainment, Sportsmans Dinners, cabaret and special events.



Executive Boxes available during the week for meetings or for entertaining on matchdays.

VIEW FROM THE TERRACES

The Official Blues Supporters Club and The Independent Supporters Club have their say

The Official View

The other Saturday I got football withdrawal symptoms, that was the Saturday that had been earmarked for round 2 of the F.A. Cup and of course no first team game. The under 19 youth team were at home down at Princes Risborough so to counteract this deprivation we went down to give them some support and I have to say that even though the weather was less than friendly what a pleasure it was to watch them play.

They played with enthusiasm and no little skill, and what a delight to see a team in Wycombe colours scoring goals, and actually winning (3-2). Michael Forsyth and Terry Evans' constructive advice and encouragement seems to have got them on the right lines. It was also nice to be able to get a reasonably priced hot drink at halftime.

Thanks to everyone who came along to support us at the Quiz night the other Thursday and contributed to an excellent evening. It resulted in a profit which we shall utilise to good effect in supporting the Football Club in the future.

We have been told that the Football Club in conjunction with Pro Star are to redesign the First Team strip for next year. Have you any strong views that you would like us to pass on to the club? One of my own personal gripes was the switch to black shorts. This makes the players less visible and also necessitates more frequent kit changes for away games. I would very much prefer a return to pale blue (or possibly white) but what do you think? Please pass any comments on to a member of the committee and we will make them known.

Coach Information

Mansfield Coaches will leave Adams Park at 10.00 a.m. and the fare for Adult members will be £12. with all the usual concession rates applying, together with the £3 surcharge for non members.

Northampton Coaches will leave Adams Park at 12.00 with an Adult Members fare of £7.50, again with the concessions and surcharge in operation.

For bookings Rena will be in her usual place outside the Vere Suite before and after this match, and telephone bookings can be made on 01296 429307

Keith Blagbrough

Independent Thinking

I hope everyone had a very good Christmas and may I take this opportunity to wish you all a Happy New Year.

Lets hope since these programme notes were handed to the printer on the 13th December the team have got back on form and put together some good results to take us up the table.

A tough game today against our old adversaries Luton Town, they are always good games against Luton – unfortunately our more recent games against them have not been very successful for us – I think we owe them one today.

Starting today we have 3 games to play in eight days a tight schedule lets hope it will be a successful time for the club.

Do not forget the WWISC merchandise we now have – especially at this time of year with the cold weather we have an excellent range of padded and fully lined fleece jackets – call at our table in Hillbottom Road to see what is available.

It was good news to hear recently that Jermaine McSporry is starting back in training it will be good to see you back Jocky - also I have heard that Stuart Roberts is about to start back in training – it will be good to see them both back in the team again, we have really missed them.

After speaking with Keith Allen recently I asked him on behalf of one of our members about the football clubs Customer Charter which I had never seen-for those interested there is a copy available to look at in the commercial offices at Adams Park.

For those of you who did not purchase the latest issue of The Wanderer which went on sale today at only £1 from our table in Hillbottom Road - it was previously mentioned that WWISC were trying to arrange a couple of social evenings. These were for a visit to the Chiltern Brewery near Stoke Mandeville and a visit to the Dog racing at Oxford. Unfortunately these trips could not be accommodated this year – however we are now looking at the end of February for a visit to the brewery and the end of March for the visit to the Dog racing. Full details will be announced in due course.

The next away game is on Sat.4th Jan. at Northampton Town (FA Cup ties permitting) and the following Saturday 11th Jan. we are away at Mansfield Town – please call at the WWISC table in Hillbottom Road today or on Wednesday to book your seats on our coaches, or phone Colin Butler on 01494-536270 or Kevin Brown on 01494-883013 - and remember we will stop at a pre. booked pub for some good food & drinks at reasonable prices.

IAN.

GOOD Afternoon and welcome to Adams Park for today's game with Luton. First and foremost, I'd like to take this opportunity to wish you a (belated) Merry Christmas and a Happy New Year.

The New Year gives us all an ideal chance to stand back and evaluate our work so far this season. In terms of the Travel Plan, this process is all the more important, bearing in mind the dynamic nature of the work surrounding traffic and travel around Adams Park. Personally, I am very pleased with what we as a club have achieved so far, and I hope we can continue the good work. The trouble with the Travel Plan, is that it takes a long time for plans to come to fruition. Also, we are currently still waiting to see what initiatives the Council will introduce in the Sands area regarding car parking before taking any further steps, although any steps we do take cannot be huge – we cannot change the world overnight!

Now for a good-bye and a hello – one of our bus companies has unfortunately ceased to operate and will be replaced by another. I would like to wish all involved with Beckwith coaches a fond farewell, and we welcome their replacements, Marlow coaches, with open arms.

The Park and Ride buses are still in operation as per usual, running as they do from The Dashwood Arms in Piddington and from opposite the cinema in Cressex. The bus from the Dashwood Arms has in particular made an encouraging start and I hope this continues. We have made a couple of changes to the routes run by these buses, incorporating extra stops along the way to offer more supporters the chance to travel to games without using their cars. At the moment, a bus leaves the Dashwood Arms at 2-00pm and stops in Lane End at the Village Hall, where local residents can park for free. After the game, the same coach leaves as soon after the final whistle as possible, again stopping in Lane End, before returning supporters to the pub for around 6-00pm. This service costs £2 for adults and £1 for children/OAPs. For details on The Dashwood Arms, please ring Gary Dickson on (01494) 881330.

Buses leave from Cressex at 1-45pm and 2-15pm and prices are still £2 for adults and £1 for children/OAPs. The first bus (1.45) will also stop at the Squirrel

Lane Stores in New Road, which many of you told us would be a popular stop en route to the ground. The second bus (2.15) now travels from Cressex to High Wycombe Train Station to pick up supporters who would have travelled to the game on the Arriva route, which has now been stopped. Hopefully these changes do not inconvenience anyone, but will give more of you a chance to use public transport.

If you have any advice, suggestions or comments, please contact me on (01494) 472100 or e-mail at andrew.gardner@wycombewanderers.co.uk. Your suggestions really do count, and without them we cannot improve the current arrangements, so please do not hesitate in getting in touch.

Press Release

Wycombe Wanderers are appealing to their supporters for help regarding their park and ride bus services. In order to fully maximise the potential of these services, we are asking supporters to try the buses free for a limited period.

As a part of this free trial, supporters can help the club by answering a few simple questions regarding the quality of the service. Any supporters who help us in this way will be entered into a free draw for a chance to meet their favourite player before a game. They will then have their photo taken with that player, which we will have signed and framed. There will be a draw of this kind for all of the featured matches.

The following games will be part of this campaign: -

Luton Town (Sat 28/12/02)

Bristol City (Wed 1/1/03)

Oldham Athletic (Sat 18/1/03)

Notts County (Sat 1/2/03)

The services themselves will remain unchanged, with two buses running from the Car Park opposite the cinema in Cressex, leaving at 1.45pm and 2.15pm for all games, along with the service from The Dashwood Arms in Piddington, which will leave the pub at 2pm. Before stopping at the pub, this bus will start its route at The Kings Arms in Stokenchurch, then pick up in Lane End. Please note that all buses will now be run by Marlow coaches, not Beckwith coaches as was the case before.

The Blues Super Cashline

WEEKLY DRAW

WEEK 1
13th DECEMBER 2002

£525.00

C4147	MRS J EVANS, LISTER GREEN, AYLESBURY, BUCKS. AGENT 9008 NADINE MORETON
WINNING	
A3992	MRS J CLEMENTS, PRESTWOOD, BUCKS. AGENT 1048 LISA WARNER
WINNING	
C4020	MRS GAY, HIGH WYCOMBE, BUCKS. AGENT 1054 SUE ALLEN
WINNING	
B2653	MRS A WESTON, HIGH WYCOMBE, BUCKS. AGENT 6022 CLIVE LOXLEY
WINNING	
A9068	MR G WILSON, HAZLEMERE, BUCKS. AGENT 1038 SAMANTHA WILSON
WINNING	
C4624	MRS J WATSON, WOODBURN GREEN, BUCKS. AGENT 1018 CHRIS HALL
WINNING	

£10 WINNERS

B4433	MRS L MCINNES, HIGH WYCOMBE. 1022 TERESA MANSFIELD
AGENT	
C2955	MR P HARRIS, BEACONSFIELD. 1046 DEAN MURPHY
AGENT	
D1401	MR A COX, PRINCES RISBOROUGH. 7000 NICOLA BUSBY
AGENT	
B4044	MRS B KINGSMAN, HIGH WYCOMBE. 1010 TERESA MANSFIELD
AGENT	
B1946	MRS M OGLIVIE, HIGH WYCOMBE. 1041 THOMAS BAVERSTOCK
AGENT	
A0059	MRS D SMITH, THAME. 9018 RACHEL SMITH
AGENT	
A1919	MISS S GITTINS, FLACKWELL HEATH. 1006 VINCE CHIVERS
AGENT	
A1184	P TAYLOR, HIGH WYCOMBE. 6004 ELAINE BRANT
AGENT	
B2040	MR A RADWELL, WHITCHURCH. 9024 TONY RADWELL
AGENT	
B7380	MRS J KINGHAM, HIGH WYCOMBE. 6009 JASON GILBERT
AGENT	

£5 WINNERS

B0583	MR CLARK, HIGH WYCOMBE 1005 RUSSELL GRAYELL
AGENT	
A0024	MRS BANNING, WIDMER END 1019 MARK ALLAN
AGENT	
A1865	MRS GOODMAN, TYLERS GREEN 1036 GRAHAM PELRIE
AGENT	
A4677	MR SMITH, THAME 9017 RACHEL SMITH
AGENT	
B5116	MRS MILLER, TYLERS GREEN 1038 SAMANTHA WILSON
AGENT	
B7176	MRS WILLIAMS, HADDENHAM 9002 EDWARD SNEYD
AGENT	
B1258	MRS KADET, CHINNOR 1048 LISA WARNER
AGENT	
B5742	MRS SMALL, HAZLEMERE 1047 BRIAN BALDWIN
AGENT	
A1962	MRS CLARK, HOLMER GREEN 8008 MR WATERSOY
AGENT	
A9338	MR KEMSLEY, HIGH WYCOMBE 8018 TONY STALLWOOD
AGENT	

**DOOR TO DOOR
LOTTERY AGENTS REQUIRED**

COMMISSION * BONUSES
* FREE SEASON TICKET TO WYCOMBE
WANDERERS (subject to sales)

**TELEPHONE: MIKE PHILLIPS,
PROMOTER ON (01494) 472100
FOR FULL DETAILS.**

BLUES DEVELOPMENT FUND, ADAMS PARK,
HIGH WYCOMBE, BUCKS, HP12 4HJ.
E-MAIL: sharon.prior@wycombewanderers.co.uk



SOUTH BUCKS
BUSINESS PRODUCTS
LIMITED

Lancaster Road, Cressex Business Park, High Wycombe

TEL: 01494 437470 FAX: 01494 443723 email: sales@south-bucks.co.uk

PRINTING

Letterheads • Business Cards • Brochures

COPYING

Pamphlets • Manuals • Colour or Black + White

STATIONERY

Desks • Chairs • Filing Cabinets

Paper Clips • Pens • Envelopes



ALLPORT

AIR • SEA & ROAD FREIGHT

SUPPLY CHAIN MANAGEMENT

INSTALLATIONS

PACKAGING

26 Chase Road, Park Royal,
London NW10 6QA
Tel: 0208 965 0678
Fax: 0208 965 1340
Web: www.allport.co.uk





WYCOMBE WANDERERS

LUTON TOWN

1	Martin TAYLOR	<input type="checkbox"/>
2	Danny SENDA	<input type="checkbox"/>
3	Chris VINNICOMBE	<input type="checkbox"/>
4	Andy THOMSON	<input type="checkbox"/>
5	Paul McCARTHY	<input type="checkbox"/>
6	Mark ROGERS	<input type="checkbox"/>
7	Darren CURRIE	<input type="checkbox"/>
8	Keith RYAN	<input type="checkbox"/>
9	Craig FAULCONBRIDGE	<input type="checkbox"/>
10	Sean DEVINE	<input type="checkbox"/>
11	Dannie BULMAN	<input type="checkbox"/>
12	Richard HARRIS	<input type="checkbox"/>
13	Mark OSBORN	<input type="checkbox"/>
14	Stuart ROBERTS	<input type="checkbox"/>
15	Jermaine McSPORRAN	<input type="checkbox"/>
16	Andy RAMMELL	<input type="checkbox"/>
17	Roger JOHNSON	<input type="checkbox"/>
18	Ben TOWNSEND	<input type="checkbox"/>
20	Gavin HOLLIGAN	<input type="checkbox"/>
21	Ijah ANDERSON	<input type="checkbox"/>
22	Frank TALIA	<input type="checkbox"/>
23	Ian SIMPEMBA	<input type="checkbox"/>
24	Steve WILLIAMS	<input type="checkbox"/>
25	Martyn LEE	<input type="checkbox"/>
28	Michael SIMPSON	<input type="checkbox"/>
30	Steve BROWN	<input type="checkbox"/>
35	Lewis COOK	<input type="checkbox"/>
36	Jonny DIXON	<input type="checkbox"/>
		<input type="checkbox"/>
		<input type="checkbox"/>

1	Mark OVENDALE	<input type="checkbox"/>
2	Aaron SKELTON	<input type="checkbox"/>
3	Alan NIELSON	<input type="checkbox"/>
4	Matthew SPRING	<input type="checkbox"/>
5	Russell PERRETT	<input type="checkbox"/>
6	Marvin JOHNSON	<input type="checkbox"/>
7	Adrian FORBES	<input type="checkbox"/>
8	Kevin NICHOLLS	<input type="checkbox"/>
9	Tony THORPE	<input type="checkbox"/>
10	Carl GRIFFITHS	<input type="checkbox"/>
11	Steve ROBINSON	<input type="checkbox"/>
12	Chris COYNE	<input type="checkbox"/>
14	Andrew FOTIADIS	<input type="checkbox"/>
15	Dean CROWE	<input type="checkbox"/>
16	Carl EMBERSON	<input type="checkbox"/>
17	Emmerson BOYCE	<input type="checkbox"/>
18	Ahmet BRKOVIC	<input type="checkbox"/>
19	Steve HOWARD	<input type="checkbox"/>
20	Peter HOLMES	<input type="checkbox"/>
21	Paul HUGHES	<input type="checkbox"/>
22	David BAYLISS	<input type="checkbox"/>
23	Ian HILLIER	<input type="checkbox"/>
24	Sol DAVIS	<input type="checkbox"/>
31	Alan KIMBLE	<input type="checkbox"/>
		<input type="checkbox"/>
		<input type="checkbox"/>

OFFICIAL CLUB SPONSORS

Integrity software

OFFICIAL STADIUM SPONSORS



OFFICIAL YOUTH TEAM SPONSORS

OFFICIAL KIT SUPPLIERS
TO WYCOMBE WANDERERS

PRO STAR

OFFICIAL MASCOT SPONSORS

OFFICIAL SPORTS DRINK SPONSORS
TO WYCOMBE WANDERERS

OFFICIAL FINANCIAL ADVISORS

HYPNOS.
THE MOST COMFORTABLE BEDS IN THE WORLD

TEL 01844 342233

SPONSORS OF
THE FAMILY ENCLOSURE

OFFICIAL PHOTOCOPIER SUPPLIERS

REFEREE
Mr. P. WaltonMatch Officials
ASSISTANT REFEREES
Mr. G. Hambling
Mr A. WebbRESERVE OFFICIAL
Mr. J. Singh

BALL SPONSORS

OUR MASCOT
PK GRAPHICS

Today's PK Graphics mascot is Benjamin Triggs from Flackwell Heath, Benjamin is 10 years old and he attends Davenies, Beaconsfield he plays football for Bourne End junior sports club as well as cricket and tennis. His favourite food is pizza and he enjoys watching Eastenders and all sports programmes on TV. Benjamin's favourite Wycombe player is Darren Currie

