



Luton Town Football Club

Official Matchday Magazine • Price £2.50

Nationwide League Division Two

Saturday 1st May 2004 • Kick Off 3.00pm



Official Shirt Sponsor



Official Kit Supplier



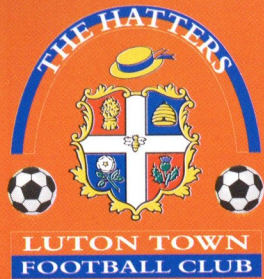
Luton Town

v

Sheffield Wednesday

Match Sponsor: **F & B Catering**

Matchball Sponsor: **Neale Cannon & Aragon Windows**



Function & Conference Suites at Kenilworth Stadium



For meetings, receptions, presentations, parties, AGM's or product launches, all year round.

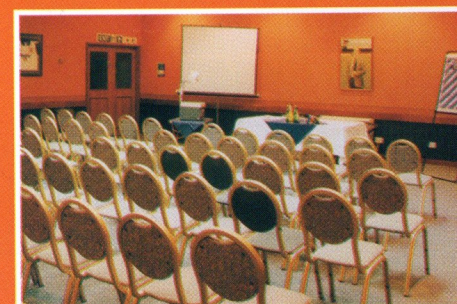
Luton Town Football Club offers unique facilities with a warm welcome.

Six function rooms offering professional catering from coffee to buffets to waitress silver service, from 8 to 80 persons.

Comprehensive business facilities include projectors and screens, flip charts, fax and photocopying.

Room layouts can be boardroom, theatre or banqueting.

Bar, dance floor and disco information available on request



Function Suite	Reception or Bar only	Conference or Dinner
Eric Morecambe Suite	100	80
Century Club	100	80
Kenilworth Suite	100	50
Joe Payne Lounge	100	45
Millennium Suite	70	35
The Boardroom	50	30

For more information call the Commercial Department on 01582 411622 or email: commercial@lutontown.co.uk

www.lutontown.co.uk

Inside Today

Manager's thoughts on the season	Page 5
The skipper's view	Page 7
But what a magnificent season!	Page 9
Last away game travel offers	Page 10
Programme bids reach £1,100	Page 11
Chesterfield ticket arrangements	Page 12
Today's sponsors	Page 14
Welcome to the Owls	Page 18
Blast from the Past	Page 22
End of an Era	Page 24
Buy your sat offer	Page 27
Bournemouth match report	Page 28
Disappointment in Wales	Page 32
Town Teaser	Page 34
Jackpot on offer	Page 35
Travelling fans earn thanks	Page 39
Under-19s a point from title	Page 41
Latest Junior Hatters news	Page 43
Young Belles chase doubles	Page 45
Club shop bargains	Page 46
Community	Page 49
Kenilworth Road open day	Page 52
Old favourite to star again	Page 53
The Second Division Scene	Page 55
All the stats	Page 56
Today's squads and officials	Page 58

Honours

Littlewoods Cup
Winners 1987-88
Finalists 1988-89

FA Cup
Finalists 1958-59

Simod Cup
Finalists 1987-88

Division 2
Champions 1981-82

Division 3 (S)
Champions 1936-37

Division 4
Champions 1967-68

Official Matchday Magazine

Editor

Brian Swain

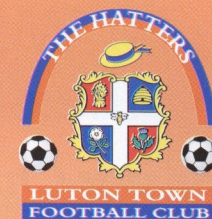
Design & Printing

Regal Litho Ltd

Photography

Gareth Owen

The views expressed in this programme are not necessarily those of Luton Town Football Club.



Luton Town FC

Kenilworth Road Stadium
1 Maple Road, Luton
Bedfordshire LU4 8AW

Main Reception:
01582 411622
Fax: 01582 405070

Ticket Office: 01582 416976
Community Dept: 01582 391927

Vice Presidents

R. L. Banks, D. Ludlow MBE,
R. Safranek, J. Sapsworth

Chief Executive/Secretary

Cherry Newbery

Manager

Mike Newell

Director of Football & First Team Coach

Mick Harford

Coach

Brian Stein

Youth Team Coach

Marvin Johnson

Youth Development Officer

Mark Ridgway

Medical Officer

Dr. Bill Berry

Football in the Community

Stuart Smith

Physiotherapist

Paul Coleman

FA Treatment of Injuries

Consultant Physio

John Sheridan

Commercial Manager

Peter Davis

Catering Manager

Lee Clark

Safety Officer

Geoff Lovell

Ticket Office

Darren Bell

Financial Controller

Tania Buonpane FCCA

Club Dentist

A. Chris BDSA (Syd)

Club Chaplain

Rev Catherine Moss

Log on to Luton Town's official website at www.lutontown.co.uk

The FA Women's Cup Final in partnership with Nationwide

Arsenal v Charlton Athletic

Bank Holiday Monday May 3rd 2004, 1.00pm
Loftus Road, QPR FC

TheFA.com/women

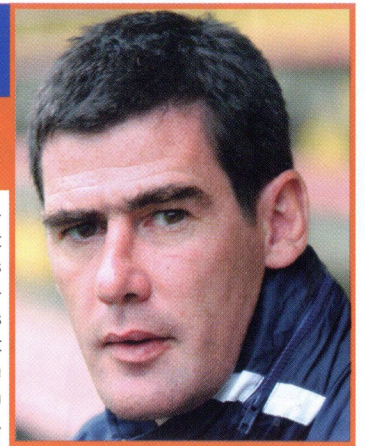


Live on BBC1
from 12.40pm



Tickets: £3 adults and £1 concessions (£5/£1 on the day)
Call the ticket hotline on 0870 112 1967

The Manager's Message



GOOD afternoon and welcome to Kenilworth Road for our final home fixture, against Sheffield Wednesday. Welcome also to Chris Turner, his staff, players, directors and supporters from Hillsborough. It goes without saying that they have not had the season they were looking for after relegation to Division Two last year. But like the other big city clubs, some of which will drop from the Premier League in the next few weeks, you can't help thinking that one day they will be back. Right at this moment, however, their fans might not agree.

If I had a choice I would write this column on Saturday morning or lunch-time, or certainly at the last possible moment in time for the first supporter coming through the gates. But I don't, and a man called Brian Swain nags me all week to meet printing deadlines. I am sure most of you know Brian, and when I heard last week that he was retiring my first thought was "Thank God!" It didn't take long to sink in however that there will be another Brian Swain along next season, or at least another programme editor. Somehow, I can't help thinking that Luton Town won't mean quite as much to whoever it is. We wish him a long and happy retirement.

It's a pity we couldn't send him off with a trip to the play-offs. That wasn't meant to be and what the club has been through this season finally took its toll in the last month. The sad thing is that it hasn't fully taken its toll yet.

In protecting other clubs and itself the Football League in its wisdom not only restricts clubs in administration to 20 players, but also stops them from re-signing their own players, therefore stripping them of their assets.

I have no doubt that some of our best players will walk away under freedom of contract in the next month or two. Clubs like Luton Town have a history of producing and finding good young players, and have survived and had success because of it. That is the only way forward for clubs outside the elite these days, and it doesn't make sense that clubs in the lower division cannot make a profit selling their top young players.

That's not the only thing that doesn't make sense these days. I heard last night that someone else is in trouble for criticising Uriah Rennie. What happened to freedom of speech? In a week when the FA decided to take no action against Graham Poll for his thoughts on Gary Neville it seems strange that we have a protected species, and rules for one and not another.

Referees should be seen and not heard, and the best ones are. But in a world, or at least a country, that

has gone celebrity-mad in the last couple of years we have superstar officials capable of not only earning a better living than some players, but in certain

cases, such as in the Winters of this world, who have joined the "after dinner" circuit, people who genuinely believe that supporters pay money to watch them. When I see a referee putting cones out to do his warm-up, and signing autographs I can't help thinking we have lost it somewhere. He also retires this season, and he won't be missed - just ask Sir Alex Ferguson!

It would be very remiss of me not to thank a number of people for their help this season. I couldn't wish for a better staff and in Mick and Brian I have not only genuine, old-fashioned football people, but genuine people full stop. They run the show, so if anyone has any complaints blame them!

Thanks also to Marvin Johnson, Mark Ridgway, Paul Coleman and doctors Berry and Deeley, our kit man Derek and everyone on the ground staff and administration side.

We have been stretched beyond belief this season, and there are people who just keep going so that the club keeps going. The players have been fantastic and we could not have asked any more of them. Their attitude in the face of adversity has been first class and I genuinely believe that if we can keep the majority of them and add a few we will have a real chance next year.

Last, but of course not least, thanks to our supporters, without whom we wouldn't even be here. I will not patronise you or try to influence you in any way because you will have already made up your mind about me, but I will say that I have enjoyed my year at Luton Town as much as any year at any club I have ever been at. It was difficult, to say the least, at the beginning, but with the help of the people I have mentioned and your faith it has been possible to have a somewhat reasonable season.

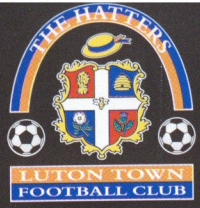
I share your disappointment in not gaining what would have been a remarkable achievement considering the playing field.

Enjoy your summer.

Mike Newell

For the latest news, views & interviews call:
CLUB CALL on 09068 121123

Calls cost 60p per minute at all times



Official
Hatters Broadband Offers

**SIGN
UP!**



to AOL or NTL
BROADBAND

and get **HATTERS WORLD**

FREE!

- Broadband from £24.99 a month
- 10 times faster downloads
- Phone & surf at the same time
- Enjoy fast, high quality video

AOL
Broadband



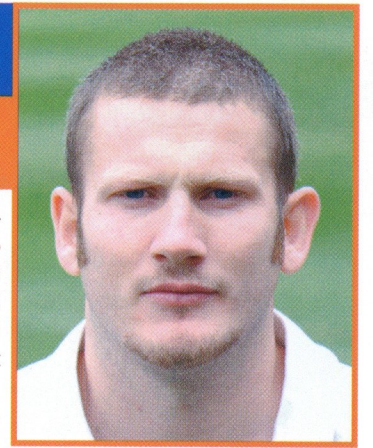
ntl:

HATTERS
WORLD
INTERNET, TV AND RADIO

To sign up to AOL or NTL broadband
and get your **FREE** World subscription
visit www.lutontown.co.uk

* Broadband subscription fees and conditions apply

The Town Captain's View



WE ARE reaching the end of a difficult season, very disappointed that we did not keep up our play-off challenge all the way to the final whistle. We are unhappy at the way our poor recent run has cost us, but when we step back and look at everything that has happened in this club over the past 12 months I think we should be reasonably satisfied with the season we have had.

Administration caused all kinds of problems, some of them felt very personally by the staff, and our loyalty and team spirit was tested to the full. Happily, we passed the test, and I think that with a depleted squad we have done well to be involved in the promotion chase right up until the last three games of the season. Obviously we all want to play at a higher level, but I hope the fans have seen for themselves that we did our best, and I am sure you would rather be following Luton Town than, say, Wycombe or Notts County.

It has been painful to endure our worst run of the season when we most needed to string together a run of good results. But I have never before been involved in a season where so many problems have affected a team. We have had a rotten run of injuries and players needing surgery. When we went to Wrexham, for instance, nine players who would have been in strong contention for places were on the injured list.

The gaffer was unable to bring in replacements because of the club being in administration. He had to go with young players, and all credit to those who came in and gave everything. But in the end we ran out of gas.

We have come through a tough time, and painful though some of this season has been, perhaps the experience will help us all.

The home draw with Bournemouth just about ended our play-off hopes, and we were very disappointed not to get the three points we wanted. We felt comfortable in the first half, and well worth our lead, but as in so many other

games this season we failed to get the second goal that would have knocked the stuffing out of them.

Bournemouth were not a bad side, but we felt we should have beaten them. It meant that we went to Wrexham with our play-off chances hanging on a very slender thread. But mathematically it was still possible, and we went into the game with that in mind, and we wanted to win. We played some decent football, but once more did not take enough of our chances and paid the price. I think our major problem this season has been the lack of that ruthless killer instinct to finish teams off when we have had them on the rack.

This afternoon we want to give you a happy ending to the season. I believe in the old saying that you should try to complete your season with a winning run, to set you up for the start of the next campaign. I know Sheffield Wednesday will be keen to do the same at the end of a season that has been even more disappointing for them than for us.

Then we go to Chesterfield for the final game, and I expect there will again be a good following from Luton. On behalf of all the players, I want to express our thanks for your superb support throughout the campaign, especially at away games.

We owe you two good performances and six points from our last two games, and I hope that you all have a wonderful summer, and come back refreshed and keen as ever when Kenilworth Road hosts its first game of the 2004/05 season.



Kevin Nicholls

Log on to Luton Town's official website at
www.lutontown.co.uk

Kenilworth Suite Members

Mr J Ashton

Corporate Coaching

DBF Crosswinds Ltd

Mr K Harvey

Mr R Harvey

J P Hygiene Supplies

Mr P Mitchell

Protexx Mortgage &
Financial Services

Regal Litho Ltd

Remdex UK Ltd

Mr J Siegler

Dr D Siegler

Stanley Casinos

Travel Extras

Vangis UK Ltd

Mr & Mrs R Williams

Over 100 Cardiovascular
& Resistance machines

Creche/Swimming Lessons

Children's Hi 5 Club

Bar & Restaurant

20m Indoor Pool

Spa & Sonarium

Large Free Weights Area

Over 75 Classes Per Week

Free Internet Usage

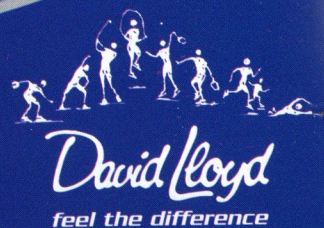
Fully trained staff

'the hatters choice'
luton's finest fitness facility
who knows where it may lead?

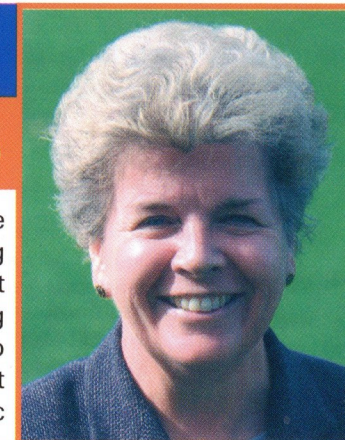
Join David Lloyd Luton today and pay only £20
(saving up to £115)

Call 01582 692046/7 for more details.

David Lloyd Luton,
Capability Green, Luton, Beds LU1 3LU



From The Chief Executive



GOOD afternoon and welcome to our final league game of the season – and what a season it has been!

The dark days of last summer now seem so long ago, and would any of us at the time have imagined the magnificent season that lay ahead of us? I for one was just grateful that we were still alive and actually playing football in the Nationwide League.

The manager, director of football, coaches and players have been magnificent, and I would also like to pay tribute to my own backroom staff who have worked so tirelessly under very difficult circumstances. The support we have received from you, the supporters, not only at all the matches, but also the messages, cards and on occasions even flowers, has been fantastic, so a huge thank-you to each and every one of you.

And it would be very remiss of me not to mention all the match day staff – our thanks to you also.

We must now all look forward to the future, and build on what has been achieved this season.

Coming back to today, we wish Brian Swain and his wife Rosemary every happiness as they retire to Cornwall. We will all miss Brian's wittiness about the place, and his willingness to give help and advice. I am sure we will be seeing him at Kenilworth Road in the future, and he knows he will always be welcome.

Representatives from Travel Extras, our shirt sponsors, are here today carrying out a bucket collection for their nominated charity, Save the Children.

This year, Save the Children are encouraging people to "Skip A Treat" to help educate the world's poorest children. Their week kicked off last Sunday, and Travel

Extras have been taking part in great fund-raising events to help boost the fantastic work undertaken by Save the Children. I know our supporters will give generously this afternoon, as they always do.

A question I have been asked quite often during the season has been regarding a video of the highlights of last season. We normally produce one every year, but were unable to do so last summer because of the unusual circumstances we found ourselves in. However, the good news is that we are producing a video and a DVD which will contain highlights from last season and this. The video should be available in late June, with the DVD due out shortly afterwards.

Season ticket holders will be advised by post shortly about the prices and arrangements for next season.

The provisional fixture list for the 2004/05 campaign is due to be issued by The Football League on June 24.

Finally, I wish you all a very happy summer. I am really looking forward to my holiday this year! We look forward to welcoming you all back for the next campaign, which starts with a pre-season friendly here at Kenilworth Road on Saturday July 24 (3pm).

Cherry Newbery

Hatters Away For The Last Time

THE TOWN complete their season at Chesterfield on Saturday, and coaches will be run to the game by Town on Tour and the Bobbers Travel Club.

Town on Tour, part of Luton Town Supporters Club, will leave Leighton Buzzard at 10.15 and Maple Road at 11, and call at Milton Keynes Coachway about 30 minutes later. The fare is £14 for LTSC members, £12 for junior and senior members, and £16 for others.

The Bobbers start from Cranfield at 10am, leaving Luton at 11, and their fares are £11.50 for adults, £9.50 for concessions.

To book seats with either service, visit their kiosks at the top of Kenilworth Road today. Or you can phone Paul Deason of the Bobbers on 01234 750996. The phone number for Town on Tour is 07960 567465.

Motoring To Saltergate

TO DRIVE to Chesterfield leave Luton on the M1 going north to junction 29, and there turn left onto the A617 to follow the signposts towards Chesterfield. Five miles on from the motorway you



come to a roundabout, where you take the second exit, signposted towards the town centre. Another roundabout comes up quickly, where you take the first exit, going towards Bakewell and Buxton. Take the third exit at the next roundabout and you are in Foljambe Road and the stadium is ahead of you, to the right.

Mileage from Luton: about 125.

Last Chance To Buy A Unique Collection

THE Editor's programme collection, from every league and domestic cup game played by the Town in the last 32 years, will be in new ownership within a few days.

As a reporter, Brian Swain has not missed a single competitive Town game anywhere in this country since Christmas 1972. He has kept every programme, and by the time he goes to Saltergate on Saturday it will be 1,629 consecutive matches.

He then retires to the west Country, and his programme collection is up for sale, with the money raised going to the Luton Town Supporters Club's appeal for £20,000 to buy a new minibus for the youth squad.

As we went to press bidding had reached £1,100 and if you want to make a better offer you have until midnight on Monday to get it to the editor. You can e-mail him at brian.swain@btinternet.com

Swain is a founder-member of Luton Town Supporters Club, and its minibus appeal is still looking for donations. If you give £200 or more you can have your name put on the new vehicle as one of its sponsors. Advertising space on the bus is on offer to any company willing pay a minimum of £1,000.

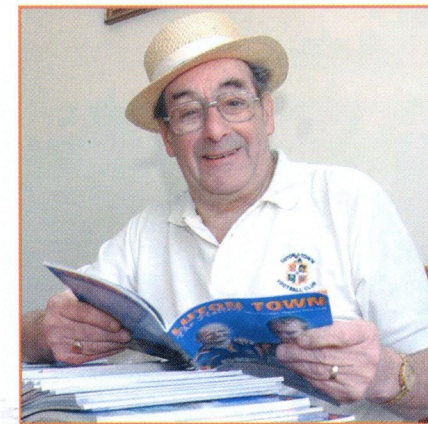
If you want to support the sponsorship scheme, or make any sort of donation, large or small, please send your cheque, payable to Luton Town Supporters Club, to the football club.

If you are quick you can also put in a written bid for Swain's programmes by writing to him at Luton Town, but the letter must arrive by close of business on Monday. The result of the sale will be publicised on the Town's official website.

Meanwhile, the Editor would like to thank the many people who have offered their kind thoughts and good wishes for his future. He is giving up his seat in the Press box, but having been born to be a Hatters fan will turn up now and again to renew old friendships.

He offers his very grateful thanks to the many people who have made his soccer-mad life so enjoyable over the years. He can still hardly believe that he could earn money by watching Luton Town!

Thanks are due in particular to all those who have helped him with production of the programme. There are too many to mention individually, both inside and outside the club, and Swain covers his last Kenilworth Road game today with mixed emotions: sadness that one very happy chapter of life is over, but pleased to achieve a life-long dream of living in Falmouth, a town he loves and where he has a lot of friends.



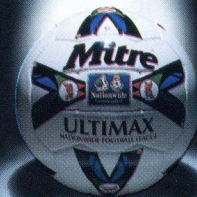
A man and his memories: Brian Swain with part of his programme collection which is to be sold to the highest bidder. Picture: Luton News.

£20,000

- £19500
- £19500
- £19000
- £18500
- £18000
- £17500
- £17000
- £16500
- £16000
- £15500
- £15000
- £14500
- £14000
- £13500
- £13000
- £12500
- £12000
- £11500
- £11000
- £10500
- £10000
- £9500
- £9000
- £8500
- £8000
- £7500
- £7000
- £6500
- £6000
- £5500
- £5000
- £4500
- £4000
- £3500
- £3000
- £2500
- £2000
- £1500
- £1000
- £500



Last Season
The Nationwide Football
League saw an increase in
Attendance of 13.5%;
Why...?



The authority...

The Quality of the Football

Image by Empics 0115 840 444 Digital Artwork by SentryBox 01895 251 220



Are You A Hatters Fan? Then Come And Join Us!



Luton Town Supporters Club is the official Hatters fans' club, but is independent and run by its members.

Benefits include discounts on away match travel, and reduced admission charges to regular meetings with players and staff, and to the end of season presentation night.

Annual membership costs a minimum donation of £7 for adults, £6 for pensioners and under-16s, or £12 for families.

For more information call at the LTSC kiosk in Kenilworth Road before or after any home game.

CONNECT WITH YOUR CLUB



Luton Town

09068 121 123

TELETEXT ONLY p52

Calls cost 60p/min. ClubCall EC2A 4PF



News From The Ticket Office



Nationwide League Division Two Chesterfield v Luton Town

Saturday May 8, 2004, kick-off 3pm

Prices: Terracing: £13 adults,
£7 concessions Seats: £15 adults, £9 concessions



This is an **ALL TICKET** match for Luton Town supporters, with no tickets available on the day of the game. Our allocation is 2,100 tickets, 1,500 terracing and 600 seats, and they will be sold as follows:

SEASON TICKET HOLDERS AND MEMBERS

Tickets are now on sale, subject to availability, to season ticket holders and members until 5pm on Wednesday May 5. Season ticket holders can purchase one ticket each, on production of Special Match Voucher D. Members can purchase one ticket per membership card holder, on production of the card.

NO TELEPHONE BOOKINGS will be accepted.

GENERAL SALE

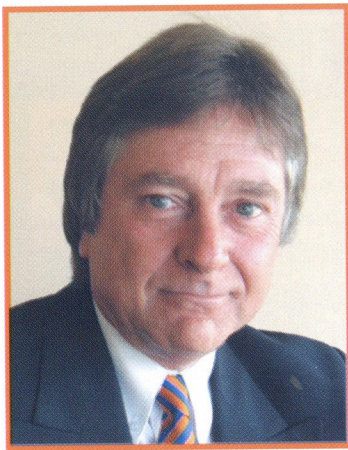
If any tickets remain after priority sales, they will go on general sale from 10am on Thursday May 6

Ticket Office Close Season Opening Hours

Monday - Friday: 10.00am - 5.00pm

Saturday: 10.00am - 2.00pm

Please note that the Ticket Office and Club Shop will be closed from Monday 10th May to Saturday 15th May inclusive.



Commercial Corner

ON WHAT has unfortunately been confirmed as our last home game of the season, we extend our

usual very warm welcome to all our commercial clients and sponsors. It is another full house for us, necessitating use of the larger Eric Morecambe Suite again for what we hope will be a most enjoyable game. The tremendous support for our commercial initiatives throughout the season is much appreciated by all at Luton Town.



Tony Perrera of LinPac Automotive, our match ball sponsors versus Bournemouth, holding the ball and commemorative certificate following the presentation by the players.

Catering have gained a reputation for quality cuisine. All occasions and events are catered for and no event is too big or too small.

From business lunches to seven-course meals, and barbecues to deluxe gourmet cold displays are all within their range. To find out more contact David Hardware on 01582 650863 or 07961 983423.

MATCH BALL SPONSOR Neale Cannon & Aragon Windows

It is always nice when we welcome back old friends who have been regular sponsors over the years, such as Neale Cannon. This afternoon Neale is sharing the match ball sponsorship with his close friend, Mr Chris Freeman. Chris, who happens to be a Sheffield Wednesday fan, runs his own window company called Aragon Windows in his home town, Ampthill. This is the third year Neale has sponsored a match ball, and he says it is one of the highlights of the year for him. Chris and Neale are joined today by Chris's twin brother, Bob, and good friends, Pete Scower, Keith Owen



Mick Abbott of City Plumbing, joint match sponsors for the Bournemouth game, with his guests.

MATCH SPONSOR F & B Catering



We welcome for the first time as match sponsors F & B Catering, together with their guests. The company are the leading outside caterer and food vending operator in the area. Established in 1998, F & B

Welcome to All Our Sponsors and Guests



Joint Match Sponsors against Bournemouth, Critical Research, are seen here with Managing Director, Derek Farr on the left, wearing his coat with pride.

and Barry Swanell All except Chris are hoping to see a good Luton victory.

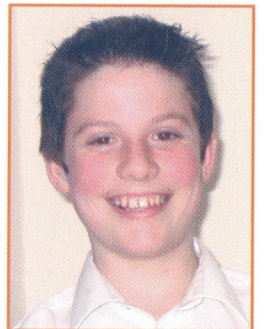
COMMERCIAL MASCOT Thomas Park

We welcome as our Commercial Mascot, Thomas Park, aged 12, who is accompanied by his dad and friends. When Thomas leads out the team, it will, I am sure, be one of the highlights of an unforgettable day



4. A happy Sami Naveed, the Commercial Mascot versus Bournemouth, holding his commemorative certificate.

for him. He attends Alameda Middle School in Ampthill, and his hobbies include playing the drums, diving, cricket, playing on his X-Box, and of course football. His favourite player is Enoch Showunmi.



While the football season is now coming to a close, commercially it is the start of one of our busiest times of the year, as we start to renew all our existing commercial arrangements, such as executive boxes, suite memberships, ground advertising and so on. As well as seeking new clients in all areas of our commercial portfolio, we continue to evaluate and fine-tune our efforts to maximise benefits for the club and for our clients.

While we will no doubt be meeting a number of you at the Open Day on Sunday May 9 and at the Kit Sponsors presentation evening on May 10 at the Chiltern Hotel, on behalf of myself, John and Amelia in the Commercial Department we thank all our partners and sponsors for their wonderful support and co-operation throughout this season. We wish you all a most enjoyable summer break, and look forward to welcoming you back at the start of next season in August. Have an enjoyable afternoon.

Peter Davis



Offering a comprehensive choice in modern gaming, relaxed dining, late bars and live entertainment

Open every day from 2.00pm until 6.00am, Sunday morning until 4.00am

STANLEY LUTON CASINO
Skimpot Road,
Luton, Bedfordshire LU4 0JB
Telephone: 01582 591148
Fax: 01582 490349

STANLEY LUTON INTERNATIONAL CASINO
85 Park Street,
Luton, Bedfordshire LU1 3HG
Telephone: 01582 439080
Fax: 01582 439089

FREE MEMBERSHIP is just a phone call away
All applicants must be 18yrs or over. 24hrs must elapse from receipt of application
www.stanleycasinos.com



Hatters



Form Guide:

Won: 1
Drawn: 1
Lost: 4
Scored: 8
Conc: 13
Points: 4
Goal Diff: -5
Last 6: LLLWDL
Last 5 Home: DDLWD
Last 5 Away: LDLLL

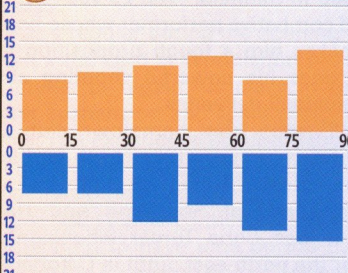
Miscellaneous

Players Used: 35
Clean Sheets: 9
Failed to Score: 9

The Guys to Watch

Headed goals	Howard	5
Long range shots	Howard	2
Inside 6 yards	Howard	4
Shots from 6-18 yards	Howard, Forbes	6
Volleyed shots	4 players	1
Penalties	Nicholls	2
Scored 1st Goal in match	Howard	8
Most goals in last 10	6 players	1
Points gained from goals	Howard	11.5

When Goals Scored & Conceded



Goalkeeping

Opp. attempts on target	240
Goals conceded	63
On target/goals scored	3.81
Division 2 rating	20

Goalscoring Strike Rate

Shots on target	265
Goals scored	66
On target / goals	4.02
Division 2 Rating	8

Goals in last 10 mins

Goals For, last 10	6
Points won	1
Goals Against, last 10	12
Points lost	13

Fouls & Offsides

Average fouls per game	13.68
Div 2 Rating (1=least, 24=most)	22
Average Offsides per game	4.75
Div 2 Rating	24

Swings

WON when behind	3
DRAWN when behind	6
LOST when ahead	4
DRAWN when ahead	4
WON 2 down	1
WON 1 down	2
LOST 2 up	0
LOST 1 up	4
DRAWN 2+ down	0
DRAWN 1 down	6
DRAWN 2+ up	0
DRAWN 1 up	7

Attendances

Aggregate	138,649
Highest	8,499
Lowest	5,002
Average	6,302

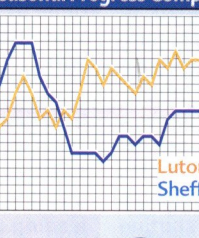
Where Goals

Close Range	14
Inside Area	23
Outside Area	8

How Goals

Shots	35
Headers	20
Volleys	5
Penalties	3
Free Kicks	1
Own Goals	2

Seasonal Progress Comparison



Set Piece Goals

Scored from C	8
Conceded from C	7
Scored from FK	12
Conceded from FK	6

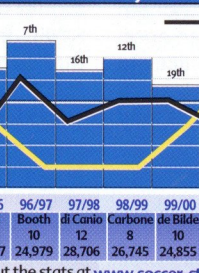
Cards

81	7
----	---

Margins

WON BY:	9	1 Goal	8
LOST BY:	2	2 Goals	2
WON BY:	3	3 Goals	3
LOST BY:	0	4 Goals	0
WON BY:	0	5+ Goals	0

Sheffield Wednesday's 10-Year Record

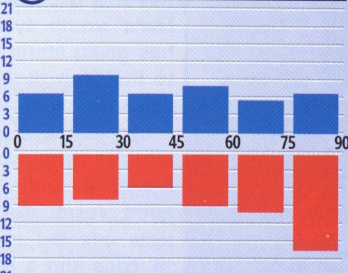


Check out the stats at www.soccer-stats.com

The Guys to Watch

Headed goals	Ndumbu-Nsungu	2
Long range shots	Lee, Brunt	2
Inside 6 yards	Ndumbu-Nsungu	2
Shots from 6-18 yards	3 players	2
Volleyed shots	Quinn, Smith P	2
Penalties	Ndumbu-Nsungu	3
Scored 1st Goal in match	Ndumbu-Nsungu	4
Most goals in last 10	4 players	1
Points gained from goals	Ndumbu-Nsungu	12

When Goals Scored & Conceded



Goalkeeping

Opp. attempts on target	258
Goals conceded	58
On target/goals scored	4.45
Division 2 rating	11

Goalscoring Strike Rate

Shots on target	221
Goals scored	45
On target / goals	4.91
Division 2 Rating	20

Goals in last 10 mins

Goals For, last 10	4
Points won	5
Goals Against, last 10	12
Points lost	7

Fouls & Offsides

Average fouls per game	11.86
Div 2 Rating (1=least, 24=most)	7
Average Offsides per game	2.95
Div 2 Rating	4

Swings

WON when behind	0
DRAWN when behind	5
LOST when ahead	2
DRAWN when ahead	5
WON 2 down	0
WON 1 down	0
LOST 2 up	0
LOST 1 up	2
DRAWN 2+ down	0
DRAWN 1 down	5
DRAWN 2+ up	2
DRAWN 1 up	3

Attendances

Aggregate	484,418
Highest	25,664
Lowest	18,799
Average	22,019



SWFC



Form Guide:

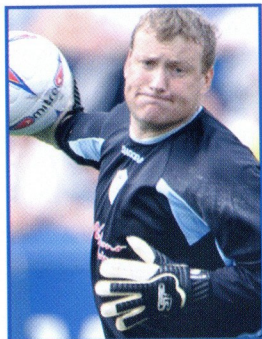
Won: 1
Drawn: 2
Lost: 3
Scored: 4
Conc: 9
Points: 5
Goal Diff: -5
Last 6: WLDDLL
Last 5 Home: WLWDL
Last 5 Away: LLLDL

Miscellaneous

Players Used: 35
Clean Sheets: 11
Failed to Score: 16



Welcome to Today's Visitors



1. KEVIN PRESSMAN

Kevin is a product of the Owls' youth system who has given sterling service to the Club during his 18 years as a Hillsborough professional. A good shot stopper who commands his area confidently, his solid form during that time has led to England 'B' caps and a number of call-ups to the full-squad.

The lifelong Wednesdayite passed the landmark of 450 SWFC appearances during the 2002/03 campaign, placing him within seven appearances of second place in the SWFC post-war appearance table.

On his day, Pressman is arguably as formidable a goalkeeper as any in the country, as he has proved on countless occasions over the years. He made his debut against Southampton in 1987 and remained a squad member before establishing a regular starting place in 1993/94.

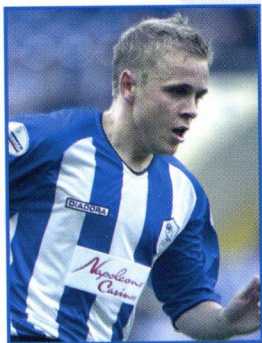
2. DEREK GEARY

The diminutive Irishman has become a Hillsborough crowd favourite after breaking into the senior set-up during the 2000/01 season, an inspired Worthington Cup outing against Sheffield United helped raise his popularity and his resulting consistent displays have cemented his status as a cult hero.

Geary was spotted turning out in Irish football in 1997 and moved to Sheffield after impressing during a trial, 2000 and making his debut against Oldham Athletic in September 2000. The Dubliner is an energetic fullback who is defensively sound and likes to get forward on the overlap. Although lacking in height, he is effective in the aerial challenge and solid in the tackle.

3. BRIAN BARRY-MURPHY

Brian was recruited on a free transfer from Preston in January 2003, calling an end to a three and a half year stint at Deepdale. A left sided player, he oper-



ates predominantly as a full back although he can also be used in midfield. The 25-year-old is a committed and combative performer whose finely honed tackling makes him a tough proposition for opponents, as does his powerful shooting ability and accurate deadball deliveries.

He joined Preston from hometown club Cork City and, in addition to making the North End first team, accrued experience during his time in Lancashire from loan spells at Southend and Hartlepool. Although it was Chris Turner who signed Barry-Murphy for the north-east outfit in October 2002, the pair had to wait three months to work with each other as the Owls boss took up the Hillsborough hot-seat shortly after the Irishman's switch to Victoria Park.

5. DEAN SMITH

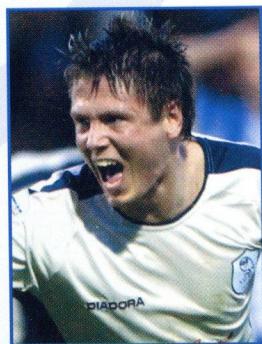
Dean moved to Hillsborough in February 2003 on a free transfer from Leyton Orient and rapidly settled into the heart of the Owls defence. His record of leading each club at which he has played was maintained when Chris Turner chose him to be SWFC Club Captain ahead of the 2003-04 campaign.

The 32-year-old is an old-fashioned style centre half whose game is based on tough tackling and combative performances, allied to quick anticipation and good reading of the game. His aerial prowess also enables him to net his fair quota of goals on his forays forward.

The West Bromwich product started out at nearby Walsall where he spent five years and made over 150 appearances before moving on to Hereford United. After three years at Edgar Street, Smith moved on to Orient and his last game for the East London outfit was his 600th competitive appearance in six years at Brisbane Road.

6. LEIGH BROMBY

Leigh is a classy performer who broke into the SWFC first team towards the latter part of the 2000/01 campaign, having made his League bow during a loan spell at Mansfield Town. Having originally earned a starting place in the left-back slot, he moved into his natural position of centre-



Sheffield Wednesday FC



centre-half in 2001-02 and the only disappointment was a troublesome hamstring injury which halted his progress.

Bromby was a regular during the opening months of 2002-03 but a red card at Wimbledon proved costly. He was unable to regain his place in the starting eleven after suspension and spent a month on loan at Norwich. The experience bolstered the Dewsbury lad's confidence and he returned to the team for the final five games of the term.

The willowy defender is comfortable in possession, always appearing to have time on the ball and his ability to read the game and fine positional sense are assets to the SWFC cause

7. ALAN QUINN

Alan won the 2002-03 Player of the Year award after producing some superb performances on regaining his starting spot. The 24-year-old was a shining light during a difficult term as Chris Turner's influence succeeded in coaxing inspired displays from the midfielder. His form also led to international recognition as he made his Republic of Ireland bow against Norway in April.

The Dubliner is a perpetual motion midfielder whose all action style and boundless energy is a real asset. He operates either in the centre of midfield or on the left flank, where his dribbling skills and hard running can be used to full effect. Quinn joined the Owls in 1997 after being spied playing for Cherry Orchard in his native Ireland, making his first team debut just four months after his arrival in England and cementing a regular spot in 1999-2000. He passed the milestone of 150 SWFC appearances towards the end of last season.

8. PAUL MCLAREN

Paul signed for SWFC in June 2001 on a 'Bosman' free transfer from Luton Town. He is a creative player who can unlock defences with his incisive passing and vision, allied to no little amount of competitive spirit. Blessed with strong running ability that enables him to cover every inch of the park, McLaren is also adept at winning possession in midfield skirmishes and is an industrious member of the team. He developed in the youth system at Kenilworth Road, signing professional terms in 1994 and going on to make over 200 Hatters appearances before moving north to Sheffield 6.

Although predominantly a central midfield man, the High Wycombe lad can also be used wide on the right or as a centre half, where his aerial ability is an

asset. His first term at Hillsborough saw him cement a regular starting berth at the turn of the year and establish himself as a vital cog in the Owls style of play.

9. KIM OLSEN

Kim joined the Owls in February 2004 after completing a move from Danish outfit FC Midtjylland. The striker penned a contract keeping him at Hillsborough until the summer of 2005 after joining for an undisclosed fee. The 25-year-old made a quick impact, earning the matchwinning penalty on his home debut against Hartlepool United after making his bow at Port Vale seven days earlier.

Olsen's 6'4" frame makes him a formidable opponent in the air for defenders, as does his ability to finish sharply in and around the penalty area. But the Dane is more than just a tall target man, processing neat touches and passing ability when in possession on the floor.

12. STEVEN HASLAM

Steven is Wednesday through and through having supported the Club throughout his time developing in the Hillsborough youth teams. He is a product of the FA School at Lilleshall and has represented England at all levels from Under-15 to Under-18, as well gaining Under-20 caps with the national team. The High Green lad signed professional forms in 1996 and broke into the first team in the 1999-2000 campaign in an 'anchor man' role after making his debut against Liverpool in May 1999.

Throughout his career at Junior and Reserve team level, he has been known as a centre half capable of operating at right back. However, the Sheffielder has played the bulk of his SWFC games in midfield, only reverting to full back on occasion. Haslam is a calm and composed performer with sound technical skills and sharp passing ability, whose time in the 'engine room' has polished his tackling and combative edge.

15. ADAM CHAMBERS

Adam joined the Owls on loan from West Bromwich Albion in February 2004, making his debut in the win at Rushden and Diamonds. The 23-year-old has contributed his boundless energy to the cause, constantly closing down, putting opponents under pressure and providing bite in the Wednesday engine room.

West Bromwich-born, Chambers came through the ranks at his hometown club and turned professional in 1999.

Welcome to Today's Visitors

18. JON SHAW

Jon earned himself a tag as a prolific goalscorer with his impressive record at Academy and Reserve levels, before stepping up to senior level. He made his senior debut as a substitute in an FA Cup tie at Gillingham in January 2003, having first being called into the first team squad the previous term. He also came off the bench against Walsall on the final day of 2002-03.

Powerful in the air and blessed with sharp finishing ability, the Gleadless lad causes problems for opponents with his industrious, bustling style of play. During the 2000-01 campaign, he achieved the milestone of scoring in four consecutive Reserve games, having come on as a substitute in each. The lifelong Owls fan continued his progress in the Reserve team last season and his efforts were rewarded with the offer of a one-year contract.

19. RICHARD WOOD

Richard broke into the Wednesday first team towards the end of 2002-03 and marked his arrival with a bang, scoring on his full debut at Burnley. The youngster made such an impression on Chris Turner that the Owls boss handed him a two-year deal before he had completed the second year of his Academy scholarship.

Wood's performances in the Reserves had marked him out as a prospect for the future. After breaking into the second string side in his first scholarship year, he became a solid presence with his steadying influence and polished man marking ability. The Ossett product is a tall, commanding figure whose height is an asset in both boxes. He joined the Academy full time after six years on the books at Hillsborough, and has shown his versatility by switching from his natural position of centre-half into the full back positions when required to do so.

20. JON BESWETHERICK

Jon was recruited on a two-year deal from Plymouth Argyle in May 2002 after his contract with the Home Park side had expired. His final term with the Pilgrims had proved a successful one, with the rangy defender a regular member of their promotion winning side. However, he struggled to regain his starting spot after losing his place early in the season and had a loan spell at Swindon Town towards the end of the campaign.

Liverpool-born Beswetherick developed in Argyle's youth teams, turning professional in 1996 and making over 150 appearances during his time at the

Devon club. He is an attacking full back who likes to push forward down the left flank and provide dangerous crosses into the penalty area.

21. OLA TIDMAN

Ola became an Owl in July 2003 after joining on a free transfer from Stockport County. The Swede caught Chris Turner's eye during his time at Edgeley Park, after signing for the Hatters from Belgian outfit RAA La Louvière in January 2003. He made only 18 appearances for County but his form in that time attracted the Owls' interest.

The 24-year-old has also played for Malmö FF and BK Kick in his homeland and KAA Gent of Belgium, in addition to representing his county at Under-21 level. He is a tall imposing presence between the sticks with his ability to command his area in a dominant fashion.

22. ROBBIE MUSTOE

Chris Turner recruited Robbie ahead of the 2003-04 campaign, after the midfielder impressed during pre-season games. He is a vastly experienced performer who brings experience accumulated in over 550 professional outings to the Owls cause, giving him a key role as an organiser in the side. His tough tackling and work rate are major assets as is Mustoe's eye for a pass, while his fitness levels remain as high as ever.

The Oxford product started his career with his hometown club in 1986, making just short of 100 appearances before a 1990 move to Middlesbrough. He established himself as a pivotal member of the Teesiders' line-up and went on to give them superb service over 12 years, amassing over 450 Boro outings before joining Charlton in the summer of 2002. Robbie played his part as the Addicks achieved a twelfth place finish.

23. TERRY COOKE

Terry signed a one-year deal at Hillsborough in August 2003 – almost three years after making his Owls debut! The winger had previously enjoyed two spells with SWFC whilst on loan from Manchester City in the 2000-01 campaign, before returning to Sheffield when Chris Turner snapped him up following a successful trial period.

A traditional old-fashioned wideman, he is at his best when running at defenders and supplying dangerous crosses into the area.

The Brummie started his career with Manchester United before moving to join their rivals City after a



Sheffield Wednesday FC



successful loan stint in 1999. He played a major part as the Blues achieved promotion to Division One and was also a member of the City squad that reached the Premiership in 2000.

24. GUYLAIN NDUMBU-NSUNGU

Guylain joined the Owls on a year-long loan deal from French outfit Amiens in September 2003. The youngster is a pacy striker, blessed with sound technical ability and adept at holding up possession. These qualities enable him to link up the play and find the back of the net.

The forward, christened 'Sungu' by his teammates, hails from Kinshasa in the Democratic Republic of Congo but moved to France at the age of seven.

28. CHRIS CARR

Chris joined the Owls in a transfer deadline day move from Newcastle United in March 2004.

Prior to joining Wednesday, Carr had been on Newcastle's books for four years having previously been with their north-east neighbours Sunderland.

Chris is a defender who can operate either as a right back or centre half, bringing his committed and combative approach to either role. His temperament made such an impression on boss Chris Turner that he handed Carr the captain's armband for the reserve side soon after his arrival at the club.

31. ADAM PROUDLOCK

Adam joined Wednesday from Wolves for an undisclosed fee in September 2003. Owls fans were already well aware of his abilities after he spent a month on loan at Hillsborough during the 2002-03 campaign, finding the net against Stoke City and Rotherham United. He also scored a brace against Wednesday after a return to Wolves which saw him help them reach the Premiership.

The striker is a powerful performer whose strength causes problems for defenders, along with his quick-silver pace. Capable of clever link play around the box and razor sharp finishing, he turned professional with Wolves after developing under Chris Turner's guidance in the Molineux youth system.

32. ROBERT POULTER

Robert was first involved in the first team squad as a substitute against Luton Town in November 2003. He represented England at Under-16 level in 2001/02 and is a goalkeeper of real potential. He featured in the Under-17 team before challenging for a regular spot at Under-19 level.

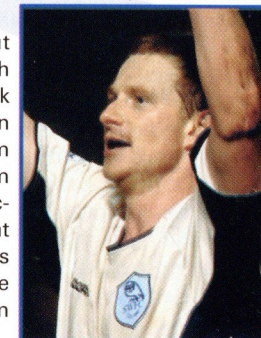
33. LEWIS MCMAHON

Lewis made his Wednesday debut in the Owls' 4-0 win over Scunthorpe United which took them through to the LDV Trophy area final in January 2004. The Doncaster lad had progressed in the SWFC reserve and under-19 sides over the previous two and a half years since joining the Wednesday Academy in the summer of 2001.

34. MARK ROBINS

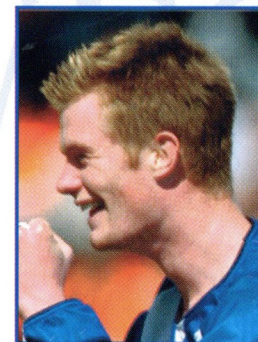
An out-and-out goalpoacher with a wealth of experience, Mark joined the Owls in December 2003 from neighbours Rotherham United. He enjoyed a successful three-year spell at Millmoor during which his goals firstly inspired the Millers to promotion from Division Two.

The veteran striker started his career at Manchester United and spent six years at Old Trafford, in which time he became known for popping up with some vital goals as United won the FA Cup, European Cup Winners' Cup and European Super Cup. He moved on to Norwich in 1992 and was a part of their UEFA Cup campaign in 1993-94, before representing Leicester, Manchester City and Walsall.

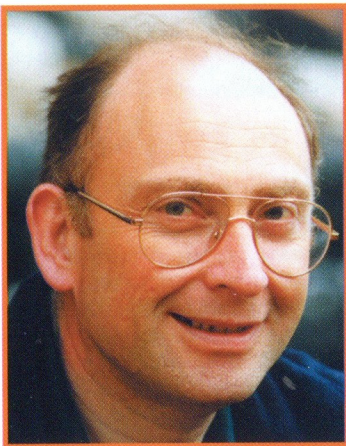


35. CHRIS BRUNT

Chris got his Owls career off to a stunning start, netting with a superb 25-yard free-kick just seven minutes into his full debut against Brighton. The midfielder joined Wednesday from Middlesbrough in March 2004 and quickly earned himself a first team spot after settling into the side.



The Ulsterman moved to Hillsborough after almost three years in Middlesbrough's academy. Able to operate either in the centre of the park or as a wideman on the left flank, Brunt caught the eye with his lethal left foot. He forged himself a reputation as a major threat when taking aim from distance and also has a wide range of pinpoint passing in his armoury.



Blast From The Past

We welcome back Sheffield Wednesday to Kenilworth Road for the first time since 1991/92 when both teams were in the top

Division One as champions and it was not until 1937 that we clashed again, this time in the old Division Two.

In the two seasons leading up to the war we suffered three heavy defeats at the hands of the Owls and had only one point, from a 2-2 home draw in March 1938, to show for our troubles.

We did eventually break our duck in a game that did not count! Wednesday were our only visitors at the start of the 1939/40 campaign and a 3-0 win, with Hugh Billington netting twice, was followed by a victory at Bradford Park Avenue and a draw at Fulham before war broke out and brought the season to an abrupt halt. This series of results did however give rise to the famous quiz question, "Which team were top of Division Two for seven years without getting promotion?"

The same fixture list was retained for the 1946/47 campaign, the first after the war, making Sheffield Wednesday our visitors on the opening day. Only two players, Billington and Horace Gager, were still in the Luton line-up but the result was just as emphatic with the Town winning 4-1 in front of a crowd of 21,105 and with Mel Daniel netting a hat-trick.

Billington signed off with a goal in his final game for the Hatters in a 1-1 draw with the Owls the following season but generally games between the

two sides in the 1940's were low scoring affairs.

During the next decade, Wednesday became known as the 'yo-yo' club due to the fact that they seemed to move from the old Division One to Division Two and back again almost season by season. When we did manage to catch up with them, results tended to go with the home team but Roland Legate, David Noake and Mike Tracey are all probably glad we

flight. A lot of water has passed under the bridge since then!

Our first league meeting with the Owls took place during the century before last – on 2nd December 1899 to be precise. We were only the fifth league visitors to the new Wednesday Ground, Owlerton, subsequently re-named Hillsborough, and came up against a home side that was on its way back to Division One.

Apparently the 6-0 scoreline did not fully reflect Wednesday's superiority as Luton goalkeeper Teddy Daw performed miracles to prevent "an even heavier defeat." Our team line-up for the return, four months later, showed six changes from the original fixture and I suppose that the 0-1 scoreline was more respectable if nothing else. We went our separate ways at the end of that campaign with the Hatters moving back to the Southern League and Wednesday promoted to



Luton players look on as Vic Halom (second right) attempts to add to his three goals against the Owls at Kenilworth Road in April 1972. Offside was not an issue in those days!

Clashes With The Owls Over The Centuries

did meet as they all made their Luton debut against Wednesday during the 1950's. Incidentally, I have been reminded that Roland Legate, who actually scored on his debut against the Owls, will be 65 on 4th May. Happy birthday Roland!

Following our relegation from Division One in 1960 we had our own share of moving about the divisions and did not cross paths with Wednesday for another ten years.

When we travelled to Hillsborough for a Division Two clash on 10th October 1970 everyone was aware that history was not on our side. We had not won there in eleven previous meetings but any worries were soon put to bed as the Hatters went goal mad, winning 5-1.

The game, which was televised, had the football world buzzing for weeks because it had discovered something which we had known about for over a year – Malcolm Macdonald was a natural goalscorer. Mac scored a hat-trick that day and took the headlines for a display of pace and power but it somewhat overshadowed a brilliant team performance and in particular the unselfish play of Don Givens who netted the other two goals.

Since that time our record at Hillsborough has failed to live up to that marvellous performance

with only one win from 13 appearances. In November 1987 a cross from Mark Stein which somehow found its way into the net plus a more conventional strike from Ian Allinson confirmed only our second win in north Sheffield.

Our home record in the same period has blown hot and cold with some sparkling wins interspersed with some woeful performances.

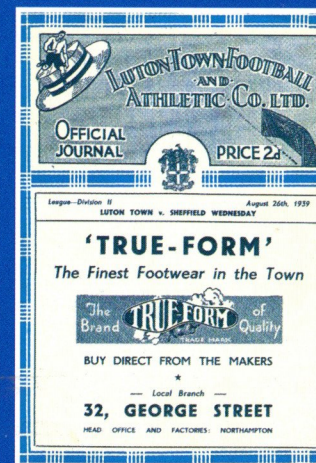
Vic Halom netted his only Luton hat-trick, with all the goals coming in an eleven minute spell, during the 3-1 home win over the Owls in April 1972 while many supporters can remember the 3-0 mauling of Wednesday in front of the 'Match of the Day' cameras in November 1980.

On the other side of the coin the same fixture was televised by the same people the following season and we were swept aside 0-3. This was the first of only four defeats that campaign as we skated away with the championship of the old Division Two but we were hammered so comprehensively that day most of us felt that promotion was way out of our grasp and that the Owls would walk the division.

It just goes to show how much we really know!

Roger Wash

Yesterday's pages



The Town produced their normal, highly regarded, programme for the opening day of the ill-fated 1939/40 season. Despite the fact that everyone in the country knew that a war was imminent there is not one word of gloom or doom in the programme which remains very positive about the months ahead.

The Hatters had transferred away the popular Bill Redfern and Eddie Connelly over the summer and the directors were anxious to head off a supporter rebellion by introducing Reg Stockill and local boy Horace Gager to the fold and asking for patience. Stockill became an immediate success when scoring in the 3-0 win over Wednesday.

It had been announced that shirt numbering from 2 to 11 would be compulsory from the start of the season for all Football League matches. The game against

Wednesday was therefore the start of a slippery slope. Whatever next – shirt advertising?

Brian Swain - The End Of An Era

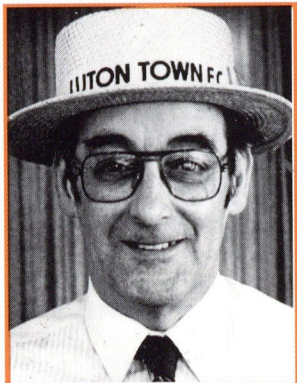


Photo courtesy of the Luton News

This afternoon's match with Sheffield Wednesday not only marks the end of the Hatters' league campaign on home soil but also the end of an era for Programme Editor Brian Swain. The popular journalist, who has established himself as part of the fixtures and fittings at Kenilworth Road over the past few decades, is hanging

up his phone for the last time at the end of the season and retiring to Cornwall.

The curtain will come down on an incredible career - which has spanned more than 30 years - at Chesterfield next weekend, but it will be an emotional afternoon for him today as he bids farewell to the ground that has become his second home. Brian has filled a variety of roles during his time reporting on the Hatters' fortunes. He has followed Luton Town's progress in the league and cups - both home and away - and chalked up an impressive run of more than 1,600 consecutive Luton games in domestic competitions, a record that will come to an end at Saltergate on May 8th.

In fact, there is only one match that Brian has missed since the early Seventies and that was the Anglo-Italian cup tie away to Cesena in November 1995 - and that wasn't through want of trying. A month earlier Brian had sat through a 4-0 defeat in Genoa and was prepared to drive to northeast Italy for this game, if he could find someone to accompany him on the long and arduous journey. Sadly he couldn't - and missed out on being part of a crowd of fewer than 500 who witnessed a narrow 2-1 reverse for Luton.

Where it all began

Coming from a family with a footballing background it was no surprise that Brian soon found himself taken in by the beautiful game. His father, "Oke", was heavily involved in the local league scene and was one of the most respected referees in the area. At the tender age of five Brian took himself off to watch Luton's reserves during the war. After that hour-and-half of his early years he was hooked - so taken in by it all that he can't remember who the Hatters played

that day! It is probably the one thing about football that he can't tell you.

In his late teens Brian joined St John Ambulance and used to sit on the touchline with them at Luton on matchdays. It was this privilege, more than anything else, that prompted him to become a volunteer. By this time Brian had followed in his father's footsteps and qualified as a referee, an experience that was to provide him with a valuable insight when he came to report on football. Like all referees he came in for his share of criticism from the players, but unlike most, he attracted slightly different abuse: in one local league match it was suggested that Brian take his glasses off so that he could see better!

Putting pen to paper

Brian began his career on the Luton News as a copy boy, became Deputy Chief Reporter and was then appointed Industrial Correspondent, before landing his dream job as Sports Editor at Christmas 1972, a position he once referred to as "the best present he ever had". He went on to become a freelance journalist in 1997, working for a variety of Fleet Street newspapers, as well as local radio and television.

Looking back, Brian has seen it all: plastic pitches and the away fans' ban have been and gone. He's been there for those memorable days at Maine Road and Wembley, but also seen the darker days. The sale of Peter Anderson highlighted the precarious state that the club was in financially in the mid-Seventies, and like many supporters Brian did everything he could to help to raise funds and keep the Hatters going.

The 65-year-old has notched up some impressive firsts along the way. When he reported his first match it was the first time that a Luton News Sports Editor had written under his own name. During his time with the Luton News Brian also branched out into commentary with Chiltern Radio when the station was first launched. He took to it like a duck to water and it was on the airwaves that he was to have his finest hour - but more on that later.

And he was one of the first (and few) who drove through a blizzard in 1987 to reach Liverpool, only to find that the Luton players were still stranded at Heathrow. The club had opted to fly up to Liverpool for an FA Cup tie because of the bad weather conditions but arrived at the airport to find that their plane was grounded. Meanwhile Brian was at Anfield, contending with an angry Kenny Dalglish. Liverpool's fiery Scottish manager was unhappy that the match had to be postponed and at his press conference he

pointed to Brian and said: "He managed to get here." It was later that year that Brian celebrated 25 years of unbroken service with the local paper at a party in the old Cat's Whiskers pub. He was particularly flattered to discover that his surprise guest list included then manager Ray Harford and the entire Luton Town team, who presented him with a gift from the club, the emotional presentation is the only time that Brian's been lost for words. His deputy at Luton news Eric Norris remembers the event fondly and is still full of praise for the job that Brian did to earn that evening. Paying tribute to his old boss he commented: "It goes without saying that Brian is a professional of the top order. Not only has he not missed a Luton game in all his time but he never missed a deadline either."

Nothing must get in the way of a story

It was on one of those great occasions in Luton's history that Brian's dedicated reporting came to the fore - the famous relegation match with Manchester City. Brian was reporting on the game for Chiltern Radio. In those days, with Teletext and the internet just a twinkle in their innovators' eyes, the local radio was all that supporters who couldn't make away games had to rely on to know how the Hatters were getting on. As the time ticked away, the studio linkman announced: "There's been a goal at Maine Road - and we'll tell you all about it after this record!"

At this point, Brian could be heard shouting in the background: "Put me on! Put me on! Put me on NOW! Luton have scored! Luton have scored!" Fortunately, he got his wish and took over the broadcast - ahead of the intended record - to announce in excited, but by now more measured, tones that Raddy Antic had just netted that all-important goal, five minutes from time, to keep the Hatters in Division One. Desperate to get on air, it was the nearest that Brian ever came to losing his cool.

"He is an absolute professional," says pressbox colleague of more than 25 years, Denis O'Donoghue. "In all the years that I've been with him while he's



Photo courtesy of Gareth Owen

broadcasting and filing reports from the pressbox, I haven't seen him actually write down a single word of copy! He dictates everything off the top of his head. And it's all totally accurate, beautifully constructed and a pleasure to read or hear. He is a remarkable journalist who would have been a great asset to any "Fleet Street" newspaper, but who chose to stay with the life and club he loves. On top of that, he has a heart as big as a house."

It is a view echoed by Danny Fallon, who has accompanied Brian on many a trek up and down the country to report on the Hatters. He added: "He has an addiction and a love for Luton. He is unbelievable; he is dedicated to his job and to the club. He is a model, as both a journalist and a gentleman."

It was on one such journey with Brian and the late Roy Bentley - a trip to Stoke in the mid-Eighties - that Danny recalls the time when their car broke down on the way back and they had to hitch a ride home on a low-loader, getting back at 2am. There was no rest for the wicked, though. Brian was up a matter of hours later to referee a local Sunday game, such is his love for the game.

His contribution to the Hatters in particular was something that Chief Executive and Club Secretary Cherry Newbery was keen to acknowledge: "It has been my pleasure to work alongside Brian over the past few years, he is a total professional and dedicated to Luton Town. He has always been there to listen and give advice and I will personally miss his input."

It is a view re-iterated by club historian Roger Wash who added: "He has always been very helpful to me over the years, from his time with the Luton News through to his work as programme editor. He loves Luton Town Football Club and he always has time for anyone who has the interests of the club at heart." And to that end Brian's generosity is epitomised by a gesture he made last month when he put his entire collection of Luton Town programmes up for sale to raise funds for the Supporters Club's appeal to raise £20,000 to buy a new minibus for the Town's youth squad.

Come seven o'clock this evening, with his reports phoned through - ready to be read by the nation over their Sunday morning breakfasts - Brian will probably be sitting back in his local, with a whisky in one hand and a cigar in the other, toasting the end of a wonderful era in his life.

Everyone connected with Luton Town Football Club would like to wish Brian and his wife, Rosemary, a very long, happy and enjoyable retirement in their new home in Cornwall. The Kenilworth Road pressbox just won't be the same again without the Chattering Hatter.

(With special thanks to: John Buckledee, Denis O'Donoghue, Danny Fallon, Andy MacKenzie, Cherry Newbery, Eric Norris and Roger Wash for their contributions to this article.)

Regal Litho

352 Selbourne Road
Luton Beds LU4 8NU
Tel: 01582 493332
Fax: 01582 560731
ISDN: 01582 560854
Email: regallithold90@atlas.co.uk
www.regallitho.co.uk

- ◆ Digital Artwork
- ◆ Conventional Repro
- ◆ Platemaking
- ◆ Colour Printing
- ◆ Finishing
- ◆ Distribution
- ◆ Stationery
- ◆ Point of Sale
- ◆ Brochures
- ◆ Commercial Print
- ◆ Magazine Publishing

The Publishers & Printers of:

**Scale
Aircraft
Modelling**

**Scale
Aircraft
Monographs**

SUPPORT YOUR CLUB

Put your name or message
on your seat for **£15.00**



NAME THAT SEAT!

For just a minimum of £15.00 you can have your name or message affixed to your chosen seat and play your own part in helping to preserve the future of your football club, who you and your family may have supported and loved for generations. You may make an additional contribution for your seat should you wish to do so.

This unique offer not only allows you to put your name on your selected seat for all of our remaining seasons at Kenilworth Road, but after the ground finally closes and we move into our new home, your seat will be removed from the Stadium and be given to you to keep forever as your lasting memory of the wonderful history of Kenilworth Road and Luton Town Football Club.

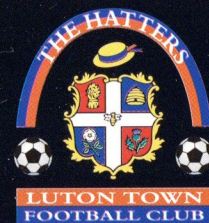
Just think, what a unique Birthday Gift this could make, as well as perhaps a very special way to commemorate a loved one, or family member. Additionally as a local business why not buy a block to promote and advertise your service or product?

To take advantage of this unique offer just pick up an application form from the Club Shop, Ticket Office or simply download an application form from the Luton Town website www.lutontown.co.uk.

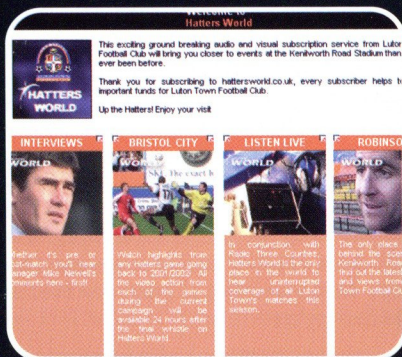
Complete it and post it back to **Names on Seats**, Luton Town Football Club, Maple Road, Luton, LU4 8AW, enclosing your remittance for a minimum of £15.00, either by cheque payable to **Luton Town FC** or alternatively by completing the credit/debit card details section of the order form.



HATTERS WORLD



STAY WITH US THIS SUMMER



- EXCLUSIVE INTERVIEWS
- SEARCHABLE VIDEO ARCHIVE
- MATCH HIGHLIGHTS

ALL FOR £34.99

Draw Dents Hopes Of Both Sides

Luton Town 1 Bournemouth 1

BY HALF time in the final evening game of the season the Town had one hand on the three points needed to move up to seventh place in the table. But Bournemouth stirred themselves in the second half to earn a draw, which was no good to either side, although the final end to our dreams was delayed by a few days.

Mike Newell and Town fans were left to regret that the game was not settled in the first 45 minutes when the Town were buzzing.

Steve Howard headed his 13th goal of the season from a far post free kick by Steve Robinson, hit a post with another header, and watched as sub Curtis Davies had a header cleared off the line, with the keeper beaten.

The 75th-minute equaliser was heavy with irony: Robinson, who had another superb game, made a crucial mistake in his own half to gift the ball to Warren Feeney, who took his chance expertly. When Bournemouth came to Kenilworth Road in early March for the game that never was, he was sidelined by injury. Bournemouth came to Luton with slender play-off hopes of their own. It was a must-win game for both sides, but the verdict by both managers was that on the night the result was about right.

Said Mike Newell: "We had the chances to kill it in the first half but that has very often been the case this season, not putting teams to the sword when we have had them on the rack.

"In the second half I think Bournemouth were probably the better side and you have to give

them credit for that. We didn't create much until the last five or six minutes.

"Davies was unlucky not to score, but it was good defending. We could have had games over by half time this season, particularly here, but Brentford was probably the only one where it was easy in the last 20 minutes. It's been one of those seasons when you look back and say we could have had that game won, but we didn't, and it's cost us."

The game added to the Town's injury list, with Emmerson Boyce forced out early after a collision with Kevin Foley which left him temporarily blinded in one eye. Davies did well as his replacement, as he did again at Wrexham on Saturday. Robinson soldiered on with a groin strain which prevented him playing at Wrexham, and Ahmet Brkovic took a whack on his foot and also missed the North Wales trip.

Sean O'Driscoll, the Bournemouth manager, said: "Both sides had a go and it was a fair result in the end. Once we settled down we passed the ball well and caused Luton problems. I am disappointed their goal came from a set play, but it was a great delivery and a great header.

"I go to an awful lot of games in this division and don't see many sides trying to play football, so we wanted to re-iterate the fact that we wanted to play, and I think both teams did that. It was a good game and the players enjoyed it, with two sides trying to do the right things.

Match Details

TOWN: Hyldgaard; Keane, Boyce (Davies 15 mins), Coyne, Davis; Foley, Robinson, Nicholls, Brkovic (Leary 65 mins); Howard, Forbes (Showunmi 77 mins). Unused subs: Mansell, Brill.

BOOKED: Sol Davis.

BOURNEMOUTH: Moss; Buxton, Broadhurst, C. Fletcher, Cummings; Hayter, Browning, Purches (Tindall 79 mins), Jorgensen; Feeney, Holmes. Unused subs: Young, Stock, Elliott, O'Connor.

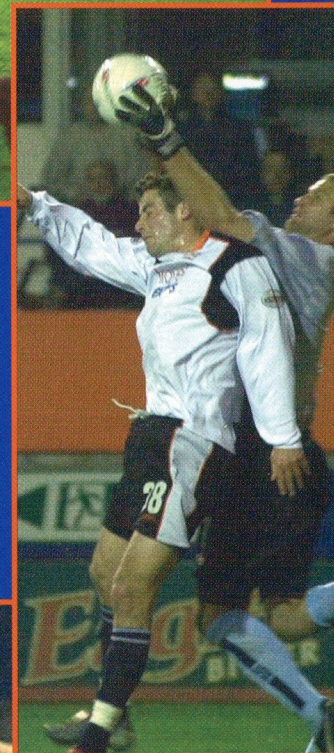
BOOKED: Warren Feeney.

REFEREE: David Pugh, Merseyside.

ATTENDANCE: 6,435 including 432 Bournemouth fans.



AT FULL STRETCH: Adrian Forbes in determined mood while working in partnership with Steve Howard in the Town attack.



RIGHT: Michael Leary puts pressure on Bournemouth goalkeeper Neil Moss



BELOW: Keith Keane, who has grabbed his chance to become a league regular, in competition with Claus Jorgensen

Hatters Pic of the Week



INFORMAL SQUAD PICTURE: Club photographer Gareth Owen captures a group of happy but disappointed Town players as they approach the end of a season that dawned with huge misgivings but then flourished so well that until the last few games a play-off place was within reach. And the squad's message to fans is simple: Thanks for your backing. We hope all supporters have an enjoyable summer, and look forward to meeting again in August for the start of the next campaign.

Away Defeat Ends Linger Hope

Wrexham 2 Luton Town 1

THE TOWN went to North Wales knowing it needed a miracle to keep slim play-off hopes alive. In the event results elsewhere killed off the dream, but this season's away record has been the root of our disappointment. Too many have come on days when the Town have played well without cashing in when they were on top, and that was the case again at The Racecourse.

Wrexham could have been two or three down at the interval but instead had nicked an unlikely goal. Another after the interval left the Town second best despite hitting back within a minute.

A recurring theme had run through so many post-match debates: playing nice football is no use at all without goals, and that was the Town's fate again at Wrexham.

Further injuries were no help, with Emmerson Boyce, Steve Robinson and Ahmet Brkovic the latest to be ruled out. But Curtis Davies, Stephen O'Leary and Michael Leary all did well, with O'Leary unlucky not to mark his first league start with a goal. Leary had been the first to test either keeper, with Michael Ingham doing well to deny him after an astute pass by Steve Howard had played in the young midfielder. O'Leary came even closer, with a rasping angled drive which thudded against the cross bar with the keeper beaten.

On a warm sunny afternoon, both teams played positive football, but the marking was questionable when Hector Sam headed the opening goal on 35 minutes, following a short corner routine and a cross by Steve Thomas, who had earlier sent a long-range drive whistling past a post.

Sam almost got a second goal just before the break, but was thwarted by a brilliant tackle by Davies, a few minutes after Howard had been similarly denied at the other end by Steve Roberts.

Enoch Showunmi forced a top class save out of Ingham early in the second half, and on the hour the Town sent on Adrian Forbes for Keith Keane, to gamble with three attackers. But within two minutes a through-ball by Darren Ferguson sent Sam on a run for goal and he escaped Chris Coyne's attentions long enough to toe-poke in his second goal. That should have wrapped up the points for Wrexham, except that the Town surged back from the restart, and smart work by O'Leary down the left wing set up Howard to lash in his 14th goal of the season.

It then needed the Town to move up a gear, but they could not, and in the final minute were indebted to Sol Davis for clearing off the line when Sam thought he had chipped in his hat-trick goal.

Mike Newell said: "I am disappointed at the way the season has fizzled out. I know we were up against it the last month or so, but I still believed that with the spirit we have and the way the young lads have performed we could still sneak into the play-offs.

"Youngsters coming in have been the big plus. But injuries and suspensions have caught up with us, and we have not been able to cope with them. It was always going to be difficult to achieve anything in administration, but when you can't add to your squad...

"We could have beaten Wrexham. We have created chances in the first half and could have put the game beyond their reach, but that has been the case on a number of occasions this season, and is something we have to look at. We have just lacked that ability to put the ball in the net."

Wrexham boss Denis Smith said: "It was a good team performance. Luton bombarded us, but we worked hard and got the result we deserved, and I thought our lads at the back were outstanding."

Match Details

TOWN: Hyldgaard; Foley, Davies, Coyne, Davis; Keane (Forbes 60 mins), Nicholls (Mansell 75 mins), Leary, O'Leary; Howard, Showunmi. Unused subs: Neilson, Hillier, Brill.

BOOKED: Steve Howard, Curtis Davies, Kevin Foley, all for fouls.

WREXHAM: Ingham; Roberts, Lawrence, Spender; Barrett, Crowell (M. Jones 67 mins), Ferguson, Thomas, Edwards; Sam, Llewellyn. Unused subs: Whitfield, Holmes, L. Jones, Armstrong.

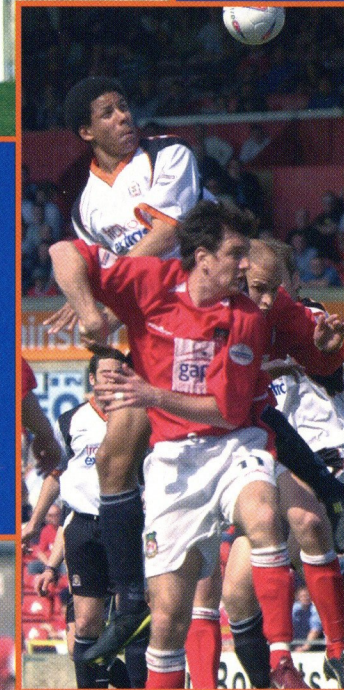
BOOKED: Matt Crowell

REFEREE: Kevin Friend, Leicestershire.

ATTENDANCE: 3,239, Wrexham's lowest league attendance this year, including 424 Town fans.



CLOSE CALL: Steve Howard, who scored for the second consecutive match, was close to a first-half equaliser with this effort, with Steve Roberts doing just enough to deflect the ball wide of goal.



RIGHT: Defender Curtis Davies joins in a Town attack, in competition with Chris Llewellyn and Steve Roberts.

BELOW: Stephen O'Leary, starting a league game for the first time, mixes it with Paul Barrett and Steve Roberts.



Town Teaser

IF YOU know your Town Trivia, you could win a pair of match tickets in our Town Teaser competition. Listen to the PA announcer before kick-off for your chance to have a go. At the Bournemouth match we asked why Cherries defender Stephen Purches gave us a little pleasure at Dean Court earlier in the season, and the answer was that he scored one of our goals.

TODAY'S QUESTION

Who played alongside Emmerson Boyce at centre-half when the Town drew with Sheffield Wednesday at Hillsborough in November?

GARETH OWEN Photography

...working **PR** photography

Tel: 07850 560289
Fax: (01582) 616567
e-mail: gareth@go-photo.co.uk

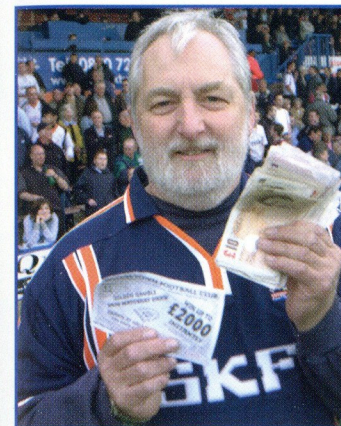


Plastering • Screeding • Drylining
Partitions • Jointing • Cornice
Rendering

MACS Plasterboard Systems Ltd
York House 140 High Town Road Luton Beds LU2 0DJ
Tel: 01582 722060 Fax: 01582 722040
www.macsplasterboards.co.uk

Last Chance To Win A Fistful Of Fivers

FOR the last time this season one supporter will go home richer than he or she was when they watched the game kick-off. Once more we will be dishing out hundreds of pounds in our



Golden Gamble lottery, which has already paid out £17,580 to 26 winners, an average of £676 each.

Our picture shows Paul Wright, of Wildacre Road, Rushden, whose £1 ticket was worth £770 after Justin Deeley picked it out of the drum at the Bristol City game. The winner when we played Bournemouth was Michael Tearle, from Colesbourne Drive, Downhead Park, Milton Keynes. Matt Spring made the draw and Mr Tearle collected £690.

Today's prize, as usual, depends on how many Golden Gamble tickets are sold. Half of your £1 stake goes to the jackpot and the other 50p to club funds, and your support is much appreciated. Golden Gamble tickets at £1 each are on sale in all parts of the ground this afternoon and as usual the draw will be made at half time, with the cash available to the winner immediately.

WE ARE still looking for two winners who have not yet collected their Golden Gamble prizes. The jackpot at the postponed Bournemouth game was £585, won by ticket 29485, and at the Oldham match the prize was £740, won by ticket 36681. If you hold either of those tickets, please contact the commercial department.

WIN THE VALUE OF YOUR HOLIDAY!

travelextras
dedicated to the independent traveller

Make a booking with Hatters Travel to travel between 1st May and 31 July 2004, and we'll give you your money back!

Simply book through Hatters Travel, enjoy your holiday and take a photo whilst you are there! The best photos will be posted on the official Luton Town website and a winner will be selected! It's that easy!

Send your photos in to:
Hatters Travel
Mayday House, Crescent Road
Luton, Bedfordshire
LU2 0AR

Make sure that you enclose your booking reference number.

Remember, with Hatters Travel every booking generates 10% back to YOUR CLUB, ensuring continuing support to the great on and off pitch activities that the Hatters give to you!

Hatters Travel offers all fans great rates for everything but the flight - worldwide!

Car Rental from just £10 per day!

Hotels & accommodation from just £9.50pppn!

UK airport car parking from just £2.50 per day!

Travel Insurance from as little as £1 per day!

VIP airport lounge passes from just £112 per visit!

Terms & Conditions

Standard Travel Extras terms and conditions apply. Photos must be received by 31 July 2004. One winner will be randomly selected.

KIT SPONSORS

Home Kit

	Kevin Nicholls WHOSH
	Chris Coyne Mel Westwood
	Matthew Spring Brian Hall
	David Bayliss Kenilworth Connection
	Alan Neilson LTFC Barmy Army, London Branch
	Paul Hughes Les & Sue Miller
	Steve Howard Sally & Sue
	Lee Mansell Elsie & Danny Clubb
	Brian Stein Danny Clubb
	Marvin Johnson Gill, Julie & Yvonne
	Russell Perrett Graham Bates & Chris Park
	Adrian Forbes CMO Bird Proofing Specialists
	Steve Robinson David Hobbs & Maya Robinson
	Ian Hillier The Regular Rabble
	Paul Underwood Two Madhatters & The Big 'G'
	Dean Brill Luton Insulation Services
	Enoch Showunmi Enoch's Army www.enochsarmy.co.uk

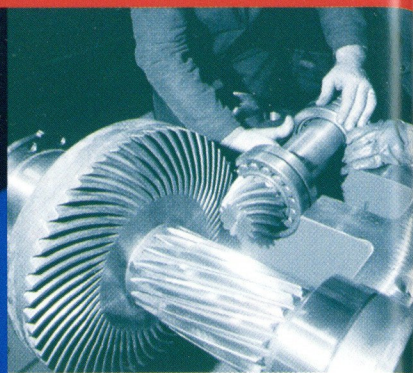
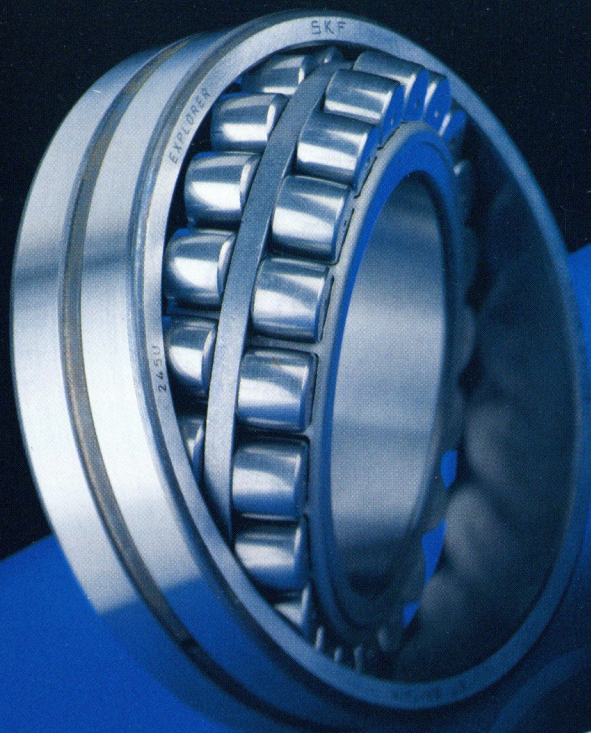
	Emmerson Boyce Elsie Clubb
	Robert Beckwith Danny & Elsie Clubb
	Richard Mansell Danny & Elsie Clubb
	Cherry Newbery WHOSH
	Mike Newell LTFC Supporters Club (MK)
	Ahmet Brkovic G. Owen Ceramic Tiling Ltd
	Mark Ridgway Luton Town Supporters Club
	Sol Davis Personal Security Services
	Mick Harford Les Miller, Miller & Company
	John Moore Ian Smith
	Kevin Foley Sally Mayne & Family
	Matthew Judge The Regular Rabble
	Michael Leary MacNaughton Ltd
	Morten Hyldgaard Scott Simpson
	Keith Keane Mark Norman
	Leon Barnett Available
	Parys Okai Available
	Steven O'Leary Available

Sponsorship Now Available For Home & Away Kits.
Please contact the Commercial Department on 01582 411622 for more details and a list of current players available for sponsorship

Away Kit

	Kevin Nicholls WHOSH
	Chris Coyne Andrew Bates
	Matthew Spring www.locateinbedfordshire.co.uk
	Paul Hughes G. Owen Ceramic Tiling Ltd
	Steve Howard Denise, Nicky & Wendi
	Russell Perrett Mad as a Hatter
	Adrian Forbes Bobbers Travel Club
	Dean Brill Luton Insulation Services
	Steve Robinson Tracy Maddox
	Emmerson Boyce Elsie Clubb
	Mike Newell Nikki & Robert Ginsberg
	Robert Beckwith CMO Bird Proofing Specialists
	Mick Harford T, P, S, J & R Oliver
	Kevin Foley Kelly Maintenance Ltd
	Cherry Newbery WHOSH
	Morten Hyldgaard Mike & Harry Vernon
	Enoch Showunmi Enoch's Army www.enochsarmy.co.uk

	Sol Davis Nicola Guy
	Ahmet Brkovic New Bloke and KTF
	Brian Stein Culsen Travel Ltd
	Keith Keane Mark Norman
	David Bayliss Available
	Alan Neilson Available
	Lee Mansell Available
	Ian Hillier Available
	Paul Underwood Available
	Michael Leary Available
	Matthew Judge Available
	John Moore Available
	Marvin Johnson Available
	Richard Mansell Available
	Steven O'Leary Available
	Parys Okai Available
	Leon Barnett Available



THE MARKET LEADER

SKF Explorer bearings

The spherical roller bearing was invented by SKF and we remain the worldwide technological leader, with the introduction of Explorer.

The best confirmation of the total quality of SKF spherical roller bearings is their dominating market position. Demand for SKF is twice as large as any other bearing manufacturer.

Available in sizes from 20 to 1,800mm bore diameter; together with a sealed version available from 35 to 220mm bore diameter.

Standard features

- Symmetrical rollers
- Special roller profile
- Self-guiding rollers - an SKF patent
- Floating guide ring
- Metallic cages

Application benefits

- Up to three times longer life
- Higher load ratings
- Reduced noise
- Lower maintenance costs
- Increased machine uptime

For a FREE catalogue on Explorer spherical roller bearings please complete and return to: SKF FREEPOST MK1540 Luton LU3 4BR

Name

Company

Address

.....

Postcode

Tel

E-mail

Manager Thanks Fantastic Fans

MIKE Newell this week led the praise for the Town's magnificent supporters who have backed the team all over the country. More than 400 made it to Wrexham on Saturday, for a game which most of us knew in our hearts was unlikely to keep our play-off hopes alive. That away support was more than twice Wrexham had when they came to Kenilworth Road earlier this season, and overall the Town's away support has been 50 per cent better than visiting teams have enjoyed here.

The Town boss said: "The fans have been fantastic. I know if we had still had a chance at Wrexham the place would have been full. They have travelled up and down the country, and we couldn't ask any more of them. I know it has been frustrating for them at times, but they just keep coming and keep backing us, and that has been one of the highlights of the season for me, seeing so many supporters travelling away."

The latest stats for fans on the road at Town matches:

Town Travellers

Stockport	671
Brighton	727
Notts Co	1,215
Plymouth	449
Charlton (CC)	2,407
Oldham	487
Swindon	412
Stevenage (LDV)	1,028
Brentford	1,468
Bournemouth	462
Bristol City	496
Rushden (LDV)	876
Thurrock (FAC)	509
Sheffield Wed	1,462
Rochdale (FAC)	562
Southend (LDV)	216
Blackpool	458
Colchester	941
Bradford	1,620
Rushden	2,319
Wycombe	1,838
Grimsby	249
Peterborough	2,583
Barnsley	723
Port Vale	601
QPR	3,139
Hartlepool	284
Tranmere	573
Wrexham	424
Total:	29,199
Average:	942

Visitors to Luton

Rushden	922
Yeovil (CC)	493
Grimsby	318
Hartlepool	573
Port Vale	344
QPR	1,872
Tranmere	170
Wycombe	414
Peterborough	579
Wrexham	176
Thurrock	239
Chesterfield	168
Barnsley	358
Notts County	363
Stockport	364
Tranmere(FAC)	1,344
Colchester	367
Brighton	1,107
Brentford	579
Blackpool	325
Plymouth	1,638
Oldham	300
Swindon	943
Bristol City	1,543
Bournemouth	432
Total:	15,931
Average:	637

The
Football Emporium



225 High Street, Bromley, Kent

WHETHER IT BE A BIRTHDAY OR CHRISTMAS PRESENT, OR EVEN A GIFT FOR YOURSELF, YOU WILL FIND SOMETHING UNIQUE, INTERESTING, OR EVEN AMUSING, FOR SUPPORTERS OF ALL CLUBS, AT THE FOOTBALL EMPORIUM. OR IF BROMLEY IS A LITTLE FAR, VISIT OUR WEBSITE WWW.PREMIERIMAGE.CO.UK OR CALL FOR A BROCHURE 020 8464 9421

World Cup Merchandise ~ Clothing ~ Original Art Books ~ Photography ~ Autographs ~ Toys & Games Housewares ~ Memorabilia ~ Antiques ~ Ephemera

www.hummingbirdmotors.co.uk

STRIKING BRAND NEW MITSUBISHI'S from only £7995

and a full range of Mitsubishi pre-owned vehicles

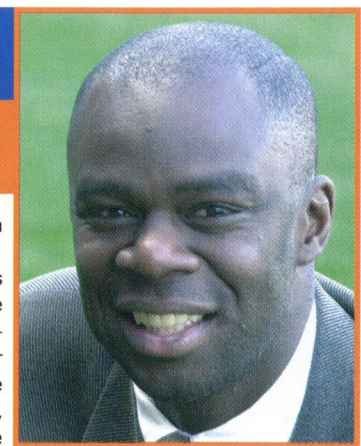
also available

- SALES • SERVICE • PARTS

Good luck Hatters, may your success continue this season

HUMMING BIRD MOTORS
41-45 LONDON RD ST ALBANS HERTS AL1 1LJ
01727 852323
email: hbmotors@btinternet.com
Open: Mon-Fri 8.30-6pm • Sat 8.30-5pm • Sun 10.30-3pm (Demonstrations on Sunday by appointment only)

Youth Soccer: The under-19s



IT WAS a major anti-climax on Saturday when we had to call off the game that will decide the Division Two South championship of the Umbro Isotonic Football League Youth Alliance.

Injuries and first team calls left us unable to field a team against Cheltenham, so our final game of the season was postponed until this morning. By the time you read this we will either be champions, or close runners-up to Portsmouth, who have finished their season.

To take the title we had to avoid defeat, because we kicked off level on points with Pompey, and with the same goal difference. We were top of the table because we had scored more than Portsmouth, but a defeat today would send the championship to

Fratton Park on goal difference. I am always pleased to see our young players get their chance in the first team squad, and for the game at Wrexham Kevin Foley, Keith Keane, Dean Brill, Curtis Davies, Stephen O'Leary, Parys Okai and Leon Barnett were all involved with the league squad. Sean Ridgway was away with the Republic of Ireland youth team, and Zach Barrett, David Deeney, Matthew Judge and Luke Maitland were injured.

Umbro Isotonic FL Youth Alliance Under-19 South Central Conference

August

9 Rushden H 3-2 Judge 2, Andrew
16 Cambridge A 1-2 Barnett
23 Kidderminster H 1-1 Judge

September

6 Cheltenham H 2-0 Mansell, Davies
13 Walsall A 1-4 O'Leary
27 Oxford H 3-3 O'Leary 2, Okai

October

4 Northampton H 3-0 Judge 2, Okai
11 Southend (LC) A 1-0 Barnett
16 Brighton(FAYC1) A 0-2
18 West Brom A 3-1 Freeman, Deeney, Barnett
25 Cheltenham A 4-2 Freeman, Ridgway, Magadah 2

November

1 Walsall H 0-3
15 Oxford A 1-1 Davies
22 Swindon (LC) H 0-4
29 Northampton A 2-0 Andrew, Ridgway

December

6 West Brom H 1-0 Andrew

January

10 Cambridge H 0-1
17 Rushden A 1-1 Green

February

7 Kidderminster A 1-2 Judge
Merit Division S. Section Div II

February

14 Portsmouth A 3-2 Judge, Andrew, Hanley
28 Swansea H 3-0 Judge, Maitland, Okai

March

20 Torquay H 3-1 Judge 2, Okai
27 Oxford Utd H 4-0 Judge, Ridgway, Maitland, OG

April

3 Swindon A 3-2 Andrew 3
17 Brentford A 1-0 Judge

May

1 Cheltenham H

So we had only four players available, and had to postpone the game. Portsmouth beat Swindon 2-0 in their final game of the season to move joint top with us. We are the only team to beat Portsmouth this season, and went into today's game as the only side with a 100 per cent record. So a draw this morning would be good enough in terms of taking the title, but my demand was that we go out and win it and finish on a real high. But whatever happened, the boys have done Luton Town proud, and I have enjoyed working with them.

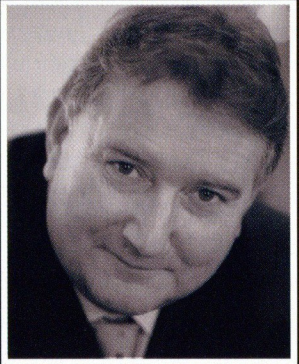
APPEARANCES (as sub in brackets): Mountford 23, Ridgway 23, Deeney 22(2), R. Mansell 22(1), Howell 22, Barnett 20, Okai 16(1), Judge 16(1), Edae 15, Andrew 14(2), Keane 13, Davies 12(1), O'Leary 12, Maitland 10(1), Freeman 6(1), Hanley 5(3), Jones 5, Barrett 4, Magadah 2(8), S. Sinclair 2(7), Brill 2, Godfrey 2, Green 2(1), Ward 1(2), Pendleton 1(2), Tague 1, Beckwith 1, Lambu 1, Wright 0(2), Richardson 0(1), Burrows 0(1), Robinson 0(1), Francis 0(1).

GOALS: Judge 12, Andrew 7, Okai 4, O'Leary 3, Barnett 3, Ridgway 3, Magadah 2, Freeman 2, Davies 2, Maitland 2, Deeney 1, Mansell 1, Green 1, Hanley 1, OG 1.

Marvin Johnson

Merit Division Two South

	P	W	D	L	F	A	GD	Pts
Luton Town	6	6	0	0	17	5	12	18
Portsmouth	7	6	0	1	16	4	12	18
Cheltenham	6	4	1	1	7	3	4	13
Torquay	7	2	1	4	14	11	3	7
Swindon	6	1	2	3	9	12	-3	5
Oxford	6	1	1	4	5	12	-7	4
Brentford	7	1	1	5	7	16	-9	4
Swansea	5	1	0	4	6	18	-12	3



Join Britain's fastest growing trade union. Phone me on:

0800 731 81 51

Paul Kenny
Paul Kenny
Paul Kenny
GMB London Regional Secretary

GMB
BRITAIN'S GENERAL UNION
LONDON

GMB - PROTECTING OVER 80,000 PEOPLE AT WORK IN THE LONDON REGION

new business environments

refurbishment • interiors • design and build

'All In One Solution' providing services from complete commercial property refurbishment design and build to individual office installation

- Design and Build
- Joinery
- Suspended Ceilings
- Painting and Decorating
- Electrical
- Carpets and Flooring
- Partitioning
- Exteriors
- Refurbishment



London
Midlands
South East

SPONSORS OF THE EXECUTIVE BOXES NET

Tel: 01525 405430 / 840426 Fax: 01525 840095 www.cpcontracts.co.uk

CP Contracts, The old Coach House, 6 Woburn Street, Amphill, Bedfordshire MK45 2HP



Find Freedom within.....

no other Health Club offers you more for less...
.....with no need for contracts

Fitness First Luton, Skimpot Lane, Luton, Beds, LU4 0JB
Tel: 01582 560200
www.fitnessfirst.co.uk

Junior Hatters With Happy Harry

Junior Hatters Club is sponsored by:

A.M.A. AUSTIN LIMITED. **AMA**
General Builders • Bespoke Joinery •
Refurbishment Contractors
01582 840088



Glo Construction Plant Hire
01582 665555

WE ENJOYED most of our final away game trip, to Wrexham, although of course the match result was not what we wanted. But our thanks are due to the Welsh club for entertaining us so well. They invited us to send out a mascot and seven-year-old Jay Sharpe represented the Junior Hatters. He is pictured at the Racecourse Ground with Chris Coyne.



Unfortunately Chesterfield are not able to offer us a facility to visit them next week, but there should be plenty of away day treats to look forward to next season.

Part of the fun is a quiz competition run on the coach journeys, and this season's winning team was No Jimmy Jinx - James Usher and his Uncle Pete - who just headed off You're Having a Laugh and Bob Trotters Utd.

We are now preparing for next season, and membership forms and our latest newsletter should be

available in June, with the new Junior Hatters year starting on August 1.

Membership is open to boys and girls aged from 0 to 16 and there are lots of advantages. The annual Open Day (see page 52) is free to all children, but if you want to join any of the club's coaching courses, advertised today on page 24, you get a 10 per cent discount if you are a Junior Hatter. For more information call Junior Hatters headquarters in the Community office, on 01582 391927.



MASCOTS enjoy being close to the action at Kenilworth Road, and our pictures are from our last two home games. The one above was taken at the Bristol City match, when Jay Sharpe was on duty for the Junior Hatters and Joanne Chan was the commercial mascot. The group below were pictured at the Bournemouth game, with Graham Randall representing the Junior Hatters, while Sami Naved was the commercial mascot.

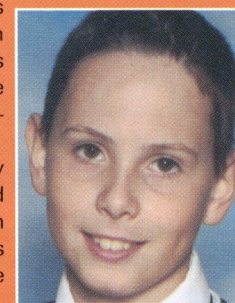
Today's Mascot

TWELVE-year-old James Usher, from Scarborough Avenue, Stevenage, has the honour of being the final Junior Hatters mascot of the season.

He goes to Barclay School, Stevenage, and is a regular at Town games, sitting with his granddad and Uncle Peter in the Kenny End.

James enjoys his football, and also likes using his computer, and his favourite player is Adrian Forbes.

Our ball boys today are Darryl King, from Warden Hill Road, Luton, and Thomas Mackie, of Arundel Road, Luton.



If you would like to join the Junior Hatters call the Football in the Community on 01582 391927

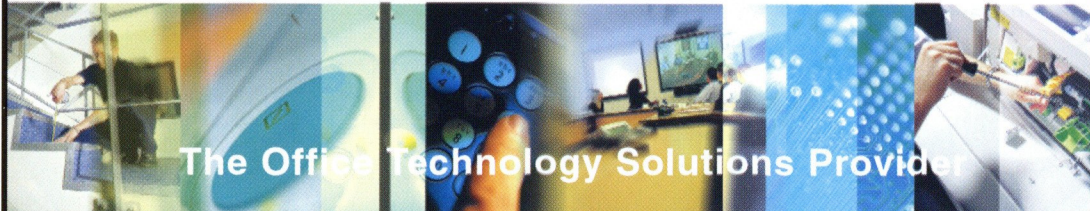


BEDFORDSHIRE AND LUTON'S COMPANY OF THE YEAR

Admiral

GROUP OF COMPANIES

Victory House Chobham Street Luton Beds LU1 3BS Tel: 0870 330 7500



The Office Technology Solutions Provider

- SALES & SERVICE • COPIERS • PRINTERS • FAX • TELEPHONE SYSTEMS • IT & MAC NETWORKS • AUDIO VISUAL • VIDEO CONFERENCING • LEAST COST ROUTING • FACILITIES MANAGEMENT •

Today's customers want instant responses and instant service, in the store, over the internet, over the phone. In this demanding environment any missed opportunity means a lost relationship. That's why customer-driven businesses need more than reliable systems. They also need the assurance of world-class support, which is what Admiral offer and deliver

Admiral - one of the UK's leading office technology solutions providers - offers its customers the resources of a major national group, delivered through local points of contact. By taking an independent view of markets and technologies, and adding our unique insights into the needs of our customers, we offer customised solutions that will improve your business performance.

Call 0870 330 7500

- One of the Industry's fastest growing office technology solutions provider
- Award Winning Customer Service - Business Excellence Awards Winner 2002
- Strong partnerships with the industry's leading manufacturers, ensuring 'best price, best quality' products
- Independent status to ensure a non-biased position to protect clients' interests and deliver value for money
- 97% of existing clients renew their contracts with Admiral
- Tailored billing functionality, compliments the Admiral philosophy of 'holistic account management' - focusing on your needs
- Central offices in Greater London, Home Counties, Midlands and the South East
- Nationwide after sales support and on-going 'through life' support for truly efficient workplaces



solutions for the digital age

www.admiral-group.com

More Honours For The Town Belles

IN A hectic weekend of football Belles added two more league titles to their haul, and reached three league cup finals.

The prolific under-10s finally made sure of their championship with a 3-1 win over Garston Ladies. A brace from Amy Garrett and a Bethany Smith goal clinched the win, and took the team's goals tally for the season to an incredible 189, with just six conceded. They face Spurs in the cup final as they search for the double.

The under-12 Saturday squad wrapped up their title with a blazing 11-0 win over Crawley Green. Kelly Moss, Yasmin Hickling, Sammy Joiner, Danielle Bailey, Kirsty McIntosh and Danielle Carty were on target, and they too have a 100% record, with one match remaining.

In cup action were the Under-12, 13 and 15 squads. In another epic encounter with Cambridge United the under-15s drew 0-0 after extra time, and reached the final by winning the penalty shoot-out 6-5, with Janine Daly converting the vital kick.



CHAMPIONS (2): the under 12s enjoy their moment of success.

The under-12s progressed in a similar manner after a 2-2 draw with Denham United. The goals came from Livi Robinson and a late rescuing penalty from Jade McEntaggart, and it was left to Sian Hall to brilliantly save the last spot kick to take Belles through.

The under-13s triumphed 4-1, also over Denham United. Micky Taylor, Natalie Burchnall and Brittany Murtagh gave Luton a 3-0 half-time lead but United fought back with a goal before the tie was finished off by Kelsey Lamont with a fine header.

This has been another fine season for the Belles, winning honours on and off the field at national, regional and local levels, and any female aged from 6 upwards who is interested in joining Luton Town Belles for next season should keep a look-out in the local press for details of our trials day. Or if you would like to begin training immediately make contact using the details printed below.



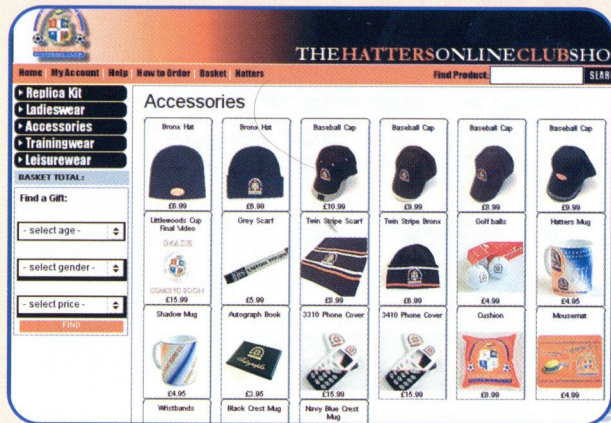
CHAMPIONS (1): The under-10s celebrate after clinching the league title on Saturday.

Dave Baker

LUTON Belles organises football for girls of all ages, from six upwards. If you want to know more, or fancy being involved, e-mail Dave Baker at luton-belles@hotmail.com The Belles also have a website - pay a visit to www.luton-townbelles.com Home matches are played at Stockwood Park athletics stadium, under-10 to senior on Sundays and under-10 and under-12 mini soccer on Saturdays. Fixtures details can be found on the website.

Telephone the Luton Town ticket office on 01582 416976

Now Available In The Club Shop



Log on to www.hattersshop.com for more details and to check out our **NEW** stock that is now available



Home & Away Shirt & Shorts

Shirt
 Childrens YS, YM, YL **£29.99**
 Youths YXL **£34.99**
 Adults S, M, L, XL, XXL **£39.99**

Shorts
 Youths **£15.99**
 Adults **£19.99**

www.hattersshop.com

END OF SEASON SALE

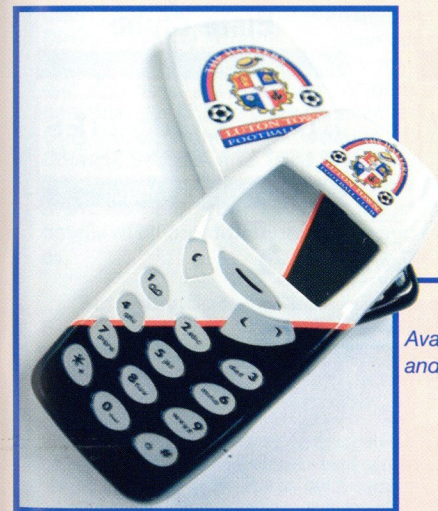
Special offers on selected items

Starts TODAY



Selected Sweat shirts, Rugby Shirts & Jumpers now available for £5 or £10. Kids Coats now £15
 Please visit the Club Shop to see the full range of sale items

NEW ITEMS ALSO AVAILABLE



Available for Nokia 3310 and 3410 mobile phones

Golf Balls £4.99
Pennants £2.95 - £5.95
Mini Kits £4.99
Kit Keyrings £2.50
Mousemats £4.99
Phone Covers £15.99
 and much more...

Visit the Club Shop now to see the full range available

Tel: 01582 411622
 Shop opening hours:

Monday: Closed. Tuesday - Friday: 10am - 4pm
 Saturday Home Matchday: 9am - 5.15pm
 Saturday Away Matchday: 10am - 12noon

Luton Town Executive Box Holders

BILLINGTON & LAWRENCE
Tel: 01582 726100

travelextras
dedicated to the independent traveller
Tel: 01582 545400

G.P. Quorenton
(Ductwork)
Tel: 01582 882561

Graham's
Tel: 01582 731199

Wheeler Construction Co Ltd
Tel: 01707 647508

RED KITE COMMERCIAL SERVICES **Buttle's**
Everything for Busy Builders
Tel: 01525 211441 Tel: 01727 844558

Rob Stringer of Epic Records

VAUXHALL
Tel: 01582 721122

Marandon Engineering Ltd
Tel: 01582 604534

Genesis Homes
Tel: 01280 821300

J.J. KELLY & SONS LTD
Tel: 01582 455406

Admiral Group of Companies
Company of the year
www.admiral-group.com
Tel: 01582 653333

GMB KEEP PUBLIC SERVICES PUBLIC
Tel: 020 8202 8272

Allsop Building
Tel: 01582 458000

ISLEBEST
Tel: 01582 492949

Freelance Environmental Services Ltd
01582 450512

CASINO
01582 591148

Butterfields
01582 491100

Luton Building
01582 730633

ANC EXPRESS

Mr Mick Connolly

SKF
Tel: 01582 490049

Danny & Elsie Clubb

HOME COUNTIES Insurance Services Ltd
Tel: 01525 719955

Bargad (Electrical) Ltd. and N.E.D.
01234 845930

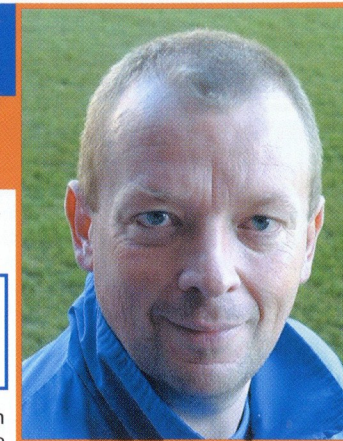
Hi-Tech Flooring LIMITED
Tel: 01582 670303

Focus On: HOME COUNTIES Insurance Services Ltd

As the tenant of box 10, Home Counties Insurance Services Ltd was formed in 1990 by Cliff Amos, as a General Insurance Intermediary, who dealt with all classes of insurance, but with a bias towards commercial client needs. Subsequent growth and the acquisition of Whites Insurance in January 2000 has broadened their portfolio to include personal lines insurance. As Home Counties Insurance, Cliff together with co-directors Graeme Cole and Steve White, all lifelong fans, with a collective 70 years combined experience, can offer a comprehensive range of insurance services including motor, household, commercial, and Lloyds, for all types of business insurance. Please contact via info@homecountiesinsurance.com or visit their website at www.homecountiesinsurance.com



LTFC in the Community



working in conjunction with Bedfordshire Football Association and Luton Borough Council



AT THE end of another season we're hoping this Summer will be a little less eventful than the last.

For the Community Department, I am delighted with the progress we have made over the last year. Our courses now attract twice and often three times the number of children we had this time a year ago, and I feel this is due to the quality of the sessions we put on, and the quality of the coaching staff we employ. Our recent acquisition of the Holiday Course Charter Standard endorses this.

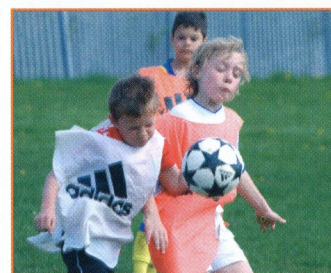
On a personal note I would like to thank Steve Patterson for all his support, which is often above and beyond the call of duty.

In addition I would like to put on record my gratitude to the people whose help has made the last year so successful: to the players and everybody involved at the club thank you. In particular I would like to thank Cherry Newbery and Fraser Foster, my PFA Regional Director, whose support has been constant. Most of all I would like to show my appreciation to our sponsors and partners who make everything possible - G IS Windows, Specsavers, AMA Austin, GLO Hire, Vauxhall Aftersales, Luton Borough Council, Beds FA and Trust in Luton.

The summer will be a very busy time for this department, so keep your eyes on the club website for details of all our different holiday and evening courses.

Saturday Soccer Clubs, Season 2004/5

Book now for a great day out with Luton Town Football in the Community which might also give you the opportunity to play in a short game on the Kenilworth Road pitch, depending on the weather.



For each Saturday home game in The Football League next season, the Football and Community Department will be running a Saturday Soccer Club.

These are open to children of all ages, and will occupy them between 10am and 5pm. Schools, Football Clubs, children looking for an unusual way to celebrate their birthday or perhaps just looking for a fun day out might want to participate. Places will be allocated on a first come, first served basis.

The first group to enrol will have the choice of all the league fixtures, and with the second group taking second choice and so on. Should the Luton Town fixture of your chosen day be postponed, your match ticket will be valid for the re-scheduled date.

The soccer clubs programme will be: 10.15am - 12.15pm: Professional soccer coaching on the state of the art Pro Zone at Vauxhall.

12.30 - 1.30: Buffet Lunch in the Trophy Room at Vauxhall and a mini-quiz for the children.

2pm: Arrive at Kenilworth Road to watch the Town's game.

The coaching part of the package will be limited to 20 children due to the size of the facility.

The cost for coaching, buffet and match will be £20 per child. A parent or guardian can enjoy the buffet and match for £15, and up to four additional places for party organisers will also be available at £15 each. Any additional match tickets required will have to be purchased.

Thanks for all you support over the season, have a great summer and hopefully we will see you at some of our activities.

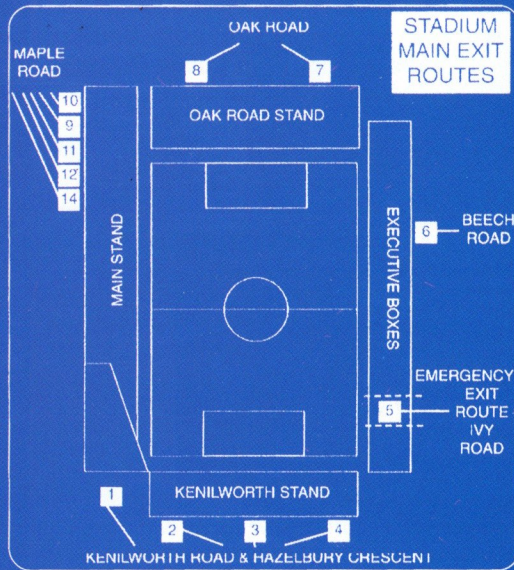


EVACUATION PROCEDURE

IN THE event of any emergency in the stadium, Luton Town FC and the emergency services have agreed on an evacuation procedure which is designed to ensure the safe and controlled evacuation of the crowd, and to ensure their safe dispersal from the area, to allow the emergency services to carry out their tasks.

In the event of evacuation from all or part of the stadium, you will receive instructions over the public address system on how you should leave. In an evacuation of the main stand you will be instructed to use the pitch. Stewards will direct you to the nearest exit. It may be that your normal exit route will not be available. On leaving the stadium, you will find some roads closed to pedestrians, to enable swift and unobstructed access for the emergency services. Please leave the area of the ground as quickly as possible, by the route directed. Your co-operation will be most appreciated.

Geoff Lovell, Safety Manager.



Nationwide Division 2 Statistics

Margins of Victory

Games WON by	1 gl	2 gls	3 gls	4 gls	5+ gls
Plymouth	7	12	2	1	2
Bristol City	15	3	1	1	1
Hartlepool	10	7	1	1	1
QPR	9	3	6	1	1
Brighton	8	7	4	1	0
Swindon	8	9	2	1	0
Port Vale	13	2	3	1	0
Bournemouth	13	1	2	0	1
Wrexham	12	3	1	1	0
Tranmere	11	1	2	2	0
Blackpool	10	3	2	1	0
Colchester	11	4	1	0	0
Luton	9	6	1	0	0
Barnsley	9	4	1	0	0
Brentford	10	2	0	1	0
Rushden	6	5	1	1	0
Sheff Wed	10	2	1	0	0
Grimsby	5	5	0	1	1
Oldham	5	2	3	0	1
Peterborough	5	3	2	0	1
Chesterfield	6	4	1	0	0
Stockport	7	3	1	0	0
Notts County	5	2	3	0	0
Wycombe	3	1	2	0	0

Comebacks

WON from	-3	-2	-1	Total
Port Vale	0	0	5	5
Blackpool	0	1	3	4
Bournemouth	0	0	4	4
Hartlepool	0	1	2	3
Luton	0	1	2	3
Chesterfield	0	0	3	3
Plymouth	0	0	3	3
Rushden	0	0	3	3
Wrexham	0	0	3	3

Scoring Chances per Game

No. of Shots per game	ON Target	OFF Target
Plymouth	7.84	6.50
Bristol City	6.64	4.84
Notts County	6.00	5.23
Swindon	6.14	5.02
QPR	6.16	4.95
Colchester	5.41	5.43
Bournemouth	5.34	5.36
Peterborough	5.68	5.00
Luton	6.02	4.64
Oldham	5.39	5.18
Hartlepool	5.93	4.55
Barnsley	5.77	4.48
Brighton	5.45	4.70
Blackpool	5.91	4.14
Wrexham	5.66	4.34
Port Vale	5.27	4.66
Grimsby	5.32	4.48
Rushden	5.80	3.95
Tranmere	5.39	4.32
Stockport	5.05	4.55
Sheff Wed	5.02	4.39
Chesterfield	4.77	4.34
Brentford	4.66	3.80
Wycombe	4.48	3.48

Throwaways

LOST from	+3	+2	+1	Total
Port Vale	0	0	6	6
Grimsby	0	0	4	4
Luton	0	0	4	4
Oldham	0	0	4	4
Peterborough	0	1	2	3
Wycombe	0	1	2	3
Brentford	0	0	3	3
QPR	0	0	3	3
Rushden	0	0	3	3

Scorer's Points Gained & Scoring Run

Player	Gls	Gls/Gm	Pts	Run 1st Gl
Leon Knight	25	0.60	22	3
Scott Taylor	16	0.52	17	3
Tommy Mooney	19	0.43	16	4
Steve McPhee	21	0.48	15	4
Wayne Andrews	12	0.31	15	4
Lee Peacock	14	0.36	14	3
Steve Howard	13	0.39	14	3
Eugene Dadi	15	0.41	12	2
Kevin Betsy	10	0.23	12	1
Guylain Ndumbu-Nsungu	9	0.45	12	2
Paul Heffernan	20	0.53	11	3
Kevin Gallen	16	0.37	11	3
Glynn Hurst	12	0.44	11	3
Rodney Jack	12	0.28	11	2

eg if player scores the goal in a 1-0 win, the goal is worth 2 pts as score would have been 0-0, or if 2 goals in 2-1 win, goals worth 3 pts. Also shown is goals per game figure and number of games player scored 1st goal

Volleyed Shots

Player	Club	Goals
Heffernan	Notts County	6
Feeney	Bournemouth	5
Knight	Brighton	5
Hayter	Bournemouth	4
Sheron	Blackpool	4
McPhee	Port Vale	4
Jack	Rushden	4
Mooney	Swindon	4

Scored in last 15 mins

FOR	76-90	Total	%
Bristol City	19	55	35
Plymouth	24	80	30
Swindon	21	75	28
Tranmere	15	56	27
QPR	19	76	25
Chesterfield	12	48	25
Peterborough	13	53	25
Notts County	12	49	24
Rushden	14	60	23
Bournemouth	13	56	23
Grimsby	12	53	23

Against	76-90	Total	%
Brentford	27	68	40
QPR	14	44	32
Peterborough	16	56	29
Brighton	12	43	28
Sheff Wed	16	58	28
Chesterfield	18	69	26
Luton	15	63	24

Fouls & Offsides per game

FOULS	Games	Fouls	Average
QPR	44	713	16.20
Notts County	44	609	13.84
Luton	44	602	13.68
Tranmere	44	596	13.55
Barnsley	44	585	13.30
Grimsby	44	582	13.23
Brighton	44	577	13.11
Brentford	44	575	13.07
Plymouth	44	572	13.00
Colchester	44	568	12.91
Wycombe	44	567	12.89

OFFSIDES	Games	Offsides	Average
Luton	44	209	4.75
Chesterfield	44	185	4.20
Rushden	44	185	4.20
Hartlepool	44	182	4.14
Oldham	44	182	4.14
Peterborough	44	179	4.07
Bristol City	44	174	3.95
Grimsby	44	166	3.77
Tranmere	44	164	3.73
Blackpool	44	159	3.61
Wrexham	44	158	3.59

Average is number of Fouls/Offsides per game. Clubs are ordered by highest number of Fouls/Offsides per game.

Goals from Close Range

Player	Club	Goals
Brighton	Knight	8
Port Vale	McPhee	8
Plymouth	Coughlan	7
Port Vale	Paynter	7
Swindon	Parkin	7
Tranmere	Jones	7
Bournemouth	Hayter	6
Blackpool	Taylor	6
Hartlepool	Williams E	6
Plymouth	Friio	6
QPR	Gallen	6
Rushden	Lowe	6
Stockport	Barlow	6

Late Goals Scored

Player	Club	Goals
Hayter	Bournemouth	5
Mooney	Swindon	5
Parkin	Swindon	5
Heffernan	Notts County	4
Friio	Plymouth	4
Evans	Plymouth	4
Taylor	Tranmere	4

Set Piece Goals

Scored from	Corner	Free Kick	Total
Plymouth	13	13	26
Hartlepool	9	11	20
Luton	8	12	20
Swindon	6	13	19
Stockport	5	13	18
Brentford	10	7	17
Bristol City	12	4	16
Port Vale	7	9	16
QPR	5	11	16
Rushden	8	8	16

Conceded from	Corner	Free Kick	Total
Brentford	13	8	21
Chesterfield	11	10	21
Wycombe	13	8	21
Stockport	6	14	20
Bristol City	6	13	19
Bournemouth	8	9	17
Grimsby	6	10	16

Football's Future

Cash in on our support for:

- pitches
- social inclusion projects
- changing rooms
- education schemes
- kit and equipment
- pavilions

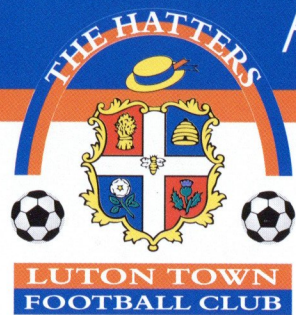
Football Foundation
football's biggest supporter

www.footballfoundation.org.uk Helpline 0800 0277766

EVERY CLUB, EVERY GAME
...FROM THE PREMIERSHIP
TO THE CONFERENCE

CELEBRATE WITH US!

At Luton Town's ever-popular



OPEN DAY

At Kenilworth Road Sunday May 9 2004, 12noon – 4pm

Admission: Adults £1,
Children & Senior Citizens FREE

Plans are now being finalised for our next open day, with a host of entertainment and activities on offer:



Stadium Tours
Club Shop sale offers
Penalty Shoot-out
Face Painting
Refreshments
Community Football Coaching
Golden Gamble for adults



A detailed timetable will be confirmed shortly – see the club's official website www.lutontown.co.uk for details.

Players, Management and Happy Harry all in attendance

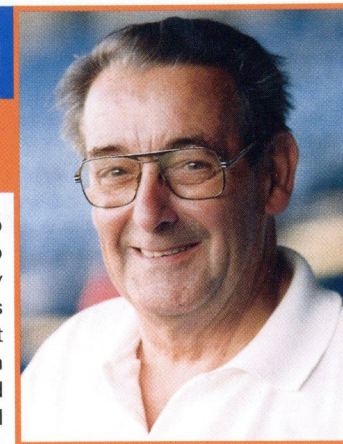
Parking available in Hazelbury Crescent car park

Entrance to the ground: Press gate, top of Kenilworth Road



"We look forward to welcoming all our supporters to the Open Day. The support over the past season has been fantastic, and the day will give supporters, players and staff the opportunity to celebrate the season." – **Chief Executive and Club Secretary Cherry Newbery.**

Around The Town - By The Editor



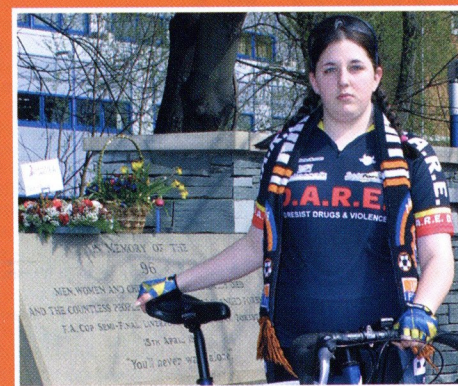
THE FANS say farewell to a remarkable season tomorrow evening, gathering with great hope for the future of Luton Town after being in the depths of despair before the campaign kicked off. The sell-out annual presentation night organised by Luton Town Supporters Club will, as usual, reserve its loudest cheers for the manager, coaches and players who have done most to keep the Hatters remarkably close to the promotion chase. Individuals will be honoured – player of the year, goal of the season and so on – but for most of us the season that ends at Chesterfield next week will be remembered mainly for the off-the-field troubles that have been by far our toughest opponent. Some of us are old enough to have seen it before, and are therefore confident that Luton Town will still be in business long after we are gone. And for supporters of a certain age, tomorrow's celebration will be all the more pleasant as it brings back into the Luton Town family one of the greatest players the club has ever had, Bruce Rioch. The guest of honour started his career as a schoolboy with the Town, and became an apprentice 41 years ago. His explosive shooting power from midfield sent Town fans into raptures and left opposing goalkeepers shell-shocked, and he was a vital member of the squad that kicked off the Town's revival after they had sunk into football's basement, then called the Fourth Division. The championship in 1968 was the start of the

journey back to the top, later to be completed by David Pleat's 1982 side, but long before then Luton Town had hit financial troubles (surprise, surprise!) and Bruce Rioch was sold to Aston Villa for £110,000, a record for a Third Division deal. Later, Derby, twice, and Everton were to appreciate his non-stop skill and the peak came for the Stopsley lad who had a Scottish father in 1978 when he skippered Scotland in the Mexico World Cup. He won 24 caps, and his Kenilworth Road stats were 167 appearances and 52 goals. We hope he enjoys his return to Luton tomorrow. We watched his career after his Luton days with a mixture of pride and envy, and perhaps one or two more are about to go out of Kenilworth Road in the next few weeks, with or without the manager's blessing. If so, I will wish them well, and thank them most sincerely for their efforts this season.

Brian Swain

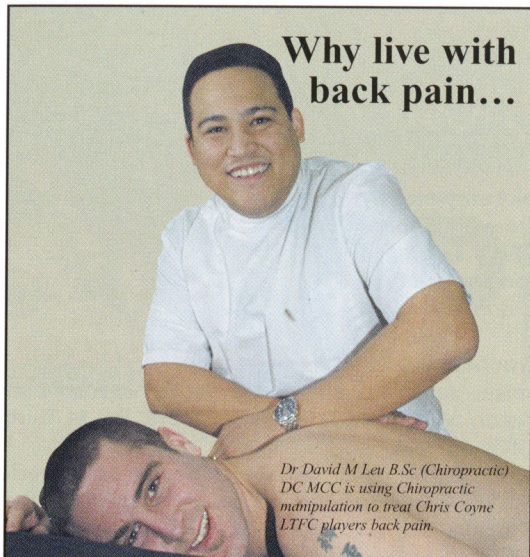
Fan On Memorial Ride

THE almost unbelievable eruption of joy at SIXTEEN-year-old Nikki Forman, a Town supporter who travels from her home to Sleaford, Lincs, to every home game, and to some away matches as well,



represented the club in a poignant reminder of some things that are more important than football. She is a member of a cycle racing team and took part in the Hillsborough Memorial Ride, which went from Nottingham to Sheffield and then on to Liverpool. The team stopped at the memorial at Hillsborough and laid a wreath in memory of those who died 15 years ago, and thanks to sponsorships when they got to Liverpool they were able to hand over a cheque for £1,500 to the Alder Hey Children's Hospital. Nikki reports that parts of the ride were hard going, but she thoroughly enjoyed it. Her goal) turned out to be priceless, because it helped set the scene for the great Maine Road showdown delight a month later.

You can email the programme editor at brian.swain@btinternet.com



Why live with back pain...

Dr David M Leu B.Sc (Chiropractic) DC MCC is using Chiropractic manipulation to treat Chris Coyne LTFC players back pain.

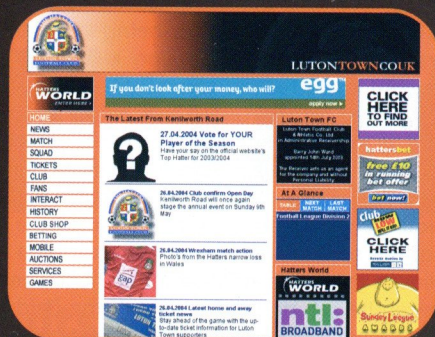
Major professional teams are benefiting from Chiropractic treatment for their sporting injuries



BACK TO BACK Chiropractic Clinic
Member of the British Chiropractic Association
Registered with the General Chiropractic Council

To make an appointment: **01582 391000**
268 Crawley Green Rd, Stopsley, Luton, Bedfordshire, LU2 0SJ

The Official Luton Town Website
www.lutontown.co.uk



For all the latest news on Luton Town. Get online at www.lutontown.co.uk

Wednesday Fail To Justify The Odds

BOTH sides are playing for pride and hoping to end poor runs this afternoon. While the Town's play-off hopes vanished as they managed just one win in their last ten games, Sheffield Wednesday have not been close to the top six since late October, and have not won for five games.

Relegated last season, they were the bookies' favourites to bounce back, but despite huge support at home and away the team has struggled after a decent start to the season. Wednesday were second in mid-September, with a defeat at Wrexham their only reverse in the first seven games.

But they were never again able to find the same consistency, and after slipping down to 18th place in December have been hovering around mid-table ever since.

QPR and Sheffield Wednesday kicked off as 4-1 joint favourites for the title with William Hill. Plymouth, now crowned champions, were expected to be mid-table at 20-1, with the Town's odds 28-1. Bristol City, now contesting the one remaining automatic promotion place with QPR, were 11-2 shots, which

meant they were expected to finish third. The odds at the other end of the table forecast that Chesterfield, at 100-1, would be bottom, and just above them, at 50-1, would be Brentford, Colchester, and Wycombe. In the event, Wycombe and Notts County (40-1) are already down, with the two other relegation places likely to come from Grimsby, 14-1 in August, Chesterfield, Rushden (16-1) and Brentford.

The Town could yet finish in seventh place in the table, which sounds good when we remember what went on last summer, while Sheffield Wednesday cannot even make the top ten. Their away record is six wins, five draws and 11 defeats. The victories were at Swindon, Peterborough and Wycombe, in the first three weeks of the season, and at Brentford in October, Wrexham in January and Rushden in February. The draws were at Hartlepool, Bristol City, Barnsley, Tranmere and Notts County. Defeats came at Bournemouth, Brighton, Colchester, QPR, Oldham, Port Vale, Plymouth, Chesterfield, Stockport, Grimsby and Blackpool.

Wednesday's last six results: Brighton H 2-1, Grimsby A 0-2, Brentford H 1-1, Notts County A 0-0, Blackpool A 1-4 and Colchester H 0-1.

Nationwide League Division Two

	HOME					AWAY					GD	Pts	
	P	W	D	L	F	A	W	D	L	F			A
(C) Plymouth	44	16	5	1	50	13	8	7	7	30	27	40	84
QPR	44	15	7	0	46	12	5	10	7	30	32	32	77
Bristol City	44	14	6	2	32	11	7	7	8	23	25	19	76
Swindon	44	12	6	4	40	22	8	6	8	35	34	19	72
Hartlepool	44	10	8	4	38	21	10	4	8	36	36	17	72
Brighton	44	16	4	2	38	11	4	7	11	23	32	18	71
Port Vale	44	14	6	2	43	27	5	4	13	26	35	7	67
Bournemouth	44	11	7	4	35	25	6	7	9	21	25	6	65
Tranmere	44	12	7	3	34	17	4	9	9	22	36	3	64
Luton Town	44	13	6	3	41	25	3	9	10	25	38	3	63
Colchester	44	10	8	4	31	23	6	5	11	19	31	-4	61
Blackpool	44	9	5	8	30	24	7	6	9	26	35	-3	59
Barnsley	44	7	12	3	25	18	7	5	10	26	37	-4	59
Wrexham	44	9	6	7	27	19	8	2	12	22	38	-8	59
Oldham	44	8	8	6	35	25	3	12	7	28	34	4	53
Sheff Wed	44	7	9	6	24	23	6	5	11	21	35	-13	53
Stockport	44	6	8	8	29	33	5	10	7	31	34	-7	51
Brentford	44	8	5	9	33	38	5	6	11	18	30	-17	50
Peterborough	44	5	7	10	35	32	6	8	8	18	24	-3	48
Rushden	44	9	5	8	37	32	4	4	14	23	38	-10	48
Chesterfield	44	8	7	7	33	31	3	8	11	15	38	-21	48
Grimsby	44	9	5	8	35	26	3	6	13	18	53	-26	47
(R) Notts County	44	6	8	8	31	26	4	3	15	18	50	-27	41
(R) Wycombe	44	5	6	11	30	38	1	11	10	18	35	-25	35

Today's Other Second Division fixtures

- Blackpool v Peterborough**
- Bournemouth v Stockport**
- Brighton v Notts County**
- Colchester v Rushden**
- Grimsby v Brentford**
- Hartlepool v Plymouth**
- Oldham v Chesterfield**
- Port Vale v Tranmere**
- QPR v Swindon**
- Wycombe v Wrexham**
- Tomorrow**
- Barnsley v Bristol City**

Eagle IPA - Proud to sponsor Luton Town F.C.



Your 'local beer' supporting your local Football Club
Now available at the Bar!

Today's Squads



3(0)

Manager: Mike Newell

1	Morten HYLDGAARD	<input checked="" type="checkbox"/>
3	Alan NEILSON	<input checked="" type="checkbox"/>
4	Matthew SPRING	<input type="checkbox"/>
5	Russell PERRETT	<input type="checkbox"/>
6	Paul UNDERWOOD	<input type="checkbox"/>
7	Adrian FORBES	<input checked="" type="checkbox"/>
8	Kevin NICHOLLS	<input checked="" type="checkbox"/>
11	Steve ROBINSON	<input checked="" type="checkbox"/>
12	Chris COYNE	<input checked="" type="checkbox"/>
16	Enoch SHOWUNMI	<input checked="" type="checkbox"/>
17	Emmerson BOYCE	<input checked="" type="checkbox"/>
18	Ahmet BRKOVIC	<input type="checkbox"/>
19	Steve HOWARD	<input checked="" type="checkbox"/>
21	Paul HUGHES	<input type="checkbox"/>
22	David BAYLISS	<input type="checkbox"/>
23	Ian HILLIER	<input type="checkbox"/>
24	Sol DAVIS	<input checked="" type="checkbox"/>
27	Peter HOLMES	<input type="checkbox"/>
31	Curtis DAVIES	<input checked="" type="checkbox"/>
32	Lee MANSELL	<input checked="" type="checkbox"/>
33	Dean BRILL	<input checked="" type="checkbox"/>
37	Keith KEANE	<input type="checkbox"/>
38	Michael LEARY	<input checked="" type="checkbox"/>
39	Stephen O'LEARY	<input checked="" type="checkbox"/>
41	Kevin FOLEY	<input checked="" type="checkbox"/>
43	Matthew JUDGE	<input type="checkbox"/>
44	Parys OKAI	<input type="checkbox"/>
45	Leon BARNETT	<input type="checkbox"/>
47	Rob BECKWITH	<input type="checkbox"/>



2(2)

Manager: Chris Turner

1	Kevin PRESSMAN	<input checked="" type="checkbox"/>
2	Derek GEARY	<input checked="" type="checkbox"/>
3	Brian BARRY-MURPHY	<input checked="" type="checkbox"/>
4	Graeme LEE	<input type="checkbox"/>
5	Dean SMITH	<input checked="" type="checkbox"/>
6	Leigh BROMBY	<input type="checkbox"/>
7	Alan QUINN	<input type="checkbox"/>
8	Paul MCLAREN	<input checked="" type="checkbox"/>
9	Kim OLSEN	<input checked="" type="checkbox"/>
11	Paul SMITH	<input checked="" type="checkbox"/>
12	Steven HASLAM	<input type="checkbox"/>
13	Chris STRINGER	<input type="checkbox"/>
14	Matt HAMSHAW	<input type="checkbox"/>
15	Adam CHAMBERS	<input checked="" type="checkbox"/>
16	Craig ARMSTRONG	<input type="checkbox"/>
17	Richard EVANS	<input type="checkbox"/>
18	Jon SHAW	<input checked="" type="checkbox"/>
19	Richard WOOD	<input checked="" type="checkbox"/>
20	Jon BESWETHERICK	<input type="checkbox"/>
21	Ola TIDMAN	<input checked="" type="checkbox"/>
22	Robbie MUSTOE	<input type="checkbox"/>
23	Terry COOKE	<input checked="" type="checkbox"/>
24	Gylain NDUMBU-NSUNGU	<input type="checkbox"/>
28	Chris CARR	<input checked="" type="checkbox"/>
31	Adam PROUDLOCK	<input type="checkbox"/>
32	Robert POULTER	<input type="checkbox"/>
33	Lewis MCMAHON	<input checked="" type="checkbox"/>
34	Mark ROBINS	<input checked="" type="checkbox"/>
35	Chris BRUNT	<input checked="" type="checkbox"/>

Today's Officials

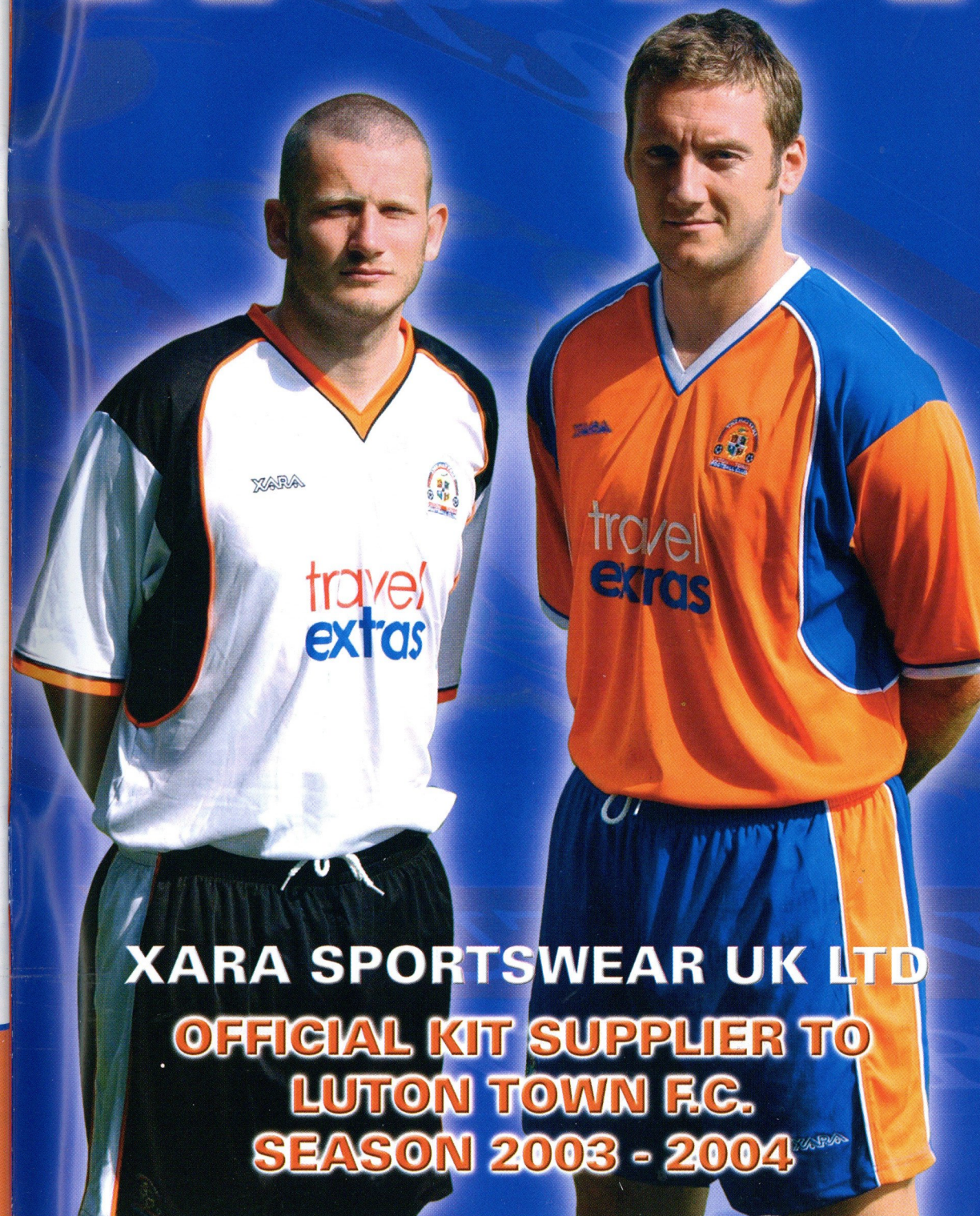
Referee: Dermot Gallagher, Oxfordshire

Assistants: Andy Woolmer, Northamptonshire (red and yellow flag);

Paul Barnes, Peterborough (yellow flag)

Fourth official: Ray Olivier, West Midlands

XARA



XARA SPORTSWEAR UK LTD

**OFFICIAL KIT SUPPLIER TO
LUTON TOWN F.C.**

SEASON 2003 - 2004

Hatters Travel

From

£10
per day!



❖ car rentals

From

£9.50
pppn!



❖ hotels & accommodation

From

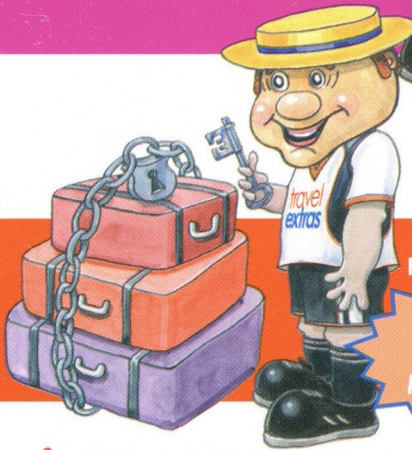
£12
per visit!



❖ airport lounges

From

£1
per day!



❖ travel insurance

From

£2.99
per day!



❖ airport parking

book **anything** with **Hatters Travel** and **10%** goes back to the **Club!**

Support your club and support your team!

08707 27 37 27
travelextras.com/lffc

in association with

travelextras ❖

dedicated to the independent traveller