

Official Matchday Programme of Rochdale AFC £2.50

# THE VOICE OF SPORTSMAN



Official Match Sponsor



NATIONAL  
GEOGRAPHIC



Coca-Cola  
Football League Two



Inside  
**Adam Le Fondre** - FA Cup Hat-Trick Hero!  
Action from Notts County & Brentford

**MMC**  
estates

Official Club  
Sponsor

**Rochdale v Luton Town**  
Saturday 22nd November 2008 • Kick Off: 3.00pm

# REVITALISING COMMUNITIES

**MMC**  
estates

OFFICIAL SPONSOR



LAND REGENERATION INDUSTRIAL DEVELOPMENTS  
COMMERCIAL DEVELOPMENTS RESIDENTIAL DEVELOPMENTS

**MMC ESTATES**

The Quadrant Green Lane Heywood OL10 1NG

Tel 01706 369969 Fax 01706 364 279

[www.MMCestates.com](http://www.MMCestates.com)

Land Regeneration and Property Development

## Centenary Season Memories

With striker issues affecting his squad, Dale manager Keith Hill dipped into the loan market 12 months ago this week to bring former Spotland favourite Lee McEville back to the club.

The script was clearly written for 'Evil' who hustled his way through in the 67th minute to score the only

goal of the game against a stubborn Mansfield side, before racing to the Dale bench to celebrate with assistant manager Dave Flitcroft.

Nobody seemed to mind the pouring rain, although the ball boy had at least made the sensible decision to protect his head from the showers.

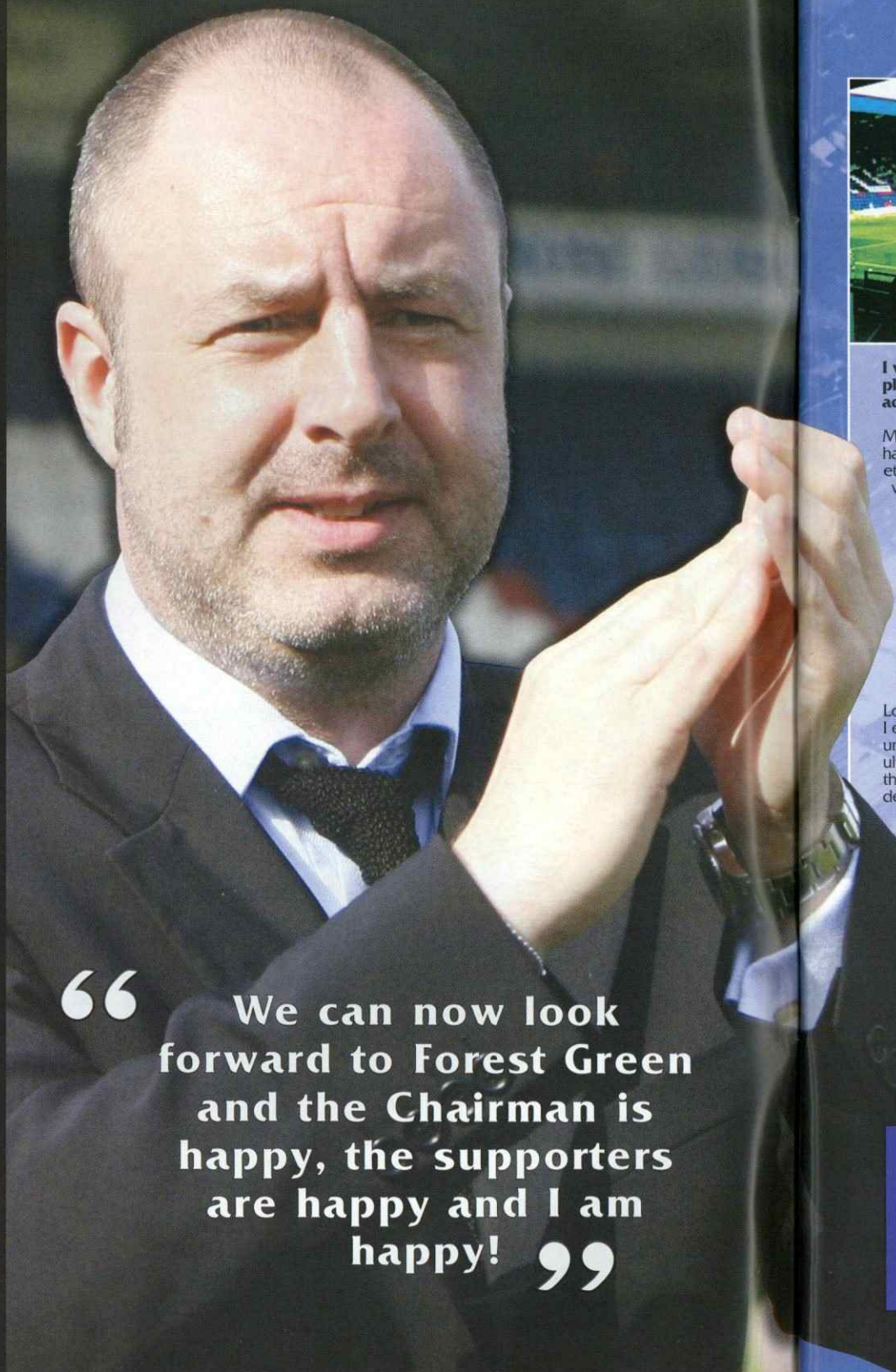


Rochdale AFC  
 Motland Stadium  
 Rochdale  
 Lancashire  
 OL11 5DS

Tel: 0844 826 1907  
 Fax: 01706 648466

Commercial  
 Department  
 Tel: 0844 826 1907  
 (option 3)  
 www.rochdaleafc.co.uk

President: Mrs L Stoney  
 Chairman: Chris Dunphy  
 Directors: Jim Marsh, Graham  
 Milson, Andrew Kelly,  
 Bryn MacLeod  
 Associate Director:  
 Hazelhurst  
 Vice-Presidents:  
 Brianley, Len Hilton, David  
 Patrick, Graham Morris  
 Chief Executive/Secretary:  
 Ian Garlick  
 Manager: Keith Hill  
 Assistant Manager:  
 David Flitcroft  
 Physiotherapist: Andy Thorpe  
 Assistant Physiotherapist:  
 Ian Lucas  
 Conditioning Coach:  
 Gary Proctor  
 Sports Scientist:  
 Marcus Svensson  
 Chief Scout:  
 Ian Forrest  
 Goalkeeping Coach: Ian Wilcox  
 Head Of Youth Development  
 Youth Team Coach:  
 Chris Beech  
 Centre Of Excellence  
 Manager: Tony Ellis  
 Youth Development Officer:  
 Ian McLaren  
 Administrator  
 Youth Development  
 Administration Assistants:  
 Katy Spence, Sarah Ashton  
 Accounts Manager:  
 Nicola Toolan  
 Administration Assistant:  
 Nicola Buckley  
 Business Development  
 Manager: Iain Johnstone  
 Projects Manager:  
 Stuart Ashworth  
 Series Manager:  
 Peter Woodhouse  
 Series Assistants:  
 David Lord, Bill Hallard,  
 Michael Orr  
 Media Officer: Mike Brookes  
 Commercial Administration  
 Assistant: Jan Marsh  
 Football In The Community  
 Officer: Keith Hicks  
 Manager: Jack Northover  
 Groundsmen: Phil Collinson,  
 Peter Makin, Tony Chew  
 Community Centre Manager:  
 Paul Andrews



“ We can now look forward to Forest Green and the Chairman is happy, the supporters are happy and I am happy! ”

## A Word From The Manager

# Keith Hill



**I would like to welcome Mick Harford, his staff, players and supporters as we both get back to league action after our midweek cup games.**

Mick and Dave Flitcroft are very good mates and they have been on quite a few end-of-season tours to Spain, etc. He is a good manager and certainly has his hands full with the situation he inherited at Luton, but they have very good football players.

If you look at their squad, a lot of them have played in the Championship and League One and we have to make sure we are aware they are coming here looking to win the football match. I saw the goals that they scored at the weekend and we know what type of side they are going to be and the threat they possess. We can obviously be confident, but we also need to make sure we are fully recovered after playing 120 minutes on Tuesday evening.

Looking back on Tuesday night's FA Cup win over Barnet, I enjoyed every aspect of it to be honest. It was unfortunate we made the mistakes that we did to ultimately aid Barnet's game plan. We had to change things at half-time, but we did it knowing we could definitely get back into the tie. Mistakes can sometimes cloud your judgement and you do react to them, but performance-wise there wasn't too much wrong.

It was unfortunate that we had to sacrifice Mark Jones at half-time to get Lee Thorpe on. We went a little bit more direct than we would normally do, but played with a real tempo, with Jon Shaw and Thorpe together, Alfie in between them and Will Buckley given a free role. We played some good football with that directness and to be honest, we deserved to get on terms. With the players we have and the fitness

levels we possess, I fully expected us to win it in extra-time. Adam Le Fondre is claiming a hat-trick and he was superb on the night. He is a very good player and we do have a very good squad, believe it or not.

We can now look forward to the next round at Forest Green and the Chairman is happy with the win, the supporters are happy and I am happy. We showed a lot of bravery, especially being two-down. We could have gone under, but we didn't and drew strength from ourselves and our belief in each other.

As I say, though, mistakes did help Barnet and we gifted them two goals. We can't keep letting that happen and we are trying to address it. We cannot hide from the fact that we are conceding stupid goals and they will cost us.

It is a young squad, but we have to address things collectively and cannot hide from them. We have to make sure we go on to turn good performances into clean sheet performances as well because, ultimately, clean sheets win Championships. It is important because if we can score the goals we are doing and keep clean sheets, then we will be formidable.

Tuesday showed that we have good competition for places. We try to recruit the right blend of players and we have the right team spirit within the camp. There is no negativity and no back-stabbing. If there is we root it out and get rid of it.

I do feel a little, though, for Mark Jones. He has been tremendous since he came to the club and Tuesday was a real opportunity for him, but things didn't work out. It didn't go for the team in the first half so we had to change things and sacrifice him, but he is a very good football player and still a massive part of our plans.

Enjoy the game  
 Keith

**EAS**  
 ENERGY • ATHLETICS • STRENGTH

**THE PRODUCTS  
 THE PROS USE**



# PICTURE

## Framming at The China Shop



- Football Shirts
- Works of Art
- Photographs

The China Shop  
19 - 21 Market Place  
Heywood  
OL10 1 LA

TEL: 01706 367601

Official Suppliers to Rochdale A.F.C.

[www.footballshirtframing.com](http://www.footballshirtframing.com)

### Spotland Study Centre For all your I.T. Needs & More.

For more information contact:  
Ian Andrews

@

Spotland Study Centre, Willbutts Lane, Rochdale

Tel: 01706-713143

Fax: 01706-653098

E-mail: [ianandrews@spotlandstudycentre.co.uk](mailto:ianandrews@spotlandstudycentre.co.uk)



# CAR.I.P.LTD

### RECYCLERS OF ALL UNWANTED SCRAP METALS

Scrap cars wanted good prices paid free collection de-pollution through an authorised treatment facility.  
Deregistration with the DVLA completed by us leaving you hassle free with total peace of mind.

TELEPHONE: 01706 837868 UNIT 3 JERMYN ST. ROCHDALE OL12 0DP

also best prices paid for copper, brass, aluminum, stainless and all electrical cable.



# LUTON TOWN



**S**hould Luton Town avoid relegation from the Football League this season, it will go down as one of the most astonishing stories in the history of the game.

The Hatters started the season on -30 points due to penalties imposed by the league after several financial irregularities.

Last Saturday's 2-1 home defeat of Dagenham reduced that deficit to 11 points, but this still leaves them 20 points adrift of Grimsby in the last 'safe' place in the division.

In the face of such long odds, it is testament to the players' professionalism that they haven't become cut even further adrift.

It would have been easy for them to have given up before a ball was kicked, but manager Mick Harford has moulded a squad that is 100% committed to achieving something quite remarkable.

He was pleased with the victory last weekend, even though it was only Luton's second at Kenilworth Road in the league this term.

"It was a must-win game in terms of our results at home and the situation we are in," said Mr Harford. "But we created lots and lots of chances and we thought maybe the score at half-time flattered Dagenham.

"We came under pressure at the death when they threw bodies forward, but the boys handled it well.

"I'm delighted for the players and they put in a lot of effort and deserved it. They are an honest bunch and the fans were behind them today.

"We deserved a victory I thought. It was a good overall team effort."

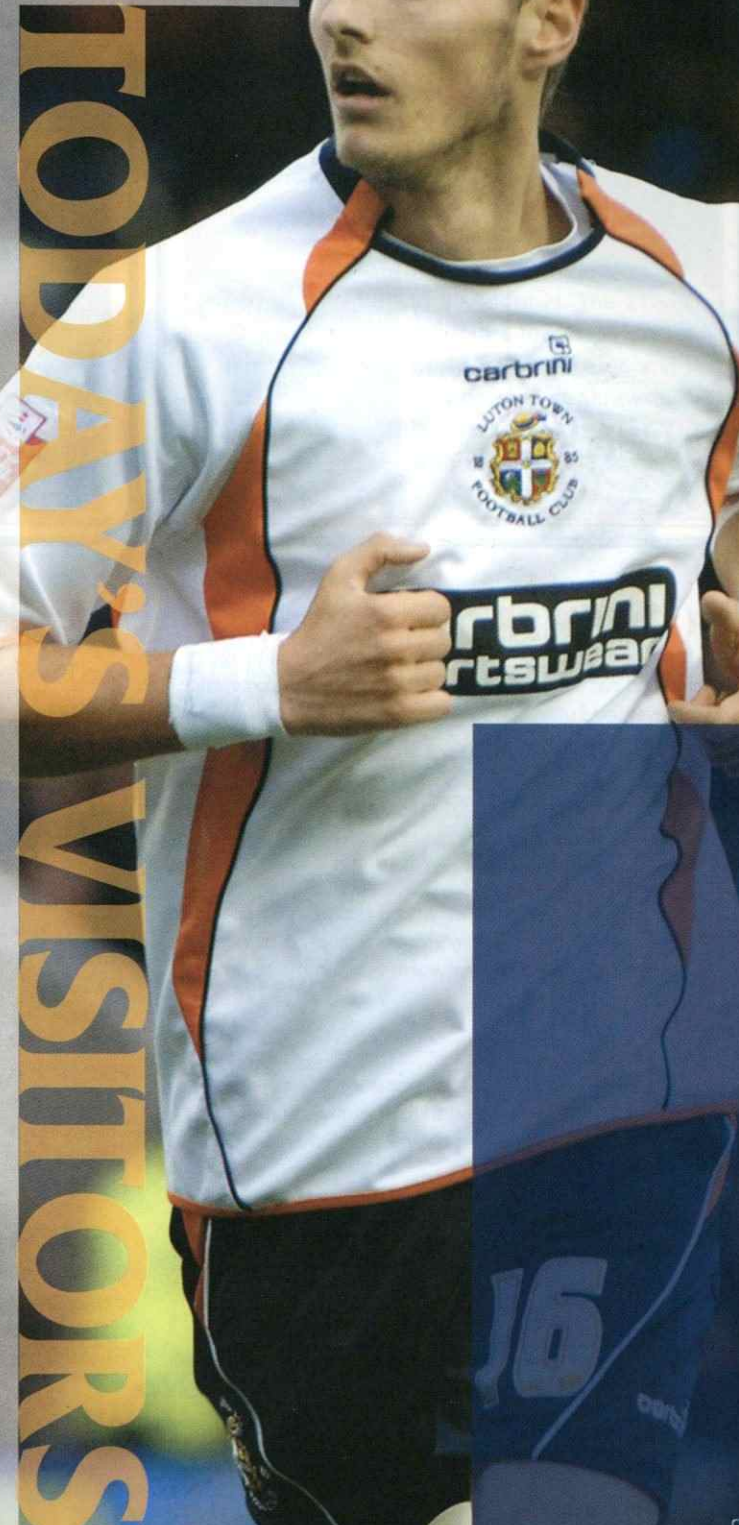
The win actually meant Luton have lost just once in their last six league and cup outings.

Shrewsbury spoiled the Hatters' recent good form with a 3-0 win at the New Meadow three weeks ago, but that is their only defeat in the last six away matches.

Draws were achieved at Bradford and Grimsby, while Bury were beaten 2-1 at Gigg Lane and Walsall 1-0 at the Bescot Stadium in the Johnstone's Paint Trophy.

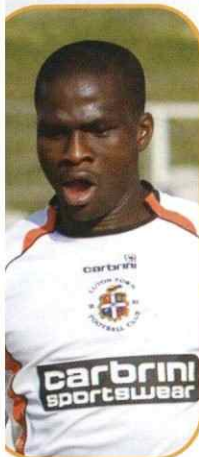
And then on Tuesday night, Luton overcame a tricky FA Cup replay at Altrincham, albeit at a late hour after a floodlight failure and a penalty shoot-out, to move into round two and a tie at Southend.

Cup runs are a secondary issue, though, as retaining the club's 111-year league history is the only priority for this season.



# Luton Town

## SQUAD CHECK



### 2. CLAUDE GNAKPA

Claude is a Marseille-born defender who linked up with the Hatters in August on a free transfer from Peterborough. The 25-year old played much of his early football in the Spanish leagues.



### 4. KEITH KEANE

Another player to have come up through the ranks, Keith, who was 22 on Thursday, recently played his 100th league game for the Hatters. The midfielder represented the Republic of Ireland at schoolboy level.



### 8. KEVIN NICHOLLS

Kevin returned to Kenilworth Road in the summer for his second spell with the Hatters, two years after leaving Luton for Leeds. The 29-year old midfielder initially made nearly 200 appearances for our visitors after joining them from Wigan in August 2001.



### 14. ASA HALL

Asa signed his first professional contract at Birmingham in 2004, but he was restricted to reserve team outings during his time at St Andrews. The 21-year old had a loan spell at Boston early in 2006 and was also on loan at Shrewsbury last season, before linking up with Luton in the summer.

### 1. DEAN BRILL

Luton-born Dean joined his hometown club at the age of nine and has progressed through the Centre of Excellence, representing Luton Schools and Bedfordshire County Schools at various age groups. Now 22, he won the goalkeeper's jersey when Kevin Blackwell took over the managerial reins at Kenilworth Road at the start of last term.

### 3. SOL DAVIS

Sol is a 29-year old defender who is closing in on his 200th league appearance for today's visitors. Initially a trainee with Swindon, Sol moved to Kenilworth Road in the summer of 2002.

### 5. IAN ROPER

After making over 320 league appearances for Walsall, Ian switched to Luton on a free transfer in the summer. The 31-year old won a League Two championship medal with the Saddlers in 2006/07.

### 6. GEORGE PILKINGTON

George is an experienced defender who linked up with today's opponents in July after spending five seasons at Port Vale. Aged 26, he started out as a trainee at Everton, but never made the first team at Goodison Park.

### 7. GARRETH O'CONNOR

Garreth originally played for Bohemians in Ireland, but moved to Bournemouth in the summer of 2000. Five years

later he joined Burnley, but his time at Turf Moor was injury-hit and he returned to Bournemouth on loan early last term. The 29-year old midfielder joined Luton at the start of October.

### 10. RYAN CHARLES

Ryan is a 19-year old striker who is in his second season as a professional at Kenilworth Road after progressing through the club's youth system.

### 11. LEWIS EMANUEL

Lewis (25) is a left-sided defender who played over 100 games for hometown club Bradford before joining Luton in July 2006.

### 12. HARRY WORLEY

Harry (19) started his career at Chelsea, but moved on to Leicester in the summer after failing to make the breakthrough at Stamford Bridge. He joined Luton on loan in September, adding to earlier career loan spells at Doncaster and Carlisle.

### 15. ED ASAFU-ADJAYE

Currently in his first season as a professional, Ed came up through the Hatters' youth ranks to make his league debut against Crewe in March. The 19-year old defender spent part of last term on loan at Salisbury City.

### 16. ROSSI JARVIS

Rossi is a former Norwich trainee who joined Luton from

the Canaries in July. Aged 20, the midfielder had loan spells at Torquay and Rotherham during his time with the Canaries.

### 17. KEVIN WATSON

Kevin is a vastly-experienced central midfielder who was recruited by today's visitors in August after being released by Colchester. The 34-year old began his career as a trainee at Spurs, but enjoyed most success in helping Rotherham gain consecutive promotions from 1999 to 2001.

### 19. DREW TALBOT

Drew is a 22-year old forward who was signed from Sheffield Wednesday for £250,000 in January 2007. He was originally on Barnsley's books before drifting out of league football for a short time.

### 20. MICHAEL SPILLANE

Another player on a season-long loan from Norwich, Michael is a Republic of Ireland under-19 international who can play at the back or in midfield.

### 23. WAYNE ANDREWS

Luton became Wayne's 12th league club when he linked-up with them last month. Thirty-one on Tuesday, the big striker began his career at Watford in the mid-1990s and can count Oldham, Colchester and Crystal Palace among his former employees.

### 24. TOM CRADDOCK

Tom joined the Hatters on loan from Middlesbrough last

month and made an excellent start to his Town career, scoring three times in his first four league outings. The 22-year old has also played on loan at Wrexham and Hartlepool in recent seasons.

### 28. PAUL McVEIGH

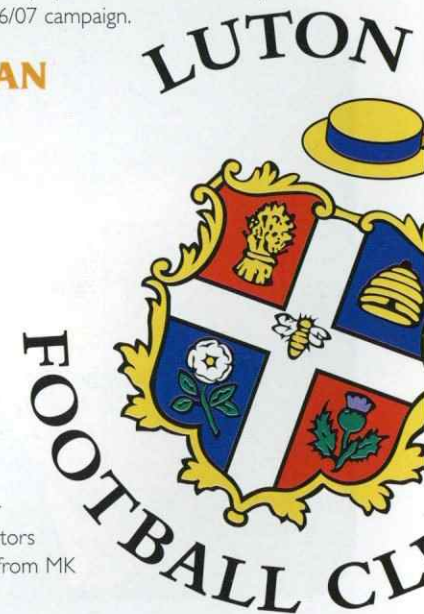
Paul clocked-up over 200 league appearances for Norwich prior to moving to Kenilworth Road in August 2007. The 30-year old Northern Ireland international started his career at Tottenham and also played on loan for Burnley towards the end of the 2006/07 campaign.

### 29. JORDAN PATRICK

Jordan is a young forward who has made a handful of appearances from the bench for the Hatters this season.

### 32. KEVIN GALLEN

Kevin is a vastly-experienced striker who joined our visitors on a month's loan from MK





# Luton Town SQUAD CHECK



**18. CHRIS MARTIN**

Chris is a striker who is on a season-long loan at Kenilworth Road from Norwich. The 20-year old earned England under-19 honours with the Canaries, scoring on his debut against Turkey in March 2007.



**21. CONRAD LOGAN**

Conrad will bring back unhappy memories for Dale fans as he was Stockport's goalkeeper in last season's play-off final at Wembley. On loan from Leicester at the time, the 22-year old has joined Luton on a similar basis until the end of December.

Dons last week. The 33-year old, who has scored over 100 league goals in his career; netted twice for the Dons in their 3-2 defeat at Spotland last season.

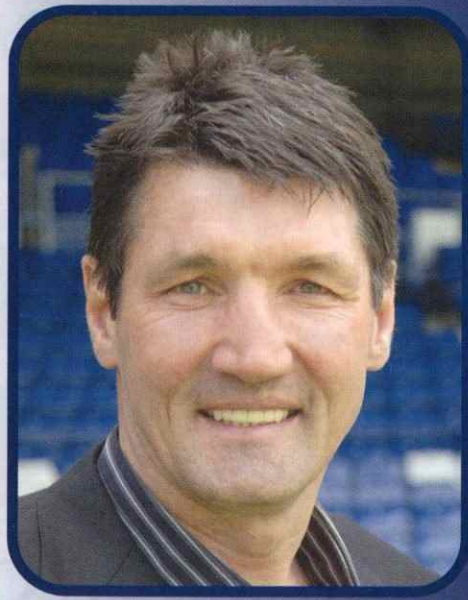
**33. JAKE HOWELLS**

Jake is a 20-year old defender who has established himself in

Luton's back line over the past month.

**40. SCOTT SINCLAIR**

17-year old Scott is a midfielder who made his debut when coming on as a substitute against Brentford in the Johnstone's Paint Trophy last month.



Manager  
**Mick Harford**

**Mick was appointed manager at Kenilworth Road in January, taking over from Kevin Blackwell who left due to Luton's financial predicament.**

**This is his second permanent managerial role, as he was in charge at Rotherham from April-December 2005. Mr Harford has also managed Nottingham Forest and QPR on a caretaker basis.**

**The 49-year old is something of a legend among Hatters' fans after scoring 69 league goals in two spells with the club between 1984 and 1992.**

**He also played for nine other clubs, including Lincoln, Birmingham, Chelsea and Wimbledon, and was capped twice by England in the late-1980s.**

# Luton Town Miscellany

## Early Days

Luton Town was formed in April 1885 as a merger of the two leading local teams, the (Luton) Wanderers and Excelsior. They moved several times before arriving at their current ground, Kenilworth Road, in 1905. Luton were the first professional club in the south of England, becoming fully professional in 1891.

They joined the Football League in 1897, but left three years later due to bad attendances, high wages and the fact that due to most professional clubs at the time being in the north of England, they were spending too much money on transport.

## Cup Specialists

Luton had a reputation for their cup exploits in the 1980s, in particular in the League Cup.

They reached the final of that competition when it was known as the Littlewoods Cup in both 1988 and 1989, defeating Arsenal 3-2 in the first final, but losing 3-1 to Nottingham Forest 12 months later.

The Hatters were also FA Cup semi-finalists around the same time, only to lose on all three occasions to Everton (1985), Wimbledon (1988) and Chelsea (1994).

## Kit Story



Luton's original kit was a claret and navy halved shirt, with navy shorts and socks. White and black were used for the first time in 1891, but were quickly abandoned in favour of a claret shirt, with navy shorts and socks. In 1896 they changed again, to a bizarre white, black and claret striped shirt that only lasted two years. It wasn't until 1901 that Luton took on a colour scheme that lasted - a much lighter shade of blue was adopted for the shirt, while the white shorts and navy socks remained.

In 1920 there was another overhaul and Luton took on what is now seen as their 'traditional' kit. White shirts were adopted, with black shorts and socks. In 1973, Luton suddenly changed from the established white and black to orange and navy, which was to set them apart from clubs such as Derby, Fulham and Port Vale.

However, this didn't last long and in 1979 another dramatic change coincided with Adidas arriving as kit manufacturer. Luton took to the field in an all-white strip, with orange and navy trim and an orange collar. In 1981 orange sleeves were added and the kit proved lucky as Luton won promotion back to the First Division (squad pictured).

## From My Collection ...

I have a small number of Luton programmes from the 1980s in my collection, including the one pictured from their Second Division fixture against Chelsea in December 1981.

There are two interesting aspects to this issue. The first is the player pictured on the left on the front cover; none other than Hatters' skipper Brian Horton.

Secondly, the league table showed Luton eight points clear of Oldham at the top, while Chelsea were a further five points adrift in seventh place. Another current Premier League club, Bolton, were on the bottom.

My brother was in the Navy and he attended Luton's First Division game with Manchester United in October 1982 with a fellow sailor.

He kindly brought me back a programme and although it's a bit weather-beaten, Town's early season record is clear to see.

In their last two home games, they had beaten Notts County 5-3 and Brighton 5-0, while their last away fixture ended in a 4-4 draw at Stoke.

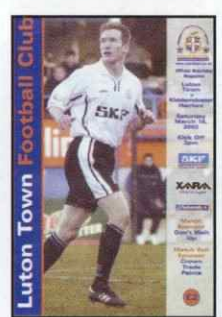
Fans expecting a goal-fest against United were disappointed as the match finished 1-1. Finally, the Luton v Kidderminster programme from March 2002 contained an interview with former Dale defender David Bayliss, who was asked what he wanted to do when he finished playing.

"I don't think I want to be a manager," said Barrow's current joint manager!

## Famous Fans

Luton have several famous supporters, including England spin bowler Monty Panesar (pictured), actor Colin Salmon, boxer Billy Schwer, poet John Hegley and, of course, former Breakfast TV presenter Nick Owen, who fronts the consortium that runs the club.

The Hatters' most famous past fan was director Eric Morecambe who, along with his side-kick Ernie Wise, frequently put comedic references about Luton into his popular television show of the 1970s.



## HOMEGROWN TALENT

Central defender Dave Bayliss came through Rochdale's youth set-up to make his debut in a 2-2 draw with Barnet in April 1995. The Liverpoolian didn't appear again until the following August, but over the next six years he became an established member of Dale's back four, chipping in with some useful goals along the way. After falling out with caretaker-manager David Hamilton, he joined Luton in December 2001 and was sent-off when he returned to Spotland with the Hatters two months later. He was also sent-off against Dale in January 2005 when on loan at Chester and remarkably, after joining Dale in a loan move from Wrexham, he was again dismissed when the two sides met in March 2006. Now joint-manager of Barrow, he helped guide the Cumbrians to the Blue Square Premier League at the end of last season.

Rochdale – 189 apps, 9 goals (2 spells)  
Luton – 37 apps



## ELLIOTT LESS

Forward Steve Elliott had a brief spell with Luton early in the 1984/85 campaign. He joined the Hatters from Preston in July 1984, but made just a handful of appearances before linking-up with Walsall five months later. Spells at Bolton and Bury followed, before Steve arrived at Spotland in October 1989. Despite scoring on his debut in a 2-1 win at Grimsby – as well as on his home debut a week later – Elliott struggled to repeat his early career form on a consistent basis at Spotland and was released by Dave Sutton at the end of the 1990/91 season.

Rochdale – 52 apps, 9 goals  
Luton – 12 apps, 3 goals



## NOT ALL GOOD!

Scouse left-back Alan Goodall made an ill-fated move to Kenilworth Road from Spotland in the summer of 2007. Although he played in a high proportion of the Hatters' fixtures last term, the club's financial problems left him departing for Chesterfield in July. Brought into league football from Bangor City by Steve Parkin in the summer of 2004, Goodall became a firm favourite among the Spotland faithful. He played in Dale's FA Cup third round tie at Charlton that season and also scored in the record-breaking 7-2 win at Stockport in March 2007.

Rochdale – 120 apps, 8 goals  
Luton – 29 apps, 1 goal



## SEASMAN THE MOMENT

Another Scouser, midfielder John Seaman, ended his playing career with Dale some 13 years after he had appeared for Luton. The cultured left-footed player joined the Hatters from Tranmere in January 1975, but played just a handful of games in his time at Kenilworth Road. He moved on for successful spells with the likes of Millwall and Rotherham and while at Millmoor he was a team-mate of future Dale manager Vic Halom, who brought him on loan to Rochdale from Cardiff in November 1984. Debuting in a 1-0 home loss to Swindon, Seaman returned to Spotland in July 1985 and played in Dale's FA Cup defeat by Manchester United at Old Trafford. Released by Eddie Gray at the end of the 1987/88 campaign, he later worked for Leeds' Academy, where he discovered Scott Carson, as well as acting as a players' agent, with the likes of David Nugent and Jon Stead on his books.

Rochdale – 95 apps, 4 goals (2 spells)  
Luton – 8 apps, 2 goals



## LEGEND!

Striker Steve Taylor had an unhappy spell at Luton during the 1978/79 season. Successful early career spells with Bolton and Oldham saw Taylor join the Hatters in January 1979, but within six months he was on his way back up north when he linked up with Mansfield. He later appeared for Burnley, Wigan and Stockport, before arriving at Spotland in November 1984, where he immediately forged a prolific partnership in attack with Barry Diamond as Dale staved off the threat of re-election. He progressed to win the Golden Boot in 1985/86 with 31 goals in all competitions, so it was with great surprise when the club sold him to Preston for a paltry sum in October 1986. He returned to Rochdale in March 1989, but the sharpness had disappeared and it was no shock when he retired from the game that summer at the age of 33.

Rochdale – 101 apps, 46 goals (2 spells)  
Luton – 20 apps, 0 goal



# LEACH

## DISTRIBUTION A WINNING STRATEGY

NATIONWIDE DISTRIBUTION  
STORAGE - HAZCHEM



...IF IT'S ON A PALLET,  
**LEACH**  
DISTRIBUTION  
WILL TAKE IT ANYWHERE.

JA Leach Transport Limited,  
Chichester Street, Rochdale OL16 2AU  
T 01706 868 777 F 01706 868 811  
E info@leach-ltd.co.uk  
[www.leach-ltd.co.uk](http://www.leach-ltd.co.uk)



# Dale Action



Notts County 1, Rochdale 2

League Two ... Meadow Lane ... Tuesday 28th October 2008

## action 1

Joe Thompson takes on Jamie Clapham



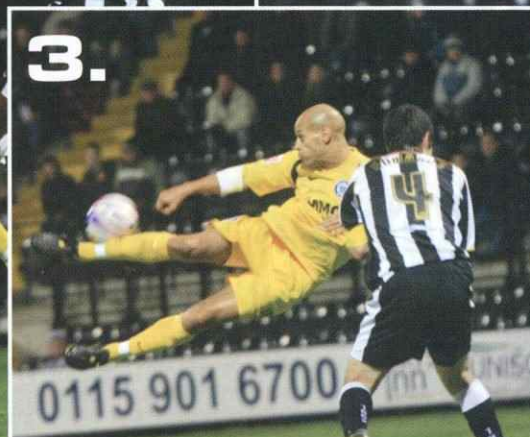
## action 2

Rory McArdle gets up highest at a first half corner for Dale



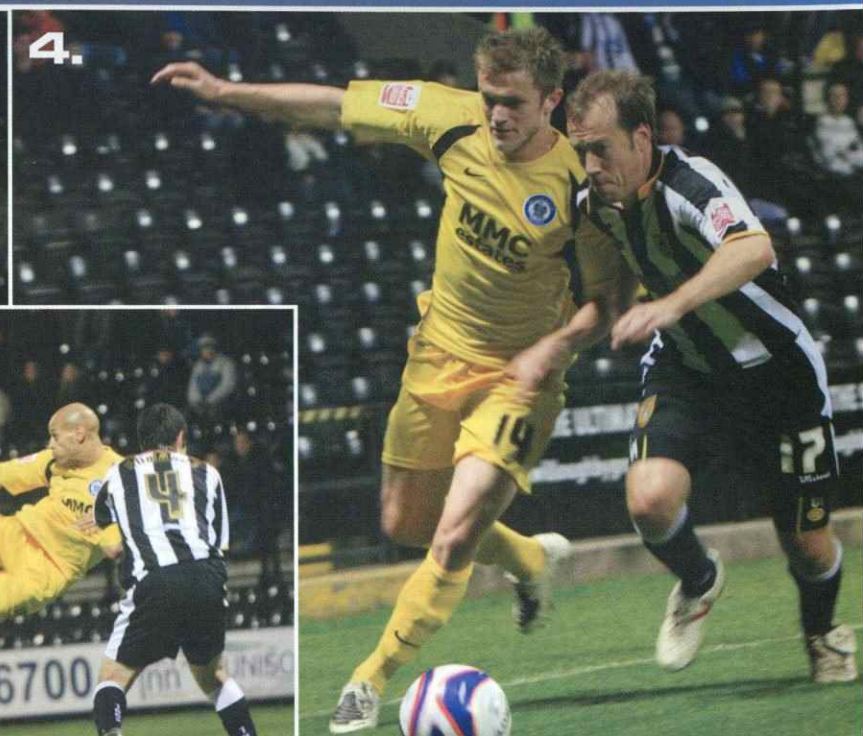
## action 3

A spectacular attempt to volley the ball by Lee Thorpe



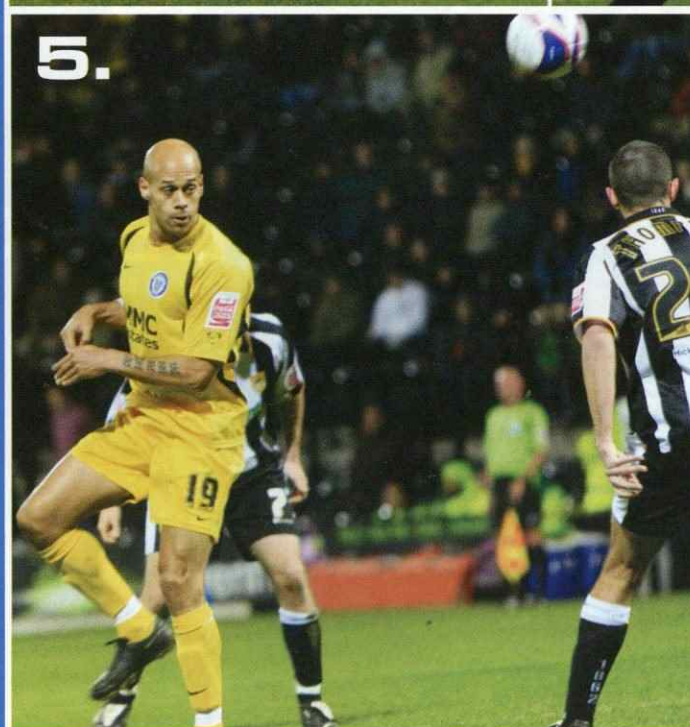
## action 4

Scott Wiseman does battle with Jamie Clapham on Dale's right



## action 5

Lee Thorpe heads towards goal as Dale look to get back into the game



## action 6

Tom Kennedy is wrong-footed by Matt Hamshaw



## action 7

Chris Dagnall is determined not to let John Thompson get away from him



## action 8

Lee Thorpe slots home Dale's winner after rounding goalkeeper Russell Hoult



Pictures by Daniel Youngs





## WHITE RIBBON CAMPAIGN



wear a white ribbon to create exposure of the campaign, together with this article published in The Voice of Spotland.

## RARE RESULT

Dale's home game against Chester last month saw them win 6-1 for the first time in almost 40 years.

The last team to lose by that scoreline at Spotland were Grimsby Town, who were beaten 6-1 here on 4th January 1969, with Reg Jenkins grabbing a hat-trick.

In total, Dale have won ten Football League matches by a 6-1 margin.

## SHOTS DOWN

Dale's recent 3-1 defeat of Aldershot was their fifth consecutive home win over the Shots.

Indeed, we have now won seven of the teams' last eight meetings at Spotland, with the only exception coming on a miserable Tuesday night in October 1984 when Aldershot triumphed 2-1.

In total, Dale have now won 15 of their 25 home fixtures against the Shots.

## CROWDED HOUSE

The crowd of 2,750 at the Aldershot match was the largest attendance for that particular Spotland fixture in nearly 40 years.

3,305 people turned up to witness a 3-0 Dale win in January 1969, but the largest 'gate' since then had been just 1,834 in 1980/81.

Conversely, when we faced the Shots at Spotland in April 1984, the official crowd figure was given as just 853!

## LEWIS' FLAG TOUR

Supporters may see a flag at Spotland today bearing the name Lewis O'Neill.

This is in tribute to a four-year old boy who died just over two years ago to a very rare illness. Lewis's parents made the flag as a tribute to their son and are visiting all 92 Premiership and Football League grounds on what they are calling the 'Lewis Flag Tour'. Today marks their 45th different ground.

They are at Spotland as guests of David Flitcroft, who has kindly provided tickets for them through their friendship with former Dale striker Clive Platt.

We are sure all Dale fans will wish them well on their quest to complete 'The 92' with Lewis's flag.

## HUNDREDS UP

Congratulations are due to two members of the Dale squad who recently made their 100th appearances for the club.

Chris Dagnall, who made his Dale debut in a 1-0 home defeat by Stockport in January 2006, reached the milestone when he came off the bench in the Johnstone's Paint Trophy tie at Scunthorpe earlier this month.

Meanwhile Adam Rundle, who first appeared against Walsall on the opening day of the 2006/07 campaign, achieved his century in the FA Cup game at Barnet a fortnight ago (pictured).



## MATCH MASCOT



**Christopher Longley**

Christopher, from Littleborough, is 10-years old.

He attends Smithy Bridge Primary School and says his favourite Dale players are Chris Dagnall and Gary Jones.

*Have a great day Christopher.*

## MATCH REFEREE

**Steve Bratt**  
(West Midlands)

Steve is in his third season on the referees' list and is this afternoon appearing at Spotland for the third time. He was last here for our first home game of last season against Chester, while back in October 2006 he refereed the Johnstone's Paint Trophy tie against Crewe.



## THERE'S SOMETHING FOR EVERYONE AT ODEON ROCHDALE



**ODEON Kids** screenings are especially for children every Saturday and Sunday 11am. What's more with every child ticket, you get a free adult ticket. ODEON Kids also runs everyday throughout school holiday periods, with the exception of Bank Holidays.



**ODEON Newbies** is exclusively for parents with new babies. Enjoy the latest blockbusters with your little ones. Screenings are held Wednesdays at 11am and baby changing facilities are available. Tickets are priced as normal with babies going for free.



**ODEON Senior Screen** is a season of films for more mature guests. What's more enjoy FREE tea or coffee and biscuits before the screening. ODEON Senior Screen is offered at a discounted rate.

Also Save money with a Family Ticket - Either 2 adults and 2 children or 1 adult and 3 children, children must be under 15. Available for any film at any time.



# Coach Options Ltd

## OFFICIAL TEAM COACH AND TRAVEL COURIERS FOR ROCHDALE AFC

TEL. 01706 713 966 FAX. 01706 759 996

766 Manchester Road, Castleton, Rochdale OL11 3AW www.optionstours.co.uk

**Ground:**  
New Lawn Stadium,  
Nympsfield Road, Forest  
Green, Nailsworth, Gloucs  
GL6 0ET

**Telephone:**  
(01453) 834860

**Manager:**  
Jim Harvey

**Current League  
Position:** 21st (Blue  
Square Premier)

**Last Season:**  
8th (Blue Square Premier)

**Colours:**  
Black & white shirts, black  
shorts, black socks



## HOW TO GET THERE

Take the M62 westbound and join the M6 (South), merging onto the M5 at Walsall. Leave the M5 at Junction 13 (s/p Stroud A419) and follow A419 to Stroud. On meeting the A46, follow signs for 'Bath, Nailsworth A46'. After 2-3 miles you'll pass the Crown Inn on the right, then a petrol station on the left-hand side. In the centre of Nailsworth there's one mini-roundabout; turn right into Spring Hill. Go up the hill and continue along this road, which becomes Nympsfield Road, for approx 900 yards. The ground is on the left-hand side at the new roundabout.

## WHAT'S THE GROUND LIKE?

The club moved a short distance to their new ground at beginning of the 2006/07 season. This ground is literally only a few hundred yards up the road from their old Lawn Ground which is has now been redeveloped for housing.

The ground is sited on top of a fairly

steep hill and quite exposed to the elements. It is dominated by the smart looking Western Thermal Stand at one side of the pitch. This 2,000 all-seated stand has a cantilever roof as well as row of executive boxes running across the back of it.

Opposite is a small open terrace, which is only seven steps high.

Interestingly, both ends have to different degrees been relocated from the old Lawn to the new ground. At the Nympsfield Road end of the ground is a covered terrace, the roof of which came from the Barnfield Road side of the old ground. Opposite is the EESI Stand, which is a covered seated stand that is given to away supporters. This stand is of interest as it was transported from the club's old ground and re-erected at the New Lawn.

## PARKING

The club car park is at the summit of the hill you climb to the ground, but this only holds 250 cars and is often full an hour before kick-off. The cost of

parking is £3 per car.

Street parking will be your only other option.

## PRICES

**Terrace: Adults £14, concessions and students £8, children (under-16) £5**  
**Seats: Adults £18, concessions and students £10, children (under-16) £7**

**Forest Green's programme costs £2.50.**

## DALE TRAVEL CLUB

**Departure Time:** 9.00am  
**Fares:** Adults £15, under-16s £15

For further details or to reserve your seat, ring the Club Shop on (0844) 826 1907.



# Clayton Park

## BAKERS



# premier taste!

November 2003

### A long road to nowhere for disappointing Dale

Southend United 4, Rochdale 0  
Division Three

Dale fell to sixth from bottom of the table after yet another league defeat, their fifth in succession. What made this loss all the more galling was that Southend were next to bottom at kick-off and had caretaker-manager Steve Tilson in charge following Steve Wignall's dismissal.

The Shrimpers were on top from the first whistle and it seemed only a matter of time before they would score. They had to wait until the 33rd minute, but then netted twice in double quick time.

Tes Bramble bagged both goals; firstly scoring after Leon Cort's miscued header had set him up and then connecting with Jay Smith's cross to fire in from an angle.

Dale were shell-shocked, but they were given a lifeline on the stroke of half-time when David McSweeney handled and a penalty was awarded.

Sadly, Lee McEvilly blasted the spot-kick over the bar to sum up the first half.

The game was up for Dale on 66 minutes when Southend's Jim Corbett made no mistake from the same penalty spot after Gareth Griffiths had tugged Cort's shirt.

Sean McClare was then sent-off for a dreadful two-footed lunge and United completed the scoring in injury time when Leon Constantine lobbed the stranded Neil Edwards.

**Dale:** Edwards, Evans, Grand, McClare, Griffiths, Burgess, Bertos, Jones (Warner), McEvilly (Townson), Bishop, Doughty (McCourt)

**Attendance:** 3,169  
**Referee:** SG Tomlin (Sussex)

Dale fielded new loan striker Andy Bishop at Southend five years ago

**Luton** drew 0-0 at Sheffield Wednesday, a result that left them in 13th place in the Second Division.



November 1998

### Dale saved by a Holt out of the blue

Chester City 1, Rochdale 1  
Division Three

Dale managed to pick up a point at the Deva Stadium, despite a dreadfully poor performance. Chester had lost 6-0 at Cardiff in the FA Cup a week earlier, but their confidence didn't seem too dented as they enjoyed the better of what was in truth an awful match.

City opened the scoring midway through the first half after good work by John Murphy. The big striker picked up a loose ball and squared it for Darren Wright to finish, despite Mark Monington's strong challenge.

Dale rarely looked like getting back into the game, but from nowhere they fashioned a 73rd minute leveller.

Isidro Diaz picked up the ball on the left and his deep cross was superbly headed home at the far post by Michael Holt.

"It was a tough game," said Graham Barrow. "But perhaps we have learned the lesson I've been preaching that there isn't a lot between the teams in this division."

**Dale:** Edwards, Bailey (Holt), Sparrow, Hill, Monington, Farrell, Carden, Painter, De Souza (Diaz), Bryson, Peake  
**Attendance:** 2,495  
**Referee:** WM Jordan (Tring)

Michael Holt scored Dale's equaliser at the Deva Stadium

**Luton** had Phil Gray and Gary Doherty on target as they drew 2-2 at Lincoln in a Second Division match.



November 1988

### Beaumont gem ensures victory

Rochdale 2, York City 0  
Division Four

Dale made it eight home games without defeat with what was eventually a comfortable victory over a poor York side.

Two second half goals won the game, allowing Dale to move up five places to seventh in the Fourth Division table.

Mark Smith opened the scoring three minutes into the second half, converting after Neil Edmonds had missed Chris Beaumont's cross.

Three minutes from time the points were eventually secured when Smith this time set up Beaumont, who turned his marker before firing past Chris Marples.

**Dale:** Welch, Copeland, Lomax (Wood), Armitage, Sutton, Reid, O'Shaughnessy, Smith, Edmonds, Beaumont, Frain  
**Attendance:** 1,880  
**Referee:** JL Watson (Whitley Bay)



Chris Beaumont gets up to celebrate his goal against York

**Luton** moved up to 15th place in the First Division after a 2-2 draw at Norwich, Roy Wegerle scoring both goals.

November 1978

### Little Droylsden show the will and the way to Spotland success

Rochdale 0, Droylsden 1  
FA Cup

Dale went out of the FA Cup to a non-league team for the third season running after an abject display at Spotland.

The Cheshire League part-timers were good value for their 1-0 victory, scoring the game's only goal on 34 minutes and then comfortably dealing with anything Dale could muster in the time that remained.

In truth, though, Dale mustered very little and the final whistle was greeted with stunned apathy on the terraces rather than the expected chorus of boos.

Taylor was the matchwinner for the Bloods, shooting home in a goalmouth scramble after Dale failed to clear a corner.

**Dale:** Shyne, O'Loughlin, Hart, Scott, Snookes, Price, Scaife, Hoy, Hilditch, Esser, Owen

**Attendance:** 3,252  
**Referee:** D Shaw (Sandbach)

**Luton** were beaten 3-0 at home by Sunderland in a Second Division fixture.



Rochdale fans aren't the only ones to sing that song. We profile other clubs that begin with the letter 'R' ...

## RODA JC

Dutch Eredivisie

### WHO ARE THEY?

#### Year founded

1962 (merger of Roda Sport and Rapid JC)

#### Club address

Postbus 1156, 6460 BD Kerkrade, Holland

#### Telephone number

00 31 045 6317000

#### Ground capacity

19,979

#### Colours

Yellow shirts, black shorts, yellow socks

#### Nicknames

The Pride of the South, De Koempels, De Limburgers

#### Website

www.rodajc.nl

### MAJOR HONOURS

#### Dutch Titles

Winners 1956 (as Rapid JC)

#### Dutch Cup

Winners 1997 & 2000  
Runners-up 1976, 1988, 1992 & 2008



Martin Jol



### OTHER INFORMATION

Roda play at the Parkstad Limburg Stadion, which opened in 2000 with a friendly match against Real Zaragoza.

Roda have been in the Eredivisie (the Dutch First Division) since 1973, their best season coming in 1994/95 when they finished runners-up to Ajax

Roda's best European performance came in the 2001/02 UEFA Cup. They lost 1-0 at home to AC Milan, before winning by the same scoreline at the San Siro. Milan eventually won on penalties.

Dick Advocaat, coach of UEFA Cup holders Zenit St Petersburg, made 113 league appearances for Roda in the mid-1970s.

Tranmere midfielder Edrissa Sonko was with Roda at the start of the Millennium, scoring 20 goals in 112 outings.

Former Tottenham manager Martin Jol was in charge of Roda from 1996 to 1998.

Why wait for  
**Christmas  
Day?**

This week:  
your chance to win a  
**Flip Mino Digital  
Video Camera**



Grab hot gifts at  
**www.cokezone.co.uk**



'Coca-Cola', 'Coke' and 'Coke Zone' are registered trade marks of The Coca-Cola Company. Coke Zone is the rewards programme for 'Coca-Cola'. Get codes from specially marked packs of 'Coke', 'diet Coke' and 'Coke Zero'; exchange them for points; and spend points on rewards and entries to prize draws. To join Coke Zone you must be 12 yrs or over and a resident of GB, CI or IOM. Further terms and conditions apply, see [www.cokezone.co.uk](http://www.cokezone.co.uk) for details. Flip Mino Digital Video Camera promotion: Entrants must be 12 yrs or over. 10 daily prize draws will be held from 21-27 November 2008.

# Football in the Community

Telephone: 01706 643836 Email: Keith.Hicks@rochdaleafc.co.uk



## FOOTBALL IN THE COMMUNITY ATTRACTIONS 2008/09

### ROCHDALE AFC SATURDAY CLUBS

Spend a day at Spotland watching Dale play and take part in organised activities

Itinerary:

Meet at Community Office  
12.00 – 2.00 Coaching/5-a-sides  
2.00 – 2.30 Lunch provided by McDonald's  
2.30 – 4.45 Take seat in WMG Stand for match (Specially reserved section)

All supervision through out the day is provided by Football in the Community Staff

**Only £9.00**

### BIRTHDAY TREATS

Have a party to remember at Rochdale AFC with up to 20 of your mates

You provide the food, we do the rest! (Alternatively, McDonald's meals on request)

Session involves warm-up and team games, plus 5-a-sides and a tour of Rochdale AFC (supervised by Community Staff Coach)

Use of Studs Bar for the party for two hours  
Autographed Rochdale AFC ball for birthday boy or girl  
Family tickets for a Rochdale AFC home match

Goodies bag

Parties are arranged from Monday – Thursday: 4.00pm – 6.00pm

**ONLY £60.00 – AMAZINGLY GOOD VALUE**

### FOOTBALL COACHING SESSIONS FUN & COACHING CLUBS AT SOCCER FACTORY (NEAR TESCO)

### SATURDAY & SUNDAY FUN & COACHING SESSIONS

10.00am – 12.00pm  
Sessions by FA qualified coaches  
Fun sessions involving coaching/games/5-a-sides

**Only £3.00 per session**

### GIRLS ONLY FUN & COACHING SESSIONS

Saturdays: 10.00am – 12.00pm

Whether experienced players or novices, all are welcome  
Fun sessions involving coaching/games/5-a-sides  
Links with Rochdale AFC Ladies (Talented players to form new teams: under- 8s-12s)

**Only £3.00 per session**

### LITTLEBOROUGH SATURDAY CLUB

Littleborough Community School, Calderbrook Road, Littleborough  
5-a-sides throughout the morning 10.00am – 12.00pm every Saturday  
Just turn up and play 5-a-sides all morning supervised by a qualified staff member  
All boys and girls are put into appropriate age groups

**Only £3.00 per session** (No booking required)

### SIDDAL MOOR SATURDAY CLUB

Siddal Moor Sports College, Newhouse Road, Heywood  
10.00am – 12.00pm every Saturday  
For boys and girls aged 6+  
Coaching & 5-a-sides

**Only £3.00 per session** (No booking required)

### HOLIDAY COACHING COURSES

Held at EVERY half-term holiday throughout the year

Venues at located at:  
Rochdale AC 5-a-side Complex  
Littleborough Community School  
St Mary's Primary School, Middleton  
Siddal Moor Sports College, Heywood (Subject to alteration, plus other venues to be arranged where possible)

We believe that flexibility is important, so we offer a range of packages

3/4/5 day Courses  
Half days (10.00am – 12.30pm) or full days (10.00am – 3.00pm)

Come down and enjoy yourself at one of the popular courses, which cater for beginners to talented players.  
Children will be placed into groups of similar ages.

Prices are very affordable and prove excellent value for money.

5 day full course	£40.00 per week
5 day half course	£30.00 per week
4 day full course	£35.00 per week
4 day half course	£25.00 per week
3 day full course	£30.00 per week
3 day half course	£20.00 per week
Single days	£12.00

Discounts for families or for attending more than one course  
Each day, all attenders are coached in different aspects of football and also take part in skills competitions followed by 5-a-sides.

Ground tours are arranged plus, when available, Rochdale's AFC superstars are invited to sign autographs and chat to attenders.

Awards in each age group are presented at the end of the week to:  
Most Improved Attender/Skills Winner/Star Performer/Personality

Free tickets to Rochdale AFC home matches

**PROMISING PLAYERS ARE INVITED TO THE CENTRE OF EXCELLENCE**



**Hello everybody and welcome to Spotland for yet another home game, this time against Luton Town.**

### SCHOOLS MATCHDAY VISIT/BALL BOYS

Today, we have invited St Margaret's Primary School and Milnrow Parish Primary School to share the ball boy duties and take part in the half-time challenge match.

Last Saturday, you were entertained by Alice Ingham and Holy Family primary schools in what turned out to be a one-sided affair, with the latter winning convincingly.



Let's hope today's effort is a little closer with many goals scored.

### GREATER MANCHESTER ABILITY COUNTS LEAGUE

We will be taking our Under-16s squad down to The Cliff again on Friday to play against Bolton and Liverpool. Hopefully they will be as successful as last month when they beat Manchester

United 1-0 and then followed that with a fantastic 6-0 defeat of Wigan Athletic.

### Under-16s Championship Table

Team	P	W	D	L	GD	Pts
ROCHDALE	2	2	0	2	7	6
Manchester U.	2	1	1	0	0	5
Wigan Ath.	2	0	1	1	-7	3
Bolton W.	1	0	0	1	0	1
Liverpool	1	0	0	1	0	1

The Open Age squad competed recently at the Manchester FA Sports Village, beating Everton 3-1 and Manchester City 2-0, but losing to Oldham Athletic 2-3 and Amputees Males 1-4.

### Adult Championship Table

Team	P	W	D	L	GD	Pts
Oldham Ath.	4	3	1	0	8	11
Everton	4	2	1	1	3	9
Amputees	4	2	0	2	1	8
ROCHDALE	4	2	0	2	0	8
Manchester C.	4	0	0	4	-12	4

We are continuing training for the Under-16s on Wednesdays from 5.30-7.30pm, with the Open Age taking place on Mondays at the same time, both sessions at the club's 5-a-side complex.

Anybody is welcome, but please contact me to confirm your attendance.

### CHRISTMAS FUN COURSES

Yes, Christmas is only about five weeks away and we have finalised details for the school holidays with venues at the Soccer Factory and Littleborough Community School.

**Monday 22nd and Tuesday 23rd December:**

**Soccer Factory** - Edinburgh Way, Rochdale (near Tesco)  
**Littleborough Community School** - Calderbrook Road, Littleborough

### Monday 29th and Tuesday 30th December

**Soccer Factory** - Edinburgh Way, Rochdale (near Tesco)

**Full day:** 10.00am – 3.00pm/Half-day 10.00am – 12.00pm

Costs are **£12.00** per day or **£7.00** per half-day

There is no enrolment/registration, but anybody is welcome to come to either venue any day(s) which suits (discounts are available for attending more than one day).

So, if you want something to do over the festive period or want to wear that new kit after Christmas, pay a visit to the nearest location and spend your free time with the Community Staff.

There will be daily awards (sponsored by McDonald's) and free tickets to watch Dale home matches.

See you all on 13th December for the visit of Bournemouth.

### Hicksy

**A**s winter draws ever closer, the fear of losing fixtures to frost has been lessened with the club investing in new and improved covers for the playing surface at Spotland.

Head groundsman Phil Collinson is very happy with the covers and is sure they will have a positive impact in the weeks to come.

"Hopefully they will do the trick for us. The covers we have bought are twice as thick as the previous ones. In the past we have had to double and sometimes triple-up the covering, but these are similar in thickness to those used by Oldham Athletic and they seem to do well with frost.

"Coming into winter it is fingers crossed that we can actually get the covers down in time and my first job every day is to look at the weather forecast as to what lies in store for us. I am sure that Gina in the main office is fed up with me getting on to her computer to look at the Met Office website trying to find out when the frost is coming.

"Unfortunately once it gets in it stays in and is made even worse by the shadow thrown onto the pitch by the Main Stand. Our aim

has to be to make sure the frost doesn't get in and these covers will be a great help."

Physically getting them into position will also be a simpler task, as Phil explains.

"The beauty of these is that they have an inflatable sausage which takes about three minutes to inflate and then two people can just roll it

out. Within about 10 minutes the whole of the troublesome area can be covered. It comes in two pieces, which will do the length of the pitch and come out about 20 metres. Instead of having numerous covers with a lot of seams and potential gaps, we can, with the bigger, thicker covers, reduce our problems when the frosts actually arrive."



## A BRIEF WORD PHIL COLLINSON

## SERVICE SPORT - SERVICE SOLUTIONS

### SERVICE AND SALES OF FITNESS EQUIPMENT



**servicesport**

are proud to be  
associated with  
Rochdale Football Club

To contact us or order your **FREE** catalogue call  
0044 (0) 845 402 2456  
[www.servicesport.co.uk](http://www.servicesport.co.uk)



colourplan **design**  
& Print

# WE'RE ON THE BALL

FOOTBALL • RUGBY • CRICKET • BOXING

## Scrutator

### “Older fans may remember Dave Sutton’s infamous interview in 1993 when he suggested that non-league teams should be banned from the FA Cup”

I'm sure I write the same article at this time of year every year, so I'm going to do it again and this time I've got the backing of Keith Hill!

Why has the FA tinkered so much with the FA Cup? The consequences of their meddling has diluted the spirit and fervour that the merest mention of 'the cup' would evoke in people normally quite sedate.

I put 'the cup' in inverted commas because there was a time when it was quite simply referred to as The Cup.

The Cup was always the FA Cup. No other pot came close to The Cup. I'm sure the editor of this publication will be quite happy for me to refer to the FA Cup as The Cup for time immemorial, as The Cup will always be The Cup. Even now when friends meet to travel to an FA Cup tie, early exchanges will always include remarks like "cup fever" and "up fer t'cup!"

Ten years ago and further back in time, the first two rounds always used to be regionalised. Dale would traditionally face industrial ties with the likes of Darlington and Scunthorpe, before the chance to face Manchester United when the big clubs entered at the third round stage.

Nowadays it is different. The draw is national so Dale can be pitted against any random Southern club. So far we've had ties at places like Cambridge, Bristol Rovers, Stevenage, Southend and Barnet. Meanwhile Peterborough, Oxford and Brentford have visited Spotland.

This is lunacy. Even the most aloof FA executive can see that it is quite

absurd making fans and teams travel hundreds of miles in pursuit of cup glory. Indeed, judging from the first round attendances, many fans have turned their backs on the early rounds of The Cup.

Spare a thought for the non-league teams. Time was when their first round was akin to our third round. A chance to really cash in. Grays would long for Southend away. They got Carlisle. Where is the sense in forcing the loyal few hundred who watch Grays to travel 350 miles to have their big day out?

Why can't common sense prevail? Is it the FA or the clubs who have voted for the de-regionalisation of The Cup?

Keith Hill was spot on when he was quoted as saying the FA have got this wrong. He isn't the first Dale manager to take on the FA when it comes to The Cup. Older fans may remember Dave Sutton's infamous interview in 1993 when he suggested that non-league teams should be banned from the FA Cup. The furore that created at the time was tremendous; one big hook caught a lot of big fish. Sutton based his rationale on non-league sides being thuggish in their approach to matches and there was an incident at Barrow's Holker Street the other season which supports his claim.

Mind you, there's a Gretna forward who would argue the opposite; well, he will when he finally lands after being walloped up into the air by Gareth Gray in 1991!

You can turn Keith Hill's sentiments towards the league. (The league doesn't command enough to be

called The League, as opposed to The Cup!!)

Will football's bottom two divisions follow the Blue Square led regionalisation one day? Football is cyclic, things come and go and then come back. It is absolutely certain that Division Three North and South will one day return. When, is open for debate ... probably when oil is about to run out!

Would the league be better for a North-South divide? I really cannot answer that question as I am not old enough to recall 1958 when football was last conducted in that way at this level.

My gut reaction is that it would be a good move, although I'd miss my trips to Devon.

What I do know is that when I watched the second round draw on Sunday 9th November, every time a club like Southend was pulled out at home, I could only watch the next ball out from between my fingers! And then breathe an audible sigh of relief when I spotted it wasn't ball number 33.

This isn't The Cup. This is torture and it is wrong to put The Cup and torture together in the same breath.

On the plus side, ITV are doing a far better job with their coverage than the BBC used to do, when they had this habit of bigging-up the Premiership for the first hour, before Gary Lineker (or Ray Stubbs before him) apologetically and condescendingly introduced a ten minute round up of the minnows in action.

“One does like something to read when one is having a wee!”

*The Queen, July 2008*

# PUBlications

Advertise your business in a pub toilet!  
Covering Lancs, Yorks, Cheshire & The East Mids.

[info@pubadvert.co.uk](mailto:info@pubadvert.co.uk)





## Jason Birch brings us an irreverent look at life in League Two ...

Accrington Stanley's resounding 3-0 victory over Bournemouth last Saturday gave them their first win in five games.

A lightning three-goal blitz in the opening 20 minutes secured the points, their first goal slotted home by Paul Mullin (pictured) in the third minute.



a fifth straight home defeat on the Shakers. Grimsby fans struggled to put into words how it felt 'to win again'; one supporter who posted his congratulations to the team online, gave an indication of just how long it had been since his team Grimsby had last won in the league by listing all the things he had done with his life since:

'...married, divorced, had children, served in the Foreign Legion, found God, got my pilot's licence, patented unmeltable chocolate, circumnavigated the globe, went to the moon (and back), got a telegram from the Queen, been a Big Brother contestant, witnessed sunshine, ate my own bodyweight in celery and tidied my sock drawer!'

Following their exit from the FA Cup, Chester City parted company with manager Simon Davies, his reign in charge lasting only seven months. Former boss Mark Wright has been quickly reappointed for a third spell in charge at the Deva Stadium, becoming the club's sixth manager in the last four years.

Of particular interest to Dale fans was the performance of Kallum Higginbotham, who, on his first start for the Reds, put in a performance that earned him the 'Man of the Match' award.

Bournemouth fans were furious with their team's display, labelling them of 'lacking the nous' to play football at League Two level. Ex-England and Tottenham midfielder Darren Anderton was singled out for his talent of 'marking the centre circle for 90 minutes.'

The manager's job at Chester City is expected to feature on The Discovery Channel soon, judged to be one of 'The ten most hardest jobs in the UK' and up there with deep sea fisherman, oil rig worker and booking agent for Michelle McManus!

Sky Sports have unveiled Bradford City v



Darlington as being their next game to be screened live from League Two

in February, each club pocketing £30,000 and £10,000 respectively. Setanta TV, meanwhile, are paying £80,000 to AFC Bournemouth for the privilege of showing their FA Cup tie against first round giant killers Blyth Spartans 'live' next weekend.

Macclesfield Town supporters had plenty to say online following their 1-1 draw with Dale. One fan's view was: 'I thought we deserved the draw. When Dale get the ball down they look very dangerous, but we defended brilliantly at times, even if it was in our own box.'

The signing of goalscorer Nat Brown from Wrexham was hailed as a 'Masterstroke'.

### TODAY'S OTHER FIXTURES

### COCA-COLA FOOTBALL LEAGUE TWO

Barnet v Macclesfield T.

Brentford v Darlington

Bury v Gillingham

Chester C. v Aldershot T.

Chesterfield v Accrington S.

Dagenham & R. v Notts Co.

Lincoln C. v Shrewsbury T.

Morecambe v Exeter C.

Rotherham U. v Bradford C.

Wycombe W. v Port Vale



## league 2 table

		P	GD	PTS
1	Darlington	16	15	31
2	Wycombe	15	10	31
3	Shrewsbury	16	18	27
4	Rochdale	16	9	27
5	Brentford	16	8	27
6	Bradford	16	7	27
7	Gillingham	16	4	27
8	Exeter	16	3	27
9	Bury	16	4	25
10	Dag & Red	16	11	24
11	Chesterfield	16	5	22
12	Lincoln City	16	1	22
13	Aldershot	16	-8	21
14	Port Vale	16	-8	19
15	Notts County	16	1	18
16	Accrington Stanley	16	-2	18
17	Morecambe	16	-8	16
18	Macclesfield	15	-14	14
19	Chester	16	-14	13
20	Barnet	16	-16	13
21	Rotherham	16	4	9
22	Grimsby	16	-19	9
23	Bournemouth	15	-8	-3
24	Luton	15	-3	-11

## appearances chart

Player	League 08/09		Other 08/09		Dale Career		Overall Career	
	Apps	Goals	Apps	Goals	Apps	Goals	Apps	Goals
Buckley	9(4)	6	3	-	24	6	24	6
Dagnall	11(5)	5	3(1)	2	102	37	146	44
D'Laryea	-	-	-	-	10	-	11	-
Evans	-	-	-	-	1	-	1	-
Higginbotham	1(2)	-	1	-	42	3	47	3
Holness	1(2)	-	1(1)	-	26	-	26	-
G Jones	16	-	4	-	381	51	450	53
M Jones	-	-	2(1)	-	3	-	152	28
Keltie	8(1)	-	3(1)	-	13	-	192	1
Kennedy	16	1	5	-	71	3	229	9
Lambert	(1)	-	-	-	1	-	1	-
Le Fondre	7(9)	3	2(2)	3	80	27	153	47
McArdle	16	1	5	-	116	5	118	5
Ramsden	7	-	1	-	100	6	176	6
Rhodes	5	2	-	-	5	2	15	3
Rundle	15(1)	4	3(2)	-	102	15	226	27
Russell	16	-	5	-	38	-	168	-
Shaw	2	1	2(1)	-	5	1	36	3
Spencer	-	-	-	-	22	-	130	-
Stanton	16	-	5	-	90	-	366	1
Thorpe	7(5)	3	2(3)	1	25	5	476	109
Thompson	5(3)	1	2(1)	-	37	2	37	2
Toner	9(3)	-	3(1)	-	16	-	219	19
Wiseman	9(2)	-	3(1)	-	15	-	77	1

Up to and including Barnet (h), 18/11/08

## league 2 stats

### Best Home Win

7-0, Shrewsbury T. v Gillingham, 13/9/08

### Best Away Win

6-0, Darlington at Macclesfield T., 30/8/08

### Highest Aggregate

7 goals

7-0, Shrewsbury T. v Gillingham, 13/9/08

3-4, Rotherham U. v Barnet, 18/10/08

6-1, Rochdale v Chester C., 21/10/08

1-6, Exeter C. v Chesterfield, 28/10/08

### Leading Scorers (all competitions)

16 goals - Grant Holt (Shrewsbury T.)

12 goals - Jamie Ward (Chesterfield)

11 goals - Peter Thorne (Bradford C.)

### Highest Attendances

14,038, Bradford C. v Notts Co., 9/8/08

13,154, Bradford C. v Rochdale, 23/8/08

13,083, Bradford C. v Luton T., 4/10/08

### Lowest Attendances

1,152, Accrington S. v AFC Bournemouth, 15/11/08

1,217, Accrington S. v Wycombe W., 25/10/08

1,247, Macclesfield T. v Lincoln C., 21/10/08

## league 2 attendances

TEAM	HIGH	LOW	AVE
Accrington	3012	1152	1697
Aldershot	5023	3039	3937
Barnet	2887	1776	2225
Bournemouth	5377	3554	4434
Bradford	14038	12432	12944
Brentford	5362	3733	4453
Bury	3597	2362	2868
Chester	3102	1295	1993
Chesterfield	4951	3042	3675
Dagenham	2629	1433	1852
Darlington	3559	2814	3098
Exeter	5328	3930	4757
Gillingham	5339	4316	4855
Grimsby	4562	2950	3843
Lincoln	5003	3417	4325
Luton	7149	5402	5983
Macclesfield	2556	1247	1884
Morecambe	2606	1571	2091
Notts Co	6033	3610	4757
Port Vale	7273	5493	6255
<b>Rochdale</b>	<b>5492</b>	<b>2162</b>	<b>3024</b>
Rotherham	4748	3322	3795
Shrewsbury	7162	5163	5915
Wycombe	5799	4021	4774



# Rochdale AFC Statistics 2008/09



Key: (45) Time of Substitution

Player Booked ●

Player Sent Off ○

Month	Date	Opposition	Competition	Pts	Pos	Att	Away	Starting Players	Substitutes
August 2008	Sat 9	A Grimsby Town	D0-0	1	14	4213	696	Russell Ramsden Kennedy Kettle	McArdle Wiseman (75) G Jones Dagnal Le Fondre (84) Rundle
	Tue 12	H OLDHAM ATHLETIC (CC1) Δ	D0-0	-	-	5786	3082	Russell Ramsden Kennedy Kettle	McArdle Higginbotham (100) G Jones Dagnal Shaw (62) Rundle (112)
	Sat 16	H BARNET	W3-1	4	5	2442	90	Russell Ramsden Kennedy Kettle	McArdle Higginbotham (60) G Jones Dagnall (69) SHAW (82) RUNDLE ●
	Sat 23	A Bradford City	L0-2	4	11	13154	915	Russell Ramsden (54) Kennedy Kettle	McArdle Toner (54) G Jones Dagnal Shaw (68) Rundle
Sat 30	H BURY	D1-1	5	13	5492	1916	Russell Wiseman Kennedy Kettle	McArdle Buckley G Jones Dagnal LE FONDRE Rundle	
September	Sat 6	H WYCOMBE WANDERERS	L0-1	5	14	2880	144	Russell Ramsden Kennedy Toner (79)	McArdle Buckley (57) G Jones Dagnal (79) Le Fondre Rundle
	Sat 13	A Rotherham United	D2-2	6	15	3569	458	Russell Ramsden Kennedy Kettle	McArdle BUCKLEY (72) G Jones RHODES (81) Le Fondre (66) Rundle
	Sat 20	H CHESTERFIELD	W2-1	9	10	2884	413	Russell Ramsden KENNEDY Kettle	McArdle BUCKLEY G Jones Rhodes Le Fondre (60) Rundle
	Sun 28	A Accrington Stanley	W3-1	12	9	2417	1249	Russell Ramsden (27) Kennedy Kettle	McArdle BUCKLEY (88) G Jones RHODES LE FONDRE (63) ● Rundle
October	Sat 4	H DAGENHAM & REDBRIDGE	L0-2	12	12	2566	101	Russell Wiseman Kennedy Kettle (79) ●	McArdle Buckley G Jones Rhodes Le Fondre (56) Rundle (79)
	Tue 7	H CARLISLE UNITED (IPT2) ☆	D2-2	-	-	1608	318	Russell Holmes (90) Kennedy (45) Toner	McArdle Thompson G Jones THORPE Dagnall (75) Rundle
	Fri 10	A Lincoln City	D1-1	13	9	4510	330	Russell Holmes Kennedy Toner	McArdle Buckley (71) G Jones Rhodes (66) Thorpe ● RUNDLE
	Sat 18	A Morecambe	D1-1	14	12	2572	937	Russell Wiseman Kennedy Toner	McArdle Thompson G Jones Dagnall (77) Thorpe Rundle (60)
	Tue 21	H CHESTER CITY	W6-1	17	10	2162	305	Russell Wiseman Kennedy Toner	McArdle Thompson G Jones (86) Dagnall 3 (64) THORPE (76) BUCKLEY
	Sat 25	H ALDERSHOT TOWN	W3-1	20	10	2750	256	Russell Wiseman Kennedy Toner	McArdle THOMPSON G Jones Dagnal (77) Thorpe RUNDLE (62)
Tue 28	A Notts County	W2-1	23	8	3610	344	Russell Wiseman Kennedy Toner	McArdle Thompson (51) G Jones Dagnal (68) THORPE 2 Rundle	
November	Sat 1	A Brentford	W2-1	26	6	4291	292	Russell Wiseman Kennedy Toner	McArdle BUCKLEY (90) G Jones Dagnal (63) Thorpe Rundle
	Tue 4	A Scunthorpe United (IPT3)	L0-1	-	-	2174	228	Russell Wiseman Kennedy Toner	McArdle Thompson (77) Kettle Le Fondre (69) M Jones (58) Buckley
	Sat 8	A Barnet (FAC1)	D1-1	-	-	1782	355	Russell Wiseman Kennedy Toner	McArdle Buckley G Jones ● Dagnall Thorpe (73) Rundle (83)
	Sat 15	H MACCLESFIELD TOWN	D1-1	27	4	3013	365	Russell Wiseman Kennedy Toner	McArdle Thompson (70) G Jones Dagnal (70) Thorpe RUNDLE
	Tue 18	H BARNET (FAC1R) ○	W3-2	-	-	2339	60	Russell Wiseman Kennedy Kettle	McArdle M Jones (46) G Jones Shaw (69) LE FONDRE 3 (105) Buckley
	Sat 22	H LUTON TOWN	3:00	-	-	-	-	-	-
	Tue 25	A Gillingham	7:45	-	-	-	-	-	-
	Sat 29	A Forest Green Rovers (FAC2)	3:00	-	-	-	-	-	-
December	Sat 6	A Darlington	3:00	-	-	-	-	-	-
	Sat 13	H AFC BOURNEMOUTH	3:00	-	-	-	-	-	-
	Sat 20	A Exeter City	3:00	-	-	-	-	-	-
	Fri 26	H SHREWSBURY TOWN	3:00	-	-	-	-	-	-
Sun 28	A Port Vale	3:00	-	-	-	-	-	-	
January 2009	Sat 3	H ACCRINGTON STANLEY	3:00	-	-	-	-	-	-
	Sat 10	A Chesterfield	3:00	-	-	-	-	-	-
	Sat 17	H LINCOLN CITY	3:00	-	-	-	-	-	-
	Sat 24	A Dagenham & Redbridge	3:00	-	-	-	-	-	-
	Tue 27	H NOTTS COUNTY	7:45	-	-	-	-	-	-
	Sat 31	A Aldershot Town	3:00	-	-	-	-	-	-
February	Tue 3	A Chester City	7:45	-	-	-	-	-	-
	Sat 7	H MORECAMBE	3:00	-	-	-	-	-	-
	Sat 14	A Macclesfield Town	3:00	-	-	-	-	-	-
	Sat 21	H BRENTFORD	3:00	-	-	-	-	-	-
Sat 28	H GRIMSBY TOWN	3:00	-	-	-	-	-	-	
March	Tue 3	A Barnet	7:45	-	-	-	-	-	-
	Sat 7	A Bury	3:00	-	-	-	-	-	-
	Tue 10	H BRADFORD CITY	7:45	-	-	-	-	-	-
	Sat 14	H ROTHERHAM UNITED	3:00	-	-	-	-	-	-
	Sat 21	A Wycombe Wanderers	3:00	-	-	-	-	-	-
Sat 28	H EXETER CITY	3:00	-	-	-	-	-	-	
April	Sat 4	A AFC Bournemouth	3:00	-	-	-	-	-	-
	Sat 11	H PORT VALE	3:00	-	-	-	-	-	-
	Mon 13	A Shrewsbury Town	3:00	-	-	-	-	-	-
	Sat 18	H DARLINGTON	3:00	-	-	-	-	-	-
	Sat 25	A Luton Town	3:00	-	-	-	-	-	-
May	Sat 2	H GILLINGHAM	3:00	-	-	-	-	-	-

**Substitutes**

Higginbotham (75)	Thorpe (84)	Toner	Lambert	Spencer
Le Fondre (62)	Toner (100)	Thorpe (112)	Wiseman	Lambert
Toner (60)	Le Fondre (69)	Thorpe (82)	Wiseman	Spencer
Le Fondre (54)	Wiseman (54) ●	Thorpe (68)	Higginbotham	Spencer
Ramsden	Higginbotham	Thorpe	Shaw	Toner
Thorpe (57)	Lambert (79)	Higginbotham (79)	Wiseman	Spencer
Thorpe (66) ●	Toner (72)	Dagnal (81)	Wiseman	M Jones
Dagnal (60)	Higginbotham	Toner	Wiseman	M Jones
Wiseman (27)	Dagnal (63)	Thompson (88)	Toner	Spencer
Dagnal (56)	Thompson (79)	Toner (79)	Holness	Spencer
Wiseman (45)	Le Fondre (75)	Kettle (90)	Higginbotham	Spencer
Dagnal (66)	Le Fondre (71)	Kettle	Wiseman	Spencer
Holness (51)	Buckley (60)	Le Fondre (77)	M Jones	Spencer
Le Fondre (63)	Rundle (76)	Kettle (86)	Holness	Spencer
BUCKLEY (62)	Le Fondre (77)	Holness (90)	Kettle	Spencer
Buckley (51)	Le Fondre (68)	Holness	Kettle	Spencer
Le Fondre (63)	Thompson (90)	Holness	Kettle	Spencer
Dagnal (58)	Thorpe (69)	Rundle (77)	Holness	Spencer
Holness (58) ●	Shaw (73)	M Jones (83)	Le Fondre	Kettle
Le Fondre (70)	Buckley (70)	Holness	Kettle	Spencer
Thorpe (46)	Thompson (69)	Rundle (105)	Holness	Ramsden

Home Games in bold, cup games in italics

Δ - Lost 4-1 on pens  
 ☆ - Won 4-3 on pens  
 ○ - Won after extra time

# Man of the Match

Sponsored by the Co-operative



Adam Rundle with his MOTM award and the Match Sponsors, Saddleworth Physiotherapy Clinic, following the Macclesfield match.

Match Ball Sponsors Steve and Amy Hartley of Hartwood Toolmaking Services ( 07779 099547 ) with Director Paul Hazelhurst after the Macclesfield draw.



The **co-operative.co.uk/electrical**

**“Great price, fast delivery, highly recommended”\***

\*a very satisfied customer



98% of items delivered free in 2 days.

Text confirmation of your 3 hour delivery slot for large appliances.

visit us at [www.co-operative.co.uk/electrical](http://www.co-operative.co.uk/electrical)

## Official Match Sponsor

We welcome back Trends UK Ltd again as Official Match Sponsors. Trends are the UK's No. 1 Science Toy company, with UK and International rights for National Geographic Science Toys, Based in Oxfordshire, Trends is owned by David Bottomley, a lifelong Dale supporter and Lee Clowes a lifelong Man City Supporter. David, along with his son Simon, travel many thousands of miles each season from their home in Henley watching the Dale.

Joining Trends today are Julie Bottomley, and the Clarke Family from Norwich, who have adopted the Dale as their 2nd Team. Nigel, Angela, Charlotte and Robert Clarke now wear The Dale strip with pride in Norwich and will be watching Dale for the 5th time in a year including the trip to Wembley. Also here today are Steve and Robert Wilks, lifelong Luton fans, and Jeff and Peadar from BLM Azure one of the UK's Leading Media Specialists.

Finally wishing the Dale every success for the remainder of the season and to say a big thank you to Keith Hill and all the team at Rochdale for bringing professionalism and a desire to win to the Dale.



**NATIONAL GEOGRAPHIC™**



SPONSORS



## SHOTS IMPROVE BUT IT'S ANOTHER AWAY DEFEAT

Rochdale 3, Aldershot Town 1

That there was some encouragement to be taken from a 3-1 defeat shows how rocky a road Aldershot are riding on their travels.

Will Buckley's injury-time goal, which extended Rochdale's winning margin to 3-1, hid what might have been. John Grant had a goal ruled out for offside in the 89th minute, which would have made the score 2-2, tapping home after Ben Harding's shot had been saved by Sam Russell.

However, Gary Waddock and his squad were left to reflect on familiar failings: poor defending, which leads to shipping late goals and an inability to preserve what their earlier endeavour has achieved.

Aldershot had already fought back once after an insipid first half, riding their luck and then equalising through substitute Marvin Morgan.

For a brief period Rochdale were rocking and that Aldershot sensed victory was possibly their ultimate undoing. This inexperienced squad are still underestimating the value of a point. Perhaps Waddock, desperate to arrest the run of defeats, is too.

He had adjusted his team formation commendably during the game, but, at 1-1, he could have reverted to a more conservative approach for the last 20 minutes and protected being level against a fine side.

Instead, the game became increasingly open and Rochdale, who will push hard for the play-offs again on this showing, were able to introduce high quality from the

bench and Keith Hill's men were fresh and smart enough to exploit the gaps.

Chris Dagnall, the game's outstanding player, was a constant menace and just before the half hour he beat Charles to a weak lay-off from Hylton and spread the ball to Adam Rundle. His shot took a cruel deflection off Day and gave Bull no chance.

After the break, however, Aldershot's fortunes changed, which strengthened the belief that Morgan's eventual equaliser was a wind of change.

Briefly, Aldershot were on top, but increasingly in the last 20 minutes, Rochdale came again. Jones' initial shot was superbly blocked on the line by Day, the rebound fell to Joe Thompson and he squeezed his shot home at the near post.

Source: Aldershot Mail

## NOTTS AGAIN FAIL TO PRESS HOME THEIR ADVANTAGE

Notts County 1, Rochdale 2

So, two of Notts County's proud recent records have bitten the dust in the space of four days.

First, their unbeaten run in League Two this season was ended on 11 games with defeat at Chesterfield on Saturday.

And then last night against Rochdale they suffered their first loss at Meadow Lane since March 11 - also after a run of 11 unbeaten games.

Jamie Forrester slotted home his third successful spot-kick of the campaign put County 1-0 ahead, but Notts once again displayed their frustrating inability to hold onto a lead. It is their

fatal flaw this season.

As so many times in the opening 14 games of the campaign, they have too easily surrendered an advantage. Poor defending cost them dearly once again as Lee Thorpe struck two goals in ten minutes to complete a quick-fire turnaround.

His first, just after the hour mark, was placed inside the post with pinpoint precision and he kept his cool to round Russell Hoult and slide the ball into the net to make it 2-1.

But he was allowed far too much space just outside the penalty area to pick his spot.

And he sailed through unmarked into the penalty area to latch onto substitute William Buckley's incisive pass and double his tally. Hoult was terribly exposed for both goals.

Dale never gave Notts time to play their passing game and worryingly, the Magpies didn't possess a Plan B.

Source: Nottingham Evening Post



have you had an **accident?**  
...call your local compensation Solicitors



**NO WIN NO FEE**

No insurance to pay! No Credit Agreements  
Nothing Deducted From Your Compensation  
Simple, If you win £10,000, you receive £10,000

Accident Solicitors

Partners Paul Ackroyd & Chris Bracey are experienced specialist compensation solicitors. We offer you an honest, frank assessment of the merits of your claim. We are approachable and we personally handle your case from start to finish, making sure you receive the very best representation and maximum payout for your accident.

Road Traffic Accident • Accident at Work • Tripped or Slipped  
Sports Injury • General Accident  
Home and Hospital visits any time  
By referring the case to the Rochdale AFC, A2 will make a payment to the Club so you and A2 will be financially supporting your Club.

**01706 343 322**

e-mail [paul@a2accidentsolicitors.co.uk](mailto:paul@a2accidentsolicitors.co.uk)

Bull Brow Chambers, 6 Baillie Street, (Bottom of Yorkshire Street) Rochdale, OL16 1JG  
We are members of the Law Society's Personal Injury Panel, The Association of Personal Injury Lawyers and the Law Society. Members of the Motor Accident Solicitors Society

New year **No excuses**

**FREE**  
1-DAY GUEST  
MEMBERSHIP  
for you and a friend\*  
Bring this ad to the club to claim

Join the world's No.1 health club  
**0870 898 07 26**  
Sandbrook Park, Rochdale OL11 1SA

*FitnessFirst*

## FAVOURITE PROGRAMME

Having lived in Luton since 1993 and being a regular visitor to Kenilworth Road, matches against the Hatters have particular significance to me (Dave Coupe). The first time I saw Luton play Dale was at Kenilworth Road in October 2001.

Luton's programme at the time was edited by Brian Swain, who was part of the furniture at Kenilworth Road until his retirement a few years ago.

Swain produced a tidy, if unspectacular effort which had the usual captain's and manager's columns and pen pics for Dale.

The most interesting piece in the programme was Roger Wash's 'All Our Yesterdays' column, which looked back to Dale's last match at Kenilworth Road in 1969. Wash is the Hatters' official historian and having written several books on Luton, still writes for the Town programme today.

Dale arrived at Kenilworth Road in second place in the Third Division, behind the table-topping Hatters. A solitary goal from Paul Wheatcroft gave Dale a 1-0 victory and lifted us to the head of the table. It also gave one young man bragging rights at work the following Monday morning!

## BEST GAME

In the return game at Spotland in February 2002, Dale completed the double over the Hatters with a 1-0 win. Although this may not sound like a great match, the scoreline did not really tell the full story.

Dale had just beaten York 5-4 in a bizarre game on the Tuesday before, pushing us back into the promotion frame. Luton arrived at Spotland in the promotion places hoping for revenge and with former Dale star David Bayliss in their starting eleven.

We took the lead through boy wonder Patrick McCourt as his shot deflected off Bayliss and over the stranded Hatters' keeper. The rest of the match resembled the Alamo as loan goalkeeper Steve Banks turned in a wonder show to defy the Luton forward line.

To add spice to the match, Bayliss was dismissed for two yellow cards and had a spat with Dale coach David Hamilton on his way down the tunnel.

We held on for a famous 1-0 win to complete the double over the Hatters.

## HATTERS' PROMOTION PARTY

Luton arrived at Spotland on the final day of the 1969/70 season with the chance to win the title on offer.

2,000 visiting supporters trekked to Spotland, but the game was in doubt after torrential rainfall in the Rochdale area. With so much riding on the result, the match went ahead and the Hatters recorded a 2-1 win, thanks to goals from Viv Busby and Malcolm MacDonald. Dale grabbed a consolation through Reg Jenkins and 5,886 fans saw the match.

In the end the win was not enough for the Hatters as they finished in second place in the table to Orient, but they were still promoted.

The programme was fairly reasonable for Dale issues of that era, with plenty of adverts dominating limited, yet interesting reading material.

One such article focused on postcards fans had sent in to the club praising individual players.

J. Connolly of Castleton described Hughen Riley as 'Spotland's Paul Madeley', while Joyce Taylor from Littleborough said Dennis Butler was 'The Francis Lee of Spotland'!

## OTHER LUTON PROGRAMMES

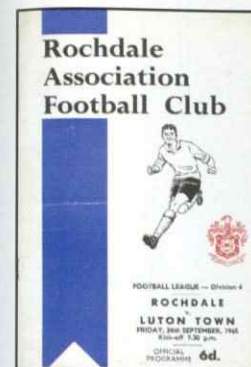
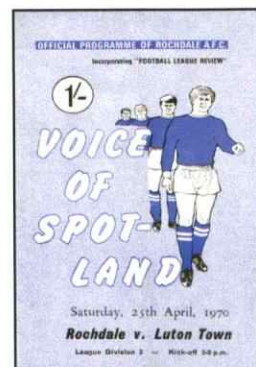
One of the most notable Luton v Rochdale games took place at Kenilworth Road in November 1969.

Dale had just come out of a run of eight consecutive wins, while the Hatters had lost just one league game all term. Not surprisingly, they headed Division Three, while we were in second place.

The game was featured on 'Match of the Day' on that Saturday night and Luton showed their promotion credentials with a 2-0 win.

The match programme started with awful pink shading on the front cover, but the contents were excellent.

A bloke called Eric Pugh wrote 'Eric Pugh's Page', which was a bit odd as it spanned a page and a half!



Howard Kendall (Everton) on its cover.

Dale met Luton for the first time in the 1910/11 FA Cup competition, but our maiden league fixtures didn't take place until 1965/66.

Tony Pullein, a name synonymous with programme writing from the 1960s to the 1980s penned the Dale section, which was a detailed breakdown of our season so far, as well as player profiles. Rochdale - the shock team of the season so far' was his headline.

The informative Football League Review was stapled into the centre pages and featured a youthful looking

The Hatters came to Spotland on a Friday night in September and recorded a 2-1 win, George Morton netting for Dale.

The club were hoping Friday night football would boost the crowds, but the attendance of 3,692 was the season's lowest to date, although four consecutive losses might have had something to do with that.

The Supporters' Club Notes had an eerie sense of foreboding when it said: 'The biggest drawback to the expected increase tonight lies in the failure of the team to win lately.'

They also wrote: 'We know things haven't been going according to plan lately but we do deplore those who go around criticising the team whilst pretending to be supporters.'

The programme contained just 12 pages, of which three were full of adverts. Included were adverts for the Jolly Waggoner pub on Spotland Road and the Old Clock Face Hotel on Toad Lane, neither of which still exist to my knowledge.

## LAST SPOTLAND MEETING

Luton were last at Spotland for an FA Cup second round match in December 2003.

A penalty from Steve Robinson put the visitors on their way and Lee Mansell added a second late on. Robinson also missed another penalty, but Luton were never troubled in a comfortable 2-0 win.

Fans may recall that this was the game in which Dale left-back Michael Simpkins became involved in a slanging match with supporters in the WMG Stand.

Saturday 6th December 2003  
FA Cup, Second Round

## ROCHDALE 0 LUTON TOWN 2

**Dale:** Edwards, Evans, Simpkins, Beech (Patterson), Burgess, Grand, McCourt, Jones, Connor (McEvilly), Bishop (Townson), Doughty

**Luton T.:** Beresford, Hillier, Boyce, Coyne, Davis, Mansell, Robinson, Brkovic, Forbes, Howard, Holmes

**Att:** 2,807

**Referee:** AR Hall (Birmingham))

## COMPLETE RECORD

### AT SPOTLAND

	Pld	W	D	L	F	A
League	5	2	1	2	8	6
FA Cup	2	0	1	1	1	3
TOTAL	7	2	2	3	9	9

### OVERALL

	Pld	W	D	L	F	A
League	10	3	1	6	12	19
FA Cup	3	0	1	2	3	6
TOTAL	13	3	2	8	15	25

First met in league: 1965/66  
Doubles achieved: 1  
Doubles conceded: 2

Biggest wins: Home: 3-0, 1966/67  
Away: 1-0, 2001/02  
Heaviest defeats: Home: 0-2, 2003/04 (FA Cup)  
Away: 1-4, 1965/66 & 1967/68

Last home win: 1-0, 2001/02  
Last away win: 1-0, 2001/02  
Last home draw: 2-2, 1967/68  
Last away draw: None  
Last home defeat: 0-2, 2003/04 (FA Cup)  
Last away defeat: 0-2, 1969/70

## Get a winning result with your new local Howarth Timber & Building Supplies Rochdale

**Proud sponsors of Rochdale AFC**

Your new local Howarth Timber & Building Supplies Rochdale features not only the widest range of products but also expertise, service and knowledge you can rely on.

With over 165 years' experience and a UK network of 28 timber and builders' merchants branches, the Howarth Timber Group is the UK's largest privately owned and operated timber group.

**BRICKS & BRICK MATCHING SERVICE • BLOCKS • FLOORING • DECKING • AGGREGATES • LINTELS  
PLASTER & PLASTERBOARD • DRAINAGE GOODS • SEALANTS & CHEMICALS ...PLUS MUCH MORE!**

Howarth Timber & Building Supplies Rochdale. Milnrow Road, Rochdale, Lancashire OL16 2AA.  
Tel. 01706 710 962 Fax. 01706 345 481 Email. [sales.rochdale@howarth-timber.co.uk](mailto:sales.rochdale@howarth-timber.co.uk)

**HOWARTH TIMBER & BUILDING SUPPLIES**  
MUCH MORE THAN JUST TIMBER

**Committed to the environment**  
For more information visit [www.howarth-timber.co.uk](http://www.howarth-timber.co.uk)  
Howarth Timber is the UK's longest privately owned and operated timber group with over 165 years' experience



# DALE SUPPORTERS TRUST

## EGM

Dale Supporters Trust is hoping to spend £3,000 on Rochdale Football Club shares as part of the club's capital share issue.

To do so we require the support of our members and the Trust has called an Emergency General Meeting for members to vote on the proposal to buy more shares.

The EGM will take place immediately after today's game in Studds Bar.

The Trust board feels that the purchase of shares is the best use of our funds so that we can increase our influence within the club and bolster our position as one of the club's largest shareholders outside of the boardroom.

Please attend the meeting with your membership cards for voting purposes. This is likely to be the largest expenditure of the season, so it is vital that we have the support of our members before we buy more shares.

## TRUST TEAMS UP WITH THE RATCLIFFE

Rochdale Supporters Trust has linked up with The Ratcliffe Bars and Function Suites in an effort to raise money for the family of Paul Conway.

The Trust will be selling tickets for the must attend 'Paul Conway Benefit Day' on Sunday 7th December via its matchday desks in Studds Bar and Dale Bar at today's home game against Luton. Tickets are also available in the Rochdale AFC Club Shop and in the Dale Bar itself during the week.

The evening will begin with a meat and potato pie hot buffet, before a performance by popular Irish band The Rascals.

A presentation to players involved in the matchday experience package will then take place, as well as a series of auctions, which include signed shirts from several top flight clubs, as well as a number of unique auctions that will appeal to all Rochdale fans.

Events including the 'Guy Proctor Spoons Challenge' and 'Heads and Tails Bingo' will also take place, before top band 'The Rascals' take to the stage.

There will then follow a rendition of Paul's favourite song 'American Pie', performed by Ciaran Toner (guitar) with Adam Rundle and Clark Keltie providing the lead vocals. The rest of the squad and staff of Rochdale AFC will provide the backing vocals and this performance will be available as a video to be downloaded via Dale World for just £1.

It promises to be a great event and a fitting tribute to a much loved member of the Rochdale family and you are urged to secure your tickets quickly as this will surely be a popular event for all Dale fans.

Doors open for the afternoon/evening event at 4pm and tickets are priced at just £12 each.

## 2009 CALENDAR

The Trust hoped to sell out the final stock of calendars during the midweek game against Barnet. This means that the calendar has been by far the most successful fundraiser of the season to date, earning more than £2,000 for Trust

coffers.

Feedback on the calendars, which feature memorable Dale moments, such as last season's Wembley trip and the 2003 FA Cup games against Preston and Wolves, has been excellent, with Dale fans commenting on how impressed they have been with the quality of the publication.

If we do have any remaining after Tuesday's game, they will be available for sale today at the Trust desks in Studds and Dale Bar.

We are very pleased with the way sales of the calendar have gone and we are definitely hoping to produce a similar souvenir for Dale fans next season.



# Player Sponsors

 <p><b>Keith Hill</b> home: B.A. Kilpatrick</p>	 <p><b>David Flitcroft</b> home: B.A. Kilpatrick</p>	 <p><b>James Spencer</b> home: Call 0870 822 1907 to sponsor this player. away: BA Kilpatrick</p>	 <p><b>Sam Russell</b> home: Bob Morrissey away: Good Luck Hartwood Toolmaking Services</p>
 <p><b>Simon Ramsden</b> home: Janet Beecheno - Wishing Simon and the lads every success away: In memory of Derek Lomax</p>	 <p><b>Tom Kennedy</b> home: Falcon Trunking away: The Grindrods &amp; Craig</p>	 <p><b>Nathan Stanton</b> home: Bullet, Mid, Ashy &amp; Sam A away: Ronan O' Driscoll</p>	 <p><b>Rory McArdle</b> home: Bob Morrissey away: David &amp; Simon Bottomley - Dale in Henley</p>
 <p><b>Gary Jones</b> home: rochdaleafc.com away: Dale Supporters Trust</p>	 <p><b>Adam Le Fondre</b> home: rochdaleafc.com away: Colin and Alan Wild - "Up the Dale"</p>	 <p><b>Chris Dagnall</b> home: Mavis Shellard away: Adam Taylor</p>	 <p><b>Adam Rundle</b> home: Jane Prince away: The Olivers, Preston</p>
 <p><b>Ciaran Toner</b> home: Iain Johnstone Call 0870 822 1907 to sponsor this player.</p>	 <p><b>Nathan D'laryea</b> home: Mark Stuart &amp; Gerry. Call 0870 822 1907 to sponsor this player.</p>	 <p><b>Kallum Higginbotham</b> home: Graham Chadwick away: Alicia Hennon</p>	 <p><b>Joe Thompson</b> home &amp; away: Hopwood Hall</p>
 <p><b>Lee Thorpe</b> home: Saddleworth Physiotherapy Clinic Call 0870 822 1907 to sponsor this player.</p>	 <p><b>Clark Keltie</b> home: Darren, Mike &amp; Denise Webb away: MECCA Rochdale</p>	 <p><b>Scott Wiseman</b> home &amp; away: Box No 8</p>	 <p><b>Jon Shaw</b> home: Marie Webb, Dave Buckley: Spotland welcomes you ... promotion beckons. away: Good Luck Jon, Spencer &amp; Rebecca Kerry</p>
 <p><b>Will Buckley</b> home &amp; away: Hopwood Hall</p>	 <p><b>Marcus Holness</b> home: Samantha Johnstone Call 0870 822 1907 to sponsor this player.</p>	 <p><b>Kyle Lambert</b> home: D &amp; N E Roofing Specialists Ltd away: Screenprint Signs Ltd</p>	 <p><b>Raphale Evans</b> home: Dale Supporters Trust away: Call 0870 822 1907 to sponsor this player.</p>
 <p><b>Mark Jones</b> home: David &amp; Simon Bottomley - Dale in Henley away: Call 0870 822 1907 to sponsor this player.</p>	 <p><b>Jack Northover</b> Steve Jones &amp; Peter Downes</p>	 <p><b>Desmond the Dragon</b> Club Shop</p>	

# Dale QUIZ

## 1. TOP, MIDDLE, BOTTOM

Here we see the top, middle and bottom of the heads of three different Dale players. Can you name them?

CLUE: The players have all played for Dale and Luton.



## 2. ANAGRAM GENIUS

These anagrams are the names of two past or present Dale players jumbled up. Can you name them?

AGONY WOODED SIN  
NOT RANKING MOM

## 3. NEGATIVELY SPEAKING

Who is the past or present Dale player featured in this negative?



## 4. GIVE US A CLUE

The cryptic clue should lead you to a past or present Dale player. Who is it?

"Deal or No Deal?" Not with that spelling!

## 5. WHO AM I?

Can you name this former Dale player from the three clues?

- I was born in Dumbarton in February 1960.
- I joined Dale from a non-league club in 1984.
- I once featured in a controversial match against Dale when I was still a Dale player!

## 6. ODD ONE OUT

Of the four Dale players listed below, one of them is the odd one out. Which one and why?

**Grant Holt**  
**Rene Howe**  
**David Perkins**  
**Jamie Taylor**



## BRENTFORD 1 ROCHDALE 2

So, the first of our three long trips down South in the month of November. The usual car load was back after the past trips being hijacked by all and sundry and there was an air of quiet confidence as the Traveller's Tales car took to the road.

### In the car

With the usual foursome back (myself, the Captain, Dingle and Razz), the banter was back to its bluest (not that it really changes that much when we have different company, to be honest).

As usual we avoided talking much about our own footballing matters and most of the talk was about off the field activities. The only real bit of football-related conversation centred on the Captain's recent trip to Hull. Dale's former chairman had managed to get tickets for their game against Chelsea (no doubt Mr Parkin had been in touch) and the Captain had been fortunate enough to be invited.

After retelling the full match activities, from the corporate hospitality to how the game is far faster and more skilful than what we are used to, he stated that it wasn't for him and he was happy watching Dale week in, week out. We are obviously going to lose a fan if we get to the Premiership!



Overpaid, over-pampered and now over-rated ... Officially!

### In the pub

For those who don't know, Brentford has a pub at each of the four corners of the ground and we plumped for The Griffin. If I hadn't taken on driving duties - and it was my first visit to Griffin Park - I may have taken on the challenge of having a pint in each pub, but unfortunately it was one pub and one pub only.

The Griffin was clearly very popular with the visiting fans, as there were only a few home shirts on view.

When you go on these long trips it is interesting to see that you do have the normal diehards that you see at every game, but these also bring out all the exiles we have dotted around the wrong end of the country. It is quite unusual to spot a Dale Centenary shirt and the person wearing it talk in a broad cockney accent when you are expecting a Rochdale brogue.

### In the ground

Griffin Park is a tidy, traditional Football League ground. Okay, it's not in my most favourite place in the world (that London), but it scores highly in keeping with what I expect a football ground to be. The Traveller's Tales party thought best of paying the extra quid to be seated in the upper tier and positioned themselves behind the goal with the majority of our supporters.

It was a similar team to which played in the victory against Notts County. If you think back to last season, it's quite easy to take that for granted, when we were loaning players left, right and centre. Just remember we had the likes of Guy Branston at the back this time last year. How DID we get to Wembley?

The first half of the game was good for Dale. We stifled their play, but went forward with purpose. Dale are

starting to find their striking touch in the box and goals are coming from all over the pitch instead of just the front men.

The first goal came from an unusual source; a corner! Yep, one of those things that we kept winning and were always being cleared or ballooned into the stand, was converted. McArdle rose above the Brentford defence and powered a header past the keeper. It silenced the critics in the away end who were saying that "We never score from corners". And yes, I was one of them!

Then just as you thought it couldn't get any better, Buckley decided to snake his way to the goal and calmly pass the ball into the net to open up a two goal advantage. Half-time and two-nil up, the away end was a very happy place.

As the rain continued to fall (which it had done for most of the day in the 'Big Smoke'), the second half started. Although we weren't as dominant as the first period, we still looked comfortable.

We still managed to spoil our clean sheet as Brentford pulled one back, but the siege we expected on our goal never materialised and in fairness we looked more likely to score again. It was an 'ugly win', but I will take that all season if it means success.

The home crowd became increasingly frustrated as we closed out the game, but for the life of me I could not understand their chant of "2-1 to the referee", as both our goals were controversy free and I didn't see any potential penalties that the ref missed. Bitterness, me thinks!

### In the car

The final whistle went and as usual we applauded off the players. It was a trek to the car and would have been rather unpleasant if we had not just taken three points.

As we walked through the droves of Brentford fans, my point that they were rather bitter following their defeat was proven when one of them shouted out: "Yeah, go on, p\*\*\* off back up Nawf (North) and your dole offices."

"You can say what you want, mate, it's still 2-1," came back the rather witty retort.



### Unemployed, but three points better off!

As we travelled back through the driving rain, trying to find a dole office that was open on a Saturday, we decided that McArdle was Man of the Match. His goal topped off a fine defensive display, especially in the latter half of the game when Brentford went for the long ball approach.

Discussion turned to the enjoyable day out and we discussed the fact that so many exiles made the trip to Brentford and that we are fortunate that we have plenty of former Rochdale residents dotted around the country.

"It's probably because Rochdale is such a dump. I bet teams like Morecambe hardly have any exiles because it's a nice place to live," Razzle stated.

He's probably right. I'll have to ask a few next time we see them ... Next week!!

As always gentlemen it was a pleasure

## WHAT DID WE LEARN?

1. The glitz of the Premiership isn't all it's cracked up to be in the Captain's eyes
2. There would have been 100 away fans if it wasn't for our exiles
3. McArdle is living up to his 'Wall' nickname
4. Grim up north? Not when you have three points in the boot
5. You can enjoy London trips



PROGRAMME  
64 pages for £2.50; 14 advert pages

There are some hidden gems in Brentford's programme, although the ridiculously large page headings and wasted space do let it down.

Dale coverage is brief and to the point, but Steve Smith's article looking back at old Dale v Brentford programmes was of interest to collectors, if a little boring in its execution.

Supporters Trust 'Bees United' occupied four pages, which further supports the official, fairly serious theme throughout the programme.

In summary, too serious and straight-laced for my liking, with the attempts at light-heartedness not really working.

"One does like something to read when one is having a wee!"

The Queen, July 2008

# PUBlications

Advertise your business in a pub toilet!  
Covering Lancs, Yorks, Cheshire & The East Mids.

info@pubadvert.co.uk



# Dale on the Road

DARLINGTON Saturday 6th December 2008 Kick-Off 3.00pm

**Ground:**  
Darlington Arena,  
Neasham Road, Darlington  
DL12 1DL

**Telephone:**  
(01325) 387000

**Manager:**  
David Penney

**Current League**  
**Position:** 1st

**Last Season:**  
6th

**Colours:**  
Black & white shirts, black  
shorts, black socks



## HOW TO GET THERE

Take the M62 eastbound, then the A1(M) northbound, exiting at junction 57. Take the A66 towards Darlington/Teesside, continuing over two roundabouts, until you see the stadium on your left at a third roundabout. Turn left at this roundabout into Neasham Road for the stadium.

## WHAT'S THE GROUND LIKE?

The Darlington Arena still continues to be something of a millstone around the Quakers' neck and they are yet to fill it to half of its 25,000 capacity, never mind anything more.

The ground is a smaller version of Middlesbrough's Riverside Stadium and if I was a Darlo supporter I'd be a bit miffed that the seats were all red, with some black and white ones interspersed here and there. It should really be the other way round.

Despite being only four years old, the ground has undergone several name changes. It started off as the Reynolds Arena, then became the Williamson Motors Stadium, followed by the 96.6 TFM Darlington Arena and then the Balfour Webnet Darlington Arena!

If nothing else, Darlington are going

to cause massive headaches in football quizzes in future years!

As with most new grounds, the stands look virtually identical, apart from the South Stand which has a row of executive boxes running across the back of it. In the South East corner of the stadium is a Police Control Box, whilst in the North East corner there is a large video screen.

Away fans are housed in the East Stand behind one of the goals.

One thing we do remember is that they don't serve hot drinks at the snack bars. Instead there are several vending machines, so make sure you have plenty of change and plenty of patience as you wait for something to eventually pop out!

## PARKING

There is a large car park at the ground which was charging £5 last season. There can be a wait to get off it after the game, but we don't think there will be a crowd in excess of 8,000 this time!

## PRICES

Darlington operate one of those Early Bird

schemes, so read on carefully!

If you buy your ticket on the day it will cost **£18** adults, **£12** senior citizens, **£7** for 10-16 year olds and free to under-10s. If you buy your ticket in advance, the prices will be **£16**, **£10** and **£6** respectively.

At the time of writing we don't have any information as to when these pre-match tickets will be available, so we advise you to keep an eye on the official Rochdale AFC website ([www.rochdaleafc.co.uk](http://www.rochdaleafc.co.uk)) and the Rochdale Observer.

Darlington's matchday programme costs **£2.50**.

## DALE TRAVEL CLUB

**Departure Time:** 12.00pm  
**Fares:** Adults £13, under-16s £10

For further details or to reserve your seat, ring the Club Shop on (0844) 826 1907.



AA ★★★★★

Mercure

## Mercure NORTON GRANGE HOTEL AND SPA MANCHESTER NORTH



Mercure Norton Grange is available for a wide range of events, including:

- Weddings including Civil Ceremonies
- Conferences for up to 220 delegates
- Exhibitions
- Private Dinner Parties
- Birthday and Anniversary Celebrations
- Christenings
- Naming Ceremonies
- Pamper Days

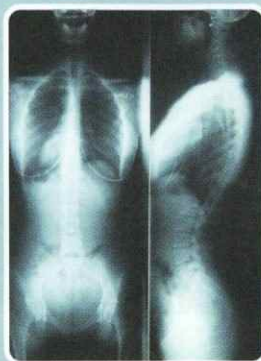
With 81 beautifully appointed en-suite bedrooms and our Spa Naturel Health, Fitness and Beauty Club, which includes an 18 metre indoor pool, indoor/ outdoor hydro pool, thermal suite with bio sauna, rock sauna, cold room and aroma steam room, technogym and 6 beauty treatment rooms, we really can provide the complete package. For more details on any of our facilities contact us now.

Mercure NORTON GRANGE HOTEL AND SPA  
Castleton, Rochdale, Greater Manchester OL11 2XZ Tel: 01706 630 788 Fax: 01706 516 781  
Email: [h6631-sb@accor.com](mailto:h6631-sb@accor.com)  
[www.mercure-uk.com](http://www.mercure-uk.com)



# what is your body telling you?

## time to see a chiropractor?



**GONSTEAD CLINIC OF CHIROPRACTIC**



Tel: **0161 833 02 02**

Email: [gonsteaduk@hotmail.com](mailto:gonsteaduk@hotmail.com)

Web: [www.gonstead-uk.com](http://www.gonstead-uk.com)

3rd Floor | 20 St Ann's Square  
Manchester | M2 7HG



# Do you love the game?

The Football Foundation provides grants for kit, goalposts, pitches, floodlights, clubhouses, coaching and innovative projects that use football to deliver a wide range of community benefits. If you are a local authority, football club, youth group, charity or a school looking to update your football facility or need to build a new one, or have an idea for using football to tackle a local issue you can take advantage of this funding.

For more information visit

[www.footballfoundation.org.uk](http://www.footballfoundation.org.uk)



FUNDING PARTNERS



improving facilities • creating opportunities • building communities

# Dale Fans in Exile



This season in The Voice of Spotland, we are profiling exiled Dale fans, wherever they live and whatever their age and Dale-supporting experience.

Today we feature

## DAVE COUPE

**Place of residence:** Luton  
**Occupation:** Systems Support Engineer

**When did you leave Rochdale and why?**  
I'm probably similar to a lot of people really, as I left Whitworth in 1993 to go to university in Luton.

**How many home/away games do you see in a season?**

About nine home games and probably about nine away games as well, including one virtually on my doorstep this season.

**Who do you travel to games with?**

Home games – my dad, away games - usually Dave Booth aka Cockney Dave. Trips with him are very entertaining.

**How do you keep in touch with what is happening at Spotland?**

Various ways really; the internet messageboard, official and unofficial websites, friends and The Voice of Spotland.

**What do your friends/ colleagues think of you supporting Dale?**

They admire me for supporting Rochdale and following my home town club. Everyone I know was watching the play-off final hoping that Dale would win because they knew of my love of the team.

**What is your favourite Dale match?**

It has to last season's play-off semi-final win against Darlington. I've never felt such emotion as the final penalty went in.

**What is your worst Dale match of all time?**

Probably the play-off final against Stockport. The heartbreak was horrible, it knocked me for six.

**Who is your favourite Dale player of all time?**  
No contest – Gary Jones.

**Who is your worst Dale player of all time?**

No contest - Michael Simpkins!

**What is your best moment(s) as a Dale fan?**

Besides the play-off semi-final, it would probably be my first game against Stockport in August 1985. Dale won 4-1 to go top of the league.

**What is your worst moment(s) as a Dale fan?**

Apart from the play-off final, I'll go for the match against Rushden in the play-off semi-final in 2002. The rain, the match, everything went wrong!

**Have you got any other information or interesting stories?**

During last season I saw Dale a total of 19 times. My record up until the play-off final was played 19, won 18, drawn 1, so I never saw Dale lose a match until the final at Wembley. I doubt very much that this will happen again!

*Dave would like to extend a special Spotland welcome today to Luton Town fans Gary Thomasson, John Luckman and Kevin Berry. All three have travelled up from Luton with Dave to watch the Hatters take on Dale this afternoon.*



If you are an exiled Dale fan and would like to appear in this feature, contact the Editor at [rochdale\\_programme@hotmail.com](mailto:rochdale_programme@hotmail.com) for further details

## Action 1

Will Buckley takes on former Dale loan player Glenn Poole



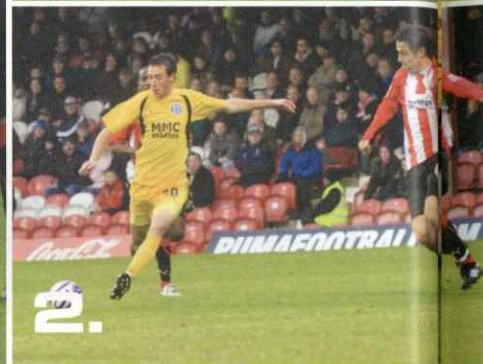
## Action 2

Will Buckley gets in another shot during the first half at Griffin Park



## Action 3

Adam Rundle is dragged back as he tries to break for goal



## Action 4

Chris Dagnall battles with a Brentford defender and the poor weather conditions



## Action 5

Rory McArdle celebrates with David Flitcroft after heading Dale into a 1-0 lead



## Action 6

Lee Thorpe gets up well to flick the ball forwards



## Action 7

Adam Rundle keeps the ball close at hand as Sam Wood fights for possession



## Action 8

Chris Dagnall tries to block a Brentford clearance



For all your commercial needs, call **0844 826 1907**

## PAUL CONWAY DAY

With all the places filled in the squad for the Paul Conway Day, our attention is firmly focussed on the evening event.

The Paul Conway Variety Show is without doubt one no Dale fan should miss.

Adam Rundle, a former Pop Idol contestant, will serenade one lucky fan on the night and will also join the rest of the squad to perform Paul Conway's favourite song, 'American Pie'. They will be accompanied by Ciaran Toner on guitar and the backing vocals will be provided by the rest of the Rochdale players.

Jack the Kit Man will be doing a Half Monty later in the evening and Guy Proctor will take someone on in the Famous Dale Spoon Challenge.

In addition, the squad and management are also offering totally exclusive one-off prizes to help raise money for the fund in the form of a raffle. The prizes will be boxes filled with personal items from the players.

We also have numerous items of signed merchandise from many League and Premiership Clubs who have generously contributed to our event.

To be in with a chance of winning any of these prizes or to just see your Dale heroes as you've never seen them before, get your tickets now.

Tickets for the event in The Ratcliffe on Sunday 7th December are on sale now priced at £12 from the Club Shop and also

include entertainment from Irish Band 'The Rascals' and a delicious Hot-Pot supper.

Tickets for the event are limited so please don't leave it too late!

## TRAVEL CLUB

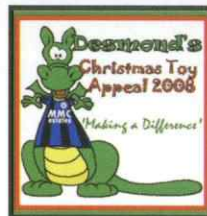
Book your places on the coach for our three forthcoming away games by calling 0844 826 1907.

Tuesday 25th November: Gillingham - The coach leaves 1.30pm and will cost £30 for adults and £25 for concessions.

Saturday 29th November: Forest Green Rovers - The coach leaves 9am and will cost £15 for adults and £15 for concessions.

Saturday 6th December: Darlington - The coach leaves at 12pm and will cost £13 for adults and £10 for concessions.

## DESMOND'S CHRISTMAS TOY APPEAL



Rochdale Football Club are joining forces with our Supporters Trust in collecting new toys for this year's Christmas Toy Appeal after a plea from

Rochdale Infirmary. Similar requests have virtually fallen on deaf ears, with many big organisations spreading very little festive cheer.

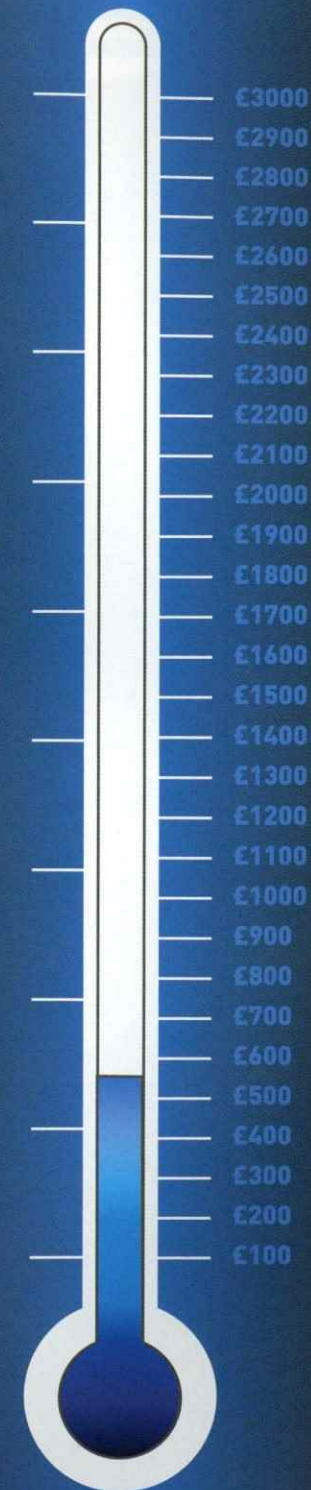
Hospital Play Specialist Louise Gallagher is looking to brighten up the lives of children who will be in the hospital over the festive period and has asked Rochdale Football Club for help.

"We are desperate for Christmas presents to give out on Christmas Day to the children," said Louise. "We have approached many of the big supermarkets and businesses in Rochdale and although I know they probably get many requests for charitable donations, I have to say I was somewhat surprised by the lack of response.

"We aren't doing this for ourselves, we are doing it for the children; I thought that was what Christmas was all about."

We are sure we can make Christmas a little easier to bear for the children so we are asking for your help. We are collecting new toys or donations in the Club Shop up until Wednesday 10th December 2008 before visiting the hospital on Friday 12th December, where Desmond will hand over the gifts donated by Rochdale AFC supporters.

<b>Geoff Cheetham, London</b> "UP THE DALE"	£1
<b>Dave &amp; Steven Crossley</b> "Hasta La Victoria Siempre"	£1
<b>Richard Bott</b>	£1
<b>Anne &amp; Mike Howarth, Lancaster</b>	£1
<b>Sylvia &amp; Harold Barton</b>	50p
<b>Francis Collins, Rochdale</b>	50p
<b>In Memory of Andrew Faragher (Faggy)</b> "Going Up! Going Up! Going Up!"	£1
<b>Jo Wild</b>	£1
<b>The Kindons</b> "Good luck for season 2008/09"	50p
<b>The Kindons</b>	£1
	per goal for any player scoring above 14 goals
<b>Peter &amp; Pat Hall</b> "Believe in the sign"	£1
<b>Ken Fletcher</b> "Up, up & away - top 3 this season!"	50p
<b>The Cleggies</b> "Who scored then?"	50p
<b>Chris, Ginny &amp; Francesca Newton</b> "All the best to the lads"	£1
<b>South Manchester &amp; Cheshire Rochdale Supporters</b> "SMAC your goals in - make us pay!"	£1
<b>Nigel MacDonald</b> "The Revolution Continues"	50p
<b>Frank Thorpe, Mel &amp; Graham</b>	£1.50
<b>Steve Derbyshire, Bamford</b>	50p
<b>Francis Finnigan</b> "Everything in life is about The Dale!"	50p
<b>Nick Grenier</b> "Make me skint Dale. Good luck from the Isle of Man"	£1
<b>Dale Supporters Trust</b> "Trust in us!" www.daletrust.org.uk	£1
<b>Mavis Shellard</b>	50p
<b>Graham Morris</b>	£1
<b>Ant &amp; Em, Derby</b> "Come on Dale, let's stop the consistency! Promotion is long overdue!"	50p
<b>Dave, Mike &amp; Caz</b>	50p



**Enter the Mecca Bingo Crossbar Challenge for your chance to win £1000!**

**Mecca Bingo - so much more**

Visit: [www.meccarochdale.com](http://www.meccarochdale.com) or Tel: 01706 750755



# Adam LE FONDRE



**Adam Le Fondre got his hands on a limited edition day-glo FA Cup football after helping secure Dale's passage to the second round of the cup with his hat-trick in Tuesday's remarkable game against Barnet.**

However, it wasn't all plain sailing as Keith Hill's side donned their Hachimaki and gifted Barnet two first half goals, before staging a stirring fightback.

"I don't think we played too badly in the first half, to be honest," said Le Fondre. "It was just a couple of mistakes that cost us, but we certainly came out in the second half and expressed ourselves and turned the game on its head."

It seemed that turning point arrived in the shape of the number 19 shirt worn by Lee Thorpe. His presence in a newly-formed three-man front line, together with an upping of tempo, pinned the visitors back and for large periods in the second half kept them firmly on the back foot.

Le Fondre agreed that the introduction of the big man certainly changed the game.

"Lee gave us that something extra up front when he came on after the break. It allowed us to be a little more direct in our play and it gave me and Jon Shaw more space. I thought they couldn't

handle the three of us; Lee won a lot of balls in air and myself and Jon were getting on the end of them."

With two goals in the bag, Le Fondre had been on the end of a couple of crunching challenges in extra-time and had signalled to the bench to come off. Adam Rundle prepared himself and as he and the fourth official approached the white line, Alfie got a chance for the hat-trick.

"To be honest, my calves had exploded. I was struggling and ready to come off, but then the ball arrived at my feet I just forgot about my problems. When I realised I had a chance I knew I couldn't get much power on it because my legs were so tired. I just thought I'd lift it towards the back stick and see what happened. Fortunately for me it went in.

"I know Joe (Thompson) was trying to claim it, but like I said to him, look on the BBC at the bit that says Le Fondre 3! I'm delighted to have scored three goals, but it was a team performance that won through in the end and I'm just pleased we are into the next round.

"We know the trip to Forest Green won't be easy, but we have to say we have a great chance to make it through to the third round. Hopefully if that is the case we will get a nice juicy tie away at one of the big Premiership clubs where I'm sure we would give a good account of ourselves."



Adam became only the fifth Rochdale player to score a hat-trick in the FA Cup – and the first for 43 years!

Reg Jenkins notched our last treble in the famous old competition when his goals helped Dale to a 5-0 replay defeat of Fleetwood on 17th November 1965.

Our other FA Cup hat-trick scorers are:

**JOHN HALL**

v Skelmersdale, 17/11/23, won 4-0

**BERT WHITEHURST**

v Crook T, 26/11/27, won 8-2

**BILLY WOODS**

v Hartlepoons U., 14/12/46, 6-1

## Greg Jones takes a look at recent happenings in the football world ...

When England boss Fabio Capello named his squad for last Wednesday's match in Germany, there were undoubtedly some surprised reactions when he named 20-year old central defender Michael Mancienne amongst his defenders.

Mancienne (pictured) is currently on-loan at Wolves from Chelsea and his performances have helped Wanderers to the top of the Championship, dropping just 11 points in 17 games. He told Wolves' website, "It's a great honour. It's a great game to be picked for and just to be in and around the squad will be superb."



Wolves' boss Mick McCarthy even compared Mancienne to Germany legend Franz Beckenbauer after he helped Wolves to a clean sheet in their 2-0 win over Burnley earlier this month.

Controversial Chelsea striker Didier Drogba has been charged with violent conduct by the FA after he threw a coin into the Burnley fans during their defeat on penalties in the Carling Cup. The coin was thrown at Drogba by a Claret's supporter when he celebrated in front of the 6,000 away fans after opening the scoring. The Ivory Coast international then picked up the coin and hurled it into the Burnley section of the crowd. Jamie Carragher was sent-off for a similar incident in 2002 during

Liverpool's FA Cup loss to Arsenal. Drogba is no stranger to controversy on the pitch, but this does make a small change to his usual antics.

There has already been coin-throwing controversy in the Premiership this season when assistant referee Phil Sharp was struck by a coin at Villa Park. Despite it allegedly being aimed at then-Portsmouth boss Harry Redknapp, the coin inflicted a cut to Sharp's head, which happened towards the end of the 0-0 draw between Villa and Pompey.

Wigan boss Steve Bruce says he was on the end of abuse from his own son when he turned down the chance to manage his boyhood team Newcastle United. Bruce could have joined the Toon when Bobby Robson was sacked in 2004, but stayed at the club he was then managing, Birmingham City.

Bruce stated: "I felt, out of loyalty to Birmingham at the time, that I couldn't go. It was a huge decision. When I turned it down my son rang me up and said: "What are you doing, Dad, you daft sod!"

His son, Alex, currently plays for Ipswich Town after moving from Birmingham, where he was criticised for being favoured by his father who was in charge at the time. He is reported to be being watched by Italian clubs Fiorentina, Genoa and Napoli. Mamma-mia!

"Jimmy Bullard, Bullard, he's better than Steve Gerrard. He's thinner than Frank Lampard, Jimmy Bullard, Bullard!"

This is the song that rings around Craven Cottage when Fulham midfielder Jimmy Bullard (pictured) excites the home crowd. However, despite his fondness for Fulham and their fans, he admits that only part of that song is true.

Bullard, who joined Fulham from Wigan in 2006, was on the receiving end of a horrific injury which kept him out for the best

part of 18 months. Now the midfielder is back and up to his usual tricks on the pitch, with the latest coming during the 0-0 draw at home to Sunderland when he grabbed former Wigan team-mate Pascal Chimbonda by the unmentionables!



### QUIZ ANSWERS (from page 43)

**TOP, MIDDLE, BOTTOM**  
Steve Taylor, Alan Goodall & Steve Elliott

**ANAGRAM GENIUS**  
Wayne Goodison & Mark Monington

**NEGATIVELY SPEAKING**  
Jon Boardman

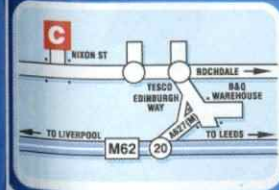
**GIVE US A CLUE**  
Neil Edmonds

**WHO AM I?**  
Barry Diamond

**ODD ONE OUT**  
Grant Holt never scored a hat-trick for the club

# CARCRAFT

Is proud to support  
**Rochdale AFC**



We're easy to find and closer than you think

**NORTH MANCHESTER**

Nixon Street, Castleton, Rochdale OL11 3JW

Just minutes off the M62 Jct. 20.

# CARCRAFT

**OPEN 7 DAYS Mon-Fri 10am-9pm, Sat 9am-9pm, Sun 10am-6pm**

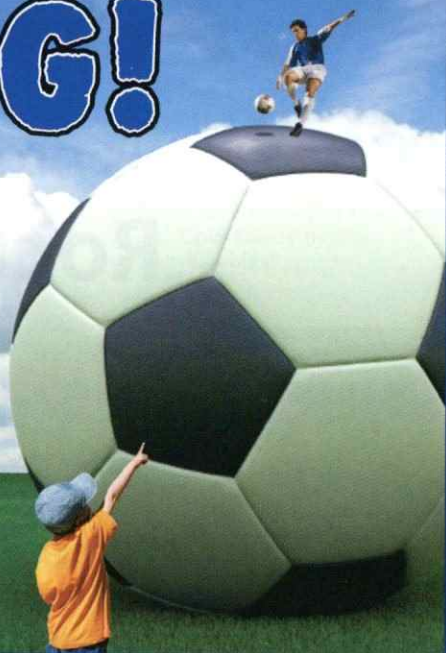
KICK OFF YOUR SEASON  
WITH SOMETHING **BIG!**

HILLSIDE NOW DO LARGE FORMAT PRINTING  
Display Boards - Exhibition Stands - Banners  
Canvas Prints - Lightbox Graphics - Vehicle Livery  
Window Graphics - Pop Up Displays

Call us today for a FREE quote on  
**01706 711872**

 hillsideprint

Units 1-3 Buckley Road Industrial Estate, Buckley Road, Rochdale OL12 9EF  
tel: 01706 711872 fax: 01706 340787  
email: info@hillsideprint.com www.hillsideprint.com



LIFE BEGINS  
AT **40**

This season marks the 40th anniversary of  
Rochdale AFC's solitary promotion campaign.  
The Voice of Spotland takes a look back at  
that historic season ...

**16 - 23 NOVEMBER  
1968**

Two scoreless games and just a single point,  
albeit at second-placed Aldershot, had left  
Dale in tenth place in Division Four.

They were five points clear of the re-  
election zone, but just three points adrift of  
the promotion places as league action took  
a back seat for a fortnight to make way for  
the FA Cup ...

 **CopperPot**  
INDIAN CUISINE  
Fully Licensed RESTAURANT Tel: 01706 651881

Open all Bank Holidays  
Take Away Service Available  
Childrens, Vegetarian and  
English Menu Available  
Party Bookings Catered For

Sandbrook Park, Sandbrook Way, Rochdale  
OL11 1RY  
Tel: 01706 651881  
www.copperpot.com

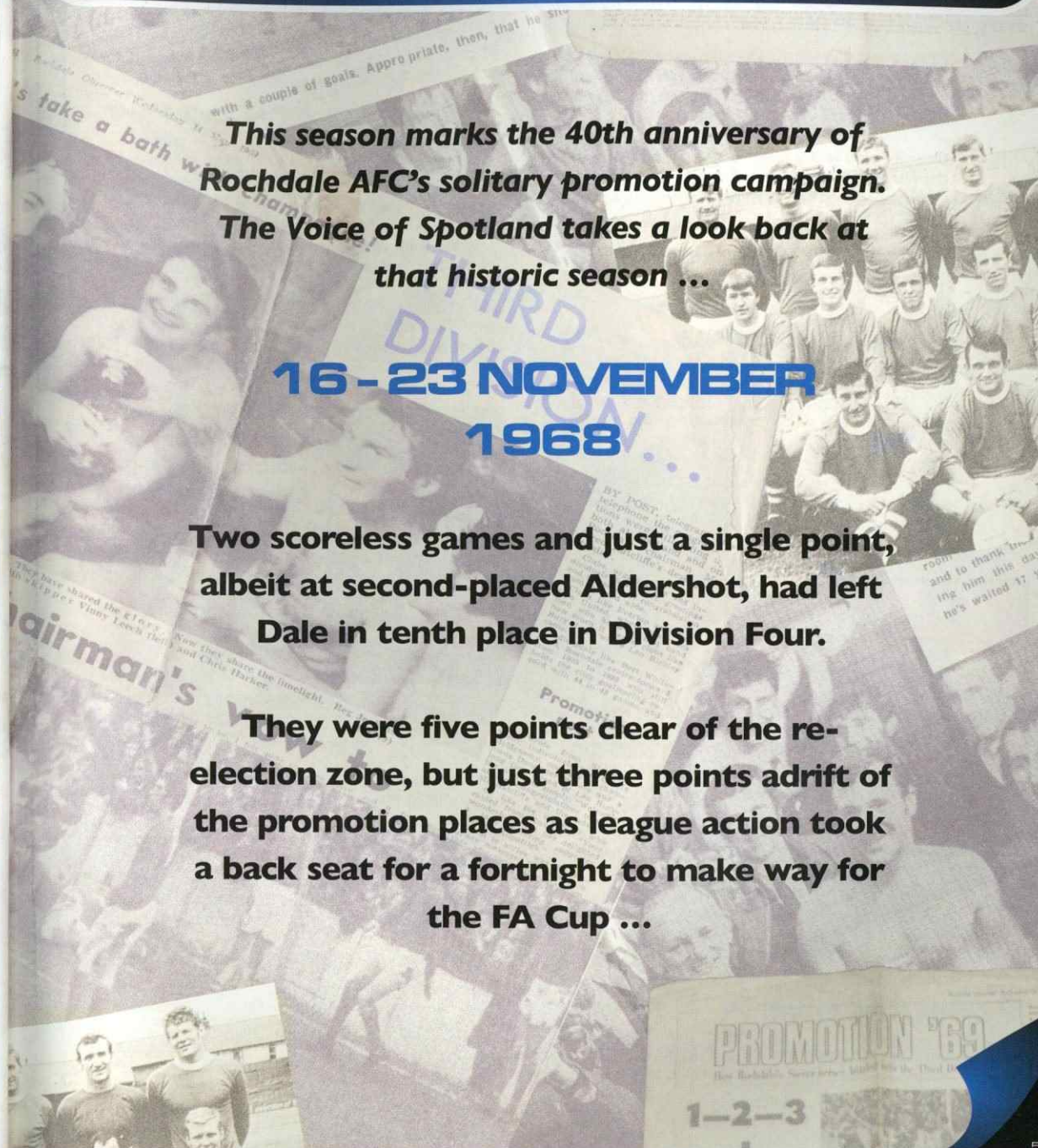
'Experience the Flavour'

OPENING HOURS

Monday - Thursday 5:00pm - 11:00pm  
Friday - Saturday 5:00pm - 12:00pm  
Sunday 2:00pm - 11:00pm

Rochdale  
**Observer**

First for local sport



# LIFE BEGINS AT 40



Season 1968/69

## CUP FEVER

Dale had progressed beyond the first round of the FA Cup only five times in the previous 14 seasons and they had reached round three just once in that time.

First round opponents Barnsley were in 13th place in Division Three and had eliminated Dale from the competition at Oakwell five years earlier, so the omens were clearly on their side.

Barnsley also had a player with a good pedigree in their squad in the shape of striker Jimmy Robson, who had scored for Burnley in their 1962 cup final defeat to Spurs.

Robson, of course, worked on the coaching staff at Spotland later in his career.

## A SPIRITED DRAW

Using a classic footballing cliché, Barnsley manager 'Mr Johnny Steele' wrote in his programme column that 'The league must remain our prime interest. It is our bread and butter.'

He also said: 'We will do our best to make progress towards the possibility of a plum third round draw against one of the big clubs.'

## Saturday 16th November Barnsley 0 Rochdale 0

**Dale:** Harker, Radcliffe, Ryder, Leech, Parry, Ashworth, Whitehead, Melledew, Smith (Jenkins), Rudd, Butler  
**Attendance:** 11,414  
**Referee:** J Quinn (Middlesbrough)

It wasn't clear if the Barnsley players were 'doing their best' to reach the next round of the cup as they were second best to Dale for the majority of the 90 minutes. However, Dale were wasteful in front of goal and it meant everyone had to reconvene at Spotland two days later for the replay.

## IN THE HAT

Dale hadn't made the second round draw for three years, so there was some anticipation when the balls

were placed into the velvet bag on Monday lunchtime.

The outcome was disappointing – and for Barnsley as well, no doubt – when Dale found out that should we win the replay, we would travel to play Darlington, the current Fourth Division leaders, at Feethams.

## CONCENTRATING ON THE LEAGUE

Although the prospect of facing Darlington in round two wasn't exactly awe-inspiring, Dale had done enough in their 0-0 draw at Feethams in October to suggest they would provide worthy opposition in the battle for round three.

But the fear around Spotland was that Dale had let the Tykes off the hook once and wouldn't be so fortunate second time around.

## Monday 18th November Rochdale 0, Barnsley 1

**Dale:** Harker, Radcliffe, Ryder, Leech, Parry, Ashworth, Whitehead, Melledew, Smith (Jenkins), Rudd, Butler  
**Attendance:** 7,340  
**Referee:** J Quinn (Middlesbrough)

The townsfolk certainly fancied a cup run as the crowd was more than 3,000 up on the last home game against Newport.

But it was all-so predictable, as opined by Derek Nicholls in the Rochdale Observer.

'Auspicious occasion and inopportune outcome greet one another so consistently at Spotland that the nature of the game and a gate that topped 7,000 for the first time in several seasons ought to have been recognised as omens usually boding no good.'

In other words, Dale always fail when they get a big crowd!

As in the first meeting Dale were the more dominant side, but they fell to the sucker punch of Norman Dean's 32nd minute volley.

## DAWSON'S WEEK

Having failed to score in their last four outings, Dale tried to boost their firepower by tabling a bid for Bury forward Alex Dawson, a 'Busby Babe' earlier in his career.

It was thought the fee offered was more than double the £3,000 paid to Bolton for Dennis Butler nine months earlier – and that was the club's record transfer outlay!

However, ahead of the weekend trip to Wrexham, the club were still waiting to hear back from their Gigg Lane counterparts.

## MORE WELSH WOE?

With defeats at home to Swansea and Newport over the past month, Dale were hoping that taking on a Welsh outfit on their own turf would provide a change of luck.

The Red Dragons were six places worse off in the table, but victory would see them draw level on points with Len Richley's faltering Rochdale side.

## Saturday 23rd November Wrexham 3 Rochdale 2

**Dale:** Harker, Radcliffe, Ryder, Leech, Parry, Ashworth, Whitehead, Melledew, Melling, Rudd, Butler  
**Attendance:** 5,663  
**Referee:** ET Jennings (Stourbridge)

Terry Melling returned to the side and at last found his shooting boots, but his brace was all in vain as Dale made it five games without a win.

Wrexham were 2-0 up by the 23rd minute, but Melling's diving header brought Dale back into the match.

He equalised on the hour-mark and the game was now anybody's to win, but the home side scored the crucial fifth goal of the afternoon with five minutes to play, too late for Dale to mount any sort of retaliation.

## AROUND TOWN

Tiffany's nightclub had some tremendous midweek entertainment; Wednesday night was 'Ladies Gift Night', while on Thursday was the 'Popular Over-21s Night'

The Hippodrome Bingo Club was offering players the 'chance of a lifetime to win a colour TV for a whole year'

Illegitimate births in Rochdale had more than doubled in ten years

Unemployment in Rochdale was falling, with 754 people out of work this month, compared to 762 last month

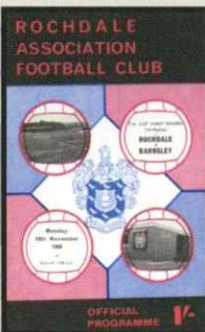
## TV TIMES

On BBC1 you could watch 'The Wednesday Show with David Jacobs', while Granada were showing 'Mike & Bernie's Show' (pictured). There was no mention of Schnorbitz!



## TOP OF THE POPS

The Hugo Montenegro Orchestra, with the theme tune from the film 'The Good, The Bad and The Ugly', were in their second week at the top of the charts and were going to stay there for a little while longer.



PROMOTION '69

## Parting Shot



Luton's last league visit to Spotland was back in February 2002, when both teams were in the thick of the promotion race.

It was an unhappy return to Spotland for Dave Bayliss, who we see in the picture getting a slight touch to Patrick McCourt's shot, with the ball looping up and over the 'keeper for the only goal of the game.

Bayliss was also sent-off for two yellow cards and became involved in a tunnel fracas with David Hamilton and other members of the Dale bench.

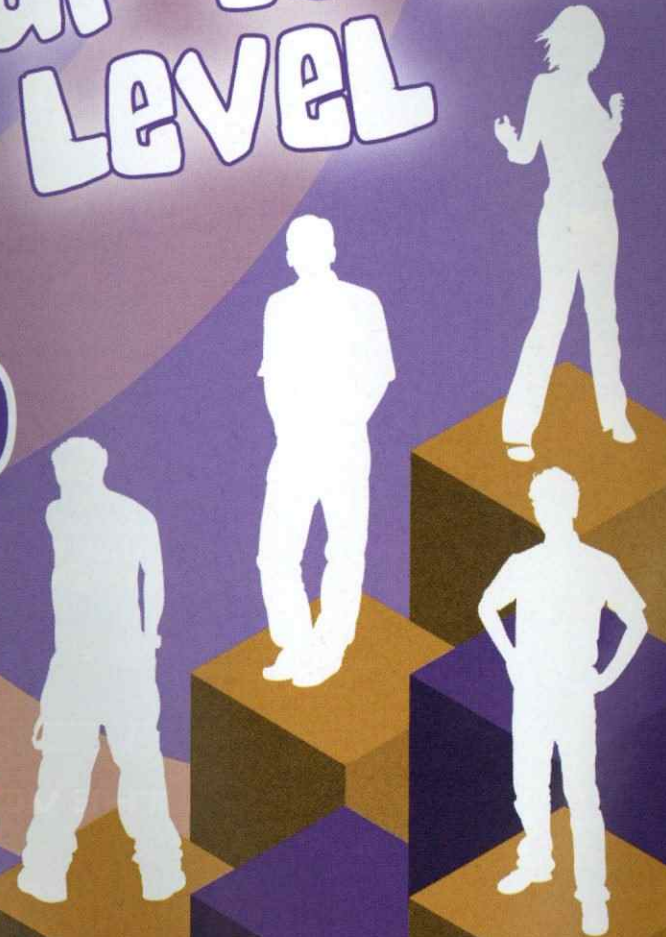
## LEARNING AGREEMENT

A rewarding experience

# STEP UP TO THE NEXT LEVEL

## STEP UP

- IF YOU'RE 16-17
- IF YOU WANT TO IMPROVE YOUR SKILLS
- IF YOU WANT TO EARN A £250 BONUS



connexions

>lsc

Leading learning and skills

Connexions Rochdale  
Tel - 01706 622770

Learning.Agreement@connexions-rochdale.org.uk





# Squad Check

## rochdaleafc

**manager:** Keith Hill  
**colours:** Blue & Black Shirts,  
White Shorts, Blue Socks

## lutontown

**manager:** Mick Harford  
**colours:** White Shirts, Navy  
Blue Shorts, White Socks

### match officials



**referee:**  
Mr SJ Bratt  
(West Midlands)



**assistant  
referee:**  
Mr AR Holmes  
(Lancashire)



**assistant  
referee:**  
Mr NA Yates  
(West Yorkshire)



**fourth  
official:**  
Mr J Waugh  
(South Yorkshire)

- 1: Sam **Russell** (GK)
- 2: Simon **Ramsden**
- 3: Tom **Kennedy**
- 4: Nathan **Stanton**
- 5: Clark **Keltie**
- 6: Ciaran **Toner**
- 8: Gary **Jones**
- 9: Chris **Dagnall**
- 10: Adam **Le Fondre**
- 11: Adam **Rundle**
- 12: Nathan **D'Laryea**
- 14: Scott **Wiseman**
- 15: Joe **Thompson**
- 17: Jon **Shaw**
- 18: Kallum **Higginbotham**
- 19: Lee **Thorpe**
- 20: Raphale **Evans**
- 21: James **Spencer** (GK)
- 23: Rory **McArdle**
- 26: Kyle **Lambert**
- 27: Mark **Jones**
- 30: Will **Buckley**
- 31: Marcus **Holness**

- 1: Dean **Brill** (GK)
- 2: Claude **Gnakpa**
- 3: Sol **Davis**
- 4: Keith **Keane**
- 5: Ian **Roper**
- 6: George **Pilkington**
- 7: Garreth **O'Connor**
- 8: Kevin **Nicholls**
- 10: Ryan **Charles**
- 11: Lewis **Emanuel**
- 12: Harry **Worley**
- 14: Asa **Hall**
- 15: Ed **Asafu-Adjaye**
- 16: Rossi **Jarvis**
- 17: Kevin **Watson**
- 18: Chris **Martin**
- 19: Drew **Talbot**
- 20: Michael **Spillane**
- 21: Conrad **Logan** (GK)
- 23: Wayne **Andrews**
- 24: Tom **Craddock**
- 28: Paul **McVeigh**
- 29: Jordan **Patrick**
- 32: Kevin **Gallen**
- 33: Jake **Howells**
- 40: Scott **Sinclair**

### Next Home Game

Saturday 13th December 2008

### AFC BOURNEMOUTH

Coca-Cola Football League Two

Kick Off 3.00pm



## THE VOICE OF SPOTLAND

**Editor:** Mark Wilbraham

**Contributors:** Stuart Ashworth, Jason Birch, Mike Brookes,  
David Chaffey, Dave Coupe, Jarrod Flett, Keith Hicks, Iain Johnstone,  
Greg Jones, Dale Supporters Trust, Scrutator

**Photography:** Daniel Youngs (DY Sporting Photos), Steve Bennett,  
Carl Flaherty

**Design:** Tony Demellweek

**Print:** Colourplan Design & Print

**E-mail:** rochdale\_programme@hotmail.com