

# HATTERS

LUTON TOWN FC OFFICIAL MATCHDAY PROGRAMME: £3.00

V BRENTFORD 25/11/08 7.45PM

Official Club sponsor

Tonight's Mascot



Kaelan Bond



# Contents



Luton Town v Brentford FC

**04 MICK HARFORD**  
The Hatters boss looks ahead to this evening's game

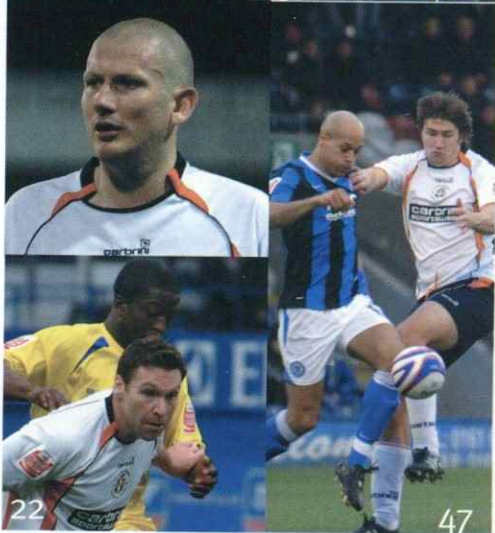


**FRIENDLY FIRE 22**  
All the action from our League Two game against Dagenham & Redbridge

**06 NICK OWEN**  
Chairman Nick Owen looks ahead to the rest of the season

**FRIENDLY FIRE 38**  
All the action from our FA Cup game against Altrincham

**09 THE SKIPPER**  
Nico hopes the team can pick up three points this evening



**LUTON LADIES 41**  
The latest news from Luton Ladies

**11 IN TOWN**  
We welcome Brentford to Kenilworth Road this afternoon

**FRIENDLY FIRE 47**  
All the action from our League Two game against Rochdale

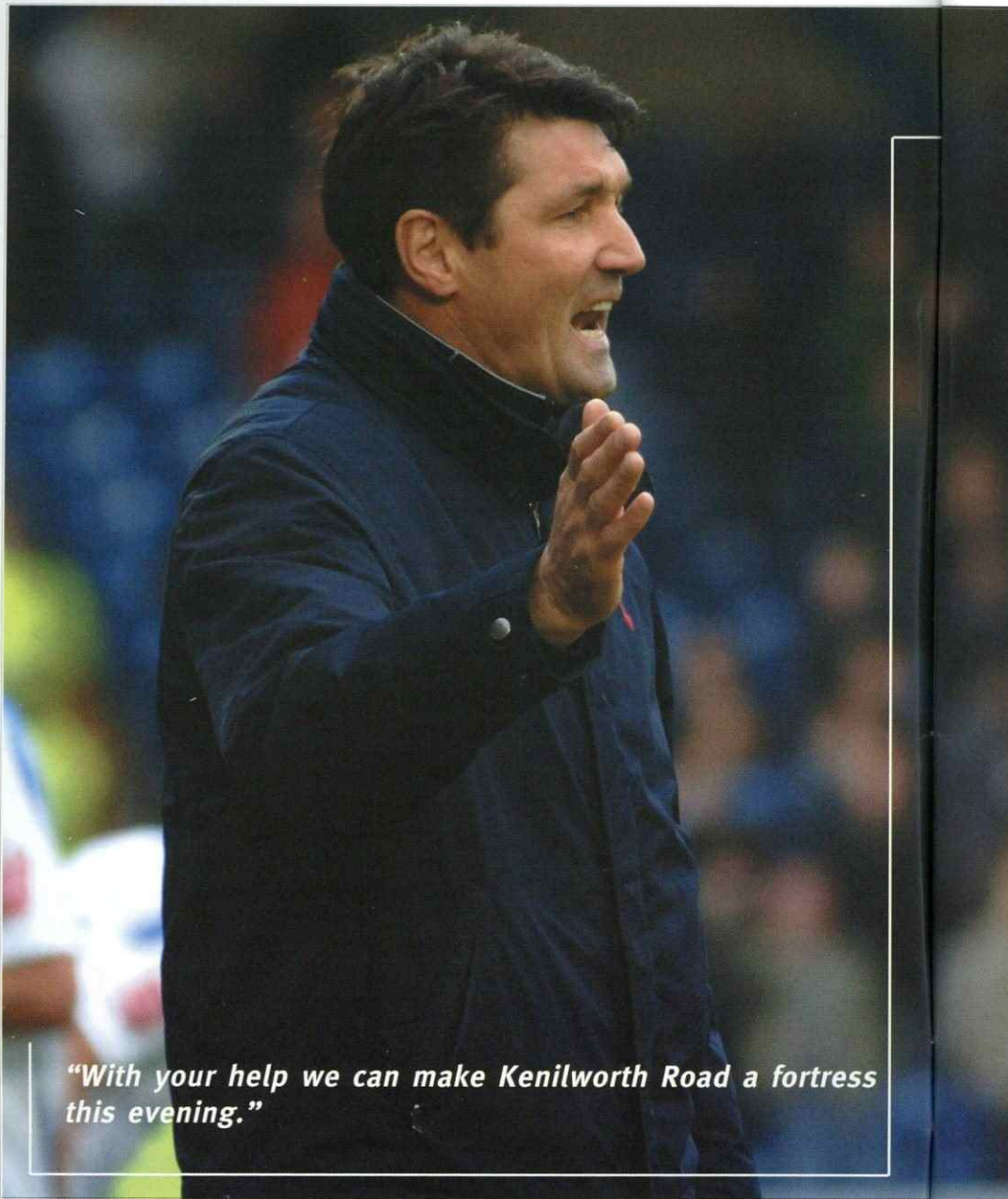
**20 COMMERCIAL**  
Find out who is this evening's mascot

**TICKETS 62**  
Get the latest Ticket Information for the Hatters upcoming home and away fixtures

**31 ONE ON ONE**  
We talk to Tom Craddock about how he is finding Luton Town







*"With your help we can make Kenilworth Road a fortress this evening."*

# mickharford



## MANAGER

Good evening and welcome to tonight's game against Brentford.

It was a disappointing result last Saturday. We knew it was going to be a tough game but the referee certainly didn't help.

But we must now put that behind us and look ahead to this evening's match against Brentford.

It is great to have Jake Howells and Sol Davis back in the squad, but we will be missing Kevin Nicholls and Chris Martin.

Chris is serving a match ban after picking up five yellow's while Nico has picked up an injury.

Nico's desperate to get back playing for Luton and he just seems to be having some bad luck at the moment

but he is an inspiration to everyone of the players.

It is great to get through to the second round of the FA Cup. It was a long game and it goes to show that no game can be labelled an 'easy' match.

I felt we battled well against Altrincham and showed great ability, particularly as we were reduced to ten men.

I would like to thank all the fans who were at that match, it was a long night which wasn't helped by the delayed kick-off but you really got behind the team and I can assure you it makes a huge difference.

We have our Johnstone Paint Trophy Area Semi-Final coming up and although we know we need to concentrate on the League it's

fantastic to think in a couple of games time we could be playing at Wembley.

I would like to extend a warm welcome to Andy Scott, the chairman, directors, players and fans and hope you all have a safe journey back home.

Please continue to show your support for the lads this evening. Together we can make Kenilworth Road a fortress tonight and for the rest of the season

Big Mick



Good evening and welcome to Kenilworth Road, as we enter a vital time for our football club.

Saturday's performance and result at Rochdale was bitterly disappointing, but, as ever, we have to dust ourselves down, get over it and start playing

chances and the goals were magnificent. What a difference a match like that makes to the whole weekend!

Now we are starting a run of five League matches at Kenilworth Road before the end of the year.

I know we football fans are perpetual optimists, but why can't we expect at least 12 of the maximum 15 points from those games?

We know we are good enough on our day - it's just doing it all the time that's been our problem, not helped, of course, by our sickening injury list.

At least that seems to be getting better, with a few familiar faces coming back into contention.

A special mention here for Drew Talbot, who's had long and arduous months of recovery and rehab stretching way back into last season before at last getting himself on the field again. Welcome back, Drew!

Having travelled to a good number of away grounds this season, one

as well and confidently as we know we can.

We have to be inspired by our last home performance against Dagenham and Redbridge, when we served up some scintillating football.

We created some excellent

# nickowen



## Luton Town Football Club Chairman

thing has constantly struck me: the sympathy and support for us over our points deduction.

Fellow fans and other directors have all expressed astonishment at what happened to us.

What is more, a great number of people I speak to seem to believe we are doomed even now to go down - that has to be even more motivation for us to prove people wrong.

We are still convinced we can do it and we have to keep believing because it is a very, very long road to the end of the season.

Finally, on a personal

level, I would like to thank everyone who has been kind enough to come up to me or to send me messages over the death of my father, Bertie. Almost to the end, he was talking about Luton Town.

On the day after the Bournemouth match was abandoned, he was saying it might be just as well to give us more time to get injured players back. Less than 72 hours later, he was gone. I owe him so much.

A warm welcome to the Brentford players, fans and directors tonight, including their chairman and my old boss at TV-am, ITV Sport and the

BBC, Greg Dyke.

Enjoy the game.

Nick  
Chairman

**“We are still convinced we can do it and we have to keep believing because it is a very, very long road to the end of the season.”**





**After 21 years in the business  
you could say we love what we do**

So if your business involves making it, selling it, moving it or serving it  
and you want communications advice, we should be talking.

[www.williammurray.co.uk/big-21](http://www.williammurray.co.uk/big-21)

**William Murray Communications**

Cygnat House, 12/14 Sydenham Road, Croydon, Surrey CR0 2EE  
T. +44 (0)20 8256 1360 F. +44 (0)20 8681 3116 E. [contact@williammurray.co.uk](mailto:contact@williammurray.co.uk)  
[www.williammurray.co.uk](http://www.williammurray.co.uk)



**NICO BELEIVES IN THE SQUAD**

Obviously we were all disappointed to break our unbeaten run on Saturday against Rochdale.

The game never really got started and although it is easy to blame the referee as professional's we have to be able to cope with those kind of situations.

However, after a long Tuesday evening at Altrincham we have got through to the next round of the FA Cup.

I felt everyone played fantastically well and would particularly like to mention Conrad Logan. He made some great saves including a penalty save which kept us in the game.

It was unfortunate to go down to ten men but we worked well as a team and I

**"I am devastated to be back out injured again but I would like to assure all of you that I am doing everything I can to get fit."**

believe that we deserved to win that game.

Our last game at Kenilworth Road saw one of our best performances so far this season. I am certain we can replicate that performance and pick up another three

points this afternoon.

I am devastated to be back out injured again but I would like to assure all of you that I am doing everything I can to get fit and will continue to work with the team off the pitch.

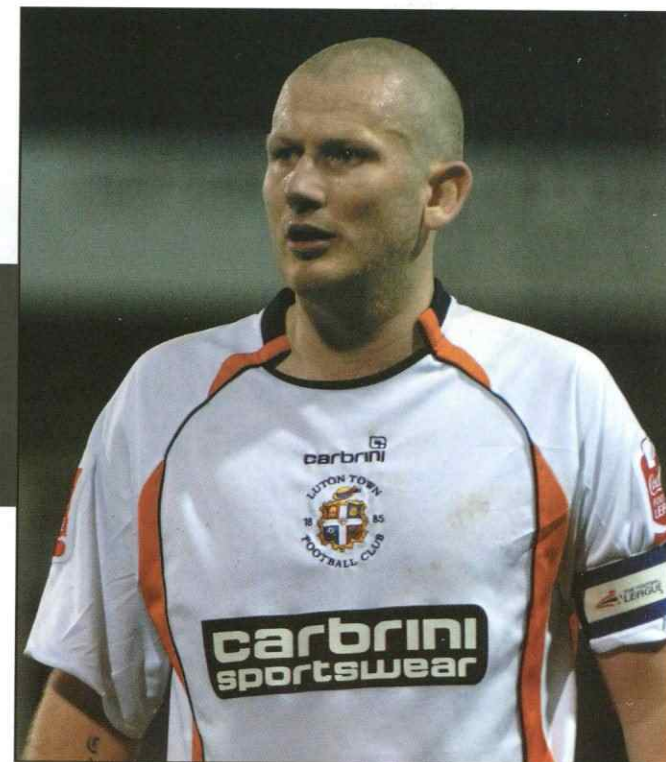
It is good to see Sol Davis back in the squad after serving his one match ban and also Jake Howells who has been extremely impressive so far this season and I think it's fair to say that we can expect great

things from him in the future.

I would like to thank every supporter who made the long journey's to Altrincham and Rochdale. Your support at both these games has been brilliant and has really helped the team.

Please get behind the lads this evening, they will be doing everything they can to give you something to cheer about and together I am certain we can get another three points today.

Nico







## CONGRATULATIONS

Luton Town Football Club would like to congratulate Julian and Anne Hyde from Hitchin on their recent wedding.

Julian and Anne have been supporters of Luton Town Football Club for over 30 years, and Julian is also a member of Loyal Luton Supporters Club.

We wish them many happy years together.

## Carol Service

The 12th Annual Luton Town Community Carol Service is on Thursday 18th December at 7:30pm at St Mary's Parish Church, Church Street, Luton

Directors, players and staff will be in attendance

All Welcome

## 3 FOR 2 TICKET PROMOTION

Buy your Barnet and Morecambe tickets and get your Lincoln ticket free.

As an early Christmas present to it's supporters, Luton Town are delighted to offer a 3 for 2 promotion which covers the games against Barnet (Sat 6th Dec - 3pm K.O), Morecambe (Sat 20th Dec - 3pm K.O) and Lincoln City (Sun 28th Dec - 3pm K.O). Simply buy your Barnet and Morecambe tickets together at normal pre-match prices (detailed below) and receive a ticket for the Lincoln game completely free!

This offer is available until close of business on Friday 5th December when the ticket office will remain open until 7 pm to assist supporters. If you have already bought your tickets in advance for any of these games, please contact the ticket office on 01582 416796 or [ticketoffice@lutontown.co.uk](mailto:ticketoffice@lutontown.co.uk) and we will be happy to honour this promotion.

### Pre-Match Prices

Adults (22-64)	£20
Senior (65-75)	£15
Young Adult (17-21)	£15
Golden Senior (Over 75)	£10
Youth (10-16)	£10
Junior (Under 10)	£5



## OFFICIALS

**Chairman**  
Nick Owen

**Supervisory Board**  
Paul Ballantyne  
Bob Curson  
Godfrey Ingram  
Mick Pattinson  
David Wilkinson

**Managing Director**  
Gary Sweet

**Directors**  
Antony Brown  
Stephen Browne

**Manager**  
Mick Harford

**Assistant Manager**  
Warren Neill

**Physiotherapist**  
Harry Scott-Stackman

**Coaches**  
Dmitri Kharine  
Joe Dunbar

**Youth Development Officer**  
Gregg Broughton

**Youth Team Coach**  
Alan Neilson

**Football and Community Development Officer**  
Stuart Smith

**Club Secretary**  
Cherry Newbery

**Club Chaplain**  
Alan West



Thomas Cook

Going Places

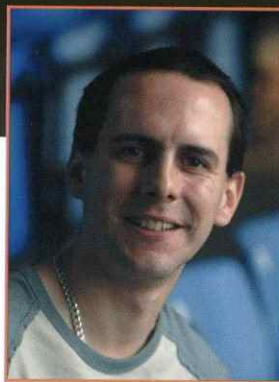
Still fancy  
your pie & pint?

## Hatters Holidays

You save! - With a guaranteed discount off a wide range of UK & overseas holidays.  
We win! - With a royalty payment to the club on every booking made.

Stores nationwide • [lutontown.thomascooksport.com](http://lutontown.thomascooksport.com)

# The Numbers Game



Simon Pitts looks back at the Hatters previous fixtures against Brentford

before Brentford won at the 18th time of asking at Kenilworth Road in October 1951. In the previous matches Luton had won fourteen and drawn three! A staggering 44 goals had been scored, with just 17 conceded.

Boyce had opened the scoring early in the game, but the second half was to become the Showunmi show as he scored three great goals in a 4-1 win for Luton.

**32** The number of previous league meetings between the sides at Kenilworth Road. Luton have twenty two victories, with the visitors winning just five times, there have also been five draws. The Hatters have scored 69 goals and conceded 33.

**4** There have actually been four Luton hat tricks in this fixture. Jimmy Yardley was the first in a 5-2 win back in September 1927, before Tait repeated the feat in that remarkable ten goal thriller. Hugh Billington scored all the goals in a 3-0 win in September 1947, with Enoch Showunmi scoring his first professional hat trick in February 2004, on only his fifth league start for the Hatters! Emmerson

**1** Only once has this fixture failed to find a goal, and that was back in February 1993.

**2** Just two players have moved from Brentford to Luton, Jimmy Drinnan scored 12 goals in 32 appearances in 1929/30 before he moved on to Burnley whilst Bert Lawson only featured once for the first team, away at Exeter in December 1933 after his move.

**2** Just two converted penalties for Luton in this fixture, and they've both come in the last eight years. October 21st 2000 and Stuart Douglas, making his first appearance of the season, soon put the Hatters into a two goal lead. Mark Stein was brought down in the box and Matthew Spring netted the resultant spot kick to make it 3-0 before half time. The visitors pulled a goal back after the break through Andy Scott. It was celebration time when Brentford were the visitors in April 2005 as the Hatters were presented with the League One Championship trophy after the match. The visitors hadn't read the script though and took a 2-1 lead despite Ahmet Brkovic opening the scoring for Luton. With six minutes left Kevin Nicholls made no mistake from the spot to level after Steve Robinson was brought down. Enoch Showunmi scored in the last minute, before Robinson added a fourth in injury time to seal a remarkable late comeback.

**4** The number of players to have moved to Brentford from Luton. George McLeod was the first after making 60 appearances, scoring eight goals in the 1950's. Two players moved in the 1970's, first David Court after 59 appearances for the Hatters, and then Jim McNichol after just 17 appearances. Ian Benjamin also made 17 appearances, and scored two goals, before his transfer to Griffin Park.



Enoch Showunmi scored his first professional hat trick against Brentford

**17** The number of unbeaten games for the Hatters in this fixture,





Brentford Football Club are an English football club based in Brentford in the London Borough of Hounslow.

They were founded in 1889 and play their home games at Griffin Park, their home stadium since 1904.

Brentford's most successful spell came during the 1930s, when they achieved consecutive top six finishes in the First Division. Since the War, they have spent most of their time in the third and fourth tiers of English football.

Brentford have been FA Cup quarter-finalists on four occasions, and have twice been Football League Trophy runners-up.

After a 45-year absence, Brentford were promoted back to the Second Division (renamed the First Division with the advent of the Premier League in 1992) in the 1991-92 season as Third Division champions, though they were relegated again the following year.

There followed several seasons of the club narrowly missing out on promotion.

Former Chelsea FA Cup hero David Webb was appointed manager in 1993 and twice led the side



**The Ground: Griffin Park**

It has been the home ground of League Two side Brentford since it was built in 1904.

It is known for being the only English league football ground to have a pub on each corner, and is situated in a predominantly residential area.

The ground gets its name from the Griffin in the logo of Fuller's Brewery, which at one point owned the land on which the stadium was built.

The highest ever attendance at the ground was 38,678 when Brentford played Leicester City on February 26, 1949. The ground currently has a capacity of 12,763.

Griffin Park is beneath the flightpath of London Heathrow Airport and the roofs of the stadium are used as a large advertising space because of this. The space is currently used by Qatar Airways.

Brentford's hopes of moving to a new 20,000-capacity stadium were boosted after they were given an option to buy a 7.6-acre site at Lionel Road.

The proposed new home for the Bees is close to their current Griffin Park ground, which would be redeveloped into residential housing if they relocate.

**TheBees**

into the play-offs.

In 1996-97 he led them to the play-off final at Wembley, but the side were beaten by Crewe Alexandra.

The club suffered more promotion agony in 2002 under manager Steve Coppell as they lost out to Stoke City in the play-off final having been just minutes away from automatic promotion on the final day of the season, and again under manager Martin Allen in 2004-05, on that occasion losing 3-1 on aggregate to Sheffield Wednesday in the semi-finals after finishing 4th in League One.

Following Rosenior's departure, youth team coach Scott Fitzgerald was appointed manager on a full-time basis on 21 December 2006 with Alan Reeves acting as his assistant.

Fitzgerald was unable to turn around the club's fortunes, and Brentford were relegated to Football League Two in April 2007.

On 18 April 2007, The Sun newspaper reported that Micky Adams was in line to return as manager, nine years after being sacked following relegation.

Instead, former England captain Terry Butcher was appointed as manager on April 24 with former Brentford winger Andy Scott as his assistant.

Butcher's reign at Griffin Park was, however, not a successful one, and his contract was terminated by mutual consent on December 11, 2007, after winning just 5 matches in 23.

Butcher's assistant Andy Scott was appointed as manager on January 4, 2008 following a successful caretaker spell.

**Interesting Fact**

Rod Stewart was an apprentice at the club, before he focussed on his music career.

## The Manager

Andrew "Andy" Scott (born August 2, 1972) is a former professional footballer whose clubs included Sheffield United, Brentford and Leyton Orient, England.

He was forced to retire in 2005 due to heart problems.

After his retirement, Scott landed a coaching role at Leyton Orient.

He went on to become youth team manager.

On May 9, 2007, Scott was appointed assistant manager at Brentford.

On the 11th December it was announced that Scott would be the caretaker manager of Brentford.

His caretaker spell was a successful one, and he landed the role permanently on January 4, 2008.



**Andy Scott**

**TheBees**





### **BEN HAMER**

Ben has joined The Bees on a season long loan from Reading. He also spent almost the whole of last season at Griffin Park making 21 appearances.

### **KEVIN O'CONNOR**

A former Brentford Youth player Kevin celebrates his 10th season as a pro at Griffin Park this season with a Testimonial having made approaching 350 appearances.

### **RYAN DICKSON**

Ryan made 31 appearances for the Club last season having originally joined on loan

from Plymouth Argyle in November.

### **MARCUS BEAN**

The experienced midfielder, born in London, joined The Bees during the close season from Blackpool.

### **MARK PHILLIPS**

London born Mark signed for The Bees after impressing in three pre season friendlies. He was formerly with Millwall.

### **ALAN BENNETT**

Alan has rejoined The Bees on loan from Reading until January 2009 after a loan spell last season in which he played the final 11 games for the Club.

### **ADAM NEWTON**

Adam brought a wealth of experience with him of almost 300 games when he signed from Peterborough United during the close season.

### **GARY SMITH**

Gary made his mark with the Club last season making over 30 appearances having signed from MK Dons.

### **NATHAN ELDER**

6'3" Nathan joined The

**CHARLIE MACDONALD**



Bees from Brighton on transfer deadline day in January and his presence up front promises much for the current season.

### **CHARLIE MACDONALD**

Charlie was the Club's 8th pre season signing when joining from Southend United and has brought much needed experience to the Brentford attack.

### **GLENN POOLE**

Having joined The Bees from non league Grays Athletic, Glenn finished last season, his first with the Club, as leading scorer with 14 goals.

### **JOSH WRIGHT**

Midfielder Josh joined Brentford on loan from Charlton Athletic in



**NATHAN ELDER**

**TheBees**



September.

### **BRETT JOHNSON**

The 6'1" defender joined the Club in the first week in August having featured for The Bees in four pre season friendlies. His previous club was Northampton Town for whom he signed in June 2005 from Aldershot after being tracked by a number of League clubs.

### **JAMES WILSON**

James has joined on a three month loan from Bristol City. The current Welsh Under 21 international played in Brentford's final pre season victory at Woking.

### **SAM WOOD**

Sam was one of Brentford's first close season signings when he joined from Bromley. The

Brentford Lifeline Society has financed Sam's signing.

### **CRAIG PEAD**

Craig was a member of last season's PFA League Two Select side for the second successive season.

### **DARIUS CHARLES**

Darius has joined Blue Square Premier League side Ebbsfleet on a season long loan.

### **MOSES ADEMOLA**

Moses joined the Club in May from non league Croydon Athletic. His transfer was financed by Supporters Fanzine, Thorne in the Side.

### **SIMON BROWN**

The experienced goalkeeper joined the Club from Hibernians during the summer of 2007. He is currently on

a half season loan with Darlington.

### **KARLEIGH OSBORNE**

The former Youth central defender matured as a player last season when making over thirty appearances.

### **ROSS MONTAGUE**

The tall striker is another former Youth player who gained good experience last season.

### **JOHN HALLS**

The former Arsenal trainee who was most recently at Reading having joined them from Stoke City for £250,000 has joined The Bees until the end of the season.

### **SEB BROWN**

The 18 year old goalkeeper is a product of the Youth Scheme.

### **MARVIN WILLIAMS**

The London born midfielder joined The Bees from Yeovil Town during the close season.



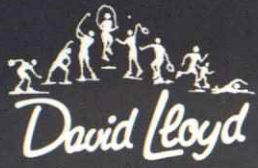
**ALAN BENNETT**





- FREE day visit to David Lloyd Luton for 2 adults and 2 children. Valid up to 30th November 2008.
- Over 130 adult group exercise classes a week.
- Family activities timetable for 6 months - 16 year olds. Classes include: **Lindy Lou's Dinky Dancers, Tatty Bumpkin Yoga, Stretch & Grow, Football Frenzy, Ballet, Teen Spin, Teen Circuits, Teen Combat, Karate and Kick Boxing.**
- Swimming pool with jacuzzi and saunarium.
- Swimming pool family fun with Water World and Family Splash Hour.
- Swimming coaching available for all levels from 3 months including adult lessons.
- Gymnasium with extensive range of cardiovascular and resistance equipment.
- Extensive free weights area.
- NEW! Power Plate - the celebrity 15 minute work out.
- Club lounge with Costa Coffee, licensed bar and restaurant.
- **Call David Lloyd Luton on 01582 692 045**

LIFE. Be fit for it



**Junior Watters**



Hello and welcome to all Junior Hatters

**HAPPY BIRTHDAY TO:**

- Mitchell Howe
- Alex Robinson-Welsh
- Jonny Douse
- Joshua Mawson
- Thomas Leaning
- Jonathon Norris
- Joe Hargreaves
- Jay Sanders
- Emma Sanders
- Adam Wedd

Can you find all these football based words in the grid below?

Good luck!!

- BOOTS
- NUMBER
- DEFENCE
- STRIKE
- BALL

**HATTERS WORDSEARCH**

F	L	N	N	D	E	O	D
S	E	N	E	E	K	U	E
E	R	B	E	F	I	M	T
N	U	M	B	E	R	B	E
O	N	A	O	N	T	E	B
K	L	E	O	C	S	E	B
L	N	B	T	E	U	O	M
E	O	E	S	U	R	E	D
E	N	M	N	P	Q	N	A





A huge welcome to this evening's Mascot.

Mascot



**Kaelan Bond**

**Date Of Birth**

22/07/1997

**School Attended**

St Paul's Catholic School

**Fav Luton player**

Sol Davis

## APOLOGISE TO JAKE HOWELLS



The editor, directors and board would like to extend an apology to Jake Howells for comments made in the programme at our recent FA Cup home tie against Altrincham.

It was suggested that Jake is only in the team due to injuries to other players. We would like to put the record straight and publicly acknowledge that Jake is in the team on merit and has become a valuable first team member.

We would also like to apologise to Mick Harford and his staff.

Antony Brown  
Director

# PERIMETER ADVERTISING

**Stadium and pitch perimeter advertising in the modern day sporting arena represents one of the most powerful statements available to companies wishing to drive their brand or service message into the centre of their target audience.**

**At Kenilworth Road we offer a range of strategic positions within the ground that provide your business with the new opportunity to project your company to your target marketplace for at least 23 games per season.**

**For more information and prices, call 01582 411622  
or email: [commercial@lutontown.co.uk](mailto:commercial@lutontown.co.uk)**



**LUTON TOWN - 123 YEARS OF HISTORY - BE PART OF IT**



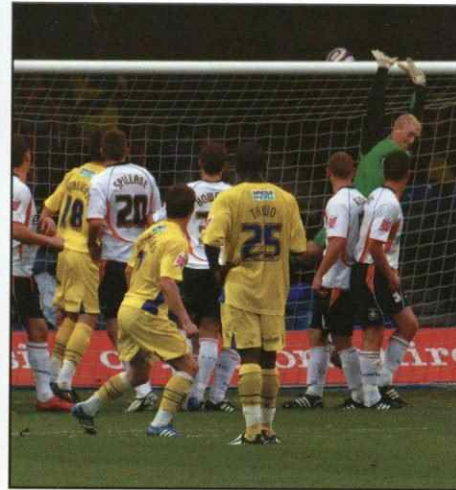


LEAGUE TWO

Saturday 15th November 2008

**Hatters 2 Dagenham & Redbridge 1**

Kick off: 3pm Kenilworth Road



**Luton Town:** Logan, Gnakpa, Davis (Jarvis 76), Keane, Roper, Nicholls (Hall 84), Martin, Spillane, McVeigh, Gallen, Howells

03 Scott Griffin is denied thanks to a great diving save by Conrad Logan

06 Sol Davis slots home into the right-hand corner

32 Magnus Okuonghae heads in a corner

41 Chris Martin puts in a cross to Paul McVeigh who fires past the diving keeper

**LUTON TOWN 2  
DAGENHAM 1**

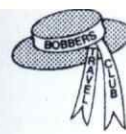
84 Claude Gnakpa has his goal disallowed thanks to a late offside flag

86 The Hatters are denied a penalty after Kevin Gallen is fouled in the area

**LUTON TOWN 2  
DAGENHAM 1**

03 As It Happened:





# Bobbers Travel Club

## Coach Travel Price List - Season 2008/09



**LIFE MEMBERSHIP**  
ONLY £2.00 per Adult  
&  
£1.00 for OAP/Child

For **ALL** Luton Town F.C. 1st Team Away Fixtures  
For Bookings telephone: **01234 856542**  
(Answer phone service will operate at times)

Bobbers  
Travel Club  
Est. 1979

DATE	DESTINATION			ADULT Fare	*CHILD / OAP Fare	CRANFIELD Departure	LUTON Departure	
<b>2008</b>	Sat	Aug	16	GILLINGHAM	£15	£13	10.30	11.30
	Sat	Aug	30	EXETER CITY	£25	£22	07.30	08.30
	Sat	Sep	6	MACCLESFIELD TOWN	£18	£15	09.00	10.00
	Sat	Sep	20	ROTHERHAM UNITED	£18	£15	09.30	10.30
	Sat	Oct	4	BRADFORD CITY	£20	£17	08.30	09.30
	Tue	Oct	21	GRIMSBY TOWN	£20	£17	13.30	14.30
	Sat	Oct	25	BURY	£20	£17	08.30	09.30
	Sat	Nov	1	SHREWSBURY TOWN	£18	£15	09.30	10.30
	Sat	Nov	22	ROCHDALE	£20	£17	08.30	09.30
	Sat	Dec	13	WYCOMBE WANDERERS	£13	£11	11.30	12.30
	Fri	Dec	26	CHESTERFIELD	£17	£14	10.00	11.00
<b>2009</b>	Sat	Jan	3	CHESTER CITY	£20	£17	08.30	09.30
	Sat	Jan	17	DARLINGTON	£25	£22	07.30	08.30
	Tue	Jan	27	AFC BOURNEMOUTH	£17	£14	14.00	15.00
	Sat	Feb	7	ACCRINGTON STANLEY	£23	£20	08.00	09.00
	Sat	Feb	14	DAGENHAM & REDBRIDGE	£13	£11	10.30	11.30
	Sat	Feb	28	PORT VALE	£17	£14	10.00	11.00
	Tue	Mar	10	NOTTS COUNTY	£16	£14	15.00	16.00
	Sat	Mar	14	ALDERSHOT TOWN	£15	£13	10.30	11.30
	Sat	Mar	28	MORECAMBE	£25	£22	07.30	08.30
	Sat	Apr	11	LINCOLN CITY	£17	£14	09.30	10.30
	Sat	Apr	18	BARNET	£13	£11	11.30	12.30
	Sat	May	2	BRENTFORD	£13	£11	11.30	12.30

\* Child rate is for a youth under 16 years of age. Prices and times may be subject to change

■ For any problem that arises on the day of travel, please contact this Mobile Phone No. **(0779) 4140352**  
(Only between the times of the Cranfield & Luton departures) – PLEASE USE MAIN NUMBER AT ALL OTHER TIMES.

### BOOK FOR COACHES IN ANY OF THE FOLLOWING WAYS:-

1. FROM OUR TICKET KIOSK IN KENILWORTH ROAD TURNSTILES - SEE A BOBBERS TRAVEL CLUB COMMITTEE MEMBER **BEFORE** ANY FIRST TEAM HOME MATCH UNTIL 15 MINUTES PRIOR TO KICK-OFF.
2. ON THE RETURN JOURNEY FROM THE PREVIOUS AWAY GAME,
3. OR BY TELEPHONE ON **(01234) 856542**

**Payment of Membership covers you for a Life Membership**

### PLEASE NOTE:-

1. Any member who books and then fails to turn up without notifying us in advance will be required to pay for that journey IN FULL, before being allowed to travel again.
2. If a match is postponed ALL members will be required to book again when the match is re-arranged.  
NO BOOKINGS WILL BE AUTOMATICALLY CARRIED FORWARD TO THE REVISED DATE.
3. Being a membership club, we do insist that you are issued with a Travel Club Card, which MUST be carried on every journey.

### BOBBERS TRAVEL CLUB COMMITTEE ARE:

JOHN PYPER - President    STEVE RUSSELL - Vice President  
LES MILLER - Travel Co-ordinator & Treasurer    SUE MILLER - Committee Steward

The Official Energy Partner of The Football League.

E.ON is proud to partner the world's oldest league football competition.



**e-on**





# PROGRAMMED FOR SUCCESS



Football Matchday programme advertising represents one of the most effective and dynamic opportunities available for presenting your corporate message, or promotional statement to a receptive and responsive audience.

Selling over 3,500 copies per home match with each copy read (on average) by three people, this collectable advertising opportunity places your advert, or promotional message in front of at least 40,500 readers over our 23 home league games

For more information and prices, call 01582 411622 or email: [commercial@lutontown.co.uk](mailto:commercial@lutontown.co.uk)

Designed by Lee Wood

## Girls Centre of Excellence

SPONSORS SEASON 2008/09



TOUR SPONSORS



Good afternoon and welcome to today's game.

The first Term of our Girls Development Centre is rapidly approaching its end and the process of re booking is now underway. There are still spaces for Term 2 of the Development Centre, all the information you require to enroll is shown below.

**What is the Girls Development Centre?**

The Girls Development Centre is a Football Coaching Centre open to: Ambitious players wishing to progress towards the Girls Centre of Excellence. Newcomers wishing to master the basics.

**What is the cost and what will I gain from attending?**

The cost is £35 per term for nine practical sessions. You will receive training from excellent coaches at great facilities and a comprehensive written assessment.

**What will we work on in training?**

The four elements we feel are vital in making it as a professional footballer: Technique Insight Personality Speed

**Who will my coach be?**

All staff will have to have an enhanced CRB (police record) check, a first aid qualification and will hold a minimum of the Level 2 FA Coaching Certificate. There will also be an involvement from Centre of Excellence Director and Head Coaches to enhance your Development and the assessment procedure.

**What happens if I do well?**

If your coach feels you have shown the right levels of ability and attitude during or at the end of the term, you will be given the opportunity to progress to the Centre of Excellence. Players who display talent can be moved up through the programme after a few weeks, whilst the system also caters for those who wish to progress at a slower rate.

**How do I get more details?**

By calling 01582 391927 or emailing [lutontownfitc@btconnect.com](mailto:lutontownfitc@btconnect.com)

VENUE: Denbigh High School , Alexandra Avenue , Luton , Beds, LU3 1HE.  
 DAY: Fridays  
 TIMES: 18:00-19:00  
 TERM 2: 5th December 2008 to 20th February 2009  
 TERM 3: 7th February 2009 to 8th May 2009

You don't have to have attended previous terms to join term 2 or 3. You can pay for one term at a time or both terms at once.

Enjoy the Game  
 Stuart Smith



Lily Knowles - U16



Amy Dewar - U10



Mollie Bailey - U14





There has been a lot of comment in the press recently on the comments made by Sir Trevor Brooking on the state of Youth Development in English football.

After watching a large number of games at youth level this season, I think his criticism is well directed and accurate despite Lord Mawhinney's protestations.

A majority of clubs outside of the Premier League are still signing youngsters because of their size and ability to influence a game. A majority of coaches are still starting out each game with one goal – to win. A majority of parents would still prefer to see the goalkeeper play long, rather than risk giving to a defender who may concede possession in a dangerous area of the pitch. In a majority of games a young player making a mistake gets hammered, rather than being given the opportunity to use the mistake as a valuable tool in their personal development.

As a football club, we have got to take heed of all of the points raised by Sir Trevor and do our best to ensure that our Youth Development programme sets out with one goal, producing footballers who are capable of playing for Luton Town and in the Premier League. If this goal describes the end product what are the mechanisms in place to allow us to fulfil it?

### Giving Young Players Opportunities

The manager has been brave and has backed the young players at the club even in these demanding times. Jake Howells, Scott Sinclair and Jordan Patrick have all played for the first team, Mark Farthing & Jena-Philip Yamfam have been involved with the squad. All of the Youth Team have experienced action in the reserves, along with Ryan Da Silva from the Under 16's.

Beneath these squads Matthew Harriott, Christian Tavemier, Ben Islam, Matthew James, Josh Smith & Kwame Fordah have all represented the Under 18 's at the age of 15. Newman Carney & Alasan Ann have played in the same squad at the age of 14. In everyone of our squads from Under 9 through to Under 16 boys are played in older age groups to enhance their development at the expense of results. The process is monitored carefully to ensure that this progression is in the best interests of each individual.

### Protecting Technically Gifted Players

One fact that cannot be overlooked is that to play in the Premier League a player has to have athletic qualities. It is also important to remember that our young players are going to be playing in the Premier League of the future, not of today. In the last 40 years the distance covered by players in top flight football has gone up by over 50%. The number of sprints per game in the Premiership has doubled since 2002. The average number of high intensity activities has almost doubled since 2002. All of these facts are important, and they are one of the reasons why we provide specific athletic training for our young players, but this mustn't be at the expense of technical development.

We employ Eizo Sugino as our skills coach, and Dan Walder as our Technical Development Coach, and they both look to ensure that players ball control, passing ability and ability to dribble in tight situations are maximised.

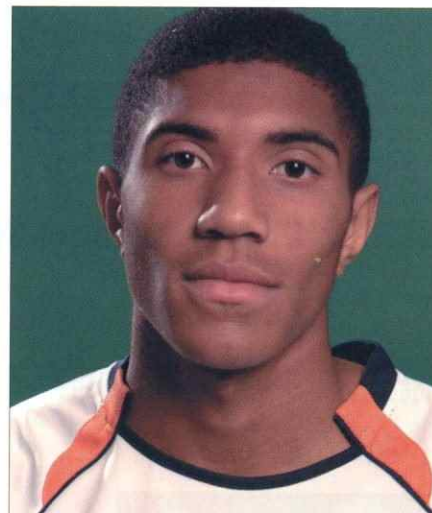
### Playing Philosophy and Environment

Luton Town are well known for their style of football, and we need to create an environment where our young players are encouraged to get on the ball and pass it, even when the opposition wants to play a more direct style of football. All of our coaches look to encourage our teams to play out of defence from the goalkeeper. Occasionally this means we will concede a goal by giving away possession in defence, but this is a small price to pay if the end product is Jake Howells being comfortable in possession under pressure.

Recently we played an Under 12 game in full size goals and it would have been easy for our strikers to shoot from 25-30 yards over the diminutive opposition keeper. Our philosophy dictated that our players were asked to pass the ball and create genuine goal-scoring opportunities rather than exposing a short term solution at the expense of long term development.

To conclude, Sir Trevor Brooking is correct in saying that we are as a nation still some way behind our European counterparts in developing young footballers. However, as a football club we are looking to ensure that we close that gap as soon as possible.

Regards  
Gregg Broughton  
Youth Development Officer



Luton 3  
Brentford 2

We started off with a slight change of formation, playing a diamond in midfield, which I personally think worked after changing last week halfway through the first half at Northampton.

The tempo from everyone was good throughout the game which resulted in myself, Scott Sinclair, giving Luton the lead early in the first half.

We kept the tempo up for the rest of the first half and for part of the second half with fantastic play and a great ball from Richard Owusu and finished well by Alex Price.

Some more good football lead to another goal with a beautiful half volley strike from outside the box from Richard Owusu which gave us a 3-0 lead.

With 15 minutes left the whole team switched off and Brentford got two goals through sloppy play, but we held on for a very good win, finishing the game 3-2.

After the game Alan Neilson said, "It was a great team performance, we played at a really good tempo with loads of quality."

by Scott Sinclair

first4vauxhallfirst4ford  
nearly new low mileage cars and commercial vehicles

Match Analysis Sponsors 2008/09



www.isa-accountants.co.uk  
Under 18 Team Sponsors



# executive **box holders**



**J.J. KELLY & SONS LTD**

Tel: 01582 455406

**BV BILLINGTON & LAWRENCE**

Tel: 01582 726100

**SHALLOWFORD CONSULTING**

Tel: 01438 831013

**Admiral**  
GROUP OF COMPANIES

Tel: 01582 653333

**Butterfields**

01582 491100

**Mr Mick Connolly**

**SKF**

Tel: 01582 490049

**F&S**  
PIPEWORK SERVICES LTD



**Luton Plastics**

*Hi-Tech Flooring*  
LIMITED

**LUTON TOWN FOOTBALL CLUB**

**Carlsberg**  
OFFICIAL BEER

**OFFICIAL BEER OF LUTON TOWN F.C.**

Enjoy Responsibly

# tom **craddock**



**Age:** 22

**Where were you born:** Darlington

**Favourite Song:** Estelle's and Sean Paul's 'Come Over'

**Favourite Film:** Donnie Brasco

**Favourite Meal:** My mum's spaghetti bolognese

**What car do you drive:** Alfa Romeo

**Who has the best car:** Dimitri Kharine, he has a BMW 7 Series

**Who is your favourite player:** Alan Shearer

**Who is the best dressed:** Me!!

**Who is the worst dressed:** Michael Spillane - he has some awful gear

**What is your most embarrassing moment:** Missing a penalty when I was on loan at Hartlepool





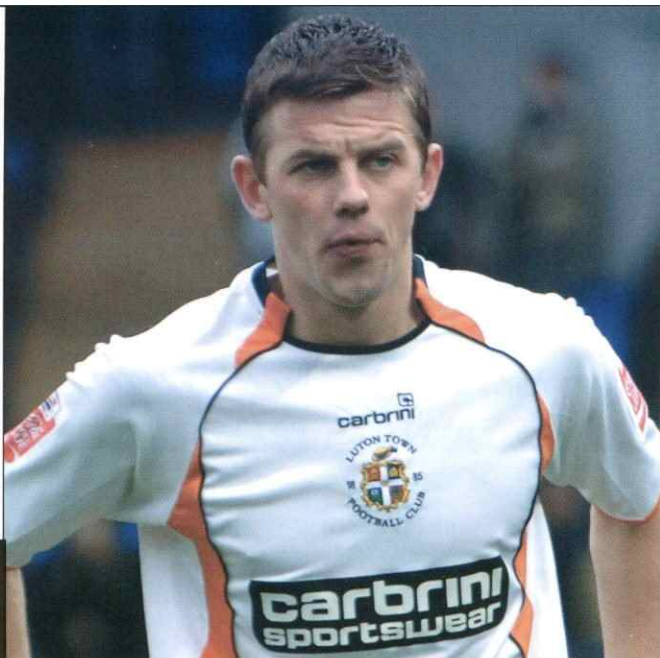
Tom Craddock had an instant impact after signing on loan from Premier League side Middlesbrough, scoring three goals in his first three games.

The 22-year-old bagged a brace in the 2-2 draw against Grimsby Town before scoring the opening goal in the 2-1 win at Bury to delight the Hatters' faithful.

**“Obviously when you are a new player you have got to try and make your mark in the team and show the rest of the lads what you are all about”**

“Obviously when you are a new player you have got to try and make your mark in the team and show the rest of the lads what you are all about,” said Craddock.

“And hopefully with the couple of goals I have scored I have done that.”



## One on One

**On loan Middlesbrough striker, Tom Craddock, talks about his hopes for the season**

Craddock, who has made five first team appearances for Boro, extended his loan spell for a further month earlier in November and admits that the Manager played a large part in bringing him to Kenilworth Road:

“I used to watch him when he played for Wimbledon, I know he

was a very tough striker so if I can get a bit of advice from him on how to be more physical in my game then it will be definitely worthwhile coming here.

“I was scoring goals for the reserves at Middlesbrough and the coaches and the gaffer up there told me that I'd be allowed to go out on loan so they put my

name about and the gaffer here showed an interest.

“He came to watch me in a reserve game up at our training ground; I think that was on the Tuesday and on the Thursday night I was down here. I was glad to come because it's always nice when someone shows that they want you and I think that was half the battle.”

Craddock is no stranger to the Football League after spending time on loan at both Wrexham and Hartlepool United.



The spell at the Red Dragons got off to a flying start, scoring on his debut against Bristol Rovers but a knee injury

League 2, how do Luton compare to Wrexham?

“I would say here we have probably got a

**“This club is not a bottom of League 2 team, I think without all the minus points we'd be in 15th place so it goes to show you just how many good players we have got here.”**

meant the end of the loan deal with excellent statistic of a goal a game ratio for the Dragons.

So with experience of

better team than we had at Wrexham. This club is not a bottom of League 2 team, I think without all the minus points we'd be in 15th place so it goes to show you just how many good players we have got here.”

And Craddock hopes to continue helping Luton Town Football Club.

“I just want to carry on and hopefully help the team do well and if I can nick another couple of goals then it will be all the better but obviously the main thing is to try and get us out of the minus points and get us climbing that table.”



2008/2009



tomcraddock





# FlashBack

Club Historian Roger Wash looks back at a memorable clash between the Town and the Bees.

The Town were relegated to the old Division Three in 1963, the first time they had been at that level for 26 years.

It had been only a short time since they were an established top flight side and appearing in the FA Cup final but with a team made up of over-the-hill veterans and other clubs' cast-offs the glory years seemed far away.

There was one ace up the

Hatters' sleeve though.

Signed from Chester in October 1962, Ron Davies had scored 21 goals in only 29 Division Two League games in a poor Luton side, becoming a firm crowd favourite along the way.

After only three games into the 1963/64 campaign, though, the news that all Town supporters had been dreading was announced with Davies being sold for a pitiful £35,000 to Norwich, who had been chasing him relentlessly since he netted six times against them the previous season.

The Hatters were obviously weaker with the sale of Davies and the goalscoring completely dried up.

The mantle of leading the attack was placed firmly on the shoulders of 33 year old Gordon Turner who was surrounded by some pretty ordinary players.

By the time Christmas 1963 approached the Town were struggling at the bottom of the table with a grand total of four wins to their credit and a succession of heavy defeats, particularly at home, behind them.

A forward from Northampton, Ray Smith,

had been signed for £5,000 but he lasted only a few anonymous games before disappearing off to non-League football, while another forward, brought to Kenilworth Road just before Christmas, caused barely a ripple of enthusiasm amongst the, by now, highly cynical Luton fans.

John O'Rourke was 18 when he came to Luton having become surplus to requirements at Chelsea where Tommy Docherty was blessed with plenty of forward cover.

Another cast-off we all thought, especially as O'Rourke had previously been discarded by Arsenal as well.

The striker made his debut in a 2-1 home win over Reading and immediately caught the eye with his youthful enthusiasm and no little skill, and by the time of his first goal, in a 3-1 home victory over Colchester in January 1964, he had won over the fans.

### The Game Brentford 2 Luton Town 6 February 8th 1964

Although the Town had started to pick up a few home points, the away record was dire without a victory on foreign soil since October



■ O'Rourke saves the Town from relegation in 1963/64 by netting the winner against Watford in the final home game.

1962.

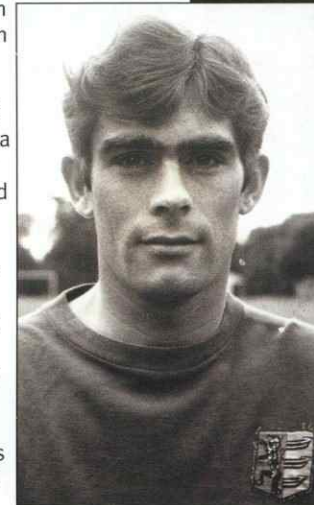
It was therefore understandable that only a handful of Luton supporters made their way to Griffin Park to see the still bottom of the table Town to take on a Bees side that was hovering around mid-table.

The customary away defeat looked on the cards as early as the eleventh minute when Brentford winger Mark Lazarus raced from his own half to set up an easy chance for Billy McAdams – a lead that was comfortably held until the interval.

Whatever was said at half-time should have been bottled and sold as what happened in the first 21 minutes of the second period created a new Luton hero and made a complete mockery of the Town's lowly

position. On 46 minutes, winger Harry Walden equalised for the Town with a simple tap in before John O'Rourke took over, scoring four goals – including a seven minute hat-trick- to turn the game on its head.

Lazarus had knocked in a consolation for Brentford in amongst O'Rourke's devastating spell but Walden put the game beyond any doubt just before the end with his second and the Town's sixth.



■ The new hero, John O'Rourke.

Brentford complained about an injury to goalkeeper Chick Brodie, but as the score was 4-2 in the Hatters favour when he left the field, it hardly mattered.

O'Rourke proved a revelation that season as his 22 goals from 23 games proved, with the Town escaping relegation at the death following a run of nine games without defeat at the end of the campaign.

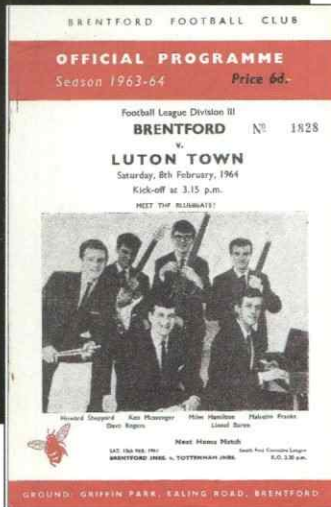
Tommy Docherty was left to rue his decision to let O'Rourke go, while the Town fans would never again moan about cast-offs....not for a couple of years anyway!



Luton Town:  
Baynham, McBain, Bramwell, Pacey, Caleb, Lownds, Walden, McKechnie, O'Rourke, Reid, Riddick.



Brentford:  
Brodie, Jones, Thomson, Smith, Gelson, Higginson, Lazarus, Fielding, McAdams, Ward, Block.







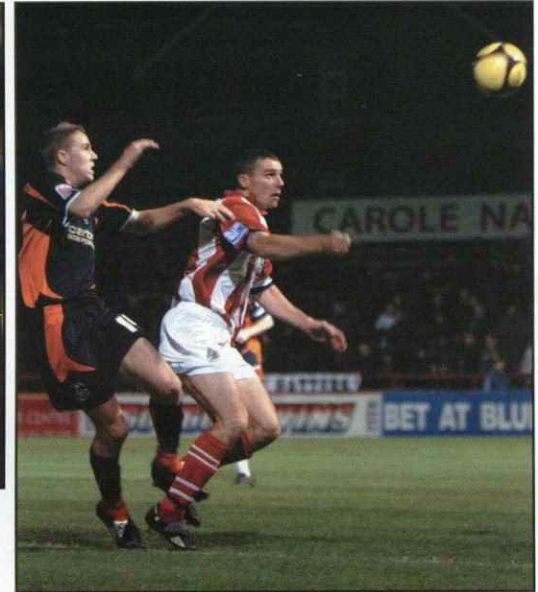
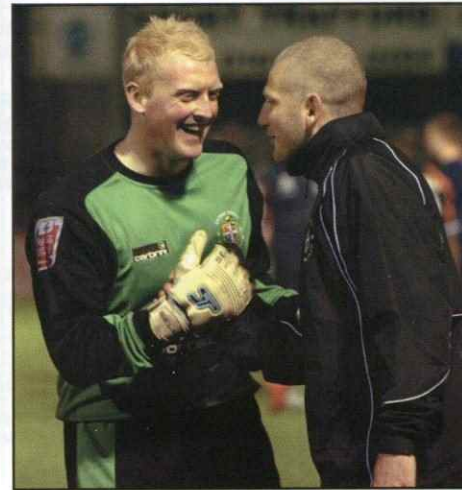
## FA CUP - FIRST ROUND PROPER REPLAY

Tuesday 18th November 2008

### Altrincham 0 Hatters 0

Altrincham 2 Hatters 4 on penalties

Kick off: 8.20pm Moss Lane



0 As It Happened: 7  
 Chris Martin sees his close range header sail over the bar  
 25 Paul McVeigh heads across goal to Chris Martin who misses the target with an open goal gaping  
 HT  
 62 ALTRINCHAM 0  
 LUTON TOWN 0  
 Claude Gnakpa heads wide a Kevin Nicholls free-kick  
 67 Sol Davis is sent off after fouling Chris Senior in the area. Conrad Logan dives low to save the spot kick  
 94 Paul McVeigh heads wide a Kevin Nicholls cross  
 Conrad Logan makes two saves before Paul McVeigh scores the winner  
 PEN  
 FT ALTRINCHAM 0 (2)  
 LUTON 0 (4)

**Luton Town:** Logan, Gnakpa, Roper, Keane, O'Connor (Jarvis 70), McVeigh, Nicholls (Talbot 100), Hall, Spillane, Martin, Howells (Davis 61)



# don't Worry about a thing

**£1000  
MINIMUM  
PART EXCHANGE**

**BUY NOW  
FIRST REPAYMENT  
JANUARY  
2009**

**FIXED  
PAYMENTS  
FOR THE TERM**

## Worry Free Motoring from Hartwell

In the current economic climate, we know that every penny counts. It has always been our mission to bring you the very best cars at the very best prices. Right now we are also offering our special 'Worry Free Motoring' package on selected used cars meaning **every little thing is going to be alright!**

**08/58 Ford Fiesta Hatchback  
1.25 Style 5dr**



BLUE  
Was  
£10495

**CLEARANCE PRICE Save  
£7995 £2500**

**07/07 Ford Focus 1.6 Zeec 5dr  
Climate Pack**



RED  
Was  
£9495

**CLEARANCE PRICE Save  
£7995 £1500**

**08/57 Peugeot 308 Hatch 1.6  
VTi SE 5dr**



SILVER  
Was  
£12995

**CLEARANCE PRICE Save  
£9995 £3000**

**08/08 Ford Mondeo Hatchback  
2.0 Zetec 5dr**



GREY  
Was  
£17995

**CLEARANCE PRICE Save  
£13995 £4000**

**02/52 Mercedes Benz C-Class  
C200K Elegance 4dr Automatic**



GREEN  
Was  
£9495

**CLEARANCE PRICE Save  
£6995 £2500**

**00/W Ford Focus  
1.6 LX 5dr**



SILVER  
Was  
£3495

**CLEARANCE PRICE Save  
£2995 £500**

**Hartwell**  
Dunstable

Open 7 Days:  
Monday to Friday  
9.00am to 7.00pm  
Saturday 9.00am to 6.00pm  
Sunday 10.00am to 4.00pm

77-81  
London Road,  
Dunstable  
LU6 3DT



Call Now:  
**0870 904 9374**

**12.9%  
APR** TYPICAL

Visit [BestPriceCar.co.uk](http://BestPriceCar.co.uk) - Our Award Winning No.1 Website

One click, one call, beats all.

## lutonladies



A welcome break from league action saw the Ladies First Team visit Bedford Ladies FC in the County Cup for our first competitive meeting.

The two clubs have always enjoyed an excellent relationship and that was reflected in the game.

Bedford's keeper, Katie Upton, made a string of good saves to keep parity and it was 30 minutes before Luton took the lead, when Jade McEntaggart's corner was headed in by Micky Taylor.

With just a single goal separating the teams with 2 minutes to the break Laura Day surged through the middle to smash her shot into the top corner and then Rebecca Kane picked her way past several tackles to fire past the keeper to all but finish the tie before half time.

With no further goals a 3-0 victory was enough to move Town into the quarter finals.

This weekend is again one for cup action with Town travelling down the M4 to meet Swindon Town in the



Ollie Koranteng scored a hat trick and there were goals for Mirella Tambini, Maisie Wyatt, Terri Petit and Shanice Jimenez.

The Under 14's turned in a good performance against Hemel Hempstead winning 5-1 with the goals spread around for Rebecca Smart, Georgia Hardy, Megan Roe, Kerry Keyte and Lauren Porter.

A vital 1-0 away win for the Under 12's at Denham United gives them a four point

lead at the top of the table from Spurs. The winner came from Chloe Varney.

The Under 11's came out on top at Enfield Town in a tight encounter with goals coming from Rebecca Reeve (3) and Saskia Christie-Kelly in a 4-3 away win.

Finally, the Under 16 squad were 14-1 victors over Towcester Grace Shiels (4), Leyah Maddix (3), Kellie Hair (2), Lauren Bard (2), Lauren Dunn, Stacey Penn and Stacey Gayton were on the score sheet.

Second Round Proper of the FA Cup and will be looking to overcome somewhat of a bogey team who we have failed to beat on a number of previous occasions.

The Reserves also reached the quarter finals comfortably with a 5-0 win at Sharnbrook. Nina Hale and Yasmin Hickling both scored twice with Semma Halil adding the other goal.

It was goals galore for the table topping Under 15's who crushed Letchworth GCE with a team record score of 21-0.

Holly Sheridan and Katie Davis both scored seven,



# kitsponsors



DEAN BRILL **01**

**Age:** 22  
**Position:** Goalkeeper  
**Signed:** May 2006

M&S Water Services  
Bobbermans 606ers

CLAUDE GNAKPA **02**

**Age:** 25  
**Position:** Defender  
**Signed:** August 2008

Andy & Drew  
Kevin Lennon

SOL DAVIS **03**

**Age:** 28  
**Position:** Defender  
**Signed:** August 2002

Trust in Luton (2003) Ltd  
LUTON TOWN SUPPORTERS TRUST  
WHOSH  
Tommy Lennon

KEITH KEANE **04**

**Age:** 21  
**Position:** Defender  
**Signed:** August 2008

Trust in Luton (2003) Ltd  
LUTON TOWN SUPPORTERS TRUST  
Maddie Knight

IAN ROPER **05**

**Age:** 31  
**Position:** Defender  
**Signed:** August 2008

LTSC - Scandinavia  
Bernard Elwen

GEORGE PILKINGTON **06**

**Age:** 26  
**Position:** Defender  
**Signed:** August 2008

WHOSH  
Bobbers Travel Club

GARRETH O'CONNOR **07**

**Age:** 29  
**Position:** Midfielder  
**Signed:** October 2008

www.lutonoutlaws.com  
Craig Lowrie

KEVIN NICHOLLS **08**

**Age:** 29  
**Position:** Midfielder  
**Signed:** August 2008

Pulse Tattoo  
Image with Attitude  
WHOSH

SAM PARKIN **09**

**Age:** 27  
**Position:** Striker  
**Signed:** August 2006

Les & Sue Miller  
Miller & Company  
Lynn, Ben & Rhiannon

RYAN CHARLES **10**

**Age:** 18  
**Position:** Striker  
**Signed:** August 2008

Performance Car Hire  
The Mayne Family

LEWIS EMANUEL **11**

**Age:** 24  
**Position:** Midfielder  
**Signed:** August 2008

Matthew Crossland  
Bobbermans 606ers

HARRY WORLEY **12**

**Age:** 19  
**Position:** Defender  
**Signed:** October 2008

AVAILABLE  
AVAILABLE

ASA HALL **14**

**Age:** 21  
**Position:** Midfielder  
**Signed:** August 2008

Carole Jinks & Sharon Skinner  
WHOSH

ED ASAFU-ADJAYE **15**

**Age:** 19  
**Position:** Defender  
**Signed:** August 2008

Jacqui Peacock  
Loyal Luton Supporters Club

ROSSI JARVIS **16**

**Age:** 20  
**Position:** Midfielder  
**Signed:** August 2008

Carole Jinks & Sharon Skinner  
Oscar & Rosie Barron

KEVIN WATSON **17**

**Age:** 34  
**Position:** Midfielder  
**Signed:** August 2008

Gill, Julie & Yvonne  
TJ Fordham Plumbing & Heating

CHRIS MARTIN **18**

**Age:** 19  
**Position:** Striker  
**Signed:** August 2008  
*On Loan*

Luton Town Ladies FC  
Richard & Zak Tilley

DREW TALBOT **19**

**Age:** 22  
**Position:** Striker  
**Signed:** January 2007

Information design associates  
LTSC - Scandinavia

MICHAEL SPILLANE **20**

**Age:** 19  
**Position:** Defender  
**Signed:** August 2008  
*On Loan*

Kelly Knight  
A1 Partitions

CONRAD LOGAN **21**

**Age:**  
**Position:** Goalkeeper  
**Signed:** August 2008  
*On Loan*

Emma Banks  
Josie & Andrew Kingston

GEORGE BEAVAN **25**

**Age:** 18  
**Position:** Defender  
**Signed:** August 2008

Stone Futures Ltd 'Good Luck'  
WHOSH

DEAN MORGAN **27**

**Age:** 24  
**Position:** Striker  
**Signed:** February 2005

Available  
Available

PAUL McVEIGH **28**

**Age:** 30  
**Position:** Striker  
**Signed:** August 2007

The Bricklayers Arms  
Available



# STAFF kitsponsors



**MICK HARFORD**



Age: 49  
Position: Manager  
Signed: January 2008

Mr & Mrs Langford Hat

Hitchin Hatters

**WARREN NEIL**



Age: 45  
Position: Assistant Manager  
Signed: January 2008

www.lutonoutlaws.com

Luke Browne

**JOE DUNBAR**



Age: 41  
Position: Fitness Coach  
Signed: June 2008

Available

Available

**DIMITRI KHARINE**



Age: 40  
Position: Goalkeeper Coach  
Signed: July 2006

Available

Available

**ALAN NEILSON**



Age: 35  
Position: Youth Manager  
Signed: August 2008

Luke Browne

Luton Town Supporters Club

**GREG BROUGHTON**



Age: 33  
Position: Youth Development Officer  
Signed: August 2008

Available

Available



## KIT SPONSORSHIP 08/09

If you would like to sponsor a players kit or for more information please contact the Commercial Department on 01582 411622 or [commercial@lutontown.co.uk](mailto:commercial@lutontown.co.uk)

# youthsponsors



If you would like to sponsor a youth player or their kit please contact the Commercial Department on 01582 411622 or [commercial@lutontown.co.uk](mailto:commercial@lutontown.co.uk)

**Sam BARKER**



Kit Sponsored by:  
**Michael Capp**  
Executive Club Member

Player Sponsored by:  
Available

**Riccardo BIGGI**



Kit Sponsored by:  
Available

Player Sponsored by:  
Available

**Oliver CLEAVER**



Kit Sponsored by:  
Available

Player Sponsored by:  
Available

**Ashley DEENEY**



Kit Sponsored by:  
**Michael Capp**  
Executive Club Member

Player Sponsored by:  
Available

**Mark FARTHING**



Kit Sponsored by:  
**Joe O'Dell**

Player Sponsored by:  
Available

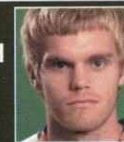
**Aaron FLETCHER**



Kit Sponsored by:  
Available

Player Sponsored by:  
Available

**Harry HOGARTH**



Kit Sponsored by:  
**Fifties Fan**

Player Sponsored by:  
Available

**Jake HOWELLS**



Kit Sponsored by:  
**Neil Ehrenzweig**

Player Sponsored by:  
**Don Hutchison**

**Taylor NATHANIEL**



Kit Sponsored by:  
Available

Player Sponsored by:  
Available

**Richard OWUSU**



Kit Sponsored by:  
Available

Player Sponsored by:  
Available

**Aidan QUINN**



Kit Sponsored by:  
**Michael Capp**  
Executive Club Member

Player Sponsored by:  
Available

**Scott SINCLAIR**



Kit Sponsored by:  
**Fifties Fan**

Player Sponsored by:  
**Don Hutchison**

**Adam WATKINS**



Kit Sponsored by:  
**Michael Capp**  
Executive Club Member

Player Sponsored by:  
Available

**Jack WOOD**



Kit Sponsored by:  
**Michael Capp**  
Executive Club Member

Player Sponsored by:  
Available

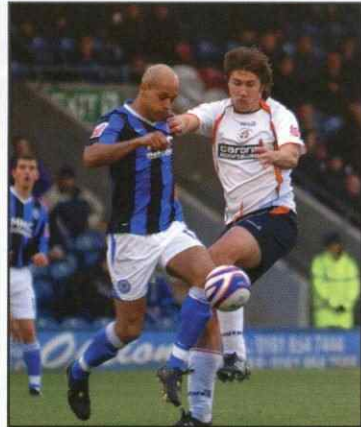
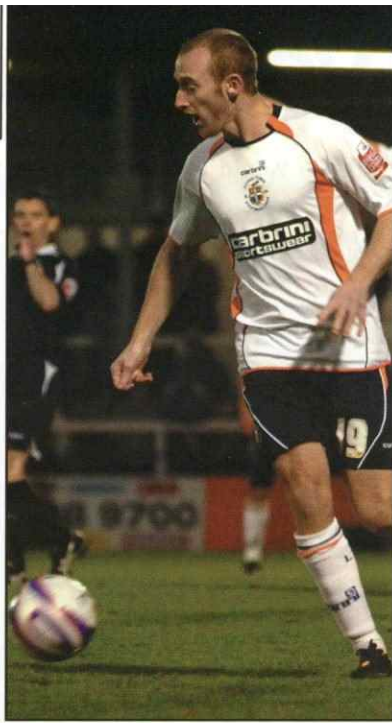


the future



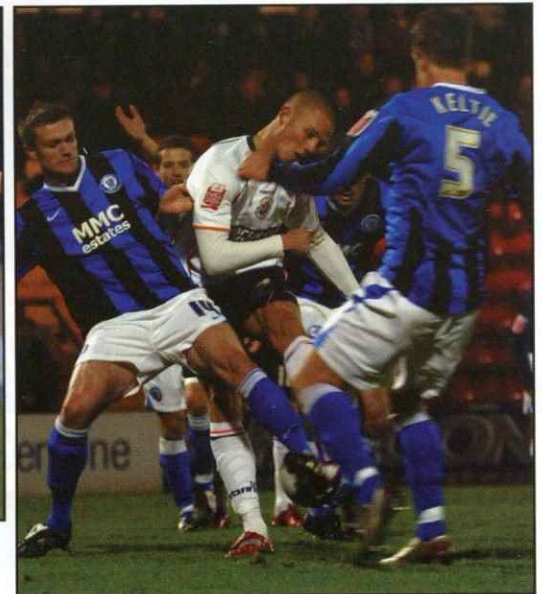
LEAGUE TWO

Saturday 22nd November 2008  
**Rochdale 2 Hatters 0**  
 Kick off: 3pm Spotland



0  
 As It Happened: 3  
 12  
 40  
 HT  
 59  
 77  
 79  
 FT  
**ROCHDALE 2  
 LUTON 0**

Lee Thorpe heads in at the near post  
 Lee Thorpe has a clean run on goal, but Conrad Logan rushes off his line to clear the danger  
 Adam Rumbold tries his luck from distance but Conrad Logan makes an easy save  
 Rochdale are awarded a penalty, Adam Le Fondre steps up and fires the ball into the left hand corner  
 Adam Le Fondre headers over from close range  
 Drew Talbot sees his header cleared off the line



**Luton Town:** Logan, Gnakpa, Roper, Spillane, Jarvis, Keane, Hall, O'Connor (Talbot 59), McVeigh (Worley 80), Gallen, Martin





**72 Clubs. The 'Coca-Cola' Football League.**

# staffprofile



**Name:** Richard 'Roger' Osborne

**Started:** March 08

**Position:** Groundsman

**Main Role:** Look after the main pitch and the training ground pitch and drawing the lines on before a game.

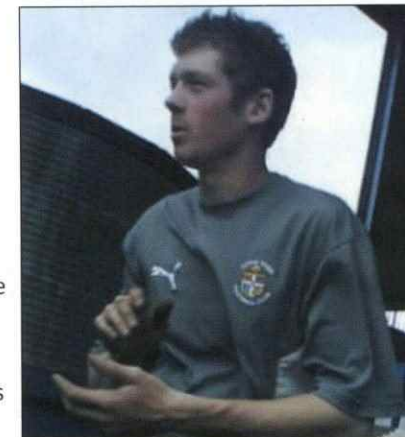
**Best Memory:** Getting the pitch looking nice for the games - it always nice to see hardwork pay off!!!

**Worst Memory:** I put too much oil in one of the mowers when I first started and had to spend ages emptying it all back out again. It wasn't the best first impression!

**Views & Opinions:** I think the pitch is looking the best it has done in years and hopefully this will help the players this season.

At the moment the pitch is the best it has been so far this season.

2020 are doing a brilliant job in keeping the club running and I think the team have a real chance of staying up.



**"I think the pitch is looking the best it has done in years and hopefully this will help the players this season."**



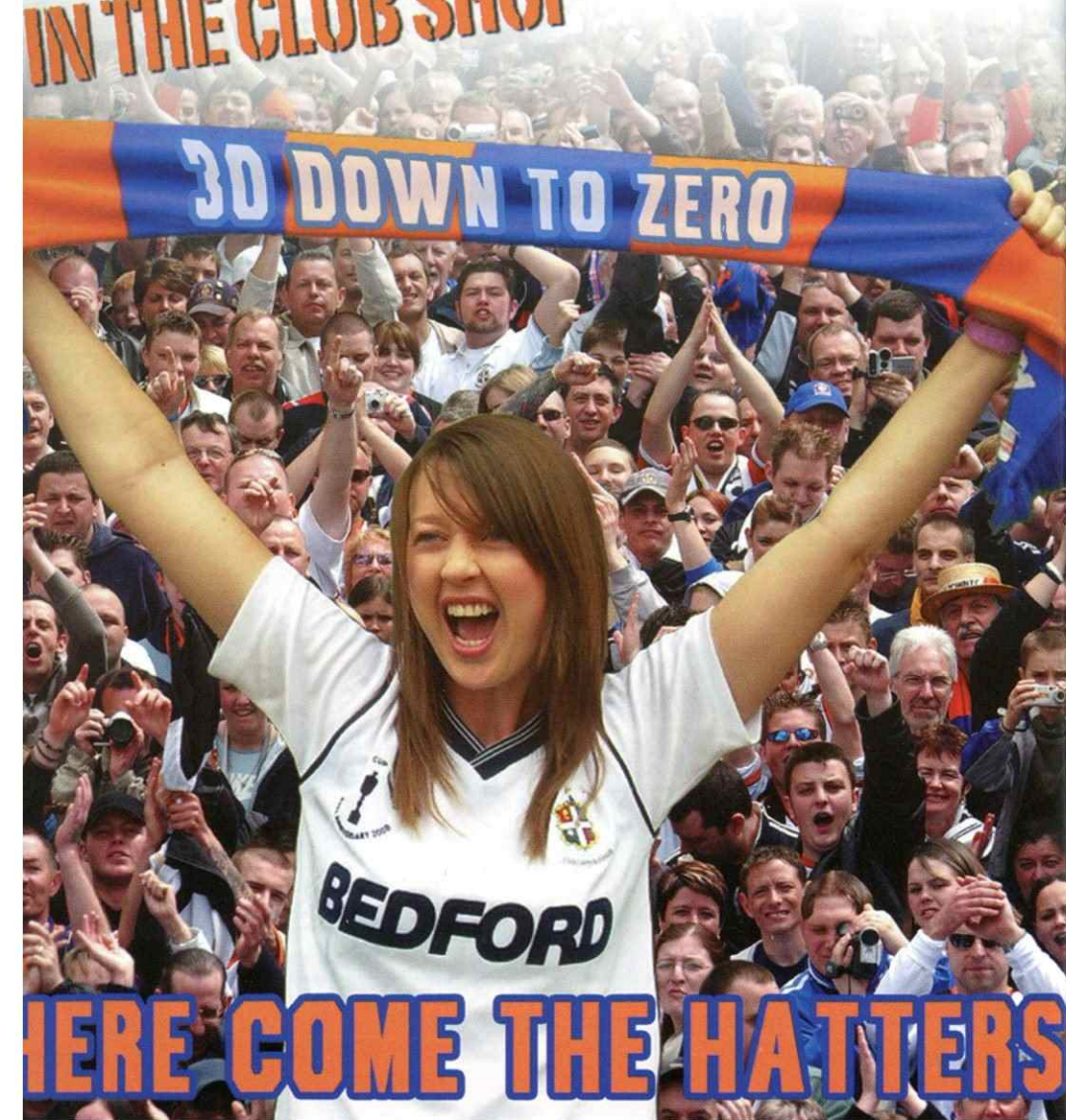
# 30 DOWN TO ZERO

THE NEW SINGLE FROM JANE LEDSON  
AND THE SHOUTY BOYS



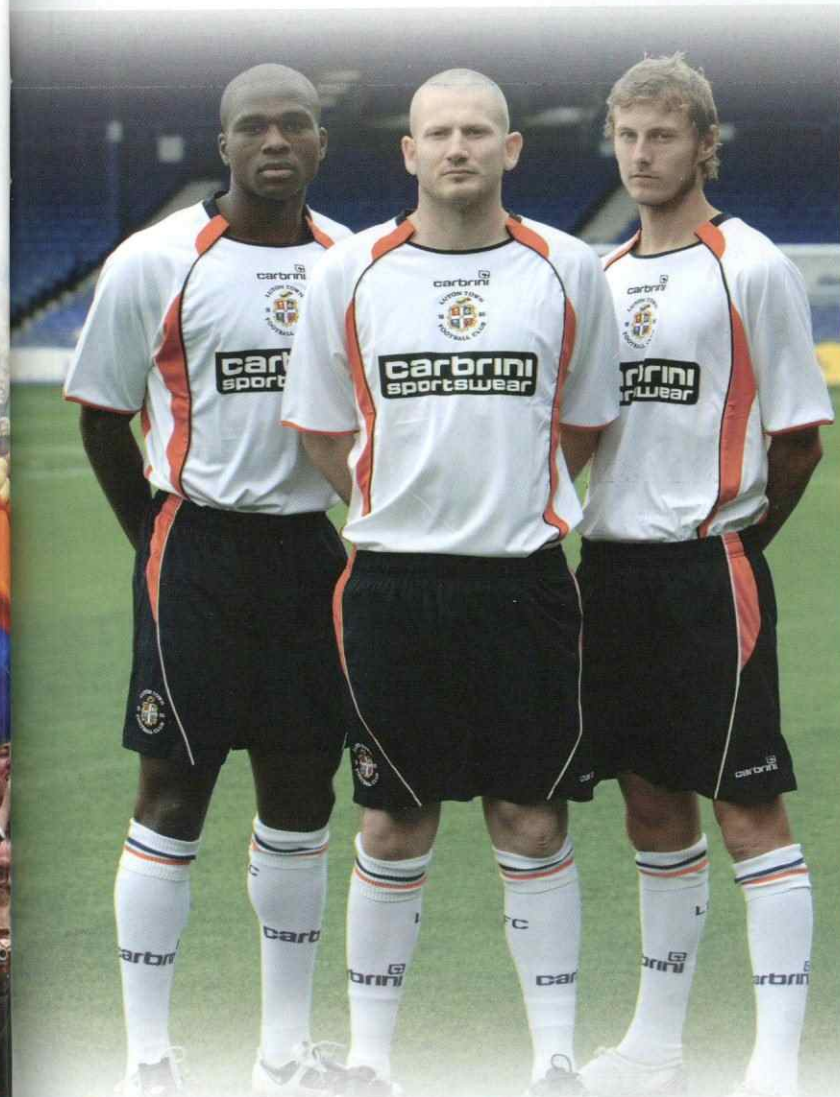
NOW AVAILABLE  
IN THE CLUB SHOP

ONLY £2  
ALL PROCEEDS TO LTFC



HERE COME THE HATTERS

# NEW MERCHANDISE



AVAILABLE NOW  
FROM THE  
CLUB SHOP





Simon Wedd outlines his Luton dream team. Simon sits in the Kenilworth stand with his two sons Harry and Adam.

## GOALKEEPER

### Jake Findlay

Big, brave & agile with amazing reflexes, it was not surprising that he became a Kenilworth Road favourite and was ever present in goal. During the Hatters 1st stint back in the top flight of football Findlay produced some of the best keeping of his career.

## RIGHT BACK

### Claude Gnakpa

The French defender has had a stunning season and has week in week out delivered 1st class performances. Always looks lively pushing forwards and scored a cracker against Darlington; Mick look no further for a prolific striker!

## CENTRE BACK

### Wayne Turner

A local lad, Wayne was a regular member of the first team in the 80's. A product of the youth policy Wayne always gave 110%. Now back at the club for a 3rd period Wayne was years ahead of the charity appeal 'tash for cash' sporting a corker for most of his playing career.

## CENTRE BACK

### Tim Breaker

A passionate full back that always looked equally at home pushing forwards; he always wore his heart on his sleeve and proved that he still has talent at the recent game against the Arsenal XI where he played most off the park.

## LEFT BACK

### Kirk Stephens

When David Pleat took over as manager at Kenilworth Road, one of his 1st signings was Kirk. Known as 'Basher' to his team mates he gave Luton excellent service with over 200 appearances.

## RIGHT MIDFIELD

### Ceri Hughes

Hughes gained 8 international caps for Wales, the same amount of years he played for Luton. An aggressive two footed midfielder who was unfortunately dogged by long term injuries.

## CENTRE MIDFIELD

### Kingsley Black

Black a local lad produced for years at the very highest level including international for Northern Ireland. Pacey and tricky causing opposite defences nightmares; another who put in an excellent performance against the Arsenal XI that any manager would have been proud off.

## CENTRE MIDFIELD

### Garry Parker

When Garry was spotted playing for the Oxfordshire youth side his form was good enough to convince the Luton scouts that he had a future at the Kenny. He signed as an apprentice and never looked back; a midfielder player with great presence & vision.

## LEFT MIDFIELD

### David Moss

Another ingenious signing by David Pleat from Swindon,

'Mossy' was the greatest crosser of the ball. 218 League apps (+3 as sub), 88 goals; scored a stunner against Millwall at 'The Den' to win the game for Luton 2-1.

## STRIKER

### Paul Walsh

An England international Walsh was arguably one of the greatest talents to have ever graced the Luton Town shirt. Electric pace off the mark and plenty of imagination in creating chances for others; 3 hatricks in his first season says it all!

## STRIKER

### Scott Oakes

Oakes was a regular in the side, and a fans favorite, usually playing on the left wing. During his time at Luton, he was capped once for England Under-21 and is probably most famous for his 'Scott Three' FA cup hattrick against West Ham in 94.

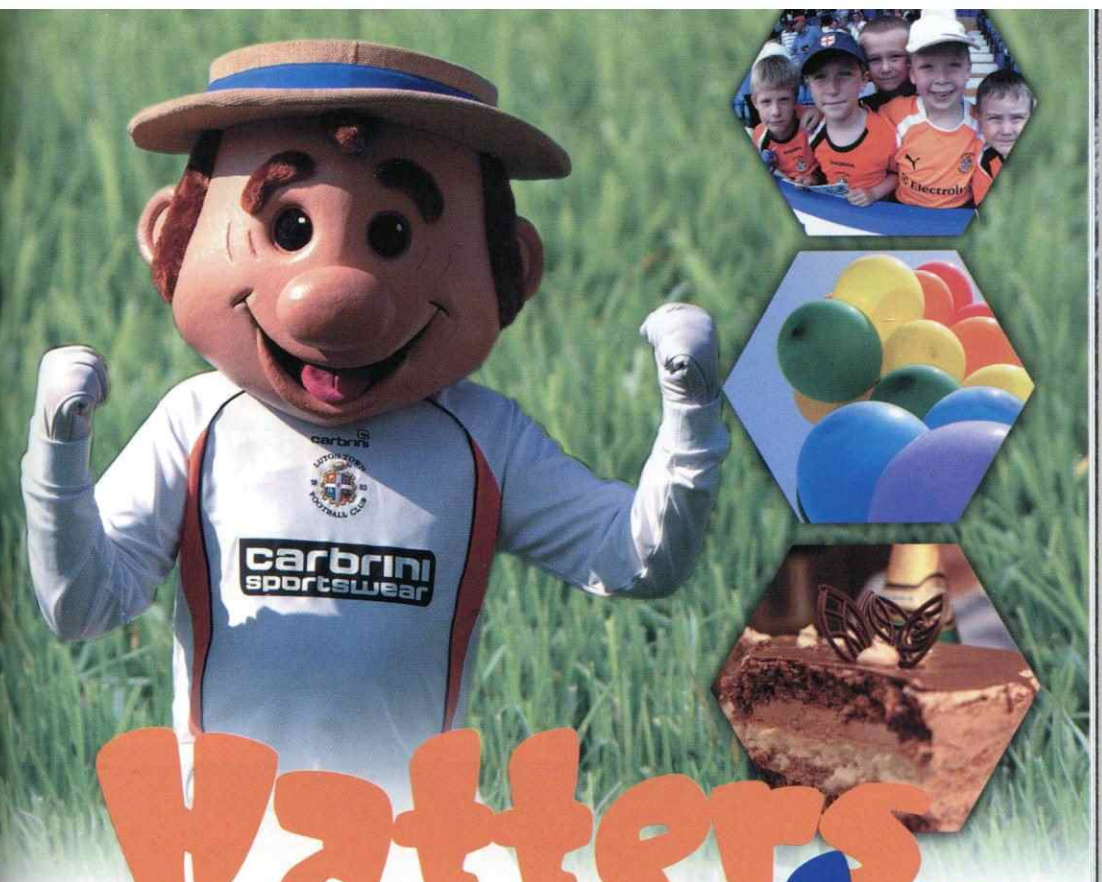




YOU DON'T HAVE TO GO TO WEMBLEY  
TO MEET YOUR HEROES



Designed by Lee Wood



# Watters Party



Make your kids birthday one of the most special events ever!

Bring your child and their friends to a professional football match  
so they can have a truly fun day

For more information and prices, call 01582 411622 or email: [commercial@lutontown.co.uk](mailto:commercial@lutontown.co.uk)

**LUTON TOWN - 123 YEARS OF HISTORY - BE PART OF IT**

Designed by Lee Wood

## Mascot Packages

Don't miss out on your chance to walk in the footsteps of real legends

For more information and prices, call 01582 411622

or email: [commercial@lutontown.co.uk](mailto:commercial@lutontown.co.uk)

**LUTON TOWN - 123 YEARS OF HISTORY - BE PART OF IT**



**NHS**

3rd degree burns  
Sunday 8.17am

**Luton Blood Donor Centre Open Day  
30th October 2008**

Luton Town manager Mick Harford will be at the Blood Donor Centre in St George's Square at 5pm to help promote donating blood. Please come and visit us!

**blood.co.uk**

 Save a life Give blood

**OTHER GAMES BEING PLAYED TODAY**

- Aldershot vs Lincoln
- Bournemouth vs Morecambe
- Bradford vs Chesterfield
- Darlington vs Chester
- Exeter vs Rotherham
- Gillingham vs Rochdale
- Macclesfield vs Grimsby
- Notts Co vs Wycombe
- Port Vale vs Barnet
- Shrewsbury vs Dag & Red



**Stat Pack**

**MANAGERIAL RECORDS**

Mick Harford	Andrew Scott
Played 37 Won 7 Drawn 8 Lost 22	Played 38 Won 16 Drawn 9 Lost 13
For 35 Against 57	For 46 Against 45
Av Pts/game 0.78	Av Pts/game 1.50
<b>Biggest Win(s)</b> Luton 3 Oldham 0 (15/03/2008). <b>Biggest Loss(es)</b> Hartlepool 4 Luton 0 (02/02/2008).	<b>Biggest Win(s)</b> Brentford 4 Grimsby 0 (16/08/2008). <b>Biggest Loss(es)</b> Brentford 1 Bury 4 (04/03/2008).

**MANAGER HEAD TO HEAD RECORD**

Played ..1	Mick Harford .....	0	Andrew Scott.....	0
Draws ..1	Goals 2		Goals 2	

**Player with the most...**

shots
Chris Martin 29
shots on target
Sam Parkin 14

**shots off target**

Chris Martin 15
-----------------

**assists**

Claude Gnakpa 3
-----------------

**crosses**

Claude Gnakpa 32
------------------

**fouls**

Michael Spillane 22
---------------------

**free-kicks-won**

Claude Gnakpa 25
------------------



**Player with the most...**

shots
Charlie MacDonald 28
shots on target
Charlie MacDonald 17

**shots off target**

Nathan Elder 14
-----------------

**assists**

Glenn Poole 4
---------------

**crosses**

Glenn Poole 21
----------------

**fouls**

Nathan Elder 44
-----------------

**free-kicks-won**

Marcus Bean 36
----------------

**SHARP SHOOTERS**

Luton	CCFL Cup	Tot	Brentford	CCFL Cup	Tot	
Asa Hall	3	1	4	7	1	8
Tom Craddock	3	0	3	5	2	7
Chris Martin	2	1	3	4	1	5



**TEAM HEAD TO HEAD RECORD**

Played ....38	Luton wins .....	17	Brentford wins .....	13
Draws ....8	Goals 61 (1.6 per game)		Goals 46 (1.2 per game)	
0-0's .....2	Times failed to score 12		Times failed to score 11	

**Biggest League win at Luton for each team:**  
 21/02/2004 Luton 4-1 Brentford  
 13/10/1951 & 28/09/1963 Luton 0-2 Brentford



**2008/09 LEAGUE STATS**

	24 Position	5	
	15 Played	16	
	5 Won	7	
	4 Drawn	6	
	6 Lost	3	
	18 Goals For	20	
	21 Goals Against	12	
	-11 Points	27	

**Record Against Top Half of Table**

W	D	L	RANK	W	D	L	RANK
4	1	2	4	2	3	2	11

**Record Against Bottom Half of Table**

W	D	L	RANK	W	D	L	RANK
1	3	4	22	5	3	1	6

**Record When Scoring First**

W	D	L	RANK	W	D	L	RANK
5	2	0	12	6	3	0	6

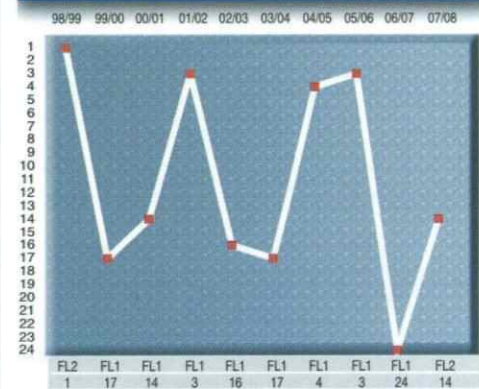
**Record When Conceding First**

W	D	L	RANK	W	D	L	RANK
0	2	6	19	1	1	3	9

**Match Scores**

**Wins:** 1-0[2], 2-1[2], 3-1[1], **Losses:** 0-1[1], 0-3[1], 1-2[3], 1-3[1], **Draws:** 1-1[3], 2-2[1]  
**Wins:** 1-0[3], 2-1[1], 3-0[1], 3-1[1], 4-0[1], **Losses:** 0-1[1], 0-3[1], 1-2[1], 1-1[4], **Draws:** 0-0[2], 1-1[4]


**BRENTFORD - TEN SEASON RECORD**




\*up to and including 19/11/2008

**LUTON TOWN FC SPECIAL OFFER**

*Acolina Country House Hotel*  
 For Luxury Golf breaks & holidays in the Algarve



*Book direct quoting 'LTFC' for preferential rates*



RESERVATIONS & ENQUIRIES:

Tel. (00351) 289 358 792 Email: reservas@acolinahotel.com www.acolinahotel.com



**The New Football Pools** www.footballpools.com



LUTON TOWN SUPPORTERS CLUB FOLLOWING THE HATTERS AWAY, THROUGHOUT THE UK

**BOOKING NUMBER – 07960 567465**  
**ONLINE @ [www.lutontownsc.co.uk](http://www.lutontownsc.co.uk)**

**\*\*\*\*UNDER 7's TRAVEL FREE\*\*\*\***

When accompanied by a full paying adult

**DEPARTURE TIMES + PRICES 2008/09**

DATE	DESTINATION	DEPARTURE TIME	ADULTS	CONCESSIONS
Sat 16.08.08	Gillingham	11:00	£13	£11
Sat 30.08.08	Exeter City	08:00	£22	£20
Sat 06.09.08	Macclesfield Town	10:00*	£18	£16
Sat 20.09.08	Rotherham United	10:00*	£16	£14
Sat 04.10.08	Bradford City	09:30*	£19	£17
Tue 21.10.08	Grimsby	15:00*	£20	£17
Sat 25.10.08	Bury	09:00*	£19	£16
Sat 01.11.08	Shrewsbury	10:00	£17	£14
Sat 22.11.08	Rochdale	09:00*	£19	£17
Sat 13.12.08	Wycombe Wanderers	12:30	£11	£9
Fri 26.12.08	Chesterfield	11:00*	£15	£13
Sat 03.01.09	Chester City	09:00*	£18	£16
Sat 17.01.09	Darlington	08:30*	£23	£21
Tue 27.01.09	Bournemouth	15:30	£17	£15
Sat 07.02.09	Accrington Stanley	09:00*	£21	£19
Sat 14.02.09	Dagenham & Redbridge	12:00	£11	£9
Sat 28.02.09	Port Vale	11:00	£16	£14
Tue 10.03.09	Notts County	16:00*	£16	£16
Sat 14.03.09	Aldershot	11:30	£13	£11
Sat 28.03.09	Morecambe	08:00*	£23	£21
Sat 11.04.09	Lincoln	10:00*	£17	£15
Sat 18.04.09	Barnet	12:30	£11	£9
Sat 02.05.09	Brentford	12:00	£11	£9

A supplement of £2 per trip is payable by non-LTSC Members

Prices and departure times may be subject to change

**PICK UP POINTS**

**LUTON TOWN FC – MAPLE ROAD CAR PARK**

Parking is available here costing £5 per car (payable to LTFC staff)

Northbound journeys include a pickup at:

**MILTON KEYNES – NEWPORT PAGNELL SERVICE STATION**

30mins after Luton pickup

Other pick-ups will be considered providing a minimum of 5 passengers joining the coach. Please contact us for further discussion.

**\*\*\*NEWSPAPERS ON REQUEST\*\*\***

Want a newspaper for your trip? Request this when booking and pay a £5 deposit and your paper will be waiting for you on board.

**Terms & Conditions**

A valid Luton Town Supporters Club membership card must be shown at time of payment or a supplement of £2 will be payable on published prices. Passengers between the ages of 12 and 16 may only travel unaccompanied on production of a completed Parental Permission form (please ask on booking). Under NO circumstances will any child under 12 years be permitted to travel unless accompanied by a responsible adult (over 18). Town on Tour reserve the right to refuse travel to any passenger

Full terms and conditions can be obtained on request

**competitiontime!**



**ARE YOU A WINNER?**



If this is your face circled you have just won a £10 Club Shop voucher!

To claim your prize please visit the Club Shop either at half-time or at the end of the game or contact the Commercial Department on 01582 411622 or [commercial@lutontown.co.uk](mailto:commercial@lutontown.co.uk)

(Prize must be claimed by Friday 28th November 2008, photo ID may be required)



The Football Foundation provides grants for kit, goalposts, pitches, floodlights, clubhouses, coaching and innovative projects that use football to deliver a wide range of community benefits. If you are a local authority, football club, youth group, charity or a school looking to update your football facility or need to build a new one, or have an idea for using football to tackle a local issue you can take advantage of this funding.

For more information visit [www.footballfoundation.org.uk](http://www.footballfoundation.org.uk)



improving facilities • creating opportunities • building communities



# queensway

The most important piece of your puzzle



**Proud to be supporting Luton Town Football Club  
and 123 years of history**

Queensway Publishing, 4 Centre Way, Claverings Industrial Estate, Edmonton, London N9 0AP  
T: 0208 807 7669 F: 0208 807 6123 E: queenswaypub@aol.com

## travelnews



### FA Cup Second Round

Saturday 29th November

#### Southend United

Kick off: 3pm Roots Hall, Victoria Ave, Southend-On-Sea, SS2 6NQ



#### What's the Ground Like?

At one end of the ground is the relatively new South Stand. This stand replaced a former open terrace and greatly improved the overall look. It is a small 'double decker' type of stand, the upper tier hanging over the lower. It is all seated and covered, but unfortunately has a few supporting pillars. On its roof is a small clock, dedicated to former player, Director & Chairman, Frank Walton. Away fans are now housed in what was originally the home end, the North Stand, which is a covered seated stand at the other end of the ground. This stand, like the West Stand at one side of the pitch, are both single tiered and have old looking 'barrel' shaped roofs, with the West Stand having a unique double barrel roof. On the

other side the East Stand is another single tiered, covered stand, that has a row of executive boxes running across the back of it. At the front are some strange looking dugouts, which has the management team standing at the front leaning on a wall, with the players sitting behind.

#### What Is It Like For Visiting Supporters?

Up to 2,000 away fans can be accommodated in the North Stand, although the initial allocation is 1,200. One good thing for away fans in the North Stand, is that comparatively few numbers of fans can really make some noise from it.

#### Where To Eat & Drink?

The main away fans pub is the Golden Lion, which is situated

on the A127, just up from from the car park entrance to the Main Stand. This pub which serves drinks before the game in plastic glasses, also had a large screen television, showing Sky. The nearby Spread Eagle pub is for home fans only. There is also a good fish and chip shop located across the road by the traffic lights, called the 'Fish House'.

#### How To Get There By Car?

At roundabout take the 1st exit, then join the M1 motorway (signposted London). Leave the M1 at junction 6a, then join the M25 motorway (signposted Stansted Airport, Dartford). At Junction 27 (M11) continue forward onto the M25 (signposted Dartford Tunnel). Leave the M25 at junction 29, then at roundabout take the 1st exit, then merge onto the A127 (signposted Southend, Basildon) Continue on the A127. Turn right onto Fairfax Drive. Turn left onto Victoria Avenue.

#### Car Parking

There is plenty of street parking to be found. Otherwise there is a car park at the ground, behind the Main Stand which costs £5, or there is the Southend High School For Boys which also offers car parking for £5 per car (the school entrance is on Prittlewell Road).





## FORTHCOMING AWAY FIXTURES

Saturday 29th November  
**Southend United**  
 Kick off: 3pm Roots Hall



## FA CUP SECOND ROUND

We have an initial allocation of 1000 for this game.

Tickets are NOW ON SALE from the Ticket Office.

This game is not all ticket but supporters are advised to purchase tickets prior to the day of the game to avoid long queues.

Tickets will be available on the day of the game from the Ticket Office located next to the away turnstiles.

Prices: Adult £16, Students (with valid ID) / Seniors (Over 65) £10, Under 16's £5

In the event of a replay the game will be played here at Kenilworth Road on Tuesday 9th December, kick-off 7:45pm

Prices: Adult £15, Seniors (Over 65) £10, Under 17's £5

Tickets will be on general sale (non season ticket holder seats) from 10am on Monday 1st December from the Ticket Office.

Season Ticket holders have until the close of business on Saturday 6th December to contact the Ticket Office to claim their own seat, after that it will go on general sale.

## Matchday Ticket Voucher Book

The perfect gift for  
 all Luton fans  
 this Christmas



## FORTHCOMING HOME FIXTURES

Tuesday 2nd December  
**AFC Boumemouth**  
 Kick off: 7.45pm Kenilworth Road



Tickets are now on general sale at normal pre-matchday prices.

Tickets purchased for the 28/10/08 remain valid. Supporters should present their ticket stubs at the turnstiles and season ticket holders should present Match Voucher A.

There will be an £2 increase for tickets purchased on the night of the game.

Saturday 6th December  
**Barnet**  
 Kick off: 3pm Kenilworth Road



Tickets are now on general sale at normal pre-matchday prices.

There will be an £2 increase for tickets purchased on the day of the game.

Tuesday 16th December  
**Colchester United**  
 Kick off: 7.45pm Kenilworth Road



This match is pay on the night only. All seating will be unreserved.

Adults £15, Over 65 £10, Under 17 £5,  
 Under 17 free when accompanied by a paying adult



**Ticket Office: 01582 416976**

## STANDS MATCH TICKET PRICE

All Areas	
Juniors (Under 10)	£5
Youth (Age 10-16)	£10
Young Adult (Age 17-21)	£15
Adult (Age 22-64)	£20
Senior (Age 65-75)	£15
Golden Senior (Over 75)	£10

## Compromise Seating - Main Enclosure A, B, H & J, Main Stand G

Juniors (Under 10)	£5
Youth (Under 17)	£10
Young Adult (Age 17-21)	£15
Adult (Age 22-64)	£15
Senior (Age 65-75)	£15
Golden Senior (Over 75)	£10

## MATCHDAY VOUCHER BOOKS

(x5 tickets per book)

Juniors (Under 10)	£22.50
Youth (Age 10-16)	£45
Young Adult (Age 17-21)	£67.50
Adult (Age 22-64)	£90
Senior (Age 65-75)	£67.50
Golden Senior (Over 75)	£45





**Coca-Cola League Two**

Team	P	W	D	L	F	A	GD	PTS
Darlington	16	9	7	0	20	8	12	34
Rochdale	17	9	5	3	30	15	15	32
Bradford	17	8	6	3	29	18	11	30
Shrewsbury	17	9	3	5	31	22	9	30
Bury	17	7	7	3	33	15	18	28
Brentford	17	8	4	5	26	18	8	28
Exeter	17	7	7	3	21	13	8	28
Dag & Red	17	8	4	5	23	20	3	28
Gillingham	17	8	3	6	35	19	16	27
Aldershot	17	8	3	6	25	25	0	27
Chesterfield	17	7	3	7	22	29	-7	24
Lincoln City	17	6	5	6	29	24	5	23
Accrington Stanley	17	6	5	6	18	17	1	23
Port Vale	17	5	4	8	19	21	-2	19
Notts County	17	16	1	10	20	30	-10	19
Morecambe	17	3	9	5	23	27	-4	18
Macclesfield	17	3	8	6	19	27	-8	17
Chester	16	5	2	9	19	31	-12	17
Barnet	17	3	4	10	19	34	-15	13
Grimsby	17	3	4	10	19	37	-18	13
Rotherham	17	1	7	9	14	33	-19	10
Bournemouth	17	7	5	5	22	20	2	9
Luton	16	3	6	7	18	26	-8	2
Luton	16	5	4	7	18	23	-5	-11

**2008-09 APPEARANCES**

LEAGUE	This Season				Luton Career	
	App	Gls	App	Gls	CARDS	APP GOALS
Wayne ANDREWS	0(3)	0	1	0	1(3)	4
Ed ASAFU-ADJAYE	2(1)	0	1	0	3(1)	11
George BEAVAN	0	0	2	0	2(0)	0
Dean BRILL	6	0	1	0	7(0)	64
Ryan CHARLES	0(7)	1	1(1)	1	1(8)	16
Tom CRADDOCK	4	3	1	0	5(0)	3
Sol DAVIS	10	1	2(1)	0	12(1)	1
Lewis EMANUEL	8	0	2	0	10(0)	71
Kevin GALLAN	2	0	0	0	2(0)	2
Claude GNAPKA	15	1	6	0	21(0)	1
Asa HALL	12(2)	3	3(1)	1	15(3)	18
Jake HOWELLS	6(1)	0	4	0	10(1)	8
Rossi JARVIS	15(1)	0	4(2)	2	19(3)	22
Keith KEANE	14	0	4(1)	0	18(1)	3
Josh KLEN-DAVIES	0(1)	0	0	0	0(1)	1
Conrad LOGAN	10	0	5	1	15(0)	15
Chris MARTIN	16	2	1(1)	0	22(0)	22
Paul McVEIGH	3(4)	1	3(1)	0	6(5)	3
Kevin NICHOLLS	5	0	4	0	9(0)	2
Gareth O'CONNOR	5	0	2(2)	0	5(2)	0
Sam PARKIN	7(1)	3	2	0	9(1)	3
Jordan PATRICK	0(2)	0	0	0	0(2)	2
George PILKINGTON	6	0	2	0	8(0)	8
Tristan PLUMMER	0(5)	0	1(2)	1	1(7)	1
Marc PUGH	3(1)	0	0	0	3(1)	4
Ian ROPER	7	1	2	0	9(0)	1
Scott SINCLAIR	0	0	0	0	0(1)	0
Michael SPILLANE	15	2	5	0	20	2
Drew TALBOT	0(1)	0	0	0	0(3)	55
Kevin WATSON	1(4)	0	1(3)	0	2(7)	9
Harry WORLEY	6(2)	0	1(1)	0	7(3)	10

# Stats08/09

Date	Opponent	Score	Att	Away	Pos
<b>August</b>					
Sat 9	H Port Vale	FL2	L1-3	7,149	546 24
Tue 12	H Plymouth	LGCP	W2-0	2,682	340 n/a
Sat 16	A Gillingham	FL2	W1-0	5,339	743 24
Sat 23	H Notts County	FL2	D1-1	6,085	381 24
Tue 26	A Reading	LGCP	L1-5	7,498	745 n/a
Sat 30	A Exeter City	FL2	W1-0	5,328	745 24
<b>September</b>					
Sat 6	A Macclesfield	FL2	L1-2	2,349	733 24
Sat 13	H Aldershot Town	FL2	W3-1	6,462	810 24
Sat 20	A Rotherham	FL2	L0-1	4,095	866 24
Sat 27	H Chester City	FL2	D1-1	5,731	212 24
<b>October</b>					
Sat 4	A Bradford City	FL2	D1-1	1,903	492 24
Tue 7	H Brentford	JPT	D2-2	2,029	286 n/a
Sat 11	H Darlington	FL2	L1-2	5,560	207 24
Sat 18	H Accrington	FL2	L1-2	5,492	80 24
Tue 21	A Grimsby Town	FL2	D2-2	4,021	212 24
Sat 25	A Bury	FL2	W2-1	3,052	408 24
Tue 28	H Bournemouth	FL2	ABANDONED		
<b>November</b>					
Sat 1	A Shrewsbury	FL2	L0-3	6,188	805 24
Tue 4	A Walsall	JPT	W1-0	1,844	153 n/a
Sat 8	H Altricham	FA	D0-0	3,200	359 n/a
Sat 15	H Dagenham & Red	FL2	W2-1	5,402	268 24
Tue 18	A Altrincham	FA	D0-0	2,397	tbc n/a
Sat 22	A Rochdale	FL2	L0-2	2,901	tbc 24
Tue 25	H Brentford	FL2			
<b>December</b>					
Tue 2	H AFC Bournemouth	FL2			
Sat 6	H Barnet	FL2			
Sat 13	A Wycombe	FL2			
Tue 16	H Colchester United	JPT			
Sat 20	H Morecambe	FL2			
Fri 26	A Chesterfield	FL2			
Sun 28	H Lincoln City	FL2			
<b>January</b>					
Sat	A Chester City	FL2			
Sat 10	H Rotherham	FL2			
Sat 17	A Darlington	FL2			
Sat 24	H Bradford City	FL2			
Tue 27	A Bournemouth	FL2			
Sat 31	H Bury	FL2			
<b>February</b>					
Tue 3	H Grimsby Town	FL2			
Sat 7	A Accrington	FL2			
Sat 14	A Dagenham & Red	FL2			
Sat 21	H Shrewsbury	FL2			
Sat 28	A Port Vale	FL2			
<b>March</b>					
Tue 3	H Gillingham	FL2			
Sat 7	H Exeter City	FL2			
Tue 10	A Notts County	FL2			
Sat 14	A Aldershot Town	FL2			
Sat 21	H Macclesfield	FL2			
Sat 28	A Morecambe	FL2			
<b>April</b>					
Sat 4	H Wycombe	FL2			
Sat 11	A Lincoln City	FL2			
Mon 13	H Chesterfield	FL2			
Sat 18	A Barnet	FL2			
Sat 25	H Rochdale	FL2			
<b>May</b>					
Sat 2	A Brentford	FL2			



Brill	Gnapka	Roper	Pilkington	Davis**	Emanuel	Nicholls	Hall	Jarvis*	Parkin 1	Martin	K-Davis**	Plummer*	Watson	Keane	Spillane
Brill	Gnapka	Spillane	Pilkington	Davis**	Emanuel*	Nicholls	Hall	Jarvis 1	Parkin 1	Martin***	Keane*	Plummer*	Watson***	Fletcher	McVeigh
Brill	Gnapka	Spillane	Pilkington	Davis	Keane	Nicholls	Hall	Jarvis	Parkin 1	Martin	Watson*	Plummer**	McVeigh	Jackson	Roper
Brill	Gnapka	Spillane	Pilkington	Davis	Emanuel	Nicholls	Hall**	Jarvis*	Parkin	Martin 1	Plummer*	Watson**	Roper	Logan	Keane
Logan	Gnapka	Keane	Pilkington	Davis*	Emanuel	Nicholls	Plummer	Watson	Parkin**	Martin***	Jarvis*	Charles 1**	Hall***	Brill	Roper
Brill	Gnapka	Spillane	Pilkington	Davis	Emanuel	Nicholls	Keane	Jarvis	Parkin 1	Martin*	Charles*	Hall	Watson	Logan	Roper
Brill	Gnapka**	Spillane	Pilkington	Davis*	Emanuel	Watson	Keane	Jarvis***	Parkin	Martin	Charles 1*	Hall**	Plummer***	Logan	Roper
Logan	Gnapka	Spillane 1	Pilkington***	Pugh*	Emanuel	Hall 1	Keane	Jarvis**	Parkin	Martin 1	Charles*	Plummer**	Watson***	Brill	Roper
Brill	Gnapka*	Spillane	Worley	Pugh	Emanuel	Hall**	Keane	Jarvis***	Parkin	Martin	Charles*	A-Adjaye**	Watson***	Logan	Roper
Logan	Gnapka	Spillane	Worley	Davis	Emanuel	Hall 1	Keane	Jarvis*	Pugh	Martin	Charles*	A-Adjaye	Sinclair	Brill	Roper
Logan	Gnapka	Spillane 1	Worley	Davis*	Emanuel**	Hall	Keane	Jarvis***	A-Adjaye	Martin	Howells*	McVeigh**	Charles***	Brill	Plummer
Logan	Gnapka	Spillane	Worley	Howells	O'Connor***	Hall	Charles**	Jarvis	A-Adjaye*	Martin 2	Plummer*	Sinclair**	McVeigh***	Brill	Roper
Logan	Gnapka 1	Spillane	Worley	Howells	O'Connor**	Hall	Keane	Jarvis	A-Adjaye*	Martin	Charles*	Pugh**	McVeigh	Brill	Roper
Logan	Roper	Spillane	Worley	Howells	O'Connor*	Hall 1	Keane	Jarvis**	Craddock	Martin	Andrews*	McVeigh**	Patrick	Brill	Davis
Logan	Gnapka	Spillane	Roper	Howells	Davis*	Hall***	Keane	Jarvis	Craddock 2	Martin**	McVeigh*	Parkin**	Patrick**	Brill	Worley
Logan	Gnapka	Spillane	Roper 1	Howells	Davis*	Hall	Keane	Jarvis**	Craddock 1	Martin	McVeigh*	Andrew**	Worley***	Brill	Patrick
Logan	Gnapka**	Spillane	Roper	Howells	Worley	McVeigh	Keane	Jarvis	Craddock	Martin*	Andrews*	Patrick**	Beavan	Brill	Fathering
Logan	Gnapka	Spillane	Roper**	Howells*	Beavan	McVeigh	Keane	Jarvis 1	Craddock***	Martin	O'Connor**	Worley**	Watson***	Brill	Andrews
Logan	Gnapka	Spillane	Nicholls*	Howells	Beavan	McVeigh**	Keane	Jarvis	Andrews**	Martin	Watson*	O'Connor*	Talbot***	Brill	Worley
Logan	Gnapka	Spillane	Nicholls**	Howells	Davis*1	McVeigh 1	Keane	Roper	Gallen	Martin	Jarvis*	Hall**	Talbot	Brill	Worley
Logan	Gnapka	Spillane	Nicholls***	Howells*	O'Connor**	McVeigh	Keane	Roper	Hall	Martin	Davis*	Jarvis**	Talbot***	Brill	Worley
Logan	Gnapka	Spillane	Gallen	Jarvis	O'Connor*	McVeigh**	Keane	Roper	Hall	Martin	Talbot*	Worley**	Beavan	Brill	Fathering





FOR THE HATTERS AT THE KENNY

Tuesday 2nd December

**AFC Bournemouth**

Kenilworth Road



Like the Hatters, Bournemouth were left facing an uphill struggle in Coca-Cola League 2 before the season had even started, after receiving a 17 point deduction as a result of their failure to emerge from administration.

After picking up just two points in their opening four league matches, manager Kevin Bond was dismissed at the beginning of September, despite coming agonisingly close to pulling off an incredible great escape in League 1 last season.

Former Northern Ireland and Bournemouth striker Jimmy Quinn was named as Bond's immediate successor, subsequently being handed the unenviable task of leading the Cherries out of their League 2 predicament, whilst former defender Jason Tindall was appointed assistant manager.

Since the match with the Hatters was abandoned at the end of October, the Cherries have continued to experience mixed fortunes in all competitions. A 1-1 draw with Chesterfield in the league was followed by a narrow defeat at the hands of League 1 Colchester in the Johnstone's Paint Trophy, which has setup an area semi-final against Luton for the U's.

Quinn's side bounced back from this defeat with an impressive victory over in-form Bristol Rovers in the FA Cup but then suffered a 3-0 defeat away to Accrington Stanley in the league last weekend, which

means they have only won once in League 2 since the start of October.

Bournemouth will be looking to their vastly experienced duo of Darren Anderton and Sammy Igoe to pull the strings in midfield, but it's the younger players who could pose a greater threat to the Hatters when they visit Kenilworth Road in ten days time.

19-year-old Marvin Bartley was plucked out of non-league football in 2007, and has established himself as a first choice player at the heart of the Cherries' midfield this season. The combative Bartley scored his first goal for the club in last month's win against Darlington.

Upfront, the Cherries have signed Michael Rankine on loan this month from Rushden & Diamonds. The striker scored 14 goals for the Diamond's last year and



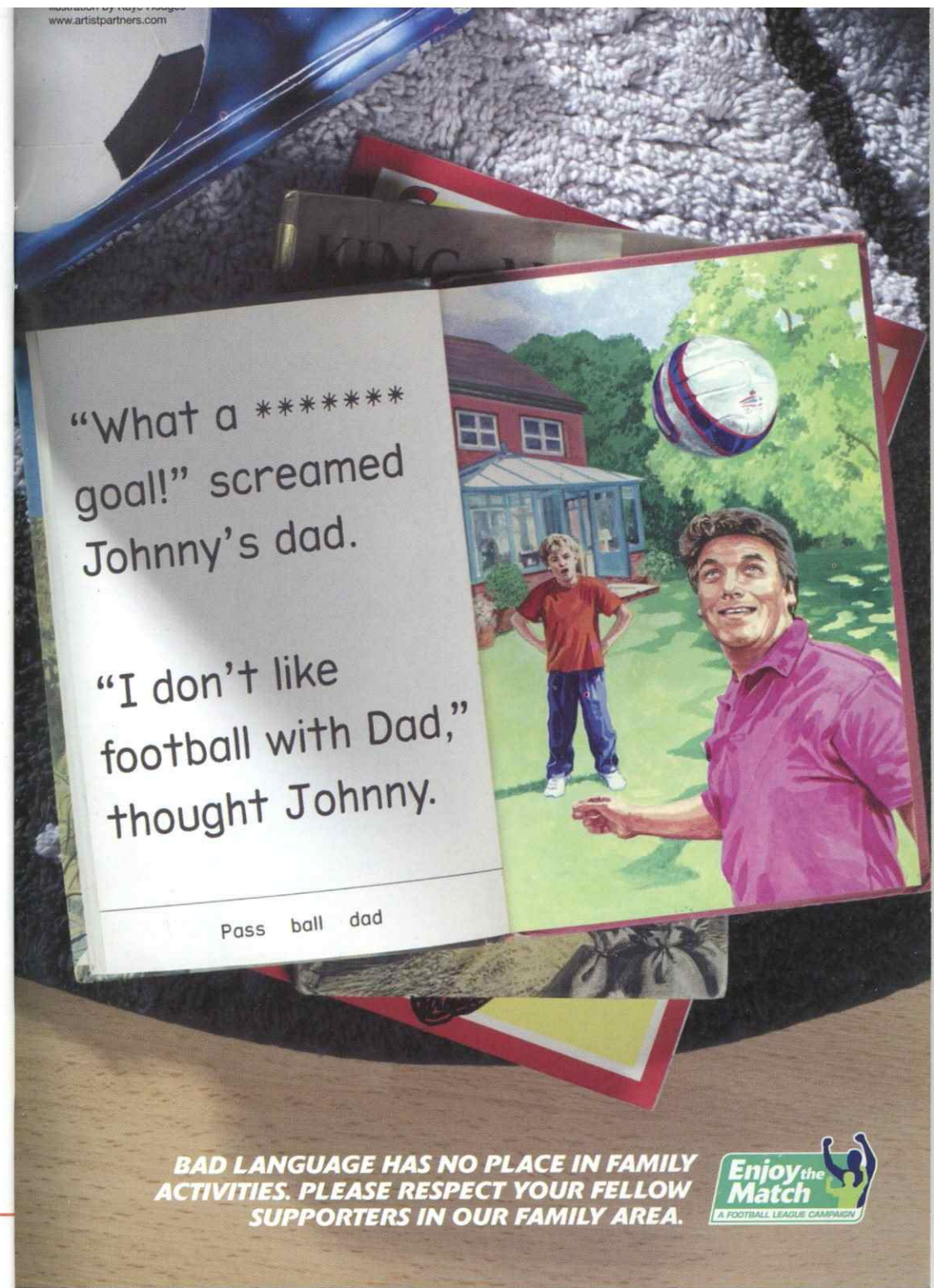
will provide some stern competition for Bournemouth's long-list of forwards.

Whilst 20-year-old forward Brett Pitman seems to be coming of age this season, putting in a series of impressive early displays, and will undoubtedly pose a threat to the Hatter's defence if selected.

The meeting will be 58th in total between the two sides. Last season the two matches between the clubs produced 12 goals, with the Cherries coming out on top on both occasions, putting eight past Dean Brill over the two games.

However, the previous season produced two comparatively less entertaining games, with the Dorset club on the end of a double defeat at the hands of the Hatters, losing both matches 1-0.

www.artistpartners.com



“What a \*\*\*\*\* goal!” screamed Johnny’s dad.

“I don’t like football with Dad,” thought Johnny.

Pass ball dad

**BAD LANGUAGE HAS NO PLACE IN FAMILY ACTIVITIES. PLEASE RESPECT YOUR FELLOW SUPPORTERS IN OUR FAMILY AREA.**





# HATTERS

## LUTON TOWN

1	DEAN BRILL		
2	CLAUDE GNAKPA		
3	SOL DAVIS		
4	KEITH KEANE		
5	IAN ROPER		
6	GEORGE PILKINGTON		
7	GARRETH O'CONNOR		
8	KEVIN NICHOLLS		
10	RYAN CHARLES		
11	LEWIS EMANUEL		
12	HARRY WORLEY		
14	ASA HALL		
15	ED ASAFU-ADJAYE		
16	ROSSI JARVIS		
17	KEVIN WATSON		
18	CHRIS MARTIN		
19	DREW TALBOT		
20	MICHAEL SPILLANE		
21	CONRAD LOGAN		
23	WAYNE ANDREWS		
24	TOM CRADDOCK		
25	GEORGE BEAVAN		
28	PAUL MCVEIGH		
29	JORDAN PATRICK		
32	KEVIN GALLEN		
33	JAKE HOWELLS		
40	SCOTT SINCLAIR		

## BRENTFORD

1	BEN HAMER		
2	KEVIN O'CONNOR		
3	RYAN DICKSON		
4	MARCUS BEAN		
5	MARK PHILLIPS		
6	ALAN BENNETT		
7	ADAM NEWTON		
8	GARY SMITH		
9	NATHAN ELDER		
10	CHARLIE MACDONALD		
11	GLENN POOLE		
12	JOSH WRIGHT		
13	BOB WINSTANLEY		
14	BRETT JOHNSON		
15	JAMES WILSON		
16	SAM WOOD		
17	CRAIG PEAD		
18	DARIUS CHARLES		
19	MOSES ADEMOLA		
21	SIMON BROWN		
22	KARLEIGH OSBORNE		
23	ROSS MONTAGUE		
26	JOHN HALLS		
31	SEB BROWN		
32	MARVIN WILLIAMS		

### REFEREE

J. MOSS

### ASSISTANT

R. BEEVOR

### ASSISTANT

W.G. NORCOTT

### 4TH OFFICIAL

N A HAIR



Tuesday 2nd December

**AFC Boumemouth**

Kick off: 7.45pm  
Kenilworth Road



**Next up at home**