

2008/2009



# theBLUES

v Luton Town

£3.00

FA Cup Sponsored by E-On Second Round | Saturday 29th November 2008 | Kick-Off 3.00pm



Official Matchday Magazine of Southend United FC

MATCH SPONSOR

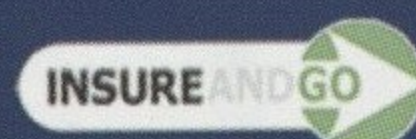


PROGRAMME SPONSOR



MATCHBALL SPONSOR

GARY LOCKETT





This season, E.ON is rewarding their gas and electricity customers by giving them the chance to win free family football tickets to FA Cup games. Just visit [familyfootball.co.uk](http://familyfootball.co.uk)

**e-on**

See website for entry dates and full Terms and Conditions.

**Southend United Football Club**

Roots Hall Stadium, Victoria Avenue  
Southend-on-sea, Essex SS2 6NQ

Telephone: 01702 304050  
Text Phone: 01702 304117  
Fax: 01702 304124  
Web: [www.southendunited.co.uk](http://www.southendunited.co.uk)  
email: [info@southend-united.co.uk](mailto:info@southend-united.co.uk)  
Box Office: 08444 77 00 77  
Club Shop: 01702 351117  
Commercial: 01702 304149  
Text-an-Office: 07920 107694

**Who's Who**

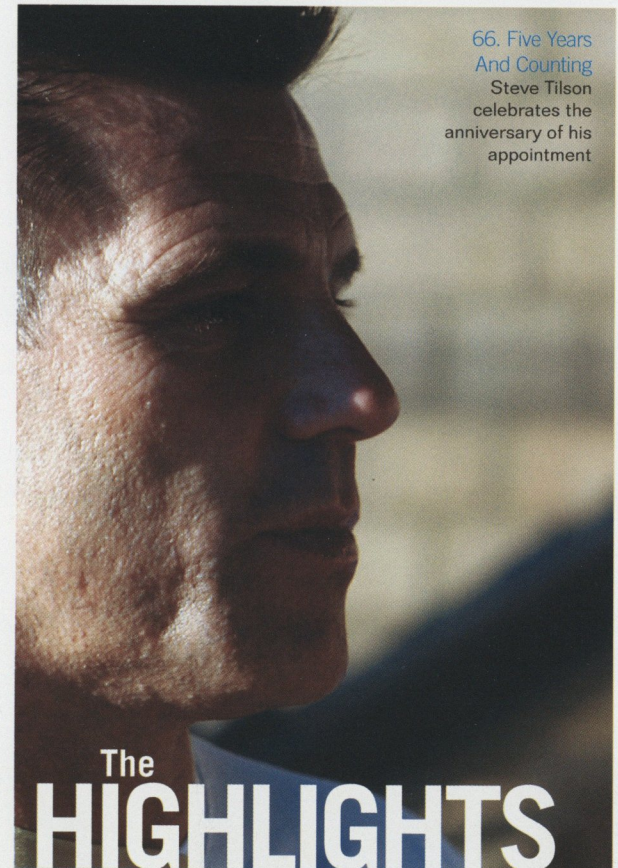
Chairman: Ron Martin  
Chief Executive: Geoffrey King  
Directors: Michael Markscheffel, Raymond Osborne, Paul Robinson, Frank Van Wezel, Derek Wilshire, Gary Lockett  
Manager: Steve Tilson  
Assistant Manager: Paul Brush  
Reserve Manager: Dean Austin  
Goalkeeping Coach: Lee Turner  
Kit Manager: Steve Parmenter  
Physiotherapist: John Stannard  
Assistant Physiotherapist: Ben Clarkson  
Head of Youth: Ricky Duncan  
Centre of Excellence Manager: Luke Hobbs  
Development Coach: Mark Bonner  
Club and Company Secretary: Helen Norbury  
Financial Controller: Patrick van der Waag  
Director of Commercial Services: Garry Adamson  
Corporate Sales Manager: Tisha Brett  
Commercial Administrator: Marisa Freeman  
Ticket Office Manager: Matthew Fletcher  
Bars and Catering Managers: Sharon Munro-Baxter & Linda Kitts  
Safety Officer: David Jobson  
Head Groundsman: Ken Hare  
Media Manager: David Scriven  
Media Assistant: Dean Simmons  
Marketing Manager: Mark Davies  
Study Support Centre Manager: Simon Bell  
Community Chief Executive: Steve Goodsell  
Team Doctor: Dr A. Annan  
Crowd Doctor: Dr A. K. Sinha

**Honours**

Third Division Runners-up: 1990/91  
Fourth Division Champions: 1980/81  
Fourth Division Runners-up: 1971/72, 1977/78  
Football League Trophy Runners-up: 2003/04, 2004/05  
League Two Play-Off winners: 2004/05  
League One Champions: 2005/06  
Southern League Div. Two Champions: 1906/07, 1907-08  
Elected to Football League: 1920-21  
Division Four Promoted: 1986-87 & 1989-90

**Programme**

Editor: Dean Simmons  
Photos: David Scriven and Graham Bridgeman-Clarke  
Design: Alchemy Creations 01462 437205  
Print: Queensway 020 8807 7669



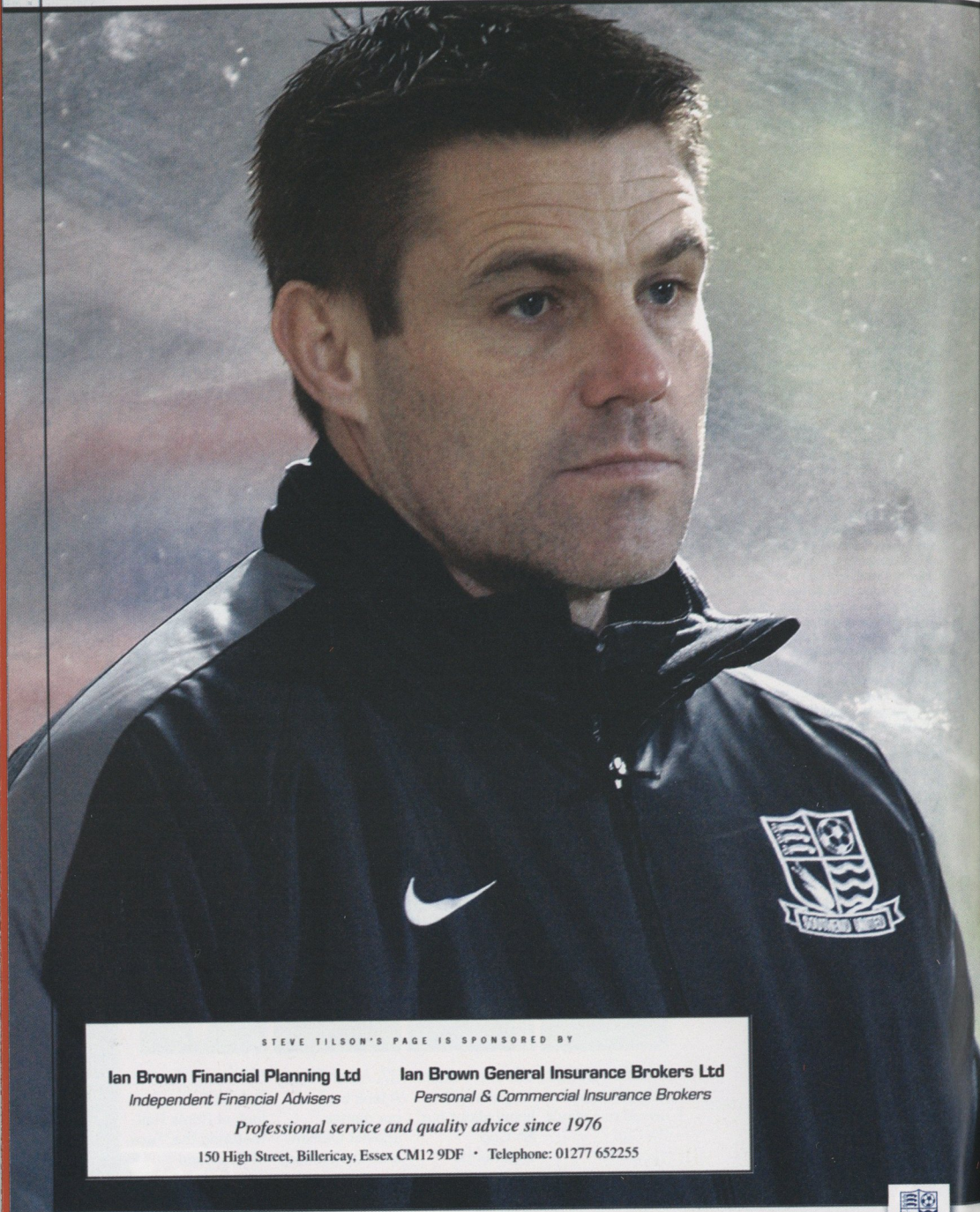
66. Five Years And Counting  
Steve Tilson celebrates the anniversary of his appointment

The **HIGHLIGHTS**



- 6. Adam Barrett Skipper looks ahead to today's FA Cup encounter.
- 15. The Hatters All you need to know about our FA Cup opponents.
- 37. Action Replay A look back at our games against Oldham and Cheltenham.
- 55 Around the Club Behind the scenes look at Roots Hall, featuring the 'Face of Southend'.





## Steve Tilson

**You are often guaranteed goals with us, so it was a bit strange to experience our first goalless draw in the league for 85 matches at Cheltenham Town on Tuesday night.**

I felt that if we had showed more of a cutting edge up front or if our final ball had been better at times, we would have taken the three points.

Unfortunately, it wasn't to be, but it is a decent point for us away from home. Perhaps the outcome may have been more favourable for us, if we had more options available up front.

We only had one of six centre forwards available to us and it certainly doesn't make things easy.

I was pleased with how we handled Cheltenham though; we defended well throughout the 90 minutes and it's the first clean sheet that we have had away from home in quite a while.

We have proved ourselves a hard team to beat recently, but we have only managed to win one of our last six games and that is a record we will be looking to turn more in our favour.

Our bench wasn't strong enough against Cheltenham, but I know that once everyone is fit and available, we aren't a bad side.

It's important to enjoy a good cup run and like many teams, we will be hoping to reach the third round of the competition and draw one of the big sides from the Premier League.

Of course, our focus right now is only on playing Luton Town this afternoon and although they are a division below us, we know it is going to be a tough game.

Everyone knows that anything can happen in the FA Cup and having struggled past Telford in the last round, we have to be on our guard.

We have had players missing through injury and suspension recently and have been down to the bare bones, but hopefully, that situation may have cleared up a bit better for this afternoon.

Francis Laurent is back from suspension and Alex Revell should be fit, so that will give us more options in attack, as we look to get a result.

The support of the fans has always been a major boost to the players, so please get behind the boys today.

Enjoy the game.

“Our bench wasn't strong enough against Cheltenham, but I know that once everyone is fit and available, we aren't a bad side.”

STEVE TILSON'S PAGE IS SPONSORED BY

**Ian Brown Financial Planning Ltd**    **Ian Brown General Insurance Brokers Ltd**  
Independent Financial Advisers    Personal & Commercial Insurance Brokers

*Professional service and quality advice since 1976*

150 High Street, Billericay, Essex CM12 9DF • Telephone: 01277 652255

## Adam Barrett

**It is going to be a difficult game against Luton Town today, but we want a good run in the FA Cup because it is a special competition.**

Luton have had their financial problems and it is a very big ask for them this year to stay up in League Two following their points deduction, so I think the FA Cup will be a nice distraction for them.

Financially, they need the money more than anyone, so there is a big incentive for them to do well and get into the third round.

It is the same for us though, we want to progress and we want a cup run. We are at home and have a great opportunity to reach the third round.

If we apply ourselves and work as hard as we can, I'm sure we can put ourselves into the hat for the third round.

As players, you want to be playing against the top clubs and we are certainly no different here. We want to make sure we are in the hat for the third round, but first and foremost we have to make sure our attitude is right for today's match against Luton.

It was a disappointing result against Oldham last weekend. I thought it was probably the best performance we have had since the Leeds game, so there were a lot of positives to take from it.

I thought we did enough to win the game and had enough chances, but we were disappointed as a team with their first goal from a corner.

At 1-0 up, we looked comfortable and strong and had chances to kill the game off. There were positives to take from it, but it just shows you what can happen in football, as we have played worse this season and won.

On Tuesday night, it was a difficult tie at Cheltenham. They are fighting for their lives and we were pleased with the point, even though I felt we had enough chances to win the game.

It was a 0-0 draw and a cleansheet away from home which is pleasing, but it was a game we should have won.

We had to make changes to the team and have a depleted forward line, which was always going to make it difficult. We played well enough to take the three points, but it was a point away from home and we now have to build on that.

Hopefully, in the next couple of weeks some of our important players will be coming back, which I feel we are going to need. At full strength, we can match anyone in the league.

Unfortunately, our centre forwards had been dropping like flies, which has made it tough and we have had to make changes elsewhere, but if we can get a settled side coming up to Christmas, then we can get ourselves back into the mix and challenge at the top in the league.

Up the Blues.




"If we apply ourselves and work as hard as we can, I'm sure we can put ourselves into the hat for the third round."

ADAM BARRETT'S PAGE IS SPONSORED BY

ENERGY SAVING WINDOWS  
FENSA  
QUALITY CERTIFIED

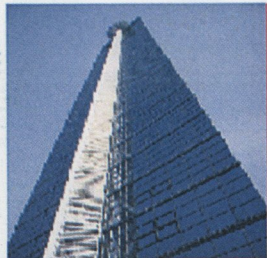
**SEEMORE GLASS**  
QUALITY WINDOWS - DOORS & CONSERVATORIES  
www.seemoreglass.co.uk

01702 205853

Family Business • Established over 40 years  
Built on reputation - a name you can trust • Energy saving windows  
10% discount with this advert

2 Main Road, Hockley, Essex S55 4QS ☎ 01702 205853 🌐 www.seemoreglass.co.uk





# Trimark (UK) Ltd

## A BETTER WAY

For all of your Office Furniture requirements:

- Furniture - Workstations, Seating, Storage, Boardroom, Reception.
- Design - Space Planning, Interior design, Move Management, Free Advice.
- Fit-Out - Floors, Ceilings, Walls, HVAC, Full Turnkey Solutions.
- Office, Hotel and Leisure, Theatre, Restaurant, Stadia.
- Bespoke items - Reception, break-out, trading desks, call centres.

Nothing too small, Nothing too large - Trimark (UK) Ltd can show the way.

CALL NOW - 01268 773926 - 07793 273153

Email: [talk2us@trimarkuk.co.uk](mailto:talk2us@trimarkuk.co.uk)

[www.trimarkuk.co.uk](http://www.trimarkuk.co.uk)

Locally Based in Rayleigh - Call now for professional advice.



fromtheboardroom



# Customer Care IT'S WHAT YOU DO

**When I joined the Board of Southend United eight years ago, the matter that struck me most was the complete lack of customer/supporter care, perhaps better known as customer service.**

I remember one of my first visits to a match, when the Club was under the chairmanship of Vic Jobson and as a new director, I was invited into the Chairman's box to sample the hospitality and enjoy the game from an elevated position above the half way line. The box held some 20 people and was served by one harassed waitress, who served wine that had been opened two weeks before and frankly, even if she knew just how bad the taste was, could not have cared!

It was clear that this attitude to customers extended throughout the business, even buying tickets was a trauma not to be experienced even by the most ardent supporter. The Club was living in the Dark Ages and if we were to improve and enlarge the customer base, then matters had to change and change quickly. We set about improving reservation, access control and data systems, all with the intention of getting to know supporters better and therefore, better serve their needs.

The improvements using IT technology are somewhat easier to achieve than those improvements that require more of a human interface with the customer, who may be somewhat reluctant to respond after years of abuse. But persistence pays off,



as we have seen a rapid improvement in the quality of service that we offer, not only in the corporate areas, but also in the stadium concourse areas too. This is not just a one off exercise, where one solution fits all, as there are many facets to the services that the Club has to offer. Take for example the services that we expect stewards and security personnel to deliver - once untrained in any aspect of stewarding - they are now expected to take NVQ courses on all aspects of stewarding, including supporter dispute handling as well as general customer service techniques. The Club has two Stewards dedicated to providing information to supporters, both home and away, and on many occasions, have provided an invaluable service

when away crowds have been large.

The training programmes that we have instituted and advice that we offer to personnel, both full time and part time, may not be complicated, but they are just good honest practices that have seriously begun to pay off, as the Club has recently collected its second Echo Business award for Customer Service in two years. Think of the opportunities that lie ahead - for if we can deliver that standard of service that deserves such a prestigious award in a decaying 53 year old stadium, imagine what we can achieve in a new one!

Thanks to all involved.

*Geoffrey King*  
Chief Executive



[www.southendunited.co.uk](http://www.southendunited.co.uk)



## Bouncebackability

Good afternoon everybody and welcome to Roots Hall for this FA Cup Second Round encounter, against Luton Town.

The lads tasted a rare and unjust defeat against Oldham. But a battling draw at Cheltenham, with a makeshift forward line, has now got the team back on track. With just two defeats in fifteen games, the lads are doing incredibly well. Especially when you take into account that we have had four or five loanees in our squad. But now the loanees have been recalled back to their respective clubs, the hard work really starts now. The fringe players and indeed some of our younger squad members, are now getting their chance to impress the management and claim a regular starting berth.

But as we now enter a hectic period, without our loan stars, we all need to get right behind the lads that are stepping in and help them through what is going to be a very tough six weeks until the transfer window opens. Hopefully in January, Mr Tilson, Brush and Martin will again wave their magic wand in the transfer market and further strengthen the squad, which will fire us back into the play-off picture.

We all want success at this club and we have been spoiled with it over the last 4 or 5 seasons, if we were honest with ourselves. Being a football supporter is about "supporting" the club through the good and the bad times. So if things are not going to plan on the pitch, it is our job as "supporters" to give the team a lift and help them through any rough patches. We are like a very large family, so if the team needs support, we must be there to give it at all times. The players will respond by treating us to more success on the pitch, I am sure...

We all know it's going to be tough without the loanees that

have performed so well for us. But we need to look forwards, not back and give those stepping into the limelight, the support they deserve. They all wear the blue of Southend United FC and for that reason alone, we must back them 110% when they step out onto that pitch. If mistakes are made, encourage the lads, don't abuse them. It's human nature to make mistakes, so let's all pick them back up again and show them we are with them. They need you!

Moving on. Before the Leeds game, a bet was made on ShrimperZone.com between a Suffolk residing Leeds' fan, Gareth Boggis and a Southend fan, Paul Cox (otherwise known as MK Shrimper). Basically, depending on which team was victorious, the supporter of the losing club would attend a home match of the other in full colours. Fortunately, Southend won and Gareth lost the bet!

This harmless bet has now snowballed and Gareth and Paul have already helped raise nearly £600 for Essex charity Little Havens. We'd love to raise as much as possible for this great charity, so if you can spare something for Little Havens, please take time to visit:

[www.justgiving.com/paulcox4](http://www.justgiving.com/paulcox4)

This is all in memory of Blues' fan Katie Hart-Greenfield, who passed away in February, at the young age of 15, following a brave fight against a brain tumour. Katie's father Nick, an avid Blues' fan himself, is also assisting with the fundraiser. Coupled with the fantastic help of Gareth and Paul, they have between them set a target of



£750. So with the help of fellow Southend fans, let's surpass this figure and give this fantastic organisation, the financial support they desperately need. The staff at Little Havens looked after Katie so well during her time there and it would be fitting of us Southend fans to give a little, that could mean so much to another young person's life...Please do give generously. Thank You.

As a result, Gareth will be joining us on the 13th December for the Huddersfield game, donning a Blues' shirt and also sitting in with the noisy lot over in V & W Block of the West Stand! He will then be "dragged" to the Spread Eagle for a post-match beverage or two, where he will be made to join in with the Southend songs! Although joining in with a certain anti-Leeds tune, maybe a bit much for him, but we will see!...

All those involved in this great gesture should be very proud of themselves and I'm sure Katie will look down on us with a big smile on her face on the 13th. Well done everyone, especially Gareth, who has really been a

great sport in all of this. Top marks to you Sir. Maybe Leeds fans are not that bad after all!...

Just to finish we are pleased to announce that The Blue Voice website is not that far away from launch now, we are just tidying up a few things and testing the site for bugs. We are hoping to launch early November just in time for our one-year anniversary since formation! We feel it will be worth the wait....

Get saving [www.thebluevoice.co.uk](http://www.thebluevoice.co.uk) into your web browsers now, ready for launch day. We need as many of you as possible to join up to our site and spread the word of The Blue Voice. Remember this is a long-term plan, with the main objective to create an awesome matchday experience at the New Stadium. But in the short term striving to make the best out of what Roots Hall has to offer! Please support our initiative.

All that leaves me to say is "Sing Up" everyone, show your pride and passion and let's roar the lads on to the next round. Who knows, we may draw a big boy in the Third Round, which will give us a chance to repeat our giant killing act once more!

**Lee Smith**

Chairman for and on behalf of  
The Blue Voice.





## Leicester City



Walkers Stadium

Capacity: 32,500

Address: Filbert Way, Leicester, LE2 7FL

Club Phone Number: 0844 815 6000

Website: www.lcfc.com

Email: corporatesales@lcfc.co.uk

### Travel Guide

Leave Southend via the A127. At Rayleigh Weir junction continue forward through underpass. Continue forward on to

Southend Arterial Road - A127 entering Basildon. Branch left (signposted Dartford Crossing, Stansted Airport), then at roundabout take the 3rd exit, then join the M25 motorway (signposted Stansted Airport). At Junction 27 (M11) continue forward on to the M25 (signposted Heathrow Airport). Branch left, then join the M1 motorway (signposted The North, Luton Airport). Leave the M1 at junction 21, then at roundabout take the 3rd exit on to the A5460 (signposted Leicester). At roundabout take the 2nd exit on to the A5460 (signposted Leicester). Turn right on to unnamed road. Turn right on to unnamed road. At roundabout take the 3rd exit on to Raw Dykes Road. Bear left. Arrive at the Walkers Stadium.

Distance from Roots Hall: 133.8 miles (2 hr 25 min)



## Hartlepool United



Victoria Park

Capacity: 7,629

Address: Clarence Road, Hartlepool, TS24 8BZ.

Club Phone Number: 01429 272584

Website: www.hartlepoolunited.co.uk

Email: media@hartlepoolunited.co.uk

### Travel Guide

Leave Southend via the A127. At Rayleigh Weir junction continue forward through underpass. Continue forward on to Southend Arterial Road - A127 entering Basildon. Branch left (signposted Dartford Crossing, Stansted Airport), then at roundabout take the 3rd exit, then join the M25 motorway (signposted Stansted Airport). Leave the M25 at junction 27, then keep right to join the M11 motorway (signposted Stansted Airport, Harlow, Cambridge). Continue forward on to Huntingdon Road - A14 (signposted M11N Cambridge, Newmarket). Continue forward at junction 23 (signposted The North A1M, Peterboro'). Continue forward on to the A1. At roundabout take the 1st exit on to the A1. At Colsterworth Roundabout take the 2nd exit on to Great North Road - A1. At Gonerby Moor Roundabout take the 1st exit on to the A1. At Markham Moor roundabout take the 3rd exit on to the A1. At

roundabout take the 3rd exit on to Blyth Road - A1. At roundabout take the 2nd exit, then join Doncaster By Pass - A1(M) motorway (signposted The North, Doncaster). At junction 35 continue forward (signposted The North). End of motorway continue forward on to the A1. At junction 41 continue forward on the A1(M) (signposted The North). At A1(M) junction 45 continue forward on to the A1 (signposted The North, Wetherby). Continue forward on to the A1. Leave the A1(M) at junction 49 - Dishforth Interchange, then merge on to the A168. Continue forward on to the A19 entering Middlesbrough. Keep in right-hand lanes then continue forward (signposted A19 The North, Hartlepool). Branch left, then at roundabout take the 3rd exit on to the A139 entering Stockton On Tees and cross road bridge. At roundabout take the 1st exit on to Bypass Road - A1027. At roundabout take the 2nd exit on to Wolviston Road. At roundabout take the 2nd exit on to Stockton Road - A689. Continue forward on to Stockton Road - A689 entering Hartlepool. At Owton Lodge Roundabout take the 2nd exit on to Stockton Road - A689. At roundabout take the 2nd exit on to the A689. At roundabout take the 2nd exit on to the A689. Bear right on to Marina Way - A179. At traffic signals continue forward (signposted The North, Sunderland, Durham). At roundabout take the 2nd exit on to the A179. At roundabout take the 1st exit on to Middleton Road - B1376. Turn left on to Stuart Street. Turn right on to Greenwood Road. Turn left on to Lansbury Grove. Arrive at Victoria Park.

Distance from Roots Hall: 276.2 miles (4 hr 54 min)

## Home Tickets

Southend United v  
Huddersfield Town



Coca-Cola League One

Saturday, December 13 2008

Kick-Off: 3.00pm

Tickets are on general sale to all Southend United supporters via online and telephone sale and in person at the Box Office.

Southend United v  
Northampton Town



Coca-Cola League One

Saturday, December 26 2008

Kick-Off: 3.00pm

Tickets are on general sale to all Southend United supporters via online and telephone sale and in person at the Box Office.

Southend United v  
Crewe Alexandra



Coca-Cola League One

Saturday, January 10 2008

Kick-Off: 3.00pm

Tickets are on general sale to all Southend United supporters via online and telephone sale and in person at the Box Office.

## Away Tickets

Leicester City  
v Southend United



Coca-Cola League One

Saturday, December 6 2008

Kick-Off: 2.30pm

Tickets for Southend United's away fixture at Leicester City are now on general sale.

Prices have been set as follows:

- Adults £23
- Seniors £21
- Under 22's and Students £15
- Under 16's £10
- Under 12's £5
- Under 8's £3.

Disabled supporters pay the relevant concession price with a free carer. Car park passes are available for wheelchair disabled supporters priced at £5.

To purchase your tickets, visit the Blues Box Office in person or call the hotline on 08444 77 00 77.

Hartlepool United  
v Southend United



Coca-Cola League One

Friday, December 19 2008

Kick-Off: 7.45pm

Southend United have received ticketing details for their away match against Hartlepool United next month.

The Blues travel north on Friday December 19 - kick-off 7.45pm - in their final match before Christmas.

And tickets for this game have been priced at £20 adults and £10 for seniors, students and juniors.

These are on sale to Season Card holders, who have until today to purchase their ticket.

Team Blues members can purchase between Monday December 1st and Wednesday December 3rd, with any remaining tickets going on general sale from Thursday December 4th.

To purchase your ticket either visit the Blues Box Office in person or call the Ticket Hotline on 08444 77 00 77.

For tickets or more details contact the Blues Box Office

**08444 770077**

## Ticket Prices and Categories:

### ECHO EAST STAND

	Advance	MatchDay
Adult	£20	£22
Senior Citizen	£13	£15
Students*	£13	£15
Young Person ***	£13	£15
Juniors	£10	£11
Under 8	£5	£5

### ESSEX AUTO GROUP WEST STAND

	Advance	MatchDay
Adult	£20	£22
Senior Citizen	£13	£15
Students*	£13	£15
Young Person ***	£13	£15
Juniors	£10	£11
Under 8	£5	£5

### HI-TEC SOUTH UPPER

	Advance	MatchDay
Adult	£20	£22
Senior Citizen	£13	£15
Students*	£13	£15
Young Person ***	£13	£15
Juniors	£10	£11
Under 8	£5	£5

### SOUTH EAST ESSEX COLLEGE COMMUNITY STAND (FAMILIES)

	Advance	MatchDay
Family Ticket **	£20	£22
Additional Junior	£4	£4
Additional Adult	£16	£18

NB: \*Students will be required to provide proof that they are in full-time education to qualify for the concessionary rate. \*\* Family Ticket consists of one Adult and one Junior. \*\*\* Young Person tickets are aged 17-20 inclusive



**lemon tree**  
print & design



**Print & Design  
partner of The Blues**  
**tel: 01268 724 634**

**Lemon Tree offer a full service of design and print:**

Business cards, Letterheads, Comp slips, Leaflets,  
Posters, Design, Banners, Flyers Booklets & Brochures

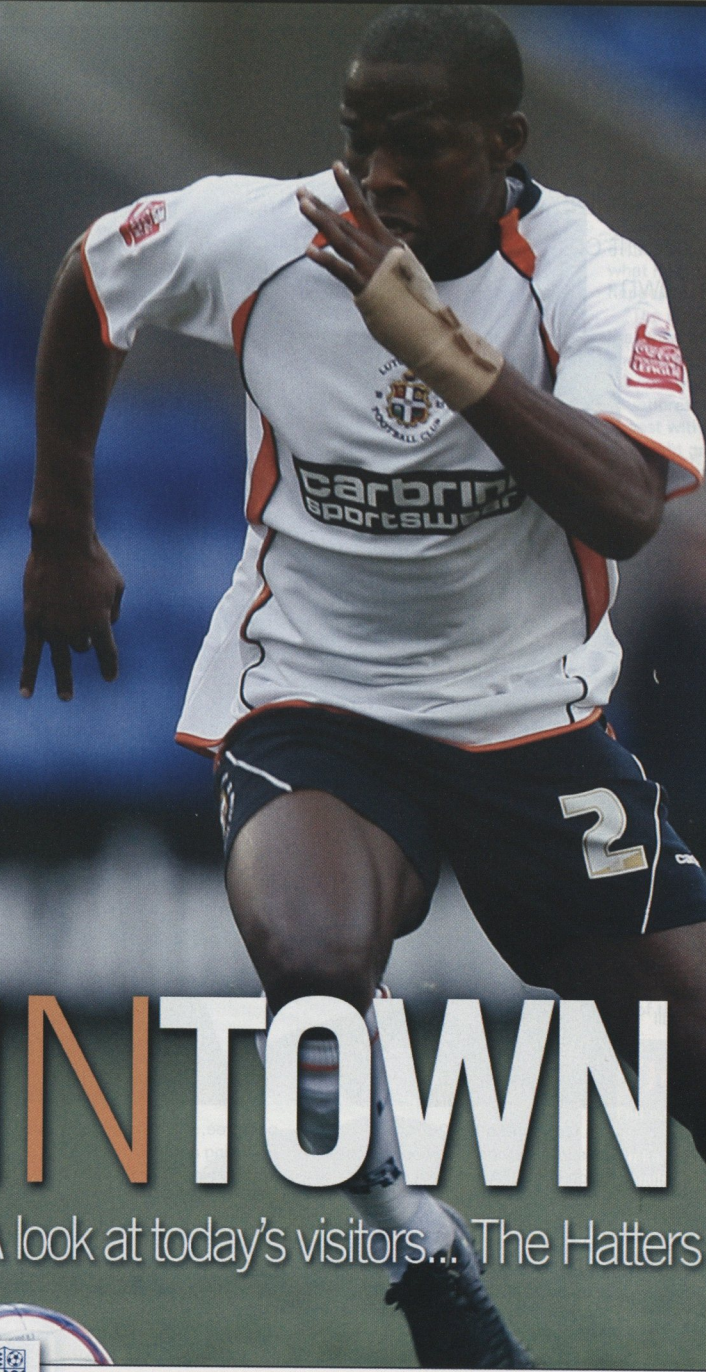
**plus much more!**

Business cards from £20.00 | Letterheads from £50.00  
Full colour leaflets from £20.00

**[www.lemontreeprint.com](http://www.lemontreeprint.com)**

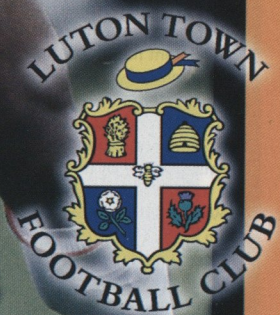
**lutontown**

**SBS**  
SPECIALIST BUILDING SERVICES  
DEVELOPERS OF FINE HOMES



**INTOWN**

A look at today's visitors... The Hatters



[www.southendunited.co.uk](http://www.southendunited.co.uk)



# Luton Town

In the current economic situation, it is fair to say that no one has felt the 'credit crunch' effect more in football than Luton Town.



Luton have been through more ordeal than any club would wish to go through in recent times.

Having been deducted 10 points last season for entering administration, they were all but consigned to relegation to League Two and when the inevitable happened, an even greater punishment surfaced over the year.

Despite the fact Luton Town Football Club 2020 took over as new owners in 2008, the financial turmoil continued following financial irregularities that had come about from the previous regime, Jayten.

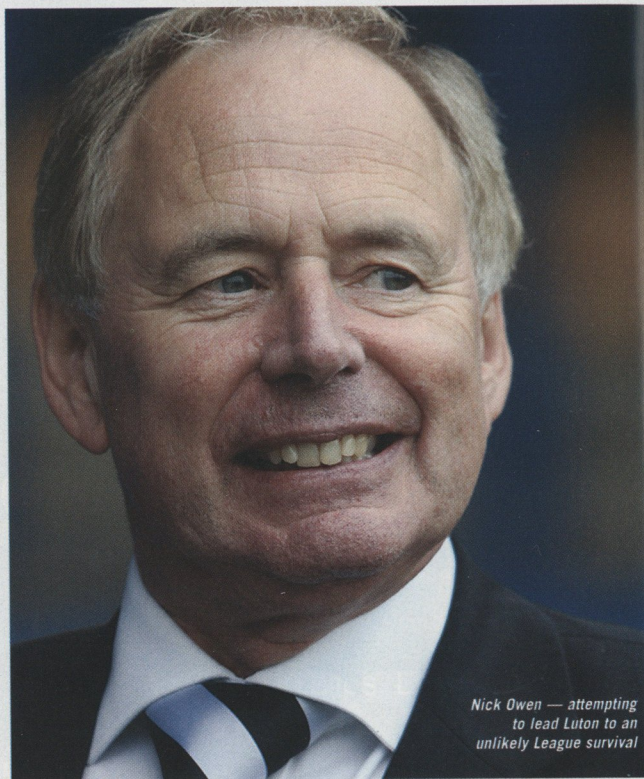
Luton were docked 10 points ahead of this season and then suffered a further 20 point penalty by the Football League for exiting administration without a Company Voluntary Agreement.

The challenge that faced them also resulted in a near new squad needing to be rebuilt from scratch over the summer, but Luton have certainly given it a go to try and cut the deficit down as soon as possible.

While they have been cutting away at the margin, the more recent inconsistent nature of their form still has them adrift at the bottom of League Two.

They currently stand on -11 points and 21 points away from getting themselves out of the bottom two, but today's encounter will at least provide a different environment for them in the FA Cup.

Luton will no doubt see the many advantages of attempting to reach the third round of a competition, which can always throw up a money spinning tie against a big side.



Nick Owen — attempting to lead Luton to an unlikely League survival

In fact, during the 2004/05 season, Southend previously hosted Luton in the FA Cup, but made a swift exit at the first round stage, as Luton wrapped up a 3-0 win in the first half.

Luton needed that little bit of luck to overcome opposition in the shape of a non-league side with FA Cup

pedigree, Altrincham, to progress following a penalty shoot-out success in a first round replay.

Luton's biggest challenge may lie in League Two this season, but they may welcome the break in the FA Cup following two straight league defeats against Rotherham and Brentford.

Last Game...

## Luton Town 0 Brentford 1

Luton Town failed to find a response to falling behind in the first half at home to Brentford in their League Two encounter last Tuesday.

Asa Hall (pictured below) had an early shot cleared off the line before Nathan Elder bagged the only goal of the game in the 29th minute, when he appeared in the right place to head home from six yards out.

Brentford further pressed forward in search of increasing their lead after the interval, with Luton stopper Conrad Logan forced to make fine saves to deny Dean Bowditch and Elder.

Luton's woe was then compounded when Keith Keane was controversially sent off four minutes from time, for a foul on former Southend striker Charlie MacDonald outside the area.



For a side who competed in the Championship alongside Southend just two years ago, Luton's fall from grace is palpable, but manager Mick Harford is hoping a dressing room heart-to-heart following their 1-0 defeat at home to Brentford on Tuesday will have the desired effect.

He said: "We've just had a 45 minute chat after the game about what has gone on and how it's happened.

"The players are still telling me that they have the belief, the desire and the passion to turn this around. Obviously it's a bit of a tricky situation and it's time to be open and honest with the players now. We've lost eight games and on that kind of form we won't get out of this (relegation).

"I'm not going to harp on about excuses or injuries, but there are some key ones missing. I don't want to discredit any of the players in the team at the moment, because they are grafting and putting a shift in, but the club has been on a downward spiral for a long time and it's got to stop.

"The first thing I will do is question myself. Is the training right? Are the tactics right? Am I picking the right players? Have I brought the right players into the football club? I've said this to the players, but my belief is that we've got a good enough squad.

"Circumstances at the moment are working against us with injuries and suspensions, but that's part of football. We have got to start winning games. There is no easy way out of this."

## The Basics

**Full name:** Luton Town Football Club  
**Nickname:** The Hatters  
**Founded:** 1885  
**Stadium:** Kenilworth Road  
**Chairman:** Nick Owen  
**Manager:** Mick Harford  
**League:** League Two  
**2007/08:** League One - 24th



# The Players



Meet the men from Kenilworth Road...



## Michael Spillane

Spillane joined Luton on a season-long loan from Norwich in August 2008. The Irish youngster is equally at home in defence or midfield, having played in both positions in recent seasons for the Canaries and is a Republic of Ireland under-19 international.

## Sol Davis

Davis has been a regular feature in the backline at Luton, joining from Swindon in 2002. The 29-year-old tough-tackling left back was unfortunately involved in a serious incident in October 2006, when he suffered a stroke on the team bus prior to the match at Ipswich. He has since made a miraculous recovery and appeared over 200 times for Luton.

## Paul McVeigh

McVeigh is a Northern Irish midfielder who began his career at Tottenham. It was at Norwich where the 30-year-old really made his mark in the game though, as he made over 200 appearances during a seven year spell. McVeigh signed for Luton last year and is

able to play anywhere across midfield or up front.

## Gareth O'Connor

Irish midfielder O'Connor signed a short-term contract with Luton that will keep him with the club up until January 2009. The 30-year-old has spent most of his career at Bournemouth, where he made over 200 appearances during a five year spell.

## Asa Hall

Hall is another versatile player capable of playing in midfield or defence and is Luton's leading goalscorer this season with four goals. Hall began his football career in Wolves' youth system before signing his first professional contract with Birmingham in 2004. He went on to have loan spells with Boston, Ashford Town and Shrewsbury ahead of signing for Luton this summer.

## Jake Howells

Howells is a versatile 17-year-old who has come up through the ranks at Luton. He made his debut

against Hartlepool in May 2008 and has become a regular feature in the team, being pushed forward from left back into an advanced midfield role.

## Drew Talbot

Talbot signed for Luton Town in a £250,000 deal in January 2007 from Sheffield Wednesday. He made an immediate impact, making one and then scoring the winner against his old club at Kenilworth Road on his home league debut. Originally on the books of Barnsley, Talbot drifted out of football after injury, but came back with Sheffield Wednesday's academy in the 2003/04 season.

## Kevin Gallen

Veteran striker Gallen recently joined Luton on a one-month loan from MK Dons. The 33-year-old is best known for playing for Queens Park Rangers, where he enjoyed two separate spells at the club and having scored a total of 97 goals, is the sixth highest scorer in their history. Gallen has also played for Huddersfield, Barnsley and Plymouth.

## Predicted XI

### Conrad Logan

Irish goalkeeper Logan joined Luton on loan from Leicester City until January and having made himself the number one between the sticks, was the team's hero in the first round of the FA Cup. The 22-year-old saved a penalty against Altrincham during normal time and then made the crucial save to see Luton progress in the ensuring shoot-out.

### Claude Gnakpa

French full-back Gnakpa joined Luton at the start of the season on a free transfer from Peterborough. Having plied his trade across Europe with Montpellier HSC, Racing de Santander, Deportivo Alaves and FC Vaduz, Gnakpa moved to Swindon Town for a brief spell, before being taken on by Peterborough in July 2007. He was a regular in their League Two promotion winning side last year, starting 25 games.

### Ian Roper

Roper is a central defender with bags of experience, who signed a contract at Luton in August 2008. Roper climbed up the ranks while at Walsall, gaining a reputation of being a tough, no-nonsense defender. He made 325 appearances during his 13 year period at the club, where he won promotion on three occasions - most recently in 2006/07 as a League Two champion.

Kenilworth Road — the home of Luton Town





## The Best of the Rest

### Dean Brill

Brill joined his hometown club Luton at the age of nine and has progressed through the Centre of Excellence, representing Luton Schools and Bedfordshire County Schools at a variety of age groups. A tall, commanding goalkeeper standing at six foot three, Brill has made over 70 appearances for the Hatters, but has currently lost his place in the side.

### George Beavan

Beavan is a promising central defender who was handed a trial at Luton in 2006 before joining their youth team. The 18-year-old went on to make his first team debut last season against Bournemouth in February 2008. Beavan is equally comfortable playing at left back or in the centre of defence.

### Rossi Jarvis

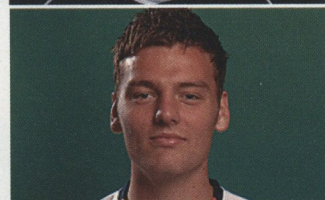
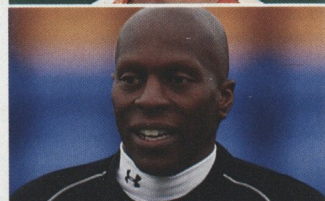
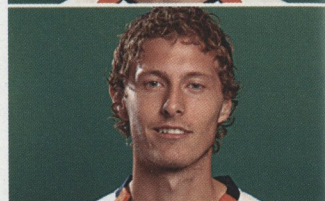
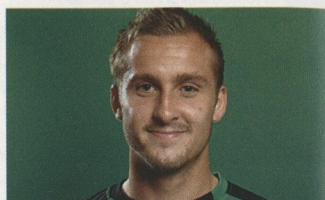
Jarvis is an adaptable player who can play on the left or right hand side of defence or in midfield. Jarvis came through the Norwich City youth system, becoming the youngest player to appear for the reserve team at the tender age of 14. He went on to spend loan periods at Torquay and Rotherham, but after finding first team opportunities hard to come, he joined Luton in August 2008 on a free transfer.

### Wayne Andrews

Andrews recently signed for Luton in October and made his debut the following day in a 2-1 defeat against Accrington. The 30-year-old has made one start for Luton and four appearances from the bench, as he searches for his first goal for the club. Andrews has previously played for Oldham, Colchester and Crystal Palace amongst a number of clubs.

### Chris Martin

Martin joined Luton on a season-long loan from Norwich City in August 2008. Martin is a young striker who has played 30 times for the Canaries, scoring five times, after he burst into the first team in 2007. He is strong for his age and technically gifted and his early promise saw him win call-ups for the England Under-19s squad, scoring on his debut against Turkey in March 2007. He has scored three times for Luton.



## Southend United v Luton Town. The Full Record

	Southend United wins	Draws	Luton Town wins
League	18	14	26
FA Cup	1	0	4
Other	1	0	0
<b>Total</b>	<b>12</b>	<b>7</b>	<b>8</b>

In Charge...

## Mick Harford

Since hanging up his boots, Mick Harford has twice had a spell on the coaching staff at Luton Town, initially as assistant manager under Joe Kinnear and more recently as director of football for Mike Newell.

During his first spell at the club, he helped mastermind the Hatters' promotion back to the Second Division in 2001/02. As director of football and first team coach, he played his part in building the side that secured promotion to the Championship, running away with the League One title during 2004/05.

Harford left the Hatters in November 2004 to be re-united with Kinnear at Nottingham Forest. He then took over as caretaker manager at Forest in December 2004, replacing Kinnear, for a total of six matches before Gary Megson was confirmed as the new manager at the City Ground.

Having left Forest in January 2005, he had intended to spend the rest of the season helping out old friend Andy King at Swindon Town. However, after a couple of months at the County Ground, he became manager at Rotherham United, whose relegation from what is now the Championship had already been confirmed.

The eighth month spell in charge at Millmoor was the first managerial job he held in his own right and on leaving the club, he had a short spell coaching the forwards at Millwall.

He then hooked up with his former Derby County team-mate Geraint Williams at Colchester United in summer 2006, as his number two; a position he held for a year before the opportunity arrived to join John Gregory - again as an assistant manager - at Queens Park Rangers in June 2007.

In October 2007, Harford took caretaker charge at QPR for one month following Gregory's dismissal, losing only once in five games before he himself left the club when Luigi De Canio took over as a manager.

Harford was placed in charge of Luton Town until the end of the 2007/08 season and committed to stay ahead of this campaign, despite the club being docked 30 points.



## Leigh Edwards looks at the links between the two clubs...

### Title Triumph

Former Luton Town right-back Duncan Jupp was an experienced figure in Southend United's 2005-06 League One title triumph. Moving to Luton from Notts County in February 2003, he made five League appearances prior to joining Southend in July 2003. He also featured in the 2004-05 League Two play-off final success and played in that season's LDV Vans Trophy final, making 100 League appearances before moving to Gillingham in July 2006. Ex-Luton central defender Efe Sodje also featured in Southend's 2005-06 League One title campaign.

### Promotion Winner

Luton Town midfielder Adam Locke was an influential figure in Southend United's 1990-91 promotion success. Moving to Roots Hall from Crystal Palace in August 1990, he made his League debut in Southend's 1-0 win at Mansfield Town a month later and netted four goals in 73 League games prior to joining Colchester United in September 1994. He joined Luton from Bristol City in August 1999 but was unable to prevent relegation in 2000-01 and scored five times in 62 League outings before moving to Hornchurch in September 2002.

### Youth International

Former England Youth international midfielder Scott Houghton has played for Luton Town and Southend United during his career. Moving to Kenilworth Road from Tottenham Hotspur in August 1993, his solitary goal in 16 First Division games came in Luton's 5-0 victory at home to Barnsley two months later and he was sold to Walsall for £20,000 in September 1994. He joined Southend from Peterborough United in November 1998 and scored nine times in 79 League outings while at Roots Hall before moving to Leyton Orient in October 2000.



Adam Locke

### Managing to Succeed

One-time Luton Town inside-forward Barry Fry had a spell as Southend United's manager. Moving to Kenilworth Road from Bolton Wanderers in July 1965, the England Schoolboy international made six League appearances as Luton narrowly failed to regain Third Division status at the first attempt in 1965-66 and joined Gravesend & Northfleet in July 1966. He succeeded Colin Murphy as Southend's manager in April 1993, guiding the Blues into the First Division promotion frame before leaving to take charge of Birmingham City in December 1993.

### Ever-Present

Former Luton Town striker Ian Benjamin was ever-present in Southend United's 1990-91 promotion success. Moving to Roots Hall from Exeter City in March 1990, the England Youth international helped Southend win promotion that season and scored the goal at Bury that clinched further promotion in 1990-91. He netted 33 times in 122 League games before being sold to Luton Town for £50,000 in December 1992. Scoring twice in 13 First Division outings for today's visitors, he reunited with David Webb at Brentford in late 1993.

### Championship Success

Former Southend United midfielder Lil Fuccillo featured in Luton Town's 1981-82 Second Division championship success. Signing professional at Kenilworth Road in July 1974, he was twice ever-present and starred in Luton's 1978-79 League Cup run, netting 24 goals in 160 League games before moving via Tulsa Roughnecks to Southend in December 1983. He scored four times in 45 League outings while at Roots Hall prior to joining Peterborough United in August 1985 and briefly managed Luton during the 2000-01 campaign.



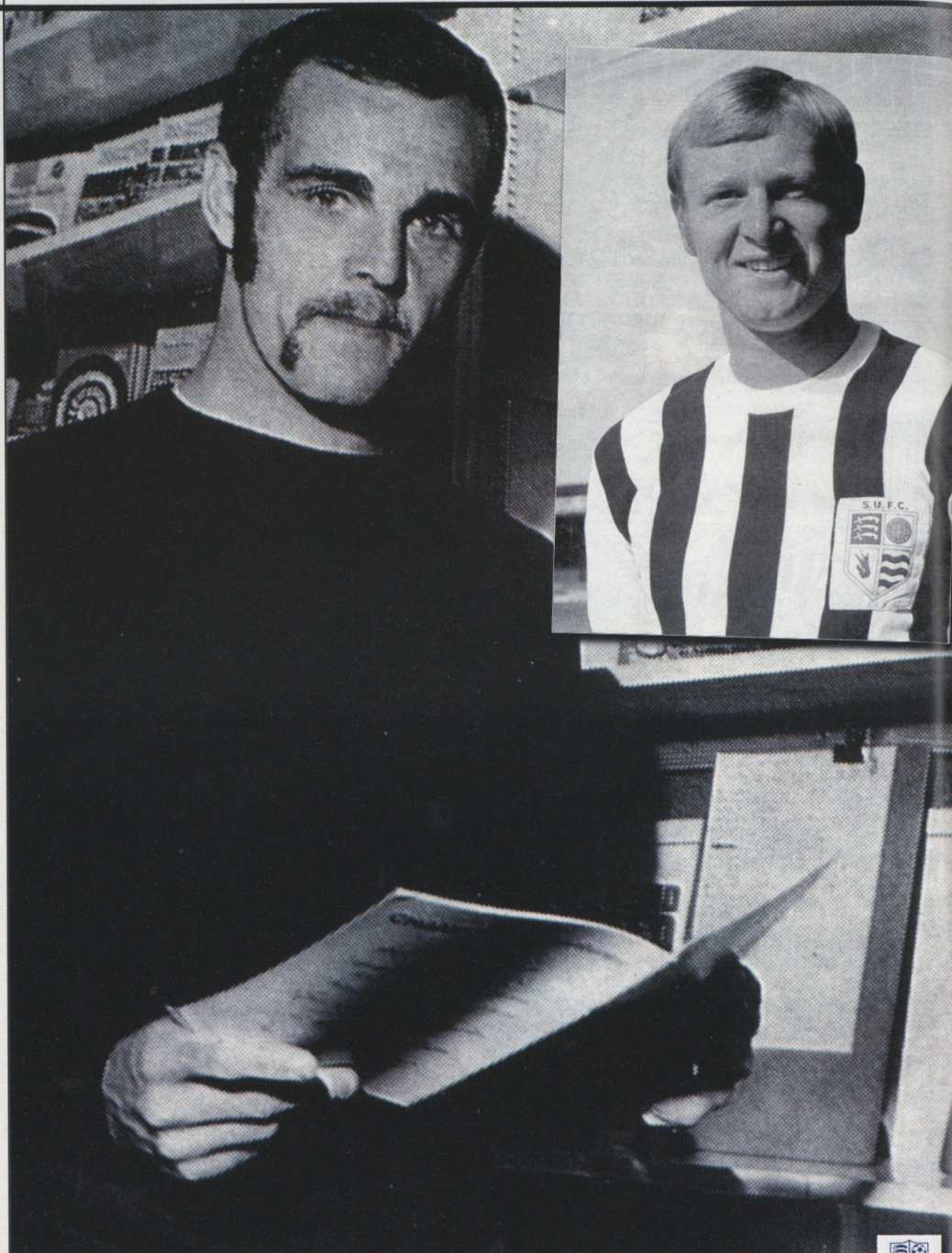
Scott Houghton

### Cup Hero

One-time Southend United central defender Chris Turner was an influential figure in Luton Town's 1978-79 League Cup fourth round victory at Aston Villa. Moving to Kenilworth Road from Peterborough United for £100,000 in July 1978, he netted five goals in 30 Second Division games for Luton before moving via New England Teamen to Cambridge United in September 1979. He joined Southend in October 1983 and his solitary goal in 22 League outings clinched the 1-1 draw at Newport County a month later, returning to Cambridge United as manager.

### In Safe Keeping

Former Southend United goalkeeper Graham Horn was a key figure in Luton Town's 1973-74 promotion success. Moving to Luton from Arsenal in February 1973, he made 58 League appearances prior to joining Los Angeles Aztecs in May 1976. He joined Southend from Kettering Town in December 1977 and played nine League games before moving to Aldershot in January 1980. Doug Beach, Chris Coyne, Carl Emberson, George Goodyear, Billy Kellock, Joe Loughran, Dean Morgan, Barry Silkman and Bill Thirlaway have also played for both clubs.



# GOALKINGS

The romance of the FA Cup is very much alive at Roots Hall today.

Two special guests in the shape of Southend United legends Billy Best and Gary Moore are in attendance and will be presented to the crowd at half time.

Billy Best and Gary Moore scored consecutive hat tricks in the first and second rounds of the FA Cup for the Blues in high-scoring 9-0 and 10-1 wins against Kings Lynn and Brentwood respectively during the 1968/69 season.

Best actually scored three goals in the first round and went on to score five times in the second round. Moore also followed suit in the first round with a hat trick and four goals in the second round.

To emphasise the significance of such an achievement, it was the first time in the history of the FA Cup that the same two players had scored hat-tricks in successive ties.

In fact, 40 years on, this is a remarkable record that still stands to this day.

Both Best and Moore have been invited down as guests of Southend for this afternoon's FA Cup second round tie against Luton Town. They will be sitting in the Directors' Box to watch the game, as well as picking out the winners for the 50/50 draw.

Best spent over four years here and made a total of 247 appearances for Southend, scoring 123 goals. Moore was closer to six years, having scored 55 goals in 181 appearances in a blue shirt.

Ahead of today's match, we caught up with Moore, as he prepared to travel down from his home up north near Darlington to return to the Essex coastline for the first time since he left Southend in 1974.

Moore, now 63, has many great memories of playing for the club, as he looked back on being in the first Southend team to achieve promotion back in May 1972.

"I am really looking forward to coming to Roots Hall," he said.

"I brought my nephew down to Southend 12 years ago for a trial when Peter Taylor was the manager, but I didn't get the chance to go to the ground, as I dropped him off and came back to the north-east.

"In fact, the last time I was at Roots Hall was actually just before I left Southend in 1974.

"I always look out for Southend's results and always like to see the club doing well.

"I have some wonderful memories of my time at Southend. I was at the club for five and a half seasons and didn't want to leave, but the manager at the time Arthur Rowley had other ideas!

"Unfortunately, you have to move on in football, as that is part of the job.

"We won promotion to the Third Division in 1972 and this was the first time Southend had ever achieved this, so it was nice to be in that side.

"I'm delighted to be coming to today's game and hopefully, Southend can get a result.

"I think it is wonderful to be introduced on the pitch at half time. I got the call the other day from the club secretary Helen Norbury and felt very honoured.

"It will be a difficult game though, as Luton's manager Mick Harford was a tough character as a player and I imagine he will have his team wound up for it.



"Southend have that bit of quality to overcome that and I will certainly be cheering them on. There may even be a few fans who can remember me playing for Southend."

It is perhaps ironic that Moore's first visit back to Roots Hall will be to watch Southend in the FA Cup, a competition where both he and Best wrote their names into the history books.

Southend scored 19 goals during the first two rounds of the FA Cup in wins over King's Lynn 9-0 and Brentford 10-1. Billy Best scored eight times over the two ties and Gary Moore was on target with seven goals.

Southend played host to Southern League outfit King's Lynn in the first round and kick-started their cup campaign when taking the lead inside just two minutes through Moore.

Moore and Best went on to both score hat tricks during an emphatic 9-0 victory.

The Blues were then drawn at home in the second round against another Southern League side in the shape of Brentwood Town. Southend went one better when scoring 10 goals past their Essex neighbours, as Moore set the ball rolling when heading in the opening goal.

Although Brentwood did manage to equalise, Moore scored with three more headers and Sammy McMillan helped put the Blues 5-1 to the good.

It was then Best's turn to take over and the striker did so in some style when scoring the remaining five goals of the match, with four coming in the final six minutes of the game.

Best's final three goals actually came in the 87th, 88th and 89th minute.

This meant that for the first time in FA Cup history, the same two players scored hat tricks in successive ties.

Alongside the significance of Best's and Moore's hat tricks



though came about another impressive feat. During Southend's run to the fourth round of the FA Cup, Best scored a total of 10 goals in the competition in just four games.

This double figure tally is actually the most that has ever been scored in a single season, with Best sharing his name in the record books alongside former Bournemouth striker Ted McDougall.

Best has also scored the most goals for Southend in the FA Cup with a total of 15 spread across a five year period from 1968 to 1973; a record he shares with Roy Hollis.

Southend did go on to beat Swindon 2-1 in the next round, with Best again on target. This was the same Swindon side who

later that same season would go on to beat Arsenal to lift the League Cup.

But Southend's cup adventure ended for the year in the fourth round and even though Best scored his 10th goal in the competition, it wasn't enough to halt a 2-1 defeat at Mansfield.

The competition record of scoring two consecutive hat tricks occurred in December 1968 – standing the test of time for 40 years.

Moore admitted: "I don't think that Billy and I ever realised at the time just how big it was. You look back and think, I don't suppose anyone will ever do that again – it was quite unique.

"We didn't realise what a feat it was in a way. We just took each game as it came and then reflected on them afterwards. We thought that we had been lucky to get hat tricks in both games and were almost fighting over the match ball.

"The match ball disappeared at the end and neither of us managed to get it.

"It is something that I am very proud of and I'm sure Billy was as well. We played in a great side with some great players like Phil Chisnall, Sammy McMillan and Eddie Clayton and then there were good club stalwarts like Micky Beasley.

"That side was very good for a striker to play in, because they created lots of chances.

"I spoke to Billy on Monday night for the first time in 35 years and it will be lovely to see him.

"For me, Billy Best in my time and since has been the best player that Southend have ever had. There have been lots of good players for the club over the years and the manager Steve Tilson certainly comes into that.

"It will be smashing to come down today, but I really hope that Southend can get a good result; I hope Billy and I are lucky mascots."



## Football historian Leigh Edwards profiles ten post-war Luton Town goalscoring favourites...



### Gordon Turner

Long-serving inside-forward Gordon Turner holds Luton Town's all-time goalscoring record. Signing professional at Kenilworth Road in March 1950, he featured in Luton's 1951-52 FA Cup run and 1952-53 promotion near-miss. He was leading marksman seven times, including 1954-55 when ever-present as they won promotion to the top-flight, also representing the Football League. Netting 243 goals in 406 League outings for the Hatters, he briefly reunited with Jesse Pye at Wisbech Town in July 1964, then played for Kettering Town, Dunstable and Bletchley. He lived and worked locally until his death in December 1976.

### Ron Davies

Welsh international striker Ron Davies was Luton Town's leading marksman in 1962-63. Initially with Chester, he twice topped their goalscoring charts and moved to Kenilworth Road in October 1962. He impressed with his aerial strength in a struggling side, netting 21 goals in 32 League games for Luton before joining Norwich City in September 1963. Moving to Southampton in August 1966, he was top scorer three times prior to joining Portsmouth in April 1973. He played for Manchester United, Arcadia Shepherds, LA Aztecs, Tulsa Roughnecks and Seattle Sounders, becoming a soccer coach in Florida.

### John O'Rourke

England U-23 striker John O'Rourke was Luton Town's top scorer in three successive seasons. Initially with Arsenal, he moved via Chelsea to Luton in December 1963 and netted 64 goals in 84 League games while

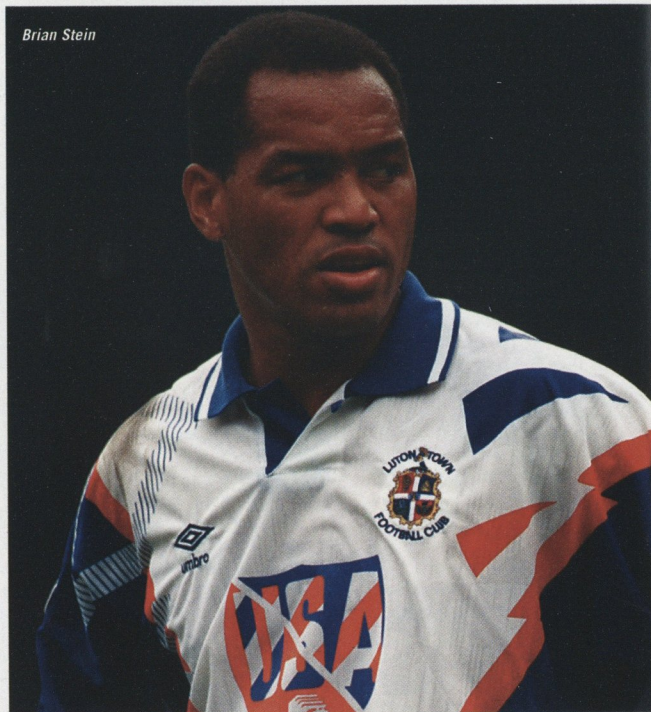
at Kenilworth Road before joining Middlesbrough in July 1966. He starred as they regained Second Division status at the first attempt in 1966-67, then had spells with Ipswich Town, Coventry City and QPR in the top-flight, moving to AFC Bournemouth in January 1974. Later with Poole Town, Johannesburg Rangers, Weymouth, Dorchester Town and Poole again, he has since been a newsagent in Highcliffe.

### Malcolm MacDonald

Ace marksman Malcolm Macdonald was capped 14 times by England

after leaving Luton Town. Initially with Tonbridge, he joined Fulham in August 1968 and moved to Kenilworth Road in July 1969. He was Luton's top scorer in two consecutive seasons including their 1969-70 promotion success and netted 49 goals in 88 League games before being sold to Newcastle United for £180,000 in May 1971. An FA Cup finalist in 1974, he joined Arsenal for £330,000 in August 1976 and was an FA Cup finalist again in 1978 before injury ended his career. He managed Fulham and Huddersfield Town and now works in the media.

Brian Stein



### Barry Butlin

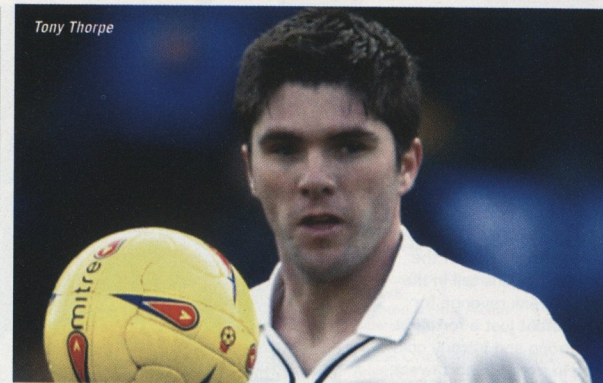
Striker Barry Butlin was leading marksman as Luton Town regained top-flight status in 1973-74. Signing professional for Derby County in January 1967, he had limited opportunities under Brian Clough and was loaned to Notts County prior to joining Luton for £50,000 in November 1972. He netted 24 goals in 57 League games while at Kenilworth Road before moving to Nottingham Forest for £122,000 in October 1974. Reunited with Clough, he featured in their 1976-77 promotion campaign and joined Peterborough United in August 1977, then played for Sheffield United. He is a financial adviser, living in Chellaston.

### Brian Stein

England international striker Brian Stein scored twice in Luton Town's 1988 Littlewoods Cup final triumph. Moving to Kenilworth Road from Edgware Town in October 1977, he was leading marksman in Luton's 1981-82 Second Division success and also starred as they were FA Cup semi-finalists in 1984-85 and 1987-88. He joined Caen in July 1988 and moved via Annecy back to Luton in July 1991. Voted their 'Player of the Year' for the second time in 1991-92, he netted 130 goals in 427 League games overall before joining Barnet in August 1992, helping win promotion in 1992-93. His brother Mark also played for Luton.

### Paul Walsh

England international striker Paul Walsh was capped five times while at Luton Town. Signing professional for Charlton Athletic in October 1979, he starred in their 1980-81 promotion success and moved to Luton in July 1982. He was 'Player of the Year' in 1982-83 and leading marksman in 1983-84, netting 24 goals in 80



Tony Thorpe

First Division games for the Hatters prior to joining Liverpool in May 1984. Helping to win the League Championship in 1985-86, he joined Tottenham Hotspur in February 1988 and was an FA Cup winner in 1991. Later with Portsmouth and Manchester City until injury ended his career, he is now a football agent.

### Mick Harford

England international striker Mick Harford played for Luton Town in consecutive Littlewoods Cup finals including their 1988 Wembley triumph. Signing professional for Lincoln City in July 1977, he had spells with Newcastle United, Bristol City and Birmingham City prior to joining Luton in December 1984. He starred as the Hatters were FA Cup semi-finalists in 1984-85 and 1987-88, moving to Derby County in January 1990 and returning to Luton in September 1991. Joining Chelsea in August 1992, he then played for Sunderland, Coventry and Wimbledon. He has since been coach and now manager back at Luton.

### Tony Thorpe

Striker Tony Thorpe was leading marksman as Luton Town qualified for the Second Division play-offs in 1996-97. A former

Leicester City trainee, he reunited with David Pleat at Luton in August 1992 and was also top scorer in 1997-98. He joined Fulham for £800,000 in February 1998 and helped them reach the play-offs that season. Sold to Bristol City for £1,000,000 in June 1998, he was top scorer three times prior to rejoining Luton in July 2002 after two loan spells. He netted 70 goals in 164 League games overall before moving to QPR in August 2003, then Swindon, Colchester, Stevenage, Grimsby and Tamworth.

### Steve Howard

Striker Steve Howard topped Luton Town's goalscoring charts in five successive seasons. Initially with Tow Law, he joined Hartlepool United in August 1995 and moved to Northampton Town for £120,000 in February 1999. He starred in their 1999-2000 promotion campaign, joining Luton for £50,000 in March 2001. A key figure as the Hatters won promotion in 2001-02, then the League One title in 2004-05, he scored 95 goals in 212 League outings before being sold to Derby County for £1,000,000 in July 2006. He helped them win promotion in 2006-07 and joined Leicester City for £1,500,000 in January 2008.



## Southend United U18s 2 Gillingham U18s 3

Report by Rob Craven

Southend United's run in the Youth Alliance Cup was ended at the first knockout stage for the second season in succession, as they lost 3-2 at home to Gillingham.

Blues' Youths had progressed to the second round of the competition after winning their group, but the visitors made conditions tell in the second half to wreak revenge for their League defeat just a fortnight ago. With a strong and bitterly cold wind blowing in from the northwest, Southend had enjoyed the advantage of the arctic blasts during the first period and should have gone into the break ahead. Instead, they were left counting the cost of missed opportunities.

Ricky Duncan reinstated Justin Hazell, the 16-year-old midfielder helping Kyle Asante to flank Craig Calver up front in a 4-3-3 formation. There was also a rearrangement in defence, Callum Whittaker coming in at right-back and Ade Osifuwa partnering Ronnie Jones, with Durran Reynolds switching to left-back.

Seven minutes had passed when Calver had the first effort on goal, seeing a deflected shot curve into the goalkeeper's gloves after burrowing into the penalty area. Hazell then flashed an effort across the face of goal from Jones' sweeping ball forwards, before Jamie Dennis mis-kicked Calver's centre from a good position just outside the six-yard box.

Gillingham took the lead against the run of play in the 22nd minute. There appeared to be no danger as the Southend defence stroked the ball to each other, but Charlie Stimson and Adam Burchell began to exert pressure, leading to the former forcing the ball wide of the advancing Nathan McDonald for Burchell to pass into an unguarded net.

There was a swift response from the Blues, when Calver blasted into the side-netting from Dennis' flicked header and the same pairing combined successfully on 26 minutes



The tackles fly in

to level the scores. McDonald's long ball was glanced into the path of Calver, who controlled calmly before smashing a stinging shot into the top right-hand corner.

Dennis was unaware of an opportunity to give Blues the lead

when he charged down a clearance from Hazell's right-wing cross, but two marginal decisions either side of half-time ultimately helped to shape the course of the match.

In stoppage time at the end of the first half, Asante slid the ball into the

path of Calver who caressed a dipping shot over the 'keeper, only to see the ball strike the underside of the crossbar.

As it fell, the Saffron Walden-born front man believed that it had crossed the goal-line, but Asante could not follow-up to eliminate any doubt and the assistant referee ruled out United's pleas.

A little over two minutes after the break, the Gills were in front again. Tom Murphy had just seen a long-range effort bounce off of the top of the bar, when Ellis Munday swung a cross in from the right.

McDonald was forced to collect at his near post, but the referee's assistant this time decreed that he had carried the ball over the line and awarded a goal.

Murphy and Stimson had an excellent opportunity to make it 3-1 when McDonald's goal-kick failed to reach the halfway line in a gust, but Davis Abbey raced back to snuff out the problem. At the other end, Calver teed up Merrick James-Lewis for a fierce drive past the left-hand upright.

At the midpoint of the second half, Southend drew level. Calver rode a challenge in the centre of the pitch before offloading to Hazell, who found the bottom left-hand corner with a clinical finish from 15 yards to record his seventh goal of the campaign.

Perhaps Blues' best opportunity arrived ten minutes from the end when Whittaker's free-kick from the right bounced up for Jones, who was positioned beside the penalty spot. Unfortunately, the defender's half-volley was fired over the crossbar.

Instead, it was the Kent-based club who dealt the decisive blow after a contentious free-kick was awarded on the edge of the penalty area. Luke Rooney stepped up to fire towards the left-hand side of the goal, with a deflection ensuring that it nestled into the net away from McDonald's clutches.

Despite four minutes of injury time, largely awarded after a dog escaped its leash and bounded across the field, Southend could not find an equaliser.

**Southend:** McDonald, Whittaker (Ljungström 88), Jones, Osifuwa, Reynolds, Dennis (Crawford 89), Abbey, James-Lewis, Asante, Calver, Hazell.



\* Lost 8-9 on penalties

Date	Ko	v	Opponent	Comp	Res
<b>August</b>					
Sat 16	11:00	H	Millwall	YAL	W2-0
Sat 30	11:00	A	Colchester United	YAL	W2-1
<b>September</b>					
Sat 6	11:00	A	Dagenham & Redbridge	YAL	D0-0
Sat 13	11:00	A	Rushden & Diamonds	SC1	W2-1
Sat 20	11:00	H	Wycombe Wanderers	SC2	D1-1
Sat 27	11:00		Free Week	SC3	
<b>October</b>					
Sat 4	11:00	A	Queens Park Rangers	SC4	W5-3
Sat 11	11:00	H	Millwall	SC5	L0-1
Sat 18	11:00	H	Brighton & Hove Albion	YAL	W2-0
Sat 25	11:00	A	Aldershot Town	YAL	W6-2
<b>November</b>					
Sat 1	11:00	A	Leyton Orient	YAL	P-P
Wed 5	19:00	H	Brentford	FAYCI	*D3-3
Sat 8	11:00	H	Gillingham	YAL	W2-1
Sat 15	11:00	A	Millwall	YAL	P-P
Sat 22	11:00	H	Gillingham	SCR2	L2-3
Sat 29	11:00	A	Brighton & Hove Albion	YAL	P-P
<b>December</b>					
Sat 6	11:00	H	Dagenham & Redbridge	YAL	
Sat 13	11:00	H	Leyton Orient	YAL	
<b>January</b>					
Sat 10	11:00	H	Aldershot Town	YAL	
Sat 17	11:00	H	Colchester United	YAL	
Sat 31	11:00	A	Gillingham	YAL	
<b>February</b>					
Sat 7	11:00	H	Wycombe Wanderers	YAL	
Sat 14	11:00	A	Barnet	YAL	
Sat 21	11:00	H	Brentford	YAL	
<b>March</b>					
Sat 7	11:00	A	Luton Town	YAL	
Sat 14	11:00	H	Northampton Town	YAL	
Sat 28	11:00	A	Peterborough United	YAL	
<b>April</b>					
Sat 4	11:00	H	Queens Park Rangers	YAL	
Sat 18	11:00	A	Rushden and Diamonds	YAL	



Date	Ko	v	Opponent	Comp	Res
<b>August</b>					
Tue 19	14:00	H	Northampton Town	CL	W1-0
<b>September</b>					
Tue 9	19:00	A	Wycombe Wanderers	CL	W4-1
Tue 16	14:00	H	Peterborough United	CL	W6-2
Tue 30	14:00	H	Stevenage Borough	CL	W3-2
<b>October</b>					
Tue 14	19:00	A	Ipswich Town	CL	L0-2
<b>November</b>					
Tue 11	14:00	H	Wycombe Wanderers	CL	L0-1
<b>December</b>					
Tue 2	14:00	H	Leyton Orient	CL	
Wed 10	14:00	A	Colchester United	CL	
<b>January</b>					
Mon 5	19:00	A	Watford	CL	
Tue 13	19:00	H	Ipswich Town	CL	
Wed 21	19:00	A	Stevenage Borough	CL	
<b>February</b>					
Tue 10	14:00	H	Colchester United	CL	
Tue 17	14:00	A	Leyton Orient	CL	
Tue 24	14:00	A	Luton Town	CL	
<b>March</b>					
Tue 17	14:00	H	Watford	CL	
Tue 24	14:00	A	Northampton Town	CL	
<b>April</b>					
Wed 8	14:00	A	Peterborough United	CL	
Tue 21	14:00	H	Luton Town	CL	







# ON THE MEND

Most football supporters only get to wonder what it would be like to work for the club that they follow, but assistant physiotherapist Ben Clarkson is living that dream writes **Rob Craven**...

"It is a dream job for me – I'm so lucky to work within professional football," he gushes. "The football industry only has a limited number of jobs tied in with it, so I feel privileged to be in one."

Clarkson, who has been at Southend United for over three years in his current role, first started to help out at the Centre of Excellence whilst still in full-time education: "I got into physiotherapy through a period on work experience when I was at college. I did a few placements – one with John Gowens and then another with John Stannard and Terry Baker – and that led to me going on to do a degree in the subject at University in Salford," he explains.

"Working in sport was something that I decided I wanted to do pretty early on, although I had to make a choice between writing about it by going on a journalism course and having a more hands-on approach – in the end, I chose to have a hands-on role," he continues. "That time here on work experience gave me a taste of what it would be like and I really enjoyed it."

The King Edmund School-

educated Clarkson is keen to pay tribute to Blues' current physio John Stannard, who has provided support and knowledge throughout his time at Roots Hall: "It is really good working with John – he was especially helpful towards the start. I suppose he was a kind of mentor."

"There are certain things that you have to know working in football such as specific assessment skills and common football injuries. Sport isn't really covered in physiotherapy degrees, so I needed to top up my knowledge."

As Clarkson established himself at the club, one of the first hurdles that he had to overcome was working with his idols: "When I first started, I was a little nervous around the players, but as time progresses it becomes a job. Before, they were my heroes, but you can't afford to be star struck. I wanted to be professional."

What about treating someone with the vast experience of Dougie Freedman? "It has been great to work with Dougie. He is very professional and has high standards, so he is the kind of person that I need to aspire to work with."

“It is personally really satisfying to see those players come through from the youth team into the first-team.”

Clarkson's main matchday responsibilities relate to the reserve and youth teams, but a typical day will generally last 10 hours. "I arrive an hour prior to the players at training and the first thing that I will do is assess the injured players. If anyone has a slight knock, they'll come in to enable them to participate in training," he begins.

"I then commence fitness work and rehabilitation. Players have lunch and I'll give massages. After training, I'll have a look at any new injuries that have been picked up and liaise with the coaching staff. Generally, my day starts at 8:30am and ends after 6:00pm.

"I do get to work with the professionals quite a bit – when John isn't around they are my responsibility and the reserve team often has a lot of pros in there as well. John and I split the job; it's not just the case that I look after the youngsters," he reveals.

How important is a physiotherapist's relationship with the club's coaches? "You have to have a close relationship with them, as they want to know how the players are. They have to have trust in you that you will return players to them and the players also have to have trust that you will help them to recover."

Although Clarkson could pick almost any working day out as a highlight, there are a couple of matches that stick in the memory: "The opportunity to work with the first team at Tottenham in the Carling Cup and obviously the Manchester United match at Roots Hall as well."

However, Clarkson is also fortunate enough to see the players in the club's ever-more successful youth team progressing into the senior set-up: "It is personally really satisfying to see those players come through from the youth team into

the first team. For instance, I have known Justin Hazell since he was just 13 and there are others like Stuart O'Keefe, Charles Ademeno and Franck Moussa that have also got in.

"You have an attachment to them as a senior figure in their development – you'll often have conversations with them like they might have at home with their parents," he says.

As you would expect, Clarkson is hoping to achieve all that he can in his profession with his local outfit.

"Ideally, I'd like to get into the Premier League with Southend United," he declares. "You have to look at opportunities the same as you would in any job, but with the new ground and Academy status, you would like to think that we can push on. If this club is run professionally, we can have success on and off the pitch.

"The new stadium will be a massive help – it will make a huge difference to every day that I spend here. It will assist players' rehabilitation; they will feel a million dollars and work harder, just the same as a businessman would if they moved into a brand new office."

Fortunately for him, Clarkson's 'office' is the training ground of the club he holds dear to his heart.

### Quick Questions

**Role:** Assistant Physio

**Time at SUFC:** Three years

**Previous Clubs:** None

**Nickname:** Nothing you can print!

**Favourite team:** Southend United

**Idols:** Stan Collymore & Ricky Otto

**Best moment in football:** The Man.

United match in the Carling Cup

**Favourite TV Show:** Entourage

**Favourite Film:** The Godfather

**Favourite Music:** Oasis



# How would you like two free tickets to a Southend game?

We've just launched E.ON's Southend United EnergyPlan\*, a new 12 month Dual Fuel tariff especially for Southend United fans.

By taking this product, we'll give you two free tickets\*\* to watch a Southend home league game, plus we'll customise your bills to feature the Southend United crest. You will also be automatically entered into a series of competitions to win money-can't-buy football prizes.

To find out more call 0800 051 5548.  
Or text "SUFC" and your name to 80366  
to request a call back.



Lines open 8am-8pm Monday to Friday and 9am-5pm Saturdays. Call backs will occur Monday to Friday 12pm-8pm. \*Available for both new and existing residential customers paying by Direct Debit on unrestricted or economy 7 meters only. Excludes pre-payment customers and premises that are part of a group price contract. A cancellation fee of £20 applies. Terms and conditions apply. \*\*Vouchers provided for exchange for tickets at least 24 hours before the match. Tickets subject to availability and are for home league games for the 2008/2009 season only.



# PHOTOFINISH

Blues' taste home defeat  
before gaining a point on  
the road at Cheltenham...





**Main:**  
Rob Milsom in action on his debut.  
**Left (top to bottom):**  
Peter Clarke heads clear.  
Alan McCormack takes on former Blue Kevin Maher.  
Jean-Francois Christophe in an aerial duel.  
James Walker puts Southend 1-0 up.

**TEAMS**

**Southend United:** Federici, Francis, Clarke, Barrett, Harding, Betsy, Christophe (Grant 87), McCormack, Milsom, Revell (Ademeno 79), Walker.  
**Scorer:** Walker 53.

**Oldham Athletic:** Crossley, Lomax, Stam, Hazell, Jones, Liddell, Allott, Maher, Taylor, Byfield, Hughes.  
**Scorers:** Taylor 67, Hughes 71

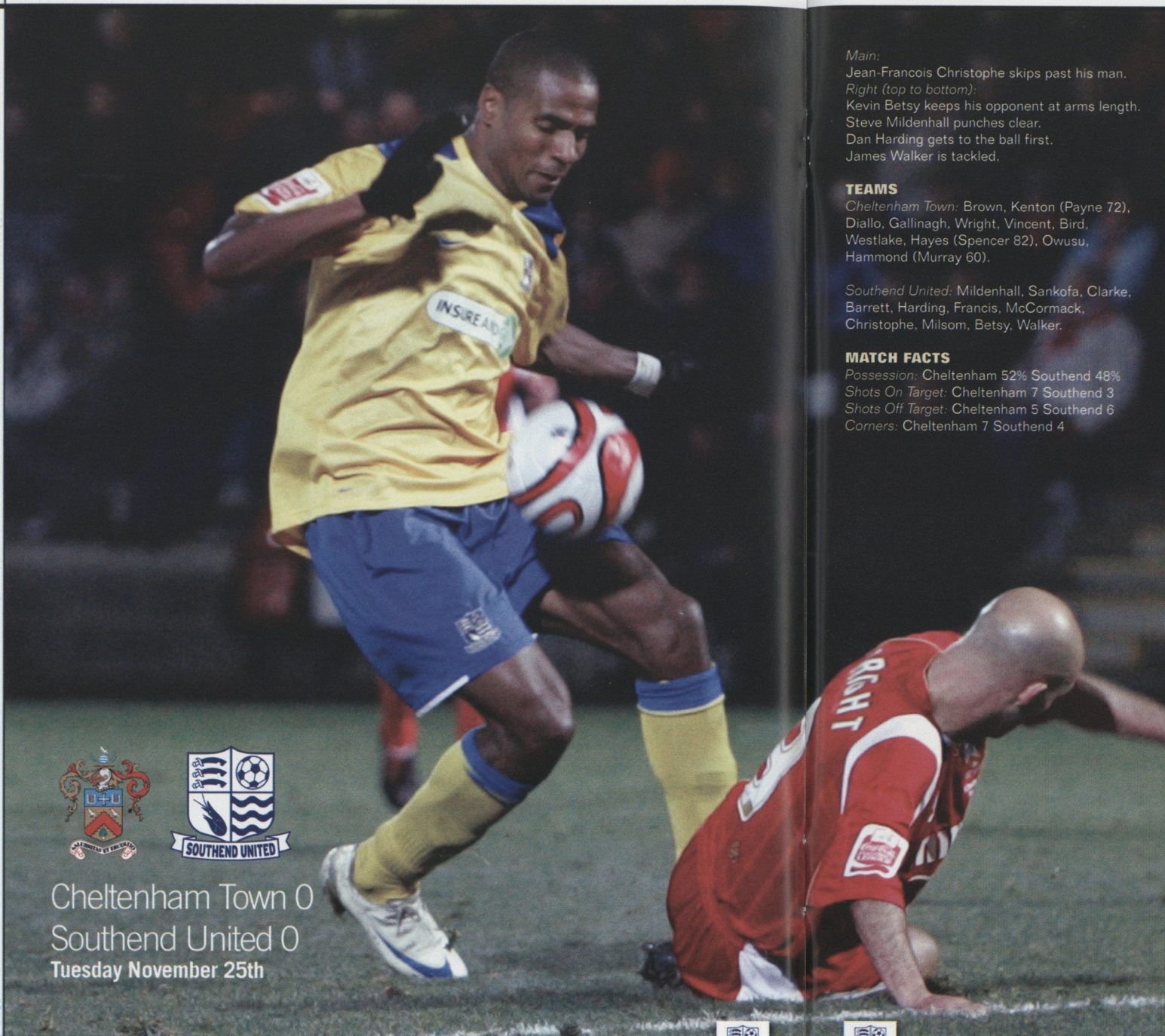
**MATCH FACTS**

**Possession:** Southend 46% Oldham 54%  
**Shots On Target:** Southend 2 Oldham 5  
**Shots Off Target:** Southend 6 Oldham 3  
**Corners:** Southend 6 Oldham 7



Southend United 1  
Oldham Athletic 2  
Saturday November 22nd





Cheltenham Town 0  
Southend United 0  
Tuesday November 25th

**Main:**

Jean-Francois Christophe skips past his man.

**Right (top to bottom):**

Kevin Betsy keeps his opponent at arms length.

Steve Mildenhall punches clear.

Dan Harding gets to the ball first.

James Walker is tackled.

**TEAMS**

*Cheltenham Town:* Brown, Kenton (Payne 72), Diallo, Gallinagh, Wright, Vincent, Bird, Westlake, Hayes (Spencer 82), Owusu, Hammond (Murray 60).

*Southend United:* Mildenhall, Sankofa, Clarke, Barrett, Harding, Francis, McCormack, Christophe, Milsom, Betsy, Walker.

**MATCH FACTS**

*Possession:* Cheltenham 52% Southend 48%

*Shots On Target:* Cheltenham 7 Southend 3

*Shots Off Target:* Cheltenham 5 Southend 6

*Corners:* Cheltenham 7 Southend 4





15

Osei  
**Sankofa**

"The Trusted Provider of  
Global solutions in Custody  
and Wealth management"

# INFORMATION M O S A I C

To learn more about us, our careers opportunities and our award winning products for the Investment Services Industry, **converg-e™** and **cama™** please visit our website at [www.informationmosaic.com](http://www.informationmosaic.com)

NEW YORK BOSTON DUBLIN LONDON LUXEMBOURG SINGAPORE

upforthecup



## BIG GUNS AWAIT...

**Southend United and Luton Town both needed to overcome first round replays to set up this afternoon's tie in the FA Cup sponsored by E.ON.**

Second half goals from Simon Francis and James Walker helped Southend United see off the challenge of AFC Telford 2-0, while Luton also needed to battle past non-league opposition in the shape of Altrincham.

League Two outfit Luton Town were forced to wait for penalties to book their place in the second round of the competition following a goalless draw after extra time.

Luton had to battle with 10 men from the 67th minute following the dismissal of Sol Davis, who also gave away a penalty in the process.

Yet goalkeeper Conrad Logan became the hero for Luton, as he saved Warren Peyton's spot kick and went on to twice keep Altrincham at bay, when it came to the dreaded shoot-out to secure a 4-2 victory on penalties.

Southend and Luton will now be looking to book their place in the third round of the FA Cup in

January, with the incentive that the Premier League sides will come into the draw

**Full Second Round Draw:**

Chesterfield vs. Droylsden  
Peterborough vs. Tranmere  
Eastwood Town vs. Wycombe  
Notts County vs. Kettering  
Leicester City vs. Dagenham  
Barrow vs. Brentford  
Bradford City vs. Leyton Orient  
Southend United vs. Luton Town  
Forest Green Rovers vs. Barnet  
Histon vs. Leeds  
Scunthorpe vs. Alfreton Town  
Torquay United vs. Oxford United  
Fleetwood Town vs. Hartlepool  
Morecambe vs. Cheltenham  
Gillingham vs. Stockport  
Millwall vs. Aldershot  
Carlisle or Grays vs. Crewe Alexandra  
Bournemouth vs. Blyth Spartans  
Kidderminster Harriers vs. Curzon Ashton  
Port Vale vs. Macclesfield Town



[www.southendunited.co.uk](http://www.southendunited.co.uk)



# SHRIMPERS TRUST

Good afternoon and welcome to Roots Hall for this FA Cup second round tie against Coca-Cola League Two club Luton Town.

We seem to have picked the Hatters out a few times in recent years in various Cup competitions and I'd certainly prefer to remember the Tesfaye Bramble-inspired 3-2 success in 2001 or the 3-0 LDV Vans Trophy area quarter-final two years later than the more recent 3-0 first round reverse during the 2004/5 campaign.

Despite the 2-1 home defeat to Oldham Athletic seven days ago, recent form has seen the Shrimpers hard to beat, with a number of draws collected. That was epitomised on Tuesday night when we gathered a goalless draw at Cheltenham Town - our first 0-0 in over 80 League matches.

The end of November has witnessed the Shrimpers Trust in a frenzy of activity and this will be continued into the start of December.

## Coach Travel

### Leicester City

Adult Members: £15.00  
Adult Non-Members: £25.00  
SJS/DAP/Student Members: £12.00  
Junior/DAP/Student Non-Members: £20.00

### Pick-up Times

Roots Hall: 09.15 • The Elms: 09.30  
Tarpots: 09.40 • The Watermill: 09.45

### Hartlepool United

Adult Members: £25.00  
Adult Non-Members: £30.00  
SJS/DAP/Student Members: £20.00  
Junior/DAP/Student Non-Members: £25.00

### Pick-up Times

Roots Hall: 12.00 • The Elms: 12.15  
Tarpots: 12.25 • The Watermill: 12.30

Last Monday, myself and Bryan Woodford attended the latest convening of the Youth Development Association. As part of the Shrimpers Trust's commitment to the youth department at Southend United, three committee members were invited onto the Association along with Ricky Duncan and four members of SUFC staff. This body then determines how the money raised through the Blues Lottery is distributed within the Youth Department.

There are set to be some big announcements regarding the Blues Lottery within the next few weeks, so please make sure that you support the initiative. This will in turn assist Ricky Duncan as he builds towards establishing an Academy at Southend alongside the proposed new stadium.

The construction was one of the main talking points at Wednesday's Trust Annual General Meeting. A number of members were present as the main focus of the evening moved away from the directors' reports and the re-election of the present committee - with the addition of Lara McSweeney, Paul Smith and Alec Trott - to our special guests, Club chairman Ron Martin and manager Steve Tilson.

Ron and Steve were more than happy to answer any queries that our membership put to them in over an hour's worth of questioning; the committee of the Shrimpers Trust would like to thank them once again for giving up their time to come along. You should, by the time you read these notes, be able to read a full account of the evening on our website, [shrimperstrust.co.uk](http://shrimperstrust.co.uk).

Then on Thursday evening, the Trust's fully-liveried coach was on show at the switching on of the Rayleigh Lights. Paul Yeomanson and Bryan Woodford were on hand to promote the Shrimpers Trust and also the football club, with a number of

## Forthcoming Events

### Curry Night

Wednesday 3rd December 2008  
The Maharaja, London Road  
Contact: Alan Perry (01702 476458)

### Quiz Night

Saturday 31st January 2009  
The Shrimpers Bar, Roots Hall  
Contact: Alan Perry (01702 476458)

### Bowling Night

Thursday 12th February 2009  
The Kursall Bowl, Southend-on-Sea  
Contact: Alan Perry (01702 476458)

Further details on our website: [www.shrimperstrust.co.uk](http://www.shrimperstrust.co.uk)

first-team players in attendance.

Moving on to next week and we will be holding a Curry Night on Wednesday 3rd December at the Maharajah on the London Road in Benfleet, starting at 7:30pm. The cost is just £12 per head; the event is open to members and non-members of the Trust alike. This is usually an excellent social evening for Southend supporters, so if you are interested, please get in touch with Alan Perry as soon as possible by emailing [alanperry4@hotmail.com](mailto:alanperry4@hotmail.com) or by phone on 01702 476 458.

Last Saturday, our Race Night in the Shrimpers Bar raised nearly £500, so a big thank-you is due to all who attended and had an excellent time, although I suppose that depended on how heavy your pockets were at the end of the night! Our next Race Night is in March and more details will be available on our website nearer the time.

For now, though, enjoy the match - Up the Shrimpers!

Rob Craven  
Shrimpers Trust Committee

Away Travel Phone Number  
**07892 905338**

# QUID-A-GOAL

## General Aims

The aim of the scheme - like most of the Shrimpers Trust's activities is to raise money for Southend United Football Club and make sure that there is a club for us to be supporting in the foreseeable future.

In particular, some of the money raised from this Seasons "Quid a Goal" scheme will be donated to the Southend United Community and Educational Trust (SUCET) to help fund their Bodycare Programme.

This programme is delivered young children of both Infant and Junior school age to help them get a healthy start in life with the benefits of physical activity and healthy eating being covered as well as mental and social health.

The total pledged so far is £980.41  
The following are some of pledges we have received so far for the 2008/09 Season.

### First Team Goals

Alan Perry, Trevor Bashford, Brian Cornell, Derek Reeves, Michael Marksheffel, Richard Cunningham, Peter & Berry Beach, Graham Levett, Alan Willis, Peter Moorhouse, Linda Kidd, Roy O'Sullivan, Paul Richards, John Walton, Mark Haines, Karl Butcher, Andrew Styles, Stephen Michaels, Kitty Butler, Frank Van Wezel  
First Team Clean Sheets  
Joanna Warren, Nick Hammond, Phil

Truscott, Duncan Sheekey, David Mason, Robert Wright, Michael Marksheffel, Simon Woolmer, Sheila White, Chris Pipe, Mike Roles, Graham Hilder, Mark Folwell, Linda Kidd, John Walton, Karl Butcher, Ron Thompson, Mark Gilbert, Ruth Jenkinson, Keith Overall, Mike Roles, Francis Evans, Jon-Paul Fitzgerald  
Goals scored by Lee Barnard  
Anthony Walkington, Mark Francis, Steve Raker, David Oldbury, Martin Rutter, Mark Folwell, Steven Krzoska, Connor Ionnton, Karl Butcher, Paul Boreham, Ken Page, Lee Bird, Cathy Miles, Roy Rice, Andrew Perry  
Goals scored by James Walker  
Mr & Mrs C.J. Cave, Mark Francis, David Oldbury, Brian Green, Lara McSweeney, Brian Cotgrove, Ted Gunn, Brian Denton, Nigel Rickard  
Goals scored by Franck Moussa  
Colin Harris, Adrian Greene  
Goals scored by Adam Barrett  
Duncan Sheekey, Maureen Palmer, Charles Barrett, Linda Kidd, Reg Burton, Bryan Woodford, Graham Muncey, Jim Smith, Tom Johnson, John Hanks, Tony Leverett, Paul Stratford, Frank Van Wezel, Dave Bishop  
Goals scored by Simon Francis  
Samuel Johnson, Linda Kidd, Adrian Greene  
Goals scored by Alan McCormack  
Elliot Muncey, Graham Reed, Lara McSweeney

Goals scored by Paul Furlong  
Martin Brooks, John Cooper, Dave Bishop  
Goals scored by Peter Clarke  
Nigel Rickard, John Cooper  
Goals scored by Alex Revell  
Dave Bishop  
Goals scored by Dougie Freedman  
John Cooper, Dave Bishop, Tony Walkington  
Goals scored by Johnny Herd  
Colin Harris  
Away Clean Sheets  
Trevor Bashford, Cathy Miles  
Away League Wins  
Peter Cowell, Nick Green, Jonathan Humphrey, Dean Overall, Steven Hodis  
Home Wins  
Amy & Matt Pryce  
SUFC reach League One Play-Offs  
Ron Mackenzie  
Goals scored against Colchester United  
Chris Pipe  
Away Goals  
Andrew Moorhouse, Alec Trott, Seasons Points Tally  
Linda Kidd, Norman Sale, Terry Cornwell, Mark Gilbert  
SUFC Gain Automatic Promotion  
Paul Yeomanson  
Away League wins by two goals or more  
Bryan Woodford, Natalie Wolfendale  
Steve Mildenhall Clean Sheets  
Elliot Muncey  
Reserve Team Goals  
Brian Denton  
Four or more SUFC bookings in a match  
Zoe Greene  
Regulation penalties scored by SUFC  
Nigel Rickard  
Own goals scored for SUFC  
Nigel Rickard  
First Team Hat-Tricks  
Colin Harris

## WANT TO MAKE A PLEDGE?

Name: .....

Address: ..... Postcode: .....

Home Tel No: ..... Email: .....

Clean Sheets: £..... Team Goals: £.....

Player Goals (Please specify name and amount):.....

Other Pledge (Please specify type/name and amount) :.....

I wish to pledge my support for the above amounts in the Shrimpers Trust 2008/09 Season "Quid a Goal" scheme. At the end of the season you will be contacted informing you of the amount your pledge has raised, and then Cheques should be made payable to the "Southend United Supporters Club Trust" for the total amount. If you do not wish your name to appear in Southend United Programmes please tick box

Signature: .....





## A very big thank you to our Annual Sponsors for their continued support.

**Main Club Sponsor**



**Shirtback Sponsor**



**Short Sponsor**



**East Stand Sponsor**



**West Stand Sponsor**



**South Stand Sponsor**



**North Stand Sponsor**



**Family Stand Sponsor**



**Centre of Excellence Sponsor**



**Youth Team Sponsor**



**Programme Sponsor**



**Match Ticket Home Sponsor**



**Match Ticket Away Sponsor**



**Ball Boy Sponsor**



**Matchball Sponsor**



**Junior Members Sponsor**



### Annual Blues Lounge Members 2008/09

Derek Soloman from Designer Living UK, The Ward Family, Ken Field & Guest, Specialist Building Services.

### Annual Platinum Suite Members 2008/09

The Gilligan Family, Alton Garden Centre, Bill Barker, Broadway Estates, Timothy Quinlan, Ron Brown, The Canning Family, Club Kingswood. Coldrooms UK, Cottis House, Cumberland Packaging, Dedman Property, Ray Hems, The Hub London, Steve Richards, Unitruck, Mike Jones, R P Martin, Michael Nelkin, Philip & Lynda Thomas, John Sime, Simpson Reed, Gavin Markscheffel, Joe Gibbs & David Loman, John & Jane Morley.

### Annual Executive Suite Holders 2008/09

Strathmore Care, Network Europe Group, Insure & Go, Albon Engineering, Essex Auto Group, EDP Group, Scottish & Newcastle Brewers, The Blues Consortium, Brockwell & Son.

If your wish to become an annual Blues sponsor or would like more information please contact the Commercial Department on 01702 304133.

Only 10 days on from our victory in the First Round against Telford and it's back to cup action this afternoon as we welcome our visitors Luton Town.

The Hatters have been regular opponents of the Blues over the last few years and last season it was honours even as both teams earned wins on home soil.

Back in 2001 the two sides met in the first round of the competition and it was the Blues who came out on top in a thrilling encounter winning by the odd goal in five, a similar match and result would be most welcome.

The reward for the winners of this tie will be a place in the third round and the prospect of a money spinning tie against higher opposition, therefore the prize is a massive one. Hopefully, the lads can rise to the challenge and see us into the draw which takes place on Sunday afternoon.

After today's game we start to turn our attentions to the busy Christmas period however, unusually we only have two home games in December against Huddersfield in two weeks and Northampton on Boxing Day.

Anyone looking for hospitality for either of those games should contact the commercial department. The Boxing Day game is always a special one in the football calendar and what better way to enjoy the festivities than to bring the family to Roots Hall - a great way to clear the cobwebs after Christmas Day.

So it's all to play for this afternoon, enjoy the game and make plenty of noise as usual, it does make a difference.

Up The Blues!

Tisha Brett, Corporate Sales Manager



## Stand Out From The Crowd!

A very big thank you goes out to all our hospitality guests today. We hope you enjoy the match and thank you all for your support.

### Match Sponsors

- Trimark UK Limited

### Executive Suite

- A & W Bentall & Guests
- Trimark UK Limited & Guests
- PNJ Decorators & Guests
- Ron Wallace & Guests
- Robert Allen & Guests

### Blues Lounge

- Gary Grace & Guest
- Andy Smith & Guest
- Martin Sheern & Guest
- Andy & Lindy Deanus
- Margaret Figg & Guest

### Hospitality Available for the Huddersfield Town game on 13th December...

#### Executive Suites

The Executive Suites at Southend United run along the fantastic Echo East Stand and give way to the best views of the pitch in the stadium; with catering for upto 10 people in each box it is a great way to watch The Blues with your friends and colleagues.

£695 + vat

#### Package Includes:

- Main Car Park Pass
- Hospitality for up to 10 guests
- Pre-Match Meal
- Half-time Refreshments
- Complimentary Tea and Coffee
- Hostess Service
- Complimentary beer, wine & soft drinks (limited)\*
- In Box Betting Facility
- Sky and Terrestrial TV
- Matchday Programmes

#### Platinum Suite

If being pampered for a few hours is what you need then look no further than an afternoon or evening watching your favourite game and having fine food in our exclusive, prestigious, comfy and stylish Platinum Suite with seats in the much sort after Directors Enclosure. Frighteningly popular you will need to book early.

£80 + vat

#### Package Includes:

- Directors Box Seats
  - Three-course Lunch/Dinner
  - Complimentary Matchday Programmes
  - Half-time Refreshments
  - Waitress 'Silver Service'
  - Stadium Car parking space
  - Complimentary Tea and Coffee
  - Name featured in Matchday Programme
  - Specialised Betting Facility
  - Blues TV, including action replays
  - Sky and Terrestrial TV
- Call the Commercial Department on 01702 304133 to reserve your space

The Platinum Suite is also available for those wishing not to dine

£60 + vat

#### Package Includes:

- Directors Box Seats
- Complimentary Matchday Programmes
- Stadium Car parking space
- Complimentary Tea and Coffee
- Name featured in Matchday Programme
- Specialised Betting Facility
- Blues TV, including action replays
- Sky and Terrestrial TV

#### Blues Lounge

Warm, cosy and friendly atmosphere, what a way to enjoy the company of your family, friends and colleagues. Win a signed football in our Blues Lounge quiz which is hosted by our very own Blues legend David Crown!

£65 + vat per person

#### Package Includes:

- Three Course Carvery Style Luncheon
- Two complimentary glasses of wine
- Stadium Car Park Pass
- Matchday Programme for each guest
- Seats within the ever popular Blues Lounge Paddock (East Stand)
- Half-time Refreshments
- Pay-Bar with pre-bookable facilities for half-time
- An opportunity to meet the squad after the match
- Giant TV Screen with Sky TV
- LIVE Match Action Replays with Blues TV

**Season Ticket Holders Offer!**  
**Blues Lounge — Just £45 plus VAT for this match.**  
Only a few places left so please book early.

#### Sponsorship

Match Sponsorship Packages are not only an ideal way to raise the profile of your company brand but also a great way to treat that someone special on their birthday or at Christmas with a VIP Reception, pre-match three course meal, hospitality for up to ten guests and the wonderful opportunity to choose and have your photograph taken with the Man of the Match!

#### Matchday Sponsorship

£1,750 + vat (Category A Games)  
£1,500 + vat (Category B Games)

Call Corporate Sales Manager Tisha in the Commercial Department on 01702 304133.

A very big thank you goes out to all our hospitality guests today. We hope you enjoy the match and thank you all for your kind support.

**Combining Business with Passion...**



Sponsored by



University of Essex

## Festival Time

Last weekend, we hosted an Under-13 Development Festival at Boots & Laces Training Ground which was, despite the cold, a really good day's football. The conduct of all the teams and parents was excellent and the standard of football was good to watch. I must thank Martin at Doverhouse Lions, Clasford Stirling at Broadwater United, Phil Sackey at Thurrock, Gary Hoy at Letchworth City Eagles, John McGinn at Bexley Repts and Morgan La Force at Bishops Stortford for attending and making it an enjoyable Festival for all the players. Simon Cox and our Under 13's completed the teams.

### Under 8's

A group of our Under 8's are now training twice a week, once with the Under 8's and once with the Under 9's. We have a good group, which is continually changing with new additions frequently attending sessions and games. In the next few weeks, some of our Under 8's will be playing in three games. The first being an Internal fixture, before playing Luton Town and then taking part in an indoor tournament with a number of other Football League clubs.

In addition to this, throughout the month of December we will also be hosting an Under 7's festival and a Development Training day for all of our shadow Squads and Development Centre's.

### Trials

We have trials coming up for our Development Centre in Romford.



The Centre takes place on a Monday night at The Coopers Coburn School. The Centre runs for Under 9's, Under 10's and Under 11's. Anyone interested in trials should contact Ian Fleming Centre Co-ordinator on 07974 143760.

We will be holding our own trial days in the February Half Term for players aged Under 6 - Under 14's on Wednesday 18th February 2008. Any players interested should email: [mark.bonner@southend-united.co.uk](mailto:mark.bonner@southend-united.co.uk).

### Winter Break

Having begun our season way back in July, we are close to our winter break, but with three weekend games remaining, two weeks training, development festivals, development days, indoor tournaments, trials and player & parent report evenings, the final few weeks will be as productive as ever.

The New Year promises to be a really exciting time with seven teams travelling to Germany or Austria in January to take part in indoor tournaments alongside the cream of Europe. We will keep you informed of our progress.

Mark Bonner  
Recruitment Officer



## Centre of Excellence Player Sponsors

### Under-16:

Jack Paxman  
Julian Okai  
Courts Advertising  
Essex of Commerce Denise Rossiter

### Under-15:

Louis Baucutt  
Ryan Auger  
Mitchell Seymour  
Aitch Care Homes  
S.J. Plastering  
High Speed Piercing

### Under-14:

Jack Edwards  
Dan Ferrigno  
Protect Electric Ltd  
FTG Ltd

### Under-13:

Anthony Madden  
Charlie Barlow  
Liam Conley  
Connor Hammond  
Ted Smith  
Moss and Coleman Solicitors  
Hatfull Bros  
Digital Pie Ltd  
Grays Thermal Insulation Eng  
North City Autos Chingford Ltd

### Under-12:

Tommy Metcalfe  
Keith Orenuga  
Bradley Patterson  
Alex Stephenson  
Tuink  
Danish Sports Travel  
Maurine's Pie and Mash Shop  
IFS. Choice Homes. AAB, Lounge Suite Centre

### Under-11:

Joe Bedford  
Sonny Coutts  
Danny Gould  
Adam Topley  
GBM Support Services Ltd  
Thermoshield Windows. Vital Signs, Digital Ltd  
H.T. Squibb. L.A.P.D  
Kad Environmental Consultancy Ltd.  
Geoff Keane Carpets. Exclusive Cleaners  
Ski Chalets Morzine Limited, Roman Kitchens

### James Macree

Billy Harris  
Harry Larke  
Tommy Worsfold  
Henry Larke

### Under-10:

Joe Carter  
Jack Church  
Harry Mole  
Tony's Taxi Service  
R. Transport  
Executive Vehicle Solutions Limited

### Under-9:

Luca Collins  
Village Stationary

If you are interested in sponsoring a player, please contact Luke Hobbs on 01702 304123 or email: [luke.hobbs@southend-united.co.uk](mailto:luke.hobbs@southend-united.co.uk)



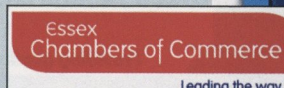
## SHRIMPERS TRUST

The Shrimpers Trust are the official and exclusive sponsors of the Centre of Excellence tour programme season 2008/09.

## Want to help?

If you are interested in sponsoring the Centre of Excellence please contact Luke Hobbs on 01702 304123 or email: [luke.hobbs@southend-united.co.uk](mailto:luke.hobbs@southend-united.co.uk)

in association with



# We're Backing the Blues

## First for Shrimpers? News & Views

To get the  
Echo delivered to  
your door just call:

**FREEPHONE:  
0800 9530227**

[www.echo-news.co.uk](http://www.echo-news.co.uk)

## JOSEPH R. LAMB

Independent Financial Advisers Ltd

Support us to support Southend United youth development

- Investing for capital growth?
- Would like to plan for your retirement?
- At retirement and confused?
- Need to protect your family or business?
- Looking for a better mortgage?

Chillingstone House, 26 Eastwood Road, Rayleigh SS6 7JQ

Tel: 01268 749880 Email: [ifa@josephlamb.co.uk](mailto:ifa@josephlamb.co.uk) Web: [www.josephlamb.com](http://www.josephlamb.com)



Providing quality financial advice to individuals, families and businesses for over 38 years

Authorised and regulated by the Financial services Authority

## blues4kidscorner

SBS  
SPECIALIST BUILDING SERVICES  
DEVELOPERS OF FINE HOMES

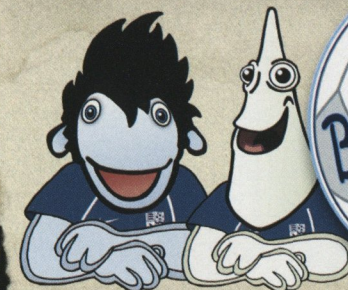
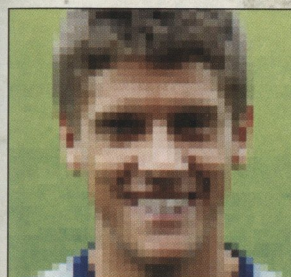
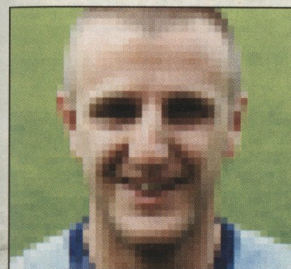


### Happy Birthday!

To all the Mini and Junior Blues  
that have birthdays in November!

### Who Am I?

WHICH SOUTHEND PLAYERS ARE THESE?



### Junior Membership Is Free!

Remember, Junior Blues (8-16 years) and Mini Blues (0-7yrs) Memberships are FREE of charge for the 2008/09 Season and once you have signed up you are a member until you turn 16-years-old! Receiving many benefits including Goody-bag, Membership Card, Birthday Card, 10% off kid's parties, exclusive competitions and much more... To sign up, just call 01702 304147, or email: [marketing@southend-united.co.uk](mailto:marketing@southend-united.co.uk).

### Quiz

Answers will appear in the Huddersfield Town programme.

1. Who is Southend's leading goalscorer this season?
2. Which Southend player wears the number 21 shirt?
3. How old is Southend left back Johnny Herd?
4. Which two players recently returned to Reading after a loan spell at Roots Hall?
5. Which Premier League club is new recruit Rob Milsom on loan from?
6. What round of the FA Cup did Southend reach last season?
7. What nationality is Southend striker Francis Laurent?

Peter Clarke and Alex Revell

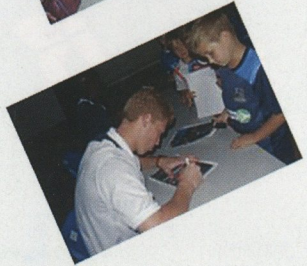
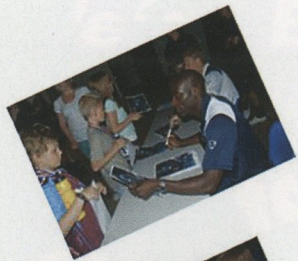
Who Am I?



## South East Essex College



[www.southendunited.co.uk](http://www.southendunited.co.uk)



**SOUTHEND UNITED**

COMMUNITY AND  
EDUCATIONAL TRUST



Monday 22nd December - Tuesday 23rd December



# CHRISTMAS HALF TERM FUN



# WITH FIRST TEAM AUTOGRAPH SESSION



CHARTER STANDARD  
HOLIDAY COURSE

Call 01702 341351 for more information

- Children booked on will receive a free ticket voucher for a Southend United League One Match  
TERMS AND CONDITIONS APPLY
- 10 % Discount on overall price when any child books on a course with brother or sister

THE ONLY OFFICIAL SOUTHEND UNITED SOCCER SCHOOLS

aroundtheclub



[www.southendunited.co.uk](http://www.southendunited.co.uk)

As the first face you are likely to see when coming to Roots Hall, Michelle Williams' role at Southend United cannot be underestimated.

Receptionist Michelle has a number of different tasks to undertake each day, but through greeting guests and visitors to the Club comes with it the biggest trait needed on match day, when meeting the public eye.

Affectionately known as 'The Face of Southend', although rumour has it she coined the phrase herself, Michelle certainly has a collective list of duties to carry out at the Club, having undertaken two spells at Southend.

Partaking in a new venture - running a pub in between with her husband Richard and two children Rachel and Lucy - Michelle has certainly become well-versed when it comes to multitasking in a number of different jobs throughout Southend United - in the Club Shop, Ticket Office and Commercial Department.

Michelle said: "I am the first point of call when people are visiting the Club.

"My role means I meet and greet visitors, book meeting rooms, order stationery, organise work experience students, deal with incoming and outgoing post, work on matchday on reception to greet all home and away directors for the day and any other ad hoc duties that may arise.

"I open the post and make sure that all meetings are confirmed to the lovely girls in Bars & Catering, Linda and Sharon. I also answer the very busy switchboard, greet visitors making sure they sign in and provide them with visitor passes, do typing for Ray Davy, who is our Community Officer, and generally help any of my colleagues with the various things that may be required throughout the day.

"When I first started here I worked on Reception and I worked closely with the Club Secretary, Helen Norbury as her assistant. I then worked on matchday in the Blues Lounge, as a hostess and I have also worked a little in the Commercial Department.

"When I returned from the pub in Warwickshire, Helen was on maternity

leave, Lis Orford was the assistant Club Secretary and I then worked with her. I have even worked in the Ticket Office, during busy periods, such as when we were promoted to the Championship, as the amount of people that became season ticket holders at that time was amazing. I helped show people the stadium to see which seat they would like.

"The time I will never forget is when we had people camping outside the Ticket Office overnight to obtain Manchester United tickets, I have never seen it so busy. We were so rushed off our feet that I was starting to lose my voice. Some say it was so lovely and peaceful!"

An original two and a half year spell with the Blues has now been surpassed by the three-year mark in her second stint back on the Essex coastline and the enjoyment she gains from working here was an easy lure to come back.

She said: "I must enjoy working here at Southend United for me to leave and come back again!

"It has such a friendly family feel about the place and we quite often have social evenings outside of the Club, to let our hair down from time to time. I have made so many friends throughout my time here, whether they are colleagues or customers."

The chance to meet a host of stars is always a perk of the job, but the office environment gives Michelle just as much joy with the people she works alongside - although she is quick off the mark to list the famous faces she has met during her time at the Club.

"I have met some very famous people such as Trevor Brooking, Razor Ruddock, Phil Jupitus, Terry Alderton, Lisa Scott-Lee, Chesney Hawkes and last, but by no means least, Chico," she said.

"There are probably many more to remember!

"I have also worked with so many lovely people here. I work very closely with Ray Davy; in fact, if I wanted to be big headed, you could call me his PA! He does a lot of work with charitable organisations who contact him a great deal, always wanting a little more from the Club.

"I think if Ray had his way he would want to help everyone, but sometimes this is just not possible."



A five week programme designed to help increase health and physical activity levels, whilst providing individuals with information and knowledge they need in order to maintain a healthy lifestyle.

The programme is aimed at the over 40's, who for whatever reason may have veered down that unhealthy path that can be so very tempting.

Southend United Community and

Education Trust need sponsors to keep this programme going and are offering in return an extensive package to increase awareness of your company brand here at Roots Hall.

With over 8,000 supporters coming through our doors every other week and sometimes twice a week, there is no better place in Southend to get your company name seen.

Package includes:

- One half page advertisement in a matchday programme of your choice (worth £300 + vat)

- One email marketing campaign for your company from our database (worth £500 + vat)

- Two tickets to come and enjoy a match and a meal in our exclusive Blues Lounge (worth £130 + vat)

- Your company name mentioned in the press, in our programme and on our website every time the programme is given coverage.

Please call Tisha on 01702 304133 to help fund this programme.

# BLUES BODYCARE FIT FOR LIFE



## and if you know your history...

SBS  
SPECIALIST BUILDING SERVICES  
DEVELOPERS OF FINE HOMES

This week in the history of Southend United with Nick Hart...

### 1947

United's second season following the end of the Second World War saw a successful league campaign with Harry Warren's side finishing their Division Three South campaign in 9th place. However, this weekend 61 years ago saw the Blues go out of the FA Cup at the first hurdle. The draw had paired them with fellow Division Three South side Newport County and despite two goals from Ken Bennett the Welshmen ran out 3-2 winners. The result was all the more disappointing as it came in the middle of a fine run of league results that saw United beaten just twice in 17 games.

### 1957

A Division Three South encounter this weekend in 1957 saw Crystal Palace visit Roots Hall to take on Eddie Parry's Blues' side who after an excellent start to the season followed by a dip in form were again looking like genuine promotion contenders. 10,706 fans were inside the ground for Saturday afternoon game that ended in a 1-1 draw. Errol Crossan scored for Southend in the game that was United's third consecutive 1-1 draw. United finished the season in 7th place meaning a place in the following season's new Third Division as the Fourth Division came into existence. United's points tally of 54 for the 1957-8 season was a record at the time for the club.

### 1987

A season that had started so disastrously for United under new boss Dick Bate was just beginning to turn around 21 years ago. It had not been much fun on the road for Blues' fans with an 8-1 defeat at Gillingham, 6-2 reverse at Notts



County and 7-0 rout at Sunderland but a trip to York City saw United earn their second away win of the season. Goals from Nicky Smith, David Crown and Martin Ling saw United overcome fellow strugglers York and keep the Blues one place above their bottom of the table hosts. 2,225 fans saw the game and thanks to a last day 4-0 home win over Blackpool Southend survived the drop and finished 17th in the table.

### 1997

Following relegation the previous season from what we now know as the Championship the Blues under new boss Alvin Martin (pictured above) looked to consolidate in their new Division Two surroundings. Despite a reasonable start to their league campaign by the time United travelled to

Chesterfield on November 29th 1997 they had slipped to 19th in the table. A 1-0 reverse at Saltergate in front of 3,215 fans did not allay the fears of relegation and the turn of the year saw the Blues go 555 minutes without scoring. Despite a late flurry towards the end of the season no wins in their last seven games consigned the team to a second successive bottom of the table finish and Southend's infamous "custard splat" blue and yellow shirts were never seen again!

"...the Blues under new boss Alvin Martin looked to consolidate in their new Division Two surroundings."



[www.southendunited.co.uk](http://www.southendunited.co.uk)



## Teenage Kickz

Prior to the Southend United game against Oldham Athletic last Saturday there was a pitch-side presentation to celebrate the achievement of Southend United being one of just seven clubs to be chosen in this phase by the Football Foundation, to run the nationally acclaimed Kickz Inclusion project.

Steve Goodsell Chief Executive of the Community Trust commented: "The project has been a great success so far with a high level of active participants in the football sessions and the dance and DJ workshops, with the support of Positive Futures and the YMCA.

"With the help of our Partners we look forward to the challenge of developing the project further. One thing in the pipeline is a Pan-London Kickz League, where we will be able to play matches against other Kickz Projects at Tottenham Hotspur, West Ham Utd and Charlton Athletic. Alternative activities such as Nail Art will be offered in the future as we seek to attract more girls to the Kickz project."

For more information on Southend United Kickz contact Steve Goodsell on 01702 341351 or email [s.goodsell@southendunited-cet.co.uk](mailto:s.goodsell@southendunited-cet.co.uk)

*Pictured:* Jeni Sanders of the Football Foundation presents a cheque for £95,000 to Ron Martin, Chairman of Southend Utd FC, Steve Goodsell, CEO of the Trust, and Blues striker Lee Barnard. Also pictured are John Walker Divisional Commander of Southend Police, Tony Payne, Chair of the Kickz Steering Group and MP David Ames.

children whilst you pick up those last minute bargains?

The famous Blues Soccer School will once again be at Shoeburyness High School, a modern and safe venue for our fun filled activities.

Southend Utd players will be attending on the Monday so make sure you bring your autograph books!

*What to expect?*

- Football, fun and games
- Boys and girls aged between 6 and 14
- All participants receive a special Southend Utd medal
- All coaches fully CRB checked

*Dates*

Monday 22nd and Tuesday 23rd December 2008

*Want to know more?*

For further information or a booking form please call Stuart Fowler on 01702 341351 or email [s.fowler@southendunited-cet.co.uk](mailto:s.fowler@southendunited-cet.co.uk)

Welcome to Roots Hall for this afternoon's FA Cup Second Round tie against Luton Town.

Although the League must take priority there is no mistaking the importance of this game, as the winners have a potential glamour tie against a Premier League club, depending on the draw at Soho Square of course! We wish Steve, Paul and the boys all the best and hope you enjoy your afternoon here at Southend Utd.

*Steve Goodsell*

CEO of Southend Utd Community & Educational Trust

## Goodbye Deano

As you probably know by now Dean Austin has moved on from his post as Blues reserve team manager to

take up the role of Assistant First Team Manager at Watford. Dean was very supportive of the work carried out by the Community Trust, as are Tilly and Paul. We wish Dean every success at Vicarage Road.

## The Southend Radio Christmas Toy Appeal

*(supported by Inchcape Volkswagen Southend)*

Here at the Trust we are big fans of Southend Radio 105.1 and are always happy to support the many good causes they help to promote within the town.



This Christmas, you can help us do something very special.

Southend Radio are collecting presents for local children who are in need, in care, and in need of an extra smile at Christmas.

The Christmas Toy Appeal is underway, and we are asking you to pop an extra gift in your basket when you are our Christmas shopping, and drop it in at one of the following collection points.

- Southend Radio next to Adventure Island
- Asda in Shoeburyness
- The Royals Shopping Centre in Southend



- Morrisons in Hadleigh
- The Castle Point Council Offices on Kiln Road, Thundersley
- Inchcape Volkswagen in Comet Way, Southend

*Thank you in advance for your kind donation. We do ask that you consider the following when donating your gift:*

- Please ensure all presents are brand new.
- Please leave all presents unwrapped, so that we can make sure it goes to an appropriate child.
- Please avoid any food or drink

Southend Borough Council look after youngsters from babies to teenagers, and will inevitably get more presents for smaller children.

Why not donate something for an older child, such as a gift token?

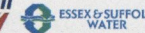
Donations are being taken until Saturday 13th December, at the Festive Family Fun Day in Southend Town Centre, where you can see the Southend Radio Roadshow.

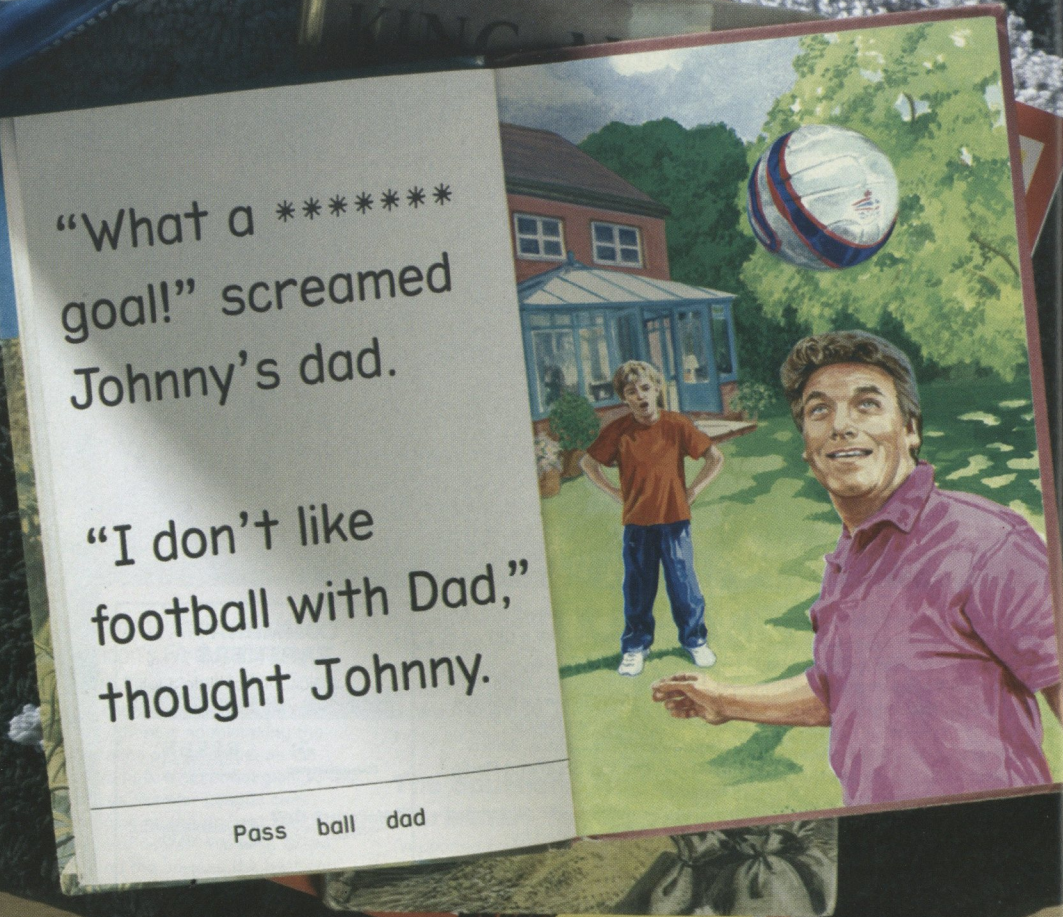
The Southend Radio Christmas Toy Appeal, supported by Inchcape Volkswagen, Comet Way, Southend - wishing you a very merry Christmas!

## Southend United Christmas Soccer School

If you are planning to go Christmas shopping on the 22nd or 23rd December why not let us look after your football loving

## COMMUNITY PARTNERS





“What a \*\*\*\*\* goal!” screamed Johnny’s dad.

“I don’t like football with Dad,” thought Johnny.

Pass ball dad

**BAD LANGUAGE HAS NO PLACE IN FAMILY ACTIVITIES. PLEASE RESPECT YOUR FELLOW SUPPORTERS IN OUR FAMILY AREA.**



## Fun and Games

Greg Paulson, a Year 7 student from a local Secondary School, has recently finished Southend United's Playing for Success programme at the Extra Time Study Support Centre.

We thought it would be fun to get Greg's thoughts on all his visits to the Centre and share his experiences in the matchday programme.

“I had a great time coming to the Centre. My favourite part was probably the tour of the stadium and seeing where the players got ready for the match. In the classroom my favourite activities were 'Dragons' Den' and 'Shipwrecked'. In Dragons' Den we had to make and sell a product to the Dragons. I was really nervous standing up in front of everyone, but I think it really helped my confidence. When we did 'Shipwrecked' we had to imagine that we were on a desert island and could only have 10 items. I had fun arguing with my friends over what we should and shouldn't take, but it meant that we learnt to work better as a



group. We even got to use the Nintendo Wii's and do the Southend United Big Brain Challenge. That was really hard!”

Many of the students who are selected by their schools to come to the Centre have 'improve my confidence' as one of their targets. We asked Greg if he felt that the work he'd done at the centre had made any difference back at school. “Definitely! My maths and science has got much better and I am a lot more confident in English now. It's not just being more confident in my work though, using Education City and some other computer

programs helped me understand things better and I found it has made work back at school a lot easier to understand.”

In fact, Greg has now moved from 'middle band' to 'success band' in both maths and English, with the school citing the Study Support Centre as a major influence.

We asked Greg what he would say to any Year 7 pupil thinking about starting Playing for Success. “Just do it. It will really help you at school. You'll do a lot better in the lessons that you're not doing so well at and to learn in the football stadium makes it extra special.”

Dan Ager

Playing for Success Coordinator



### Study Support Centre Contact Details

email: [extratime@southend-united.co.uk](mailto:extratime@southend-united.co.uk)  
Telephone: 01702 304102

[extra time] @sufo  
study support centre







Still fancy your pie & pint?

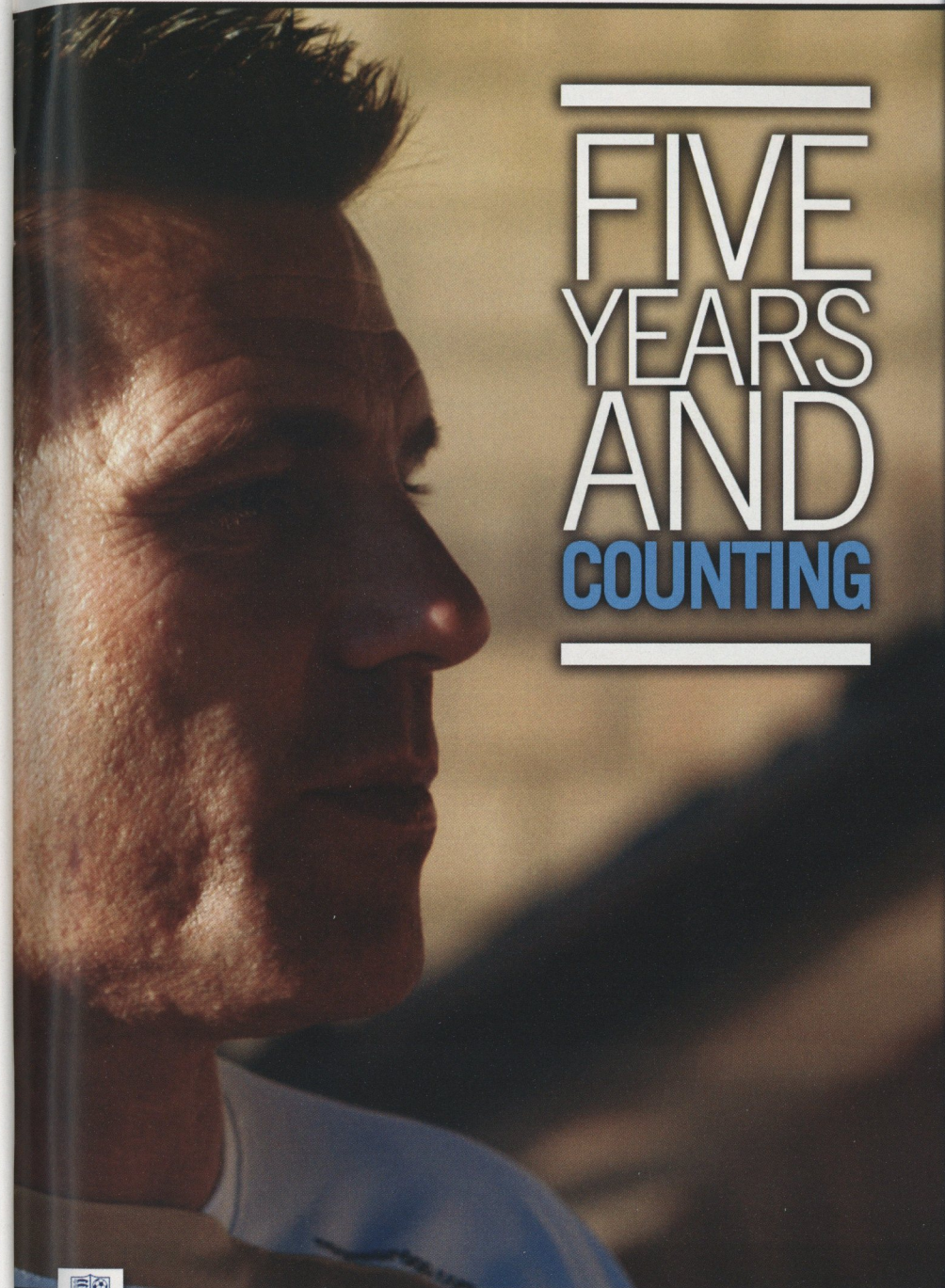
## The Blues Holiday Club

You save! - With a guaranteed discount off a wide range of UK & overseas holidays.  
We win! - With a royalty payment to the club on every booking made.

**Stores nationwide • [southendunited.thomascooksport.com](http://southendunited.thomascooksport.com)**

No membership or proof of being a supporter required. Supporters receive a guaranteed discount on package holidays operated by a Thomas Cook tour operator and on holidays operated by selected non-Thomas Cook tour operators. Applies to summer or winter package holidays, city breaks, cruises, worldwide travel and UK weekend breaks/hotel-only. Discount can vary - please ask for details at time of booking. Bookings must be made at a Thomas Cook or Going Places store, by calling 0870 751 9954 or online at [southendunited.thomascooksport.com](http://southendunited.thomascooksport.com). Calls are charged at local rate plus network extras (price correct at time of printing). Discount cannot be combined with any other discount or offer. All holidays are subject to availability and relevant tour operator's booking conditions. Thomas Cook Sport is a trading name of Thomas Cook Retail Ltd, ABTA 18601.

stevetilson



FIVE YEARS AND COUNTING



[www.southendunited.co.uk](http://www.southendunited.co.uk)



It is perhaps ironic that having recently celebrated five years in charge of Southend United, Steve Tilson admitted the thought of being a manager was one that hadn't initially crossed his mind...

On reflection, he is probably glad he did and having chalked up an impressive milestone at Roots Hall, there is little doubt it has been one covered in success since he was first appointed on a full time basis back on November 20th 2003.

At the time of the departure of Steve Wignall and then caretaker chief David Webb, Tilson was working in the club's youth department, but the promotion into the hot seat to take control of the first team was the beginning of something special.

The statistics speak for themselves, Tilson is now the eighth longest serving manager working in this country today.

"I hadn't really thought about becoming a manager too much," he said.

"At the time, being the youth coach here and not being in that role for too long, I was really getting familiar with that.

"The manager's job then fell in my lap and I didn't have time to think. I got the caretaker's job and things went well and I found myself getting the job permanently.

"It's mad how quickly the five years have gone and it's funny how it's all worked out.

"To start with, I only thought I was going to be doing it for a couple of weeks. There was a lot of talk about Ian Atkins or Stan Collymore coming in and I was just in charge before someone else took control.

"However, things went well and we just kept on going.

"There are only 92 jobs in the football league and luckily enough I have come through.

"Sometimes you only get one chance and I'd like to think I have taken it."

Tilson's tally sheet contains

plenty of memorable highs, having led Southend to two promotions towards the Championship, a play-off semi-final last season, two Football League Trophy finals and of course, a Carling Cup victory over Manchester United.

That is a far cry from the scenario from which Tilson, along with his assistant Paul Brush, originally oversaw in 2003, when they took over a team struggling in League Two and facing relegation into non-league football.

To say that Tilson was able to turn Southend's fortunes around since then would be a huge understatement and the mere fact that just three years later the Blues would go on to ply their trade in the Championship, was proof of such a dramatic turnaround.

He admitted: "The five years has gone pretty quick, I've got to be honest, but I've enjoyed it and we've had some decent success over the five years.

"From where we were five years ago staring the Conference in the face, to where we are now, I think just over that period of time that there is no particular high for me.

"Obviously the back-to-back promotions and getting into the play-offs last season was a fantastic achievement by the players, after bouncing back from relegation.

"The players have all been fantastic and we've had some great moments.

"I just think throughout, coming from where we were and where we are now, does show how far this football club has come and that's just down to a lot of hard work from everyone at the club.

"The relegation from the Championship was the worst

feeling I've had, but even then the lads were great and really gave it a go in what is a massive, massive league - thankfully, there haven't been too many low points.

"I've really enjoyed my time as manager here and hopefully, we can push on."

Tilson was a fans' favourite as a player, making a total of 275 appearances and continued his love affair with the club when he took over as manager.

In fact, Tilson has become just the seventh Southend manager in the club's history to have enjoyed five years at the helm, but alongside the many highs comes the more unwelcome trait in the game of stress!

But with the New Stadium on the horizon and the swift desire to get back into the Championship as soon as possible, you can bet Tilson will be striving for even more success to further cap his reign in charge as manager.

"It's certainly a stressful job; there is no doubt about that," said Tilson.

"It has long hours and people will never realise just how much pressure there is unless they were doing it.

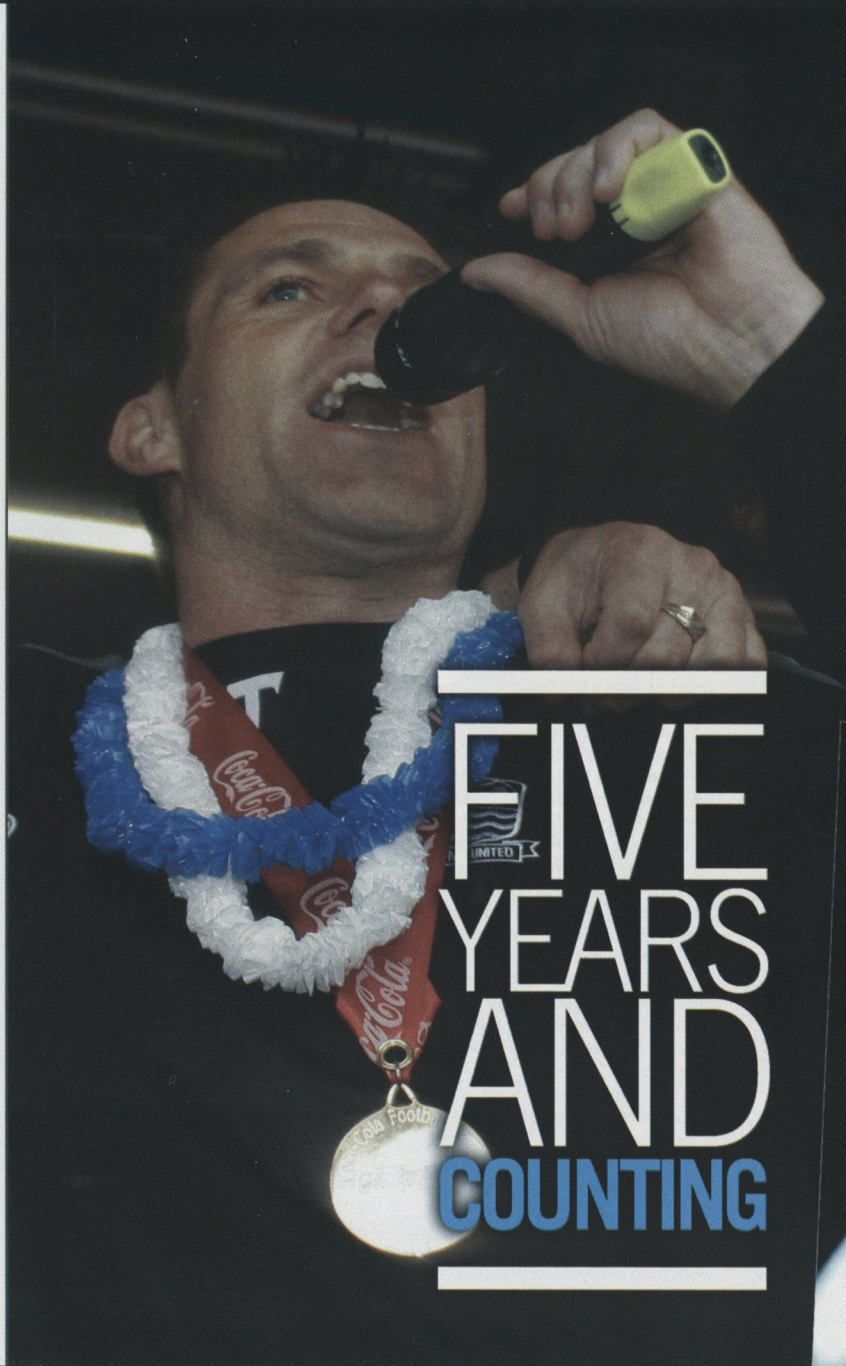
"Every day in training you are planning and trying to keep your players happy.

"And on the back of that, on a Saturday and a Tuesday, you are trying to win games each week.

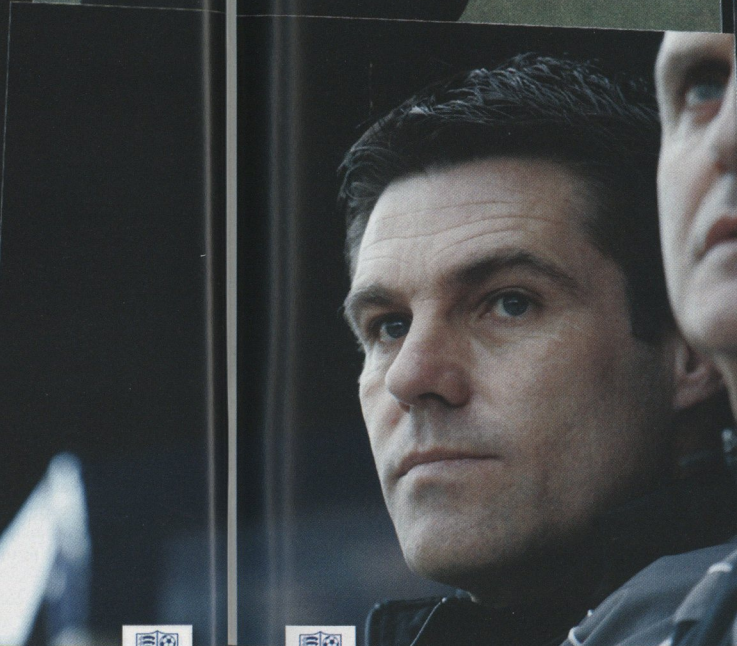
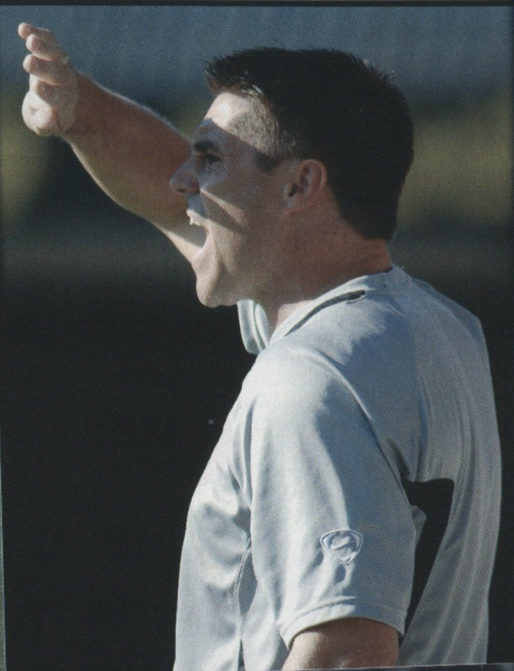
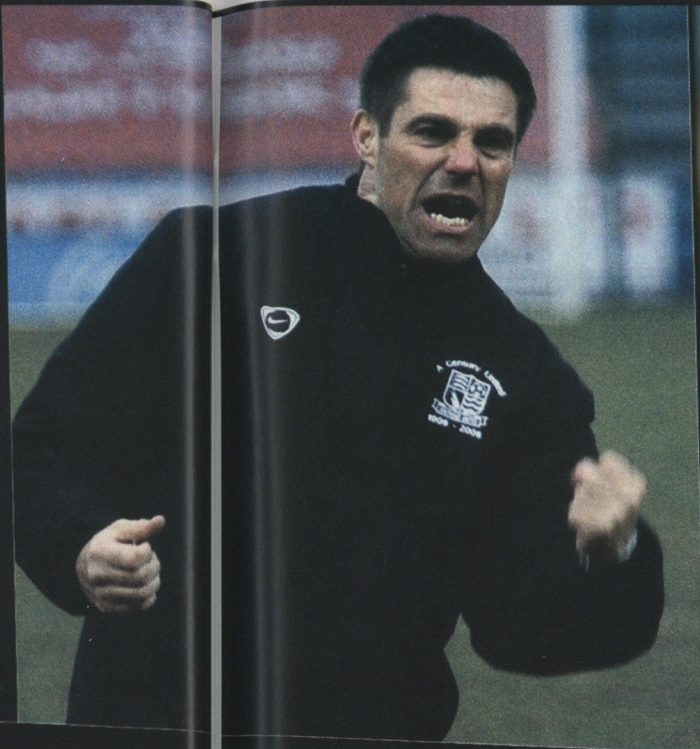
"As much as I have enjoyed it and we have had a fantastic five years, it has been intense.

"We are certainly looking to get back into the Championship; that is our target.

"Getting the new stadium will give us the impetus we need to go forward and I think once that happens, we can really push on again."



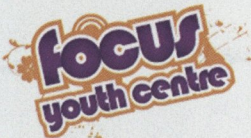
FIVE YEARS AND COUNTING



Aged 13-19?  
Why not come along to  
your local Connexions



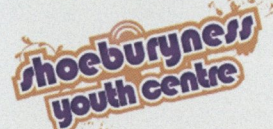
1-3 Cluny Square  
Southend | SS2 4AF  
Tel: 01702 463927



Short Street  
Southend | SS2 5BY  
Tel: 01702 464315

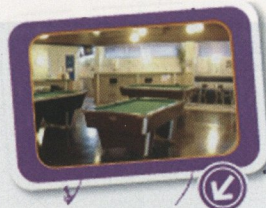


Elm Road  
Leigh-on-Sea | SS9 1SP  
Tel: 01702 478426



Delaware Road  
Shoeburyness | SS3 9NS  
Tel: 01702 293780

To find out where your  
local Connexions centre  
is call 01702 420290



Connexions can  
support you with...

- Life Issues
- Volunteering
- Relationships
- Money
- Careers
- Leisure
- Health
- Jobs
- and more!



connexions

# Matchday Sponsorship



Now that we are well into the season and the Blues are heading in the right direction, why not get involved with Southend United by sponsoring a match?

Matchday Sponsorship is our premier matchday package and there is no better way to impress your business partners than to entertain them in our first class

facilities at Southend United Football Club, raising your company brand profile to over 8,000 Blues' fans inside Roots Hall and many more through our matchday programme.

The experience of sponsoring a match at Southend United is a lasting one for all of your guests. The fact that so many of our previous matchday sponsors return year after year is a testament to the service provided by the Club.

The full Matchday Sponsorship package is as follows:-

- Three Stadium Car Park Passes
- An executive suite for 10 guests
- Pre Match Hot Food
- Refreshments at half time
- Complimentary beer, wine & soft drinks
- Complimentary matchday programmes
- Sky and terrestrial TV incorporating Blues TV
- Full page colour advertisement in the matchday programme
- Company logo on matchday programme
- Scoreboard and Tannoy announcements
- Selection and presentation of Man of the Match award
- Photograph with man of the match

**The cost of this prestigious package is only £1500 + vat.**

For available matches or to book please call the Commercial Department on 01702 304133.





## Dean Austin moves to Watford

Southend United reserve team boss Dean Austin joined Watford Football Club on Monday.

Austin, 38, has moved today to become the Championship club's new assistant manager, as part of new Hornets boss Brendan Rodgers backroom team.

Watford unveiled Rodgers as their new manager after sacking Aidy Boothroyd earlier this month.

Former Blues' full-back Austin rejoined the club 18-months ago, as reserve team manager and chief scout following an unsuccessful spell as Farnborough Town manager.

During his time as second string boss, he guided the Blues' reserve side to a top three finish last season, as well as securing the Essex Senior Cup for the first time since 1997.

United's reserve side are currently second in the Totesport.com East Division.

Austin's association with Southend United started in 1990, when he arrived in Essex from non-league side St. Albans under David Webb.

He went on to spend two years at Roots Hall as a player between 1990 and 1992, going on to rack up over 100 appearances before making a £375,000 move to Tottenham Hotspur.

"This is a place close to my heart," Austin told southendunited.co.uk after taking his final coaching session with Southend.

"I was here as a player 18 years ago and enjoyed some good times. I have thoroughly enjoyed my second spell here.

"But the opportunity was just too good to turn down at Watford, as it is a chance to improve myself at a good football club."

Southend United will now start the process to appoint a successor to Austin's.

Everybody at Southend United wishes Dean all the best for the future.

## Right On Time!

Win a signed ball with Blues Insider.

For those of you who may not be familiar with Blues Insider, the Club's official e-magazine, over the last few weeks we have been giving Blues fans the opportunity to win a signed football, simply by guessing the correct (or nearest to) time of the first goal in the Blues next Saturday match.

Congratulations to Steve Ford who came closest last Saturday with the guess of 54 minutes, one short of the actual time of James Walker's finish.

A special mention goes out to Graham Bridgeman-Clarke whose guess of 52 minutes meant he was in the draw against Steve, with Steve coming out victorious on this occasion.

To enter next week's competition, with another signed ball up for grabs, simply guess in which minute you think the first goal by a Blues player will be scored in next Saturday's game against Leicester City.

If, for the more pessimistic of fans out there, you think that no goal will be scored, then put **NO GOALS** in your email.

In the event of more than one supporter selecting the same minute, then they will go into a hat and the winner will be drawn at random. If no one guesses the correct minute, it will go to the nearest guess.

So if you want to enter for the Leicester fixture, simply email your answer to [marketing@southend-united.co.uk](mailto:marketing@southend-united.co.uk) before 3pm on Saturday to be in with a chance of winning.

However, in order to be in with a chance of winning you must have subscribed to Blues Insider, our free weekly e-magazine. To register simply go to [www.register-southendunited.co.uk](http://www.register-southendunited.co.uk).



## Long Service Award

Dr. Sinah is presented with the Football League's Long Service Award by Southend United boss Steve Tilson at last weekend's League One match against Oldham Athletic following his retirement from his post as Club Doctor at Roots Hall.

# Southend United Club Day

Southend United Football Club is delighted to announce that it is holding a 'Club Day' at Roots Hall for the match against Huddersfield Town on Saturday 13th December.

The event is a bid to create an affinity between the Blues and local Football Clubs and provides local amateur teams with a great opportunity to treat their players, as well as providing a chance to earn some well needed funds!

The Club will issue interested teams (Junior or Senior) with a number of match tickets on a sale or return basis, which they can sell to whoever they choose. For each ticket sold a commission of £5 can be earned.

### SO HOW DO CLUBS TAKE PART?

If you are part of a Club, here's all that you need to do:

- Declare interest and nominate a point of contact.
- Declare how many tickets you feel you could sell.
- You will then be given your tickets on a 'sale or return' basis.
- You sell what tickets you can and return non-sales along with the revenue, (minus your commission) no later than three days prior to the game. Any local Clubs wishing to take up this offer, or would like further information, then please contact Mark Davies on 01702 304132 or email [mark.davies@southend-united.co.uk](mailto:mark.davies@southend-united.co.uk) before Wednesday 3rd December.

## Season Card Holder Offer

Do you Fancy A Change of Scenery?

**Why not try the Southend United Blues Lounge Hospitality Experience.**

Exclusive Price available only to Season Card holders for the Southend United v Huddersfield Town fixture on 13th December.

**Only £45 plus VAT per person (normal price £65 plus VAT)**

This Includes:

- Three course carvery meal with two glasses of wine per person in Blues Lounge
- Car park pass
- Complimentary match programme
- Echo East Stand Seats
- Half time refreshments
- Pay bar facility
- Access to players after the match
- All hosted by Blues Legend David Crown!

This deal is subject to availability and places are expected to go quickly so book now by calling Tisha on 01702 304133.



**50/50 DRAW WINNERS FROM OLDHAM ATHLETIC**  
 1st Prize (50% of Net Takings)  
 Ticket No: 05953  
 2nd Prize (Two Blues Lounge Hospitality Tickets) - Ticket No: 03046  
 3rd Prize (Signed Southend United Football) - Pink Ticket No: 301  
 Prize winners are asked to claim their prizes at the main reception at the end of the game.



# ARE YOU

## ONLY £2 PER WEEK

ALL PROFITS GO TO THE SOUTHEND UNITED YOUTH DEVELOPMENT ASSOCIATION.

### THREE PRIZES A WEEK INCLUDING:

**FREE HOLIDAY (WORTH £600)**

TRIP FOR TWO ON TEAM COACH AND MATCH TICKET (PRICELESS)

**DIRECTORS BOX SEATS FOR TWO AND HOSPITALITY (WORTH £125 EACH)**

TRIP ON PLANE FOR TWO WITH THE CHAIRMAN AND PLAYERS (PRICELESS)

**TICKETS TO WATCH ENGLAND PLAY AT WEMBLEY FOR TWO\* (PRICELESS)**

**MASCOT SPACE (WORTH £235)**

**EXECUTIVE SUITE AND HOSPITALITY FOR UP TO 10 PEOPLE (WORTH £695)**

**CASH GIVEAWAYS (UP TO £1000)**

**HOLIDAY VOUCHERS (UP TO £200 OFF ANY THOMAS COOK HOLIDAY)**

**SIGNED MEMORABILIA (PRICELESS)**

[WWW.BLUES-LOTTERY.CO.UK](http://WWW.BLUES-LOTTERY.CO.UK)

### RECENT WINNERS

WEEK 16 - NOVEMBER 22ND

**FIRST PRIZE**

JACQUELINE SMITH - 163  
(SIGNED SUFC SHIRT)

**SECOND PRIZE**

DAVID TURNER - 240  
(SIGNED SUFC BALL)

**THIRD PRIZE**

CHRIS STONEHAM - 228  
(SIGNED SUFC PHOTO)

\*SUBJECT TO FA TICKETING GUIDELINES

## fanfocus

Name? Robert Craven  
Age? 25  
Where are you from in Essex?  
Prittlewell

How long have you supported Southend United?  
My first match was a 2-1 defeat to Tranmere Rovers in March 1993.

How did you get into supporting Southend?  
That first match was part of a school trip, but I didn't really start seriously going home and away until I left South Essex for University in Colchester. I suppose it was just a case of feeling an affinity to my hometown.

Do you remember your first game watching The Blues?  
Yes, I remember quite a bit of it. I was in the West Stand and I recall that Andy Ansah scored our goal. I also remember the crowd chanting his name afterwards.

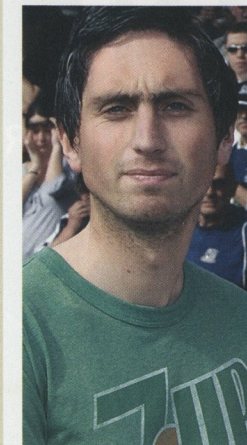
Who is your favourite Southend player and why?  
I don't know whether I have a real favourite player over the time. Obviously, the individuals that helped us to win successive promotions will always be remembered fondly, but I will be really pleased when our current group of youth-teamers start to force their way into the first team.

Since Ricky Duncan came back to the club, I've been fortunate enough through my work with the Shrimpers Trust to speak regularly with Ricky and his squad and it will be great if someone like Franck Moussa or Stuart O'Keefe can become a regular member of the first team.

What are your greatest memories?  
I think as one of the 89 Southend supporters at Swansea City's old Vetch Field ground when Mark Warren scored to put us 3-1 up with only eight men on the pitch, I can count myself very fortunate to have seen a unique piece of the club's history. For a single moment, occasions like Freddy Eastwood's free kick against Manchester United or Wayne Gray's winner to seal the League One title at home to Bristol City are times when Roots Hall has really been rocking and you feel part of something special.

What is the finest goal you have seen scored at Roots Hall?  
Drewe Broughton's strike against Colchester United in the area final of the LDV Vans Trophy to seal the club's place in a national Cup final for the first time in its history - not so much for the quality of the strike, but for all that had gone before it. I seem to remember Drewe had missed a hatful of chances that night and you didn't think it was going to be our night, but when he netted with Sam Stockley lying 'injured' (he soon got up to remonstrate with the referee after the ball flew into the goal) and playing him onside, that was fantastic.

If the club could sign any player, who would you like to see?  
Being close to realistic, if we could come to an agreement with either Adam Federici or Lee Sawyer from our recent loan batch, then that would be superb. More idealistically, a really commanding centre-half like a fully fit Ledley King or Jonathan Woodgate would complement either Adam Barrett or Peter Clarke.



Do you have any superstitions when coming to watch Southend?  
I've tried everything - wearing a particular replica shirt, avoiding any replica kits, walking on a certain side of the road, leaving at precisely the same time, eating the same food before a match - and I can tell you that nothing works! It doesn't stop you trying it again, though!



[www.southendunited.co.uk](http://www.southendunited.co.uk)

# WET IS DRY™

100% WATERPROOF & 100% BREATHABLE



## THE NEW HI-TEC V-LITE ALTITUDE ULTRA WP/ WITH HYDRO MANAGEMENT NANO TECHNOLOGY

A revolutionary plasma based technology that enhances every fibre of material allowing the boot to stay completely waterproof and breathable.

ANOTHER INDUSTRY FIRST FROM HI-TEC



WATERPROOF



HYDROPHOBIC



BREATHABLE



LIGHTWEIGHT



EASY CLEANER



ENVIRONMENT FRIENDLY

Discover more at [www.wetisdry.com](http://www.wetisdry.com)

The trade mark and patents (both granted and pending) for ion-mask are owned by P21 Ltd.

**HI-TEC** FEATURING **ion-mask**

chrisphillips

SBS  
SPECIALIST BUILDING SERVICES  
DEVELOPERS OF FINE HOMES



## The Big Freeze

After white-water rafting while on my brother in law's stag do in Edinburgh early one morning last March, I promised to never moan about being cold ever again.

This was as freezing as freezing could be and meant I couldn't actually move for several minutes after we had finished.

Sadly it was the same at Cheltenham Town on Tuesday.

Now many people are misguided in thinking that the press box is warmer than anywhere else inside the ground.

Well let me put the record straight - it isn't!

At Whaddon Road I had on three hats, two t-shirts, a jumper, a coat plus trousers and trousers and still it was a struggle to exert enough pressure on my laptop keyboard.

It was therefore probably just as well there wasn't too much to write about as we were finally held to a scoreless shut-out in the league for the first time since Boxing Day 2006.

Hopefully, it will be warmer on and off the pitch this afternoon and we can start to convert more of the chances that are coming our way.

That hasn't been the case in the last two outings and we are now about to enter a crucial stage of the season.

During December the fixtures will be coming thick and fast and, maybe even more importantly, the re-opening of the transfer window takes place.

And that is when the destiny of our season could well be decided.

For while the loan signings have been superb for us, they remain a short term solution to long term problems.



Permanent signings are now needed instead, so we can bring more continuity back to the team.

That has been a huge factor in our success over the last few seasons and is certainly something we need to get back instead of having to chop and change the team when the latest crop of loan deals expire.

### The Magic of the FA Cup

For many, the FA Cup is not what it used to be.

The immense exposure of the Champions League has reduced the appeal of our own domestic competition in some quarters.

But it certainly hasn't for me and I doubt it has for many other supporters for sides at this level and the majority of those at Roots Hall today.

After all this is a competition which is still capable of conjuring up some fantastic and unexpected stories.

The matches remain impossible to predict and can lead to non-league minnows facing the giants of the game.

That leads to excitement at all stages of the competition, unlike the Champions League, and means the FA Cup will remain just as magical for future generations.

■ For Chris Phillips' views on this afternoon's FA Cup clash with Luton Town visit [www.echo-news.co.uk/theblues](http://www.echo-news.co.uk/theblues) later on today or see Monday's Echo.

"...while the loan signings have been superb for us, they remain a short term solution to long term problems."



[www.southendunited.co.uk](http://www.southendunited.co.uk)

**Steve Tilson**

SPONSORED BY  
**Ewan Tilly & Thomas**



HOME KIT AVAILABLE

AWAY KIT AVAILABLE

**Paul Brush**

SPONSORED BY  
**Mark & Matt Francis**




HOME KIT AVAILABLE

AWAY KIT AVAILABLE

**Steve Mildenhall**

HOME KIT  
**Team Husky - Tehya**



AWAY KIT  
**AVAILABLE**

**Simon Francis**


HOME KIT  
**Team Husky**



AWAY KIT  
**J Ring Roofing**

**Peter Clarke**


HOME KIT  
**Team Husky - Casha & Kia**



AWAY KIT  
**Team Husky**

**Adam Barrett**


HOME KIT  
**Bryan Woodford**



AWAY KIT  
**Jack & Rob Woodford**

**Alan McCormack**

HOME KIT  
**Sheern Transport Services  
Tel: 07919 002156**



AWAY KIT  
**Simon Adams**

**Lee Barnard**


HOME KIT  
**Roger & Verina Weaver**



AWAY KIT  
**Sheern Transport Services  
Tel: 07919 002156**

**James Walker**

HOME KIT  
**Genesis TCC Ltd**



AWAY KIT  
**AVAILABLE**

**Alex Revell**

HOME KIT  
**Kevin Barlow — Blues Lottery Winner**



AWAY KIT  
**Blues Insider**

**Damian Scannell**


HOME KIT  
**Team Husky**



AWAY KIT  
**AVAILABLE**

**Franck Moussa**

HOME KIT  
**SUFC Exiles**



AWAY KIT  
**AVAILABLE**

**Osei Sankofa**

HOME KIT  
**Team Husky**



AWAY KIT  
**AVAILABLE**

**Johnny Herd**

HOME KIT  
**Johnson School of Motoring Ltd**



AWAY KIT  
**AVAILABLE**

**Francis Laurent**

HOME KIT  
**Paul Smith & Lara McSweeney**



AWAY KIT  
**AVAILABLE**

**Richie Foran**

HOME KIT  
**AVAILABLE**



AWAY KIT  
**AVAILABLE**

**Ian Joyce**

HOME KIT  
**Kink Hair  
01702 464646**



AWAY KIT  
**Team Husky**

**Clark Masters**

HOME KIT  
**Team Husky**



AWAY KIT  
**AVAILABLE**

**Paul Furlong**

HOME KIT  
**www.ShrimperZone.com**



AWAY KIT  
**AVAILABLE**

**Dan Harding**

HOME KIT  
**AVAILABLE**



AWAY KIT  
**AVAILABLE**

**Peggy Lokando**

HOME KIT  
**AVAILABLE**



AWAY KIT  
**AVAILABLE**

**Anthony Grant**

HOME KIT  
**Team Husky**



AWAY KIT  
**AVAILABLE**

**Dougie Freedman**

HOME KIT  
**Sian Lockett**



AWAY KIT  
**Sue Lockett**

**Liam Feeny**

HOME KIT AVAILABLE

AWAY KIT AVAILABLE

**Charles Ademeno**

HOME KIT  
**AVAILABLE**



AWAY KIT  
**AVAILABLE**

**Jamie Forshaw**

SPONSORED BY  
**Lara McSweeney & Paul Smith**



**CREATING LEISURE**

**Junior Stanislas**

HOME KIT AVAILABLE

AWAY KIT AVAILABLE

**Kevin Betsy**

HOME KIT  
**The Hair Academy  
01702 511511**



AWAY KIT  
**www.southendunited.co.uk**


**Ronnie Jones**

SPONSORED BY  
**Lakeside MOT**



**Luke Hobbs**

**Progoalkeeper.com**  
Goalkeeper Gloves, Clothing & Equipment all at great prices.  
[www.progoalkeeper.com](http://www.progoalkeeper.com)



**Jean-Francois Christophe**


HOME KIT  
**Kara Lockett**



AWAY KIT  
**Team Husky**


**Medi Abalimba**

SPONSORED BY  
**Team Husky**



**Tashan Adeyinka**

SPONSORED BY  
**Team Husky**



**CREATING LEISURE**

**Rob Milsom**

HOME KIT  
**AVAILABLE**



AWAY KIT  
**AVAILABLE**

**Stuart O'Keefe**

SPONSORED BY  
**Lara McSweeney & Paul Smith**



**Want To Sponsor?**

If you are interested in sponsoring a Southend United player or for further information, please call the Commercial Department on 01702 304149.





Blues Goalscorers

	LG	FA	LC	JPT	TOT
Lee Barnard	5	0	0	0	5
Dougie Freedman	4	0	0	0	4
Francis Laurent	3	1	0	0	4
Peter Clarke	3	0	0	0	3
Alex Revell	3	0	0	0	3
Lee Sawyer	1	0	0	2	3
Hal Robson-Kanu	2	0	0	0	2
Jean-Francois Christophe	1	1	0	0	2
James Walker	1	1	0	0	2
Adam Barrett	1	0	0	0	1
Kevin Betsy	1	0	0	0	1
Anthony Grant	1	0	0	0	1
Dan Harding	1	0	0	0	1
Simon Francis	0	1	0	0	1

James Walker — two in two



Coca-Cola League One Fixtures

**Last Night**  
 Barrow v Brentford, R2, 19:45  
 Port Vale v Macclesfield, R2, 19:45

**Today**  
 Bournemouth v Blyth Spartans, R2, 17:30  
 Bradford v Leyton Orient, R2, 15:00  
 Chesterfield OFF Drydysden, R2, 15:00  
 Eastwood Town v Wycombe, R2, 15:00  
 Fleetwood Town v Hartlepool, R2, 14:00  
 Forest Green v Rochdale, R2, 15:00  
 Gillingham v Stockport, R2, 15:00  
 Grays Athletic v Carlisle, R1, 13:00  
 Kidderminster v Curzon Ashton, R2, 15:00  
 Leicester v Dag & Red, R2, 15:00  
 Millwall v Aldershot, R2, 15:00  
 Morecambe v Cheltenham, R2, 15:00  
 Peterborough v Tranmere, R2, 15:00  
 Scunthorpe v Alfreton Town, R2, 15:00  
 Southend v Luton, R2, 15:00  
 Torquay v Oxford Utd, R2, 15:00

**Tomorrow**  
 Histon v Leeds United, R2, 12:15  
 Notts County v Kettering, R2, 13:00

**Wednesday 3rd December**  
 Carlisle/Grays Athletic v Crewe, R2, 19:45

Coca-Cola League One Table

	P	W	D	L	F	A	W	D	L	F	A	Gd	Pts
1 Leicester City	18	6	2	1	13	6	5	3	1	18	10	15	38
2 MK Dons	18	6	0	3	17	8	6	1	2	20	9	20	37
3 Millwall	18	7	1	1	13	7	4	2	3	14	14	6	36
4 Oldham Athletic	18	6	2	1	22	9	4	2	3	12	13	12	34
5 Peterborough Utd	18	6	2	1	21	9	3	4	2	12	11	13	33
6 Scunthorpe Utd	18	5	2	2	17	11	5	1	3	16	13	9	33
7 Leeds Utd	18	6	1	2	21	11	4	1	4	11	11	10	32
8 Stockport County	18	3	4	2	11	8	1	3	1	14	6	11	31
9 Tranmere Rvs	18	5	1	3	17	11	3	2	4	9	12	3	27
10 Southern Utd	18	5	2	2	13	9	2	4	3	15	19	0	27
11 Walsall	17	4	0	4	15	15	3	3	3	12	12	0	24
12 Hartlepool Utd	18	4	3	2	22	17	3	0	6	7	13	-1	24
13 Northampton Tn	17	4	3	1	13	7	2	2	5	11	15	2	23
14 Huddersfield Tn	18	2	3	4	12	15	4	2	3	13	15	-5	23
15 Bristol Rovers	18	4	2	3	20	14	1	5	3	14	16	4	22
16 Carlisle Utd	18	5	1	3	18	13	1	1	7	6	19	-8	20
17 Leyton Orient	18	2	3	4	7	12	3	2	4	7	10	-8	20
18 Swindon Tn	17	3	2	4	15	17	1	5	2	13	15	-4	19
19 Brighton & H.A.	18	2	4	3	12	13	2	3	4	9	13	-5	19
20 Colchester Utd	17	2	2	5	9	11	3	1	4	18	20	-4	18
21 Yeovil Tn	18	2	5	2	10	10	2	1	6	5	15	-10	18
22 Hereford Utd	18	3	2	4	9	8	0	1	8	2	20	-17	12
23 Cheltenham Tn	18	3	2	4	12	15	0	1	8	7	26	-22	12
24 Crewe Alex	18	2	2	5	12	18	0	1	8	9	24	-21	9

Fixtures & Results

Date	KO	Venue	Opponents	Comp	Score	Pos	Att (Away)
<b>August</b>							
Sat 9	15:00	H	Peterborough United	FL1	W1-0	10	8,665 (1,468)
Tue 12	19:45	H	Cheltenham Town	CC1	*L0-1	-	2,998 (116)
Sat 16	15:00	A	Millwall	FL1	D1-1	7	8,114 (626)
Fri 22	19:45	H	Brighton & Hove Albion	FL1	L0-2	7	7,976 (1,230)
Sat 30	15:00	A	Walsall	FL1	L2-5	19	3,843 (357)
<b>September</b>							
Tue 2	19:45	H	Leyton Orient	JPT1	L2-4	-	3,499 (486)
Sat 6	15:00	A	Carlisle United	FL1	L1-2	22	6,561 (181)
Sat 13	15:00	H	Hereford United	FL1	W1-0	16	6,393 (240)
Sat 20	15:00	A	Crewe Alexandra	FL1	W4-3	12	3,574 (263)
Fri 26	19:45	H	Leyton Orient	FL1	W3-0	8	9,261 (1,777)
<b>October</b>							
Sat 4	15:00	A	Yeovil Town	FL1	W2-1	7	4,008 (430)
Sat 11	15:00	H	Stockport County	FL1	D1-1	9	7,125 (406)
Sat 18	15:00	H	Swindon Town	FL1	W2-1	6	7,965 (381)
Tue 21	19:30	A	Scunthorpe United	FL1	D1-1	6	4,324 (241)
Sat 25	15:00	A	Bristol Rovers	FL1	L2-4	10	7,055 (461)
Tue 28	19:45	H	Leeds United	FL1	W1-0	7	10,132 (1,988)
<b>November</b>							
Sat 1	13:00	H	Colchester United	FL1	D3-3	9	8,920 (1,249)
Sat 8	15:00	A	AFC Telford United	FAC1	D2-2	9	3,631 (453)
Sat 15	15:00	A	Tranmere Rovers	FL1	D2-2	8	5,019 (232)
Tue 18	19:45	H	AFC Telford United	FAC1R	W2-0	-	4,415 (322)
Sat 22	15:00	H	Oldham Athletic	FL1	L1-2	9	7,041 (254)
Tue 25	19:45	A	Cheltenham Town	FL1	D0-0	10	2,908 (225)
Sat 29	15:00	H	Luton Town	FAC2			
<b>December</b>							
Sat 6	14:30	A	Leicester City	FL1			
Sat 13	15:00	H	Huddersfield Town	FL1			
Fri 19	19:45	A	Hartlepool United	FL1			
Fri 26	15:00	H	Northampton Town	FL1			
Sun 28	15:00	A	MK Dons	FL1			
<b>January</b>							
Sat 3	15:00	A	Leyton Orient	FL1			
Sat 10	15:00	H	Crewe Alexandra	FL1			
Sat 17	15:00	A	Stockport County	FL1			
Sat 24	15:00	H	Yeovil Town	FL1			
Tue 27	19:45	A	Leeds United	FL1			
Sat 31	15:00	H	Bristol Rovers	FL1			
<b>February</b>							
Tue 3	19:45	H	Scunthorpe United	FL1			
Sat 7	15:00	A	Swindon Town	FL1			
Sat 14	15:00	H	Tranmere Rovers	FL1			
Sat 21	15:00	A	Colchester United	FL1			
Sat 28	15:00	A	Peterborough United	FL1			
<b>March</b>							
Tue 3	19:45	H	Millwall	FL1			
Sat 7	15:00	H	Walsall	FL1			
Tue 10	19:45	A	Brighton & Hove Albion	FL1			
Sat 14	15:00	A	Hereford United	FL1			
Sat 21	15:00	H	Carlisle United	FL1			
Fri 27	19:45	H	Hartlepool United	FL1			
<b>April</b>							
Sat 4	15:00	A	Huddersfield Town	FL1			
Fri 10	13:00	H	MK Dons	FL1			
Mon 13	15:00	A	Northampton Town	FL1			
Sat 18	15:00	H	Leicester City	FL1			
Sat 25	15:00	A	Oldham	FL1			
<b>May</b>							
Sat 2	15:00	H	Cheltenham Town	FL1			



Mildenhall	Francis	Clarke	Barrett	Harding	Scannell*	Bailey	Moussa	Walker**	Furlong***	Barnard	Joyce	Sankofa	Grant**	Betsy*	Revell***
Mildenhall	Francis	Clarke	Barrett	Harding	Scannell***	Grant**	Moussa	Betsy	Furlong**	Barnard	Joyce	Sankofa**	Herd	O'Keefe	Ademeno Revell*
Mildenhall	Francis	Clarke	Barrett	Harding	Grant	Moussa	Betsy	Ademeno*	Revell**	Barnard	Joyce	Sankofa*	Herd	O'Keefe	Furlong**
Mildenhall	Francis	Clarke	Barrett	Harding	Betsy	Grant	Moussa	Robson-Kanu	Revell**	Barnard	Joyce	Sankofa	Sawyer*	Ademeno	Furlong
Mildenhall	Francis	Clarke	Barrett	Harding	Betsy	Grant	Sawyer	Robson-Kanu**	Revell*	Barnard	Joyce	Sankofa	Scannell**	Walker*	Furlong
Mildenhall	Francis	Clarke	Sankofa	Barrett	Betsy	Grant*	Sawyer*	Robson-Kanu**	Barnard	Walker***	Masters	Christophe*	Scannell**	Laurent***	Furlong
Mildenhall	Francis	Clarke	Barrett	Harding	Betsy***	Grant	Christophe	Robson-Kanu*	Freedman	Barnard***	Masters	Sankofa	Walker*	Revell***	Furlong***
Mildenhall	Francis	Clarke	Barrett	Harding	Betsy	Christophe	Sawyer**	Walker**	Freedman	Barnard**	Grant	Sankofa**	Scannell***	Revell***	Robson-Kanu*
Joyce	Francis	Clarke	Barrett	Harding	Betsy	Christophe	Sawyer***	Walker***	Freedman*	Barnard*	Grant***	Sankofa	Scannell	Revell**	Robson-Kanu**
Federici	Francis	Clarke	Barrett	Harding	Betsy	Christophe	Sawyer**	Robson-Kanu*	Freedman*	Barnard*	Grant*	Sankofa	Walker	Revell**	McCormack***
Federici	Francis	Clarke	Barrett	Harding	Betsy	Christophe**	Sawyer*	Robson-Kanu*	Revell	Barnard**	Grant*	Sankofa	Walker**	Scannell	McCormack***
Federici	Francis	Clarke	Barrett	Harding	Betsy	Christophe	Sawyer*	Robson-Kanu*	Revell	Barnard	Grant	Sankofa*	Walker	Laurent	McCormack**
Federici	Francis	Clarke	Barrett	Sankofa	Betsy	Christophe	Sawyer**	Robson-Kanu*	Revell**	Walker	Grant	Scannell	Furlong	Laurent***	McCormack**
Federici	Francis	Clarke	Barrett	Harding	Betsy	Christophe	Sawyer**	Robson-Kanu*	Revell***	Barnard**	Grant	Scannell	Walker**	Laurent**	McCormack**
Federici	Francis	Clarke	Barrett	Harding	Betsy***	Christophe	McCormack**	Robson-Kanu	Revell	Walker*	Joyce	Scannell***	Grant**	Laurent*	O'Keefe
Federici	Francis	Clarke	Barrett	Harding	Betsy	Christophe	Sawyer*	Robson-Kanu	Revell***	Laurent**	Grant*	Scannell**	Walker	Sankofa	McCormack***
Federici	Francis	Clarke	Barrett	Harding**	Betsy	Christophe	Sawyer	Robson-Kanu*	Revell	Laurent***	Grant	Scannell***	Walker	Sankofa**	McCormack*
Mildenhall	Francis	Clarke	Barrett	Herd	Grant**	Christophe	McCormack	Betsy**	Revell	Laurent	Grant	Scannell	Walker**	Sankofa	O'Keefe Hazell Furlong
Federici	Francis	Clarke	Barrett	Harding	Betsy	Christophe	Sawyer**	Robson-Kanu*	Revell	Laurent	Mildenhall	Scannell	Grant**	Sankofa	McCormack**
Mildenhall	Francis	Clarke	Barrett	Herd	Scannell**	Christophe	McCormack*	Grant**	Betsy	Walker	Joyce	Ademeno**	Lokando	Sankofa	O'Keefe Hazell**
Federici	Francis	Clarke	Barrett	Harding	Betsy	Christophe*	McCormack	Milsons	Revell*	Walker	Mildenhall	Ademeno*	Herd	Sankofa	Grant**
Mildenhall	Sankofa	Clarke	Barrett	Harding	Francis	McCormack	Christophe	Milsons	Betsy	Walker	Joyce	Ademeno	Herd	O'Keefe	Grant





Southend United

Manager: Steve Tilson  
Colours: Blue & White



Luton Town

Manager: Mick Harford  
Colours: White, Orange & Black

	Pld	Goal
1. Steve Mildenhall	<input type="checkbox"/>	<input type="checkbox"/>
2. Simon Francis	<input type="checkbox"/>	<input type="checkbox"/>
5. Peter Clarke	<input type="checkbox"/>	<input type="checkbox"/>
6. Adam Barrett	<input type="checkbox"/>	<input type="checkbox"/>
7. Anthony Grant	<input type="checkbox"/>	<input type="checkbox"/>
8. Alan McCormack	<input type="checkbox"/>	<input type="checkbox"/>
9. Lee Barnard	<input type="checkbox"/>	<input type="checkbox"/>
10. James Walker	<input type="checkbox"/>	<input type="checkbox"/>
11. Alex Revell	<input type="checkbox"/>	<input type="checkbox"/>
12. Damian Scannell	<input type="checkbox"/>	<input type="checkbox"/>
13. The Blue Voice	<input type="checkbox"/>	<input type="checkbox"/>
14. Franck Moussa	<input type="checkbox"/>	<input type="checkbox"/>
15. Osei Sankofa	<input type="checkbox"/>	<input type="checkbox"/>
16. Dougie Freedman	<input type="checkbox"/>	<input type="checkbox"/>
18. Johnny Herd	<input type="checkbox"/>	<input type="checkbox"/>
19. Charles Ademeno	<input type="checkbox"/>	<input type="checkbox"/>
20. Jean-Francois Christophe	<input type="checkbox"/>	<input type="checkbox"/>
21. Kevin Betsy	<input type="checkbox"/>	<input type="checkbox"/>
22. Richie Foran	<input type="checkbox"/>	<input type="checkbox"/>
23. Dan Harding	<input type="checkbox"/>	<input type="checkbox"/>
24. Ian Joyce	<input type="checkbox"/>	<input type="checkbox"/>
25. Clark Masters	<input type="checkbox"/>	<input type="checkbox"/>
26. Francis Laurent	<input type="checkbox"/>	<input type="checkbox"/>
27. Peggy Lokando	<input type="checkbox"/>	<input type="checkbox"/>
29. Paul Furlong	<input type="checkbox"/>	<input type="checkbox"/>
30. Stuart O'Keefe	<input type="checkbox"/>	<input type="checkbox"/>
33. Rob Milsom	<input type="checkbox"/>	<input type="checkbox"/>
34. Liam Feeney	<input type="checkbox"/>	<input type="checkbox"/>
35. Junior Stanislas	<input type="checkbox"/>	<input type="checkbox"/>
43. David Marrable	<input type="checkbox"/>	<input type="checkbox"/>

	Pld	Goal
1. Dean Brill	<input type="checkbox"/>	<input type="checkbox"/>
2. Claude Gnakpa	<input type="checkbox"/>	<input type="checkbox"/>
3. Sol Davis	<input type="checkbox"/>	<input type="checkbox"/>
4. Keith Keane	<input type="checkbox"/>	<input type="checkbox"/>
5. Ian Roper	<input type="checkbox"/>	<input type="checkbox"/>
6. George Pilkington	<input type="checkbox"/>	<input type="checkbox"/>
7. Garreth O'Connor	<input type="checkbox"/>	<input type="checkbox"/>
8. Kevin Nicholls	<input type="checkbox"/>	<input type="checkbox"/>
9. Sam Parkin	<input type="checkbox"/>	<input type="checkbox"/>
10. Ryan Charles	<input type="checkbox"/>	<input type="checkbox"/>
11. Lewis Emanuel	<input type="checkbox"/>	<input type="checkbox"/>
12. Harry Worley	<input type="checkbox"/>	<input type="checkbox"/>
14. Asa Hall	<input type="checkbox"/>	<input type="checkbox"/>
15. Ed Asafu-Adjaye	<input type="checkbox"/>	<input type="checkbox"/>
16. Rossi Jarvis	<input type="checkbox"/>	<input type="checkbox"/>
17. Kevin Watson	<input type="checkbox"/>	<input type="checkbox"/>
18. Chris Martin	<input type="checkbox"/>	<input type="checkbox"/>
19. Drew Talbot	<input type="checkbox"/>	<input type="checkbox"/>
20. Michael Spillane	<input type="checkbox"/>	<input type="checkbox"/>
21. Conrad Logan	<input type="checkbox"/>	<input type="checkbox"/>
23. Wayne Andrews	<input type="checkbox"/>	<input type="checkbox"/>
24. Tom Craddock	<input type="checkbox"/>	<input type="checkbox"/>
25. George Beavan	<input type="checkbox"/>	<input type="checkbox"/>
27. Dean Morgan	<input type="checkbox"/>	<input type="checkbox"/>
28. Paul McVeigh	<input type="checkbox"/>	<input type="checkbox"/>
33. Jake Howells	<input type="checkbox"/>	<input type="checkbox"/>
36. Aaron Fletcher	<input type="checkbox"/>	<input type="checkbox"/>
40. Scott Sinclair	<input type="checkbox"/>	<input type="checkbox"/>

Match Officials

Referee: A.M. Penn  
Asst Referee: W. Atkin  
Asst Referee: M.F. Thompson  
Fourth Official: G.J.N. Jerden



Next Here

Huddersfield Town

Saturday 13th December 2008  
Kick-Off 3.00pm  
Coca-Cola League One

Northampton Town

Friday 26th December 2008  
Kick-Off 3.00pm  
Coca-Cola League One

Next Away

Leicester City

Saturday 6th December 2008  
Kick-Off 2.30pm  
Coca-Cola League One

Hartlepool United

Friday 19th December 2008  
Kick-Off 7.45pm  
Coca-Cola League One



# Register and Reap the Rewards



Register your TeamCard at  
[www.teamcard.co.uk](http://www.teamcard.co.uk)  
and you can...

- Earn points shopping online with over 100 Major retailers.
- Stay up to date with all special offers and TeamCard points promotions.
- Enter Southend TeamCard competitions and win fabulous prizes.
- Share FanPics with other Southend fans.
- Increase your TeamCard points earning potential...  
...and lower the cost of your football.

Register your Southend TeamCard today at [www.teamcard.co.uk](http://www.teamcard.co.uk)



TeamCard lowering the cost of your football

**INSUREANDGO**

are proud to be main sponsors of



As a Blues fan you

**save 25%**

when you buy your travel insurance with us!

Call **0844 888 3241** now  
and quote **SUTL5** for instant cover

**With InsureandGo  
you get more:**

Single Trip




from

**£6**

Annual Multi Trip

from

**£29**

-  Up to **THREE** kids go free per adult
-  Over **40** adventure sports covered as standard including jet skiing, scuba diving, and over-water parascending
-  **17 days** winter sports included on Annual Multi Trip policies

For more details on our policies visit [insureandgo.com](http://insureandgo.com) or call **0844 888 3241**

Premium paid will depend on individual circumstances. Authorised & regulated by the FSA. Calls may be recorded and/or monitored. All prices from, pp, per policy, and are available from insureandgo.com. An administration fee may be payable. Terms and conditions apply. Offer only available over the phone.