

HATTERS

LUTON TOWN FC OFFICIAL MATCHDAY PROGRAMME: £3.00

V BARNET 6/12/08 3.00PM

Official Club sponsor



Match sponsor



Matchball sponsor



Today's Mascots

Daniel McMillan
Ryan Le-Vien



Contents

Luton Town v Barnet



04 MICK HARFORD

The Hatters boss looks ahead to this afternoon's game



FRIENDLY FIRE 22

All the action from our League Two game with AFC Bournemouth

06 NICK OWEN

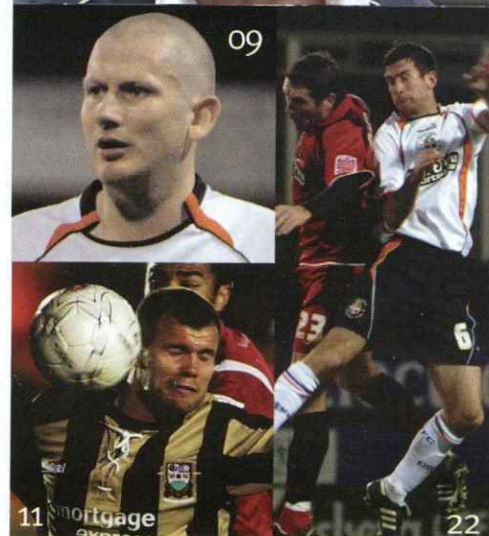
Hatters Chairman, Nick Owen, reflects on the progress so far

COMMUNITY 26

Catch up with the latest news from Football in the Community

09 THE SKIPPER

Nico hopes the team can start an unbeaten run



LUTON LADIES 47

The latest reports from Luton Ladies

11 IN TOWN

We welcome Barnet to Kenilworth Road this afternoon

MEET THE STAFF 49

We introduce you to David in Commercial

20 COMMERCIAL

Find out who is sponsoring this evening's game

TICKETS 62

Get the latest Ticket Information for the Hattes upcoming home and away fixtures

31 ONE ON ONE

We talk to George Pilkington about his aims for the season



Luton Town Football Club Official Matchday Programme

Editor: Zoe Wood Cover Designed by Lee Wood Contributors: Chris Rivett, Rob Swan, Simon Pitts, Roger Wash.

Photographer: Gareth Owen.

Printed by: Queensway Publishing 020 8807 7669



mickharford



MANAGER

Hello, good afternoon and welcome to Kenilworth Road for this afternoon's clash against Barnet.

I would like to start by welcoming Paul Fairclough and everyone connected with Barnet to Kenilworth Road and hope you all have a safe journey, albeit a short one, back down the M1.

Reflecting on the Bournemouth game on Tuesday, in the end we had to be satisfied with a point, we didn't help ourselves by basically handing the opposition three goals on a plate by some really sloppy defending, which has to be the most disappointing part of our recent games.

Credit must go to the players; they kept

going and deserved the equaliser with a Paul McVeigh penalty.

If we can attack as we did in the last half an hour of Tuesday's game we will create and hopefully, convert some of the chances that will come our way.

But as I have stressed to the players we MUST tighten up in defensive situations and start getting back to keeping clean sheets.

It is paramount that we are solid and have a gritty determination to keep the opposition to minimum strikes or opportunities on our goal; this is something we have been working on since Tuesday's game.

Again you created a very positive atmosphere on

Tuesday. Get behind the lads as you always do and hopefully we can repay you with the three points you deserve.

Keep the faith

Mick



make savings.

We are debt-free and bearing in mind the horrendous situation we inherited, that is some achievement.

We feel that every department is heading in the right direction, but there is one area that deserves special praise at the moment. Our youth set-up.

However disappointing things may be at first team level at the moment, it goes without saying that the youngsters are our future and encouraging youth is one of the cornerstones of 2020's mission.

Well, the Football League has just completed an audit of our Centre of Excellence, the equivalent of a school Ofsted visit, and the verdict has been outstanding.

The League look at everything in fine detail, such as staff, training methods, paperwork and facilities - they even talk to parents to find out if they are happy with things. They were full of compliments.

ability to keep going and come twice from behind.

Things on the field will surely get better and that would be in keeping with good things going on elsewhere in the club.

For instance, we are very pleased with the way we have brought costs under control and continue to

Welcome again to Kenilworth Road for our second home match in four days.

We may have been disappointed with only a draw against Bournemouth on Tuesday, but, with five minutes to go, it was looking decidedly worse than that so we need to take some consolation from our

nickowen



Luton Town Football Club Chairman

Youth team coach Alan Neilson and Youth Development Officer Greg Broughton look after youngsters from the under nine up to under 18.

It is a tremendous tribute to them that they have achieved so much in such a short time and received the thumbs up from the Football League.

Five of our home-produced young players are in the first team squad and you already know we have had two schoolboys on the fringes this season.

Our set-up needs to be especially good to persuade parents that a club at the bottom of the league is the place for their children to be.

Alan and Greg point to two ex-Luton youngsters being in the last England squad, four more playing in the Premier League and two regulars in the Championship.

They all had an early chance to prove themselves at Luton Town FC!

So let's be proud of our youth set-up and hope the feel good factor can extend throughout the playing side, so that this afternoon can be the beginning of the run that leads us to safety.

It is still possible, as you know, we just need a few decent breaks to go for us for a change.

There is no panic in the boardroom and our

commitment is as solid as ever.

Enjoy the game,

Nick

“Let's be proud of our youth set-up and hope the feel good factor can extend throughout the playing side, so that this afternoon can be the beginning of the run.”



**After 21 years in the business
you could say we love what we do**

So if your business involves making it, selling it, moving it or serving it
and you want communications advice, we should be talking.

www.williammurray.co.uk/big-21

William Murray Communications

Cygnets House, 12/14 Sydenham Road, Croydon, Surrey CR0 2EE

T. +44 (0)20 8256 1360 F. +44 (0)20 8681 3116 E. contact@williammurray.co.uk

www.williammurray.co.uk



NICO HOPES THE TEAM CAN START AN UNBEATEN RUN

Welcome one and all to another crunch match.

I know I keep repeating myself but today is another must win game for us, especially against another club who could find themselves in the relegation dogfight. It is vitally important that as we enter this busy Christmas period we kick start an unbeaten run and hopefully that can start this afternoon.

It was great to see Kevin Gallen get his first goal for Luton against Bournemouth on Tuesday night and what a screamer it was. I am sure we can expect many more from him.

Obviously I was gutted to have had to leave the pitch so early and I feel like I've let people down. I felt great in training all week and came off as a cautionary measure to preserve my fitness so I can contribute more to our survival throughout the season.

"Your support so far this season has been excellent and I would like to urge you to really get behind the team this afternoon."

Our first half performance in that game wasn't good enough and we know that, but I really feel that we deserved to get three points as we came out fighting after the break and playing at a pace. We have got to learn to start games like we finished that one and no

better time than today.

I know some of you may be disappointed with our recent performances but I can assure every single one of you that the level of commitment and determination in the dressing room would make you proud. We've got a fantastic bunch of lads here who I'm happy to stand alongside. What we need to do is convert that passion into quality football.

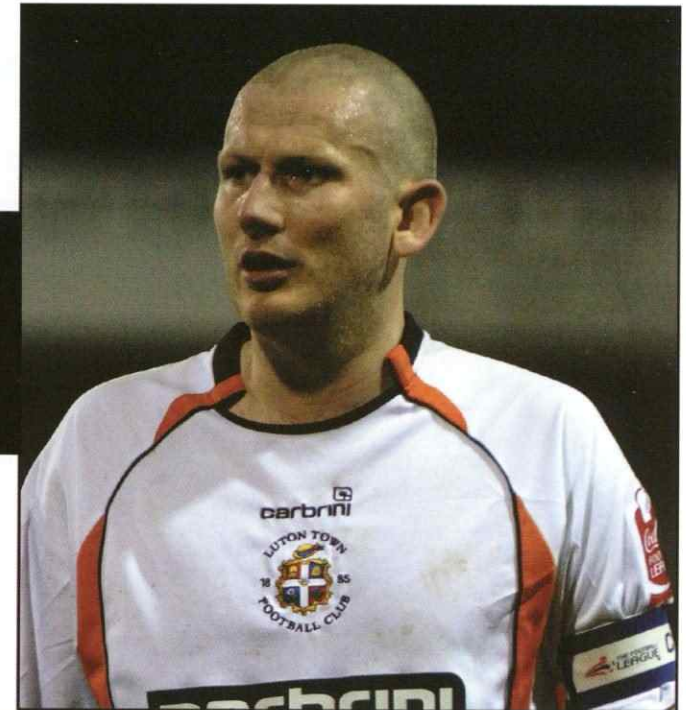
Kenilworth Road can be a tough environment for some of the younger lads so please get behind them positively today and let's lift their spirits.

Your support so far this season has been excellent and I would like to urge you to really get behind the team this afternoon. I know it must be frustrating for you all but I can assure you we are doing everything we can both on and off the pitch to ensure we maintain our league status.

Despite slowly getting some of our senior pro's back from injury we still have a very young squad but I think that they have proved that they are up for the challenge and more than capable, we just need that little bit of luck which has cruelly deserted us this season.

Please get behind the lads this afternoon.

Nico





ERIC MORECAMBE SUITE

The Eric Morecambe Suite will be open before, at half-time and after today's match.

Pints cost just £2 and before every match you can get a pie and a pint for just £3.50!!!

Entry to the Eric Morecambe suite is via the Maple Road bridge or at the back of the main stand.

The Eric Morecambe Suite will be open from 12:30pm for a Saturday match and 6pm for a midweek match.

Please note this suite is open to HOME supporters only.



Carol Service

The 12th Annual Luton Town Community Carol Service is on Thursday 18th December at 7:30pm at St Mary's Parish Church (opposite the Arndale Centre), Church Street, Luton

Directors, players and staff will be in attendance

All Welcome

FLAG DAY

At this afternoon's game against Barnet, representatives of the British Heart Foundation (BHF) will be in attendance to collect a cheque from the Football Club for their donation of the money raised from May's Littlewoods Cup 20th Anniversary game against Arsenal. The BHF was the nominated charity of Elaine Sealey, widow of the Hatters' legendary goalkeeper Les Sealey.

In conjunction with the BHF's involvement, the club have decided to run a "Flag Day" at today's match. The support that the team has received this season has been nothing short of magnificent, but we are always looking at ways to improve the fans experience at games and after consulting various fans groups throughout the season, one suggestion was to create a European type atmosphere with the introduction of flags for a game.

There are 2,000 small flags available to fans for a £1 donation and any money raised will be split equally between Luton Town FC and the BHF. There will also 300 larger flags, which will be available for £6 (money raised goes directly to the Football Club).



OFFICIALS

Chairman
Nick Owen

Supervisory Board
Paul Ballantyne
Bob Curson
Godfrey Ingram
Mick Pattinson
David Wilkinson

Managing Director
Gary Sweet

Directors
Antony Brown
Stephen Browne

Manager
Mick Harford

Physiotherapist
Harry Scott-Stackman

Coaches
Dmitri Kharine

Youth Development Officer
Gregg Broughton

Youth Team Coach
Alan Neilson

Football and Community Development Officer
Stuart Smith

Club Secretary
Cherry Newbery

Club Chaplain
Alan West

Thomas
Cook

Going Places

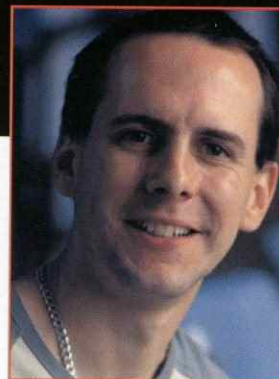
Still fancy
your pie & pint?

Hatters Holidays

You save! - With a guaranteed discount off a wide range of UK & overseas holidays.
We win! - With a royalty payment to the club on every booking made.

Stores nationwide • lutontown.thomascooksport.com

No membership or proof of being a supporter required. Supporters receive a guaranteed discount on package holidays operated by a Thomas Cook tour operator and on holidays operated by selected non-Thomas Cook tour operators. Applies to summer or winter package holidays, city breaks, cruises, worldwide travel and UK weekend breaks/hotel-only. Discount can vary - please ask for details at time of booking. Bookings must be made at a Thomas Cook or Going Places store, by calling 0870 751 9954 or online at lutontown.thomascooksport.com. Calls are charged at local rate plus network extras (price correct at time of printing). Discount cannot be combined with any other discount or offer. All holidays are subject to availability and relevant tour operator's booking conditions. Thomas Cook Sport is a trading name of Thomas Cook Retail Ltd, ABTA JB601.



The Numbers Game

Simon Pitts looks back at the previous Hatters fixtures

Thames finished 1-0 to the home side, whilst the top flight match at Blackpool in 1958 was also a defeat for the Hatters, 3-0. In 1980 Oldham Athletic were held 0-0 at Boundary Park

same time as Brian Stein. Sperrin made just two substitute appearances for the Hatters before joining today's opponents Barnet. Herbie Smith (1959) was signed from Tooting & Mitcham and made just one League Cup substitute appearance, in 1980. Smith's appearance was the 3rd round defeat at home to Manchester City, whilst Seamus Heath's (1961) only appearance had come in the previous round against Reading. Finally it's Happy Birthday to Paul McVeigh (1977) who scored his first goal for Luton in the recent 2-1 win against Dagenham & Redbridge. McVeigh was a Tottenham trainee who scored in the Premiership in May 1997 on his third, and last appearance, for Spurs, before joining Norwich City in March 2000. McVeigh played over 200 times for the Canaries before joining the Hatters on a free transfer in the summer of 2007.

1 There has only been one previous league match on this date at Kenilworth Road, and the Hatters beat Doncaster Rovers 2-1 in 1947 courtesy of goals from Bobby Brennan and Allenby Driver.

22 Back in 1986 Luton travelled to Oxford United, and despite goals for both the Stein brothers, Brian and Mark, the home side won 4-2, thanks largely to a hat-trick from John Aldridge.

2 Luton have twice played FA Cup matches on this date. Matt Tees scored the goal as the Hatters lost 2-1 at Hillingdon Borough in 1969, but it was better news five years ago at Rochdale. Luton took the lead through a Steve Robinson penalty after Adrian Forbes was brought down, before Lee Mansell wrapped up the win.

5 The number of Luton players to have been born on this day. Roger Hoy (1946) made 37 appearances for the Hatters between 1970-71. Martyn Sperrin (1956) was signed from Edgware Town at the

5 The number of away League games played on this date, with the Hatters failing to win any of them, and losing three and drawing twice. Just three goals were scored and nine conceded!

1924 The first league match to be played on this date and Luton travelled to Bristol Rovers. Andy Kerr scored as the sides shared the points in a 1-1 draw.

3 Luton went three games without scoring on this date. In 1930 the Division Three South game at



Steve Robinson scored a hat-trick for the Hatters on this day in the FA Cup



Barnet Football Club is an English football team from High Barnet, London, England, currently playing in Coca Cola Football League Two.

In March 2004 they were in one of the play off positions of the Football Conference but failed to gain promotion to League Two, the lowest flight of the Football League. In the 2004-05 season they won the Football Conference, to return to the Football League after an absence of four years.

Before that they had been members of the Football League for ten years.

Barnet's most eventful season was the 1992-93 season. They were on the verge of expulsion for failing to pay their players' wages as well as failing to meet a deadline for a £50,000 fine.

In spite of these problems, Barnet won promotion to Division Two. But the Bees were



The Ground: Underhill Stadium

Underhill is the home of Barnet F.C.. It is situated in Barnet in the London Borough of Barnet and has a capacity of 5,568.

It is the smallest Football League stadium in London, and is famous for its slope from the North to South end. It is also used for Arsenal reserve games.

The 2007/2008 season was Barnet's 100th year at Underhill.

The club are currently in the middle of a fight with the town council as they struggle to implement plans to build a new stadium.

Underhill has seven stands. On the bottom end of the ground is the South Stand which was opened recently.

The East Terrace is split into three sections, with the home fans allocated the two southernmost parts and the remaining section allocated to away supporters.

Adjacent to the East Terrace stands the North East Family Stand with covered seating for away supporters. The tiny North Terrace backs onto Westcombe Drive, where residents can watch the action.

The Main Stand is flanked by two smaller stands, the North West Terrace and Family Stand.

unable to sustain themselves at this level and went down after one season with just five wins all season.

Barry Fry was the manager who secured Barnet's promotion successes in the early 1990s. Subsequent managers of the club include Ray Clemence, Terry Bullivant, John Still and Tony Cottee.

A number of Barnet players have gone on to represent Premiership clubs. They include Dougie Freedman, Marlon King, Andy Clarke, Linvoy Primus and Maik Taylor. Jimmy Greaves also played for the club before retiring.

This season started even worse than the previous season had, with only one point from Barnet's first seven games.

By late September, only the three teams that had been docked points prior to the start of the season had lower league positions.

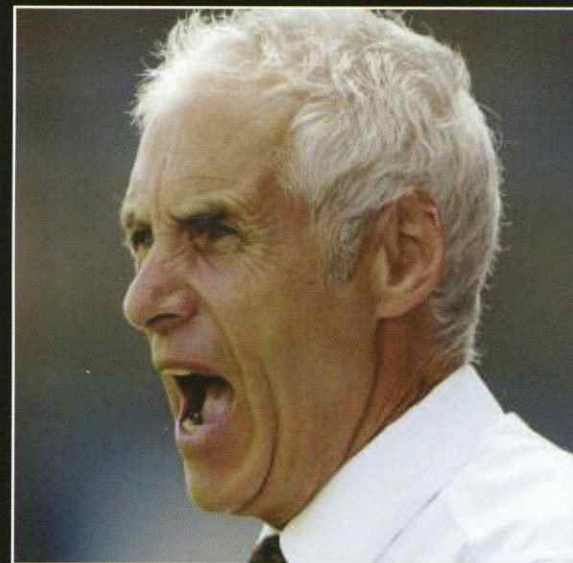
Barnet finally got their first win of the season away at Grimsby where they won 1-0.

The Manager

Paul Fairclough (born 31 January 1950 in Liverpool) is the current manager of Barnet F.C. and the England C national football team, formerly known as the National Game XI, England Non-League team or the England Semi-pro team.

Prior to Barnet he was manager of Stevenage Borough, taking them to a Nationwide Conference title and a much-publicised FA Cup tie with Newcastle United.

While in a managerial position at Hertford in the late eighties, he was also an IT teacher at Onslow St Audrey's School in Hatfield. He was renowned for his brightly coloured shirts and stories about the members of Dexys Midnight Runners.



Paul Fairclough



ROBERT BECKWITH

A goalkeeper who will be familiar with Luton fans having come through the ranks at Kenilworth Road . He joined the Bees at the start of last season and is currently understudy to Barnet's number one Lee Harrison.

LEE HARRISON

With an impressive 400 appearances to his name, Harrison brings a wealth of experience to the squad and is a fans favourite at Underhill. He started his career at Charlton and has gone on to have spells at Peterborough United and

Leyton Orient.

RAN KADOCH

Became the first Israeli goalkeeper to play English League football when he signed for Barnet, but his progress at Underhill has been disrupted after picking up a thigh strain during his debut

JOE DEVERA

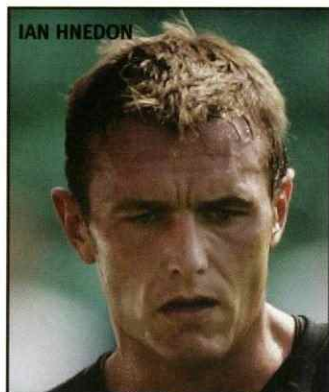
A highly rated defender who has come through the ranks at Underhill and deservedly won Barnet's Player of the Season last year. Spent most of his career at right-back, but has recently moved to centre-half.

KENNY GILLET

During his first season at Barnet, the French defender was inspirational and has shown plenty of promise. Strong in the air and with plenty of pace, Gillet is rated highly at Underhill.

ISMAIL YAKUBU

Having taking over the captain's armband last season, the powerful central defender has



IAN HNEDON

been ever present for Barnet over the past couple of seasons.

IAN HENDON

A former Northampton Town defender who skippered the Bees to the Conference title in 2005.

He started his career at Tottenham, winning the The FA Youth Cup in 1990. He has also enjoyed spells at Leyton Orient, Notts County and Sheffield Wednesday.

NEAL BISHOP

Joined from Conference club York City in the summer of 2007 and has won honours at international level with the England C team. He began his career at Middlesbrough and also



ROBERT BECKWITH



went on to play for Scarborough and Gateshead .

MICHAEL LEARY

A former Luton Town midfielder, who is showing the form at Underhill that he never really showed at Kenilworth due to injuries. Throughout his career he has played in the centre of midfield, but is also adaptable to play in the centre of defence.

ALBERT ADOMAH

A skilful winger, with bags of pace and plenty of trickery, Adomah scored on his Barnet

debut in a 2-1 victory over Hereford last season. He joined Barnet from non-league Harrow Borough.

MAX PORTER

Joined Barnet from Bishop Stortford in the summer of 2007 and has gone on to play in many positions for the Bees since his arrival.

CLIFF AKURANG

Another former non-league player who has quickly adapted to the pressures of full-time football with simple ease. He joined Barnet from Conference outfit Histon and scored seven goals

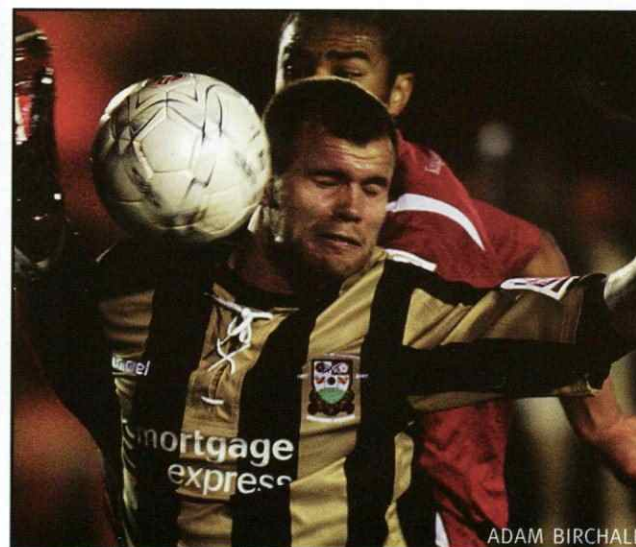
from 20 appearances last season.

ADAM BIRCHALL

Finished as top scorer for Barnet last season with 15 goals and it has been this form that has led to him gaining international honours with Wales at Under-21 level. His talents were spotted by Arsenal, where he progressed through their ranks as a youngster.

LUKE MEDLEY

Signed in the close season from Bradford City, declining their offer of a new contract. A quick centre-forward, Medley has been mainly used as a substitute during this campaign.



ADAM BIRCHALL



- FREE day visit to David Lloyd Luton for 2 adults and 2 children. Valid up to 30th November 2008.
- Over 130 adult group exercise classes a week.
- Family activities timetable for 6 months - 16 year olds. Classes include: **Lindy Lou's Dinky Dancers, Tatty Bumpkin Yoga, Stretch & Grow, Football Frenzy, Ballet, Teen Spin, Teen Circuits, Teen Combat, Karate and Kick Boxing.**
- Swimming pool with jacuzzi and saunarium.
- Swimming pool family fun with Water World and Family Splash Hour.
- Swimming coaching available for all levels from 3 months including adult lessons.
- Gymnasium with extensive range of cardiovascular and resistance equipment.
- Extensive free weights area.
- NEW! Power Plate - the celebrity 15 minute work out.
- Club lounge with Costa Coffee, licensed bar and restaurant.
- **Call David Lloyd Luton on 01582 692 045**



LIFE. Be fit for it



Junior Hatters



Hello and welcome to all Junior Hatters

Please give a warm welcome to today's Junior Hatter mascot, Luke Baynham (pictured below) and ball boys Daniel Lewis and Lewis Baxter.



DECEMBER BIRTHDAYS

- Jake Brooks
- Harry Evans
- Luca Johnson
- David Baverstock
- Kayleigh Chandler
- James Wells
- Dylan Fitzpatrick
- Callum Radford
- Michael Clinton
- Emma Leafe
- Jake Wright-Pacock
- Jamie Graves
- Lewis Baxter
- Sinead Duffy

CommercialMatters

A huge welcome to this afternoon's Match Sponsor, Matchball Sponsor and Mascots.

Match Sponsor



The club extends a very warm welcome to the management and guests of HiB Ltd who are back with us today at Kenilworth Road as Match Sponsors. Managing Director Warren Ginsberg and his son Robert – the Operations Director, are both long term supporters of Luton and with their head office within walking distance of Barnet's ground Underhill they could not pass up the opportunity of sponsoring the first ever league game between the two clubs.

HiB are one of the leading Bathroom Distributors in the UK with a newly built National Distribution Centre in Tamworth as well as a head office in Barnet. Their range of Bathroom Mirrors, Bathroom Cabinets, Bathroom Furniture and Bathroom Lighting is available from leading Bathroom Showrooms and Building Merchants. Both Warren and Robert wish, "Mick, all the players and staff the best for today's game and the rest of the season".

Matchball Sponsor

In memory of Edmond Edwards

Today's match ball sponsor has been a Luton fan for the past 41 years. Michael has sponsored the match ball today in memory of his father Edmond Edwards who was a lifelong Luton fan, who sadly past away a few years ago. Following on the tradition, Michael attended his first game at the club aged 5 years old and has been a fan ever since. Michael, his friends and family wish the lads all the best for today's game and every success for the rest of the season.

Mascot



Ryan Le-Vien

Date Of Birth
07/12/1996

School Attended
Arnold Middle School

Fav Luton player
Kevin Nicholls

Mascot

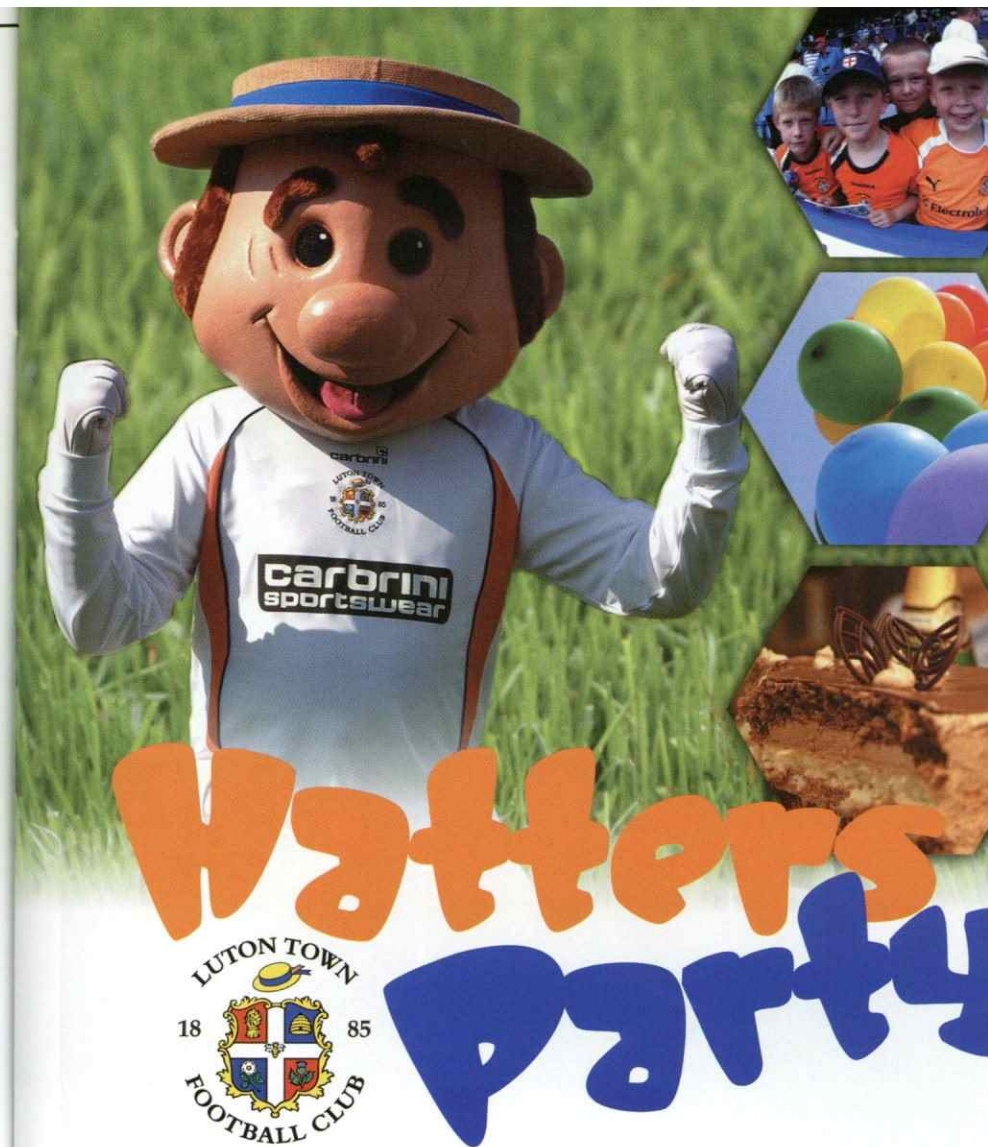


Daniel McMillan


Date Of Birth
16/08/1998

School Attended
Warden Hill Junior School

Fav Luton player
Kevin Nicholls and Dean Brill



Watters Party



Make your kids birthday one of the most special events ev

Bring your child and their friends to a professional football m
so they can have a truly fun day

For more information and prices, call 01582 411622 or email: commercial@lutontc

LUTON TOWN - 123 YEARS OF HISTORY - BE PART

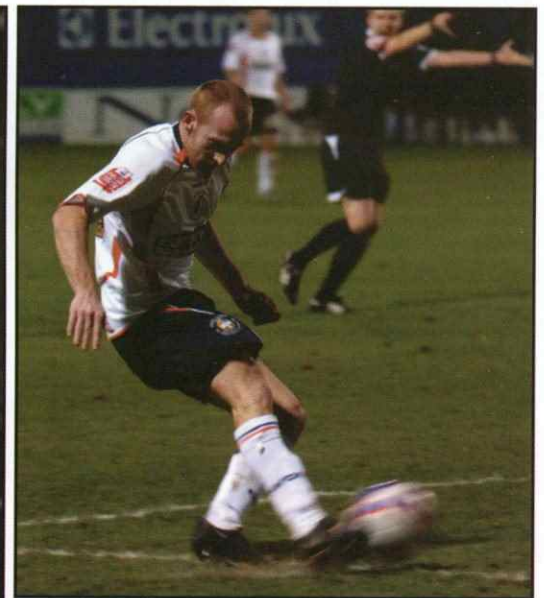
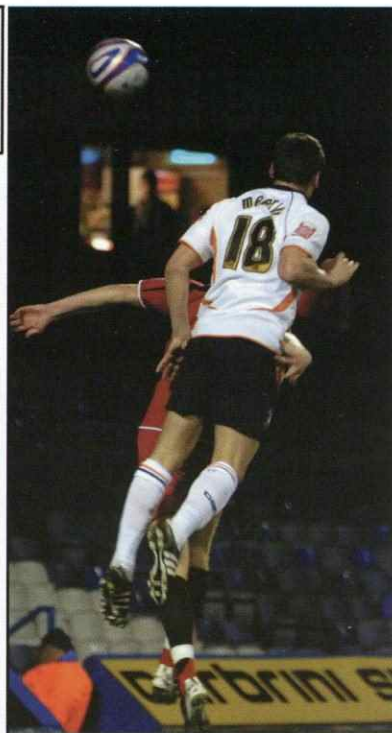
Designed by

LEAGUE TWO

Tuesday 2nd December 2008

Hatters 3 AFC Bournemouth 3

Kick off: 7.45pm Kenilworth Road



Luton Town: Logan, Gnakpa, Keane, Pilkington, Nicholls (Jarvis 25), Emanuel (Talbot 46), Watson (Hall 55), Martin, McVeigh, Gallen, Howells

0 As It Happened: 18 19 HT 51 56 76 85 FT

Lewis Emanuel's cross is headed in by Bournemouth's defender Ryan Garry
 Moseley knocks home a loose ball
LUTON 1 BOURNEMOUTH 1
 Moseley rolls home his second goal of the evening
 Gallen's fierce free kick from 20 yards rockets past Jaial for his first goal for the club
 Tubbs heads past Logan for six yards
 Paul McVeigh steps up to smash the penalty straight down the middle of the goal
LUTON 3 BOURNEMOUTH 3

cuppreview



The Hatters take on League 1 outfit Colchester United in the Area Semi Finals of the Johnstone's Paint Trophy on the 16th December, in a match which will see the winner go one step closer to the showpiece final at Wembley next April.

Luton's progression to the Area Semi Final came after Rossi Jarvis fired a last minute winner past Walsall's Clayton Ince from the edge of the area at the Bescot Stadium last month.

It was Jarvis' second goal of the season, and one which the 20-year-old would undoubtedly have savoured.

Colchester also booked their place in the Area Semi Final courtesy of an away win.

A goal on his debut from on-loan striker Sam Williams secured the U's passage into the semis at the expense of Bournemouth.

The U's, managed by former Scottish international Paul Lambert, managed to reach the final of this competition back in 1997, but were defeated on the day by Carlisle United after a penalty shoot-out at Wembley.

Coincidentally, Colchester recorded their biggest win of the season so far against Carlisle with a 5-0 thrashing, but the U's have been unable to replicate this level of performance in their other league matches.

Consistency has been an issue for Lambert's side this season, and the U's

currently find themselves hovering above the relegation zone in League 1.

The competition has grown in importance and popularity in recent seasons, with crowds in excess of 50,000 in attendance at the show piece final at Wembley Stadium for the last two seasons and the Hatters' faithful will be hoping for their own fairytale story in this competition after having to endure so much this year.

In the other Area Semi Final, Shrewsbury Town face Brighton & Hove Albion at the New Meadow.

Like Colchester, Brighton are also perilously close to falling into the relegation zone in League 1.

On the other hand, Shrewsbury's route to the Area Semi Final has been emphatic. A 7-0 demolition of Wycombe Wanderers was then followed by a 5-0 thrashing of Dagenham & Redbridge, and the League 2 side may well go into this match as favourites to progress to the Area Final.

The Official Energy Partner of The Football League.

E.ON is proud to partner the world's oldest league football competition.



e-on



Good afternoon and welcome to this afternoon's game.

Christmas is rapidly approaching and as always the Community Trust is running a series of fun activities for the children to enjoy throughout the Holiday period.

I would particularly like to draw your attention to the first activity shown on the flyer below. This is a brand new initiative where as well as enjoying a morning's football, the children are able to come and watch the First Team game against Morecambe in the afternoon. The children will have the opportunity to travel from Crawley Green's state of the art pitch to the Stadium in the First Team's luxury coach.

Don't miss a once in a lifetime opportunity!

If you are interested in any of the courses, please call the Football in the Community office on 01582 391927



LUTON TOWN F.C. COMMUNITY TRUST



<p>Looking to do some last minute shopping or grab a bargain? Need to entertain the kids? Why not book on one of our exciting festive courses.</p>	<p>Football mad juniors can book up and attend our training day(s) at Venues throughout Bedfordshire. Why not spend your festive days being coached by the professionals.</p>
<p>Venue: Crawley Green Sports & Social Club, Crawley Green Road, Luton LU2 9AG Date: Saturday 20th December 2008 Time: 10:00am – 17:00pm Ages: 7-9 and 10-12 years of age. Cost: £ 25</p>	<p>THIS COURSE ONLY INCLUDES: Transfer from Playing Venue to Ground in The First Team Coach Supplied by: A TO B EXEC 3 hours coaching by Luton's FA Qualified Coaches Match Ticket (child) Matchday Programme and Medal for every Participant 1 Lucky winner will be chosen in advance to be the club's mascot that day (entrants must be received by the 12th of December)</p>
<p>Venue: Barnfield College Campus, New Bedford Road Luton, LU2 7BF Date: Monday 22nd – Tuesday 23rd of December 2008 Time: 10:00am – 15:00pm Ages: 4 – 6, 7 – 9, 10 – 12, years of age. Cost: £ 25</p>	<p>Venue: Alban Middle School, Silver Street, Great Barford, MK44 3HZ Date: Monday 22nd – Tuesday 23rd of December 2008 Time: 10:00am – 15:00pm Ages: 4 – 6, 7 – 9, 10 – 12 years of age. Cost: £ 25</p>
<p>Venue: Edward Peake Middle School, Potton Road, Biggleswade, SG18 0EG Date: Monday 29th – Tuesday 30th of December 2008 Time: 10:00am – 15:00pm Ages: 4 – 6 7 – 9, 10 – 12 years of age. Cost: £ 25</p>	<p>Venue: Arnold Middle School, Hexton Road, Barton Le Clay, MK45 4JZ Date: Monday 29th – Tuesday 30th of December 2008 Time: 10:00am – 15:00pm Ages: 4 – 6, 7 – 9, 10 – 12 years of age. Cost: £ 25</p>
<p>Venue: Queensbury School, Langdale Road, Dunstable, LU6 3BU Date: Monday 29th – Tuesday 30th of December 2008 Time: 10:00am – 15:00pm Ages: 4 – 6, 7 – 9, 10 – 12 years of age. Cost: £ 25</p>	<p>Venue: Luton Regional Sports Centre, St. Thomas's Rd, Luton, LU2 7XP Date: Monday 29th – Tuesday 30th of December 2008 Time: 10:00am – 13:00pm Ages: 4 – 6. Cost: £ 20</p>
<p>Venue: Barnfield College Campus, New Bedford Road Luton, LU2 7BF Date: Friday 2nd of January 2009 Time: 10:00am – 15:00pm Ages: 4 – 6, 7 – 9, 10 – 12, years of age. Cost: £ 15</p>	<p>These Courses Includes: 5 hours coaching by Luton's FA Qualified Coaches Certificate for each child / Prizes/ Medals to be won Fun Syllabus Indoor/ Outdoor Facilities (where possible)</p>
<p>Payment Methods: Credit Cards, Cheque, (PLEASE DO NOT SEND CASH IN THE POST) if you do it is at your own risk, Availability is limited avoid disappointment and book early</p>	



SPONSORS SEASON 2008/09



TOUR SPONSORS

Good afternoon and welcome to today's game.

Today I would like to use the Centre of Excellence Pages to remind you of the Pre Centre of Excellence Development opportunities available to girls in the County. We are now taking enrolments for Term 2 of our Girls First Kicks Programme; please find information below.

Our Development Centres Programme is working well and already we have are taking a closer look at 6 players who have the potential to be offered Centre of Excellence Contracts for next season.

SESSIONS ARE AT: Lealand High School, Sundon Park Road, Sundon Park, Luton, Beds, LU3 3AL

MONDAY EVENINGS BETWEEN 6PM TO 7PM.

ONE COACH TO 10 CHILDREN

ONLY 20 PLACES AVAILABLE

EMPHASIS ON FUN AND ENJOYMENT

STATE OF THE ART ASTRO TURF TRAINING FACILITY

ALL COACHES ARE FA OR UEFA QUALIFIED; HOLD CHILD PROTECTION, EMERGENCY AID QUALIFICATIONS AND AN ENHANCED CRB CHECK

SESSIONS INCORPORATING S.A.Q. TO IMPROVE YOUR CHILDS COORDINATION AND MOTOR ABILITIES

PLUS CHILDREN WILL LEARN BASIC SUCH AS KICKING, JUGGLING, CONTROL WITH ALL PARTS OF THE BODY, PASSING, TURNING AND DRIBBLING MOVEMENTS!!!

TERM 2:
JANUARY 2009: 5th, 12th, 19th, 26th
FEBRUARY 2009: 2nd, 9th, 16th, 23rd
MARCH 2009: 2nd, 9th

TERM 3:
MARCH 2009: 16th, 23rd, 30th
APRIL 2009: 20th, 27th
MAY 2009: 4th, 11th, 18th, 25th
JUNE 2009: 1st

Payment for any one course is only by a block booking of: £35 payable in advance.

Payment for two courses is only by a block booking of: £65 payable in advance.

To enroll on any of the Girls First Kicks Courses please call me on 01582 391927.



Emma Budd
U16's Squad



Amber Pearson
U10's Squad



Victoria Rutherford
U16's Squaad

Enjoy the game

Stuart Smith

hattersyouth



We would like to welcome Luton Town's Centre of Excellence Under 14 squad to today's game.

The Under 14's are coached by Joe Deeney, they train twice a week at Baldock Arena and play every Sunday morning in the Football League Fixture Programme.

These are the signed players for 2008/09:

Name	From
Andre Nelson	Dunstable
Bayole Fasida	Dunstable
Ben McFarlane-Barnes	Hemel Hempstead
Brett Longden	Pulloxhill
Cameron Ball	Stevenage
Cameron Saul	Edmonton
Cauley Woodrow	Hemel Hempstead
Dave Moli	Luton
Jerome Jibodu	Wootton
Jordan Davis	Leighton Buzzard
Joseph Humphreys	Bishops Stortford
Kane Thomas	St Albans
Lucas Kirkpatrick	Luton
Martin Danobrega	Bedford
Michael Cain	Luton
Michael Richens	Bedford
Oliver Deegan	Northampton
Reeon Wiltshire	Luton

enormous progress from last season and this was demonstrated in their performance against Northampton Town in November. More importantly than results however, is the individual progress of the players which with the hard work put in by Joe has been significant so far this season. Five of the players are now being tested physically by training and playing in the Under 16 age group.

As a player who went through Luton's youth programme, signed professional contract and made his debut under Joe Kinnear, Joe Deeney is the ideal coach to drive the group on. Before injury cut his playing career tragically short, Joe learnt the importance in discipline on and off the field and these are attributes he tries to encourage in all of his players.

Joe Deeney commented "The group have developed nicely since pre-season, and this has allowed several individuals to really shine. The hard work that they have put in has allowed the group to take great strides forward"

Regards
Gregg Broughton
Youth Development Officer

The Under 14 year group are in the second half of a two year contract with the club, and it is one of the key age groups in Youth Development as they attempt to win a place in next season's Under 16 squad. As you will see when the players parade the pitch there is over 50 cm between the smallest player and the tallest player in the group, and 36 kilos between the heaviest and lightest. Ensuring that we monitor these differences regularly will assist us to assess player's performances and progress as accurately as possible.

The boys have now played eleven fixtures as part of the Football League Fixture Programme, against Cambridge, Wycombe, Peterborough, Rushden, QPR, Colchester, Southend, Gillingham, L Orient, Northampton & Millwall. The boys have continued to make

CALLING ALL HATTERS

PLAY A PART IN YOUR CLUB'S FUTURE
SPONSOR A LUTON TOWN YOUTH PLAYER FOR THE 2008/09 SEASON

Receive company branding or individual recognition in every home programme plus the opportunity to meet your favourite player. You will also receive your sponsored players' shirt at the end of the season.

Branding in every matchday programme to include sponsor name & photograph or company logo

Receive your sponsored players' shirt at the end of the season

Aid in the development of a Luton Town star of the future

For more information and prices, call 01582 411622 or email: commercial@lutontown.co.uk

LUTON TOWN - 123 YEARS OF HISTORY - BE PART OF IT

Designed by Lee Wood

executive **box** holders



G.P. Quorenton
(Ductwork)

Tel: 01582 882561

**BILLINGTON
& LAWRENCE**

Tel: 01582 726100

**SHALLOWFORD
CONSULTING**

Tel: 01438 831013

Admiral
GROUP OF COMPANIES

Tel: 01582 653333

Butterfields

01582 491100

Mr Mick Connolly

SKF

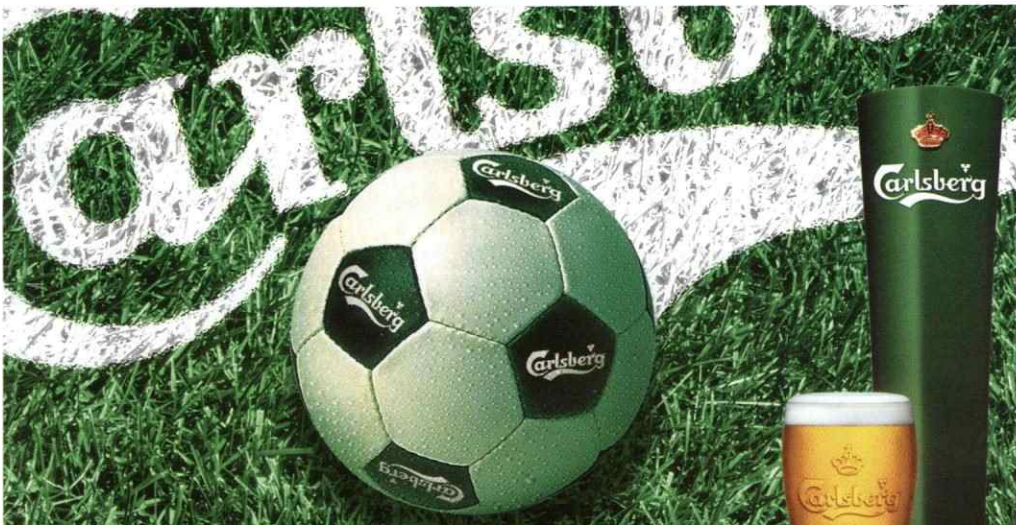
Tel: 01582 490049

F&S
PIPEWORK SERVICES LTD



Luton Plastics

Hi-Tech Flooring
LIMITED



OFFICIAL BEER OF LUTON TOWN F.C.

Enjoy Responsibly

george **pilkington**



Age: 27

Where were you born: Rugeley

Favourite Song: 'Wonderful Tonight' by Eric Clapton

Favourite Film: Gladiator

Favourite Meal: Spaghetti Bolognese

What car do you drive: Golf

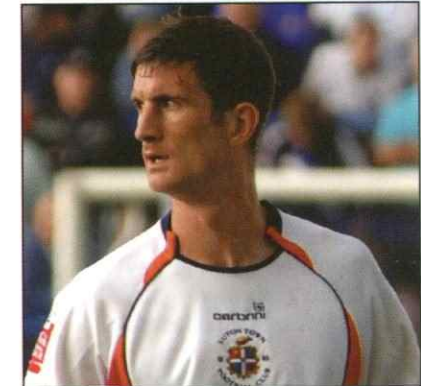
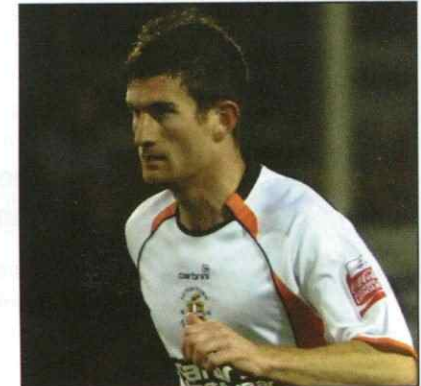
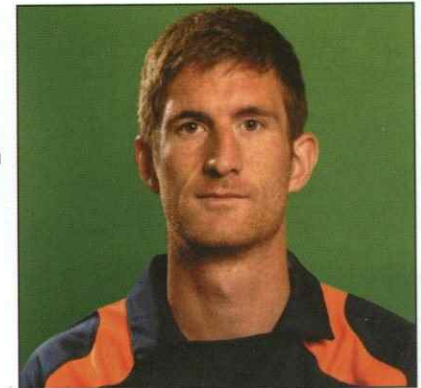
Who has the best car: Nico - a black Land Rover

Who is your favourite player: Stuart Pearce

Who is the best dressed: Wayne Andrews

Who is the worst dressed: Me!!!

What is your most embarrassing moment: Dunno, there are too many



Having just played out a dramatic 3-3 draw against Bournemouth, George Pilkington was left frustrated after seeing his defence ship in three goals.

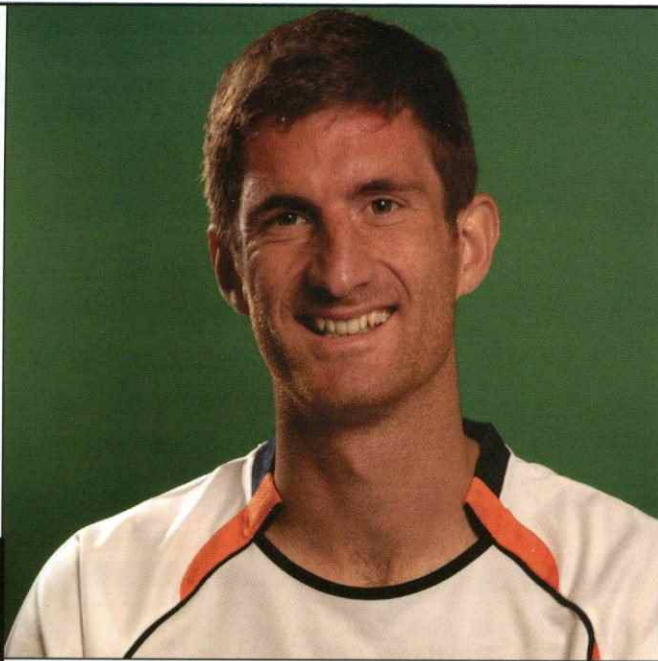
However, there were positives which the 27-year-old believes the Hatters can take from the game.

"Obviously we got a fortuitous first goal. We just didn't build on it.

"It doesn't matter who we're playing and where they are in the league, we've just got to go out and beat them."

"We conceded quite early after it and I think first half they were probably the better team. We weren't quite at the races today for the vast majority of the game," said Pilkington after the match.

The former Port Vale captain was particularly disappointed with the way the three goals were conceded, and emphasised



OneonOne

George Pilkington talks about his return from injury and his hopes for the Hatters

the need for his Hatters team-mates to keep full concentration for 90 minutes:

"You look at the goals, they're all poor goals. Probably individual errors or just lapses in concentration and it's something we need to eradicate."

With Bournemouth also battling relegation, having started the season on minus points, Pilkington

explained after the game how he felt the draw was a chance missed to close the gap, rather than a well-earned draw:

"Everyone knows how big a game it was. On the bright side we've not lost any ground on them, but it was a game we needed to win," added the Hatters' number six.

The Hatters claimed their 20th league point of the season following their draw

with the Cherries, and after the game Pilkington issued a rallying cry to the rest of his team-mates to show a bit more urgency:

"We've just got to win games - it's as simple as that.

"It doesn't matter who we're playing and where they are in the league, we've just got to go out and beat them. Every game is a Cup Final for us."

A spirited last half hour from the Hatters saw them come back to secure a point, and Pilkington predicted that if similar



performances are shown in the near future, then the points will inevitably follow:

"When we got it back 2-2

"below-par" and was mindful that the supporters need "something to shout about".

Despite the disruption

"We've all got to fight for our places, fight for the team and fight for the cause. That's what I'll be doing personally and I hope the other lads will too."

we were on top of them, the midfield were pushed on, we looked like we were going to go on to win the game and we felt positive," said the 27-year-old.

"We need to take that 20-30 minute spell into Saturday's game and if we do that then

"I'm sure we'll be beating teams quite easily," suggested the defender.

Pilkington was critical about his team's home form this season, describing the Hatters' performances at Kenilworth Road this season as

several injuries to key players has caused this season, Pilkington doesn't want to make excuses, and explained that every player has to perform to ensure the Hatters survive the threat of relegation:

"It doesn't matter what 11 players the manager puts on the pitch, we've all got to fight for our places, fight for the team and fight for the cause.

"That's what I'll be doing personally and I hope the other lads will too."

2008/2009 



georgepilkington



FlashBack

Club Historian Roger Wash looks back at events at Kenilworth Road twenty years ago.

the squad was needed as some of the mainstays in the side were heading towards veteran stage.

Wembley hero Brian Stein was the first to depart, moving to French club Caen and as Harford attempted to reduce the average age of the squad still further he brought in Roy Wegerle from Chelsea, goalkeeper Alec Chamberlain from Everton, John Dreyer from Oxford and then splashed out a Luton record £300,000 to Arsenal for Steve Williams.

Everyone at the club, as well as most supporters, now felt that the squad assembled was the best in the Town's history so it came as a major disappointment when they went down 0-1 at Sheffield Wednesday on the opening day of the 1988/89 campaign.

Early season form was patchy and it was not until the fifth game that a win was recorded - a shock 2-0 victory at Everton - but this was followed by the sale of defensive stalwart Mal Donaghy to Manchester United.

The break up of the cup-winning squad was moving ahead at speed!

By mid-November, following

back to back away defeats at Millwall and Coventry, Ray Harford decided to change his favoured 4-4-2 formation into a more attacking 4-3-3.

The new formation, favoured by the players, had an immediate impact with the Hatters thrashing West Ham 4-1 at Kenilworth Road.

This marked the start of a golden period for Roy Wegerle, with the South African scoring his first goal for the club in the West Ham game and then proving almost unplayable over the next few months as he demonstrated his repertoire of close control, balance and two-footed shooting ability, especially on the Kenilworth Road artificial surface.

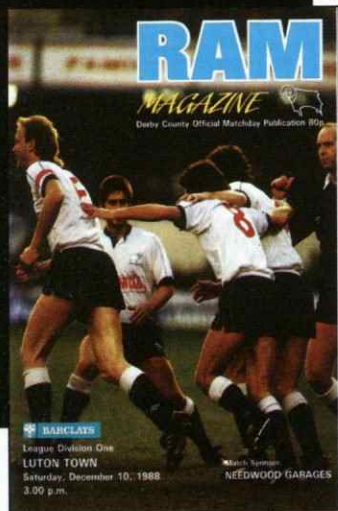
Wegerle followed up his goal against the Hammers with a pair at Norwich the following week and another two against Manchester City at Kenilworth Road as the Town moved ahead on the road to Wembley again in the Littlewoods Cup.

By the time of the visit to Derby on 10th December the Town had moved away from the nether reaches of the table and with Ray's namesake Mick now fully fit, local boy Kingsley Black tormenting defenders down the left flank and Wegerle in

Hatters manager Ray Harford took stock and looked to the future as he relaxed on holiday in the summer of 1988.

The club was seemingly in fine fettle - the Littlewoods Cup had been won in glorious style a couple of months before while the team had earned a top ten finish in the top flight three years running.

Despite all this, Harford felt that some freshening up of



■ Skipper Steve Foster (centre) with the summer signings of 1988.

inspirational form a fair number of Hatters fans travelled to the Baseball Ground in good heart.

The game Derby County 0 Luton Town 1 10th December 1988

While waiting for the game to start, Luton supporters learnt that a massive £325,000 bid to Tottenham, which would have smashed the record again, for ex-Town favourite Mitchell Thomas had been turned down by the player.

Ray Harford was worried by the lack of cover in defence but skipper Steve Foster and young Marvin Johnson repelled everything thrown at them by a frantic Rams side in the opening minutes as they hoped to extend a seven match unbeaten run.

Also in top form was goalkeeper Les Sealey who

pulled off tremendous saves from Trevor Hebbard and Ted McMinn early on before the Hatters took the lead with their first real attack of the game after 18 minutes.

And what a goal it was! Full back Richard Harvey had overlapped down the Town's left as Black took possession on the half way line.

Black's pass was perfection, and so was Harvey's cross.

Harford chested the ball down to Ricky Hill, who held it long enough for Derby's defenders to

close in on him.

As they did so he flicked a short square pass to Harford who fired in a tremendous, rising right foot bullet from 20 yards which Derby and England goalkeeper Peter Shilton never saw.

The Town rarely looked in trouble after that shock had been delivered to Derby's nervous system and went on to play, in manager Harford's words, 'the best football in the best football match so far this season.'



Luton Town: Sealey, Rob Johnson, Foster, Marvin Johnson, Harvey, Wilson, Hill, Preece, Wegerle (Oldfield), Harford, Black



Derby County: Shilton, Patterson, Wright, Blades, Forsyth, Williams, Hebbard, Callaghan, McMinn, Goddard (Gee), Saunders



■ Mick Harford. Back to his best after injury

Our knowledge puts you in pole position



As you may well know, SKF is the World Champion in rolling bearings. But did you know that there are lots of other exciting dimensions to today's SKF?

We have evolved step by step into a genuine knowledge engineering company. Our technical expertise is way out in front, ranging from pioneering design solutions to sophisticated on-line condition monitoring systems.

We transfer this knowledge to you, the customer, in everything we offer. Our products, solutions and services will make your business more efficient, environmentally friendly and competitive. And, of course, ultimately more profitable and more successful.

The Magic Box: Each time you hold one of our boxes in your hands you have access to all of this. Every box contains all of SKF's knowledge and experience, accumulated over nearly 100 years of working relations with every type of industry. Knowledge and experience gathered on land, underground, at sea, in the air – even on other planets.

It will help you gear up your business.

Luton Town, in partnership with Active Luton and Luton Borough Council, are pleased to announce the opening of the new Hatters Study Support Centre at the Ely Way training facility.

The Hatters Study Centre is part of the Playing for Success (PFS) programme which is a nationally acclaimed educational initiative aimed at providing children with exciting learning opportunities within a sporting environment.

During the Autumn term students from Lealands Sports College and Piton Primary School have taken part in a pilot programme on a Monday and Tuesday evening.

The pupils have had a great time at the Centre, enjoying a wide variety of activities from creating their own cartoon to measuring the pitch at Kenilworth Road, during the stadium visit. Four new schools will then take part in the initiative after Christmas when the project kicks off properly!

In addition to the after school study opportunities, the Hatters Study Support Centre has also hosted school visits to Kenilworth Road during the school day. Pupils from Foxdell Junior School were the lucky first to participate in the stadium tour.

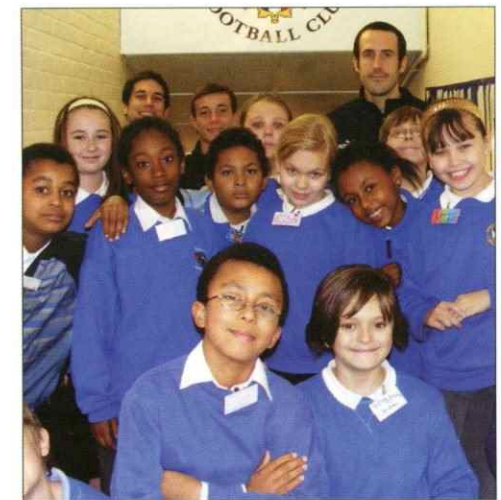
Pupils were given digital cameras and clip boards so that they were able to keep a note of the many places they visited during the tour. The following day back at school the pupils were then able to produce some wonderful

pieces of writing and art work in response to the visit.

Staff from the Hatters Study Support Centre delivered a Junior Football Officers (J.F.O) training programme during the half term school break to a group of budding young football coaches.

The J.F.O course was run in partnership with the Beds F.A and the annual 'Kick Racism Out' campaign. As part of their training the junior coaches ran a very successful football festival at Foxdell Park with more than 30 local year five and six school children.

For more information about the Hatters Study Support Centre contact Andy Ducat on 07900363750 or email him at andy.ducat@activeluton.co.uk



don't worry about a thing

**£1000
MINIMUM
PART EXCHANGE**

**BUY NOW
FIRST REPAYMENT
JANUARY
2009**

**FIXED
PAYMENTS
FOR THE TERM**

Worry Free Motoring from Hartwell

In the current economic climate, we know that every penny counts. It has always been our mission to bring you the very best cars at the very best prices. Right now we are also offering our special 'Worry Free Motoring' package on selected used cars meaning **every little thing is going to be alright!**

08/58 Ford Fiesta Hatchback
1.25 Style 5dr



BLUE
Was
£10495

CLEARANCE PRICE Save
£7995 **£2500**

07/07 Ford Focus 1.6 Zec 5dr
Climate Pack



RED
Was
£9495

CLEARANCE PRICE Save
£7995 **£1500**

08/57 Peugeot 308 Hatch 1.6
VTi SE 5dr



SILVER
Was
£12995

CLEARANCE PRICE Save
£9995 **£3000**

08/08 Ford Mondeo Hatchback
2.0 Zetec 5dr



GREY
Was
£17995

CLEARANCE PRICE Save
£13995 **£4000**

02/52 Mercedes Benz C-Class
C200K Elegance 4dr Automatic



GREEN
Was
£9495

CLEARANCE PRICE Save
£6995 **£2500**

00/W Ford Focus
1.6 LX 5dr



SILVER
Was
£3495

CLEARANCE PRICE Save
£2995 **£500**



SHARP SHOOTERS

Player	Team	Lge	Cup	Ttl
Grant Holt	Shrewsbury	9	8	17
Paul Benson	Dag & Red	10	3	13
Jamie Ward	Chesterfield	11	1	12
Peter Thome	Bradford	11	0	11
Andy Bishop	Bury	9	1	10
Ben Davies	Shrewsbury	8	1	9
Billy Clarke	Darlington	8	1	9
Jack Lester	Chesterfield	8	1	9
Charlie MacDonald	Brentford	7	2	9

WHERE TO SEE GOALS (By Ground)

Ground	Home Team	M	Gls	G/Mt
Prostar Stadium	Shrewsbury	9	32	3.56
Coral Windows Stadium	Bradford	9	32	3.56
L.B Barking & Dag Stad	Dag & Red	9	30	3.33
The Moss Rose Ground	Macclesfield	9	30	3.33
Spotland Stadium	Rochdale	9	27	3.00
Vale Park	Port Vale	9	26	2.89
Blundell Park	Grimsby	9	25	2.78
Don Valley Stadium	Rotherham	9	25	2.78
Recreation Ground	Chesterfield	9	25	2.78
The EBB Stadium	Aldershot	9	25	2.78
Kenilworth Road	Luton	8	22	2.75
The Deva Stadium	Chester	9	24	2.67
Fraser Eagle Stadium	Accrington S	9	24	2.67
96.6 Darlington Arena	Darlington	9	24	2.67
Underhill Stadium	Barnet	9	24	2.67
St James Park	Exeter	9	23	2.56
KRBS Priestfield Stad	Gillingham	9	23	2.56
Christie Park	Morecambe	9	22	2.44
Adams Park	Wycombe	8	19	2.38
Gigg Lane	Bury	9	21	2.33
Griffin Park	Brentford	9	21	2.33
Meadow Lane	Notts County	9	19	2.11
Sincil Bank	Lincoln City	9	19	2.11
Dean Court	Bournemouth	9	14	1.56

TEAM LEADERS

Team with the most... shots on target 127 Chesterfield. shots off target 114 Rochdale. corners 129 Dag & Red. hit woodwork 9 Aldershot. offsides 80 Chester. fouls 244 Chesterfield. yellow cards 34 Shrewsbury. red cards 4 Chesterfield.

PLAYER POWER

Player with the most... Shots 64 Jamie Ward (Chesterfield). Shots on target 42 Jamie Ward (Chesterfield). Shots off target 30 Kevin Ellison (Chester). Assists 9 Ryan Lowe (Chester). Crosses 88 Warren Cummings (Bournemouth). Offsides 37 Andy Bishop (Bury). Fouls 48 Grant Holt (Shrewsbury). Free-kicks won 45 Sam Saunders (Dag & Red).

Stat Pack

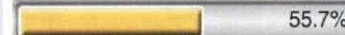


2008/09 SEASON



GOAL COUNTER 576

RIGHT FOOT 321 goals



LEFT FOOT 123 goals



HEADERS 119 goals



Own goals 11 (1.9%), Other body part 2 (0.2%)

QUICK-FIRE GOALS

From the start of a match
John O'Flynn (Barnet vs Accrington S) 0:19

By a substitute after coming on
Danny North (Grimsby vs Chester) 0:43

DISCIPLINARY



2.5 cards per match 0.2 cards per match

QUICK-FIRE CARDS

From the start of a match
Jay Harris (Chester vs Brentford) 0:51

By a substitute after coming on
Drew Broughton (Exeter vs Rotherham) -9:08

SUB TOTALS

Subs used953
Offsides1444
Corners2341
Shots Off Target2222

BEAT THE TRAFFIC

Total number of goals you would have missed by leaving every match ten minutes early

0 9 6

RESULTS

How many times each result has occurred this season - home sides score shown first

0-0	12
0-1	22
0-2	9
0-3	1
0-4	1
0-5	-
0-6	1
1-0	15
1-1	38
1-2	18
1-3	12
1-4	2
1-5	-
1-6	1
2-0	12
2-1	18
2-2	9
2-3	1
2-4	-
2-5	-
3-0	8
3-1	11
3-2	2
3-3	3
3-4	1
3-5	-
4-0	5
4-1	3
4-2	2
4-3	-
4-4	-
4-5	-
5-0	1
5-1	2
6-0	1
6-1	2
7-0	1

*up to and including 30/11/2008

Hartwell
Dunstable

Open 7 Days
Monday to Friday
9.30am to 7.00pm
Saturday 9.00am to 6.00pm
Sunday 10.30am to 4.30pm

77-81
London Road,
Dunstable
LU6 3DT



Call Now:
0870 904 9374

12.9%
APR TYPICAL

Visit BestPriceCar.co.uk - Our Award Winning No.1 Website

One click, one call, beats all.



The New
Football Pools

www.footballpools.com

kitsponsors



DEAN BRILL **01**

Age: 22
Position: Goalkeeper
Signed: May 2006

M&S Water Services

Bobbermans 606ers

CLAUDE GNAKPA **02**

Age: 25
Position: Defender
Signed: August 2008

Andy & Drew

Kevin Lennon

SOL DAVIS **03**

Age: 28
Position: Defender
Signed: August 2002

Trust in Luton (2003) Ltd
TRUST LUTON LUTON TOWN COPPERHEADS TRUST

Tommy Lennon

KEITH KEANE **04**

Age: 21
Position: Defender
Signed: August 2008

Trust in Luton (2003) Ltd
TRUST LUTON LUTON TOWN COPPERHEADS TRUST

Maddie Knight

IAN ROPER **05**

Age: 31
Position: Defender
Signed: August 2008

LTSC - Scandinavia

Bernard Elwen

GEORGE PILKINGTON **06**

Age: 26
Position: Defender
Signed: August 2008

WHOSH

Bobbers Travel Club

GARRETH O'CONNOR **07**

Age: 29
Position: Midfielder
Signed: October 2008

www.lutonoutlaws.com

Craig Lowrie

KEVIN NICHOLLS **08**

Age: 29
Position: Midfielder
Signed: August 2008

Pulse Tattoo
Image with Attitude

WHOSH

SAM PARKIN **09**

Age: 27
Position: Striker
Signed: August 2006

Les & Sue Miller & Company
Miller

Lynn, Ben & Rhiannon

RYAN CHARLES **10**

Age: 18
Position: Striker
Signed: August 2008

Performance
Car Hire

The Mayne Family

LEWIS EMANUEL **11**

Age: 24
Position: Midfielder
Signed: August 2008

Matthew Crossland

Bobbermans 606ers

ASA HALL **14**

Age: 21
Position: Midfielder
Signed: August 2008

Carole Jinks &
Sharon Skinner

WHOSH

ED ASAFU-ADJAYE **15**

Age: 19
Position: Defender
Signed: August 2008

Jacqui Peacock

Loyal Luton
Supporters Club

ROSSI JARVIS **16**

Age: 20
Position: Midfielder
Signed: August 2008

Carole Jinks &
Sharon Skinner

Oscar &
Rosie Barron

KEVIN WATSON **17**

Age: 34
Position: Midfielder
Signed: August 2008

Gill, Julie & Yvonne

TJ Fordham Plumbing
& Heating

CHRIS MARTIN **18**

Age: 19
Position: Striker
Signed: August 2008
On Loan

Luton Town
Ladies FC

Richard &
Zak Tilley

DREW TALBOT **19**

Age: 22
Position: Striker
Signed: January 2007

LTSC - Scandinavia

LTSC - Scandinavia

MICHAEL SPILLANE **20**

Age: 19
Position: Defender
Signed: August 2008
On Loan

Kelly Knight

A1 Partitions

CONRAD LOGAN **21**

Age:
Position: Goalkeeper
Signed: August 2008
On Loan

Emma Banks

Josie & Andrew
Kingston

GEORGE BEAVAN **25**

Age: 18
Position: Defender
Signed: August 2008

Stone Futures Ltd
'Good Luck'

WHOSH

DEAN MORGAN **27**

Age: 24
Position: Striker
Signed: February 2005

Available

Available

PAUL McVEIGH **28**

Age: 30
Position: Striker
Signed: August 2007

The Bricklayers
Arms

Available

STAFF kitsponsors



MICK HARFORD



Age: 49
Position: Manager
Signed: January 2008

Mr & Mrs Langford Hat

Hitchin Hatters

ALAN NEILSON



Age: 35
Position: Youth Manager
Signed: August 2008

Luke Browne

Luton Town Supporters Club

GREG BROUGHTON



Age: 33
Position: Youth Development Officer
Signed: August 2008

Available

Available

DIMITRI KHARINE



Age: 40
Position: Goalkeeper Coach
Signed: July 2006

Available

Available



KIT SPONSORSHIP 08/09

If you would like to sponsor a players kit or for more information please contact the Commercial Department on 01582 411622 or commercial@lutontown.co.uk

youthsponsors



If you would like to sponsor a youth player or their kit please contact the Commercial Department on 01582 411622 or commercial@lutontown.co.uk

Sam BARKER



Kit Sponsored by:
Michael Capp
Executive Club Member

Player Sponsored by:
Available

Riccardo BIGGI



Kit Sponsored by:
Available

Player Sponsored by:
Available

Oliver CLEAVER



Kit Sponsored by:
Available

Player Sponsored by:
Available

Ashley DEENEY



Kit Sponsored by:
Michael Capp
Executive Club Member

Player Sponsored by:
Available

Mark FARTHING



Kit Sponsored by:
Joe O'Dell

Player Sponsored by:
Available

Aaron FLETCHER



Kit Sponsored by:
Available

Player Sponsored by:
Available

Harry HOGARTH



Kit Sponsored by:
Fifties Fan

Player Sponsored by:
Available

Jake HOWELLS



Kit Sponsored by:
Neil Ehrenzweig

Player Sponsored by:
Don Hutchison

Taylor NATHANIEL



Kit Sponsored by:
Available

Player Sponsored by:
Available

Richard OWUSU



Kit Sponsored by:
Available

Player Sponsored by:
Available

Aidan QUINN



Kit Sponsored by:
Michael Capp
Executive Club Member

Player Sponsored by:
Available

Scott SINCLAIR



Kit Sponsored by:
Fifties Fan

Player Sponsored by:
Don Hutchison

Adam WATKINS



Kit Sponsored by:
Michael Capp
Executive Club Member

Player Sponsored by:
Available

Jack WOOD



Kit Sponsored by:
Michael Capp
Executive Club Member

Player Sponsored by:
Available



thefuture



72 Clubs. The 'Coca-Cola' Football League.

lutonladies



Just as the men were on FA Cup Second Round duty Town's Ladies were given the opportunity of redressing the balance against south west bogey side Swindon Town.

In less than ideal conditions Luton's passing was slick through the mud and it seemed only a matter of time before a goal followed. However, after 20 minutes Swindon opened the scoring in farcical fashion as the ball took a cruel bobble from a back pass and ran free for the Swindon forward to roll home.

The home sides joy was short lived though as they held the lead for just ten minutes as Rebecca Kane lost her marker to fire her shot across the keeper, via a deflection into the net. Good work out wide from Laura Day set up another shot for Kane which had little power but was timed well enough to find the far corner again. Kane then went on to complete her hat-trick five minutes later, jinking past three defenders before lifting the ball past the helpless keeper. Just before the break Swindon pulled a goal back from a goalmouth scramble to keep them in touch at 2-3.

The tie was effectively over following another defence splitting pass from Nicki Livingstone to Laura Day who in turn found Kane bursting through who rounded the keeper to extend the lead to 2-4. Swindon were completely unable to deal with the movement of the Town's strikers and Kane scored perhaps the pick of her five goals picking the ball up 25 yards out to find the top corner with a superb strike. The margin could then have been even greater but just one further goal followed from Michelle Byrne who beat two defenders before striking a shot from the edge of the area which then hit the post but was somehow forced into the net via

pressure from Yasmin Hickling following up to make it 6-2.

Another fine win to put the Town in the hat for the Third Round when we will visit National League side Brighton & Hove Albion at the Withead Stadium on 14th December.

The Reserves were not so fortunate and went down 3-1 to Tower Hamlets who they had beaten heavily just a month previously. Sade Laja gave Luton the lead with her first goal for the club but we were unable to build on that and add that much needed consistency to thrive in this Division.

The Under 16 squad extended their lead at the top of their league to 11 points with a 5-0 crushing of Hampstead. The Saturday squad also hit top spot defeating Moretonville 3-0 away.

It's a 12 point lead for the Under 15's although their rivals do have games in hand. This squad have really put some performances together this season and have added a ruthless streak evidenced by their defeat of Denham United 13-0. Katie Davis scored five, Mirella Tambini fired a hat trick and the other goals were shared around by Maisie Wyatt, Terri Petit, Holly Sheridan, Olivia Dacosta, and Jess McKay.



Bobbers Travel Club

Coach Travel Price List - Season 2008/09



LIFE MEMBERSHIP
ONLY £2.00 per Adult
&
£1.00 for OAP/Child

For **ALL** Luton Town F.C. 1st Team Away Fixtures

For Bookings telephone: **01234 856542**

(Answer phone service will operate at times)

Bobbers
Travel Club
Est. 1979

DATE	DESTINATION	ADULT Fare	*CHILD / OAP Fare	CRANFIELD Departure	LUTON Departure
2008	Sat Aug 16 GILLINGHAM	£15	£13	10.30	11.30
	Sat Aug 30 EXETER CITY	£25	£22	07.30	08.30
	Sat Sep 6 MACCLESFIELD TOWN	£18	£15	09.00	10.00
	Sat Sep 20 ROTHERHAM UNITED	£18	£15	09.30	10.30
	Sat Oct 4 BRADFORD CITY	£20	£17	08.30	09.30
	Tue Oct 21 GRIMSBY TOWN	£20	£17	13.30	14.30
	Sat Oct 25 BURY	£20	£17	08.30	09.30
	Sat Nov 1 SHREWSBURY TOWN	£18	£15	09.30	10.30
	Sat Nov 22 ROCHDALE	£20	£17	08.30	09.30
	Sat Dec 13 WYCOMBE WANDERERS	£13	£11	11.30	12.30
	Fri Dec 26 CHESTERFIELD	£17	£14	10.00	11.00
2009	Sat Jan 3 CHESTER CITY	£20	£17	08.30	09.30
	Sat Jan 17 DARLINGTON	£25	£22	07.30	08.30
	Tue Jan 27 AFC BOURNEMOUTH	£17	£14	14.00	15.00
	Sat Feb 7 ACCRINGTON STANLEY	£23	£20	08.00	09.00
	Sat Feb 14 DAGENHAM & REDBRIDGE	£13	£11	10.30	11.30
	Sat Feb 28 PORT VALE	£17	£14	10.00	11.00
	Tue Mar 10 NOTTS COUNTY	£16	£14	15.00	16.00
	Sat Mar 14 ALDERSHOT TOWN	£15	£13	10.30	11.30
	Sat Mar 28 MORECAMBE	£25	£22	07.30	08.30
	Sat Apr 11 LINCOLN CITY	£17	£14	09.30	10.30
	Sat Apr 18 BARNET	£13	£11	11.30	12.30
	Sat May 2 BRENTFORD	£13	£11	11.30	12.30

* Child rate is for a youth under 16 years of age. Prices and times may be subject to change

■ For any problem that arises on the day of travel, please contact this Mobile Phone No. **(0779) 4140352**
(Only between the times of the Cranfield & Luton departures) – PLEASE USE MAIN NUMBER AT ALL OTHER TIMES.

BOOK FOR COACHES IN ANY OF THE FOLLOWING WAYS:-

1. FROM OUR TICKET KIOSK IN KENILWORTH ROAD TURNSTILES - SEE A BOBBERS TRAVEL CLUB COMMITTEE MEMBER **BEFORE** ANY FIRST TEAM HOME MATCH UNTIL 15 MINUTES PRIOR TO KICK-OFF.
2. ON THE RETURN JOURNEY FROM THE PREVIOUS AWAY GAME,
3. OR BY TELEPHONE ON **(01234) 856542**

Payment of Membership covers you for a Life Membership

PLEASE NOTE:-

1. Any member who books and then fails to turn up without notifying us in advance will be required to pay for that journey IN FULL, before being allowed to travel again.
2. If a match is postponed ALL members will be required to book again when the match is re-arranged.
NO BOOKINGS WILL BE AUTOMATICALLY CARRIED FORWARD TO THE REVISED DATE.
3. Being a membership club, we do insist that you are issued with a Travel Club Card, which MUST be carried on every journey.

BOBBERS TRAVEL CLUB COMMITTEE ARE:

JOHN PYPER - President STEVE RUSSELL - Vice President
LES MILLER - Travel Co-ordinator & Treasurer SUE MILLER - Committee Steward

staffprofile



Name: David Hoskins

Started: July 2008

Position: Commercial Manager

Main Role: Looking after all of the Club's commercial activities including corporate hospitality, mascot packages, matchday and matchball sponsorship, perimeter & programme advertising, executive boxes, children's parties, celebration packages and any sporting dinners.

Best Memory: Drawing with Liverpool at home in the FA Cup this year. That game showed that on any day we can match any team in any division.

Worst Memory: Hearing the penalties imposed on the Club by the Football Association and Football League, particularly as the new owners, Luton Town FC 2020, had tried to show the football world that their transparent and honest approach was the way forward.

Views & Opinions: Looking forward to the rest of the season, I believe the foundations have been built to bring the Club success both on the pitch and behind the scenes and I hope the terrific fan base we have will continue to support us through these interesting and challenging times.



"I believe the foundations have been built to bring the Club success both on the pitch and behind the scenes"

30 DOWN TO ZERO



THE NEW SINGLE FROM JANE LEDSON
AND THE SHOUTY BOYS

**NOW AVAILABLE
IN THE CLUB SHOP**

ONLY £2
ALL PROCEEDS TO LTFC



HERE COME THE HATTERS

NEW MERCHANDISE



**AVAILABLE NOW
FROM THE
CLUB SHOP**



Les Miller picks his dream Hatters starting line up

GOALKEEPER

Les Sealey
What a character! Goalkeeper is, probably, the hardest position to choose a player for - a close call between Les and Jake Findlay.

RIGHT BACK

Kirk Stephens
Boxing Day 1979 - need I say more !

CENTRE BACK

Steve Buckley
Another tough-tackling full back. Chosen based on his Luton career - Matt Taylor would, probably, get the call if you take into account his career since leaving us.

CENTRE BACK

Brian Horton
The final part in David Pleat's jigsaw to see us walk away with the Division 2 title in 1981/82.

LEFT BACK

Steve Foster
I can still picture him holding the cup aloft at Wembley and now he is

back as part of 2020.

RIGHT MIDFIELD

Mal Donaghy
One of the most underrated players ever - always did a good solid job without doing anything spectacular.

CENTRE MIDFIELD

Graham French
What a player ! He had so much skill that he could have played at a much higher level. Scorer of the best goal I have ever seen.

CENTRE MIDFIELD

Ricky Hill
Fantastic skills - how many caps would he have won if he had played for a "big club" ?

LEFT MIDFIELD

Mick Harford
Alex Ferguson once said that, if he had signed Big Mick, United would have won the league a lot earlier. I am sure that, if he had signed him, Mick would have also won a lot more caps.

STRIKER

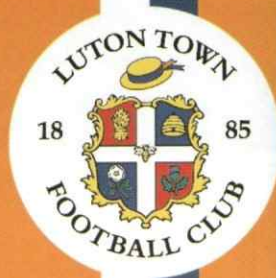
Brian Stein
Winning goal in the last minute of a cup final - what a way to "sign off" as you leave a club after a long and successful career, having been picked up from non-league football.

STRIKER

David Moss
My all-time favourite Luton player. A lot of centre forwards would be happy to have a goalscoring record like his, even if you take out the penalties.



Support the Hatters with A Plan Insurance



You get low cost:

Car Insurance

Home Insurance

Commercial Insurance

Life insurance



The Hatters get:

A significant

donation for

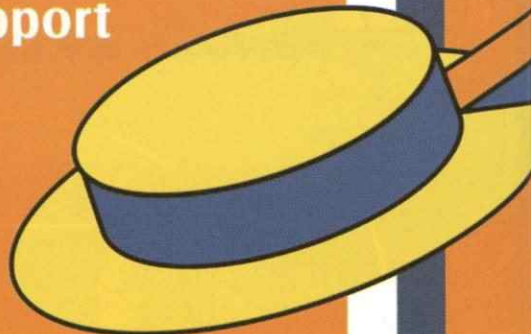
every new

policy arranged

Simply call the number below and tell them you support the Hatters!

Call:

**01582
420 101**



A
a-plan
insurance

Motor, Commercial and Home Insurance are provided by A-Plan Insurance a division of A-Plan Holdings. Authorised and regulated by The Financial Services Authority. Registered in London 750484
Life insurance provided by A-Plan Assurance a division of Assured Futures Limited.
Authorised and regulated by The Financial Services Authority. Registered in London 1040737

GET CLOSER TO THE ACTION



MATCH & BALL SPONSORSHIP



For more information and prices, call 01582 411622
or email: commercial@lutontown.co.uk

LUTON TOWN - 123 YEARS OF HISTORY - BE PART OF IT





3rd degree burns
Sunday 8.17am

Luton Blood Donor Centre Open Day 30th October 2008

Luton Town manager Mick Harford will be at the Blood Donor Centre in St George's Square at 5pm to help promote donating blood. Please come and visit us!

blood.co.uk



OTHER GAMES BEING PLAYED TODAY

- Accrington vs Brentford
- Aldershot vs Wycombe
- Bournemouth vs Chester
- Bradford vs Dag & Red
- Darlington vs Rochdale
- Exeter vs Lincoln
- Gillingham vs Chesterfield
- Macclesfield vs Bury
- Notts Co vs Morecambe
- Port Vale vs Grimsby
- Shrewsbury vs Rotherham

LUTON TOWN SUPPORTERS CLUB FOLLOWING THE HATTERS AWAY, THROUGHOUT THE UK

BOOKING NUMBER – 07960 567465
ONLINE @ www.lutontownsc.co.uk

******UNDER 7's TRAVEL FREE*****

When accompanied by a full paying adult

DEPARTURE TIMES + PRICES 2008/09

DATE	DESTINATION	DEPARTURE TIME	ADULTS	CONCESSIONS
Sat 16.08.08	Gillingham	11:00	£13	£11
Sat 30.08.08	Exeter City	08:00	£22	£20
Sat 06.09.08	Macclesfield Town	10:00*	£18	£16
Sat 20.09.08	Rotherham United	10:00*	£16	£14
Sat 04.10.08	Bradford City	09:30*	£19	£17
Tue 21.10.08	Grimsby	15:00*	£20	£17
Sat 25.10.08	Bury	09:00*	£19	£16
Sat 01.11.08	Shrewsbury	10:00	£17	£14
Sat 22.11.08	Rochdale	09:00*	£19	£17
Sat 13.12.08	Wycombe Wanderers	12:30	£11	£9
Fri 26.12.08	Chesterfield	11:00*	£15	£13
Sat 03.01.09	Chester City	09:00*	£18	£16
Sat 17.01.09	Darlington	08:30*	£23	£21
Tue 27.01.09	Bournemouth	15:30	£17	£15
Sat 07.02.09	Accrington Stanley	09:00*	£21	£19
Sat 14.02.09	Dagenham & Redbridge	12:00	£11	£9
Sat 28.02.09	Port Vale	11:00	£16	£14
Tue 10.03.09	Notts County	16:00*	£16	£16
Sat 14.03.09	Aldershot	11:30	£13	£11
Sat 28.03.09	Morecambe	08:00*	£23	£21
Sat 11.04.09	Lincoln	10:00*	£17	£15
Sat 18.04.09	Barnet	12:30	£11	£9
Sat 02.05.09	Brentford	12:00	£11	£9

A supplement of £2 per trip is payable by non-LTSC Members

Prices and departure times may be subject to change

PICK UP POINTS

LUTON TOWN FC – MAPLE ROAD CAR PARK

Parking is available here costing £5 per car (payable to LTFC staff)

Northbound journeys include a pickup at:

MILTON KEYNES – NEWPORT PAGNELL SERVICE STATION

30mins after Luton pickup

Other pick-ups will be considered providing a minimum of 5 passengers joining the coach. Please contact us for further discussion.

NEWSPAPERS ON REQUEST

Want a newspaper for your trip? Request this when booking and pay a £5 deposit and your paper will be waiting for you on board.

Terms & Conditions

A valid Luton Town Supporters Club membership card must be shown at time of payment or a supplement of £2 will be payable on published prices. Passengers between the ages of 12 and 16 may only travel unaccompanied on production of a completed Parental Permission form (please ask on booking). Under NO circumstances will any child under 12 years be permitted to travel unless accompanied by a responsible adult (over 18). Town on Tour reserve the right to refuse travel to any passenger

Full terms and conditions can be obtained on request

Acolina Country House Hotel

For Luxury Golf breaks
& holidays in the Algarve



Book direct quoting 'LTFC' for preferential rates



RESERVATIONS & ENQUIRIES:

Tel. (00351) 289 358 792 Email: reservas@acolinahotel.com www.acolinahotel.com

www.lutontown.co.uk

PAGE 57

PERIMETER ADVERTISING

Stadium and pitch perimeter advertising in the modern day sporting arena represents one of the most powerful statements available to companies wishing to drive their brand or service message into the centre of their target audience.

At Kenilworth Road we offer a range of strategic positions within the ground that provide your business with the new opportunity to project your company to your target marketplace for at least 23 games per season.



For more information and prices, call 01582 411622 or email: commercial@lutontown.co.uk

LUTON TOWN - 123 YEARS OF HISTORY - BE PART OF IT



competitiontime!



ARE YOU A WINNER?



If this is your face circled you have just won a £10 Club Shop voucher!

To claim your prize please visit the Club Shop either at half-time or at the end of the game or contact the Commercial Department on 01582 411622 or commercial@lutontown.co.uk

(Prize must be claimed by Friday 12th December 2008, photo ID may be required)



The Football Foundation provides grants for kit, goalposts, pitches, floodlights, clubhouses, coaching and innovative projects that use football to deliver a wide range of community benefits. If you are a local authority, football club, youth group, charity or a school looking to update your football facility or need to build a new one, or have an idea for using football to tackle a local issue you can take advantage of this funding.

For more information visit

www.footballfoundation.org.uk



improving facilities • creating opportunities • building communities



queensway

The most important piece of your puzzle



**Proud to be supporting Luton Town Football Club
and 123 years of history**

Queensway Publishing, 4 Centre Way, Claverings Industrial Estate, Edmonton, London N9 0AP
T: 0208 807 7669 F: 0208 807 6123 E: queenswaypub@aol.com

travelnews



LEAGUE TWO

Saturday 13th December

Wycombe Wanderers

Kick off: 3pm Adams Park, Hillbottom Road, High Wycombe, HP12 4HL



What's the Ground Like?

On one side of the ground is the impressive looking Frank Adams Stand, opened in 1996. This was named in memory of the man who originally donated to the club their previous ground at Loakes Park. It is a large two tiered stand, complete with a row of executive boxes and it dwarfs the rest of the stadium. The other three stands are smaller affairs, but are at least all covered. Only the Valley Stand at the home end remains as terracing. Opposite is the Dreams Stand, housing away supporters, a medium sized single tiered stand, with windshields to either side.

What Is It Like For Visiting Supporters?

Away fans are mostly located at one end of the ground in the Dreams Stand, where just over 1,800 supporters can be accommodated. The club has a relaxed friendly feel about it. The ground is situated in a nice setting with a wooded hill over looking the ground (this normally has a small contingent of supporters watching the game for nothing) and with green fields surrounding the other sides. The standard football ground fayre of burgers (£2.30), pies (£2), pasties and hot dogs are available from the refreshments area.

Where To Eat & Drink?

As the ground is on the edge of an industrial estate, there aren't many pubs around. The nearest pub to the Causeway Stadium, is the Hourglass in Sands (about a 15 minute walk, from the end of the road up to the ground). Away fans are normally okay in small groups except for big games or local derbies. If you arrive early you may be able to go into the Supporters Club at the ground, which cost £2 to enter. The Club is one of the suites at the far end of the Main Stand.

How To Get There By Car?

Join the M1 motorway (signposted London). Leave the M1 at junction 6a, then join the M25 motorway (signposted Heathrow Airport). Leave the M25 at junction 16, then join the M40 motorway (signposted Birmingham, Oxford). Leave the M40 at junction 4, then at roundabout take the 5th exit onto the A4010 (signposted Aylesbury, A4010). Continue on the A4010 (signposted Aylesbury). Turn right onto Hillbottom Road.

Car Parking

There is a fair sized car park located at the ground which costs £3 per car, or some of the industrial units provide match day parking.



FORTHCOMING AWAY FIXURES

Saturday 13th December
Wycombe Wanderers
 Kick off: 3pm Adams Park



This Match is ALL TICKET for Luton Supporters.

Tickets are now on general sale from the Ticket Office until 4pm on Friday 12th December.

We have an allocation of 1800 seats

Prices: Adults(16 and Over) £16, Juniors (Under 16)£4, Seniors (Over 65)£13, Students with valid ID £13, Disabled and Carer £16

Matchday Ticket Voucher Book

*The perfect gift for
 all Luton fans
 this Christmas*

Ask in the Ticket Office for more information



FORTHCOMING HOME FIXURES

Tuesday 16th December
Colchester United
 Kick off: 7.45pm Kenilworth Road



This match is pay at the turnstile on the night only. All seating will be unreserved.

Adults £15, Over 65 £10, Under 17 £5,
 Under 17 free when accompanied by a paying adult

Saturday 20th December
Morecambe
 Kick off: 3pm Kenilworth Road



Tickets are now on general sale at normal pre-matchday prices.

There will be an £2 increase for tickets purchased on the day of the game.

Sunday 28th December
Lincoln City
 Kick off: 3pm Kenilworth Road



Tickets are now on general sale at normal pre-matchday prices.

There will be an £2 increase for tickets purchased on the day of the game.



Ticket Office: 01582 416976

STANDS PRE MATCHDAY TICKET PRICE

All Areas	
Juniors (Under 10)	£5
Youth (Age 10-16)	£10
Young Adult (Age 17-21)	£15
Adult (Age 22-64)	£20
Senior (Age 65-75)	£15
Golden Senior (Over 75)	£10

Compromise Seating - Main Enclosure A, B, H & J, Main Stand G

Juniors (Under 10)	£5
Youth (Under 17)	£10
Young Adult (Age 17-21)	£15
Adult (Age 22-64)	£15
Senior (Age 65-75)	£15
Golden Senior (Over 75)	£10

MATCHDAY VOUCHER BOOKS

(x5 tickets per book)	
Juniors (Under 10)	£22.50
Youth (Age 10-16)	£45
Young Adult (Age 17-21)	£67.50
Adult (Age 22-64)	£90
Senior (Age 65-75)	£67.50
Golden Senior (Over 75)	£45



Stats 08/09

Coca-Cola League Two

Team	P	W	D	L	F	A	GD	PTS
Wycombe	18	11	7	0	26	8	18	40
Bradford	18	10	3	5	34	24	10	33
Darlington	18	9	5	4	31	17	14	32
Shrewsbury	18	8	7	3	35	16	19	31
Rochdale	18	8	7	3	30	19	11	31
Bury	18	9	4	5	28	19	9	31
Brentford	18	8	7	3	22	13	9	31
Exeter	18	8	5	5	24	21	3	29
Gillingham	18	8	4	6	26	26	0	28
Dag & Red	18	8	3	7	36	21	15	27
Aldershot	18	8	3	7	24	29	-5	27
Chesterfield	18	6	5	7	31	27	4	23
Lincoln City	18	6	5	7	18	19	-1	23
Port Vale	18	6	2	10	20	30	-10	20
Macclesfield	18	6	2	10	20	35	-15	20
Accrington Stanley	18	5	4	9	20	23	-3	19
Notts County	18	3	9	6	23	29	-6	18
Morecambe	18	3	9	6	19	27	-8	18
Chester	18	4	4	10	21	35	-14	16
Barnet	18	3	5	10	19	37	-18	14
Rotherham	18	7	6	5	23	21	2	10
Grimsby	18	1	7	10	14	34	-20	10
Bournemouth	18	3	8	7	21	29	-8	0
Luton	18	5	5	8	21	27	-6	-10

2008-09 APPEARANCES

LEAGUE	This Season				Luton Career	
	APP	GLS	TOTAL	CARDS	APP	GOALS
Wayne ANDREWS	0(0)	0	1(0)	0	1(0)	0
Ed ASARI-ADJAYE	2(1)	0	1	0	3(1)	0
George BEAVAN	0	0	2	0	2(0)	0
Dean BRILL	6	0	1	0	7(0)	0
Ryan CHARLES	0(7)	1	1(1)	1	1(8)	2
Tom CRADDOCK	4	3	1	0	5(0)	3
Sol DAVIS	11	1	3(1)	0	14(1)	1
Lewis EMANUEL	8	0	2(1)	0	10(1)	0
Kevin GALLAN	3	0	0	0	3(0)	0
Claude GNAKPA	16	1	7	0	23(0)	1
Asa HALL	13(2)	3	4(1)	1	17(3)	4
Jake HOWELLS	7(1)	0	5	0	12(1)	0
Ross JARVIS	15(2)	0	5(2)	2	20(4)	2
Keith KEANE	15	0	4(1)	0	19(1)	0
Josh KLEIN-DAVIES	0(1)	0	0	0	0(1)	0
Conrad LOGAN	11	0	6	0	17(0)	0
Chris MARTIN	16	2	7	1	23(0)	3
Paul McVEIGH	4(4)	1	4(1)	0	8(5)	1
Kevin NICHOLLS	5	0	4	0	9(0)	2
Garreth O'CONNOR	3	0	2(2)	0	5(2)	0
Sam PARKIN	7(1)	3	2	0	9(1)	3
Jordan PATRICK	0(2)	0	0	0	0(2)	0
George PILKINGTON	6	0	2(1)	0	8(1)	0
Tristan PLUMMER	0(6)	0	0	0	1(7)	0
Marc PUGH	3(1)	0	0	0	3(1)	0
Ian ROPER	8	1	3	0	11(0)	1
Scott SINCLAIR	0	0	0(1)	0	0(1)	0
Michael SPILLANE	16	2	6	1	22(0)	3
Drew TALBOT	1(1)	0	0(2)	0	1(3)	0
Kevin WATSON	1(4)	0	2(3)	0	3(7)	0
Harry WORLEY	6(2)	0	1(1)	0	7(3)	0

Date	Opponent	Score	Att	Away	Pos
August					
Sat 9	H Port Vale	FL2	L1-3	7,469	546 24
Tue 12	H Plymouth	LGCP	W2-0	2,682	340 n/a
Sat 16	A Gillingham	FL2	W1-0	5,339	743 24
Sat 23	H Notts County	FL2	D1-1	6,085	381 24
Tue 26	A Reading	LGCP	L1-5	7,498	745 n/a
Sat 30	A Exeter City	FL2	W1-0	5,328	745 24
September					
Sat 6	A Macclesfield	FL2	L1-2	2,349	733 24
Sat 13	H Aldershot Town	FL2	W3-1	6,462	810 24
Sat 20	A Rotherham	FL2	L0-1	4,095	866 24
Sat 27	H Chester City	FL2	D1-1	5,731	212 24
October					
Sat 4	A Bradford City	FL2	D1-1	3,083	492 24
Tue 7	H Brentford	JPT	D2-2	2,029	286 n/a
Sat 11	H Darlington	FL2	L1-2	5,560	207 24
Sat 18	H Accrington	FL2	L1-2	5,492	80 24
Tue 21	A Grimsby Town	FL2	D2-2	4,021	212 24
Sat 25	A Bury	FL2	W2-1	3,052	408 24
Tue 28	H Bournemouth	FL2	ABANDONED		
November					
Sat 1	A Shrewsbury	FL2	L0-3	6,188	805 24
Tue 4	A Walsall	JPT	W1-0	1,844	153 n/a
Sat 8	H Altricham	FA	D0-0	3,200	359 n/a
Sat 15	H Dagenham & Red	FL2	W2-1	5,402	268 24
Tue 18	A Altrincham	FA	D0-0	2,397	tbc n/a
Sat 22	A Rochdale	FL2	L0-2	2,901	tbc 24
Tue 25	H Brentford	FL2	L0-1	5,248	527 24
Sat 29	A Southend	FA	L1-3	4,111	502 n/a
December					
Tue 2	H AFC Bournemouth	FL2	D3-3	6,773	277 24
Sat 6	H Barnet	FL2			
Sat 13	A Wycombe	FL2			
Tue 16	H Colchester United	JPT			
Sat 20	H Morecambe	FL2			
Fri 26	A Chesterfield	FL2			
Sun 28	H Lincoln City	FL2			
January					
Sat	A Chester City	FL2			
Sat 10	H Rotherham	FL2			
Sat 17	A Darlington	FL2			
Sat 24	H Bradford City	FL2			
Tue 27	A Bournemouth	FL2			
Sat 31	H Bury	FL2			
February					
Tue 3	H Grimsby Town	FL2			
Sat 7	A Accrington	FL2			
Sat 14	A Dagenham & Red	FL2			
Sat 21	H Shrewsbury	FL2			
Sat 28	A Port Vale	FL2			
March					
Tue 3	H Gillingham	FL2			
Sat 7	H Exeter City	FL2			
Tue 10	A Notts County	FL2			
Sat 14	A Aldershot Town	FL2			
Sat 21	H Macclesfield	FL2			
Sat 28	A Morecambe	FL2			
April					
Sat 4	H Wycombe	FL2			
Sat 11	A Lincoln City	FL2			
Mon 13	H Chesterfield	FL2			
Sat 18	A Barnet	FL2			
Sat 25	H Rochdale	FL2			
May					
Sat 2	A Brentford	FL2			

Brill	Gnakpa	Roper	Pilkington	Davis**	Emanuel	Nicholls	Hall	Jarvis*	Parkin 1	Martin	K-Davis**	Plummer*	Watson	Keane	Spillane
Brill	Gnakpa	Spillane	Pilkington	Davis**	Emanuel*	Nicholls	Hall	Jarvis 1	Parkin	Martin***	Keane**	Plummer*	Watson***	Fletcher	McVeigh
Brill	Gnakpa	Spillane	Pilkington	Davis	Keane	Nicholls	Hall	Jarvis	Parkin 1	Martin	Watson*	Plummer*	McVeigh	Jackson	Roper
Brill	Gnakpa	Spillane	Pilkington	Davis	Emanuel	Nicholls	Hall**	Jarvis*	Parkin	Martin 1	Plummer*	Watson**	Roper	Logan	Keane
Logan	Gnakpa	Keane	Pilkington	Davis*	Emanuel	Nicholls	Plummer	Watson	Parkin**	Martin***	Jarvis*	Charles 1**	Hall***	Brill	Roper
Brill	Gnakpa	Spillane	Pilkington	Davis	Emanuel	Nicholls	Keane	Jarvis	Parkin 1	Martin*	Charles*	Hall	Watson	Logan	Roper
Brill	Gnakpa**	Spillane	Pilkington	Davis*	Emanuel	Watson	Keane	Jarvis***	Parkin	Martin	Charles 1*	Hall**	Plummer***	Logan	Roper
Logan	Gnakpa	Spillane 1	Pilkington***	Pugh*	Emanuel	Hall 1	Keane	Jarvis**	Parkin	Martin 1	Charles*	Plummer**	Watson***	Brill	Roper
Brill	Gnakpa*	Spillane	Worley	Pugh	Emanuel	Hall**	Keane	Jarvis***	Parkin	Martin	Charles*	A-Adjaye**	Watson***	Logan	Roper
Logan	Gnakpa	Spillane	Worley	Davis	Emanuel	Hall 1	Keane	Jarvis*	Pugh	Martin	Charles*	A-Adjaye	Sinclair	Brill	Roper
Logan	Gnakpa	Spillane 1	Worley	Davis*	Emanuel**	Hall	Keane	Jarvis***	A-Adjaye	Martin	Howells*	McVeigh**	Charles***	Brill	Plummer
Logan	Gnakpa	Spillane	Worley	Howells	O'Connor***	Hall	Charles**	Jarvis	A-Adjaye*	Martin 2	Plummer*	Sinclair**	McVeigh***	Brill	Roper
Logan	Gnakpa 1	Spillane	Worley	Howells	O'Connor**	Hall	Keane	Jarvis	A-Adjaye*	Martin	Charles*	Pugh**	McVeigh	Brill	Roper
Logan	Roper	Spillane	Worley	Howells	O'Connor*	Hall 1	Keane	Jarvis**	Craddock	Martin	Andrews*	McVeigh**	Patrick	Brill	Davis
Logan	Gnakpa	Spillane	Roper	Howells	Davis*	Hall***	Keane	Jarvis	Craddock 2	Martin**	McVeigh*	Parkin**	Patrick***	Brill	Worley
Logan	Gnakpa	Spillane	Roper 1	Howells	Davis*	Hall	Keane	Jarvis**	Craddock 1	Martin	McVeigh*	Andrew**	Worley***	Brill	Patrick
Logan	Gnakpa**	Spillane	Roper	Howells	Worley	McVeigh	Keane	Jarvis	Craddock	Martin*	Andrews*	Patrick**	Beavan	Brill	Fathring
Logan	Gnakpa	Spillane	Roper**	Howells*	Beavan	McVeigh	Keane	Jarvis 1	Craddock**	Martin	O'Connor**	Worley**	Watson***	Brill	Andrews
Logan	Gnakpa	Spillane	Nicholls*	Howells	Beavan	McVeigh***	Keane	Jarvis	Andrews**	Martin	Watson*	O'Connor**	Talbot***	Brill	Worley
Logan	Gnakpa	Spillane	Nicholls**	Howells	Davis*1	McVeigh 1	Keane	Roper	Gallen	Martin	Jarvis*	Hall**	Talbot	Brill	Worley
Logan	Gnakpa	Spillane	Nicholls***	Howells*	O'Connor**	McVeigh	Keane	Roper	Hall	Martin	Davis*	Jarvis**	Talbot***	Brill	Worley
Logan	Gnakpa	Spillane	Gallen	Jarvis	O'Connor*	McVeigh**	Keane	Roper	Hall	Martin	Talbot*	Worley**	Beavan	Brill	Fathring
Logan	Gnakpa	Spillane	Roper	Howells	Davis*	Hall	Keane	Gallen	Talbot**	Martin	Andrews*	Jarvis**	Beavan	Brill	O'Connor
Logan	Gnakpa	Spillane 1	Roper*	Howells	Davis***	Hall	Watson	Jarvis**	McVeigh	Martin	Pilkington*	Andrews**	Emanuel***	Brill	Beavan
Logan	Gnakpa	Pilkington	Keane	Howells	Emanuel**	Nicholls*	Watson***	Gallen 1	McVeigh 1	Martin	Jarvis*	Talbot**	Hall***	Brill	Beavan



IN THE LEAGUE FOR THE HATTERS AT THE KENNY

Saturday 20th December

Morecambe

3pm



Despite a poor start to only their second ever campaign in the Football League, Morecambe managed to haul themselves away from the relegation mire after a five-game unbeaten streak between the end of October and the beginning of December.

The Shrimps have been on the end of several heavy defeats this season, including 4-0 away to Nottingham Forest and 5-0 away to Gillingham, but have also shown a tenacious, fighting spirit, drawing half of their first 18 matches and coming back from a losing position to equalise on seven separate occasions.

However, the team from Christie Park have only managed to win one game away from home, a stat that may bode well for the Hatters in their final fixture before Christmas.

Morecambe's manager Sammy McLroy will take confidence from the fact his team secured their first away win last month - beating Chester City 2-1 at the Deva Stadium - and the former Northern Ireland boss will be hoping his side have the battling qualities needed to compete on their first ever visit to Kenilworth Road.

The Lancashire team will look towards on-loan Peterborough United striker Rene Howe to trouble the Hatters' defence. The 22-year-old powerful

attacker has made a big impression at Christie Park during his loan spell, and is the Shrimps' top-scorer with five league goals to his name.

Howe's strike partner, Danny Carlton is renowned amongst the Shrimps' faithful for his high work rate, and the 24-year-old is back at Morecambe on loan for his second stint at the club after moving to Carlisle United in 2007. Carlton will forever have a special place in the hearts of Shrimps' supporters, after scoring the winning goal at Wembley that took Morecambe to the Football League for the first time in their history.

Former Celtic striker Diarmuid O'Carroll is also in the Morecambe ranks - a young forward-cum-midfielder who could be a key player for the Shrimps on their visit to Luton. Although he never quite

made the grade at Celtic Park, the 21-year-old had a host of takers vying for his signature last summer, but McLroy beat off several competitors to secure the Irishman's services.

With this crop of attacking talent at their disposal, it may come as somewhat of a surprise to hear that Morecambe haven't scored more than two goals in any of their matches so far this season.

McLroy's side finished in a very respectable 11th position in their debut season in League 2 last year, racking up 60 points in the process. And after being held apart in different divisions and never meeting in cup competition, this meeting between the Shrimps and the Hatters will be the very first in both sides' histories.

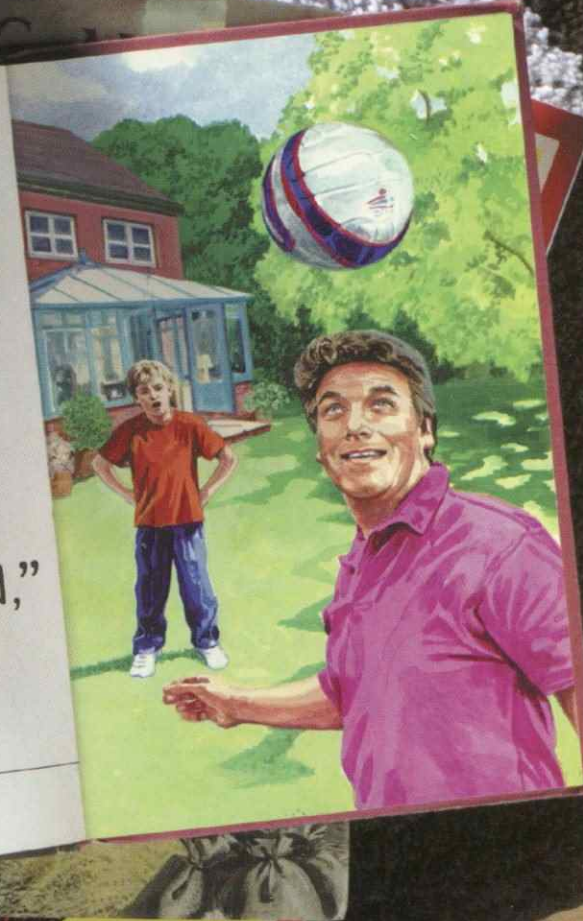


Illustration by Kaye Hodges
www.artistpartners.com

"What a ***** goal!" screamed Johnny's dad.

"I don't like football with Dad," thought Johnny.

Pass ball dad



BAD LANGUAGE HAS NO PLACE IN FAMILY ACTIVITIES. PLEASE RESPECT YOUR FELLOW SUPPORTERS IN OUR FAMILY AREA.



HATTERS

LUTON TOWN

1	DEAN BRILL		
2	CLAUDE GNAKPA		
3	SOL DAVIS		
4	KEITH KEANE		
5	IAN ROPER		
6	GEORGE PILKINGTON		
7	GARRETH O'CONNOR		
8	KEVIN NICHOLLS		
10	RYAN CHARLES		
11	LEWIS EMANUEL		
12	HARRY WORLEY		
14	ASA HALL		
15	ED ASAFU-ADJAYE		
16	ROSSI JARVIS		
17	KEVIN WATSON		
18	CHRIS MARTIN		
19	DREW TALBOT		
20	MICHAEL SPILLANE		
21	CONRAD LOGAN		
23	WAYNE ANDREWS		
24	TOM CRADDOCK		
25	GEORGE BEAVAN		
28	PAUL MCVEIGH		
29	JORDAN PATRICK		
32	KEVIN GALLEN		
33	JAKE HOWELLS		
40	SCOTT SINCLAIR		

BARNET

1	ROB BECKWITH		
2	JOE DEVERA		
3	KENNY GILLET		
4	NEAL BISHOP		
5	ISMAIL YAKUBU		
6	MICHAEL LEARY		
7	ALBERT ADOMAH		
8	MAX PORTER		
9	CLIFF AKURANG		
10	ADAM BIRCHALL		
11	NICKY DEVERDICS		
12	LUKE MEDLEY		
16	ASHLEY CAREW		
17	DANNY HART		
18	LEE HARRISON		
19	ELLIOT CHARLES		
20	IAN HENDON		
21	ARYAT TAJ		
22	JEREMY DE MAGALHAES		
23	RYAN BURGE		
24	NICKY NICOLAU		
25	RAN KADOCH		
26	ABU OGOGO		
29	JOHN O'FLYNN		

REFEREE

D J PHILLIPS

ASSISTANT

A SANNERUDE

ASSISTANT

M D STEWART

4TH OFFICIAL

A RODDA



Tuesday 16th December
Colchester United

Kick off: 7.45pm
 Kenilworth Road



Next up at **home**