

# HATTERS

LUTON TOWN OFFICIAL MATCHDAY PROGRAMME: £3.00

v ROCHDALE 25/04/09 3.00pm

Competition



Official Club sponsor



Match sponsor

Colin Keeley

Matchball sponsor



Today's Mascots

Amelia Bacon, Ellie-Mae  
Waller, Jay Sharpe,  
Kyle McPherson



**carbrini**  
sportswear

ONLY  
AT JD



JDSports.co.uk

JD - The Best of the Best.  
Available at your local JD Store The Arndale Shopping Centre, Luton and online.

**BEST  
OF THE  
BEST**



**Address:**  
Luton Town Football Club, 2020 Ltd  
Kenilworth Road Stadium,  
1 Maple Road, Luton,  
Bedfordshire LU4 8AW

**Main switchboard:** 01582 411622  
**Fax:** 01582 405070  
**Ticket Office:** 01582 416976

**OFFICIALS**

**Chairman**  
Nick Owen

**Supervisory Board**  
Paul Ballantyne, Bob Curson,  
Godfrey Ingram, Mick Pattinson,  
David Wilkinson

**Managing Director**  
Gary Sweet

**Directors**  
Antony Brown, Stephen Browne

**Manager**  
Mick Harford

**Physiotherapist**  
Harry Scott-Stackman

**First Team Coaches**  
Alan Neilson, Kevin Watson,  
Dmitri Kharine

**Youth Development Officer**  
Gregg Broughton

**Youth Team Coach**  
Alan Neilson

**Football and Community  
Development Officer**  
Stuart Smith

**Club Secretary**  
Cherry Newbery

**Club Chaplain**  
Alan West

**contents**

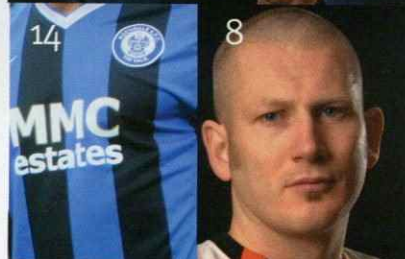


Luton Town v Rochdale



04

**MICK HARFORD** 4  
The Hatters boss reflects on a turbulent season at Kenilworth Road.



14

8

**FROM THE BOARDROOM** 6  
Gary Sweet looks forward to a new era for Luton Town Football Club.

**KEVIN NICHOLLS** 9  
The Town captain thanks the fans for their support throughout this season.

**ROCHDALE** 14  
We take a look at today's visitors from Spotland.



46

**THE GAFFER** 32  
We talk exclusively to Mick Harford on next season's challenge.

**PLAYERS ON PARADE** 38  
Photographs and reaction to our open-top bus prior to the Civic Reception at the Town Hall last Sunday.

**WYCOMBE MATCH ACTION** 46  
Photographs, stats and reaction following Tuesday's defeat to the Chairboys.



38

**2009/10 TICKET NEWS** 60  
The all important ticket news for next season.

**SEASON SO FAR** 64  
All the fixtures, results and statistics from 08/09.

Luton Town Football Club Official Matchday Programme  
Editor: Uptonaway Media Designed by Lee Wood Contributors: Chris Rivett, Rob Swan, Simon Pitts, Roger Wash, Becky Ashton & Andrew Barringer.  
Photography: www.garethowen.co.uk Printed by: Queensway Publishing 020 8807 7669  
The views expressed in this matchday magazine are those of the contributors and not necessarily those of the Editor and/or Luton Town Football Club



# MICK HARFORD MANAGER

Good afternoon and welcome to our last home match of the season for this afternoon's League 2 game with Rochdale.

Welcome to Keith Hill, his players, directors, staff and

fans from our visitors who are aiming for promotion into League 1,

As we do with all our opponents we have watched Rochdale recently so

we know what to expect and we know we know we will



be in for a tough game. That said we are determined to finish the season on a high and on a winning note

It was an entertaining game when we played at Spotland earlier in the season and I hope today's match can be just as exciting.

This season has been one of highs and lows: The high in winning a major trophy at Wembley and the low of relegation from the Football League.

Unfortunately we were unable to overcome the burden of points deductions put on us but the effort and commitment of the players was there for all to see.

It means that this great club will now be playing Conference football next season which while is a huge disappointment we now face the massive challenge of restoring our place in the Football League.

Once this season is over comes the challenge of building a new team and I am sure there will be some comings and goings over the summer as we look to rebuild a



squad capable of bouncing back at the first attempt.

Despite the difficulties we have faced this season your support has continued to amaze me. You really are the best supporters in the country.

Myself, my staff and the players would like to thank each and every one of you for your tremendous support at home, away and at Wembley.

You have got to behind the team and given them support through good times and bad and I thank you for that.

Now starts a new era for Luton Town Football Club. The shackles are off are we are able to start a fresh with the challenge that awaits next season.

As I mentioned in my programme notes for the Wycombe game, conversations with the players have taken place as we look to continue to grow this group of players into a team to face next season. Our additional targets for next year have already been identified and the process of bringing new players to the squad has started.

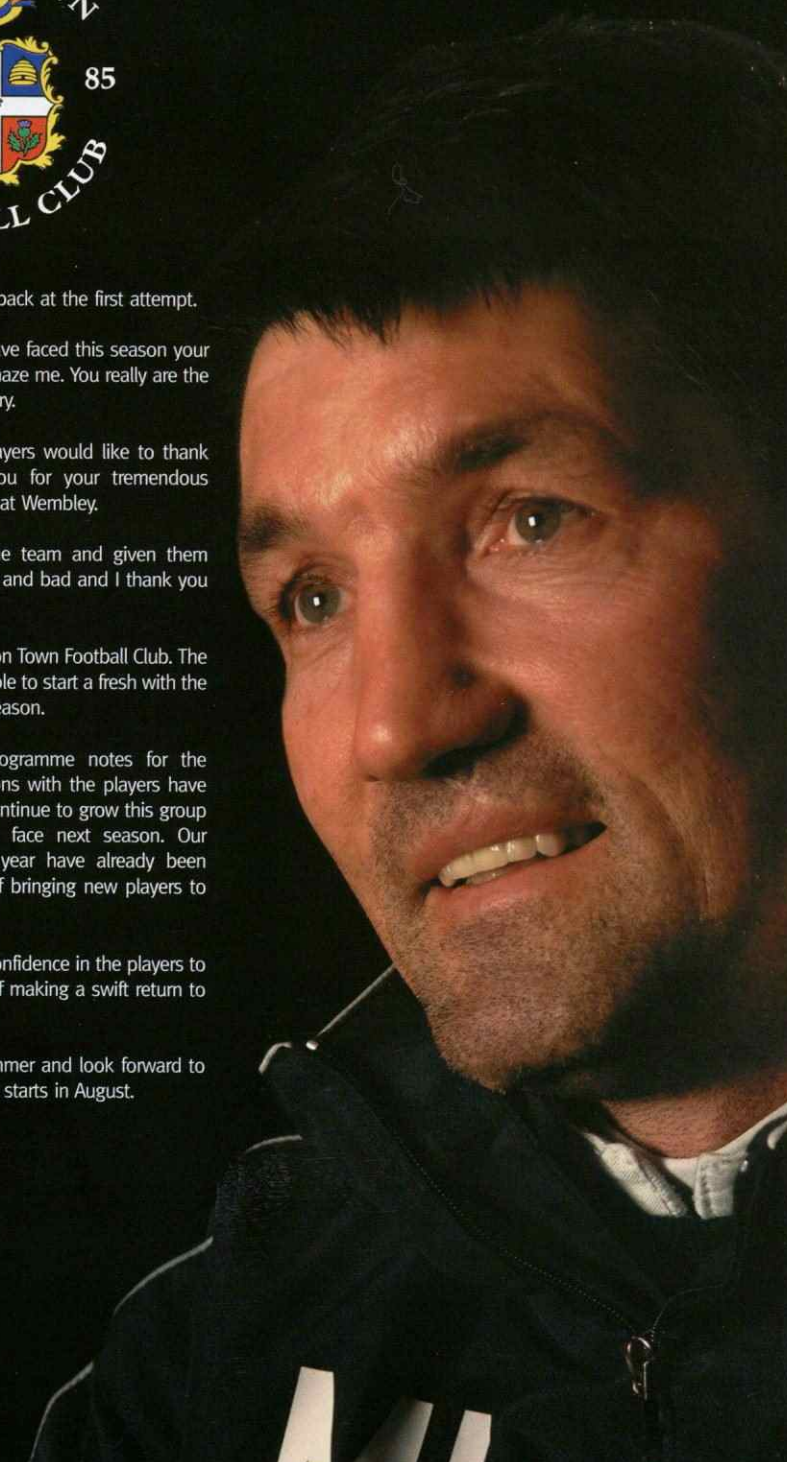
It is up to me to install the confidence in the players to give them the best chance of making a swift return to the Football League.

I hope you have a great summer and look forward to seeing you when the season starts in August.

Keep the faith.

Mick.

It is up to me to install the confidence in the players to give them the best chance of making a swift return to the Football League.







### CLUB HONOURS

Johnstone's Paint Trophy  
Winners 2009

Littlewoods Cup  
Winners 1988  
Runners up 1989

FA Cup  
Runners up 1959  
Semi-Finalists 1985, 1988, 1994

Highest League Finish  
Division One 7th 1986-87

Football League Division Two  
Champions 1982

Football League Division Three  
(South)  
Champions 1937

Football League One  
Champions 2005

Football League Division Four  
Champions 1968

Simod Cup  
Finalists 1988



A very warm welcome to Kenilworth Road for the final time this season as the curtain almost comes down on one of the most extraordinary seasons we have had in our long, rich and colourful 124 years of history.

We welcome our visitors from Rochdale this afternoon who have made the long journey to be with us.

They are hoping to exit League 2 the right way as they find themselves in the play-off positions; very unlike ourselves who have had to endure a season of torment following the strong penalty our Club was handed before a ball had even been kicked.

However, please note: this editorial should be the last time we should reflect upon the harshness of our punishment. As from now, our Club is clean and free; free of having to allow other clubs to start half a season ahead and clean of devious and misguided owners.

As of today we can rebuild without the knowledge that our joint investment, from supporters and directors, is not wasted and is not misdirected. Every penny that you give to us will be spent on reconstructing a great and successful football club.

Next season will, of course, be another challenge for us, as a management team, and you, our loyal supporters. But you can absolutely be guaranteed that we will fight with our blood, sweat and tears, within the constraints of a sensible business model, to ensure that our recovery happens as quickly as possible as we begin on zero points alongside every other club.

Many of our players are already talking about next season being a one year sabbatical from the Football League. We will maintain a valuable nucleus of a football team, with a few required additions, to comfortably ensure a sustained challenge for automatic promotion in the Blue Square Conference.

Whilst we fully recognise the challenges put in front of us to make our immediate return a steep incline, they will be nothing compared to the pressure we had to endure this season. Therefore, it should come as no surprise that the camp is confident and raring to go. The support you have given Mick Harford and the players has been nothing short of sensational and as Mick quite rightly points out, you are the best supporters in the country. We will be ready and committed.

# fromtheboardroom



## GARY SWEET LOOKS FORWARD TO A NEW ERA FOR LUTON TOWN

We now need you to repeat your support for next season. We need season ticket holders, sponsors, executive members and advertisers to give us your support for next season. There have been many occasions when Luton Town's situation has been described as an hour of need. But next season is truly it!

With this in mind, we are delighted to reveal our season ticket prices ahead of the 2009/10 campaign in this programme. The prices reflect the loyalty shown by you the supporters, with a particular and genuine desire to encourage more juniors to help rebuild Luton Town's future by willing the team to victory at every match. Throughout the season the thoughts of Antony, Stephen, Mick and I have been well documented through this medium in our matchday programme.

We hope that our feelings and opinions have given you the insight and transparency we pride ourselves on. It has been a good outlet to update you what is going on behind the scenes and to explain our goals, ambitions and activities at the club.

On behalf of the four of us, there are many people who we'd like to thank, starting with you for buying the programme and reading our articles. Stephen thanked many in the last programme; investors, sponsors, supporters, friends, contributors and staff.

However, I would also like to reserve our special thanks to Mick and his squad of



professionals who have truly represented our Club impeccably over recent months. For the few that may part company with Luton Town this summer, we thank you for your service. For the many who have committed their futures at Kenilworth Road, we can be proud to know that we have players who are more than willing to compromise league status for their loyalty to Luton Town and to you; its supporters. So, what should be made of Luton Town's legacy for 2008/09?

Rather than the season our Club was devastated by previous, traitorous owners and the football authorities, let our optimism shine through in the Luton way. Let this season be remembered for the year we ended our decline; for the season the club became honest again; for the season our players and manager held their heads high with pride at representing Luton Town and for the

season we won at Wembley, again. I will leave it for our good friend John Hegley to characterize our experiences this year. Thank you John! Have a great summer and let's re-unite on Saturday 8th August for the re-birth of Luton Town!

### 'You Can See Both Goals, John'

*Teaming spirit, Captain's grit  
Forty thousand came to sit  
And show this was a proper outfit:  
Knight and Queen alongside pawns  
Hat and iron locked and blocked and  
flashed their horns  
on this one of our finest lawns  
the stunning one which Scunny scored  
postponed the silver paint award  
the job was done  
with a lob of Claude.*

John Hegley

**"I would also like to reserve our special thanks to Mick and his squad of professionals who have truly represented our Club impeccably over recent months. For the few that may part company with Luton Town this summer, we thank you for your service."**



# SAVE MONEY AND HELP THE HATTERS

Save money on your utility bills with the Utility Warehouse. A company recently voted as the top utility supplier in the UK

Here are some benefits of joining the Utility Warehouse:

- free calls to UK and international numbers
- best value broadband and phone package
- £50 saving on your line rental
- Cheaper gas and electricity
- UK's cheapest mobile services
- 5% CashBack on your petrol and shopping
- Unique customer discount plan
- Exclusive membership discounts
- And...everything comes on one convenient monthly bill!

The Utility Warehouse calculates that a typical household can save over £850 a year with them - Just ask us how

If you take up any of the residential or business services offered by the Utility Warehouse they will donate a percentage of your monthly bill to Luton Town Football Club

For more information contact  
Shaf Hussain at [Shaf@hatterscfr.co.uk](mailto:Shaf@hatterscfr.co.uk),  
visit [www.hatterscfr.co.uk](http://www.hatterscfr.co.uk)  
or call the freephone cfr hotline on  
**0800 565 565** quoting Luton

# KEVIN MICHELLS CAPTAIN



Since our Johnstone's Paint Trophy triumph we have found it difficult to score goals - especially at Kenilworth Road where we have failed to score in the three home games we have played since Wembley.

All season teams have come and got bodies behind the ball which is not only frustrating but also very hard to breakdown. It was a similar story in our last home game against Wycombe Wanderers on Tuesday when we couldn't break the deadlock against a team challenging for promotion - and now, following their victory - for the title.

It was a tough game but it was another example of the way our season has gone as teams continue to sit-back content to take a point against us. Next season in the Conference it is likely to be much the same as we will be a team everybody wants to take points off, so we will need to start taking our chances and work on breaking teams down when they defend in such a way.

Today is our last home game of the season against another side pushing for promotion from League 2. We will look to put a spanner in the works as we look to win our final two matches.

We want to end the season as positive as possible by trying to win our final two matches and I'd like to thank each and every one of you for your fantastic support throughout this season. Home, away and at Wembley you have been brilliant and myself, my team-mates, the management and staff all appreciate it, especially considering what we've been through this season. Hopefully today we can reward your support with three points to finish our campaign at Kenilworth Road on a high note.

We can hold our heads up high despite our relegation. We have given it a really good go and the bonus of Wembley was an incredible experience for us all. I can't wait for the fixtures to come for next season. A new era for this Football Club began after we were relegated and I believe our club is a good place to be at the moment. No doubt there will be a few new faces come pre-season but it marks a fresh and positive beginning which I am really looking forward to being a part of.

On behalf of all my team-mates and myself I hope you all have a fantastic summer.

Thank you for your support, keep the faith.

Nico and the boys.





## Get free\* Family Football Tickets to watch The Hatters

This season, being an E.ON customer is about more than just your gas and electricity. Join our five million other customers and you could have the chance to win free Family Football Tickets for Football League and FA Cup matches.

Call 0800 015 1673 or visit [www.familyfootball.co.uk](http://www.familyfootball.co.uk) to switch and find out how you could benefit from being an E.ON customer.



Lines open Mon-Fri 8am to 8pm and Sat 9am to 4pm. \*See website for entry dates and full Terms and Conditions.

# news&diary



ALL THE LATEST FROM AROUND KENILWORTH ROAD

### NEWS

**Tuesday 21st April**

Despite dominating the match for long periods the Hatters go down 1-0 to promotion-chasing Wycombe Wanderers at Kenilworth Road. In a game of few chances, the visitors stole the points with a 56th minute strike from John Akinde wrong-footed Dean Brill.

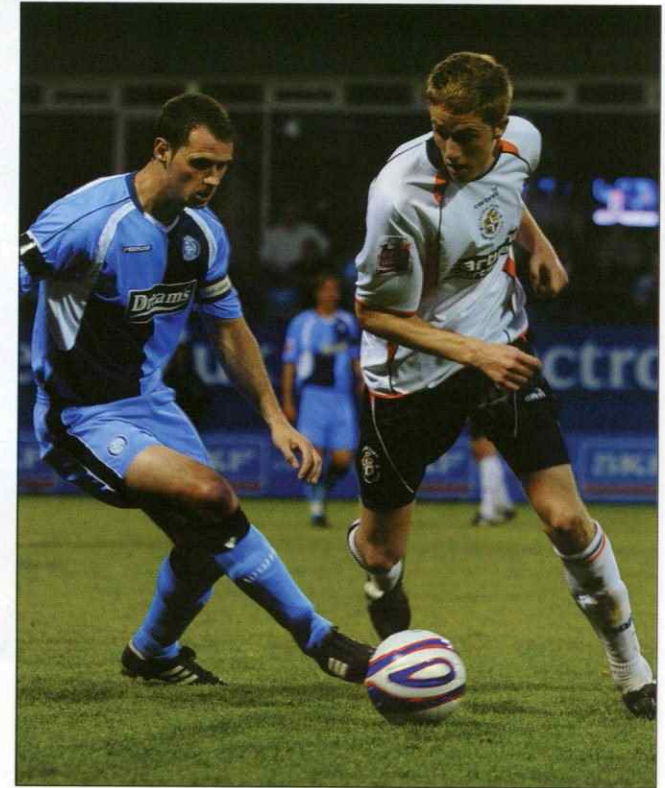
**Thursday 23rd April**

The Town reserves were held to a 2-2 draw with Leyton Orient at Brisbane Road in their quest to lift the totesport.com Combination. Aidan Quinn and Liam Toomey were on target as the Hatters twice went in front before being pegged back by their hosts.

### DIARY

**Tuesday 28th April**

Alan Neilson and Kevin Watson's reserve side still have a chance of lifting the totesport.com Combination East Division and they host Peterborough United's second-string at Kenilworth Road. Kick-off 2pm.



ALAN NEILSON



Later that evening the Hatters are hosting their end-of-season dinner at Whipnade Wild Animal Park. For further details contact the Commercial department at the club.

**Wednesday 29th April**

The Hatters' Under 18's play their penultimate game in the Puma Youth Alliance against Queens Park Rangers, at home.

**Thursday 30th April**

It will be two matches in as many days for the Town's reserves when they end their campaign in the Combination with a crunch game against local rivals Watford at Kenilworth Road. Kick-off 2pm.

**Saturday 2nd May**

A long season in League 2 comes to an end at Griffin Park when the Hatters travel to Brentford. The Bees may already been crowned league champions or may need the points against the Town to secure the crown. Kick-off 3pm.



The Under 18's finish their campaign in the Puma Youth Alliance with a trip to Peterborough United. Kick-off 11am.





## INTRODUCING NEXT SEASON'S AWAY SHIRT



Hatters Holidays

Guaranteed holiday savings simply for being a fan,  
and we also give the club a few quid too!

Stores nationwide • [lutontown.thomascooksport.com](http://lutontown.thomascooksport.com)

No membership or proof of being a supporter required. Supporters receive a guaranteed discount on package holidays operated by a Thomas Cook tour operator and on holidays operated by selected non-Thomas Cook tour operators. Applies to summer and winter package holidays, city breaks, cruises, worldwide travel and UK weekend breaks/hotel-only. All holidays are subject to availability and relevant tour operator's booking conditions. Terms and conditions apply to all bookings - see [www.thomascooksport.com](http://www.thomascooksport.com) for details. Discount can vary - please ask for details at time of booking. Discount cannot be combined with any other discount or offer. Bookings must be made at a Thomas Cook or Going Places store, by calling 0870 751 9954 or online at [lutontown.thomascooksport.com](http://lutontown.thomascooksport.com). Calls are charged at local rate plus network extras. Thomas Cook Sport is a trading name of Thomas Cook Retail Ltd, ABTA J8601, acting as an agent for Thomas Cook Tour Operations Ltd, ATOL Protected 1179.



# The numbersgame

SIMON PITTS LOOKS BACK AT PREVIOUS FIXTURES ON THIS DATE

- 1935** Joe Payne scored in a 1-1 draw against Coventry City on this day 74 years ago, the first home match since he'd netted a record ten goals in the 12-0 victory against Bristol Rovers. He had also netted twice in a 2-0 win at Newport County between these games, so it was 13 goals in three games for Payne!
- 17** The number of years since Luton's last home match in the top flight, a 2-0 win against Aston Villa. Brian Stein, with his final goal for the Hatters, and a great strike by Mark Pembridge settled the tie.
- 2** The number of Luton hat-tricks scored on this day. The first was

**5** The number of previous league meetings between the sides at Kenilworth Road. Luton have four wins and Rochdale have been victorious once. The Hatters have scored 13 goals and conceded just four.

**3** The first League match between the sides with Luton playing host was back in March 1966, and John O'Rourke netted a hat-trick in a 4-1 win for the Hatters. Gordon Riddick scored the other Luton goal.

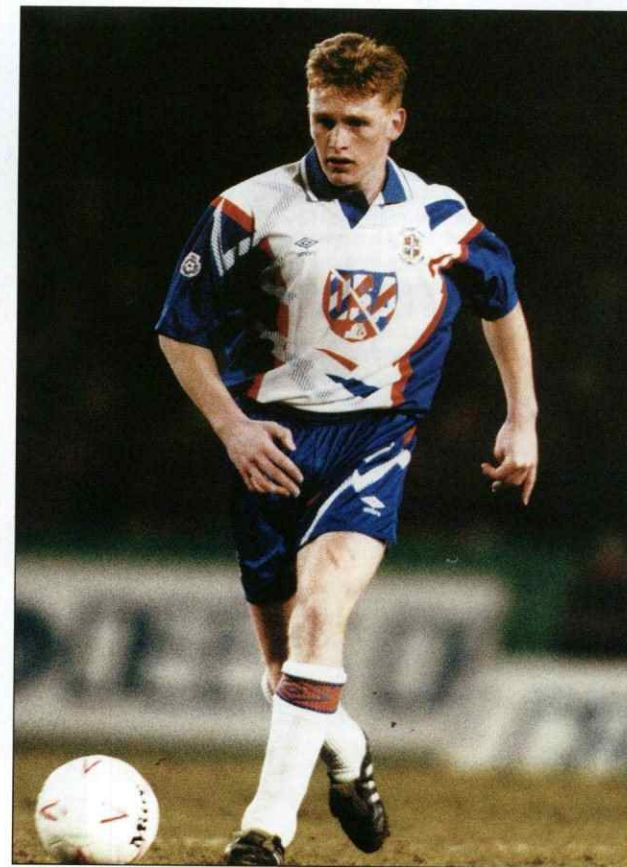
**2** Tony Thear netted twice just six months later when the sides met again, and the Hatters were victorious by a 3-1 scoreline. Bruce Riach scored the opening Luton goal.

**4** Riach also scored in the match played during the 1967/68 season, as again Luton won 4-1. This time there were four different scorers, though, as Terry Branston, Keith Allen and Ian Buxton also netted.

**0** The only time Luton have kept a clean sheet at home to Rochdale was in the 1968/69 season, as they won 2-0. John Collins and Allen again were the scorers, in front of a record crowd for this fixture of 15,876.

**1** Rochdale's only victory came in the last fixture here, back in October 2001, with the solitary goal scored by Paul Wheatcroft.

**10** The number of league games played at Kenilworth Road previously on this date. Luton have won five, lost two and three matches have ended all square. A total of 25 goals have been scored, with Luton netting 18 of them.



Mark Pembridge netted Luton's second goal on this day in 1992.





# rochdale

WELCOME TO THIS AFTERNOON'S VISITORS



## CURRENT FORM: L D W L D L

Rochdale have suffered a blip in recent weeks with just one win from their last six games, that coming over strugglers Port Vale at Spotland. The shock result was the 4-0 defeat at Boumemouth at the beginning of the month, when a hat-trick from Brett Pitman helped the Cherries to their best win of the season. Dale go into the game today on the back of a 2-0 home defeat at the hands of Darlington. Prior to Saturday's early kick-off Dale still had a realistic chance of automatic promotion but a goal from Jason Kennedy and an own goal from Rory McArdle look to have put paid to that. Keith Hill's side currently sit six points off the top three with just six to play for so it looks like they'll have to make do with the Play-Offs once more.

## PREVIOUS MEETINGS

Luton wins: 7 Rochdale wins: 4 Draws: 1

These two sides have only met 12 times, despite the first meeting coming 44 years ago! That came in September 1965, when both clubs were in the bottom tier of English football and Luton ran out 2-1 winners at Spotland. In the reverse fixture at Kenilworth the Hatters secured an impressive 4-1 win. There have always been goals in this fixture with 35 scored in just 12 games, 21 of which have come from the Hatters, while Dale have netted 14 times. Two of those goals came back in November when strikes from Lee Thorpe and Adam Le Fondre secured Keith Hill's side a 2-0 victory.

## LAST TIME AT KENILWORTH ROAD:

Rochdale have only won once at Luton in five attempts, that coming in their last meeting in October 2001. Former Manchester United striker Paul Wheatcroft, who was on loan from Bolton Wanderers, scored the only goal of the game after 39 minutes. The youngster played just six games on loan and that goal proved to be one of only three league goals he scored before dropping out of the league.

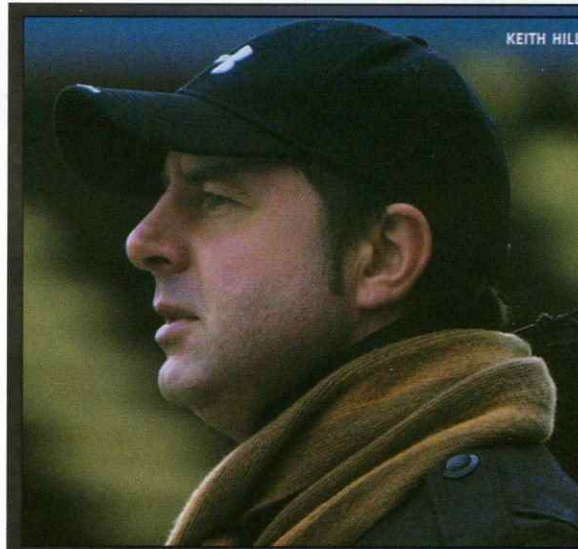
In the Luton Town side that day was Kevin Nicholls, while the man he came up against in the middle of the park was Dale's Gary Jones who is hoping to return from injury this afternoon.

## LAST FIVE SEASONS:

The recent history of today's visitors is a remarkable one given for the past 35 years Rochdale have spent the entire last 35 years in what today is known as League 2 since their relegation from the old Division 3 in 1974.

In more recent times the Dale have come close to finally breaking the run with two appearances in the end-of-season play-offs and with the season reaching its climax, the Spotland faithful will hope the play-off lottery is kinder to them than in previous years.

In 2001/02 they missed out after a semi-final defeat to Rushden and Diamonds and, last season, after going one stage further and reaching the final, they lost to Stockport County at Wembley after seeing off Darlington.



KEITH HILL

## The Manager:

Keith was appointed as Manager at Spotland on 3rd January 2007 after a successful month in caretaker charge following Steve Parkin's departure from the club.

Previously Director of Youth Football, Keith is a former Rochdale centre-half who had earned a good reputation for the work he has done with the club's young players.

As a player he began his career with Blackburn Rovers in the late 1980s, making over 100 first team appearances, before linking-up with Plymouth in September 1992. Graham Barrow took him to Spotland four years later and he spent five years there before going on to play for Cheltenham, Wrexham and Morecambe.

Keith Hill

## The Squad



### GOALKEEPER

#### FRANK FIELDING

Frank is a young goalkeeper who was brought in on-loan from Blackburn Rovers during the January 2009 transfer window. This deal has since been extended until the end of the season. The 20-year old gained plenty of league experience last term with a season-long loan at Wycombe and had recently returned to Ewood Park following three months with Northampton.

### DEFENDERS

#### SIMON RAMSDEN

Simon is a right full-back who signed a six-month contract when recruited from Grimsby Town in January 2006. His performances were so impressive that this contract was later extended to the summer of 2008. He continued to perform well and signed for the club until the end of the 2008/09 campaign. Originally a trainee at Sunderland, Simon came to Steve Parkin's attention during a brief loan spell at Notts County early in the 2002/03 campaign.

#### TOM KENNEDY

Tom arrived at Spotland from Bury in June 2007 after turning down the offer of a new contract at Gigg Lane. The 23-year old progressed through Bury's youth system to make his full debut against Carlisle on Boxing Day 2003. He went on to play over 150 times for the Shakers' and was actually their joint top scorer in the 2005/06 campaign, albeit with several strikes from the penalty spot Tom is the son of former Shakers' legend Keith Kennedy and the nephew of ex-Liverpool left-back Alan Kennedy and is the only ever present in the league this season.

#### NATHAN STANTON

Nathan joined Dale from Scunthorpe in July 2006, initially signing a 12 month contract with the club. However, he has since committed himself to staying at Spotland until the summer of 2010.

## Star Man: Adam Le Fondre

Adam joined Dale from Stockport for an undisclosed fee in July 2007, signing a three-year contract at Spotland. The 21-year old had a successful loan spell with Dale in the second half of the 2006/07 season, scoring four goals in seven appearances. Adam was a regular in Dale's first team squad last term and rewarded the manager's faith in him with a fine hat-trick in the 4-1 defeat of Accrington Stanley in March. He finished the season as the club's top scorer with 17 goals in all competitions, yet his brace of penalties in Dale's recent 3-0 defeat of Bradford meant he had already reached that total by mid-March this term. He is currently the Club's top scorer with 21 in all competitions.



ADAM LE FONDRE





The defender was a month short of his 17th birthday when he made his league bow for Scunthorpe in April 1998, coming on as a substitute in a 0-0 draw at Scarborough. It was another two years before he established himself in the Irons first team, but he moved on to be a regular in their defence over the next seven seasons, primarily occupying the right full-back spot.

### SCOTT WISEMAN

Scott signed a six-month contract at Spotland in July 2008 after being released by Darlington, a deal that has since been extended to the end of the season. His last two games for the Quakers were the Play-Off Semi-Final matches against Dale. Able to play at right-back or on the right side of midfield, Scott started his career with Hull, where he had been since the age of six. He had loan spells at Boston and Rotherham during his time with the Tigers, before moving to Darlington in May 2007.

### RORY MCARDLE

Rory returned to Spotland on-loan from

Sheffield Wednesday in November 2006, having had a lengthy loan spell with Dale during the previous campaign. The deal was made permanent three months later, when Rory signed for the club until 2009, although that contract has since been extended by a further 12 months. The Northern Ireland under-21 international defender had made just two substitute appearances for the Owls, but he did feature 20 times for Dale in 2005/06, scoring in a 3-1 win at Macclesfield.

### MIDFIELDERS

#### CLARK KELTIE

Clark was signed on a free transfer from Darlington in July 2008 having been released by the Quakers at the end of last season. Ironically, Clark's last game as a Darlington player was in their Play-Off Semi-Final defeat at Spotland when his first half penalty gave them a 3-1 aggregate lead.

Clark had broken into the Darlo side during the 2001/02 campaign and had made almost 200 senior appearances before his release.



CLARK KELTIE



RORY MCARDLE

### CIARAN TONER

The Northern Ireland international became Dale's first signing in the summer of 2008 when he was brought in on a free transfer from Grimsby.

The 27-year old started out as a trainee at Tottenham and went on to enjoy spells on loan with Peterborough and Bristol Rovers before signing for Leyton Orient in May 2002. After two seasons at Brisbane Road, Ciaran appeared for Lincoln and Cambridge (loan), prior to joining Grimsby in the summer of 2005.

### GARY JONES

Gary became Rochdale's all-time record appearance maker when he played his 346th game for the club at Mansfield in March 2008. Typically, he marked the occasion with two goals as Dale romped to a 4-0 win at Field Mill.

Then, on the opening day of the 2008/09 season at Grimsby, Gary broke the club's league appearance record when he played his 318th Football League game for Dale, passing Graham Smith's record that had stood for 34 years.

TheDale



### ADAM RUNDLE

Adam joined Dale in June 2006 after being released by Mansfield. A pacy left-winger, he had been at Field Mill for 18 months having returned to England following a spell with Dublin City. Adam's first season at Spotland was split into two distinct halves; he struggled to make an impact under Steve Parkin, but excelled when Keith Hill took over as manager.

### JOE THOMPSON

Joe is a young midfielder who was given his first team debut in the final home game of the 2005/06 season against Carlisle United. He went on to make a handful of starts and further substitute appearances during the following campaign, as well as earning national recognition when he was named League Two Apprentice of the Year at the Football League's annual awards' ceremony.

### STRIKERS

#### CHRIS DAGNALL

Chris joined Rochdale for

£25,000 in January 2006, signing from Tranmere Rovers where he came through their youth system. After a slow start to his first full season at Spotland, Chris finished the campaign with 18 goals to his name.

The club were so pleased with Chris' progress that they rewarded him with a contract extension that will keep him at Spotland until the summer of 2010. He repaid their faith with goals in both legs of the Play-Off Semi-Final against Darlington in May 2008 Chris made a slow start to this season, but netted his third hat-trick for the club in a 6-1 thrashing of Chester in October.

#### LEE THORPE

Lee joined the Dale from Brentford at the end of the January 2008. An experienced forward, Lee started his career at Blackpool, but enjoyed most success with Lincoln, whom he joined in August 1997. He scored 66 goals in five seasons with the Red Imps, before leaving Sincil Bank for various spells around the



WILL BUCKLEY

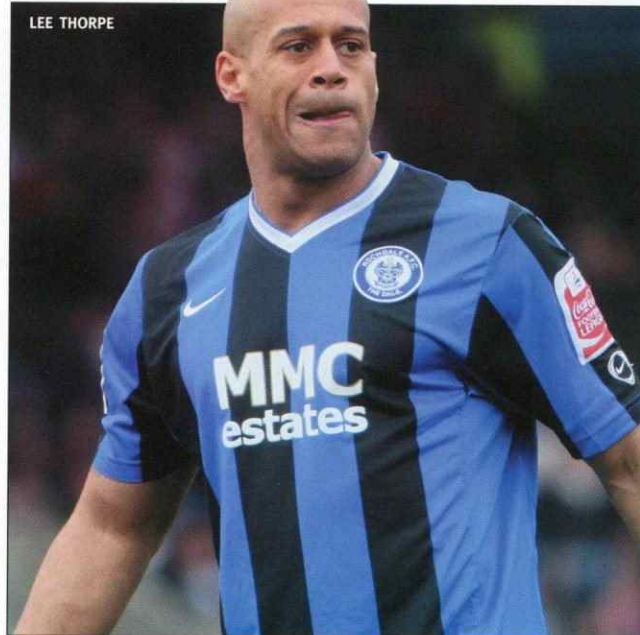
country, including stops at Leyton Orient, Bristol Rovers, Swansea and Torquay.

#### GARY MADINE

Gary joined Dale on an emergency loan from Carlisle in March 2009, replacing Lee McEvilly, who has moved to non-league Barrow, also on a temporary basis. The 18-year old burst through United's youth ranks to earn a professional contract shortly after making his senior debut against Nottingham Forest in March 2008.

#### WILL BUCKLEY

Will is a young forward who made his debut for Rochdale as a second half substitute in the 4-2 home defeat by Hereford in February 2008. He finished the campaign as a late substitute in Dale's Play-Off final defeat by Stockport at Wembley. After several impressive performances in pre-season, Will signed a contract tying him to the club until the summer of 2010. He went on to score his first career goal in the 2-2 draw at Rotherham in mid-September and had hit ten goals by early March.



LEE THORPE





THERE'S NEVER BEEN A **BETTER TIME** TO JOIN DAVID LLOYD...

...because there's more for our members from day one. Take advantage of our exclusive New Member Package:



**FREE** Personal Training Session



**FREE** Weight Loss Session



**FREE** Personalised Fitness Programme



CALL **01582 692048** NOW

OR VISIT **DAVIDLLOYD.CO.UK/LIFE**

Terms and Conditions apply. Facilities may vary per club.

David Lloyd Club, Luton, Cabability Green Business Park, Beds LU1 3LU

**LIFE. Be fit for it**

DAVIDLLOYD.CO.UK/LIFE



**adam lefondre**

After playing in last season's League 2 Play-Off final at Wembley for Rochdale, Adam Le Fondre suffered the heartache of losing out on promotion to his former club Stockport County.

With two matches remaining this season and the Dale on course for another chance to escape English football's fourth tier for the first time in over 34 years, the 22-year-old is confident that last year's disappointments will spur the club on to finally gain promotion next month.

"No player wants to go through that and it will drive us on to succeed at Wembley this time around," said Le Fondre.

"I think it will mean everything to the Dale fans. After 35 years in the bottom division, some even call it the 'Rochdale Division'."

The striker, who has 17 league goals to his name this season, said that promotion was always the target from the start of the campaign, and on a personal note, has not given up hope on finishing the season as League 2's top scorer:

"It's looking a bit thin at the minute but we'll see what happens. I'm pleased with my total but it could be better and that's what I'm striving for.

"We wanted to get automatic promotion at the start of the season. It's in our hands to get a Play-Off place now and we'll hope to go up through them."

With Rochdale slipping from second to sixth place in just under a month, Le Fondre was particularly frustrated after the club's last game against Darlington; a 2-0 home defeat, and the Dale's fifth loss in 10 matches:

"We had quite a good Easter but then we blew it against Darlington live on Sky when we didn't perform in the second half. We didn't create the same sort of tempo as we did in the first and we suffered for it."

Despite being "disappointed" to leave his hometown club Stockport County,

Le Fondre insists it was in his best interests to move in order for his career to progress, and explained that he feels at home at Spotland:

"My career has flourished since the move. I know they went up last season but I don't think I would have scored as many goals last season or this season if I'd have stayed at Stockport.

"At Stockport it was too much about me being a young lad coming through the ranks and it didn't help my reputation. I wanted to be known as a regular number 10, a good out-and-out striker who scored goals. At Rochdale, I think I've established myself as that."



Johnstone's Paint Trophy Winners 2008/09



# COMMERCIAL MATTERS

with DAVID HOSKINS

Good afternoon and welcome to all supporters, sponsors and corporate guests here at Kenilworth Road for today's final home game of the season against Rochdale.

As the season draws to a conclusion and the players take a well-earned break, now is the time the commercial department is at its busiest as we look forward and begin to plan for next season.

We have had a number of extremely successful events held this season and our next one is our hugely popular end-of-season dinner which takes place this coming Tuesday at Whipsnade Wild Animal Park. Spaces are at a premium so please contact the commercial department to guarantee your place to avoid disappointment. Throughout the summer we will be busy finalising new, fresh and exciting corporate deals and packages in anticipation for next season.

At Luton Town we are always on the lookout for new partners and businesses interested in forging links with the football club.

Our Wembley win as proved to be a fantastic springboard and we have been inundated with interest from companies near and far. If you'd like to get in contact with me to discuss how your business can benefit the club feel free to drop me a line at the club or via email at david.hoskins@2020mission.com.

I would like to end by thanking all those people who have sponsored matches, matchballs and players' shirts this season

and to all those who have been entertained on matchdays and at our events this season. Have a great summer and I look forward to seeing you all back at Kenilworth Road in August.

Enjoy the game.  
David.

#### Match sponsor: Colin Keeley

Hooked on the Hatters since he saw Ricky Hill's debut when he was a six-year-old, Colin Keeley is here with family and friends to celebrate the super job Mick Harford, the players and the 2020 consortium have done in spite of the penalties enforced on the club this season.

#### Matchball sponsor: SKF



We welcome back for the final time this season our friends from SKF to sponsor the matchball for today's game. One of the leading global suppliers of products, solutions and services in the area comprising of rolling bearings, seats, mechatronics, services and lubrications systems, SKF employ over 1,100 people at 19 sites.

#### Commercial mascots:

Today we have the pleasure of welcoming three commercial mascots to Kenilworth Road for our last home game of the season.



First up is 12-year-old Jay Sharpe from Luton who attends Lealands High and comes to matches at Kenilworth Road with his mum, grandma, granddad and uncle Dave. Jay's favourite player is Tom Craddock.



Six-year-old Ellie-Mae Waller is our second mascot. Ellie-Mae attends Ramridge School and comes to games with her Dad. Her favourite player is Kevin Nicholls and she enjoys reading and skipping.



Finally our third mascot today is Amelia Bacon from Stotfold. 12-year-old Amelia comes to home games with her dad, granddad Roy and brothers Matt and Dan. Her favourite player is Kevin Nicholls.

#### COMMERCIAL GALLERY v WYCOMBE WANDERERS



**MATCH SPONSOR: University of Bedfordshire.**  
Keith Keane is pictured receiving his man-of-the-match award from the University of Bedfordshire



**MATCHBALL SPONSOR**  
Friends and family of Century Club member John Chatterley sponsored Tuesday's matchball.



**COMMERCIAL MASCOT: Michael Pilling.**  
Our commercial mascot against Wycombe was Michael Pilling and he is pictured with Keith after the match.



**COMPETITION WINNER**  
Jim Franklin was part of the match sponsors SKF's party and he walked away with a signed ball after winning our guess the attendance competition.

To get in contact with the Commercial department call 01582 41622 or email [commercial@lutontown.co.uk](mailto:commercial@lutontown.co.uk)





**BARNET** 1

Birchall 45



**LUTON TOWN** 1

Jarvis 49



**TEAMS:**

**Barnet:** Harrison, Devera, Gillet, Bishop, Leary, Adomah, Birchall, Tabiri (Charles 90), Breen, Furlong, Bolasie. **Substitutes not used:** Porter, Kadoch, Hughes, Nicolau. **Booked:** Bolasie (79), Breen (89)

**Luton Town:** Brill, Davis, Keane, Pilkington, Nicholls, Livemore, Hall, Asafu-Adjaye, Jarvis (Howells 90), Spillane (Henderson 52), Craddock (Parkin 84). **Substitutes not used:** Roper, McVeigh.

**Booked:** Nicholls (8), Davis (75).  
**Sent off:** Nicholls (79)

Possession



3	On Target	3
5	Off Target	4
5	Corners	1
2	Yellow Cards	2
0	Red Cards	1

**MAN OF THE MATCH**  
 Ed Asafu-Adjaye



The young Town defender was pushed back into centre half and again put in another foot-perfect performance alongside George Pilkington, as the duo excelled in shackling Bees striker Paul Furlong.



**POST-MATCH VERDICT**

**Mick Harford:** "In the first half we didn't play particularly well and we were disappointed with the goal we gave away just before half-time. We had a chat at half-time about it, there were no harsh words just that we didn't really threaten them much in the first half. We had a lot of possession first half without really hurting them. I think in the second half we totally and utterly controlled the game and could have run out winners, we created the better chances."

**Ian Hendon:** "It was not a good football match but, at the end of the day, I'm pleased we've got another point. It's another game unbeaten. The first half was more competitive than the second but we never really recovered from their goal early in the second half. It was a typical end-of-season game, I was not that pleased with the performance, but it's another game when we haven't been beaten."



Our knowledge puts  
you in pole position



As you may well know, SKF is the World Champion in rolling bearings. But did you know that there are lots of other exciting dimensions to today's SKF?

We have evolved step by step into a genuine knowledge engineering company. Our technical expertise is way out in front, ranging from pioneering design solutions to sophisticated on-line condition monitoring systems.

We transfer this knowledge to you, the customer, in everything we offer. Our products, solutions and services will make your business more efficient, environmentally friendly and competitive. And, of course, ultimately more profitable and more successful.

The Magic Box: Each time you hold one of our boxes in your hands you have access to all of this. Every box contains all of SKF's knowledge and experience, accumulated over nearly 100 years of working relations with every type of industry. Knowledge and experience gathered on land, underground, at sea, in the air – even on other planets.

It will help you gear up your business.

# DEAN BRILL

A superb penalty save from Dean Brill capped a fine performance from the 23-year-old goalkeeper at the Underhill Stadium last weekend, as he helped the Town to a point against Barnet.

Veteran striker and former Hatter Paul Furlong stepped up to take the spot-kick, but was denied by an excellent full-length dive by Brill as he knocked the ball clear of his right-hand post.

The Luton-born keeper insisted he had no idea where Furlong was going to place his penalty, despite the fact they'd faced each other several times in training:

"I couldn't remember for the life of me which way he usually went. You try and use your knowledge to know where it's going but it was just a lucky guess.

"It's a guessing game. I got a bit lucky as it was a nice height but saving a penalty is always enjoyable."

Brill had saved a penalty last month against Aldershot Town, but unfortunately for the Hatters, the 23-year-old could only parry the ball back into the path of Scott Davies who converted the rebound. Brill made sure the same bad fortune wasn't to be repeated this time against the Bees:

"I pushed it away this time! I needed a bit of luck from it – the lads did well and I thought we deserved more than what we got.

"It was a soft penalty but that's football."







Good afternoon and welcome to this afternoon's game. For my last community page of the season I would like to update you on the area finals of this season's Football League Cup which we hosted a Baldock Arena last Tuesday.

We had a competition consisting of 12 school teams each representing their local League 2 southern area club. Schools from as far away as Exeter and Bournemouth made the long journey to participate in the day. We had a great day with fantastic weather, a great facility and an unbelievably competitive and closely fought tournament.

The 12 teams were put into two groups of six and played in a round-robin group to determine the winners and runners-up who were to progress to the semi-finals. In Group 1 Brentford excelled, finishing with a 100% record and a this stage looked the team to beat if the tournament was to be won. Lincoln City also looked dangerous and

were comfortable runners-up in this group. Group 2 was a different story with all three of the top teams finishing on nine points and the group having to be decided on goal difference. After much double and treble checking of maths, Gillingham went through in first place with a goal difference of plus five with Wycombe finishing in second place with a goal difference of plus four.

In the semi-finals, Lincoln had a convincing 3-1 victory over Gillingham and Brentford and Wycombe set the trend of sudden-death penalty shoot-outs with Wycombe finally triumphing 4-3 after both teams had taken 10 penalties each, after their initial 0-0 draw. In the final Wycombe and Lincoln drew 0-0 after extra-time and the scene was set for another marathon penalty shoot-out. Some stunning goalkeeping by both keepers saw the shoot-out go to a total of 15 penalties per team before Lincoln triumphed 4-3.

A fantastic day for the kids was completed with the arrival of Claude Gnakpa to present the medals and trophies. Even for the boys who were in the main were not Luton Town



supporters, the buzz the children got from meeting a cup final winning goalscorer in a Wembley final was clear to see.

I would like to thank Claude for coming to the tournament and thank him for the effort he made in talking to the parents and players.

Below are pictures of the day:

Enjoy the game  
Stuart Smith



## SPONSORS SEASON 2008/09



## TOUR SPONSORS

This morning was the last game of the season for the girls in our Centre of Excellence. The first season has been a great success on an off the field and without doubt has proved that the Centre of Excellence is here to stay all across the country.

On the field we have a way to go to match the Arsenal's of this world but even in our first year in terms of results, in one or two age groups, we have become competitive with them and at Under 14 level it has to be said we gave them a real scare.

The progress in the players technically and tactically has been immense. The girls, though, having received good coaching within their clubs, were nowhere near the level required in two main areas. Firstly, their ability to receive the ball and then to manipulate it, and secondly, their game understanding, particularly in transitions of play. Girls have come to us from teams that win every week by big scores, they haven't learned to defend or to deal with the football under pressure so a lot of work has needed to be done with the players. Off the field, our three visits from the FA - who have been monitoring our progress - have been of the highest standard and I feel that these could not have been bettered in our first year.

Involved with the Centre we have now have a level of staffing that I am delighted with, where we possess three 'A' Licence coaches, five 'B' Licence coaches and four 'C' Licence assistant coaches. Plus we have skills, goalkeeping and athletics coaches involved in the Centre.

Particularly satisfying is that we have also funded and mentored two of last season's Under 16 players, Lauren Bilston and Alice O'Shea, through their Level 2's and they are currently working every week as assistant coaches with one of the squads.

The end of the season is a nerve racking time for the players as they are due to receive their final assessments and from these - along with the results of their fourth and final athletic testing results - their futures will be determined within the Centre.

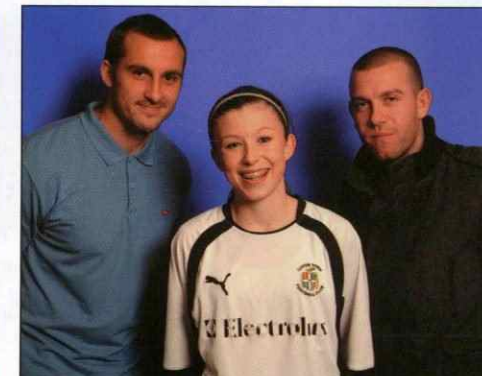
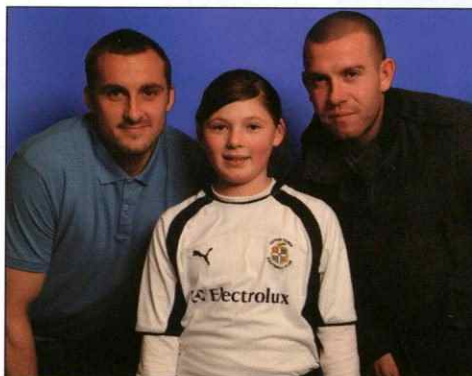


Along with their assessments the girls will receive one of three decisions.

- :A new contract for next season
- :A six-week trial at the start of next season
- :Or unfortunately, that they will not be offered a Centre of Excellence contract for next season

Those players not offered a contract for next season will receive our full support in finding a new club to play for in local football and all those players that are now too old for Centre of Excellence football we will facilitate trials for them with an adult club that offers football at the level the player requires. As soon as the assessment procedure is completed we then move onto next seasons trials. You will have read about these on these pages over the last couple of home games. Our trials process is open to any girl player regardless of standard in school Years 2 to 11 in the next academic year. For a trial registration form please call the Community office on 01582 391927.

Enjoy the game, Stuart Smith







The close season period is one of reflection and planning. In the nine months since Alan Neilson and I were appointed we have worked hard to ensure that all players are in the best possible environment to fulfil their potential as a footballer.

We feel that we have made sure that Luton Town now has the best Youth Development system outside of the academy programme.

### On what do we base this statement?

#### The best players:

Our aim is not to create successful teams, it is to create professional footballers. The two, however, are closely interlinked, and when watching our teams play on Sundays the best players in each game are usually playing for Luton. Despite 31 players regularly playing up a year and six players playing up two years, the results are successful due to us having better players than our opposition.

#### The best facilities:

At Baldock and our new playing facility at St Christopher's School we are lucky to have facilities that can only enhance the development of our young players. It is regrettable that such high quality facilities don't exist in Luton, or even in Bedfordshire, however we feel the extra sacrifice of travelling is worth it in order to create the best learning environment.

#### The best staff:

Six UEFA A Licence coaches and four UEFA B Licence coaches working with our teams is a statistic that can't be matched by some Premier League clubs never mind teams in League 2. The knowledge and teaching ability of the staff is top class and, with the extra knowledge bought in by our specialist coaches, we are able to provide a great team to work with our young players.

#### The best holistic programme:

Without a strong character, all of the elements listed above won't be enough for

a young player to reach the top level. The tours programme bought in this season has allowed the staff to introduce the players to some of the aspects needed mentally to play at the top level. Discipline, focus, determination and the desire to be the best are often talked about at football clubs.

#### How can we help players to improve these areas?

For our Under 11's was it winning 18-0 against Peterborough or losing 3-0 to Bayern Munich in front of 3,000 fans? For our Under 14/15's was it winning 7-0 against Northampton or losing 2-0 against Brondby?

As a fully chartered physiotherapist and a former professional footballer, Tim Andrews has also given the youth programme knowledge and expertise beyond the reach of most Centre of Excellence's.

#### The best pathways and opportunities:

The best youth policies give their players opportunities to progress. Sounds obvious, but some clubs have 45 players in their first team and reserve squad ahead of young players. Some managers would rather not risk throwing a young player into the first team ahead of more experienced professionals. Mick Harford has included three Under 16's in the first team squad this season, including making Jordan Patrick the youngest player to ever play for the club. In addition, six Under 16's have also played for the reserves.

Luton is a club moving forwards, we have an exciting 12 months ahead and we look forward to sharing success stories from the Youth Department during the upcoming months.



first4vauxhallfirst4ford  
nearly new low mileage cars and commercial vehicles

Match Analysis Sponsors 2008/09



www.isa-accountants.co.uk  
Under 18 Team Sponsors



Over Easter we offered long term contracts to the following players who will today sign on the pitch at half-time. The contracts ensure that they will be Luton players until the end of their Under 16 season giving both the boys and their parents long term security and the knowledge that they can develop their game without worrying that they will be rejected from the club.

#### Under 12's Tyler Reading

Tyler is a brave and talented goalkeeper from Hitchin who has been at the club since the age of seven. Tyler has found the step-up from mini-soccer to 11-a-Side straightforward and continues to excel in both training and matches.



#### Kai Francis

Kai is a skilful attacking midfielder from Dunstable who has also been at the club since the age of seven. Kai has great vision and awareness and has that special ability to make himself look as though he has always got time on the ball.



#### Luke Trotman

Luke is a strong powerful midfielder/defender from Luton and is the cousin of ex-Hatter Leon Barnett. Luke is a great athlete and shows good ability on the ball in different positions.



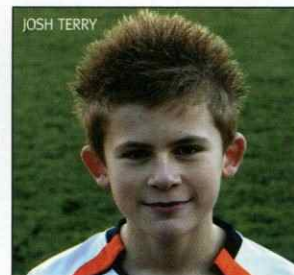
#### Under 13 Ian Rees

Ian is a skilful midfielder from Knebworth and has been with Luton since the age of 10. He is both tenacious and talented, a combination that should serve him well in the future.



#### Josh Terry

Josh is a creative midfielder from Stevenage and has been with Luton since the age of seven. Josh links the game well and is very comfortable in possession of the ball.



#### Zane Banton

Zane is a quick and skilful forward from Stevenage and has been with Luton since the age of nine. Zane is great in one versus one situations and can also score goals with both feet.



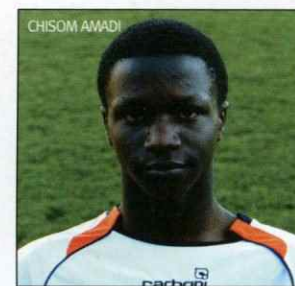
#### Devante Stanley

Devante is a skilful midfielder from Kempston and has been with Luton for one year. Devante is a livewire both on and off the pitch and can dominate a game even when up against bigger, stronger players.



#### Chisom Amadi

Chisom is a strong, quick striker from Bedford and he is in his second season with Luton. He is good with both his back to goal and at one versus one attacking making him every defenders nightmare to play against.





# Do you love the game?

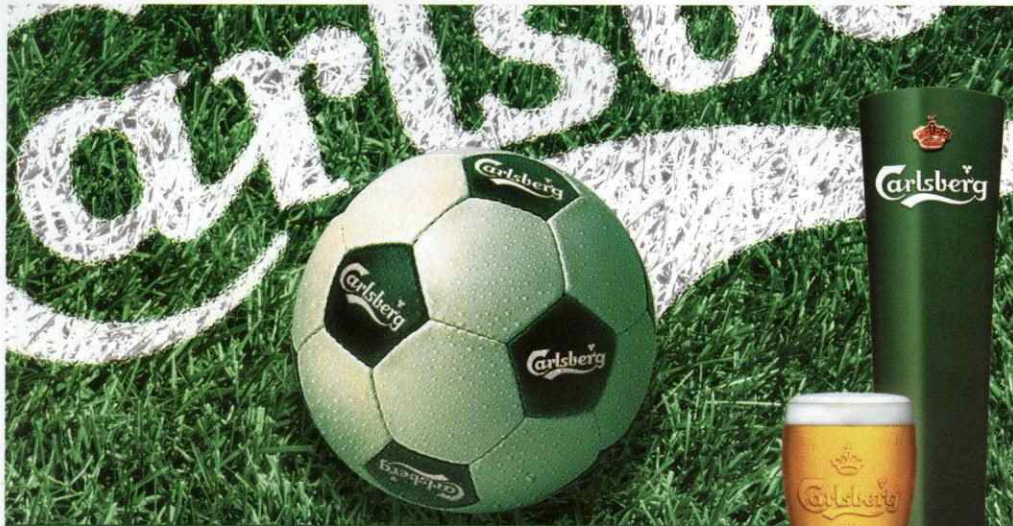
The Football Foundation provides grants for kit, goalposts, pitches, floodlights, clubhouses, coaching and innovative projects that use football to deliver a wide range of community benefits. If you are a local authority, football club, youth group, charity or a school looking to update your football facility or need to build a new one, or have an idea for using football to tackle a local issue you can take advantage of this funding.

For more information visit

[www.footballfoundation.org.uk](http://www.footballfoundation.org.uk)



improving facilities • creating opportunities • building communities



OFFICIAL BEER OF LUTON TOWN F.C.

Enjoy Responsibly

# lutonladies



The Ladies sides have all built on their previous achievements with most still in contention for honours as we enter the business end of the season.

The first team have three league games remaining against Norwich City, Welwyn Garden City and Gillingham knowing that, although it is a tall order, three wins will bring them the coveted league title which represents how far they have again progressed this season. The reserve squad have also pushed on and are set for a top half finish in what is the toughest league in London.

Our U16's have retained their league title with a 100% record demolishing Watford 9-0 with Leanne Lizaitis, Jade Doherty, Clare Howe all scoring twice with Nicola Henman, Rob Wilford and Stephanie Anes completing the scoring. They now pursue the treble in their League Cup final against Southend United having already won the County Cup.

It has also been an outstanding season for the Under 15's who fought back from a goal down to defeat Tottenham Hotspur 3-1. Katie Davis scored twice and strike partner Mirella Tambini was also on

target. They now need one win from their remaining two fixtures to net the title and meet St Martins in the cup semi final with the victor to play the winner of the Spurs/QPR tie in the final.

The Under 14 squad now have their fate in their own hands after winning 2-1 away to Stevenage. Lauren Porter equalised the home side's early goal and then provided the corner for Hayley Watson to head the winner. They too are League Cup semi-finalists.

To complete the set of 11-a-side squads, the Under 12's are also in the top two and are semi-finalists. In the last league game Chloe Vamey scored the second goal to add to an earlier penalty as the Under 12's overcome Denham United 2-0.

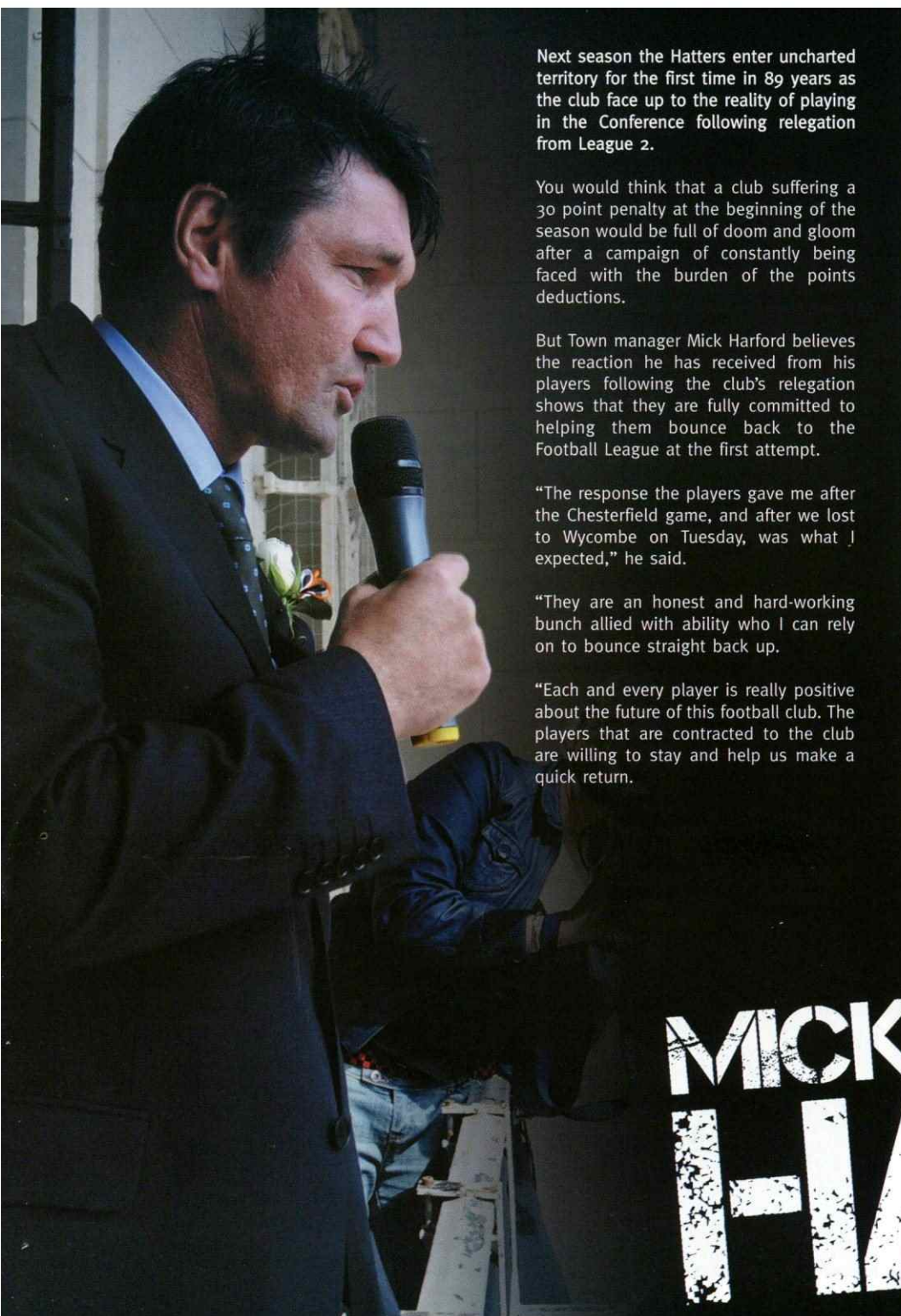
It has also been a good year for the Mini Soccer section with the Under 10 and 11's making good progress in spite of struggling for players at times.

Luton Town Ladies welcome players from age 8 to 38 so if you or anyone you know is interested in joining the ladies set up then please contact Dave at [lutonbelles@hotmail.com](mailto:lutonbelles@hotmail.com)



Johnstone's Paint Trophy Winners 2008/09



A photograph of Mick Harford, a man with dark hair wearing a dark suit, light blue shirt, and patterned tie. He is holding a black microphone and speaking. The background is slightly out of focus, showing what appears to be an indoor setting with some equipment.

Next season the Hatters enter uncharted territory for the first time in 89 years as the club face up to the reality of playing in the Conference following relegation from League 2.

You would think that a club suffering a 30 point penalty at the beginning of the season would be full of doom and gloom after a campaign of constantly being faced with the burden of the points deductions.

But Town manager Mick Harford believes the reaction he has received from his players following the club's relegation shows that they are fully committed to helping them bounce back to the Football League at the first attempt.

"The response the players gave me after the Chesterfield game, and after we lost to Wycombe on Tuesday, was what I expected," he said.

"They are an honest and hard-working bunch allied with ability who I can rely on to bounce straight back up.

"Each and every player is really positive about the future of this football club. The players that are contracted to the club are willing to stay and help us make a quick return.

"I have spoken with the players and they are desperate to get this club back where it belongs.

Harford was delighted when he found out that Blue Square, the betting company that sponsors the Conference, installed the Hatters as favourites to lift the title and gain promotion.

"I like the fact we're favourites," he said. "I like the idea that we're billed as the best team. Obviously we are the biggest team and you could say we were the biggest in League 2 and maybe even League 1.

"That's a burden we will have to carry next season but I am relishing the challenge. It will be hard, there's no doubt about that but the players, staff and everybody connected with the club are looking forward to the challenge.

"It's imperative we get off to a good start next season and if we can do that who knows where it will take us."

The manager believes it will be step into the unknown for the all those connected with the club as they set-off on their non-league adventure for the first time.

"It will be a journey for everyone. It will be an adventure for the players, the directors and definitely for the fans.

"We've never played in this league and at some of these grounds. Previously we only had to play non-league teams in the F.A. Cup so we know it will be difficult going to strange grounds where people have not been to before so we'll have to become accustomed to it."

One particular member of the Hatters' first team squad can draw on his experience of playing Conference football.

Defender Ed Asafu-Adjaye spent time on-loan at Salisbury City last season just as Harford took over at Kenilworth Road and the manager and he believes Asafu-Adjaye's grounding out on-loan has done the defender a world of good.

"Ed is a prime example of any young footballer," he said. "When I came to Luton Ed was banished to Salisbury with seemingly no future at Luton Town.

"He went away, worked hard and was a magnificent example of a how a footballer should conduct themselves and a credit to Luton Town Football Club.

"He has come back, continued to work at his game and has deserved his chance and a place in the team because of his ability and willingness to learn."

Days after the Town's relegation was confirmed the Hatters boss was already on the phone to managers who have had first hand experience of Conference football to get an insight to what lies in wait in preparation for next season.

He said: "I have spoken to Peter Taylor after the game on Tuesday and Mark Stimson and I will ring around and find out who the best players are and the kind of style teams play.

"In the two weeks since we've been relegated I've been to a couple of non-league games and I am going to another one on Sunday."

With the club on a sound financial footing since the 2020 consortium took over last summer, Harford believes everything is in place to help the club regain its league status.

"I won't let this club get in financial mess it did before. I will get the support from the board and the investors to get straight back into the Football League.

"Working on a tight budget and with the ability of the players I am very positive we can bounce straight back."

# MICK HARFORD



# HATTERS ACTION EXTRA

MICK HARFORD AND THE HATTERS SQUAD POSE IN FRONT OF THE TOWN HALL WITH THE JOHNSTONE'S PAINT TROPHY AT LAST SUNDAY'S PARADE







# flashback



Club Historian Roger Wash looks back at events at Kenilworth Road 50 years ago

Next Saturday marks the 50th anniversary of the Town's first ever visit to Wembley Stadium when they had fought through to the F.A. Cup final and where they met Nottingham Forest.

The Hatters were a decent top division club at the time, having finished seventh in 1957/58 and then topping the table for a brief period in September 1958.

By the time the F.A. Cup run started though, a drop in form meant a major reshuffle of the side for the third round tie at home to Leeds.

Leeds were seen off 5-1 at snowy Kenilworth Road and what became the 'cup' team remained unchanged as Leicester, Ipswich, Blackpool and then Norwich were seen off as expectation levels rose with each passing victory.



■ The Luton Town 'Cup' team. Back row (left to right): Tom King (trainer), Groves, McNally, Baynham, Pacey, Hawkes. Front row (left to right): Bingham, Brown, Owen, Morton, Cummins, Gregory.

During the six weeks that elapsed between the Norwich semi-final victory and the final itself neither the Town nor their Wembley opponents Nottingham Forest distinguished themselves with each side winning three of their 14 league games played.

The Town, however, had scored a psychological advantage when beating Forest 5-1 at Kenilworth Road on 9th April with Allan Brown netting four times. Unfortunately, any feeling of superiority was tempered by the fact that Forest had played a makeshift side that bore no resemblance to their cup eleven.

No real preparations were organised by the Town for the big day and the only concessions made to the fact that they were about to play on the lush turf at Wembley were training sessions on the hockey pitch at Cedars School at Leighton Buzzard. The surface was supposed to mirror that at Wembley but the players were exhausted after training on such heavy ground. The players were also not

given any special team talks and the match was simply regarded as just another game. Forest on the other hand were sequestered away during the week prior to the final.

As the two teams lined up in the tunnel, the Luton players looked relaxed and confident while those of Forest were tense. The Forest players became even more tense when they found out that the Town had not been holed up in an hotel and thought it was being said to put them off and that they had something special up their sleeves.

Director Tom Hodgson led the Town team out, in the absence of a manager, and after both sets of players had been introduced to the Duke of Edinburgh the two captains exchanged banners – a first in Wembley history. Battle then commenced.

After the epic run that had started in the snow of the previous January so much was now expected of the Hatters and everyone connected with the club was fully



■ Dave Pacey (out of picture) fires in the Town's consolation.

confident that the Cup would find a resting place at Kenilworth Road.

The first half performance, and in particular the opening 20 minutes, therefore came as a highly unpleasant shock. Forest ripped into the Town and pinged the ball around on the true surface with the result that the Hatters were left chasing shadows.

With 10 minutes gone Forest's Roy Dwight came racing on to a pulled back centre from Stuart Imlach and flashed the ball into the net past a helpless Ron Baynham. Four minutes later the game was as good as over when Billy Gray floated over a diagonal cross which was headed back into the far corner of the net by Tom Wilson.

The Town seemed set for a hiding but

were handed an unfortunate lifeline on 32 minutes when Dwight and Luton full-back Brendan McNally went for a high ball together. Dwight's studs caught McNally's chest and as both players went down it was clear that the Forest player was badly injured. After attempting to carry on he collapsed with what was later diagnosed as a fractured shin. The introduction of substitutes was still six years away and the so-called 'Wembley Hoodoo' had struck again leaving Forest to battle on with 10 men. The pitch was often blamed for the many injuries at Wembley and this game was no exception with the trainers being called on 11 times and McNally left a limping passenger with a cartilage problem – a legacy of his clash with Dwight.

The Town frantically tried to force their way back into the game knowing that a

10-man side had yet to win a Wembley final, but too often found the Forest centre-half, Bobby McKinlay, blocking their path. Hopes were raised in the 62nd minute when Dave Pacey, eight yards out, drove in a Ken Hawkes cross but as the Town huffed and puffed Forest fought like tigers.

Allan Brown almost forced extra time against a tiring Forest when he launched himself at a Billy Bingham cross, but his header flashed narrowly wide. In truth, an equaliser would have been an injustice and when the final whistle sounded everyone agreed that Forest were deserving winners.

Of the surviving members of the 1959 Cup team Dave Pacey, Tony Gregory and Ken Hawkes were able to accept the Board's invitation to attend the recent Johnstone's Paint Trophy final as welcome guests of the club.





# victoryparade



Last Sunday around 3,000 fans turned out to line the streets of Luton to see the triumphant Hatters' side arrive at their Civic Reception at the Town Hall on an open-top bus.

Mick Harford and the first team squad, together with the Johnstone's Paint Trophy, were joined on the bus by the

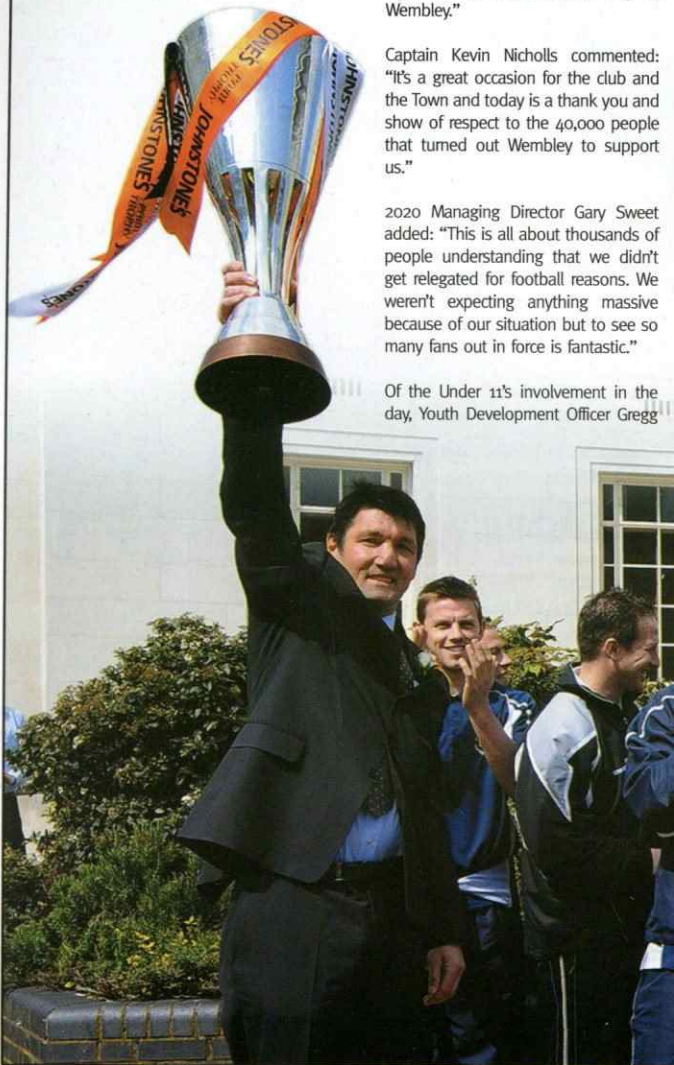
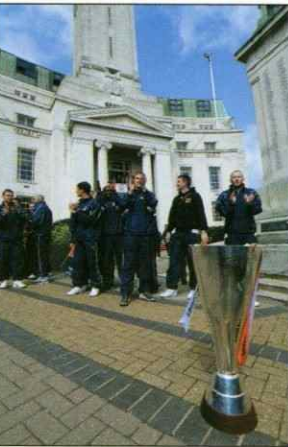
club's Under 11 squad who won the Aarau Masters earlier in the season. Club photographer Gareth Owen was on hand to capture the moment.

Hatters' Manager Mick Harford said: "It isn't a celebration as such, we would just like to show our appreciation to the fans. Their support all season has been fantastic, at home, away and at Wembley."

Captain Kevin Nicholls commented: "It's a great occasion for the club and the Town and today is a thank you and show of respect to the 40,000 people that turned out Wembley to support us."

2020 Managing Director Gary Sweet added: "This is all about thousands of people understanding that we didn't get relegated for football reasons. We weren't expecting anything massive because of our situation but to see so many fans out in force is fantastic."

Of the Under 11's involvement in the day, Youth Development Officer Gregg





# Hartwell Dunstable Tackling all your Ford and Peugeot needs.

Your local Ford and Peugeot dealer offering you everything from New & Used Car Sales to Service to Parts.



Proud sponsors of



**£50 off** | **£100 off**  
**ANY new car** | **ANY used car**  
on production of this voucher at our dealership



**Hartwell**  
Dunstable

Open 7 Days:  
Monday to Friday:  
9.00am to 7.00pm,  
Saturday: 9.00am to 6.00pm,  
Sunday: 10.30am to 4.30pm



77-81 London Road, Dunstable LU6 3DT



Call Now: 0870 904 9374

Massive choice of cars online - Visit: [hartwell.co.uk](http://hartwell.co.uk) One click, one call, beats all.

Models shown for illustration purposes only. This advert replaces any other previously advertised offer and cannot be used in conjunction with any other offer.

## thereserves



Four points from their last two matches against established League 1 opposition has not only given the Hatters' reserves a tilt at clinching the East Division title of the [totesport.com](http://totesport.com) Combination but also given a number of young players vital experience.

A 2-1 victory over Southend United at Roots Hall on Monday was followed by a 2-2 draw with Leyton Orient on Thursday which extended Alan Neilson and Kevin Watson's unbeaten record since taking over the reins of the reserves to 10 games.

The win over the Shrimpers was even more impressive given that 12 of the 14 players on duty were products of the Hatters' current youth setup.

After falling behind the young Town side stormed back and two goals from Jack Wood sealed all three points.

At Leyton Orient the Hatters led twice only to be pegged back on each occasion with the O's second equaliser coming two minutes from time.

First Team Coach Neilson was delighted with the performances of the young team especially as a number of the players were involved in both games and featured for the Under 18's on Saturday morning.

He said: "At this point in the season with so many games to catch-up on it is a challenge for the young players to play a lot matches in a short space of time.

"Against Southend we played really well, especially in the second half

against a decent side, and after playing again on Thursday at Orient it was noticeable how tired some of the boys on a hot day.

"Overall the performances of the young players have been fantastic and it helps when you have a chance of winning the title as it gives them something to aim for."

Neilson was pleased for 17-year-old Jack Wood as his performances of late for the Hatters' second string impressed Mick Harford enough to name him among the substitutes for the first team against Wycombe Wanderers on Tuesday.

"Jack has taken his chance well," Neilson said. "He's a young lad who has been rewarded for his efforts with a place on the bench for the first team. It's all part of the experience.

"He's a bit of a utility player and can play anywhere across the defence and midfield. It goes to show that if you do well in the youth and reserve teams you can get the chance to experience life with the first team."

Two matches remain for the reserves at Kenilworth Road against Peterborough and Watford which may decide who wins the East Division title with both sides also in with the hunt to pip Wycombe and the Hatters to the Combination crown.

**Remaining fixtures:**  
Peterborough (H) 28th 2pm,  
Watford (H) April 30th 2pm.



# RESERVE

REVIEW



# kitsponsors



DEAN BRILL **01**

**Position:** Goalkeeper  
**Signed:** May 2006

M&S Water Services  
Bobbermans 606ers

KEITH KEANE **04**

**Position:** Defender  
**Signed:** August 2008

Trust in Luton (2003) Ltd  
Maddie Knight

IAN HENDERSON **07**

**Position:** Midfielder  
**Signed:** January 2009

TJ Fordham Plumbing & Heating  
www.lutonoutlaws.com

RYAN CHARLES **10**

**Position:** Striker  
**Signed:** August 2008

Performance Car Hire  
The Mayne Family

CLAUDE GNAKPA **02**

**Position:** Defender  
**Signed:** August 2008

Andy & Drew  
Kevin Lennon

IAN ROPER **05**

**Position:** Defender  
**Signed:** August 2008

LTSC - Scandinavia  
Bernard Elwen

KEVIN NICHOLLS **08**

**Position:** Midfielder  
**Signed:** August 2008

Pulse Tattoo Image with Attitude  
WHOSH

LEWIS EMANUEL **11**

**Position:** Midfielder  
**Signed:** August 2008

Matthew Crossland  
Bobbermans 606ers

SOL DAVIS **03**

**Position:** Defender  
**Signed:** August 2002

Trust in Luton (2003) Ltd  
Tommy Lennon

GEORGE PILKINGTON **06**

**Position:** Defender  
**Signed:** August 2008

WHOSH  
Bobbars Travel Club

SAM PARKIN **09**

**Position:** Striker  
**Signed:** August 2006

Les & Sue Miller  
Lynn, Ben & Rhiannon

DAVID LIVERMORE **12**

**Position:** Midfielder  
**Signed:** March 2009

Mick Connolly  
Available

ASA HALL **14**

**Position:** Midfielder  
**Signed:** August 2008

Carole Jinks & Sharon Skinner  
WHOSH

CHRIS MARTIN **18**

**Position:** Striker  
**Signed:** August 2008  
*On Loan*

Luton Town Ladies FC  
Richard & Zak Tilley

GEORGE BEAVAN **25**

**Position:** Defender  
**Signed:** August 2008

Stone Futures Ltd 'Good Luck'  
WHOSH

KEVIN GALLEN **32**

**Position:** Striker  
**Signed:** Dec 2008

Craig Lowrie  
Gill, Julie & Yvonne

DIMITRI KHARINE

**Position:** Goalkeeper Coach  
**Signed:** July 2006

Available  
Available

ED ASAFU-ADJAYE **15**

**Position:** Defender  
**Signed:** August 2008

Jacqui Peacock  
Loyal Luton Supporters Club

MICHAEL SPILLANE **20**

**Position:** Defender  
**Signed:** August 2008  
*On Loan*

Kelly Knight  
A1 Partitions

DEAN MORGAN **27**

**Position:** Striker  
**Signed:** February 2005

Available  
Available

KEVIN WATSON

**Position:** First Team Coach  
**Signed:** August 2008

Emma Banks  
Josie & Andrew Kingston

GREGG BROUGHTON

**Position:** Youth Development Officer  
**Signed:** August 2008

Available  
Available

ROSSI JARVIS **16**

**Position:** Midfielder  
**Signed:** August 2008

Carole Jinks & Sharon Skinner  
Oscar & Rosie Barron

TOM CRADDOCK **24**

**Position:** Striker  
**Signed:** January 2009

Roger Davies  
LTSC - Scandinavia

PAUL McVEIGH **28**

**Position:** Striker  
**Signed:** August 2007

The Bricklayers Arms  
www.lutonoutlaws.com

ALAN NEILSON

**Position:** Youth Manager  
**Signed:** August 2008

Luke Browne  
Luton Town Supporters Club

MICK HARFORD

**Position:** Manager  
**Signed:** January 2008





Mr & Mrs Langford Hat  
Hitchin Hatters



# youthsponsors



If you would like to sponsor a youth player or their kit please contact the Commercial Department on 01582 411622 or [commercial@lutontown.co.uk](mailto:commercial@lutontown.co.uk)

<b>SAM BARKER</b>  Player sponsored by: <b>AVAILABLE</b> Kit sponsored by:  <b>Michael Capp</b> Executive Club Member	<b>RICCARDO BIGGI</b>  Player sponsored by: <b>AVAILABLE</b> Kit sponsored by:  <b>AVAILABLE</b>	<b>OLIVER CLEAVER</b>  Player sponsored by: <b>AVAILABLE</b> Kit sponsored by:  <b>AVAILABLE</b>
<b>ASHLEY DEENEY</b>  Player sponsored by: <b>AVAILABLE</b> Kit sponsored by:  <b>Michael Capp</b> Executive Club Member	<b>MARK FARTHING</b>  Player sponsored by: <b>AVAILABLE</b> Kit sponsored by:  <b>Joe O'Dell</b>	<b>AARON FLETCHER</b>  Player sponsored by: <b>AVAILABLE</b> Kit sponsored by:  <b>AVAILABLE</b>
<b>HARRY HOGARTH</b>  Player sponsored by: <b>AVAILABLE</b> Kit sponsored by:  <b>Fifties Fan</b>	<b>JAKE HOWELLS</b>  Player sponsored by: <b>Don Hutchison</b> Kit sponsored by:  <b>Neil Ehrenzweig</b>	<b>TAYLOR NATHANIEL</b>  Player sponsored by: <b>AVAILABLE</b> Kit sponsored by:  <b>AVAILABLE</b>
<b>RICHARD OWUSU</b>  Player sponsored by: <b>AVAILABLE</b> Kit sponsored by:  <b>AVAILABLE</b>	<b>AIDAN QUINN</b>  Player sponsored by: <b>AVAILABLE</b> Kit sponsored by:  <b>Michael Capp</b> Executive Club Member	<b>SCOTT SINCLAIR</b>  Player sponsored by: <b>Don Hutchison</b> Kit sponsored by:  <b>Fifties Fan</b>
<b>ADAM WATKINS</b>  Player sponsored by: <b>AVAILABLE</b> Kit sponsored by:  <b>Michael Capp</b> Executive Club Member	<b>JACK WOOD</b>  Player sponsored by: <b>AVAILABLE</b> Kit sponsored by:  <b>Michael Capp</b> Executive Club Member	 <b>YOUTH DEVELOPMENT SPONSORS</b>

## preseason

Luton Town have announced that as part of their pre season preparations for the 2009/10 season they will be playing in the South West Challenge Cup in Devon.

Twelve clubs will take part in the competition including Barnet, Wycombe Wanderers and Yeovil Town.

The tournament will consist of two preliminary round matches followed by the Semi-Finals and the final with the others teams involved being:

Barnet, Barnstaple Town, Bideford AFC, Eastleigh, Exeter City, Ilfracombe, Kidderminster Harriers, RRFC Montegnée-Liege from Belgium, Rushden & Diamonds, Wycombe Wanderers and Yeovil Town.

Matches will be played at Appledore, Barnstaple, Bideford, Ilfracombe and Torrington's football grounds between Monday 13th July and Sunday 19th July 2009 inclusive and Hatters boss Mick Harford was delighted to confirm the club's entry:

"The tournament will give Luton Town a perfect start to next season's campaign in



an area where it is sure to attract a lot of Hatters supporters.

"The tournament was a huge success last year and has attracted a good mix of teams this season which will be excellent preparation for us."

The tournament organisers are releasing a limited number of an advance 'super saver ticket', priced at £15, which will be on sale between 1st May and 30th June 2009.

There are only 1,000 of these super saver tickets on sale between the various teams involved, so they are expected to sell quickly. Tournament Executive, Terry

Schofield, was delighted to welcome the Hatters into the tournament:

"As winners of the Johnstone's Paint Trophy, Luton Town are a club we have been trying to get to participate for some time and will be a big draw for this competition so we are excited at their inclusion."

Further information on this summer's tournament can be obtained by visiting the official site at [www.southwestchallengecup.co.uk](http://www.southwestchallengecup.co.uk)

Tickets can be purchased from [www.discountsportonline.co.uk](http://www.discountsportonline.co.uk) from 1st May 2009.



LAST YEAR'S WINNERS EASTLEIGH



TUESDAY 21ST APRIL 2009  
 COCA-COLA LEAGUE TWO  
 KENILWORTH ROAD, LUTON  
 ATT:6,553

LUTON TOWN 0



WYCOMBE 1



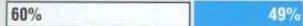
Akinde 56

**TEAMS:**

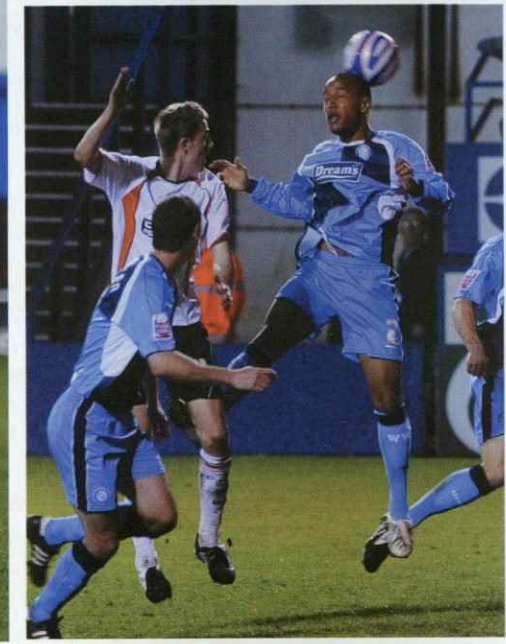
Luton Town: Brill, Davis, Keane, Pilkington, Henderson (Emanuel 60), Livermore, Hall, Jarvis (Gallen 60), Martin, Spillane, Craddock.  
 Unused substitutes: Roper, Parkin, Wood.  
 Booked: Henderson (57)

Wycombe Wanderers: Young, Hunt, Woodman (Oliver 80), McCracken, Sinclair, Holt, Pittman (Bloomfield 88), Spence, Mousinho, Akinde, Phillips (Beavon 46).  
 Unused substitutes: Sawyer, Jones.  
 Booked: Phillips (5), Akinde (82)

Possession



4	On Target	1
3	Off Target	3
7	Corners	1
1	Yellow Cards	2
0	Red Cards	0



**MAN OF THE MATCH**  
 Keith Keane



With Kevin Nicholls suspended Keane captained the side in the skipper's absence and with Ed Asafu-Adjaye's out with injury he had to drop back to centre-half where he put in another hard-working and committed performance.



**POST-MATCH VERDICT**

**Mick Harford:** "I'm sure Peter Taylor will agree when he does his interview that that was one of the most one-sided games this season in terms of possession and the way in which we tried to win the game. It was difficult to break them down, they hardly came over the halfway line in the second half, it doesn't take a genius to work out. We had one of our best passing moves in the first five minutes and they were standing in the penalty area."

**Peter Taylor:** "Give me third place now and I'll pack up and go on holiday. I'd be happy with that right now and my wife would be quite pleased as well. The players should be focused on promotion and that's what we'll try and achieve now. We've still got two very tough games left and although you'd expect anyone in my position to say that, that is the case. We go to Port Vale next and it's a difficult place to go, but hopefully we can seal it on Saturday and hopefully we won't play like we did in the first half here."





Luton Town's  
End of Season Dinner is  
Sponsored by Hartwell Ford  
Dunstable



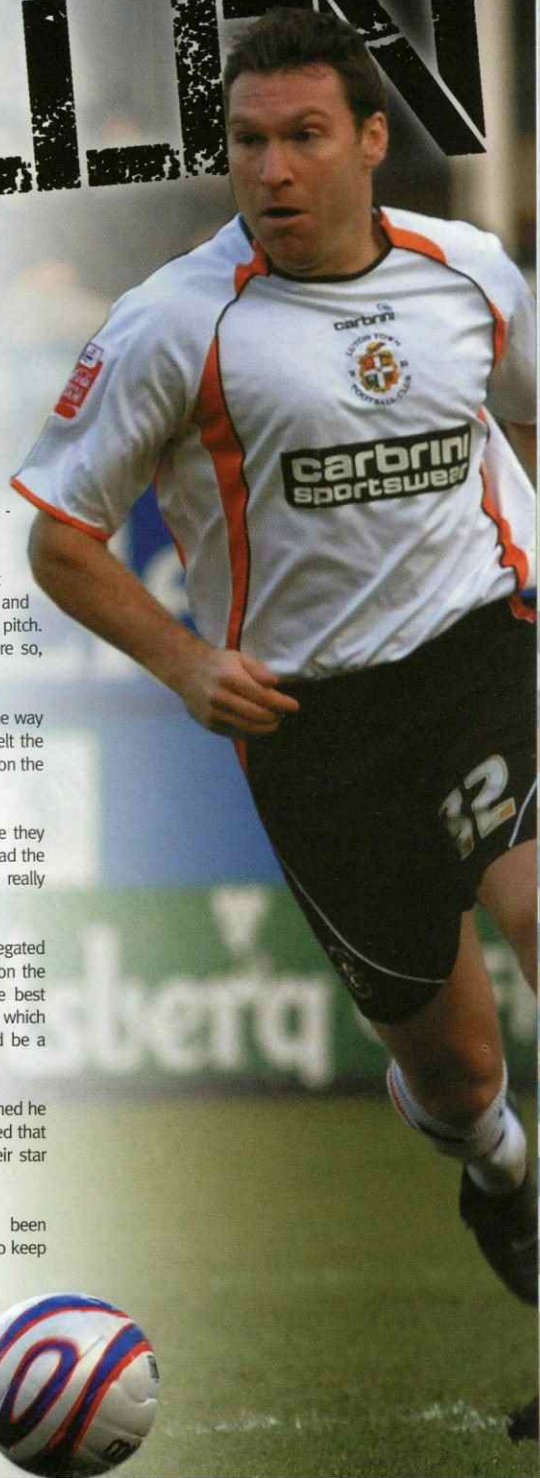
The Evening will Include:

- 3 Course Meal
- Entertainment from Comedian Russ Williams
- Message from Chairman Nick Owen
- Speech from Manager Mick Harford
- Speech from Luton Town Directors
- Kit Sponsors Photos
- LTFC Raffle

Price £65pp

For Bookings and enquiries please contact the Commercial Department on 01582 411622 or e-mail Commercial@lutontown.co.uk

# KEVIN GALLIN



A disappointing night for the Hatters was almost rescued when Kevin Gallen was introduced on the hour mark against Wycombe Wanderers. The 33-year-old's experience and influence helped the Town dominate proceedings at Kenilworth Road, but a resolute Chairboys' defence held on to take all three points.

Gallen agreed that he has the capability to get the team going and explained that good communication is essential for the squad to play their best football:

"I think I can make an impact. I can control the ball and pass it - nothing extraordinary, but I play the simple things well.

"There are a lot of young lads and they benefit when I'm out there because I talk to them. Sometimes they're a bit quiet and communication is a big part of football when you're out on the pitch. I can make a difference and I think I have since I've been here so, hopefully, long may it continue."

The former Milton Keynes Dons' striker was disappointed with the way Peter Taylor's side sat back for long periods of the game, and felt the Hatters could have been mistaken for the promotion challengers on the evidence of their performance:

"They put 10 men behind the ball from the start. It looked like they came for the draw but they had one shot and they scored. We had the whole match but they tried to nick it on the break so we're really disappointed.

"They must have thought we were a good team. I know we're relegated and bottom but they came here, sat back, and tried to hit us on the break. They're third in the league and supposedly one of the best teams in the league but if you were a neutral and didn't know which team was top and which team was relegated, I think it would be a reversal."

With next season now in the minds of the players, Gallen confirmed he will "seriously consider" any offer to stay at the club, and revealed that he'll be particularly keen to stay put if the club hold onto their star players this summer:

"Kevin Nicholls has got another year left, Keith Keane has been tremendous and it would sway me as well if the club manages to keep the players.

"There's nothing better than being part of a winning team. It might just be one season out of the Football League, then we bounce back and the whole place is buzzing again."





# Coca-Cola

**Luton Town F.C.**

Vs

 Grimsby Town F.C.	 Bradford City A.F.C.	 Barnet F.C.	 Rotherham United F.C.
 Morecambe F.C.	 Chesterfield F.C.	 Exeter City F.C.	 Wycombe Wanderers F.C.
 Bury F.C.	 Accrington Stanley F.C.	 Rochdale A.F.C.	 Aldershot Town F.C.
 Wenham & Redbridge F.C.	 Gillingham F.C.	 Lincoln City F.C.	 Chester City F.C.
 Macclesfield Town F.C.	 Brentford F.C.	 Shrewsbury Town F.C.	 A.F.C. Bournemouth
 Port Vale F.C.	 Darlington F.C.	 Notts County F.C.	

**72 Clubs. The 'Coca-Cola' Football League.**



## leagueroound-up

A REVIEW OF EVENTS AROUND COCA-COLA LEAGUE TWO



### QUAKERS EXTEND DEADLINE

Administrators have extended the deadline for potential buyers to submit a bid for Darlington.

Brackenbury Clark and Co. said a number of interested parties had come forward, but no offer had been accepted by the cut-off point on Monday, so a new deadline on 5pm on 5th May has been set.

The extra time was needed while discussions continue to secure a formal deal, a spokesman for the firm added. In a statement, the club said:

"This decision has been made because the Administrator is continuing to hold discussions with interested parties which have not come to any definitive conclusion although there are a number of parties who are willing to pursue their interest further."



### SHOTS MAKE CHANGES

Aldershot manager Gary Waddock has confirmed three players, including captain Rhys Day, will not be offered new contracts for next season. Defender Day and strikers Rob Elvins and Junior Mendes will not have their deals renewed in the summer.



Waddock said: "I would like to take this opportunity to thank them for the contribution that they made last season with promotion to the Football League. "I wish all three players the very best for the future and wish them well."



### HOWE HITS OUT AT OWNER

Bournemouth manager Eddie Howe has hit out at owner Paul Baker over the timing of a takeover statement he issued. Baker had been hoping to conclude a deal for the League 2 club by the end of last week but talks with the Murry Group stalled and he issued the statement just hours before the Cherries

faceted Chester City, who Baker is a lifelong fan of. The former director of Chester was not at the Deva Stadium on Saturday to see Bournemouth win 2-0 and almost secure their safety.

Howe told the Daily Echo: "On behalf of the team and the club, we were disappointed with it because it seems as if things are being done to try to destabilise us.

"Things were said just 48 hours before one of the biggest games in the club's history when all we wanted to do was concentrate on football."



GARY WADDOCK



### TODAY'S FIXTURES:

Accrington Stanley v Chesterfield  
Aldershot v Chester  
Bournemouth v Grimsby  
Bradford v Rotherham  
Darlington v Brentford  
Exeter v Morecambe  
Gillingham v Bury  
Macclesfield v Barnet  
Notts County v Dag & Red  
Port Vale v Wycombe  
Shrewsbury v Lincoln City

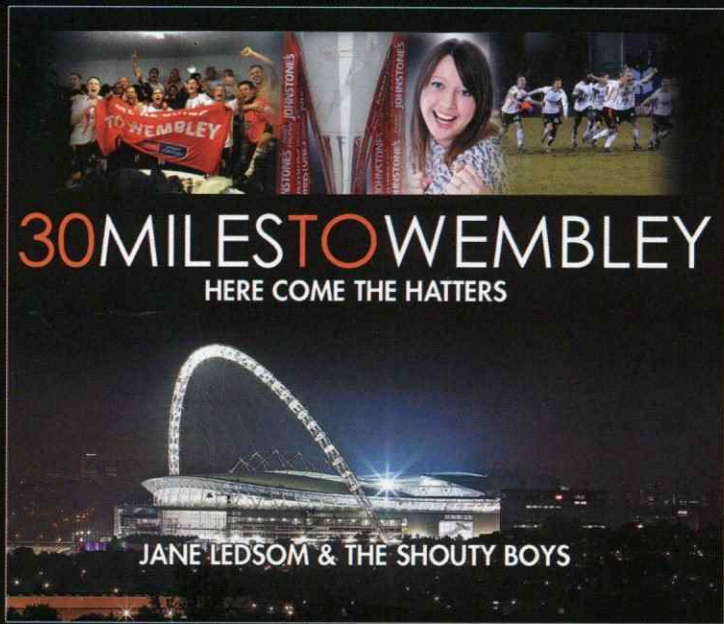


# MAKE THE HATTERS HEARD

LUTON'S OFFICIAL WEMBLEY SONG

## 30 MILESTOW WEMBLEY

HERE COME THE HATTERS



AVAILABLE TO DOWNLOAD FROM **iTunes** FROM THURSDAY 26TH MARCH

ALL PROCEEDS GO TO THE CLUB

[www.myspace.com/janeledson](http://www.myspace.com/janeledson)

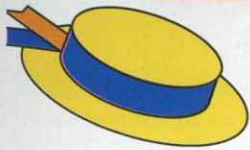
# ultimatedreamteam

Throughout the season we have asked Town fans to send in their Dream Teams as part of the matchday programme feature. It had always been our intention that we would round-up your 'ultimate' dream team at the end of season, analysing the most nominations that had been received over the course of the nine months to pick the very best of elevens.

After our match with Wycombe we received an email from season ticket holder Simon Wedd, who had been through the painstaking process of tallying up all the entries to come up with the your collective Hatters' dream team. We'd like to thank Simon (whose saved us a few hours in the office this week!) and all the Dream Team managers who have supplied their teams this season. Those that have yet to be included will be used over the course of the summer on the Hatters' official website, so keep your eyes peeled!







Support the Hatters with



# Luton Town Football Club Prize Draw!!

As part of our ongoing partnership with A Plan Insurance we are pleased to invite you to take part in our prize draw to win the following:

- ⊕ 1st Prize: Season Ticket for 2009/10 season\*
- ⊕ 2nd Prize: Signed framed Luton Town shirt
- ⊕ 3rd Prize: Signed and mounted Luton Town football

Tickets for this draw are **FREE**, all you need to do to be entered is get a quote from A Plan Insurance for either your car, van, home or business insurance on or before 5.00pm on the 24th April 2009.

The draw will take place pitch side on our last home game of the season, 25th April 2009.

Remember, we want you to save money, especially in these difficult times, and for every policy taken out by a Hatters fan, A Plan Insurance will make a donation to the club. To date A-Plan has donated thousands of pounds, and many fans have saved themselves money, so please take advantage of this.

Just call  
**01582 420 101**  
and tell A Plan you support  
the hatters, let them do the rest!!

Motor, Commercial and Home Insurance are provided by A-Plan Insurance a division of A-Plan Holdings. Authorised and regulated by The Financial Services Authority. Registered in London 750484  
Life Insurance provided by A-Plan Assurance a division of Assured Futures Limited.  
Authorised and regulated by The Financial Services Authority. Registered in London 3040737

\*To a maximum value of £350

Late entries will not be accepted. The number of entries will not be restricted, one entry will be granted for each new quotation requested. In order to qualify entries need to advise they are calling in relation to this offer. No purchase is necessary. The prizes will be awarded to the first 3 entries drawn randomly and independently observed from all entries received by the closing date. There is no cash or other alternative to the prizes stated. We reserve the right to use winners' name and photographs in publicity.



# hattersstudysupport



Hello everyone and welcome to the today's match. Even though this is the final game of the season, just like the football club itself, the Hatters Study Centre will be very busy during the summer.

One of our key jobs is to 'sign-up' a new member of staff to help with the delivery of our ever-expanding programme. We will also undertake some 'pre-season' training to improve on the curriculum that has been used in the first six months of the programme.

Schools have something exciting to look forward to this term. We have teamed up with London Luton Airport, Active Luton and Luton Town Community Trust to run the Hatters Football Festival at Kenilworth Road on Wednesday the 13th May.

We have been overwhelmed with entries from local schools. The Year 2 festival will kick off at 10am with 14 infant and junior schools sending along a mixed team to take part in the festival.

The Year 5 festival begins at 1pm and will be divided into a boys and girls section. We have more schools hoping to send teams along to the festival than we have spaces for. In all, there will be more than 300 pupils who will be given the special opportunity to play football on Kenilworth Road - something that many of them will remember for the rest of their lives.

This week I have included a couple of great photos taken recently after a whole school assembly held at Ferrars Junior School. The purpose of the special assembly was to celebrate the success of the children who completed the Hatters Reading Challenge. The children who participated in the challenge received rewards for completing various reading related challenges.

One lucky pupil even received a Luton Town shirt. By the time the new season gets underway I will be able to announce our new team line-up as well as outlining some exciting new programmes we will be launching in the next school year.

Enjoy the close season and I look forward to keeping you informed of what is going on at the Study Centre when Luton Town start the new campaign in August.

Andy Ducat  
Hatters Study Centre





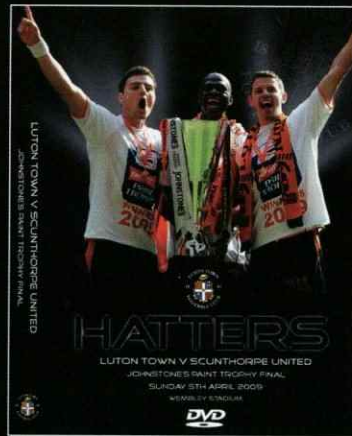
PRIDE PASSION HONOUR



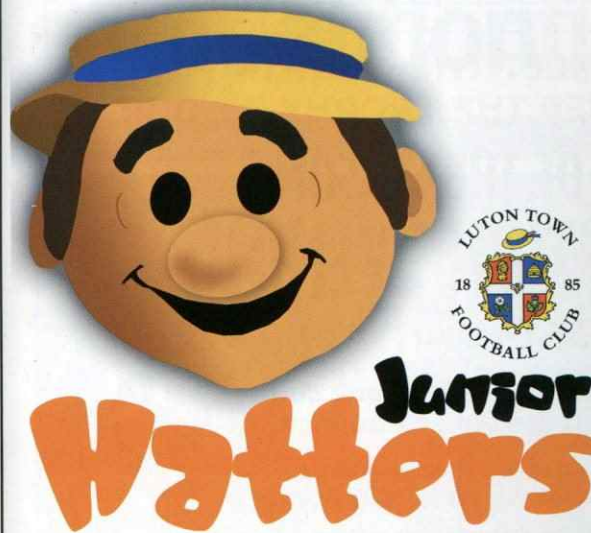
DRESS TO IMPRESS

# THE HATTERS SHOP

NEW WEMBLEY MERCHANDISE INCLUDING:  
PANORAMIC PRINTS, MATCH DVD & EXCLUSIVE WINNERS T-SHIRTS



VISIT OUR NEW ONLINE STORE: [WWW.HATTERSSHOP.CO.UK](http://WWW.HATTERSSHOP.CO.UK)



Hello and welcome to all Junior Hatters for our last home game of the season against Rochdale and to all those junior supporters who have travelled from Spottland to be with us this afternoon.

Well I can't believe the season is almost over. It seems like yesterday we were starting the season against Port Vale last August. Despite relegation we have still had lots to cheer this season. Not many fans get to see their team at Wembley but we have.

The season has been a real rollercoaster but I am sure you are used to that now being Luton supporters Personally I can't wait for next season to start. Mick and the boys have done really well on the pitch and hopefully next season we can bounce straight back up. Mick and all the players have asked me to thank you all for your brilliant support this season.

Enjoy today's match, have a fantastic summer and I look forward to seeing you all back at Kenilworth Road next season.

Happy Harry.

**Ball boys and ball girl.**  
Our signed ball winners following our prize draw means Alana-Louise Wright and Robert Smith will be ball girl and ball boy for today's game. Alana-Louise and Robert will be joined on the touchlines by Mitchell Howe from Luton whose favourite player is Kevin Nicholls.

As we won't be back until August I'd like to wish all Junior Hatters a happy birthday if they are celebrating their birthdays during the close season!

TODAY'S MASCOT:



**Kyle McPherson**  
Please give a warm welcome to our Junior Hatters mascot today who is seven-year-old Kyle McPherson from Aylesbury. Kyle won our Kio mascot competition we ran earlier this season and the prize was to be mascot for today's match. Kyle attends Thomas Hickman school and comes to matches at Kenilworth Road with his Dad in the David Preece Stand. His favourite player is Tom Craddock and apart from football, Kyle also enjoys golf.

We hope you have a day to remember with us, Kyle.



Scissor Lifts  
Alloy Towers  
Power Tools  
Articulated Booms  
Tel: 01582 873000

**NEON**  
[www.neonhire.co.uk](http://www.neonhire.co.uk)

Tool Hire  
Cherry - Pickers  
Construction Plant  
Lifting Equipment  
Fax: 01582 873007



COME AND MEET THE WINNING  
JPT TEAM AND SEE THE TROPHY AT OUR

# PLAYER OF THE SEASON PRESENTATION EVENING

Sunday 26th April 2009

Special guests, management and  
coaching staff also in attendance!

7:00pm 'til late at The Riverside Suite,  
Vauxhall Recreation Club, Gipsy Lane, Luton

Smart Casual Dress • Hot & Cold Buffet • Grand Prize Draw

£15 LTSC Members • £21 Non-Members (subject to availability)

Tickets can be purchased from the Luton Town Supporters Club kiosk in Kenilworth Road on matchdays  
or you can reserve your tickets by calling Vic and Marilyn Fussell on 01908 569339



# competitiontime!



ARE YOU A WINNER?



If this is your face circled you  
have just won a £10 Club  
Shop voucher!

To claim your prize please visit  
the Club Shop either at half-  
time or at the end of the game  
or contact the Commercial  
Department via email at  
commercial@lutontown.co.uk  
or on 01582 411622.

Photo ID may be required.

# executivebox holders



G.P. Quorenton  
(Ductwork)

Tel: 01582 882561

BILLINGTON  
& LAWRENCE

Tel: 01582 726100

SHALLOWFORD  
CONSULTING

Tel: 01438 831013

Admiral  
GROUP OF COMPANIES

Tel: 01582 653333

Butterfields

01582 491100

Mr Mick Connolly

SKF

Tel: 01582 490049

F&S  
PIPEWORK SERVICES LTD



Luton Plastics

LUTON TOWN FC  
SPECIAL OFFER

Acolina Country House Hotel  
For Luxury Golf breaks  
& holidays in the Algarve



Book direct quoting 'LTFC' for preferential rates

RESERVATIONS & ENQUIRIES:

Tel. (00351) 289 358 792 Email: reservas@acolinahotel.com www.acolinahotel.com



# SEASON TICKETS 2009/10

The Club is delighted to announce next season's ticket prices and confirm that tickets will go on sale from 9am on Saturday 2nd May 2009.

We are pleased to inform you that we have given every season ticket holder the opportunity for a discount for next season.

The club recognises that the price of season tickets needed to be reviewed following our entry into the Blue Square, we were also acutely aware of the need to strike a balance between the value of the package and the need to maximise both the numbers of people applying for season tickets and the income that it generates. This support, both physical and financial, is vitally important in our attempt to gain promotion back to The Football League at the first attempt.

The Club would like to continue its appeal to junior and youth supporters with significant discounts being offered to those under 17 and the additional commitment that the cost of their Wembley ticket will be deducted. The Club remains 100% committed to encouraging the next generation of fans into Kenilworth Road and the promotions that we have put in place further reflects this. The change in pricing also ensures that the pricing structure is broadly in-line with the other top clubs in the Blue Square Premier and more encouraging than most to youngsters.

In response to the feedback we have received from supporters who wish to commit their support to the Club as soon as possible, we have introduced a "Pre Earlybird" price. To take advantage of this price supporters must apply before 31st May 2009 and as an added benefit these supporters can take advantage of our four-month interest free credit option. There is a further period of discount between 31st May and 30th June where supporters will be able to use the Premium Credit service, which spreads the payment over eight months.

The club is also very pleased to announce that it will be able to accept Credit Card payments this season, for the first time in many years.

Finally, the Club is offering two separate initiatives to supporters in which they can support the club in an additional way financially, to support both our challenge for promotion and our Youth set up. Firstly, we are again offering a Diamond Season Ticket, which this year includes significant further benefits than last season and "money can't buy" opportunities, all at a lower price. Secondly, again in response to the feedback we have received, we are giving supporters the opportunity to pay last season's ticket prices for this season's ticket. These supporters will be named in a Roll of Honour in each matchday programme and on our official website.

Leaflets with full information on the pricing structure will be available within seven days



## ALL AREAS

	PRE EARLY BIRD 30TH MAY			EARLY BIRD 30TH JUNE			ANYTIME		
	Price	per match	Diamond	Price	per match	Diamond	Anytime	per match	Diamond
Junior (under 10)*	50	2.17	100	50	2.17	100	50	2.17	100
Youth (11-16)*	50	2.17	100	50	2.17	100	50	2.17	100
Young Adult (17-21)	200	8.70	330	225	9.78	355	250	10.87	380
Adult (22-65)	300	13.04	450	325	14.13	475	350	15.22	500
Senior (66-74)	200	8.70	330	225	9.78	355	250	10.87	380
Golden Senior (over 75)	130	5.65	260	150	6.52	280	165	7.17	295

\* - Unaccompanied Junior & Youth season ticket holders will pay a surcharge of £50 (Pre & Earlybird) & £60 (Anytime).

## COMPROMISE SEATING (MAIN STAND A, B, G, H & J)

	PRE EARLY BIRD 30TH MAY			EARLY BIRD 30TH JUNE			ANYTIME		
	Price	per match	Diamond	Price	per match	Diamond	Anytime	per match	Diamond
Junior (under 10)*	50	2.17	100	50	2.17	100	50	2.17	100
Youth (11-16)*	50	2.17	100	50	2.17	100	50	2.17	100
Young Adult (17-21)	180	7.83	310	205	8.91	335	230	10.00	360
Adult (22-65)	270	11.74	430	290	12.61	455	310	13.48	480
Senior (66-74)	180	7.83	310	205	8.91	335	230	10.00	360
Golden Senior (over 75)	130	5.65	260	150	6.52	280	165	7.17	295

\* - Unaccompanied Junior & Youth season ticket holders will pay a surcharge of £50 (Pre & Earlybird) & £60 (Anytime).



# queensway

The most important piece of your puzzle



Proud to be supporting Luton Town Football Club  
and 124 years of history

Queensway Publishing, 4 Centre Way, Claverings Industrial Estate, Edmonton, London N9 0AP  
T: 0208 807 7669 F: 0208 807 6123 E: queenswaypub@aol.com

## travelnews



### COCA-COLA LEAGUE TWO

Saturday 2nd May 2009

#### Brentford

Kick off: 3.00pm Griffin Park



#### What's the ground like?

The ground is rather compact and certainly has an individual feel. On one side is the recently christened Bill Axbey Stand (formerly the New Road Stand). Opposite is the Braemar Road Stand. Again this stand is single-tiered, all seated and has a number of supporting pillars. At one end is the Ealing Road Terrace, which up to 2007, was an open terrace that was given to away supporters.

However, the Club have now erected a roof on this end and decided to give it back to the home fans. Opposite is the Brook Road Stand. This stand which was opened in 1986, is a strange affair; a small double-decker stand that has seating on the first tier and terracing below.

#### What's it like for away supporters?

Away fans are housed in the Brook Road Stand at one end of the ground. This covered two tiered stand has 600 seats

in its upper tier and room for around 1,000 fans below in the terrace.

#### Food and drink:

There is a good selection of refreshments on offer including a selection of pies and pasties, hot dogs, burgers, chips and even curry and rice.

Brentford is famous for being the only ground in England that has a pub at every corner of the ground.

If you are feeling thirsty, get there early and have a pint in all four. They are the Royal Oak (a small locals pub), The Griffin (serves Fullers real ale), The Princess Royal and The New Inn. The New Inn is the favoured pub for away supporters.

#### How to get there:

Leave the M4 at junction 2 and take the A4, going around the Chiswick Roundabout so that you end up coming back on yourself. Continue along the A4 and at the first roundabout take a left

onto the B455 (Ealing Road). The ground is located about half a mile down this road on your right.

#### Where to park:

Street parking is available.

#### By train and tube

The nearest train station is Brentford, which is around five minutes walk away from the ground. This station is on the London Waterloo to Reading line. To get from the station to the ground, exit onto Station Road.

Take the first right into Orchard Road, right again into Windmill Road and then first left into Hamilton Road which leads into New Road and the ground.

#### Luton's last visit

The two sides last met at Griffin Park in the FA Cup First Round replay in November 2007, after the first game at Kenilworth Road ended 1-1. Goals either side of half-time from Chris Coyne and Jaroslav Fojut gave Kevin Blackwell's side a 2-0 win and set up a second round tie with Nottingham Forest.

#### Travel details

Both the Bobbers Travel Club and the Luton Town Supporters Club are running coaches to Brentford.

The Bobbers leave Cranfield at 11.30am with pick-up points along the way before a 12.30pm departure from Kenilworth Road. The fare is £13 for adults and £11 for juniors and seniors. For bookings telephone 01234 856542.

LTSC leave the Maple Road car park at 12.00noon. The fare is £11 for adults and £9 for concessions. Under 7's can travel free when accompanied by a full paying adult. For bookings telephone 07960 567465.

Information kindly provided by  
Duncan Adams. Please visit  
[www.footballgroundguide.com](http://www.footballgroundguide.com)  
for more details





# stats08/09

Date	Opponent	Score	Att	Way	Pos
<b>August</b>					
Sat 9	H Port Vale	FL2 L1-3	7,149	546	24
Tue 12	H Plymouth	CC W2-0	2,682	340	n/a
Sat 16	A Gillingham	FL2 W1-0	5,339	743	24
Sat 23	H Notts County	FL2 D1-1	6,085	381	24
Tue 26	A Reading	CC L1-5	7,498	745	n/a
Sat 30	A Exeter City	FL2 W1-0	5,328	745	24

<b>September</b>					
Sat 6	A Macclesfield	FL2 L1-2	3,349	733	24
Sat 13	H Aldershot Town	FL2 W3-1	6,462	810	24
Sat 20	A Rotherham	FL2 L0-1	4,095	866	24
Sat 27	H Chester City	FL2 D1-1	5,731	212	24

<b>October</b>					
Sat 4	A Bradford City	FL2 D1-1	3,883	492	24
Tue 7	H Brentford	JPT W1-0	18,944	153	n/a
Sat 11	H Darlington	FL2 L1-2	5,650	207	24
Sat 18	H Accrington	FL2 L1-2	5,492	80	24
Tue 21	A Grimsby Town	FL2 D2-2	4,021	212	24
Sat 25	A Bury	FL2 W2-1	3,052	408	24

<b>November</b>					
Sat 1	A Shrewsbury	FL2 L0-3	6,488	805	24
Tue 4	A Walsall	JPT W1-0	18,944	153	n/a
Sat 8	H Altrincham	FA D0-0	3,200	359	n/a
Sat 15	H Dagenham & Red	FL2 W2-1	5,402	265	24
Tue 18	A Altrincham	FA D0-0	2,397	189	n/a
Sat 22	A Rochdale	FL2 L0-2	2,901	365	24
Tue 25	H Brentford	FL2 L0-1	5,248	527	24
Sat 29	A Southend	FA L1-3	4,111	502	n/a

<b>December</b>					
Tue 2	H AFC Bournemouth	FL2 D3-3	6,773	277	24
Sat 6	H Burnet	FL2 W3-1	5,536	511	24
Sat 13	A Wycombe	FL2 D0-0	5,567	1,118	24
Tue 16	H Colchester United	JPT W1-0	2,638	222	n/a
Sat 20	H Morecambe	FL2 D1-1	5,664	124	24
Fri 26	A Chesterfield	FL2 D2-2	4,243	805	24
Sun 28	H Lincoln City	FL2 W3-2	6,643	352	24

<b>January</b>					
Tue 13	A Chester City	FL2 D2-2	1,652	370	24
Sat 17	A Darlington	FL2 L1-5	3,319	494	24
Tue 20	A Brighton & H	JPT SF D0-0	6,127	511	n/a
Sat 24	H Bradford City	FL2 D3-3	6,053	465	24
Tue 27	A AFC Bournemouth	FL2 D1-1	5,230	609	24
Sat 31	H Bury	FL2 L1-2	5,545	298	24

<b>February</b>					
Sat 14	A Dagenham & Red	FL2 L1-2	2,310	733	24
Tue 17	H Brighton & H	JPT SF D1-1	8,711	1,546	n/a
Sat 21	H Shrewsbury	FL2 W3-1	5,661	480	24
Tue 24	A Accrington	FL2 D0-0	1,033	247	24
Sat 28	A Port Vale	FL2 W3-1	5,689	503	24

<b>March</b>					
Tue 3	H Gillingham	FL2 D0-0	5,739	440	24
Sat 7	H Exeter City	FL2 L1-2	6,460	748	24
Tue 10	A Notts County	FL2 W2-0	2,886	407	24
Sat 14	A Aldershot Town	FL2 L1-2	3,098	793	24
Tue 17	H Grimsby Town	FL2 W2-1	5,830	333	24
Sat 21	H Macclesfield	FL2 W1-0	5,363	99	24
Sat 28	A Morecambe	FL2 W2-1	2,599	666	24
Tue 31	H Rotherham	FL2 L2-4	5,975	196	24

<b>April</b>					
Sun 5	N Scunthorpe Utd	JPT F W3-2	55,378	40,000	n/a
Sat 11	A Lincoln City	FL2 D0-0	4,664	872	24
Mon 13	H Chesterfield	FL2 D0-0	6,494	437	24
Sat 18	A Barnet	FL2 D1-1	2,808	1,059	24
Tue 21	H Wycombe	FL2 L0-1	6,553	1,116	24
Sat 25	H Rochdale	FL2	3:00		

<b>May</b>					
Sat 2	A Brentford	FL2	3:00		



Team	P	W	D	L	F	A	W	D	L	F	A	GD	PTS
1 Brentford	44	12	8	2	37	15	9	8	5	23	20	25	79
2 Wycombe	44	11	9	2	31	14	9	8	5	21	16	22	77
3 Exeter	44	13	4	5	34	23	8	8	6	28	25	14	74
4 Bury	44	13	4	5	35	19	7	10	5	27	24	19	74
5 Gillingham	44	12	6	4	38	21	8	10	9	29	34	2	71
6 Rochdale	44	11	6	5	40	23	8	8	8	29	34	12	69
7 Dag & Red	44	12	3	7	43	22	6	8	8	30	29	22	65
8 Shrewsbury	44	14	5	3	41	16	2	12	8	18	27	16	65
9 Chesterfield	44	8	8	6	32	26	8	7	7	30	28	8	63
10 Morecambe	44	9	9	4	29	20	6	8	8	22	30	1	62
11 Bradford	44	10	10	2	36	18	6	3	13	25	37	6	61
12 Darlington	44	11	6	5	35	20	8	6	8	23	20	18	59
13 Rotherham	44	11	6	5	32	20	10	6	6	28	12	18	58
14 Lincoln City	44	6	11	5	26	20	8	5	9	27	30	3	58
15 Aldershot	44	9	4	3	34	29	4	2	16	21	49	-23	50
16 Barnet	44	7	8	29	33	4	8	10	25	37	-16	48	
17 Accrington	44	8	5	9	24	24	4	6	12	17	34	-17	47
18 Notts County	44	6	6	10	22	28	4	8	10	25	37	-18	44
19 Port Vale	44	6	5	11	22	32	6	3	13	19	32	-23	44
20 Macclesfield	44	6	4	12	21	36	6	3	13	22	40	-33	43
21 Bournemouth	44	10	6	6	26	14	5	6	11	27	36	3	40
22 Grimsby	44	6	6	10	31	28	3	7	12	19	39	-17	40
23 Chester	44	4	7	11	23	32	4	5	13	17	45	-37	36
24 Luton	44	7	7	8	33	33	6	9	7	24	29	-5	25

## 2008-09 APPEARANCES

	This Season				Luton Career		APP GOALS	
	LEAGUE	CUPS	TOTAL	CARDS	APP	GOALS		
	App	Gls	App	Gls	App	Gls	Yel	Red
Wayne ANDREWS	1(6)	0	2(1)	0	3(7)	0	1	10
Ed ASAFU-ADJAYE	17(2)	0	5	0	22(2)	0	0	1
George BEAMAN	3(1)	0	2(1)	0	5(1)	0	0	31
Mark BOWER	16	1	0	0	16(0)	1	3	16
Dean BRILL	21	0	0	0	23(0)	0	0	18
Ryan CHARLES	0(9)	1	1(2)	1	1(1)	2	19	3
Tom CRADDOCK	25	9	2	0	28(6)	11	5	28
Sol DAVIS	22(2)	1	5(1)	0	27(3)	1	5	1
Lewis EMANUEL	17(2)	1	3(1)	0	20(3)	1	2	83
Kevin GALLEN	24(3)	3	0	0	21(3)	1	2	27
Claude GNAPKA	19(8)	1	10(1)	0	29(9)	3	1	38
Asa HALL	33(7)	10	7(2)	1	40(9)	11	3	49
Ian HENDERSON	12(5)	1	0	0	12(5)	1	2	17
Jake HOWELLS	12(14)	0	6(2)	0	18(16)	0	3	27
Ross JARVIS	31(4)	1	9(2)	0	40(6)	3	4	46
Kevin KEANE	26	0	8(0)	0	44(0)	0	1	151
Josh KLEIN-DAVIES	0(1)	0	0	0	0(1)	0	1	4
David LIVERMORE	6	0	0	0	6(0)	0	1	6
Conrad LOGAN	22	0	8	0	30(0)	0	1	30
Chris MARTIN	37(1)	11	10(1)	2	47(2)	13	10	1
Paul MCVEIGH	9(4)	3	5(2)	0	14(6)	3	1	38
Garreth MCCONNOR	16(3)	0	0	0	21(3)	0	7	1
Sam PARKIN	15(7)	4	3(2)	0	18(9)	4	4	55
Jordan PATRICK	0(2)	0	0	0	0(2)	0	0	10
George PILKINGTON	16	0	3(1)	0	19(1)	0	1	20
Tristan PLUMMER	0(5)	0	1(2)	1	1(7)	1	2	0
Lewis PRICE	1	0	1	0	2(0)	0	2	0
Mark PUGH	3(1)	0	0	0	3(1)	0	4	0
Ian ROPER	18	3	5	0	23(0)	3	7	23
Scott SINCLAIR	0	0	0(1)	0	0(1)	0	0	1
Michael SPILLANE	33(4)	3	10	1	43(4)	4	8	47
Drew TALBOT	4(3)	0	2(2)	0	6(5)	0	1	63
Akanni-Sunday WASIU	2(3)	1	0	0	2(3)	1	1	5
Kevin WATSON	2(4)	0	0	0	2(4)	0	1	10
Harry WORLEY	6(2)	0	1(1)	0	7(3)	0	0	0

KEY  
 FL2 : Coca Cola League Two  
 FAC: FA Cup  
 JPT: Johnstone Paint Trophy  
 CC: Carling Cup

\* 1st Sub \*\* 2nd Sub \*\*\*3rdSub  
 Bold denotes goalscorer  
 Number after player name denotes number of goals scored  
 ^ Luton won 4-3 on penalties

< Luton won 4-2 on penalties  
 + Goalscorers included an own goal by the opposition

Orange line in League table represents where Luton would be without the points deduction

Brill	Gnapka	Roper	Pilkington	Davis**	Emanuel	Nicholls	Hall	Jarvis*	Parkin 1	Martin	K-Davis**	Plummer*	Watson	Keane	Spillane
Brill	Gnapka	Spillane	Pilkington	Davis**	Emanuel*	Nicholls	Hall	Jarvis 1	Parkin	Martin***	Keane*	Plummer*	Watson***	Fletcher	McVeigh
Brill	Gnapka	Spillane	Pilkington	Davis	Keane	Nicholls	Hall	Jarvis	Parkin 1	Martin	Watson*	Plummer**	McVeigh	Jackson	Roper
Brill	Gnapka	Spillane	Pilkington	Davis	Emanuel	Nicholls	Hall**	Jarvis*	Parkin	Martin 1	Plummer*	Watson**	Roper	Logan	Keane
Logan	Gnapka	Keane	Pilkington	Davis*	Emanuel	Nicholls	Plummer	Watson	Parkin**	Martin***	Jarvis*	Charles 1**	Hall***	Brill	Roper
Brill	Gnapka	Spillane	Pilkington	Davis	Emanuel	Nicholls	Keane	Jarvis	Parkin 1	Martin*	Charles*	Hall	Watson	Logan	Roper

Brill	Gnapka**	Spillane	Pilkington	Davis*	Emanuel	Watson	Keane	Jarvis***	Parkin	Martin	Charles 1*	Hall**	Plummer***	Logan	Roper
Logan	Gnapka	Spillane	Pilkington***	Pugh*	Emanuel	Hall 1	Keane	Jarvis**	Parkin	Martin 1	Charles*	A-Adjaye**	Watson***	Brill	Roper
Brill	Gnapka*	Spillane	Worley	Pugh	Emanuel	Hall**	Keane	Jarvis***	Parkin	Martin	Charles*	A-Adjaye	Sinclair	Brill	Roper
Logan	Gnapka	Spillane	Worley	Davis	Emanuel	Hall 1	Keane	Jarvis*	Pugh	Martin	Charles*	A-Adjaye	Sinclair	Brill	Roper

Logan	Gnapka	Spillane 1	Worley	Davis*	Emanuel**	Hall	Keane	Jarvis**	A-Adjaye	Martin	Howells*	McVeigh**	Charles***	Brill	Plummer
Logan	Gnapka	Spillane	Worley	Howells	O'Connor**	Hall	Keane	Jarvis	A-Adjaye*	Martin 2	Plummer*	Sinclair**	McVeigh***	Brill	Roper
Logan	Gnapka 1	Spillane	Worley	Howells	O'Connor**	Hall	Keane	Jarvis	A-Adjaye*	Martin	Charles*	Pugh**	McVeigh	Brill	Roper
Logan	Roper	Spillane	Worley	Howells	O'Connor**	Hall 1	Keane	Jarvis**	Craddock	Martin	Andrews*	Martin**	Patrick***	Brill	Davis
Logan	Gnapka	Spillane	Roper	Howells	Davis*	Hall***	Keane	Jarvis	Craddock 2	Martin**	McVeigh*	Parkin**	Patrick***	Brill	Worley
Logan	Gnapka	Spillane	Roper 1	Howells	Davis*	Hall	Keane	Jarvis**	Craddock 1	Martin	McVeigh*	Andrew**	Worley***	Brill	Patrick

Logan	Gnapka**	Spillane	Roper	Howells	Worley	McVeigh	Keane	Jarvis	Craddock	Martin*	Andrews*	Patrick**	Beavan	Brill	Fathering
Logan	Gnapka	Spillane	Roper**	Howells*	Beavan	McVeigh	Keane	Jarvis 1	Craddock**	Martin	O'Connor**	Worley**	Watson***	Brill	Andrews
Logan	Gnapka	Spillane	Nicholls**												





## COCA-COLA LEAGUE TWO

Saturday 2nd May 2009

**Brentford**

Kick off: 3.00pm Griffin Park



The Hatters' last game in the Football League after an 89-year spell will take place next Saturday against table toppers Brentford, who have a chance of walking into this match as the newly crowned champions of League 2.

With the Town left facing at least one season out on loan to the Blue Square Premier—this top versus bottom clash will still carry huge importance for both sets of supporters.

Before Christmas, the Bees had spent the majority of the campaign inside the Play-Off positions. The club's impressive record at Griffin Park helped their surge up the league table, and then victory on Boxing Day moved the London side into second place, where they remained until the middle of February. A 1-1 draw against Accrington Stanley in February was enough to move Andy Scott's team

into pole position. Since then, the club have occupied top spot and have only suffered two defeats in their last 15 matches.

With just two defeats at home all season, Griffin Park has been something of a fortress for the Bees this season, in a campaign which has marked a huge improvement on their 14th place finish in this league last May, thanks largely to the influence of their 36-year-old manager who was appointed in 2007.

Brentford last faced the Hatters in November at Kenilworth Road. The visitors claimed all three points that night courtesy of a first-half header from Nathan Elder.

The Town's defence will need to be wary of the Bees' attacking prowess on their visit to London. But one player they won't have to worry about is 16-goal Charlie MacDonald

whose knee injury has ruled him out of the remainder of the season.

Fellow striker Jordan Rhodes joined on-loan from Ipswich in January and has enjoyed an influential few months, with his finest moment in a Brentford shirt coming against Shrewsbury Town, where he scored a sensational hat-trick inside the first half hour.

His team-mate, also on loan from Ipswich, Billy Clark, has also been a shrewd signing by Scott after he netted three goals in three matches at the start of the month.

The two sides are no strangers to each other, having met 74 times in the past. Luton have 34 wins to their name, the Bees have won 24 and 16 matches have ended in draws.



NATHAN ELDER

Illustration by Kaye Hooges  
www.artistpartners.com

“What a \*\*\*\*\* goal!” screamed Johnny’s dad.

“I don’t like football with Dad,” thought Johnny.

Pass ball dad

**BAD LANGUAGE HAS NO PLACE IN FAMILY ACTIVITIES. PLEASE RESPECT YOUR FELLOW SUPPORTERS IN OUR FAMILY AREA.**

**Enjoy the Match**  
A FOOTBALL LEAGUE CAMPAIGN



# HATTERS

## LUTON TOWN

1	DEAN BRILL		
2	CLAUDE GNAKPA		
3	SOL DAVIS		
4	KEITH KEANE		
5	IAN ROPER		
6	GEORGE PILKINGTON		
7	IAN HENDERSON		
8	KEVIN NICHOLLS		
9	SAM PARKIN		
10	RYAN CHARLES		
11	LEWIS EMANUEL		
14	ASA HALL		
15	ED ASAFU-ADJAYE		
16	ROSSI JARVIS		
18	CHRIS MARTIN		
20	MICHAEL SPILLANE		
22	MARK BOWER		
24	TOM CRADDOCK		
25	GEORGE BEAVAN		
28	PAUL MCVEIGH		
29	JORDAN PATRICK		
32	KEVIN GALLEN		
33	JAKE HOWELLS		
40	SCOTT SINCLAIR		

## ROCHDALE

1	SAM RUSSELL		
2	SIMON RAMSDEN		
3	TOM KENNEDY		
4	NATHAN STANTON		
5	CLARK KELTIE		
6	CIARAN TONER		
8	GARY JONES		
9	CHRIS DAGNALL		
10	ADAM LE FONDRE		
11	ADAM RUNDLE		
14	SCOTT WISEMAN		
15	JOE THOMPSON		
18	KALLUM HIGGINBOTHAM		
19	LEE THORPE		
23	RORY McARDLE		
24	GARY MADINE		
26	CRAIG DAWSON		
27	MARK JONES		
29	TOM NEWEY		
30	WILL BUCKLEY		
31	MARCUS HOLNESS		
34	FRANK FIELDING		

### REFEREE

J.J. LININGTON

### ASSISTANT

J. BUSBY

### ASSISTANT

G.R. RUSSELL

### 4TH OFFICIAL

S.J. ROSS



Saturday 2nd May 2009

**Brentford**

Kick off: 3.00 pm  
Griffin Park



next league game