

AFC WIMBLEDON

LUTON TOWN



MATCH SPONSOR

*HAPPY 50th
BIRTHDAY*
Steve Crowhurst

PROGRAMME SPONSOR

moorad choudhry

BALL SPONSOR

eddm
evolution direct & digital marketing ltd

BALL SPONSOR

ALKEN
Building and Property Maintenance

BLUE SQUARE
PREMIER





Centre Court welcomes Cheryl Leung, our new Style Consultant. On hand to share the latest looks, must-haves and top trends

Now every fashion lover and style seeker who shops in Wimbledon is in for a treat. Centre Court has secured the services of one of London's leading stylists. Cheryl Leung, a fast-rising star of the UK fashion scene, will be offering insider tips and solving your fashion dilemmas.

Share it with Cheryl: If you have a STYLE DILEMMA visit - www.centrecourtshopping.co.uk - to sign up for our regular newsletter.

Wimbledon has never looked this good.

we are talking STYLE

For fashion trends, styles and must-haves, visit centrecourtshopping.co.uk

CENTRE COURT SHOPPING, WIMBLEDON



The Cherry Red Records Fans' Stadium – Kingsmeadow
Jack Goodchild Way
422a Kingston Road
Kingston upon Thames
Surrey
KT1 3PB

E-mail: info@afcwimbledon.co.uk
Tel: 020 8547 3528

President: Dickie Guy
Vice-Presidents: Iain McNay, Mike Richardson
Chief Executive: Erik Samuelson
Commercial Director: Ivor Heller
Youth & Community Director: Nigel Higgs
Club Secretary: David Charles
Club Statistician: Rob Dale
First Team Manager: Terry Brown
Assistant Manager: Stuart Cash
First Team Coach: Simon Basseby
Reserve Team Manager: Marcus Gayle
Head of Senior Academy: Mark Robinson
Head of Junior Academy: Jeremy Sauer
Club Doctors: Mr Anup Sharma, Dr Paul Quinton, Dr Nick Fletcher
Physiotherapist: Mike Rayner MCSP
Sports Therapist: Rhiannon Luke
Kit man: Robin Bedford

CLUB HONOURS

FA Cup winners 1988
FA Amateur Cup winners 1963
Football League Division Four champions 1983
Conference South champions 2009
Isthmian League champions 1931, 1932, 1935, 1936, 1959, 1962, 1963, 1964
Isthmian League Division One champions 2005
Southern League champions 1975, 1976, 1977
Combined Counties League champions 2004
Clapham League champions 1897, 1901
Herald League champions 1897
London Senior Cup winners 1931, 1934, 1962, 1975, 1977
Surrey Senior Cup winners 1936, 1940, 1949, 1955, 2005
Southern League Cup winners 1970, 1976
Premier Challenge Cup winners 2004
Supporters Direct Trust Cup winners 2002, 2005
South of the Thames Cup winners 1954, 1961, 1962, 1963
London Charity Cup winners 1936, 1950, 1952
South Western Charity Cup winners 1931
Surrey Combination Cup winners 1929, 1931
Surrey Charity Shield winners 1925, 1926, 1927, 1931, 1935
South London Charity Cup winners 1906, 1931
Herald Cup winners 1901
South Western Cup winners 1901

AFC Wimbledon is owned by Wimbledon Football Club Supporters' Society Limited (The Dons Trust)

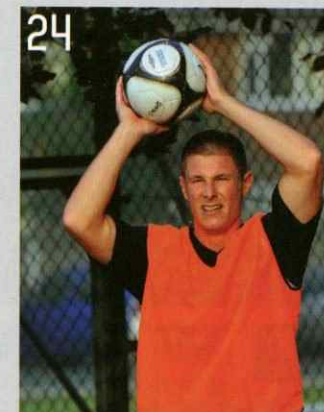
The names of all the Dons Trust board members are on page 46.

AFC WIMBLEDON v LUTON TOWN

Saturday 8 August 2009
kick-off 3.00 pm
Blue Square Premier



- 5 Erik Samuelson
- 6 Club news
- 10 Terry Brown
- 13 Haydon the Womble
- 14 Pre-season focus
- 20 Meet the new players
- 24 Interview: Paul Lorraine
- 30 Today's teams
- 32 Who are you?
- 38 Joining forces
- 42 The price we pay
- 44 Around the club
- 46 The Dons Trust
- 47 Past masters
- 50 Follow the Dons
- 53 Taking care of business
- 54 Kit sponsors
- 56 Stats



Front cover: Alan Inns in pre-season action against FC United of Manchester

Editorial team:

Managing Editor: David Charles

Editor: John Woodruff

Contributing Editors: Ray Armfield and Stephen Crabtree

Proofreading: David Griffiths

Photographs: Paul Willatts and Rob Dale

Advertising: advertising@afcwimbledon.co.uk

Editorial: editor@afcwimbledon.co.uk

Design: D2E

Production: D2E

Printed by: Evonprint

The Wonderful World of **CHERRY RED**



CHERRY RED RECORDS

Over 2,000 albums,
750 Artists, 25 niche labels



FOOTBALL CDs

Over 50 Club and
Country Compilations



CHERRY RED FILMS

Over 200 Music DVD
Collections



CHERRY RED BOOKS

Over 30 Music
Biography or Listings Books

DOWNLOAD over 20,000 tracks cherryred.co.uk/downloads



www.cherryred.tv
great concerts, fascinating interviews



DEAD KENNEDYS · TRACEY THORN · FELT



METEORS · ALIEN SEX FIEND · NICO · ATV



LEO SAYER · WALKER BROTHERS · JOE MEEK



DEAD OR ALIVE · FLOCK OF SEAGULLS · NENA



MARTIN DENNY · LULU · THEM · IVOR CUTLER



DORIS DAY · ENNIO MORRICONI · BERT BACHARACH



BARCLAY JAMES HARVEST · MAN · NIK TURNER



SHOWADDYWADDY · OSMONDS · 10CC · MUD



DIZZY GILLESPIE · OSCAR PETERSON · RONNIE SCOTT

www.cherryred.co.uk

A DIFFERENT LEAGUE

Chief Executive Erik Samuelson relishes the challenges of competing in a national league, both on and off the pitch – and no longer as the team they all want to beat.

GOOD AFTERNOON AND welcome to the fans, players and officials of Luton Town.

When we watched our team step out for the first game of last season at Newport, how many of us imagined that we'd finish as champions and be starting this season in a national league? The icing on the cake is finding ourselves today lining up against a team with a great history whose name brings back memories of FA Cup success in 1988.

For me, today feels like a real step up in everything we do. I mean no disrespect to the teams we've played so far, but this is literally a different league. And so I've been thinking about what will be new or different for us.

Until now, we've been among the top few spenders in our league, but this season our wages bill will be below the average. And for various reasons, mainly down to the level of support we command, we've always been the team that everyone wants to beat. I expect that particular mantle has passed to today's visitors, and I wish them well with the burden. Ideally, we will soon claim it back; if we do, it will mean we are doing really well.

For the first time in our history we won't be the best supported team in the league. I struggle to recall

many AFC Wimbledon games where our fans have been outnumbered, but it will happen this season at Cambridge, Oxford, Luton of course, and probably a couple of other grounds too. Games with a great atmosphere have been all too rare to date, and I welcome the change.

The Blue Square Premier brings other challenges for us as a club. When we were in the Ryman League's Premier Division we set ourselves the challenge of being seen as a well-run Conference-quality team, long before we reached that league. To help us to achieve that goal, I visited a number of clubs to find out how they did things and to borrow their best ideas. Now we will set ourselves the target of being seen as a well-run Football League team, so that we are properly prepared when we get there. This means more visits to arrange and higher standards to set.

In total, we've had about half a dozen sell-out games since we started, but it is quite possible that we'll double that number this season. I apologise to those Luton fans

“THIS IS A TOUGH LEAGUE, AND EVEN THE BEST TEAMS WILL LOSE HEAVILY FROM TIME TO TIME”

who wanted to be here today but couldn't, because of our capacity constraints. We are working to make it easier to accommodate away fans and to return the Kingston Road End to our own fans.

In addition to all these changes, consider the quality of this league. Last season, Burton Albion lost 5-0 to relegated Weymouth, Histon lost 4-1 to Grays Athletic and 4-0 to Salisbury, and Kidderminster lost 5-1 to relegated Woking. So although Burton won the Blue Square Premier, Histon came third and Kidderminster came sixth, they were all on the receiving end of a thumping or two. The other top six teams – Cambridge, Torquay and Stevenage – lost quite heavily at various times during the season.

My point is obvious: this is a tough league, and even the best teams will lose heavily from time to time. So if it happens to us, let's stay calm. It is easy to get frustrated and to voice that frustration, but please ask yourself how that helps your team.

One other statistic is that all those top six teams had excellent home records, as you'd expect. So let's get behind our team today, and for every home game this season, and do all we can to make Kingsmeadow a place that teams visit with trepidation.

Enjoy the game. Enjoy the season.

Programme a winner

For the second year running, AFC Wimbledon's matchday programme was voted by the other clubs in its league as the programme of the year. Brian Lee, the chairman of the Football Conference, will be presenting the award to the programme's managing editor, David Charles, together with Ray Armfield, Stephen Crabtree and John Woodruff, who have all provided a significant contribution to the content and production of the programme over the past seasons.

The other divisional winners were Wrexham in the Blue Square Premier and Gateshead in the Blue Square North.

You will see that we have changed the design and some of the content from last season: we want to ensure that this programme continues to be one of the best in non-League football. We hope you like it, and if you have any comments on the new look or suggestions about the content, please e-mail david.charles@afcwimbledon.co.uk

Season tickets

At the time of going to press we had sold 2,500 season tickets, which is 1,000 more than at the same stage last season. The Paul Strank Stand and the Tempest End are already sold out, but there are still season tickets available for the John Smith's Stand. If you have not already bought your season ticket, you can collect a form from the complimentary tickets window before or after today's game. It will also be possible to leave completed application forms at the window.

New Tempest kit going down a storm



Those who have purchased replica or training kits since 2002 will have noticed that every year sees an improvement in the design and quality.

The latest third kit does not let us down. The quality is better than ever, and the cut of the lightweight material makes it very comfortable to wear. Working closely with manufacturers and home end sponsors, Tempest, we have the privilege of producing unique sportswear for our unique club. In another first, the playing kit features detail in purple, a special shade called Merton lavender, one of the colours representing our home borough.

The new range of training kit is top-notch too and includes hooded and non-hooded sweatshirts, polo shirts, performance T-shirts and tracksuits.

All these items can be purchased by visiting the club shop on matchdays (cash or cheques only) or online via the official website, www.afcwimbledon.co.uk/shop/shop.php

Furthermore, as the Blue Square Premier requires, player's names and squad numbers have been allocated. Together with the Blue Square Premier decals, these or wording of your choice can be printed on your shirt (only for customers visiting the shop). For further information, see the FAQs on the shop's home page or contact us by sending an e-mail to shop@afcwimbledon.co.uk

Ken Spiller

It is with sadness that the club has learned of the death of Ken Spiller, a lifelong Wimbledon fan.

Supporting Wimbledon was already in the Spiller family genes with Ken's parents, and he followed the family tradition from the 1940s. He could vividly remember the large crowds for matches against Wycombe Wanderers and Tooting & Mitcham, and Johnny Haynes playing as a 16-year-old, and he was a big fan of Harry Stannard and Eddie Reynolds.

Ken's parents, Bill and Kath, were major forces in the Supporters' Club as committee members, and when the new club premises (later to become the Sportsman pub) were built, they lived there as landlord and landlady as well as organising away travel and generally raising money for the regular annual donation to the football club.

Ken's greatest footballing memories were the FA Amateur Cup win in 1963, the triple successes in the Isthmian and Southern Leagues, and of course the 1988 FA Cup final victory. He was a big Plough Lane fan, and never really accepted the move to Selhurst Park. He was greatly inspired by the rebirth of the club in 2002, and although he retired to the coast, he attended as many games as his health would allow.

The family's support of our club continues with Ken's sons, Richard and Alan, and grandchildren, Mike and Dan Berry, and Gemma and George Spiller, who regularly attend home and away games. Our sympathy goes to the Spiller family at this time.

Injury round-up

Mike Rayner had little to report ahead of today's game.

Kennedy Adjei has been feeling groin tightness during the course of pre-season, and he aggravated the injury on Tuesday evening during training. On assessment he was found to have a mild abductor strain, and he is likely to need a fitness test before today's game.

Derek Duncan picked up a dead leg to his calf during last Saturday's game against Farnborough Town,



Andy Little

Birthday greetings

Happy 60th birthday today to Colin Judge (Ben's dad), who as a Watford fan has more than one reason to hope for a good result for the Dons today.

Special review programme

The club has produced a special review programme, titled *How We Won the League*, which can be purchased from the club shop. The price is £2.00.

Women's FA Cup

AFC Wimbledon Ladies have been drawn at home against Horley Town Ladies FC on Sunday 27 September in the First Qualifying Round of the 2009/10 Women's FA Cup sponsored by E.ON. The match will be played at Kingsmeadow, kick-off 2.00 pm.

and he was withdrawn as a precaution when it became stiff and tightened up. The leg was still quite sore at training in the week, but I hope that with intensive treatment he will be available for selection today.

Andy Little is progressing very well and is now up to three-quarter pace running and taking part in light goalkeeping drills. So far there has been no adverse reaction in his knee, and I am hopeful of him returning to action in November.

The smartest route everyday. TomTom IQ Routes™

The quickest route to your destination may differ from a Sunday evening to a Monday morning. Now there is a unique technology that calculates the fastest option for that route: TomTom IQ Routes.™

It takes any hold-ups that might slow you down into account (e.g. rush hour, zebra crossings, traffic lights), giving you far more accurate route advice and arrival times. So even in areas you know well, you avoid stress and save time and fuel. Making it ideal for everyday use. And weekends. And holidays. And...

TomTom IQ Routes.™ Now on the new TomTom GO.
For more information www.tomtom.com



TOMTOM 
Find your way the easy way



Cancer collection

Following the recent announcement about former Don John Hartson's illness, there will be a collection today in aid of the Keep Your Eye On the Ball cancer campaign run by the Football Association. For more information about the campaign, visit www.Keepyoureyeontheball.org

Volunteers will be collecting money before the game, at half-time and after the game.

Programme subscriptions

Programme subscriptions are available for this season, to include all 23 AFC Wimbledon home league matches, two pre-season friendlies and a special review programme of last season. Programmes for FA Cup, FA Trophy, London Senior Cup and Surrey Senior Cup games are not included in the subscription.

Prices are: UK £90; Europe £118; the rest of the world £148. To subscribe, send a cheque or International Money Order in pounds sterling made payable to AFC Wimbledon Limited to: "Programme Subscriptions" at the club's address (at the top of page 3).

AFC Wimbledon TV

Missed a goal? Missed a whole match? This season we're launching afcwimbledon.tv alongside the already successful Radio WDON. Now you'll be able to catch up with what you've missed when you want to, as well as listen to the match live, and hear previews.

There will also be links to both afcwimbledon.tv and Radio WDON from a new media section on the official website, and when they're ready, you'll also be able to find the most recent highlights in the match reports on the official website. Or just go to www.afcwimbledon.tv and www.wdon.com

Can you help?

In order to support the new initiative, the club requires some help. Are you good at editing video for web broadcast, even during or immediately after a game? afcwimbledon.tv is looking for match editors for the coming season. The matches won't actually be broadcast live, and that's where you'll come in. We need a pool of editors who can capture and edit footage and then upload to our video site. If you can fill that role and fancy a crack, get in touch by emailing afcwcomms@googlemail.com

Under-15s win trophy

The Under-15s followed on from their successful 2008/09 season with a superb win in the Team Tours Direct Welsh International Super Cup, held at Aberystwyth in the last week of July. This is an annual tournament for youth teams, including some from overseas.

The squad stayed in the university campus and was accompanied by manager Steve Dormer, coach Martin Firmo and a number of parents. We treated this tournament as a pre-season training camp. It was a very competitive event, with one or two full games played every day.

In the final, on Friday 31 July, AFC Wimbledon emerged victorious with a 3-0 win against Buckhead FC. Well done lads!



LUTON - CAN YOU BELIEVE IT?

Preparations for this season have gone according to plan, says manager Terry Brown, who is cautiously optimistic about the league campaign and the cup competitions.

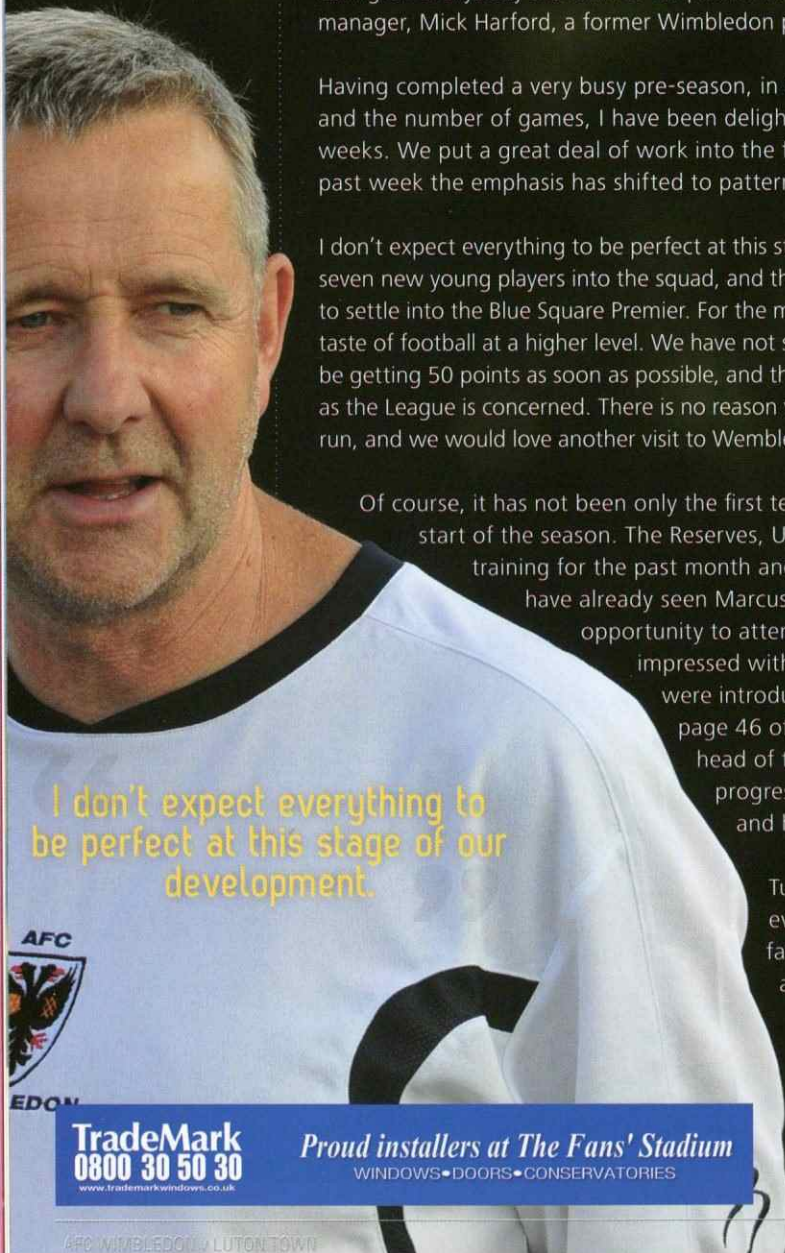
GOOD AFTERNOON AND WELCOME TO KINGSMEADOW for our first game of the season in the Blue Square Premier. When the fixtures came out I am sure there were mixed emotions on seeing that on the opening day we would be taking on everybody's favourites for promotion, Luton Town. A special welcome to their manager, Mick Harford, a former Wimbledon player and manager with legendary status.

Having completed a very busy pre-season, in both the number of training sessions and the number of games, I have been delighted with our progress over the past five weeks. We put a great deal of work into the fitness programme during July, and in the past week the emphasis has shifted to patterns of play and set pieces.

I don't expect everything to be perfect at this stage of our development. We have to fit seven new young players into the squad, and the whole squad of players will need time to settle into the Blue Square Premier. For the majority of our players this will be their first taste of football at a higher level. We have not set them ridiculous targets. The priority will be getting 50 points as soon as possible, and then we shall see where that takes us as far as the League is concerned. There is no reason why we should not enjoy a good FA Cup run, and we would love another visit to Wembley, this time in the FA Trophy.

Of course, it has not been only the first team who have been preparing for the start of the season. The Reserves, Under-19s and Under-18s have all been training for the past month and playing pre-season games, and I have already seen Marcus Gayle's team in action. I also had the opportunity to attend the academy's open day, and was very impressed with the professional way in which the boys were introduced to Merton College and the club. On page 46 of this programme, Mark Robinson, the head of the Senior Academy, writes about the progress that has been made over the past year and his hopes for the future.

Turning back to today's exciting fixture, even the most far-sighted Wimbledon fan could not have envisaged seven years ago that we would kick off the 2009/10 season against Luton Town. Please enjoy today's game, and hopefully a wonderful season.



I don't expect everything to be perfect at this stage of our development.

TradeMark
0800 30 50 30
www.trademarkwindows.co.uk

Proud installers at The Fans' Stadium
WINDOWS • DOORS • CONSERVATORIES

time & leisure **MARCUS BEALE ARCHITECTS** **merton**

a celebration of books

Wimbledon book fest 2009
3-11 October 2009

AUTHOR EVENTS WITH:
Gyles Brandreth, Michael White, Merton Poets, Ruth Waterman, Alison Weir, Salley Vickers, Penny Vincenzi, JoJo Moyes, Jessica Ruston, Virginia McKenna, Deborah Moggach, Clare Mulley, Kate Williams, Ahda Soueif, Chris Cleave, Sir Max Hasting, Julian Fellowes, Sir Peter Blake, Simon Beaufoy, Sadie Jones, Richard Surman, Sara Fanelli, Jon Henderson, Simon Hughes, William Boyd, Sadie Jones, Tom Rob Smith, June Whitfield, Timothy West & The Jigsaw Players **PLUS** Polka Children's Literature Festival - The Works

Box Office: 020 8543 4888
www.wimbledonbookfest.org

Print Solutions Concept To Delivery



print suppliers &
programme producers
for AFC Wimbledon

**MAGAZINES
NEWSLETTERS
BUSINESS STATIONERY
1 TO 5 COLOUR BROCHURES**

**IN-HOUSE DESIGN SERVICE
STOCK STORAGE FACILITIES
IN-HOUSE PRINT FINISHING**

CALL **01273 494631** OR VISIT OUR FACTORY OUTLET

Units 80-82, Mackley Industrial Estate, Small Dole, West Sussex BN5 9XE
Fax: 01273494887 Email: info@evonprint.co.uk www.evonprint.co.uk



Hi fellow Wombles!

Wow! It's our first game in the Blue Square Premier – and against Luton! I'm really excited and I bet you are too. The players have all been training very hard, and so have I – working on the weights machine, as you can see from the photo. Please do send or email me your paintings, drawings and photographs (the details are at the bottom of the page), and I'll put as many as I can in future programmes. I hope it's a sell-out crowd today, so remember to sing loud and support the players!

Haydon the Womble



This fantastic colourful drawing of me is by Sasha, aged four. Its brilliant! Thanks so much for sending it in.



This photograph of me was taken on the Isle of Man when we went there for the club's pre-season trip. I had a great time, and all the players worked really hard to win the tournament there. Well done lads!

I would like to use lots of your drawings and photos on my page in the programme this season, so please send them to me at The Burrow, c/o AFC Wimbledon, Jack Goodchild Way, 422a Kingston Road, Kingston upon Thames, Surrey, KT1 3PB. Or you can email them to me at Haydon@afcwimbledon.co.uk

Junior Dons' birthdays. Many happy returns to all the Junior Dons who have celebrated a birthday recently.

Alexander Hessey	8	Jonathan Nolan	13
Emily Shepherd	10	Jack Croucher	4
Evan Hubble	5	Alex Warner	11
Oliver Wilson	6	Ryan Woolgar	15
Ellie Bateman	6	George Croome	5
Leah Hidden	13	Molly McGough	1
Nina Drake	3	Glen Haynes	13
Alfred Revell	7		

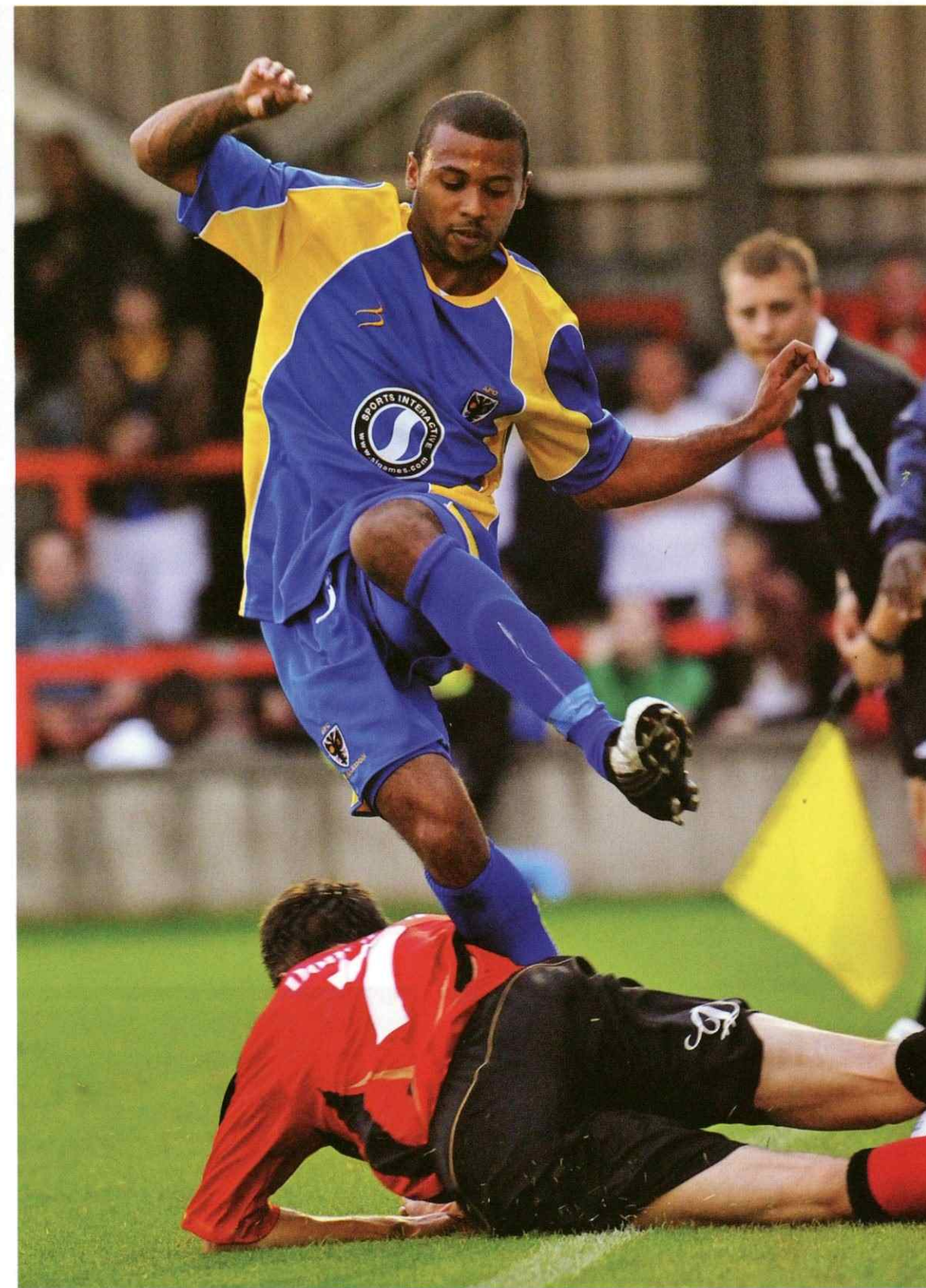
PRE-SEASON FOCUS

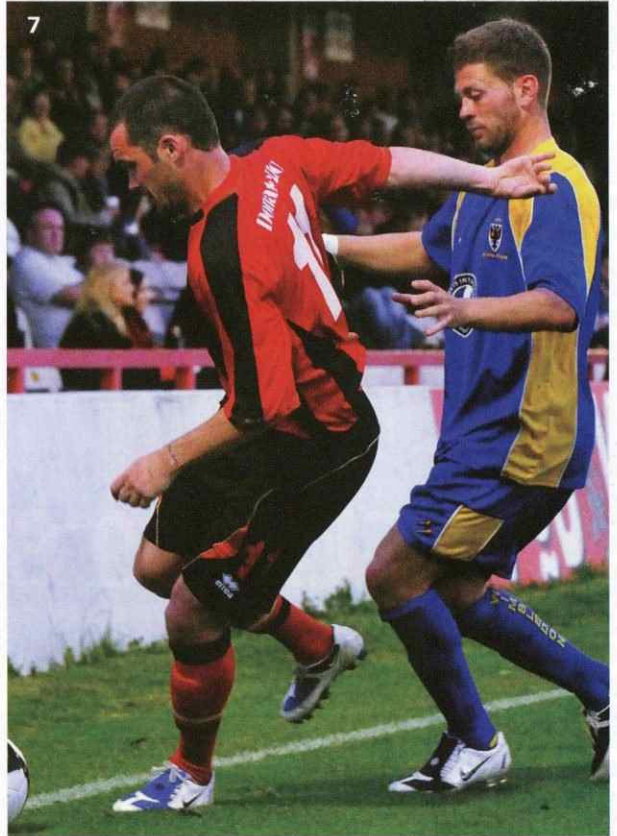
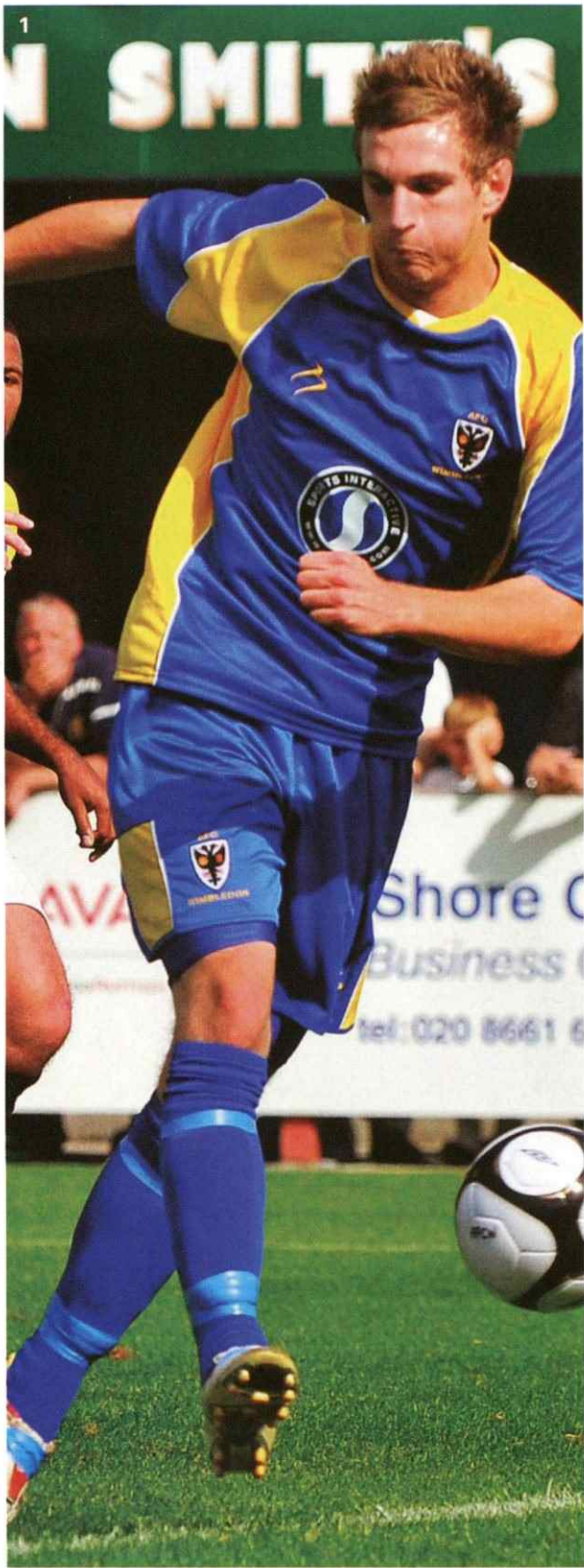
THE DONS ENJOYED A BUSY and successful warm-up to their first Blue Square Premier campaign.

As well as the pre-season games against League and non-League opposition, the club visited the Isle of Man for a three-way competition against Ramsey and an Isle of Man representative team. The weekend was also used for the new squad to bond together socially and for the directors and management team to talk to the players about the club and what was expected of them both on and off the field.

The first game, against Ramsey, resulted in an 8-1 victory with two goals each from Sam Hatton, Derek Duncan and Jon Main, and a goal apiece from Peter Rapson and Luke Moore.

A much more competitive game followed against the representative team. Goals from Lewis Taylor, Elliott Godfrey and Danny Kedwell gave the Dons the win and their first silverware of the season, the Isle of Man Trophy, which was kindly sponsored by The Premier Group (Isle of Man) Ltd.

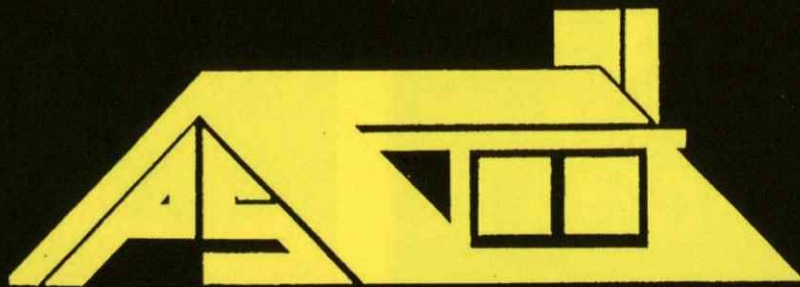




1. Peter Rapson on target against FC United
2. James Pullen at full stretch against FC United
3. Paul Lorraine holds the Co-operative SD Cup
4. Danny Kedwell goes close against Brighton
5. Ricky Wellard heads for goal against Fulham
6. Callum Willock opens the scoring against Fulham
7. Luke Garrard shepherds a Brighton attacker

P ONE STEP ABOVE THE REST P
S PAUL STRANK & SONS ROOFING S
R ROOFING CONTRACTORS & SUPPLIES R

Your Known Local family Of Roofers



- NO OUTSIDE USED ■ ALL MATERIALS SUPPLIED BY OUR SHOPS
- SCAFFOLDING ERECTED BY OUR C.I.T.B. TRAINED STAFF MAKES US THE MOST COMPETITIVE COMPANY IN LONDON
- WE WILL BEAT ANY QUOTE YOU HAVE FOR NEW ROOFS
- PRICE ON SCAFFOLD HIRE OR PRICE ON ROOFING MATERIALS FROM OUR SHOPS
- 10 YEAR BACK UP GUARANTEE ON ALL NEW ROOFS
- NEW & SECONDHAND ROOFING MATERIALS

22 WEIR ROAD, LONDON SW19

TEL: 020 8944 6010

FAX : 020 8944 1262

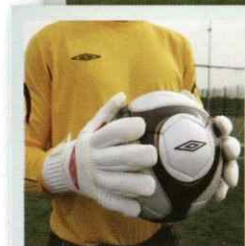
e-mail: paulstrankr1@btconnect.com • www.paulstrankroofing.co.uk

Established 1969



YOU

might not be able to pass, tackle or shoot like him. But you can wear his shorts.



The new Umbro Teamwear brochure is out now.

It's packed with everything your team could need for the new season. From bibs to balls and socks to shirts. It's reassuring to know that Umbro supply more Premiership kits than anyone else. But you don't have to be a superstar to play in our kit, with Adult kit packages from only £295.00 and junior packages from only £245.00. You really can play in Phil Jagielka's shorts. Get Umbro Teamwear. Get next season sorted.

www.umbrofootballkits.co.uk or call 0845 603 7047



MEET THE NEW PLAYERS



BRETT JOHNSON

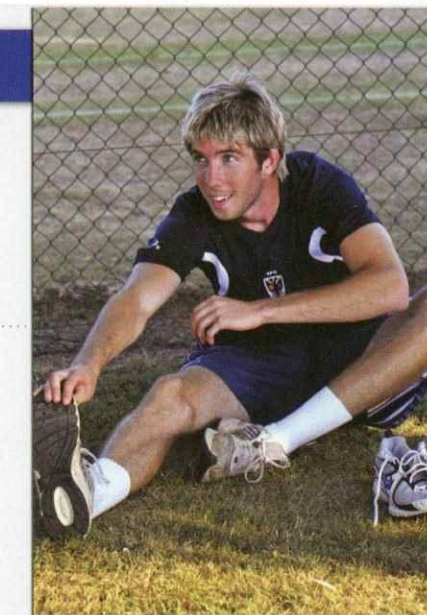
Age	Height	Weight
23	6 ft 1 in	12 st 8 lb

Previous Clubs

Ashford Town (Middx), Aldershot, Northampton Town, Gravesend & Northfleet, Grays Athletic, Brentford

Tall defender, equally comfortable at left-back or centre-back, who joined from Brentford in the summer. He began his career with Ashford Town (Middx), and in 2004 moved to Terry Brown's Aldershot, where he helped the club to the playoffs. He attracted the attention of several League sides and in June 2005 moved to Northampton Town. After spells on loan at Gravesend & Northfleet and Grays Athletic in 2005/06, he was released and joined Brentford on a free transfer at the beginning of last season.

CENTRE-HALF



RICKY WELLARD

Age	Height	Weight
21	6 ft 4 in	11 st 8 lb

Previous Club

Ashford Town (Middx)

Tall midfielder known for his passing ability. Ricky was signed from Ashford Town (Middx) in June 2009 after several previous unsuccessful attempts by Terry Brown to prise him away from the club where he had spent all his football career.

MIDFIELD

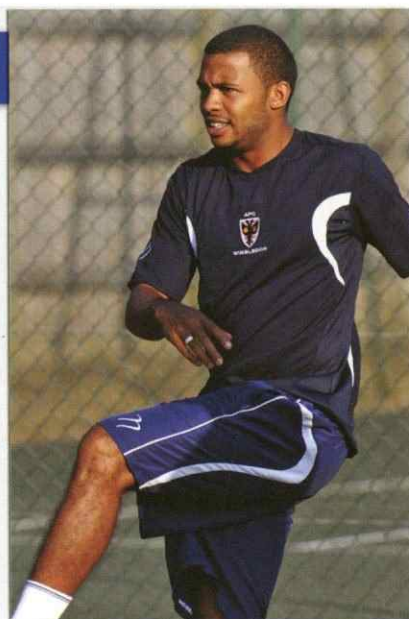
DEREK DUNCAN

Age	Height	Weight
22	5 ft 11 in	11 st 1 lb

Previous Clubs

Leyton Orient, Lewes, Wycombe Wanderers, Ebbsfleet

A left-winger with good crossing ability who is also comfortable at left-back. He started at Leyton Orient, making over 20 appearances for them in four seasons. He spent time on loan at Lewes in 2006 and was released the following year. Derek joined Wycombe Wanderers on a two-year deal but never broke into the first team, and his contract was cancelled in January 2009. He moved to Ebbsfleet for the rest of the season, and was signed by the Dons in June.



MIDFIELD

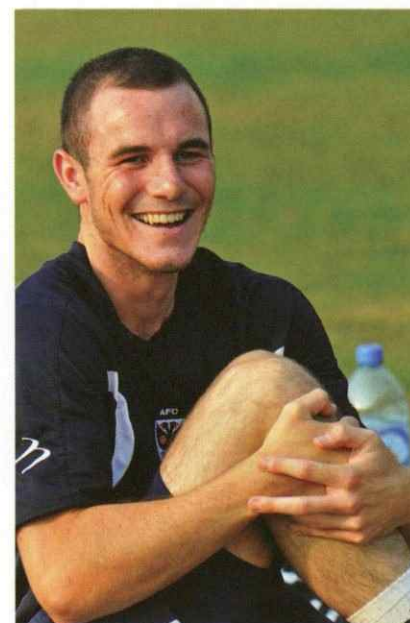
LUKE MOORE

Age	Height	Weight
21	5 ft 10 in	10 st 1 lb

Previous Club

Ebbsfleet

Skilful, fast forward who can play as an attacking midfielder or as an outright striker. He worked his way through the youth and reserve ranks at Ebbsfleet and soon established himself in the first team. Although still only 21, he has made over 150 appearances in non-League's top flight. Luke joined the Dons in June 2009, turning down an offer from a League club



FORWARD

Another new season, another new league. In the first part of a two-part feature, we open the fact files on the players Terry Brown has brought in for the new campaign.

MAKE MONEY FOR YOUR CLUB



COURTESY OF LEAGUE SPONSOR BLUE SQUARE

Open a Blue Square account today and earn money for your football club. Plus get £20 in FREE BETS *

Simply register at www.bluesquare.com/fans and click on your club's badge or call 0800 587 0400 and quote your team's name

FANS FROM A NUMBER OF BLUE
SQUARE TEAMS RAISED THOUSANDS
FOR THEIR CLUBS LAST SEASON,
YOU CAN DO THE SAME!



BLUESQUARE.COM

*Offer applies to new customers staking £10 or more, Place 5 bets of £10 or more to receive a free £10 bet. Place 5 more bets of £10 or more and receive another £10 bet, all qualifying bets win singles only, at odds of evens or greater. Offer strictly over 18s only and limited to one per person. See website for full offer terms and conditions. Blue Square encourages responsible gambling, gambleaware.co.uk

quest

The Corporate Intelligence Company

Investigations
Forensic Accounting
Due Diligence
Security

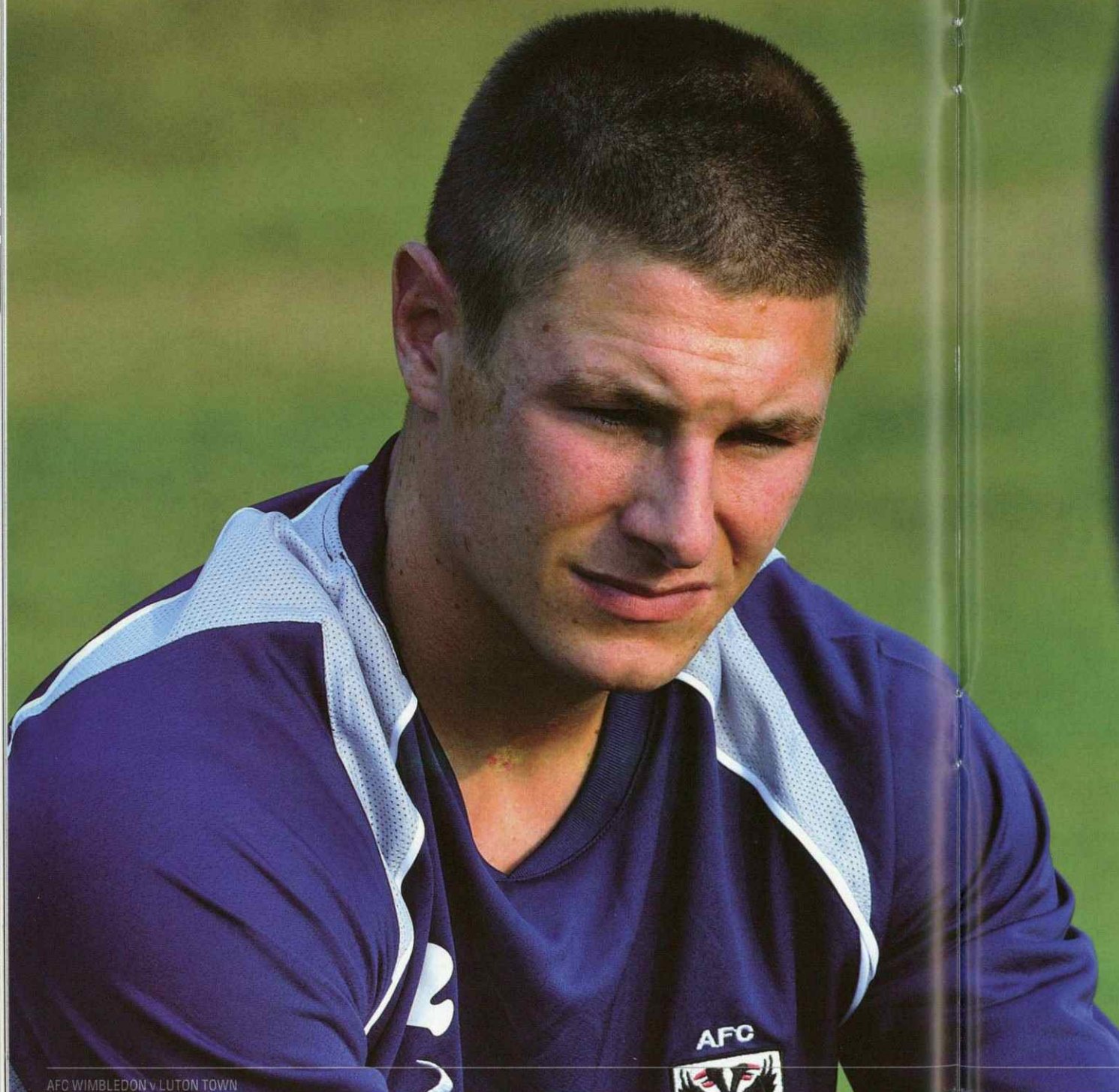
www.quest.co.uk

1 Duke St
London
W1U 3EA

Tel: 020 7224 4004

BACK WHERE HE BELONGS

As soon as the Dons went up and the Cards were sent down, Terry Brown went straight in for former favourite **Paul Lorraine**. As we discovered, he's delighted to be back.



AMONG THE ARRAY OF NEW RECRUITS WEARING YELLOW AND BLUE this afternoon will be one man who needs no introduction to the Dons faithful. Paul Lorraine starred for the club at the back end of Dave Anderson's second unsuccessful Ryman Premier League campaign, and Terry Brown's first move this summer was to pluck the 25-year-old centre-half from relegated Woking despite fierce competition from rival clubs.

The defensive stopper made his AFC Wimbledon debut in a 1-1 draw at Staines on Boxing Day 2006 and went on to impress fans with a string of impressive displays alongside Antony Howard at the heart of the back line. He played 22 times in that first spell with the Dons, scoring in the home wins over East Thurrock United and Billericay Town. It was obvious to all that he should be playing football at a higher standard, and it was no surprise when he quickly moved up to Blue Square Premier level.

Last season at Woking he was one of the few players to emerge with any credit as the Surrey side battled against relegation. There was considerable competition to secure his signature, and despite "two concrete offers from other Conference clubs" the Beckenham-born man says he returned to Kingsmeadow this summer because "Wimbledon wanted me the most."

He is impressed with the way the club has developed on the playing side since he was last here. "The support has always been tremendous, and the same people are still in charge behind the scenes. But the training facilities are now ten times better than they were, and the gaffer and Stuart Cash are a very professional unit. They demand high standards – and if you don't perform, you know you'll be out of the team.

"Training four days a week will make a difference to us this year. Although there are sides that have been successful in the Conference while staying part time, I believe that we'll need to go full time to fully establish ourselves at this level.

"I think the fans will be pleasantly surprised by the standard of football in the Premier. Each game is competitive, and the way the recession is affecting the game means that a number of high-quality footballers are dropping down to this division. I know from my time at Woking that fitness levels are high, the players are big and athletic, and it's all very professional – teams study the opposition to look at things like their dead ball routines."

Paul started playing his football in South-east London. "I played for my school, Bromley district and the Kent county team before I was taken on as a YTS at Welling at the age of 16. A knee injury I got when I was 18 set me back a bit, but I had four years at Park View Road and I made my first-team debut in the Doc Martens League."

When he was 20, he moved up to Essex. "I look back on my two seasons at Braintree as the best period in my career to date. We had a great team under George Borg, and we made the Ryman League Premier playoffs in my first season, 2004/05, before winning the league the year after." Braintree's championship season was when Paul was first sighted at Kingsmeadow. His second-half goal looked to have given the champions-elect victory when they visited South London in February 2006, but Steve Butler equalised deep into injury time.

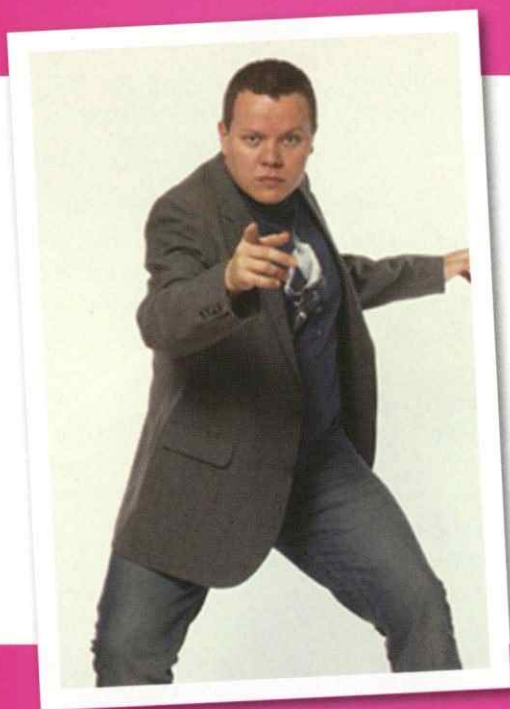
The Dons lost to Fisher Athletic in the playoffs that year, and it was the Champion Hill club who snapped up Paul during the summer as they prepared for life in the Conference South. "I live about ten minutes from their training ground, and when they signed me for £3,000 I was delighted. But I broke my hand in pre-season and I was out for four months. By the time I was fit to play again the club was going through a torrid time financially.

COMEDY @kingsmeadow

First Friday of each month... starting Friday 4 September!

3 acts + award-winning Caribbean cuisine from Ting 'n' Ting
Tickets £12 (includes dinner)

Doors open **8.00 pm** • Show starts **9.00 pm** • Bar closes **midnight**



FRIDAY 4 SEPTEMBER
ROB DEERING

"Bruisingly Hilarious." Time Out
"Truly wonderful stand-up." The Sunday Times
"Comedy's man of the moment." Metro

Also featuring:

Vince Atta
Kevin Hayes

previous acts at
comedy@kingsmeadow

Paul Tomkinson..
 Omid Djalili..
 Tim Vine...



Kingsmeadow
L I V E

for tickets call booking on
020 8547 3335

"When AFC Wimbledon came in for me before Christmas I jumped at the chance of a loan move. Dave Anderson is a good manager and I really enjoyed my time here. We had a great run in the second half of the season that took us into the playoffs, but we lost in the semi-final at Bromley. When I was offered a two-year full-time deal at Woking, it was too good a chance to turn down.

"In my first year there I had a poor season. I started reasonably well, but I lost my way a bit and ended up being asked to play at right-back – a position I'd not played in since I was about ten! In my second year there Kim Grant came in as manager, and for whatever reason he didn't rate me. He brought in his own men, so I was on the bench for the first few games.

"After eight games we were bottom, and he was sacked. His assistant, Paul Gilchrist, took over, and although we improved we were always playing catch-up from then on. The new boss had been a top-class centre-back for many years at clubs like West Brom and Leicester, and he took me under his wing. I learned so much from him. I was ever-present for the rest of the season, and I ended up as captain and won three different player of the year trophies. But we still ended up getting relegated."

Paul found it depressing to play in a side that struggled week after week, but he is looking forward to the coming campaign with confidence. "Terry Brown has recruited well this summer. He has two good players for every position, so there'll be real competition for places. The boys he's brought to the club in the last few months are young and hungry. I don't want to predict where we'll finish, but I do think we'll have a good season."

And who are the sides to look out for in this division?

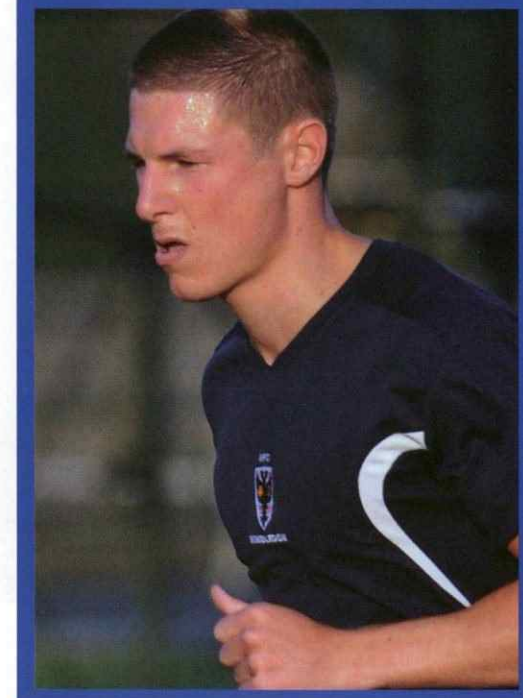
"I don't know much about why Luton were deducted points last year, but I do know that they shouldn't really be in this league, and I expect them to do well. Oxford, Cambridge and Stevenage are always strong sides, and I have a sneaking suspicion that York City will be the dark horses this season."

The new Dons skipper has no certain long-term plans.

"Before I went to Woking I completed two years of a degree in PE. My tutor there was great and said that I could go back and finish my course at a later date. At the moment I just want to play football full time at the highest level possible. I'm well aware that AFC Wimbledon can have their pick of the best players at this level, so it's a real honour that they chose me. I aim to repay the trust they've put in me on the field over the next eight months."



Terry has two good players for every position, so there'll be real competition for places





FootballFoundation
football's biggest supporter

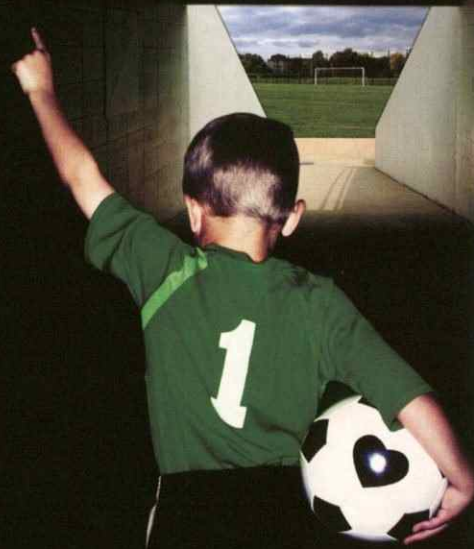
Our goal is to change people's lives through sport

The Football Foundation, the UK's largest sports charity, continues to deliver a unique programme of new and improved community sports facilities in towns and cities across the country. Offering support to thousands of clubs and community groups and with a focus on social inclusion, health, education and equalities, we are increasing participation in grass roots football and making dreams come true.

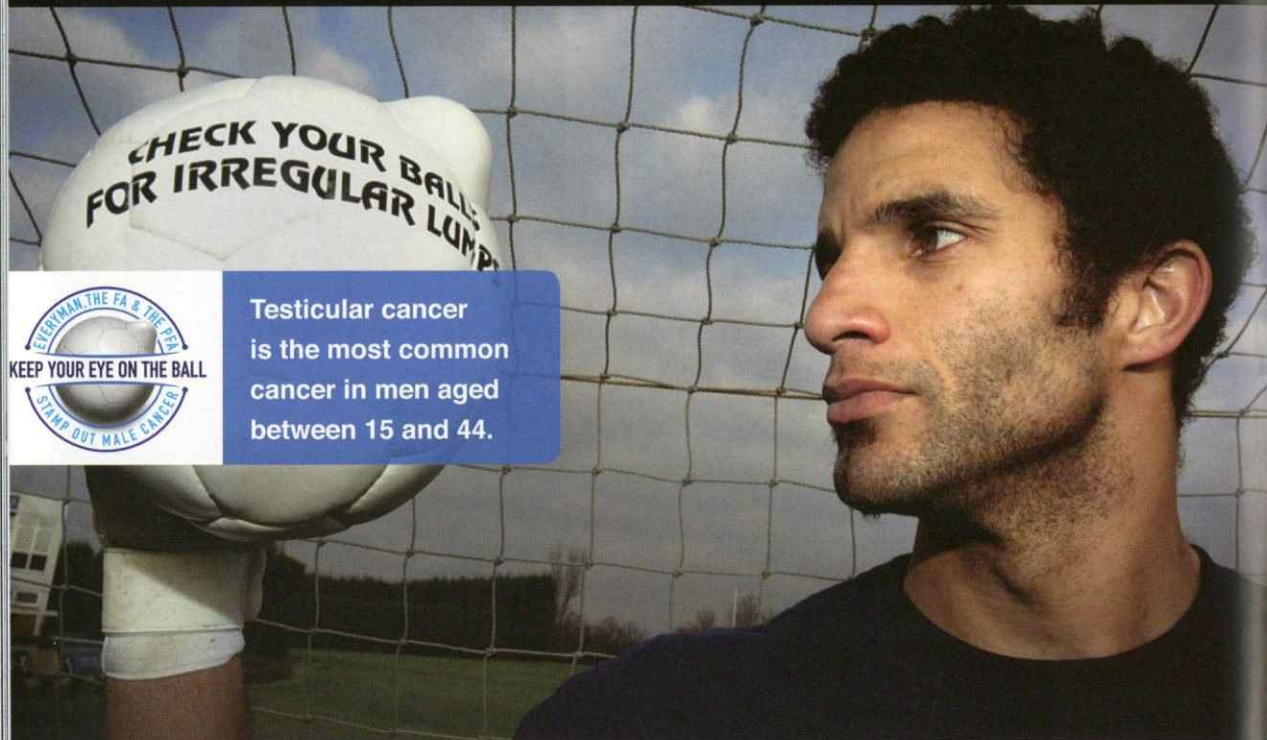
www.footballfoundation.org.uk

improving facilities • creating opportunities • building communities

Charity No 1079309 Company No 3876305



FUNDING PARTNERS



Testicular cancer is the most common cancer in men aged between 15 and 44.

A campaign run by



0800 731 9468 | kyeotb@icr.ac.uk
www.keepeyoureontheball.org

Everyman is a campaign run by The Institute of Cancer Research, 123 Old Brompton Road, London, SW7 3BP. A Charity, Not for Profit. Company Limited by Guarantee. Registered in England No. 504171



ON THIS DAY

1	9	8	9
GILLINGHAM	0	
WIMBLEDON	0	

Other games on this day

- 1967 Orient (H) D 2-2,
- 1970 Southampton (H) D 1-1,
- 1972 Tooting & Mitcham (A) D 2-2,
- 1987 Crystal Palace (H) L 0-5,
- 1981 QPR (H) L 1-4,
- 1988 Maidstone United (A) L 2-4,
- 1990 Morton (A) D 3-3,
- 1994 Chester (A) W 2-0.

NO PICNIC IN THE GARDEN OF ENGLAND

AFTER A FIVE-GAME TOUR OF SWEDEN THAT saw Wimbledon score 28 goals and concede none, the Dons found an obdurate Gillingham side a bit harder going in their first pre-season friendly on home soil.



John Scales outjumps former Don Francis Joseph

Plenty of missed chances on both sides saw the game surprisingly end as a stalemate, with visiting Wimbledon experimenting with several players occupying unfamiliar positions, including Roger Joseph on the right wing (up against his elder brother Francis, who lined up for the Gills), Alan Cork in central midfield and Dennis Wise at centre forward. Substitute John

Gayle had the Dons' best chance, but blazed over when well placed.

Segers, Curle, Young, Scales, Phelan, Joseph, Ryan, Cork, McGee, Miller, Wise.

Subs : Brooke, Gibson, Gayle, Kruszynski.

WORLD EVENTS

1963 - THE GREAT TRAIN ROBBERY

Thieves ambushed the Glasgow to Euston mail train in Buckinghamshire. The total amount stolen was put at £2.6m (worth around £26 million today) in a heist that became known as the Great Train Robbery. After a massive police operation, the gang's abandoned hideout was found at Leatherslade Farm in Bedfordshire. Just over six months later 12 - of a gang of 15 - thieves were sentenced to jail-terms totalling more than 300 years. The robbery's mastermind, Bruce Reynolds, evaded capture until 1969, when he was given a 10 year sentence. In the meantime, two of his accomplices - Charlie Wilson and Ronnie Biggs - escaped. Biggs only returned to the UK in 2001 for medical treatment and was imprisoned to serve the remainder of his 28 year sentence.

Other world events on this day:

- 1974 - Richard Nixon announces he is stepping down from the office of USA President,
- 1981 - After more than five years in captivity, Beirut hostage John McCarthy is freed.
- 2001 - Hollywood 'golden couple' Nicole Kidman and Tom Cruise are divorced.

MATCH SPONSOR



Steve Crowhurst

TODAY'S SPONSOR IS Steve Crowhurst, who is celebrating his 50th birthday with all his family here today. Steve is a season ticket holder and attends almost every game, home and away. He saw his first Dons match at Plough Lane almost 40 years ago, but rediscovered his love for the game when Super Johnny Hartson came on in that amazing game against Aston Villa at Selhurst Park.

Steve is European Publishing and Events Director for a US-based company. His hobbies are family and football, although he reminds the family that it's not always in that order! His current favourite player is Luke Garrard, but past heroes include Danny Oakins, Keith Ward and Jason Goodliffe, as they remind him of his own days (long ago) as a no-nonsense defender.

Steve and all the family would like to wish Terry and everyone at AFC the very best of luck for this season. And we will all be thinking of John Hartson and his family.

- 1 James Pullen
2 Jay Conroy
3 Chris Hussey
4 Kennedy Adjebi
5 Alan Inns
6 Ben Judge
7 Sam Hutton
8 Lewis Taylor
9 Danny Kedwell
10 Jon Main
11 Elliott Godfrey
12 Luke Garrard
13 Seb Brown
14 Derek Duncan
15 Steven Gregory
16 Brett Johnson
17 Ricky Wellard
18 Luke Moore
20 Jack Turner
21 Peter Rapson

Empty table for player statistics.



AFC WIMBLEDON

Blue shirts with yellow trim • Blue shorts with yellow • Blue socks

Manager: Terry Brown
Asst Manager: Stuart Cash
Coach: Simon Bassey
Physio: Mike Rayner
Sport Therapist: Rhiannon Luke

- 22 Paul Lorraine

Referee: I J Cooper (Rochester) Asst Referee: N Wilde (Maidstone)

Final 2008/09 Blue Square Premier table

Table with 10 columns: Pos, Team, P, W, D, L, F, A, GD, Pts. Lists 24 teams in the Premier League table.

MASCOT - SASHA HONEY BARNES-CROWHURST



Sasha

OUR MASCOT TODAY IS Sasha Honey Barnes-Crowhurst, who is four years old and attends school in Gravesend. She is here today with all her family, and especially her Daddy Steve, who is celebrating his 50th birthday. Steve is also today's match sponsor, to celebrate his half-century!

Sasha went to her first AFC Wimbledon game when she was only seven weeks old. She loves Haydon, who always gives her a hug and a high five. Her favourite player is Jonny Main, and she loves playing football in the garden and singing AFC Wimbledon songs, especially "South London is Wonderful!"

Sasha loves drawing and painting and has just started ballet lessons. She says she will score a goal against Haydon today. Watch out Mainy!

LUTON TOWN

White shirts with navy blue sleeves • Navy blue shorts • Navy blue socks

- 1 Mark Tyler
2 Ed Asafu-Adjaye
3 Lewis Emanuel
4 Keith Keane
5 Alan White
6 George Pilkington
7 Adam Newton
8 Kevin Nicholls
9 Liam Hatch
10 Tom Craddock
11 Andy Burgess
12 Shane Blackett
14 Asa Hall
15 Jake Howells
16 Rossi Jarvis
17 Ryan Charles
18 Claude Gnakpa
20 Kevin Gallen
21 Callum Reynolds
25 George Beavan

Empty table for player statistics.



Manager: Mick Harford
Asst Manager: Alan Neilson
Coach: Kevin Watson
Physio: Harry Scott-Stackman

Asst Referee: P A Kelly (Chatham) Fourth Official: R Jaye (Borehamwood)

Other Blue Square Premier matches today



- Altrincham v Ebbsfleet United
Cambridge United v Barrow
Forest Green Rovers v Kettering Town
Gateshead v Histon
Grays Athletic v Chester City
Kidderminster Harriers v Hayes & Yeading
Mansfield Town v Crawley Town
Oxford United v York City
Rushden & Diamonds v Salisbury City
Stevenage Borough v Tamworth
Wrexham v Eastbourne Borough

LUTON TOWN

1. Mark Tyler



Hugely experienced keeper signed in the summer from Peterborough, for whom he made 483 appearances in 15 years and was rewarded with a testimonial against Liverpool in 2007. Made 11 appearances while on loan to Bury in 2008/09.

position: Goalkeeper age: 32

2. Ed Asafu-Adjaye



Product of the youth system, now in his first year as a professional. Spent a short time on loan at Walton & Hersham last season, and broke into the Luton first team under former boss Mike Newell.

position: Defender age: 20

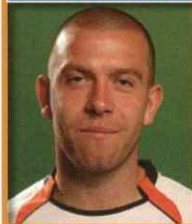
3. Lewis Emanuel



Pacy full-back who can also play in left midfield. Joined three years ago after leaving home town club Bradford City, where he started his career and made over 150 appearances in six years. Scored twice last season.

position: Defender age: 25

4. Keith Keane



Product of the Luton youth system who made his debut aged 16 in 2003, finishing his first season with 14 appearances. Represented the Republic of Ireland at schoolboy level. Features most often on the right of midfield.

position: Defender age: 22

5. Alan White



Experienced centre-half who re-signed in the summer. Started with Middlesbrough in 1996, and joined Luton the year after moving to Colchester in 2000. Later had spells at Leyton Orient, Notts County, Boston and Darlington.

position: Defender age: 33

6. George Pilkington



Highly experienced defender who joined on a free transfer last August. Began as an Everton trainee, and after a loan spell at Exeter signed in 2003 for Port Vale, for whom he made 223 league starts.

position: Defender age: 27

7. Adam Newton



Former England Under-21 international who is comfortable on the right wing or at right-back. Began at West Ham, made 249 appearances in six years with Peterborough, and spent last season at League Two champions Brentford.

position: Midfielder age: 28

8. Kevin Nicholls



Began at Charlton. Captained the Hatters to the League One title in 2004/05. In 2006, after 175 appearances and 30 goals, he moved to Leeds but fell out with Dennis Wise and signed for Preston. Returned to Luton last August.

position: Midfielder age: 30

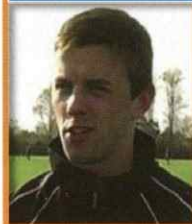
9. Liam Hatch



Tall striker on a season-long loan from Peterborough. Began at Herne Bay, and moved first to Gravesend & Northfleet and then to Barnet, helping the Bees to promotion to the Football League with 11 league goals in 2004/05.

position: Forward age: 27

10. Tom Craddock



Originally a defender, he began as a youth player with Middlesbrough and joined the Hatters initially on loan last October. After impressive scoring form the move was made permanent in January this year.

position: Forward age: 22

11. Andy Burgess



Left-footed player, comfortable anywhere in midfield. Joined in the summer from Rushden & Diamonds, where he spent all his career, apart from one season with Oxford United, where he made 57 appearances before returning.

position: Midfielder age: 27

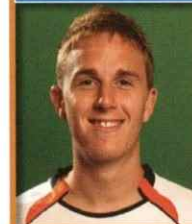
12. Shane Blackett



Pacy defender signed from Peterborough in the summer. Began his career with Dunstable Town, and helped Dagenham & Redbridge win promotion to the Football League in 2006/07.

position: Defender age: 26

14. Asa Hall



Came through the youth system at Wolves and signed for Birmingham City in 2004. Capped for England at Under-19 and Under-20 levels. A versatile player, capable of playing in midfield or defence.

position: Midfielder age: 22

15. Jake Howells



Left-back who progressed through the ranks. He made his full first-team debut away at Bradford City last October, and after 36 appearances in the 2008/09 he was rewarded with a professional contract in May.

position: Defender age: 21

16. Rossi Jarvis



Product of the Norwich City youth system, and appeared for their reserves aged 14. After loan periods at Torquay and Rotherham he joined Luton last August. Can play on the left or right of defence or midfield.

position: Midfielder age: 21

MEET THE PLAYERS

17. Ryan Charles



Energetic striker who came through the youth ranks to make his first-team debut in 2007, having been at Kenilworth Road since the age of nine. Scored on his home first-team debut, against Oldham.

position: Forward age: 19

18. Claude Gnakpa



Joined on a free transfer in August last year. After playing for various continental European sides he moved to Swindon Town briefly before signing for Peterborough in July 2007. Comfortable at centre-back or full-back.

position: Defender age: 26

20. Kevin Gallen



After 400 appearances and 97 goals for QPR in two spells spanning 14 years, he scored nine goals in 16 league starts for MK Dons before joining Luton on loan, signing permanently at the beginning of this year.

position: Forward age: 33

21. Callum Reynolds



Signed from Portsmouth on a six-month loan until January 2010. Began at Rushden & Diamonds and joined Pompey two years ago, spending time on loan last season at Basingstoke Town. Can also play in midfield.

position: Defender age: 19

25. George Beavan



Promising central defender who has played for the youth and reserve teams. Made his first-team debut as a substitute against Bournemouth. Has spent time on loan at Grays Athletic and Salisbury City.

position: Defender age: 19

PREVIOUS MEETINGS

Given the changes in football over the past two decades, it seems almost incredible that less than 20 years ago Wimbledon v Luton was a regular top-flight fixture.

WHEN THE DONS REACHED DIVISION

One in the mid-1980s, the Hatters had already been a member of the elite for five seasons, and the two sides were to enjoy six campaigns together among the big boys. This proved to be the last time that small clubs could thrive at the top on talent and hard work alone.

The first meeting, in November 1986, saw high-flying Luton do a thoroughly professional job on Dave Bassett's mid-table side in SW19. Mark Stein scored the only goal in the 56th minute, and by the time of the return match in April, played on the notorious plastic pitch at Kenilworth Road, the home side were up to third. A bore draw ensued, and the final table that year showed Wimbledon and Luton in the top seven, ahead of Manchester United and Chelsea.

Both were in the top ten again the following year, but that season was all about cups. Luton won the November league match in Bedfordshire 2-0, but the Dons reversed the score at Plough Lane in March. That game came just a week after the Hatters secured a League Cup final place against Arsenal – a match they famously won 3-2. In the FA Cup Ray Harford's men also reached the semi-final, but it was Wimbledon who stopped them from making a Wembley return.

The teams next met on the second Saturday of the following season when John Fashanu's penalty helped to secure a 2-2 draw. The ex-Millwall man was fast becoming the scourge of Luton, and he was on target again as his side put four past the Hatters on the last day of 1989.



Mick Harford is shut out at Kenilworth Road in 1989

Luton's best days were now gone. They finished just outside the relegation places that season, and avoided the drop the next season only on goal difference – and helped by the four points they gathered from the Dons. By now Harford was in charge at Plough Lane, and his new charges finished seventh at the end of the next campaign, completing the double over the Hatters, while Luton again ended up one place above the drop zone.

Wimbledon's move to Selhurst Park in the summer of 1991 did not end the Hatters' pain. They slumped to an early-season defeat in SE25, and by the time of the return match they were heading for the drop. However, goals from Imre Varadi and David Preece ensured that the home side won a final, feisty encounter 2-1.

When the clubs last met in South London, their top-flight fixture attracted just over 3,000 spectators. Today, despite meeting in what is effectively Division Five, the match is a sell-out.

DONS v HATTERS 1986-92

P13 W6 D3 L4 F19 A11

CHOICE ENCOUNTER

9 APRIL 1988, FA CUP SEMI-FINAL

LUTON TOWN 1

Harford 48

WIMBLEDON 2

Fashanu 54, Wise 79

How the purists jeered as the Crazy Gang reached the semi-final of the FA Cup with a bunch of journeymen derided for playing the long-ball game. Their arrival at White Hart Lane in a couple of battered minibuses – initially to be turned away by a snooty jobsworth – simply confirmed the prejudices of those who ran the game. But behind the rather yobbish facade lay a strength of purpose that had taken the club from non-League to the very top in record time.

Coach Don Howe had studied a video of Luton's recent Simod Cup final defeat and spotted that the timing of their offside trap was off. So in the first half, Alan Cork released John Fashanu, Dennis Wise sprang Terry Gibson and Cork, again, sent in Wise. Each time the Hatters' reserve goalkeeper Andy Dibble dived bravely at their feet to thwart them.

Having dominated the opening period without scoring, the Dons found themselves behind when Luton took the lead with their first attack of the second half. Danny Wilson fed Tim Breaker down the right, his cross was headed on by Mark Stein, and Mick Harford fired the ball past Dave Beasant from 12 yards.

Undaunted, Wimbledon raised their game. They got lucky when Dibble dropped Wise's corner at Gibson's feet, and as he tried to retrieve the ball he fouled Gibson. Fashanu coolly took a two-step run-up and side-footed home the resulting penalty. The Dons continued to pile forward, and grabbed the winner with just over ten minutes left, when Cork's cross was met by Wise's two-footed lunge, leading to wild celebrations.



Celebrations after John Fashanu's coolly taken semi-final penalty

Bobby Gould used the post-match press conference to hit out at his side's critics. "We'll continue to play the power football that has brought this wonderful club such success," he said. "Teams don't like playing against it, and we're going to continue stuffing it down their throats." The pundits were certain that he would get his comeuppance at Wembley against the team of the era, Liverpool. Instead, it proved to be Wimbledon's finest hour.

Many could not countenance the prospect of the Dons representing England abroad. Sadly, despite earning the right to enter the Cup Winners' Cup, the tragic events at the Heysel Stadium in 1985 had led to all English clubs being banned from Europe. The likes of Barcelona and Inter Milan would never get to visit Plough Lane.

Luton Town: Dibble, Breaker, Grimes (Black), McDonough, Foster, Donaghy, Wilson, B Stein, Harford, M Stein, Johnson.

Wimbledon: Beasant, Scales, Phelan, Jones, Young, Gibson (Cunningham), Cork, Fashanu, Sanchez, Wise.

DIFFERENT PATHS, ONE JOURNEY

Both sides today find themselves in the Blue Square Premier for contrasting reasons. Hatters fan **Kevin Lennon** sees a shared journey ahead – back to the Football League.

THE GAME TODAY – BETWEEN TWO of the bigger clubs in the Blue Square Premier – was one of the few matches Luton fans were looking out for when the fixture list was released. Our two teams face each other after following completely contrasting paths in recent years. Following the disgraceful treatment by the Football League in supporting the birth of franchise football, Luton fans, like many real fans all around the country, have followed the good fortunes of AFC Wimbledon.

October 2006 saw Luton climb to fifth in the Championship after beating a poor Leeds team 5-1. Mike Newell assembled a good squad, and many Luton fans dreamed of bigger and better things. Alas, events on and off the pitch led to the unwelcome honour of three consecutive relegations. In the same way that the Football League mistreated you, Luton also felt the impact of their harsh hand. Compounded by similar bullying from the FA, innocent fans again found themselves punished and picking up the pieces long after those responsible for serious financial irregularities at the oldest professional club in the South of England had sailed off into the sunset.

So it was that at the start of last season, under new owners drawn from fans and successful local businessmen, and with the united support of all the fans pulling together like never before, we began an impossible battle, kicking off on minus 30 points. But it is times like these that make or break a club. Luton fans were never going to lose the war – we now had our club back. We knew that there were going to be more downs than ups in the early days, and we were still saddled with players on Championship wages. However, the fans regrouped, and over 40,000 were rewarded with a fantastic day out at Wembley in sunny April – although many felt that beating Scunthorpe United 3-2 to win the Johnstone's Paint Trophy was small

compensation for the indignity of the subsequent first relegation out of the Football League.

We have owners and a manager who have done extremely well to have kept the nucleus of our squad from last season, supplemented with more hungry and proven players who we hope feel the same pride that us fans now do at every game. Just as importantly, there is also now far more financial responsibility and adherence to the simple but essential doctrine of living within one's means.

Unlike the 1980s, when Luton and Wimbledon were the perennial underdogs in the top flight, now we both find ourselves on a completely different pedestal. We are both widely admired for the battles we have fought in recent

“**INNOCENT FANS AGAIN FOUND
THEMSELVES PUNISHED AND
PICKING UP THE PIECES**”

years, but because of our large followings we will both be regarded as Goliaths targeted for slaying by the many Davids. If we can continue to build on the hard work, pride, respect and belief of recent years, it may not be long before we can start to look at the glory days under the twin towers of Wembley in the spring of 1988 and wonder if it is just possible that we might be able to live them once again.

First, though, there's the challenge of the Blue Square Premier. And hopefully next season we will both be kicking off back in League Two. That in itself will be a message to the football authorities. It will not quite be revenge, but it will be sweet.

Kevin Lennon is chairman of the Loyal Luton Supporters Club. For more information, visit www.loyalluton.com

**CHECK
YOURSELF**

ARE YOU AGED 16 - 24?

**DO YOU LIVE IN
SOUTH LONDON?**

1 in 10 young people are infected with Chlamydia, but don't know it. Chlamydia is a sexually transmitted infection, which often has no symptoms. If left untreated it can lead to serious health problems, such as infertility (unable to have children). Thankfully, Chlamydia is very easy to treat with antibiotics.

Why not check yourself with a free self-testing kit?

**WANT A FREE CHLAMYDIA TESTING KIT SENT TO YOU?
GO TO WWW.CHECKYOURSELF.ORG.UK**

For contact details go to www.checkyourself.org.uk

NHS

TOP DONS - AND TOP HATS



KELVIN DAVIS

A Luton trainee who spent five years at Kenilworth Road, gaining England Under-21 representative honours before joining Wimbledon for £600,000 in July 1999. He gained top-flight experience with the Dons after replacing Neil Sullivan. After a spell at Ipswich, where he was voted Championship goalkeeper of the year, he earned seven-figure moves to Sunderland and then to Southampton in 2006, for whom he has now clocked up a century of appearances.

Wimbledon appearances **131** goals **0**
Luton Town appearances **91** goals **0**



DUNCAN JUPP

"Juppy" crossed AFC Wimbledon's path as recently as last season with present club Bognor Regis Town. He spent six years with Wimbledon but was only ever on the fringes of the first team, owing to injuries and the form of others. Duncan had a five-match loan spell with Luton during 2002/03 but then went on to make over a hundred appearances for Southend United. He spent two years at Gillingham before moving into the non-League game; he is now also a mature student.

Wimbledon appearances **30** goals **3**
Luton Town appearances **3** goals **0**



CLIVE GOODYEAR

Clive won a 1988 FA Cup winner's medal during an injury-riddled three seasons with Wimbledon. He began his League career with Luton Town, where he spent five years before a move to Plymouth Argyle. He ended his playing career in Hong Kong before becoming a physiotherapist, and he returned to Kenilworth Road in that role in 1993. Clive has since assisted Chester and Cardiff City, and now has his own practice in Fenny Stratford.

Wimbledon appearances **26** goals **0**
Luton Town appearances **90** goals **4**



CHRIS WILLMOTT

Chris joined Wimbledon in a £350,000 move from Luton in summer 1999 along with Hatters team-mate Kelvin Davis. A strapping young defender, he had to be patient for opportunities at Selhurst Park, and most of his appearances came after the Dons were relegated from the Premiership. He returned to Kenilworth Road for a second spell on loan in February 2003, followed by permanent deals at Northampton and then Oxford. He was released by the U's this summer.

Wimbledon appearances **53** goals **2**
Luton Town appearances **27** goals **0**



ALAN KIMBLE

With a sweet left foot, "The Wand" spent seven top-flight seasons under Joe Kinnear at Selhurst Park after being snapped up for a bargain £150,000 in July 1993. It was no surprise when Kinnear, now the Hatters manager, brought the veteran defender to Kenilworth Road in 2002 on a free transfer, but Alan managed only a dozen League starts. After brief spells at Dagenham and then Heybridge Swifts, he has been assistant manager of Ebbsfleet United since March 2005.

Wimbledon appearances **215** goals **0**
Luton Town appearances **16** goals **0**



CHRIS PERRY

One of many quality players to emerge from the Wimbledon youth system in the 1990s, Chris was a local boy and a Wimbledon supporter as a youngster. A huge crowd favourite, his aerial ability belied his relatively slight frame and the timing of his tackling was always immaculate. He moved to Spurs in a £4 million deal in 1999 and went on to Charlton and West Bromwich before a season at Luton in 2007/08. He is currently at Southampton.

Wimbledon appearances **167** goals **2**
Luton Town appearances **35** goals **1**

We've assembled a team of players who have represented both Wimbledon and Luton and who at their peak would have given either of today's sides a run for their money.



DEAN BRENNAN

A much-travelled Irishman who made a handful of appearances at Kenilworth Road after beginning his career at Sheffield Wednesday - where he was an unused substitute on the day that Paolo di Canio pushed over referee Paul Alcock. He dropped into non-League football, and Dave Anderson brought him to AFC Wimbledon during 2006, but he never really settled at Kingsmeadow and moved on to Halesowen Town. Last season he won a Southern League championship medal with Corby Town.

Wimbledon appearances **10** goals **0**
Luton Town appearances **9** goals **0**



CERI HUGHES

Pontypridd-born Welsh international midfielder who spent eight years at Kenilworth Road, where he earned a reputation as a combative tackler. Ceri spent three years at Wimbledon where he was signed to beef up the Dons midfield, but he was sold to Portsmouth for a cut-price £150,000 in January 2000. His later career was blighted by injuries, and he failed to earn a contract following a month's trial at Cardiff City in 2002.

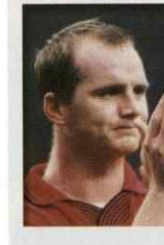
Wimbledon appearances **31** goals **1**
Luton Town appearances **175** goals **17**



MICK HARFORD

Wimbledon was the tenth (and final) club of Mick's playing career, but it was Kenilworth Road where the imposing 6 ft 4 in target man made his name. He gained his two England caps during two spells with the Bedfordshire side. Reputedly the only Wimbledon player never to have undergone a Crazy Gang initiation ceremony (!), Mick returned to Luton as manager in January 2008 after a spell in charge of Rotherham, and his side lifted the Johnstone's Paint Trophy at Wembley in 2009.

Wimbledon appearances **60** goals **9**
Luton Town appearances **168** goals **69**



JOHN HARTSON

John's first professional club was Luton, where his early potential persuaded Arsenal manager Arsene Wenger to shell out £2.5 million for the burly Welsh teenager in January 1995. Spells at Highbury and West Ham preceded a shock £7 million transfer to Wimbledon in 1999. A series of injuries prevented moves to Rangers and Tottenham, but John managed a six-year stay at Celtic, where he scored 88 goals in 141 games. He is currently undergoing chemotherapy for testicular, lung and brain cancer.

Wimbledon appearances **49** goals **19**
Luton Town appearances **54** goals **11**



LIAM GEORGE

A Republic of Ireland Under-21 international, George came through the youth ranks at Kenilworth Road to make a century of appearances for Luton. But he struggled to nail down a permanent starting berth under Joe Kinnear and drifted into non-League football with a number of clubs, including AFC Wimbledon, for whom he managed a solitary goal at Leyton during a brief spell in 2006. Liam was last heard of at Hitchin Town, playing alongside another ex-Don, Paul Barnes.

Wimbledon appearances **8** goals **1**
Luton Town appearances **102** goals **21**



RAY HARFORD

Manager

Ray led Luton to two Wembley finals, lifting the League Cup in 1987 after a 3-2 victory over Arsenal. But by 1990 the Hatters were facing relegation from the top flight, and he was replaced by Jim Ryan. Ray moved on to Wimbledon and steered them to seventh place before resigning to link up with Kenny Dalglish at Blackburn Rovers, eventually succeeding him as manager. After a move to Millwall he was diagnosed with lung cancer in October 2002, and passed away the following August at the age of 58.

'AVE IT!



**John Smith's
are proud to be
THE OFFICIAL BEER
of AFC Wimbledon**



Win £1,000!

How? With the Dons Draw! In each draw nearly £2,000 is paid out to entrants and at the same time the club benefits. There are five prizes for each monthly draw with current values of £1,000, £500, £250, £125 and £50. The chances of you winning are better than with the National Lottery, and whatever happens, money goes to pay for and improve the ground.



Signing up is easy, and can be done in two ways:

1 Go to www.thedonsdraw.co.uk and sign up online, or download the form if you prefer.

2 Fill in the form available from the Dons Trust table in the back bar and return it to the DT table or post it back to the club.

Each lottery ticket costs £2, and you can buy just one ticket if you wish.



Entrants must be aged 16 or over, and have a bank account.

The Dons Draw is a monthly lottery run by the Dons Trust and registered with, and authorised by, the Royal Borough of Kingston upon Thames. The draw takes place on or around the 15th of each month.

To minimise costs (and maximise the prizes and fundraising) the draw is run by direct debit mandate.

If you're already in the Dons Draw, but want more tickets please email donsdraw@thedonstrust.org

Enter online today! www.thedonsdraw.co.uk

THE PRICE WE PAY

Chief Executive **Erik Samuelson** has been playing with his abacus again. His analysis shows that the Dons will be hard to beat this season – on ticket prices.

FOR THE SECOND SEASON RUNNING, we have increased our prices. We gave a lot of thought to the new prices and debated them thoroughly with the Dons Trust board, especially in the light of the fact that we are in a recession and for a lot of people times are tough.

When we were making our decision, we carried out some research on other clubs' prices. We have recently reviewed them again because some clubs have changed their prices since last season. Focusing on the matchday cost of a terrace ticket, this article compares our prices with what is charged by other clubs in the league. The results are summarised in the table opposite, as we thought they would be of interest to you.

We've analysed what all the other clubs charge for an adult, a concession and a child matchday ticket. Whenever we carry out this sort of exercise, it is necessarily an over-simplification as the definitions of concession and child tickets vary dramatically from club to club: for example, some clubs let accompanied under-12s in free, and others have special prices for over-75s.

Some clubs, such as Wrexham and Oxford, charge less if the tickets are bought in advance; we've included the lower prices here. Some clubs, such as Stevenage and Kettering, are charging more for selected "premium" games – we are one such "Category A" game for both those clubs, so we've included the higher prices here. Incidentally, increasing the cost of entry for a specific game is perfectly legitimate, as long as the same price applies to equivalent tickets for the home fans.

The first point to note is that there are eight grounds where there will be no standing tickets available to Wimbledon fans. Having to sit is going to be quite a culture change for many of our fans after the past seven years, when everyone who wanted to do so could watch their football standing on a terrace.

Second, despite the increase in our prices this season, we have, along with two of the other newly promoted teams, Hayes & Yeading and Tamworth, the lowest prices for adult terrace tickets.

The biggest differences compared with other clubs are in the prices we charge for concessions and to children. There have been reports in the press over the past couple of years that the average age of fans attending

Premiership games is rising, as more and more families find themselves priced out of attending these games and can't afford to take their children. The main cause of this ageing population of fans is fairly obvious – fewer children are going to games nowadays.

We feel very strongly that tickets for children should be as cheap as possible, so that the cost of a family attending a game isn't prohibitive. That is why our price for under-16s on the terraces remains at £2, unchanged from when we started seven years ago. Altrincham, Gateshead and Grays Athletic appear to follow the same philosophy and have set children's seat prices below £5, but none are lower than Mansfield Town, who offer free entry to accompanied under-13s.

At the other end of the scale, four clubs have a single concession price, with children charged as much as other concessions – that's why the table shows children's prices costing as much as £7, £8 and even £10 at one club.

We have also spent a lot of time debating the prices for concessions. The Dons Trust board was keen to keep concession prices as low as possible, on the assumption that those buying concession tickets can't afford as much as other fans. This is why we didn't raise matchday prices for concessions when adult prices went up, so that our concession tickets now cost exactly half the adult price. As a result, we have comfortably the cheapest prices for concession tickets in the league. On average, other clubs charge concessions at two-thirds

Terrace prices in the Blue Square Premier, 2009/10

Adult price	Number of teams
£12	3
£13	9
£14	1
£15	2
£16	1
No terrace	8

Concession price	Number of teams
£6	1
£7	3
£8	5
£9	3
£10	2
£11	1
£12	1
No terrace	8

Child price	Number of teams
£2–4	7
£5	3
£6	2
£7	2
£8	1
£10	1
No terrace	8

of the adult price, with the highest very nearly 80% of the adult cost.

The same sort of conclusions apply to matchday seat prices. While Gateshead and Grays charge less than we do, at £12 and £13 respectively, the average matchday price for an adult seat in the Blue Square Premier is 10% higher than ours, while concessions are nearly 50% more expensive and children are a whopping double our price, on average. The only problem is that we have hardly any seats to sell on matchdays this season, following the huge demand for season tickets!

“ WE HAVE COMFORTABLY THE CHEAPEST PRICES FOR CONCESSION TICKETS IN THE LEAGUE ”

My purpose here is not to score points over other clubs. I did this analysis because we wanted to be satisfied that we had achieved our objective of getting more income from matches now that we are in the Blue Square Premier, while at the same time making the resulting prices reasonable and fair.

Overall, then, despite this season's increases, it seems clear that our average matchday prices are the lowest in the league. Of course, these prices flow through into the financial results, which is part of the reason why our playing budget is below the average for the division – less than half what some teams are spending. I'll return to that theme another time.

BUILDING FOR THE FUTURE

FUTURE

Senior Academy Manager **Mark Robinson** has high hopes that some of this year's academy players will progress to the reserves and eventually the first team.

Last time I wrote for the match day programme we had nearly completed our first year as an academy in partnership with Merton College. It had been a difficult year as had very little time to organise at the start, but despite a mixed bag of results we still had eight players make reserve team appearances. At least four of these have been kept on by Marcus Gayle, one still has another year in the academy, and another has been taken on by Hayes & Yeading.

This season is a different story. I started trials back in March, and after looking at nearly 150 boys of varying standards I offered 27 players a place in the academy. The best of them will represent AFC Wimbledon in the Conference Youth League, and the others will play for the Merton College side, which will be run by my assistants, Jon Phillips and Michael Hamilton. Players will move between the two sides depending on their progression, but the standards expected of them will remain the same no matter which team they are playing for.

The lads are just starting their pre-season, and enjoyed a great day last Monday when they were welcomed to the club by Terry Brown and Ivor Heller and made fully aware of what a fantastic and unique football club they are now part of. As well as a talk from myself about football matters and what is expected of them regarding conduct and attitude, Jason Moriatty gave a talk on nutrition and fitness, and Kristina Powell spoke about how to avoid injury.

The boys will have continual support on football and fitness matters as I strive to make the academy as professional as possible. Training will take place three times a week throughout the season, and after five pre-season friendlies, including games against Brentford, Bromley and a strong academy side from America (played at Chelsea's training ground in Cobham), our season will start on 9 September away to Charlton in the FA Youth Cup.

“THE BEST OF THEM
WILL REPRESENT
AFC WIMBLEDON IN
THE CONFERENCE
YOUTH ALLIANCE”

All league homes games will be played at Walton Casuals' ground, where the pitch will help the boys play the passing game that will be instilled into them.

This season will also see me work closer with Russell Harmsworth, manager of our Under-18s, aiming not only to put out the strongest team possible in the FA Youth Cup, but to fulfil our ambition of producing young players for the reserves and hopefully the first team. I am very excited by the year ahead, and I look forward to seeing some of you this season at our home games.

DATE	H/A	OPPONENTS
WED 9 SEPT	A	CHARLTON ATHLETIC TRUST *
WED 16 SEPT	A	ST ALBANS SAINTS
WED 23 SEPT	H	BROMLEY BLUES
WED 30 SEPT	A	CARSHALTON ATHLETIC
WED 7 OCT	H	CRAWLEY TOWN
WED 14 OCT	A	BOREHAM WOOD BLUES
WED 21 OCT	H	WELLING UNITED ACADEMY*
WED 4 NOV	H	MET POLICE KAFC
WED 11 NOV	A	THURROCK
WED 18 NOV	H	WATFORD CSE
WED 2 DEC	A	WEALDSTONE
WED 9 DEC	H	WOKING
WED 16 DEC	A	WYCOMBE WANDERERS AW
WED 13 JAN	H	WYCOMBE WANDERERS AW
WED 20 JAN	H	ST ALBANS SAINTS
WED 27 JAN	A	BROMLEY BLUES
WED 3 FEB	H	CARSHALTON ATHLETIC
WED 10 FEB	A	CRAWLEY TOWN
WED 24 FEB	H	BOREHAM WOOD BLUES
WED 3 MAR	A	MET POLICE KAFC
WED 10 MAR	H	THURROCK
WED 17 MAR	A	WATFORD CSE
WED 24 MAR	H	WEALDSTONE
WED 31 MAR	A	WOKING

KICK OFF 2.00PM (UNLESS OTHERWISE MUTUALLY AGREED BY BOTH CLUBS)
CUP FIXTURES ARE INDICATED BY *

BOARD THIS SUMMER?

There hasn't been much of a close season for the Dons Trust board, who have continued to meet each month to debate and determine the club's strategies and policies. Board member **Ray Armfield** summarises a busy few weeks.

THE DETAILS OF THE long-awaited strategy review were presented to Dons Trust members at two Special General Meetings. The first was held on 23 April, and owing to the lively and lengthy debate at this meeting, four topics – Stadium, Community, Financing and People – were carried over to an extra meeting, on 28 May.

These well-attended gatherings in the back bar at Kingsmeadow saw seven of the nine sections agreed and carried, with the remaining two, Stadium and Community, voted against in their present form. In response, the board is actively considering how to engage the views of the membership as a whole, with the aim of returning with revised and updated proposals to the membership as soon as is practicable.

The Dons Trust board (DTB) was sorry to lose the services of two stalwarts, with the resignations of first secretary David Wilkinson and then chairman David Cox (who remains on the board itself). Both departures will be keenly felt. As an interim measure, their duties have been shared among

DTB members until permanent replacements have been found. Kris Stewart has temporarily taken on the role of chair.

We have separated the duties of taking minutes (and several volunteers have stepped forward to apply for the role of minute taker) from the post of secretary itself, the latter role having been advertised on the club's official website on 18 July. These unexpected events have, in part, contributed to a delay in getting recent minutes of DTB monthly meetings onto the website, and we hope that this will have been rectified by the time you read this.

On the wider subject of communications, Supporters Direct Communications Officer (and Dons fan) Kevin Rye is shortly to deliver to the DTB an all-encompassing review of the way the club communicates, both internally and externally, having given the board a progress update at its May meeting. The DTB also receives a comprehensive CEO's report on the football club from Erik Samuelson each month.

Recent DTB meetings have considered presentations for and

against directors of AFC Wimbledon subsidiary companies being eligible for election to the Dons Trust board, approved the club's budget for the 2009/10 season, proposed capital expenditure projects, reviewed commercial and merchandise reports, and discussed the latest youth and community strategy.

Board members currently serve a two-year "tour of duty". It's never too early to start thinking about standing as a candidate yourself in the next round of elections, scheduled for the end of this year. In the meantime, here are a couple of dates to pencil into your diary, further details of which will be published nearer the time:

Special General Meeting
Wednesday 30 September 2009

Annual General Meeting
Monday 7 December 2009

If you have any questions about the work of the Dons Trust board or wish to raise any issues with us, please contact one of the board members listed below, in person on matchdays at Kingsmeadow or via e-mail to chair@thedonstrust.org

THE DONS TRUST BOARD

Tom Adam, Ray Armfield, Matthew Breach, David Cox, Ivor Heller, Nigel Higgs, Sean McLaughlin, Iain McNay, Dean Parsons, Aideen Rochford, Erik Samuelson, Kris Stewart.

STIG HÅKAN MILD, TO GIVE HIM HIS FULL name, began his career with his local club, Trollhättans FK, and was soon spotted by leading Swedish side IFK Göteborg. He signed for them in 1988 and made his first-team debut the same year, in a friendly against IF Elfsborg. The next year he played his first league game, and won his first Swedish league championship medal in 1991 after establishing himself as a regular in the side.

The next season saw another league title go to IFK Göteborg, and Håkan then played ten matches in the European Cup, having already made the 1992 Swedish Olympic football team. There followed a move abroad, to Swiss club Servette FC, who in his first season with them won the Swiss Super League title. He was called up for national duty for the 1994 World Cup, and after coming on as a substitute in two matches he was picked for the starting XI in the quarter-final, semi-final and third-place match, and scored a goal in Sweden's 4-0 win over Bulgaria.

Back at Servette, Håkan couldn't find his form again, and he rejoined IFK Göteborg for the second half of the 1995 campaign. After leading Göteborg to another Swedish championship in 1996 he left to try his luck overseas again, this time with Real Sociedad. Over two seasons he played 49 Primera Division games, and in 1997/98 Real Sociedad finished third, their highest finish at that time. But the lure of his homeland proved too strong once more.

He turned out for IFK Göteborg for another three seasons before one last spell with a foreign club, this time Wimbledon, where he linked up with fellow countryman and IFK team-mate Par Karlsson. This proved to be Håkan's least successful stint abroad – he played in just nine games spread over the 2001/2 season. The low but undisclosed fee for his transfer (thought later to be in the region of £200,000) put him in a moral dilemma, and he laudably chose to not accept the large amount in match bonuses that was due to him from IFK.

The 2002 fire sale of players in SE25 saw Håkan return to IFK Göteborg for a fourth spell – and a rare relegation battle, which they avoided only by winning a post-season playoff. He played on for three more seasons, with interruptions caused by injuries, and decided to make the match against FC Lyn Oslo in December 2005 his last. Håkan's name was chanted throughout the whole game as a final farewell.

After hanging up his boots, he stayed with the club as Director of Football. "IFK has always meant so much to me that it has sometimes become a problem," he admitted. But that just went to reinforce his status among IFK supporters as a true Göteborg legend – if not quite a Dons one!



PAST MASTERS HÅKAN MILD

Håkan was an experienced Swedish international, but his time at Wimbledon was blighted by a groin injury, and he returned home to end his career at IFK Göteborg.

OFFICIALLY NO.1 FOR MOBILE SPORTS BETTING



FOR SPORTS
BETTING, NEWS
& RESULTS TEXT
'BET' TO 64555
FOR A WEB LINK

WINNER OF THE
PRESTIGIOUS E-GAMING
AWARD FOR MOBILE
OPERATOR OF THE YEAR



GO TO: MOBILE.BLUESQ.COM OR TEXT: 'BET' TO 64555

One text required at your standard rate. See website for full terms and conditions. Over 18's only.
Blue Square encourages responsible gambling, gambleaware.co.uk



YOU
*might not have
his touch, control
or speed.
But you can
wear his socks.*



The new Umbro Teamwear brochure is out now.

It's packed with everything your team could need for the new season. From bibs to balls and socks to shirts. It's reassuring to know that Umbro supply more Premiership kits than anyone else. But you don't have to be a superstar to play in our kit, with Adult kit packages from only £295.00 and junior packages from only £245.00. You really can play in Michael Owen's socks. Get Umbro Teamwear. Get next season sorted.

www.umbrofootballkits.co.uk or call 0845 603 7047



TUESDAY 11 AUGUST • 7:45 PM KICK-OFF

BLUE SQUARE
PREMIER

EASTBOURNE BOROUGH

Address Langney Sports Club, Priory Lane,
Eastbourne, Sussex, BN23 7QH

Capacity 4,151

Tel 03123 766 265

Website www.eastboroughfc.co.uk



EASTBOURNE'S LAST SIX HOME GAMES

26 APR	BARROW	0-2
13 APR	GRAYS ATHLETIC	2-1
4 APR	WEYMOUTH	3-0
2 APR	EBBSFLEET UNITED	0-1
31 APR	CRAWLEY TOWN	2-1
21 APR	BURTON ALBION	1-2

Terrace prices: Adults £13; Concessions £9; Under-16s £4. Transfer to seating: £2 Matchday Programme: £2.00

This game is all ticket Tickets will be available from the booth before and after today's game. It will also be possible for personal callers to visit the club office between 10.00 am and 4.00 pm on Monday 10 August to buy their tickets.

By Road

If approaching on the A27 from Brighton, turn left at the Polegate traffic lights, and then take the exit at the large roundabout shortly afterwards to continue eastwards on the A27 (signposted Eastbourne, Hastings and Bexhill).

At the next roundabout, take the second exit towards Stone Cross and Westham (A22); at the roundabout immediately afterwards, take the first exit signposted Stone Cross and Westham. Continue towards Stone Cross village, past Dittons Nursery on your left. Shortly afterwards you will come to a crossroads, with a church on the left, the Red Lion pub on the right, and Stone Cross windmill immediately ahead. Turn right, down the B2104 (Friday Street). At the end of Friday Street turn left at the double mini-roundabout into Hide Hollow (B2191), passing Eastbourne Crematorium on the right. Turn right at the roundabout into Priory Road, and Priory Lane is about 200 yards down the road on the left.

If approaching on the A22, take the first exit at the large roundabout shortly before Polegate, signposted A27 Eastbourne, Hastings and Bexhill, then follow the directions in the previous paragraph.

Parking There are extensive car parking facilities at the ground.

By Rail

There are direct trains to Eastbourne from London Victoria calling at Clapham Junction and East Croydon. There is a taxi service outside the station. The last direct train back leaves at 10.15 pm.

The nearest station is Pevensey & Westham, also served by Victoria trains, but the service is less frequent. Note that the last train back to Victoria leaves at 9.50 pm and takes two hours.

From Pevensey & Westham station the ground is a 15–20 minute walk. From the station turn left into Eastbourne Road (B2191). Continue past an industrial estate (where the road becomes Hide Hollow). Turn left at the roundabout into Priory Road. Priory Lane and the ground are a quarter of a mile on the left.

By Coach

The supporters' coach will be picking up from The Woodman at 4.30 pm and from Kingsmeadow at 5.00 pm. The price is £10, and places on the coach can be reserved at the complimentary tickets window before and after both the FC United of Manchester and Fulham games. Alternatively, bookings can be made by contacting the club office on 020 8547 3528 during normal office hours.

The Dons will be in their usual yellow away strip.



SATURDAY 15 AUGUST • 3.00 PM KICK-OFF

BLUE SQUARE
PREMIER

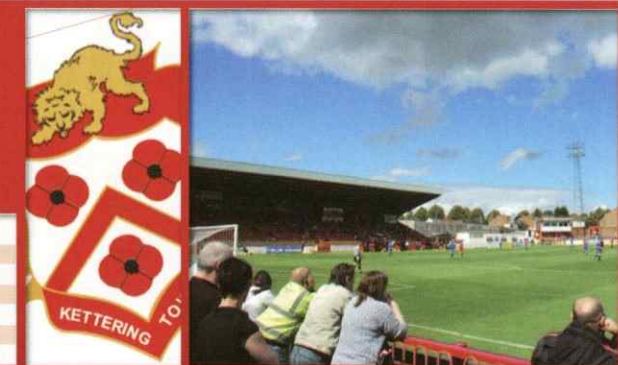
KETTERING TOWN

Address Rockingham Road, Kettering,
Northants, NN16 9AW

Capacity 5,500

Tel 01536 483028

Website www.ketteringtownfc.co.uk



EASTBOURNE'S LAST SIX HOME GAMES

18 Apr	WREXHAM	1-0
15 Apr	CRAWLEY TOWN	1-1
13 Apr	CAMBRIDGE UNITED	1-2
7 Apr	BARROW	0-0
28 Mar	EBBSFLEET UNITED	2-1
19 Mar	OXFORD UNITED	1-2

Main Stand prices: Adults £18; Senior citizens £14; Juniors £7. Please note there are no student concessions.

Terrace prices: Adults £16; Senior citizens £12; Juniors £6. Matchday Programme: £2.00

This game is all ticket This match is all ticket for AFC Wimbledon fans. We have been allocated sufficient terrace and main stand tickets for there to be no need for priority selling. Tickets can be purchased by post; applicants should enclose a self-addressed, stamped envelope together with a cheque for the correct amount. Alternatively, personal callers can visit the club office between 10.00 am and 4.00 pm on weekdays to buy their tickets.

Tickets will also be on sale from the booth before and after today's game.

Arrangements for purchasing tickets have also been published on the official website.

By Road

Leave the M1 at Junction 15, and at the roundabout take the 3rd exit (A45, signposted Northampton). At the Queen Eleanor interchange, continue forward on the A45 (signposted Wellingborough). Approaching the Lumbertubs Way interchange, branch left, and at the roundabout take the 1st exit (A43, signposted Kettering and Market Harborough). Continue across several roundabouts, always following the A43, until the intersection with the A14: take the first exit (signposted The Midlands) and merge with the A14. Soon after joining it, leave the A14 (Junction 7) and take the 3rd exit at the roundabout, rejoining the A43 (signposted Kettering). At the next roundabout take the 3rd exit, entering Kettering on the A6003 (Rockingham Road). Go straight across at the next roundabout: the entrance to the ground is on the left, at the junction with the A6900.

Parking There is very limited car parking at the ground, but there is plenty of local street parking.

By Rail

Direct trains leave from London St Pancras on the hour and half-hour. The journey time is an hour. From the station, it's a 15–20 minute walk to the ground. Go up Station Road and take the first left into Northfield Avenue. Follow this road, past Morrison's petrol station, a Nissan dealership and the Co-Op, and you will see the ground ahead of you.

By Coach

The supporters' coach will be picking up from The Woodman at 11.15 am and from Kingsmeadow at 11.45 am. Please note that this is 30 minutes earlier than originally advertised because of road works on the M25, which are causing delays. The price is £10, and places on the coach can be reserved at the complimentary tickets window before and after today's game. Alternatively, bookings can be made by contacting the club office on 020 8547 3528 during normal office hours.

The Dons will be in their usual yellow away strip.



A Winning Team

AFC Wimbledon & Radio Jackie



www.radiojackie.com

Design and photography by www.pictureperfectionist.co.uk

TAKING CARE OF BUSINESS

Commercial director Ivor Heller introduces this afternoon's matchday sponsors.

MATCH SPONSOR

I would like to welcome Steve Crowhurst into the President's Lounge today. Steve, who is a lifelong Dons fan, is here with his family celebrating his 50th birthday. And his daughter is today's mascot, too. Thanks Steve, for all your support for so many years.



PROGRAMME SPONSOR

The programme sponsor for the third season running is Moorad Choudhry, who works in investment banking in the City and is a Professor of Finance at London Metropolitan University. Moorad was inspired by the original Crazy Gang and is a lifelong supporter of the Dons.



moorad choudhry

BALL SPONSOR

Started by Eden brothers Alan and Kenny in 2000, ALKEN Building & Property Maintenance are a reliable and professional company enjoying an excellent reputation for quality workmanship and service. All aspects of building and property maintenance are undertaken, including extensions, loft conversions, kitchens, bathrooms, patios and driveways. References available; CHAS approved. E-mail AKEdenbros@hotmail.co.uk or call 07713 268 647 or 07939 233 229.

ALKEN
Building and Property Maintenance

BALL SPONSOR

EDDM are proud to support the ongoing rise of the Dons to their rightful place, the Football League.

We wish you good luck and success in this, your first year in the Blue Square Premier.

eddm
evolution direct & digital marketing ltd

FC UNITED PRESENTATIONS

Peter Rapson and FC United of Manchester man of the match John Buckley with representatives of The Co-operative Bank and Supporters Direct.







TERRY BROWN
 home kit Tony and Mary
 away kit Vivash Hunt Solicitors
 third kit Iain McNay
 home socks Barrie, Julie, Jamie and Scott Whittington
 away socks Skone Family




STUART CASH
 home kit In Memory of E.M. and D. Kay
 away kit Sean Roberts
 third kit GS Roofing
 home socks Woody
 away socks Russell Smith




SIMON BASSEY
 home kit Eileen
 away kit The Trafalgar Freehouse
 third kit James Tarrant
 home socks Ava and Joshua Bassey
 away socks Sparky, Jabba and The Sword - The Dugout Boys



ROBIN BEDFORD
 home kit DefraDons
 away kit available
 third kit available
 home socks The Stewards
 away socks Matthew and Emily Fletcher



KENNEDY ADJEI
 home kit Urban Research Ltd
 away kit The SweDons- Pelle, Markus, Paul and Henrik
 third kit Jordan Williams team
 home socks Maltser Dons
 away socks Tony and Rachael



JAY CONROY
 home kit Jennifer Guy
 away kit Weird & Wonderful World
 third kit Joshua "Scribbler" Leach
 home socks Paige Bailey
 away socks Charlie, Buddy and Milly



DEREK DUNCAN
 home kit James Tarrant
 away kit Alan and Connie Parker
 third kit Dennis Beckett
 home socks Jonathan Wilkins and William Shackel
 away socks the pope



LUKE GARRARD
 home kit David and Sharon Charles
 away kit Steve, Cathy, Emma, Chrissie, Paul, Anne and Lizzie
 third kit Peter and Michael Cork
 home socks Jim, Jan, Maria and Laura Potter
 away socks John and James Humphries



ELLIOTT GODFREY
 home kit Jon, Harry and Devon West
 away kit Steve and Pam
 third kit Simon Cheeseman
 home socks Bugsy
 away socks Winchester Belles




STEVEN GREGORY
 home kit Bob M and Old Sarum
 away kit JB & Co.
 third kit available
 home socks Paul Merritt
 away socks Old Sarum and Bob M



SAM HATTON
 home kit Diana Harris
 away kit Hard Back Dons
 third kit www.afc-wombles.com
 home socks Highland Hobbits
 away socks Ella Louise Farrow




CHRIS HUSSEY
 home kit www.itmustbedons.com
 away kit Janice and Graham Williams
 third kit Pat, Simon and Ryan
 home socks Taya
 away socks Stephen Cooles




ALAN INNS
 home kit Colin Gales
 away kit Nick Le Faye
 third kit Friends and Family of Natalie
 home socks Rob
 away socks Sparky, Jabba and The Sword - The Dugout Boys




BRETT JOHNSON
 home kit Sharon Matthews
 away kit available
 third kit available
 home socks available
 away socks available




BEN JUDGE
 home kit AFC Wimbledon Supporters Team
 away kit The Harris Family, Kent
 third kit The Terrieres
 home socks Rob Cornell
 away socks Sparky, Jabba and The Sword - The Dugout Boys



DANNY KEDWELL
 home kit Thai Rack Restaurant, Gerrards Cross
 away kit Creativitea Design Studios
 third kit Colin Whitehair
 home socks Ben and Jamie
 away socks Steven Elliott



ANDY LITTLE
 home kit In Memory of Bernard Whaley
 away kit Middlesex Dons
 third kit available
 gloves William and Michael Lonsdale
 socks Noddy




PAUL LORRAINE
 home kit Linda and Roger Dennis
 away kit Richard and Steve Lonsdale
 third kit Tina Massey
 home socks Neil and Geraldine Messenbird
 away socks Rob Cornell



JON MAIN
 home kit Ross, Bernie, Neville, Tony & Phil
 away kit Samuel "Tiger" Leach
 third kit Gibbo and Welsh Womble
 home socks Jess and Kelly
 away socks www.wup.me.uk




LUKE MOORE
 home kit Womble Misfits PLC
 away kit The Willoughby Arms
 third kit Adrian Stacey
 home socks www.afcdons.net
 away socks Jack and Kerry Yeomanson




JAMES PULLEN
 home kit Derek and Susan Goodhew
 away kit Robert and Liam Sallis
 third kit available
 gloves Nathan, Rebecca, Kerri and Aidan Clarke
 socks Happy 50th Nick!



PETER RAPSON
 home kit Windlesham Don
 away kit available
 third kit available
 home socks Pat and Jackie
 away socks available




LEWIS TAYLOR
 home kit Shore Communications
 away kit Nick and Mick
 third kit Ross, Bernie, Neville, Tony and Phil
 home socks Ollie Lewis
 away socks Number 6



RICKY WELLARD
 home kit Smitho and Woody
 away kit The Handball Club
 third kit US Dons
 home socks In Memory of James and Keira Ivers
 away socks Stafford Wombles



HAYDON THE WOMBLE
 home kit Outmere Direct Mail Ltd
 away kit Paul Strank & Sons Roofing
 third kit available
 home socks Kelly and Charlotte
 away socks Libby and Georgie Messenbird



To become a
 kit sponsor call
 Keith McGuinness
 on 020 8547 3336
 or email
kitsponsorship@afcwimbledon.co.uk

DATE	OPPOSITION	RES	ATT	1	2	3	4	5	6	7	8	9	10	11	12	14	15	16	17/13
AUG SAT 8	LUTON TOWN																		
Tue 11	EASTBOURNE BOROUGH																		
Sat 15	KETTERING TOWN																		
TUE 18	SALISBURY CITY																		
Sat 22	ALTRINCHAM																		
SAT 29	OXFORD UNITED																		
Mon 31	GRAYS ATHLETIC																		
SEPT Sat 5	TAMWORTH																		
TUE 8	WREXHAM																		
SAT 12	CAMBRIDGE UNITED																		
Sat 19	EBBSFLEET UNITED																		
TUE 22	CRAWLEY TOWN																		
SAT 26	HISTON																		
Tue 29	RUSHDEN & DIAMONDS																		
OCT SAT 3	KIDDERMINSTER HARRIERS																		
Sat 10	FOREST GREEN ROVERS																		
SAT 17	KETTERING TOWN																		
Sat 31	CHESTER CITY																		
NOV Sat 14	BARROW																		
SAT 21	YORK CITY																		
TUE 24	EBBSFLEET UNITED																		
Sat 28	LUTON TOWN																		
DEC Tue 01	SALISBURY CITY																		
SAT 05	GATESHEAD																		
Sat 19	CRAWLEY TOWN																		
SAT 26	HAYES & YEADING UNITED																		
Mon 28	STEVENAGE BOROUGH																		
JAN Fri 1	HAYES & YEADING UNITED																		
SAT 16	MANSFIELD TOWN																		
TUE 19	GRAYS ATHLETIC																		
Sat 23	WREXHAM																		
SAT 30	BARROW																		
FEB SAT 6	FOREST GREEN ROVERS																		
Tue 9	KIDDERMINSTER HARRIERS																		
Sat 13	CAMBRIDGE UNITED																		
SAT 20	TAMWORTH																		
Tue 23	OXFORD UNITED																		
MAR SAT 6	ALTRINCHAM																		
SAT 13	EASTBOURNE BOROUGH																		
Sat 20	YORK CITY																		
SAT 27	RUSHDEN & DIAMONDS																		
APR Sat 3	HISTON																		
MON 5	STEVENAGE BOROUGH																		
Sat 10	MANSFIELD TOWN																		
SAT 17	CHESTER CITY																		
Sat 24	GATESHEAD																		

PLAYER	APPEARANCES			GOALS		
	BSP	CUP	TOTAL	BSP	CUP	TOTAL
JAMES PULLEN						
JAY CONROY						
CHRIS HUSSEY						
KENNEDY ADJEI						
ALAN INNS						
BEN JUDGE						
SAM HUTTON						
LEWIS TAYLOR						
DANNY KEDWELL						
JON MAIN						
ELLIOTT GODFREY						
LUKE GARRARD						
DEREK DUNCAN						
STEVEN GREGORY						
BRETT JOHNSON						
RICKY WELLARD						
LUKE MOORE						
JACK TURNER						
PETER RAPSON						
PAUL LORRAINE						

www.afcwimbledon.tv
watch video highlights, when you want

www.wdon.com
live audio commentary, and more

FA CUP

DATE	OPPOSITION	RES	ATT	1	2	3	4	5	6	7	8	9	10	11	12	14	15	16	17	18	19/13
OCT SAT 24	4Q																				
NOV SAT 7	1																				
NOV SAT 28	2																				
JAN SAT 2	3																				

FA TROPHY

DATE	OPPOSITION	RES	ATT	1	2	3	4	5	6	7	8	9	10	11	12	14	15	16	17/13	
DEC SAT 12	1																			
JAN SAT 9	2																			
JAN SAT 30	3																			
FEB SAT 20	4																			

LONDON SENIOR CUP

DATE	OPPOSITION	RES	ATT	1	2	3	4	5	6	7	8	9	10	11	12	14	15	16	17/13
NOV W/C 30	TOOTING & MITCHAM																		
JAN W/C 4	QF																		
JAN W/C 1	SF																		
TBC	F																		

SURREY SENIOR CUP

DATE	OPPOSITION	RES	ATT	1	2	3	4	5	6	7	8	9	10	11	12	14	15	16	17/13
DEC WED 9	ASH UNITED																		
JAN WED 20	3																		
FEB WED 24	QF																		
MAR WED 25	SF																		

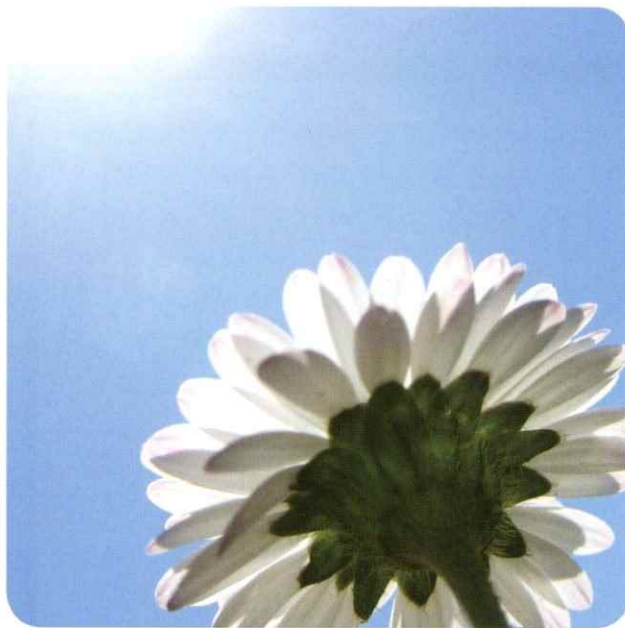
Policy on banning fans

Fans may be banned for offences which include violent, threatening or disruptive behaviour: racist or homophobic language or obscene chanting; and obstructing stewards in the performance of their duty.

If a fan is banned, that ban is indefinite until the fan demonstrates that their behaviour has improved sufficiently for readmission to be agreed. In the meantime, the club will encourage other clubs to enforce the ban at away games.

Banned fans can appeal this exclusion order to the AFC Wimbledon Chief Executive. They also have the right to appear before a selected Disciplinary and Complaints Panel to make representations to be readmitted.

websites
online advertising
viral campaigns
rich-media ads
e-newsletters/video emails
identity design
p.o.s
posters/leaflets
brochures/magazines
sports programmes
large format printing
marketing campaigns
promotions



Down 2 Earth design, create and deliver a vast array of projects, such as online advertising, websites, viral campaigns, branding and visual identity.

When it comes to making you look good, we're decent. As they say in football.

If you would like to know more about us or have a project you'd like us to take a look at then give us a call on
020 8545 4910
www.d2e.co.uk



CAPPAGH HOUSE, WATERSIDE WAY, WIMBLEDON, SW17 7AB
TEL: 020 8947 4000 FAX: 020 8944 9447
ENQUIRY@CAPPAGH.CO.UK
WWW.CAPPAGH.CO.UK



“ Proud sponsors of AFC Wimbledon ”

UTILITIES CONTRACTORS | HIGHWAY MAINTENANCE
GROUNDWORK | RECYCLED AGGREGATES | CCTV SURVEYS
MUCKAWAY | READYMIX CONCRETE | DEMOLITION
CONCRETE CRUSHING | PLANT & SKIP HIRE

CAPPAGH

“IT WAS A
GAME
OF TWO HALVES...
AND I WON
THEM BOTH!”

“4 CUPS” PHIL

It's not the winning - it's the rubbing it in! Create your own club, give it a name and pick players from Sports Interactive's world-renowned database. Then pit your skills against other managers from across the globe LIVE and online 24/7. Finally, the world will know who is the master.

PLAY, WIN, RUB IT IN!

Sign up at FootballManagerLive.com

FOOTBALL
MANAGER
LIVE



ask
about
games
.com

www.sigames.com



SEGA®
www.sega.co.uk