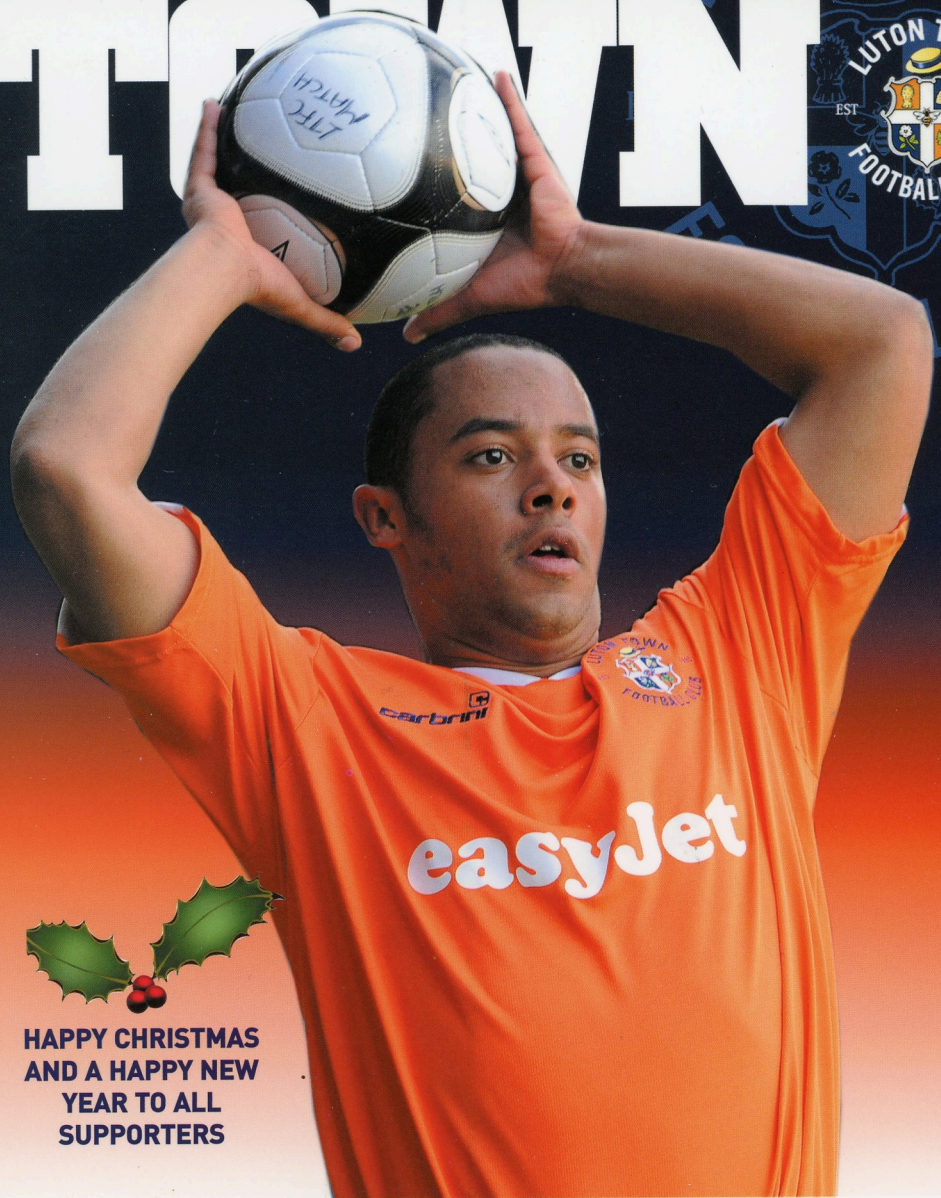


TALK OF THE

# TOP TOWN



**HAPPY CHRISTMAS  
AND A HAPPY NEW  
YEAR TO ALL  
SUPPORTERS**

## **v EASTBOURNEBOROUGH**

MONDAY 28TH DECEMBER 2009 3PM  
BLUE SQUARE PREMIER

OFFICIAL MATCHDAY PROGRAMME OF LUTON TOWN ISSUE 16 £3.00

CLUB SPONSOR

**easyJet**

BACK OF SHIRT & SHORTS SPONSOR





# carbrini® sportswear

ONLY  
AT JD



## Carbrini Pro Football Boots

### Impeccable Support, Comfort and Control

**BEST  
OF THE  
BEST**

JD - The Best of the Best.  
Available at your local JD Store  
The Arndale Shopping Centre, Luton & Online.



JDSports.co.uk

## INSIDETODAY

LUTON TOWN v EASTBOURNE BOROUGH 28 / 12 / 09



ADDRESS:  
Luton Town Football Club 2020 Ltd  
Kenilworth Road Stadium,  
1 Maple Road, Luton,  
Bedfordshire LU4 8AW

Main switchboard: 01582 411622  
Fax: 01582 405070  
Ticket Office: 01582 416976

CHAIRMAN  
Nick Owen

SUPERVISORY BOARD  
Paul Ballantyne, Andrew Cook,  
Bob Curson, Mick Pattinson,  
David Wilkinson

MANAGING DIRECTOR  
Gary Sweet

DIRECTORS  
Antony Brown, Stephen Browne

FINANCE DIRECTOR  
Ginny Bradwell

MANAGER  
Richard Money

ASSISTANT MANAGER  
Alan Neilson

CHIEF SCOUT  
Gary Brabin

PHYSIOTHERAPIST  
Harry Scott-Stackman

FIRST TEAM COACHES  
Dmitri Kharine  
Kevin Watson

YOUTH DEVELOPMENT OFFICER  
Gregg Broughton

YOUTH TEAM COACH  
Martin Prickett

FOOTBALL AND COMMUNITY  
DEVELOPMENT OFFICER  
Stuart Smith

CLUB SECRETARY (ACTING)  
Adam Cockfield

CLUB CHAPLAIN  
Alan West

04



### 04 MONEY TALKS

Richard Money on another important game.

### 06 THE BOARDROOM

The 2020 mission from director Stephen Browne.

### 09 KEVIN NICHOLLS

The Town skipper's thoughts on Eastbourne Borough.

### 12 EASTBOURNE BOROUGH

Our four page guide on our visitors from East Sussex.

### 20 DAYS PAST

Roger Wash takes a look back in time at a day in the Town's history.

### 30 DAVID OLDFIELD

In our next instalment of catching up with past players we talk to the Australian.

### 60 TICKETS & TRAVEL

Home and away ticket news and travel information ahead of Town's forthcoming matches.

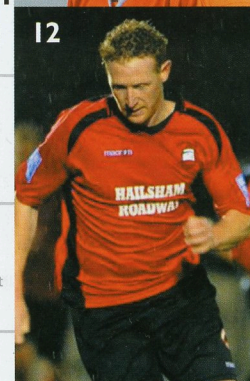
### 63 THE FINAL

Our quiz reaches its climax.

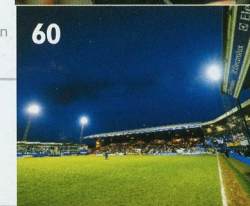
09



12



60



Luton Town Football Club official matchday programme.

Editors: Andrew Barringer and Uptonaway Media. Designed by: Lee Wood.  
Contributors: Andrew Barringer, Chris Rivett, Becky Ashton, Stuart Young, Simon Pitts, Gareth Davis and Roger Wash. Photography: www.garethowen.co.uk. Printed by Queensway Publishing 01440 711923.  
The view in this programme are those of the contributors and not necessarily those of the Editors and/or Luton Town Football Club.

Cover photo: Ed Asafu-Adjaye winds up to take a throw-in.





## CLUB HONOURS

JOHNSTONE'S PAINT TROPHY  
Winners 2009

LITTLEWOODS CUP  
Winners 1988  
Runners up 1989

FA CUP  
Runners up 1959  
Semi-Finalists 1985, 1988, 1994

HIGHEST LEAGUE FINISH  
Division One 7th 1986-87

FOOTBALL LEAGUE DIVISION TWO  
Champions 1982

FOOTBALL LEAGUE DIVISION THREE  
(SOUTH)  
Champions 1937

FOOTBALL LEAGUE ONE  
Champions 2005

FOOTBALL LEAGUE DIVISION FOUR  
Champions 1968

SIMOD CUP  
Finalists 1988

SOUTHWEST CHALLENGE CUP  
Winners 2009

# MONEY TALKS

Welcome back to Kenilworth Road for our second successive home match in the Blue Square Premier in the space of two days.

I would like to extend a warm welcome to Garry Wilson, his staff, players, the directors and supporters of Eastbourne Borough to this afternoon's fixture.

Due to the Christmas printing deadlines these notes have been written before our Boxing Day game with Histon but hopefully we have achieved a positive performance and the right result that will give us something to build on today.

Eastbourne are a superb example of a club who have done exceptionally well to rise through the non-league pyramid and, following their successful first season at this level last year, they will pose difficult challenge for us.

Today is our last match of the 2009. While everyone at the club is naturally disappointed with a relegation during the year, we all hope that 2010 is a year to remember.

Since I have come to the Club I have been overwhelmed by the support that you have given myself and the players.

We are average almost 6,500 people for our home matches in the Blue Square Premier which is a quite remarkable feat at this level.

Your support away from Kenilworth Road has continued to astound us and I am sure many clubs would like to see Luton Town play them at home every week given the numbers of people that travel to see us play.

It really is much appreciated and gives the players a huge lift. Many people talk of the expectancy placed on the players such is our magnificent backing but they are professional and experienced enough to deal with the kind of so-called 'pressure' of playing for this club.

It is sometimes hard to believe that this is a club that finds it playing outside the Football League but we must accept that this is the case and strive for success between now and the end of the season in a bid to win back that place we lost last season.

I truly believe that this is possible and I will reiterate what I have said many times before: there will be disappointments along the way but it is how we react to these setbacks that is the most important.

Any success is the result of hard work and dedication and I believe with a bit of luck we can still make this a season to remember.

It won't be easy as, as I have found out already, this division is better than many people give it credit for.

I am pleasantly surprised by the quality of football in the Blue Square Premier which makes it all the more tougher for us.

However, we must not use that as an excuse. We have a group of players at this Club who have the ability to take us forward and produce the success I have outlined above.

This is our last match in the league until we travel to meet one of our promotion rivals Mansfield Town which will be another crucial game.

Before then, however, we go to Southampton in the third round of the FA Cup on Saturday.

That will be a marvellous occasion for us as we represent the Conference and no doubt we will have plenty of you there to cheer us on.

Have a great New Year and enjoy today's game.







# 2020 MISSION

DIRECTOR STEPHEN BROWNE ON OUR FINAL GAME OF THE YEAR



Welcome to Kenilworth Road for our last match of 2009.

Today we entertain Eastbourne Borough. They will be a tough challenge as they try and collect more points to move themselves away from the relegation zone. They have not gained the points they would like on the road this season but nevertheless they have been able to pick up a third of their points tally so far from their travels.

We welcome their players, staff and supporters to Kenilworth Road and we look forward to a good and fair game of football.

The staff and board of the Club hope you all enjoyed your festive period and we hope the players can give a performance to remember as we bring the year to a close.

The Christmas period is a good time to reflect on those less fortunate than ourselves. It is a time that we try and help those around us and

ensure that everyone has something to celebrate. For us at the Club, the festive season is not the only time that we try and help others. During the course of 2009 we have been proud to start a number of initiatives that have benefited the community.

At the beginning of the year we launched our 'Play For Success' programme alongside our sponsors and partners.

This has had phenomenal results so far and we are delighted with its success. In its first year over 1,500 children from in excess of 20 schools across Luton have benefited from the courses we offer and we now have the capacity to achieve double that number over the next year.

In addition, and with our partners Active Luton, the Adult and Community Learning Department and Luton Airport, we are offering programmes such as Flying for

Success, The Hatters' Reading Challenge and the Hatters Double Club.

A football festival was held at Kenilworth Road and this involved over 400 youngsters. We have now teamed up with the UK Carnival Arts Centre to deliver a joint project linking the arts with football. The Play for Success programme will continue to go from strength to strength as we aim to reach out and help the younger generation.

Additionally, we have helped over 130 local causes and charities this year as they look to raise money for very worthy reasons. This has included a number of things - from guest appearances of Happy Harry, to involvement from the players and directors, provision of auction items, bucket collections, player endorsements and partnerships to raise money.

On top of that we have helped a number of Bedfordshire schools in

their coursework by organising tours of the ground for classes and teachers and giving youngsters the chance of work experience.

For young adults we have helped University students in their projects by giving advice on these, conducting interviews for media students, answering sports management questionnaires, judging final year coursework at Bedfordshire University, as well as offering gap year internships where we can. We have covered students who are studying sport, business, media, physiotherapy, and sports management to name a few.

We are also delighted to be part of the planning for 'Luton in Harmony' of which we are sure you will hear a lot more in the coming months, but suffice to say this is an all-inclusive initiative aimed at the entire community of Luton.

The Football in the Community Department continues to help and coach hundreds of children from across the county so that

our reach is not just limited to Luton. Again, a huge amount of interaction with children to help them develop their talents.

On top of this we are pleased to announce that after nine months of planning, the Club has now received confirmation that we have gained grant funding to open a Learning Centre at Kenilworth Road.

This funding has been hard to gain against stiff competition but it is a substantial sum that will allow us to install a top-class learning environment from scratch.

We will be working with the other excellent centres in the area so that between us we can offer the best courses for the community. It will provide at least two classrooms with a fully functional IT suite that will enable courses to be offered to supporters and the community. These courses will include NVQ accredited courses, courses to help people retrain, online courses and exams, courses to help people get back into work

in these difficult times, as well as non-qualification bearing courses aimed at helping individuals better themselves.

As you can see, the club is doing an unprecedented level of community work, never done before. This is a key part of achieving our cornerstone of 'being part of the community' which was one of our top five objectives when we became custodians of the Club and one that will breed a new generation of Hatters fans.

We thank all the staff involved in achieving these excellent results - results of which many 'big' teams are jealous - and this goes to show the immense amount of hard work they put in for the Club and the community.

On that note, it only remains for all of us at the Club to thank you again for your patience and support, and to wish you a very happy and successful 2010!

Stephen.



TRAVEL JUST GOT AFFORDABLE!!!



SAVE £100's

Take your holidays at cost price!!!

Takeoff Travel 

call 01582 740015

or email [enquiries@takeofftraveluk.com](mailto:enquiries@takeofftraveluk.com)

quoting "Luton Town Football Club"

With our unique scheme you can book all of your holidays, travel and accommodation at home and abroad free of Travel Agents Commissions! (This can reduce your holiday cost by 10-20%).

Every time you use Takeoff, Takeoff makes a contribution to Luton Town Football Club.

TakeOff Travel UK Limited is an independent travel agent part of Freedom Travel Group, ABTA L4163, protected by ATOL and IATA. Registered address 6, Stanhope Gate, Stanhope Road, Camberley, GU15 3DW



## KEVIN NICHOLLS

Welcome back again to Kenilworth Road for the second time in as many days.

It was disappointing that the Forest Green match was postponed due to the cold weather as we wanted to bounce back from the disappointment of losing to Cambridge in our previous game.

These notes were written and printed before the Histon game so I can't report on how we fared but hopefully we achieved a positive Boxing Day result that we can follow-up with today.

Games at this time of year are always vitally important so we need to make sure that we come through this period with as many points as possible as we look to cement a place in the top five of the division.

If we picked up victory against Histon another three this afternoon would be best Christmas present we could wish for.

Any team with aspirations of promotion should be winning their home games and that is something we have spoken about improving.

You look at teams above us in the table and see that their record in front of their own supporters are very good.

Before the Boxing Day games Oxford had only dropped two points all season while Stevenage and York are both yet to taste defeat.

If we can go on an unbeaten sequence at Kenilworth Road between now and the end of the season and continue our superb away form, then the second half of this campaign has the potential to be very exciting indeed.

We need to make this place a fortress again. No team should relish coming to face us here even if we are the team everyone wants to beat in the division.

It's certainly been a mixed 2009 for us following the highs of winning the Johnstone's Paint Trophy and the lows of being relegated from the Football League.

Obviously it goes without saying that three points would be the ideal tonic to see out the year on a high this afternoon but here's hoping that 2010 can bring the success we crave.

We had a taste of that sense of accomplishment and euphoria last April at Wembley and rest assured all the players and all the coaching staff are working hard to make sure we bring the good times back to this club.

On behalf of all the lads in the dressing room may I take this opportunity to wish you a prosperous and safe New Year.

Enjoy the game.

NICE  
8

THE CAPTAIN

WWW.LUTONTOWN.CO.UK





## IT'S YOUR PAGE

To send us your request and see your name in the matchday programme email [andrew.barringer@2020mission.com](mailto:andrew.barringer@2020mission.com)



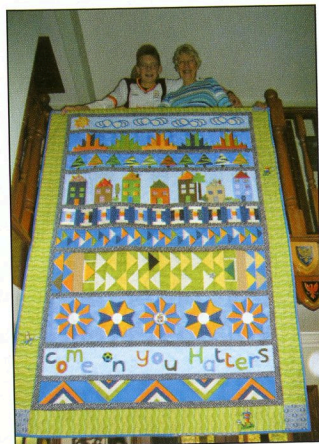
We receive a whole host of emails at the club when we request you to send us your photographs in.

With the weather being as cold as it has been recently we thought the email from Max Masters and Valerie and Donald Brace deserved to make the page.

Max writes: "After reading your article on the official website I thought it would be a great idea to show these pictures of myself and my Grandma with a very special Luton Town quilt.

"It took Valerie a year of monthly classes to complete, and every layer of the quilt tells a story.

"For example the sun is for when they win, the clouds when they lose while the Bedford Road houses and the Barton hills and trees form part of our journey to each match from Clifton.



"We are a proud family of Luton town fans, Donald my grandfather a supporter for 63 years and I am a season ticket holder of eight years.

"It would be fantastic if her hard work could be rewarded with a picture in the match programme."

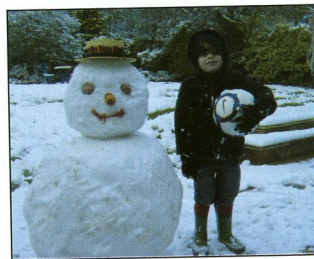
Happy to oblige, Max!

### HATTERS SNOWMAN

In keeping with the weather theme we expected to receive a deluge of photographs of you and your snow creation during the cold snap.

In the end we received just the one from supporter Robert Hill

made by his son Jake in their back garden.



## CLUB SHOP AND TICKET OFFICE CHRISTMAS AND NEW YEAR OPENING HOURS

Monday 28th December -	12 noon until kick-off and then after the game until required
Tuesday 29th December -	CLOSED
Wednesday 30th December -	10am-4pm
Thursday 31st December -	10am-4pm
Friday 1st January -	CLOSED
Saturday 2nd January -	12pm-3pm
Sunday 3rd January -	CLOSED

## NEW DATES FOR RESERVE GAMES

Supporters should note the changes to four fixtures for the Town's reserve games in the [totesport.com](http://totesport.com) Combination in 2010.

The four games in question are the home and away fixtures with Norwich City and Northampton Town.

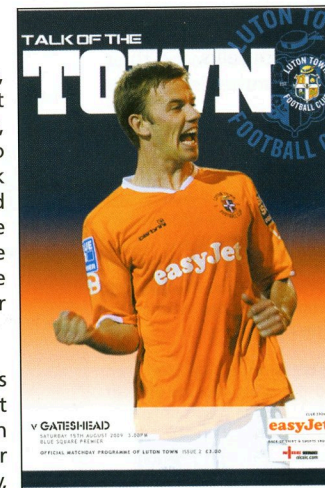
The games with Norwich have been arranged for: HOME: Tuesday 12th January, kick-off 2pm and AWAY: Wednesday 17th February, kick-off 2pm.

Against Northampton the new dates are: HOME: Tuesday 2nd February, kick-off 2pm and AWAY: Tuesday 20th April, kick-off 2pm.

## THANK YOU

As it is the last game, and therefore last programme of 2009, the editor would like to go on record and thank all the contributors and supporters who have assisted with the production of the match programme over the last 12 months.

Remember this programme is aimed at you so if you'd like an idea incorporated, or want to help in anyway, please get in touch.



## HATTERS DIARY

### SATURDAY 2ND JANUARY

The Hatters travel to Southampton for an eagerly anticipated FA Cup third round tie at St Mary's.

It will be the Town's third visit to the Saints' new stadium but this time will be aiming to make it to the fourth round of the competition against Alan Pardew's League 1 outfit. Kick-off 3pm.

### SATURDAY 9TH JANUARY

Following their exit from the FA Trophy at Cambridge the Hatters take on Play-Off rivals Mansfield Town in a rearranged match at Field Mill.

The original fixture was originally postponed due to a waterlogged pitch at the Nottinghamshire venue on 1st December. Kick-off 3pm.

Martin Prickett's Under-18s are back from their festive break as they go in search of a third straight Youth Alliance victory when they entertain Wycombe Wanderers at Ely Way. Kick-off 11am.

### SATURDAY 16TH JANUARY

After over two weeks without a game at Kenilworth Road the Town are back in action on home soil when they entertain Salisbury City.

The Hatters drew 1-1 with the Whites earlier in the campaign and will be looking to earn three valuable points in the Blue Square Premier. Kick-off 3pm.





# EASTBOURNE BOROUGH

WE TAKE A LOOK AT TODAY'S VISITORS



South in 2007/08. Eastbourne were playing County League football as late as 2000 under the name Langley Sports before their climb up the pyramid.

After being renamed in 2001 the club won promotion from the Southern League East Division in 2002/03 before the non-league's restructuring the following season saw the Sports line-up in a newly formed Conference South in 2004/05.

Their rise to today's position among the top 24 Non-League sides in the country could have come earlier had Altrincham not beaten them in a North v South Play-Off final in 2005/06.

**FACT:** While the Hatters were winning the Littlewoods Cup with victory over Arsenal in 1988, Eastbourne – then known as Langley Sports – were lifting the Sussex County League Division 2 title.

**Nickname:** Sports

**Manager:** Garry Wilson

**Ground:** Langley Sports Ground

**Last season:** Conference 13th

**2008/09 average attendance:** 1,344

**2009/10 BSP title odds:** 50/1

**PREVIOUS MEETINGS:** None

### RECENT HISTORY:

Last season Garry Wilson led the Sports to an unprecedented 13th place in the Conference following their elevation from the Conference

## THE MANAGER

GARRY WILSON

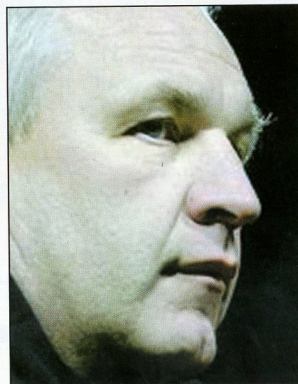
A former Scotland Under-18 international defender, Wilson took control at Priory Lane in 1999.

In his first full season he led the team to win the Sussex County League and with it promotion to the Southern League Eastern Division for the first time in the club's history.

Two seasons later he led them into the Southern League Premier Division winning a place in the newly formed Conference South.

Gaining fifth place in the first season, Wilson saw the team enter the Play-Off final for the Conference National at Stoke's Britannia Stadium where they lost to Altrincham.

There was better news the in 2008 when he guided the team into the Play-Off final for a place in the Conference National which they won 2-0 against Hampton & Richmond Borough at Stevenage.



Eastbourne Borough arrive at Kenilworth Road on the back of a recent run of good results, but are still flirting with the relegation zone as they head into today's fixture.

Sports' Manager Garry Wilson, who is now in his 11th season in charge at Langney Sports Club, is looking for improvements from his side as they head into the New Year.

"We have to be realistic about where we are in the league table," Wilson said.

"It's a little disappointing when you think about where we were this time last season.

"We've signed some quality players in the summer so we're thinking we should be doing a bit better than where we were this time last season.



## GARRY WILSON

EASTBOURNE BOSS LOOKING TO TURN DRAWS INTO WINS STARTING AT TOWN TODAY

"Hopefully we can find a way of turning draws into wins which will be a massive help. We need to start picking up three points from games."

Reflecting back on their start to the season Wilson believes the Blue Square Premier is a very competitive league which is wide open.

"This season we have been hard to beat which is a positive and we've not been conceding many recently either," he said.

"The toughest side we have probably faced so far this season is Stevenage. Physically they are very strong and difficult to play against.

"The league is very open because

most of the games we have played have been very tight, there are a lot of good teams in the conference."

Wilson knows his team will be the underdogs against the Hatters but he is relishing the prospect of seeing how they will get on against Richard Money's men.

"It's a small club against a big club," said Wilson. "We will be away from home so I expect it to be a really

tough and challenging game for my players.

"We are hoping to turn those draws we've been getting into wins because we want to climb up the league.

"We will go into the game looking to get something from it. People won't expect us to win but we will try our best to change that."

“It's a small club against a big club, we will be away from home so I expect it to be a really tough and challenging game for my players”



## GOALKEEPERS

### Danny Knowles

Stopper who signed for Borough in the 2009 close season from Woking. Previously with Gillingham, from where he had loan spells with Crawley Town and Fisher Athletic, before permanent switches to Grays Athletic and Weymouth followed.

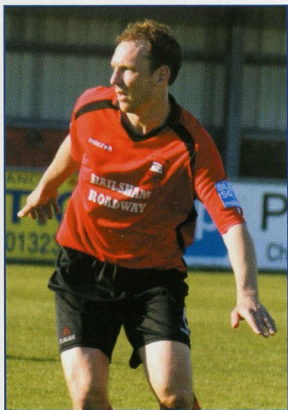
### Michael Jordan

Graduated through the ranks at Arsenal, gaining international honours for England Under-19s while with the Gunners. He made Football League debut while on loan at Chesterfield and has also had spells with Lewes and Stevenage Borough before signing for Borough in January 2009.

## DEFENDERS

### Marc Pullan

An inspiration in defence since signing from Worthing in 2006, the England non-league

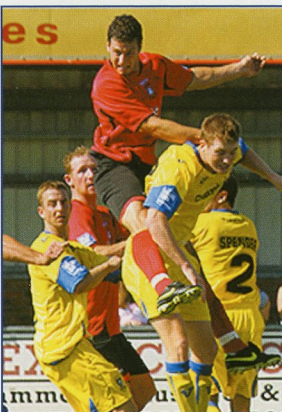


MARC PULLAN

international has also played for Peacehaven, Wick and Crawley Town.

### Ben Austin

Joined the club from local rivals Eastbourne Town in the summer of 2000 and has been a regular in defence as the club climbed from the Sussex County League to the Football Conference.



GARY ELPHICK

### Gary Elphick

Signed in the summer from Havant & Waterlooville, Gary began career with Brighton & Hove Albion. The defender has also had spells with Aldershot and St Albans City.

### Darren Baker

A product of the Brighton youth system, he signed for Borough in 1992 and has been a regular in the side ever since making his debut in October of that year. Baker has gone on to make over 800 appearances for the club as they have risen through the divisions



PAUL ARMSTRONG

### Matt Hurley

Arrived at Priory Lane at the beginning of the 2009/10 campaign after impressing with Shoreham in the Sussex County League. Matt has also been on the books of Burgess Hill Town and Mile Oak.

### Neil Jenkins

England Under-20 international defender who began career with Wimbledon before a move to Southend United. He made over 50 appearances in the Football League before a transfer to Crawley Town in 2004 before arriving at Priory Lane in 2006.

## MIDFIELDERS

### Paul Armstrong

Current club captain, Armstrong signed from Crawley Town in the 2006 close season, Paul began with Brighton before a move to Airdrieonians in the Scottish League before a move back to Sussex in 2003.



MATT CRABB

### Matt Crabb

Another long-serving player having signed from Eastbourne United in July 2000. He quickly becoming a regular in the team playing on the left side of midfield, Matt has a desire to get forward at every opportunity and is now approaching 400 appearances for the club.

### Danny Brown

Initially joined on-loan from Cambridge United in November 2008, the move was made permanent in the January 2009. A product of the Leyton Orient youth policy he has gone on to gain experience with Barnet, Oxford United and Crawley Town.

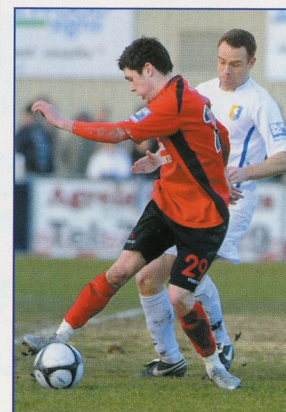
### Nathan Crabb

Matt's younger brother who also signed from Eastbourne United. Nathan has a knack of scoring goals in important matches including the club's victories in the Blue Square

South promotion final and the Sussex Senior Cup.

### Matt Smart

Long-serving midfielder who gained a cap for the England Futsal team, Smart started career with Gillingham. Also includes Shoreham, Wick and Horsham, from where he was signed in 2001, as his previous clubs.



DAN SMITH

### Dan Smith

Originally signed on a three month loan deal during the 2008/09 season from Plymouth Argyle but joined Borough permanently when he was released by the Pilgrims in May 2009. Has also spent time on loan spell at Morecambe in the Football League during 2008/09.

### Simon Weatherstone

Midfielder with a wealth of experience following stints with Oxford United, Yeovil Town, Hornchurch, Stevenage Borough, Weymouth and Crawley Town, from whom he

signed in the recent close season.

## STRIKERS

### Liam Envers-Marum

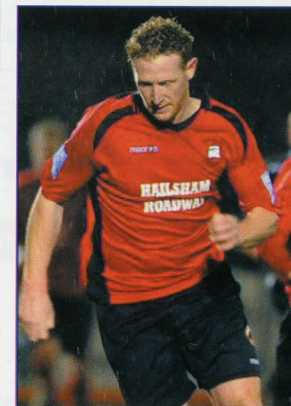
A close season signing from Woking in June 2009, the striker has previous experience with Reading and Cambridge United.

### Jamie Taylor

Striker who joined Sports in the summer of 2009 after spending last season with Grays Athletic. He has previously had spells with Horsham, Aldershot, AFC Wimbledon, Woking and Dagenham & Redbridge.

### Andy Atkin

Signed from Eastbourne United in 2005 and was playing in the Conference Promotion final only weeks later. A reliable goal scorer, Andy has scored important goals, especially during the club's 2008/09 promotion campaign.



ANDY ATKIN



Hartwell *Quality* Used Cars - Driving value since 1919.

## The Hartwell Commitment

- 30 Day Exchange
- FSA Regulated company
- Manufacturer backed finance packages
- Same day delivery service available
- Full after sales support
- Manufacturer trained technicians
- Customer Loyalty Programme
- All cars fully prepared
- Part exchanges welcome
- Independent mileage check



The Clock is Ticking...

## Price Promise

We're so confident our prices can't be beaten, if you can buy the same used car for less within 7 days we'll

## Refund the Difference!

Based on sight of a genuine 'like for like' quotation.

**EXTENDED DUE TO PUBLIC DEMAND**

# Beat the VAT increase!

Plus

Pay Nothing 'til February 2010 available on **EVERY** used car!

Beat the VAT increase by buying now before the Government are due to increase the VAT on 1st January 2010. Plus, for a limited period only, choose any used car, then after your initial deposit which could be your old car, pay **absolutely NOTHING** until February 2010.

So you get to drive away a newer car today and then no repayments until next year. **With access to over 3000 used cars we're sure to have one to suit you.** Come down to Hartwell this weekend and you can value your current car too, using a trade recognised Valuation Guide.



Value your own car!

**YES!** Value your own car this weekend only using a trade recognised valuation guide. Use our computer to see what your current car is really worth. If your car is worth more than the required deposit, we could give you Cash Back for Christmas! This offer is available for this weekend only.

Browse our massive selection of *Quality* used cars online - [www.hartwell.co.uk](http://www.hartwell.co.uk)



77 London Road, Dunstable, LU6 3DT

Tel: 0870 904 9374

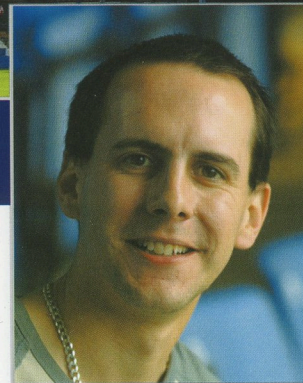
[www.hartwell.co.uk](http://www.hartwell.co.uk)



**12.9% APR**  
TYPICAL

OPEN 7 DAYS A WEEK MON-FRI 8.30am-7.00pm SAT 8.30am-5.30pm SUN 10.00am-4.00pm

Finance is subject to status, written details on request. Finance available through Hartwell Finance Ltd. \*Terms and conditions apply. See website for details.



**14**

The number of Football League matches played at Kenilworth Road on this date. The Hatters have won 10, drawn two and lost two. Luton have scored 34 goals in these matches and conceded 17.

**5**

The most number of goals scored in a home fixture on this date and it's happened twice. In 1920 Gillingham were beaten 5-0 courtesy of two goals from both Allan Mathieson and Harry Higginbotham with Syd Hoar scoring the other. In 1935 Clapton Orient were beaten 5-3 with Willie Boyd scoring all five goals, his only Luton hat-trick, and in only his third appearance for the Hatters!

**3**

The number of hat-tricks scored by Luton players in these fixtures played on this day. The first was Boyd as mentioned above, with Allan Brown scoring three in a 4-0 win against Arsenal in 1957. This was in front of the highest Kenilworth Road attendance for a fixture on this date, 27,493. In 1974 Ron Futcher, on his home league debut, repeated Brown's feat, as he netted all the goals in a 3-2 win against Wolverhampton Wanderers.

**5,285**

The lowest attendance for these fixtures saw Luton lose 4-0 to Exeter City in a Division Three South match in 1929. This is also the only home game on this date that Luton have failed to score. The only other team to win at Kenilworth Road on this date were Millwall in 1963, when the visitors won 3-1. Fred Jardine scored the Town's goal.

## NUMBERS GAME

**8**

The current run of unbeaten matches at Kenilworth Road on this date since the Millwall defeat. The Hatters have won seven and drawn just once, netting 18 goals and conceding just six. The only draw came in the 2004/05 League One Championship winning season when Colchester United held the Hatters. Richard Garcia put the visitors into the lead before Rowan Vine netted twice against his former side to put Luton 2-1 up. However, Greg Halford equalised to earn a share of the points.

**4**

The number of top flight games that Luton have played on this date at Kenilworth Road and the Hatters won them all. The 4-0 victory over Arsenal in 1957 and the 3-2 win against Wolves in 1974 have already been reported, so this leaves the 1-0 win over Charlton in 1987 and the 2-0 victory against Chelsea in 1991. Danny Wilson scored the only goal of the game against the Addicks, whilst a long range Richard Harvey strike and a John Dreyer penalty were

enough to win the points four years later.

**2008**

This time last year Luton played host to Lincoln City. Chris Martin, on-loan from Norwich, scored twice for the Hatters before Lenell John-Lewis pulled one back for the visitors, all before half time. Ian Roper restored the two goal lead soon after the break with a late goal from Adrian Patulea making the final score 3-2.



ROWAN VINE: NETTED A BRACE IN A 2-2 DRAW WITH COLCHESTER UNITED IN 2004/05

## PLAYERSTATS

	THIS SEASON		CLIP		TOTAL		CARDS		LTCF CAREER	
	LEAGUE	GOALS	APPS	GOALS	APPS	GOALS	YEL	RED	TOTAL	GOALS
Ed ASAFU-ADJAYE	7(0)	0	1(1)	0	8(1)	0	0	0	40	0
Matthew BARNES-HOMER	1(1)	0	0(1)	0	1(2)	0	0	0	3	0
Steve BASHAM	1(5)	0	1(0)	2	2(5)	2	0	0	7	2
George BEAVAN	0(0)	0	0(0)	0	0(0)	0	0	0	0	0
Shane BLACKETT	9(5)	0	5(0)	1	14(5)	1	0	1	39	1
Andy BURGESS	6(1)	0	3(0)	0	9(1)	0	0	0	10	0
Ashley CAIN	0(1)	0	0(0)	0	0(1)	0	0	0	1	0
Ryan CHARLES	0(6)	1	1(1)	0	1(7)	1	0	0	28	4
Tom CRADDICK	20(2)	7	2(3)	1	22(5)	8	3	0	57	20
George DONNELLY	0(4)	0	0(0)	0	0(4)	0	0	0	4	0
Lewis EMANUEL	2(1)	0	0(1)	0	2(2)	0	0	0	89	5
Kevin GALLEN	16(0)	5	6(0)	2	22(0)	7	2	0	51	10
Claude GNAKPA	10(6)	1	4(2)	1	14(8)	2	6	0	60	5
Shane GORE	0(0)	0	2(0)	0	2(0)	0	0	0	2	0
Asa HALL	15(2)	3	2(2)	1	17(4)	4	2	0	72	14
Liam HATCH	3(1)	0	0(0)	0	3(1)	0	2	1	4	0
Jake HOWELLS	6(7)	1	2(3)	0	8(10)	1	0	0	47	1
Rossi JARVIS	14(2)	1	3(0)	0	17(2)	1	2	1	65	4
Keith KEANE	13(0)	0	4(0)	0	17(0)	0	3	0	171	4
Freddie MURRAY	16(3)	0	4(0)	0	20(3)	0	5	0	23	0
Taylor NATHANIEL	0(0)	0	0(1)	0	0(1)	0	0	0	1	0
Adam NEWTON	19(0)	5	3(1)	2	24(1)	4	2	0	25	4
Kevin NICHOLLS	14(0)	0	4(0)	0	18(0)	0	3	1	229	33
Mark NWOKEJI	0(2)	0	0(1)	1	0(3)	1	0	0	3	1
Jordan PATRICK	0(0)	0	0(0)	0	0(0)	0	0	0	2	0
Kevin PILKINGTON	4(0)	0	3(0)	0	7(0)	0	1	0	7	0
George PILKINGTON	22(0)	4	6(0)	0	28(0)	4	2	0	50	4
Callum REYNOLDS	2(0)	0	1(0)	0	3(0)	0	1	1	7	0
Mark TYLER	18(0)	0	1(0)	0	19(0)	0	0	0	41	0
Alan WHITE	18(0)	0	6(0)	1	24(0)	1	3	0	116	4
Ben WRIGHT	4(1)	1	0(0)	0	4(1)	1	0	0	5	1

STATATTACK

WWW.LUTONTOWN.CO.UK

17





**YOU**

*might not have  
his touch, control  
or speed.  
But you can  
wear his socks.*



**The new Umbro Teamwear brochure is out now.**

It's packed with everything your team could need for the new season. From bibs to balls and socks to shirts. It's reassuring to know that Umbro supply more Premiership kits than anyone else. But you don't have to be a superstar to play in our kit, with Adult kit packages from only £295.00 and junior packages from only £245.00. You really can play in Michael Owen's socks. Get Umbro Teamwear. Get next season sorted.

[www.umbrofootballkits.co.uk](http://www.umbrofootballkits.co.uk) or call 0845 603 7047



**HATTERS CHRISTMAS PAST**

PART ONE OF ROGER WASH'S LOOK BACK AT PREVIOUS FESTIVE FIXTURES



THE TOWN TEAM LINE-UP IN 1931 HAVING SURVIVED TWO GAMES AGAINST TORQUAY IN 24 HOURS THE PREVIOUS CHRISTMAS

To most supporters here this afternoon, Christmas Day has always been a time for eating to excess while sitting in front of the television watching yet another re-run of *The Great Escape*.

Up until the late 1950's though, Christmas Day was regarded the country over as one of the most important days in the football calendar.

It was generally accepted that the women of the house would prepare the Christmas dinner while their menfolk toddled off to watch festive football before returning home exhausted ready to be fed!

It was normal practice for home and away games to be played against the same opposition on Christmas Day and Boxing Day but in those pre-computer days the fixture compilers often got it wrong with their geographical knowledge.

This often resulted in both teams travelling on a train together on Christmas night to or from some far flung outpost of the country.

When the Town entered Football League Division Three in 1920 they had to face Southampton twice over the festive period but, fortunately, Boxing Day fell on a Sunday that year so there was a chance for the players to travel at their leisure between the two fixtures.

As both games finished 1-1 the players probably wished they could have agreed the results beforehand and therefore enjoy an extended break!

The Town's first double header took place two years later when QPR were played on consecutive days.

The Hatters went down 4-0 in West London on Christmas Day then won 1-0 at Kenilworth Road after making only one change to the side.

The most amazing pair of games during the decade came in 1926. A hat-trick from Sid Reid set the Town on their way to a 6-0 home win over Millwall but the following day, with the same team, the Lions gained revenge by issuing 7-0 thrashing!

By all accounts the Hatters were lucky to get nil as they were kicked to shreds by a "robust" opposition and were offered no protection by the referee who was a late replacement and came from London.

Probably the Town's longest trip of the season was saved for the Christmas period in 1930 when the fixture planners, in their wisdom, paired us with Torquay.

The Hatters won convincingly at Kenilworth Road on Christmas Day 3-1 but not surprisingly both sides put on a jaded performance in the return the following day and 'fought' out a 1-1 draw.

OFFICIAL MATCHDAY PROGRAMME





# DAYS PAST

CHRISTMAS 1974

When the Town won promotion back to the top flight in 1974 the directors at Kenilworth Road were caught between a rock and a hard place. Should they exercise financial prudence – and with it almost certain relegation – or push the boat out and risk the very future of the club?

The supporters, of course, had no such misgivings and demanded that money be spent on strengthening the squad.

It was therefore seen as a strange decision when a then record amount for teenagers of £125,000 was spent on the little known Futchers twins, Ron and Paul, from Chester.

Supporters felt that the Hatters should be spending their money on instant first-teamers rather than 'ones for the future'.

As the season unfolded it was soon



ANOTHER YOUNGSTER, STEVE BUCKLEY, WAS INTRODUCED TO THE SIDE



PAUL (FRONT) AND RON FUTCHER RUN OUT FOR THE HATTERS BEFORE ONE OF THEIR EARLY GAMES TOGETHER

obvious that the Town were out of their depth and it took until the 10th match before a victory was recorded and, as Christmas approached, only nine points had been won and a quick return to the old Division Two beckoned.

On 7th December, in an away game at Chelsea, manager Harry Haslam decided to blood 18-year-old Paul Futchers and, although the match was lost 2-0, those Luton supporters present saw a star in the making as he played as if he had been at the heart of the Luton defence for years.

The following week's game at Anfield was also lost by the same scoreline but on 21st December, the first win for three months was achieved when Derby, the eventual champions, were seen off 1-0 at Kenilworth Road.

The game was drifting towards a scoreless draw when mid-season signing, Peter Spiring, was fouled by Colin Todd in the area leaving Jim Ryan to net from the spot.

It was later discovered that Spiring had broken his toe when being fouled and so Haslam made the brave decision to introduce Paul's twin Ron to the fray for the match at league leaders Ipswich on Boxing Day.

Ron, who had only been signed as a makeweight to keep his brother from feeling homesick, had surprised his manager by netting 22 times for the reserves but even so the decision to play him at Ipswich smacked of desperation.

The top versus bottom clash was, quite frankly, a poor affair as the Town put up the shutters in an attempt to frustrate their opponents.

Luckily, Ipswich had an off day and the spectators were streaming out long before the end, fed up with the endless backpassing of the Luton defenders and the inability of their own players to hit a barn door.

With only 30 seconds left, Luton winger John Aston, in a rare foray over



JIM HUSBAND AT THE END OF A RARE LUTON ATTACK AT IPSWICH

the half-way line, crossed the ball with his left foot from the right wing and Ron Futchers rose to glance in a delicate header for an unexpected and probably undeserved victory.

I have never seen so many cushions rain down on to a football pitch when the referee blew the final whistle only moments later!

For the home game with Wolves, two days later, the twins retained their places and a holiday crowd of 19,642 rolled up to see them.

Wolves were in mid-table, had not lost for six weeks and were full of confidence after beating high-flying Everton at Molineux on Boxing Day.

The hosts took the lead, slightly against the run of play, in the 23rd minute when Francis Munro headed home a John Farley corner but then

the Futchers twins took over Not for the first time, Paul found his brother with almost telepathic accuracy with a long ball out of defence, and sidestepping Munro, Ron drove firmly into the net in the 38th minute.

Six minutes later he headed in Aston's centre for the second.

With Aston showing the ability to beat Wolves' right-back Nigel Williams with ease, the Town took the game to their illustrious opponents and it therefore came as a shock when Barry Powell equalised in the 68th minute.

This would normally have signalled a time for heads to drop but cavalier attacking football, which was to become a feature for the rest of that campaign, was now the name of the game.

Attacks rained in on the Wolves defence while at the other end Paul Futchers, with a mix of genuine skill and heart-stopping cheek, kept the dangerous Wolves forwards John Richards and Steve Kindon at bay.

The climax came five minutes from the end when Alan West, the best midfielder on view, centred for the inevitable Ron Futchers to head home.

The crowd went wild and when the final whistle was blown, the scenes were reminiscent of a cup final win.

Harry Haslam had been doubted when he paid out such a huge sum for two unknown teenagers but, as so often was the case, he had the last laugh.





# OFFICIALLY NO.1 FOR MOBILE SPORTS BETTING



FOR SPORTS  
BETTING, NEWS  
& RESULTS TEXT  
'BET' TO 64555  
FOR A WEB LINK

WINNER OF THE  
PRESTIGIOUS E-GAMING  
AWARD FOR MOBILE  
OPERATOR OF THE YEAR



## GO TO: MOBILE.BLUESQ.COM OR TEXT: 'BET' TO 64555

One text required at your standard rate. See website for full terms and conditions. Over 18's only.  
Blue Square encourages responsible gambling. gambleaware.co.uk

## HATTERSPICS

The Hatters new online photostore Hatters Pics has become a huge success since it's launch at the beginning of October.

It has enables supporters to purchase all of our official photographs that appear on our official website and in our matchday programme, Talk of the Town.

What's more it is another important revenue stream for the Club while at the same time giving you the chance to have your favourite photographs taken by our official photographer Gareth Owen.

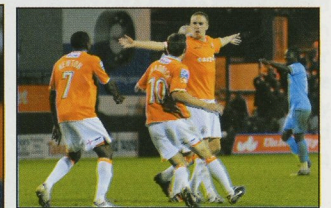
www.hatterspics.co.uk has all of club photographer Gareth's images from the Town's current league campaign in the Blue Square Premier and is updated a couple of days after every single game.

There are a variety of different products available if the photographs on whether it's a special framed print, a t-shirt or a fridge magnet Hatters Pics has the answer.

You can even piece together your own jigsaw of your favourite player. Nobody for one minute is suggesting that any of the Town players go to pieces in the box...

The site has already seen hundreds of photographs uploaded from this season's matches plus a comprehensive archive of all of the photographs taken by Gareth before, during and after our enthralling win at Wembley last April.

The library has steadily grown in size over the course of the season with the choice of pictures endless!



OFFICIAL MATCHDAY PROGRAMME





# Free Computer Courses For Hatters! Do you qualify?

Are you:

Out of work

or  
NOT in paid employment

Have you got *less than*:

5 GCSEs (A\* - C) / NVQ2 / or higher

If you answered 'yes' to the above questions, live in Luton and would like to improve your computing skills, why not take this great course fully supported by Luton Town FC to help our fans. To enrol and receive help and support on improving your job prospects, please contact: Ramona Haughian or Lindy Lloyd on 01582 490033 ramona.haughian@lutonacl.ac.uk / lindy.lloyd@lutonacl.ac.uk for more information.

## COMMERCIAL BREAK

DAVID HOSKINS BRINGS YOU THE LATEST COMMERCIAL NEWS

Good afternoon to all supporters, and in particular all our commercial guests and sponsors with us for our second of two home league fixtures over the festive period.

The commercial department has been hard gearing up for these two games and we are delighted with the response from supporters who have been interested in taking advantage of our different sponsorship and hospitality packages.

As it is our final home game before the turn of the year I must take this opportunity to thank all our sponsors and corporate guests that have been involved with the Club over the past 12 months.

It has been a very mixed year for the Club but we are all looking forward to the challenges we face – on and off the pitch – in 2010.

**MATCH SPONSOR:**  
Blaze Fire Systems



Among the sponsors of today's match are two local businessmen whose company is now providing fire protection systems for the club.

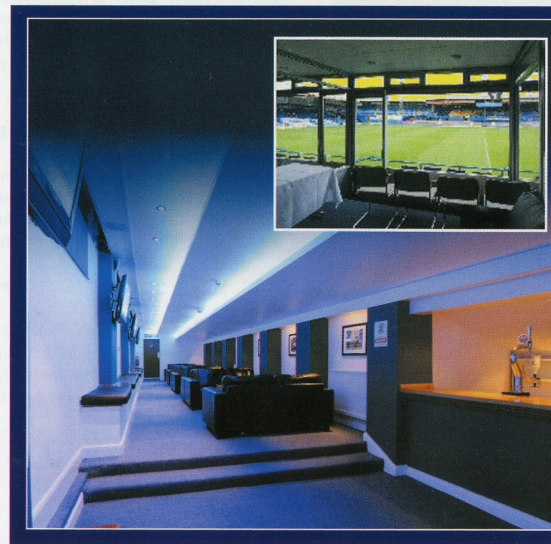
David Rosnovanu and Simon Pay have run Blaze Fire Systems for 10 years offering fire alarms, emergency lighting and fire extinguishers as well as

fire risk assessments and sprinkler maintenance.

They run a nationwide service and offer fire prevention products through their interactive website at prices you will find trouble beating. Visit their website online at [www.blazefiresystems.co.uk](http://www.blazefiresystems.co.uk).

**MATCH BALL SPONSOR:**  
Sue Miller and Regular Rabble

The Regular Rabble is a group of fans who used to club together to sponsor matches. On one occasion, when asked for a sponsor's name to put in the programme, the answer was it's just the Regular Rabble and the name stuck. They have recently reformed and are pleased to be sponsoring today's match ball.



### EXECUTIVE BOXES

Prices on executive boxes for home league and cup fixtures:

5 seater @ £270 including VAT  
8 seater @ £380 including VAT  
8 seater plus @ £420 including VAT

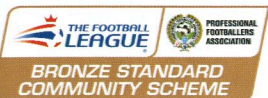
Please note that the eight seater + boxes, still only hold eight people, however they are situated on/near the half way line.

For large parties, we have an 18-seater box. This price may vary depending on the package that you would like.



# LUTON TOWN COMMUNITY TRUST

ANDY DUCAT ROUNDS-UP WHAT'S BEEN HAPPENING IN THE COMMUNITY DEPARTMENT



Every Saturday morning during the past school term the community department have been running two very successful Saturday morning soccer clubs for boys and girls ranging in age from five to 13.

The sessions take place at Bramingham Primary School and Playfootball.net up at Stopsley.

The main purpose of the Saturday morning soccer clubs is to provide high quality coaching for all players who are relatively new to the game or who are not currently playing in a football team.

Our Saturday morning courses will recommence after the Christmas break. Please phone Kieran Fox on 07771 704139 if you would like to make a booking or require additional information.

### New Year TIPs Programme

The Community Department's very popular Talent Identification Programme (TIPs) second term is now underway. We still have places available at our various venues across Bedfordshire.

We are currently running TIPs courses at the following locations:

**Bedford Modern School, Bedford,** from: 6-8pm.

**Sandy Sports Centre, Sandy,** from 5.30-6.30pm.

**Hitchin Boys School, Hitchin,** from 6.00pm.

**Almeda School Sports Hall, Ampthill,** from 5.30-6.30pm.

**Dunstable Leisure Centre, Dunstable,** from 5.30-6.30pm.

**Luton at Playfootball.net, Stopsley** from 5.30-7.30pm.

**John Henry Newman School, Stevenage** from 6-7pm.

We offer sessions for boys and girls from year two right through to year 11. If you would like to book a place please contact Stuart English on 07727 278355.

### New Year raffle

Don't forget the New Year raffle the community department are running; tickets are only £1 and we have some fantastic prizes up for grabs.

### First prize – Ultimate Match Day Experience

Exclusive use of a five-seater executive box at a home fixture of your choice. Prize includes meals, drinks and signed shirt, a chance to meet the players and a guided pre-match tour of Kenilworth Road.

### Second prize – Ultimate Family Day Out

Prize includes a pre-match meals and drinks in the Joe Payne suite for four, signed shirt, full youth kit for two plus opportunity to be a match day mascot.

### Third prize – Ultimate Supporters Package

Prize includes a pre-match meals and drinks in the Joe Payne suite for four, signed shirt, a chance to meet the players as well as a pre-match tour of Kenilworth Road.



# GIRLS CENTRE OF EXCELLENCE

WITH COMMUNITY PROJECT MANAGER KIERAN FOX

Today I would like to tell you about our Under-14 and our Under-16 squads.

The Under-16s are a relatively new squad with many of the players joining at the start this season.

They have been competing against squads that have been together for many years and have been beaten by the very top levels teams including Manchester United, Arsenal and Birmingham City but have shown how far we have progressed with impressive wins against MK Dons and Norwich City and a creditable draw with Leyton Orient during the first half of the season.

The Under-16s consists of a 19-strong squad of players: Hollie Staples, Sianika Malcolm, Kim Howard, Emma Budd, Victoria Rutherford, Kiri Chapman, Lil Stanton, Alexia Maroudias, Mollie Bailey, Kaye Henton, Jodie Brown, Micha Curtis-Weddle, Gemma Pearson, Loren Whyte, Holly Brandon, Charlotte Kerr, Derryn Hudson, Lily Knowles and Rebecca Vass.

The Under-14 Girls squad have over the past few weeks galvanised themselves into a hard-working unit playing attractive possession football.

It has culminated in the side winning its last four games with victories over Ipswich, Leyton Orient, Cambridge and Northampton.

Despite narrow defeats to Watford and Norwich the girls have scored a credible 32 goals in the first half of the season.

One of our players Chloe Smith was selected at regional/national trials and we are hopeful she will develop and play at a higher level during her career.

The Under-14 squad only has 11 players, all of which have performed superbly so far this term:

Goalkeeper Rachel Evans; defenders Ceylon Hickman, Zhane Quashie, Emma Tyler, Millie Fraser; midfielders Chloe Smith, Emily Keegan, Jasmin May; strikers Montana Fielding, Taylor Smith and Bethaney Page.

The girls have worked extremely hard all season and have had great support and encouragement from their parents.

I would like to thank them all for all they have done this year and I wish them all a very Merry Christmas and a happy and successful New Year.

### Luton Town Girls' Centre of Excellence Fixtures 2009/10

August		
22	WATFORD	A
29	NORTHAMPTON TOWN	H

September		
5	WATFORD	A
12	MILTON KEYNES	A
19	MANCHESTER UNITED	A
26	NORTHAMPTON TOWN	H

October		
3	NORWICH CITY	A
10	ARSENAL	H
17	CAMBRIDGE	A

November		
7	IPSWICH TOWN	A
14	LEYTON ORIENT	A
21	COLCHESTER	H
28	LEYTON ORIENT	H

December		
5	GAME TO BE CONFIRMED	H
12	LIVERPOOL	A

2010		
January		
9	GAME TO BE CONFIRMED	H
16	NORWICH CITY	A
23	CHARLTON ATHLETIC	H
30	WATFORD	H

February		
6	MILTON KEYNES	H
13	NORTHAMPTON TOWN	A
27	NORWICH CITY	H

March		
6	ARSENAL	A
13	CAMBRIDGE	H
20	GAME TO BE CONFIRMED	A
27	COLCHESTER	A

April		
10	IPSWICH TOWN	H
17	COLCHESTER	A
24	READING	H

May		
1	GAME TO BE CONFIRMED	A
8	GAME TO BE CONFIRMED	H
15/16	LUTON NATIONAL COE FESTIVAL	H



GIRLS' CENTRES OF EXCELLENCE 2009-10



2009/10 CENTRE OF EXCELLENCE SPONSORS

OFFICIAL MATCHDAY PROGRAMME

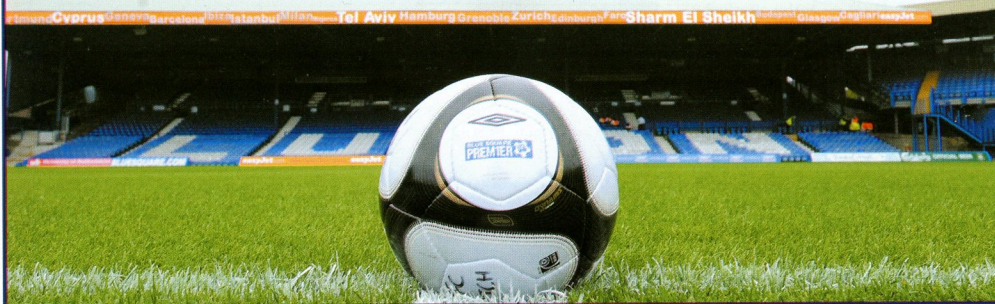


# LOYALTY LIST ROLL OF HONOUR



Despite a decrease in the cost of season tickets for this season, the following season ticket holders have kindly decided to pay last season's prices. We salute you!

T. Neale, James Armstrong, Keith Mayhew, Russell Farnhill, Andy Smith, Shirley Hobbs, Jacqueline Russell, Patricia Pipkin, Ian Corkett, Michael O Hara, Richard Buckingham, Craig Stichbury, Peter Little, James Little, Sam Watt, Phil Wash, Stephen Bailey, Andrew Wallace, Richard Tilley, Robert Eley, David Maynard, Jeff Carter, Michael Aukett, Andrew Turner, David Smeaton, Jacqueline Peacock, Graham Bell, Steven Moore, Marl Allsop, Sarah Delaney, Andrew Delaney, Andrew King, Valerie Marsh, John Earls, Graham Andrews, Craig Andrews, Martin Trainer, Julie Parry, Steve Oliver, David Carter, Graham Gaylor, Stephen Howe, Robin Platten, Mick Hall, Brian Webb, Melvyn Bass, Wendy Dilley, Mark Dilley, Sean Devlin, Connor Devlin, Steven Manfredi, Paul Manfredi, Paul Winston, Roderick Jones, Richard Robinson, E. Parish, John Parish, Mark Day, David Cockfield, Martin Henry, David Hyde, Roy Platten, Lorraine Catling, Julian Goodman, Nicholas Ellingham, Matthew Hall, Ian Baldwin, David Jones, Robin Parsons, Ben Terret, Andrew Lewis, Andy Smith, Edward Kent, Mark Bradbury, Philip Rolt, Terence Worrell, David Albone, Peter Norris, Steven Eade, Chris Browne, Jane Long, Neil Rose, Peter Wright, James Farnbrough, A. Lovell, Tonino Ciuffini, Roger Davies, Paul Ashby, Lawrence Foord, John Browning, Ronald Ledwich, Roger Davies, T. Kingston, Victor Brunt, Kevin Lennon, Glenn Hearn, Nigel Brown, Matthew Phillips, Geoffrey Chapman, Chris Oddy, Dave Wright, Peter Eyre, Damon Read, Mark George, Peter Strode, Zoe Ayres, Nigel Squires, Pamela Lavery, Benjamin Woodley, Richard Gray, Richard Ogden, Dipac Patel, Robert Atkinson, Paul Catling, Ian Beeson, Brian Garrett, J. Sanders, Mark Ashworth, Dennis Ecott, Russell Kitley, Adrian Rees, John Lawrence, William Larman, Cyril Brinklow, Cathleen Stevens, Tommy Lennon, Samuel Taylor, Louis Taylor, Chris Bailey, Zak Tilley, Joseph Kitley, Robert Kitley, Simon Gatward, Jack Gatward.



## GOLDEN GAMBLE

Once again our popular half-time Golden Gamble draw will take place this afternoon.

With a big crowd at Kenilworth Road today, a bumper payout is expected.

Tickets only £1 - half of which directly benefits the club.

Sellers will be around the ground in the lead up to kick-off so make sure you buy yours!



## HATTERS CHRISTMAS PAST

PART TWO OF ROGER WASH'S LOOK BACK AT PREVIOUS FESTIVE FIXTURES



THE TOWN ATTACK THE MANCHESTER UNITED DEFENCE IN 1957

In the last programme we looked back to the 1920's when Christmas Day was accepted as an important part of the football calendar, although the fixture compilers often got it amazingly wrong when attempting to pair up 'local' games to cut back on travelling.

Throughout the 1930s as well, 'local derbies' at places such as Cardiff, Bournemouth, Brighton and Barnsley were played on a home and away basis over the Christmas period, but from reading the match reports it would appear that no-one complained.

One surprising fact is that it took until 1935 before the Town or one of their opponents achieved the 'double' over the Christmas period.

The sequence was finally broken when a 3-0 victory was recorded at Notts County on Christmas Day was followed up with a solitary Fred Roberts goal in front of a then

record Kenilworth Road league attendance of 18,100.

We achieved the double again, over Nottingham Forest in 1938 and then over Leeds in 1947.

We then settled for a spell of playing West Ham over the Christmas period, although 'local' games against Swansea and Leeds (again) did spring up to test the resolve of the travelling supporters.

By the mid-1950s crowds for the Christmas Day fixture were beginning to dwindle due, in the main, to a cut back in public transport services on that day.

Our final Christmas Day fixture took place in 1957, and the game holds rather poignant memories for many people as it was against the 'Busby Babes' of Manchester United only a matter of weeks before the Munich disaster.

The Town players travelled to Manchester where the United officials were worried about the size of the crowd which eventually turned out to be 39,144, which was still 10,000 higher than any other crowd that day.

The League champions took an early lead against a Luton side missing several key first-teamers due to injury, through a dubious penalty netted by Duncan Edwards before the Reds' Tommy Taylor deflected a Bobby Charlton shot past a by now injured Ron Baynham in the Luton goal.

The scoring was completed in the 70th minute when Charlton tapped the ball home from close range.

It seems rather quaint to hear that the two sets of players travelled back to Luton by train together that evening ready for the return the following day which was drawn 2-2 thanks to a last gasp equaliser from Allan Brown.





There's nothing quite like playing football but when your career is at an end, the next best thing is to go into coaching.

And that's exactly where David Oldfield finds himself these days as he plays an important role in developing the next generation of stars up at Peterborough United.

He's been in the dual role of coaching the club's youth team and reserves for the last 18 months, passing on the knowledge he gained during a long playing career that included two highly successful spells here at Luton Town.

"Everyone misses playing, and I'm fortunate to have played, but coaching is very good as well," David, now 41, said.

"It is great to be working on the training ground and trying to get over some knowledge that you have to help the kids improve and press them along.

"I hoped during my career that I would go into coaching at the end of it and I'm lucky to be in football – I feel this is a way of keeping me involved.

"It is really good to try and coach the kids, and I'm learning every day in it.

"I feel very fortunate to be involved at a good club like Peterborough."

The fruits of Oldfield's labours will be seen in years to come as young players progress through the Posh youth system into the first-team.

For any youth coach, that's always going to be a satisfying moment.

# DAVID

# OLDFIELD

"We are all in this to try and do the best we can, and try and develop youth players to realise their potential," he continued.

"It is very difficult for them to make a professional career but if we can help them develop that potential it can be very satisfying.

"I have only been in this role for 18 months as the youth part of the club has only been back up and running in the last few seasons.

"It is going to take a little bit more time to develop players through the system, though it is very much up and running now.

"It is very satisfying to work with the boys, who are trying their best, and we want them to use that enthusiasm to reach their potential.

"We have a good set of hard-working lads and there's work still to do, no doubt about that, and we'll continue to work hard.

"Peterborough is a club that has given youth an opportunity in the past so the boys have got to prove they are good enough."

Having come through the youth ranks here at Luton, Oldfield knows just what it's like to be a young player trying to make his way in the game.

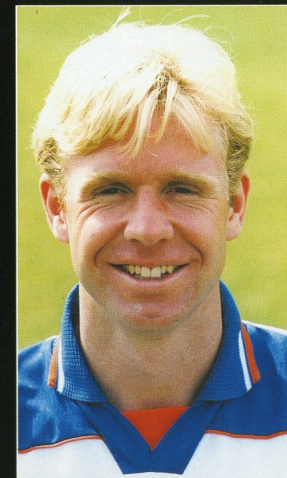
He didn't come into the Hatters' system until the age of 14 and is well aware of just how valuable a time it was in his development.

"I was invited down to train with Luton and ended up staying there,

and at the time we were being coached by John Moore," he said. "Everyone said that he was an extremely important person around the football club and I was fortunate to be involved with him.

"John was very influential with the standards he set – he wanted us to be consistent, and to do the best we can at all times.

"There were a number of very experienced senior professionals that helped get the place organised too at that time – guys like Steve Foster, Mick Harford and Danny Wilson.



"We learnt a lot at that time and from those people."

Oldfield's first spell at Luton saw him graduate to the first-team at an early age and impress at the heart of midfield before moving on to Manchester City in 1989.

He spent a year at Maine Road and then headed to Leicester City for five years ahead of his return to Kenilworth Road, where he enjoyed three more successful seasons and was a popular player among the supporters.

"Luton still has a very important place in my life – it's a very good club, and I have been back fairly recently to watch games, and also been back for reserve matches with Peterborough," he continued.

"I always used to like playing there when I was a player.

"I played for some good clubs and what I learnt when I left Luton is that the only difference is the amount of supporters.

"Luton is equally as good as Leicester and Manchester City, there's no lack of passion or love of the club – it's just how many supporters there are.

"Luton is a really important club to me, and I had a good rapport with the fans.

"The last Luton game I saw was when they beat Rotherham 3-0 in the FA Cup and they played really well that night.

"The fans appreciate their football and with them right behind the lads they can get back climbing the leagues again.

"Luton is a good club that needs to get back to where it belongs."



FATHER CHRISTMAS AND HAPPY HARRY ARE PICTURED WITH THE JUNIOR HATTERS AND MEMBERS OF THE FIRST TEAM SQUAD AT THE JUNIOR HATTERS CHRISTMAS PARTY

# THE BIGGER PICTURE



ACTION EXTRA



To buy any photograph that appears in this programme visit [www.hatterspics.co.uk](http://www.hatterspics.co.uk)

**HATTERS PICS**  
THE OFFICIAL PRINT STORE

WWW.LUTONTOWN.CO.UK



★★★★★  
THE TIMES

★★★★★  
THE SCOTSMAN

★★★★★  
DAILY TELEGRAPH

# MORECAMBE

By TIM WHITNALL Starring BOB GOLDING Directed by GUY MASTERSON



THE PERFECT CHRISTMAS TREAT!

**'Wonderful. Exceptional'**

THE TIMES

**'The performance of a lifetime'**

THE GUARDIAN

WED & SAT MATS  
2.30PM  
SUNDAY PERFORMANCES  
4PM

LIMITED SEASON ★ 6 WEEKS ONLY ★ 9 DEC - 17 JAN

BUCKLE UP THEATRE 0844 412 4659 ★ www.morecambetheplay.com



EACH WEEK WE ASK MEMBERS OF THE HATTERS' PLAYING SQUAD A QUESTION RELATED TO EACH LETTER TO THE ALPHABET.



“English, French and Spanish. My Spanish is much better than my English. Obviously my French is better!”

CLAUDE GNAKPA

We're playing catch-up now as we're three letters down so ask the questions relegated to letters K, L and M plus ask the lads about the best and worst things about being a footballer at Christmas.



**K** If you were King for a day, what would you do?

**Adam Newton:** "I'd buy rum and cokes for everyone in the world and make sure everyone enjoyed themselves."

**Alan White:** "Transfer a couple of million in the bank account. Just enough to see me through my life time!"

**Kevin Watson:** "I'd ask Kate Beckinsale to be my queen."

**Shane Gore:** "I'd sit on my throne all day and lap up being King. It's not every day you're king..."

**Ed Asafu-Adjaye:** "I'm with Whitey: I'd request a load of money!"

**Lewis Emanuel:** "I'd be nice and give everyone a day off work."

**L** Language: Can you speak any other language, if so what?

**Adam Newton:** "Oui, little bit of French."

**Kevin Nicholls:** "I find English hard as it is!"

**Alan White:** "Languages? No. I'm fluent in talking rubbish!"

**Kevin Watson:** "I have a pretty decent understand of Greek. My ex-wife is Cypriot."

**Claude Gnakpa:** "English, French and Spanish. My Spanish is much better than my English. Obviously my French is better!"

**M** Mean: Who is the meanest opponent you have ever faced?

**Adam Newton:** "Sol Davis and Tim Ryan. They are the two left-backs

I've had the most battles with."

**Kevin Nicholls:** "Darren Bullock aka Sausage Fingers, he was playing the wrong sport, he should have been playing rugby league."

**Alan White:** "Ade Akinbiyi. He horrible and nasty to play against when he was at Gillingham."

**Kevin Watson:** "Gary Brabin. Without a doubt. In direct opposition and I'd be lying if there wasn't an element of fear of being on the receiving end of one of his tackles. So I'd play with one eye on him."

**Ed Asafu-Adjaye:** "When I had to mark Andy Booth against Huddersfield. He was all arms and elbows and he gave me a black and eye and a split lip."

**Lewis Emanuel:** "Danny Mills when I was playing for Bradford against Leeds. He was nasty!"

A2Z

WWW.LITTONTOWN.CO.UK

39



## DREAM TEAM OF THE 1950'S

VIC CRISP CHOOSES HIS ALL-TIME TOWN TEAM FROM THE 1950S.

**About Vic:** Born in 1936 I have been an ardent Luton fan for 67 years. I used to walk from home on the outskirts of Luton via the Gasworks to the ground and firstly go into the children's enclosure, then later into the Kenilworth Road stand.

From the age of seven through to 18 I watched every first team and most reserve team home games. The most memorable match was when we were 3-0 down at half-time to Newcastle before coming back in the second half to win 4-3.

After joining the RAF I would always watch a home game when I could. In 1990 I moved to Vancouver Island in Canada. I always check on my computer how they are doing or their results.

### GOALKEEPER IRON BAYNHAM

During his stay at Luton he had to be on top form as always in the background was Bernard Stretton waiting to dispose him. His agility, positioning and ball handling were just some of his assets. To his credit he earned three England caps.

### DEFENDERS HARRY COOKE

Very difficult to beat. Never gave up on any tackle and was a good passer of the ball.

### BUID AHERNE

You had to be very quick to get past him. Never gave up on any tackle and a good clearer of the ball.

### SYD OWEN

I cannot say enough about him. Superb in the air, he could head a ball miles. Great in either the penalty area, he was able to read the play and cover as required. He was a real pleasure to watch and deservedly earned three England caps.

### BRENDAN MCNALLY

Strong in defence and a great tackler of the ball, Brendan was another deserved Irish international. With these players I have both flanks and the middle of the pitch covered.

### MIDFIELDERS BOB MORTON

This man was strong in midfield, a great passer of the ball, could cover ground quickly and best all could score goals.

### GEORGE STOBIBART

Another strong midfield player, good controller and passer of the ball.

### GEORGE CUMMINS

This man could make a ball stand on its end. Quick and difficult to tackle and a superb passer of the ball, George could easily open up a defence. He provided

many scoring chances for the forwards and could score himself when called upon. A joy to watch, he earned 19 international caps.

### JESSIE PYE

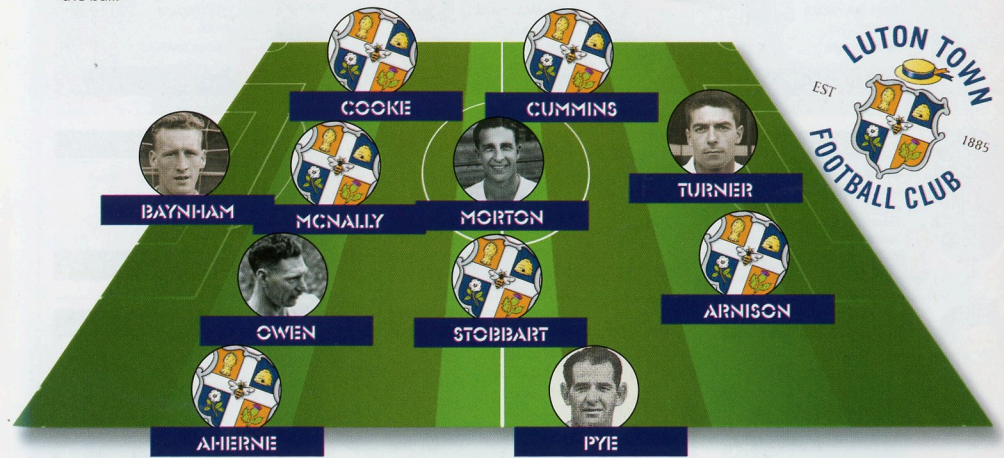
Another gifted player who could open up defences. Very fast on the ball and difficult to tackle, Jessie could easily beat a player and add strength to the forwards. A very good goal maker and scorer, he is another player in this side recognised at international level with England.

### FORWARDS GORDON TURNER

What a goal scorer. Give him the ball and goalkeepers watch out! He possessed a very hard and accurate shot and was quick on the ball. A great asset up front, Gordon was extremely unlucky to only get an England B cap. Defenders sure had to beware of him.

### BILLY ARNISON

Probably in his time, Billy was the hardest hitter of the football. He was known to bust a net on more than one occasion. Fearless of any defender, very strong in the penalty area, his power on the ball made up for his lack of skills.



## KENILWORTH ROAD SAFETY NOTICE

In the event of any emergency in the stadium, Luton Town Football Club and the emergency services have agreed on an evacuation procedure which is designed to ensure the safe and controlled evacuation of the crowd, and to ensure their safe dispersal from the area, to allow the emergency services to carry out their tasks.

In an evacuation of the Main Stand you will be instructed to use the pitch. Stewards will direct you to your nearest exit. It may be that your normal exit route will not be available. On leaving the stadium you will find some roads closed to pedestrians, to enable swift and unobstructed access for the emergency services.

In the event of an evacuation from all or part of the stadium, you will receive instructions over the public address system on how you should leave the stadium.

Please leave the area of the ground as quickly as possible, by the route directed.

Your co-operation will be most appreciated.

## KENILWORTH ROAD BOX HOLDERS

<b>Prestige</b> Design & Workwear Ltd	<b>G.P. Quorenton</b> (Ductwork) Tel: 01582 882561	<b>BILLINGTON &amp; LAWRENCE</b> Tel: 01582 726100	<b>F&amp;S</b> PIPEWORK SERVICES LTD	
<b>SHALLOWFORD CONSULTING</b> Tel: 01438 831013	<b>Admiral</b> GROUP OF COMPANIES Tel: 01582 653333	<b>Mr Mick Connolly</b>	<b>SKF</b> Tel: 01582 490049	<b>T&amp;S Plumbing &amp; Heating</b> Tel: 01234 740883
<b>CME Heating Ltd</b>	<b>LUTON PLASTICS</b> LUTON PLASTICS LTD Tel: 01582 883188	<b>interlink express</b>		












# KITSPONSORSHIP

SUPPORT THE HATTERS BY SPONSORING YOUR FAVOURITE HATTER



 <p><b>1 MARK TYLER</b> HOME: T J Forcham Plumbing &amp; Heating AWAY: Luton Town Supporters Club GLOVES: </p>	 <p><b>2 ED ASAFU-AD-JAYE</b> HOME: Jacqui Peacock AWAY: Lynn, Ben &amp; Rhiannon</p>	 <p><b>3 LEWIS EMANUEL</b> HOME: Emma Banks AWAY: Shallowford Consulting</p>
 <p><b>4 KEITH KEANIE</b> HOME: Trust in Luton(2003) AWAY: Maddie Knight</p>	 <p><b>5 ALAN WHITE</b> HOME: M&amp;S Water Services AWAY: Mick Connolly</p>	 <p><b>6 GEORGE PILKINGTON</b> HOME: WHOSH AWAY: Bobbers Travel Club</p>
 <p><b>7 ADAM NEWTON</b> HOME: Luton Ladies AWAY: Richard Robinson- RS Robinson PLG &amp; HTG</p>	 <p><b>8 KEVIN NICHOLLS</b> HOME:  AWAY: WHOSH</p>	 <p><b>9 LIAM HATCH</b> HOME: Available AWAY: The Riley Family</p>
 <p><b>10 TOM CRAADDOCK</b> HOME: Mat Phillips AWAY: LTS-Scandinavia</p>	 <p><b>12 SHANIE BLACKETT</b> HOME: Matt Crossland AWAY: TBC</p>	 <p><b>13 SHANIE GORE</b> HOME: Available AWAY: Available GLOVES: Zac Harford Tilley</p>

 <p><b>14 ASA HALL</b> HOME: WHOSH AWAY: Tommy Lennon</p>	 <p><b>15 JAKE HOWELLS</b> HOME: Neil Ehrenzweig AWAY: Bobberman 606ers</p>	 <p><b>16 ROSSI JARVIS</b> HOME: Linda &amp; Peter Little AWAY: Available</p>
 <p><b>17 RYAN CHARLES</b> HOME: TBC AWAY: The Mayne Family</p>	 <p><b>18 CLAUDE GNAKPA</b> HOME:  AWAY: Richard &amp; Zak Tilley</p>	 <p><b>19 STEVE BASHAM</b> HOME: Bernard Elwen AWAY: Available</p>
 <p><b>20 KEVIN GALLEN</b> HOME: Craig Lowrie AWAY: Gill, Julie &amp; Yvonne Supporters Direct</p>	 <p><b>21 CALLUM REYNOLDS</b> HOME: Available AWAY: Available</p>	 <p><b>23 FRIEDDIE MURRAY</b> HOME: Shallowford Consulting AWAY: Available</p>
 <p><b>25 GEORGE BEAVAN</b> HOME: WHOSH AWAY: Available</p>	 <p><b>29 MATTHEW BARNISHOMER</b> HOME: Kelly Knight AWAY: Tommy Lennon</p>	 <p><b>DMITRI KHARINE</b> HOME: Available AWAY: Available</p>
 <p><b>ALAN NEILSON</b> HOME:  AWAY: Available</p>	 <p><b>KEVIN WATSON</b> HOME: Available AWAY: Available</p>	 <p><b>HARRY SCOTT-STACKMAN</b> HOME: Available AWAY: Available</p>
 <p><b>GREGG BROUGHTON</b> HOME: Available AWAY: Available</p>	 <p><b>MARTIN PRICKETT</b> HOME: Available AWAY: Available</p>	 <p><b>HAPPY HARRY</b> HOME: Available</p>
 <p><b>RICHARD MONEY</b> HOME: Available AWAY: Hitchin Hatters</p>	 <p><b>GARY BRAIBIN</b> HOME: Available AWAY: Available</p>	



# YOUTH SPONSORS

SUPPORT THE HATTERS BY SPONSORING YOUR FAVOURITE STAR OF THE FUTURE

**RICHARD OWUSU**

HOME: Available  
AWAY: Available

**ADAM WATKINS**

HOME: Michael Capp  
AWAY: Loyal Luton Supporters Club

**AIDAN QUINN**

HOME: Michael Capp  
AWAY: Available

**FABIO BUFANO**

HOME: Available  
AWAY: Available

**SAM BARKER**

HOME: Michael Capp  
AWAY: Peter Johnson

**JACK WOOD**

HOME: Michael Capp  
AWAY: Terry Neale

**LEWIS KIDD**

HOME: Available  
AWAY: Available

**ASHLEY DIEBNEY**

HOME: Michael Capp  
AWAY: Available

**MATTHEW JAMES**

HOME: Doug Knight  
AWAY: Available

**AARON FLETCHER**

HOME: Peter Mitchell  
AWAY: Available

**TAYLOR NATHANIEL**

HOME: Julian Healy  
AWAY: Available

**CHRISTIAN TAVERNIER**

HOME: Derek Broughton  
AWAY: Available

**MATTHEW HARRIOTT**

HOME: Fred Dann  
AWAY: Available

**ALEX LACEY**

HOME: Available  
AWAY: Available

**JEAN-PHILIP YAMIFAM**

HOME: Loyal Luton Supporters Club  
AWAY: Available

**JORDAN PATRICK**

HOME: Ian Gazeley  
AWAY: Loyal Luton Supporters Club

**LIAM TOOMEY**

HOME: Available  
AWAY: Available

**RYAN DA SILVA**

HOME: Gary Chamberlain  
AWAY: Available

## UNDER 18s THE SEASONS OF FAR

THE HATTERS' UNDER-18 COACH MARTIN PRICKETT GIVES HIS HALF-TERM REPORT

It has been an up and down start to the season for the youth team with injuries wrecking any early momentum that we attempted build.

After a game-filled pre-season the scholars got off to a mixed start to the year with a defeat against Peterborough United followed by a credible draw against a QPR side who are one of the strongest sides in the division.

Following two convincing wins in the early rounds of the FA Youth Cup, the boys were disappointingly knocked out against local rivals Rushden and Diamonds in a heated affair eventually going down 2-0.

We had to sacrifice the League Cup due to injuries and our involvement in the FA Youth Cup and we failed to make it out of the group stages as we only recorded only one draw out of the four games played.

By now the squad was ravaged by injury and sickness but we still managed to earn a much deserved 5-1 victory against Barnet.

The following week a very young side lost out to 2-0 to Wycombe, however since that game we have won four out of five league matches against Barnet, Northampton, QPR and Brentford, which has propelled us up into the top half of the table.

Considering the illness and injuries we have suffered, to come to Christmas with a league record of five wins, one draw and three defeats from our nine games is testament to the hard work the boys have shown in games.

Throughout the season several players have put together a string of good performances for the Under-18s and the reserves.



Adam Watkins spent the early part of the season training with the first team, while Taylor Nathaniel made his first team debut in the FA Cup at home to Grays Athletic in a 3-0 victory.

Looking forward, seven players from the Centre of Excellence have made their debut for the Under-18s this season with Mason Blake, Newman Carney, Michael Cain,

Cauley Woodrow and Charlie Smith all accepting their scholarship offers. I look forward to working with these players in the future.

Hopefully after Christmas we will have a fully fit squad to choose from for the first time this season and continue to maintain our good run of form working towards our target of a top four finish.

AUGUST			SAT 12	BRENTFORD	W2-1
SAT 15	PETERBOROUGH UNITED	L1-3	JANUARY 2010		
SAT 29	QUEENS PARK RANGERS	D2-2	SAT 09	WYCOMBE WANDERERS	H
SEPTEMBER			SAT 23	NORTHAMPTON TOWN	A
SAT 05	NORTHAMPTON T/PYAC 1	D2-2	FEBRUARY		
THU 10	NORTHAMPTON SPENCER	W6-0	SAT 06	PETERBOROUGH UNITED	H
FA YOUTH CUP			SAT 13	BRIGHTON & HOVE A	A
SAT 19	PETERBOROUGH / PYAC3	L0-2	SAT 20	SOUTH CUP SEMI FINAL	
WED 23	RAUNDS TOWN FAYC	W7-1	SAT 27	COLCHESTER UNITED	H
SAT 26	LEYTON ORIENT / PYAC 4	L0-2	MARCH		
OCTOBER			SAT 06	DAGENHAM & REDBRIDGE	A
SAT 03	GILLINGHAM / PYAC 5	L1-2	SAT 13	GILLINGHAM	H
WED 07	RUSHDEN FAYC	L0-2	SAT 20	SOUTHEND UNITED	A
SAT 10	BARNET	W5-1	SAT 27	MILLWALL	H
SAT 17	WYCOMBE WANDERERS	L0-2	APRIL		
NOVEMBER			SAT 10	LEYTON ORIENT	A
SAT 14	NORTHAMPTON TOWN	W2-0	SAT 17	ALDERSHOT TOWN	H
SAT 21	BARNET	W3-1	MAY		
SAT 28	BRENTFORD	L2-4	SAT 22	IN SERVICE TRAINING	
DECEMBER					
SAT 05	QUEENS PARK RANGERS	W2-1			





## SPORTS INTERACTIVE



SPONSORS OF LUTON TOWN YOUTH DEVELOPMENT

Since returning to training in July there has been lots of memorable moments so far this season including:

- Under-9's performance away at QPR
- Under-10's performance away at Northampton
- Under-11's performance away at Manchester City
- Under-12's performance away at Watford
- Under-13's performance away at Fulham
- Under-14's performance at home to Millwall
- Under-16's performance away to Arsenal

It's great to see our players showing that they can compete and outplay some of the biggest clubs in the country.

The other massive bonus so far has been the success of the day release programme. The

enormous strides forward taken by the players involved in the programme are noticeable.

The support given from Supporters of Luton Youth Development (SoLYD) has been invaluable in securing the long-term success of the programme.

We would like to thank all of the volunteers who give up their time to run this project successfully. We would urge any supporters who haven't signed up to this to visit [www.solyd.co.uk](http://www.solyd.co.uk).

I would like to go on record to thank all of the coaching and scouting staff for their time over the past 12 months.

I'd also like to thank all the parents from the Under 9-14 age groups for driving their sons across the county to get them to our training centre at Baldock

twice a week and across the country for games at weekends.

Mark Burke, Marcus and the team working at Baldock do a fantastic job to ensure we enjoy using the best training facility outside of the Premier League.

Alistair and his team of ground-staff at St Christophers School in Baldock have playing perfect surfaces prepared for us to play on every Sunday, while groundsman Richard Bird and Richard Osborne have been great in trying circumstances to make sure that the pitches at Ely Way can recover from the toils of first team training to become available for the Under-16s and Under-18s.

Finally I'd like to thank Chris Checketts and his team of match officials at the Bedfordshire Football Association who make sure games are officiated excellently at weekends.

## LUTON TOWN CLUB PARTNERSHIP

WITH YOUTH DEVELOPMENT COACH DAN WALDER

King George Football Club is a volunteer run youth football club based at the King George V Playing Fields in Welwyn Garden City. It was only formed in May 2009 but by the start of the 2009-10 season had already created 11 youth league teams from Under-9 up to Under-18, all competing in the Mid Herts Rural Minors League.

On 29th October 2009 the club also managed to attain the FA Charter Standard Award, a kite mark within Grassroots Football and is regarded as a statement of quality. Obtaining the mark shows that the club is focused on implementing the FA's best practices and policies in young

player development and opens the door to further support that the club will need as it continues to grow.

In addition to league football the club runs a number of other initiatives like weekly pay-n-play sessions, development squads, summer camps and a goalkeeper academy that all help to provide footballing opportunities for some 250 local children.

KGFC is run by over 50 enthusiastic volunteers who give up their spare time for free to help work with the youngsters. Each team has at least one coach with a FA Level 1 Coaching Badge or higher to ensure that players

are developed by only qualified coaches using the FA's latest techniques.

The club realises that not only does it need to cater for social players but it also needs provide opportunities and avenues for those more talented and to this end has formed links with a number of local clubs including signing up to the Luton Town Partnership.

This link gives the club access to some great resources and has already benefited from a coaching session laid on by Luton Town's Technical Development Coach and has seen a number of players sign up to the LTFC TIPS programme.





# SUPPORT THE HATTERS WITH JONES & HALL



Have a local business?

Order your stationery online, receive a discount and earn commission for the Hatters



Jones & Hall LLP

Call **01582 592346** or log on to

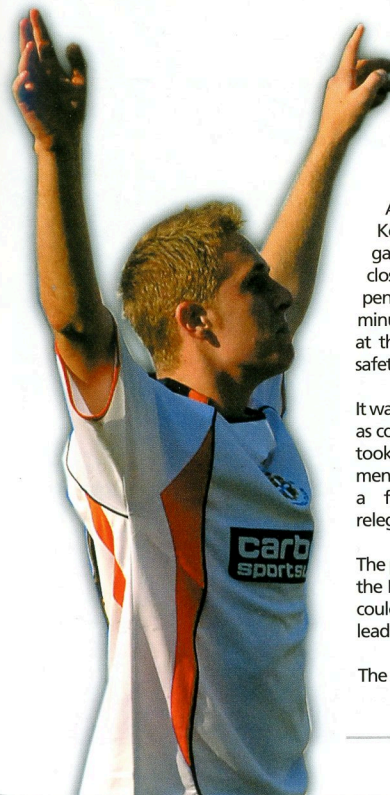
<http://jonesandhall.opnet.co.uk>

Click 'Log In'. Enter account code: LTFC02

User name: Supporter. Password: Football

## LOOKING BACK AT 2009

THE FIRST IN OUR TWO-PART REVIEW OF THE YEAR



Following the horrific points deductions handed out the beginning of the campaign, by the time 2009 came around the Town were still sitting at the bottom of the League 2 table.

A 3-2 victory over Lincoln City at Kenilworth Road in their final game of 2008 edged the Town closer to wiping out their 30-point penalty, beginning the New Year on minus one point – eight points adrift at the bottom and 15 points from safety.

It was a belated start to the New Year as cold weather and postponements took charge with Mick Harford's men finally back in action after over a fortnight without game at relegation rivals Chester City.

The point following the 2-2 draw put the Hatters on the zero points but it could have been so much more after leading 2-0 at one stage.

The Town were on receiving end of

their largest defeat of the campaign when they made the long journey north to Darlington in the fixture that followed.

Liam Hatch was the hero for the Quakers with two goals in an impressive display as the hosts ran out convincing 5-1 winners after leading 4-1 at the interval.

Three successive draws followed next including a goalless draw at Brighton in the first leg of the area final in Johnstone's Paint Trophy.

A last gasp equaliser from the penalty spot handed Bradford a point in a thrilling 3-3 draw Kenilworth Road and, after a 1-1 draw at fellow points deductees Bournemouth, January ended with a disappointing home defeat to Bury after leading through an Asa Hall goal at the break.

Bad weather continued to disrupt the Town's progress and it was Valentine's Day before they were in action when they went down 2-1 for the second successive league game



duo

DUO PANTOMIMES LTD IN ASSOCIATION WITH THE GROVE THEATRE PRESENT

THE MOST MAGICAL PANTO OF THEM ALL

Basil Brush © 2009 Ivan Owen's Estate and Peter Firmin under exclusive licence to Classic Media Distribution Limited. All Rights reserved.



**Basil Brush**  
BOOM BOOM  
AS BUTTONS

**BERNIE NOLAN**  
AS FAIRY GODMOTHER

# Cinderella

**PETER WHITFIELD**  
AS BARON HARDUP

**SCOTT COLDWELL**  
AS DANDINI

**ASHLEY LLOYD**  
AS PRINCE CHARMING

DIRECTED AND CHOREOGRAPHED BY LORETTA LEGGE

MUSICAL DIRECTOR JOE O'CONNOR

FEATURING TOM ROBERTS' WHITE SHETLAND PONIES AND CRYSTAL COACH

**JANE LEDSON**  
AS CINDERELLA

PLUS A FULL SUPPORTING CAST

**MALCOLM LORD & SIMON BASHFORD**  
AS THE OUTRAGEOUS UGLY SISTERS

heart 97.6



01582 60 20 80 • 11TH DEC 09 – 3RD JAN 10  
GROVE THEATRE DUNSTABLE • WWW.GROVETHEATRE.CO.UK

## LOOKING BACK AT 2009

THE FIRST IN OUR TWO-PART REVIEW OF THE YEAR

with defeat at Dagenham and Redbridge.

Three days later, however, that was all forgotten as the Hatters faithful were celebrating a trip to Wembley following a penalty shootout victory Brighton to book a place in the final of the Johnstone's Paint Trophy.

The win over the Seagulls had given the Town some much needed confidence and that was evident in comfortable 3-1 victory over Play-Off chasing Shrewsbury at Kenilworth Road.

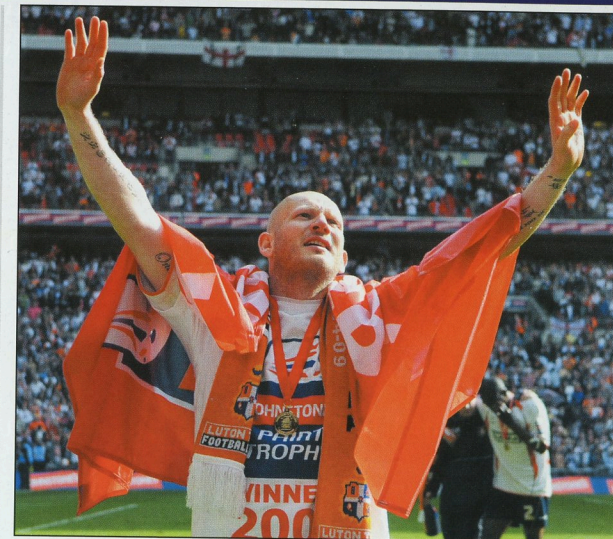
A point could only be gained on a Tuesday night trip Accrington Stanley but a superb away display at Port Vale earned the Hatters all three points as goals from Hall, Chris Martin and Kevin Gallen sealed a 3-1 victory.

There were eight fixtures for the Hatters in a busy March which began with a frustrating 0-0 home draw with Gillingham at a rain-soaked Kenilworth Road. Promotion-chasing Exeter returned to Devon with all three points as the Town's need for points became even more desperate as the teams above them began to pick up form.

However, four wins from the next five games gave the Hatters hope once more of pulling off the greatest of great escapes.

Another comfortable victory on the road was achieved at struggling Notts County with Tom Craddock and Martin on target but defeat at newly promoted Aldershot Town seemed to have once again halted their progress.

A last-minute winner from Hall earned the Town three crucial points as they came from behind to see off Mike Newell's Grimsby Town at Kenilworth Road before a



Craddock penalty was enough to defeat a resolute Macclesfield side four days later.

The Hatters won three successive matches for the first time in the campaign following a superb 2-1 victory at an in-form Morecambe side, once again battling back from behind to earn all three points with Gallen netting the decisive winning goal.



However it was a case of one step forward, two steps back as the Town warmed up for their Wembley trip with a 4-2 home defeat to Rotherham United on 31st March.

April began with the Hatters' winning the Johnstone's Paint Trophy following a dramatic 3-2 extra time win over League 1 side Scunthorpe at the new Wembley.

After falling behind to an early Gary Hooper goal the Town came storming back and goals from Martin and Craddock put them in front with two minutes left. With two minutes left it looked as though the Hatters had one hand on the trophy but Iron midfielder Grant McCann had other ideas and levelled matters with a stunning equaliser to take the tie to extra-time.

It seemed all the momentum was with Scunthorpe going into the extra 30 minutes but substitute Claude Gnaka turned out to be





FPM Facility Services Ltd  
FPM Maintenance

- Electrical Contractors and Engineers
- Data / Voice and Fibre Installations
- Fire Alarm Systems
- CCTV / Access Control
- Building Maintenance / Refurbishment
- Civil Engineering
- Plumbing / Heating
- Mechanical Services / Air Conditioning

FPM Facility Services Ltd are an Accredited NICEIC company  
we are proud to provide continued service to  
easyJet and Luton Town Fc 2020 LTD



35-37 Hastings Street, Luton, Beds. LU1 5BE  
Tel: 01582 484020 Tel: 01908 640064 Fax: 01582 487614  
Email: service@f-p-m.co.uk Web: www.f-p-m.co.uk



## LOOKING BACK AT 2009

THE FIRST IN OUR TWO-PART REVIEW OF THE YEAR

the Town's hero when the Frenchman netted what turned out to be the winning goal five minutes into extra-time to cap a memorable afternoon in front of over 40,000 Hatters fans at the national stadium.

After the euphoria of winning the trophy, however, it was back to rigours of the league and the Hatters' task of staving off relegation to the Conference.

A 0-0 draw at Lincoln City didn't help their cause, especially after learning that sides above them had dropped points.

Easter Monday, though, saw the Town's 89-year stay in the Football League ended following another goalless draw, this time to Chesterfield at Kenilworth Road.



A third straight draw followed at Underhill, Barnet, with Rossi Jarvis scoring the Town's goal before a home defeat to promotion-bound Wycombe was followed by their final home fixture in the Football League which ended with a 1-1 draw against Rochdale.

relegated, and 15 points from safety.

Without the points deductions a total points tally of 56 points would have seen the Hatters finish safely in midtable.

As the Town began to plot an instant return to the Football League, manager Harford moved quickly to tie Jake Howells, Gallen and Ed Asafu-Adjaye to extended deals.

May and June also saw the arrival of five new signings at Kenilworth Road.

Goalkeeper Mark Tyler and striker Hatch arrived from Peterborough; Andy Burgess joined from Rushden and Diamonds; winger Newton came from Brentford while defender Alan White returned for a second spell with the club after leaving Darlington.

Read the second part of our 2009 review in our next home programme against Salisbury City.



May saw the Hatters' 2008/09 campaign draw to a close and with it their final game in the Football League, at Champions Brentford which saw Adam Newton score the Bees' second goal in 2-0 win at Griffin Park - 50 years to the day that the Town had contested an FA Cup final with Nottingham Forest.

After 46 games the Town finished on 26 points, 11 points adrift of Chester, who were also





**FootballFoundation**  
football's biggest supporter

## Our goal is to change people's lives through sport

The Football Foundation, the UK's largest sports charity, continues to deliver a unique programme of new and improved community sports facilities in towns and cities across the country. Offering support to thousands of clubs and community groups and with a focus on social inclusion, health, education and equalities, we are increasing participation in grass roots football and making dreams come true.

[www.footballfoundation.org.uk](http://www.footballfoundation.org.uk)

improving facilities • creating opportunities • building communities

Charity No 1079309 Company No 3876305



# ISA Accountants

[www.isa-accountants.co.uk](http://www.isa-accountants.co.uk)



We are proud to continue our sponsorship of the Luton under 18's for the 2009/10 season.

For all your accountancy, taxation, bookkeeping & business needs.

Call Ian Croff on: 01438 360555  
[ian@isa-accountants.co.uk](mailto:ian@isa-accountants.co.uk)

A Different Kind of Accountant

## HALF-TERM PROGRESS REPORT

WITH UNDER-16 COACH JON DE SOUZA



NEWMAN CARNEY

The Under-16s have performed very well so far this season. We have managed to beat several of the best academies in the country including a 6-0 win at Arsenal and a 3-1 win over Liverpool.

We have also managed to progress to the semi-final of the Under-18 Floodlit Cup, which is

due to be played in January against Stotfold. In most games that we have played in, we have managed to play at a fantastic tempo, passing the ball quickly in possession and pressing quickly out when we don't have the ball.

However, we have found it difficult against physical sides, such as Brentford and Leyton Orient, who tend to turn games into a battle rather than footballing contest.

Our players must learn that they have to earn the right to play football, at any level, and must be prepared for the physical side of the game now that they are at the stage of entering adult football.

With this in mind, I am sure the semi-final against Stotfold will be an intriguing contest. I have no doubt we will have the better footballers, but will our boys be able to win the physical battle to

secure a place in the final? Watch this space.

Ultimately, the overall aim for all our Under-16 players is to earn a scholarship at the Club.

Of the current squad, we are delighted that five players have signed scholarship agreements.

Newman Carney, Mason Blake, Michael Cain, Cauley Woodrow and Charlie Smith have all signed forms that will keep them at the club until they are 18.

They, as well as the rest of the squad, must now realise that they have the opportunity of making football a career.

Each player must now learn to deal with pressure and expectations that come with playing football professionally and must do everything to ensure they are able to cope with the technical, physical, mental and social demands needed to become a professional footballer.



MICHAEL CAIN



CAULEY WOOD

OFFICIAL MATCHDAY PROGRAMME



# LIFE

Be fit for it

THERE'S NEVER BEEN A **BETTER TIME** TO JOIN DAVID LLOYD...

...because there's more for our members from day one. Take advantage of our exclusive New Member Package:



**FREE** Personal Training Session



**FREE** Weight Loss Session



**FREE** Personalised Fitness Programme

**JOIN NOW**

CALL **01582 692048** NOW

OR VISIT **DAVIDLLOYD.CO.UK/LIFE**

Terms and Conditions apply. Facilities may vary per club.

David Lloyd Club, Luton, Cabability Green Business Park, Beds LU1 3LU

**LIFE. Be fit for it**  
DAVIDLLOYD.CO.UK/LIFE



Welcome back to Kenilworth Road to all Junior Hatters for our second home game in two days.

A big hello to all those young fans who have made the long trip from Eastbourne to be here this afternoon. I hope you enjoy your brief stay here and have a safe journey home.

As I mentioned in my notes for the Histon programme on Boxing Day we had our Junior Hatters' Christmas party in the Eric Morecambe suite at the club.

It was a really fun night which was enjoyed everyone including the players and me!

Congratulations to Daniel Cadden who was the winner of the quiz on the night. He will receive his special prize for winning the competition in the New Year.

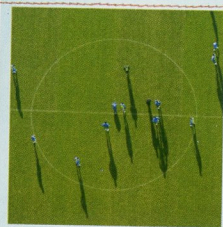


Scissor Lifts  
Alloy Towers  
Power Tools  
Articulated Booms  
Tel: **01582 873000**

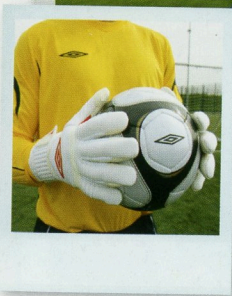
**NEON**  
www.neonhire.co.uk

Tool Hire  
Cherry - Pickers  
Construction Plant  
Lifting Equipment  
Fax: **01582 873007**





**YOU**  
*might not be  
 able to pass,  
 tackle or shoot  
 like him.  
 But you can  
 wear his shorts.*



**The new Umbro Teamwear brochure is out now.**

It's packed with everything your team could need for the new season. From bibs to balls and socks to shirts. It's reassuring to know that Umbro supply more Premiership kits than anyone else. But you don't have to be a superstar to play in our kit, with Adult kit packages from only £295.00 and junior packages from only £245.00. You really can play in Phil Jagielka's shorts. Get Umbro Teamwear. Get next season sorted.

[www.umbrofootballkits.co.uk](http://www.umbrofootballkits.co.uk) or call 0845 603 7047



**LUTONTOWNLADIES**

WITH DAVE BAKER - FROM THE PARK TO THE PREMIER LEAGUE



THE 2009/10 LUTON LADIES TEAM

2009 has certainly been an eventful year in the 13th year of Luton Town Ladies with the long sought after goal of bringing FA Premier League football to the club. What started as a single Under-12 squad in 1996 has now developed into a 10-team club with top flight status.

Cup runs and poor weather had halted the league campaign which was a two horse race with Enfield Town for the single promotion spot.

Town returned to league action trailing by several points but with games in hand. The maths were simple, and the aim was to attack and win all the matches and build a substantial goal difference in case of slip ups.

A 5-1 win at Lewes and a 9-0 crushing of Spurs got the ball rolling before further wins followed, and with two tough matches left, it was simply a matter of picking up all six points to virtually assure promotion. A nervy away trip to Gillingham eventually brought a 2-0 win which made the last game the virtual

clinch but there is nothing ever simple with this team.

With the final game with Welwyn Garden City poised at 0-0 with 55 minutes gone the visiting keeper received a severe injury which resulted in the game being abandoned but the replay saw the Town comfortably record a 5-0 win to bring the league title within touching distance.

Enfield now had to travel to Gillingham and not only win but had to make up a seemingly unassailable 22 goal difference. A 2-2 draw gave Luton Town promotion and the League title by two points and the Premier League beckoned.

Promotion meant finding a new home and we could not have asked for any better facility than Biggleswade Town who have made us very welcome for which we are very grateful.

The new campaign received a significant blow before the season

started with Luton learning that the FA had placed them in the Northern Division.

Early season woe injuries and suspensions bit hard as the wheels came off and Town slumped into the relegation places where they remain as we move into 2010.

It will certainly be an uphill task to avoid relegation but one which a young team will meet head on and I know they will give all to maintain their hard earned status.

What is for sure is that the players are all stronger and better equipped than they were six months ago and by comparison when we recently entertained Liverpool they fielded six internationals whereas we fielded four players who were Under-16 youth team players as recently as May 2009. We are a world apart in terms of budget and available resources but that has and will not stop us from competing where it really matters on the field.



**TICKET OFFICE HOURS & INFO**

You can buy tickets for all matches at Kenilworth Road in a number of ways.

1. In person at the ticket office in Kenilworth Road.

The opening hours of the ticket office are as follows:  
Monday-Friday 10am-5pm.

Monday-Friday before a home match: 10am-6pm.

Saturday on a home matchday: 9am-kickoff and until required after full-time.

Saturday on an away matchday: 9am-12noon.

2. Online by logging onto  
[www.eticketing.co.uk/lutontown/default.aspx](http://www.eticketing.co.uk/lutontown/default.aspx)

3. Over the telephone by calling 01582 416976

**MATCHDAY TICKET PRICES 2009/10**

Juniors (Under 10)	£5
Youth (Age 10-16)	£8
Young Adult (Age 17-21)	£13
Adult (Age 22-64)	£18
Senior (Age 65-75)	£13
Golden Senior (Over 75)	£10

**Compromise Seating -  
Main Enclosure A, B, H & J, Main Stand G**

Juniors (Under 10)	£5
Youth (Age 10-16)	£8
Young Adult (Age 17-21)	£13
Adult (Age 22-64)	£15
Senior (Age 65-75)	£13
Golden Senior (Over 75)	£10

**Matchday Voucher Books  
(65 tickets perbook)**

Juniors (Under 10)	£22.50
Youth (Age 10-16)	£36
Young Adult (Age 17-21)	£58.59
Adult (Age 22-64)	£81
Senior (Age 65-75)	£58.50
Golden Senior (Over 75)	£45

\* Unlike in previous seasons, for the 2009/10 campaign there will be no additional £2 charge when purchasing tickets on the day of the match.



**SALISBURY CITY**

Saturday 16th January 2010  
Blue Square Premier

Tickets are now on general sale at the normal matchday prices.



**EBBSFLEET UNITED**

Saturday 30th January 2010 Kick-off 3pm  
Blue Square Premier

Tickets are now on general sale at the normal matchday prices.

**AWAY MATCHES**



**SOUTHAMPTON**

FA Cup third round  
Saturday 2nd January 2010 Kick-off 3pm

We have been given an initial allocation of 1,200 seats.

This game is not all-ticket for Luton Town supporters but tickets are available in advance at discounted rates.

**Selling arrangements:**

Tickets are now on general sale until Thursday 31st December at 2pm.

**Prices:**

**Advance**

Adults £15  
Season Ticket Holder Adult £10  
Senior/Young Adult £10 (over 65 and age 17 to 21)  
Season Ticket Holder Senior/Young Adult £7  
Juniors £7 Under 16  
Season Ticket Holders Juniors £5

**Matchday - on the day at St Mary's**

Adults £18  
Senior Young Adults £12  
Juniors £10

**SOUTHAMPTON**

SATURDAY 2ND JANUARY 2010 KICK-OFF 3PM



**WHAT'S THE GROUND LIKE?**

The Club moved from The Dell to the new St Mary's Stadium in 2001. The stadium is completely enclosed, with all corners being filled with seating. There are also two big screens sitting on the roofs at each end. Running around three sides of the stadium, just below the roof, is a transparent perspex strip allows

this allocation can be increased to 4,750. The view of the playing action and the facilities within this stand are excellent and the leg room is good. The concourse behind the stand features a Ladbrokes, has television which show the game as it is played and a number of eating and drinking outlets. A range of pies are on offer

There is hardly any parking available at the stadium for away fans (for home fans you can pay £5 for a car parking ticket in advance and park across the road from the stadium) and there are parking restrictions in force for the local area. Most fans seem to be just heading for the city centre car parks and then embarking on the 15-20 minute walk to the stadium.

Fans also park around the Marina area and take a 10 minute walk to the ground. Parking in this area has the advantage that at the end of the game, you can avoid the city centre gridlock, by heading along the coast on the A3024 and then onto the M271/M27.

There is a free park and ride scheme in operation specifically for away supporters. This is situated just off junction 8 of the M27.

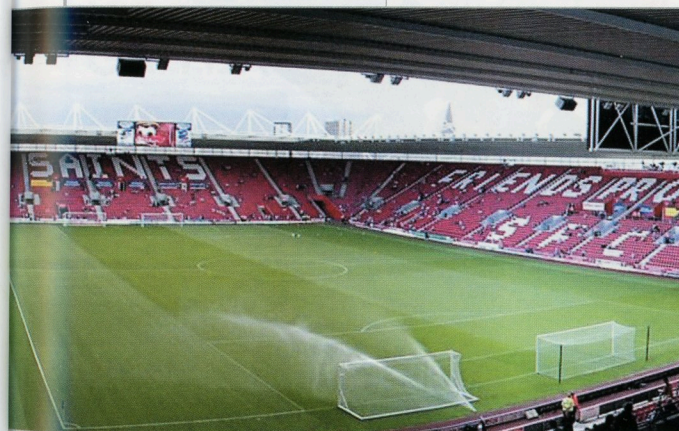
For those supporters with satellite navigation systems the postcode for St Mary's is SO14 5FP.

**TRAVEL INFORMATION**

Both Town on Tour and the Bobbers Travel Club are running coaches to St Mary's.

The Bobbers leave the Maple Road car park at 10.30am and prices are £18 for adults and £15 for concessions. To book your seat, visit the supporters' kiosk or telephone (01234) 856542.

Town on Tour depart from the Maple Road car park at 10.30am. Prices are £16 for adults and £14 for concessions.



more light and facilitates pitch growth. On the remaining side there is a row of executive boxes. The crowd are set well back from the playing action, as firstly there is a cinder track surrounding the playing surface. Outside the stadium behind the Itchen Stand is a statue of former Southampton legend Ted Bates.

**WHAT'S IT LIKE FOR LUTON FANS?**

Town fans are allocated in the Northam Stand at one end of the stadium, where normally up to 3,200 fans can sit. For cup games

plus burgers and hot dogs. There is also a 'Pie and Pint' outlet, that as the name suggests, only serves beer and pies.

**HOW TO GET THERE AND WHERE TO PARK?**

From the M3 take the A33 into Southampton. Continue on the A33 until you reach the junction with the A3024 Northam Road and turn left onto this road towards Northam. Then turn right onto the B3038, Britannia Road for the stadium.



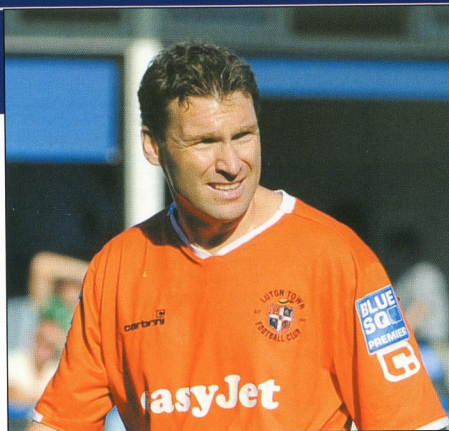
**QUEENSWAY PUBLISHING**  
 WE KNOW YOUR GAME... TO A LASTING ONE

FROM FIRST IMPRESSIONS... TO A LASTING ONE  
 T: 01440 711 920 F: 01440 711 928  
 E: QUEENSWAYPUB@AOL.COM

**QUEENSWAY PUBLISHING**  
 WE KNOW YOUR GAME... TO A LASTING ONE

DESIGN & PRINT OF TODAY'S MATCHDAY PROGRAMME  
 FROM FIRST IMPRESSIONS... TO A LASTING ONE  
 T: 01440 711 920 F: 01440 711 928  
 E: QUEENSWAYPUB@AOL.COM

THE FINAL – After quizzing 16 members of the Town squad since the start of the season we're down to the final two as Kevin Gallen and Adam Newton go head-to-head for the most prestigious award in the dressing room. Think you can do better? The answers can be found on page 66.



**KIEVIN GALEN**

**HEAD 2 HEAD**

**ADAM NEWTON**

Everton	X	Which club's ground lies closest to the River Mersey?	X	Everton
Keegan	✓	Who was the last England manager to lead a side out at the old Wembley?	✓	Keegan
Italian	✓	What was the nationality of the first player to score a hat-trick at the new Wembley?	✓	Italian
Three	X	How many league titles have Luton won?	✓	Four
Stevenage and York	✓	Which two clubs contested last season's FA Trophy final?	✓	Stevenage and York
USA, Algeria, Slovenia	✓	Can you name the three nations in England's World Cup group?	✓	Algeria, USA, Slovenia
Austria	X	Naval play in which country's top division?	X	Switzerland
Eidur Gudjohnson	✓	Which footballer was once brought on in an international match as a replacement for his Dad?	✓	Eidur Gudjohnson
Terriers	✓	What is the nickname of Huddersfield Town?	✓	Terriers
Wolves	✓	At which midlands club did Matthew Barnes-Homer begin his career?	✓	Wolves
	<b>7</b>		<b>8</b>	



# HATTERSSTATS

ALL THE RESULTS & STATS FROM THE 2009/10 SEASON



AUGUST	TEAM	COMP	SCORE	ATT	AWAY	POS
Sat 8	AFC Wimbledon	BSQP	D1-1	4,488	826	12
Tue 11	Mansfield Town	BSQP	W4-1	7,295	542	2
Sat 15	Gateshead	BSQP	W2-1	6,829	48	1
Tue 18	Forest Green	BSQP	W1-0	1,805	869	3
Sat 22	Chester City	BSQP	Do-0	6,563	85	3
Sat 29	Kettering Town	BSQP	Do-0	3,266	1,838	3

SEPTEMBER	TEAM	COMP	SCORE	ATT	AWAY	POS
Tue 1	Crawley Town	BSQP	W3-0	6,389	115	3
Sat 5	Salisbury City	BSQP	D1-1	2,044	907	3
Tue 8	Oxford United	BSQP	Lo-2	10,613	2,331	4
Sat 12	Barrow	BSQP	W1-0	6,264	144	2
Tue 22	Wrexham	BSQP	Lo-3	3,448	303	9
Sat 26	Cambridge United	BSQP	W4-3	4,870	1,728	6
Tue 29	Stevenage	BSQP	Lo-1	8,223	793	8

OCTOBER	TEAM	COMP	SCORE	ATT	AWAY	POS
Sat 3	Tamworth	BSQP	W2-1	6,297	270	5
Sat 10	Kidderminster	BSQP	W2-1	2,927	925	5
Sat 17	Altrincham	BSQP	W1-0	1,762	640	5
Tue 20	York City	BSQP	D1-1	6,387	257	5
Sat 24	Grays Athletic	FAC4Q	W3-0	2,721	124	-
Sat 31	Rushden & D	BSQP	Lo-2	7,101	402	5

NOVEMBER	TEAM	COMP	SCORE	ATT	AWAY	POS
Sat 7	Rochdale	FAC1	D3-3	3,167	355	-
Wed 11	Rochdale	FAC1R	W2-0	1,982	129	-
Sat 14	Grays Athletic	BSQP	W2-0	1,668	tbc	5
Sat 21	Cambridge United	BSQP	D2-2	7,458	711	6
Sat 28	Rotherham United	FAC2	D2-2	3,210	648	-

DECEMBER	TEAM	COMP	SCORE	ATT	AWAY	POS
Wed 2	Kettering Town	BSQP	Lo-1	6,608	237	6
Sat 5	Chester City	BSQP	Do-0	1,352	523	7
Tue 8	Rotherham United	FAC2r	W3-0	2,518	131	-
Sat 12	Cambridge Utd	FAT1	L1-3	1,665	517	-
Sat 26	Histon	BSQP				
Mon 28	Eastbourne B	BSQP				

JANUARY	TEAM	COMP	SCORE	ATT	AWAY	POS
Sat 2	Southampton	FAC3				
Sat 9	Mansfield Town	BSQP				
Sat 16	Salisbury City	BSQP				
Sat 23	Gateshead	BSQP				
Wed 27	Histon	BSQP				
Sat 30	Ebbsfleet	BSQP				

FEBRUARY	TEAM	COMP	SCORE	ATT	AWAY	POS
Sat 6	Barrow	BSQP				
Tue 9	Oxford United	BSQP				
Sat 13	Eastbourne B	BSQP				
Tue 16	AFC Wimbledon	BSQP				
Sat 20	York City	BSQP				
Sat 27	Crawley Town	BSQP				

MARCH	TEAM	COMP	SCORE	ATT	AWAY	POS
Sat 6	Hayes & Yeading	BSQP				
Sat 13	Wrexham	BSQP				
Tue 16	Kidderminster	BSQP				
Sat 20	Ebbsfleet	BSQP				
Sat 27	Hayes & Yeading	BSQP				

APRIL	TEAM	COMP	SCORE	ATT	AWAY	POS
Sat 3	Stevenage	BSQP				
Mon 5	Grays Athletic	BSQP				
Sat 10	Tamworth	BSQP				
Sat 17	Altrincham	BSQP				
Sat 24	Rushden & D	BSQP				
tba	Forest Green	BSQP				

Tyler	Reynolds	Blackett	Pilkington	Emanuel*	Newton**
Tyler	Reynolds	Keane	PILKINGTON 2	Murray**	Newton**
Tyler	Keane	Pilkington	Blackett	Murray	Burgess
Tyler	Murray*	White	Pilkington	Blackett	Burgess
Tyler	Reynolds*	Pilkington	White	Blackett	Jarvis
Tyler	Keane	White	Pilkington	Newton***	Nicholls

Tyler	A-Adjaye*	White	Pilkington	Murray	Newton
Tyler	Gnakpa*	White**	Pilkington	Murray	Nicholls
Tyler	Keane	Pilkington	White	Blackett*	Nicholls
Tyler	Gnakpa*	White	Pilkington	Murray	Hall
Tyler	Gnakpa*	White	Pilkington	Murray*	Newton
Tyler	Gnakpa*	White	Pilkington	Murray	Newton
Tyler	A-Adjaye*	White	Pilkington	Murray	Newton

Gore	Keane	White	Pilkington	NEWTON 1	Burgess
Gore	A-Adjaye	Howells	White	Pilkington	Jarvis
K.Pilkington	White	Blackett	G.Pilkington	Murray	Gnakpa**
K.Pilkington	A-Adjaye	Blackett	G.Pilkington	Murray	GNAKPA 1
K.Pilkington	White	G.Pilkington	Blackett	Gnakpa*	Murray

	P	W	D	L	F	A	W	D	L	F	A	GD	PTS	
1	Oxford Utd	23	10	1	0	28	5	7	3	2	17	12	28	55
2	Stevenage	24	8	4	0	26	8	6	4	2	14	9	23	50
3	York	24	9	4	0	23	10	4	3	4	11	12	12	46
4	Mansfield	23	6	4	1	21	8	6	1	5	16	17	12	41
5	Kettering	23	4	4	4	17	12	8	1	2	14	8	11	41
6	AFC Wimbledon	23	4	3	4	16	7	7	3	2	23	15	17	39
7	Luton	22	5	3	3	15	10	5	4	2	12	11	6	37
8	Rushden & D	23	6	1	4	18	16	4	5	3	17	10	9	36
9	Kidderminster	24	7	1	4	17	10	3	4	5	13	15	5	35
10	Cambridge Utd	23	6	2	4	24	11	2	7	2	15	16	12	33
11	Altrincham	23	2	5	4	10	12	6	3	3	15	9	4	32
12	Histon	23	4	5	2	15	10	4	2	6	14	18	1	31
13	Crawley Town	24	7	1	4	18	14	2	3	7	6	18	-8	31
14	Tamworth	24	5	2	5	16	17	2	6	4	11	13	-3	29
15	Wrexham	22	5	3	4	14	10	2	3	5	7	11	0	27
16	Barrow	23	3	7	2	14	17	3	2	6	10	16	-9	27
17	Hayes & Yeading	23	2	5	4	15	16	4	3	5	11	15	-5	26
18	Salisbury	24	4	3	5	11	11	6	0	6	15	21	-6	23
19	Gateshead	24	4	3	5	13	13	2	1	9	14	26	-12	21
20	Eastbourne Boro	23	3	5	4	14	14	1	4	6	6	19	-13	21
21	Grays Athletic	24	3	3	6	12	20	0	5	7	11	25	-22	17
22	Forest Green	23	2	4	6	8	15	1	3	7	10	27	-24	16
23	Ebbsfleet United	24	2	4	6	9	15	1	2	9	5	26	-27	15
24	Chester	24	3	1	7	12	16	2	6	5	10	17	-11	-3



Keane	Hall	Burgess	CRADDOCK 1**	Gallen	
Burgess	Hall	Jarvis	CRADDOCK 1	Gallen*	
HALL 1	Howells**	Jarvis	Craddock*	GALLEN 1	
Hall	Keane	Reynolds	CRADDOCK 1**	Gallen	
Nicholls	Gallen	Burgess	Craddock	Basham**	
Craddock**	Burgess*	Jarvis	Gallen	Murray	

Nicholls	Keane	Jarvis	CRADDOCK 1	Gallen***	
Keane	Jarvis	Newton	CRADDOCK***	GALLEN 1	
Nicholls	Hall	Newton	Gallen	Craddock**	
Keane	Jarvis	Craddock	Gallen	NEWTON 1	
Jarvis	Gallen**	Hall	Craddock	Hatch***	
JARVIS 1	Hall	HOWELLS 1**	GALLEN 2***	Hatch	
Nicholls**	Jarvis	Howells***	Hall	Craddock	

Nicholls	Jarvis	HALL 1	Hatch**	WRIGHT 1***	
Nicholls	Jarvis	Hall	Pilkington	Craddock***	
Nicholls	Hall	NEWTON 1	Craddock	Wright*	
Nicholls	HALL 1	Gnakpa	Craddock	Wright*	
Pilkington	HALL 1	Burgess***	Gallen	Charles	
Nicholls	Hall*	Jarvis**	Craddock	Gallen	

Blackett	Gnakpa	BASHAM 2	Gallen	Murray	
Burgess	Hall	Nicholls	GALLEN 2	Craddock	
Keane	Nicholls	Newton	GALLEN 1	CRADDOCK 1*	
Nicholls	Keane	Newton*	Gallen	CRADDOCK 1	
Keane	Newton	Nicholls	Gallen***	CRADDOCK 1**	

Nicholls	Keane	Newton	Craddock	Gallen**	
Hall	Keane	Emanuel**	Barnes-Homer	Craddock**	
Keane	NEWTON 1	Nicholls**	Jarvis	Gallen***	
Keane	Newton	Nicholls	Jarvis	Gallen	

Blackett	Gnakpa	BASHAM 2	Gallen	Murray	
Burgess	Hall	Nicholls	GALLEN 2	Craddock	
Keane	Nicholls	Newton	GALLEN 1	CRADDOCK 1*	
Nicholls	Keane	Newton*	Gallen	CRADDOCK 1	
Keane	Newton	Nicholls	Gallen***	CRADDOCK 1**	

Nicholls	Keane	Newton	Craddock	Gallen**	
Hall	Keane	Emanuel**	Barnes-Homer	Craddock**	
Keane	NEWTON 1	Nicholls**	Jarvis	Gallen***	
Keane	Newton	Nicholls	Jarvis	Gallen	



Howells*	Jarvis***	Basham**	Gnakpa	Gore	
Basham*	Howells**	Gnakpa***	Beavan	Gore	
Gnakpa**	Basham*	Beavan	Watkins	Gore	
Jarvis*	Howells	Gnakpa	Basham**	Gore	
Murray*	Howells**	Gnakpa	Patrick	Gore	
Blackett*	Howells***	Basham	Donnelly**	Gore	

Blackett*	Hall**	Donnelly***	Basham	Gore	
Hall*	Blackett**	Basham***	Donnelly	Gore	
Murray*	Donnelly**	Howells	Basham	Gore	
Blackett	Hatch*	Basham	Howells	Gore	
Blackett*	Charles**	Donnelly***	Reynolds	Gore	
Reynolds*	Blackett**	Craddock***	Charles	Gore	
Gnakpa*	Wright**	Charles***	Blackett	Gore	

Gnakpa*	Craddock**	Charles***	Blackett	Howells	
Gnakpa*	CHARLES 1**	Howells***	Blackett	Gore	
Charles*	Reynolds**	Burgess	Basham	Gore	
Charles*	Burgess	Basham	Reynolds	Gore	
Asafu-Adjaye*	Gnakpa*	Wood	Nathaniel***	Gore	Barker
Murray***	Burgess*	Gnakpa**	Charles	Gore	

A-Adjaye	Craddock	Hall	Howells	Reynolds	Charles
Blackett	Gnakpa	Newton	Charles	Reynolds	
Howells**	Nwokeji*	Asafu-Adjaye	Hall	Gore	
Howells*	Burgess	Jarvis	Charles	Gore	
Howells* 1*	Howells**	Hall***	Jarvis	Gore	A-Adjaye

Emanuel**	Barnes-Homer	*Jarvis	Cain	Gore	
Cain*	Nwokeji**	Jarvis	Howells	Gore	
Craddock*	Hall**	Howells***	Nwokeji	Gore	Watkins
Craddock	Hall	Barnes-Homer	Emanuel	Gore	



UPNEXT...

LUTON TOWN v SALISBURY CITY 16 / 01 / 10



## SALISBURY CITY

After today's match against Eastbourne Borough, the Hatters are next at home in the New Year when Salisbury City make the trip to Luton on Saturday 16th January for another Blue Square Premier fixture at Kenilworth Road.

The two sides met earlier in the season at the Raymond McEnhill Stadium where the game finished 1-1 with Salisbury striker Matt Tubbs scoring the equaliser to cancel out Kevin Gallen's first-half goal for Town.

Since then the Whites have struggled to find form in the league and are currently languishing in the table.

Salisbury have enjoyed some memorable matches in their history with a number of FA Cup ties to look back on.

In the 1979/80 season they reached the First Round of the FA Cup and faced Millwall at home but the game was switched to Southampton's old ground at the time, The Dell to accommodate the travelling fans and also the large number of home fans. Just under 9,000 fans witnessed Salisbury lose 2-1 in a closely fought contest.

After flirting with promotion from the Southern Division to the Premier Division and being denied access into the later because of ground grading regulations, local businessman Ray McEnhill took chairmanship of the Wiltshire club and with his ambitious approach added a new purpose built stadium at Old Sarum.

Named after the Chairman, the Raymond McEnhill Stadium has a capacity of just under 4,000 with a record attendance of 3,100 coming in 2006 when Nottingham Forest drew 1-1 with the Whites in the Second Round of the FA Cup.

The 2005/06 and 2006/07 seasons saw successive promotions which resulted in them being promoted to the highest level of non-league football, the Conference.

The Whites have maintained their status in the Blue Square Premier by finishing 12th and 16th in the 2007/08 and 2008/09 seasons respectively.

Before making the trip to Kenilworth Road in the middle of January, Salisbury have a run of tough home games to contend with which include league games against Oxford United and Histon.

# MAKE MONEY FOR YOUR CLUB



## COURTESY OF LEAGUE SPONSOR BLUE SQUARE

Open a Blue Square account today and earn money for your football club. Plus get £20 in FREE BETS \*

Simply register at [www.bluesquare.com/fans](http://www.bluesquare.com/fans) and click on your club's badge or call 0800 587 0400 and quote your team's name

FANS FROM A NUMBER OF BLUE SQUARE TEAMS RAISED THOUSANDS FOR THEIR CLUBS LAST SEASON, YOU CAN DO THE SAME!



# BLUESQUARE.COM

\*Offer applies to new customers staking £10 or more. Place 5 bets of £10 or more to receive a free £10 bet. Place 5 more bets of £10 or more and receive another £10 bet, all qualifying bets win singles only, at odds of evens or greater. Offer strictly over 18s only and limited to one per person. See website for full offer terms and conditions. Blue Square encourages responsible gambling, [gambleaware.co.uk](http://gambleaware.co.uk)



# THE SQUADS



## LUTONTOWN

1	MARK TYLER
2	ED ASAFU-ADJAYE
3	LEWIS EMANUEL
4	KEITH KEANE
5	ALAN WHITE
6	GEORGE PILKINGTON
7	ADAM NEWTON
8	KEVIN NICHOLLS
9	LIAM HATCH
10	TOM CRADDOCK
12	SHANE BLACKETT
13	SHANE GORE
14	ASA HALL
15	JAKE HOWELLS
16	ROSSI JARVIS
17	RYAN CHARLES
18	CLAUDE GNAKPA
19	STEVE BASHAM
20	KEVIN GALLEN
21	CALLUM REYNOLDS
23	FREDDIE MURRAY
25	GEORGE BEAVAN
26	KEVIN PILKINGTON
27	MARK NWOKEJI
28	ASHLEY CAIN
29	MATTHEW BARNES-HOMER

## EASTBOURNE

1	DANNY KNOWLES
2	DARREN BAKER
3	NEIL JENKINS
4	MATT SMART
5	BEN AUSTIN
6	MARC PULLAN
7	DAN SMITH
8	PAUL ARMSTRONG
9	ANDY ATKIN
10	LIAN ENVER-MARUM
11	MATT CRABB
12	SIMON JOHNSON
14	SIMON WEATHERSTONE
15	NATHAN CRABB
16	OLLIE ROWE
18	JAMIE TAYLOR
19	ROSS TRELEAVAN
21	MATT HURLEY
24	GARY ELPHICK
26	DAN BROWN
27	KAYNE MCLAGGON
30	DEAN LIGHTWOOD

### MATCH SPONSOR



### MATCHBALL SPONSOR

Sue Miller



Visit [www.lutontown.co.uk](http://www.lutontown.co.uk) after the match today for a match report, photographs and all the post-match reaction on Hatters Player.



### TODAY'S FIXTURES

Altrincham	v	York City
Chester City	v	Barrow
Gateshead	v	Wrexham
Grays Athletic	v	Crawley Town
Hayes & Yeading	v	Ebbfleet United
Histon	v	Kettering Town
Mansfield Town	v	Cambridge U
Rushden & D	v	Kidderminster
Salisbury City	v	Oxford United
Stevenage Borough	v	AFC Wimbledon
Tamworth	v	Forest Green

## THE OFFICIALS

REFEREE:	R. J. MARTIN
ASSISTANT	T. POWER
ASSISTANT	R. JAYE
4TH OFFICIAL	L. FORRESTER

## NEXTUP

LUTON TOWN v SALISBURY CITY 16 / 01 / 10  
BLUE SQUARE PREMIER 3PM

