

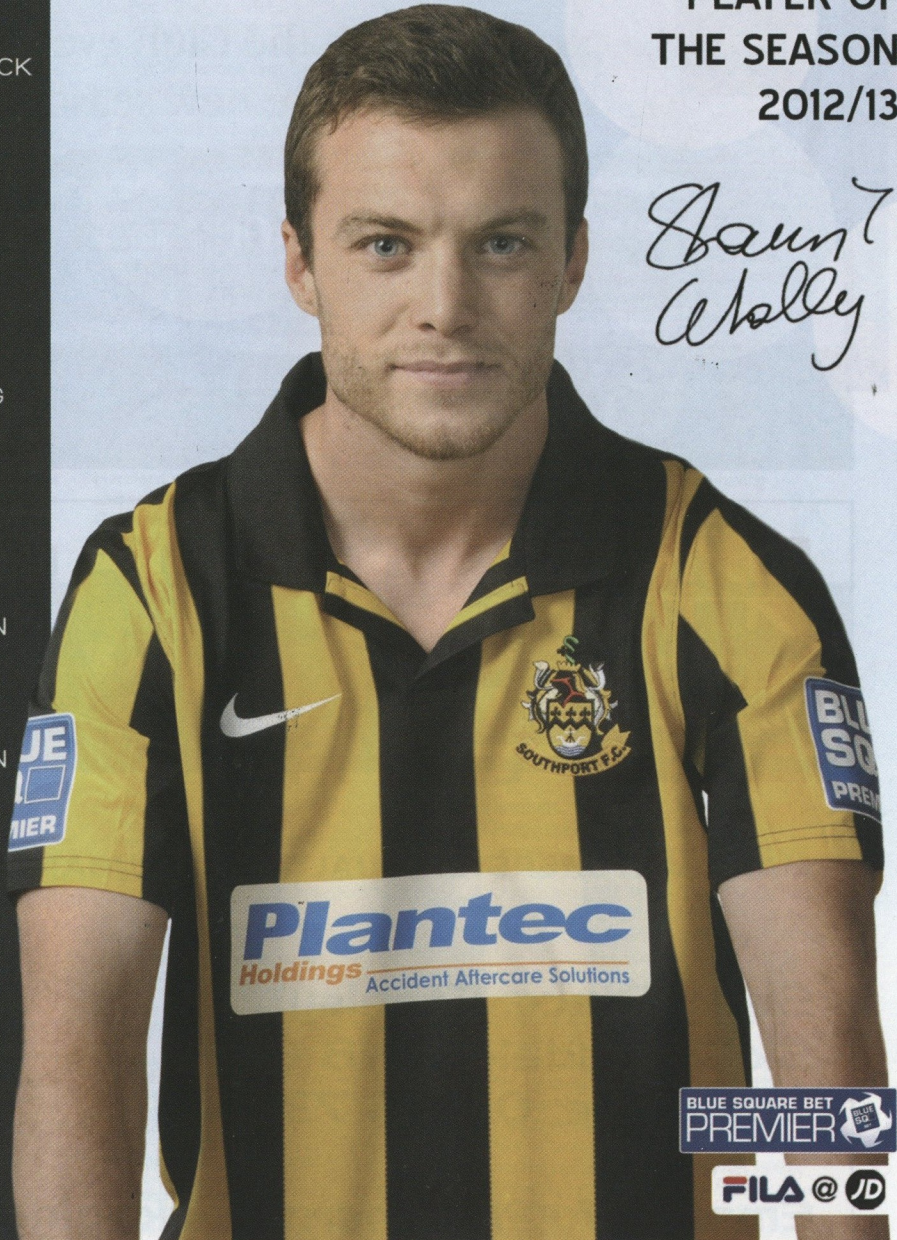
THE SANDGROUNDER

78/79 Ron PICKERING
 79/80 Graham CUNEELY
 80/81 Alan ALTY
 81/82 Joe STRONG
 82/83 Paul EVANS
 83/84 Jay McCOMB
 84/85 Kevin McCORMACK
 85/86 Paul EVANS
 86/87 John COLEMAN
 87/88 David EYRES
 88/89 Rob STURGEON
 89/90 Dave O'BRIEN
 90/91 Ossie SMITH
 91/92 Bob HOWARD
 92/93 Kevin MOONEY
 93/94 Paul MOORE
 94/95 Derek GOULDING
 95/96 Leory DOVE
 96/97 Billy STEWART
 97/98 Tim RYAN
 98/99 Scott GUYETT
 99/00 Tim RYAN
 00/01 Martin CLARK
 01/02 Steve DICKINSON
 02/03 Steve PICKFORD
 03/04 Neil FITZHENRY
 04/05 Terry FEARNES
 05/06 Steve DICKINSON
 06/07 Carl BAKER
 07/08 Kevin LEE
 08/09 Adam FLYNN
 09/10 Earl DAVIS
 10/11 Tony McMILLAN
 11/12 Tony GRAY
 12/13 Shaun WHALLEY

SHAUN WHALLEY

PLAYER OF
 THE SEASON
 2012/13

Shaun Whalley



BLUE SQUARE BET
 PREMIER

FILA @ JD

Palace
 Main Sponsor

Plantec
 Holdings
 Accident Aftercare Solutions
 Shirt Sponsor

Tiffany's of Formby
 Harris Balcombe
 Match Sponsor

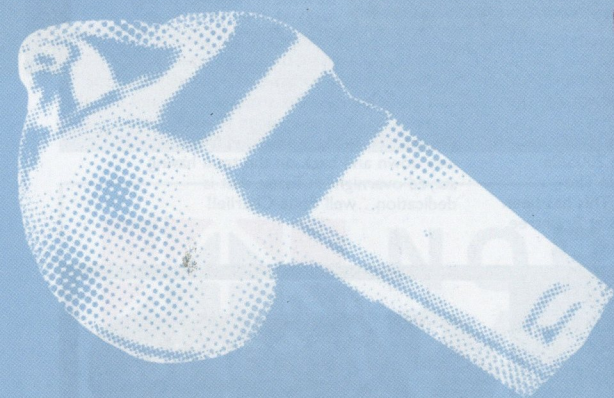
Merseyrail
 Dave Pennington
 Ball Sponsor

Sandy Tittershill
 Northern Packaging
 Programme Sponsor

Barron
 Financial Solutions
 Captain's Table

#NONSENSEINFOOTBALL

"AN INCH OR TWO EITHER SIDE OF THE POST AND THAT WOULD HAVE BEEN A GOAL."



ENOUGH SAID. JUST BET



GET STRAIGHT TO THE BLUE SQUARE BET ON YOUR MOBILE OR TABLET

bluesq.com
web | mobile | tablet



Over 18s only. Blue Square Bet encourages responsible gambling. gambleaware.co.uk

CLUB & COMMERCIAL

with HAYDN PREECE



MATCHDAY PROGRAMME

Our matchday programme fared well in the Programme Monthly Collectors review finishing in mid table. Given that we are up against full time media teams we are delighted with the outcome and it is great testament to everyone involved that we came ahead of the £3 efforts of some clubs. Thank you to all our contributors. Our feedback read " A Solid well presented effort. The Sandgrunder is ultimately constrained by top heavy advertising. Contributions from management, editor, press officer, local media and supporters trust sit alongside the visitors squad pen pictures and "Ten Classic Campaigns", whereas the retro "We've Met Before" was restricted to just the previous seasons games"

Today's visitors programme was the well deserved overall winner.

VITAL SOUNDS FOOTBALL TOURNAMENT

The Merseyrail Community Stadium hosts a Vital Sounds Charity football tournament on Saturday April 27th.

Organised by Southport College Btec Level Three Sports Diploma students and tutor Helen Wilson the aim is to raise funds for the Vital Sounds Charity. Set up by former Southport star striker Steve Haw after the death of his son Chris. Thinking of others at a time of suffering personal tragedy Steve set out to communicate awareness of young adult sudden death syndrome and raise funds for heart screening to prevent medically avoidable tragedies. Warning signs of young adult sudden death syndrome can in most cases be detected by a heart scan costing in the region of £15. All funds raised from the event will go towards heart screening.

Plus and possibly the most valuable, the outstanding Btec Sports Diploma students have raised awareness on the campus of the necessity to have a heart scan, so anyone susceptible but not knowing can be detected. In the vast majority of cases a very minor operation can correct the situation. After the Fabrice Muamba situation a year ago the danger of young adult sudden death syndrome hit the national headlines and this is something young people can relate to.

Community Director Haydn Preece said " We have been working closely with Southport College in a variety of areas with tremendous encouragement from College Principle John Clarke. Alan Moogan has coached the Southport College squad in the English Colleges League, we have contributed to the Btec Sports Diploma Course by supporting students, who as part of their assessment are required to organise a sporting event and in a variety of community/curriculum areas. The club-college links are going from strength to strength."

The turnstiles on Saturday April 27th will open at 9:30am with CF Global providing refreshments throughout the day. Local businesses, Everton and Liverpool have donated a wide range of raffle prizes. The entry fees for the tournament have already raised £800 so the final figure will enable many young people to undergo heart screening which may save a life. The Southport College students are seeking support from the town on the day.



Southport College Principal John Clarke with Steve Haw at the Merseyrail Community Stadium

Southport FC

THIS PAGE IS SPONSORED BY NINNA'S CAFE



Find us on Nevill St.
Show this programme for 10% discount. Proud Sponsor of SFC.



CLUB NEWS

with HAYDN PREECE

JAMES TREADWELL

Director of Moore and Smalley and regular club sponsor, James Treadwell was presented at a recent Blue Square Bet Premier match with a Community Partnership thank you Trophy from Chairman Charlie Clapham MBE. Moore and Smalley Director James Treadwell has backed the clubs blossoming Football Conference Community scheme which includes coaching in primary schools and colleges, working with Sefton Education Business Partnership and Arden College, running tournaments out of the Merseyrail Community Stadium, supporting coaching development, hosting Baby Ballet, linking with local charity initiatives and multi agency street games to name but a few of the clubs wide ranging deliveries.



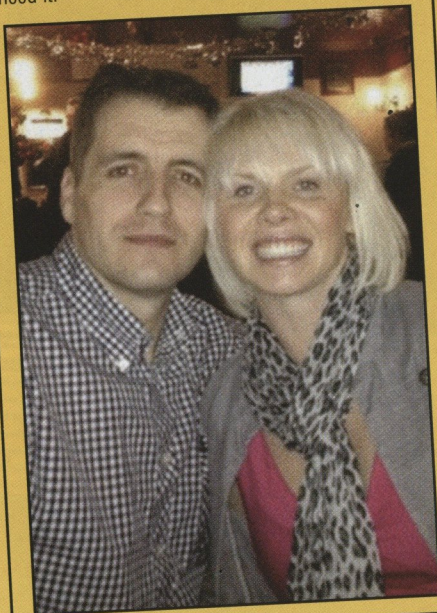
Chairman Charlie Clapham said "We are very proud of our Football Conference Community initiatives and have Moore and Smalley onboard as a Community Partner is a great accolade. I wish to thank James for putting this community partnership together, it is invaluable."

Southport FC

CONGRATULATIONS ROD

Rod Cullinane, 35, will be marrying his long time (& long suffering) girlfriend Louise Burns on the 3rd May in Southport.

Best of luck from all the lads...you're going to need it!



CLUB NEWS

CF GLOBAL

Richard Hughes of CF Global has an exciting new way to communicate to Southport supporters this summer at the window of the CF Global office on Lord Street. CF Global provide staff at sporting events internationally and via the window, interchanging adverts will be publicising the forthcoming sports around the world that CF Global require staff. Also for all Southport supporters all pre season friendlies, Everton Under 21 matches and season ticket offers will be illuminated from the CF Global office.



TODAY'S BUCKET COLLECTION FOR Woodlands Animal Sanctuary

The Sanctuary is a charitable trust and was created in February 2005 in order to care for unwanted and neglected farm animals, small domestic animals and species of native wildlife that, over the years, have been given to us to care for.

The Sanctuary receives NO government funding or financial support from a national charity and will be entirely dependent on the goodwill of private benefactors and local businesses. Every day brings new challenges to our small purse; food, bedding, heating, not to mention veterinary fees.



APRIL SOCCER CAMP ACTION AT THE MERSEYRAIL COMMUNITY STADIUM



Alan Moogan's Easter Southport Football Club Soccer Camp at the Merseyrail Community Stadium was a great success.

Coaching by Shaun Whalley, Karl Ledsham and Alan Moogan has been real fun and enjoyable for the girls and boys.

FROM THE SKIPPER

"I've just arrived home after Forest Green away and sat down to write this. What a massive result for us and everyone involved. We all more than deserved these last couple of results to see us over the finish line. It's been an up and down season but also one full of positives. Despite our league position I do feel we have progressed from last season and built a squad that is more than capable of competing at this level next year. Personally I've enjoyed playing with and captaining this set of lads this season and its been a privilege and pleasure. A massive thank you to all the fans who make the effort to travel home and away and voice their support week in week out. To have a positive crowd behind you makes such a big difference and gives everyone that extra lift. Hope everyone enjoys this last game and we can go out on a high"

GRANDY

FROM THE BOARDROOM

By Vice Chairman Sam Shrouder

Well what a roller coaster of a season it has been and as I write this piece following our courageous win at Forest Green it still has not come to a halt. But when the chips were down at Braintree, Grimsby and Forest Green I felt very proud to be a Southport supporter. The travelling fans were nothing short of magnificent and I thank everyone of you. The management and players, who are a very tight knit group rose to the challenge with three performances of great character and courage. When Liam took the decision to considerably reduce the average age of the squad we knew there would be inconsistencies, but we also know that Liam has brought in some quality youngsters, who will become very good players. It has been important for us all to show patience.



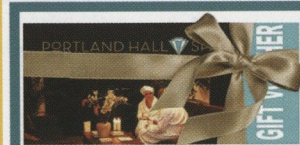
Southport Football Club could not exist without the time and expertise that so many people freely give. They are far too many to mention but they are much appreciated. My match day job is to look after the sponsors and to do the post match presentations (well somebody has to do it!) I thank the sponsors not only for their financial support but also for being lots of fun even on our bad days. Also thanks to Simon Grand and James Smith for the good grace they showed helping with the presentations. We should also recognise the fantastic work that Haydn and Alan Moogan are doing in the community. Special mention to Trust in Yellow whose increasing involvement with the Club is important for the future.

But football is primarily about the players so thanks to them for not only giving 100% even when we were having a bad run, but also for being a really good bunch of lads, which I experienced when they came round to our house after Forest Green. Even Karl Ledsham and Andy Parry spoke to me, which was very gracious of them considering the disastrous golf I played when we were part of the same team in the golf day! Also thanks to Liam and Dom for not only putting the team together but also the willing help they give in other areas.

Finally to all the fans thank you for your support. Summer well and let us do it all again same place same time next season.

Southport FC

THIS PAGE IS SPONSORED BY PORTLAND HALL SPA



Spa Days and Pamper Gifts...


Tel: 01704 537733

Portland Hall Spa vouchers from £15

Last minute? Print your own vouchers online at www.portlandhallsa.com

IDEAL CHRISTMAS GIFT

CLUB NEWS

FORMBY

LINKS
BNI FORMBY SHORT SPONSORS

Alastair Bone
 Bespoke Interiors
 Telephone: 01704 214903
 Mobile: 07817 083 826
 info@joineryinsouthport.co.uk

The Kitchen Sink
 (Southport) Ltd.
 111b Eastbank Street,
 Southport PR8 1DG
 Tel: 01704 546 505
 Fax: 01704 321 987
 Mob: 07738 083 898

MOOKGARDENS.COM
 LANDSCAPE/DESIGN DEPT
 DRIVES - PATIOS - LAWNS
 FENCING-PLANTING
 Southport Flower Show
 Gold Medal Winners
 Tel 01704 55 11 44 Mob 07831 793 074

INSURANCE REPAIR SPECIALISTS
 01704 862037

ASPRAY
 FIRE | FLOOD | WATER | STORM | IMPACT

DAVID ASHWORTH
 LEISURE AND BUSINESS TRAVEL COUNSELLOR
 T 01704 877893
 M 0779 525 3922
 E david.ashworth@travelcounsellors.com
 W http://www.travelcounsellors.co.uk/david.ashworth


Simba Sports
 Management Ltd
 david@simbasports.co.uk
 07710 583348

SOUTHPORT CARPET & FLOORING CENTRE
 99-109 EASTBANK STREET - SOUTHPORT - MERSEYSIDE - PR8 1DG
 Tel: 01704 547154 / 545345 Fax: 01704 549300
 Email: southportcarpets@hotmail.com
 Web: www.southportcarpets.com
 Steve Hanlon - Managing Director - Mob:07774 199 505
 www.arugisforlife.com

ForeSight
 electrical services
 106b Upper Aughton Road,
 Birkdale, Southport PR8 5NJ
 Tel: 01704 550007 • Fax: 05601 262228
 Mobile: 07808 311649
 Email: office@foresightelectricalservices.co.uk

S. Marsden
 Plastering & Building
 01704 514415 07901 538069
 "Proud Sponsor of Southport Football Club"
 Website: smarsdenplasteringandbuilding.co.uk

BASICS UK LTD
 Business and Specialist
 Industrial Consultancy Services
BRIAN A. SPENCER
 Managing Director
 Tel: 07742 307701
 Email: bas@basicsuk.com

LEES
 Solicitors LLP
 www.lees.co.uk
 Birkenhead 0151 647 9381
 Heswall 0151 342 6273
 West Kirby 0151 625 9364

BESPOKE SOLUTION
 BUSINESS & LIFESTYLE ASSISTANCE
 T: +44 (0)1704 566664
 M: +44 (0)7909540231
 www.bespokesolution.co.uk
 Follow us on Twitter @BSBLA


Paul Gilchrist
 Independent Mortgage Broker
 Telephone: 01704 545515
 Out of Hours: 07702 511494
 Evening and Weekend Appointments available
 17 Houghton Street, Southport, PR8 0NS

We get websites seen!
 Search Engine Optimisation
 Google Adwords
 Social Media
 01704 330033 : 07903 603518
 www.clickscr.co.uk
 @clickSCR

CFS
 Chris Whitehead BA(Hons) Dip(PFS)
 Independent Financial Adviser
 countrywide
 Estate Planning (IFA)
Countrywide Estate Planning (UK) is a trading name of Financial Partners Ltd. Financial Partners Ltd is an authorised representative of Reg. Financial Services Ltd, which is authorised and regulated by the Financial Services Authority. Financial Partners Ltd, Registered Office: 1 Nicholas Road, London W11 4AN. Registered in England and Wales No. 0892582

CROSBY ASSOCIATES
 LIMITED
 Web • Apps • Digital Marketing • Publishing

KC WORKWEAR & SPORTSWEAR
 Units 26 to 27
 Birkdale Trading Estate
 174 Liverpool Road
 Birkdale Southport
 PR8 4PZ
 email sales@kc-workwear.com
 WWW.KC-WORKWEAR.COM

CleanTouch
 HIGH QUALITY CLEANING SERVICES
 "We clean, you gleam!"
ANTONY HOWE
 Tel. 01704 840230 - 07966 590702
 E. info@cleantouchgleam.com
 www.cleantouchgleam.com
 Orchard House, 17 Summerswood Lane, Halsall, Lancashire L39 8RG

WADES DECORATORS
 Interior & Exterior Painting & Decorating
 Private & Commercial Work
 Call Neil for a free estimate
 07786867602
 0151 281 6849
 E-mail: nwades32@yahoo.co.uk
 Enhance your home or business!

Ryders
 Personalised Vehicle Services • Bespoke Finance • Quality Service & Customer Care
Mike Dixon
 Tel: 0151 922 7685 Mob: 07792 367 814
 Email: mike.dixon@ryders.co.uk Web: www.ryders.co.uk
 215 Knowsley Road, Bootle, Liverpool, L20 4NW

strawberryhr
 approachable | knowledgeable | effective
John North Director
 T: 01704 833684 or 07962 060956
 E: mail@strawberryhr.com

LONSDALE & MARSH
 CHARTERED ACCOUNTANTS
Oliver Grills
 Partner
 ogrills@lonsdales.co.uk
 07976 133339

FAREWELL TO A FRIEND



It is with great sadness and disappointment that I write my programme notes for this not only our final game of the season but more importantly the Final Game of Liam Watson our finest ever Manager and my closest friend, I realize the title indicates a death clearly there is no death but Liam leaving Southport Football Club is like a death in my family the good news is that our friendship will last beyond today it will last forever.

I first encountered Liam in 2004 when as a young player manager of Runcorn he applied for the job here at Southport, of all the interviews that Sam and I have conducted over the years Liam was head and shoulders above every other applicant (and there have been many!) his appearance in a light suit and jet black hair (yes he had jet black hair uses Grecian 2000 now!) and the most engaging smile soon had Sam and I bowled over he came prepared so it was the easiest decision we have ever had to make and what a good decision it turned out to be.

Liam has taken our football club to great heights winning a league twice not many people win leagues Liam has achieved this twice with Southport which is a tremendous feat, I guess one disappointment is that Liam never played for Southport that's my fault Liam would tell me as we signed Chris Sharratt instead of Liam I maintain that Chris was a better player than Liam!! Maybe I should own up and agree with Liam and say I picked the wrong one!

There have been some fabulous times with Liam in his two spells at the club we both agree that he should never have left in 2006, Liam has repeatedly stated that now is the right time for him and the club to move on I totally respect and understand his decision albeit it is with a heavy heart that I accepted his decision to leave, Liam has sacrificed much of his life to Southport over the last 9 years he has been my closest confidant throughout his time here, we have shared laughter and tears together, I guess now the pressure is off we can just share the laughter.

The most important message that Liam must take away from Southport Football Club and me is a massive THANK YOU not only for what he has done for our Football Club but from me personally for being my friend.

This is for sure Farewell but not Goodbye. Thanks Mate.
Charlie

THIS PAGE IS SPONSORED BY MARIC TROPHIES

BROWELL'S BIRO

with TOM BROWELL



This season has been another helter skelter of a ride for us. And for the season as a whole. The fight for the Championship has been fascinating with a number of clubs occupying the all important first place throughout the course of the last eight months. With it all coming down to tonight for Kidderminster Harriers and Mansfield Town the stakes couldn't be higher. When the fixture list came out for this season your eyes dart up and down the 46 matches with priority going to the first and last match. After last season seeing this fixture as the finale you would have been forgiven for thinking it could have been a promotion deciding encounter for both sides but unfortunately not the case.

For Luton this campaign will be remembered for their achievements in the FA Cup. The Hatters recorded 1-0 victories against Wolves and Norwich, becoming the first non league team to beat a top flight side since 1989. In this run Luton won five matches which is one less than the eventual winner. Another key moment from their season was the departure of Paul Buckle as he moves to America. Luton, who finish the season today outside the play offs for the first time since being in this division knew they had to get the right appointment and no one could argue John Still is one of few up for the challenge of guiding them back to the Football League. As the results pré and post Still have shown, he has his work cut out.

Buckle and Luton may have parted company on good terms but there have been many more managers that have been sacked with a lot being a shock which is a worrying trend. Danny Wilson and Steve King now find themselves unemployed so close to the end of the season. Wilson's Sheffield United are in fifth place in League One, just six points off an automatic promotion place with a play off place a certainty but he lost his job last week and Macclesfield Town who have just been outside the play offs in the first season back in this division called the end of King's time at Moss Rose which was less than a full season. This coming after their best ever headline making FA Cup run like Luton beating Swindon and Cardiff before losing narrowly by a penalty in a 1-0 defeat to finalists Wigan.

By the 20th March, 103 managers and coaches had been sacked this season. Richard Bevan, Chief Executive of the League Managers' Association described the amount of dismissals as embarrassing. Blackburn Rovers giving just 15 matches to Michael Appleton, which included an FA Cup win at The Emirates. In the Premiership two managers have been unfairly released from their duties. Roberto Di Matteo won the FA Cup and the one everyone wanted at Chelsea, the Champions League but was sacked in November. Nigel Adkins produced back to back promotions to send Southampton back to the Premiership however he was sacked in January. Was he a victim of being too successful? Clubs want instant success, they are getting hungrier after each match. Time is not on the managers side, no matter what they have achieved only a few months earlier. But one refreshing talking point is Steve Burr. No win in the first ten matches for Kidderminster this season but now they could be crowned champions this evening - good things come to those who wait.

SOUTHPORT HIRE CENTRE

15 Hampton Road,
 Southport
 Tel: (01704) 538595

HELPING YOUTH SOCCER IN SOUTHPORT

Sheffield Insulations

Buildings need thermal and acoustic insulation and you need help from the Experts
So, here for your information, is

YOUR FIRST ELEVEN!



Whatever the job you need look no further than our winning team -

no-one knows more about insulation than we do.

JUST CALL

0870 789 8765

FOR CONNECTION TO YOUR LOCAL STOCKIST

MBPM LTD

Insulation Contractors

12 Water Lane

Stratford

London

E25 4NL

Tel: 07796 587843



P&H Services (South Wales) Ltd

15 Stockwood View

Langstone

Newport

NP18 2NS

Mob: 07951 108853

Tel: 01633 411118

Fax: 01633 411118

mail to: pandhservices@btinternet.com

WELCOME TO LUTON TOWN



A warm welcome to The Merseyrail Community Stadium to our visitors from Luton Town for what is the final fixture of the season. Given the weather problems experienced throughout the country we are all grateful to see the season come to an end on time.

Luton come into the game after a busy week with two home games, against Newport County on Tuesday and relegated Ebbsfleet United on Thursday.

As of last Saturday they sat in eleventh place after a 1-1 home draw with Play Off hopefuls Grimsby Town but with the right set of results this week they could possibly be coming here in seventh place. To most clubs that would represent a successful campaign but such is the expectation on Luton anything outside a play off position would be seen as a disappointment.

Luton have of course experienced the high of knocking out a Premiership side from the FA Cup this season with a superb 1-0 win at Norwich in front of over 26000, a large proportion of which had travelled from Bedfordshire.

Despite the ups and downs the gates at Kenilworth Road remain the envy of most clubs in the league and coming here with an average home gate of 5916 surpasses many clubs in the Football League. This is just 85 down on 2011/12 and when a lot of clubs have experienced a big drop the fans have remained loyal. The Luton Fans Forum is not for the faint hearted however but it does provide for an entertaining read for supporters of other clubs. Be warned if you venture on to it, it is X Rated!



We've Met Before

| Season | Date | Home | Opposition | Result | Attendance | Notes |
|--------|--------|------|------------|--------|------------|-------------------------|
| 62/63 | 24-Sep | H | FLC2 | L 1-3 | 5375 | Blain |
| 65/66 | 27-Dec | H | Lge | W 3-2 | 6638 | Russell, Alty, Spence |
| 65/66 | 28-Dec | A | Lge | L 0-2 | 7307 | |
| 66/67 | 08-Oct | H | Lge | W 4-1 | 4485 | Alty(2) Spence, Russell |
| 66/67 | 25-Feb | A | Lge | D 0-0 | 6903 | |
| 68/69 | 08-Apr | A | Lge | D 0-0 | 15683 | |
| 68/69 | 14-Apr | H | Lge | D 1-1 | 3392 | A Russell |
| 69/70 | 16-Sep | H | Lge | L 0-3 | 4003 | |
| 69/70 | 14-Apr | A | Lge | L 0-1 | 16756 | |
| 10/11 | 26-Mar | H | Lge | W 2-1 | 1659 | Moogan, Lee |
| 10/11 | 09-Apr | A | Lge | L 0-6 | 5844 | |
| 11/12 | 20-Aug | A | Lge | L 1-5 | 5681 | Brown |
| 11/12 | 21-Jan | H | Lge | D 3-3 | 1665 | Gray, Mukendi, og |
| 12/13 | 29-Sep | A | Lge | L 1-3 | 5696 | Parry |

STATS

League Record 2012-2013 up to 13 April

| | Pld | W | D | L | F | A | GD | GFA | GAA | PpG | Pts | Rank |
|----------------|-----|----|----|----|----|----|-----|------|------|------|-----|------|
| Home Record | 21 | 9 | 6 | 6 | 39 | 24 | 15 | 1.85 | 1.14 | 1.57 | 33 | 9 |
| Away Record | 22 | 7 | 6 | 9 | 24 | 35 | -11 | 1.09 | 1.59 | 1.22 | 27 | 12 |
| Overall Record | 43 | 16 | 12 | 15 | 63 | 59 | 4 | 1.46 | 1.37 | 1.39 | 60 | 11 |

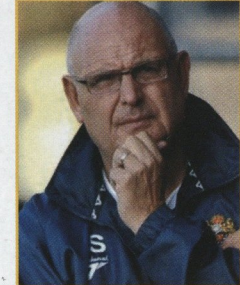
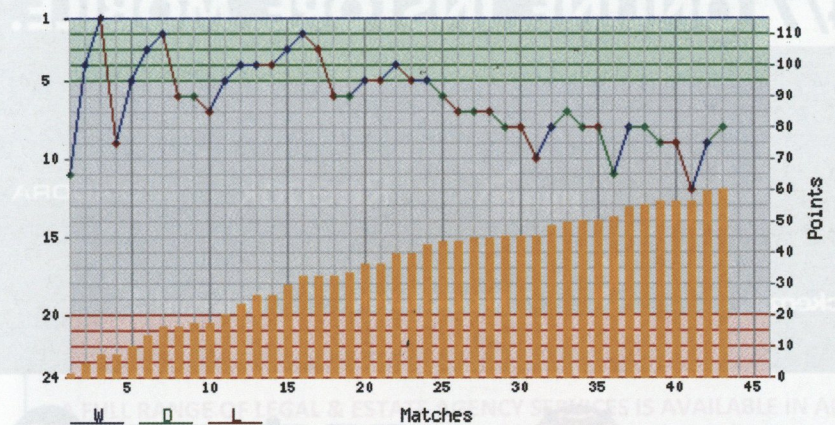
Monthly Results to 13 April

| | Pld | W | D | L | F | A | GD | GFA | GAA | PpG | Pts | Rank |
|-----------|-----|---|---|---|----|----|----|------|------|------|-----|------|
| August | 5 | 3 | 1 | 1 | 9 | 5 | 4 | 1.80 | 1.00 | 2.00 | 10 | 5 |
| September | 7 | 4 | 1 | 2 | 13 | 12 | 1 | 1.85 | 1.71 | 1.85 | 13 | 5 |
| October | 4 | 3 | 0 | 1 | 8 | 5 | 3 | 2.00 | 1.25 | 2.25 | 9 | 1 |
| November | 3 | 0 | 1 | 2 | 2 | 5 | -3 | 0.66 | 1.66 | 0.33 | 1 | 22 |
| December | 3 | 2 | 0 | 1 | 8 | 6 | 2 | 2.66 | 2.00 | 2.00 | 6 | 8 |
| January | 3 | 1 | 1 | 1 | 7 | 4 | 3 | 2.33 | 1.33 | 1.33 | 4 | 15 |
| February | 6 | 0 | 2 | 4 | 4 | 9 | -5 | 0.66 | 1.50 | 0.33 | 2 | 23 |
| March | 8 | 2 | 5 | 1 | 6 | 5 | 1 | 0.75 | 0.62 | 1.37 | 11 | 10 |
| April | 4 | 1 | 1 | 2 | 6 | 8 | -2 | 1.50 | 2.00 | 1.00 | 4 | 16 |

Recent Form

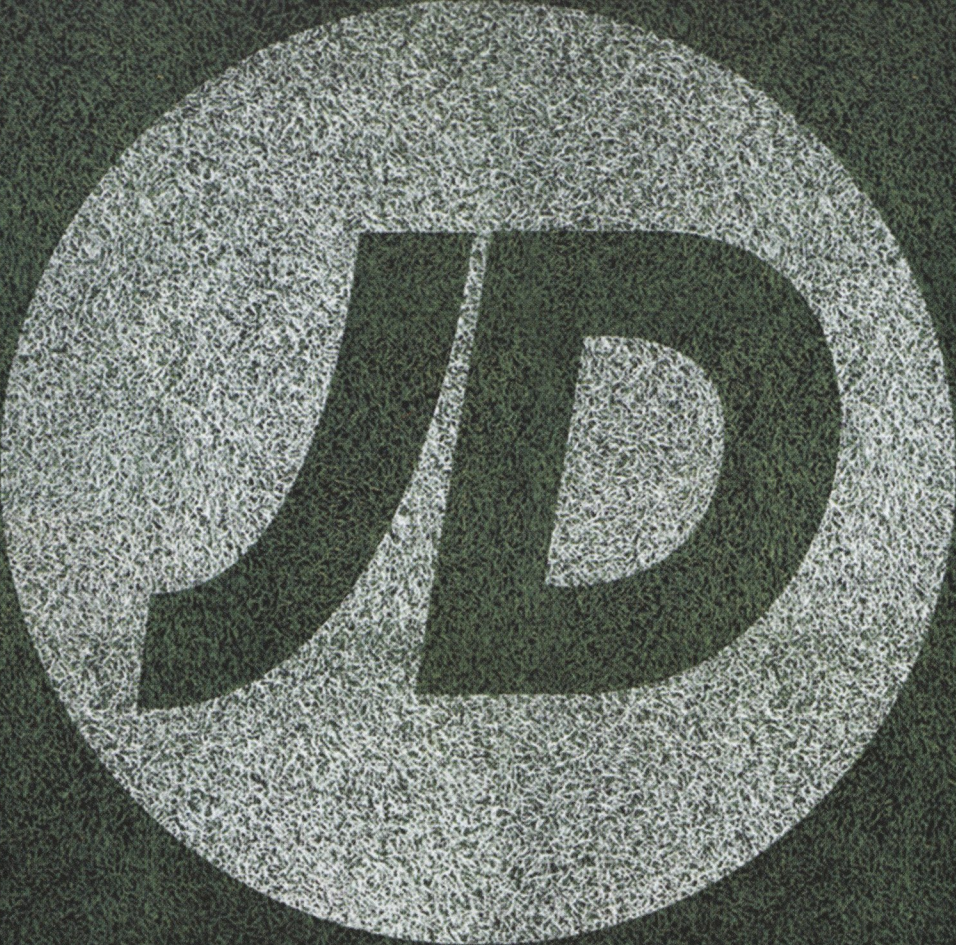
| | Pld | W | D | L | F | A | GD | GFA | GAA | PpG | Pts | Rank |
|----------------|-----|---|---|---|---|----|----|------|------|------|-----|------|
| Last 8 Overall | 8 | 2 | 4 | 2 | 9 | 10 | -1 | 1.12 | 1.25 | 1.25 | 10 | 15 |
| Last 5 Home | 5 | 2 | 2 | 1 | 6 | 3 | 3 | 1.20 | 0.60 | 1.60 | 8 | 12 |
| Last 5 Away | 5 | 1 | 3 | 1 | 4 | 7 | -3 | 0.80 | 1.40 | 1.20 | 6 | 14 |

Position Graph



JOHN STILL

The Hatters appointed John in January 2013, having been one of the longest serving managers in English football – spending almost nine years in charge of League Two outfit Dagenham & Redbridge. In that time he guided the Daggers from the Conference – as Champions in 2006/07 – to League One via the Play-Offs in 2009/10, having also previously won the Conference as manager of Maidstone. The Conference title was achieved in style: Still's side scored 93 goals and won 95 points – 14 points more than runners-up Oxford. Having kept the side in League 2 in the Daggers' first season in the Football League, Still masterminded promotion in 2009/10, a year after just missing out on the Play-offs in 2008/09. Sneaking into seventh spot, the Essex side saw off Morecambe in the semi-finals 7-2 on aggregate before beating Rotherham at Wembley in the final. Before his success at Victoria Road, Still led Dartford to the Southern League title in 1984 and won the Conference with Maidstone in 1989. He took control of Redbridge Forest, a club that would eventually become Dagenham & Redbridge, and won the Isthmian League title in 1991. Still, who signed a two-and-half year contract with achievement-based extensions at Kenilworth Road, has a fine reputation of developing players. He has proved his ability at spotting young raw footballers and nurturing them to become winners by continually finding hidden gems. Over the course of his spell with Dagenham, he has generated over £1.5m in transfer fees for the club with his careful



**PROUD SPONSORS OF THE
FOOTBALL CONFERENCE**

SHOP IT 24/7 ONLINE. INSTORE. MOBILE.

JDSPORTS.CO.UK



FILA@JD

OFFICIAL BALL SUPPLIER



carbrini@JD

OFFICIAL BENCHWEAR SUPPLIER



SOUTHPORT CARPET CENTRE

- ✓ Southports biggest carpet & flooring superstore
- ✓ Best selection of woven, tufted, plain or patterned carpet
- ✓ We will beat any genuine written like-for-like quotation
- ✓ Designer, Laminate, Natural, Parquet, Vinyl & Wood Flooring
- ✓ **Free** estimates and **Free** fitting on carpets



BUY FROM THE BEST

Get the red carpet treatment when you come to Southport Carpet Centre. Enjoy the very best in carpets and service.

WHOLE HOUSE SUPERDEALS

Refurbishing? Buying a new house? Buying to let? We have carpets and flooring for every room in your home. Grab yourself a superb deal. Amazing savings, excellent quality and more choice.

Visit our showrooms including AMTICO and KARNDEAN showrooms -
99-109 Eastbank St, Southport, PR8 1DG

Carpet & flooring design specialists are on hand to offer unrivalled quality product advice service and recommendation

To talk to someone in person call
+44 (0)1704 547154
between 9am and 5.00pm
Monday to Saturday

Need to email us?
sales@southportcarpets.com
www.southportcarpets.com

Carpet • Rugs • Laminate • Wood • Vinyl • Luxury Vinyl Tiles • Carpet Tiles • Commercial Flooring



Solicitors & Estate Agents Cockshott Peck Lewis

143 Cambridge Rd
Churchtown
01704 211649

20 Station Rd
Ainsdale
01704 574144

24 Hoghton St
Southport
01704 534034

Call Joan Kinniburgh to arrange a free valuation today & find out about our excellent competitive rates



www.cockshotts.co.uk

A FULL RANGE OF LEGAL & ESTATE AGENCY SERVICES IS AVAILABLE IN ALL THREE OF OUR OFFICES

WELCOME TO LUTON TOWN

continued



THE GROUND

Kenilworth Road is unique and apart from the results most Southport fans have enjoyed their trips down the M6/M1 to what is a ground steeped in history. It can be hard to get to and I think anyone who was on the Trust In Yellow coach this season will recall the fun and games we had having taken the wrong turn. The little Indian guy stopping the traffic on the main road as the coach did an amazing reverse manoeuvre was quite incredible. To see the ground nestling in between houses and walking through someone's back yard to get into the stand is quite unreal.



CLUB HONOURS

Littlewoods Cup Winners 1988, Runners up 1989
FA Cup Runners up 1959 Semi-Finalists: 1986, 1988, 1994
Johnstone's Paint Trophy Winners 2009
Highest League Finish
 Division One: 7th 1986-87 Division Two Champions 1982
 Division Three (South) Champions 1937 League One Champions 2005
 Division Four Champions 1968
Simod Cup Finalists 1988

THE TOWN

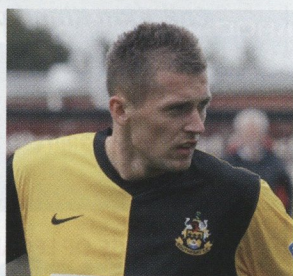
Famous for hat making, hence the nickname The Hatters. Hat making started in the town in the 17th century and although on a much smaller scale are still produced in the town today.



LINKS

Brabs gets close to Liam. Brabs was appointed Luton manager after The Hatters lost 2-1 at Haig Avenue in the 2010/11 season.

JPK, Godfrey Poku and Dan Walker have all played for Southport and Luton in recent times. Dan Walker netted Gateshead's solitary goal in their surprise 5-1 defeat at Gateshead recently.



FANS VIEW By TOM SKINNER

Ultimately, the season has been a big disappointment, with us failing not only to win promotion but also to make the play-offs, the first time we've finished outside of the top five since we've been at this level.

Nevertheless, the season's included the usual gut-wrenching lows and occasional dizzying highs that make being a Luton Town supporter so special. The ecstasy of knocking Premiership Norwich out of the FA Cup on their own patch, with a swift counter-attacking goal worthy of top-flight status, quickly drained away after we lost at lowly Barrow just a week later. Ultimately, it's this inconsistency which has held us back.

It all looked so promising last August. Seasoned Conference campaigners Jon Shaw and Ronnie Henry were brought in to bolster the side, but both have struggled for form at various stages in the campaign. Former manager Paul Buckle certainly got the side working hard, and when Scott Rendell netted a last minute penalty at Forest Green in late October it seemed we might have gained that ruthless streak to take us to the next level. However, a combination of the two cup competitions interrupting our league fixtures, along with frequent changes in personnel and the team's formation, meant we stuttered during the winter.

By the time our bout of cup fever had subsided, we realised we'd been left behind in the play-off race, before the bombshell was dropped that Paul Buckle was leaving for personal reasons. I think everyone connected with the club realised that we couldn't continue with this level of managerial instability, and new boss John Still has clearly been brought in as part of a long term project, which will hopefully see us build a winning team.

Beating Wolves and Norwich was a lovely reminder of the feeling we had in our heady Championship days seven years ago – however, we're praying that next year, our victories in the Blue Square Bet Premier are the main talking point.

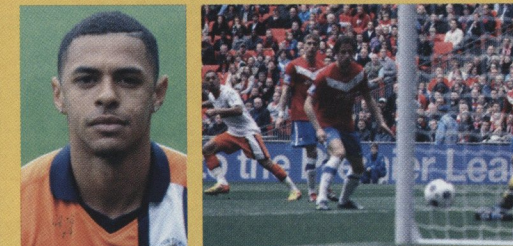
We asked Tom to name his 'Player Of The Year'

Without being churlish, based on the season as a whole, I really don't know! Our starting XI has changed so much, barely any players have played the whole season, and most of them have fallen below the standards we'd hope for!

Can I say - "the 12th man - our loyal supporters". Our support is still fantastic at this level and even our worst home league attendance of the season, 4,847 on a freezing Tuesday night (where we lost 2-1 to Hyde), would be more or less the best crowd of the season at any of the other clubs in this division!

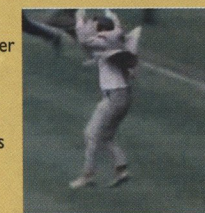


Generally speaking, Andre Gray is our danger man, his pace and power make him a handful for any defence and he can make something happen out of nothing. He is a crucial outlet for the team.



FOND MEMORY

I am sure most football supporters will never forget this image of David Pleat skipping across the turf at Maine Road when Luton avoided relegation to the old Division Two back in the 1982/83 season, one of football's great moments.



OUR VISITORS PAGES ARE SPONSORED BY EXCEL PRINT LIMITED



Keep missing
the action?

Specsavers

You should have
gone to
Specsavers!

19 Eastbank St, Southport
01704 501944

**Advice from the comfort
of your own home**

We have access to a large selection of high street banks and building societies with the benefit of independent advice. We also advise on protecting you and your family financially should anything unfortunate happen.

**Call us now for the ideal mortgage
based on your financial requirements.**

Barron
Financial Solutions

Freephone **0800 587 0140**

Call in to Heritage House, 9b Houghton Street, Southport, PR9 0TE
or e-mail us at office@barronfs.co.uk
www.barronfs.co.uk

Your home may be repossessed
if you do not keep up repayments on your mortgage.

We do not usually charge for administering your mortgage application as we receive a commission from the lender. Alternatively, you can opt to pay us 0.4% of the value of the loan and receive a refund of commission from the lender on completion.

MORTGAGE ADVISERS • PROTECTION ADVISERS

Save more with a *Railpass*
Pass it on!

Merseyrail
More than just a journey

You can make massive savings with a weekly, monthly or annual **Railpass** from **Merseyrail**.

See how much you can save on your daily commute with a Railpass.

| Adult Railpass (Over 18yrs) | Weekly | Monthly | Annual |
|--------------------------------|--------|---------|--------|
| 1 Zone | £13.80 | £48.20 | £482 |
| 2 Zones/1 Area | £17.20 | £60.20 | £602 |
| 3 Zones | £21.80 | £75.20 | £752 |
| 4 Zones | £28.00 | £97.50 | £975 |

Follow us on

twitter @merseyrail

Save with
Merseyrail

www.merseyrail.org



Flowers For Every Occasion

June
F.L.O.R.I.S.T.
The Flower Experts



Local **0800**
National
Worldwide **371865**

FORMBY SOUTHPORT ORMSKIRK
HEAD OFFICE:
CROWN HOUSE, KING STREET, SOUTHPORT

Order On-Line:
www.junetheflorist.com

FPA FEDERAL PLANNING AND SOCIETY REGISTERED
MOISTERS
of Southport Ltd.
QUALITY ASSURED

FUNERAL HOMES AT

25a Sefton Street, Southport PR8 6SG Tel: 501501
8 Station Road, Ainsdale PR8 3HS Tel: 575282
8 Marshside Road, Churchtown PR9 8PF Tel: 227430

24 Hour Service

Guaranteed Pre-Paid Pre-Arranged Funeral Plans



• Full Monumental Service Available • Wedding Limousine Hire •

PROUD TO SUPPORT SOUTHPORT FC

Supporting
the grass roots



Football
Foundation



FUNDING PARTNERS

www.footballfoundation.org.uk

improving facilities • creating opportunities • building communities

Charity No 1079309 Company No 3876305



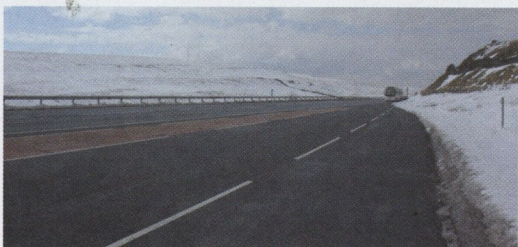
WHAT A WEEK

by ROB URWIN

It started on the last Saturday in March with a trip to Hartlepool to play Gateshead. Considering what the weather had been like the Saturday before this trip we had a great run up. Choosing to go the scenic route over the A66 there was still plenty of snow on the high ground but the roads were clear.



It was good to visit Hartlepool again after an absence of 35 years. Thankfully the ground had changed into a neat pleasant looking place and despite the sub zero temperatures it was actually very pleasant sat in the sunshine. It was a new ground for the other car travellers as in Julia who moved on to 116, Michelle (she won't count hers up) and Alan Jones (106)



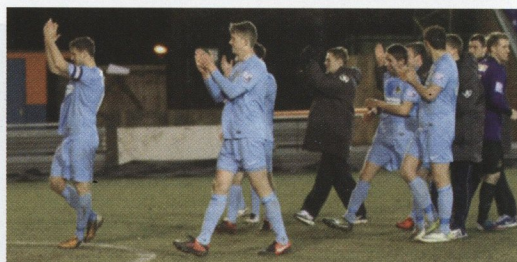
As for the game, we cruised it for 90 minutes but for the next 5 it was like a bad recurring dream as The Heed came back from the dead to draw 2-2. Emotions were running high on and off the pitch. Moogs was sent off and it all got a bit lively.

I was amazed at our supporters reaction to the ref just because he added five minutes on. There had been lengthy stoppages for two injuries, Aaron's sending off took nearly two minutes to complete, the substitution of Shaun Whalley took an age. It is alright telling the player to go over to the far side of the pitch and take his time but the ref only adds the time on. We

then have the time the ref adds on (rightly) for the Andy Owens long throws. If we had an opposition player doing that to us we would expect the added time. I thought this ref as he has been before was excellent and we only had ourselves to blame. It was a frustrated car going home as the reality crept in for the first time that maybe we have a problem.

The least said about our next match on Easter Monday at home to Alfreton the better. We lost 2-0 and it was described by some as being our worst display of the season. It was certainly close and the feeling at 4.45 was that's it, we are down. But. The other results went our way and we were hanging on in there. The usual over the top reaction on Port Chat ensued. It is always an interesting read at the best of times but this was something else!

On to Wednesday and a nice short trip to Braintree. The team left at 9am and were home for 3am the next day. We left at 1pm and got



home at 8pm on the Saturday after the Grimsby game!! Braintree was originally on the miss list but as the rearranged fixture fell during the Easter holidays and also on our 31st Wedding Anniversary we decided to make a few days of it. I know how to show a girl a good time, what more could she ask for than a football match on a freezing cold night in Braintree.

It was quite a night. You had a feeling from the first five minutes it might be our night. Braintree hit the bar and the lads really looked up for it. Chris Almond got the first and Simon Grand put us two up. We all know what happens when we go two up though don't we and when Braintree pulled one back that old feeling came back again. Cue Chris Almond who, within a minute of Braintree scoring unleashed a fantastic shot to put us 3-1 up. This time we hung on comfortably and could easily have added to the three goals. An almighty relief as we found ourselves in 17th place. The players had responded to some super positive encouragement from the 38 travelling fans which included a number of our Southern Exiles and players and supporters duly celebrated a fantastic result.



The Urwin tours progressed on to Boston and a visit to Boston United on the Thursday before a trip to Hull on the Friday and then on to Cleethorpes on the Saturday.

Grimsby away on paper looked like a nil pointer so anything from the game would be a bonus.

In the end it was a familiar tale. We played really well and controlled a large part of the game and thoroughly deserved a 2-1 lead at half-time with a brace from Karl Ledsham. Grimsby had offered very little and it looked good. Even though The Mariners came out fired up we still



looked in command and had a few excellent chances to increase the lead. Four minutes of added time were shown, the nails were down to the bone and it happened again as Grimsby scored in the second minute of added time. This was the 21st point we had dropped in the last ten minutes of a game but unlike the previous Saturday at Gateshead rather than it feel like a defeat it was a bonus point in my mind. The 71 travellers rightly applauded the battle weary Sandgrounders off the pitch, they had given everything in a week that had so many ups and downs. Phones were checked and we had finished the day in 17th place but the pack were closing. Five points out of twelve? Will it be enough? I was hoping for seven but Alfreton put paid to that. Time will tell and as we go into today's game you will be able to see whether the two points dropped at Gateshead in added time will prove costly or whether the point gained proves crucial, such is the closeness of the league this season, these fine margins are critical.



Southport FC

Southport FC

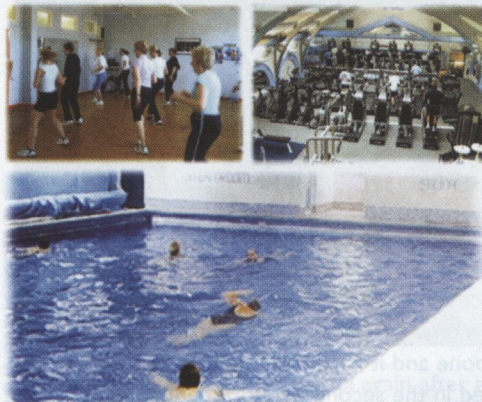
WHAT A WEEK

WHAT A WEEK



WHERE MORE COSTS LESS

Fantastic All Year Round Offers



- 3 Swimming Pools (inc adult only pool)
- Saunas
- Steam Rooms
- Large Gym
- Ladies Only Gym
- Squash Courts
- Aerobics / Pilates
- Yoga Classes
- Exercise Classes
- Hydro Whirlpool
- Free Parking
- Non-members welcome
- Various Social Activities
- TV & Sports Bar

**NEW
FREE WEIGHTS
STUDIO & SEPARATE
PUNCH BAG ROOM**

***call in to view
the facilities**

Ask about our
special
monthly offers
from £23

www.victorialeisure.co.uk

Central Promenade, Southport 01704 541220

Volare
AUTHENTIC ITALIAN RESTAURANT

**Southport's Favourite
Italian Restaurant**

613 Lord Street, Southport PR9 0AN
Book now calling 01704546232 or 07796866936

**Western Thermal Limited
Insulation for Industry
and Building Construction**

**Thermal Insulation
Ventilation & Koolduct
Sheet Metal Fabrications**

**Leading the way
as a sponsor of
SOUTHPORT FOOTBALL CLUB**



Western Thermal Limited

Head Office:

Western Thermal Limited

Unit 14, Springfield Business Centre
Stroudwater Business Park, Stonehouse
Gloucestershire GL10 3SX

Tel: (01453) 791232 Fax: (01453) 791305

E-mail: general@western-thermal.co.uk

Branch Offices:

40-41 High Street, Egham, Surrey TW20 9DP

Tel: (01784) 433518 Fax: (01784) 434223

Unit 1 Beza Court, Beza Road Industrial Estate, Hunslet, Leeds LS10 2BR

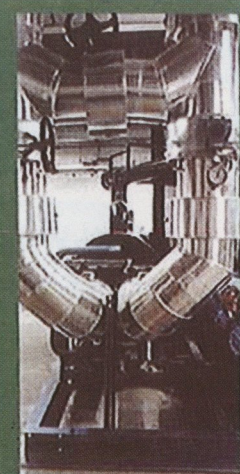
Tel: (0113) 2762996 Fax: (0113) 2701583

Unit 6, Thornton Business Park, Milford Haven, Pembrokeshire SA73 2RY

Tel: (01646) 695127 Fax: (01646) 695127

Western Thermal Limited

" We want to be your Partner not just a Contractor "



an ISO 9002 company
certification number FS14557



2012/13 PLAYER OF THE YEAR SHAUN WHALLEY

FACTFILE

BORN WHISTON 7 AUGUST 1987

DEBUT 7 FEBRUARY 2009

RE-JOINED 29 January 2011

GOALS 28 League 4 CUP

APPEARANCES

106 + 8 League 15 + 2 CUP



THE WHALLEY GOALS

| | | | | | | |
|-------|---|---------------------|-----|---|-----|-----------------------------------|
| 08/09 | A | Marine | LSC | W | 5-1 | Hedges, Whalley, Booth(2), Gray S |
| 10/11 | H | YORK CITY | Lge | W | 4-0 | Lever(pen), Whalley(2), Lee |
| 10/11 | H | GRIMSBY TOWN | Lge | D | 2-2 | Whalley, Davis |
| 10/11 | H | HISTON | Lge | W | 3-1 | Whalley, Ledsham, Gray |
| 10/11 | A | EASTBOURNE BOROUGH | Lge | L | 1-4 | Whalley(pen) |
| 10/11 | H | CAMMELL LAIRD | LSC | W | 3-0 | T Gray, Daly, Whalley |
| 10/11 | H | BARROW | Lge | L | 2-4 | Marsh-Evans, Whalley |
| 10/11 | A | RUSHDEN & DIAMONDS | Lge | D | 2-2 | McGinn(pen), Whalley |
| 10/11 | A | KETTERING TOWN | Lge | L | 1-3 | Whalley |
| 11/12 | H | LINCOLN CITY | Lge | D | 2-2 | Kissock, Whalley |
| 11/12 | H | AFC TELFORD UNITED | Lge | W | 3-2 | Whalley, Walker, Lee |
| 11/12 | A | FOREST GREEN ROVERS | Lge | W | 3-2 | Davis, Grand, Whalley |
| 11/12 | A | MANSFIELD TOWN | Lge | W | 3-1 | og, Whalley, Gray |
| 11/12 | A | GATESHEAD | Lge | W | 3-2 | Whalley(2) Mukendi |
| 11/12 | H | DARLINGTON | Lge | W | 2-0 | Ledsham, Whalley |
| 11/12 | H | STOCKPORT COUNTY | Lge | W | 5-0 | Gray 2 1 pen, Whalley 3 |
| 11/12 | A | TAMWORTH | Lge | D | 2-2 | Whalley, Gray (pen) |
| 12/13 | A | ALFRETON TOWN | Lge | D | 3-3 | Whalley, Almond, Tames |
| 12/13 | H | GATESHEAD | Lge | W | 2-0 | Whalley, Ledsham |
| 12/13 | H | STOCKPORT COUNTY | FAT | W | 3-1 | Ledsham, Whalley(pen) Almond |
| 12/13 | H | MACCLESFIELD TOWN | Lge | W | 3-2 | Willis, Almond, Whalley |
| 12/13 | H | MANSFIELD TOWN | Lge | L | 1-2 | Whalley |
| 12/13 | H | WREXHAM | FAT | L | 1-3 | Whalley(pen) |
| 12/13 | A | HEREFORD UNITED | Lge | D | 2-2 | Whalley, Byrne |
| 12/13 | H | DARTFORD | Lge | D | 2-2 | Owens, Whalley(pen) |
| 12/13 | H | CAMBRIDGE UNITED | Lge | W | 2-1 | Byrne, Whalley(pen) |
| 12/13 | H | FOREST GREEN ROVERS | Lge | L | 1-2 | Whalley(pen) |
| 12/13 | A | GATESHEAD | Lge | D | 2-2 | Almond, Whalley |

THANKS FOR EVERYTHING SHAUN AND GOOD LUCK

Southport FC

Southport FC



Cobra Frames
Professional Picture Framers

89a London Street, Southport
01704 547791

THESE PAGES ARE SPONSORED BY COBRA FRAMES, LONDON STREET, SOUTHPORT
Discounts for all Southport Supporters on production of this programme

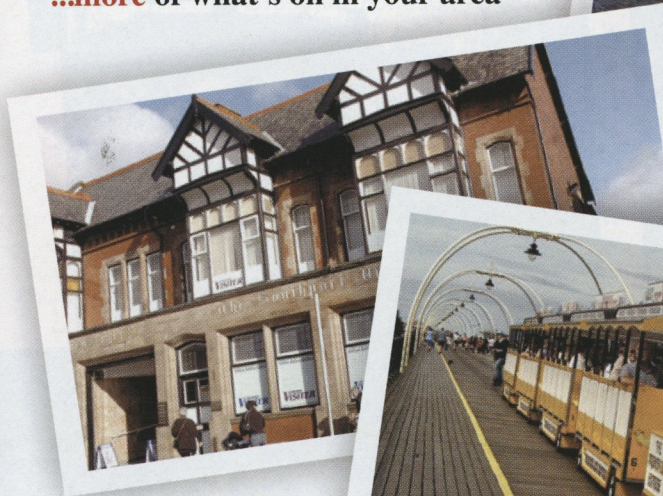
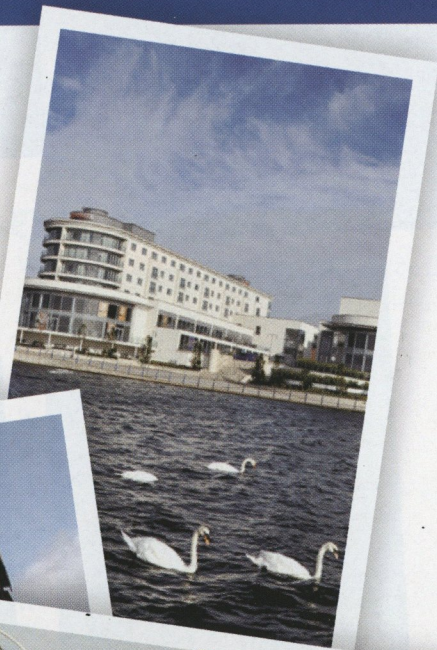
CENTRE SPOT

Southport Visiter

www.southportvisiter.co.uk

Connecting you
with your
community...

- ...more local news
- ...more local sport
- ...more of what's on in your area



Pick up your Southport Visiter
OUT EVERY THURSDAY!

Call on our 25 years experience

Call Anthony's
Travel for reliable
and award winning,
low cost luxury
coach hire



Winner of UK Coach Awards

Coach Operator of the Year (medium fleets)

Winner of Route One Excellence Awards

Coach Operator of the Year (small fleets)

...plus two Drivers shortlisted for coach Driver of the Year!



Anthony's Travel
Luxury Coach & Minibus Hire *...Simply the Best*

01928
561460

www.anthonys-travel.co.uk

8 Cormorant Drive, Picow Farm Road, Runcorn WA7 4UD

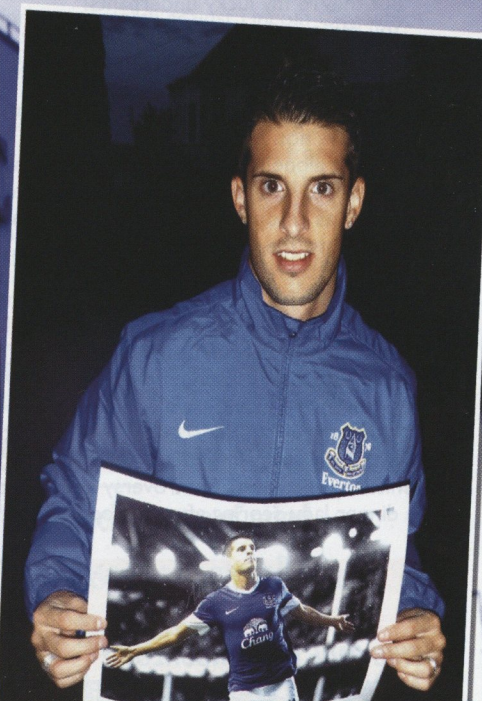
Email: enquiries@anthonys-travel.co.uk

THE PERFECT FOOTBALL GIFT.....



@SPORTSIGNINGS
Footy funnies, News & Competitions

WWW.SPORTSIGNINGS.COM



Market Leaders in Authentic Signed Everton FC
Memorabilia. Website updated daily.



COMMITTEE FOR DUBIOUS SOGGY BOTTOM GOALS

by THE ONION BAG – Twitter: @sfc_onionbag

Southport FC

“Have you noticed anything different?”
(Blind panic! Think, think... I know, I'll go for the obvious...)
 “Yeah, I was just about to tell you, your hair looks lovely.”

“I've not had my hair done! I can't believe you sometimes!”

(Stall for time...drop the TV remote...sly look around the room as bend to pick it up..)

“The dog! What have you done to the dog? You've had him stuffed!”

“It's not the dog, it's a pouffé!”

“A puffy what?”

“A pouffé! It's French. It came with the sofa and armchair that you've been sitting on for the last two hours; it was delivered this morning!”

“Oh! So where's the dog?”

“He's not allowed in here anymore, he's banned. And don't think you're gonna sit on my new suite all night watching football wearing those!”

“But they're my lucky underpants!”

“You can stand over there. You're always telling me that you don't like sitting down at the match!”

It may appear that I don't like change or that I'm not very observant, I disagree, but I admit that I don't always notice things.

I am not alone! It's amazing how many managers didn't see the stonewall penalty their centre half gave away as an opposing player was catapulted headlong into the advertising hoardings!

And then there are the referees! In a bid to make the ref's job 'easier', the footballing bodies have introduced the fourth official, two additional referee assistants in the Europa League, and there's the ongoing debate about goal-line technology. Any of these 'advances' would have completely ruined our daily kick-around in the school yard (jumpers for goalposts, no touchlines, no off-sides, no ball).

Admittedly there was controversy - ricochets off the dinner lady, scoring after the opposition went in

for double Geography etc. Also, you never knew whether you were winning 6-2 or trailing 5-3, but everyone went home convinced they were a winner.

Amazingly although players could be forced to leave the pitch, Yellow and Red cards were first used as late as the 1970 World Cup Finals, and were only adopted in the English Leagues in 1976. The FA has since considered introducing a Green card for when a player has received a verbal warning. Players and fans have often suggested that the referee should carry two additional cards, one showing the results from his last visit to Specsavers, the other confirming that at some point he did actually have a father!

But for me one of the most bizarre new additions to the beautiful game has been the creation of the Dubious Goals Committee by the Premier League. Their sole responsibility is to determine who actually scored a goal, a panel created for the egos and goal scoring bonuses of football's elite rather than the accuracy of statistical records (allegedly).

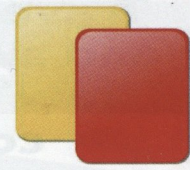
The Committee is shrouded in mystery. The identity of the members at any one time is kept secret to protect them from 'undue influences', as is the location of their meeting place. It is rumoured that the Dubious Goals Committee uses a broom cupboard in a dark corridor somewhere in Whitehall, squeezed between Monty Pythons Ministry of Silly Walks and Mary Berry's Council for the Prevention of Soggy Bottomed Tarts. No Premier League Spokesperson was prepared to confirm or deny this.

Have a great Summer everyone. See you next season. The OB



(Blind panic! Think, think... I know, I'll go for the obvious...)

“Yeah, I was just about to tell you, your hair looks lovely.”



THIS PAGE IS SPONSORED BY KEVIN BRADLEY DYSON SPARES AND REPAIRS

Dyson
 Spares & Repairs
 H. Johnson & Sons
 85 Upper Aughton Road,
 Birkdale, Southport
 Tel: 01704 564329
 (Vacuum Cleaner Specialists)



PRESS CUTTINGS

with ALAN JONES

Southport FC

Most teams have a star player, and even when times have been tough for Southport this season, their leading man has usually shone.

When Shaun Whalley returned for a third spell with the Sandgrounders in January 2011, few would have expected the impact he has gone on to make.

Today, Whalley will pick up the Supporters' Player of the Season award, and in many ways there is no player more worthy of this year's accolade.

Throughout the campaign,



Whalley has often thrived away from home

Whalley's level of performance has been outstanding, building on the reputation he forged last season as one of the most exciting attacking talents in the Blue Square Bet Premier.

This season, he has contributed 11 goals - the same number that he managed last time around - but his value to the Southport team is quantified in more than just goals scored.

Creating many chances for the rest of the team, he has been the supplier of countless goals over the past two-and-a-half seasons, providing Southport with an injection of dynamism and energy.

Having played for the Sandgrounders briefly as a youngster and also on loan from Wrexham in 2008/09, Whalley's return coincided with the arrival of another eye-catching attacker, John Paul Kissock. But unlike Kissock, we have seen the former Chester City prodigy develop into a complete and consistent performer.

Whalley is probably the most talented attacking player we have seen since Carl Baker left in 2007. An instinctive and imaginative player who has also brought a sense of individuality to the team this season, his explosive performances are now matched by an end product.

The way Southport set up means Whalley has often thrived

away from home and as we travel around the country, he has regularly earned high praise from opposition press boxes.

One of his best performances of the season came in the recent draw at Grimsby Town when, for the best part of an hour, he was unplayable, as the home defence resorted to foul after foul on the Southport number 7.

Supplying the cross for the Sandgrounders' second goal, he almost capped a stellar performance with a truly mesmerizing effort, sidestepping several defenders before bringing a finger-tip save from goalkeeper James McKeown.

Whalley's season has featured a number of fine goals, including an excellent individual effort at Alfreton Town, a delicate chip in the home victory over Gateshead and a well-struck winner against Macclesfield Town. Among his best displays was also the home match against Lincoln City, which saw him set up three of Southport's four goals.

Whalley's performances this season seem to have attracted plenty of admirers from around the leagues and, at 25, he should just be hitting the peak of his powers.

Liam Watson's recent comments suggest the interest in Whalley is such that today could be his final game in a Southport shirt. If it is, he will bow out on the back of a fine season.

THIS PAGE IS SPONSORED BY GRANT GIBSON

For financial peace of mind
 Call Clive Gibson or Campbell Grant
 Telephone:
01704 572622

GRANT GIBSON
 ACCOUNTANTS

PRESS CUTTINGS

GO FOR IT SOUTHPORT

give it all you've got this season!

Wishing you every success



SSAB Swedish Steel Ltd

The corrosion resistant cladding for
heating and ventilating installations

A WINNER EVERY TIME!

SSAB Swedish Steel Ltd

Narrowboat Way, Hurst Business Park, Brierley Hill, West Midlands DY5 1UF

Telephone 01384 74660 • Fax 01384 77575

email: sales@dobel.co.uk

www.dobel.co.uk

#NONSENSEINFOOTBALL

"I'M GOING TO MAKE A
PREDICTION - IT COULD
GO EITHER WAY!"

UP TO
£25

FREE BET*
SIGN UP TODAY

ENOUGH
SAID.
JUST
BET

**1ST GOAL
SCORER
BETTING**

Available for every
Blue Square Bet
Premier fixture

**BLUE
SQ**
BET

Sign up at

bluesq.com

web | mobile | tablet

T&Cs apply. *Sign up offer: New customers only. We'll match your first bet of at least £5 up to £25 in the form of a free bet token. Free bet stake not returned in winnings and expires after 30 days. Qualifying bet must be placed on a win, single or multiple bets at odds of evens or greater. Void bets do not qualify for free bet tokens. Over 18s only. Blue Square Bet encourages responsible gambling. gambleaware.co.uk

Season Summaries

by DAVE GOSTELOW and ROB URWIN

Throughout the 2013/14 season we will be taking a look back at The 35 Non League years season by season. In a series of articles, pictures and stats we will recall, the good, the bad and the ugly. As a taster for these articles the first season is here. If anyone has any pictures, articles, quirky items etc that you think could be good to include please get in touch with the Programme Editor.

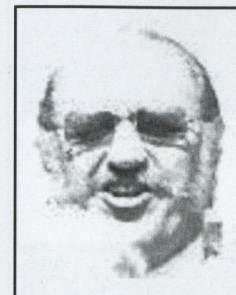
| 1978/79 | P | W | D | L | F | A | PTS | H | Att | A | Att |
|----------------------|-----------|-----------|-----------|-----------|-----------|-----------|-----------|-----------|-----------|-----------|-----------|
| Mossley | 44 | 32 | 5 | 7 | 117 | 48 | 69 | 0-1 | 1301 | 2-1 | 553 |
| Altrincham | 44 | 25 | 11 | 8 | 93 | 39 | 61 | 3-1 | 691 | 3-1 | 1683 |
| Matlock Town | 44 | 24 | 8 | 12 | 100 | 59 | 56 | 2-1 | 1216 | 1-1 | 987 |
| Scarborough | 44 | 19 | 14 | 11 | 61 | 44 | 52 | 1-2 | 487 | 0-1 | 1731 |
| Southport | 44 | 19 | 14 | 11 | 62 | 49 | 52 | ** | ** | ** | ** |
| Boston United | 44 | 17 | 18 | 9 | 40 | 33 | 52 | 1-0 | 513 | 0-1 | 1954 |
| Runcorn | 44 | 21 | 9 | 14 | 79 | 54 | 51 | 0-3 | 947 | 0-0 | 682 |
| Stafford Rangers | 44 | 18 | 14 | 12 | 67 | 41 | 50 | 1-2 | 690 | 1-1 | 1329 |
| Goole Town | 44 | 17 | 15 | 12 | 56 | 61 | 49 | 1-1 | 304 | 2-0 | 500 |
| Northwich Vics | 44 | 18 | 11 | 15 | 64 | 52 | 47 | 2-2 | 441 | 2-2 | 1117 |
| Lancaster City | 44 | 17 | 12 | 15 | 62 | 54 | 46 | 2-2 | 489 | 2-2 | 606 |
| Bangor City | 44 | 15 | 14 | 15 | 65 | 66 | 44 | 0-0 | 308 | 2-0 | 255 |
| Worksop Town | 44 | 13 | 14 | 17 | 55 | 67 | 40 | 2-0 | 352 | 2-0 | 332 |
| Workington | 44 | 16 | 7 | 21 | 62 | 74 | 39 | 3-1 | 493 | 2-0 | 436 |
| Netherfield | 44 | 13 | 11 | 20 | 39 | 69 | 37 | 2-1 | 469 | 1-2 | 205 |
| Barrow | 44 | 14 | 9 | 21 | 47 | 78 | 37 | 1-2 | 724 | 2-0 | 877 |
| Gainsborough Trinity | 44 | 12 | 12 | 20 | 52 | 67 | 36 | 3-3 | 398 | 0-3 | 475 |
| Morecambe | 44 | 11 | 13 | 20 | 55 | 65 | 35 | 1-0 | 894 | 1-0 | 443 |
| Frickley Ath | 44 | 13 | 9 | 22 | 58 | 70 | 35 | 0-0 | 422 | 3-1 | 551 |
| South Liverpool | 44 | 12 | 10 | 22 | 48 | 85 | 34 | 2-2 | 364 | 1-0 | 296 |
| Gateshead | 44 | 11 | 11 | 22 | 42 | 63 | 33 | 0-2 | 305 | 1-2 | 304 |
| Buxton | 44 | 11 | 9 | 24 | 50 | 84 | 31 | 2-1 | 230 | 1-1 | 490 |
| Macclesfield Town | 44 | 8 | 10 | 26 | 40 | 92 | 26 | 3-2 | 721 | 1-1 | 371 |

Player Of The Season Ron Pickering
Managers Harry McNally

| 1978/79 | Lge App | Lge Sub | Lge Goals | Cup App | Cup Sub | Cup Goals | Total App | Total Sub | Total Goals |
|-------------------|------------|-----------|-----------|-----------|----------|-----------|------------|-----------|-------------|
| Ron Pickering | 43 | | 1 | 9 | | | 52 | 0 | 1 |
| Barry Knowles | 41 | | | 9 | | | 50 | 0 | 0 |
| Tommy Wheeldon | 34 | 1 | 4 | 9 | | 2 | 43 | 1 | 6 |
| John Salter | 32 | 1 | 2 | 4 | | | 36 | 1 | 2 |
| Nigel Halsall | 30 | 2 | 2 | 5 | | | 35 | 2 | 2 |
| Graham Barrow | 30 | | 5 | 5 | | 3 | 35 | 0 | 8 |
| Graham Cunneely | 29 | | | 4 | | | 33 | 0 | 0 |
| Chris Kisby | 28 | | | 4 | | | 32 | 0 | 0 |
| John Higham | 23 | | | 8 | | | 31 | 0 | 0 |
| Terry Nolan | 21 | 4 | 8 | 7 | | 3 | 28 | 4 | 11 |
| Cliff Woof | 21 | 2 | | 5 | | | 26 | 2 | 0 |
| Joe Turner | 17 | 3 | 6 | 1 | 2 | 1 | 18 | 5 | 7 |
| Maurice Whittle | 16 | | 1 | 4 | | 1 | 20 | 0 | 2 |
| Steve Walsh | 15 | 6 | 3 | 3 | | | 18 | 6 | 3 |
| Malcolm Dalrymple | 15 | | | 5 | | | 20 | 0 | 0 |
| John Gerrard | 15 | | 8 | | | | 15 | 0 | 8 |
| Paul Birchall | 14 | 1 | 1 | | 1 | | 14 | 2 | 1 |
| John Beesley | 13 | | 8 | 3 | | | 16 | 0 | 8 |
| George Dewsnip | 11 | 1 | 4 | 4 | | 1 | 15 | 1 | 5 |
| Frank Towers | 8 | | 5 | 2 | | | 10 | 0 | 5 |
| Drew Ferguson | 6 | | 2 | | 1 | | 6 | 1 | 2 |
| Dave Wignall | 5 | | 1 | 3 | | | 8 | 0 | 1 |
| Brian Jackson | 3 | 1 | | 1 | | | 4 | 1 | 0 |
| Mick Clarke | 3 | | | | | | 3 | 0 | 0 |
| Jeff Swede | 2 | 1 | | 1 | | | 3 | 1 | 0 |
| Tony Brookfield | 2 | | | 1 | | | 3 | 0 | 0 |
| Dave Furnival | 2 | | 1 | 2 | 1 | 1 | 4 | 1 | 2 |
| Chris McKeown | 2 | | | | | | 2 | 0 | 0 |
| John McInnes | 1 | 2 | | | | | 1 | 2 | 0 |
| Steve Cole | 1 | | | | | | 1 | 0 | 0 |
| Hilton Phillips | 1 | | | | 1 | | 1 | 1 | 0 |
| Dave Billington | 0 | 1 | | | | | 0 | 1 | 0 |
| Pat Lavelle | 0 | 1 | | | | | 0 | 1 | 0 |
| own goals | | | | | | | 0 | 0 | 0 |
| TOTALS | 484 | 27 | 62 | 99 | 6 | 12 | 583 | 33 | 74 |

1978/79

From playing in front of 10,089 (less around 50 depressed Sandgrounders) celebrating Watford fans at Vicarage Road as they began their climb through the leagues to 296 at Holly Park, South Liverpool, the contrast couldn't have been more stark and the reality of life in Non League football set in on the 19th August 1978.



What a lot of supporters had seen as inevitable had finally happened and on June 2nd 1978 Southport failed in their bid for re-election to the Football League. As with a lot of things with Southport Football Club even the re-election bid hadn't been straight forward. The Club had not had a bad 1977/78 season, they finished above Rochdale who were seven points behind The Sandgrounders and who had suffered an alarming slump in gates whereas the Southport attendances had risen. Hopes had been high but there was one factor that hadn't been taken into account and he came in the guise of Southport Chairman Walter Giller (pictured) who could best be described as abrasive, at worst, obnoxious, and by most, an absolute nightmare.

Wigan campaigned long and hard with Arthur Horrocks, a former director of Southport in the early seventies putting in a lot of time canvassing the other clubs vote. It couldn't

have been closer on the day. Southport and Wigan tied on 26 votes each with Rochdale comfortably re-elected. The second ballot was clear cut with Wigan winning 29-20.

Southport won their first game in Non League with Joe Turner (pictured) taking the honours of scoring our first ever goal. The first season turned out to be not too bad and a finishing position of fifth was achieved with some very good games along the way. The highlights were undoubtedly a 3-1 win at Non League giants Altrincham which started off a run of four successive wins including 2-0 wins at former Football League Clubs Workington and Barrow, a 2-1 win at Champions elect Mossley and also grabbing a 1-1 draw at Matlock another team who finished above Southport. In the FA Cup the town got behind the Club with over 600 taking to the roads to Northwich in the fourth qualifying round to see out a 0-0 draw. The replay saw 2002 return to Haig Avenue and in an electric atmosphere Southport prevailed 2-0 with Graham Barrow and Terry Nolan bringing the house down. It was a disappointing first round draw, away to Altrincham and in one of the best but most painful games of football you will ever witness we exited the competition 4-3. An estimated 800 Southport fans had made the trip which proved football was still alive in the town.

However, the decision not to accept the invitation to join the Football Alliance (now The Conference) on the grounds that the additional travelling costs were excessive alienated the supporters as Southport distanced themselves from ever getting back into the Football League. It was a decision that led to many people abandoning the club and the 1979/80 season was to prove to be a long hard struggle.



THIS PAGE IS SPONSORED BY VITAL SOUNDS

**SAVE
UP TO
50%
ONLINE**

www.galaxyfootball.co.uk

Products Shown: Nike Striker II Game Shirt, Nike Park Kiti Short & Nike Tournament Game Sock.



Official Kit Supplier To



GALAXYFOOTBALL
matchday, training, kit & equipment **.CO.UK**



- 4 Star Luxury Accommodation
- Superb Marine Brasserie
- Conferencing for up to 200 in our meeting rooms
- The Marine Suite for Parties and Events up to 200 guests
- The Marine Bar and Lounge with outside Terrace
- Super Rates @ www.ramadaplazasouthport.co.uk
- Call us on 01704 516220



RAMADA PLAZA



MR OHMS
(SOUTHPORT) LTD
ELECTRICAL WHOLESALER

From a light bulb to a lighting scheme!

Mr Ohms can supply it all



Mr Ohms - Sponsors of Southport F.C. Ball Boys and Girls

Southport - 01704 533688
Unit B, Kensington Industrial Park,
Hall St, Southport PR9 0SF
Ormskirk - 01695 586000
Unit 7a, Old Boundary Way, Ormskirk L39 2YW
e: mrohms@btinternet.com www.mrohms.co.uk

We are proud to support Southport F.C.

...our firm having been started by Walter Connard in 1883 – just two years after the 'Port started. We are now in the fourth generation of a family business and would like to wish Southport F.C. and their supporters every success in the forthcoming season.

CONNARD & SON LTD

Jewellers, Goldsmiths & Silversmiths



421 Lord Street, Southport
Telephone: 01704 531977

The oldest family firm on Lord Street

SPONSOR A SANDGROUNDER

WE WOULD LIKE TO THANK ALL OF OUR KIT SPONSORS

Liam Watson



Sponsored by
FRIENDS OF
REAL LANCASHIRE

Tony McMillan



Sponsored by
STUART GORDON
SOUTHPORT
LANCASHIRE

Chris Lever



Sponsored by
MAVIS BUTTERFIELD

Steve Akrigg



Sponsored by
MIKE CORCORAN

Simon Grand



Sponsored by
THE TAYLORS

Shaun Whalley



Sponsored by
DAVE AND TINA
HALSALL,
HOCKLIFFE, BEDS

Alan Moogan



Sponsored by
JEFF CAHN,
LARA, VICTORIA,
AUSTRALIA

Tony Gray



Sponsored by
RICHARD AND
TIMOTHY SOLK

Liam Willis



Available

James Smith



Sponsored by
TRUST IN YELLOW

Darren Stephenson



Available

Karl Ledsham



Sponsored by
DAVE AND TINA
HALSALL,
HOCKLIFFE, BEDS

Russell Benjamin



Available

Chris Almond



Available

Andy Parry



Sponsored by
THE CORONATION PUB,
12 KING STREET,
SOUTHPORT
01704 530611
Number 1 for value & sport

Aaron Chalmers



Available

Steven Tames



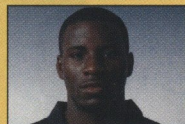
Available

Chris Lynch



Available

Michael Bakare



Sponsored by
STUART ROBERTS



Charlie Joyce



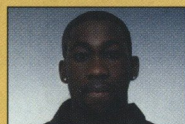
Available

Louis Barnes



Sponsored by
TIFFANY'S OF FORMBY

Godfrey Poku



Sponsored by
GED, DENISE AND JOSH
FOSTER

Please contact Haydn Preece if you are interested in sponsoring any of the remaining players. The cost is £150 and your picture, with your chosen player, will appear on this page. You also get the photo signed by your chosen player



TRUST IN YELLOW

LATEST NEWS FROM THE MEMBERSHIP

END OF SEASON REVIEW AND THANK YOU'S

As this is the last game of the season we would like to say thank you to everyone who has helped the work of Trust In Yellow this year.

As everyone is aware the Trust reached its target of nearly £25,000 as its share of the money needed for the proposed new floodlights. This was due to the generous support of people like the late Sally Devine, the epic Grimsby run of Colin Aindow, and the many people who gave donations and supported our various events.

Back in August we had the **Cricket match** against Liam and the players' team and our thanks went to the Rookery for allowing us to use their ground and to everyone who took part including the players in Liam's team who gave us our usual 'hammering'. Things will be different in this year's match!!

In October our annual **Race Night** was a great success thanks to sponsorship by 'Tiffany's of Formby' and a large number of individual sponsors of races and horses including many of the players. Tony Adams gave his usual star performance as the compere.

In November we had our first **'Make up Party'** in the Grandstand Bar organised by supporter, Michelle Middleton and Trust Board member Julia Urwin.

Two new projects that the Trust has supported this season are the **Match Updates Service** and the **Player of the Month Award**.

Many thanks to Colin Hill and Alan Jones for the fantastic job they have done in providing the invaluable updates which have proved so popular especially when we have been playing at grounds a long way from Southport (such as Braintree!).

Thanks to an idea suggested by Rob Urwin we introduced the Player of the Month Award in the autumn which has proved increasingly popular and also has given some of our younger members the chance to go on the pitch and make the presentation to their heroes.

We have always been proud of the **Publications** that the Trust has produced. At the end of last season Rob Urwin produced the superb booklet 'Southport's Great Eight' to celebrate both the record winning away run in 2011/12 and also the memory of Sally Devine the club's photographer who tragically died of cancer. There are copies available in the club shop with all profits going to MacMillan Nurses.

This year one of our supporters, Mark Iddon, produced a fascinating record of one season in Southport's past called **'Southport 1905/06'**. The book is on sale in the club shop and Mark is donating an amount to TIY from the sale of each book.

Julia Urwin always does a great job in taking excellent photographs of the action at home and away matches. She also provides photographs for some papers including the 'Champion' and generously donates the money she receives to the Trust.

We are always looking for ways to raise the profile of TIY. Back in February two of our exiled members, Dave and Tina Halsall, who live in Hockliffe in Bedfordshire, donated a **large banner** which is now proudly on display at the back of the Jack Carr stand for home matches and is taken to all of our away games.



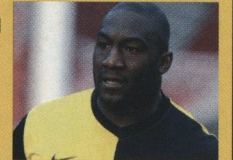
One of the most successful parts of the Trust's activities is of course **Coach Travel** to away matches. We are grateful to Alan Scarisbrick and Phil Carder for all the hard work they have put into organising the trips including the highly successful weekend visit to Lincoln. Thanks also to Arthur and Elite coaches for the excellent service they provide and to all our regular travellers.



We are always delighted with the support we receive from Liam Watson and the players for Trust events whether it is the annual cricket match, race night, quiz nights etc. We feel as a club we are really lucky to have someone like Liam as manager who involves himself with the supporters in this way.

A number of events the Trust organises are specifically to build these bonds like the 'Players Reunion' back in 2011 and although not a Trust event we were very pleased to back the fantastic job that Jonathan O'Byrne did in organising events to raise money to keep Kevin Lee at the club.

And a couple of months ago it was really pleasing to see Earl Davis back at Southport to receive a presentation from the Trust for the tremendous service he has given to the club over the last few years. Thanks to Colin Aindow for organising Earl's return.



There are of course many other people on and off the Trust board who deserve thanks for their work over this year.

We shall continue to try and work with the club and also to try and improve facilities for supporters. For example in the close season a team of Trust members will be cleaning and painting the toilets behind the Jack Carr stand and giving the terracing there a clean.

It is no good disguising that there have been some difficulties during the year because the club has not been able to find its share of the money needed to buy the new floodlights to match that raised by the Trust.

Hopefully progress will be made on the project in the coming months.

THIS PAGE IS SPONSORED BY RIMMER SCAFFOLDING

RIMMER SCAFFOLDING LIMITED
SUPPORTING SOUTHPORT FC
(RUSSELL RIMMER)
INDUSTRIAL, COMMERCIAL & DOMESTIC
Hire - Delivery - Labour Only
Contract Work throughout the North West
Safety Comes First
7 DAY SERVICE - FREE ESTIMATES
CITB Registered - Fully Insured - Competitive Rates

LANCASHIRE

THE COUNTY PALATINE



LANCASHIRE, the County Palatine, is the underlying original county. It EXISTS TODAY, as it has for over 900 years, as a legally constituted and defined area fixed by Statute.

The present administrative county of Lancashire is a local government creation, loosely based on central parts of the underlying county. It has even lost Blackpool and Blackburn.

HOWEVER, all of the map area remains firmly in Lancashire and you can still use Lancashire in your address with the full agreement of Royal Mail, providing you include the POSTCODE and the appropriate POST-TOWN.

SOUTHPORT is the POST-TOWN for the whole of Southport, Banks, and parts of the parishes of Halsall and Scarisbrick.

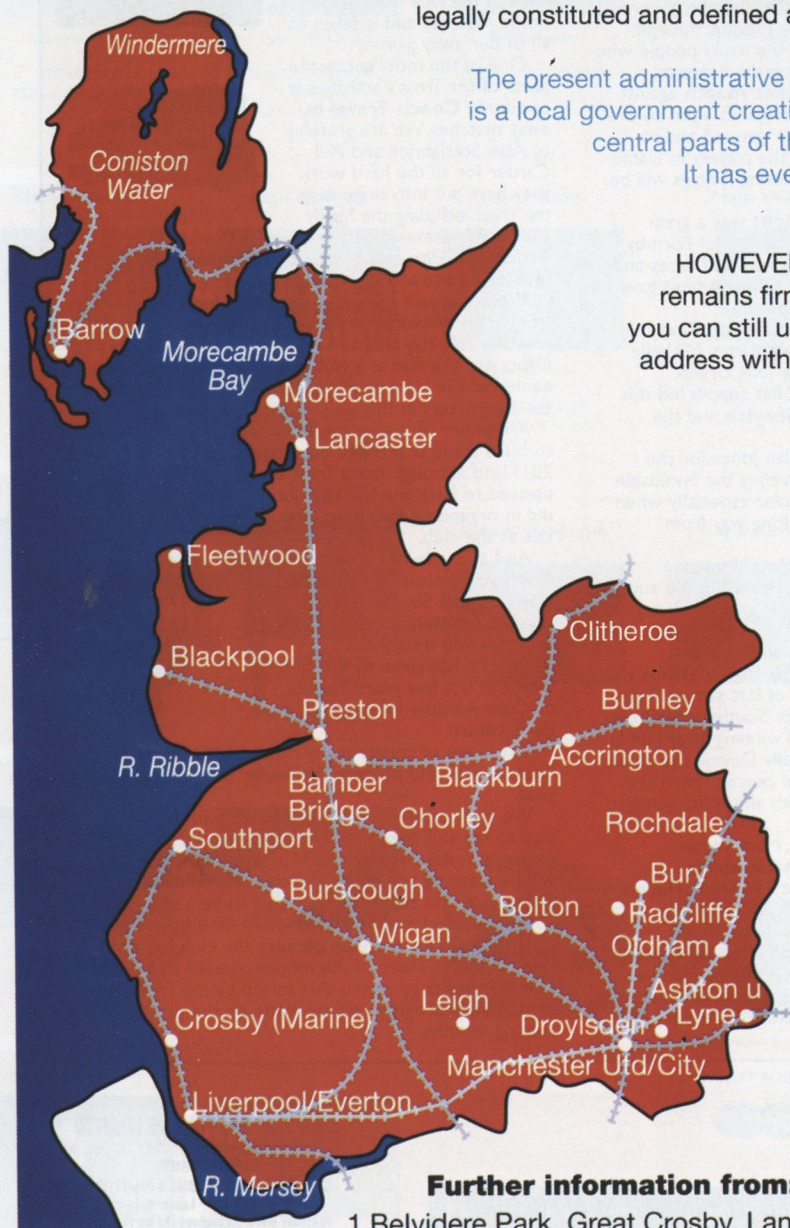
"I can confirm that Southport is indeed within the County Palatine."
Duchy of Lancaster Office, Strand, London, WC2E 7ED.
 14 June 2002

Further information from: F.O.R.L.

1 Belvidere Park, Great Crosby, Lancashire. L23 0SP

Telephone: 0151 928 2770

Website: www.forl.co.uk **E-mail:** csd@forl.co.uk



THE HOGFATHER MOTORCYCLES

T: 0845 644 8360 - F: 0845 644 8361

info@TheHogfather.co.uk

www.TheHogfather.co.uk

Facebook – The Hogfather Motorcycles

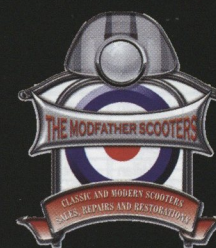
MOTORCYCLE ACCIDENT RECOVERY REPAIR SERVICES

T: 0800 987 5290

info@THMARRS.co.uk

www.THMARRS.co.uk

Facebook - MARRS



THE MODFATHER SCOOTERS

T: 0845 644 8360 - F: 0845 644 8361

info@TheModfather.com

www.TheModfather.com

Facebook – The Modfather Scooters

HOG SPORT HONEYS

T: 0845 644 8360 - F: 0845 644 8361

info@HogSportHoneys.com

www.HogSportHoneys.com

Facebook – Hog Sport Honeys





MATCH DETAILS

All the fixtures and scorelines throughout the 2012/13 season



Southport FC

Southport FC

| Date | Opponents | H/A | SCORE | SCORERS | ATT | AWAY | PTS | POS | 1 | 2 | 3 | 4 | 5 |
|-----------------|--------------------------|-----|-------|----------------------------------|------|------|-----|-----|----------|----------|--------|--------|--------|
| AUGUST | | | | | | | | | | | | | |
| Sat 11 | GRIMSBY TOWN | H | 1-1 | Grand | 1743 | 750 | 1 | 15 | McMillan | Smith | Lever | Akrigg | Grand |
| Tue 14 | ALFRETON TOWN | A | 3-3 | Whalley, Almond, Tames | 562 | 64 | 2 | 15 | McMillan | Smith | Lever | Akrigg | Grand |
| Sat 18 | CAMBRIDGE UNITED | A | 0-2 | | 2004 | 95 | 2 | 19 | McMillan | Smith | Lever | Akrigg | Grand |
| Sat 25 | TAMWORTH | H | 0-3 | | 1014 | 94 | 2 | 23 | McMillan | Smith | Barnes | Akrigg | Grand |
| Mon 27 | HYDE | A | 2-0 | Almond, Tames | 734 | 178 | 5 | 17 | McMillan | Smith | Lever | Lynch | Grand |
| SEPT | | | | | | | | | | | | | |
| Sat 1 | AFC TELFORD UNITED | H | 0-3 | | 1005 | 144 | 5 | 20 | McMillan | Smith | Lever | Lynch | Grand |
| Tue 4 | GATESHEAD | H | 2-1 | Whalley, Ledsham | 686 | 21 | 8 | 17 | McMillan | Smith | Lever | Lynch | Grand |
| Sat 8 | KIDDERMINSTER HARRIERS | A | 2-2 | Ledsham, Gray(pen) | 1650 | 104 | 9 | 18 | McMillan | Parry | Lever | Lynch | Smith |
| Sat 15 | EBBSFLEET UNITED | H | 1-0 | Lever(pen) | 872 | 22 | 12 | 14 | McMillan | Parry | Lever | Lynch | Smith |
| Sat 22 | NEWPORT COUNTY | A | 1-2 | Lever(pen) | 2802 | 78 | 12 | 16 | McMillan | Parry | Lever | Lynch | Smith |
| Tue 25 | STOCKPORT COUNTY | H | 1-1 | Willis | 818 | 198 | 13 | 14 | McMillan | Parry | Lever | Lynch | Smith |
| Sat 29 | LUTON TOWN | A | 1-3 | Parry | 5696 | 77 | 13 | 18 | McMillan | Parry | Lever | Lynch | Smith |
| OCTOBER | | | | | | | | | | | | | |
| Sat 6 | NUNEATON TOWN | H | 3-1 | Lever(pen) Grand, Almond | 1302 | 132 | 16 | 17 | McMillan | Parry | Lever | Akrigg | Grand |
| Tue 9 | BARROW | A | 2-3 | Lynch, Own Goal | 924 | 68 | 16 | 17 | McMillan | Lynch | Willis | Akrigg | Grand |
| Sat 13 | WOKING | A | 3-2 | Parry, Lynch, Lever(pen) | 1739 | 32 | 19 | 15 | McMillan | Parry | Lever | Lynch | Grand |
| Sat 20 | WREXHAM(FAC4Q) | A | 0-2 | | 1911 | 178 | ** | ** | McMillan | Lynch | Lever | Akrigg | Grand |
| Sat 27 | HEREFORD UNITED | H | 2-2 | Ledsham, Lever(pen) | 1028 | 143 | 20 | 15 | McMillan | Lynch | Lever | Parry | Grand |
| NOVEMBER | | | | | | | | | | | | | |
| Tue 6 | WREXHAM | H | 1-4 | Tames | 1324 | 515 | 20 | 16 | McMillan | Smith | Willis | Parry | Grand |
| Sat 10 | MANSFIELD TOWN | A | 0-1 | | 1918 | 83 | 20 | 20 | McMillan | Smith | Lever | Lynch | Grand |
| Tue 13 | DARWEN (LIC2) | H | 2-0 | Akrigg, Tames | 194 | 80 | ** | ** | Hibbert | Parry | Willis | Lynch | Akrigg |
| Sat 17 | DARTFORD | A | 2-2 | Akrigg, Ledsham | 1506 | 67 | 21 | 20 | McMillan | Smith | Lever | Akrigg | Grand |
| Sat 24 | STAFFORD RANGERS (FAT 1) | A | 4-0 | Almond, Tames 2, Owens | 531 | 104 | ** | ** | McMillan | Smith | Lever | Akrigg | Lynch |
| DECEMBER | | | | | | | | | | | | | |
| Sat 1 | STOCKPORT COUNTY | A | 4-3 | Almond, Akrigg, Owens, og | 3445 | 185 | 24 | 17 | McMillan | Smith | Lever | Akrigg | Grand |
| Tue 4 | MARINE (LSC QF) | A | 2-2* | Tames, Bakare | 209 | ** | ** | ** | Hibbert | Chalmers | Willis | Akrigg | Lynch |
| Sat 8 | BRAINTREE TOWN | H | 0-2 | | 803 | 14 | 24 | 20 | McMillan | Smith | Lever | Akrigg | Lynch |
| Sat 15 | STOCKPORT COUNTY(FAT2) | A | 1-1 | Ledsham | 1328 | 123 | ** | ** | McMillan | Chalmers | Lever | Parry | Lynch |
| Tue 18 | STOCKPORT COUNTY(FAT2R) | H | 3-1 | Ledsham, Whalley(pen) Almond | 540 | 113 | ** | ** | McMillan | Chalmers | Willis | Parry | Lynch |
| Wed 26 | MACCLESFIELD TOWN | H | 3-2 | Willis, Almond, Whalley | 1173 | 183 | 27 | 18 | McMillan | Smith | Willis | Parry | Grand |
| Sat 29 | HYDE | H | 0-1 | | 1068 | 98 | 27 | 18 | McMillan | Smith | Willis | Parry | Grand |
| JANUARY | | | | | | | | | | | | | |
| Tue 1 | MACCLESFIELD TOWN | A | 2-2 | Lever 2 (1pen) | 1481 | 225 | 28 | 19 | McMillan | Smith | Lever | Lynch | Grand |
| Sat 5 | AFC TELFORD UNITED | A | 3-1 | Grand 2, Almond | 1643 | 106 | 31 | 17 | McMillan | Smith | Lever | Lynch | Grand |
| Tue 8 | LINCOLN CITY | H | 4-2 | Grand 2, Owens, Ledsham | 815 | 115 | 34 | 12 | McMillan | Smith | Lever | Lynch | Grand |
| Sat 12 | KINGS LYNN TOWN (FAT3) | A | 2-0 | Parry, Tames | 1498 | 103 | ** | ** | McMillan | Smith | Lever | Lynch | Grand |
| Sat 19 | MANSFIELD TOWN | H | 1-2 | Whalley | 804 | 80 | 34 | 13 | McMillan | Parry | Willis | Akrigg | Grand |
| Sat 26 | WREXHAM (FAT QF) | H | 1-3 | Whalley(pen) | 1473 | 699 | ** | ** | McMillan | Smith | Lever | Akrigg | Grand |
| Tue 29 | WREXHAM | A | 2-2 | Ledsham, Owens | 3002 | 55 | 35 | 12 | McMillan | Smith | Lynch | Akrigg | Grand |
| FEBRUARY | | | | | | | | | | | | | |
| Sat 2 | HEREFORD UNITED | A | 2-2 | Whalley, Byrne | 1513 | 83 | 36 | 13 | McMillan | Chalmers | Owens | Byrne | Grand |
| Sat 9 | NUNEATON TOWN | A | 1-0 | Own Goal | 779 | 81 | 39 | 13 | McMillan | Chalmers | Owens | Byrne | Grand |
| Tue 12 | BARROW | H | 5-2 | Willis, Ledsham 2, Almond, Owens | 806 | 81 | 42 | 11 | McMillan | Chalmers | Owens | Byrne | Grand |
| Sat 23 | WOKING | H | 1-2 | Chalmers | 911 | 75 | 42 | 14 | McMillan | Chalmers | Owens | Byrne | Grand |
| MARCH | | | | | | | | | | | | | |
| Sat 2 | DARTFORD | H | 2-2 | Owens, Whalley(pen) | 823 | 67 | 43 | 14 | McMillan | Chalmers | Willis | Byrne | Smith |
| Tue 5 | CAMBRIDGE UNITED | H | 2-1 | Byrne, Whalley(pen) | 615 | 55 | 46 | 13 | McMillan | Chalmers | Willis | Byrne | Smith |
| Sat 9 | LINCOLN CITY | A | 0-1 | | 1827 | 108 | 46 | 13 | McMillan | Chalmers | Smith | Byrne | Parry |
| Tue 12 | FOREST GREEN ROVERS | H | 1-2 | Whalley(pen) | 632 | 27 | 46 | 13 | McMillan | Chalmers | Smith | Parry | Grand |
| Sat 16 | EBBSFLEET UNITED | A | 1-4 | Almond | 603 | 40 | 46 | 15 | McMillan | Chalmers | Smith | Parry | Grand |
| Tue 19 | TAMWORTH | A | 1-2 | Chalmers | 565 | 27 | 46 | 16 | McMillan | Chalmers | Owens | Parry | Grand |
| Sat 23 | KIDDERMINSTER HARRIERS | H | 1-3 | Hattersley | 946 | 212 | 46 | 16 | Smith(B) | Chalmers | Lever | Parry | Grand |
| Tue 26 | NEWPORT COUNTY | H | 0-2 | | 606 | 55 | 46 | 18 | Smith(B) | Smith(J) | Lever | Parry | Grand |
| Sat 30 | GATESHEAD | A | 2-2 | Almond, Whalley | 406 | 78 | 47 | 20 | Hedge | Chalmers | Owens | Byrne | Grand |
| APRIL | | | | | | | | | | | | | |
| Mon 1 | ALFRETON TOWN | H | 0-2 | | 830 | 85 | 47 | 20 | Hedge | Smith | Lever | Byrne | Grand |
| Wed 3 | BRAINTREE TOWN | A | 3-1 | Almond 2, Grand | 451 | 38 | 50 | 17 | Hedge | Chalmers | Lever | Byrne | Grand |
| Sat 6 | GRIMSBY TOWN | A | 2-2 | Ledsham 2 | 3780 | 71 | 51 | 17 | Hedge | Chalmers | Lever | Parry | Grand |
| Sat 13 | FOREST GREEN ROVERS | A | 1-0 | Own Goal | 1496 | 133 | 54 | 17 | Hedge | Chalmers | Owens | Parry | Grand |
| Sat 20 | LUTON TOWN | H | | | | | | | | | | | |

| 6 | 7 | 8 | 9 | 10 | 11 | Subs | | | | | Ref |
|----------|----------|----------|------------|------------|----------|----------------|----------------|----------------|------------------|----------|---------------|
| Parry | Whalley | Moogan | Bakare | Gray | Benjamin | Ledsham(11) | Almond(10) | Chalmers(8) | Lynch | Nemes | S Stockbridge |
| Parry | Whalley | Moogan | Bakare | Ledsham | Benjamin | Almond(7) | Chalmers(11) | Tames(9) | Lynch | Nemes | B Toner |
| Parry | Chalmers | Moogan | Bakare | Ledsham | Almond | Stephenson(7) | Tames(9) | Barnes(10) | Lynch | Nemes | J Arney |
| Parry | Chalmers | Ledsham | Bakare | Gray | Almond | Benjamin(7) | Lynch(4) | Stephenson(10) | Tames | Nemes | A Backhouse |
| Parry | Benjamin | Moogan | Tames | Gray | Almond | Bakare(11) | Chalmers(9) | Barnes(10) | Stephenson | Nemes | R Joyce |
| Parry | Whalley | Poku | Tames | Gray | Benjamin | Ledsham(11) | Bakare(9) | Chalmers(5) | Barnes | Nemes | C Kavanagh |
| Parry | Whalley | Poku | Bakare | Gray | Ledsham | Benjamin(7) | Tames(10) | Barnes(9) | Chalmers | Nemes | J Whiteley |
| Grand | Whalley | Poku | Bakare | Gray | Ledsham | Tames(9) | Benjamin(7) | Chalmers(10) | Barnes | Nemes | R Martin |
| Grand | Whalley | Poku | Gray | Moogan | Ledsham | Tames(2) | Bakare(9) | Almond(11) | Benjamin | Hibbert | D Handley |
| Grand | Whalley | Poku | Ledsham | Moogan | Almond | Bakare(11) | Benjamin(8) | Tames(7) | Akrigg | Hibbert | A Bromley |
| Grand | Whalley | Poku | Ledsham | Moogan | Almond | Tames(11) | Bakare(2) | Willis(4) | Benjamin | Hibbert | R Joyce |
| Grand | Whalley | Poku | Ledsham | Moogan | Almond | Tames(5) | Willis(10) | Benjamin(11) | Akrigg | Hibbert | B Huxtable |
| Poku | Whalley | Ledsham | Ellison | Moogan | Almond | Willis(3) | Tames(11) | Benjamin(10) | Bakare | Hibbert | C Kavanagh |
| Poku | Whalley | Moogan | Ellison | Bakare | Parry | Tames(10) | Smith(9) | Benjamin | Joyce | Hibbert | W Barratt |
| Poku | Whalley | Benjamin | Ellison | Stephenson | Willis | Joyce(9) | Tames(10) | Almond | Moogan | Hibbert | J Hopkins |
| Poku | Whalley | Benjamin | Tames | Parry | Almond | Ledsham(4) | Smith, Hibbert | Moogan, Bakare | Campbell, McIver | | C Knowles |
| Poku | Whalley | Moogan | Tames | Stephenson | Ledsham | Smith(2) | Almond(10) | Willis(3) | Benjamin | Hibbert | K Evans |
| Poku | Whalley | Moogan | Tames | Stephenson | Ledsham | Benjamin(9) | Lynch(2) | Joyce(10) | Chalmers | Hibbert | S Stockbridge |
| Parry | Whalley | Moogan | Tames | Benjamin | Ledsham | Almond(10) | Stephenson(11) | Chalmers(8) | Willis | Hibbert | D Ford |
| Joyce | Chalmers | Benjamin | Tames | Stephenson | Almond | Ledsham(9) | Campbell(6) | Lever | Whalley | McMillan | D McNamara |
| Poku | Whalley | Moogan | Tames | Ledsham | Almond | Chalmers(6) | Stephenson(9) | Lynch(4) | Benjamin | Hibbert | P Rees |
| Poku | Ledsham | Moogan | Owens | Tames | Almond | Benjamin(6) | Stephenson(9) | Chalmers(8) | Willis | Hibbert | R Jones |
| Poku | Whalley | Moogan | Owens | Ledsham | Almond | Bakare(11) | Lynch(5) | Chalmers(7) | Tames | Hibbert | P Banks |
| Joyce | Whalley | Moogan | Tames | Benjamin | Bakare | Ledsham(8) | Campbell(9) | Almond | Lever | McMillan | G Johnson |
| Poku | Whalley | Moogan | Owens | Tames | Almond | Ledsham(4) | Chalmers(9) | Bakare(10) | Benjamin | Hibbert | R Joyce |
| Smith | Whalley | Moogan | Benjamin | Ledsham | Almond | Tames(7) | Willis(11) | Grand | Campbell | Hibbert | D Ford |
| Smith | Whalley | Moogan | Benjamin | Ledsham | Almond | Poku(8) | Akrigg(2) | Tames | Campbell | Hibbert | B Toner |
| Lynch | Whalley | Benjamin | Ledsham | Poku | Almond | Bakare(7) | Joyce(11) | Tames | Akrigg | Hibbert | A Backhouse |
| Lynch | Whalley | Benjamin | Ledsham | Poku | Almond | Tames(11) | Bakare(8) | Joyce(10) | Akrigg | Hibbert | D Handley |
| Willis | Whalley | Moogan | Owens | Ledsham | Benjamin | Bakare(9) | Almond(7) | Joyce | Akrigg | Hibbert | A Miller |
| Parry | Whalley | Moogan | Owens | Ledsham | Benjamin | Almond(8) | Poku(11) | Bakare(7) | Willis | Hibbert | R Martin |
| Parry | Whalley | Poku | Owens | Ledsham | Almond | Joyce(9) | Tames(11) | Bakare(7) | Willis | Hibbert | R Joyce |
| Parry | Whalley | Poku | Owens | Ledsham | Almond | Willis(3) | Tames(11) | Benjamin(4) | Chalmers | Hibbert | K Hill |
| Smith | Whalley | Moogan | Tames | Ledsham | Benjamin | Bakare(3) | Joyce(9) | Chalmers(8) | Lynch | Hibbert | C Kavanagh |
| Parry | Whalley | Moogan | Owens | Poku | Ledsham | Lynch(3) | Benjamin(6) | Tames(S1) | Almond | Hibbert | M Bull |
| Benjamin | Whalley | Moogan | Owens | Poku | Ledsham | Chalmers(4) | Bakare(3) | Joyce(10) | Tames | Hibbert | D Ford |
| Smith | Whalley | Kay | Ledsham | Poku | Benjamin | Parry(11) | Almond | Tames | Joyce | Hibbert | B Huxtable |
| Smith | Whalley | Kay | Ledsham | Poku | Benjamin | Almond(11) | Tames(7) | Parry | Willis | Hibbert | W Barratt |
| Smith | Whalley | Kay | Ledsham | Poku | Almond | Willis(4) | Parry(5) | Tames(11) | Benjamin | Hibbert | K Evans |
| Smith | Whalley | Kay | Ledsham | Poku | Almond | Willis(9) | Parry(2) | Tames(4) | Benjamin | Hibbert | R Joyce |
| Parry | Whalley | Kay | Owens | Poku | Ledsham | Clancy(3) | Almond(2) | Benjamin | Tames | Hibbert | C Kavanagh |
| Parry | Whalley | Kay | Owens | Poku | Ledsham | Clancy(3) | Almond(10) | Benjamin(11) | Tames | Hibbert | S Stockbridge |
| Clancy | Whalley | Kay | Owens | Poku | Ledsham | Almond(8) | Willis(2) | Tames(6) | Benjamin | Hibbert | K Johnson |
| Clancy | Whalley | Kay | Ledsham | Benjamin | Almond | Lever(2) | Willis(11) | Moogan | Tames | Hibbert | A Backhouse |
| Clancy | Whalley | Kay | Hattersley | Benjamin | Almond | Ledsham(10) | Lever(5) | Tames(9) | Willis | Hibbert | R Whitton |
| Smith | Whalley | Kay | Hattersley | Poku | Ledsham | Hibbert(2) | Lever(9) | Almond(3) | Clancy | Moogan | G Horwood |
| Poku | Whalley | Moogan | Hattersley | Owens | Ledsham | Almond(11) | Kay(8) | Clancy(7) | Byrne | Hibbert | D Handley |
| Poku | Whalley | Moogan | Hattersley | Owens | Ledsham | Kay(6) | Hibbert(1) | Almond(8) | Byrne | Clancy | S Stockbridge |
| Smith | Whalley | Moogan | Hattersley | Kay | Ledsham | Almond(9) | Lever(7) | Benjamin | Clancy | Hibbert | C Kavanagh |
| Parry | Whalley | Kay | Ledsham | Owens | Almond | Clancy(8) | Benjamin(9) | Willis | Tames | Hibbert | B Toner |
| Smith | Whalley | Parry | Ledsham | Owens | Almond | Hattersley(2) | Benjamin(7) | Kay | Clancy | Hibbert | J Arney |
| Smith | Whalley | Kay | Ledsham | Owens | Almond | Hattersley(10) | Benjamin(8) | Clancy(11) | Willis | Hibbert | R Joyce |
| Smith | Whalley | Kay | Hattersley | Ledsham | Almond | Poku(8) | Moogan | Clancy | Willis | Hibbert | A Bromley |



THESE PAGES ARE SPONSORED BY SOUTHPORT BREWERY

MATCH SPONSORS

LOCAL BUSINESSES SUPPORTING THEIR LOCAL TEAM

SOUTHPORT FOOTBALL CLUB CORPORATE SPONSORSHIP 2012/2013

| DATE | CLUB | MATCH SPONSOR | BALL SPONSOR | PROGRAMME SPONSOR | CAPTAINS TABLE SPONSOR |
|---------------------------|------------------------|--|---|---|---|
| SAT. 11 AUG | GRIMSBY TOWN | PALACE CHEMICALS | PALACE CHEMICALS | PALACE CHEMICALS | PALACE CHEMICALS |
| SAT. 25 AUG | TAMWORTH | FORMBY BNI | BARRON FINANCIAL SOLUTIONS | RAMADA PLAZA | KARL PRICE |
| SAT. 1 SEPT | AFC TELFORD | KEITH MITCHELL | BARRON FINANCIAL SOLUTIONS | DAVE PENNINGTON | JENKAR SHIPPING |
| TUES. 4 SEPT | GATESHEAD | MERSEYRAIL | KARL PRICE | TIFFANY'S OF FORMBY | ALL WHITE TAXI'S |
| SAT. 15 SEPT | EBBSFLEET UTD | MERSEYRAIL/BARRON FINANCIAL SOLUTIONS | CRAIG JACKSON/DEANE MOTORS | RAMADA PLAZA | NATWEST |
| TUES. 25 SEPT | STOCKPORT COUNTY | PLANTEC/PENISINULAR | BARRON FINANCIAL SOLUTIONS | DSG | DAVE PENNINGTON |
| SAT. 6 OCT | NUNEATON TOWN | SOUTHPORT COLLEGE | TIFFANY'S OF FORMBY | MOORE & SMALLEY | BARRON FINANCIAL SOLUTIONS |
| SAT. 27 OCT | HEREFORD UTD | BARRON FINANCIAL SOLUTIONS/KARL PRICE | HEINEKEN | JULIAN TITTERSHILL THE FHT'S | ALAN & BEN TAYLOR/FRED HAMPTON |
| TUES. 6 NOV | WREXHAM | MERSEYRAIL/DSG | ANTHONY'S TRAVEL /SPORTS 360 | HEINEKEN/DAVE PENNINGTON | ALL WHITE TAXI'S |
| SAT. 8 TH DEC | BRAINTREE | CSB/NATWEST | HANALEX WEALTH LTD & LLOYD & CO | GALAXY FOOTBALL | DAVE PENNINGTON |
| TUES. 26 DEC | MACCLESFIELD TOWN | THE VICE PRESIDENTS | CHRIS ASPINALL | DAVE PENNINGTON | MERSEYRAIL |
| SAT. 29 DEC | HYDE | RAMADA PLAZA | DAVE PENNINGTON | CS DIGITAL | MERSEYRAIL |
| TUES. 8 TH JAN | LINCOLN CITY | LINDE STERLING | DAVE PENNINGTON | VICTORIA LEISURE | SPORTS 360 |
| SAT. 19 JAN | MANSFIELD TOWN | RED INSURE | BARRON FINANCIAL SOLUTIONS | DAVE PENNINGTON/DAVID RIMMER | PLANTEC/LIVERPOOL MECEDES |
| SAT. 26 JAN | WREXHAM | DAVE BARRON | ADRIAN SHANDLEY | MERSEYRAIL/GEOFF WILLIAMS | HANALEX WEALTH LTD LLOYD & CO |
| TUES. 12 FEB | BARROW | MERSEYRAIL/COUNTY INSURANCE | ALL WHITE TAXI'S | QPAC PACKAGING | RAMADA PLAZA /HEINEKEN |
| SAT. 23 FEB | WOKING | "THE ODDFELLOWS" | BARRON FINANCIAL SOLUTIONS | MERSEYRAIL/LINDE STERLING | MOISTERS /DAVE PENNINGTON |
| SAT. 2 MAR | DARTFORD | KARL PRICE | MERSEYRAIL/MOORE & SMALLEY | MOORE & SMALLEY/HANALEX WEALTH & LLOYD & CO | BARRON FINANCIAL SOLUTIONS/GWYN THOMAS |
| TUES. 5 MAR | CAMBRIDGE UTD | HATFIELDS | NATWEST | 3663/HANALEX WEALTH & LLOYD & CO | DAVE PENNINGTON (6) |
| TUES. 12 MAR | FOREST GREEN ROVERS | HATFIELDS | DAVE PENNINGTON/HEINEKEN | BARRON FINANCIAL SOLUTIONS/ANTHONY'S TRAVEL | TIFFANY'S OF FORMBY/HANALEX WEALTH & LLOYD & CO |
| SAT. 23 MAR | KIDDERMINSTER HARRIERS | NORTHERN PACKAGING | OAKMERE TECHNICAL/LYNBROOK/KIRWANS SOLICITORS | DAVE JELLEYMAN/LYNBROOK | BARRON FINANCIAL SOLUTIONS/MARTYN O'HARA (6) |
| TUES. 26 MAR | NEWPORT COUNTY | PLANTEC/HSBC | QPac PACKAGING/BARRON FINANCIAL SOLUTIONS | MOORE & SMALLEY/DAVID ASHWORTH | HANALEX WEALTH & LLOYD & CO |
| MON. 1 APR | ALFRETON TOWN | MERSEYRAIL (4)/BARRONFINANCIAL SOLUTIONS | KATHRYN FISHER /HANALEX WEALTH & LLOYD & CO | MATTHEW FISHER | PLANTEC |
| SAT. 20 APR | LUTON TOWN | TIFFANY'S OF FORMBY/HARRIS BALCOMBE | MERSEYRAIL/ DAVE PENNINGTON | SANDY TITTERSHILL/NORTHERN PACKAGING | BARRON FINANCIAL SOLUTIONS |

22/01/13

LOCAL BUSINESS SUPPORTING THEIR LOCAL TEAM

MANY THANKS TO TODAY'S SPONSORS



Main Sponsor



Shirt Sponsor

Tiffany's of Formby
Harris Balcombe
Match Sponsor

Merseyrail
Dave Pennington
Ball Sponsor

Sandy Tittershill
Northern Packaging
Programme Sponsor



Captain's Table

www.southportfc.net

Alzheimer's Society

Leading the fight against dementia

Is your life affected by dementia?



Alzheimer's Society in Sefton is here for you.

We provide a range of services in your area which include providing information and offering support.

If you would like to know more about our services, or have questions about dementia and how we might be able to support you, contact Alzheimer's Society local office in Sefton.

T: 01704 539967

E: southport@alzheimers.org.uk

alzheimers.org.uk

Alzheimer's Society operates in England, Wales and Northern Ireland. Registered charity no. 296645

Training Venue of Southport FC



The place for ALL sports

Best wishes to Liam and the Lads for the 2012/13 Season!



Junior Football Coaching
Pitches for Hire for Winter Training
Football Kit and Equipment Shop
5 and 7 a side Night-time Leagues
Function Room for Hire
All Inclusive Hassle Free Kids Parties

Conference and Teaching room
Corporate Tournaments
5, 7 and 11 a side Floodlit 3G Pitches
Licenced Bar with Live Sports
On Site Parking
Sports Injuries Clinic

For more details or to make a booking, give us a call on the number below

01695 550426

www.jmosportspark.co.uk

info@jmosportspark.co.uk

Blaguegate Playing Fields, Liverpool Road, Skelmersdale, WN8 8BX



SEASON STATS

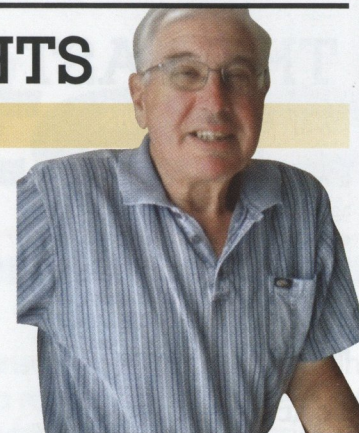
Keeping you up to date with the Sandgrounders Stats for the season

| | 16-Apr | P | W | D | L | F | A | GD | PTS |
|----|------------------------|----|----|----|----|----|----|-----|-----|
| 1 | Mansfield Town | 45 | 29 | 5 | 11 | 91 | 52 | 39 | 92 |
| 2 | Kidderminster Harriers | 45 | 27 | 9 | 9 | 78 | 40 | 38 | 90 |
| 3 | Newport County | 45 | 25 | 10 | 10 | 85 | 57 | 28 | 85 |
| 4 | Wrexham | 45 | 22 | 14 | 9 | 74 | 44 | 30 | 80 |
| 5 | Grimsby Town | 45 | 22 | 14 | 9 | 67 | 38 | 29 | 80 |
| 6 | Hereford Utd | 45 | 18 | 13 | 14 | 69 | 63 | 6 | 67 |
| 7 | Dartford | 45 | 19 | 9 | 17 | 67 | 62 | 5 | 66 |
| 8 | Forest Green | 45 | 18 | 11 | 16 | 62 | 47 | 15 | 65 |
| 9 | Braintree Town | 45 | 18 | 9 | 18 | 62 | 72 | -10 | 63 |
| 10 | Woking | 45 | 18 | 8 | 19 | 72 | 79 | -7 | 62 |
| 11 | Luton Town | 44 | 16 | 13 | 15 | 65 | 61 | 4 | 61 |
| 12 | Macclesfield Town | 45 | 16 | 12 | 17 | 63 | 69 | -6 | 60 |
| 13 | Cambridge United | 45 | 15 | 14 | 16 | 67 | 67 | 0 | 59 |
| 14 | Alfreton Town | 45 | 15 | 12 | 18 | 67 | 73 | -6 | 57 |
| 15 | Hyde | 45 | 16 | 7 | 22 | 62 | 70 | -8 | 55 |
| 16 | Nuneaton | 45 | 13 | 15 | 17 | 54 | 63 | -9 | 54 |
| 17 | Southport | 45 | 14 | 12 | 19 | 71 | 83 | -12 | 54 |
| 18 | Lincoln City | 45 | 14 | 11 | 20 | 61 | 72 | -11 | 53 |
| 19 | Gateshead | 45 | 12 | 16 | 17 | 56 | 61 | -5 | 52 |
| 20 | Tamworth | 45 | 14 | 10 | 21 | 53 | 68 | -15 | 52 |
| 21 | Stockport County | 45 | 13 | 11 | 21 | 57 | 72 | -15 | 50 |
| 22 | Barrow | 45 | 11 | 13 | 21 | 45 | 82 | -37 | 46 |
| 23 | Ebbsfleet | 44 | 8 | 15 | 21 | 55 | 85 | -30 | 39 |
| 24 | AFC Telford Utd | 45 | 6 | 17 | 22 | 52 | 75 | -23 | 35 |

| | 16-Apr | P | W | D | L | F | A | GD | PTS |
|----|------------------------|----|----|----|----|----|----|-----|-----|
| 1 | Kidderminster Harriers | 45 | 27 | 9 | 9 | 78 | 40 | 38 | 90 |
| 2 | Mansfield Town | 44 | 28 | 5 | 11 | 89 | 51 | 38 | 89 |
| 3 | Newport County | 44 | 25 | 9 | 10 | 83 | 55 | 28 | 84 |
| 4 | Wrexham | 44 | 22 | 13 | 9 | 73 | 43 | 30 | 79 |
| 5 | Grimsby Town | 44 | 21 | 14 | 9 | 66 | 38 | 28 | 77 |
| 6 | Hereford Utd | 44 | 18 | 13 | 13 | 68 | 61 | 7 | 67 |
| 7 | Forest Green | 44 | 18 | 11 | 15 | 60 | 44 | 16 | 65 |
| 8 | Dartford | 44 | 18 | 9 | 17 | 64 | 60 | 4 | 63 |
| 9 | Woking | 44 | 18 | 8 | 18 | 72 | 78 | -6 | 62 |
| 10 | Braintree Town | 44 | 18 | 8 | 18 | 61 | 71 | -10 | 62 |
| 11 | Luton Town | 43 | 16 | 12 | 15 | 63 | 59 | 4 | 60 |
| 12 | Macclesfield Town | 45 | 16 | 12 | 17 | 63 | 69 | -6 | 60 |
| 13 | Cambridge United | 45 | 15 | 14 | 16 | 67 | 67 | 0 | 59 |
| 14 | Alfreton Town | 45 | 15 | 12 | 18 | 67 | 73 | -6 | 57 |
| 15 | Hyde | 45 | 16 | 7 | 22 | 62 | 70 | -8 | 55 |
| 16 | Nuneaton | 45 | 13 | 15 | 17 | 54 | 63 | -9 | 54 |
| 17 | Southport | 45 | 14 | 12 | 19 | 71 | 83 | -12 | 54 |
| 18 | Lincoln City | 45 | 14 | 11 | 20 | 61 | 72 | -11 | 53 |
| 19 | Gateshead | 44 | 12 | 15 | 17 | 55 | 60 | -5 | 51 |
| 20 | Tamworth | 44 | 14 | 9 | 21 | 52 | 67 | -15 | 51 |
| 21 | Stockport County | 44 | 13 | 10 | 21 | 56 | 71 | -15 | 49 |
| 22 | Barrow | 45 | 11 | 13 | 21 | 45 | 82 | -37 | 46 |
| 23 | Ebbsfleet | 43 | 8 | 14 | 21 | 54 | 84 | -30 | 38 |
| 24 | AFC Telford Utd | 45 | 6 | 17 | 22 | 52 | 75 | -23 | 35 |

FRODSHAM'S THOUGHTS

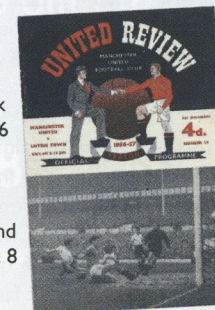
with DAVID FRODSHAM



Welcome to Luton Town. I saw them play here a few times in the Football League over forty years ago but my first acquaintance with the "Hatters" was at Old Trafford on Saturday December 1st 1956 when they played against Manchester United in a First Division game. The kick off was at 2.15pm there being no flood lights then at the ground and the official attendance was returned at 34,736. I was in the RAF as a National Serviceman undergoing what was then called "square bashing" at Wilmslow. A group of us went to the game after being allowed out in our "best blues", all shiny boots and peaked caps. I still have the match programme of twelve pages which cost 4 pence in old money, less than 2 pence to-day. As far as I can recall this was the one and only time that I saw the Busby Babes play and there in the centre pages are the names of that magnificent team that was so tragically

destroyed at Munich just fourteen months later on February 6th 1958. Seven members of the team that played against Luton Town that day were to lose their lives as a result of the plane crash including the three scorers, Duncan Edwards, Tommy Taylor and David Pegg. United won the game 3-1. Luton were welcomed to Old Trafford as a team that had fully established their right to a place in Division 1 following their promotion from the Second Division two years earlier. By the start of December 1956 they were in mid table after 18 games whereas United were at the top of the League and would go on to take the title in April 1957 by a clear 8 points from Tottenham Hotspur. Luton Town had played their football in the lower leagues until a promotion to Division 2 in 1937 and then in 1955 they reached the top tier after finishing second to Birmingham City. In 1959 they contested the FA Cup Final against Nottingham Forest but lost the game 2-1. Unfortunately relegation followed in April 1960 and life in the lower leagues meant an end to their visits to Old Trafford. United's and Luton's paths crossed in the close season of 1974 as United fell out of Division 1 passing Luton who were returning to the top Division. But in 1974/75 United won back their place at the top table as Luton finishing in twentieth place in Division 1 were relegated after just one season. To their great credit they rallied again and enjoyed status as a Division 1 club in the Eighties but sadly an indifferent season in 1991/92 found them outside the new Premier League in August 1992 so their wait goes on for another league game at

We were to finish the Season in sixth place



return south to play on the Tuesday. Hardly ideal over Christmas given the mileage involved but in fairness to the fixture compilers the teams contesting Division 4 were overwhelmingly from the North of England and Luton's choice of a local holiday fixture would have been confined to either Colchester or Aldershot. I am pleased to say we won the game here 3-2 before 6638 with goals from the reliable trio of Russell, Alty and Spence. The last Football League game between us, so far that is, was at Luton on Tuesday evening April 14th 1970. The home team were in third place and keen to win promotion. We were fourth from the foot of the table and anxious about relegation. It was Luton's final home game of the season but they had two more away games to play. We had four remaining fixtures. The programme described us as a struggling team but it was recalled that in February 1967 we had played a goal less draw at Kenilworth Road allegedly defending tactically with ten men in our penalty area. We had drawn again in 1969 but in 1970 before an attendance of 16756 we lost, albeit by a single second half goal. Luton were promoted. We did not do quite so well.

the "Theatre". Our first meetings with to-day's opponents took place in seasons 1965/66 and 1966/67 in the Fourth Division and we played them again in Division 3 in 1968/69 and 1969/70. So we had just 8 games in our Football League career against them winning two, drawing three and losing three. Our first ever game against them in the League was here on Monday afternoon December 27th 1965. It was the first game in a double header, as the return game was arranged for Kenilworth Road the next afternoon. Luton had travelled north on the Sunday afternoon and both teams would then have to

Southport FC

Southport FC

FRODSHAM'S THOUGHTS

| SOUTHPORT FC LEAGUE MATCH STATS 12-13 | | | | | | | | | |
|---------------------------------------|-----|----|----|----|----|-------------------|--------------------|--|----|
| League Games | | H | | A | | CURRENT SEQUENCES | | | |
| Times of Goals | For | Ag | F | A | F | A | Games Scored In | | |
| 1-9 mins | 6 | 8 | 1 | 4 | 5 | 4 | Wins | | 1 |
| 10-19 mins | 8 | 10 | 2 | 4 | 6 | 6 | Defeats | | 0 |
| 20-35 mins | 11 | 8 | 6 | 5 | 5 | 3 | Draws | | 0 |
| 36-45 mins | 8 | 9 | 4 | 7 | 4 | 2 | GAMES SINCE | | |
| 46-60 mins | 12 | 12 | 5 | 7 | 7 | 5 | A Win | | 0 |
| 61-79 mins | 17 | 13 | 8 | 6 | 9 | 7 | A Home Win | | 4 |
| 80-90 mins | 9 | 23 | 5 | 8 | 4 | 15 | An Away Win | | 0 |
| TOTAL | 71 | 83 | 31 | 41 | 40 | 42 | A Defeat | | 3 |
| Blowick End | 13 | 20 | | | | | An Away Defeat | | 4 |
| Scarisbrick End | 18 | 21 | | | | | A Home Defeat | | 0 |
| TOTAL | 31 | 41 | | | | | A Score Draw | | 1 |
| Pens Awarded | 13 | 8 | 7 | 3 | 6 | 5 | A No Score Draw | | 51 |
| Pens Scored | 10 | 7 | 6 | 2 | 4 | 5 | Conceding A Goal | | 1 |
| Frequency | 0 | 1 | 2 | 3 | 4 | 5 | Scoring A Goal | | 0 |
| Goals Scored | 9 | 14 | 14 | 6 | 2 | 1 | GOAL METHOD | | |
| Goals Conceded | 4 | 10 | 21 | 7 | 2 | | Open Play | | 37 |
| Winning Margin | 7 | 5 | 1 | | | | Corner | | 16 |
| Losing Margin | 9 | 5 | 4 | | | | Penalty | | 10 |
| Draws | 2 | 9 | 1 | | | | Direct Free Kick | | 1 |
| Home | No | W | D | L | | | Indirect Free Kick | | 5 |
| Scoring first | 8 | 5 | 3 | | | | Throw In | | 2 |
| Conceding first | 14 | 2 | 4 | 8 | | | | | |
| Winning at half time | 5 | 3 | 2 | | | | | | |
| Drawing at half time | 6 | 2 | 3 | 1 | | | | | |
| Losing at half time | 11 | 2 | 1 | 8 | | | | | |
| Away | No | W | D | L | | | | | |
| Scoring first | 13 | 6 | 4 | 3 | | | | | |
| Conceding first | 10 | 1 | 4 | 5 | | | | | |
| Winning at half time | 10 | 4 | 3 | 3 | | | | | |
| Drawing at half time | 8 | 3 | 3 | 2 | | | | | |
| Losing at half time | 5 | 2 | 3 | | | | | | |

| SOUTHPORT FC APPEARANCES AND SCORERS 2012/13 | | | | | | |
|--|-----------------|-----------------|-----------------|-------------------|------------------|--------------------|
| Player | Lge Goals 12/13 | Lge Total Goals | Cup Goals 12/13 | Total Goals 12/13 | Career Cup Goals | Total Career Goals |
| Chris Almond | 11 | 11 | 2 | 13 | 2 | 13 |
| Karl Ledsham | 10 | 17 | 2 | 12 | 3 | 20 |
| Shaun Whalley | 9 | 28 | 2 | 11 | 4 | 32 |
| Simon Grand | 7 | 11 | 0 | 7 | 0 | 11 |
| Chris Lever | 7 | 17 | 0 | 7 | 1 | 18 |
| Andy Owens | 5 | 9 | 1 | 6 | 3 | 12 |
| OWN GOALS | 4 | | | | | |
| Steven Tames | 3 | 3 | 5 | 8 | 5 | 8 |
| Liam Willis | 3 | 3 | 0 | 3 | 0 | 3 |
| Steve Akrigg | 2 | 3 | 1 | 3 | 2 | 5 |
| Neill Byrne | 2 | 2 | 0 | 2 | 0 | 2 |
| Aaron Chalmers | 2 | 2 | 0 | 2 | 0 | 2 |
| Chris Lynch | 2 | 2 | 0 | 2 | 0 | 2 |
| Andrew Parry | 2 | 2 | 1 | 3 | 1 | 3 |
| Tony Gray* | 1 | 60 | 0 | 1 | 17 | 77 |
| Danny Hattersley | 1 | 1 | 0 | 1 | 0 | 1 |
| Michael Bakare | 0 | 0 | 1 | 1 | 1 | 1 |

THIS PAGE IS SPONSORED BY TURKISH DELIGHT

WELCOME TO THE TASTE OF SOUTHPORT'S FIRST AUTHENTIC TURKISH KEBAB HOUSE

TURKISH DELIGHT

PIZZA, BURGER & KEBAB

ALL OUR PIZZAS AND KEBABS ARE FRESHLY MADE ON THE PREMISES

TELEPHONE ORDERS WELCOME

01704 538 699

9 CORONATION WALK, SOUTHPORT



THE LAST WORD

with ROB URWIN

It only seems like five minutes ago that I was welcoming everyone back to the Merseyrail Community Stadium at the start of the season...it has flown by

My Personal Awards:

GOAL OF THE SEASON

A few contenders, Steven Tames at Hyde, Andy Parry at Kings Lynn, Karl Ledsham at Stockport



and home v Gateshead and a late entry is Chris Almond's belter at Braintree but my winner is Andy Owens at home to Lincoln City. This one has also been submitted for the Conference Goal Of The Season and must be in with a great chance.

PLAYER OF THE YEAR

For once it is clear cut in my opinion and I will be amazed if it isn't repeated in the official

voting. Shaun Whalley has probably had his best season scoring and creating an awful lot of our goals. An outstanding season and I for one will be very sorry to see him leave in the summer.... if he does!

MATCH OF THE SEASON

The 4-3 win at Stockport County had just about everything you could ask for and a lot we didn't want as well. Throwing a three goal lead away is not good for the heart but the late winner albeit an own goal (which Leddy is still trying to claim) made yet another visit to Edgeley Park rather special.

WORST MATCH

We won at Nuneaton but it was a dreadful game, the three points made it bearable. The "winner" has to be the 3-0 home defeat to relegated AFC Telford United.

BEST NEWCOMER

Aaron Chalmers who although not getting in to the starting XI until late in the season has put in a series of wholehearted displays which have quickly won over the Southport fans.

BEST TEAM

I think it is fair to say no one team has been particularly outstanding but Mansfield's performance here is the best I have seen this season. Newport in the second half at Rodney



Parade were impressive and I honestly thought today's visitors would have been in the play offs at least after their performance against us at Kenilworth Road.

BEST OPPOSITION PLAYER

We've seen quite a bit of Wrexham this season (unfortunately) and in each game he has played I have been mightily impressed with Danny Wright, a powerful and pacy centre forward who would look very good in the number 9 shirt for Southport!!

Finally as we draw to a close, thanks once again to everyone who is involved with the production of The Sandgrunder and I hope you like the look of a couple of the new features we will be including next season, there will be others.

Keep an eye on the website for full details of how you can subscribe to the programme for the full season and have your away programmes saved for collection in the club shop.

THIS PAGE IS SPONSORED BY

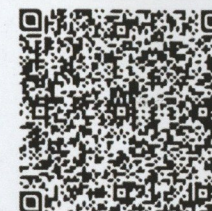
MANY HAPPY RETURNS TRAVEL

Plantec Holdings

Accident Aftercare Solutions

We provide products & services for the Motor Insurance Industry; offering assistance to those who have been involved in a road traffic accident. We will take care of every aspect of your claim; which will be professionally handled by our award winning team 24 hours a day, 7 days a week and with the minimum of disruption you.

Proud Shirt Sponsor of Southport FC



Scan our QR code

We are on your door step to offer that personal touch

If you require our assistance, call our 24 Hour Accident Aftercare Helpline

0844 58 88 688

▲ We pride ourselves on providing a traceable, transparent and ethical service to you

◆ www.plantecholdings.co.uk



MATCH STATUS

Half time
 Full time
 Attendance

MATCH ODDS

BLUE SQ BET Southport 7/5
 Draw 21/10
 Luton 17/10

MATCH OFFICIALS

W. Barratt
 L. Watson
 I. Johnston
 M. Walsh
 Sponsored by **Specsavers**



SOUTHPORT

Manager Liam WATSON

| Pld | Gls | Y | R |
|-----|-----|---|---|
| 1 | | | |
| 2 | | | |
| 3 | | | |
| 4 | | | |
| 5 | | | |
| 6 | | | |
| 7 | | | |
| 8 | | | |
| 9 | | | |
| 10 | | | |
| 11 | | | |
| 12 | | | |
| 13 | | | |
| 14 | | | |
| 15 | | | |
| 16 | | | |
| 17 | | | |
| 18 | | | |
| 19 | | | |
| 20 | | | |
| 21 | | | |
| 22 | | | |
| 23 | | | |
| 24 | | | |



LUTON TOWN

Manager John STILL

| Pld | Gls | Y | R |
|-----|-----|---|---|
| 1 | | | |
| 2 | | | |
| 3 | | | |
| 4 | | | |
| 5 | | | |
| 6 | | | |
| 7 | | | |
| 8 | | | |
| 9 | | | |
| 10 | | | |
| 11 | | | |
| 12 | | | |
| 13 | | | |
| 14 | | | |
| 15 | | | |
| 16 | | | |
| 17 | | | |
| 18 | | | |
| 19 | | | |
| 20 | | | |
| 21 | | | |
| 22 | | | |
| 23 | | | |
| 24 | | | |
| 25 | | | |
| 26 | | | |
| 27 | | | |
| 28 | | | |
| 29 | | | |
| 30 | | | |
| 31 | | | |
| 32 | | | |
| 33 | | | |
| 37 | | | |



Thanks for your support throughout the season
 Bintree Town 1 - 3 Southport, 3 April 2013

WHEREVER YOU ARE THIS SUMMER,
 KEEP UP TO DATE WITH ALL
 THE LATEST NEWS ONLINE AT
southportfc.net
 AND ON TWITTER
[@southport_fc](https://twitter.com/southport_fc)

