



OFFICIAL MATCHDAY PROGRAMME • £3.00
SATURDAY 13 FEBRUARY 2016 • KICK-OFF 3.00 PM

AFC WIMBLEDON

v LUTON TOWN



Match Sponsor



Ball Sponsor



Ball Sponsor



Programme Sponsor

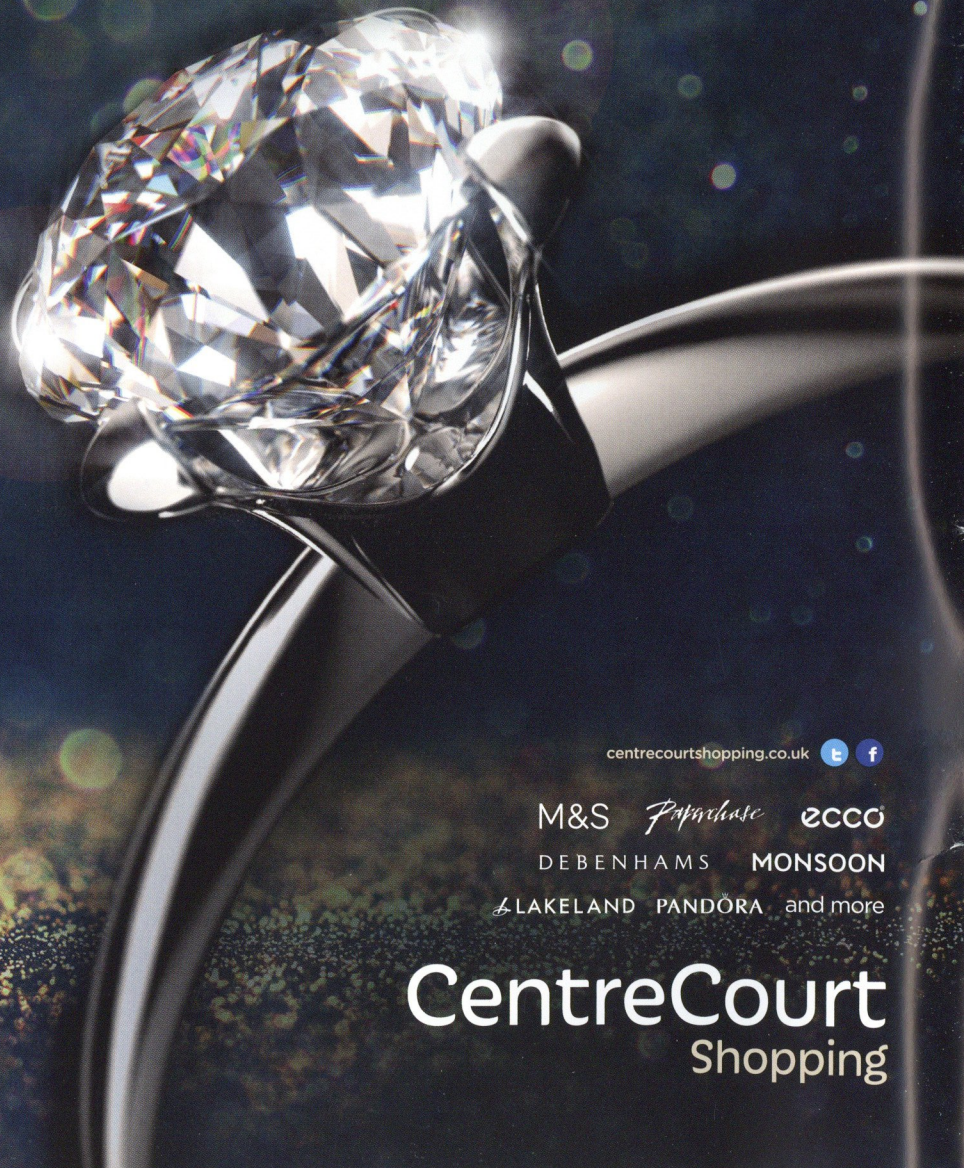
moorad choudhry



SPARKLE

AT CENTRE COURT THIS VALENTINES

WILL YOU FIND AND WIN THE CENTRE COURT DIAMOND?

12th-14th February - See Website For More Details



centrecourtshopping.co.uk  

M&S *Papachase* ECCO

DEBENHAMS MONSOON

LAKELAND PANDORA and more

CentreCourt
Shopping



The Cherry Red Records Stadium
Jack Goodchild Way,
422a Kingston Road
Kingston upon Thames
Surrey, KT1 3PB

Email: info@afcwimbledon.co.uk
Tel: 020 8547 3528
Fax: 0808 280 0816

President: Dickie Guy
Life Vice-President: Mike Richardson
Vice-President: Iain McNay
Chief Executive: Erik Samuelson
Commercial Director: Ivor Heller
Operations Director and Club Secretary: David Charles
Director: Mick Buckley
Foundation Executive Director: Kay Skelton

Manager: Neal Ardley
Assistant Manager: Neil Cox
First-team Coach: Simon Bassey
Goalkeeping Coach: Ashley Bayes
Academy Manager: Jeremy Sauer
Academy Head of Coaching: Mark Robinson
Senior Professional Development Coach: Alan Reeves
Club Doctors: Mr Anup Sharma, Dr Bhavesh Kumar,
Dr Brinda Christopher
Physiotherapist: Stuart Douglas
Sports Therapist: Rhiannon Luke
Sports Scientist: Jason Moriarty
Kitman: Robin Bedford
Ladies & Girls Section Chairman: Dennis Lowndes
Ladies First-team Manager: Chris Lyons

EDITORIAL TEAM

Managing Editor: David Charles
Editor: John Woodruff
Contributing Editors: Ray Armfield, Stephen Crabtree,
Chris Slavin
Photographs: Stuart Butcher/Pro Sports Images,
Simon Roes, Paul Willatts
Proofreading: Rob Crane, Nick Roberts
Advertising: advertising@afcwimbledon.co.uk
Editorial: editor@afcwimbledon.co.uk
Art Director: Andrew Sanders andy@tgdh.co.uk
Designer: Niklas Iliffe niklas@tgdh.co.uk
Production: The Graphic Design House/tgdh.co.uk
Printed by: Bishops Printers/bishops.co.uk

AFC Wimbledon is owned by Wimbledon Football Club
Supporters' Society Limited (The Dons Trust).

The names of all the Dons Trust Board members are on
page 49.

All content © AFC Wimbledon Ltd 2016. No part to be
reproduced without permission. The views expressed
by individual contributors do not necessarily reflect the
views of AFC Wimbledon.

Front cover: Andy Barcham

afcwimbledon.co.uk
facebook.com/afcwimbledon
twitter.com/@afcwimbledon



AFC WIMBLEDON v LUTON TOWN

SATURDAY 13 FEBRUARY 2016 KICK-OFF 3.00 PM



16 MATCH ACTION

A disappointing home defeat to Yeovil ends the Dons' unbeaten run

20 FROM GRIFFIN PARK TO KINGSMEADOW

Getting promoted with the Dons is the aim for Jake Reeves

28 FA YOUTH CUP

Another cup upset proves a step too far for the U18s
against Chelsea

59 SILKY SKILLS

We catch up with legendary Dons goalkeeper Dave Beasant

HONOURS

FA Cup winners 1988
FA Amateur Cup winners 1963
Football League Division Four champions 1983
Conference National play-off winners 2011
Conference South champions 2009
Isthmian League Premier Division play-off
winners 2008
Isthmian League champions 1931, 1932, 1935,
1936, 1959, 1962, 1963, 1964
Isthmian League Division One champions 2005

Southern League champions 1975, 1976, 1977
Combined Counties League Premier Division
champions 2004
London Senior Cup winners 1931, 1934, 1962,
1975, 1977, 2014
Surrey Senior Cup winners 1936, 1940, 1949,
1955, 2005
Southern League Cup winners 1970, 1976
Premier Challenge Cup winners 2004
Supporters Direct Trust Cup winners 2002, 2005
Mid Surrey League champions 1906
South London Charity Cup winners 1905, 1931

BALANCING COST AND DESIGN

Chief Executive **Erik Samuelson** reports on how the club is now looking at the cost implications of the detailed design of the new stadium, and adds his congratulations to all involved in Tuesday's FA Youth Cup game.

Good afternoon. It's always a pleasure to welcome the officials, players and fans of Luton Town, a club we've enjoyed pitting our wits against in some very exciting matches in recent years, while off the pitch enjoying a strong and friendly relationship.

On my page today I'm delving a little deeper into the stadium design process. While we are making progress on developing the Section 106 agreement to underpin the planning decision, we've also been looking again, and again, at the stadium design. So I thought I'd bring you up to date on that.

A key issue is cost – or, to be more precise, affordability. We are constrained in what we can develop by a spending limit which is determined by the contributions we will get from Galliard Homes, plus the proceeds of the sale of Kingsmeadow to Chelsea, plus what we feel we can reasonably afford to borrow without overreaching ourselves financially.

Until we go to tender we won't know the actual cost of what we'd like to build, so we are using estimates developed by our consultants Mott MacDonald, who give us regular updates on the projected cost based on their knowledge of the industry and their close monitoring of key indices. In passing, I should add that, with the rate at which costs in the construction industry are currently rising, every delay in going to tender is almost certainly adding to our costs at a rate

much higher than general inflation.

So we know what we can spend, and we are matching that, with some contingency up our sleeves, with the estimated stadium cost. This has meant we've had to make some changes to the design to keep within our cost constraints. For example,

“WE’VE HAD TO MAKE SOME CHANGES TO THE DESIGN TO KEEP WITHIN OUR COST CONSTRAINTS”

while the capacity of the final stadium remains at about 20,000, the starting capacity has come down and is now likely to be below 10,000. On balance we don't think this is a bad thing, but we have instructed our architects to demonstrate how we could quickly increase the capacity at a manageable cost, should the revised lower capacity prove to be insufficient.


Meanwhile, the design continues to be refined. We've been looking at a range of issues, including the amount of accommodation for stadium-based staff, the size of the club shop, the size and scale of the hospitality area that can be used for events on non-matchdays, where a screen/scoreboard would go, and where the players' changing rooms and medical facilities are in relation to the players' tunnel.

Every tweak to the design has potential effects elsewhere in the

stadium. For example, changes to the hospitality area have substantial knock-on effects for the stadium design, and that can in turn have consequences for the initial capacity. Getting down to this level of detail has certainly had the effect on me of making it all so much more real and close.

All of this work rests on the assumption that the Section 106 agreement will be completed in sufficient detail for it to be submitted to the GLA for their consideration in the near future. That is the next step in the process, and one we are working hard on at the moment.

I can't end this page without referring to the performance of the U18 team on Tuesday night. I'm sure that every Dons fan in the stadium felt that our young players had done us proud, and that the final scoreline was not a fair reflection of the balance of the game. So well done to each and every one of them, and also to their management and coaching team.

An occasion like Tuesday night is about the wider club as well as the football itself. It was fantastic to see such a large crowd (3,455 if you've not seen the attendance figures) at the game. But it was also very satisfying the next day to receive messages of appreciation from Chelsea fans about the atmosphere, the friendliness they experienced and the general way the match was run. So in addition to the many plaudits the team deserve, I will add my own appreciation of the backroom team who made the evening run so smoothly. 

NEW ALBUMS : NEW ALBUMS : NEW ALBUMS : NEW ALBUMS

CHERRY RED RECORDS

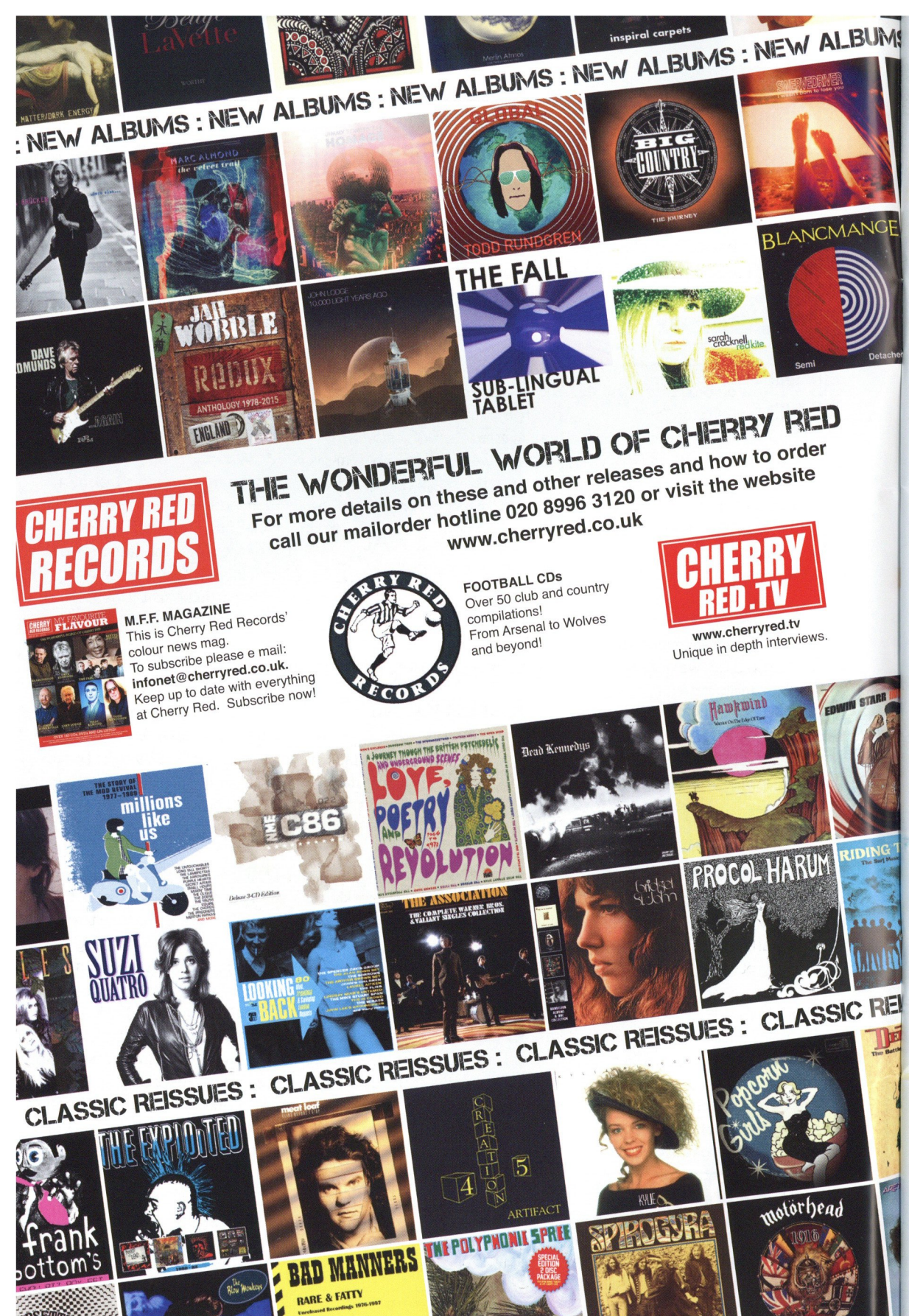
THE WONDERFUL WORLD OF CHERRY RED
For more details on these and other releases and how to order call our mailorder hotline 020 8996 3120 or visit the website www.cherryred.co.uk

CHERRY RED TV
www.cherryred.tv
Unique in depth interviews.

FOOTBALL CDS
Over 50 club and country compilations!
From Arsenal to Wolves and beyond!

M.F.F. MAGAZINE
This is Cherry Red Records' colour news mag.
To subscribe please e mail: infonet@cherryred.co.uk
Keep up to date with everything at Cherry Red. Subscribe now!

CLASSIC REISSUES : CLASSIC REISSUES : CLASSIC REISSUES



We make buying print nice *and easy*.

Now that's something to really celebrate.



**Proud to be supporting
AFC Wimbledon**

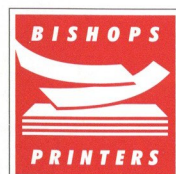
Official programme printers 2015/16

WE CREATE | WE PRINT | WE DELIVER

ishops Printers | Walton Road | Farlington
portsmouth | Hampshire | PO6 1TR

T | 023 9233 4900 | E | enquiries@bishops.co.uk

M | bishops.co.uk



Print. Perfected

PLAYER NEWS

We welcome to the club 23-year-old goalkeeper **Kelle Roos**, who has joined us on loan from Derby County until the end of the season. Kelle signed for Derby in January 2014 on a two-and-a-half year contract and has been the understudy to first-choice

Derby keeper Scott Carson. He had a brief spell on loan at Rotherham United earlier this season.

With the Development Squad getting little match time in recent weeks due



Kelle Roos

to the poor weather, three players have gone out on loan to sides in the Ryman League Premier Division in order to gain valuable game time. **Ben Harrison** has joined Tonbridge Angels, and **Tom Beere** and **Joe McDonnell** have both joined Hampton & Richmond Borough. Each loan is for one month.

DATE FOR BRISTOL

The Sky Bet League 2 home match against Bristol Rovers that was rained off last Saturday will now be played on Tuesday 6 March, kick-off 7.45 pm.

GOLDEN GOALS

The first goal in the match against *Yeovil Town* was scored by player number 11 on the team-sheet in the 9th minute. This prize has not yet been claimed, and the holder of the winning ticket should claim by following the instructions on the reverse of their

ticket. The second goal was scored by player 8 in minute 12, winning £25 for Chris Hanley.

Sales of Golden Goal tickets have raised £6,812 for the Dons Trust Stadium Fund so far this season. In all, £177,159 has been raised since sales began in August 2002.

STUART'S INJURY NOTES

It's very rare that postponed games actually benefit anyone. Players want to play, and fans plan their weekend around watching their team. But from a physio's point of view, last Saturday's postponement of the match at Bristol Rovers meant that **Dannie Bulman** (hamstring) and **Sean Rigg** (calf injury) didn't miss a game. Both players joined in training on Monday, and at the time of writing I predict that both will be available for selection for today's match.

George Oakley has had a successful operation to fix his broken

fibula: he had an internal fixation pin nailed through his fibula and tibia to reduce the fracture. He came out of his cast on Tuesday and is now wearing an Aircast boot. He has a follow-up appointment on 29 March to assess his progress.

Egli Kaja is recovering well from his ankle sprain and is due to return to training imminently.

Finally, **Will Nightingale** is progressing very well from his knee injury. He is currently completing running drills set by Jason Moriarty, and he's strengthening his legs, especially his thighs, to offload the stress on his knees.

PUTTING IT RIGHT

The final paragraph of the of Ladies & Girls page in the Yeovil programme should have read as follows:

"It is an absolute pleasure to manage and coach this team. I would also like to thank the parents for the constant support that they give me and the team. I would also like to thank my assistant coach, James Murtagh, for all his help and support both at training and on match days, together with Alex Rogers."

NEW Post-16 LEVEL 3 Programme

FOOTBALL & EDUCATION

in association with  in association with 

for trial dates see
6thform.southfieldsacademy.com
afcwimbledon.co.uk

WHAT ARE YOUR GOALS?

In The Wider Interests Of Market Research!!



ERROR MESSAGE

Manager **Neal Ardley** knows that his players need to eliminate costly errors, especially against lower-placed opponents, if the Dons are to have a chance of making the play-offs.



Good afternoon and welcome to Nathan Jones and everyone associated with Luton Town. Today's game is the first of 18 matches left in League Two, and the focus still has to remain the same as always: to accumulate the necessary points to secure a spot in the top seven. In the previous four seasons it's taken between 68 and 72 points to finish in seventh place, but with the bottom teams in the table currently on fewer points than in previous seasons (so that the teams higher up are on more points), the target for the play-offs may be higher this time round.


This makes the defeat against Yeovil Town two weeks ago all the more frustrating. As a manager I'm well aware of the form this club has against teams at the bottom, and it's important not to let that transmit to the players, but it's always the fine lines that can make a difference.

Against Dagenham & Redbridge, their keeper made five really good saves in a what was a one-sided affair, only for an individual error to cost us so late in the game that we couldn't respond. And, even though we put in a very poor performance against Stevenage, it was an individual error that cost us what would have been a lucky point.

And so to the Yeovil defeat. Scoring two goals at home should secure you something from a game, but that wasn't possible after three bad goals conceded and the errors we made. So we have to pick ourselves up, do

our best to set off on a new run, and basically try to cut out errors in our defending to give us a chance of picking up points regularly again. I'm glad to say that this is something we have done well for most of the season.

Not being able to play last Saturday at Bristol was a real sickener. We were halfway down the M4 when we heard that the match had been called off and had to turn round and head back home. The rearrangement of the game will add to our fixture congestion at the end of this month and the start of March, so our whole squad will need to be fit and in good form to keep us going.

Lastly, I would like to say well done to everyone from our Academy after Tuesday night's FA Youth Cup tie. It was more than just a game of football: it signalled something really special in the history of our club, and the performance of not only our players but also our fans and the club as a whole made me feel really proud and uplifted. 

**"WE HAVE TO
PICK OURSELVES
UP AND DO OUR
BEST TO SET OFF
ON A NEW RUN"**

PAUL STRANK ROOFING LTD

Raising the Roof - Lowering the Prices

Paul Strank Roofing specialise in all aspects of Roofing, whatever the job may entail. From Leaky Gutters to complete Roof Renewals, we treat each job individually.

Providing over 45 Years of experience, craftsmanship and professionalism, Paul Strank Roofing has established itself as a trusted roofing contractor.

With competitive prices, free local delivery and specialist knowledge, our roofing and builders merchants provide unsurpassed customer service.

- Velux Roof Windows & Domes
- Whitesales Windows & Domes
- Milled Lead and Lead Sheets
- Celotex Insulation Boards
- Concrete & Clay Tiles
- RubberBond Roofing Systems
- Reclaimed Goods
- FSC Certified Timber
- Gutter & Rainwater Systems
- Elith Man Made Slates
- Spanish natural Slates
- Calor Gas Stockist
- Concrete Coping Stones
- Aggregates



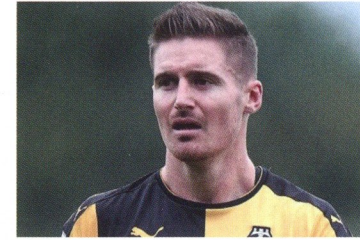
ROOFING & BUILDING MATERIALS: 0208 944 6063

ROOFING & SCAFFOLD SERVICES: 0208 944 6010

Paul Strank Roofing Ltd - 22 Weir Road, Wimbledon, London, SW19 8UG

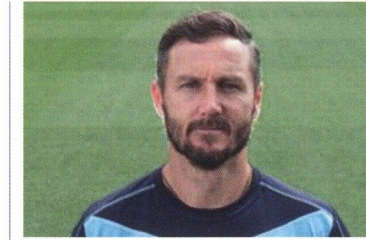
Email: Roofing@paulstrankroofing.co.uk

Twitter: @PaulStrankMBE



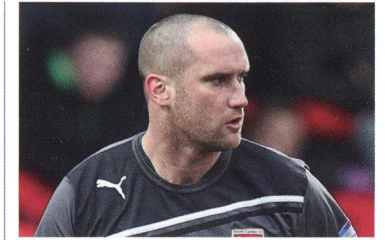
CORR BLIMEY!

Talismanic Cambridge United striker Barry Corr has undergone knee surgery and will be out for the rest of the season. The 30-year-old, who joined the U's on a two-year contract from Southend in the summer, had struggled with injury for much of the season but even so scored 12 goals in 24 matches. "We'll miss him," said manager Shaun Derry. "He's scored goals and he's a big player for us, but we were rolling him out at the moment and it wasn't fair."



BARRY'S MUSICAL CHAIRS

Barry Richardson resumed his combined role of Wycombe Wanderers goalkeeping coach and back-up keeper after Matt Ingram was sold to QPR, and kept a clean sheet when pressed into service just eight days later when Alex Lynch was injured early on in the Chairboys' game against Plymouth Argyle. It had been more than a decade since Richardson, now 46, broke his leg in his last match, for Doncaster Rovers, and 27 years since he made his senior debut, for Scarborough in 1989.



ROCHE MAKES A POINT

Another goalkeeping Barry, 33-year-old Morecambe custodian Barry Roche, made the headlines last week – but at the other end. With the Shrimps trailing visiting Portsmouth 1–0 in injury time, the big Irishman headed home a dramatic equaliser to earn a draw. "I didn't have a clue how to celebrate. I thought about doing a Klinsmann, but the pitch was too dry," said Roche. "I jumped, and then there was the pile-on of all pile-ons. I couldn't breathe, so I had to throw a few off me!"



OH TEDDY, TEDDY ...

Despite making two transfer deadline signings earlier in the day – converting forward Aaron O'Connor's loan into a permanent move, and adding Oxford striker Pat Hoban on a one-month loan – Stevenage manager Teddy Sheringham parted company with the club on 1 February. The Boro were in 19th place, eight points above the relegation zone, having taken three points from a possible 24. Sheringham had succeeded Graham Westley, under whom Stevenage reached the play-offs last season.



PITCH BATTLE AT YEOVIL

Yeovil Town have been stripped of £16,500 damages previously awarded to them for unsuccessful work to improve their pitches, as the result of a Court of Appeal decision. The Glovers now face a hefty legal bill after the ruling, which followed a lengthy dispute with contractors hired in 2012 to upgrade the main pitch and training surfaces to Championship standard. But after four days of work in heavy rain, the pitches were said to have been left in no better state than when the contractors began work.



REDS' TURKISH DELIGHT?

A Turkish consortium could be set to take control of Crawley Town very soon, according to Red Devils CEO Michael Dunford. The prospective buyers were reported to have agreed a deal in principle, but they will still need to pass the Football League's Owners and Directors test and convince the authorities that they have the funds to run the club on an ongoing basis. Dunford also revealed that the Sussex club have received a tentative enquiry from an English group, who may step in if the Turkish bid fails.

HAYDON THE WOMBLE



Hi Dons fans!

Welcome to today's game against Luton Town. I had some great fun recently, and I'm now a Guinness World Record holder! I was part of a team of mascots, including Harry Hatter from Luton, who took part in a penalty shooting competition where we had to score as many penalties as we could in one minute. The old record was 10, but we scored 16, so we got the world record! Let's hope there are no penalties today, and we get to watch a great game of football – and get another three points! Come on you Dons!

Haydon the Womble

Don't forget to keep emailing in your photos of me and you to Haydon@afcwimbledon.co.uk so I can use them on this page. Or you can post them to me at: Haydon, The Burrow, c/o AFC Wimbledon, Jack Goodchild Way, 422a Kingston Road, Kingston upon Thames, Surrey, KT1 3PB.

Here's a photo taken at the Guinness World Record recording. It shows me with lots of other mascots including Peter Burrow (Peterborough), Nelson the Dog (Portsmouth), Gully (Brighton), Harry Hatter (Luton), and Sir Valiant and Robyn the Robin (Charlton).



SPOT THE DIFFERENCE!

There are five differences between these two photos – can you spot them all?



PLAYER PROFILE: BARRY FULLER

I recently met up with Barry Fuller, and I asked him questions that some of you suggested at the end of the last season.

What other clubs have you played for?
Charlton Athletic, Stevenage, Gillingham and Barnet.

What position do you play?
Right-back.

How much training do you do a week?
Five days a week, lots of different exercises.

What's your favourite training exercise?
Defending sessions.

What car do you drive?
A Vauxhall.

If you could eat anything, what would it be?
Chocolate!

What was the last film you saw?
The Lion King, with my children.

If you weren't a footballer, what would you be?
A coach.

Which football club do you support?
West Ham.

This great picture of me and 8-month-old Donnie was taken at the game against Bristol Rovers on Boxing Day. I love walking round the ground and meeting you all for high fives and hugs, so make sure you come and say hello if you see me today!



HAYDON'S CHALLENGE

Keep a close eye on the action today and write down how many of the following there are during the game:

Corners for the Dons	
Corners for Luton	
Goal-kicks for the Dons	
Goal-kicks for Luton	
Throw-ins for the Dons	
Throw-ins for Luton	
Substitutions in the first half	
Substitutions in the second half	
Offside decisions	

JOIN THE JUNIOR DONS!

If you would like to become a Junior Don (for Under-16s it's just £10) please email membership@thedonstrust.org. All Junior Dons receive a birthday card and a Christmas card signed by the players, and get their birthday mentioned on this page.

JUNIOR DONS' BIRTHDAYS

Congratulations to all those who celebrate their birthday in the middle of February. I hope you all have a fantastic day!

Lauren Richardson	10
Theo White	13
Max O'Reilly	8
Jacob Borley	5
Maya Szczelkun	11
Sam Dunford	12
Noah Johnston	3
Kai Jennings	10
Isabel Payne	12
Phoebe Payne	12
Isabella Taylor	11

LOSING CONTROL

Managing your credit can be stressful or stress-free. The difference is our personalised text and email alerts to help you make payments on time. The difference is how great it feels to be in control.

The difference is Capital One
capitalone.co.uk

34.9% APR representative variable

® A registered mark of Capital One (Europe) plc. Registered Office: Trent House, Station Street, Nottingham, NG2 3HX. Registered in England and Wales. Company Number: 3879023. Authorised and Regulated by the Financial Conduct Authority.

TODAY'S MASCOTS

EMMA FENDLEY

Emma will be celebrating her 12th birthday on 25 February. She lives in New Malden and comes to all the home games with Daddy.

Her current favourite players are Bayo Akinfenwa and Andy Barcham, and her all-time favourite is Jack Midson. The best Wimbledon games she's seen were the 4-3 win over Cheltenham two seasons ago, where we scored three goals in three minutes, and the FA Cup game against Liverpool last season.

Emma plays at left-back for the AFC Wimbledon Girls U12 Yellows team, and when she's not playing football she enjoys swimming and seeing her friends.



FRANCIS WIGGINS

Francis is 10 and his birthday is 19 July. He lives in Hampton and comes to games with his dad, Xavier.

His favourite player, since he started coming to games, is Barry Fuller, and from before his time, Dave Beasant. His favourite game was also the 4-3 win over Cheltenham, with those three goals in three minutes.

Francis plays as a goalkeeper for his local club, Hearts of Teddlothian, and he also enjoys playing rugby (for Teddington RFC) and watching the mighty Dons!



HELP THE CLUB AND WIN £1,000!



The Dons Draw is a monthly lottery that pays out over £2,000 to entrants.

There are six prizes each month, with values of £1,000, £500, £250, £150, £100 and £75. Win or lose, your stake in the draw goes to pay for and improve The Cherry Red Records Stadium.

Each lottery ticket costs £2 per month, and you can buy as many or as few as you like. Even a single ticket helps the Trust and gives you a chance of winning.



Scan this code to sign up for the Dons Draw



Signing up is easy, and can be done in two ways:

1. Go to www.thedonsdraw.co.uk and sign up online.
2. If you prefer to fill in a paper form, download one from the website or pick one up on a matchday from the Dons Trust gazebo.

Return the completed form to the gazebo or post it back to the club.

The Dons Draw is a lottery run by the Dons Trust and registered with, and authorised by, the Royal Borough of Kingston upon Thames. The draw takes place on or around the 15th of each month. Entrants must be aged 16 or over, and have a bank account. To minimise costs (and maximise the prizes and fundraising), money is collected from entrants monthly by direct debit.

www.thedonsdraw.co.uk

SATURDAY 30 JANUARY 2016 | VENUE: THE CHERRY RED RECORDS STADIUM
ATTENDANCE: 4,525 | REFEREE: DARREN ENGLAND | MAN OF THE MATCH: ANDY BARCHAM

AFC WIMBLEDON 2-3 YEOVIL TOWN

(2-2)



GOALSCORERS

Fitzpatrick (9), Elliott (29)

LINE-UP

(4-4-2)

Shea (GK), Fuller (C),
Robinson, Osborne,
Kennedy, Reeves, Meades,
Fitzpatrick (Francomb 64),
Barcham, Elliott (Azeez 65),
Taylor (Akinfenwa 64)

UNUSED SUBSTITUTES

Beere, Smith, Sweeney,
McDonnell (GK)

YELLOW CARDS

Osborne (34), Azeez (90)



DONS	MATCH STATS	GLOVERS
52%	POSSESSION	48%
3	SHOTS ON TARGET	3
4	SHOTS OFF TARGET	0
5	OFFSIDE	0
5	CORNERS	4
19	FOULS CONCEDED	5
2	YELLOW CARDS	0
0	RED CARDS	0

FIRST HALF

Taylor neatly set up Fitzpatrick, who fired an unstoppable shot into the roof of the net to give Wimbledon an early lead – soon cancelled by Compton's clean finish. The Dons regained the lead when Elliott cracked home emphatically from just inside the area. A free-kick taken by Compton close to the touchline coming out of the sun deceived Shea and ended up in the top corner for 2-2.

SECOND HALF

Taylor fired wide from an acute angle after good work by Barcham. Kennedy pulled down Dawson in the box, and Compton stepped up to beat Shea for his hat-trick. Azeez picked up a pass from Francomb and struck a low effort that Yeovil keeper Krysiak just scrambled away. With Yeovil forced to defend deep, Azeez powered forward again and passed to Francomb, but he shot over the crossbar



GOALSCORERS

Compton (12, 35, 63 pen)

LINE-UP

(4-3-3)

Krysiak (GK), Roberts,
Sokolik, Smith, Dickson,
Tozer, Walsh (Gillett 82),
Dolan, Compton
(Dolan 87), Zoko (C),
Jeffers (Dawson 53)

UNUSED SUBSTITUTES

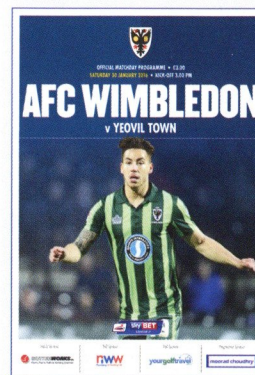
Laird, Weale (GK), Allen,
Cornick

"WE SCORED TWO VERY GOOD GOALS. AT HOME THAT SHOULD BE ENOUGH, BUT THE THREE GOALS WE CONCEDED WERE REALLY POOR."

NEAL ARDLEY

"I'M NOT JUST PUTTING A TEAM OUT THERE AND TELLING THEM TO RUN ABOUT. THERE'S MORE TO IT THAN MEETS THE EYE."

DARREN WAY



IN PICTURES

- (1) Andy Barcham tussles with Connor Smith.
- (2) Lyle Taylor cracks in a shot.
- (3) David Fitzpatrick – his first ever start for the Dons.
- (4) Jake Reeves launches an attack.
- (5) Substitute Ade Azeez speeds past Kevin Dawson.





WIMBLEDON
BREWERY

BEER APPRECIATION DAY

What on earth is the swim bladder of a sturgeon doing in my pint?

Do you, your friend, your father, brother, sister, boyfriend, girlfriend, husband, grandma, love beer?

Want to know more about how it's made and appreciate its diverse flavours from a position of knowledge?

Then join us on one of our Beer Appreciation Days, here at Wimbledon Brewery.

Why not buy a Beer Appreciation Day Gift Voucher? A great gift for friends or family.

AGENDA:

- 10.30am **Arrival and Coffee**
- 10.45am **Beer in history and society** – What impact has beer had on the culture and daily lives of the good people of these fair isles over the centuries?
- 11.30am **The Brewing Process** – Say hello to the ingredients, and follow them around various shiny vessels to the majestic finale.
- 12.30am **Beer and Food Matching** – After 2 hours of talking about it, you'll be more than ready for some sampling. Lunch will be a beer and food pairing session, with five beer types to try alongside a varied buffet.
- 1.45pm **Beer Flavour Profiling** – The only way to learn is by practising. Let's practise with 8 more beer types from around the world. By the end of this session you will understand more of the complex flavours that constitute a good beer. Hoppy and malty are flavours you probably know already, but can you spot toffee, dried fruits, plums, coffee, cloves, marmalade?
- 2.45pm **Brewery Tour** – Enter the mystical realm of the brewer. Wander amongst the shiniest vessels this side of Raynes Park. This is where questions will be asked to check if you've been listening!
- 3.15pm **Brewery Tap** – Finish the day with a sweet sherry in our brewery tap. Alternatively, you could have a few pints of our glorious ale fresh from our casks.
- 4pm **Home Time** – By this time everyone will be very emotional and lifelong friends.

Cost: £95 – Includes all teaching materials, lunch, all beer samples and 3 pints in our tap.

When: Last Saturday of each month from 30th January, 2016

How to Book: By e-mail to enquiries@wimbledonbrewery.com or by phone 0203 764 9786

It's God's Work

questTM

The Corporate Intelligence Company

Investigations

Strategy

Corporate & Sporting Integrity

Risk Mitigation

Technology

www.quest.co.uk

1 DUKE ST. LONDON W1U 3EA

Tel: 020 7224 4004

FROM GRIFFIN PARK TO KINGSMEADOW



Jake Reeves returned to AFC Wimbledon as a 21-year-old who had already experienced promotion, but the midfielder says he's had to adapt his game to be a success at League Two level. Since rejoining the Dons in January 2015, this time on a permanent basis, Jake has been one of the first names on Neal Ardley's team-sheet – and he says achieving promotion with AFC Wimbledon would mean more to him than when he was in Brentford's promotion-winning squad.

“THE AWAY SUPPORT WE GET IS UNBELIEVABLE – THE FANS REALLY DO TRAVEL IN THEIR NUMBERS”



Surveying the field

PLAYER BIO:

Born 30 May 1993, Lewisham. Jake spent his youth career with Tottenham Hotspur and Brentford, making his Bees debut at the age of 17. He spent time on loan at St Albans City in 2011 and with AFC Wimbledon the following year, making five appearances for the Dons before being recalled. Jake transferred to Swindon in August 2014 but played only 12 times for the Robins. He signed for the Dons on a permanent deal from Swindon Town in the January 2015 transfer window, and was in the starting XI for every game that season after his arrival.

Congratulating goalscorer Fitzpatrick



Earlier this season, Neal Ardley said there was no fitter midfield pairing in League Two than Jake Reeves and Dannie Bulman, but former Brentford player Jake says it's been far from easy to establish himself at this level. It's certainly been a lot easier, though, than when he first arrived at AFC Wimbledon during the 2012/13 season, when the Dons were battling against relegation.

“It's not the most ideal situation for a flair player in League Two, but I've worked hard with the manager

to get the other side of the game into my play. It's about knowing when you can and can't play in certain areas, otherwise you're going to get splattered by a six-foot-plus midfielder. The manager has been good with me in terms of working on that side of things.

“He gave me my first real chance of first-team football away from Brentford when I was here on loan. He played me in every game, which really helped me as I was only 19. I remember coming here for my first day at training, and then we were straight off to an away game at

Exeter. It was a little daunting back then because I was only a boy. I played all five games while I was here before going back to Brentford. I quickly realised what was required in this league, and that it had been the best thing for me to be put straight into the team.

“So I went back to Brentford and carried on learning my trade. I'm 22 now, and I feel I've progressed as a player. I went to Swindon as well, and I've learned a lot from different people. I believe I'm implementing that on the pitch now. You're never too old to learn, and that comes from



Laid-back approach

playing games, especially if you're playing with a regular partner like I am with Dannie. Hopefully, there's plenty more to come from me."

Now 22, Jake looks back at the season when Brentford got promoted in 2014 as the highlight of his career so far. But he says that a promotion with Wimbledon would surpass that, and the changes implemented by the coaching staff since he was last here in 2012/13 makes him believe it can be achieved.

"I've had this conversation with my old man, and though this is a league down from when I was with Brentford, it would mean a hell of a lot more to me than going up to the Championship with them. I've been playing every week here and I'm really enjoying my time at the club. In Brentford's promotion season I was mainly coming on as a substitute and making the odd start, but it was

still great to be a part of the squad. I saw what was required to achieve promotion – everyone wants to achieve things in their career.

"The main thing here is that the place has now changed for the better. The club has moved forward a lot on and off the pitch since that time. The quality of training is better, along with the facilities at the training ground. There are a lot of new faces as well, which shows that the manager has worked hard to recruit the players he wants.

"I kept in contact with people here after I left the first time, just to see how everyone was getting on, but then there was an opportunity to come back. I remembered what the manager was like with me previously, so it was a no-brainer really.

"We all feel as a squad that we should be higher in the table. There have been certain games we should

have won or seen out a result. I think we are still in a good position, though, and in a good place to kick on. If we can get on another decent run, we can get ourselves back up the table."

Jake was discovered by West Ham United when he was playing local football in South-East London, but he only had a short stay with the Hammers before moving on to Tottenham Hotspur. Jake credits former Queens Park Rangers striker Bradley Allen, who is now academy coach at Spurs, with a big part in his development.

"I was spotted by a guy called Paul Senior at West Ham when I was 11. He took me to Spurs too after I got released. I enjoyed my time at Spurs – my main coaches there were Bradley Allen and Chris Ramsey. Bradley, at U15 level, really took my game on from what it was when I first went there. Chris had a different style, but he was good too. Darren Sarll, who was my youth-team manager at Brentford, was also a key influence, and he's now taken over as manager at Stevenage."

As a player who has had to bounce back from being let go by other clubs, Jake is in a good position to offer advice to young Dons aiming to make the grade. In recent interviews ahead of the FA Youth Cup tie against Chelsea, Jason Stripp, Seanan McKillop and Alfie Egan said that Jake was a midfielder player they looked up to in terms of improving their own game. But what does Jake think are the key characteristics for young players trying to make the step up from an academy to the senior ranks?

"It's a team game, but at that age you really have to try and understand the strong parts of your own game," said Jake, who was an interested



Dazzling the opposition

spectator as the U18s took on Chelsea on Tuesday. "You have to make sure your strong points are better than anyone else's and really make those characteristics stand out. That can help you get noticed. If you also work on the weak parts of your game as much as you can, you'll give yourself the best possible opportunity to improve as a player."

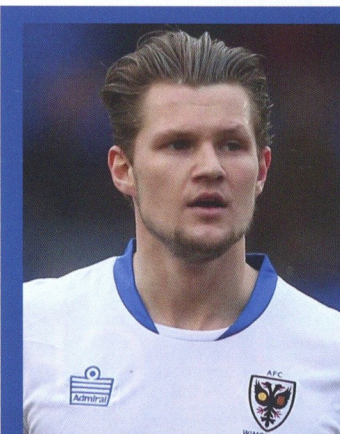
As he is now in his second spell with the Dons, Jake is fully aware of what the club is all about, and the

commitment to the cause shown by Wimbledon supporters at away games has particularly impressed him.

"I knew about the Wimbledon story when I was growing up, and I obviously heard about it again when I signed here. The away support we get is unbelievable – the fans really do travel in their numbers. We want to push as hard as we can for them to try and get into the play-offs. Hopefully, it will happen this season, but if not we will keep pushing next season."



Pressing forward



10 QUESTIONS FOR JAKE

1. Favourite ground you've played at?
Bramall Lane
2. Your career highlight?
Winning promotion with Brentford
3. The toughest opponent you've played against?
Jonathan Greening
4. And the best player you've played with?
Jonathan Douglas
5. Who do you room with on away trips?
Dannie Bulman
6. Favourite goal scored for Wimbledon?
Against Northampton at home
7. Who's your funniest teammate?
Dannie Bulman
7. If you could play abroad, where would it be?
Spain
8. Favourite Wimbledon kit to play in?
The white away kit
10. Main interest away from football?
Cooking

CHEM FLOW
ENVIRONMENTAL

THE CHEMFLOW END

KENT
WOMBLES

WE ARE MORE BEHIND
THE TEAM
THAN EVER THIS YEAR

LET'S MAKE 'THE CHEMFLOW END'
A FORTRESS
THIS SEASON!

LOOKING
FOR ALASKA

THE ELECTRIC DEBUT BY
AWARD-WINNING AUTHOR OF
THE FAULT IN OUR STARS

JOHN GREEN

NEW YORK TIMES BESTSELLING AUTHOR OF
THE FAULT IN OUR STARS

JOHN
GREEN

PAPER
TOWNS

BLOOMSBURY

AN
ABUNDANCE
OF
KATHERINES

JOHN GREEN

#1
NEW YORK TIMES
BESTSELLER

THE FAULT
IN OUR STARS

JOHN GREEN

'YOU LAUGH, YOU CRY, AND THEN YOU COME BACK FOR MORE'
— Markus Zusak, bestselling author of *The Book Thief*



ALL GO AT THE FOUNDATION

In what has been a very busy time for the AFC Wimbledon Foundation, Sports Development Manager **Joe Roberts** has an update on current activities.

A hectic few weeks for the AFCW Foundation in the run-up to half-term has kept all our departments busy with organising and planning. This coming week we will be running our usual half-term football camps at our two venues, Wimbledon Park and Southfields Academy. As always, we will be creating a fun and friendly environment for players of all abilities, giving away player-of-the-day prizes and arranging for players from the first team to make appearances.

Children's TV channel Nickelodeon will also be paying us a visit during half-term. They will be filming at our first-team training ground for their brand new *Nick Kicks* programme, a football-related children's show produced in association with the Football League Trust. Each week, *Nick Kicks* takes viewers behind the scenes at the Football League with visits to clubs, interviews with players, and even a regular feature in which popular character SpongeBob SquarePants takes on club mascots in weekly challenges, in which our first-team players and staff will take part.

Our regular Saturday-morning sessions at Wimbledon Park are still proving as popular and busy as ever, even during the recent wet and windy weather! As some of you may already know, we have now added a girls-only session which runs in conjunction



Our walking footballers go through their paces before a home game

with the main session at Wimbledon Park. This allows girls of all ages and abilities to play on a separate pitch, where they are coached by our inspirational and energetic Female Football Development team of Emma O'Connor and Georgia Heasman. Since we started the girls-only sessions, numbers have been growing each week – they are proving very popular with the keen female footballers in Wimbledon Park.

Our walking football programme is in the middle of one of its busiest

periods, with tournaments and festivals coming thick and fast. Most recently our Walking Wombles took part in a tournament held by the Surrey FA down at Walton-upon-Thames which attracted 12 teams and over 100 players. We also entered two teams into the FA People's Cup, which you may have seen advertised before live coverage of FA Cup ties on the BBC. The People's Cup is a free-to-enter knockout competition that gives the people of England the chance to

play in their version of the FA Cup. It welcomes male and female players, able and disabled, across ten categories ranging from under-14s to over-35s. The tournament was held in Brixton, and after a superb performance from our Walking Wombles they qualified for the next round. Our players also had the chance to meet goalkeeping royalty in the form of Peter Shilton, who was present as an ambassador for the whole event.

The Foundation is supporting the YMCA Sleep Easy event, which is taking place on 26 February. This event, which has grown in popularity over the past few years, will this year take place at two locations: Holy Trinity Church in Wimbledon, and the Memorial Gardens in Kingston-upon-Thames. Here willing participants are sponsored to give up the comfort of their own beds to sleep rough for one night. This purpose of Sleep Easy is to raise awareness of homelessness in our community, and to celebrate the hard work done by the YMCA to help combat homelessness while also raising vital funds to keep their various projects up and running.

There has been lots going on, and there is more to come over the next few weeks for the AFC Wimbledon Foundation!



Friday 26 February 2016

Sleep rough so others don't have to.
 Could you trade your warm comfy bed for a cardboard box and sleeping bag? We invite you to do just that for just one night, to raise funds for homeless people in your community.

GET IN TOUCH WITH THE FOUNDATION:

Telephone: 020 8974 5712

Email: communityfootball@afcwimbledon.co.uk

Website: afcwimbledonfoundation.com



CURRENT COURSES

FEBRUARY HALF-TERM CAMP

Ages 4 to 14

Venues

Southfields Academy, 333 Merton Road, London, SW18 5JU
 Wimbledon Park, Revelstoke Road, London, SW18 5NN

15–19 February

Full day: **9.30 am to 3.00 pm** (arrive at 9.15 am)

Half-day: **9.30 am to 12.00 noon** (arrive at 9.15 am)

At Southfields:

Half-day: **£10.00**

Full day: **£15.00**

Full week of half-days: **£40.00**

Full week of full days: **£60.00**

At Wimbledon Park:

Half-day: **£15.00**

Full day: **£20.00**

Full week of half-days: **£60.00**

Full week of full days: **£80.00**

WALKING FOOTBALL PROGRAMME

For the more mature participant!

All welcome.

Every Wednesday evening, **6.00 pm to 7.00 pm**

Venue

Tooting & Mitcham United (outdoor 3G pitch)
 Bishopsford Road, Morden, Surrey, SM4 6BF

£4 per session

COURSE COMING UP

SATURDAY FOOTBALL CLUB

Ages 4 to 14

The Saturday Football Club runs during school term time at Wimbledon Park. The dates for the second half of the spring term are:

27 February

5 March

12 March

19 March

Venue

Wimbledon Park, Revelstoke Road, London, SW18 5NN

10.00 am to 11.30 am (arrive at 9.45 am)

£6 per session

Female-only sessions

16 and under: **9.00 am to 10.30 am**

Over-16s: **10.30 am to 11.30 am**

NEW! Over-30s

Initial price **£2** per session



TUESDAY 9 FEBRUARY 2016 | VENUE: THE CHERRY RED RECORDS STADIUM
 ATTENDANCE: 3,455 | REFEREE: DEAN TRELEAVEN | MAN OF THE MATCH: : THE WHOLE TEAM

AFC WIMBLEDON 1-4 CHELSEA

(1-1)



GOALSCORER

Egan (35)

LINE-UP

(4-1-4-1)

Wingate (GK), Mensah, Omperon, Sibbick, Kalambayi, Stripp (C) (Antwi 77), Bellikli (Wood 66), McKillop, Ano, Egan (Williams-Bowers 66), Olusanya

UNUSED SUBSTITUTES

Zabotti (GK), Batchelor



“I’M GUTTED THAT IT ENDED 4-1. IT’S NOT THAT I’D HAVE BEEN HAPPY WITH 2-1, BUT 4-1 WAS NOT A FAIR REFLECTION.”

MARK ROBINSON

“YOUR BOYS GAVE US A TOUGHER CHALLENGE THAT MANY OTHERS WE’VE FACED IN RECENT YEARS, AND THAT’S CREDIT TO YOU ALL.”

JOE EDWARDS



GOALSCORERS

Tomori (15), Maddox (65, 84), Ali (90+3)

LINE-UP

(3-5-2)

Baxter (GK) Chalobah, Clarke-Salter (C), Tomori, Wakefield, Scott (Sammut 79), Mount (Maddox 58), Ali, Dasilva, Abraham, Ugbo (Sterling 66)

UNUSED SUBSTITUTES

Thompson (GK), Christie-Davies

YELLOW CARDS

Scott, Maddox, Sammut

FIRST HALF

Wimbledon struggled to get the ball in the first 10 minutes, and Toby Sibbick made a fine clearance to deny Chelsea. When a cross was headed back across goal by Tammy Abraham, stand-in keeper Wingate saved well from Ugbo, but Tomori struck home the opener.

Chances for Wimbledon to get on the ball were scarce in the first half-hour, but a sign of Wimbledon’s improvement was when they worked a shooting chance through the middle, and McKillop found Bellikli, but Bellikli’s shot was just wide.

However, the Dons’ efforts were soon rewarded with an equaliser. Olusanya beat his man again and put over a cross that Chelsea keeper Baxter could only parry, and Egan was on hand to head home.

Chelsea responded, and could have regained the lead when Wakefield got down the left and crossed for Abraham just a few yards out, but he shot over from close range.

SECOND HALF

After Dasilva’s cross bounced off the crossbar, Bellikli showed his quality at the other end with a lovely turn and cross to pick out Olusanya, but he was crowded out by the Chelsea defence.

Chelsea were dominating possession again, and midway through the half they regained the lead when Maddox cut inside and unleashed a superb effort that gave Wingate no chance as it arched into the top corner. The Dons responded instantly, Wood fashioning a chance for himself, but he fired just wide with Baxter beaten. An equaliser so nearly came when Tomori almost diverted a dangerous cross by Ano into his own net.

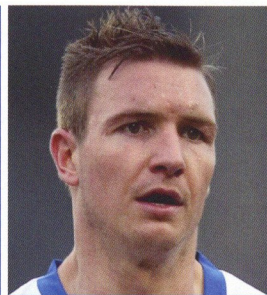
With Wimbledon pressing forward, Wakefield broke and picked out Maddox, and he produced a clinical finish over Wingate to notch his second. Ali added the fourth in injury-time with a free-kick. For the Dons, there was still time for Sibbick to strike the bar with a late free-kick.

(1) Neset Bellikli sprints down the wing. (2) Paul Kalambayi keeps his man at arm’s length. (3) Emmanuel Mensah stays alert. (4) Piling on the pressure at a second half-corner. (5) Alfie Egan’s header beats Chelsea keeper Nathan Baxter. (6) Toyosi Olusanya escapes his marker.



LOOKING BACK AT EVENTS THIS WEEK 1, 5, 10 AND 20 YEARS AGO

1 YEAR



Dave Winfield

"When it was 11 v 11, I thought we were the more likely team to score," says Neal Ardley, after leaving the Pirelli Stadium with a hard-earned goalless draw against high-flying Burton Albion. Defender Mark Phillips was red-carded and will now miss the next three matches.

As an almost direct replacement for Phillips, Ardley signs experienced central defender Dave Winfield on a month's loan from York City. Winfield (currently out of favour at Bootham Crescent) has also

played for Aldershot Town and Wycombe Wanderers, winning promotions with each of them. He makes an immediate Dons debut at Shrewsbury Town.

Having been given a bye to the second round of the London Senior Cup after winning the competition in 2014, a youthful AFC Wimbledon Development XI – augmented by goalkeeper Ross Worner and defender Jack Smith – are knocked out on penalties by Corinthian-Casuals at Tolworth after a goalless 120 minutes.

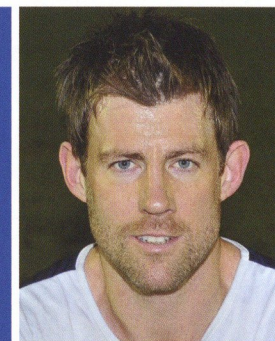
5 YEARS

On 12 February, bogey team York City are finally beaten at the fourth attempt. Sam Hatton plays a key role in edging out the Minstermen 1–0 at Kingsmeadow: his deflected free-kick deceives Michael Ingham in the visitors' goal, and his solid performance at right-back helps to secure a clean sheet.

AFC Wimbledon Ladies claim their first win since October – a nervy but very welcome 2–1 victory over Panthers in a London & SE Regional

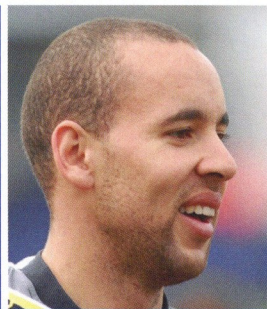
Women's Football League meeting. Also celebrating are the U15 boys, who reach the Surrey Youth Cup semi-finals thanks to a late Nehemie Mole goal against Whyteleafe.

Terry Brown signs Drewe Broughton on loan from Lincoln City until the end of the season. "I've been aware of him for some time," says Brown. "He offers us different options – a big strong lad who wins headers, creating chances for others. I expect he'll take some of the pressure off Danny Kedwell."



Drewe Broughton

10 YEARS



Liam George

New signing Martin Carthy finds the net just 26 minutes into his AFC Wimbledon debut against Margate on 11 February. But the East London firefighter can't put out the spark of Danny Hockton, who scores either side of half-time to give his 18th-placed side an unexpected three Ryman League points.

Other new faces in manager Dave Anderson's squad include former Irish U21 striker Liam George – who scored on his debut at Leyton the previous Saturday,

and once attracted a £350,000 bid from Wimbledon FC during his Luton Town days – and ex-Sheffield Wednesday midfielder Dean Brennan (now managing Hemel Hempstead Town).

The AFC Wimbledon reserves are held to a 1–1 draw by Camberley Town's second string in a Suburban League Southern Division clash on 11 February. Luke Pigden gives the Dons the lead on the hour, but they are pegged back when the hosts grab an equaliser with just 10 minutes to go.

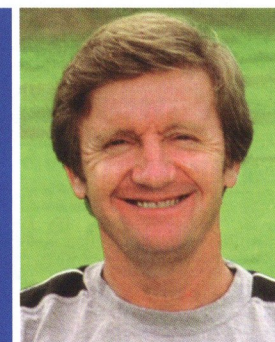
20 YEARS

Dean Holdsworth's replay goal – the first in 253 minutes of meetings between the Dons and Middlesbrough this season – sends the Dons through to an FA Cup fifth-round tie at Huddersfield. Juninho provides the only spark of creativity for the visitors, but he is shackled by Øyvind Leonhardsen in front of just 5,220.

Elsewhere, Wimbledon are reportedly favourites to sign Costa Rican striker Paulo Wanchope, currently on trial with QPR, and are also said to be after Grimsby Town winger John Oster. Joe

Kinnear's assistant Terry Burton is also wanted – by England, to assist coaching the national side – but Sam Hammam refuses to release him.

After going undefeated for nearly three months, Wimbledon's reserves blow up spectacularly, losing 3–0 at home to bottom side Swindon Town. A win could have taken the Dons to within four points of the leaders, and manager Lawrie Sanchez makes his disappointment with the performance very clear.



Terry Burton

The Nerdfighter Community

HELPING
AFC Wimbledon
GET IT
WIMBLE-DONE!

fightworldsuck.org



sky BET

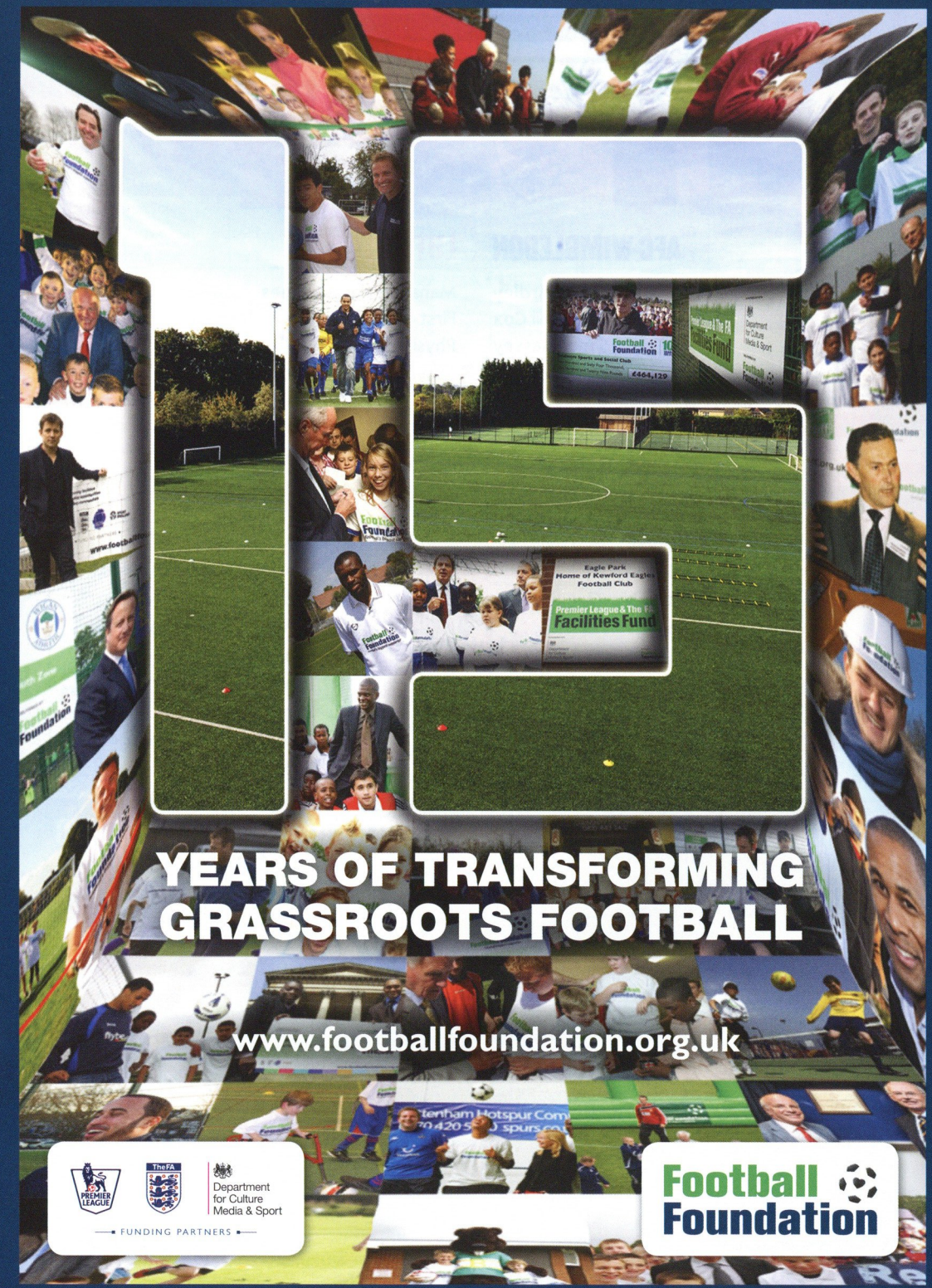
**PROUD TO CONTINUE OUR
TITLE SPONSORSHIP**



UNTIL 2019

COMING NEXT SEASON

skybet.com



**YEARS OF TRANSFORMING
GRASSROOTS FOOTBALL**

www.footballfoundation.org.uk



@FootballFoundtn

flickr.com/footballfoundation

Youtube.com/Footballfdn

linkedIn.com/football-foundation



AFC WIMBLEDON

Manager: Neal **Ardley**
 Assistant Manager: Neil **Cox**
 Coach: Simon **Bassey**
 Physio: Stuart **Douglas**
 Sports Therapist: Rhiannon **Luke**



LUTON TOWN

Manager: Nathan **Jones**
 First-team Coach: Kevin **Nugent**
 Physio: Simon **Parsell**

(GK) James Shea	1			
(C) Barry Fuller	2			
Callum Kennedy	3			
Dannie Bulman	4			
Paul Robinson	6			
George Francomb	7			
Jake Reeves	8			
Tom Elliott	9			
Adebayo Akinfenwa	10			
Sean Rigg	11			
Jon Meades	12			
Adebayo Azeez	14			
Andy Barcham	17			
Connor Smith	18			
David Fitzpatrick	19			
Ryan Sweeney	20			
George Pilbeam	21			
Karleigh Osborne	22			
Dan Gallagher	25			
Egli Kaja	26			
Callum Wilson	27			
Christian Toonga	28			
(GK) Kelle Roos	29			
Lyle Taylor	33			

					1	Mark Tyler (GK)
					2	Stephen O'Donnell
					3	Dan Potts
					4	Jonathan Smith
					6	Scott Cuthbert (C)
					7	Alex Lawless
					8	Cameron McGeehan
					9	Paul Benson
					10	Ryan Hall
					11	Danny Green
					14	Jack Marriott
					15	Paddy McCourt
					16	Elliot Justham (GK)
					17	Pelly Ruddock Mpanzu
					18	Magnus Okuonghae
					19	Olly Lee
					22	Craig Mackail-Smith
					24	Curtley Williams
					25	Mark O'Brien
					32	Luke Trotman
					34	Isaac Galliford
					35	Zane Banton
					37	Frankie Musonda
					40	Jake Howells
					44	Alan Sheehan
					45	Joe Pigott

Referee: Christopher **Sarginson**

Assistants: Carl **Fitch** and Matt **Eva**

4th Official: Ian **Cooper**

LEAGUE TWO TABLE

Up to and including games played on 9 February

Pos	Team	P	Home					Away					Fixture/Result			
			W	D	L	F	A	W	D	L	F	A	GD	Pts	Home	Away
1	Northampton Town	28	11	1	3	26	12	8	3	2	25	19	+20	61	1-1	1 Mar
2	Plymouth Argyle	29	8	2	5	22	16	9	3	2	21	10	+17	56	0-2	9 Apr
3	Oxford United	28	6	6	2	20	12	8	4	2	24	13	+19	52	27 Feb	0-1
4	Mansfield Town	31	5	6	5	22	19	8	3	4	21	15	+9	48	3-1	1-1
5	Bristol Rovers	29	6	2	6	18	15	8	3	4	21	14	+10	47	0-0	8 Mar
6	Wycombe Wanderers	29	5	4	6	19	20	8	3	3	16	9	+6	46	1-1	2 Apr
7	Leyton Orient	30	7	4	4	25	19	5	6	4	21	22	+5	46	23 Apr	1-1
8	Portsmouth	28	5	7	3	24	9	6	5	2	21	16	+20	45	28 Mar	0-0
9	Accrington Stanley	26	6	3	2	22	16	7	3	5	21	15	+12	45	5 Mar	4-3
10	Cambridge United	30	6	3	6	21	24	6	5	4	23	17	+3	44	1-2	4-1
11	AFC Wimbledon	28	5	3	6	19	20	6	6	2	23	15	+7	42	—	—
12	Carlisle United	26	7	4	3	27	20	4	5	3	18	20	+5	42	23 Feb	1-1
13	Exeter City	28	5	5	4	21	19	6	2	6	18	21	-1	40	2-1	2-0
14	Luton Town	30	3	5	7	18	22	7	3	5	24	19	+1	38	13 Feb	0-2
15	Crawley Town	30	7	2	6	16	17	4	2	9	19	31	-13	37	16 Apr	2-1
16	Morecambe	30	5	2	8	23	26	5	4	6	27	27	-3	36	2-5	12 Mar
17	Notts County	27	7	2	5	26	24	3	4	6	14	22	-6	36	2-1	2-0
18	Barnet	28	8	3	3	22	13	1	3	10	14	31	-8	33	2-0	20 Feb
19	Stevenage	31	4	5	6	17	24	3	5	8	23	30	-14	31	1-2	30 Apr
20	Newport County AFC	28	1	6	6	16	23	5	3	7	16	20	-11	27	7 May	2-2
21	Yeovil Town	29	3	5	6	18	22	2	4	9	12	22	-14	24	2-3	1-1
22	Hartlepool United	26	4	2	8	14	21	3	1	8	10	22	-19	24	2-0	25 Mar
23	Dagenham & Redbridge	29	0	4	10	10	26	4	4	7	20	26	-22	20	0-1	19 Apr
24	York City	28	3	3	7	17	25	1	5	9	12	27	-23	20	19 Mar	3-1

OTHER GAMES TODAY

ACCRINGTON STANLEY	v	CRAWLEY TOWN
DAGENHAM & REDBRIDGE	v	BARNET
HARTLEPOOL UNITED	v	YEOVIL TOWN
LEYTON ORIENT	v	NORTHAMPTON TOWN
MORECAMBE	v	OXFORD UNITED
NEWPORT COUNTY AFC	v	CARLISLE UNITED
PLYMOUTH ARGYLE	v	MANSFIELD TOWN
PORTSMOUTH	v	BRISTOL ROVERS
STEVENAGE	v	CAMBRIDGE UNITED
WYCOMBE WANDERERS	v	EXETER CITY
YORK CITY	v	NOTTS COUNTY

TUESDAY

ACCRINGTON STANLEY	v	CARLISLE UNITED
HARTLEPOOL UNITED	v	NOTTS COUNTY
OXFORD UNITED	v	NORTHAMPTON TOWN
YORK CITY	v	EXETER CITY

NEXT SATURDAY

BARNET	v	AFC WIMBLEDON
BRISTOL ROVERS	v	MORECAMBE
CAMBRIDGE UNITED	v	YORK CITY
CARLISLE UNITED	v	STEVENAGE
CRAWLEY TOWN	v	PLYMOUTH ARGYLE
EXETER CITY	v	NEWPORT COUNTY AFC
LUTON TOWN	v	HARTLEPOOL UNITED
MANSFIELD TOWN	v	DAGENHAM & REDBRIDGE
NORTHAMPTON TOWN	v	WYCOMBE WANDERERS
NOTTS COUNTY	v	LEYTON ORIENT
OXFORD UNITED	v	ACCRINGTON STANLEY
YEOVIL TOWN	v	PORTSMOUTH

NEXT HOME GAME
 sky BET LEAGUE 2 TUESDAY 23 FEBRUARY 2016 • KICK-OFF 7.45 PM



AFC WIMBLEDON
 v
CARLISLE UNITED



**SUPPORT YOUR TEAM
THROUGH TRAVEL!**

Book your travel for games through **HotelPlanner.com**
and **5%** goes to **AFC Wimbledon**

Get the Lowest Group Hotel Rates. Guaranteed!

SCAN
to Book
Travel



OR Visit:

www.HotelPlanner.com/AFCWimbledon



Business Insurance?
Try A-Plan...



Our business
is looking
after yours

Our clients rate us...

4.8/5 for satisfaction based on over
1,000 reviews on reviews.co.uk[^]



Call **0208 944 4121** or visit www.aplan.co.uk/afcwimbledon

A-Plan Insurance, 52 Wimbledon Hill Road, Wimbledon SW19 7PA

[^]Source: reviews.co.uk as of 4 December 2015. Authorised and regulated by the Financial Conduct Authority.

GETTING IT TOGETHER

The play-offs may still seem a little distant, but in a division where momentum is key, Nathan Jones' side haven't given up on a top-seven finish just yet.

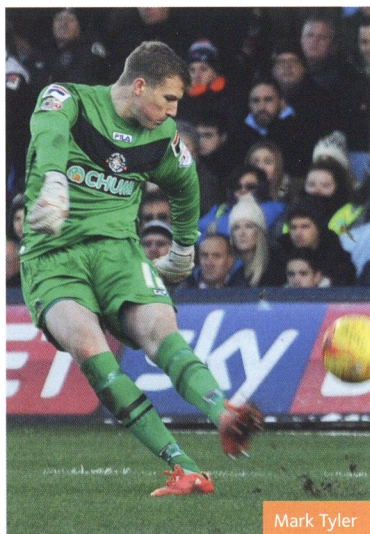


Last season the Hatters celebrated their return to the Football League after eight seasons in the Conference by finishing just three points outside the play-off places, and in the summer there was some high-profile transfer activity at Kenilworth Road. Cameron McGeehan arrived and Mark Cullen departed, both for six-figure fees, and Cullen was replaced by Craig Mackail-Smith. Then, with 2015/16 barely three weeks old, Brentford's sale of former Luton striker Andre Gray to Burnley netted the Bedfordshire club £1.1 million in sell-on fees spread over three seasons. And if the Clarets are promoted back to the Premier League with Gray in the side, Luton will be due a further £700,000 – the potential total value of the deal (including the fee Brentford paid in June 2014) making this one of the most lucrative transfers in the club's history.

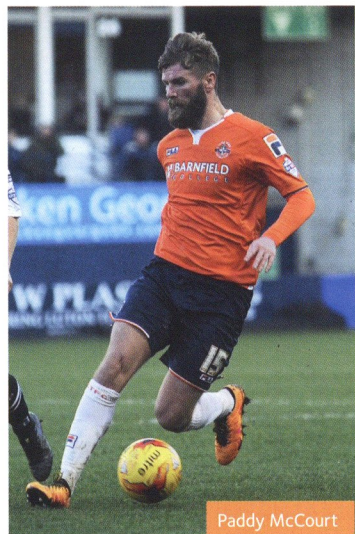
However, the anticipated promotion charge by John Still's side soon stalled, nowhere more noticeably than in front of an expectant fanbase at Kenilworth Road itself. With their 1–0 away win at faltering Wycombe Wanderers last Saturday, the Hatters have now picked up 24 of their 38 points on the road. Since the 2–0 defeat of AFC Wimbledon on 26 September, they have won just once at home in nine attempts – and until Alan Sheehan's late equaliser against Yeovil ten days ago, Luton hadn't managed a home goal for 354 minutes. Before that, a 4–1 win at Hartlepool in early October – their best away victory as a Football League club since March 2005 – lifted them to tenth in League Two, their highest placing this season. But a run of just two wins in ten games, which included consecutive 3–4 home defeats, was enough for the Hatters board to dispense with the services

of Still a week before Christmas. Andy Awford's caretaker spell ended with the appointment of Nathan Jones on 6 January, and the former Brighton coach has enjoyed a mixed bag of results while finding his feet.

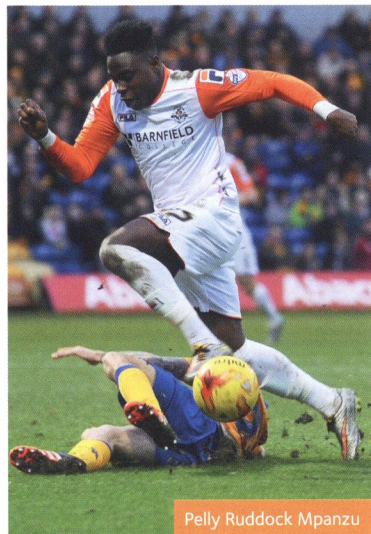
There are big plans afoot off the field. Chairman Gary Sweet announced that the preferred location for the Hatters' new stadium is Power Court – a site that is about half a mile from their current home, has been unused for more than a decade and is close to the town's main rail, bus and road links, including the Luton Dunstable Guided Busway. "Our intention is to submit a formal planning application prior to the beginning of the 2016/17 season, along with plans for other enabling developments at Power Court and facilitating developments on the land owned by the club at Junction 10a of the M1," announced Sweet in December. This followed earlier news that the club was purchasing a 40-acre plot for £10 million. Sweet emphasised the need for a new home by adding, "It's fair to say that we are a club at the heart of the community, with the community at its heart. Currently, around 9,000 Hatters fans visit Kenilworth Road on home match days – 95% of the stadium's home capacity." This is a scenario with which we at AFC Wimbledon are of course familiar. Another near-capacity crowd at the Cherry Red Records Stadium this afternoon will demonstrate why the move back to the Dons' spiritual home of Plough Lane is not just emotional desire, but also a practical necessity.



Mark Tyler



Paddy McCourt



Pelly Ruddock Mpanzu

Like a number of John Still signings, **Elliot Justham** was plucked from non-league football, in his case from East Thurrock United, and he has been preferred to veteran

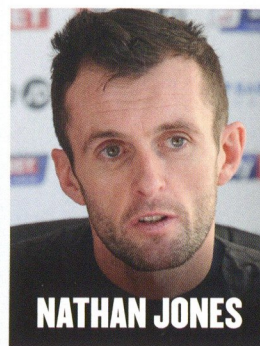
Mark Tyler in recent months. And the 38-year-old Tyler appeared to be publicly courted for a possible return to Peterborough United by Posh Chairman Darragh MacAnthony during the January transfer window.

Right-back **Stephen O'Donnell** captained Aberdeen to the 2011 Scottish Youth Cup and U19 league double, then spent four years with Partick Thistle, helping them reach the Scottish Premier League. **Curtley Williams** played for the Glenn Hoddle Academy Jerez Industrial side in Spain, but it was at Lowestoft Town that Luton's scouting network found him and made him their first capture after the return to the Football League in 2014. At 21, **Dan Potts** has already played in all four divisions, with West Ham and Colchester, but the left-back has recently been sidelined, and versatile stalwart **Jake Howells** may deputise. Skipper **Scott Cuthbert** will be the central defensive pivot, and recent Bradford City loanee arrival **Alan**

Sheehan may partner him. Waiting in the wings will be **Magnus Okuonghae**, but Irish U19 international **Mark O'Brien** remains another injury doubt, so youth prospects **Luke Trotman** and **Frankie Musonda** stand by.

There is no shortage of wingers at Kenilworth Road, but getting them off the treatment table is a priority for Nathan Jones. **Paddy McCourt's** first Luton goal in their win at Mansfield was a timely reminder of the Northern Ireland international's talent; nicknamed "the Derry Pelé", he cost £200,000 when he joined Celtic in 2008. Knee damage rules out McCourt's NI team-mate Josh McQuoid today, and an ankle knock saw left-sided **Ryan Hall** missing recently. On the right flank, **Alex Lawless** has been a squad regular since switching from York City in 2011. **Danny Green** has chipped in with his share of goals from the right wing, but he may not be able to shrug off an ankle injury in time for today. In the engine room, leading scorer **Cameron McGeehan's** goals and industry make him a likely starter, and if he is pushed forward then **Jonathan Smith** will protect the back four. Player of the Year Nathan Doyle is also absent through injury, which is giving

Pelly Ruddock Mpanzu his chance to impress. **Olly Lee**, son of former Newcastle and England midfielder Rob, penned a two-year deal in September. **Isaac Galliford** may also travel today. Marquee signing **Craig Mackail-Smith** cost Brighton £2.5 million as recently as July 2011, but it was at Peterborough that the Scottish international made his name: his 80 goals in 185 starts helped Posh to two promotions, from League Two to the Championship. The evergreen **Paul Benson** still knows where the goal is at the age of 36, but he has slipped down the pecking order with the emergence of **Jack Marriott**, of whom Ipswich Town youth recruitment officer Malcolm Moore once said, "He's a striker – tough, quick, aggressive and has a horrible knack of scoring goals." The former Tractor Boy got both goals against the Dons earlier this season. A fortnight ago **Joe Pigott** joined on loan for the remainder of 2015/16, linking up again with Nathan Jones, who coached him at Charlton. Still only 19, **Zane Banton** made his first-team bow back in November 2013, and has returned to the fold recently after a successful loan spell at Hemel Hempstead Town.



NATHAN JONES

Jones left his role as first-team coach at Brighton on 6 January to replace John Still, landing a two-and-a-half year contract. The Hatters job is the first permanent managerial post for the former Welsh defender, though it does mark a return to Kenilworth Road – Luton was his first professional club as a player following a £10,000 move from Merthyr Tydfil in 1995. He spent two seasons in Spanish football with Numancia and Badajoz before establishing himself back in England at Southend United. Smith spent most of his playing career with Brighton and Yeovil Town, commencing his coaching badges with the Glovers.

THE GAFFER

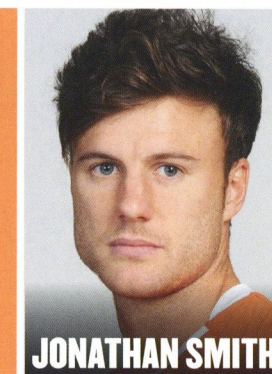
Previous clubs managed
Brighton & Hove Albion (caretaker)

THE FANS' FAVOURITE

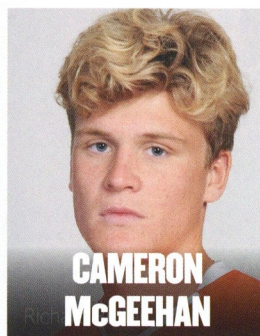
Position
Midfielder

Previous clubs
Morecambe
Fleetwood Town (loan)
Bamber Bridge (loan)
Forest Green Rovers
York City
Swindon Town

Defensive midfielder Smith won the Luton Players' Player of the Year award last season. His professional debut for Morecambe against Grimsby in a 2005 Johnstone's Paint Trophy tie ended with him converting the winning spot-kick in a penalty shoot-out, but it took a move to Forest Green Rovers to ignite his career. He returned north to join York City for the first of two spells at Bootham Crescent in 2010. The following season, Paolo Di Canio paid £30,000 to take him to Swindon Town, but after he was transfer-listed Smith moved to Luton and helped the Hatters back into the Football League.



JONATHAN SMITH



CAMERON MCGEEHAN

McGeehan, a free-scoring central midfielder, was born in Kingston and is a former Tiffin School pupil. He was on the books of Fulham when Chelsea paid £80,000 for him at the age of just 10! Released after six years at Stamford Bridge, he joined Norwich City and captained the Canaries to a satisfying FA Youth Cup Final win over the Blues in 2013. He didn't quite break through at Carrow Road, but scored twice on his Cambridge United debut before switching to Luton, initially on loan and then permanently after the Hatters paid a six-figure fee for his services in July.

THE ONE TO WATCH

Position
Midfielder

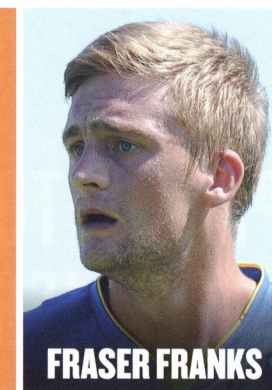
Previous clubs
Norwich City
Cambridge United (loan)

THE HISTORICAL LINK

Position
Defender

Other clubs
Brentford
Basingstoke Town (loan)
Hayes & Yeading (loan)
Newport County AFC (loan)
Welling United
Stevenage

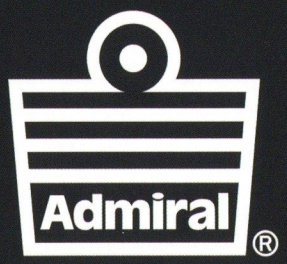
A Chelsea junior for seven years, Franks joined AFC Wimbledon in 2009 after leaving Brentford, making a memorable Dons debut as they defeated Crawley Town 2-1 live on Premier Sports TV, whose viewers voted him Man of the Match. A serious knee injury caused him to miss AFC Wimbledon's Football League bow, and after just four more appearances for the Dons he left for Welling United. After a successful 18 months there, the Hatters signed him for an undisclosed fee in January 2014. He made 30 starts at Kenilworth Road but left by mutual consent to join Stevenage last July.



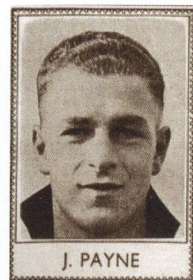
FRASER FRANKS



PROUD TO BE OFFICIAL KIT SUPPLIERS TO THE DONS!



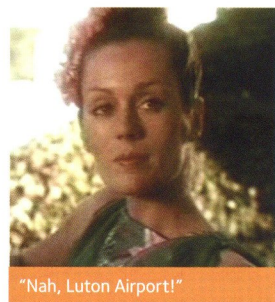
FIVE THINGS YOU NEVER KNEW ABOUT LUTON TOWN



J. PAYNE

- 1 Luton can lay claim to being the first professional club in southern England: they were formed in 1885 and began paying their players five years later. They were also founding members of the Southern League, in 1894.
- 2 The club's first ground was at Dallow Lane, close to the now-closed Luton-to-Dunstable railway line. In the 19th century, play was sometimes interrupted by excessive smoke from passing steam engines.
- 3 Such was the quality of Luton's team in 1921 that, although they played in the third tier, an international between Ireland and England featured three Luton players: Irishmen Louis Bookman and Allan Mathieson, plus Ernie Simms for England.
- 4 Wing-half Joe Payne played at centre-forward against Bristol Rovers on 13 April 1936 and scored ten goals – a Football League record – in a 12–0 win. A year later, Chelsea bought him for a large fee!
- 5 Luton began 2008/09 with a crippling 30-point deduction by the FA and the Football League for financial irregularities dating back several years. The subsequent relegation cost them the Football League place they'd held since 1920.

... AND FIVE THINGS YOU NEVER KNEW ABOUT LUTON



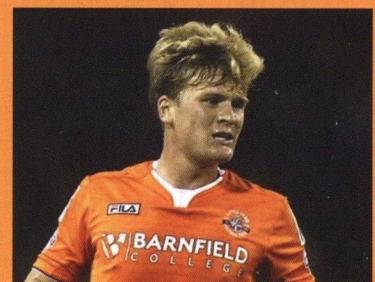
"Nah, Luton Airport!"

- 1 The town was immortalised in a 1970s TV advert for Campari starring Lorraine Chase, in which she was asked "Were you truly wafted here from paradise?" – and she answered, "Nah, Luton Airport!"
- 2 Luton was founded in the sixth century when the Saxons conquered what is now Bedfordshire and created a settlement (a *tun*) by the river Lea. The name is recorded in the *Domesday Book* as "Loitone".
- 3 Luton's economy was traditionally industry-based and included vehicle manufacture, engineering and millinery – hence the club's nickname of the Hatters. But with the upgrading of the airport in the 1980s and 1990s it's now travel-focused, with EasyJet and Thomson Holidays based in the town.
- 4 The comedian Eric Morecambe was an avid Hatters supporter, and later a director, and he often mentioned the club in comedy sketches. There is now a suite at Kenilworth Road named in his honour.
- 5 Well-known Lutonians by birth include footballer Kerry Dixon, singer Paul Young, England cricketer Monty Panesar, 2015 *Great British Bake Off* winner Nadiya Hussain, novelist Arthur Hailey and two members of Jethro Tull!

CLUB RECORDS

- Highest attendance*
30,069 v Blackpool
4 March 1959
FA Cup sixth-round replay
- Biggest win*
15–0 v Great Yarmouth Town
21 November 1914
FA Cup first round
- Heaviest defeat*
0–9 v Small Heath
12 November 1898
Football League Division Two
- Most career appearances*
Bob Morton, 562 (1948–64)
- Most career goals*
Gordon Turner, 276 (1949–64)
- Most goals in a season*
Joe Payne, 58 (1936/37)
- Highest transfer fee received*
£3,000,000, Curtis Davies
West Bromwich Albion (2005)
- Highest transfer fee paid*
£850,000, Lars Elstrup
Odense Boldklub (1989)

TOP SCORER



Cameron McGEEHAN:
10 goals (in all competitions)

LAST SIX AWAY GAMES

6 Feb	Wycombe Wanderers	1–0
23 Jan	Mansfield Town	2–0
2 Jan	Bristol Rovers	0–2
28 Dec	Portsmouth	0–0
19 Dec	Exeter City	3–2
6 Dec	Peterborough United (FAC)	0–2

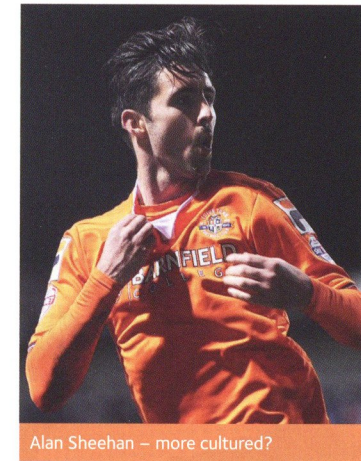
League unless stated

STANDING STILL AND MOVING ON

Steve Moore, a lifelong Hatter and presenter of live commentary broadcasts of Luton games on Diverse FM from 2009 to 2015, assesses how the visitors have fared since they were last here.

So, almost exactly a year on from our last game at your place, we return not only in a very different situation, but also with a different manager. It was interesting to re-read the piece I wrote for the programme for last season's match here and remind myself how quickly things fell apart for us this time last year. Last time I was writing that, following such a good start, it would be disappointing were we to miss out on automatic promotion. But then David Connolly scored the winner with practically the last kick of the game, setting the tone for what was to come: that was the second of eight defeats in nine that saw us finish outside the play-offs.

Looking back, the fact that we now have a new manager can probably be attributed to that slide. In hindsight, despite quite a significant turnover in personnel, John Still never truly turned the side round after that slump, and a significant number of late goals going against the Hatters may have indicated a lack of belief in the dressing room. The low point probably came in the home game against Carlisle. Not only were we 3-1 up on the hour, but the first 15 minutes of that second half may well be the best Luton have played this season. However, the moment Alex Gilliead pulled one back, pretty




Alan Sheehan – more cultured?

much everyone in the ground knew that Carlisle were going to win that game – which they did, 4-3. Although Still lasted another few weeks, it was pretty obvious at that point that the writing was on the wall, and another 4-3 defeat, this time against Northampton, proved to be his last game in charge.

Still was actually back in management, with his beloved Dagenham & Redbridge, before we had even filled the vacancy. The appointment of first-time manager Nathan Jones was something of a surprise. The former Brighton coach, who spent some time with Luton as a player but without making any first-team appearances, was evidently very highly rated, as he'd survived three different managerial regimes on the south coast. However, few people outside footballing circles would have put the Welshman

anywhere near the job at the start of the process.

With the size of our squad, it was always very unlikely that Jones would be busy bringing people in during his first month in charge, and more likely that he would spend the bulk of his time assessing and trimming the guys already here. The only real hint of his longer-term plans for the squad came when he let Luke Wilkinson, a cornerstone of the defence from the promotion season, go to Stevenage, replacing him with the less imposing but more cultured figure of converted left-back Alan Sheehan. This would suggest a desire to play a slower and less direct game than what would be considered a John Still hallmark.

It is abundantly clear that, although we have managed to drop points to several sides who are deep in the relegation mire, there are at least two (and probably more) sides who will not reach 40 points this season. If that's the case we need only one more victory to secure our safety, so the rest of this season will almost certainly be a continuation of that assessing process for the new boss. This is especially true for some of our bigger-name players, such as Craig Mackail-Smith, Paddy McCourt and Josh McQuoid, all of whom have failed to make sure their names are always on the team-sheet, despite their calibre, and are probably among the higher earners. 



Bayo Akinfenwa and Ade Azeez run to congratulate David Connolly on his late winner

ONE FROM THE PAST

SATURDAY 21 FEBRUARY 2015, SKY BET LEAGUE 2
THE CHERRY RED RECORDS STADIUM, ATTENDANCE: 4,050

DONS 3-2 HATTERS

Potter 28,
Bulman 42,
Connolly 90+3

(2-1)

Stockley 45,
Lee 68

It is almost a year now since David Connolly came off the bench to grab a dramatic late winner and sink Luton on their last visit to Kingsmeadow. The 37-year-old striker rounded keeper Elliot Justham to score with the last kick of the game to settle a topsy-turvy encounter in which the Hatters had fought back brilliantly from 2-0 down.

Bayo Akinfenwa should have put the Dons ahead after 13 minutes when, completely unmarked, he shot and hit a post. The woodwork also denied Sean Rigg midway through the first half, but AFC Wimbledon eventually took the lead in the 27th minute when Akinfenwa's effort was parried by Justham, and the rebound was tucked

away by Alfie Potter. Dannie Bulman thundered a shot into the top corner of the net to double the lead, but Luton hit back on the stroke of half-time: Jayden Stockley turned home the ball after Luke Guttridge's attempt had come back off a post. The visitors levelled the scores after the break when Guttridge set up on-loan West Ham striker Elliot Lee for a goal on his debut. The game looked to be heading for a draw until the veteran Connolly's late intervention.

"I'm delighted for him as he's had a tough year of his footballing life," said Dons boss Neal Ardley after the final whistle, "and hopefully he'll enjoy being able to do that in the last minute today. We thought, let's be brave and go 4-3-3 and play three centre-forwards, and that's what Dave does – he plays on shoulders and reads those types of moments. It was a game of two halves. I thought in the first half we were brilliant, I really did.

You come in at half-time thinking 2-1, what a performance, could have been four, should have been four. But in the second half, to be fair to Stilly [the then Luton manager John Still], he's got them up and at it and caused us all sorts of problems."

DONS: Shea, Fuller, Winfield, Oshilaja, Kennedy, Potter (Connolly 89), Bulman, Reeves, Rigg (Beere 74), Tanner (Azeez 80), Akinfenwa.

HEAD2HEAD
IN ALL COMPETITIONS

	V	
11	6	7
WINS	DRAW	WINS

yourgolftravel.com

Golf Holidays to over 3,500 destinations



CALL 0800 043 6644

visit yourgolftravel.com

THE UNDER-21s

With all their scheduled league and cup games since mid-December falling victim to the weather, the Development Squad have played two friendly matches this month.

AFC WIMBLEDON 0-1 SWANSEA CITY
 (0-1) Biabi 12
TUESDAY 2 FEBRUARY 2016 FRIENDLY

E vans broke down Wimbledon's left and crossed for Biabi, whose first-time shot at the near post beat McDonnell for what would prove to be the winner. Beere's corner fell nicely for Toonga on the edge of the area, but his effort was cleared off the line. Olusanya set up a half-chance for Azeez, but his control let him down.

After Biabi was denied by McDonnell at the start of the second half, Wimbledon began to have the better of it. A delivery from Bellikli was just beaten out by the Swansea keeper. Lovely play down the left by Azeez ended with a ball across the face of goal, and Pilbeam appeared to be hauled down, but the referee was unimpressed.

AFC WIMBLEDON: McDonnell, Wilson, Omperon (Williams-Bowers), Sweeney, Pilbeam, Beere, Toonga (Egan), Gallagher, Bellikli, Azeez, Olusanya (Austin).

MILLWALL 0-1 AFC WIMBLEDON
 (0-0) Azeez 70
TUESDAY 9 FEBRUARY 2016 FRIENDLY

A zeez staked his claim for more first-team opportunities with a well-taken winner in what was an impressive overall display against a Millwall side that included three players who were on the bench for their first team last Saturday. Shea and Kennedy also featured in a Dons squad that included U18s who were not in the 16 for the FA Youth Cup tie that evening.

The decisive moment came in the second half when Cockle sent over a fine cross that Azeez controlled well in the box, before finishing clinically. Azeez played up front alongside Fitzpatrick in a game that was arranged at short notice after the league match against Gillingham scheduled for the previous day had been postponed.

AFC WIMBLEDON: Shea, Wilson, Pilbeam, Sweeney, Kennedy, Walker (Cockle), Toonga, Gallagher, Chapman, Azeez, Fitzpatrick.



FINAL THIRD DEVELOPMENT LEAGUE, SOUTH DIVISION

Up to and including games played on 9 February

Pos	Team	P	W	D	L	F	A	GD	Pts
1	AFC Bournemouth	7	5	0	2	26	16	+10	15
2	AFC Wimbledon	5	4	1	0	14	3	+11	13
3	Southend United	6	3	1	2	14	6	+8	10
4	Leyton Orient	7	2	1	4	11	15	-4	7
5	Gillingham	6	2	0	4	6	23	-17	6
6	Luton Town	7	1	2	4	10	10	0	5
7	Cambridge United	4	1	1	2	2	10	-8	4

RESULTS AND FIXTURES

Date	H/A	Opponents	Comp	Result
25 Aug	A	Cambridge United	FTDL	4-0
8 Sep	A	AFC Bournemouth	FTDL	3-1
15 Sep	A	Plymouth Argyle	PLC	1-2
22 Sep	A	Luton Town	FTDLC	0-3
5 Oct	H	Milton Keynes	FTDLC	1-1
13 Oct	H	Southend United	FTDLC	3-5
2 Nov	A	Thamesmead Town	LSC	3-1
30 Nov	H	Southend United	FTDL	1-0
7 Dec	H	AFC Bournemouth	FTDL	6-2
14 Dec	H	Cambridge United	FTDL	0-0
16 Feb	A	Leyton Orient	FTDL	
15 Mar	A	Luton Town	FTDL	
21 Mar	H	Luton Town	FTDL	
29 Mar	A	Southend United	FTDL	
5 Apr	A	Gillingham	FTDL	

FTDL: Final Third Development League, South Division
 PLC: Premier League Cup
 FTDLC: Final Third Development League Cup (group stage)
 LSC: London Senior Cup

With regret, AFC Wimbledon withdrew from the **London Senior Cup** after being unable to agree a suitable date with the London FA for the Dons' second-round tie with London Bari.

The match, in which London Bari were drawn as the home side, was originally scheduled to have been played at the Cherry Red Records Stadium on Saturday 9 January, with the agreement of both clubs and the London FA, but was postponed because of a waterlogged pitch.



END OF SEASON

Celebration

A night to celebrate the achievements of the whole Football Club.

Supported by the First Team, Ladies & Girls section, Academy & Foundation.

Food Village, including at least three different street food options.

Live music, plus DJ.

All will be held in a spectacular marquee on the pitch.

SAT 21 MAY
CHERRY RED RECORDS STADIUM



For further information please contact Pietro at **020 8547 3336** or email commercial@afcwimbledon.co.uk

THE UNDER-18s

AFC Wimbledon's Under-18s extended their unbeaten run to eight matches with a hard-fought victory against Dagenham & Redbridge.

AFC WIMBLEDON 3-2 DAGENHAM & REDBRIDGE

Williams-Bowers 14, Marchant 30, Stripp 39 (3-1) Mongoy 33, White 60

SATURDAY 23 JANUARY 2016
FOOTBALL LEAGUE YOUTH ALLIANCE



FOOTBALL LEAGUE YOUTH ALLIANCE, SOUTH EAST

Final table

Pos	Team	P	W	D	L	F	A	GD	Pts
1	Luton Town	22	17	2	3	57	15	+42	53
2	Southend United	22	14	0	8	47	37	+10	42
3	Leyton Orient	22	12	5	5	49	21	+28	41
4	Barnet	22	12	2	8	55	39	+16	38
5	AFC Wimbledon	22	12	2	8	42	37	+5	38
6	Gillingham	22	11	4	7	49	43	+6	37
7	Stevenage	22	8	3	11	35	52	-17	27
8	Northampton Town	22	8	2	12	39	43	-4	26
9	Milton Keynes	22	8	1	13	44	63	-19	25
10	Dagenham & Redbridge	22	7	0	15	36	54	-18	21
11	Peterborough United	22	6	2	14	37	63	-26	20
12	Cambridge United	22	4	3	15	34	57	-23	15

FOOTBALL LEAGUE YOUTH ALLIANCE MERIT LEAGUE 1 FIXTURES

Date	H/A	Opponents	Results
13 Feb	H	Portsmouth	
20 Feb	A	Luton Town	
26 Feb	A	Plymouth Argyle	
5 Mar	H	Barnet	
12 Mar	A	Cheltenham Town	
19 Mar	A	Gillingham	
2 Apr	H	Exeter City	
8 Apr	A	AFC Bournemouth	
16 Apr	H	Leyton Orient	
23 Apr	H	Southend United	

With manager Mark Robinson not arriving back from Manchester until the early hours of the match day after watching FA Youth Cup opponents Chelsea earn a 5-1 win against Manchester United, assistant James Oliver-Pearce took over the reins. With a top-six finish in the Football League Youth Alliance already secured, the young Dons were set some new challenges, including playing a 4-4-2 formation that had not been used for a while.

Wimbledon dominated early possession, with Seanan McKillop and Man of the Match Jason Stripp pulling the strings in midfield, and the pressure paid off in the 14th minute: Reece Williams-Bowers did well to read a back-pass before showing plenty of composure to deliver a cool finish. The lead was so nearly doubled when Williams-Bowers headed a perfect cross from Emmanuel Mensah onto the crossbar, and Dan Ano was ruled offside after slotting home.

The Dons' second came on the half-hour when a corner taken by Stripp was headed down by Paul Kalambayi, and George Marchant converted well from close range. But Wimbledon now lost their focus and allowed Daggers to come back into the game. They paid the price for being caught in possession when a quick break by the visitors led to Jordy Mongoy reducing the arrears.

That goal sparked Wimbledon to regain the initiative, and the third goal came six minutes before half-time when excellent work down the left by Neset Bellikli and a smart cut-back set up Stripp, who calmly rolled the ball home.

In the second half the Dons looked to be coasting to victory, but they began to commit too many players forward, giving Daggers a chance to exert some pressure. The deficit was reduced when Joe White pounced on a defensive lapse to beat Dons keeper Will Mannion. Wimbledon regained control in the latter stages after making substitutions: Nathan Wood had already replaced the impressive Williams-Bowers, and now Toyosi Olusanya and Alfie Egan came on for Bellikli and McKillop. It was so nearly 4-2 when Dan Ano fired against a post, but three was enough to give the team their seventh win on the spin.

AFC WIMBLEDON: Mannion, Mensah, Marchant, Batchelor, Kalambayi, Stripp, Bellikli (Olusanya 61), McKillop (Egan 66), Ano, Williams-Bowers (Wood 56), Chapman. Unused subs: Wingate, Thompson.



yourgolftravel.com



JOIN THE PLAYERS ON THE

AFC WIMBLETON PRE SEASON TOUR

FROM

£689

LA MANGA PRINCIPE FELIPE

4 NIGHTS | B&B | AFC WIMBLETON GOLF DAY |
OPEN TRAINING SESSION | MATCH DAY TICKETS AND MORE!



WIMBLETON

CHAIR WALKS FOR CHARITY

Matthew Breach, Chair of the Dons Trust Board has news of some charity activities coming up later this season.

Each year, a group of hardy walkers undertake a long-distance sponsored walk near the end of the season in aid of the AFC Wimbledon Foundation and other local charities. The ninth "Walk Further For Wimbledon" will take place this year on 15 and 16 April, with the group tackling the 30 miles from Crawley Town's Broadfield Stadium and arriving at the Cherry Red Records Stadium in time for when our home game against the West Sussex club kicks off. If you are interested in taking part or wish to sponsor the group, please email me on matthew.breach@thedonstrust.org.

As a warm-up for this, I've agreed to represent the Trust in joining Jeff Stelling's Men United March for its last day, on 30 March. Jeff – well known for his role hosting *Soccer Saturday* on Sky Sports and his love of Hartlepool United – is walking the equivalent of ten marathons in ten days as he makes his way from Hartlepool to Wembley via several football grounds. On 30 March I'll be joining him for the last leg, a trek of 26 miles setting off from AFC Wimbledon and heading to Wembley via Brentford, Fulham, QPR and Chelsea. This event is in aid of Prostate Cancer UK and is allied to the official Football League charity partner Men United. More information can be found at tinyurl.com/jfny3au. If you would like to sponsor me in aid of this great cause, please go to justgiving.com/Matthew-Breach1/.

All in all, I shall be spending a lot of time walking over the next three months! 

20'S PLENTY

With the cost of watching football rising, we look at the Football Supporters' Federation's campaign for cheaper tickets for away fans.


The cost of watching football has been in the news recently, especially with Liverpool fans' walk-out in the 77th minute of their match last weekend against Sunderland. The Football Supporters' Federation (FSF), to which the Dons Trust is affiliated, has a long-running "20's Plenty" campaign that is also now attracting increased media attention.

The campaign calls on football clubs at all levels of the game to "recognise and reward the amazing contribution of away fans" by agreeing an across-the-board cap on away match ticket prices of £20 (and £15 for concessions). Although it is aimed mainly at Premier League clubs, the campaign is also targeting Football League clubs whose prices for away fans are above £20. (AFC Wimbledon does not fall into this category!)

The FSF say: "Watching live football is becoming more and more expensive and, in the current financial climate, many fans are finding it harder to afford. Increases in the cost of fuel and rail fares make travelling away particularly expensive. Lower prices would help make football more affordable for those on low wages, children, students and OAPs. Football must act now to make sure it doesn't lose the next generation of match-going fans. Away fans are the beating heart of football, the hardcore. Travelling supporters bring colour and atmosphere to grounds, spend the most money watching their teams, and make the most effort to support their clubs. The away fan should not be taken for granted."

The campaign has already resulted in reduced ticket prices for fans at Coventry City, Barnsley, Bradford City and Doncaster Rovers, and more than 12,000 fans from around the country signed a petition supporting the campaign.

The Dons Trust is affiliated to the FSF, but individual supporters can also join, lending weight to their campaigns – and it's free! Go to fsf.org.uk/join/

The FSF are also campaigning on the issue of safe standing, which could be of interest to Dons fans with our new stadium on the horizon. The Dons Trust plans to consult about this more in coming months. 

THE DONS TRUST BOARD

Tom Adam, Matthew Breach, Mark Davis, Colin Dipple, Roger Evans, David Growns, Nigel Higgs, Jane Lonsdale and Sean McLaughlin



www.thedonstrust.org
twitter.com/TheDonsTrust
info@thedonstrust.org

Our match highlights have a new home for season 2015/16...



Every goal. Every Saturday. Football League Tonight.

9pm on Channel 5



#FootballOn5



THE ACADEMY
HOMEGROWN & HUNGRY

THE AFC WIMBLEDON U14s

Steve Jaye, assistant coach of the U14s, looks at how the 2015/16 season has gone so far for this very talented age-group.

The U14s age group are currently going through an important year of their Academy careers, as at the end of this season the decision will be made for each of them about whether they will be signed for a further two seasons, joining our U15/16s age group. All the boys are excellent learners and are working very hard to get their contract.

This can also be a difficult time for the boys as they can start to experience dramatic growth spurts, and this often affects a player's fundamental movement patterns. So one of our main aims is to guide and support our squad through this, with the help of our experienced sports therapy and medicine team.

The season started extremely well, with the team scoring 24 goals




AFC Wimbledon U14s, 2015/16, with Assistant Coach Steve Jaye

and conceding none in their first six games. Since mid-October it has been more difficult for the group to build on their strong start as the opposition have begun to work out how to counteract our very distinct style of possession-based football.

An indication of the current strength within the Academy is that we have two U13 players playing up permanently in our age group. This demonstrates how creating the right environment for our players can really allow them to succeed and excel – something we are very proud of. Most notably, U13 Dylan recently played up in an U16 game against Luton, and even managed to score against players two to three years older than himself – a great achievement for both Dylan and the club.

Recently the whole Academy started using a Performance Management Application (PMA) to log all coaching hours and player data. This is now shared with all the

players and their parents, and is a big help with their development. A key section of PMA is video analysis: all match footage and clips are saved, as well as our Academy goal-of-the-month competition videos (which you can find on our YouTube account). This allows our players to watch clips from all age groups and shows them what it will be like when they progress to different stages in their careers. It also provides the opportunity for coaches to pull videos off to show the players a best-practice model of what is expected. This is still all very new, and I am sure we will find many more benefits of using this system.

In the past two weeks the group have been back on top form, and players have been returning from injury. The boys have a real appetite to improve and progress at the club, and we're confident that you'll be hearing about some of them in the near future. 

ACADEMY NEWS

Congratulations to Toyosi Olusanya and Alfie Egan on signing their first professional contracts with the club last week.

Welcome to the club U9s Ollie and George, who have both recently signed for the Academy.

We are holding trials for our Football and Education programme next week. Email collegefootball@afcwimbledon.ltd.uk ASAP for a place if you are looking for post-16 options.

For all Academy news you can follow us on Twitter @AFCWAcademy

You can contact the AFC Wimbledon Academy on 020 8247 9911 or academy@afcwimbledon.ltd.uk

AFC Wimbledon Ladies First Team



Sponsored by **The Socially Responsible Investment Fund PCC plc**

All home fixtures are played at **Sutton United Football Club**

The Borough Sports Ground,
Gander Green Lane, Sutton, SM1 2EY

FREE Entrance to all fixtures, Families welcome

Matchday facilities include: Hot and Cold Snacks from the Bar



London & South East Regional Women's League Premier Division 2015 - 2016

	P	W	D	L	GD	Pts
AFC Wimbledon Ladies First Team	16	14	2	0	39	44
London Corinthians Ladies	13	9	2	2	31	29
Leyton Orient Ladies	15	8	2	5	23	26
Herne Bay Ladies FC	12	8	0	4	7	24
Carshalton Athletic Ladies	16	8	0	8	-1	24
Camden Town Ladies	13	5	3	5	-4	18
Fulham FC Foundation Ladies	14	5	2	7	7	17
Crawley Wasps Ladies	14	4	2	8	-4	14
Aylesford Ladies	15	2	3	10	-43	9
Eastbourne Town Ladies	11	2	2	7	-25	8
Bexhill United Ladies	13	1	2	10	-30	5

Recent Results & Forthcoming Fixtures

10/01/16	Crawley Town LFC v AFC Wimbledon LFT	0 - 4
24/01/16	Crystal Palace Res LFC v AFC Wimbledon LFT (Surrey County Cup)	0 - 5
31/01/16	AFC Wimbledon LFT v Camden Town LFC	1 - 1
14/02/16	AFC Wimbledon LFT v Eastbourne Town LFC
21/02/16	AFC Wimbledon LFT v Carshalton Athletic LFC (Surrey County Cup)
28/02/16	AFC Wimbledon LFT v Carshalton Athletic LFC
06/03/16	Carshalton Athletic LFC v AFC Wimbledon LFT

All KO's are at 2.00pm unless otherwise stated



Supporting sport in the local community

www.coreco.co.uk
020 7220 5110



Greater London Women's Football League Premier Division 2015 - 2016

	P	W	D	L	GD	Pts
Queens Park Rangers Development	13	8	3	2	43	27
AFC Wimbledon Development	11	7	3	1	15	24
Watford Development	9	7	2	0	31	23
Colne Valley	12	6	2	4	5	20
Hemel Hempstead	9	5	2	2	2	17
AFC Phoenix	12	5	2	5	0	17
Regents Park Rangers	13	5	1	7	1	16
Crystal Palace Development	11	5	0	6	-11	15
Tottenham Hotspurs Development	12	2	2	8	-20	8
Northwood	12	1	3	8	-46	6
Brentford WFC	12	1	2	9	-20	5

Recent Results & Forthcoming Fixtures

20/12/15	AFC Phoenix v AFC Wimbledon Development	0 - 1
24/01/16	AFC Wimbledon Development v Comets (Capital Womens Int Cup)	2 - 0
14/02/16	AFC Wimbledon Development v Brentford WFC
21/02/16	AFC Wimbledon Development v QPR Reserves (Cap Wom Int Cup)
28/02/16	AFC Wimbledon Development v Crystal Palace Development
06/03/16	AFC Wimbledon Development v Bromley FC (J Greenacre Mem Tro)

All KO's are at 2.00pm unless otherwise stated

OUR TARGET IS IN SIGHT

As the Ladies first team continue their seemingly unstoppable progress towards a league title, manager **Chris Lyons** reports on the four matches played last month.

As expected, January proved to be a tough month for us. The game against London Corinthians, our closest challenger and toughest league rival, was a really gritty affair. The weather was appalling, and we had to play at their home ground, Well Hall, which offers no protection from the elements.

The strong wind and heavy rain made things difficult for both teams. Kelly-Jade Whelan put us ahead just after half-time, and we went two up when Emma Keady finished well with a dink over their keeper. They got one back after 67 minutes, and from then on it was a game of attrition as both defences were severely tested. We held on for the win, gained more valuable points over our rivals and gave ourselves some breathing space.

We then beat Crawley Wasps 4-0. That may sound convincing, but as our last three goals were scored in the last 10 minutes, the scoreline didn't really reflect the competitiveness of the game. We had to work very hard for the win, and Crawley did exactly as we thought they would, making things very difficult for us. I think the depth of our squad, plus the determined spirit of our players, was what enabled us to turn the screw in the final ten minutes and put the game well out of our opponents' reach.

After that we continued our defence of the Surrey County Cup, travelling to the Mayfield Stadium, home of AFC Croydon Athletic, to take on Crystal Palace's reserves. The game went exactly as we expected it to, and we won 5-0. Our defence was rarely tested, we didn't concede a single corner and keeper Tash Salgado hardly had a save to make. In fact most of what she had to do was with her feet, as we had so much time and space with the ball. The only disappointing thing for me coming out of this game was the shoulder injury to Rebecca Sargent. Although it was diagnosed as only a minor injury, with a probable two-game lay-off, it was still disappointing not to have her available for selection. Winning this game put us through to a semi-final against Carshalton Athletic on 21 February, at Gander Green Lane.

On 31 January we hosted Camden Town for one of the most one-sided 1-1 games I've seen for a long time. I don't want to take anything away from our visitors, but we battered their goal and it became one of those games where we'd only score through a stroke of luck or a touch of class. Our late equaliser was the latter - a class strike from Libby Suchley. Credit to Camden, as they are the only team to have taken points off us this season, and as a newly promoted team they should be very pleased with how they've adjusted to life in the LSER league.

On Sunday we should have travelled to Herne Bay. The longer journeys are certainly much more comfortable now thanks to Reptons, and their support is much appreciated by us all. This is probably our longest away trip this season, but unfortunately due to bad weather the pitch was unplayable and the match was postponed.

It's still some way from the end of the season, but our destination is becoming clearer: we are now just seven points away from being mathematically certain of claiming the top spot, with four games left to play.

Finally, I'd like to congratulate Sian Houghton-North and her partner Emma on the arrival of newly born twins Betsy and Fletcher (pictured). And Zoe (Vinnie) Clifford and her partner Stacey are expecting their new arrival any time now. Vinnie is a lifelong Wimbledon supporter and a regular in the Chemflow End.



Welcome Betsy and Fletcher

SimonRoe
PHOTOGRAPHY

Official Club Photographer to AFC Wimbledon Ladies & Girls

Tel: 07747 036956 www.simonroephotography.co.uk

IVOR HELLER INTRODUCES TODAY'S MATCH SPONSORS

I would like to welcome our match sponsors today, C&J Fieldwork Partnership LLP. This will be their first match sponsorship for AFC Wimbledon, and so I would like to welcome Chrissie Rogowska and Jayne Curtis and their guests to the Cherry Red Records Stadium today. I hope your first match sponsorship will end in a victory for the Dons, and that you have many more days like this with us.

MATCH SPONSOR



Owned by long-standing Dons supporter Chrissie Rogowska and business partner Jayne Curtis, C&J Fieldwork Partnership LLP has a highly experienced team of multilingual market researchers able to conduct fieldwork globally, including customer satisfaction and public opinion surveys using telephone and face-to-face in-depth interviews and focus groups.

We offer a wide range of market research fieldwork services. With your business in mind we will work with you to achieve your goals, whether by interviewing other businesses or consumers. We provide regular detailed progress reports, and data processing services to provide tabulations and data/verbatim exports.

C&J have a successful track record of working for clients in a wide range of business sectors both in the UK and overseas, in education, insurance, finance, healthcare, law, business and home electronics and professional sport to name but a few areas, and together with our business partners we can also provide full market analysis and reporting.

For further information, please call 01959 562647/564624, email chrissie@cjfieldworkpartnership.com or visit cjfieldworkpartnership.com.

BALL SPONSOR



Quest provides investigative and security services to leading law firms, high-profile individuals, commercial organisations, regulators and financial institutions. Quest's Sports Group has extensive expertise in, and a thorough understanding of, the sports industry, having conducted many successful investigations and inquiries for a range of sport clients.

BALL SPONSOR



Hother Associates are a Wimbledon-based quantity surveying practice who also provide project management and CDM co-ordination services to all sectors of the building/property industry. Established in 1992, they have completed a wide range of projects for an extensive client list. They are proud to have been responsible for managing the construction of AFC Wimbledon's John Green Stand, the extension of the Paul Strank Stand and several other facility upgrades at the Cherry Red Records Stadium. Visit hother.co.uk or call 020 8947 7999 for further details.

PROGRAMME SPONSOR

moorad choudhry

The programme sponsor for the ninth season running is Moorad Choudhry, who is CEO of Habib Bank Zurich plc in the City of London, and a Professor of Mathematical Sciences at Brunel University. Moorad was inspired by the original Crazy Gang and is a lifelong supporter of the Dons.



YEOVIL TOWN PRESENTATIONS

Man of the Match Andy Barcham with match sponsors (1) Gutterworks and ball sponsors (2) RWW Plumbing & Heating and (3) Your Golf Travel.



WIN A PROFESSIONAL FOOTBALL TABLE WITH A-PLAN INSURANCE

Have you ever fancied yourself as a pro at table football? Today could be the day when you show that you are, not only to yourself but to all of AFC Wimbledon. Today, outside the middle bar, our sponsors A-Plan Insurance are holding a Foomball tournament, where you can win the very same table that you play on. There will be a series of knockout rounds, and the final will be played in front of the Chemflow End at half-time – a great opportunity not to be missed!



A-Plan Insurance, who have a base in Wimbledon, now offer tradesman liability and van insurance policies in addition to car, home insurance and more. For every quote you request



from A-Plan Insurance in Wimbledon, they will donate £5 to the We Are Wimbledon Fund (WAWF). If you then take out a policy, A-Plan will donate £30 to the WAWF. So you can save on your insurance costs while helping to give money back to the club. Since November, A-Plan have donated £555 to the WAWF.

To get a quote on your insurance and hopefully save yourself some money, call A-Plan on 020 8944 4121 or visit their branch in Wimbledon Hill Road.

If you would like more details about match sponsorship or matchday hospitality, then please get in contact with **Pietro Palladino** on commercial@afcwimbledon.co.uk or call 020 8547 3336.



NEAL ARDLEY

Home kit
Leaside Groundworks
Away kit
Vivash Brand LLP
Third kit
Iain McNay
Home Socks
The Skone family
Away Socks
Vinnie the Guinea Pig



NEIL COX

Home kit
In memory of E.M. and D. Kay
Away kit
Stuart Deacons and Lorraine Clements
Third kit
Moorad Choudhry
Home Socks
Moorad Choudhry
Away Socks
Moorad Choudhry



SIMON BASSEY

Home kit
Eileen
Away kit
Paul Strank Roofing Ltd
Third kit
Pat and Jackie
Home Socks
In memory of Dr John Wheeler
Away Socks
Simon and Jill



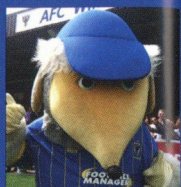
ASHLEY BAYES

Home kit
Spike Brits
Away kit
Control Room staff
Gloves
Spike Brits
Socks
Jill and the cats



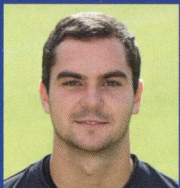
ROBIN BEDFORD

Home kit
Colin Gales
Away kit
Available
Third kit
Available
Home Socks
Jim Clover
Away Socks
James Anstee



HAYDON THE WOMBLE

Home kit
Paul Strank Roofing Ltd
Away kit
Peter Cork and Sebbie
Home Socks
Libby and Georgie Messenbird
Away Socks
Phoebe Mapple



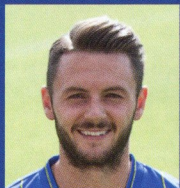
1 JAMES SHEA

Home kit
Anuk, Millie and Leela Teasdale
Away kit
Anuk, Millie and Leela Teasdale
Gloves
Don Wimble
Socks
In memory of Bob Turner



2 BARRY FULLER

Home kit
Darren Leach
Away kit
Grant May
Third kit
Nick Le Faye
Home Socks
Ella Louise Farrow
Away Socks
The Sleet family



3 CALLUM KENNEDY

Home kit
Michael and Delia Briggs
Away kit
Simon Cheeseman
Third kit
Linda and Roger Dennis
Home Socks
Chloe Sharpe
Away Socks
Gareth Hughes



4 DANNIE BULMAN

Home kit
Jambo Harding
Away kit
Handball Club
Third kit
PLC
Home Socks
Neil Messenbird
Away Socks
wupgb.co.uk



5 WILL NIGHTINGALE

Home kit
PISA
Away kit
PISA
Third kit
Hardback Dons
Home Socks
Lozzle, Luke, Rossco and Toddy
Away Socks
Anthony Yellop



6 PAUL ROBINSON

Home kit
Joe Blair
Away kit
ScanScape
Third kit
Pat, Paolo and Simon
Home Socks
Cerys and Charlie Leahy
Away Socks
ScanScape



7 GEORGE FRANCOMB

Home kit
Andy Brassel, Pete O'Brien, Julian
Away kit
The Harris family, Kent
Third kit
Robert and Liam Sollis
Home Socks
Alex Mapple
Away Socks
afcdons.net



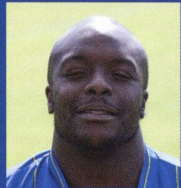
8 JAKE REEVES

Home kit
Janice and Graham Williams
Away kit
Peter, Mark and Karen
Third kit
David and Sharon
Home Socks
John Woodruff
Away Socks
Steve Dowse



9 TOM ELLIOTT

Home kit
Anuk, Millie and Leela Teasdale
Away kit
Cyrus and Clemency
Third kit
US Dons
Home Socks
H. and H. Paralimni Wombles
Away Socks
William Sharpe



10 ADEBAYO AKINFENWA

Home kit
Alex, Max, Joe, Tom and Cait's
Away kit
Alex Mitchell
Third kit
Jack and Kerry Yeomanson
Home Socks
Tony and Rachael
Away Socks
Charlie, Peter and Milly



11 SEAN RIGG

Home kit
Friends and family of Natalie
Away kit
Available
Third kit
Lady and Butler
Home Socks
The Organic Street
Away Socks
Dave Dalchow (retd)



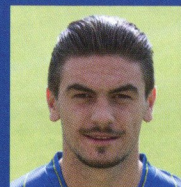
12 JON MEADES

Home kit
Weird & Wonderful World
Away kit
Dennis Beckett
Third kit
Nick and Mike
Home Socks
Rob Cornell
Away Socks
Win or lose, it's Ness I choose



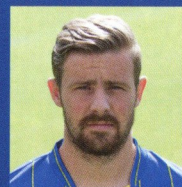
14 ADEBAYO AZEEZ

Home kit
Sharon Mathews
Away kit
The SweDons
Third kit
Joe and Roxy
Home Socks
Luke, Amelie and Maya
Away Socks
James Edward Farrow



15 GEORGE OAKLEY

Home kit
Anuk, Millie and Leela Teasdale
Away kit
Anuk, Millie and Leela Teasdale
Third kit
Anuk, Millie and Leela Teasdale
Home Socks
Anuk, Millie and Leela Teasdale
Away Socks
Anuk, Millie and Leela Teasdale



16 TOM BEERE

Home kit
The Harris family, Wimbledon
Away kit
Martin and Daniel Riordan
Third kit
Available
Home Socks
Rob Woodward
Away Socks
Millie and Lola Jezzard



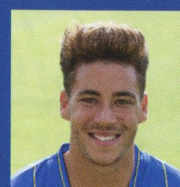
17 ANDY BARCHAM

Home kit
Sue and Bill
Away kit
Sean Ashfield
Third kit
Derek and Susan Goodhew
Home Socks
Malteser Dons
Away Socks
Rosie Clover



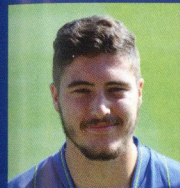
18 CONNOR SMITH

Home kit
Available
Away kit
Available
Third kit
Available
Home Socks
Available
Away Socks
Available



19 DAVID FITZPATRICK

Home kit
Gordon Macey
Away kit
Jordan Williams Team
Third kit
The DoughtMeisterGeneral
Home Socks
PISA
Away Socks
PISA



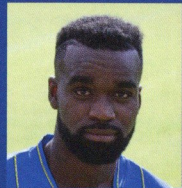
20 RYAN SWEENEY

Home kit
Alan and Connie Parker
Away kit
The Draper family
Third kit
Alex Mitchell
Home Socks
Kerry Clover
Away Socks
Anthony Cornell



21 GEORGE PILBEAM

Home kit
Derek and Susan Goodhew
Away kit
Jon Harry Devon West
Third kit
Available
Home Socks
Mikey and Joey Gleeson
Away Socks
Trevorwomble



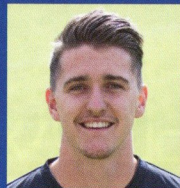
22 KARLEIGH OSBORNE

Home kit
Colin Gales
Away kit
Jonathan Ling
Third kit
Bernie, Neville, Tony and Phil
Home Socks
Paul Merritt
Away Socks
Malteser Dons



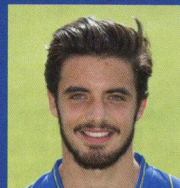
23 BEN HARRISON

Home kit
The Balchins
Away kit
Nigel and Paul - Stoneleigh Wombles
Third kit
Braemar Property Management
Home Socks
George, Molly and Arthur Gleeson
Away Socks
Steve Hill



24 JOE McDONNELL

Home kit
Camerascan CCTV Ltd
Away kit
Camerascan CCTV Ltd
Gloves
Camerascan CCTV Ltd
Socks
Camerascan CCTV Ltd



25 DAN GALLAGHER

Home kit
The Rosemonts
Away kit
ScanScape
Third kit
Available
Home Socks
Stef King
Away Socks
ScanScape



26 EGLI KAJA

Home kit
The Clovers
Away kit
Colin Whitehair
Third kit
Graham Benbow
Home Socks
Available
Away Socks
Available



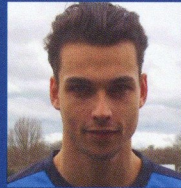
27 CALLUM WILSON

Home kit
Diana Harris
Away kit
Available
Third kit
Available
Home Socks
Dylan and Lewis Bailey
Away Socks
Greg Parker



28 CHRISTIAN TOONGA

Home kit
In memory of Bernard Whaley
Away kit
PISA
Third kit
Nick, Peter and Sean
Home Socks
Noddy
Away Socks
PISA



29 KELLE ROOS

Home kit
Available
Away kit
Available
Gloves
Available
Socks
Available



33 LYLE TAYLOR

Home kit
Lee Walker
Away kit
Roger Caley
Third kit
The Sleet family
Home Socks
Malteser Dons
Away Socks
Teddy Clover



SILKY SKILLS

From silk-screen printer to Wembley history-maker, Dave Beasant fully deserves his place in the Dons pantheon. We spoke to him recently about his years with Wimbledon.

In this age of millionaire teenage footballers, it's astonishing that a goalkeeper as good as Dave Beasant should be signed for a pittance. But this was back in 1978. He'd been playing for non-league Edgware Town, while working as a silk-screen printer, and came along to talk to Dave Bassett having impressed the previous year in a London Senior Cup tie that the Dons won 2-0. "Harry asked me what I was earning," the club legend told us recently. "I told him £25 a week, and he immediately said he'd match it. I was on £18 a week at Edgware as well as my other wages, but I was desperate to be a footballer so I took a pay cut."

"Working as a printer, I used to go home smelling like a fishmonger and it wasn't something I wanted to do all my life. From the day I arrived at Wimbledon to the day I left, it was fun. There were the likes of Corky, Wally, Steve Parsons and Dave Donaldson when I arrived – all strong characters. Those were fun days, driving to reserve games in a minibus and stopping for a pint on the way home."

Dave's ability started to shine through, and he was picked for his first-team debut at home to Blackpool in January 1980. "It's not a game I'll ever forget. The score was 1-1 when their winger, Colin Morris, cut in and fired a shot at goal. It was a pretty tame effort, but somehow I managed to let it go through my arms and my legs before it trickled into the net. I wanted the ground to open up and swallow me! Afterwards, the



The famous Lurch to the left

chairman, Ron Noades, took me up to the directors' box and tried to get me drunk. He kept telling me, 'We all believe in you – put it behind you.' It took me a while, but eventually I managed to do that."

"Lurch", as he was known, became the first-choice keeper at the start of the 1981/82 campaign and for six years he was ever present as the Dons climbed the divisions. Having joined when the club was in Division Four, he captained Wimbledon to their 1988 FA Cup final triumph at Wembley. But the Crazy Gang style was not to everyone's taste. "Johnny Giles had written a piece in one of the newspapers on cup final morning saying it would be the death of football if we won. No-one mentioned that his Leeds side had been notoriously 'hard' back in the 1970s. Bobby Gould simply used Giles's words to motivate us.

"That day was a massive high. I got all the adulation, but we were all about being a team. No-one outside the camp thought we could do it, but we knew we could. My dad wasn't really

interested in sport and rarely saw me play. He nearly didn't come to the cup final, but in the end I persuaded him to. He didn't say much afterwards, but I was in tears and so was he. It meant everything to him, but he didn't know how to say it."

Since those heady days, Dave has enjoyed a nomadic career but has a soft spot for AFC Wimbledon. "I was fortunate in leaving the club before they had to move to Selhurst Park. I still regard Plough Lane as the club's proper home, so I'm delighted that they will be returning there shortly. It will take the club back where it belongs."

DAVE BEASANT

Born: 20 March 1959, Willesden, London

Dons debut: 12 January 1980; left 13 June 1988

Appearances: 388

Other clubs (include): Edgware Town, Newcastle United, Chelsea, Southampton, Nottingham Forest, Portsmouth, Brighton & Hove Albion

The
QUALERS!
* South London *

27TH FEB 2016
8PM-1AM
(band on 9:30pm)

SKA & REGGAE DJs

£15

TICKETS AVAILABLE FROM

WWW.KINGSMEADOWLIVE.COM OR BOX OFFICE: 020-8247-9918

HERRY RED RECORDS STADIUM, JACK GOODCHILD WAY, KINGSTON ROAD, KINGSTON UPON THAMES, SURREY, KT1 3PB



AFC WIMBLEDON GROUND REGULATIONS

TICKETS FOR HOME GAMES

The majority of games are not all-ticket, and entry can be obtained on the day of the match. However, we always advise fans to buy tickets in advance as some areas of the ground may sell out beforehand. Advance tickets can be purchased either online, via afcwimbledon.co.uk/tickets, or by visiting the club offices on weekdays between 9.30 am and 5.00 pm. Tickets bought in person may be paid for by debit or credit card, cheque or cash. Tickets will not be sold over the phone.

All-ticket matches

For games which are likely to sell out, priority will be given to season ticket holders, Dons Trust members, AFC plc shareholders and those signed up to the AFC Wimbledon Membership Scheme. Advance notice will be given of games designated all-ticket.

Prices

Standard League Two matchday ticket prices are as given below.

Chemflow Terrace

Adults £17; Concessions £11; Under-18s £4.

Your Golf Travel Terrace

Adults £16; Concessions £10; Under-18s £4.

Paul Strank Stand, Block M

Adults £20; Concessions £13; Under-18s £9.

The John Green Stand

Adults £20; Concessions £13; Under-18s £9.

Concession prices apply to over-65s, full-time students and the unemployed. Proof of age/status will need to be provided.

NOW ON SALE

Tickets for the following games can now be bought via the online ticket shop or in person from the club offices (times and days as above).

CARLISLE UNITED

TUESDAY 23 FEBRUARY • KICK-OFF 7.45 PM

OXFORD UNITED

SATURDAY 27 FEBRUARY • KICK-OFF 3.00 PM

The safety and wellbeing of supporters entering The Cherry Red Records Stadium is of paramount importance to AFC Wimbledon. The club management reserves the right for its stewards, club officials or the police to remove any person who does not comply with all the regulations.

In particular, fans should not:

- bring into the ground items such as fireworks, flares and laser devices or any article that may be considered to be usable as a weapon and/or that might compromise public enjoyment/safety
- throw any object within the ground
- enter the playing area without lawful authority
- take part in any discriminatory behaviour or use obscene or abusive language
- persistently stand in seating areas
- obstruct gangways, access ways, exits and entrances
- attempt to enter or be in the ground while under the influence or in possession of drugs or intoxicating liquor.

The stadium is a no-smoking area, and that includes the use of electronic cigarettes.

If you have any concerns over a matter of safety you should immediately bring it to the attention of one of the stewards on duty.

Failure to comply with the regulations may result in being banned from the ground. If a fan is banned, that ban is indefinite until the fan has demonstrated that their behaviour has improved sufficiently for readmission to be agreed. Until that happens, the club will encourage other clubs to enforce the ban. Banned fans have the right to appeal against the ban and to appear before a disciplinary and complaints panel to make representations to be readmitted to the ground. If they fail to overturn the ban, they have the right to appeal to the Chief Executive.

The full ground regulations as published by the Football League are posted in various places around the ground, and entering the stadium constitutes acceptance of these rules and regulations.

BARNET

The Hive, Camrose Avenue,
Edgware, HA8 6AG

barnetfc.com
020 8381 3800
tellus@barnetfc.com



BEES' HOME FORM

16 Jan	Carlisle United	0-0
9 Jan	Bristol Rovers	1-0
26 Dec	Newport County AFC	2-0
19 Dec	Crawley Town	4-2
5 Dec	Newport County AFC (FAC)	0-1
28 Nov	Mansfield Town	1-3

SATURDAY 20 FEBRUARY 2016 • 3.00 PM KICK-OFF



TICKETS

This match is not all-ticket, and it will be possible to purchase tickets on the day of the game at the turnstiles, with cash and card payments accepted. Tickets will also be available to purchase from AFC Wimbledon in advance: from the online shop, at afcwimbledon.co.uk/tickets; after today's game, at the complimentary tickets window; or by visiting the club offices, between 9.30 am and 5.00 pm on weekdays. Tickets will not be sold over the phone.

Dons fans have the choice of sitting in the West Stand, with access to the Jubilee Bar, which opens at 12.30 pm, or standing on the North Terrace, which has access to the tea huts.

Prices

Seats Adults £23; Concessions (over 64 or under 19) £12; Under-14s £5.
Terrace Adults £17; Concessions (over 64 or under 19) £12; Under-14s £5.

Disabled supporters

Ambulant disabled and wheelchair supporters pay the price relevant to their age category, and a carer is admitted free of charge. Tickets for disabled supporters need to be purchased in advance by calling the phone number on the left.

CAR PARKING

Parking is available at the ground on a first come, first served basis at a cost of £5 per vehicle.

COACH TRAVEL

The club will not be running a supporters' coach for this game.

Show your colours

The Dons will be wearing their white away kit.

For more information see footballgroundguide.com

NORTHAMPTON TOWN

TUESDAY 1 MARCH 2016
7.45 PM KICK-OFF



Sixfields Stadium,
Northampton, NN5 5QA

ntfc.co.uk
01604 683700
secretary@ntfc.tv



COBBLERS' HOME FORM

6 Feb	York City	2-0
23 Jan	Morecambe	3-1
9 Jan	Milton Keynes (FAC)	2-2
2 Jan	Barnet	3-1
28 Dec	Accrington Stanley	1-0
19 Dec	Portsmouth	1-2

TICKETS

This match is not all-ticket, and it will be possible to purchase tickets on the day of the game at the turnstiles. However, tickets are available for purchase from AFC Wimbledon in advance for a small discount. Tickets can be purchased from the online shop, at afcwimbledon.co.uk/tickets; after today's game, at the complimentary tickets window; or by visiting the club offices, between 9.30 am and 5.00 pm on weekdays. Tickets will not be sold over the phone.

Dons fans will be accommodated in the covered and seated South Stand.

Prices

Adults £20; Concessions (over 65) £16; Juniors (under 18) £8; Under-7s are admitted free of charge.

All prices rise by £2 on the day of the game.

Disabled supporters

Wheelchair and ambulant disabled fans are charged £14, with a carer admitted free of charge. This price also rises by £2 on the day of the game.

CAR PARKING

Parking is available at the ground on a first come, first served basis at a cost of £3 per vehicle.

COACH TRAVEL

The supporters' coach will leave from opposite South Wimbledon tube station at 4.30 pm and from the Cherry Red Records Stadium at 5.00 pm. The price is £13, and places on the coach can be reserved today, before or after the game, at the complimentary tickets window. Alternatively, bookings can be made by contacting the club office on 020 8547 3528 between 9.30 am and 5.00 pm on weekdays.

Show your colours

The Dons will be wearing their green third kit.

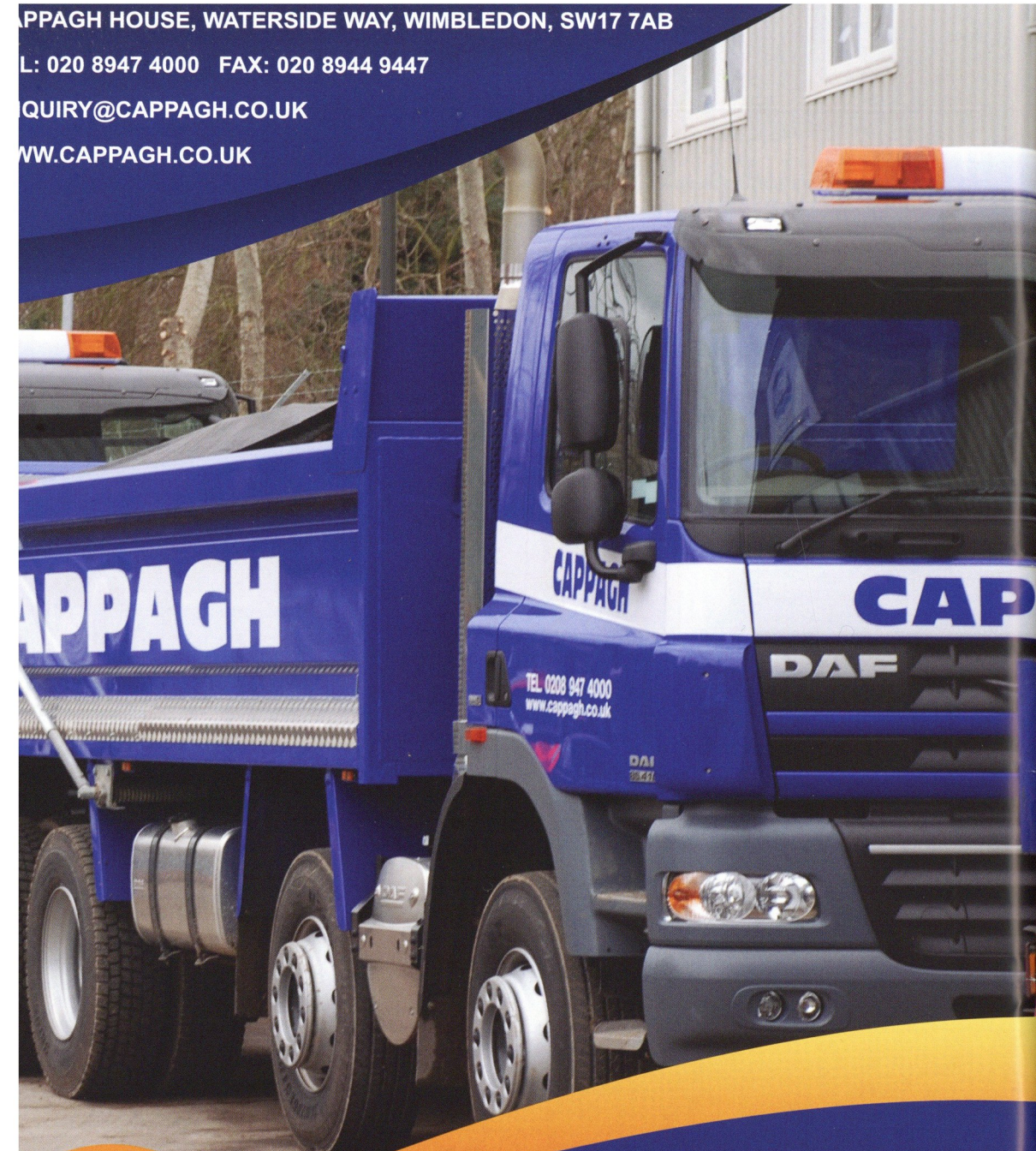
For more information see footballgroundguide.com

CAPPAGH HOUSE, WATERSIDE WAY, WIMBLEDON, SW17 7AB

TEL: 020 8947 4000 FAX: 020 8944 9447

ENQUIRY@CAPPAGH.CO.UK

WWW.CAPPAGH.CO.UK



“ Proud sponsors of AFC Wimbledon ”

UTILITIES CONTRACTORS | HIGHWAY MAINTENANCE
GROUNDWORK | RECYCLED AGGREGATES | CCTV SURVEYS
MUCKAWAY | READYMIX CONCRETE | DEMOLITION
CONCRETE CRUSHING | PLANT & SKIP HIRE

CAPPAGH

THE MERTON ABBEY MILLS EXPERIENCE

A UNIQUE RIVERSIDE VILLAGE IN SW19

Restaurants, Bars, Cafes, Shops & Theatre

Award Winning World Food

Live Free Open Air Entertainment

Shows & Events

History & Heritage

Family Fun

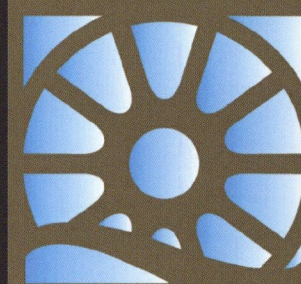
Gift Shopping

Live Music

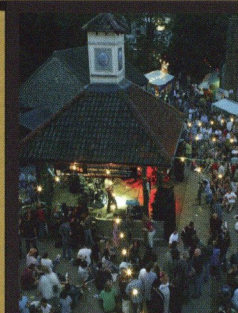
Waterwheel Museum

Weekend Market

Arts & Crafts



MERTON ABBEY MILLS



Just visit

www.mertonabbeymills.com

for all you need to know

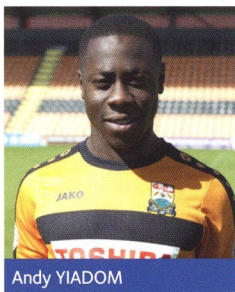
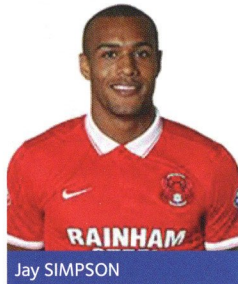
DATE	OPPOSITION	COMP.	RES./K.O.	ATT. (AWAY)	PTS	POS.	STARTING XI
t 8 Aug	H Plymouth Argyle	L2	0-2	4,805 (932)	0	18	SHEA FULLER OSBORNE ROBINSON FRANCOMB BARCHAM
e 11 Aug	A Cardiff City	COC(1)	0-1	6,314 (550)	—	—	SHEA FULLER KENNEDY ROBINSON NIGHTINGALE RIGG
t 15 Aug	A Crawley Town	L2	2-1	2,988 (1,296)	3	11	SHEA FULLER MEADES ROBINSON OSBORNE BARCHAM ①
e 18 Aug	H Cambridge United	L2	1-2	4,114 (640)	3	13	SHEA FULLER KENNEDY ROBINSON OSBORNE BARCHAM
t 22 Aug	A Carlisle United	L2	1-1	5,949 (311)	4	14	SHEA FULLER MEADES ROBINSON OSBORNE BARCHAM ①
t 29 Aug	H Exeter City	L2	2-1	3,803 (467)	7	12	SHEA FULLER MEADES ROBINSON OSBORNE BARCHAM
e 1 Sep	H Plymouth Argyle	JPT(1)	2-3	1,251 (316)	—	—	SHEA FULLER HARRISON NIGHTINGALE OSBORNE BARCHAM
t 5 Sep	A Mansfield Town	L2	1-1	3,042 (208)	8	13	SHEA FULLER MEADES ROBINSON OSBORNE RIGG
t 12 Sep	A Yeovil Town	L2	1-1	3,687 (593)	9	13	SHEA FULLER MEADES ROBINSON NIGHTINGALE BARCHAM
t 19 Sep	H Notts County	L2	2-1	3,962 (547)	12	12	SHEA FULLER MEADES ROBINSON NIGHTINGALE BARCHAM
t 26 Sep	A Luton Town	L2	0-2	8,415 (588)	12	15	SHEA FULLER MEADES ROBINSON OSBORNE BARCHAM
e 29 Sep	H Northampton Town	L2	1-1	3,525 (309)	13	16	SHEA FULLER MEADES ROBINSON AJAYI BARCHAM
t 3 Oct	H Barnet	L2	2-0	4,068 (537)	16	13	SHEA FULLER MEADES ROBINSON AJAYI BARCHAM
t 10 Oct	A Oxford United	L2	0-1	6,301 (549)	16	14	SHEA FULLER MEADES ROBINSON AJAYI BARCHAM
t 17 Oct	H Morecambe	L2	2-5	3,679 (96)	16	16	SHEA FULLER MEADES ROBINSON AJAYI BARCHAM ①
e 20 Oct	A Accrington Stanley	L2	4-3	1,315 (131)	19	14	WILSON FULLER MEADES ROBINSON AJAYI RIGG
t 24 Oct	A York City	L2	3-1	3,000 (362)	22	12	WILSON FULLER MEADES ROBINSON OSBORNE RIGG
t 31 Oct	H Hartlepool United	L2	2-0	3,638 (255)	25	10	WILSON FULLER MEADES ROBINSON OSBORNE KENNEDY ①
t 7 Nov	H Forest Green Rovers	FAC(1)	1-2	2,465 (131)	—	—	WILSON FULLER MEADES ROBINSON OSBORNE RIGG
n 15 Nov	A Portsmouth	L2	0-0	15,892 (794)	26	9	WILSON FULLER MEADES ROBINSON OSBORNE RIGG
t 21 Nov	H Wycombe Wanderers	L2	1-1	4,482 (749)	27	8	WILSON FULLER MEADES ROBINSON OSBORNE RIGG
e 24 Nov	H Dagenham & Redbridge	L2	0-1	3,557 (171)	27	11	WILSON FULLER MEADES ROBINSON OSBORNE KENNEDY
t 28 Nov	A Leyton Orient	L2	1-1	6,024 (1,274)	28	11	WILSON FULLER MEADES ROBINSON OSBORNE RIGG
t 12 Dec	H Stevenage	L2	1-2	3,846 (282)	28	13	WILSON KENNEDY MEADES ROBINSON OSBORNE RIGG
t 19 Dec	A Newport County	L2	2-2	2,798 (247)	29	14	SHEA FULLER MEADES ROBINSON OSBORNE BARCHAM
t 26 Dec	H Bristol Rovers	L2	0-0	4,668 (806)	30	13	SHEA FULLER MEADES ROBINSON OSBORNE BARCHAM
on 28 Dec	A Exeter City	L2	2-0	5,072 (314)	33	12	SHEA FULLER MEADES ROBINSON OSBORNE RIGG
t 2 Jan	A Cambridge United	L2	4-1	5,754 (669)	36	10	SHEA FULLER MEADES ROBINSON OSBORNE BARCHAM
t 16 Jan	H Mansfield Town	L2	3-1	4,089 (302)	39	8	SHEA FULLER MEADES ROBINSON OSBORNE BARCHAM
t 23 Jan	A Notts County	L2	2-0	5,072 (683)	42	7	SHEA FULLER MEADES ROBINSON OSBORNE BARCHAM ①
t 30 Jan	H Yeovil Town	L2	2-3	4,525 (518)	42	10	SHEA FULLER MEADES ROBINSON OSBORNE BARCHAM
t 13 Feb	H Luton Town	L2	3.00 pm				
t 20 Feb	A Barnet	L2	3.00 pm				
e 23 Feb	H Carlisle United	L2	7.45 pm				
t 27 Feb	H Oxford United	L2	3.00 pm				
e 1 Mar	A Northampton Town	L2	7.45 pm				
t 5 Mar	H Accrington Stanley	L2	3.00 pm				
e 8 Mar	A Bristol Rovers	L2	7.45 pm				
t 12 Mar	A Morecambe	L2	3.00 pm				
t 19 Mar	H York City	L2	3.00 pm				
i 25 Mar	A Hartlepool United	L2	3.00 pm				
on 28 Mar	H Portsmouth	L2	12.45 pm				
t 2 Apr	A Wycombe Wanderers	L2	3.00 pm				
t 9 Apr	A Plymouth Argyle	L2	3.00 pm				
t 16 Apr	H Crawley Town	L2	3.00 pm				
e 19 Apr	A Dagenham & Redbridge	L2	7.45 pm				
t 23 Apr	H Leyton Orient	L2	3.00 pm				
t 30 Apr	A Stevenage	L2	3.00 pm				
t 7 May	H Newport County	L2	3.00 pm				

Key First Substitute Second Substitute Third Substitute Subbed Substitute Booking Sent Off Goals Scored ①

STARTING XI					SUBSTITUTES						
BULMAN	REEVES	TAYLOR	AKINFENWA	ELLIOTT	RIGG (67)	AZEEZ (73)	MEADES (82)	KENNEDY	NIGHTINGALE	FITZPATRICK	McDONNELL
BULMAN	MEADES	FRANCOMB	AKINFENWA	TAYLOR	BARCHAM (69)	ELLIOTT (69)	AZEEZ (69)	McDONNELL	REEVES	FITZPATRICK	OSBORNE
TAYLOR	REEVES	FRANCOMB	AKINFENWA ①	ELLIOTT	BULMAN (46)	AZEEZ (78)	RIGG (86)	KENNEDY	NIGHTINGALE	FITZPATRICK	McDONNELL
BULMAN	REEVES	RIGG	AKINFENWA	ELLIOTT ①	TAYLOR (72)	AZEEZ (72)	FRANCOMB (72)	NIGHTINGALE	MEADES	FITZPATRICK	McDONNELL
BULMAN	REEVES	FRANCOMB	TAYLOR	ELLIOTT	KENNEDY (9)	AKINFENWA (62)	AZEEZ (77)	NIGHTINGALE	RIGG	FITZPATRICK	McDONNELL
BEERE	REEVES	FRANCOMB ①	AKINFENWA	ELLIOTT	TAYLOR (67)	AZEEZ (72) ①	RIGG (76)	NIGHTINGALE	FITZPATRICK	McDONNELL	GALLAGHER
BEERE	REEVES	RIGG	TAYLOR ①	AZEEZ ①	GALLAGHER (35)	FITZPATRICK (46)	FRANCOMB (52)	ELLIOTT	McDONNELL	—	—
BULMAN	REEVES	FRANCOMB	AKINFENWA	ELLIOTT ①	NIGHTINGALE (30)	TAYLOR (69)	AZEEZ (76)	FITZPATRICK	McDONNELL	GALLAGHER	KAJA
BULMAN	REEVES	FRANCOMB	AKINFENWA ①	ELLIOTT	AZEEZ (70)	RIGG (74)	BEERE	SWEENEY	OSBORNE	McDONNELL	KAJA
BULMAN ①	REEVES	FRANCOMB	AKINFENWA ①	ELLIOTT	OSBORNE (35)	RIGG (57)	AZEEZ (60)	BEERE	PILBEAM	McDONNELL	KAJA
BULMAN	REEVES	FRANCOMB	AKINFENWA	AZEEZ	RIGG (46)	KAJA (80)	OAKLEY (90+1)	KENNEDY	SWEENEY	McDONNELL	GALLAGHER
BULMAN	REEVES	FRANCOMB	AKINFENWA	AZEEZ ①	TAYLOR (44)	RIGG (69)	KAJA (83)	KENNEDY	TOONGA	SWEENEY	McDONNELL
BULMAN	REEVES	FRANCOMB	TAYLOR ①	AZEEZ	AKINFENWA (63)	RIGG (68) ①	KENNEDY (80)	OSBORNE	McDONNELL	KAJA	TOONGA
BULMAN	REEVES	RIGG	TAYLOR	AZEEZ	OSBORNE (26)	AKINFENWA (54)	ELLIOTT (72)	KENNEDY	FRANCOMB	McDONNELL	TOONGA
BULMAN ②	REEVES	FRANCOMB	AKINFENWA	TAYLOR ②	FRANCOMB (39)	ELLIOTT (77)	KENNEDY	AZEEZ	OSBORNE	McDONNELL	TOONGA
BULMAN	REEVES	FRANCOMB	TAYLOR ①	AZEEZ ①	ELLIOTT (73)	AZEEZ (84)	KENNEDY	BEERE	OSBORNE	McDONNELL	TOONGA
BULMAN	REEVES	FRANCOMB	TAYLOR ①	AZEEZ	KENNEDY (21)	ELLIOTT (64) ①	TOONGA (86)	BEERE	AJAYI	McDONNELL	KAJA
BULMAN	REEVES	KENNEDY ①	ELLIOTT	TAYLOR	AKINFENWA (60)	ELLIOTT (83)	TOONGA (90+2)	SWEENEY	McDONNELL	GALLAGHER	KAJA
BULMAN	REEVES	FRANCOMB	TAYLOR	AZEEZ	TOONGA (68)	AZEEZ (69)	BEERE (77)	SWEENEY	McDONNELL	GALLAGHER	KAJA
BULMAN	REEVES	FRANCOMB	TAYLOR	AZEEZ	AKINFENWA (60)	KENNEDY (82)	BEERE	McDONNELL	GALLAGHER	KAJA	TOONGA
BULMAN	TOONGA	FRANCOMB	AKINFENWA	TAYLOR	AZEEZ (62) ①	KENNEDY (62)	ELLIOTT (62)	BEERE	SWEENEY	McDONNELL	KAJA
BULMAN	REEVES	FRANCOMB	AKINFENWA	TAYLOR	RIGG (69)	ELLIOTT (75)	AZEEZ (81)	SWEENEY	McDONNELL	KAJA	TOONGA
BULMAN	REEVES	FRANCOMB	AKINFENWA ①	TAYLOR	AZEEZ (71)	ELLIOTT (81)	KENNEDY	SWEENEY	McDONNELL	KAJA	TOONGA
BULMAN	REEVES	FRANCOMB ①	AKINFENWA	TAYLOR	AZEEZ (59)	ELLIOTT (74)	FITZPATRICK	SWEENEY	McDONNELL	KAJA	TOONGA
BULMAN	TOONGA	FRANCOMB	AZEEZ	TAYLOR ②	AKINFENWA (35)	ELLIOTT (70)	FITZPATRICK (78)	KENNEDY	RIGG	SWEENEY	McDONNELL
BULMAN	REEVES	FRANCOMB	AKINFENWA	TAYLOR	ELLIOTT (74)	KENNEDY (81)	RIGG (82)	AZEEZ	FITZPATRICK	SWEENEY	McDONNELL
BULMAN	REEVES	FRANCOMB	ELLIOTT ①	TAYLOR ①	AKINFENWA (57)	AZEEZ (69)	BARCHAM (79)	KENNEDY	FITZPATRICK	SWEENEY	McDONNELL
BULMAN	REEVES	FRANCOMB	AKINFENWA	TAYLOR ①	ELLIOTT (77)	AZEEZ (77) ①	RIGG (86)	KENNEDY	FITZPATRICK	SWEENEY	McDONNELL
BULMAN	RIGG	ELLIOTT	AKINFENWA	TAYLOR ①	KENNEDY (46)	AZEEZ (69) ①	BEERE	FITZPATRICK	SWEENEY	McDONNELL	GALLAGHER
KENNEDY	REEVES	RIGG	ELLIOTT ①	TAYLOR	AKINFENWA (76)	FITZPATRICK (78)	AZEEZ (81)	SMITH	SWEENEY	McDONNELL	—
KENNEDY	REEVES	FITZPATRICK ①	ELLIOTT ①	TAYLOR	FRANCOMB (64)	AKINFENWA (65)	AZEEZ (65)	BEERE	SMITH	SWEENEY	McDONNELL

PLAYER	APPEARANCES			GOALS			CARDS		MOTM
	LEAGUE	CUPS	TOTAL	LEAGUE	CUPS	TOTAL	Yellow	Red	
1. James SHEA	20	2	22						
2. Barry FULLER	27	3	30				6		2
3. Callum KENNEDY	6 (7)	2	8 (7)	1	1	2			1
4. Dannie BULMAN	24 (1)	2	26 (1)	3		3	1		2
5. Will NIGHTINGALE	2 (1)	2	4 (1)				1		1
6. Paul ROBINSON	28	2	30	1		1	2		3
7. George FRANCOMB	22 (3)	1 (1)	23 (4)	2		2	2		3
8. Jake REEVES	25	2	27				7		6
9. Tom ELLIOTT	12 (12)	1 (1)	13 (13)	6		6	1		2
10. Adebayo AKINFENWA	18 (9)	1	19 (9)	5		5	1		
11. Sean RIGG	13 (11)	3	16 (11)	1		1	3		
12. Jon MEADES	26 (1)	2	28 (1)	2		2	4		2
14. Adebayo AZEEZ	8 (18)	1 (2)	9 (20)	6	1	7	2		
15. George OAKLEY	– (1)		– (1)						
16. Tom BEERE	1	1 (1)	2 (1)				1		
17. Andy BARCHAM	18 (1)	1 (1)	19 (2)	4		4			4
18. Semi AJAYI	5		5				1		
18. Connor SMITH									
19. David FITZPATRICK	1 (1)	– (2)	1 (3)	1		1			
20. Ryan SWEENEY									
21. George PILBEAM									
22. Karleigh OSBORNE	21 (2)	2	23 (2)				5	1	
23. Ben HARRISON		1	1						
24. Joe McDONNELL									
25. Dan GALLAGHER		– (1)	– (1)						
26. Egli KAJA	– (2)		– (2)						
27. Callum WILSON									
28. Christian TOONGA	2 (2)	– (1)	2 (3)				1		
29. Kelle ROOS									
31. Ben WILSON	8	1	9						
33. Lyle TAYLOR	21 (4)	3	24 (4)	10	1	11	4	1	5
Own goals									

Loan players in italic Appearances as a substitute in brackets
Appearances in county cup competitions not included



GOALSCORERS

Player	Team	Goals
Jay SIMPSON	Leyton Orient	22
Matty TAYLOR	Bristol Rovers	14
Marc RICHARDS	Northampton Town	14
Barry CORR	Cambridge United	12
Jado IBEHRE	Carlisle United	12
Shaun MILLER	Morecambe	11
Lyle TAYLOR	AFC Wimbledon	10
Liam SERCOMBE	Oxford United	10
John AKINDE	Barnet	10
Josh WINDASS	Accrington Stanley	10
Tom NICHOLS	Exeter City	10
Billy KEE	Accrington Stanley	10
Kemar ROOFE	Oxford United	10

DISCIPLINE

Player	Team	Yellow	Red	Points
Andy YIADOM	Barnet	8	1	12
Christopher CLEMENTS	Mansfield Town	8	1	12
Liam NOBLE	Notts County	3	2	11
Nicky HUNT	Leyton Orient	7	1	11
Vadaine OLIVER	York City	7	1	11
Luke JOYCE	Carlisle United	3	2	11
Jason TAYLOR	Northampton Town	2	2	10
Mark ROBERTS	Cambridge United	6	1	10
Mawouna AMEVOR	Notts County	5	1	9
Bradley PRITCHARD	Leyton Orient	9	0	9
Mat GREEN	Mansfield Town	5	1	9
And 4 other players				9

FOULS

Player	Team	Fouls
Adebayo AKINFENWA	AFC Wimbledon	66
Matt GREEN	Mansfield Town	65
Matt HARROLD	Crawley Town	60
John AKINDE	Barnet	50
Barry CORR	Cambridge United	50

The points totals for discipline are based on four points for a red card and one for a yellow.

WE'RE MAKING FOOTBALL LEAGUE BETTING BETTER



MORE MARKETS
ON YOUR TEAM THAN ANY OTHER BOOKMAKER

ARE YOU IN?
skybet.com/FL72

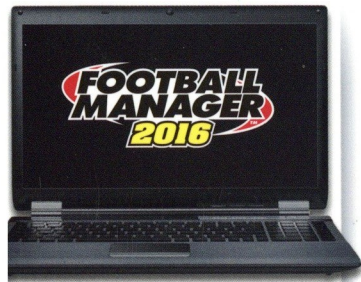
18+ only. Terms and conditions apply. More Markets refers to Outright Markets, comparison made using Oddschecker. For more information visit skybet.com/FL72. GAMBLE RESPONSIBLY. FOR MORE INFORMATION VISIT WWW.GAMBLEAWARE.CO.UK

FOOTBALL MANAGERTM

*We discover the stars before they shine
Getting them ready to cross that white line
We choose the tactics, we improve our squads
Using everything we've got to defy the odds
We handle the media, we make the subs
and impress with our knowledge, post-match, in the pubs*

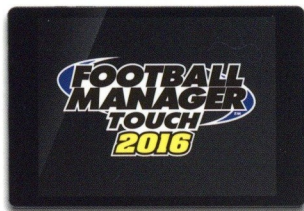
#WEARETHEMANAGERS

COME JOIN US



The full experience giving managers total control

OUT NOW
for PC, Mac, Linux



For managers who prefer a fast-paced experience

OUT NOW
for PC, Mac, Linux,
high-end tablets



The quickest way to manage on the go

OUT NOW
for iOS, Android, Amazon



WWW.FOOTBALLMANAGER.COM



© Sports Interactive Limited 2015. Published by SEGA Publishing Europe Limited. Developed by Sports Interactive Limited. SEGA and the SEGA logo are either registered trademarks or trademarks of SEGA Holdings Co., Ltd. or its affiliates. SEGA is registered in the U.S. Patent and Trademark Office. Football Manager, the Football Manager logo, Sports Interactive and the Sports Interactive logo are either registered trademarks or trademarks of Sports Interactive Limited. All rights reserved. All other company names, brand names and logos are property of their respective owners. © 2015 Valve Corporation. Steam and the Steam logo are trademarks and/or registered trademarks of Valve Corporation in the U.S. and/or other countries. Apple and the Apple logo are trademarks of Apple Inc. registered in the U.S. and other countries. App Store is a service mark of Apple Inc. Google Play is a trademark of Google Inc.

SEGA[®]