

THE "LUTON NEWS"

PRICE

1d.

Football Handbook

1914-15.

'RYTO' (Saves Pounds)

21a, New Bedford Rd., Luton.

FOR ALL THE WORLD'S
BEST CYCLES from £3 - 12 - 6 to £12 - 12 - 0
Cash or E. P.

Motor Cycles - from £23

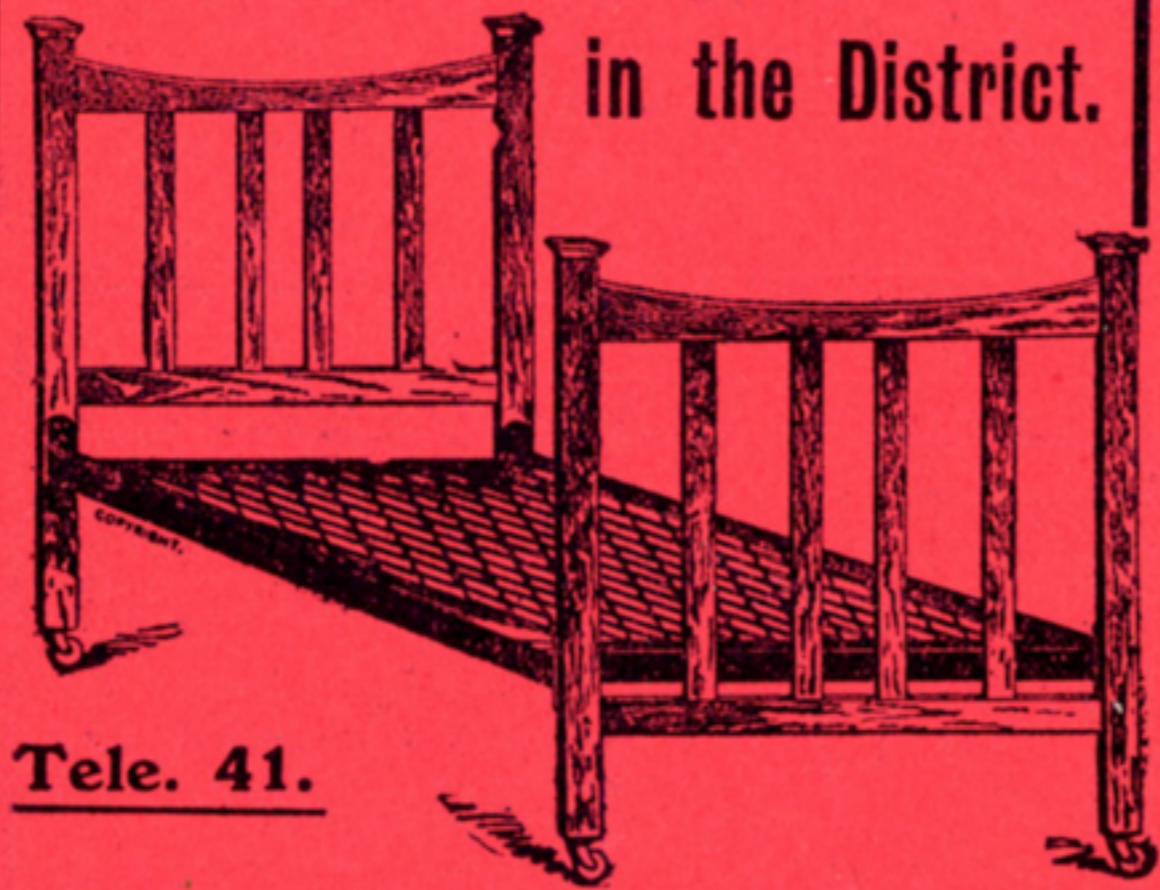
(Matchless, J.A.P. and other makes)

Small Cars & Tradesmen's Delivery Vans, £130

ANY MAKE MOTOR CYCLE OR CAR SUPPLIED.
EASY PAYMENTS ARRANGED.

Cheapest House Furnishers

in the District.



Tele. 41.

J. WEBDALE & SONS

LTD.,

Wellington Street,

LUTON.

BACK TO DIVISION I.

AFTER two Seasons in the Second Division of the Southern League, Luton are back once more in the First Division. Promotion was well earned, the Town being equal with Croydon Common on points, though not so good in goal average. By the way, it was inferiority in goal average that brought the Town down three seasons ago. Luton were one of the very first clubs to join the Southern League, and there has been a chorus of welcome on their return to the "upper circle." It is to be hoped that Luton will remain there.

Financially, the Directors have no cause to complain of their experience in the Second Division, as at the end of the period the Club (who, of course, like the other English Clubs, received a subsidy for Welsh trips) was in a stronger position monetarily than when it was relegated. But from the playing point of view no one—least of all any of the footballers who have had experience of some of the Welsh grounds—desires to renew the acquaintanceship with Division II.

This season the Directors have returned to the policy of running a reserve team and have therefore secured admission to the South-Eastern League, from which they retired when they dropped from the First Division of the Southern League and dispensed with a reserve team. The travelling expenses in connection with both Leagues will not be any more than those of last year, but the wage bill will be considerably greater, and the Club will need support through thick and thin. Most of the promotion winning team have been re-engaged. Their enthusiasm is already known. Much is also hoped for from the new men. May Luton never again be in danger of relegation.

CRUSADER.

CLUB OFFICIALS.

Directors:

H. ARNOLD (Chairman),
W. SOPER, W. J. ALLEN, E. GIBBS, F. J. CRICK, HUGH
WOODS, J. SQUIRES, H. SMART, E. MOUSE.

Secretary:

CHAS. GREEN, 73, Hazelbury Crescent, Luton.

Telephone 155. _____

GET IT AT
ALEXANDER'S

29a, 31 & 33,
Wellington Street,
LUTON.

Drapers, Dressmakers & Furriers

LADIES MAY RELY ON OUR
Dressmaking Department

For the Latest Styles and Perfect Fit.

AUTUMN NOVELTIES

ARRIVING DAILY.

Furs a Speciality

CONSULT US ON THESE GOODS.

Men who have played for Luton

Since it adopted Professionalism.

1891-2. J. Burley; Sanders, Hoy; Wright, Paul, Taylor, E. H. Lomax; F. K. Whitby, Deacon, C. Lomax, Ocee, H. Whitby, Chesher.

1892-3. Burley, T. Read; Sanders, Hoy, George, Wilson; Wright, Julian, Taylor, Watkins; Brown, Chesher, Allen, H. and F. Whitby, Barbour, Galbraith, J. McKenzie, Kirk.

1893-4. Bee; Chesher, Wilson, C. Reed; Watkins, Julian, Taylor; H. Whitby, Allen, Galbraith, Finlayson, Vickers, J. Dimmock, Brown, Hayes.

1894-5. Bee; Chesher, M. D. Nicholson, McEwen, Watkins, McCrindle, Howe, Collins; Brown, Gallacher, Galbraith, Prentice, Allen, Dimmock, Jack.

1895-6. Jack Russell, Williams; Stirton, M. D. Nicholson, McCartney, McEwen; Watkins, Stewart, Docherty; Gallacher, Finlayson, Galbraith, Parkinson, Birch, Ekins, Coupar, Dimmock.

1896-7. Williams; Davies, McCartney, McEwen; Perrins, Stewart, Docherty, Watkins; Gallacher, Finlayson, McInnes, Galbraith, Birch, Coupar, Ekins, Dimmock, Brown.

1897-8. Williams; McCartney, McEwen; Davies, Stewart, Docherty, Perrins; Gallacher, Coupar, Birch, Clarke, Donaldson, Little, McInnes, Ekins, Durrant.

1898-9. Perkins; H. Williams, Moore, Dow; C. Ford, Clark, Sharp, Crump; Durrant, Hewitt, W. Ford, Kemplay, Draper, McInnes, Brock, Ekins.

1899-1900. Daw; Dow, McCurdy; Morrison, Stewart, Brown, Williams, Rally; Inglis, Brock, Fairgrieve, Draper, McInnes, Eckford.

1900-1. Monks, Ord; Lindsay, McCurdy; Clifford, Holdstock, Williams, Cox; Brown, Blessington, Molyneux, Burbage, Dempsey, Tierney, Saxton, Durrant.

1901-2. Ord; Lindsay, Sharp, Street; F. Hawkes, White, Williams, R. Hawkes; Durrant, Blessington, Brown, Barker, Tierney, Colvin.

1902-3. Frail; Lindsay, Sharp, Hood; F. Hawkes, White, Williams, R. Hawkes; Durrant, Blessington, Hilsdon, Moody, Davidson, Gall, Allsopp.

FREEMAN, HARDY & WILLIS

LTD.

ARE STYLE LEADERS

IN THE MOST FASHION-
ABLE OF LADIES',
GENTS'
AND CHILDREN'S

Smart
Footwear



Football
Boots

4/11½ to 8/11 NEWEST SHAPES, BEST
VALUE IN THE WORLD.

Local Address:

38 George Street,
LUTON.

1903-4. Thompson; Bennett, McEwen; F. Hawkes, White, R. Hawkes, Williams; Durrant, Eaton, McKee, Storey, Moody, Allsopp, Griffiths, Madden.

1904-5. Lindsay; Turner, McEwen, J. Dow; F. Hawkes, White, R. Hawkes, Pritchard, Willams; Eaton, Ross, Lamberton, Penman, Moody, Wallace, Barnes.

1905-6. Platt; Blackett, McCurdy, J. Dow, Else, Watkins; F. Hawkes, White, R. Hawkes, Gallacher; Warner, Macdonald, Brown, E. Dobson, Pickering, Barnes, Latheron.

1906-7. Platt; Hogg, Jackson, McCurdy; F. Hawkes, White, R. Hawkes, Jones, Gallacher; Warner, Schofield, Macdonald, Brown, Murphy, E. Dobson, Gittins, Pickering, Barnes, Fitzpatrick, Latheron.

1907-8. Platt, Jarvis; Hogg, Nicholson, Dimmock, McCurdy; F. Hawkes, Jones, White, R. Hawkes; Rankin, Walders, Rigate, Hall, Brown, Pearson, Farrant, Moody, Latheron.

1908-9. Platt, Jarvis; Dimmock, McCurdy, Gregory, Chapman; F. Hawkes, Jones, R. M. Hawkes, White; Brown, Rigate, Haycock, Menzies, Bradley, Stansfield, Moody, Johnson.

1909-10. Jarvis, Fry; Hedley, McCurdy, Chapman, Rayner, Ruffett, Potts, F. Hawkes, Jones, R. M. Hawkes, Slennett, Trueman; Brown, Quinn, Smith, Moody, Stansfield, Johnson, Divine, Moore, Porter, Schofield.

1910-11. Naisby, Jarvis; Wightman, Chapman, Potts, Webb, J. Ashton, C. Watson; F. Hawkes, Bushell, R. M. Hawkes, Johnson; Brown, Quinn, Walker, Smith, Stephenson, Moody, Lashbrooke, Stansfield.

1911-12. Naisby; Wightman, Potts, Ashton, A. Brown; F. Hawkes, Bushell, R. M. Hawkes; Brown, Walker, Stephenson, Moody, Stansfield, Johnson, Shepherd, Walden, Lashbrooke, Streeton.

1912-13. J. W. Day, R. Abbott, H. Bateman; C. G. Henderson, E. J. Potts, J. Jarvie; F. Hawkes, S. Thompson, T. T. Wilson, R. M. Hawkes; J. Stephenson, A. Wileman, W. Smith, J. Murphy, B. Holland, T. Streeton, A. Worth.

1913-14. J. T. Mitchell, R. Abbott; J. R. Elvey, J. Robinson, J. Jarvie; F. Hawkes, R. W. Frith, R. M. Hawkes, T. T. Wilson; M. Donaghy, E. Stevens, A. F. Durrant, A. Wileman, E. Simms, R. Brewis, F. Rollinson, J. Wilkie, S. Hoar.

The "Luton News" for Football Reports.

Harry Parsons,

— AT —
Your Service



Whether you
are in need of

Football

OR

Sports

Attire,

OR

Everyday

Wearing

Apparel,

you are sure of
**PERSONAL
SERVICE**

AND

Best Value

by calling at

Suits to
measure

A Speciality.

18, Manchester Street, Luton.

Bedfordshire County Senior Cup.

The County Competition was commenced in Season 1894-5, and the trophy was presented to the Association by Samuel Whitbread, Esq., M.P. for Bedford; S. H. Whitbread, Esq., M.P. for South Beds; and G. W. Russell, Esq., M.P. for North Beds.

Season.

CUP WINNERS.

- 1894-5. Luton Montrose bt. Luton Reserves at Luton.
1895-6. Dunstable Town bt. Luton Excelsiors, 4-1, at Luton.
1896-7. Luton Reserves bt. Dunstable Town 7-0 at Luton.
1897-8. Luton Falcon bt. Bedford Queens, 1-0, at Luton.
1898-9. Luton Reserves bt. Bedford Queens, at Bedford.
1899-00. Bedford Montrose bt. Bedford Queens, at Bedford.
1900-1. Luton Reserves bt. Arlesey Town, 4-0, at Luton.
1901-2. Luton Reserves bt. Luton Amateurs, 3-0, at Luton, after a drawn game, 2-2.
1902-3. Biggleswade bt. Luton Clarence, 3-1, at Biggleswade.
1903-4. Luton Reserves bt. Luton Clarence, 3-2, at Luton.
1904-5. Luton Clarence bt. Luton Amateurs, 2-1, at Luton, after a drawn game, 2-2.
1905-6. Luton Reserves bt. Arlesey, 3-2, at Arlesey.
1906-7. Luton Clarence bt. Luton Celtic, 2-1, at Luton.
1907-8. Biggleswade bt. Luton Celtic, 4-2, at Biggleswade.
1908-9. Kempston Rovers bt. Luton Clarence, 2-0, at Biggleswade, after an abandoned game at Bedford, when the Clarence were leading 2-1.
1909-10. Luton Clarence bt. Leighton Town, 5-0, at Luton.
1910-11. Luton Clarence bt. Bedford Town, 5-0, at Bedford.
1911-12. Luton Clarence bt. Bedford Town, 4-1, at Luton.
1912-13. Luton Crusaders bt. Luton Reliance, 2-1, at Luton.
1913-14. Luton Clarence bt. Luton Albion, 2-0, at Luton.

J. T. Jeffs & Sons

15
Manchester
Street.

THE
SHOPS
FOR
REPAIRS

41
Wellington
Street.

AND

WATCHES, JEWELLERY,
:: :: CLOCKS, ETC., :: ::

OF STERLING WORTH.

ALWAYS SOMETHING NEW AND INTERESTING.

Depots for "BELL" Lever Watches. English throughout.
High Grade Movement. Eleven Jewels, 50/-. Three
years' warranty.

The "LUTON" Lever. Keyless, smart in appearance and
perfect timekeeper, 30/-. Three years' warranty.

The "JEWEL" Keyless Watch at 12/6 is the best Ladies'
Watch at the price. :: Watches of every description.

*Large and varied Stock of Up-to-Date JEWELLERY,
CLOCKS, &c.*

Addresses { 41, WELLINGTON ST. } Phone No.
{ 15, MANCHESTER ST. } 533.



J. T. MITCHELL

Has become a great favourite with the followers of the Luton Town Club, because of his consistently brilliant goalkeeping last season. He commenced his football career at the age of 17 with Darnall Bible Class, Sheffield. His first professional club was Thorpe Hesley, and his display attracted the attention of Sheffield United, who signed him on. After five years with them he came to Luton just before the beginning of last season. His figure on the transfer list was £250, but after considerable negotiation it was agreed that Luton should pay a smaller sum and the United will have an interest if he is transferred. Mitchell is absolutely fearless in his play, and many times last season he saved by taking the ball right off the toe of an opponent. He is 25 years of age, stands 5ft. 11in., and weighs about 12 stone.

F. L.
HARWOOD,

THE KENILWORTH
Stationery & Tobacco Stores,
Dunstable Road, Luton,

FOR
POSTCARDS. Local Views, Fancy and
Birthday.

STATIONERY. Good Value in Note-
papers, Writing Pads, etc.

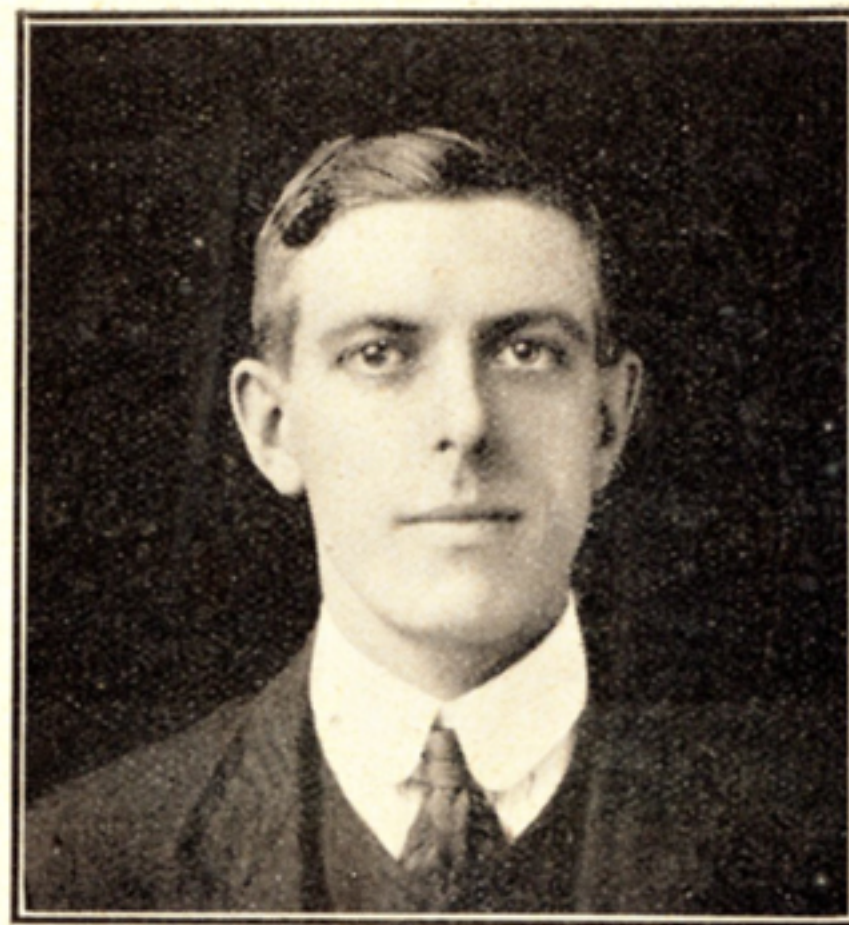
FANCY GOODS. Leather, China, and
Photo Frames, etc.

BOOKS. 6d. and 7d. Novels. Good range of
Newest Volumes, etc.

TOBACCO. Cigars & Cigarettes,
large and choice selection always in Stock.

Playing Cards, Games and Toys,
Etc., Etc.

NEWSPAPERS AND MAGAZINES
... PROMPTLY DELIVERED.



R. ABBOTT

Is a goalkeeper of local production. He was born in Luton and after two seasons with the Albion he assisted Bedford Town for part of a season. Luton Town then obtained his signature as an amateur. He played for the County in the final when Bedfordshire won the Southern Counties' Amateur Championship. Last season he became a professional for Luton and showed capital form when he took the place of Mitchell, who was injured in the Cup-tie against South Shields. Abbott played against Aberdare, Newport (home and away on Christmas Day and Boxing Day), Croydon Common (on the following day), Caerphilly, Coventry, and Cardiff. Abbott is just under 6 ft., and weighs 11 stone.

SMART
OVERCOATS
and **SUITS,**

*Made exactly to your measure in all
the Newest Materials from*

25/-

ASK FOR PATTERNS.

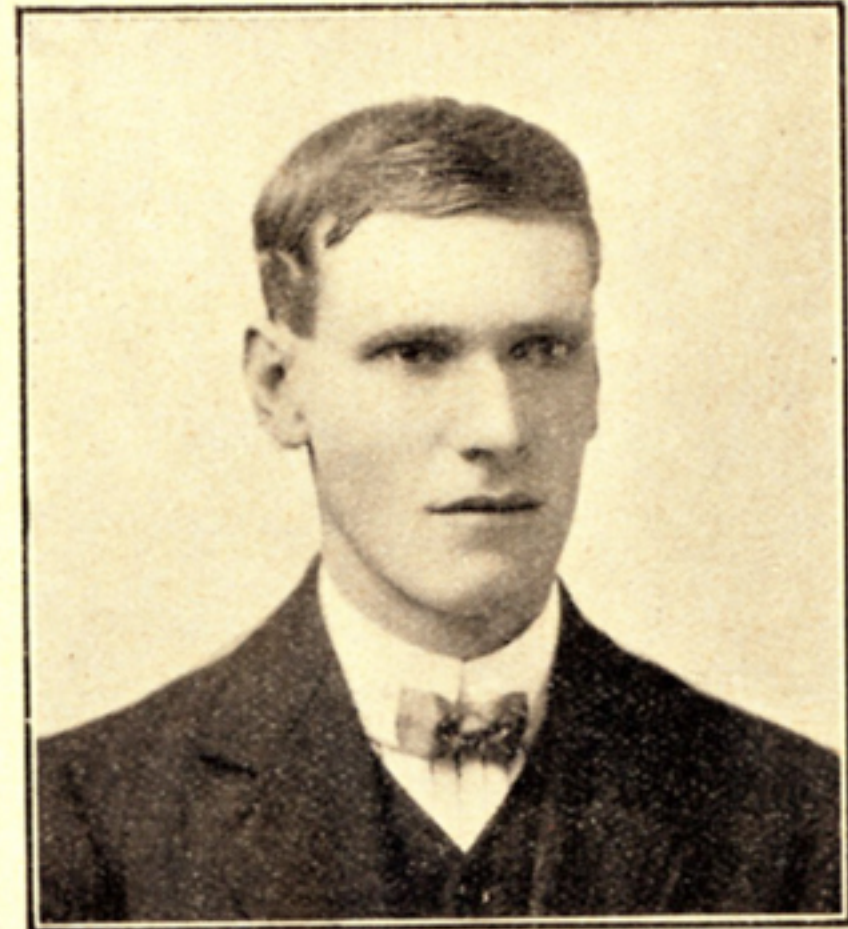
Foster Brothers

CLOTHING COMPANY, Ltd.

TAILORS AND JUVENILE OUTFITTERS,

22, Market Place,

LUTON.



J. R. ELVEY

Is a promising young back, well known to local footballers. He comes from Leagrave. After playing for Dunstable-road School, Luton, he assisted Leagrave for two years, and then joined Luton Clarence, with whom he played three seasons (two as captain). He regularly represented Bedfordshire, and has played for the Southern Counties against London. He became a professional at the beginning of last season, when he signed for the Town. Although not very sturdy-looking for a back, he never funks, and his capital steady play earned him a regular place in the team. Even greater success is wished him this year. Elvey is not quite 22, weighs 11 stone 3 lbs., and stands 5 ft. 9 ins.

E. PRIDMORE

Jeweller and
Tobacconist,

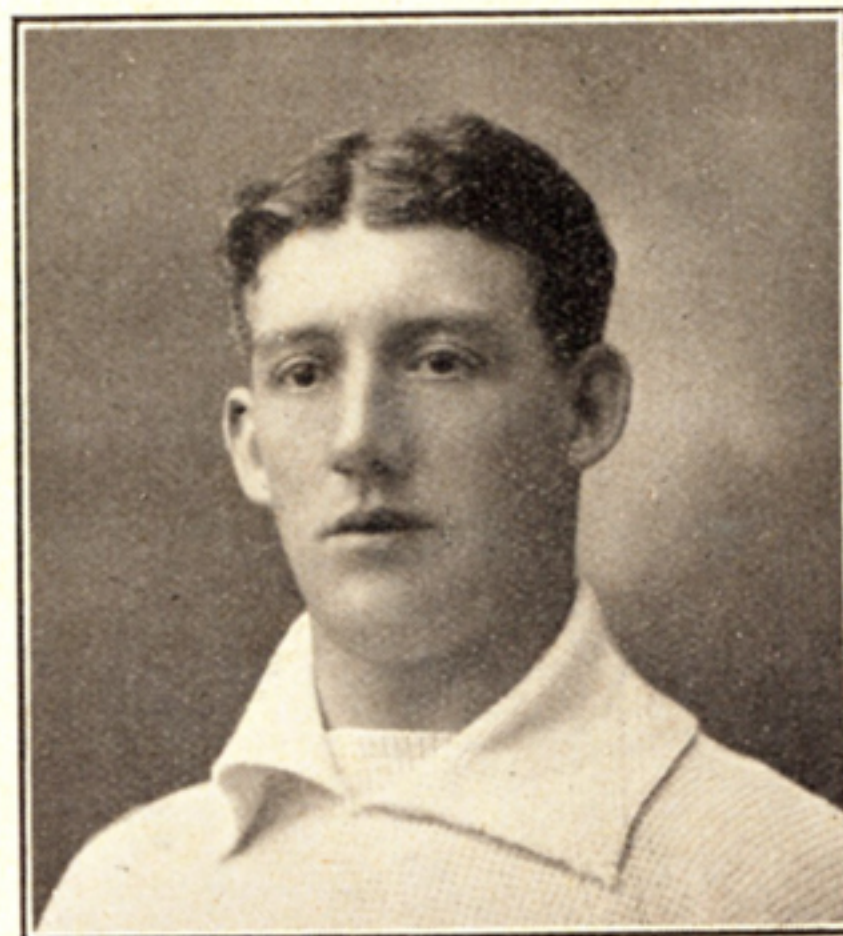
HAS A LARGE ASSORTMENT OF

**PIPES, POUCHES and all
SMOKERS' REQUISITES.**

Watch Repairs

A SPECIALITY.

**CHAPEL STREET,
LUTON.**



JOHN DUNN

Comes to Luton from Leeds City. He is spoken of as a young back of considerable promise. He captained Eccles Borough in 1912-13, when they won the championship of the First Division of the Lancashire Combination. Altogether he has served three years with them. Last season he was transferred to Leeds City. Dunn is 22 years of age, standing 5 ft. 10½ ins., and weighing 12½ stone.

HALLETT'S **COMMERCIAL HOTEL,**

(Proprietor:—F. A. HALLETT)

Formerly the 'THRIFT' DINING ROOMS,
Stuart Street, LUTON.

DINNERS AND TEAS

A SPECIALITY.

Football Parties

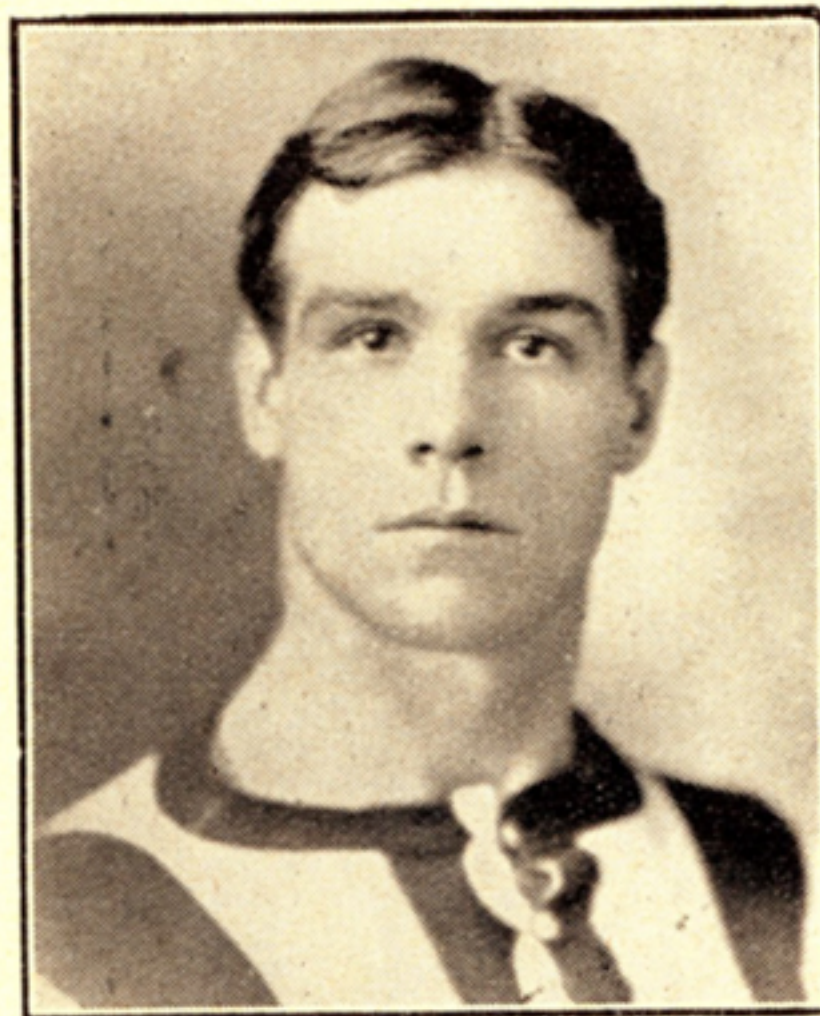
CATERED FOR. VERY MODERATE TERMS.

GOOD ACCOMMODATION FOR CYCLISTS.

TOBACCO, CIGARS & CIGARETTES IN STOCK.

LARGE ROOM for SOCIALS, DINNERS, Etc.

Terms on application.



JAMES ROBINSON

Is another of the men retained from last season. Like Mitchell, he came to Luton from Sheffield United, with whom he had previously played for two seasons. In the first few months here he did not show his best form, but when called upon suddenly to take the place of Elvey in the Cup-tie with Croydon he performed splendidly. A few weeks later, Jarvie was not available, and Robinson came in again, and his play was of such a good standard that he ensured his continuance in the position. During the latter part of the season he improved wonderfully. A feature of his play is his powerful kicking. Robinson is 25 years of age, 5 ft. 10½ in. in height, and 12 stone in weight.

H. ROSEN

Is always ready and willing
— to advance —

£5 to £1,000

— PROMPTLY AND PRIVATELY TO —
PROFESSIONAL GENTLEMEN, DOCTORS,
CLERGYMEN, TRADESMEN, FARMERS
AND RESPECTABLE HOUSEHOLDERS
GENERALLY, WHO ARE NOT MINORS,
IN ANY PART OF THE UNITED KINGDOM,
ON THEIR OWN SIMPLE PROMISSORY
NOTE, WITHOUT SURETIES OR ANY
OTHER SECURITY, REPAYABLE IN ONE
— SUM OR BY INSTALMENTS. —

All enquires and communications treated in strict confidence.

LETTERS REPLIED TO AT ONCE.

Call or write:—

H. ROSEN,
25, Cheapside, LUTON.



E. J. POTTS

Will be familiar to most Luton football followers, though he was not with the Town Club last season. He first came into prominence as an amateur with Tufnell Park, and holds twenty-seven medals for various football competitions including the London Junior Cup and the Middlesex Junior Cup. He left Tufnell Park to become a professional for Luton, for whom he played four seasons. He was then—last season—signed on by Croydon Common but is now once more back in the ranks of his old club. Potts is a left back and has always played in the rear division. Standing 5ft. 7in. in height he weighs 11st. 4lbs.

STANLEY WELCH,

BOOKSELLER, STATIONER,
— NEWSAGENT, —

51^D. Stuart Street, Luton

(5 Doors from Wellington St.)

SPECIAL QUOTATIONS FOR QUANTITIES
TRY US FOR GIFT AND PRIZE ORDERS
ANY BOOK not in Stock PROMPTLY OBTAINED
NOVELS at 4½d., 6d., 7d., 1/-, 2/-, etc.
LARGE STOCK OF BEST LINES
EARLY DELIVERY of all MORNING PAPERS
YOU SHOULD GIVE US A TRIAL.

WE APPRECIATE YOUR ENQUIRIES
EVERY ATTENTION given to YOUR ORDERS
LOCAL and all other kinds of POST CARDS
Cheapest House for Postcard & Autograph Albums
HOLIDAY GUIDE BOOKS, Etc., Etc.



Photo by] **FRED HAWKES** [Mr. W. Harold Cox, Luton.

Like the local chairman, "needs no introduction." As is the case with Bob Hawkes—to whom, it has to be stated, he is no relation whatever—he has been associated with Luton all his life, though the season before last Chelsea had designs upon him. His experience as a forward has been of great value to him as a half-back, and not only to him, but to the players in front of him. He is a very consistent footballer. This is his 12th season with Luton. Fred is 5 ft. 8½ins. in height, and weighs a little over 11 stone.

Footballs! Footballs!

Footballs!

JOHN UNWIN

82, High Town Road,

LUTON,

Who is the Local Agent for FRANK SUGG'S Football
:: Material, has an unrivalled Selection of Football ::
Requisites in stock.

Football King	-	-	} <i>AT</i> <i>CURRENT</i> <i>CATALOGUE</i> <i>PRICES.</i>
League Ball	-	-	
The City	-	-	
The Bloomer	-	-	
The United	-	-	
The Centre Half	-	-	
The Klynker	-	-	
School League	-	-	
Junior League	-	-	
National	-	-	
Bladders	-	-	
Goal Nets	-	-	
Boys' Footballs	-	-	

FOOTBALLS LET OUT ON HIRE.

Jerseys, Shirts, Knickers, Boots, Shinguards,

A SPECIALITY.

**WHY SEND AWAY WHEN YOU CAN GET THE SAME
ARTICLES IN THE TOWN AND SAVE CARRIAGE ?**



R. W. FRITH

Is a centre-half who has it in him to make a name for himself. Last season was his first with Luton, to whom he came after three seasons with Derby County, following one with Sheffield United. In his first matches at Luton he hardly came up to expectations, but the Directors persevered with him on the advice of those who recommended him. This proved a wise policy, and Frith developed to such an extent that he became an outstanding player. In defensive work he was brilliant. Many a time he frustrated the other side by doubling towards goal and making himself a third back. He also improved in attack, not as a goal-scoring half, but as one who helped others to score. Frith is 22 years of age, 5 ft. 11 in. in height, and 12 stone in weight.

**FOOTBALL
PARTIES**

Specially
Catered
for.

✠

COSY CORNER Cafe

**Dinners,
Teas,
Suppers.**

**Private
Dining
Room
For Parties.**

COSY CORNER Cafe

✠

Next
to
Palace Theatre,
MILL ST.,
—LUTON.—

Proprietors: **SIMMONDS & Co.**



E. G. NEEDHAM

Is one of this season's new men, and is a nephew of Ernest Needham, the old Sheffield player. Luton's new half-back began his career at inside left for Staveley Parish Church, and scored 46 goals: In the following season he went half-back, and was afterwards signed by Sheffield United, for whom he played regularly for three seasons with the Reserves at left half. Once he assisted the first team in a League game against Notts County. Last season he joined Staveley Town, who finished fourth in the Derbyshire League and also won the Bayley Cup. Needham is 22 years of age, 5 ft. 7½ ins. in height, and weighs about 11½ stone.

— W. F. —
BOOTES

Watchmaker, Jeweller,
and Silversmith. :: ::



The Shop for Lucky Wedding
and Engagement Rings in 9,
18 and 22 carat Gold. All
sizes kept in stock. :: :: ::

THE CELEBRATED

Waltham Watches

AT ALL PRICES,

In Gold, Silver and Gold Filled
Five Years' Warranty Given.



15, GUILDFORD STREET, LUTON.



Photo by] **R. M. HAWKES** [Mr. W. Harold Cox, Luton.

Is a name celebrated in football, and one which will always be associated with what is best and most honourable in the game. "Bob," as he is familiarly known, was born at Breachwood Green, near Luton, and for several seasons captained Hertfordshire in the Counties' Amateur Championship. Many big clubs would have given a lot to have had his services, but he remained loyal to Luton, for whom for years he played as an amateur. He has taken part in a great number of amateur Internationals, and in 1907 played for England against Ireland. It was not until 1911-12 he became a professional. Bob, who has taken part in the Olympic games and played football in every country where it is played, is very brainy at the game. Some of his movements are a sheer delight to watch. In height he is 5 ft. 8½ ins., and in weight he is 10 st. 8 lbs.

IF YOU SHOULD CATCH COLD

:: WATCHING THE MATCH ::

ONE BOTTLE OF

— DR. BROWNE'S —

Influenza Mixture

WILL PUT YOU RIGHT.

Per **1/6** Bottle.



FORTIFY YOURSELF AGAINST
ALL WEATHERS BY TAKING

“FOSFO,”

The Tonic that Invigorates and Strengthens,

Per **1/6** Bottle.



H. E. COCKER,

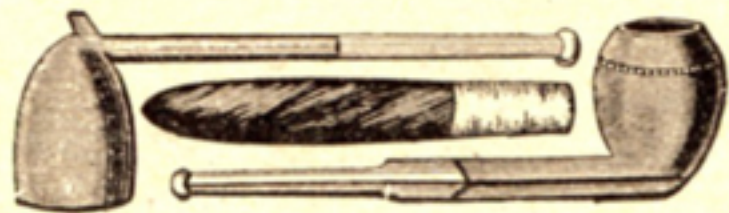
Post Office Pharmacy, **DUNSTABLE ROAD &
KENILWORTH ROAD,**

LUTON.



H. P. ROBERTS

Is one of the new outside-rights. While he was playing for them, Port Sunlight won the Wirral Cup. All the goals for Port Sunlight in each of the five rounds were scored by Roberts, who also netted the two in the final. During his four seasons with Leeds City he played about 100 consecutive Second League matches. He was their regular outside right, and right up to the latter part of the season before last, when he left them to help Scunthorpe, he was never relegated to the reserve team. In his last match for Leeds he scored the winning goal for them at Notts Forest. Last season and a part of the previous one he was with Scunthorpe, and did them splendid service. Roberts, who has several times been reserve to Meredith for the Internationals, is about 25, 5 ft. 7 ins., and 10 stone.



Chas. BARKER,

16, Manchester Street,

LUTON,

**Wholesale and Retail
TOBACCONIST**

PUBLICANS AND THE TRADE SUPPLIED.

Chas. Barker's Cigars

Are the Footballers' Friend.



R. N. MACFARLANE

Is the other fresh outside right. He started with Wallsend Elm Villa at the age of 15, and at outside right in their reserve team scored 17 goals in 16 matches. Getting his place at inside right, in the first eleven, he obtained 12 goals in 19 matches. His team won the League. Macfarlane next joined Willington Athletic, but had only played four games for them when he was invited to sign for Everton. As he was but 18 years old, and had half of his apprenticeship as a blacksmith to complete, he did not welcome the idea. Eventually, however, he agreed. At the end of the season he was offered terms to stay, but as work at his trade was not found for him, he returned to finish his apprenticeship. He then played for Tyneside clubs, his team last season being Hebburn Argyle. Macfarlane is 21 years of age, 5 ft. 9 ins. in height, and weighs 11 st. 6 lbs.

16/1/15 Watford F 1-1

Luton Town F.C. First XI. Fixtures, 1914-15.

1914.				GOALS.		Read the "Luton News" for Football Reports.	1915.				
DATE.		OPPONENTS.		FOR	AG'ST.		DATE.		OPPONENTS.		FOR
Sept.	2	Wed. ..	Southampton .. A	3	3	Jan.	2	Sat. ..	Plymouth .. A	3	3
"	5	Sat. ..	Plymouth .. H	2	1	"	9	" ..	F. A. Cup <i>Saints</i> .. A	0	3
"	9	Wed. ..	Southampton .. H	0	2	"	16	" ..	West Ham <i>10/3/15</i> .. H	1	2
"	12	Sat. ..	West Ham .. A	0	3	"	23	" ..	Norwich City .. A	1	3
"	16	Wed. ..	Queen's Park Rangers H	2	4	"	30	" ..	Gillingham .. H	3	1
"	19	Sat. ..	Norwich City .. H	1	1	Feb.	6	" ..	Brighton .. A	1	9
"	26	" ..	Gillingham .. A	4	2	"	13	" ..	Cardiff City .. H	2	1
"	30	Wed. ..	Reading .. H	1	2	"	20	" ..	Exeter City .. A	2	1
Oct.	3	Sat. ..	Brighton .. H	0	1	"	27	" ..	Crystal Palace .. H	1	2
"	10	" ..	Cardiff City .. A	0	3	Mar.	6	" ..	Portsmouth .. H	0	2
"	14	Wed. ..	Bristol Rovers .. H	3	1	"	13	" ..	Swindon .. A	2	4
"	17	Sat. ..	Exeter City .. H	0	2	"	20	" ..	Southend .. H	3	4
"	24	" ..	Crystal Palace .. A	3	2	"	27	" ..	Queen's Park Rangers A	3	0
"	31	" ..	Portsmouth .. A	3	3	Apl.	2	<i>Good Friday</i>	Watford .. A	4	2
Nov.	4	Wed. ..	Watford (Sth. C. Cup) H	2	0	"	3	Sat. ..	Millwall .. A	2	2
"	7	Sat. ..	Swindon .. H	2	0	"	5	<i>Easter Mon.</i>	Watford .. H	0	2
"	14	" ..	Southend .. A	0	1	"	10	Sat. ..	Bristol Rovers .. A	0	1
"	21	" ..	F. A. Cup <i>Yarmouth</i> .. H	1	0	"	17	" ..	Croydon Common .. H	2	1
"	28	" ..	Millwall <i>Yarmouth</i> .. H	0	0	"	24	" ..	Reading .. A	0	4
Dec.	5	" ..	F. A. Cup <i>Oxford</i> .. H	1	0						
"	12	" ..	Croydon Common .. A	1	1						
"	19	" ..	F. A. Cup <i>Bromley</i> .. H	1	1						
"	25	<i>Xmas Day</i>	Northampton .. H	1	1						
"	26	<i>Boxing Day</i>	Northampton .. A	3	0						

Best
Football
Reports.

The Luton News

ADVERTISERS! PLEASE NOTE THESE FIGURES.

Guaranteed Net Weekly Sale,

15,754 Copies.

STORE YOUR CYCLE
AND HAVE
YOUR TEA AT THE SAME PLACE



A GOOD PLAIN TEA for **6^{d.}**

YOUR CYCLE STORED UNDER
COVER AT THE OLD SPOT for **2^{d.}**

Note Address:

T. J. WEBB,

Baker and Confectioner,

197, Dunstable Road, Luton,

Close to Ground.



A. WILEMAN

Commences his third season with Luton. Those who had watched his play since his connection with the Club were glad to hear he was re-signed. His brilliant drives from the inside right position are not merely spectacular. They are deadly. Last season he was second in the list of goal-scorers, having netted 33, of which 27 were in Southern League matches. With his brother, he started with Newhall Swifts, South Derbyshire. They both went to Burton United, and afterwards to Chelsea. His brother subsequently joined Southend, but Arthur went to Millwall and then Luton. He is 25 years of age, stands 5 ft. 7 in., and weighs 11 stone.

Before the Match,

DINNER.



After the Match,

TEA.



After the Pictures,

SUPPER.



Whether it is Dinner, Tea or Supper, the
Best, most convenient and
most comfortable place is

DUMPLETON'S RESTAURANT

Bute Street, Luton.

LEADING LINES of TOBACCO, CIGARS & CIGARETTES.

Football Parties Catered for.



E. SIMMS

Proved himself last season to be the right sort of man as a centre-forward for Southern League Second Division football, and it is naturally hoped that he will now show himself equally effective against First Division opponents. He has a very direct and fearless style. Last season he was top scorer, with 37 goals, of which 28 were obtained in the Southern League. His previous teams were Murton Colliery and Barnsley. Simms is 22 years of age, 5 ft. 9 ins. in height, and 11 st. 10 lbs. in weight.

— LUTON'S —
Premier Tailor.

(Over 40 years in Wellington St.)

**GIVE HIM A TRIAL.
SATISFACTION ASSURED.**

**FAIR PLAY -
BEST VALUE Always.**



**Luton's
Fashion
Centre
For
Men.**



W. LACEY & SON

CITY TAILORS & OUTFITTERS,

**14 WELLINGTON STREET
LUTON.**



F. ROLLINSON

Is a skilful player, whose form last season with Luton justifies his retention. He scored 32 goals, but that was by no means the sum total of his work. His passing to the other men was frequently very near perfection, and his unselfish style considerably helped the team as a whole. Unlike some players, he does his work without at the same time trying to impress upon everyone how clever he is. Rollinson, who is a native of Sheffield, played six seasons for the Wednesday and two for Portsmouth before coming to Luton. He is 26 years of age, 5 ft. 8½ ins. in height, and 11½ stone in weight.

W. BELL,
THE Tailor,
1889.

W. BELL,
THE Tailor,
1914.

"NUFF SED."

'Phone
22 y 3.



Photo by] **J. CHIPPERFIELD** [Mr. W. Harold Cox, Luton
Is one of the two left-wing men who have learnt their football locally. Born in London, he was brought to Luton at an early age. Like Elvey, he first played for Dunstable Road Schools. He is a mechanic at the Commercial Car works, and played for their team until joining the Clarence, whom he has assisted during the past two seasons. When about 17 years old, he played for Luton Town Reserves against Tottenham Reserves and West Ham Reserves. The season before last, from inside left, he did the hat trick for Luton against Newport in the Southern League, and scored one of the goals at Cardiff in the Southern Alliance. Last season he did not play for Luton, but assisted the Clarence. He has just recently embraced professionalism, but wisely decides to remain at his trade. He is a level-headed youth of considerable promise. Aged 20, he stands 5 ft. 8½ ins., and weighs 10 st. 10 lbs.



Do You Play

Football

?

Oh yes!

Then the
best place
to get your

FOOTBALL

BOOTS

IS AT

E. WILLIAMS,
 **15, PARK SQUARE, LUTON**

He holds a very big stock, all Regulation Patterns,
as sanctioned by the Football Association.



Photo by] **S. HOAR** [Mr. W. Harold Cox, Luton.

Is another local of promise. Starting with Leagrave Juniors, he passed on to Toddington, and was with Harlington for half a season before signing for the Clarence. It was while with the last-named that he came into prominence. He was signed by the Town Club in January as a professional, and his fine play at outside left enabled him to keep his position. His centres are beautifully judged. With further experience he should develop considerably. Hoar is 20 years of age next November. He stands 5 ft. 8 ins. in height, and weighs about 9 st. 7 lbs.

The Well-Known
For . . .

Clock House

Tele. 21 x 5.

FOOTBALL

Boots.



Agents for the Well-known "CERT BRAND."

PUBLIC BENEFIT BOOT Co.

— Also —
ST. ALBANS.

Park Square, Luton.



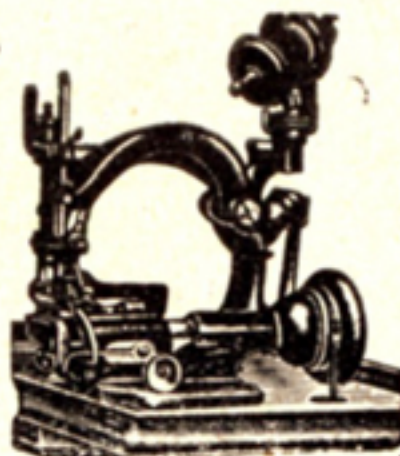
Photo by] **F. LINDLEY.** [Mr. W. Harold Cox, Luton. Was born at Sheffield, but his first well-known clubs were Dundee and Motherwell. After playing for them regularly at outside left he was signed by Sheffield United two seasons ago. Last season he was with Newport County, and assisted them in all their four matches against Luton. His favourite position is outside-left, but while with Newport he also proved a good centre-forward. He is 24 years of age, stands 5 ft. 9 in. and weighs 11 st.

W. FROST,

ENGINEER & MACHINIST,

28, Collingdon St.,

LUTON.

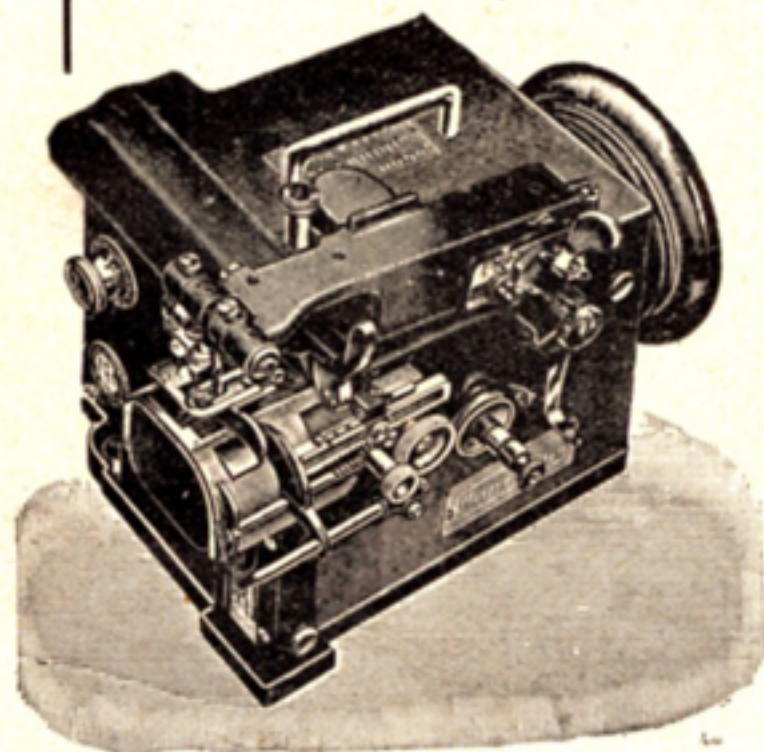


"Dresdensia."

AGENT FOR THE CELEBRATED

'Lutonia & Dresdensia'

STRAW HAT MACHINES.



"Lutonia."

Lowest
Prices.

Cash or
Easy
Payments.

Luton Town F.C. Reserve Fixtures, 1914-15.

				Goals - For	Agst.
Sept.	1	Tues.	Brentford ...	H	
"	5	Sat.	West Ham ...	A	
"	7	Mon.	Brentford ..	A	
"	12	Sat.	West Ham ...	H	
"	19	"	Boscombe ...	A	
"	24	Thur.	Norwich City ...	A	
"	26	Sat.	Gillingham ...	H	
Oct.	1	Thur.	Arsenal ...	A	
"	3	Sat.	Brighton ..	A	
"	7	Wed.	Portsmouth ...	H	
"	10	Sat.	Cardiff City ...	H	
"	17	"	Tottenham Hotspur ...	A	
"	21	Wed.	Portsmouth ...	A	
"	24	Sat.	Bristol City ...	H	
"	29	Thur.	Chelsea ...	A	
"	31	Sat.	"	"	
Nov.	7	"	Swindon ...	A	
"	14	"	Southend ...	H	
"	19	Thur.	Fulham ...	A	
"	21	Sat.	Queen's Park Rangers ...	A	
"	28	"	"	"	
Dec.	5	"	Clapton Orient ...	A	
"	12	"	Croydon Common ..	H	
"	19	"	"	"	
"	Xmas Day	"	Southampton ...	A	
Box. Day,	Dec 26	"	Southampton ...	H	
Dec.	28	Mon.	Fulham ...	H	
Jan.	2	Sat.	"	"	
"	9	"	Chelsea ...	H	
"	16	"	"	"	
"	23	"	Norwich City ...	H	
"	30	"	Gillingham ...	A	
Feb.	6	"	Brighton ...	H	
"	13	"	Cardiff City ...	A	
"	20	"	Tottenham Hotspur ...	H	
"	27	"	Bristol City ...	A	
Mar.	3	Wed.	Arsenal ...	H	
"	6	Sat.	Southend ...	A	
"	13	"	Swindon ...	H	
"	20	"	"	"	
"	24	Wed.	Reading ...	A	
"	27	Sat.	Queen's Park Rangers ...	H	
Good Fri	Apr. 2	"	Watford ...	H	
April 3	Sat.	"	"	"	
Easter Mon.	"	"	Watford ...	A	
Easter Tues.	"	"	Clapton Orient ...	H	
April 10	Sat.	"	Boscombe...	H	
"	17	"	Croydon Common ...	A	
"	24	"	Reading ...	H	

Headquarters of
LUTON FOOTBALL SUPPORTERS' CLUB,
LUTON & DISTRICT FOOTBALL LEAGUE

AND ALL OTHER
Organized Sports Clubs in the District.

EDWARDS' RESTAURANT

Manchester St., LUTON.

THE BEST KNOWN HOUSE IN LUTON.

**Football Parties,
Dinners & Socials**

— Specially Catered for. —

Good Accommodation for Cyclists.

EVERYTHING OF THE BEST QUALITY.

"Have TEA at EDWARDS"



LUTON TOWN FOOTBALL SUPPORTERS' CLUB.

Headquarters: Edwards' Restaurant, Manchester Street. *Meeting Night:* Tuesday.
President: Ald. A. Wilkinon. *Vice-Presidents:* C. Harmsworth, Esq., M.P., J. O. Hickman, Esq.,
A. A. Oakley, Esq., Rev. E. B. Mahon. *Treasurer:* Mr. F. J. Crick.
Committee: Messrs J. Ashby, W. Burgess, H. Corley, T. Day, E. Dillingham, P. Edwards, C. Elvey,
A. Flitton, R. Fuller, F. Hunt, J. Jenkins, E. Mouse, G. E. Pilkington, A. Robinson, W. Stanley,
C. Stokes, A. Tearle, S. Vanschagan, G. E. M. Walker, J. Wilding, S. Wilkinon, J. Woorall.
Hon. Sec: Mr. P. Brightman, 67, Collingdon St. *Assist. Hon. Secs.:* Messrs. P. Crick and W. Stanley.

NEW HUDSON CYCLE CO.

LIMITED

(LLOYD, PARTRIDGE & Co.)

FOOTBALL SPECIALISTS.

Club Secretaries and all Footballers!



Please get our FOOTBALL CATALOGUE. Examine our Goods and note our Prices.

QUALITY Right!! PRICES Unbeatable!!

Lists Post Free.

New Hudson Cycle Co., Ltd.

(Lloyd, Partridge & Co.)

CHAPEL ST., Luton.

ENGLISH CUP DRAW.

Preliminary Round, Sept. 26th.—Luton Amateur v. Enfield, Luton Clarence v. Tufnell Spartan.

First Round, Oct. 10th.—Luton Reliance v. Barnet and Alston or Wealdstone, Chesham Generals or Hitchin Union Jack v. Luton Clarence or Tufnell Spartan, Page Green Old Boys v. Luton Amateur or Enfield.

Bedfordshire Football Association.

SEASON 1914-15.

THE Bedfordshire Association still continues to make steady progress. The number of affiliated clubs and competitions last season reached a record figure—149. During the coming season it is expected that the 150 mark will be well passed. The County Senior Cup again found a resting place in Luton, the Clarence winning the trophy for the sixth time. It is a significant fact, too, that all the semi-finalists were Luton clubs. The County Junior Cup attracted no less than fifty-four entries. A Luton club—the Rosedale—reached the final, but they were beaten by Langford, and the cup for the second time was won by a Biggleswade League club.

The officers of the Association are:—

President: Mr. E. Lyonel Finch, 8, Clarendon road, Bedford.

Vice-Presidents: Mr. J. H. Scott, 121, Hitchin road, Luton, and Mr. M. A. Barber, 86, Midland road, Bedford.

Hon. Sec. and Treas.: Mr. Albert E. Ansell, 79, Havelock road, Luton.

Auditors: Mr. G. W. Walker, Luton, and Mr. H. Eaton, Bedford.

Executive Council: Mr. E. Wood, Biggleswade; Mr. E. Humphreys, 35, Commercial road, Bedford; Mr. E. Day, Avondale road, Luton; Mr. C. Green, 73, Hazelbury Crescent, Luton; Mr. F. Drage, 120, Dudley-street, Bedford; Mr. T. Bunker, Rosebery-avenue, Linslade, Leighton Buzzard; Mr. S. Kilby, 57, Tavistock-street, Luton.

— THE —
FOOTBALL GROUND

is only a short distance from the
**Leading Temperance Hotel
 and Restaurant, i.e.,**

The Franklin

THE MOST UP-TO-DATE RESTAURANT
 IN THE TOWN.

Front of the Town Hall,
GEORGE STREET, LUTON.

* * *

The Best of Refreshments.
 Splendid Accommodation.
 Visiting Teams well Catered for.
 Prices very Moderate.

This House is well-known and Specially
 Recommended.

HARRY JONES, Proprietor.

LIST OF AFFILIATED CLUBS.

- Amphill Town.** A Wm. D. Dillingham, Arthur-st. B Amphill Park and Station-rd. C Old George. D Green Jerseys.
- Arlesey Juniors.** A H. L. Papworth, High-st. B Arlesey Bury. C The White Horse. D Navy and Sky Blue.
- Aspley Guise.** A H. F. Fryer, Mount Pleasant.
- Aspley Guise and Woburn Sands Stars.** A H. Glassman, Chapel-st. Woburn Sands. B Station-rd. C Swan Hotel. D Red Jerseys.
- Barton Rovers.** A C. V. Ward, Beta Cottage, Manor-rd. B Luton-rd. C Coach and Horses. D Black and White Stripes.
- Bedford Albion.** A S. Harris, 87, Coventry-rd, Queen's Park. D Black and White Stripes.
- Bedford Amalgamated.** A W. H. Rayner, 18, Silver-st. B Russell Park. D Black and White.
- Bedford Adams Juniors.** A Fred W. Beart, 39, Ombersley-rd. B Bedford Park and Russell Park. D Light and Dark Blue.
- Bedford Celtic.** A E. J. Brewer, 12, Eastville-rd. B Russell Park. C On ground. D Green and White Stripes.
- Bedford Church Cadets.** A T. G. Gunnell, 111, Hurst Grove. B Biddenham. D Dark and Light Blue.
- Bedford Clarence (Thursday).** A F. West, 20, Argyll-st.
- Bedford East Anglian Royal Engineers.** A L. H. Course, 32, Ford End-rd. B Russell Park. C On ground. D Red and Blue Stripes.
- Bedford Falcon.** A W. Tysoe, 18, Greenhill-st. B Ford End-rd. D Red and White Stripes.
- Bedford Lynton Works.** A C. C. Crouch, 11, Churchville-rd. B Russell Park. D Red Jerseys.
- Bedford Melrose.** A F. G. Cooper, 10, Britannia Place. B Russell Park or Bedford Park. C On ground. D Black and White Stripes.
- Bedford Victoria.** A F. Rayner, 29, Wellington-st.
- Bedford Queen's Park United (Thursday).** A B. Yoxen, 65, York-st. B Bedford Park or Russell Park. D Claret and Sky.
- Bedford Queen's Juniors.** A W. A. Gregory, 100, Hurst Grove. D Blue and White.
- Bedford Russell Park Rangers.** A Cecil H. Martin, 64, Bower-st. B Russell Park. D Black and Amber.
- Bedford Southend Athletic.** A J. W. Dunkley, 11, Millbrook-rd. B Bedford Park or Russell Park. D Claret.
- Bedford Town.** A E. W. Taylor, 108, Howbury-st. B Ford End-rd. C Horse and Groom. D Red.
- Bedford United.** A T. Parker, 70, Cauldwell-st. B Russell Park. C On ground. D Blue and White Stripes.
- Biddenham United.** A A. H. Burton, Biddenham, Bedford. B Biddenham. C Three Tuns, Biddenham. D Black and Amber.
- Biggleswade and District.** A Wm. Albon, Shortmead-st., Biggleswade. B Fairfield Meadow. C The Swan Hotel. D Green.
- Biggleswade Victorias.** A Tom Ferguson, Livery Stables, Market-sq. B Hitchin-st. D Black and White.

For
Rainy
Days.



For
Summer
Evenings

"His Master's Voice"

GRAMOPHONE.

The Instrument that brings the
world's greatest artistes to your
home. From

£4 to £100.

Sole Agents:

S. Farmer & Co.

2, Wellington Street, Luton.

Also Sole Agents for

The Pianola Piano.

- Bolnhurst.** A H. Whitmore, Bolnhurst, St. Neots.
Bromham United. A J. T. Grandey, School House, Bromham, Bedford.
Carlton. A A. E. Stote, Harrold, Sharnbrook.
Clapham. A T. W. Jones, Clapham, Bedford. B Ley's Field. D Blue and White.
Clophill. A S. Matthews, High-st., Clophill, Ampthill.
Cranfield. A S. White, High-st., Cranfield, Woburn Sands.
Dunstable Clarence. A S. Walker, Fairholme, St. Peter's-rd. B Bull Pond Lane. D Red and White Stripes.
Dunstable Town. A A. G. Dumbleton, 6, Winfield-st. B Bull Pond Lane. C Nag's Head. D Green and White Stripes.
Dunstable Waterlow's Athletic. A R. Ratcliff, 10, Waterlow-rd. B Nr. L. & N.W. Station. C On ground. D Red and Black.
Eaton Bray United. A F. Proctor, Bower Lane, Eaton Bray, nr. Dunstable. B Village Green. D Claret and Light Blue.
Eaton Socon. A A. McKechnie, Eaton Socon, St. Neots. B Eaton Ford. C Rose and Crown. D Yellow and Black.
Eaton Socon United. A A. G. Smith, 11, Brewery Cottages, Eaton Socon, St. Neots.
Felmersham United. A R. B. Turner, Felmersham, Sharnbrook. B Stafford's Field, Radwell. C The Swan. D Black and Amber.
Flitwick. A H. R. Gailer, Station-rd, Flitwick, Ampthill. B Recreation ground. C Swan Inn. D Red.
Goldington. A J. Ashworth, The "Swan," Goldington, Bedford. B The Green. C Swan Inn. D Dark Green.
Great Barford and District. A W. T. Moor, Great Barford, Sandy. D Red and Black.
Greenfield and Pulloxhill. A J. Russell, The Chequers, Pulloxhill, Ampthill. C The Chequers. D Navy and White Jerseys.
Harrold United. A E. Clayson, Berry Cottage, Little Odell, Sharnbrook. B Church Field. D Claret and Sky Blue.
Henlow. A C. C. Handley, High-st. B Henlow Park. C Five Bells. D Sky Blue and Navy.
Heath United. A A. Miles, The Poplars, Heath, Leighton Buzzard. B Handpost Field. D Black and Red.
Holwell. A H. Baines, Holwell, Hitchin. B Bury Field. D Navy and Sky Stripes.
Houghton Regis. A C. Dudley, 3, King-st., Dunstable. B The Green. C The Crown Inn. D Green and Gold Stripes.
Kempston Rovers. A F. W. Smith, 46, King-st. B Newells Lane. C Half Moon. D Red and White Stripes.
Kempston Springfield Rangers. A J. Vine, 4, Little Dale-rd. B Park-rd Field. D Dark and Light Blue.
Kempston Thursday. A W. A. Riddy, 134, Bedford-rd. B Little Dale-st. D Black and Amber.
Kempston St. Johns. A F. Horner, 282, Bedford-rd. B "Boot Inn" Field. D Light and Dark Blue Stripes.
Kempston Wesleyan Juniors. A F. Greenaway, 53, Stuart-st.
Langford. A T. Rogers, The Leys, Langford. C Wrestlers Inn. D Red.
Leagrave Rangers. A W. Draper, 7, Norton-rd. D Black and White.
Leighton Albion. A F. Palmer, Vandyke-rd.

Make Sure of Using the
HARDINGE

(The well-known Footballer)

FOOTBALL

THIS SEASON!

As used by many League Clubs and in last year's

SEMI-FINAL

ASTON VILLA v. LIVERPOOL.

Please write for our complete FOOTBALL
CATALOGUE. Free on application to

JOHN WISDEN & Co., Ltd.

23, Cranbourn Street

(Next to Leicester Square Tube Station),

Leicester Square, London, W.C.

- Leighton Silver Stars.** A J. Clements, Mill-rd. D Blue and White.
Leighton Templar Guild. A H. H. Theobalds, 46, Ashwell-st. B Page's Park, Billington-rd. C The Challenge Restaurant. D Blue and White.
Leighton Thursday. A W. J. Dimmock, 23, Market-sq. B Lake-st. C Golden Bell. D Blue and Yellow.
Leighton Town. A A. Kempster, 22, Back-st. B Lake-st. C Challenge Restaurant, North-st. D Claret and Amber.
Luton Albion. A J. Hall, Talbot-rd. B Pope's Meadow. C On ground. D Green.
Luton Amateur. A A. Gilder, 35, Moor-st. B "The Dell," Old Bedford-road. D White.
Luton Argyle. A J. Tacchi, Manor-rd.
Luton Bailey Hill Brotherhood. A F. Holdstock, 22, South-rd.
Luton Brown & Green's Athletic. A H. Barrett, 22, Chiltern Rise.
Luton Celtic Athletic. A F. Turvey, 37, Windsor-st.
Luton Celtic (Wednesday). B Pope's Meadow. C On ground. D Amber and Blue.
Luton Christ Church Insitute. A L. G. Berrett, 12, Kenilworth-rd. B Winsdon Hill. D Dark Blue.
Luton Clarence. A S. Kilby, 57, Tavistock-st. B Stockingstone-rd. C On ground. D Black and White Stripes.
Luton Commercial Cars. A D. T. Dockrill, 20, Havelock-rd. D Green and White.
Luton Co-operative Athletic (Wednesday). A C. S. Emerton, 95, Hitchin-rd. D Royal and White.
Luton Corinthians. B Pollard's Meadow, Old Bedford-rd. C On ground. D Royal Blue and White.
Luton Crusaders. A A. Pease, 6, Charles-st. B "Klondyke," Old Bedford-rd. C St. Matthew's Schools. D Light and Dark Blue.
Luton C.W.S. Cocoa Works. A C. Chipperfield, 194, Dunstable-rd. B Pollard's Meadow, Old Bedford-rd. C On ground. D Claret and Gold.
Luton Davis Athletic. A W. Hammett, 82, Grange-rd. B Dunstable-rd. nr. Laundry. C On ground. D Black and White, and Red and White.
Luton E.A.R.E. A F. H. Raynes, Tennyson-rd.
Luton Excelsior. A V. Tompkins, 31, Frederic-st.
Luton Falcon. A J. Dean, 24, Regent-st. B Pope's Meadow, Old Bedford-rd. C On ground. D Royal Blue.
Luton Granville United. A F. G. Ansell, 219, Hitchin-rd. B Pope's Meadow, Old Bedford-rd. C On ground. D Black and White Stripes
Luton Hoo. A H. Cresswell, The Garden, Luton Hoo. B Luton Hoo Park. D Black and Amber.
Luton Imperials. A G. Inskip, 28, Lnydhurst-rd. B Faunch's Meadow, Old Bedford-rd. C On ground. D White.
Luton Ivydale. A W. Preece, 207, North-st.
Luton Kenilworth Rangers. A A. Derbyshire, 50, Salisbury-rd. B The Moor. D Blue and Yellow.
Luton Kent's Athletic. A B. W. Willisson, 32, Spencer-rd. B Half-way Meadow, Dunstable-rd. C On ground. D White.

Players or Spectators

CAN BE FITTED UP FOR SEASON 1914-15

IN A STYLE WHICH GUARANTEES

SATISFACTION.



Jerseys, Shirts
and Knickers,
Football Stockings,
—&c.
Rainproof Coats,
Overcoats, and
Mackintoshes,
Smart Tailor-made
Winter Suits.

HARRY INWOOD,

The Smart Tailor and Outfitter,

CHAPEL STREET & STUART STREET, Luton.

Luton Midland Athletic. A B. Clarke, 225, Hitchin-rd. D Light Blue.
Luton Midland Railway Athletic. A H. Plasom, 5, Stockwood Crescent.
B Pollard's Meadow, Old Bedford-rd. C On ground. D Black and
White Stripes.

Luton Montrose. A T. Goddard, Stuart-st.

Luton Phoenix. A E. F. Dimmock, 49, Cowper-st. B East Ward Rec.
D Black and White Stripes.

Luton Reliance. A S. G. Ward, 60, Talbot-rd. B Old Bedford-rd. C Nr.
ground.

Luton Rosedale. A O. Whittemore, 62, Chapel-st. B East Ward Rec.
C White Lion. D Dark Red and White.

Luton Rovers. A P. Biggs, 5, Gloucester-rd.

Luton Skefko Athletic. A F. Seguss, 72, Butlin-rd. B Hartop's Farm,
Limbury. D Green and White Stripes.

Luton Silver Star. A S. Bonfield, 57, Ridgway-rd. B Old Bedford-rd.
C On ground. D Black and White.

Luton Social Club. A F. E. Millard, 14, Silver-st.

Luton Stanley. A S. Baldock, 5, Vernon-rd. B West Ward Rec.
D Black and White.

Luton St. Saviours. A E. Clarke, 9, Princess-st. B Stockwood Park
(Farley-road entrance). D Scarlet.

Luton Town. A C. Green, 73, Hazelbury Crescent. B Off Dunstable-rd.
C On ground.

Luton Trinity. A W. Randall, 106, Reginald-st. B Pollard's Meadow,
Old Bedford-rd. C On ground. D Navy.

Luton Unity (Wednesday). A E. J. Rattle, 9, Cheapside. B Pope's
Meadow, Old Bedford-rd. D Black and White Stripes.

Luton Vauxhall Motors Athletic. A A. J. Eyre, 70, May-st. B Round
Green. C Royal Oak. D Maroon.

Luton Victoria. A C. W. Carter, 17, Rothesay-rd. D Blue.

Luton Wednesday Hotspurs. A B. Frost, jnr., 4, Cardiff Grove.
B "The Dell," Old Bedford-rd. C On ground. D Emerald and Gold
halves.

Luton Wednesday Villa. A A. W. Anderson, 34, Highfields-rd. B Pope's
Meadow, Old Bedford-rd. C On ground. D Claret and Blue.

Luton West Ward Rangers. A R. S. Pakes, 21, Dallow-rd.

Marston Rovers. A R. Bevan, "Morteyne Arms," B Adjoining Mill-
brook Station, Ampthill.

Maulden. A C. Kirby, George-st. B Mr. Robinson's Field. D Red and
White.

Old Lutonians. A C. G. Hyde, School House, Caddington. B Winsdon.
Hills. D Red and Gold.

Old Warden. A A. Gale, Old Warden, Biggleswade.

Potton Town. A H. Lawson, Station-rd. B Recreation Ground. C Red
Lion. D Black and Red Stripes.

Sandy Albions. A H. G. Finding, St. Neots-rd. B Recreation Ground.

Sandy Juniors. A A. W. Finding, St. Neots-rd., Sandy.

Sandy Thursday. A H. G. Finding, St. Neots-rd., Sandy.

C Bricklayers Arms. D Black and White Stripes.

Shefford United. A G. Dilley. B Shefford Hardwicke. C Railway Hotel.
D Claret and Sky.

Getting Chilled is Dangerous.



Football Spectators run greater risks than players.

Damp Ground—Cold Winds.

Owbridge's Lung Tonic has been sold for 40 years, and has a **WORLD-WIDE REPUTATION.**

By checking a cold at the onset it prevents many an illness.

OF ALL CHEMISTS AND STORES. 1s. 1½d., 2s. 9d., 4s. 6d.

- Silsoe United.** A G. Burrows, 43, Wallnutt Lane, Silsoe, Ampthill.
Slip End Juniors. A S. Arnold, Front-st. B Turf Moor. D Black and White Stripes.
Southill United. A E. Bryant, Southill, Biggleswade. D Blue & White.
Steppingley. A T. Rogers, 24, Steppingley, Ampthill.
Stondon United. A J. T. Scott, Lower Stondon, Shefford. B Mr. Ruffett's Meadow. C Three Horse Shoes. D Blue and White Stripes.
Stopsley. A G. Cain, Stopsley, nr Luton. B Ramridge End. D Claret.
Stopsley Baptist. A A. Ellingham, 49, Ramridge-rd. B Badgers Dell. Old Bedford-rd. D Sky and Navy.
Stotfold. A C. E. Pinner, Asylum-rd. B High-st. C Black Lion. D Black and Amber.
Stotfold Athletic. A A. Huckle, 4, Common-rd. B Brittain's Meadow. C Coach and Horses. D Green and Scarlet.
Sundon. A H. Roberts, 50, Windsor-st. C White Hart. D Blue and White Stripes.
Three Counties Asylum. A J. Davies, Three Counties' Asylum, nr Hitchin. B Asylum Ground. D Navy.
Toddington Stars. A W. Horley, High-st. B Dunstable-rd., Toddington. C The New Inn. D Red and Amber.
Westoning Ramblers. A H. Gazeley, Cottage Farm, Westoning, Ampthill. B Bell Hotel ground. C Bell Inn. D Royal and White.
Wilstead. A C. H. Francis, Church-rd., Wilstead, Bedford.
Woburn Town. A F. E. Randall, 68, Leighton-st. B Bedford-st. C Magpie Hotel. D Claret and Sky.
Wootton Blue Cross. A R. B. Walker, Wootton, Bedford. B Cock Inn ground. C Cock Inn. D Light and Dark Blue.
Woodside United. A S. Grimsdale, 71, Cowper-st., Luton. B Slip End Recreation ground. D Red and Black Stripes.
Wyboston United. A J. Haynes, Wyboston, St. Neots.
Wymington Stars. A T. Lewis, High-st. B Mr. Harris's Field. D Sky and Navy Blue.

COUNTY MATCHES, 1913-14.

Southern Counties Championship.

v. **Hertfordshire, at Luton.**—Result, 0—0. *Team:* J. H. Bunker, W. G. Toyer, A. Webdale, and H. S. Parsons (all Clarence); F. Ashpool (Luton Trinity); B. Parris (Bedford Town); E. Rogers and J. Chipperfield (Clarence); C. Wilde (Luton Albion); W. H. Barton (Clarence), and S. Keech (Bedford Falcon).

v. **Berks and Bucks, at Chesham.**—Result, 1—1. *Team:* J. H. Bunker (Clarence); R. Healey (Trinity); S. G. Ward (Albion); A. Wright (Albion); F. Ashpool (Trinity); B. Parris (Bedford Town); G. Inwoods and B. Bliss (Amateur); T. Fensome (Trinity); J. Chipperfield and S. Hoar (Clarence).

ALEC. WATSON'S Famous "League" Football

as used by Manchester United,
Seasons 1904-5-6-7-9-10-11.

Special Quality Size 5. School size.
7/9 6/9



A high-grade quality at a medium price.

See following Testimonial—

MANCHESTER UNITED FOOTBALL GROUND,
OLD TRAFFORD,
Feb. 9th, 1911

Dear Sir,

It gives us, the undermentioned players of the Manchester United Football Club, great pleasure to testify to the excellence of the Alec. Watson "Special League" Football, which we have now used continuously in our League Matches and Cup Ties for the past 6 years.

We have found it the best of Balls for shape and wear, and could not wish to play with a better.

Yours respectfully,

Charlie Roberts
also Samuel *E. J. Ward*
Richard Dushworth *J. Horner*
Geo. Stacey *E. Ward*
J. B. F. Fisher *Alce Bell*
Anthony Bonnelly *Alce*

Jerseys, Knickers, and Stockings a Speciality. Choose your colours from A.W.'s catalogue, which contains a registered sheet of 80 coloured designs post free from

ALEC. WATSON'S "Mail Order Dept. 60"
39, Piccadilly, MANCHESTER.

and 35, Oxford Street, Manchester.

IMPORTANT DATES.

English Cup.

Qualifying Competition.		Competition Proper.	
1914. Sept. 12—	Extra Prel. Round	1915. Jan. 9—	1st Round
" 26—	Prel. Round	" 30—	2nd "
Oct. 10—	1st "	Feb. 20—	3rd "
" 24—	2nd "	Mar. 6—	4th "
Nov. 7—	3rd "	" 27—	Semi-Finals
" 21—	4th "	Apl. 24—	Final
Dec. 5—	5th "		
" 19—	6th "		

Luton Town are exempted until the Fourth Round of the Qualifying Competition. Other local clubs competing are Luton Amateur, Clarence and Reliance.

Amateur Cup.

Qualifying Competition.		Competition Proper.	
1914. Oct. 3—	1st Round.	1915. Jan. 2—	1st Round
" 17—	2nd "	" 16—	2nd "
" 31—	3rd "	Feb. 13—	3rd "
Nov. 21—	4th "	" 27—	4th "
		Mar. 13—	Semi-Finals
		Apl. 17—	Final

Beds. Senior Cup.

1914. Nov. 14—	Prel. Round	1915. Jan. 23—	2nd Round
Dec. 12—	1st "	Feb. 20—	Semi-Finals
		April 5—	Final

Beds. Junior Cup.

Qualifying Competition.		Competition Proper.	
1914. Oct. 31—	Prel. Round	1915. Feb. 6—	1st Round
Nov. 28—	1st "	Mar. 13—	Semi-Finals
Dec. 19—	2nd "	April 5—	Final

The "Luton News"

THE BEST PAPER FOR

Football Reports!

Luton Clarence Fixtures, 1914-15.

Sept. 5	Tooting AL	Away
" 12	Catford Southend AL	Home
" 19	Old Kingstonians AL	Away
" 26	Tufnell Spartan EC	Home
Oct. 3	Amateur Cup	
" 10	English Cup	
" 17	Amateur Cup	
" 24	Summerstown AL	Home
" 31	Metrogas AL	Home
Nov. 7	Hampstead Town AL	Away
" 14	Finchley AL	Home
" 21	Chelmsford AL	Away
" 28					
Dec. 5					
" 12	Hampstead Town AL	Home
" 19	Metrogas AL	Away
" 25					
" 26	Tufnell Park AL	Away
Jan. 2	Amateur Cup	
" 9	Finchley AL	Away
" 16					
" 23	Old Kingstonians AL	Home
" 30	Summerstown AL	Away
Feb. 6	Enfield AL	Home
" 13					
" 20	Chelmsford AL	Home
" 27	Enfield AL	Away
Mar. 6	Barnet and Alston AL	Away
" 13	Barnet and Alston AL	Home
" 20					
" 27	Tufnell Park AL	Home
Apr. 2	Catford Southend AL	Away
" 3					
" 5					
" 10	Tooting AL	Home

AL Athenian League.

EC English Cup.

Wolsey Underwear.

Every ounce of wool for Wolsey Underwear is specially selected for its elasticity, softness, absorbency and strength, and one of the vital reasons for specifying Wolsey as against unknown woollen garments is, that to most folk, these essentials of underwear satisfaction are very hard to recognise in underwear on the counter.

Guaranteed Unshrinkable.

- A. Medium Weight Vests (short or long sleeves) ... 4/11
Pants 4/11
- B. Winter Weight Vests (short or long sleeves) ... 5/6
Pants 5/11
- C. Winter Weight Vests or
Pants 6/11

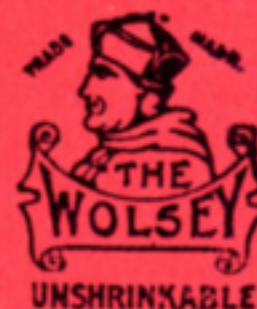


Stocked by

Blundell Bros. (Luton)
Ltd.,

Gent's Outfitters,

12, Cheapside, LUTON.



M. MARES

FOR

Football Outfits



Special Department for

ASK FOR
THE
FOOTBALL
LIST.

Football

SPECIAL
TERMS
FOR
CLUBS.

Clothing



8 & 10, George Street,

AND

187, Dunstable Road,

— LUTON. —