

PRICE ONE PENNY. ❧

THE LUTON NEWS
Football Handbook,
❧ 1902-1903. ❧

ERNEST GIBBS,
Wholesale Tobacconist and
Cigar Merchant,
Business Transfer Agent and
Valuer.

OFFICE:
19, Upper George Street, LUTON.

If you want to ❧+

BUY OR SELL A BUSINESS

call on E.G. without delay.

CYCLE, MOTOR AND
ATHLETIC OUTFITTERS.

W. A. SALE & CO.,
70, George Street, LUTON.

Telephone, 041. (Close to Town Hall).

FOOTBALL & HOCKEY GOODS.

+✕ GYMNASIUMS FITTED. ✕+

Sole Agents for the very best Cycles
and Motors in the World.

HUMBER, QUADRANT, SINGER,
PREMIER, ENFIELD, and TRIUMPH.

BABY CARRIAGE DEPÔT.

Accessories and Repairs of every
description.

STORAGE FOR CYCLES AND CARS.

The Luton Town Football Club.

A BRIEF HISTORY.

The Luton Town Football Club has now been in existence some seventeen years, having been formed by an amalgamation of the Luton Wanderers with the Luton Excelsiors. The first few years were comparatively uneventful, the Clubs with whom fixtures were carried out including Wellingborough Grammar School, St. Albans, Clapton, Old St. Paul's, London Caledonians, and others of less importance. The gate-money in 1886-7 amounted to £41 4s.; the next year it increased by about £9; and in 1889-90, the last year of pure amateurism, the gate-money advanced to £87 7s. 5d. During the next season it was found desirable to pay some of the players for time lost, and in 1891-92 the plunge into professionalism was made, the whole of the players being paid, though the amount was necessarily very small. The experiment was found to be so satisfactory, both in regard to the quality of the football and the interest evoked, that the fully-paid professional was not long in making his appearance. But the results were not entirely gratifying, for, though the gate-money rose from two figures to four, the expenses increased at an even greater rate. However, such rapid strides had been made that in 1897 Luton, aspiring to greater things, transferred from the Southern League to the Second Division of the English League. For one season, from a football point of view, they did fairly well, but financially the shackles of transfers, heavy travelling expenses, and high wages were so tight that the Club became considerably involved in debt. Want of money compelled the directors to exercise considerable economy in the engagement of players, some of whom, moreover, did not come up to expectations, and the position in the Second Division of the League getting worse, it was resolved to seek re-admission to the Southern League. This was done, and under the new conditions, Luton made a somewhat better show from a playing standpoint, securing ninth position on the League table with 24 points for 28 matches, but the financial support still left a good deal to be desired. Last season there was a still further improvement, whilst the Club obtained seventh place with 32 points for 30 matches.

UNDER NEW MANAGEMENT.

THE FRANKLIN
**Temperance Commercial
 Hotel,**
LUTON'S RESTAURANT

(Opposite the Town Hall),

GEORGE STREET.

Splendid Accommodation for
 Football Teams and Cyclists.

Hall to suit Large Parties.

— ❖ ❖ ❖ —
 ALL PROVISIONS OF THE BEST.

Hot Joints Daily from 12 till 2.

English Beef and Mutton. Prime Well-Matured
 York Hams. Chops and Steaks. Tea and
 Coffee always ready. Well appointed Beds.
 Hot Drinks, Cigars, &c. Hot Baths. Private
 Dining and Tea Rooms.

ALL AT POPULAR PRICES!

— ❖ ❖ ❖ —
 J. C. LEWIS - - Proprietor.
 A TRIAL SOLICITED.

The "Luton News"—circulates throughout South
 Bedfordshire.



JOSEPH FRAIL.

The new goalkeeper, comes with excellent recommendations, and should prove a decided acquisition to the team. He is a native of Burslem, and began his active football career with the Port Vale. Then he signed on for Glossop, where he remained two seasons, and afterwards served similar periods for Derby County, Chatham and Middlesbrough, leaving the last named club to come to Luton. Physically he is an ideal goalkeeper, for he is tall and well built, and punches the ball very powerfully. He is 28 years of age, 5ft. 11½ in. in height, and weighs 14st. 6lbs.

So much in Satisfaction, so little in Cost—

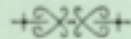
BASSETT'S

Macintoshes and Rainproof Coats in all the newest shades.

They Fit the Particular Desire—
BASSETT'S
Overcoats, Suits and Trousers.

REAL WORTH AND
REAL ECONOMY—

BASSETT'S
TAILORING.



S. BASSETT,

Tailor, Batter,

Hosier,

AND

Complete Outfitter,

28, WELLINGTON ST.,

LUTON.

The Standard which others Imitate—
The Style and Quality of
BASSETT'S
Hats, Caps, Ties, Scarves, Gloves, Mufflers.

Comfort that costs little in Wearing—

BASSETT'S

Undervests, Pants, Flannel Shirts, Cycle,
Football Hose and Half Hose.

The "Luton News"—is THE Football Paper.



WILLIAM LINDSAY.

This is Lindsay's eleventh season as a professional footballer and his third with the Luton Club. He is a native of Stockton-on-Tees. After four years' experience with his local club he signed on for Everton, and following a couple of seasons there, went to Grimsby, for which club he played three seasons. He then assisted Newcastle in their test matches, and for the next two seasons signed on and played for them regularly in their League engagements. He is a strong back, his kicking being of a very powerful order. His age is 28, his height 5ft. 10½in. and weight 12st. 8lbs.

LOOK OUT FOR THE

SPECIAL SHOW

OF

Jackets, Mantles,

AND

Autumn Dresses

AT

Alexander & Son's,

The Dress & Mantle House,

WELLINGTON STREET,

❧ LUTON. ❧

The "Luton News"—Gives best value to
Advertisers.



ALBERT SHARP,

who now enters on his second season for the Luton Club, was born 24 years ago, and his active football experience extends over seven years. As an Albanian, he naturally was first identified with the St. Albans Club, and after three seasons with them he went over to their near and dear neighbours, Watford, for whom he played another three seasons, chiefly at back, but also at half-back. He is a fearless and dashing player, and prefers the full-back position, but performs at right or left with equal facility. He is 5ft. 9½in. in height, and scales 11st. 9lbs.

FRED COOK,

Tailor, Outfitter, &c.,

1, HIGH TOWN ROAD,

LUTON.

THE RAINPROOF OVERCOATS

ARE

BETTER VALUE THAN EVER.

**F. C. is making on his Premises
a Special Pattern REGISTERED
DESIGN Overcoat. Ask to see a
Sample.**

The "Luton News"—Leads the way.



FRED HAWKES

Is a native of Luton, and if all native talent were as good we should not have to go away from home for players. As a lad he played in the Christ Church School team, and whilst with them won two medals. He was afterwards with the Stanley for a couple of seasons, and when that club became defunct joined the Reserves. Last season was his first as a regular member of the premier eleven. Whilst with the Reserves he performed at inside-right, but he was seen to greater advantage when he filled the position of right-half for the first eleven. He is 21 years of age, scales 10st. 2lbs., and is 5ft. 6½in. in height.

MOTTO:

"KEEP MOVING."

Goods Stored.



Estimates Free.

FRANCIS MERCHANT,

COMPLETE

House Furnisher

CARPET AND LINO WAREHOUSEMAN,

8 & 10, Manchester St.,*LUTON.*

See our Windows and note Quality and Price.

All Goods marked in Plain Figures.

Blinds of all kinds.

Repairs.

The "Luton News"—Gives best value to Readers.

FRED WHITE

Is a native of Dunstable. When a lad, however, he came to Luton, and at the age of fourteen was playing for the Victoria. He afterwards joined the Star, and having been with them some three seasons threw in his lot with the Reserves, with whom he remained until his promotion to the first rank. He has plenty of pluck, is an indefatigable worker, and never acknowledges defeat. His place is at centre-half. He is 22 years of age, weighs 10st. 4lbs., and is 5ft. 7in. in height.

Watches! Clocks! Jewellery!

F. C. WHITE,

31, Manchester St., Luton,

(OPPOSITE BRIDGE STREET),

FOR ALL KINDS OF

Watches, Clocks, Jewellery.

The Noted Shop for WALTHAM LEVERS.
Hundreds sold. Every satisfaction given.

Medals and Presents a Speciality.

Any Goods not in Stock procured in 12 hours.

Presentation Clocks a Speciality.

Repairs to Watches, Clocks, &c., under
own supervision, have every attention.

Watches cleaned, &c., in three days.

Waltham Levers and Luton Levers.

With Three Years' Warranty.

GOLD FILLED & SOLID CASES KEPT IN STOCK.

Note the Address — **Opposite BRIDGE STREET.**

The "Luton News"—"Wanted," 20 Words, 6d.



HARRY WILLIAMS.

Who now begins his fifth season with the Luton Club, has had a good deal of experience in the football field. As a boy of 14 he had a place in the Hitchin Team, and among other Clubs he afterwards played for were Brentford and St. Albans, whilst he also frequently had the honour of appearing in the Herts County Elevens. He is an indefatigable worker and has always been one of the most consistent members of the Luton team. His height is 5ft. 10in., and weight 11st. 9lbs.

For Wear only

IN

Boots, Snoes, Slippers, *~*
Leggings, Gaiters, &c.,

GO TO

H. LAWSON,

Wholesale and Retail Boot and
Shoe Manufacturer,

19, MANCHESTER STREET,

~ LUTON. *~*

Bespoke Orders on Shortest Notice.

Special attention given to Repairs.

BEST VALUE IN THE TOWN

IN

FOOTBALL BOOTS.

A Large Assortment of all kinds in stock.

Also made to measure at all prices.

And Players with awkward feet would do well
to give a call.



ALSO A GOOD STOCK OF FOOTBALLS
AND ACCESSORIES.

"The Luton News"—Gives best value to
Advertisers.



ROBERT HAWKES,

Or, as he is more popularly known, "Bob," is a native of Breachwood Green. He came to Luton a youngster, and during his school days played in the Higher Grade School team. He subsequently joined the Stanley, and after a rest of three or four years, threw in his lot with the Victoria, with whom he played until last year, when he joined the Reserves. Towards the end of the season he turned out on several occasions for the first team, and was so successful that the directors decided to invite him to play regularly in future. He has not consented to do this, but is willing to lend his assistance whenever possible. He usually plays at right or left half. His age is 21, height 5 ft. 8½ in. and weight 10st. 8 lbs.

Luton Town Football Club fixtures, 1902-3

FIRST ELEVEN.

Date.	Opponents.	Goals	
		For.	Agst.
Sept. 1	Brentford, S.E.L. (h)		
" 3	Watford (friendly) (a)		
" 6	Portsmouth, S.L. (a)		
" 8	Watford (friendly) (h)		
" 13	New Brompton, S.L. (h)		
" 17	Brighton and Hove, S.E.L. (a)		
" 20	Swindon, S.L. (a)		
" 27	Kettering, S.L. (h)		
Oct. 4	Millwall, S.L. (h)		
" 11	Reading, S.L. (a)		
" 18	Queen's Park Rangers, S.L. (h)		
" 25	Southampton, S.L. (a)		
Nov. 1	Third Round E.C.		
" 3	Brentford, S.E.L. (a)		
" 8	Bristol Rovers, S.L. (a)		
" 15	Fourth Round E.C.		
" 22	Watford, S.L. (a)		
" 29	Divisional Final E.C.		
Dec. 6	Tottenham Hotspur, S.L. (a)		
" 13	Intermediate Round E.C.		
" 20	Portsmouth, S.L. (h)		
" 25	Kettering (friendly) (a)		
" 26	Northampton, S.L. (h)		
" 27	New Brompton, S.L. (a)		
Jan. 1	Clapton (friendly) (a)		
" 3	Swindon, S.L. (h)		
" 10	Kettering, S.L. (a)		
" 17	Millwall, S.L. (a)		
" 24	Reading, S.L. (h)		
" 31	Queen's Park Rangers, S.L. (a)		
Feb. 7	Competition Proper E.C.		
" 14	Wellingboro', S.L. (a)		
" 21	Bristol Rovers, S.L. (h)		
" 28	Ilford (friendly) (a)		
Mar. 7	Watford, S.L. (h)		
" 14	Brentford, S.L. (a)		
" 21	Tottenham Hotspur, S.L. (h)		
" 28	West Ham, S.L. (a)		
Apl. 4	Southampton, S.L. (h)		
" 10	Kettering (friendly) (h)		
" 11	Wellingboro', S.L. (h)		
" 13	Northampton, S.L. (a)		
" 14	Brentford, S.L. (h)		
" 18	West Ham, S.L. (h)		
" 25			

17

SECOND ELEVEN.

Date.	Opponents.	Goals	
		For.	Agst.
Sept. 6	West Ham, S.E.L. (h)		
" 13	Tottenham Hotspur, S.E.L. (a)		
" 20	Chesham Generals, S.E.L. (h)		
" 27	West Ham, S.E.L. (a)		
Oct. 4	Hitchin, S.E.L. (a)		
" 11	Gray's United, S.E.L. (h)		
" 18	Queen's Park Rangers, S.E.L. (a)		
" 25	Bedford Queen's, S.E.L. (h)		
Nov. 1			
" 8	Bedford Queen's, B.L. (h)		
" 15			
" 22	Watford, S.E.L. (h)		
" 29			
Dec. 6	Brighton and Hove, S.E.L. (h)		
" 13			
" 20	St. Albans, S.E.L. (a)		
" 25			
" 26	Bedford Queen's, B.L. (a) ..		
" 27	Tottenham Hotspur, S.E.L. (h)		
Jan. 3	Luton Clarence, B.L. (a)		
" 10	Hitchin, S.E.L. (h)		
" 17	Beds Cup		
" 24	Gray's United, S.E.L. (a) ..		
" 31	Queen's Park Rangers, S.E.L. (h)		
Feb. 7			
" 14	Beds Cup		
" 21			
" 28	St. Albans, S.E.L. (h)		
Mar. 7	Watford, S.E.L. (a)		
" 14	Luton Clarence, B.L. (h) ..		
" 21	Leighton Cee Springs, B.L. (a)		
" 28	Leighton Cee Springs, B.L. (h)		
Apl. 4			
" 10	Bedford Queen's, S.E.L. (a)		
" 11			
" 13	Beds Cup final		
" 14			
" 18			
" 25	Chesham Generals, S.E.L. (a)		

Howitt's Flowers.

WREATHS, CROSSES,
SHOWER BOUQUETS & POSIES

Howitt's BULBS.

Ask for Catalogue and see our Prices before
ordering out of Town.

Howitt's Fruit Trees.

Carefully
Selected **ROSES.**

A Large Assortment of Best Varieties.

Ornamental Trees and Shrubs.

E. HOWITT & SONS,

Wellington Street & Stuart Street,

*Nurseries at
DUNSTABLE.*

LUTON.

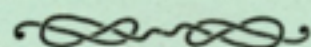
The "Luton News"—"For Sales," 20 words, 6d.



JACK DURRANT.

A local player, who has during the last four or five years played almost regularly for the Town Club, is 23 years of age. As a youngster he attracted attention in the Waller-street Higher Grade School team, and on three occasions he obtained a place in a team representative of the Schoolboys' League. He played for the Luton Stanley before signing on for Luton Town. He now performs at outside right, and on his day would be very hard to beat. He is 5ft. 9in. in height, and weighs 10st. 5 lbs.

G. TREASURE,
GENERAL
House Furnisher



Prams and Mail Carts,
in all the Latest Designs.



Fancy Wicker and Baby Chairs, &c.
Bedsteads and Bedding.

Agent for White's Sewing Machines

Cycles, Sewing Machines and Prams
Let Out on Hire.

Repairs Promptly Executed.



43, Cheapside, LUTON.

The "Luton News." Largest circulation in the County.

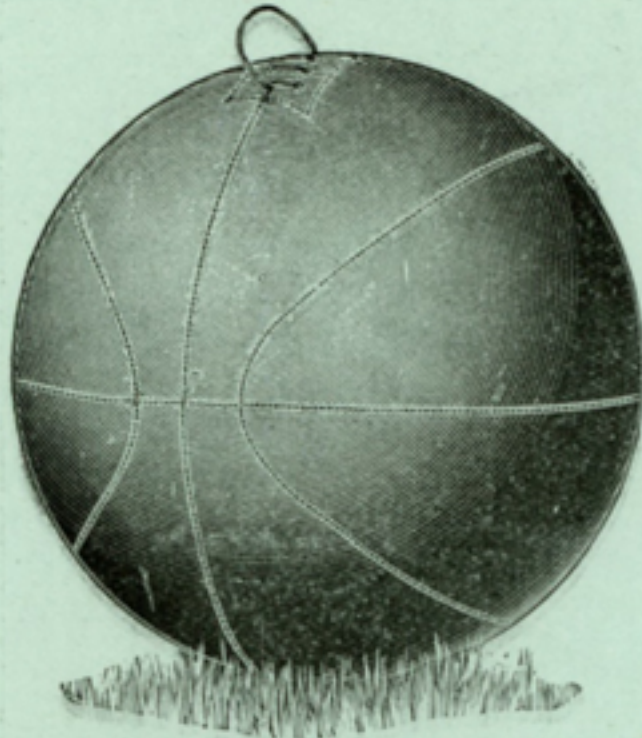


JAMES BLESSINGTON,

Who came to Luton from Bristol City, is a Scotchman with a splendid record. Born in 1874 at Linlithgow, he is now 28 years of age, stands 5ft. 7ins. in height, and scales 12st. 3 lbs. His first appearance of any note in the football world was for Leith Athletic, and in the following season he was with the Celtic. He remained with them six years, and during that time they won the Scottish League Championship four times. He played twice for Scotland against England, has appeared twice in inter-League matches, and on five different occasions played in International matches against Ireland. From Glasgow he migrated to Preston North End, and about the middle of his second season with them was signed on by Derby County. He next played with Bristol City, and for the past two seasons with Luton, proving himself to be a very capable inside-right.

LLOYD, PARTRIDGE & CO., Athletic Outfitters.

EVERY BALL GUARANTEED.



FINEST COWHIDE AND BEST
WORKMANSHIP.

The "DIADEM" FOOTBALL (Reg.)

Used regularly by Sheffield United and many
noted Clubs. 10s. 6d. complete.

OTHER FOOTBALLS, 3s. 6d., 4s. 3d., 4s. 6d.,
5s. 3d., 5s. 6d., 6s. 6d., 7s. 6d., 8s. 11d.,
and 9s. 6d.

INFLATORS, 1s. 5d., 1s. 9d., 2s. 3d., 3s. 6d.,
4s. 6d.

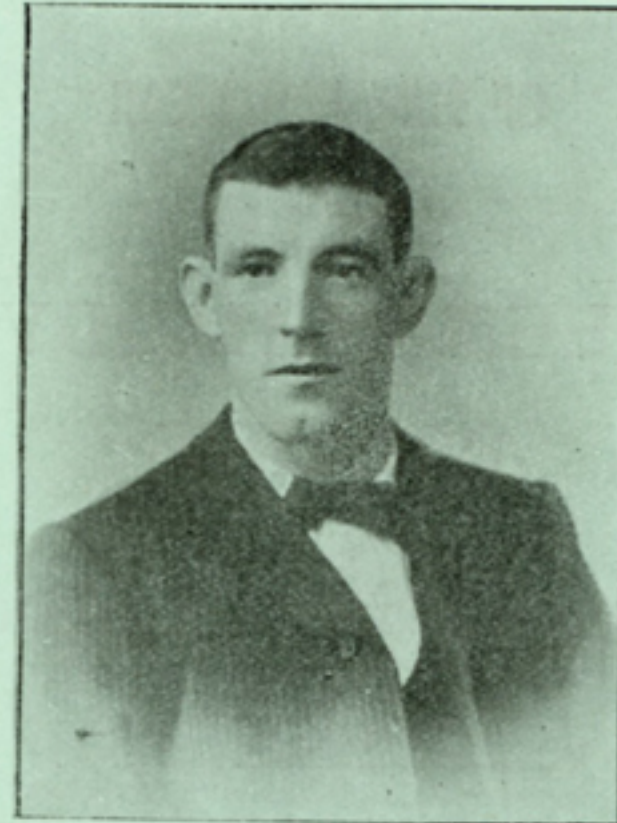
BEST RED RUBBER BLADDERS, Size 3,
1s. 6d.; Size 4, 1s. 8d.; Size 5, 1s. 9d.

Nets, Goals, Shin Guards, &c., &c.

Write for List.

NEW HUDSON CYCLE & SPORTS DEPOT,
CHAPEL STREET, LUTON.

The "Luton News"—Best Advertising Medium.



JOHN HILSDON.

Who has signed on as a professional for Luton, was formerly an amateur. He was born at Marden, Kent, twenty-one years ago, and his first appearance as a footballer was with the Salton Rovers. He spent a season with Leytonstone, and afterwards joined Clapton Orient, for whom he has played during the past five seasons. Whilst at Clapton he became known as a prolific goal-scorer, and played four times for West Ham, and once for the Arsenal. He has also appeared as a representative of Middlesex County on three occasions, and played twice for Essex County. He plays at inside right, is 5ft. 6½in. in height, and weighs just over 10st.

TO

"Reach the Goal"

OF FINE FOOTWEAR

WEAR ONLY

FREEMAN, HARDY & WILLIS'S

Famous Boots & Shoes.

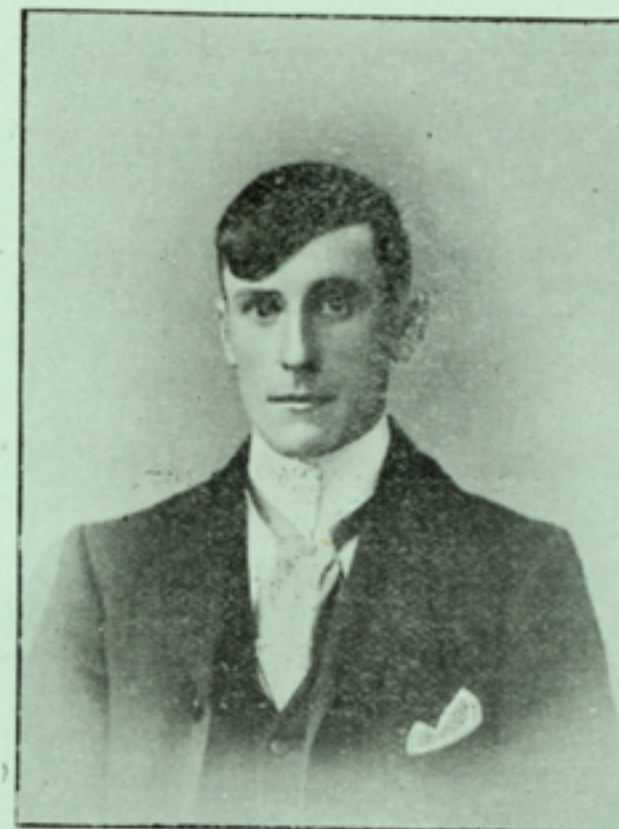
38, *George Street, LUTON.*

GRAND ASSORTMENT OF

FOOTBALL BOOTS

from 3/11½.

The "Luton News"—Has the best Fiction.

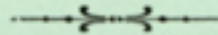


HERBERT MOODY.

Who will probably occupy the centre-forward position during the coming season, is a native of Luton. As a youngster he was a member of the Chapel Street School team, and subsequently played for the Stanley. He afterwards joined the Reserves, and has been associated with them for the past three or four years. Towards the end of last season he played several times for the first eleven, and rendered very useful service, chiefly as centre-forward. He has, however, appeared at other positions in the front rank with much success. He is 22 years of age, weighs about 10st. 7lbs., and is 5ft. 9in. in height.

FOOTBALL!

Telegrams of all Luton's away Matches received by E. PRIDMORE.



Before going to the Match be sure you get one of E. PRIDMORE'S

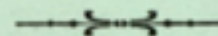
"JEWEL OF ASIA" CIGARS,



Manufactured in Dindigul.

A Mild Indian Cigar; Splendid Aroma.

2d. each; 7 for 1/-.



FOR A RELIABLE WATCH

Try one of E. PRIDMORE'S Waltham Levers,
30/- each. Cannot be beaten.

E. PRIDMORE,

WATCHMAKER, JEWELLER AND
TOBACCONIST.

CHAPEL STREET, LUTON.

Watch Repairs a Speciality.

The "Luton News"—Gives all the News.



LEON GALL

Is a Scotchman, his native place being Alloa. He is 22 years of age, 5ft. 6½ in. in height, and weighs about 11 stone. He has signed for Luton as inside left, but has frequently played outside-right. When a junior he played for two seasons in the Vale of Forth team, and was afterwards associated with Alloa Athletic. He next assisted Gainsborough Trinity for one season, and afterwards removed to Doncaster, where he played for three winters. Last season he was identified with the Wellingborough Club, and rendered them valuable service.

Artistic 9 9 9
 Photographs

At MODERATE PRICES at

Anderson & Co's

Wellington Street Studio,

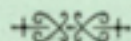
AND . . .

High Town Road, Luton.

Also at Hockliffe Street, Leighton Buzzard.

Pictures and Picture-Frames

At Prices to suit everybody.



**PICTURE-FRAMING, MOUNT-
 CUTTING, RE-GILDING, &c.,
 in all its Branches.**

The "Luton News"—Expresses its opinions
 fearlessly.



THOMAS ALLSOPP.

The new outside-left, is a native of Leicester. He first appeared with St. Matthew's, and afterwards joined Belgrave United—both junior teams. He subsequently turned out for the Leicester Fosse Reserves, and after having served a season with them, was promoted to the first team, for whom he has played during the last two seasons. He is only 19 years of age, but his performances for the Fosse are well spoken of, and it is hoped that he will render useful service for Luton. He weighs 11st. 6lbs., and is 5ft. 7in. in height.

REASONS

Why intending Purchasers of PIANOS or ORGANS do well to go to

S. FARMER & CO.,

- 1.—Because no one in the district has so large a variety of makers represented. If one does not suit you another will.
- 2.—Because the utmost discount allowed by the makers is given.
- 3.—Because liberal allowances are made for old instruments taken in exchange.
- 4.—Because you can exchange an instrument if you are not perfectly satisfied.
- 5.—Because all guarantees are rigidly observed.
- 6.—Because skilled and trained men are employed to tune and regulate all instruments.

Sole Agents for BECHSTEIN, BRINSMEAD, SQUIRE & SON, ROGERS & SON,
RUD IBACH, WALDEMAR, CHAPPELL, ESTEY, KARN, CROWN,
MASON & HAMLIN, &c.

Iron Frame, Check Action, Full Trichord PIANOS, from 16 Guineas, or 10/6
per month.

2, WELLINGTON STREET, LUTON, and at Dunstable.

ABOUT THE JUNIOR CLUBS.

LUTON JUNIOR FOOTBALL LEAGUE.—This is the fourth season of this Combination. Interest in its competitions was at a low ebb last year, and entries this season have not come up to expectations, consequently only one Division has been formed. Mr. W. P. Banks is Chairman, Mr. James H. Scott, hon. sec. and treasurer, and other members of the Committee are :—S. Bottoms, W. Pease, C. Butler, A. E. Richardson, H. Brewer, J. Hearne, and A. Davis.

LUTON AMATEURS F.C.—Entered for English Cup, Amateur Cup, and Beds Cup Competitions. E. Saunders, captain; H. Warren, vice-captain; A. Richardson, 2, Rothesay-road, hon. secretary. "A" Team, entered for Luton Junior League, captain, J. Cook; vice-captain, H. Brown. Ground: The Dell, Old Bedford Road (about 150 yards beyond Wardown).

LUTON CLARENCE.—Entered for Amateur Cup, Beds Cup, and Bedford and District League. A. E. Ansell, captain; Thomas Smart, 4, Buxton Road, hon. secretary. Ground: Faunch's Field, Old Bedford Road.

STUART RANGERS' F.C. (Champions 1st Division, Luton Junior League, 1901-2).—Entered for Beds Cup and Luton Junior League. J. C. Shaw, captain; Stanley Bottoms, Lyndhurst Road, hon. secretary. Ground: People's Park.

LEAGRAVE.—Entered for Junior League and Beds Cup. W. Smith, captain; W. Draper, vice-captain; C. W. Butler, 52, Brunswick Street, hon. secretary. Ground: Near Foundry, Dunstable Road.

LUTON TRINITY F.C.—Entered for Luton Junior League. A. R. Brown, captain; H. Brewer, 38, Stuart Street, hon. secretary. Ground: People's Park.

VILLA ROVERS.—Luton Junior League and Beds Cup. W. Cole, Windmill Inn, hon. secretary. Ground: East Ward Recreation Ground.

MONTROSE.—Luton Junior League and Beds Cup. S. J. Cook, captain; W. Pease, 211, Hitchin Road, hon. secretary. Ground: People's Park.

STOPSLEY MONTROSE. — Entered for Laton Junior League. A. Whittemore, captain; S. Smith, vice-captain; E. Smith, Stopsley, hon. secretary. Ground: Stopsley.

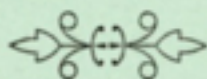
CHRIST CHURCH OLD BOYS.—J. Eaton, captain; A. E. Rickard, 6, Victoria-street, Luton, hon. secretary; L. H. Allcock, 7, Buxton-road, assistant hon. secretary. Ground: Mr. Allen's Meadow, Dunstable-road.

KAFFIRS' F.C.—Beds Cup Competition. A. Bliss, captain; T. Parsons, vice-captain; E. Hayward, 29, Cowper Street, hon. secretary. Ground: People's Park.

OLD VICARAGE.—Beds Cup Competition. W. Ansell, captain; J. Hearn, 2, Holly Street, hon. secretary.

LUTON WEDNESDAY UNITED.—A. Osborne, captain; W. Kendall, 19, Elizabeth Street, hon. secretary. Ground: Near Faunch's Farm, Old Bedford Road.

ST. MARY'S F.C.—Hon. Secretary, R. Green, 90, Church Street, Luton.



WATCHES. JEWELLERY. SPECTACLES.

CLOCKS. REPAIRS.



Some remarkable Lines in Lady's and Gent's Watches. See Window for styles and prices.



Our Noted Alarms, 2/6 each.



By special arrangement with a large firm of Opticians, unusual facilities are offered for Sight Testing. Spectacles fitted by a new method. Call and inspect our stock, &c.

JOHN JEFFS,

37, High Town Road, LUTON.


J. J. WOODING,

The favour
of your
Patronage
respectfully
solicited.

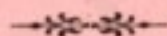
**Family
Grocer,**

Deliveries
to all
Parts
of the Town
twice
daily.

81, High Town Road,

 **LUTON.**

All Goods sold at this Establishment are
guaranteed in every respect, and any not
approved of, are willingly exchanged.

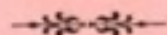


WOODING'S SELF-RAISING FLOUR

(STATUE BRAND).

3d. and 6d. per bag.

We have every confidence in recommending
this Flour as the finest on the Market.



HOUSEHOLD FLOUR.

1/4 per Stone.

FINEST PASTRY FLOUR.

1/8 per Stone.