

PRICE ONE PENNY.

THE LUTON NEWS
Football Handbook

1903—1904.

ERNEST GIBBS,

**Wholesale Tobacconist and
Cigar Merchant,
Business Transfer Agent and
Valuer.**

OFFICE:

19, Upper George Street, LUTON.

If you want to

BUY OR SELL A BUSINESS,
call on E.G. without delay.

TELEPHONE 41.

J. WEBDALE & SONS,

(ESTABLISHED OVER 50 YEARS),

The Cheapest House in the
District for

**BEDSTEADS,
BEDDING,**

General Furniture,
Carpets, Rugs, Floorcloths and Linoleums.

—❖—
*Houses furnished from Stock at the Shortest
Notice.*
—❖—

21, 23 and 25, WELLINGTON STREET,
(OPPOSITE PEEL STREET),

❖ **LUTON.**

The Luton Town Football Club.

LIKE most football organisations, the Luton Club has had a somewhat chequered career, and at times circumstances have been so discouraging that, but for the steadfastness and self-sacrifice of a few individuals, the Club must inevitably have perished in the vortex of financial disaster. To Mr. H. ARNOLD, who has so long been at the head of affairs, credit is especially due for the persistent and ungrudging efforts he has made to keep the game alive, and in view of these efforts it must be as gratifying to him and his co-directors, as it is to all of us, to know that the prospects for the ensuing season are brighter than has been the case in any recent year.

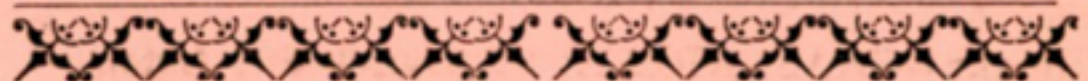
Last season, for the first time since the Club adopted out-and-out professionalism, an actual profit was made. Truly it was a small one, but very welcome nevertheless. The Town Football Club, it may be as well to state, was formed some eighteen years ago, by an amalgamation of the Luton Wanderers with the Luton Excelsiors, but it was not until 1890-91 that professionalism was adopted in a tentative sort of way, some of the players then being paid for time lost from work. The following year all the members of the team were paid, though the amount was extremely small, being about half-a-crown per man. After that, ambition led to the engagement of the fully-paid professional, and Luton became one of the leading football organisations in the South. In the Southern League, the rivalry between Millwall and Luton was such as will be long remembered, and for two successive seasons they came out champions and runners-up respectively. The other Southern Clubs lagged so much in the rear that



TO ENSURE A GOAL
KICK WITH
W. BIGG'S
FOOTBALL
BOOTS.



We supply Luton Town Team.



Luton seceded from the League, and in 1897 gained admission to the Second Division of the English League. Unfortunately hopes were not realised, for though expensive talent was engaged, and the football became of a higher class than ever, the financial support did not increase to a corresponding degree, and consequently debts accumulated. In 1900 Luton again became identified with the Southern League, the Clubs in which had improved out of all knowledge, and it is hoped that this season the effort to get amongst the top-sawyers will prove more successful than hitherto. The Directors have been particularly fortunate in securing Mc Ewen, who did them excellent service a few years ago and has since become famous as a member of the team which last season won the English Cup, and the engagement of two or three First League men, with the retention of players whose capabilities are well known, goes far to justify the hope that we have a real good time in store.



The Club Officials.

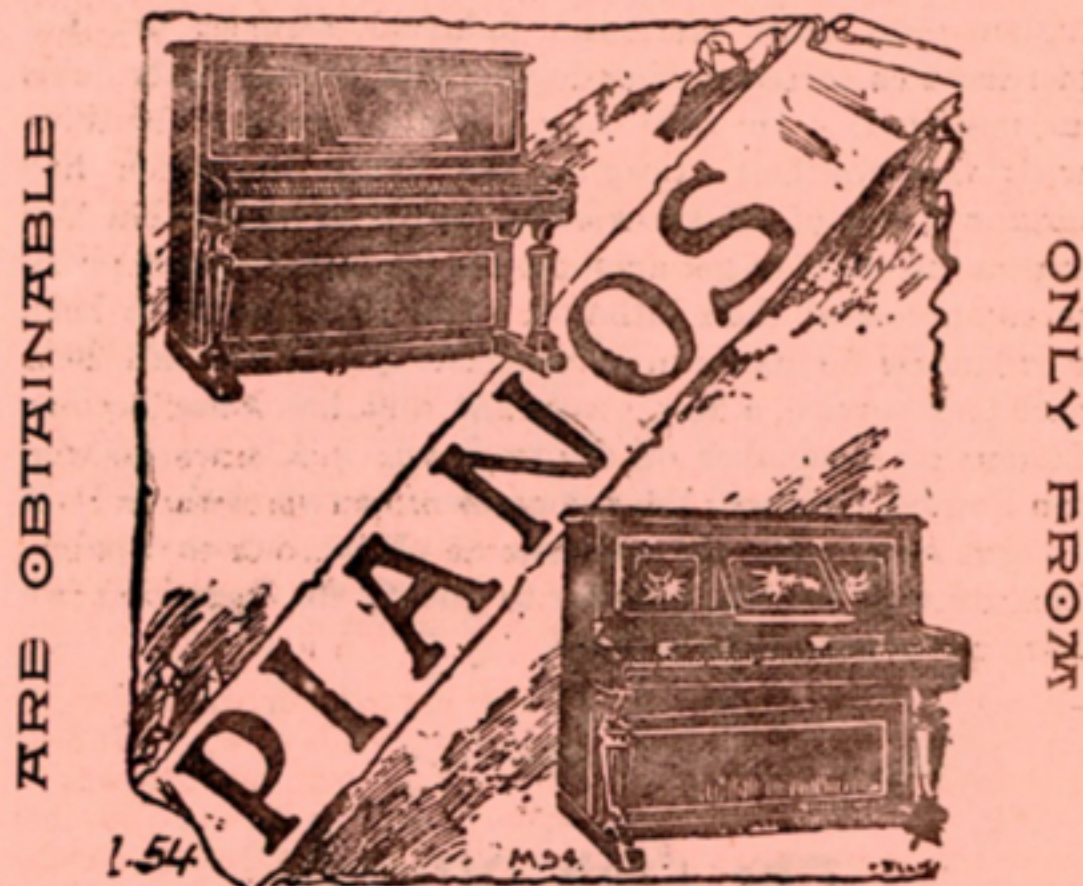
DIRECTORS:

H. ARNOLD (CHAIRMAN),

J. SQUIRES, E. GIBBS, H. T. SHACKLETON,
W. CARTER, H. SMART, W. J. ALLEN,
F. GENTLE, G. SMART, I. SMITH.

SECRETARY—CHAS. GREEN, 81, Church St., Luton.

Karnock pianos



ARE OBTAINABLE

ONLY FROM

S. FARMER & Co.,
2, WELLINGTON ST., & 85, GEORGE ST.,

✻ LUTON. ✻

They are absolutely the best value obtainable in a low priced piano. 16 guineas, 18 guineas, 20 guineas. Warranted for 10 years. Tuned One Year Free.

Sole Agents : S. FARMER & Co.

MEN WHO HAVE PLAYED FOR LUTON.

THE following is a list of the men who have played for the Luton Club since it adopted professionalism:—

1891-2.—J. Burley; B. Sanders and A. Hoy; J. Wright, H. Paul, A. H. Taylor and E. H. Lomax; F. K. Whitby, G. Deacon, C. Lomax, H. W. Ocle, H. Whitby, and W. Chesher.

1892-3.—Burley, and T. Reed; Sanders, Hoy, W. George, and Wilson; Wright, Julian, Taylor, and Watkins; Brown, Chesher, Allen, H. and F. Whitby, H. Barbour, Galbraith, J. McKenzie, and F. V. Kirk.

1893-4.—Bee; Chesher, Wilson, and C. Read; Watkins, Julian, and Taylor; H. Whitby, Allen, Galbraith, Finlayson, Vickers, J. Dimmock, Brown, and Hayes.

1894-5.—Bee; Chesher, M. D. Nicholson, and McEwen; Watkins, McCrindle, Howe, and Collins; Brown, Gallacher, Galbraith, Prentice, Allen, Dimmock, and Jack.

1895-6.—Jack, Russell, and Williams; Stirton, M. D. Nicholson, and McEwen; Watkins, Stewart, and Docherty; Gallacher, Finlayson, Galbraith, Parkinson, Birch, Ekins, Coupar, and Dimmock.

1896-7.—Williams; Davies & McEwen; Perrins, Stewart, Docherty, and Watkins; Gallacher, Finlayson, McInnes, Galbraith, Birch, Coupar, Ekins, Dimmock, and Brown.

1897-8.—Williams; McCartney and McEwen; Davies, Stewart, Docherty, and Perrins; Gallacher, Coupar, Birch, Clarke, Donaldson, Little, McInnes, Ekins and Durrant.

1898-9.—Perkins; H. Williams, Moore, and Dow; C. Ford, Clarke, Sharp, and Crump; Durrant, Hewitt, W. Ford, Kemplay, Draper, McInnes, Brock, and Ekins.

1899-1900.—Daw; Dow and McCurdy; Morrison, Stewart, J. Brown, Williams, and Ralley; Inglis, Brock, Fairgrieve, Draper, McInnes, and Eckford.

1900-1.—Monks and Ord; Lindsay and McCurdy; Clifford, Holdstock, Williams, and Cox; Brown, Blessington, Molyneux, Burbage, Dempsey, Tierney, Saxton, and Durrant.

1901-2.—Ord; Lindsay, Sharp, and Street; F. Hawkes, White, Williams, and R. Hawkes; Durrant, Blessington, Brown, Barker, Tierney, and Colvin.

1902-3.—Frail; Lindsay, Sharp, and Hood; F. Hawkes, White, Williams, and R. Hawkes; Durrant, Blessington, Hilsdon, Moody, Davidson, Gall, and Allsopp.

The Franklin Temperance
Commercial Hotel,
LUTON'S RESTAURANT,
(OPPOSITE THE TOWN HALL.)
GEORGE STREET.

**Splendid Accommodation
For Football Teams and Cyclists.**

HALL TO SUIT LARGE PARTIES.

ALL PROVISIONS OF THE BEST.

Hot Joints Daily from 12 to 2.

English Beef and Mutton. Prime Well-Matured
York Hams. Chops and Steaks. Tea and
Coffee always ready. Well appointed Beds.
Hot Drinks, Cigars, &c. Hot Baths. Private
Dining and Tea Rooms.

All at Popular Prices.

J. C. Lewis, Proprietor.

A TRIAL SOLICITED.



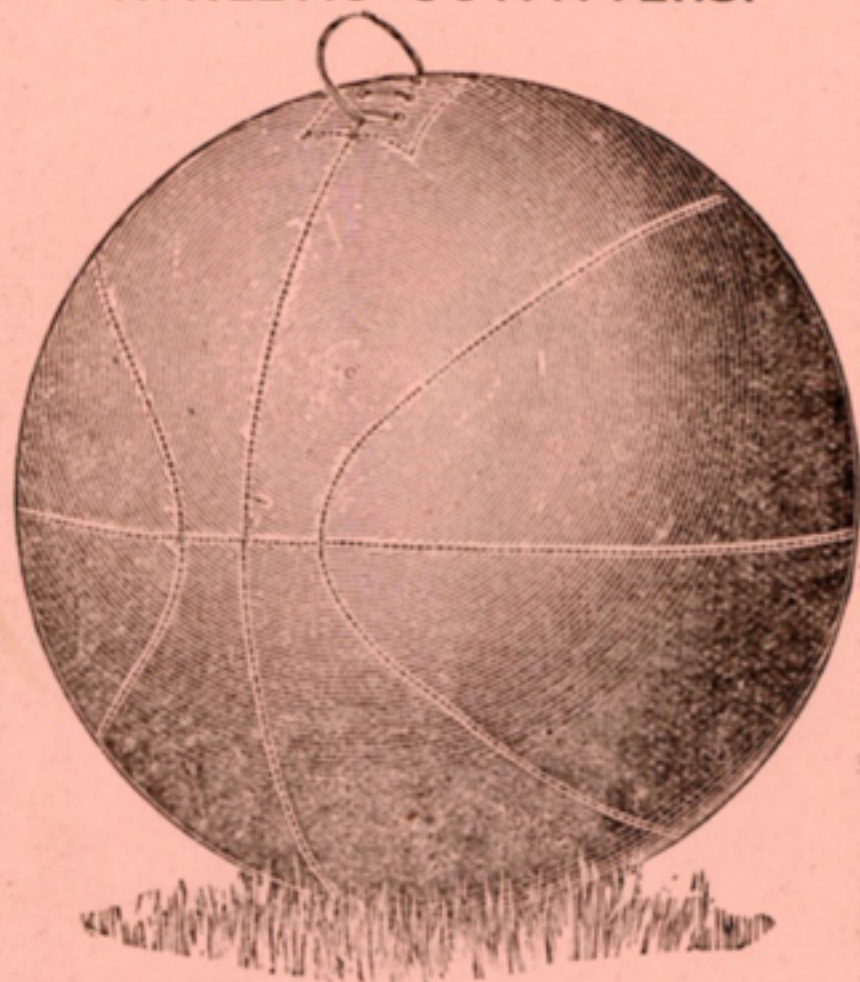
FREDERICK THOMPSON.

Luton's new goalkeeper comes with a very high reputation. He started his football career with a junior Club in Sunderland, in 1891, and the following season he did so well as to attract the attention of Sunderland who signed him on, and he played for their "A" team for three seasons. He then went to Bury, and during his six years with them, they succeeded in winning the English Cup. Thompson also had the honour, in 1900, of playing for the North against the South. He has never played in any other position than between the uprights. Twenty-eight years of age, he stands 5ft. 9in. in his stockings, and weighs 11st. 4lbs.

LLOYD, PARTRIDGE & Co.

ATHLETIC OUTFITTERS.

Every Ball Guaranteed.



Finest Cowhide & Best Workmanship.

THE 'DIADEM' FOOTBALL, (REG.)

Used by Sheffield United & many noted Clubs. 10/6 complete.

All the best makes of Footballs supplied.

DEMON, GRASSHOPPER, &c.

OTHER FOOTBALLS, 2/3, 2/10, 3/3, 3/6, 4/3, 5/-, 5/6, 6/6
7/6, 8/9, 9/6, 11/6, 12/6.

FOOTBALL BOOTS, 3/11 to 12/6. Good Variety.

BEST RED BLADDERS guaranteed. Size 1, 10½d.,
size 2, 1/3, size 3, 1/6, size 4, 1/8, size 5, 1/9.

Goal Nets, Shin Guards, Inflators, &c. Write for List.

NEW HUDSON CYCLE & SPORTS DEPOT,
CHAPEL STREET, LUTON.



JOHN BENNETT.

Luton's new right back, like Mc Ewen, is a native of Liverpool, and will attain his 24th year in November next. He first played as an amateur with a Club called Wavertree, and as a professional he made his debut with Wellingborough. He next played for Lincoln City, and the last two seasons were spent with the Northampton Club. His play whilst with them was very highly spoken of, and he ought to do Luton good service. He is 5ft. 8½ins. in height, and turns the scale at 12st. 4lbs.

Picture Framing Tastefully Executed.

Studio--90, Castle St.,
LUTON.



WM. H. COX,

(LATE COX & JONES.)

Art Photographer.

Portraiture of the Highest Class at
Moderate Prices.

Enlargements in Carbon and Sepia
Platinotype. *See examples at studio.*

Special care with Children's
Portraiture.

**WEDDING, CRICKET, & FOOTBALL
GROUPS AT SPECIAL PRICES.**



Photo

JAMES McEWEN.

W. H. Cox.

This famous full back, whose return to Luton after an absence of five years, has caused so much local satisfaction, is 29 years of age and a native of Liverpool. Mac first came to Luton in 1894, and his excellent and consistent play soon made him popular with the spectators. Four years later he went to Glossop, helped them into the First Division of the League, remained with them another season, and then signed on for Bury. During the three years with them he never missed a League match, and last season had as great a share as anyone in winning the English Cup. He plays left full back. Weight, 11st. Height, 5ft. 6in.

To "Reach the Goal"



OF FINE FOOTWEAR

WEAR ONLY

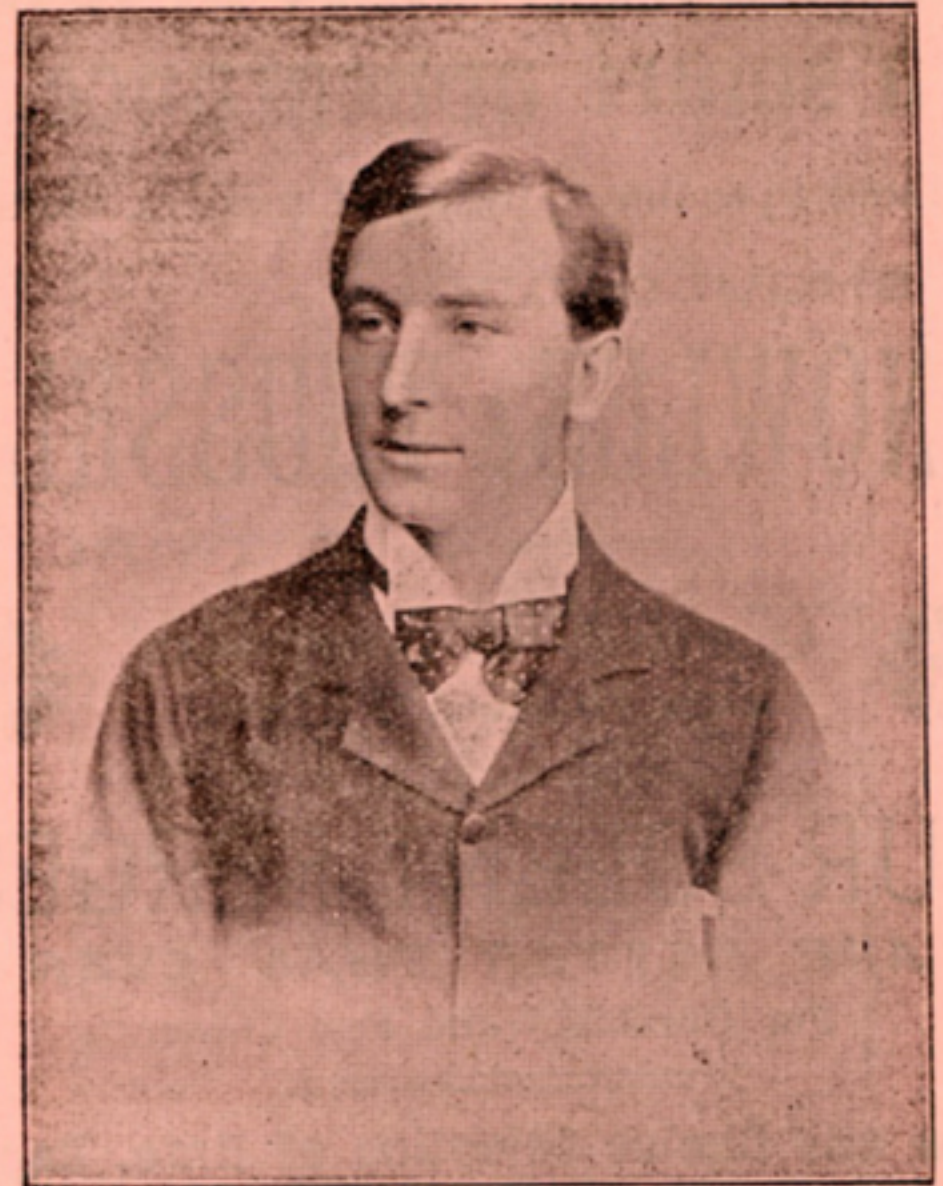
FREEMAN,
HARDY &
WILLIS'S

Famous Boots and Shoes,

38, GEORGE STREET,

✻ LUTON. ✻

Grand Assortment of Football Boots
from 3/11½.



HARRY WILLIAMS

Is now entering upon his sixth season with the Luton Club, and during the whole of that time has rarely been an absentee. As a boy of 14 he had a place in the Hitchin team. Later on he played for Brentford and St. Albans, and often figured in the Herts. County Elevens, but it was with Luton that he made his first acquaintance with really class football. He is an indefatigable worker, and though generally appearing in the half-back line, he showed last season that he can render a splendid account of himself at full back. Williams is 5ft. 10ins. in height, and his weight is 11st. 9lbs.

Men who wish to present a smart appearance,

Without Spending extravagant sums on clothes,

SHOULD GIVE

KNOWLES & TRUSSELL

— A TRIAL.



We study our Customers'
own particular style.



OUR SOLENT SERGES

ARE BETTER THAN EVER

For Durability and Fast Colour.

New and Choice Selection of Hats, Caps,
Shirts, and all Articles of Men's wear
in Stock in Great Variety, at

30 Manchester Street, Luton.

N.B.—Football Outfits a Speciality.



FRED HAWKES.

Luton is naturally and properly proud of its half-back line which, though composed of local men, is one of the finest in the South. A consistently good player is Fred Hawkes, the right half, his coolness and judgment being a source of delight to the home spectators and of wonder to visitors. He is a native of Luton, played first with the Christ Church School team, afterwards with the Stanley (now defunct), and then with the Luton Reserves. He was soon drafted into the first eleven, and for the past two seasons has been a regular member of the team. Fred has had tempting offers from a First League team, but prefers to remain at home. He is 22 years of age, stands 5ft. 6½ins., and turns the scale at 10st. 2lbs.

6, WELLINGTON ST.,
✻ LUTON. ✻

H. W. Spratley,

(15 Years employed at 4 Bute Street),

GENTS' HAIRDRESSER,
And Umbrella Manufacturer.

The Best Fitted Saloon

✻ ✻ ✻ in the District.

HAIRBRUSHED BY ELECTRICITY.
POPULAR PRICES.

Umbrellas Re-covered and
Repaired.



A large variety of Ladies' and
Gent's Umbrellas in Stock.

A Special Line in Ladies' and Gents'
Umbrellas at 2/11 and 3/6.



FRED WHITE.

Nor the least successful of the Luton halves is Fred White, for though perhaps he may lack the finish of the others, he is such a worrier and puts so much dash and vigour into his work that he is a regular terror to opposing forwards. Centre forwards of great repute who have come to do battle against Luton have been reduced to complete ineffectiveness by the remarkable energy of Luton's centre-half. White is a native of Dunstable, but came to Luton as a lad, played first with the Victoria, and afterwards with the Star. He next joined the Luton Reserves, and thoroughly earned his promotion to first rank. He is 23 years of age, weighs 10st. 4lbs., and is 5ft. 7ins. in height.

Where to Furnish

BY EASY INSTALMENTS.

THE
LUTON FURNISHING Co.,

BUTE STREET & WALLER STREET,

SUPPLY EVERY DESCRIPTION OF

HOUSEHOLD FURNITURE

AT LOWEST PRICES.

GENERAL TERMS:

£5 worth, 2/- weekly. £15 worth, 4/- weekly
£10 ,, 3/- ,, £20 ,, 5/- ,,

OR TERMS ARRANGED.

SPECIAL OFFER:

A FULL SIZE BRASS RAIL BEDSTEAD
(extending foot), Pair of Palliasses, Wool
Bed, Bolster, and 2 Pillows,

THE LOT--£2 18s. 6d.

Delivered free any distance, for 5/- down, 1/- weekly

Our Illustrated Catalogue, showing how to Furnish a Cottage
or Villa, FREE on Application.

PIANOS FROM 10/6 PER MONTH.

All Goods Delivered Free in Private Vans, any distance.



ROBERT HAWKES.

Luton's left half, popularly known as "Bob", is a player of remarkable ability. A native of Breachwood Green, he came to Luton as a boy, and played first for the Higher Grade School team, afterwards for the Stanley, and then for the Victoria. He joined the Luton Reserves a couple of years ago, and showed to such advantage that he was soon given a trial in the first team. Last season he played regularly with the premier eleven, and his brilliance as a player attracted the attention of one of the foremost Clubs in the First Division of the English League. As an Amateur, he might have accepted the handsome offer made to him straight away, but he steadfastly declined. His place is left-half, but he also plays a good game forward. He is 22 years of age, stands 5ft. 8½ins., and weighs 10st. 8lbs.

FOOTBALL = = =

— KNICKERS!

FOOTBALL SHIRTS!

FOOTBALL BOOTS!

M. MARES,

Athletic Outfitter,

6, 8, 10, GEORGE STREET,
LUTON.



JACK DURRANT

Is another local player who has rendered excellent service for the Town Club. When as a boy he played for the Waller Street Higher Grade School, he was seen to possess considerable ability, and on three occasions obtained a place in a team representative of the Schoolboys' League. He afterwards joined the Luton Stanley and then, becoming identified with the Town Club, has performed for them pretty regularly during the past five or six years. His favourite position is outside-right, and being very speedy, he is, at his best, an extremely dangerous man. He is 24 years of age, is 5ft. 9ins. in height, and weighs 10st. 5lbs.



FOR WEAR ONLY
IN
BOOTS, SHOES, SLIPPERS,
LEGGINGS, GAITERS, &c.,
GO TO

H. LAWSON & SON,

Wholesale & Retail
Boot & Shoe Manufacturers,
19, MANCHESTER STREET,
*** LUTON, ***

Bespoke Orders on the Shortest Notice.
Special Attention given to Repairs.

Best Value in the Town

IN

FOOTBALL BOOTS.

A Large Assortment of all kinds in stock.

Also made to measure at all prices.

Players with awkward feet would do well
to give a call.

Also a Stock of Footballs & Accessories.



SAMUEL L. L. EATON.

It is a rather singular thing, that Blessington, who for three seasons played inside-right for Luton, should have gone to Leicester Fosse, whilst Eaton, Leicester's inside-right, has come to Luton. Eaton is a native of Derby, and at the age of thirteen was captain of the Derby Schoolboys against Sheffield, Nottingham, and Leicester Schools. After playing for Derby St. James, he had a couple of seasons with Derby County Reserves, and then signed on for Leicester Fosse. He played for the Fosse when they just missed getting into the First Division of the League and that season he scored 26 goals. He has had several offers from First Division Clubs, but transfer fees stood in his way. He can play inside-right or left or outside-right, but prefers the first named position. He is not yet 23 years old, and weighs 10st. 10lbs.

Luton Town Football Club.

1ST XI. FIXTURES, 1903—4.

Date.	Opponents.	Goals.	
		For	Agst.
Sep. 2	Watford (h)	3	0
„ 5	Southampton, S.L. (a)	0	0
„ 9	Watford (a)	0	3
„ 12	Fulham, S.L. (h)	0	0
„ 19	Millwall, S.L. (a)	3	2
„ 21	West Ham, S.L. (a)	1	1
„ 26	Queen's Park Rangers, S.L. (h)....	1	0
Oct. 3	Plymouth, S.L. (a).....	0	0
„ 7	New Brompton, S.E.L. (a).....	1	2
„ 10	Reading, S.L. (h)	2	1
„ 12	New Brompton, S.E.L. (h).....	2	0
„ 17	Woolwich Arsenal (a)	2	2
„ 24	Bristol Rovers, S.L. (h)	1	0
„ 31	F.A. Cup (3rd round) <i>HITCHIN</i>	2	1
Nov. 7	Portsmouth, S.L. (h).....	0	0
„ 14	F.A. Cup, 4th round <i>WATFORD</i>	4	1
„ 21	Brentford, S.L. (h)	1	0
„ 28	F.A. Cup, 5th round <i>FULHAM</i>	3	3

GO TO G. UNDERWOOD,

PERFECT FIT.
STYLE GUARANTEED

Tailor, Hatter, Dressier, and Outfitter,

FOR SUITS & OVERCOATS,
TO MEASURE OR READY TO WEAR.

22, MARKET PLACE, LUTON.

Date.	Opponents.	For	Agst.
Dec. 5	Tottenham Hotspur, S.L. (h).....	3	2
„ 12	Swindon, S.L. (h)	3	1
„ 19	New Brompton, S.L. (a)	2	2
„ 26	Northampton, S.L. (h).....	1	0
„ 28	Kettering, S.L. (h)	2	1
Jan. 2	Southampton, S.L. (h)	1	0
„ 9	Fulham, S.L. (a)	0	1
„ 13	Watford, S.E.L. (a)	3	4
„ 16	Millwall, S.L. (h)	1	1
„ 23	Queen's Park Rangers, S.L. (a) ..	1	2
„ 30	Plymouth, S.L. (h)	1	1
Feb. 6	Reading, S.L. (a) <i>April 13</i>	1	1
„ 13	Wellingborough, S.L. (a) <i>March 7</i>	0	2
„ 20	Bristol Rovers, S.L. (a)	1	3
„ 27	Brighton and Hove, S.L. (h).....	2	0
Mar. 3	Clapton (a)	2	0
„ 5	Portsmouth, S.L. (a).....	0	3
„ 12	<i>Northampton</i>	3	0
„ 19	Brentford, S.L. (a)	1	2
„ 26	West Ham, S.L. (h)	1	0
Apl. 1	Wellingborough, S.L. (h).....	1	2
„ 2	Tottenham Hotspur, S.L. (a).....	1	1
„ 4	Northampton, S.L. (a)	0	0
„ 5	Brighton and Hove, S.L. (a)	2	2
„ 9	Swindon, S.L. (a) <i>Feb 6th</i>	0	1
„ 16	New Brompton, S.L. (h).....	1	0
„ 23	Kettering, S.L. (a).....	2	1
„ 30	Watford, S.E.L. (h)	3	2

26-20

71-56

FRED COOK,
Tailor, Outfitter, &c.,
1, HIGH TOWN ROAD,
LUTON.



THE
Rainproof Overcoats
ARE
Better Value than Ever.

All our Business is done on strictly
Cash Terms, consequently we can
give
BEST VALUE FOR MONEY.



GEORGE STOREY,

On George Christopher Storey, to give him his full name, is 24 years of age, having first seen the light on October 20th, 1879. He first played for Formby, next went to Everton as an amateur, and afterwards played for Aberystwith and Oswestry, qualifying with both the last named Clubs for Welsh Cup medals. Storey subsequently played for St. Helens, but his first professional engagement was with Bury. He plays inside-left or centre-forward but has a preference for the latter. He is regarded as a very promising player, and is favoured by Nature, being 5ft. 9½ins. in height, and weighing 11st. 4lbs.

FOOTBALL!!!

*Telegrams of all Luton's away Matches
received by E. Pridmore.*

*Before going to the Match be sure you get
One of E. Pridmore's*

"JACK JONES" CIGARS.

2d. each, 7 for 1/-

Cigarettes & Tobaccos at Lowest London Prices.

For Reliable Watch

**Try one of E. Pridmore's Waltham Levers,
30/- each. Cannot be beaten.**

E. PRIDMORE,

WATCHMAKER,

JEWELLER, AND

TOBACCONIST.

CHAPEL STREET, LUTON.

WATCH REPAIRS A SPECIALITY.



JAMES McKEE.

A native of Harthill, near Falkirk, is James McKee, and quite new to Southern football. As a player, he came out with the Heart of Midlothian, and afterwards joined East Stirlingshire. Whilst with the latter, he took part in two Scottish qualifying Cup Finals, and also played for Scotland against Wales. Subsequently he came over the border, and last season played for Bolton Wanderers. He can take the centre-half or centre-forward positions, but prefers the latter. He is 25 years of age, 5ft. 8ins. in height, and weighs 12st.

THE BEST PLACE

To buy your Overcoats.

To buy your Rainproofs.

To buy your Suits.

To buy your Trousers.

To buy your Hats.

To buy your Caps.

To buy your Shirts.

To buy your Ties.

To buy your Collars.

To buy your Gloves.

To buy your Socks.

To buy your Pants.

To buy your Undervest.

To have your Suits made.

To have your Overcoats made.

To have your Trousers made.

To have your Coat and Vest made.

IS

S. BASSETT'S,

✧ Practical Tailor, ✧

Hatter, Hosier, & Little Boys' Outfitter,

28, WELLINGTON STREET

✧ LUTON. ✧

Everything the Newest, Up-to-date in Style and
low in price consistent with good workmanship.



HERBERT MOODY.

LUTON has not turned out a forward of greater ability than Moody, who is native born and bred. As a boy he played for the Chapel Street School team, and afterwards for the Stanley. He next put in three or four seasons with the Reserves, and in the trials given him with the first team, he showed so much cleverness and dash that last season he was signed on as a regular member of the premier eleven. He can play centre on occasion, but shines better at inside-left, his passing, both with head and feet, being a very conspicuous feature of his play. Moody is 23 years of age, is 5ft. 9ins. in height, and weighs 10 st. 7lbs.

YOU WANT A MOTOR?
HAVE YOU SEEN THE
'QUADRANT'

Yes!
lots of
them
at
Luton.



Yes!
lots of
them
at
Luton.

QUADRANT MOTOR BICYCLE

SEE THE LATEST, BEST MOTOR MADE,

AT THE SOLE AGENTS,

W. A. SALLÉ & CO.,

CYCLE & MOTOR AGENTS,

THE SPORTS OUTFITTERS,

70, GEORGE STREET.

Accessories of every description.

We Supply the necessary parts for

Cricket, Tennis, Croquet, and Football.

CYCLES by HUMBER, PREMIER, ENFIELD, TRIUMPH

BABY CARRIAGES OF EVERY DESCRIPTION.



THOMAS ALLSOPP.

A FINELY built young fellow is Luton's outside-left, with a rare turn of speed, and his brilliant runs up the wing are something worth seeing. He is a native of Leicester, and after playing with junior teams there, he became connected with the Leicester Fosse Reserves and was soon drafted into the first eleven. He spent two seasons with the Fosse, and last year came to Luton. He is a player of great ability, and with a little more experience should be able to hold his own with the best. He is only 20 years of age, and consequently has plenty of time to develop. Allsopp is a cricketer of considerable merit, and is connected with the Leicestershire County Club. His height is 5ft. 7ins., and weight 11st. 6lbs.

JOHN G. MURDOCH & Co.,

Pianoforte & Music Warehouse,
49, WELLINGTON STREET,

LUTON.

SOLE AGENTS FOR THE

Spencer Pianos, and other
Malcolm Organs, leading
Makers.

PIANOS FROM £15 10s. NETT CASH,

OR

On the Easy Payment System,

FROM

10s. 6d. per month.

TEN YEARS WARRANTY. CARRIAGE PAID.

OLD PIANOS TAKEN IN EXCHANGE.

F. NICHOLLS,

SOLE AGENT.



CHARLES GRIFFITHS.

ONE of the new men signed on, is a native of Oswestry and 21 years of age. He first played with Oswestry Olympic, a junior Club, and in 1899 signed a professional form for Chirk, and in his first season established a record by scoring 38 goals out of a total of 57. He remained another season with them, and then joined Oswestry United. Last October he signed for St. Helens, a Lancashire League team, but soon afterwards got transferred to Barnsley. He plays at any of the inside positions, and has also performed at outside-right. Griffiths is 5ft. 6ins. in height and weighs 11st.

Motto== 'Keep Moving.'

GOODS STORED.

REMOVALS & WAREHOUSING.	ESTD 1855
HOUSE FURNISHER.	ESTIMATES
F. MERCHANT.	F. MERCHANT,
8 & 10, MANCHESTER STREET,	8 & 10, MANCHESTER ST.
LUTON.	LUTON.

ESTIMATES FREE.



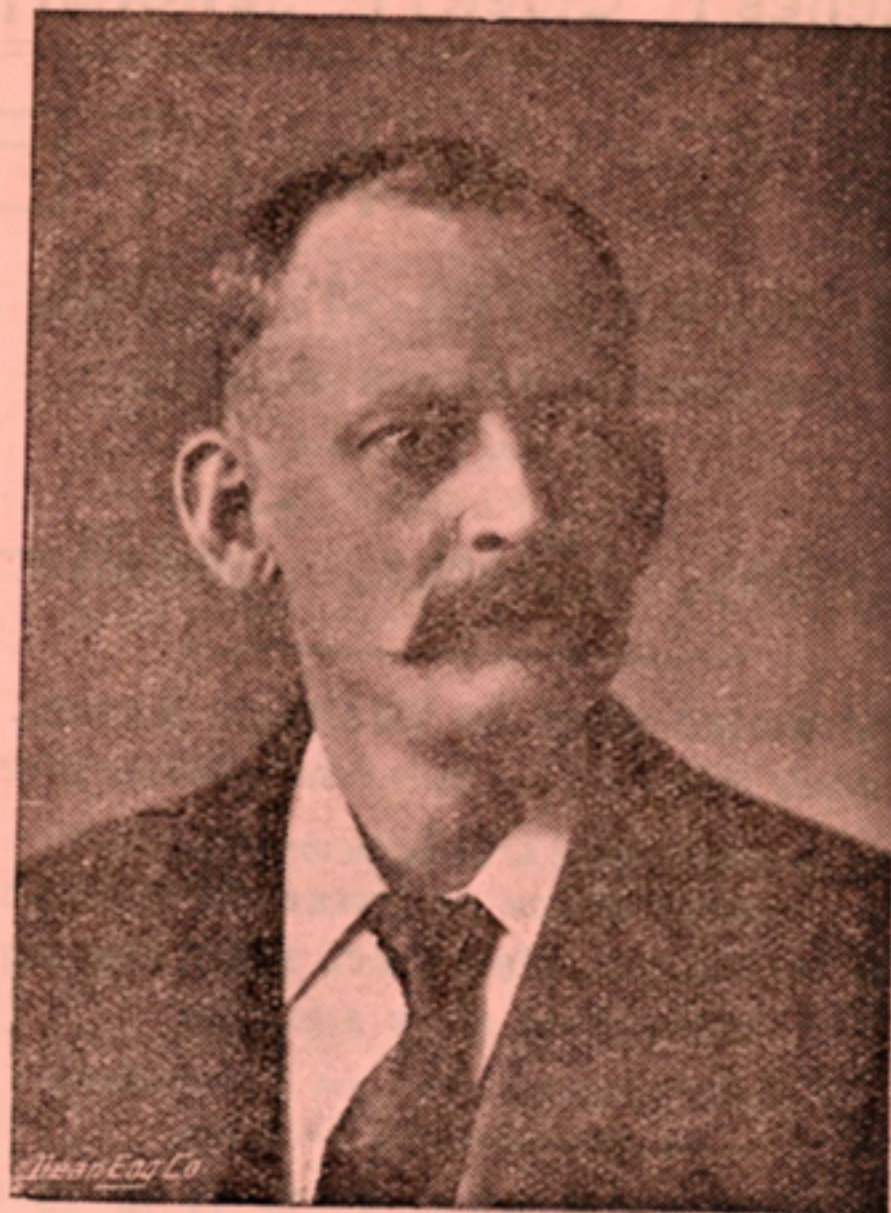
FRANCIS MERCHANT,

Complete House Furnisher,
CARPET & LINO WAREHOUSEMAN,

8 & 10, MANCHESTER STREET,
LUTON.

See our Windows and Note Quality and Price.
All Goods marked in Plain Figures.
Blinds of all kinds. Repairs.

THE LUTON
Electric Carpet Beating Works.



WILLIAM LEECH.

WILLIAM LEECH, the new trainer, began his career as a Salford Harrier, winning £400 worth of prizes from the quartermile to the the ten mile race. His entry to the football world was with Bury as assistant trainer. In 1895 took charge of the Derby County team, and they finished up second in the English League, and were in the semi-final of the English Cup against Wolverhampton, when they lost Steve Bloomer, and had to play ten men, the consequence being that the Wolves won by 2 goals to 1. Leech afterwards went to Newcastle United, Grimsby and Barnsley.

Watches ! Clocks ! Jewellery !

F. C. WHITE,

31, MANCHESTER ST., LUTON,

(OPPOSITE BRIDGE STREET.)

FOR ALL KINDS OF

Watches, Clocks, Jewellery.

The Noted Shop for Waltham Levers.
Hundreds sold. Every satisfaction given.

MEDALS & PRESENTS A SPECIALITY.

LARGE STOCK OF PRESENTATION GOODS.

Repairs to Watches, Clocks, &c., under own supervision, have every attention.

Watches cleaned, &c., in Three days.

WALTHAM LEVERS.

Silver, Gold, and Gold Filled.

Always in Stock. Three Years' Warranty.

NOTE THE ADDRESS—

OPPOSITE BRIDGE STREET

LUTON TOWN 2ND XI. FIXTURES.

Date.	Opponents.	For	Agst.
Sep. 5	Woolwich Arsenal, S.E.L. [h]		
" 12			
" 19	Brighton and Hove, S.E.L. [h]		
" 26	Queen's Park Rangers, S.E.L. [a].		
Oct. 3	Chesham Generals, S.E.L. [h]		
" 10	Aylesbury United, S.E.L. [a]		
" 17	Biggleswade [h]		
" 24	Brighton and Hove, S.E.L. [a]		
" 31	Leighton Cee Springs [a]		
Nov. 7			
" 14	War Office, S.E.L. [a]		
" 21	Grays United, S.E.L. [a]		
" 28			
Dec. 5			
" 12			
" 19	St. Albans, S.E.L. [h]		
" 25			
" 26	Woolwich Arsenal, S.E.L. [a]		
" 28	Hitchin, S.E.L. [a]		
Jan. 2			
" 9	Grays United, S.E.L. [h]		
" 16	Beds. Cup		
" 23	Queens Park Rangers, S.E.L. [h] ..		
" 30	St. Albans, S.E.L. [a]		
Feb. 6	War Office, S.E.L. [h]		
" 13	Beds. Cup		
" 20			
" 27			
Mar. 5	Leighton Cee Springs [h]		
" 12	Biggleswade [a]		
" 19	Hitchin, S.E.L. [h]		
" 26	Tottenham Hotspur, S.E.L. [a]		
Apl. 1			
" 2	Tottenham Hotspur, S.E.L. [h]		
" 4	Beds. Cup Final		
" 9			
" 16	Chesham Generals, S.E.L. [a]		
" 23	Aylesbury United, S.E.L. [h]		

C. TYDEMAN,

(LATE C. W. WARD.)

Furnishing Ironmonger

44 & 46, CHAPEL STREET,

+ LUTON. +

The Noted House for all Furnishing and Household Ironmongery.

Brooms and Brushes, Garden Tools,
Wire Netting and Roofing Felt,

Ready Mixed Paint.

Best Sheffield Tools and Cutlery
at lowest prices.

Table and Suspension Lamps.

Try our **SNOWFLAKE LAMP OIL**
at 10d. per gallon.

No Smoke, No Smell. Pure White Light.

Taylor's Celebrated "Eyewitness" Cutlery.

The Bedfordshire Football Association.



MR. G. W. WALKER,
Hon. Secretary.

THE Beds. F. A. was formed in February, 1894, principally on the initiative of Mr. G. H. Barford, who at that time took considerable interest in the winter national sport. Mr. F. Ebbs was chosen as Secretary, a position he occupied until 1901, when, owing to pressure of business, he was obliged to relinquish the work into the hands of Mr. G. Wistow Walker. The Association has exerted a beneficial influence upon the character of football in the county, and although the first season only 21 clubs were included in the Association, last season there were 62 clubs in direct affiliation.

The work of the Association includes every phase of football work, assisting and protecting weak clubs, aiding and advising upon technicalities and "knotty points" in the laws of the game, suppressing vicious tendencies of the players, and encouraging budding "footers" in their efforts to play a pure, scientific game. Besides these points, which are only a few in its many-sided nature, the Beds. F.A. has undertaken the examination and classification of the referees in the county, whilst the present Secretary is at all times ready to give expert advice, and to lecture on difficulties. The following are the officers, but the Executive may undergo a change in September:—

GALE & SON, COMPLETE HOUSE FURNISHERS,



Chapel Street and
High Town Road,
Luton. ✻ ✻

LOOK OUT



FOR THE



OPENING

OF

Our New Premises

IN

CHAPEL STREET.

Removals—Estimates Free.

President—Mr. Frank Ebbs.

Vice-Presidents—Messrs. E. L. Finch and R. E. Green.

Hon. Sec. and Treas.—Mr. G. Wistow Walker, 40, Brook Street, Luton.

Auditors—Messrs. C. Green and J. H. Scott.

Executive—Messrs. J. Davies, G. H. Taylor, E. Humphreys, C. Green, J. H. Scott, and A. Davis.

In August, 1902, a Commission from the Football Association was engaged inquiring into the application for a member of the Beds. F.A. being also a member of the Council of that august body. The case of the Beds. F.A. was successfully engineered by the Secretary, who has now the honour of attending the deliberations of the F.A.

The Beds. Cup Competition for amateurs has been productive of much good football, and has tended to create a deep interest among the many amateurs. Last season, the final was played at Biggleswade, when a large gathering resulted, the gate amounting to £60, the second best record, the previous one being at Bedford. The present holders are the Biggleswade F.C.

LIST OF AFFILIATED CLUBS & SECRETARIES.

Arlesey, A. A. Williams, Arlesey.

Amphill Town, E. W. Skinner, Park Street, Amphill.

Aspley Guise, G. H. Taylor, School House, Aspley Guise, R.S.O.

Biggleswade and District, C. J. Larkinson, Church Road, Biggleswade.

Biggleswade Wesleys, W. Thomason, Foundry Yard, Biggleswade.

Bedford: Queen's Engineering Works, Mr. Veitch, Hurst Grove, Bedford.

Bedford: Rose Thursday, James P. Smith, 50, High Street, Bedford.

Bedford: St. Cuthbert Star, R. Sprague, 83, Bower street, Bedford.

PLAIT MILLS

HAND OR POWER.

Suitable alike for every kind of Plait.

Unequalled for Ease,

Convenience, Durability,

Strength, Compactness,

And Cheapness.

SATISFACTION GUARANTEED.

FURTHER PARTICULARS FROM THE MAKER:—

FRANK MOODY,

ENGINEER,

CHAPEL STREET,
LUTON.

Bedford: St. Cuthbert Social, E. P. Valentine, Bedford.
Bedford: Southend Albions, A. Whiffin, Sandhurst Road, Bedford.

Bedford: Kempston Rovers, R. Robinson, 15, High Street, Kempston, Bedford.

Bedford: Clapham, T. R. Clark, Manor Farm, Clapham, Bedford.

Bedford: Athletic, W. J. Harris, 99, High Street, Bedford.

Harlington United, J. L. Woodcraft, Harlington, near Dunstable.

Harrold Rovers, E. Clayson, The Green, Harrold.

Houghton Works, F. G. Bannister, 75, Upper Union Street, Dunstable.

Langford, H. D. Plant, Langford, near Biggleswade.

Langford Wesleyan, E. M. Street, Langford.

Lavendon, C. Green, Northampton Road, Lavendon, Newport Pagnell.

Leagrave United, Bert Squires, Leagrave.

Leighton Cee Springs, G. F. Aldritt, Linslade, Leighton Buzzard.

Luton: Amateurs, A. E. Richardson, 2, Rothesay Rd.

Luton: Avondale, A. Davis, 34, Hibbert Street.

Luton: Bury Park Rangers.

Luton: Christ Church Old Boys, A. E. Richard, 6, Victoria Street.

Luton: Clarence, Thos. Smart, 61, Cowper Street.

Luton: Friends' Adult Athletic, F. Craddock, 7, Crawley Green Road.

Luton: Imperials, P. W. Clark, 14, Union Street.

Luton: Kaffirs, E. Hayward, 29, Cowper Street.

Luton: Melrose, J. H. Scott, 121, Hitchin Road.

Luton: Montrose, W. Pease, 211, Hitchin Road.

Luton: Norton Rangers, B. W. Martyn, 4, Rothesay Road.

Luton: Old Vicarage, J. Hearn, 2, Holly Street.

Luton: Town, C. Green, 81, Church Street.

Luton: Trinity.

LOOK OUT FOR

THE

Special Show

OF



JACKETS,
MANTLES,
and
AUTUMN
DRESSES,

AT

Alexander & Son's,

The Dress and Mantle House,

WELLINGTON STREET, LUTON.

Luton: St. Mary's, R. E. Green, 90, Church Street.
Luton: St. Saviour's, S. Everitt, 51, Hastings Street.
Luton: Stuart Rangers, S. Bottoms, 7, Lyndhurst Rd.
Luton: Villa Rovers, W. Cole, Alfred Street.
Luton Volunteers, E. Scott, Volunteer Club.
Luton Wesley Guild, H. Clark, Dallow Road.
Luton Wednesday, A. H. Clark, 48, Hightown Road.
Luton Wednesday United, W. Kendall, 19, Elizabeth Street.
Luton Y.M.C.A., G. H. Tomkins, 28, Grove Road.
Markyate, H. Cain, 128, High Street, Markyate, near Dunstable.
Marston, J. Allen, Marston Moreteyne, Ampthill.
Maulden, F. E. Greenwood, Maulden.
Meppershall, G. Ansell, Meppershall, near Shefford.
Old Warden, Rev. R. Lang, Old Warden Vicarage, Biggleswade.
Potton, Geo. Woodman, "Elmslie," Potton.
Sandy, J. Mead, High Street, Sandy.
Sandy Free Church, G. Truin, High Street, Sandy.
Slip End, B. Fensome, Summer Street, Slip End, Luton.
Stotfold Village, T. E. Smith, Regent Street, Stotfold.
Stopsley, E. Smith, Stopsley, Luton.
Three Counties Asylum, P. Keenan, Three Counties Asylum, near Hitchin.
Totternhoe United, A. King, Jun., Totternhoe, Dunstable.
Toddington, H. M. Roxby, St. James', Toddington.
Wymington, W. Darnell, Wymington, R. S. O., Rushden.

Luton Junior Football.

THE present season augurs well for Junior Football in and around Luton. A new lease of life has visited the Luton Junior League, and after passing through stormy waters, smooth sailing is anticipated. Mr. R. E. Green has been elected President, and Mr. J. H. Scott, 121, Hitchin Road, Luton, is Hon. Secretary

and Treasurer. The League caters for all clubs within a 5-mile radius of the Town Hall, and does much to encourage that class of football lying between the Schoolboys' League and the Senior Competitions. It is an undisputed fact that when Luton Town F.C. are in the ascendant, an impetus is also given to Junior Football. The more players there are the better will it be for the health and physique of the rising generation.

Two Timely Reminders.

TO FOOTBALL SECRETARIES :

Reports of Matches will always be welcome. Copy should reach the "NEWS" Office as early in the week as possible.

Fixtures Cheaply

and

• • Promptly Printed

AT THE

'LUTON NEWS' PRINTING WORKS

MANCHESTER STREET.

FIRST IN CIRCULATION.

FIRST IN POPULARITY.

The Luton News

AND BEDS CHRONICLE.

PUBLISHED EVERY THURSDAY EVENING.

**Has the Largest Circulation in the
County of Bedford.**

**"Wanted" or "For Sale" Advertisements,
20 Words, 6d.; 3 insertions, 1s.**

Advertisements received up till 10.30 a.m.
on Thursdays for insertion same evening.

**PUBLISHING OFFICE :
MANCHESTER STREET, LUTON.**

J. J. WOODING,

Personal
Attention
given to all
Orders.

Family Grocer,

Goods
delivered to
all parts of
the Town
twice daily.

81, HIGH TOWN ROAD,
LUTON.

All Goods sold at this Establishment are
guaranteed in every respect, and any not
approved of are willingly exchanged.

* GROCERY + LINES. *

LEMON BUTTER (for Cheese Cakes, &c.),
per jar, 7½d.

CUSTARD POWDER, 1lb. tins, 6½d.
(To make 24 pints).

COKE NUT, for Cakes, per lb., 4½d.

FLOUR, Best Household, per stone, 1s. 4d.