

PRICE ONE PENNY.

THE LUTON NEWS
Football Handbook

✠ 1904—1905. ✠

ERNEST GIBBS,
Business Transfer Agent, Valuer,
and Public House Broker.

OFFICE:

19, UPPER GEORGE STREET, LUTON.

If you want to

BUY OR SELL A BUSINESS,

call on E.G. without delay.

TELEPHONE 41.

J. WEBDALE & SONS,

(ESTABLISHED OVER 50 YEARS),

The Cheapest House in the District

FOR

BEDSTEADS

BEDDING,

GENERAL FURNITURE,

Carpets, Rugs, Floorcloths and Linoleums.

*Houses furnished from Stock at the
Shortest Notice.*

21, 23 and 25,

WELLINGTON STREET,

(OPPOSITE PEEL STREET),

* LUTON.

The Luton Town Football Club.

THOUGH perhaps not one of the oldest institutions in Luton, there are few which have had a more eventful career than the Luton Town Football Club. For nearly twenty years, the Club has weathered the storms which organisations of this character invariably encounter; time after time wreck has seemed almost inevitable, but thanks to the steadfastness of the few and the support of the many, the existence of the Club has been continued, and during the last year or two the outlook has brightened considerably.

The Town Football Club was formed something like nineteen years ago by an amalgamation of the Luton Wanderers with the Luton Excelsiors, but it was not until 1890-91 that professionalism was adopted in a tentative sort of way, some of the players being then paid for time lost from work. The following year all the members of the team were paid, though the amount was extremely small, being about half-a-crown per man. After that, ambition led to the engagement of a fully-paid professional, and Luton became one of the leading football organisations in the South. In the Southern League, the rivalry between Millwall and Luton was such as will be long remembered, and for two successive seasons they came out champions and runners-up respectively. The other Southern Clubs lagged so much in the rear that Luton seceded from the League, and in 1897 gained admission to the Second Division of the English League. Unfortunately, hopes were not realized, for though expensive talent was engaged, and the football became of a higher class than ever, the financial support did not increase to a corresponding degree, and consequently debts accumulated. In 1900, Luton again became identified with the Southern League, the Clubs in which had improved out of all knowledge, and last season a big bid for the Championship was made, but the forwards failed to rise to the occasion. However, the position was a very satisfactory one, and with very much the same defence and another line of forwards, it is hoped to do even better this season.

TO REACH THE GOAL

OF

Perfection in Footwear,

WEAR ONLY

FREEMAN,

HARDY &

WILLIS'S

FAMOUS BOOTS & SHOES,

33, GEORGE ST., LUTON.

Grand Assortment of Football Boots

From 3/11½.

With improvement in play, there has been a corresponding advance in gate receipts, and from a financial point of view last year was the best since the Club became a professional organisation, a profit of £132 being made on the twelve months' working. The increased patronage bestowed upon football locally may be judged from the fact that the gate-money, which in 1889-90, the last year of pure amateurism, amounted to £87 7s. 5d., had last season grown to about £2,500. Let us hope that the improvement recently shown will continue, and that the season 1904-5 may prove even more successful than its predecessors.

THE CLUB OFFICIALS.

DIRECTORS: - H. ARNOLD (Chairman), J. SQUIRES, E. GIBBS, H. T. SHACKLETON, W. CARTER, H. SMART, W. J. ALLEN, F. GENTLE, G. SMART, I. SMITH, A. E. PILGRIM, W. SOPER.

SECRETARY: CHAS. GREEN, 81, Church St., Luton.

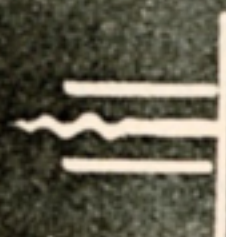
The Luton News

and Beds. Chronicle.

PUBLISHED EVERY THURSDAY EVENING.



First in Circulation.



First in Popularity.

"WANTED" OR "FOR SALE" ADYTS..

20 Words, 6d.; 3 insertions, 1s.

Picture Framing Tastefully Executed

Studio---90, Castle St.,

* LUTON. *



WM. H. COX,

(Late Cox & Jones.)

Art Photographer

Portraiture of the Highest Class at
Moderate Prices.

Enlargements in CARBON and SEPIA
PLATINOTYPE. *See examples at
Studio.*

**Special care with Children's
Portraiture.**

*Wedding, Cricket, and Football
Groups at Special Prices.*



A. LINDSAY.

A good man will be required to fill Thompson's place in goal, and the Luton directors believe they have that man in Lindsay, who for three seasons has been understudy to Doig, Sunderland's famous custodian. Born at West Hartlepool on September 26th, 1881, Lindsay is now in his 23rd year. He began playing in 1896 for a local club known as St. James, and in 1899 was found in the West Hartlepool team, with whom he remained for three seasons. He then signed on for Sunderland and was with them until last year. As a goalkeeper, the only position he has played in, he is highly spoken of, but of course while Sunderland had a star of the first magnitude in Doig, Lindsay's chances of promotion were not bright. Height, 5ft. 8ins., weight, 11st. 6lbs.

Having fixed the Day,

Where shall we buy the
HOUSE FURNITURE? ❀

*FROM THE LARGEST STOCK IN
THE DISTRICT, OF COURSE!*

BLUNDELL BROTHERS (LUTON)

LIMITED,
GEORGE STREET, LUTON.

BEST POSSIBLE CASH VALUE!

8 Large Showrooms to select from—

*Bedsteads
Bedding
Carpets*

*Curtains
Floorcloths
Linoleums*

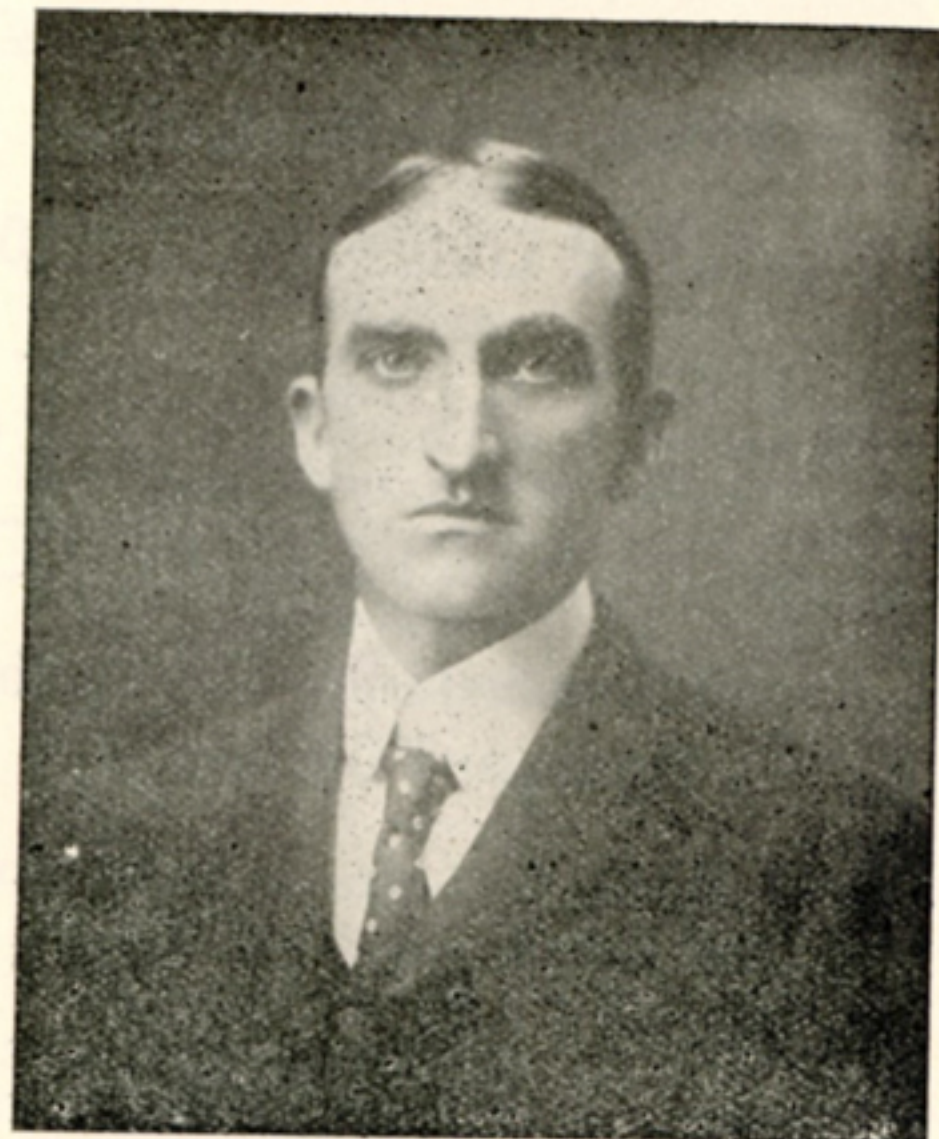
*Furniture for
Bedroom or
Parlour*

Catalogues, Price Lists and Estimates Free.

BLUNDELL BROTHERS

(LUTON) LIMITED,

❀ George Street, LUTON. ❀



TED TURNER.

TURNER, who is to partner McEwen at back, is one of the best known of Luton's new men, for he has not only played First League football but has had a lot of experience with the Southern League. He was born at Skerton, near Lancaster, 27 years ago, was brought out by the Skerton Club and was afterwards captured by Everton, playing first with the Reserves and then with the first team. He had a couple of seasons with Portsmouth, then went to Northampton, and next signed on for Portsmouth again. Last season he played for Fulham, and helped them to beat Luton both in the Cup-tie and the League. He missed only two matches during the season and was generally recognised as one of the best men in the team. Height, 5ft. 10½ins., weight, 12st 2lbs.

THE WELL-KNOWN HOUSE.

THE FRANKLIN

Temperance Commercial Hotel

AND

RESTAURANT,

CLOSE TO THE TOWN HALL,

GEORGE STREET, LUTON.

Special Accommodation for Football
Teams and Cyclists.

DINING HALL for Large or Small Parties.

HOT JOINTS from 12 to 2 daily.

ENGLISH BEEF AND MUTTON.

CHOPS AND STEAKS.

PRIME WELL-MATURED YORK HAMS.

TEA AND COFFEE ALWAYS READY.

HOT DRINKS FOR WINTER USE.

PRIVATE DINING AND TEA ROOMS

HOT BATHS. BEDS. CIGARS AND CIGARETTES.

ALL AT THE LOWEST POSSIBLE PRICES.

As you know the place, please tell others.

J. C. LEWIS, Proprietor.



Photo

JAMES McEWEN.

W. H. Cox.

This famous full back, whose return to Luton after an absence of five years, caused so much local satisfaction, is 30 years of age and a native of Liverpool. Mac first came to Luton in 1894, and his excellent and consistent play soon made him popular with the spectators. Four years later he went to Glossop, helped them into the First Division of the League, remained with them another season, and then signed on for Bury. During the three years with them he never missed a League match, and had as great a share as anyone in winning the English Cup. He plays left full back. Height, 5ft. 6ins. Weight, 11st.

THE PERFECT SMOKE.

KING'S COUNSEL.

14/- per 100.

7/- per 50.

CIGARS.

Havana
and British,
IN PERFECT CONDITION.

CIGARS.

JOHN M. DOW,
3, MILL STREET.

CIGARETTES.

FINEST QUALITY
Egyptian, Turkish,
Virginia

CIGARETTES.

"K.C."

THE PERFECT SMOKE.



JOHN M. DOW,

Who may be expected to assist the Club as an amateur, is a native of Dundee. He has had a good deal of experience of English League Football, having been two seasons with Newton Heath, with whom he had the honour of appearing in the test matches, and one with Glossop North End, who elected him captain. He came to Luton in 1898, and played for two seasons, rendering splendid service as a sound and vigorous back. He afterwards joined West Ham. and then Middlesbrough, but returned to Luton last year and settled down to business. Besides football he plays golf and cricket, and stands high in popular favour. He is 5ft. 9½in. in height, and weighs 12st.

PLAIT MILLS.

✿ HAND OR POWER. ✿

Suitable alike for every kind of Plait

Unequalled for Ease,
Convenience, Durability,
Strength, Compactness,
and Cheapness.

SATISFACTION GUARANTEED.

FURTHER PARTICULARS FROM THE MAKER:

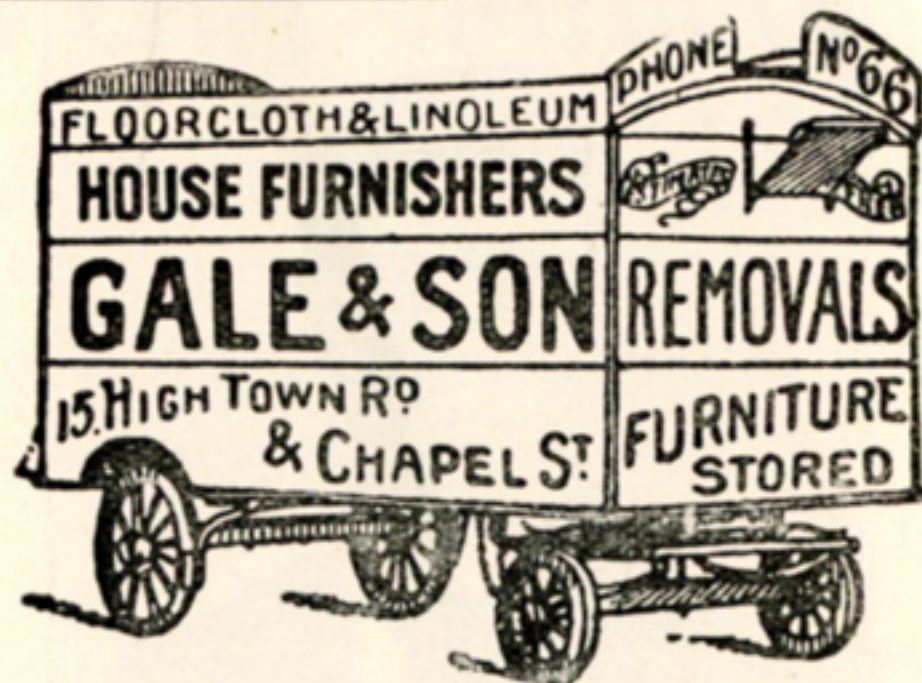
FRANK MOODY
ENGINEER,
CHAPEL STREET
LUTON.



FRED HAWKES.

Luton is naturally and properly proud of its half-back line which, though composed of local men, is one of the finest in the South. A consistently good player is Fred Hawkes, the right half, his coolness and judgment being a source of delight to the home spectators and of wonder to visitors. He is a native of Luton, played first with the Christ Church School team, afterwards with the Stanley (now defunct), and then with the Luton Reserves. He was soon drafted into the first eleven, and for the past three seasons has been a regular member of the team. Fred has had tempting offers from a First League team, but prefers to remain at home. He is 23 years of age, height 5ft. 6½ins., weight, 10st. 2lbs.

MOVE ON, PLEASE!



WE CAN MOVE YOU CHEAP! 2/. an Hour.

Quick? Yes, rather! Doesn't do to waste time.

Want some Lino in the new house? We can supply it, and lay it free, too.

Some of the furniture wants repairing, does it? We'll do it. Anything from a Walking Stick to a Mangle. Furnish you from cellar to roof at a moment's notice, and in the quickest possible time.

My card! Thank you.

GALE & SON, 12, Chapel Street,
15, High Town Rd.

LUTON,

Complete House Furnishers.



FRED WHITE.

A VERY popular player is Fred White, for though perhaps he may lack the finish of the other half-backs, he is such a worrier and puts so much dash and vigour into his work that he is a regular terror to the opposing forwards. Centre forwards of great repute who have come to do battle against Luton have been reduced to complete ineffectiveness by the remarkable energy of Luton's centre-half. White is a native of Dunstable, but came to Luton as a lad, played first with the Victoria, and afterwards with the Star. He next joined the Luton Reserves, and thoroughly earned his promotion to first rank. He is 21 years of age. Height, 5ft 7in. Weight 10st. 4lbs.

WATCHES ! CLOCKS ! JEWELLERY !

F. C. WHITE,

31, MANCHESTER ST., LUTON

FOR ALL
KINDS OF **Watches, Clocks,**
Jewellery. 

THE NOTED SHOP FOR WALTHAM LEVERS.

Hundreds sold. Every satisfaction given.

Medals and Presents a Speciality

LARGE STOCK OF PRESENTATION GOODS.

REPAIRS to Watches, Clocks, &c., under own supervision, have every attention.

WATCHES CLEANED, &c., IN THREE DAYS.

Waltham Levers, Silver, Gold, &
Gold Filled.

Always in Stock. Three Years' Warranty.

Note the Address—

Opposite Bridge Street.



ROBERT HAWKES

Luton's left half, popularly known as "Bob," is a player of remarkable ability. A native of Breachwood Green, he came to Luton as a boy, and played first for the Higher Grade School team, afterwards for the Stanley, and then for the Victoria. He joined the Luton Reserves three years ago, and showed to such advantage that he was soon given a trial in the first team. For the past two seasons he has played regularly with the premier eleven and his brilliance as a player attracted the attention of Clubs in the First Division of the English League, but he refused all offers to go away, preferring to keep his amateur status and play for Luton. His place is left-half, but he also plays a good game forward. He is 23 years of age. Height, 5ft. 8½in, weight, 10st. 8lbs.



CYCLES,
Motor Cycles,
Motor Cars,

SPORTS, GAMES.

W. A. SALE ^{AND} CO.,
70, GEORGE STREET,
LUTON.

FOOTBALLS FROM 1/6.

Cases, Bladders, best quality only.

INDOOR GAMES.

Cycles, Motor Cycles, Trailers, Motor
Cars for Hire, any distance or time.

REPAIRS OF EVERY DESCRIPTION.



HARRY WILLIAMS

Is now entering upon his seventh season with the Luton Club. As a boy of 14 he had a place in the Hitchin team. Later on he played for Brentford and St. Albans, and often figured in the Herts County Elevens, but it was with Luton that he made his first acquaintance with really class football. He is still an indefatigable worker, despite his many years' service, and though generally appearing in the half-back line, he has shown on occasion that he can render a splendid account of himself at full back. Height, 5ft. 10ins., weight, 11st. 9lbs.

LOOK OUT!
 FOR THE
SPECIAL SHOW
 OF
Jackets,
Mantles,
 AND **Autumn**
Dresses

AT
ALEXANDER & SON'S,
 The Dress and Mantle House,
WELLINGTON STREET, LUTON.



SAMUEL L. L. EATON.

Eaton is a native of Derby, and at the age of thirteen was captain of the Derby Schoolboys against Sheffield, Nottingham, and Leicester Schools. After playing for Derby St. James, he had a couple of seasons with Derby County Reserves, and then signed on for Leicester Fosse. He played for the Fosse when they just missed getting into the First Division of the League and that season he scored 26 goals. He had several offers from First Division Clubs, but transfer fees stood in his way, and so he signed for Luton, and last season rendered excellent service. He can play inside-right or left or outside-right. He is not yet 24 years old. Height, 5ft. 7in., weight, 10st. 10lbs.

FOOTBALL!

Telegrams of all Luton's away Matches
received by E. PRIDMORE.

Before going to the Match be sure you get

ONE OF E. PRIDMORE'S

MILD INDIAN CIGARS

2d. each, 7 for 1s.

For a

RELIABLE WATCH

Try one of

E. Pridmore's Waltham Levers, 30/- each.

CANNOT BE BEATEN.

E. PRIDMORE,

Watchmaker, Jeweller, and Tobacconist,
CHAPEL STREET, LUTON.

WATCH REPAIRS A SPECIALITY.



GEORGE LAMBERTON.

LAMBERTON, who is 23 years of age, was born at Waterford, and commenced playing football in 1898 for a Manchester League Club. He afterwards signed on for Bury and remained with them four seasons, taking part in something like a dozen of the first team's matches each year. The first season he was with them he played in the last nine League matches and scored eight goals. He was the most prolific of Bury's scorers in the Lancashire Cup competition, and was first Reserve in the English Cup semi-final with Aston Villa. Has played in all the forward positions, but prefers inside-right or centre forward. Height, 5ft. 7ins., weight, 11st. 3lbs.

THOSE WHO WEAR

MY

Overcoats, Rainproof Coats, Suits,

Trousers,

Hats, Caps, Shirts, Hosiery and Ties,

WIN

Comfort, Style and Satisfaction.

S. BASSETT,

28,

ELLINGTON

STREET,

LUTON.

PRACTICAL
TAILOR

AND

COMPLETE

Outfitter.



DAVID ROSS.

Ross is a name famous in football, and the subject of this sketch is a brother of George Ross, the veteran Bury captain. David was born at Darwen in 1884 and will not attain his majority until January 8th next. He began playing when only twelve years old for a Sunday-school Club, and after playing several seasons for junior teams, signed on for Bury. He can take inside-right or inside-left, but the former is his favourite position. In his first League game for Bury he scored half-a-dozen goals and in matches with other League Clubs has been very favourably noticed. Ross possesses several medals. Height, 5ft. 7in., weight, 10st.

A. Woodfield & Co.,

ELECTRICAL & GENERAL . .

. . ENGINEERS,

CHAPEL STREET, LUTON.

Specialities :

Electrical Installations. ❀ ❀

Motor-Car and Motor-Cycle

REPAIRS. ❀ ❀ ❀

Rubber Work

BY UP-TO-DATE

VULCANIZING MACHINERY

ESTIMATES FREE.



E. PENMAN,

Who was signed on by Luton as a coming centre forward, was born at Darlington in 1882, and is therefore only 22 years of age. His experience has been gained with Darlington Clubs, but he has played against Sunderland and Newcastle Reserves, Sheffield United, Middlesbrough, and Stockton, and the impression he created was so favourable that one or two First League clubs made inquiries about him, while more than one Southern League Club endeavoured to obtain his signature. His positions are half-back or centre forward, with a preference for the latter. Height, 5ft. 10ins., weight, 11st. 3lbs.

Luton Town Football Club.

1ST XI. FIXTURES, 1904—5.

Goals.

Date.	Opponents.	For	Agst.
Sept. 1	Swindon, S.L. [a]	0	1
„ 3	Southampton, S.L. [h]	1	2
„ 7	Watford, S.E.L. [a]	0	1
„ 10	Fulham, S.L. [a]	0	2
„ 17	Watford, S.L. [h]	2	1
„ 24	Plymouth, S.L. [a]	0	3
Oct. 1	West Ham, S.L. [h]	0	2
„ 8	Reading S.L. [a]		
„ 15	Bristol Rovers, S.L. [h]		
„ 22			
„ 29	Portsmouth, S.L. [h]		
Nov. 5	Brentford, S.L. [a]		
„ 12	Queen's Park Rangers S.L. [h]		
„ 19	Millwall, S.L. [a]		
„ 26	Tottenham Hotspur, S.L. [h]		
Dec. 3	Brighton and Hove, S.L. [a]		
„ 10	F.A. Cup		
„ 17	New Brompton, S.L. [h]		
„ 24	Wellingboro', S.L. [a]		
Boxing D.	Northampton, S.L. [h]		
Tues. 27	Watford, S.E.L. [h]		
Sat. 31	Southampton, S.L. [a]		

GET YOUR
 FIXTURE CARDS
 PRINTED AT THE
 Luton News Printing Works,
 Manchester Street,
 LUTON.

Date.	Opponents.	For	Agst.
Jan. 7	Fulham, S.L. [h]		
„ 14	F.A. Cup		
„ 21	Plymouth, S.L. [h]		
„ 28	West Ham, S.L. [a]		
Feb. 4	Reading, S.L. [h]		
„ 11	Bristol Rovers, S.L. [a]		
„ 18	Hull City, F. [a]		
„ 25	Portsmouth, S.L. [a]		
Mar. 4	Brentford, S.L. [h]		
„ 11	Queen's Park Rangers S.L. [a]		
„ 18	Millwall, S.L. [h]		
„ 25	Tottenham Hotspur, S.L. [a]		
April 1	Brighton and Hove, S.L. [h]		
„ 8	Swindon, S.L. [h]		
„ 15	New Brompton, S.L. [a]		
Good Fri.	Watford, S.L. [a]		
Sat. 22	Wellingboro', S.L. [h]		
Eas. Mon.	Northampton, S.L. [a]		
„ Tues.			
Sat. 29			

JOHN G. MURDOCH & CO.,

Pianoforte and Music Warehouse,

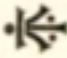
49, WELLINGTON ST., LUTON.

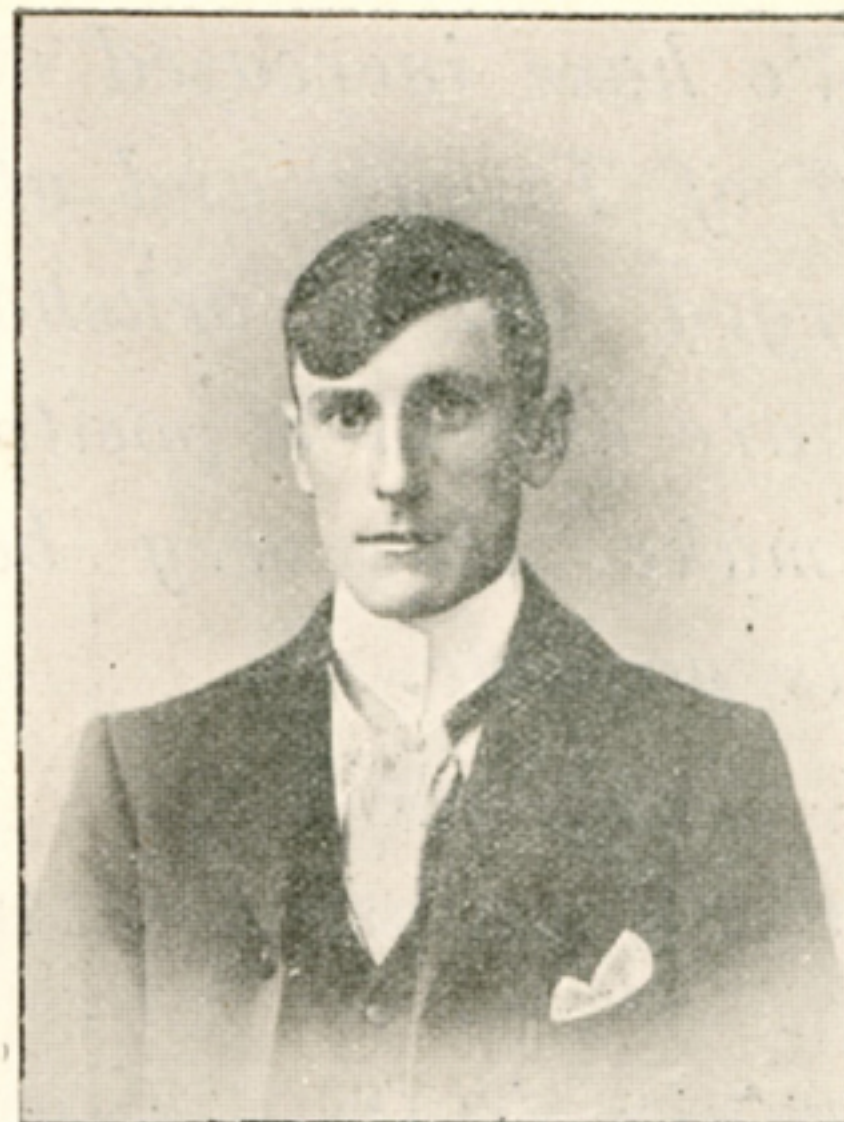
SOLE AGENTS FOR THE

SPENCER PIANOS,
MALCOLM ORGANS, & other
leading
Makers.

PIANOS from £15 10s. Nett Cash,
Or on the Easy Payment System from
10s. 6d. per month.

TEN YEARS' WARRANTY. CARRIAGE PAID.
OLD PIANOS TAKEN IN EXCHANGE.

F. NICHOLLS, 
SOLE AGENT.



HERBERT MOODY.

LUTON has not turned out a forward of greater ability than Moody, who is native born and bred. As a boy he played for the Chapel Street School team, and afterwards for the Stanley. He next put in three or four seasons with the Reserves, and in the trials given him with the first team, he showed so much cleverness and dash that two seasons ago he was signed on as a regular member of the premier eleven. He can play centre on occasion, but shines better at inside-left, his passing, both with head and feet, being a very conspicuous feature of his play. Unfortunately, accidents have prevented him appearing as regularly as could have been wished. Moody is 24 years of age, height, 5ft. 9ins., weight 10st. 7lbs.

*We have increased our
Staff of Tailors, and also
enlarged our Workshop,
and are now in a position
to make the very best
goods possible.*

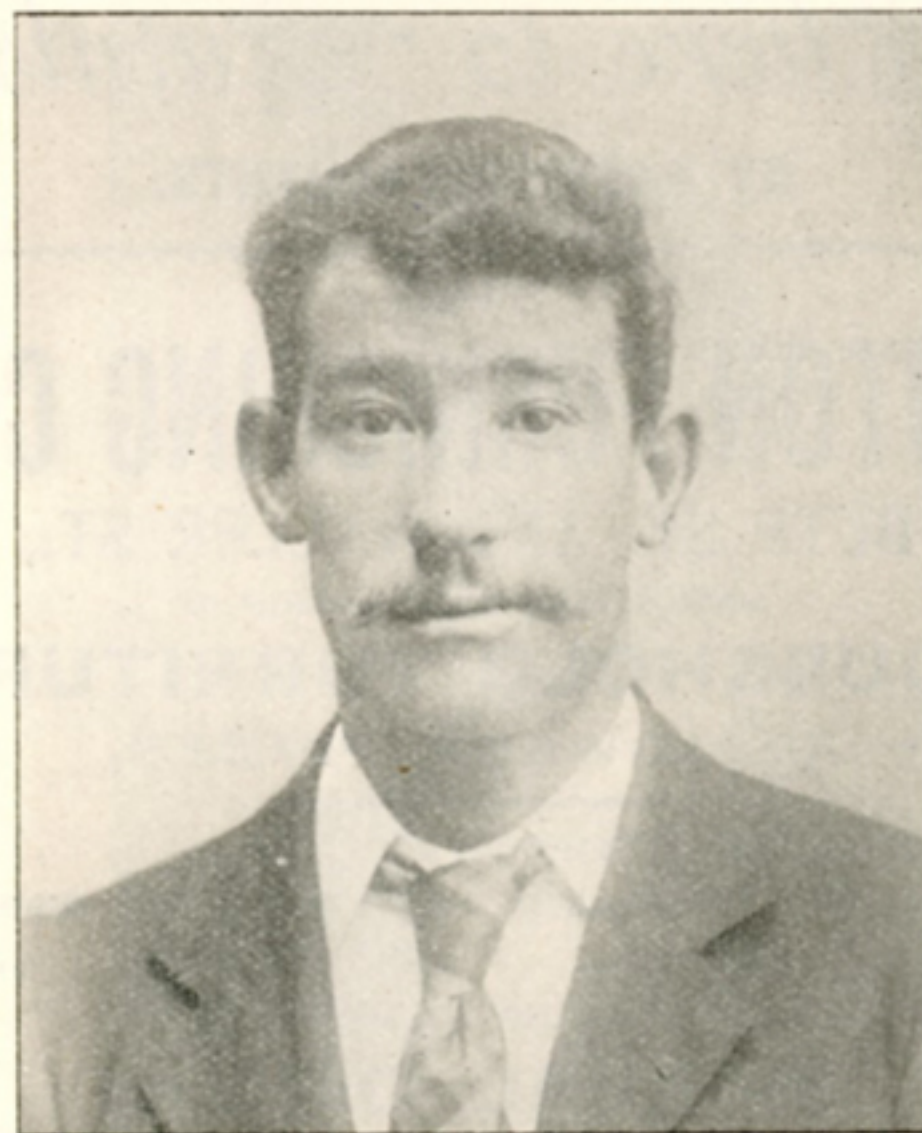
~~~~~  
WE CATER FOR ALL CLASSES, FOR CASH ONLY.

~~~~~  
PRIVATE FITTING ROOM.

~~~~~  
**FRED COOK,**

**Tailor, Hosier, &c.,**

**1, HIGH TOWN RD., LUTON.**



J. WALLACE.

THIS player, though he has yet to make a name for himself, comes with excellent credentials, and is spoken of by those who have seen him as a fearless and dashing player. Born at West Ham in 1879 and therefore 25 years of age, he began playing in 1898 for a local club and then had a couple of years with the London Caledonians. He next joined West Ham and appeared both at centre forward and inside-left, but considers the latter to be his proper place. He has frequently played with Barnes, who thinks a lot of him. Height, 5ft. 9ins., weight, 10st. 10lbs.



# Where to Furnish

BY EASY INSTALMENTS.

## THE LUTON FURNISHING Co.

BUTE ST. AND WALLER ST.,

SUPPLY EVERY DESCRIPTION OF  
**HOUSEHOLD FURNITURE**  
AT LOWEST PRICES.

### GENERAL TERMS:

£5 worth, 2/- weekly. £15 worth, 4/- weekly  
£10 ,, 3/- ,, £20 ,, 5/- ,,

OR TERMS ARRANGED.

### SPECIAL OFFER:

A FULL SIZE BRASS RAIL BEDSTEAD  
(extending foot), Pair of Palliasses, Wool  
Bed, Bolster, and 2 Pillows,

**THE LOT -- £3 : 0 : 0.**

Delivered free any distance, for 5/- down, 1/- weekly.

Our Illustrated Catalogue, showing how to Furnish a Cottage  
or Villa, FREE on Application.

**PIANOS FROM 10/6 PER MONTH.**

All Goods Delivered Free in Private Vans, any distance.



WILLIAM BARNES.

LUTON's new outside-left is a man with a considerable reputation, for he played three seasons with Sheffield United in First League football and helped them to win the English Cup when they beat Southampton at the Crystal Palace by two goals to one. Indeed, it was Barnes who scored the winning goal. Barnes is 25 years of age, was born at West Ham, and commenced his football career with the Leyton Club. He afterwards migrated to Sheffield, and returned to West Ham a couple of seasons ago to play for the Southern League Club of that name. He has played both inside and outside-left but prefers the latter position. Height 5ft. 9ins., weight, 11st.



# **Football Knickers!**

---

# **Football Shirts!**

---

# **Football Boots!**

---



## **M. MARES,**

ATHLETIC OUTFITTER,

**6, 8, 10, George Street,**

✻ **LUTON.** ✻



W. LAWSON, TRAINER.

W. LAWSON, popularly known as "Billy," is Luton bred and born. For several seasons he acted as trainer to the first team and previous to that looked after the Reserves for the love of the thing. Last season he had a rest but returns to his duties once again. Has had considerable experience as an athlete, having in his time been a boxer of no mean order, and taken part in some very tough contests. He is 37 years of age, stands 5ft. 7ins. high, and weighs about 10st. As a trainer he is said by men who know to be without a superior even in First League circles.



Goals scored for Luton will get points, but YOUR GOAL, if you want an UMBRELLA, is to go to

## H. W. SPRATLEY'S, Gents' Hairdresser and Umbrella Manufacturer.

*We make a Point of giving Best Value at Lowest Prices.*

The Largest Selection in Luton to  
Choose from, at all Prices.

Ladies and Gents' Umbrellas  
in stock from 1/11 to 21/=

Umbrellas Re-covered from 1/6  
to 15/6.

ALL KINDS OF REPAIRS EXECUTED ON THE PREMISES.

DON'T FORGET ADDRESS:

**6, WELLINGTON ST., LUTON.**

## **Luton Town 2nd XI. Fixtures.**

| Date.     | Opponents.                      | For | Ag'nst. |
|-----------|---------------------------------|-----|---------|
| Sept. 3   | Grays United, S.E.L. [a] ....   |     |         |
| " 10      | Eastbourne Old Tn. S.E.L. [h]   |     |         |
| " 17      |                                 |     |         |
| " 24      | Maidstone United, S.E.L. [h] .. |     |         |
| Oct. 1    |                                 |     |         |
| " 8       | Grays United, S.E.L. [h] ....   |     |         |
| " 15      |                                 |     |         |
| " 22      | Eastbourne Old Tn. S.E.L. [a]   |     |         |
| " 29      |                                 |     |         |
| Nov. 5    | South London United S.E.L [h]   |     |         |
| " 12      | Queen's Park Rangers S.E.L [a]  |     |         |
| " 19      | Aylesbury United, S.E.L. [h] .. |     |         |
| " 26      | Tottenham Hotspur, S.E.L. [a]   |     |         |
| Dec. 3    | Brighton and Hove, S.E.L. [h]   |     |         |
| " 10      | Leyton, F. [a] .....            |     |         |
| " 17      | South London United S.E.L [a]   |     |         |
| " 24      |                                 |     |         |
| Boxing D. | Hitchin, S.E.L. [a] .....       |     |         |
| Tues. 27  |                                 |     |         |
| Sat. 31   |                                 |     |         |
| Jan. 7    | Woolwich Arsenal, S.E.L. [a] .. |     |         |
| " 14      |                                 |     |         |
| " 21      | Beds. Cup. ....                 |     |         |
| " 28      | War Office, F. [h] .....        |     |         |
| Feb. 4    |                                 |     |         |
| " 11      | Woolwich Arsenal, S.E.L. [h]    |     |         |
| " 18      |                                 |     |         |
| " 25      |                                 |     |         |
| Mar. 4    | Aylesbury United, S.E.L. [a] .. |     |         |
| " 11      | Queen's P'k Rangers S.E.L [h]   |     |         |
| " 18      | Maidstone United, S.E.L. [a] .. |     |         |
| " 25      | Tottenham Hotspur, S.E.L. [h]   |     |         |
| April 1   | Brighton and Hove, S.E.L. [a]   |     |         |
| " 8       |                                 |     |         |
| " 15      | Hastings, S.E.L. [h] .....      |     |         |
| Good Fri. | Hitchin, S.E.L. [h] .....       |     |         |
| Sat. 22   | Hastings, S.E.L. [a] .....      |     |         |
| Eas. Mon. | Beds. Cup Final .....           |     |         |
| Sat. 29   |                                 |     |         |



# W. A. Knowles,

TAILOR, HATTER & HOSIER,

30, Manchester Street, Luton.

NOTED FOR . . .

Seasonable and Suitable Clothing,

TO MEASURE & READY-MADE.

Free Trading at **Pocket  
Protection  
Prices.**

N.B.—Football Outfits a Speciality.

## Bedfordshire Football Association.

SEASON 1904-5.

NEVER since the formation of the Association in February, 1894, has there been such an influx of clubs as was experienced last season, yet notwithstanding this fact the high water mark of membership has not been reached. The prospects for the present season are rosier than ever, and the impetus given to junior football has been of a very beneficial character. The confidence engendered by the present administration was the means of retaining in office the principal workers of the Association, so that continuity in the work will not be broken. In the past some splendid work has been done by the officials, and the earnestness, energy and perseverance shown have been instrumental in greatly adding to the usefulness of the Association. A sense of security in the administration of the laws has pervaded the whole work of the Executive, and reviewing the past season's work, a most gratifying feature was the diminution of the cases of suspensions and punishment for breaches of the laws. This speaks well for the character of the football in the county and the effectiveness of the advisory section of the work done by the secretary. The Association is conducted on thoroughly up-to-date lines and includes every grade of club in its ranks. There exists a link between the schoolboys right through to the professional organisation and every species of club is catered for. Last season there were 70 clubs in direct affiliation. The present officers are:—

*President*:—Mr. Frank Ebbs.

*Vice-Presidents*:—Messrs. E. L. Finch and R. E. Green.

*Hon. Sec. and Treas.*:—Mr. G. Wistow Walker, 40, Brook Street, Luton.

*Auditors*:—Messrs. C. Green and J. H. Scott.



# FOOTBALLERS' COMPLETE OUTFITTERS

THE BEST OF EVERYTHING FOR CLUBS.

Largest and Most Up-to-date Stock



in Midland Counties.

SHIRTS, KNICKERS, BOOTS, FOOTBALLS,  
CASES, BLADDERS, SHINGUARDS, GOAL  
NETS, KIT BAGS, PUMPS, REFEREES'  
WHISTLES, &c.

LISTS FREE.

New Hudson Sports Depot,  
Chapel Street, Luton.

*Executive*: — Messrs. J. Davies, H. Phillips, E. Humphreys, C. Green, J. H. Scott and A. Davis.

The Secretary (Mr. G. W. Walker) also represents the Beds. F. A. upon the Council of the Football Association, Ltd., so that the interests of the clubs in the county are well watched.

The Beds. Cup Competition for amateur teams is always productive of good, sound football, and tends to create an interest among the amateurs. Several alterations in the rules at the Annual Meeting were made in the interests of clubs not possessing private grounds and it is anticipated a larger number of competitors will enter for this season. The present holders are the Luton Town Reserves.

## LIST OF AFFILIATED CLUBS.

(a) Name and address of Sec. (b) Ground.  
(c) Dressing room.

- ARLESEY. (a) A. A. Williams, Arlesey, Beds. (b) Mr. Hildred's Field. (c) On Ground.
- AMPTHILL TOWN. (a) E. W. SKINNER, Arthur Street, Ampthill.
- ASPLEY GUISE. (a) G. H. Taylor, School House, Aspley Guise, R.S.O. (b) East Street. (c) Bell Hotel.
- BIGGLESWADE AND DISTRICT. (a) C. J. Larkinson, Hitchin Street, Biggleswade. (b) Fairfield. (c) Crown Hotel.
- BIGGLESWADE UNITED. (a) T. Carr, Holme Green, Biggleswade.
- BIGGLESWADE WESLEYS. (a) Edgar Wood, Biggleswade.
- BEDFORD ATHLETIC. (a) A. R. Godchild, 12, Alexandra Place, Bedford.
- BEDFORD EARLY CLOSERS. (a) W. S. Smith, 52, Ampt-hill Road, Bedford.
- BEDFORD SOUTHEND ALBIONS. (a) A. Whiffir, Sandhurst Road, Bedford.



# GRAMOPHONES ! !

## GRAMOPHONES ! !

### *The Finest Talking Instrument.*



The World's  
GREATEST  
SINGERS .  
have sung for  
the . .  
Gramophone  
Only.

Do not con-  
found it with  
other Talking  
Machines ob-  
tainable in .  
Luton.

## S. Farmer & Co.,

PIANO & ORGAN WAREHOUSE,

**2, Wellington Street**

AND

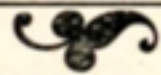
**85, George Street.**

- BEDFORD QUEEN'S PARK EXCELSIOR. (a) A. G. Buck, 25, Ford End Road, Bedford.
- BEDFORD ST. CUTHBERT SOCIAL. (a) E. P. Valentine, 108, Bower Street, Bedford.
- BEDFORD WESLEY GUILD. (a) S. T. Wadlow, 91, High Street, Bedford.
- CADDINGTON. (a) E. C. Cripps, Caddington, Luton. (b) Luton Close.
- DUNSTABLE RANGERS. (a) J. Braine, 6, Cross Street, Dunstable. (b) Bull Pond Lane.
- DUNSTABLE STANVILLE. E. Gazeley, 23, Beale Street, Dunstable.
- EATON SOCON EAGLES. (a) W. Giblett, Eaton Socon, near St. Neots. (b) White Horse Field.
- HARROLD ROVERS. (a) E. Clayson, The Green, Harrold, Beds.
- HOUGHTON REGIS. (a) E. J. Holt, "Belmont," Houghton Regis, Dunstable.
- HOUGHTON WORKS. (a)
- KEMPSTON ROVERS. (a) R. Robinson, 16, High Street, Kempston, Bedford.
- LANGFORD. (a) H. D. Plant, Langford, Biggleswade.
- LANGFORD WESLEYANS. (a) W. Hawkins, Langford. (b) Mushroom Meadow.
- LAVENLON. (a) C. Green, Northampton Road, Laven- don, Newport Pagnell.
- LEAGRAVE UNITED. (a) W. Pinney, The Firs, Dun- stable Road, Luton.
- LEIGHTON CEE SPRING. (a) P. Hamilton Read, Leigh- ton Buzzard. (b) Bridge Street (entrance by towing path). (c) Mr. T. Church's, Bridge Street.
- LUTON ALBION. (a) F. King, 53, John Street, Luton.
- LUTON AMATEUR. (a) A. C. E. Richardson, Burnham House, Rothesay Road, Luton. (b) The Dell, Old Bedford Road. (c) On ground.
- LUTON ARGYLE. (a) A. Norris, 83, North Street, Luton.





# To Ensure a Goal



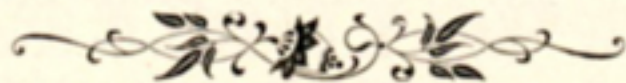
KICK WITH

# W. BIGG'S

# FOOTBALL



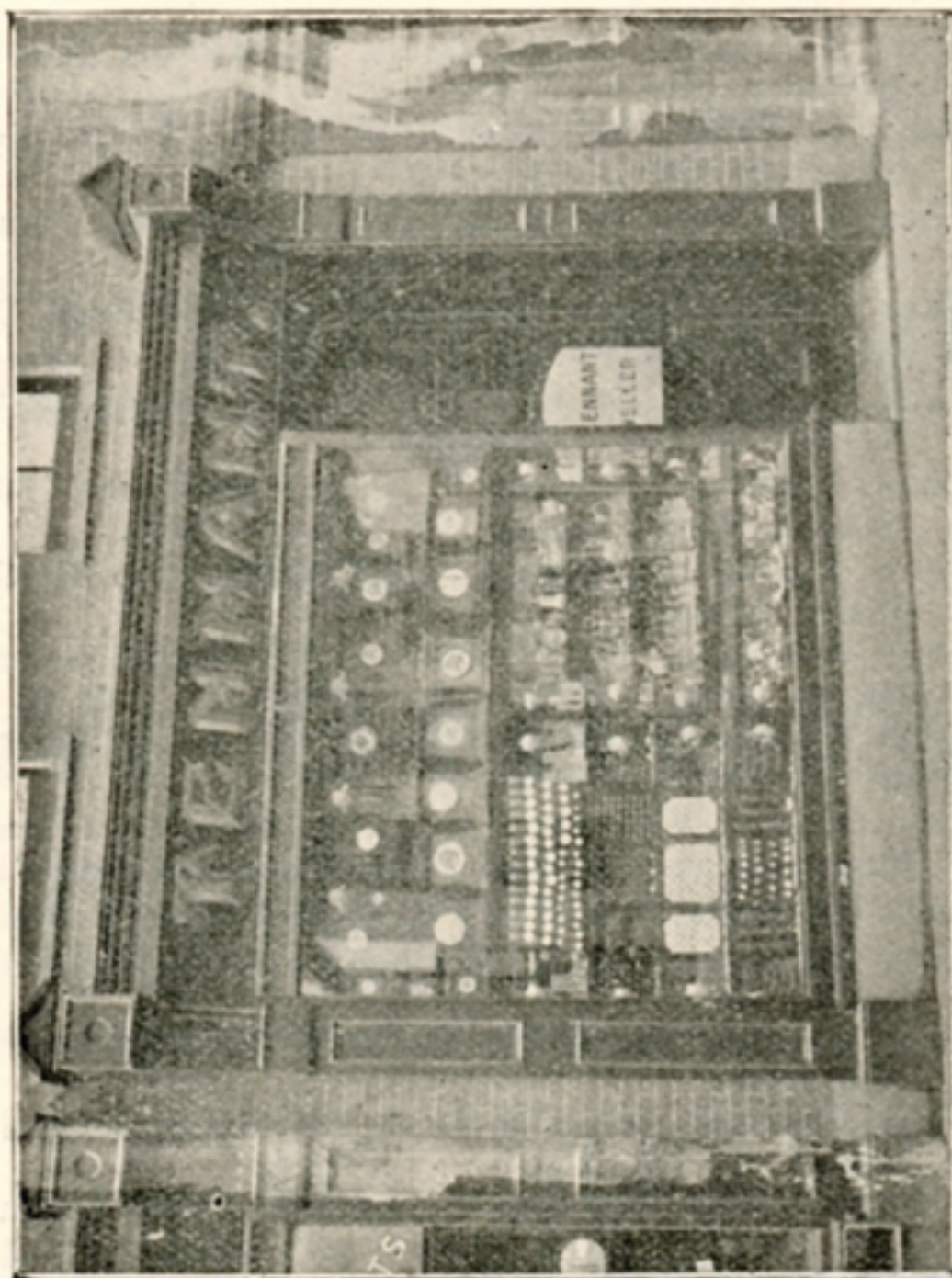
# BOOTS.



We Supply the Luton Town Team.

- LUTON AVONDALE. (a) A. Davis, 34, Hibbert Street, Luton.
- LUTON BLUNDELL BROTHERS. (a) E. W. BEALE, 14, George Street, Luton.
- LUTON BURY PARK RANGERS. (a) L. Williamson, Dunstable Place, Luton. (b) People's Park.
- LUTON CHRIST CHURCH OLD BOYS. (a) L. Allcock, 7, Buxton Road, Luton.
- LUTON CLARENCE. (a) A. E. Ansell, 71, Church Street, Luton. (b) Pope's Meadow.
- LUTON CRESCENT RANGERS. (a) F. Bradshaw, 23, Hitchin Road, Luton. (b) People's Park.
- LUTON DALLOW RANGERS. (a) P. Coles, 14, North Street, Luton.
- LUTON FERNDAL. (a) W. Watson, 209, North Street, Luton.
- LUTON FRIENDS' ADULT ATHLETIC. (a) A. Scrivener, 80, Dallow Road, Luton.
- LUTON GRANVILLE UNITED. (a) P. Chandler, 19, Alfred Street, Luton. (b) East Ward Recreation Ground.
- LUTON HAVELOCK. (a) F. Hunt, 15, Dudley Street, Luton.
- LUTON IMPERIALS. (a) P. W. Clark, 14, Union Street, Luton.
- LUTON KAFFIRS. (a) E. Hayward, 9, Tavistock Crescent, Luton.
- LUTON MILLROSE. (a) J. H. Scott, 121, Hitchin Road, Luton.
- LUTON MELVILLE. (a) S. Payne, Chobham Street, Luton.
- LUTON MONTROSE. (a) W. Pease, 211, Hitchin Road, Luton.
- LUTON MOORDALE. (a) T. Gurney, 50, Crawley Road, Luton.
- LUTON NEWTOWN INSTITUTE. (a) H. Farr, 91, Albert Road, Luton.
- LUTON NORTON RANGERS. (a) B. W. Martyn, 4, Rothesay Road, Luton.





The Most UP-TO-DATE STOCK in the town of  
WATCHES, CLOCKS, JEWELLERY, and  
ELECTRO-PLATE at

**TENNANT'S**, 13, New Bedford Rd., Luton  
(OPPOSITE CATTLE MARKET).

THE NOTED SHOP FOR REPAIRS. TELEPHONE No. 250x3.

- LUTON OLD VICARAGE. (a) E. Euington, 212, Park Street, Luton.
- LUTON PHOENIX. (a) W. GAME, 111, Windmill Street, Luton.
- LUTON ROSEDALE. (a) V. Hawkes, 53, Cardigan Street, Luton.
- LUTON SILVER STAR. (a) A. Hill, 23, Brunswick Street, Luton.
- LUTON STANLEY. (a) A. Heley, 127, Wellington Street, Luton.
- LUTON STAR. (a) A. Albone, 123, Hitchin Road, Luton.
- LUTON ST. MARY'S. (a) R. E. Green, 90, Church Street, Luton.
- LUTON ST. MARY'S UNITED. (a) L. E. Hawkes, 6, Cumberland Street, Luton.
- LUTON ST. SAVIOUR'S. (a) M. R. Crawley, 65, Buxton Road, Luton.
- LUTON TOWN. (a) C. Green, 81, Church Street, Luton.
- LUTON TRINITY. (a) A. Brown, 225, Dunstable Road, Luton.
- LUTON VICTORIA. (a) H. C. Horsford, Park Street, Luton.
- LUTON WEDNESDAY. (a) A. H. Clarke, 48, High Town Road, Luton.
- LUTON WEDNESDAY ATHLETIC. (a) J. Buckingham, Park Lane, Luton.
- LUTON WEDNESDAY UNITED. (a) W. Kendall, 19, Elizabeth Street, Luton.
- LUTON WESLEY GUILD. (a) H. Blows, Cardiff Road, Luton. (b) Biscot Path. (c) Ground.
- LUTON WHITE STAR. (a) W. Young, 20, Duke Street, Luton.
- MARKYATE. (a) H. Cain, 128, High Street, Markyate, Dunstable.
- MARSTON. (a) J. Allen, Marston; Ampthll.
- MAULDEN. (a) J. R. Eattell, Maulden, Ampthill.
- MEPPERSHALL. (a) G. Ansell, Meppershall, near Shefford. (b) Long's Meadow. (c) Five Bells Inn.



# ORIENT CAFE

44,  
GEORGE STREET, LUTON

Midway between Bell and George Hotels.

---

---

The Popular CAFE for Footballers.

---

---

High-class Refreshments

AT MODERATE PRICES.

EVERY CONVENIENCE FOR VISITORS.

Soups, Fish, Joints, Entree, Sweets.

TEAS A SPECIALITY.

---

---

Proprietor: J. W. WHITWORTH.

OLD WARDEN. (a) Rev. G. K. Cassels, Old Warden Vicarage, Biggleswade.  
POTTON. (a) A. E. Nicholls, Station Road, Potton.  
SANDY FREE CHURCH. (a) J. Milliner and George Western, Sandy. (c) Temperance Hotel.  
SANDY CHURCH LADS' BRIGADE. (a) F. H. Blaine, Sandy.  
STOPSLEY. (a) E. Smith, Stopsley, Luton.  
STOTFOLD VILLAGE. (a) T. E. Smith, Stotfold, Beds.  
THREE COUNTIES ASYLUM. (a) P. Keenan, Three Counties Asylum, near Hitchin.  
TODDINGTON. (a) H. M. Roxby, St. James, Toddington, Dunstable.  
TOTTERNHÖE UNITED. (a) A. H. King, Totternhoe, Dunstable.  
WOBURN SANDS MONTROSE. (a) G. E. Buck, Chapel Street, Woburn Sands, R.S.O.  
WYMINGTON STARS. (a) H. Fisher, Wymington, near Rushden.

---

## Luton Junior League.

HAVING successfully negotiated the stormy waters of past mismanagement, this League enters upon a new era. Never in the history of the League has there been such a desire to take part in the competition, and a large accession of clubs marked the chief feature of the Annual meeting. Mr. R. E. Green has been re-elected Chairman, with Mr. J. H. Scott, 121, Hitchin Road, Luton, as Hon. Secretary and Treasurer. The following clubs form the different divisions:—

### Division 1.

Trinity, Old Vicarage, New Town Institute, Montrose, Friends' Adult.



# Thepworths Ltd.,

The World's Clothiers.

New WINTER STOCK now on Show.  
SEE WINDOWS.

Latest Styles in Boys' and  
Men's Suits & Overcoats.

MEN'S SUITS from 17/11 to 50/-

MEN'S OVERCOATS from 17/11 to 42/-

BOYS' SUITS from 3/11 to 18/6

BOYS' OVERCOATS from 3/11 to 12/6

NOTE ADDRESS—

47. GEORGE ST.,  
LUTON.

## *Division 2.*

Stanley, Dunstable Stanville, Crescent Rangers, Granville United, Star, St. Mary's, Dallow Rangers, St. Saviour's, Ferndale, Stopsley.

## *Division 3.*

Albion, Havelock, Crescent Rangers Reserves, Victoria, Phoenix, Argyle, Silver Star, Rosedale, Melville, Granville United Reserves, St. Saviour's 2nd.

## **Beds. and District League.**

THIS League, which it was feared had died a natural death, has been granted a new lease of life, although in a very small way. The interest taken in its doings seems to have been flabby and apathetic, yet a fresh start has been made and this resuscitation may lead to brighter things in the future. The clubs forming it are:—Luton Amateurs, Clarence, Trinity and Leighton Cee Spring, and the Secretary (*pro tem.*) is Mr. P. Hamilton Read, Leighton Buzzard.

## **Two Timely Reminders.**

### TO FOOTBALL SECRETARIES.

Reports of Matches will always be welcome. Copy should reach the "News" Office as early in the week as possible.

FIXTURES CHEAPLY & PROMPTLY PRINTED  
at the . . .

**"Luton News" Printing Works.**



FOR  
BOOTS, SHOES, SLIPPERS,  
LEGGINGS, GAITERS, &c.,

GO TO

**H. LAWSON & SON,**

Wholesale and Retail  
Boot and Shoe Manufacturers,

19, MANCHESTER STREET,

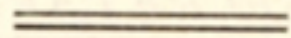
AND

10, HITCHIN ROAD, LUTON.



Bespoke Orders on the Shortest Notice.

Special Attention given to Repairs.



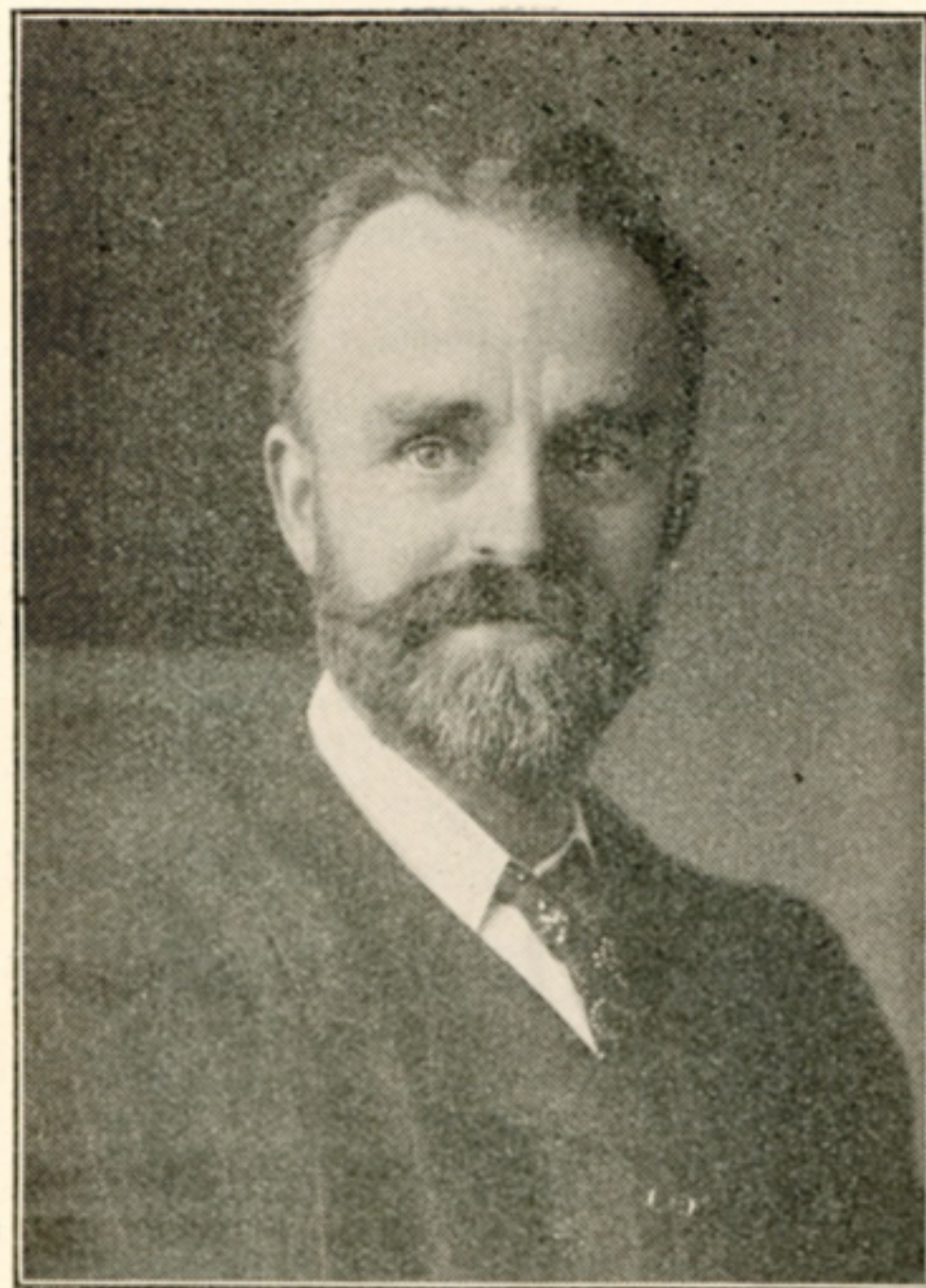
**BEST VALUE IN THE TOWN**

IN

**FOOTBALL BOOTS.**

(Also made to measure at all prices).

**FOOTBALLS AND ACCESSORIES IN STOCK.**



**Mr. G. W. WALKER,**  
Hon. Sec. Beds. Football Association.



## MEN WHO HAVE PLAYED FOR LUTON.

The following is a list of men who have played for the Luton Club since it adopted professionalism:—

1891-2.—J. Burley; B. Sanders and A. Hoy; J. Wright, H. Paul, A. H. Taylor and E. H. Lomax; F. K. Whitby, G. Deacon, C. Lomax, H. W. Ocle, H. Whitby, and W. Chesher.

1892-3.—Burley and T. Reed; Sanders, Hoy, W. George, and Wilson; Wright, Julian, Taylor, and Watkins; Brown, Chesher, Allen, H. & F. Whitby, H. Barbour, Galbraith, J. McKenzie, and F. V. Kirk.

1893-4.—Bee; Chesher, Wilson, and C. Read; Watkins, Julian, and Taylor; H. Whitby, Allen, Galbraith, Finlayson, Vickers, J. Dimmock, Brown, and Hayes.

1894-5.—Bee; Chesher, M. D. Nicholson, & McEwen; Watkins, McCrindle, Howe, and Collins; Brown, Gallacher, Galbraith, Prentice, Allen, Dimmock, and Jack,

1895-6.—Jack, Russell, and Williams; Stirton, M. D. Nicholson and McEwen; Watkins, Stewart, and Docherty; Gallacher, Finlayson, Galbraith, Parkinson, Birch, Ekins, Coupar, and Dimmock.

1896-7.—Williams; Davies and McEwen; Perrins, Stewart, Docherty, and Watkins; Gallacher, Finlayson, McInnes, Galbraith, Birch, Coupar, Ekins, Dimmock, and Brown.

1897-8.—Williams; McCartney and McEwen; Davies, Stewart, Docherty, and Perrins; Gallacher, Coupar, Birch, Clarke, Donaldson, Little, McInnes, Ekins, and Durrant.

1898-9.—Perkins; H. Williams, Moore, and Dow, C. Ford, Clarke, Sharp and Crump; Durrant, Hewitt, W. Ford, Kemplay, Draper, McInnes, Brock, and Ekins.

1899-1900.—Daw; Dow and McCurdy; Morrison, Stewart, J. Brown, Williams and Ralley; Inglis, Brock, Fairgrieve, Draper, McInnes, and Eckford.

1900-1.—Monks and Ord; Lindsay and McCurdy; Clifford, Holdstock, Williams and Cox; Brown, Blessington, Molyneux, Burbage, Dempsey, Tierney, Saxton and Durrant.

1901-2.—Ord; Lindsay, Sharp and Street; F. Hawkes, White, Williams, and R. Hawkes; Durrant, Blessington, Brown, Barker Tierney, and Colvin,

1902-3.—Frail; Lindsay, Sharp and Hood; F. Hawkes, White, Williams, and R. Hawkes; Durrant, Blessington, Hilsdon, Moody Davidson, Gall, and Allsopp.

1903-4.—Thompson; Bennett and McEwen; F. Hawkes, White, R. Hawkes, and Williams; Durrant, Eaton, McKee, Storey, Moody, Allsopp, Griffiths and Madden.

# Motto == 'Keep Moving.'



## FRANCIS MERCHANT,

Complete House Furnisher,  
Carpet & Lino Warehouseman,  
8 & 10, MANCHESTER STREET,  
LUTON.

See our Windows and Note Quality and Price.  
All Goods Marked in Plain Figures.  
Blinds of all kinds. - - - - - Repairs.

THE  
LUTON ELECTRIC CARPET BEATING WORKS.



# WHERE IS WOODING'S AND HIGH TOWN ROAD?

Seeing that twice lately there have been people wandering about, and in one case at least failing to find either **WOODING'S** or **HIGH TOWN ROAD**, it seems time that one should try and make clear where this Grocery and Sweet Business is to be found.

High Town Road is the main road leading away from the Midland Railway Station towards Round Green. **WOODING'S SHOPS** are in the centre of **HIGH TOWN ROAD**, the Sweet Shop on the right hand side, at No. 78, and the Grocery Shop a little farther up on the opposite side, at the corner of Havelock Road, and the No. 81.

I hope this will be clear enough for all would-be buyers to find their way thither.

The good woman that couldn't find us wanted

## **COLEMAN'S WINCARNIS**

for an invalid, and had to return without it.

Other invalids now may like to know that we have a large quantity of this wine in stock, and the price is  $2/4\frac{1}{2}$  and  $3/6$  per bottle.

**Hall's Wine**, too, for ill folk,  $1/9$  and  $3/-$  per bot.

WE ALSO STOCK ALL

**W. & A. GILBEY'S WINES and SPIRITS,**  
**COCO WINE, MEAT and MALT WINE,**

and if you have lost your appetite through illness, try our **ORANGE** and **QUININE** at  $1/-$  per bot.