

*Price One Penny.*

THE LUTON NEWS  
**Football Handbook**

✻ 1905—1906. ✻

**ERNEST GIBBS,**

*BUSINESS TRANSFER AGENT,*

VALUER, AND

*PUBLIC HOUSE BROKER.*

~~~~~  
*OFFICE:*

**19, UPPER GEORGE STREET, LUTON.**

~~~~~  
IF YOU WANT TO

BUY OR SELL A BUSINESS

CALL ON E. G. WITHOUT DELAY.



TELEPHONE 41.

# J. WEBDALE & SON

(ESTABLISHED OVER 50 YEARS),

The Cheapest House in the District

FOR

## BEDSTEADS

BEDDING,

**GENERAL FURNITURE,**

Carpets, Rugs, Floorcloths and Linoleums.

---

Houses furnished from Stock at the  
Shortest Notice.

---

21, 23 and 25,

WELLINGTON STREET

(OPPOSITE PEEL STREET),

\* LUTON.

## Luton Town Football Club.

MANY have been the vicissitudes experienced by the Luton Town Football Club, for the effort, in a comparatively small place like Luton, to run a team to compete with the talent which unlimited funds enable the Clubs in larger centres of population to command, is naturally attended with many disappointments. Last season was again unfortunate, for though the Club had some very clever players, they were so lacking in weight that they were seldom able to make the most of their chances and were often beaten by teams which were not their equal in the finer points of the game. This season the Directors have avoided the mistake of last year, and the new men engaged are, taken all round, a considerably heavier lot.

By an amalgamation of the Luton Wanderers with the Luton Excelsiors the Town Football Club was formed some twenty years ago, and for a time was carried on as an amateur organisation. In 1890-91 the principle of paying for lost time was recognised, but to avoid invidious distinctions, half-a-crown per week was paid each man, and it was in this modest sort of way that the plunge into the troublous waters of professionalism was made. Of course it was not long before the fully-fledged professional made his appearance, and Luton became one of the leading football organisations in the South. Their rivalry with Millwall in the Southern League will be long remembered, for at that time it was a case of these two clubs being first and the rest nowhere. The Dockers, however, always managed to come out on top, though the supporters of the Luton Club generally laid the flattering unction to their souls that it was the element of luck which favoured



# TO REACH THE GOAL

OF

PERFECTION

IN FOOTWEAR

WEAR ONLY

## Freeman, Hardy

## • & Willis's •

FAMOUS

## Boots & Shoes,

### 38, GEORGE ST., LUTON.

### Grand Assortment of Football Boots

FROM **3/11½.**

Millwall's claim to superiority. In 1896 Luton seceded from the Southern League, owing to the weakness of so many of the teams engaged in it, and for a season depended upon the United League and friendlies. Admission to the Second Division of the English League was gained in 1897, but increased receipts did not keep pace with increased expenses, and in 1900 Luton once again became identified with the Southern League. In 1903-4 they did so well that there seemed a possibility of gaining championship honours, for they went through the first half of the season without a single defeat, but last year told quite a different story, and Luton for the first time figured in the "bottom two" on the League table. As a consequence they had to apply for re-admission to the League, and it says much for the popularity enjoyed by the Club that their request was acceded to without a single opposing voice. Although the team did so poorly, so far as results were concerned, there was but little falling off in the gate money, and the deficit on the year's working was only a small one. Starting this season on a new ground, and, excepting the half-back line, with a new team, it is hoped that success, so long merited, will now be attained.

### The Club Officials.

DIRECTORS :

H. ARNOLD (CHAIRMAN),  
J. SQUIRES, E. GIBBS, H. T. SHACKLETON,  
W. CARTER, H. SMART, W. J. ALLEN,  
F. GENTLE, G. SMART, I. SMITH, A. E. PILGRIM,  
W. SOPER.

SECRETARY :—CHAS. GREEN, 81, Church St., Luton,



**Telephone No. 244 X 5.**

FOR ALL REQUISITES

PLEASE CALL

OR

RING UP

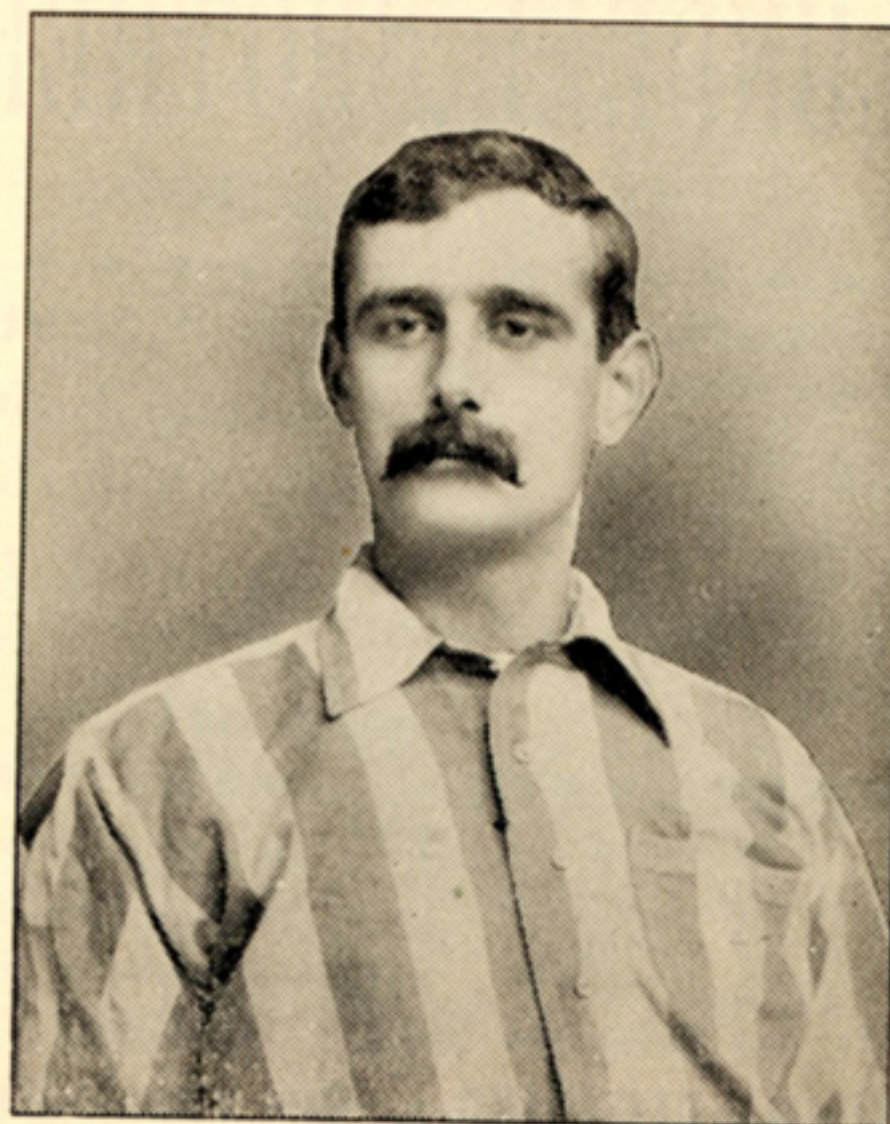
**The Ironmongery Combine**

**55, Waller Street,**

**LUTON.**

*Repairs have immediate attention.*

**ESTIMATES FREE.**



A. E. LEWIS.

LUTON's new goalkeeper is as prominent in cricket as in football, and renders effective service for Somersetshire both with bat and ball. A native of Bedminster, he played football first as an amateur for the Bedminster Club, and as a pro he afterwards played for Bristol City, Everton, Walsall, Sheffield United, and Sunderland. Has played full back and goal, but prefers the latter. He stands 6ft. 1in., and weighs 13st. 10lbs.



# BLUNDELL BROTHERS

(LUTON) LIMITED.

ALL FOOTBALLERS  
SHOULD WEAR OUR  
**Noted Suits  
and Overcoats.**

SUITS READY-TO-WEAR  
14/11 to 42/-

**OVERCOATS**

1905 STYLES,  
16/6 to 45/-

*See Windows!*

WE ARE NOTED FOR  
**JUVENILE CLOTHING.**

Football Shirts.  
Football Knicks.  
Football Hose.

*SPECIAL QUOTATIONS  
TO CLUBS.*

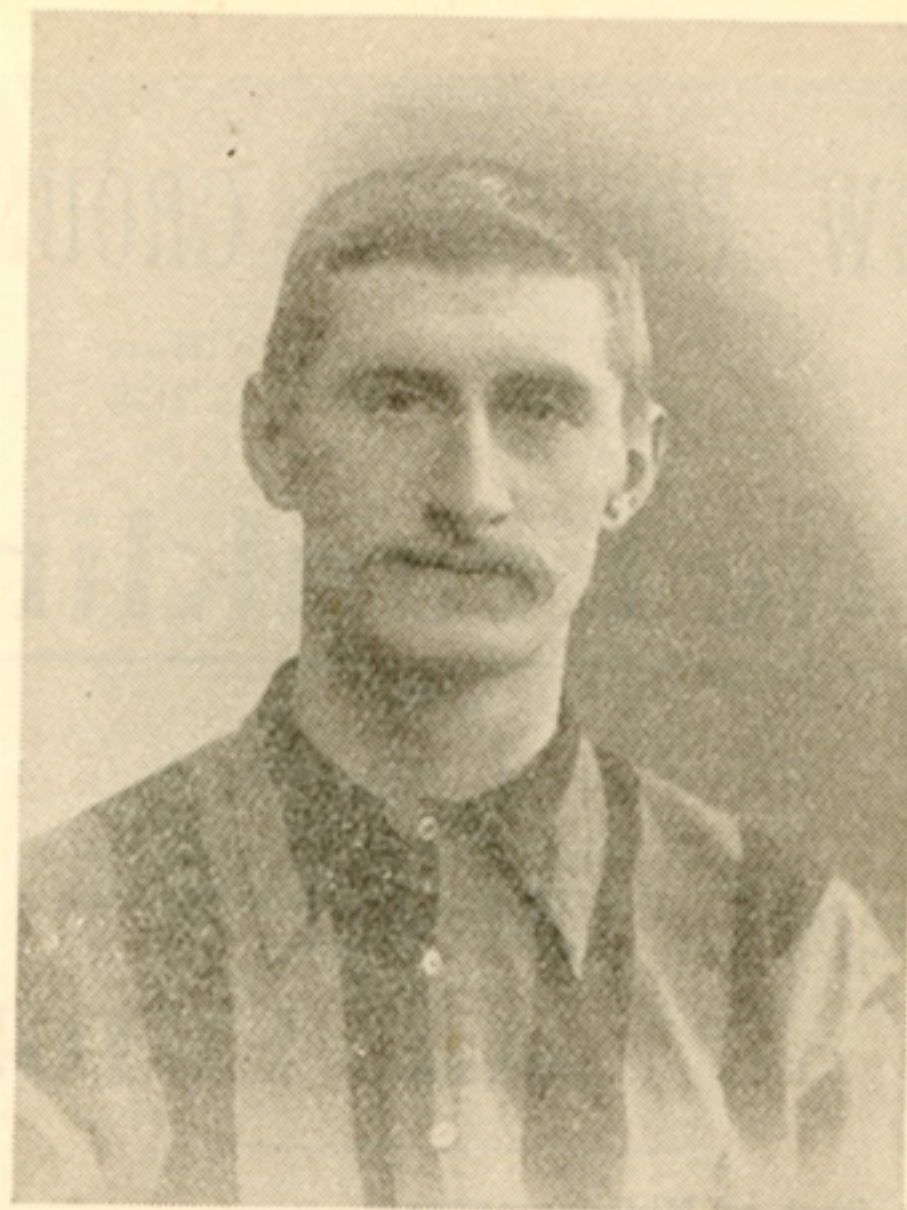
NEW DESIGNS  
AND PATTERNS.  
ESTIMATES FREE.

Football Clubs are invited  
to inspect

**Our Specialities.**

General Drapers, Outfitters,  
Complete House Furnishers & Removal Contractors,

George St., Cheapside, **LUTON.**  
and Chapel Street,



JOSEPH BLACKETT.

STANDING 5ft. 11in. and turning the scale at 12st., Joseph Blackett is quite the right build for a full back, and he may be expected to do Luton good service in that capacity. He is a native of Newcastle, and after going through his novitiate in junior clubs, he joined the Newcastle United "A" team, afterwards went to Loughborough, then had three seasons with Wolverhampton Wanderers, followed by one at Sunderland, and his last four seasons were spent in Middlesbrough. Blackett has twice been a reserve for International honours—once against Scotland and last season against Ireland. He is 28 years of age, and has the advantage of being a teetotaller and non-smoker.



. THE .  
**NEW FOOTBALL GROUND**

Is only a Short Distance from  
the **LEADING TEMPERANCE**  
**HOTEL & RESTAURANT**, i.e.,

**The Franklin,**

*Front of the Town Hall,*

**George Street,**  
 **LUTON.**

**The Best of Refreshments.**

**Splendid Accommodation.**

**Visiting Teams well catered for.**

**Prices very Moderate.**

**This House is well known and Specially  
Recommended.**

**J. C. LEWIS, Proprietor.**



**WILLIAM McCURDY.**

BLACKETT's partner at back will be one with whom Lutonians are familiar, William McCurdy to wit. Born at Brighton 29 years ago, McCurdy made a reputation for himself as a full back whilst playing in the Vale of Clyde. In 1899, despite offers from 3rd Lanark and the Clyde, he came south, and for two seasons rendered excellent service to Luton. He then migrated to Nottingham, where he joined the Forest, and afterwards became identified with Tottenham Hotspur. He is a very capable player, and the Luton people were not at all sorry when they heard of his return. His height is 5ft. 8½in., and he weighs 12st.



# PLAIT MILLS

HAND OR POWER.

Suitable alike for every kind of Plait.

Unequalled for Ease,  
Convenience, Durability,  
Strength, Compactness,  
and Cheapness.

*SATISFACTION GUARANTEED.*

Further Particulars from the Maker:

## FRANK MOODY,

ENGINEER,

CHAPEL STREET,

✻ LUTON.



JOHN M. DOW.

THIS player, who has only just been re-instated as an amateur, notwithstanding that his assistance to the Town Club throughout last season, both in the first team or Reserves, was absolutely free, has once again consented to help the team when required. "Johnny" is a native of Dundee, but he has found much to his taste in Luton, and to the ties of football, cricket, and golf, which brought about his attachment to the place, he has added the claim of business, and would now seem to have permanently settled down here. In English League Football he was for two seasons with Newton Heath, and one with Glossop North End, who elected him captain. He is a sound and vigorous back. He came to Luton first in 1898, and afterwards played for West Ham and Middlesbrough before returning to Luton. He stands 5ft. 9½in., and weighs 12st.



# JOHN UNWIN,

HAS AN UNRIVALLED SELECTION OF

## Football Requisites

IN STOCK.

BEFORE PLACING THEIR ORDERS CLUBS WILL  
DO WELL TO SEE HIS  
**COMPLETE OUTFITS.**

Duke's Celebrated "TIGER" Footballs,  
at 9/9 each.

A Large Consignment of the famous  
"RIGHT WING" Footballs  
Just Arrived at 8/9 each.

**BOOTS A SPECIALITY.**

NOTE ADDRESS:

**82, HIGH TOWN ROAD,  
LUTON.**



BERT ELSE,

Who has rendered very useful service to the Club as an amateur in the Reserve team, has this year been signed on as a pro. He is a native of Luton, and is now in his 22nd year. At the age of 12 he played for the Hitchin Road School, afterwards for the Stuart Rangers and the Clarence, and then for the Town Reserves. He plays either left or right back, but prefers the latter. Height 5ft. 5½in., weight 10st. 8lbs.

HARRY WATKINS

Is another local man who has signed a professional form. Born at Luton on Jan 21st, 1885, he also learned his football as a Hitchin Road School-boy, beginning at 9 years of age. He played for Harpenden three seasons, helping them to win the Mid-Herts. and Herts. Junior Cups, and subsequently was identified with the Clarence. His position is right back. Height 5ft. 10in., weight 11st. 5lbs. We have been unable to get a photograph suitable for reproduction.



WATCHES ! CLOCKS ! JEWELLERY !

**F. C. WHITE,**  
31, MANCHESTER ST., LUTON

FOR ALL  
KINDS OF **Watches, Clocks,  
Jewellery.**

THE NOTED SHOP FOR WALTHAM LEVERS.

*Hundreds sold. Every satisfaction given.*

**Medals and Presents a Speciality**

LARGE STOCK OF PRESENTATION GOODS.

REPAIRS to Watches, Clocks, &c., under own supervision, have every attention.

WATCHES CLEANED, &c., IN THREE DAYS.

**Waltham Levers** Silver, Gold, &  
Gold Filled.

*Always in Stock. Three Years' Warranty.*

Note the Address—

**Opposite Bridge Street.**

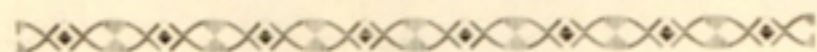


FRED HAWKES.

ONCE again Luton will be represented by a local half-back line, one of the smartest members of which is Fred Hawkes, who is a native of the town and is now 24 years of age. He first played in the Christ Church School team, afterwards with the Stanley (now defunct), and then with the Luton Reserves. His ability soon attracted notice, and for the past four seasons he has been a regular member of the first team. Fred has been the recipient of several offers from the North, but, fortunately for Luton, they have all been declined. His height is 5ft. 8in., and weight 11st.



# CYCLES, MOTOR CYCLES, MOTOR CARS.



## W. A. SALE & CO.,



70, George Street,  
LUTON.



**FOOTBALLS** from 1/6 to 12/6.

**HOCKEY STICKS** from 2/- to 10/6,

and **BALLS** from 1/- to 4/6.

---

CYCLES, MOTOR CYCLES, MOTOR CARS  
for Hire, any distance or time.

**REPAIRS OF EVERY DESCRIPTION.**



FRED WHITE.

A NATIVE of Dunstable, Fred White came to Luton at an early period of his career, and worked his way up through the ranks of the juniors till he secured a place in the Town Reserves. His good work speedily earned promotion, and for the first team White has made a name for himself as a half-back whose inexhaustible vigour and worry tactics may be depended upon to spoil the play of almost any centre forward. He is 25 years of age, stands 5ft. 7in., and weighs 10st. 4lbs.



**W. BELL,**



TAILOR and  
BREECHES MAKER,

22, CHAPEL STREET, LUTON.

**BELL & Co.,**

THE HOUSE FOR

GENTS' High-class Hosiery,  
& Hats and Neckwear.

Chapel Street & Stuart Street,  
... LUTON.

**FOOTBALL OUTFITS a Speciality.**



ROBERT HAWKES.

AMATEURISM in football is not always above suspicion, but if ever there was a genuine amateur, who played for the love of the game and that alone, it is Bob Hawkes. Several tempting offers have been made him by First League Clubs, but he has refused them all, and the lovers of Luton football owe him a debt of gratitude for his steadfast adhesion to the Town Club. A native of Breachwood Green, he came to Luton as a boy, played first for his school and afterwards for a couple of junior clubs. He then had three seasons with the Town Reserves, and for the last three years has been a regular member of the first eleven. He plays left-half, but can also render a good account of himself in the forward line. He is 24 years of age, stands 5ft. 8½in., and weighs 10st. 8lbs.



# Football!

TELEGRAMS  
of all Luton's away  
Matches received by  
E. PRIDMORE.

*Before going to the Match be sure you get*

ONE OF E. PRIDMORE'S

**BLACK FRIAR'S CIGARS.**

2d. each, 7 for 1s.

FOR A

**RELIABLE WATCH**

TRY ONE OF

E. Pridmore's Waltham Levers, 30/- each.

CANNOT BE BEATEN.

**E. PRIDMORE,**

Watchmaker, Jeweller, & Tobacconist,

**Chapel Street, LUTON.**

WATCH REPAIRS A SPECIALITY.



PATRICK J. GALLACHER.

For the second time in its history, Luton will have a Gallacher at outside right, and if Patrick renders as good service as his predecessor, no one will have cause to complain. Born at Parkhead, Glasgow, 23 years ago, Gallacher took to football early in life, playing first for Parkhead Rangers, then for Glasgow Ashfield, and afterwards spent three seasons with Duntach Hibs. In 1904-5, he had offers from Edinburgh Hibernians and Sunderland but decided in favour of Tottenham Hotspur, who also approached him. He plays either outside or inside right or full-back. He stands 5ft. 11in., and weighs 13st. 2lbs.



# WHERE to FURNISH

BY EASY INSTALMENTS.

## THE LUTON FURNISHING Co.

BUTE ST. AND WALLER ST.,

SUPPLY EVERY DESCRIPTION OF

**HOUSEHOLD FURNITURE**  
AT LOWEST PRICES.

### GENERAL TERMS:

£5 worth, 2/- weekly. £15 worth, 4/- weekly  
£10 „ 3/- „ £20 „ 5/- „

OR TERMS ARRANGED.

### SPECIAL OFFER:

A FULL SIZE BRASS RAIL BEDSTEAD  
(extending foot), Pair of Palliasses, Wool  
Bed, Bolster, and 2 Pillows,

**THE LOT - - £3 - 0 - 0.**

Delivered free any distance, for 5/- down, 1/- weekly.

Our Illustrated Catalogue, showing how to Furnish a Cottage  
or Villa, FREE on Application.

**PIANOS FROM 10/6 PER MONTH.**

*All Goods Delivered Free in Private Vans, any distance.*



ALF WARNER

Is a native of Nottingham, having been born there 26 years ago. After playing for some time in junior football, he signed on for Notts County, and when given a place in the first team, he had the distinction of being the youngest player in the League (Div.I.) In 1900 he was chosen to play against the Scottish Union, but a Cup-tie engagement prevented his appearance. In 1902, Warner joined Tottenham Hotspur and played many brilliant games for them during his three years' connection with that club. He is at home in most forward positions, but this season will no doubt generally be seen at inside-right. He has the reputation of being a deadly shot. His height is 5ft. 7in., and weight 11st.



If you want to know where to buy

LADIES' & GENT'S  
**UMBRELLAS**

Go To

6, WELLINGTON STREET, LUTON,

WHERE

**H. W. SPRATLEY**

HAS THE BEST SELECTION

**FOR**

You to Pick from at Lowest Prices.

*All the Latest Designs. See Windows!*

UMBRELLAS IN STOCK FROM

1s. 6d. to 25s.

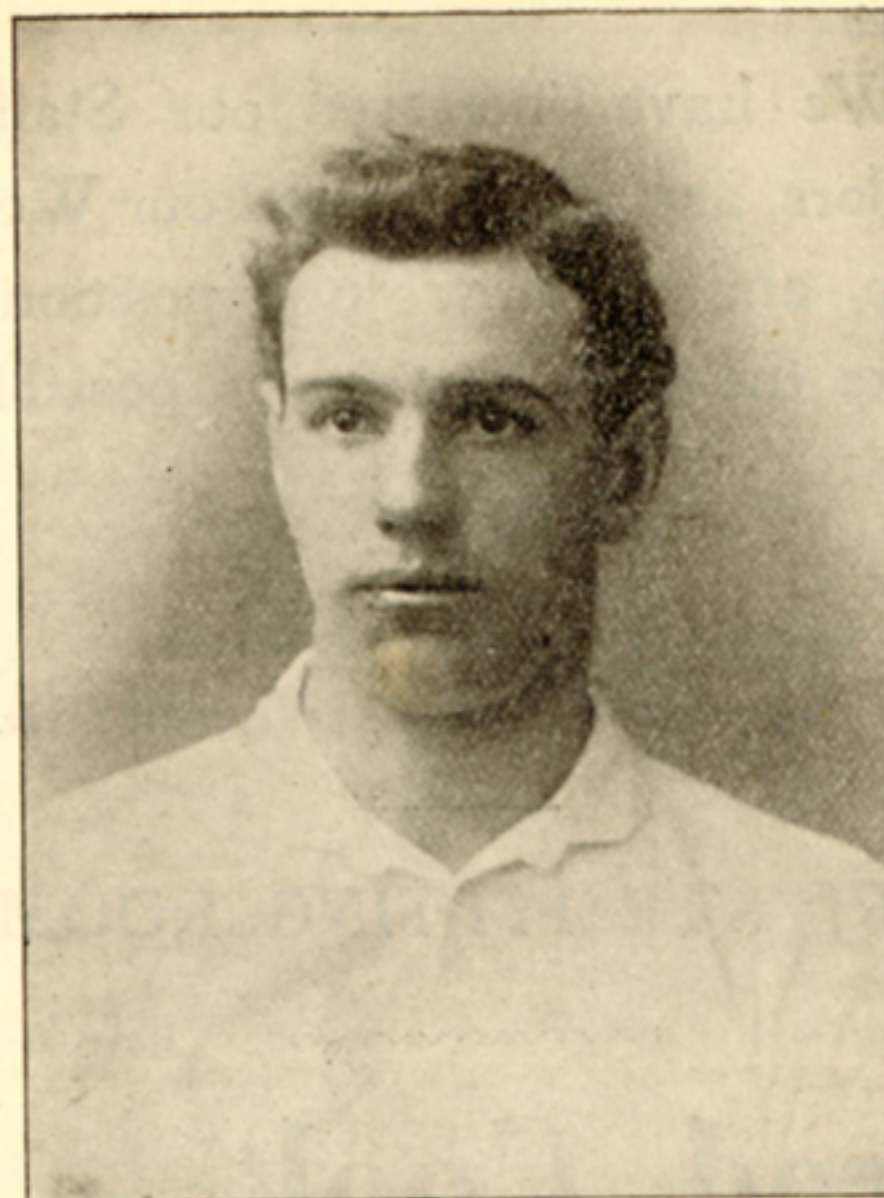
**NOTHING**

To Beat my Special Line at 3s. 11d.; Umbrellas  
Re-covered from 1s. 6d. to 15s. 6d.



**H. W. SPRATLEY,**

GENT'S HAIRDRESSER AND  
UMBRELLA MANUFACTURER.

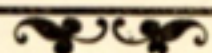


ALEXANDER BROWN.

VERY few people are better known in the football world than "Sandy" Brown, Luton's International centre-forward. Born at Glenbuck, Ayrshire, 27 years ago, Brown was known as the "Glenbuck goal-getter" when only 15 years of age, and at 17, he joined St. Bernard's as a professional. He was soon induced to cross the border however, and played three seasons for Preston North End. He then went to Portsmouth for a season, played for Tottenham two seasons, returned to Portsmouth, and afterwards went to Middlesbrough. He was chiefly instrumental in winning the English Cup for Tottenham, his goal scoring in the Cup-ties being phenomenal. His first International was at Glasgow, on the occasion of the Ibrox Park disaster, and he played against England in 1903-4. Brown stands 5ft. 9½in., and weighs 12st.

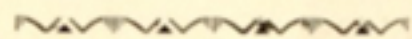


We have increased our Staff of Tailors, and also enlarged our Workshop, and are now in a position to make the very best goods possible.



***We cater for all classes,  
for Cash only.***

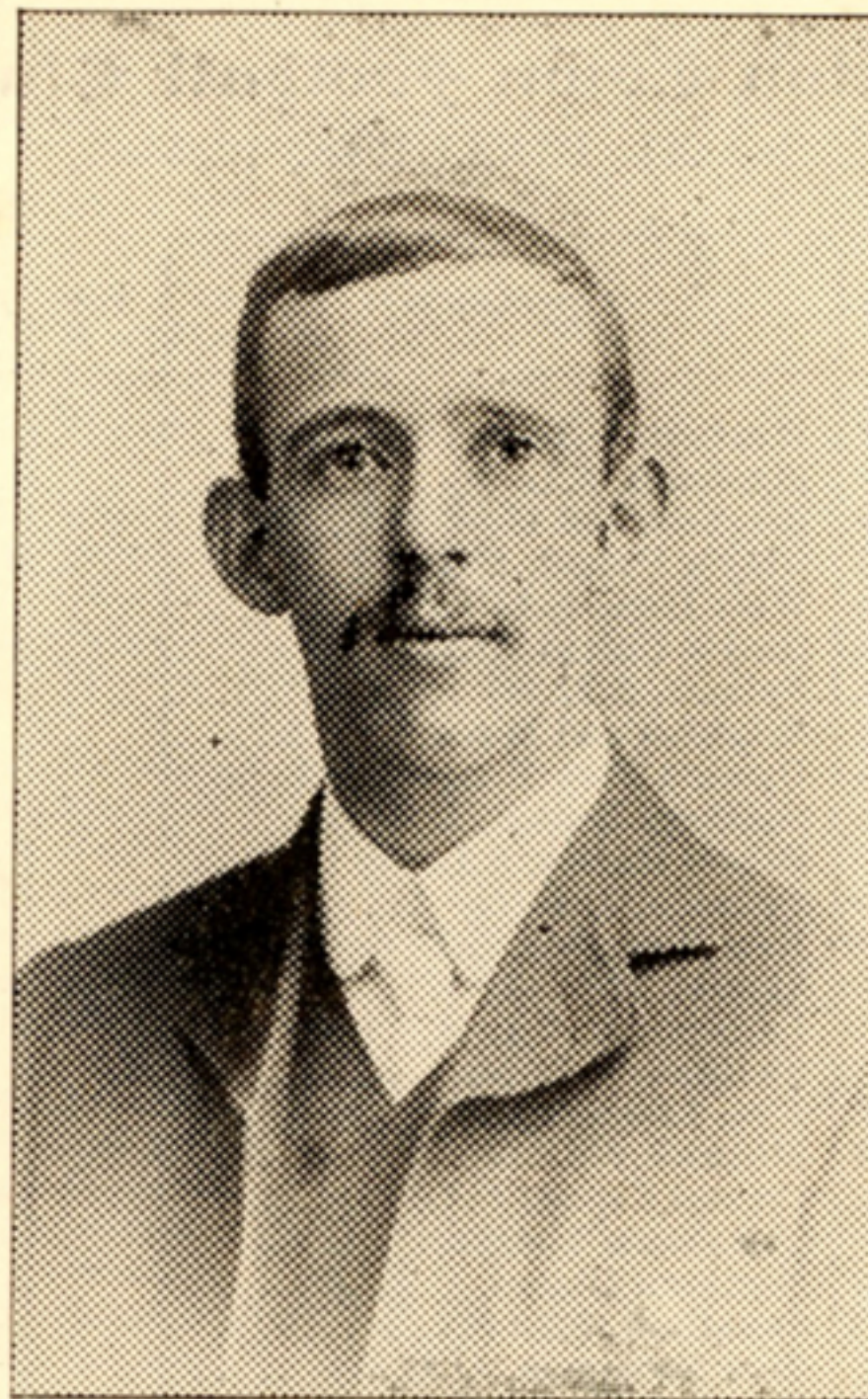
PRIVATE FITTING ROOM.



**Fred. Cook,**

Tailor, Hosier, &c.,

**1, High Town Rd., Luton.**



JOHN PICKERING.

THIS player, who is a little over 22 years of age, stands 5ft. 9½in., and weighs 11st. 5lbs., comes to us from Bury, and is a native of Newcastle-on-Tyne. He made a name for himself with Wellington Athletic, and added to his reputation when playing for Bury, the club's supporters being very sorry to lose him. His position is inside left.



# Luton Town Football Club.

1ST XI. FIXTURES, 1905—6.

GOALS.

Date	Opponents.	For	Agst.
Sep. 2	Watford, U.L. (a) .....		
" 4	Plymouth, S.L. (h) .....		
" 9	Brighton and Hove, S.L. (h) ....		
" 13	Gray's United, U.L. (a) .....		
" 16	West Ham, S.L. (a) .....		
" 18	Gray's United, U.L. (h) .....		
" 23	Fulham, S.L. (h) .....		
" 27	Brighton and Hove, U.L. (a) ....		
" 30	Queen's Park Rangers, S.L. (a) ..		
Oct. 5	Southern United, U.L. (a) .....		
" 7	Bristol Rovers, S.L. (h) .....		
" 9	Swindon, U.L. (h) .....		
" 14	New Brompton, S.L. (a) .....		
" 16	Leyton, U.L. (h) .....		
" 21	Portsmouth, S.L. (h) .....		
" 28	Swindon, S.L. (a) .....		
" 30	New Brompton, U.L. (h) .....		
Nov. 4	Millwall, S.L. (h) .....		
" 11	Crystal Palace, U.L. (h) .....		
" 18	Tottenham Hotspur, S.L. (a) ....		
" 20	Southern United, U.L. (h) .....		
" 25	Brentford, S.L. (h) .....		
" 27	New Brompton, U.L. (a) .....		
Dec. 2	Norwich City, S.L. (a) .....		
" 9	F.A. Cup .....		
" 16	Southampton, S.L. (a) .....		
" 23	Reading, S.L. (h) .....		
" 25	Xmas Day, Watford, S.L. (h) ....		
" 26	Boxing Day, Northampton, S.L. (h)		
" 30	Leyton, U.L. (a) .....		

.. Get Your Football Fixtures printed ..

"LUTON NEWS" PRINTING WORKS, Manchester Street, Luton.

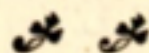
Date	Opponents.	For	Agst.
Jan. 6	Brighton and Hove, S.L. (a) ....		
" 13	F.A. Cup .....		
" 20	West Ham, S.L. (h) .....		
" 24	Swindon, U.L. (a) .....		
" 27	Fulham, S.L. (a) .....		
Feb. 3	Queen's Park Rangers, S.L. (h) ..		
" 10	Bristol Rovers, S.L. (a) .....		
" 17	New Brompton, S.L. (h) .....		
" 24	Portsmouth, S.L. (a) .....		
" 26	Clapton Orient, U.L. (h) .....		
Mar. 3	Swindon, S.L. (h) .....		
" 10	Millwall, S.L. (a) .....		
" 12	Brighton and Hove, U.L. (h) ....		
" 17	Crystal Palace, U.L. (a) .....		
" 19	Clapton Orient, U.L. (a) .....		
" 24	Tottenham Hotspur, S.L. (h) ....		
" 31	Brentford, S.L. (a) .....		
Apl. 7	Norwich City, S.L. (h) .....		
" 13	Good Friday, Watford, S.L. (a) ....		
" 14	Plymouth, S.L. (a) .....		
" 16	Easter Mon. Northampton, S.L. (a)		
" 17	Watford, U.L. (h) .....		
" 21	Southampton, S.L. (h) .....		
" 28	Reading, S.L. (a) .....		

S.L. SOUTHERN LEAGUE

U.L. UNITED LEAGUE.



TO . . .  
**Football Club**  
**Committees.**



Before ordering your

**CLUB OUTFITS**

write to M. MARES for Samples and Quotations for **Jerseys, Shirts, Knickers, Boots, etc.**

---

**BEST VALUE IN THE TRADE**

FOR

**ATHLETIC CLOTHING.**

---

**M. MARES,**

**6, 8, 10, George Street, LUTON.**



**A. MACDONALD.**

Though only 25 years of age, Macdonald has had seven years experience of professional football, and during that time has played for Partick Thistle, Everton, Southampton, Portsmouth, and Wellingborough. His favourite position is inside left. He is 5ft. 9½ins. in height, and weighs 11st.

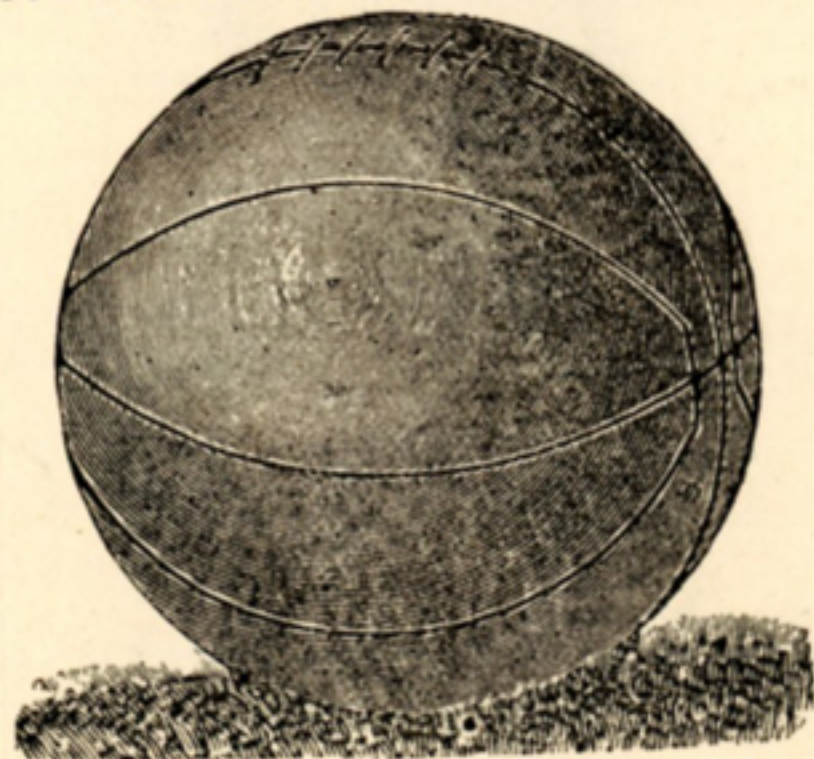


# The NEW HUDSON Cycle & Sports Depot

(LLOYD, PARTRIDGE & CO.)

ATHLETIC OUTFITTERS.

Every Ball Guaranteed.



Finest Material and Best  
Workmanship.

The "League King" (Reg.)  
10/6 Complete.

Largest & Best Stock of Football Requisites,  
Balls, Cases, Bladders, Shirts, Knickers,  
Goal Posts and Nets, Shin Guards.

CHAPEL STREET, LUTON.



WILLIAM BARNES

Is the only one of last year's forwards retained for the present season, and he proved himself a man of considerable ability, his speedy runs being a great feature. Born at West Ham 26 years ago, Barnes began his football career with the Leyton club, and afterwards migrated to Sheffield, spending three seasons with Sheffield United in First League football and helping them to win the English Cup when they beat Southampton at the Crystal Palace by two goals to one. Indeed, it was Barnes who scored the winning goal. He subsequently spent a couple of seasons with West Ham and then came to Luton. He has played both inside and outside left but prefers the latter position. His height is 5ft. 9in., and he weighs 11st.




# W. A. Knowles,

TAILOR,  
HATTER,  
HOSIER,  
30, MANCHESTER ST., LUTON.

The Cheapest and Best House for  
GENTS' OUTFITS of every description.



 See our Pattern Sheet of  
Coloured Football Shirts.  
Newest Designs.

FOOTBALL KNICKERS in Great Variety.



W. LAWSON, TRAINER

W. LAWSON, popularly known as "Billy," is Luton bred and born. For several seasons he has acted as trainer to the first team and previous to that looked after the Reserves for the love of the thing. He has had considerable experience as an athlete, having in his time been a boxer of no mean order, and taken part in some very tough contests. He is 38 years of age, stands 5ft. 7ins. high, and weighs about 10st. As a trainer he is said by men who know to be without a superior even in First League circles.



MOTTO: — "KEEP MOVING."



# FRANCIS MERCHANT

COMPLETE HOUSE FURNISHER,  
CARPET AND LINO WAREHOUSEMAN,  
8 & 10,  
MANCHESTER ST.,  
LUTON.

See our Windows and Note Quality and Price  
All Goods Marked in Plain Figures. Repairs.  
Blinds of all kinds.

The Luton Electric Carpet Beating Works.

## LUTON RESERVE FIXTURES, 1905—6.

Date.	Opponents.	For.	Agst.
Sept. 2	Watford [h] .....		
" 9	Brighton and Hove [a] .....		
" 16	Woolwich Arsenal [h] .....		
" 23	Leyton [a] .....		
" 30	Queen's Park Rangers [h] .....		
Oct. 7			
" 14	Leyton [h] .....		
" 21	Watford [a] .....		
" 28			
Nov. 4	Eastbourne Old Town [a] .....		
" 11	Northampton, F. [a] .....		
" 18	Tottenham Hotspur [h] .....		
" 25	Woolwich Arsenal [a] .....		
Dec. 2	Chelsea [h] .....		
" 9			
" 16	Grays United [h] .....		
" 23			
" 25			
" 26	Hitchin [a] .....		
" 30			
Jan. 6	Brighton and Hove [h] .....		
" 13			
" 20	Beds Cup .....		
" 27	Hastings [h] .....		
Feb. 3	Queen's Park Rangers [a] .....		
" 10	Eastbourne Old Town [h] .....		
" 17			
" 24	Beds Cup .....		
Mar. 3	Maidstone [a] .....		
" 8	Chelsea [a] .....		
" 10			
" 17	Maidstone [h] .....		
" 24	Tottenham Hotspur [a] .....		
" 31	Northampton, F. [h] .....		
Apl. 7	Grays United [a] .....		
" 13	Hitchin [h] .....		
" 14	Wanstead, F. [h] .....		
" 16	Beds Cup Final .....		
" 21	Hastings [a] .....		
" 28	Wanstead, F. [a] .....		





# TO ENSURE A GOAL

KICK WITH

## W. BIGG'S

# Football Boots.



We supply the Luton Town Team.



## BEDFORDSHIRE FOOTBALL ASSOCIATION.

SEASON 1905—6.

THE prospects for the coming season in football matters have never been so bright as at present, and a great deal of this is due to the fostering care of the Beds. Football Association. No matter what the status of the club, the Association sets itself to study its interests, and in fact exercises a careful oversight. The steady annual increase of membership has been maintained since the commencement of the Association in February, 1894, when 21 clubs only were in affiliation. There was a marked difference last season, as 88 clubs were directly under its jurisdiction. This total has not been reached without much careful and energetic work by the officials, and proves the usefulness of having the whole of Association football under one efficient control. It gives a stability and confidence to the weaker organisations when they can rely upon sound help from those deeply interested in the cultivation of pure English sport and the suppression of degrading tendencies. In the whole of the County it has been computed on a low basis that there are at least 1500 players *actively* participating in the popular winter pastime. When so many cry out about "passive" football, as evidenced by the large crowds at some matches, it is a healthy sign to chronicle such a number of "active" footballers. To this end is the work of the Beds. F.A. directed, to cause active participation in the game. Bedfordshire is in a fortunate position as regards football administration, for there is a good connection from the lowest, or schoolboy, football, to the highest as shown in the parent body—the Football Association, Ltd. This con-



# ORIENT CAFE

44,

**GEORGE STREET, LUTON**

Midway between Bell and George Hotels.

---

THE  
**Popular Cafe for Footballers.**

---

**HIGH-CLASS REFRESHMENTS**

---

AT MODERATE PRICES.

EVERY CONVENIENCE FOR VISITORS.

**Soups, Fish, Joints, Entree, Sweets.**

**TEAS a Speciality.**

---

**Proprietor : J. W. WHITWORTH.**

necting link, specially as regards Luton, is very useful, and keeps the administration up-to-date. Recent legislation has placed the control of the Leagues in the County under the Beds F.A., but this will not take away the League committees, who will as before continue to conduct their own business; only in cases of sanction and other matters the Beds F.A., and not the Football Association, will direct affairs. Necessarily this will entail more work on the Executive, but aims at more power. During the past season, through the work of the Hon Sec., a fresh lease of life was given to football in the County Town, and now a strong League exists there.

Mr. G. Wistow Walker, the Hon. Sec., still represents the Beds F.A. on the Council of the F.A., and watches the interests of local football very carefully.

There is only one professional club in the County, and it is not surprising that the Beds County Cup is run solely for the purpose of encouraging amateur talent. The final contests of late years have proved the general equalising of this class of football, and perhaps one of the keenest competitions was that which ended last season's working, when Luton Clarence ran out winners, and are now in possession of the Cup for the first time.

The present officers are—

*President :* Mr. Frank Ebbs, 45, Rothesay Road, Luton.

*Vice-Presidents :* Messrs. E. L. Finch, 8, Clarendon Road, Bedford ; and J. Davies, Arlesey.

*Hon. Sec. and Treas. :* Mr. G. Wistow Walker, 40, Brook Street, Luton.

*Auditors :* Messrs. R. E. Green and J. H. Scott.

\* *Executive :* Messrs. E. Humphreys (Bedford), G. Cain (Stopsley), C. Green, J. H. Scott, and A. Davis (Luton).

\* Executive Election in September may alter the constitution of this Committee.



Don't fail to see our Special Line in  
**PIANOS.**

**15 GUINEAS**

OR

**10/6 PER MONTH.**

✱ Full Trichord, Iron Frame, ✱  
✱ Check Action ✱  
**TEN YEARS WARRANTY!**

**Large Stock of PHONOGRAPHS and  
RECORDS at Stores Prices.**

*Note the Address:*

**W. T. ROBERTS & SON,**

MUSICAL INSTRUMENT WAREHOUSE,  
**28, CASTLE STREET, LUTON.**

## LIST OF AFFILIATED CLUBS.

*a Name and Address of Sec.    b Ground.    c Dressing-room.*

ALEY GREEN ALBION. H. Samm, Ivy Villa, Harcourt street, Luton.  
AMPTHILL TOWN. a E. W. Skinner, Arthur st., Ampthill.  
ARLESEY. a H. Templeman, Arlesey, Beds. b Mr. Hildred's Field. c On Ground.  
ARLESEY OLD BOYS. a G. S. Howard, 10, New rd., Arlesey.  
ASPLEY GUISE. a G. H. Taylor, School House, Aspley Guise, R.S.O. b East street. c Bell Hotel.  
BEDFORD ALL SAINTS DISTRICT. a A. H. Perkins, 13, Idlesleigh road, Bedford.  
BEDFORD CHURCH LADS' BRIGADE. a T. G. Gunnell, 5, Alexander road, Bedford.  
BEDFORD EARLY CLOSERS. a W. S. Smith, 52, Ampthill road, Bedford.  
BEDFORD QUEEN'S PARK EXCELSIOR. a A. G. Buck, 25, Ford End road, Bedford.  
BEDFORD RUSSELL RANGERS. a H. Sprague, 83, Bower street, Bedford.  
BEDFORD SOCIALS. a E. P. Valentine, 56, Denmark street, Bedford.  
BEDFORD SOUTHEND ALBIONS. a A. Whiffin, 21, Sandhurst road, Bedford.  
BEDFORD THURSDAY ATHLETIC. a A. R. Goodchild, 21, Commercial road, Bedford.  
BEDFORD UNITED. a J. Barnard, 3, Stanley Street, Bedford.  
BEESTON RANGERS. a Chas. Barrett, Beeston, Sandy.  
BIGGLESWADE AND DISTRICT. a C. J. Larkinson, Hitchin street, Biggleswade. b Fairfield. c Crown Hotel.  
BIGGLESWADE WESLEYS. a Edgar Wood, Biggleswade. b Back Meadows. c Royal Oak Hotel.  
CLIFTON. a John Deverill, "The Lakes," Clifton, near Biggleswade.  
DUNSTABLE HIGHFIELDS. a Percy Lockhart, Dunstable.



# FOOTBALL BOOTS!

# FOOTBALL BOOTS!

Before deciding what Football Boots you are going to wear for the 1905-06 Season, see our samples in Men's, Youths' and Boys. Every pair guaranteed CROME throughout, with Waterproof Soles, manufactured on the premises. *Quality and Prices Right.*

<b>GENTS'</b>					<b>YOUTHS'</b>				<b>BOYS'</b>			
6	7	8	9	10	5	4	3	2	13	1	12	11
<b>6/11</b>					<b>5/6</b>				<b>4/11</b>			
									<b>4/6</b>			
									<b>3/11</b>			

Also made to measure. Players requiring special size or fitting should pay us a call.

## LAWSON & SON,

Boot Manufacturers,  
MANCHESTER STREET.

Our Gentlemen's Special Line is the  
**NEW ENGLAND BOOT**  
*A Guarantee Given with each Pair.*

**SEE WINDOWS!**

ANY SHAPE. **8/11** ONE PRICE.  
ANY KIND. ONE QUALITY.

DUNSTABLE RANGERS. *a* H. Bunker, 7, Garden road, Dunstable. *c* Nag's Head.  
DUNSTABLE VOLUNTEERS. *a* A. Barton, 58, Upper Union street, Dunstable.  
EATON SOCON EAGLES. *a* W. Giblett, Eaton Socon, near St. Neots. *b* White Horse Field.  
FLITWICK. *a* S. B. Short, Flitwick, Ampthill.  
GOLDINGTON UNITED. *a* A. B. Alexander, Schools, Goldington, Bedford.  
HARLINGTON. *a* J. J. Harris, Harlington, near Dunstable.  
HENLOW. *a* P. Ward, The Lodge, Henlow, Biggleswade.  
HOUGHTON UNITED. *a* E. Gazeley, 23, Beale street, Dunstable. *b* Bull Pond Lane.  
KEMPSTON ROVERS. *a* F. Stanton, 110, Margetts road, Kempston, Bedford.  
LEAGRAVE INSTITUTE. *a* E. J. Maidment, Biscot, Luton.  
LEIGHTON CEE SPRINGS. *a* H. V. Jones, Leighton Buzzard. *b* Bridge street (entrance by towing path). *c* Mr. T. Church's, Bridge street.  
LEIGHTON JUNIOR. *a* H. Wallace, Hartwell Crescent, Leighton Buzzard.  
LUTON ALBION. *a* F. King, 53, John street, Luton.  
LUTON AMATEUR. *a* C. F. Fairhurst, 55, Crawley road, Luton. *b* The Dell, Old Bedford road. *c* On Ground.  
LUTON ARGYLE. *a* W. Bryan, 17, North street, Luton.  
LUTON AVONDALE. *a* A. Davis, 34, Hibbert street, Luton.  
LUTON BAKERS. *a* Hedley Cook, 13, High street, Luton.  
LUTON BROWN & GREEN'S IRON WORKS. *a* H. Sharp, 19, King's road, Luton.  
LUTON CAXTON. *a* A. V. Beckett, 219, Dunstable road, Luton.  
LUTON CELTIC. *a* Stanley Kilby, 57, Tavistock street, Luton.  
LUTON CLARENCE. *a* A. E. Ansell, 71, Church street, Luton. *b* Pope's Meadow.  
LUTON CRESCENT RANGERS. *a* A. Dewar, 31, Vicarage street, Luton. *b* People's Park.  
LUTON DALLOW RANGERS. *a* A. Custance, 18, Old Bedford road, Luton.  
LUTON FERNDALB. *a* W. Watson, 209, North street, Luton.



# S. FARMER & CO.'S Pianos

BY

BECHSTEIN,	OBERMEIER,	WALDEMAR,
BRINSMEAD,	ROGERS,	CHAPPELL,
BROADWOOD,	B. SQUIRE,	BROOKLYN,
IBACH,	KARNOCK,	GORS & KALLMANN

## Organs

BY

ESTEY,	PUTNAM,	HILLIER,
KARN,	MASON & HAMLIN,	CROWN.

### S. FARMER & CO.'S HIRE SYSTEM

IS FAIR AND EQUITABLE.

LOWEST PRICES OBTAINABLE.

Piano and Organ Merchants,

2, WELLINGTON STREET and  
85, GEORGE STREET, LUTON.

Branch: 3, West Street, Dunstable.

LUTON FRIENDS' ADULT ATHLETIC. a P. C. Kilby, 116, Wenlock street, Luton.  
LUTON GROCERS AND PROVISION MERCHANTS. a W. Kendall, 19, Elizabeth Street, Luton.  
LUTON HAVELOCK. a F. Hunt, 15, Dudley street, Luton.  
LUTON Highbury. a Sid. C. Allen, 7, Havelock road, Luton.  
LUTON IRONMONGERS. a R. E. Green, 90, Church street, Luton.  
LUTON MELVILLE. a H. W. Holdstock, 12, Hillside road, Luton.  
LUTON MONTROSE. a W. Pease, 211, Hitchin road, Luton.  
LUTON MOORDALE. a T. Gurney, 80, Crawley road, Luton.  
b Biscot Path.  
LUTON NEWTOWN INSTITUTE. a G. W. Stonebridge, 23, Queen street, Luton.  
LUTON OLD VICARAGE. a H. Day, 17, Holly Walk, Luton.  
LUTON ORIENT. a B. Perry, 24, Liverpool road, Luton.  
LUTON PARISH CHURCH Y.M.C.A. a A. Davis, 34, Hibbert street, Luton.  
LUTON PARK RANGERS. a S. Palmer, 9, Havelock road, Luton.  
LUTON PHENIX. a R. E. Green, 90, Church street, Luton.  
LUTON QUEEN'S. a T. Ayres, 39, North street, Luton.  
LUTON RANGERS UNITED. a G. Clarke, 8, Holly street, Luton.  
LUTON ROVERS. a W. Cole, 32, Alfred street, Luton.  
LUTON ROSEDALE. a V. Hawkes, 53, Cardigan street, Luton.  
LUTON SAXONDALE.  
LUTON SILVER STAR. a W. Jakins, 1, Taylor street, Luton.  
LUTON STANLEY. a G. Ives, 125, Wellington street, Luton.  
LUTON STAR. a A. Albone, 123, Hitchin road, Luton.  
LUTON ST. MARY'S. a R. E. Green, 90, Church street, Luton.  
LUTON ST. MARY'S UNITED. a L. E. Hawkes, 6, Cumberland street, Luton.  
LUTON OLD ST. SAVIOUR'S. a M. R. Crawley, 65, Buxton road, Luton.



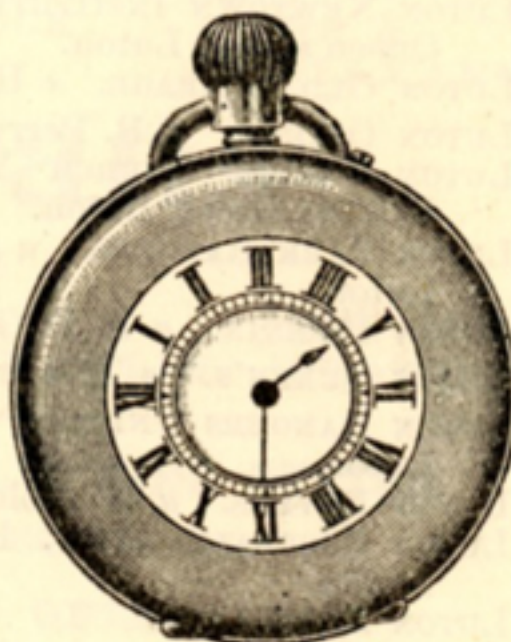
# W. F. BOOTES,



Watchmaker,  
Jeweller, and  
Silversmith.

Thermometers & Barome-  
ters Cleaned & Repaired.  
Clocks Wound by Contract  
Repairs a Speciality.  
Old Gold & Silver Bought.

The Shop for  
Courtng Couples.



Wedding & Engagement Rings a Speciality.

## 15, Guildford St., Luton.

THE CELEBRATED . . .

WALTHAM WATCHES AT ALL PRICES.

LUTON ST. SAVIOUR'S CHURCH. *a* A. G. Brown, 37,  
Alma street, Luton. *b* Stockwood Park.  
LUTON TAILORS. *a* H. Brooker, 17, George Street, Luton.  
LUTON TOWN. *a* C. Green, 81, Church street, Luton.  
*b* Dunstable Road. *c* On Ground.  
LUTON TRINITY. *a* A. Brown, 225, Dunstable road,  
Luton. *b* Biscot Path. *c* On Ground.  
LUTON UNITED. *a* H. Kilby, 15, Bailey street, Luton.  
*b* West Ward Recreation Ground.  
LUTON VICTORIA. *a* H. C. Horsford, 131, Park street,  
Luton.  
LUTON WANDERERS. *a* W. G. Smart, 24, Mill street, Luton.  
LUTON WESLEY GUILD. *a* A. East, Hibbert Street,  
Luton. *b* Biscot Path. *c* On Ground.  
MARKYATE ST. JOHN'S. *a* F. E. Beck, 140, High street,  
Markyate, Dunstable.  
MARSTON ROVERS. *a* F. Tuffnell, Marston, Ampthill.  
MEPPERSHALL. *a* F. Poulter, Meppershall, near Shefford.  
*b* Long's Meadow. *c* Five Bells Inn.  
OLD WARDEN. *a* Rev. G. K. Cassels, Old Warden  
Vicarage, Biggleswade.  
POTTON. *a* R. Gibbs, Market square, Potton.  
SANDY CHURCH LADS' BRIGADE. *a* A. R. Brown, Cam-  
bridge Road, Sandy.  
SANDY FREE CHURCH. *a* J. Milliner, St. Neots road,  
Sandy.  
SHILLINGTON. *a* R. H. Brown, Rose Hill, Shillington,  
Hitchin.  
SLIP END. *a* B. Fensome, 25, Harcourt street, Luton.  
STOPSLEY. *a* E. Smith, Stopsley, Luton.  
STOTFOLD. *a* T. E. Smith, Stotfold, Beds.  
THREE COUNTIES ASYLUM. *a* P. Keenan, Three Countie  
Asylum, near Hitchin.  
TODDINGTON. *a* C. Sharp, Toddington, Dunstable.  
TURVEY. *a* F. W. Wright, Bridge Street, Turvey.



# HILL & WOOD,

ELECTRICAL & GENERAL

. . ENGINEERS,

CHAPEL STREET, LUTON.

## SPECIALITIES:

Electrical Installations.

Motor-Car and Motor-Cycle  
REPAIRS.

## Rubber Work

BY UP-TO-DATE

VULCANIZING MACHINERY.

Estimates Free.

Nat. Tel. 0611.

UPPER CALDECOTE. a G. Darnell, Royal Oak Yard,  
Upper Caldecote, Biggleswade.

WOBURN SANDS MONTROSE. a G. E. Buck, Chapel street,  
Woburn Sands, R.S.O.

WOOTTON BLUE CROSS. a R. B. Walker, Wootton,  
Bedford.

WYMINGTON STARS. a H. Fisher, Wymington, near  
Rushden.

---

## LUTON JUNIOR LEAGUE.

This admirable organisation enters upon its eighth season. For some time it has supplied a splendid training ground for the young fellows of the town and district, and from its commencement to the present time has fostered the true spirit. Last season twenty-five clubs were formed into three divisions, and at the present time the same number have entered for this season's competition. The Trinity captured the First Division trophy, Crescent Rangers the Second Division, and Melville were winners of the Third. Naturally, the latter two clubs, with the runners-up, enter the higher grade, and this promotion should create a good League. The Management Committee consists of the officers and nine elected members. Dr. Hillier is the President, with Mr. R. E. Green as Chairman, and Mr. J. H. Scott, 121, Hitchin Road, Luton, as Hon. Sec. and Treas. The following are the clubs:—

1ST DIVISION—Trinity, Old Vicarage, Celtic, Friends Adult, Newtown Institute.

2ND DIVISION—Melville, Old St. Saviour's, Dallow Rangers, Houghton Regis United, Luton Queen's, Luton United, St. Mary's United, Markyate St. John's,



FOR UNSHRINKABLE  
**Flannel Shirts**  
 AND  
**Underwear**  
 IN  
 Cashmere, Merino,  
 and Ram Fleece,  
 GO TO—

TAILOR and  
 OUTFITTER,

For Dainty  
**Ties & Scarfs**  
 THE LATEST IN  
**Collars, Gloves**  
 AND  
**Mufflers,**  
 GO TO—

**S. BASSETT,**

The NEWEST in  
**Hats & Caps,**  
 JUVENILE,  
 YOUTHS'  
 and MEN'S  
**CLOTHING**  
 AT  
 POPULAR  
 PRICES.

28, Wellington Street,  
 LUTON.

The 'Winner.'  
 —  
**BASSETT'S**  
**Rainproof .**  
**OVERCOAT**  
**21/-**  
 12 DISTINCT PATTERNS

Slip End, Wesley Guild, Old Vicarage Reserves, Dunstable Rangers Reserves.

3RD DIVISION—Rosedale, Albion, Havelock, Moor-dale, Saxondale, Houghton United Reserves, Dunstable Highfields.

#### TRADESMEN'S CUP COMPETITION.

Considerable interest was taken last season in a series of matches confined to shopkeepers and their assistants of the town, and as an outcome of the competition this combination has been formed. It will provide some good Wednesday football, and as the various trades have entered into the formation with spirit, the experiment will be watched with much interest. The initiative was taken by Mr. T. V. Donelan, and in the summer several meetings were held and the competition floated. For the purposes of the competition, the old Luton Charity Cup, owned by the Luton Town F.C., has been given, on certain conditions, as a trophy, and as the objects aim at assisting the Town club's finances and local charities, the competition is well worthy of support and a keen contest is anticipated. The Chairman is Mr. T. V. Donelan, of The New Hall, Wellington Street, Luton, with Mr. B. H. Barnes, 55, Stuart Street, as Secretary.

#### BEDFORD FOOTBALL LEAGUE.

Owing to the unfortunate lapse of the old Bedfordshire and District League, football in the County town has been at a low ebb, but chiefly through the instrumentality of Mr. G. Wistow Walker, Hon. Sec. of the Beds. F.A., another League was formed in September, 1904, and passed through a very successful first season. Two Divisions were formed—the first being open to all



September 1st.

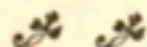
# Special Show

. OF .

## Jackets

AND

## Dresses.



# ALEXANDER & SON

33, Wellington Street,

✻ ✻ LUTON.

clubs of a senior character in the County, and the second confined to a certain radius from Bedford. This season opens with three clubs in the First Division and eleven in the Second. The League possesses two splendid trophies, the winners in the First Division being Queen's Park Excelsiors, and All Saints carried off the honours in the minor division. The financial position of the League is excellent, as a balance on the right right side of nearly £3 shows. Mr. Guy Pym, M.P., is the President, whilst there is a long list of vice-presidents, the working officials being—

*Chairman* : Mr. E. Lyonel Finch.

*Vice-Chairman and Referees' Secretary* : Mr. M. A. Barber.

*Hon. Sec. and Treas.* : Mr. H. Eaton, 22, Battison Street, Bedford.

FIRST DIVISION—Bedford Socials, Kempston Rovers, Queen's Park Excelsiors.

SECOND DIVISION—Amphill Town, Bedford United, Bedford Social Reserves, Bedford Church Lads Brigade, Goldington United, Queen's Park Excelsior Reserves, Sandy Church Lads' Brigade, Turvey, Wootton Blue Cross, Marston Rovers.





## MEN WHO HAVE PLAYED FOR LUTON.

The following is a list of men who have played for the Luton Club since it adopted professionalism:—

1891-2.—J. Burley; B. Sanders and A. Hoy; J. Wright, H. Paul, A. H. Taylor and E. H. Lomax; F. K. Whitby, G. Deacon, C. Lomax, H. W. Ocle, H. Whitby, and W. Chesher.

1892-3.—Burley and T. Reed; Sanders, Hoy, W. George, and Wilson; Wright, Julian, Taylor, and Watkins; Brown, Chesher, Allen, H. & F. Whitby, H. Barbour, Galbraith, J. McKenzie, and F. V. Kirk.

1893-4.—Bee; Chesher, Wilson, and C. Read; Watkins, Julian and Taylor; H. Whitby, Allen, Galbraith, Finlayson, Vickers, J. Dimmock, Brown, and Hayes.

1894-5.—Bee; Chesher, M. D. Nicholson, & McEwen; Watkins, McCrindle, Howe, and Collins; Brown, Gallacher, Galbraith, Prentice, Allen, Dimmock, and Jack.

1895-6.—Jack, Russell, and Williams; Stirton, M. D. Nicholson and McEwen; Watkins, Stewart, & Docherty; Gallacher, Finlayson, Galbraith, Parkinson, Birch, Ekins, Coupar, and Dimmock.

1896-7.—Williams; Davies and McEwen; Perrins, Stewart, Docherty, and Watkins; Gallacher, Finlayson, McInnes, Galbraith, Birch, Coupar, Ekins, Dimmock, and Brown.

1897-8.—Williams; McCartney and McEwen; Davies, Stewart, Docherty, and Perrins; Gallacher, Coupar, Birch, Clarke, Donaldson, Little, McInnes, Ekins, and Durrant.

1898-9.—Perkins; H. Williams, Moore, and Dow; C. Ford, Clark, Sharp and Crump; Durrant, Hewitt, W. Ford, Kemplay, Draper, McInnes, Brock, and Ekins.

1899-1900.—Daw; Dow and McCurdy; Morrison, Stewart, J. Brown, Williams and Ralley; Inglis, Brock, Fairgrieve, Draper, McInnes and Eckford.

1900-1.—Monks and Ord; Lindsay and McCurdy; Clifford, Holdstock, Williams and Cox; Brown, Blessington, Molyneux, Burbage, Dempsey, Tierney, Saxton and Durrant.

1901-2.—Ord; Lindsay, Sharp and Street; F. Hawkes, White, Williams, and R. Hawkes; Durrant, Blessington, Brown, Barker, Tierney, and Colvin.

1902-3.—Frail; Lindsay, Sharp and Hood; F. Hawkes, White, Williams and R. Hawkes; Durrant, Blessington, Hilsdon, Moody, Davidson, Gall, and Allsopp.

1903-4.—Thompson; Bennett and McEwen; F. Hawkes, White, R. Hawkes, and Williams; Durrant, Eaton, McKee, Storey, Moody, Allsopp, Griffiths and Madden.

1904-5.—Lindsay; Turner, McEwen, J. Dow; F. Hawkes, White, R. Hawkes, Pritchard and Williams; Eaton, Ross, Lamberton, Penman, Moody, Wallace, and Barnes.

## *A Record in Journalism!*

# The Luton News

And Bedfordshire Chronicle

By its last enlargement, holds a position  
which is unique in the Newspaper World,  
being

THE LARGEST &

HALFPENNY

(PROVINCIAL WEEKLY) NEWSPAPER


IN THE KINGDOM.

8 PAGES—56 COLUMNS—One Halfpenny

BEST FOR READERS.

BEST FOR ADVERTISERS.

*Largest Circulation in Town & County.*

 Weekly Sale far in excess of the combined  
issues of its Luton Contemporaries.

N.B. — The "News" gives *all the news* in  
an attractive form, and is actually larger than  
several papers published in neighbouring towns  
at one penny weekly.

PUBLISHING OFFICE: MANCHESTER STREET.



# Where is **WOODING'S** and **High Town Road**?

Seeing that twice lately there have been people wandering about, and in one case at least failing to find either **WOODINGS'** or **HIGH TOWN ROAD**, it seems time that one should try and make clear where this Grocery and Sweet Business is to be found.

High Town Road is the main road leading away from the Midland Railway Station towards Round Green. **WOODING'S SHOPS** are in the centre of **HIGH TOWN ROAD**, the Sweet Shop on the right hand side, at No. 78, and the Grocery Shop a little farther up on the opposite side, at the corner of Havelock Road, and the No. 81.

I hope this will be clear enough for all would-be buyers to find their way thither.

The good woman that couldn't find us wanted

## **COLMAN'S WINGARNIS**

for an invalid, and had to return without it.

Other invalids now may like to know that we have a large quantity of this wine in stock, and the price is  $2/4\frac{1}{2}$  and  $3/6$  per bottle.

**Hall's Wine**, too, for ill folk,  $1/9$  and  $3/-$  per bot.

WE ALSO STOCK ALL

**W. & A. GILBEY'S WINES and SPIRITS,**  
**COCO WINE, MEAT and MALT WINE,**

and if you have lost your appetite through illness, try our **ORANGE** and **QUININE** at  $1/-$  per bot.